

SEHX SERIES™

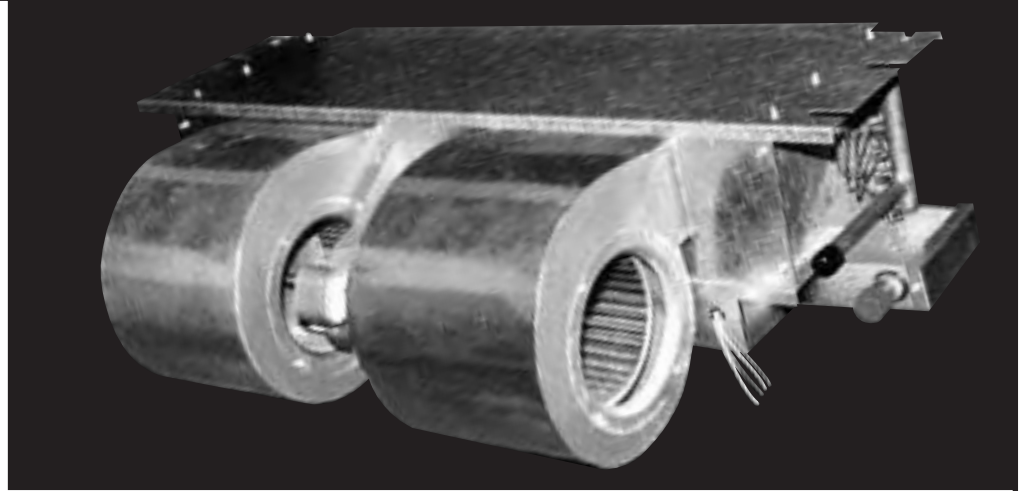
Air Handler

DX Cooling with Electric Heat

Horizontal Ceiling Mounted Design

Description:

The SEHX Series horizontal fan coil series is designed for horizontal mounting into a furred down ceiling. This space saving SEHX series handles up to 1150 CFM of air movement, up to 3 tons of cooling, and up to 10 KW of electric heat. For cooling requirements, these units are designed to accept coils to match with most brands of AC condensing units. The SEHX Series are dual rated for 208/240 V and are U.L. listed.



- 208-240V / 1 Ph / 60 Hz.
- Space saving design.
- Galvanized steel blower wheels
- Prewired for cooling and heating.
- 208-240V / 40VA transformer.
- Primary and secondary condensation drains.
- Easy access for service and maintenance.
- High efficiency copper.

Options:

- Louvered access panel
- Non-louvered access panel
- Time delay relays
- Heat-pump version available (H.P. Extension Plenum) field or factory installed, "SEHP Series"
- Return air plenum kit (field or factory installed)

Blower Data:

Model Number	Motor H.P.	CFM vs. External Static Pressure						
		0.0	0.05	0.10	0.15	0.20	0.25	0.30
SEHX-12-XX-07-0C62	1/10	800	775	750	730	704	680	655
SEHX-15-XX-07-0C64	1/6	690	660	635	610	600	580	560
SEHX-18-XX-0A-0C64	1/6	810	785	765	740	720	700	680
SEHX-19-XX-0E-0C64	1/6	910	880	855	830	805	785	765
SEHX-24-XX-09-0C64	1/6	950	920	890	875	850	825	805
SEHX-25-XX-0H-0C65	1/4	1160	1130	1100	1070	1040	1020	985
SEHX-30-XX-0J-0C65	1/4	1180	1145	1115	1085	1055	1025	1000
SEHX-31-XX-05-0C65	1/4	1160	1130	1100	1070	1040	1020	985
SEHX-34-XX-0K-0C65	1/4	1256	1212	1172	1133	1084	1059	1029
SEHX-35-XX-01-0C65	1/4	1216	1172	1138	1108	1049	1024	995
SEHX-36-XX-0K-0C65	1/4	1275	1230	1190	1150	1100	1075	1045
SEHX-37-XX-01-0C65	1/4	1235	1190	1155	1125	1065	1040	1010

Ceiling Access Panels

Part No.	Overall Frame Dimension	Type	SunTherm Horizontal Air Handler Models	Ship Wt.
CPL1	27-1/2x43	Louvered	SEHX-12, SEHX-18, SEHX-19	18
CPNL1	27-1/2x43	Non-Louvered	SEHX-24	18
CPL2	27-1/2x49	Louvered	SEHX-25, SEHX-30, SEHX-31	20
CPNL2	27-1/2x49	Non-Louvered		20
CPL3	27-1/2x55-1/2	Louvered	SEHX-34, SEHX-35	21
CPLN3	27-1/2x55-1/2	Non-Louvered		21
CPL4	27-1/2 X 62-1/2	Louvered	SEHX-36, SEHX-37	22
CPNL4	27-1/2 x 62-1/2	Non-Louvered		22

Approved for installation with 0" clearance to combustible materials.

Performance Data:

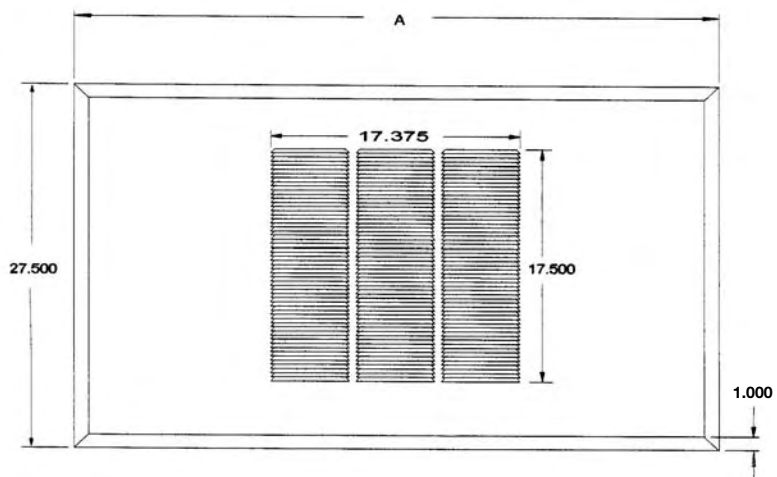
Model Number	Nom. CFM	Nom. Cool BTUH	Heat (1)		Total Amps	Min. Circuit Ampacity	(2) Max. Fuse
			KW	BTUH			
SEHX-12	400	12,000	0	0	1	15	15
			3	10,200	14	18	20
			5	17,000	22	28	30
			6	20,500	26	33	40
			8	27,300	34	43	45
SEHX-15	500	15,000	0	0	2	15	15
			3	10,200	14	18	20
			5	17,000	22	28	30
			6	20,500	27	34	40
			8	27,300	35	44	45
SEHX-18/19	600	18,000	0	0	2	15	15
			3	10,200	14	18	20
			5	17,000	22	28	30
			6	20,500	27	34	40
			8	27,300	35	44	45
			10	34,000	44	55	60
SEHX-24	800	24,000	0	0	2	15	15
			3	10,200	14	18	20
			5	17,000	22	28	30
			6	20,500	27	34	40
			8	27,300	35	44	45
			10	34,000	44	55	60
SEHX-25/30/31	1000	30,000	0	0	2	15	15
			3	10,200	15	19	20
			5	17,000	23	29	30
			6	20,500	28	35	40
			8	27,300	36	45	45
			10	34,000	44	55	60
SEHX-34/35	1100	35,000	0	0	3	15	15
			3	10,200	15	19	20
			5	17,000	23	29	30
			6	20,500	28	35	40
			8	27,300	36	45	45
			10	34,000	44	55	60
SEHX-36/37	1200	36,000	0	0	3	15	15
			3	10,200	15	19	20
			5	17,000	23	29	30
			6	20,500	28	35	40
			8	27,300	36	45	45
			10	34,000	44	55	60

Notes: (1) All BTUH heating ratings at 240V - derate heating capacities by 25% for 208V.
 (2) Maximum fuse or HACR-type circuit breaker.

Louvered Door Dimensions:

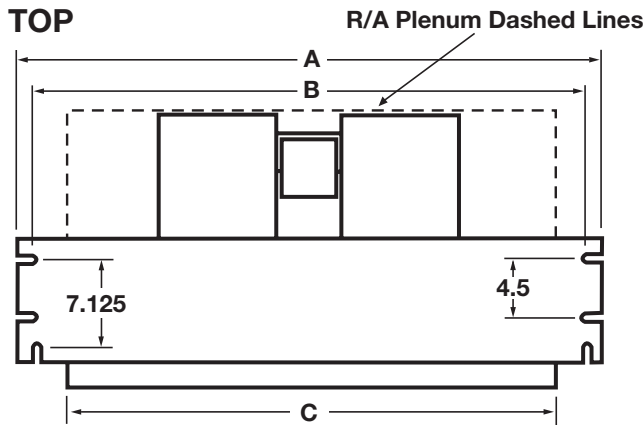
Part No.	A
CPL1	43.000
CPL2	49.000
CPL3	55.500
CPL4	62.500

Note: "CPNL" - (Non-Louvered Version)

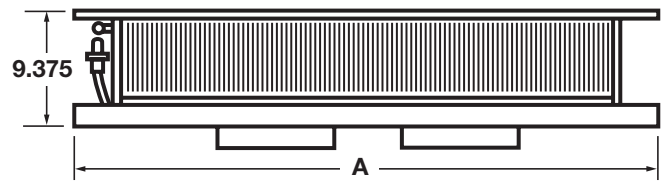


All Technical Specifications Subject to Change Without Notice.

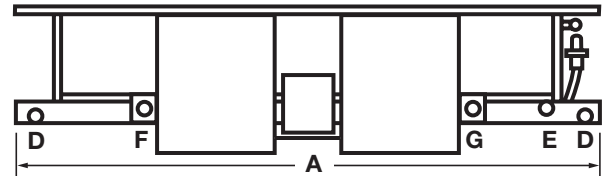
Dimensional Data:



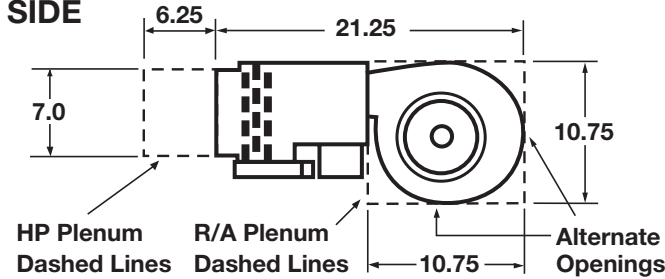
FRONT



BACK



SIDE



- D 3/4 MALE DRAIN CONN PRIMARY
- E 3/4 MALE DRAIN CONN SECONDARY
- F .875 POWER CONN
- G .562 THERMOSTAT CONN

Physical Dimensions:

Model Number	Liq. Line	Suct. Line	Evap. Rows	A	B	C	Ship Wt.
SEHX-12-XX-07-0C62	3/8	3/4	2	37	34.25	30	55
SEHX-15-XX-07-0C64	3/8	3/4	4	37	34.25	30	65
SEHX-18-XX-0A-0C64	3/8	3/4	3	37	34.25	30	60
SEHX-19-XX-0E-0C64	3/8	3/4	4	37	34.25	30	65
SEHX-24-XX-09-0C64	3/8	3/4	3	37	34.25	30	60
SEHX-25-XX-0H-0C65	3/8	3/4	4	45	42.25	38	75
SEHX-30-XX-0J-0C65	3/8	3/4	3	45	42.25	38	70
SEHX-31-XX-05-0C65	3/8	3/4	4	45	42.25	38	75
SEHX-34-XX-0K-0C65	3/8	3/4	3	49	46.25	42	74
SEHX-35-XX-01-0C65	3/8	3/4	4	49	46.25	42	80
SEHX-36-XX-0K-0C65	3/8	3/4	3	56	53.25	49	85
SEHX-37-XX-01-0C65	3/8	3/4	4	56	53.25	49	90

All Technical Specifications Subject to Change Without Notice.