

## PRECISION ENERGY METER KIT

### FEATURES:

- ◆ Polycarbonate NEMA Enclosure (Multiple sizes available)
- ◆ Programmable Display
  - ◇ Color LCD (Touchscreen)
  - ◇ Large, easy to read
- ◆ Integrated power supply
- ◆ BACnet and Modbus Options



### PRODUCT DESCRIPTION:

The Elkor Energy Meter Kit includes the WattsOn-Mark II precision energy meter installed in a NEMA panel with a touch screen color graphical display, pre-wired with a power supply. The kit is available with various CT styles and sizes.

The kit may be ordered in a small (8" x 8") or medium (8" x 10") enclosure. Kits include an internal universal (120-240VAC) 24VDC power supply which may be used by auxiliary devices inside the panel such as controls or gateways. Optional components such as shorting blocks, fuse blocks, or client supplied accessories may be installed.

The LCD touch screen panel features large, easy to read fonts and the ability to configure the display and meter locally. Trending is available over 24h, 1h and 2 minutes.

The communication between the display and the meter uses the auxiliary meter port, allowing the main communications port (optional BACnet or Modbus, serial or Ethernet) to be connected to external equipment, RTUs, PLCs or gateways.

The display may be customized by either the client, or by Elkor for a variety of features, display functions, logging, trending and visualizations (graphs, gauges).

The kit may be optionally ordered without the front panel display for full NEMA 4X rating.

SPECIFICATIONS:					
<b>Size [1**]</b>	<b>Small (-S)</b>			<b>Medium (-M)</b>	
<b>Overall Dimensions (H x W x D)</b>	7.94" x 8.15" x 3.98"			9.93" x 8.15" x 3.98"	
<b>Internal Dimensions (H x W)</b>	6.75" x 6.88"			8.75" x 6.88"	
<b>Internal Fuse and CT Block</b>	No			Yes	
<b>Power Supply</b>	120-240Vac, 15W (120-277Vac optional: -277PS model designation)				
<b>Protocol [2**]</b>	<b>-M1 Model</b>	<b>-M2 Model</b>	<b>-E2 Model</b>	<b>-E3 Model</b>	<b>-E4 Model</b>
<b>Communication Method</b>	RS-485 Modbus/RTU	RS-485 BACnet/MSTP	Ethernet (RJ45) BACnet/IP & Modbus/TCP	Ethernet (RJ45) Modbus/TCP & Webserver & HTTP Post	Ethernet (RJ45), WiFi Modbus/TCP & Webserver & HTTP Post
<b>Current Input [3**]</b>	<b>-mV Model</b>	<b>-mA Model</b>	<b>-5A Model</b>	<b>-RC</b>	
<b>CT Type</b>	333mV Output	mA Output	XXX:5A Output	Rogowski Coil	
<b>Rated Input Range</b>	0-333mV	0-200mA	0-5A	0-360mV	
<b>Display Option [4**]</b>	<b>(omitted)</b>		<b>-DL</b>		<b>-NDP</b>
<b>Description</b>	Front Color Touch LCD		Internal (on-meter) Display Only		No Displays
<b>Enclosure NEMA Rating</b>	NEMA 1		NEMA 4X		NEMA 4X

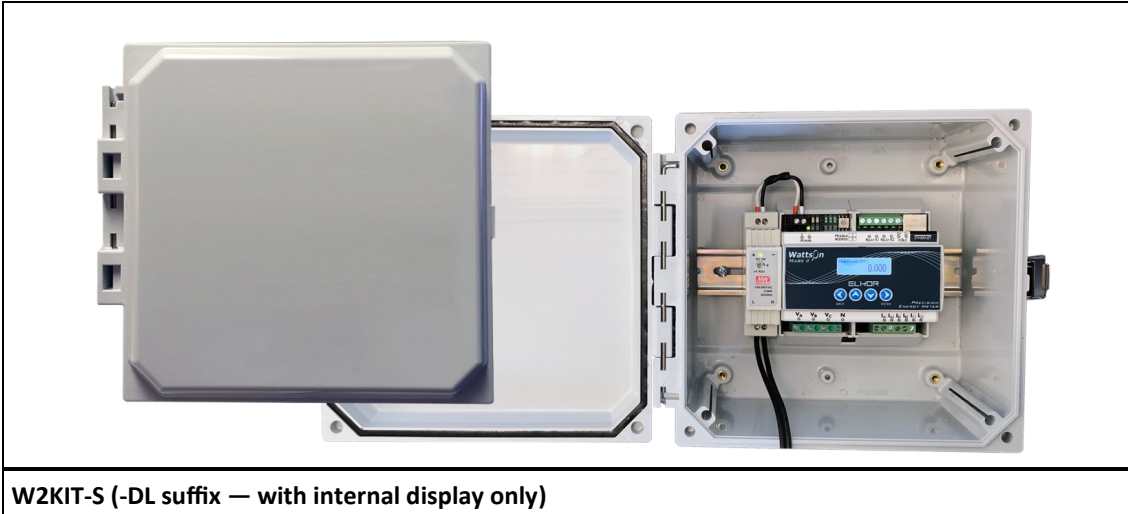
### ORDERING:

**W2KIT- [1] - [2] - [3] - [4]**

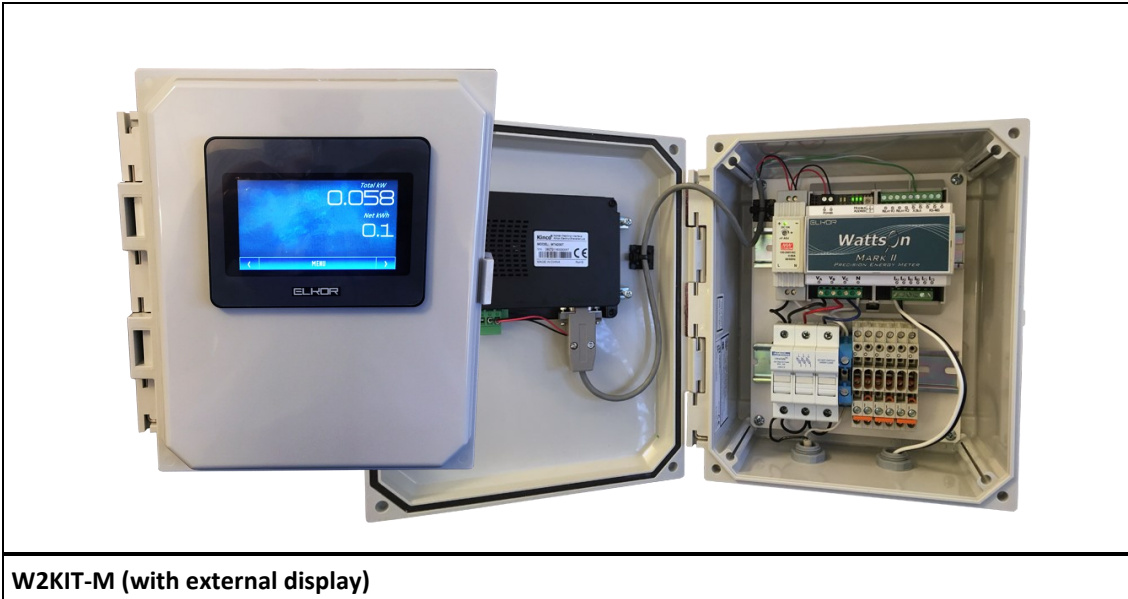
Example: W2KIT-S-M1-5A



W2KIT-S (with external display)



W2KIT-S (-DL suffix — with internal display only)



W2KIT-M (with external display)