



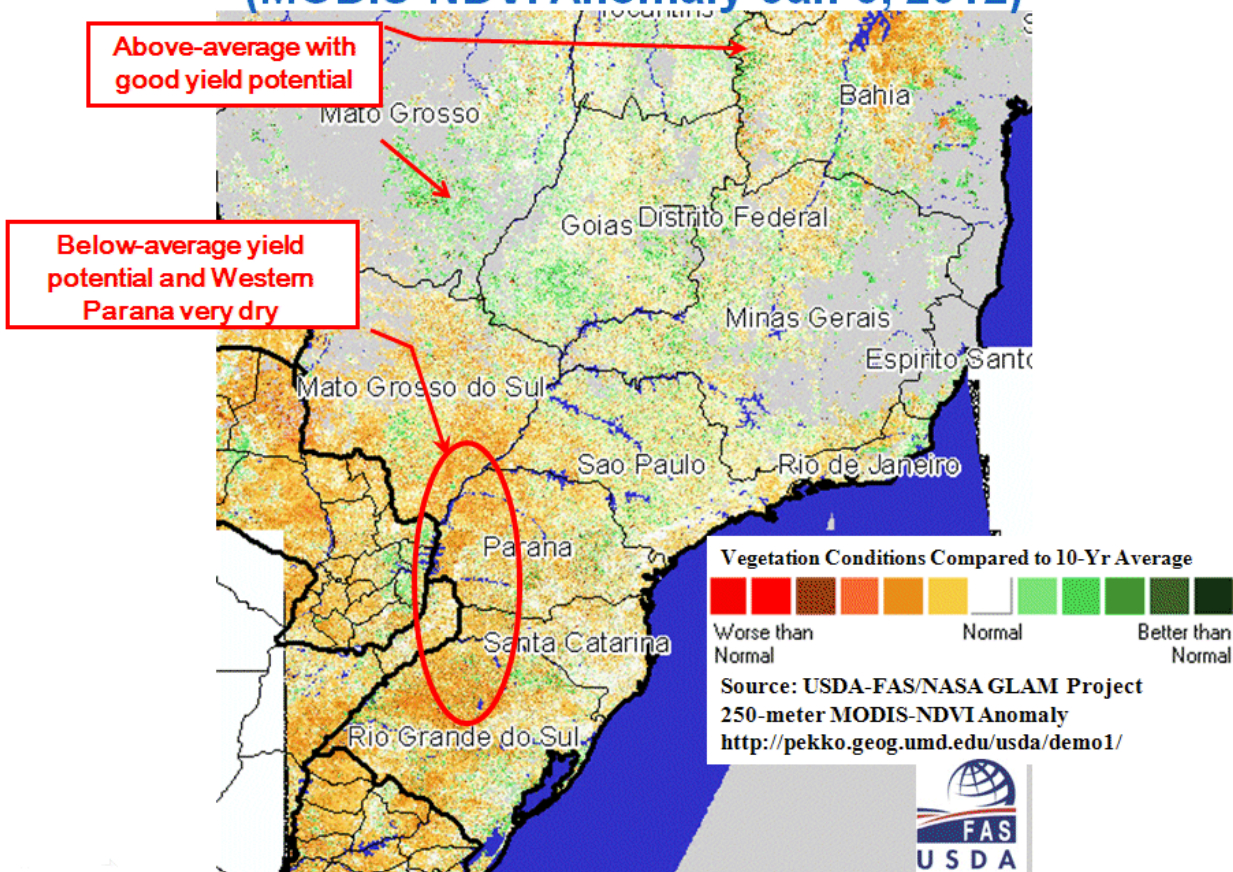
United States  
Department of  
Agriculture

Foreign  
Agricultural  
Service

Circular Series  
WAP 01-12  
January 2012

# World Agricultural Production

## Vegetation Conditions or “Greenness” Compared to the 10-year Average (MODIS-NDVI Anomaly-Jan 3, 2012)



### Drought in Southern Brazil Reduces 2011/12 Soybean Production Forecast

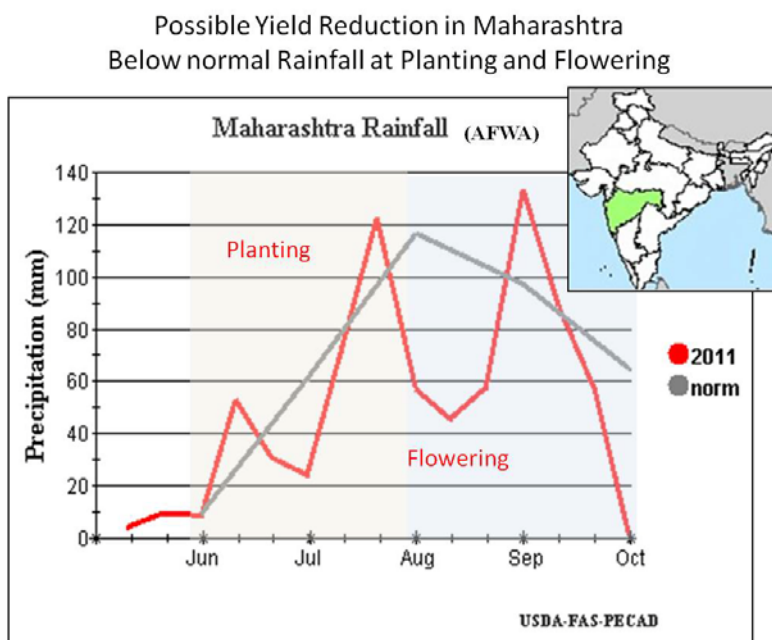
Brazil’s 2011/12 soybean production is forecast at 74 million tons, down 1.0 million from last month and down 1.5 million or 2 percent from last year. Yield is forecast at 2.96 tons per hectare, down 1 percent from last month due to below-average rainfall in the south during November and December. Area is forecast at a record 25 million hectares, unchanged from last month and up 0.8 million or 3 percent from last year. The planting pace was ahead of the 5-year average throughout the planting season, with most of the crop planted by the end of December.

Approved by the World Agricultural Outlook Board

Above-average rainfall during October gave nearly ideal planting conditions for most of Brazil. However, below-average rainfall in the south during December reduced potential yields, especially in regions that were planted early where crop stage was in the critical flowering and pod-filling stages during December's drought.

Harvesting started this month in Parana, the second-largest soybean producing state, which reported below-average yields in the early-planted regions located in the western and southwestern portions of the state. DERAL, the state crop estimating agency for Parana, also reduced their soybean production forecast this month by 1.4 million tons (from 14.1 to 12.7 MT) due to December's drought and low reported harvested yields in western Parana.

In contrast, seasonal rainfall was beneficial in central and northeastern parts of Brazil. Mato Grosso, the largest soybean producing state in the central west, is expecting a record soybean harvest of 22.2 million tons and above last year's record crop of 20.4 million tons. *(For more information, contact Curt Reynolds, PhD, at 202-690-0134.)*



### India Cotton: High Production Projected for the 2011/12 Crop

The USDA estimates 2011/12 India cotton production at a record 27.0 million bales (480-pound bales), down 2 percent from last month, but up 1.6 million or 6 percent from last year. Harvested area is estimated at 12.2 million hectares, unchanged from last month, but up 10 percent from last year. Yield is estimated at 482 kilograms per hectare, down 2 percent from last month and down 3 percent from last year.

The 2011 monsoon season started at a relatively slow rate in May, but conditions improved significantly in July and August. Despite a slow start to the season, favorable planting conditions in July and August extended the planting window and boosted plantings in all major growing areas. Rainfall throughout the season progressed well and provided favorable conditions

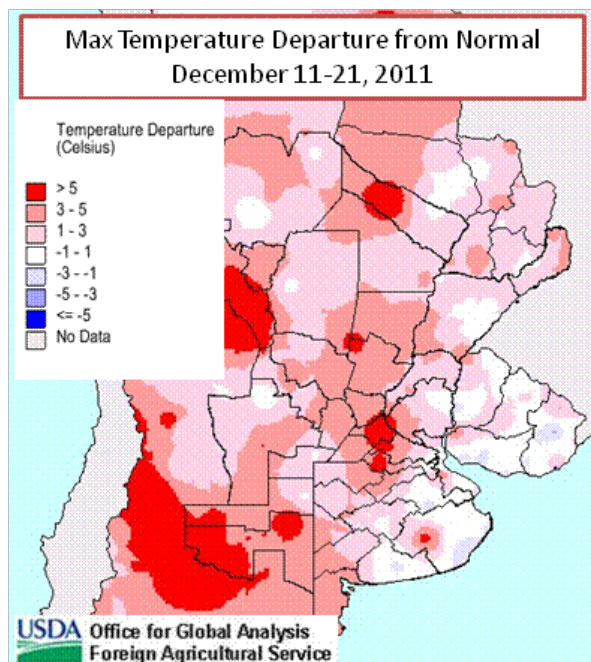
for crop growth and development. The ideal planting conditions, high domestic prices, and anticipated export demand encouraged record cotton plantings in the major growing areas of Gujarat, Andhra Pradesh, and Madhya Pradesh. But in some areas, especially Maharashtra, observers are concerned about possible yield reductions caused by below-normal rainfall at the beginning of the planting season and limited irrigation supplies in the areas that typically rely on supplemental irrigation.

Seed cotton arrivals from November through early January are averaging 25 percent lower than last year. The largest shortfalls, at approximately 40 percent less than the same time last year, are in Maharashtra, the state that contributes about 20 percent of national production. The delayed start to the harvest campaign and farmer holding (anticipating higher prices) are the primary suspects for the low arrivals, but lower yields may be a significant contributing factor as well. *(For more information, contact Dath Mita, PhD, at 202-720-7339.)*

### Argentina Corn: December Dryness Threatens Production Prospects

The USDA forecasts Argentine corn production for 2011/2012 at 26.0 million tons, down 3.0 million from last month but up 3.5 million from last year. Area is estimated at 3.8 million hectares, unchanged from last month but up 0.2 million from last year. Yield is estimated at 6.84

Heat in December Hurts Corn and Soy Crops in Argentina



tons per hectare (t/ha), up 9 percent from last year. During December, several locations in Argentina's key corn-production region reported sporadic high temperatures above 38 degrees Celsius, (100 degrees Fahrenheit), resulting in moisture stress for some of the corn. About half of the early corn was entering the silking and tasseling stages – the stages most susceptible to drought. The corn in the northwest region of Buenos Aires, the southeast region of Cordoba, and the far southern region of Santa Fe has taken the brunt of the damage. Only scattered or very light rain (less than one-half inch) fell last week near the towns of Colonia, Almada, and Hernando in the province of Cordoba, while elsewhere in much of this southern region of the province no rain has been recorded. In Buenos Aires, the regions around the towns of Pergamino, Rojas and Salto have received less than 10 mm (less than one-half inch) with temperatures well above 100 degrees Fahrenheit. In the regions of Junín, Villegas (Pergamino) in

Buenos Aires province and around María Teresa and Labordeboy in the province of Sante Fe, the crop has been under heat stress for several weeks. Some specialist suggest from 4 to 7 inches of rain will be necessary to replenish soil moisture and relieve plant stress for continued crop progress. In some sandy fields with severe damage, farmers are harvesting hay or directly grazing the corn crop. *(For additional information, contact Dr. Denise McWilliams at 202-720-0107.)*

## **Argentina: After Dry December, Soybeans Likely to Benefit from Recent Rainfall**

Argentine soybean production for 2011/12 is estimated at 50.5 million tons, down 1.5 million from last month, but up 1.5 million from last year. Harvested area is estimated at 18.7 million hectares, up 2 percent from last year's 18.3 million. Yield is estimated at 2.70 tons per hectare, down 1 percent from last month and up almost 1 percent from last year. Excessive December dryness resulted in poor emergence and establishment of first-crop soybeans in northwestern Buenos Aires, southern Cordoba and far-south Santa Fe provinces. Most soybeans in this region are not yet flowering and could pull out of severe stress if the crop receives rainfall in January and February. For instance, around Junín most soybeans only received about 6 mm (just over a third of an inch) of rain during December, which hampered crop establishment and growth. In the areas hardest hit from lack of rain, leaves of the soybean plants are smaller and crop plant internodes are short which may limit future plant branching and flower and pod set. The rain that fell in early January will encourage the planting of second-crop soybeans. As of last week, only 40 percent of the second-crop soybeans were in the ground. *(For additional information, contact Dr. Denise McWilliams at 202-720-0107.)*

## **Russia Sunseed: Production Estimate Continues to Climb**

The USDA estimates Russia sunflowerseed production for 2011/12 at a record 9.6 million tons, up 0.8 million or 9 percent from last month and up 4.3 million or 79 percent from last year. Harvested area is estimated at a record 7.3 million hectares, unchanged from last month but up 1.7 million from last year, when severe drought resulted in an unusually high rate of abandonment. Yield is estimated at 1.32 tons per hectare, up 38 percent from last year and up 18 percent from the 5-year average. The estimated yield, while not actually a record for Russia, is the highest of the post-Soviet era. (Official data indicates sunseed yield at 1.48 tons per hectare in 1989/90.) The month-to-month increase is based on a December 28 report from the Ministry of Agriculture citing sunseed output at 9.6 million tons. *(For more information, contact Mark Lindeman at 202-690-0143.)*

## **Ukraine Sunseed: Area and Production Estimates Revised**

The USDA has revised its estimates of Ukraine sunseed area and production for the marketing years 2005/06 through 2011/12 in an effort to more closely reflect actual output. The USDA revisions were based chiefly on exports of sunflower oil, meal, and seed, which are reported by the State Customs Service of Ukraine to the Global Trade Information Service and published in the Global Trade Atlas. Yield was estimated based on analysis of weather, yield models, and SSC data, and harvested area was derived from the production and yield estimates.

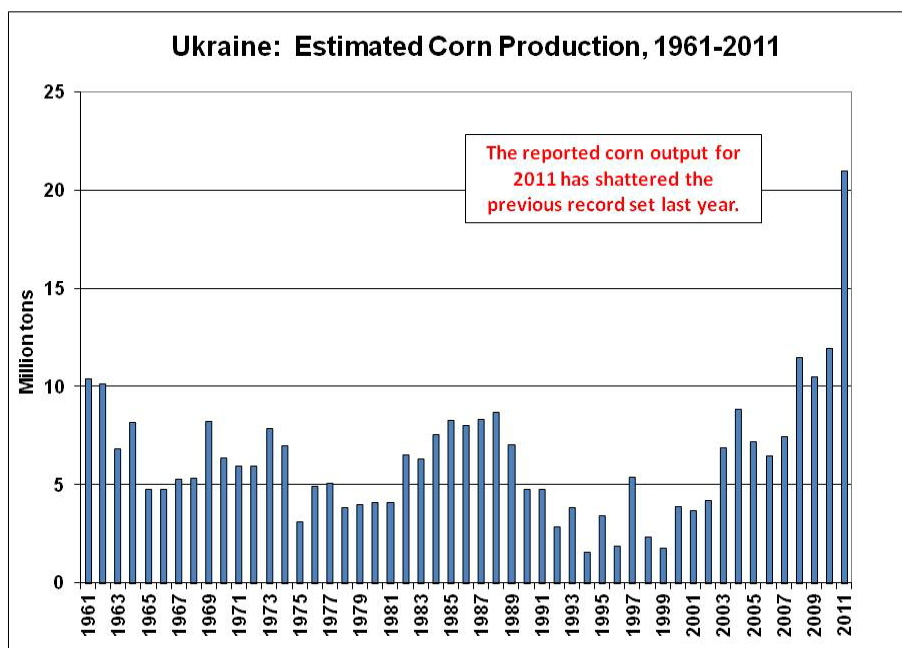
Ukrainian law requires agricultural enterprises to follow approved crop rotations in an effort to reduce the incidence of soil-borne fungal disease caused by too-frequent planting of sunflowers, a consistently and highly profitable crop. These restrictions essentially restrict many farmers from planting as much sunseed as they would like, and has resulted in the likely under-reporting of sunseed area and production to the State Statistical Committee of Ukraine (SSC). Note that sunseed is the only commodity for which the USDA does not adopt the area and production data from the State Statistical Committee of Ukraine (SSC). The USDA considers SSC data to be generally reliable and continues to use final SSC numbers as the basis for official area and

production data for all other Ukrainian oilseeds and grains. *(For additional information, please contact Mark Lindeman at 202-690-0143.)*

### Ukraine Corn: Ministry Harvest Reports Indicate Enormous Crop

The USDA estimates Ukraine corn production for 2011/12 at a record 22.5 million tons, up 1.5 million or 7 percent from last month’s record forecast, and up 10.6 million or 89 percent from last year. Yield is estimated at a record 6.43 tons per hectare, up 43 percent from last year. Harvested area is estimated at 3.5 million hectares, unchanged from last month but up 0.9 million from last year. Favorable weather enabled the corn harvest to continue into late December. Last year, by comparison, harvest was essentially finished by December 1.

Corn yield has doubled over the past ten years, and the estimated yield for 2011/12 surpasses the previous record (5.02 tons per hectare in 2009/10) by nearly 30 percent. The remarkable reported yield is consistent with the favorable weather that has prevailed throughout the growing season, but the major reason for the steady 10-year climb in yield is the continued expansion in the use of hybrid seed. Imported hybrids account for about 70 percent of Ukraine’s corn seed, and local commodity analysts indicate that hybrid use will continue to increase. Yields have also benefited from more efficient fertilization techniques and steady improvement in the quality of harvest machinery. *(For more information, contact Mark Lindeman at 202-690-0143.)*

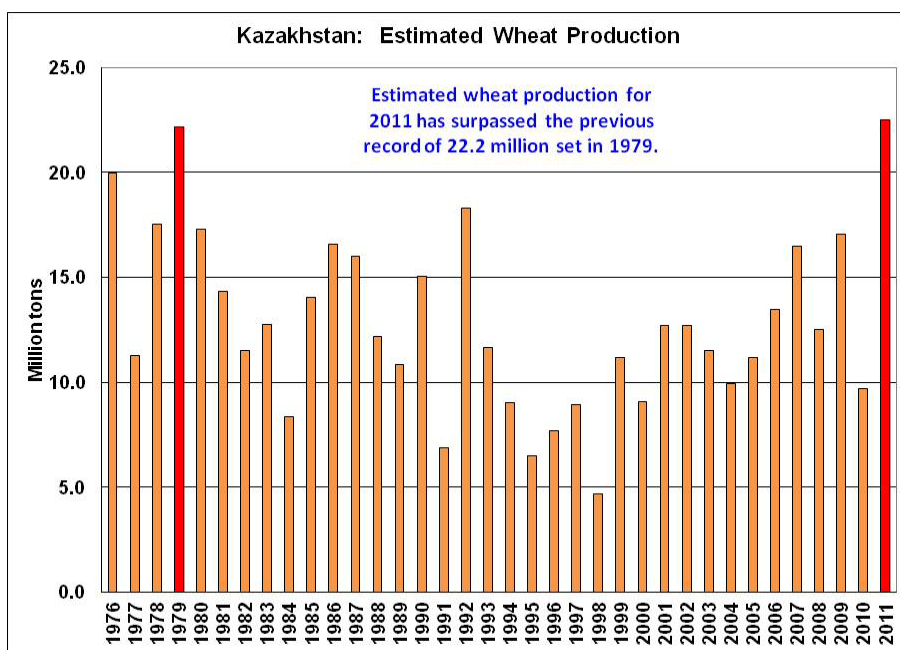


Source: USDA

USDA Office of Global Analysis  
Foreign Agricultural Service

## Kazakhstan: Wheat Production Surpasses Record

The USDA estimates Kazakhstan 2011/12 wheat production at 22.5 million tons, up 1.5 million or 7 percent from last month, and up 12.8 million or 132 percent from last year. The harvest surpassed the previous record of 22.2 million tons, set in 1979 when sown area was nearly 25 percent higher. Area for 2011/12 is estimated at 13.8 million hectares against 14.5 million last year. Yield is estimated at a record 1.63 tons per hectare (t/ha) compared to 1.52 t/ha last month, 0.67 t/ha last year, and the 5-year average of 1.02 t/ha. The month-to-month revision is based on preliminary data from the State Statistical Agency. The main wheat-production region benefited from outstanding weather throughout the growing season. Wheat typically comprises about 80 to 85 percent of Kazakhstan's total grain production. *(For more information, contact Mark Lindeman at 202-690-0143.)*



Source: USDA

USDA Office of Global Analysis  
Foreign Agricultural Service

This report uses information from the Foreign Agricultural Service's (FAS) global network of agricultural attachés and counselors, official statistics of foreign governments and other foreign source materials, and the analysis of economic data and satellite imagery. Estimates of foreign area, yield, and production are from the International Production Assessment Branch, FAS, and are reviewed by USDA's Inter-Agency Commodity Estimates Committee. Estimates of U.S. area, yield, and production are from USDA's National Agricultural Statistics Service. Numbers within the report may not add to totals because of rounding. This report reflects official USDA estimates released in the World Agricultural Supply and Demand Estimates (WASDE-502), January 12, 2012.

**Printed copies are available from the National Technical Information Service. Download an order form at [http://www.ntis.gov/products/specialty/usda/fas\\_a-g.asp](http://www.ntis.gov/products/specialty/usda/fas_a-g.asp), or call NTIS at 1-800-363-2068.**

The FAS International Production Assessment Branch prepared this report. The next issue of World Agricultural Production will be released after 9:30 a.m. Eastern Time, February 9, 2012.

### Conversion Table

#### Metric tons to bushels

Wheat, soybeans	=	MT * 36.7437
Corn, sorghum, rye	=	MT * 39.36825
Barley	=	MT * 45.929625
Oats	=	MT * 68.894438

#### Metric tons to 480-lb bales

Cotton	=	MT * 4.592917
--------	---	---------------

#### Metric tons to hundredweight

Rice	=	MT * 22.04622
------	---	---------------

#### Area & weight

1 hectare	=	2.471044 acres
1 kilogram	=	2.204622 pounds



For further information, contact:  
**U.S. Department of Agriculture**  
Foreign Agricultural Service  
**Office of Global Analysis**  
International Production Assessment Division  
Ag Box 1051, Room 4630, South Building  
Washington, DC 20250-1051

Telephone: (202) 720-1157

Fax: (202) 720-1158

---

### **GENERAL INFORMATION**

Director	Derrick Williams III	202-690-0131	derrick.williams@fas.usda.gov
Acting Deputy Director	Paul Provance	202-720-0873	paul.provance@fas.usda.gov
Sr. Analyst/SIA Manager	Curt Reynolds, PhD	202-690-0134	curt.reynoldsc@fas.usda.gov
USDA Remote Sensing Advisor	Glenn Bethel	202-720-1280	glenn.bethel@fas.usda.gov
Sr. Agricultural Economist	Paul Provance	202-720-0873	paul.provance@fas.usda.gov
Sr. Analyst/Technical Lead	Dath Mita PhD	202-720-0881	mita.dath@fas.usda.gov
Program Analyst	Mary Jackson	202-720-0886	mary.jackson@fas.usda.gov
GIS Analyst/WAP Coordinator	Justin Jenkins	202-720-0419	justin.jenks@fas.usda.gov

### **COUNTRY- AND REGION-SPECIFIC INFORMATION**

South America	Denise McWilliams PhD	202-720-0107	denise.mcwilliams@fas.usda.gov
Europe and North Africa	Bryan Purcell	202-690-0138	bryan.purcell@fas.usda.gov
FSU-12, Russia	Mark Lindeman	202-690-0143	mark.lindeman@fas.usda.gov
Canada, Mexico, Central America and Caribbean	Arnella Trent	202-720-0881	arnella.trent@fas.usda.gov
China, East Asia, Venezuela	Paulette Sandene	202-690-0133	paulette.sandene@fas.usda.gov
South Asia, India, Australia and New Zealand	Dath Mita PhD	202-720-7339	mita.dath@fas.usda.gov
Africa, Brazil	Curt Reynolds PhD	202-690-0134	curt.reynoldsc@fas.usda.gov
Middle East and Southeast Asia	Michael Shean	202-720-7366	michael.shean@fas.usda.gov
Eastern United States	Robert Tetrault	202-720-1071	robert.tetrault@fas.usda.gov
Western United States	Jim Crutchfield	202-690-0135	james.crutchfield@fas.usda.gov



**Table 01 World Crop Production Summary**

Million Metric Tons

Commodity	World	Total Foreign	North America			EU-27	Former Soviet		Asia (WAP)					South America		Selected Other			All Others
			United States	Canada	Mexico		Russia	Ukraine	China	India	Indonesia	Pakistan	Thailand	Argentina	Brazil	Australia	South Africa	Turkey	
---Million metric tons---																			
<b>Wheat</b>																			
2009/10	685.4	625.1	60.4	26.8	4.1	138.8	61.8	20.9	115.1	80.7	nr	24.0	nr	12.0	5.0	21.8	2.0	18.5	93.6
2010/11 prel.	651.7	591.6	60.1	23.2	3.7	135.7	41.5	16.8	115.2	80.8	nr	23.9	nr	16.1	5.9	27.9	1.5	17.0	82.5
2011/12 proj.																			
Dec	689.0	634.6	54.4	25.3	3.8	137.5	56.0	22.0	117.9	85.9	nr	24.0	nr	14.5	5.0	28.3	1.8	18.8	93.8
Jan	691.5	637.1	54.4	25.3	3.8	137.5	56.2	22.0	117.9	85.9	nr	24.0	nr	14.5	5.8	28.3	1.8	18.8	95.3
<b>Coarse Grains</b>																			
2009/10	1,115.6	766.8	348.8	22.5	27.3	155.0	31.8	24.1	169.6	33.9	6.9	3.6	4.2	28.5	58.4	10.9	13.9	11.2	164.9
2010/11 prel.	1,097.4	767.2	330.2	22.3	29.4	139.5	16.4	21.4	183.4	42.0	6.8	3.6	4.1	30.6	60.5	11.8	11.3	10.1	174.1
2011/12 proj.																			
Dec	1,145.2	821.9	323.3	21.9	28.0	146.7	31.5	31.4	198.1	40.4	8.1	3.6	4.2	37.4	63.8	12.9	13.0	10.7	170.3
Jan	1,145.6	821.9	323.7	21.9	27.8	147.0	32.8	32.9	198.1	40.4	8.1	3.6	4.2	34.4	63.8	12.9	13.0	10.7	170.3
<b>Rice, Milled</b>																			
2009/10	440.5	433.4	7.1	nr	0.2	1.9	0.6	0.1	136.6	89.1	36.4	6.8	20.3	0.7	7.9	0.1	nr	0.4	132.4
2010/11 prel.	450.4	442.8	7.6	nr	0.1	1.9	0.7	0.1	137.0	95.3	35.5	5.0	20.3	1.1	9.3	0.5	nr	0.5	135.6
2011/12 proj.																			
Dec	460.8	454.8	6.0	nr	0.1	1.9	0.7	0.1	140.5	100.0	37.3	6.7	20.3	1.0	8.7	0.7	nr	0.5	136.4
Jan	461.4	455.5	5.9	nr	0.1	1.9	0.7	0.1	140.5	100.0	37.3	6.6	20.3	1.0	8.2	0.7	nr	0.5	137.8
<b>Total Grains</b>																			
2009/10	2,241.5	1,825.3	416.3	49.3	31.6	295.7	94.2	45.1	421.3	203.7	43.3	34.4	24.4	41.2	71.4	32.9	15.8	30.0	390.9
2010/11 prel.	2,199.5	1,801.6	397.9	45.4	33.2	277.0	58.6	38.4	435.6	218.1	42.3	32.5	24.3	47.8	75.6	40.2	12.8	27.5	392.2
2011/12 proj.																			
Dec	2,295.0	1,911.3	383.7	47.1	31.9	286.1	88.2	53.5	456.5	226.3	45.4	34.3	24.5	52.9	77.5	41.9	14.8	29.9	400.5
Jan	2,298.5	1,914.5	384.0	47.1	31.7	286.4	89.7	55.0	456.5	226.3	45.4	34.2	24.5	49.9	77.8	41.9	14.8	29.9	403.4
<b>Oilseeds</b>																			
2009/10	443.9	345.0	98.9	16.5	0.6	29.6	8.0	10.5	57.8	32.4	9.4	5.2	0.6	57.9	71.4	2.6	1.2	1.5	39.6
2010/11 prel.	454.8	354.4	100.4	17.2	0.7	29.1	7.2	11.6	57.7	34.7	9.7	4.8	0.6	53.8	79.3	3.8	1.7	1.8	40.6
2011/12 proj.																			
Dec	457.6	366.6	91.0	18.5	0.9	29.0	11.3	12.2	57.3	36.4	10.2	5.5	0.7	56.7	78.8	4.1	1.8	2.1	41.3
Jan	457.4	366.1	91.2	18.5	0.9	28.9	12.1	13.2	57.3	36.2	10.2	5.5	0.7	55.2	77.8	4.6	1.8	2.1	41.2
<b>Cotton</b>																			
2009/10	101.7	89.5	12.2	nr	0.5	1.1	nr	nr	32.0	23.0	0.0	9.6	0.0	1.0	5.5	1.8	0.0	1.8	13.3
2010/11 prel.	115.3	97.2	18.1	nr	0.7	1.1	nr	nr	30.5	25.4	0.0	8.8	0.0	1.3	9.0	4.2	0.1	2.1	14.0
2011/12 proj.																			
Dec	123.4	107.6	15.8	nr	1.2	1.6	nr	nr	33.5	27.5	0.0	10.0	0.0	1.2	9.0	5.0	0.1	3.1	15.4
Jan	122.8	107.2	15.7	nr	1.2	1.6	nr	nr	33.5	27.0	0.0	10.0	0.0	1.2	9.0	5.0	0.1	3.1	15.4

1/ Includes wheat, coarse grains, and rice (milled) shown above.

**Table 02 Wheat Area, Yield, and Production**

Country / Region	Area (Million hectares)				Yield (Metric tons per hectare)				Production (Million metric tons)				Change in Production			
	Prel.		2011/12 Proj.		Prel.		2011/12 Proj.		Prel.		2011/12 Proj.		From last month		From last year	
	2009/10	2010/11	Dec	Jan	2009/10	2010/11	Dec	Jan	2009/10	2010/11	Dec	Jan	MMT	Percent	MMT	Percent
<b>World</b>	227.61	223.29	222.54	222.61	3.01	2.92	3.10	3.11	685.44	651.68	688.97	691.50	2.53	0.37	39.83	6.11
<b>United States</b>	20.19	19.27	18.50	18.50	2.99	3.12	2.94	2.94	60.37	60.06	54.41	54.41	0.00	0.00	-5.65	-9.41
<b>Total Foreign</b>	207.42	204.02	204.05	204.12	3.01	2.90	3.11	3.12	625.07	591.62	634.56	637.09	2.53	0.40	45.47	7.69
<b>China</b>	24.29	24.32	24.20	24.20	4.74	4.74	4.87	4.87	115.12	115.18	117.92	117.92	0.00	0.00	2.74	2.38
<b>South Asia</b>																
India	27.75	28.36	29.40	29.40	2.91	2.85	2.92	2.92	80.68	80.80	85.93	85.93	0.00	0.00	5.13	6.35
Pakistan	9.05	9.03	9.00	9.00	2.65	2.65	2.67	2.67	24.00	23.90	24.00	24.00	0.00	0.00	0.10	0.42
Afghanistan	2.58	2.35	2.10	2.10	1.65	1.57	1.19	1.19	4.25	3.70	2.50	2.50	0.00	0.00	-1.20	-32.43
<b>Former Soviet Union - 12</b>																
Russia	28.70	26.61	25.68	25.68	2.15	1.56	2.18	2.19	61.77	41.51	56.00	56.23	0.23	0.41	14.72	35.47
Ukraine	6.75	6.28	6.70	6.70	3.09	2.68	3.28	3.28	20.87	16.84	22.00	22.00	0.00	0.00	5.16	30.61
Kazakhstan	14.75	14.50	13.80	13.80	1.16	0.67	1.52	1.63	17.05	9.70	21.00	22.50	1.50	7.14	12.80	131.96
Uzbekistan	1.40	1.40	1.40	1.40	4.43	4.64	4.50	4.50	6.20	6.50	6.30	6.30	0.00	0.00	-0.20	-3.08
<b>EU-27</b>	25.82	26.11	25.76	25.76	5.38	5.20	5.34	5.34	138.82	135.67	137.49	137.49	0.00	0.00	1.81	1.34
France	5.15	5.43	5.45	5.45	7.44	7.04	6.61	6.61	38.32	38.21	36.00	36.00	0.00	0.00	-2.21	-5.78
Germany	3.23	3.23	3.26	3.26	7.81	7.37	7.06	7.06	25.19	23.78	23.00	23.00	0.00	0.00	-0.78	-3.29
United Kingdom	1.78	1.94	2.00	2.00	7.93	7.67	7.68	7.68	14.08	14.88	15.35	15.35	0.00	0.00	0.47	3.17
Poland	2.35	2.41	2.42	2.42	4.17	3.87	3.84	3.84	9.79	9.30	9.30	9.30	0.00	0.00	0.00	0.00
Spain	1.77	1.94	1.95	1.95	2.71	3.02	3.41	3.41	4.81	5.84	6.65	6.65	0.00	0.00	0.81	13.83
Italy	1.90	1.81	1.67	1.67	3.53	3.59	3.66	3.66	6.70	6.49	6.10	6.10	0.00	0.00	-0.39	-6.01
Denmark	0.74	0.77	0.74	0.74	8.04	6.61	6.80	6.80	5.94	5.06	5.00	5.00	0.00	0.00	-0.06	-1.11
Hungary	1.14	1.01	0.98	0.98	3.85	3.76	4.18	4.18	4.40	3.80	4.10	4.10	0.00	0.00	0.30	7.89
Romania	2.15	2.15	1.96	1.96	2.47	2.69	3.72	3.72	5.30	5.78	7.30	7.30	0.00	0.00	1.53	26.41
Bulgaria	1.25	1.13	1.04	1.04	3.19	3.62	4.08	4.08	3.98	4.09	4.25	4.25	0.00	0.00	0.16	3.81
<b>Canada</b>	9.64	8.27	8.55	8.55	2.79	2.80	2.96	2.96	26.85	23.17	25.26	25.26	0.00	0.00	2.09	9.03
<b>Australia</b>	13.88	13.65	14.10	14.10	1.57	2.04	2.01	2.01	21.83	27.89	28.30	28.30	0.00	0.00	0.41	1.47
<b>Middle East</b>																
Turkey	7.80	8.00	7.70	7.70	2.37	2.13	2.44	2.44	18.45	17.00	18.80	18.80	0.00	0.00	1.80	10.59
Iran	6.65	7.00	6.80	6.80	2.03	2.21	2.02	2.02	13.49	15.50	13.75	13.75	0.00	0.00	-1.75	-11.29
Syria	1.50	1.35	1.50	1.50	2.40	2.67	2.17	2.17	3.60	3.60	3.25	3.25	0.00	0.00	-0.35	-9.72
<b>North Africa</b>																
Egypt	1.32	1.26	1.32	1.32	6.45	5.71	6.59	6.59	8.52	7.20	8.70	8.70	0.00	0.00	1.50	20.83
Morocco	2.98	2.85	3.04	3.04	2.15	1.71	1.91	1.91	6.40	4.89	5.80	5.80	0.00	0.00	0.91	18.68
<b>Argentina</b>	4.00	4.60	5.00	5.00	3.00	3.50	2.90	2.90	12.00	16.10	14.50	14.50	0.00	0.00	-1.60	-9.94
<b>Others</b>	18.57	18.08	18.00	18.07	2.43	2.35	2.39	2.43	45.18	42.47	43.06	43.86	0.80	1.86	1.40	3.29

World and Selected Countries and Regions

**Table 03 Total Coarse Grain Area, Yield, and Production**

Country / Region	Area (Million hectares)				Yield (Metric tons per hectare)				Production (Million metric tons)				Change in Production			
	2009/10	Prel.	2011/12 Proj.		2009/10	Prel.	2011/12 Proj.		2009/10	Prel.	2011/12 Proj.		From last month		From last year	
		2010/11	Dec	Jan		2010/11	Dec	Jan		2010/11	Dec	Jan	MMT	Percent	MMT	Percent
<b>World</b>	310.52	309.53	314.54	314.70	3.59	3.55	3.64	3.64	1,115.55	1,097.41	1,145.19	1,145.56	0.38	0.03	48.16	4.39
<b>United States</b>	36.32	36.52	37.15	36.96	9.60	9.04	8.70	8.76	348.76	330.24	323.27	323.70	0.43	0.13	-6.54	-1.98
<b>Total Foreign</b>	274.20	273.01	277.39	277.74	2.80	2.81	2.96	2.96	766.80	767.17	821.92	821.87	-0.06	-0.01	54.70	7.13
<b>China</b>	33.38	34.77	35.72	35.72	5.08	5.27	5.55	5.55	169.60	183.41	198.06	198.06	0.00	0.00	14.66	7.99
<b>South America</b>																
Brazil	13.93	14.86	15.54	16.04	4.19	4.07	4.11	3.98	58.41	60.48	63.83	63.83	0.00	0.00	3.35	5.54
Argentina	4.20	5.66	6.02	6.02	6.80	5.40	6.22	5.72	28.53	30.56	37.41	34.41	-3.00	-8.02	3.85	12.61
<b>EU-27</b>	32.53	30.19	30.24	30.23	4.77	4.62	4.85	4.86	155.04	139.46	146.70	147.03	0.33	0.22	7.57	5.43
France	4.21	3.77	3.76	3.76	7.52	7.22	7.28	7.33	31.65	27.17	27.34	27.54	0.20	0.73	0.37	1.37
Germany	3.68	3.29	3.24	3.24	6.67	6.16	5.77	5.77	24.56	20.26	18.69	18.69	0.00	0.00	-1.57	-7.76
Poland	6.16	6.01	5.64	5.64	3.24	2.95	3.06	3.06	19.94	17.74	17.27	17.27	0.00	0.00	-0.47	-2.63
Spain	4.13	3.94	3.84	3.84	2.92	3.28	3.63	3.68	12.09	12.91	13.94	14.14	0.20	1.43	1.23	9.54
Italy	1.43	1.37	1.53	1.53	7.20	7.61	7.51	7.51	10.32	10.41	11.51	11.51	0.00	0.00	1.10	10.59
Hungary	1.72	1.56	1.65	1.65	5.29	5.46	5.87	5.87	9.09	8.54	9.66	9.66	0.00	0.00	1.13	13.18
United Kingdom	1.30	1.07	1.12	1.12	5.80	5.65	5.76	5.67	7.54	6.07	6.47	6.37	-0.10	-1.55	0.30	4.89
Romania	3.14	3.03	3.24	3.24	2.91	3.46	3.75	3.75	9.14	10.48	12.13	12.13	0.00	0.00	1.65	15.75
<b>Former Soviet Union - 12</b>																
Russia	16.50	13.80	15.40	15.40	1.93	1.19	2.05	2.13	31.84	16.42	31.50	32.80	1.30	4.11	16.38	99.78
Ukraine	8.06	7.64	7.94	7.94	2.99	2.81	3.95	4.14	24.14	21.44	31.40	32.90	1.50	4.78	11.46	53.44
Kazakhstan	2.21	1.98	1.99	1.99	1.49	0.92	1.60	1.70	3.30	1.82	3.18	3.38	0.20	6.30	1.56	85.95
<b>Africa</b>	81.09	81.19	80.71	80.71	1.33	1.41	1.35	1.35	107.96	114.40	108.76	108.76	0.00	0.00	-5.64	-4.93
Nigeria	18.25	18.35	18.35	18.35	1.54	1.57	1.52	1.52	28.15	28.74	27.90	27.90	0.00	0.00	-0.84	-2.92
South Africa	4.15	3.73	3.85	3.85	3.35	3.03	3.36	3.36	13.88	11.33	12.95	12.95	0.00	0.00	1.62	14.34
Ethiopia	4.93	4.93	4.93	4.93	1.63	2.02	1.83	1.83	8.05	9.93	9.03	9.03	0.00	0.00	-0.90	-9.07
Egypt	1.05	1.06	0.73	0.73	6.99	7.13	6.66	6.66	7.34	7.56	4.86	4.86	0.00	0.00	-2.70	-35.71
<b>India</b>	27.01	27.09	26.45	26.45	1.25	1.55	1.53	1.53	33.89	42.00	40.37	40.37	0.00	0.00	-1.63	-3.88
<b>Southeast Asia</b>																
Indonesia	3.06	2.85	3.15	3.15	2.25	2.39	2.57	2.57	6.90	6.80	8.10	8.10	0.00	0.00	1.30	19.12
Philippines	2.52	2.63	2.56	2.56	2.47	2.76	2.73	2.73	6.23	7.27	7.00	7.00	0.00	0.00	-0.27	-3.73
Thailand	1.03	1.01	1.03	1.03	4.04	4.01	4.08	4.08	4.15	4.05	4.20	4.20	0.00	0.00	0.15	3.70
<b>Mexico</b>	8.20	9.29	8.73	8.63	3.32	3.16	3.21	3.22	27.25	29.37	28.00	27.78	-0.22	-0.78	-1.59	-5.43
<b>Canada</b>	5.23	4.67	4.75	4.75	4.30	4.77	4.61	4.61	22.48	22.26	21.87	21.87	0.00	0.00	-0.40	-1.78
<b>Australia</b>	5.90	5.38	5.79	5.79	1.85	2.19	2.23	2.23	10.92	11.76	12.91	12.91	0.00	0.00	1.15	9.73
<b>Turkey</b>	4.23	4.17	3.98	3.98	2.64	2.42	2.69	2.69	11.18	10.10	10.70	10.70	0.00	0.00	0.60	5.94
<b>Others</b>	25.11	25.83	27.42	27.37	2.59	2.54	2.48	2.48	64.97	65.59	67.95	67.79	-0.16	-0.24	2.21	3.36

World and Selected Countries and Regions

**Table 04 Corn Area, Yield, and Production**

Country / Region	Area (Million hectares)				Yield (Metric tons per hectare)				Production (Million metric tons)				Change in Production			
	Prel.		2011/12 Proj.		Prel.		2011/12 Proj.		Prel.		2011/12 Proj.		From last month		From last year	
	2009/10	2010/11	Dec	Jan	2009/10	2010/11	Dec	Jan	2009/10	2010/11	Dec	Jan	MMT	Percent	MMT	Percent
<b>World</b>	157.74	163.11	168.31	168.83	5.19	5.07	5.15	5.14	819.23	827.35	867.52	868.06	0.54	0.06	40.71	4.92
<b>United States</b>	32.17	32.96	33.97	33.99	10.34	9.59	9.21	9.24	332.55	316.17	312.69	313.92	1.23	0.39	-2.25	-0.71
<b>Total Foreign</b>	125.57	130.15	134.34	134.84	3.88	3.93	4.13	4.11	486.69	511.19	554.84	554.14	-0.69	-0.13	42.96	8.40
<b>China</b>	31.18	32.50	33.40	33.40	5.26	5.45	5.74	5.74	163.97	177.25	191.75	191.75	0.00	0.00	14.51	8.18
<b>South America</b>																
Brazil	12.93	13.80	14.50	15.00	4.34	4.17	4.21	4.07	56.10	57.50	61.00	61.00	0.00	0.00	3.50	6.09
Argentina	2.75	3.60	3.80	3.80	8.47	6.25	7.63	6.84	23.30	22.50	29.00	26.00	-3.00	-10.34	3.50	15.56
<b>Mexico</b>	6.28	7.00	6.65	6.65	3.24	3.02	3.08	3.08	20.37	21.13	20.50	20.50	0.00	0.00	-0.63	-2.98
<b>EU-27</b>	8.29	7.98	8.79	8.79	6.87	6.99	7.27	7.32	56.95	55.80	63.89	64.31	0.43	0.67	8.52	15.27
France	1.68	1.53	1.57	1.57	9.10	9.00	9.81	9.94	15.29	13.79	15.40	15.60	0.20	1.30	1.81	13.13
Italy	0.93	0.92	1.00	1.00	9.30	9.60	9.58	9.58	8.65	8.78	9.58	9.58	0.00	0.00	0.80	9.11
Hungary	1.18	1.07	1.20	1.20	6.36	6.55	6.75	6.75	7.50	7.00	8.10	8.10	0.00	0.00	1.10	15.71
Romania	2.35	2.25	2.55	2.55	3.19	3.87	4.00	4.00	7.50	8.70	10.20	10.20	0.00	0.00	1.50	17.24
Poland	0.27	0.30	0.34	0.34	6.23	5.72	6.18	6.18	1.71	1.72	2.10	2.10	0.00	0.00	0.39	22.45
<b>India</b>	8.33	8.55	8.50	8.50	2.01	2.49	2.47	2.47	16.72	21.28	21.00	21.00	0.00	0.00	-0.28	-1.32
<b>Canada</b>	1.14	1.20	1.20	1.20	8.37	9.74	8.92	8.92	9.56	11.71	10.70	10.70	0.00	0.00	-1.01	-8.66
<b>Indonesia</b>	3.06	2.85	3.15	3.15	2.25	2.39	2.57	2.57	6.90	6.80	8.10	8.10	0.00	0.00	1.30	19.12
<b>Ukraine</b>	2.09	2.65	3.50	3.50	5.02	4.50	6.00	6.43	10.49	11.92	21.00	22.50	1.50	7.14	10.58	88.77
<b>Serbia</b>	1.20	1.23	1.26	1.26	5.33	5.53	4.97	4.97	6.40	6.80	6.27	6.27	0.00	0.00	-0.53	-7.84
<b>Egypt</b>	0.84	0.85	0.52	0.52	7.48	7.65	7.31	7.31	6.28	6.50	3.80	3.80	0.00	0.00	-2.70	-41.54
<b>Philippines</b>	2.52	2.63	2.56	2.56	2.47	2.76	2.73	2.73	6.23	7.27	7.00	7.00	0.00	0.00	-0.27	-3.73
<b>Vietnam</b>	1.13	1.20	1.25	1.25	4.09	4.17	4.32	4.32	4.61	5.00	5.40	5.40	0.00	0.00	0.40	8.00
<b>Thailand</b>	1.00	0.98	1.00	1.00	4.10	4.08	4.15	4.15	4.10	4.00	4.15	4.15	0.00	0.00	0.15	3.75
<b>Russia</b>	1.37	1.42	1.74	1.74	2.90	2.17	3.61	3.83	3.96	3.08	6.30	6.68	0.38	6.03	3.61	117.24
<b>Sub-Saharan Africa</b>																
South Africa	3.26	2.86	3.00	3.00	4.11	3.82	4.17	4.17	13.42	10.92	12.50	12.50	0.00	0.00	1.58	14.43
Nigeria	4.90	4.90	4.90	4.90	1.83	1.91	1.78	1.78	8.95	9.34	8.70	8.70	0.00	0.00	-0.64	-6.85
Ethiopia	2.00	2.00	2.00	2.00	1.95	2.40	2.20	2.20	3.90	4.80	4.40	4.40	0.00	0.00	-0.40	-8.33
Zimbabwe	1.10	1.35	1.60	1.60	0.59	0.74	0.88	0.88	0.65	1.00	1.40	1.40	0.00	0.00	0.40	40.00
<b>Turkey</b>	0.50	0.49	0.45	0.45	8.00	7.35	8.00	8.00	4.00	3.60	3.60	3.60	0.00	0.00	0.00	0.00
<b>Others</b>	29.71	30.11	30.57	30.57	2.01	2.09	2.11	2.11	59.82	62.99	64.38	64.38	0.00	0.00	1.39	2.20

World and Selected Countries and Regions

**Table 05 Barley Area, Yield, and Production**

Country / Region	Area (Million hectares)				Yield (Metric tons per hectare)				Production (Million metric tons)				Change in Production			
	Prel.		2011/12 Proj.		Prel.		2011/12 Proj.		Prel.		2011/12 Proj.		From last month		From last year	
	2009/10	2010/11	Dec	Jan	2009/10	2010/11	Dec	Jan	2009/10	2010/11	Dec	Jan	MMT	Percent	MMT	Percent
<b>World</b>	55.78	50.44	50.31	50.16	2.71	2.44	2.65	2.66	150.92	123.23	133.29	133.45	0.16	0.12	10.22	8.29
<b>United States</b>	1.26	1.00	0.91	0.91	3.93	3.93	3.74	3.74	4.95	3.93	3.39	3.39	0.00	0.00	-0.53	-13.58
<b>Total Foreign</b>	54.52	49.44	49.40	49.25	2.68	2.41	2.63	2.64	145.97	119.31	129.90	130.06	0.16	0.12	10.75	9.01
<b>Russia</b>	9.09	7.21	7.96	7.96	1.97	1.16	2.07	2.13	17.88	8.35	16.50	16.94	0.44	2.64	8.59	102.81
<b>EU-27</b>	13.94	12.49	12.06	12.06	4.46	4.24	4.34	4.33	62.15	53.03	52.35	52.25	-0.10	-0.19	-0.77	-1.46
Germany	1.88	1.64	1.61	1.61	6.54	6.29	5.46	5.46	12.29	10.33	8.78	8.78	0.00	0.00	-1.55	-14.98
France	1.88	1.58	1.55	1.55	6.92	6.39	5.72	5.72	13.00	10.10	8.87	8.87	0.00	0.00	-1.23	-12.20
Spain	3.02	2.87	2.73	2.73	2.41	2.84	3.12	3.12	7.30	8.15	8.50	8.50	0.00	0.00	0.35	4.29
United Kingdom	1.14	0.92	0.97	0.97	5.83	5.70	5.79	5.68	6.67	5.25	5.60	5.50	-0.10	-1.79	0.25	4.72
Denmark	0.59	0.59	0.60	0.60	5.77	5.04	5.55	5.55	3.42	2.99	3.30	3.30	0.00	0.00	0.31	10.33
Poland	1.16	1.12	1.00	1.00	3.44	3.15	3.33	3.33	3.98	3.53	3.33	3.33	0.00	0.00	-0.20	-5.67
Czech Republic	0.45	0.39	0.37	0.37	4.41	4.08	4.97	4.97	2.00	1.58	1.85	1.85	0.00	0.00	0.27	16.92
Finland	0.60	0.41	0.41	0.41	3.63	3.26	3.60	3.60	2.18	1.33	1.48	1.48	0.00	0.00	0.15	10.96
Sweden	0.36	0.32	0.32	0.32	4.65	3.87	4.53	4.53	1.68	1.23	1.45	1.45	0.00	0.00	0.22	17.69
Italy	0.31	0.27	0.32	0.32	3.42	3.62	3.60	3.60	1.05	0.99	1.17	1.17	0.00	0.00	0.17	17.56
Hungary	0.32	0.29	0.26	0.26	3.22	3.37	3.81	3.81	1.03	0.97	0.99	0.99	0.00	0.00	0.02	2.48
Austria	0.18	0.17	0.15	0.15	4.59	4.60	5.23	5.23	0.84	0.78	0.80	0.80	0.00	0.00	0.02	2.83
<b>Ukraine</b>	4.99	4.32	3.70	3.70	2.37	1.97	2.43	2.43	11.83	8.48	9.00	9.00	0.00	0.00	0.52	6.08
<b>Canada</b>	2.92	2.39	2.37	2.37	3.26	3.19	3.28	3.28	9.52	7.61	7.76	7.76	0.00	0.00	0.16	2.04
<b>Australia</b>	4.42	3.74	4.00	4.00	1.78	2.18	2.13	2.13	7.87	8.15	8.50	8.50	0.00	0.00	0.36	4.36
<b>Turkey</b>	3.40	3.35	3.20	3.20	1.91	1.76	2.03	2.03	6.50	5.90	6.50	6.50	0.00	0.00	0.60	10.17
<b>China</b>	0.63	0.65	0.68	0.68	3.70	3.85	3.85	3.85	2.32	2.50	2.60	2.60	0.00	0.00	0.10	4.00
<b>Iran</b>	1.68	1.70	1.65	1.65	2.06	2.06	1.82	1.82	3.45	3.50	3.00	3.00	0.00	0.00	-0.50	-14.29
<b>Morocco</b>	2.18	1.92	2.03	2.03	1.74	1.34	1.16	1.16	3.80	2.57	2.34	2.34	0.00	0.00	-0.23	-8.95
<b>Kazakhstan</b>	1.85	1.60	1.60	1.60	1.36	0.81	1.56	1.69	2.52	1.30	2.50	2.70	0.20	8.00	1.40	107.69
<b>Ethiopia</b>	0.98	0.98	0.98	0.98	1.61	1.44	1.44	1.44	1.57	1.40	1.40	1.40	0.00	0.00	0.00	0.00
<b>Belarus</b>	0.61	0.69	0.65	0.65	3.47	2.85	2.77	2.77	2.12	1.97	1.80	1.80	0.00	0.00	-0.17	-8.44
<b>India</b>	0.78	0.74	0.75	0.75	2.17	1.82	2.09	2.09	1.69	1.35	1.57	1.57	0.00	0.00	0.22	16.30
<b>Argentina</b>	0.50	0.75	0.95	0.95	2.70	3.93	3.47	3.47	1.36	2.95	3.30	3.30	0.00	0.00	0.35	11.86
<b>Mexico</b>	0.23	0.31	0.31	0.21	2.17	2.52	2.52	2.67	0.50	0.78	0.78	0.56	-0.22	-27.91	-0.22	-27.91
<b>Iraq</b>	0.50	1.25	1.13	1.13	0.90	0.92	0.88	0.88	0.45	1.15	1.00	1.00	0.00	0.00	-0.15	-13.04
<b>Algeria</b>	1.24	1.00	1.00	1.00	1.94	1.50	1.35	1.35	2.40	1.50	1.35	1.35	0.00	0.00	-0.15	-10.00
<b>Others</b>	4.58	4.35	4.40	4.35	1.76	1.57	1.74	1.72	8.05	6.83	7.65	7.49	-0.16	-2.09	0.66	9.59

World and Selected Countries and Regions

**Table 06 Oats Area, Yield, and Production**

Country / Region	Area (Million hectares)				Yield (Metric tons per hectare)				Production (Million metric tons)				Change in Production			
	Prel.		2011/12 Proj.		Prel.		2011/12 Proj.		Prel.		2011/12 Proj.		From last month		From last year	
	2009/10	2010/11	Dec	Jan	2009/10	2010/11	Dec	Jan	2009/10	2010/11	Dec	Jan	MMT	Percent	MMT	Percent
<b>World</b>	11.26	10.58	11.04	11.04	2.07	1.86	2.06	2.09	23.32	19.65	22.77	23.11	0.33	1.47	3.46	17.58
<b>United States</b>	0.56	0.51	0.38	0.38	2.42	2.31	2.05	2.05	1.35	1.18	0.78	0.78	0.00	0.00	-0.40	-33.87
<b>Total Foreign</b>	10.70	10.07	10.66	10.66	2.05	1.83	2.06	2.09	21.97	18.47	21.99	22.33	0.33	1.52	3.85	20.86
<b>Russia</b>	3.37	2.90	3.23	3.23	1.60	1.11	1.55	1.65	5.40	3.22	5.00	5.33	0.33	6.68	2.12	65.76
<b>Canada</b>	0.98	0.91	1.03	1.03	2.97	2.74	2.91	2.91	2.91	2.48	3.00	3.00	0.00	0.00	0.52	20.97
<b>EU-27</b>	2.91	2.72	2.68	2.68	2.95	2.71	2.99	2.99	8.58	7.37	8.01	8.01	0.00	0.00	0.64	8.72
Poland	0.53	0.54	0.50	0.50	2.70	2.47	2.71	2.71	1.42	1.34	1.35	1.35	0.00	0.00	0.02	1.35
Finland	0.34	0.28	0.31	0.31	3.54	2.90	3.38	3.38	1.21	0.81	1.04	1.04	0.00	0.00	0.23	28.78
Spain	0.56	0.54	0.52	0.52	1.65	1.89	2.10	2.10	0.92	1.02	1.08	1.08	0.00	0.00	0.06	6.19
Germany	0.16	0.14	0.14	0.14	5.07	4.24	4.41	4.41	0.83	0.60	0.63	0.63	0.00	0.00	0.03	5.35
Sweden	0.19	0.17	0.18	0.18	3.99	3.23	4.26	4.26	0.75	0.54	0.78	0.78	0.00	0.00	0.24	44.51
United Kingdom	0.13	0.12	0.13	0.13	5.77	5.52	5.76	5.76	0.74	0.69	0.72	0.72	0.00	0.00	0.04	5.11
France	0.12	0.10	0.09	0.09	4.90	4.57	4.35	4.35	0.57	0.45	0.37	0.37	0.00	0.00	-0.08	-18.14
Italy	0.13	0.11	0.12	0.12	2.34	2.45	2.40	2.40	0.31	0.28	0.29	0.29	0.00	0.00	0.01	3.94
Denmark	0.07	0.05	0.05	0.05	4.70	4.91	4.80	4.80	0.32	0.23	0.24	0.24	0.00	0.00	0.01	3.90
Romania	0.20	0.20	0.18	0.18	1.45	1.74	1.83	1.83	0.30	0.34	0.33	0.33	0.00	0.00	-0.01	-2.94
Czech Republic	0.05	0.05	0.05	0.05	3.32	2.65	3.33	3.33	0.17	0.14	0.15	0.15	0.00	0.00	0.01	8.70
Hungary	0.05	0.05	0.06	0.06	2.19	2.41	2.82	2.82	0.11	0.12	0.16	0.16	0.00	0.00	0.03	26.02
Austria	0.03	0.03	0.03	0.03	3.89	3.63	3.60	3.60	0.11	0.10	0.09	0.09	0.00	0.00	-0.01	-8.16
Ireland	0.02	0.02	0.02	0.02	7.30	7.63	7.25	7.25	0.15	0.15	0.15	0.15	0.00	0.00	0.00	0.00
Lithuania	0.06	0.07	0.07	0.07	2.23	1.34	2.00	2.00	0.14	0.09	0.13	0.13	0.00	0.00	0.04	49.43
<b>Australia</b>	0.85	0.83	1.00	1.00	1.37	1.37	1.65	1.65	1.16	1.14	1.65	1.65	0.00	0.00	0.51	44.61
<b>Ukraine</b>	0.42	0.31	0.29	0.29	1.76	1.47	1.90	1.90	0.73	0.46	0.55	0.55	0.00	0.00	0.09	20.09
<b>China</b>	0.23	0.24	0.24	0.24	1.78	1.75	1.75	1.75	0.41	0.42	0.42	0.42	0.00	0.00	0.00	0.00
<b>Belarus</b>	0.17	0.18	0.28	0.28	3.31	2.40	2.91	2.91	0.55	0.44	0.80	0.80	0.00	0.00	0.36	81.00
<b>Brazil</b>	0.13	0.15	0.15	0.15	1.89	2.46	2.40	2.40	0.25	0.38	0.37	0.37	0.00	0.00	-0.01	-2.37
<b>Argentina</b>	0.14	0.29	0.22	0.22	1.31	2.32	1.57	1.57	0.18	0.66	0.35	0.35	0.00	0.00	-0.32	-47.73
<b>Chile</b>	0.08	0.11	0.10	0.10	5.01	5.32	5.00	5.00	0.38	0.56	0.50	0.50	0.00	0.00	-0.06	-11.35
<b>Norway</b>	0.07	0.07	0.07	0.07	3.36	3.36	3.36	3.36	0.25	0.25	0.25	0.25	0.00	0.00	0.00	0.00
<b>Turkey</b>	0.09	0.10	0.10	0.10	2.34	2.21	2.21	2.21	0.22	0.21	0.21	0.21	0.00	0.00	0.00	0.00
<b>Kazakhstan</b>	0.15	0.16	0.16	0.16	1.34	1.00	1.00	1.00	0.20	0.16	0.16	0.16	0.00	0.00	0.00	0.00
<b>Serbia</b>	0.07	0.07	0.07	0.07	1.85	1.85	1.85	1.85	0.12	0.12	0.12	0.12	0.00	0.00	0.00	0.00
<b>Others</b>	1.05	1.04	1.04	1.04	0.60	0.58	0.58	0.58	0.63	0.61	0.61	0.61	0.00	0.00	0.00	0.66

World and Selected Countries and Regions

**Table 07 Rye Area, Yield, and Production**

Country / Region	Area (Million hectares)				Yield (Metric tons per hectare)				Production (Million metric tons)				Change in Production			
	Prel.		2011/12 Proj.		Prel.		2011/12 Proj.		Prel.		2011/12 Proj.		From last month		From last year	
	2009/10	2010/11	Dec	Jan	2009/10	2010/11	Dec	Jan	2009/10	2010/11	Dec	Jan	MMT	Percent	MMT	Percent
<b>World</b>	6.43	5.51	5.28	5.28	2.73	2.10	2.42	2.42	17.52	11.54	12.79	12.76	-0.03	-0.24	1.21	10.49
<b>United States</b>	0.10	0.11	0.10	0.10	1.75	1.77	1.64	1.64	0.18	0.19	0.16	0.16	0.00	0.00	-0.03	-14.81
<b>Total Foreign</b>	6.33	5.40	5.18	5.18	2.74	2.10	2.44	2.43	17.35	11.36	12.63	12.59	-0.03	-0.25	1.24	10.91
<b>EU-27</b>	2.80	2.59	2.28	2.28	3.55	3.01	3.02	3.02	9.95	7.80	6.88	6.88	0.00	0.00	-0.91	-11.70
Poland	1.40	1.40	1.10	1.10	2.66	2.34	2.33	2.33	3.71	3.27	2.57	2.57	0.00	0.00	-0.71	-21.56
Germany	0.76	0.63	0.62	0.62	5.70	4.63	4.11	4.11	4.33	2.90	2.53	2.53	0.00	0.00	-0.37	-12.76
Spain	0.13	0.14	0.15	0.15	1.37	2.02	2.27	2.27	0.18	0.28	0.34	0.34	0.00	0.00	0.06	22.91
Lithuania	0.08	0.05	0.05	0.05	2.54	1.67	2.50	2.50	0.21	0.09	0.13	0.13	0.00	0.00	0.04	49.43
Latvia	0.06	0.04	0.04	0.04	2.75	2.50	2.76	2.76	0.16	0.10	0.11	0.11	0.00	0.00	0.01	10.53
France	0.03	0.03	0.03	0.03	5.20	5.21	4.48	4.48	0.13	0.15	0.13	0.13	0.00	0.00	-0.02	-13.91
Denmark	0.04	0.05	0.05	0.05	5.57	5.44	5.33	5.33	0.25	0.25	0.25	0.25	0.00	0.00	0.00	0.00
Czech Republic	0.04	0.03	0.03	0.03	4.68	3.93	4.68	4.68	0.18	0.12	0.12	0.12	0.00	0.00	0.00	-0.85
Austria	0.05	0.05	0.05	0.05	3.76	3.50	4.28	4.28	0.18	0.16	0.20	0.20	0.00	0.00	0.04	22.36
Sweden	0.04	0.03	0.03	0.03	5.92	4.72	5.76	5.76	0.22	0.12	0.14	0.14	0.00	0.00	0.03	22.03
Hungary	0.04	0.04	0.03	0.03	1.80	2.08	2.30	2.30	0.07	0.08	0.08	0.08	0.00	0.00	0.00	1.33
Slovakia	0.02	0.02	0.01	0.01	2.85	2.12	3.31	3.31	0.06	0.04	0.04	0.04	0.00	0.00	0.01	19.44
Finland	0.03	0.03	0.03	0.03	2.48	2.76	2.80	2.80	0.06	0.07	0.07	0.07	0.00	0.00	0.00	1.45
United Kingdom	0.01	0.01	0.01	0.01	7.20	6.20	7.00	7.00	0.04	0.03	0.04	0.04	0.00	0.00	0.00	12.90
Romania	0.02	0.02	0.01	0.01	2.06	2.27	2.50	2.50	0.03	0.03	0.03	0.03	0.00	0.00	0.00	-11.76
Greece	0.02	0.02	0.02	0.02	1.83	1.83	1.83	1.83	0.03	0.03	0.03	0.03	0.00	0.00	0.00	0.00
Portugal	0.02	0.02	0.02	0.02	0.95	0.90	0.95	0.95	0.02	0.02	0.02	0.02	0.00	0.00	0.00	0.00
<b>Russia</b>	2.15	1.76	1.62	1.62	2.02	0.93	1.85	1.83	4.33	1.64	3.00	2.97	-0.03	-1.03	1.33	80.82
<b>Belarus</b>	0.45	0.35	0.58	0.58	2.70	2.09	2.61	2.61	1.23	0.74	1.50	1.50	0.00	0.00	0.77	104.08
<b>Ukraine</b>	0.46	0.28	0.29	0.29	2.07	1.66	1.93	1.93	0.95	0.46	0.55	0.55	0.00	0.00	0.09	18.53
<b>Canada</b>	0.12	0.10	0.08	0.08	2.43	2.44	2.47	2.47	0.28	0.23	0.20	0.20	0.00	0.00	-0.04	-15.95
<b>Turkey</b>	0.14	0.13	0.13	0.13	2.49	2.08	2.08	2.08	0.34	0.27	0.27	0.27	0.00	0.00	0.00	0.00
<b>Argentina</b>	0.05	0.02	0.04	0.04	1.15	1.67	1.43	1.43	0.06	0.04	0.05	0.05	0.00	0.00	0.01	25.00
<b>Kazakhstan</b>	0.06	0.07	0.07	0.07	1.23	0.71	0.71	0.71	0.08	0.05	0.05	0.05	0.00	0.00	0.00	0.00
<b>Australia</b>	0.04	0.04	0.04	0.04	0.57	0.57	0.57	0.57	0.02	0.02	0.02	0.02	0.00	0.00	0.00	0.00
<b>Switzerland</b>	0.00	0.00	0.00	0.00	6.67	6.67	6.67	6.67	0.02	0.02	0.02	0.02	0.00	0.00	0.00	0.00
<b>Others</b>	0.06	0.06	0.06	0.06	1.36	1.39	1.39	1.39	0.09	0.09	0.09	0.09	0.00	0.00	0.00	0.00

World and Selected Countries and Regions

**Table 08 Sorghum Area, Yield, and Production**

Country / Region	Area (Million hectares)				Yield (Metric tons per hectare)				Production (Million metric tons)				Change in Production			
	Prel.		2011/12 Proj.		Prel.		2011/12 Proj.		Prel.		2011/12 Proj.		From last month		From last year	
	2009/10	2010/11	Dec	Jan	2009/10	2010/11	Dec	Jan	2009/10	2010/11	Dec	Jan	MMT	Percent	MMT	Percent
<b>World</b>	40.66	41.20	41.09	40.88	1.46	1.60	1.50	1.49	59.19	66.08	61.54	60.74	-0.80	-1.30	-5.33	-8.07
<b>United States</b>	2.23	1.95	1.79	1.59	4.35	4.51	3.48	3.43	9.73	8.78	6.25	5.45	-0.80	-12.79	-3.33	-37.95
<b>Total Foreign</b>	38.43	39.25	39.29	39.29	1.29	1.46	1.41	1.41	49.46	57.30	55.30	55.30	0.00	0.00	-2.00	-3.49
<b>Sub-Saharan Africa</b>																
Nigeria	7.50	7.60	7.60	7.60	1.53	1.54	1.51	1.51	11.50	11.70	11.50	11.50	0.00	0.00	-0.20	-1.71
Sudan	6.00	6.20	5.60	5.60	0.44	0.74	0.68	0.68	2.63	4.61	3.80	3.80	0.00	0.00	-0.81	-17.50
Ethiopia	1.55	1.55	1.55	1.55	1.34	2.06	1.74	1.74	2.08	3.20	2.70	2.70	0.00	0.00	-0.50	-15.63
Burkina	1.62	1.62	1.62	1.62	0.94	1.20	1.11	1.11	1.52	1.95	1.80	1.80	0.00	0.00	-0.15	-7.69
Tanzania	0.90	0.90	0.90	0.90	0.79	0.94	0.82	0.82	0.71	0.85	0.74	0.74	0.00	0.00	-0.11	-12.94
Niger	1.50	1.50	1.50	1.50	0.49	0.80	0.60	0.60	0.74	1.20	0.90	0.90	0.00	0.00	-0.30	-25.00
Uganda	0.31	0.31	0.31	0.31	1.60	1.68	1.61	1.61	0.50	0.52	0.50	0.50	0.00	0.00	-0.02	-3.85
Mozambique	0.61	0.62	0.62	0.62	0.62	0.62	0.66	0.66	0.38	0.38	0.41	0.41	0.00	0.00	0.03	6.77
Ghana	0.34	0.34	0.34	0.34	1.03	1.06	0.96	0.96	0.35	0.36	0.33	0.33	0.00	0.00	-0.04	-9.72
South Africa	0.09	0.07	0.05	0.05	2.26	2.25	2.50	2.50	0.20	0.16	0.13	0.13	0.00	0.00	-0.03	-19.35
<b>South Asia</b>																
India	7.50	7.20	7.20	7.20	0.89	0.94	0.94	0.94	6.70	6.74	6.80	6.80	0.00	0.00	0.06	0.89
Pakistan	0.24	0.24	0.24	0.24	0.60	0.60	0.60	0.60	0.15	0.15	0.15	0.15	0.00	0.00	0.00	0.00
<b>South America</b>																
Argentina	0.75	1.00	1.00	1.00	4.83	4.40	4.70	4.70	3.63	4.40	4.70	4.70	0.00	0.00	0.30	6.82
Brazil	0.79	0.82	0.80	0.80	2.34	2.83	2.75	2.75	1.85	2.31	2.20	2.20	0.00	0.00	-0.11	-4.93
<b>Mexico</b>	1.62	1.92	1.70	1.70	3.87	3.84	3.88	3.88	6.25	7.35	6.60	6.60	0.00	0.00	-0.75	-10.20
<b>China</b>	0.56	0.58	0.60	0.60	3.00	3.10	3.08	3.08	1.68	1.80	1.85	1.85	0.00	0.00	0.05	2.78
<b>Australia</b>	0.50	0.67	0.66	0.66	3.03	3.07	3.64	3.64	1.51	2.07	2.40	2.40	0.00	0.00	0.33	16.05
<b>Egypt</b>	0.16	0.16	0.16	0.16	5.63	5.63	5.63	5.63	0.90	0.90	0.90	0.90	0.00	0.00	0.00	0.00
<b>EU-27</b>	0.12	0.11	0.13	0.13	5.22	5.45	5.73	5.73	0.62	0.62	0.75	0.75	0.00	0.00	0.13	20.93
France	0.06	0.05	0.04	0.04	5.40	5.50	6.27	6.27	0.31	0.29	0.28	0.28	0.00	0.00	-0.01	-3.50
Italy	0.04	0.04	0.06	0.06	6.08	6.61	6.16	6.16	0.24	0.27	0.39	0.39	0.00	0.00	0.12	43.17
<b>Others</b>	5.78	5.84	6.71	6.71	0.96	1.03	0.92	0.92	5.57	6.03	6.15	6.15	0.00	0.00	0.12	1.91

World and Selected Countries and Regions



**Table 09 Rice Area, Yield, and Production**  
**World and Selected Countries and Regions**

Country / Region	Area (Million hectares)				Yield (Metric tons per hectare)				Production (Million metric tons)				Change in Production			
	Prel.		2011/12 Proj.		Prel.		2011/12 Proj.		Prel.		2011/12 Proj.		From last month		From last year	
	2009/10	2010/11	Dec	Jan	2009/10	2010/11	Dec	Jan	2009/10	2010/11	Dec	Jan	MMT	Percent	MMT	Percent
<b>World</b>	156.02	157.01	160.26	160.14	4.23	4.30	4.31	4.32	440.52	450.37	460.84	461.44	0.60	0.13	11.07	2.46
<b>United States</b>	1.26	1.46	1.06	1.06	7.94	7.54	8.03	7.92	7.13	7.59	6.04	5.94	-0.10	-1.62	-1.66	-21.81
<b>Total Foreign</b>	154.77	155.55	159.20	159.08	4.20	4.27	4.28	4.29	433.39	442.78	454.80	455.50	0.70	0.15	12.72	2.87
<b>East Asia</b>																
China	29.63	29.82	29.94	29.94	6.59	6.56	6.70	6.70	136.57	137.00	140.50	140.50	0.00	0.00	3.50	2.55
Japan	1.62	1.63	1.60	1.58	6.52	6.51	6.59	6.66	7.71	7.72	7.68	7.65	-0.03	-0.44	-0.07	-0.96
Korea, South	0.92	0.89	0.85	0.85	7.04	6.51	6.68	6.58	4.92	4.30	4.22	4.22	0.00	0.00	-0.07	-1.65
Korea, North	0.59	0.58	0.58	0.57	5.02	4.24	4.51	4.32	1.91	1.60	1.70	1.60	-0.10	-5.88	0.00	0.00
<b>South Asia</b>																
India	41.85	42.70	45.00	45.00	3.19	3.35	3.33	3.33	89.09	95.30	100.00	100.00	0.00	0.00	4.70	4.93
Bangladesh	11.60	11.80	12.00	12.00	4.01	4.22	4.13	4.25	31.00	33.20	33.00	34.00	1.00	3.03	0.80	2.41
Pakistan	2.80	2.10	2.75	2.75	3.64	3.57	3.63	3.57	6.80	5.00	6.65	6.55	-0.10	-1.50	1.55	31.00
<b>Southeast Asia</b>																
Indonesia	12.10	12.08	12.15	12.15	4.73	4.67	4.83	4.83	36.37	35.50	37.30	37.30	0.00	0.00	1.80	5.07
Vietnam	7.42	7.61	7.56	7.56	5.39	5.53	5.54	5.54	24.99	26.30	26.15	26.15	0.00	0.00	-0.15	-0.57
Thailand	10.94	10.67	10.96	10.96	2.81	2.88	2.81	2.81	20.26	20.26	20.30	20.30	0.00	0.00	0.04	0.19
Burma	7.00	7.00	6.69	6.69	2.60	2.65	2.71	2.71	10.55	10.75	10.50	10.50	0.00	0.00	-0.25	-2.33
Philippines	4.41	4.53	4.60	4.60	3.52	3.69	3.62	3.62	9.77	10.54	10.50	10.50	0.00	0.00	-0.04	-0.37
Cambodia	2.68	2.78	2.63	2.70	2.84	2.97	2.90	3.12	4.78	5.20	4.80	5.30	0.50	10.42	0.10	1.92
Laos	0.89	0.87	0.82	0.82	3.61	3.45	3.76	3.76	1.92	1.80	1.85	1.85	0.00	0.00	0.05	2.78
Malaysia	0.67	0.67	0.67	0.67	3.71	3.71	3.74	3.74	1.62	1.61	1.63	1.63	0.00	0.00	0.02	1.24
<b>South America</b>																
Brazil	2.77	2.82	2.75	2.60	4.22	4.83	4.63	4.62	7.93	9.26	8.65	8.16	-0.49	-5.66	-1.10	-11.85
Peru	0.41	0.39	0.34	0.34	7.40	7.28	7.10	7.10	2.09	1.94	1.67	1.67	0.00	0.00	-0.27	-14.08
<b>Sub-Saharan Africa</b>																
Nigeria	2.10	2.15	2.17	2.17	2.06	1.93	1.98	1.98	2.60	2.49	2.58	2.58	0.00	0.00	0.09	3.61
Madagascar	1.34	1.34	1.34	1.34	3.36	3.57	3.21	3.21	2.88	3.06	2.75	2.75	0.00	0.00	-0.31	-10.12
<b>EU-27</b>	0.46	0.47	0.46	0.46	6.49	6.25	6.44	6.44	1.89	1.87	1.90	1.90	0.00	0.00	0.03	1.71
Italy	0.24	0.25	0.24	0.24	6.74	6.28	6.52	6.52	0.98	0.95	0.97	0.97	0.00	0.00	0.02	2.11
Spain	0.12	0.12	0.12	0.12	6.42	6.36	6.39	6.39	0.54	0.54	0.55	0.55	0.00	0.00	0.00	0.37
<b>Egypt</b>	0.67	0.45	0.76	0.76	9.87	10.60	9.51	9.51	4.30	3.10	4.70	4.70	0.00	0.00	1.60	51.61
<b>Iran</b>	0.54	0.54	0.54	0.54	4.20	4.21	4.21	4.21	1.49	1.50	1.50	1.50	0.00	0.00	0.00	0.00
<b>Others</b>	11.39	11.69	12.04	12.04	2.96	3.08	3.09	3.08	21.95	23.49	24.27	24.19	-0.08	-0.31	0.71	3.00

Yield is on a rough basis, before the milling process  
Production is on a milled basis, after the milling process

**Table 10 Total Oilseed Area, Yield, and Production**

**World and Selected Countries and Regions**

Country / Region	Area (Million hectares)				Yield (Metric tons per hectare)				Production (Million metric tons)				Change in Production			
	Prel.		2011/12 Proj.		Prel.		2011/12 Proj.		Prel.		2011/12 Proj.		From last month		From last year	
	2009/10	2010/11	Dec	Jan	2009/10	2010/11	Dec	Jan	2009/10	2010/11	Dec	Jan	MMT	Percent	MMT	Percent
<b>World Total</b>	--	--	--	--	--	--	--	--	443.95	454.80	457.62	457.35	-0.27	-0.06	2.55	0.56
<b>Total Foreign</b>	--	--	--	--	--	--	--	--	345.05	354.42	366.62	366.13	-0.49	-0.13	11.71	3.30
<b>Oilseed, Copra</b>	--	--	--	--	--	--	--	--	5.88	5.89	5.84	5.84	0.00	0.00	-0.06	-0.95
<b>Oilseed, Palm Kernel</b>	--	--	--	--	--	--	--	--	12.22	12.64	13.35	13.35	0.00	0.00	0.71	5.60
<b>Major Oilseeds</b>	206.29	213.29	217.95	218.79	2.06	2.05	2.01	2.00	425.85	436.27	438.44	438.17	-0.27	-0.06	1.90	0.44
<b>United States</b>	35.51	37.18	35.28	35.20	2.79	2.70	2.58	2.59	98.90	100.38	91.01	91.22	0.22	0.24	-9.15	-9.12
<b>Foreign Oilseeds</b>	170.78	176.11	182.67	183.58	1.91	1.91	1.90	1.89	326.95	335.89	347.43	346.94	-0.49	-0.14	11.06	3.29
<b>South America</b>	50.21	51.72	53.67	53.37	2.80	2.81	2.74	2.71	140.71	145.19	147.26	144.76	-2.50	-1.70	-0.43	-0.29
Brazil	24.50	25.78	26.58	26.58	2.91	3.07	2.96	2.92	71.36	79.21	78.73	77.73	-1.00	-1.27	-1.49	-1.87
Argentina	20.75	20.91	21.73	21.43	2.79	2.58	2.61	2.58	57.94	53.85	56.68	55.18	-1.50	-2.65	1.33	2.47
Paraguay	2.82	3.03	3.14	3.14	2.61	2.83	2.52	2.52	7.35	8.57	7.90	7.90	0.00	0.00	-0.68	-7.87
Bolivia	1.14	0.99	1.06	1.06	1.74	1.75	1.70	1.70	1.98	1.73	1.80	1.80	0.00	0.00	0.07	3.87
<b>China</b>	27.10	26.52	25.91	25.91	2.13	2.18	2.21	2.21	57.84	57.69	57.33	57.33	0.00	0.00	-0.36	-0.63
<b>South Asia</b>	37.21	38.25	40.16	40.16	1.00	1.02	1.03	1.03	37.07	39.00	41.47	41.27	-0.20	-0.48	2.28	5.83
India	33.06	34.20	35.73	35.73	0.96	0.99	1.00	0.99	31.62	33.93	35.68	35.48	-0.20	-0.56	1.56	4.58
Pakistan	3.83	3.73	4.10	4.10	1.36	1.29	1.35	1.35	5.19	4.81	5.53	5.53	0.00	0.00	0.72	14.86
<b>EU-27</b>	10.99	11.41	11.74	11.70	2.70	2.55	2.47	2.47	29.65	29.07	28.96	28.91	-0.05	-0.17	-0.17	-0.57
France	2.25	2.21	2.34	2.34	3.30	2.98	3.13	3.13	7.43	6.60	7.31	7.31	0.00	0.00	0.71	10.83
Germany	1.50	1.51	1.48	1.48	4.26	3.80	2.81	2.74	6.36	5.75	4.16	4.06	-0.10	-2.40	-1.69	-29.33
Poland	0.83	0.86	0.82	0.82	3.05	2.63	2.28	2.28	2.52	2.25	1.86	1.86	0.00	0.00	-0.39	-17.19
Romania	1.26	1.44	1.42	1.42	1.48	1.70	1.75	1.75	1.87	2.45	2.49	2.49	0.00	0.00	0.04	1.43
Hungary	0.82	0.80	0.85	0.85	2.32	2.03	2.30	2.30	1.91	1.63	1.95	1.95	0.00	0.00	0.32	19.55
United Kingdom	0.57	0.64	0.70	0.70	3.35	3.47	3.64	3.79	1.91	2.23	2.55	2.65	0.10	3.92	0.42	18.83
<b>Former Soviet Union - 12</b>	17.24	18.75	20.20	21.40	1.30	1.21	1.37	1.37	22.38	22.71	27.59	29.37	1.79	6.48	6.66	29.32
Russia	6.95	7.20	9.27	9.27	1.16	1.01	1.21	1.30	8.03	7.24	11.25	12.05	0.80	7.11	4.81	66.39
Ukraine	6.64	7.30	6.55	7.75	1.58	1.58	1.86	1.70	10.52	11.55	12.20	13.20	1.00	8.20	1.65	14.29
Uzbekistan	1.30	1.30	1.34	1.34	1.17	1.23	1.23	1.23	1.53	1.60	1.65	1.65	0.00	0.00	0.05	3.13
<b>Canada</b>	7.83	8.05	9.09	9.09	2.11	2.14	2.04	2.04	16.51	17.23	18.53	18.53	0.00	0.00	1.29	7.50
<b>Africa</b>	12.19	12.53	12.99	12.99	0.89	0.92	0.91	0.91	10.87	11.52	11.83	11.83	0.00	0.00	0.32	2.74
Nigeria	2.08	2.10	2.05	2.05	1.05	1.05	1.06	1.06	2.19	2.21	2.17	2.17	0.00	0.00	-0.03	-1.45
<b>Southeast Asia</b>	3.57	3.57	3.58	3.58	1.33	1.33	1.35	1.35	4.75	4.76	4.84	4.84	0.00	0.00	0.07	1.51
Indonesia	1.29	1.23	1.22	1.22	1.52	1.56	1.55	1.55	1.96	1.91	1.90	1.90	0.00	0.00	-0.01	-0.52
<b>Australia</b>	1.99	2.75	2.43	2.48	1.31	1.38	1.71	1.85	2.61	3.81	4.15	4.59	0.44	10.60	0.78	20.54
<b>Others</b>	2.45	2.56	2.89	2.89	1.86	1.92	1.90	1.91	4.55	4.91	5.49	5.52	0.03	0.58	0.61	12.49

World Total and Total Foreign: (Major Oilseeds plus copra and palm kernel)

Major Oilseeds: (soybeans, sunflowerseeds, peanuts(inshell), cottonseed and rapeseed)

**Table 11 Soybean Area, Yield, and Production**

Country / Region	Area (Million hectares)				Yield (Metric tons per hectare)				Production (Million metric tons)				Change in Production			
	Prel.		2011/12 Proj.		Prel.		2011/12 Proj.		Prel.		2011/12 Proj.		From last month		From last year	
	2009/10	2010/11	Dec	Jan	2009/10	2010/11	Dec	Jan	2009/10	2010/11	Dec	Jan	MMT	Percent	MMT	Percent
<b>World</b>	102.17	102.76	103.83	103.51	2.55	2.57	2.50	2.48	260.85	264.18	259.22	257.00	-2.22	-0.85	-7.18	-2.72
<b>United States</b>	30.91	31.00	29.82	29.80	2.96	2.92	2.78	2.79	91.42	90.61	82.89	83.17	0.29	0.34	-7.43	-8.20
<b>Total Foreign</b>	71.26	71.75	74.01	73.71	2.38	2.42	2.38	2.36	169.44	173.57	176.33	173.83	-2.50	-1.42	0.26	0.15
<b>South America</b>																
Brazil	23.50	24.20	25.00	25.00	2.94	3.12	3.00	2.96	69.00	75.50	75.00	74.00	-1.00	-1.33	-1.50	-1.99
Argentina	18.60	18.30	19.00	18.70	2.93	2.68	2.74	2.70	54.50	49.00	52.00	50.50	-1.50	-2.88	1.50	3.06
Paraguay	2.68	2.84	2.90	2.90	2.69	2.92	2.62	2.62	7.20	8.30	7.60	7.60	0.00	0.00	-0.70	-8.43
Bolivia	0.90	0.85	0.90	0.90	1.85	1.86	1.76	1.76	1.67	1.58	1.58	1.58	0.00	0.00	0.00	0.00
Uruguay	0.86	0.87	1.00	1.00	2.11	1.79	1.80	1.80	1.82	1.55	1.80	1.80	0.00	0.00	0.26	16.50
<b>East Asia</b>																
China	9.19	8.52	7.65	7.65	1.63	1.77	1.76	1.76	14.98	15.10	13.50	13.50	0.00	0.00	-1.60	-10.60
Korea, South	0.07	0.07	0.08	0.08	1.99	1.46	1.69	1.69	0.14	0.11	0.14	0.14	0.00	0.00	0.03	30.48
Korea, North	0.14	0.14	0.14	0.14	1.08	1.19	1.19	1.19	0.15	0.16	0.16	0.16	0.00	0.00	0.00	0.00
Japan	0.14	0.14	0.14	0.14	1.62	1.63	1.63	1.63	0.22	0.22	0.22	0.22	0.00	0.00	0.00	0.00
<b>India</b>	9.60	9.30	10.27	10.27	1.01	1.05	1.07	1.07	9.70	9.80	11.00	11.00	0.00	0.00	1.20	12.24
<b>Canada</b>	1.38	1.48	1.54	1.54	2.54	2.94	2.75	2.75	3.51	4.35	4.25	4.25	0.00	0.00	-0.10	-2.28
<b>Former Soviet Union - 12</b>																
Ukraine	0.62	1.04	1.10	1.10	1.68	1.62	2.00	2.00	1.04	1.68	2.20	2.20	0.00	0.00	0.52	30.95
Russia	0.79	1.04	1.20	1.20	1.19	1.18	1.25	1.25	0.94	1.22	1.50	1.50	0.00	0.00	0.28	22.75
<b>Southeast Asia</b>																
Indonesia	0.53	0.47	0.47	0.47	1.32	1.38	1.38	1.38	0.70	0.65	0.64	0.64	0.00	0.00	-0.01	-1.54
Vietnam	0.15	0.20	0.22	0.22	1.47	1.50	1.63	1.63	0.21	0.30	0.35	0.35	0.00	0.00	0.05	17.85
Thailand	0.11	0.12	0.12	0.12	1.55	1.50	1.50	1.50	0.17	0.18	0.18	0.18	0.00	0.00	0.00	0.00
Burma	0.16	0.17	0.17	0.17	1.20	1.21	1.21	1.21	0.19	0.20	0.20	0.20	0.00	0.00	0.00	0.00
<b>EU-27</b>	0.31	0.38	0.42	0.42	2.71	2.79	2.90	2.90	0.84	1.05	1.22	1.22	0.00	0.00	0.17	16.41
Italy	0.14	0.16	0.21	0.21	3.47	3.45	3.43	3.43	0.47	0.55	0.70	0.70	0.00	0.00	0.15	27.36
France	0.04	0.05	0.05	0.05	2.50	2.75	2.55	2.55	0.11	0.14	0.12	0.12	0.00	0.00	-0.02	-14.29
<b>Sub-Saharan Africa</b>																
South Africa	0.31	0.42	0.42	0.42	1.82	1.70	1.79	1.79	0.57	0.71	0.75	0.75	0.00	0.00	0.04	5.63
Nigeria	0.44	0.44	0.44	0.44	1.02	1.02	1.02	1.02	0.45	0.45	0.45	0.45	0.00	0.00	0.00	0.00
Uganda	0.15	0.15	0.15	0.15	1.10	1.10	1.10	1.10	0.17	0.17	0.17	0.17	0.00	0.00	0.00	0.00
<b>Serbia</b>	0.15	0.15	0.17	0.17	2.41	2.41	2.52	2.52	0.35	0.35	0.42	0.42	0.00	0.00	0.07	18.57
<b>Mexico</b>	0.08	0.11	0.13	0.13	1.49	1.50	1.50	1.50	0.12	0.17	0.20	0.20	0.00	0.00	0.03	19.05
<b>Iran</b>	0.08	0.09	0.09	0.09	2.46	2.47	2.47	2.47	0.21	0.21	0.21	0.21	0.00	0.00	0.00	0.00
<b>Others</b>	0.32	0.31	0.32	0.32	1.86	1.91	1.91	1.91	0.60	0.59	0.61	0.61	0.00	0.00	0.02	2.89

World and Selected Countries and Regions

**Table 12 Cottonseed Area, Yield, and Production**

Country / Region	Area (Million hectares)				Yield (Metric tons per hectare)				Production (Million metric tons)				Change in Production			
	Prel.		2011/12 Proj.		Prel.		2011/12 Proj.		Prel.		2011/12 Proj.		From last month		From last year	
	2009/10	2010/11	Dec	Jan	2009/10	2010/11	Dec	Jan	2009/10	2010/11	Dec	Jan	MMT	Percent	MMT	Percent
<b>World</b>	29.43	32.65	34.85	34.81	1.33	1.33	1.34	1.33	39.03	43.48	46.64	46.42	-0.22	-0.47	2.93	6.74
<b>United States</b>	3.05	4.33	3.99	3.95	1.24	1.28	1.21	1.21	3.76	5.53	4.82	4.78	-0.04	-0.85	-0.75	-13.63
<b>Total Foreign</b>	26.39	28.32	30.86	30.86	1.34	1.34	1.35	1.35	35.27	37.95	41.82	41.64	-0.18	-0.43	3.69	9.71
<b>China</b>	5.30	5.15	5.50	5.50	2.37	2.32	2.39	2.39	12.54	11.95	13.13	13.13	0.00	0.00	1.18	9.85
<b>South Asia</b>																
India	10.31	11.14	12.20	12.20	0.95	0.97	0.96	0.94	9.80	10.80	11.70	11.50	-0.20	-1.71	0.70	6.48
Pakistan	3.00	2.90	3.20	3.20	1.39	1.31	1.38	1.38	4.18	3.80	4.40	4.40	0.00	0.00	0.60	15.79
<b>Former Soviet Union - 12</b>																
Uzbekistan	1.30	1.30	1.34	1.34	1.17	1.23	1.23	1.23	1.53	1.60	1.65	1.65	0.00	0.00	0.05	3.13
Turkmenistan	0.55	0.64	0.58	0.58	1.05	1.07	0.96	0.96	0.58	0.69	0.55	0.55	0.00	0.00	-0.14	-19.71
Tajikistan	0.17	0.17	0.20	0.20	0.88	0.94	1.00	1.00	0.15	0.16	0.20	0.20	0.00	0.00	0.05	29.03
Kazakhstan	0.12	0.13	0.14	0.14	1.25	0.85	1.11	1.00	0.15	0.11	0.16	0.14	-0.02	-9.68	0.03	27.27
<b>South America</b>																
Brazil	0.84	1.40	1.40	1.40	2.43	2.39	2.39	2.39	2.03	3.35	3.35	3.35	0.00	0.00	0.00	0.00
Argentina	0.44	0.61	0.55	0.55	0.70	0.73	0.68	0.68	0.31	0.44	0.38	0.38	0.00	0.00	-0.07	-14.77
<b>Middle East</b>																
Turkey	0.28	0.32	0.48	0.48	2.04	2.16	2.08	2.08	0.57	0.69	1.00	1.00	0.00	0.00	0.31	44.93
Syria	0.17	0.13	0.15	0.15	2.75	2.75	2.73	2.73	0.45	0.34	0.41	0.41	0.00	0.00	0.07	19.19
Iran	0.11	0.12	0.14	0.14	0.97	1.00	1.00	1.00	0.11	0.12	0.14	0.14	0.00	0.00	0.02	12.50
<b>Australia</b>	0.20	0.59	0.60	0.60	2.73	2.20	2.50	2.50	0.55	1.30	1.50	1.50	0.00	0.00	0.20	15.38
<b>EU-27</b>	0.26	0.31	0.37	0.37	1.34	1.30	1.44	1.44	0.35	0.40	0.54	0.54	0.00	0.00	0.14	35.10
Greece	0.20	0.24	0.30	0.30	1.53	1.33	1.50	1.50	0.31	0.32	0.45	0.45	0.00	0.00	0.13	40.63
Spain	0.06	0.06	0.07	0.07	0.73	1.19	1.20	1.20	0.04	0.08	0.08	0.08	0.00	0.00	0.01	12.00
<b>Sub-Saharan Africa</b>																
Burkina	0.42	0.40	0.40	0.40	0.46	0.45	0.48	0.48	0.19	0.18	0.19	0.19	0.00	0.00	0.01	7.22
Mali	0.25	0.26	0.48	0.48	0.50	0.52	0.47	0.47	0.13	0.13	0.23	0.23	0.00	0.00	0.09	68.66
Cameroon	0.15	0.14	0.18	0.18	0.75	0.98	0.93	0.93	0.11	0.14	0.16	0.16	0.00	0.00	0.03	18.25
Sudan	0.03	0.04	0.09	0.09	0.96	1.21	0.94	0.94	0.03	0.05	0.09	0.09	0.00	0.00	0.03	66.67
Zimbabwe	0.38	0.40	0.43	0.43	0.50	0.48	0.51	0.51	0.19	0.19	0.22	0.22	0.00	0.00	0.03	14.74
Nigeria	0.40	0.41	0.36	0.36	0.49	0.50	0.48	0.48	0.19	0.21	0.17	0.17	0.00	0.00	-0.03	-15.61
Benin	0.18	0.18	0.17	0.17	0.64	0.55	0.63	0.63	0.12	0.10	0.11	0.11	0.00	0.00	0.01	8.08
Uganda	0.07	0.10	0.10	0.10	0.74	1.09	1.31	1.31	0.05	0.11	0.13	0.13	0.00	0.00	0.02	20.18
<b>Egypt</b>	0.12	0.16	0.21	0.21	1.14	1.14	1.14	1.14	0.14	0.18	0.24	0.24	0.00	0.00	0.06	35.59
<b>Mexico</b>	0.08	0.12	0.19	0.19	2.09	2.15	1.97	2.14	0.16	0.25	0.38	0.41	0.03	8.53	0.16	63.45
<b>Burma</b>	0.30	0.30	0.30	0.30	0.63	0.63	0.63	0.63	0.19	0.19	0.19	0.19	0.00	0.00	0.00	0.00
<b>Others</b>	0.98	0.93	1.12	1.12	0.50	0.52	0.56	0.56	0.49	0.49	0.63	0.63	0.00	0.48	0.14	29.16

World and Selected Countries and Regions

**Table 13 Peanut Area, Yield, and Production**

Country / Region	Area (Million hectares)				Yield (Metric tons per hectare)				Production (Million metric tons)				Change in Production			
	Prel.		2011/12 Proj.		Prel.		2011/12 Proj.		Prel.		2011/12 Proj.		From last month		From last year	
	2009/10	2010/11	Dec	Jan	2009/10	2010/11	Dec	Jan	2009/10	2010/11	Dec	Jan	MMT	Percent	MMT	Percent
<b>World</b>	20.40	21.33	20.75	20.74	1.64	1.66	1.71	1.71	33.36	35.40	35.54	35.53	-0.01	-0.02	0.14	0.38
<b>United States</b>	0.44	0.51	0.45	0.44	3.83	3.71	3.67	3.71	1.68	1.89	1.66	1.65	-0.01	-0.36	-0.24	-12.57
<b>Total Foreign</b>	19.96	20.83	20.29	20.29	1.59	1.61	1.67	1.67	31.68	33.51	33.88	33.88	0.00	0.00	0.37	1.11
<b>China</b>	4.38	4.53	4.70	4.70	3.36	3.45	3.45	3.45	14.71	15.64	16.20	16.20	0.00	0.00	0.56	3.58
<b>South Asia</b>																
India	5.30	6.00	5.26	5.26	0.92	0.98	1.02	1.02	4.90	5.85	5.35	5.35	0.00	0.00	-0.50	-8.55
Pakistan	0.11	0.11	0.11	0.11	0.90	0.90	0.90	0.90	0.10	0.10	0.10	0.10	0.00	0.00	0.00	0.00
<b>Sub-Saharan Africa</b>	7.84	7.80	7.80	7.80	0.93	0.95	0.93	0.93	7.32	7.39	7.29	7.29	0.00	0.00	-0.10	-1.29
Nigeria	1.25	1.25	1.25	1.25	1.24	1.24	1.24	1.24	1.55	1.55	1.55	1.55	0.00	0.00	0.00	0.00
Senegal	1.06	1.00	1.00	1.00	0.97	1.10	1.00	1.00	1.03	1.10	1.00	1.00	0.00	0.00	-0.10	-9.09
Chad	0.35	0.35	0.35	0.35	1.32	1.32	1.32	1.32	0.47	0.47	0.47	0.47	0.00	0.00	0.00	0.00
Ghana	0.47	0.47	0.47	0.47	0.94	0.94	0.94	0.94	0.44	0.44	0.44	0.44	0.00	0.00	0.00	0.00
Sudan	1.00	1.00	1.00	1.00	0.85	0.85	0.85	0.85	0.85	0.85	0.85	0.85	0.00	0.00	0.00	0.00
Congo (Kinshasa)	0.48	0.48	0.48	0.48	0.78	0.78	0.78	0.78	0.37	0.37	0.37	0.37	0.00	0.00	0.00	0.00
Burkina	0.35	0.35	0.35	0.35	1.01	1.01	1.01	1.01	0.35	0.35	0.35	0.35	0.00	0.00	0.00	0.00
Guinea	0.21	0.21	0.21	0.21	1.24	1.24	1.24	1.24	0.26	0.26	0.26	0.26	0.00	0.00	0.00	0.00
Cameroon	0.31	0.31	0.31	0.31	0.77	0.77	0.77	0.77	0.24	0.24	0.24	0.24	0.00	0.00	0.00	0.00
Mali	0.25	0.25	0.25	0.25	1.10	1.10	1.10	1.10	0.28	0.28	0.28	0.28	0.00	0.00	0.00	0.00
Malawi	0.22	0.22	0.22	0.22	1.20	1.20	1.20	1.20	0.27	0.27	0.27	0.27	0.00	0.00	0.00	0.00
Cote d'Ivoire	0.15	0.15	0.15	0.15	1.00	1.00	1.00	1.00	0.15	0.15	0.15	0.15	0.00	0.00	0.00	0.00
Uganda	0.21	0.21	0.21	0.21	0.70	0.70	0.70	0.70	0.15	0.15	0.15	0.15	0.00	0.00	0.00	0.00
Central African Republic	0.13	0.13	0.13	0.13	1.12	1.12	1.12	1.12	0.14	0.14	0.14	0.14	0.00	0.00	0.00	0.00
Benin	0.16	0.16	0.16	0.16	0.81	0.81	0.81	0.81	0.13	0.13	0.13	0.13	0.00	0.00	0.00	0.00
Mozambique	0.29	0.29	0.29	0.29	0.38	0.38	0.38	0.38	0.11	0.11	0.11	0.11	0.00	0.00	0.00	0.00
Niger	0.26	0.26	0.26	0.26	0.42	0.42	0.42	0.42	0.11	0.11	0.11	0.11	0.00	0.00	0.00	0.00
South Africa	0.06	0.06	0.06	0.06	2.05	2.09	2.18	2.18	0.12	0.12	0.12	0.12	0.00	0.00	0.01	4.35
<b>Southeast Asia</b>																
Indonesia	0.75	0.75	0.75	0.75	1.67	1.67	1.67	1.67	1.25	1.25	1.25	1.25	0.00	0.00	0.00	0.00
Burma	0.67	0.67	0.67	0.67	1.49	1.49	1.49	1.49	1.00	1.00	1.00	1.00	0.00	0.00	0.00	0.00
Vietnam	0.25	0.24	0.25	0.25	2.11	1.99	2.10	2.10	0.53	0.49	0.52	0.52	0.00	0.00	0.03	5.97
Thailand	0.07	0.07	0.07	0.07	1.77	1.77	1.77	1.77	0.12	0.12	0.12	0.12	0.00	0.00	0.00	0.00
<b>South America</b>																
Argentina	0.22	0.27	0.30	0.30	3.80	2.78	3.67	3.67	0.84	0.74	1.10	1.10	0.00	0.00	0.36	49.46
Brazil	0.10	0.10	0.10	0.10	2.47	2.50	2.60	2.60	0.24	0.25	0.26	0.26	0.00	0.00	0.01	4.00
<b>Egypt</b>	0.06	0.06	0.06	0.06	3.17	3.17	3.17	3.17	0.19	0.19	0.19	0.19	0.00	0.00	0.00	0.00
<b>Mexico</b>	0.05	0.05	0.05	0.05	1.56	1.56	1.56	1.56	0.07	0.07	0.07	0.07	0.00	0.00	0.00	0.00
<b>Others</b>	0.19	0.19	0.19	0.19	2.37	2.34	2.34	2.34	0.44	0.44	0.44	0.44	0.00	0.00	0.01	1.14

World and Selected Countries and Regions

**Table 14 Sunflowerseed Area, Yield, and Production**

Country / Region	Area (Million hectares)				Yield (Metric tons per hectare)				Production (Million metric tons)				Change in Production			
	Prel.		2011/12 Proj.		Prel.		2011/12 Proj.		Prel.		2011/12 Proj.		From last month		From last year	
	2009/10	2010/11	Dec	Jan	2009/10	2010/11	Dec	Jan	2009/10	2010/11	Dec	Jan	MMT	Percent	MMT	Percent
<b>World</b>	22.88	23.24	25.06	26.21	1.38	1.41	1.48	1.49	31.63	32.82	37.21	38.94	1.73	4.64	6.12	18.64
<b>United States</b>	0.79	0.76	0.60	0.59	1.74	1.64	1.59	1.57	1.38	1.24	0.95	0.93	-0.02	-2.43	-0.32	-25.46
<b>Total Foreign</b>	22.09	22.48	24.46	25.62	1.37	1.40	1.48	1.48	30.25	31.58	36.26	38.01	1.75	4.83	6.43	20.38
<b>Former Soviet Union - 12</b>																
Russia	5.60	5.55	7.30	7.30	1.15	0.96	1.21	1.32	6.43	5.35	8.80	9.60	0.80	9.09	4.25	79.44
Ukraine	5.00	5.40	4.60	5.80	1.52	1.56	1.85	1.64	7.60	8.40	8.50	9.50	1.00	11.76	1.10	13.10
Moldova	0.23	0.25	0.25	0.25	1.25	1.51	1.60	1.60	0.28	0.38	0.40	0.40	0.00	0.00	0.02	4.44
Kazakhstan	0.72	1.10	1.20	1.20	0.51	0.41	0.42	0.42	0.37	0.45	0.50	0.50	0.00	0.00	0.05	11.11
<b>South America</b>																
Argentina	1.49	1.74	1.88	1.88	1.55	2.11	1.71	1.71	2.30	3.67	3.20	3.20	0.00	0.00	-0.47	-12.81
Uruguay	0.01	0.00	0.01	0.01	0.90	1.33	1.50	1.50	0.01	0.00	0.02	0.02	0.00	0.00	0.01	275.00
Bolivia	0.24	0.14	0.16	0.16	1.32	1.07	1.38	1.38	0.31	0.15	0.22	0.22	0.00	0.00	0.07	43.79
<b>China</b>	0.96	0.95	0.96	0.96	2.04	2.00	2.08	2.08	1.96	1.90	2.00	2.00	0.00	0.00	0.10	5.26
<b>EU-27</b>	3.90	3.74	4.20	4.16	1.77	1.85	1.93	1.94	6.91	6.92	8.10	8.05	-0.05	-0.62	1.13	16.33
France	0.73	0.70	0.74	0.74	2.34	2.36	2.57	2.57	1.70	1.64	1.90	1.90	0.00	0.00	0.26	15.85
Hungary	0.53	0.50	0.57	0.57	2.35	1.98	2.33	2.33	1.26	0.99	1.33	1.33	0.00	0.00	0.34	34.34
Spain	0.85	0.70	0.84	0.84	1.02	1.27	1.27	1.27	0.87	0.89	1.07	1.07	0.00	0.00	0.18	20.63
Italy	0.12	0.10	0.11	0.11	1.98	2.20	2.20	2.20	0.25	0.22	0.24	0.24	0.00	0.00	0.02	9.01
Slovakia	0.08	0.09	0.09	0.09	2.23	1.70	2.36	2.36	0.19	0.15	0.21	0.21	0.00	0.00	0.06	40.00
<b>South Asia</b>																
India	1.40	0.76	1.00	1.00	0.59	0.63	0.63	0.63	0.82	0.48	0.63	0.63	0.00	0.00	0.16	32.63
Pakistan	0.45	0.45	0.50	0.50	1.52	1.52	1.50	1.50	0.69	0.69	0.75	0.75	0.00	0.00	0.07	9.49
<b>Turkey</b>	0.46	0.49	0.49	0.49	1.74	2.06	1.89	1.89	0.80	1.00	0.93	0.93	0.00	0.00	-0.08	-7.50
<b>South Africa</b>	0.40	0.65	0.65	0.65	1.23	1.29	1.31	1.31	0.49	0.83	0.85	0.85	0.00	0.00	0.02	2.41
<b>Burma</b>	0.55	0.55	0.55	0.55	0.64	0.64	0.64	0.64	0.35	0.35	0.35	0.35	0.00	0.00	0.00	0.00
<b>Serbia</b>	0.17	0.17	0.18	0.18	2.35	2.35	2.37	2.37	0.40	0.40	0.42	0.42	0.00	0.00	0.02	3.75
<b>Canada</b>	0.07	0.07	0.07	0.07	1.60	1.60	1.60	1.60	0.12	0.12	0.12	0.12	0.00	0.00	0.00	0.00
<b>Australia</b>	0.03	0.03	0.03	0.03	1.52	1.52	1.36	1.36	0.04	0.04	0.04	0.04	0.00	0.00	-0.01	-13.64
<b>Others</b>	0.42	0.44	0.44	0.44	0.92	1.02	1.02	1.02	0.38	0.45	0.45	0.45	0.00	0.00	0.01	1.12

World and Selected Countries and Regions

**Table 15 Rapeseed Area, Yield, and Production**

Country / Region	Area (Million hectares)				Yield (Metric tons per hectare)				Production (Million metric tons)				Change in Production			
	Prel.		2011/12 Proj.		Prel.		2011/12 Proj.		Prel.		2011/12 Proj.		From last month		From last year	
	2009/10	2010/11	Dec	Jan	2009/10	2010/11	Dec	Jan	2009/10	2010/11	Dec	Jan	MMT	Percent	MMT	Percent
<b>World</b>	31.41	33.31	33.47	33.52	1.94	1.81	1.79	1.80	60.98	60.39	59.84	60.28	0.44	0.74	-0.11	-0.18
<b>United States</b>	0.33	0.58	0.43	0.42	2.03	1.92	1.63	1.65	0.67	1.11	0.70	0.70	0.00	0.43	-0.41	-37.20
<b>Total Foreign</b>	31.08	32.73	33.05	33.10	1.94	1.81	1.79	1.80	60.31	59.28	59.15	59.59	0.44	0.74	0.31	0.52
<b>EU-27</b>	6.52	6.99	6.75	6.75	3.31	2.96	2.83	2.83	21.55	20.71	19.10	19.10	0.00	0.00	-1.61	-7.76
Germany	1.47	1.49	1.45	1.45	4.29	3.83	2.82	2.75	6.31	5.70	4.10	4.00	-0.10	-2.44	-1.70	-29.80
France	1.48	1.47	1.55	1.55	3.80	3.29	3.41	3.41	5.62	4.82	5.29	5.29	0.00	0.00	0.47	9.84
United Kingdom	0.57	0.64	0.70	0.70	3.35	3.47	3.64	3.79	1.91	2.23	2.55	2.65	0.10	3.92	0.42	18.83
Poland	0.82	0.85	0.81	0.81	3.06	2.63	2.28	2.28	2.51	2.24	1.85	1.85	0.00	0.00	-0.39	-17.26
Czech Republic	0.36	0.37	0.37	0.37	3.18	2.82	2.89	2.89	1.13	1.04	1.08	1.08	0.00	0.00	0.04	3.36
Denmark	0.16	0.17	0.15	0.15	3.90	3.46	3.33	3.33	0.64	0.58	0.50	0.50	0.00	0.00	-0.08	-13.04
Hungary	0.26	0.26	0.24	0.24	2.23	2.15	2.22	2.22	0.58	0.56	0.53	0.53	0.00	0.00	-0.03	-5.36
Romania	0.44	0.58	0.39	0.39	1.55	1.81	1.88	1.88	0.68	1.05	0.73	0.73	0.00	0.00	-0.33	-30.95
Slovakia	0.17	0.17	0.15	0.15	2.32	1.92	2.43	2.43	0.39	0.32	0.35	0.35	0.00	0.00	0.03	9.29
Sweden	0.10	0.11	0.10	0.10	2.99	2.56	2.82	2.82	0.30	0.28	0.28	0.28	0.00	0.00	0.00	1.08
Lithuania	0.19	0.20	0.20	0.20	2.17	2.10	2.10	2.10	0.42	0.42	0.42	0.42	0.00	0.00	0.00	0.00
Latvia	0.09	0.09	0.09	0.09	2.20	2.31	2.28	2.28	0.21	0.22	0.21	0.21	0.00	0.00	-0.01	-4.65
Austria	0.06	0.05	0.05	0.05	3.00	3.15	3.33	3.33	0.17	0.17	0.18	0.18	0.00	0.00	0.01	5.88
Finland	0.08	0.16	0.09	0.09	1.57	1.30	1.43	1.43	0.13	0.21	0.13	0.13	0.00	0.00	-0.07	-35.61
Estonia	0.08	0.10	0.09	0.09	1.66	1.34	1.52	1.52	0.14	0.13	0.14	0.14	0.00	0.00	0.00	3.05
<b>China</b>	7.28	7.37	7.10	7.10	1.88	1.78	1.76	1.76	13.66	13.10	12.50	12.50	0.00	0.00	-0.60	-4.58
<b>South Asia</b>																
India	6.45	7.00	7.00	7.00	0.99	1.00	1.00	1.00	6.40	7.00	7.00	7.00	0.00	0.00	0.00	0.00
Pakistan	0.27	0.27	0.29	0.29	0.85	0.85	0.97	0.97	0.23	0.23	0.28	0.28	0.00	0.00	0.05	21.74
Bangladesh	0.30	0.30	0.31	0.31	0.75	0.75	0.74	0.74	0.23	0.23	0.23	0.23	0.00	0.00	0.01	2.22
<b>Canada</b>	6.38	6.50	7.47	7.47	2.02	1.97	1.90	1.90	12.89	12.77	14.17	14.17	0.00	0.00	1.39	10.90
<b>Australia</b>	1.71	2.09	1.75	1.80	1.12	1.14	1.43	1.63	1.92	2.38	2.50	2.94	0.44	17.60	0.56	23.43
<b>Former Soviet Union - 12</b>																
Ukraine	1.01	0.86	0.85	0.85	1.85	1.70	1.76	1.76	1.87	1.47	1.50	1.50	0.00	0.00	0.03	2.04
Russia	0.56	0.61	0.77	0.77	1.20	1.09	1.23	1.23	0.67	0.67	0.95	0.95	0.00	0.00	0.28	41.79
Belarus	0.34	0.31	0.30	0.30	1.80	1.22	1.33	1.33	0.61	0.37	0.40	0.40	0.00	0.00	0.03	6.95
<b>Paraguay</b>	0.04	0.06	0.07	0.07	1.11	1.59	1.43	1.43	0.04	0.10	0.10	0.10	0.00	0.00	0.00	-1.96
<b>Others</b>	0.24	0.37	0.39	0.39	1.06	0.67	1.09	1.09	0.25	0.25	0.42	0.42	0.00	0.00	0.18	71.43

World and Selected Countries and Regions

**Table 16 Copra, Palm Kernel, and Palm Oil Production**

Country / Region	Production (Million metric tons)				Change in Production			
	2009/10	Prel.	2011/12 Proj.		From last month		From last year	
		2010/11	Dec	Jan	MMT	Percent	MMT	Percent
<b>Oilseed, Copra</b>								
Philippines	2.52	2.60	2.60	2.60	0.00	0.00	0.00	0.00
Indonesia	1.60	1.54	1.48	1.48	0.00	0.00	-0.06	-3.90
India	0.74	0.74	0.74	0.74	0.00	0.00	0.00	0.00
Vietnam	0.24	0.24	0.24	0.24	0.00	0.00	0.00	0.00
Mexico	0.23	0.23	0.23	0.23	0.00	0.00	0.00	0.00
Papua New Guinea	0.13	0.13	0.13	0.13	0.00	0.00	0.00	0.00
Thailand	0.07	0.07	0.07	0.07	0.00	0.00	0.00	0.00
Sri Lanka	0.07	0.07	0.07	0.07	0.00	0.00	0.00	0.00
Mozambique	0.05	0.05	0.05	0.05	0.00	0.00	0.00	0.00
Cote d'Ivoire	0.05	0.05	0.05	0.05	0.00	0.00	0.00	0.00
World	5.88	5.89	5.84	5.84	0.00	0.00	-0.05	-0.85
<b>Oilseed, Palm Kernel</b>								
Indonesia	5.88	6.30	6.80	6.80	0.00	0.00	0.50	7.94
Malaysia	4.52	4.52	4.68	4.68	0.00	0.00	0.16	3.54
Nigeria	0.67	0.67	0.67	0.67	0.00	0.00	0.00	0.00
Thailand	0.27	0.26	0.29	0.29	0.00	0.00	0.02	7.69
Papua New Guinea	0.13	0.14	0.14	0.14	0.00	0.00	0.00	0.00
Colombia	0.10	0.09	0.10	0.10	0.00	0.00	0.02	25.00
Cote d'Ivoire	0.08	0.08	0.08	0.08	0.00	0.00	0.00	0.00
Brazil	0.06	0.07	0.07	0.07	0.00	0.00	0.00	0.00
Cameroon	0.07	0.07	0.07	0.07	0.00	0.00	0.00	0.00
Congo (Kinshasa)	0.06	0.06	0.06	0.06	0.00	0.00	0.00	0.00
World	12.22	12.64	13.35	13.35	0.00	0.00	0.71	5.62
<b>Oil, Palm</b>								
Indonesia	22.00	23.60	25.40	25.40	0.00	0.00	1.80	7.63
Malaysia	17.76	18.22	18.70	18.70	0.00	0.00	0.48	2.63
Thailand	1.35	1.29	1.45	1.45	0.00	0.00	0.16	12.40
Nigeria	0.85	0.85	0.85	0.85	0.00	0.00	0.00	0.00
Colombia	0.77	0.78	0.89	0.89	0.00	0.00	0.10	12.82
Papua New Guinea	0.49	0.50	0.53	0.53	0.00	0.00	0.03	6.00
Ecuador	0.43	0.46	0.50	0.50	0.00	0.00	0.04	8.70
Cote d'Ivoire	0.30	0.30	0.30	0.30	0.00	0.00	0.00	0.00
Brazil	0.24	0.27	0.28	0.28	0.00	0.00	0.02	7.69
Honduras	0.25	0.25	0.25	0.25	0.00	0.00	0.00	0.00
World	45.86	47.93	50.57	50.57	0.00	0.00	2.64	5.51

World and Selected Countries and Regions



**Table 17 Cotton Area, Yield, and Production**

Country / Region	Area (Million 1000 HA)				Yield (Kilograms per hectare)				Production (Million 480 lb. bales)				Change in Production			
	Prel.		2011/12 Proj.		Prel.		2011/12 Proj.		Prel.		2011/12 Proj.		From last month		From last year	
	2009/10	2010/11	Dec	Jan	2009/10	2010/11	Dec	Jan	2009/10	2010/11	Dec	Jan	MBales	Percent	MBales	Percent
<b>World</b>	30.14	33.49	35.77	35.73	735	750	751	749	101.68	115.32	123.42	122.84	-0.58	-0.47	7.52	6.52
<b>United States</b>	3.05	4.33	3.99	3.95	871	910	865	865	12.19	18.10	15.83	15.67	-0.15	-0.97	-2.43	-13.42
<b>Total Foreign</b>	27.09	29.16	31.78	31.78	719	726	737	734	89.49	97.22	107.59	107.16	-0.43	-0.40	9.95	10.23
<b>China</b>	5.30	5.15	5.50	5.50	1,315	1,289	1,326	1,326	32.00	30.50	33.50	33.50	0.00	0.00	3.00	9.84
<b>South Asia</b>																
India	10.31	11.14	12.20	12.20	486	496	491	482	23.00	25.40	27.50	27.00	-0.50	-1.82	1.60	6.30
Pakistan	3.00	2.90	3.20	3.20	697	661	680	680	9.60	8.80	10.00	10.00	0.00	0.00	1.20	13.64
<b>Former Soviet Union - 12</b>																
Uzbekistan	1.30	1.30	1.34	1.34	653	687	682	682	3.90	4.10	4.20	4.20	0.00	0.00	0.10	2.44
Turkmenistan	0.55	0.64	0.58	0.58	582	595	530	530	1.47	1.75	1.40	1.40	0.00	0.00	-0.35	-20.00
Tajikistan	0.17	0.17	0.20	0.20	480	528	544	544	0.38	0.40	0.50	0.50	0.00	0.00	0.10	25.00
Kazakhstan	0.12	0.13	0.14	0.14	635	461	568	568	0.35	0.28	0.37	0.37	0.00	0.00	0.09	32.73
<b>Sub-Saharan Africa</b>																
Burkina	0.42	0.40	0.40	0.40	363	354	381	381	0.70	0.65	0.70	0.70	0.00	0.00	0.05	7.69
Mali	0.25	0.26	0.48	0.48	383	398	363	363	0.44	0.48	0.80	0.80	0.00	0.00	0.33	68.42
Zimbabwe	0.38	0.40	0.43	0.43	286	272	295	295	0.50	0.50	0.58	0.58	0.00	0.00	0.08	15.00
Benin	0.18	0.18	0.17	0.17	423	363	416	416	0.35	0.30	0.33	0.33	0.00	0.00	0.03	8.33
Cote d'Ivoire	0.22	0.20	0.22	0.22	346	370	421	421	0.35	0.34	0.43	0.43	0.00	0.00	0.09	25.00
Cameroon	0.15	0.14	0.18	0.18	327	428	404	404	0.23	0.28	0.33	0.33	0.00	0.00	0.05	18.18
Nigeria	0.40	0.41	0.36	0.36	248	252	242	242	0.45	0.48	0.40	0.40	0.00	0.00	-0.08	-15.79
Sudan	0.03	0.04	0.09	0.09	403	518	399	399	0.05	0.10	0.17	0.17	0.00	0.00	0.07	65.00
<b>South America</b>																
Brazil	0.84	1.40	1.40	1.40	1,419	1,400	1,400	1,400	5.45	9.00	9.00	9.00	0.00	0.00	0.00	0.00
Argentina	0.44	0.61	0.55	0.55	495	459	475	475	1.00	1.28	1.20	1.20	0.00	0.00	-0.08	-5.88
Paraguay	0.02	0.03	0.07	0.07	302	399	342	342	0.03	0.06	0.11	0.11	0.00	0.00	0.06	100.00
<b>Middle East</b>																
Turkey	0.28	0.32	0.48	0.48	1,361	1,429	1,406	1,406	1.75	2.10	3.10	3.10	0.00	0.00	1.00	47.62
Syria	0.17	0.13	0.15	0.15	1,359	1,280	1,306	1,306	1.03	0.74	0.90	0.90	0.00	0.00	0.17	22.45
Iran	0.11	0.12	0.14	0.14	605	635	645	645	0.30	0.35	0.40	0.40	0.00	0.00	0.05	14.29
<b>Australia</b>	0.20	0.59	0.60	0.60	1,932	1,550	1,814	1,814	1.78	4.20	5.00	5.00	0.00	0.00	0.80	19.05
<b>EU-27</b>	0.26	0.31	0.37	0.37	888	797	942	942	1.07	1.12	1.61	1.61	0.00	0.00	0.49	44.14
Greece	0.20	0.24	0.30	0.30	1,023	816	980	980	0.94	0.90	1.35	1.35	0.00	0.00	0.45	50.00
Spain	0.06	0.06	0.07	0.07	424	715	778	778	0.12	0.21	0.25	0.25	0.00	0.00	0.04	20.77
<b>Egypt</b>	0.12	0.16	0.22	0.22	790	843	792	792	0.43	0.60	0.80	0.80	0.00	0.00	0.20	33.33
<b>Mexico</b>	0.08	0.12	0.19	0.19	1,343	1,374	1,318	1,375	0.48	0.73	1.15	1.20	0.05	4.35	0.47	63.93
<b>Others</b>	1.82	1.94	2.14	2.14	291	304	320	322	2.43	2.71	3.14	3.16	0.02	0.64	0.45	16.63

World and Selected Countries and Regions

**TABLE 18**

The table below presents a record of the differences between the January projection and the final Estimate. Using world wheat production as an example, the "root mean square error" means that chances are 2 out of 3 that the current forecast will not be above or below the final estimate by more than 0.7 percent. Chances are 9 out of 10 (90% confidence level) that the difference will not exceed 1.2 percent. The average difference between the January projection and the final estimate is 3.3 million tons, ranging from 0.0 million to 8.3 million tons. The January projection has been below the estimate 21 times and above 9 times.

**RELIABILITY OF PRODUCTION PROJECTIONS 1/**

COMMODITY AND REGION	Root mean square error	90 percent confidence interval	Difference between forecast and final estimate					
			Average	Smallest	Largest	Years		
						Below final	Above final	
	Percent		---Million metric tons---					
<b>WHEAT</b>								
World	0.7	1.2	3.3	0.1	8.3	21	9	
U.S.	0.1	0.2	0.0	0.0	0.3	12	8	
Foreign	0.8	1.4	3.3	0.1	8.3	21	9	
<b>COARSE GRAINS 2/</b>								
World	1.3	2.2	9.6	0.0	23.6	21	9	
U.S.	0.5	0.8	0.4	0.0	4.6	13	7	
Foreign	1.8	3.0	9.4	0.3	26.3	20	10	
<b>RICE (Milled)</b>								
World	1.8	3.0	4.9	0.0	13.9	24	5	
U.S.	1.8	3.1	0.1	0.0	0.3	12	5	
Foreign	1.8	3.0	4.9	0.1	13.9	25	5	
<b>SOYBEANS</b>								
World	3.4	5.8	4.4	0.0	22.4	19	11	
U.S.	1.5	2.5	0.6	0.0	2.5	12	13	
Foreign	5.9	10.0	4.5	0.2	22.6	19	11	
<b>COTTON</b>			---Million 480-lb. bales---					
World	2.6	4.4	1.8	0.0	5.4	19	10	
U.S.	0.9	1.5	0.1	0.0	0.3	11	18	
Foreign	3.1	5.3	1.8	0.0	5.7	21	8	
<b>UNITED STATES</b>			-----Million bushels-----					
<i>CORN</i>	0.5	0.8	13	0	148	4	2	
<i>SORGHUM</i>	1.2	2.0	2	0	53	1	3	
<i>BARLEY</i>	0.5	0.9	1	0	11	12	4	
<i>OATS</i>	0.2	0.4	0	0	2	4	3	

1/ Marketing years 1981/82 through 2009/10. Final is defined as the first November estimates following the marketing year.

2/ Includes corn, sorghum, barley, oats, rye, millet, and mixed grain

January 2012

Office of Global Analysis, FAS, USDA