

CONF ALL

AIRBUS
2, ROND POINT EMILE DEWOITINE
31700 BLAGNAC
FRANCE

The content of this document is the property of Airbus.

It is supplied in confidence and commercial security on its contents must be maintained.

It must not be used for any purpose other than that for which it is supplied, nor may information contained in it be disclosed to unauthorized persons.

It must not be reproduced in whole or in part without permission in writing from the owners of the copyright. Requests for reproduction of any data in this document and the media authorized for it must be addressed to Airbus.

MANDATORY MANDATORY MANDATORY

ATA SYSTEM: 53

**TITLE: FUSELAGE - FAIRING - INSPECTION OF EXTERNAL FUSELAGE SKIN
PANEL AT FR34 UNDERNEATH THE FAIRING STRUCTURE BETWEEN
STRG 43 LHS AND RHS**

MODIFICATION No.:

None

ATA SYSTEM: 53

TITLE: FUSELAGE - FAIRING - INSPECTION OF EXTERNAL FUSELAGE SKIN PANEL AT FR34 UNDERNEATH THE FAIRING STRUCTURE BETWEEN STRG 43 LHS AND RHS

REVISION TRANSMITTAL SHEET

This page transmits Revision No. 01 of Service Bulletin No. A320-53-1287.

A. ADDITIONAL WORK

No additional work is required by this revision.

B. REASON

Revision No. 01 issued to:

- Change the compliance from recommended to mandatory
- Modify the installation of electrical bonded rivets (from wet to dry installation)
- Incorporate changes found necessary and carried out during the accomplishment of this Service Bulletin on aircraft with Manufacturer Serial Number (MSN) 00118, 00907 and 00964.

NOTE: This revision satisfies the requirements of the subsequent Technical Adaptation(s) (TA)s issued for the related Manufacturer Serial Number (MSN)s.

TA	MSN
80389224/032/2018	00118
80389224/060/2018	00907, 00964
80389224/087/2018	Applicability of the original issue of this Service Bulletin, except MSN 00118, 00907 and 00964
80567181/005/2019	02948
80567181/019/2019	Applicability of the original issue of this Service Bulletin, except MSN 00118, 00907, 00964 and 02948

C. CHANGES

CONF 001

SERVICE BULLETIN	
General	Revised text and layout changes of this revision are not identified with revision bars.
SUMMARY	
GENERAL EVALUATION	General evaluation table updated.
APPLICABILITY	Applicability updated. CONF 002 added.
PLANNING INFORMATION	
COMPLIANCE	
Classification	Compliance updated from Recommended to Mandatory.
Accomplishment Timescale	Accomplishment timescale updated.

ACCOMPLISHMENT INSTRUCTIONS	
Task set A320-A-53-XX-1287-01000-93BA-A Inspection of external fuselage skin panel at FR34	
PROCEDURE	
A320-A-53-XX-1287-01001-740A-A Depending on the Inspection result, install the Belly Fairing Panel at FR34 removed for access	Installation of rivets item 2 modified. Referenced documentation updated. References updated.
APPENDIX	
Inspection Report	
Inspection Report	Appendix added.
Fig. Inspection Report	Illustration added.

CONF 002

SERVICE BULLETIN	
General	Revised text and layout changes of this revision are not identified with revision bars.
SUMMARY	
GENERAL EVALUATION	General evaluation table updated.
APPLICABILITY	CONF 002 created.
PLANNING INFORMATION	
COMPLIANCE	
Classification	Compliance updated from Recommended to Mandatory.
Accomplishment Timescale	Accomplishment timescale updated.
APPENDIX	
Inspection Report	
Inspection Report	Appendix added.
Fig. Inspection Report	Illustration added.

CONF ALL

D. **FILING INSTRUCTIONS**

This Service Bulletin has been generated electronically and is reissued as a complete document. Replace the complete document.

Put this Revision Transmittal Sheet in front of the Service Bulletin.

E. **HISTORY OF PREVIOUS REVISIONS**

No previous revision

F. **REVISION SEQUENCE**

ORIGINAL: Jul 29/14

REVISION No. : 01 - Apr 04/19

ATA SYSTEM: 53

TITLE: FUSELAGE - FAIRING - INSPECTION OF EXTERNAL FUSELAGE SKIN PANEL AT FR34 UNDERNEATH THE FAIRING STRUCTURE BETWEEN STRG 43 LHS AND RHS**SUMMARY**

This summary is for information only and is not approved for modification of the aircraft.

A. MODIFICATIONS**CONF 001**

MODIFICATION CLASSIFICATION	
MAJOR	None
MINOR	None

NOTE: As per EASA IR 21, a minor change is one that has no appreciable effect on the mass, balance, structural strength, reliability, operational characteristics affecting the airworthiness of the product. All other changes are major changes.

CONF 002

MODIFICATION CLASSIFICATION	
MAJOR	None
MINOR	None

NOTE: As per EASA IR 21, a minor change is one that has no appreciable effect on the mass, balance, structural strength, reliability, operational characteristics affecting the airworthiness of the product. All other changes are major changes.

CONF ALL**B. REASON****(1) History**

One operator reported chafing on the forward fuselage at bottom of Frame 34 between Stringer 43 Left Hand (LH) and Right Hand (RH) sides underneath the fairing structure. After investigation, a contact has been identified between the belly fairing nut plate (Part Number (PN) D5323023500000) and the fuselage causing chaffing on the fuselage. Wear has also been identified on the fuselage by excessive grip length. No inspection task exists in the maintenance program to detect this damage.

(2) Objective/Action

This Service Bulletin recommends doing a detailed inspection of external fuselage skin panel at Frame 34 underneath the fairing structure.

(3) Advantages

Modification No. 37878G0503 thru Service Bulletin No. Ref. SB A320-53-1281 installs reinforced and cut-out belly fairing nut plate. It will prevent slight deformation of the belly fairing skin plates. This modification Service Bulletin is a final fix to this inspection.

(4) Operational/Maintenance Consequences

None

C. GENERAL EVALUATION

EVALUATION TABLE			
COMPLIANCE	MANDATORY	COST SAVING	NO
A/C OPERATION AFFECTED	NO	VENDOR SB	NO
CANCELS INSPECTION SB	NO	ETOPS AFFECTED	NO
PAX COMFORT AFFECTED	NO	POTENTIAL AD	YES
RELIABILITY AFFECTED	NO	STRUCTURAL LIFE EXTENSION	NO
LIFE LIMIT	NO	LINE MAINTENANCE AFFECTED	NO
VALIDATION ON AIRCRAFT	YES	BOOKLET AVAILABLE	YES

NOTE: Service Bulletin must be accomplished.

NOTE: This Service Bulletin has been validated at original issue on A320 aircraft with Manufacturer Serial Number (MSN) 00069.

NOTE: A booklet including photographs taken during the validation of this Service Bulletin is available on AirbusWorld - Maintenance and Engineering - AirN@v engineering (in the concerned SB file).

D. MAINTENANCE CONFIGURATION

CONF 001

No specific aircraft maintenance configuration required.

CONF 002

No specific aircraft maintenance configuration required.

CONF ALL

E. MATERIAL PRICE INFORMATION

CONF 001

(1) Inspection of external fuselage skin panel at FR34

- (a) Task set A320-A-53-XX-1287-01000-93BA-A Inspection of external fuselage skin panel at FR34

MATERIAL PRICE INFORMATION TABLE			
MATERIAL SET	QTY PER A/C	PRICE PER A/C	MAIN PARTS
Part kit 531287A01R02	1	105.00 USD	Washers, Screws, Rivets

CONF 002

(1) Inspection of external fuselage skin panel at FR34

- (a) Task set A320-A-53-XX-1287-01000-93BA-A Inspection of external fuselage skin panel at FR34

MATERIAL PRICE INFORMATION TABLE			
MATERIAL SET	QTY PER A/C	PRICE PER A/C	MAIN PARTS
Part kit 531287A02R00	1	150.00 USD	Washers, Screws, Rivets

CONF ALL

F. APPLICABILITY

This Service Bulletin is applicable to this (these) operator(s):

03Q 06R 10N 11X 13Y 14S 15S 15T 17S 19R 23R 25P 28M 29S 31V 32Q 36R 38W 39N 40N
40S 41N 41S 46L 46U 47P 48L 48O 48P 53Z 56O 59Z 60U 61W 68M 69X 73W 76W 78X 80X
82M 82U 83L 83O 83V 84M 85T 86P 86W 86Z 87Q 89Q 89T 91X 95V 95W 98W 98X 99W
AAF **AAL** AAR AAV AAW **AAY** ABL ABY ACA ACI ADR AEE AFL AFR AHY AIC AIJ ALK AMC AMU
AMV ANA ANR ANZ ART ARU ASL ATR AUA AUH **AVA** AVJ AWC AXM AZA AZU B2V BAV BAW
BEC BEG BEL BGF BGH BKP BRS BSX BTN BUC BJB CCA CCM CEB CEF CES CFG CJL CLH CQH
CQN CSA CSC CSN CSZ CTB CTN CTV CYP **DAL** DCS DKH DLH DNU DQA DRK DSM DTR EAF
EDW EIN ELB ERN ETD ETJ EWE EWG EYZ F2I FBS FCB **FFT** FHM FHY FIA FIN FRN G4I G8E
GAF GAP GBB GCR GJT GLG GMI GOW GSH GWI GWR HDA HKE HKJ I2L IBE IBS IGO IND IRA
IRB IRC ISR IYE IZG JAD JAV **JBW** JOC JSA JST KAC KAY KCH KKK KME KNE KZR LAN LBT
LDM LFO LGW LKE LKH LLC LLM LLP LLX LMJ LNU LUR LWA LYX LZB MAU MKR MLD MMA
MMO MON MRJ MSC MSR MXA MYX NIA **NKS** NMA NMB NUM NVD NWK OHY OLY OMS ONE
ORF OTF OZW PIA PIC PTI QAF QQE QSM QTR R1T RBG RIH RJA ROT RSY RWZ RYW RZO SAA
SAI SAS SAW SBI SDM SDR SEK SEY SFW SHJ SHU SKU SLK SND SOL SSG SSV SUD SVR SVW
SWM SWR SYR SZN T2R TAE TAI TAM TAP TAR TBZ TCI TDM TDR THY TNA U6A **UAL** UEA UJX
UKN **USA** VAW VIV VJC VLG VOE **VOI VRD** VRE VVC WHT WRC WZZ

G. CONCURRENT REQUIREMENTS

None

H. NATURE OF THE WORK

CONF 001

(1) Inspection of external fuselage skin panel at FR34

- (a) Task set A320-A-53-XX-1287-01000-93BA-A Inspection of external fuselage skin panel at FR34

AIRCRAFT	YES
EQUIPMENT	NO

CONF 002

(1) Inspection of external fuselage skin panel at FR34

- (a) Task set A320-A-53-XX-1287-01000-93BA-A Inspection of external fuselage skin panel at FR34

AIRCRAFT	YES
EQUIPMENT	NO

CONF ALL

I. MANPOWER

CONF 001

(1) Inspection of external fuselage skin panel at FR34

- (a) Task set A320-A-53-XX-1287-01000-93BA-A Inspection of external fuselage skin panel at FR34

MANPOWER	
TOTAL MAN-HOURS	11.50 h
ELAPSED TIME (HOURS)	5.50 h

CONF 002

(1) Inspection of external fuselage skin panel at FR34

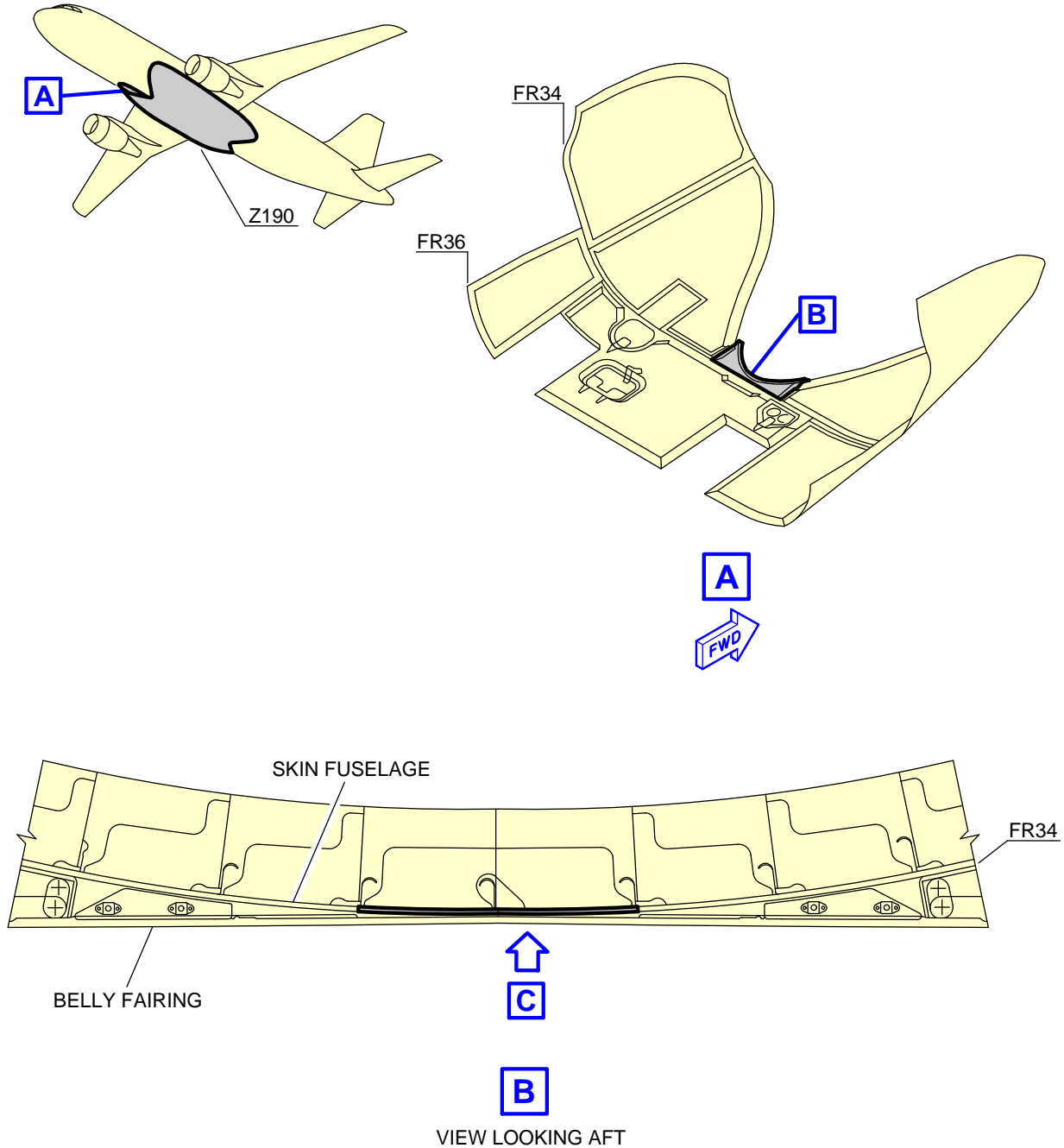
- (a) Task set A320-A-53-XX-1287-01000-93BA-A Inspection of external fuselage skin panel at FR34

MANPOWER	
TOTAL MAN-HOURS	13.00 h
ELAPSED TIME (HOURS)	6.50 h

CONF ALL

J. GENERAL OVERVIEW

CONF ALL

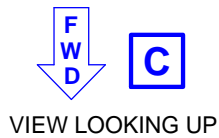
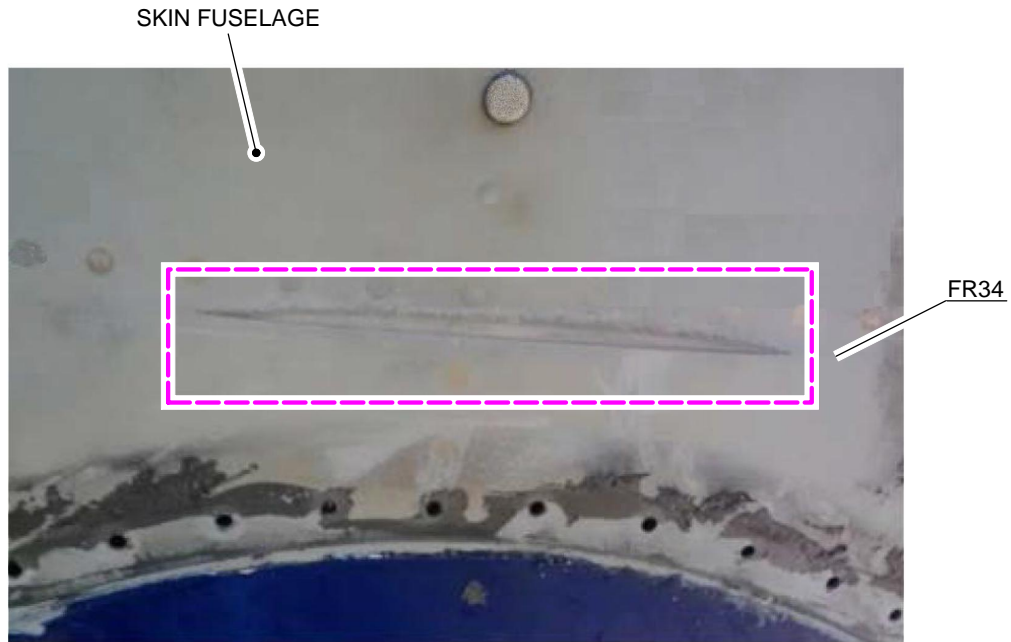


NOTE:

+ FASTENERS NOT AFFECTED

ICN-A320-A-53XX1287-A-FAPE3-0018T-A-001-01

Figure ICN-A320-A-53XX1287-A-FAPE3-0018T-A-001-01 SHEET 1/2

CONF ALL**NOTE:**

VIEW AFTER REMOVAL OF THE BELLY FAIRING PANEL

 INSPECTION AREA

ICN-A320-A-53XX1287-A-FAPE3-0018U-A-001-01

Figure ICN-A320-A-53XX1287-A-FAPE3-0018U-A-001-01 SHEET 2/2

ATA SYSTEM: 53

**TITLE: FUSELAGE - FAIRING - INSPECTION OF EXTERNAL FUSELAGE SKIN
PANEL AT FR34 UNDERNEATH THE FAIRING STRUCTURE BETWEEN
STRG 43 LHS AND RHS****1. PLANNING INFORMATION****A. APPLICABILITY**

NOTE: This Service Bulletin is only applicable to aircraft on which MOD No. 37878G0503 (Service Bulletin No. Ref. SB A320-53-1281) is not embodied.

(1) Models

ON A/C 02035, 02059, 02071, 02081, 02100, 02109, 02317, 02328, 02333, 02344, 02350, 02358, 02367, 02377, 02582, 02601, 02686, 02750, 02918, 02931, 02951, 02955, 02967, 02972, 03009, 03220, 03225

318-111

ON A/C 01599, 02394, 02523, 02544, 02552, 02575, 02910, 03100, 03238, 03333, 03363

318-112

ON A/C 03030, 03062, 03214, 03216, 03371

318-122

ON A/C 00750, 00755, 00763, 00790, 00821, 00837, 00906, 00917, 00933, 00938, 00979, 00985, 00998, 01000, 01020, 01025, 01034, 01036, 01100, 01106, 01120, 01127, 01151, 01165, 01169, 01176, 01180, 01190, 01201, 01216, 01247, 01267, 01271, 01344, 01362, 01404, 01415, 01444, 01449, 01471, 01488, 01505, 01524, 01560, 01583, 01616, 01622, 01640, 01645, 01654, 01677, 01679, 01684, 01699, 01733, 01743, 01753, 01759, 01761, 01803, 01841, 01851, 01863, 01876, 01890, 01938, 02010, 02030, 02037, 02043, 02050, 02052, 02053, 02062, 02069, 02072, 02091, 02093, 02103, 02119, 02120, 02129, 02170, 02176, 02179, 02181, 02184, 02196, 02213, 02214, 02222, 02228, 02230, 02236, 02240, 02241, 02243, 02245, 02249, 02251, 02253, 02258, 02260, 02264, 02279, 02283, 02287, 02289, 02300, 02311, 02318, 02332, 02353, 02360, 02365, 02370, 02378, 02380, 02382, 02385, 02392, 02400, 02402, 02412, 02436, 02456, 02460, 02463, 02465, 02471, 02477, 02481, 02492, 02495, 02497, 02503, 02512, 02514, 02516, 02527, 02528, 02538, 02548, 02556, 02565, 02578, 02586, 02588, 02605, 02625, 02636, 02638, 02646, 02677, 02681, 02691, 02700, 02702, 02715, 02716, 02727, 02735, 02742, 02744, 02751, 02754, 02763, 02765, 02769, 02777, 02779, 02782, 02786, 02788, 02790, 02795, 02803, 02806, 02812, 02818, 02821, 02827, 02829, 02831, 02843, 02852, 02854, 02860, 02866, 02870, 02873, 02876, 02884, 02889, 02897, 02923, 02938, 02946, 02959, 02961, 03003, 03036, 03041, 03053, 03059, 03061, 03078, 03082, 03084, 03088, 03090, 03118, 03122, 03134, 03137, 03176, 03179, 03184, 03209, 03255, 03281, 03298, 03320, 03336, 03380

319-111

ON A/C 00578, 00612, 00621, 00629, 00646, 00654, 00713, 00727, 00734, 00767, 00794, 00833, 00885, 00890, 00896, 00904, 00922, 00929, 00946, 00949, 00972, 00997, 01016, 01018, 01019, 01029, 01033, 01038, 01040, 01046, 01048, 01051, 01055, 01069, 01073, 01077, 01084, 01086, 01089, 01095, 01097, 01102, 01107, 01109, 01122, 01124, 01135, 01136, 01147, 01155, 01160, 01170, 01172, 01182, 01184, 01203, 01205, 01209, 01245, 01252, 01254, 01263, 01265, 01269, 01275, 01277, 01283, 01285, 01287, 01289, 01297, 01301, 01303, 01305, 01309, 01311, 01313, 01315, 01317, 01319, 01326, 01328, 01331, 01336, 01340, 01342, 01348, 01352, 01354, 01358, 01360, 01364, 01369, 01371, 01377, 01378, 01382, 01388, 01389, 01391, 01393, 01429, 01494, 01515, 01562, 01577, 01579, 01592, 01598, 01601, 01603, 01612, 01618, 01625, 01630, 01634, 01668, 01673, 01706, 01718, 01722, 01740, 01742, 01745, 01750, 01756, 01765, 01770, 01778, 01779, 01781, 01786, 01791, 01805, 01808, 01846, 01853, 01866, 01872, 01882, 01884, 01886, 01901, 01916, 01925, 01936, 01963, 01980, 01997, 02012, 02019, 02033, 02057, 02066, 02074,

02078, 02083, 02086, 02101, 02113, 02122, 02124, 02126, 02127, 02131, 02174, 02186, 02198, 02209, 02224, 02262, 02265, 02266, 02271, 02319, 02387, 02398, 02406, 02416, 02420, 02427, 02442, 02446, 02448, 02450, 02483, 02494, 02518, 02547, 02593, 02607, 02611, 02617, 02624, 02628, 02629, 02632, 02644, 02652, 02662, 02709, 02729, 02733, 02746, 02762, 02773, 02774, 02811, 02836, 02849, 02857, 02878, 02879, 02905, 02907, 02913, 02925, 02935, 02954, 02985, 03019, 03024, 03028, 03043, 03054, 03094, 03096, 03102, 03108, 03139, 03169, 03171, 03181, 03188, 03202, 03204, 03245, 03271, 03285, 03288, 03300, 03305, 03309, 03324, 03331, 03344, 03346, 03347, 03364, 03377, 03385, 03388

319-112

ON A/C 00598, 00600, 00618, 00625, 00637, 00644, 00647, 00660

319-113

ON A/C 00546, 00572, 00609, 00610, 00616, 00623, 00627, 00634, 00636, 00639, 00641, 00649, 00651, 00656, 00670, 00672, 00679, 00682, 00688, 00689, 00691, 00693-00695, 00697, 00700, 00711, 00717, 00719, 00721, 00723, 00728, 00729, 00732, 00736, 00738, 00740, 00742, 00744, 00752, 00757, 00769, 00773, 00779, 00785, 00800, 00813, 00817, 00829, 00831, 00840, 00845, 00853, 00860, 00869, 00875, 00880, 01058, 01062, 01071, 01078, 01090, 01091, 01126, 01129, 01131, 01149, 01164, 01167, 01191, 01230, 01249, 01324, 01325, 01346, 01392, 01414, 01434, 01453, 01456, 01479, 01483, 01498, 01501, 01520, 01543, 01549, 01567, 01570, 01582, 01659, 01662, 01683, 01685, 01693, 01709, 01714, 01738, 01746, 01752, 01766, 01774, 01796, 01800, 01810, 01815, 01819, 01820, 01824, 01828, 01833, 01839, 01870, 01875, 01897, 01923, 01959, 01976, 01982, 01990, 02002, 02013, 02026, 02028, 02039, 02047, 02087, 02095, 02369, 02373, 02464, 02474, 02618, 02641

319-114

ON A/C 01002, 01157, 01485, 01541, 01551, 01556, 01795, 01908, 01999, 02237, 02269, 02285, 02293, 02298, 02306, 02346, 02440, 02487, 02499, 02507, 02508, 02519, 02525, 02532, 02541, 02545, 02546, 02550, 02551, 02554, 02555, 02557, 02558, 02561, 02581, 02592, 02672, 02675, 02684, 02693, 02706, 02748, 02757, 02801, 02805, 02819, 02825, 02837, 02839, 02841, 02847, 02890, 02921, 02949, 03046, 03065, 03073, 03085, 03133, 03168, 03186, 03226, 03243, 03250, 03260, 03356

319-115

ON A/C 00686, 00690, 00748, 00759, 00783, 00788, 00798, 00804, 00825, 00843, 00847, 00850, 00858, 00862, 00867, 00871, 00873, 00882, 00893, 00898, 00944, 00948, 00952, 00965, 00980, 00989, 01022, 01031, 01082, 01115, 01118, 01142, 01193, 01197, 01211, 01222, 01225, 01232, 01236, 01239, 01243, 01258, 01261, 01279, 01291, 01295, 01321, 01329, 01338, 01380, 01384, 01401, 01420, 01423, 01426, 01440, 01445, 01460, 01466, 01474, 01477, 01507, 01510, 01513, 01522, 01529, 01537, 01545, 01558, 01569, 01573, 01574, 01581, 01585, 01590, 01594, 01600, 01604, 01606, 01627, 01647, 01649, 01653, 01664, 01671, 01688, 01731, 01737, 02000, 02007, 02015, 02098, 02172, 02188, 02194, 02202, 02205, 02268, 02281, 02308, 02326, 02355, 02375, 02379, 02389, 02418, 02429, 02438, 02454, 02466, 02469, 02501, 02559, 02614, 02621, 02643, 02694, 02697, 02720, 02981, 03049, 03195, 03200, 03231, 03292

319-131

ON A/C 00889, 00913, 00924, 00931, 00976, 01010, 01043, 01049, 01056, 01064, 01066, 01088, 01092, 01096, 01103, 01111, 01116, 01139, 01140, 01159, 01178, 01223, 01228, 01281, 01323, 01350, 01373, 01375, 01395, 01397, 01406, 01410, 01463, 01490, 01527, 01534, 01547, 01552, 01563, 01565, 01575, 01576, 01643, 01703, 01758, 01790, 01801, 01826, 01831, 01837, 01844, 01855, 01880, 01893, 01912, 01934, 01947, 01952, 01955, 01962, 02023, 02032, 02089, 02096, 02200, 02203, 02232, 02273, 02277, 02295, 02296, 02302, 02304, 02321, 02335, 02339, 02362, 02371, 02383, 02396, 02404, 02408, 02414, 02426, 02433, 02435, 02444, 02452, 02458, 02467, 02468, 02470, 02473, 02485, 02490, 02505, 02560, 02567, 02568, 02570, 02572, 02574, 02579, 02585, 02595, 02603, 02615, 02622, 02631, 02634, 02648, 02655, 02657, 02659, 02660, 02664, 02666, 02667, 02669,

02673, 02679, 02690, 02698, 02704, 02711, 02718, 02723, 02738, 02739, 02784, 02797, 02813, 02815, 02833, 02845, 02850, 02858, 02864, 02872, 02886-02888, 02892-02894, 02898, 02901, 02929, 02940, 02942, 02948, 02963, 02969, 02976, 02978, 02983, 02997, 03007, 03011, 03017, 03020, 03026, 03032, 03057, 03128, 03142, 03144, 03165, 03172, 03193, 03248, 03252, 03258, 03269, 03276, 03311, 03317, 03342, 03352, 03358, 03375
319-132

ON A/C 00910, 01053, 01212, 01256, 01335, 01468, 01589, 01656, 01971, 01986, 02004, 02008, 02192, 02263, 02313, 02341, 02348, 02421, 02431, 02510, 02534, 02597, 02639, 02650, 02771, 02780, 02979, 03045, 03069, 03077, 03114, 03116, 03124, 03175, 03253, 03279
319-133

ON A/C 00029, 00059, 00068-00073, 00078, 00083-00086, 00093, 00094, 00104, 00109-00112, 00115-00118, 00121, 00122, 00124-00127, 00135, 00137, 00138, 00140-00142, 00148-00150, 00152-00154, 00157, 00159-00162, 00171, 00172, 00174, 00175, 00183, 00185, 00192, 00197, 00200-00203, 00205, 00206, 00208-00211, 00213, 00216-00220, 00229, 00231, 00232, 00237, 00239, 00242, 00248, 00253-00255, 00262, 00263, 00265, 00267-00269, 00272, 00273, 00277, 00281, 00282, 00284, 00285, 00287, 00290, 00293, 00297, 00298, 00300-00303, 00306, 00307, 00309, 00311, 00312, 00318, 00319, 00324, 00328-00330, 00341, 00342, 00346, 00370, 00371, 00378, 00382, 00390, 00400-00404, 00426, 00438, 00482, 00491, 00501, 00507, 00511, 00531, 00534, 00549, 00554, 00622, 00658, 00662, 00669, 00685, 00958, 00975, 01187, 01337, 01365, 01367, 01700, 01973, 02054, 02061, 02082, 02092
320-211

ON A/C 00087, 00181, 00182, 00195, 00234, 00279, 00294, 00325, 00331, 00339, 00340, 00343, 00345, 00355, 00358, 00360, 00367, 00372, 00380, 00381, 00387, 00388, 00395, 00399, 00407-00410, 00417, 00418, 00420-00422, 00427, 00436, 00445, 00466, 00497, 00525, 00528, 00537, 00569, 00579, 00645, 00671, 00726, 00766, 00774, 00778, 00786, 00795, 00801, 00807, 00809, 00814, 00818, 00830, 00832, 00846, 00884, 00894, 00903, 00905, 00907, 00911, 00923, 00937, 00957, 00962, 00964, 00971, 00981, 00988, 00996, 01011, 01037, 01381, 01402, 01416, 01437, 01535, 01633, 01641, 01646, 01789, 01812, 02046
320-212

ON A/C 00533, 00548, 00553, 00559, 00566, 00574, 00577, 00585, 00596, 00603, 00607, 00611, 00617, 00619, 00630, 00635, 00643, 00648, 00650, 00653, 00657, 00665, 00673, 00681, 00701, 00703, 00706, 00714, 00716, 00724, 00730, 00735, 00737, 00745, 00749, 00754, 00764, 00768, 00776, 00782, 00797, 00828, 00838, 00844, 00854, 00861, 00863, 00868, 00870, 00876, 00879, 00883, 00888, 00897, 00909, 00914, 00921, 00925, 00936, 00939, 00942, 00945, 00947, 00951, 00960, 00967, 00973, 00982, 00984, 00986, 00992, 00994, 00999, 01005, 01009, 01026, 01028, 01030, 01041, 01047, 01052, 01054, 01059, 01061, 01063, 01065, 01067, 01070, 01072, 01081, 01087, 01093, 01099, 01101, 01108, 01112, 01114, 01119, 01121, 01125, 01130, 01132, 01134, 01137, 01138, 01141, 01148, 01150, 01152, 01162, 01168, 01171, 01175, 01179, 01181, 01189, 01198, 01200, 01206, 01208, 01210, 01213, 01217, 01221, 01224, 01226, 01229, 01231, 01237, 01242, 01244, 01255, 01259, 01262, 01264, 01268, 01286, 01288, 01292, 01294, 01296, 01298, 01306, 01308, 01310, 01312, 01314, 01316, 01318, 01320, 01322, 01330, 01345, 01347, 01357, 01361, 01370, 01372, 01379, 01385, 01387, 01390, 01394, 01396, 01405, 01413, 01430, 01439, 01441, 01443, 01448, 01450, 01454, 01457, 01461, 01467, 01470, 01473, 01478, 01480, 01484, 01489, 01493, 01502, 01504, 01516, 01530, 01532, 01540, 01542, 01544, 01550, 01553, 01564, 01571, 01578, 01588, 01597, 01605, 01615, 01637, 01639, 01655, 01657, 01667, 01674, 01678, 01686, 01692, 01694, 01712, 01717, 01719, 01725, 01735, 01736, 01744, 01747, 01751, 01757, 01762, 01767, 01769, 01775, 01777, 01780, 01787, 01793, 01797, 01799, 01806, 01809, 01816, 01838, 01852, 01860, 01864, 01867, 01873, 01874, 01879, 01885, 01889, 01894, 01900, 01906, 01911, 01913, 01920, 01924, 01929, 01931, 01937, 01940, 01942, 01949, 01951, 01954, 01961, 01964, 01965, 01968, 01975, 01981, 01983, 01989, 02001, 02003, 02009, 02011, 02018, 02022, 02024, 02034, 02036,

02048, 02049, 02056, 02065, 02068, 02104, 02106, 02114, 02116, 02123, 02133, 02134, 02140, 02142-02146, 02151, 02154, 02155, 02158, 02162, 02163, 02165, 02166, 02171, 02175, 02178, 02180, 02182, 02183, 02187, 02189, 02191, 02199, 02206, 02207, 02212, 02217, 02219, 02221, 02225, 02227, 02233, 02235, 02239, 02242, 02244, 02248, 02250, 02256, 02272, 02274, 02278, 02291, 02294, 02325, 02327, 02347, 02349, 02354, 02361, 02364, 02374, 02388, 02390, 02391, 02399, 02407, 02409, 02411, 02419, 02425, 02432, 02437, 02439, 02451, 02478, 02484, 02486, 02493, 02498, 02506, 02511, 02529, 02539, 02540, 02542, 02562, 02569, 02583, 02584, 02591, 02596, 02606, 02616, 02619, 02620, 02623, 02627, 02633, 02635, 02637, 02654, 02656, 02658, 02665, 02668, 02674, 02678, 02683, 02685, 02695, 02696, 02699, 02705, 02708, 02712, 02719, 02721, 02740, 02743, 02745, 02749, 02758, 02760, 02761, 02764, 02768, 02770, 02776, 02778, 02785, 02789, 02792, 02794, 02796, 02798, 02800, 02807, 02810, 02820, 02822, 02824, 02830, 02834, 02835, 02846, 02851, 02853, 02855, 02861, 02865, 02867, 02875, 02877, 02899, 02902, 02909, 02915, 02920, 02924, 02930, 02932, 02937, 02939, 02947, 02950, 02960, 02962, 02964, 02966, 02968, 02973, 02975, 02980, 02986, 02988, 02991, 02993-02995, 02998, 03002, 03006, 03008, 03014, 03016, 03021, 03023, 03025, 03027, 03031, 03035, 03037, 03040, 03044, 03047, 03048, 03052, 03055, 03056, 03058, 03060, 03063, 03068, 03076, 03079, 03083, 03087, 03093, 03095, 03097, 03099, 03101, 03107, 03111, 03121, 03123, 03129, 03131, 03132, 03135, 03136, 03138, 03147-03149, 03152, 03153, 03155, 03157, 03160, 03161, 03164, 03170, 03174, 03180, 03187, 03189, 03197, 03199, 03205, 03206, 03211, 03215, 03218, 03221, 03224, 03230, 03234, 03236, 03240, 03242, 03246, 03256, 03266, 03268, 03272, 03273, 03278, 03282, 03284, 03286, 03289, 03293, 03304, 03306, 03310, 03312, 03313, 03318, 03321, 03323, 03337, 03345, 03349, 03359, 03361, 03366, 03368, 03373, 03374, 03383, 03389

320-214

ON A/C 02612, 02816, 02826, 02842, 02869, 02881, 02885, 02926, 02944, 02956, 02989, 03000, 03018, 03064, 03080, 03109, 03115, 03117, 03140, 03145, 03151, 03154, 03173, 03178, 03182, 03194, 03201, 03203, 03213, 03223, 03232, 03237, 03261, 03277, 03291, 03295, 03299, 03325, 03327, 03328, 03338, 03343, 03353, 03362, 03370, 03376

320-216

ON A/C 00045, 00046, 00049-00057, 00064-00067, 00076, 00077, 00081, 00082, 00099, 00113, 00164-00166, 00168, 00169, 00178, 00194, 00198, 00230, 00243, 00249, 00251, 00252, 00256, 00259, 00260, 00275, 00276, 00291, 00292, 00296, 00308, 00314, 00316, 00317, 00320-00322, 00332, 00347, 00351, 00353, 00354, 00357, 00361, 00362, 00366, 00368, 00373, 00376, 00386, 00393, 00398, 00405, 00406, 00414-00416, 00423, 00424, 00428-00432, 00441, 00444, 00447, 00449, 00476, 00480, 00486, 00490, 00499

320-231

ON A/C 00435, 00439, 00442, 00448, 00450, 00452, 00454, 00456, 00457, 00462-00465, 00470, 00472, 00475, 00479, 00483, 00485, 00487, 00489, 00496, 00500, 00503, 00504, 00506, 00508, 00510, 00512, 00523, 00527, 00530, 00539, 00540, 00542, 00543, 00551, 00565, 00568, 00571, 00573, 00575, 00580, 00582, 00584, 00587, 00589, 00592, 00613, 00638, 00640, 00655, 00659, 00661, 00667, 00676, 00678, 00683, 00702, 00709, 00712, 00720, 00722, 00743, 00751, 00756, 00758, 00760, 00762, 00770, 00780, 00784, 00791, 00803, 00805, 00812, 00816, 00820, 00822, 00824, 00826, 00834, 00836, 00839, 00842, 00849, 00851, 00856, 00857, 00859, 00865, 00866, 00872, 00877, 00881, 00886, 00892, 00895, 00900, 00918, 00927, 00928, 00930, 00932, 00934, 00943, 00950, 00953, 00955, 00966, 00977, 00990, 01001, 01003, 01014, 01032, 01035, 01039, 01050, 01057, 01075, 01076, 01079, 01083, 01085, 01104, 01105, 01110, 01117, 01123, 01128, 01143, 01146, 01156, 01158, 01163, 01166, 01173, 01177, 01183, 01192, 01194, 01196, 01215, 01234, 01235, 01240, 01246, 01248, 01251, 01253, 01257, 01266, 01270, 01272, 01274, 01280, 01282, 01284, 01290, 01302, 01327, 01341, 01343, 01349, 01359, 01363, 01368, 01376, 01398, 01407, 01409, 01411, 01418, 01419, 01422, 01424, 01427, 01432, 01435, 01446, 01452, 01459, 01469, 01475, 01482, 01486, 01495, 01497, 01506, 01508, 01509, 01514, 01518, 01528, 01533, 01538, 01546, 01555, 01557, 01559, 01561, 01566, 01580, 01584, 01586, 01591, 01593, 01595, 01609, 01610, 01613, 01617, 01620, 01621, 01628, 01635,

01644, 01648, 01650, 01652, 01661, 01663, 01665, 01669, 01672, 01680, 01687, 01689, 01696, 01697, 01702, 01705, 01708, 01710, 01715, 01721, 01723, 01728, 01732, 01739, 01741, 01749, 01754, 01755, 01760, 01764, 01771, 01773, 01782, 01784, 01785, 01792, 01802, 01804, 01814, 01818, 01821, 01823, 01825, 01827, 01829, 01832, 01834, 01835, 01840, 01842, 01845, 01847, 01849, 01856, 01857, 01861, 01862, 01865, 01868, 01871, 01883, 01888, 01891, 01892, 01895, 01896, 01898, 01899, 01902, 01904, 01907, 01909, 01910, 01914, 01915, 01917, 01918, 01922, 01927, 01933, 01935, 01944, 01945, 01948, 01957, 01958, 01969, 01979, 01987, 01993, 01996, 01998, 02006, 02016, 02020, 02027, 02029, 02031, 02038, 02040, 02042, 02063, 02070, 02073, 02075, 02077, 02079, 02084, 02085, 02090, 02094, 02097, 02099, 02108, 02112, 02121, 02125, 02130, 02132, 02135-02139, 02141, 02147-02150, 02152, 02153, 02156, 02157, 02159-02161, 02164, 02167-02169, 02173, 02177, 02185, 02193, 02195, 02197, 02201, 02204, 02210, 02215, 02223, 02229, 02231, 02238, 02246, 02254, 02257, 02259, 02275, 02280, 02284, 02286, 02288, 02292, 02297, 02299, 02307, 02310, 02312, 02314, 02316, 02322, 02329, 02331, 02334, 02336, 02338, 02340, 02343, 02345, 02352, 02356, 02359, 02366, 02368, 02372, 02376, 02384, 02386, 02393, 02395, 02397, 02401, 02403, 02405, 02413, 02415, 02417, 02422, 02423, 02428, 02430, 02441, 02443, 02445, 02447, 02449, 02453, 02455, 02457, 02459, 02461, 02475, 02479, 02482, 02489, 02491, 02496, 02502, 02504, 02509, 02513, 02515, 02517, 02520, 02522, 02524, 02526, 02531, 02533, 02535, 02537, 02564, 02566, 02571, 02573, 02576, 02577, 02580, 02587, 02589, 02594, 02598, 02600, 02602, 02604, 02608, 02609, 02613, 02626, 02630, 02640, 02642, 02645, 02647, 02649, 02651, 02661, 02663, 02670, 02671, 02676, 02680, 02688, 02689, 02692, 02701, 02703, 02710, 02714, 02717, 02724, 02725, 02728, 02731, 02732, 02734, 02737, 02747, 02752, 02753, 02755, 02766, 02772, 02781, 02783, 02787, 02802, 02804, 02808, 02814, 02817, 02828, 02832, 02838, 02840, 02844, 02848, 02856, 02859, 02863, 02871, 02874, 02880, 02883, 02896, 02900, 02904, 02906, 02908, 02911, 02914, 02922, 02928, 02934, 02943, 02945, 02952, 02953, 02958, 02970, 02977, 02982, 02984, 02987, 02990, 02992, 03004, 03010, 03012, 03029, 03033, 03039, 03050, 03066, 03071, 03072, 03074, 03086, 03089, 03091, 03105, 03119, 03125, 03127, 03141, 03143, 03150, 03156, 03158, 03159, 03162, 03166, 03167, 03177, 03183, 03185, 03190, 03192, 03196, 03208, 03210, 03219, 03227, 03228, 03239, 03257, 03259, 03263, 03264, 03270, 03275, 03287, 03296, 03301, 03303, 03308, 03314, 03316, 03330, 03332, 03335, 03341, 03348, 03351, 03354, 03357, 03365, 03379, 03381, 03384, 03386

320-232

ON A/C 00460, 00556, 00558, 00561, 00696, 00698, 00704, 00705, 00718, 00733, 00739, 00741, 00902, 00912, 00916, 00919, 01007, 01013, 01300, 01304, 01332, 01334, 01339, 01351, 01353, 01355, 01400, 01491, 01500, 01512, 01523, 01526, 01548, 01568, 01624, 01626, 01730, 01854, 01858, 01877, 01903, 02014, 02044, 02102, 02118, 02252, 02282, 02301, 02434, 02775, 02791, 02917, 03042, 03103, 03113, 03280, 03319, 03378

320-233

CONF ALL**(2) Applicability by MSN**

00029 00045 00046 00049-00057 00059 00064-00073 00076-00078 00081-00087
00093 00094 00099 00104 00109-00113 00115-00118 00121 00122 00124-00127
00135 00137 00138 00140-00142 00148-00150 00152-00154 00157 00159-00162
00164-00166 00168 00169 00171 00172 00174 00175 00178 00181-00183
00185 00192 00194 00195 00197 00198 00200-00203 00205 00206 00208-00211
00213 00216-00220 00229-00232 00234 00237 00239 00242 00243 00248
00249 00251-00256 00259 00260 00262 00263 00265 00267-00269 00272 00273
00275-00277 00279 00281 00282 00284 00285 00287 00290-00294 00296-00298
00300-00303 00306-00309 00311 00312 00314 00316-00322 00324 00325
00328-00332 00339-00343 00345-00347 00351 00353-00355 00357 00358
00360-00362 00366-00368 00370-00373 00376 00378 00380-00382 00386-00388
00390 00393 00395 00398-00410 00414-00418 00420-00424 00426-00432
00435 00436 00438 00439 00441 00442 00444 00445 00447-00450 00452 00454

00456 00457 00460 00462-00466 00470 00472 00475 00476 00479 00480 00482
00483 00485-00487 00489-00491 00496 00497 00499-00501 00503 00504
00506-00508 00510-00512 00523 00525 00527 00528 00530 00531 00533 00534
00537 00539 00540 00542 00543 00546 00548 00549 00551 00553 00554 00556
00558 00559 00561 00565 00566 00568 00569 00571-00575 00577-00580 00582
00584 00585 00587 00589 00592 00596 00598 00600 00603 00607 00609-00613
00616-00619 00621-00623 00625 00627 00629 00630 00634-00641 00643-00651
00653-00662 00665 00667 00669-00673 00676 00678 00679 00681-00683
00685 00686 00688-00691 00693-00698 00700-00706 00709 00711-00714
00716-00724 00726-00730 00732-00745 00748-00752 00754-00760 00762-00764
00766-00770 00773 00774 00776 00778-00780 00782-00786 00788 00790 00791
00794 00795 00797 00798 00800 00801 00803-00805 00807 00809 00812-00814
00816-00818 00820-00822 00824-00826 00828-00834 00836-00840 00842-00847
00849-00851 00853 00854 00856-00863 00865-00873 00875-00877 00879-00886
00888-00890 00892-00898 00900 00902-00907 00909-00914 00916-00919
00921-00925 00927-00934 00936-00939 00942-00953 00955 00957 00958 00960
00962 00964-00967 00971-00973 00975-00977 00979-00982 00984-00986
00988-00990 00992 00994 00996-01003 01005 01007 01009-01011 01013
01014 01016 01018-01020 01022 01025 01026 01028-01041 01043 01046-01059
01061-01067 01069-01073 01075-01079 01081-01093 01095-01097 01099-01112
01114-01132 01134-01143 01146-01152 01155-01160 01162-01173 01175-01184
01187 01189-01194 01196-01198 01200 01201 01203 01205 01206 01208-01213
01215-01217 01221-01226 01228-01232 01234-01237 01239 01240 01242-01249
01251-01259 01261-01272 01274 01275 01277 01279-01292 01294-01298
01300-01306 01308-01332 01334-01355 01357-01365 01367-01373 01375-01382
01384 01385 01387-01398 01400-01402 01404-01407 01409-01411 01413-01416
01418-01420 01422-01424 01426 01427 01429 01430 01432 01434 01435 01437
01439-01441 01443-01446 01448-01450 01452-01454 01456 01457 01459-01461
01463 01466-01471 01473-01475 01477-01480 01482-01486 01488-01491
01493-01495 01497 01498 01500-01502 01504-01510 01512-01516 01518 01520
01522-01524 01526-01530 01532-01535 01537 01538 01540-01553 01555-01571
01573-01586 01588-01595 01597-01601 01603-01606 01609 01610 01612 01613
01615-01618 01620-01622 01624-01628 01630 01633-01635 01637 01639-01641
01643-01650 01652-01657 01659 01661-01665 01667-01669 01671-01674
01677-01680 01683-01689 01692-01694 01696 01697 01699 01700 01702 01703
01705 01706 01708-01710 01712 01714 01715 01717-01719 01721-01723 01725
01728 01730-01733 01735-01747 01749-01762 01764-01767 01769-01771
01773-01775 01777-01782 01784-01787 01789-01793 01795-01797 01799-01806
01808-01810 01812 01814-01816 01818-01821 01823-01829 01831-01835
01837-01842 01844-01847 01849 01851-01858 01860-01868 01870-01877
01879 01880 01882-01886 01888-01904 01906-01918 01920 01922-01925
01927 01929 01931 01933-01938 01940 01942 01944 01945 01947-01949 01951
01952 01954 01955 01957-01959 01961-01965 01968 01969 01971 01973 01975
01976 01979-01983 01986 01987 01989 01990 01993 01996-02004 02006-02016
02018-02020 02022-02024 02026-02040 02042-02044 02046-02050 02052-02054
02056 02057 02059 02061-02063 02065 02066 02068-02075 02077-02079
02081-02087 02089-02104 02106 02108 02109 02112-02114 02116 02118-02127
02129-02189 02191-02207 02209 02210 02212-02215 02217 02219 02221-02225
02227-02233 02235-02246 02248-02254 02256-02260 02262-02266 02268
02269 02271-02275 02277-02289 02291-02302 02304 02306-02308 02310-02314
02316-02319 02321 02322 02325-02329 02331-02336 02338-02341 02343-02350
02352-02356 02358-02362 02364-02380 02382-02409 02411-02423 02425-02461
02463-02471 02473-02475 02477-02479 02481-02487 02489-02499 02501-02520
02522-02529 02531-02535 02537-02542 02544-02548 02550-02552 02554-02562
02564-02589 02591-02598 02600-02609 02611-02652 02654-02681 02683-02686
02688-02706 02708-02712 02714-02721 02723-02725 02727-02729 02731-02735
02737-02740 02742-02755 02757 02758 02760-02766 02768-02792 02794-02798

02800-02808 02810-02822 02824-02861 02863-02867 02869-02881 02883-02890
 02892-02894 02896-02902 02904-02911 02913-02915 02917 02918 02920-02926
 02928-02932 02934 02935 02937-02940 02942-02956 02958-02964 02966-02970
 02972 02973 02975-02995 02997 02998 03000 03002-03004 03006-03012 03014
 03016-03021 03023-03033 03035-03037 03039-03050 03052-03066 03068
 03069 03071-03074 03076-03080 03082-03091 03093-03097 03099-03103
 03105 03107-03109 03111 03113-03119 03121-03125 03127-03129 03131-03145
 03147-03162 03164-03190 03192-03197 03199-03206 03208-03211 03213-03216
 03218-03221 03223-03228 03230-03232 03234 03236-03240 03242 03243 03245
 03246 03248 03250 03252 03253 03255-03261 03263 03264 03266 03268-03273
 03275-03282 03284-03289 03291-03293 03295 03296 03298-03301 03303-03306
 03308-03314 03316-03321 03323-03325 03327 03328 03330-03333 03335-03338
 03341-03349 03351-03354 03356-03359 03361-03366 03368 03370 03371
 03373-03381 03383-03386 03388 03389

(3) MSN by configuration

CONF 001

MSN	CONFIGURATION
00029 00045 00046 00049 00050 00051 00052 00053 00054	001
00055 00056 00057 00059 00064 00065 00066 00067 00068	
00069 00070 00071 00072 00073 00076 00077 00078 00081	
00082 00083 00084 00085 00086 00087 00093 00094 00099	
00104 00109 00110 00111 00112 00113 00115 00116 00117	
00118 00121 00122 00124 00125 00126 00127 00135 00137	
00138 00140 00141 00142 00148 00149 00150 00152 00153	
00154 00157 00159 00160 00161 00162 00164 00165 00166	
00168 00169 00171 00172 00174 00175 00178 00181 00182	
00183 00185 00192 00194 00195 00197 00198 00200 00201	
00202 00203 00205 00206 00208 00209 00210 00211 00213	
00216 00217 00218 00219 00220 00229 00230 00231 00232	
00234 00237 00239 00242 00243 00248 00249 00251 00252	
00253 00254 00255 00256 00259 00260 00262 00263 00265	
00267 00268 00269 00272 00273 00275 00276 00277 00279	
00281 00282 00284 00285 00287 00290 00291 00292 00293	
00294 00296 00297 00298 00300 00301 00302 00303 00306	
00307 00308 00309 00311 00312 00314 00316 00317 00318	
00319 00320 00321 00322 00324 00325 00328 00329 00330	
00331 00332 00339 00340 00341 00342 00343 00345 00346	
00347 00351 00353 00354 00355 00357 00358 00360 00361	
00362 00366 00367 00368 00370 00371 00372 00373 00376	
00378 00380 00381 00382 00386 00387 00388 00390 00393	
00395 00398 00399 00400 00401 00402 00403 00404 00405	
00406 00407 00408 00409 00410 00414 00415 00416 00417	
00418 00420 00421 00422 00423 00424 00426 00427 00428	
00429 00430 00431 00432 00435 00436 00438 00439 00441	
00442 00444 00445 00447 00448 00449 00450 00452 00454	
00456 00457 00460 00462 00463 00464 00465 00466 00470	
00472 00475 00476 00479 00480 00482 00483 00485 00486	
00487 00489 00490 00491 00496 00497 00499 00500 00501	
00503 00504 00506 00507 00508 00510 00511 00512 00523	
00525 00527 00528 00530 00531 00533 00534 00537 00539	
00540 00542 00543 00546 00548 00549 00551 00553 00554	
00556 00558 00559 00561 00565 00566 00568 00569 00571	
00572 00573 00574 00575 00577 00578 00579 00580 00582	
00584 00585 00587 00589 00592 00596 00598 00600 00603	

MSN	CONFIGURATION
00607 00609 00610 00611 00612 00613 00616 00617 00618	
00619 00621 00622 00623 00625 00627 00629 00630 00634	
00635 00636 00637 00638 00639 00640 00641 00643 00644	
00645 00646 00647 00648 00649 00650 00651 00653 00654	
00655 00656 00657 00658 00659 00660 00661 00662 00665	
00667 00669 00670 00671 00672 00673 00676 00678 00679	
00681 00682 00683 00685 00686 00688 00689 00690 00691	
00693 00694 00695 00696 00697 00698 00700 00701 00702	
00703 00704 00705 00706 00709 00711 00712 00713 00714	
00716 00717 00718 00719 00720 00721 00722 00723 00724	
00726 00727 00728 00729 00730 00732 00733 00734 00735	
00736 00737 00738 00739 00740 00741 00742 00743 00744	
00745 00748 00749 00750 00751 00752 00754 00755 00756	
00757 00758 00759 00760 00762 00763 00764 00766 00767	
00768 00769 00770 00773 00774 00776 00778 00779 00780	
00782 00783 00784 00785 00786 00788 00790 00791 00794	
00795 00797 00798 00800 00801 00803 00804 00805 00807	
00809 00812 00813 00814 00816 00817 00818 00820 00821	
00822 00824 00825 00826 00828 00829 00830 00831 00832	
00833 00834 00836 00837 00838 00839 00840 00842 00843	
00844 00845 00846 00847 00849 00850 00851 00853 00854	
00856 00857 00858 00859 00860 00861 00862 00863 00865	
00866 00867 00868 00869 00870 00871 00872 00873 00875	
00876 00877 00879 00880 00881 00882 00883 00884 00885	
00886 00888 00889 00890 00892 00893 00894 00895 00896	
00897 00898 00900 00902 00903 00904 00905 00906 00907	
00909 00910 00911 00912 00913 00914 00916 00917 00918	
00919 00921 00922 00923 00924 00925 00927 00928 00929	
00930 00931 00932 00933 00934 00936 00937 00938 00939	
00942 00943 00944 00945 00946 00947 00948 00949 00950	
00951 00952 00953 00955 00957 00958 00960 00962 00964	
00965 00966 00967 00971 00972 00973 00975 00976 00977	
00979 00980 00981 00982 00984 00985 00986 00988 00989	
00990 00992 00994 00996 00997 00998 00999 01000 01001	
01002 01003 01005 01007 01009 01010 01011 01013 01014	
01016 01018 01019 01020 01022 01025 01026 01028 01029	
01030 01031 01032 01033 01034 01035 01036 01037 01038	
01039 01040 01041 01043 01046 01047 01048 01049 01050	
01051 01052 01053 01054 01055 01056 01057 01058 01059	
01061 01062 01063 01064 01065 01066 01067 01069 01070	
01071 01072 01073 01075 01076 01077 01078 01079 01081	
01082 01083 01084 01085 01086 01087 01088 01089 01090	
01091 01092 01093 01095 01096 01097 01099 01100 01101	
01102 01103 01104 01105 01106 01107 01108 01109 01110	
01111 01112 01114 01115 01116 01117 01118 01119 01120	
01121 01122 01123 01124 01125 01126 01127 01128 01129	
01130 01131 01132 01134 01135 01136 01137 01138 01139	
01140 01141 01142 01143 01146 01147 01148 01149 01150	
01151 01152 01155 01156 01157 01158 01159 01160 01162	
01163 01164 01165 01166 01167 01168 01169 01170 01171	
01172 01173 01175 01176 01177 01178 01179 01180 01181	
01182 01183 01184 01187 01189 01190 01191 01192 01193	
01194 01196 01197 01198 01200 01201 01203 01205 01206	
01208 01209 01210 01211 01212 01213 01215 01216 01217	
01221 01222 01223 01224 01225 01226 01228 01229 01230	

MSN	CONFIGURATION
01231 01232 01234 01235 01236 01237 01239 01240 01242	
01243 01244 01245 01246 01247 01248 01249 01251 01252	
01253 01254 01255 01256 01257 01258 01259 01261 01262	
01263 01264 01265 01266 01267 01268 01269 01270 01271	
01272 01274 01275 01277 01279 01280 01281 01282 01283	
01284 01285 01286 01287 01288 01289 01290 01291 01292	
01294 01295 01296 01297 01298 01300 01301 01302 01303	
01304 01305 01306 01308 01309 01310 01311 01312 01313	
01314 01315 01316 01317 01318 01319 01320 01321 01322	
01323 01324 01325 01326 01327 01328 01329 01330 01331	
01332 01334 01335 01336 01337 01338 01339 01340 01341	
01342 01343 01344 01345 01346 01347 01348 01349 01350	
01351 01352 01353 01354 01355 01357 01358 01359 01360	
01361 01362 01363 01364 01365 01367 01368 01369 01370	
01371 01372 01373 01375 01376 01377 01378 01379 01380	
01381 01382 01384 01385 01387 01388 01389 01390 01391	
01392 01393 01394 01395 01396 01397 01398 01400 01401	
01402 01404 01405 01406 01407 01409 01410 01411 01413	
01414 01415 01416 01418 01419 01420 01422 01423 01424	
01426 01427 01429 01430 01432 01434 01435 01437 01439	
01440 01441 01443 01444 01445 01446 01448 01449 01450	
01452 01453 01454 01456 01457 01459 01460 01461 01463	
01466 01467 01468 01469 01470 01471 01473 01474 01475	
01477 01478 01479 01480 01482 01483 01484 01485 01486	
01488 01489 01490 01491 01493 01494 01495 01497 01498	
01500 01501 01502 01504 01505 01506 01507 01508 01509	
01510 01512 01513 01514 01515 01516 01518 01520 01522	
01523 01524 01526 01527 01528 01529 01530 01532 01533	
01534 01535 01537 01538 01540 01541 01542 01543 01544	
01545 01546 01547 01548 01549 01550 01551 01552 01553	
01555 01556 01557 01558 01559 01560 01561 01562 01563	
01564 01565 01566 01567 01568 01569 01570 01571 01573	
01574 01575 01576 01577 01578 01579 01580 01581 01582	
01583 01584 01585 01586 01588 01589 01590 01591 01592	
01593 01594 01595 01597 01598 01599 01600 01601 01603	
01604 01605 01606 01609 01610 01612 01613 01615 01616	
01617 01618 01620 01621 01622 01624 01625 01626 01627	
01628 01630 01633 01634 01635 01637 01639 01640 01641	
01643 01644 01645 01646 01647 01648 01649 01650 01652	
01653 01654 01655 01656 01657 01659 01661 01662 01663	
01664 01665 01667 01668 01669 01671 01672 01673 01674	
01677 01678 01679 01680 01683 01684 01685 01686 01687	
01688 01689 01692 01693 01694 01696 01697 01699 01700	
01702 01703 01705 01706 01708 01709 01710 01712 01714	
01715 01717 01718 01719 01721 01722 01723 01725 01728	
01730 01731 01732 01733 01735 01736 01737 01738 01739	
01740 01741 01742 01743 01744 01745 01746 01747 01749	
01750 01751 01752 01753 01754 01755 01756 01757 01758	
01759 01760 01761 01762 01764 01765 01766 01767 01769	
01770 01771 01773 01774 01775 01777 01778 01779 01780	
01781 01782 01784 01785 01786 01787 01789 01790 01791	
01792 01793 01795 01796 01797 01799 01800 01801 01802	
01803 01804 01805 01806 01808 01809 01810 01812 01814	
01815 01816 01818 01819 01820 01821 01823 01824 01825	
01826 01827 01828 01829 01831 01832 01833 01834 01835	

MSN	CONFIGURATION
01837 01838 01839 01840 01841 01842 01844 01845 01846	
01847 01849 01851 01852 01853 01854 01855 01856 01857	
01858 01860 01861 01862 01863 01864 01865 01866 01867	
01868 01870 01871 01872 01873 01874 01875 01876 01877	
01879 01880 01882 01883 01884 01885 01886 01888 01889	
01890 01891 01892 01893 01894 01895 01896 01897 01898	
01899 01900 01901 01902 01903 01904 01906 01907 01908	
01909 01910 01911 01912 01913 01914 01915 01916 01917	
01918 01920 01922 01923 01924 01925 01927 01929 01931	
01933 01934 01935 01936 01937 01938 01940 01942 01944	
01945 01947 01948 01949 01951 01952 01954 01955 01957	
01958 01959 01961 01962 01963 01964 01965 01968 01969	
01971 01973 01975 01976 01979 01980 01981 01982 01983	
01986 01987 01989 01990 01993 01996 01997 01998 01999	
02000 02001 02002 02003 02004 02006 02007 02008 02009	
02010 02011 02012 02013 02014 02015 02016 02018 02019	
02020 02022 02023 02024 02026 02027 02028 02029 02030	
02031 02032 02033 02034 02035 02036 02037 02038 02039	
02040 02042 02043 02044 02046 02047 02048 02049 02050	
02052 02053 02054 02056 02057 02059 02061 02062 02063	
02065 02066 02068 02069 02070 02071 02072 02073 02074	
02075 02077 02078 02079 02081 02082 02083 02084 02085	
02086 02087 02089 02090 02091 02092 02093 02094 02095	
02096 02097 02098 02099 02100 02101 02102 02103 02104	
02106 02108 02109 02112 02113 02114 02116 02118 02119	
02120 02121 02122 02123 02124 02125 02126 02127 02129	
02130 02131 02132 02133 02134 02135 02136 02137 02138	
02139 02140 02141 02142 02143 02144 02145 02146 02147	
02148 02149 02150 02151 02152 02153 02154 02155 02156	
02157 02158 02159 02160 02161 02162 02163 02164 02165	
02166 02167 02168 02169 02170 02171 02172 02173 02174	
02175 02176 02177 02178 02179 02180 02181 02182 02183	
02184 02185 02186 02187 02188 02189 02191 02192 02193	
02194 02195 02196 02197 02198 02199 02200 02201 02202	
02203 02204 02205 02206 02207 02209 02210 02212 02213	
02214 02215 02217 02219 02221 02222 02223 02224 02225	
02227 02228 02229 02230 02231 02232 02233 02235 02236	
02237 02238 02239 02240 02241 02242 02243 02244 02245	
02246 02248 02249 02250 02251 02252 02253 02254 02256	
02257 02258 02259 02260 02262 02263 02264 02265 02266	
02268 02269 02271 02272 02273 02274 02275 02277 02278	
02279 02280 02281 02282 02283 02284 02285 02286 02287	
02288 02289 02291 02292 02293 02294 02295 02296 02297	
02298 02299 02300 02301 02302 02304 02306 02307 02308	
02310 02311 02312 02313 02314 02316 02317 02318 02319	
02321 02322 02325 02326 02327 02328 02329 02331 02332	
02333 02334 02335 02336 02338 02339 02340 02341 02343	
02344 02345 02346 02347 02348 02349 02350 02352 02353	
02354 02355 02356 02358 02359 02360 02361 02362 02364	
02365 02366 02367 02368 02369 02370 02371 02372 02373	
02374 02375 02376 02377 02378 02379 02380 02382 02383	
02384 02385 02386 02387 02388 02389 02390 02391 02392	
02393 02394 02395 02396 02397 02398 02399 02400 02401	
02402 02403 02404 02405 02406 02407 02408 02409 02411	
02412 02413 02414 02415 02416 02417 02418 02419 02420	

MSN	CONFIGURATION
02421 02422 02423 02425 02426 02427 02428 02429 02430	
02431 02432 02433 02434 02435 02436 02437 02438 02439	
02440 02441 02442 02443 02444 02445 02446 02447 02448	
02449 02450 02451 02452 02453 02454 02455 02456 02457	
02458 02459 02460 02461 02463 02464 02465 02466 02467	
02468 02469 02470 02471 02473 02474 02475 02477 02478	
02479 02481 02482 02483 02484 02485 02486 02487 02489	
02490 02491 02492 02493 02494 02495 02496 02497 02498	
02499 02501 02502 02503 02504 02505 02506 02507 02508	
02509 02510 02511 02512 02513 02514 02515 02516 02517	
02518 02519 02520 02522 02523 02524 02525 02526 02527	
02528 02529 02531 02532 02533 02534 02535 02537 02538	
02539 02540 02541 02542 02544 02545 02546 02547 02548	
02550 02551 02552 02554 02555 02556 02557 02558 02559	
02560 02561 02562 02564 02565 02566 02567 02568 02569	
02570 02571 02572 02573 02574 02575 02576 02577 02578	
02579 02580 02581 02582 02583 02584 02585 02586 02587	
02588 02589 02591 02592 02593 02594 02595 02596 02597	
02598 02600 02601 02602 02603 02604 02605 02606 02607	
02608 02609 02611 02612 02613 02614 02615 02616 02617	
02618 02619 02620 02621 02622 02623 02624 02625 02626	
02627 02628 02629 02630 02631 02632 02633 02634 02635	
02636 02637 02638 02639 02640 02641 02642 02643 02644	
02645 02646 02647 02648 02649 02650 02651 02652 02654	
02655 02656 02657 02658 02659 02660 02661 02662 02663	
02664 02666 02667 02669 02672 02673 02675 02677 02679	
02681 02684 02686	

CONF 002

MSN	CONFIGURATION
02665 02668 02670 02671 02674 02676 02678 02680 02683	002
02685 02688 02689 02690 02691 02692 02693 02694 02695	
02696 02697 02698 02699 02700 02701 02702 02703 02704	
02705 02706 02708 02709 02710 02711 02712 02714 02715	
02716 02717 02718 02719 02720 02721 02723 02724 02725	
02727 02728 02729 02731 02732 02733 02734 02735 02737	
02738 02739 02740 02742 02743 02744 02745 02746 02747	
02748 02749 02750 02751 02752 02753 02754 02755 02757	
02758 02760 02761 02762 02763 02764 02765 02766 02768	
02769 02770 02771 02772 02773 02774 02775 02776 02777	
02778 02779 02780 02781 02782 02783 02784 02785 02786	
02787 02788 02789 02790 02791 02792 02794 02795 02796	
02797 02798 02800 02801 02802 02803 02804 02805 02806	
02807 02808 02810 02811 02812 02813 02814 02815 02816	
02817 02818 02819 02820 02821 02822 02824 02825 02826	
02827 02828 02829 02830 02831 02832 02833 02834 02835	
02836 02837 02838 02839 02840 02841 02842 02843 02844	
02845 02846 02847 02848 02849 02850 02851 02852 02853	
02854 02855 02856 02857 02858 02859 02860 02861 02863	
02864 02865 02866 02867 02869 02870 02871 02872 02873	
02874 02875 02876 02877 02878 02879 02880 02881 02883	
02884 02885 02886 02887 02888 02889 02890 02892 02893	
02894 02896 02897 02898 02899 02900 02901 02902 02904	
02905 02906 02907 02908 02909 02910 02911 02913 02914	

MSN	CONFIGURATION
02915 02917 02918 02920 02921 02922 02923 02924 02925	
02926 02928 02929 02930 02931 02932 02934 02935 02937	
02938 02939 02940 02942 02943 02944 02945 02946 02947	
02948 02949 02950 02951 02952 02953 02954 02955 02956	
02958 02959 02960 02961 02962 02963 02964 02966 02967	
02968 02969 02970 02972 02973 02975 02976 02977 02978	
02979 02980 02981 02982 02983 02984 02985 02986 02987	
02988 02989 02990 02991 02992 02993 02994 02995 02997	
02998 03000 03002 03003 03004 03006 03007 03008 03009	
03010 03011 03012 03014 03016 03017 03018 03019 03020	
03021 03023 03024 03025 03026 03027 03028 03029 03030	
03031 03032 03033 03035 03036 03037 03039 03040 03041	
03042 03043 03044 03045 03046 03047 03048 03049 03050	
03052 03053 03054 03055 03056 03057 03058 03059 03060	
03061 03062 03063 03064 03065 03066 03068 03069 03071	
03072 03073 03074 03076 03077 03078 03079 03080 03082	
03083 03084 03085 03086 03087 03088 03089 03090 03091	
03093 03094 03095 03096 03097 03099 03100 03101 03102	
03103 03105 03107 03108 03109 03111 03113 03114 03115	
03116 03117 03118 03119 03121 03122 03123 03124 03125	
03127 03128 03129 03131 03132 03133 03134 03135 03136	
03137 03138 03139 03140 03141 03142 03143 03144 03145	
03147 03148 03149 03150 03151 03152 03153 03154 03155	
03156 03157 03158 03159 03160 03161 03162 03164 03165	
03166 03167 03168 03169 03170 03171 03172 03173 03174	
03175 03176 03177 03178 03179 03180 03181 03182 03183	
03184 03185 03186 03187 03188 03189 03190 03192 03193	
03194 03195 03196 03197 03199 03200 03201 03202 03203	
03204 03205 03206 03208 03209 03210 03211 03213 03214	
03215 03216 03218 03219 03220 03221 03223 03224 03225	
03226 03227 03228 03230 03231 03232 03234 03236 03237	
03238 03239 03240 03242 03243 03245 03246 03248 03250	
03252 03253 03255 03256 03257 03258 03259 03260 03261	
03263 03264 03266 03268 03269 03270 03271 03272 03273	
03275 03276 03277 03278 03279 03280 03281 03282 03284	
03285 03286 03287 03288 03289 03291 03292 03293 03295	
03296 03298 03299 03300 03301 03303 03304 03305 03306	
03308 03309 03310 03311 03312 03313 03314 03316 03317	
03318 03319 03320 03321 03323 03324 03325 03327 03328	
03330 03331 03332 03333 03335 03336 03337 03338 03341	
03342 03343 03344 03345 03346 03347 03348 03349 03351	
03352 03353 03354 03356 03357 03358 03359 03361 03362	
03363 03364 03365 03366 03368 03370 03371 03373 03374	
03375 03376 03377 03378 03379 03380 03381 03383 03384	
03385 03386 03388 03389	

CONF ALL

(4) Configuration definition

CONF 001

Configuration 001

CONF 001 is applicable for aircraft on which MOD No. 35239P9039 is not embodied.

CONF 002

Configuration 002

CONF 002 is applicable for aircraft on which MOD No. 35239P9039 is embodied.

CONF ALL**B. CONCURRENT REQUIREMENTS**

None

C. REASON**(1) History**

One operator reported chafing on the forward fuselage at bottom of Frame 34 between Stringer 43 Left Hand (LH) and Right Hand (RH) sides underneath the fairing structure. After investigation, a contact has been identified between the belly fairing nut plate (Part Number (PN) D5323023500000) and the fuselage causing chaffing on the fuselage. Wear has also been identified on the fuselage by excessive grip length. No inspection task exists in the maintenance program to detect this damage.

(2) Objective/Action

This Service Bulletin recommends doing a detailed inspection of external fuselage skin panel at Frame 34 underneath the fairing structure.

(3) Advantages

Modification No. 37878G0503 thru Service Bulletin No. Ref. SB A320-53-1281 installs reinforced and cut-out belly fairing nut plate. It will prevent slight deformation of the belly fairing skin plates. This modification Service Bulletin is a final fix to this inspection.

(4) Operational/Maintenance Consequences

None

D. DESCRIPTION

To accomplish this Service Bulletin it is necessary to:

(1) Inspection of external fuselage skin panel at FR34

(a) Task set A320-A-53-XX-1287-01000-93BA-A Inspection of external fuselage skin panel at FR34

- 1 Do a Detailed Inspection of the External Fuselage Skin Panel at FR34, between STGR 43 LH and RH Sides
- 2 Depending on the Inspection result, rework the Fuselage Skin Panel
- 3 Depending on the Inspection result, do a Special Detailed Inspection of External Fuselage Skin Panel for crack

CONF 001

- 4 Depending on the Inspection result, install the Belly Fairing Panel at FR34 removed for access

CONF 002

- 4 Depending on the Inspection result, install the Belly Fairing Panel at FR34 removed for access

CONF ALL**E. COMPLIANCE****(1) Classification**

MANDATORY: Service Bulletin must be accomplished.

(2) Accomplishment Timescale

This Service Bulletin has been classified Mandatory by the issue of an Airworthiness Directive (AD) published by the European Aviation Safety Agency (EASA). The AD must be used as the reference document for the mandated accomplishment timescale.

Table 1, CONF ALL - Inspection of External Fuselage Skin Panel at Frame 34 underneath the Fairing Structure between STGR 43 LH and RH Sides

CONDITIONS	ACTION	COMPLIANCE TIME		REPETITIVE INTERVAL
		THRESHOLD	GRACE PERIOD	
All Aircraft	Do a detailed inspection of the external fuselage skin panel at Frame 34 underneath the fairing structure between STGR 43 LH and RH sides in accordance with . Ref. Task set A320-A-53-XX-1287-01ZZZ-93BZ-A	Before 12000 Flight Cycles (FC) / 24000 Flight Hours (FH) from Entry Into Service (EIS)	5000FC / 10000FH	None
No chafing marks found	Install the belly fairing panel in accordance with Ref. Task A320-A-53-XX-1287-01ZZZ-740Z-A	Before next flight	None	None
	Apply Service Bulletin No. Ref. SB A320-53-1281 (terminating action).	None	None	None
	OR			
	Install the belly fairing panel in accordance with Ref. Task A320-A-53-XX-1287-01ZZZ-740Z-A	Before next flight	None	None
	Repeat the inspection of external fuselage skin panel at Frame 34 underneath the fairing structure between STGR 43 LH and RH sides in accordance with Ref. Task set A3	None	None	12000FC / 24000FH

CONDITIONS	ACTION	COMPLIANCE TIME		REPETITIVE INTERVAL
		THRESHOLD	GRACE PERIOD	
	20-A-53-XX-128 7-01ZZZ-93BZ-A			
Chafing marks found	Do a damage rework of the fuselage skin panel in accordance with Ref. Task A320-A-53-XX-1287-01ZZZ-600Z-A	Before next flight	None	None
	Do a special detailed inspection for crack in accordance with Ref. Task A320-A-53-XX-1287-02ZZZ-300Z-A	Before next flight	None	None
	Do the measurement of crack length and remaining thickness in accordance with Ref. Task A320-A-53-XX-1287-02ZZZ-300Z-A	Before next flight	None	None
	Contact AIRBUS for further instruction.	Before next flight	None	None
No crack found	Do the measurement of remaining thickness in accordance with Ref. Task A320-A-53-XX-1287-02ZZZ-300Z-A	Before next flight	None	None
Remaining thickness is out of SRM limits	Contact AIRBUS for further instruction.	Before next flight	None	None
Remaining thickness is within SRM limits	Re-protect reworked area in accordance with Ref. Task A320-A-53-XX-1287-02ZZZ-300Z-A and Install the belly fairing panel in accordance with Ref. Task A320-	Before next flight	None	None

CONDITIONS	ACTION	COMPLIANCE TIME		REPETITIVE INTERVAL
		THRESHOLD	GRACE PERIOD	
	A-53-XX-1287-01ZZZ-740Z-A			
	Apply Service Bulletin No. Ref. SB A320-53-1281 (terminating action).	None	None	None
	OR			
	Re-protect reworked area in accordance with Ref. Task A320-A-53-XX-1287-02 ZZZ-300Z-A and Install the belly fairing panel in accordance with Ref. Task A320-A-53-XX-1287-01ZZZ-740Z-A	Before next flight	None	None
	Repeat the inspection of external fuselage skin panel at Frame 34 underneath the fairing structure between STGR 43 LH and RH sides in accordance with Ref. Task set A320-A-53-XX-1287-01ZZZ-93BZ-A	None	None	12000FC / 24000FH

F. APPROVAL

The technical content of this document is approved under the authority of Design Organisation Approval No. EASA.21J.031.

If an aircraft listed in the applicability has a modification or repair embodied that is not of AIRBUS origin, and which affects the content of this Service Bulletin, the operator is responsible for obtaining approval by its airworthiness authority for any adaptation necessary before incorporation of the Service Bulletin.

G. MANPOWER

CONF 001

The manpower estimates given in this Service Bulletin are based on the direct labor cost to do the work. These estimates assume that the work will be done by experienced personnel, and may need to be revised upwards to suit operator's circumstances. The estimates do not include the time to prepare, plan or inspect the work. Manufacture and procurement of parts and tools, drying times for paints, sealants, etc., and general administration work are also not included.

(1) Inspection of external fuselage skin panel at FR34

- (a) Task set A320-A-53-XX-1287-01000-93BA-A Inspection of external fuselage skin panel at FR34

PREPARATION		
Job Set-up	1.50 h	
Remove the Belly Fairing Panel at FR34 for access	1.50 h	
PROCEDURE		
Do a Detailed Inspection of the External Fuselage Skin Panel at FR34, between STGR 43 LH and RH Sides	0.50 h	
Depending on the Inspection result, rework the Fuselage Skin Panel	1.00 h	
Depending on the Inspection result, do a Special Detailed Inspection of External Fuselage Skin Panel for crack	1.00 h	
Depending on the Inspection result, install the Belly Fairing Panel at FR34 removed for access	4.00 h	
PREPARATION FOR TEST		
None		
TEST		
None		
CLOSE-UP		
Close-up	2.00 h	
TOTAL MAN-HOURS	11.50 h	
ELAPSED TIME (HOURS)	5.50 h	

CONF 002

The manpower estimates given in this Service Bulletin are based on the direct labor cost to do the work. These estimates assume that the work will be done by experienced personnel, and may need to be revised upwards to suit operator's circumstances. The estimates do not include the time to prepare, plan or inspect the work. Manufacture and procurement of parts and tools, drying times for paints, sealants, etc., and general administration work are also not included.

(1) Inspection of external fuselage skin panel at FR34

- (a) Task set A320-A-53-XX-1287-01000-93BA-A Inspection of external fuselage skin panel at FR34

PREPARATION		
Job Set-up	1.50 h	
Remove the Belly Fairing Panel at FR34 for access	2.00 h	
PROCEDURE		
Do a Detailed Inspection of the External Fuselage Skin Panel at FR34, between STGR 43 LH and RH Sides	0.50 h	
Depending on the Inspection result, rework the Fuselage Skin Panel	1.00 h	
Depending on the Inspection result, do a Special Detailed Inspection of External Fuselage Skin Panel for crack	1.00 h	
Depending on the Inspection result, install the Belly Fairing Panel at FR34 removed for access	5.00 h	

PREPARATION FOR TEST		
None		
TEST		
None		
CLOSE-UP		
Close-up	2.00 h	
TOTAL MAN-HOURS	13.00 h	
ELAPSED TIME (HOURS)	6.50 h	

CONF ALL

H. WEIGHT AND BALANCE

Not changed

I. ELECTRICAL LOAD DATA

Not changed

J. REFERENCES

CONF 001

(1) Inspection of external fuselage skin panel at FR34

- (a) Task set A320-A-53-XX-1287-01000-93BA-A Inspection of external fuselage skin panel at FR34

AIRCRAFT MAINTENANCE MANUAL (AMM)	
06-20-00, Page Block 001	06-31-53, Page Block 001
Task 12-34-24-869-001	Task 20-21-11-911-001
Task 20-28-00-912-802	Task 52-30-00-860-001 Task 52-30-00-860-002
Task 53-22-14-000-001	Task 53-35-13-000-002
Task 53-22-14-400-001	Task 53-35-13-400-002
ELECTRICAL STANDARD PRACTICES MANUAL (ESPM)	
20-51-20	20-55-00
IN SERVICE INFORMATION (ISI)	
00.00.00179	
NON DESTRUCTIVE TEST MANUAL (NTM)	
51-10-04	51-10-08
SERVICE BULLETIN (SB)	
A320-53-1281	
STRUCTURAL REPAIR MANUAL (SRM)	
51-23-12	51-24-00
51-40-00	51-42-00
51-43-00	51-75-12
53-21-11	

STANDARDS MANUAL (SM)
CONSUMABLE MATERIAL LIST (CML)

CONF 002

(1) Inspection of external fuselage skin panel at FR34

- (a) Task set A320-A-53-XX-1287-01000-93BA-A Inspection of external fuselage skin panel at FR34

AIRCRAFT MAINTENANCE MANUAL (AMM)	
06-20-00, Page Block 001	06-31-53, Page Block 001
Task 12-34-24-869-001	Task 20-21-11-911-001
Task 20-28-00-912-802	Task 52-30-00-860-001 Task 52-30-00-860-002
Task 53-22-14-000-001	Task 53-35-13-000-002
Task 53-22-14-400-001	Task 53-35-13-400-002
ELECTRICAL STANDARD PRACTICES MANUAL (ESPM)	
20-51-20	20-55-00
IN SERVICE INFORMATION (ISI)	
00.00.00179	
NON DESTRUCTIVE TEST MANUAL (NTM)	
51-10-04	51-10-08
SERVICE BULLETIN (SB)	
A320-53-1281	
STRUCTURAL REPAIR MANUAL (SRM)	
51-23-12	51-24-00
51-40-00	51-42-00
51-43-00	51-75-12
53-21-11	

STANDARDS MANUAL (SM)
CONSUMABLE MATERIAL LIST (CML)

CONF ALL

K. PUBLICATION AFFECTED

None

L. INDUSTRY SUPPORT INFORMATION

AIRBUS will not provide industry support for accomplishment of this Service Bulletin.

2. MATERIAL INFORMATION

A. MATERIAL APPLICABILITY

CONF 001

Material for task set A320-A-53-XX-1287-01000-93BA-A Inspection of external fuselage skin panel at FR34

MATERIAL	QTY	SEE NOTES
Consumables	See SB	
Part kit 531287A01R02	1	

CONF 002

Material for task set A320-A-53-XX-1287-01000-93BA-A Inspection of external fuselage skin panel at FR34

MATERIAL	QTY	SEE NOTES
Consumables	See SB	
Part kit 531287A02R00	1	

CONF ALL

B. TOOLING

No tools

C. CONSUMABLES

CONF 001

Consumables for task set A320-A-53-XX-1287-01000-93BA-A Inspection of external fuselage skin panel at FR34

ITEM	REFERENCE CML	DESCRIPTION	DRAWING	SEE NOTES
	04DAB2	Primer Epoxy Paint-Corrosion Inhibiting-structure		
	04QAB2	Coating-Flexible-Structure		
	06AAA1	Polysulfide Sealant-General Purpose-Brushable		
	06ACC1	Polysulfide Sealant-Low Density Multi Purpose-Interfay		
	08BAA9	Non Aqueous Cleaner-General		
	10ABC1	Surface Pretreatment-Light Alloys-Chemical Conversion Yellow		
	14SBA1	Textile-Lint free-Cotton		

CONF 002

Consumables for task set A320-A-53-XX-1287-01000-93BA-A Inspection of external fuselage skin panel at FR34

ITEM	REFERENCE CML	DESCRIPTION	DRAWING	SEE NOTES
	04DAB2	Primer Epoxy Paint-Corrosion Inhibiting-structure		

ITEM	REFERENCE CML	DESCRIPTION	DRAWING	SEE NOTES
	04QAB2	Coating-Flexible-Structure		
	06AAA1	Polysulfide Sealant-General Purpose-Brushable		
	06ACC1	Polysulfide Sealant-Low Density Multi Purpose-Interfay		
	08BAA9	Non Aqueous Cleaner-General		
	10ABC1	Surface Pretreatment-Light Alloys-Chemical Conversion Yellow		
	14SBA1	Textile-Lint free-Cotton		

CONF ALL

D. LIST OF NEW PARTS

CONF 001

Part kit 531287A01R02

Cost	105.00 USD
Availability	270 d (calendar days from receipt of order)
NOTE(S)	
<p>The availability given above is the standard lead-time from the date of your purchase order. If items are required before this time, please include a retrofit planning schedule with your order so that we can try to comply with your requirements.</p> <p>The sales terms (costs and availability) are estimated in relation to economic conditions. The latest valid price and lead-time for ordering purposes shall be obtained through the AIRBUS Spares portal or through a request for quotation to airbus.kit@airbus.com.</p>	

Procurement address	D4296	AIRBUS Material, Logistics and Suppliers ATP II B, Hein-Sass-Weg 24 21129 HAMBURG GERMANY Phone: +49 40 743 51775 E-mail: airbus.kit@airbus.com Internet: http://spares.airbus.com
NOTE(S)		
Customers with aircraft shown in the applicability of this Service Bulletin should send a purchase order to AIRBUS at the address given above and quote the number of this Service Bulletin.		

ITEM	PART No.	QTY (UM)	KEYWORD	DRAWING	SEE NOTES
2	ASNA2049DXJ4019	31	RIVET		
3	ASNA2001V3-4	4	SCREW		
4	NAS1169-10	6	WASHER		

ITEM	PART No.	QTY (UM)	KEYWORD	DRAWING	SEE NOTES
5	NAS1102E3-6	2	SCREW		
NOTE(S)					
Refer to the AIRBUS Ref. SM if you find part numbers of hardware components in the related kit(s) which you cannot identify in the LIST OF COMPONENTS of this Service Bulletin. The SM will give you the correct part number to part number relationship.					

CONF 002

Part kit 531287A02R00

Cost	150.00 USD
Availability	270 d (calendar days from receipt of order)
NOTE(S)	
<p>The availability given above is the standard lead time from the date of your purchase order. If items are required before this time, please include a retrofit planning schedule with your order so that we can try to comply with your requirements.</p> <p>The sales terms (costs and availability) are estimated in relation to economic conditions. The latest valid price and lead time for ordering purposes shall be obtained through the AirbusSpares portal or through a request for quotation to airbus.kit@airbus.com.</p>	

Procurement address	D4296	AIRBUS Material, Logistics and Suppliers ATP II B, Hein-Sass-Weg 24 21129 HAMBURG GERMANY Phone: +49 40 743 51775 E-mail: airbus.kit@airbus.com Internet: http://spares.airbus.com
---------------------	-------	---

ITEM	PART No.	QTY (UM)	KEYWORD	DRAWING	SEE NOTES
2	ASNA2049DXJ4019	31	RIVET		
3	ASNA2001V3-4	4	SCREW		
4	NAS1169-10	6	WASHER		
5	NAS1102E3-6	2	SCREW		
6	ABS0112-24-03C	12	RIVET		
NOTE(S)					
Refer to the AIRBUS Ref. SM if you find part numbers of hardware components in the related kit(s) which you cannot identify in the LIST OF COMPONENTS of this Service Bulletin. The SM will give you the correct part number to part number relationship.					

CONF ALL

E. LIST OF EXISTING PARTS

No parts

3. ACCOMPLISHMENT INSTRUCTIONS**Task set A320-A-53-XX-1287-01000-93BA-A**

Inspection of external fuselage skin panel at FR34

WARNING: MAKE SURE THAT YOU OBEY ALL THE WARNINGS AND ALL THE CAUTIONS INCLUDED IN THE REFERENCED PROCEDURES.

CAUTION: ALWAYS OBEY THE PRECAUTIONS THAT FOLLOW TO KEEP ELECTRICAL WIRING IN A SATISFACTORY CONDITION (ELECTRICALLY AND MECHANICALLY SERVICEABLE). WHEN YOU DO MAINTENANCE WORK, REPAIRS OR MODIFICATIONS, ALWAYS KEEP ELECTRICAL WIRING, COMPONENTS AND THE WORK AREA AS CLEAN AS POSSIBLE. TO DO THIS:

- **PUT PROTECTION, SUCH AS PLASTIC SHEETING, CLOTHS, ETC., AS NECESSARY ON WIRING AND COMPONENTS.**
- **REGULARLY REMOVE ALL SHAVINGS, UNWANTED MATERIAL AND OTHER CONTAMINATION.**

THESE PRECAUTIONS WILL DECREASE THE RISK OF CONTAMINATION AND DAMAGE TO THE ELECTRICAL WIRING INSTALLATION. IF THERE IS CONTAMINATION, REFER TO Ref. ESPM 20-55-00.

NOTE: The accomplishment instructions of this Service Bulletin include procedures given in other documents or in other sections of the Service Bulletin. When the words "refer to" are used and the operator has a procedure accepted by the local authority he belongs to, the accepted alternative procedure can be used. When the words "in accordance with" are used then the given procedure must be followed.

NOTE: The access and close-up instructions, not comprising return to service tests, in this Service Bulletin do not constitute or affect the technical intent of the Service Bulletin. Operators can therefore, as deemed necessary, omit or add access and/or close-up steps to add flexibility to their maintenance operations as long as the technical intent of the Service Bulletin is met within the set parameters.

NOTE: Manual titles given in the accomplishment instructions are referred to by acronyms. Refer to paragraph 1.J., References, for the definition of acronyms.

NOTE: This Service Bulletin contains the instructions for the on-aircraft maintenance necessary to ensure the continued airworthiness of the aircraft. For any deviations to the instructions, including RC paragraph contained herein, contact AIRBUS for further instructions and approval.

NOTE: The purpose of flowcharts is to supplement the information given in the Procedure and Compliance paragraphs and not to serve as the primary source for tasks or compliance times given in this Service Bulletin.

NOTE: This Service Bulletin is classified mandatory or expected to be classified mandatory by an Airworthiness Directive (AD). The paragraphs 3.C. and 3.E. in these accomplishment instructions are Required for Compliance (RC) and must be done to comply with the AD. To allow more flexibility, the rule "refer to" and "in accordance with" will apply to these paragraphs 3.C. and 3.E. Other paragraphs are recommended and may be deviated from, done as part of other actions or done with accepted methods different from those given in the Service Bulletin, as long as the RC paragraphs can be done and the aircraft can be put back into a serviceable condition.

NOTE: Discarded parts must be managed at the operator's discretion.

A. TASK SET ASSOCIATED INFORMATION**Task Manpower**

CONF 001	TOTAL MAN-HOURS	11.50 h
CONF 002	TOTAL MAN-HOURS	13.00 h
CONF 001	ELAPSED TIME (HOURS)	5.50 h
CONF 002	ELAPSED TIME (HOURS)	6.50 h
CONF ALL		

B. PREPARATION

(1) Task A320-A-53-XX-1287-01001-540A-A - Job Set-up

Job Set-Up Information

Manpower/Resources/Skills

Man-hours	1.50 h
Minimum Number of person	1
Elapsed Time	1.50 h

Referenced Information

Manuals/Drawings	References/Sheets
AMM	Task 12-34-24-869-001 Task 52-30-00-860-001 Task 53-22-14-000-001 Task 53-35-13-000-002

Procedure

NOTE: For the basic Aircraft configuration, refer to AMM Chapter "Introduction - Aircraft status for maintenance" in Manual Front Matter section.

- (a) Make sure that the aircraft is electrically grounded, refer to Ref. AMM Task 12-34-24-869-001.
- (b) Put an access platform(s) in position at Zone 190 and Zone 825.
- (c) Open the FWD Cargo-Compartment door Door 825AR, refer to Ref. AMM Task 52-30-00-860-001.
- (d) Remove the access panel Electrical Panel 191BB, refer to Ref. AMM Task 53-35-13-000-002.
- (e) Remove the Cargo-Compartment floor panel(s) at Frame 34 to get access to the fuselage, refer to Ref. AMM Task 53-22-14-000-001.

CONF 001

(2) Task A320-A-53-XX-1287-02001-540A-A - Remove the Belly Fairing Panel at FR34 for access

CAUTION: DO NOT USE A METAL SCRAPER TO REMOVE THE UNWANTED MATERIAL. A METAL SCRAPER CAN CAUSE DAMAGE TO THE SURFACE OF THE COMPONENT.

Job Set-Up Information

Working Area

Impacted Zone	Access / Work Location
190	

Manpower/Resources/Skills

Man-hours	1.50 h
Minimum Number of person	1
Elapsed Time	1.50 h

Material necessary to do the job

Consumables				
ITEM	REFERENCE CML	DESCRIPTION	DRAWING	SEE NOTES
	08BAA9	Non Aqueous Cleaner- General		
	14SBA1	Textile-Lint free-Cotton		

Referenced Information

Manuals/Drawings	References/Sheets
AMM	06-20-00, Page Block 001 06-31-53, Page Block 001
CML	CONSUMABLE MATERIAL LIST (CML)
SRM	51-42-00

Procedure

(a) Standard Practices

- 1 For the specification of Material application codes given in this Service Bulletin, refer to the Consumable Material List (CML) Ref. CML.
- 2 For the Frame (FR) identification, refer to Ref. AMM 06-31-53, Page Block 001.
- 3 For the Zone identification, refer to Ref. AMM 06-20-00, Page Block 001.
- 4 Remove and install fasteners in accordance with Ref. SRM 51-42-00.
- 5 Tag all the parts you must remove and retain to make the subsequent installation easier.

(b) Remove the belly fairing panel Item (1) at Frame 34:
Refer to Ref. Fig. Removal/Installation of the Belly Fairing Panel

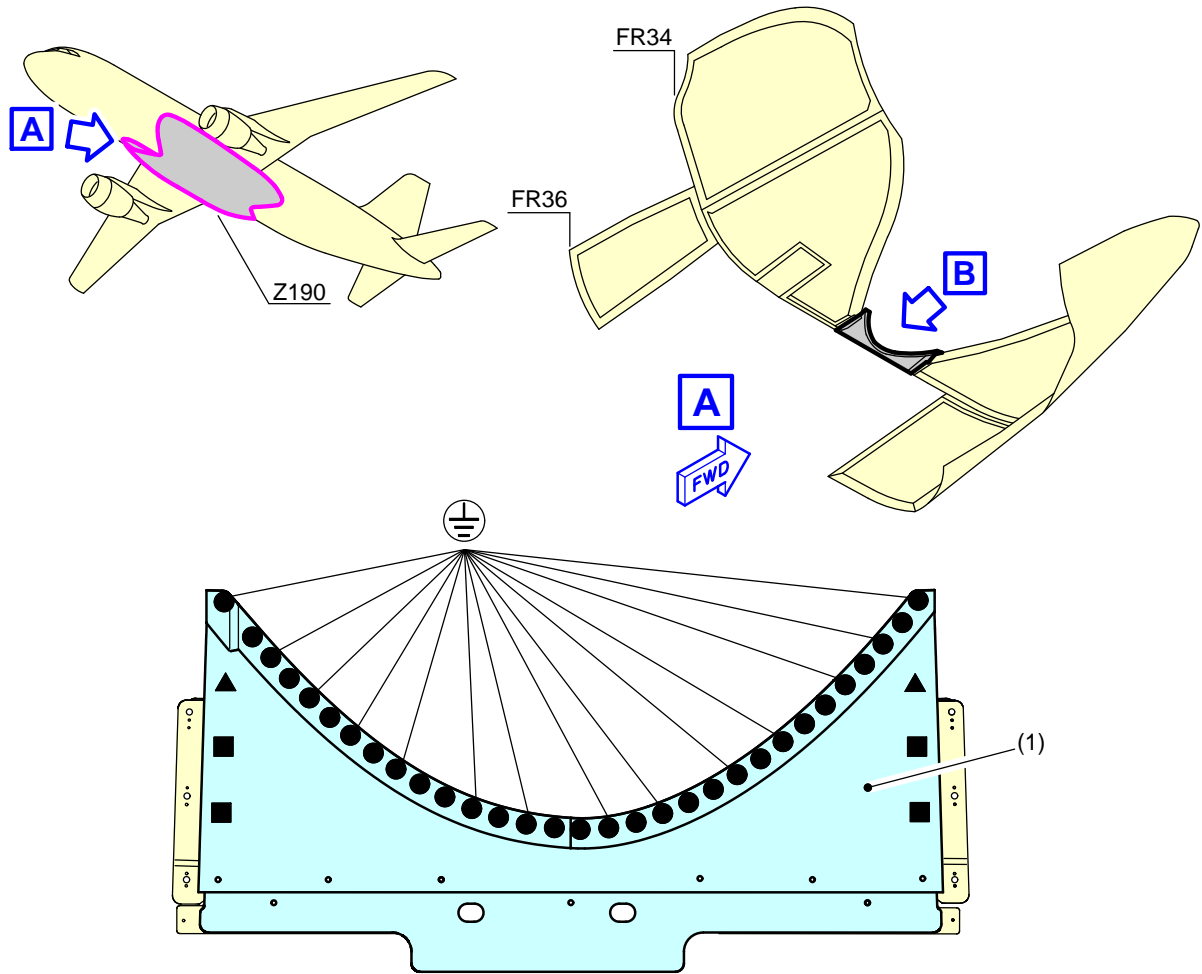
- 1 If necessary, use a non metallic spatula to remove the sealant and clean the areas with:
 - NonAqueous Cleaner- 08BAA9
General
and
 - Textile-LintFree Cotton 14SBA1
- 2 Remove the belly fairing panel:
Refer to Ref. Fig. Removal/Installation of the Belly Fairing Panel

a Remove:

1	Skin panel	Item (1)	Retain
31	Rivet	Item (2)	Discard
4	Screw	Item (3)	Discard
6	Washer	Item (4)	Discard
2	Screw	Item (5)	Discard

(c) Get access to the work area.

CONF 001



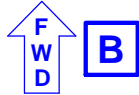
NOTE:



ELECTRICAL BONDING



FASTENERS NOT AFFECTED



VIEW LOOKING UP

HOLE SYMBOL	ITEM	PN	DESCRIPTION	REMARKS
●	(2) 2	ASNA2049DXJ4019	RIVET	HEAD ON VISIBLE SIDE
■	(3) 3	ASNA2001V3-4	SCREW	HEAD ON VISIBLE SIDE
	(4) 4	NAS1169-10	WASHER	
▲	(5) 5	NAS1102E3-6	SCREW	HEAD ON VISIBLE SIDE
	(4) 4	NAS1169-10	WASHER	

ICN-A320-A-53XX1287-A-FAPE3-0018Q-A-001-01

Figure ICN-A320-A-53XX1287-A-FAPE3-0018Q-A-001-01 SHEET 1/1

CONF 002

- (2) **Task A320-A-53-XX-1287-02002-540A-A - Remove the Belly Fairing Panel at FR34 for access**

Job Set-Up Information

Working Area

Impacted Zone	Access / Work Location
190	

Manpower/Resources/Skills

Man-hours	2.00 h
Minimum Number of person	1
Elapsed Time	2.00 h

Material necessary to do the job

Consumables				
ITEM	REFERENCE CML	DESCRIPTION	DRAWING	SEE NOTES
	08BAA9	Non Aqueous Cleaner- General		
	14SBA1	Textile-Lint free-Cotton		

Referenced Information

Manuals/Drawings	References/Sheets
AMM	06-20-00, Page Block 001 06-31-53, Page Block 001
CML	CONSUMABLE MATERIAL LIST (CML)
SRM	51-42-00

Procedure

- (a) Standard Practices
- 1 For the specification of Material application codes given in this Service Bulletin, refer to the Consumable Material List (CML) Ref. CML.
 - 2 For the Frame (FR) identification, refer to Ref. AMM 06-31-53, Page Block 001.
 - 3 For the Zone identification, refer to Ref. AMM 06-20-00, Page Block 001.
 - 4 Remove and install fasteners in accordance with Ref. SRM 51-42-00.
 - 5 Tag all the parts you must remove and retain to make the subsequent installation easier.
- (b) Remove the belly fairing panel Item (1) at Frame 34:
Refer to Ref. Fig. Removal/Installation of the Belly Fairing Panel
- 1 If necessary, use a non metallic spatula to remove the sealant and clean the areas with:

NonAqueous Cleaner- General and	08BAA9
Textile-LintFree Cotton	14SBA1

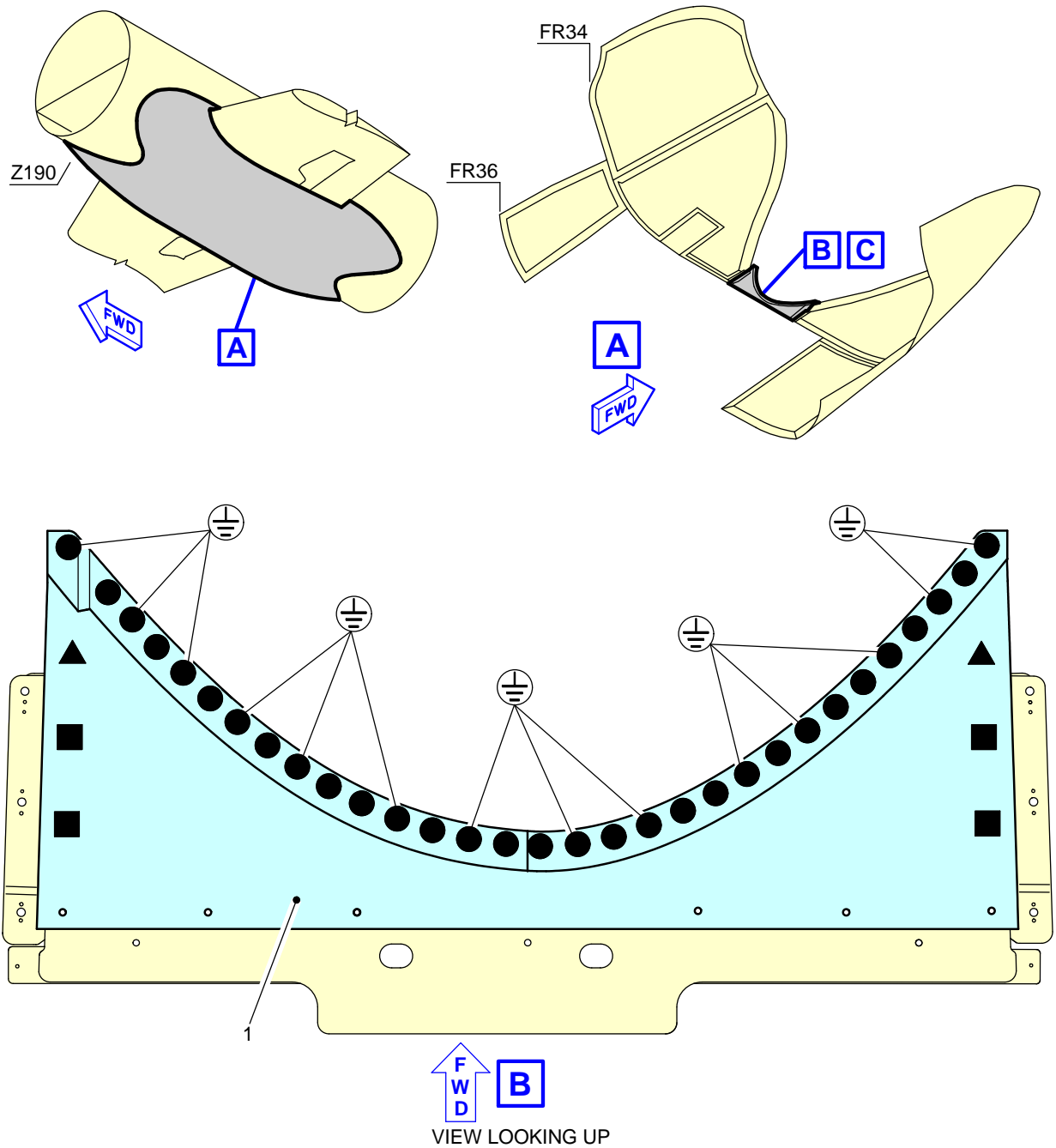
2 Remove the belly fairing panel:
Refer to Ref. Fig. Removal/Installation of the Belly Fairing Panel

a Remove:

1	Skin panel	Item (1)	Retain
31	Rivet	Item (2)	Discard
4	Screw	Item (3)	Discard
6	Washer	Item (4)	Discard
2	Screw	Item (5)	Discard
12	Rivet	Item (6)	Discard

(c) Get access to the work area.

CONF 002



NOTE:

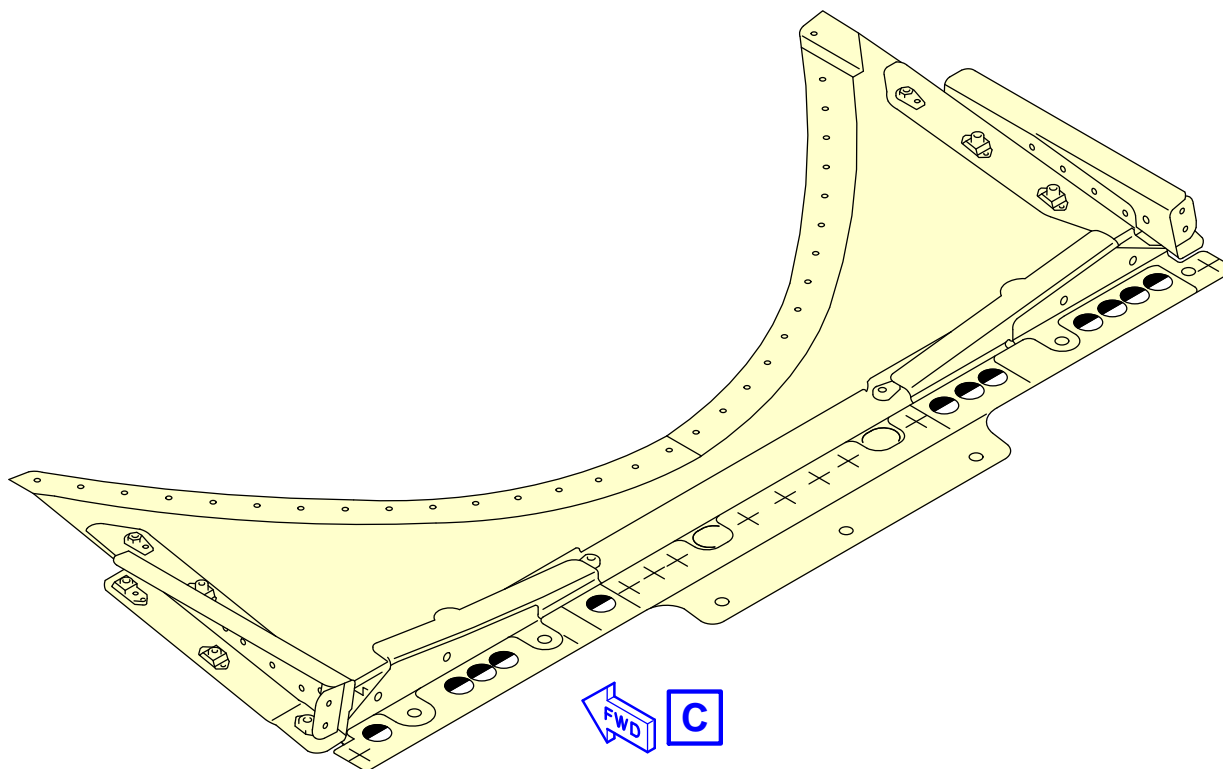
ELECTRICAL BONDING.

REFER TO SHEET 02 FOR THE APPLICABLE FASTENER.

ICN-A320-A-53XX1287-A-FAPE3-00XE7-A-001-01

Figure ICN-A320-A-53XX1287-A-FAPE3-00XE7-A-001-01 SHEET 1/2

CONF 002



HOLE SYMBOL	ITEM		PART NUMBER	DESCRIPTION	REMARKS
●	(2)	2	ASNA2049DXJ4019	RIVET	HEAD ON NEAR SIDE
◐	(6)	6	ABS0112-24-03C	RIVET	HEAD ON FAR SIDE
■	(3)	3	ASNA2001V3-4	SCREW	HEAD ON NEAR SIDE
	(4)	4	NAS1169-10	WASHER	
▲	(5)	5	NAS1102E3-6	SCREW	HEAD ON NEAR SIDE
	(4)	4	NAS1169-10	WASHER	

NOTE:

+ FASTENER NOT AFFECTED.

ICN-A320-A-53XX1287-A-FAPE3-00XE8-A-001-01

Figure ICN-A320-A-53XX1287-A-FAPE3-00XE8-A-001-01 SHEET 2/2

CONF ALL

C. PROCEDURE

(1) Task A320-A-53-XX-1287-01001-300A-A - Do a Detailed Inspection of the External Fuselage Skin Panel at FR34, between STGR 43 LH and RH Sides

Job Set-Up Information

Working Area

Impacted Zone	Access / Work Location
190	

Manpower/Resources/Skills

Man-hours	0.50 h
Minimum Number of person	1
Elapsed Time	0.50 h

Referenced Information

Manuals/Drawings	References/Sheets
AMM	06-20-00, Page Block 001 06-31-53, Page Block 001
SB	A320-53-1281

Procedure

(a) Standard Practices

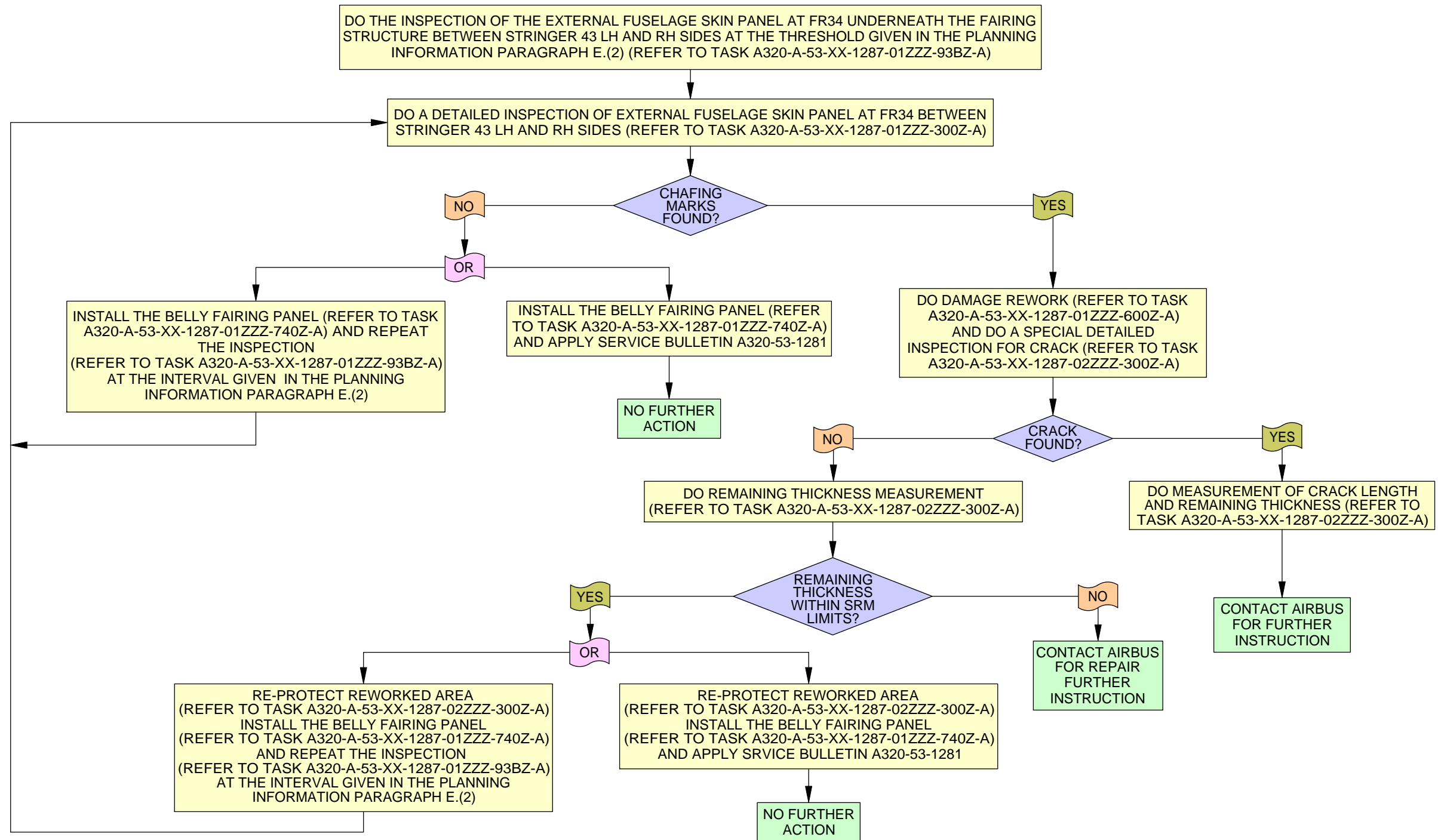
- 1 For the Frame (FR) identification, refer to Ref. AMM 06-31-53, Page Block 001.
- 2 For the Zone identification, refer to Ref. AMM 06-20-00, Page Block 001.

(b) At the threshold given in the PLANNING INFORMATION Paragraph E.(2):
Do a detailed inspection of the external fuselage skin panel at Frame 34 between Stringer 43 LH and RH sides:

Refer to Ref. Fig. Flow Chart
Refer to Ref. Fig. Inspection of Fuselage Skin Panel

- 1 Check if there are chafing marks on fuselage skin panel at rework location:
 - a If no chafing marks are found:
 - <1> Do Ref. Task A320-A-53-XX-1287-01ZZZ-740Z-A.
and
Apply Service Bulletin No. Ref. SB A320-53-1281 as terminating action.
OR
 - <2> Do Ref. Task A320-A-53-XX-1287-01ZZZ-740Z-A.
and
Repeat the inspection at the Interval given in the PLANNING INFORMATION Paragraph E.(2), refer to Ref. Task set A320-A-53-XX-1287-01ZZZ-93BZ-A.
 - b If chafing marks are found:
 - <1> Do Ref. Task A320-A-53-XX-1287-01ZZZ-600Z-A.
and
Do Ref. Task A320-A-53-XX-1287-02ZZZ-300Z-A.

CONF ALL

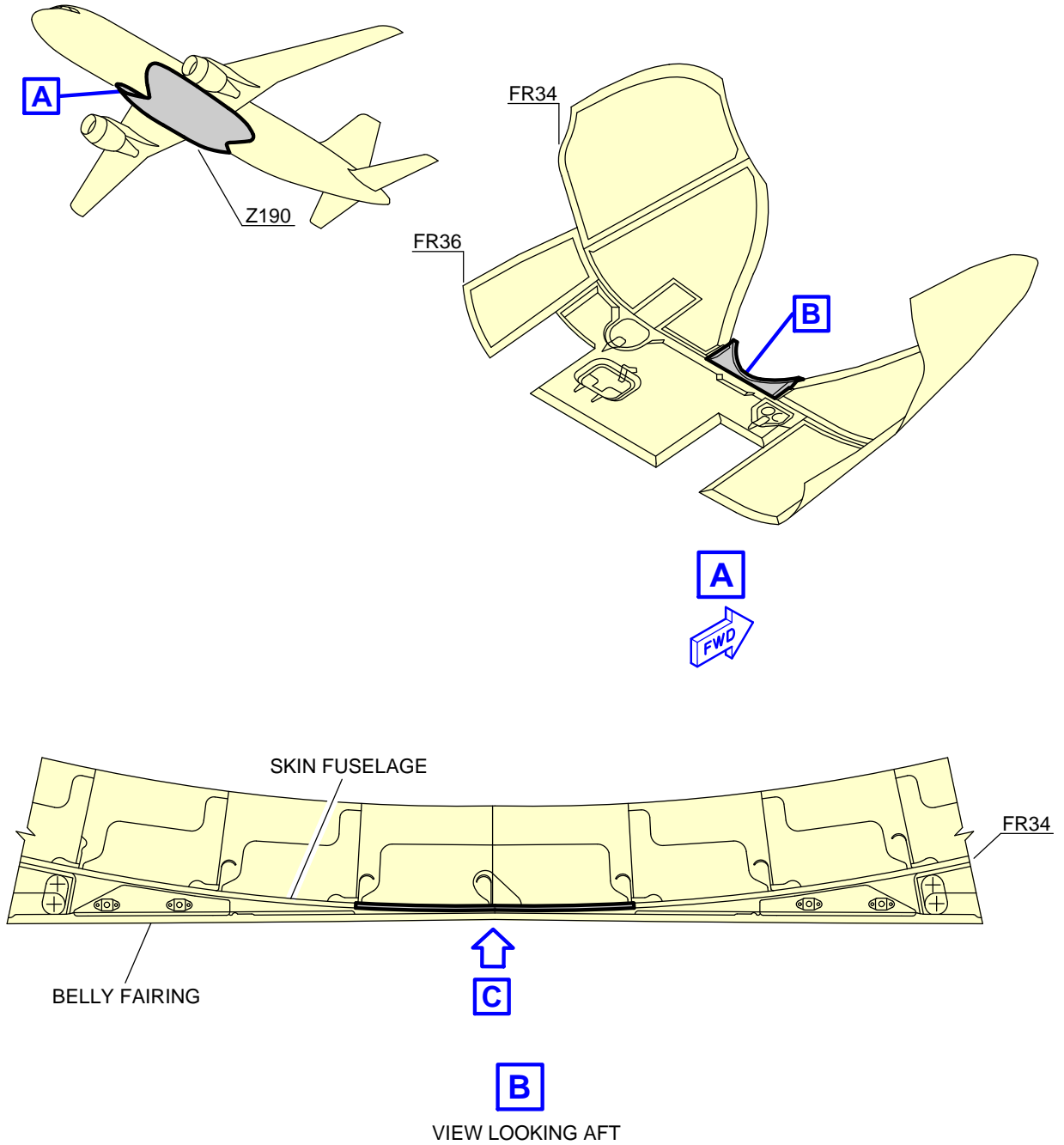


NOTE:
THE PURPOSE OF FLOWCHARTS IS TO SUPPLEMENT THE INFORMATION GIVEN IN THE PROCEDURE AND COMPLIANCE PARAGRAPHS AND NOT TO SERVE AS THE PRIMARY SOURCE FOR TASKS OR COMPLIANCE TIMES GIVEN IN THIS SERVICE BULLETIN.

ICN-A320-A-53XX1287-A-FAPE3-0018R-A-006-01

Figure ICN-A320-A-53XX1287-A-FAPE3-0018R-A-006-01 SHEET 1/1

CONF ALL

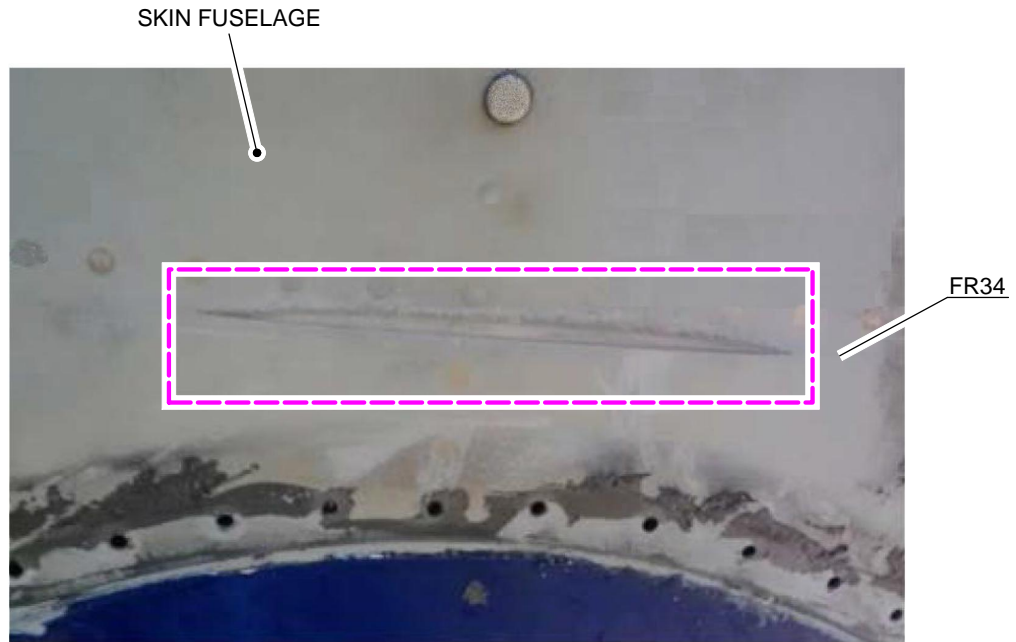


NOTE:

+ FASTENERS NOT AFFECTED

ICN-A320-A-53XX1287-A-FAPE3-00180-A-001-01

Figure ICN-A320-A-53XX1287-A-FAPE3-00180-A-001-01 SHEET 1/2

CONF ALL
VIEW LOOKING UP**NOTE:**

VIEW AFTER REMOVAL OF THE BELLY FAIRING PANEL

 INSPECTION AREA

ICN-A320-A-53XX1287-A-FAPE3-0018P-A-001-01

Figure ICN-A320-A-53XX1287-A-FAPE3-0018P-A-001-01 SHEET 2/2

- (2) **Task A320-A-53-XX-1287-01001-600A-A - Depending on the Inspection result, rework the Fuselage Skin Panel**

Job Set-Up Information

Working Area

Impacted Zone	Access / Work Location
190	

Manpower/Resources/Skills

Man-hours	1.00 h
Minimum Number of person	1
Elapsed Time	1.00 h
Skills	Airframe

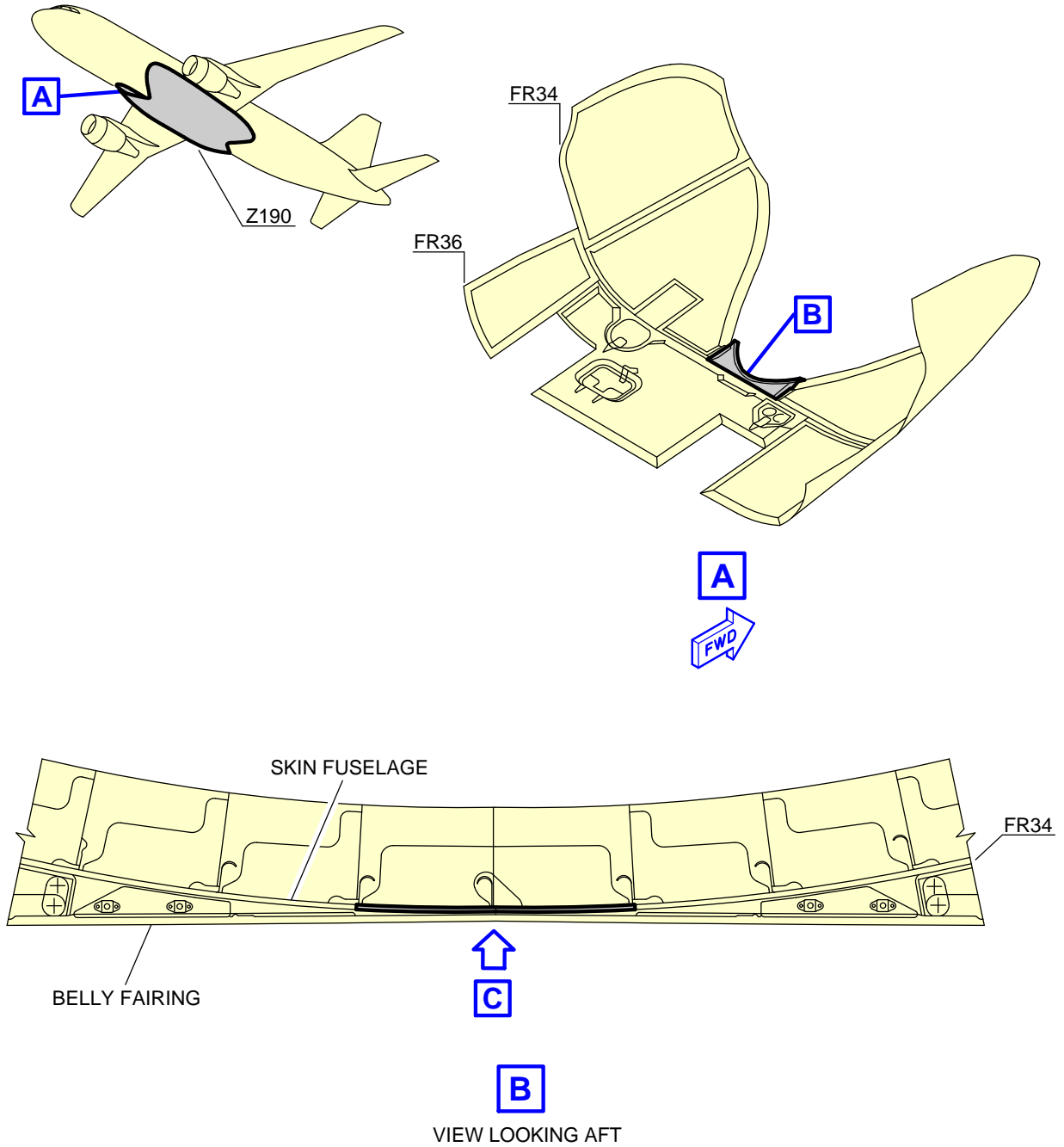
Referenced Information

Manuals/Drawings	References/Sheets
AMM	06-20-00, Page Block 001 06-31-53, Page Block 001
SRM	53-21-11

Procedure

- (a) Standard Practices
- 1 For the Frame (FR) identification, refer to Ref. AMM 06-31-53, Page Block 001.
 - 2 For the Zone identification, refer to Ref. AMM 06-20-00, Page Block 001.
- (b) Do damage rework of the fuselage skin panel in accordance with Ref. SRM 53-21-11.
Refer to Ref. Fig. Inspection of Fuselage Skin Panel

CONF ALL



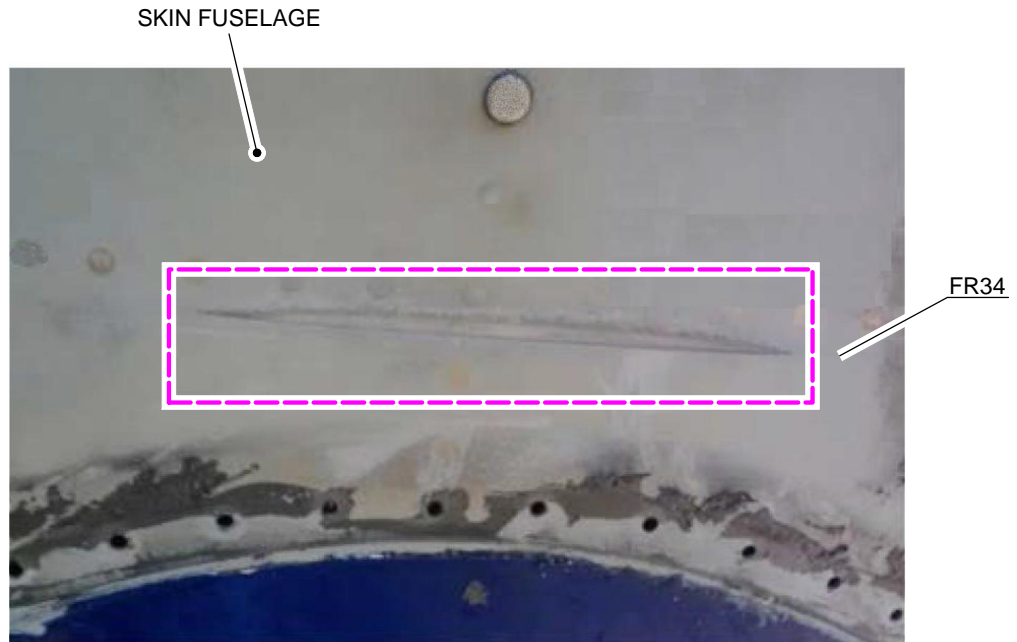
NOTE:

+ FASTENERS NOT AFFECTED

ICN-A320-A-53XX1287-A-FAPE3-00180-A-001-01

Figure ICN-A320-A-53XX1287-A-FAPE3-00180-A-001-01 SHEET 1/2

CONF ALL



 
VIEW LOOKING UP

NOTE:

VIEW AFTER REMOVAL OF THE BELLY FAIRING PANEL

 INSPECTION AREA

ICN-A320-A-53XX1287-A-FAPE3-0018P-A-001-01

Figure ICN-A320-A-53XX1287-A-FAPE3-0018P-A-001-01 SHEET 2/2

- (3) Task A320-A-53-XX-1287-02001-300A-A - Depending on the Inspection result, do a Special Detailed Inspection of External Fuselage Skin Panel for crack**

Job Set-Up Information

Working Area

Impacted Zone	Access / Work Location
190	

Manpower/Resources/Skills

Man-hours	1.00 h
Minimum Number of person	1
Elapsed Time	1.00 h
Skills	Non-Destructive Testing

Referenced Information

Manuals/Drawings	References/Sheets
AMM	06-20-00, Page Block 001 06-31-53, Page Block 001
ISI	00.00.00179
NTM	51-10-04 51-10-08
SB	A320-53-1281
SRM	51-75-12 53-21-11

Procedure

- (a) Standard Practices
- 1 For the Frame (FR) identification, refer to Ref. AMM 06-31-53, Page Block 001.
 - 2 For the Zone identification, refer to Ref. AMM 06-20-00, Page Block 001.
 - 3 Renew the protective finish in accordance with Ref. SRM 51-75-12.
- (b) Do a special detailed inspection for crack in accordance with Ref. NTM 51-10-08.
Refer to Ref. Fig. Flow Chart
Refer to Ref. Fig. Inspection of Fuselage Skin Panel
- 1 Check if there is crack on fuselage skin panel at rework location:
 - a If crack is found:
 - <1> Do the measurement of crack length in accordance with Ref. NTM 51-10-08, and remaining thickness in accordance with Ref. NTM 51-10-04.
 - <2> Contact AIRBUS for further instruction.
 - b If no crack is found:
 - <1> Do the measurement of remaining thickness in accordance with Ref. NTM 51-10-04.
 - <a> If the remaining thickness is out of Ref. SRM 53-21-11 limits:

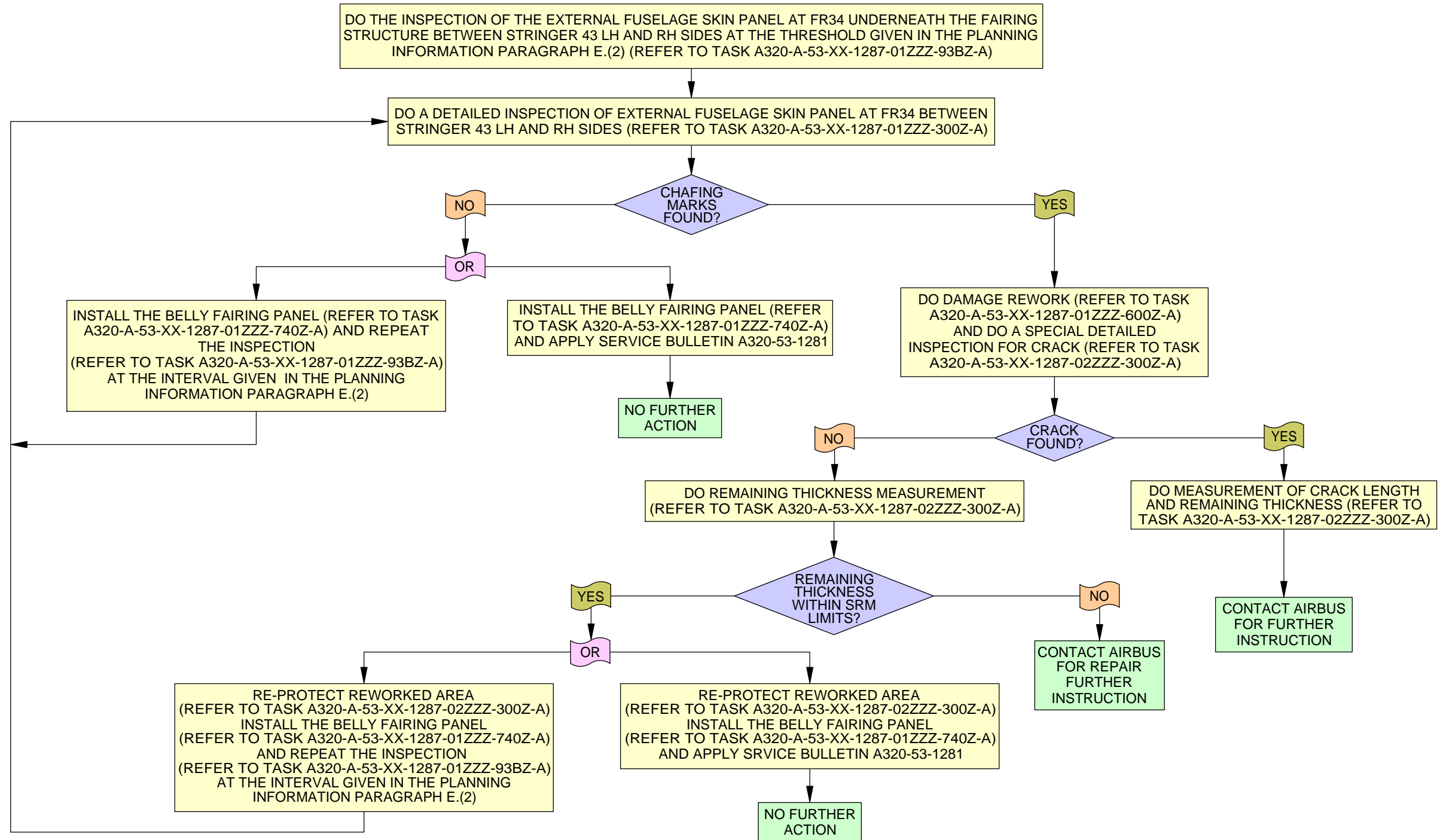
A318/A319/A320/A321

SERVICE BULLETIN

- [1] Contact AIRBUS for further instruction.
- If the remaining thickness is within Ref. SRM 53-21-11 limits:
 - [1] Re-protect the reworked area in accordance with Ref. SRM 51-75-12.
and
Renew the protective finish of the fuselage in accordance with Ref. SRM 51-75-12.
and
Do Ref. Task A320-A-53-XX-1287-01ZZZ-740Z-A.
and
Apply Service Bulletin Ref. SB A320-53-1281 as terminating action.
OR
 - [2] Re-protect the reworked area in accordance with Ref. SRM 51-75-12.
and
Renew the protective finish of the fuselage in accordance with Ref. SRM 51-75-12.
and
Do Ref. Task A320-A-53-XX-1287-01ZZZ-740Z-A
and
Repeat the inspection at the interval given in the PLANNING INFORMATION Paragraph E.(2), refer Ref. Task set A320-A-53-XX-1287-01ZZZ-93BZ-A.
- (c) Upload the completed Inspection Report sheet given in Ref. Appendix Inspection Report in accordance with Ref. ISI 00.00.00179.

NOTE: Uploading the Inspection Report sheet is not Required for Compliance.

CONF ALL

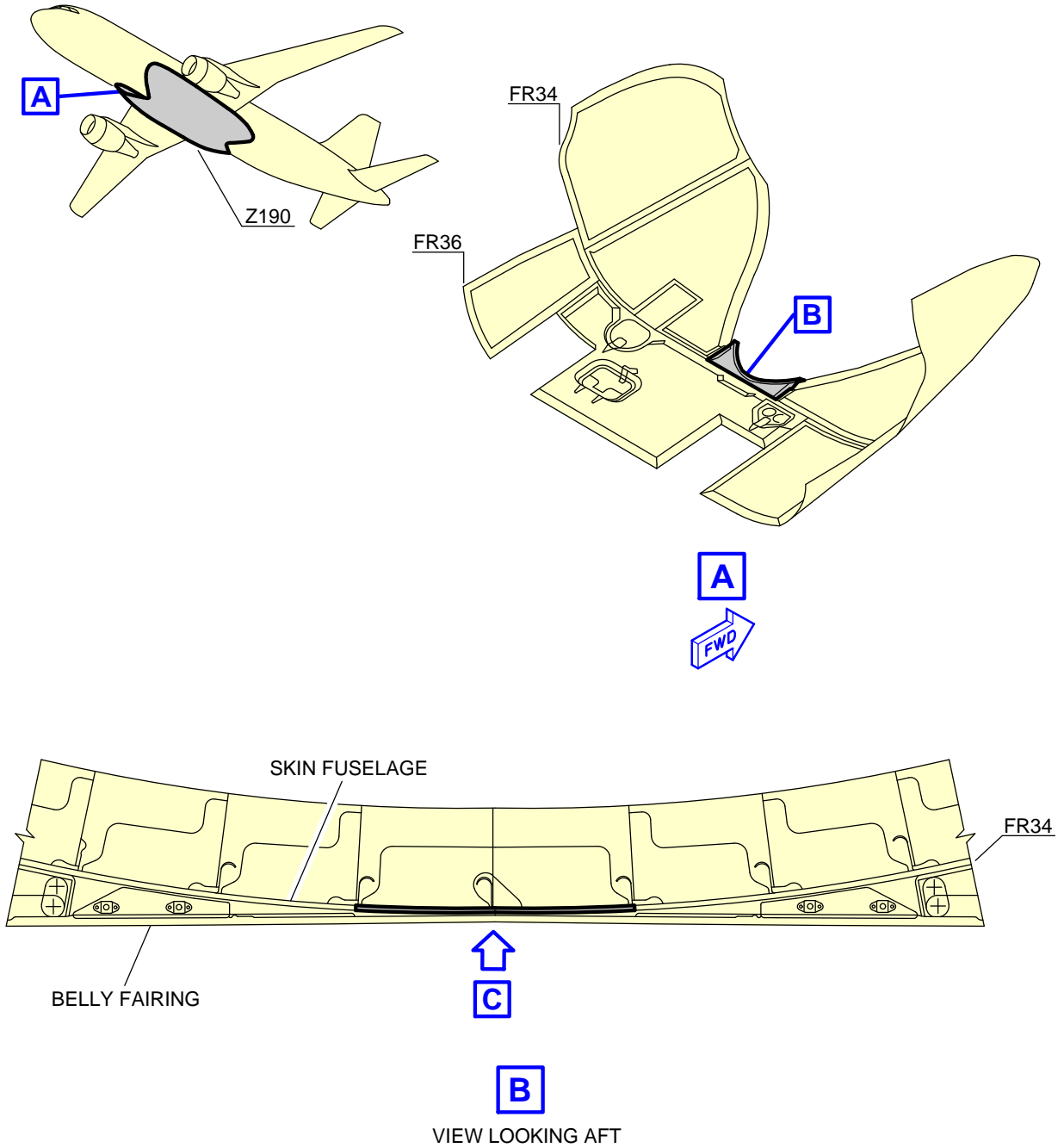


NOTE:
THE PURPOSE OF FLOWCHARTS IS TO SUPPLEMENT THE INFORMATION GIVEN IN THE PROCEDURE AND COMPLIANCE PARAGRAPHS AND NOT TO SERVE AS THE PRIMARY SOURCE FOR TASKS OR COMPLIANCE TIMES GIVEN IN THIS SERVICE BULLETIN.

ICN-A320-A-53XX1287-A-FAPE3-0018R-A-006-01

Figure ICN-A320-A-53XX1287-A-FAPE3-0018R-A-006-01 SHEET 1/1

CONF ALL



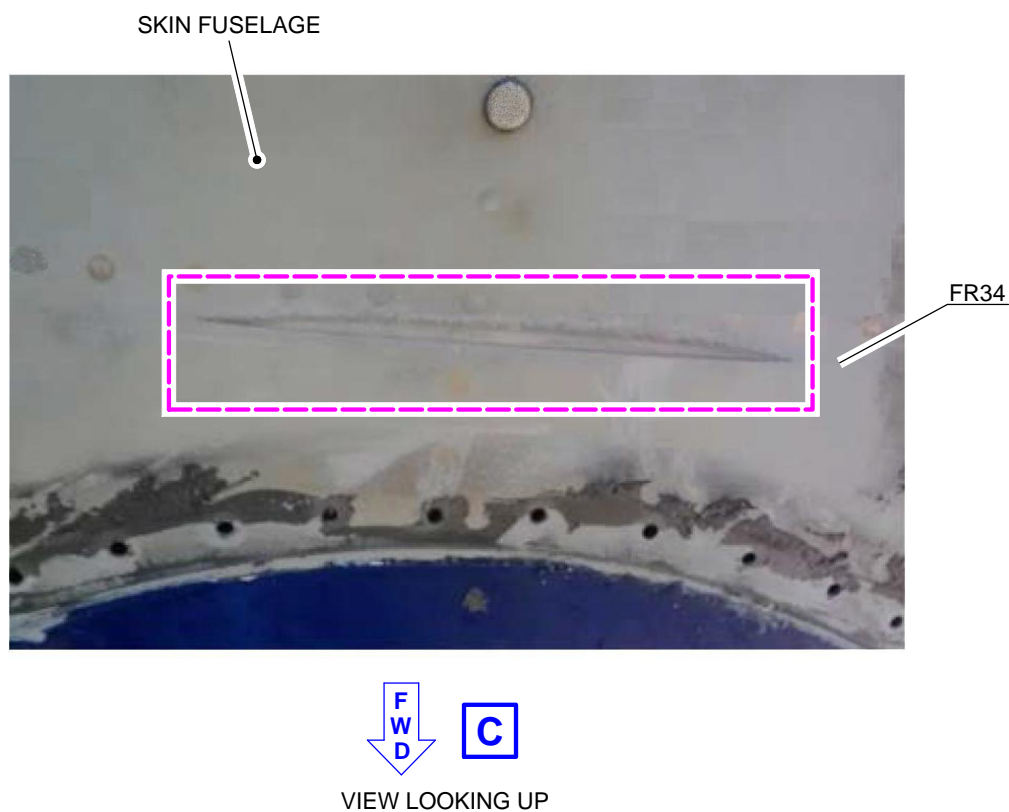
NOTE:

+ FASTENERS NOT AFFECTED

ICN-A320-A-53XX1287-A-FAPE3-00180-A-001-01

Figure ICN-A320-A-53XX1287-A-FAPE3-00180-A-001-01 SHEET 1/2

CONF ALL



NOTE:

VIEW AFTER REMOVAL OF THE BELLY FAIRING PANEL

 INSPECTION AREA

ICN-A320-A-53XX1287-A-FAPE3-0018P-A-001-01

Figure ICN-A320-A-53XX1287-A-FAPE3-0018P-A-001-01 SHEET 2/2

CONF 001

- (4) Task A320-A-53-XX-1287-01001-740A-A - Depending on the Inspection result, install the Belly Fairing Panel at FR34 removed for access**

Job Set-Up Information

Working Area

Impacted Zone	Access / Work Location
190	

Manpower/Resources/Skills

Man-hours	4.00 h
Minimum Number of person	2
Elapsed Time	2.00 h
Skills	Airframe

Material necessary to do the job

Consumables				
ITEM	REFERENCE CML	DESCRIPTION	DRAWING	SEE NOTES
	04DAB2	Primer Epoxy Paint-Corrosion Inhibiting-structure		
	04QAB2	Coating-Flexible-Structure		
	06AAA1	Polysulfide Sealant-General Purpose-Brusable		
	06ACC1	Polysulfide Sealant-Low Density Multi Pupose-Interfay		
	10ABC1	Surface Pretreatment-Light Alloys-Chemicl Conversion Yellow		

Part kit 531287A01R02					
ITEM	PART No.	QTY (UM)	KEYWORD	DRAWING	SEE NOTES
2	ASNA2049DXJ4019	31	RIVET		
3	ASNA2001V3-4	4	SCREW		
4	NAS1169-10	6	WASHER		
5	NAS1102E3-6	2	SCREW		

Referenced Information

Manuals/Drawings	References/Sheets
AMM	06-20-00, Page Block 001 06-31-53, Page Block 001 Task 20-21-11-911-001 Task 20-28-00-912-802
CML	CONSUMABLE MATERIAL LIST (CML)
ESPM	20-51-20
SRM	51-23-12 51-24-00 51-40-00

Manuals/Drawings	References/Sheets
	51-42-00 51-43-00 51-75-12

Procedure

(a) Standard Practices

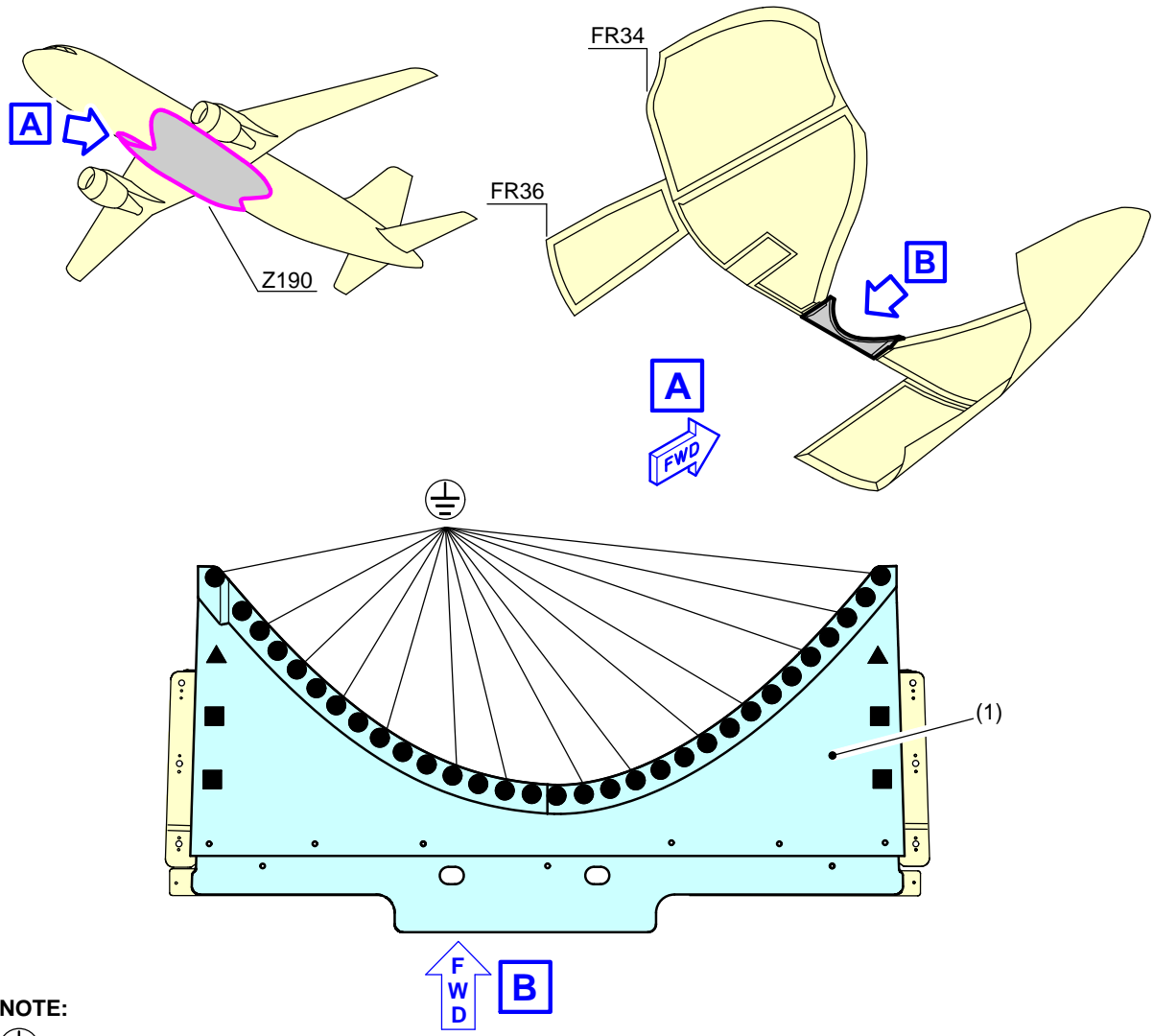
- 1 For the specification of Material application codes given in this Service Bulletin, refer to the Consumable Material List (CML) Ref. CML.
- 2 If the length of any fastener specified in this Service Bulletin does not meet installation standards given in ASR Data Module 51-4, then a fastener of the same specification, or an approved substitute, with a length which meets the installation standards given in (ASR Data Module 51-4 or SRM Chapter 51) may be used. In addition, washers may be installed for fastener grip length in accordance with SRM Chapter 51.
- 3 For the FR identification, refer to Ref. AMM 06-31-53, Page Block 001.
- 4 For the Zone identification, refer to Ref. AMM 06-20-00, Page Block 001.
- 5 To torque tighten the standard threaded fasteners, refer to Ref. AMM Task 20-21-11-911-001.
- 6 Remove and install fasteners in accordance with Ref. SRM 51-42-00.
- 7 Obtain alternative and substitute fastener data, in accordance with Ref. SRM 51-43-00.
- 8 If alternative and substitute fasteners have to be used, you must make sure that the associated nut/collar are compatible in accordance with Ref. SRM 51-40-00 'Mating Part' column.
- 9 Apply sealant in accordance with Ref. SRM 51-24-00.
- 10 Renew the protective finish in accordance with Ref. SRM 51-75-12.
- 11 For electrical bonding, refer to Ref. ESPM 20-51-20 and Ref. AMM Task 20-28-00-912-802.

(b) Install the Skin panel Item (1) at Frame 34.
Refer to Ref. Fig. Removal/Installation of the Belly Fairing Panel

- | | | | |
|----------|---|-----------------|----------|
| <u>1</u> | Install: | | |
| 1 | Skin panel | Item (1) | Retained |
| 4 | SCREW | ASNA2001V3-4 | Item 3 |
| 6 | WASHER | NAS1169-10 | Item 4 |
| 2 | SCREW | NAS1102E3-6 | Item 5 |
| <u>2</u> | Wet install the Countersunk Rivets Item 2 to the Skin panel Item (1), except for electrical bonding points.
Refer to Ref. Fig. Removal/Installation of the Belly Fairing Panel | | |
| 31 | RIVET | ASNA2049DXJ4019 | Item 2 |
| | with: | | |
| | PolysulfideSealant-
General Purpose
Brushable | 06AAA1 | |

- 3 Apply a bead of sealant around the mating surface of the parts installed and to the interface with the structure with:
- PolysulfideSealant-Low 06ACC1
Density Multi Purpose
Interior
- 4 Renew the protective finish with:
- SurfacePretreatment- 10ABC1
Light Alloys Chemical
Conversion
- 5 Restore the paint scheme with:
- PrimerEpoxy Paint-- 04DAB2
Corrosion Inhibiting
Structure
and
- Coating--Flexible 04QAB2
Structure
- 6 Apply special protection in accordance with Ref. SRM 51-23-12.

CONF 001



NOTE:



ELECTRICAL BONDING



FASTENERS NOT AFFECTED



VIEW LOOKING UP

HOLE SYMBOL	ITEM	PN	DESCRIPTION	REMARKS
●	(2) 2	ASNA2049DXJ4019	RIVET	HEAD ON VISIBLE SIDE
■	(3) 3	ASNA2001V3-4	SCREW	HEAD ON VISIBLE SIDE
	(4) 4	NAS1169-10	WASHER	
▲	(5) 5	NAS1102E3-6	SCREW	HEAD ON VISIBLE SIDE
	(4) 4	NAS1169-10	WASHER	

ICN-A320-A-53XX1287-A-FAPE3-0018Q-A-001-01

Figure ICN-A320-A-53XX1287-A-FAPE3-0018Q-A-001-01 SHEET 1/1

CONF 002

- (4) Task A320-A-53-XX-1287-01002-740A-A - Depending on the Inspection result, install the Belly Fairing Panel at FR34 removed for access**

Job Set-Up Information

Working Area

Impacted Zone	Access / Work Location
190	

Manpower/Resources/Skills

Man-hours	5.00 h
Minimum Number of person	2
Elapsed Time	2.50 h
Skills	Airframe

Material necessary to do the job

Consumables				
ITEM	REFERENCE CML	DESCRIPTION	DRAWING	SEE NOTES
	04DAB2	Primer Epoxy Paint-Corrosion Inhibiting-structure		
	04QAB2	Coating-Flexible-Structure		
	06AAA1	Polysulfide Sealant-General Purpose-Brusable		
	06ACC1	Polysulfide Sealant-Low Density Multi Pupose-Interfay		
	10ABC1	Surface Pretreatment-Light Alloys-Chemicl Conversion Yellow		

Part kit 531287A02R00					
ITEM	PART No.	QTY (UM)	KEYWORD	DRAWING	SEE NOTES
2	ASNA2049DXJ4019	31	RIVET		
3	ASNA2001V3-4	4	SCREW		
4	NAS1169-10	6	WASHER		
5	NAS1102E3-6	2	SCREW		
6	ABS0112-24-03C	12	RIVET		

Referenced Information

Manuals/Drawings	References/Sheets
AMM	06-20-00, Page Block 001 06-31-53, Page Block 001 Task 20-21-11-911-001 Task 20-28-00-912-802
CML	CONSUMABLE MATERIAL LIST (CML)
ESPM	20-51-20
SRM	51-23-12

Manuals/Drawings	References/Sheets
	51-24-00 51-40-00 51-42-00 51-43-00 51-75-12

Procedure

(a) Standard Practices

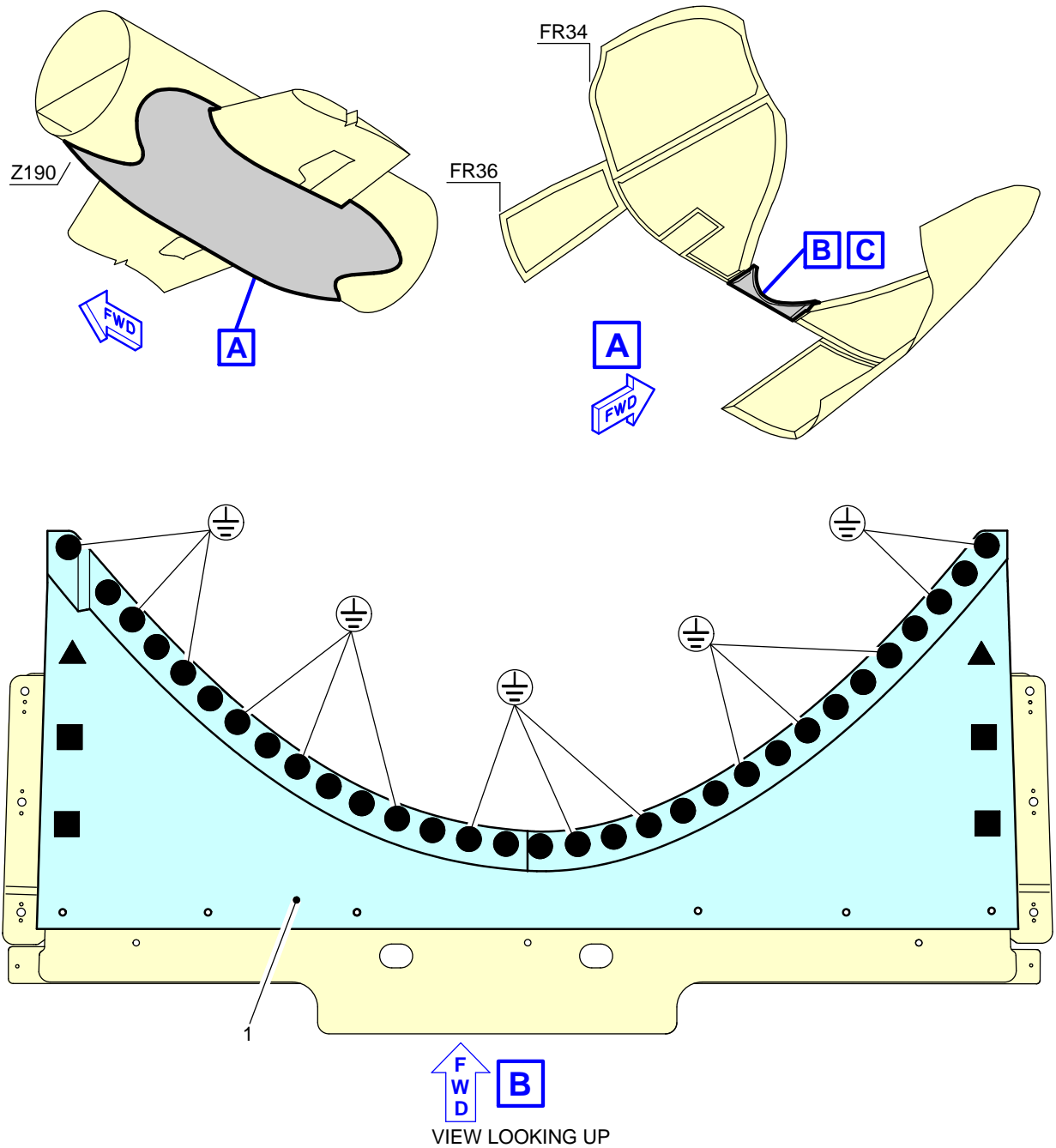
- 1 For the specification of Material application codes given in this Service Bulletin, refer to the Consumable Material List (CML) Ref. CML.
- 2 If the length of any fastener specified in this Service Bulletin does not meet installation standards given in ASR Data Module 51-4, then a fastener of the same specification, or an approved substitute, with a length which meets the installation standards given in (ASR Data Module 51-4 or SRM Chapter 51) may be used. In addition, washers may be installed for fastener grip length in accordance with SRM Chapter 51.
- 3 For the FR identification, refer to Ref. AMM 06-31-53, Page Block 001.
- 4 For the Zone identification, refer to Ref. AMM 06-20-00, Page Block 001.
- 5 To torque tighten the standard threaded fasteners, refer to Ref. AMM Task 20-21-11-911-001.
- 6 Remove and install fasteners in accordance with Ref. SRM 51-42-00.
- 7 Obtain alternative and substitute fastener data, in accordance with Ref. SRM 51-43-00.
- 8 If alternative and substitute fasteners have to be used, you must make sure that the associated nut/collar are compatible in accordance with Ref. SRM 51-40-00 'Mating Part' column.
- 9 Apply sealant in accordance with Ref. SRM 51-24-00.
- 10 Renew the protective finish in accordance with Ref. SRM 51-75-12.
- 11 For electrical bonding, refer to Ref. ESPM 20-51-20 and Ref. AMM Task 20-28-00-912-802.

(b) Install the Skin panel Item (1) at Frame 34.
Refer to Ref. Fig. Removal/Installation of the Belly Fairing Panel

<u>1</u>	Install:		
1	Skin panel	Item (1)	Retained
4	SCREW	ASNA2001V3-4	Item 3
6	WASHER	NAS1169-10	Item 4
2	SCREW	NAS1102E3-6	Item 5
12	RIVET	ABS0112-24-03C	Item 6
<u>2</u>	Wet install the Countersunk Rivets Item 2 to the Skin panel Item (1), except for electrical bonding points. Refer to Ref. Fig. Removal/Installation of the Belly Fairing Panel		
31	RIVET with:	ASNA2049DXJ4019	Item 2

- PolysulfideSealant- 06AAA1
General Purpose
Brushable
- 3 Apply a bead of sealant around the mating surface of the parts installed and to the interface with the structure with:
- PolysulfideSealant-Low 06ACC1
Density Multi Purpose
Interior
- 4 Renew the protective finish with:
- SurfacePretreatment- 10ABC1
Light Alloys Chemical
Conversion
- 5 Restore the paint scheme with:
- PrimerEpoxy Paint-- 04DAB2
Corrosion Inhibiting
Structure
and
- Coating--Flexible 04QAB2
Structure
- 6 Apply special protection in accordance with Ref. SRM 51-23-12.

CONF 002



NOTE:

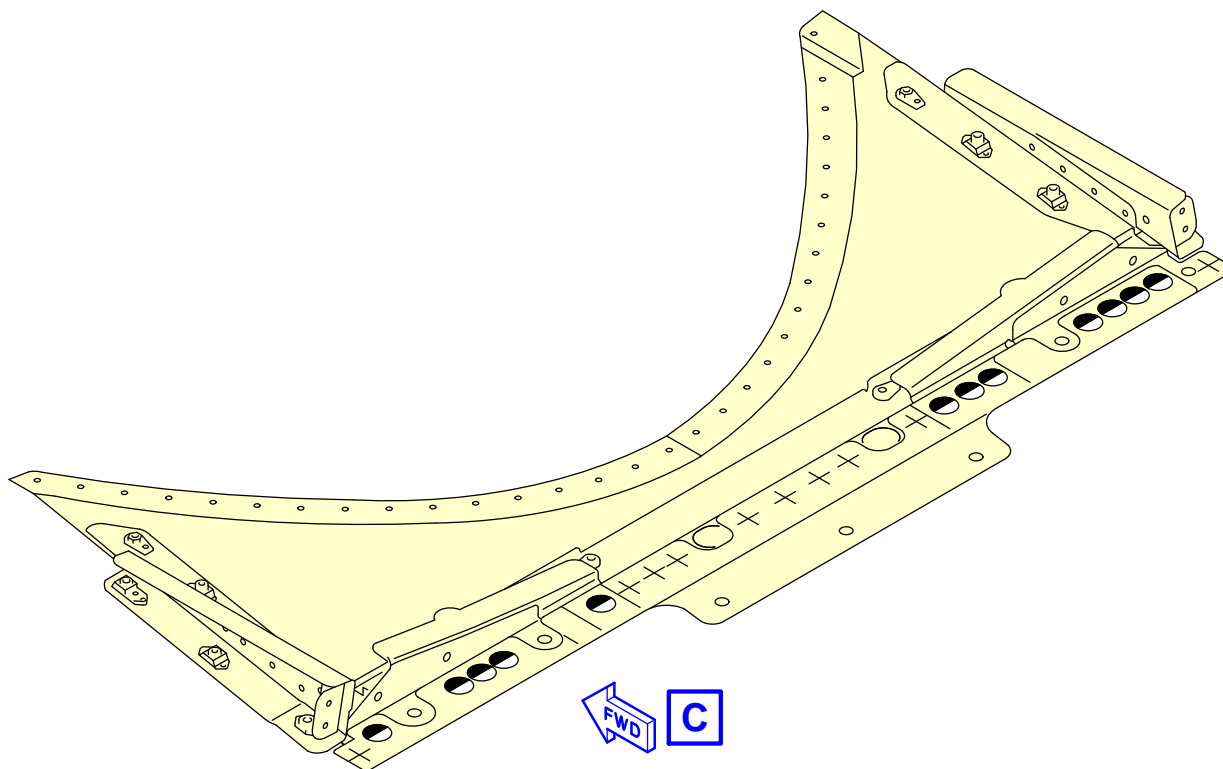
ELECTRICAL BONDING.

REFER TO SHEET 02 FOR THE APPLICABLE FASTENER.

ICN-A320-A-53XX1287-A-FAPE3-00XE7-A-001-01

Figure ICN-A320-A-53XX1287-A-FAPE3-00XE7-A-001-01 SHEET 1/2

CONF 002



HOLE SYMBOL	ITEM		PART NUMBER	DESCRIPTION	REMARKS
●	(2)	2	ASNA2049DXJ4019	RIVET	HEAD ON NEAR SIDE
◐	(6)	6	ABS0112-24-03C	RIVET	HEAD ON FAR SIDE
■	(3)	3	ASNA2001V3-4	SCREW	HEAD ON NEAR SIDE
	(4)	4	NAS1169-10	WASHER	
▲	(5)	5	NAS1102E3-6	SCREW	HEAD ON NEAR SIDE
	(4)	4	NAS1169-10	WASHER	

NOTE:

+ FASTENER NOT AFFECTED.

ICN-A320-A-53XX1287-A-FAPE3-00XE8-A-001-01

Figure ICN-A320-A-53XX1287-A-FAPE3-00XE8-A-001-01 SHEET 2/2

CONF ALL

D. PREPARATION FOR TEST

None

E. TEST

None

F. CLOSE-UP

(1) Task A320-A-53-XX-1287-02001-740A-A - Close-up

Job Set-Up Information

Manpower/Resources/Skills

Man-hours	2.00 h
Minimum Number of person	1
Elapsed Time	2.00 h

Referenced Information

Manuals/Drawings	References/Sheets
AMM	Task 52-30-00-860-002 Task 53-22-14-400-001 Task 53-35-13-400-002

Procedure

- (a) Make sure that the work areas are clean and clear of tools and others items of equipment.
- (b) Install the cargo-compartment floor panel(s) removed for access, refer to Ref. AMM Task 53-22-14-400-001.
- (c) Install the access panel Electrical Panel 191BB, refer to Ref. AMM Task 53-35-13-400-002.
- (d) Close the FWD cargo-compartment Door 825AR, refer to Ref. AMM Task 52-30-00-860-002.
- (e) Remove the access platform(s).
- (f) Put the aircraft back to its initial configuration.

G. ADMINISTRATIVE

(1) Task A320-A-53-XX-1287-01001-90AA-A - Administrative

Procedure

Confirm in the applicable aircraft records that you have completed all the work defined in this Service Bulletin task set as required.

APPENDIX**A. Inspection Report**

Inspection Report

The attached inspection report sheet must be uploaded in accordance with Ref. ISI 00.00.00179.

CONF ALL

<u>INSPECTION REPORT</u>															
SERVICE BULLETIN No : A320-53-1287	UPLOAD THE COMPLETED INSPECTION REPORT SHEET IN ACCORDANCE WITH ISI 00.00.00179														
A/C MSN :															
FLIGHT CYCLES :															
FLIGHT HOURS :															
DATE OF INSPECTION :															
INSPECTION METHOD : <input type="checkbox"/> SPECIAL DETAILED INSPECTION															
<table border="1" style="margin: auto; border-collapse: collapse;"> <tbody> <tr> <td style="width: 50%;">CHAFING MARKS FOUND?</td> <td style="width: 50%; text-align: center;"><input type="checkbox"/> YES <input type="checkbox"/> NO</td> </tr> <tr> <td>CRACK FOUND?</td> <td style="text-align: center;"><input type="checkbox"/> YES <input type="checkbox"/> NO</td> </tr> <tr> <td rowspan="2">CRACK LENGTH</td> <td style="text-align: center;">VALUE :</td> </tr> <tr> <td style="height: 20px;"></td> </tr> <tr> <td rowspan="2">REMAINING THICKNESS MEASUREMENTS</td> <td style="text-align: center;">VALUE :</td> </tr> <tr> <td style="height: 20px;"></td> </tr> <tr> <td>REMAINING THICKNESS MEASUREMENTS WITHIN LIMITS?</td> <td style="text-align: center;"><input type="checkbox"/> YES <input type="checkbox"/> NO</td> </tr> <tr> <td>SERVICE BULLETIN A320-53-1281 APPLIED?</td> <td style="text-align: center;"><input type="checkbox"/> YES <input type="checkbox"/> NO</td> </tr> </tbody> </table>		CHAFING MARKS FOUND?	<input type="checkbox"/> YES <input type="checkbox"/> NO	CRACK FOUND?	<input type="checkbox"/> YES <input type="checkbox"/> NO	CRACK LENGTH	VALUE :		REMAINING THICKNESS MEASUREMENTS	VALUE :		REMAINING THICKNESS MEASUREMENTS WITHIN LIMITS?	<input type="checkbox"/> YES <input type="checkbox"/> NO	SERVICE BULLETIN A320-53-1281 APPLIED?	<input type="checkbox"/> YES <input type="checkbox"/> NO
CHAFING MARKS FOUND?	<input type="checkbox"/> YES <input type="checkbox"/> NO														
CRACK FOUND?	<input type="checkbox"/> YES <input type="checkbox"/> NO														
CRACK LENGTH	VALUE :														
REMAINING THICKNESS MEASUREMENTS	VALUE :														
REMAINING THICKNESS MEASUREMENTS WITHIN LIMITS?	<input type="checkbox"/> YES <input type="checkbox"/> NO														
SERVICE BULLETIN A320-53-1281 APPLIED?	<input type="checkbox"/> YES <input type="checkbox"/> NO														

ICN-A320-A-53XX1287-A-FAPE3-00S7K-A-001-01

B. REPORTING SHEET

TITLE:	FUSELAGE - FAIRING - INSPECTION OF EXTERNAL FUSELAGE SKIN PANEL AT FR34 UNDERNEATH THE FAIRING STRUCTURE BETWEEN STRG 43 LHS AND RHS
--------	--

MODIFICATION No.:	
-------------------	--

(1) SB Reporting status

This Service Bulletin will only be incorporated into affected customized Maintenance and Flight Operations Products if it is duly reported to Airbus.

(2) GENERAL information

The SB Reporting policy is published in ISI 00.00.00135. This document provides information regarding: the SB Reporting means and benefits, the update of customized Maintenance Products and customized Flight Operations Products.

If this Service Bulletin has an operational impact, refer to paragraph "Flight Operations Products" for further information on the update of affected Flight Operations Products.

(3) SB Reporting procedure

Standard practice to report SB is to use the online reporting application on AirbusWorld.

Refer to ISI 00.00.00179:

- For complete information on reporting means to Airbus, Question 2 "What are the standard practices for SB Reporting?"
- If this SB requires previous or simultaneous accomplishment of other SBs, Question 3 "What about the reporting of prerequisite Service Bulletins?"

NOTE: ISI 00.00.00179 covers all the frequently asked questions about SB Reporting. It is revised on a regular basis.

C. QUALITY PERCEPTION FORM

Use this form to tell us what is your perception of the quality of this Service Bulletin.

The reported data that you provide us will be used to analyse areas of difficulties and to take corrective action to further improve the quality of our Service Bulletin.

We thank you for the time you have taken in completing this form.

Quality rating of this SB	4	3	2	1
Quality rating of the Accomplishment Instructions	4	3	2	1
Quality rating of the Illustrations	4	3	2	1
Is this SB easy to understand ?	Y / N			

NOTE: Please rate on a scale of 1 to 4, with 4 being the highest score

If you have difficulties in the accomplishment of this SB please quote below the area(s) and give a short description of the issue.

	Planning		Material		Instructions
X	Applicability	X	Tooling	X	Preparation
X	Reason	X	List of Materials Operator Supplied	X	Mod/Inspection
X	Manpower	X	Kit content	X	Test
X	References	X	Re-identification	X	Close-up
X	Publication			X	Illustrations
X	Industry Support				

Comments :

Operator :
Name/Title

Date :

Please return this form to :

AIRBUS
2, ROND POINT EMILE DEWOITINE
31700 BLAGNAC
FRANCE

Or via your Resident Customer Support Office.