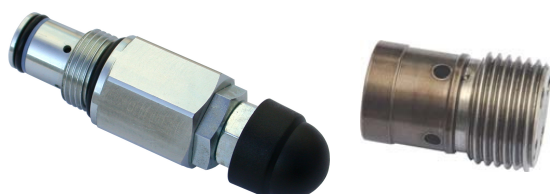


Pressure-limiting valve type VDB (size 3)

operating pressure p_{max}	350 bar
volume flow V_{max}	10 L/min



Product characteristics

Pressure-limiting valves are a type of pressure control valve. They safeguard the system against excessive system pressure or limit the operation pressure.

Features and benefits:

- suitable for pressure holding function
- screw-in cartridge for block installation
- seated valve, directly controlled
- valve for limitation of initial pressure (adjustable) or system pressure (fixed)
- leakproof
- setting type with hexagon key (adjustable) / response pressure fixed and secured (fixed)

Table of Contents

Technical data.....	2
Characteristic lines.....	3
Dimensions and connections.....	4
Order information.....	5
Contact details.....	6

Technical data

General

weight	BE03 fixed:	0.12 kg
	BE03 adjustable:	0.15 kg

ambient temperature	-30 to +50 °C
----------------------------	---------------

mounting position	arbitrary
--------------------------	-----------

Hydraulic parameters

Hydraulic fluid: mineral oil according to DIN 51524, other media on request

Pressure setting range: see characteristic lines and order information.

max. operating pressure	BE03 fixed:	380 bar
	BE03 adjustable:	350 bar

max. volume flow	10 L/min
-------------------------	----------

temperature hydraulic fluid	-25 to +70 °C
------------------------------------	---------------

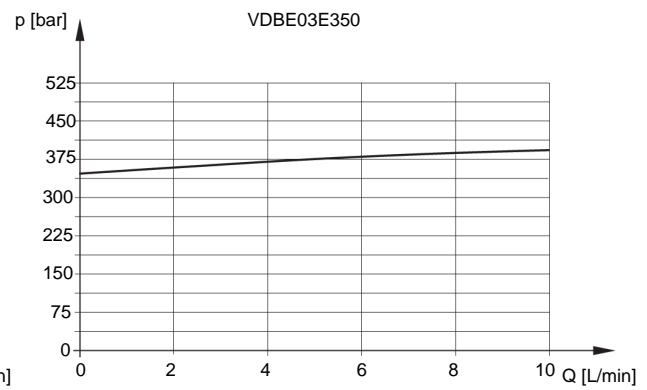
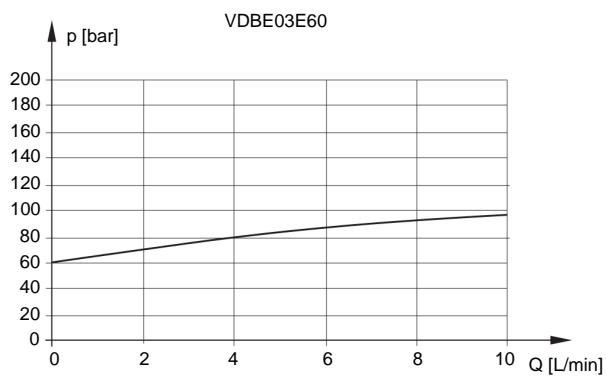
viscosity	10-600 mm ² /s
------------------	---------------------------

permissible degree of pollution	max. class 21/18/15 according ISO4406
--	---------------------------------------

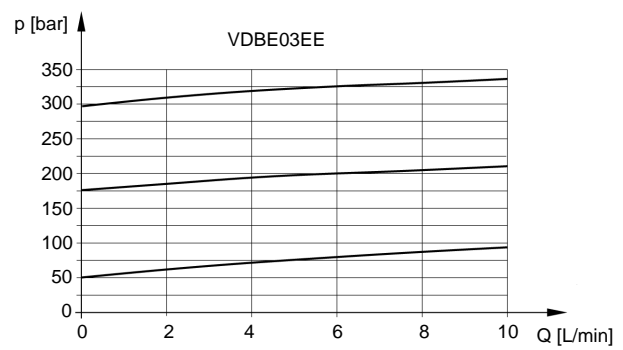
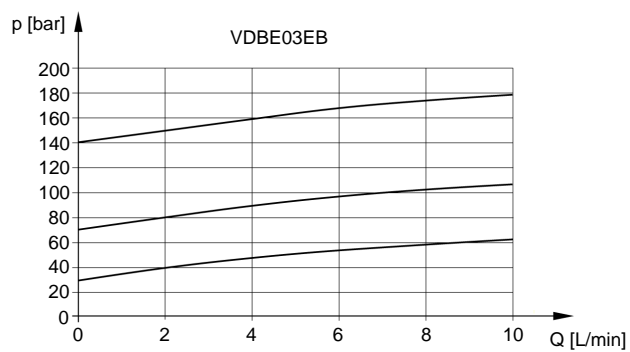
Characteristic lines

measured at 50 °C temperature of hydraulic fluid, viscosity 35 mm²/s, tolerance ±5 %

VDBE03 fixed



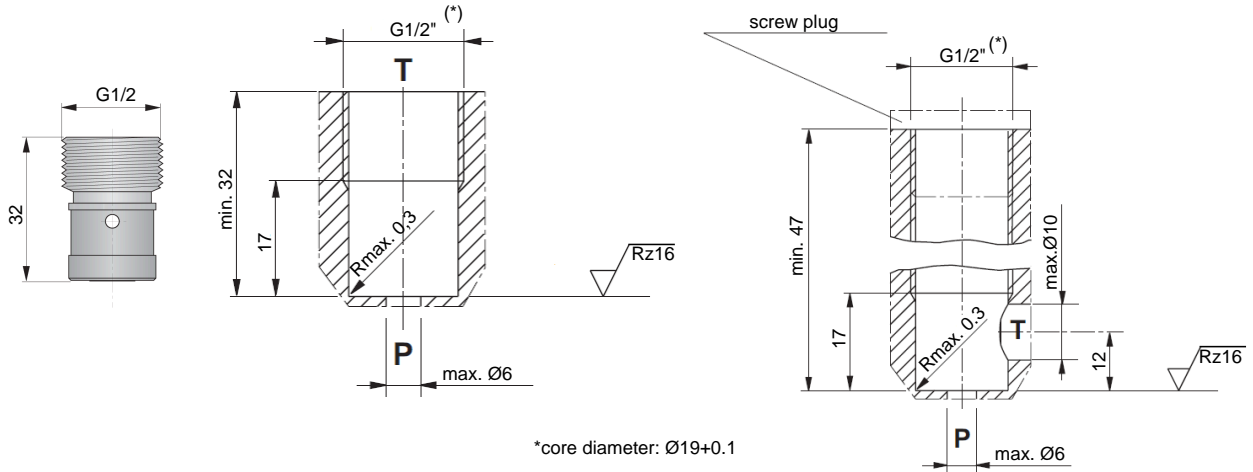
VDBE03 adjustable



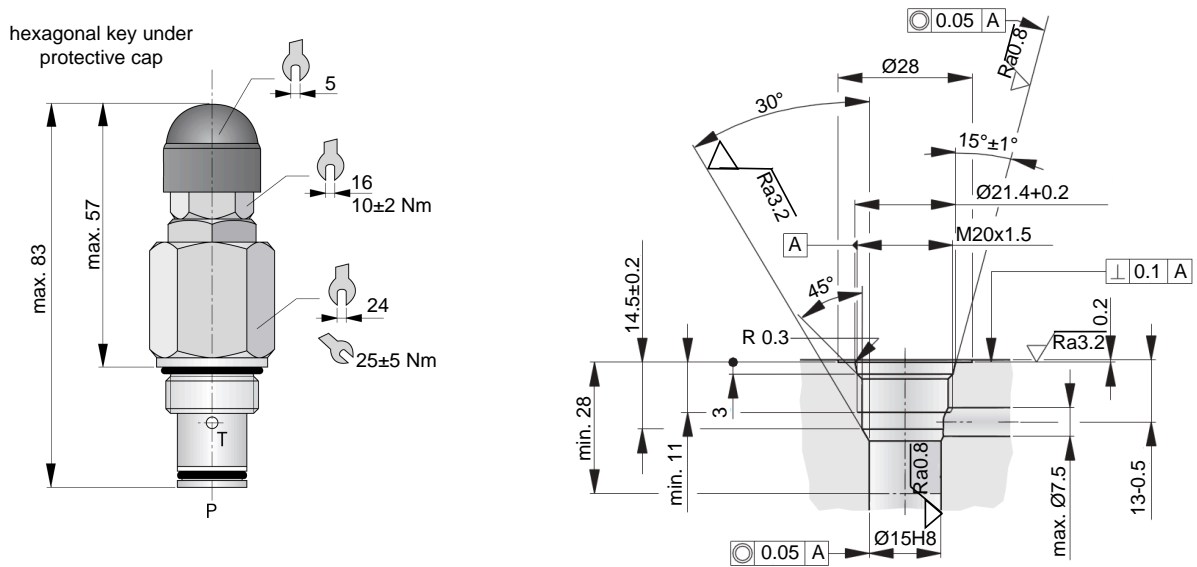
Dimensions and connections

Dimensions are given in mm.

VDBE03 fixed



VDBE03 adjustable



Order information

Type code VD BE 03 adjustable

VD BE	03	E	B
			pressure range
		B	10 - 140 bar
		E	20 - 350 bar
			adjustment possibility
			with hexagon key
	size	3	
type	pressure-limiting valve		

Type code VD BE 03 fixed

VD BE	03	350
		opening pressure
		60 bar
		350 bar
	size	3
type	pressure-limiting valve	

Contact details

Headquarters

HAWE Hydraulik SE
Einsteinring 17
85605 Aschheim
Germany

e-mail: info@hawe.de
www.hawe.com

Phone: +49 (0) 89 / 37 91 00 - 1000

Contact to the Customer Service

Phone (Head office)	+ 49 (0) 89 / 37 91 00 - 1000
Phone (Spare parts)	+ 49 (0) 89 / 37 91 00 - 1302
Phone (Customer Service)	+ 49 (0) 89 / 37 91 00 - 1491
Fax (Customer Service)	+ 49 (0) 89 / 37 91 00 - 91491
e-mail	spareparts@hawe.de service@hawe.de