

**GENERAL NOTES**

- NON-PERMITTED TANKS & EQUIPMENT MAY CHANGE
- ACTUAL PIPING CONFIGURATION MAY VARY DUE TO MAINTENANCE/ UPKEEP OF FACILITY.

**TANK LEGEND**

TANK NO.	TANK VOLUME	TANK CONTENTS	REMARKS
1	15,000 USG	USED MINERAL SPIRITS	10'-6" FLAT BOTTOM VERTICAL STORAGE TANK
2	15,000 USG	CLEAN 105' MINERAL SPIRITS	10'-6" FLAT BOTTOM VERTICAL STORAGE TANK
3	12,000 USG	CLEAN 150' MINERAL SPIRITS	8'-0" HORIZONTAL STORAGE TANK

**REVISIONS**

NO.	DESCRIPTION	BY	CHK	APPR	DATE
A	NEW RELEASE	MBH	KJM	WEY/CL	052384
B	ADDED TANK 3 & TRANSFER STOR. RELEASED TO CL FOR PERMIT MOD.	MBH	KJM	WEY/CL	072896
C	ADD STIL EQUIPMENT	JEX	RS	RS	032907
D	ADD DETAILS	JEX	RS	RS	033007
E	ADD WASTE STORAGE	JEX	RS	RS	051707
F	REMOVE RECYCLE SYSTEM	JEX	RS	RS	121510

**PROPRIETARY STATEMENT**

THIS DRAWING IS THE EXCLUSIVE PROPERTY OF SAFETY-KLEEN SYSTEMS, INC. AND IS PROPRIETARY AND CONFIDENTIAL INFORMATION. THIS DRAWING AND THE INFORMATION CONTAINED THEREIN MUST NOT BE DUPLICATED, USED, DIVULGED, REPRODUCED, COPIED, DISCLOSED OR APPROPRIATED IN WHOLE OR IN PART FOR ANY PURPOSE OTHER THAN AS EXPRESSLY AUTHORIZED BY SAFETY-KLEEN SYSTEMS, INC. THIS DRAWING MUST BE RETURNED PROMPTLY UPON REQUEST.

**Project Solutions**  
Company

1390 Home Industrial Drive • Suite 200 • Columbia • MO 65202  
• Phone: (573) 443-7100 • Fax: (573) 443-7181 •

TITLE

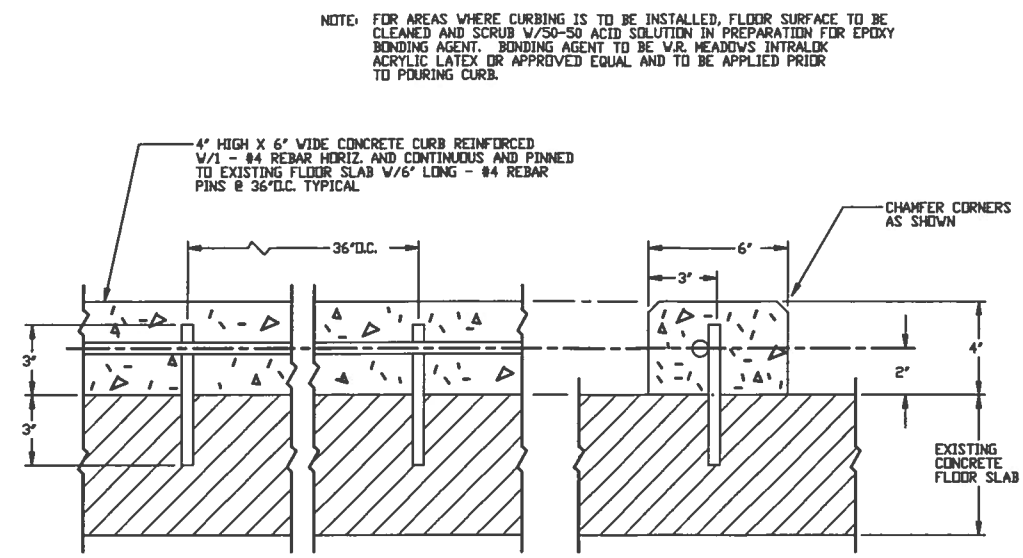
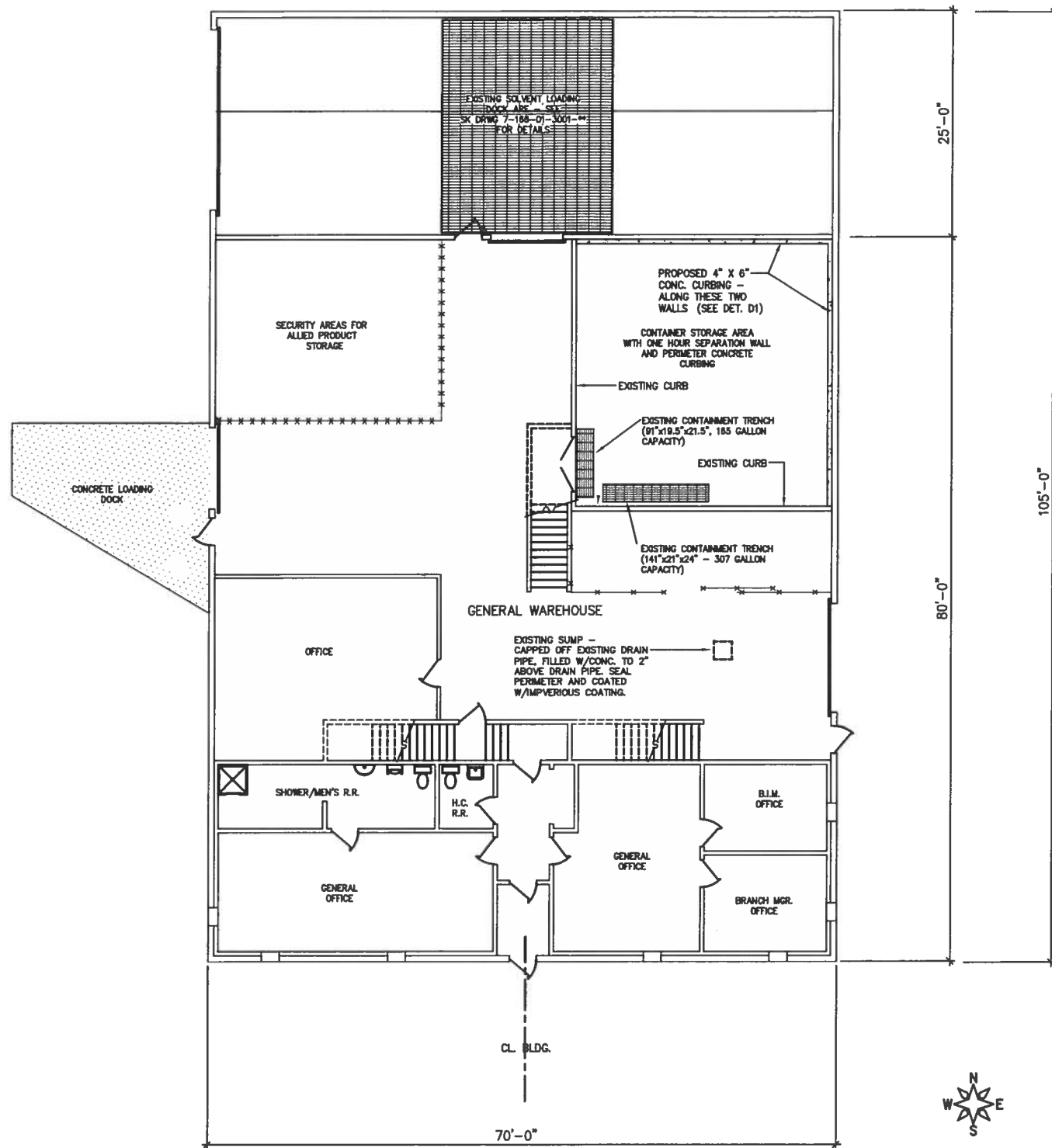
**SITE PLAN EXISTING**

**SAFETY-KLEEN SYSTEMS, INC.**  
6400 LIBBY DR. CLUMBER B BLDG. 3 PLANO, TX 75084  
PHONE 972-880-8740

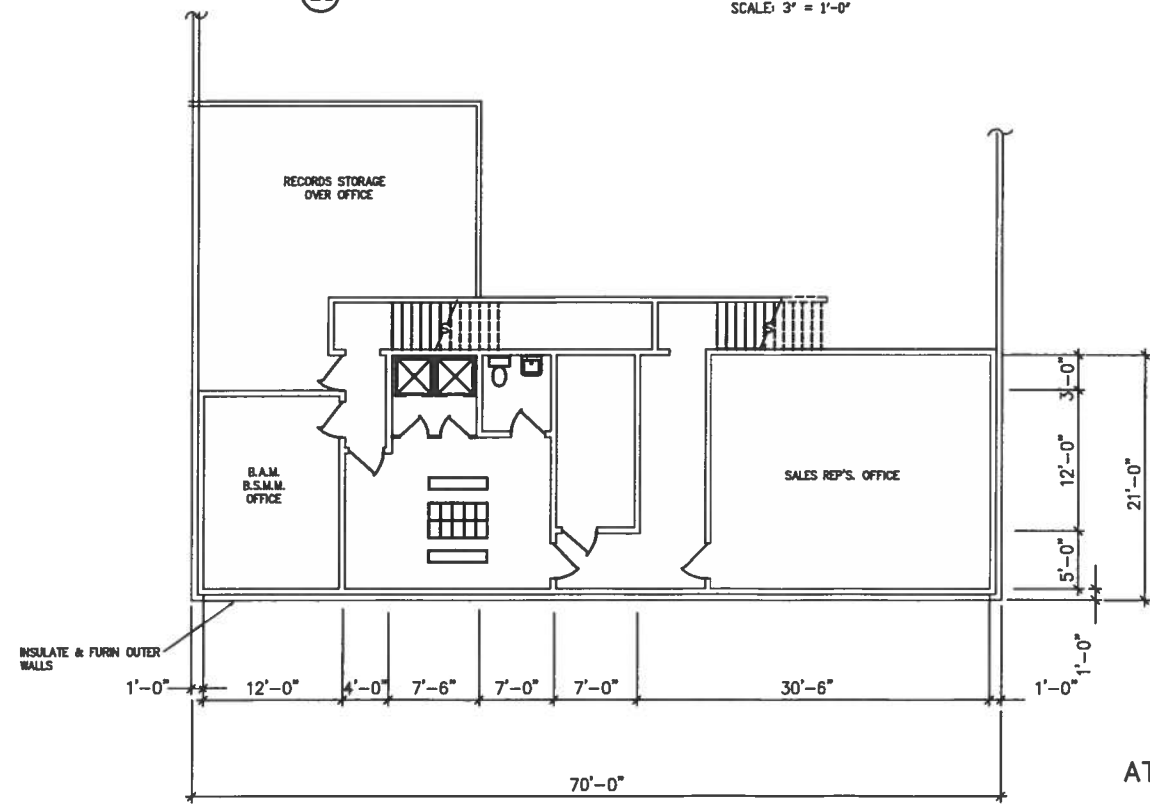
SCALE	BY	CHKD	APPROVED	OPERATIONS	DATE
1"=20'-0"	MBH				05-23-04
SERVICE CENTER LOCATION	SC-DWG NUMBER	REV			
SALT LAKE CITY, UT	7113-SPO0-001	F			



ATTACHMENT 7



DETAIL D-1 CURB CONSTRUCTION  
SCALE: 3" = 1'-0"



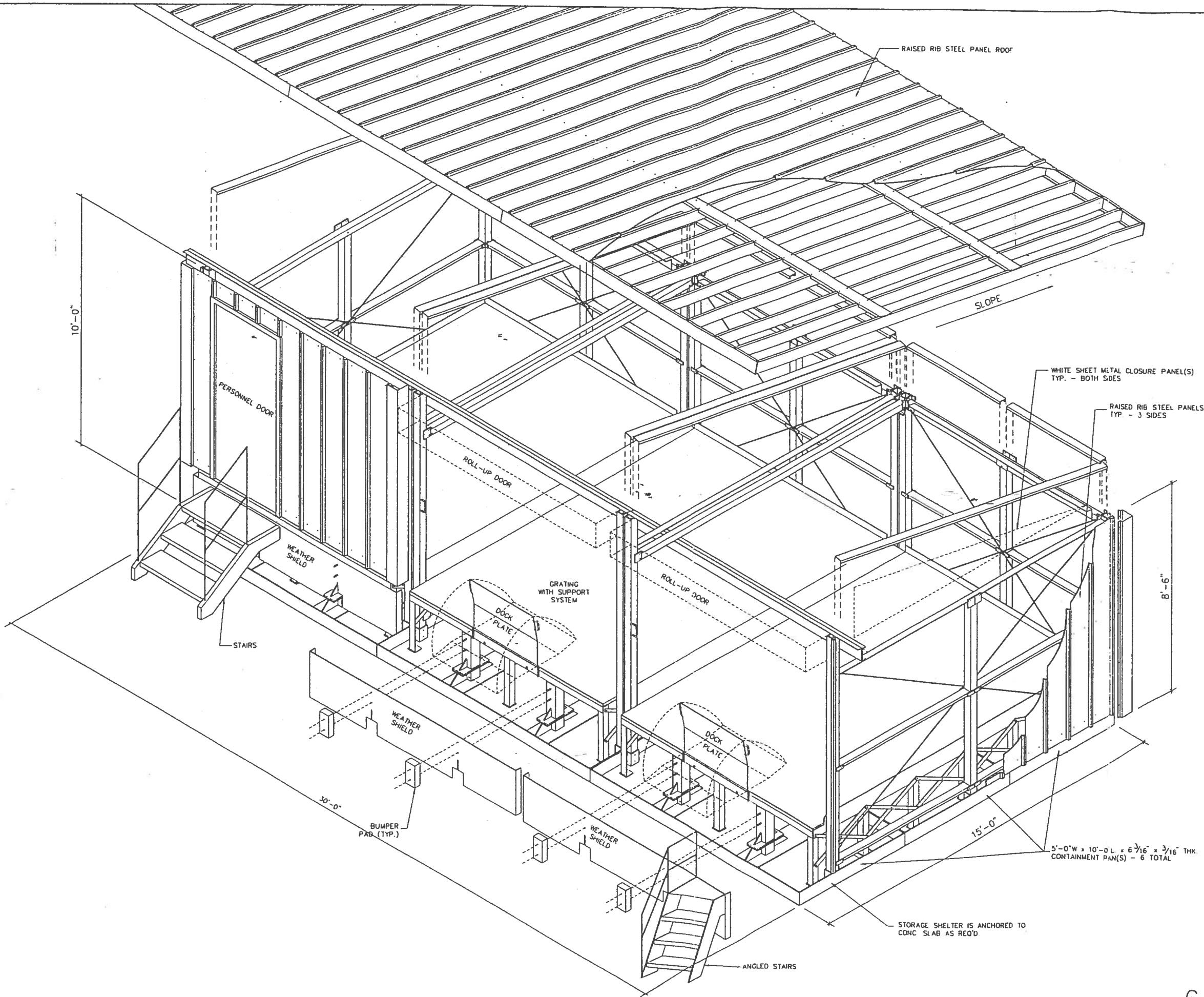
ATTACHMENT 7

PROPRIETARY STATEMENT

THIS DRAWING IS THE EXCLUSIVE PROPERTY OF SAFETY-KLEEN CORP. AND IS PROPRIETARY AND CONFIDENTIAL INFORMATION. THIS DRAWING AND THE INFORMATION CONTAINED THEREIN MUST NOT BE DUPLICATED, USED, DIVULGED, REPRODUCED, COPIED, DISCLOSED OR APPROPRIATED IN WHOLE OR IN PART FOR ANY PURPOSE OTHER THAN AS EXPRESSLY AUTHORIZED BY SAFETY-KLEEN CORP. THIS DRAWING MUST BE RETURNED PROMPTLY UPON REQUEST.

TITLE		FLOOR PLAN 1066 S. PIONEER RD.			
SAFETY-KLEEN SYSTEMS, INC. 5400 LEGACY DR. CLUSTER II BLDG. 3 PLANO, TX 75024 800-669-5740		SCALE 1/8" = 1'-0"	BY WEY	CHKD CHD	APPROVED OPERATIONS
DATE 07-28-87		SERVICE CENTER LOCATION SALT LAKE CITY, UT		SC-DWG NUMBER 718801-QJ01700	REV. NO. 04

NO.	DESCRIPTION	BY	CHK	APPR	DATE
04	REMOVE RECYCLE AREA NOTE	JEK	RS	RS	121510
03	ADD OFFICE AND STORAGE AREA	JEK	RS	RS	051707
02	REVISED MEZZ. OFFICE PLAN; DWG. # WAS 7001.	RD			012803
01	ADDED CURB DETAIL	MJP			121991



**GENERAL NOTES**

1.) ACTUAL TRANSFER SHELTER CONFIGURATION MAY VARY DO TO CONSTRUCTION, MAINTENANCE AND OR UPKEEP AT THE FACILITY.

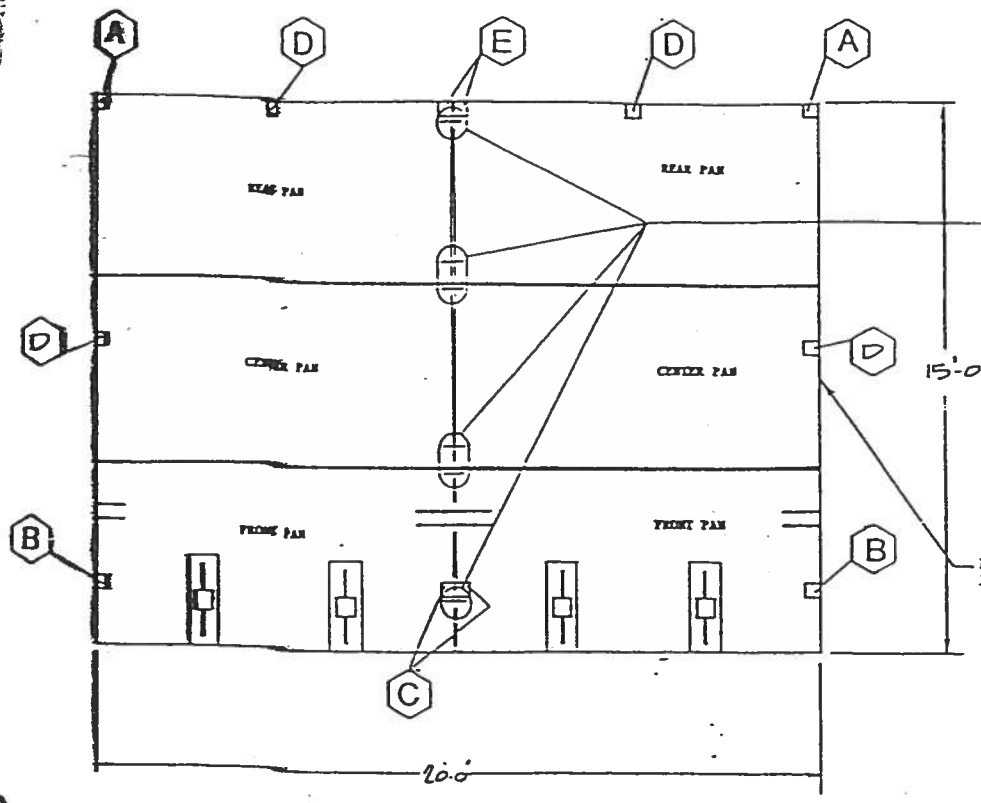
**REVISIONS**

NO	DESCRIPTION	BY	CHK	APPR	DATE
A	RELEASED TO CL FOR PERMIT MOD	MBH	KJM	WEY/CL	072696

TITLE  
**3 BAY CLASS 1B  
 TRANSFER SHELTER**

**S Safety-Kleen Corp.**  
 1000 NORTH RANDALL ROAD ELGIN, ILLINOIS 60123  
 PHONE (847)597-8460

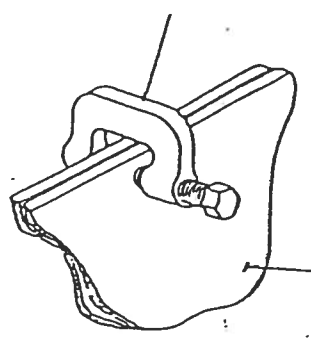
SCALE	BY	CHKD	APPROVED	EHS	DATE
1/2"=1'-0"	MBH	KJM	WEY	CL	07-25-96
SERVICE CENTER LOCATION	SC-DWG NUMBER	REV. NO			
SALT LAKE CITY, UT	716601-QJPB300	A			



**PLAN VIEW / PAN ARRANGEMENT**

SCALE: 3/8"=1'-0"

REAR CLAMPS (8 FOR 2 PAN) SUPPLIED BY SAFETY KLEEN CORP. SEE PLAN VIEW AT LEFT FOR TYPICAL LOCATIONS TICKETED SEPARATELY

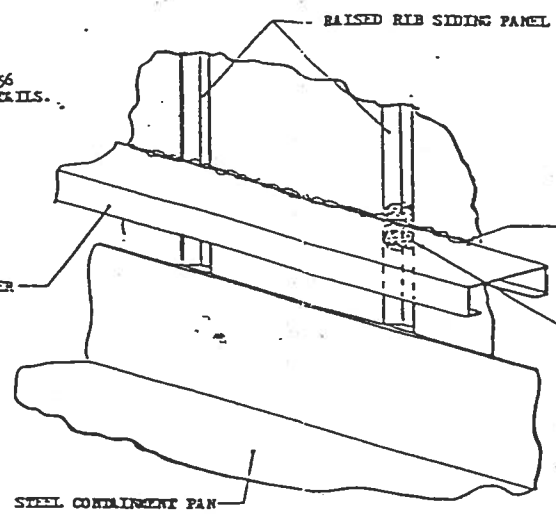


**CLAMP DETAIL**

NO SCALE

MAJING SIDES OF STEEL PANS TO BE CLAMPED

REF. S. K. DRAWING D1236 FOR PAN CONSTRUCTION DETAILS.

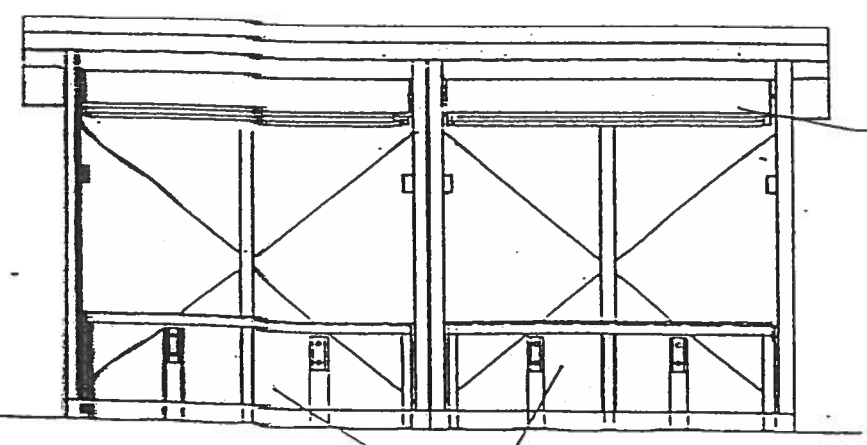


USE A SILICONE TYPE SEALANT AT JOINT OF BOTTOM GIRT MEMBER AND SIDING. SEE NOTE BELOW REGARDING WADDING MATERIAL FOR SEALING AT RAISED RIB AREAS.

PLACE AN ALUMINUM FOIL WAD INSIDE RIB BETWEEN SIDING AND BOTTOM GIRT MEMBER TO PREVENT SEALANT FROM FLOWING THROUGH.

**SEALING DETAIL**

NO SCALE

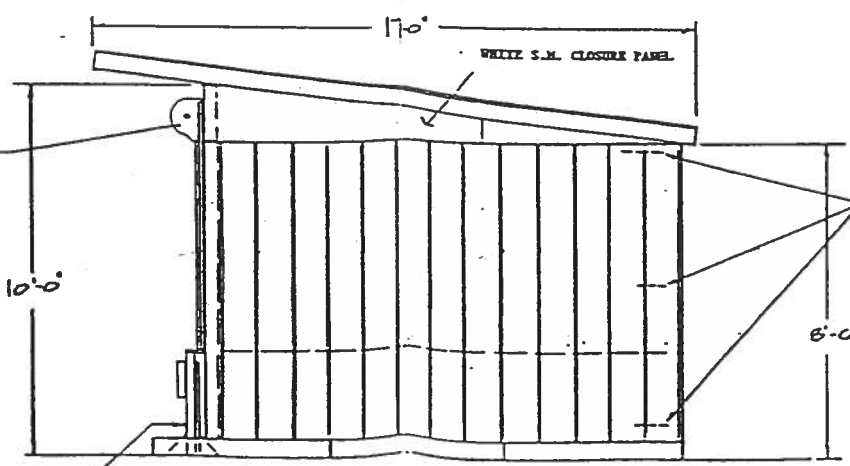


**FRONT VIEW**

SCALE: 3/8"=1'-0"

SHOW 9/8 SECURITY WADDER SHEILD FOR CLARITY

OVERHEAD DOOR TO BE REEL TYPE ROLL-UP DOOR



**SIDE ELEVATION**

SCALE: 3/8"=1'-0"

FINISH COATERS 1/26 GA. CORNER TRIM SECTIONS, SECURED 6-10-16 SCREW EACH SIDE.

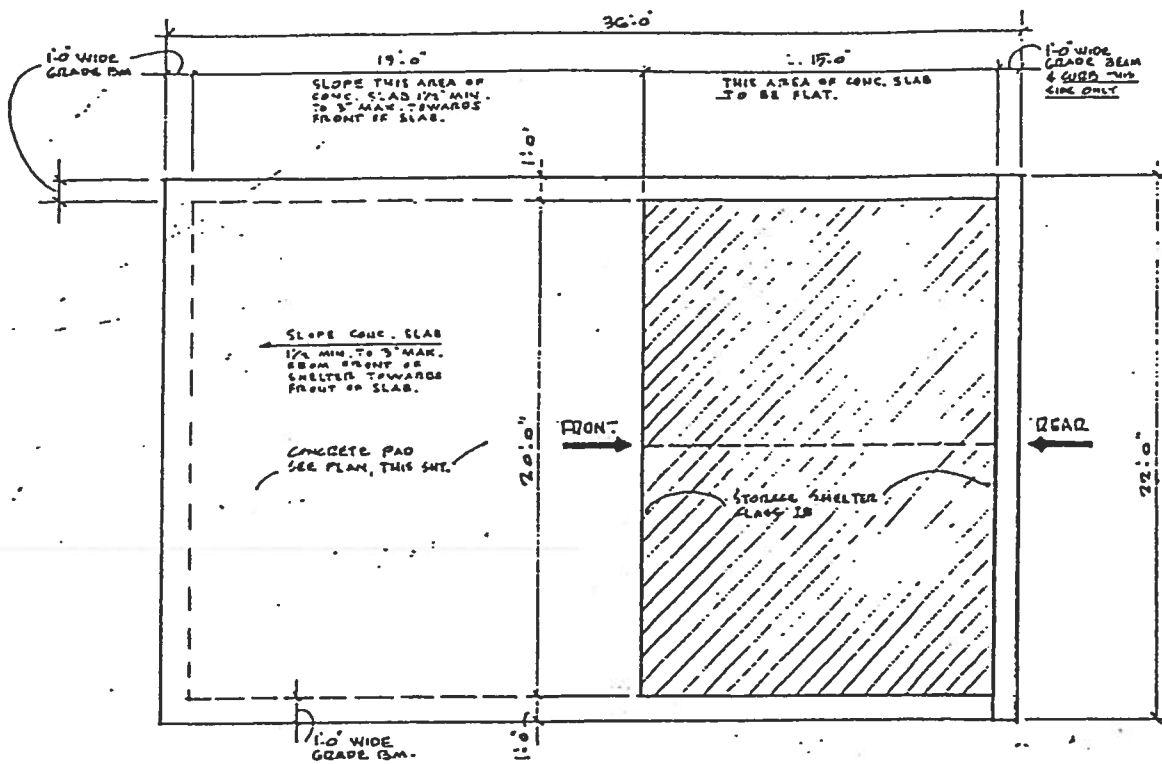
SIDE PANELS SEALED

REF. S.K. DOC. D11033 FOR SECURITY WADDER SHEILD

SONG TO BE 26 GA. CORRUGATED PANELS SEALED 1/2 8-10-16 SCREWS AT EACH FLAT BETWEEN 0.58 1/4" HIGH DOC 10' O.C.

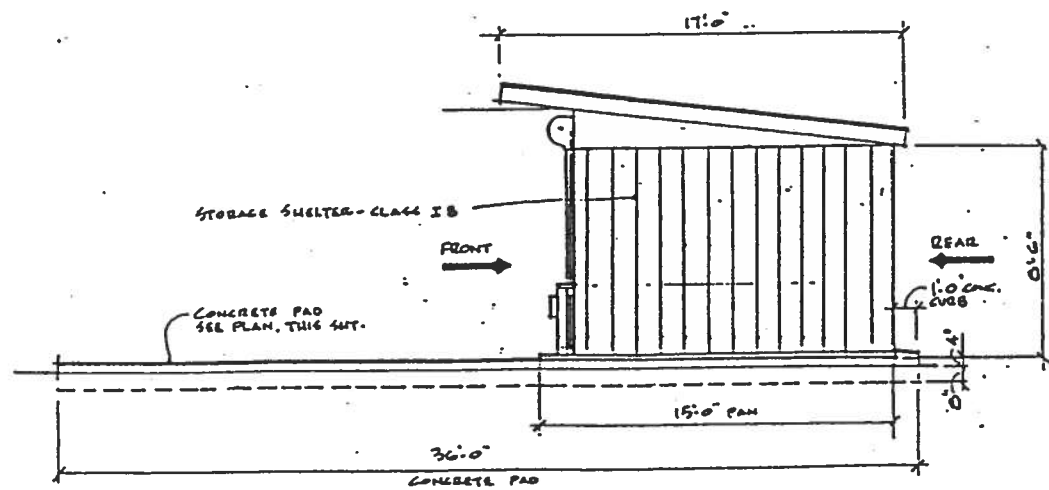
- (A) REAR CORNER POST
- (B) FRONT POST
- (C) FRONT CENTER POST
- (D) CENTER POST
- (E) REAR INTERMEDIATE POST
- (F) END CHANNEL DETAIL
- (G) REAR ANGLE DETAIL
- (H) SIDE ANGLE DETAIL

<b>Safety-Kleen Corp.</b>		PHONE (714) 941-1111
777 ONE THREE ROAD - CLARK, CALIFORNIA 91709		
<b>STORAGE SHELTER - CLASS IB</b>		
AS NOTED		
0/13/06		
SMF		
FOR SERVICE CENTER BRANCH: 10173E		

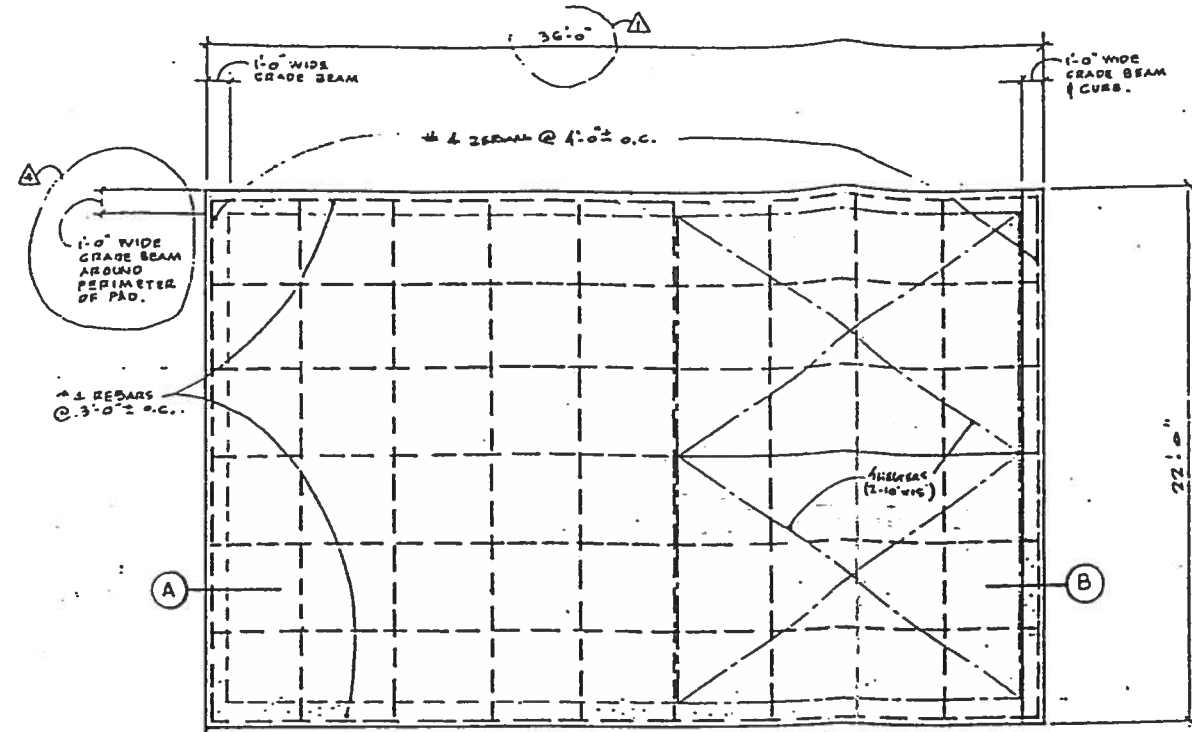


**PLAN** - SHOWING STORAGE SHELTER ON CONCRETE PAD  
SCALE: 1/4" = 1'-0"

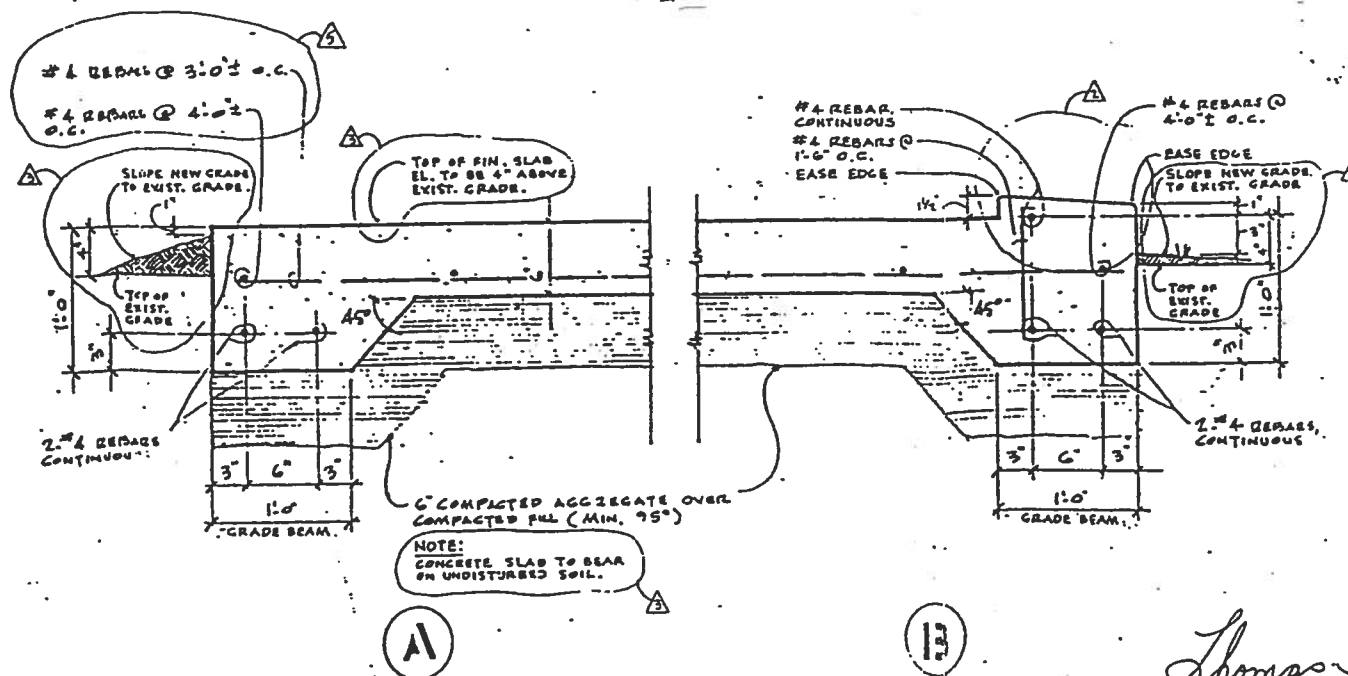
Six Containment Pans 10'x5'x6 9/16"  
Drain pipes through adjacent pans  
front to back - See drawing D12356



**ELEVATION** - SHOWING STORAGE SHELTER ON CONCRETE PAD  
SCALE: 1/4" = 1'-0"



**PLAN** - CONCRETE PAD FOR STORAGE SHELTER - CLASS 1B  
SCALE: 1/4" = 1'-0"  
NOTE:  
CONCRETE TO OBTAIN 4,000 PSI STRENGTH IN 28 DAYS

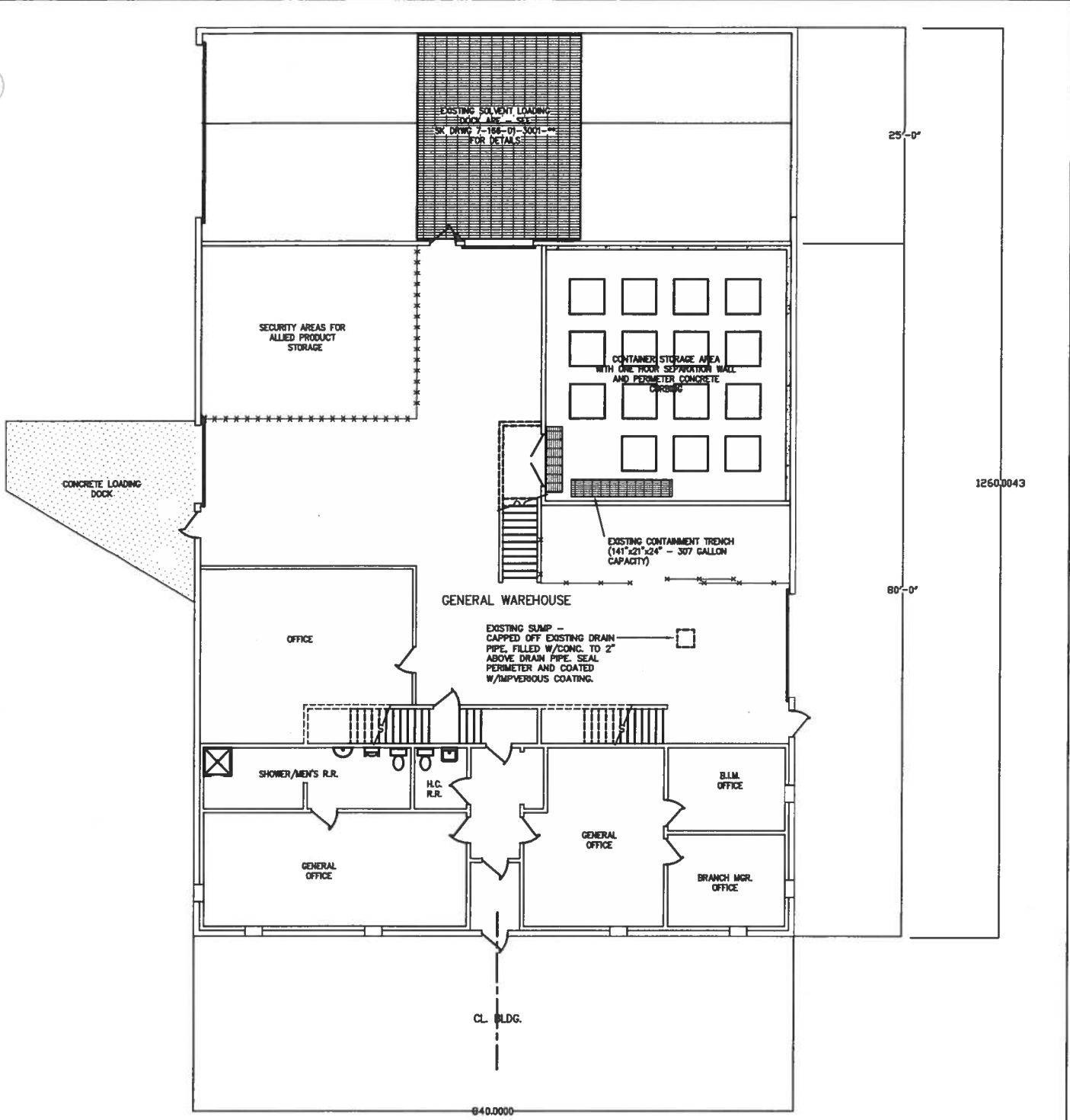


**DETAILS**  
SCALE: 1/2" = 1'-0"

Thomas J. Troller 9/19/91

ADD PLAN & REVISIONS - CONC. PAD & STORAGE SHELTER	DATE: 9/19/91
EXTENDED GRADE BEAM AROUND PERIMETER OF PAD	C.S. 12/15/90
<b>Safety-Kleen Corp.</b>	
777 BUS THRUWAY ROAD • BURLINGAME, CALIF. 94010 • PHONE 312 987-4488	
<b>PAD, CONCRETE - FOR CLASS 1B STORAGE SHELTER</b>	
DATE: 9/19/91	BY: T.J. TROLLER
DATE: 12/15/90	BY: C.S. 12/15/90
DATE: 12/15/90	BY: C.S. 12/15/90
DATE: 12/15/90	BY: C.S. 12/15/90
FOR SERVICE CENTER BRANCH: <b>D12326</b>	





25'-0"

1260.0043

80'-0"

840.0000

**EXISTING FLOOR PLAN**

SCALE: 1/8"=1'-0"

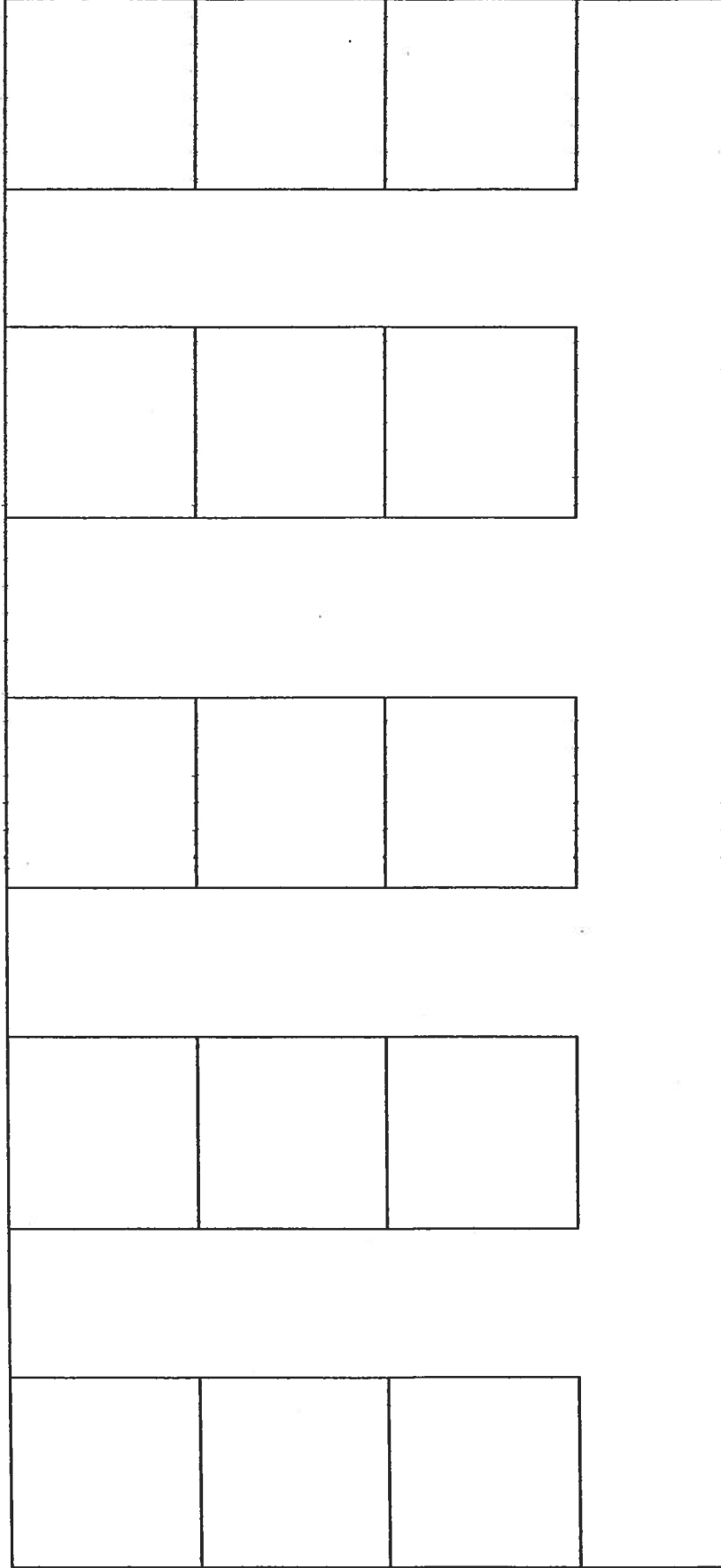
15 SPACES WITH A  
POTENTIAL CAPACITY OF  
10 - 30 GALLON DRUMS

15 X 10 X 30 = 4500 GALLONS

**ATTACHMENT 7**

7113-WB00-006  
REV 2

# Metal Container Storage Shelter Example Storage Configuration

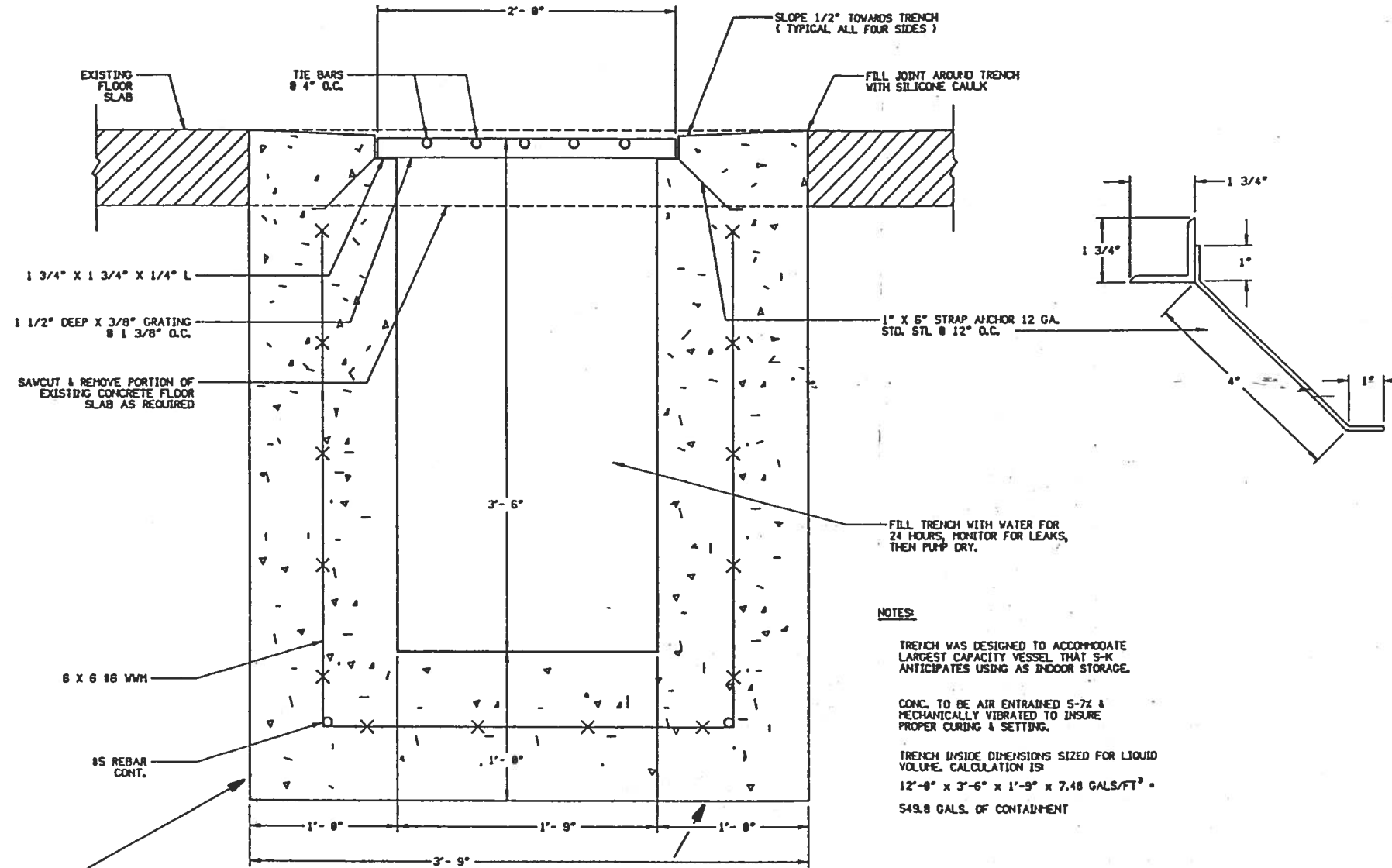


15 pallet positions x 220 gallons/pallet (4 x 55 gallons/container) equals a maximum of 3,300 gallons of storage capacity.



NOTE: BOTH PROJECT ENGINEER [E. YOUNG] AND  
INSTALLING CONTRACTOR ADVISE THIS  
STANDARD USED FOR NORTH-SOUTH TRENCH  
WITH THE FOLLOWING INSIDE DIMENSIONS:  
11'-6" LONG X 21" WIDE X 24" DEEP.

JULY 1, 1995 *J.R. Baker*



NOTE: TRENCH SITTING ON AND IN COMPACTED  
ENGINEERED FILL.

JULY 1, 1995 *J.R. Baker*

NOTES:

TRENCH WAS DESIGNED TO ACCOMMODATE  
LARGEST CAPACITY VESSEL THAT S-K  
ANTICIPATES USING AS INDOOR STORAGE.

CONC. TO BE AIR ENTRAINED 5-7% &  
MECHANICALLY VIBRATED TO INSURE  
PROPER CURING & SETTING.

TRENCH INSIDE DIMENSIONS SIZED FOR LIQUID  
VOLUME. CALCULATION IS:  
12'-0" x 3'-6" x 1'-9" = 7.48 GALS/FT<sup>3</sup> =  
549.8 GALS. OF CONTAINMENT

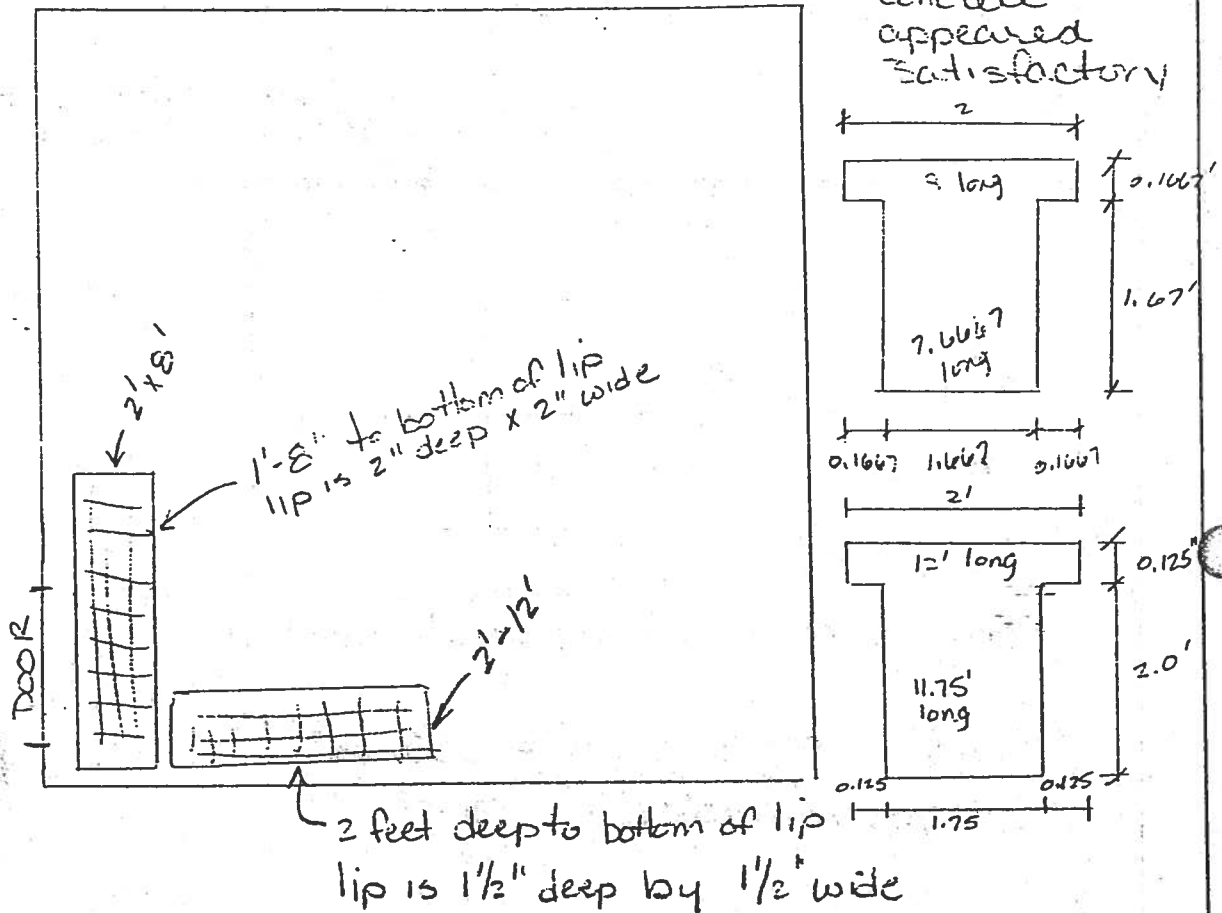
NO.		DESCRIPTION		BY	CHKD	APPR	DATE
REVISIONS							
TITLE: 12'-0" X 2'-0" X 3'-6" TRENCH DETAIL - RETROFIT							
FOR USE WHEN RETROFITTING EXISTING BLDGS. W/NO CONTAINMENT							
<b>S SAFETY-KLEEN CORP.</b>							
<small>777 SW THIRD ROAD, SUITE 200, GAINESVILLE, FL 32609 PHONE 352/397-0400</small>							
PROJ. ENGR.	OPERATIONS MGR.	SCALE	DRAWN	DATE			
		2" = 1'-0"	PBG	12/14			
BRANCH FOR SERVICE CENTER BRANCH				DRAWING NO. A13022			

Container Storage - Part of warehouse

± Coated concrete trenches by door  
grating over trenches

→ N

No cracks observed  
Sealant and concrete  
appeared  
Satisfactory



$$\begin{aligned}
 \text{Volume} &= 1.667' \times 7.667' \times 1.667' + (8 \times 0.1667 \times 0.1667) 2 + (1.667' \times 0.1667 \times 0.1667) 2 \\
 &\quad + 1.75' \times 11.75' \times 2' + (12 \times 0.125 \times 0.125) 2 + (1.75 \times 0.125' \times 0.125') 2 \\
 &= 21.3 \text{ FT}^3 + 0.4 \text{ FT}^3 + 0 + 41.1 \text{ FT}^3 + 0.3 \text{ FT}^3 + 0 \\
 &= 63.1 \text{ FT}^3
 \end{aligned}$$

$$63.1 \text{ FT}^3 \times \frac{7.48 \text{ gal}}{\text{FT}^3} \approx 472 \text{ gal}$$

22-141 50 SHEETS  
22-142 100 SHEETS  
22-144 200 SHEETS

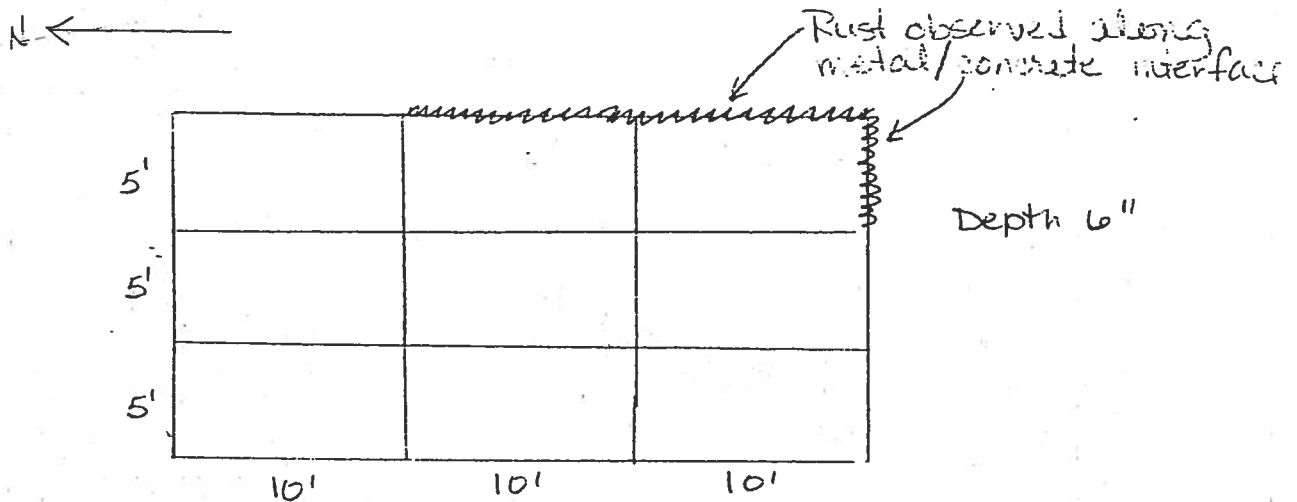


Flammable Materials Shelter - Separate metal enclosure

Drums sit on grating over metal containment pans.  
 Pans are coated w/ black paint.  
 Shelter is bolted to concrete pad.

Minor rust observed where paint has chipped.

Recommend new coating be applied.



North 3 pans looked recently coated

$$\text{Volume} = 15' \times 30' \times 0.5' = 225 \text{ FT}^3$$

$$\text{Each pan} = 5' \times 10' \times 0.5' = 25 \text{ FT}^3$$

$$25 \text{ FT}^3 \times \frac{7.48 \text{ gal}}{\text{FT}^3} = 187 \text{ gal}$$

$$225 \text{ FT}^3 \times \frac{7.48 \text{ gal}}{\text{FT}^3} = 1,683 \text{ gal}$$

NOTE: Pans were sandblasted and painted black after the June 1997 inspection

# Chemical Resistant Urethane

## A Superior Chemical & Abrasion Resistant Coating

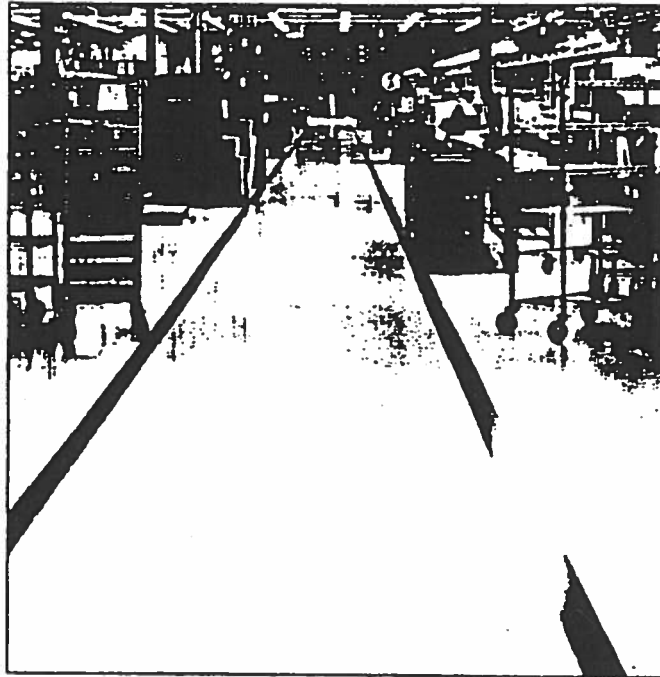
### Description

A 2-component, aliphatic urethane coating. Available in clear, white, gray, beige and other attractive colors.

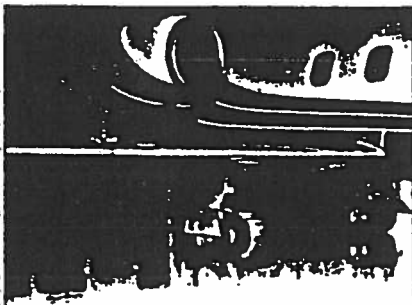
An advanced aliphatic urethane, this 2-component nonyellowing coating offers the latest in chemical, abrasion and soiling resistance. Specifically formulated for use on concrete surfaces where a variety of chemical spills are common. It is ultraviolet light resistant and produces optimum light reflectance.

### Advantages

- Provides excellent chemical resistance
- Contains exceptional anti-soiling abrasion resistant properties
- Produces optimum light reflectance
- Resists effects of ultraviolet light



Chemical Resistant Urethane  
Available in clear, white, gray,  
beige and other attractive colors.



# Moisture Cure Urethane— Clear & Pigmented

## Guaranteed to Outperform Conventional Coatings & Sealers

### Description

An oil-free moisture cure urethane (MCU) coating formulated at several solids levels for specific job requirements.

Wears up to five times longer than conventional coatings. MCU produces a tough, protective shield that guards concrete surfaces against heavy traffic wear and penetration of oil, grease and chemicals.

Ensures a high film build and high-gloss appearance despite heavy traffic. Increases light reflectance and decreases energy costs.

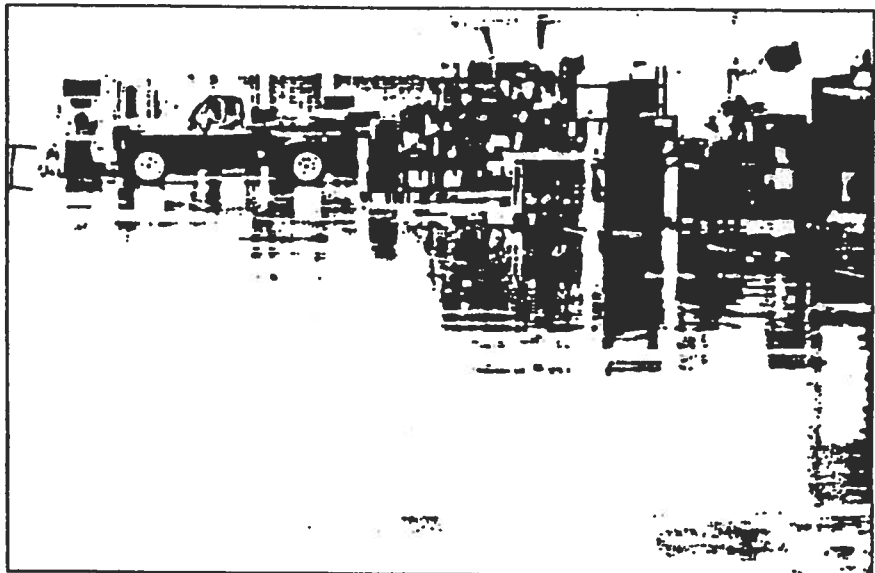
### Advantages

- Wears up to 5 times longer than ordinary coatings
- Provides exceptional durability
- High film build protects against heavy traffic abuse
- Resists oil, grease & most chemicals
- Exhibits outstanding reflectivity
- MCU color additives are available in a variety of colors

### Where to Use

Restrooms  
Supermarket Storage Areas  
Aircraft Hangars

Laundries  
Chemical Production Areas  
Auto Dealerships  
Industrial Plants  
Interior Loading Docks  
Warehouses  
Food Processing Plants  
Power Plants  
Parking Garages  
Textile Mills  
Paper Mills  
Printing Plants  
Bottling Plants  
Marine Dealerships  
School Garages



## Urethane Support Products

### Preparation Chemicals

Highly concentrated degreasers, solvent and water-based cleaners, and acid conditioners are available to insure proper surface preparation. Nonflammable stripper is also available to remove permanent coatings that may be disposed of as dry waste.

### Color Additives

Concentrated color additives designed for pigmenting clear MCU systems. Available in a variety of attractive high-gloss colors. Reduce cost and inventory requirements.

### Thinners

Specially formulated for proper thinning of MCU and CRU systems and cleanup of application equipment.

### Primer

A 2-component, water-based epoxy primer/bond coat. This primer is ideal on both damp and dry concrete surfaces prior to the application of urethane systems. Reduces installation downtime and

insures superior adhesion of topcoats. No objectionable odor or fire hazard.

### Catalysts

CRU and MCU catalysts to accelerate the drying and cure times of the coatings.



A complete line of preparation products for concrete floors.



**FEDERAL INTERNATIONAL CHEMICALS**

1191 S. Wheeling Road, Wheeling, IL 60090

(312) 541-9000

Manufacturing facilities in Illinois, New Jersey, Florida and California.

Warehouse in Colorado.

division of The Hulspar Corporation

**RECEIVED**

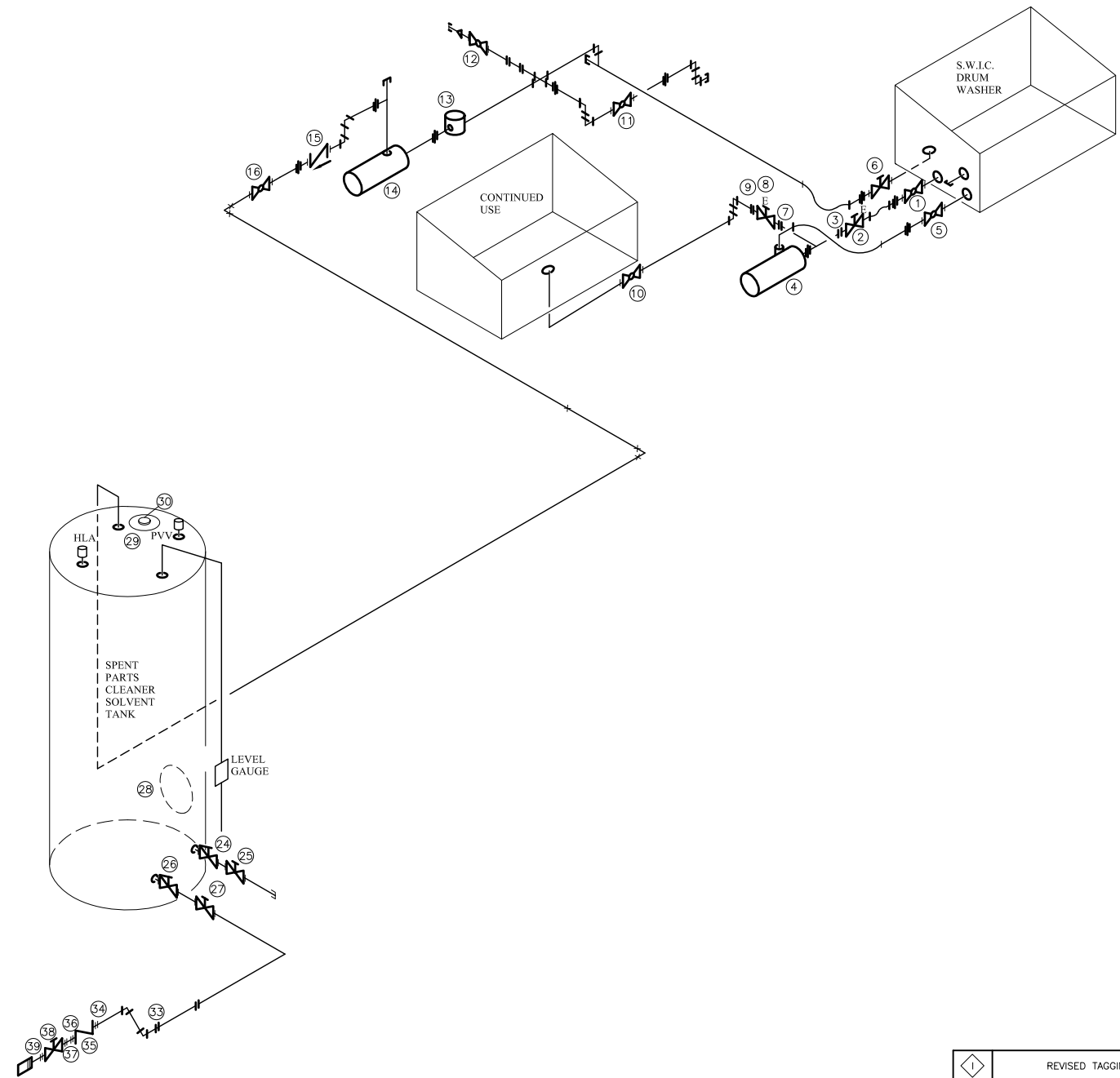
APR 14 1987

JT 18054

Environmental Department  
SAFETY-KLEEN CORP.

FITTING SCHEDULE

1	1.5" THREADED BALL VALVE
2	ELECTRONIC VALVE
3	FLANGE
4	RE-CIRCULATION PUMP DRUM WASHER
5	1.5" THREADED BALL VALVE
6	2" THREADED GATE VALVE
7	FLANGE
8	ELECTRONIC VALVE
9	FLANGE
10	2" THREADED BALL VALVE
11	2" THREADED BALL VALVE
12	2" THREADED BALL VALVE
13	STRAINER
14	UMS PUMP
15	2" CHECK VALVE
16	2" THREADED BALL VALVE
17	NDT USED
18	NDT USED
19	NDT USED
20	NDT USED
21	NDT USED
22	NDT USED
23	NDT USED
24	3" EMERGENCY VALVE
25	3" GATE VALVE
26	3" EMERGENCY VALVE
27	3" GATE VALVE
28	SIDE MANWAY
29	TOP MANWAY
30	8" FLANGED E-VENT
31	NDT USED
32	NDT USED
33	FLANGE
34	FLANGE
35	3" CHECK VALVE
36	FLANGE
37	FLANGE
38	3" GATE VALVE
39	FLANGE
40	
41	
42	
43	
44	
45	
46	
47	
48	
49	
50	
51	
52	
53	
54	
55	
56	
57	
58	
59	



**HAZARDOUS WASTE PARTS CLEANER SOLVENT TANK SYSTEM PIPING SCHEMATIC**  
NO SCALE

TITLE	
GENERAL NOTES	
1.	PIPING CONFIGURATION AS INDICATED WAS FIELD VERIFIED ON 5-9-07.
2.	NUMBERS IN CIRCLES INDICATE TAGS ATTACHED TO EQUIPMENT OR FITTING AS SHOWN.
3.	NON-PERMITTED TANKS & EQUIPMENT MAY CHANGE.
4.	ACTUAL PIPING CONFIGURATION MAY VARY DUE TO MAINTENANCE AND/OR UPKEEP OF FACILITY.

**PROPRIETARY STATEMENT**

THIS DRAWING IS THE EXCLUSIVE PROPERTY OF SAFETY-KLEEN CORP. AND IS PROPRIETARY AND CONFIDENTIAL INFORMATION. THIS DRAWING AND THE INFORMATION CONTAINED THEREIN MUST NOT BE DUPLICATED, USED, DIVULGED, REPRODUCED, COPIED, DISCLOSED OR APPROPRIATED IN WHOLE OR IN PART FOR ANY PURPOSE OTHER THAN AS EXPRESSLY AUTHORIZED BY SAFETY-KLEEN CORP. THIS DRAWING MUST BE RETURNED PROMPTLY UPON REQUEST.

SYMBOL LIST	
	CAMLOC COUPLING
	90° CAMLOC COUPLING
	GATE VALVE
	INTERNAL EMERGENCY VALVE
	BALL VALVE
	SCREWED COUPLING
	CHECK VALVE
	STRAINER
	PUMP
	REDUCER/INCHREASER
	SCREWED UNION
	CAP
	HOSE CLAMP
	FLEXIBLE HOSE
	PIPE PENETRATION/ATTACHMENT TO EQUIPMENT
	DIRECTION OF FLOW

CONNECTION TYPES	
	FLANGED
	SCREWED
	WELDED

1	REVISED TAGGING/PIPING/TANKS	JEK	NC	NC	060820
H	REVISED PIPING/ISSUED FOR PERMIT	JEK	NC	NC	052019
G	ISSUED FOR PERMIT	JEK	NC	NC	041519
F	REVISED TAGGING/PIPING FOR STILL REMOVAL	JEK	JB	JB	071411
E	REMOVE VALVE & TAG # 32	JEK	RS	RS	121207
D	SHOW ASBUILT CONDITIONS	GAS	GAS	RS	071007
C	REVISED TAGGING	GAS	GAS	RS	062807
B	REVISED TAGGING	GAS	GAS	RS	051707
A	REVISED TAGGING	GAS	GAS	RS	051407
D	NEW ISSUE FOR PERMIT	GAS	GAS	GAS	031407
NO.	DESCRIPTION	BY	CHK	APPR	DATE
REVISIONS					

TITLE

**ENVIRONMENTAL PIPING SCHEMATIC (SPENT PARTS CLEANER SOLVENT)**

**SAFETY-KLEEN SYSTEMS, INC.**  
2600 N. CENT. EXPRESSWAY STE 400 RICHARDSON, TX. 75080  
PHONE 800-669-5740

SCALE NONE	BY PSC	CHKD GAS	APPROVED GAS	OPERATIONS GAS	DATE 3/14/07
SERVICE CENTER LOCATION SALT LAKE CITY, UT			SC-DWG. NO. 7113-5600-351	REV. NO. 1	

06-06-01 4:00 PM KCPB027.DWG 9536.1