

STORMSHIELD NETWORK SECURITY

QUICK INSTALLATION GUIDE - SN2100 and SN3100

1. INSTALLATION

Before you install your Stormshield Network Firewall, carefully read and follow the safety instructions listed in the document SAFETY RULES AND INSTALLATION PRECAUTIONS.

CONTENTS OF THE PACKAGING

- Your Stormshield Network Firewall appliance,
- Two power cords,
- An RJ45 crossover cable,
- An RJ45 to DB9F serial cable,
- A set of brackets, rails and screws for rack-mounting.

INSTALLATION IN A 19" RACK

The minimum vertical space needed for installing an SN2100 and SN3100 is 1U.

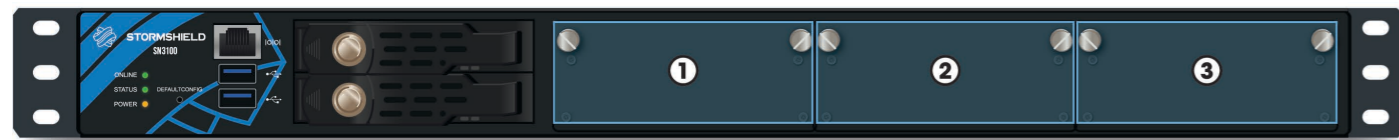
The procedure for setting up rails is described in the document provided with the product, explaining how to mount the Firewall in the rack.

2. INSERTING EXTENSION MODULES

IMPORTANT

Network modules must only be added or removed on appliances that have fully shut down and which are necessarily unplugged from any electrical power supply.

When extension modules are added or removed, interfaces will be reordered according to the order shown below:



To enhance your product's performance, specific recommendations on the location of modules are as follows: modules have to be inserted from left to right, using preferably slots **2** and **3** for extension modules 10GbE or faster.

EXTRACTION AND INSERTION PROCEDURE

1. **Extracting:** unscrew the 2 knurled screws and extract the existing module by pulling on both screws.
2. **Inserting:** insert the extension module all the way in (push harder towards the end), then screw in the 2 knurled screws completely.

For further information on the specifications of compatible copper and fiber extension modules, please refer to the document PRODUCT PRESENTATION AND INSTALLATION.



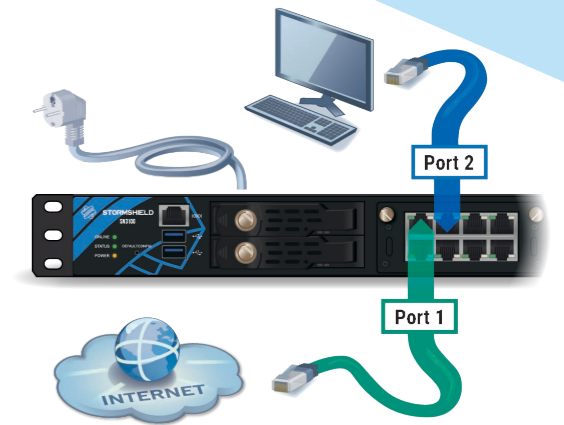
Take note of the registration password **1** and the serial number **2** located on the underside of your Firewall. You will be asked for this information during the installation.

3. CONNECTING AND STARTING UP

Plug your Stormshield Network Firewall into the mains power supply. As SN3100 model is equipped with redundant power supplies (optional on SN2100 model), plugging them into 2 separate power sources is recommended.

Connect the network ports in the following order:

- **INTERNAL interface 2 (IN)** → Client workstation
- **EXTERNAL interface 1 (OUT)** → Internet access device



IMPORTANT

Network port **1** is reserved for the modem or the Internet router. You cannot access the configuration interface from this port.

NOTE

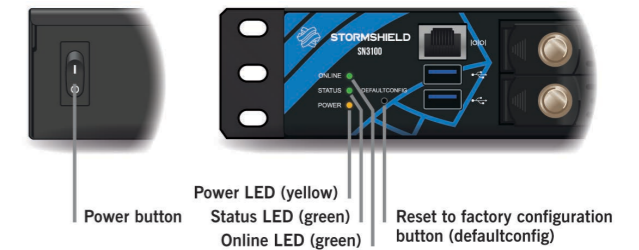
The two ports located on the back of the product (**MGMT1** and **MGMT2**), dedicated to the management of the appliance, can be used as internal interfaces.

As soon as the appliance is powered up, press once on the **Power button** (rear panel). Wait a few minutes for all 3 LEDs - **Online**, **Status** and **Power** to light up.

From your client workstation, you will be able to log on to the administration interface at the following address:

https://10.0.0.254/admin

Enter « admin » as both the login and password.



4. ASSISTANCE

- If you are unable to connect to your Firewall, check the configuration of your client workstation. DHCP has to be enabled on this client workstation or its IP address has to belong to the same address range as the Firewall's (10.0.0.0/8).
- During the initial connection, a warning may appear in your browser. Confirm that you wish to continue in order to access the administration interface.
- If you had connected your client workstation to **Port 1**, you will no longer be able to access the administration interface. You will need to connect your computer to **Port 2** and reboot the Firewall. Connect to the Firewall in console mode (refer to the document PRODUCT PRESENTATION AND INSTALLATION).
- To shut down your Firewall, press the **Power button** (rear panel) once and wait for several minutes until all 3 LEDs (**Online**, **Status** and **Power**) go out.
- In the event of hardware problems with your Firewall or if one of the elements does not match its description, please contact your certified partner.

5. DOCUMENTATION

Log on to the following address to access or to obtain the ID and password for accessing **YOUR SECURE AREA**: **https://www.mystormshield.eu**

YOUR SECURE AREA allows you to do the following:

- Activate licenses, software options or download the latest updates,
- Manage your licenses,
- Subscribe to technical and commercial mailing lists.

For further information, please refer to the document PRODUCT PRESENTATION AND INSTALLATION.

ONLINE HELP for Stormshield Network Firewalls is available online and contains various types of documentation (Guides, Technical Notes, etc).

https://documentation.stormshield.eu

THE KNOWLEDGE BASE compiled by the technical support team can be accessed from your Secure area.

