

Oracle® Communications
EAGLE FTP Table Base Retrieval

Software Installation Instructions

Release 4.5 and later

909-0643-001 Revision K

February 2014

ORACLE®

Copyright © 2003, 2014, Oracle and/or its affiliates. All rights reserved.

This software and related documentation are provided under a license agreement containing restrictions on use and disclosure and are protected by intellectual property laws. Except as expressly permitted in your license agreement or allowed by law, you may not use, copy, reproduce, translate, broadcast, modify, license, transmit, distribute, exhibit, perform, publish, or display any part, in any form, or by any means. Reverse engineering, disassembly, or decompilation of this software, unless required by law for interoperability, is prohibited.

The information contained herein is subject to change without notice and is not warranted to be error-free. If you find any errors, please report them to us in writing.

If this is software or related documentation that is delivered to the U.S. Government or anyone licensing it on behalf of the U.S. Government, the following notice is applicable:

U.S. GOVERNMENT RIGHTS Programs, software, databases, and related documentation and technical data delivered to U.S. Government customers are "commercial computer software" or "commercial technical data" pursuant to the applicable Federal Acquisition Regulation and agency-specific supplemental regulations. As such, the use, duplication, disclosure, modification, and adaptation shall be subject to the restrictions and license terms set forth in the applicable Government contract, and, to the extent applicable by the terms of the Government contract, the additional rights set forth in FAR 52.227-19, Commercial Computer Software License (December 2007). Oracle America, Inc., 500 Oracle Parkway, Redwood City, CA 94065.

This software or hardware is developed for general use in a variety of information management applications. It is not developed or intended for use in any inherently dangerous applications, including applications that may create a risk of personal injury. If you use this software or hardware in dangerous applications, then you shall be responsible to take all appropriate fail-safe, backup, redundancy, and other measures to ensure its safe use. Oracle Corporation and its affiliates disclaim any liability for any damages caused by use of this software or hardware in dangerous applications.

Oracle and Java are registered trademarks of Oracle and/or its affiliates. Other names may be trademarks of their respective owners.

Intel and Intel Xeon are trademarks or registered trademarks of Intel Corporation. All SPARC trademarks are used under license and are trademarks or registered trademarks of SPARC International, Inc. AMD, Opteron, the AMD logo, and the AMD Opteron logo are trademarks or registered trademarks of Advanced Micro Devices. UNIX is a registered trademark of The Open Group.

This software or hardware and documentation may provide access to or information on content, products, and services from third parties. Oracle Corporation and its affiliates are not responsible for and expressly disclaim all warranties of any kind with respect to third-party content, products, and services. Oracle Corporation and its affiliates will not be responsible for any loss, costs, or damages incurred due to your access to or use of third-party content, products, or services.



CAUTION: Use only the Installation procedure included in the Upgrade Kit.

Before upgrading any system, please access Oracle's Tekelec Customer Support site and review any Technical Service Bulletins (TSBs) that relate to this upgrade.

Refer to the Customer Care Center section for instructions on accessing this site.

Contact Oracle's Tekelec Customer Care Center and inform them of your upgrade plans prior to beginning this or any upgrade procedure.

Phone: 1-888-367-8552 or 919-460-2150 (international)

FAX: 919-460-2126

TABLE OF CONTENTS

LIST OF FIGURES	4
1. INTRODUCTION	5
OVERVIEW	5
RELATED PUBLICATIONS	5
DOCUMENTATION AVAILABILITY, PACKAGING, AND UPDATES	6
DOCUMENTATION ADMONISHMENTS	6
CUSTOMER CARE CENTER.....	6
EMERGENCY RESPONSE.....	8
2. HARDWARE AND SOFTWARE REQUIREMENTS	10
3. SOFTWARE INSTALLATION	11
OVERVIEW	11
FTRA SOFTWARE INSTALLATION ON WINDOWS.....	12
FTRA SOFTWARE INSTALLATION ON UNIX.....	19
JAVA RUNTIME ENVIRONMENT INSTALLATION	20
WINDOWS FTRA RELEASE 4.X OR LATER UPGRADE	21
UNIX FTRA RELEASE 4.X OR LATER UPGRADE	22

List of Figures

Figure 1. Exploring the FTRA 4.X CD Using Windows Explorer.....	12
Figure 2 Exploring the FTRA 4.X Zip File Using Windows Explorer.....	12
Figure 3. Add or Remove Program Window	13
Figure 4. Selecting a Custom Installation	13
Figure 5. Creating New Folder for FTRA Installation.....	14
Figure 6. Rename New Folder to ftra	15
Figure 7. Copy the ftra_install.exe File	16
Figure 8. Extracting the FTRA Program Files Using the Command Prompt	16
Figure 9. Setting the Environment Variables.....	17
Figure 10. Creating a Shortcut to FTRA.....	18
Figure 11 Windows Upgrade Procedure from FTRA Release 4.x to FTRA Release 4.5	21

1. Introduction

Overview

Oracle Communications EAGLE FTP Table Base Retrieval (FTRA) was designed in conjunction with the FTP Retrieve and Replace feature to transfer EAGLE database tables using an FTP session to a remote server for offline processing. The FTRA is a stand-alone application that interfaces with one or more STP's. The FTRA can read database tables from the selected EAGLE using the EAGLE's retrieve commands. The EAGLE will convert the output of these retrieve commands into CSV (comma separated value) format files that FTRA ultimately collects. The FTRA also uses a local list of EAGLE commands: FTRA reads the contents of the commands file, validates the commands, and finally uses the command to collect data from the selected STP. FTRA also collects logs useful for event tracking and error message display.

The FTRA provides the following features through the use of a graphical user interface (GUI).

- STP Connection Configuration
- STP Connectivity Test
- FTP Server Configuration
- Retrieving the EAGLE database tables with the results converted to CSV files.
- Automated or manual retrieval of database tables from multiple STPs with the command line interface. The results are converted to CSV files.
- Validation of command files before being sent to the STP.
- Command file editing
- Viewing the log files for event tracking and error message display.

Related Publications

For information about additional publications that are related to this document, refer to the Related Publications document. The Related Publications document is published as a part of the Release Documentation.

User Guide Conventions

In order to clearly differentiate between references to objects, actions, literal entries, and user-supplied information, the following conventions are used in this user guide:

Menu selections and buttons are shown in bold, and the steps in a menu path are represented with ">". For example:

Select **Edit > STP Connection Configuration** from the menu.

The **Add** button is not enabled when the **STP Connection Configuration** menu opens.

Commands and entries that must be entered exactly as shown in this document are shown in the 10 point Courier bold font. For example:

Using a text editor (such as Notepad), add the following lines to the `AUTOEXEC.BAT` file:

```
SETFTRA_HOME="C:\ <download_directory>"  
SETJRE_HOME="C:\Program Files\Java\j2re1.4.0_01"
```

User-specific information is shown in italics and enclosed in “<>”. For example, the name of the folder you wish to use as the download directory in the previous example is shown as *<download_directory>*.

Documentation Availability, Packaging, and Updates




Documentation is provided with each system in accordance with contractual agreements. For General Availability (GA) releases, a complete EAGLE documentation set is published. For Limited Availability (LA) releases, a documentation subset may be published tailored to specific feature content or hardware requirements. Documentation Bulletins announce a new or updated release.

The electronic file of each manual is available from www.oracle.com. This site allows for 24-hour access to the most up-to-date documentation, including the latest versions of Feature Notices.

Documentation is updated when significant changes are made that affect system operation. Updates resulting from Severity 1 and 2 Problem Reports (PRs) are made to existing manuals. Other changes are included in the documentation for the next scheduled release. Updates are made by re-issuing an electronic file to the customer support site. Customers with printed documentation should contact their Sales Representative for an addendum. Occasionally, changes are communicated first with a Documentation Bulletin to provide customers with an advanced notice of the issue until officially released in the documentation. Documentation Bulletins are posted on the Customer Support site and can be viewed per product and release.

Documentation Admonishments

Admonishments are icons and text throughout this manual that alert the reader to assure personal safety, to minimize possible service interruptions, and to warn of the potential for equipment damage.

	DANGER: (This icon and text indicate the possibility of personal injury.)
	WARNING: (This icon and text indicate the possibility of equipment damage.)
	CAUTION: (This icon and text indicate the possibility of service interruption.)

Customer Care Center

Oracle’s Tekelec Customer Care Center is your initial point of contact for all product support needs. A representative takes your call or email, creates a Customer Service Request (CSR) and directs your requests to the Tekelec Technical Assistance Center (TAC). Each CSR includes an individual tracking number. Together with TAC Engineers, the representative will help you resolve your request.

The Customer Care Center is available 24 hours a day, 7 days a week, 365 days a year, and is linked to TAC Engineers around the globe.

Tekelec TAC Engineers are available to provide solutions to your technical questions and issues 7 days a week, 24 hours a day. After a CSR is issued, the TAC Engineer determines the classification of the trouble. If a critical problem exists, emergency procedures are initiated. If the problem is not critical, normal support procedures apply. A primary Technical Engineer is assigned to work on the CSR and provide a solution to the problem. The CSR is closed when the problem is resolved.

Tekelec Technical Assistance Centers are located around the globe in the following locations:

Tekelec - Global

Email (All Regions): support@tekelec.com

- **USA and Canada**

Phone:

1-888-FOR-TKLC or 1-888-367-8552 (toll-free, within continental USA and Canada)

1-919-460-2150 (outside continental USA and Canada)

TAC Regional Support Office Hours:

8:00 a.m. through 5:00 p.m. (GMT minus 5 hours), Monday through Friday, excluding holidays

- **Central and Latin America (CALA)**

Phone:

USA access code +1-800-658-5454, then 1-888-FOR-TKLC or 1-888-367-8552 (toll-free)

TAC Regional Support Office Hours (except Brazil):

10:00 a.m. through 7:00 p.m. (GMT minus 6 hours), Monday through Friday, excluding holidays

- **Argentina**

Phone:

0-800-555-5246 (toll-free)

- **Brazil**

Phone:

0-800-891-4341 (toll-free)

TAC Regional Support Office Hours:

8:30 a.m. through 6:30 p.m. (GMT minus 3 hours), Monday through Friday, excluding holidays

- **Chile**

Phone:

1230-020-555-5468

- **Colombia**

Phone:

01-800-912-0537

- **Dominican Republic**

Phone:

1-888-367-8552

- **Mexico**

Phone:

001-888-367-8552

- **Peru**

Phone:

0800-53-087

- **Puerto Rico**

Phone:

1-888-367-8552 (1-888-FOR-TKLC)

- **Venezuela**

Phone:

0800-176-6497

- **Europe, Middle East, and Africa**

Regional Office Hours:

8:30 a.m. through 5:00 p.m. (GMT), Monday through Friday, excluding holidays

- **Signaling**

Phone:

+44 1784 467 804 (within UK)

- **Software Solutions**

Phone:

+33 3 89 33 54 00

- **Asia**

- **India**

Phone:

+91 124 436 8552 or +91 124 436 8553

TAC Regional Support Office Hours:

10:00 a.m. through 7:00 p.m. (GMT plus 5 1/2 hours), Monday through Saturday, excluding holidays

- **Singapore**

Phone:

+65 6796 2288

TAC Regional Support Office Hours:

9:00 a.m. through 6:00 p.m. (GMT plus 8 hours), Monday through Friday, excluding holidays

Emergency Response

In the event of a critical service situation, emergency response is offered by Oracle's Tekelec Customer Care Center 24 hours a day, 7 days a week. The emergency response provides immediate coverage, automatic escalation, and other features to ensure that the critical situation is resolved as rapidly as possible.

A critical situation is defined as a problem with an EAGLE that severely affects service, traffic, or maintenance capabilities, and requires immediate corrective action. Critical problems affect service and/or system operation resulting in:

- A total system failure that results in loss of all transaction processing capability
- Significant reduction in system capacity or traffic handling capability
- Loss of the system's ability to perform automatic system reconfiguration
- Inability to restart a processor or the system
- Corruption of system databases that requires service affecting corrective actions
- Loss of access for maintenance or recovery operations
- Loss of the system ability to provide any required critical or major trouble notification

Any other problem severely affecting service, capacity/traffic, billing, and maintenance capabilities may be defined as critical by prior discussion and agreement with Oracle's Tekelec Customer Care Center.

2. Hardware and Software Requirements

To run the offline application, a workstation on a Windows or UNIX platform is required.

The Windows workstation requires that the following hardware and software is installed.

- Windows® 2000/XP¹, Windows 7 Professional, or Windows Server 2008 R2
- Note: Windows 98 and Windows NT support is discontinued.²
- CPU: Pentium III 750MHz or faster
- RAM – Minimum 128 MB
- Disk Space – Minimum 500 MB + 500 MB per STP
- CD-ROM drive
- 10/100BaseT Ethernet connection to the LAN
- Static IP addressing
- Java™ Runtime Environment (JRE) 1.7³

The UNIX workstation requires that the following hardware and software is installed.

- Solaris 10 SPARC
- Processor speed - 500 MHz or faster
- RAM - Minimum 512 MB
- Disk Space - Minimum 500 MB + 500 MB per STP
- CD-ROM drive
- 10/100BaseT Ethernet connection to the LAN
- Static IP addressing
- Java™ Runtime Environment (JRE) 1.7³

¹ Windows is a registered trademark of Microsoft Corporation in the United States of America and/or other countries.

² Windows Vista is not supported.

³ Java and all Java-based marks are trademarks or registered trademarks of Sun Microsystems, Inc. in the United States of America and other countries. FTRA and Java are separate products, but FTRA requires Java to operate.

3. Software Installation

Overview

The installation and upgrading of the FTRA can be done locally or remotely thru a LAN. Since FTRA is a Java™ based application, it requires the Java™ Runtime Environment to be installed on your machine. The installation and upgrading of the FTRA can be accomplished in 5-10 minutes if the Java™ Runtime Environment had been previously installed and 30-90 minutes (depending upon the download speed of your internet connection if you are downloading the Java™ Runtime Environment software from Sun Microsystem's web site) if it has not been previously installed. The FTRA will not provide service during this time. If the FTRA is being upgraded, it will not be necessary to recreate directories or environment variables that already exist.

If the FTRA software is being installed for the first time, perform one of these procedures:

[FTRA Software Installation on Windows](#)

[FTRA Software Installation on Unix](#)

If the FTRA software is being upgraded to FTRA 4.5, perform one of these procedures:

[Windows FTRA Release 4.x or Later Upgrade](#)

[Unix FTRA Release 4.x or Later Upgrade](#)

Installation of the FTRA software can do done in one of two ways: if the release is 4.4 or earlier, an FTRA CD may be provided for installation; for 4.5 and subsequent releases, the FTRA software will be distributed via a downloaded zip file obtained from www.oracle.com.

FTRA Software Installation on Windows

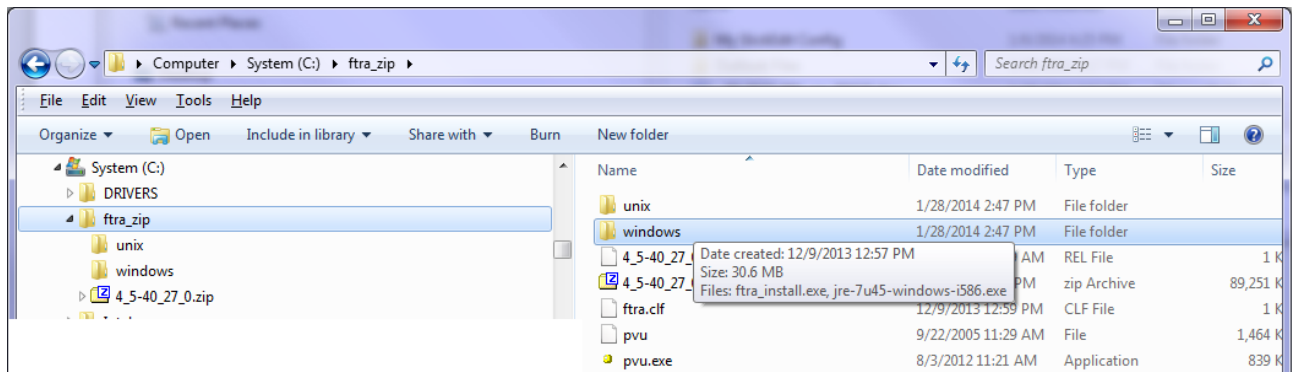
1. If you are installing FTRA using an FTRA CD, place the FTRA CD in the CD-ROM drive.
 - a. To see the contents of the FTRA CD, double click on **My Computer** icon on the Desktop of your computer. That action will open the Windows Explorer.
 - b. Click on the **Folders** tab at the top of the Windows Explorer menu and it will display the drives in your system.
 - c. Select the CD Drive by clicking on it and it will display the contents of the CD as shown in Figure 1.

Figure 1. Exploring the FTRA 4.X CD Using Windows Explorer.



2. Follow the steps below if the FTRA Software will be installed from a downloaded FTRA zip file.
 - a. Create a new folder to copy and unzip the FTRA zip file into it:
 - i. Select the C: drive.
 - ii. Right click and select **New -> Folder** as shown in Figure 2, and rename it ftra_zip.
 - b. Copy the downloaded FTRA zip file to the ftra_zip folder, and
 - c. Unzip the file to that same directory.

Figure 2 Exploring the FTRA 4.X Zip File Using Windows Explorer.



Proceed to Step 3 to install the Java Runtime Environment.

3. Install the Java™ 2 Runtime Environment, Standard Edition from the CD or fra_zip directory:

You may not need to install the Java™ 2 Runtime Environment, Standard Edition Version 1.7 if it is already installed on your machine. Perform the following steps to verify the existing Java installation.

- a. Go to **Start Menu->Settings->Control Panel ->Add or Remove Programs**. That action will display all the programs that are installed on your computer.
- b. Verify the Java version installed:
 - i. If the Java™ 2 Runtime Environment, Standard Edition Version 1.7 is already installed on your computer (as shown in Figure 3), go to Step 5.
 - ii. If the Java™ 2 Runtime Environment Standard Edition Version 1.7 software is not installed on your computer, go to Step 4.

Figure 3. Add or Remove Program Window

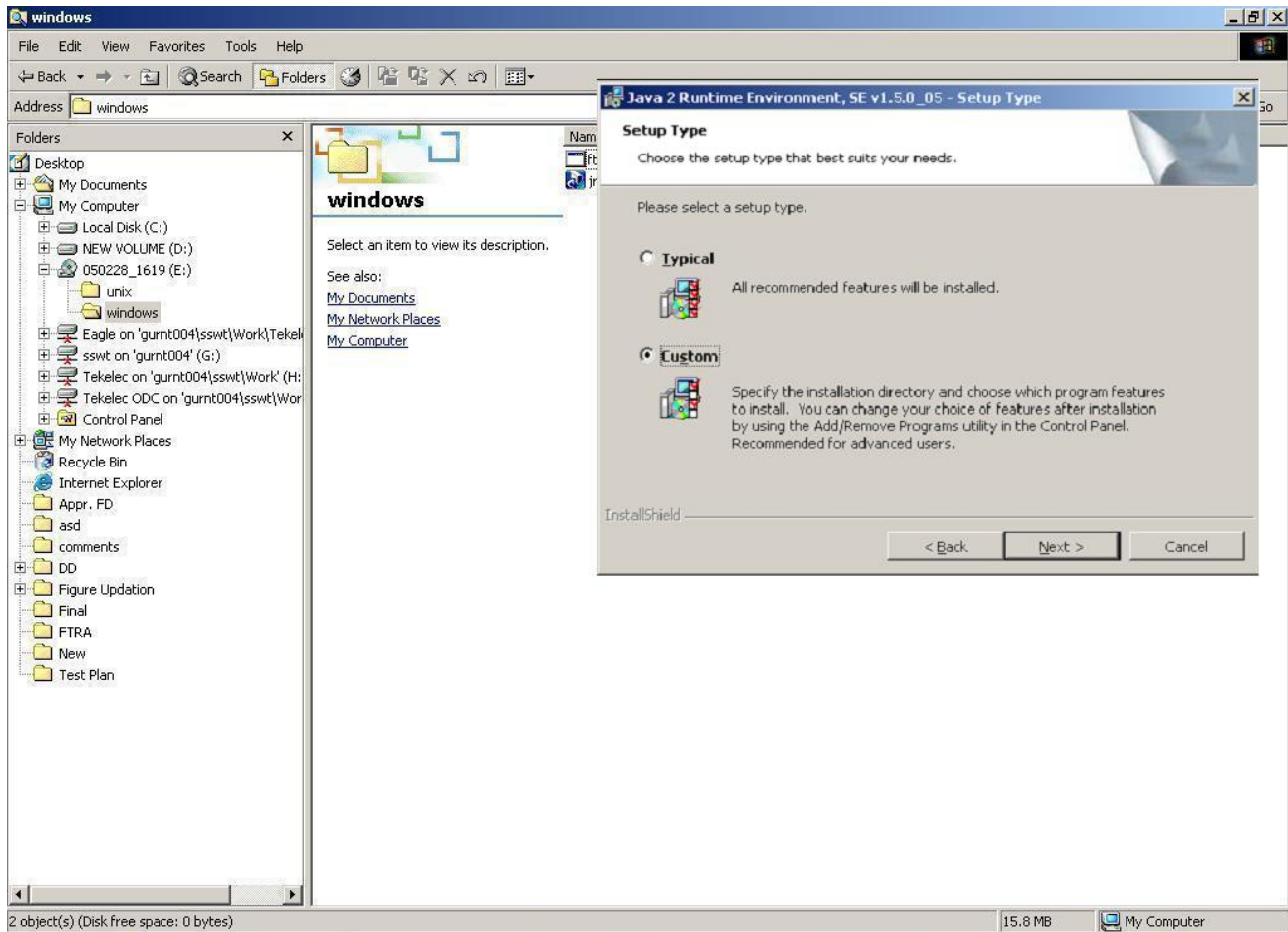


4. Install the Java™ 2 Runtime Environment software on your computer by performing these steps.

- a. Select the CD Drive on your computer or select the fra_zip directory.
- b. Select the Windows folder by double clicking on it. The executable files required for the FTRA installation are displayed.
- c. Double-click on the Java™ 2 Runtime Environment, Standard Edition installable icon in the Windows folder. The InstallShield Wizard opens.
 - i. For JRE 1.7, click on jre-7u45-windows-i586.exe.
- d. Follow the InstallShield Wizard instructions. Click the **Yes/ Next** buttons in the InstallShield Wizard to proceed with the installation procedure.
- e. The InstallShield wizard will ask you to choose the destination location for the installation of the Java™ 2 Runtime Environment, Standard Edition only when custom installation is selected. You may change it by clicking on the **Change** button, or you may use the default path given by the wizard. You need to remember this path, as the path will be required in Step 8.

Figure 4. Selecting a Custom Installation

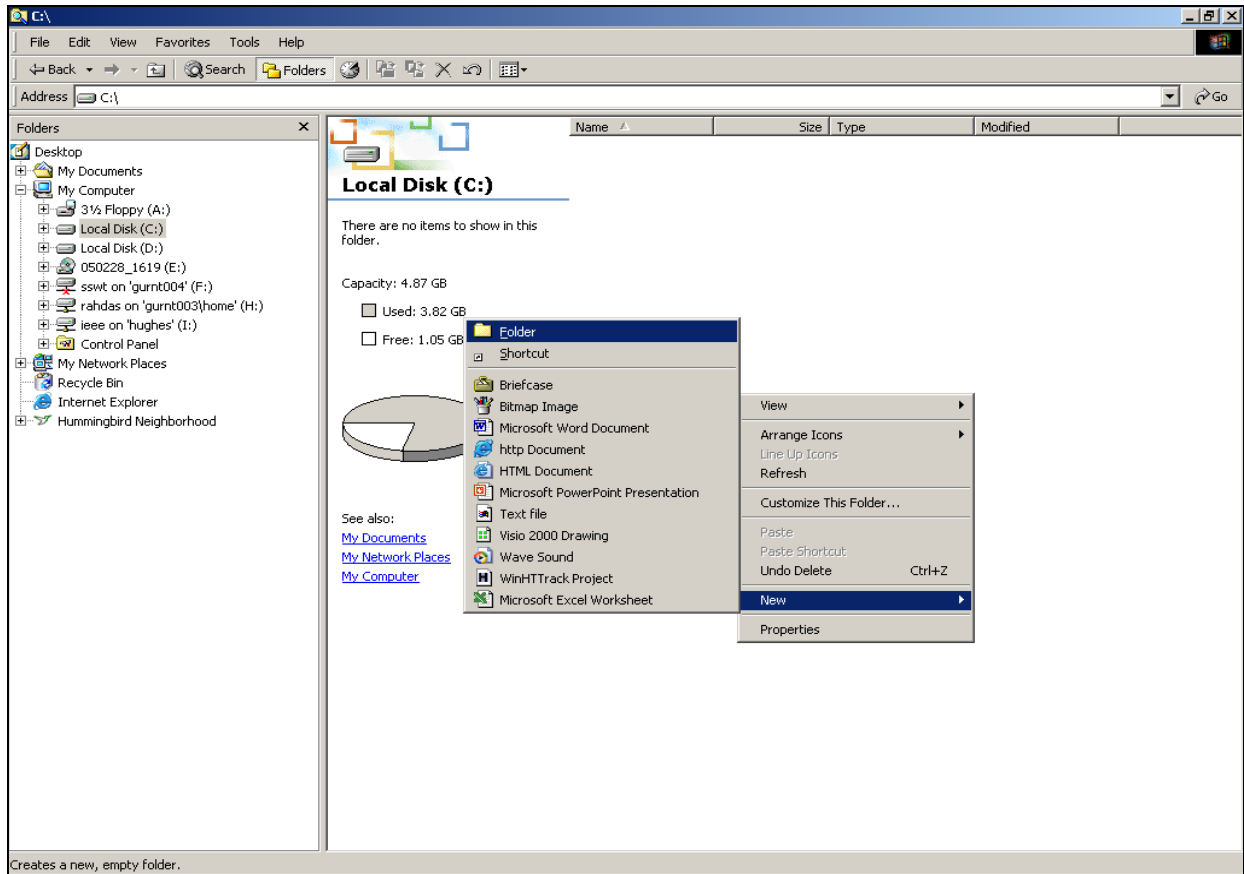
EAGLE FTP Table Base Retrieval (FTRA)
Software Installation Instructions



5. Create a folder on your computer for installing the FTRA package (the <base_directory>), for example, C:/ftra.
The new folder can be created on any drive on your computer. Perform these steps to create the folder. For this example, a new folder named *ftra* is created on the C: Drive.
 - a. Select the C: Drive from Windows Explorer.
 - b. Right click and select **New>Folder** as shown in Figure 5. This will create a folder with the name **New Folder**.

Figure 5. Creating New Folder for FTRA Installation

EAGLE FTP Table Base Retrieval (FTRA)
Software Installation Instructions



c. Rename this folder to *ftra* as shown in Figure 6.

Figure 6. Rename New Folder to ftra

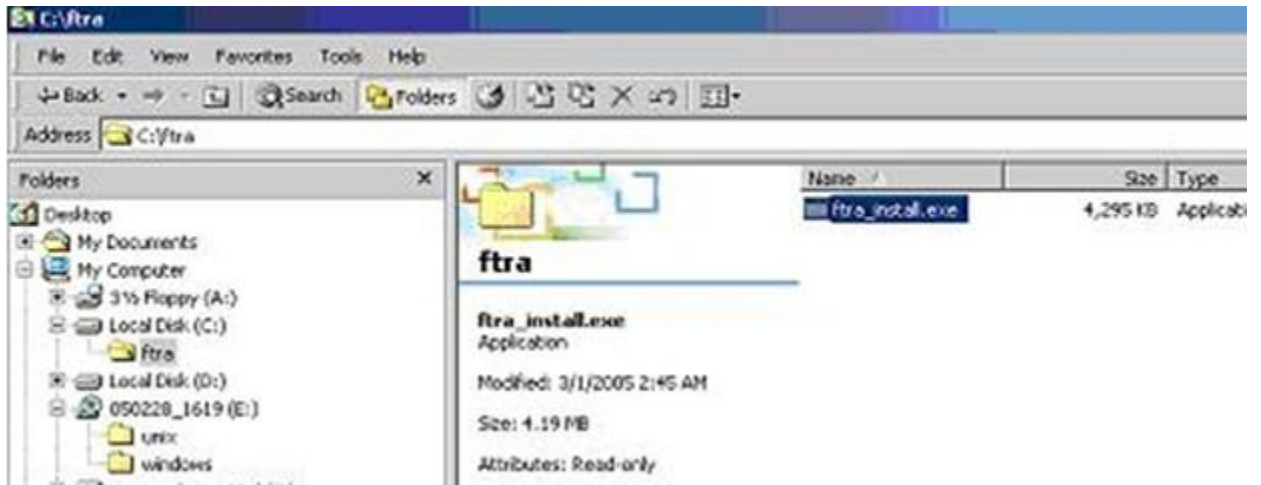


Note: If you are upgrading FTRA and a previous installation of the software exists inside the *ftra* folder, choose a different name for your *<base_directory>* or else choose to remove or rename your previous FTRA installation.

6. Copy *ftra_install.exe* file from the FTRA CD or the *ftra_zip* directory to the *<base_directory>* by performing these steps.
 - a. In Windows Explorer, select the CD Drive or the *ftra_zip* folder on your machine and go to the Windows folder.

- b. Copy the *ftra_install.exe* file from the Windows folder to the *<base_directory>* directory as shown in Figure 7.

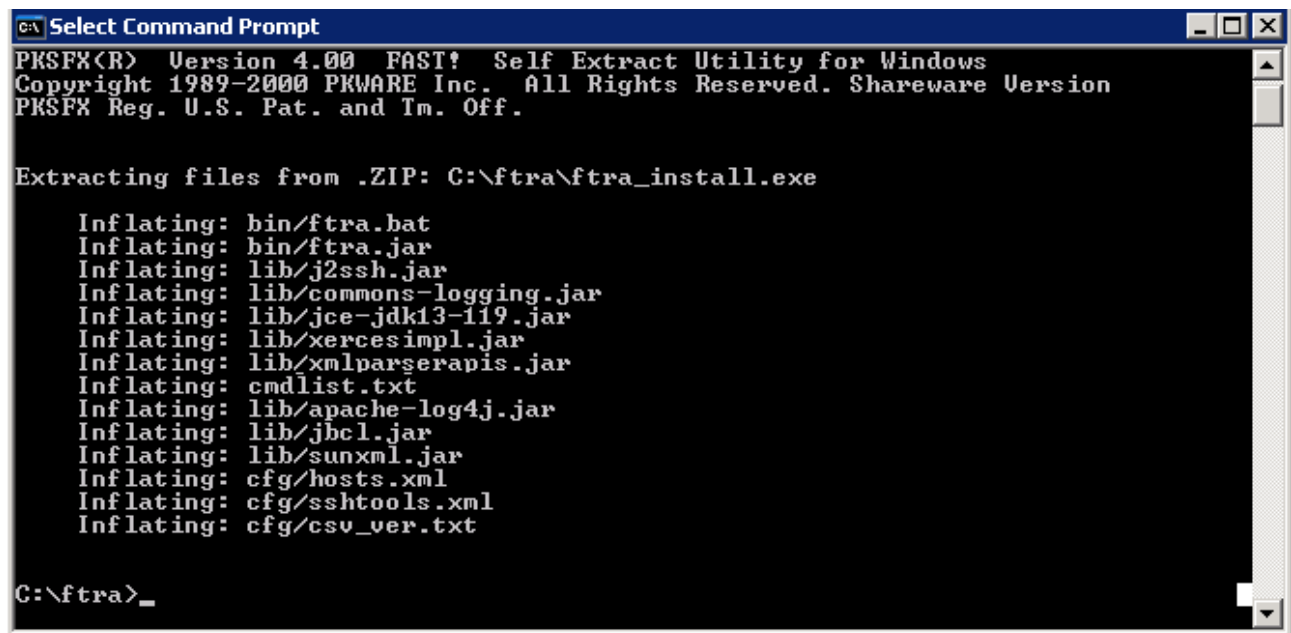
Figure 7. Copy the ftra_install.exe File



a.

7. Extract the FTRA files using only the Command Prompt. Do not use a Windows Explorer window to extract the FTRA program files.
 - a. Open the Windows command prompt.
 - b. Change directory to the FTRA *<base_directory>*.
 - c. Enter the *ftra_install.exe -d* command as shown in Figure 8. This will extract the FTRA program files in *<base_directory>*.

Figure 8. Extracting the FTRA Program Files Using the Command Prompt

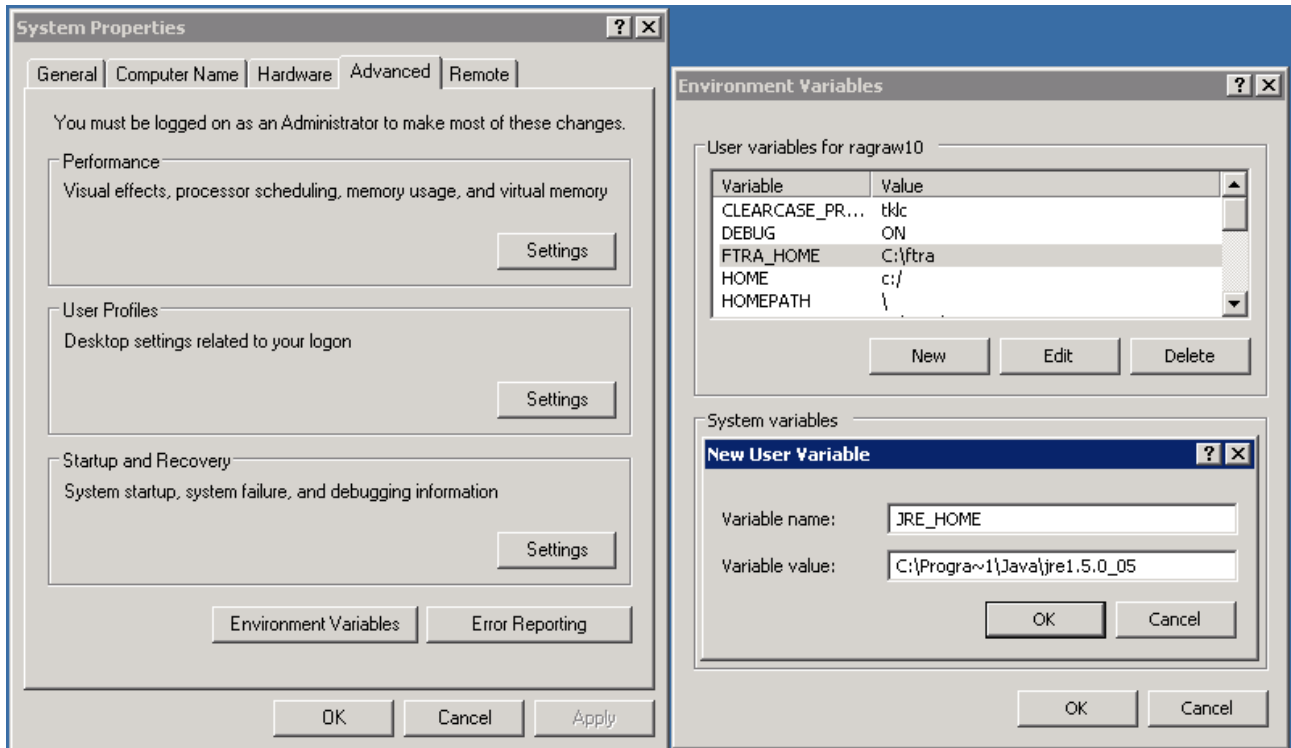


8. Set the system/user environment variables *FTRA_HOME* & *JRE_HOME*.
 - a. Right-click the **My Computer** icon on the desktop and select **Properties**.
 - b. In the **Advanced** tab, click **Environment Variables** and then click **New** as shown in Figure 9.
 - c. Under *User variables*, enter the following variable names and their values.

FTRA_HOME = C:\ <base_directory created for FTRA> (typically C:\ftra)

JRE_HOME = C:\Program Files\Java\<jre path> (typically, the folder where Java is installed, and the Java path information recorded in Step 3).

Figure 9. Setting the Environment Variables



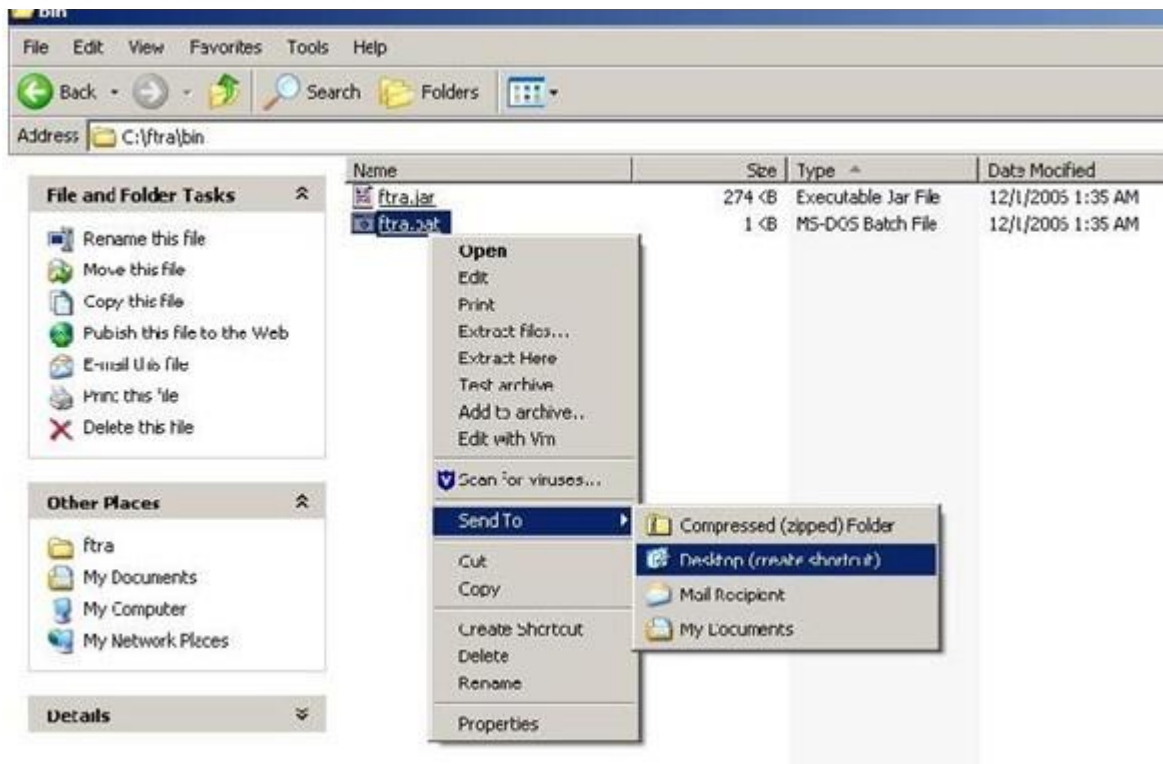
Note: If the directory name has spaces or is over eight characters long, the DOS short name may be required to define the environment variable. For example, using the *JRE_HOME* environment variable above, the user would define the variable as “C:\Progra~1\Java\<jre path>” (without the quotes) with maximum of eight characters for the directory name.

9. Create an FTRA shortcut on your desktop:
 - a. Using Windows Explorer, open the <base_directory>/bin folder.
 - b. Right click on the *ftra.bat* file and then select *Send To->Desktop (Create Shortcut)* as shown below in Figure 10. This will create the shortcut to FTRA on the desktop.

Note: For a new installation of FTRA Release 4.x, the bin folder will contain the *ftra.jar* and *ftra.bat* files only as shown in Figure 10.

Note: On multi-user systems, the shortcut should be placed in the Default User or in All Users desktop folder in order to make it available to all users.

Figure 10. Creating a Shortcut to FTRA



FTRA Software Installation on Unix

1. Place the FTRA CD in the CD-ROM drive if the software will be installed from a CD; or if the FTRA software was delivered (downloaded) as a zip file, create a temporary directory and copy the downloaded FTRA zip file to it. Unzip the contents into that temporary directory.
2. Check whether Java is already installed in your computer. Check the version of the Java 2 Runtime Environment installed by using the command **java -version**.

If the Java 2 Runtime Environment Standard Edition Version 1.7 is already installed in your computer, go to Step 4.

3. To install the Java 2 Runtime Environment, Standard Edition from the CD, open **FileManager** and go to the CDROM drive. Follow the instructions in the [Java™ Runtime Environment Installation](#) procedure to install the Java 2 Runtime Environment Standard Edition Version 1.7.
4. Create an *<install_directory>* to install the FTRA software into. The preferred location where to install the FTRA software is *<HOME_DIRECTORY>/ftra*, but you may place it wherever you would prefer. Open **FileManager** and go to the preferred location. From **FileManager**, select **File > New Folder** and rename it **ftra**. Copy the file *ftra_install.tar* from the FTRA CD or the temporary zip location to the new *<install_directory>* (for example, *<HOME_DIRECTORY>/ftra*).

Note: You can identify the HOME_DIRECTORY with the command “echo \$HOME_DIRECTORY”.

5. Extract the FTRA file(s) from the new *<install_directory>*. (For example, *<HOME_DIRECTORY>/ftra*).

From **FileManager**, right-click on the *ftra_install.tar* file and select **Archive Unpack**. That action will extract the program files into a new */bin* subdirectory.

Note: The Archive Unpack function is only available when using the CDE (Common Desktop Environment) X-window File Manager. If you are not using the CDE, the Unix tar -xvzf ftra_install.tar command to extract the contents of ftra_install.tar should be used. Please refer to the man pages for more information about the tar command.

6. To display the environment settings use the following commands:

```
echo $FTRA_HOME
```

```
echo $JRE_HOME
```

An example of the possible output is:

```
echo $FTRA_HOME:
```

```
<ftra_install_directory> (for example, <HOME_DIRECTORY>/ftra)
```

```
echo $JRE_HOME:
```

```
<jre_install_directory> (for example, /usr/java)
```

Note: For NetBoss, the example of the output would be:

```
harristest[netboss]/opt/home/netboss% echo $FTRA_HOME
```

```
/usr/ftra/
```

```
harristest[netboss]/opt/home/netboss% echo $JRE_HOME
```

```
/usr/java/
```

If FTRA_HOME is already set to <HOME_DIRECTORY>/ftra and JRE_HOME is set to <jre_install_directory>, go to step 7.

7. Set the required environment variables by using `setenv` command from the shell prompt:

```
setenv FTRA_HOME '<ftra_install_directory>' (for example, <HOME_DIRECTORY>/ftra)
```

```
setenv JRE_HOME '<jre_install_directory>'
```

If a user wants these environment variables to be set each time the user logs in, then add these lines to the user's `.cshrc` file.

For Netboss, set the required environment variables in the user's `.cshrc` file by editing the file using some editor like 'vi':

```
setenv FTRA_HOME "$ (anmdr) /local/stp/ftra"
```

```
setenv JRE_HOME "/usr/java"
```

Note: Use the `ls -al` command to view the hidden file `.cshrc` and the `'man vi'` command to display help for the vi editor.

8. Change to the FTRA bin directory to run FTRA. (for example, `<cd/ftra/bin>`)

Run FTRA by entering this command. `./ftra`

Note: Verify that the `ftra` file is executable. Otherwise, use `chmod 555 ftra` command to change the permissions on this file.

Java Runtime Environment Installation

The Java Runtime Environment (JRE) can be installed from the FTRA CD or from the web site <http://java.sun.com/products/archive> and follow the product installation instructions.

JRE 1.7 installation

Following are the installation steps for JRE 1.7.

1. Log on as root.
2. Go to the Java installation directory:
Shell> `cd /usr`
3. Copy the Java distribution from the FTRA CD or `ftra_zip` directory:
Shell> `cp <path to FTRA CD>/jre-7u45-solaris-sparc.tar.gz .`
4. Untar the JRE tar file:
Shell> `tar -zxvf jre-7u45-solaris-sparc.tar.gz`
This will create a directory called `jre1.7.0_45`.
5. Make a symbolic link to this directory called `/usr/java`:
If a Java™ link already exists in the directory, remove the existing link first.
(Check for link using `ls -l`, remove with `rm java`)
Shell> `ln -s jre1.7.0_45 java`

Windows FTRA Release 4.x or Later Upgrade

1. Place the FTRA CD in the CD-ROM drive; or if the FTRA software is being delivered via the downloaded zip file, create a temporary directory to copy the downloaded FTRA zip file. Unzip the contents into that temporary directory.
2. From Windows Explorer, copy the `ftra_install.exe` file from the `FTRA_CD` or from the temporary zip location to the existing `<base_directory>` directory (see step 4 of the [FTRA Software Installation on Windows](#), procedure for details about the `<base_directory>`).
3. Extract the FTRA file(s) to the existing `<base_directory>`, using the Command Prompt only. Do not use a Windows Explorer window for the extraction.

From Windows command line, enter the `ftra_install.exe -d` command. This will create the sub-directories and extract the program files into the existing `<base_directory>`.

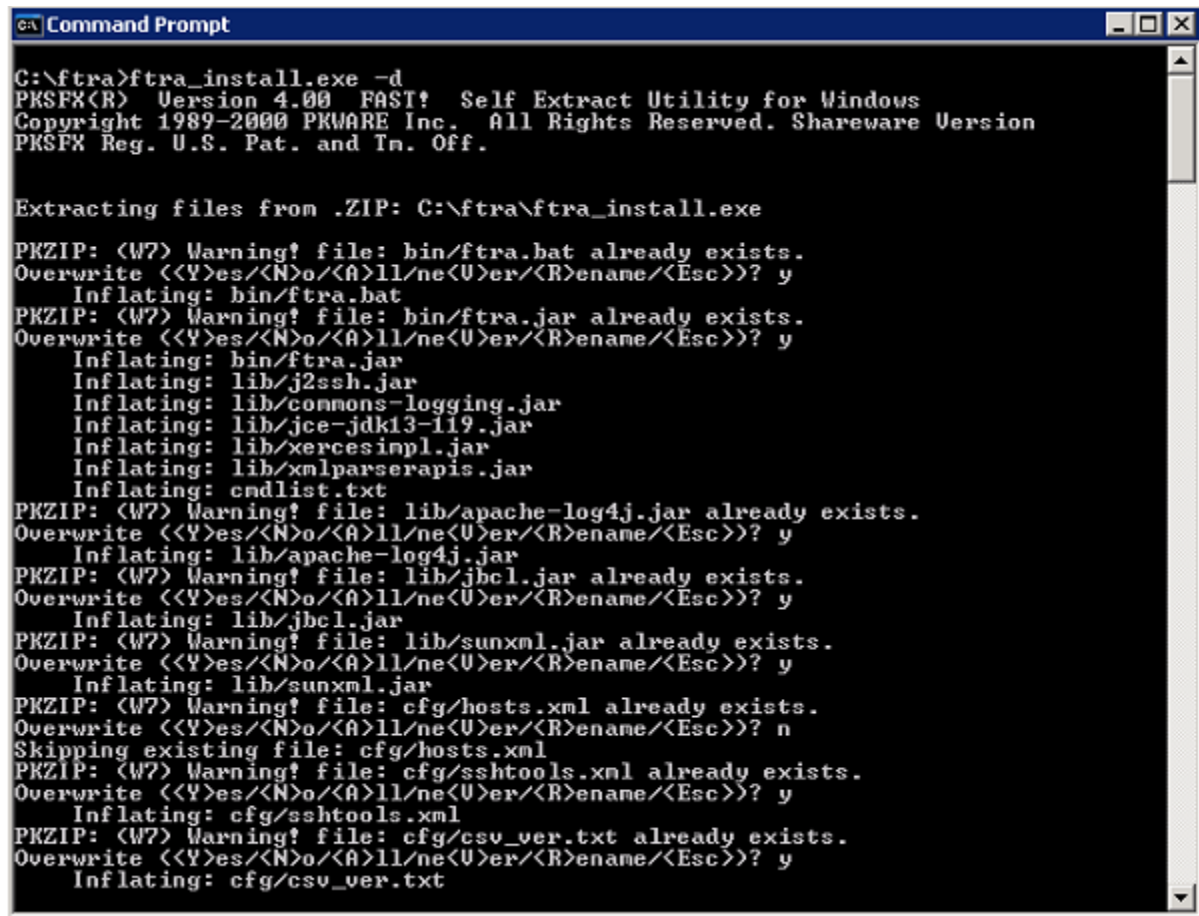
Note: Answer “yes”, when asked to overwrite an existing file. Follow the below recommendations when asked about overwriting of hosts.xml -

- **For FTRA release 4.x till 4.4** - If some host entries were previously provisioned in `hosts.xml` file that need to be retained, answer “no” when asked to overwrite `eh hosts.xml` file. Figure 11 shows the selection of “no” option for `hosts.xml` file.
- **For FTRA release 4.5** – It is mandatory to answer “yes” when asked to overwrite `hosts.xml` file.

FTRA Release 4.x or later has been installed.

4. Start the FTRA software. See the “FTRA Initialization” section in the FTP-Based Table Retrieve Application (FTRA) User Guide for more information on starting the FTRA software. The existing FTRA STP Connection Configuration data will automatically be converted during the FTRA system initialization.

Figure 11 Windows Upgrade Procedure from FTRA Release 4.x to FTRA Release 4.5



```
ca Command Prompt
C:\ftra>ftra_install.exe -d
PKSPFX(R) Version 4.00 FAST! Self Extract Utility for Windows
Copyright 1989-2000 PKWARE Inc. All Rights Reserved. Shareware Version
PKSPFX Reg. U.S. Pat. and Tm. Off.

Extracting files from .ZIP: C:\ftra\ftra_install.exe

PKZIP: (W7) Warning! file: bin/ftra.bat already exists.
Overwrite <<Y>es/<N>o/<A>ll/ne<U>er/<R>ename/<Esc>>? y
Inflating: bin/ftra.bat
PKZIP: (W7) Warning! file: bin/ftra.jar already exists.
Overwrite <<Y>es/<N>o/<A>ll/ne<U>er/<R>ename/<Esc>>? y
Inflating: bin/ftra.jar
Inflating: lib/j2ssh.jar
Inflating: lib/commons-logging.jar
Inflating: lib/jce-jdk13-119.jar
Inflating: lib/xercesimpl.jar
Inflating: lib/xmlparserapis.jar
Inflating: cmdlist.txt
PKZIP: (W7) Warning! file: lib/apache-log4j.jar already exists.
Overwrite <<Y>es/<N>o/<A>ll/ne<U>er/<R>ename/<Esc>>? y
Inflating: lib/apache-log4j.jar
PKZIP: (W7) Warning! file: lib/jbcl.jar already exists.
Overwrite <<Y>es/<N>o/<A>ll/ne<U>er/<R>ename/<Esc>>? y
Inflating: lib/jbcl.jar
PKZIP: (W7) Warning! file: lib/sunxml.jar already exists.
Overwrite <<Y>es/<N>o/<A>ll/ne<U>er/<R>ename/<Esc>>? y
Inflating: lib/sunxml.jar
PKZIP: (W7) Warning! file: cfg/hosts.xml already exists.
Overwrite <<Y>es/<N>o/<A>ll/ne<U>er/<R>ename/<Esc>>? n
Skipping existing file: cfg/hosts.xml
PKZIP: (W7) Warning! file: cfg/sshtools.xml already exists.
Overwrite <<Y>es/<N>o/<A>ll/ne<U>er/<R>ename/<Esc>>? y
Inflating: cfg/sshtools.xml
PKZIP: (W7) Warning! file: cfg/csv_ver.txt already exists.
Overwrite <<Y>es/<N>o/<A>ll/ne<U>er/<R>ename/<Esc>>? y
Inflating: cfg/csv_ver.txt
```

Unix FTRA Release 4.x or Later Upgrade

1. Place the FTRA CD in the CD-ROM drive or if the FTRA software is being delivered via the downloaded zip file, create a temporary directory to copy the downloaded FTRA zip file. Unzip the contents into that temporary directory.
2. From **FileManager**, copy the `ftra_install.tar` file to the existing `<install_directory>` directory (see step 4 of the [FTRA Software Installation on Unix](#) procedure for details about the `<install_directory>`).
3. From **FileManager**, right-click on the `ftra_install.tar` file that was copied from the FTRA CD/temporary unzip directory. Do not right-click on the `ftra_install.tar` file on the FTRA CD or in the files in the temporary unzip directory. Select **Archive Unpack**. The program files will be extracted into the existing directory containing the FTRA software.

Note: The Archive Unpack function is only available when using the CDE (Common Desktop Environment) X-window File Manager. If the CDE is not being used, the Unix tar command should be used to extract the program files. Please refer to the man pages for the tar command for more information about using the tar command.

If installing from the command prompt, the `tar -xvfw ftra_install.tar` command is used to extract the contents of `ftra_install.tar`. The user may choose to enter 'y' or 'n' at the command prompt to overwrite or not to overwrite files, while the files are being extracted from the `ftra_install.tar` file. For FTRA release 4.x till 4.4, care has to be taken if the entries in `hosts.xml` file need to be saved as given below -

- For FTRA release 4.x till 4.4

To retain the `hosts.xml` file, which may contain some provisioned host entries, make a backup of the file before overwriting, using the command:

```
mv hosts.xml hosts_backup.xml
```

To restore the original `hosts.xml` file, use the command:

```
cp hosts_backup.xml hosts.xml
```

- **For FTRA release 4.5**

It is mandatory to overwrite the `hosts.xml` file.

When the extraction of the FTRA program files has completed, the FTRA 4.x software has been installed.

4. Start the FTRA software. See the “FTRA Initialization” section in the FTP-Based Table Retrieve Application (FTRA) User Guide for more information on starting the FTRA software. The existing FTRA STP Connection Configuration data will automatically be converted during the FTRA system initialization.