

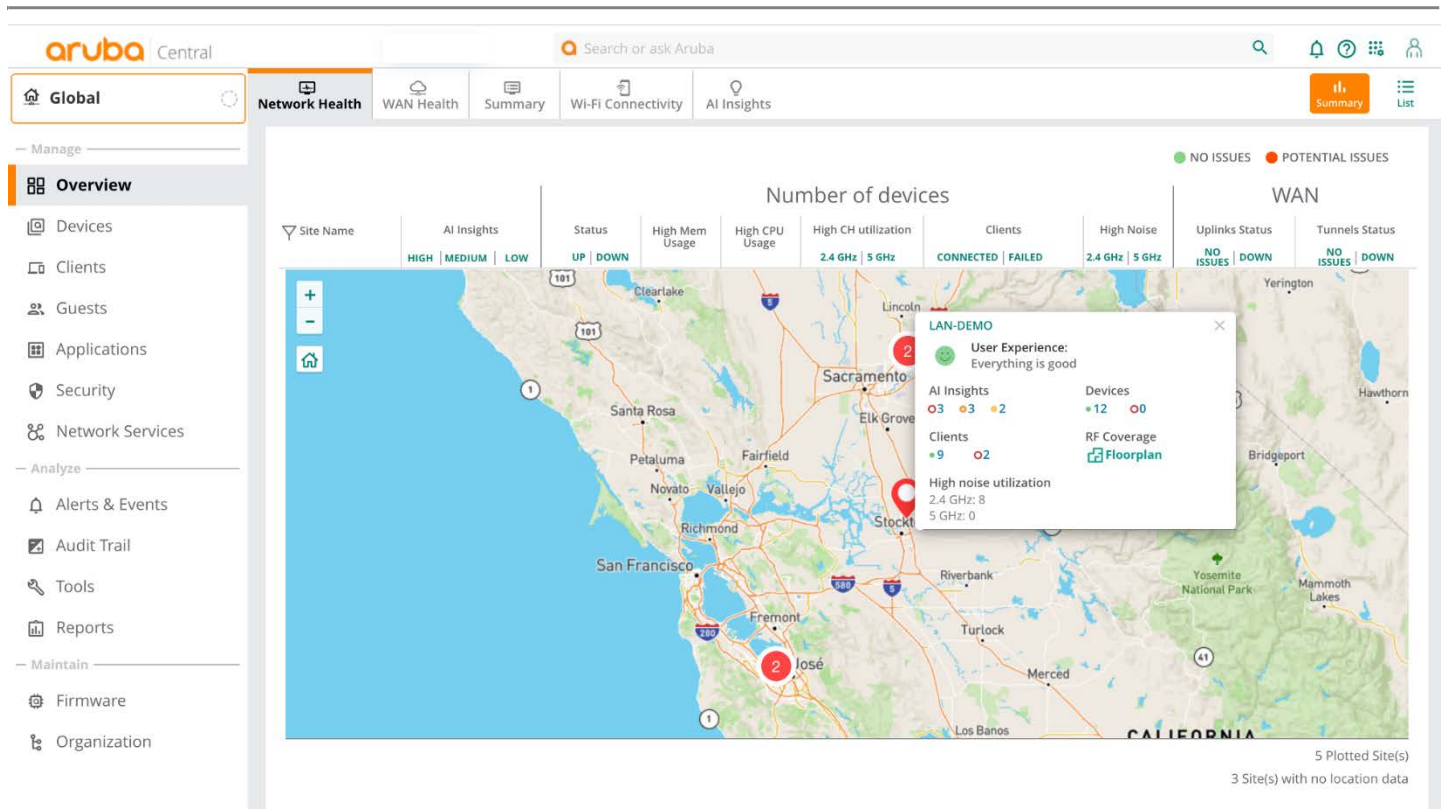
Overview

Aruba Central Software

Aruba Central is a powerful cloud networking solution that offers unmatched simplicity for today's networks. As the management and orchestration console for Aruba ESP (Edge Services Platform), Aruba Central provides a single pane of glass for overseeing every aspect of wired and wireless LANs, WANs, and VPNs across campus, branch, and remote office locations.

AI-powered analytics, end-to-end orchestration and automation, and advanced security features are built natively into the solution. Live upgrades, robust reporting, and live chat support are also included, bringing more efficiency to day-to-day maintenance activities.

Built on a cloud-native, microservices architecture, Aruba Central delivers on enterprise requirements for scale and resiliency, but is also driven by intuitive workflows and dashboards that make it a perfect fit for SMBs with limited IT personnel. So whether you have one business location or several hundred, IT can spend less time on managing network infrastructure and more time on creating value for the business.



Aruba Central Software

Overview

Key Features

- Unified management of wireless, wired, VPN, and SD-WAN for simplified operations
 - AI-based insights for faster troubleshooting and continuous network optimization
 - Integration with Aruba UXI to proactively monitor and improve the end-user experience
 - Advanced IPS/IDS threat defense management
 - Contact tracing and location tracing to ensure workplace safety
 - APIs and webhooks for ease of integration with other leading IT platforms
 - Live Chat and an AI-based search engine for an enhanced support experience
 - SaaS, on-premises, and managed service options for flexible consumption and financing
-



Standard Features

Streamlined Network Operations

Aruba Central eliminates the inefficiency of using disjointed, domain-specific network management tools. It begins with a network health summary dashboard that provides quick insights to analyze and improve the network—whether it be the wired or wireless LAN, or performance across the WAN.

From this single dashboard, IT operators can readily assess the state of the network with views into global and site-level details. Selecting a site changes the interface to only show network devices and connected clients specific to that location. This way, IT operators can swiftly identify potential problems, as well as zero-in on specific locations that require their immediate attention.

Simplified Onboarding and Provisioning

Onboarding, configuring, and provisioning network devices is a key activity in any environment, but can be time-consuming and complex. Aruba Central accelerates this process with an easy setup wizard, flexible configuration options, and zero touch provisioning, further aided by an intuitive mobile installer app

Guided Setup Wizard

The setup wizard automatically adds account subscriptions, synchronizes device inventory from orders, and assigns purchased licenses to devices.

This saves time, improves accuracy, and makes it easier to onboard devices into your environment.

Flexible Config Options

To simplify device configurations, Aruba Central uses templates and a UI option that features guided, step-by-step workflows. For devices with common configuration requirements, network admins can use groups to instantly apply or modify settings across large sets of devices.

Additional options are available for Aruba CX switches, including pre-built express configs that enable network-wide changes with only a few prompt-driven inputs. A multi-editor is also available for more advanced configurations. Both options offer built-in device validation, giving network admins the ability to rapidly stage, test, and roll-out changes while ensuring common criteria and existing policies are met.

Zero Touch Provisioning

Zero touch provisioning provides a simple, intuitive workflow for setting up APs, switches, and gateways – no onsite IT involvement required. Configuration parameters can be defined within Aruba Central based on network- or site-specific requirements. To get started, simply plug in and power on a device. As the device boots up, it connects to Aruba Central and automatically receives its running configuration from the cloud.

Mobile Installer App

The mobile installer app allows you to delegate the installation and deployment of devices to trusted resources or third-party service providers. The app lets you define the access privileges of each IT resource and track the onboarding process as devices are scanned and added to the assigned network. The zero touch provisioning process is then used, and the status of each device is instantly updated in the Aruba Central installer dashboard.

Supported network devices

Aruba Central provides management for a wide range of Aruba wireless APs, switches, and gateways (formerly known as controllers). For wireless networks, Aruba Central supports deployments both with and without gateways.

[Review the full list of supported devices here.](#)



Standard Features

AI-Powered Monitoring and Troubleshooting

When a network- or business-impacting problem occurs, quick detection, root cause identification, and resolution are at the core of maintaining a stable environment. Aruba Central enables 24x7, intelligent monitoring of networks, applications, client devices, and end-user experience, all correlated into powerful visualizations and dashboards.

AIOps for Wireless, Wired, And WAN

Aruba Central includes a full-service AIOps solution that automates common troubleshooting activities, reducing IT support tickets and associated costs. Aruba's AIOps solution is based on machine learning models that are consistently trained with network performance data collected from tens of thousands of Aruba customers across every vertical, market segment, and network type.

Core components of the AIOps solution include:

- **AI Insights:** Automatically surface and diagnose an array of common network-impacting issues by using dynamic, per-site baselines that are continuously tuned as conditions change – no manual setup or adjustment of service level thresholds required. Built-in anomaly detection highlights the severity and impact of issues as they occur, helping IT pinpoint root cause and proper remediation steps with 95% accuracy.
- **AI Search:** A natural language processing (NLP) engine of the Aruba Central data lake that points to solution guides, troubleshooting tips, and more. Whether operators are looking for best practices on device configurations or need to isolate a problem impacting a specific user, AI Search provides fast, interactive responses that simplify Day 0 to Day 2 operations.
- **AI Assist:** Uses event-driven automation to collect diagnostics, post them to a shared location, generate a ticket in tools such as ServiceNow, and even notify Aruba TAC for proactive customer support.

Eliminating manual troubleshooting can help solve issues up to 90% faster. Customers can also tap into anonymized peer benchmarks that offer optimal configuration settings based on performance levels at sites with similar network characteristics – in some cases improving capacity by up to 25%.

Additional Monitoring Capabilities

Detailed health and analytics dashboards are also available to monitor:

- **Network health:** Gain broad visibility into network-wide performance, and drill-in to specific sites with summaries of device utilization, configuration compliance, and other statistics.
- **Application visibility:** Monitor application health across the network, ensuring critical services receive priority traffic while tracking and enforcing acceptable usage by site, device, or location.
- **UCC analytics:** A consolidated view of how VoIP applications are performing with mean opinion scores (MOS) and insights into potential RF performance and capacity issues.
- **Client health:** Delivers a multitude of details on devices connected to the network, including insights into client performance, connectivity status, physical location, and the data path.
- **AI-based connectivity insights:** Automatically identify potential Wi-Fi connectivity issues tied to DHCP, DNS, authentication failures, and more.

For wired networks, IT operators gain visibility into the health and utilization of both individual and stacked switches. This includes port status, PoE consumption, VLAN assignments, device and neighbor connections, power status, and more—with built-in alerts and events that accelerate wired network troubleshooting.

Built-in Troubleshooting Tools

Troubleshooting capabilities include live events, packet capture, logs, and rich command line tools. Diagnostic checks such as ping tests and traceroutes are also available, as are device-level performance tests for Aruba infrastructure.

User Experience Insight Integration

Aruba User Experience Insight (UXI) completes IT's understanding of application and network health by measuring it from the perspective of end users. UXI sensors deliver continuous monitoring and testing of wireless, wired, and WAN performance, reporting any anomalies directly to the Aruba Central network health dashboard. When a problem is detected, IT can quickly identify systemic or intermittent issues in any location, then access the full UXI dashboard for advanced troubleshooting.



Standard Features

AI-Powered Optimization

Cloud, IoT, and newer applications such as 8K video streaming and AR/VR are flooding Wi-Fi networks. Combined with poor building conditions that can interfere with client connectivity, these bandwidth-intensive applications can have a crippling effect on network performance and end-user experience.

Aruba Central orchestrates a number of unique AI-powered capabilities that keep Wi-Fi networks performing at peak levels.

Deliver SLA-Grade Application QoS

Guarantee performance and optimize user experience with Air Slice. By dynamically allocating radio resources such as time, frequency, and spatial streams, Air Slice helps guarantee performance for latency-sensitive, high-bandwidth applications such as AR/VR, Zoom, and Slack as well as IoT devices.

Automate RF Management

Improve wireless capacity and coverage controls with AirMatch. By utilizing AI and machine learning, AirMatch analyzes periodic RF data across the network to derive configuration changes for every deployed Aruba AP, which receive dynamic updates based on changing environmental conditions.

Optimize Client Connectivity

Enhance traditional radio and roaming techniques with ClientMatch, a patented RF optimization technology that continually enhances connectivity for Wi-Fi 6 and Wi-Fi 5 clients and eliminates sticky client issues.

Eliminate Indoor Cellular Gaps

Enable seamless handoffs between cellular and Wi-Fi with Air Pass*. Using pre-negotiated agreements with major mobile network operators and the Wi-Fi certified Passpoint® standard, Air Pass eliminates the need for captive portals, usernames, and passwords to deliver a great experience for your guests while reducing costs and management overhead of DAS.

Notes: Air Pass is currently available in the U.S. only.

Edge-To-Cloud Security

Hybrid workplace initiatives, IoT, and edge computing are dissolving the traditional IT perimeter. Meanwhile, new security exploits continue to crop up every day. To help tighten networks amidst this increasingly diverse threat landscape, Aruba Central provides a number of advanced security capabilities.

Role-based Policies

Replace manual configuration of static VLANs and ACLs with role-based policies that define proper access privileges for employees, guests, contractors, and other user groups. Aruba Central provides a single location to configure these policies, which are automatically enforced across the network – no matter where users connect, nor whether they're wired in or using Wi-Fi on the LAN, or have moved to another location on the WAN.

Secure Wireless Segmentation

For venues such as malls or airports that require multi-tenancy operations, MultiZone enables secure SSID separation without needing to deploy additional access points. A key use case of MultiZone is keeping IoT devices – which aren't very secure – separate from other enterprise traffic without incurring the expense or complexity of deploying and managing another wireless network.

Intrusion Detection

Aruba Central utilizes Aruba's Rogue AP Intrusion Detection Service (RAPIDS) to identify and resolve issues caused by rogue APs and clients. Wired and wireless data is automatically correlated to identify potential threats, strengthening network security and improving incident response processes by reducing false positives.

Web Content Filtering

Web Content Classification (WebCC) classifies websites by content category and rates them by reputation and risk score, enabling IT to block malicious sites to help prevent phishing, DDoS, botnets, and other common attacks.



Standard Features

Integrated Policy Enforcement Firewall

Built-in deep packet inspection sees and classifies thousands of applications for granular, per-app traffic enforcement, allowing IT to block, prioritize, and rate-limit bandwidth for an individual or groups of apps.

AI-Based Device Profiling

To close visibility gaps often associated with mobile and IoT devices, Aruba Central can directly display information gathered from **Aruba ClearPass Device Insight**, which offers AI- and machine-learning-based discovery and profiling. ClearPass Device Insight automatically categorizes all devices running on any wired or wireless network, using packet inspect to create behavioral profiles and traffic patterns that ensure devices are accurately categorized and receiving proper policy enforcement.

SD-WAN ORCHESTRATION

Legacy WANs are rigid, costly, and too cumbersome to manage. Aruba SD-WAN can help simplify WAN management while enhancing user experiences. As the cloud-based management console for Aruba SD-WAN, Aruba Central empowers IT to centrally manage virtual, headend, and branch gateways and route traffic over MPLS, broadband, and cellular links.

Aruba Central also provides:

- Integrated topology views for graphical representation of gateways and details per site.
- Monitoring of WAN circuit health, bandwidth availability, and tunnel status for each site.
- Quality of experience (QoE) scores for SaaS apps with drill-downs for root cause analysis.
- WAN orchestration for managing routing preferences across branches and data centers.
- Virtual gateway management to directly extend policies to gateways hosted in public clouds.
- Streamlined management of integrations with AWS Transit Gateway Network Manager and Microsoft Azure Virtual WAN.
- An advanced security dashboard with IDS/IPS, threat intelligence data, and correlation with incident management capabilities.

Please refer to the **[SD-WAN data sheet](#)** for more.

Contact Tracing

Historical Wi-Fi location data is available with Aruba Central and can be exported to third-party data analysis tools as needed. This includes the ability to run simple search queries on a per-client basis to track the movement of nearby connected employees or guests, including contact duration. The solution is intended to expediently provide data for appropriate enterprise and public health entities to manage and counteract potential COVID-19 outbreaks.

To expand location accuracy, the Bluetooth radio within Aruba APs can be used as Bluetooth tags or as Bluetooth hubs when deployed as part of Aruba Meridian. For more details, please learn about Aruba's **Hybrid Workplace** solutions.

Reporting and Maintenance

Robust Reporting

Aruba Central provides premium-grade reporting features that are included as part of the base license subscriptions. Reports cover device connectivity, network health, capacity planning, and the ability to baseline and compare user experience across various sites in the network. A reporting wizard is also provided to generate scheduled and on-demand reports that highlight network and application health, throughput and usage data, device and client inventory, activity auditing, and much more.

Live Upgrades

Upgrading firmware on network devices often results in downtime or loss of service. In such cases, IT organizations often rely on time-consuming, CLI-based processes, or must place calls to customer support to help initiate upgrades.

Aruba Central offers a radically simplistic approach with a GUI-based workflow to upgrade firmware on deployed network devices. This includes the ability to complete live upgrades to reduce maintenance windows and ensure continuous operations. Upgrades can be completed at the site level, and can also be scheduled during non-peak hours of operation. Lastly, rules governing firmware compliance can also be managed within the Aruba Central UI for all managed devices.



Standard Features

Remote Teleworker Services

Aruba Central enables IT to easily scale, monitor, and secure the network infrastructure required to support thousands of remote users who need access to corporate applications and services – no taxing, manual setup required. This includes the ability to manage secure overlay VPN tunnels from purpose-built Aruba Remote APs to provide an in-office experience, as well as Virtual Intranet Access (VIA) VPN clients to Aruba gateways deployed in data centers or public cloud infrastructure. For existing customers with APs running Aruba Instant or APs with IAP-VPN connections, it's easy to convert to an Aruba Central-managed VPN platform. Learn more in the [Aruba Central Work from Home At-A-Glance](#).

Extensibility Through APIs and Webhooks

For customers developing network automation frameworks, Aruba Central offers extensibility with other leading IT platforms and solutions through APIs and webhooks. By automatically pulling data from Aruba Central into these third-party solutions, network operators can programmatically trigger actions based on certain events or conditions. Common workflows that extend across multiple systems can be further automated, such as creating IT tickets in ServiceNow, or orchestrating configuration changes across hundreds of network devices using Ansible

Cloud Security and Reliability

Designed from the ground up, Aruba Central ensures the highest possible availability through:

- A web-scale database design for responsive performance, even with large data sets.
- Service redundancy, hosted from data centers worldwide in multiple locations.
- Secure HTTPS connectivity, with certificate-based authentication for the highest level of protection.

FedRAMP Certification in Progress

Aruba Central is currently undergoing FedRAMP certification to enable U.S. federal agencies and participating state and local (SLED) agencies to deploy cloud products and services for their Aruba infrastructure. Certification is expected to be completed in the first half of 2021. For further details on Aruba Central data privacy features, [refer to the technical brief](#).

Deploy and Manage Your Way

Aruba Central is available via software-as-a-service (SaaS), on-premises, and managed service models, giving customers the choice and flexibility required to suit a diverse set of technical, staffing, and financial requirements.

Multi-Cloud Support

The SaaS version of Aruba Central is hosted in Microsoft Azure and Amazon Web Services (AWS), offering greater flexibility for customers with multi-cloud strategies, as well as for those who have standardized on either cloud provider's services.

Aruba Central is also part of a broader ecosystem of joint solutions with both Microsoft and AWS, and is the only enterprise-grade cloud networking solution that runs on both cloud providers' platforms. Customers with specific technical requirements or preferences between Azure and AWS should contact their Aruba sales representative to learn more.

On-premises Deployments

Aruba Central On-Premises is ideal for customers who want the agility and efficiency of the cloud, but need to adhere to stringent regulatory or compliance requirements. Customers with legacy network designs that may temporarily inhibit cloud adoption are also potential candidates for this option.

Aruba Central On-Premises is powered by purpose-built server appliances, available in either 3-, 5-, or 7-node clusters for enterprise-class scale and resiliency. A 1-node option is also available to support smaller deployments. Please refer to Tables 1-2 and 5 below for additional details on supported features, appliance specifications, and ordering details. You can also find additional purchasing information in the ordering guide.

Managed Connectivity Services

Further operational and financing flexibility is available through Managed Connectivity Services (MCS), which is a network as-a-service (NaaS) option built by Aruba and delivered by Aruba partners along with Aruba Global Services experts.

MCS provides subscription-based usage of the hardware and software that power Aruba Central On-Premises, which is configured, managed, and continuously optimized by Aruba technology experts. In this manner, MCS delivers cloud-like flexibility and significantly reduces overhead for in-house IT personnel. The result is an end-to-end solution that enhances IT efficiency,



Standard Features

maximizes budgets, and ensures frictionless service delivery for optimal network performance. For more details, please refer to Tables 1-3 below, or contact your Aruba sales representative.

Simple, Flexible Consumption

Software license suites enable various management features within Aruba Central, and are purchased on a per-device basis. Licenses are available in 1-, 3-, 5-, 7-, and 10-year increments, making it easy for customers to align requirements for AIOps, security, and other desired management features with both current and future budgets.

Foundation Licenses

Foundation licenses provide all primary enterprise features and functionality for campus, branch, remote worker, and data center locations. This includes provisioning, configuring, monitoring, and troubleshooting of wired, wireless, WAN, and VPN infrastructure.

Advanced Licenses

Advanced licenses include all foundation features and add enhanced AIOps, security, and other premium features to deliver an end-to-end solution for managing and optimizing enterprise networks.

Device and Service Tokens

Device tokens include all primary enterprise features and functionality for cloud-based wireless and switching deployments. Service tokens enable a set of advanced wireless features such as Cloud Guest, Presence Analytics, Unified Communications, AirGroup, and Clarity/Wi-Fi Health.

For more information on these subscriptions and how to order, please refer to Table 4 for cloud-based deployments and Table 5 for on-premises deployments.

Aruba Central Help Center

Aruba Central provides context-based assistance when and where you need it the most. The NLP engine of AI Search dynamically adjusts query results based on your location within the Aruba Central user interface, placing helpful solution guides directly at an IT admin's fingertips. In addition to the AI Assist feature that can automatically notify Aruba TAC of an issue, there's also an integrated 24x7 live chat for real-time support.

For information on features, configurations, and newly supported APs, switches, and gateways, please visit the **[Aruba Central Help Center](#)**.

Airheads Community

Aruba's Airheads Community is a great place to connect, innovate, and share with some of the sharpest enthusiasts in the networking industry. You'll get access to discussion forums, expert articles, and cutting-edge content. Learn more at **<https://www.arubanetworks.com/airheads-community/>**



Service and Support

For Service Providers

Aruba Central provides an option for managed service providers (MSPs) to manage multi-tenant network environments for enterprises. More information on MSP mode and other technical details are available in the [Aruba Central Help Center](#).

Customer First, Customer Last Support

Aruba products that are assigned an Aruba Central subscription are fully supported and include:

- 24x7 priority technical support including guidance on configuration, interoperability, and more.
- Software updates and upgrades for Aruba Central and all Aruba hardware products managed by Aruba Central.
- Options to upgrade parts replacement for all hardware managed by Aruba Central with a [Foundation Care for Aruba](#) contract for either next business day exchange or 4-hour onsite repair and replacement.

In addition to hardware replacement options, you can also optionally add Aruba Pro Care for fast access to senior Aruba TAC Engineers, who are assigned as a single point of contact for case management, reducing the time spent addressing and resolving issues.

For complete details on Foundation Care and Pro Care, please visit: <https://www.arubanetworks.com/support-services/>

Design, Deployment, Migration, and Management Services

Aruba Professional Services can help you rapidly deploy Aruba Central and other components of Aruba ESP with [QuickStart Services](#) that provide expert audit, design, and deployment or migration assistance following Aruba best practices.

You can also optimize your deployments across the technology lifecycle to maximize value with Proactive Engineering Services, providing technology management and easy renewal or expansion services. [Learn more here.](#)



Configuration Information

BTO Models

Rule#	Description	SKU
Device Management Subscriptions / Tokens		
1	Aruba Central Device Management 1 Token 1 Year Subscription E-STU	JY925AAE
1	Aruba Central Device Management 1 Token 3 Year Subscription E-STU	JY926AAE
1	Aruba Central Device Management 1 Token 5 Year Subscription E-STU	JY927AAE
Notes: Includes Network Management and monitoring capabilities		
Services Subscriptions / Tokens		
1	Aruba Central Cloud Services 1 Token 1 Year Subscription E-STU	JY928AAE
1	Aruba Central Cloud Services 1 Token 3 Year Subscription E-STU	JY929AAE
1	Aruba Central Cloud Services 1 Token 5 Year Subscription E-STU	JY930AAE
Notes: Enables one of the following services for one access point: Guest WiFi, Presence Analytics, or Clarity. To enable all 3 services, you must order 3 subscriptions for each AP.		
Bundle Subscriptions / E-Rate		
1	Aruba Central Device Management/Cloud Services 1 Token 5yr Subscription E-Rate Bundle E-STU	JZ017AAE
Notes: Enables one of the following services for one access point: Guest WiFi, Presence Analytics, or Clarity. To enable all 3 services, you must order 3 subscriptions for each AP.		
Cloud Web Policy Enforcement / IAP		
1	Aruba SUB1-WE-IAP-1 Cloud Web Policy Enforcement for 1 Instant AP 1-year Subscription E-STU	JW455AAE
1	Aruba SUB3-WE-IAP-1 Cloud Web Policy Enforcement for 1 Instant AP 3-year Subscription E-STU	JW456AAE
1	Aruba SUB5-WE-IAP-1 Cloud Web Policy Enforcement for 1 Instant AP 5-year Subscription E-STU	JW457AAE
Notes: Cloud web policy enforcement for 1 AP (NOT required for Access Points with Central Subscription)		
Configuration Rules		
Rule #	Descriptions	
1	For use with iQuote. Do not model in OCx as it is already visible in the Aruba Catalog under Network Management.	
Cloud Services / WLAN Gateway Foundation Subscriptions		
2	Aruba Central WLAN Gateway Foundation 1 year Subscription E-STU	R4G90AAE
2	Aruba Central WLAN Gateway Foundation 3 year Subscription E-STU	R4G91AAE
2	Aruba Central WLAN Gateway Foundation 5 year Subscription E-STU	R4G92AAE
2	Aruba Central WLAN Gateway Foundation 7 year Subscription E-STU	R4G93AAE
2	Aruba Central WLAN Gateway Foundation 10 year Subscription E-STU	R4G94AAE
Cloud Services / Access Point Foundation Subscriptions		
2	Aruba Central AP Foundation 1 year Subscription E-STU	Q9Y58AAE
2	Aruba Central AP Foundation 3 year Subscription E-STU	Q9Y59AAE
2	Aruba Central AP Foundation 5 year Subscription E-STU	Q9Y60AAE
2	Aruba Central AP Foundation 7 year Subscription E-STU	Q9Y61AAE
2	Aruba Central AP Foundation 10 year Subscription E-STU	Q9Y62AAE
Cloud Services / Access Point Advanced Subscriptions		
2	Aruba Central AP Advanced 1yr Subscription E-STU	Q9Y63AAE
2	Aruba Central AP Advanced 3yr Subscription E-STU	Q9Y64AAE
2	Aruba Central AP Advanced 5yr Subscription E-STU	Q9Y65AAE
2	Aruba Central AP Advanced 7yr Subscription E-STU	Q9Y66AAE
2	Aruba Central AP Advanced 10yr Subscription E-STU	Q9Y67AAE
Cloud Services / 25XX Switch Foundation Subscriptions		
2	Aruba Central 25xx or 8 to 16 port Switch Foundation 1 year Subscription E-STU	Q9Y68AAE
2	Aruba Central 25xx or 8 to 16 port Switch Foundation 3 year Subscription E-STU	Q9Y69AAE
2	Aruba Central 25xx or 8 to 16 port Switch Foundation 5 year Subscription E-STU	Q9Y70AAE
2	Aruba Central 25xx or 8 to 16 port Switch Foundation 7 year Subscription E-STU	Q9Y71AAE
2	Aruba Central 25xx or 8 to 16 port Switch Foundation 10 year Subscription E-STU	Q9Y72AAE
Cloud Services / 62XX/29XX Switch Foundation Subscriptions		
2	Aruba Central 62xx or 29xx Switch Foundation 1 year Subscription E-STU	Q9Y73AAE

Configuration Information

2	Aruba Central 62xx or 29xx Switch Foundation 3 year Subscription E-STU	Q9Y74AAE
2	Aruba Central 62xx or 29xx Switch Foundation 5 year Subscription E-STU	Q9Y75AAE
2	Aruba Central 62xx or 29xx Switch Foundation 7 year Subscription E-STU	Q9Y76AAE
2	Aruba Central 62xx or 29xx Switch Foundation 10 year Subscription E-STU	Q9Y77AAE

Cloud Services / 63XX/38XX Switch Foundation Subscriptions

2	Aruba Central 63xx/38xx Switch Foundation 1 year Subscription E-STU	Q9Y78AAE
2	Aruba Central 63xx/38xx Switch Foundation 3 year Subscription E-STU	Q9Y79AAE
2	Aruba Central 63xx/38xx Switch Foundation 5 year Subscription E-STU	Q9Y80AAE
2	Aruba Central 63xx/38xx Switch Foundation 7 year Subscription E-STU	Q9Y81AAE
2	Aruba Central 63xx/38xx Switch Foundation 10 year Subscription E-STU	R3K02AAE

Cloud Services / 8XXX Switch Foundation Subscriptions

2	Aruba Central 8XXX Switch Foundation 1 year Subscription E-STU	R3K03AAE
2	Aruba Central 8XXX Switch Foundation 3 year Subscription E-STU	R3K04AAE
2	Aruba Central 8XXX Switch Foundation 5 year Subscription E-STU	R3K05AAE
2	Aruba Central 8XXX Switch Foundation 7 year Subscription E-STU	R3K06AAE
2	Aruba Central 8XXX Switch Foundation 10 year Subscription E-STU	R3K07AAE

Cloud Services / 64XX/54XX Switch Foundation Subscriptions

2	Aruba Central 64xx or 54xx Switch Foundation 1 year Subscription E-STU	R8L80AAE
2	Aruba Central 64xx or 54xx Switch Foundation 3 year Subscription E-STU	R8L81AAE
2	Aruba Central 64xx or 54xx Switch Foundation 5 year Subscription E-STU	R8L82AAE
2	Aruba Central 64xx or 54xx Switch Foundation 7 year Subscription E-STU	R8L83AAE
2	Aruba Central 64xx or 54xx Switch Foundation 10 year Subscription E-STU	R8L84AAE

Cloud only TAC Services / 64XX/54XX Switch Foundation Subscriptions

2	Aruba Central 64xx or 54xx Switch Foundation 1 year Subscription Cloud only TAC E-STU	R8L85AAE
2	Aruba Central 64xx or 54xx Switch Foundation 3 year Subscription Cloud only TAC E-STU	R8L86AAE
2	Aruba Central 64xx or 54xx Switch Foundation 5 year Subscription Cloud only TAC E-STU	R8L87AAE
2	Aruba Central 64xx or 54xx Switch Foundation 7 year Subscription Cloud only TAC E-STU	R8L88AAE
2	Aruba Central 64xx or 54xx Switch Foundation 10 year Subscription Cloud only TAC E-STU	R8L89AAE

Configuration Rules

Rule # Descriptions

- 2 [Add the Central Cloud Skus to the Aruba Catalog as Standalone:](#)
[Aruba > Network Management > Central > Cloud Services](#)

Cloud only TAC Services / 25XX/6100/8 Switch Foundation Subscriptions

2, 4	Aruba Central 25xx/6100/8 to 12 port Switch Foundation 1 year Cloud only TAC E-STU	R8L65AAE
2, 4	Aruba Central 25xx/6100/8 to 12 port Switch Foundation 3 year Cloud only TAC E-STU	R8L66AAE
2, 4	Aruba Central 25xx/6100/8 to 12 port Switch Foundation 5 year Cloud only TAC E-STU	R8L67AAE
2, 4	Aruba Central 25xx/6100/8 to 12 port Switch Foundation 7 year Cloud only TAC E-STU	R8L68AAE
2, 4	Aruba Central 25xx/6100/8 to 12 port Switch Foundation 10 year Cloud only TAC E-STU	R8L69AAE

Cloud only TAC Services / 62XX/29XX Switch Foundation Subscriptions

2, 5	Aruba Central 62xx or 29xx Switch Foundation 1 year Subscription Cloud only TAC E-STU	R8L70AAE
2, 5	Aruba Central 62xx or 29xx Switch Foundation 3 year Subscription Cloud only TAC E-STU	R8L71AAE
2, 5	Aruba Central 62xx or 29xx Switch Foundation 5 year Subscription Cloud only TAC E-STU	R8L72AAE
2, 5	Aruba Central 62xx or 29xx Switch Foundation 7 year Subscription Cloud only TAC E-STU	R8L73AAE
2, 5	Aruba Central 62xx or 29xx Switch Foundation 10 year Subscription Cloud only TAC E-STU	R8L74AAE

Notes: [Add the Central On-Prem Skus to the Aruba Catalog as Standalone:](#)

[Aruba > Network Management > Central > On-Prem Services](#)

Cloud only TAC Services / 63XX/38XX Switch Foundation Subscriptions

2	Aruba Central 63xx or 38xx Switch Foundation 1 year Subscription Cloud only TAC E-STU	R8L75AAE
2	Aruba Central 63xx or 38xx Switch Foundation 3 year Subscription Cloud only TAC E-STU	R8L76AAE
2	Aruba Central 63xx or 38xx Switch Foundation 5 year Subscription Cloud only TAC E-STU	R8L77AAE
2	Aruba Central 63xx or 38xx Switch Foundation 7 year Subscription Cloud only TAC E-STU	R8L78AAE
2	Aruba Central 63xx or 38xx Switch Foundation 10 year Subscription Cloud only TAC E-STU	R8L79AAE

Configuration Information

Cloud only TAC Services / 8XXX Switch Foundation Subscriptions

2	Aruba Central 8xxx Switch Foundation 1 year Subscription Cloud only TAC E-STU	R8L90AAE
2	Aruba Central 8xxx Switch Foundation 3 year Subscription Cloud only TAC E-STU	R8L91AAE
2	Aruba Central 8xxx Switch Foundation 5 year Subscription Cloud only TAC E-STU	R8L92AAE
2	Aruba Central 8xxx Switch Foundation 7 year Subscription Cloud only TAC E-STU	R8L93AAE
2	Aruba Central 8xxx Switch Foundation 10 year Subscription Cloud only TAC E-STU	R8L94AAE

Configuration Rules

Rule # Descriptions

2	Add the Central Cloud Skus to the Aruba Catalog as Standalone: Aruba > Network Management > Central > Cloud Services	
4	In addition to the platforms identified, the following Switches can also use this Service: Aruba 2930F 12G PoE+ 2G/2SFP+ Switch Aruba 2930F 8G PoE+ 2SFP+ Switch	JL693A JL258A
5	These Services are compatible with the platforms identified, except for the following Switches: Aruba 2930F 12G PoE+ 2G/2SFP+ Switch Aruba 2930F 8G PoE+ 2SFP+ Switch	JL693A JL258A

On-Prem Appliance

1, 2	Aruba Central 512GB Appliance	R1Q05B
------	-------------------------------	--------

Notes: [OCA Only Model Selection Form -](#)
[Aruba > Network Management > Central > On-Prem Hardware Platform](#)
[Aruba Central On-Prem Appliance Menu](#)

Configuration Rules

Rule # Descriptions

1	Bring in (Min 1 // Max 1) Localized power cord based on the Aruba Wireless Power Cord Table
2	If JW124A is the selected localized power cord, do not add Localized Power Cord

On-Prem Services / Gateway and Controller Foundation Subscriptions

3	Aruba Central On-Premises Campus Gateway Ctr Foundation 1 yr Subscription E-STU	R6U58AAE
3	Aruba Central On-Premises Campus Gateway Ctr Foundation 3 yr Subscription E-STU	R6U59AAE
3	Aruba Central On-Premises Campus Gateway Ctr Foundation 5 yr Subscription E-STU	R6U60AAE
3	Aruba Central On-Premises Campus Gateway Ctr Foundation 7 yr Subscription E-STU	R6U61AAE
3	Aruba Central On-Premises Campus Gateway Ctr Foundation 10 yr Subscription E-STU	R6U62AAE

On-Prem Services / Access Point Foundation Subscriptions

3	Aruba Central On-Premises AP Foundation 1 year Subscription E-STU	R6U63AAE
3	Aruba Central On-Premises AP Foundation 3 year Subscription E-STU	R6U64AAE
3	Aruba Central On-Premises AP Foundation 5 year Subscription E-STU	R6U65AAE
3	Aruba Central On-Premises AP Foundation 7 year Subscription E-STU	R6U66AAE
3	Aruba Central On-Premises AP Foundation 10 year Subscription E-STU	R6U67AAE

On-Prem Services / 25XX/6100 Switch Foundation Subscriptions

3	Aruba Central On-Premises Switch 25xx/6100 Foundation 1 year Subscription E-STU	R6U73AAE
3	Aruba Central On-Premises Switch 25xx/6100 Foundation 3 year Subscription E-STU	R6U74AAE
3	Aruba Central On-Premises Switch 25xx/6100 Foundation 5 year Subscription E-STU	R6U75AAE
3	Aruba Central On-Premises Switch 25xx/6100 Foundation 7 year Subscription E-STU	R6U76AAE
3	Aruba Central On-Premises Switch 25xx/6100 Foundation 10 year Subscription E-STU	R6U77AAE

On-Prem Services / 62XX/29XX Switch Foundation Subscriptions

3	Aruba Central On-Premises Switch 62xx or 29xx Foundation 1 year Subscription E-STU	R6U78AAE
3	Aruba Central On-Premises Switch 62xx or 29xx Foundation 3 year Subscription E-STU	R6U79AAE
3	Aruba Central On-Premises Switch 62xx or 29xx Foundation 5 year Subscription E-STU	R6U80AAE
3	Aruba Central On-Premises Switch 62xx or 29xx Foundation 7 year Subscription E-STU	R6U81AAE
3	Aruba Central On-Premises Switch 62xx or 29xx Foundation 10 year Subscription E-STU	R6U82AAE

On-Prem Services / 63XX/38XX Switch Foundation Subscriptions

3	Aruba Central On-Premises Switch 63xx or 38xx Foundation 1 year Subscription E-STU	R6U83AAE
3	Aruba Central On-Premises Switch 63xx or 38xx Foundation 3 year Subscription E-STU	R6U84AAE
3	Aruba Central On-Premises Switch 63xx or 38xx Foundation 5 year Subscription E-STU	R6U85AAE

Configuration Information

3	Aruba Central On-Premises Switch 63xx or 38xx Foundation 7 year Subscription E-STU	R6U86AAE
3	Aruba Central On-Premises Switch 63xx or 38xx Foundation 10 year Subscription E-STU	R6U87AAE

On-Prem Services / 64XX/54XX Switch Foundation Subscriptions

3	Aruba Central On-Premises 64xx or 54xx Switch Foundation 1 year Subscription E-STU	R8M10AAE
3	Aruba Central On-Premises 64xx or 54xx Switch Foundation 3 year Subscription E-STU	R8M11AAE
3	Aruba Central On-Premises 64xx or 54xx Switch Foundation 5 year Subscription E-STU	R8M12AAE
3	Aruba Central On-Premises 64xx or 54xx Switch Foundation 7 year Subscription E-STU	R8M13AAE
3	Aruba Central On-Premises 64xx or 54xx Switch Foundation 10 year Subscription E-STU	R8M14AAE

On-Prem only TAC Services / 64XX/54XX Switch Foundation Subscriptions

3	Aruba Central On-Premises 64xx or 54xx Switch Foundation 1 year Subscription COP only TAC E-STU	R8M15AAE
3	Aruba Central On-Premises 64xx or 54xx Switch Foundation 3 year Subscription COP only TAC E-STU	R8M16AAE
3	Aruba Central On-Premises 64xx or 54xx Switch Foundation 5 year Subscription COP only TAC E-STU	R8M17AAE
3	Aruba Central On-Premises 64xx or 54xx Switch Foundation 7 year Subscription COP only TAC E-STU	R8M18AAE
3	Aruba Central On-Premises 64xx or 54xx Switch Foundation 10 year Subscription COP only TAC E-STU	R8M19AAE

Configuration Rules

Rule # Descriptions

- 3 [Add the Central On-Prem Skus to the Aruba Catalog as Standalone:](#)
[Aruba > Network Management > Central > On-Prem Services](#)

On-Prem only TAC Services / 25XX/6100 Switch Foundation Subscriptions

3, 4	Aruba Central On-Premises 25xx/6100/8 to 12 port Switch Foundation 1 year COP only TAC E-STU	R8L95AAE
3, 4	Aruba Central On-Premises 25xx/6100/8 to 12 port Switch Foundation 3 year COP only TAC E-STU	R8L96AAE
3, 4	Aruba Central On-Premises 25xx/6100/8 to 12 port Switch Foundation 5 year COP only TAC E-STU	R8L97AAE
3, 4	Aruba Central On-Premises 25xx/6100/8 to 12 port Switch Foundation 7 year COP only TAC E-STU	R8L98AAE
3, 4	Aruba Central On-Premises 25xx/6100/8 to 12 port Switch Foundation 10 year COP only TAC E-STU	R8L99AAE

On-Prem only TAC Services / 62XX/29XX Switch Foundation Subscriptions

3, 5	Aruba Central On-Premises 62xx or 29xx Switch Foundation 1 year Subscription COP only TAC E-STU	R8M00AAE
3, 5	Aruba Central On-Premises 62xx or 29xx Switch Foundation 3 year Subscription COP only TAC E-STU	R8M01AAE
3, 5	Aruba Central On-Premises 62xx or 29xx Switch Foundation 5 year Subscription COP only TAC E-STU	R8M02AAE
3, 5	Aruba Central On-Premises 62xx or 29xx Switch Foundation 7 year Subscription COP only TAC E-STU	R8M03AAE
3, 5	Aruba Central On-Premises 62xx or 29xx Switch Foundation 10 year Subscription COP only TAC E-STU	R8M04AAE

On-Prem TAC Services / 63XX/38XX Switch Foundation Subscriptions

3	Aruba Central On-Premises 63xx or 38xx Switch Foundation 1 year Subscription COP only TAC E-STU	R8M05AAE
3	Aruba Central On-Premises 63xx or 38xx Switch Foundation 3 year Subscription COP only TAC E-STU	R8M06AAE
3	Aruba Central On-Premises 63xx or 38xx Switch Foundation 5 year Subscription COP only TAC E-STU	R8M07AAE
3	Aruba Central On-Premises 63xx or 38xx Switch Foundation 7 year Subscription COP only TAC E-STU	R8M08AAE
3	Aruba Central On-Premises 63xx or 38xx Switch Foundation 10 year Subscription COP only TAC E-STU	R8M09AAE

On-Prem TAC Services / 8XXX Switch Foundation Subscriptions

3	Aruba Central On-Premises 8xxx Switch Foundation 1 year Subscription COP only TAC E-STU	R8M20AAE
3	Aruba Central On-Premises 8xxx Switch Foundation 3 year Subscription COP only TAC E-STU	R8M21AAE
3	Aruba Central On-Premises 8xxx Switch Foundation 5 year Subscription COP only TAC E-STU	R8M22AAE
3	Aruba Central On-Premises 8xxx Switch Foundation 7 year Subscription COP only TAC E-STU	R8M23AAE
3	Aruba Central On-Premises 8xxx Switch Foundation 10 year Subscription COP only TAC E-STU	R8M24AAE

Configuration Rules

Rule # Descriptions

- 3 [Add the Central On-Prem Skus to the Aruba Catalog as Standalone:](#)
[Aruba > Network Management > Central > On-Prem Services](#)
- 4 [In addition to the platforms identified, the following Switches can also use this Service:](#)
- | | |
|--------------------------------------|--------|
| Aruba 2930F 12G PoE+ 2G/2SFP+ Switch | JL693A |
| Aruba 2930F 8G PoE+ 2SFP+ Switch | JL258A |
- 5 [These Services are compatible with the platforms identified, except for the following Switches:](#)
- | | |
|--------------------------------------|--------|
| Aruba 2930F 12G PoE+ 2G/2SFP+ Switch | JL693A |
| Aruba 2930F 8G PoE+ 2SFP+ Switch | JL258A |

Technical Specifications

Aruba Central Deployment Model Comparison			
	Cloud (SaaS)	On-premises	Managed Connectivity Services
Server Appliances			
Server Options	N/A	1, 3, 5 and 7 server options	SOW based
Server Support	N/A	Optional	✓
Software			
License Model	Per device (AP, switch, gateway)		SOW based
License Duration	Fixed Term (1-, 3-, 5-, 7-, 10-year)		SOW based
Software Support	✓	✓	✓
Network Devices			
Scale	N/A	Up to 25K	Up to 25K
Supported Devices	Aruba IAPs, Switches, Gateways	Aruba APs/IAPs, Switches, Controllers, and Conductors	SOW based
Compatible OS	InstantOS, SD-WAN, AOS-S, AOS-CX	InstantOS, AOS6, AOS8, AOS-S, AOS-CX	InstantOS, AOS6, AOS8, AOS-S, AOS-CX
Hardware Support	Optional	Optional	Optional
Select Features			
AI Insights	Wi-Fi, Wired, SD-WAN	Wi-Fi Health Insights	Wi-Fi Health Insights
AI Search	✓	N/A	N/A
AI Assist/Live Chat	✓	N/A	N/A
Contact Tracing	✓	N/A	N/A
UXI Integration	✓	N/A	N/A
Dynamic Segmentation	✓	✓	✓
WAN Support	SD-WAN/SD-Branch	N/A	N/A
APIs/Webhooks	✓	✓	✓
Miscellaneous			
Professional Services	Optional	Optional	Included (E.g., Migration)
Managed Service Provider Mode	Optional	N/A	N/A



Technical Specifications

Aruba Central On-Premises Appliance Technical Specifications

Category	Aruba Central Appliance (R1Q05B)	Aruba Central Ready AirWave 8 Appliance (R1Q04B)
System Specifications		
CPU	2, 20-Core Intel Xeon-Gold 6138, 3.6 GHz, HPE DL360 Gen10	
Memory	512GB	
Storage	2TB SSD or SAS HDD (4TB ins RAID 10 configuration)	
Scalability		
Managed Devices	Up to 25,000 with a 7-node cluster	
Power		
Power	500 W Flexible Slot (FS) platinum hot-plug power supply	
Power Supply	Optional redundant power supply	
AC Input Voltage	110/220 V ac Auto-Selecting	
AC Input Frequency	50/60 Hz Auto-Selecting	
Physical		
Rackmount	1U SFF easy install rail 1U Cable management arm	
Dimensions (H x W x D)	4.29 x 43.46 x 70.7 cm (1.7 x 17.1 x 27.8 in)	
Weight	16.27 kg (35.9 lb), Maximum	
HPE SmartDrives	4 LFF SAS/SATA/SSD 8 or 10 SFF SAS/SATA/SSD	
Networking	4 x 1 GbE embedded + FlexibleLOM slot	
VGA/Serial/USB ports	Front VGA (Optional), rear VGA standard and serial (Optional), 5 USB 3.0	
Industry compliance	ASHRAE A3 and A4, Lower idle power	
Warranty		
Hardware	1 year parts	
Software	90 days	

Managed Connectivity Services

	Service Capability	Description
Day 0 and Day 1 Services (Quick Start Service for strategy, assessment, design, and deployment)	Installation	Rack and stack of server infrastructure based on an Aruba-provided design blueprint
	Migration	Based on an Aruba-provided migration blueprint
	Deployment and Configuration	Deployment and configuration of all software
	Knowledge Transfer	Training for customer stakeholders with high-level and low-level design docs
Day 2 Services (Intelligent Operations Subscription for ongoing management and optimization)	Software Upgrades	Major, minor, and patch upgrades completed by Aruba IT Ops
	System Status and Solution Performance	Proactive tuning and optimization to avoid outages
	Hardware Status	24/7 active monitoring of solution by Aruba IT Ops
	Adoption of New Capabilities	Monthly assessment with dedicated Customer Success Manager to evaluate usage and determine appropriate change windows



Summary of Changes

Date	Version History	Action	Description of Change
02-Aug-2021	Version 8	Changed	Configuration Information and Technical specification sections were updated.
07-Jun-2021	Version 7	Changed	Configuration Information section was updated.
01-Mar-2021	Version 6	Changed	Overview, Standard Features, Configuration Information and Technical Specifications sections were updated. SKUs added in Configuration Information section.
18-Jan-2021	Version 5	Changed	Overview section was updated.
03-Aug-2020	Version 4	Changed	Overview and Technical Specifications sections were updated.
03-Apr-2017	Version 3	Changed	Format on Accessories section updated
06-Mar-2017	Version 2	Changed	Document name changed to Aruba Central Software Document was completely revised.
01-Nov-2016	Version 1	New	New QuickSpecs.



Copyright

Make the right purchase decision.
Contact our presales specialists.



Chat



Email



Call



Get updates



© Copyright 2021 Hewlett Packard Enterprise Development LP. The information contained herein is subject to change without notice. The only warranties for Hewlett Packard Enterprise products and services are set forth in the express warranty statements accompanying such products and services. Nothing herein should be construed as constituting an additional warranty. Hewlett Packard Enterprise shall not be liable for technical or editorial errors or omissions contained herein.

To learn more, visit: <http://www.hpe.com/networking>

c05272678 - 15696 - Worldwide - V8 - 02-August-2021