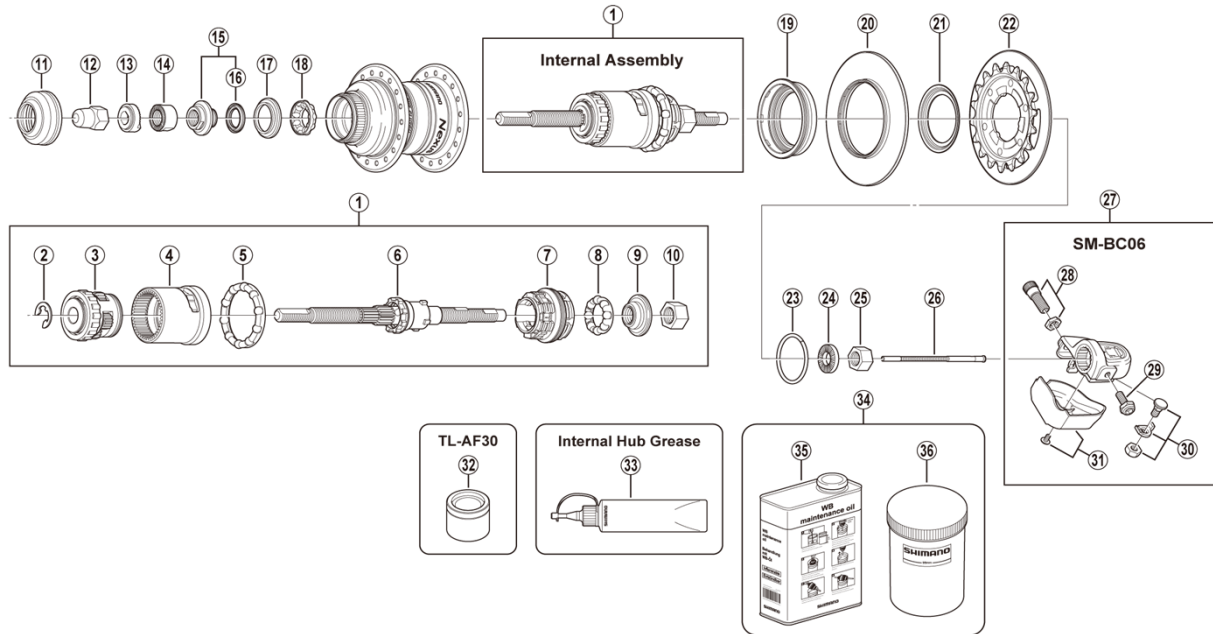


# NEXUS 3-speed Internal Hub SG-3D55



SG-3R40  
SG-3R55  
SG-S500

ITEM NO.	SHIMANO CODE NO.	DESCRIPTION	INTERCHANGEABILITY		
			SG-3R40	SG-3R55	SG-S500
1	Y36U98010	Internal assembly (axle length 192.6 mm)			
2	Y33Y19000	Stop ring (diameter 9.6 mm)	A	A	
3	Y35E98020	Carrier unit		A	
4	Y35H90300	Ring gear unit		A	
5	Y33R90220	Ball retainer K (7/32" x 10)	A	A	
6	Y36U98020	Axle unit (axle length 192.6 mm)			
7	Y33S90200	Driver unit	A		
8	Y33R90210	Ball retainer J (7/32" x 8)	A	A	
9	Y33R90500	Right hand cone with dust seal	A		
10	Y32530120	Right hand lock nut (9.9 mm)	B		
11	Y24Z02000	Rotor mount cover			A
12	Y31414010	Cap nut (3/8")			A
13	Y34R85000	Non-turn washer 8L (dark green)			A
	Y33Z20200	Non-turn washer 2 (yellow)	A		
14	Y35Z19000	Left hand serated lock nut (10.7 mm)			A
15	Y35Z98060	Left hand cone with dust cap and seal ring			A
16	Y37710000	Seal ring			A
17	Y32T08100	Left hand Inner dust cap			A
18	Y36U98030	Ball retainer (7/32" x 9)			A
19	Y36U09000	Right hand dust cap A			
20	Y36U10000	Chain guard	A		
21	Y33R52001	Right hand dust cap B			
22	Y1ZN98010	Sprocket wheel 18T with guard plate (CS-S500)			A
	Y1ZN98020	Sprocket wheel 20T with guard plate (CS-S500)			A
23	Y32120010	Snap ring C	A	A	
24	Y22006010	Washer (3.2 mm)	B		
25	Y20003000	Hub nut (9 mm)	A		
26	Y33S98290	Push rod (90.75 mm)	A		
27	Y6P198030	SM-BC06 Bell crank unit			
28	Y33S98010	Cable adjusting bolt and nut			
29	Y33S74000	Bell crank body fixing bolt			
30	Y33S98030	Inner cable fixing bolt unit			
31	Y6P198040	Bell crank cover and fixing screw			
32	Y70811000	TL-AF30 Left hand inner dust cap installation tool			A
* 33	Y04130100	Internal hub grease (100 g)			
	Y04130200	Internal hub grease (2.5 kg)			
* 34	Y00298010	Internal hub maintenance oil set			
* 35	Y00201000	Internal hub maintenance oil (1 L)			
* 36	Y00201100	Bottle			

A: Same parts.

B: Parts are usable, but differ in materials, appearance, finish, size, etc.

Absence of mark indicates non-interchangeability.

Specifications are subject to change without notice.

Jul.-2021-2723B

© Shimano Inc. I

# SHIMANO