



**Series 1500 Pneumatic Chemical Injection Pump
1-1/2" Plunger - Part Number P50B124C3QLC34**

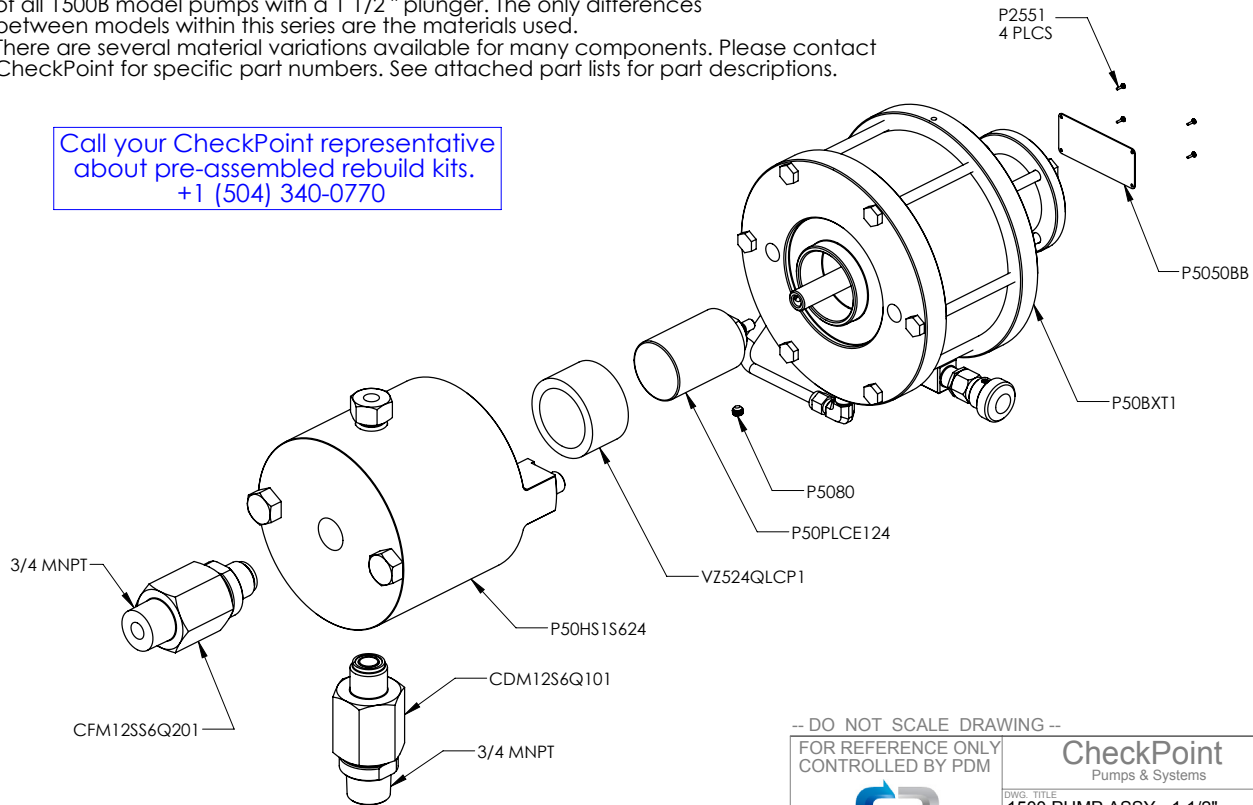
PUMP CUTAWAYS AND DRAWINGS

On the following pages are external and internal pump drawings with part numbers and material codes.
The following table identifies each material code.


MATERIAL CODES	
303 Stainless Steel	S3
304 Stainless Steel	S4
316 Stainless Steel	S6
17-4 PH Stainless Steel - HH 1150	S7
420 Stainless Steel	S0
6061 Aluminum	A6
Acetal	AC
Aflas®	AF
Buna-N®	BU
Ceramic - EverWear™	CE
Ceramic - NBD200™	CN
Delrin®	DL
Duplex 2205	D4
Super Duplex 2507	D5
Elgiloy®	EL
FKM	PF
FFKM	FK
Hastelloy® C276	HC
HNBR	HN
Iron	FE
Low carbon steel	ST
Monel®	MO
PVC	PV
PEEK	PK
Teflon® - Bronze Filled	TB
Teflon® - Carbon Filled	TC
Teflon® - Glass Filled	TG
Teflon® - Mica Filled	TM
Teflon® - Polyimide Filled	TP
Teflon® - Virgin	TF
Titanium	TI
Ultra High Molecular Weight Polyethylene (UHMWPE)	UH
Urethane	UR
Viton®	VI
XWL	XL

NOTE:
This drawing is specifically for P50B124C3QLC34, but is representative of all 1500B model pumps with a 1 1/2" plunger. The only differences between models within this series are the materials used. There are several material variations available for many components. Please contact CheckPoint for specific part numbers. See attached part lists for part descriptions.

Call your CheckPoint representative
about pre-assembled rebuild kits.
+1 (504) 340-0770



-- DO NOT SCALE DRAWING --

FOR REFERENCE ONLY CONTROLLED BY PDM	CheckPoint Pumps & Systems
	DWG. TITLE 1500 PUMP ASSY - 1 1/2" 316SS HEAD/CK - CERAMIC
21200 HAZARD LINE MANCHEVILLE, LA 70471 USA TEL 504.340.0770 -- FAX 888.217.6402	P50B124C3QLC34 SIZE A
DRAWING NUMBER	

PROPRIETARY AND CONFIDENTIAL
THE INFORMATION CONTAINED HEREIN IS PROPRIETARY TO CHECKPOINT SYSTEMS AND SHALL NOT BE REPRODUCED OR DISCLOSED IN WHOLE OR IN PART OR USED FOR ANY PURPOSE EXCEPT WHEN SUCH USER POSSESSES DIRECT WRITTEN AUTHORIZATION FROM CHECKPOINT SYSTEMS



**Series 1500 Pneumatic Chemical Injection Pump
1-1/2" Plunger - Part Number P50B124C3QLC34**

PART NUMBER	Description	QTY.	MATERIAL CODES	TEMPERATURE (°C) MIN/MAX
P50BXT1	1500 MOTOR	1	S6/TC/HN/DL	-268//288, -40/100, -29/160, -50/90
P50HS1S624	1500 HEAD SUB ASSY	1	S6/PF/TF	-29/204, -268/288
CDM12S6Q101	CHECK VALVE - DISCHARGE	1	S6/PF	-29/204
CFM12SS6Q201	CHECK VALVE - SUCTION	1	S6/PF	-29/204
P50PLCE124	K50PLRCU24 PLUNGER - 1 1/2" CERAMIC	1	CE	NA
P5080	K50PLRCU24 SSET SCREW	1	S6	NA
VZ524QLCP1	PACKING	1	PF/TM/PK	-29/240, -268/288, -73/288
P5050BB	1500 SERIAL NUMBER PLATE	1	S6	NA
P2551	1250-1500 SERIAL PLATE U-DRIVE	4	S6	NA

Call your CheckPoint representative about pre-assembled rebuild kits.
+1 (504) 340-0770

[Plunger Kit - K50PLRCU24](#)

[Check Valve Rebuild Kit - KFM12S6Q201](#)

[Motor Rebuild - K50MRU](#)

[Spool Kit - K25SPT16](#)

[Complete Rebuild - KS150124CQ34](#)

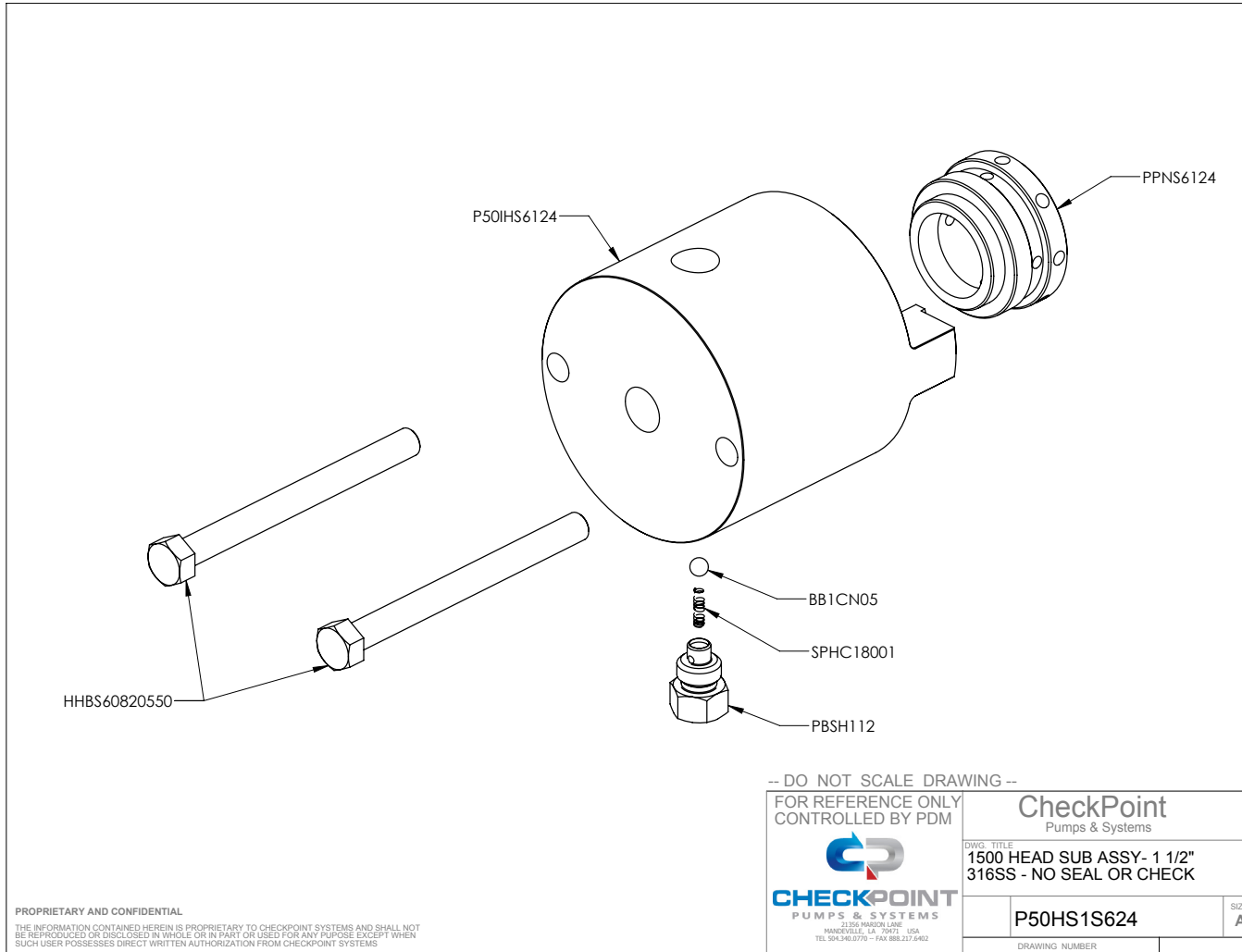
- Includes Motor Rebuild Kit
- Check Valve Rebuild Kit
- Packing
- Spool Kit
- D-Slides

PROPRIETARY AND CONFIDENTIAL

THE INFORMATION CONTAINED HEREIN IS PROPRIETARY TO CHECKPOINT SYSTEMS AND SHALL NOT BE REPRODUCED OR DISCLOSED IN WHOLE OR IN PART OR USED FOR ANY PURPOSE EXCEPT WHEN SUCH USER POSSESSES DIRECT WRITTEN AUTHORIZATION FROM CHECKPOINT SYSTEMS

-- DO NOT SCALE DRAWING --

FOR REFERENCE ONLY CONTROLLED BY PDM	 CheckPoint Pumps & Systems		
 CHECKPOINT PUMPS & SYSTEMS <small>21288 HAZARD LANE MANDEVILLE, LA 70471 USA TEL 504.340.0770 -- FAX 888.217.6402</small>	DWG. TITLE 1500 PUMP ASSY - 1 1/2" 316SS HEAD/CK - CERAMIC		
	<table border="1"> <tr> <td>P50B124C3QLC34</td> <td>SIZE A</td> </tr> </table>	P50B124C3QLC34	SIZE A
P50B124C3QLC34	SIZE A		
DRAWING NUMBER			





**Series 1500 Pneumatic Chemical Injection Pump
1-1/2" Plunger - Part Number P50B124C3QLC34**

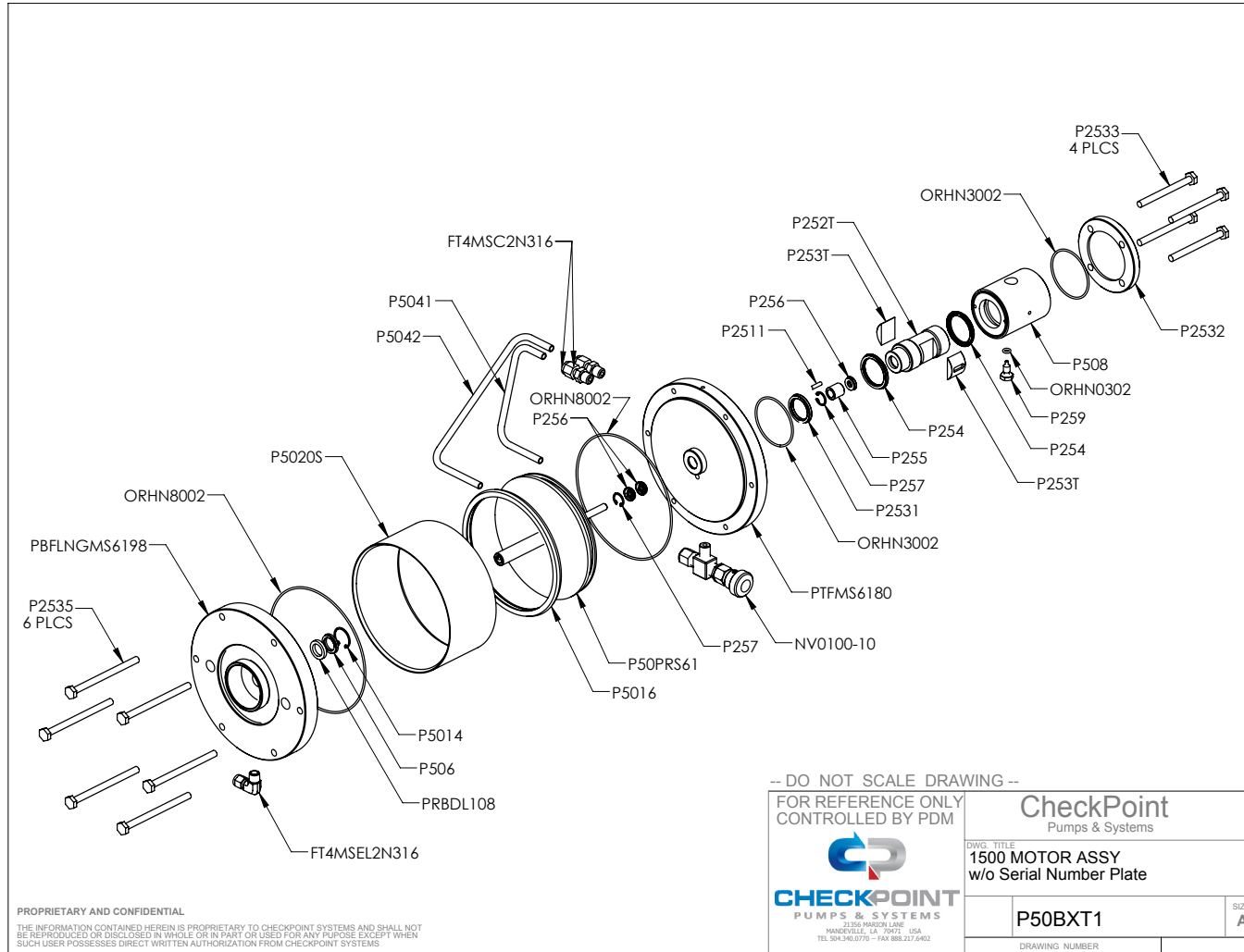
PART NUMBER	DESCRIPTION	QTY.	MATERIAL CODES	TEMPERATURE (°C) MIN/MAXC
SPHC18001	SPRING	1	HC	NA
PPNS6124	1 1/2" PACKING NUT	1	S6	NA
BB1CN05	BALL - BLEED	1	CN	NA
PBSH112	BLEED SCREW	1	HC	NA
P50HS6124	INJECTION HEAD	1	S6	NA
HHBS60820550	BOLT - HEAD	2	S6	NA

PROPRIETARY AND CONFIDENTIAL

THE INFORMATION CONTAINED HEREIN IS PROPRIETARY TO CHECKPOINT SYSTEMS AND SHALL NOT BE REPRODUCED OR DISCLOSED IN WHOLE OR IN PART OR USED FOR ANY PURPOSE EXCEPT WHEN SUCH USER POSSESSES DIRECT WRITTEN AUTHORIZATION FROM CHECKPOINT SYSTEMS

-- DO NOT SCALE DRAWING --

FOR REFERENCE ONLY CONTROLLED BY PDM	CheckPoint Pumps & Systems		
 <small>21250 WARDEN LANE MANCHESTER, LA 70971 USA TEL 504.340.0770 -- FAX 888.217.6402</small>	<small>DWG. TITLE</small> 1500 HEAD SUB ASSY- 1 1/2" 316SS - NO SEAL OR CHECK		
	<table border="1"> <tr> <td>P50HS1S624</td> <td><small>SIZE</small> A</td> </tr> </table>	P50HS1S624	<small>SIZE</small> A
P50HS1S624	<small>SIZE</small> A		
<small>DRAWING NUMBER</small>			





**Series 1500 Pneumatic Chemical Injection Pump
1-1/2" Plunger - Part Number P50B124C3QLC34**

PART NUMBER	DESCRIPTION	QTY.	MATERIAL CODE	Temperature (°C) Min/Max
PTFMS6180	TOP FLANGE MOTOR	1	S6	NA
P508	HOUSING	1	S6	NA
PBFLGMS6198	BOTTOM FLANGE - MOTOR	1	S6	NA
P5020S	CYLINDER - MOTOR	1	S6	NA
P50PRS61	PISTON ASSY	1	S6	NA
P2532	TOP COVER	1	S6	NA
P253T	D-SLIDE	2	TC	-268/288
NV0100-10	ASSY-NEEDLE VALVE	1	S6/PF	-29/204
P259	ALIGNMENT SCREW	1	S6	NA
P2511	ALIGNMENT PIN	1	S0	NA
P2533	BOLT - HOUSING	4	S6	NA
P2535	BOLT - CYLINDER	6	S6	NA
FT4MSC2N316	MNPT CONNECTOR	2	S6	NA
FT4MSEL2N316	MNPT ELBOW	1	S6	NA
P5041	TOP TUBE	1	S6	NA
P5042	BOTTOM TUBE	1	S6	NA
P252T	SPOOL - 1" FULL STROKE	1	TC	-268/288
P255	SPOOL SPACER	1	TC	-268/288
P256	SEAL - PISTON ROD	3	UR	-40/100
P257	SNAP RING - INTERNAL	2	S6	NA
ORHN0302	O-RING ALIGNMENT SCREW	1	HN	-29/160
ORHN3002	O-RING HOUSING	2	HN	-29/160
ORHN8002	O-RING - CYLINDER	2	HN	-29/160
P2531	SEAL - TOP FLANGE	1	UR	-40/100
P254	SEAL - SPOOL	2	UR	-40/100
PRBDL108	ROD BUSHING	1	DL	-50 TO +90
MKT1524 - P506	SEAL - MOTOR	1	UR	-40/100
P5014	SNAP RING - INTERNAL	1	S6	NA
P5016	Crown Seal - Piston	1	UR	-40/100

K25SPT16

K50MRU

Call your CheckPoint representative about pre-assembled rebuild kits, +1 (504) 340-0770
Motor Rebuild Kit - K50MRU - Contains all seals in the motor (air) end of the 1500 series pump.
Spool Kit - K25SPT16

-- DO NOT SCALE DRAWING --

FOR REFERENCE ONLY
CONTROLLED BY PDM

CheckPoint
Pumps & Systems



DWG. TITLE
**1500 MOTOR ASSY
w/o Serial Number Plate**

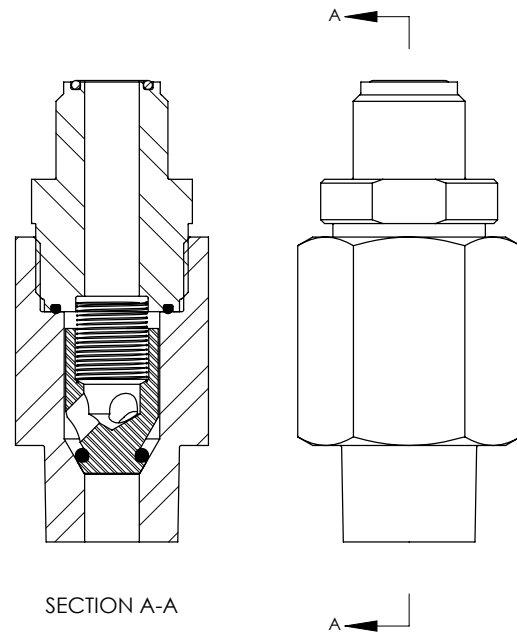
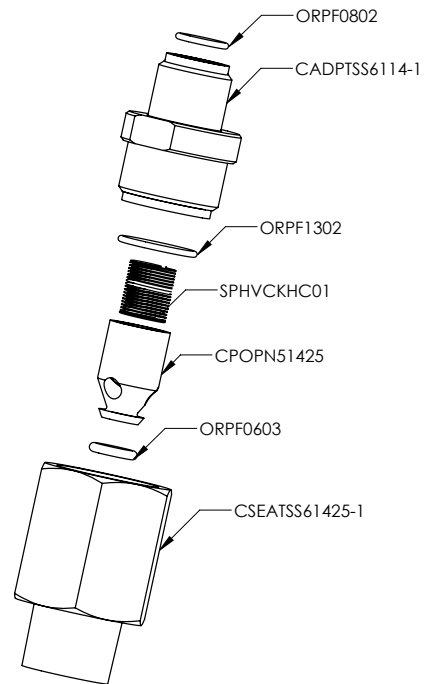
P50BXT1

SIZE
A

DRAWING NUMBER


PROPRIETARY AND CONFIDENTIAL

THE INFORMATION CONTAINED HEREIN IS PROPRIETARY TO CHECKPOINT SYSTEMS AND SHALL NOT BE REPRODUCED OR DISCLOSED IN WHOLE OR IN PART OR USED FOR ANY PURPOSE EXCEPT WHEN SUCH USER POSSESSES DIRECT WRITTEN AUTHORIZATION FROM CHECKPOINT SYSTEMS



Call your CheckPoint representative about pre-assembled rebuild kits.
+1 (504) 340-0770
Check Valve Rebuild Kit - KFM12S6Q201

-- DO NOT SCALE DRAWING --

FOR REFERENCE ONLY CONTROLLED BY PDM	CheckPoint Pumps & Systems
 21200 HAZARD LANE MANCHEVILLE, LA 70471 USA TEL 504-340-0770 -- FAX 888-217-6402	DWG. TITLE ASSEMBLY - 3/4" HV DISCHARGE - CHECK
	CFM12SS6Q201
	SIZE A
	DRAWING NUMBER

PROPRIETARY AND CONFIDENTIAL
THE INFORMATION CONTAINED HEREIN IS PROPRIETARY TO CHECKPOINT SYSTEMS AND SHALL NOT
BE REPRODUCED OR DISCLOSED IN WHOLE OR IN PART OR USED FOR ANY PURPOSE EXCEPT WHEN
SUCH USER POSSESSES DIRECT WRITTEN AUTHORIZATION FROM CHECKPOINT SYSTEMS




**Series 1500 Pneumatic Chemical Injection Pump
1-1/2" Plunger - Part Number P50B124C3QLC34**

PART NUMBER	DESCRIPTION	QTY.	MATERIAL CODES	Temperature (°C) Min/Max
CADPTSS6114-1	CHECK ADAPTER SUCTION	1	S6	NA
CPOPNS1425	POPPET - CHECK	1	S6	NA
CSEATSS61425-1	CHECK SEAT	1	S6	NA
SPHVCKHC01	SPRING	1	HC	NA
ORPF0603	O-RING	1	PF	-29/204
ORPF0802	O-RING	1	PF	-29/204
ORPF1302	O-RING	1	PF	-29/204

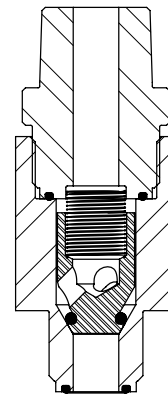
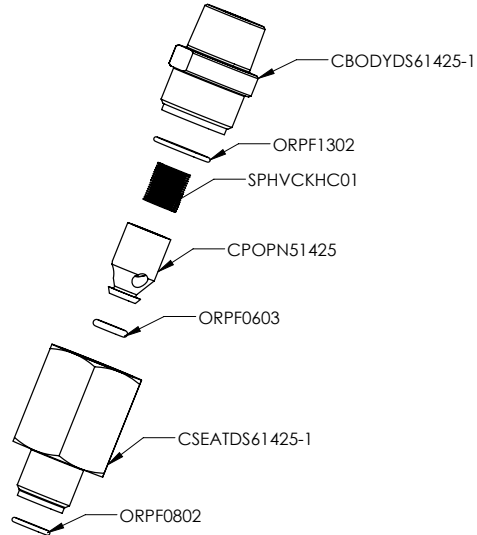
KFM12S6Q201

Call your CheckPoint representative about pre-assembled rebuild kits.
+1 (504) 340-0770
Check Valve Rebuild Kit - KFM12S6Q201 - Contains O-rings and spring

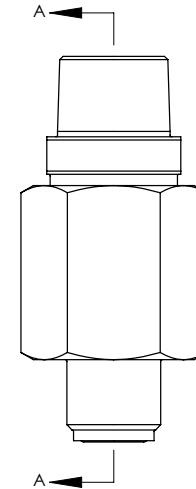
-- DO NOT SCALE DRAWING --

FOR REFERENCE ONLY CONTROLLED BY PDM	CheckPoint Pumps & Systems
 CHECKPOINT PUMPS & SYSTEMS <small>2155 MASON LANE MANORVILLE, LA 70061 USA TEL 504-340-0770 - FAX 888-217-6402</small>	DWG. TITLE ASSEMBLY - 3/4" HV DISCHARGE - CHECK
	SIZE A
	CFM12SS6Q201
	DRAWING NUMBER

PROPRIETARY AND CONFIDENTIAL
THE INFORMATION CONTAINED HEREIN IS PROPRIETARY TO CHECKPOINT SYSTEMS AND SHALL NOT
BE REPRODUCED OR DISCLOSED IN WHOLE OR IN PART OR USED FOR ANY PURPOSE EXCEPT WHEN
SUCH USER POSSESSES DIRECT WRITTEN AUTHORIZATION FROM CHECKPOINT SYSTEMS



SECTION A-A



Call your CheckPoint representative about pre-assembled rebuild kits.
+1 (504) 340-0770
Check Valve Rebuild Kit - KFM12S6Q201

PROPRIETARY AND CONFIDENTIAL

THE INFORMATION CONTAINED HEREIN IS PROPRIETARY TO CHECKPOINT SYSTEMS AND SHALL NOT BE REPRODUCED OR DISCLOSED IN WHOLE OR IN PART OR USED FOR ANY PURPOSE EXCEPT WHEN SUCH USER POSSESSES DIRECT WRITTEN AUTHORIZATION FROM CHECKPOINT SYSTEMS

-- DO NOT SCALE DRAWING --

FOR REFERENCE ONLY
CONTROLLED BY PDM



CheckPoint
Pumps & Systems

DWG. TITLE
ASSEMBLY - 3/4" HV
DISCHARGE - CHECK

CDM12S6Q101

SIZE
A

DRAWING NUMBER




**Series 1500 Pneumatic Chemical Injection Pump
1-1/2" Plunger - Part Number P50B124C3QLC34**

PART NUMBER	DESCRIPTION	QTY.	MATERIAL CODES	Temperature (°C) Min/Max
CSEATDS61425-1	CHECK SEAT DISCHARGE	1	S6	NA
CBODYDS61425-1	CHECK BODY DISCHARGE	1	S6	NA
COPN51425	POPPET - CHECK	1	XL	NA
SPHVCKHC01	SPRING	1	HC	NA
ORPF0802	O-RING	1	PF	-29/204
ORPF0603	O-RING	1	PF	-29/204
ORPF1302	O-RING	1	PF	-29/204

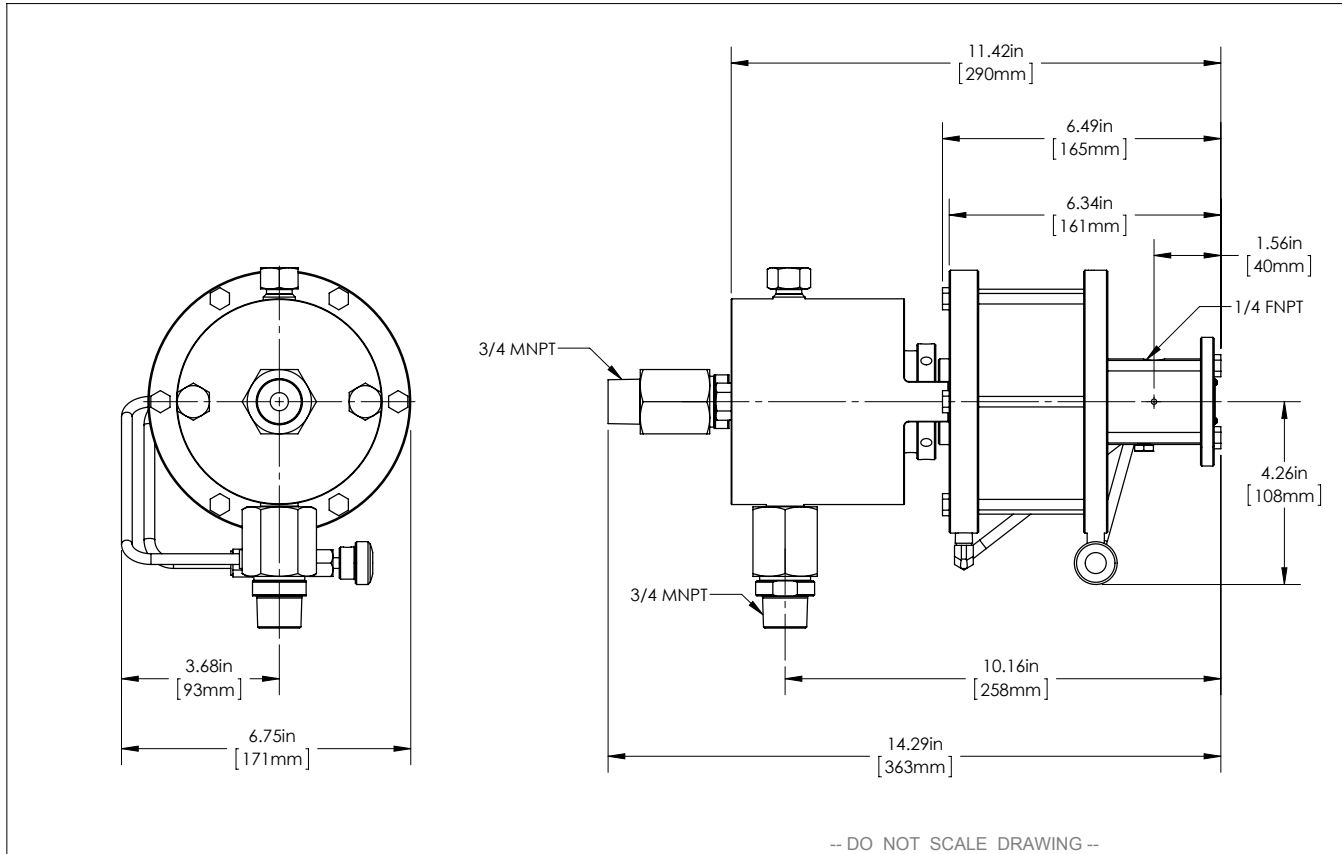
KFM12S6Q201

Call your CheckPoint representative about pre-assembled rebuild kits.
+1 (504) 340-0770
Check Valve Rebuild Kit - KFM12S6Q201 - Contains all o-rings and spring

-- DO NOT SCALE DRAWING --


FOR REFERENCE ONLY CONTROLLED BY PDM		CheckPoint Pumps & Systems	
		DWG. TITLE ASSEMBLY - 3/4" HV DISCHARGE - CHECK	
CHECKPOINT PUMPS & SYSTEMS <small>2126 HANSON LANE MANVELLE, LA 70471 USA TEL 504/340/0770 - FAX 888.217.6402</small>		CDM12S6Q101	SIZE A
<small>PROPRIETARY AND CONFIDENTIAL THE INFORMATION CONTAINED HEREIN IS PROPRIETARY TO CHECKPOINT SYSTEMS AND SHALL NOT BE REPRODUCED OR DISCLOSED IN WHOLE OR IN PART OR USED FOR ANY PURPOSE EXCEPT WHEN SUCH USER POSSESSES DIRECT WRITTEN AUTHORIZATION FROM CHECKPOINT SYSTEMS</small>		<small>DRAWING NUMBER</small>	

**Series 1500 Pneumatic Chemical Injection Pump
1-1/2" Plunger - Part Number P50B124C3QLC34**



PROPRIETARY AND CONFIDENTIAL
THE INFORMATION CONTAINED HEREIN IS PROPRIETARY TO CHECKPOINT SYSTEMS AND SHALL NOT BE REPRODUCED OR DISCLOSED IN WHOLE OR IN PART OR USED FOR ANY PURPOSE EXCEPT WHEN SUCH USER POSSESSES DIRECT WRITTEN AUTHORIZATION FROM CHECKPOINT SYSTEMS

-- DO NOT SCALE DRAWING --

FOR REFERENCE ONLY CONTROLLED BY PDM	CheckPoint Pumps & Systems
	DWG. TITLE 1500 PUMP ASSY - 1 1/2" 316SS HEAD/CK - CERAMIC
21200 MARSHALL LANE MANCHESTER, LA 70471 USA TEL 504.340.0770 -- FAX 888.217.6402	SIZE A
	P50B124C3QLC34
	DRAWING NUMBER