



Applies to: See **PRODUCTS AFFECTED**

July 28th, 2022

Revision summary:

Affected Accessories received an update [to include IPXXB \(finger proof\) connectors.](#) The High Voltage receptacle was changed from Amphenol P/N HVG1S403FC to Amphenol P/N EX40302E. The [mating connector kit](#) was not updated [as they were supposed to be Forward/backward compatible, so, and](#) customers received Amphenol connector kit with Amphenol P/N HVG1P403MC. [The HVIL connections using HVG series connector/plugs and EX receptacles/sockets were found to have intermittent connections.](#) To ensure high quality HVIL connections, the [mating/Updated](#) connector kit will [include be replaced with](#) Amphenol P/N EX40306EM.

Symptom:

There is a potential for HVIL male terminals to make intermittent contact causing a break in HVIL circuit when using Amphenol HVG1P403MC on Accessories equipped with Amphenol EX40302~~6EM~~ receptacle.

Products affected:

eAC3.7HV/MV- 3kW Scroll Air Compressor

eAC3.7HV/MV- 3kW Scroll Air Compressor - with HVIL

eHPS3.0HV- 3.0kW Electric Power Steering Pump

eHPS3.0HV-01 3.0kW Electric Power Steering Pump

eHPS3.0CONT- Connector kit for 3.0kW power steering pump

eAC3.7CONT- Connector kit for 3.0kW HV/MV Electric Air Compressor

Corrective Action:

Discontinue use of CSI P/N eHPS3.0CONT and eAC3.7CONT on accessories equipped with EX40302E High Voltage receptacle. Replace connector kit with updated CSI connector kit P/N eHPS3.0CONT-01 and eAC3.7HVCONT-01

Parts information:

eHPS3.0CONT-01: Connector kit for 3.0KW power steering pump w/ EX Socket - Amphenol 1 of EX40306EM, 3 of EX30M4, and 2 of EX16M1

eAC3.7HVCONT-01: Connector kit for 3.0kW HV/MV Electric Air Compressor w/ EX Socket - Amphenol 1 of EX40306EM, 3 of EX30M4, and 2 of EX16M1

Warranty claim information:



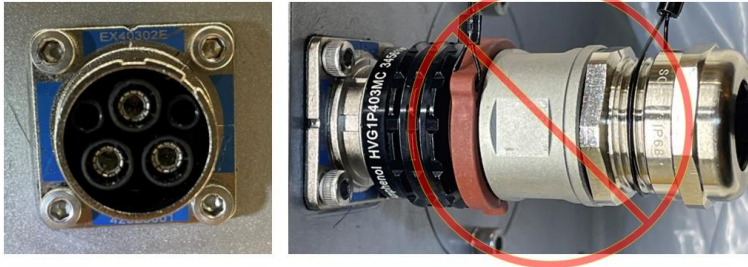
Service Bulletin

SB22-001

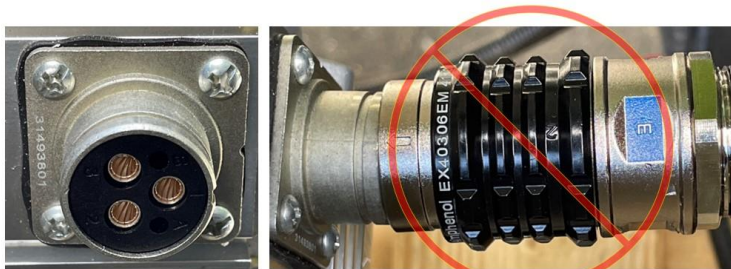
Submit RMA form to CSI service manager with number of connectors that need replacement. A 1:1 exchange will be offered by CSI at no additional charge to customers.

Diagrams:

July 28th, 2022



EX40302E + HVG1P403MC



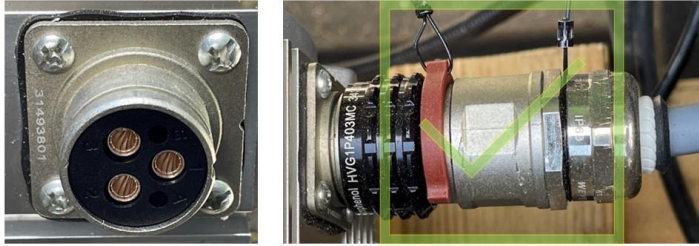
HVG1S403FC + EX40306EM

Diagrams:

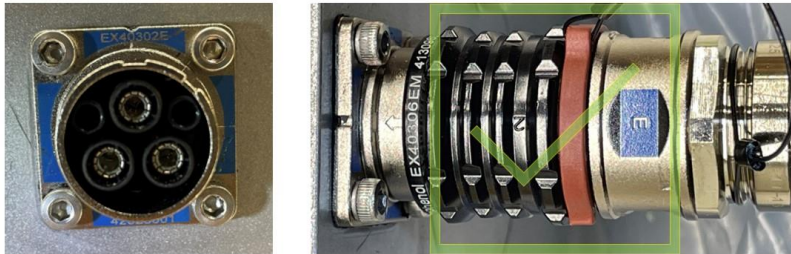
July 28th, 2022

Formatted: Font: Bold

Formatted: Border: Top: (Thin-thick-thin medium gap, Auto, 2.25 pt Line width), Bottom: (Thin-thick-thin medium gap, Auto, 2.25 pt Line width)



HVG1S403FC + HVG1P403MC



EX40302E + EX40306EM
