



The pinnacle of performance and security

HP LaserJet Enterprise MFP M634, M635, M636 series



The world's most secure printing.¹



Maximum productivity.
High-speed performance.



Powerful printing.
Energy smart.²

The world's most secure printing.¹



Only HP enterprise printers repair themselves from attacks in real time while offering outstanding manageability. Automatically monitor threats, detect intrusions, and validate operating software while centrally managing your fleet with ease.



Always on guard

Only HP enterprise printers offer built-in security features that are always on guard.¹

- With HP Sure Start, each device regularly checks its operating code and repairs itself from attempted hacks.
- Whitelisting checks firmware during startup to help ensure its authentic, good code—digitally signed by HP.
- Run-time intrusion detection continually monitors activity to detect and stop attacks, then automatically reboots.
- HP Connection Inspector inspects outgoing network connections to stop suspicious requests like malware.

Get instant notification of potential security issues so immediate action can be taken to prevent potential attacks. This MFP works with leading Security Information and Event Management (SIEM) tools like Splunk, ArcSight, and McAfee.

[▶ For more information](#)

Fleet management

HP Web Jetadmin visit: hp.com/go/wja

Solution brief: <http://h20195.www2.hp.com/V2/GetPDF.aspx/4AA5-2718ENW.pdf>

Video: <http://hp.brightcovegallery.com/solutions/detail/video/4271055504001/>

HP Universal Print Driver visit: hp.com/go/upd

Solution brief: <http://h20195.www2.hp.com/V2/GetPDF.aspx/4AA2-4781ENW.pdf>

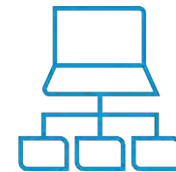


Take security to the next level

Help protect your device with more than 250 embedded security features.³ Protect information on the MFP and in transit over the network. Store data on the 256-bit encrypted HP High-Performance Secure Hard Disk.

Add features such as card readers and more through the Hardware Integration Pocket.⁴ Equip your MFP to store and protect larger files with the optional memory upgrade. Further safeguard data stored on the MFP—keys, passwords, certificates, and more—using the standard HP Trusted Platform Module.⁵

Easily develop, deploy, and integrate HP and third-party solutions with the HP Open Extensibility Platform. Optional HP Access Control solutions can help you reinforce security, while helping to reduce costs.



Centralize control to help build business efficiency

Centralize control of your printing environment with HP Web Jetadmin.⁶ Optional HP JetAdvantage Security Manager offers an effective, policy-based approach to help secure HP devices.⁷ Easily set security configuration policies and automatically validate settings across the fleet.

HP JetAdvantage Secure Print⁸ and HP Access Control (HPAC) help secure documents by requiring authentication to release print jobs. In addition, extend capabilities and easily customize with HPAC—integrate job accounting, manage rights, and establish quotas for things such as color use.⁹ Save IT time and make printing easy for the entire enterprise by using a single driver for all HP devices.

Security

HP JetAdvantage Security Solutions visit: hp.com/go/printsecurity

Solution brief: <http://h20195.www2.hp.com/V2/GetPDF.aspx/4AA3-1295ENW.pdf>

Video: <http://hp.brightcovegallery.com/products/detail/video/4270905124001/>

HP JetAdvantage Security Manager visit: hp.com/go/securitymanager

Brochure: <http://h20195.www2.hp.com/V2/GetPDF.aspx/4AA3-9275ENW.pdf>

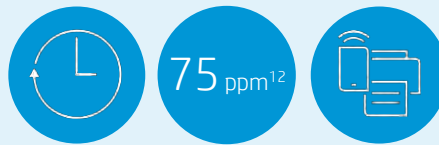
Video: <http://hp.brightcovegallery.com/products/detail/video/4270837770001/>

Maximum productivity. High-speed performance.

Get the job done with an MFP equipped for high-speed performance and designed for energy efficiency. Be confident that your employees can speed through their tasks without interruption.

Keep business moving

Breeze through tasks—this MFP prints your first page from ready/sleep mode as fast as 5.1/8.0 seconds.^{10,11} Print up to 75 pages per minute (ppm),¹² simplex (M636 series)—with up to 85% duplex efficiency.



Print directly from your smartphone, tablet, or notebook PC to your Wi-Fi Direct^{®13}/Bluetooth[®] Low Energy¹⁴ enabled MFP—without accessing the company network. Or choose managed mobile print solutions (HP PrinterOn Enterprise or HP Access Control) for advanced management and reporting capabilities.¹⁵

Loaded for productivity

Spend less time loading paper with a 3,750-sheet maximum capacity.¹⁶ Options for this series include a 1x550 and 2,000-sheet HCI feeder, a 3x550-sheet paper feeder, or a 1x550-sheet paper feeder with a cabinet to store supplies. The wheeled stand allows you to relocate the MFP.¹⁷ Standard and optional 550-sheet input trays fit a whole ream of paper and support paper sizes from 4 x 6 inches to legal (A6 to 216 x 356 mm).



Equip employees to breeze through tasks using the new, intuitive interface on the 9.0-inch (22.8 cm) functional touchscreen with 8.0-inch (20.3 cm) color graphics display. (For more information, see Appendix A.) The three-bin stapler/stacker with job offset allows you to set up each bin for a different department or option, such as face down, fax, and copy (M634z, Flow M635z, and Flow M636z models only).

Designed to conserve

Help keep productivity up and energy use down. This efficient MFP is designed for exceptionally low energy consumption—thanks to its innovative design and specially formulated toner.¹⁸



Help cut costs with HP Auto-On/Auto-Off Technology¹⁹ and HP Instant-On Technology²⁰—intelligence that readies your MFP right when you need it and turns it off when you don't. Print efficiently on lightweight, high-performance HP EcoFFICIENT paper—designed to save energy.

Powerful printing. Energy smart.²



Get exceptional print quality and help protect your MFP, using Original HP Toner cartridges with JetIntelligence.



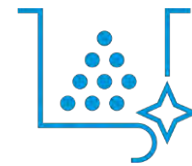
Exceptional print quality

Count on the advantages of Original HP Toner cartridges—performance, high quality, and dependability. Precision black toner is engineered to deliver consistent placement of toner particles and produce sharp text, bold blacks, and crisp graphics.



Help protect your investment

Don't put your MFP—and print quality—at risk. Help retain the consistent Original HP quality you paid for with innovative anti-fraud technology. Enable office-wide adherence to printing policies with cartridge authentication technology.



Ready to work, right away

Speed through print jobs right out of the box. This MFP is shipped with preinstalled, specially designed Original HP LaserJet toner cartridges with JetIntelligence. Auto seal removal enables simple and seamless cartridge replacement, so you can get back to business fast—without costly delays or frustrating messes.



Print uninterrupted and get more pages with optional high-yield and extra-high-yield cartridges²¹ (A/X/Y: 10,500/25,200/42,000 pages²²)

Give workgroups the speed they need.



Accelerate workflow, improve accuracy, and easily connect people throughout your organization. Complete high-volume scan jobs fast—up to 180 ipm for Flow models²³—and avoid extra steps with an MFP designed for maximum productivity.



Fast, unattended scanning

Turn stacks of paper documents into digital files. Load up to 150 pages into the automatic document feeder for fast two-sided, single-pass scanning.²⁴ Spend less time waiting with two-sided scan speeds up to 120 images per minute (ipm)²³ (up to 180 ipm²³ for the Flow models). Choose Flow models for advanced workflow features such as HP EveryPage and a pull-out keyboard.²⁵



Easily scan, copy, and fax

Easily make copies or send faxes using the scanner glass or the ADF. Scan a variety of media sizes from the ADF—from checks (2.7 x 5.8 in) to banners (8.5 x 34 in). Send scanned documents directly to email, network folders, LAN fax addresses,²⁶ or Microsoft® SharePoint®. Walk up and print from or scan to a memory device using the easy-access USB port.²⁷



Every page, every time

Capture every page easily—with confidence. HP EveryPage gives employees smooth paper-handling capabilities to detect potential errors or missed pages on the spot—for scan jobs of all kinds.²⁵

Help ensure every scanned document is properly oriented, cropped to size, and grayscale-optimized.

Flow MFP features²⁵



HP EveryPage featuring ultrasonic multi-feed detection



Faster scan speeds



Automatic page orientation, auto-crop, and auto-tone



Pull-out keyboard



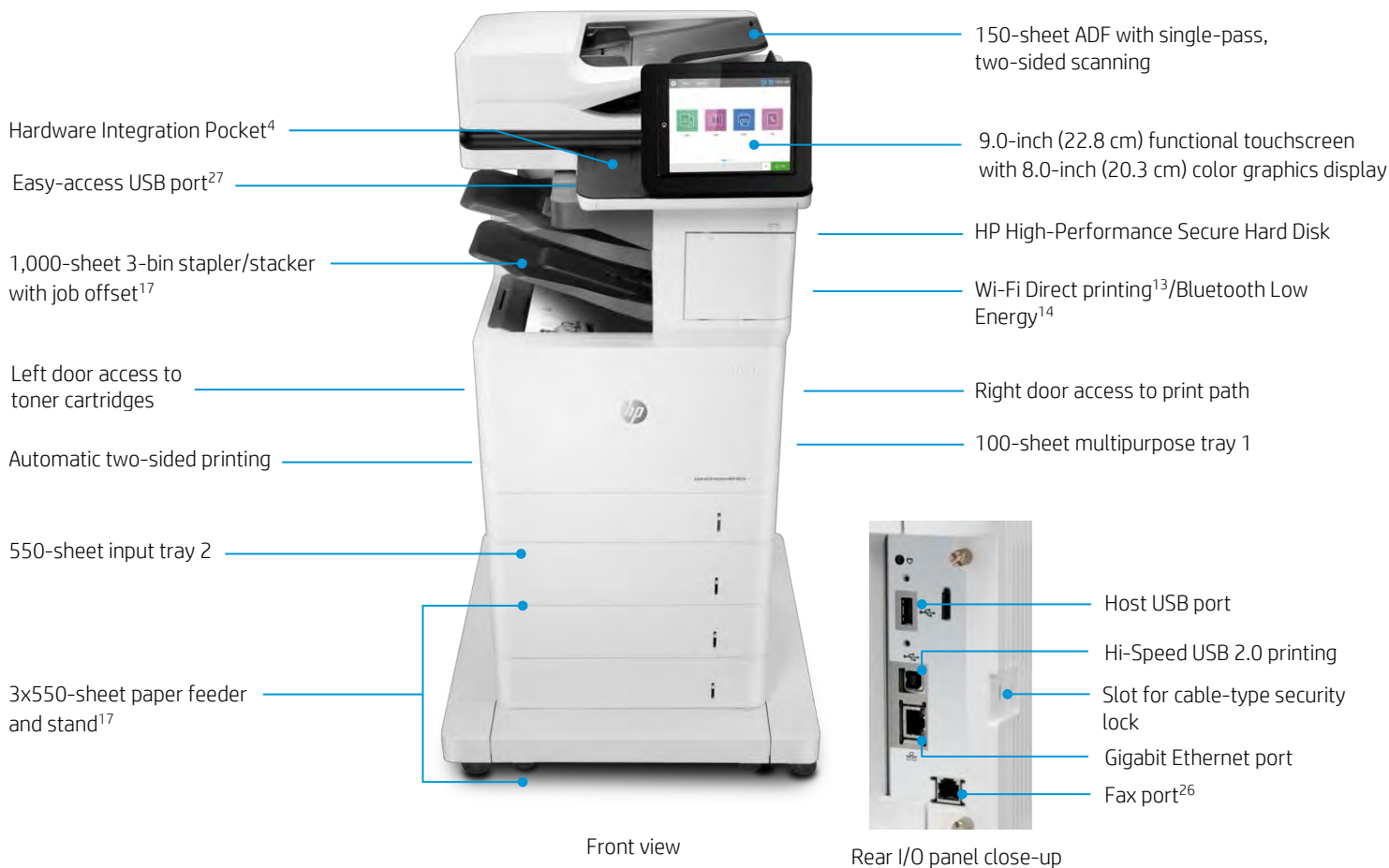
Built-in OCR



Extended life ADF

Get to know the HP LaserJet Enterprise MFP M634 series

HP LaserJet Enterprise MFP M634z shown



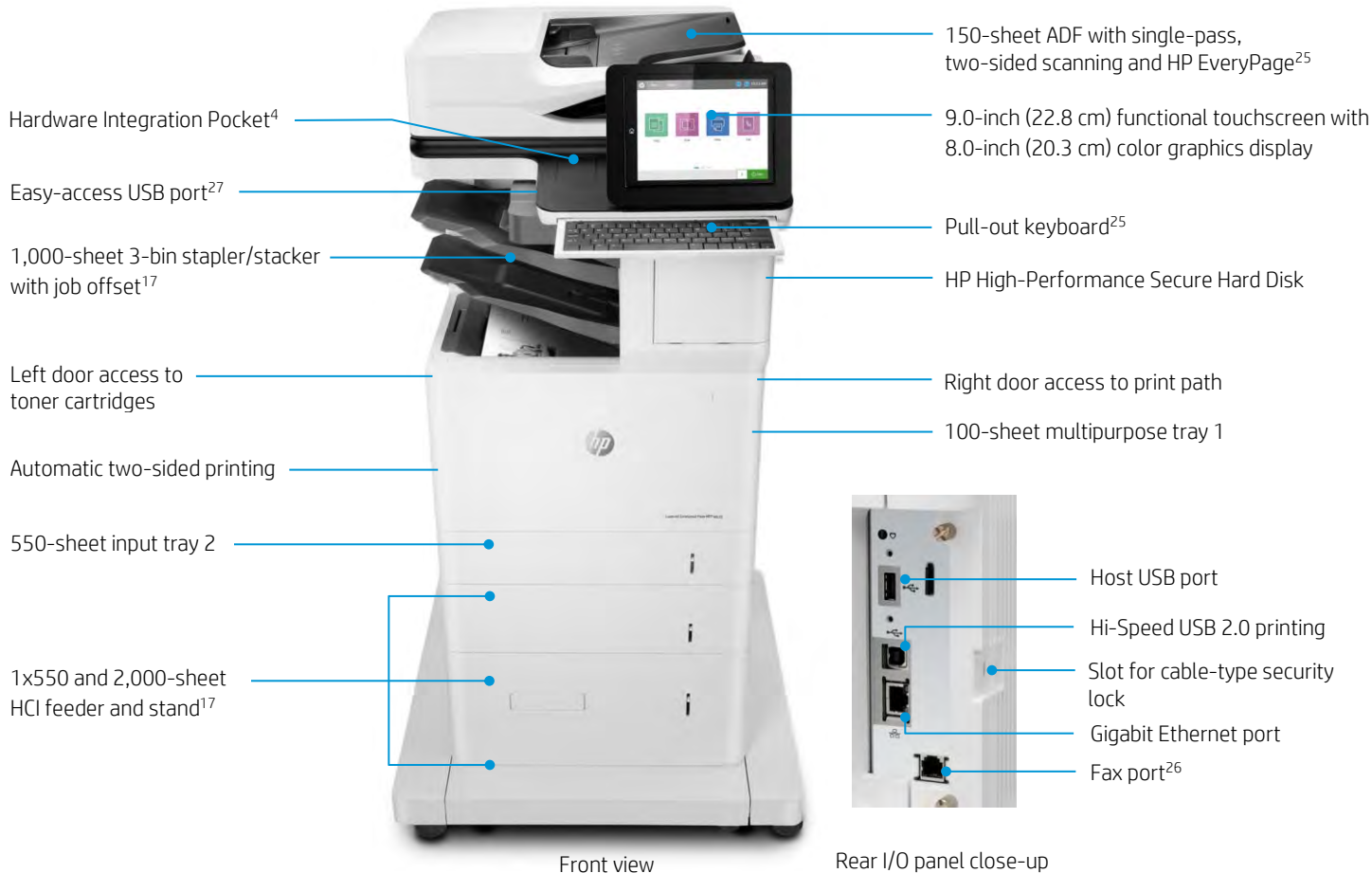
Series at a glance



Model (product number)	Flow MFP M634h (7PS95A)	MFP M634z (7PS96A)
Print speeds (letter/A4) ¹²	Up to 55/52 ppm	Up to 55/52 ppm
Fax capabilities	Optional	✓
HP High-Performance Secure Hard Disk	✓	✓
100-sheet tray 1 and 550-sheet tray 2	✓	✓
550-sheet paper feeder ²⁸	Optional (up to four)	Optional (up to one)
1x550-sheet paper feeder with stand and cabinet ²⁸	Optional	Not available
3x550-sheet paper feeder and stand ²⁸	Optional	✓
1x550 and 2,000-sheet HCI feeder and stand ²⁸	Optional	Not available
Envelope feeder	Optional (up to two)	Optional (up to one)
3-bin stapler/stacker with job offset	Not available	✓
Advanced workflow features, including pull-out keyboard ²⁵	✓	Not available
Direct mobile printing	Optional wireless direct ¹³ /NFC touch-to-print ²⁹	Embedded Wi-Fi Direct ¹³ /Bluetooth Low Energy ¹⁴
Wireless networking	Optional ³⁰	Embedded

Get to know the HP LaserJet Enterprise MFP M635 series

HP LaserJet Enterprise Flow MFP M635z shown



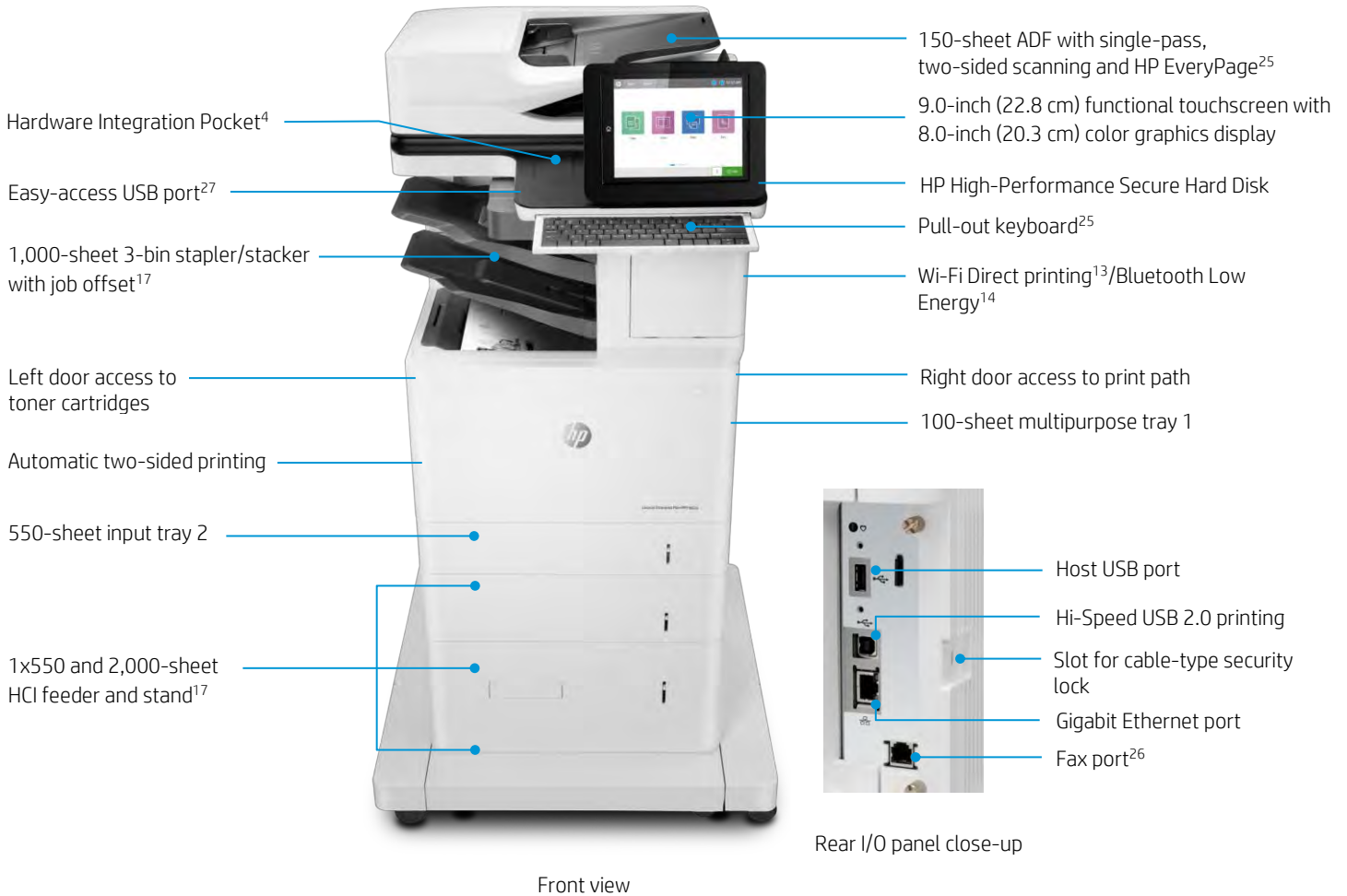
Series at a glance



Model (product number)	MFP M635h (7PS97A)	MFP M635ft (7PS98A)	Flow MFP M635z (7PS99A)
Print speeds (letter/A4) ¹²	Up to 65/61 ppm	Up to 65/61 ppm	Up to 65/61 ppm
Fax capabilities	Optional	✓	✓
HP High Performance Secure Hard Disk	✓	✓	✓
100-sheet tray 1 and 550-sheet tray 2	✓	✓	✓
550-sheet paper feeder ²⁸	Optional (up to four)	Optional (up to one)	Optional (up to one)
1x550-sheet paper feeder with stand and cabinet ²⁸	Optional	✓	Not available
3x550-sheet paper feeder and stand ²⁸	Optional	Not available	Not available
1x550 and 2,000-sheet HCI feeder and stand ²⁸	Optional	Not available	✓
Envelope feeder	Optional (up to two)	Optional (up to one)	Optional (up to one)
3-bin stapler/stacker with job offset	Not available	Not available	✓
Advanced workflow features, including pull-out keyboard ²⁵	Not available	Not available	✓
Direct mobile printing	Optional wireless direct ¹³ /NFC touch-to-print ²⁹	Optional wireless direct ¹³ /NFC touch-to-print ²⁹	Optional wireless direct ¹³ /NFC touch-to-print ²⁹
Wireless networking	Optional ³⁰	Optional ³⁰	Optional ³⁰

Get to know the HP LaserJet Enterprise MFP M636 series

HP LaserJet Enterprise Flow MFP M636z shown



Series at a glance



Model (product number)	MFP M636fh (7PT00A)	Flow MFP M636z (7PT01A)
Print speeds (letter/A4) ¹²	Up to 75/71 ppm	Up to 75/71 ppm
Fax capabilities	✓	✓
HP High-Performance Secure Hard Disk	✓	✓
100-sheet tray 1 and 550-sheet tray 2	✓	✓
550-sheet paper feeder ²⁸	Optional (up to four)	Optional (up to one)
1x550-sheet paper feeder with stand and cabinet ²⁸	Optional	Not available
3x550-sheet paper feeder and stand ²⁸	Optional	Not available
1x550 and 2,000-sheet HCI feeder and stand ²⁸	Optional	✓
Envelope feeder	Optional (up to two)	Optional (up to one)
3-bin stapler/stacker with job offset	Not available	✓
Advanced workflow features, including pull-out keyboard ²⁵	Not available	✓
Direct mobile printing	Optional wireless direct ¹³ /NFC touch-to-print ²⁹	Embedded Wi-Fi Direct ¹³ /Bluetooth Low Energy ¹⁴
Wireless networking	Optional ³⁰	Embedded

Paper-handling accessories



	550-sheet paper feeder (J8J89A)	1x550-sheet paper feeder with stand and cabinet (J8J91A)	3x550-sheet paper feeder and stand (J8J93A)	1x550 and 2,000-sheet HCL feeder and stand (J8J92A)	Envelope feeder (J8J90A)	3-bin stapler/stacker
Standard		M635fht	M634z	Flow M635z, Flow M636z		M634z, Flow M635z, Flow M636z
Optional	Add up to one: M634z, M635fht, Flow M635z, Flow M636z ²⁸ Add up to four: Flow M634h, M635h, M636fh ²⁸	Flow M634h, M635h, M636fh ²⁸	Flow M634h, M635h, M636fh ²⁸	Flow M634h, M635h, M636fh ²⁸	Add up to one: M634z, M635fht, Flow M635z, Flow M636z Add up to two: Flow M634h, M635h, M636fh	Not available

What's new

HP LaserJet Enterprise Flow MFP M636z	HP LaserJet Enterprise Flow MFP M633z	HP LaserJet Enterprise Flow MFP M630z
Print speed: up to 75 ppm, simplex; up to 62 ipm, duplex ¹²	Print speed: up to 75 ppm, simplex; up to 62 ipm, duplex ¹²	Up to 60 ppm, simplex; up to 41 ipm, duplex
150-sheet ADF and duplex scan speeds up to 180 ipm, ²³ black and color (Flow models)	150-sheet ADF and duplex scan speeds up to 180 ipm, ²³ black and color (Flow models)	100-sheet ADF with duplex scan speeds up to 60/45 ipm (black/color)
FPO as fast as 5.1/12.1 seconds from ready/sleep ^{10,11}	FPO as fast as 5.3/12.1 seconds from ready/sleep ^{10,11}	FPO as fast as 8.5/11 seconds from ready/sleep
250+ embedded security settings, ³ including HP Sure Start, run-time intrusion detection, whitelisting, and the HP Trusted Platform Module	250+ embedded security settings, ³ including HP Sure Start, run-time intrusion detection, and whitelisting	HP Sure Start not available; Whitelisting and run-time intrusion detection available with firmware upgrade
3-bin stapler/stacker with job offset and up to 3,200-sheet input, standard (3,750 sheets maximum); ¹⁶ input trays hold 550 sheets	3-bin stapler/stacker with job offset and up to 3,200-sheet input, standard (3,750 sheets maximum); ¹⁶ input trays hold 550 sheets	Up to 3,100-sheet input (standard/maximum); input trays hold 500 sheets
Original HP Toner cartridges with JetIntelligence; Extra High Yield black (~42,000 pages) ^{21,22}	Original HP Toner cartridges with JetIntelligence; Extra High Yield black (~41,000 pages) ^{21,22}	Original HP toner cartridges; Extra High Yield black not available

Technical specifications

	HP LaserJet Enterprise MFP M634 series	HP LaserJet Enterprise MFP M635 series	HP LaserJet Enterprise MFP M636 series
Product number	Flow M634h: 7PS95A M634z: 7PS96A	M635h: 7PS97A M635fht: 7PS98A Flow M635z: 7PS99A	M636fh: 7PT00A Flow M636z: 7PT01A
Control panel/data entry	9.0-inch (22.8 cm) functional touchscreen with 8.0-inch (20.3 cm) color graphics display; easy-access USB port; Hardware Integration Pocket ⁴ Flow M634h, Flow M635z, Flow M636z: Plus extended keyboard		
Print speed¹²			
Simplex	Up to 55 ppm, letter (52 ppm, A4)	Up to 65 ppm, letter (61 ppm, A4)	Up to 75 ppm, letter (71 ppm, A4)
Duplex	Up to 53 ipm, letter (50 ipm, A4)	Up to 53 ipm, letter (50 ipm, A4)	Up to 62 ipm, letter (58 ipm, A4)
First page out	From ready: ¹⁰ As fast as 5.1/5.2 seconds (letter/A4) (<i>all models</i>) From sleep: ¹¹ Flow M634h: as fast as 11.6/11.7 seconds (letter/A4); M634z: as fast as 14.6/14.7 seconds (letter/A4) M635h, M635fht, M636fh: as fast as 8.0/8.1 seconds (letter/A4) Flow M635z and Flow M636z: as fast as 12.1/12.2 seconds (letter/A4)		
Print resolution	FastRes 1200 (600 x 600 x 8bpp dpi), 1200 x 1200 dpi (<i>all models</i>)		
Scanning resolution	Up to 600 dpi (<i>all models</i>)		
ADF scan speed²³			
Single-sided	M634z, M635h, M635fht, M636fh: Up to 75/69 ppm (letter/A4, black and color) Flow M634h, Flow M635z, Flow M636z: Up to 90/83 ppm (letter/A4, black and color)		
Two-sided	M634z, M635h, M635fht, M636fh: Up to 120/111 ipm (letter/A4, black and color) Flow M634h, Flow M635z, Flow M636z: Up to 180/167 ipm (letter/A4, black and color)		
Features			
Printing	Print preview, duplex printing, print multiple pages per sheet (2, 4, 6, 9, 16), collation, watermarks, store print jobs		
Scanning	Flatbed scanner, up to 8.5 x 14 in (216 x 356 mm); 150-sheet ADF with two-sided, single-pass scanning; Advanced features: Optimize text/picture, image adjustments, job build, output quality setting, selectable scan resolution 75 to 600 dpi, auto detect color, edge erase, job notification, blank page suppression, Quick Sets Flow M634h, Flow M635z, Flow M636z: Plus HP EveryPage with ultrasonic multi-feed detection, Embedded Optical Character Recognition (OCR), auto-orientation, auto-crop-to-page, auto-tone		
Digital sending	Standard: scan to email; save-to-network folder; save-to-USB drive; send to SharePoint; send to FTP; send to Internet fax; ²⁶ local address book; SMTP over SSL; blank page removal; edge erase; auto color sense; auto crop to content; compact PDF Optional via HP Digital Sending Software (HP DSS): send to folder; send-to-workflow; send-to-printer; authentication; digital fax (send to LAN, Internet); OCR; local address book; via HP Embedded Capture: metadata capture and validation; data transfer; scan workflow management Flow M634h, Flow M635z, Flow M636z: Plus auto tonescale; auto orientation; multi-pick detect; auto straighten; auto crop to page; OCR		
File formats ³¹	PDF, JPEG, TIFF, MTIFF, XPS, PDF/A; digital send PDF, JPEG, TIFF, MTIFF, XPS, PDF/A; scan to easy-access USB: PDF, JPEG, TIFF, MTIFF, XPS, PDF/A Flow M634h, Flow M635z, Flow M636z: Plus TEXT (OCR), Unicode TEXT (OCR), RTF (OCR), Searchable PDF (OCR), Searchable PDF/A (OCR), HTML (OCR), CSV (OCR); digital send Hi-Compression PDF, TEXT (OCR), Unicode TEXT (OCR), RTF (OCR), Searchable PDF (OCR), Searchable PDF/A (OCR), HTML (OCR), CSV (OCR); scan to TEXT (OCR), Unicode TEXT (OCR), RTF (OCR), Searchable PDF (OCR), Searchable PDF/A (OCR), HTML (OCR), CSV (OCR)		
Copying	Two-sided copying, scalability, image adjustments (darkness, contrast, background cleanup, sharpness), N-up, N or Z-ordering, content orientation, collation, booklet, job build, edge-to-edge, job storage, ID Copy, Book Copy, A-to-B Copy (different media sizes); copy resolution: up to 600 x 600 dpi (flatbed), up to 600 x 450 dpi (ADF)		

	HP LaserJet Enterprise MFP M634 series	HP LaserJet Enterprise MFP M635 series	HP LaserJet Enterprise MFP M636 series
Faxing	<p>M634z, M635fht, Flow M635z, M636fh, Flow M636z:</p> <p>Fax speed:³² Up to 6 seconds per page/33.6 kbps (letter/A4); fax forwarding, receive fax polling, broadcasting to up to 210 locations, speed dial up to 1000 numbers, each with 210 destinations, auto-fax reduction, auto-redialing, stored faxes, fax archiving, scale-to-fit, fax address book, LAN/Internet fax, fax number confirmation, holiday fax schedule</p> <p>Fax resolution: Standard 203 x 98 dpi, fine 203 x 196 dpi, superfine up to 203 x 392 dpi, best up to 300 x 300 dpi (400 x 400 dpi for received faxes only); 256 levels of gray</p> <p>M634h, M635h: Fax optional</p>		
Processor	1.2 GHz (<i>all models</i>)		
Memory	<p>M634z, M635h, M635fht, M636fh, Standard: 2 GB system memory (1.5 GB printer and 512 MB scanner); Maximum: expandable to 4.0 GB system memory through one 144-pin DDR3 DIMM slot</p> <p>Flow M634h, Flow M635z, Flow M636z, Standard: 2.5 GB system memory (1.5 GB printer and 1 GB scanner); Maximum: expandable to 4.5 GB system memory through one 144-pin DDR3 DIMM slot</p>		
Storage	Embedded HP High-Performance Secure Hard Disk, minimum 500 GB (AES 256 hardware encryption or greater; secure erase capabilities)		
Durability ratings			
Recommended monthly page volume ³³	5,000 pages to as high as 30,000 pages (<i>all models</i>)		
Recommended monthly scan volume ²⁴	<p>M634z, M635h, M635fht, M636fh: 14,250 pages to as high as 23,750 pages</p> <p>Flow M634h, Flow M635z, Flow M636z: 26,750 pages to as high as 44,500 pages</p>		
Duty cycle ³⁴	Up to 300,000 pages (<i>all models</i>)		
Media specifications			
Input capacity	<p>Flow M634h, M635h, M636fh: Up to 650 sheets standard (up to 3,750 maximum)²⁸</p> <p>Tray 1: Up to 100 sheets</p> <p>Tray 2: Up to 550 sheets</p>		
	<p>M634z: Up to 2,300 sheets standard (up to 2,850 maximum)²⁸</p> <p>Tray 1: Up to 100 sheets</p> <p>Tray 2: Up to 550 sheets</p> <p>3x550-sheet paper feeder and stand</p>	<p>M635fht: Up to 1,200 sheets standard (up to 3,750 maximum)²⁸</p> <p>Tray 1: Up to 100 sheets</p> <p>Tray 2: Up to 550 sheets</p> <p>1x550-sheet paper feeder with stand and cabinet</p> <p>Flow M635z: Up to 3,200 sheets standard (up to 3,750 maximum)</p> <p>Tray 1: Up to 100 sheets</p> <p>Tray 2: Up to 550 sheets</p> <p>1x550 and 2,000-sheet HCl feeder and stand</p>	<p>Flow M636z: Up to 3,200 sheets standard (up to 3,750 sheets maximum)²⁸</p> <p>Tray 1: Up to 100 sheets</p> <p>Tray 2: Up to 550 sheets</p> <p>1x550 and 2,000-sheet HCl feeder and stand</p>
Output capacity	<p>Flow M634h, M635h, M635fht, M636fh: Up to 500 sheets; Up to 75 envelopes</p> <p>M634z, Flow M635z, Flow M636z: Up to 1,000 sheets, with three-bin stapler/stacker</p>		
Two-sided printing	Automatic (<i>all models</i>)		
Media sizes	<p>Tray 1: Letter, legal, statement, executive, Oficio (8.5 x 13 in), 3 x 5 in, 4 x 6 in, 5 x 7 in, envelopes (No. 9, No. 10, Monarch); A4, A5, A6, RA4, B5 (JIS), B6 (JIS), 16K, 10 x 15 cm, Oficio (216 x 340 mm), postcards (JIS single and double), envelopes (DL ISO, C5, C6, B5); Custom media sizes: 3 x 5 to 8.5 x 14 in (76 x 127 to 216 x 356 mm)</p> <p>Trays 2, 3, 4, and 5: Letter, legal (trays 3, 4, 5 only), executive; A4, A5, A5-R, A6, RA4, B5 (JIS), 16K; Custom media sizes: 3.9 x 5.8 to 8.5 x 11 in (99 x 148 to 216 x 297 mm)</p> <p>HCl: Letter, legal; A4; Custom media sizes: 8.27 x 11 to 8.5 x 14 (210 x 279 to 216 x 356 mm)</p> <p>Duplex: Letter, legal, executive; A4, A5, RA4, B5 (JIS), Oficio (216 x 340 mm)</p> <p>ADF: Letter, legal, Oficio, executive, statement, 16K, 4 x 6 in, 5 x 7 in, 5 x 8 in; A4, RA4, A5, A6, B5, B6 (JIS), Postcard (JIS), DPostcard (JIS)</p>		
Media weights	<p>Tray 1: 16 to 53 lb (60 to 200 g/m²)</p> <p>Tray 2+: 16 to 32 lb (60 to 120 g/m²)</p>		
Media types	Paper (plain, light, bond, recycled, heavy, extra heavy, cardstock, pre-printed, pre-punched, colored, rough, heavy rough), mono transparency, labels, letterhead, envelope, heavy envelope		

	HP LaserJet Enterprise MFP M634 series	HP LaserJet Enterprise MFP M635 series	HP LaserJet Enterprise MFP M636 series
Print languages	HP PCL 6, HP PCL 5, HP postscript level 3 emulation, native PDF printing (v 1.7), Apple® AirPrint® ³⁵		
Fonts	105 internal TrueType fonts scalable in HP PCL, 92 internal scalable fonts in HP postscript level 3 emulation (Euro symbol built-in); 1 internal Unicode font (Andale Mono WorldType); 2 Internal Windows® Vista® 8 fonts (Calibri, Cambria); Additional font solutions available via third-party flash memory cards; HP LaserJet fonts and IPDS Emulation available at hp.com/go/laserjetfonts		
Connectivity	2 USB 2.0 Host; 1 Hi-Speed USB 2.0 Device; 1 Gigabit Ethernet 10/100/1000T network M634z, M635fh, Flow M635z, M636fh, Flow M636z: Plus fax Flow M634h, M635h: Optional fax		
Mobile printing	HP ePrint, ³⁶ AirPrint, ³⁵ Mopria-certified, Google Cloud Print™ 2.0, HP Roam for Business optional MFP M634z and Flow MFP M636z: Plus Wi-Fi Direct ¹³ and Bluetooth Low Energy ¹⁴ Flow M634h, M635h, M635fh, Flow M635z, M636fh: Optional wireless direct printing ¹³ and NFC touch-to-print ²⁹ enabled with purchase of accessory		
Network capabilities	Standard: via HP Jetdirect Ethernet embedded print server supports: 10Base-T, 100Base-Tx, 1000Base-T; 802.3az (EEE) support on Fast Ethernet and Gigabit Ethernet; IPsec Plus 802.11a/b/g/n wireless networking (<i>M634z and Flow M636z models</i>) <i>All other models:</i> Optional 802.11a/b/g/n wireless networking enabled with purchase of accessory ³⁰		
Network protocols	Via built-in networking solution: TCP/IP, IPv4, IPv6 Print: TCP-IP port 9100 Direct Mode, LPD (raw queue support only), Web Services Printing, IPP 2.0, Apple AirPrint, ³⁵ HP ePrint, FTP Print, Google Cloud Print Discovery: SLP, Bonjour®, Web Services Discovery IP Config: IPv4 (BootP, DHCP, AutoIP, Manual, TFTP Config, ARP-Ping), IPv6 (Stateless Link-Local and via Router, Statefull via DHCPv6) Management: SNMPv2/v3, HTTP/HTTPS, Telnet, TFTP Config, FTP FW Download, Syslog Security: SNMPv3, SSL Cert Management, Firewall, ACL, 802.1x		
Security	Identity management: Kerberos authentication, LDAP authentication, 1000 user PIN codes, optional HP and third-party advanced authentication solutions (e.g., badge readers) Network: IPsec/firewall with Certificate, Pre-Shared Key, and Kerberos authentication, Supports WJA-10 IPsec configuration Plug-in, 802.1X authentication (EAP-PEAP; EAP-TLS), SNMPv3, HTTPS, Certificates, Access Control List Data: Storage Encryption, Encrypted PDF and Email (uses FIPS 140 validated cryptographic libraries from Microsoft), Secure Erase, SSL/TLS (HTTPS), Encrypted Credentials Device: Security lock slot, USB port disablement, Hardware Integration Pocket for security solutions, ⁴ Intrusion Detection with Red Balloon Security Technology – constant in-device monitoring for attacks, HP Sure Start Secure Boot – BIOS Integrity Checking with self-healing capability, Whitelisting – loads only known good code (DLLs, EXEs, etc.) Security management: Compatible with HP JetAdvantage Security Manager, ⁷ Device Security Syslog Messages processed and accessible in ArcSight, McAfee, and Splunk SIEMs		
Compatible operating systems³⁷	Windows Client OS (32/64 bit): Windows 10, Windows 8.1, Windows 7 Ultimate Mobile OS: iOS, Android™ Mac: Apple® macOS Sierra v10.13, Apple® macOS High Sierra v10.14, Apple® macOS Mojave v10.15		
Compatible network operating systems	Windows Server 2008 R2 64-bit, Windows Server 2008 R2 64-bit (SP1), Windows Server 2012 64-bit, Windows Server 2012 R2 64-bit, Windows Server 2016 64-bit, Windows Server 2019 64-bit, Citrix Server 6.5, Citrix XenApp and XenDesktop 7.6, Novell iPrint server, Citrix Ready Kit Certification up to Citrix Server 7.18		
System requirements, Windows	2 GB available hard disk space, Internet connection or USB port, Internet browser. For additional OS hardware requirements, see microsoft.com.		
System requirements, Macintosh	2 GB available hard drive space, Internet connection or USB port, Internet browser. For additional OS hardware requirements, see apple.com.		

	HP LaserJet Enterprise MFP M634 series	HP LaserJet Enterprise MFP M635 series	HP LaserJet Enterprise MFP M636 series
Dimensions (width x depth x height)	Flow M634h: 20.15 x 22 x 25.2 in (512 x 558 x 640 mm); Maximum: ³⁸ 40.5 x 31.7 x 34.1 in (1030 x 808 x 865 mm) M634z: 26 x 25.9 x 48.5 in (661 x 658 x 1234 mm); Maximum: ³⁸ 40.5 x 35 x 59.1 in (1030 x 890 x 1500 mm)	M635h: 20.15 x 22 x 25.2 in (512 x 558 x 640 mm); Maximum: ³⁸ 40.5 x 31.7 x 34.1 in (1030 x 808 x 865 mm) M635fht: 26.15 x 26 x 43.2 in (665 x 600 x 1094 mm); Maximum: ³⁸ 40.5 x 35 x 53.7 in (1030 x 890 x 1356 mm) Flow M635z: 26 x 25.9 x 48.5 in (661 x 658 x 1234 mm); Maximum: ³⁸ 40.5 x 35 x 59.1 in (1030 x 890 x 1500 mm)	M636fh: 20.15 x 22 x 25.2 in (512 x 558 x 640 mm); Maximum: ³⁸ 40.5 x 31.7 x 34.1 in (1030 x 808 x 865 mm) Flow M636z: 26 x 25.9 x 48.5 in (661 x 658 x 1234 mm); Maximum: ³⁸ 40.5 x 35 x 59.1 in (1030 x 890 x 1500 mm)
Weight (with print cartridges)	Flow M634h: 73.2 lb (33.2 kg) M634z: 137.8 lb (62.5 kg)	M635h: 73.2 lb (33.2 kg) M635fht: 115.8 lb (52.5 kg) Flow M635z: 141.8 lb (64.3 kg)	M636fh: 73.2 lb (33.2 kg) Flow M636z: 141.8 lb (64.3 kg)
What's in the box	HP LaserJet Multifunction Printer; HP Black Original LaserJet Toner Cartridge (~10,500 yield); ²² documentation (hardware install guide, regulatory flyer); power cord		
Software included^{d31}	No software solutions are included in the box, only on http://hp.com		
Downloadable software	HP Easy Start (Guided Software Install for Windows and Mac); HP PCL6 XPS Discrete Print Driver, Product Documentation and Support; HP Mac OS Print Driver, HP Easy Admin; Printer Administrator Resource Kit; HP Universal Print Drivers PCL6 GDI & PS GDI for Windows, HP ePrint Software (Mobile Driver for Windows), SAP Print Drivers; HP Web JetAdmin, ⁶ HP JetAdvantage Security Manager, ⁷ HP Roam, HPLIP Linux Printer Driver; Unix Model Script Printer Driver		
Warranty	One-year warranty. Warranty and support options vary by product, country, and local legal requirements. Go to hp.com/support to learn about HP award-winning service and support options in your region.		

Environmental and power specifications

	HP LaserJet Enterprise MFP M634 series	HP LaserJet Enterprise MFP M635 series	HP LaserJet Enterprise MFP M636 series
Environmental ranges			
Temperatures	Operating range: 50 to 91°F (10 to 32.5°C); Recommended operating range: 59 to 80.6°F (15 to 27°C); Storage: -4 to 104°F (-20 to 40°C)		
Relative humidity (RH) range	Operating range: 10 to 80% RH; Recommended operating range: 30 to 70% RH		
Acoustic power emissions³⁹			
Ready mode	Inaudible	Inaudible	M636fh: Inaudible Flow M636z: 3.5 B(A)
Active printing	6.9 B(A)	7.0 B(A)	M636fh: 7.1 B(A) Flow M636z: 7.0 B(A)
Active scanning	7.2 B(A)	7.2 B(A)	M636fh: 7.2 B(A) Flow M636z: 7.3 B(A)
Acoustic pressure emissions (bystander)			
Ready mode	Inaudible	Inaudible	M636fh: Inaudible Flow M636z: 15 dB(A)
Active printing	55 dB(A)	54 dB(A)	M636fh: 57 dB(A) Flow M636z: 55 dB(A)
Active scanning	<i>All models: 58 dB(A)</i>		
Power specifications⁴⁰			
Power supply	Built-in 115 V or 220 V power supply (Not dual voltage, power supply varies by part number with # Option code identifier) 100–127 V nominal @ ±10% (min 90 V, max 140 V); 50–60 Hz nominal ± 3 Hz (min 47 Hz, max 63 Hz); 12 A 220–240 V nominal @ ±10% (min 198 V, max 264 V); 50–60 Hz nominal ± 3 Hz (min 47 Hz, max 63 Hz); 6 A		
Power consumption	Printing/copying: 740 watts; ready: 29 watts; sleep: 3.3 watts; auto-off/wake on LAN: 0.8 watts; manual off: 0.1 watts		
Energy-saving features	HP Auto-On/Auto-Off Technology, ¹⁹ Instant-On Technology, ²⁰ Instant-On Copy		
Environmental specifications	ENERGY STAR® certified; CECP; EPEAT® Silver registered models available ⁴⁰		
Typical Electricity Consumption (TEC)⁴¹	2.219 kWh/week	2.626 kWh/week	3.183 kWh/week
Safety and regulatory compliance	IEC 60950-1:2005 +A1:2009 +A2:2013 (International); EN60950-1:2006 +A11:2009 +A1:2010 +A12:2011 +A2:2013 (EU); EN 60825-1:2014/IEC 60825-1:2014 (Class 1 Laser Product); EN 62479:2010/IEC 62479:2010; IEC 62471:2006 / EN 62471:2008; Low Voltage Directive 2014/35/EU with CE Mark (Europe); GS Certificate (Germany, Europe); UL/cUL Listed and UC CoC (US/Canada); CAN/CSA C22.2 No. 60950-1-07 2nd Ed. 2011-12; compliance with Laser safety standards 21 CFR 1040.10 and 1040.11 except for deviations pursuant to Laser notice No. 50, dated June 24, 2007; other safety approvals as required by individual countries.		
Electromagnetic emission standard	CISPR 22:2008 (International) Class A, CISPR 32:2012 (International) Class A / EN 55032:2012 Class A, CISPR 35:2016 (International) Class A / EN 55035:2017 Class A, EN 55024:2010 +A1:2015, EN 61000-3-2:2014, EN 61000-3-3:2013, FCC CFR 47 Part 15 Class A, ICES-003, Issue 6 Class A, Low Voltage Directive 2014/35/EU, EMC Directive 2014/30/EU. Other EMC approvals as required by individual countries.		
Telecom compliance certification	M634z, M635fht, Flow M635z, M636fh, Flow M636z (Telecom wired): ES 203 021-1 v2.1.1; ES 203 021-2 v2.1.2; ES 203 021-3 v2.1.2; FCC Rules and Regulations 47 CFR Part 68. Other Telecom wired approvals as required by individual countries.		

Ordering information

Use accessories and supplies specifically designed for the MFP to help provide efficient performance. To order the accessories and supplies listed here, go to hp.com. To contact HP by country, please visit hp.com/go/contact.

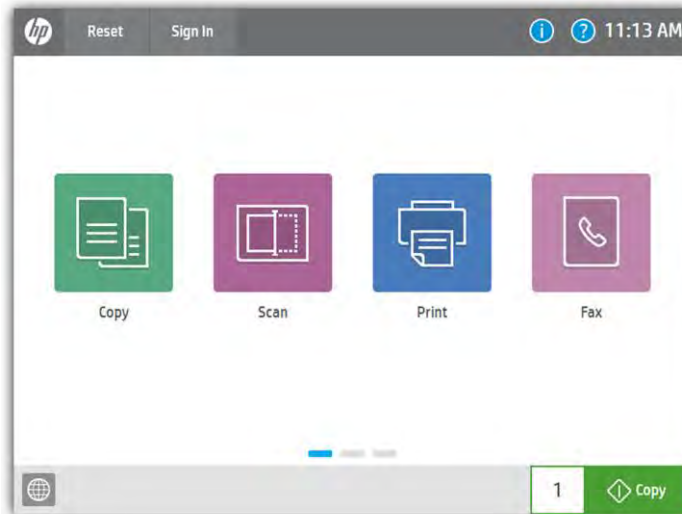
If you don't have access to the Internet, contact your qualified HP dealer or call HP (U.S.) at (800) 282-6672.

MFP	HP LaserJet Enterprise Flow MFP M634h	7PS95A
	HP LaserJet Enterprise MFP M634z	7PS96A
	HP LaserJet Enterprise MFP M635h	7PS97A
	HP LaserJet Enterprise MFP M635fht	7PS98A
	HP LaserJet Enterprise Flow MFP M635z	7PS99A
	HP LaserJet Enterprise MFP M636fh	7PT00A
	HP LaserJet Enterprise Flow MFP M636z	7PT01A
Supplies	HP 147A Black Original LaserJet Toner Cartridge (~10,500 pages) ²²	W1470A
	HP 147X High Yield Black Original LaserJet Toner Cartridge (~25,200 pages) ²²	W1470X
	HP 147Y Extra High Yield Black Original LaserJet Toner Cartridge (~42,000 pages) ²²	W1470Y
	HP LaserJet 110 V Maintenance Kit (225,000 pages)	J8J87A
	HP LaserJet 220 V Maintenance Kit (225,000 pages)	J8J88A
	HP 300 ADF Roller Replacement Kit (150,000 pages)	J8J95A
HP Staple Cartridge Refill (5,000 staples)	J8J96A	
Accessories	HP LaserJet 550-sheet Paper Tray	J8J89A
	HP LaserJet Envelope Feeder	J8J90A
	HP LaserJet 1x550 Stand	J8J91A
	HP LaserJet HCI Stand	J8J92A
	HP LaserJet 3x550 Stand	J8J93A
	HP MFP Analog 700 Fax Accessory	2EH31A
	HP Accessibility Assistant	2MU47A
	HP 2 GB 144-Pin DDR3 TAA Version DIMM	2NR09A
	HP TAA Version Secure Hard Disk Drive	5EL03A
	HP Secure High-Performance Hard Disk Drive	B5L29A
	HP Removable Hard Drive Enclosure	2NR12A
	HP Accessibility Kit	2TD64A
	HP Jetdirect 3100w BLE/NFC/Wireless Accessory	3JN69A
	HP MFP Analog Fax 701 Fax Accessory	5UT59A
	HP LaserJet Danish/French/German Keyboard Overlay Kit	A7W13A
	HP Internal USB Ports	B5L28A
	HP Foreign Interface Harness	B5L31A
	HP SmartCard NIPRNet Solution for U.S. Government	CC543B
	HP 2 GB DDR3x32 144-Pin 800MHz SODIMM Accessory	E5K49A
	HP Jetdirect 3000w NFC/Wireless Accessory	J8030A
	HP LaserJet Keyboard Overlay Kit Sweden	A7W14A
	HP USB Universal Card Reader	X3D03A
	HP HIP2 Keystroke Reader	Y7C05A
HP Legic Reader	4QL32A	
HP Services	Make sure your imaging and printing investments are protected with Care Pack, part of HP Care. Pick your package of services to keep your MFP running and your business moving. Now your office can spend less time troubleshooting and more time getting things done. For details, visit hp.com/go/cpc . ⁴¹	
Boost performance—it's your choice. HP Care provides options to help you manage imaging and printing—from Care Pack services to customizable and advisory services. With HP Managed Print Services, we oversee everything for you.	Installation	U9JT2E
	3-Year Next Business Day Onsite	U9NK0E
	5-Year Next Business Day Onsite	U9NK2E
	3-Year 4-Hour 9x5 Onsite	U9NK3E
Solutions	HP Web Jetadmin: hp.com/go/wia	
	HP Universal Print Driver: hp.com/go/upd	
	HP JetAdvantage Security Manager: hp.com/go/securitymanager	
	HP LaserJet fonts, barcodes, and IPDS Emulation available at hp.com/go/laserjetfonts	
	HP JetAdvantage On Demand Cloud Solutions: hp.com/go/JetAdvantageondemand To learn more about available infrastructure, management, and workflow solutions, visit hp.com/go/printing_solutions	

Appendix A: Control panel features

Upgrade to a modern interface

The HP LaserJet Enterprise MFP M634/M635/M636 series is powered by HP FutureSmart 4.0 firmware. Its modern, tablet-like interface keeps things simple and intuitive across your fleet of enterprise devices. A scalable control panel interface improves future extensibility and allows for customization, along with a robust set of new apps and usability features. You can even customize with your own wallpaper image and company logo. The new Message Center, with more detailed information and helpful animations, makes it easy to address device events. The simplified home screen displays just four core apps by default (three apps for products without fax). Additional apps are easily accessed by swiping right to left, like with a smartphone or tablet.

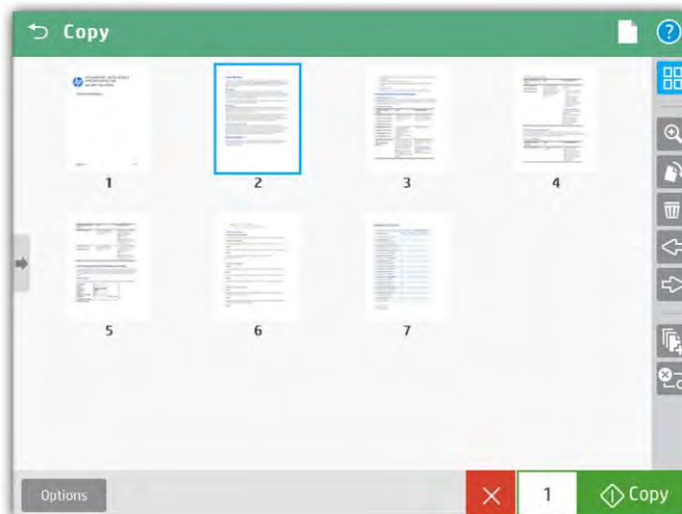


Edit jobs right at the MFP

The control panel features an enhanced image preview—now for both copies and scans. Right from the device's 9.0-inch (22.8 cm) functional touchscreen with 8.0-inch (20.3 cm) color graphics display, you can easily preview and edit scans before sending them. You can apply changes (like rotating) to a single page, or to multiple pages at once. Batch separation allows users to create separate PDF or PDF/A files from scanned pages. The Flow MFP M634h, M635z, and M636z models can also create PDF OCR and PDF/A OCR files.



The new user interface enables **swipe**, **rotate**, and **drag-and-drop** capabilities



- Zoom
- Rotate pages
- Delete pages
- Change page order
- Add pages (job build)
- Cancel job

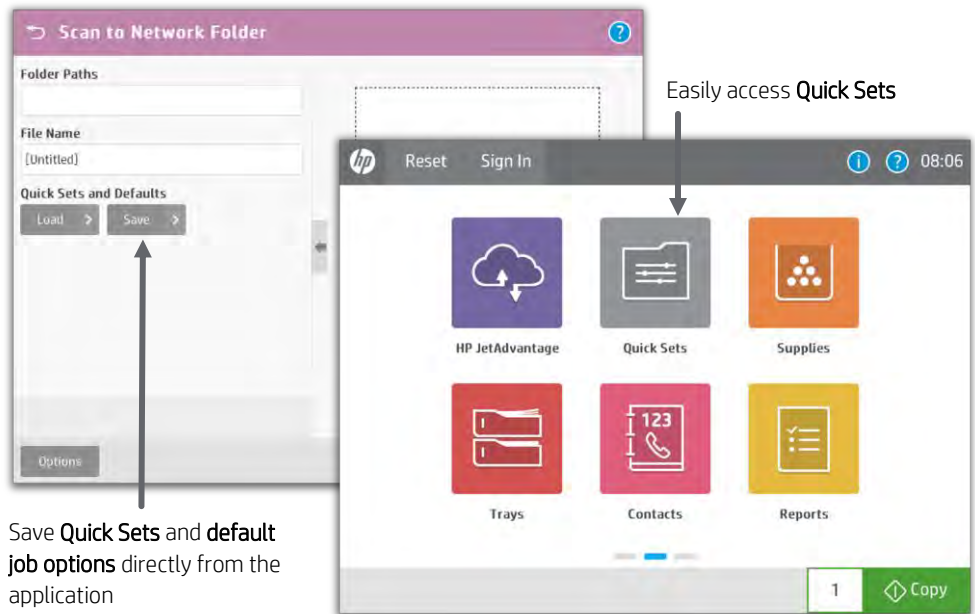
You can start a **preview** prior to committing to the copy job

Use Quick Sets to launch automated workflows

The MFP's digital sending capability allows users to route documents to a variety of destinations like email recipients, network folders, fax, FTP, a USB device, or Microsoft SharePoint.

Quick Sets automate all of the steps of a complicated workflow and provide easy access to the configurations you use most, such as page size, resolution, and file format. You can also specify security settings, such as encrypted PDFs to be delivered through encrypted and signed emails.

Help users find what they need by moving individual Quick Sets to any screen or folder using the home screen customization feature. With Quick Sets, IT can promote or block access to certain device features. Calls to the helpdesk can be reduced when users have everything they need and are restricted from accessing settings they shouldn't tamper with.



Save **Quick Sets** and **default job options** directly from the application

Troubleshoot with ease

The HP LaserJet Enterprise MFP M634/M635/M636 series can help save your IT department valuable time when it comes to troubleshooting problems. The Remote Control Panel allows users to operate the user interface remotely, so IT can troubleshoot problems without running to the MFP.⁴² Users can also quickly troubleshoot technical issues with HP's innovative, cloud-based Online Help services that are relevant and up to date. Easily solve problems from your PC or mobile device. A Quick Response (QR) code on the touchscreen links to Online Help using smart phones and tablets.⁴³ You can also find these links in the HP Embedded Web Server event log.



¹ Based on HP review of 2019 published features of competitive in-class printers. Only HP offers a combination of security features to automatically detect, stop, and recover from attacks with a self-healing reboot, in alignment with NIST SP 800-193 guidelines for device cyber resiliency. For a list of compatible products, visit: hp.com/go/PrintersThatProtect. For more information, visit hp.com/go/PrinterSecurityClaims.

² Based on the reduced energy use of HP LaserJet printers and cartridges with JetIntelligence introduced since 2015 compared to previous toner versions without JetIntelligence, using ENERGY STAR® methodology.

³ Some features require additional purchase. A FutureSmart service pack update may be required to activate security features. Learn more at hp.com/go/printsecurity.

⁴ Solutions deployed through the Hardware Integration Pocket (HIP) may require additional purchase.

⁵ Use of the HP Trusted Platform Module accessory may require a firmware upgrade.

⁶ HP Web Jetadmin is available for download at no additional charge at hp.com/go/wja.

⁷ HP JetAdvantage Security Manager must be purchased separately. For details, see hp.com/go/securitymanager.

⁸ HP JetAdvantage Secure Print works with any network-connected printer or MFP. On-device authentication is available for many HP LaserJet, PageWide, and OfficeJet Pro devices and selected non-HP devices. Some devices may require a firmware upgrade. Internet connection required for cloud storage and retrieval of print jobs. Print-job release from a mobile device requires a network connection and QR code. For more information and a list of supported printers and MFPs, see hp.com/go/JetAdvantageSecurePrint.

⁹ Color access control capabilities vary from device to device.

¹⁰ Measured using ISO/IEC 17629. Exact speed varies depending on the system configuration, software application, driver, and document complexity. Learn more at hp.com/go/printerclaims.

¹¹ Measured after 15 minutes in sleep. Exact speed varies depending on the system configuration, software application, driver, document complexity, and time in sleep.

¹² Measured using ISO/IEC 24734; excludes first set of test documents. For more information, see hp.com/go/printerclaims. Exact speed varies depending on the system configuration, software application, driver, and document complexity.

¹³ Wi-Fi Direct® printing is embedded in the HP LaserJet Enterprise M634z and Flow M636z models. All other models can add wireless direct with purchase of the optional HP Jetdirect 3000w NFC/Wireless Direct Accessory. Mobile device needs to be connected directly to the signal of a Wi-Fi Direct-supported MFP or printer prior to printing. Depending on mobile device, an app or driver may also be required. For details, see hp.com/go/mobileprinting.

¹⁴ Bluetooth® Low Energy is standard only on the HP LaserJet Enterprise MFP M634z and Flow MFP M636z models, and it cannot be added to other models.

¹⁵ Requires purchase of server software such as HP JetAdvantage Connect or HP Access Control Secure Pull Printing. Learn more at hp.com/go/businessmobileprinting.

¹⁶ Purchase of optional paper trays required to reach maximum input capacity. The M634z has a maximum input capacity of 2,850 sheets, the M635fht has a maximum input capacity of 1,750 sheets, and all other models have a maximum input capacity of 3,750 sheets.

¹⁷ Standard and optional paper-handling accessories vary by model. See paper-handling accessories, page 9, for details.

¹⁸ Energy claim based on TEC data reported on energystar.gov as of January 2017. Data normalized to determine energy efficiency of in-class laser printers with published speeds of 55 to 75 ppm (letter). Subject to device settings. Actual results may vary.

¹⁹ HP Auto-On/Auto-Off Technology capabilities are subject to printer and settings.

²⁰ Compared with products that use traditional fusing.

²¹ HP 37X High Yield and 37Y Extra High Yield Black Original LaserJet Toner cartridges are not included in printer purchase; purchase separately. Learn more at hp.com/go/learnaboutsups.

²² Toner cartridge yields established using ISO/IEC test standards. Actual yields and costs vary considerably depending on images printed, number of color pages printed, and other factors.

²³ Scan speed measured from ADF at default 300 dpi (black-and-white, grayscale, and color). Actual processing speeds may vary depending on scan resolution, network conditions, computer performance, and application software.

²⁴ The Recommended Monthly Scan Volume (RMSV) is up to 44,500 for the Flow M634h, Flow M635z, and Flow M636z models and up to 23,750 pages for all other models. HP recommends that the number of scanned pages per month be within the stated range for optimum device performance, based on factors including supplies replacement intervals and device life over an extended warranty period.

²⁵ The pull-out keyboard and HP EveryPage are only available on the HP LaserJet Enterprise Flow MFP M634h, Flow MFP M635z, and Flow MFP M636z models.

²⁶ Fax capability is optional on the HP LaserJet Enterprise Flow MFP M634h and MFP M635h models.

²⁷ An administrator must enable the easy-access USB port before use.

²⁸ The MFP is limited to a total of six input feeders. The HP LaserJet Enterprise MFP M634z, M635fht, Flow M635z, and Flow M636z can add up to one additional optional 550-sheet paper feeder or envelope feeder. The Flow M634h, M635h, and M636fh can add up to four additional optional 550-sheet paper feeders; or, they can add one of the other optional accessories (1x550-sheet paper feeder with stand and cabinet, 3x550-sheet paper feeder and stand, or 1x550 and 2,000-sheet HCI feeder and stand) and up to one additional optional 550-sheet paper feeder or envelope feeder. The optional maximum configurations may raise glass height above best customer usability standards.

²⁹ Touch-to-print capability can be added to all models (except M634z and Flow M636z) with purchase of the optional HP Jetdirect 3000w NFC/Wireless Direct Accessory. Mobile device must support Near Field Communication (NFC)-enabled printing. For more information, see hp.com/go/businessmobileprinting.

³⁰ All models can add wireless networking with the purchase of the HP Jetdirect 3100w BLE/NFC/Wireless Accessory (3JN69A). Wireless performance is dependent on physical environment and distance from access point, and may be limited during active VPN connections.

³¹ Scan software not included in box. HP Scan and TWAIN driver available for download at hp.com/support.

³² Based on standard ITU-T test image #1 at standard resolution and MMR encoding, the HP fax device can transmit at 3 sec/page for V.34 and 6 sec/page for V.17.

³³ HP recommends that the number of printed pages per month be within the stated range for optimum device performance, based on factors including supplies replacement intervals and device life over an extended warranty period.

³⁴ Duty cycle is defined as the maximum number of pages per month of imaged output. This value provides a comparison of product robustness in relation to other HP LaserJet or HP Color LaserJet devices, and enables appropriate deployment of printers and MFPs to satisfy the demands of connected individuals or groups.

³⁵ Supports the following devices running iOS 4.2 or later: iPad®, iPad 2, iPhone® (3GS or later), iPod® touch (third generation or later). Works with HP's AirPrint-enabled printers and requires the printer be connected to the same network as your iOS device. Wireless performance is dependent on physical environment and distance from the access point.

³⁶ Printer requires ePrint account registration. App or software may be required. Wireless operations are compatible with 2.4 GHz operations only. Learn more at hp.com/go/mobileprinting.

³⁷ Full solution software available only for Windows 7 and newer, UPD software available only for Windows 7 and newer, HP Software for Mac and Windows is no longer included on the CD, but can be downloaded from 123.hp.com. Legacy Windows Operating Systems (XP, Vista, and equivalent servers) get print and Scan drivers only with a reduced feature set, Windows RT OS for Tablets (32- and 64-bit) uses a simplified HP print driver built into the RT OS.

³⁸ Maximum dimensions measured with right side jam access door open, left side cartridge door open, all trays open and extended, and ADF open.

³⁹ Acoustic values are subject to change. For current information, see hp.com/support.

⁴⁰ Power requirements are based on the country/region where the printer is sold. Do not convert operating voltages. This will damage the printer and void the product warranty. ENERGY STAR® value typically based on measurement of 115V device.

⁴¹ Service levels and response times may vary depending on your geographic location. Service starts on date of hardware purchase. Restrictions and limitations apply. For details, visit hp.com/go/cpc.

⁴² Availability dependent on firmware or software updates or upgrades.

⁴³ Online Help must be enabled on the printer or MFP. Mobile device must have an Internet connection to access online services.

Sign up for updates
hp.com/go/getupdated



© Copyright 2017–2020 HP Development Company, L.P. The information contained herein is subject to change without notice. The only warranties for HP products and services are set forth in the express warranty statements accompanying such products and services. Nothing herein should be construed as constituting an additional warranty. HP shall not be liable for technical or editorial errors or omissions contained herein.

AirPrint, Apple, Bonjour, iPad, iPhone, and iPod are trademarks of Apple Inc. Android and Google Cloud Print are trademarks of Google Inc. Bluetooth is a trademark owned by its proprietor and used by HP Inc. under license. Citrix and XenDesktop are registered trademarks of Citrix Systems, Inc. and/or one more of its subsidiaries, and may be registered in the United States Patent and Trademark Office and in other countries. ENERGY STAR is a registered trademark owned by the U.S. Environmental Protection Agency. Linux is the registered trademark of Linus Torvalds in the U.S. and other countries. Microsoft, Windows, Windows Server, Windows Vista, and SharePoint are U.S. registered trademarks of the Microsoft group of companies. UNIX is a registered trademark of The Open Group. Wi-Fi Direct is a registered trademark of Wi-Fi Alliance.

4AA7-7128ENUC, June 2020, Rev. 2

