

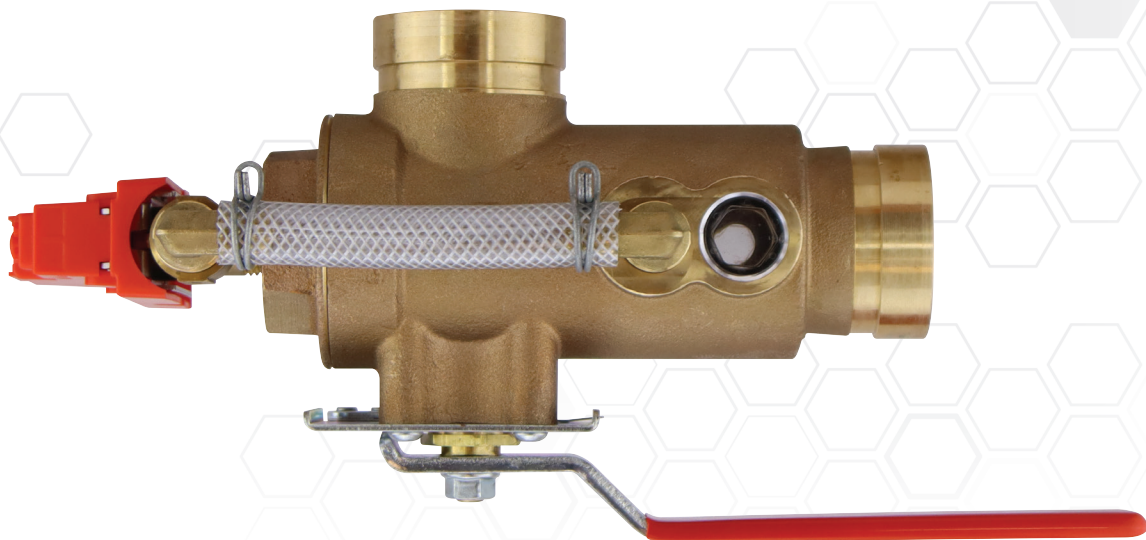
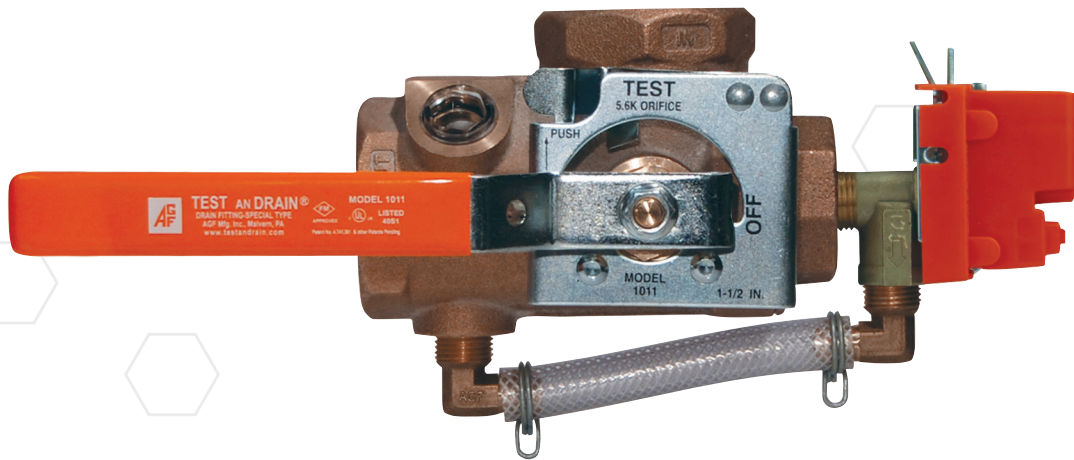


**AGF Manufacturing**

**TESTANDRAIN®**

**SYSTEM TEST VALVES**

SINCE 1986



**TESTANDRAIN®**

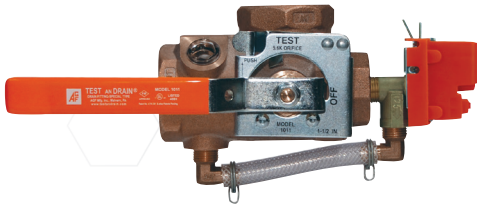
**System Test and Express Drain Valves with Pressure Relief**

**NOTE:** NFPA 13 Standard (2010 or more recent) requires a pressure relief valve on all wet pipe fire sprinkler systems. TESTANDRAIN valves with pressure relief are an efficient way to meet code requirements.

**Model 1011A**

Provides the test and express drain functions for wet pipe fire sprinkler systems. Includes a Model 7000L pressure relief valve (175 PSI) with drain trim that can be locked out for hydrostatic testing. Other PSI ratings are available (200, 225, or 300).

- Cast Bronze Valve Body
- Thread x Thread (NPT) Connections
- Includes Pressure Relief Valve with Drain Trim
- **British Standard Pipe Thread (BSPP) Available**



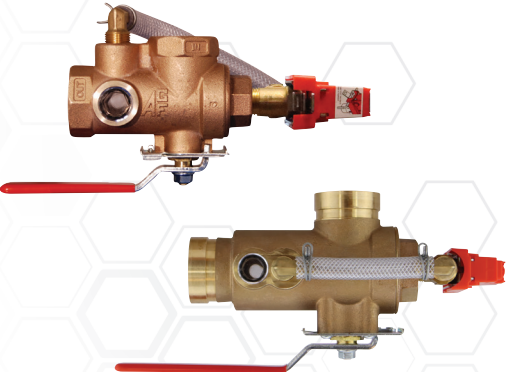
		1011A Part Numbers				
Orifice Size		3/4"	1"	1¼"	1½"	2"
K-Factor	Fractional					
2.8	3/8"	200A	210A	220A	230A	240A
4.2	7/16"	201A	211A	221A	231A	241A
<b>5.6</b>	<b>1/2"</b>	<b>202A</b>	<b>212A*</b>	<b>222A*</b>	<b>232A</b>	<b>242A**</b>
8.0	17/32"	203A	213A	223A	233A	243A
11.2 (ELO)	5/8"	204A	214A	224A	234A	244A
14.0 (ESFR)	3/4"	N/A	N/A	225A	235A	245A
25.2	-	N/A	N/A	N/A	236A	246A

\*Case quantity 10 • \*\*Case quantity 6

**Model 2511A**

Features an alternative handle location for installation flexibility. Includes a Model 7000L pressure relief valve (175 PSI) with drain trim that can be locked out for hydrostatic testing. Other PSI ratings are available (200, 225, or 300).

- Cast Bronze Valve Body
- Thread or Groove Connections
- Includes Pressure Relief Valve with Drain Trim



		2511A Part Numbers				
Orifice Size		1"		1¼"		2"
K-Factor	Fractional	Thread	Groove	Thread	Groove	Groove
2.8	3/8"	406A-0	406GA-0	407A-0	407GA-0	409GA-0
4.2	7/16"	406A-1	406GA-1	407A-1	407GA-1	409GA-1
<b>5.6</b>	<b>1/2"</b>	<b>406A-2</b>	<b>406GA-2</b>	<b>407A-2</b>	<b>407GA-2</b>	<b>409GA-2</b>
8.0	17/32"	406A-3	406GA-3	407A-3	407GA-3	409GA-3
11.2 (ELO)	5/8"	406A-4	406GA-4	407A-4	407GA-4	409GA-4
14.0 (ESFR)	3/4"	N/A	N/A	407A-5	407GA-5	409GA-5
25.2	-	N/A	N/A	N/A	N/A	409GA-6

# TEST<sub>AND</sub>DRAIN<sup>®</sup>

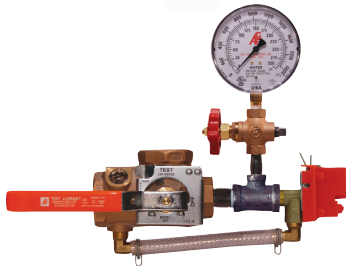
## System Test and Express Drain Valves with Pressure Relief

**NOTE:** NFPA 13 Standard (2010 or more recent) requires a pressure relief valve on all wet pipe fire sprinkler systems. TEST<sub>AND</sub>DRAIN valves with pressure relief are an efficient way to meet code requirements.

### Model 1011T

Includes a Model 7600 3-way universal gauge valve, a Model 7500 pressure gauge, and a Model 7000L pressure relief valve (175 PSI) with drain trim that can be locked out for hydrostatic testing. Other PSI ratings are available (200, 225, or 300).

- Thread x Thread (NPT) Connections
- Pressure Relief Valve with Drain Trim, 3-Way Universal Gauge Valve, and Pressure Gauge
- **British Standard Pipe Thread (BSPP) Available**

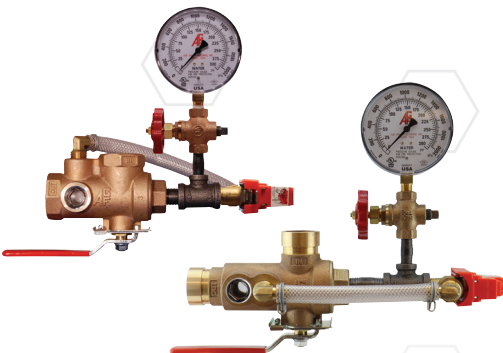


Orifice Size		1011T Part Numbers				
K-Factor	Fractional	3/4"	1"	1¼"	1½"	2"
2.8	3/8"	200T	210T	220T	230T	240T
4.2	7/16"	201T	211T	221T	231T	241T
<b>5.6</b>	<b>1/2"</b>	<b>202T</b>	<b>212T</b>	<b>222T</b>	<b>232T</b>	<b>242T</b>
8.0	17/32"	203T	213T	223T	233T	243T
11.2 (ELO)	5/8"	204T	214T	224T	234T	244T
14.0 (ESFR)	3/4"	N/A	N/A	225T	235T	245T
25.2	-	N/A	N/A	N/A	236T	246T

### Model 2511T

Features an alternative handle location for installation flexibility. Includes a Model 7600 3-way universal gauge valve, a Model 7500 pressure gauge, and a Model 7000L pressure relief valve (175 PSI) with drain trim that can be locked out for hydrostatic testing. Other PSI ratings are available (200, 225, or 300).

- Cast Bronze Valve Body
- Thread or Groove Connections
- Pressure Relief Valve with Drain Trim, 3-Way Universal Gauge Valve, and Pressure Gauge



Orifice Size		2511T Part Numbers				
K-Factor	Fractional	1"		1¼"		2"
		Thread	Groove	Thread	Groove	Groove
2.8	3/8"	406T-0	406GT-0	407T-0	407GT-0	409GT-0
4.2	7/16"	406T-1	406GT-1	407T-1	407GT-1	409GT-1
<b>5.6</b>	<b>1/2"</b>	<b>406T-2</b>	<b>406GT-2</b>	<b>407T-2</b>	<b>407GT-2</b>	<b>409GT-2</b>
8.0	17/32"	406T-3	406GT-3	407T-3	407GT-3	409GT-3
11.2 (ELO)	5/8"	406T-4	406GT-4	407T-4	407GT-4	409GT-4
14.0 (ESFR)	3/4"	N/A	N/A	407T-5	407GT-5	409GT-5
25.2	-	N/A	N/A	N/A	N/A	409GT-6

**TESTANDRAIN®**

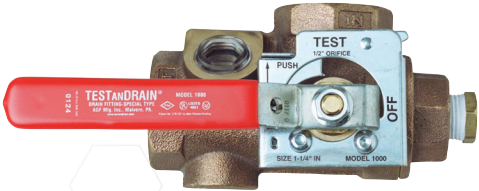
**System Test and Express Drain Valves**

**NOTE:** NFPA 13 Standard (2010 or more recent) requires a pressure relief valve on all wet pipe fire sprinkler systems. AGF recommends our TESTANDRAIN valves with pressure relief (Model 1011A/2511A) to meet code requirements.

**Model 1000**

Provides the test and express drain functions for wet pipe fire sprinkler systems.

- Cast Bronze Valve Body
- Thread x Thread (NPT) Connections
- British Standard Pipe Thread (BSPT) Available



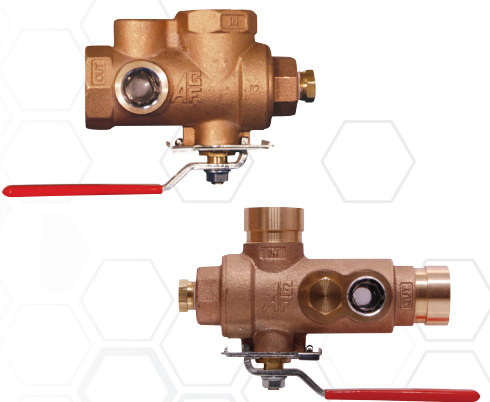
		1000 Part Numbers				
Orifice Size		3/4"	1"	1¼"	1½"	2"
K-Factor	Fractional					
2.8	3/8"	100	110	120	130	140
4.2	7/16"	101	111	121	131	141
<b>5.6</b>	<b>1/2"</b>	<b>102</b>	<b>112*</b>	<b>122*</b>	<b>132</b>	<b>142**</b>
8.0	17/32"	103	113	123	133	143
11.2 (ELO)	5/8"	104	114	124	134	144
14.0 (ESFR)	3/4"	N/A	N/A	125	135	145
25.2	-	N/A	N/A	N/A	136	146

\*Case quantity 10 • \*\*Case quantity 6

**Model 2500**

Provides the test and express drain functions for wet pipe fire sprinkler systems. Features an alternative handle location for installation flexibility.

- Cast Bronze Valve Body
- Thread or Groove Connections

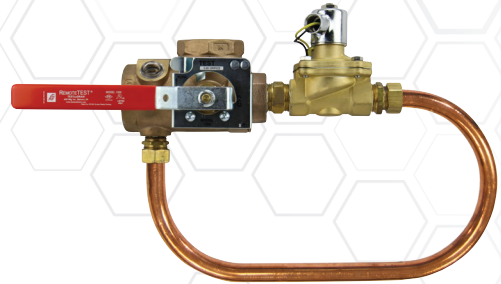
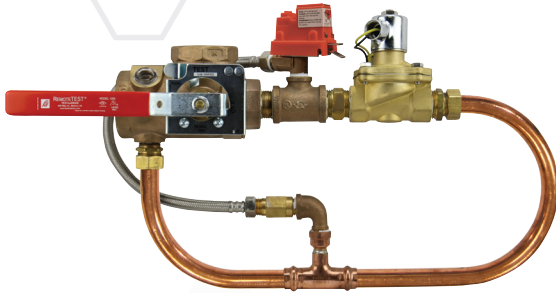


		2500 Part Numbers				
Orifice Size		1"		1¼"		2"
K-Factor	Fractional	Thread	Groove	Thread	Groove	Groove
2.8	3/8"	406-0	406G-0	407-0	407G-0	409G-0
4.2	7/16"	406-1	406G-1	407-1	407G-1	409G-1
<b>5.6</b>	<b>1/2"</b>	<b>406-2</b>	<b>406G-2</b>	<b>407-2</b>	<b>407G-2</b>	<b>409G-2</b>
8.0	17/32"	406-3	406G-3	407-3	407G-3	409G-3
11.2 (ELO)	5/8"	406-4	406G-4	407-4	407G-4	409G-4
14.0 (ESFR)	3/4"	N/A	N/A	407-5	407G-5	409G-5
25.2	-	N/A	N/A	N/A	N/A	409G-6

**REMOTE TEST**

**Remote Operated System Test and Express Drain Valves**

**NOTE:** NFPA 13 Standard (2010 or more recent) requires a pressure relief valve on all wet pipe fire sprinkler systems. REMOTE TEST valves with pressure relief are an efficient way to meet code requirements.



**Model 1211**

The REMOTE TEST Model 1211 is a remotely operated inspector's test and drain valve designed to integrate into a fire panel or BMS and allow one person to activate each specific system or group of systems from one central location when performing the inspector's test. Includes a Model 7000L pressure relief valve (175 PSI) with drain trim; other PSI ratings are available (200, 225, or 300). The Model 7000L can be temporarily closed during hydrostatic testing so it doesn't have to be removed from the system.

- Remote Operation
- Standard Orifice Size K5.6 (Other Orifice Sizes Available)
- Includes Drain Loop and Pressure Relief Valve with Check Valve

1211 Part Numbers			
Volt	1"	1¼"	2"
24V	271-350	273-350	275-350
110V	271-351	273-351	275-351

**Model 1200**

The REMOTE TEST Model 1200 is a remotely operated inspector's test and drain valve designed to integrate into a fire panel or BMS and allow one person to activate each specific system or group of systems from one central location when performing the inspector's test.

- Remote Operation
- Standard Orifice Size K5.6 (Other Orifice Sizes Available)
- Includes Drain Loop

1200 Part Numbers			
Volt	1"	1¼"	2"
24V	270-350	272-350	274-350
110V	270-351	272-351	274-351

**TEST AND DRAIN**

**REMOTE TEST**

**Locking Plate Kits**



AGF locking plate kits provide protection for TEST AND DRAIN Models 1000, 2500, 1011, and 2511; and REMOTE TEST Models 1200 and 1211. Please indicate valve size when ordering

Part Number
870

**TESTANDRAIN®**

**Pressure Relief Trim Kits**

**Model 1011/2511**

**Standard "A" Kit Includes:** Model 7000 pressure relief valve (175 PSI); other PSI ratings are available (205 or 250), bypass tube, barbed elbows (2), and hose clamps (2).

**Standard "T" Kit Includes:** Model 7000 pressure relief valve (175 PSI); other PSI ratings are available (205 or 250), Model 7500 pressure gauge, Model 7600 3-way universal gauge valve, tee, plug, nipples, bypass tube, barbed elbows (2), and hose clamps (2).

**"L" Kits Include:** Components of the Standard "A" or "T" Kit and an upgraded Model 7000L pressure relief valve (175 PSI), which can be temporarily closed for hydrostatic testing so it doesn't have to be removed from the system; other PSI rating are available (200, 225, or 300 PSI).



A Kit



"L" Kit 7000L Pressure Relief Valve



T Kit

	A Kit					T Kit				
Size	3/4"	1"	1 1/4"	1 1/2"	2"	3/4"	1"	1 1/4"	1 1/2"	2"
Model	1011	1011/2511	1011/2511	1011	1011/2511	1011	1011/2511	1011/2511	1011	1011/2511
Item ID	260	260	261	262	262	263	263	264	265	265
	260L	260L	261L	262L	262L	263L	263L	264L	265L	265L

**TESTANDRAIN®**

**REMOTE TEST®**

**DRAINANTEST®**

**Valve Repair Kits**

**Model 1000/1011/1200/1500/2500/2511**

Repair kits are available for all TESTANDRAIN models (1000, 1011, 2500, and 2511), REMOTETEST models (1200 and 1211), and DRAINANTEST models (1500). Repair kits include: adapter gasket (1), replacement ball (1), valve seats (2), stem packaging (1), and stem washer (1).



Models		1000/1011/1200			2500/2511		2500/2511/1500
Orifice Size		3/4" & 1"	1 1/4"	1 1/2" & 2"	1"	1 1/4"	2"
K-Factor	Fractional						
2.8	3/8"	9700A	9710A	9730A	9741A	9750A	9760A
4.2	7/16"	9701A	9711A	9731A	9742A	9751A	9761A
<b>5.6</b>	<b>1/2"</b>	<b>9702A</b>	<b>9712A</b>	<b>9732A</b>	<b>9743A</b>	<b>9752A</b>	<b>9762A</b>
8.0	17/32"	9703A	9713A	9733A	9744A	9753A	9763A
11.2 (ELO)	5/8"	9704A	9714A	9734A	9745A	9754A	9764A
14.0 (ESFR)	3/4"	-	9715A	9735A	-	9755A	9765A
25.2	-	-	-	9736A	-	-	9766A

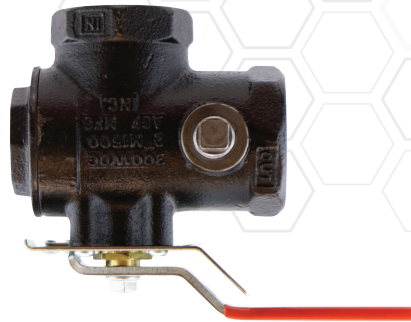
## DRAIN<sub>AN</sub>TEST®

### Main Drain Alarm and Test Valve

#### Model 1500

The DRAIN<sub>AN</sub>TEST Model 1500 is a main drain alarm and test valve with an iron body that uses British Standard Pipe Thread (BSPP).

- Iron Body
- British Standard Pipe Thread
- Can be ordered as a Model 1511 with a 262 Pressure Relief Kit



1500 Part Numbers		
Orifice Size		2"
K-Factor	Fractional	
2.8	3/8"	290
4.2	7/16"	291
<b>5.6</b>	<b>1/2"</b>	<b>292</b>
8.0	17/32"	293
11.2 (ELO)	5/8"	294
14.0 (ESFR)	3/4"	295
25.2	-	296

## INSPECTORSTEST™

### Inspector's Test Valves

**NOTE:** NFPA 13 Standard (2010 or more recent) requires a pressure relief valve on all wet pipe fire sprinkler systems. AGF recommends our INSPECTORSTEST assemblies with pressure relief to meet code requirements. Assemblies with pressure relief include a Model 7000L relief valve (175 PSI) that can be locked out for hydrostatic testing; other PSI ratings are available (200, 225, or 300).

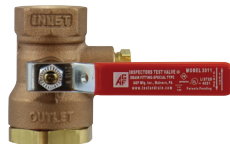
#### Model 3011A

- 1" Bronze Test Valve
- Pressure Relief Valve with Drain
- Includes Sight Glass



#### Model 3011BV

- 1" Bronze Test Valve



#### Model 3011SG

- 1" Bronze Test Valve
- Includes Sight Glass



INSPECTORSTEST Part Numbers				
Orifice Size		3011A	3011BV	3011SG
K-Factor	Fractional			
2.8	3/8"	300A	300BV	300SG
4.2	7/16"	301A	301BV	301SG
<b>5.6</b>	<b>1/2"</b>	<b>302A*</b>	<b>302BV</b>	<b>302SG</b>
8.0	17/32"	303A	303BV	303SG
11.2 (ELO)	5/8"	304A	304BV	304SG

\*Case quantity 10

Sight Glass Part Number	3011 Pressure Relief Kit Part Number
305	306



**AGF Manufacturing**  
100 Quaker Lane • Malvern, PA 19355

Phone: 610-240-4900

Fax: 610-240-4906

**[www.agfmfg.com](http://www.agfmfg.com)**