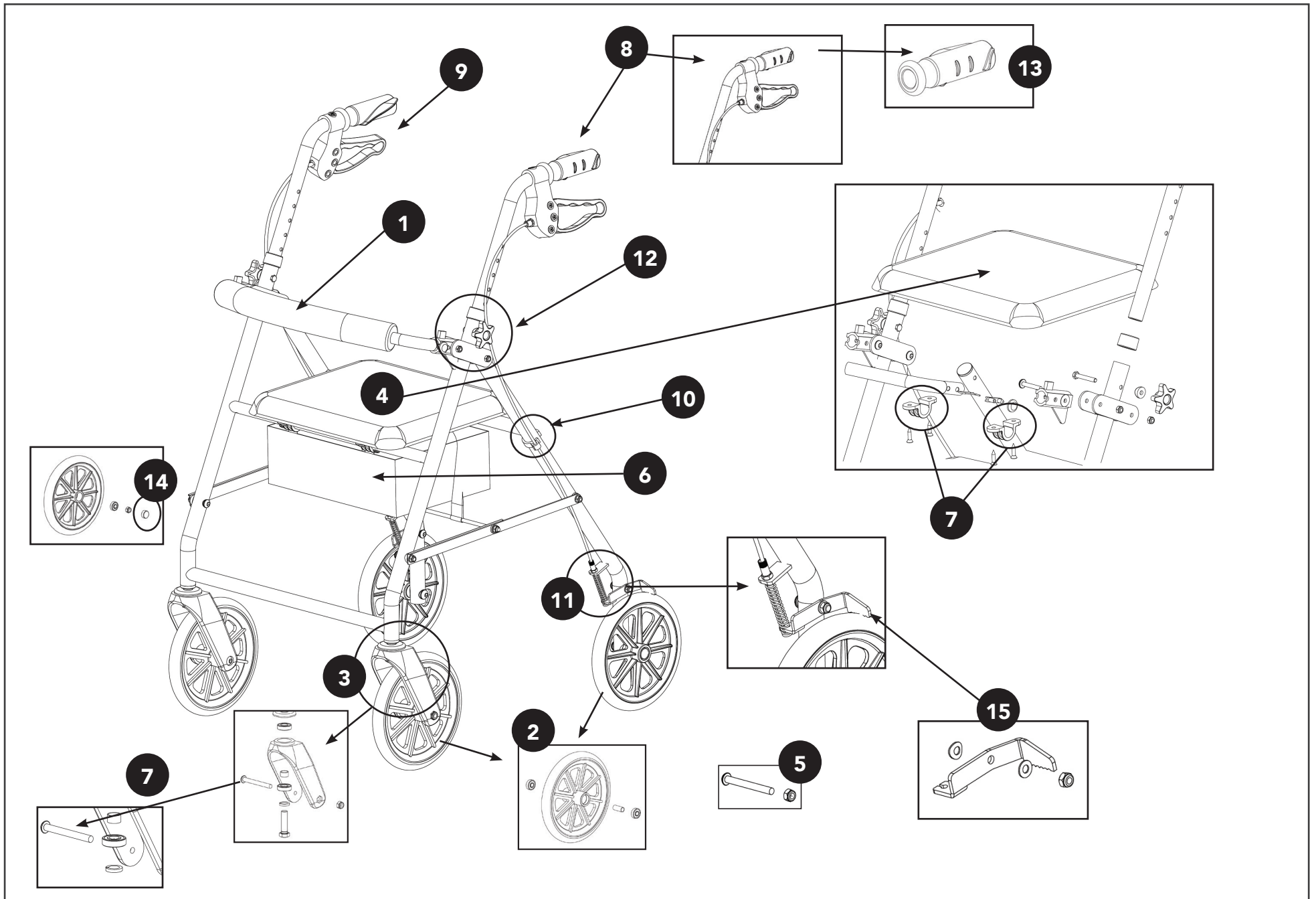


6" STEEL ROLLATOR & 6" Knocked-Down



6" STEEL ROLLATOR 6" STEEL ROLLATOR & 6" Knocked-Down

Fig.	Description (Part Number Depends on Serial Number)	BL Serial No.	MH Serial No.
1	ProBasics 6" Steel Rollator Straight Backrest (Hardware Not Included)		X1RLS6MH01
2	ProBasics 6" Steel Rollator Caster w/Bearing (Front or Rear)	X1RLSBL08	X1RLS6MH02
3	ProBasics 6" Steel Rollator Front Caster Fork Assembly	X1RLSBL09	X1RLS6MH03
4	ProBasics 6" Steel Rollator Replacement Seat	X1RLSBL10	X1RLS6MH04
5	ProBasics 6" Steel Rollator Caster Axle Bolt w/Nut (Front or Rear)	X1RLSBL11	X1RLS6MH05
6	ProBasics 6" Steel Rollator Replacement Pouch		X1RLS6MH06
7	ProBasics 6" Steel Rollator Seat Clips and Screws	X1RLSBL13	X1RLS6MH07
8	ProBasics 6" Rollator Left Hand Brake System (Includes brake spring & wheel contact)	X1RLS6BL06	X1RL6MH01
9	ProBasics 6" Rollator Right Hand Brake System (Includes brake spring & wheel contact)	X1RLS6BL05	X1RL6MH02
10	Probasics Brake Cable Ring	X1RLSBL01	X1RLMH01
11	Probasics Rollator Brake Spring	X1RLSBL02	X1RLMH02-2
12	Probasics Rollator Handle Height Adjustment Knob		X1RLMH03
13	Probasics Rollator Handle Grips, Pair	X1RLSBL04	X1RLMH04
14	Probasics Rollator Caster Cap		X1RLMH05
15	Probasics Rollator Brake Wheel Contact	X1RLSBL06	X1RLMH06-2
16	Probasics Front Leg Assembly includes Brakes and Handles -Blue (Not Pictured) (KD Units)	X1RLS6BL01	
17	Probasics Rear Leg Assembly includes Brakes and Handles - Blue (Not Pictured) (KD Units)	X1RLS6BL02	
18	Probasics Front Leg Assembly includes Brakes and Handles - Burgundy (Not Pictured) (KD Units)	X1RLS6BL03	
19	Probasics Rear Leg Assembly includes Brakes and Handles - Burgundy (Not Pictured) (KD Units)	X1RLS6BL04	
20	Probasics Replacement Knobs 4 Pack for Knockdown Units (KD units)	X1RLS6BL10	