

THINAPP MICROSOFT PROJECT 2013



This how to guide document is a walk thru of using VMware ThinApp 5.0 to ThinApp (virtualize) Microsoft Project 2013 on a 64bit Windows 7 machine.

REQUIREMENTS:

- Microsoft Project 2013 installation files and updates/patches
- Microsoft Project 2013 KMS server OR MAK
- VMware ThinApp 5.0
- Clean install of Windows 7 machine



Task 1: **PRESCAN**

- 1.1. Extract and copy Microsoft Project 2013 installation files to the local drive of the capture machine.
- 1.2. Place all Microsoft Project 2013 Updates/Patches/Service Pack files (.msp) in the **Updates** folder
- 1.3. Disconnect/disable NIC of the capture VM.
- 1.4. Locate **config.xml** – located in **prjpro.wv** folder. Add these lines to the bottom of the file, immediately above **</Configuration>**:

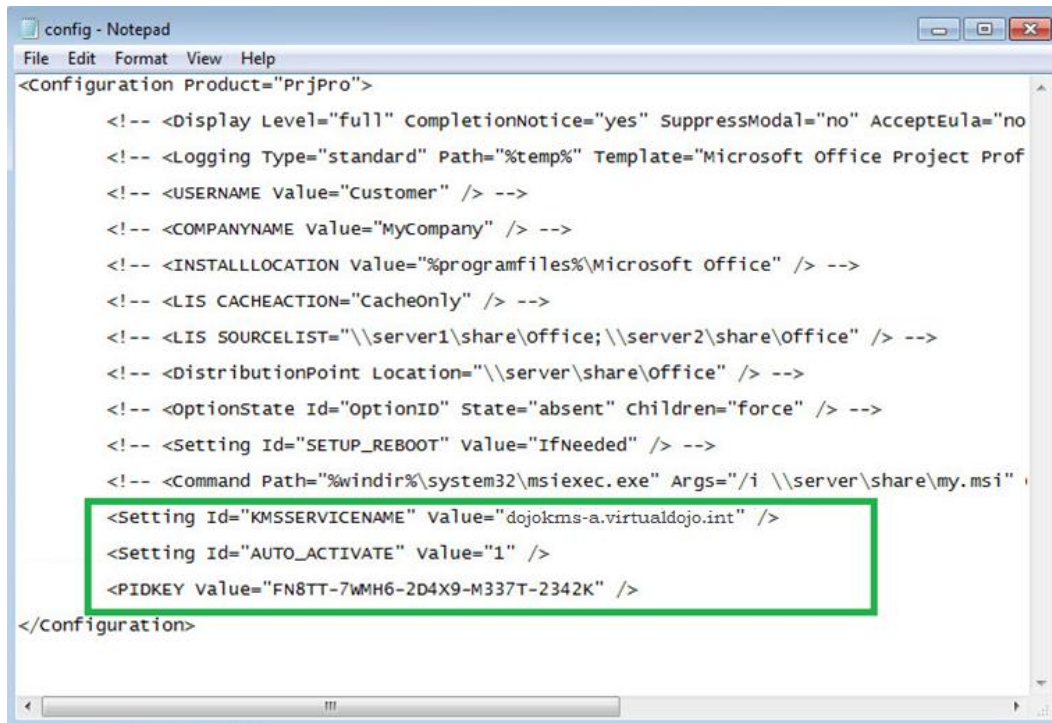
If using MAK skip to step 1.6

Project Edition	KMS Client Key
Project 2013 Standard	6NTH3-CW976-3G3Y2-JK3TX-8QHTT
Project 2013 Professional	FN8TT-7WMH6-2D4X9-M337T-2342K

1.5. For **KMS** licensing activation:

```
<Setting Id="KMSSERVICENAME" Value="dojokms-a.virtualdojo.int" />  
<Setting Id="AUTO_ACTIVATE" Value="1" />  
<PIDKEY Value="FN8TT-7WMH6-2D4X9-M337T-2342K"/>
```

NOTE: Replace **dojokms-a.virtualdojo.int** with your organization's KMS server. Then replace **FN8TT-7WMH6-2D4X9-M337T-2342K** with the product KMS client key (see table above).



1.6. For **MAK** licensing activation:

```
<PIDKEY Value="VHKC6-9BTGG-P3JGW-PGV49-YGX6F"/>  
<Setting Id="AUTO_ACTIVATE" Value="1"/>  
<Setting Id="USEROPERATIONS" Value="1"/>
```

Note: Replace **VHKC6-9BTGG-P3JGW-PGV49-YGX6F** with your MAK license key

```
config - Notepad
File Edit Format View Help
<Configuration Product="PrjPro">
  <Display Level="none" CompletionNotice="no" SuppressModal="yes" AcceptEula="yes" />
  <!-- <Logging Type="standard" Path="%temp%" Template="Microsoft Office Project Professional Setup(*).txt" /> -->
  <!-- <USERNAME Value="Customer" /> -->
  <!-- <COMPANYNAME Value="MyCompany" /> -->
  <!-- <INSTALLLOCATION Value="%programfiles%\Microsoft Office" /> -->
  <!-- <LIS CACHEACTION="CacheOnly" /> -->
  <!-- <LIS SOURCELIST="//server1/share/Office;\\server2/share/Office" /> -->
  <!-- <DistributionPoint Location="//server/share/Office" /> -->
  <!-- <OptionState Id="OptionID" State="absent" Children="force" /> -->
  <!-- <Setting Id="SETUP_REBOOT" value="IfNeeded" /> -->
  <!-- <Command Path="%windir%\system32\msiexec.exe" Args="/i \\server/share/my.msi" QuietArg="/q"
ChainPosition="after" Execute="install" /> -->
  <PIDKEY Value=" YGX6F-PGV49-PGW3J-9BTGG-VHKC6"/>
  <Setting Id="AUTO_ACTIVATE" value="1"/>
  <Setting Id="USEROPERATIONS" value="1"/>
</Configuration>
```

1.6.1. For silent and automatic MAK licensing activation, replace this line:

<!-- <Display Level="full" CompletionNotice="yes" SuppressModal="no" AcceptEula="no" /> -->

1.6.2. With this line:

<Display Level="none" CompletionNotice="no" SuppressModal="yes" AcceptEula="yes" />

```
config - Notepad
File Edit Format View Help
<Configuration Product="PrjPro">
  <Display Level="none" CompletionNotice="no" SuppressModal="yes" AcceptEula="yes" />
  <!-- <Logging Type="standard" Path="%temp%" Template="Microsoft Office Project Professional Setup(*).txt" /> -->
  <!-- <USERNAME Value="Customer" /> -->
  <!-- <COMPANYNAME Value="MyCompany" /> -->
  <!-- <INSTALLLOCATION Value="%programfiles%\Microsoft Office" /> -->
  <!-- <LIS CACHEACTION="CacheOnly" /> -->
  <!-- <LIS SOURCELIST="//server1/share/Office;\\server2/share/Office" /> -->
  <!-- <DistributionPoint Location="//server/share/Office" /> -->
  <!-- <OptionState Id="OptionID" State="absent" Children="force" /> -->
  <!-- <Setting Id="SETUP_REBOOT" value="IfNeeded" /> -->
  <!-- <Command Path="%windir%\system32\msiexec.exe" Args="/i \\server/share/my.msi" QuietArg="/q"
ChainPosition="after" Execute="install" /> -->
  <PIDKEY Value=" YGX6F-PGV49-PGW3J-9BTGG-VHKC6"/>
  <Setting Id="AUTO_ACTIVATE" value="1"/>
  <Setting Id="USEROPERATIONS" value="1"/>
</Configuration>
```

1.7. Save the modified **config.xml**.

- 1.8. Launch ThinApp **Setup Capture**
- 1.9. At **Setup Capture – Welcome** click **Next**



- 1.10. At **Setup Capture – Ready to Prescan** click on **Prescan**



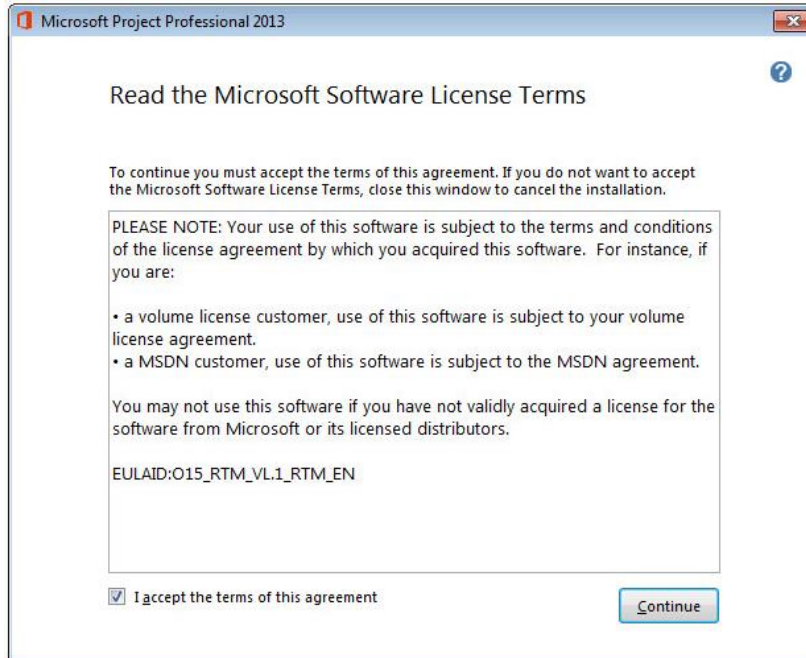
1.11. Minimize ThinApp Setup Capture window



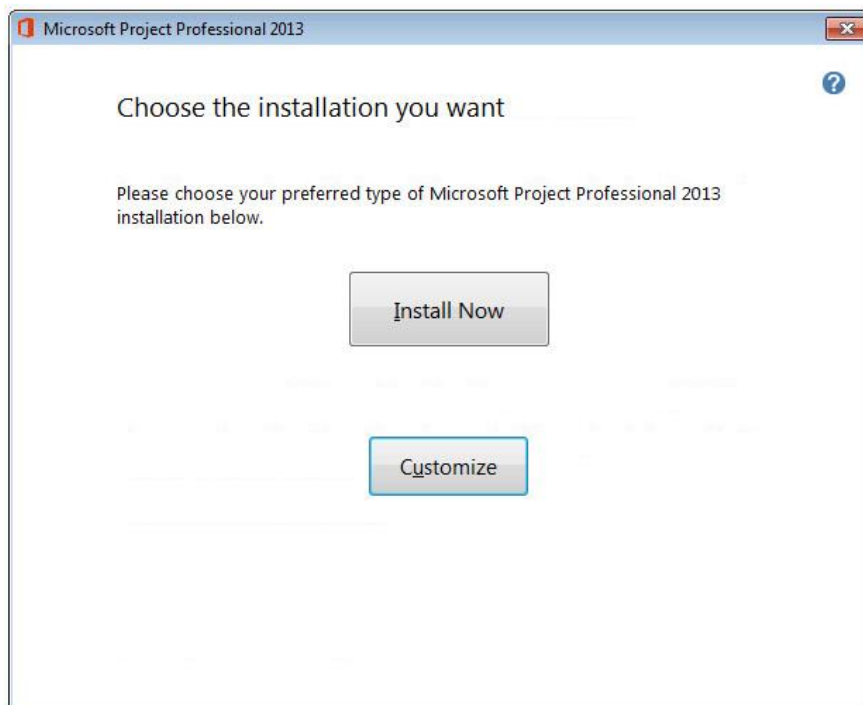
Task 2: MICROSOFT PROJECT INSTALLATION

2.1. Right-click on setup.exe and **Run as Administrator**

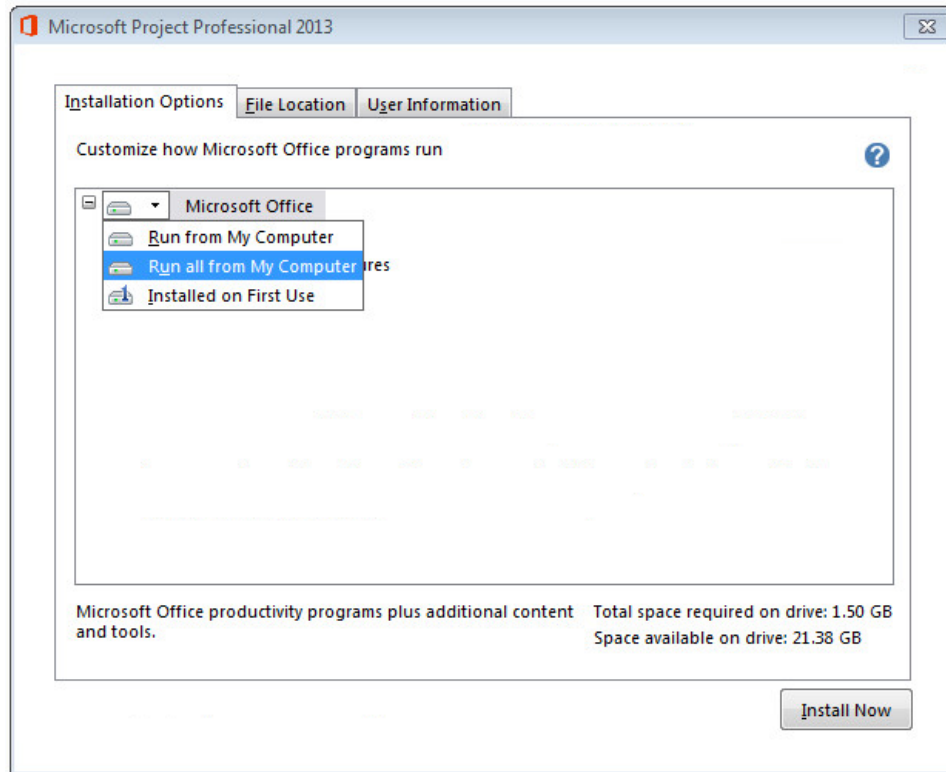
2.2. Accept the terms of the license agreement then click **Continue**



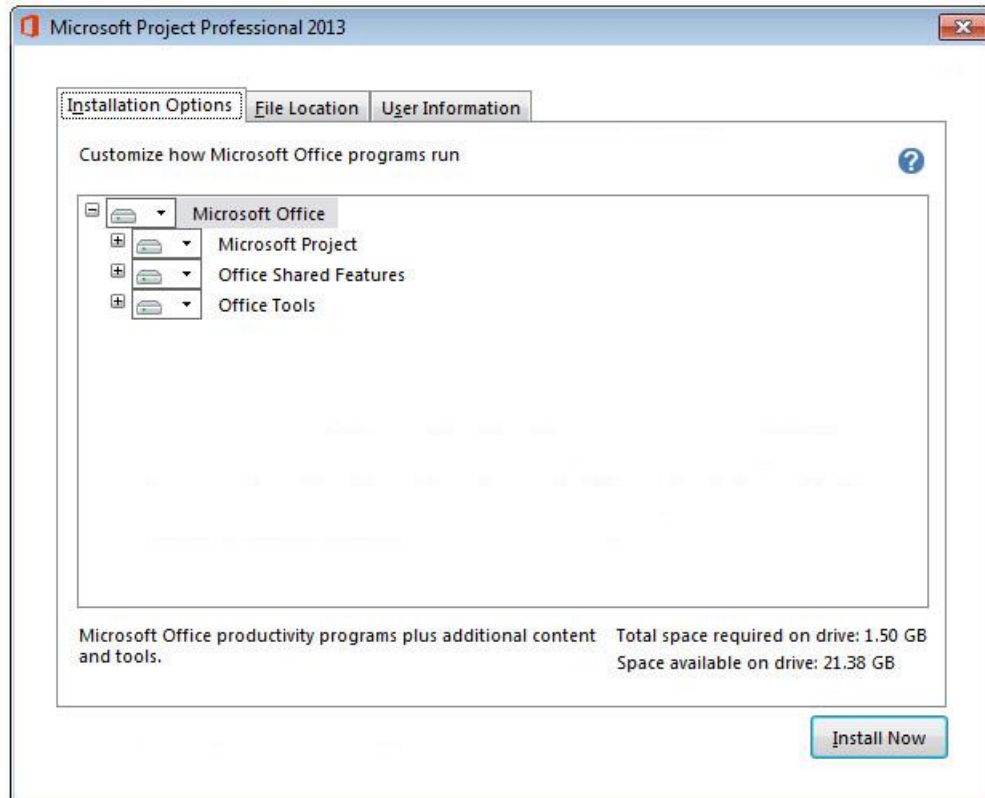
2.3. Click on **Customize**

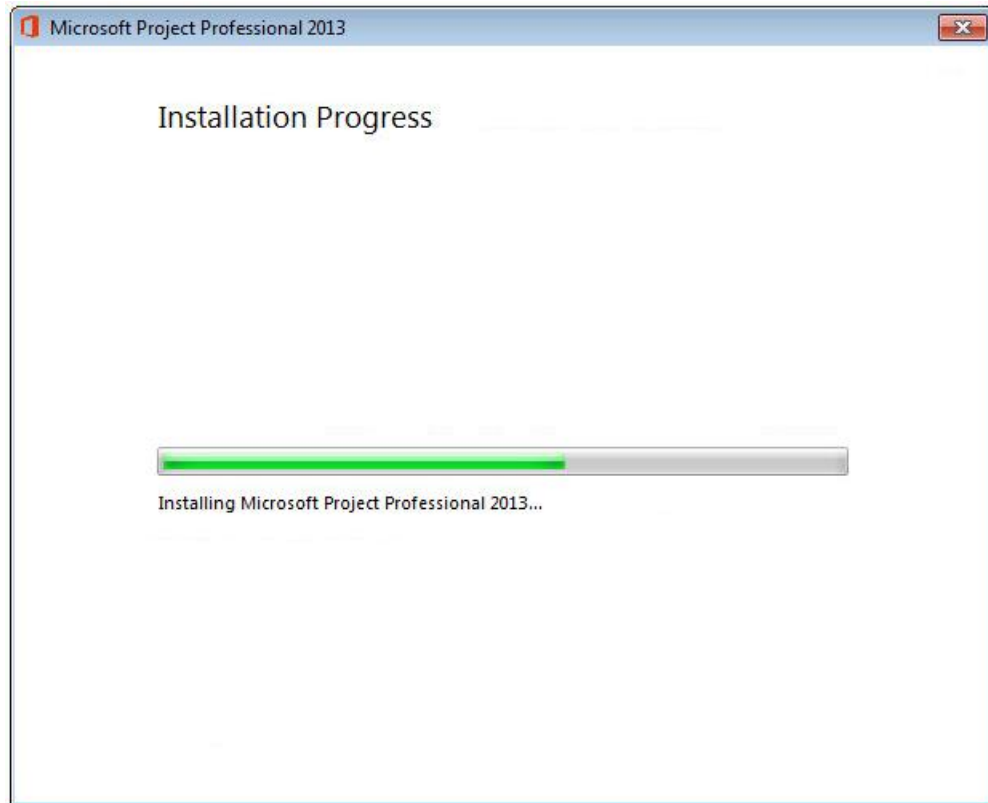


2.4. Click on **Run all from My Computer**

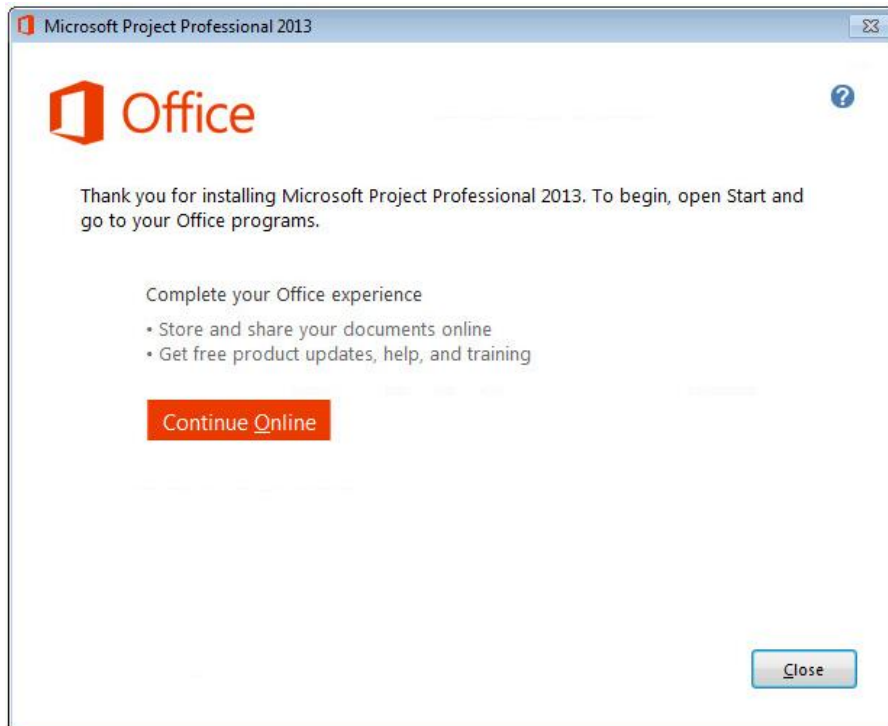


2.5. Click on **Install Now**





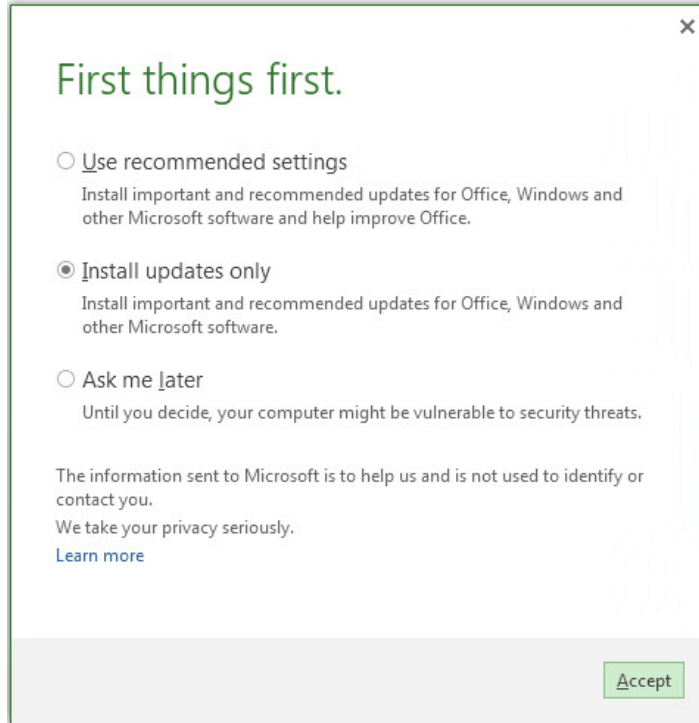
2.6. Click **Close** when prompted



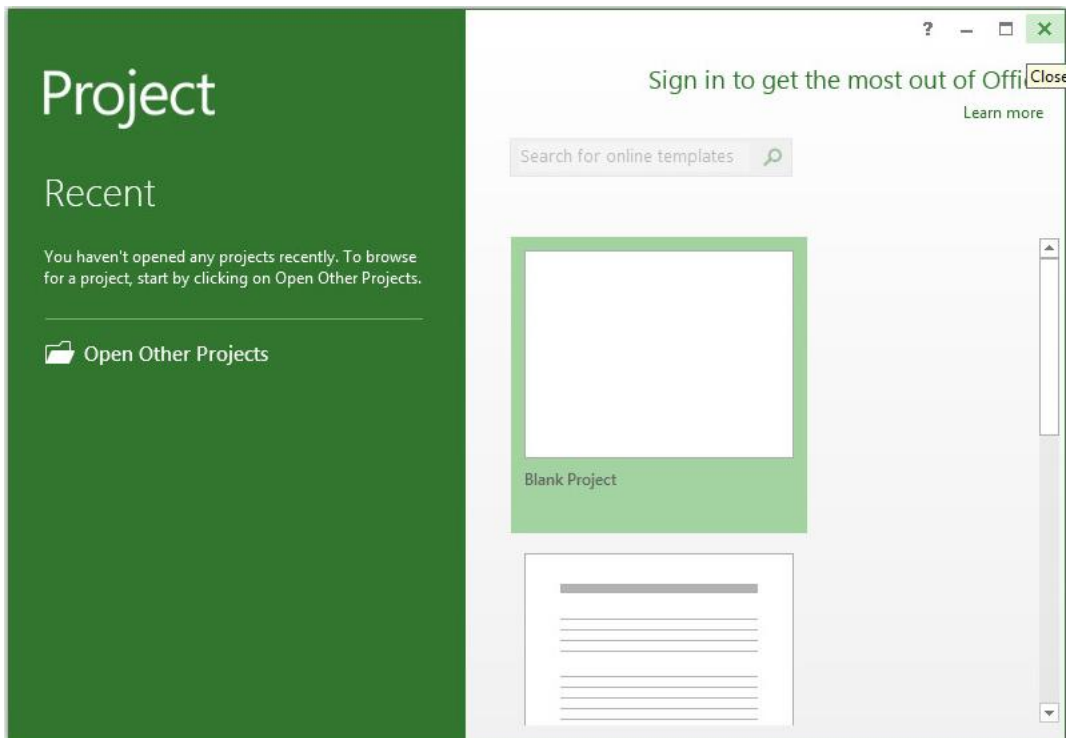


Task 3: CONFIGURE

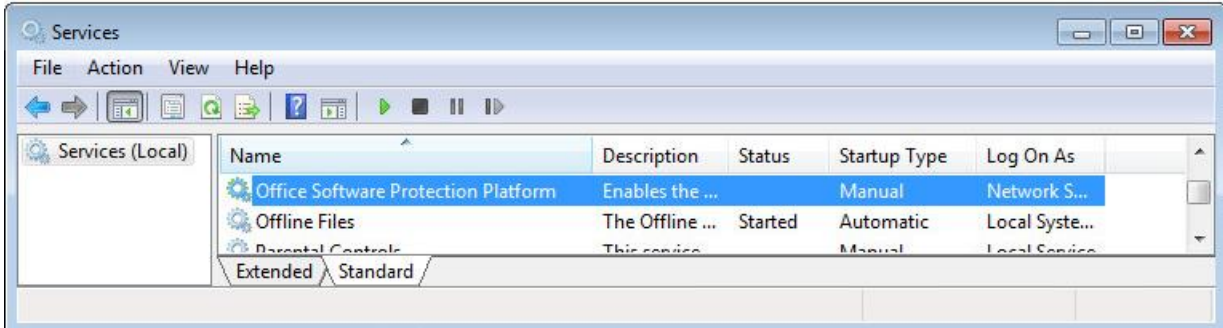
3.1. Launch **Project 2013** and select **Install updates only** then click **Accept**



3.2. Close/Exit **Project 2013** application



- 3.3. Open Services console (services.msc) and stop the Office Software Protection Platform Service (ospssvc)

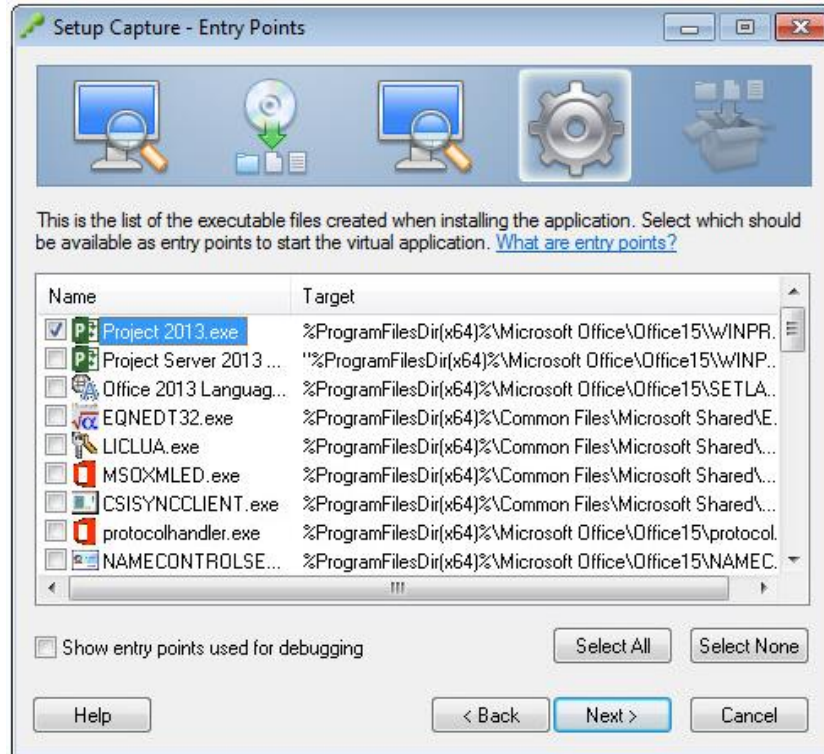


Task 4: POSTSCAN

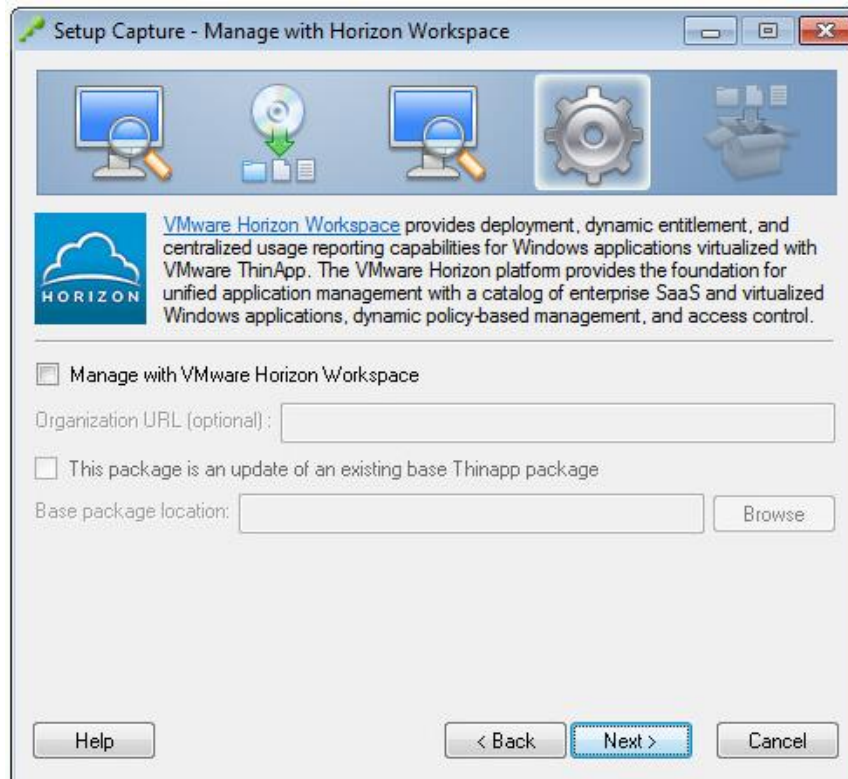
- 4.1. Maximize/Restore ThinApp Setup Capture window and click on Postscan



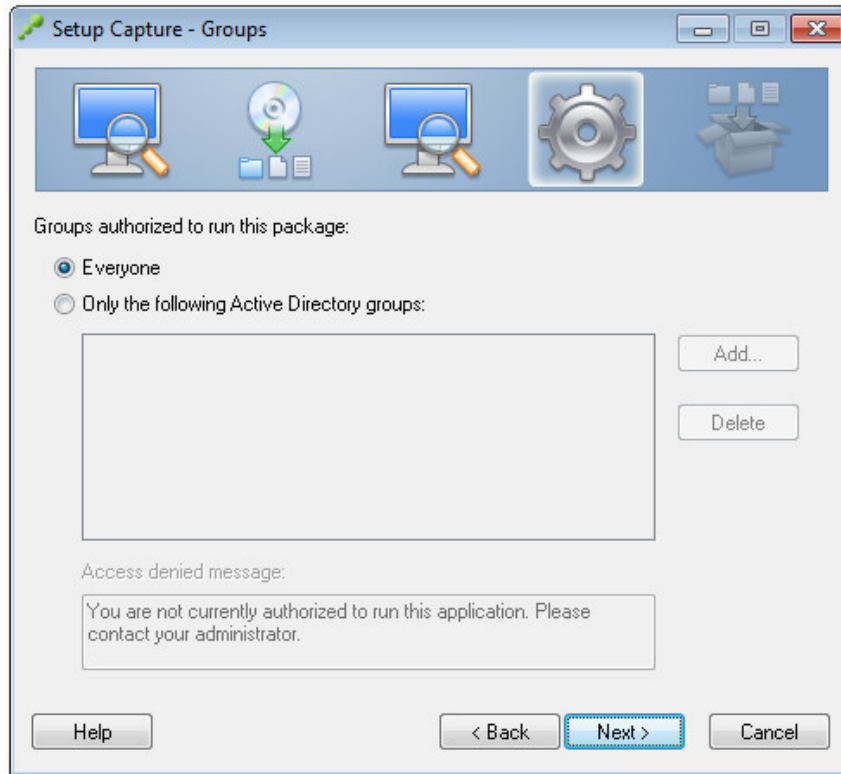
- 4.2. Select Visio 2013.exe entry point then click Next



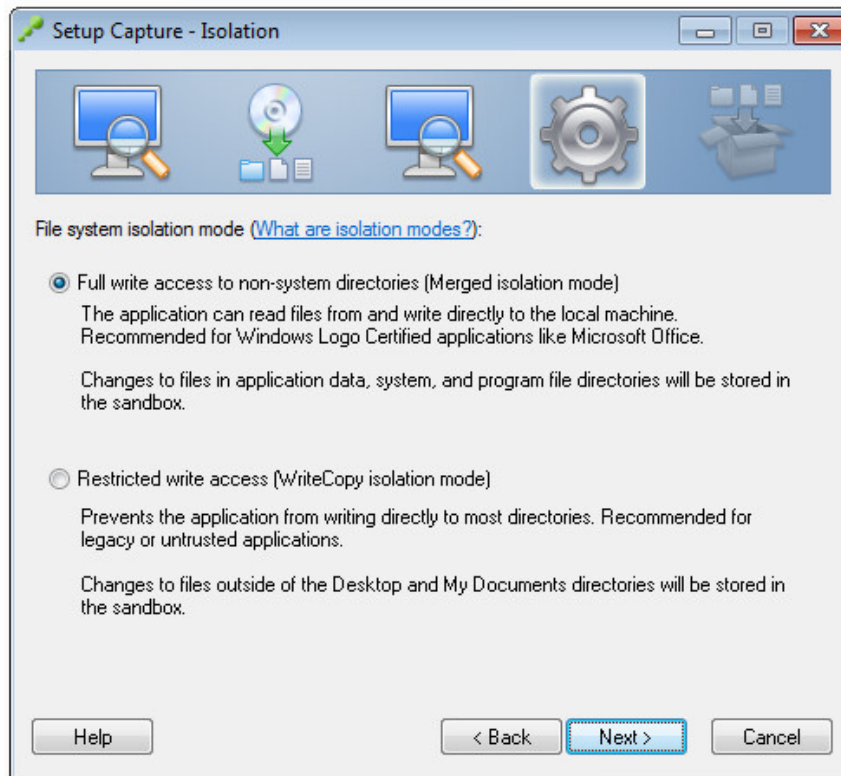
4.3. At Setup Capture - Manage with VMware Horizon Workspace click Next



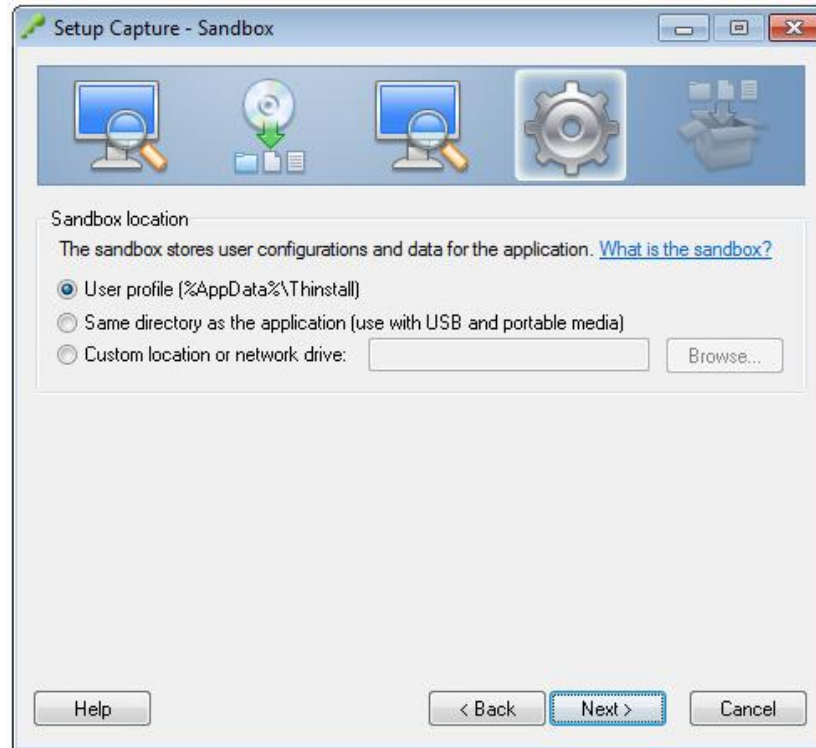
4.4. On **Setup Capture – Groups** dialog box click **Next**



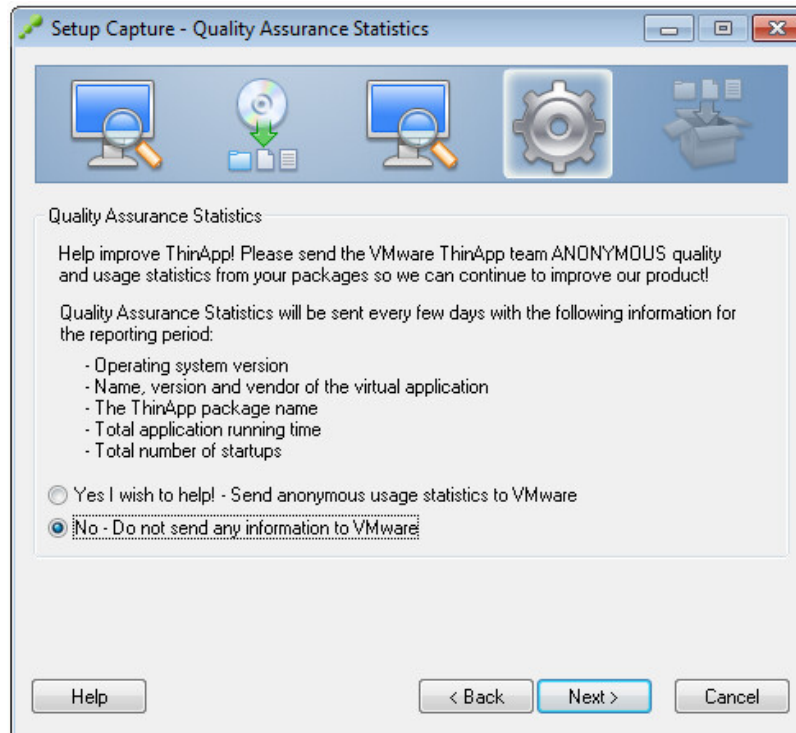
4.5. Click **Next** on **Setup Capture – Isolation** screen



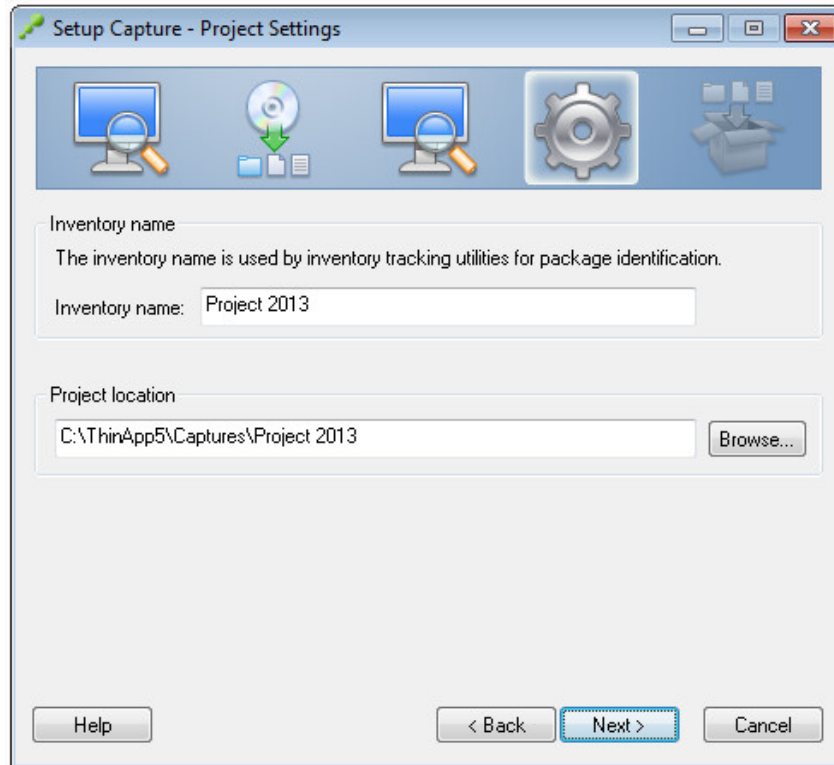
- 4.6. Click **Next** on **Setup Capture – Sandbox** page accepting the default **User profile** selection



- 4.7. Select **No – Do not send any information to VMware** then click Next



4.8. Enter **Inventory name** then click **Next**

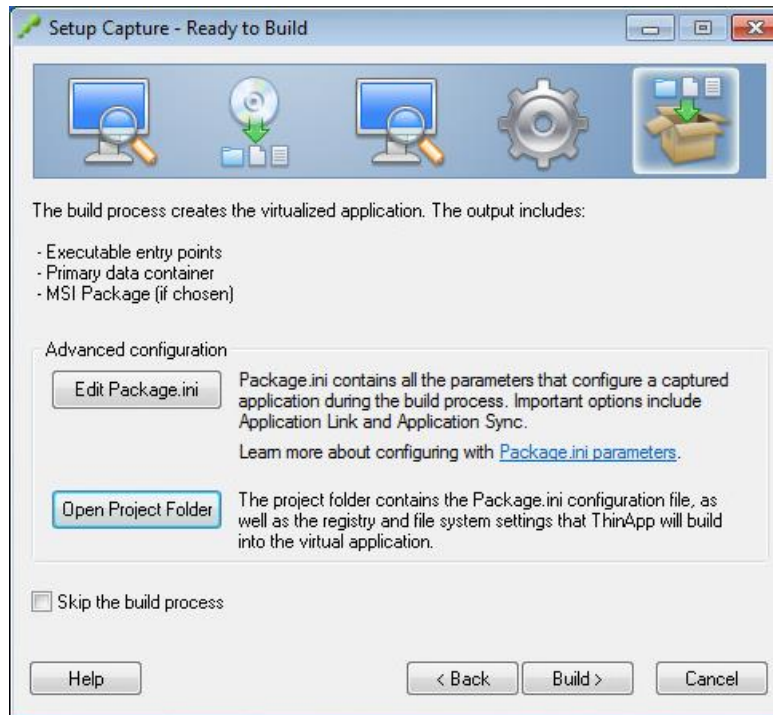


4.9. Select **Generate MSI package** then click **Save**



 **Task 5: BUILD**

5.1. Click on Open Project Folder



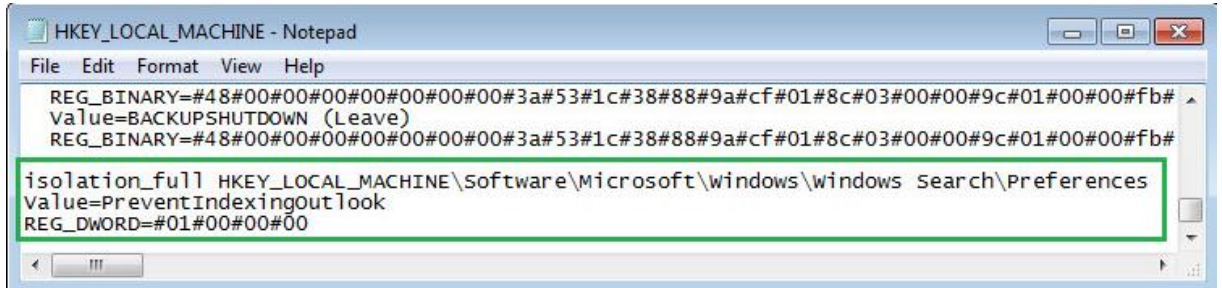
5.2. If Project 2013 will be deployed on a system with Microsoft Office natively installed, add these entries at the beginning of HKEY_LOCAL_MACHINE.txt

```
deleted HKEY_LOCAL_MACHINE\Software\Classes\AppID\{32820823-eb9f-42bf-badb-4482911536bb}
deleted HKEY_LOCAL_MACHINE\Software\Classes\AppID\{32f506a9-36f4-45ca-a3b7-e220e2fadcf}
deleted HKEY_LOCAL_MACHINE\Software\Classes\AppID\{0b6faa6c-afa9-4c9f-92a9-d1b9e13e49e7}
deleted HKEY_LOCAL_MACHINE\Software\Classes\AppID\{b3fd0790-e46d-44d8-a88c-fcd99771da5e}
deleted HKEY_LOCAL_MACHINE\Software\Classes\AppID\{4918cead-10bb-4345-b406-c0096b646c24}
deleted HKEY_LOCAL_MACHINE\Software\Classes\AppID\{80f8087e-f900-4c25-b7fb-66ddf3ad2685}
deleted HKEY_LOCAL_MACHINE\Software\Classes\AppID\{2fe7e56b-8195-4c8f-a199-fde2e4e09456}
deleted HKEY_LOCAL_MACHINE\Software\Classes\AppID\{f1f1e3ad-0dff-41f3-96d0-11b3aa4f0c96}
deleted HKEY_LOCAL_MACHINE\Software\Classes\AppID\{c722abe9-52ee-45de-b7aa-1cb7f27dac05}
deleted HKEY_LOCAL_MACHINE\Software\Classes\AppID\{458b6290-216a-410c-bdc8-24008876301b}
deleted HKEY_LOCAL_MACHINE\Software\Classes\AppID\{491ccf72-9e19-45bc-8a78-5e8c8be7f464}
deleted HKEY_LOCAL_MACHINE\Software\Classes\AppID\{529c81ad-3788-4f3d-8c1c-71ccf202de21}
deleted HKEY_LOCAL_MACHINE\Software\Classes\AppID\{2b402eec-0c7f-447c-8d44-e816888b1115}
deleted HKEY_LOCAL_MACHINE\Software\Classes\AppID\{ce175ea0-8692-4968-b769-1b0029498a41}
deleted HKEY_LOCAL_MACHINE\Software\Classes\AppID\{b69b7cc0-0e89-46d0-a99e-abddd4b61743}
deleted HKEY_LOCAL_MACHINE\Software\Classes\AppID\{de5206e8-c4ad-42cc-bd53-8cbb3558e80c}
deleted HKEY_LOCAL_MACHINE\Software\Classes\AppID\{f9285c37-8314-4516-89d5-e4932dc92de6}
deleted HKEY_LOCAL_MACHINE\Software\Classes\AppID\{dce06134-5696-4fa8-b13e-51aad6def5d9}
```

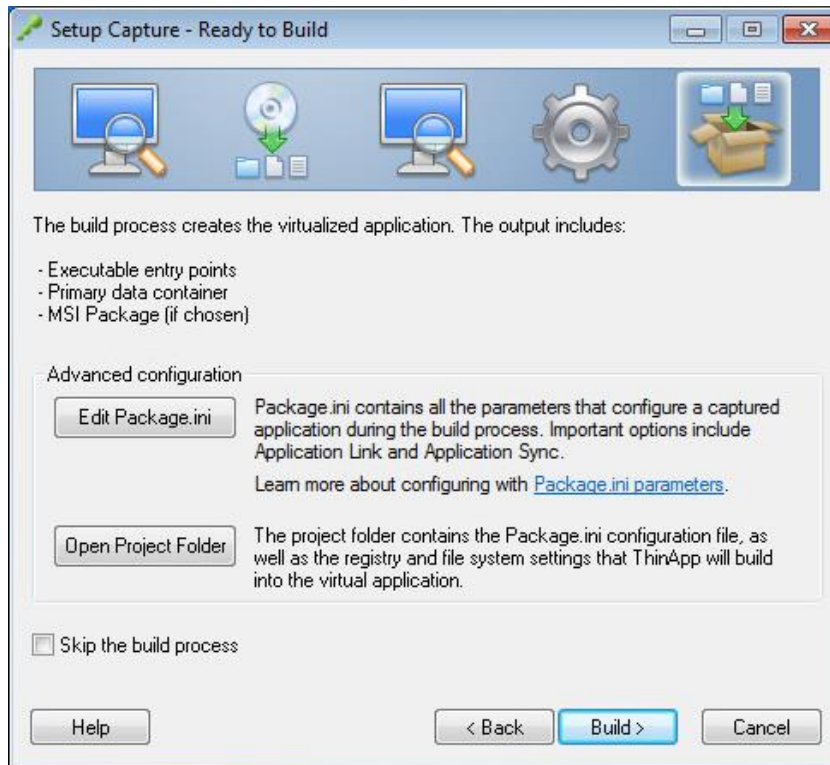
//DH TECHNOLOGIES, LLC//

deleted HKEY_LOCAL_MACHINE\Software\Classes\AppID\{fc4fc45c-be7e-4704-99ac-951db77b91dc}
deleted HKEY_LOCAL_MACHINE\Software\Classes\AppID\{947a7174-52b0-44f2-bfb6-7f3e07843277}
deleted HKEY_LOCAL_MACHINE\Software\Classes\AppID\{69c6e0d2-c565-4d52-9930-d46c4116f708}
deleted HKEY_LOCAL_MACHINE\Software\Classes\AppID\{aeddd0615-3da5-4d6a-abde-63cedf4e80a4}
deleted HKEY_LOCAL_MACHINE\Software\Classes\AppID\{23a22094-b01e-43cf-a372-6d4ee6d9eabf}
deleted HKEY_LOCAL_MACHINE\Software\Classes\AppID\{22c493c3-99e2-45e9-a739-ee497e141be3}
deleted HKEY_LOCAL_MACHINE\Software\Classes\AppID\{d049f335-4ac7-4400-b449-c532f4876693}
deleted HKEY_LOCAL_MACHINE\Software\Classes\AppID\{8d2d2f50-cdf0-45cb-8949-9a39ade5cb7a}
deleted HKEY_LOCAL_MACHINE\Software\Classes\AppID\{3ff290b5-342b-40dd-a66b-00e76c0e5b80}
deleted HKEY_LOCAL_MACHINE\Software\Classes\AppID\{3086391e-945a-44f8-880a-24d7eee14dae}
deleted HKEY_LOCAL_MACHINE\Software\Classes\AppID\{2f9a3248-de98-4b16-b56c-0cdc2d4d3d42}
deleted HKEY_LOCAL_MACHINE\Software\Classes\AppID\{23b98090-64e4-400f-9107-921a78bc2cdd}
deleted HKEY_LOCAL_MACHINE\Software\Classes\AppID\{8d95965c-956f-4eed-a18f-cf18e6d31e88}
deleted HKEY_LOCAL_MACHINE\Software\Classes\AppID\{4530f183-15be-4eba-8bef-e68b6686b921}
deleted HKEY_LOCAL_MACHINE\Software\Classes\AppID\{7f76b468-81a6-49ec-9c38-069143206618}
deleted HKEY_LOCAL_MACHINE\Software\Classes\AppID\{37d23cc0-470c-4312-a01c-77e1c6e0ad61}
deleted HKEY_LOCAL_MACHINE\Software\Classes\AppID\{b17b4b81-bb80-4c17-871c-57d5ab14991d}
deleted HKEY_LOCAL_MACHINE\Software\Classes\AppID\{b2e79a4f-f632-43af-86dc-191cd03082ae}
deleted HKEY_LOCAL_MACHINE\Software\Classes\AppID\{ea2c0345-2c36-45d4-9692-6972ce4e96c6}
deleted HKEY_LOCAL_MACHINE\Software\Classes\AppID\{35dee61f-342b-41a2-acdb-2e207760af1b}
deleted HKEY_LOCAL_MACHINE\Software\Classes\AppID\{8c74e7e1-d44a-4cce-9ec0-144a0e037d43}
deleted HKEY_LOCAL_MACHINE\Software\Classes\AppID\{816b6d90-87e6-430f-a5fd-734be662bb55}
deleted HKEY_LOCAL_MACHINE\Software\Classes\AppID\{a5fb8c3a-6da1-4438-a6cf-44c589aa2665}
deleted HKEY_LOCAL_MACHINE\Software\Classes\AppID\{6a4a43f1-4846-4c4b-9a70-c4eac0184d97}
deleted HKEY_LOCAL_MACHINE\Software\Classes\AppID\{c3fe9663-9bde-40dd-ae25-f2f8aa2d6b1a}
deleted HKEY_LOCAL_MACHINE\Software\Classes\AppID\{26cd69c4-d593-4936-a8bb-e592816a0fad}
deleted HKEY_LOCAL_MACHINE\Software\Classes\AppID\{ad89527a-aed4-4382-be23-19be89f9d01e}
deleted HKEY_LOCAL_MACHINE\Software\Classes\AppID\{c00469cb-209b-4823-94bb-4139e48f5923}
deleted HKEY_LOCAL_MACHINE\Software\Classes\AppID\{a5ce878d-59a9-48ae-8e0a-ed717267302d}
deleted HKEY_LOCAL_MACHINE\Software\Classes\AppID\{1a821936-fee1-43a8-8222-87f4e049afb9}
deleted HKEY_LOCAL_MACHINE\Software\Classes\AppID\{a5e4db17-4067-4d19-9812-2e3b879b8a35}
deleted HKEY_LOCAL_MACHINE\Software\Classes\AppID\{712cbb5d-58be-48dc-b930-c8362f63fdee}
deleted HKEY_LOCAL_MACHINE\Software\Classes\AppID\{f986cbbd-8807-418a-adbd-b8ddb92c590}
deleted HKEY_LOCAL_MACHINE\Software\Classes\AppID\{8abec68c-a5d1-40f5-966c-501ddd5c3fe}
deleted HKEY_LOCAL_MACHINE\Software\Classes\AppID\{cc0569bb-bde5-4d6b-ac65-b1fa7a227258}
deleted HKEY_LOCAL_MACHINE\Software\Classes\AppID\{fbd5f1a-0b96-4b9e-8f17-df17a3dc59ef}
deleted HKEY_LOCAL_MACHINE\Software\Classes\AppID\{17e35d4e-df3a-4a2b-83be-a1b17e710e8a}
deleted HKEY_LOCAL_MACHINE\Software\Classes\AppID\{a1971a89-4e84-41d9-b3e0-18a109146bff}
deleted HKEY_LOCAL_MACHINE\Software\Classes\AppID\{f4bc39d7-c2c0-40f1-8e59-fe9bd797d755}
deleted HKEY_LOCAL_MACHINE\Software\Classes\AppID\{0b753f3d-cf41-42b6-8289-b7a8d334e8f9}
deleted HKEY_LOCAL_MACHINE\Software\Classes\AppID\{9d9abca5-0a0b-485a-a962-d1b983ec8274}
deleted HKEY_LOCAL_MACHINE\Software\Classes\AppID\{d19d1258-ada6-40e1-b4d6-5d160e2ebfc9}

- 5.3. Add the following entry at the bottom of HKEY_LOCAL_MACHINE.txt
- ```
isolation_full HKEY_LOCAL_MACHINE\Software\Microsoft\Windows\Windows
Search\Preferences
Value=PreventIndexingOutlook
REG_DWORD=#01#00#00#00"
```

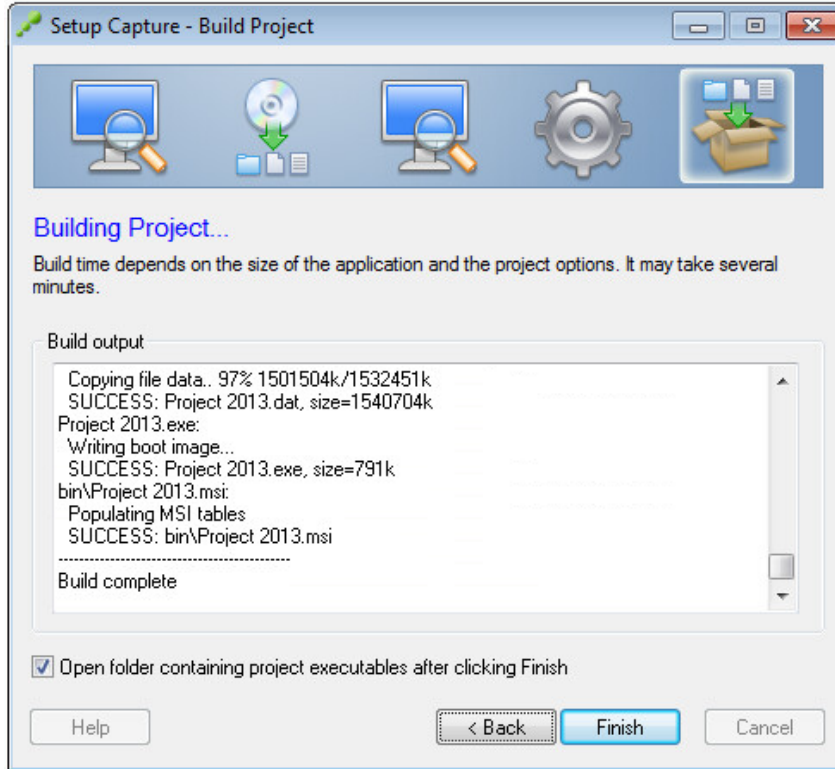


- 5.4. At the **Setup Capture – Ready to Build**, click on the **Build**



- 5.5. After the build process is complete, verify it read **SUCCESS** in the Build Output window then click **Finish**





 **Task 6: COMPLETION**

Run **Project 2013.exe** and verify it launch successfully.

