



# **Bartow County Planning Commission**

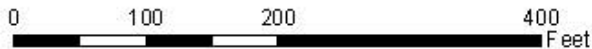
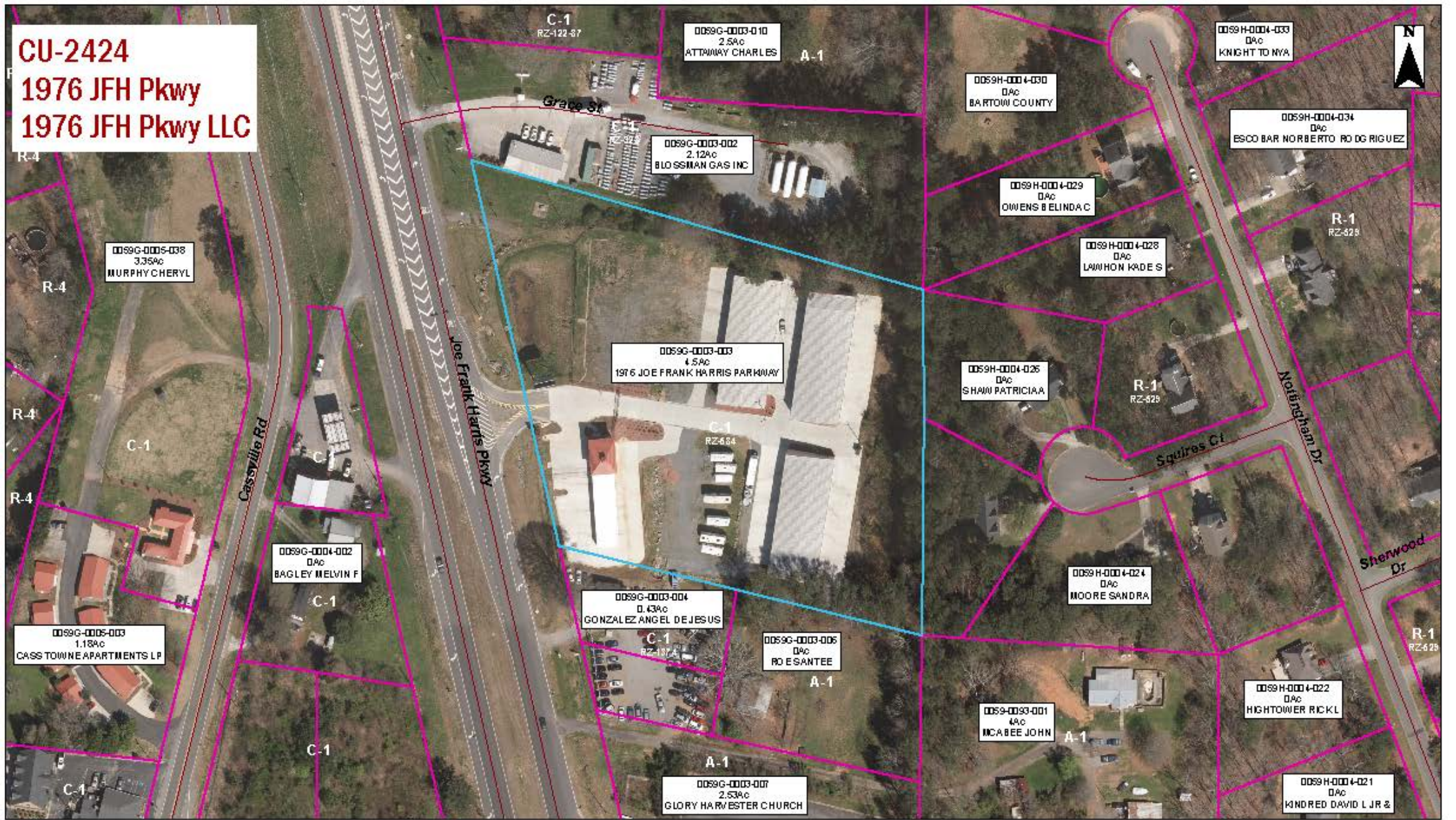
**March 8, 2021**

- 1. CU-2424**
- 2. RZ-2425**
- 3. RZ-2426**

**1976 JFH Pkwy  
50 Brown Farm Rd  
94 Industrial Way**

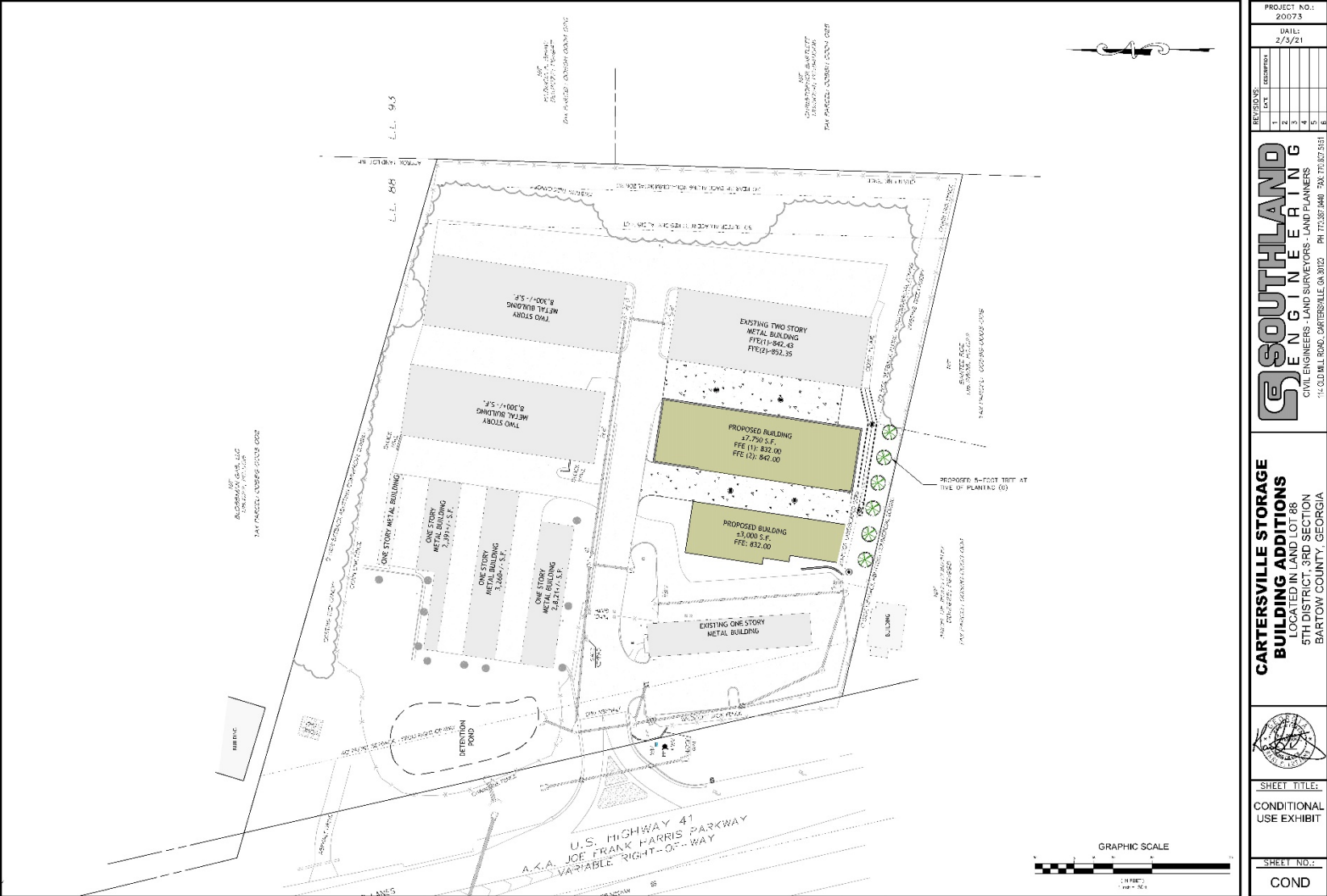
**1976 JFH Pkwy LLC  
SA Land Group LLC  
SA Land Group LLC**

**CU-2424**  
**1976 JFH Pkwy**  
**1976 JFH Pkwy LLC**



# 1976 JFH Pkwy – Conditional Use

## Allow expansion of storage facility in C-1



# 1976 JFH Pkwy – Conditional Use Allow expansion of storage facility in C-1



**RZ-2425**  
**50 Brown Farm Rd**  
**SA Land Group LLC**

0056-07-03-001  
 18Ac  
 .AND HOLDINGS LLC

A-1

A-1  
 0056-0730-001  
 65.9Ac  
 MORROW J KENNETH II &

0046-0001-010  
 52.48Ac  
 DLD 113 LLC

Incorporated

0056-0803-001  
 13.63Ac  
 PARAPET PARTNERS LLC  
 A-1

Incorporated

0054-0801-002  
 10Ac  
 MCNEEL BUILDING SYSTEMS LLC

0056-0802-003  
 8Ac  
 STORAGE PLACE LLC

C-1  
 RZ-1167

0056-0802-001  
 9.77Ac  
 WALNUTG ROVE WEST END LLC

West Ave

Incorporated

0044-0001-003  
 22.89Ac  
 CARTERSVILLE-BARTOW CO

A-1

0056-0802-002  
 3.28Ac  
 MORROW J KENNETH II &

A-1

0055-0815-001  
 128.74Ac  
 CARTERSVILLE BARTOW

Brown Farm Rd

Hwy 113

Hwy 67

C-1  
 RZ-569

0055-0854-002  
 2.9Ac  
 POPHAM JACK REVOCABLE TRUST

0055-0855-001  
 2.05Ac  
 ALIB HAI INVESTMENTS INC  
 C-1  
 RZ-441

ated

0056-0856-002  
 14.71Ac  
 DEVELOPMENT AUTHORITY OF

R3  
 (wC)

R3  
 (wC)

R3  
 (wC)

R3  
 (wC)

R3  
 (wC)

R3  
 (wC)

R3  
 (wC)

Westside Chse

R3  
 (wC)

R3  
 (wC)

R3  
 (wC)

R3  
 (wC)

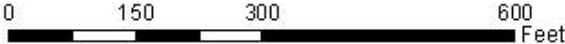
R3  
 (wC)

R3  
 (wC)

R3  
 (wC)

R3  
 (wC)

RZ-706

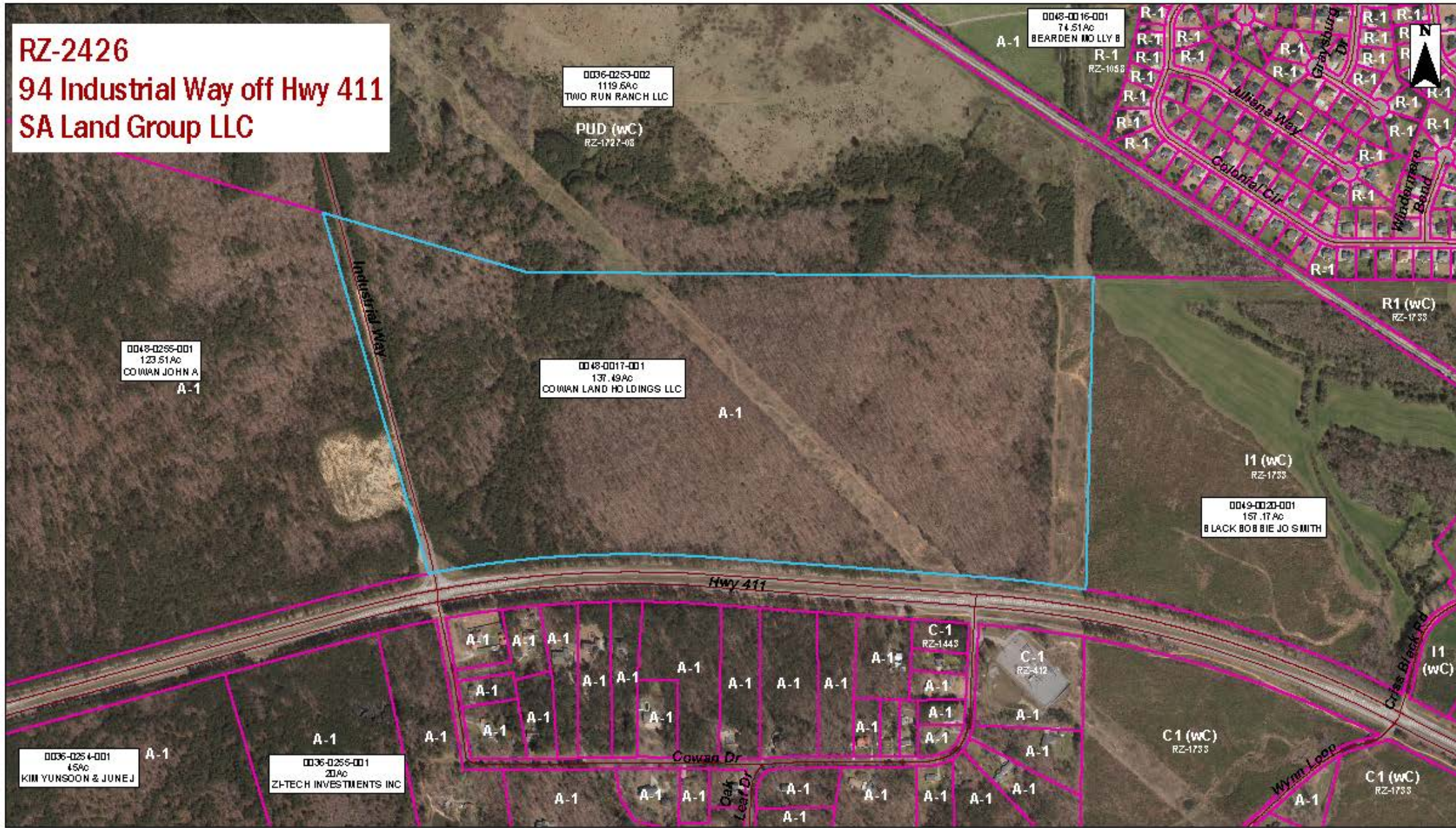




# 50 Brown Farm Rd Rezoning C-1 to R-2



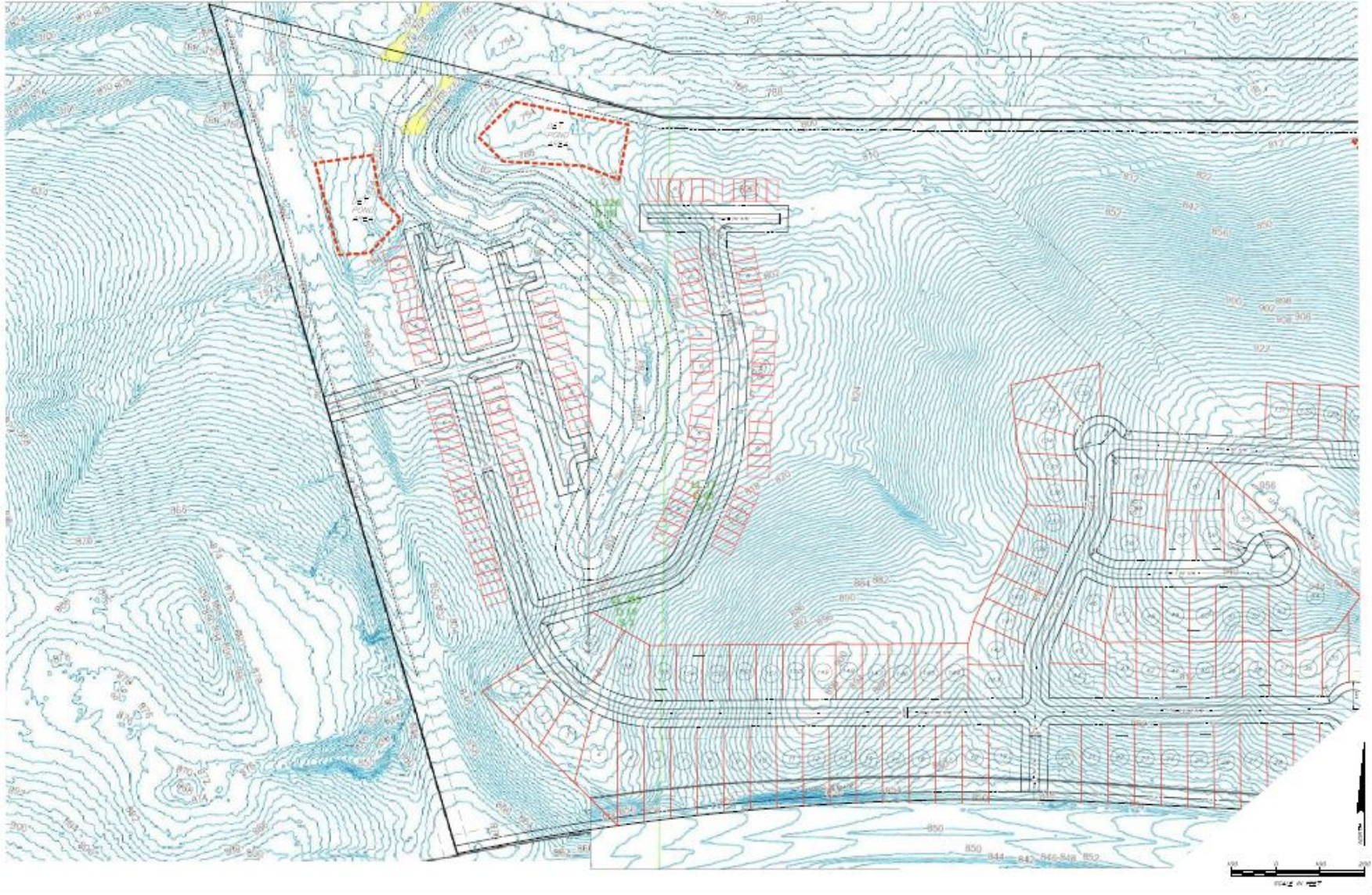
**RZ-2426**  
**94 Industrial Way off Hwy 411**  
**SA Land Group LLC**





# 94 Industrial Way off Hwy 411

Rezoning A-1 to R-2 (this is west side of property)



# 94 Industrial Way off Hwy 411

## Rezoning A-1 to R-2 (this is east side of property)



# 94 Industrial Way off Hwy 411 Rezoning A-1 to R-2

