

ADDENDUM NO. 2

CITY OF BERLIN
2021 Street & Utility Improvements

DATE OF ADDENDUM: March 24, 2021
Bid Opening: 11:00 a.m. local time on March 30, 2021

This Addendum is issued to modify, explain, and/or to correct the original drawings, specifications, and/or contract documents, and/or previous addendums, and is hereby made a part of the contract documents. Please attach this addendum to the specifications and note receipt of this addendum in the proper space provided on the bid proposal form. Please read the entire addendum. This addendum shall be binding on all contracts.

NOTICE TO PLAN HOLDERS

CHANGES TO THE BID

On sheet 00310-2 Item #7 strike the quantity of 17 EA Sanitary Sewer Manhole and replace with 16 EA Sanitary Sewer Manhole.

On sheet 00310-2 Item #9 strike the quantity of 1 EA Sanitary Sewer Drop Manhole, 60” Dia. and replace with 2 EA Sanitary Sewer Drop Manhole, 60” Dia.

On sheet 00310-5 Item #29 strike the quantity of 29 EA Storm Sewer Inlet and replace with 28 EA Storm Sewer Inlet.

On sheet 00310-5 Item #31 strike the quantity of 7 EA Storm Sewer Manhole and replace with 9 EA Storm Sewer Manhole.

On sheet 00310-17 Item #138 strike the quantity of 11 EA Storm Sewer Inlet and replace with 10 EA Storm Sewer Inlet.

On sheet 00310-17 insert the following bid item after item #138:

138a.)	1	EA	Storm Sewer Yard Inlet			
				_____	\$ _____	\$ _____
			Per Each			

On sheet 00310-18 Item #139 strike the quantity of 4 EA Storm Sewer Manhole and replace with 3 EA Storm Sewer Manhole.

On sheet 00310-18 Item #140 strike the quantity of 1 EA Storm Sewer Manhole, 60” Dia. and replace with 2 EA Storm Sewer Manhole, 60” Dia.

CHANGES TO THE PLAN

Replace sheet 15 of 46 with the attached sheet 15 of 46. Note the following revisions:

- Label was added to Sanitary Manhole K1

Replace sheet 16 of 46 with the attached sheet 16 of 46. Note the following revisions:

- Storm Inlet 5A was renamed to Storm Inlet 9A and changed to show a standard 2'x3' box
 - Contractor should note to install a Neenah R-3290-A casting (driveway casting)
- Storm Inlet 5B was renamed to Storm Inlet 9B
- Sanitary Manhole N1 was changed from a 48" diameter manhole to a 60" diameter manhole.

Replace sheet 18 of 46 with the attached sheet 18 of 46. Note the following revisions:

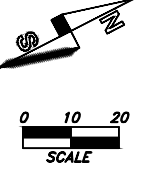
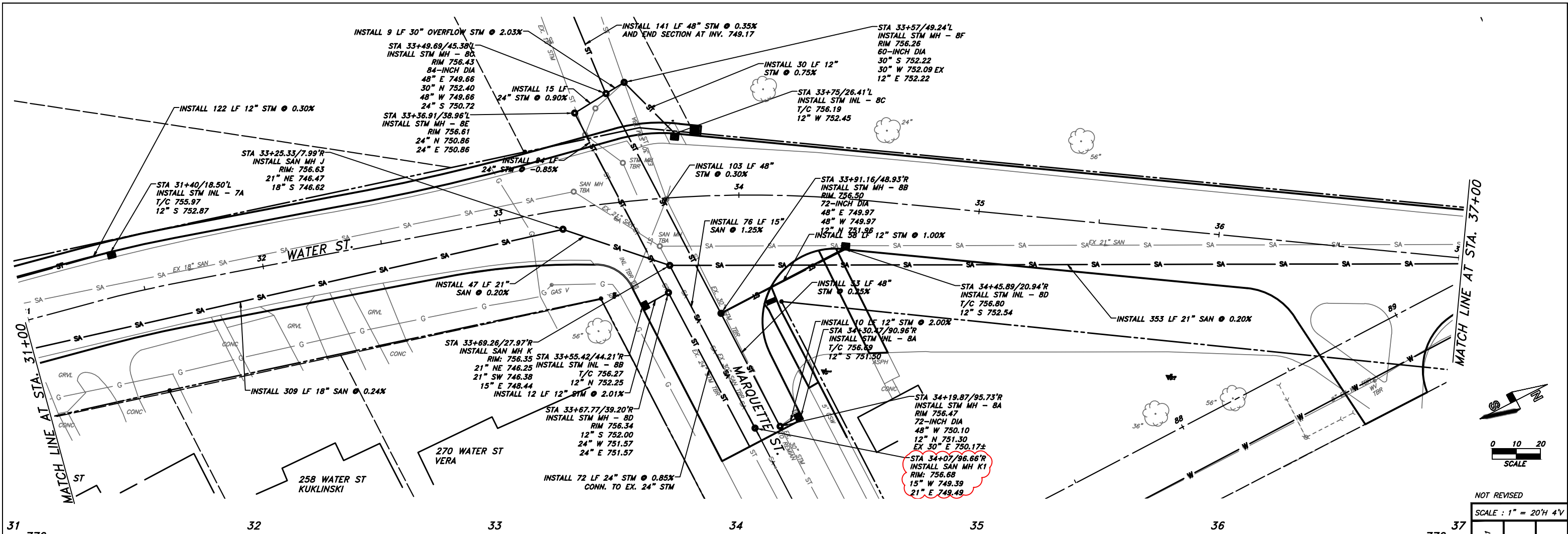
- Storm Manhole P3 was changed from a 48" diameter manhole to a 60" diameter manhole.

Replace sheet 19 of 46 with the attached sheet 19 of 46. Note the following revisions:

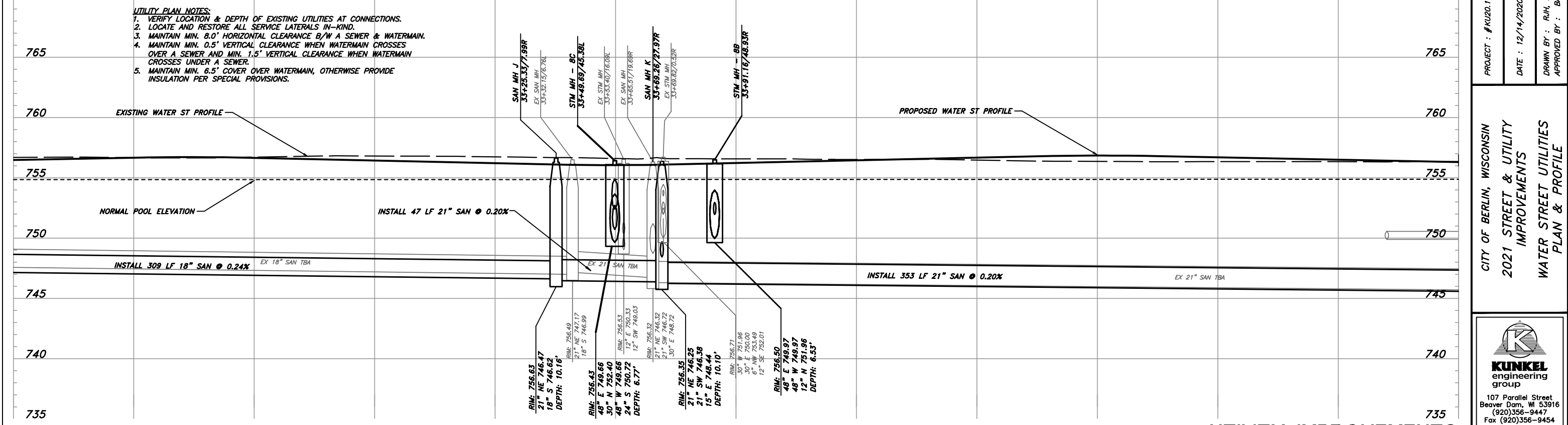
- Storm Inlet P4-C was changed to a yard inlet.

Replace sheet 28 of 46 with the attached sheet 28 of 46. Note the following revisions:

- Storm Inlet 5A was renamed to Storm Inlet 9A and changed to show a standard 2'x3' box



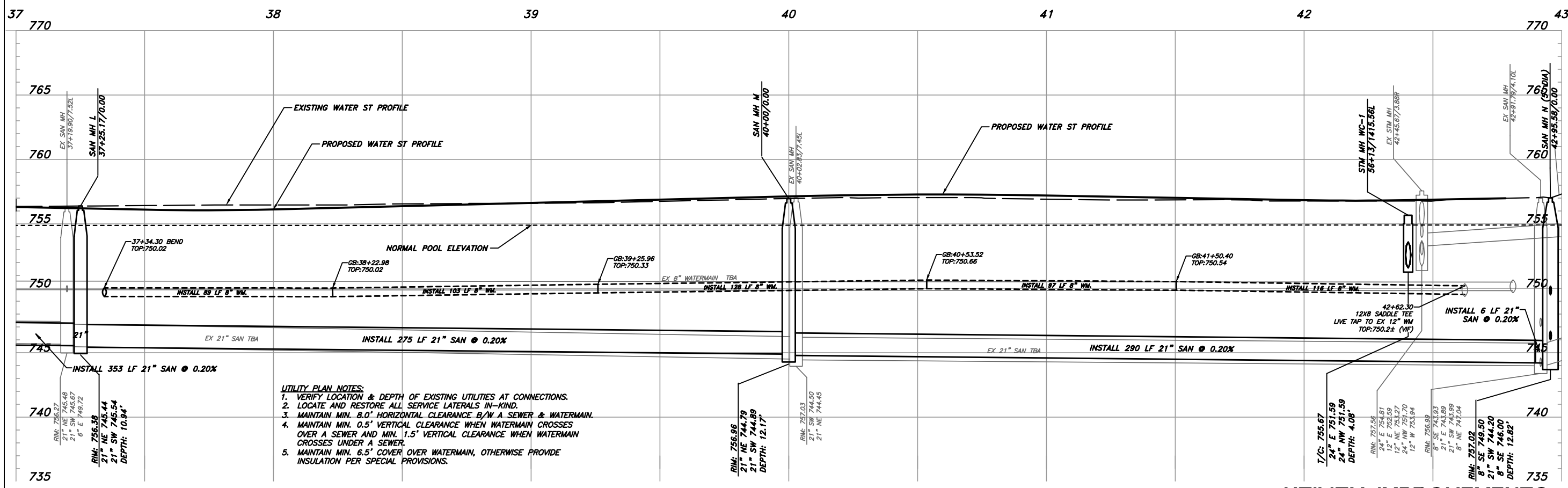
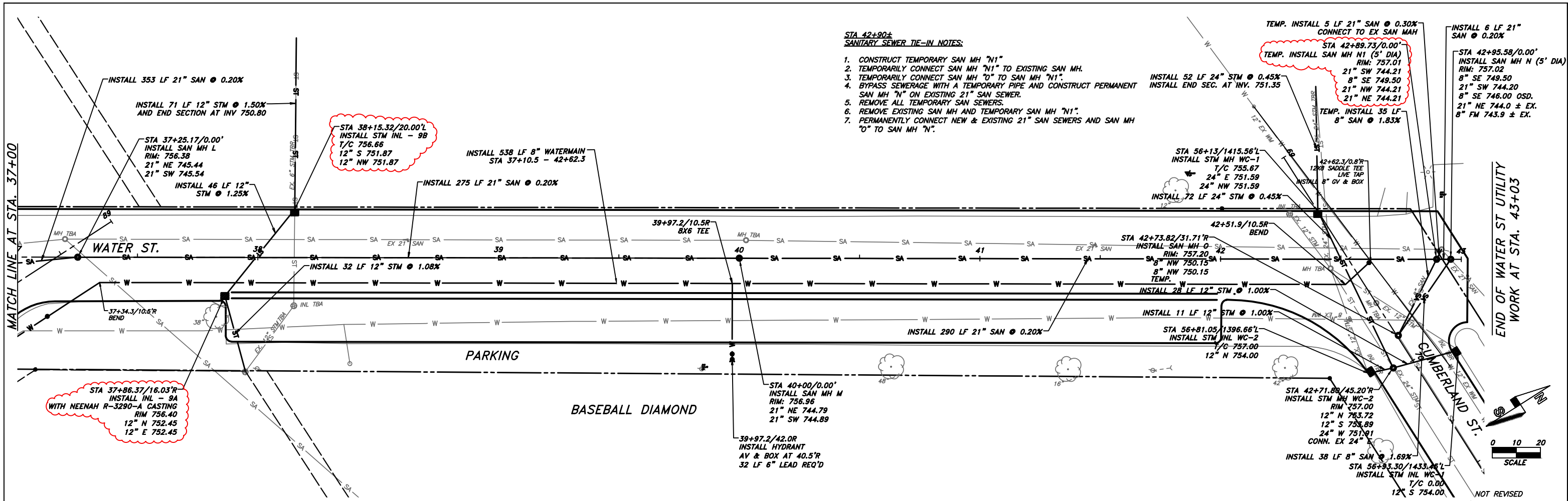
31 770 32 770 33 770 34 770 35 770 36 770 37 770



NOT REVISION
 SCALE : 1" = 20'H 4"V
 PROJECT : #K20.1061
 DATE : 12/14/2020
 DRAWN BY : RUH, ZA
 APPROVED BY : BAO

CITY OF BERLIN, WISCONSIN
 2021 STREET & UTILITY
 IMPROVEMENTS
 WATER STREET UTILITIES
 PLAN & PROFILE

KUNKEL
 engineering
 group
 107 Parallel Street
 Beaver Dam, WI 53916
 (920)356-9447
 Fax (920)356-9454



- UTILITY PLAN NOTES:**
1. VERIFY LOCATION & DEPTH OF EXISTING UTILITIES AT CONNECTIONS.
 2. LOCATE AND RESTORE ALL SERVICE LATERALS IN-KIND.
 3. MAINTAIN MIN. 8.0' HORIZONTAL CLEARANCE B/W A SEWER & WATERMAIN.
 4. MAINTAIN MIN. 0.5' VERTICAL CLEARANCE WHEN WATERMAIN CROSSES OVER A SEWER AND MIN. 1.5' VERTICAL CLEARANCE WHEN WATERMAIN CROSSES UNDER A SEWER.
 5. MAINTAIN MIN. 6.5' COVER OVER WATERMAIN, OTHERWISE PROVIDE INSULATION PER SPECIAL PROVISIONS.

SCALE : 1" = 20'H 4"V

PROJECT : #K20.1061

DATE : 12/14/2020

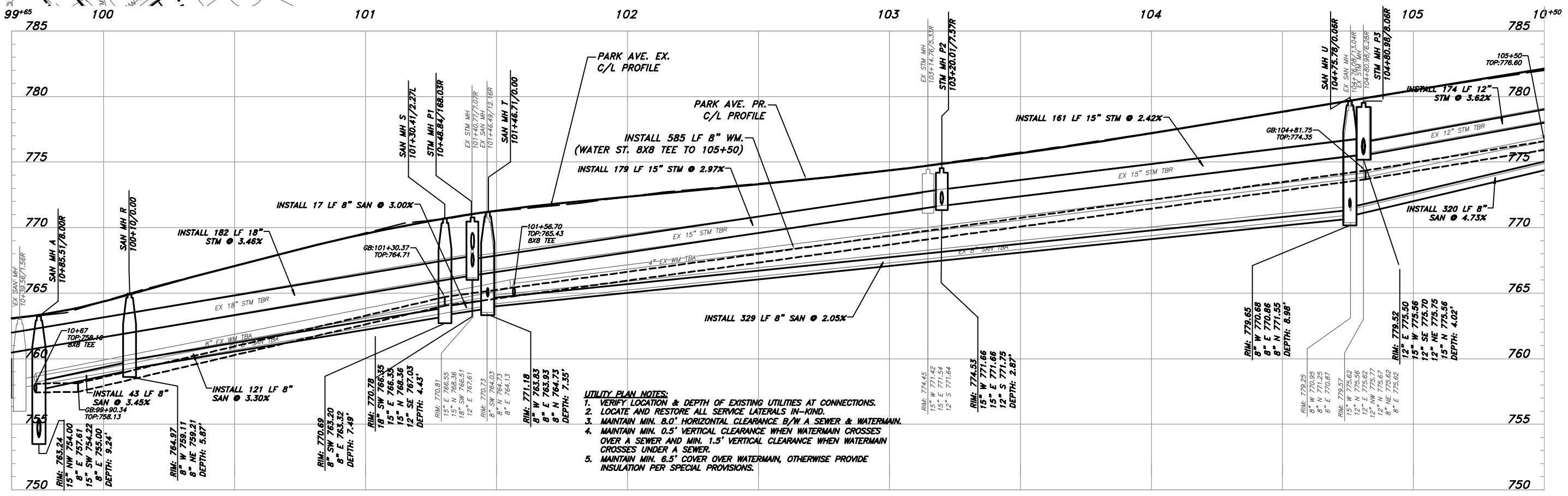
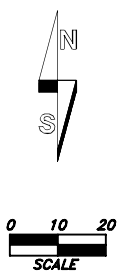
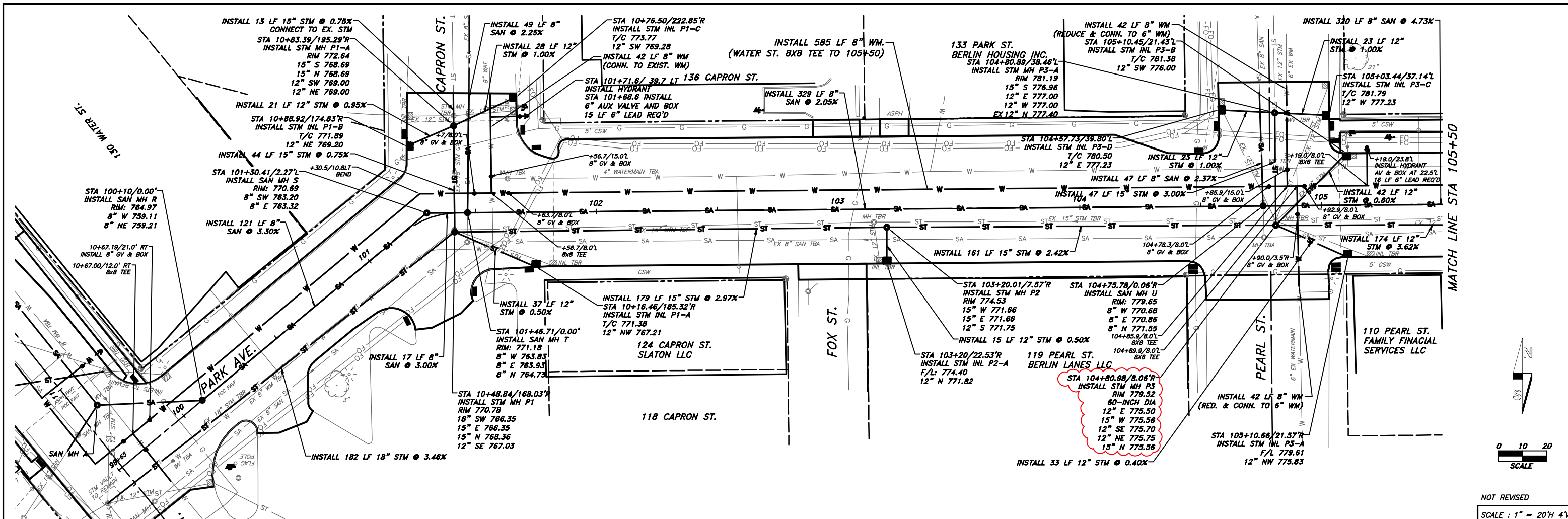
DRAWN BY : RUH, ZA

APPROVED BY : BAO

CITY OF BERLIN, WISCONSIN
 2021 STREET & UTILITY
 IMPROVEMENTS
 WATER STREET UTILITIES
 PLAN & PROFILE

KUNKEL
 engineering group

107 Parallel Street
 Beaver Dam, WI 53916
 (920)356-9447
 Fax (920)356-9454



- UTILITY PLAN NOTES:**
1. VERIFY LOCATION & DEPTH OF EXISTING UTILITIES AT CONNECTIONS.
 2. LOCATE AND RESTORE ALL SERVICE LATERALS IN-KIND.
 3. MAINTAIN MIN. 8.0' HORIZONTAL CLEARANCE B/W A SEWER & WATERMAIN.
 4. MAINTAIN MIN. 0.5' VERTICAL CLEARANCE WHEN WATERMAIN CROSSES OVER A SEWER AND MIN. 1.5' VERTICAL CLEARANCE WHEN WATERMAIN CROSSES UNDER A SEWER.
 5. MAINTAIN MIN. 6.5' COVER OVER WATERMAIN, OTHERWISE PROVIDE INSULATION PER SPECIAL PROVISIONS.

PLOT DATE: 3/24/2021 3:48:12 PM
 M:\Township\berlin_city\2021 Street & Utility\Water S\DWG\2021 ST-Util - 6_ZA.dwg

UTILITY IMPROVEMENTS

NOT REVISED

SCALE: 1" = 20' H 4' V

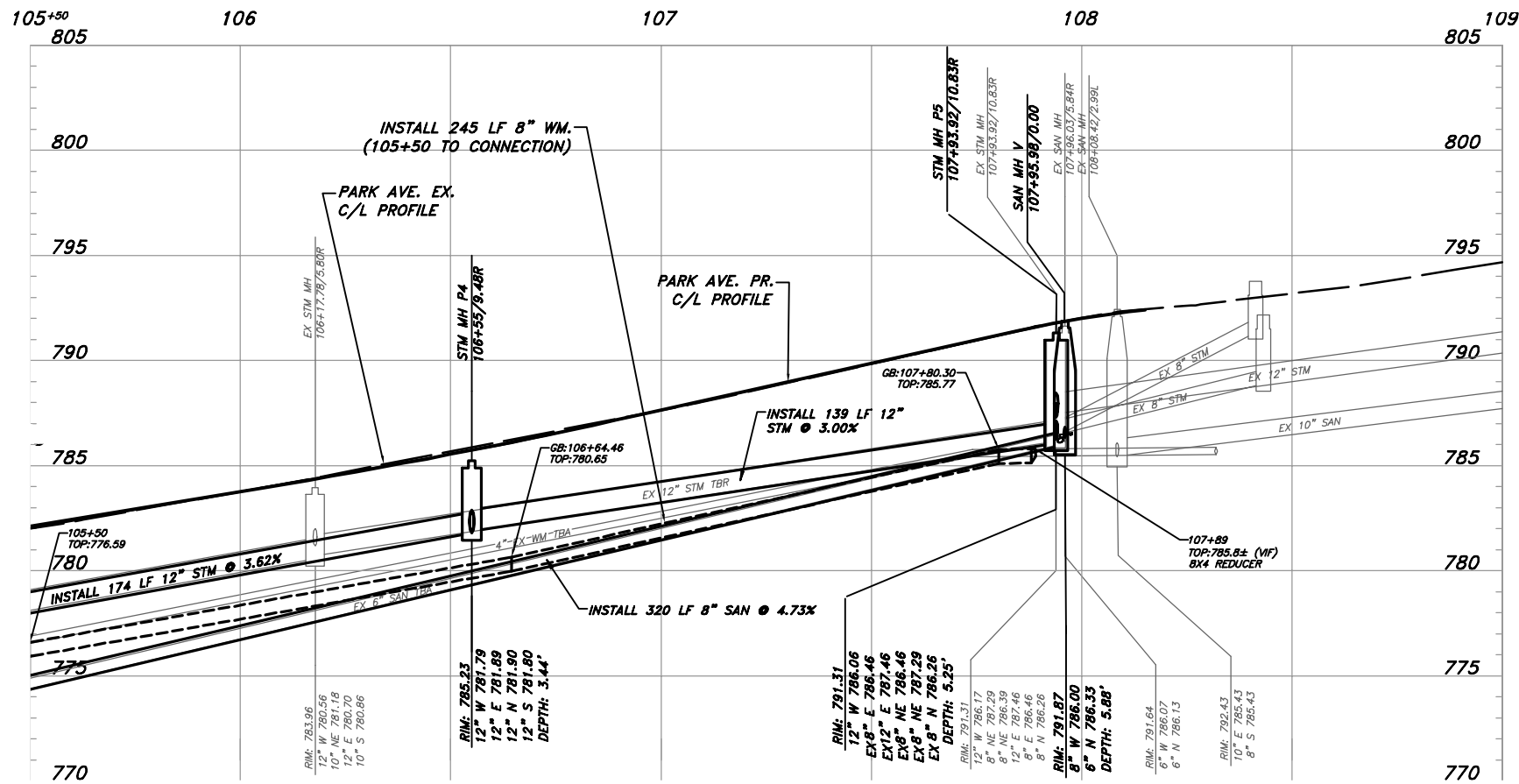
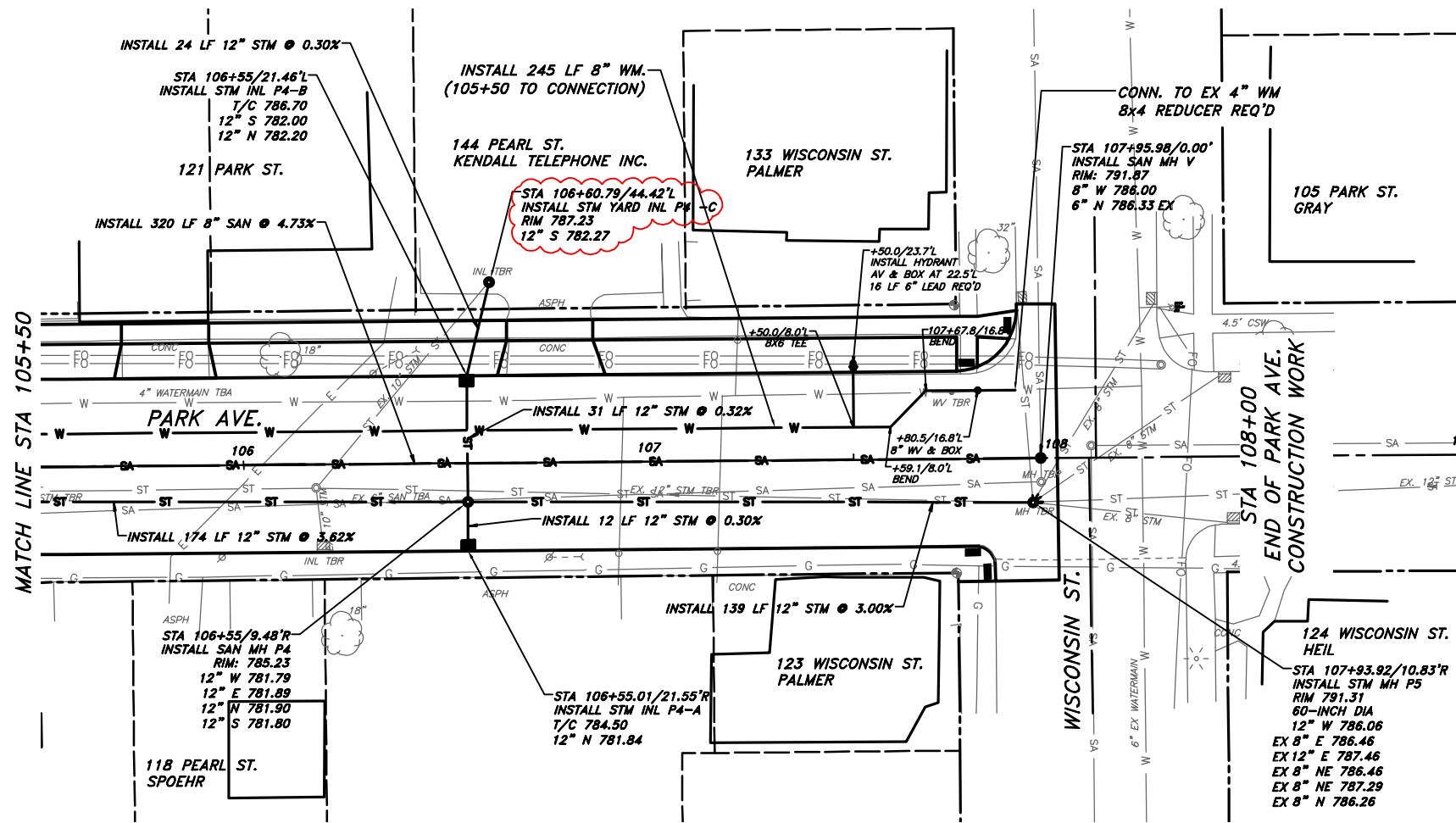
PROJECT: #K020.1061	DRAWN BY: RJH
DATE: 12/14/2020	APPROVED BY: BAO

CITY OF BERLIN, WISCONSIN
 2021 STREET & UTILITY
 IMPROVEMENTS
 PARK AVENUE UTILITIES
 PLAN & PROFILE

KUNKEL
 engineering
 group

107 Parallel Street
 Beaver Dam, WI 53916
 (920)356-9447
 Fax (920)356-9454

SHEET 18 OF 46



UTILITY PLAN NOTES:

1. VERIFY LOCATION & DEPTH OF EXISTING UTILITIES AT CONNECTIONS.
2. LOCATE AND RESTORE ALL SERVICE LATERALS IN-KIND.
3. MAINTAIN MIN. 8.0' HORIZONTAL CLEARANCE B/W A SEWER & WATERMAIN.
4. MAINTAIN MIN. 0.5' VERTICAL CLEARANCE WHEN WATERMAIN CROSSES OVER A SEWER AND MIN. 1.5' VERTICAL CLEARANCE WHEN WATERMAIN CROSSES UNDER A SEWER.
5. MAINTAIN MIN. 6.5' COVER OVER WATERMAIN, OTHERWISE PROVIDE INSULATION PER SPECIAL PROVISIONS.



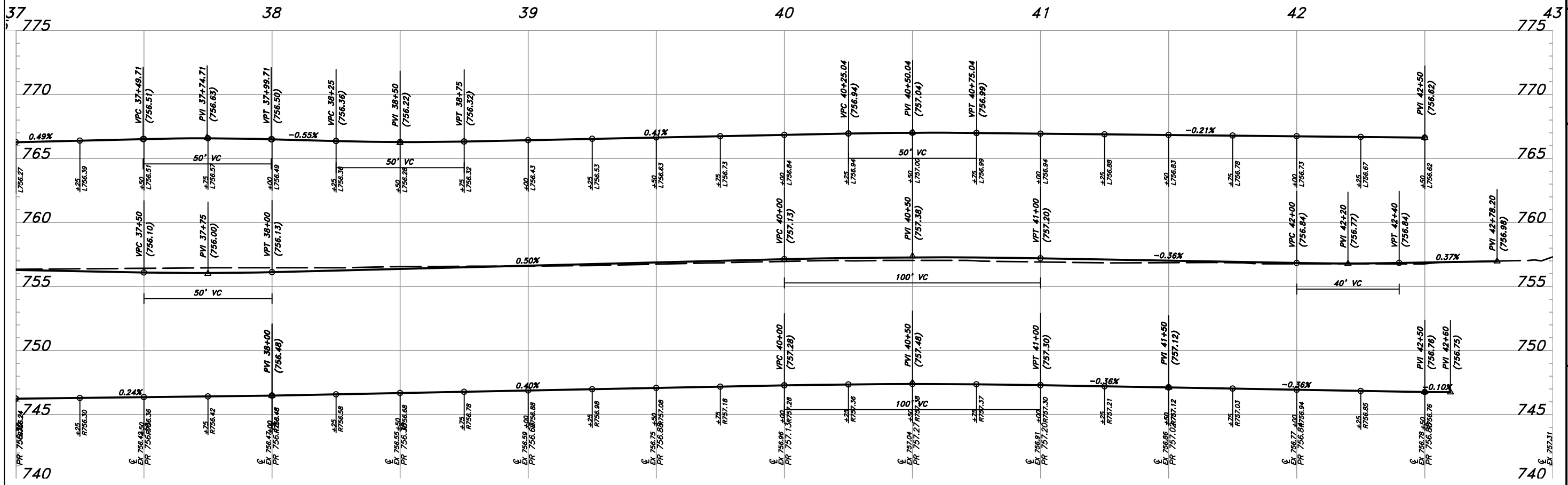
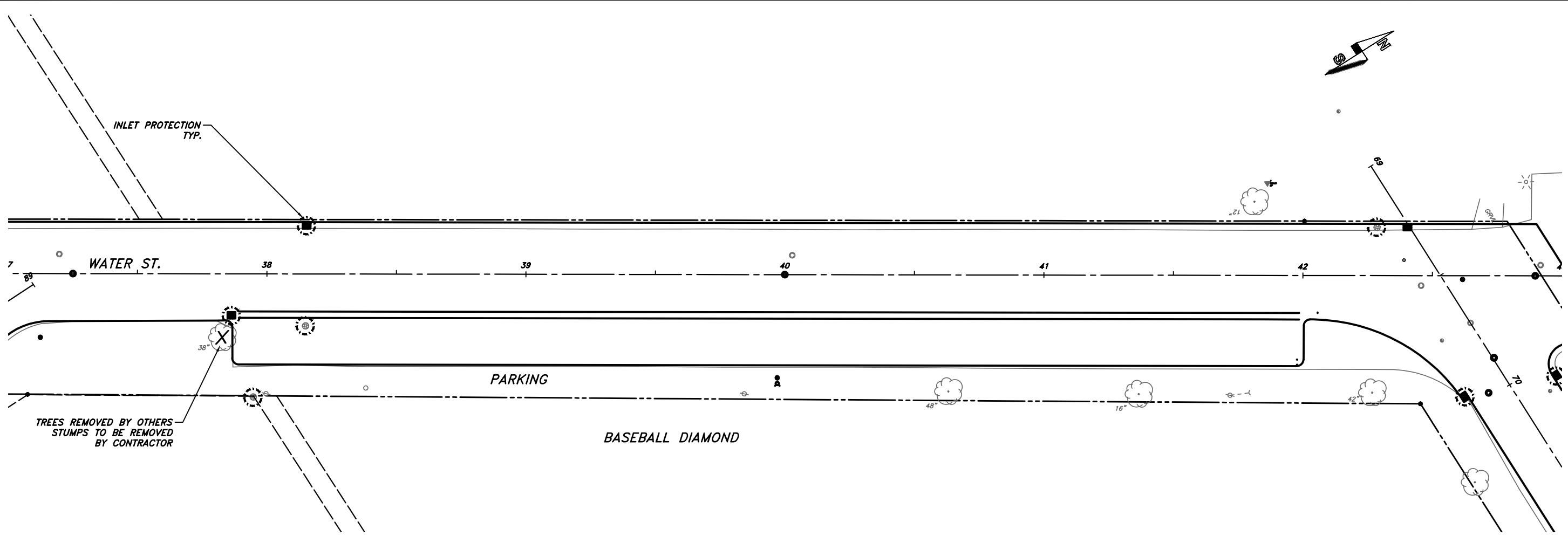
NOT REVISED
SCALE: 1" = 20'H 4"V

PROJECT: #K20.1061	DATE: 12/14/2020	DRAWN BY: RJH
		APPROVED BY: BAO

CITY OF BERLIN, WISCONSIN
2021 STREET & UTILITY
IMPROVEMENTS
PARK AVENUE UTILITIES
PLAN & PROFILE



KUNKEL
engineering
group
107 Parallel Street
Beaver Dam, WI 53916
(920)356-9447
Fax (920)356-9454



STREET GRADES

PLOT DATE: 3/24/2021 3:42:05 PM
 M:\Towns\berlin_city\2021 Street & Utility\Water St\DWG\2021 St-Paving - 6_ZA.dwg

REVISED 3/24/2021
 SCALE : 1" = 20'H 4"V

PROJECT : #K20.1061	DRAWN BY : RJH
DATE : 12/14/2020	APPROVED BY : BAO

CITY OF BERLIN, WISCONSIN
 2021 STREET & UTILITY
 IMPROVEMENTS
 WATER STREET PLAN & PROFILE

KUNKEL
 engineering group
 107 Parallel Street
 Beaver Dam, WI 53916
 (920)356-9447
 Fax (920)356-9454

SHEET 28 OF 46