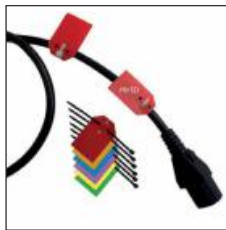


# ePDU G3 Accessories

Accessories	Part Number	Benefits
Cable ID tags	IDTAG16A, IDTAG32A, IDTAG16A3P	Identify and mark cables
Sensor	EMP001	Get live measurement on temperature, humidity, set threshold and be notified in real time
Adaptor Fast Ethernet Gigabit	GBCONV	Quick and easy way to upgrade your 10/100 Mb network interface G3 ePDU to Gigabit speed
ePDU to UPS cables	CBL0UT32 CBL20UT32	Connect an ePDU 32A input to the hardware output UPS
Intelligent Power Manager	IPM Basic, Silver, Gold	Monitor and managed multiple ePDUs Trigger actions from ePDUs & sensor events



IDTAG16A, IDTAG32A, IDTAG16A3P



EMP001



GBCONV



CBL0UT32



CBL20UT32

All ePDU G3 come with a 2 years warranty as standard. Warranty extension up to 3 years (Warranty+) and 5 years (Warranty 5) available



Eaton ePDU Basic G3 has a compliant environmental declaration

## Need Something Special?

- Dedicated engineering teams in 3 centres of excellence are available to create your perfect ePDU
- Specific configurations or complete engineering projects
- Including national socket types, UK, French, Din/Schuko – including combinations of up to 3 types of outlet on an ePDU
- Colored ePDUs now available for the entire range, to easily identify your power source



Power distribution for IT equipment

Basic  
In-Line Metered  
Metered Input

Metered Outlet  
Switched  
Managed



# ePDU G3 Platform



**South Asia Office**  
Eaton's Electrical Sector  
Eaton Power Quality Pvt. Ltd.  
2, EVR Street, Sedarpet Industrial Estate,  
Pondicherry - 605 111. Tel: +91 413 2672000

**Sales and Service**  
Toll Free Hotline: 1800 425 7585  
E-mail: EatonPowerQualityIndia@eaton.com

**Offices Across India**

**New Delhi**  
Unit A1 & B1, 3rd Floor,  
TDI Centre, Plot No. - 7, Jasola,  
New Delhi - 110025  
Ph: 011 45851800

**Mumbai**  
EL Floor, VITS Luxury Business Hotel,  
Andheri Kurla Road, Andheri (East),  
Mumbai - 400 059  
Tel: +91 22 4005 3817  
Fax: +91 22 4005 3810

**Bangalore**  
Unit No. 501, 4th Floor,  
Prestige Atrium, Central Street,  
Bangalore - 560 001  
Tel: +91 80 4901 2200  
Fax: +91 80 4901 2239

**Hyderabad**  
Ground and First Floor,  
8-3-1110/B/2, Plot No.104,  
Keshav Nagar Colony,  
Srinagar Colony post,  
Hyderabad - 500 073  
Tel: +91 40 4018 9601

**Chennai**  
No. 36, Nehru Street,  
Off. Old Mahabalipuram  
Road, Sholinganallur,  
Chennai - 600 019

**Ahmedabad** +91 8980040323  
**Chandigarh** +91 9356856675  
**Coimbatore** +91 9344067649  
**Cochin** +91 9344067649  
**Gurgaon** +91 9312051030  
**Kolkata** +91 33 4004 0968  
**Pune** +91 9325052902

**Sales and Service Operations**

**Sri Lanka**  
+94 11 2871 000, 7520 000  
+94 11 7520 031

**Nepal**  
+97 714429777, 714429888  
+97 714423376

**Bangladesh**  
+8802 7170368, 7162568, 7162619  
+8802 9347918, 9330765, 9348220  
+8802 9130363, 9139314



# Eaton's 3rd generation power distribution technology

The ePDU G3 platform is designed to provide reliable, cost effective power distribution together with highly accurate monitoring and control for IT equipment in the datacentre.

## This Industry-leading platform enables you to:

- Reliably distribute power to your IT equipment
- Accurately meter and control power consumption
- See where you have available power and are most efficient
- Choose the level of metering to provide the level of information that you require
- Choose equipment switching to allow remote data centre control

## How do I reduce cooling costs by taking advantage of modern hot-air containment solutions and the newest IT technologies to get higher rack operating temperatures?

60° Operating Temperature: ePDU G3 can be used in very hot environments. Take full advantage of ASHRAE guidelines.

- ePDU G3 operates in extreme environments and containment solutions
- Allows for: containment solutions, free cooling scenarios and operating IT equipment with high temperature thresholds
- Plus optional environmental monitoring with dry contacts with configurable alarms for additional sensors

## How can I learn what my IT equipment is consuming so I can optimize my Data Centre, control my costs and utilize all my available power?

Equipment Metering: Meter Individual outlets or group outlets to meter equipment with multiple inputs, over multiple ePDUs for A and B feed. Clearly see capacity exactly what your equipment is consuming.

## How can I operate remotely with lights-out control, including remote re-booting, scheduled shut downs and restarts?

Equipment Switching: Switch individual outlets or group to switch equipment with multiple inputs, over multiple ePDUs for A and B feed, including sequencing and scheduled shut-down and restart. Supports Graceful Shutdown with Eaton's Intelligent Power Protector.

## Simplify load balancing

Colour coding and laser engraved chassis easily link breakers to outlet groups.



## How do I simply control and configure my ePDU, and easily see where I have any problems?

Easy Configuration: includes central advanced LCD display with menu system. Change settings incl. IP address, configure via USB stick copy / paste configuration file or configure En Masse via IPM software.

Central Communication and Alerts: Read Current, Voltage, Power, kWhr and more, Multi colour interface allows easy identification of alerts. Easily monitor the status of your power distribution on the LCD, via the web interface or via your management software.



## How to avoid downtime if a rack PDU becomes faulty or I want to upgrade?

No Downtime on Upgrades: ePDU G3 has Hot-Swap network components – update or change without changing the outlet state.

## How do I ensure that my PDUs will fit in all my different racks? How do I ensure that nothing interferes with my IT Equipment and hot-swap components?

### Small with Flexible Mounting: Easily access hot-swappable IT equipment and components.

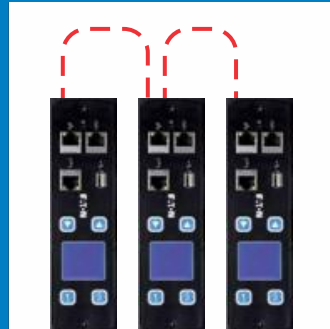
- ePDUs are available in 0U to fit vertically on the back of a rack, or in 1U/2U to be mounted horizontally in any server rack
- Ensure the ePDU, plugs and cables are completely out of the way of equipment with button mount on the rear and sides
- Optionally side mount to face the rear doors of the rack to ensure the ePDU, plugs and cables don't interfere with hot-swap IT equipment
- Choose to raise or lower the ePDU in the rack to suit your installation
- Unique patented variable mounting system can be mounted at any point on the ePDU and gives full flexibility

### Low profile chassis:

- The ePDU doesn't protrude into the rack and is low profile even at the breakers
- 52mm wide x 53mm high and 58.7mm at breakers on most models
- Hydraulic-Magnetic Circuit Breakers include accidental-tip protection by default

1U/2U form factor ePDUs can be mounted horizontally, vertically, or under a surface.





**How can I reduce the cost of networking for monitoring rack PDUs and reduce network traffic?**

Daisy-Chain 8 ePDUs from one IP port and one IP address: this reduces the cost of networking, reduces IP addresses and data packets on the network. Daisy Chaining reduces network infrastructure costs by up to 87%.



**How do I ensure that my IT equipment is protected against IEC plugs being accidentally knocked out during maintenance or come lose through vibration?**

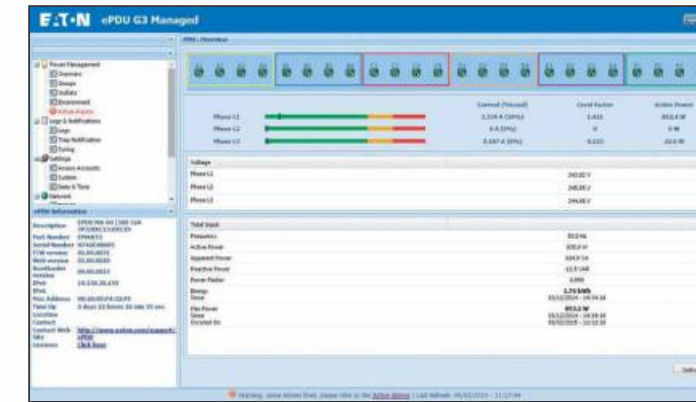
Integrated Grip – IEC Plug Retention: Prevents accidental disconnect from being bumped or from vibration. Works with any IEC plug, no need to buy special cables or brackets.



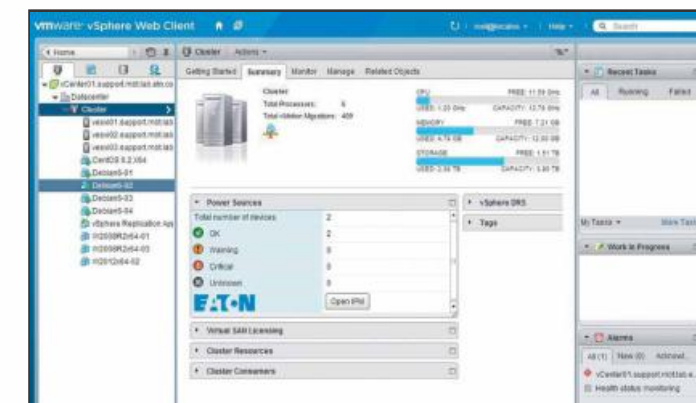
**How do I ensure that costs can be appropriately attributed or billed for department billing and colocation data centers?**

IEC +/-1% Billing Grade Accuracy: Meter your energy consumption (kWh) plus V, W and A extremely accurately. Choose your level of Metering: from ePDU to branch circuit to individual pieces of equipment, including metering kWh for IT equipment over A and B feeds.

**How can I ensure business uptime if the power goes down?**



Detailed web-based interface on ePDU G3

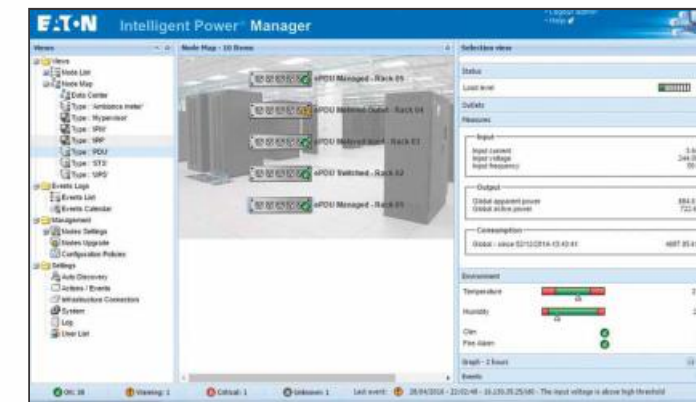


Intelligent Power Manager integration into VMware interface

**Full integration into VMware and Citrix with Intelligent Power Manager**

- Trigger VM migration or VMware Site Recovery Manager (SRM)
- User configurable alerts on the ePDU G3 work with Eaton's Intelligent Power Manager (IPM) software to trigger actions
- Trigger automatic migration of virtual servers in the event of a power failure via UPS, ePDU alarm or threshold, temperature/humidity or dry contact event
- User configurable: includes feed going down, branch circuit reaching a defined threshold etc.
- Full integration in VMware interface

**How can I easily monitor many ePDUs and IT equipment?**



**Intelligent Power Manager offers supervision and control through a single interface**

- One interface to monitor your power usage of many ePDUs
- ePDU and UPS Management
- En masse Configuration of ePDU
- En masse Update of ePDU

**Eaton collaborates with the leaders in converged and hyper-converged infrastructures and provide lab-validated power management solutions to ensure high uptime of IT systems and data integrity in case of power and environmental issues.**



# Key technology features

## Growing functionality

	Basic	In-Line Metered	Metered Input	Metered Outlet	Switched	Managed
IEC outlet eTrip plug retention: retains all standard IEC plugs	✓	N/A	✓	✓	✓	✓
Colour-coded outlet and branch circuits for simple load balancing	✓	N/A	✓	✓	✓	✓
Eaton Hydraulic-Magnetic Circuit Breakers with accidental trip protection	✓	N/A	✓	✓	✓	✓
Low-profile form factor: 52mm wide x 53mm deep on most models	✓	✓	✓	✓	✓	✓
60 Degree C operating temperature	✓	✓	✓	✓	✓	✓
Installation: Button mounting on rear & side + variable mounting system	✓	✓	✓	✓	✓	✓
Hot-Swap eNMC with Advanced LCD + Optional Temp/Humidity sensor	✓	✓	✓	✓	✓	✓
±1% IEC Class 1 Billing Grade Accuracy for V, W, A and kWh	✓	✓	✓	✓	✓	✓
Input and Phase Metering, Circuit Breaker Current Metering	✓	✓	✓	✓	✓	✓
Daisy-Chain Network 8 ePDUs	✓	✓	✓	✓	✓	✓
Standard Units with UK, French and Schuko outlets	✓	✓	✓	✓	✓	✓
En masse configuration and update available via IPM software	✓	✓	✓	✓	✓	✓
Single Pane Monitoring of many ePDUs+UPS as part of the power chain, via IPM	✓	✓	✓	✓	✓	✓
Trigger advanced actions including Vmware SRM and VM migration via IPM	✓	✓	✓	✓	✓	✓
HTTP, HTTPS, SSL, Telnet, FTP, SNMP, SMTP, DNS, DHCP, LDAP, RADIUS	✓	✓	✓	✓	✓	✓
Circuit Breaker Status Monitoring	✓	✓	✓	✓	✓	✓
Outlet and IT Equipment Metering across A and B feed	✓	✓	✓	✓	✓	✓
Level 3 PUE measurements	✓	✓	✓	✓	✓	✓
Turn off unused outlets to control commissioning	✓	✓	✓	✓	✓	✓
Remote Site Management	✓	✓	✓	✓	✓	✓
Outlet and IT Equipment Switching/reboot /sequencing across A and B feed	✓	✓	✓	✓	✓	✓

**Basic** Basic Reliable Power Distribution with integrated plug retention

**In-Line Metered** Add Metering to upgrade existing basic PDUs

**Metered Input** Meter the input and Branch circuits

**Metered Outlet** Meter the input, branch, individual outlets and IT equipment across A and B feed

**Switched** Switch individual outlets and IT equipment across A and B feed, plus input and branch metering

**Managed** Both Switch and Meter individual outlets and IT equipment across A and B feed

## Technical specifications

Input Type / Rating (A)	Outlet type: Qty	Breakers	Basic p/n	Dimensions LxWxD, mm	In-Line Metered & Dual p/n	Dimensions LxWxD, mm	Metered Input p/n	Dimensions LxWxD, mm	Metered Outlet p/n	Dimensions LxWxD, mm	Switched p/n	Dimensions LxWxD, mm	Managed p/n	Dimensions LxWxD, mm
C14 10A	8XC13	2 single pole	EBA002	443x52x53			EMIH02	10x19" x203						
	12XC13	2 single pole	EBA019	443x52x53			EMIB03	1070x52x53	EMOB03	1154x52x53	ESWB03	1154x52x53	EMAB03	1154x52x53
	16XC13	2 single pole	EBA003	704x52x53										
	8XFR : 1XC19		EFLX08*	10x19" x80										
	8XGE : 1XC19		EFLX80*	10x19" x80										
	6XUK : 1XC19		EFLX68*	52x19" x120										
	12XC13 : 1XC19		EFLX121*	10x19" x80										
	16XC13		EBA021	704x52x53										
	8XC13						<b>New</b> EMIH28	10x19" x203						
	18XC13 : 2XC19						EMIB09	1070x52x53	EMOB22	1604x52x53	ESWB22	1604x52x63	EMAB22	1604x52x53
IEC60309 16A	20XC13 : 4XC19		EBA022	1070x52x53										
	7XC13 : 1XC19													
	18XC13 : 2XC19						EMIB10	1070x52x53						
	20XC13 : 4XC19						EMIB04	1070x52x53	EMOB04	1604x52x53	ESWB04	1604x52x53	EMAB04	1604x52x53
	IEC60309													
	2 x IEC60309													
	12XC13 : 4XC19													
	20XC13 : 4XC19													
	20XC13 : 2XC19													
	20XC13 : 2XC19 : 2XFR													
IEC60309 32A	20XC13 : 2XC19 : 2XGE													
	36XC13 : 6XC19													
	IEC60309													
	2 x IEC60309													
	12XC13 : 4XC19						EMIB06	1070x52x53						
	20XC13 : 4XC19						<b>New</b> EMIH06	20x19" x127	EMOB05	1604x52x53	ESWB05	1604x52x63	EMAB05	1604x52x53
	20XC13 : 2XC19						EMIB05	1154x52x53	EMOB05	1604x52x53	ESWB05	1604x52x63	EMAB05	1604x52x53
	20XC13 : 2XC19 : 2XUK						EMIB16	1154x52x53	EMOB16	1604x52x53	ESWB16	1604x52x63	EMAB16	1604x52x53
	20XC13 : 2XC19 : 2XFR						EMIB17	1154x52x53	EMOB17	1604x52x53	ESWB17	1604x52x63	EMAB17	1604x52x53
	20XC13 : 2XC19 : 2XGE						EMIB18	1154x52x53	EMOB18	1604x52x53	ESWB18	1604x52x63	EMAB18	1604x52x53
Dual input	IEC60309						EMIB08	1604x52x53						
	2 x IEC60309													
	12XC13 : 4XC19													
	20XC13 : 4XC19													
	20XC13 : 2XC19													
	20XC13 : 2XC19 : 2XFR													
	20XC13 : 2XC19 : 2XGE													
	36XC13 : 6XC19													
	IEC60309													
	2 x IEC60309													
IEC60309 16A 3P	21XC13 : 3XC19													
	36XC13 : 6XC19													
	6XC19													
	3XC13 : 8XC19													
	6XC13 : 12XC19													
	18XC13 : 6XC19													
	12XC13 : 12XC19													
	30XC13 : 12XC19													
	IEC60309													
	2 x IEC60309													
IEC60309 16A 3P	21XC13 : 3XC19													
	36XC13 : 6XC19													
	6XC19													
	3XC13 : 8XC19													
	6XC13 : 12XC19													
	18XC13 : 6XC19													
	12XC13 : 12XC19													
	30XC13 : 12XC19													
	IEC60309													
	2 x IEC60309													

\* Basic G3 features not applicable for the FlexPDU range  
All standard ePDUs come with 3m cable

Standard Models above are in stock in Europe - for others models please contact your local reseller  
Need Something Special? Dedicated engineering teams in centres of excellence are available to create your perfect ePDU