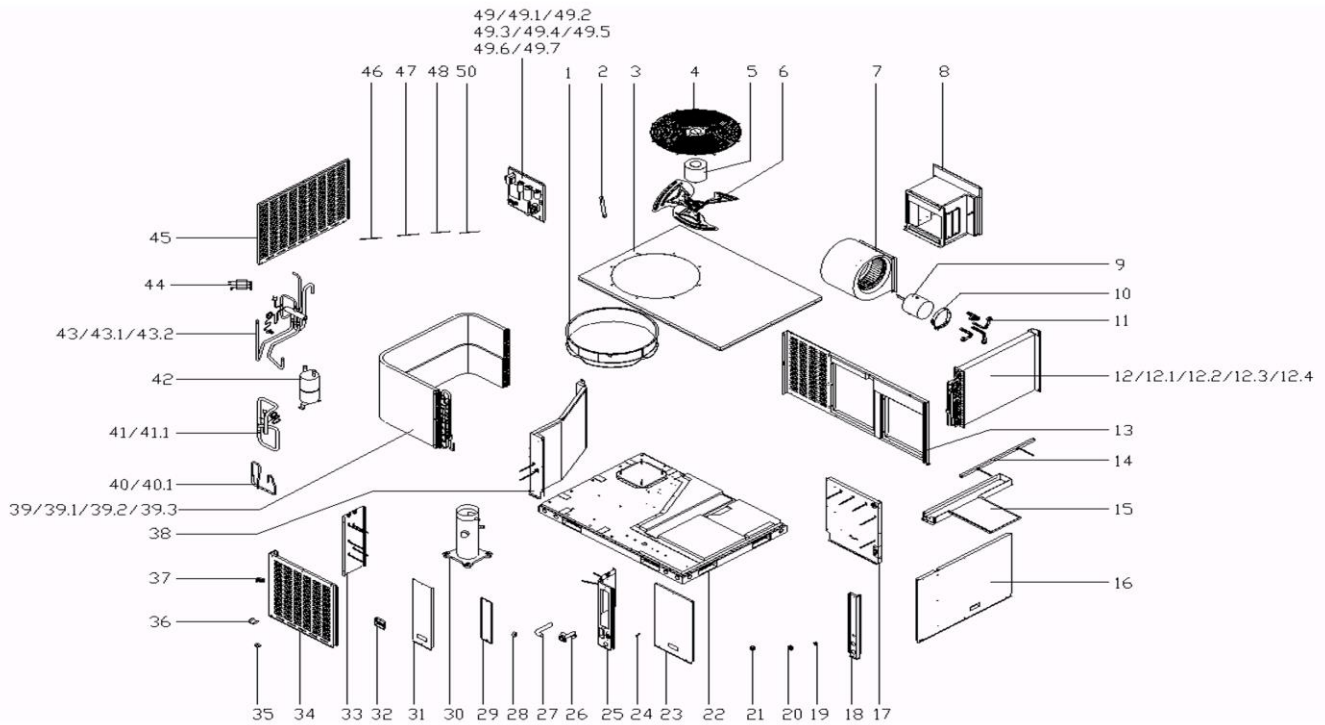


Exploded View

Model

ARC-36HWN1-M14L



EX_ID	Spare Parts Code	Part Name(EN)
1	12127700000006	Ventilation
2	12123000000252	Wiring conduit
3	12227700004098	Top cover assembly
4	12923000000028	Grille, top cover
5	11002012000506	Motor
6	12200104000014	Propeller fan
7	12200101000054	Centrifugal fan
8	12227700003727	Air duct ass'y
9	11002015001041	Brushless DC Motor
10	12223000001993	Motor bracket II
11	12223000001932	Supporter subassembly of fan motor
12	15827700000468	Evaporator ass'y
12.1	15827700000469	Evaporator
12.2	15127700004494	Input pie ass'y
12.3	15127700004172	Evaporator output pipe ass'y
12.4	12227700004061	Condenser connection board assembly
13	12227700004089	Panel assembly,interior
14	12227700004084	Beam assembly
15	12227700004072	Drainage pan assembly
16	12227700004079	Panel assembly,interior
17	12227700004081	Condenser connection board assembly
18	12227700004030	Pole ass'y
19	12127700000003	Wire clamp
20	12100511000045	Wiring rubber ring
21	15500402000023	seal plug
22	12227700004033	Base ass'y
23	12227700004070	E-Part box cover
24	12100304000002	Wiring snaps
25	12227700004094	Pole assembly
26	12127700000012	Drain connector
27	12627700000036	Connecting pipe ass'y
28	12200201000001	Throat bander
29	12227700004066	Cover board
30	11102010000410	Fixed speed scroll compressor
31	12227700004068	Cover board
32	12100702000045	Handle

EX_ID	Spare Parts Code	Part Name(EN)
33	12227700004077	Partition board parts
34	12227700004063	preventer plate
35	12600401000024	compressor feet base
36	12227700001945	Condenser fixing plate
37	12600401000158	rubber base
38	12227700004086	Partition board assembly
39	15827700000454	Condenser ass'y
39.1	15827700000455	Condenser
39.2	15127700004139	Condenser inlet pipe ass'y
39.3	15127700004437	Condenser outlet pipe ass'y
40	15427700000990	Throttle ass'y
40.1	15500210000748	Throttle
41	15427700000991	Suction pipe ass'y
41.1	17400516000089	Pressure switch
42	15500508000082	Accumulator cylinder
43	15427700000992	4-Ways valve ass'y
43.1	15500216000084	4-way valve
43.2	17400516000101	Pressure switch
44	17401203001164	Joint wires ass'y, compressor
45	12227700004064	preventer plate
46	11201007000412	Pipe Temperature Sensor
47	11201007000077	Room Temperature Sensor
48	17401110000022	Ground wire
49	17227700000626	E-part box assembly
49.1	12227700003962	Installation board
49.2	17127700000672	Main control board assembly
49.3	11203502000032	AC contactor
49.4	11203103000142	Linear Transformer
49.5	17400401000196	Wire joint, 8P
49.6	17400103000150	Capacitor
49.7	17400103000152	Capacitor
50	17400513000056	Discharge temp sensor