



Products and solutions guide

Spring 2021

Axis at a glance

Axis offers intelligent security solutions to enable a smarter, safer world. Over the last 30 years, we have continuously launched innovative, sustainable network products through an open-based platform and expanded partner network. Our network surveillance technology empowers customers to interpret, predict, and respond to situations proactively in a broad spectrum of segments and applications.

Smart solutions for today and tomorrow

You are in the driver's seat. With our broad portfolio of cameras, recording solutions, access control, audio, and wearables—building a customized solution is just a phone call away. Our offerings also include added cybersecurity features and hardening to mitigate risk, as the security of our devices and customers is a top priority.

Segments include, but are not limited to the following:



Smart Cities



Transportation



Banking



Government



Healthcare



Retail



Critical infrastructure



Education

Axis firsts

- 1996** World's first network camera
- 1998** World's first video encoder
- 1999** World's first network video chip, ARTPEC
- 2003** Launch of cameras with PoE
- 2008** First H.264 compression standard for network cameras
- 2009** World's first HDTV network camera
- 2010** World's first thermal network camera
- 2011** Axis introduces Lightfinder technology
- 2013** First non-proprietary, IP-based physical access control system
- 2015** Axis announces first network door station, first audio product (network horn speaker), and Zipstream technology
- 2016** Axis acquires 2N
- 2017** World's first network radar detector
- 2020** Axis announces wearable product category, Axis body worn

Where you can visit us

Axis has metro-area offices all over the world, with a listing below of where you can find our Experience Centers in the Americas.

If you would like to visit our offices, here is how to get started:

www.axis-communications.com/visitus or reach out to your Axis rep to schedule a visit. We would love to see you!

United States

- ▲ Boston, MA
- ▲ Chicago, IL
- ▲ Los Angeles, CA
- ▲ Dallas, TX
- ▲ Ft. Lauderdale, FL
- ▲ Washington DC
- ▲ Manhattan, NY - *opening soon!*
- ▲ San Jose, CA - *opening soon!*

Canada

- ▲ Toronto, ON

Latam

- ▲ Mexico City, MX

Did you know?

Axis has offices in **50+** countries

Axis is a Sweden-based company founded in **1984**

Axis companies include **2N** and **Citilog**

Axis has **3,600+** employees worldwide

CONTENTS

- 1-2 | **Axis at a glance**
- 3 | **Tools for success**
- 4 | **Technologies**
- 5 | **Video management software**
- 6 | **Wearables**
- 7 | **Analytics**
- 11 | **Network cameras**
 - 11 | Fixed box cameras
 - 13 | Fixed bullet cameras
 - 15 | Modular cameras
 - 19 | Fixed dome cameras
 - 27 | Pan/tilt/zoom cameras
 - 33 | Thermal cameras
 - 35 | Explosion-protected cameras
 - 37 | Canon network cameras
- 39 | **Network video recorders**
- 41 | **Desktop terminals & switches**
- 42 | **Video encoders & rack solutions**
- 45 | **Network audio systems**
- 47 | **Access control**
- 49 | **2N**
- 51 | **Accessories**
- 53 | **System devices**
- 54 | **Video management software specifications**

Axis Warranty

Even more peace of mind

Our 5-year warranty delivers years of trouble-free ownership, and control over your costs.

www.axis.com/en-us/support/warranty-and-rma

Partner with us

By partnering with us, you will have access to innovative technology, an expanded network, world-class training, and more. Discover which program best suits your business needs:



Channel Partner Program



Application Development Partner Program



Architecture & Engineering Program



Technology Partner Program

To learn more, visit: www.axis.com/en-us/partners

Technical services

Whether you have a question or need general support, Axis' award-winning technical services team is here to help. With over 50+ locally-based technical support Engineers, online support services, and engineers around the globe, support is available wherever you are, whenever you need it.

Average wait time is less than 2 minutes



3 different languages spoken



24/7 online helpdesk



24/5 online chat

www.axis.com/support



Academy

Enjoy a wide selection of training and services, such as our Axis Certification Program, to support you and your business. Our trainings can be customized to best suit your needs from traditional classroom offerings, such as in-person, eLearning and webinars, to our new virtual-instructor led trainings.

To find out more and to get started, visit: www.axis.com/learning

Sustainability

View our full Sustainability Report at: www.axis.com/sustainability

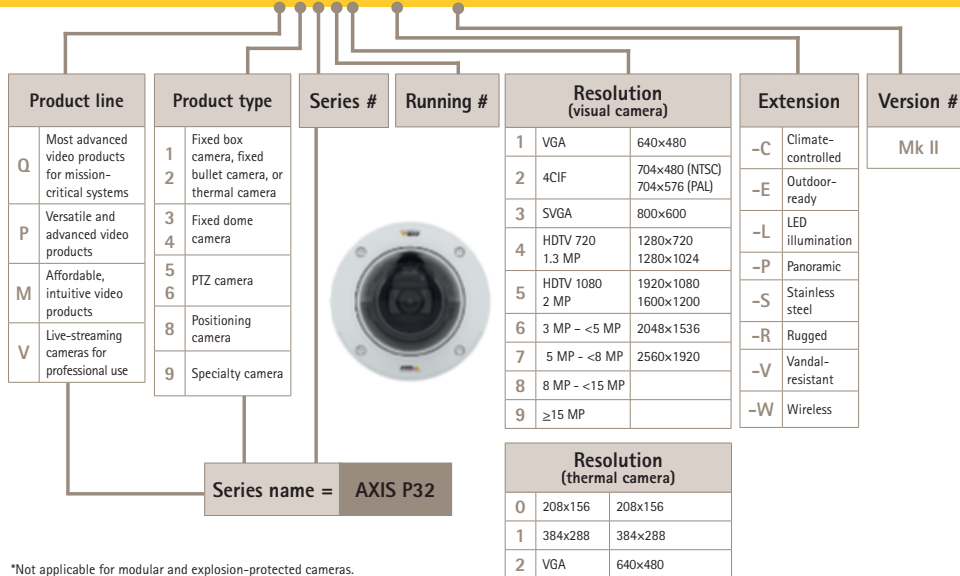


In addition to what you will learn through Academy offerings, you can also take advantage of a wide range of tools and services to help you design a network surveillance solution from start to finish. These tools and services range from selecting the right products, designing solutions, or remotely managing a customer's system. There is help at every stage—take advantage of these tools to run your projects more smoothly and efficiently.

This is the Axis product naming structure. It is pretty much code for how to decode it. Believe us, it will come in handy!

Network cameras*

AXIS P3245-LVE Mk II Network Camera



Product selector

If you are looking for a more dynamic way to view product specifications, we have a solution for that. Check out our product selector:



Audio design service

- Design assistance for integrators installing Axis network audio systems
- Consult with your local Axis Engineer for assistance.
 - Receive a system design with speaker placement (when floorplan is provided).
 - Review the audio coverage and dB levels provided —represented with heat maps.

Find out more: www.axis-communications.com/audiodesignservice

AXIS Site Designer

- Design assistance for Axis network surveillance solutions
- Design any surveillance system—small or large—with video management software and products from Axis or partners.
 - Plan camera placement and coverage easily with the new maps-feature.
 - Generate a quote and change items in your bill of materials in minutes.
 - Import camera and recording settings into your VMS and share notes with installers in seconds.

Learn more at: www.axis.com/en-us/tools/axis-site-designer/overview

There is a lot to take in. That is why we created this guide as a starting point.

As you go through these pages, if you have any questions or want to learn more, please contact us.

Support: +1 800 444 2947

Helpdesk: www.axis.com/support/helpdesk

Chat: www.axis.com/support/chat

So, what is your challenge?

We know customers need reliable surveillance in any type of condition. Whatever the challenge may be, Axis provides innovative technology to solve surveillance challenges and achieve a smarter, safer world.



Bandwidth and storage

Zipstream

Preserve forensic detail while lowering bandwidth and storage requirements. Unlike most compression technology, Zipstream does not just limit bitrate. Instead, three types of intelligent algorithms ensure that forensic information is identified, recorded, and sent in full resolution and at full frame rate. Allowing you to save space and money without sacrificing valuable information.



False alarms

Radar

Radar reduces false alarms and provides crucial information about detected objects that video cameras cannot, such as their exact position, and the speed and direction of their movement. It is perfect for wide-open, outdoor areas with moderate activity.



Strong backlighting

Forensic WDR

This technology eliminates the threat of underexposure or overexposure by using three types of intelligent algorithms to lower noise levels and increase image signal to display every detail in the best possible way, delivering video for maximum forensic usability.



Identification and detection

Thermal imaging

Thermal imaging captures images solely based on the heat that radiates from people and objects. Reliable identification and privacy protection is ensured even in pitch black, fog, or camouflage.



Low-light conditions

Lightfinder

Achieve high-resolution video with crisp color and minimal motion blur, even in near darkness. A combination of sensors and careful image processing works to capture full-color images in low-light conditions—even better than the human eye.



Shaky images

Electronic image stabilization

Image stabilization combats movement in situations where the camera is subject to heavy vibrations. Attain clear and precise images without the need for costly stabilization mounts.



Complete darkness

OptimizedIR

Optimized for specific cameras and situations, this technology controls and disperses IR LED lights for optimal performance, even in complete darkness.



Analog systems

From analog to IP

We believe in the power of IP. Network devices deliver a variety of benefits over traditional analog surveillance systems, such as smoother integration, intelligent analytics, lower installation and maintenance costs, and maximized scalability.

Whether it is a single site or many, a few cameras or 100, Axis has you covered with an end-to-end solution. Systems are easy to install, maintain, and scale as needs change and businesses grow. With an end-to-end solution, all components are designed to complement one another, so you get the best out of each element with unmatched sales and technical support.

AXIS Camera Station

The powerful video management software offers easy installation and setup with automatic camera discovery, as well as a dynamic configuration wizard.

- Intuitive interface with mapping and customizable views for exceptional user experience
- Scales with customers as camera counts grow, new locations are added, or new products such as audio and door stations, become required
- Efficient investigation tools including video redaction and simplified exporting
- Powerful rules engine offers both communication and triggers across solution components
- Mobile app for securely and remotely viewing video via AXIS Secure Remote Access
- Efficient management and maintenance of the Axis network devices in the system with integrated AXIS Device Manager

For more information visit:

www.axis.com/products/axis-camera-station

For a complete list of specifications for both AXIS Camera Station and AXIS Companion go to page 54



AXIS Camera Station Integrator Suite is an all-in-one toolkit that gives you complete control over the project lifecycle from designing, purchasing, installing, and testing all the way to solution maintenance. By ensuring everything works seamlessly from the outset, you can be more productive, reduce labor costs, and prevent post-installation nightmares.

- AXIS Site Designer for component selections and documentation.
- AXIS Camera Station Autoconfiguration Tool for project imports.
- AXIS Installation Verifier for stress tests and reports.
- AXIS Camera Station Health Monitoring for remote health monitoring and alerts.

For more information visit www.axis-communications.com/ACSIntegratorSuite

AXIS Companion VMS

Are you a small business that is in need of a simple surveillance solution? AXIS Companion is a free software that gives users effortless control over their security camera system anywhere, anytime with secure remote access to video and easy integration options for audio, door stations, and more.



What is your VMS solution?

We've broken it down to make finding the right solution for your business needs simple. Hover your phone camera over the QR code to get more info!

What is your VMS solution?

The size of your security solution in the Video Management Software (VMS) marketplace depends on your business not only on the number of sites, but also on the complexity of what you want to do. You have to know how they can be best addressed. Our software is designed and developed to perfectly meet Axis products and solutions. Our installation can be very simple in your business and seamlessly expand with your needs. Be sure to match your business growth to match your security solution.

AXIS Companion **AXIS Camera Station**

Who's it for?

Smaller sites
Basic needs for surveillance to protect people and assets.

Larger sites
Advanced needs for active surveillance of your premises.



Wearables

Wearable surveillance allows you to capture valuable evidence, ensure personal safety and gain perspective through documented events. Axis body worn solutions are designed with an open platform to provide seamless integration and the ability to choose where and how you want to manage your video.

Solution benefits

- Open platform for direct integration with third party systems
- Choice of video storage and management
- Scalable system for a future-proof investment
- Best-in-class cybersecurity
- Free firmware updates
- 3-year warranty



Axis body worn system

AXIS W100



AXIS W700 /
AXIS W701



AXIS W800



Product Highlights

Axis body worn system		
AXIS W100 Body Worn Camera	AXIS W700/W701 Docking Station	AXIS W800 System Controller
<ul style="list-style-type: none"> > Robust, durable & lightweight, IP67 & MIL-STD-810H rated > Long battery life: 12 hours at 1080p/17 hours at 720p > GPS/GNSS receiver for location data > End-to-end encryption with FIPS 140-2 certification and CJIS compliance > Klick Fast System for flexible mounting options 	<ul style="list-style-type: none"> > Quick, reliable charging > Secure and easy offloading to system controller at 100Mbps/sec per camera > 120vAC power adapter with ethernet connection to system controller 	<ul style="list-style-type: none"> > Securely send data to preferred content destination (VMS/EMS) > Built-in software for easy configuration, user management & health monitoring > Includes power adapter and mounting bracket
Axis part #	01722-001	01723-004 (1-bay) 01724-004 (8-bay)

AXIS Case Insight

New



- Gather and manage digital evidence in one centralized location
- Ensure data integrity end-to-end encryption & audit trail functionality
- Computer Aided Dispatch & Record Management System integration
- Unlimited storage for Axis body worn cameras**
- Cloud-based software, hosted and managed by Axis

Axis part #

1 year license*	1 month expansion*
02084-001 (US) 02287-001 (US GOV only) 02295-001(CAN)	02085-001 (US) 02293-001 (US GOV only) 02296-001 (CAN)

learn more at: axis.com/bodyworn

**Unlimited storage for Axis body worn cameras included, additional storage for other devices is sold separately

*1 license needed per AXIS W100

Analytics enable proactive surveillance that can detect and deter intruders and help improve business optimization through actionable insights. These edge-based applications, which can be embedded directly into Axis cameras, are also scalable and help reduce bandwidth and storage-use by recording and sending only the footage that needs to be viewed. Axis also allows members of its Application Development Partner program to live on the edge, so to speak, and develop their own analytics using its AXIS Camera Application Platform.

ACAP:

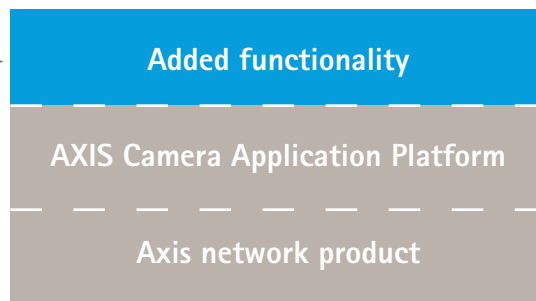
AXIS Camera Application Platform (supports ACAP) is an open application platform that allows members of Axis' Application Development Partner program to develop applications for Axis network cameras and video encoders.



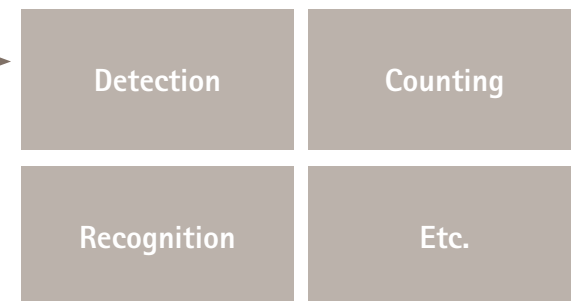
Network product meeting specific end user needs



Axis product with open application platform



Applications by third-party developers



Downloaded by integrator, reseller, or end user

New Analytic of the quarter: **AXIS Object Analytics***

AXIS Object Analytics provides reliable detection and classification of people and vehicles for a variety of surveillance needs. Thanks to intelligent algorithms, it suppresses most sources of costly false alarms to keep the focus on real threats. This analytic also offers...

- **Reliable object detection and classification even amongst partial visibility or granular scenes**
- **Easy, flexible set-up with a straightforward interface**
- **Integration with the camera's event management system and other network solutions**
- **Customizable commands based on triggered alarms**

*AXIS Object Analytics comes preinstalled directly on compatible Axis network cameras with updated firmware at no extra cost.

To learn more about this unique analytic, visit www.axis.com/en-us/products/axis-object-analytics or get in touch with your local sales rep.



Analytics for security applications

Effective surveillance means providing proactive and layered protection that starts at the perimeter and works its way inward to the heart of the operation, including critical inner areas and access control. At each layer, its measure of success depends on the organization's ability to:

Detect, verify, identify, and track intruders

Thanks to the power of high-definition video and analytics, such as AXIS Guard Suite and AXIS Perimeter Defender, it is possible to automatically detect and respond to moving people and vehicles that are intruding on a property. With these intelligent analytics working together, both inner areas and outer perimeters are covered.

AXIS Guard Suite:

Complimentary applications to use with Axis network video products*. AXIS Guard Suite encompasses AXIS Motion Guard, AXIS Fence Guard, and AXIS Loitering Guard.



AXIS Motion Guard

Detects motion and triggers an alarm when an object moves in a predefined area.



AXIS Fence Guard

Set up virtual fences within a camera's field to detect and alert when an object crosses into a defined area.



AXIS Loitering Guard

Triggers an alarm if people or vehicles are loitering in a predefined area for too long.

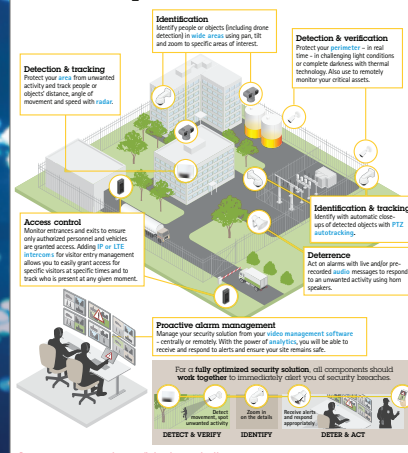
*products running firmware 7.x or higher

AXIS Perimeter Defender



AXIS Perimeter Defender offers high-detection accuracy, minimal false alarms and support for PTZ autotracking. It is designed to automatically detect and trigger an alarm to respond to moving people and vehicles that are intruding. This highly reliable system provides you with all of the tools you need to set up a scalable, cost-effective perimeter protection solution to keep staff and assets secure.

Key benefits of an intrusion protection solution.



What are the benefits of an intrusion protection solution?

An Axis intrusion protection solution reliably protects your site. Hover your phone camera over the QR code below to learn about the benefits of a complete solution!



In the past, video surveillance was mainly perceived as a security solution. Today, the capabilities of network video make it a much more useful tool for a wider spectrum of job functions in many industries. The two main drivers behind this shift has been the development of analytics and the increased integration of IP video with other IoT systems.

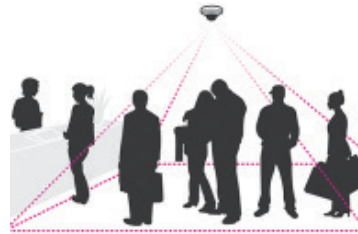
Go beyond passive—be proactive

What if you need a system that allows you to communicate with customers in real time based on the current (and always changing) situation? Employees cannot be everywhere at once. A network solution based on audio, video, and analytics can count, measure, detect or track, as well as communicate with customers or employees on site.



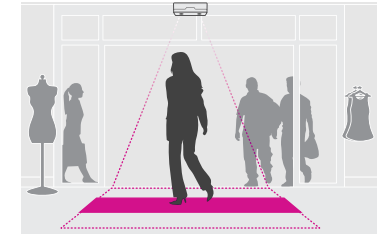
AXIS People Counter

Analyze visitor trends and count visitors



AXIS Queue Monitor

Gather real-time data to improve service planning and visitor experience



AXIS Occupancy Estimator

Respond to visitor flow with real-time data on the number of people in a location



AXIS Live Privacy Shield

Protect people's privacy while still monitoring activities



AXIS Cross Line Detection

Detect moving objects that cross a user-defined virtual line and triggers an alarm



AXIS Store Reporter

Gain full control of your data to analyze and measure performance

Analytics for traffic optimization

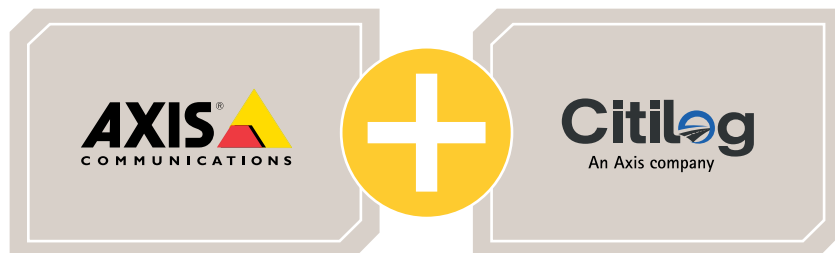
The road to smarter traffic management starts with a solution that allows you to set your sights on a more efficient road network where traffic flows smoothly and safely—saving not only time but lives too.

Video-based traffic management solutions can provide information in real time so you can make decisions instantly or analyze the data later to improve traffic situations for the long term.

Partnering for smarter traffic mobility

With video analytics, partners like Citilog can transform Axis network cameras into powerful sensors that put you on the road to smarter traffic management:

- ▶ **Traffic data collection:** Collect reliable data so you can better assess congestion and reduce bottlenecks.
- ▶ **Incident detection:** Quickly identify and responds to incidents. When an accident happens, an automatic alert is sent to first responders and law enforcement.
- ▶ **Intersection control:** Sensors detect pre-gridlock situations to help better manage traffic and intersections



AXIS Parking Violation Detection:

Unauthorized or illegal parking can cause congestions and disturbances. This application enables you to set up zones where unauthorized vehicles are not supposed to park. It then sends an alert to security personnel when an event is triggered.



AXIS M10 Series

AXIS M1045-LW

AXIS M1065-L^(a)

AXIS M1065-LW^(b)



AXIS M11 Series

AXIS M1134

AXIS M1135^(a)

AXIS M1135-E^(b)

AXIS M1137-E^(b)

AXIS M1137^(a)

AXIS M1145-L

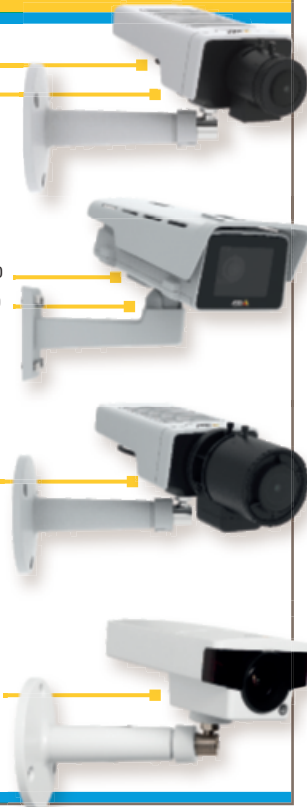


Image sensor	1/3" progressive scan RGB CMOS	1/3" progressive scan RGB CMOS
Lens / Field of view	Fixed 2.8mm/ F2.0 110°	Fixed 2.8mm/ F2.0 110°
Day and night	Automatic	Automatic
Min illumination / (lux)	0.25 / 0.05	0.25 / 0.05
Video compression (Zipstream / H.264 / H.265)	✓ / ✓ / -	✓ / ✓ / -
Max video resolution (pixels)	1920x1080 (2 MP)	1920x1080 (2 MP)
Frames per second	25/30	25/30
Audio support	-	Two-way Built-in mic and speaker
Alarm in- / outputs	Micro USB type B for power only	Micro USB type B for power only
Analytics *	AXIS Video Motion Detection, active tampering alarm	AXIS Video Motion Detection, active tampering alarm
Technology	WDR corridor format OptimizedIR ONVIF	WDR corridor format OptimizedIR ONVIF
Power	4.75-5.25 V DC, typical 2.7 W, max 4.4 W,	PoE Type 1 Class 2 ^(a) typical 2.7W, max 4.8W ^(a) 4.75-5.25 V DC, typical 2.5 W, max 4.7 W (max 5.0W ^(b))
Outdoor use	-	-
Other	Digital PTZ IR distance 10m (32ft) Memory card slot	Digital PTZ IR distance 10m (32ft) PIR Motion Sensor Memory card slot
Axis part #	0812-004	0811-001 ^(a) 0810-004 ^(b)

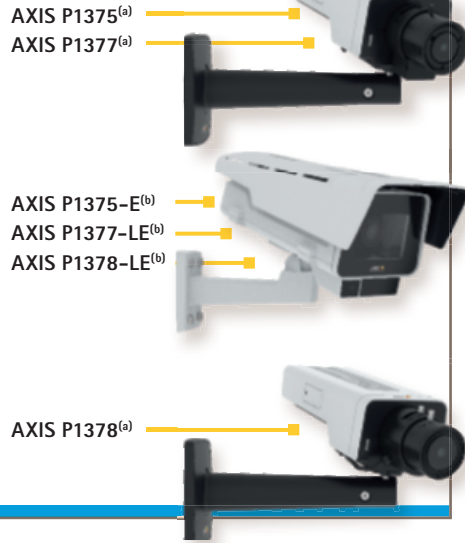
AXIS M10 Series	
AXIS M1045-LW	AXIS M1065-L ^(a) AXIS M1065-LW ^(b)
Image sensor	1/3" progressive scan RGB CMOS
Lens / Field of view	Fixed 2.8mm/ F2.0 110°
Day and night	Automatic
Min illumination / (lux)	0.25 / 0.05
Video compression (Zipstream / H.264 / H.265)	✓ / ✓ / -
Max video resolution (pixels)	1920x1080 (2 MP)
Frames per second	25/30
Audio support	-
Alarm in- / outputs	Micro USB type B for power only
Analytics *	AXIS Video Motion Detection, active tampering alarm
Technology	WDR corridor format OptimizedIR ONVIF
Power	4.75-5.25 V DC, typical 2.7 W, max 4.4 W,
Outdoor use	-
Other	Digital PTZ IR distance 10m (32ft) Memory card slot
Axis part #	0812-004

AXIS M11 Series			
AXIS M1134	AXIS M1135 ^(a) AXIS M1135-E ^(b)	AXIS M1137 ^(a) AXIS M1137-E ^(b)	AXIS M1145-L
Image sensor	1/3" progressive scan RGB CMOS	1/2,7" Progressive scan RGB CMOS	1/2,9" progressive scan RGB CMOS
Lens	Varifocal 3-10.5 mm	Varifocal 3-10.5mm/ F1.4 90°-33°	Varifocal 2.8-13mm/ F1.4 112°-24°
Day and night	Automatic	Automatic	Automatic
Min illumination / (lux)	0.15 / 0.03	0.15 / 0.03	0.17 / 0.03
Video compression	✓ / ✓ / ✓	✓ / ✓ / ✓	✓ / ✓ / ✓
Max video resolution	1280x720	1920x1080	5 MP: 2592x1944 4 MP: 2688x1512
Frames per second	25/30	25/30	25/30
Audio support	External microphone input or line input, built-in microphone	External microphone input or line input, built-in microphone ^(a)	External microphone input or line input, built-in microphone ^(a)
Alarm in- / outputs	1/1	1/1	1/1
Analytics *	AXIS Video Motion Detection, active tampering alarm	AXIS Video Motion Detection, active tampering alarm	AXIS Video Motion Detection, active tampering alarm, AXIS Object Analytics
Technology	Lightfinder Forensic WDR corridor format ONVIF	Lightfinder Forensic WDR corridor format ONVIF	Lightfinder Forensic WDR corridor format ONVIF
Power	PoE Type 1 Class 2 typical 4.1W, max 6.49W	PoE Type 1 Class 2 typical 4.1W, max 6.49W	PoE Type 1 Class 3 typical 4.5W, max 7.2W
Outdoor use	-	✓ ^(b)	✓ ^(b)
Other	Digital PTZ 512 MB RAM, 512 MB Flash Memory card slot	Digital PTZ 512 MB RAM, 512 MB Flash Memory card slot	Digital PTZ 1024MB RAM, 512MB Flash Memory card slot
Axis part #	01979-001	01768-001 ^(a) ; 01772-001 ^(b)	01769-001 ^(a) ; 01773-001 ^(b)

* For a complete list of supported analytics and third party applications see axis.com/acap

* Security features for all cameras include: password protection, IP Address filtering, HTTPS encryption, IEEE 802.1X network access control, digest authentication, user access log, centralized certificate management

AXIS P13 Series



AXIS Q16 Series



Not Pictured:
AXIS Q1645-LE^(b), AXIS Q1647-LE^(b)

AXIS P13 Series

Image sensor	
Lens / Field of view	
Day and night	
Min illumination / (lux)	
Video compression (Zipstream / H.264 / H.265)	
Max video resolution (pixels)	
Frames per second	
Audio support	
Alarm in- / outputs	
Analytics *	
Technology	
Power	
Outdoor use	
Other	
Axis part #	

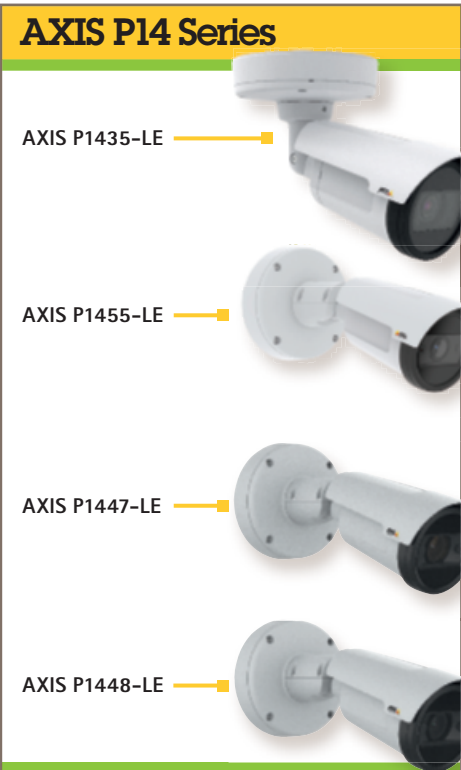
AXIS P1375 ^(a) AXIS P1375-E ^(b)	AXIS P1377 ^(a) AXIS P1377-LE ^(b)	AXIS P1378 ^(a) AXIS P1378-LE ^(b)
1/2.8" progressive scan RGB CMOS	1/2.7" progressive scan RGB CMOS	1/1.8" progressive scan RGB CMOS
Lens CS 2.8–8 mm/ F1.2 124°–42°	Varifocal 2.8–8 mm, F1.2 111°–38° ^(a) 90°–38° ^(b)	Varifocal 3.9–10 mm, F1.5 119°–45° ^(a) 115°–45° ^(b)
Automatic	Automatic	Automatic
0.05 / 0.01	0.13 / 0.03	0.15 / 0.03
✓ / ✓ / ✓	✓ / ✓ / ✓	✓ / ✓ / ✓
1920x1080 (2 MP)	2592x1944 (5MP)	3840x2160 (4K)
25/30	25/30	25/30
Two-way, Built in mic	Two-way, Built in mic	Two-way, Built in mic
2 / 2	2 / 2	2 / 2
AXIS Video Motion Detection, active tampering alarm, audio detection, AXIS Object Analytics	AXIS Video Motion Detection, active tampering alarm, audio detection, AXIS Object Analytics	AXIS Video Motion Detection, active tampering alarm, audio detection, AXIS Object Analytics
Lightfinder, electronic image stabilization, Forensic WDR, corridor format, ONVIF	Lightfinder, electronic image stabilization, OptimizedIR, Forensic WDR, corridor format, ONVIF	Lightfinder, electronic image stabilization, OptimizedIR, Forensic WDR, corridor format, ONVIF
PoE Type 1 Class 3	PoE Type 1 Class 3 ^(a) PoE Type 2 Class 4 ^(b)	PoE Type 1 Class 3 ^(a) PoE Type 2 Class 4 ^(b)
✓ ^(b)	✓ ^(b)	✓ ^(b)
IP66-, IK10- NEMA 4X ratings Digital PTZ Memory card slot	IP66-, IK10- NEMA 4X ratings Digital PTZ Memory card slot	IP66-, IK10- NEMA 4X ratings Digital PTZ Memory card slot
01532-001 ^(a) 01533-001 ^(b)	01808-001 ^(a) 01809-001 ^(b)	01810-001 ^(a) 01811-001 ^(b)

AXIS Q16 Series

AXIS Q1615 Mk III ^(a) AXIS Q1615-LE Mk III ^(b)	AXIS Q1645 ^(a) AXIS Q1645-LE ^(b)	AXIS Q1647 ^(a) AXIS Q1647-LE ^(b)	AXIS Q1659
1/2.8" progressive scan RGB CMOS	1/2" progressive scan RGB CMOS	1/2" progressive scan RGB CMOS	22.4 x 15.0 mm APS-C CMOS
Varifocal 2.8–8.5 mm/F1.2 116°–40° ^(a) 102°–40° ^(b)	Varifocal 3.9–10.0 mm/F1.5 109°–42° ^(a) 92°–42° ^(b)	Varifocal 3.9–10.0 mm/F1.5 110°–44° ^(a) 92°–42° ^(b)	Varifocal 10 - 22 mm/ F3.5-4.5
Automatic	Automatic	Automatic	Automatic
0.05/0.01	0.05 / 0.01	0.12 / 0.02	0.04 / 0.004
✓ / ✓ / ✓	✓ / ✓ / -	✓ / ✓ / -	✓ / ✓ / -
1920x1080 (2 MP)	1920x1080 (2 MP)	2592x1944 (5MP)	5472x3648 (20MP)
25/30	25/30	25/30	25
Two-way, Built in mic	Two-way, Built in mic	Two-way, Built in mic	Two-way
2 / 2	4 / 4	4 / 4	2 / 2
AXIS Video Motion Detection, AXIS Guard Suite, active tampering alarm, audio detection	AXIS Video Motion Detection, AXIS Guard Suite, active tampering alarm, audio detection	AXIS Video Motion Detection, AXIS Guard Suite, active tampering alarm, audio detection	AXIS Video Motion Detection, AXIS Guard Suite, active tampering alarm, audio detection
Lightfinder, electronic image stabilization, OptimizedIR, Forensic WDR, corridor format, ONVIF	Lightfinder, electronic image stabilization, OptimizedIR, Forensic WDR, corridor format, ONVIF	Lightfinder, electronic image stabilization, OptimizedIR, Forensic WDR, corridor format, ONVIF	Lightfinder, electronic image stabilization, OptimizedIR, Forensic WDR, Corridor format, ONVIF
PoE Type 1 Class 3	PoE Type 1 Class 3 ^(a) PoE Type 2 Class 4 ^(b)	PoE Type 1 Class 3 ^(a) PoE Type 2 Class 4 ^(b)	PoE Type 2 Class 4
✓ ^(b)	✓ ^(b)	✓ ^(b)	-
IP66-, IP67- NEMA 4X- and IK10- rated Digital PTZ Memory card slot	IP66-, IP67- NEMA 4X- and IK10- rated Digital PTZ Memory card slot	IP66-, IK10- NEMA 4X ratings Digital PTZ Memory card slot	Digital PTZ Memory card slot
02051-001 ^(a) 02064-001 ^(b)	01222-001 ^(a) 01223-001 ^(b)	01051-001 ^(a) 01052-001 ^(b)	0967-001

* For a complete list of supported analytics and third party applications see axis.com/acap

* Security features for all cameras include: password protection, IP Address filtering, HTTPS encryption, IEEE 802.1X network access control, digest authentication, user access log, centralized certificate management



	AXIS M20 Series		AXIS P14 Series			
	AXIS M2025-LE	AXIS M2026-LE Mk II	AXIS P1435-LE	AXIS P1455-LE	AXIS P1447-LE	AXIS P1448-LE
Image sensor	1/2.8" progressive scan RGB CMOS	1/3" progressive scan RGB CMOS	1/2.8" progressive scan CMOS	1/2.8" progressive scan RGB CMOS	1/2.9" progressive scan RGB CMOS	1/2.5" progressive scan RGB CMOS
Lens / Field of view	Fixed 2.8mm / F2.0 115°	Fixed 2.4mm / F2.0 130°	Varifocal 3-10.5 mm / F1.4 95°-35°, 10-22 mm / F1.85 34.5°- 18°	Varifocal 3-9mm / F1.6 114°-37°	Varifocal 2.8-8.5 mm / F1.2 104°-36°	Varifocal 2.8-9.8 mm / F1.6 109°-37°
Day and night	Automatic	Automatic	Automatic	Automatic	Automatic	Automatic
Min illumination / (lux)	0.2 / 0.04	0.3 / 0.06	0.12 / 0.01	0.7 / 0.01	0.15 / 0.03	0.18 / 0.04
Video compression (Zipstream / H.264 / H.265)	✓ / ✓ / -	✓ / ✓ / ✓	✓ / ✓ / -	✓ / ✓ / ✓	✓ / ✓ / -	✓ / ✓ / -
Max video resolution (pixels)	1920 x 1080 (2MP)	2688 x 1520 (4MP)	1920 x 1080 (2MP)	1920 x 1080 (2MP)	3072 x 1728 (5MP)	3840 x 2160 (4K)
Frames per second	25/30	25/30	25/30	25/30	25/30	25/30
Audio support	-	-	-	External microphone input or line input	External microphone input or line input	External microphone input or line input
Alarm in- / outputs	-	-	1/1	1/1	1/1	1/1
Analytics *	AXIS Video Motion Detection, active tampering alarm	AXIS Video Motion Detection, active tampering alarm	AXIS Video Motion Detection	AXIS Object Analytics, AXIS Motion Guard, AXIS Fence Guard, AXIS Loitering Guard, AXIS Video Motion Detection	AXIS Video Motion Detection	AXIS Video Motion Detection
Technology	Zipstream, Forensic WDR Capture, corridor format, ONVIF, OptimizedIR	Zipstream, WDR, corridor format, OptimizedIR, ONVIF	Zipstream, IR Illumination, WDR - Forensic Capture, corridor format, ONVIF	Zipstream, Forensic WDR, Lightfinder 2.0, corridor format, OptimizedIR, ONVIF	Zipstream, Forensic WDR, Lightfinder, OptimizedIR, ONVIF	Zipstream, Forensic WDR, Lightfinder, corridor format, OptimizedIR, ONVIF
Power	PoE Type 1 Class 2 typical 4.1W, max 6.3W	PoE Type 1 Class 3 typical 5.1W, max 7.9W	PoE Type 1 Class 3 typical 4.6W, max 11W	PoE Type 1 Class 3 typical 7.7 W, max 12.95 W	PoE Type 1 Class 3 typical 6.7W, max 12.95	PoE Type 1 Class 3 typical 7.1W, max 12.95W
Outdoor use	✓	✓	✓	✓	✓	✓
Other	IP66-, NEMA 250 Type 4X-, and IK08-rated IR Distance 15m (50ft) Digital PTZ Memory card slot	IP66-, NEMA 250 Type 4X-, and IK08-rated IR Distance 15m (50ft) Digital PTZ Memory card slot	IP66, IP67- and NEMA 4X-rated, 10.5 mm: IR Dist. 30 m (98 ft) 22 mm: IR Dist. 50 m (164 ft), memory card slot Digital PTZ	IP66/IP67-, NEMA 4X-, and IK10-rated IR Distance 40m (131ft) Digital PTZ Memory card slot	IP66/IP67-, NEMA 4X-, and IK10-rated IR Distance 40 m (131 ft) Digital PTZ Memory card slot	IP66/IP67-, NEMA 4X-, and IK10-rated IR Distance 25m (82ft) Digital PTZ Memory card slot
Axis part #	0911-001(white) 0988-001(black)	01049-001 (white) 01050-001(black)	22 mm: 0890-001	01997-001	01054-001	01055-001

* For a complete list of supported analytics and third party applications see axis.com/acap

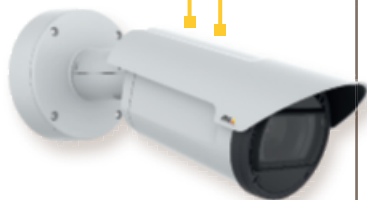
* Security features for all cameras include: password protection, IP Address filtering, HTTPS encryption, IEEE 802.1X network access control, digest authentication, user access log, centralized certificate management

AXIS Q17 Series

AXIS Q1700-LE



AXIS Q1785-LE
AXIS Q1786-LE



AXIS Q1798-LE

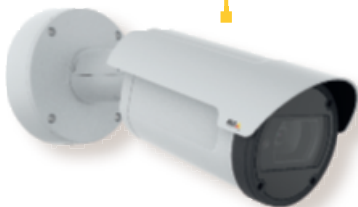
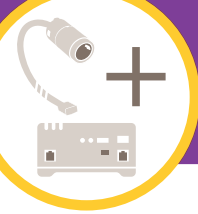


Image sensor
Lens / Field of view
Day and night
Min illumination / (lux)
Video compression (Zipstream / H.264 / H.265)
Max video resolution (pixels)
Frames per second
Audio support
Alarm in- / outputs
Analytics *
Technology
Power
Outdoor use
Other
Axis part #

AXIS Q17 Series			
AXIS Q1700-LE	AXIS Q1785-LE	AXIS Q1786-LE	AXIS Q1798-LE
1/2.8" progressive scan RGB CMOS	1/2.8" progressive scan RGB CMOS	1/1.8" progressive scan RGB CMOS	4/3" back-illuminated color CMOS
8 x Optical Zoom 18-137 mm / F2.9-4.1 16°-2.3°	4.3-137 mm, F1.4-4.0 60°-2.3°	32 x Optical Zoom 4.3-137 mm / F1.4-4.0 60°-2.3°	Canon 12-48 mm / F1.7-4.0 90°-21°
Automatic	Automatic	Automatic	Automatic
0.16 / 0.03	0.16 / 0.03	0.18 / 0.04	0.03 / 0.006
- / ✓ / -	✓ / ✓ / -	✓ / ✓ / -	✓ / ✓ / ✓
1920 x 1080 (2MP)	1920 x 1080 (2MP)	2560 x 1440 (4MP)	3712 x 2784 (10MP)
25/30	25/30	25/30	25/30
Automatic gain control	Automatic gain control	Automatic gain control	External microphone input, line input
2 / 2	2 / 2	2 / 2	2 / 2
License Plate Capture, Support for supports ACAP	AXIS Video Motion Detection, AXIS Guard Suite, active tampering alarm, gatekeeper	AXIS Video Motion Detection, AXIS Guard Suite, active tampering alarm, gatekeeper	AXIS Video Motion Detection, AXIS Guard Suite, active tampering alarm, gatekeeper, AXIS Object Analytics
Lightfinder, electronic image stabilization, OptimizedIR, Forensic WDR, corridor format, ONVIF	Lightfinder, electronic image stabilization, OptimizedIR, Forensic WDR, corridor format, ONVIF	Lightfinder, electronic image stabilization, OptimizedIR, Forensic WDR, corridor format, ONVIF	Lightfinder, electronic image stabilization, OptimizedIR, Forensic WDR, corridor format, ONVIF
PoE Type 1 Class 3 Typical 7.7W, max 12.95W	PoE Type 1 Class 3 ^(a) PoE Type 2 Class 4 ^(b)	PoE Type 1 Class 3 ^(a) PoE Type 2 Class 4 ^(b)	PoE Type 2 Class 4
✓	✓	✓	✓
IP66/IP67-, NEMA 4X-, and IK10-rated IR Distance 40m (131ft) License Plate Capture Memory card slot	IP66/IP67-, NEMA 4X-, and IK10-rated IR Distance 30m (98ft) 32x optical zoom Memory card slot	IP66/IP67-, NEMA 4X-, and IK10-rated IR Distance 30m (98ft) 32x optical zoom Memory card slot	IP66/IP67-, NEMA 4X-, and IK10-rated IR Distance 100m (328ft) 4x optical zoom Memory card slot
01782-001	01161-001	01162-001	01702-001

* For a complete list of supported analytics and third party applications see axis.com/acap

* Security features for all cameras include: password protection, IP Address filtering, HTTPS encryption, IEEE 802.1X network access control, digest authentication, user access log, centralized certificate management



AXIS F Series



	AXIS F Series					
	AXIS F34 Main Unit	AXIS F34 Surveillance System	AXIS F41 Main Unit	AXIS F44 Dual Audio Input Main Unit	AXIS F1004	AXIS F1004 Bullet
Image sensor	-	1/4" (effective) progressive scan RGB CMOS	-	-	1/4" (effective) progressive scan RGB CMOS	1/4" (effective) progressive scan RGB CMOS
Lens / Field of view	-	2.1 mm/F2.2 fixed iris 102°	-	-	2.1 mm/F2.2 fixed iris 102 ° with F34/F41/F44	2.1 mm/F2.2 fixed iris 102 ° with F34/F41/F44
Min illumination / (lux)	-	0.4	-	-	0.4	0.4
Video compression (Zipstream / H.264 / H.265)	✓/✓/-	✓/✓/-	✓/✓/-	✓/✓/-	-	-
Max video resolution (pixels)	1920 x 1080 (2MP) (Sensor Dependent)	1280x720 (1MP)	1920 x 1200 (Sensor Dependent) (2M)	1920 x 1080p (2MP) (Sensor Dependent)	1280x720 (1MP)	1280x720 (1MP)
Frames per second	15 (HDTV 720p) (four sensors) 30 (HDTV 720p) (one sensor)	15 (HDTV 720p)	30 (1920x1200) (No WDR) 15 (DHDTV 1080p) (WDR) 60 (HDTV 1080p) (No WDR)	15 (HDTV 1080p) (No WDR) 15 (HDTV 720p) (WDR) 30 (HDTV 720p) (No WDR)	-	-
Audio support	-	-	Two-way	Dual Audio	-	-
Alarm in- / outputs	-	-	4 / 4	4 / 4	-	-
Analytics *	w, tampering alarm, supports ACAP	AXIS Video Motion Detection, tampering alarm, supports ACAP	AXIS Video Motion Detection, audio detection, tampering alarm, supports ACAP	AXIS Video Motion Detection, audio detection, tampering alarm, supports ACAP	-	-
Technology	Zipstream, corridor format, ONVIF	Zipstream, corridor format, ONVIF	Zipstream, WDR -Forensic Capture (sensor dependent), corridor format, ONVIF	Zipstream, WDR - Forensic Capture (sensor dependent), corridor format, ONVIF	WDR	WDR
Power	PoE Type 1 Class 3 (max 12.27W), 8-28V DC, max 12.58W	PoE Type 1 Class 3 (max 12.27W), 8-28V DC, max 12.58W	PoE Type 1 Class 3 (max 7.7W), 8-28V DC, max 7.8W	PoE Type 1 Class 3 (max 12.95W), 8-28V DC, max 13.33W	-	-
Outdoor use	-	-	-	-	-	-
Other	Two Memory card slot, Four (4) Video Channels	Includes: 4x AXIS F1004 sensors Units, 4x F8214 Dome Accessory, 4x F8224 Recessed Mount, 2x 64GB microSDXC card	Memory card slot	Two Memory card slot, Four (4) Video Channels	-	-
Axis part #	0778-001	0779-004	0658-001	0936-001	8 m (26ft): 0765-001	8 m (26ft): 0935-001

* For a complete list of supported analytics and third party applications see axis.com/acap

* Security features for all cameras include: password protection, IP Address filtering, HTTPS encryption, IEEE 802.1X network access control, digest authentication, user access log, centralized certificate management

AXIS F Series



AXIS F1004
Pinhole

AXIS F1005-E



AXIS F1015



AXIS F1025



AXIS F1035-E



AXIS F4005



AXIS F4005-E



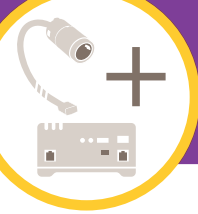
AXIS F Series

Image sensor	
Lens / Field of view	
Min illumination / (lux)	
Video compression (Zipstream / H.264 / H.265)	
Max video resolution (pixels)	
Frames per second	
Audio support	
Alarm in- / outputs	
Analytics *	
Technology	
Power	
Outdoor use	
Other	
Axis part #	

	AXIS F1004 Pinhole	AXIS F1005-E	AXIS F1015	AXIS F1025	AXIS F1035-E	AXIS F4005	AXIS F4005-E
Image sensor	1/4" (effective) progressive scan CMOS	1/2.8" (effective) progressive scan RGB CMOS	1/2.8" (effective) progressive scan RGB CMOS	1/2.8" (effective) progressive scan RGB CMOS	1/2.8" (effective) progressive scan RGB CMOS	1/2.8" (effective) progressive scan RGB CMOS	1/2.8" (effective) progressive scan RGB CMOS
Lens / Field of view	3.7 mm/F2.5 fixed iris, fixed focus, pinhole 57 ° with F34/F41/F44	2.8 mm/F2.0 fixed iris 113 ° with F34/F41/F44 1080p 73 ° with F34/F44 in 720p	Varifocal 3-6 mm/ F2.0 fixed iris 97 - 52 ° with F34/ F41/F44 in 1080p 62-35 ° with F34/ F44 720p	3.7 mm/F2.5 fixed iris, pinhole 92 ° with F34/F41/ F44 in 1080p 56 ° with F34/F44 in 720p	1.3 mm/F2.8 fixed iris 194 ° with F34/F41/F44 in 1080p 112 ° with F34/F44 in 720p	2.8 mm/F2.0 fixed iris 113 ° with F34/F41/F44 in 1080p 73 ° with F34/F44 in 720p	2.8 mm/F2.0 fixed iris 110 ° with F34/ F41/F44 in 1080p 71 ° with F34/F44 in 720p
Min illumination / (lux)	0.5	0.3	0.3	0.3	0.3	0.3	0.3
Video compression (Zipstream / H.264 / H.265)	-	-	-	-	-	-	-
Max video resolution (pixels)	"1280 x 720 (1MP)"	1920 x 1200 (2MP)	1920 x 1200 (2MP)	1920 x 1200 (2MP)	1920 x 1200 (2MP)	1920 x 1200 (2MP)	1920 x 1200 (2MP)
Frames per second	-	-	-	-	-	-	-
Audio support	-	-	-	-	-	-	-
Alarm in- / outputs	-	-	-	-	-	-	-
Analytics *	-	-	-	-	-	-	-
Technology	WDR	WDR - Forensic Capture (with AXIS F41/F44 Main Unit)	WDR - Forensic Capture (with AXIS F41/F44 Main Unit)	WDR - Forensic Capture (with AXIS F41/F44 Main Unit)	WDR - Forensic Capture (with AXIS F41/F44 Main Unit)	WDR - Forensic Capture (with AXIS F41/F44 Main Unit)	WDR - Forensic Capture (with AXIS F41/F44 Main Unit)
Power	-	-	-	-	-	-	-
Outdoor use	-	✓	-	-	✓	-	✓
Other	-	IP66 / IP67 rated	-	-	IP66 / IP67 rated	Recessed Dome, 120° tilt	Recessed Dome, IP66 and IK09 rated, 120° tilt
Axis part #	8 m (26ft): 01003-001	3 m (10ft): 0675-001 ^(a) , 12 m (39ft): 0676-001 ^(b)	3 m (10ft): 0677-001 ^(a) , 12 m (39ft): 0678-001 ^(b)	3 m (10ft): 0735-001 ^(a) , 12 m (39ft): 0734-001 ^(b)	3 m (10ft): 0737-001 ^(a) , 12 m (39ft): 0736-001 ^(b)	12 m (39ft): 0798-001	12 m (39ft): 0775-001

* For a complete list of supported analytics and third party applications see axis.com/acap

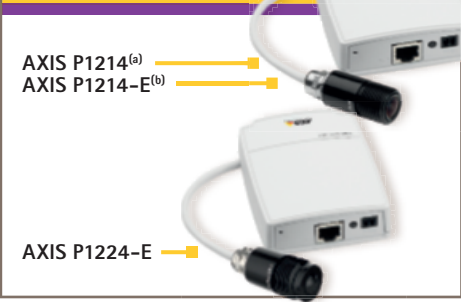
* Security features for all cameras include: password protection, IP Address filtering, HTTPS encryption, IEEE 802.1X network access control, digest authentication, user access log, centralized certificate management



AXIS FA Series



AXIS P12 Series



	AXIS FA Series					AXIS P12 Series	
	AXIS FA54 Main unit	AXIS FA1105	AXIS FA1125	AXIS FA3105-L Eyeball	AXIS FA4115 Dome	AXIS P1214 ^(a) AXIS P1214-E ^(b)	AXIS P1224-E
Image sensor	-	1/3" (effective) progressive scan RGB CMOS	1/3" (effective) progressive scan RGB CMOS	1/3" (effective) progressive scan RGB CMOS	1/3" (effective) progressive scan RGB CMOS	1/4" progressive scan RGB CMOS	1/4" progressive scan RGB CMOS
Lens / Field of view	-	2.8 mm/F2.0 fixed iris 111°	"3.7mm/ F2.5 fixed iris, fixed focus, pinhole 91°"	3.13 mm/F2.0 fixed iris 103°	Varifocal 2.8-6.0 mm/ F2.0 fixed iris 99-53°	"3.7 mm/F2.5 fixed iris, fixed focus, pinhole 57° ^(a) 2.8 mm/F2.0 81° ^(b) "	1.56 mm/F2.8 fixed iris, fixed focus 145°
Min illumination / (lux)	-	0.2	0.25	0.2 (0 lux with IR illumination)	0.2	1.0 (color)	1.8 (color)
Video compression (Zipstream / H.264 / H.265)	✓ / ✓ / -	-	-	-	-	- / ✓ / -	- / ✓ / -
Max video resolution (pixels)	1920x1080 (2 MP)	1920x1080 (2 MP)	1920x1080 (2 MP)	1920x1080 (2 MP)	1920x1080 (2 MP)	1280x720 (1MP)	1280x720 (1MP)
Frames per second	30 (HDTV 1080p)	30 (HDTV 1080p)	30 (HDTV 1080p)	30 (HDTV 1080p)	30 (HDTV 1080p)	30 (HDTV 720p)	30 (HDTV 720p)
Audio support	Two-way	-	-	-	-	-	-
Alarm in- / outputs	4 / 4	-	-	-	-	1 / 1	1 / 1
Analytics *	AXIS Video Motion Detection audio detection tampering alarm supports ACAP	-	-	-	-	AXIS Video Motion Detection tampering alarm supports ACAP	AXIS Video Motion Detection tampering alarm supports ACAP
Technology	Zipstream, Forensic WDR, corridor format, Quad view, ONVIF	Forensic WDR	Forensic WDR	Forensic WDR	Forensic WDR	corridor format, ONVIF	corridor format, ONVIF
Power	12V DC, typical 14W, max 30W	-	-	-	-	PoE Type 1 Class 2 (max 6.49W), 8-28V DC max 4.7W	PoE Type 1 Class 2 (max 6.49W), 8-28V DC max 4.7W
Outdoor use	-	-	-	-	-	✓ ^(b)	✓
Other	Two memory card slots, HDMI output, Four(4) Video Channels	-	-	-	-	IP66 rated and NEMA 4X sensor unit only ^(b)	IP66 rated and NEMA 4X sensor unit only, memory card slot
Axis part #	0878-004	0913-001	0914-001	01026-001	01001-001	0532-001 ^(a) 0533-001 ^(b)	0654-001

* For a complete list of supported analytics and third party applications see axis.com/acap

* Security features for all cameras include: password protection, IP Address filtering, HTTPS encryption, IEEE 802.1X network access control, digest authentication, user access log, centralized certificate management

AXIS P12 Series

AXIS P1244



AXIS P1245



AXIS P1254



AXIS P1264



AXIS P1265



AXIS P1275



Image sensor

Lens / Field of view

Min illumination / (lux)

Video compression
(Zipstream / H.264 / H.265)

Max video resolution
(pixels)

Frames per second

Audio support

Alarm in- / outputs

Analytics *

Technology

Power

Outdoor use

Other

Axis part #

AXIS P12 Series

AXIS P1244	AXIS P1245	AXIS P1254	AXIS P1264	AXIS P1265	AXIS P1275
1/4" progressive scan RGB CMOS	1/2.9" (effective) progressive scan RGB CMOS	1/4" progressive scan RGB CMOS	1/4" progressive scan RGB CMOS	1/2.9" (effective) progressive scan RGB CMOS	1/2.9" (effective) progressive scan RGB CMOS
2.1 mm/F2.2 fixed iris, fixed focus 102 °	2.8 mm/F2.0 fixed iris, fixed focus 111 °	2.1 mm/F2.2 fixed iris, fixed focus 102 °	3.7 mm/F2.5 fixed iris, fixed focus, pinhole 57 °	3.7 mm/F2.5 fixed iris, fixed focus, pinhole 91 °	2.8 mm/F2.0 fixed iris, fixed focus 99 °
0.4 (color)	0.22 (color)	0.4 (color)	0.5 (color)	0.27 (color)	0.22 (color)
✓ ✓ -	✓ ✓ -	✓ ✓ -	✓ ✓ -	✓ ✓ -	✓ ✓ -
1280x720 (1MP)	1280 x 1080 (2 MP)	1280x720 (1MP)	1280x720 (1MP)	1280 x 1080 (2 MP)	1280 x 1080 (2 MP)
30 (HDTV 720p)	30 (HDTV 1080p)	30 (HDTV 720p)	30 (HDTV 720p)	30 (HDTV 1080p)	30 (HDTV 1080p)
-	-	-	-	-	-
-	-	-	-	-	-
AXIS Video Motion Detection, tampering alarm, supports ACAP	AXIS Video Motion Detection, tampering alarm, supports ACAP	AXIS Video Motion Detection, tampering alarm, supports ACAP	AXIS Video Motion Detection, tampering alarm, supports ACAP	AXIS Video Motion Detection, tampering alarm, supports ACAP	AXIS Video Motion Detection, tampering alarm, supports ACAP
Zipstream, WDR, corridor format, ONVIF	Zipstream, WDR- Forensic Capture, corridor format, ONVIF	Zipstream, WDR, corridor format, ONVIF	Zipstream, WDR, corridor format, ONVIF	Zipstream, WDR- Forensic Capture, corridor format, ONVIF	Zipstream, WDR- Forensic Capture, corridor format, ONVIF
PoE Type 1 Class 2, max 4.0W, typical 2.5W	PoE Type 1 Class 2, max 4.0W, typical 2.5W	PoE Type 1 Class 2, max 4.0W, typical 2.5W	PoE Type 1 Class 2, max 4.0W, typical 2.5W	PoE Type 1 Class 2, max 4.0W, typical 2.5W	PoE Type 1 Class 2, max 4.0W, typical 2.5W
-	-	-	-	-	-
Memory card slot	Memory card slot	Memory card slot	Height strip available, Memory card slot	Height strip available, Memory card slot	Memory card slot
0896-001	0926-001	0924-001	0925-001	0927-001	0928-001

* For a complete list of supported analytics and third party applications see axis.com/acap

* Security features for all cameras include: password protection, IP Address filtering, HTTPS encryption, IEEE 802.1X network access control, digest authentication, user access log, centralized certificate management



AXIS M30 Series

AXIS M3015

AXIS M3016



New

AXIS M3077-PLVE



New

AXIS M3057-PLVE Mk II

AXIS M3058-PLVE



Image sensor	
Lens / Field of view	
Day and night	
Min illumination / (lux)	
Video compression (Zipstream / H.264 / H.265)	
Max video resolution (pixels)	
Frames per second	
Audio support	
Alarm in- / outputs	
Analytics *	
Technology	
Power	
Outdoor use	
Other	
Axis part #	

AXIS M30 Series				
AXIS M3015	AXIS M3016	AXIS M3077-PLVE	AXIS M3057-PLVE Mk II	AXIS M3058-PLVE
1/3" progressive scan CMOS	1/3" progressive scan CMOS	1/1.8" progressive scan CMOS 6MP	1/1.8" progressive scan CMOS 6MP (3072x2048)	1/1.7" progressive scan CMOS 12MP (4000x3000)
2.8 mm/F2.0 fixed focus, fixed iris 106 °	1.8 mm/F2.4 fixed focus, fixed iris 132 ° (4:3 aspect ratio) 152 ° (16:9 aspect ratio)	1.56 mm/F2.0 fixed iris, fixed focus 183 °	1.56 mm/F2.0 fixed iris, fixed focus 183 °	1.2 mm/F2.2 fixed iris, fixed focus 181 °
-	-	Automatic	Automatic	Automatic
0.25 (color)	0.35 (color)	0.16 (color) 0.03 (B/W) 0 (with IR illumination)	0.16 (color) 0.03 (B/W) 0 (with IR illumination)	0.19 (color) 0.04 (B/W) 0 (with IR illumination)
✓ ✓ ✓	✓ ✓ ✓	✓ ✓ ✓	✓ ✓ ✓	✓ ✓ ✓
1920x1080 (2MP)	2016x1512 (4:3) 2304x1296 (16:9) (2MP)	2016x2016 (overview) (6MP)	2016x2016 (overview) (6MP)	2992x2992 (overview) (12MP)
30 (HDTV 1080p)	30 (HDTV 1080p)	60 (overview only w/o WDR) 30 (Overview and Dewarped w/ WDR)	60 (overview only w/o WDR) 30 (Overview and Dewarped w/ WDR)	30 (overview only w/o WDR) 15 (Overview and Dewarped w/ WDR)
-	-	One-way (two built-in mics)	-	-
		1 / 1	1 / 1	1 / 1
AXIS Video Motion Detection, tampering alarm Axis Camera Application Platform	AXIS Video Motion Detection, tampering alarm Axis Camera Application Platform	Axis Video Motion Detection, tampering alarm, audio detection	AXIS Video Motion Detection, tampering alarm Axis Camera Application Platform	AXIS Video Motion Detection, tampering alarm Axis Camera Application Platform
Zipstream, WDR, corridor format, ONVIF	Zipstream, WDR, corridor format, ONVIF	Zipstream, Forensic WDR, Lightfinder, Mutli-view streaming, Digital PTZ, ONVIF, corridor format	Zipstream, Forensic WDR, Lightfinder, Multi-view streaming, Digital PTZ, ONVIF, corridor format	Zipstream, Forensic WDR, Multi-view streaming, Digital PTZ, ONVIF, corridor format
PoE Type 1 Class 1, Typical 2.8W, max 3.7W	PoE Type 1 Class 1, Typical 2.9W, max 3.8W	PoE Type 1 Class 3, Typical 8.0W, max 11.9W	PoE Type 1 Class 3, Typical 8.0W, max 11.9W	PoE Type 1 Class 3, Typical 7.8W, max 12.95W
-	-	✓	✓	✓
Memory card slot, Digital PTZ	Memory card slot, Digital PTZ	Vandal resistant, IP66 and NEMA 4X ratings, Session Initiation Protocol (SIP), Memory card slot, HDMI, digital roll	Vandal resistant, IP66 and NEMA 4X ratings, IK10 vandal resistant, 66 ft range, Memory card slot, HDMI, digital roll	Vandal resistant, IP66 and NEMA 4X ratings, IK10 vandal resistant, 66 ft range, Memory card slot, HDMI
01151-001	01152-001	02018-001	02109-001	01178-001

* For a complete list of supported analytics and third party applications see axis.com/acap

* Security features for all cameras include: password protection, IP Address filtering, HTTPS encryption, IEEE 802.1X network access control, digest authentication, user access log, centralized certificate management

AXIS M30 Series

AXIS M3064-V



AXIS M3065-V



AXIS M3066-V



AXIS M3067-P



AXIS M3068-P



AXIS M3075-V



AXIS M30 Series					
AXIS M3064-V	AXIS M3065-V	AXIS M3066-V	AXIS M3067-P	AXIS M3068-P	AXIS M3075-V
1/2.9" progressive scan RGB CMOS	1/2.9" progressive scan RGB CMOS	1/2.9" progressive scan RGB CMOS	1/1.8" progressive scan CMOS 6MP (3072x2048)	1/1.7" progressive scan CMOS 12MP (4000x3000)	1/2.9" progressive scan RGB CMOS
3.1 mm/F2.0 fixed iris, fixed focus M12 mount 83°	3.1 mm/F2.0 fixed iris, fixed focus M12 mount 102°	2.4 mm/F2.1 fixed iris, adjustable focus M12 mount 131°	1.6 mm/F2.0 fixed iris, fixed focus, IR corrected 185°	1.65 mm/F2.8 fixed iris, fixed focus, IR corrected 185°	3.1 mm/F2.0 fixed iris, fixed focus HFOV 102°
Automatic	Automatic	Automatic	Automatic	Automatic	Automatic
.2 (color) / 0.04 (B/W)	.2 (color) / 0.04 (B/W)	0.23 (Color) / 0.05 (B/W)	0.18 (color) 0.04 (B/W)	0.32 (color) 0.06 (B/W)	.2 (color) / 0.04 (B/W)
✓/✓/✓	✓/✓/✓	✓/✓/✓	✓/✓/✓	✓/✓/✓	✓/✓/✓
1280x720 (2MP)	1920x1080 (2 MP)	2304x1728 (4 MP)	2016x2016 (6MP)	2880x2880 (12MP)	1920x1080 (2 MP)
30 (HDTV 720p)	30 (HDTV 1080p)	30 (HDTV 2688x1520)	60 (overview only w/o WDR) 30 (Overview and Dewarped w/WDR)	30 (overview only w/o WDR) 15 (Overview and Dewarped w/WDR)	30 (HDTV 2688x1520)
Two-way	Two-way	Two-way	Two-way	Two-way	One-way
-	-	-	-	-	-
AXIS Video Motion Detection tampering alarm Axis Camera Application Platform	AXIS Video Motion Detection tampering alarm Axis Camera Application Platform	AXIS Video Motion Detection tampering alarm Axis Camera Application Platform	AXIS Video Motion Detection tampering alarm Axis Camera Application Platform	AXIS Video Motion Detection tampering alarm Axis Camera Application Platform	AXIS Video Motion Detection tampering alarm Axis Camera Application Platform
Zipstream, WDR, Digital PTZ, ONVIF, corridor format	Zipstream, WDR, Digital PTZ, ONVIF, corridor format	Zipstream, WDR, Digital PTZ, ONVIF, corridor format	Zipstream, Lightfinder, Forensic WDR, Multi-view streaming, ONVIF	Zipstream, Forensic WDR, Multi-view streaming, ONVIF	Zipstream, WDR, Digital PTZ, corridor format, ONVIF
PoE Type 1 Class 1, Typical 1.6W, max 2.0W	PoE Type 1 Class 1, Typical 2.2W, max 2.5W	PoE Type 1 Class 1, Typical 2.5W, max 3.0W	PoE Type 1 Class 2, Typical 3.7W, max 6.49W	PoE Type 1 Class 2, Typical 3.7W, max 6.49W	PoE Type 1 Class 1, Typical 2.6W, max 3.0W
-	-	✓	✓	✓	-
Vandal resistant, IP42 rating and IK08, Memory card slot	Vandal resistant, IP42 rating and IK08, Memory card slot, HDMI Type D	Vandal resistant, IP42 rating and IK08, Memory card slot, HDMI Type D	360°/180° Panoramic views, Memory card slot	360°/180° Panoramic views, Memory card slot	Vandal resistant, IP42 rating and IK08, Memory card slot, HDMI Type D
01716-001	01707-001	01708-001	01731-001	01732-001	01709-001

* For a complete list of supported analytics and third party applications see axis.com/acap

* Security features for all cameras include: password protection, IP Address filtering, HTTPS encryption, IEEE 802.1X network access control, digest authentication, user access log, centralized certificate management



Image sensor
Lens / Field of view
Day and night
Min illumination / (lux)
Video compression (Zipstream / H.264 / H.265)
Max video resolution (pixels)
Frames per second
Audio support
Alarm in- / outputs
Analytics *
Technology
Power
Outdoor use
Other
Axis part #

AXIS M31 Series	
AXIS M3115-LVE	AXIS M3116-LVE
1/2.9" progressive scan RGB CMOS	1/2.7 progressive scan RGB CMOS
2.8 mm, F2.0 Fixed iris, Fixed focus, HFOV 105°	2.4 mm, F2.1 Fixed iris, fixed focus, HFOV 130°
Automatic	Automatic
0.17 (Color) 0.03 (B/W) 0 lux (with IR illumination)	0.19 lux (color) 0.04 (B/W) 0 lux (with IR illumination)
✓ ✓ ✓	✓ ✓ ✓
1920x1080 (2 MP)	2688x1512 (4 MP)
30 (HDTV 1080p)	30 (HDTV 1080p)
Two-way	Two-way
-	-
AXIS Video Motion Detection, tampering alarm	AXIS Video Motion Detection, tampering alarm
Zipstream, Lightfinder, Forensic WDR, ONVIF, corridor format	Zipstream, Lightfinder, Forensic WDR, ONVIF, corridor format
PoE Type 1 Class 3 Typical: 3.7 W, Max.: 7 W	PoE Type 1 Class 3 Typical: 4.6 W, Max.: 8.7 W
✓	✓
IP66, NEMA 4X rated, IK08 impact- resistant, Support for memory card, IR range 20 m (65ft)	IP66, NEMA 4X rated, IK08 impact- resistant, Support for memory card, IR range 20 m (65ft)
01604-001	01605-001

AXIS M32 Series	
AXIS M3205-LVE	AXIS M3206-LVE
1/2.9" progressive scan RGB CMOS	1/2.5" progressive scan RGB CMOS
3.1mm, F2.0 Fixed iris, IR corrected 100°	2.9mm, F2.0 Fixed iris, IR corrected 105°
Automatic	Automatic
0.2 lux (color) 0.04 (B/W) 0 lux (with IR illumination) ^(a)	0.22 lux (color) 0.05 (B/W)
✓ ✓ ✓	✓ ✓ ✓
1920x1080 (2 MP)	2304x1728 (4MP)
25/30	25/30
-	-
1 / 1	1/1
AXIS Video Motion Detection, active tampering alarm.	AXIS Video Motion Detection, active tampering alarm.
Zipstream, WDR, ONVIF, corridor format	Zipstream, WDR, ONVIF, corridor format
PoE Type 1 Class 3 Max 12.0 W, Typical 3.7 W	PoE Type 1 Class 3 Max 12.5 W, Typical 4.2 W
✓	✓
IP66, NEMA 4X rated, IK10 impact- resistant, Support for memory card, IR range 20 m (65ft)	IP66, NEMA 4X rated, IK10 impact- resistant, Support for memory card, IR range 20 m (65ft)
01517-001	01518-001

AXIS M42 Series
AXIS M4206-V ^(a) AXIS M4206-LV ^(b)
1/2.5" progressive scan RGB CMOS
3-6mm F2.0, Fixed iris, Remote Focus and Zoom 100°- 45°
Automatic
0.26 lux (color) 0.05 (B/W)
✓ ✓ ✓
2048x1536 (3 MP)
30
-
-
AXIS Video Motion Detection, active tampering alarm
Zipstream, Lightfinder, Forensic WDR, ONVIF, corridor format, OptimizedIR
PoE Type 1 Class 2 Typical 3.2 W, max 4.6 W
-
Built in IR LED (100ft range) Digital PTZ, Memory card slot, IP52 and IK08 rating ^(a) IP66, IK10 and NEMA 4x rating ^(b)
01240-001 ^(a) 01241-001 ^(b)

* For a complete list of supported analytics and third party applications see axis.com/acap

* Security features for all cameras include: password protection, IP Address filtering, HTTPS encryption, IEEE 802.1X network access control, digest authentication, user access log, centralized certificate management

AXIS P32 Series

New

AXIS P3247-LV^(a)
AXIS P3247-LVE^(b)



New

AXIS P3248-LV^(a)
AXIS P3248-LVE^(b)



AXIS P3245-V^(a)
AXIS P3245-LV^(b)



AXIS P3245-VE^(c)
AXIS P3245-LVE^(d)



Not Pictured:
AXIS P3255-LVE^(e)

AXIS P33 Series

AXIS P3367-V^(a)



AXIS P3367-VE^(b)



AXIS P3374-V^(a)
AXIS P3375-V^(b)



AXIS P3374-LV^(b)
AXIS P3375-LV^(c)



AXIS P3375-LVE^(d)



Not Pictured:
AXIS P3375-VE^(b)

AXIS P32 Series

AXIS P3247-LV ^(a) AXIS P3247-LVE ^(b)	AXIS P3248-LV ^(a) AXIS P3248-LVE ^(b)	AXIS P3245-V ^(a) AXIS P3245-LV ^(b) AXIS P3245-VE ^(c) AXIS P3245-LVE ^(d) AXIS P3255-LVE ^(e)
1/2.7" progressive scan RGB CMOS	1/1.8" progressive scan RGB CMOS	1/2.8" progressive scan RGB CMOS
Varifocal, 3–8 mm, F1.3 Remote zoom and focus, P-Iris control, IR corrected	Varifocal, 4.3–8.6 mm, F1.5 Remote zoom and focus, P-Iris control, IR corrected	Varifocal, 3.4–8.9mm, F1.8 Remote focus and zoom, P-iris, IR corrected 100°-36°
Automatic	Automatic	Automatic
0.13 lux (color) 0 lux (B/W)	0.14 lux (Color) 0 lux (B/W)	0.1 lux (color) 0.02 lux (B/W)
✓ ✓ ✓	✓ ✓ ✓	✓ ✓ ✓
2592x1944	3840 x 2160 (4K)	1920 x 1080 (2 MP)
30 (5 MP)	30 (4K)	25/30 (WDR) 50–60 (no WDR)
-	-	Two-way Built-in mic ^(a)
-	1/1	1/1
AXIS Object Analytics, AXIS Motion Guard, active tampering alarm	AXIS Object Analytics, AXIS Motion Guard, active tampering alarm	AXIS Video Motion Detection, active tampering alarm, AXIS Object Analytics
ONVIF, Forensic WDR, Zipstream in H.264/H.265, OptimizedIR, Lightfinder 2.0	ONVIF, Forensic WDR, Zipstream in H.264, OptimizedIR, Lightfinder	ONVIF, Forensic WDR, Zipstream, OptimizedIR, Lightfinder 2.0, DLPU ^(E)
PoE IEEE 802.3af/802.3at Type 1 Class 3 Typical 6.5 W, max 10.5 W	PoE IEEE 802.3af/802.3at Type 1 Class 3 Typical 8.2 W, max 11.4 W	PoE Type 1 Class 3 Max 11.6W, Typical 6.4W
✓ ^(b)	✓ ^(b)	✓ ^(c,d)
Support for memory card, IR range (130ft), NEMA 4X and IK10 rated ^(b)	IP66 IK10 and NEMA 4X rated ^(b) , Support for memory card, IR Range (130ft)	IP52, IK10 vandal resistant, Support for memory card, IR Range 40m (130ft)
01595-001 01596-001	01597-001 01598-001	01591-001 ^(a) , 01592-001 ^(b) , 01594-001 ^(c) , 01593-001 ^(d) , 02099-001 ^(E)

AXIS P33 Series

AXIS P3367-V ^(a) AXIS P3367-VE ^(b)	AXIS P3374-V ^(a) AXIS P3374-LV ^(b)	AXIS P3375-V ^(a) AXIS P3375-VE ^(b) AXIS P3375-LV ^(c) AXIS P3375-LVE ^(d)
1/3.2" progressive scan RGB CMOS	1/3" progressive scan CMOS	1/3" progressive scan CMOS
Varifocal, 3–9mm/ F1.2, IR corrected, P-iris, Remote focus and zoom 84°-30°	Varifocal, 3–10mm/ F1.4 IR corrected, P-iris, Remote focus and zoom 90°-34°	Varifocal, 3–10mm/ F1.4, IR corrected, P-iris, Remote focus and zoom 90°-34°
Automatic	Automatic	Automatic
0.2 lux (color) 0.04 lux (B/W)	0.15 lux (color) ^(a,b) 0.16 lux (color) ^(c,d) 0.03 lux (B/W)	0.15 lux (color) ^(a,b) 0.16 lux (color) ^(c,d) 0.03 lux (B/W)
✓ ✓ ✓	✓ ✓ ✓	✓ ✓ ✓
2592 x 1944 (5 MP)	1280 x 720 (1MP)	1920 x 1080 (2 MP)
2MP: 30fps 3MP: 20fps 5MP: 12fps	30 (WDR) 60 (no WDR)	30 (WDR) 60 (no WDR)
Two-way Built-in mic ^(a)	Two-way Built-in mic ^(b)	Two-way Built-in mic ^(a,c)
1/1	1/1	1/1
AXIS Video Motion Detection, active tampering alarm	AXIS Video Motion Detection, active tampering alarm	AXIS Video Motion Detection, active tampering alarm
ONVIF, WDR, corridor format	ONVIF, Forensic WDR, Zipstream, OptimizedIR, Lightfinder	ONVIF, Forensic WDR, Zipstream, Lightfinder, OptimizedIR
PoE Type 1 Class 2 ^(a) Max 6.2W, Class 3 ^(b) 12.1 W	PoE Type 1 Class 2 ^(a) Typical: 2.8 W, Max 3.9 W, Class 3 ^(b) Typical: 5 W, Max 8.2 W	PoE Type 1 Class 2 ^(a) Typical: 2.8 W, Max 3.9 W Class 3 ^(b,c,d) Typical: 3.1 W, Max 9.5 W
✓ ^(b)	-	✓ ^(b,d)
IP66 and NEMA 4X rated ^(b) , IK10 Impact-resistant, Support for memory card	IK10 vandal resistant, Support for memory card, IR Range 30m (100ft) ^(b)	IP66 and NEMA 4X rated ^(b,d) , Support for memory card, IR Range (100ft)
0406-001 ^(a) 0407-001 ^(b)	01056-001 ^(a) 01058-001 ^(b)	01060-001 ^(a) , 01061-001 ^(b) , 01062-001 ^(c) , 01063-001 ^(d)

* For a complete list of supported analytics and third party applications see axis.com/acap

* Security features for all cameras include: password protection, IP Address filtering, HTTPS encryption, IEEE 802.1X network access control, digest authentication, user access log, centralized certificate management



AXIS Multi-sensor Network Cameras

New

- AXIS P3715-PLVE 
- AXIS P3717-PLE 
- AXIS P3719-PLE 
- AXIS P3807-PVE 
- AXIS Q3708-PVE 
- AXIS Q3709-PVE 

Image sensor
Lens / Field of view
Day and night
Min illumination / (lux)
Video compression (Zipstream / H.264 / H.265)
Max video resolution (pixels)
Frames per second
Audio support
Alarm in- / outputs
Analytics *
Technology
Power
Outdoor use
Other
Axis part #

AXIS Multi-sensor Network Cameras					
AXIS P3715-PLVE	AXIS P3717-PLE	AXIS P3719-PLE	AXIS P3807-PVE	AXIS Q3708-PVE	AXIS Q3709-PVE
2 x 1/2.8" progressive scan RGB CMOS	4x 1/2.8" progressive scan CMOS	4 x 1/2.5" progressive scan RGB CMOS	4 x 1/2.9" progressive scan CMOS	3 x 1/1.8" progressive scan CMOS	3x 1/2.3" progressive scan CMOS
Varifocal, 3 - 6 mm, F1.8 -2.6	Varifocal 3-6mm/F1.8 Motorized focus and zoom 96° - 49°	Varifocal 3-6mm/F1.8-2.6 Motorized focus and zoom 101° - 49°	4 x lenses, fixed iris 3.2 mm/F2.0 Combined horizontal FOV: 180°	3 x lenses, fixed iris 5.0 mm, F2.8 180°	3 x lenses, fixed iris 5.0 mm, F2.8 180°
Automatic	Automatic	Automatic	Automatic	Automatic	Automatic
0.17 (Color) 0.04 (B/W)	0.17(color)	0.20(color) 0.04(B/W)	0.17 (color) 0.05 (B/W)	0.3 (color) 0.06 (B/W)	2 (color) 0.4 (B/W)
✓ / ✓ / -	✓ / ✓ / -	✓ / ✓ / ✓	✓ / ✓ / -	✓ / ✓ / -	✓ / ✓ / -
2 x 1920x1080	4x 1920 x 1080 (8 MP)	4x 2560 x 1440 (15MP)	4320 x 1920 (8MP)	2560 x 1920 (15MP)	3x 3840 x 2880 (33MP)
30	30	25/30	30 (HDTV 1080p)	20/30	20/30
-	-	-	-	-	-
-	-	-	-	-	-
AXIS Motion Guard, AXIS Fence Guard, active tampering alarm, supports ACAP	AXIS Video Motion Detection, tampering alarm, supports ACAP	AXIS Video Motion Detection, active tampering alarm, supports ACAP, AXIS Perimeter Defender	AXIS Video Motion Detection, tampering alarm, supports ACAP	AXIS Video Motion Detection, tampering alarm	AXIS Video Motion Detection, tampering alarm
Zipstream, Forensic WDR, ONVIF	Zipstream, Lightfinder, Forensic WDR, ONVIF	Zipstream, WDR ONVIF	Zipstream, Lightfinder, Forensic WDR, ONVIF	ONVIF, Forensic WDR, Zipstream	ONVIF, Forensic WDR, Zipstream
PoE IEEE 802.3at Type 1 Class 3, typical 7.06 W, max 12.95 W	PoE IEEE 802.3at Class 4 typical 11.1 W, max 17.0 W	PoE IEEE 802.3at Type 2 Class 4	PoE Typical 7 W, max 12.9 W	PoE Type 2 Class 4 25.5 W, typical 18.3 W"	PoE+ Class 4 Type 2 Class 4, max. 23.1 W, typical 16.7 W
✓	✓	✓	✓	✓	✓
2x2 MP multidirectional camera, 360° IR illumination (50 ft), IP67-, NEMA 4X-rated, IK10	360° multisensor camera, IP66-, IP67-, NEMA 4X-rated, IR illumination (50ft)	15 MP, 360° multisensor camera, IP66-, IP67-, NEMA 4X-rated, IR illumination (50ft)	180° seamless multisensor, IP66/IP67, IK 10 and NEMA 4X ratings	180° multisensor camera, IP66, IK10 and NEMA 4x ratings, 3 sensors, 1 IP address	180° multisensor camera, Vandal resistant, IP66, IK10 and NEMA 4x ratings
01970-001	01504-001	01500-001	01048-001	0801-001	0664-001

* For a complete list of supported analytics and third party applications see axis.com/acap

* Security features for all cameras include: password protection, IP Address filtering, HTTPS encryption, IEEE 802.1X network access control, digest authentication, user access log, centralized certificate management

AXIS P39 Series

AXIS P3904-R
Mk II

AXIS P3905-R
Mk II



AXIS P3925-R



AXIS P3935-LR



New

AXIS P3925-LRE



AXIS P39 Series					
	AXIS P3904-R Mk II	AXIS P3905-R Mk II	AXIS P3925-R	AXIS P3935-LR	AXIS P3925-LRE
Image sensor	1/2.9" progressive scan CMOS	1/2.9" progressive scan CMOS	1/2.9" progressive scan CMOS	1/2.9" Progressive scan RGB CMOS	1/2.9" Progressive scan RGB CMOS
Lens / Field of view	3.6 mm/F2.0 fixed iris, adjustable focus, M12 mount 87 °	3.6 mm/F2.0 fixed iris, adjustable focus, M12 mount 87 °	2.8 mm, F1.6 Horizontal Field of view: 110°, Vertical Field of view: 62°, M12 mount, fixed iris	2.8 mm, F1.6 Horizontal Field of view: 110°, Vertical Field of view: 62°, M12 mount, fixed iris	6.0 mm, F1.9 Horizontal field of view: 56° Vertical field of view: 30° M12 mount, fixed iris
Day and night	-	-	-	Automatic	-
Min illumination / (lux)	Color: 0.15 lux @ 50 IRE F2.0 Color: 0.06 lux @ 30 IRE F2.0	Color: 0.15 lux @ 50 IRE Color: 0.06 lux @ 30 IRE	0.06(color) 0.01(B/W) lux at 30 IRE F1.6 0.12(color) 0.02(B/W) lux at 50 IRE F1.6 0 lux with IR illumination on	0.06(color) 0.01(B/W) lux at 30 IRE F1.6 0.12(color) 0.02(B/W) lux at 50 IRE F1.6 0 lux with IR illumination on	0.07 (Color) 0.02 (B/W)
Video compression (Zipstream / H.264 / H.265)	✓ ✓ / -	✓ ✓ / -	✓ ✓ ✓	✓ ✓ ✓	✓ ✓ ✓
Max video resolution (pixels)	1280x720 (1MP)	1920x1080 (2 MP)	1920x1080 (2 MP)	1920x1080 (2 MP)	1920x1080 (2 MP)
Frames per second	30 (HDTV 720p)	30 (HDTV 1080p)	Up to 25/30 fps (50/60 Hz) in all resolutions	60 (HDTV 1080p w WDR On) 120 (HDTV 1080p w WDR Off)	25/30 fps (50/60 Hz) in all resolutions
Audio support	-	-	-	Two-way	-
Alarm in- / outputs	-	-	-	2 / 2	-
Analytics *	AXIS Video Motion Detection, tampering alarm, supports ACAP	AXIS Video Motion Detection, tampering alarm, supports ACAP	AXIS Video Motion Detection, Active Tampering, Alarm Blocked view detection, Shock detection	AXIS Video Motion Detection, active tampering alarm, Blocked view detection, Shock detection, audio detection	AXIS Motion Guard, AXIS Fence Guard, AXIS Loitering Guard AXIS Video Motion Detection, shock detection
Technology	Zipstream, Lightfinder, Forensic WDR, electronic image stabilization, ONVIF, corridor format	Zipstream, Lightfinder, WDR - Forensic Capture, ONVIF, corridor format	Zipstream, Forensic WDR, electronic image stabilization, corridor format, ONVIF	Zipstream, Lightfinder, Forensic WDR, electronic image stabilization, ONVIF, corridor format	Zipstream, Forensic WDR, electronic image stabilization, ONVIF
Power	PoE Type 1 Class 2 Typical 2.9 W, max 3.6 W	PoE Type 1 Class 2 Typical 2.9W, max 3.6W	PoE Type 1 Class 2 Typical 4.2 W, max 6.4 W	PoE Type 1 Class 3, typical 6.6 W, max 11.8 W	PoE Type 1 Class 3 IR illumination on: typical 6.3 W, max 11.8 W
Outdoor use	-	-	✓	-	✓
Other	IP67 and NEMA 4x ratings, digital PTZ, Traffic Light mode, memory card slot	IP67 and NEMA 4x ratings, digital PTZ, Traffic Light mode, memory card slot	IP66/67 and NEMA 4x, IK10 ratings, digital PTZ, memory card slot, Rugged connectors for mobile surveillance	IP66/67-, NEMA 250 4X- and IK10, memory card slot	IP66/67-, NEMA 250 4X-, IP6K9K- and IK10+-rated aluminum casing with AR-coated tempered glass
Axis part #	RJ-45: 01078-001 ^(a) , M12: 01071-001 ^(b)	RJ-45: 01072-001 ^(a) , M12: 01073-001 ^(b)	01920-00, 01933-001	01919-00,1 01932-001	02090-001

* For a complete list of supported analytics and third party applications see axis.com/acap

* Security features for all cameras include: password protection, IP Address filtering, HTTPS encryption, IEEE 802.1X network access control, digest authentication, user access log, centralized certificate management



AXIS P91 Series

AXIS P9106-V



Image sensor
Lens / Field of view
Day and night
Min illumination / (lux)
Video compression (Zipstream / H.264 / H.265)
Max video resolution (pixels)
Frames per second
Audio support
Alarm in- / outputs
Analytics *
Technology
Power
Outdoor use
Other
Axis part #

AXIS P91 Series	
AXIS P9106-V	
Image sensor	1/3" progressive scan RGB CMOS
Lens / Field of view	M12 mount, fixed focus, fixed iris 1.8 mm, F2.4 130 °
Day and night	-
Min illumination / (lux)	0.35 lux at 50 IRE F2.4
Video compression (Zipstream / H.264 / H.265)	✓ / ✓ / -
Max video resolution (pixels)	2016x1512 (3 MP)
Frames per second	25/30fps
Audio support	-
Alarm in- / outputs	-
Analytics *	AXIS Video Motion Detection, active tampering alarm
Technology	Zipstream, Lightfinder, Forensic WDR, electronic image stabilization, ONVIF, corridor format
Power	PoE Type 1 Class 1 Typical 2.8 W, max 3.2 W
Outdoor use	✓
Other	IP66, IK10-rated
Axis part #	01620-001 White ^(a) , 01553-001 Brushed Steel ^(b)

AXIS Q35 Series

AXIS Q3515-LV



AXIS Q3515-LVE



AXIS Q3517-LV



AXIS Q3517-LVE



AXIS Q35 Series		
AXIS Q3515-LV ^(a) , AXIS Q3515-LVE ^(b)	AXIS Q3517-LV ^(a) , AXIS Q3517-LVE ^(b) , AXIS Q3517-SLVE ^(c)	
Image sensor	1/2.8" progressive scan RGB CMOS	1/1.8" progressive scan RGB CMOS
Lens / Field of view	9 mm: 3-9 mm, F1.3 Horizontal Field of view: 105°-36°, Vertical Field of view: 57°-21° 22 mm: 9-22 mm, F1.6 Horizontal Field of view: 36°-15°, Vertical Field of view: 19°-9°	Varifocal 4.3-8.6 mm/F1.5 IR corrected, P-Iris Remote focus and zoom 96° - 50°
Day and night	Automatic	Automatic
Min illumination / (lux)	9 mm: Color: 0.07 lux at 50 IRE, F1.3; B/W: 0.01 lux at 50 IRE, F1.3 22 mm: Color: 0.11 lux at 50 IRE, F1.6; B/W: 0.02 lux at 50 IRE, F1.6	WDR and Lightfinder: 0.12 (Color) 0.02 (B/W) 0 lux with IR
Video compression (Zipstream / H.264 / H.265)	✓ / ✓ / -	✓ / ✓ / -
Max video resolution (pixels)	1920x1080 (2MP)	3072x1728 (5MP)
Frames per second	50/60 fps (1920x1080)with WDR 100/120fps without WDR	30 (5 MP) 60 (4 MP) (no WDR)
Audio support	Two-way	Two-way
Alarm in- / outputs	2 / 2	2 / 2
Analytics *	AXIS Video Motion Detection audio detection tampering alarm AXIS Guard Suite	AXIS Video Motion Detection audio detection tampering alarm AXIS Guard Suite
Technology	Zipstream, Lightfinder, Forensic WDR, electronic image stabilization, OptimizedIR, ONVIF, corridor format	Zipstream, Lightfinder, Forensic WDR, electronic image stabilization, OptimizedIR, ONVIF, corridor format
Power	Type 1 Class 3, typical 5.6 W, max 12.5 W	Type 1 Class 3, typical 6.5W, max 12.9W
Outdoor use	✓ ^(b)	✓
Other	Vandal resistant, IP52 and IK10, OptimizedIR (130 ft range), IP66 IP67 and NEMA 4x ratings ^(b) memory card slot Digital PTZ, Optical zoom, Preset positions 9 mm: 3x Optical zoom, 2x Digital zoom 22 mm: 2.4x Optical zoom, 2x Digital zoom	IP52-, IK10+, Support for memory card
Axis part #	9 mm: 01039-001 ^(a) , 9 mm: 01041-001 ^(b) 22 mm: 01044-001 ^(a) , 22 mm: 01046-001 ^(b)	01021-001 ^(a) , 01022-001 ^(b) , 01237-001 ^(c)

* For a complete list of supported analytics and third party applications see axis.com/acap

* Security features for all cameras include: password protection, IP Address filtering, HTTPS encryption, IEEE 802.1X network access control, digest authentication, user access log, centralized certificate management

AXIS Q35 Series

AXIS Q3518-LVE
AXIS Q3527-LVE



AXIS Q36 Series

AXIS Q3615-VE
AXIS Q3617-VE



AXIS Q92 Series

AXIS Q9216-SLV



Image sensor	
Lens / Field of view	
Day and night	
Min illumination / (lux)	
Video compression (Zipstream / H.264 / H.265)	
Max video resolution (pixels)	
Frames per second	
Audio support	
Alarm in- / outputs	
Analytics *	
Technology	
Power	
Outdoor use	
Other	
Axis part #	

AXIS Q35 Series	
AXIS Q3518-LVE	AXIS Q3527-LVE
1/1.7" progressive scan RGB CMOS	1/1.8" progressive scan CMOS
Varifocal 4.3-8.6mm/F1.5 IR-corrected, P-Iris Remote focus and zoom 93°- 48°	Varifocal 4.2-8.6 mm/F1.5 Remote focus and zoom P-iris, IR-corrected 96°- 50°
Automatic	Automatic
0.15 (color) 0.03 (B/W)	0.12 (color) 0.02 (b/w)
✓ ✓ -	✓ ✓ -
3840x2160 (4K)	3072x2048(5 MP)
30 fps	25 to 30 fps (5 MP w/ WDR) 50/60 fps (4 MP w/out WDR)
Two-way	-
2 / 2	-
AXIS Video Motion Detection, audio detection, tampering alarm, AXIS Guard Suite	AXIS Video Motion Detection, audio detection, tampering alarm, AXIS Guard Suite
WDR Forensic Capture, Zipstream, corridor format, Lightfinder, Electric Image Stabilization, ONVIF	WDR Forensic Capture, Zipstream, corridor format, Lightfinder, Electric Image Stabilization, ONVIF
PoE Type 1 Class 3 Typical 7.1 W, max 12.6 W	PoE Type 1 Class 3 typical 6.5 W, max 12.9 W
✓	✓
IP66-, IP67-, IP6K9K- and NEMA 4X-rated, IK10+ vandal resistant, Support for memory card	Vandal resistant, IP66-, IP67-, IP6K9K- and NEMA 4X-rated, IK10+ vandal resistant
01493-001	01565-001

AXIS Q36 Series	
AXIS Q3615-VE	AXIS Q3617-VE
1/1.9 progressive scan CMOS	1/1.8 progressive scan CMOS
Varifocal 4.1 - 9 mm/F1.6 P-Iris, Remote focus and zoom 100°- 46°	Varifocal 4.1 - 9 mm/F1.6 P-Iris, Remote focus and zoom, 6 MP mode: 101°- 46° 4 MP 16:9 mode: 90°- 41°
Automatic	Automatic
Color: 0.1 lux at 50 IRE, F1.6; B/W: 0.02 lux at 50 IRE, F1.6	0.18 (color) 0.03 (B/W)
✓ ✓ -	✓ ✓ -
1920x1200(2.3 MP)	3072x2048(4 MP)
25/30 (HDTV 1080p) (WDR) 50/60 (HDTV 1080p) (no WDR)	25/30 (4MP 2720X1536) (WDR) 20 (6MP 3072X2048) (no WDR)
-	-
-	-
AXIS Video Motion Detection, tampering alarm, AXIS Guard Suite	AXIS Video Motion Detection, AXIS Fence Guard, AXIS Motion Guard, active tampering alarm
WDR Forensic Capture, Zipstream, ONVIF, Lightfinder, PTRZ	Zipstream, ONVIF, Forensic WDR, Lightfinder, PTRZ
PoE Type 1 Class 3 Typical 4.5 W, max 10.4 W	PoE Type 1 Class 3 Typical 6.1 W, max 11.4 W
✓	✓
IP66/67 and NEMA 4X rated, IK10 vandal resistant, memory card slot	IP66/67 and NEMA 4X rated, IK10 vandal resistant, memory card slot
0743-001	0744-001

AXIS Q92 Series
AXIS Q9216-SLV
1/2.5" progressive scan RGB CMOS
2.4 mm, F2.0 Fixed focus, fixed iris, M12 mount 125°
Automatic
0.23(color) 0.05(B/W)
✓ ✓ ✓
2304 x 1728 (4MP)
30/25 fps
Two-way
1 / 1
AXIS Video Motion Detection, active tampering alarm
Zipstream, corridor format, WDR, OptimizedIR, ONVIF
PoE Type 1 Class 3 typical 4.7W, Max 10.8W
✓
IP66-, IP69-, IP6K9K- and NEMA 4X-rated IK10+ vandal resistant memory card slot Anti-ligature and anti- grip stainless steel, IR illumination 15 m (49 ft)
Steel 01766-001 White: 01767-001

* For a complete list of supported analytics and third party applications see axis.com/acap

* Security features for all cameras include: password protection, IP Address filtering, HTTPS encryption, IEEE 802.1X network access control, digest authentication, user access log, centralized certificate management



AXIS M50 Series

AXIS M5054
 AXIS M5065
 AXIS M5525-E



Image sensor
Lens / Field of view
Day and night
Min illumination / (lux)
Video compression (Zipstream / H.264 / H.265)
Max video resolution (pixels)
Frames per second
Pan/Tilt/Zoom
Audio support
Alarm in- / outputs
Analytics *
Technology
Power
Outdoor use
Other
Axis part #

AXIS M50 Series		
AXIS M5054	AXIS M5065	AXIS M5525-E
1/4.85" progressive scan RGB CMOS	1/4.85" progressive scan CMOS	1/2.8" Progressive Scan CMOS
Varifocal 2.2-11.0 mm, F1.4-F2.5 14°-71°	2.2 - 11.0 mm/F1.4 - 2.5	4.7 - 47 mm/F1.6 - 2.8
-	-	Automatic
Color: 0.9 lux @ 30 IRE F1.4	1.2 lux at 30 IRE F1.4	0.55 (Color) 0.01 (B/W)
✓ / ✓ / -	✓ / ✓ / -	✓ / ✓ / -
1280 x 720 (1MP)	1920 x 1080 (2 MP)	1920 x 1080 (2 MP)
25/30 fps	Up to 25/30 fps	Up to 25/30 fps
25 Presets Pan: ±179° Tilt: 0-90° Zoom: 5x optical, 10x digital	25 Presets, Pan: ±179°, 100° Tilt: 90°, 100° Zoom: 5x optical, 10x digital	100 presets 360° endless pan, 90° tilt Nadir flip, Limited Guard tour, Control queue, On-screen directional indicator
One-Way Built-in mic	One-Way Built-in mic	Two-Way
-	-	4 / 4
AXIS Video Motion Detection, audio volume detection, scream detection, removed object detection	AXIS Video Motion Detection, tampering alarm, Scream detection, Removed object detection	AXIS Video Motion Detection, audio detection, advanced gatekeeper
Zipstream Technology	Zipstream Technology, WDR-Forensic Capture	Zipstream, Forensic WDR, ONVIF,
PoE Type 1 Class 3 Typical 4.6 W, max 7.8 W	PoE Class 3 Typical 4.8 W, max 8.0 W	PoE Type 1 Class 3 Typical 6.6 W, max 12.95 W (Midspan not supplied)
-	-	✓
IP51 rating, Memory card slot	IP51 rating, Memory card slot, Z-Wave Technology	IP66-, NEMA 4X- and IK09-rated
01079-001	01107-004	01146-001

AXIS P54 Series	
AXIS P5414-E	AXIS P5415-E
1/2.8" progressive scan CMOS	1/2.8" progressive scan CMOS
4.7 - 84.6 mm/F1.6 - 2.8 auto iris and autofocus 18x optical zoom 12x digital zoom	4.7 - 84.6 mm/F1.6 - 2.8 auto iris and autofocus 18x optical zoom 12x digital zoom
Automatic	Automatic
0.4 (color) 0.04 (B/W)	0.5 (color) 0.04 (B/W)
✓ / ✓ / -	✓ / ✓ / -
1280 x 720 (1MP)	1920 x 1080 (2 MP)
Up to 30/25 fps	Up to 30/25 fps
100 presets ± 135° pan 0° - 90° tilt Limited guard tour	100 presets ± 135° pan 0° - 90° tilt Limited guard tour
Two-Way	Two-Way
4 / 4	4 / 4
AXIS Video Motion Detection, audio detection, advanced gatekeeper	AXIS Video Motion Detection, audio detection, advanced gatekeeper
ONVIF, WDR Forensic Capture	ONVIF, WDR Forensic Capture,
DC PoE+ IEEE 802.3at (Midspan not supplied)	DC PoE+ IEEE 802.3at (Midspan not supplied)
✓	✓
IP66- and NEMA 4X-rated, IK07 impact-resistance	IP66- NEMA 4X-and IK07 rated
0588-001	0589-001

AXIS P54 Series

AXIS P5414-E
 AXIS P5415-E



* For a complete list of supported analytics and third party applications see axis.com/acap
 * Security features for all cameras include: password protection, IP Address filtering, HTTPS encryption, IEEE 802.1X network access control, digest authentication, user access log, centralized certificate management

AXIS P56 Series

AXIS P5654-E



AXIS P5655-E



AXIS Q60 Series

AXIS Q6074



AXIS Q6074-E



Image sensor
Lens / Field of view
Day and night
Min illumination / (lux)
Video compression (Zipstream / H.264 / H.265)
Max video resolution (pixels)
Frames per second
Pan/Tilt/Zoom
Audio support
Alarm in- / outputs
Analytics *
Technology
Power
Outdoor use
Other
Axis part #

AXIS P56 Series	
AXIS P5654-E	AXIS P5655-E
1/2.8" progressive scan RGB CMOS	1/2.8" progressive scan CMOS
Varifocal 4.0-84.6mm, F1.6-4.5 Horizontal Field of view: 77.0°-3.6° 21x optical zoom and 12x digital	4.3 - 137.6mm/F1.4 - 4.0 auto iris and autofocus 32x optical zoom 12x digital zoom, focus recall
Automatic	Automatic
0.1 (Color) 0.03 (B/W)	0.1 (Color) 0.02(B/W)
✓ ✓ ✓	✓ ✓ ✓
1280 x 720 (1MP)	1920 x 1080 (2 MP)
Up to 60/50 fps	Up to 60/50 fps
256 Preset Positions, 360° endless pan, 180° tilt, e-flip, Guard Tour	256 Presets, Pan: 360° endless, 0.1°- 350° Tilt: 180°, 0.1°- 350° Zoom: 32x optical, 12x digital
-	Two-Way
-	4/4
AXIS Video Motion Detection, advanced gatekeeper	AXIS Video Motion Detection, audio detection, advanced gatekeeper
Lightfinder 2.0, electronic image stabilization, Zipstream, Forensic WDR	Forensic WDR, Lightfinder 2.0, Electronic Image Stabilizer
PoE+ midspan 1-port: 100-240 V AC, max 37 W Type 2 Class 4	PoE+ IEEE 802.3at, Type 2 Class 4 : typical 10,5 W, max 19 W
✓	✓
IP66-, NEMA 4X- and IK10, Aluminum casing, polycarbonate (PC) dome	IP66-, NEMA 4X- and IK10-rated
01759-001	01682-001

AXIS Q60 Series	
AXIS Q6074	AXIS Q6074-E
1/2.8" progressive scan CMOS	1/2.8" progressive scan RGB CMOS
4.25 - 127.5 mm/F1.6 - 4.2 auto iris and autofocus 30x optical zoom 12x digital zoom, focus recall	4.25 - 127.5 mm/F1.6 - 4.2 auto iris and autofocus 30x optical zoom 12x digital zoom, focus recall
Automatic	Automatic
0.1 (color) 0.002 (B/W)	0.1 (color) 0.002 (B/W)
✓ ✓ ✓	✓ ✓ ✓
1280 x 720 (1MP)	1280 x 720 (1MP)
50/60	Up to 50/60 fps
256 Preset Positions, 360° endless pan, 180° tilt, e-flip, Guard Tour	256 presets, 360° endless pan, 220° tilt, E-Flip, Guard tour, Tour recording
Two-Way	-
4 / 4	-
AXIS Video Motion Detection, AXIS Guard Suite, autotracking, active gatekeeper, audio detection, AXIS Object Analytics	AXIS Video Motion Detection, AXIS Guard Suite, autotracking, active gatekeeper, AXIS Object Analytics
Lightfinder 2.0, Zipstream Technology, Electronic Image Stabilizer, ONVIF, WDR	Lightfinder 2.0, Zipstream Technology, Electronic Image Stabilizer, ONVIF, WDR
Axis PoE+ midspan 1-port: 100-240 V AC, max 22.4 W IEEE 802.3at Type 2 Class 4	PoE+ Class 4 High PoE (Midspan supplied)
✓	✓
IP52-rated, Support for SD/SDHC/SDXC card	IP66-, IP67-, NEMA 4X- and IK10-rated Metal casing (aluminum)
01968-004	01974-004

* For a complete list of supported analytics and third party applications see axis.com/acap

* Security features for all cameras include: password protection, IP Address filtering, HTTPS encryption, IEEE 802.1X network access control, digest authentication, user access log, centralized certificate management



Pan/Tilt/Zoom cameras

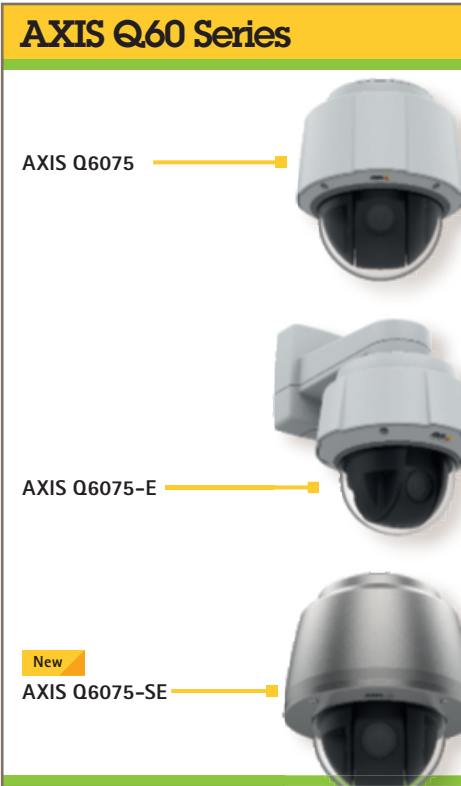
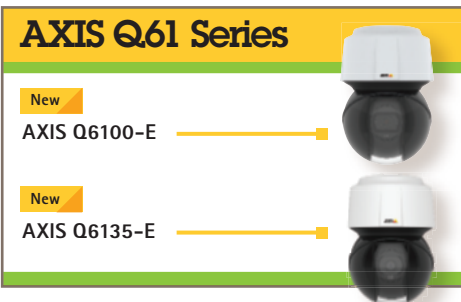


Image sensor
Lens / Field of view
Day and night
Min illumination / (lux)
Video compression (Zipstream / H.264 / H.265)
Max video resolution (pixels)
Frames per second
Pan/Tilt/Zoom
Audio support
Alarm in- / outputs
Analytics *
Technology
Power
Outdoor use
Other
Axis part #

AXIS Q60 Series		
AXIS Q6075	AXIS Q6075-E	AXIS Q6075-SE
1/2.8" progressive scan CMOS	1/2.8" progressive scan CMOS	1/2.8" progressive scan CMOS
4.25-170 mm/F1.6-4.95 autofocus, auto-iris, 40X optical 12X digital	4.25-170 mm/F1.6-4.95 autofocus, auto-iris, 40X optical 12X digital	4.25-170 mm, F1.6-4.95 Horizontal field of view: 65.1°-2.00° (1080p), autofocus, auto-iris
Automatic	Automatic	Automatic
0.1 (color) 0.02 (B/W)	0.1 (color) 0.02 (B/W)	0.1 (Color) 0.002 (B/W)
✓ / ✓ / -	✓ / ✓ / -	✓ / ✓ / ✓
1920x1080 (2 MP)	1920x1080 (2 MP)	1920x1080 (2 MP)
50/60	50/60	50/60
256 presets, 360° endless pan, 220° tilt, E-Flip, Guard tour, Tour recording	256 presets, 360° endless pan, 220° tilt, E-Flip, Guard tour, Tour recording	256 presets, 360° endless pan, 220° tilt, E-Flip, Guard tour, Tour recording
Two-Way	-	-
-	-	-
AXIS Video Motion Detection, AXIS Guard Suite, gatekeeper, audio detection, supports ACAP, AXIS Object Analytics	AXIS Video Motion Detection, AXIS Guard Suite, autotracking, active gatekeeper, AXIS Object Analytics	AXIS Object Analytics, AXIS Video Motion Detection, AXIS Guard Suite, autotracking, active gatekeeper, AXIS Object Analytics
Lightfinder 2.0, ONVIF, Zipstream technology, Electronic Image stabilizer	Lightfinder 2.0, ONVIF, Zipstream technology, Electronic Image stabilizer	Lightfinder 2.0, Zipstream technology, WDR, ONVIF, Electronic Image stabilizer
Axis PoE+ midspan 1-port: 100-240 V AC, max 22.4 W IEEE 802.3at Type 2 Class 4	Axis High PoE 60 W SFP midspan: 100-240 V AC	24 V DC +/- 0.5 V, min 3.2 A (75 W)
✓	✓	✓
IP52-Rated, Metal Casing (Aluminum), Acrylic (PMMA) clear dome	IP66-, IP67-, NEMA 4X- and IK10-Rated	IP6K9K-, IP66-, IP67, NEMA 4X-, NEMA 6P and IK10-rated, Stainless steel casing
01750-004	01752-004	02239-001

AXIS Q61 Series	
AXIS Q6100-E	AXIS Q6135-LE
1/2.5" progressive scan RGB CMOS	1/2.8" progressive scan CMOS
2.8 mm/F2.0, autofocus, fixed iris, Horizontal field of view: 360	4.3 - 137.6 mm/F1.4 - 4.0 autofocus, auto-iris Horizontal field of view: 58.3° - 2.4°, 32x optical
Automatic	Automatic
0.4 (Color) 0.03 (B/W)	0.06 (color) 0.008 (B/W)
✓ / ✓ / ✓	✓ / ✓ / ✓
2592x1944	1920x1080 (2 MP)
20	60
One-click PTZ	256 presets, 360° endless pan, +20 to -90° tilt, Guard tour, Tour recording
-	-
-	-
AXIS Video Motion Detection, AXIS Guard Suite, active tampering alarm, edge storage events	AXIS Object Analytics, AXIS Video Motion Detection, Autotracking 2, Axis Fence Guard, Axis Motion Guard, active gatekeeper
Zipstream	Sharpdome, Electronic, Image Stabilizer, Lightfinder, WDR-Forensic Capture, ONVIF, OptimizedIR
Power consumption without PTZ - PoE typical 9W, max 23W	High PoE PoE+ IEEE 802.3at Class 4 (Midspan supplied)
✓	✓
IP66-, NEMA 4X- and IK10-rated polycarbonate aluminum casing	IK08, IP66 and NEMA 4X ratings
01711-001	01959-004



* For a complete list of supported analytics and third party applications see axis.com/acap
 * Security features for all cameras include: password protection, IP Address filtering, HTTPS encryption, IEEE 802.1X network access control, digest authentication, user access log, centralized certificate management

AXIS Q61 Series

AXIS Q6128-E



AXIS Q6154-E



AXIS Q6155-E

AXIS Q62 Series

AXIS Q6215-LE



Image sensor
Lens / Field of view
Day and night
Min illumination / (lux)
Video compression (Zipstream / H.264 / H.265)
Max video resolution (pixels)
Frames per second
Pan/Tilt/Zoom
Audio support
Alarm in- / outputs
Analytics *
Technology
Power
Outdoor use
Other
Axis part #

AXIS Q61 Series		
AXIS Q6128-E	AXIS Q6154-E	AXIS Q6155-E
1/2.3" progressive scan CMOS	1/2.8" Progressive scan CMOS	1/2.8" Progressive scan CMOS
3.9 - 46.8 mm/F1.8 auto iris and autofocus 12x optical zoom 12x digital zoom	4.3 - 129 mm/F1.6 - 4.7 auto iris and Laser focus 30x optical zoom 12x digital zoom	4.3 - 129mm/F1.6 -4.7 auto iris and Laser focus 30x optical zoom 12x digital zoom
Automatic	Automatic	Automatic
0.45 (color) 0.03 (B/W)	0.15 (color) 0.01 (B/W)	0.15 (color) 0.01 (B/W)
✓ / ✓ / -	✓ / ✓ / -	✓ / ✓ / -
3840x2160 (8.3MP) 4K Ultra HD	1280x720 (1MP)	1920x1080 (2 MP)
30 (4K 3840x2160) 60 (HDTV 1080p)	60 fps (720p) (1MP)	30 fps (1080p) 60 fps (720p)
256 presets, 360° endless pan,+20 to -90° tilt, Guard tour, Tour recording	256 presets, 360° endless pan,+20 to -90° tilt, Guard tour, Tour recording	256 presets, 360° endless pan,+20 to -90° tilt, Guard tour, Tour recording
-	-	-
-	-	-
AXIS Video Motion Detection, Autotracking, Active Gatekeeper, tampering alarm, Shock detection, Highlight compensation,	AXIS Video Motion Detection, Autotracking, Shock detection, Axis Fence Guard, Axis Motion Guard, supports ACAP	AXIS Video Motion Detection, Autotracking, Shock detection, supports ACAP, Axis Fence Guard, Axis Motion Guard
Sharpdome, Electronic Image Stabilizer, ONVIF	Sharpdome, Electronic Image Stabilizer, Lightfinder technology, WDR-Forensic Capture, ONVIF	Sharpdome, Electronic Image Stabilizer, Lightfinder technology, WDR-Forensic Capture, ONVIF
High PoE PoE+ IEEE 802.3at Class 4 (Midspan supplied)	High PoE PoE+ IEEE 802.3at Class 4 (Midspan supplied)	High PoE PoE+ IEEE 802.3at Class 4 (Midspan supplied)
✓	✓	✓
IK08, IP66 and NEMA 4X ratings	IK08, IP66 and NEMA 4X ratings	IK08, IP66 and NEMA 4X ratings, IR illumination (250ft)
0799-004	01511-004	0934-004

AXIS Q62 Series
AXIS Q6215-LE
1/1.9" progressive scan CMOS
Varifocal 6.7-201mm/F1.6-5.3 Autofocus 30x optical zoom 12x digital zoom
Automatic
0.07 (Color) 0.008 (B/W)
✓ / ✓ / -
1920x1080 (2 MP)
Up to 50/60 fps in all resolutions
256 presets, 360° endless pan, -90 to +90 tilt, 30x optical zoom, 21x digital zoom, tour recording, guard tour, control queue
-
-
AXIS Video Motion Detection, AXIS Guard Suite, active tampering alarm, supports ACAP
Lightfinder, WDR, OptimizedIR, electronic image stabilization, ONVIF
High PoE 1 midspan-port: 100-240 V AC
✓
IP66, IP68, NEMA 4X and IK10 ratings, IR Illuminatin (1,300ft)
01442-004

* For a complete list of supported analytics and third party applications see axis.com/acap

* Security features for all cameras include: password protection, IP Address filtering, HTTPS encryption, IEEE 802.1X network access control, digest authentication, user access log, centralized certificate management



AXIS Q86 Series

AXIS Q8641-E

AXIS Q8642-E



AXIS Q8685-E

AXIS Q8685-LE



Image sensor
Lens / Field of view
Day and night
Min illumination / (lux)
Video compression (Zipstream / H.264 / H.265)
Max video resolution (pixels)
Frames per second
Pan/Tilt/Zoom
Audio support
Alarm in- / outputs
Analytics *
Technology
Power
Outdoor use
Other
Axis part #

AXIS Q86 Series - Axis positioning cameras			
AXIS Q8641-E	AXIS Q8642-E	AXIS Q8685-E	AXIS Q8685-LE
Uncooled Micro bolometer	Uncooled Micro bolometer	1/2.8" progressive scan CMOS	1/2.8" progressive scan CMOS
35 mm/F1.2	60 mm/F1.25	4.3-129 mm, F1.6-4.7 mm auto iris and autofocus 30x optical zoom 12x digital zoom	4.3-129 mm, F1.6-4.7 mm auto iris and autofocus 30x optical zoom 12x digital zoom
-	-	Automatic	Automatic
-	-	0.2 (Color) 0.01 (B/W)	0.2 (Color) 0.01 (B/W)
✓ / ✓ / -	✓ / ✓ / -	✓ / ✓ / -	✓ / ✓ / -
384x288	640x480	1920x1080 (2 MP)	1920x1080 (2 MP)
Up to 8.3 fps and 30 fps	Up to 8.3 fps and 30 fps	30 (HDTV 1080p) 60 (HDTV 720p)	30 (HDTV 1080p) 60 (HDTV 720p)
360° endless pan, 90° to -40° tilt, Guard tour	360° endless pan, 90° to -45° tilt, Guard tour	360° endless pan, 90° to -45° tilt Guard tour	360° endless pan, 90° to -45° tilt Guard tour
-	-	-	-
4 / 4	4 / 4	4 / 4	4 / 4
AXIS Video Motion Detection, Shock detection, supports ACAP	AXIS Video Motion Detection, Shock detection, supports ACAP	AXIS Video Motion Detection, tampering alarm, supports ACAP	AXIS Video Motion Detection, tampering alarm, supports ACAP
electronic image stabilization, Zipstream technology, ONVIF	electronic image stabilization, Zipstream technology, ONVIF	WDR Forensic Capture, electronic image stabilization, Zipstream technology, ONVIF	WDR Forensic Capture, electronic image stabilization, Zipstream technology, ONVIF
24 V AC/DC Typical 16 W, max 182 W	24 V AC/DC Typical 16 W, max 182 W	20-28 V AC/DC Typical: 16 W Max: 204 W	20-28 V AC/DC Typical: 16 W (without illumination), 64 W (with illumination) Max: 204 W (without illumination), 300 W (with illumination)
✓	✓	✓	✓
IP66 and NEMA 4X rating, High speed precision PT-head, memory card, palette setting, SFP slot,	IP66 and NEMA 4X rating, High speed precision PT-head, memory card, palette setting, , SFP slot	IP66 and NEMA 4X ratings, Wiper included, , SFP slot	IP66 and NEMA 4X ratings, Wiper included, , SFP slot,
01119-001	01121-001	0862-001	0864-001

* For a complete list of supported analytics and third party applications see axis.com/acap

* Security features for all cameras include: password protection, IP Address filtering, HTTPS encryption, IEEE 802.1X network access control, digest authentication, user access log, centralized certificate management

AXIS Q87 Series

New

AXIS Q8752-E



Image sensor	Visual: 4.3–137.6 mm 32x optical zoom and 12x digital zoom Thermal: Athermalized 35–105 mm
Lens / Field of view	Visual: 4.3–129 mm 30x optical zoom and 12x digital zoom Thermal: Athermalized 35 mm
Day and night	Automatic
Min illumination / (lux)	0.09 (Color) 0.008 (B/W)
Video compression (Zipstream / H.264 / H.265)	✓ / ✓ / -
Max video resolution (pixels)	Visual: 1920x1080 Thermal: 640x480
Frames per second	Visual: Up to 50/60 fps (50/60Hz) Thermal: Up to 8.3 fps and 30 fps
Pan/Tilt/Zoom	Pan: 360°endless Tilt: -90° to +45°
Audio support	Audio in
Alarm in- / outputs	4 / 4
Analytics *	AXIS Guard Suite, AXIS Video Motion Detection, Orientation AID PTZ, audio detection, advanced gatekeeper
Technology	Zipstream, Forensic WDR, Lightfinder 2.0, Dual Electronic Image Stabilization
Power	20–28 V AC/DC, typical 16 W, max 204W
Outdoor use	✓
Other	IP66-, NEMA 4X- and IK10- rated, High speed precision PT-head, memory card, SFP slot
Axis part #	01841-001

AXIS Q87 Series - Axis positioning cameras

AXIS Q8752-E

Visual: 4.3–137.6 mm 32x optical zoom and 12x digital zoom
Thermal: Athermalized 35–105 mm

Visual: 4.3–129 mm 30x optical zoom and 12x digital zoom
Thermal: Athermalized 35 mm

Automatic

0.09 (Color) 0.008 (B/W)

✓ / ✓ / -

Visual: 1920x1080
Thermal: 640x480

Visual: Up to 50/60 fps (50/60Hz)
Thermal: Up to 8.3 fps and 30 fps

Pan: 360°endless
Tilt: -90° to +45°

Audio in

4 / 4

AXIS Guard Suite,
AXIS Video Motion Detection,
Orientation AID PTZ,
audio detection,
advanced gatekeeper

Zipstream,
Forensic WDR,
Lightfinder 2.0,
Dual Electronic Image Stabilization

20–28 V AC/DC, typical 16 W, max 204W

✓

IP66-,
NEMA 4X- and IK10- rated,
High speed precision PT-head,
memory card, SFP slot

01841-001

AXIS V59 Series

AXIS V5925

1/2.8" progressive scan CMOS

4.4 – 132 mm/F1.4–4.6
autofocus, P-iris control,
30x optical, 12x digital zoom

Automatic

1.0 (Color) 0.03 (B/W)

✓ / ✓ / ✓

1920x1080
(2 MP)

60/50 fps (60/50 Hz)

Pan: ±170°, 0.2–100°/s
Tilt: -20° - 90°, 0.2–90°/s
Zoom: 30x Optical, 12x Digital, Total 360x

Two-Way

2 / 2

AXIS Video Motion Detection,
AXIS PTZ Autotracking,
supports ACAP

ONVIF

DC (Power Supply Included)

-

SDI and HDMI Type A 1080p output, XLR-3
(left + right) microphone/line input,
memory card slot,
48KHz CD Quality Audio,

01966-004

AXIS V59 Series

New

AXIS V5925



* For a complete list of supported analytics and third party applications see axis.com/acap

* Security features for all cameras include: password protection, IP Address filtering, HTTPS encryption, IEEE 802.1X network access control, digest authentication, user access log, centralized certificate management



AXIS F Series

New

AXIS FA1080-E Thermal Sensor Unit



AXIS P12 Series

New

AXIS P1280-E



AXIS Q19 Series

AXIS Q1941-E



AXIS Q1941-E PT Mount

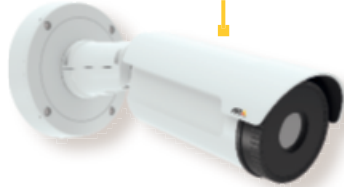


	AXIS F Series	AXIS P12 Series	AXIS Q19 Series	
Image sensor	FA1080-E Uncooled Micro bolometer	AXIS P1280-E Uncooled Micro bolometer	AXIS Q1941-E Uncooled Micro bolometer	AXIS Q1941-E PT Mount Uncooled Micro bolometer
Lens / Field of view	2.2mm, F1.05 / 63 degrees 4 mm, F1.2 / 35.4 degrees	2.2mm, F1.05 / 63 degrees 4 mm, F1.2 / 35.4 degrees	7 mm/F1.2; 55° 13 mm/F1.0; 28° 19 mm/F1.23; 19.4° 35 mm/F1.2; 10.7° 60 mm/F1.25; 6.2°	7 mm/F1.2; 55° 13 mm/F1.0; 28° 19 mm/F1.23; 19.4° 35 mm/F1.2; 10.7° 60 mm/F1.25; 6.2°
Detection range (m/yd.)	2.2 mm: 101/110 ^(c) 309/337 ^(d) 4 mm: 166/182 ^(c) 511/599 ^(d)	2.2 mm: 101/110 ^(c) 309/337 ^(d) 4 mm: 166/182 ^(c) 511/599 ^(d)	7 mm: 200/219 ^(c) 613/671 ^(d) 13 mm: 393/430 ^(c) 1205/1318 ^(d) 19 mm: 567/620 ^(c) 1739/1902 ^(d) 35 mm: 1028/1124 ^(c) 3153/3448 ^(d) 60 mm: 1774/1940 ^(c) 5441/5951 ^(d)	7 mm: 200/219 ^(c) 613/671 ^(d) 13 mm: 393/430 ^(c) 1205/1318 ^(d) 19 mm: 567/620 ^(c) 1739/1902 ^(d) 35 mm: 1028/1124 ^(c) 3153/3448 ^(d) 60 mm: 1774/1940 ^(c) 5441/5951 ^(d)
Sensitivity	NETD < 100 mK	NETD < 100 mK	NETD < 70 mK	NETD < 70mK
Video compression (Zipstream / H.264 / H.265)	-	✓ / ✓ / -	✓ / ✓ / -	✓ / ✓ / -
Max video resolution (pixels)	-	208 x 156	384/288	384/288
Frames per second	8.3 fps	8.3 fps	8.3 fps	8.3 fps
Audio support	-	-	Two-way, full duplex	-
Alarm in- / outputs	-	-	2 / 2	-
Analytics *	-	AXIS Guard Suite, AXIS Video Motion Detection	AXIS Video Motion Detection, AXIS Guard Suite, audio detection, active tampering alarm	AXIS Video Motion Detection, AXIS Guard Suite, Shock Detection
Technology	-	Zipstream, Corridor Format	electronic image stabilization, Zipstream, Thermal Imaging, ONVIF, corridor format	electronic image stabilization, Zipstream, Thermal Imaging, ONVIF
Power	-	Type 1 Class 2 max 4.0 W , typical 2.5 W	PoE Type 1 Class 3, max 11.8W, typical 4.8W	PoE Type 1 Class 3, max 11.8W, typical 4.8W
Outdoor use	✓	✓	✓	✓
Other	Required hardware: FA54 Main Unit (sold separately)	IP66, IP67 and NEMA 4x ratings, palette setting	IP66, IP67 and NEMA 4X-rated Memory Card Slot 512 MB RAM, 256 MB Flash	IP66, IP67 and NEMA 4X-rated Memory Card Slot 512 MB RAM, 256 MB Flash
Axis part #	2.2 mm: 02089-001 4 mm: 01728-001	2.2 mm: 02114-001 4 mm: 0940-001	7 mm: 0786-001 13 mm: 0787-001 19 mm: 0877-001 35 mm: 0788-001 60 mm: 0789-001	7 mm 0973-001 13 mm 0974-001 19 mm: 0979-001 35 mm: 0975-001 60 mm: 0977-001

* For a complete list of supported analytics and third party applications see axis.com/acap
 * Security features for all cameras include: password protection, IP Address filtering, HTTPS encryption, IEEE 802.1X network access control, digest authentication, user access log, centralized certificate management
 *(c) and (d) refer to detection range measured for (c) humans 1.8 m x 0.5 m and (d) vehicles 2.3 x 2.3 m, calculated with Johnson's criteria

AXIS Q19 Series

AXIS Q1942-E



AXIS Q1942-E PT Mount



AXIS Q29 Series

AXIS Q2901-E^(a)

AXIS Q2901-E PT^(b)

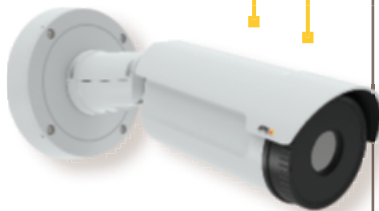


Image sensor
Lens / Field of view
Day and night
Min illumination / (lux)
Video compression (Zipstream / H.264 / H.265)
Max video resolution (pixels)
Frames per second
Audio support
Alarm in- / outputs
Analytics *
Technology
Power
Outdoor use
Other
Axis part #

AXIS Q19 Series	
AXIS Q1942-E	AXIS Q1942-E PT Mount
Uncooled Micro bolometer	Uncooled Micro bolometer
10 mm/ F1.25; 63° 19 mm/F1.23; 32° 35 mm/F1.20; 17° 60 mm/F1.25; 10°	10 mm/ F1.25; 63° 19 mm/F1.23; 32° 35 mm/F1.20; 17° 60 mm/F1.25; 10°
10 mm: 291/318 ^(c) 892/978 ^(d) 19 mm: 573/627 ^(c) 1757/1921 ^(d) 35 mm: 1079/1179 ^(c) 3307/3617 ^(d) 60 mm: 1833/2005 ^(c) 5623/6149 ^(d)	10 mm: 291/318 ^(c) 892/978 ^(d) 19 mm: 573/627 ^(c) 1757/1921 ^(d) 35 mm: 1079/1179 ^(c) 3307/3617 ^(d) 60 mm: 1833/2005 ^(c) 5623/6149 ^(d)
NETD < 50mK	NETD < 50mK
✓ / ✓ / -	✓ / ✓ / -
640x480	640x480
8.3fps	8.3fps
Two-way, full duplex	-
2 / 2	-
AXIS Video Motion Detection, AXIS Guard Suite, audio detection, active tampering alarm	AXIS Video Motion Detection, AXIS Guard Suite, Shock Detection
electronic image stabilization, Zipstream, Thermal Imaging, ONVIF, corridor format	electronic image stabilization, Zipstream, Thermal Imaging, ONVIF
PoE Type 1 Class 3, max 11.8W, typical 4.8W	PoE Type 1 Class 3, max 11.8W, typical 4.8W
✓	✓
IP66, IP67 and NEMA 4X-rated Memory Card Slot 512 MB RAM, 256 MB Flash	IP66, IP67 and NEMA 4X-rated Memory Card Slot 512 MB RAM, 256 MB Flash
10 mm: 0916-001 19 mm: 0918-001 35 mm: 0920-001 60 mm: 0922-001	10 mm: 0981-001 19 mm: 0983-001 35 mm: 0985-001 60 mm: 0987-001

AXIS Q29 Series
AXIS Q2901-E ^(a) AXIS Q2901-E PT ^(b)
Uncooled Micro bolometer
9 mm/F1.25 35degrees 19 mm/F1.25 17degrees
Thermography:(3) -40°C (-40°F) to 550°C (1022 °F)
NETD < 50mK
- / ✓ / -
336x256
8.3fps
Two-way ^(a)
2 / 2 ^(a)
AXIS Video Motion Detection, active tampering alarm, supports ACAP
corridor format ^(a) Isothermal Palette ONVIF
PoE Type 1 Class 3, max 11.8W, typical 4.8W
✓
IP66-, IP67- and NEMA 4X-rated Memory card slot 256 MB RAM, 128 MB Flash
9 mm: 0645-001 ^(a) 9mm:0646-001 ^(b) 19 mm: 0647-001 ^(a) 19mm: 0648-001 ^(b)


* For a complete list of supported analytics and third party applications see axis.com/acap

* Security features for all cameras include: password protection, IP Address filtering, HTTPS encryption, IEEE 802.1X network access control, digest authentication, user access log, centralized certificate management

^(c) and ^(d) refer to detection range measured for (c) humans 1.8 m x 0.5 m and (d) vehicles 2.3 x 2.3 m, calculated with Johnson's criteria



Temperature alarm



XF60-Q2901


XF40-Q2901

Thermal positioning



XP40-Q1942

Visual positioning



XP40-Q1765

New

XP40-Q1785

Visual PTZ



D201-S XPT Q6055

	Temperature alarm		Thermal positioning	Visual positioning		Visual PTZ
Image sensor	XF60-Q2901	XF40-Q2901	XP40-Q1942	XP40-Q1765	XP40-Q1785	D201-S XPT Q6055
Lens/ Field of view	Uncooled Micro bolometer	Uncooled Micro bolometer	Uncooled Micro bolometer	1/2.9" progressive scan CMOS	1/2.8" progressive scan RGB CMOS	1/2.8" progressive scan RGB CMOS
Day and night	Althermalized 19mm / F1.25 17°	Althermalized 19mm / F1.25 17°	Althermalized 19mm / F1.23 32°	4.7 - 84.6 mm / F1.6 - 2.8 59° - 4°	Autofocus 4.3 - 137 mm/F1.4-4.0	Autofocus 44-142.6 mm / F1.6 - 4.41, 62.8° - 2.23°
Hazardous certification	Automatic	Automatic	Automatic	Automatic	Automatic	Automatic
Classification	Worldwide	Worldwide	Worldwide	Worldwide	Worldwide	Worldwide
Min. Illumination (lux)	Class I/II/III Div 1	Class I/Div 1	Class I/Div 1	Class II, Div 1 and Zone 1	Class I/II, Division 1, Zone 1	Class I/II/III Division 1, and Zone 1/21
Video compression	0.5 (color) 0.04 (B/W)	0.5 (color) 0.04 (B/W)	0.5 (color) 0.04 (B/W)	0.5 (color) 0.04 (B/W)	0.16 (Color) 0.03 (B/W)	0.3 (color) 0.03 (B/W)
Max video resolution (pixels)	Motion JPEG, H.264	Motion JPEG, H.264	Motion JPEG, H.264	Motion JPEG, H.264	Motion JPEG, H.264	Motion JPEG, H.264
Frames per second	Sensor is 336x256. Can scale up to 720x576	Sensor is 336x256. Can scale up to 720x576	Sensor is 640x480. Can scale up to 720x576	1920x1080 (2 MP)	1920x1080	1920x1080 (2 MP)
Pan/Tilt/Zoom	Up to 8.3 fps	Up to 8.3 fps	Up to 8.3 fps	30 (HDTV 1080p)	30 fps (w/ WDR), 60 fps (w/o WDR)	30 (HDTV 1080p)
Analytics*	-	-	Pan: 360° endless, Tilt: ±90°	360° endless pan, +/-90° tilt Visual camera: 10x optical zoom, 12x digital zoom	Pan: 360° endless, 0.1 - 45°/s Tilt: ±90°, 0.1 - 24°/s, 32x optical zoom, 12x digital zoom	Pan: 360° endless, 0.05°-400°/s Tilt: 220°, 0.05°-450°/s Visual camera: 32x optical zoom, 12x digital zoom
Technology	AXIS Video Motion Detection, Shock detection, supports ACAP	AXIS Video Motion Detection, Shock detection, supports ACAP	AXIS Video Motion Detection, Shock detection, supports ACAP	AXIS Video Motion Detection, active tampering alarm, supports ACAP	AXIS Video Motion Detection, AXIS Guard Suite, gatekeeper	AXIS Video Motion Detection, Autotracking, Active Gatekeeper; supports ACAP
Power	Temperature Detection, ONVIF	Temperature Detection, ONVIF	electronic image stabilization, Zipstream, ONVIF	WDR Dynamic Contrast, ONVIF	Forensic WDR, Lightfinder, Electric Image Stabilization	WDR, Artic Temperature Control, ONVIF
Outdoor use	110 V AC: 33 W	24 V AC: 28 W	24 V AC: 100 W	24 V AC (Power Supply not Included)	24 V AC, 110 V AC, or 230 V AC, depends on model	AXIS T8154 60 W SFP Midspan: 100-240 V AC
Other	✓	✓	✓	✓	✓	✓
Axis part #	IP66-, NEMA-4X rated, 316L stainless steel	IP66-, NEMA-4X rated, 316L stainless steel	IP66-, IP67- rated, electropolished SAE 316L stainless steel	IP66-, IP67-P67, NEMA-4X rated, 316L stainless steel	IP66-, IP67-rated, 316L stainless steel	IP66-, NEMA-4X rated, 316L stainless steel
	01135-001	01133-001	01142-001	01113-001	02121-001	01480-001

* For a complete list of supported analytics and third party applications see axis.com/acap

* Security features for all cameras include: password protection, IP Address filtering, HTTPS encryption, IEEE 802.1X network access control, digest authentication, user access log, centralized certificate management

Visual fixed

D101-A XF P3807



F101-A XF P1377



F101-A XF Q1785



XF40-Q1765

XF60-Q1765



Visual fixed					
	D101-A XF P3807	F101-A XF P1377	F101-A XF Q1785	XF40-Q1765	XF60-Q1765
Image sensor	4 x 1/2.9" progressive scan RGB CMOS	1/2.7" progressive scan RGB CMOS	1/2.8" progressive scan RGB CMOS	Uncooled Micro Bolometer	Uncooled Micro Bolometer
Lens/ Field of view	Fixed 3.2mm / F2.0 180°	Varifocal 3.9-10 mm / F1.5	Varifocal 4.3 - 137mm / F1.4 - 4.0 39° - 1.3°	Autofocus 4.7 - 84.6mm / F1.6 - 2.8 59° - 4°	Autofocus 4.7 - 84.6mm / F1.6 - 2.8 59° - 4°
Day and night	Automatic	Automatic	Automatic	Automatic	Automatic
Hazardous certification	Worldwide	Worldwide	Worldwide	Worldwide	UL Certified
Classification	Class I/II/III Div 1 and Zone 1 certifications	Class I/II/III Div 1 and Zone 1 Certifications	Class I/II/III, Division 1 and Zone 1	Class I/II/III, Division 1	Class I/II/III, Division 1
Min. Illumination (lux)	0.17 lux (color) 0.05 lux (B/W)	0.15 (color) 0.03 (B/W)	0.16 (color) 0.03 (B/W)	0.5 (color) 0.04 (B/W)	0.5 (color) 0.04 (B/W)
Video compression	Motion JPEG, H.264	Motion JPEG, H.264/H.265	Motion JPEG, H.264	Motion JPEG, H.264	Motion JPEG, H.264
Max video resolution (pixels)	4320x1920 to 480x270 (8 MP)	2592x1944 (5 MP)	1920x1080 HDTV 1080p (2 MP)	1920x1080 (2 MP)	1920x1080 (2 MP)
Frames per second	Up to 25/30 fps (50/60 Hz) without WDR Up to 12.5/15 fps (50/60 Hz) with WDR 7.5 MP (dewarped): up to 12.5/15 fps (50/60 Hz)	30 FPS	With WDR: Up to 30/25 fps Without WDR: Up to 60/50 fps	30 (HDTV 1080p)	30 (HDTV 1080p)
Pan/Tilt/Zoom	-	-	-	-	-
Analytics*	AXIS Video Motion Detection, active tampering alarm, supports ACAP	AXIS Video Motion Detection, Autotracking, Fence detector, supports ACAP	AXIS Video Motion Detection, AXIS Guard Suite, active tampering alarm, Gatekeeper	AXIS Video Motion Detection tampering alarm, supports ACAP	AXIS Video Motion Detection tampering alarm, supports ACAP
Technology	Forensic WDR, Lightfinder, Zipstream technology	WDR-Forensic Capture, Lightfinder technology, Zipstream	Forensic WDR, Lightfinder, electronic image stabilization, Zipstream	WDR Dynamic Contrast, ONVIF	WDR Dynamic Contrast, ONVIF
Power	PoE Class 3	PoE Type 1 Class 3	PoE Type 1 Class 3	24 V AC (Power Supply not Included)	24 V AC (Power Supply not Included)
Outdoor use	✓	✓	✓	✓	✓
Other	IP66 and IP67 rated, Red/Silver Color	IP66-rated, powdercoated aluminum chassis	IP68-rated, EN 1.4404 (ASTM 316L) stainless steel casing for maximum corrosion protection	IP66 and NEMA 4X ratings, 316L stainless steel, UL, CSA, UL models: Three 3/4" NPT conduit entires	IP66 and NEMA 4X ratings, 316L stainless steel, UL, CSA, UL models: Three 3/4" NPT conduit entires
Axis part #	01914-001	01927-001	01587-001	01111-001	01124-001

* For a complete list of supported analytics and third party applications see axis.com/acap

* Security features for all cameras include: password protection, IP Address filtering, HTTPS encryption, IEEE 802.1X network access control, digest authentication, user access log, centralized certificate management



Image sensor
Lens/ Field of view
Day and night
Min. illumination (lux)
Video compression (Zipstream / H.264 / H.265)
Max video resolution (pixels)
Frames per second
Audio support
Alarm in- / outputs
Analytics *
Technology
Power
Outdoor use
Other
Axis part #

Canon fixed network cameras	
VB-S910F	
Image sensor	Progressive scan CMOS 1/4.85"
Lens/ Field of view	2.25-7.88mm, F1.4-F2.6, Autofocus, 3.5x optical, 4x digital, 20.8 - 78.6°
Day and night	-
Min. illumination (lux)	.95 (Color) .5 (B/W)
Video compression (Zipstream / H.264 / H.265)	- / ✓ / -
Max video resolution (pixels)	1920x1080 (2.1MP)
Frames per second	30fps
Audio support	Two-way
Alarm in- / outputs	2/2
Analytics *	Moving Object Detection, Abandoned Object Detection, Removed Object Detection, Camera Tampering Detection, Passing Detection, Intrusion Detection
Technology	ONVIF Profile S
Power	PoE IEEE 802.3af Type 1/Type 2
Outdoor use	-
Other	memory card slot
Axis part #	1389C001

Canon fixed dome cameras			
VB-H652LVE	VB-H651VE	VB-S800VE	
Image sensor	Progressive scan CMOS 1/3"	Progressive scan CMOS 1/3"	
Lens/ Field of view	2.55-6.12mm, F1.2-F1.8, Autofocus, 2.4x optical, 4x digital zoom, 50.1 - 122.1°	2.55-6.12mm, F1.2-F1.8, Autofocus, 2.4x optical, 4x digital zoom, 50.1 - 122.1°	2.7mm, F1.6, 93.8°
Day and night	-	-	-
Min. illumination (lux)	.035 (Color) .002 (B/W)	.035 (Color) .002 (B/W)	.5 (Color) .3 (B/W)
Video compression (Zipstream / H.264 / H.265)	- / ✓ / -	- / ✓ / -	- / ✓ / -
Max video resolution (pixels)	1920x1080 (2.1MP)	1920x1080 (2.1MP)	1920x1080 (2.1MP)
Frames per second	30fps	30fps	30fps
Audio support	Two-way	Two-way	Two-way
Alarm in- / outputs	2/2	2/2	2/2
Analytics *	Moving Object Detection, Abandoned Object Detection, Removed Object Detection, Camera Tampering Detection, Passing Detection, Intrusion Detection, Volume Detection, Scream Detection	Moving Object Detection, Abandoned Object Detection, Removed Object Detection, Camera Tampering Detection, Passing Detection, Intrusion Detection, Volume Detection, Scream Detection	Moving Object Detection, Abandoned Object Detection, Removed Object Detection, Camera Tampering Detection, Passing Detection, Intrusion Detection
Technology	ONVIF Profile S & G	ONVIF Profile S & G	ONVIF Profile S
Power	AC/DC, PoE IEEE 802.3af Type 1/Type 2	AC/DC, PoE IEEE 802.3af Type 1	PoE IEEE 802.3af Type 1
Outdoor use	✓	✓	✓
Other	memory card slot IP66, IK10 Rating	memory card slot IP66, IK10 Rating	memory card slot IP66, IK10 Rating
Axis part #	1061C001	01384C001	01388C001

* For a complete list of supported analytics and third party applications see axis.com/acap

* Security features for all cameras include: password protection, IP Address filtering, HTTPS encryption, IEEE 802.1X network access control, digest authentication, user access log, centralized certificate management

Canon pan/tilt/zoom cameras

VB-H45^(a)
VB-H45B^(b)



VB-M44^(a)
VB-M44B^(b)



VB-M50B



VB-S30D Mk II

VB-S30VE

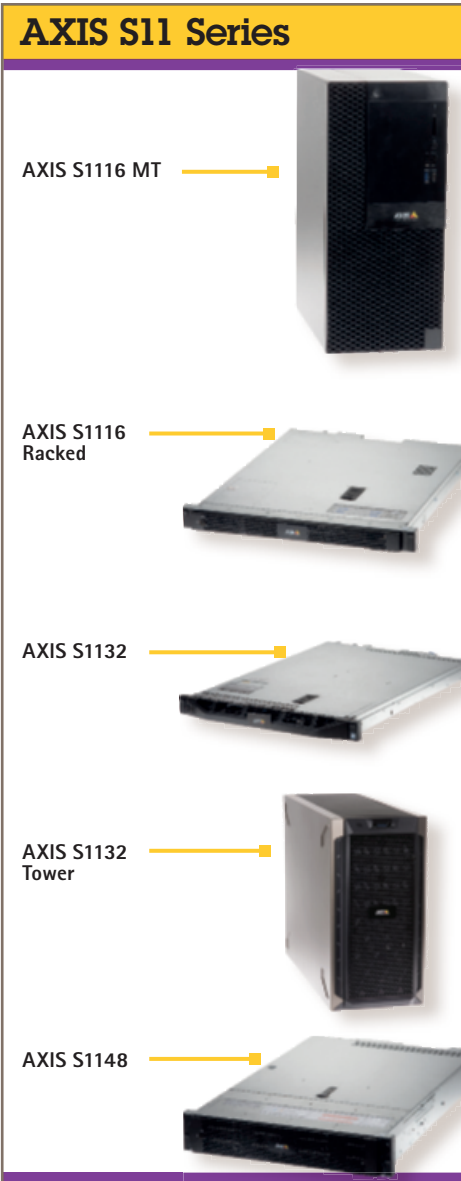
Image sensor
Lens/ Field of view
Day and night
Min. illumination (lux)
Video compression (Zipstream / H.264 / H.265)
Max video resolution (pixels)
Frames per second
Audio support
Alarm in- / outputs
Analytics *
Technology
Power
Outdoor use
Other
Axis part #

Canon pan/tilt/zoom network cameras

VB-H45 ^(a) VB-H45B ^(b)	VB-M44 ^(a) VB-M44B ^(b)	VB-M50B	VB-S30D Mk II	VB-S30VE
Progressive scan CMOS 1/3"	Progressive scan CMOS 1/3"	Progressive scan CMOS 1/3"	Progressive scan CMOS 1/4.85"	Progressive scan CMOS 1/4.85"
4.7-94 mm F1.6-F3.5 20x digital zoom 60.4°-3.2°	4.7-94 mm F1.6-F3.5 20x digital zoom 60.4°-3.2°	17.7-88.5 mm F1.8-F2.4 20x digital zoom 15.6°-3.2°	2.25-7.88 mm F1.4-F2.6 4x digital zoom 77.7° -20.7°	"2.25-7.88 mm F1.4-F2.6 4x digital zoom 77.1°-20.6°"
Automatic	Automatic	Automatic	Automatic	Automatic
0.05 / 0.003	0.05 / 0.003	0.4 / 0.002	0.95 / 0.5	1.0 / 0.55
- / ✓ / -	- / ✓ / -	- / ✓ / -	- / ✓ / -	- / ✓ / -
1920x1080 (2.1 mp)	1280x960 (1.3 MP)	1920x1080 (1.3 MP)	1920x1080 (2.1 MP)	1920x1080 (2.1 MP)
30fps	30fps	30fps	30fps	30fps
Two-way	Two-way	Two-way	One-way	Two-way
2/2	2/2	2/2	1/1	1/1
Moving Object Detection, Abandoned Object Detection, Removed Object Detection, Camera Tampering Detection, Passing Detection, Volume Detection, Intrusion Detection, Scream Detection	Moving Object Detection, Abandoned Object Detection, Removed Object Detection, Camera Tampering Detection, Passing Detection, Volume Detection, Intrusion Detection, Scream Detection	Moving Object Detection, Abandoned Object Detection, Removed Object Detection, Camera Tampering Detection, Passing Detection, Volume Detection, Intrusion Detection, Scream Detection	Moving Object Detection, Abandoned Object Detection, Removed Object Detection, Camera Tampering Detection, Passing Detection, Volume Detection, Intrusion Detection, Scream Detection	Moving Object Detection Abandoned Object Detection Removed Object Detection Camera Tampering Detection Passing Detection Intrusion Detection
ONVIF Profile S	ONVIF Profile S	ONVIF Profile S & G	ONVIF Profile S	ONVIF Profile S
AC/DC PoE IEEE 802.3 at Type 1	AC/DC PoE IEEE 802.3 at Type 1	AC/DC PoE IEEE 802.3 at Type 1	AC/DC PoE IEEE 802.3 at Type 1	AC/DC PoE IEEE 802.3 af
-	-	-	-	
memory card slot	memory card slot	memory card slot	memory card slot	memory card slot IP66, IK10 Rating
2541C002 ^(a) 2541C001 ^(b)	2542C001 ^(a) 2542C002 ^(b)	1064C001	2545C001	1387C001

* For a complete list of supported analytics and third party applications see axis.com/acap

* Security features for all cameras include: password protection, IP Address filtering, HTTPS encryption, IEEE 802.1X network access control, digest authentication, user access log, centralized certificate management



Included storage
Licenses included
Max. licenses supported
Bandwidth
RAID support
Empty bays for flexible storage
Max. resolution supported
Operating system
Form factor
Integration of third-party cameras
Built-in PoE switch
Warranty
Axis part #

AXIS S11 Series				
AXIS S1116 MT	AXIS S1116 Racked	AXIS S1132	AXIS S1132 Tower	AXIS S1148
8TB	8TB	16TB	32TB ^(a) 64TB ^(b)	24 TB ^(a) 64 TB ^(b) 144 TB ^(c)
16	16	32	32	48
32	32	48	48	64
256Mb/s	256Mb/s	384Mb/s	384Mb/s	512Mb/s
RAID Levels: 0, 1	RAID Levels: 0,1	RAID Levels: 0, 1, 5, 6, 10	RAID Levels: 0, 1, 5, 6, 10, JBOD	RAID Levels: 0, 1, 5, 6, 10
1	2	0	4 ^(a) , 0 ^(b)	2 ^(a) , 4 ^(b) , 0 ^(c)
Live View: Up to 25 camera split views or 1 x 4K camera view. Playback: 4 x 1080p camera split views or 1 x 4K camera view. Supports 2 monitors	Need Desktop Terminals	Need Desktop Terminals	Live View: Up to 25 cameras split views or 1 x 4K camera view. Playback: Up to 25 camera split views or 1 x 4K camera view. Supports 2 monitors	Need Desktop Terminals
Microsoft Windows 10 Enterprise	Microsoft Windows 10 Enterprise	Microsoft Windows 10 Enterprise	Microsoft Windows 10 Enterprise	Microsoft Windows 10 Enterprise
Mini Tower	Racked	Racked	Tower	Racked
Yes	Yes	Yes	Yes	Yes
-	-	-	-	-
Axis 5-year warranty; Includes next business day onsite hardware repair	Axis 5-year warranty; Includes next business day onsite hardware repair	Axis 5-year warranty; Includes next business day onsite hardware repair	Axis 5-year warranty; Includes next business day onsite hardware repair	Axis 5-year warranty; Includes next business day onsite hardware repair
01617-001	01618-001	01613-001	02079-004 ^(a) 02080-004 ^(b)	01614-001 ^(a) 01615-001 ^(b) 01616-001 ^(c)

* For a complete list of supported analytics and third party applications see axis.com/acap

* Security features for all cameras include: password protection, IP Address filtering, HTTPS encryption, IEEE 802.1X network access control, digest authentication, user access log, centralized certificate management

AXIS S22 Series

AXIS S2208



AXIS S2212



AXIS S2216



AXIS S2224



AXIS S30 Series

AXIS S3008



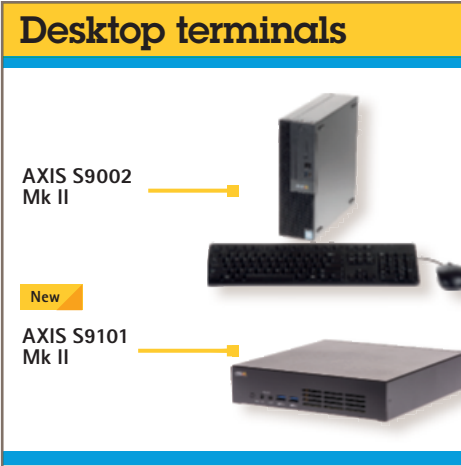
Included storage
Licenses included
Max. licenses supported
Max. recording bandwidth supported
RAID support
Empty bays for flexible storage
Max. viewing resolution supported
Operating system
Form factor
Integration of third-party cameras
Built-in PoE switch
Warranty
Axis part #

AXIS S22 Series			
AXIS S2208	AXIS S2212	AXIS S2216	AXIS S2224
4TB	6TB	8TB	12TB
8	12	16	24
8	12	16	24
192Mb/s	192Mb/s	384Mb/s	384Mb/s
No	No	0, 1, 10	0, 1, 10
1	1	2	2
Supports two monitors, max one 4K monitor recommended 1 x 4K stream full screen 4 split x 1080p Up to 8 cameras split view	Supports two monitors, max one 4K monitor recommended 1 x 4K stream full screen 4 split x 1080p Up to 12 cameras split view	Supports two monitors, max one 4K monitor recommended 1 x 4K stream full screen 4 split x 1080p Up to 16 cameras split view	Supports two monitors, max one 4K monitor recommended 1 x 4K stream full screen 4 split x 1080p Up to 24 cameras split view
Microsoft Windows 10 Enterprise	Microsoft Windows 10 Enterprise	Microsoft Windows 10 Enterprise	Microsoft Windows 10 Enterprise
Racked	Racked	Racked	Racked
Yes	Yes	Yes	Yes
135W (max 25W per port) PoE Class 4	135W (max 25W per port) PoE Class 4	260W (max 25W per port) PoE Class 4	260W (max 25W per port) PoE Class 4
Recorder: 5-year warranty Hard drive: 3-year limited hardware warranty	Recorder: 5-year warranty Hard drive: 3-year limited hardware warranty	Recorder: 5-year warranty Hard drive: 3-year limited hardware warranty	Recorder: 5-year warranty Hard drive: 3-year limited hardware warranty
01580-004	01581-004	01582-004	01583-004

AXIS S30 Series
AXIS S3008
2TB ^(a) , 4TB ^(b) , 8TB ^(c)
0
8
160Mb/s
No
0
Need desktop terminal
Axis OS
-
No
65W ^{(a)(b)} , 60W ^(c) , up to PoE Class 3 with LLDP
Recorder: 5-year warranty Hard drive: 3-year limited hardware warranty
02105-004 (2 TB), 02046-004 (4 TB), 02135-004 (8 TB)

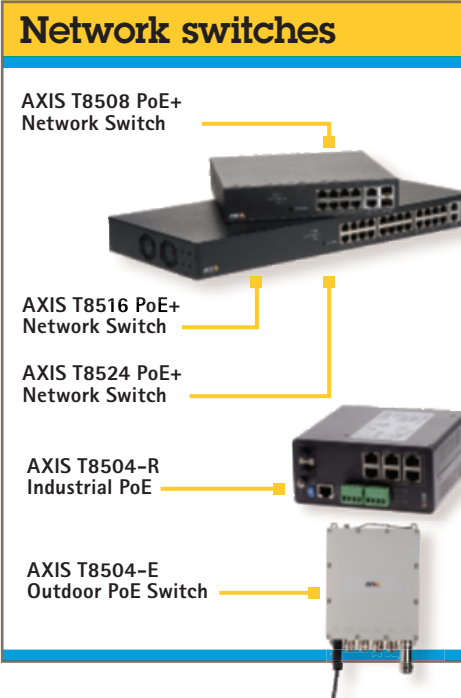
* For a complete list of supported analytics and third party applications see axis.com/acap

* Security features for all cameras include: password protection, IP Address filtering, HTTPS encryption, IEEE 802.1X network access control, digest authentication, user access log, centralized certificate management



AXIS Camera Station
Operating system
Supported monitors
4k video streaming
Compatibility
Form factor
Axis part #

Desktop terminals	
AXIS S9002 Mk II	AXIS S9101 Mk II
Pre-installed (client only)	Pre-installed (client only)
Microsoft Windows 10 Enterprise	Microsoft Windows 10 Enterprise
4	2
Yes (4 streams)	Yes (1 stream)
AXIS Camera Station and AXIS Companion	AXIS Camera Station and AXIS Companion
Desktop terminal for viewing	Desktop terminal for viewing
01619-001	01985-004



PoE Port
Power Budget
Switching Capacity
SFP ports
Rack mountable
PoE++ Ports
Axis part #

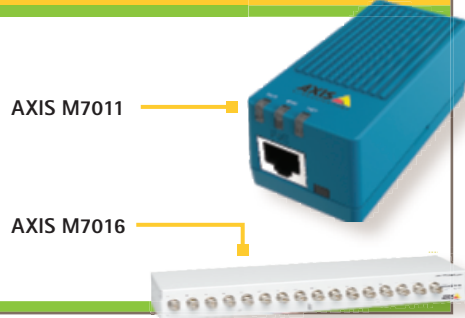
Network switches				
AXIS T8504-E Outdoor PoE Switch	AXIS T8508 PoE+ Network Switch	AXIS T8516 PoE+ Network Switch	AXIS T8524 PoE+ Network Switch	AXIS T8504-R Industrial PoE Switch
4	8	16	24	4
150W	130W	240W	370W	240W
10 Gbps	20 Gbps	36 Gbps	52 Gbps	16 Gbps
1	2	2	2	2
-	✓	✓	✓	-
2	-	-	-	4
01449-001	01191-004	5801-694	01192-004	01633-001

* For a complete list of supported analytics and third party applications see axis.com/acap

* Security features for all cameras include: password protection, IP Address filtering, HTTPS encryption, IEEE 802.1X network access control, digest authentication, user access log, centralized certificate management

Video encoders

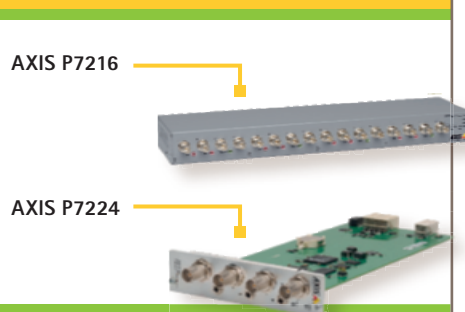
AXIS M70 Series



AXIS M71 Series



AXIS P72 Series



Audio support	-
Alarm in-/outputs	-
Frames per second H.264 (NTSC) in maximum resolution	30 (D1)
Max. video resolution (pixels)	D1: 720x480 (NTSC)
Pan/Tilt/Zoom support	*
Power	PoE IEEE 802.3af Class 1
Analytics*	AXIS Video Motion Detection, tampering alarm, supports ACAP
Serial connectors	RS-422/RS-485
Other	1 IP Address, Memory card slot
Video source	1 BNC composite input
Version: standalone/blade	Standalone
Video compression	Motion JPEG, H.264
Frames per second Motion JPEG (NTSC) in maximum resolution	30 (D1)
Axis part #	0764-001

AXIS M70 Series	
AXIS M7011	AXIS M7016
-	-
-	-
30 (D1)	30 (D1) per channel
D1: 720x480 (NTSC)	D1: 720x480 (NTSC)
*	Support for one PTZ driver in each group of 4 channels Up to 100 presets/camera, Guard tour, PTZ control queue, Supports Windows Compatible joysticks
PoE IEEE 802.3af Class 1	AXIS PS-P power supply 12 V DC, 17 W
AXIS Video Motion Detection, tampering alarm, supports ACAP	AXIS Video Motion Detection, active tampering alarm
RS-422/RS-485	RS-422/RS-485
1 IP Address, Memory card slot	4 IP Address, one per four channels
1 BNC composite input	4 BNC Composite inputs
Standalone	Standalone
Motion JPEG, H.264	Motion JPEG, H.264, Motion JPEG
30 (D1)	30 (D1) per channel
0764-001	0541-004

AXIS M71 Series
AXIS M7104
-
-
25/30
720x576/720x480 (PAL/NTSC)
*
8-28 V DC, max 4.7 W Power over Ethernet (PoE) IEEE 802.3af/802.3at Type 1 Class 3
AXIS Video Motion Detection, active tampering alarm, supports ACAP
RS-485/RS-422 Full Duplex
1 IP for four channels
4 BNC Composite inputs
Standalone
Motion JPEG, H.264, H.265
25/30
01679-001

AXIS P72 Series	
AXIS P7216	AXIS P7224
Two-way	Two-way
4 / 4	4 / 4
30 (D1) per channel	30 (D1) per channel
D1: 720x480 (NTSC)	D1: 720/480 (NTSC)
*	Wide range of analog PTZ cameras supported, Support for one PTZ driver, Up too 100 presets/camera, Supports Windows compatible joysticks
Axis PS-P power supply	12 V DC, max. 6 W
AXIS Video Motion Detection, audio detection, tampering alarm	AXIS Video Motion Detection, audio detection, tampering alarm
RS-485/RS-422 Full Duplex	RS-485/RS-422 (2 Wire) Duplex
4 IP Address, 4 memory card slots, Quad-view, ONVIF	1 IP address, Quad-view, ONVIF
16 BNC Composite inputs	4 BNC Composite inputs
Standalone	Blade
H.264, Motion JPEG	H.264, Motion JPEG
30 (D1) per channel	30 (D1) per channel
0542-004	0418-001

* For a complete list of supported analytics and third party applications see axis.com/acap

* Security features for all cameras include: password protection, IP Address filtering, HTTPS encryption, IEEE 802.1X network access control, digest authentication, user access log, centralized certificate management

AXIS P73 Series

AXIS P7304



Audio support
Alarm in-/outputs
Frames per second H.264 (NTSC) in maximum resolution
Max. video resolution (pixels)
Pan/Tilt/Zoom support
Power
Analytics*
Serial connectors
Other
Video source
Version: standalone/blade
Video compression
Frames per second Motion JPEG (NTSC) in maximum resolution
Axis part #

AXIS Q74 Series

AXIS Q7411



AXIS Q7414



AXIS Q7424-R Mk II



AXIS Q7436



AXIS P73 Series		AXIS Q74 Series			
AXIS P7304		AXIS Q7411	AXIS Q7414	AXIS Q7424-R Mk II	AXIS Q7436
Two-way		Two-way	Two-way	Two-way	-
4 / 4		4 / 4	2 / 2	4 / 4	2 / 2
30 (D1) per channel		60 (D1) per channel	30 (D1) per channel	30 (D1) per channel	60 (D1) per channel
D1: 720x480 (NTSC)		D1: 720x480 (NTSC)	D1: 720x480 (NTSC)	D1: 720x480 (NTSC)	D1: 720x480 (NTSC)
*		Wide range of analog PTZ cameras supported, Support Windows compatible joysticks, Compatible with Coaxitron by Pelco, 100 Preset/camera, Guard tour, PTZ control queue	Wide range of analog PTZ cameras supported, Support Windows compatible joysticks, 100 Preset/camera, Guard tour, PTZ control queue	Wide range of analog PTZ cameras supported, Support Windows compatible joysticks, 100 Preset/camera, Guard tour, PTZ control queue	Wide range of analog PTZ cameras supported, Support Windows compatible joysticks, Compatible with Coaxitron by Pelco, 100 Preset/camera, Guard tour, PTZ control queue
8-28 V DC, max 8.2 W Power over Ethernet (PoE) IEEE 802.3af/802.3at Type 1 Class 3		Power over Ethernet IEEE 802.3af Class 2 8-28 V DC input, max. 5.3 W	12 V DC, max 13.0 W	8-28 V DC, max. 10 W 20-24 V AC, max. 15.6 VA Power over Ethernet IEEE 802.3af/802.3at Type 1 Class 3	12 V DC, max 16.3 W
AXIS Video Motion Detection, active tampering alarm, audio detection, supports ACAP		AXIS Video Motion Detection, audio detection, tampering alarm, supports ACAP	AXIS Video Motion Detection, audio detection, tampering alarm, supports ACAP	AXIS Video Motion Detection, tampering alarm, audio detection	AXIS Video Motion Detection, tampering alarm, supports ACAP
RS485/RS-422 Full Duplex		RS-485/RS-422 Full Duplex	RS-485/RS-422 Full Duplex	RS-485/RS-422 Full Duplex	RS-485
One IP Address for 4 channels, SD Card supported		1 IP address, SD Card supported	4 IP Addresses, ONVIF	1 IP Address for 4 Channels, SD card supported	6 IP address, Coaxitron, PTZ control, ONVIF
4 BNC Composite inputs		1 BNC Composite input	4 BNC Composite inputs	4 BNC Composite inputs	6 BNC Composite inputs
Standalone		Standalone	Blade	Standalone	Blade
H.264, H.265, Motion JPEG		H.264, Motion JPEG	H.264, Motion JPEG	H.264, Motion JPEG	H.264, Motion JPEG
30 (D1) per channel		60 (D1) per channel	30 (D1) per channel	30 (D1) per channel	60 (D1) per channel
01680-001		0518-004	0354-001	0742-001	0584-001

* For a complete list of supported analytics and third party applications see axis.com/acap

* Security features for all cameras include: password protection, IP Address filtering, HTTPS encryption, IEEE 802.1X network access control, digest authentication, user access log, centralized certificate management



Rack solutions

AXIS 291 1U



AXIS Q7920



Number of slots	
Blades supported	
Maximum number of channels	
Rack size	
Rack width	
Built-in power supply	
Network	
Axis part #	
Video source	
Version: standalone/ blade	
Video compression	
Frames per second Motion JPEG (NTSC) in maximum resolution	
Axis part #	

Rack solutions	
AXIS 291 1U	AXIS Q7920
3	14
AXIS Q7414, AXIS P7224, AXIS Q7436	AXIS Q7414, AXIS P7224, AXIS Q7436
18	84
1U	5U
19"	19"
Power Supply	Two redundant power supplies
One Ethernet 10Base-T/100Base-TX/1000Base-T (Gigabit Ethernet) port	Four Ethernet 10Base-T/100Base-TX/1000Base-T (Gigabit Ethernet) port / Four 1 Gbps SFP slots
0267-004	0575-004
1 BNC composite input	4 BNC Composite inputs
Standalone	Standalone
Motion JPEG, H.264	Motion JPEG, H.264, Motion JPEG
30 (D1)	30 (D1) per channel
0764-001	0541-004

* For a complete list of supported analytics and third party applications see axis.com/acap

* Security features for all cameras include: password protection, IP Address filtering, HTTPS encryption, IEEE 802.1X network access control, digest authentication, user access log, centralized certificate management



Network speakers

AXIS C1004-E cabinet speaker



AXIS C1310-E horn speaker



AXIS C1410 mini speaker



AXIS C2005 ceiling speaker



Max sound pressure level	96 dB
Voice announcements	Up to 50 pre-recorded voice announcements through AXIS Audio Edge, built-in each speaker
SIP support	✓
Background music	✓
Coverage pattern	130 horizontal x 100 vertical
Outdoor use	✓
Built-in amplifier	6W Class D
In -/ out ports	-
Power	Type 1 Class 3, 12.95W
Other	AXIS Audio Edge included, VAPIX, supports supports ACAP, SIP
Axis part #	White: 0833-001, Black: 0923-001

Audio management software

AXIS Audio Manager Pro e-License

AXIS Audio Manager Pro C7050 Mk II

New
AXIS Audio Manager Edge



Number of speakers	1000+ audio devices
Number of zones	100+
Licenses included	Unlimited
Hardware	Minimum requirement on PC hardware, As C7050 or better
Storage	128 GB
Operating system	Microsoft Windows 10
Virtual machine support	VMware ESXi, Microsoft Hyper-V, and Microsoft Windows Datacenter w/ configuration/resources allocated similar to minimum hardware requirements
Axis part #	02062-001

Network speakers

AXIS C1004-E	AXIS C1310-E	AXIS C1410	AXIS C2005
96 dB	>121 dB	90 dB	95 dB
Up to 50 pre-recorded voice announcements through AXIS Audio Edge, built-in each speaker	Up to 50 pre-recorded voice announcements through AXIS Audio Edge, built-in each speaker	Up to 50 pre-recorded voice announcements through AXIS Audio Edge, built-in each speaker	Up to 50 pre-recorded voice announcements through AXIS Audio Edge, built-in each speaker
✓	✓	✓	✓
✓	✓	✓	✓
130 horizontal x 100 vertical	70 horizontal x 100 vertical	145 coaxial	130 coaxial
✓	✓	-	-
6W Class D	7 W Class D	7 W Class D	6 W Class D
-	2 / 2	-	-
Type 1 Class 3, 12.95W	Type 1 Class 3, 12.95W	Type 1 Class 3, 12.95W	Type 1 Class 3, 12.95W
AXIS Audio Edge included, VAPIX, supports supports ACAP, SIP	AXIS Audio Edge included, VAPIX, supports supports ACAP, SIP	AXIS Audio Edge included, VAPIX, supports supports ACAP, SIP	AXIS Audio Edge included, VAPIX, supports supports ACAP, SIP
White: 0833-001, Black: 0923-001	01796-001	01916-001	0824-001

Audio management software

AXIS Audio Manager Pro e-License	AXIS Audio Manager Pro C7050 Mk II	AXIS Audio Manager Edge
1000+ audio devices	1000+ audio devices	Up to 200 audio devices
100+	100+	Up to 20 zones
Unlimited	Unlimited	-
Minimum requirement on PC hardware, As C7050 or better	Intel Core i3-7100T, 8GB RAM, 128GB SSD	No extra hardware
128 GB	128 GB	Depends on available memory in device flash or SD card
Microsoft Windows 10	Microsoft Windows 10 IoT	Run on the edge
VMware ESXi, Microsoft Hyper-V, and Microsoft Windows Datacenter w/ configuration/resources allocated similar to minimum hardware requirements	-	-
02062-001	02071-004	-

* For a complete list of supported analytics and third party applications see axis.com/acap

* Security features for all cameras include: password protection, IP Address filtering, HTTPS encryption, IEEE 802.1X network access control, digest authentication, user access log, centralized certificate management

Audio system devices

AXIS C8033
Network Audio
Bridge



AXIS C8210
Amplifier



Built-in amplifier	
Audio support	
SIP support	
In -/ out ports	
Voice announcements	
Background music	
Power	
Axis part #	

Audio system devices

AXIS C8033 Bridge	AXIS C8210 Amplifier
-	15W amplifier
One-way, two-way	One-way, two-way
✓	✓
2 / 2	2 / 2
Pre-recorded voice announcements through AXIS Audio Edge. Voice announcement through built-in SIP support for connection to any IP telephone/VoIP system and VAPIX support	Pre-recorded voice announcements through AXIS Audio Edge. Voice announcement through built-in SIP support for connection to any IP telephone/VoIP system and VAPIX support
Music playback through AXIS Audio Edge. Offline streaming from SD card and audio-in, online streaming support.	Music playback through AXIS Audio Edge. Offline streaming from SD card and audio-in, online streaming support.
8-28V DC, max 4 W typical 8.5W, PoE Type 1 Class 2, Max 4W	PoE Type 1 Class 3 (Max 12.95W), Type 2 Class 4 (Max 25W)
01025-001	01558-001

Microphone type	
Configurable buttons	
Voice announcements	
Power	
Frequency response	
Other	
Axis part #	

2N® SIP Microphone

2N® SIP Mic	
Paging Console	
12	
✓	
PoE, DC	
400 Hz – 7.5 kHz (-10 dB), 275 Hz – 12 kHz (-20 dB)	
Server-less paging , Two-way communication, Listen in function, Pre-recorded or live announcements,	
01208-001	

Network microphone

2N® SIP Mic



Network I/O audio modules

AXIS P8221



AXIS T6101



AXIS T6112



Number of I/Os	
Number of relays	
Power in/out	
Outdoor ready	
UL rating	
Axis part #	

Network I/O audio modules

AXIS P8221	AXIS T6101	AXIS T6112
8	2	2
8	-	-
8-34 V DC, max 8.2 W PoE Type 1 Class 3	PoE Type 1 Class 2	PoE Type 1 Class 2
-	-	-
-	UL 62638-1	UL 62638-1
0820-001	01160-001	01230-001

AXIS T83 microphones

AXIS T8353A
Microphone 3.5mm

AXIS T8351 Mk II
Microphone 3.5 mm



AXIS T8355
Digital Microphone



Axis part #	
-------------	--

Microphones

AXIS T83 Microphones are compact and discreet with high-performance in all scenarios. They are compatible with Axis network video products and offer great detail and resolution. They are suitable for indoor installation in both large and restricted areas.

AXIS T8353A Mic. 3.5mm	AXIS T8351 Mk II Mic 3.5mm	AXIS T8355 Digital Mic
5032-531	5031-511	01561-001

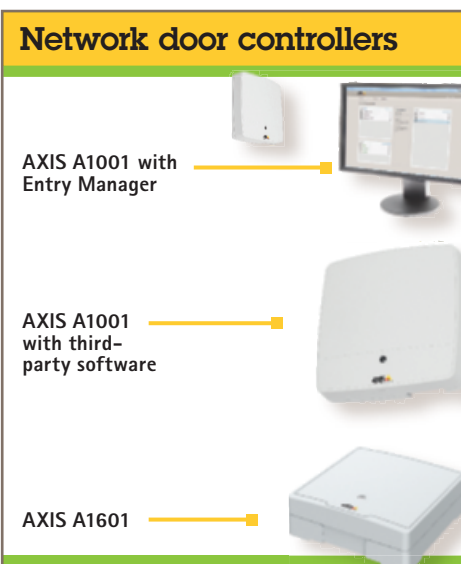
* For a complete list of supported analytics and third party applications see axis.com/acap

* Security features for all cameras include: password protection, IP Address filtering, HTTPS encryption, IEEE 802.1X network access control, digest authentication, user access log, centralized certificate management



SIP support
Keypad
Audio support
Alarm in- / outputs
Max. video resolution
Horizontal Field of view
Dimensions (H x D x W)
Max. frames per second
Reader
Reader protocol
Power
Outdoor use
Axis part #

Network video intercoms			
AXIS A8004-VE	AXIS A8105-E	AXIS A8207-VE Mk II	AXIS I8016-LVE
✓	✓	✓	✓
-	-	✓	-
Two-way	Two-Way	Two-way	two-way
4	2	4	2
720p	1920x1200	3072x2048	2592x1944
97	180	180	140
10.25" x 2.21" x 5.3"	5.83" x 1.64" x 1.42"	9.75" x 4.19" x 2"	4.9" x n/a x 4.9"
30	25	30	30
-	-	✓	-
-	-	RS485, Wiegand, VAPIX reader interface	N/A
PoE Type 1 Class 3	PoE Type 1 Class 3	PoE Type 1 Class 3, PoE Type 2 Class 4, or 8-28V DC min 25W	Type 1, Class 3
✓	✓	✓	✓
0673-001	0871-001	02026-001	01995-001



Door controllers per system
Readers per system
Wried readers per controller
Wireless lock
Number of I/Os
Plenum rated
Power
UL rating
Axis part #

Network door controllers		
AXIS A1001 (with Entry Manager)	AXIS A1001 (with third-party software)	AXIS A1601
33	1-2 wired doors or 1 wired door together with a single wireless lock gateway per controller	1-2 wired doors or 1 wired door together with a single wireless lock gateway per controller
66	Partner Dependent	Partner Dependent
2	2	2
ASSA ABLOY Aperio® wireless lock & SimonsVoss SmartIntego wireless lock	ASSA ABLOY Aperio® wireless lock & SimonsVoss SmartIntego wireless lock	ASSA ABLOY Aperio® wireless lock & SimonsVoss SmartIntego wireless lock
2	2	6
✓	✓	✓
DC, PoE Class 3	DC, PoE Class 3	DC, PoE Class 4
UL 2043, and 294	UL 294 and UL 2043	UL 2043, 293, 294
Embedded on AXIS A1001	0540-001	01507-001

* For a complete list of supported analytics and third party applications see axis.com/acap
 * Security features for all cameras include: password protection, IP Address filtering, HTTPS encryption, IEEE 802.1X network access control, digest authentication, user access log, centralized certificate management

Card readers

AXIS A4011-E



AXIS A4010-E



Keypad
Reader protocol
Power
Outdoor ready
UL Rating
Axis part #

Card readers

AXIS A4011-E	AXIS A4010-E
✓	-
RS-485, OSDP	RS-485, OSDP
12V DC	12-24V DC
✓	✓
UL 294	UL 294
0745-001	01023-001

Network I/O relay modules

AXIS A9188



AXIS A9188-VE

AXIS A9161



Number of I/Os
Number of relays
Power in/out
Outdoor ready
UL rating
Axis part #

Network I/O relay modules

AXIS A9188	AXIS A9188-VE	AXIS A9161
8	8	6
8	8	1
8-28V DC, max 26 W or PoE Type 1 Class 3, or Type 2 class 4	8-28V DC, max 26 W or PoE Type 1 Class 3, or Type 2 class 4	8-28V DC, max 26 W or PoE Type 1 Class 3
-	✓	-
-	UL 294	-
0820-001	0831-001	0821-001

* For a complete list of supported analytics and third party applications see axis.com/acap

* Security features for all cameras include: password protection, IP Address filtering, HTTPS encryption, IEEE 802.1X network access control, digest authentication, user access log, centralized certificate management

About 2N

2N is a leading global manufacturer of IP intercoms with production based in the Czech Republic. The Company offers solutions including IP intercoms and access control. 2N products comply with the most stringent international standards and integrate with most third-party systems. Axis Communications distributes and supports 2N products and solutions in the US, Canada, Mexico, Caribbean, and Central and South America.

2N® IP Verso



2N® IP Verso

The 2N® IP Verso security intercom is configurable to your needs thanks to its modularity. It provides reliable door entry control and its open IP platform allows you to easily interface with other systems. It offers discrete HD camera and voice communication.

Choose from 14 module options: Bluetooth, Touch Display, Touch Keypad, Fingerprint reader, Keypad, RFID card reader (125 kHz; 13.56MHz).

Axis part #	Description
01271-001	2N® IP Verso - Main w/o camera
01272-001	2N® IP Verso - Main w/o camera black
01273-001	2N® IP Verso - Main w/ camera
01274-001	2N® IP Verso - Main w/ camera black
01253-001	2N® IP Verso - Keypad
01266-001	2N® IP Verso - Bluetooth
01275-001	2N® IP Verso - Touch display
01276-001	2N® IP Verso - Fingerprint
01277-001	2N® IP Verso - Touch keypad

2N® IP Solo



2N® IP Solo

A compact IP intercom with hidden HD camera. Enables calls to your smart phone app or answering unit. Integrates with home automation systems. Sharp video day and night.

Key Features: Entrance to your Smart Home; Sharp video day and night; Stylish and durable; Tailored for residential market

Axis part #	Description
01300-001	2N® IP Solo - flush mount, nickel
02205-001	2N® IP Solo w/o Camera - flush mount, nickel
01301-001	2N® IP Solo - surface mount, nickel
02203-001	2N® IP Solo w/o Camera - surface mount, nickel
01303-001	2N® IP Solo - flush mount, black
02204-001	2N® IP Solo w/o Camera - flush mount, black
01302-001	2N® IP Solo - surface mount, black
02202-001	2N® IP Solo w/o Camera - surface mount, black

2N® IP Force



2N® IP Force

Extremely durable IP intercom that can withstand even the most demanding conditions. Provides visitor communication, monitoring and door entry control.
Key Features: Durable and built for extreme conditions, professional night vision, clear sound in noisy environments.

Axis part #	Description
01334-001	2N® IP Force - 1-button, HD camera, pictograms
01335-001	2N® IP Force - 1-button, pictograms
01336-001	2N® IP Force - 1-button
01337-001	2N® IP Force - 1-button & HD camera
01338-001	2N® IP Force - 1-button & keypad
01339-001	2N® IP Force - 1-button & HD camera & keypad
01340-001	2N® IP Force - 2-button & HD camera
01341-001	2N® IP Force - 2-button
01342-001	2N® IP Force - 4-button
01343-001	2N® IP Force - 4-button & HD camera

2N® Access Unit 2.0



2N® Access Unit 2.0

The 2N® Access Unit 2.0 is a door controller and reader in one. Available in 3 modular versions (Bluetooth & RFID reader, RDIF reader & keypad, or RFID reader) and easily installed with a single ethernet cable. Thanks to IP technology, the units can be remotely administration via a web interface, 2N® Access Commander software or the 2N® Remote Configuration. The Bluetooth feature offers use of a smart phone as an alternative to RFID cards.

Axis part #	Description
01851-001	2N® Access Unit 2.0 Bluetooth & RFID NFC SEC
01852-001	2N® Access Unit 2.0 Keypad & RFID NFC SEC
02146-001	2N® Access Unit 2.0 RFID 125kHz 13MHz NFC SEC 2G

2N® Indoor Compact



2N® Indoor Compact

Indoor answering unit with minimalist design, tempered glass surface, 4.3" color display and intuitive controls. A simply elegant solution for audio and video communication.

Axis part #	Description
01935-001	2N® Indoor Compact, Black
01936-001	2N® Indoor Compact, White

* For a complete list of supported analytics and third party applications see axis.com/acap

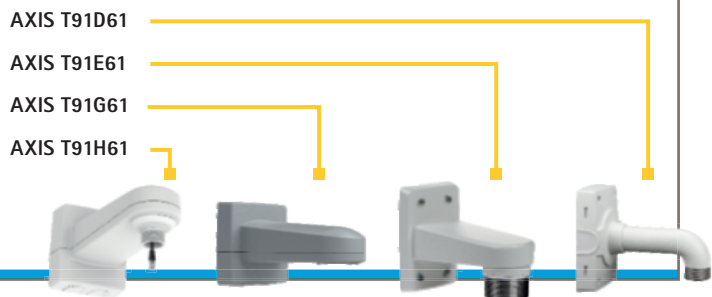
* Security features for all cameras include: password protection, IP Address filtering, HTTPS encryption, IEEE 802.1X network access control, digest authentication, user access log, centralized certificate management



Network video accessories

Axis provides a full range of high-quality accessories to complement your system. Below are some of our most popular accessories as well as a link to our accessory selector, to easily find compatible accessories for your installation needs.

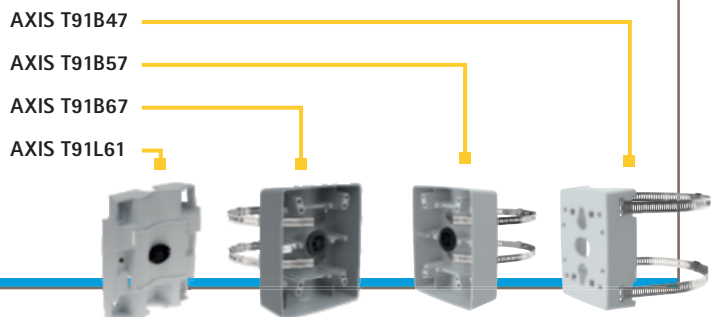
Wall mounts



Compatible with
Environment
Axis part #

Wall mounts			
AXIS T91D61	AXIS T91E61	AXIS T91G61	AXIS T91H61
Requires correct pendant kit for camera	Requires correct pendant kit for camera	Includes integrated T94A01D pendant kit and pre-mounted Ethernet cable with IP66 RJ45 connector and room for injector	Built in IP66 RJ45 connector, requires correct pendant kit for camera
Indoor/Outdoor	Indoor/Outdoor	Indoor/Outdoor	Indoor/Outdoor
5504-821	5506-481	5506-951	5507-641

Pole mounts



Compatible with
Environment
Axis part #

Pole mounts			
AXIS T91B47 4"-16" diameter pole ^(a) 2"- 6" diameter pole ^(b)	AXIS T91B57 4"-16" diameter pole	AXIS T91B67 2.5"-6.5" diameter pole	AXIS T91L61
Fits most domes and outdoor bullet series camera	AXIS T91G61, T91H61, and AXIS T98A Surveillance Cabinet series	Axis fixed dome cameras compatible with 1.5" NPS threaded Axis pendant kits	AXIS Q60 Series AXIS Q61 Series AXIS P55 Series AXIS P56 Series AXIS Q37 Series
Indoor/Outdoor	Indoor/Outdoor	Indoor/Outdoor	Indoor/Outdoor
01164-001 ^(a) , 01165-001 ^(b)	01470-001	01473-001	5801-721

Corner mounts



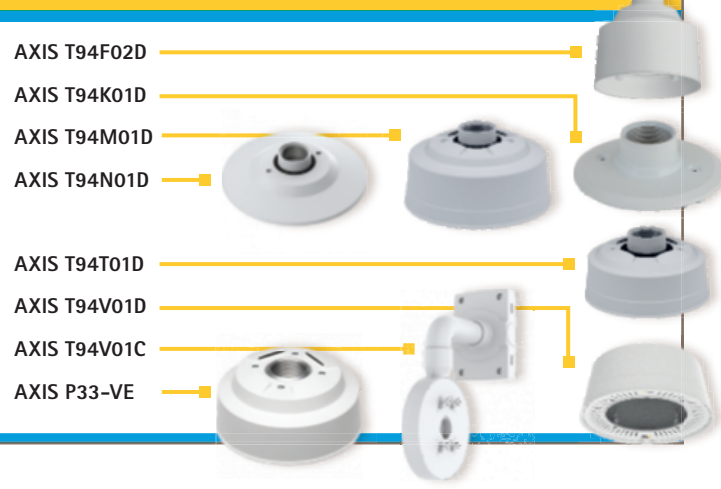
Compatible with
Environment
Axis part #

Corner mounts	
AXIS T91A64	AXIS T94R01B
T91B61 and T91D61	T91E61 Wall Mount for fixed dome and bullet style cameras
Indoor/Outdoor	Indoor/Outdoor
5017-641	5507-601

* For a complete list of supported analytics and third party applications see axis.com/acap

* Security features for all cameras include: password protection, IP Address filtering, HTTPS encryption, IEEE 802.1X network access control, digest authentication, user access log, centralized certificate management

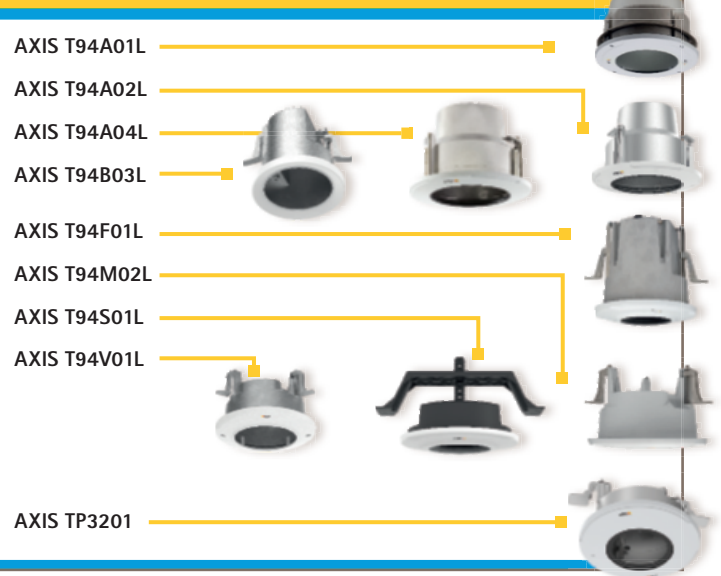
Pendant kits



AXIS T94F02D
 AXIS T94K01D
 AXIS T94M01D
 AXIS T94N01D
 AXIS T94T01D
 AXIS T94V01D
 AXIS T94V01C
 AXIS P33-VE

Compatible with
Environment
Axis part #

Recessed mounts



AXIS T94A01L
 AXIS T94A02L
 AXIS T94A04L
 AXIS T94B03L
 AXIS T94F01L
 AXIS T94M02L
 AXIS T94S01L
 AXIS T94V01L
 AXIS TP3201

Compatible with
Environment
Axis part #

Pendant kits

AXIS T94F02D	AXIS T94K01D	AXIS T94M01D	AXIS T94N01D	AXIS T94T01D	AXIS T94V01D
AXIS M3024, 25, 26, 27, 37: -LVE/-VE/-PVE	AXIS P32XX-V/-LV, P33XX-V/-LV, Q3505-V	AXIS Q3505-VE	AXIS P3717-PLE	AXIS P32XX-VE/-LVE	AXIS Q36XX-VE
Outdoor	Indoor	-	Indoor/Outdoor	Outdoor	Indoor/Outdoor
5900-021	5505-081	5505-091	01513-001	5505-871	5801-431

Pendant kits

AXIS T94V01C	AXIS P33-VE
Compatible with Axis dome cameras, box cameras, and bullet cameras.	AXIS P33XX-VE/-LVE
Indoor/Outdoor	
01457-001	5502-321

Compatible with
Environment
Axis part #

Recessed mounts

AXIS T94A01L	AXIS T94A02L	AXIS T94A04L	AXIS T94B03L
Q60XX-E (Only -E PTZ Models)	P5624-E, P5635-E	Q61XX-E	M2025/26-LE and Axis Companion Bullet
Outdoor	Outdoor	Indoor/Outdoor	Indoor
5505-721	5506-171	5801-611	5801-861

Recessed mounts

AXIS T94F01L	AXIS T94M02L	AXIS T94S01L	AXIS T94V01L	AXIS TP3201
M3024,25,26,27 M3037-LVE/VE/PVE	Outdoor recessed mount for mid-size outdoor dome cameras such as: AXIS P32-VE/-LVE, P33-VE/-LVE and Q35-VE/-LVE series	P32XX-V/LV	Indoor and outdoor use for the AXIS Q36-VE and AXIS P38 Series	M3205,06, P3227,28,45, P3367,74,75, Q3515,17
Indoor	Outdoor	Indoor	Outdoor	Indoor
5503-901	01156-001	5507-671	5801-441	01757-001

Not sure where to start?

Check out this helpful video to learn the ins and out of using our accessory selector tool.



* For a complete list of supported analytics and third party applications see axis.com/acap

* Security features for all cameras include: password protection, IP Address filtering, HTTPS encryption, IEEE 802.1X network access control, digest authentication, user access log, centralized certificate management



System devices

Axis system devices connect and enhance the performance of your network solutions, and have been tested and verified to ensure a perfect match with Axis products.

System devices

- PoE products
- Portcast devices
- Media converters
- Decoders
- People counter

Security radar

AXIS D2110-VE

AXIS surveillance microSDXC™ card

256 GB

AXIS T8310 video surveillance control board

AXIS T8310 control board

Sensor
Object Data
Frequency
RF transmit power
Detection Range
Field of Detection
Distance Accuracy
Angle Accuracy
Alarm in- / outputs
Spatial differentiation
Data Refresh rate
Coverage
Power
Object Classification
Radar Controls
Axis part #

Security radar

D2110-VE
Phased array FMCW (Frequency Modulated Continuous Wave)
Range, direction, velocity, object type
24.05–24.25 GHz (channels 1 and 2)
<100 mW (EIRP) License free. No harmful radiation.
3–60 m (10–200 ft) when detecting a person 3–85 m (10–280 ft) when detecting a vehicle
Horizontal: 180°
0.7 m (2.3 ft)
1°
4 / 4
3 mb
10 Hz
5600 m2 (61000 sq ft) for persons 11300 m2 (122000 sq ft) for vehicles
PoE Type 2 Class 4 typical 11W, max 15W
Humans, vehicles, unknown
Multiple detection zones, crossline detections, and exclude zones with filters for short-lived objects, object speed, and object type. Radar transmission on/off, coexistence, reference map with rotation and cropping, grid opacity, zone opacity, color scheme, trail lifetime, detection sensitivity, swaying object filter
01564-001

System devices

Product	Description & link
PoE Products	For powering up your PoE device via and Ethernet cable: www.axis.com/en-us/products/poe-products
Portcast devices	Provides Axis Cameras with additional functionality: www.axis.com/en-us/products/portcast-devices
Media converters Et PoE extenders	Solutions for your Ethernet, Fiber or Coaxial connections: www.axis.com/en-us/products/media-converters-and-poe-extenders
Decoders	Enabling analog or digital monitors to connect and to display live video streaming: www.axis.com/en-us/products/decoders
People counter	Stereoscopic camera providing high-accuracy people counting: www.axis.com/en-us/products/people-counters

AXIS surveillance microSDXC™ card

AXIS Surveillance mircoSDXC™ Card is delivered with an SDTM card adapter

	Axis part #
64GB	5801-951
64GB (10 Pack)	5801-961
128GB	01491-001
128GB (10 Pack)	01678-001
256GB	01609-001

AXIS T8310 video surveillance control board

A modular system for accurate controlling and navigating functions. Each unit can be purchased separately or sold together

	Axis part #
AXIS T8310 Control Kit	5020-001
AXIS T8311 Joystick	5020-101
AXIS T8312 Keypad	5020-201
AXIS T8313 Jog Dial	5020-301



Number of Cameras per site
Product Compatibility
Supported OS
Licenses
Multi-site support
Live View
Audio Streaming
Event Triggers
Event Action
Axis Secure remote access
Event log
Export
Playback

AXIS Companion	AXIS Camera Station
General	
≤ 16	≤ 100
Axis total portfolio (as from firmware 8.40)*	Axis total portfolio, ONVIF**
Windows, iOS, Android	Windows, iOS, Android
Free	Licensed
✓	✓
Up to 16 cameras (1,4,9 and 16 split views and full screen), Axis corridor format, camera sequence, digital PTZ, PTZ Control	Up to 25 cameras (Flexible live view configuration), Axis corridor format, camera sequence, digital PTZ, dewarp, multiple monitors, hot spot, site map, web page, PTZ Control integration, Timeline visualization with date and time
Two way audio streaming, full duplex for Axis devices, one way for third party cameras, echo cancellation, and noise reduction	Two way audio streaming, full duplex for Axis devices, one way for third party cameras, echo cancellation, and noise reduction
Event management	
Events triggered by video AXIS Video Motion Detection and Axis Fence Guard	Events triggered by video AXIS Video Motion Detection, active tampering alarm, AXIS Cross Line Detection, Axis Fence Guard, external I/O, action button, external HTTPS, system triggers and device event triggers
Record, Push notification to mobile devices	Record, visual notification, audible alert, switch to camera/view Go to PTZ preset, email, alarm procedure, external I/O acknowledgement of alarms, HTTP notification
Security	
✓	✓
-	✓
Investigation and export	
Single images in jpeg, video sequences ASF or MP4, Installation-free stand alone player included, Digital signature on exported recordings	Single images in jpeg, video sequences ASF or MP4, Installation-free stand alone player included, Digital signature on exported recordings, Manual or scheduled export
Play back speed up to 8 x frame by frame, search for recordings based on camera, date and time via timeline visualization	Synchronized play back up to 36 cameras, Play back speed up to 65 x frame by frame, search for recordings based on camera, date and time via timeline visualization

Core Device eLicense
Universal Device eLicense
V4 to Universal Upgrade eLicense
ACS Core to Universal UPG eLicense

Version 5 licenses	
Axis part #/eLicense Part #	
0879-010	
0879-020	
0879-040	
0879-030	

* Except for AXIS Camera station specific recorders, AXIS S11 series and AXIS S22 series

**Except for AXIS Companion dedicated portfolio, AXIS Companion IP cameras are supported only by AXIS Companion video management software and mobile apps for iOS and Android devices

About Axis Communications

Axis enables a smarter and safer world by creating network solutions that provide insights for improving security and new ways of doing business. As the industry leader in network video, Axis offers products and services for video surveillance and analytics, access control, and audio systems.

Axis has more than 3,800 dedicated employees in over 50 countries and collaborates with partners worldwide to deliver customer solutions. Axis was founded in 1984 and has its headquarters in Lund, Sweden.

For more information about Axis, please visit our website www.axis.com.

Distributed by:



Connect with your local ADI or Axis representative for more information.

