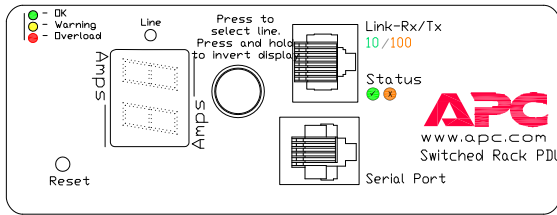
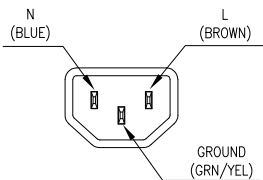


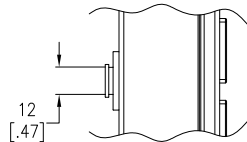
ISOMETRIC VIEW



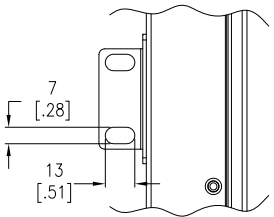
DETAIL A (DISPLAY INTERFACE-ENLARGED)



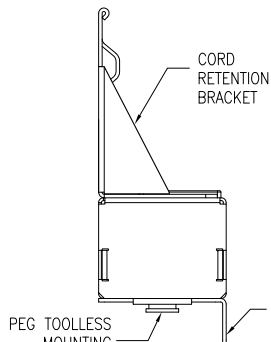
VIEW B (ENLARGED)



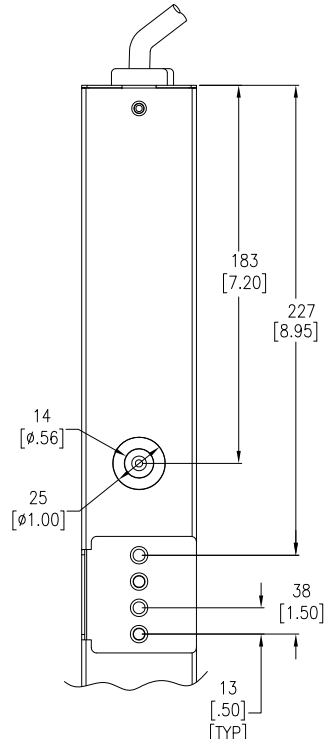
VIEW D (ENLARGED)



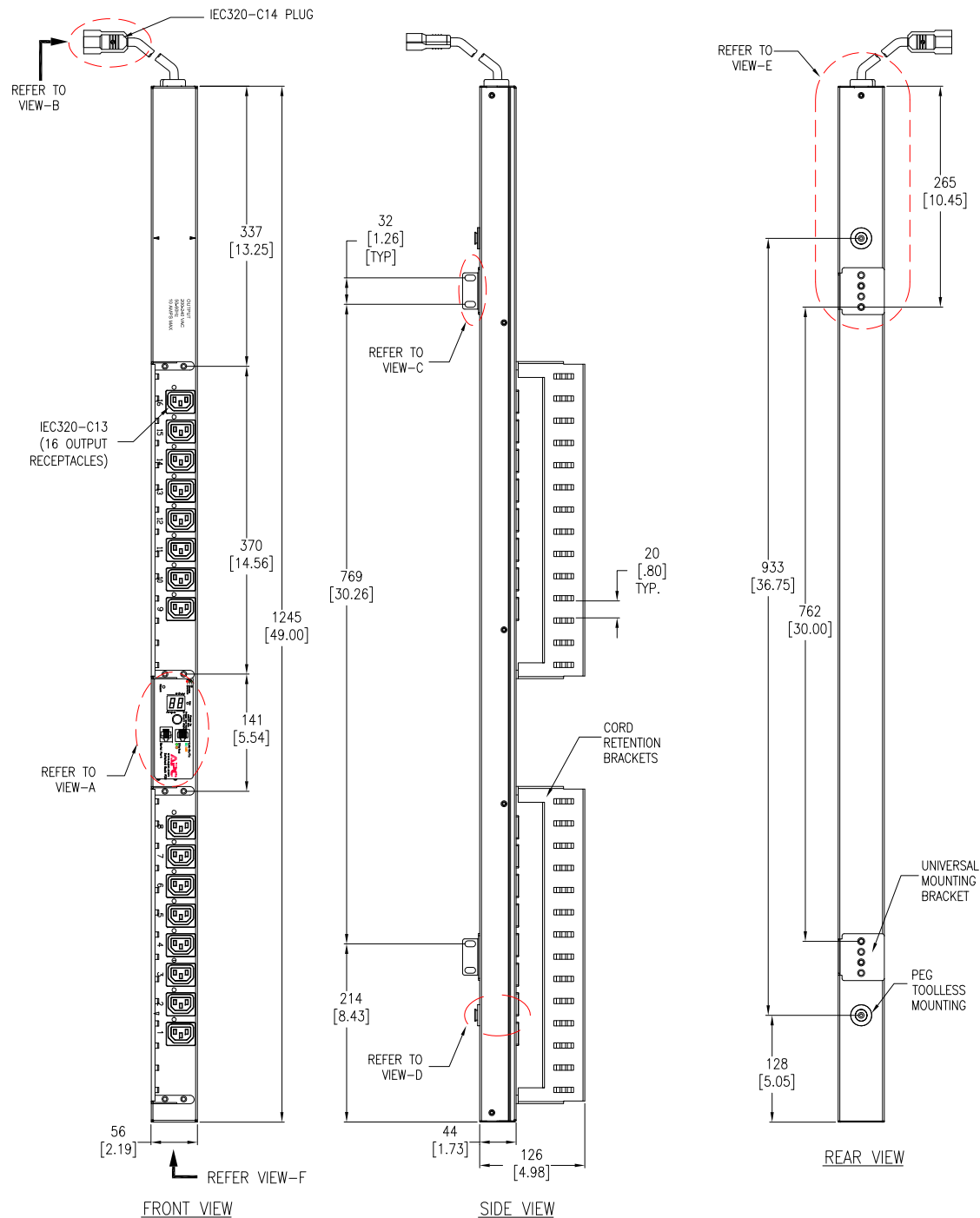
VIEW C (ENLARGED)



VIEW F (ENLARGED)



VIEW E (ENLARGED)



FRONT VIEW

SIDE VIEW

REAR VIEW

- NOTES:**
1. INSTALLATION SHALL COMPLY WITH ALL APPLICABLE NATIONAL, STATE AND LOCAL ELECTRICAL REGULATIONS.
 2. REFER TO PRODUCT DOCUMENTATION FOR ADDITIONAL DETAILS PRIOR TO INSTALLATION AND SITE PREPARATION WORK.
 3. UNLESS OTHERWISE SPECIFIED, ALL DIMENSIONS ARE IN MILLIMETERS [INCHES].
 4. NET WEIGHT OF UNIT IS 4.32kg [9.5 lb].
 5. UNIVERSAL MOUNTING BRACKET IS AN ALTERNATIVE MOUNTING METHOD TO THE TOOLLESS MOUNT FOR NON APC RACKS.
 6. BRACKET KITS TO MOUNT TO SPECIFIC COMPETITORS RACKS ARE AVAILABLE AS OPTIONS
 7. LENGTH OF POWER CORD IS 3048mm [120 Inches].

THIS DRAWING AND SPECIFICATIONS HEREIN ARE THE PROPERTY OF SCHNEIDER ELECTRIC AND SHALL NOT BE COPIED, REPRODUCED OR USED IN WHOLE OR IN PART, AS THE BASIS FOR THE MANUFACTURE OR SALE OF ITEMS WITHOUT WRITTEN PERMISSION FROM SCHNEIDER ELECTRIC. THIS DRAWING IS BASED UPON LATEST AVAILABLE INFORMATION AND IS SUBJECT TO CHANGE WITHOUT NOTICE.



TITLE: RACK PDU, SWITCHED, ZERO U
10A, 200-250V
INPUT: IEC320-C14
OUTPUT: (16)IEC320-C13
GENERAL ARRANGEMENT

PROJECT: SUBMITTAL DRAWINGS SHEET 1 OF 1

DWG NO:	AP7950B		REV:	0
DRAWN:	JAYAPRAKASH	29-AUG-16	THIRD	ANGLE
ENGINEER:	KATIE RICK	07-DEC-16	PROJECTION	
APPROVED:	KATIE RICK	07-DEC-16		