

# Meraki Z-Series

## Cloud-managed teleworker gateway



### Fast, reliable connectivity for the modern teleworker

The Cisco Meraki Z-Series teleworker gateway is an enterprise class firewall, VPN gateway and router. Each model offers five gigabit ethernet ports and wireless for connectivity. Each model is designed to securely extend the power of Meraki cloud managed networking to employees, IT staff, and executives working from home.

Using Meraki's proven and highly scalable Auto VPN technology, administrators can deploy network services including VoIP and remote endpoints with automatic, zero-touch provisioning. Additionally the Z-series provides secure wired and wireless access, and increases end-user productivity through Layer 7 traffic shaping.

All models feature a high-performance stateful firewall, support for VLANs, inter-VLAN routing, and isolation to segregate corporate data from recreational traffic. The Z-series offers the latest in wireless performance with 802.11ac Wave 2 technology with MU-MIMO support to provide reliable and high speed network access for most demanding business applications and latest devices.

### Z-Series and Meraki cloud management: a powerful combo

All Meraki devices are managed via the Meraki cloud, with an intuitive browser-based interface. Since the Z-series is self-configuring and managed over the web, you can rapidly deploy at remote locations without any assistance from end-users.

Meraki Cloud services monitor all devices 24x7 and deliver real-time alerts if any device encounters a problem. Remote diagnostics tools enable real-time troubleshooting through any web browser. New features and enhancements are delivered seamlessly over the web, so you never have to manually download software updates or worry about missing security patches.

## Product highlights

- 4 GbE ports for printers, phones and other wired devices
- 1 PoE-enabled port for VoIP phones and other powered devices
- Dual-concurrent 802.11ac Wave 2 radios with up to 1.3 Gbps data rate
- Auto VPN for intelligent site-to-site VPN connectivity
- 802.1x port authentication for wired devices
- Optional desk stand
- Layer 7 application traffic shaping and prioritization
- Layer 3 firewall to separate corporate data from personal traffic
- Up to 4 SSIDs with integrated enterprise security and personal / guest access
- Self-configuring, plug-and-play deployment
- Ideal for telecommuters using VoIP and remote applications
- Sleek, low profile design
- Built-in 100 Mbps CAT 3 LTE connectivity (Z3C)

## Z-Series portfolio

	Z3	Z3C
		
<b>Recommended use cases</b>	Teleworker with VoIP or PoE, IoT, and M2M	Teleworker with VoIP or PoE, IoT, and M2M
<b>Recommended clients</b>	Up to 5 devices	Up to 5 devices
<b>Stateful firewall throughput</b>	100 Mbps	100 Mbps
<b>Maximum VPN throughput</b>	50 Mbps	50 Mbps
<b>WAN interfaces</b>	1 x GbE RJ45 1 x USB (cellular failover <sup>1</sup> )	1 x GbE RJ45 1 x Integrated CAT 3 LTE Cellular Modem (cellular failover) 1 x USB (cellular failover <sup>1</sup> )
<b>LAN interfaces</b>	4 x GbE	4 x GbE
<b>PoE</b>	1 x PoE enabled port (802.3af, 15.5W)	1 x PoE enabled port (802.3af, 15.5W)
<b>Dimensions (w x d x h)</b>	6.83" x 4.41" x 1.04" (173.4mm x 112mm x 26.3mm)	7.9" x 4.41" x 1.04" (200mm x 112mm x 26 mm)
<b>Weight</b>	0.85 lbs (0.386 kg)	1.1 lbs (0.487 kg)
<b>Power supply</b>	50W (54 V / 0.92 A) Power supply included	50W (54 V / 0.92 A) Power supply included
<b>Operating temperature</b>	32°F to 104°F (0°C to 40°C)	32°F to 104°F (0°C to 40°C)
<b>Humidity</b>	5% to 95% non-condensing	5% to 95% non-condensing

<sup>1</sup> Requires separate cellular mode

## Z-Series accessories



Desk stand  
(sold separately)

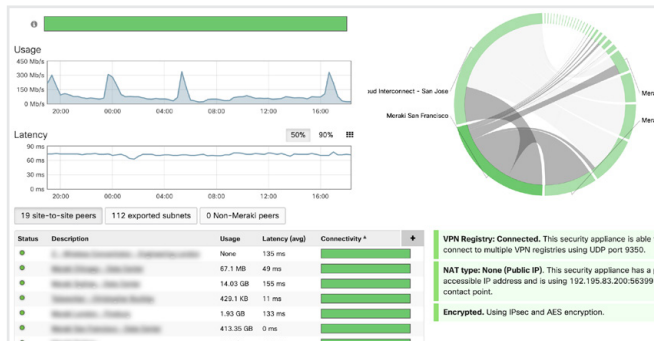


50W power adapter spare



Power cord  
(sold separately)

## Features



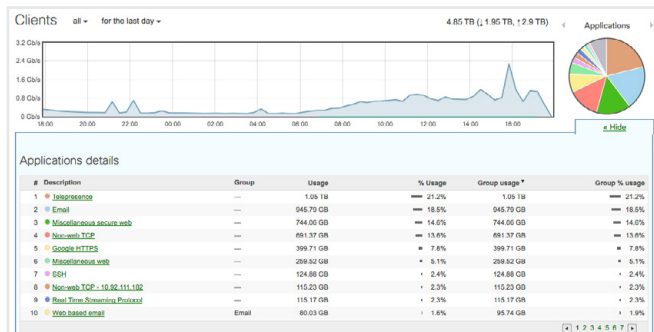
### Auto configuring site-to-site VPN

### Auto VPN

Leveraging Meraki's cloud architecture, VPN tunnels to HQ or the data center can be enabled via a single click without any command-line configurations or multi-step key permission setups. Meraki's patent-pending Auto VPN technology automatically tunnels, hole punches, sets up route tables, and establishes the IPsec connections, completely eliminating the complexity seen in traditional site-to-site VPN solutions.

### Application-aware traffic shaping

The Z-Series includes an integrated layer 7 packet inspection, classification, and control engine, enabling you to set QoS policies based on traffic type. Prioritize your mission critical applications like VoIP or remote desktop, while setting limits on recreational traffic, e.g., peer-to-peer and video streaming.



### Application visibility and control

### Simple, powerful security from end to end

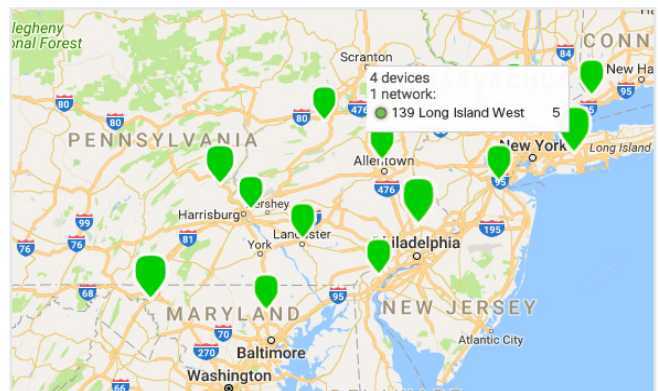
With end-to-end VPN encryption, corporate data is always protected. Additionally the Meraki Z-series supports 802.1x wired port authentication, offering network and endpoint security no matter where the gateway may be deployed

### Self-configuring, self-optimizing, self-healing

When plugged in, the Z-Series automatically connects to the Meraki cloud, downloads its configuration, and joins your network. In case of WAN IP address changes, the Z-Series self heals by re-establishing the site-to-site VPN tunnels using the new IP address. Also, if a supported SIM card is installed or a 3G/4G modem is connected and primary WAN uplink connectivity fails, the Z-Series will automatically failover to cellular.

### Industry-leading cloud management

Meraki's award-winning cloud management architecture unifies WAN, LAN, and wireless management under a web based dashboard, and scales easily from small deployments to large, multi-site deployments with tens of thousands of devices. The Meraki dashboard provides intuitive yet powerful role-based administration, firmware updates, configuration changes, email alerts, and easy to audit change logs.



### Multi-site management via the Meraki cloud

# Z-Series specifications

## Performance

- Firewall Throughput - 100 Mbps
- VPN Throughput - 50 Mbps
- Recommended for 5 clients or fewer

## Interfaces

- WAN interface: 1x GbE
- LAN interfaces: 4x GbE
- PoE: 1 x 802.3af enabled port
- 1x USB 2.0 port for 3G / 4G connectivity
- 1 x CAT 3 LTE modem for cellular connectivity (Z3C only)

## Network and security services

- Stateful firewall, 1:1 NAT, DMZ
- Auto (site-to-site IPsec) VPN
- Client VPN (IPsec L2TP), limit 2 authorized users (with Meraki-hosted authentication only)
- Automatic Layer 3 failover (including VPN connections)
- Application level (Layer 7) traffic analysis and shaping
- Multiple WAN IP, PPPoE, NAT
- VLAN support and DHCP services
- 802.1x wired port authentication
- Static routing
- User and device quarantine

## Integrated wireless

- 4 SSIDs
- 2x 802.11a/b/g/n/ac (2.4Ghz or 5 Ghz), 2x2 MU-MIMO with 2 spatial streams
- Max data rate - 1.3 Gbps
- 4x internal dipole antennas (gain: 3 dBi @ 2.4 GHz, 4 dBi @ 5 GHz)
- WPA2-PSK authentication
- Regulatory: FCC (US), IC (Canada), CE (Europe), C-Tick (Australia/New Zealand), RoHS

## Monitoring and reporting

- Throughput, connectivity monitoring and email alerts
- Detailed historical per-port and per-client usage statistics
- Application usage statistics
- Org-level change logs for compliance and change management
- VPN tunnel and latency monitoring
- Network asset discovery and user identification
- Periodic emails with key utilization metrics
- Syslog integration
- LTE traffic and performance (Z3C only)

## Remote diagnostics

- Live remote packet capture
- Real-time diagnostic and troubleshooting tools
- Aggregated event logs with instant search

## Management

- Managed via the web using the Meraki Cloud Controller
- Single pane of glass management of wired and wireless networks
- Zero-touch remote deployment (no staging needed)
- Automatic firmware upgrades and security patches
- Centralized policy management
- Org-level two-factor authentication and single sign-on
- Role based administration with change logging and alerts

## Integrated cellular (Z3C only)

- LTE bands: 2, 4, 5, 13, and 17 (North America). 1, 3, 7, 8, and 20 (Worldwide\*)
- 100 Mbps CAT 3 LTE
- Additional regulatory information: PTCRB (US), RCM (ANZ, APAC), GCF (EU)
- \* Z3C not available in Japan

# Z-Series specifications

## Z3 & Z3C environmental specifications

Power: 50W (54 V / 0.92 A), external power supply included

Operating temperature: 32°F to 104°F (0°C to 40°C)

Humidity: 5 to 95% non-condensing

Desktop or wall mount (all standard mounting hardware included)

Kensington lock hard point

## Regulatory

FCC (US)

CB (IEC)

CISPR (Australia/New Zealand)

PTCRB (US)

RCM (Australia/New Zealand, Asia Pacific)

GCF (EU)

## Warranty

Full lifetime hardware warranty with next-day advanced replacement included.

# Included in the box

Z3	<ul style="list-style-type: none"> <li>1 x Z3-HW</li> <li>1 x Power Adapter (power cord sold seperately)</li> <li>1 x Cat5 ethernet cable</li> <li>1 x Mounting Kit</li> </ul>
Z3C (North America)	<ul style="list-style-type: none"> <li>1 x Z3C-HW-NA</li> <li>1 x Power Adapter (power cord sold seperately)</li> <li>1 x Cat5 ethernet cable</li> <li>1 x Mounting Kit</li> <li>1 x SIM card ejector tool</li> </ul>
Z3C (Worldwide <sup>1</sup> )	<ul style="list-style-type: none"> <li>1 x Z3C-HW-WW</li> <li>1 x Power Adapter (power cord sold seperately)</li> <li>1 x Cat5 ethernet cable</li> <li>1 x Mounting Kit</li> <li>1 x SIM card ejector tool</li> </ul>

<sup>1</sup> Z3C not available in Japan

## Ordering guide

To place an order for an Z-Series teleworker gateway, pair a specific hardware model with a single license (which includes cloud services, software upgrades and support). For example, to order a Z3 with a 3-year license, order an Z3-HW with LIC-Z3-ENT-3YR. Lifetime warranty with advanced replacement is included on all licensed hardware at no additional cost.

Model	Power	License	Description
Z3-HW	Includes universal power supply, power cord sold separately <sup>2</sup>	LIC-Z3-ENT-1YR LIC-Z3-ENT-3YR LIC-Z3-ENT-5YR LIC-Z3-ENT-7YR LIC-Z3-ENT-10YR	Cisco Meraki Z3 Cloud Managed Teleworker Gateway, 1 year Enterprise License and Support Cisco Meraki Z3 Cloud Managed Teleworker Gateway, 3 year Enterprise License and Support Cisco Meraki Z3 Cloud Managed Teleworker Gateway, 5 year Enterprise License and Support Cisco Meraki Z3 Cloud Managed Teleworker Gateway, 7 year Enterprise License and Support Cisco Meraki Z3 Cloud Managed Teleworker Gateway, 10 year Enterprise License and Support
Z3C-HW-NA (Z3C with LTE North America)  Z3C-HW-WW (Z3C with LTE Worldwide <sup>1</sup> )		LIC-Z3C-ENT-1YR LIC-Z3C-ENT-3YR LIC-Z3C-ENT-5YR LIC-Z3C-ENT-7YR LIC-Z3C-ENT-10YR	Cisco Meraki Z3C Enterprise License and Support, 1 year Enterprise License and Support Cisco Meraki Z3C Enterprise License and Support, 3 year Enterprise License and Support Cisco Meraki Z3C Enterprise License and Support, 5 year Enterprise License and Support Cisco Meraki Z3C Enterprise License and Support, 7 year Enterprise License and Support Cisco Meraki Z3C Enterprise License and Support, 10 year Enterprise License and Support
MA-PWR-CORD-US <sup>2</sup> MA-PWR-CORD-EU MA-PWR-CORD-UK MA-PWR-CORD-AU MA-PWR-CORD-JP		-	Cisco Meraki Power Cord for Z3 and Z3C (US Plug) <sup>2</sup> Cisco Meraki Power Cord for Z3 and Z3C (EU Plug) Cisco Meraki Power Cord for Z3 and Z3C (UK Plug) Cisco Meraki Power Cord for Z3 and Z3C (AU Plug) Cisco Meraki Power Cord for Z3 and Z3C (JP Plug)
MA-STND-1		-	Z3 and Z3C Teleworker Gateway desk stand

<sup>1</sup> Z3C not available in Japan

<sup>2</sup> 1 x US power cord will be automatically included with all US orders