



## The pinnacle of performance and security

HP LaserJet Managed E60100 series  
HP LaserJet Managed MFP E62600 series



The world's most secure printing<sup>1</sup>



Maximum productivity.  
High-speed performance.



Powerful printing.  
Energy smart.<sup>2</sup>

# The world's most secure printing<sup>1</sup>



Only HP Enterprise devices repair themselves from attacks in real time while offering outstanding manageability. Automatically monitor threats, detect intrusions, and validate operating software while centrally managing your fleet with ease.



## Always on guard

Only HP Enterprise devices offer built-in security features that are always on guard.<sup>1</sup>

- With HP Sure Start, each device regularly checks its operating code and repairs itself from attempted hacks.
- Whitelisting checks firmware during startup to help ensure it's authentic, good code—digitally signed by HP.
- Run-time intrusion detection continually monitors activity to detect and stop attacks, then automatically reboots.
- HP Connection Inspector inspects outgoing network connections to stop suspicious requests like malware.

Thwart potential attacks by receiving instant notification of security issues. These devices work with leading Security Information and Event Management (SIEM) tools like Splunk, ArcSight, McAfee, and SIEMonster.



## Take security to the next level

Help protect your device with more than 150/250 (printer/MFP) embedded security features.<sup>3</sup> Protect information on the device and in transit over the network. Store data on the 256-bit encrypted HP High-Performance Secure Hard Disk.<sup>4</sup>

Add features such as card readers<sup>5</sup> and more through the Hardware Integration Pocket.<sup>6</sup> Equip your printer to store and protect larger files with the optional 1 GB memory upgrade. Further safeguard data stored on the printer—keys, passwords, certificates, and more—using the optional HP Trusted Platform Module.<sup>7</sup>

Easily develop, deploy, and integrate over 180 HP and third-party solutions with the HP Open Extensibility Platform. Optional HP Access Control solutions can help you reinforce security, while helping to reduce costs.



## Centralise control to help build business efficiency

Centralise control of your printing environment with HP Web Jetadmin—and help build business efficiency.<sup>8</sup> Optional HP JetAdvantage Security Manager offers an effective, policy-based approach to help secure HP printing and imaging devices.<sup>9</sup> Easily set security configuration policies and automatically validate settings for every HP printer and MFP in your fleet.

HP JetAdvantage Secure Print<sup>10</sup> and HP Access Control (HPAC) help secure documents by requiring authentication to release print jobs. In addition, extend capabilities and easily customise with HPAC—integrate job accounting, manage rights, and establish quotas for things such as colour use.<sup>11</sup> Save IT time and make printing easy for the entire enterprise by using a single driver for all HP devices.<sup>12</sup>

### ▶ For more information

#### Fleet management

HP Web Jetadmin visit: [hp.com/go/wja](http://hp.com/go/wja)

Solution brief: <http://h20195.www2.hp.com/V2/GetPDF.aspx/4AA5-2719EEW.pdf>

Video: <http://hp.brightcovegallery.com/solutions/detail/video/4271055504001/>

HP Universal Print Driver visit: [hp.com/go/upd](http://hp.com/go/upd)

Solution brief: <http://h20195.www2.hp.com/V2/GetPDF.aspx/4AA2-4781EEW.pdf>

#### Security

HP JetAdvantage Security Solutions visit: [hp.com/go/printsecurity](http://hp.com/go/printsecurity)

Solution brief: <http://h20195.www2.hp.com/V2/GetPDF.aspx/4AA3-1295EEW.pdf>

Video: <http://hp.brightcovegallery.com/products/detail/video/4270905124001/>

HP JetAdvantage Security Manager visit: [hp.com/go/securitymanager](http://hp.com/go/securitymanager)

Brochure: <http://h20195.www2.hp.com/V2/GetPDF.aspx/4AA3-9275EEW.pdf>

Video: <http://hp.brightcovegallery.com/products/detail/video/4270837770001/>

# Maximum productivity. High-speed performance.

Get the job done with a device equipped for high-speed performance. Be confident that your employees can speed through tasks without interruption.

## Keep business moving

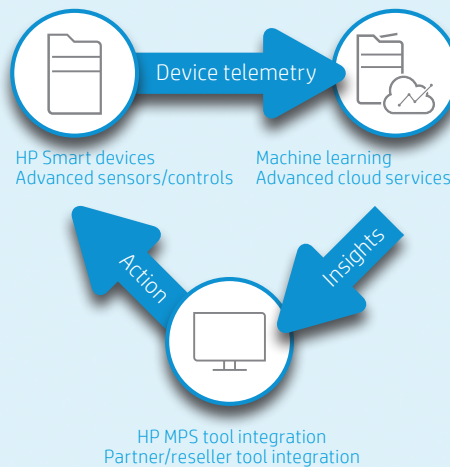
Breeze through tasks—this device prints your first page from ready and sleep mode as fast as 5.1 and 7.9 seconds, respectively.<sup>13,14</sup> Print up to 61 pages per minute (ppm), simplex<sup>15</sup> (E60165dn, MFP E62665hs, and Flow MFP E62665h/zmodels)—with up to 85% duplex efficiency.



Accelerate workflow with single-pass, two-sided scanning up to 111 images per minute (ipm) (MFP E62655dn and MFP E62665hs models) and up to 167 ipm (Flow MFP models).<sup>16</sup>

## Maximise uptime

HP Smart Device Services (SDS) help keep business moving by avoiding lapses in productivity. Reduce time spent calling and waiting, with technology that allows your service provider to quickly pinpoint issues before they become a problem. Remote diagnostic tools help provide faster, more efficient fixes. Simple issues can be resolved remotely, and service calls go faster when techs know exactly what they need for the right fix.



HP devices communicate their health and call your service provider for help when they need it. Empower advanced analytics with smart sensors, event logs, device telemetry, and access for remote configurations and adjustments that let your service provider know how devices are working.

## Loaded for productivity

Spend less time loading paper with a 4,400-sheet (E60100 series) or a 3,750-sheet (MFP E62600 series) maximum input capacity.<sup>17</sup> Empower employees with additional paper-handling accessories (see pages 7 and 10).<sup>18</sup> Optional 550-sheet input trays fit a whole ream of paper and support media sizes up to 216 x 356 mm.



Equip employees to breeze through tasks with an adjustable touchscreen control panel—available on select models. (For more information, see Appendix A on page 21.) The 5-bin stapler/stacker with job offset allows you to set up each bin for a different department or option, such as face down, fax,<sup>19</sup> and copy (select models). An easy-access USB port on all models allows users to easily walk up and print.<sup>20</sup>

# Powerful printing. Energy smart.<sup>2</sup>



Get exceptional print quality and help protect your device, using Original HP Toner cartridges with JetIntelligence.



## Exceptional print quality

Count on the advantages of Original HP Toner cartridges—performance, high quality, and dependability. Precision black toner is engineered to deliver consistent placement of toner particles and produce sharp text, bold blacks, and crisp graphics.

Print uninterrupted with HP Black Managed LaserJet Toner cartridges (YC/MC: 41,000/50,000 pages<sup>21</sup>).



## Help protect your investment

Don't put your printer or MFP—or print quality—at risk. Help retain the consistent Original HP quality you paid for with innovative, anti-fraud technology. Enable office-wide adherence to printing policies with cartridge authentication technology.



## Ready to work, right away

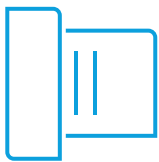
Speed through print jobs right out of the box. These devices ship with preinstalled, specially designed Original HP LaserJet Toner cartridges with JetIntelligence. Auto seal removal enables simple and seamless cartridge replacement, so you can get back to business fast—without costly delays or frustrating messes.



# Give workgroups the speed they need



With the MFP E62600 series, accelerate workflow, improve accuracy, and easily connect people throughout your organisation. Complete high-volume scan jobs fast—up to 167 ipm for Flow MFP models<sup>16</sup>—and avoid extra steps with a device designed for maximum productivity.



## Fast, unattended scanning

Turn stacks of paper documents into digital files—scan up to 45,000 pages per month with the Flow models.<sup>22</sup> Load up to 150 pages into the automatic document feeder (ADF) for fast two-sided, single-pass scanning (MFP E62600 series only).<sup>23</sup> Choose Flow models for advanced workflow features such as HP EveryPage and a pull-out keyboard.<sup>24</sup>



## Easily scan, copy, and fax

Easily make copies or send faxes using the scanner glass or the ADF (MFP E62600 series only). Scan a variety of media sizes from the ADF—from checks (69 x 147 mm) to banners (216 x 863 mm). Send scanned documents directly to email, network folders, LAN fax addresses,<sup>19</sup> or Microsoft® SharePoint®.



## Optional workflow solutions

HP Digital Sending Software leverages existing IT infrastructure and uses a common administrative utility and user interface. HP Capture and Route is scalable and makes it easy to control, track, and distribute scanned content.

### Flow MFP features<sup>24</sup>



HP EveryPage featuring ultrasonic multi-feed detection



Faster scan speeds



Automatic page orientation, auto-crop, and auto-tone



Pull-out keyboard



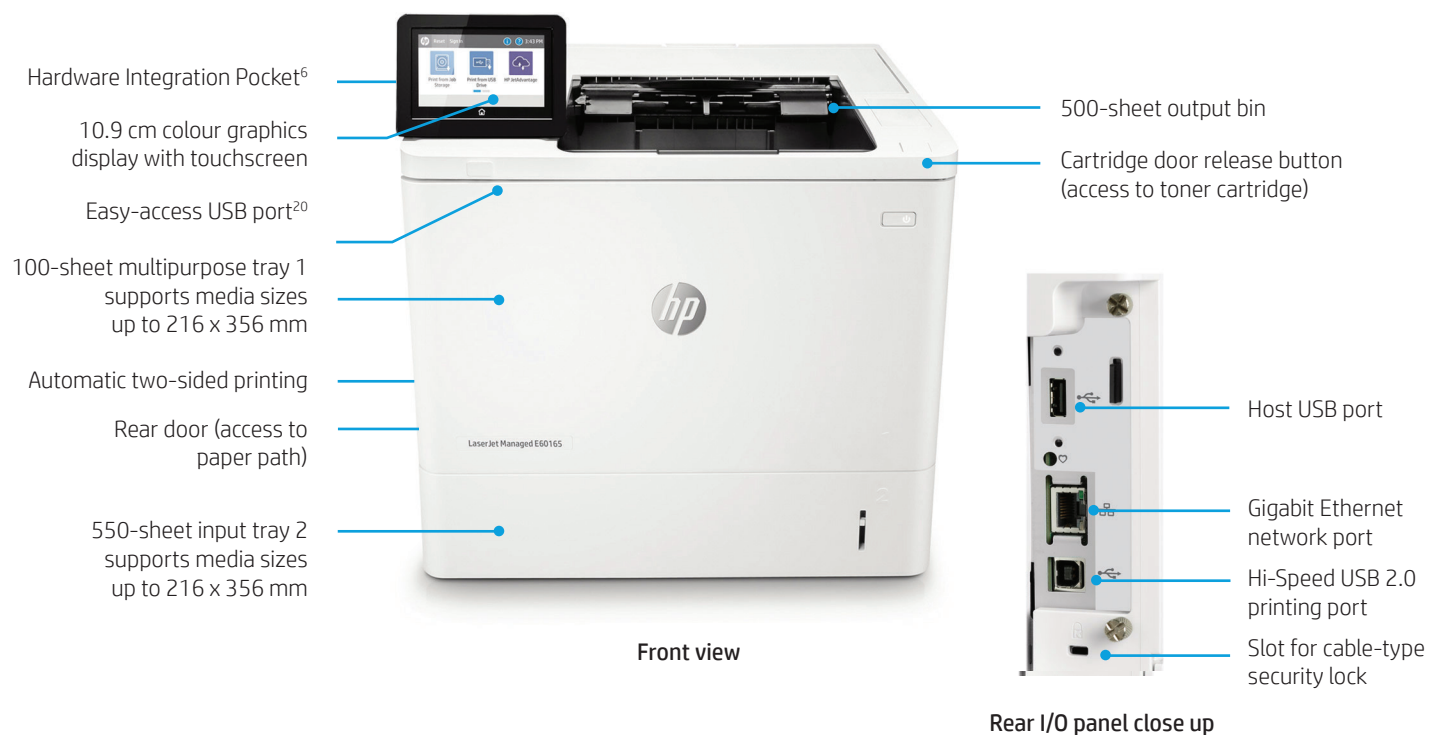
Built-in OCR



Extended-life ADF

# Get to know the HP LaserJet Managed E60100 series

HP LaserJet Managed E60165dn shown



## Series at a glance



Model (product number)	E60155dn (3GY09A)	E60165dn (3GY10A)
Print speed (A4) <sup>15</sup>	Up to 52 ppm	Up to 61 ppm
100-sheet multipurpose tray 1, 550-sheet tray 2	✓	✓
Input capacity (standard/maximum <sup>17</sup> )	Up to 650/4,400 pages (both models)	
Wireless direct <sup>25</sup> /NFC touch-to-print <sup>26</sup> /Bluetooth <sup>®</sup> Low Energy (BLE) <sup>27</sup>	Optional	Optional
Wireless networking <sup>28</sup>	Optional	Optional
HP High-Performance Secure Hard Disk <sup>4</sup>	Optional	Optional
Recommended Monthly Page Volume <sup>29</sup>	5,000 to 30,000 pages	5,000 to 40,000 pages

# Paper-handling accessories – E60100 series



550-sheet Paper Feeder (LOH17A)

2,100-sheet Paper Feeder (LOH18A)

Envelope Feeder (LOH21A)<sup>30</sup>

Printer Stand (LOH19A)

Stapler/Stacker/Mailbox (LOH20A)

Optional<sup>31</sup>

Add up to four  
*(all models)*

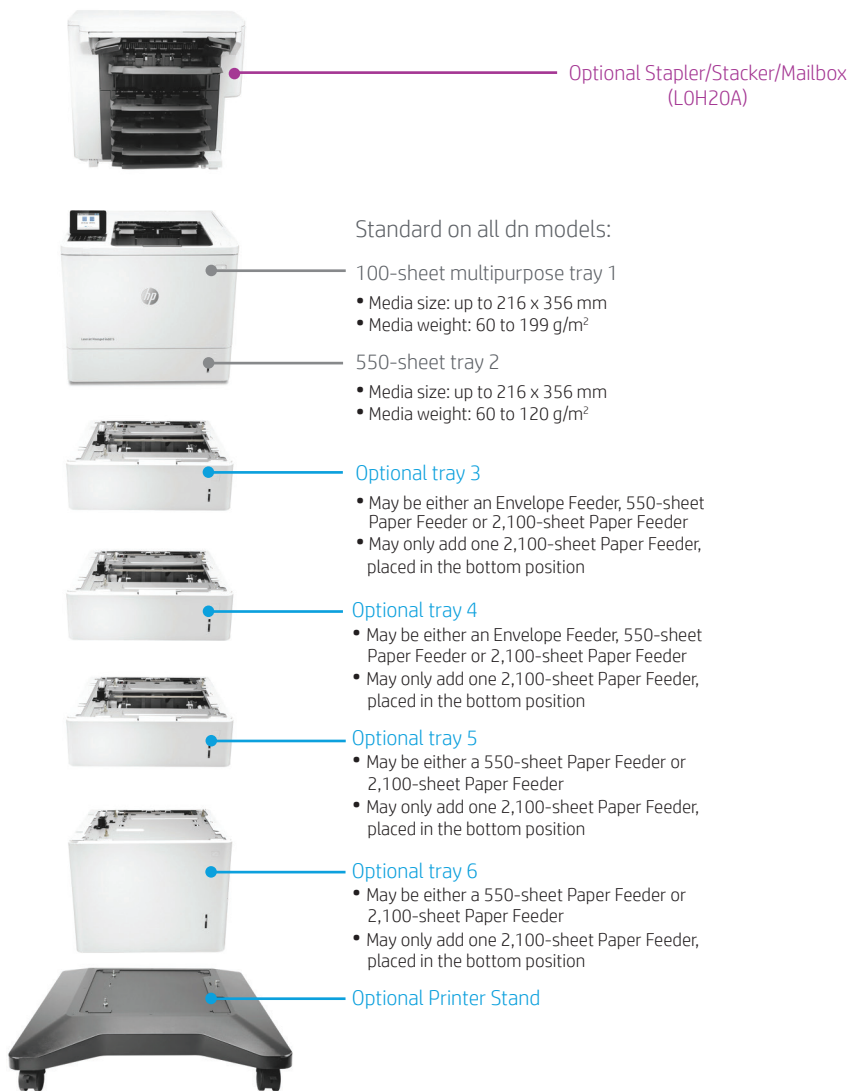
Add up to one  
*(all models)*

Add up to two  
*(all models)*

Add up to one  
*(all models)*

Add up to one  
*(all models)*

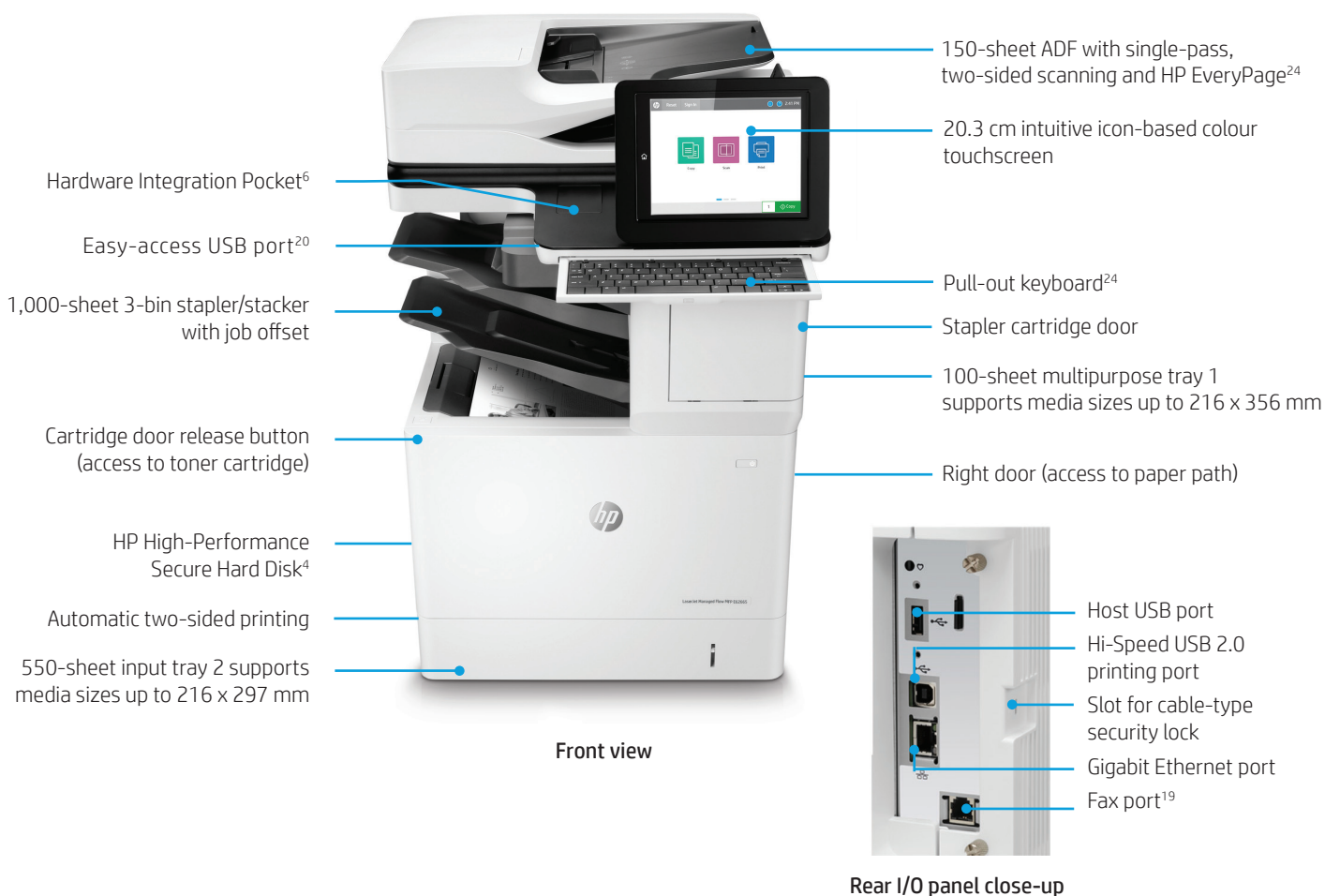
# HP LaserJet Managed E60100 series – Configuration





# Get to know the HP LaserJet Managed MFP E62600 series

HP LaserJet Managed Flow MFP E62665z shown



## Series at a glance

Model (product number)	MFP E62655dn (3GY14A)	MFP E62665hs (3GY15A)	Flow MFP E62665h (3GY16A)	Flow MFP E62665z (3GY17A)
Print speed (A4) <sup>15</sup>	Up to 52 ppm	Up to 61 ppm	Up to 61 ppm	Up to 61 ppm
Input capacity (standard/maximum <sup>17</sup> )	Up to 650/3,750 pages (all models)			
3-bin stapler/stacker with job offset	Not available	✓	Not available	✓
Advanced workflow features, including pull-out keyboard <sup>24</sup>	Not available	Not available	✓	✓
HP High-Performance Secure Hard Disk <sup>4</sup>	Optional	✓	✓	✓
Wireless direct <sup>25</sup> /NFC touch-to-print <sup>26</sup> /BLE <sup>27</sup>	Optional	Optional	Optional	Optional
Wireless networking <sup>28</sup>	Optional	Optional	Optional	Optional
Recommended Monthly Page Volume <sup>29</sup>	5,000 to 40,000 pages (all models)			

# Paper-handling accessories – MFP E62600 series



550-sheet Paper Feeder (J8J89A)



1x550-sheet Paper Feeder with Stand and Cabinet (J8J91A)<sup>32</sup>



3x550-sheet Paper Feeder and Stand (J8J93A)<sup>33</sup>



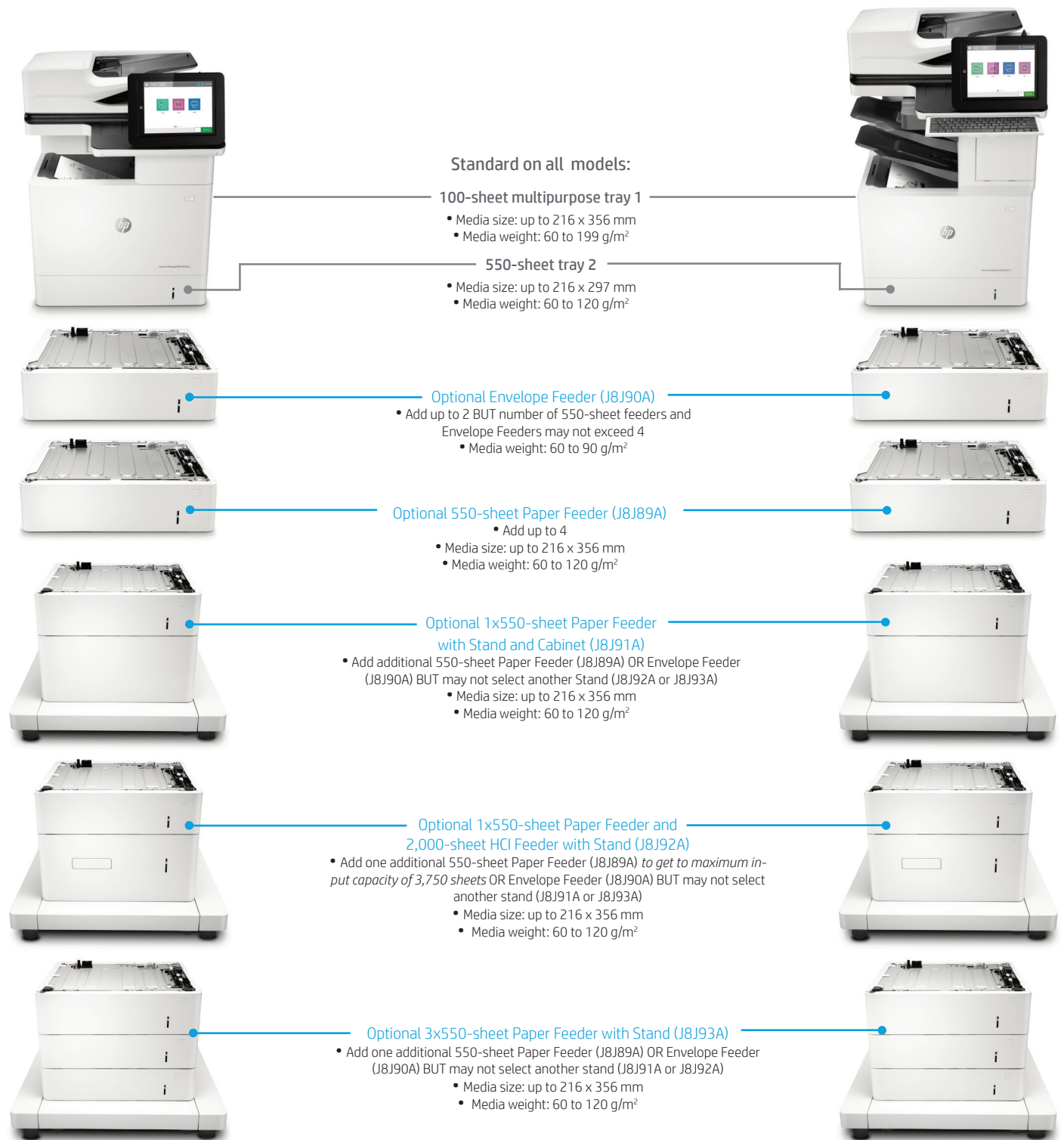
1x550 and 2,000-sheet HCl Feeder and Stand (J8J92A)<sup>34</sup>



Envelope Feeder (J8J90A)<sup>35</sup>

Optional <sup>31</sup>	Add up to four <i>(all models)</i>	Add up to one <i>(all models)</i>	Add up to one <i>(all models)</i>	Add up to one <i>(all models)</i>	Add up to two <i>(all models)</i>
Maximum device input <sup>17</sup>	1,200 sheets (one tray) 1,750 sheets (two trays) 2,300 sheets (three trays) 2,850 sheets (four trays)	1,200 sheets	2,300 sheets	3,200 sheets <b>Note:</b> To get to maximum input capacity of 3,750 sheets, add an additional 550-sheet tray to this accessory.	N/A

# HP LaserJet Managed MFP E62600 series – Configuration



# What's new



**HP LaserJet Managed E60165dn**

FPO as fast as 5.1 seconds from ready <sup>13</sup>
10.9 cm colour graphics display with touchscreen
Consumable Access Control helps reduce cost per page (CPP) by helping to prevent users from replacing cartridges too early
Fixed-Size Cassette Guide ensures proper placement of correct media size to help prevent paper jams and waste (input tray 2 only)
Overfill messaging communicates when the tray is filled over capacity to help avoid jams



**HP LaserJet Managed E60065dn**

FPO as fast as 5.4 seconds from ready <sup>13</sup>
6.9 cm LCD with keypad
Not available
Not available
Not available



**HP LaserJet Managed Flow MFP E62665z**

FPO as fast as 5.3 seconds from ready <sup>13</sup>
Consumable Access Control helps reduce cost per page (CPP) by helping to prevent users from replacing cartridges too early
Fixed-Size Cassette Guide ensures proper placement of correct media size to help prevent paper jams and waste (input tray 2 only)
Overfill messaging communicates when the tray is filled over capacity to help avoid jams



**HP LaserJet Managed Flow MFP E62565z**

FPO as fast as 5.4 seconds from ready <sup>13</sup>
Not available
Not available
Not available

# HP LaserJet Managed E60100 series technical specifications

	HP LaserJet Managed E60155dn	HP LaserJet Managed E60165dn
<b>Product number</b>	3GY09A	3GY10A
<b>Control panel</b>	10.9 cm (4.3-inch) colour graphics display with touchscreen	10.9 cm (4.3-inch) colour graphics display with touchscreen
<b>Print speed (A4/letter)<sup>15</sup></b>		
Single-sided	Up to 52/55 ppm	Up to 61/65 ppm
Two-sided	Up to 50/53 ipm	Up to 50/53 ipm
<b>Print speed (A5)<sup>36</sup></b>		
Landscape	Up to 80 ppm	Up to 100 ppm
Portrait	Up to 6 ppm ( <i>all models</i> )	
<b>First page out (A4/letter)</b>		
From ready <sup>13</sup>	As fast as 5.1/5.0 seconds ( <i>all models</i> )	
From sleep <sup>14</sup>	As fast as 8.3/8.2 seconds ( <i>all models</i> )	
<b>Print resolution</b>	FastRes1200; Up to 1200 x 1200 dpi ( <i>all models</i> )	
<b>Printing features</b>	Print preview, print multiple pages per sheet (2, 4, 6, 9, 16), collation, watermarks, store print jobs, easy-access USB <sup>20</sup>	
<b>Processor</b>	1.2 GHz ( <i>all models</i> )	
<b>Memory</b>	512 MB, standard; 1.5 GB, maximum with purchase of 1 GB accessory DIMM	
<b>Storage</b>	4 GB eMMC non-volatile storage; Firmware encryption (AES 128 or AES 256) of customer/job data; Secure Cryptographic Erase – Job Data, Secure Erase – Disk	
<b>Durability ratings</b>		
Recommended monthly page volume <sup>29</sup>	5,000 to 30,000 pages	5,000 to 40,000 pages
Duty cycle <sup>37</sup>	Up to 375,000 pages	Up to 420,000 pages
<b>Media specifications</b>		
Input capacity	Up to 650 sheets (up to 4,400 maximum <sup>17</sup> ) ( <i>all models</i> ) Tray 1: Up to 100 sheets Tray 2: Up to 550 sheets	
Output capacity	Up to 500 sheets (standard); up to 1,300 sheets with optional 5-bin stapler/stacker/mailbox accessory	
Two-sided printing	Automatic ( <i>all models</i> )	
Media sizes	Tray 1: A4, A5, A6, RA4, B5 (JIS), B6 (JIS), Oficio (216 x 340 mm), 16K, 10 x 15 cm, postcards (JIS single and double), envelopes (B5, C5, C6, DL), postcard (JIS single and double); Letter, legal, statement, executive, 3 x 5 in, 4 x 6 in, 5 x 7 in, 5 x 8 in, 8.5 x 13 in, envelopes (No. 9, No. 10, Monarch); Custom media sizes: 76 x 127 to 216 x 356 mm (3 x 5 to 8.5 x 14 in) Tray 2: A4, A5, A6, RA4, B5 (JIS), B6 (JIS), 16K, 10 x 15 cm, postcards (JIS single and double); Letter, legal, executive, statement, 4 x 6 in, 5 x 7 in, 5 x 8 in; Custom media sizes: 3.9 x 5.8 to 8.5 x 14 in (99 x 148 to 216 x 356 mm) Optional 550-sheet tray: A4, A5, A6, RA4, B5 (JIS), B6 (JIS), 10 x 15 cm, Oficio (216 x 340 mm), 16K, postcard (JIS single and double); Letter, legal, executive, statement, 4 x 6 in, 5 x 7 in, 5 x 8 in, 8.5 x 13 in; Custom media sizes: 99 x 148 to 216 x 356 mm (3.9 x 5.8 to 8.5 x 14 in) Optional 2,100-sheet feeder: A4; Letter, legal; Custom media sizes not supported	
Media weights	Tray 1: plain: 60 to 199 g/m <sup>2</sup> (16 to 53 lb); envelopes: 60 to 90 g/m <sup>2</sup> (16 to 24 lb) Tray 2, optional 550-sheet tray, optional 2,100-sheet feeder: 60 to 120 g/m <sup>2</sup> (16 to 32 lb)	
Media types	Paper (plain, light, bond, recycled, heavy, extra heavy, cardstock, pre-printed, pre-punched, coloured, rough, heavy rough), mono transparency, labels, letterhead, envelope, heavy envelope	
<b>Print languages</b>	HP PCL 6, HP PCL 5 (HP PCL 5 driver available from the Web only), HP postscript level 3 emulation, native PDF printing (v 1.7), Apple AirPrint <sup>38</sup>	
<b>Fonts</b>	105 internal TrueType fonts scalable in HP PCL, 92 internal scalable fonts in HP postscript level 3 emulation (Euro symbol built-in); 1 internal Unicode font (Andale Mono WorldType); 2 Internal Windows Vista® 8 fonts (Calibri, Cambria); Additional font solutions available via third-party flash memory cards; HP LaserJet fonts and IPDS Emulation available at <a href="http://hp.com/go/laserjetfonts">hp.com/go/laserjetfonts</a>	
<b>Connectivity</b>	1 Hi-Speed USB 2.0 Device; 2 Hi-Speed USB 2.0 Host; 1 Gigabit Ethernet; 1 Hardware Integration Pocket <sup>6</sup>	
<b>Mobile printing</b>	HP ePrint, <sup>39</sup> Apple AirPrint, <sup>38</sup> Mopria-certified, Google Cloud Print™ 2.0, Roam-capable for easy printing <sup>40</sup> Optional: Wireless direct printing, <sup>25</sup> NFC touch-to-print, <sup>26</sup> and BLE <sup>27</sup> ( <i>all models</i> )	



	HP LaserJet Managed E60155dn	HP LaserJet Managed E60165dn
<b>Network capabilities</b>	Standard: via HP Jetdirect Ethernet embedded print server supports: 10Base-T, 100Base-Tx, 1000Base-T; 802.3az (EEE) support on Fast Ethernet and Gigabit Ethernet; IPsec	
	Optional: 802.11b/g/n wireless networking <sup>28</sup> ( <i>all models</i> )	
<b>Network protocols</b>	Via built-in networking solution: TCP/IP, IPv4, IPv6	
	Print: TCP-IP port 9100 Direct Mode, LPD (raw queue support only), Web Services Printing, IPP 2.0, Apple AirPrint, <sup>38</sup> HP ePrint, <sup>39</sup> FTP Print, Google Cloud Print	
	Discovery: SLP, Bonjour, Web Services Discovery	
	IP config: IPv4 (BootP, DHCP, AutoIP, Manual, TFTP Config, ARP-Ping), IPv6 (Stateless Link-Local and via Router, Statefull via DHCPv6)	
	Management: SNMPv2/v3, HTTP/HTTPS, Telnet, TFTP Config, FTP FW Download, Syslog	
	Security: SNMPv3, SSL Cert Management, Firewall, ACL, 802.1x	
<b>Security</b>	Identity Management: Kerberos authentication, LDAP authentication, 1000 user PIN codes, optional HP and third-party advanced authentication solutions (e.g., badge readers)	
	Network: IPsec/firewall with Certificate, Pre-Shared Key, and Kerberos authentication, Supports WJA-10 IPsec configuration Plug in, 802.1X authentication (EAP-PEAP, EAP-TLS), SNMPv3, HTTPS, Certificates, Access Control List	
	Data: Storage Encryption, Encrypted PDF and email (uses FIPS 140 validated cryptographic libraries from Microsoft), Secure Erase, SSL/TLS (HTTPS), Encrypted Credentials	
	Device: Security lock slot, USB port disablement, Hardware Integration Pocket for security solutions, <sup>6</sup> Intrusion Detection with Red Balloon Security Technology – Constant in-device monitoring for attacks, HP SureStart Secure Boot – BIOS Integrity Checking with self-healing capability, Whitelisting – loads only known good code (DLLs, EXEs, etc.)	
	Security Management: Compatible with HP JetAdvantage Security Manager, <sup>6</sup> Device Security Syslog Messages processed and accessible in ArcSight, McAfee, Splunk, and SIEMonster SIEMs	
<b>Compatible operating systems<sup>41</sup></b>	Windows® Client OS (32- and 64-bit): Win10, Win8 Basic, Win8 Pro, Win8 Enterprise, Win8 Enterprise N, Win7 Starter Edition SP1, UPD Win7 Ultimate	
	Apple Mac OS: Sierra 10.12, High Sierra 10.13, Mojave 10.14	
	Mobile OS: Android™	
	Discrete PCL6 Printer Driver – Supported operating systems: For more information, go to <a href="http://support.hp.com">support.hp.com</a>	
	UPD PCL6/PS Printer Drivers <sup>12</sup> – Supported operating systems: For more information, go to <a href="http://hp.com/go/upd">hp.com/go/upd</a>	
<b>Compatible network operating systems</b>	Windows Server® 2008 R2 64-bit, Windows Server 2008 R2 64-bit (SP1), Windows Server 2012 64-bit, Windows Server 2012 R2 64-bit, Windows Server 2016 64-bit, Failover Cluster 2008 R2, Failover Cluster 2012 R2, Terminal Server 2008 R2, Remote Desktop Server 2012 R2	
	Citrix® Server 6.5, Citrix XenApp and XenDesktop® 7.6, Citrix Ready Kit Certification – up to Citrix Server 7.18; For more information, see <a href="http://citrixready.citrix.com">citrixready.citrix.com</a>	
	Novell iPrint Server	
	Linux®: For more information, see <a href="http://developers.hp.com/hp-linux-imaging-and-printing">developers.hp.com/hp-linux-imaging-and-printing</a>	
	UPD PCL6/PS Printer Drivers <sup>12</sup> Supported for Compatible network operating systems, please see <a href="http://hp.com/go/upd">hp.com/go/upd</a>	
<b>System requirements, Windows</b>	A compatible operating system (see above), 2 GB available hard disk space, OS compatible hardware (for OS hardware requirements see <a href="http://microsoft.com">microsoft.com</a> )	
<b>System requirements, Macintosh</b>	A compatible operating system (see above), 2 GB available hard disk space (for operating system compatible hardware requirements see <a href="http://apple.com">apple.com</a> )	
<b>Dimensions, operating (width x depth x height)</b>	Operating: 431 x 466 x 380 mm (17 x 18.3 x 15 in) ( <i>all models</i> )	
	Maximum: <sup>42</sup> 431 x 1040 x 453 mm (17 x 40.9 x 17.8 in) ( <i>all models</i> )	
<b>Weight (with print cartridges)</b>	21.55 kg (47.51 lb) ( <i>all models</i> )	
<b>What's in the box</b>	HP LaserJet Managed Printer; Original HP LaserJet Toner Cartridge (toner cartridge installed); Documentation (Hardware Install Guide); Power cord; Fixed-Size Cassette Guide (input tray 2 only)	
<b>Downloadable software</b>	From <a href="http://123.hp.com">123.hp.com</a> : HP Easy Start (Guided Software Install for Windows and Mac)	
	From <a href="http://hp.com">hp.com</a> : Windows OS: Full solution software and drivers, Basic solution software and drivers, HP PCL6 XPS Discrete Print Driver, Product documentation and support	
	From <a href="http://hp.com">hp.com</a> : Mac OS: HP Easy Start (Guided Software Install), HP Mac PS Print Driver, HP Easy Admin	
	For Mobile OS, iOS: For more information, see <a href="http://hp.com/go/businessmobileprinting">hp.com/go/businessmobileprinting</a> ; Android: For more information, see <a href="http://hp.com/go/businessmobileprinting">hp.com/go/businessmobileprinting</a>	
	From <a href="http://hp.com">hp.com</a> for printer administrators: Printer Administrator Resource Kit (Driver Configuration Utility – Driver Deployment Utility – Managed Printing Administrator), HP Universal Print Drivers <sup>12</sup> PCL6 GDI and PS GDI for Windows, HP ePrint Software <sup>39</sup> (Mobile Driver for Windows), SAP Print Drivers: For more information, see <a href="http://support.hp.com/us-en/document/c05051702">support.hp.com/us-en/document/c05051702</a> , HP Web Jetadmin, <sup>8</sup> HP JetAdvantage Security Manager, <sup>9</sup> HP Roam, <sup>40</sup> HPLIP Linux Printer Driver: For more information, see <a href="http://developers.hp.com/hp-linux-imaging-and-printing">developers.hp.com/hp-linux-imaging-and-printing</a> , Unix® Model Script Driver: For more information, see <a href="http://support.hp.com/us-en/document/c04222920">support.hp.com/us-en/document/c04222920</a> , ReadIris	

**Warranty**

One-year, next-business day, onsite warranty; Warranty and support options vary by product, country and local legal requirements. Go to [hp.com/support](http://hp.com/support) to learn about HP world-class service and support options in your region.

## Environmental and power specifications

	HP LaserJet Managed E60155dn	HP LaserJet Managed E60165dn
<b>Environmental ranges</b>		
Temperatures	Operating: 15 to 32.5° C (59 to 90.5° F); Recommended operating: 15 to 27° C (59 to 80.6° F); Storage: -20 to 40° C (-4 to 104° F)	
Relative Humidity	Operating range: 10 to 80% RH; Recommended operating range: 30 to 70% RH; Storage range: 10 to 90% RH	
<b>Acoustic power emissions</b>	Ready mode: 3.5 B(A) Printing: 7.0 B(A) <sup>43</sup>	Ready mode: 3.5 B(A) Printing: 7.2 B(A) <sup>44</sup>
<b>Acoustic pressure emissions (bystander)</b>		
Ready mode	Inaudible ( <i>all models</i> )	
Active mode	55 dB(A)	57 dB(A)
<b>Power specifications<sup>45</sup></b>		
Power supply	100 V-127 V nominal @ +/-10%; 50-60 Hz nominal +/- 3 Hz; 12 A 220 V-240 V nominal @ +/-10%; 50-60 Hz nominal +/- 3 Hz; 6 A	
Power consumption	Active: 710 watts; Ready: 12.3 watts; Sleep: 0.52 watts; Auto-off/Manual on: <0.1 watts; Manual Off: <0.1 watts	Active: 720 watts; Ready: 15.4 watts; Sleep: 0.6 watts; Auto-off/Manual on: <0.1 watts; Manual Off: <0.1 watts
Typical electricity consumption (TEC)	Blue Angel (BA): 1.971 kWh/week ENERGY STAR® (ES): 2.131 kWh/week	BA: 2.425 kWh/week ES: 2.622 kWh/week
Energy-saving features	HP Auto-On/Auto-Off Technology; <sup>46</sup> Instant-on Technology <sup>47</sup> ( <i>all models</i> )	
<b>Environmental specifications</b>	Blue Angel compliant; ENERGY STAR certified; EPEAT® Silver; <sup>48</sup> mercury-free	Blue Angel compliant; ENERGY STAR certified; CECP; EPEAT Silver; <sup>48</sup> mercury-free
<b>Safety and regulatory compliance</b>	IEC 60950-1:2005 +A1:2009 +A2:2013 (International); EN60950-1:2006 +A11:2009 +A1:2010 +A12:2011 +A2:2013 (EU); EN 60825-1:2014/IEC 60825-1:2014 (Class 1 Laser Product); EN 62479:2010/IEC 62479:2010; Low Voltage Directive 2014/35/EU with CE Mark (Europe); GS Certificate (Germany, Europe); UL/cUL Listed and UC CoC (US/Canada); CAN/CSA C22.2 No. 60950-1-07 2nd Ed. 2011-12; Compliance with Laser safety standards 21 CFR 1040.10 and 1040.11 except for deviations pursuant to Laser notice No. 50, Dated June 24, 2007; Other safety approvals as required by individual countries	
<b>Electromagnetic emission standard</b>	CISPR 22:2008 (International) - Class A, CISPR32:2012 (International) - Class A, EN 55032: 2012 (EU) - Class A, EN 61000-3-2: 2014, EN 61000-3-3: 2013, EN 55024: 2010, EMC Directive 2014/30/EU, FCC CFR 47 Part 15 Class A/ICES-003, Issue 6 Class A. Other EMC approvals as required by individual countries	

# HP LaserJet Managed MFP E62600 series technical specifications

	HP LaserJet Managed MFP E62655dn	HP LaserJet Managed MFP E62665hs	HP LaserJet Managed Flow MFP E62665h	HP LaserJet Managed Flow MFP E62665z
<b>Product number</b>	3GY14A	3GY15A	3GY16A	3GY17A
<b>Control panel/data entry</b>	20.3 cm (8-inch) colour graphics display with touchscreen; rotating (adjustable angle) display			Plus: Pull-out keyboard ( <i>Flow models only</i> )
<b>Print speed (A4/letter)<sup>15</sup></b>				
Single-sided	Up to 52/55 ppm	Up to 61/65 ppm		
Two-sided	Up to 43/45 ipm	Up to 50/53 ipm		
<b>Print speed (A5)<sup>36</sup></b>				
Landscape	Up to 80 ppm	Up to 100 ppm		
Portrait	Up to 6 ppm ( <i>all models</i> )			
<b>First page out (A4/letter)</b>				
From ready <sup>13</sup>	As fast as 5.3/5.1 seconds ( <i>all models</i> )			
From sleep <sup>14</sup>	As fast as 7.9/7.8 seconds	As fast as 12.2/12.1 seconds	As fast as 7.9/7.8 seconds	As fast as 12.2/12.1 seconds
<b>Print resolution</b>	FastRes 1200; Up to 1200 x 1200 dpi ( <i>all models</i> )			
<b>Scanning resolution</b>	Up to 600 dpi ( <i>all models</i> )			
<b>ADF scan speed (A4/letter)<sup>16</sup></b>				
Single-sided	Up to 69/75 ppm (black and colour)		Up to 83/90 ppm (black and colour)	
Two-sided	Up to 111/120 ipm (black and colour)		Up to 167/180 ipm (black and colour)	
<b>Features</b>				
Printing	Print preview, duplex printing, print multiple pages per sheet (2, 4, 6, 9, 16), collation, watermarks, store print jobs, easy-access USB			
Scanning	Flatbed scanner, up to 216 x 365 mm (8.5 x 14 in); 150-sheet ADF with two-sided, single-pass scanning; Advanced features: Optimise text/picture, image adjustments, job build, output quality setting, selectable scan resolution 75 to 600 dpi, auto detect colour, edge erase, job notification, blank page suppression, Quick Sets			Plus: HP EveryPage with ultrasonic multi-feed detection, Embedded Optical Character Recognition (OCR), auto-orientation, auto-crop-to-page, auto-tone
Digital sending	Standard: Scan to email, save-to-network folder, save-to-USB drive, send to SharePoint, send to FTP, send to Internet fax, <sup>19</sup> local address book, SMTP over SSL, send to LAN fax, <sup>19</sup> blank page removal, edge erase, auto colour sense, auto crop to content, compact PDF, Quick Sets			Plus: HP EveryPage with ultrasonic multi-feed detection, Embedded Optical Character Recognition (OCR), auto-orientation, auto-crop-to-page, auto-tone
	Optional: via HP Digital Sending Software (HP DSS): send to folder, send-to-workflow, send-to-printer, authentication, digital fax (send to LAN, Internet), OCR, local address book; Optional via HP Embedded Capture: metadata capture and validation, data transfer, scan workflow management			
File formats <sup>49</sup>	PDF, JPEG, TIFF, MTIFF, XPS, PDF/A; Scan to easy-access USB: PDF, JPEG, TIFF, MTIFF, XPS, PDF/A; Print from easy-access USB: PDF, PS, Print Ready files (.prn, .pcl, .cht)			Plus: TEXT (OCR), Unicode TEXT (OCR), RTF (OCR), Searchable PDF (OCR), Searchable PDF/A (OCR), HTML (OCR), CSV (OCR); Scan to easy access USB: TEXT (OCR), Unicode TEXT (OCR), RTF (OCR), Searchable PDF (OCR), Searchable PDF/A (OCR), HTML (OCR), CSV (OCR)
Copying	Auto scale, reduce/enlarge from scanner glass (25 to 400 percent), collate, auto colour detection, two-sided copying, image adjustments (darkness, background cleanup, sharpness); Job build			
Faxing ( <i>optional on all models</i> )	Fax speed: <sup>50</sup> 33.6 kbps/3 seconds per page (A4/letter), fax forwarding, receive fax polling, broadcasting to up to 210 locations, speed dial up to 1000 numbers, each with 210 destinations, auto-fax reduction, auto-redialing, stored faxes, fax archiving, scale-to-fit, fax address book, LAN/Internet fax, fax number confirmation, holiday fax schedule			
	Fax resolution: Standard 203 x 98 dpi, fine 203 x 196 dpi, superfine 300 x 300 dpi, best up to 300 x 300 dpi (400 x 400 dpi for received faxes only); 256 levels of grey			

	HP LaserJet Managed MFP E62655dn	HP LaserJet Managed MFP E62665hs	HP LaserJet Managed Flow MFP E62665h	HP LaserJet Managed Flow MFP E62665z
<b>Processor</b>	1.2 GHz ( <i>all models</i> )			
<b>Memory</b>	Standard: 1.5 GB (printer) and 512 MB (scanner) Maximum: 3 GB, when Accessory DIMM is installed ( <i>all models</i> )		Standard: 1.5 GB (printer) and 1 GB (scanner)	
<b>Durability ratings</b>				
RMPV <sup>29</sup>	5,000 pages to as high as 40,000 pages ( <i>all models</i> )			
RMSV <sup>22</sup>	14,000 pages to as high as 24,000 pages		27,000 pages to as high as 45,000 pages	
Duty cycle <sup>37</sup>	Up to 450,000 pages ( <i>all models</i> )			
<b>Media specifications</b>				
Input capacity	Up to 650 sheets standard (up to 3,750 maximum <sup>17</sup> ) ( <i>all models</i> ) Tray 1: Up to 100 sheets Tray 2: Up to 550 sheets			
Output capacity	Up to 500 sheets	Up to 1,000 sheets with 3-bin stapler/stacker	Up to 500 sheets	Up to 1,000 sheets with 3-bin stapler/stacker
Two-sided printing	Automatic ( <i>all models</i> )			
Media sizes	Tray 1: A4, A5, A6, RA4, B5 (JIS), B6 (JIS), 10 x 15 cm, Oficio (216 x 340 mm), 16K, envelopes (B5, C5, C6, DL), postcards (JIS single and double); Letter, legal, statement, executive, 3 x 5 in, 4 x 6 in, 5 x 7 in, 8.5 x 13 in, envelopes (No. 9, No. 10, Monarch); Custom media sizes: 76 x 127 to 216 x 356 mm (3 x 5 to 8.5 x 14 in) Tray 2: A4, A5, A6, B5 (JIS), B6 (JIS), 10 x 15 cm, 16K, postcard (JIS single and double); Letter, executive, statement, 4 x 6 in, 5 x 7 in, 5 x 8 in; Custom media sizes: 99 x 148 to 216 x 297 mm (3.9 x 5.8 to 8.5 x 11.7 in) Optional 550-sheet tray: A4, A5, A6, RA4, B5 (JIS), B6 (JIS), 10 x 15 cm, Oficio (216 x 340 mm), 16K, postcard (JIS single and double); Letter, legal, executive, statement, 4 x 6 in, 5 x 7 in, 5 x 8 in, 8.5 x 13 in; Custom media sizes: 99 x 148 to 216 x 356 mm (3.9 x 5.8 to 8.5 x 14 in) Optional 2,000-sheet feeder: A4; Letter, legal; Custom media sizes not supported ADF: A4, A5, RA4, B5 (JIS), Oficio (216 x 340 mm), 16K; Letter, legal, executive			
Media weights	Tray 1: Plain: 60 to 199 g/m <sup>2</sup> (16 to 53 lb); Envelopes: 60 to 90 g/m <sup>2</sup> (16 to 24 lb) Tray 2 and optional 550-sheet tray, optional 2,000-sheet feeder, duplex: 60 to 120 g/m <sup>2</sup> (16 to 32 lb) ADF: 45 to 199 g/m <sup>2</sup> (12 to 53 lb)			
Media types	Paper (plain, light, bond, recycled, heavy, extra heavy, cardstock, pre-printed, pre-punched, coloured, rough, heavy rough), mono transparency, labels, letterhead, envelope, heavy envelope			
<b>Print languages</b>	HP PCL 6, HP PCL 5 (HP PCL 5 driver available from the Web only), HP postscript level 3 emulation, native PDF printing (v 1.7), Apple AirPrint <sup>38</sup>			
<b>Fonts</b>	105 internal TrueType fonts scalable in HP PCL, 92 internal scalable fonts in HP postscript level 3 emulation (Euro symbol built-in); 1 internal Unicode font (Andale Mono WorldType); 2 Internal Windows Vista 8 fonts (Calibri, Cambria); Additional font solutions available via third-party flash memory cards; HP LaserJet fonts and IPDS Emulation available at <a href="http://hp.com/go/laserjetfonts">hp.com/go/laserjetfonts</a>			
<b>Connectivity</b>	1 Hi-Speed USB 2.0 Device; 2 Hi-Speed USB 2.0 Host; 1 Gigabit Ethernet; 1 Hardware Integration Pocket <sup>6</sup>			
<b>Mobile printing</b>	HP ePrint, <sup>39</sup> Apple AirPrint, <sup>38</sup> Mopria-certified, Google Cloud Print 2.0, HP Roam-capable for easy printing <sup>40</sup> Optional: Wireless direct printing, <sup>25</sup> NFC touch-to-print, <sup>26</sup> and BLE <sup>27</sup> ( <i>all models</i> )			
<b>Network capabilities</b>	Standard: via HP Jetdirect Ethernet embedded print server supports: 10Base-T, 100Base-Tx, 1000Base-T; 802.3az (EEE) support on Fast Ethernet and Gigabit Ethernet; IPsec Optional: 802.11 a/b/g/n wireless networking <sup>28</sup> ( <i>all models</i> )			
<b>Network protocols</b>	Via built-in networking solution: TCP/IP, IPv4, IPv6 Print: TCP-IP port 9100 Direct Mode, LPD (raw queue support only), Web Services Printing, IPP 2.0, Apple AirPrint, <sup>38</sup> HP ePrint, <sup>39</sup> FTP Print, Google Cloud Print Discovery: SLP, Bonjour, Web Services Discovery IP Config: IPv4 (BootP, DHCP, AutoIP, Manual, TFTP Config, ARP-Ping), IPv6 (Stateless Link-Local and via Router, Statefull via DHCPv6) Management: SNMPv2/v3, HTTP/HTTPS, Telnet, TFTP Config, FTP FW Download, Syslog Security: SNMPv3, SSL Cert Management, Firewall, ACL, 802.1x			

	HP LaserJet Managed MFP E62655dn	HP LaserJet Managed MFP E62665hs	HP LaserJet Managed Flow MFP E62665h	HP LaserJet Managed Flow MFP E62665z
<b>Security</b>	<p>Identity management: Kerberos authentication, LDAP authentication, 1000 user PIN codes, optional HP and 3rd party advanced authentication solutions (e.g., badge readers)</p> <p>Network: IPsec/firewall with Certificate, Pre-Shared Key, and Kerberos authentication, Supports WJA-10 IPsec configuration Plug-in, 802.1X authentication (EAP-PEAP, EAP-TLS), SNMPv3, HTTPS, Certificates, Access Control List</p> <p>Data: Storage Encryption, Encrypted PDF and Email (uses FIPS 140 validated cryptographic libraries from Microsoft), Secure Erase, SSL/TLS (HTTPS), Encrypted Credentials</p> <p>Device: Security lock slot, USB port disablement, Hardware Integration Pocket for security solutions,<sup>6</sup> Intrusion Detection with Red Balloon Security Technology – Constant in-device monitoring for attacks, HP Sure Start Secure Boot – BIOS Integrity Checking with self-healing capability, Whitelisting – loads only known good code (DLLs, EXEs, etc.)</p> <p>Security management: Compatible with HP JetAdvantage Security Manager,<sup>9</sup> Device Security Syslog Messages processed and accessible in ArcSight, McAfee, Splunk, and SIEMonster SIEMs</p>			
<b>Compatible operating systems<sup>41</sup></b>	<p>Windows Client OS (32- and 64-bit): Win10, Win8 Basic, Win8 Pro, Win8 Enterprise, Win8 Enterprise N, Win7 Starter Edition SP1, UPD Win7 Ultimate</p> <p>Apple Mac OS: Sierra 10.12, High Sierra 10.13, Mojave 10.14</p> <p>Mobile OS: Android</p> <p>Discrete PCL6 Printer Driver – Supported operating systems: For more information, go to <a href="http://support.hp.com">support.hp.com</a></p> <p>UPD PCL6/PS Printer Drivers<sup>12</sup> – Supported operating systems: For more information, go to <a href="http://hp.com/go/upd">hp.com/go/upd</a></p>			
<b>Compatible network operating systems</b>	<p>Windows Server 2008 R2 64-bit, Windows Server 2008 R2 64-bit (SP1), Windows Server 2012 64-bit, Windows Server 2012 R2 64-bit, Windows Server 2016 64-bit, Failover Cluster 2008 R2, Failover Cluster 2012 R2, Terminal Server 2008 R2, Remote Desktop Server 2012 R2</p> <p>Citrix Server 6.5, Citrix XenApp and XenDesktop 7.6, Citrix Ready Kit Certification – up to Citrix Server 7.18; For more information, see <a href="http://citrixready.citrix.com">citrixready.citrix.com</a></p> <p>Novell iPrint Server</p> <p>Linux: For more information, see <a href="http://developers.hp.com/hp-linux-imaging-and-printing">developers.hp.com/hp-linux-imaging-and-printing</a></p> <p>UPD PCL6/PS Printer Drivers;<sup>12</sup> Supported for Compatible network operating systems, please see <a href="http://hp.com/go/upd">hp.com/go/upd</a></p>			
<b>System requirements, Windows</b>	A compatible operating system (see above), 2 GB available hard disk space (OS hardware requirements, see <a href="http://microsoft.com">microsoft.com</a> )			
<b>System requirements, Macintosh</b>	A compatible operating system (see above), 2 GB available hard drive space, Internet (OS hardware requirements, see <a href="http://apple.com">apple.com</a> )			
<b>Dimensions, operating (width x depth x height)</b>	512 x 558 x 640 mm (20.15 x 22 x 25.2 in)		512 x 558 x 775 mm (20.15 x 22 x 30.5 in)	
<b>Dimensions, maximum<sup>42</sup> (width x depth x height)</b>	1030 x 808 x 865 mm (40.5 x 31.7 x 34.1 in)		1030 x 808 x 1025 mm (40.5 x 31.7 x 40.4 in)	
<b>Weight (with print cartridges)</b>	33.18 kg (73.75 lb)	33.73 kg (74.35 lb)	41.26 kg (90.95 lb)	41.62 kg (91.75 lb)
<b>What's in the box</b>	HP LaserJet Managed Multifunction Printer, HP Original LaserJet Toner Cartridge (toner cartridge installed), Documentation (Hardware Install guide), Power cord, Fixed-Size Cassette Guide (input tray 2 only)			
<b>Downloadable software</b>	<p>From <a href="http://123.hp.com">123.hp.com</a>: HP Easy Start (Guided Software Install for Windows and Mac)</p> <p>From <a href="http://hp.com">hp.com</a>: Windows OS: Full solution software and drivers, Basic solution software and drivers, HP PCL6 XPS Discrete Print Driver, Product documentation and support</p> <p>From <a href="http://hp.com">hp.com</a>: Mac OS: HP Easy Start (Guided Software Install), HP Mac PS Print Driver, HP Easy Admin</p> <p>For Mobile OS: iOS: For more information, see <a href="http://hp.com/go/businessmobileprinting">hp.com/go/businessmobileprinting</a>; Android: For more information, see <a href="http://hp.com/go/businessmobileprinting">hp.com/go/businessmobileprinting</a></p> <p>From <a href="http://hp.com">hp.com</a> for printer administrators: Printer Administrator Resource Kit (Driver Configuration Utility – Driver Deployment Utility – Managed Printing Administrator), HP Universal Print Drivers<sup>12</sup> PCL6 GDI and PS GDI for Windows, HP ePrint Software<sup>39</sup> (Mobile Driver for Windows), SAP Print Drivers: For more information, see <a href="http://support.hp.com/us-en/document/c05051702">support.hp.com/us-en/document/c05051702</a>, HP Web Jetadmin,<sup>8</sup></p> <p>HP JetAdvantage Security Manager,<sup>9</sup> HP Roam,<sup>40</sup> HPLIP Linux Printer Driver: For more information, see <a href="http://developers.hp.com/hp-linux-imaging-and-printing">developers.hp.com/hp-linux-imaging-and-printing</a>, Unix Model Script Driver: For more information, see <a href="http://support.hp.com/us-en/document/c04222920">support.hp.com/us-en/document/c04222920</a>, ReadIris</p>			
<b>Warranty</b>	One-year, next-business day, onsite warranty. Warranty and support options vary by product, country and local legal requirements. Go to <a href="http://hp.com/support">hp.com/support</a> to learn about HP world-class service and support options in your region.			



# Environmental and power specifications

	HP LaserJet Managed MFP E62655dn	HP LaserJet Managed MFP E62665hs	HP LaserJet Managed Flow MFP E62665h	HP LaserJet Managed Flow MFP E62665z
<b>Environmental ranges</b>				
Temperatures	Operating range: 15 to 32.5° C (59 to 90.5° F); Recommended operating range: 15 to 27° C (59 to 80.6° F); Storage: -20 to 40° C (-4 to 104° F)			
Relative Humidity	Operating range: 10 to 80% RH; Recommended operating range: 30 to 70% RH; Storage range: 10 to 90% RH			
<b>Acoustic power emissions</b>				
	Ready: 3.5 B(A) Print: 7.0 B(A) <sup>51</sup> Scan: 7.3 B(A)	Ready: 3.5 B(A) Print: 7.2 B(A) <sup>44</sup> Scan: 7.3 B(A)	Ready: 3.5 B(A) Print: 7.2 B(A) <sup>44</sup> Scan: 7.3 B(A)	Ready: 3.5 B(A) Print: 7.2 B(A) <sup>44</sup> Scan: 7.3 B(A)
<b>Acoustic pressure emissions (bystander)</b>				
	Ready: Inaudible Print: 56 dB(A) Scan: 57 dB(A)	Ready: 15 dB(A) Print: 57 dB(A) Scan: 57 dB(A)	Ready: 15 dB(A) Print: 57 dB(A) Scan: 57 dB(A)	Ready: 15 dB(A) Print: 57 dB(A) Scan: 57 dB(A)
<b>Power specifications<sup>45</sup></b>				
Power supply	100 V-127 V nominal @ +/-10%; 50-60 Hz nominal +/- 3 Hz; 12 A 220 V-240 V nominal @ +/-10%; 50-60 Hz nominal +/- 3 Hz; 6 A			
Power consumption	Printing/copying: 740 watts; Ready: 29 watts; Sleep: 3.3 watts; Auto-off/Manual on: 0.1 watts; Manual off: 0.1 watts			
Typical Electricity Consumption (TEC)	BA: 2.219 kWh/week ES: 2.348 kWh/week	BA: 2.626 kWh/week ES: 2.849 kWh/week	BA: 2.626 kWh/week ES: 2.849 kWh/week	BA: 2.626 kWh/week ES: 2.849 kWh/week
Energy-saving features	HP Auto-On/Auto-Off Technology, <sup>46</sup> Instant-on Technology <sup>47</sup> ( <i>all models</i> )			
<b>Environmental specifications</b>	Blue Angel compliant; ENERGY STAR certified; CECP; EPEAT Silver registered models available; <sup>48</sup> mercury-free			
<b>Safety and regulatory compliance</b>	IEC 60950-1:2005 +A1:2009 +A2:2013 (International); EN60950-1:2006 +A11:2009 +A1:2010 +A12:2011 +A2:2013 (EU); EN 60825-1:2014/IEC 60825-1:2014 (Class 1 Laser Product); EN 62479:2010/IEC 62479:2010; Low Voltage Directive 2014/35/EU with CE Mark (Europe); GS Certificate (Germany, Europe); UL/cUL Listed and UC CoC (US/Canada); CAN/CSA C22.2 No. 60950-1-07 2nd Ed. 2011-12; Compliance with Laser safety standards 21 CFR 1040.10 and 1040.11 except for deviations pursuant to Laser notice No. 50, Dated June 24, 2007; Other safety approvals as required by individual countries			
<b>Electromagnetic emission standard</b>	CISPR 22:2008 (International) - Class A, CISPR32:2012 (International) - Class A, EN 55032: 2012 (EU) - Class A, EN 61000-3-2: 2014, EN 61000-3-3: 2013, EN 55024: 2010, EMC Directive 2014/30/EU, FCC CFR 47 Part 15 Class A/ICES-003, Issue 6 Class A. Other EMC approvals as required by individual countries			

# Ordering information

<b>Product</b>	HP LaserJet Managed E60155dn	3GY09A
	HP LaserJet Managed E60165dn	3GY10A
	HP LaserJet Managed MFP E62655dn	3GY14A
	HP LaserJet Managed MFP E62665hs	3GY15A
	HP LaserJet Managed Flow MFP E62665h	3GY16A
	HP LaserJet Managed Flow MFP E62665z	3GY17A
<b>Supplies</b>	HP Black Managed LaserJet Toner Cartridge (~50,000 pages) <sup>21</sup>	W9004MC
	HP 37Y Extra-High-Yield Black Contract Original LaserJet Toner Cartridge (~41,000 pages) <sup>21</sup>	CF237YC
	HP Staple Cartridge Refill (5,000 staples)	J8J96A
	<b>E60100 series models only:</b>	
	HP LaserJet 110V Fuser Maintenance Kit (225,000 pages)	L0H24A
	HP LaserJet 220V Fuser Maintenance Kit (225,000 pages)	L0H25A
	<b>MFP E62600 series models only:</b>	
	HP LaserJet 110v Fuser Maintenance Kit (225,000 pages)	J8J87A
	HP LaserJet 220v Fuser Maintenance Kit (225,000 pages)	J8J88A
	HP ADF Maintenance Kit (150,000 pages)	J8J95A
<b>Accessories</b>	HP Internal USB Ports (AA Module - CSR-A)	B5L28A
	HP High-Performance Secure Hard Disk (FIPS - CSR-A)	B5L29A
	HP Jetdirect 2900nw Print Server	J8031A
	HP Jetdirect 3100w BLE/NFC/Wireless Accessory	3JN69A
	HP Trusted Platform Module Accessory	F5S62A
	HP Accessibility Assistant	2MU47A
	HP Removable Hard Drive Enclosure	2NR12A
	HP USB Universal Card Reader	X3D03A
	HP HIP2 Keystroke Reader	Y7C05A
	HP Legic Reader	4QL32A
	<b>E60100 series models only:</b>	
	HP LaserJet 550-sheet Paper Feeder	L0H17A
	HP LaserJet 2,100-sheet Paper Feeder	L0H18A
	HP LaserJet Printer Stand	L0H19A
	HP LaserJet Stapler/Stacker/Mailbox	L0H20A
	HP Envelope Feeder	L0H21A
	HP Extension Tray Cover	L0H22A
	HP 1 GB 90-Pin DDR3 DIMM	G6W84A
	<b>E62600 series models only:</b>	
	HP LaserJet 550-sheet Paper Feeder	J8J89A
	HP LaserJet 1x550-sheet Paper Feeder with Stand and Cabinet	J8J91A
	HP LaserJet 1x550 and 2,000-sheet HCI Feeder and Stand	J8J92A
	HP LaserJet 3x550-sheet paper Feeder and Stand	J8J93A
	HP LaserJet Envelope Feeder	J8J90A
	HP LaserJet MFP Analog 700 Fax Accessory	2EH31A
	HP LaserJet Keyboard Overlay Kit Sweden (Flow models only)	A7W14A
	HP LaserJet Keyboard Overlay Kit - Danish/French-Switzerland/German-Switzerland (in the box when ordering BAZ option) (Flow models only)	A7W13A
	HP Foreign Interface Harness	B5L31A
	HP 1 GB 144-Pin DDR3 x32 800MHz SODIMM	E5K48A
	HP 2 GB 144-Pin DDR3 x32 800MHz SODIMM	E5K49A
<b>Solutions</b>	HP Web Jetadmin: <a href="http://hp.com/go/wja">hp.com/go/wja</a>	
	HP Universal Print Driver: <a href="http://hp.com/go/upd">hp.com/go/upd</a>	
	HP JetAdvantage Security Manager: <a href="http://hp.com/go/securitymanager">hp.com/go/securitymanager</a>	
	HP JetAdvantage On Demand Cloud Solutions: <a href="http://hp.com/go/jetadvantageondemand">hp.com/go/jetadvantageondemand</a>	
	HP LaserJet fonts, barcodes, and IPDS Emulation available at <a href="http://hp.com/go/laserjetfonts">hp.com/go/laserjetfonts</a> To learn more about available infrastructure, management, and workflow solutions, visit <a href="http://hp.com/go/printing_solutions">hp.com/go/printing_solutions</a> .	

# Appendix A: Control panel features

## Upgrade to a modern interface

The HP LaserJet Managed E60100 and MFP E62600 series are powered by HP FutureSmart 4 firmware. Its modern, user-friendly interface keeps things simple and intuitive across your fleet of Enterprise devices. A scalable control panel interface improves future extensibility and allows for customisation, along with a robust set of new apps and usability features. You can even customise with your own wallpaper image and company logo. The new Message Center, with more detailed information and helpful animations, makes it easy to address device events. The simplified home screen displays just a few core apps by default. Additional apps are easily accessed by swiping right to left, like with a smartphone or tablet.



To access additional apps on the new printer user interface, simply swipe right to left

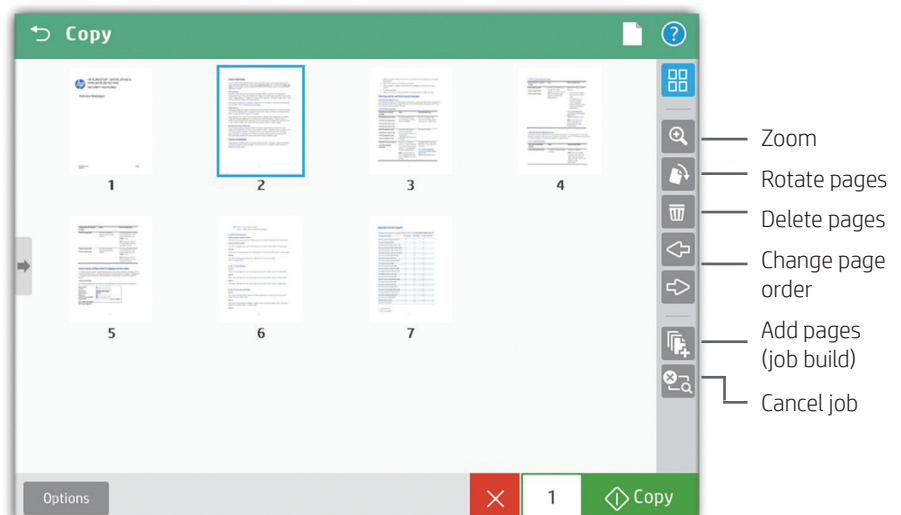


## Edit jobs right at the MFP

The control panel on the MFP E62600 series features an enhanced image preview—now for both copies and scans. Right from the MFP's 20.3 cm colour touchscreen control panel, you can easily preview and edit scans before sending them. You can apply changes (like rotating) to a single page, or to multiple pages at once. Batch separation allows users to create separate PDF or PDF/A files from scanned pages. Flow models can also create PDF OCR and PDF/A OCR files.



The new MFP user interface enables swipe, rotate, and drag-and-drop capabilities



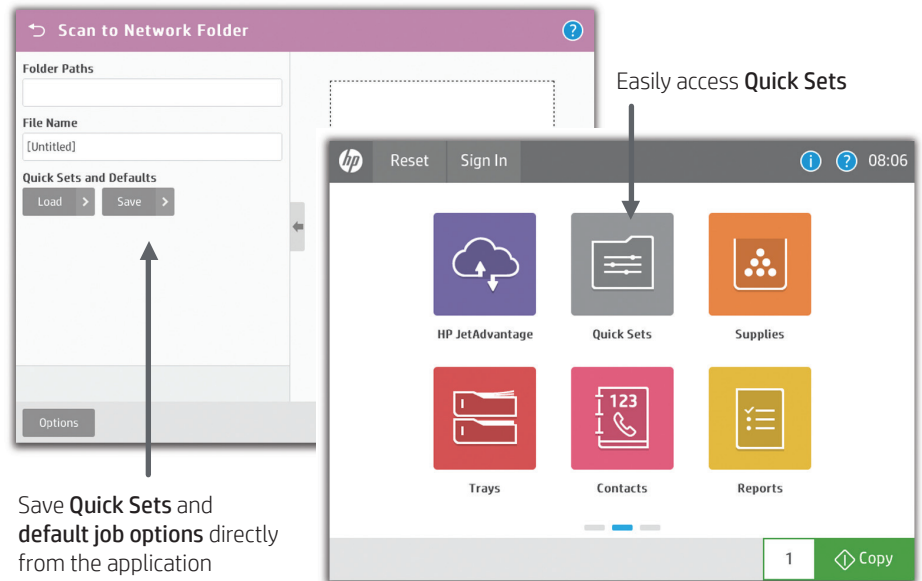
You can start a **preview** prior to committing to the copy job

## Use Quick Sets to launch automated workflows

The digital sending capability on the MFP E62600 series models allows users to route documents to a variety of destinations like email recipients, network folders, fax,<sup>19</sup> FTP, a USB device, or Microsoft SharePoint.

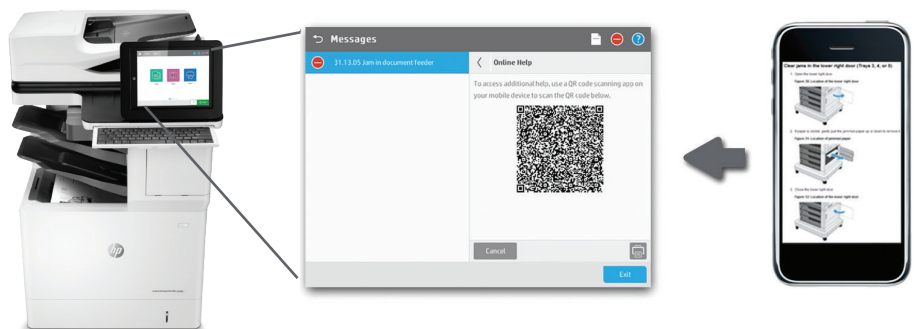
Quick Sets automate all of the steps of a complicated workflow and provide easy access to the configurations you use most, such as page size, resolution, and file format. You can also specify security settings, such as encrypted PDFs to be delivered through encrypted and signed emails.

Help users find what they need by moving individual Quick Sets to any screen or folder using the home screen customisation feature. With Quick Sets, IT can promote or block access to certain device features. Calls to the helpdesk can be reduced when users have everything they need and are restricted from accessing settings they shouldn't tamper with.



## Troubleshoot with ease

The HP LaserJet Managed E60100 and MFP E62600 series can help save your IT department valuable time when it comes to troubleshooting problems. The Remote Control Panel allows users to operate the user interface remotely, so IT can troubleshoot problems without running to the printer or MFP.<sup>52</sup> Users can also quickly troubleshoot technical issues with HP's innovative, cloud-based Online Help services that are relevant and up to date. Easily solve problems from your PC or mobile device. A Quick Response (QR) code on the touchscreen links to Online Help using smart phones and tablets.<sup>53</sup> You can also find these links in the HP Embedded Web Server event log.



<sup>1</sup> Based on HP review of 2018 published security features of competitive in-class printers. Only HP offers a combination of security features that can monitor to detect and automatically stop an attack then self-validate software integrity in a reboot. For a list of compatible products, visit: [hp.com/go/PrintersThatProtect](http://hp.com/go/PrintersThatProtect). For more information, visit: [hp.com/go/printersecurityclaims](http://hp.com/go/printersecurityclaims).

<sup>2</sup> Based on the reduced energy use of HP LaserJet printers and cartridges with JetIntelligence introduced since 2015 compared to previous toner versions without JetIntelligence, using ENERGY STAR® methodology.

<sup>3</sup> Some features require additional purchase. A FutureSmart service pack update may be required to activate security features. Learn more at [hp.com/go/printsecurity](http://hp.com/go/printsecurity).

<sup>4</sup> The HP High-Performance Secure Hard Disk is standard on the HP LaserJet Managed MFP E62665hs and Flow MFP models; it can be added as an optional accessory to all E60100 models and the MFP E62655dn model.

<sup>5</sup> HP Proximity Card Reader (CZ208A) is available for separate purchase for select HP devices with Hardware Integration Pocket (HIP) and touchscreen display.

<sup>6</sup> Solutions deployed through the Hardware Integration Pocket (HIP) may require additional purchase.

<sup>7</sup> Use of the optional HP Trusted Platform Module accessory may require a firmware upgrade.

<sup>8</sup> HP Web Jetadmin is available for download at no additional charge at [hp.com/go/wja](http://hp.com/go/wja).

<sup>9</sup> HP JetAdvantage Security Manager must be purchased separately. For details, see [hp.com/go/securitymanager](http://hp.com/go/securitymanager).

<sup>10</sup> HP JetAdvantage Secure Print works with any network-connected printer or MFP. On-device authentication is available for many HP LaserJet, PageWide, and OfficeJet Pro devices and selected non-HP devices. Some devices may require a firmware upgrade. Internet connection required for cloud storage and retrieval of print jobs. Print-job release from a mobile device requires a network connection and QR code. For more information and a list of supported printers and MFPs, see [hp.com/go/JetAdvantageSecurePrint](http://hp.com/go/JetAdvantageSecurePrint).

<sup>11</sup> Color access control capabilities vary from device to device.

<sup>12</sup> The HP Universal Print Driver is available for download at no additional charge at [hp.com/go/upd](http://hp.com/go/upd).

<sup>13</sup> Measured using ISO/IEC 17629. Exact speed varies depending on the system configuration, software application, driver, and document complexity. Learn more at [hp.com/go/printerclaims](http://hp.com/go/printerclaims).

<sup>14</sup> Measured after 15 minutes in sleep. Exact speed varies depending on the system configuration, software application, driver, document complexity, and time in sleep.

<sup>15</sup> Measured using ISO/IEC 24734; excludes first set of test documents. For more information, see [hp.com/go/printerclaims](http://hp.com/go/printerclaims). Exact speed varies depending on the system configuration, software application, driver, and document complexity.

<sup>16</sup> Scan speed measured from ADF at default 300 dpi (black-and-white, greyscale, and colour). Actual processing speeds may vary depending on scan resolution, network conditions, computer performance, and application software.

<sup>17</sup> Purchase of optional paper trays required to reach maximum input capacity.

<sup>18</sup> Standard and optional paper-handling accessories vary by model. See paper-handling accessories tables, pages 7 and 10, for details.

<sup>19</sup> Fax capability is optional on the HP LaserJet Managed MFP E62600 series and is not available on the HP LaserJet Managed E60100 series.

<sup>20</sup> An administrator must enable the easy-access USB port before use.

<sup>21</sup> Average black declared yields based on ISO/IEC 19752 and continuous printing. Actual yields vary considerably based on images printed and other factors. For details see [hp.com/go/learnaboutsupplies](http://hp.com/go/learnaboutsupplies). HP Black Managed LaserJet Toner cartridges are not included in printer purchase; purchase separately.

<sup>22</sup> The Recommended Monthly Scan Volume (RMSV) is up to 45,000 for the Flow MFP E62665h and Flow MFP E62665z models and up to 24,000 pages for the MFP E62655dn and MFP E62665hs models. HP recommends that the number of scanned pages per month be within the stated range for optimum device performance, based on factors including supplies replacement intervals and device life over an extended warranty period.

<sup>23</sup> All models of the HP LaserJet Managed MFP E62600 series include a 150-sheet ADF. The ADF can scan media sizes from checks (66 x 147 mm) to banners (216 x 863 mm).

<sup>24</sup> The pull-out keyboard and HP EveryPage are only available on the HP LaserJet Managed Flow MFP E62665h and Flow MFP E62665z models.

<sup>25</sup> Wireless direct printing can be added by purchasing the optional HP Jetdirect 3100w BLE/NFC/Wireless Accessory (3JN69A). Mobile device needs to be connected directly to the signal of a wireless direct supported MFP or printer prior to printing. Depending on mobile device, an app or driver may also be required. For details, see [hp.com/go/mobileprinting](http://hp.com/go/mobileprinting).

<sup>26</sup> Touch-to-print can be added by purchasing the optional HP Jetdirect 3100w BLE/NFC/Wireless Accessory (3JN69A). Mobile device must support Near Field Communication (NFC)-enabled printing. For more information, see [hp.com/go/businessmobileprinting](http://hp.com/go/businessmobileprinting).

<sup>27</sup> Bluetooth® Low Energy is optional with the addition of the HP Jetdirect 3100w BLE/NFC/Wireless Accessory (3JN69A). Bluetooth is a trademark owned by its proprietor and used by HP Inc. under licence.

<sup>28</sup> Wireless networking can be added with purchase of the optional HP Jetdirect 2900nw Print Server (J8031A). Wireless performance is dependent on physical environment and distance from access point, and may be limited during active VPN connections.

<sup>29</sup> HP recommends that the number of printed pages per month be within the stated range for optimum device performance, based on factors including supplies replacement intervals and device life over an extended warranty period.

<sup>30</sup> The E60100 series may add a maximum of two Envelope Feeders (LOH21A). A combination of 550-sheet Paper Feeders and Envelope Feeders cannot exceed a total number of four.

<sup>31</sup> For U.S. models, configuration does not meet ADA height requirements if more than 3 stackable accessories are added to the base model or a stackable accessory is added to a 2,100-sheet Paper Feeder.

<sup>32</sup> If you select the HP LaserJet 1x550-sheet Paper Feeder and Stand (J8J91A), you cannot select another feeder/stand accessory (J8J92A or J8J93A). You may add one additional 550-sheet Paper Feeder (J8J89A) or one Envelope Feeder (J8J90A).

<sup>33</sup> If you select the HP LaserJet 3x550-sheet Feeder and Stand (J8J93A), you cannot select another feeder/stand accessory (J8J91A or J8J92A). You may add one additional 550-sheet Paper Feeder (J8J89A) or one Envelope Feeder (J8J90A).

<sup>34</sup> If you select the HP LaserJet 1x550/2,000-sheet HCI Feeder and Stand (J8J92A), you cannot select another feeder/stand accessory (J8J91A or J8J93A). You may add one additional 550-sheet Paper Feeder (J8J89A) or one Envelope Feeder (J8J90A).

<sup>35</sup> The MFP E62600 series may add a maximum of two Envelope Feeders (J8J90A). A combination of 550-sheet Paper Feeders (J8J89A) and Envelope Feeders (J8J90A) cannot exceed a total number of four.

<sup>36</sup> Measured using ISO 24734 feature test, A5 landscape feed. Speed may vary based on content, PC, media orientation, and media type.

<sup>37</sup> Duty cycle is defined as the maximum number of pages per month of imaged output. This value provides a comparison of product robustness in relation to other HP LaserJet or HP Color LaserJet devices, and enables appropriate deployment of printers and MFPs to satisfy the demands of connected individuals or groups.



<sup>38</sup> Supports the following devices running iOS 4.2 or later: iPad, iPad 2, iPhone (3GS or later), iPod touch (3rd generation or later). Works with HP's AirPrint-enabled printers and requires the printer be connected to the same network as your iOS device. Wireless performance is dependent on physical environment and distance from the access point.

<sup>39</sup> Printer requires ePrint account registration. App or software may be required. Wireless operations are compatible with 2.4 GHz operations only. Learn more at [hp.com/go/mobileprinting](http://hp.com/go/mobileprinting).

<sup>40</sup> Subscription or accessory may be required. For more information, visit [hp.com/go/roam](http://hp.com/go/roam). To enable HP Roam, some devices may require firmware to be upgraded and an optional accessory to add Bluetooth® Low Energy (BLE) beaconing capabilities. Customer can purchase the HP Jetdirect 3100w BLE/NFC/Wireless accessory or the RadBeacon USB.

<sup>41</sup> Full solution software available only for Windows® 7 and newer, UPD software available only for Windows 7 and newer, HP Software for Mac and Windows is no longer included on the CD, but can be downloaded from [123.hp.com](http://123.hp.com). Legacy Windows Operating Systems (XP, Vista, and equivalent servers) get print and Scan drivers only with a reduced feature set, Windows RT OS for Tablets (32- and 64-bit) uses a simplified HP print driver built into the RT OS.

<sup>42</sup> Maximum dimensions of the device are measured with all paper trays folded out and standard accessories installed.

<sup>43</sup> Acoustic values are subject to change. For current information see [hp.com/support](http://hp.com/support). Configuration tested: base model, simplex printing, A4 paper at an average of 51 ppm.

<sup>44</sup> Acoustic values are subject to change. For current information see [hp.com/support](http://hp.com/support). Configuration tested: base model, simplex printing, A4 paper at an average of 65 ppm.

<sup>45</sup> Power requirements are based on the country/region where the printer is sold. Do not convert operating voltages. This will damage the device and void the product warranty.

<sup>46</sup> HP Auto-On/Auto-Off Technology capabilities are subject to printer and settings.

<sup>47</sup> HP LaserJet products with Instant-on Technology use an innovative, quick-heating fuser system that warms rapidly and cools quickly, helping you conserve energy compared with products that use traditional fusing.

<sup>48</sup> EPEAT® registered where applicable. EPEAT registration varies by country. See [epeat.net](http://epeat.net) for registration status by country.

<sup>49</sup> Scan software not included in box. HP Scan and TWAIN driver available for download at [hp.com/support](http://hp.com/support).

<sup>50</sup> Based on standard ITU-T test image #1 at standard resolution and MMR encoding, the HP fax device can transmit at 3 sec/page for V.34 and 6 sec/page for V.17.

<sup>51</sup> Acoustic values are subject to change. For current information see [hp.com/support](http://hp.com/support). Configuration tested: base model, simplex printing, A4 paper at an average of 53 ppm.

<sup>52</sup> Availability dependent on firmware or software updates or upgrades.

<sup>53</sup> Online Help must be enabled on the printer or MFP. Mobile device must have an Internet connection to access online services.

---

© Copyright 2019 HP Development Company, L.P. The information contained herein is subject to change without notice. The only warranties for HP products and services are set forth in the express warranty statements accompanying such products and services. Nothing herein should be construed as constituting an additional warranty. HP shall not be liable for technical or editorial errors or omissions contained herein.

Android and Google Cloud Print are trademarks of Google Inc. Apple and AirPrint are trademarks of Apple Inc. Bluetooth is a trademark owned by its proprietor and used by HP Inc. under licence. Citrix and XenDesktop are registered trademarks of Citrix Systems, Inc. and/or one more of its subsidiaries, and may be registered in the United States Patent and Trademark Office and in other countries. ENERGY STAR is a registered trademark owned by the U.S. Environmental Protection Agency. Linux is the registered trademark of Linus Torvalds in the U.S. and other countries. Microsoft, SharePoint, Windows, Windows Vista, and Windows Server are U.S. registered trademarks of the Microsoft group of companies. UNIX is a registered trademark of The Open Group.

