



Product Service

CERTIFICATE

No. Z1A 17 08 01811 001

Holder of Certificate: **Steelcase AG**

Brienner Str. 42
80333 München
GERMANY

Certification Mark:



Product:

tables
Office work tables
(desking range)

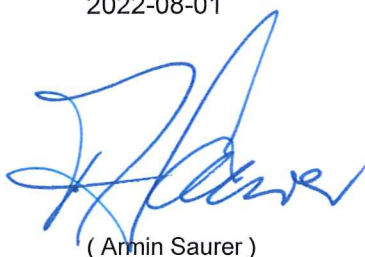
Tested according to:

PPP 55022A:2012
DIN EN 527-1:2011
DIN EN 527-2:2003
DIN EN 527-3:2003
AfPS GS 2014:01 PAK

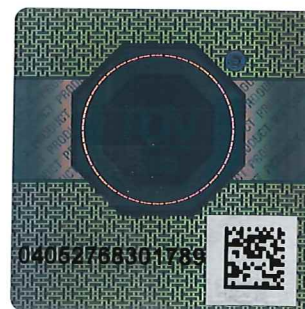
The product meets the safety and health requirements of the German Product Safety Act section 20 to 22 ProdSG. The certification marks shown above can be affixed on the product. It is not permitted to alter the certification marks in any way. In addition the certificate holder must not transfer the certificate to third parties. This certificate is valid until the listed date, unless it is cancelled earlier. See also notes overleaf.

Test report no.: 028-713109376-001

Valid until: 2022-08-01


(Armin Saurer)

Date, 2017-08-03



Page 1 of 2

**CERTIFICATE**

No. Z1A 17 08 01811 001

Model(s):**Kalidro****Types: 10 / 12 / 13 / 16 / 21 / 25 / 48****Parameters:**

Types: 10 / 12 / 13 / 16 / 21 / 25 / 48

Width [mm]: Type 10 = min. 1600 (all other types in width no restriction, min. 1,28m²)

Depth [mm]: Type 10 = min. 800 (all other types in depth no restriction, min. 1,28m²)

Height [mm]: Classification acc. DIN EN 527-1:2011
Basis = 680-760 (Type D)
Teleskop = 620-850 (Type B)
Fix height = 720 (Type C)

Material of frame: powder coated pipes, made of steel 45 x 45 mm and 2 mm profiled steel section

Material of table top: E1 chipboard (melamine coated)
pure wood
laminated plastic table top

Thickness of table top [mm]: Standard = 19 & 25
Tech Top = 14

Maximum load capacity [kg]: 75
15 (CPU bracket)

Accessories: Knee panel
cable duct
jacked cable duct
jack
CPU bracket
Orga Rail

Factory(ies):

19642