

Pro-face

Software Guide



Pro-face

by **Schneider** Electric

Index

Your Choice of Platform	4-5
GP-Pro EX.....	6-18
WinGP	15
Remote PC Access (RPA)	16
WebServer	16
FTP Server.....	17
Transfer Tool	17
Memory Loader	18
Pass Through.....	18
Remote HMI	19
BLUE Open Studio.....	20-25
Pro-Server EX.....	26-27
GP-Viewer EX	28
Camera-Viewer EX.....	29
Driver Support	30
Operating Environment	31
Service & Support.....	32-33

A Global Leader for 40+ Years

For over 40 years, Pro-face has set the standard for Human Machine Interface and Industrial Personal Computers. A global company, with a local presence, Pro-face provides global product availability, support, and service.

While we are global, it's our local presence that makes us agile, and able to provide our customers with world class products, and industry leading support. From our state-of-the-art facility in Ann Arbor Michigan, we are able to provide local product assembly and customization, training, repair, and technical support that makes your decision to use Pro-face a wise one.

Pro-face helps manufacturers, big and small, solve their toughest factory problems and make their companies efficient, automated and profitable. As an ISO9001 certified company, Pro-face was the first company to produce a touch screen flat panel operator interface, and our hardware and software connects to more third party devices than any others in the industry. But what really sets us apart is our commitment to be a true partner with our customers.

Pro-face America

profaceamerica.com

1050 Highland Drive, Suite D

Ann Arbor, MI 48108

734-477-0600 | 800-289-9266

Fax: 734-864-7347

customercare@profaceamerica.com





Local Assembly

We listen to you, our customer, and custom build iPC's to your specifications right here in our state-of-the-art facility in Ann Arbor, Michigan. All iPC's are assembled by hand and tested by our experienced technicians, who see the products through from beginning to end.

Training

Pro-face offers hands-on training both at our corporate office and at your facility to ensure that you are comfortable utilizing the capabilities of your HMI and iPC. In addition, a large library of web based training is at your fingertips.

Repair

Should your HMI or iPC need repair or refurbishment, Pro-face America has the fastest turn around repair service in the industry with an average of just three days.

Tech Support

Pro-face offers industry leading tech support at no cost. Real time, live help to answer your questions and get your applications running and your problems solved.

Our FREE technical support website has been upgraded with services aimed at reducing development man-hours by offering FAQ, Driver Downloads, Manual downloads, Application Notes, and much more.

People

At Pro-face, it's not only our products that are industry leading, but also our people. Whether its tech support, application engineering, customer care, or the ability to custom assemble and ship products rapidly, Pro-face provides customer service that continuously delivers.



The Pro-face eCatalog is the absolute best way to find everything you need to know about any Pro-face offering—complete with technical specifications, 360° visuals, CAD drawings, manuals, data sheets, and much more

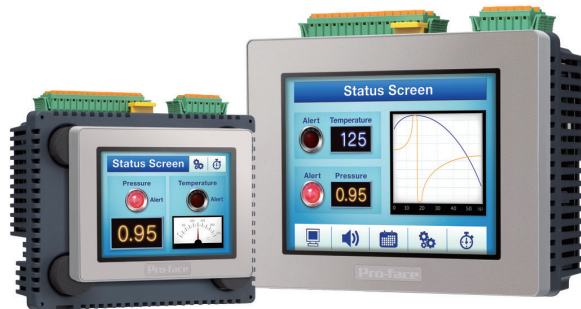
Your Choice of Platform

HMI



The **GP4000** Series offers touch screen displays with extensive simultaneous multi-protocol connectivity. The HMI to use for data sharing and data acquisition applications.

HMI + Control

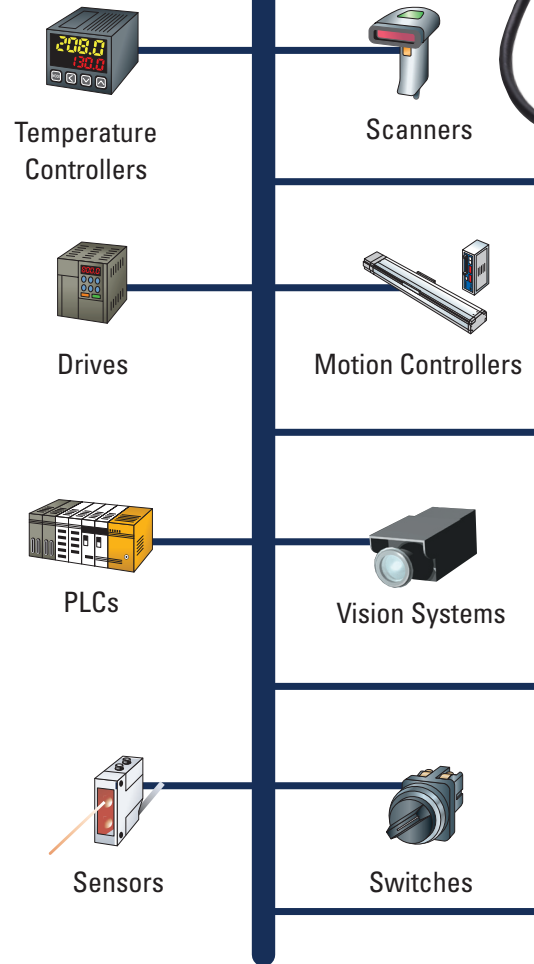


The **LT4000M** provides both HMI and digital / analog control in a single unit. A unique modular style allows the display and rear module to be mounted directly or separately.

Flat Panel Monitors



Pro-face **FP5000** Series Flat Panel Monitors offer display sizes of 12.1" or 15" TFT color, with enhanced resolution that will meet the needs of your applications.



Flexible and Easy Installation with Compact Configurations

22mm Hole Mounting

LT4000M
Series



EZ Numpad



EZ Towerlight



EZ Fingerprint Recognition Unit



EZ Illuminated Switch

Enhanced HMI



The **SP5000** Series delivers cutting-edge features with an innovative and flexible modular design. For Industry 4.0 smart automation architectures. Ideal for big data. 12 display + box combinations.

Industrial PC

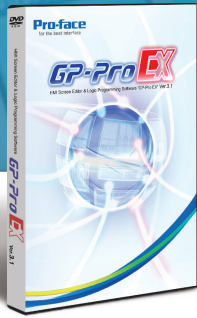


The **PS5000** Series offers high connectivity, reliability, and design. Our built-to-order lineup includes Node Box PCs with Intel Core i7, and Celeron CPUs which can be used in a modular and flexible Panel PC configuration with 15", 19" or 22" display screens, allowing the flexibility to change the functions and sizes.

USB Solutions



Pro-face **EZ Series** HMI accessories are easy to connect and powered by the USB port, easy to install with 22mm hole mounting, and easy to set up with GP-Pro EX.



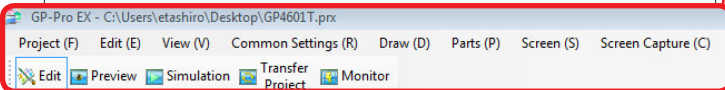
GP-Pro EX

GP-Pro EX is the easy-to-use development software for Pro-face HMI and IPC. With a wide array of development tools, expanded diagnostic and simulation capabilities, GP-Pro EX is capable of handling the most demanding applications.

GP-Pro EX

HMI Screen Editor & Logic Programming Software

Create Your Application in Only Minutes



1. Set-up Communications

- Choose and set up PLC and third-party devices effortlessly
- System settings are logically arranged and easy to find

2. Design Application / Screens

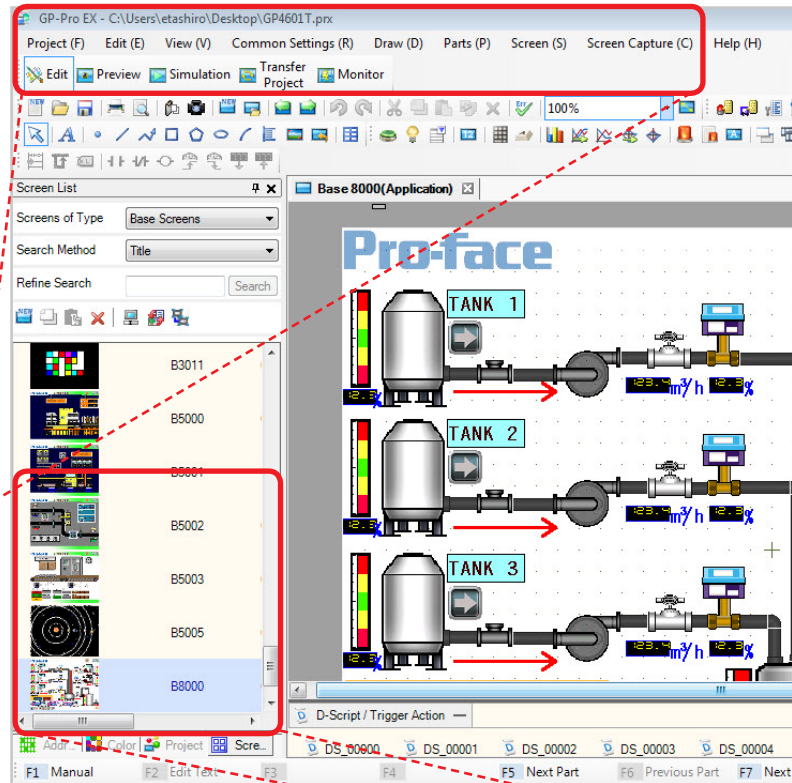
- Drag-and-drop addressing, parts and colors
- Efficient features to reduce development time
- Create consistent look and feel using the user-defined templates

3. Simulate and Test

- Verify before you travel
- Debug your application without hardware
- Test without downloading

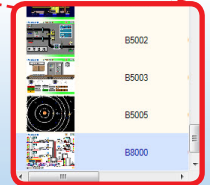
4. Download / Transfer

- Tamper-proof HMI application – password-protected project source



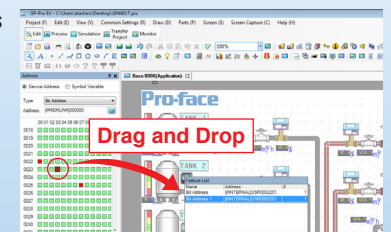
Thumbnail View

- Visually select the screens you need
- Updated instantly
- Screen number and descriptive label are shown for clarity



Visual PLC Addressing

- ✓ Smart visual address mapping for fast PLC-address-to-part communication connections
- Drag and drop PLC address onto part to quickly link controller address to push button, tank, graph, etc.
- Gives a quick visual check on how each part is mapped to controller or I/O device
- Significantly reduces screen development time
- Quick indication of what controller addresses are still available



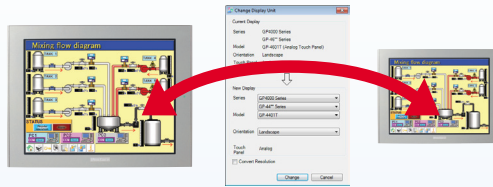
One development software for both dedicated and open windows-based operator interfaces

Extensive Time-Saving Features

Create consistent look and feel, detailed applications in minutes!

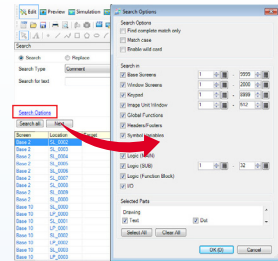
Resolution Conversion

- Adjusts HMI application to different screen sizes



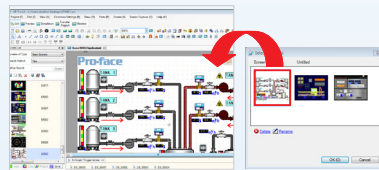
Search & Replace

- Easily find text anywhere in the application
- Quickly replace addresses or text throughout.



Templates

- Reuse complete screens with addressing
- Build entire applications by using templates



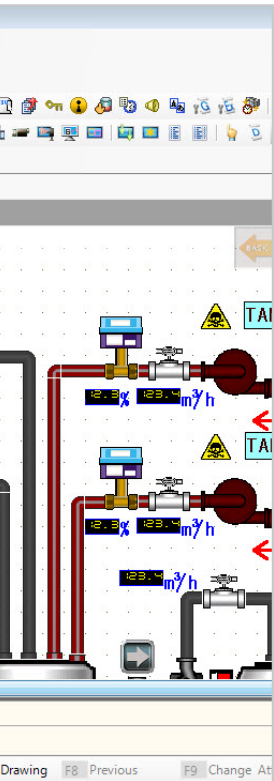
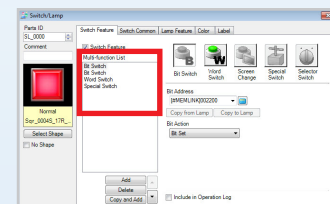
Headers and Footers

- One-click access to multiple user-defined headers (e.g. title) and footers (e.g. menu) for perfect placement. Edits to headers/footers update all screens simultaneously!



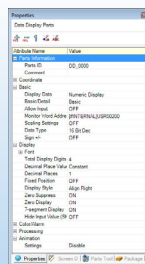
Multifunction Switches

- Execute multiple actions with one switch
- No need to stack switches, leading to possible operator error
- Choose Bit Switch, Word Switch, Special Function, change screen, etc.



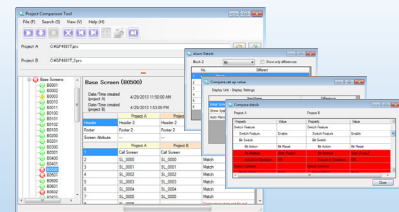
Property Window

- Quickly make changes to multiple objects with a single mouse click



Project Comparison Tool

- You can check the details to see if there are any differences between project files at a glance



Our **FREE** Technical Support site is a vast resource of product and application knowledge to help you maximize your HMI

- Videos
- Application Notes
- Certifications
- Driver Downloads
- FAQs
- Manuals
- Sample Downloads
- Screen Development Techniques



GP-Pro EX HMI Development Software

Application Investment Protection
Import older project files

Project Converter

Import and convert project data created with previous versions of GP-Pro to upgrade to the latest hardware. You can also save projects created in GP-Pro EX 3.1 or later to be read by 3.0 with the version reverter tool.

GP510



1990s

GP2000



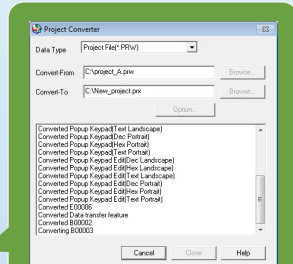
AGP3000



GP4000



TODAY

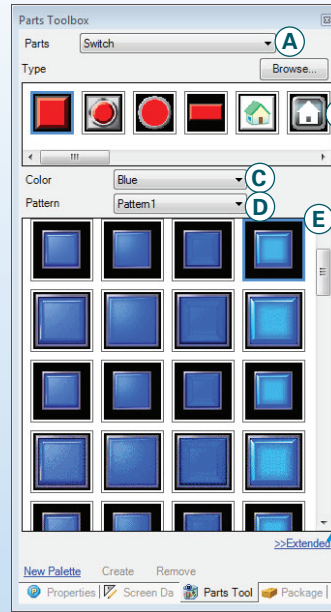


Project Converter Tool

Powerful Parts Toolbox allows for part customization and expansion

Parts Toolbox

Create more intuitive screens by understanding how parts are used at the site. Easy search system leads you to the right drawing.



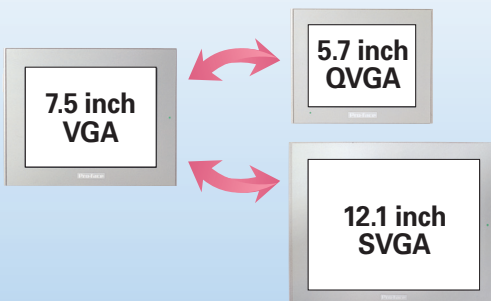
- A Category selection**
Select from switch/lamp/data display/graph/etc.
- B Type (shape) selection**
- C Color selection**
- D Pattern selection**
0-256/interface lock/delay
- E Parts display based on category**
- F Color number selection**
Select from 65535 colors/256 colors/etc.
- G Part drawing ID**

Plus!

- Select shape and format of parts already in place by opening the editing screen (shape browser).
- Register your own parts and group together for quick part placement

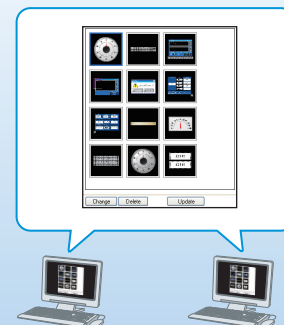
Auto Screen Scaling

Built-in Resolution Converter automatically converts project files to different resolutions. Significant time savings in changing screen sizes.



Share Images and Parts

Register your own parts and save them as a template on the server to share. Group together for quick part placement.



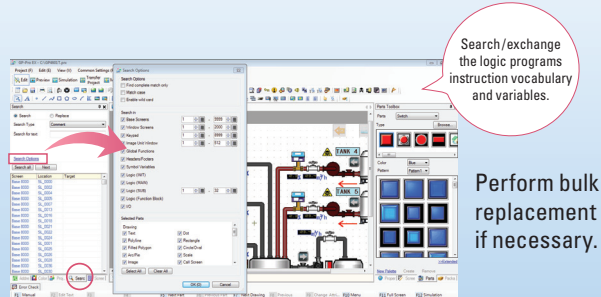
Register multiple parts and images as one group!

GP-Pro EX HMI Development Software

Maximize the value of your HMI and do more than before.

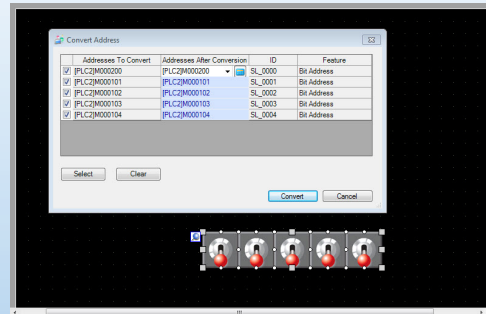
Quick Search Window

Search for parts information by item in the project. Edit groups of devices, labels, and parts by using the search results. You can also search and replace text on screens.



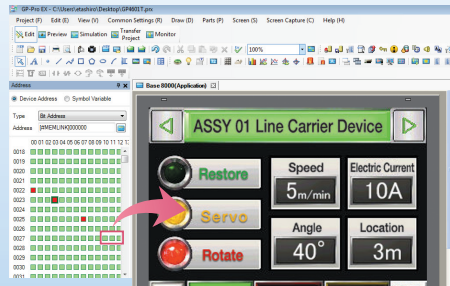
Simultaneous Part Address Changing

Change selected part addresses simultaneously. Duplicating similar screens is ultra fast and easy.



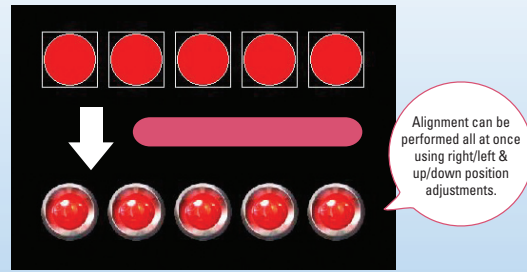
Fast Address Mapping

Drag and drop logic addresses onto graphic images for fast linking and reduce logic control mistakes.



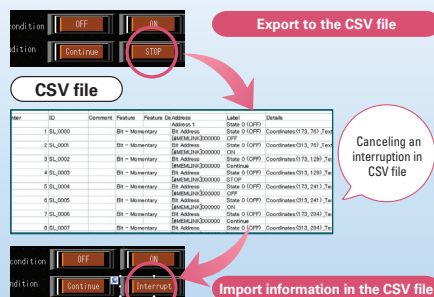
Multiple Part Editing

Change the shape of multiple parts at one time. Easily re-create images from past project files.



Import/Export the Part List in CSV

Export a parts information record to CSV file. Make changes using Excel and import information back into the project. Make fast label changes to a large number of parts.



Display CAD Images

Write DXF, DWF files downloaded using Visio to GP-Pro EX project files. You can also use CAD data on screens.

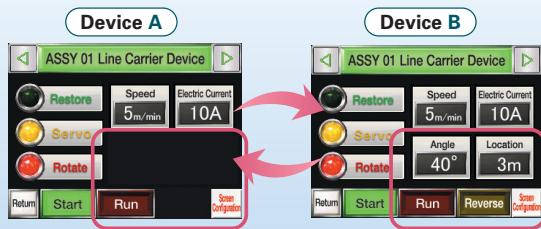


GP-Pro EX HMI Development Software

Reduce number of screens with extensive animation features

Part Visibility On/Off

Control part visibility by device or operator. Save development time and reduce project file size.



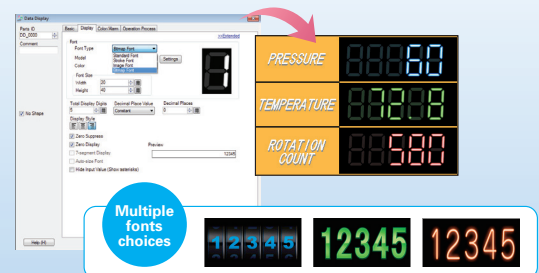
Use the same base screen

Reduce work by eliminating need to create new screens.

Functional parts simplify screen design and enhance readability

Font Choices for Data Display (Bitmap)

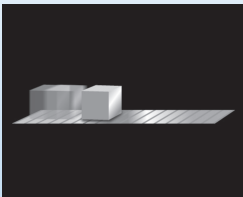
7 segment feature on data display provides for easy readability and visibility.



Move/Rotate Graphics

Move and rotate drawings and images to reduce design time when creating call-up screens.

Horizontal/vertical transfer



Express progress and movements on a conveyor.

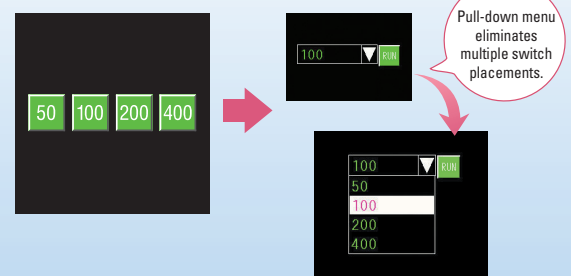
Rotate



Animate meters to display realistic situations.

Pull Down Selector List

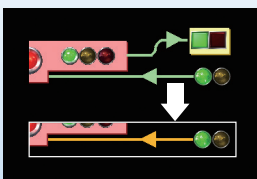
Reduce the number of switches installed using pull-down selection parts to save display space and development time.



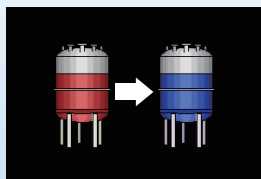
Convenient switch to change screens.

Control Graphic Colors

Vary the color of drawings and images, to eliminate work involved in creating call-up screens.



Change the colors via various control parameters



Color change showing current operating conditions

Change the color of lines, drawings, letters, graph lines, background, etc.

Scalable Numeric Entry Display

Numbers entered using the numeric keypad are displayed on the keyboard to prevent incorrect data entry.



Key size may be scaled easily to match display criteria

GP-Pro EX HMI Development Software

Easy language setup according to the operator

Create Multi-Language Applications

Use Excel to create multi-country text tables to allow the HMI operator to easily switch between display languages.

A	B	C	D	E
English	Spanish	German	Chinese (Simplified)	Japanese
Return to origin	Volver al origen	zurück zum Ursprung	返回原点	原点復帰
Close fan	cerrar del funcionamiento	Langens einstellen	扇を閉じる	扇を閉じる
Intersect with parts	Intersect with parts	Intersect mit Teilen	部分と交差	部分と交差
Decreasing Air Pressure	Disminución de la presión de aire	Abnehmender Luftdruck	空気圧低下	空気圧低下
Pump leakage	Fuga en una bomba	Pumpen Leckage	ポンプの漏れ	ポンプの漏れ
Start	Comenzar	Starten	開始	開始
Stop	Parar	Stop	停止	停止
English	Spanish	German	Chinese (Simplified)	Japanese
Return to origin	Volver al origen	zurück zum Ursprung	返回原点	原点復帰
Close fan	cerrar del funcionamiento	Langens einstellen	扇を閉じる	扇を閉じる
Intersect with parts	Intersect with parts	Intersect mit Teilen	部分と交差	部分と交差
Decreasing Air Pressure	Disminución de la presión de aire	Abnehmender Luftdruck	空気圧低下	空気圧低下
Pump leakage	Fuga en una bomba	Pumpen Leckage	ポンプの漏れ	ポンプの漏れ
Start	Comenzar	Starten	開始	開始
Stop	Parar	Stop	停止	停止
English	Spanish	German	Chinese (Simplified)	Japanese
Return to origin	Volver al origen	zurück zum Ursprung	返回原点	原点復帰
Close fan	cerrar del funcionamiento	Langens einstellen	扇を閉じる	扇を閉じる
Intersect with parts	Intersect with parts	Intersect mit Teilen	部分と交差	部分と交差
Decreasing Air Pressure	Disminución de la presión de aire	Abnehmender Luftdruck	空気圧低下	空気圧低下
Pump leakage	Fuga en una bomba	Pumpen Leckage	ポンプの漏れ	ポンプの漏れ
Start	Comenzar	Starten	開始	開始
Stop	Parar	Stop	停止	停止
English	Spanish	German	Chinese (Simplified)	Japanese
Return to origin	Volver al origen	zurück zum Ursprung	返回原点	原点復帰
Close fan	cerrar del funcionamiento	Langens einstellen	扇を閉じる	扇を閉じる
Intersect with parts	Intersect with parts	Intersect mit Teilen	部分と交差	部分と交差
Decreasing Air Pressure	Disminución de la presión de aire	Abnehmender Luftdruck	空気圧低下	空気圧低下
Pump leakage	Fuga en una bomba	Pumpen Leckage	ポンプの漏れ	ポンプの漏れ
Start	Comenzar	Starten	開始	開始
Stop	Parar	Stop	停止	停止

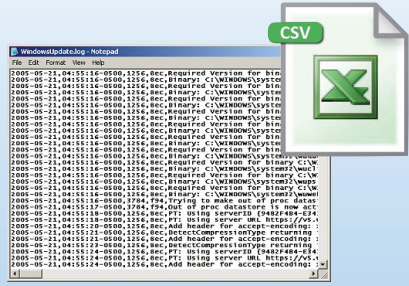
Input in Excel, copy and paste into GP-Pro EX.

Number	Character	Line	Table Name	Character	Table Name	Character	Table Name	Character	Table Name	Character	Table Name	Character	Table Name
1	10	17	How monitoring video not open	監視ビデオが開かれません	監視ビデオが開かれません	監視ビデオが開かれません	監視ビデオが開かれません	監視ビデオが開かれません	監視ビデオが開かれません	監視ビデオが開かれません	監視ビデオが開かれません	監視ビデオが開かれません	監視ビデオが開かれません
2	10	17	Return to origin	Volver al origen	zurück zum Ursprung	返回原点	原点復帰	原点復帰	原点復帰	原点復帰	原点復帰	原点復帰	原点復帰
3	26	1	Close fan	cerrar del funcionamiento	Langens einstellen	扇を閉じる	扇を閉じる	扇を閉じる	扇を閉じる	扇を閉じる	扇を閉じる	扇を閉じる	扇を閉じる
4	26	1	Intersect with parts	Intersect with parts	Intersect mit Teilen	部分と交差	部分と交差	部分と交差	部分と交差	部分と交差	部分と交差	部分と交差	部分と交差
5	36	1	Decreasing Air Pressure	Disminución de la presión de aire	Abnehmender Luftdruck	空気圧低下	空気圧低下	空気圧低下	空気圧低下	空気圧低下	空気圧低下	空気圧低下	空気圧低下
6	37	1	Pump leakage	Fuga en una bomba	Pumpen Leckage	ポンプの漏れ	ポンプの漏れ	ポンプの漏れ	ポンプの漏れ	ポンプの漏れ	ポンプの漏れ	ポンプの漏れ	ポンプの漏れ
7	10	1	Start	Comenzar	Starten	開始	開始	開始	開始	開始	開始	開始	開始
8	10	2	Stop	Parar	Stop	停止	停止	停止	停止	停止	停止	停止	停止
9	10	2	English	Spanish	German	Chinese (Simplified)	Japanese	Chinese (Simplified)	Japanese	Chinese (Simplified)	Japanese	Chinese (Simplified)	Japanese
10	10	2	Spanish	English	German	Chinese (Simplified)	Japanese	Chinese (Simplified)	Japanese	Chinese (Simplified)	Japanese	Chinese (Simplified)	Japanese
11	10	2	German	English	Spanish	Chinese (Simplified)	Japanese	Chinese (Simplified)	Japanese	Chinese (Simplified)	Japanese	Chinese (Simplified)	Japanese
12	10	2	Chinese	English	Spanish	German	Japanese	Chinese (Simplified)	Japanese	Chinese (Simplified)	Japanese	Chinese (Simplified)	Japanese
13	10	2	Japanese	English	Spanish	German	Chinese (Simplified)	Japanese	Chinese (Simplified)	Japanese	Chinese (Simplified)	Japanese	Chinese (Simplified)
14	10	1	Change Language	Cambiar la lengua	Ändern Sprache	言語変更	言語変更	言語変更	言語変更	言語変更	言語変更	言語変更	言語変更
15	10	1	Alarm	Alerta	Warnung	警報	警報	警報	警報	警報	警報	警報	警報

Extended alarm functions for reduced labor thanks to added enhanced functions

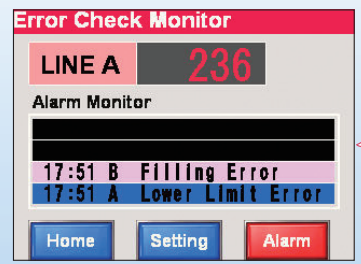
Export Alarm and Sampling Data to CSV

- Any international date format available
- Multi-Language Text Table feature is supported
- Improved performance when saving files with New Folder creation



Use Windows™ Fonts for Readability

Windows™ computer fonts may be used for the data display, text table, and alarm. Anti-aliasing support in labels for smooth font display.

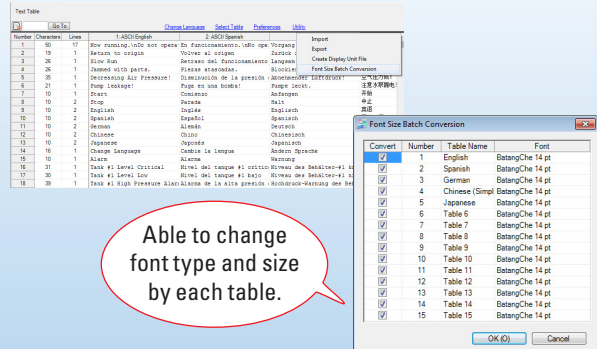


Responds to multiple languages.

The font and size of the text table and label of the switch/lamp can be setup individually.

Batch Conversion of Text Table Font

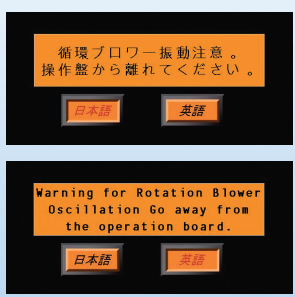
able to change the font setting for each language at one time.



able to change font type and size by each table.

Automatic Font Size Adjustment

Switching languages when multiple-languages are used automatically adjusts font sizes according to the size of the switches, lamps and message displays.



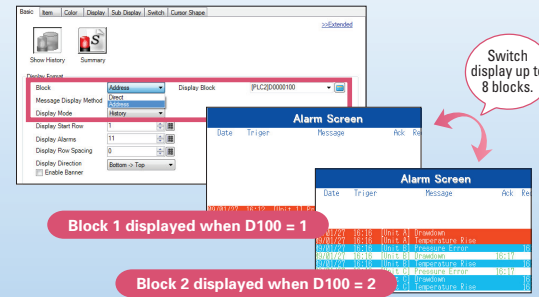
Japanese

English

Character size will be enlarged or reduced if the number of characters decreases or increases when switching languages.

Control Alarm Indication

Reduce screen design and save time by using alarm blocks that display alarms based on the device or level of importance on one alarm indicator.



Switch display up to 8 blocks.

Block 1 displayed when D100 = 1

Block 2 displayed when D100 = 2

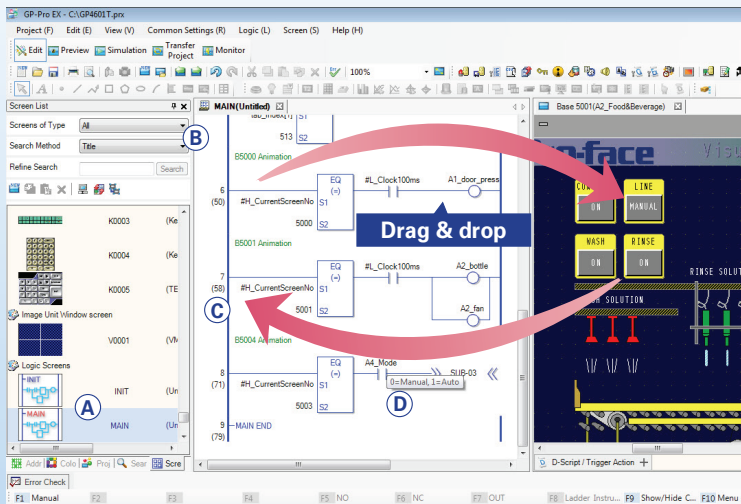
GP-Pro EX HMI Development Software

Unburden your PLC with built-in control

Ladder Logic Control Programming

See supported instruction notation list

GP-Pro EX provides a built-in logic editor to create an all-in-one HMI plus Control application. Using one software for both screen development and ladder logic ensures glitch free operations and tighter revision control.



- A Block-structured Subroutine**
Initialization logic, main logic and subroutines can be blocked, enabling smooth editing.
- B Logic search/replace**
Search or replace the indefinite numbers of logic with the search window.
- C Number of steps displayed**
The size of a logic program is easily viewed with the number of steps displayed up to 60,000 steps. The internal memory is reduced to 1MB for 60,000 steps (screen data).
- D Tip Display for Comments**
Displaying comments as tips makes a program clear. Comments can be displayed at any time.

Use the logic program for controlling external devices!

*Not available on all models.
*Not compatible with some connection device address specifications

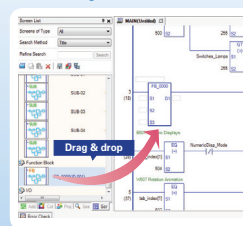
Maintenance Features allow monitoring of logic under operation

- **Logic Display**
You can check the operation of a logic program within the system on site.
- **Address Display**
The logic address is displayed, enabling you to check variable names and their current values.
- **Online Editing**
You can change a logic program even while the control function is operating without stopping work.

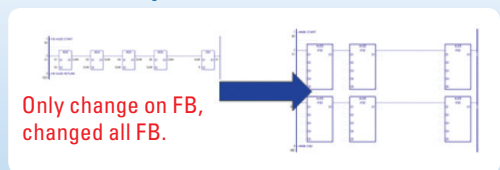
Function Block

You can reuse logic programs by making them into a component, which drastically reduces development hours and mistakes in programming.

Easy Operation for EX



Save Memory for GP



Easy to place FB to Ladder by Drag & Drop.
Able to reduce memory when same FB used.

Create your own functions or write a simple communication driver

Develop a program or simple communication driver using Pro-face D-Script simplified language. Re-use previous revisions of D-Scripts created by user, no need to re-create work previously done.

Function

Bit operation ON, OFF, clear
Memory operation Copy and shift, etc.
CF/SD file operation File access, delete list output, etc.
USB file operation File access, delete list output, etc.
SIO port operation Send/receive data
Printer operation Send data
Draw Call screen, circle, straight line, square, etc.
Others Debug message and exit WinGP

Tool Conditional

Branching IF, LOOP, etc.
Comparison AND, OR, >, =, <, etc.
Operation +, x, bit operator, etc.

Configure the settings on a trigger condition such as "Continuous Action", "Timer-Bit change" and "When condition is satisfied". Additionally, a wide variety of functions such as search (searching and replacing strings in a script) and debugging functions (displaying messages and addresses on the system), etc., are provided.

GP-Pro EX HMI Development Software

Security Controls Prevent Unauthorized Access

A variety of security controls are available to allow operators access to select HMI screens while preventing unauthorized access to password protected screens such as recipes and alarm screens.

Define Access and Restrictions per User

Access rights consisting of user names, passwords, fingerprints*, and their assigned access level are determined for each operator interface.



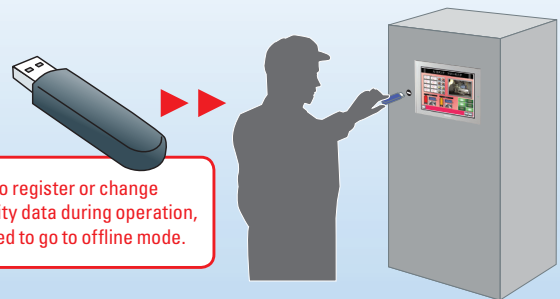
Enable Security Function			
Add User ID			Fingerprint Recognition
Level	ID	Password	Fingerprint
1	OPER1	123	
1	OPER2	234	
5	MAINT	ABC	
5	SHIFTSUP	ABC1	
10	REMOTER	CDE	
11	REMOTERiv	CDE1	
15	PLANTSUP	XYZ	
15	OEM	OEM	

Set Security Level For Each Feature		
Item	Level	Disable
Offline Mode	0	
Logic Monitor	0	
Online Logic Editing	0	
Read GP-Viewer Data	5	
Write GP-Viewer Data	5	
View Web Server Contents	10	

* Requires EZ Series Fingerprint Reader

Security Maintenance

Quickly and easily change passwords for each machine operator. Passwords may be changed or added using a memory card, USB stick, or by FTP!



Able to register or change security data during operation, no need to go to offline mode.

Delete files after changes to ensure security.

Operator Safety (Security Per Part)

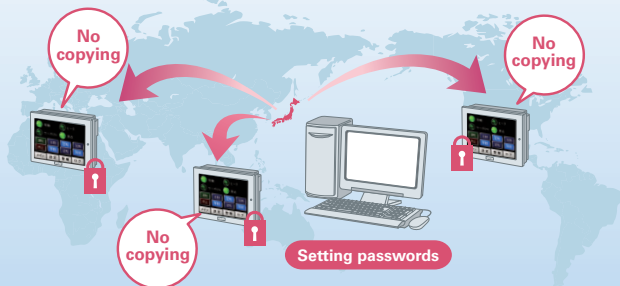
Configure access and authority parameters per part by requiring a certified ID or password for parts that are controlled by different security levels.



Security levels may be set for each part for operator safety. Combined with the animation function, some parts may become inactive or hidden if they require a higher authority level after operator log-in

Project Security

Set passwords for each screen or script to prevent accidental unauthorized access. Use security features to protect intellectual property rights.



Investment Protection: Protect your data assets even when exporting the system overseas.

No PC on site Required

Use a USB memory stick for daily, weekly or monthly security changes, performing part label changes, transferring screens, setting recipes or collecting log data from the HMI.

Perform secure project updates for OEMs and System Integrators



GP-Pro EX HMI Development Software

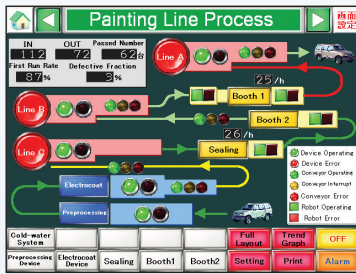
Verify Performance and Operation Without Hardware

GP-Pro EX HMI Screen and Logic Simulation

A pseudo-environment created on your PC. Prevent errors in operation by allowing confirmation and debugging before transfer.

Screen Operation Check

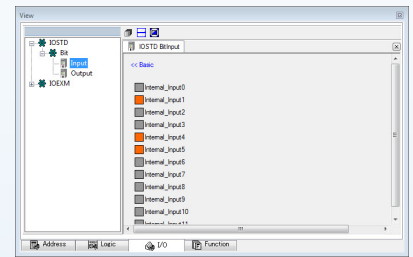
Confirm screen performance before transfer without connecting to PLC. Check actions performed using the touch panel installed with the mouse.



Do a screen capture to use for creating specifications.

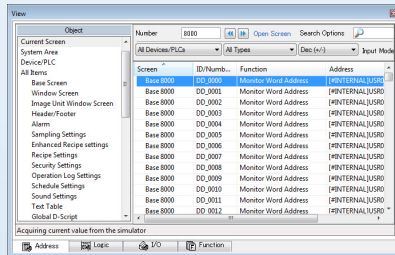
I/O Operation Check

Confirm current values for addresses allocated to I/O driver terminal in order to control external I/O. Some I/O drivers allow switching between ON/OFF state or change current values.



Controller Address Check

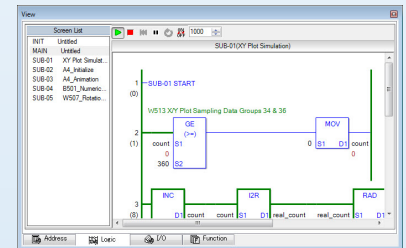
Display and edit the list of present values of virtual connected devices.



Perform intuitive operation debugging using the screen view or logic view.

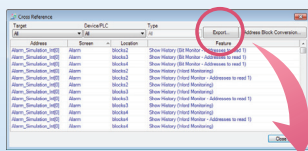
Logic Operation Check

Confirm present values and ON/OFF status of symbol variables and addresses before transferring the project file. Minimize time in logic program debugging.



Cross Reference CSV Export

Output the list of used addresses as a CSV file to perform a cross reference check. You can select to output either individual screens or all screens.

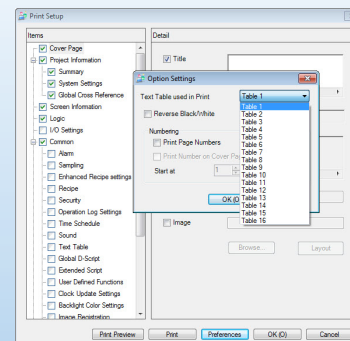


Address	Location	Feature
Alarm_Simulation_0[0]	Alarm block2	Show History (Bit Monitor - Addresses to read 1)
Alarm_Simulation_0[1]	Alarm block3	Show History (Bit Monitor - Addresses to read 1)
Alarm_Simulation_0[2]	Alarm block4	Show History (Bit Monitor - Addresses to read 1)
Alarm_Simulation_0[3]	Alarm block2	Show History (Word Monitoring)
Alarm_Simulation_0[4]	Alarm block2	Show History (Word Monitoring)
Alarm_Simulation_0[5]	Alarm block3	Show History (Word Monitoring)
Alarm_Simulation_0[6]	Alarm block3	Show History (Word Monitoring - Addresses to read 1)
Alarm_Simulation_0[7]	Alarm block3	Show History (Word Monitoring)
Alarm_Simulation_0[8]	Alarm block4	Show History (Word Monitoring)
Alarm_Simulation_0[9]	Alarm block4	Show History (Word Monitoring - Addresses to read 1)
Alarm_Simulation_0[10]	Alarm block4	Show History (Word Monitoring)
Alarm_Simulation_0[11]	Alarm block2	Show History (Bit Monitoring)
Alarm_Simulation_0[12]	Alarm block2	Show History (Bit Monitoring)

Export to CSV file

Print Out Settings

Select and print required setup information of the project file. Minimize documentation labor.

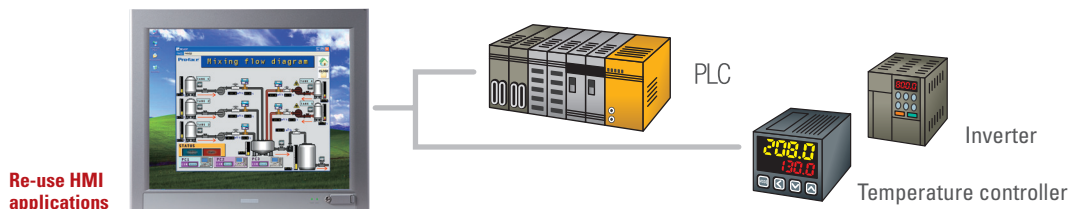


RTF format output option

GP-Pro EX HMI Development Software

WinGP Maximizing Your Industrial Computer Potential

WinGP is runtime software for GP-Pro EX HMI created applications. Pro-face dedicated operator interfaces are quickly installed on an industrial touch screen computer creating an On-Demand Windows-based HMI.



Run a GP-Pro EX HMI application and communicate with various controllers using a Pro-face industrial computer.

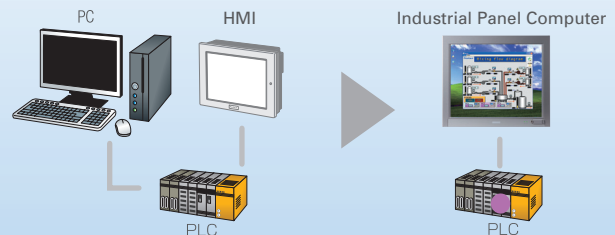
Pro-face Industrial Computers

UL Class 1 Div 2 certified industrial computers with built-in health monitoring to maximize process uptime. A wide variety of solid state drives, fanless, RAID and other options are available.



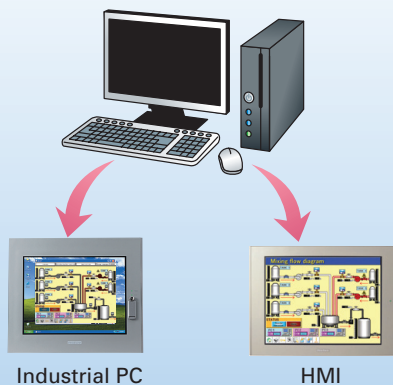
Reduce System Space

Conventional systems that combine a PC, a graphic operator interface and a PLC can be simplified to an industrial PC and a PLC. Reduced components reduces maintenance time and costs.



Re-use Existing HMI Applications

Stay flexible with your choice of technology.



3rd Party Application Flexibility

Communicate to WinGP runtime using a flexible link to user applications.

Link to User Database using the Handling API

Enables a user application to receive WinGP status and to change its setup. (Provided as the DLL file).

Control from User Application using Device Address API

Enables a user application to read/write devices on controllers connected with WinGP. (Provided as the DLL file).

Supported Languages

• Visual C++ • Visual Basic • C# • VB.NET • VBA

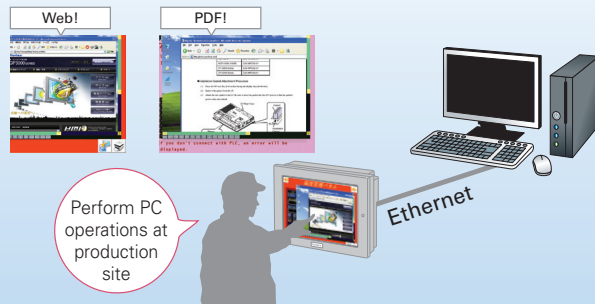
GP-Pro EX HMI Development Software

Remote PC Access (RPA) Full Power of a PC Available to your HMI over the Internet/Network

Remote PC Access (RPA) brings full PC functionality to a dedicated operator interface. Open any document such as PDFs, CAD, JPEGs, etc. or hot link to the machine builder's web site from the display screen of the operator interface.

Remote PC Access

Interact with a remote server PC using the operator interface. The Operator Interface shows the same PC server display on its screen.



Only for Ethernet TFT HMIs with VGA graphics and higher

Application and Benefits

Updating Machine Documentation

- Store machine manuals in one location on a remote PC server.
- All HMIs with RPA will automatically see the latest version posted.

Design Internet Hot Links to OEM Site

- Create HMI buttons that open up OEM web site to get latest machine updates.

Review Work Process and Reports

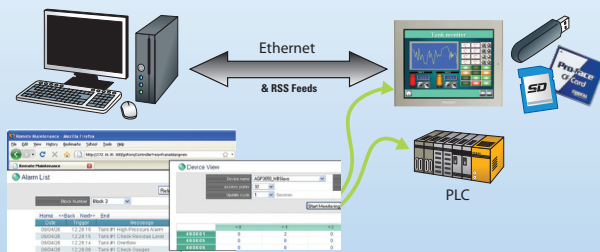
- Keep current with production changes, supply demand, and productivity reports.

WebServer RSS Feed Alarm Monitoring and Launch GP-Viewer EX with Browser

FREE WebServer provides OEMs, System Integrators and End-users to automatically receive alarm notifications through RSS feeds, or launch GP-Viewer EX to monitor the machine operator activities.

Use standard web browser to:

- Access the Operator interface via IP Address
- View Active and Historical Alarms
- Read and Write data to Operator Interface
- Read and Write data to PLC memory
- Launch additional HMI software tools



Application and Benefits

Remote Alarm Monitoring

- Automatic notification via RSS feeds
- Review and prioritize daily alarms to reduced maintenance costs.

Update PLC Data

- Optimize machine performance using web-based monitoring and updating PLC data values.

Update Operator Interface Data

- Reduce individual operator alarm inspections to increase maintenance efficiency.

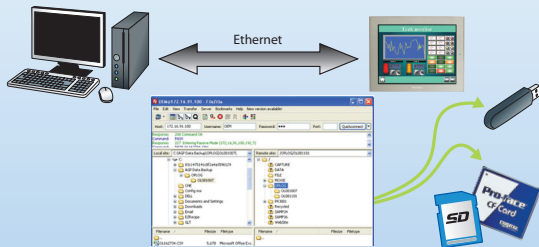
GP-Pro EX HMI Development Software

FTP Server Upload and Download Data Files to the Operator Interface Data over the Internet

FREE FTP Server provides OEMs and System Integrators the ability to access an operator interface to perform remote routine maintenance or online customer support without the need to travel on-site.

Use any FTP Client to:

- Access the Operator interface via IP Address.
- Upload Diagnostics Data:
 - Alarms, Operation Log, Event Recorder Video
- Perform Remote Maintenance:
 - Upload and Download Operational Data
 - Training Videos, Recipe Data, Security Settings



Application and Benefits

Reduce travel cost

- Acquire alarm logs, event recorder, video captures and data files over the internet.

Save Travel Time

- Perform remote diagnostics and phone support in your office, eliminating on-site travel time.

Easy Field Maintenance

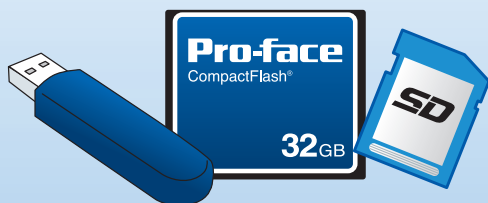
- Update recipe data, security settings and language settings without on-site plant floor visit.

Transfer Tool Field Maintenance and backup with data protection

FREE Transfer Tool allows application upgrades to the operator interface in the field without the need for development software. Ideal solution for OEMs or system integrators looking for an easy field upgrade solution.

Use Transfer Tool on site to:

- Update and backup HMI and logic projects
- Download recipe, video, security and language updates to the CF/SD card.
- Compare differences between two HMI applications
- Upload log data from the HMI CF/SD card or USB.
- Maintain information transfer flexibility via:
 - Ethernet / USB Port / Serial Port



Application and Benefits

HMI Application verification (revision control)

- Check for application tampering by comparing HMI application project on unit to a known good project.

Intellectual Rights Protection

- Allow others to perform field updates without the ability to access proprietary project information.

Access CF/SD or USB Data Storage Device

- Retrieve or store log, recipe, other files etc. using any of the three transfer methods.

* This is the same transfer utility used in GP-Pro EX.

GP-Pro EX HMI Development Software

Memory Loader Field Maintenance and Backup with Data Protection

FREE Memory Loader tool stores project, drivers or images to upload to one or multiple HMIs using a simple USB or CF / SD storage device. Eliminates the need for HMI development software and a laptop on site.

Use Memory Loader to:

- Prepare a CF / SD / USB image to load on HMI.
 - Includes Project, Driver and System updates
 - Multiple Projects can be stored simultaneously
- Download project to HMI without using a PC.
- Back-up existing project in HMI before updating.
- Offer a simple update procedure that can be performed by the machine operator.



Application and Benefits

Remote Field Upgrades

- E-mail edited project file to site location for technician to store on USB stick and upload to operator interface.

Project Backup and Recovery

- Backup existing HMI application before updating to restore HMI to previous state if necessary.

Update Multiple HMIs (portability)

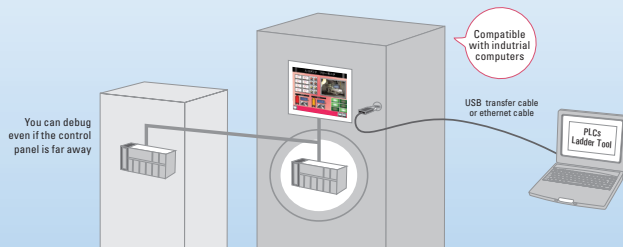
- Use CF / SD card or USB memory stick to update all HMIs using the same application.

Pass Through Programming and Monitoring PLC via Operator Interface

FREE Pass Through tool allows you to program the PLC through the operator interface. PLC access is provided through the Ethernet connection on the HMI. Ideal for quick programming changes to optimize system performance.

Use Pass Through to:

- Program or monitor PLC via HMI.
- Eliminate need to connect a PLC Programming cable.
- Take advantage of existing HMI to PLC communication cable connection.
- Access PLC remotely through HMI's Ethernet or USB.
- Save travel expenses with remote maintenance.



Application and Benefits

On site PLC Diagnostics

- No need for PLC programming cable. Use the USB or Ethernet port on the HMI to obtain communication access to the PLC.

Off site Remote PLC Diagnostics

- Use the Ethernet port on HMI to gain PLC access remotely. Even if PLC normally programs through a serial connection.

Update PLC without disruption

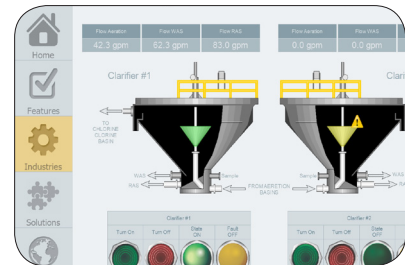
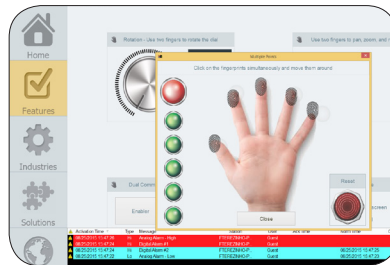
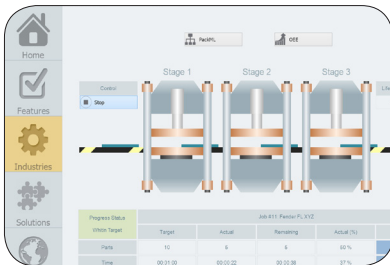
- Diagnose and perform PLC maintenance without disrupting communications to the HMI.

BLUE Open Studio



BLUE Line Management Lite SCADA Open Studio

SCADA/HMI Software for Intuitive Dashboards, OEE, and the Internet of Things.



PS5000 Bundled

Available to be bundled with all Pro-face PS5000 Series Industrial PCs

Support for Multiple Document Interface on Studio Mobile Access (SMA)

Access your graphical interface from any device, with groups of screens, popups, and dialogs

OPC Redundancy

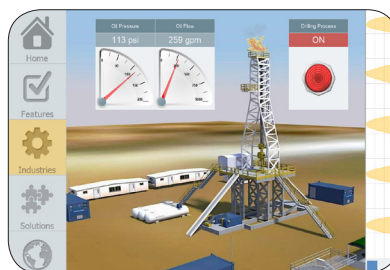
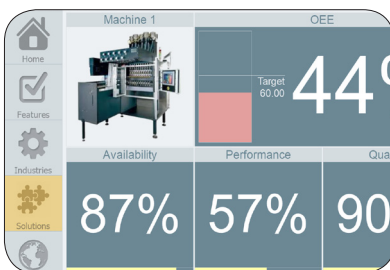
Native redundancy for OPC UA and OPC XML/DA interfaces

Built-in Tag Integration with PLCs

Comprehensive tag integration with PLCs from Schneider and other manufacturers

Library of Symbols

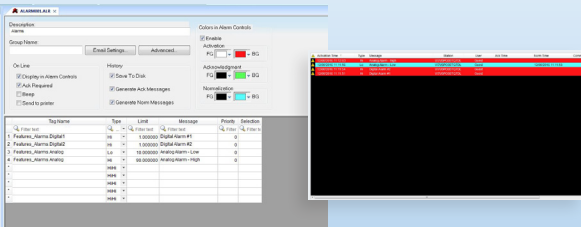
Expanded and improved set of symbols for HMI/SCADA applications



BLUE Open Studio Lite SCADA

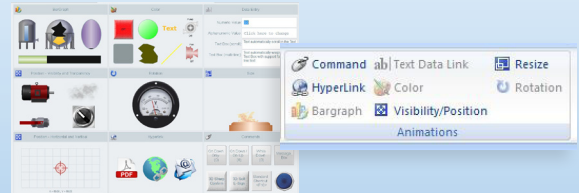
Alarms

Alarms are real-time and historical; log data in binary format or to any database or send alarms or reports using multi-media formats like PDF. Use remote notification to have alarms sent right to your inbox, printer, or smartphone.



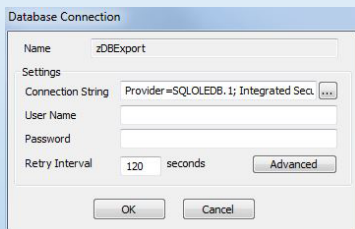
Animation

Paste images, and even rotate dynamically using custom rotation points. Fill bar graphs with color, or adjust the scale of objects easily. Other animations include 'command' (for touch, keyboard and mouse interaction), hyperlink, text data link, color, resize, transparency, and position.



Database

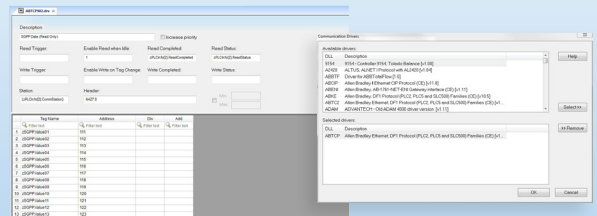
Connect to any SQL database (Microsoft SQL, MySQL, Sybase, Oracle), or Microsoft Access or Excel, and ERP/ MES systems (including SAP). Offering a built in interface that doesn't require



knowledge of SQL (for trends, alarms / events, grid and other objects).

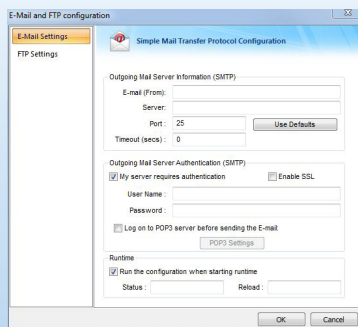
Drivers

Provides over 250 native communication drivers for PLCs, temperature controllers, motion controllers, bar code/2D/RFID readers, and many other devices. Use these built in drivers, or connect to an OPC server.



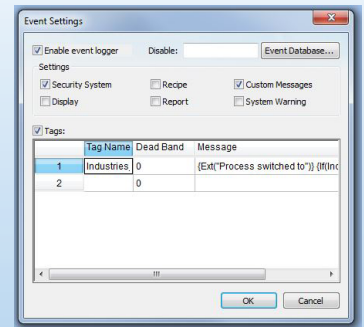
Email

Send email or text messages that can be accessed from mobile devices. Get real-time information on alarms, process values, and other events. Supports SSL encryption.



Events

Log events such as security system changes (user logon or off), screen open/ close, recipe/report operations, system warnings, and any tag value changes, including custom messages.



BLUE Open Studio Lite SCADA

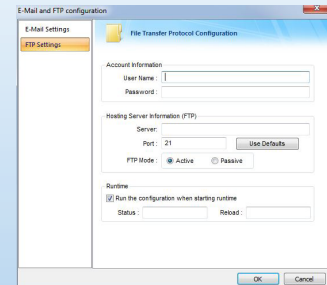
FDA Traceability

Built-in functionality to create 21 CFR part 11 compliant projects with traceability and e-signatures. Can be used for any application where traceability is a requirement.



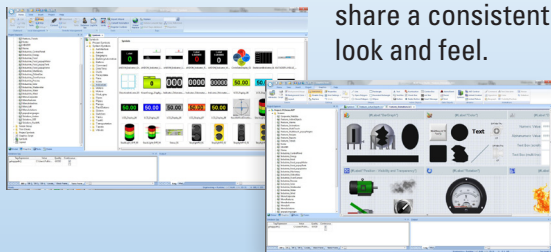
FTP

Automatically upload or download files during runtime to/from remote storage locations using the FTP protocol and flexible scripting functions. Configure FTP via scripting or the included interface.



Graphics & Design Tools

Create screens to meet any application requirement using the tools in our graphic interface. Combine over 1,000 animated objects to create any functionality required. Store graphics in the library for future use, and easily make projects across a product line share a consistent look and feel.



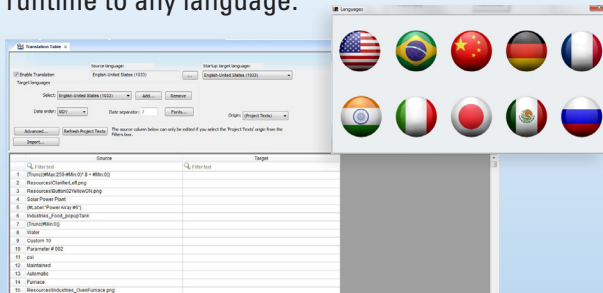
Intellectual Property Protection

Screens, documents, scripts and worksheets can be individually password protected. Prevent unauthorized viewing or editing of your project or application. Protect your intellectual property with just a few mouse clicks.



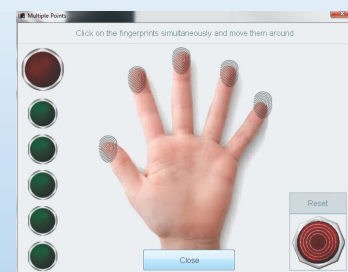
Multi-Language

Includes English, Portuguese, German, French, Russian, Chinese Traditional and Simplified, and Spanish, or use translation tools to switch the runtime to any language.



Multi-Touch Interface

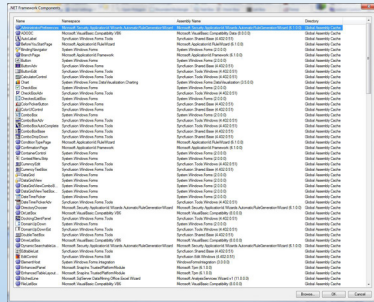
Multi-touch interface allows development for any touch-screen enabled device. Use familiar, modern interface gestures, like pinch zooming and panning. Scroll through alarms using swiping gestures. Rotate graphics, dock screens, and take advantage of features like dual-touch command.



BLUE Open Studio Lite SCADA

.NET and ActiveX

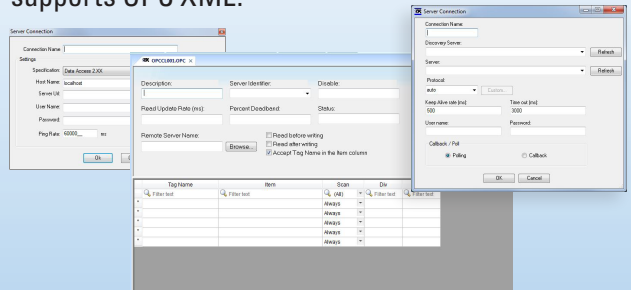
Use 3rd party controls to enhance your project. BLUE Open Studio is a container for ActiveX and .NET controls, allowing you to add functionality



such as browsers, media players, charting, live streaming from cameras, and other ActiveX or .NET controls.

OPC

Provides native OPC interfaces, such as OPC DA (Server/ Client), OPC HDA(Server), UA (Client) and OPC .NET 3.0 (Client). BLUE Open Studio also supports OPC XML.



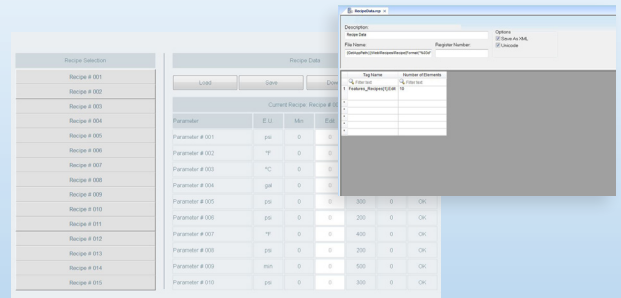
PDF Export

Send alarms, reports, or any file to a production supervisor, quality manager, or maintenance staff using the included PDF writer.



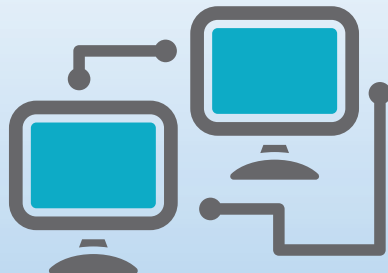
Recipes

Save time and maintain consistency by automating part parameters or production quantities with flexible recipe management tools.



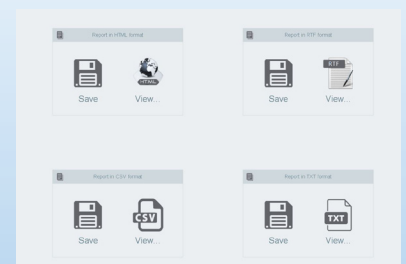
Redundancy

For critical applications where data is vital, BLUE Open Studio supports web server, database and overall system redundancy to protect your information.



Reports

Create clear, concise reports in plain text, RTF, XML, PDF, HTML, and CSV or integrate with Microsoft Office programs such as Excel. BLUE Open Studio has also partnered with Ocean Data Systems to offer further reporting capabilities through Dream Report for BLUE Open Studio*.



*Additional licenses required.

BLUE Open Studio Lite SCADA

Scalable

Use the same development environment to design and deploy projects to a wide range of platforms, such as WindowsEmbedded, Windows 7, Windows 8, and Server 2012 editions.



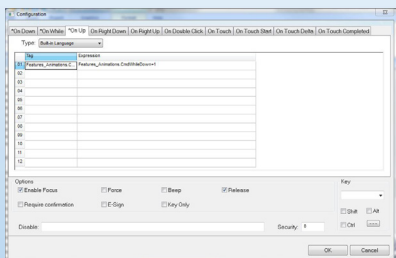
Scheduler

Schedule application behavior triggered by tag changes, date/ time, frequency, or any trigger. Use this for simulation, to trigger reports or other functionality at a particular time of day, or even to trigger driver worksheets to read/ write at a scan rate you choose.

Event	Trigger	Time	Date	Tag	Expression	Disable
1	Close	00:00:01		Features_Performance	IF Features_Performance > 100 Features_Performance > 100	
2	Close	00:00:02		Features_Performance	IF Features_Performance > 100 Features_Performance > 100	
3	Close	00:00:02		Features_Performance	IF Features_Performance > 100 Features_Performance > 100	
4	Close	00:00:02		Features_Performance	IF Features_Performance > 100 Features_Performance > 100	
5	Close	00:00:02		Features_Performance	IF Features_Performance > 100 Features_Performance > 100	
6	Close	00:00:02		Features_Performance	IF Features_Performance > 100 Features_Performance > 100	
7	Close	00:00:02		Features_Performance	IF Features_Performance > 100 Features_Performance > 100	
8	Close	00:00:02		Features_Performance	IF Features_Performance > 100 Features_Performance > 100	
9	Close	00:00:02		Features_Performance	IF Features_Performance > 100 Features_Performance > 100	
10	Close	00:00:02		Features_Performance	IF Features_Performance > 100 Features_Performance > 100	

Scripting

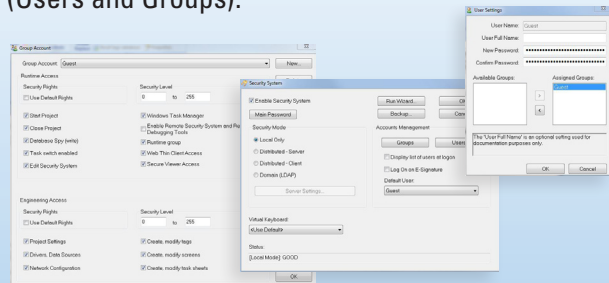
Two powerful scripting languages are supported; built-in BLUE Open Studio functions and standard VBScript. Take advantage of widely available resources for VBScript. Script debugging tools



for the native VBScript editor include breakpoints, and a variable watch list to improve scripting productivity.

Security

BLUE Open Studio includes support for group and user accounts, e-signatures, and traceability. Integrate your project to the Active Directory (Users and Groups).



Standards

Take advantage of common industry standards to develop applications that are compatible with any format. TCP/IP, .NET, ActiveX, OPC (client and server), ADO/ODBC, COM/DCOM, OLE, DDE, XML, SOAP, and HTML5 are supported.



Studio Mobile Access (SMA)

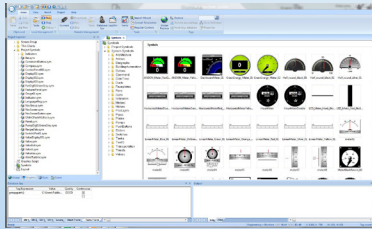
Studio Mobile Access is a HTML5 compatible thin client that offers a multiple document interface that allows you to access your graphical interface from any device with a browser that supports HTML5.



BLUE Open Studio Lite SCADA

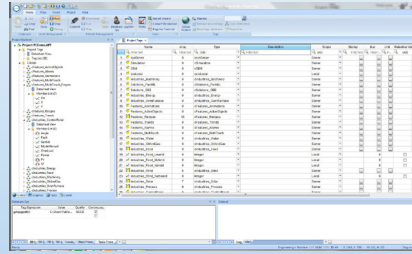
Symbols

Included library features push buttons, pilot lights, tanks, sliders, meters, motors, pipes, valves and other common objects. Use the 1,000+ included symbols in your project, modify existing symbols to suit your needs, or create your own from scratch. BLUE Open Studio supports 3rd party symbol libraries and graphic tools.



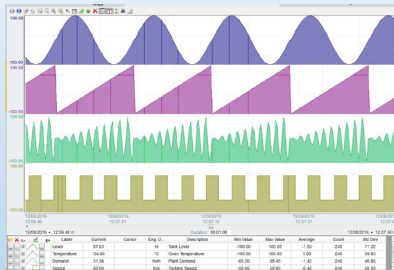
Tag Database

Features an object-oriented database with boolean, integer, real, strings, arrays, classes (structures), indirect tags and included system tags. Built-in functions allow you to create, delete, or modify the tags database settings during the runtime. Offers tag integration from a wide range of PLCs.



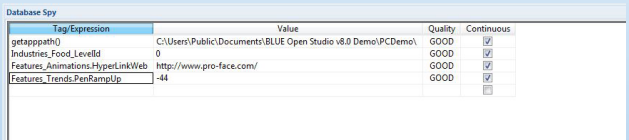
Trends

Real-time and Historical trends, and Statistical Process Control (SPC) functionality are supported. Log data in binary format, or to any local or remote SQL database. Date/ Time based or numeric (X/Y plot) trends give you the flexibility to display information that best suits your application.



Troubleshooting

Quickly debug and verify a project using local and remote tools for troubleshooting, including status fields, DatabaseSpy and LogWin. Capture screen open and close times, see communications in real-time, messages related to OPC, recipes/reports, security, database errors and even custom messages.



Tag/Expression	Value	Quality	Continuous
getapppath()	C:\Users\Public\Documents\BLUE Open Studio v8.0 Demo\PC\Demo\	GOOD	<input checked="" type="checkbox"/>
Industries_Food_LevelId	0	GOOD	<input checked="" type="checkbox"/>
Features_Animations:HyperLinkWeb	http://www.pro-face.com/	GOOD	<input checked="" type="checkbox"/>
Features_Trends:PenRampUp	-44	GOOD	<input checked="" type="checkbox"/>

XML Screen Toolkit

Modify or create screens during the runtime, or import screens that you've created.



BLUE Open Studio is a comprehensive platform that includes all the tools you'll need to make SCADA and HMI applications that have real power behind them. The development environment allows you to develop once and deploy anywhere. BLUE Open Studio supports all Windows runtime platforms (including 32 and 64 bit), ranging from Windows Embedded Compact, Windows Embedded Standard, Vista, Windows 7, Windows 8, and Windows Server Editions (Server 2008 R2, Server 2012), along with built-in support for local or remote (web) based visualization.

Build powerful graphical displays, and take advantage of the 250+ available communication drivers for all major PLC products. BLUE Open Studio includes OPC UA, OPC.NET and OPC Classic (HDA and DA), trends, alarms, reports, recipes and built-in SQL database support as standard features.

BLUE HMI Development Platform



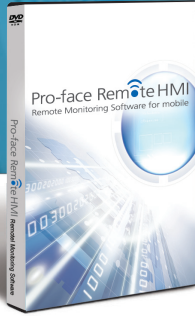
COMING SOON

A revolutionary new HMI software will offer an alternative experience in HMI design.



BLUE

Please check profaceamerica.com for future announcements.



Remote HMI

Pro-face Remote HMI allows you to check machines and equipment for alarms, operating status, and other information using a tablet or smartphone from anywhere on the factory floor.

Pro-face Remote HMI

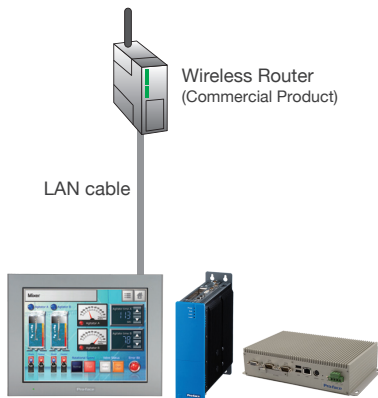


Quick steps to use Pro-face Remote HMI

STEP1

Hardware Preparation

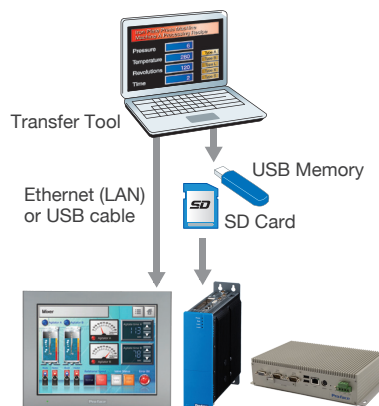
Configure Wireless Router and connect to HMI.



STEP2

Transfer Project File

Configure application in GP-Pro EX & transfer it to HMI.



STEP3

Install Remote HMI on a tablet or smartphone

Download and install Pro-face Remote HMI on a tablet or smartphone. Search for HMI and connect to monitor the HMI screen.



*Remote HMI Server license is required separately to monitor IPC and PC.

Monitor and Control Pro-face HMI screen on a smart phone or a tablet.



Download Pro-face Remote HMI today!



Screen Shortcut

Images or text of machines to monitor can be registered as shortcuts to easily jump from one HMI to another among multiple applications, for various working environments.



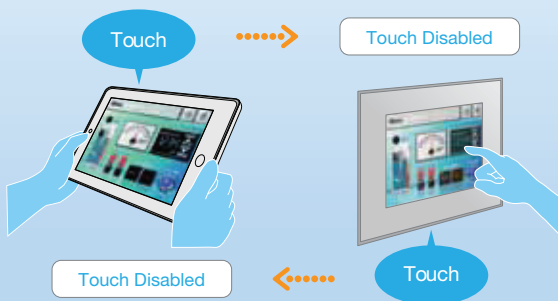
Remote Status Icon

A local operator can check the status of remote connection and touch monopoly of HMI server or remote client on an HMI screen for safer operation.



Touch Exclusive Control

Setting the monopolize touch function prevents unexpected operational misuses caused by redundant operation. Operation is re-enabled only 30 seconds after Pro-face Remote HMI or the GP unit on the equipment has been operated.



Synchronized or Asynchronized

Switch communication modes to monitor status. Synchronous mode allows you to monitor screens that are the same as the operators' screens. Asynchronous mode allows you to monitor different screens during regular operation without stopping on-site operation.





Pro-Server EX

Data management software

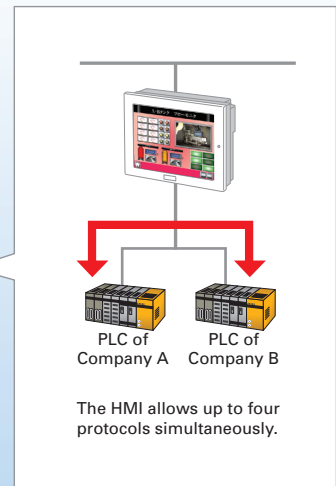
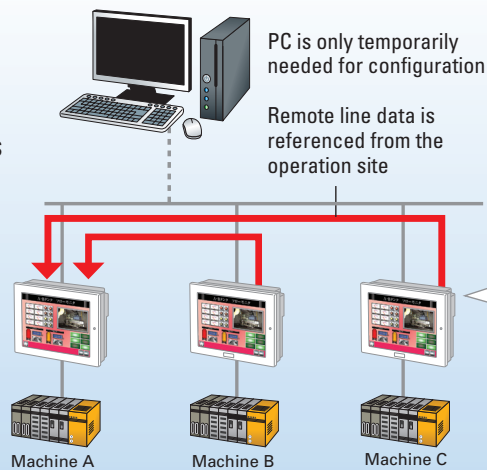
Pro-Server EX

Pro-Server EX is a powerful, multi-function data management software tool that provides real-time reporting of automated manufacturing and production environments.

Data sharing – Interdevice communication

Use Pro-Server to set up inter-device communication between Pro-face HMIs allowing data to be shared with multi-vendor devices regardless of the type of data or control device.

- Enable peer-to-peer data sharing
- Act as a gateway between HMIs or different brand PLCs
- Send build data directly from one HMI to the next



Easy Set Up

The beauty of Pro-Server EX is that there is no complex programming, additional drivers, or 3rd party software needed. Pro-Server EX provides a step-by-step setup process to build a simple, yet extremely powerful method of moving machine or process data to and from Microsoft Excel Reports, CSV files, Databases, even other Pro-Face HMIs and their connected PLCs or devices.

For advanced users, Pro-Server EX also has a variety of APIs which connect with the current Windows development applications you may already know such as Microsoft Visual Basic or Visual C++.

Data Distribution

Pro-Server EX shows alerts on your network, and even sends e-mail alerts automatically to maintenance or production staff when certain trigger conditions occur, reducing downtime.

If changes in production instructions are needed, you can update them remotely. Changing instructions quickly and accurately is important for the safety of your operators and integrity of your process. Pro-Server EX can send operating instructions, production plans and other data created in the office directly to PLC at the production site.

Pro-Server EX

Easy Data Collection

Pro-Server EX allows you to write data to and from a PLC, giving you the opportunity to get data where it needs to go, automatically.

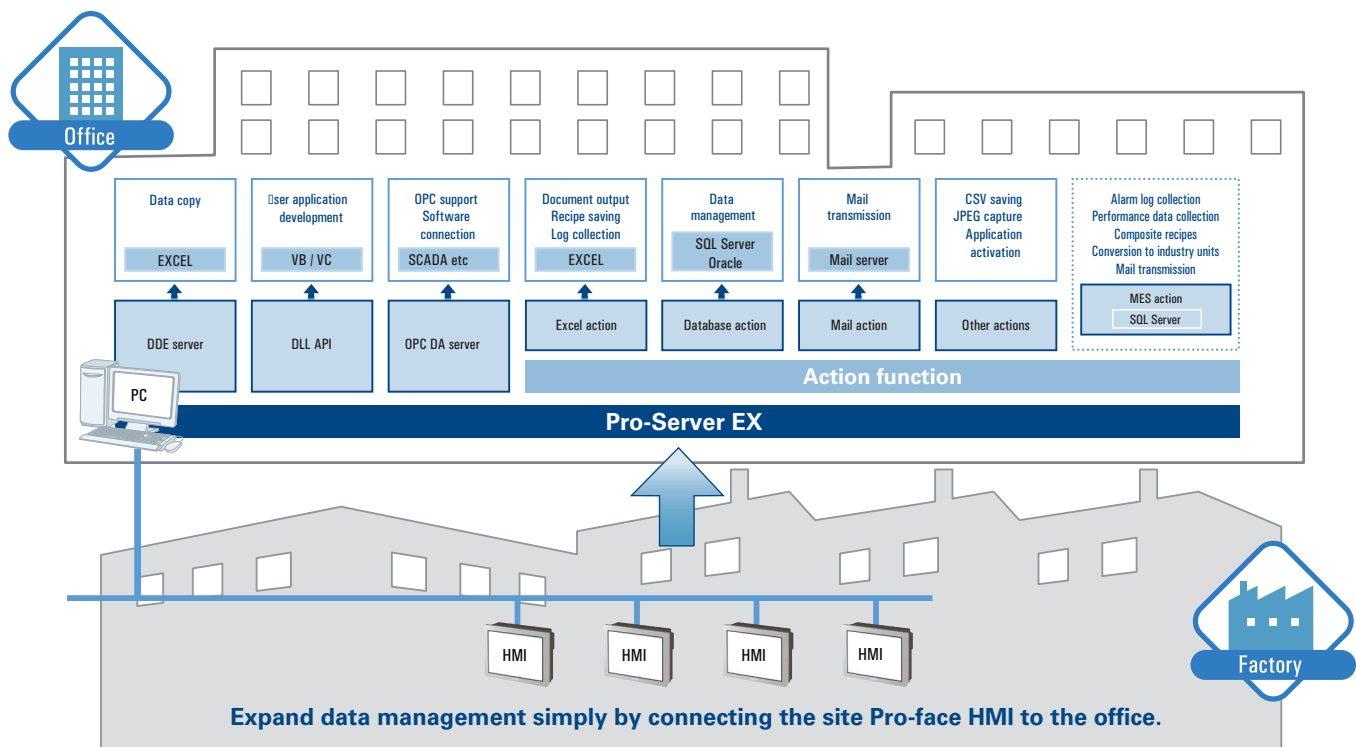
It's your information gateway! You have the data, Pro-Server EX is the collector and delivery system.

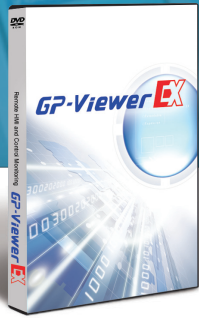
Pro-Server EX can communicate with any device with an SQL or Oracle database. When devices are connected to the network, Pro-Server EX can collect production data in real time and store it in a wide variety of formats such as CSV, EXCEL, and Access. With built-in templates, and a dedicated toolbar, you can be up and running in no time.

Enterprise integration

- Connect to existing enterprise system
- Enhance existing designs
- Use common communication methods

✓ OPC DA server	✓ DDE
✓ API (VB, VB.NET, VC, C#.NET)	✓ DLL
✓ Access™/Excel®	✓ ODBC, SQL, Oracle
✓ Image management	✓ PC health
✓ E-mail via SMTP	✓ MES



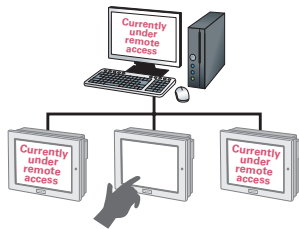


GP-Viewer EX

GP-Viewer EX software is an ideal tool to service and support multiple locations from the main office. GP-Viewer EX allows monitoring of machine operators from a remote PC. See exactly what they see displayed on the HMI screen. Not only monitor, but have the ability to take control of operations for training and diagnostic purposes.

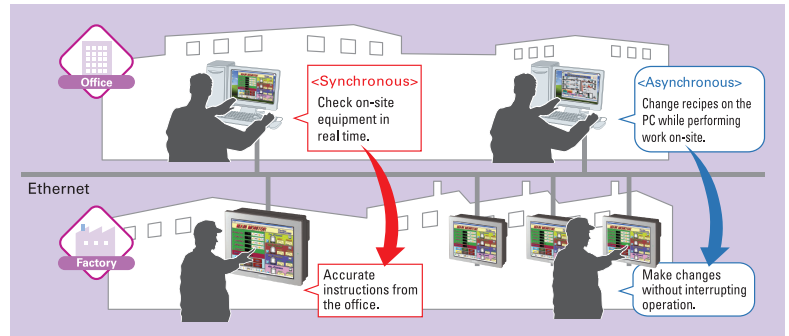
Remote Monitoring Software

GP-Viewer EX



Lock Out Feature Prevents Operational Errors

Prevent operational errors by the operator by locking operations other than for "in us" indicator by remote PC.



Monitor and Train Machine Operators

Walk operators through the exact procedures to operate the machine safely. Provide as an ongoing service and support function for OEMs and Integrators.

Machine Diagnostic Servicing

GP-Viewer EX allows you to check diagnostic data on other screens without interfering with the operator. Make updates to optimize quality and performance.

GP-Viewer EX Functionality

- Capability as if you were in front of the HMI.
- Update HMI Security Settings for Safety and unauthorized access.
- Upload Diagnostic data such as alarms, operation log, event recorder video.
- Analyze logged data and make adjustments.
- Upload and download operational data.
- Training Videos, Recipe Data, and Multi-language updates.

Application and Benefits

Monitor Machine Operators

- View Operators while they are working to ensure procedures are being followed.

Take Control of HMI from Remote Location

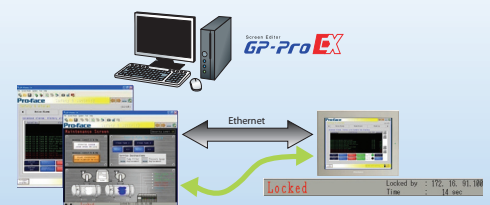
- Service the machine without the expense of traveling to the site location.
- Control 4 HMIs simultaneously from your PC.

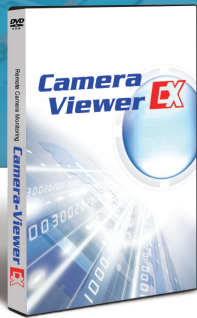
View Protected Diagnostic Screens

- Gather maintenance data without interrupting the machine operator.

Using GP-Viewer EX (Tools Required)

Operator Interface:	AGP3000, LT3000, GP4000, LT4000M, SP5000 Series HMI with Ethernet
Development Software:	GP-Pro EX V3.1 or later
GP-Viewer EX License:	Requires a license installed on each HMI
GP-Viewer EX Software:	Found on GP-Pro EX & our support site (Runs on Windows-based PC/AT computer)
Network Connection:	Open access to HMI static IP address





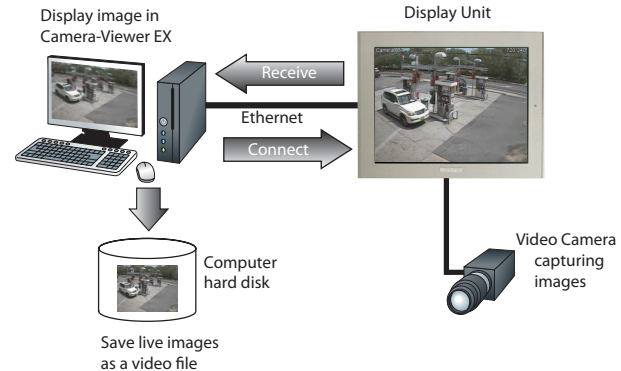
Camera-Viewer EX

Camera-Viewer EX software is a valuable software program which allows you to view streaming video from a remote PC. See exactly what is happening at the operation site. Display, record, and playback. Ethernet connection makes it easy and affordable to monitor and service from multiple support locations.

Remote Camera Monitoring

Camera-Viewer EX

New hardware purchases are unnecessary when Camera-Viewer EX leverages your existing control architecture for streaming video. This translates into significant cost savings for those wishing to remotely access, control, and view live video.



Increase Security and Safety

Live video feed allows you to monitor the industrial site and record who accessed the area. Bring the image from hard to reach, or dangerous areas safely back to your home offices.

Remote Diagnostics

Reduce travel cost and machine shutdown time with Camera-Viewer EX. From a remote location, instantly watch video of disturbances and provide diagnostic servicing of equipment.

Camera-Viewer EX Functionality

Remote Monitoring
View live streaming video from a multimedia HMI on your PC.

Record & Playback
Record live video on your HMI, playback the recordings on your remote PC or the HMI itself.

Search for files by date & time recorded.

Application and Benefits

Monitor Machine Site

- Another way to view operations while away to ensure policies are followed.
- Walk operators through instructions.

Safety and Security

- Diagnose issues quickly through recordings.
- View hard to reach or dangerous areas or monitor access to machines or locations.

No new hardware purchases necessary!

Using Camera-Viewer EX (Tools Required)

Operator Interface:	AGP3000 Series (Multimedia Class)
Development Software:	GP-Pro EX V2.7 or later
Camera-Viewer EX License:	Requires a license installed on each HMI
Camera-Viewer EX Software:	Found on GP-Pro EX (Runs on Windows-based PC/AT computer)
Network Connection:	Open access to HMI static IP address

Third-Party Driver Support

PLC

Beckhoff Automation
 CoDeSys Automation Alliance
 Control Technology Corporation
 Crouzet Millenium
 CC-Link Partner Association
 Delta-TAU data system, inc.
 Digital Electronics Corporation
 Emerson Process Management
 FATEK AUTOMATION Corporation
 Fuji Electric Co.
 FANUC LTD.
 GE Intelligent
 GE Fanuc Automation
 Hitachi IES Co.
 Hitachi, Ltd.
 JTEKT Corporation
 KEYENCE Corporation
 KOYO ELECTRONICS CO.
 LS Industrial Systems
 MEIDENSHA Corporation
 Mitsubishi Electric Corporation
 Mitsubishi Heavy Industries
 MODBUS IDA

ODVA

OMRON Corporation
 Panasonic Electric Works
 Rockwell Automation, Inc.
 Saia-Burgess Controls Ltd.
 Schneider Electric Industries
 Sharp Manufacturing Systems Corp.
 SICK AG
 Siemens AG
 Siemens Building Technologies
 TOSHIBA Corporation
 TOSHIBA MACHINE Co.
 YASKAWA Electric Corporation

Temperature Controllers

Azbil Corporation (Former Yamatake)
 Fuji Electric Systems Co.
 Azbil Corporation Controller
 CHINO Corporation
 Shinko Technos Co.
 YOKOGAWA Electric Corp.
 RKC INSTRUMENT INC.
 OMRON Corporation
 RKC INSTRUMENT INC.

Inverters

Fuji Electric Systems Co.
 Hitachi IES Co., Ltd.
 Hitachi IES Co., Ltd.
 YASKAWA Electric Corporation
 Mitsubishi Electric Corporation

Servos

Sanmei Electronics Co.0
 YASKAWA Electric Corporation

Industrial Robots

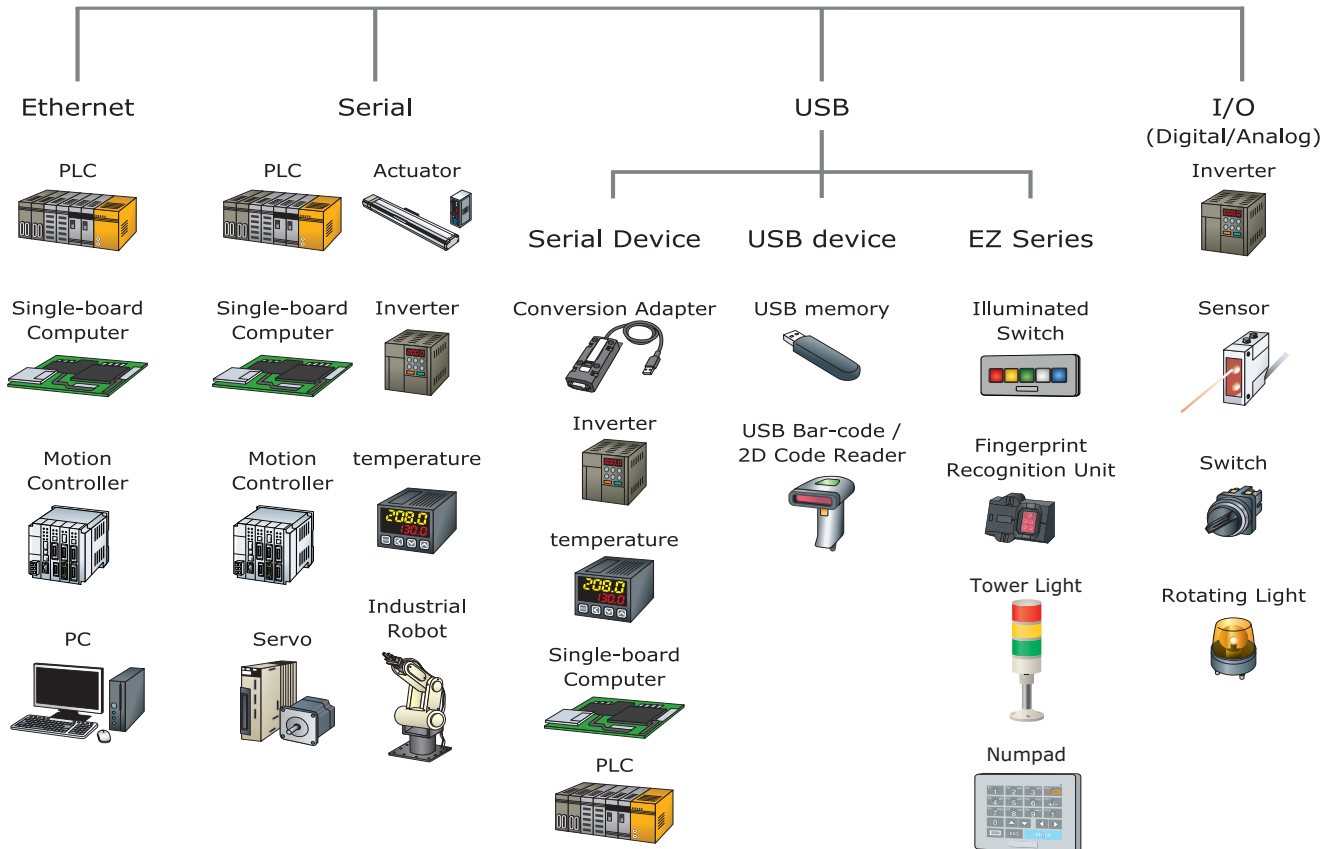
DENSO WAVE INCORPORATED
 Hyundai Heavy Industries
 IAI Corporation
 Seiko Epson Corporation
 YASKAWA Electric Corporation
 Yamaha Motor Co.

Vision Sensors

Banner Engineering Presence

We support Barcode scanners, 2-D Readers, and Printers from companies such as Aimex Corp., OPT Electronics, Denso Co., HHP, Cognex, Symbol, HP, Epson, NEC, and more!

** Driver support dependent on software package selected.*



The World Leader in Third-Party Driver Support

Operating Environment

GP-Pro EX

OS	Windows XP 32bit OS (Service Pack 2 or later, any edition), Windows Vista 32bit OS (any Service Pack, any edition), Windows 7 32bit OS (any Service Pack, any edition), Windows 7 64bit OS (Service Pack 1 or later, any edition), Windows 8.0 32bit/64bit OS (any Service Pack, Core/Pro/Enterprise Edition), Windows 8.1 32bit/64bit OS (any Service Pack, Core/Pro/Enterprise Edition), Windows 10 32bit/64bit OS (any Edition)
CPU	Pentium4 1.3Ghz or greater
Resolution	SVGA (800 x 600) or better (256 colors or greater required)
Memory	Windows Vista/7/8: 1 GB or greater (2 GB or greater recommended) Other than Windows Vista/7/8: 512 MB or greater (1 GB or greater recommended)
Hard Disk Space	1 GB or greater - Free space necessary for installation
Language	Software Menu
	Languages that Hardware can Display
Other	English/ Japanese/ Korean/ Chinese (simplified/traditional)/ German/ French/ Italian/ Spanish English, Japanese, Korean, Chinese (simplified/traditional), Thai, Cyrillic. For languages other than English/Japanese, FEPs and fonts for these languages should be added. .Net Framework 2.0 (any Service Pack) - On a PC without .NET Framework Ver. 2.0, this is automatically installed. Microsoft Internet Explorer Ver. 6.0 or later Mouse (absolutely necessary), DVD-ROM drive (necessary only for software installation) An environment where you are connected to the internet - Necessary only for online user registration and online update service

* Please address inquiries about the site license to a sales representative.

* A USB port or Ethernet port is required to transfer screens on a PC.

Pro-Server EX

OS	Windows 2000 32bit OS (Service Pack 3 or later, any edition), Windows XP 32bit OS (Service Pack 3 or later, any edition), Windows Vista 32bit OS (any Service Pack, any edition), Windows Server 2003 32bit OS (Standard Edition/Enterprise Edition), Windows Server 2003 R2 32bit OS (Standard Edition/Enterprise Edition), Windows 7 32bit/64bit OS (any Service Pack, any edition), Windows Server 2008 32bit/64bit OS (Standard Edition/Enterprise Edition/DataCenter Edition), Windows Server 2008 R2 32bit/64bit OS (Standard Edition/Enterprise Edition/DataCenter Edition)
CPU	Pentium III 500MHz or greater
Resolution	Pentium III 500MHz or greater
Memory	Pro-Server EX Developer: 256MB or greater Pro-Server EX Runtime: 128MB or greater (256MB or greater recommended)
Hard Disk Space	Pro-Server EX Developer: 1.1GB or greater (2.2GB or greater recommended) Pro-Server EX Runtime: 650MB or greater (1.3GB or greater recommended) * Free space necessary for installation
Language	English/ Japanese
Other Software	Microsoft Excel 2000 - 2010 (for the action function)
	Microsoft Access 2000 - 2010 (for the action function)
	Microsoft Internet Explorer Ver. 5.0 or later (for the action function) .NET Framework Ver. 2.0 * On a PC without .NET Framework Ver. 2.0 This is automatically installed.
Network Connection	10BASE-2, 10BASE-5, 10BASE-T, 100BASE-TX, 1000BASE-T

Remote HMI

OS	iOS: Ver. 6.0 or later. Android: Ver. 2.3x or later
Language	English/ Japanese
Other	GP-Pro EX Ver. 3.1 or later Tablet or smart phone and Wi-Fi required

Movie Converter (EX-MOVCON-LICENSE)

OS	Windows 2000 Professional (Service Pack 4 or later) Windows XP Home, Professional (any Service Pack)
CPU	Pentium III 1 Ghz or greater
Memory	256 MB or greater (512 MB or greater recommended)
Hard Disk Space	For installation: 60MB or greater. After installation: 25MB or greater

GP-Viewer EX

OS	Windows 2000 (Service Pack 3 or later, any edition), Windows Server 2003 32bit OS (Service Pack 2 or later), Windows XP 32bit OS (Service Pack 2 or later, any edition), Windows Vista 32bit OS (any Service Pack, any edition), Windows 7 32bit/64bit OS (any Service Pack, any edition), Windows 8 32bit/64bit OS (any Service Pack, Core/Pro/Enterprise Edition)
-----------	---

BLUE Open Studio

OS*	Windows 7 Service Pack 1, Windows 8.1, Windows 10, Windows Server 2008 R2 Service Pack 1, Windows Server 2012 R2, Windows Server 2016, Windows Embedded 7 Standard
CPU	No requirements
Resolution	SVGA (800 x 600) minimum
Memory	1 GB free memory (RAM)
Hard Disk Space	2 GB free storage (hard drive or non-volatile)
Other	<ul style="list-style-type: none"> Standard keyboard & pointer input (i.e., a mouse, trackpad, or touchscreen) .NET Framework 3.5 Microsoft Internet Explorer 6.0 or later Ethernet or Wi-Fi network adapter Administrator privileges on the computer
Optional	DVD-ROM drive, to install the software from an installation disc
	Serial COM ports & adapters, to be used for direct communication with PLCs and other devices
	Internet Information Services (IIS) installed and turned on, to make your projects accessible to thin clients and mobile devices Microsoft Visual Studio 2010 or Team Explorer 2010 installed, to enable workgroup collaboration and source control

* 32-bit/64-bit compatible; We recommend Home Premium, Professional, Enterprise, and Ultimate editions of Windows, because they include Internet Information Services (IIS) as a pre-installed feature that can be turned on. We do not recommend the Starter and Home Basic editions because they do not include IIS, but you can still use them if you do not plan to use web-based features.

WinGP GP-Pro EX Runtime for Pro-face Industrial PCs

OS	For Pro-face IPC: Windows XP (Service Pack 2 or later), Windows XP Embedded, Windows 7, Windows Embedded Standard7, Windows Embedded Standard 2009 For PC/AT Compatible Machine: Windows XP (Service Pack 2 or later), Windows Vista 32bit OS (any Service Pack, any edition), Windows 7 32bit/64bit OS (any Service Pack, any edition), Windows 8 32bit/64bit OS (any Service Pack, Core/Pro/Enterprise Edition)
Resolution	QVGA - SXGA (depending on the product)
Memory	For Pro-face IPC: PS4000B: 1 GB or greater (2 GB or greater recommended) Other than PS4000B: 256 MB or greater (512 MB or greater recommended) For PC/AT Compatible Machine: Windows Vista/7/8: 1 GB or greater (2 GB or greater recommended) Other than Windows Vista/7/8: 512 MB or greater (1 GB or greater recommended)

Camera-Viewer EX

OS	Windows XP 32bit OS (Service Pack 2 or later, any edition), Windows Vista 32bit OS (Service Pack 1 or later, any edition), Windows Server 2003 32bit OS (Service Pack 1 or later, Standard Edition/Enterprise Edition), Windows Server 2003 R2 32bit OS (Service Pack 1 or later, Standard Edition/Enterprise Edition)
-----------	--

Remote PC Access (RPA)

OS	UltraVNC: Support OS (http://www.uvnc.com) TightVNC: Ubuntu 7.04 Feisty Fawn DesktopCD
Other	GP-Pro EX Ver. 2.0 or later RPA Key Code (Sold separately)
	UltraVNC (Version: 1.0.8.2) or TightVNC (Version: 1.2.9-21) * Should be installed on the PC on the server. Ethernet cable and HUB (commercially available)

Transfer Tool

OS	Windows 2000 (Service Pack 3 or later) * Case of individual installation, Windows XP 32bit OS (any Service Pack, any edition), Windows Vista 32bit OS (any Service Pack, any edition), Windows 7 32bit/64bit OS (any Service Pack, any edition), Windows 8.0 32bit/64bit OS (any Service Pack, any edition)
Other	.NET Framework Ver. 2.0 * On a PC without .NET Framework Ver. 2.0 This is automatically installed.
Hard Disk Space	340 MB or greater * Free space for a project file size required

Pass-Through

OS	Windows 2000 (Service Pack 4 or later), Windows XP 32bit OS (Service Pack 2 or later), Windows Vista 32bit OS (any Service Pack, any edition), Windows 7 32bit/64bit OS (any Service Pack, any edition), Windows 8 32bit/64bit OS (any Service Pack, Core/Pro/Enterprise Edition)
Hard Disk Space	For installation: 3MB. After installation: 1MB

Service & Support



ISO 9001:2000
Quality System Certified

ISO 14000
Quality System Certified



We have offices around the corner, and around the world. We are there for you with our combination of channel partners, area sales managers, and trained application engineers to support you before and after the sale.

INTERNATIONAL PRO-FACE

- Pro-face International Offices
- Pro-face America Sales Offices

Global Support

One of the great features of Pro-face is that the same level of customer support is available in countries where the product is exported to. Overseas customers can receive high quality support in both telephone inquiries and repair services.

FREE Tech Support

Pro-face is committed to delivering excellent technical support whether you are local or abroad. Free, real time solutions.

800-289-9266
support@profaceamerica.com

Repair Services

Pro-face has eliminated loss throughout the entire process by providing free quotes for repair and return delivery. We are constantly re-evaluating our systems to ensure satisfaction for all of our customers.

A Global Company...

...with a Local Presence.

Pro-face America, Inc.

Our **FREE** Technical Support site is a vast resource of product and application knowledge designed to help you maximize the value of your Pro-face HMI

- FAQs
- Manuals
- Sample Downloads
- Driver Downloads
- HMI Learning Center
- Application Notes
- Certifications
- Much, Much More...



HMIsource.com/otasuke



Training

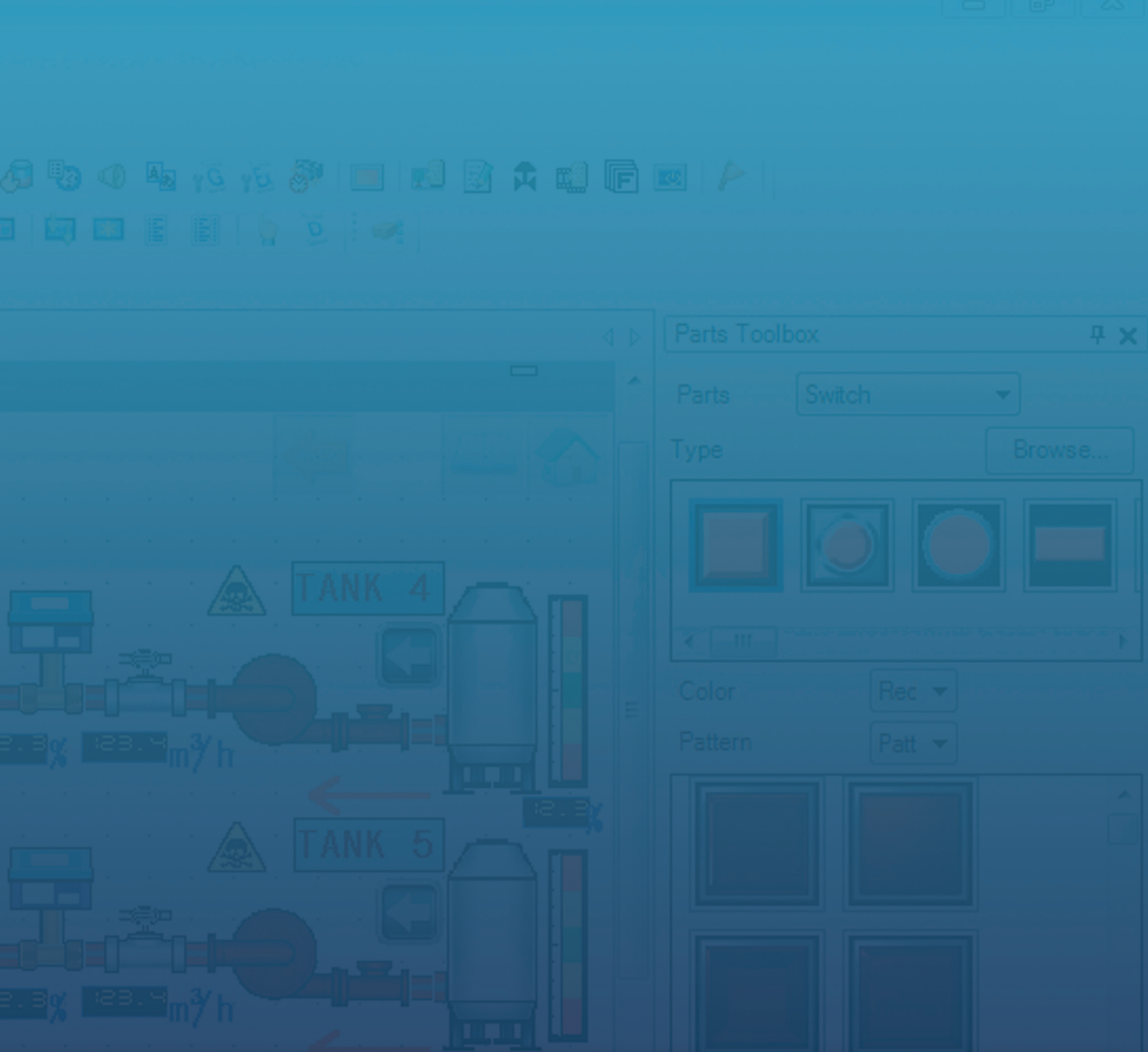
A variety of technical seminars are offered to help customers in order to get the most out of our Pro-face products. Easy-to-understand textbooks are prepared based on what the customer desires to learn.

Technical Support Website

Our free technical support website has been upgraded with services aimed at reducing development man-hours by offering FAQ, Driver Downloads, Manual downloads, Application Notes, and much more.

eCatalog

This app, available on iTunes and Google Play, contains the entire Pro-face product catalog, complete with technical specifications, 360° visuals, CAD drawings, manuals, data sheets, and much more.



Pro-face

by Schneider Electric

We are always striving to connect customers to their clients, processes, and people through high quality products, and service and support from around the world.



ProfaceAmerica.com