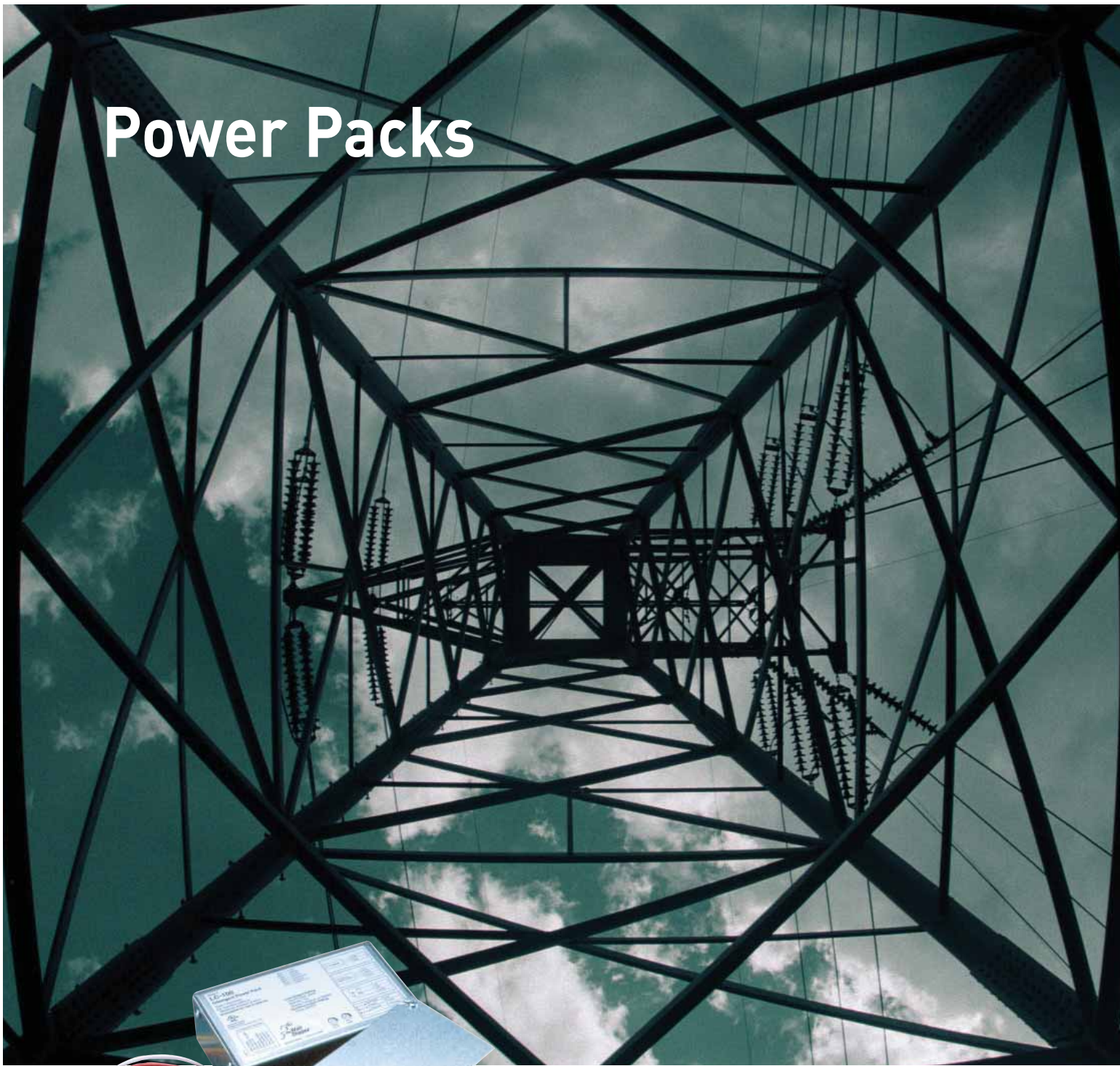


Power Packs



a guide to Watt Stopper power packs

 **Watt Stopper**

 **legrand**[®]

Power to Rely On

Watt Stopper power packs are the cornerstone of any low voltage lighting control system. They reliably switch high voltage loads in response to low voltage signals – from control devices such as occupancy sensors, daylighting controls, lighting control panels, and switches.



Just as no two applications are alike in terms of their lighting control needs, the same is true of power packs. That's why Watt Stopper offers more choices in power pack configurations and models than any other controls manufacturer. We recognize that unique applications demand unique solutions.

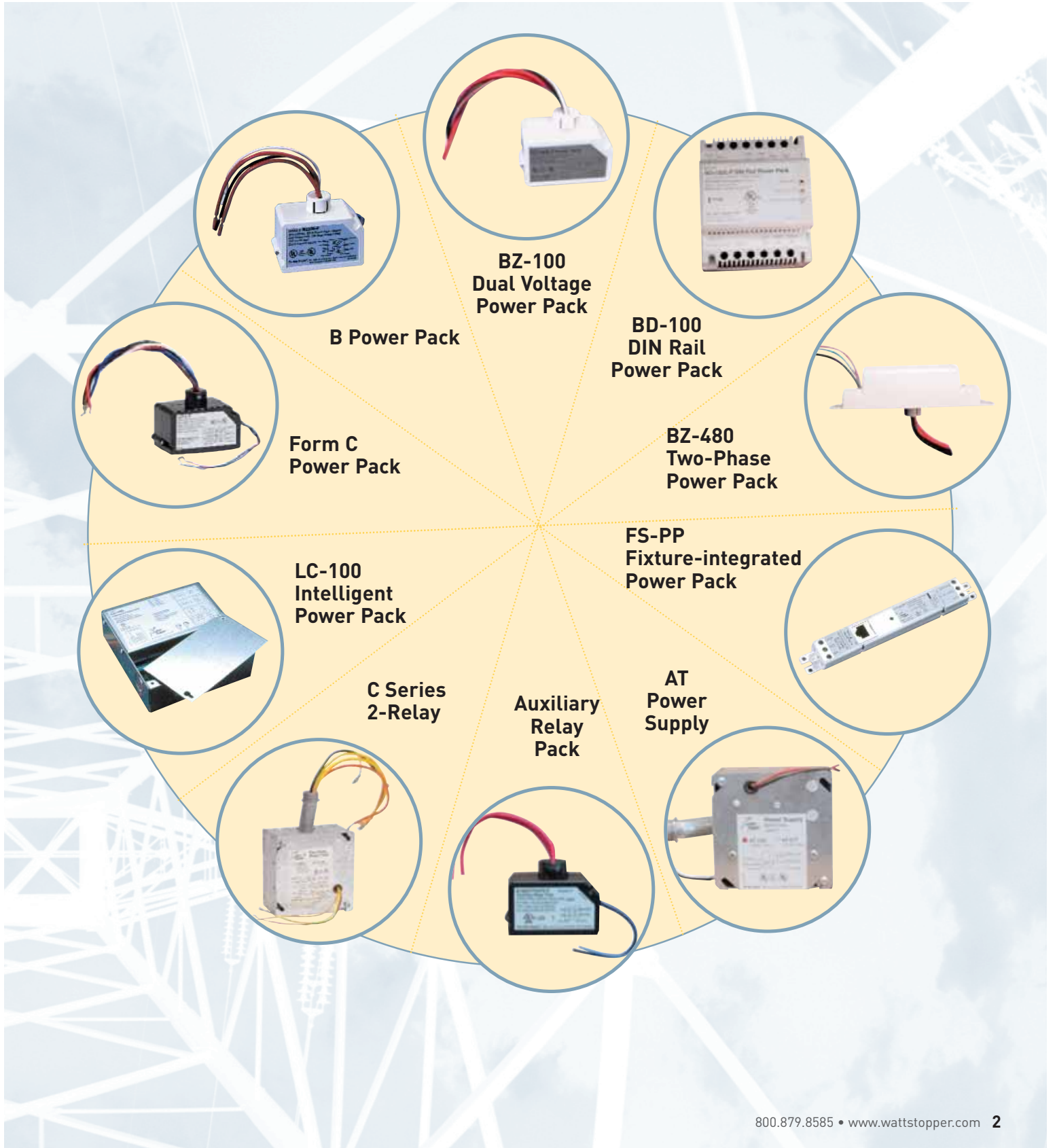
Standard Power Packs

Many applications require conventional switching without any additional specialized functionality. Watt Stopper's standard power packs provide superior reliability in performance teamed with more flexibility in wiring and installation.

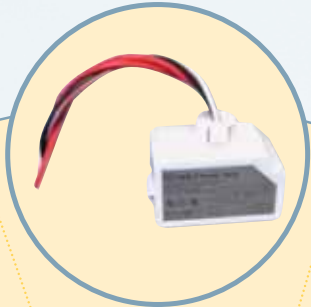
Specialized Power Packs

For applications where control strategies demand greater flexibility and sophistication, Watt Stopper/Legrand developed power packs offering a range of specialized features and functions, including load shedding, Hold-ON and Hold-OFF, and dimming.

Powerful tools to ensure lighting control success



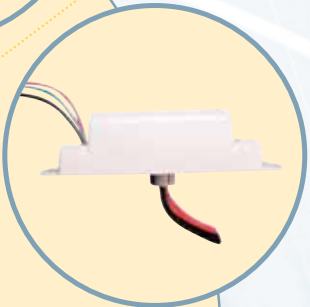
B Power Pack



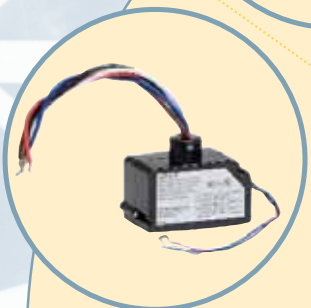
**BZ-100
Dual Voltage
Power Pack**



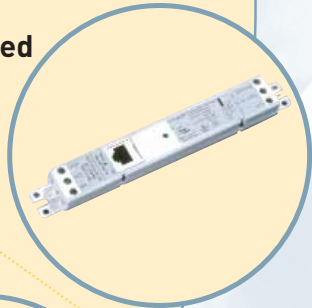
**BD-100
DIN Rail
Power Pack**



**BZ-480
Two-Phase
Power Pack**



**Form C
Power Pack**



**FS-PP
Fixture-integrated
Power Pack**



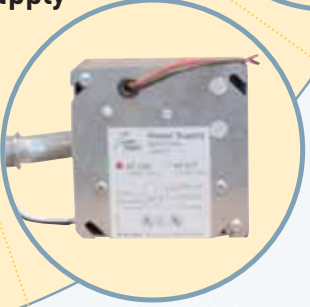
**LC-100
Intelligent
Power Pack**



**C Series
2-Relay**



**Auxiliary
Relay
Pack**



**AT
Power
Supply**

Standard Power Packs



B Series

Economical all-purpose power packs that provide 24 VDC operating voltage to Watt Stopper occupancy sensors.

Applications:

- General purpose
- Lighting circuits
- Self-contained air conditioners
- Pumps
- Fans
- Motors
- VAV systems
- Motorized damper controls setback
- Thermostats

BZ-100 Dual Voltage

Full-featured dual voltage power packs provide operating voltage to Watt Stopper occupancy sensors. Enable special applications in conjunction with lighting control panels or building management systems.

Applications:

- Load shedding
- Holding lighting ON or OFF
- Lighting circuits
- Self-contained air conditioners
- Pumps
- Fans
- Motors
- VAV systems
- Motorized damper controls setback
- Thermostats

Product Catalog #(s)	B-120E-P, B-277-E, B-230-E, B347D	BZ-100
Voltage	120/277/230/347VAC, 60Hz	120/277VAC, 60Hz
Load Rating		
Ballast (A)	20/20/20/15	20
Incandescent (A)	13/-/13/-	20
Motor (hp)	1/-/1/-	1
Features		
Single relay	•	
Dual relay		•
Isolated relay	•	•
Zero crossing relay	•(120/230/277 only)	•
Plenum rated (UL 2043)	•	•
Dimming capability		
Device Inputs		•
Hold-OFF relay		•
Hold-ON relay		•
Occupancy Sensor	•	•
Time clock		
Load shedding capability		•
Form C relay		
Single voltage input	•	
Multi voltage inputs		•
0-10V dimming		
Manual-ON		
Terminal style wiring		
DIN rail mounting		

Specialized Power Packs



Auxiliary Relay

Supplementary relay packs provide switching of loads for greater flexibility.

- Applications:**
- Applications where two loads will be switched using a single sensor
 - Open office areas with bi-level switching and daylighting

S120/277/347E-P
120/277/347VAC, 60Hz



Form C

Single-pole, double throw isolated relay with normally open and normally closed output.

- Applications:**
- Applications where advanced switching logic is required
 - Areas where Fail-ON functionality is desired
 - High/low operation using 0-10V dimming ballasts

A120C-P, A277C-P
120/277VAC, 60Hz



C Series 2-relay

Dual isolated relays provide an alternative to using two power packs.

- Applications:**
- Applications requiring independent, simultaneous control of two circuits
 - Areas where installation space is limited

C-120E-P, C277E-P
120/277VAC, 60Hz

20/20/15
13/-/-
1/-/-

8NO/5NC; 6NO/3NC
5NO/3NC; 5NO/2.5NC
1NO/.25NC; 2NO/.5NC

20/20
13/-
1/-

-
-
-

-
-
-

-
- [2]

-
-

-

Specialized Power Packs



AT Power Supply

Power supply containing transformer with no relay. It provides up to 800 mA of 24VDC to occupancy sensors and other control devices.

Applications:

- Applications where many sensors will be used
- Large open office areas
- Large warehouses



LC-100 Intelligent Power Pack

Power pack with two relay outputs and two dimming channels that accepts signals from multiple control devices for specialized control functions.

Applications:

- Room-specific lighting control needs, including:
 - dimming
 - daylighting
 - load shedding
 - bi-level switching
- Applications where control scenarios such as Hold-ON, Hold-OFF are desired

Product Catalog #(s)	AT-120, AT-277	LC-100
Voltage	120/277VAC, 60Hz	120/277VAC, 50/60Hz
Load Rating		
Ballast (A)	-/-	20
Incandescent (A)	-/-	20
Motor (hp)	-/-	1
Features		
Single relay		
Dual relay		•
Isolated relay		•
Zero crossing relay		• (2)
Plenum rated (UL 2043)		•
Dimming capability		•
Device Inputs		•
Hold-OFF relay		•
Hold-ON relay		•
Occupancy Sensor		•
Time clock		•
Load shedding capability		•
Form C relay		
Single voltage input		
Multi voltage inputs		•
0-10V dimming		•
Manual-ON		•
Terminal style wiring		
DIN rail mounting		



BD DIN Rail Mounted

All-purpose DIN rail mountable power pack that provides 24 VDC operating voltage to Watt Stopper VDC control devices.

Applications:

- Application where DIN rail mounting is required
- European installations (CE rated)
- Lighting circuits
- General purpose

BZ-480 Two-Phase

Power pack that switches two-phase 480 VAC loads and provides 24 VDC operating voltage for control devices.

Applications:

- Large open areas that employ 480VAC loads
- Warehouses
- Gymnasiums
- Parking garages
- Light industrial areas

FS Fixture-Integrated

Power pack for use with fixture integrated low voltage occupancy sensors.

Applications:

- Integrated control option for lighting fixtures
- Libraries
- Open Offices
- Task Lights

BD-100E-P, BD-100M

100-120/277VAC, 50-60Hz

BZ-480-E, BZ-480-I

480VAC, 60Hz

FS-PP

120/277VAC, 60Hz

20

6

5A NO/3.0A NC 4.3A NO/2.5A NC

20

-

5A NO/3.0A NC 4.3A NO/2.5A NC

1

1

1/6

•

•

•

•

•

•

•

•

•

•

•

•

•

•

•

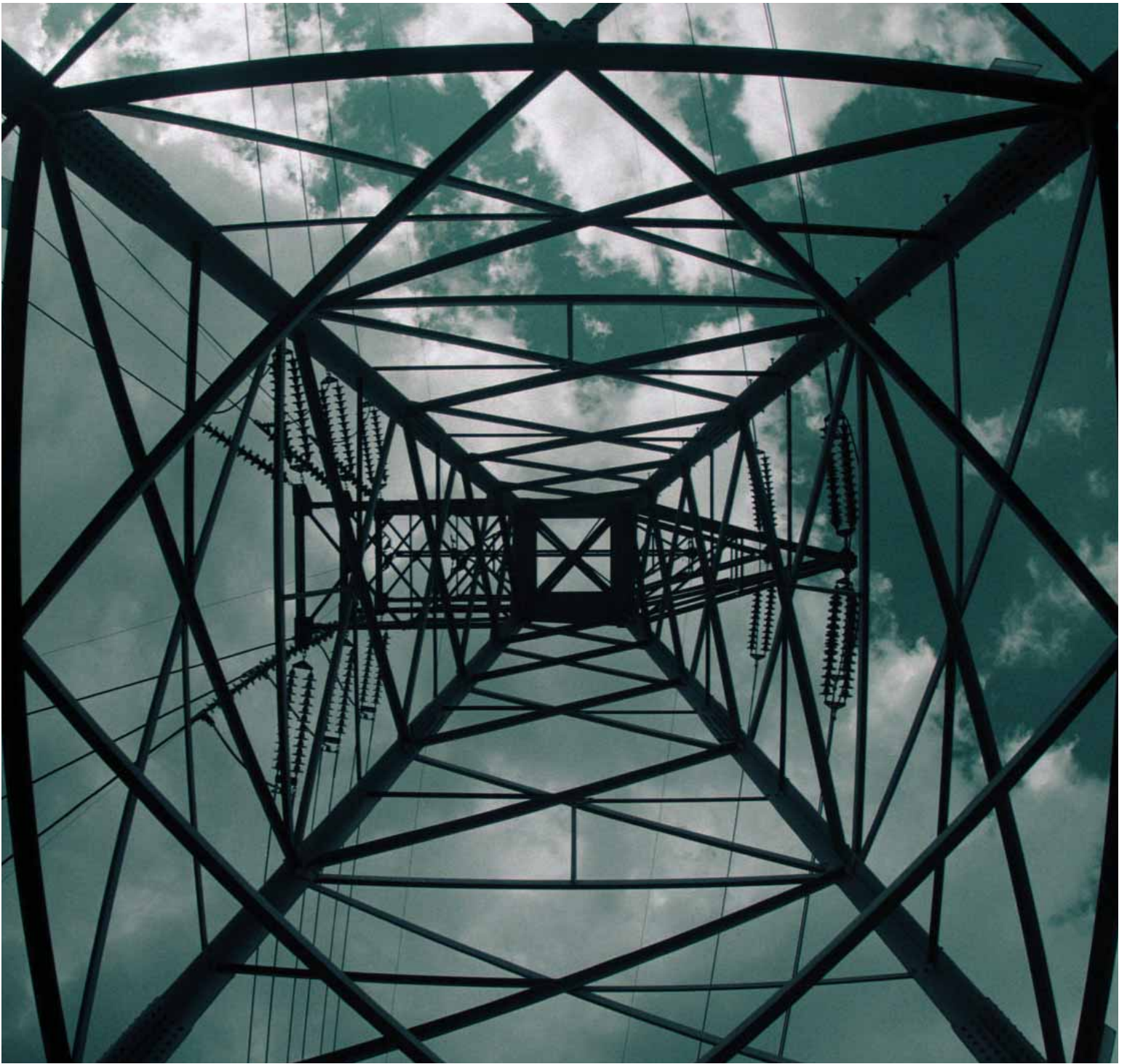
•

•

•

•

•



 **WattStopper**

 **legrand**[®]

WS-05-20056

800.879.8585 • www.wattstopper.com