

SONY



NEW WAYS TO INSPIRE

Live Your Vision

AV Solutions Range Guide August 2020

Contents

| | | | | | |
|------------------------------|----|-------------------------------------|----|---|----|
| Welcome | | Projectors | | Visual Imaging Cameras | |
| The Sony Solution | 3 | F-Series laser | 18 | SRG Series | 43 |
| Service and Support | | P-Series laser | 24 | POV and BOX cameras | 44 |
| SupportNET | 5 | CW-Series | 26 | BRC Series | 45 |
| Sony Solutions | | F-lamp | 28 | IP Remote Controllers | 46 |
| TEOS Workplace Management | 6 | CH-lamp | 30 | Visual Simulation and Visual Entertainment | |
| Beamforming Microphone | 10 | E-lamp | 32 | Laser Light Source Projectors | 48 |
| Edge Video Analytics | 12 | BRAVIA Professional Displays | | VPL-GTZ380 | 48 |
| Crystal LED Modular Displays | 14 | BRAVIA Solutions | 34 | VPL-GTZ280 | 48 |
| | | BRAVIA BZ Series | 36 | VPL-GTZ270 | 49 |
| | | BRAVIA Tuner Models | 38 | VPL-GTZ240 | 49 |

The Sony Solution

When it comes to professional AV technology, Sony provides much more than just great products. We create solutions that make visual communications and knowledge sharing even smarter and more efficient.

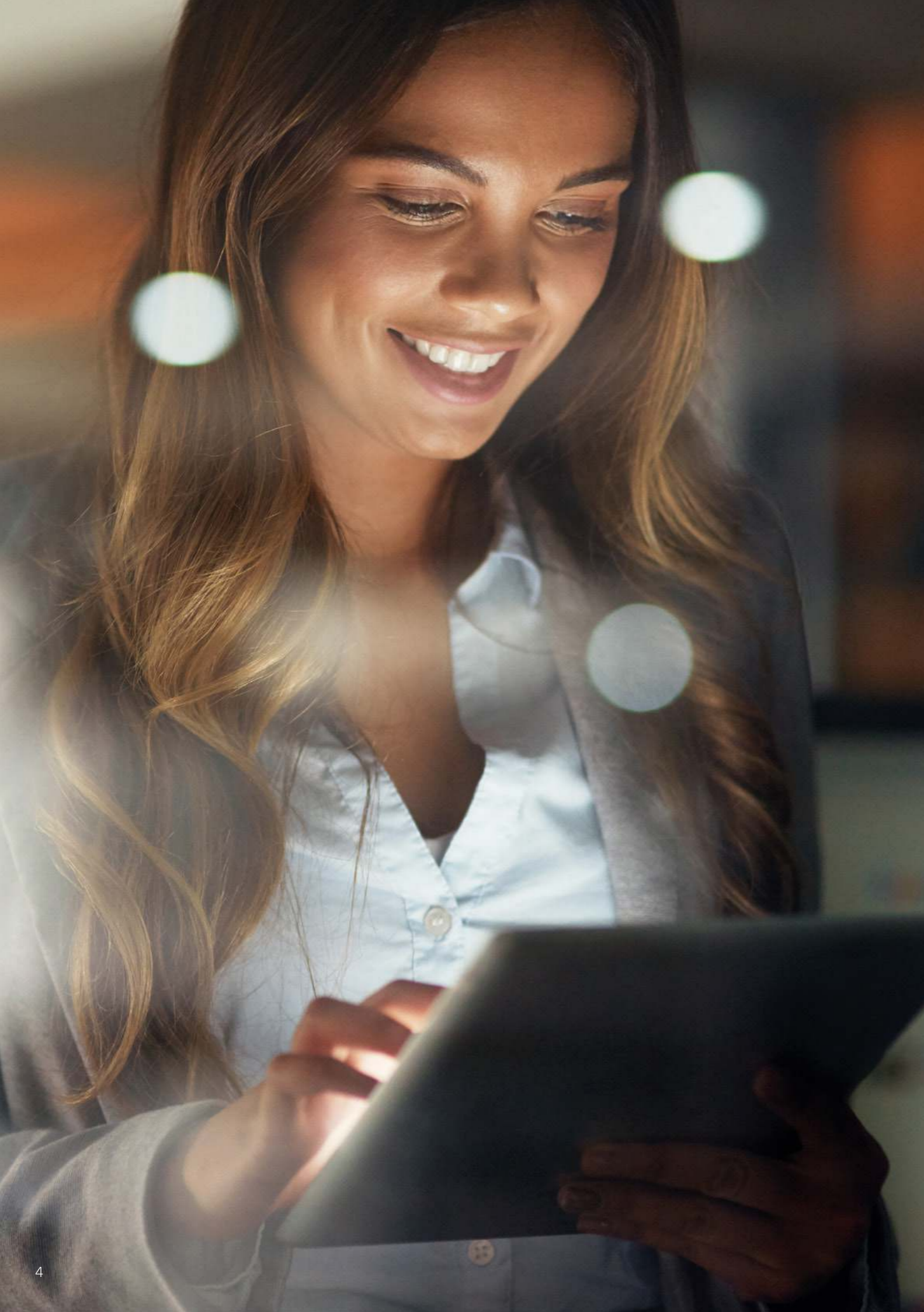
We empower organizations of every industry, sector and size with advanced audio-visual tools that help them go further. From schools to universities, small business to big business, retail to automotive, healthcare to faith-based worship and more, we have the perfect solution.

Our comprehensive suite of TEOS solutions intelligently manage all of your connected devices, while our powerful collaboration tools enable real-time knowledge sharing. Discover new levels of detail with our class-leading BRAVIA Professional Displays, and take your presentations further with our bright, captivating range of Laser Projectors. While our renowned lineup of PTZ cameras feature progressive technologies ideal for remote working and distance learning applications.

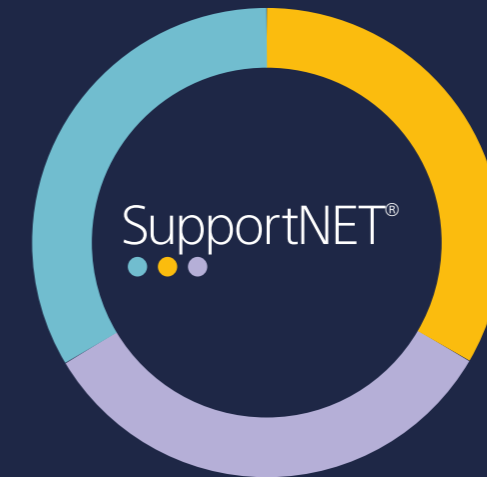
Support is at the heart of everything we do. With our SupportNET, you'll always get the best service for your business. With specialist advice and a host of support features included as standard, we've got you covered.

For full product features and specifications please visit pro.sony





For more on SupportNET call **1-877-398-7669** or email **SupportNET@am.sony.com** 



You've got our support

Your business cannot afford unscheduled interruptions. Our SupportNET packages make sure you are covered with the perfect level of support.



SupportNET

Our **SupportNET** packages go beyond a standard warranty with access to expert technical assistance. Our Network Operations Center can answer your questions on setting up and using your product by phone or email. And if you need repairs, we'll organize things quickly and efficiently, with free shipping and no hidden costs.



SystemWatch®

Everybody's business is different. A number of our business critical system products are eligible for **SystemWatch** remote support services, including remote monitoring configured to your system. **SystemWatch** may also include single vendor support in a multivendor solution environment.



Advanced Exchange Program

In the rare event that a customer experiences a problem with any Pro BRAVIA FW Series Display or Laser VPL Series Projector, they may be entitled to receive a new unit at no cost in exchange for the return of the defective unit. Restrictions apply. Contact your Sony Account Manager for details.

For support contact information please visit www.sony.com/servicesplus and click on the contact us page.

TEOS Workplace Solutions

Making spaces perform

As people move through the workplace TEOS solutions help them be more efficient and productive.

Orchestrate your office

Manage

Take full control of devices, signage and content across all spaces.



Streamline room bookings



Mobile

Manage meetings from anywhere with a mobile application that combines room booking, room control and mirroring.

Book

Save time and optimise the use of meeting spaces with an interactive booking solution.



Make visiting easy



Reception

Extend a professional welcome to every visitor as they sign in and notify their host of their arrival.



Wayfinding

Navigate the workplace easily and find available rooms.

Master your meetings



Connect

Mirror content wirelessly from your device to BRAVIA professional displays.

Meeting Display

Turn idle meeting screens into smart and informative displays.



Room Control

Control connected meeting room devices through a customisable interface.

Communicate clearly

Signage

Create and distribute colorful, eye-catching and touch-interactive digital signage.



Corporate TV

Implement a Corporate TV solution for workers to view and change channels.



Survey

Collect feedback from employees and guests with a fully customisable survey platform.



Videowall

Edit content to play on video walls in any configuration.

The TEOS Solutions Model

TEOS workplace solutions allow organizations to scale up fast and full support is always available.

1 Purchase the TEOS server software license
The server license TEM-SRV250 is required to run TEOS solutions. It has a one-off cost and covers your whole corporate network. This license gives users access to Manage for TEOS which is the central platform to control all devices and content.



2 Choose your hardware and software
Purchase devices (such as displays or tablets) and TEOS licenses for each device to run your chosen solution (such as signage or room booking). Hardware comes with 3 years of support included, and software comes with 1 year.



3 Choose your optional service
Decide if you want additional services such as extended support, on-site set up, training, or software custom development.

A full offering



Software
Control
Signage
Add-ons
Mobile



Hardware
Displays
Projectors
Tablets
Player



Service
Support and firmware
Custom dev
Set-up
Training



Visit the TEOS hub to contact an expert, book a demo or discover more about our intelligent workspace solutions: pro.sony/TEOS



Beamforming Microphone

Introducing Sony's IP- based ceiling beamforming microphone with advanced speech reinforcement and clear recording technologies – enabling truly hands-free lectures and presentations.

The solution will significantly improve the audio experience within education and corporate organizations thanks to its ceiling-mount microphone, which removes the need for hand held or body worn microphones and subsequent batteries or device management.

It also has speech reinforcement, an advanced clear audio quality as well as a unique combination of beamforming technology*1 and an Intelligent Feedback Reduction function which helps improve recording quality and can then automatically adjust the output volume for consistency and ease of listening.

The microphone is incredibly simple to install as it supports the Dante®*2 digital audio-over-IP networking standard and Power over Ethernet (PoE) so power is managed through a single network cable. It also features a dual channel output for simultaneous recording through dedicated output channels and across wide areas to record both the speaker and students/participants voices. The microphone also has auto-noise reduction capabilities to minimize

background sound from air conditioners, projectors etc. all of which make it ideal for lecture capture.

The microphone can be easily integrated into existing AV setups and used with a wide range of products while also boasting the Sony free-of-charge "Microphone System Manager" software (MASM-1). This supports central setting and management of multiple microphones in various rooms via IP.



*1: Beamforming is a signal processing technique used for directional signal transmission or reception. A loud speaker system is required for speech reinforcement.
*2: Dante® is trademark of Audinate Pty Ltd.

For full product features and specifications visit pro.sony/beam-mic





Edge Analytics Appliance

Adding more intelligence to every presentation

The REA-C1000 Edge Analytics Appliance brings an exciting new dimension of audience engagement to lectures, MOOCs, government and corporate presentations.



Advanced built-in AI-based video technology analyzes the input it receives from connected cameras and combines the camera feeds with image sources to create high-quality video content that can be displayed live or recorded. Acting as the smart hub of a connected AV setup, the compact and light-weight REA-C1000 allows educational institutions and corporate organizations to automatically generate compelling video content in real time. The REA-C1000 offers a range of powerful presentation features that are available via optional licenses.

Handwriting extraction & presenter overlay

The REA-C1000 intelligently extracts handwritten text and diagrams from black and white boards. This can be displayed as a real-time overlay that 'floats' in front of the presenter, allowing audiences to clearly see written content with enhanced color and contrast as well as gestures and expressions of the presenter.

Chroma key-less CG overlay

Based on advanced motion detection technology, this feature can extract the presenter's image, overlaying it onto any background image or movie without the need for a dedicated chromakey system or specialist operator.

PTZ auto tracking

The REA-C1000 can serve as a virtual camera operator, controlling a connected PTZ camera to track the current presenter smoothly, keeping them accurately framed and sharply focused as they move around or turn their back to the audience. (Requires Sony's compatible PTZ Camera.)

Focus area cropping

Using this feature, an image from one camera can be simultaneously shown as two different output images. Connected to a 4K camera, the REA-C1000 can simultaneously output a wide-angle view in 4K resolution and a cropped view of the same presenter in FHD. The cropped image can also be selectable as static or dynamic.

Close-up by gesture

The REA-C1000 can react intelligently when an audience member stands up to speak, triggering the camera to zoom in and frame the new speaker.



For full product features and specifications visit pro.sony/Edge

Crystal LED Display System

The ultimate big-screen display solution, delivering ultra-real visual experiences on virtually any scale.

Crystal LED Display System

- Spectacularly immersive high-contrast images with unprecedented depth and detail.
- Crystal clarity, with no image artifacts or picture noise.
- Exceptionally wide viewing angle, with no color shift from any viewpoint.
- Seamless images on any scale, with no visible gaps or tiling lines between display modules.



Don't just display. Astonish.

Crystal LED turns the world's biggest ideas into thrilling visual reality – from automotive and industrial product design, theme parks, museums and galleries to corporate lobbies, boardrooms, broadcast studios, retail and scientific research facilities.



Industrial Design

Redefining reality

Our ultimate display solution brings the world's biggest ideas to life in the world of industrial product design and manufacturing. Simulate every step of the design process with groundbreaking, borderless design. Multiple panels can be seamlessly tiled to create super-sized displays with any dimension or aspect ratio and no bezels or visible gaps.



High End Retail

Overwhelming visuals on any scale

With 10-bit color depth, wide color gamut (140% of sRGB) and a maximum rate of 120 frames per second, our Crystal LED display system offers astonishing pictures and superb contrast at more than 1,000,000:1. And with brightness of up to 1000 cd/m² (1000 nits), your customers will experience every fine detail.



Corporate Lobbies & Boardrooms

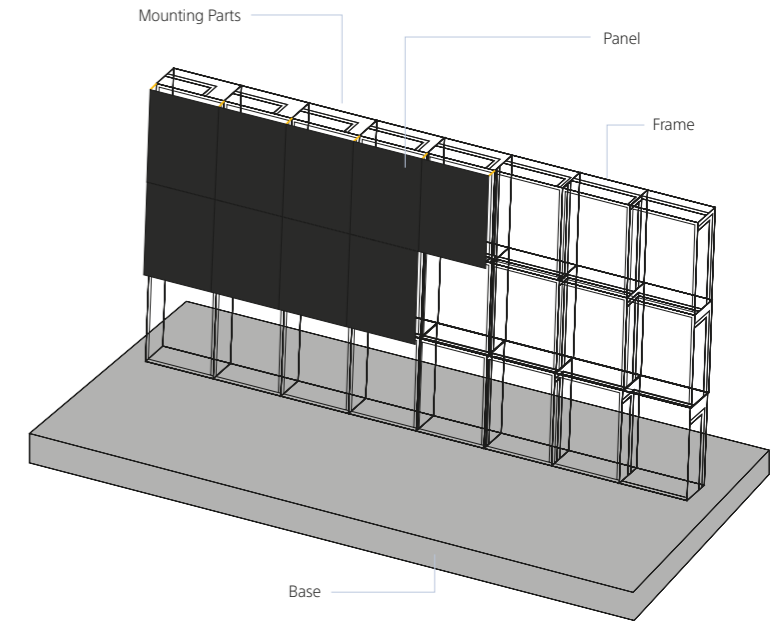
A stunning image at any angle
Our Crystal LED display system offers a viewing angle of virtually 180 degrees so that anyone, no matter where they are in the space, can see the full picture, even in both dimly lit and bright environments. And because moving images are blur-free with near-instant response and a maximum refresh rate of 120 fps, it's perfect for bringing video conferences to life.

Crystal LED Display

Sony's dedicated team of Crystal LED specialist engineers manage the full design, installation, service and support working together with our system integrators so you have complete peace of mind.

Crystal LED Display Base & Frame

Multiple Crystal LED Display Units and controller are integrated with the customised base and frame to create a complete large-scale display solution. The highly rigid frame structure ensures excellent positioning accuracy and stability for each display module. The accompanying base unit is carefully installed, using digital levelling measurement to ensure absolutely precise alignment.



Crystal LED Display Unit - ZRD-2



Crystal LED Display Controller - ZRCT-200



| Specifications | Crystal LED Display Unit - ZRD-2 |
|---|--|
| Method | Self Light Emitting Display |
| Light emission device | Sony Original Developed Super Micro LED (RGB in 1pixel) |
| Pixel pitch | 1.26mm |
| Black area | >99% (Ratio of display area except lighting point area) |
| Unit resolution (W x H) | 320 x 360 (115,200pixels) |
| Unit size (mm/inch) (W x H x D) | 403.2 x 453.6 x 100 / 15 7/8 x 17 7/8 x 4 |
| Unit area (sqm/sqft) | 0.18 / 1.97 |
| Unit weight (kg/lb) | 10.0 kg / 22 lb. 0.74 oz |
| Cell module resolution (W x H) | 80 x 120 (9,600pixels) |
| Cell module size (mm/inch) (W x H) | 100.8 x 151.2 / 3 3/32 x 5 15/16 |
| Cell module configuration (W x H) | 4 x 3 in 1 unit (12 Cell Modules in 1 unit) |
| Brightness (nit = cd/m ²) | Maximum 1,000, Color Temp D93 |
| Contrast ratio | more than 1,000,000:1 |
| Viewing angle | Almost 180° (H/V) |
| Display native Color space | 140% wider than sRGB |
| Input signal | 10bit |
| Signal interface | 1 in 1out (2x RJ45) (Unit-Controller or Unit-Unit) |
| Signal cable (Unit-Controller, Unit-Unit) | Cat.7 Ethernet Cable |
| Power In/Out | 1 AC Inlet, 1 AC Outlet (AC Inlet: IEC C13, AC Outlet: IEC C14 x1) |
| Power requirements | AC200-240V, 50/60 Hz, Single Phase |
| Average power consumption (per Unit) | 100W |
| Average power consumption (per sqm) | 550W (approx.) |
| LED lifespan (half brightness) | 87,600hour |
| Storage temperature | -20°C-60°C |
| Operation humidity | 20-80% (No condensation) |
| Storage humidity | 20-80% (No condensation) |

| Specifications | Crystal LED Display Controller - ZRCT-200 |
|--|--|
| Maximum control number of display unit | 72 (6unit/1port x 12port) |
| Maximum input resolution | W3840 x H2160 |
| Maximum input frame rate | 120p |
| Video input | HDMI (HDMI2.0a) x 2 *HDCP Compliant, DisplayPort (DP1.2) x 2 |
| Unit output | RJ45 x 12 |
| Maximum power consumption | 90W |
| Controller size (mm) (W x D x H) | 440 x 349 x 65 (without protrusions) 440 x 367.3 x 75 (incl. protrusions) *1.5U 19inch Rack |
| Controller size (inch) (W x H x D) | 17 3/8 x 13 3/4 x 2 5/8 (without protrusions) 17 3/8 x 14 15/32 x 2 15/16 (incl. protrusions) *1.5U 19inch Rack |
| Storage temperature | -20°C-60°C |
| Operation humidity | 20-80% (No condensation) |
| Storage humidity | 20-80% (No condensation) |

For full product specifications and features please visit pro.sony/CLED



Projectors

From classrooms and offices to lecture halls and auditoriums, Sony projectors deliver outstanding quality, reliability and energy-efficiency in every kind of venue.

Installation projectors

Outstanding image quality

Our Laser projectors are ideal for a wide range of high-end business, education or large-scale applications. The powerful Z-Phosphor laser light source is teamed with Sony's advanced 3LCD projection and Reality Creation image processing to deliver extremely bright, rich, and stable colors with great clarity. For everyday applications and environments, our lamp projectors offer the same advanced 3LCD projection engine with cost-effective features that deliver the same high-quality performance.

Business and education projectors

Including portable applications

For classrooms or meeting spaces, our portable and desktop projectors are lightweight, durable, and easy-to-use, combining outstanding performance with cost efficiency. Wireless connectivity enables presentation direct from your PC. If space is limited, our Short Throw and Ultra Short Throw models produce big, bright images without needing to be far from the screen, whiteboard or wall.

Highlights - laser or lamp technology

- Powerful, WUXGA & WXGA resolution images.
- Models range from 4,000 to 13,000 lumens color and white light output.
- Easy, flexible installation.
- Energy-saving features.

Highlights

- 3LCD BrightEra™ technology.
- Smart ECO features.
- Long lamp life.
- Options with WXGA or XGA resolution.
- Models range from 3,200 to 5,000 lumens color and white light output.

For full product features and specifications visit pro.sony/laser

F-Series Laser Projectors



VPL-FHZ131L/W
VPL-FHZ131L/101L/91L Black
models are available

Sony's flagship laser projectors for larger and more demanding venues requiring the best in technology, resolution and highly sophisticated features. Delivers powerful performance, optional lenses, up to 20,000 hours of life and attractive TCO.

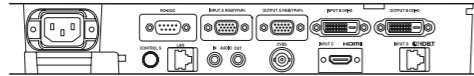
Laser light projectors with Sony 3LCD BrightEra™ Panel Technology

In a world first, Sony has combined a highly efficient laser light source with 3LCD BrightEra™ technology. This unique combination delivers exceptionally bright, high contrast pictures with excellent color accuracy and stability, plus high efficiency and significantly greater durability for reduced lifetime ownership costs.

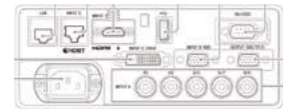
F-Series

Connector Panel Information

Rear connector panel for the VPL-FHZ58, VPL-FHZ61, VPL-FHZ70, VPL-FHZ66 & VPL-FHZ75 projectors



Rear connector panel for the VPL-FHZ131L, VPL-FHZ101L, and VPL-FHZ91L.



F-Series

Optional Accessories



PAM-400
Ceiling mount



PAM-600
Ceiling mount

Featuring



For full product specifications and features please visit pro.sony/projectors



| Specifications | | VPL-FHZ58 | VPL-FHZ61 | VPL-FHZ70 | VPL-FHZ66 | VPL-FHZ75 |
|---|--|---|-------------------------|------------|-------------------------|------------|
| Display system | 3LCD System | • | • | • | • | • |
| Size of effective display area | 0.76" (19 mm) x 3 BrightEra LCD Panel, Aspect ratio: 16:10 | • | • | • | • | • |
| Number of pixels | 6,912,000 (1920 x 1200 x 3) pixels | • | • | • | • | • |
| Projection lens *1 | Focus | Powered | | | | |
| | Zoom - Powered/Manual | Powered | | | | |
| | Zoom - Ratio | Approx. x 1.6 | | | | |
| | Throw Ratio | 1.39:1 to 2.23:1 | | | | |
| Lens shift | Powered/Manual | Powered | | | | |
| | Range Vertical | -5% / +60% ⁵ | -5% / +60% ⁵ | -5% / +70% | -5% / +60% ⁵ | -5% / +70% |
| | Range Horizontal | +/- 32% | | | | |
| Light source | Type | Laser diode | | | | |
| Laser life *4 | Light output mode: Standard | 20,000 H | | | | |
| Filter cleaning / replacement cycle (Max.) *2 | | 20,000 H | | | | |
| Auto filter cleaning | | • | • | • | • | • |
| Screen size (Max) | | 40" to 600" (depending on projection lens) | | | | |
| White & Color Light output *2 | Lamp mode: Standard | 4,200 lm | 5,100 lm | 5,500 lm | 6,100 lm | 6,500 lm |
| | Middle | 3,000 lm | 3,500 lm | 5,100 lm | 4,000 lm | 6,100 lm |
| Contrast ratio (full white / full black) *3 | | 500,000:1 | | | | |
| Color calibration | | • | • | • | • | • |
| Displayable scanning frequency | Horizontal | 15 kHz to 92 kHz | | | | |
| | Vertical | 48 Hz to 92 Hz | | | | |
| Display resolution | Computer signal input *4 | Maximum display resolution: 1920 x 1200 dots | | | | |
| | Video signal input | NTSC, PAL, SECAM, 480/60i, 576/50i, 480/60p, 576/50p, 720/60p, 720/50p, 1080/60i, 1080/50i (The following items are available for digital signal (HDMI input) only; 1080/60P, 1080/50p, 1080/24p) | | | | |
| Color System | | NTSC3.58, PAL, SECAM, NTSC4.43, PAL-M, PAL-N, PAL60 | | | | |
| Keystone correction (Max.) *1*8 | Vertical | +/- 30 degrees | | | | |
| | Horizontal | +/- 30 degrees | | | | |
| INPUT OUTPUT (Computer / Video / Control) | INPUT A | RGB / Y PB PR input connector: Mini D-sub 15 pin (female) Audio input connector: Stereo mini jack | | | | |
| | INPUT B | DVI input connector: DVI-D 24-pin (single link), HDCP support Audio input connector: Shared with input A | | | | |
| | INPUT C | HDMI input connector: HDMI 19-pin, HDCP support Audio input connector: HDMI audio support | | | | |
| | INPUT D | HDBaseT interface connector: RJ45, 4 play (Video, Audio, LAN, Control) | | | | |
| | VIDEO IN | Video input connector: BNC, Audio input connector: Shared with input A | | | | |
| | OUTPUT A | Monitor output for Input A Connector: Mini D-sub 15-pin (female) Audio output connector: Stereo mini jack | | | | |
| | OUTPUT B | Monitor output for Input B Connector: DVI-D 24-pin (single link), HDCP not supported Audio output, Monitor out connector: Stereo mini jack | | | | |
| | REMOTE | D-sub 9-pin (male) / RS232C | | | | |
| | LAN | RJ45, 10BASE-T/100BASE-TX | | | | |
| | IR (Control S) | Stereo mini jack, Plug in power DCSV | | | | |
| OSD language | 24-languages | English, Dutch, French, Italian, German, Spanish, Portuguese, Turkish, Polish, Russian, Swedish, Norwegian, Japanese, Simplified Chinese, Traditional Chinese, Korean, Thai, Vietnamese, Arabic, Farsi, Finnish, Indonesian, Hungarian, Greek | | | | |
| Acoustic noise | Standard | 32 dB | | 34 dB | | 32 dB |
| | Middle | 28 dB | | 28 dB | | 28 dB |
| Operating temperature / Operating humidity *5 | 32°F to 109°F (0°C to 45°C) / 20% to 80% (no condensation) | • | • | | • | |
| Storage temperature / Storage humidity *5 | 14°F to +140°F (-10°C to +60°C) / 20% to 80% (no condensation) | • | • | | • | |
| Power requirements | | AC 100 V to 240 V, 50 Hz / 60 Hz | | | | |
| Power consumption Lamp mode: High *5 | AC 100 V to 120 V | 367 W | 420 W | | 515 W | |
| | AC 220 V to 240 V | 352 W | 408 W | | 497 W | |
| Power consumption (Standby mode) | AC 100 V to 120 V | 0.5 W | | | | |
| | AC 220 V to 240 V | 0.5 W | | | | |
| Power Consumption (Network Standby Mode) *5 | AC 100 V to 120 V | 15.0 W (LAN) 19.4 W (HDBaseT) 19.4 W (All Terminals / Networks) (when "Standby Mode" set to "Standard") | | | | |
| | AC 220 V to 240 V | 13.3 W (LAN) 17.4 W (HDBaseT) 17.4 W (All Terminals / Networks) (when "Standby Mode" set to "Standard") | | | | |
| Body color | | White (Black Available) | | | | |
| Dimensions (W x H x D) (without protrusions) | | Approx. 18 1/8 x 6 21/32 x 20 9/32 inches (460 x 169 x 515 mm) | | | | |
| Mass | | Approx. 35lb (16 kg) | | | | |
| Supplied accessories | Remote commander | RM-PJ27 | | | | |
| Optional accessories | Projection Lens | PAM 310, PAM-0.5M / PAM-1.0M / PAM-1.5M VPLL-3003 / 3007 / Z3009 / Z3010 / Z3024 / Z3032 | | | | |

*1 With supplied standard lens.
 *2 This figure is expected maintenance time, not guaranteed time.
 *3 The actual value depends on the environment and how the projector is used.
 *4 The value is average.
 *5 Available for VESA Reduced Blanking signal.
 *6 To be updated for VPL-FHZ70 & VPL-FHZ75.
 *7 The values are estimate.
 *8 This figure is expected maintenance time, not guaranteed time.
 *9 The actual value depends on the environment and how the projector is used.
 *10 The picture quality may deteriorate when the V Keystone function is used for it is an electrical correction.
 *11 When using BKM-PJ20.
 *12 Correct as of July 2020. Subject to change.

| Specifications | | VPL-FHZ131L | VPL-FHZ120L | VPL-FHZ91L |
|---|--|---|--|------------|
| Display system | 3LCD System | • | • | • |
| Size of effective display area | 1" x 3 BrightEra LCD Panel, Aspect ratio: 16:10 | • | • | • |
| Number of pixels | 6,912,000 (1920 x 1200 x 3) pixels | • | • | • |
| Projection lens*1 | Focus | Powered | | |
| | Zoom - Powered/Manual | Powered | | |
| | Zoom - Ratio | Depend on Lens | | |
| | Throw Ratio | Depend on Lens | | |
| Lens shift | Powered/Manual | Powered | | |
| | Range Vertical | Depend on Lens | | |
| | Range Horizontal | Depend on Lens | | |
| Light source | Type | Laser+Phosphor | | |
| Laser life *4 | Light output mode: Standard | 20,000 H | | |
| Filter cleaning / replacement cycle (Max.) *2 | | 10,000 H (service maintenance) | | |
| Auto filter cleaning | | • | • | • |
| Screen size (Max) | | 40" to 600" (depending on projection lens) | | |
| White & Color Light output | Lamp mode: Standard | 13,000 lm | 10,000 lm | 9,000 lm |
| | Middle | 10,000 lm | 8,800 lm | 8,000 lm |
| Contrast ratio (full white / full black) | | ∞:1 | ∞:1 | ∞:1 |
| Color calibration | | Yes (500 hours) | | |
| Displayable scanning frequency | Horizontal | 15 kHz to 92 kHz | | |
| | Vertical | 48 Hz to 92 Hz | | |
| Display resolution | Computer signal input *4 | Maximum display resolution: 1920 x 1200 dots | | |
| | Video signal input | 480/60i, 576/50i, 480/60p, 576/50p, 720/60p, 720/50p, 1080/60i, 1080/50i (The following items are available for digital signal (HDMI input) only; 1080/60P, 1080/50p, 1080/24p, 1080/30p ⁹) | | |
| Color System | | NTSC3.58, PAL, SECAM, NTSC4.43, PAL-M, PAL-N, PAL60 | | |
| Keystone correction (Max.) *1 | Vertical | +/- 30 degrees | | |
| | Horizontal | +/- 30 degrees | | |
| INPUT OUTPUT (Computer / Video / Control) | INPUT A | RGB / Y PB PR input connector: 5 BNC female, G with sync/Y: 1 Vp-p +2dB, sync negative, 75 ohms terminated, RGB/PbPr: 0.7 Vp-p +2dB, 75 ohms terminated, Sync signal: TTL level high impedance, positive/negative | | |
| | INPUT B | RGB input connector: Mini D-sub 15-pin female, RGB: 0.7 Vp-p ± 2 dB, 75 ohms terminated, Sync signal: TTL level high impedance, positive/negative | | |
| | INPUT C | DVI input connector: DVI-D 24-pin (single link), HDCP support HDCP: v1.4 | | |
| | INPUT D | HDBaseT interface connector: RJ45, 3 play (Video, LAN(100BASE-TX), RS-232C) | | |
| | INPUT E | HDBaseT interface connector: RJ45, 3 play (Video, LAN(100BASE-TX), RS-232C) | | |
| | INPUT F | Optional adaptor slot for 3G-SDI Input Adaptor (BKM-PJ20) | | |
| | INPUT G | HTML Viewer | | |
| | VIDEO IN | Video input connector: BNC, Audio input connector: Shared with input A | | |
| | OUTPUT A | MONITOR output connector: Mini D-sub 15 pin female, G with sync/Y: 1 Vp-p +2dB, sync negative, 75 ohms terminated, RGB/PbPr: 0.7 Vp-p +2dB, 75 ohms terminated, Sync signal: HD, VD4V(open), 1 Vp-p(75 ohms), positive/negative | | |
| | REMOTE | D-sub 9-pin (male) / RS232C | | |
| LAN | RJ45, 10BASE-T/100BASE-TX/1000BASE-T | | | |
| IR (Control S) | Stereo mini jack, Plug in power DCSV | | | |
| OSD language | 24-languages | English, Dutch, French, Italian, German, Spanish, Portuguese, Turkish, Polish, Russian, Swedish, Norwegian, Japanese, Simplified Chinese, Traditional Chinese, Korean, Thai, Vietnamese, Arabic, Farsi, Finnish, Indonesian, Hungarian, Greek | | |
| Acoustic noise | Lamp mode: Standard | 42 dB | | |
| | Middle | 39 dB | | |
| Operating temperature / Operating humidity | 32°F to 109°F (0°C to 45°C) / 20% to 80% (no condensation) | • | • | • |
| Storage temperature / Storage humidity | 14°F to +140°F (-10°C to +60°C) / 20% to 80% (no condensation) | • | • | • |
| Power requirements | | AC 100 V to 240 V, 10.8 A to 4.4 A, 50 Hz / 60 Hz | AC 100 V to 240 V, 8.4 A to 3.4 A, 50 Hz / 60 Hz | |
| Power consumption Lamp mode: High | AC 100 V to 120 V | 1076Wmax | 840Wmax | |
| | AC 220 V to 240 V | 1033Wmax | 814Wmax | |
| Power consumption (Standby mode) | AC 100 V to 120 V | 0.50 W | | |
| | AC 220 V to 240 V | 0.50 W | | |
| Power Consumption (Network Standby Mode) | AC 100 V to 120 V | 21.6W (LAN) / 26.5W (HDBT) / 26.6W (ALL Terminals and Networks Connected, when "Standby Mode" is set to "Standard") | | |
| | AC 220 V to 240 V | 21.3W (LAN) / 26.5W (HDBT) / 26.6W (ALL Terminals and Networks Connected, when "Standby Mode" is set to "Standard") | | |
| Body color | | White/Gray, Black/Black | | |
| Dimensions (W x H x D) (without protrusions) | | Approx. 21.417 x 8.071 x 22.205 inches (544 x 205 x 564 mm) | | |
| Mass | | Approx. 58lb (27kg) | | |
| Supplied accessories | Remote commander | RM-PJ30 | | |
| Optional accessories | Projection Lens | VPLL-4008, Z4111, Z4015, Z4019, Z4025, Z4045, Z4107 | | |

*1 The values are estimates.
 *2 This value is average with lamp dimming.
 *3 The picture quality may deteriorate when the V Keystone function is used for it is an electrical correction.
 *4 The figures are approximate. They vary depending on the environment or how the projector is used.

F Series – Optional Lenses



VPL-FHZ131L, VPL-FHZ101L & VPL-FHZ91L

Optional Bayonet Lenses

| | | | | | |
|---|--|---|---|--|---|
|  | VPLL-Z4107 WUXGA: 0.75 - 0.94 |  | VPLL-4008 WUXGA: 1.00:1 |  | VPLL-Z4111 WUXGA: 1.30 - 1.96 Standard |
|  | VPLL-Z4015 WUXGA: 1.85 - 2.44 |  | VPLL-Z4019 WUXGA: 2.41 - 3.07 |  | VPLL-Z4025 WUXGA: 3.02 - 5.58 |
|  | VPLL-Z4045* WUXGA: 5.56 - 7.50 | | | | |

* VPLL-Z4045 max mechanical shift 9.6:1

VPL-FHZ58/61/66, VPL-FHZ70, VPL-FHZ75, FH60/65

Optional Lenses

| | | | | | |
|---|---------------------------------------|---|---|--|---|
|  | VPLL-3003 WUXGA: 0.33:1 |  | VPLL-3007 WUXGA: 0.65:1 |  | VPLL-Z3009 WUXGA: 1.0-1.39:1 |
|  | VPLL-3010 WUXGA: 1.0-1.39:1 |  | VPLL-Z3024 WUXGA: 2.34 - 3.19 |  | VPLL-Z3032 WUXGA: 3.18 - 4.84 |

For full product specifications and features please visit pro.sony/installation



P-Series Laser Projector



Compact, versatile laser projectors with excellent picture quality and easy maintenance: the bright choice for education and corporate environments.

Spectacular image quality

Powerful Z-Phosphor laser light source and advanced BrightEra 3LCD projection engine deliver detail-packed images with high 5000 lumens of color brightness.

Flexible installation

Position the projector freely at any angle, on its side or even upside down. HDBaseT reduces cabling for simpler integration.

Long life, less maintenance

Reliable, long-lasting laser light source offers up to 20,000 hours virtually maintenance-free operation.

Discreet partner for any presentation space

Stylish blend-in design with tidy cable management and low fan noise.

P-Series

Connector Panel Information

Rear connector panel for the VPL-PHZ12 projector.



P-Series

Optional Accessories



Featuring



For full product specifications and features please visit pro.sony/laser

Specifications

| Specifications | | VPL-PHZ12 | |
|---|---|--|-----------|
| White & Color Light output | 3 LCD system | • | |
| Size of effective display area | 0.76" (19.3 mm) x 3 BrightEra LCD Panel | • | |
| Number of pixels | WUXGA: 6,912,000 (1920 x 1200 x 3) pixels | • | |
| Size of effective display area | Aspect ratio: 16:10 | • | |
| Projection lens | Zoom | Manual | |
| | Focus | Manual | |
| | Lens shift | Manual (Vertical: +20%~+55%, Horizontal: +/- 10%) | |
| | Throw ratio | 1.28-1.88:1 | |
| | Focal length / Aperture | f = 0.841" - 1.230" (21.37 - 31.25 mm) f/1.50-1.95 | |
| Light source | | Laser + Phosphor | |
| Filter cleaning | | 20,000 H | |
| White & Color Light output ^{*1} | Lamp mode: | High | >20,000 H |
| | | Standard | >20,000 H |
| | | Low | 100,000 H |
| Contrast ratio (full white / full black) ^{*2} | | ∞:1 | |
| Key stone correction (Max) ^{*3} | | Horizontal: +/-30 degrees Vertical: +/-20 degrees | |
| Power requirements | | AC 100 V to 240 V, 4.3 A to 1.7 A, 50 Hz / 60 Hz | |
| Speaker | | 16W (monaural) | |
| Display scanning frequency | Horizontal | 15 kHz to 92 kHz | |
| | Vertical | 48 Hz to 92 Hz | |
| Display scanning frequency | Computer signal input | Maximum display resolution: 1920 x 1200 dots | |
| | Video signal input | 480/60i, 576/50i, 720/60p, 720/50p, 1080/60i, 1080/50i, 1080/60p, 1080/50p, 1080/24p | |
| Color system | | NTSC3.58, PAL, SECAM, NTSC4.43, PAL-M, PAL-N, PAL-60 | |
| OSD language | 27-languages | English, French, German, Italian, Spanish, Portuguese, Japanese, Chinese (Simplified), Korean, Russian, Dutch, Norwegian, Swedish, Thai, Arabic, Turkish, Polish, Vietnamese, Farsi, Finnish, Indonesian, Hungary, Greek, Czech, Slovakia, Romania | |
| Operating Instructions languages | | English, Germany, French, Italy, Spanish, Russian, Simplified Chinese, Japanese, Arabic | |
| INPUT OUTPUT (Computer / Video / Control) | INPUT A | RGB / Y PB PR input connector: Mini D-sub 15 pin female Audio input connector: Stereo mini jack | |
| | INPUT B | HDMI input connector: HDMI 19-pin, Digital RGB/YPBPR, HDCP support, HDMI audio support | |
| | INPUT C | HDMI input connector: HDMI 19-pin, Digital RGB/YPBPR, HDCP support, HDMI audio support | |
| | INPUT D | HDBaseT interface connector: RJ45, 4 play (Video, Audio, LAN (100BASE-TX), RS-232C) | |
| | VIDEO IN | Video input connector: Phono Jack Audio input connector: Shared with INPUT A | |
| | OUTPUT | Audio output connector: Stereo mini jack | |
| | REMOTE | D-sub 9-pin (male) / RS232C | |
| | LAN | RJ45, 10BASE-T/100BASE-TX | |
| USB | TYPE-A / TYPE-B | | |
| Acoustic noise ^{*4} | Lamp mode: | High | 36dB |
| | | Standard | 28dB |
| | | Low | 25dB |
| Operating temperature / Operating humidity | | 32°F to 104°F (0°C to 40°C) / 20% to 80% (no condensation) | |
| Storage temperature / Storage humidity | | 14°F to +140°F (-10°C to +60°C) / 20% to 80% (no condensation) | |
| Power consumption AC 100 V - 120 V | Lamp mode: | High | 424 W |
| | | Standard | 287 W |
| | | Low | 217 W |
| Power consumption AC 220 V - 240 V | Lamp mode: | High | 403 W |
| | | Standard | 279 W |
| | | Low | 211 W |
| Power consumption (when "Standby mode" is set to "Low") | AC 100 V to 120 V | 0.5 W | |
| | AC 220 V to 240 V | 0.5 W | |
| Power Consumption (Networked Standby Mode) | AC 100 V to 120 V | 342W | |
| | AC 220 V to 240 V | 328W | |
| Power Consumption (Networked Standby Mode) | AC 100 V to 120 V | 12.5W (LAN) / 13.2W (optional WLAN module) / 16.8W (HDBaseT)/17.4W (ALL Terminals and Networks Connected, when "Standby Mode" is set to "Standard") | |
| | AC 220 V to 240 V | 11.9W (LAN) / 12.6W (optional WLAN module) / 17.0W (HDBaseT)/17.6W (ALL Terminals and Networks Connected, when "Standby Mode" is set to "Standard") | |
| On mode power consumption | AC 100 V to 120 V | 369 W | |
| | AC 220 V to 240 V | 353 W | |
| Heat dissipation | AC 100 V to 120 V | 1446BTU | |
| | AC 220 V to 240 V | 1374BTU | |
| Body Color (Color Code) | White/Gray | • | |
| Dimensions (W x H x D) | | Approx. 20.079 x 5.059 x 13.961 inches (510 x 128.5 x 354.6 mm) | |
| Outside Dimensions (W x H x D) (without protrusions) | | Approx. 20.079 x 4.449 x 13.961 inches (510 x 113 x 354.6 mm) | |
| Mass | | Approx. 19.180 lb (8.7 kg) | |
| Supplied accessories | | Remote commander (RM-PJ8), Battery (CR2025), AC power cord, Operating instructions (CD-ROM), Quick Reference Manual, Warranty card, Security label, Flyers (WEEE) / (EU battery direction), Application software (CD-ROM) | |
| Battery for the remote commander of the projector | | Lithium Battery / CR2025 / 1 | |

^{*1} The values are estimates.

^{*2} This value is average with lamp dimming.

^{*3} The picture quality may deteriorate when the V Keystone function is used for it is an electrical correction.

^{*4} The figures are approximate. They vary depending on the environment or how the projector is used.

CW-Series Laser Projector



Smallest Laser projector series on the market. WXGA resolution that looks like WUXGA with our new built-in scaler chip. The ultimate laser projector for lamp replacement. Same energy efficiency, TCO, image quality, brightness and stylish design that comes with our other PH Series.



Spectacular image quality

New scaler chip minimizes image degradation, and Powerful Z-Phosphor laser light source with advanced BrightEra 3LCD projection engine deliver detail-packed images with high 5000 lumens of color brightness.

Long life, less maintenance

Reliable, long-lasting laser light source offers up to 20,000 hours virtually maintenance-free operation

The ultimate lamp projector replacement

Smallest body size in its class, 5,000 lumens color & white light output, all in a stylish blend-in design.

CW-Series

Connector Panel Information

Rear connector panel for the CW-Series projectors



Advanced Replacement Program

Customers that may experience a problem with a BRAVIA Professional Display (including FW and FWD Series) or VPL-Series Professional Laser Projector (excluding VPL-G, VPL-H, VPL-W models) while still under warranty may be entitled to receive a replacement unit at no cost in exchange for the return of a unit that is determined by Sony to be defective. To initiate a replacement, the end-user customer must call **800-883-6817** or email ProSupport@sony.com.

Please contact your Sony Representative for more information on this program.

CW-Series

Featuring



For full product specifications and features please visit pro.sony/projectors

| Specifications | | VPL-CWZ10 | |
|---|---|---|---------|
| White & Color Light output 3 LCD system | 3 LCD system | • | |
| Size of effective display area | 0.64" x 3 BrightEra LCD Panel, Aspect ratio: 16:10 | • | |
| Number of pixels Size of effective display area | 3,072,000 (1280x800 x 3) pixels | • | |
| | WXGA (1280x800 pixels) | • | |
| | Aspect ratio: 16:10 | • | |
| Projection lens | Zoom | Manual | |
| | Focus | Manual | |
| | Lens shift | 0.37V | |
| | Throw ratio | 1.29:1 to 2.07:1 | |
| | Focal length/ Apert | f = 0.717" - 1.157" (18.20mm - 29.38mm) | |
| Light source | Laser + Phosphor | | |
| Filter cleaning | - | | |
| White & Color Light output *1 | Lamp mode: | High | 5000 lm |
| | | Standard | 4200 lm |
| | | Low | 3000 lm |
| Contrast ratio (full white / full black) *2 | ∞:1(SYQ) 3,000,000:1(C1) | | |
| Key stone correction (Max) *3 | Horizontal: +/-30 degrees Vertical: +/-30 degrees | | |
| Power requirements | AC 100 V to 240 V, 3.4 A to 1.5 A, 50 Hz / 60 Hz | | |
| Speaker | 16W (monaural) | | |
| Display scanning frequency | Horizontal | 15 kHz to 92 kHz | |
| | Vertical | 48 Hz to 92 Hz | |
| Display resolution | Computer signal input | Maximum display resolution: 1920 x 1200 dots | |
| | Video signal input | NTSC, PAL, SECAM, 480/60i, 576/50i, 480/60p, 576/50p, 720/60p, 720/50p, 1080/60i, 1080/50i, 1080/60p, 1080/50p/1080/24p | |
| Color system | NTSC3.58, PAL, SECAM, NTSC4.43, PAL-M, PAL-N, PAL60 | | |
| OSD language | 27-language (English, French, German, Italian, Spanish, Portuguese, Japanese, Chinese (简体), Korean, Russian, Dutch, Norwegian, Swedish, Thai, Arabic, Turkish, Polish, Vietnamese, Farsi, Finnish, Indonesian, Hungary, Greek, Czech, Slovakia, Romania) | | |
| Operating Instructions languages | 'English, Germany, French, Italy, Spanish, Russian, Japanese, Arabic | | |
| INPUT OUTPUT (Computer / Video /Control) | INPUT A | RGB / Y PB PR input connector: Mini D-sub 15 pin female Audio input connector: Stereo mini jack | |
| | INPUT B | HDMI input connector: HDMI 19-pin, HDCP support, Audio input connector: HDMI audio support | |
| | INPUT C | HDMI input connector: HDMI 19-pin, HDCP support, Audio input connector: HDMI audio support | |
| | VIDEO IN | Video input connector: Phono jack | |
| | OUTPUT | Audio output connector: Stereo mini | |
| | REMOTE | D-sub9pin male/RS232C | |
| | LAN | RJ45,10BASE-T/100BASE-TX | |
| | USB | Type-A (Only for FW upgrade) | |
| Acoustic noise*4 | Lamp mode: | High | 36dB |
| | | Standard | 32dB |
| | | Low | 28dB |
| Operating temperature / Operating humidity | 32°F to 104°F (0°C to 40°C) / 20% to 80% (no condensation) | | |
| Storage temperature / Storage humidity | 14°F to +140°F (-10°C to +60°C) / 20% to 80% (no condensation) | | |
| Power consumption AC 100 V - 120 V | Lamp mode: | High | 342 W |
| | | Standard | 319 W |
| | | Low | 274 W |
| Power consumption AC 220 V - 240 V | Lamp mode: | High | 326 W |
| | | Standard | 304 W |
| | | Low | 252 W |
| Power consumption (when "Standby mode" is set to "Low") | AC 100 V to 120 V | | 0.5 W |
| | AC 220 V to 240 V | | 0.5 W |
| Power Consumption (Networked Standby Mode) | AC 100 V to 120 V | 2W (Wake up on LAN) / 15W (ALL Terminals and Networks Connected, when "Standby Mode" is set to "Standard") | |
| | AC 220 V to 240 V | 2W (Wake up on LAN) / 15W (ALL Terminals and Networks Connected, when "Standby Mode" is set to "Standard") | |
| On mode power consumption | AC 100 V to 120 V | 320W | |
| | AC 220 V to 240 V | 300W | |
| Heat dissipation | AC 100 V to 120 V | 1167 BTU/h | |
| | AC 220 V to 240 V | 1112 BTU/h | |
| Body Color (Color Code) | White/Gray | | • |
| Dimensions (W x H x D) | Approx. 14.606 x 4.606 x 12.571 inches (371 x 117 x 319.3mm) | | |
| Outside Dimensions (W x H x D) (without protrusions) | Approx. 20.079 x 4.449 x 13.961 inches (510 x 113 x 354.6mm) | | |
| Mass | Approx. 14.606 x 3.937 x 12.571 inches (371 x 100 x 319.3mm) | | |
| Supplied accessories | Remote commander (New RM-PJ8 (SYQ), New RM-PJ8CN (C1)), Battery (CR2025), HD15pin Cable, AC power cord, Operating instructions (CD-ROM), Quick Reference Manual (QRM), Safety Regulation, Warranty card, Security label, Flyers (Warning), (WEEE), (EU Battery direction) / Security bar, Kensington Lock | | |
| Battery for the remote commander of the projector | Lithium Battery / CR2025 / 1 | | |

*1 The values are estimates.

*2 This value is average with lamp dimming.

*3 The picture quality may deteriorate when the V Keystone function is used for it is an electrical correction.

*4 The figures are approximate. They vary depending on the environment or how the projector is used.
Projectors

F-Series Lamp Projector



Model: VPL-FH60

WUXGA resolution for the most demanding venues that require the highest resolutions, brightest projections and highly sophisticated features. The F-Series delivers powerful performance, optional lenses, longer life and low maintenance.

Edge-Blend and Warp capabilities

Built-in GUI and PC software for multi projector image blending with warping

DICOM capabilities

Display X-ray and MRI images that conform to GSDF (Grayscale Standard Display Function).

Reality creation

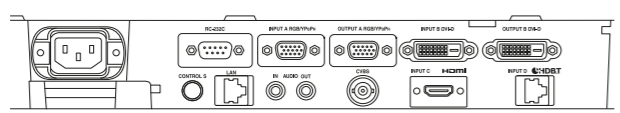
Clarity in every pixel. Sony's process technology and proprietary algorithm creates pixel mapping that is as close to the original as you can get.

Side by Side content

Displays two different images / content from two different input sources.

F-Series

Connector Panel Information



Rear connector panel for VPL-FH60 projector

F-Series

Optional Accessories



PAM-600 Ceiling mount

Featuring

For full product specifications and features please visit pro.sony/projectors

| Specifications | | VPL-FH60 | |
|--|--|--|--|
| Display device | 3 LCD | • | |
| Size of effective display area | 0.76" (19 mm) x 3 BrightEra LCD Panel, Aspect ratio: 16:10 | • | |
| Number of pixels | 6,912,000 (1920 x 1200 x 3) pixels | • | |
| Projection lens*1 | Focus | Powered | |
| | Zoom - Powered/Manual | Powered | |
| | Zoom - Ratio | Approx. x 1.6 | |
| | Throw Ratio | 1.39:1 to 2.23:1 | |
| Lens shift | Powered/Manual | Powered | |
| | Range Vertical | -5%, +60% | |
| | Range Horizontal | +/- 32% | |
| Light source | Type/Wattage | High pressure mercury lamp 280 W type | |
| Recommended lamp replacement time*2 | Lamp mode: | High | 3,000 H |
| | | Standard | 4,000 H |
| Filter cleaning*2 | | 20,000 H Same as the lamp replacement is recommended | |
| Screen size*1 | | 40" to 600" (1.02 m to 15.24 m) (measured diagonally) | |
| White & Color Light output | Lamp mode: | High | 5000 lm |
| | | Standard | 3200 lm |
| Contrast ratio (full white / full black)*3 | | 2000:1 | |
| Displayable scanning frequency | Horizontal | 15 kHz to 92 kHz | |
| | Vertical | 48 kHz to 92 kHz | |
| Display resolution | Computer signal input | Maximum display resolution: 1920 x 1200 dots *4 | |
| | Video signal input | NTSC, PAL, SECAM, 480/60i, 576/50i, 480/60p, 576/50p, 720/60p, 720/50p, 1080/60i, 1080/50i The following items are available for digital signal only, 1080/60p, 1080/50p, 1080/24p | |
| Color System | | NTSC3.58, PAL, SECAM, NTSC4.43, PAL-M, PAL-N, PAL60 | |
| Keystone correction (Max.) | Vertical | +/- 30 degrees | |
| | Horizontal | +/- 30 degrees | |
| OSD language | 24-languages | English, Dutch, French, Italian, German, Spanish, Portuguese, Turkish, Polish, Russian, Swedish, Norwegian, Japanese, Simplified Chinese, Traditional Chinese, Korean, Thai, Vietnamese, Arabic, Farsi, Finnish, Indonesian, Hungarian, Greek | |
| INPUT OUTPUT (Computer / Video / Control) | INPUT A | RGB / Y PB PR input connector: | RGB / Y PB PR input connector: Mini D-sub 15-pin (female) Audio input connector: Stereo mini jack |
| | INPUT B | RGB input connector: | DVI input connector: DVI-D 24-pin (single link), HDCP support Audio input connector: Shared with Input A |
| | INPUT C | HDMI input connector: | HDMI input connector: HDMI 19-pin, HDCP support Audio input connector: HDMI Audio Support |
| | INPUT D | Audio input connector: | HDBaseT interface connector: RJ45, 4 play (Video, Audio, LAN, Control) |
| | S VIDEO IN | HDMI input connector: | Video input connector: BNC, Audio input connector: Shared with input A |
| | VIDEO IN | S video input connector: | Monitor output for Input A Connector: Mini D-sub 15-pin (female) Audio output connector: Stereo mini jack |
| | OUTPUT | Audio input connector: | Monitor output for Input B Connector: DVI-D 24-pin (single link), HDCP not supported/ Audio output, Monitor out connector: Stereo mini jack |
| | REMOTE | Monitor output for Input A Connector: | D-sub 9-pin (male) / RS232C |
| | LAN | Audio input connector: | RJ45, 10BASE-T/100BASE-TX |
| | IR (Control S) | Monitor output for Input B Connector: | Control S input connector: Stereo mini jack Plug in power DC 5V |
| Acoustic noise | Lamp mode: | Standard 28 dB | |
| Operating temperature / Operating humidity | | 32°F to 104°F (0°C to 40°C) / 20% to 80% (no condensation) | |
| Storage temperature / Storage humidity | | 14°F to +140°F (-10°C to +60°C) / 20% to 80% (no condensation) | |
| Power requirements | AC 100 V to 240 V, 4.3A to 1.8A, 50 Hz / 60 Hz AC 100 V to 240 V, 5.0A to 2.1A, 50 Hz / 60 Hz | • | |
| Power consumption Lamp mode: | AC 100 V to 120 V | High Standard | 429 W 268 W |
| | AC 220 V to 240 V | High Standard | 416 W 216 W |
| | AC 100 V to 120 V AC 220 V to 240 V | | 0.5 W 0.5 W |
| Power Consumption (Networked Standby Mode) | AC 100 V to 120 V | | 15.0 W (LAN) / 15.0 W (HDBaseT) / 15.0 W (All Terminals and Networks Connected) (when "Standby Mode" is set to "Standard") |
| | AC 220 V to 240 V | | 13.3 W (LAN) / 13.3 W (HDBaseT) / 13.3 W (All Terminals and Networks Connected) (when "Standby Mode" is set to "Standard") |
| Heat dissipation | AC 100 V to 120 V | | 1464 BTU/h |
| | AC 220 V to 240 V | | 1419 BTU/h |
| Dimensions (W x H x D) (without protrusions) | | Approx. 18 1/8 x 6 21/32 x 20 9/32 inches (460 x 169 x 515mm) | |
| Mass | | Approx. 28 lb (13 kg) | |
| Supplied accessories | | RM-PJ27 Remote RM-PJ27 Remote Commander (1), Size AA (R6) batteries (2), AC Power Cord (1), Plug holder (1), Terminal (1)RM-PJ27 Remote Commander (1), Size AA (R6) batteries (2), AC Power Cord (1), Plug holder (1), Terminal, Size AA (R6) batteries (2), AC Power Cord (1), Plug holder (1), Terminal Cover (1), Quick Reference Manual (1), Operating Instructions (CD-ROM) (1) | |

*1 Specifications based on VPL-Z4111 (VPL-FH290L & VPL-FH2120L).
 *2 The values are estimate.
 *3 This figure is expected maintenance time, not guaranteed time. The actual value depends on the environment and how the projector is used.
 *4 The figures are approximate. They are dependent on the environment or how the projector is used.
 *5 The picture quality may deteriorate when the V Keystone function is used for it is an electrical correction.

CH-Series Lamp Projectors



These installation models raise the bar with high resolution images and energy efficiency, total cost of ownership, image quality, brightness and stylish design.

Audio / Speaker bypass

When set to "Always On," the speaker/microphone is available via Audio Input A.

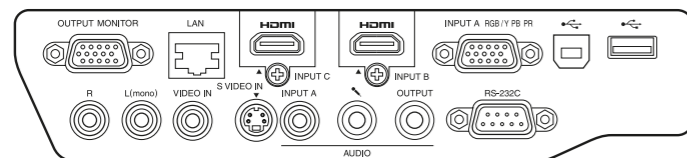
WUXGA resolution installation projectors

4,000 - 5,000 lumens brightness.

CH-Series

Connector Panel Information

Rear connector panel for the VPL-CH350 & VPL-CH370 projectors



CH-Series

Replacements



LMP-C281
Replacement projector lamp (CH370/CH375)

Optional Accessories



IFU-WLM3
USB wireless module



PAM-200
Ceiling mount

Featuring



For full product specifications and features please visit pro.sony/projectors

Specifications

| | VPL-CH350 | VPL-CH370 | |
|--|---|---|----------------------------|
| Display system | 3 LCD system | • | |
| Size of effective display area | 0.64" (16.3 mm) x 3, Aspect ratio: 16:10 | • | |
| Number of pixels | 6,912,000 (1920 x 1200 x 3) pixels | • | |
| Projection lens | Zoom | Optional: Manual (Approx. x1.45) | |
| | Focus | Manual | |
| | Lens shift | Manual (Vertical: +/- 5%, Horizontal: +/- 4%) | |
| | Throw ratio | 1.5:1 to 2.2:1 | |
| Light source | Ultra high pressure mercury lamp / 250 W type | • | |
| | Ultra high pressure mercury lamp / 280 W type | • | |
| Recommended lamp replacement time*2 | Lamp mode: | | |
| | High | 3,000 H | 2,500 H |
| | Standard | 4,000 H | 3,000 H |
| | Low | 5,000 H | 3,500 H |
| Filter cleaning | Same time as the lamp replacement is recommended | | |
| Screen size | 40" to 300" (1.02 m to 7.62 m) (measured diagonally) | | |
| White & Color Light output | Lamp mode: | | |
| | High | 4000 lm | 5000 lm |
| | Standard | 3200 lm | 3600 lm |
| | Low | 2600 lm | 3100 lm |
| Contrast ratio (full white / full black) | 2500:1 | | |
| Acoustic noise | Lamp mode: | | |
| | High | 36dB | 38dB |
| | Standard | 33dB | 35dB |
| | Low | 29dB | 29dB |
| Display scanning frequency | Horizontal | 19 kHz - 92 kHz | |
| | Vertical | 48 Hz - 92 Hz | |
| Display resolution | Computer signal input | Maximum display resolution: 1920 x 1200 dots ^{*1} Panel display resolution: 1920 x 1200 dots | |
| | Video signal input | 480/60i, 576/50i, 480/60p, 576/50p, 720/60p, 720/50p, 1080/60i, 1080/50i, 1080/60p, 1080/50p, 1080/24p | |
| Color system | NTSC3.58, PAL, SECAM, NTSC4.43, PAL-M, PAL-N | | |
| Keystone correction | Vertical: Max. +/- 30 degrees, Horizontal: Max. +/- 20 degrees | | |
| OSD language | 24-languages | English, French, German, Italian, Spanish, Portuguese, Japanese, Simplified Chinese, Traditional Chinese, Korean, Russian, Dutch, Norwegian, Swedish, Thai, Arabic, Turkish, Polish, Vietnamese, Farsi, Indonesian, Finnish, Hungarian, Greek | |
| INPUT OUTPUT (Computer / Video / Control) | INPUT A | RGB / Y PB PR input connector: | Mini D-sub 15-pin (female) |
| | | Audio input connector: | Stereo mini jack |
| | INPUT B / INPUT C | HDMI input connector: | HDMI 19-pin, HDCP support |
| | S VIDEO IN | S video input connector: | Mini DIN 4-pin |
| | VIDEO IN | Video input connector: | Phono jack |
| | OUTPUT | Monitor output connector*2: | Mini D-sub 15-pin (female) |
| | | Audio output connector*5: | Stereo mini jack |
| | REMOTE | | D-sub 9-pin (male) |
| | SPEAKER | | 12 W x 1 (monaural) |
| | MICROPHONE INPUT | | Mini jack |
| LAN | | RJ45, 100BASE-TXT / 100BASE-TX | |
| | | RJ45, 100BASE-TX | |
| HDBaseT | RJ45, 4 Play | | |
| USB | Type-A, Type-B | | |
| Operating temperature / Operating humidity | 32°F to 104°F (0°C to 40°C) / 20% to 80% (no condensation) | | |
| Storage temperature / Storage humidity | 14°F to +140°F (-10°C to +60°C) / 20% to 80% (no condensation) | | |
| Power requirements | | AC 100 V to 240 V, 3.6 A to 1.6 A, 50/60 Hz | |
| | | AC 100 V to 240 V, 3.9 A to 1.7 A, 50/60 Hz | |
| Power consumption AC 100 V - 120 V | Lamp mode: | | |
| | High | 353 W | 388 W |
| | Standard | 285 W | 315 W |
| | Low | 265 W | 279 W |
| Power consumption AC 220 V - 240 V | Lamp mode: | | |
| | High | 334 W | 367 W |
| | Standard | 272 W | 299 W |
| | Low | 254 W | 266 W |
| Power consumption (Standby Mode) | AC 100 V to 120 V | 4.7W / 0.5W | 4.7 / 0.3W |
| | AC 220 V to 240 V | 4.9W / 0.5W | 4.9 / 0.5W |
| Heat dissipation | AC 100 V to 120 V | 1204 BTU | 1323 BTU |
| | AC 220 V to 240 V | 1139 BTU | 1252 BTU |
| Outside Dimensions (W x H x D) (without protrusions) | Approx. 15 31/32 x 4 7/16 x 13 inches (406 x 113 x 330.5 mm) | | |
| Mass | Approx. 12 lb (5.7 kg) | | |
| Supplied accessories | RM-PJ8 Remote Commander (1), Lithium battery: CR2025 (1), AC Power Cord (1), Lens cap (1), Quick Reference Manual (1), Operating Instructions (CD-ROM) (1), Presentation Station for Network Presentation application (CDROM) (1) | | |

*1 Available for VESA Reduced Blanking signal.

*2 From INPUT A.

E-500 Series Lamp Projector



Model: VPL-EW575

This portable projector fills larger rooms with bright, high-impact images. Smart features make the most of today's integrated AV/IT environments.

High brightness, high contrast images

Fill larger classrooms and meeting rooms with powerful output up to 4300 lumen brightness. High 20,000:1 contrast ratio ensures crisp, images and text.

Wider connectivity options

Project from a networked computer, or present wirelessly from laptops, tablets and smartphones. Dual HDMI ports for standard and latest wireless adaptors and direct USB display connection.

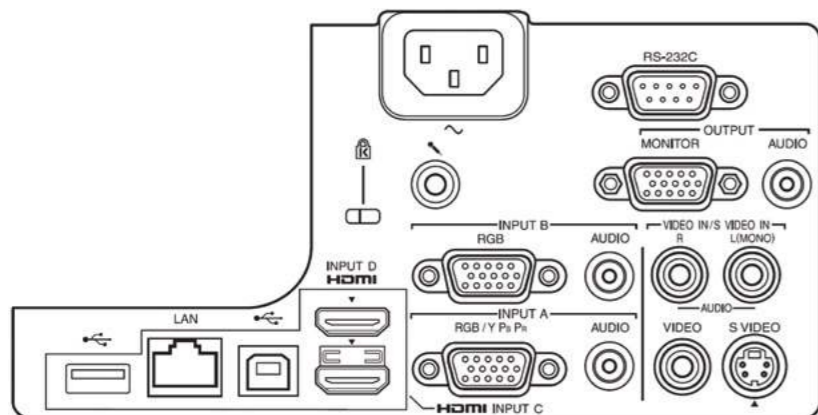
Affordable ownership costs

Smart energy-saving features like Auto Mode and Lamp Dimming, plus up to 10,000 hours lamp replacement intervals contribute to low ownership costs and reduced maintenance.

E-500 Series

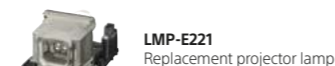
Connector Panel Information

Rear connector panel.



E-500 Series

Replacements



Optional Accessories



Featuring



For full product specifications and features please visit pro.sony/projectors-desktop

Specifications

| Specifications | | VPL-EW575 | |
|---|--|---|---|
| Display system | 3 LCD | • | |
| Size of effective display area | 0.75" (19mm) x 3 BrightEra LCD Panel Aspect ratio 16:10 | • | |
| Number of pixels | 3,072,000 (1280x800 x 3) pixels | • | |
| Projection lens | Manual Focus | • | |
| | Throw Ratio | 1:10:1 to 1.79:1 | |
| Light source | | Ultra high pressure mercury lamp 225W type | |
| Recommended lamp replacement time*1 | Lamp mode: | High | 4,300 H |
| | | Standard | 3,200 H |
| | | Low | 2,400 H |
| Filter cleaning / replacement cycle (Max.)*1 | | 10,000 H | |
| Screen size | | 30" to 300" (0.76 m to 7.62 m) | |
| White & Color Light output*2 | Lamp mode: | High | 4200 lm |
| | | Standard | 3000 lm |
| | | Low | 2300 lm |
| Contrast ratio (full white / full black)*3 | | 20000:1 (SYQ) 12000:1 (C1) | |
| Speaker | | 16W (monaural) | |
| Displayable scanning frequency | Horizontal | 15 kHz to 92 kHz | |
| | Vertical | 48 Hz to 92 Hz | |
| Display resolution | Computer signal input | Maximum display resolution: 1600 x 1200 dots, fV:60Hz | |
| | Video signal input | NTSC, PAL, SECAM, 480/60i, 576/50i, 480/60p, 576/50p, 720/60p, 720/50p, 1080/60i, 1080/50i, 1080/60p, 1080/50p | |
| Color System | | NTSC3.58, PAL, SECAM, NTSC4.43, PAL-M, PAL-N, PAL60 | |
| Keystone correction (Max.)*4 | Vertical | | +/-30 degrees |
| | | | +/-20 degrees |
| OSD language | 27-languages | English, French, German, Italian, Spanish, Portuguese, Japanese, Chinese, Korean, Russian, Dutch, Norwegian, Swedish, Thai, Arabic, Turkish, Polish, Vietnamese, Farsi, Finnish, Indonesian, Hungarian, Greek, Czech, Slovakia, Romania | |
| INPUT OUTPUT (Computer / Video /Control) | INPUT A | RGB / Y PB PR input connector: Mini D-sub 15 pin female/Audio input connector: Stereo mini jack | |
| | INPUT B | RGB input connector: Mini D-sub 15 pin female/Audio input connector: Stereo mini jack | |
| | INPUT C | HDMI input connector: HDMI 19-pin, HDCP support/Audio input connector: HDMI audio support | |
| | INPUT D | HDMI input connector: HDMI 19-pin, HDCP support/Audio input connector: HDMI audio support | |
| | S VIDEO IN | S Video input connector: Mini DIN 4-pin | |
| | VIDEO IN | Video input connector: Phono jack | |
| | OUTPUT | MONITOR output connector: Mini D-sub 15 pin female/Audio output connector: Stereo mini | |
| | Y PB/CB PR/CR | Component: Mini D-sub 15 pin female | |
| | REMOTE | D-sub 9-pin male/RS232C | |
| | LAN | RJ45,100BASE-TX (Shared with HDBaseT) | |
| USB | Type-A & Type-B | | |
| MICROPHONE IN | Microphone jack: Mini Jack | | |
| Acoustic noise*5 | Lamp mode: | Low | 29dB |
| Operating temperature / Operating humidity | | | 32°F to 104°F (0°C to 40°C) (20% to 80%; no condensation) |
| Storage temperature / Storage humidity | | | 14°F to +140°F (-10°C to +60°C) (20% to 80%; no condensation) |
| Power requirements | AC 100 V to 240 V, 3.4 A to 1.5 A, 50 Hz / 60 Hz | | • |
| Power consumption | AC 100 V to 120 V | High | 332 W |
| | | Standard | 270 W |
| | AC 220 V to 240 V | High | 319 W |
| | | Standard | 261 W |
| | | Low | 225 W |
| Power consumption (when "Standby mode" is set to "Low") | AC 100 V to 120 V | | 0.5 W |
| | AC 220 V to 240 V | | 0.5 W |
| Power Consumption (when "Standby Mode" is set to Standard*) | AC 100 V to 120 V | 5.5W (LAN) / 6.0W (optional WLAN module) / 6.2W (ALL Terminals and Networks Connected) | |
| | AC 220 V to 240 V | 5.8W (LAN) / 6.3W (optional WLAN module) / 6.6W (ALL Terminals and Networks Connected) | |
| Standby Mode / Networked Standby Mode Activated | | | Approx. 10 Minutes |
| Wireless Network(s) On/Off Switch | Press the MENU button, then select [Connection/Power] > [WLAN Settings] > [WLAN Connection] > Select On or Off | | |
| Heat dissipation | AC 100 V to 120 V | | 1133 BTU |
| | AC 220 V to 240 V | | 1088 BTU |
| Dimensions (W x H x D) (without protrusions) | | | Approx. 14 3/8 X3 25/32 X9 29/32 inches (365 x 96.2 x 252 mm) |
| Mass | | | Approx. 9 lb (4.1kg) |
| Supplied accessories | RM-PJ8 Remote Commander (1), Lithium battery: CR2025 (1), AC Power Cord (1), Operating Instructions (CDROM) (1), Quick Reference Manual (1) Lens cap (1) | | |
| Optional Accessories | LMP-E221, IFU-WLM3 (WLAN module) | | |

*1 This figure is expected maintenance time, not guaranteed time. The actual value depends on the environment and how the projector is used.
*2 The values are estimate.
*3 The value is average.

*4 The picture quality may deteriorate when the V Keystone function is used for it is an electrical correction.
*5 The figures are approximate. They vary depending on the environment or how the projector is used.



BRAVIA Professional Displays

Bring the spectacular depth and quality of BRAVIA to your business with the latest range of ultra-slim and energy efficient Professional HDR Displays. Available from 43" to 98" our line-up offers all the technological performance and style you'd expect from BRAVIA.

Installation-friendly and easy to manage, they're ideal for presenting your best image in a wide range of environments, from retail spaces to meeting rooms and classrooms, communal areas and hospitality spaces.

Highlights

- Brilliant 4K image quality with powerful 4K X1 processor and Reality Creation.
- Embedded HTML5 platform for easy digital signage.
- Copy custom settings to multiple screens via USB memory.
- Slim, stylish and installation friendly with versatile control options.
- 24/7 operation and reliable high-brightness panels.*
- Compatible with TEOS Workplace Solutions.

Advanced Replacement Program

Customers that may experience a problem with a BRAVIA Professional Display (including FW and FWD Series) or VPL-Series Professional Laser Projector (excluding VPL-G, VPL-H, VPL-W models) while still under warranty may be entitled to receive a replacement unit at no cost in exchange for the return of a unit that is determined by Sony to be defective. To initiate a replacement, the end-user customer must call **800-883-6817** or email **ProSupport@sony.com**.

Please contact your Sony Representative for more information on this program.

*Model dependent

Digital Signage

Inspire customers and guide visitors with powerful, cost-effective digital signage. We've developed three digital signage options that allow you to easily operate screens from a centralized or decentralized location with the content you want – anytime, anyplace.

Stand-Alone Simple Media Player-2 (WQF-USMP2 - FREE)

This free software media player allows content to play on Professional BRAVIA displays when movie, still image, and HTML content files are copied to USB flash memory and then inserted into a USB port on the Pro BRAVIA.

- HTML5 Application that runs from USB thumb drive.
- Supports Slide Show, Playlists, and Schedules.
- Supports 4K images, video, and HTML5 content.

Cloud-Based "iRevo iDS" (iDS/1yr and iDS/5yr options)

Sony has partnered with iRevo to integrate a cloud-based Enterprise-Class Digital Signage solution with professional BRAVIA displays.

- Android app runs directly on BRAVIA Professional Android platform.
- No on-premise hardware – application runs on AWS.
- Able to aggregate content from many different sources.

On-Premise BRAVIA Signage (WQ-BS1)

This application delivers video and still images to Professional BRAVIA displays and manages the information via a network. Features include management of displays, power schedule management, content playlists, scheduled delivery management, content interrupt, and more.

- HTML5 application installs and runs directly on the BRAVIA Pro HTML5 platform.
- Install BRAVIA Signage Server and all necessary components with 1 click on Windows PC.
- Supports grouping and content delivery over a LAN.
- Includes a Content Creation (content layout feature).

For full product specifications and features please visit pro.sony/BRAVIA

BRAVIA BZ Series



Available in a wide range of screen sizes to suit any size classroom or meeting room, BRAVIA Professional Displays bring your visuals to life with bright, detail-packed 4K HDR pictures and easy content sharing. Ensure everyone's informed with attractive, colorful signage and keep costs in check with energy-saving features.

See every detail in 4K

The 4K resolution LCD panel (3840 x 2160 pixels) ensures incredible color, contrast and realism, with four times the detail of Full HD. All models are HDR compatible, displaying a wider range of brightness levels for a level of detail and realism beyond anything you've seen before.

Superior displays designed for business

Portrait, advanced control, professional mode, optional interactive compatibility, 24/7 operation or an embedded HTML5 platform for easy digital signage creation; our BRAVIA 4K Displays are designed to suit all professional needs.

Personalize BRAVIA your way

BRAVIA suits any business application with a range of personalization options and built-in solutions, including TEOS solutions, Meeting Room solution, Media Player, Digital Signage, Smart Automation, Screen Mirroring and Android Applications Store*.

Features

16:9 4K resolution (3840 x 2160 pixels)

With over 8 million pixels, a 4K resolution screen offers four times the detail of Full HD. Combined with the ability to manage 4K 60P up to 18Gbps, it now produces a level of detail and realism beyond anything you've seen before.

4K HDR X1 Processor

Our powerful 4K HDR X1 Processor enhances contrast, clarity and color to the highest level. Clarity improves with intelligent upscaling and noise reduction, colors are individually enhanced, and dynamic range of contrast is optimized frame by frame.

Higher contrast, higher brightness

With Full Array Local Dimming being supported (BZ40H models only), specific sections of the screen can be incredibly bright while other areas remain pitch black so you get the best contrast possible. In addition, light areas in the image receive a boost in backlighting, creating brilliant peaks of brightness.

Compatible with High Dynamic Range (HDR)

View a wider range of brightness levels with HDR — the emerging video format that allows content creators to expand their range of creativity.

Strong performance

With new functionalities such as Wi-Fi 5GHz Support, Apply AirPlay, Chromecast built-in, DICOM, BRAVIA performance is stronger than ever before.

Elegant design

With the sleek new design, your BRAVIA will add a perfectly sophisticated touch to any environment.

Versatile control options

Easily control your BRAVIA remotely — including on/off, input signal select, and adjust volume — via IP or RS-232C. For quick operation in meetings or for digital signage, it takes just one click to change to your selected default settings.

Automatic on/off feature

Easily program your BRAVIA with the On Timer feature to automatically turn your BRAVIA on or off.

Portrait and 24/7 capability

Portrait mode and 24/7 capability ensure greater signage impact. The BRAVIA Display can be used in both portrait orientation and operate 24/7.

Professional Mode

There is now more control to disable input or remote control, remove labels, and block buttons; customize and store display settings and features, add security and copy them easily from display to display via USB flash memory.

| Specifications | | FW-43BZ35F | FW-49BZ35F | FW-55BZ40H | FW-65BZ40H | FW-75BZ40H | FW-85BZ40H |
|---|--|--|---|--|---|--|---|
| General features | Screen size (diagonal) | 43" | 49" | 55" | 65" | 75" | 85" |
| | Brightness (cd/m ²)*** | 505 cd/m ² | | Typ. 620 cd/m ² / Peak 850 cd/m ² | | | |
| | Native contrast ratio | 1400:1 | 5000:1 | 6,000:1 | | 4,000:1 | |
| | Dynamic contrast ratio | 400000:1 | | 550000:1 | | 600000:1 | |
| | Response time (ms) | 5 | | 8 | | 6 | |
| | Display resolution | 4K (3840x2160) | | 4K (3840x2160) | | 4K (3840x2160) | |
| | Compatible with HDR | Yes (HDR10, HLG) | | Yes (HDR10, HLG, Dolby Vision) | | | |
| Display features | Aspect ratio | | | 16:9 | | | |
| | Portrait compatibility | | | Yes | | | |
| | Dimming type | | | Local Dimming | | | |
| | Display device | | | LCD | | | |
| | Backlight type | Edge LED | | Direct LED | | | |
| Video specs | 4K Processor | 4K HDR Processor X1 | | X1 4K HDR Processor | | | |
| | Operation time | | | 24/7 | | | |
| | Wide Mode | Wide zoom/Normal/Full/Zoom/14:9 | | Auto/Wide zoom/Normal/Full/Zoom/14:9 | | | |
| | 4:3 Default | | | Yes | | | |
| | Video Processing | | | 4K X-Reality PRO | | | |
| | Motion enhancer | Motionflow XR 800Hz (Native 100Hz) | | X-Motion Clarity, Auto mode | | | |
| | TRILUMINOS Display | | | Yes | | | |
| Audio specs | Viewing angle (Right/Left/Up/Down) | | | 178 (89/89/89/89) | | | |
| | HDMI Signal | 4096x2160p (24,50,60Hz), 3840x2160p (24,25,30,50,60Hz), 1080p (30,50,60Hz), 1080i (50,60Hz), 720p (30,50,60Hz), 720i (50,60Hz), 576p, 480p, 480i | | 4096x2160p (24,50,60Hz), 3840x2160p (24,25,30,50,60Hz), 1080p (30,50,60,100,120Hz), 1080i (50,60Hz), 720p (30,50,60Hz), 720i (50,60Hz), 576p, 480p | | | |
| Professional features | Speaker position | Down Firing | | Side Back + Down Firing | | | |
| | Audio Power Output | | | 10W + 10W | | | |
| | Professional Hidden Mode | | | Yes | | | |
| | HDMI auto wake-up | | | Yes | | | |
| | Compatible with TDM Digital Signage | | | Yes | | | |
| Network specs | HTML5 platform | | | Yes | | | |
| | Multicast / IPTV | | | Yes | | | |
| | Operating System | Android 9.0 (via future firmware update) | | Android 9.0 | | | |
| | On-board Storage (GB) | | | 16 GB | | | |
| Convenience features | Wi-Fi Direct | | | Yes | | | |
| | Wi-Fi Certified | | | Yes | | | |
| Inputs and outputs | Wireless LAN | | | Integrated | | | |
| | Security 802.1X | | | Yes | | | |
| | USB playback codecs | MPEG1:MPEG1/MPEG2PS:MPEG2/MPEG2TS(HDV,AVCHD);MPEG2.AVC/MP4(XAVC S);AVC,MPEG4,HEVC/AV1:Xvid,MotionJpeg/ASF(WMV):VCI/ MOV:AVC,MPEG4,MotionJpeg/ MKV:Xvid,AVC,MPEG4,VP8,HEVC/ WEBM:VP8/3GPP:MPEG4,AVC/MP3/ASF(WMA)/WAV/MP4AAC/FLAC/JPEG | | MPEG1:MPEG1/MPEG2PS:MPEG2/MPEG2TS(HDV,AVCHD);MPEG2.AVC/MP4(XAVC S);AVC,MPEG4,HEVC/AV1:Xvid,MotionJpeg/ASF(WMV):VCI/ MOV:AVC,MPEG4,MotionJpeg/ MKV:Xvid,AVC,MPEG4,VP8,HEVC/ WEBM:VP8/3GPP:MPEG4,AVC/MP3/ASF(WMA)/WAV/MP4AAC/FLAC/JPEG | | | |
| | On screen clock | | | Yes | | | |
| | Sleep timer | | | Yes | | | |
| | On/Off timer | | | Yes | | | |
| | Chromecast built-in | | | Yes | | | |
| | Apple AirPlay (Internet required) | | | Yes | | | |
| | IP Control | | | Yes | | | |
| | Control specs | RS-232C Control | | | 1 (Side) | | |
| Design features | HDMI CEC | | | Yes | | | |
| | HDCP | | | HDCP2.3 (for HDMI1/2/3/4) | | | |
| | Composite Video Input(s) | 1 (Rear Hybrid w/Component) | | 1 (Side) | | | |
| | HDMI inputs total | 4 (3Side,1Rear) | | 4 (4Side) | | | |
| | Analog Audio Input(s) (Total) | 1 (Rear) | | 1 (Side Analog Conversion) | | | |
| | Digital Audio Output(s) | 1 (Rear) | | 1 (Side) | | | |
| | USB ports | 3 (Side) | | 2 (Side) | | | |
| Environment specs | Ethernet inputs | | | 1 (Side) | | | |
| | Frame color | | | Black | | | |
| | Stand Design | Silver Chevron | | Metal Blade Stand | | | |
| | VESA® Hole Spacing Compatible | | | Yes | | | |
| Measurements | VESA® Hole Pitch(W x H) | 3.937 x 7.874 inches (10.0 x 20.0 cm) | 7.874 x 7.874 inches (20.0 x 20.0 cm) | 11.811 x 11.811 inches (30.0 x 30.0 cm) | | 15.748 x 15.748 inches (40.0 x 40.0 cm) | |
| | Screen Size for WEB (diagonal, cm, integer or 1st decimal) | 42.520 inches (108.0 cm) | 48.504 inches (123.2 cm) | 54.724 inches (139.0 cm) | 64.567 inches (164.0 cm) | 74.410 inches (189.0 cm) | 84.646 inches (215 cm) |
| | On-mode power consumption | Standard: 76.0W | Standard: 88.0W | 97.0W | 121.0W | 152.0W | 189.0W |
| | Power Consumption (in Standby) | | | 0.50W | | | |
| Weight | Dynamic Backlight Control | | | Yes | | | |
| | Power Saving Mode / Back Light Off Mode | | | Yes | | | |
| | Dimension of TV without Stand (W x H x D) | 37.9 x 22.4 x 2.3 inches (965x569x58 mm) | 43.2 x 25.4 x 2.3 inches (1098x644x58 mm) | 48.5 x 2.8 x 28 inches 1231x70x710 mm | 57 x 2.8 x 32.8 inches 1450x70x833 mm | 65.9 x 2.8 x 37.8 inches 1674x71x961 mm | 74.8 x 2.8 x 37.8 inches 1899x72x961 mm |
| Dimension of TV with Stand (W x H x D) | 38 x 24.7 x 11 inches 965x628x279 mm | 43.2 x 26.7 x 11 inches 1098x703x279 mm | 48.5 x 13.3 x 30.7 inches 1231x338x780 mm | 57.1 x 13.3 x 35.6 inches 1450x338x903 mm | 66 x 16.1 x 40.7 inches 1674x410x1034 mm | 74.8 x 17.4 x 45.7 inches 1899x441x1162 mm | |
| Dimension of Package Carton (W x H x D) | 42.1 x 27.4 x 5.8 inches 1070 x 695x 148 mm | 46.8 x 30.6 x 5.8 inches 1188 x 776 x 148 mm | 53.1 x 6.4 x 33 inches 1350x162x836 mm | 62 x 7.3 x 37.8 inches 1576x186x961 mm | 71.3 x 7.4 x 43.7 inches 1812x188x1110 mm | 80.2 x 10.2 x 48.6 inches 2038x260x1235 mm | |
| Weight | Weight of TV without Stand | 23.8 lbs (10.8 Kg) | 29.1 lbs (13.2 Kg) | 37.4 lbs (16.5 Kg) | 48.9 lbs (22.2 Kg) | 72.5 lbs (32.9 Kg) | 97.2 lbs (44.1 Kg) |
| | Weight of TV with Stand | 24.9 lbs (11.3 Kg) | 30.2 lbs (13.7 Kg) | 38.6 lbs (17.5 Kg) | 51.1 lbs (23.2 Kg) | 75.8 lbs (34.4 Kg) | 105.2 lbs (47.7 Kg) |
| | Weight of Package Carton(Gross) | 33.1 lbs (15 Kg) | 41.9 lbs (19 Kg) | 52.9 lbs (24 Kg) | 68.3 lbs (31 Kg) | 101.4 lbs (46 Kg) | 136.7 lbs (62 Kg) |

***Basic

BRAVIA TV Tuner Models



Our latest range of BRAVIA features a built in TV Tuner ideal for public places such as reception areas, waiting rooms and communal spaces.

Set-up's fast and fuss-free with Pro mode that lets you copy custom settings to every screen in the building. Operation's refreshingly intuitive, too. With energy saving features like auto power on/off, you'll benefit from lower ownership costs. Even more flexibility's provided with our in-built software platform that offers powerful integration and control options.

Features

Easily create digital signage*

Produce compelling digital signage with no prior training needed. Combine graphics, text, video and live web content to create attractive signage in minutes.

See finer detail

X-Reality™ PRO picture processing analyses every frame, matching scenes with our special image database to refine images and reduce noise.

Smoother movement

Motionflow XR inserts additional picture frames between the originals, ensuring smoother, sharper detail in fast-moving sequences.

Installation friendly

The slim, stylish display offers a wide range of mounting options, is VESA compliant and integrates color neatly into any corporate, retail or educational environment.

Professional Mode**

There's now more control to disable input or remote control, remove labels and block buttons; customise and store display settings and features, add security then copy them easily from display to display via USB flash memory.

Compatible with High Dynamic Range (HDR)

View a wider range of brightness levels with HDR, the emerging video format that allows content creators to expand their range of creativity.

Ultimate Picture Quality More color with TRILUMINOS Display

TRILUMINOS Display maps colors from a wider palette, faithfully reproducing a world of richer, more lifelike hues and tones.

Improve content quality with Reality Creation

This high picture quality engine takes Full HD content much, much closer to 4K Ultra HD quality. Whether it's a presentation to clients or engaging digital signage, you'll get the best picture possible.

Pictures and sound in perfect harmony

Sony's Acoustic Multi-Audio™ system combines two sound positioning tweeters in the rear of the display with the bass reflex speakers for Sound-from-Picture Reality™. Action and sound are precisely aligned for even more immersive viewing.

Automatic on/off feature

Easily program your BRAVIA with the On-Timer feature to automatically turn the flat panel on /off.

Portrait

Use the BRAVIA Display in portrait for greater signage impact.

Do more with Android TV

Discover a world of apps and online content powered by Android TV. Use Voice Search to find content easily with no typing.

*Requires TEP-X96 Player. **Basic

For full product specifications and features please visit pro.sony/BRAVIA





| Specifications | | FWD-43X800H | FWD-49X800H | FWD-55X800H |
|-------------------------|---|--|--|--|
| TV System | TV System (Digital Terrestrial) | ATSC | | |
| | TV System (Digital Cable) | Clear QAM | | |
| | Number of Tuners (Terre/Cable) | 1 (Digital/Analog) | | |
| Display features | Dimming Type | Frame Dimming | | |
| | Display Device | LCD | | |
| | Backlight Type | Edge LED | Edge LED | Direct LED |
| Video specs | Wide Mode_01 | Auto/Wide Zoom/Normal/Full/Zoom | | |
| | 4:3 Default | Yes | | |
| | Video Processing | 4K X-Reality PRO | | |
| | Motionflow | Motionflow XR 240 (Native 60Hz) | | |
| | HDR Compatible | Yes (HDR10,HLG,Dolby Vision) | | |
| | HDMI Signal | 4096x2160p (24,60Hz), 3840x2160p (24,30,60Hz), 1080p (30,60Hz), 1080/24p, 1080i (60Hz), 720p (30,60Hz), 720/24p, 480p | | |
| Audio specs | Speaker Position | Down Firing | | |
| | Audio Power Output | 10W + 10W | | |
| Network specs | WiFi Direct | Yes | | |
| | Wi-Fi Certified | Yes | | |
| | Home network feature | Home Network Client, Home Network Renderer | | |
| | Screen mirroring (Miracast) | Yes (only for B2B purpose) | | |
| | IP Network Update | Yes | | |
| | Internet Browser | Vewd (Not pre-installed) | | |
| | Wireless LAN | Integrated | | |
| Convenience features | Codec for USB | MPEG1:MPEG1/MPEG2PS:MPEG2/MPEG2TS(HDV,AVCHD):MPEG2_AVC/MP4(XAVC S):AVC,MPEG4,HEVC/AVI:Xvid,MotionJpeg/ASF(WMV):VC1/MOV:AVC,MPEG4,MotionJpeg/MKV:Xvid,AVC,MPEG4,VP8,HEVC/WEBM:VP8/3GPP:MPEG4_AVC/MP3/ASF(WMA)/LPCM/WAV/MP4AAC/FLAC/JPEG | | |
| | On Screen Clock | Yes | | |
| | Sleep Timer | Yes | | |
| | On/Off Timer | Yes | | |
| | Chromecast built-in | Yes | | |
| Inputs and outputs | HDCP | HDCP2.3 (for HDMI1/2/3/4) | | |
| | RF Connection Input(s) | 1 (Side) | | |
| | Composite Video Input(s) | 1 (Bottom) | | |
| | HDMI Connection(s) (Total) | 4 (3Side,1Bottom) | | 4 (4Side) |
| | Digital Audio Output(s) | 1 (Bottom) | | |
| | USB | 2 (Side) | | |
| | Ethernet Connection(s) | 1 (Bottom) | | 1 (Side) |
| Design features | Finish (Surface Color) | Black | | |
| | Table Top Stand (supply) | Separate (assembly required) | | |
| | VESA Hole Spacing Compatible | Yes | | |
| | VESA Hole Pitch | 4 x 7 7/8 inch (100 x 200 mm) | 7 7/8 x 7 7/8 inch (200 x 200 mm) | 11 7/8 x 11 7/8 inch (300 x 300 mm) |
| Eco and energy saving | Screen Size (measured diagonally) | 43" (42.5") | 49" (48.5") | 55" (54.6") |
| | Rated Power Consumption | 97W | 107W | 196W |
| | Annual Power consumption | 129kWh/Year | 158kWh/Year | 161kWh/Year |
| | Power Consumption (in Standby) | 0.5W | | |
| | Power Requirements (voltage) | DC 19.5V | | AC 120V for UL cUL AC 110-240V for other |
| | Power Saving Mode / Back Light Off Mode | Yes | | |
| | Dynamic Backlight Control | Yes | | |
| | LightSensor | Yes | | |
| | AC Power Input | AC ADAPTER | | C8 INLET(REAR) |
| Measurements | TV only (W x H x D) | 38 1/4 x 22 1/2 x 2 1/4 (17/32) inch (970 x 570 x 57 (13) mm) | 43 3/8 x 25 1/2 x 2 1/4 (17/32) inch (1101 x 645 x 57 (13) mm) | 49 x 28 3/8 x 2 7/8 (21/32) inch (1243 x 718 x 71 (16) mm) |
| | TV with Stand (W x H x D) | 38 1/4 x 24 7/8 x 11 3/8 inch (970 x 630 x 286 mm) | 43 3/8 x 27 3/4 x 11 3/8 inch (1101 x 704 x 286 mm) | 49 x 30 7/8 x 13 1/2 inch (1243 x 782 x 340 mm) |
| | Package Carton (W x H x D) | 42 1/4 x 27 3/8 x 5 5/8 inch (1070 x 695 x 141 mm) | 46 7/8 x 30 5/8 x 5 5/8 inch (1188 x 776 x 141 mm) | 53 1/8 x 32 7/8 x 6 3/8 inch (1348 x 833 x 160 mm) |
| | TV only (Weight) | 20.7 lbs (9.4 kg) | 26 lbs (11.8 kg) | 35.3 lbs (16 kg) |
| | TV with Stand (Weight) | 21.6 lbs (9.8 kg) | 26.7 lbs (12.1 kg) | 37 lbs (16.8 kg) |
| | Gross weight (Package Carton) | 30.9lbs (14 kg) | 37.5 lbs (17 kg) | 48.5 lbs (22 kg) |
| | Display specifications | Viewing Angle (Right/Left) | 178 (89/89) degree | |
| Viewing Angle (Up/Down) | | 178 (89/89) degree | | |
| Display Resolution | | QFHD | | |
| Aspect Ratio | | 16:9 | | |
| OS | | Android 9.0 Pie | | |
| Signage specs | Easy HTML5 Signage embedded | Yes | | |
| | Multicast / IPTV | Yes | | |
| Control specs | RS-232C Control | 1 (Bottom) | | 1 (Side) |
| | Hotel Mode Pro | Yes | | |
| | IP Control | Yes | | |
| | HDMI auto wake-up | Yes | | |



| Specifications | | FWD-65X800H | FWD-75X800H | FWD-85X800H |
|-------------------------|---|--|--|--|
| TV System | TV System (Digital Terrestrial) | ATSC | | |
| | TV System (Digital Cable) | Clear QAM | | |
| | Number of Tuners (Terre/Cable) | 1 (Digital/Analog) | | |
| Display features | Dimming Type | Frame Dimming | | |
| | Display Device | LCD | | |
| | Backlight Type | Direct LED | | |
| Video specs | Wide Mode_01 | Auto/Wide Zoom/Normal/Full/Zoom | | |
| | 4:3 Default | Yes | | |
| | Video Processing | 4K X-Reality PRO | | |
| | Motionflow | Motionflow XR 240 (Native 60Hz) | | |
| | HDR Compatible | Yes (HDR10,HLG,Dolby Vision) | | |
| | HDMI Signal | 4096x2160p (24,60Hz), 3840x2160p (24,30,60Hz), 1080p (30,60Hz), 1080/24p, 1080i (60Hz), 720p (30,60Hz), 720/24p, 480p | | |
| Audio specs | Speaker Position | Down Firing | | |
| | Audio Power Output | 10W + 10W | | |
| Network specs | WiFi Direct | Yes | | |
| | Wi-Fi Certified | Yes | | |
| | Home network feature | Home Network Client, Home Network Renderer | | |
| | Screen mirroring (Miracast) | Yes (only for B2B purpose) | | |
| | IP Network Update | Yes | | |
| | Internet Browser | Vewd (Not pre-installed) | | |
| | Wireless LAN | Integrated | | |
| Convenience features | Codec for USB | MPEG1:MPEG1/MPEG2PS:MPEG2/MPEG2TS(HDV,AVCHD):MPEG2_AVC/MP4(XAVC S):AVC,MPEG4,HEVC/AVI:Xvid,MotionJpeg/ASF(WMV):VC1/MOV:AVC,MPEG4,MotionJpeg/MKV:Xvid,AVC,MPEG4,VP8,HEVC/WEBM:VP8/3GPP:MPEG4_AVC/MP3/ASF(WMA)/LPCM/WAV/MP4AAC/FLAC/JPEG | | |
| | On Screen Clock | Yes | | |
| | Sleep Timer | Yes | | |
| | On/Off Timer | Yes | | |
| | Chromecast built-in | Yes | | |
| Inputs and outputs | HDCP | HDCP2.3 (for HDMI1/2/3/4) | | |
| | RF Connection Input(s) | 1 (Side) | | |
| | Composite Video Input(s) | 1 (Side) | | |
| | HDMI Connection(s) (Total) | 4 (4Side) | | |
| | Digital Audio Output(s) | 1 (Side) | | |
| | USB | 2 (Side) | | |
| | Ethernet Connection(s) | 1 (Side) | | |
| Design features | Finish (Surface Color) | Black | | |
| | Table Top Stand (supply) | Separate (assembly required) | | |
| | VESA Hole Spacing Compatible | Yes | | |
| | VESA Hole Pitch | 11 7/8 x 11 7/8 inch (300 x 300 mm) | | 15 3/4 x 15 3/4 inch (400 x 400 mm) |
| Eco and energy saving | Screen Size (measured diagonally) | 65" (64.5") | 75" (74.5") | 85" (84.6") |
| | Rated Power Consumption | 239W | 363W | 367W |
| | Annual Power consumption | 190kWh/Year | 270kWh/Year | 342kWh/Year |
| | Power Consumption (in Standby) | 0.5W | | |
| | Power Requirements (voltage) | AC 120V for UL cUL AC 110-240V for other | | |
| | Power Saving Mode / Back Light Off Mode | Yes | | |
| | Dynamic Backlight Control | Yes | | |
| | LightSensor | Yes | | |
| | AC Power Input | C8 INLET(REAR) | | |
| Measurements | TV only (W x H x D) | 57 5/8x33 1/8x2 7/8 (21/32) inch (1462 x 841 x 71 (16) mm) | 66 1/2 x 38 1/4 x 2 7/8 (19/32) inch (1686 x 969 x 72 (15) mm) | 74 7/8 x 42 7/8 x 2 7/8 (2 1/32) inch (1899 x 1089 x 71 (16) mm) |
| | TV with Stand (W x H x D) | 57 5/8x35 3/8x13 1/2 inch (1462 x 905 x 340 mm) | 66 1/2 x 41 x 16 3/8 inch (1686 x 1042 x 414 mm) | 74 7/8 x 46 1/4 x 17 1/2 inch (1899 x 1174 x 442 mm) |
| | Package Carton (W x H x D) | 62 x 37 3/4 x 7 1/4 inch (1574 x 958 x 184 mm) | 71 3/8 x 43 5/8 x 7 3/8 inch (1810 x 1107 x 187 mm) | 80 1/4 x 48 5/8 x 10 1/4 inch (2036 x 1232 x 258 mm) |
| | TV only (Weight) | 47.8 lbs (21.7 kg) | 70.1 lbs (31.8 kg) | 97.2 lbs (44.1 kg) |
| | TV with Stand (Weight) | 49.8 lbs (22.6 kg) | 72.5 lbs (32.9 kg) | 100.5 lbs (45.6 kg) |
| | Gross weight (Package Carton) | 68.3 lbs (31 kg) | 94.8 lbs (43 kg) | 130.1 lbs (59 kg) |
| | Display specifications | Viewing Angle (Right/Left) | 178 (89/89) degree | |
| Viewing Angle (Up/Down) | | 178 (89/89) degree | | |
| Display Resolution | | QFHD | | |
| Aspect Ratio | | 16:9 | | |
| OS | | Android 9.0 Pie | | |
| Signage specs | Easy HTML5 Signage embedded | Yes | | |
| | Multicast / IPTV | Yes | | |
| Control specs | RS-232C Control | 1 (Side) | | |
| | Hotel Mode Pro | Yes | | |
| | IP Control | Yes | | |
| | HDMI auto wake-up | Yes | | |



Visual Imaging Cameras

Sony's professional 4K and Full HD visual imaging cameras take your video creation to a new level

Smooth, silent operation combined with a powerful zoom range: you'll capture every presenter and contributor with crisp clarity using our PTZ cameras.

The SRGs feature unique View-DR* and XDNR* and Clear Image Zoom* technology from Sony, ensuring you capture clarity at distance or in poor light environments.

The new Exmor R CMOS Sensor ensures high quality 4K* images with less noise.

The SRGs support multiple camera control protocols, multi stream codec as well as NDI®|HX offering great compatibility and flexible IP.

Control is easy, over standard IP networks as well as the ability to stream video over the same network connection.**



*4K update available by the end of March 2020
 **Camera model dependent

SRG Series



Ideal for a wide range of applications - from classrooms and meeting spaces to houses of worship, lecture halls and medical environments. The SRG Series feature smart monitoring features and standard compliance for easy network integration.



| Specifications | SRG-X400 | SRG-300H |
|------------------------------|---|---|
| Interface | HDMI, 3G-SDI and IP | HDMI |
| Sensor | 1/2.5 type ExmorR CMOS | 1/2.8 type Exmor CMOS |
| Signal format | 2160*1/29.97p, 25p, 23.98p (HDMI and IP only), 1080/59.94p, 50p, 29.97p, 25p, 23.98p, 1080/59.94i, 50i, 720/59.94p, 50p | 1080/59.94p, 50p, 29.97p, 25p, 1080/59.94i, 50i, 720/59.94p, 50p, 29.97p, 25p |
| NDI® HX* | Yes (Optional) | No |
| IP Streaming | Yes | No |
| Zoom | 30x (4K with CI2)/40x (HD with CI2) | Optical 30x, Digital 12x |
| Pan/Tilt Speed | Max. Pan: 300°/sec Max. Tilt: 126°/sec | Max. Pan: 100°/sec Max. Tilt: 90°/sec |
| Horizontal Viewing Angle | Approx. 70.0 degree (Wide) | Approx. 65 degree (Wide) |
| Preset Position | 256 (CGI), 100 (VISCA) | 16 |
| Broadcast Picture Adjustment | No | |
| Audio Input | Yes (2ch) | No |
| Genlock | No | |
| Power | DC 12 V, PoE+ | DC 12V |
| Control | RS-422, VISCA over IP, CGI | VISCA (RS-232 and RS422) and RJ45 VISCA over IP |
| Ceiling Mount | | Yes |



| Specifications | SRG-X120 | SRG-120DH | SRG-120DS | SRG-120DU |
|------------------------------|---|---|---|--|
| Interface | HDMI, 3G-SDI and IP | HDMI | 3G-SDI | USB |
| Sensor | 1/2.5 type ExmorR CMOS | 1/2.8 type Exmor CMOS | | |
| Signal format | 2160*1/29.97p, 25p, 23.98p (HDMI and IP only), 1080/59.94p, 50p, 29.97p, 25p, 23.98p, 1080/59.94i, 50i, 720/59.94p, 50p | 1080/59.94p, 50p, 29.97p, 25p, 1080/59.94i, 50i, 720/59.94p, 50p, 29.97p, 25p | 1080/59.94p (A/B), 50p (A/B), 29.97p, 25p, 1080/59.94i, 50i, 720/59.94p, 50p, 29.97p, 25p | 1080/59.94p, 50p, 29.97p, 25p, 720/59.94p, 50p, 29.97p, 25p, 15p |
| NDI® HX* | Yes (Optional) | No | | |
| IP Streaming | Yes | No | | |
| Zoom | 12x (4K/HD) | 12x | | |
| Pan/Tilt Speed | Max. Pan: 300°/sec Max. Tilt: 126°/sec | | | |
| Horizontal Viewing Angle | Approx. 70.0 degree (Wide) | Approx. 71 degree (Wide) | | |
| Preset Position | 256 (CGI), 100 (VISCA) | 16 | | |
| Broadcast Picture Adjustment | | No | | |
| Audio Input | Yes (2ch) | No | | |
| Genlock | | No | | |
| Power | DC 12 V, PoE+ | DC 12V | | |
| Control | RS-422, RJ-45 VISCA over IP, CGI | RS-232, VISCA, RJ-45 VISCA over IP | | RS-232, VISCA, RJ-45 VISCA over IP, UVC |
| Ceiling Mount | Yes | No | | |

* 1 Requires 4K optional license SRGL-4K

** SRG-X400: Black Color SRG-X400/W: White Color SRG-X120: Black Color SRG-X120/W: White Color SRG-300H: Black Color SRG-300H/W: White Color

For full product specifications and features please visit pro.sony/remotecameras



POV and BOX Cameras



The new compact SRG-XP1 POV and SRG-XB25 BOX remote cameras deliver high-quality images at 4K 60P alongside full IP connectivity, expanding its renowned remote camera line up. Users can select the wide-angle SRG-XP1 or the powerful optical zoom SRG-XB25, which offer users new options for sites that are hard-to-access or where there is no space for a full-sized camera and dedicated operator.



| Specifications | SRG-XP1* | SRG-XB25* |
|--------------------------|--|--|
| Interface | HDMI 2.0 / Ethernet / USB3.0 | HDMI 2.0 / Ethernet |
| Sensor | Sensor 1/1.8" 8.42MP CMOS | 1/2.5" 8.5MP CMOS |
| Signal format | 3840p/1080p/720p/480p (480p is only for HDMI) | |
| Frame Rate | 59.94/50/29.97/25 | |
| Video Streaming | Video Streaming RTSP / RTMP / NDI® HX (via optional license) / MPEG-TS | |
| Optical Zoom | No | 25X |
| Digital Zoom | Yes 4X | |
| Pan / Tilt / Zoom | ePTZ | No |
| Horizontal Viewing Angle | 102° (without lens distortion correction) | 68° |
| Audio Output | No | Yes |
| Audio Input | 3.5mm x1 | |
| Power | 12VDC +/-20% | |
| POE | Yes (IEEE802.3af) | |
| Control | VISCA over IP / ONVIF Profile S ** / CGI command / UVC | VISCA over IP / ONVIF Profile S ** / VISCA / CGI command |
| Ceiling Mount | YES. Tripod Mount (upper & lower) | |
| Dimension (H x W x D) | 2.02 x 2.85 x 4.79 inches | 2.79 x 3.15 x 7.02 inches |

* SRG-XP1: Black Color SRG-XP1/W: White Color SRG-XB25: Black Color SRG-XB25/W: White Color
** TBD Specifications subject to change at launch time

For full product specifications and features please visit pro.sony/remotecameras

BRC Series



From TV studios and sports stadiums to auditoriums, lecture theatres and houses of worship – our sophisticated, dependable BRC remote cameras capture and stream broadcast-quality video footage in detail-packed 4K or Full HD.



| Specifications | BRC-X1000 (4K) | BRC-X400 (4K) | BRC-H900 (HD) | BRC-H800 (HD) |
|------------------------------|---|---|--|---|
| Interface | 3G-SDI x2, HDMI | 3G-SDI, HDMI, IP | HD/SD-SDI, Composite, RGB/Component, S Video | 3G-SDI, HDMI |
| Sensor | 1.0-type Exmor R CMOS | 1/2.5 type Exmor R CMOS | 1/2 type Exmor 3xCMOS | 1.0 type Exmor R CMOS |
| Signal format | 2160/29.97p, 25p, 23.98p 1080/59.94p, 59.94i, 50p, 50i, 23.98p 720/59.94p, 50p | 2160/29.97p, 25p, 23.98p (HDMI and IP only), 1080/59.94p, 50p, 29.97p, 25p, 23.98p 1080/59.94i, 50i 720/59.94p, 50p | 60 Hz: 1080/59.94i, 720/59.94P, NTSC 50 Hz: 1080/50i, 720/50P, PAL | 1080/59.94p, 59.94i, 50p, 50i, 23.98p 720/59.94p, 50p |
| NDI® HX* | No | Yes (Optional) | No | |
| IP Streaming | No | Yes | No | |
| Zoom | 18x (4K with CIZ)/24x (HD with CIZ), Max. 48x (HD with CIZ and Tele Convert Mode) | 30x (4K with CIZ)/40x (HD with CIZ), Max. 80x (HD with CIZ and Tele Convert Mode) | 14x | 24x (with CIZ), Max. 48x (HD with CIZ and Tele Convert Mode) |
| Pan/Tilt Speed | 0.3°/sec ~ 60°/sec | Max. Pan: 300°/sec Max. Tilt: 126°/sec | 0.3°/sec ~ 60°/sec | |
| Horizontal Viewing Angle | Approx. 64.6 degree (Wide) | Approx. 70.0 degree (Wide) | Approx. 59.6 degree (Wide) | Approx. 64.6 degree (Wide) |
| Preset Position | 100 | 256 (CGI), 100 (VISCA) | 16 | 100 |
| Broadcast Picture Adjustment | Gamma/Knee/Detail/ Black gamma/Color matrix | Gamma/Knee/Black Gamma/ Color Matrix | Gamma/Knee/Detail/ Black gamma/Color matrix | |
| Audio Input | No | Yes (2ch) | No | No |
| Genlock | Yes | | | |
| Power | DC12 V, PoE+ | | DC 12 V | DC12 V, PoE+ |
| Control | RS-422 (VISCA)/RJ-45 (VISCA over IP) RS-422 (VISCA)/RJ-45 (VISCA over IP) | | RS-232C, RS-422 (VISCA)/ RJ-45 (VISCA over IP (Optional)) | RS-422 (VISCA)/RJ-45 (VISCA over IP) |
| Ceiling Mount | Yes | | | |

*1 with Dual link 3G-SDI (2SI only) for 4K video output

* BRC-X1000/1: Black Color BRC-X1000/W/PW: White Color BRC-H800/1: Black Color BRC-H800/W/PW: White Color BRC-X400: Black Color BRC-X400/W: White Color

For full product specifications and features please visit pro.sony/remotecameras

RM-IP10



Up to 5 controllers can operate on a single network

- Up to 5 RM-IP10 control panels can be used on a single network allowing shared control and simultaneous multi-operator control of large camera systems.

Simple RJ-45 (10Base-T/100Base-TX) connection for easy connection

- The RM-IP10 links to an IP network with via a RJ-45 connector providing very easy, low cost and speedy installation.

Control of up to 112 SRG/BRC cameras via IP

- The RM-IP10 remote control panel gives you control of up to 112 BRC cameras over an IP network.

Additional ability to use VISCA control

- The RM-IP10 can also control up to 7 SRG/BRC cameras over a traditional VISCA (Video System Control Architecture) network.

RM-IP500



Control up to 100 BRC or SRG cameras via IP

- SRG-300 and SRG-120 series are newly supported.

High-quality control of PTZF functions

- Pan and tilt adjustment with joystick.
- Zoom control either via joystick or a separate seesaw lever.
- Adjustable speed control of PTZF via dedicated dials.

Store and recall camera presets

- Up to 100 presets (camera angles and settings) can be stored.
- Presets can be recalled instantly via the numeric keypad.

Simple set-up

- Automatic IP address assignment of connected cameras.
- Auto assignment of camera.

Visual Simulation and Visual Entertainment

Every projector in our simulation and visualization line-up delivers stunning high contrast, native 4K images. At more than four times the resolution of Full HD, it guarantees an astonishingly detail-packed experience, with richer color and unbeatable image quality.

Whether you're creating a flight simulation for pilot training, a Planetarium, or sharing a finely-detailed visualization for an automotive design, our projectors can provide you with the very best picture.

For full product specifications and features please visit pro.sony/SXR



Laser Light Source Projectors



Sony combines the best of its projection technologies, 4K Pro SXR D imagery and laser light source technology, to create projectors with native 4K resolution.

VPL-GTZ380



Cutting-edge Sony imaging technologies allow the VPL-GTZ380 to effortlessly reproduce high-brightness images with stunning richness, color and detail in a remarkably compact chassis.

- Native 4K resolution
- 10,000 lumens brightness
- Super high contrast
- DCI-P3 wide color gamut
- High performance picture processor, "X1™ Ultimate for projector"
- HDR compatible
- Compact body size with four-corner mounted design
- Liquid cooling system and streamlined airflow design with low-noise operation
- Long-life optics with virtually zero maintenance up to 20,000h*
- Sealed optics for dust-resistance
- 4K 120Hz and 4K 3D support with dual input**
- Low transport delay
- Smear reduction
- Infrared light output for night vision goggle simulation**

*The actual value depends on the usage environment.
**Required optional license

VPL-GTZ280



High-speed signal processing, fast motion blur reduction, infrared light output for night vision, and vibration resistance - all ideal for visualisation, simulation and training applications.

- Exclusive SXR D chip provides native 4K resolution and high contrast ratio.
- 2,000 lumens brightness (5,000 lumens with optional upgrade).
- Quad DisplayPort inputs.
- 4K 3D capability for reliable simulation*.
- Deep blacks reduce white band visibility for multi-projector blending.
- Long life optics, up to 20,000h (up to 40,000h in low brightness mode).
- Dust resistance by sealed optics.
- Constant brightness mode and periodic auto calibration for enduring image quality.
- High-speed motion functions: 4K 120Hz input, smear reduction, transport delay reduction*.
- Infrared light output for night vision simulation*.
- Angle-free installation and vibration endurance for motion based system.
- Whisper quiet operation less than 35dB.
- HDR (High Dynamic Range) Gamma*.

VPL-GTZ270



4K Pro SXR D up to 5,000 lumens. An extremely high contrast ratio, high dynamic range and wide color space - ideal for visual entertainment applications including planetariums, theme parks, and museums.

- Exclusive SXR D chip provides native 4K resolution and high contrast ratio.
- Flexible input capabilities: 2 x DisplayPort, 2 x HDMI
- 'Reality Creation' upscaling.
- HDR (High Dynamic Range)*.
- Wide Color Space - covers full DCI range and simulated BT2020.
- 4K 3D capability.
- Deep blacks reduce white band visibility for multi-projector blending.
- Less maintenance.
- Long life optics, up to 20,000h (up to 40,000h in low brightness mode).
- Dust resistance by sealed optics.
- Angle-free installation.
- Constant brightness mode and periodic auto calibration for enduring image quality.
- Robust chassis for easy handling and self stack capability.
- Whisper quiet operation less than 35dB.

*Optional

VPL-GTZ240



Combining 4K Pro SXR D imagery and Z-Phosphor™ laser light source technology, to create a compact size projector with native 4K resolution, high-speed signal processing, fast motion blur reduction and vibration resistance - all ideal for visualization, simulation, and training applications.

Advanced Usability

- Advanced Laser Light Source.
- 2,000 lumens brightness.
- Rugged chassis with motion based operation.
- 2 x HDMI inputs.
- Long-life optics up to 20,000h.
- Low noise operation.
- Quick start enhances operation.
- Low transport delay.
- Changeable lens.
- Compact design.

Great Image Quality

- Native 4K resolution.
- Excellent color reproduction.
- Super high-contrast ratio.
- Reality Creation 4K upscaling.
- Advanced motion blur reduction.

Multi Projection Usability

- Pre-adjusted brightness and color temperature for multi projection.

Classification



Featuring

HDMI 4K SXR D

For full product specifications and features please visit pro.sony/SXR D

| Specifications | | VPL-GTZ240 | VPL-GTZ270 | VPL-GTZ280 | VPL-GTZ380 | |
|--|--|---|---|---|---|---|
| Display system | | 4K Pro SXRD panel, projection system | | | | |
| Size of effective display area | | 0.74" x 3 | | | | |
| Number of pixels | | 26,542,080 (4096 x 2160 x 3) pixels | | | | |
| Projection lens ² | Focus | Powered | | | | |
| | Zoom | Powered | | | | |
| Light source | | Laser diode | | | | |
| Light output | Standard | 2,000 lm | 5,000 lm | 2,000 lm | 10,000 lm | |
| | using the LSM-BRINT optional upgrade | - | - | 5,000 lm | - | |
| Color light output | Standard | 2,000 lm | 5,000 lm | 2,000 lm | 10,000 lm | |
| | using the LSM-BRINT optional upgrade | - | - | 5,000 lm | - | |
| Contrast ratio | Native (conditions apply) | 16,000:1 ^{*1} | Up to 20,000:1 ^{*1} | Up to 20,000:1 ^{*1} (native contrast) | Up to 16,000:1 ^{*1} (native contrast) | |
| | Dynamic | ∞ | ∞ | ∞ | ∞ | |
| Accepted digital signals ³ | VGA, SVGA, XGA, WXGA (1280x768), Quad-VGA, SXGA, 720x480/60p, 720x576/50p, 1280x720/50p, 1280x720/60p, 1920x1080/24p, 1920x1080/50p, 1920x1080/60p, 3840x2160/24p, 3840x2160/50p, 3840x2160/60p, 3840x2160/100P, 3840x2160/120P, 4096x2160/24p, 4096x2160/50p, 4096x2160/60p, 4096x2160/100P, 4096x2160/120P | | • | • | • | |
| | VGA, SVGA, XGA, WXGA (1280x768), Quad-VGA, SXGA, 720x480/60p, 720x576/50p, 1280x720/50p, 1280x720/60p, 1920x1080/50i ^{*4} , 1920x1080/60i ^{*4} , 1920x1080/24p, 1920x1080/50p, 1920x1080/60p, 3840x2160/24p, 3840x2160/25p ^{*4} , 3840x2160/30p ^{*4} , 3840x2160/50p, 3840x2160/60p, 4096x2160/24p, 4096x2160/25p ^{*4} , 4096x2160/30p ^{*4} , 4096x2160/50p, 4096x2160/60p | | • | • | • | |
| Accepted signals | 480/60p, 576/50p, 720/60p, 720/50p, 1080/60i, 1080/50i, 1080/60p, 1080/50p, 1080/24p, 3840 x 2160/24p, 3840 x 2160/25p, 3840 x 2160/30p, 3840 x 2160/50p, 3840 x 2160/60p, 4096 x 2160/24p, 4096 x 2160/25p, 4096 x 2160/30p, 4096 x 2160/50p, 4096 x 2160/60p | • | | | | |
| Color bit depth | | Up to 12 bit | Up to 12 bit via HDMI / Up to 10 bit via Display Port | Up to 10 bit | Up to 10 bit | |
| OSD language | 18-languages | English, Dutch, French, Italian, German, Spanish, Portuguese, Turkish, Russian, Swedish, Norwegian, Japanese, Simplified Chinese, Traditional Chinese, Korean, Thai, Arabic, Polish | | | | |
| INPUT OUTPUT (Computer/Video/ Control) | HDMI 1 / HDMI 2 | 2 inputs (HDCP 2.2 x 2), Digital (RGB/Y Pb/Cb Pr/Cr) | • | • | | |
| | DISPLAY PORT | 4 inputs (HDCP 1.3 x 2, HDCP 1.3 for V Split x 2), Digital (RGB) | | | • | |
| | TRIGGER | | 2 connectors, Mini jack, DC 12V Max.100 mA | | | |
| | ROMOTE | RS-232C, D-sub 9-pin (female) | | • | • | • |
| | | RS-232C, D-sub 9-pin (male) | • | | | |
| | LAN | | RJ45, 10BASE-T/100BASE-TX | | | |
| | IR IN / OUT | | IN:1, Out:1, Mini jack | | | |
| | SYNC | | IN:1, Out:1 | | | |
| USB | | Type A | | | | |
| Acoustic noise | Standard | 39 dB | | 30 dB ~ 35 dB ^{*1} | 30 dB ~ 35 dB ^{*1} | |
| Operating temperature / Operating humidity | 41°F to +104°F (5°C to 40°C)/20% to 80% (no condensation) | • | • | • | • | |
| Storage temperature / Storage humidity | 14°F to +140°F (-10° to + 60°)/20% to 80% (no condensation) | • | • | • | • | |
| Power requirements | AC 220 V to 240 V, 6 A, 50/60 Hz (For Europe and China) AC 100 V to 240 V, 12 A to 6 A, 50/60 Hz (For the other countries) | • | • | • | • | |
| Power consumption: High | | MAX. 1.2 kW | | | | |
| Power consumption (Standby mode, When "Remote Start" is set to "Off") | | 0.4 W | | | | |
| Power Consumption (Networked Standby Mode, When "Remote Start" is set to "On") | | 0.6 W | | | | |
| Heat dissipation | | 1671 BTU/h | 4092 BTU/h | 4092 BTU/h | 4092 BTU/h | |
| Dimensions (W x H x D) (without protrusions) | 21 21/32 x 8 31/32 x 29 17/32 in (550 x 228 x 750 mm) | | • | • | • | |
| | 22 1/16 x 8 25/32 x 19 17/32 in (560 x 223 x 496 mm) | • | | | | |
| Dimensions (W x H x D) | 21 21/32 x 10 5/16 x 29 17/32 in (550 x 262 x 750 mm) | | • | • | • | |
| | 22 x 9 x 19.5 in (560 x 230 x 496 mm) | • | | | | |
| Mass | | Approx. 43 lb (19.5 kg) (without lens) | Approx. 88 lb (40 kg) (excluding lens) | Approx. 88 lb (40 kg) (excluding lens) | Approx. 88 lb (40 kg) (excluding lens) | |
| Supplied accessories | RM-PJ29 Remote Commander (1), Size AA (R6), Manganese Batteries (2), AC Power Cord (1), Operating Instructions (CD-ROM) (1), Safety Regulations (5) | | | | | |

*1 This value is approximate. Depends on the projector setting condition and usage environment

*2 The lenses are optional accessories

*3 60p,30p,24p include 59.94/60Hz, 29.97Hz/30Hz, 23.98Hz/24Hz

*4 Available via HDMI input

VPL-GTZ380, VPL-GTZ270, VPL-GTZ280, VPL-GTZ240

Optional accessories



VPLL-Z7008
0.80:1 to 1.02:1



VPLL-Z7013
1.27:1 to 2.73:1

© 2020 Sony Corporation.

All rights reserved. Reproduction in whole or in part without permission is prohibited. Features and specifications are subject to change without notice. All non-metric weights and measurements are approximate. 'Sony' is a registered trademark of Sony Corporation. All other trademarks are the property of their respective owners.

Errors and omissions excepted.

Visit pro.sony

Follow us on [@sonyProUSA](https://twitter.com/sonyProUSA)

Join the conversation [#SonyPro](https://twitter.com/sonyPro)

Download our mobile app [Pro USA by Sony](#)



SONY