

# EV9



Movement that inspires



First time for all  
**The Kia EV9**

Technology, space, and sustainability,  
 a combination that will set new standards of luxury.

The Kia EV9 is a large, electric SUV that presents the future of mobility life.



EV9 digital catalog  
 (Web / PC)



EV9 digital catalog  
 (Mobile)

# The birth of an electric SUV that everyone has been dreaming about

Unprecedented freedom, space, and innovation waiting to be experienced.  
The story of a new lifestyle begins.



Earth Full Option (Snow White Pearl)

Specifications may vary according to the trim and options that are selected.



Earth Full Option (Ivory Matte Silver) / Specifications may vary according to the trim and options that are selected.

Specifications may vary according to the trim and options that are selected.



Earth Full Option (Panthera Metal) / Specifications may vary according to the trim and options that are selected.

# Design

A bold and modern design that conveys the powerful presence of a large electric SUV is combined with innovative technology to complete EV9's unique beauty.



Digital pattern lighting grille / Small cube projection LED headlamp / LED daytime running lights  
21" Hyper Silver wheel

Specifications may vary according to the trim and options that are selected.



Earth Full Option (Ivory Matte Silver) / Specifications may vary according to the trim and options that are selected.

# Exterior

A clean and refined tailgate connects with the shoulder line's sleek edge to establish a striking and elegant presence that is unique to large SUVs.



LED rear combination lamp



Auto-flush door handle

Earth Full Option (Panthera Metal) / Specifications may vary according to the trim and options that are selected.



1. Recycled PCM plastic from plastic waste

2. Recycled PET yarns from plastic bottles

3. Bio plastic from sugar cane

4. Recycled PET fabric from plastic bottles

5. Non-toxic, BTX-free paint

6. Recycled PET/nylon carpeting from plastic bottles and fishing nets

7. Bio PU from corn starch

8. Bio paint made with vegetable oil

# 10 Must Have Sustainable Items

To respect nature and conduct social responsibility, Kia is striving to create sustainable, eco-friendly products and services using 10 must-have sustainable items including recycled plastic.

9. Bio PU foam made with vegetable oil

10. Recycled PET felt from plastic bottles



# Interior Detail



Ambient light



Illuminated steering wheel emblem



Column-type electronic shift lever



Panoramic wide display (with integrated info / air conditioning)



Meridian premium sound system  
(14 speakers, external amplifier)



1st-row cup holder cover



Extendable center console



Earth Full Option 2nd-row Swivel Seat (Light Gray Interior) / Specifications may vary according to the trim and options that are selected.

# Space

Four E-GMP-based seating configurations and a bigger interior space help to fill every day with meaningful moments that you will want to remember.



1st-row relaxation comfort seats

Specifications may vary according to the trim and options that are selected.



# Seats

As the first electric model in the world with 4 seat configurations and the first large electric SUV in Korea with 3 rows of seats, EV9's interior can be reconfigured according to users' needs and preferences for more colorful experiences.



6-seater with standard seats



7-seater with standard seats





Earth Full Option 6-seater Swivel Seat (Light Gray interior)

**2nd-row swivel seats (6-seater)**

2nd-row swivel seats can rotate inward 180 degrees to face the 3rd row, providing greater functionality and convenience that can support a new lifestyle.

※ Swivel seats can also rotate outward 90 degrees.



Earth Full Option 6-seater Relaxation Seat (Light Gray interior)

**2nd-row premium relaxation seats (6-seater)**

1-touch relaxation seats with a built-in massage function in the 2nd row offer comfort and relaxation to help relieve occupants' fatigue.

※ Includes the Dynamic Body Care function

# Convenience



**Independently controlled 3-zone full auto+ air conditioning system & Roof diffuser air vents**  
 An independent rear seat air conditioning system maximizes passengers' comfort by allowing rear seat passengers to adjust cooling and heating independently. Diffusing air vents in the roof allow passengers to regulate direct wind according to their needs.  
 ※ The operation of the air conditioning system's independent control function may be limited under certain conditions (such as outside temperature).



**2nd-generation LED interior lighting system (dimmable)**  
 Passengers can control the brightness of interior lighting for greater comfort.



**Rear seat control**  
 Allows 2nd- and 3rd-row seats folding/unfolding, 2nd-row seat position adjustment, and seat warming/ventilation control through the infotainment system display for greater passenger convenience.

**After blow**  
 Dries condensation that forms after using the air conditioner to prevent odors for a more pleasant cabin environment.



**Front trunk / Trunk**  
 Bigger and more ample cargo spaces support a more leisurely mobility life.



**2nd-row tilting 1-touch walk-in**  
 1-touch tilting walk-in buttons on the top and bottom of 2nd-row seats provide easy access to the 3rd row without the need to manually displace the car seats.  
 ※ Standard option for the 7-seater / Applicable to the 2nd-row seat behind the front passenger seat.



**Parabolic motion glovebox**  
 The glovebox opens in a parabolic motion for greater storage convenience.

**3rd-row utilities**  
 Amenities such as cup holders for 3rd-row passengers and a USB type-C port provide 1st-row comfort to 3rd-row passengers.

# Technology



## Kia Digital Key 2

Conveniently lock/unlock the doors or start the engine with a smartwatch or smartphone instead of a smart key.

※ Information on Digital Key 2 service activation and device compatibility can be found in Kia Connect ([connect.kia.com](https://connect.kia.com)).



## Over-the-air software update

Update software wirelessly when an update is available by confirming consent when the car is in park or when the ignition is turned off.

※ Images on the infotainment system screen may change depending on the update.

## e hi-pass

e hi-pass can be requested and linked to Kia CarPay to make toll payments without the need to keep a physical card in the vehicle.

※ Service providers: Hyundai Card (other card companies are expected to follow)



## Head-Up Display

A large, high-definition 12" head-up display shows key driving information from the cluster and navigation.



## Fingerprint authentication system

Fingerprint recognition can be used to validate in-vehicle payments, cancel valet mode, and start/drive the vehicle.



## Built-in Cam 2

High-resolution cameras in the front and back provide excellent quality images day and night and can record/store video and audio. Supports large external memory cards and can be connected to the Kia Connect for services such as incident alerts and to record/store information such as GPS vehicle location to help you stay in control.

# Kia Connect Store

Choices that you make at the time of purchase do not have to determine the future of your car life. Through the Kia Connect Store, you can add new features anytime, anywhere, for as long as you want, or for the rest of your life even after completing the purchase of your car.



※ Details can be found in the Kia Connect Store. Images and contents of the Kia Connect Store are subject to change without notice.



## 1. Lighting patterns



Diverse lighting patterns offer users a variety of experiences. Buy lighting patterns from the Kia Connect Store and create a unique look for your car.

- Standard patterns provided
 

기본차 COMPLETE	GT-line FOCUSED
--------------	-----------------
- Additional patterns
 

EFFICIENT	ACTIVE	TECHNICAL
ELEGANT	SOLID	

- ※ Lighting patterns are only available for vehicles with the digital pattern lighting grille.
- ※ The additional patterns can be purchased through the Kia Connect service.
- ※ Additional patterns are shown on images of the standard model. Pattern movements apply equally to the GT-line.

## 2. Streaming Plus



Enjoy a better media streaming experience by watching videos or listening to high-quality music through the car's infotainment system without the need to connect a separate device.

- Video Streaming
 

**WATCHA wavve**
- Music streaming
 

**Melón genie**

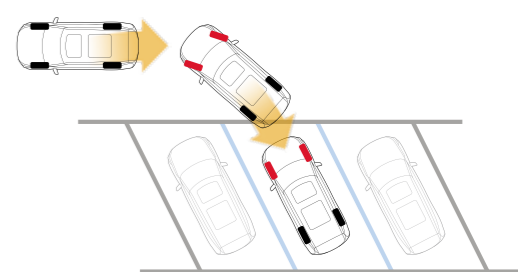
- ※ Video streaming works only when the vehicle is in the park position.
- ※ Streaming Plus is a data plan for streaming services. Separate subscriptions to streaming content providers are necessary to use this service.
- ※ Video/music streaming service subscriptions need to be linked to Streaming Plus using the Kia Connect app.
- ※ Media streaming content providers supported by Streaming Plus may change or be discontinued depending on the content providers' circumstances.

## 3. Remote Smart Parking Assist 2



Helps to park or pull out the car while remaining inside or outside of the vehicle.

- \* Remote: forward/reverse movement, perpendicular/parallel/angle parking in reverse
- \* Smart (controlled from inside the vehicle) : Parallel forward exit, perpendicular/parallel/angle parking in reverse



- ※ ADAS is only intended to assist the driver. Be attentive while driving at all times.
- ※ Functions may not operate smoothly due to road or driving conditions.
- ※ Remote Smart Parking Assist 2 is only available for vehicles equipped with a Surround View Monitor (SVM). The smart key will come equipped with Remote Smart Parking Assist buttons (Forward/Reverse).

Specifications may vary according to the trim and options that are selected.

# Performance

Discover a comfortable yet dynamic drive that is unlike any that you have experienced before.



19" - tire 2WD model				21" - tire 4WD model			
Range per charge	High capacity battery	Max. power	Max. torque	Range per charge	High capacity battery	Max. power	Max. torque
501 km	99.8 kWh	150 kW	350 Nm	454 km	99.8 kWh	283 kW	600~700 Nm
				<small>※ 700 Nm with the boost option, 600 Nm without</small>			

Earth Full Option (Ocean Blue) / Specifications may vary according to the trim and options that are selected.

# Driving Technology & Safety



**Hands-On Detection**  
Capacitive sensors recognize mere touches of the steering wheel to determine if the driver is in a "hands-on" state to provide a more comfortable driving experience.



**Crosswind Stability Control**  
Minimizes lateral movement caused by strong winds with partial braking and steering torque control to provide a more stable drive while driving at high speeds.



**Dynamic torque vectoring\***  
Stable cornering is provided while turning with partial braking and driving torque control.

\* A virtual image has been used to help viewers' understanding. / Specifications may vary according to the trim and options that are selected.

# ADAS

Kia's advanced driver assistance systems promote safety and convenience while driving as well as parking.



## Highway Driving Assist 2 (includes Lane Change Assist)

Helps to maintain a preset speed and a safe distance from the vehicle in front while cruising on an expressway or highway. Helps to keep the center of the lane even on a curved road. Steers the car away from vehicles in adjacent lanes that get dangerously close while maintaining the lane. Automatically changes the lane if the driver activates the turn signal while holding on to the steering wheel and the car is cruising above the minimum required speed.



## Lane Keeping Assist 2

Helps to keep the center of the lane using "steering angle control" instead of "torque control," providing superior control versus the original Lane Keeping Assist.



## Navigation-based Smart Cruise Control

Helps to maintain a safe speed according to road conditions while driving on an expressway or highway. Automatically reduces the speed before entering a safety zone, curved section, or entry/exit of an expressway or highway. Resumes acceleration to preset levels thereafter.



## Reverse Parking Collision-avoidance Assist

Alerts the driver if there is a risk of colliding with an object in the back while pulling out in reverse. Helps to brake the car automatically if the risk of colliding increases even after sounding an alarm.



## Rear Cross-traffic Collision-avoidance Assist

Alerts the driver if a car is approaching from the left or right while pulling out in reverse. Helps to brake the car automatically if the risk of colliding increases even after sounding an alarm.



### Forward Collision-avoidance Assist

Monitors the surroundings while driving and alerts the driver if there is a danger of collision. Helps to brake the car automatically if the vehicle in front stops abruptly or if the risk of colliding with a car, pedestrian, or cyclist in front continues to increase even after sounding an alarm. Helps to brake the car automatically if the turn signal is activated and there is a risk of colliding with an oncoming vehicle in the opposite lane while making a left turn or with a vehicle approaching from the left or right while crossing an intersection. In addition, it automatically helps to brake the car if there is a risk of colliding with an oncoming vehicle in the opposite lane. Moreover, it steers the car away from vehicles in the opposite or adjacent lanes if there is a risk of colliding while making a lane change. Finally, it automatically helps to evade cars, pedestrians, or cyclists on the edge of the road as well as vehicles in the back in an adjacent lane while making a lane change.



### Remote Smart Parking Assist 2

Helps to park or pull out the car remotely from the outside. Sensors detect parking spaces and automatically help to move and steer the car into place. Automatically stops the car if an obstacle is detected. The driver can activate remote parking or move the car forward/backward remotely from the outside using the smart key. In addition, the driver can operate the smart park/exit function using buttons inside the vehicle. Compared to the first version, parking accuracy has been improved with parking line recognition. Angle parking has been added and remote forward/reverse performance has been improved.



### High Beam Assist

Recognizes surrounding light sources and illumination, including lamps from vehicles in front and opposite lanes, to automatically adjust the high beams.



### Safe Exit Assist

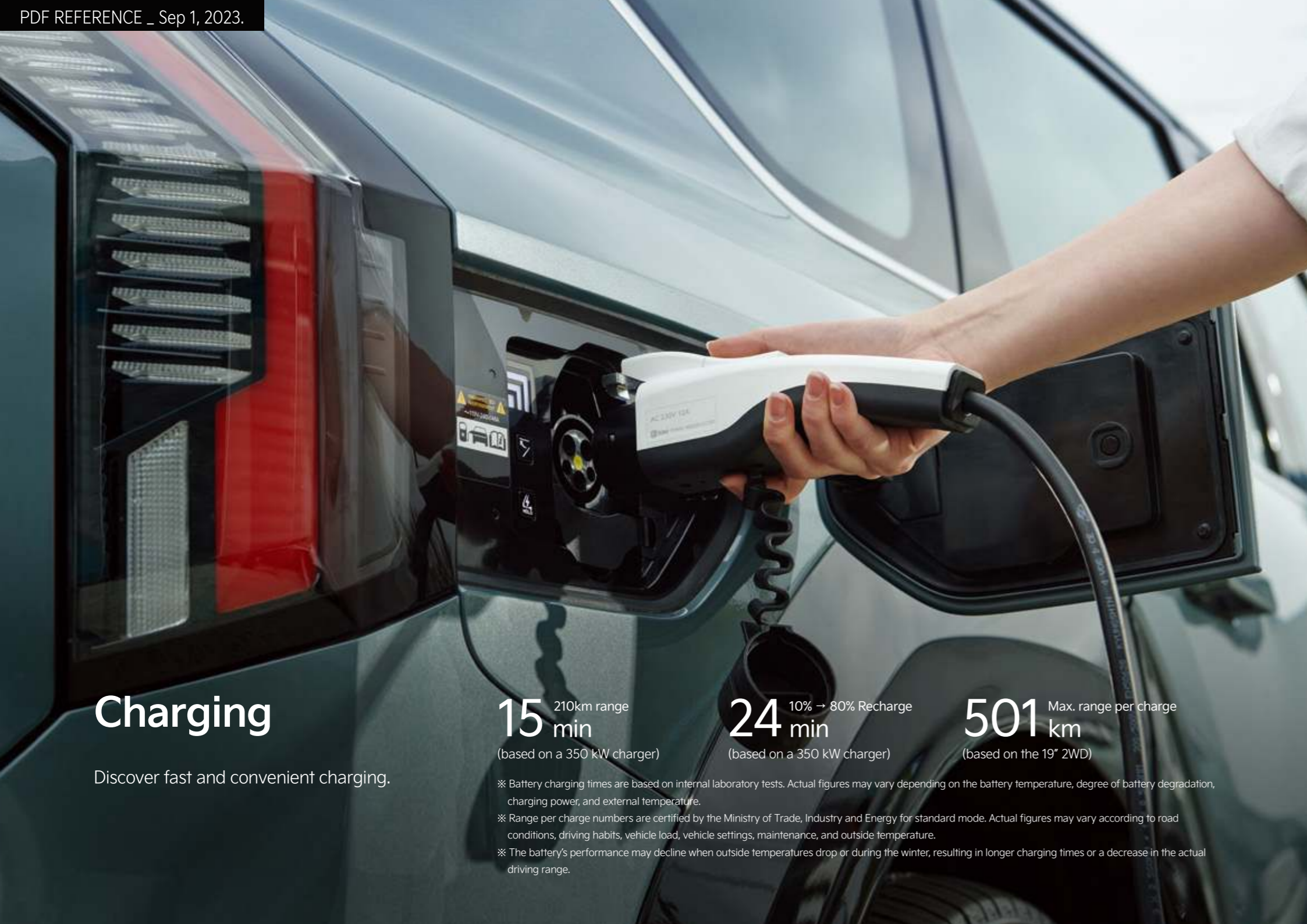
Sounds an alarm if a passenger tries to disembark while a car is approaching from the back in an adjacent lane. Keeps the electronic child safety lock locked and helps to prevent the doors from opening even if the driver unlocks the doors if the risk of colliding continues to increase.



### Front/Rear Parking Distance Warning

Alerts the driver against nearby objects to avoid collisions while moving at low speeds.





# Charging

Discover fast and convenient charging.

**15 min** 210km range  
(based on a 350 kW charger)

**24 min** 10% → 80% Recharge  
(based on a 350 kW charger)

**501 km** Max. range per charge  
(based on the 19" 2WD)

- ※ Battery charging times are based on internal laboratory tests. Actual figures may vary depending on the battery temperature, degree of battery degradation, charging power, and external temperature.
- ※ Range per charge numbers are certified by the Ministry of Trade, Industry and Energy for standard mode. Actual figures may vary according to road conditions, driving habits, vehicle load, vehicle settings, maintenance, and outside temperature.
- ※ The battery's performance may decline when outside temperatures drop or during the winter, resulting in longer charging times or a decrease in the actual driving range.

# EV Experience



**Automatic billing system for charging (Plug and Charge)**  
 User identification and charging begin as soon as the charging cable is connected. Payment is processed automatically once charging is complete.  
 ※ Initial app enrollment and payment method registration is required.



**Indoor V2L outlet**  
 An indoor V2L outlet allows the use of diverse electronic devices inside the vehicle without depleting the vehicle's battery.



**External V2L connector**  
 An external V2L connector allows the use of diverse electronic devices outside of the vehicle, providing added convenience for users to enjoy a wider array of outdoor activities.

※ V2L : Vehicle-to-load ※ Power consumption (at normal room temperature) : Approx. 80 kWh / Max. power 3.6 kW ※ Specifications may vary according to the trim and options that are selected.

Experience a new kind of freedom for the first time

# EV9 GT-line

Powerful, bold touches complement EV9's confident look to create the GT-line.

Bold and uninhibited energy supplement powerful driving to breathe new inspiration into life.



GT-line full option (Iceberg Green)



GT-line full option excluding HDP (Pebble Gray)

# GT-line Exterior



Exclusive GT-line front bumper (GT-line full option)

Exclusive GT-line front bumper (GT-line full option excluding HDP)

21" Dark Silver wheel

Bridge-type black roof rack

Specifications may vary according to the trim and options that are selected.



GT-line Full Option (Iceberg Green) / Specifications may vary according to the trim and options that are selected.



GT-line Full Option (Black & White interior) / Specifications may vary according to the trim and options that are selected.

# GT-line Interior



Digital center mirror  
Hidden-type touch button



Suede headlining  
Digital side mirror

Specifications may vary according to the trim and options that are selected.



## Highway Driving Pilot(HDP)

Maintain the lane and keep a safe distance from the vehicle in front without having to hold the steering wheel while driving on main expressways and highways.

### Highway Driving Pilot(HDP) usage scenario

Discover a new kind of freedom and convenience while driving with "hands-off" Level 3 conditional autonomous driving technology.



1. Position the car in a lane of a main highway



2. Activate the HDP button



3. Begin HDP hands-free driving

### Highway Driving Pilot (HDP)

- HDP operates in expressways and highways. It does not work if the road does not have a physical structure, such as a median, that separates the road.
- HDP does not function at interchanges (IC/JC) or variable lane entry points. Operation may be limited or restricted in tunnels and underpasses depending on circumstances.
- HDP offers Level 3 conditional driving autonomy. It may require the driver to take control, and the driver must be ready to do so at all times.
- HDP will ask the driver to take control if the vehicle goes outside of operating range or if driver intervention is required. If the driver does not respond within 10 seconds, the vehicle will flash the hazard warning lamps and make an emergency stop inside the lane. As this may lead to a collision with vehicles in the back, the driver must not fail to take control.
- HDP may not detect every object around the vehicle. The driver must be ready to take the wheel at all times.
- HDP only functions when the vehicle is traveling below the 80 km/h operational speed limit. The limit can vary depending on driving conditions.
- The driver must remain alert and ready to take direct control of the vehicle at all times in case HDP becomes disengaged.
- HDP's operation depends on the condition of the road, surroundings, vehicle, and driver. Operation may be limited or restricted depending on the circumstances.
- HDP's operation may be limited if lidars are automatically calibrated after the vehicle is started.
- HDP's operation may be restricted during rainfall/snowfall, when outside temperature is not within the recommended range (about 5°C to 39°C), and at night (before sunrise and after sunset).
- HDP's operation may be restricted if the system cannot verify the driver's condition due to glasses (or sunglasses) that block infrared light.
- Sensors used for HDP's operation must be kept free of obstructions and contamination. HDP may not function properly if sensors are obstructed or contaminated. It may disengage if contamination or obstruction occurs while driving. (Relates to contamination of the Lidar/radar/camera surface or mounting of a trailer/carrier, etc.).
- Normal operation of HDP may be limited if the software is not kept up to date. To ensure proper operation, maintain a Kia Connect "Basic" service subscription and update the software whenever notified.
- Precision map updates are supported for up to 8 years after discontinuation (from the last day of production) of models equipped with HDP. Precision map updates are required to use HDP.
- HDP will be upgraded continuously through over-the-air software updates (operating speed improvement, etc.).
- HDP operation guidelines are subject to change. Detailed guidelines will be posted once HDP is introduced.

# Equipment



19" machined finish wheel



20" machined finish wheel



21" Hyper Silver wheel



21" Dark Silver wheel (GT-line only)



Slim projection LED headlamp / Matte black front garnish



Matte black bumper



Smart power tailgate



Standard glove box



2nd-row manual side sun curtains



Premium bio-synthetic leather seat



Standard cup holder



Luggage net



Standard center console



Electronic Chromic Mirror



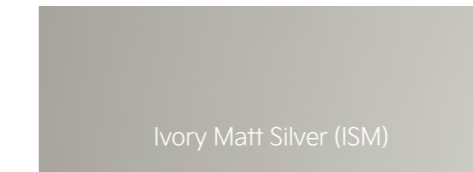
1st/2nd-row ventilated seats\*



1st/2nd-row heated seats\*

# Exterior Color

## Matt Colors



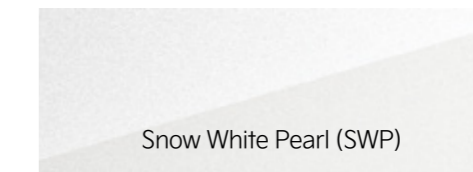
Ivory Matt Silver (ISM)



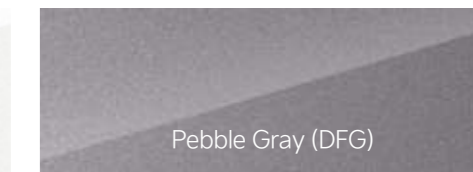
Ocean Matt Blue (OBM)

※ Matt colors are not available together with the digital-pattern lighting grille.

## Glossy Colors



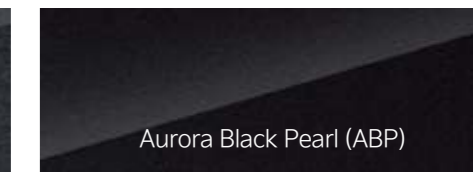
Snow White Pearl (SWP)



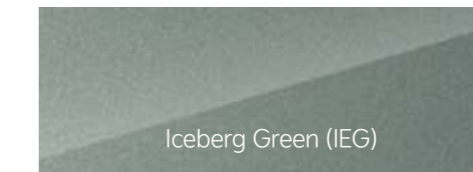
Pebble Gray (DFG)



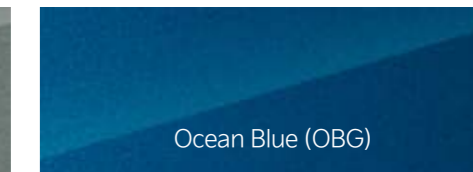
Panthera Metal (P2M)



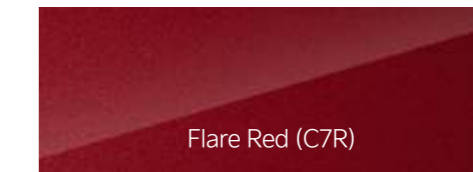
Aurora Black Pearl (ABP)



Iceberg Green (IEG)



Ocean Blue (OBG)



Flare Red (C7R)

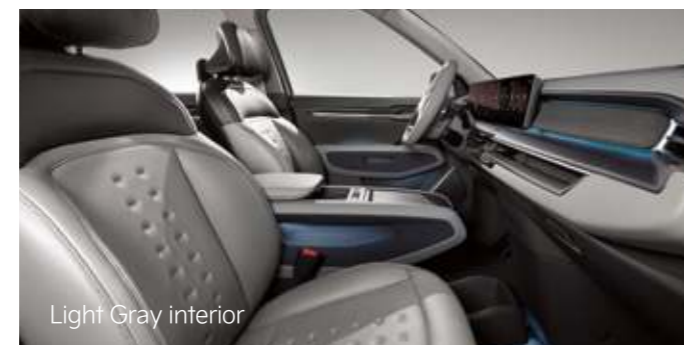
\* A virtual image has been used to help viewers' understanding. / Specifications may vary according to the trim and options that are selected.

# Interior Color

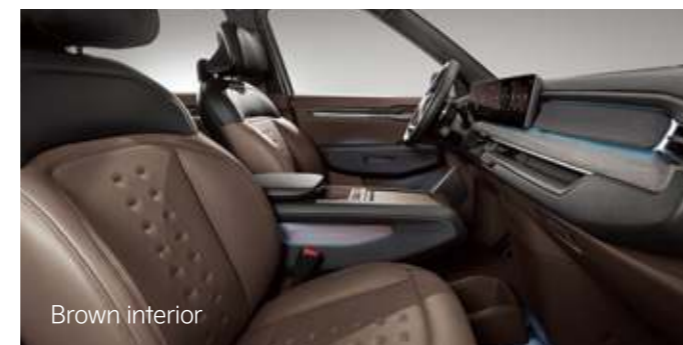
## Air / Earth



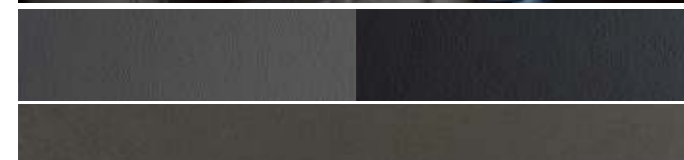
Black interior



Light Gray interior



Brown interior



※ Image depicts Earth Full Option.

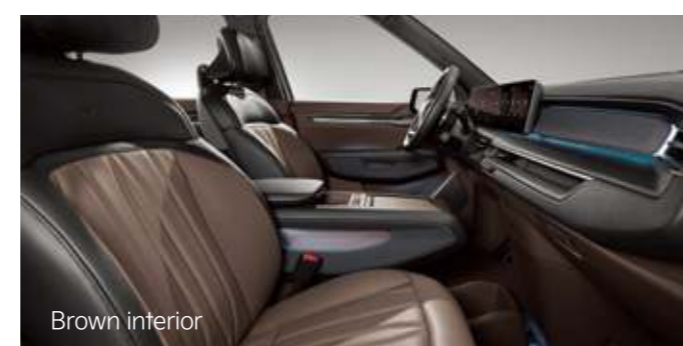
## GT-line



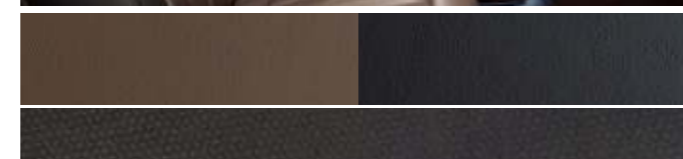
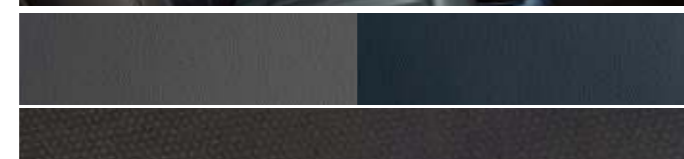
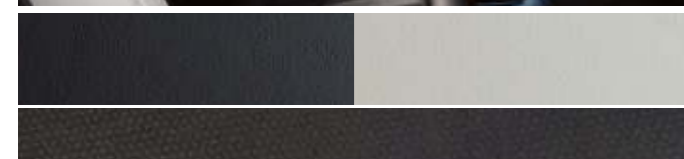
Black&White interior



Navy interior



Brown interior



※ Image depicts GT-line Full Option.

Specifications may vary according to the trim and options that are selected.

# KIA Genuine Accessories

## Lounge Package



2nd-row console (Built-in refrigerator)



Console pop-up table



2nd-row smartphone wireless charging system



Rear seat neck pillow

## Vehicle protection film



Vehicle protection film I (exterior)



Vehicle protection film II (interior/exterior)

## Camping Package



LED portable lamp



Luggage pop-up table

## Trailer Package



Tow hitch

※ 19" wheel: includes with self-levelizer



Side step



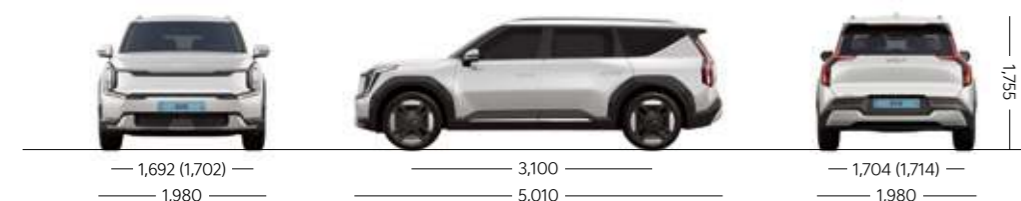
Reversible luggage mat

Specifications may vary according to the trim and options that are selected.

# Specifications

## Air / Earth

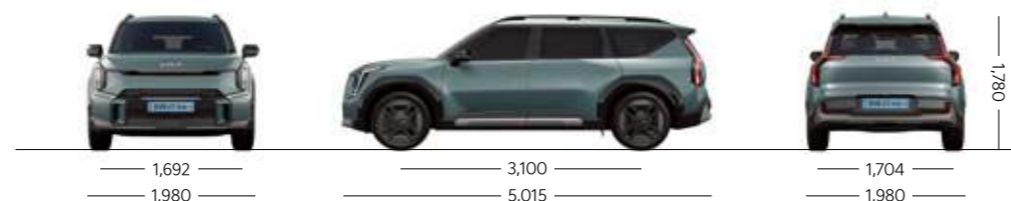
※ Wheel tread : Based on 20"/21" tires / ( ) is based on 19" tires ※ Overall height : Includes the roof rack Units: mm



Specifications	Air/Earth	Specifications	Air/Earth
Overall length (mm)	5,010	Type	Li-ion
Overall width (mm)	1,980	Battery Capacity (kWh)	99.8
Overall height (mm)	1,755	Max. power (kW)	150(2WD) / 283(4WD)
Wheelbase (mm)	3,100	Max. torque (Nm)	350(2WD) / 600~700(4WD)
Wheel tread (mm)	front (mm) 1,692 (1,702) rear (mm) 1,704 (1,714)	Electric motor	

## GT-line

※ Wheel tread : Based on 21" tires ※ Overall height : Includes the roof rack Units: mm



Specifications	GT-line	Specifications	GT-line
Overall length (mm)	5,015	Type	Li-ion
Overall width (mm)	1,980	Battery Capacity (kWh)	99.8
Overall height (mm)	1,780	Max. power (kW)	283
Wheelbase (mm)	3,100	Max. torque (Nm)	700
Wheel tread (mm)	front (mm) 1,692 rear (mm) 1,704	Electric motor	

Model name	Passenger capacity	Battery voltage (V) / Capacity (Ah)	Unladen weight (kg)	Range per charge (km)			Government-reported energy efficiency (km/kWh)			
				Combined	City	Highway	Combined	City	Highway	
Air/Earth	2WD 19" tires	7-seater	552 / 180.9	2,425	501	559	429	4.2	4.7	3.6
	2WD 19" tires	6-seater	552 / 180.9	2,405	501	559	429	4.2	4.7	3.6
	2WD 20" tires	7-seater	552 / 180.9	2,430	480	538	408	4.1	4.6	3.5
	2WD 20" tires	6-seater	552 / 180.9	2,410	480	538	408	4.1	4.6	3.5
	4WD 19" tires	7-seater	552 / 180.9	2,550	445	490	389	3.8	4.2	3.3
	4WD 19" tires	6-seater	552 / 180.9	2,570	445	490	389	3.8	4.2	3.3
	4WD 21" tires	7-seater	552 / 180.9	2,565	454	502	395	3.9	4.3	3.4
	4WD 21" tires	6-seater	552 / 180.9	2,585	454	502	395	3.9	4.3	3.4
GT-line	4WD 21" tires	7-seater	552 / 180.9	2,610	443	483	394	3.8	4.1	3.4
	4WD 21" tires	6-seater	552 / 180.9	2,615	443	483	394	3.8	4.1	3.4

※ The actual driving range may decrease in the winter or when outside temperatures drop due to a decline in the battery's performance.

※ Fuel efficiency numbers (range) correspond to standard mode. Actual figures may vary according to driving habits, vehicle speed, number of passengers, vehicle load, vehicle settings, maintenance, outside temperature, weather, and road conditions.

Specifications may vary according to the trim and options that are selected.

## EV purchase process

- 1. Sign a purchase contract**
    - Visit a sales branch and sign a contract
  - 2. Apply for a local subsidy**
    - Check the remaining local government budget for subsidies and check it against the vehicle delivery date
    - Fill out and file an application
    - Confirm approval
  - 3. Select a home charger**
    - Check the charger type and installation process
    - Contact a supplier
  - 4. Confirm approval of the subsidy and vehicle delivery**
    - 10 days before delivery, confirm the payment of the subsidy with the local government
    - Accept the vehicle delivery
  - 5. Request the payment of the government subsidy**
    - Register the car and request the payment of the subsidy (request must be filed within 10 days of delivery)
    - Payment due is offset once the subsidy is deposited into Kia's account
  - 6. Customer care**
    - Kia follows up on any questions or comments with the customer
- ※ The process may change at the local governments' discretion. For more information, please visit the electric vehicles portal site of the Ministry of Environment.

## Kia EV Members Card (not a credit card)

Charge your vehicle or use membership points at affiliated stores with a single Kia EV Members card



### Mobile Card

**Instructions** Search "MyKia" in Google Play Store/Apple App Store and download the app. Confirm your identity using affiliated apps such as Kakao Pay, Samsung Pay, or Payco. Agree to the terms and conditions and sign up for KIA Members.

**Key Benefits** Top up and make payments using NFC or QR codes (Android OS compatible). Check, use, or accumulate Kia Members Points.

### Physical card

**Instructions** Apply for a physical card using the MyKia app (available to Charging Roaming service subscribers only)

**Key Benefits** RFID payment at charging stations nationwide. Can be linked with a validated membership card to collect or redeem Kia Members points when charging an electric vehicle.

※ Affiliated Charging Roaming stations: KEPCO, SK Electric Inc., KEPCO PLUG, ChargeBee, Daeyoung Chaevi, Everon, GNTel, Powercube, Jeju Electric Vehicle Service, GS Caltex, etc. Affiliated charging stations are subject to change without prior notice.

## Kia EV Members Benefits

- 1. Charging Services**
  - Charging Roaming service : Access to all affiliated charging stations without individual subscriptions to each service provider. Ability to make payments with Kia Members points.
  - Subscription-based charging plans : Discounted prices at SSC and KEPCO charging stations with the payment of a monthly subscription fee.
- 2. Care Programs**
  - Car Care : Exterior damage care service for new Kia EV cars.
  - Lifecare : Lifestyle propositions for Kia EV Members.
  - EV Goods : Exclusive aftermarket EV products for the protection of new cars and safety/convenience.
  - Exclusive, invitation-only events for Kia EV Members (throughout the year)
- 3. Maintenance services (EVERYthing care)**
  - Kia Members EV Basic Inspection / EV Quick Care Service / EV Roadside Assistance Service

## Exclusive Kia EV9 customer benefits (Option 1)

- Smart, door-to-door "Car Wash Clean" vouchers (5 times, 1 year)
- Cleaning and polishing of the exterior at the customer's preferred location/time
- Premium airport pick-up/drop-off service (2 times, 1 year)
- Pick-up/drop-off service after parking at Gimpo Airport for up to 2 days and 3 nights
- Airport lounge access (4 times, 1 year)
- International lounge access at Incheon, Gimpo, and Gimhae airports
- EV9 365 Golf Care Service (9-times guaranteed, 1 year)
- KRW 1 million prizes for hole-in-ones (9 times) or an albatross (1 time) during 1 year
- Coverage for injuries, accidents, and damages incurred during domestic golf rounds

※ Eligibility is limited to individual customers and individual business owners who apply within 6 months of delivery. Choice of 1 benefit to be claimed within 1 year.  
 ※ For more information, please visit the Kia Members website (members.kia.com) or MyKia.  
 Kia EV dedicated concierge: 1899-0012 / Kia customer center: 080-200-2000

**Kia Connect** Kia Connect is Kia's connected car service for wireless navigation updates, smartphone-based remote vehicle control, and emergency alerts for a safer and more convenient vehicle usage experience.

- Remote control** Cool or heat the interior of the car in advance remotely using a smartphone app.
- Safety and security** Emergency assistance through the Kia Connect center in the event of an airbag deployment or roadside emergency (24/7, 365 days).
- Maintenance** Vehicle maintenance services including diagnosis of breakdowns, driving information, and wireless updates.
- Navigation** Optimal route guidance using real-time traffic information.
- Streaming service** Use streaming services inside the vehicle without connecting a smartphone.

※ Complimentary 5-years of service upon initial enrollment with the purchase of a vehicle followed by 5 additional years of light service (SOS emergency dispatch, automatic notification of airbag deployment, monthly reports, traffic information).

※ A link to a streaming service subscription is required to use Kia Connect's streaming service

※ If your streaming service subscription only supports mobile devices, it will not be compatible with Kia Connect's streaming service.

※ For more information, visit Kia Connect's Kakao Talk customer service center (search "기아커넥트" through the Kakao Talk search window and befriend).





Kia maintains uniform prices and terms nationwide to earn customers' trust.

Differences between information in the brochures and products sold may occur due to discrepancies with the printing date of brochures. Specifications may change due to suppliers' circumstances. Photographs may depict optional features. Please refer to the latest price list and contact a sales representative to make a purchase.

- Colors depicted in photographs may differ from the actual colors due to printing limitations.
- Navigation functions and information displayed may vary depending on when the navigation system was updated.
- Caution: For safe driving, please read the user manual before the initial use of the vehicle.
- Please recycle this booklet to protect the environment.
- Customer service center: 080-200-2000

09/01

2023

Date of publication



Movement that inspires



**This PDF file is for reference only.**

Differences with actual models sold may occur due to discrepancies with the time of printing. Please refer to the latest monthly price list and consult a sales representative to make a purchase.