



ATG's Skyline Linear High Bay is built from the ground up for performance and versatility. Deployable in damp locations and temperatures ranging from -20°C to 50°C, this precisely constructed fixture is ideal for virtually all indoor commercial use. The Skyline series comes "Sensor-ready."

PRODUCT SPECS	
Input Voltage (VAC)	100-277
THD	<20%
CCT (K)	4000K, 5000K
PF	>0.9
IP Rating	IP20
CRI	80+
L70 Hours per TM21-2008: REPORTED (Calculated)	>54,000 Hrs (161,000 Hrs)
Housing	Steel
Color	White**
Lens Material	PC
Lens Type	Clear (standard), Frosted (optional)
Temperature Range	-20°C to 50°C <sup>†</sup>
Warranty	10 Years*

PROJECT DETAILS		TYPE
Project:		
Product:		
Prepared by:		
Notes:		

APPLICATIONS	
Application	Ceiling/Suspended
Fixture Type	High Bay (HB)
Office and Meeting Space	X
Educational Facilities	X
Industrial and Distribution	X
Hospital and Healthcare Facilities	X
Garage and Parking Lot	
Parks and Recreation	X

**ENABLED:** Bluetooth DLC Tru Blu SILVAIR

**CERTIFICATIONS AND COMPATIBILITIES**

ORDER FORMAT							Example: HBEL2-210-50F-G3
Series	Wattage	CCT	Lens	Voltage	Dimming	Generation	
HBEL2	85=85W 105=105W 130=130W 155=155W 210=210W	40=4000K 50=5000K	Blank=Clear F-Frosted	Blank=100-277V	Blank=0-10V Dimming ND=Non Dimming	G3=Gen 3	
HBEL4	300=300W						

INFORMATION FOR LIGHTING CONTROLS APPLICATIONS		
<p><b>LLLC - Luminaire Level Lighting Control (Mesh Network)</b></p> <p>LLLC</p> <p> </p> <p>Control-luminaire groupings typified by needs to a space or user, coordinated via wireless signals, executed at each luminaire. LLLC and networked solutions are highlighted by ability to operate independently or in mesh coordination. Note: they are not related by a power circuit.</p>	<p><b>LALC - Local Area Lighting Control (Circuit Level)</b></p> <p>LALC</p> <p> </p> <p>LALC solutions are highlighted by their "many to one" arrangements. This can save on hardware costs with minimal labor increases. Characteristically they are linked (related) by power or control wires.</p>	<p><b>SAFC - Stand Alone Fixture Control</b></p> <p>SAFC</p> <p>*possibly rebated on fixture only</p> <p>SALC solutions have sensors that typically only detect and individually control a single fixture. Characteristically they have A) 1:1 sensor to fixture relationship; B) sensor integrally wired and/or affixed to fixture; C) Likely to have physical settings on the sensor, but may have hand held program tool.</p>

## CONTROLS, OPTIONS, AND ACCESSORIES

↓ CLICKABLE LINKS ↓

### LLLC - LUMINAIRE LEVEL LIGHTING CONTROL (MESH NETWORK)

ATG Code	Description	Model Number
W4	Bi-level PIR Occ sensor	<a href="#">PSC-BL-I-FM-DC0-BLE-SR</a>
W5	Bi-Level PIR Occupancy Sensor Side Mounted, 100-277V	<a href="#">PSC-BL-I-FM-110-BLE-SR</a>
P7	12V Power Supply for fixture mount w/relay	<a href="#">PSC-AC-PP-700C</a>
P4	12V Power Supply for fixture mount (no relay)	<a href="#">PSC-AC-PP-400</a>
L1	LENS, LOW BAY 30FT H X 60FT DIA WH	PIR-BL01-F3-LBL
L2	LENS, LOW BAY 30FT H X 60FT DIA BN	PIR-BL01-F3-LBL-BN
L3	LENS, HIGH BAY 4FT H X 70FT DIA WH	PIR-BL01-F5-HBL
L4	LENS, HIGH BAY 4FT H X 70FT DIA BN	PIR-BL01-F5-HBL-BN
A1	Arm, High Bay Offset extension	ARM

### LALC - LOCAL AREA LIGHTING CONTROL (CIRCUIT LEVEL)

ATG Code	Description	Model Number
W4	Bi-level PIR Occ sensor	<a href="#">PSC-BL-I-FM-DC0-BLE-SR</a>
W9	12V Wireless Fixture Controller	<a href="#">PSC-WCM-50-DC0-BLE-SR</a>
P5	Room controller, KO mounted, 120-277In / 12VC and 0-10V out / 16A	<a href="#">PSC-WCM-450-BLE-SR</a>
P7	12V power supply for fixture mount with relay	<a href="#">PSC-AC-PP-700C</a>

### SAFC - STAND ALONE FIXTURE CONTROL

ATG Code	Description	Model Number
S6	Sensor, Microwave, 12Vdc, 3.5mm Audio Jack	EFS06R
S7	Sensor, Microwave 120/277V, Remote Antenna On/Off/Dim/Lux Hold Off	<a href="#">MWS01</a>
R3	Hand Held Remote Programmer (use with S6)	RM01
S1	Sensor, PIR, On/Off, 120-277V, KO Mounted	<a href="#">BRI819-P-B-O</a>

### ACCESSORIES

ATG Code	Description	Model Number
SM	Surface Mount Kit	CLMB0-0600AD-RS
PMKA	Pendant Mounting Kit	PMKA-HBEL-G2
E15	Emergency Driver and Backup Battery, 20W, 120-277/347Vac	EMA20YY-050
WG*	Wire Guard(s) *see page 8	

## PROJECTED LUMEN MAINTENANCE

Model	Ambient Test Temp	Reported Hours	0 Hrs	25,000 Hrs	TMI21-11 <sup>†</sup> L94 54,000	50,000 Hrs	100,000 Hrs	L70 Hrs
HBEL2-85-XXF-G3	25°C / 77°F	54,000	1	0.957	0.9038	0.911	0.8255	184,000
HBEL2-105-XXF-G3	25°C / 77°F	54,000	1	0.9496	0.8887	0.8969	0.7858	158,000
HBEL2-130-XXF-G3	25°C / 77°F	54,000	1	0.9539	0.8975	0.905	0.8147	190,000
HBEL2-210-XXF-G3	25°C / 77°F	54,000	1	0.9506	0.8908	0.8988	0.8035	162,000
HBEL2-300-XXF-G3	25°C / 77°F	54,000	1	0.9585	0.9067	0.9067	0.8303	189,000

<sup>†</sup>Projected per IESNA TM-21-11

<sup>†</sup>DLC Reported Hours = Max 6x LM-80 tested duration (SSC STWxC25B-XX @9,000 Hrs)

## APPLICATION

This Linear High Bay is best mounted via V-hook or surface mounting. The fixture can also be mounted through pendant, or chain. Our lighting consultant can work with you to determine the optimal model for your mounting height. **V-hook and jack chain as standard included in box.** The Skyline G3 operates from -4°F to 122°F (-20°C to 50°C)

## CONSTRUCTION

The Skyline G3 housing is formed from heavy gage sheet steel, and features paint after fabrication for both light and industrial uses. An optional frosted diffuser available for glare reduction.



## ELECTRICAL

The luminaire is available with wattages of 85-300W. Units are available with a standard 100-277Vac.

## OPTICS

The Skyline's light distribution is optimized for professional environments requiring high levels of illumination and visual detail.

## LUMEN DATA

Catalog Number	Wattage	Length	40K		Catalog Number	Wattage	Length	50K	
			Efficacy (Lm/W)	Lumens (Lm)				Efficacy (Lm/W)	Lumens (Lm)
HBEL2-85-40F-G3	85W	2FT	135.05	11,197.2	✓ HBEL2-85-50F-G3	85W	2FT	137.51	11,451.8
HBEL2-105-40F-G3	105W		133.83	14,041.7	✓ HBEL2-105-50F-G3	105W		136	14,280.0 <sup>‡</sup>
HBEL2-130-40F-G3	130W		134.44	17,384.6	✓ HBEL2-130-50F-G3	130W		136.41	17,576.7
✓ HBEL2-155-40F-G3	155W		133.61	20,079.6	✓ HBEL2-155-50F-G3	155W		136.62	20,382.3
HBEL2-210-40F-G3	210W		135.81	27,618.4	✓ HBEL2-210-50F-G3	210W		138.25	27,931.1
HBEL4-300-40F-G3	300W	4FT	140.43	41,587.0	✓ HBEL2-300-50F-G3	300W	4FT	135.04	40,214.7

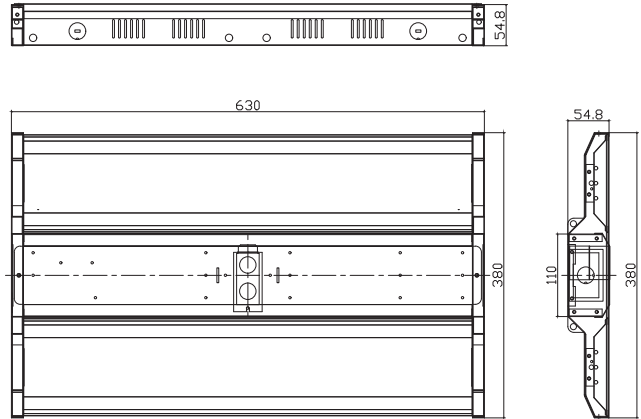
For output performance with Clear Diffuser, please contact ATG

‡ Lumen output values per DLC reported output, all others are DLC tested values

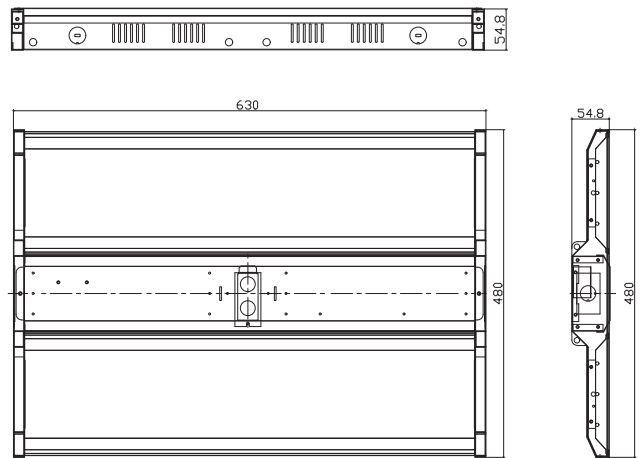
✓ Stock item ATG Core Product

## DIMENSIONS

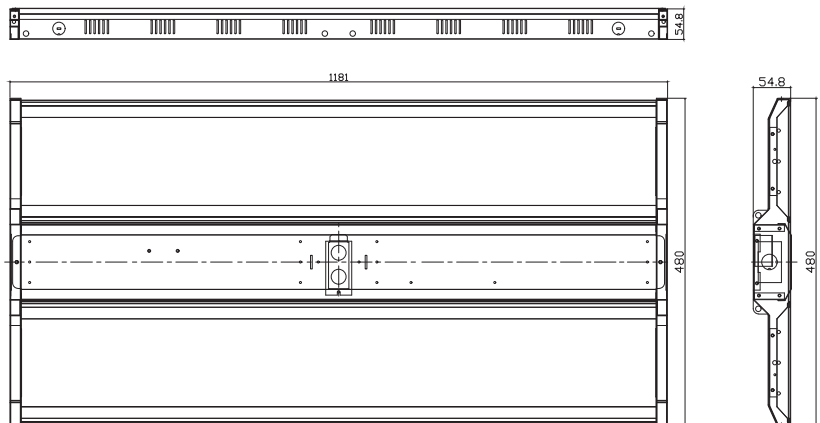
**85W**  
**105W**  
**130W**  
**155W**



**210W**



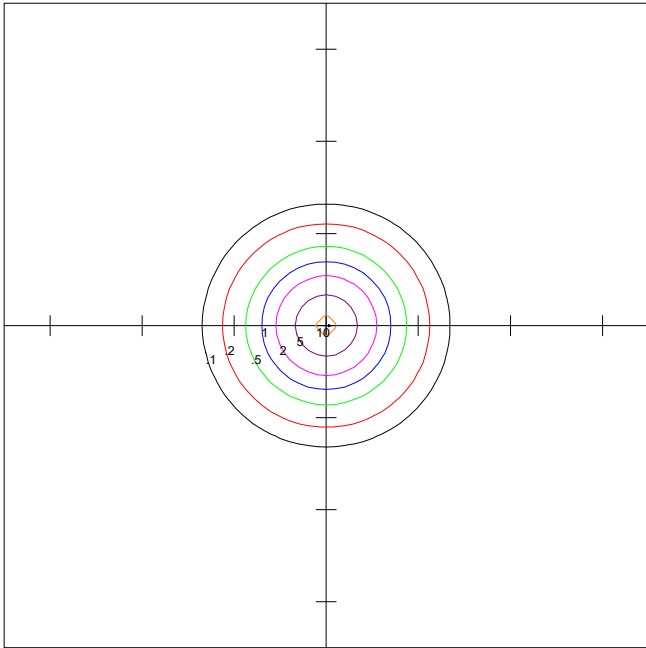
**300W**



Part No.	Length (L)	Width (W)	Depth (D)
HBEL2-85-(40/50)F-G3	24.8	14.95	2.15
HBEL2-105-(40/50)F-G3	24.8	14.95	2.15
HBEL2-130-(40/50)F-G3	24.8	14.95	2.15
HBEL2-155-(40/50)F-G3	24.8	14.95	2.15
HBEL2-210-(40/50)F-G3	24.8	18.9	2.15
HBEL4-300-(40/50)F-G3	46.5	18.9	2.15

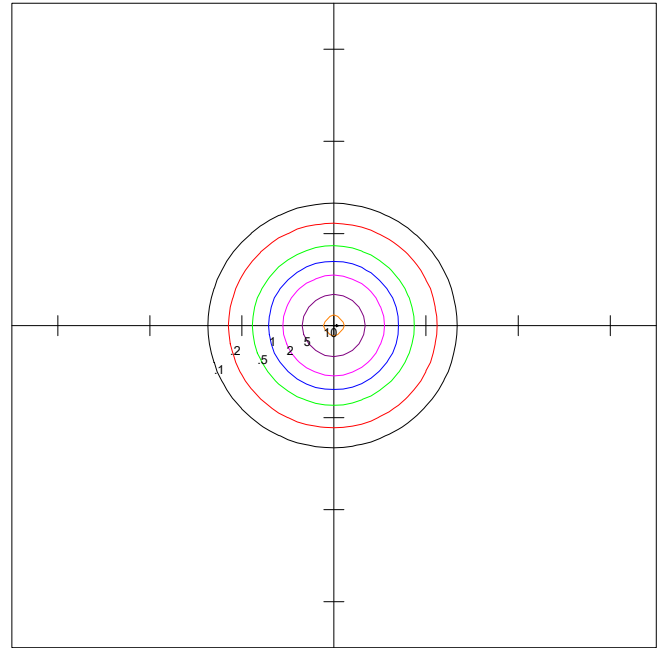
Recorded in inches

**COVERAGE**



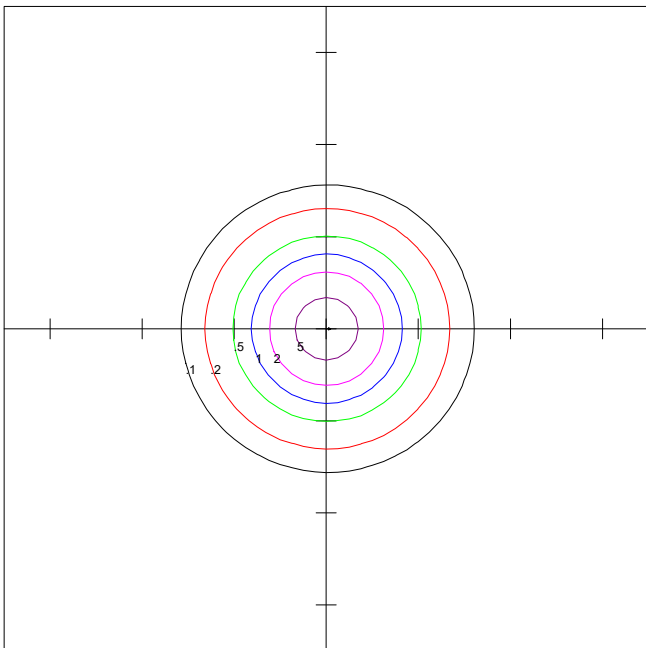
ATG Electronics  
SKYLINE HBEL2-85-40F  
24.8"L X 14.95"W X 2.15"H. LED HIGH BAY FIXTURE  
WITH FROSTED LENS

Horizontal Footcandles  
Scale: 1 Inch = 40 Ft.  
Light Loss Factor = 1.00  
Lumens Per Lamp = N.A. (absolute photometry)  
Luminaire Lumens = 11374  
Mounting Height = 20.00 Ft  
Maximum Calculated Value = 11.06 Fc



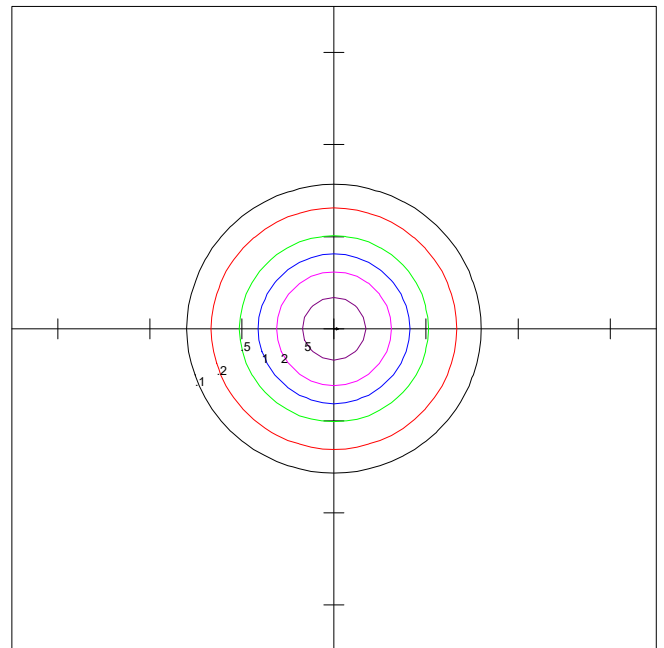
ATG Electronics  
SKYLINE HBEL2-85-50F  
24.8"L X 14.95"W X 2.15"H. LED HIGH BAY FIXTURE  
WITH FROSTED LENS

Horizontal Footcandles  
Scale: 1 Inch = 40 Ft.  
Light Loss Factor = 1.00  
Lumens Per Lamp = N.A. (absolute photometry)  
Luminaire Lumens = 11559  
Mounting Height = 20.00 Ft  
Maximum Calculated Value = 11.20 Fc



ATG Electronics  
SKYLINE HBEL2-105-40F  
24.8"L X 14.95"W X 2.15"H. LED HIGH BAY FIXTURE  
WITH FROSTED LENS

Horizontal Footcandles  
Scale: 1 Inch = 40 Ft.  
Light Loss Factor = 1.00  
Lumens Per Lamp = N.A. (absolute photometry)  
Luminaire Lumens = 14175  
Mounting Height = 25.00 Ft  
Maximum Calculated Value = 8.73 Fc  
Arrangement: Single



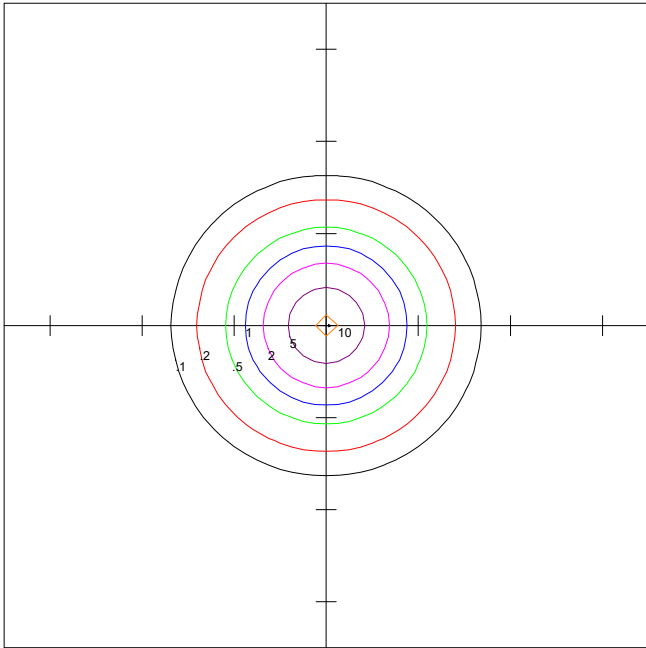
ATG Electronics  
SKYLINE HBEL2-105-50F  
24.8"L X 14.95"W X 2.15"H. LED HIGH BAY FIXTURE  
WITH FROSTED LENS

Horizontal Footcandles  
Scale: 1 Inch = 40 Ft.  
Light Loss Factor = 1.00  
Lumens Per Lamp = N.A. (absolute photometry)  
Luminaire Lumens = 14280  
Mounting Height = 25.00 Ft  
Maximum Calculated Value = 8.70 Fc  
Arrangement: Single



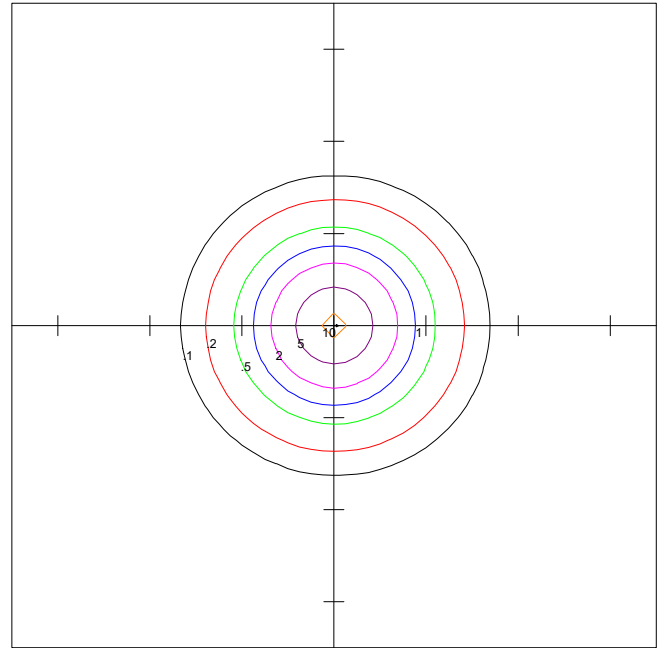
# Lumen output values per DLC reported output, all others are DLC tested values

**COVERAGE (CONTINUED)**



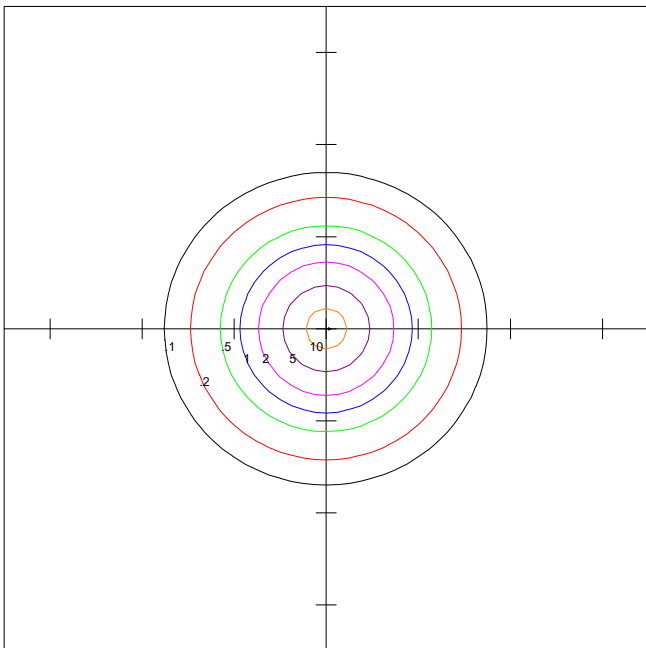
ATG Electronics  
SKYLINE HBEL2-130-40F  
24.8"L X 14.95"W X 2.15"H. LED HIGH BAY FIXTURE  
WITH FROSTED LENS

Horizontal Footcandles  
Scale: 1 Inch = 40 Ft.  
Light Loss Factor = 1.00  
Lumens Per Lamp = N.A. (absolute photometry)  
Luminaire Lumens = 17550  
Mounting Height = 25.00 Ft  
Maximum Calculated Value = 10.85 Fc  
Arrangement: Single



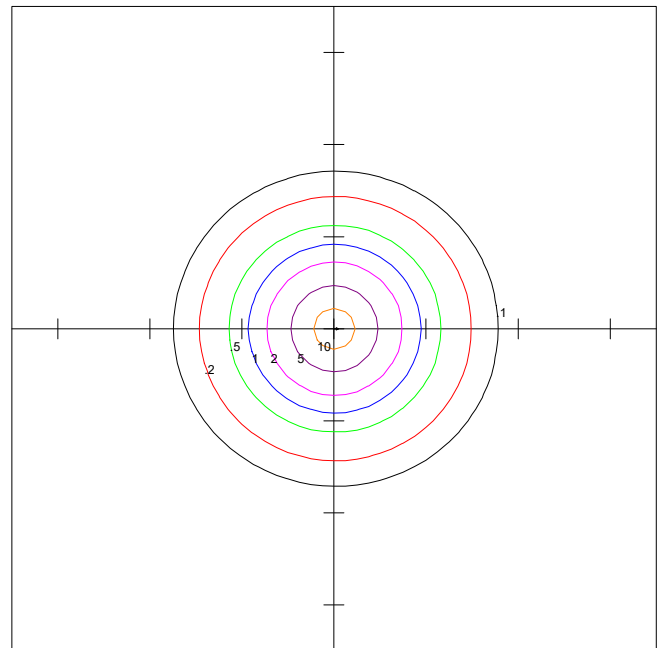
ATG Electronics  
SKYLINE HBEL2-130-50F  
24.8"L X 14.95"W X 2.15"H. LED HIGH BAY FIXTURE  
WITH FROSTED LENS

Horizontal Footcandles  
Scale: 1 Inch = 40 Ft.  
Light Loss Factor = 1.00  
Lumens Per Lamp = N.A. (absolute photometry)  
Luminaire Lumens = 17680  
Mounting Height = 25.00 Ft  
Maximum Calculated Value = 10.93 Fc  
Arrangement: Single



ATG Electronics  
SKYLINE HBEL2-155-40F  
24.8"L X 14.95"W X 2.15"H. LED HIGH BAY FIXTURE  
WITH FROSTED LENS

Horizontal Footcandles  
Scale: 1 Inch = 40 Ft.  
Light Loss Factor = 1.00  
Lumens Per Lamp = N.A. (absolute photometry)  
Luminaire Lumens = 20925  
Mounting Height = 25.00 Ft  
Maximum Calculated Value = 13.01 Fc  
Arrangement: Single

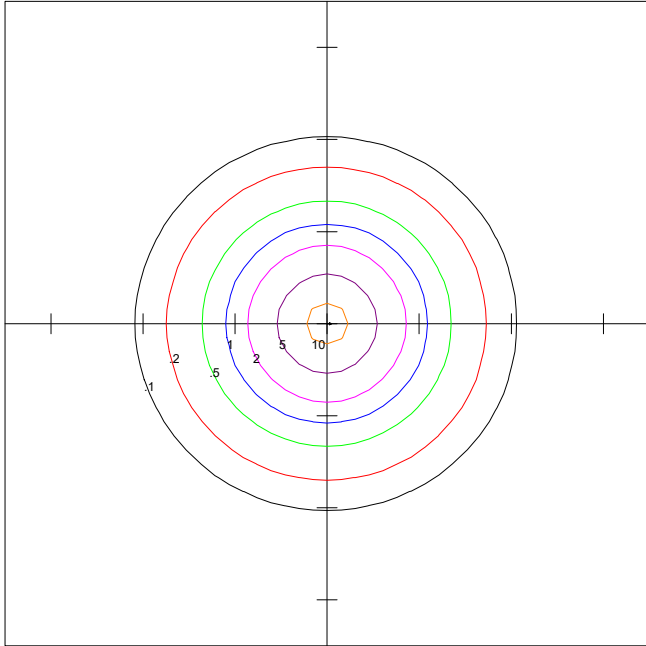


ATG Electronics  
SKYLINE HBEL2-155-50F  
24.8"L X 14.95"W X 2.15"H. LED HIGH BAY FIXTURE  
WITH FROSTED LENS

Horizontal Footcandles  
Scale: 1 Inch = 40 Ft.  
Light Loss Factor = 1.00  
Lumens Per Lamp = N.A. (absolute photometry)  
Luminaire Lumens = 21080  
Mounting Height = 25.00 Ft  
Maximum Calculated Value = 13.07 Fc  
Arrangement: Single

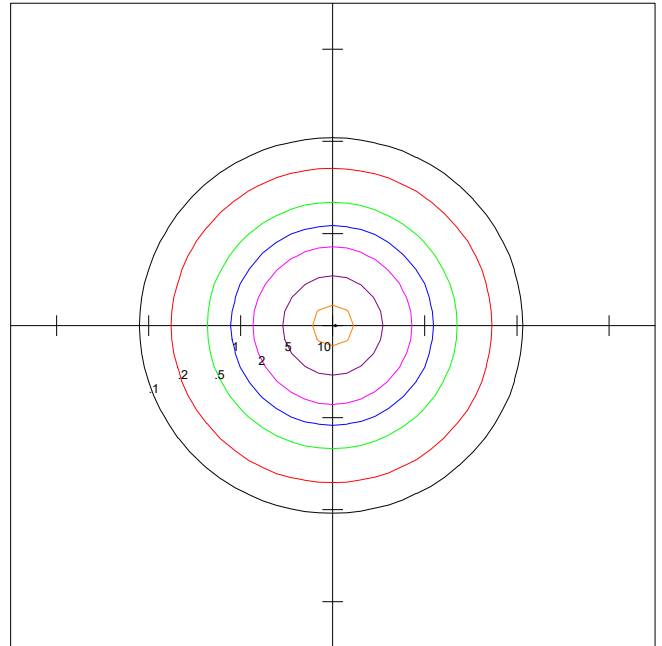
# Lumen output values per DLC reported output, all others are DLC tested values

**COVERAGE (CONTINUED)**



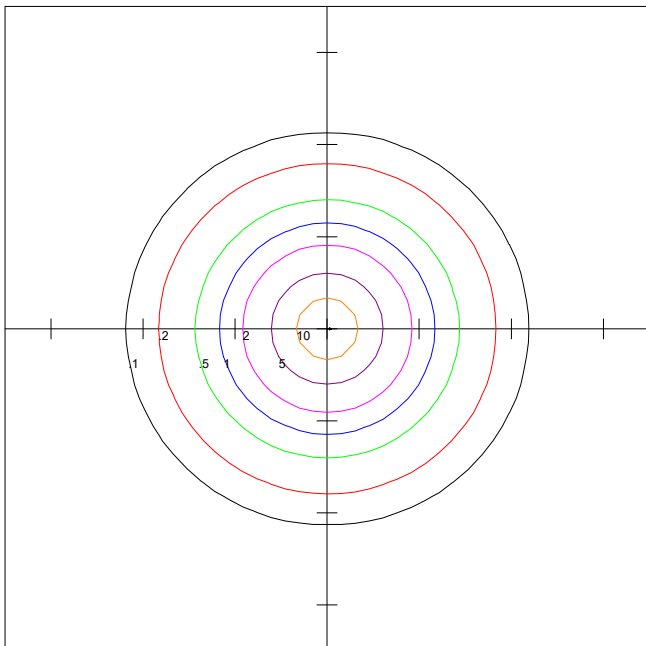
ATG Electronics  
SKYLINE HBEL2-210-40F  
24.8"L. X 18.9"W. X 2.15"H. LED HIGH BAY FIXTURE  
WITH FROSTED LENS

Horizontal Footcandles  
Scale: 1 Inch = 40 Ft.  
Light Loss Factor = 1.00  
Lumens Per Lamp = N.A. (absolute photometry)  
Luminaire Lumens = 28349  
Mounting Height = 30.00 Ft  
Maximum Calculated Value = 12.14 Fc  
Arrangement: Single



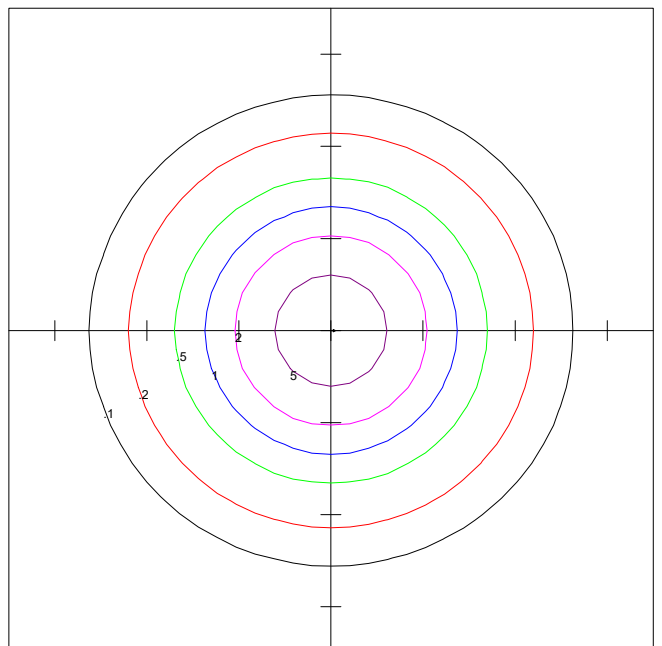
ATG Electronics  
SKYLINE HBEL2-210-50F  
24.8"L. X 18.9"W. X 2.15"H. LED HIGH BAY FIXTURE  
WITH FROSTED LENS

Horizontal Footcandles  
Scale: 1 Inch = 40 Ft.  
Light Loss Factor = 1.00  
Lumens Per Lamp = N.A. (absolute photometry)  
Luminaire Lumens = 28560  
Mounting Height = 30.00 Ft  
Maximum Calculated Value = 12.11 Fc  
Arrangement: Single



ATG Electronics  
SKYLINE HBEL2-300-40F  
46.5"L. X 18.9"W. X 2.15"H. LED HIGH BAY FIXTURE  
WITH FROSTED LENS

Horizontal Footcandles  
Scale: 1 Inch = 40 Ft.  
Light Loss Factor = 1.00  
Lumens Per Lamp = N.A. (absolute photometry)  
Luminaire Lumens = 34425  
Mounting Height = 30.00 Ft  
Maximum Calculated Value = 14.65 Fc  
Arrangement: Single



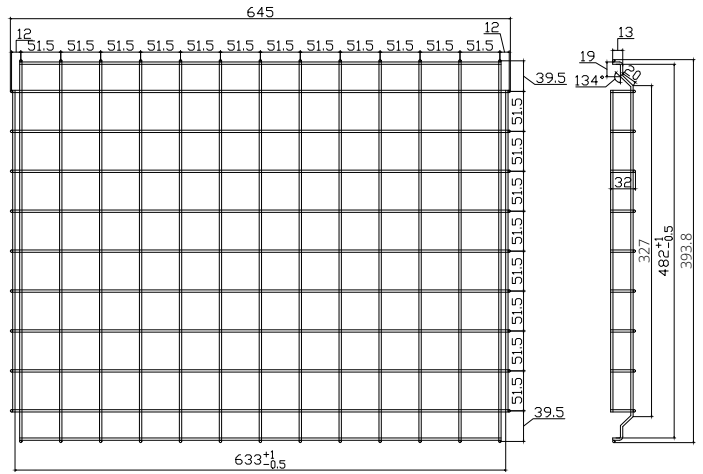
ATG Electronics  
SKYLINE HBEL2-300-50F  
46.5"L. X 18.9"W. X 2.15"H. LED HIGH BAY FIXTURE  
WITH FROSTED LENS

Horizontal Footcandles  
Scale: 1 Inch = 40 Ft.  
Light Loss Factor = 1.00  
Lumens Per Lamp = N.A. (absolute photometry)  
Luminaire Lumens = 40500  
Mounting Height = 40.00 Ft  
Maximum Calculated Value = 9.62 Fc  
Arrangement: Single

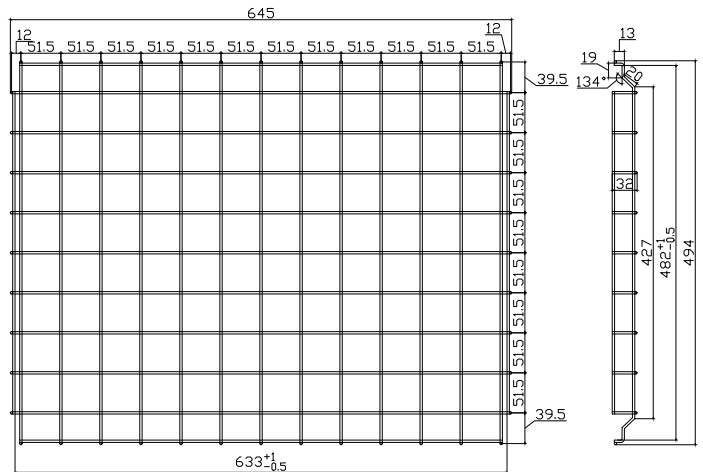
# Lumen output values per DLC reported output, all others are DLC tested values

**ACCESSORIES**

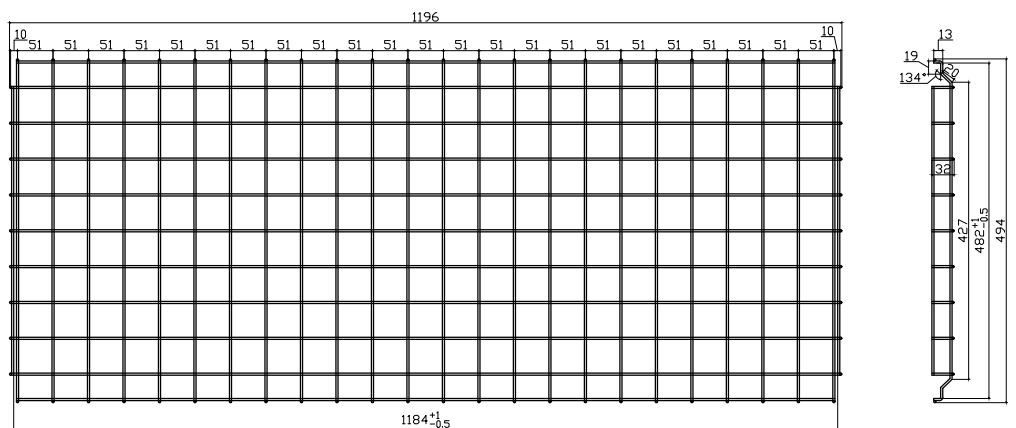
**Wireguard**  
for 85w, 105W, 130W, 155W  
**WG-HBEL-G2-01**



**Wireguard**  
for 210W  
**WG-HBEL-G2-02**



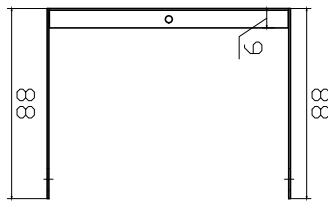
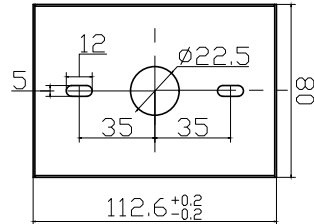
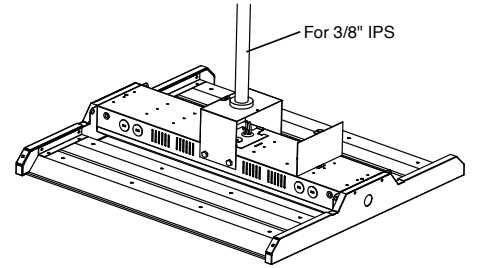
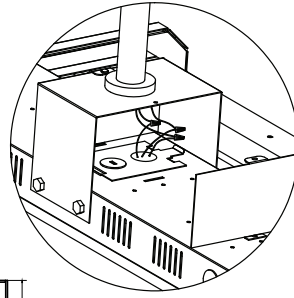
**Wireguard**  
for 300W  
**WG-HBEL-G2-03**



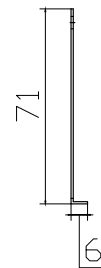
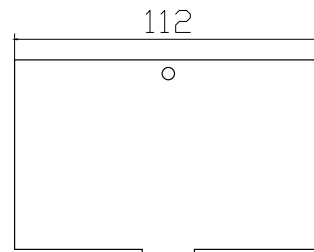


**MOUNTING**

**Pendant  
Mounting Kit  
PMK-HBEL-G2**

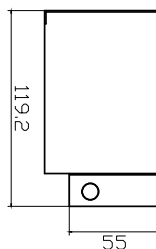
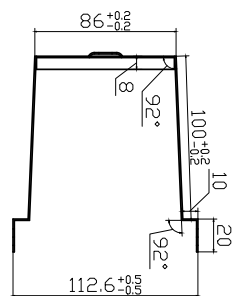
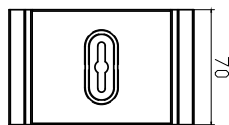
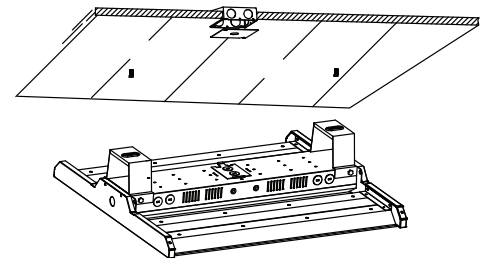
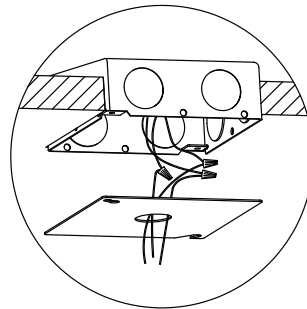


**U-Bracket  
(1 Pc)**



**End Caps  
(2 pcs)**

**Surface Mount  
SMK-HBEL-G2-01**



**Hangar Bracket  
(2 pcs)**

## 10 YEAR WARRANTY

ATG Electronics®

Industry Leading 10 Year Limited Warranty For North American LED Lighting Fixtures

ATG Electronics warrants to the original purchaser of ATG Electronics Domestic LED products listed above that were manufactured for which the ATG Electronics Spec Sheet located on our website contains the words "10 year limited warranty" that, subject to the below terms and conditions of this warranty, when such LED products are properly installed they will comply with ATG Electronics published product specifications for such products and will be free from material defects in material and workmanship for a period of ten (10) years from the date of sale by ATG Electronics, or, if lesser, 50,000 hours of operation (at an average of 13.6 hours per day operation). The LED arrays in the Product(s) will be considered defective in material or workmanship only if a total of 15% or more of the individual light emitting diodes in the Product(s) fail to illuminate.

The above express limited warranty is extended by ATG Electronics® only to the original or first end-user purchaser and only for the original installed location. This warranty only applies to products purchased after June 1, 2017. This warranty is non-transferrable, whether by assignment or operation of law. The original purchaser must provide warranty claims to ATG Electronics within the warranty period promptly upon discovery and in accordance with ATG Electronics Return and Repair Procedures as outlined within this document.

Should any defects be found by ATG Electronics upon its inspection of the properly returned product, ATG Electronics sole responsibility and liability under this warranty will be, at its option, to either repair or replace the defective part or parts or else make available a new replacement unit that will provide equal or better performance. All decisions regarding the existence or non-existence of defects or otherwise affecting the warranty shall be made by ATG ELECTRONICS and shall be final and binding on all parties. Where a defective LED product is replaced under this warranty, the balance of the original warranty period shall remain effective.

### Conditions and Exclusions

This warranty is conditioned upon proper installation, use and maintenance. This warranty will automatically become null and void and shall not be applicable to any LED fixture which (i) has not been timely paid for, (ii) is not installed and operated in accordance with the current edition of The National Electric Code (NEC), the Standards for Safety of Underwriters' Laboratory, Inc. (UL) or with ATG Electronics instructions and guidelines, (iii) has been moved from its original installation, (iv) has been installed within an area that has exposure to sulfur or any area with high acidic compounds in use, (v) has been operated in an ambient temperature or humidity that is higher than 35 degrees Celsius, (vi) has been subjected to a lightning strike, power surge or over voltage condition, (vii) has its LED Board subjected to static electricity due to failure to discharge same prior to connecting or disconnecting the lead from the LED board, (viii) was not installed and/or operated in accordance with ATG Electronics instructions and guidelines, (ix) has been mishandled, misused, abused, tampered with, modified or altered by anyone other than ATG ELECTRONICS, (x) has been subjected to abnormal stresses and operating conditions, or (xi) has been operated without over voltage and lightning protection devices in place.

### Limitations

#### Disclaimers & Limitations of Liability

The foregoing warranty is exclusive of all other statutory, written or oral warranties and no other warranties of any kind, statutory, by operation of law or course of performance, or otherwise, are given, herein expressed or otherwise received. EXCEPT AS EXPRESSLY PROVIDED ABOVE, ATG ELECTRONICS DISCLAIMS ALL REPRESENTATIONS, WARRANTIES AND CONDITIONS OF ANY KIND, EXPRESS OR IMPLIED, REGARDING THE LED PRODUCTS AND ITS SERVICES, INCLUDING, WITHOUT LIMITATION, THE IMPLIED WARRANTIES OF MERCHANTABILITY AND FITNESS FOR A PARTICULAR USE OR PURPOSE.

**LIMITATION OF LIABILITY.** Other than the obligation to repair or replace as provided above, ATG Electronics shall have no liability for any losses, expenses or damages as a result of the installation, use, inability to use, removal or replacement of any LED product. ATG Electronics will not under any circumstances whether as a result of breach of contract, breach of warranty, tort, strict liability or otherwise be liable for consequential, incidental, special or exemplary damages including but not limited to, loss of profits or revenues, loss of any other goods or associated equipment or

damage to any associated equipment, cost of capital, cost of substitute products, facilities or services, down time cost or claims of claimant's customers. ATG Electronics liability on any claim of any kind for any loss or damages arising out of, resulting from or concerning any LED product, any aspect of this warranty or for any products or services furnished hereunder shall not exceed the price of the fixture which gives rise to the claim.

### Return and Repair Procedures

All warranty requests and or questions are to be directed to ATG Electronics Customer Service Department (CSD) at 888-618-7298. If deemed necessary, the CSD will issue a Returned Merchandise Authorization (RMA) number which must be included on both the packing slip of the component or fixture being returned and on the outside of the box. You must include your name and contact information, including your email address, on the packing slip so that we can contact you easily. Each component or fixture must be packaged very carefully and properly so as to prevent damages in shipment and must be shipped freight prepaid. Please obtain a proof of delivery to ensure that the material is received.

Once the component or fixture has been received and tested, an evaluation report will be provided to the end user via email. This report will clarify the following:

- I) The component / fixture is covered under the warranty policy and will either be repaired or replaced.
- II) The component / fixture is not covered under the warranty policy and the reason for this determination.

If ATG ELECTRONICS determines that the component or fixture is covered under the warranty, then the appropriate repairs will be started or a replacement fixture will be manufactured and shipped. Please note that in the event the returned component or fixture is found not to be covered under this warranty, you may be subject to a labor charge for the evaluation process and will be responsible for all return shipping charges and fees. For components and fixtures determined to be covered under this warranty prior to the first anniversary of the Sale Date, the repaired or replacement component or fixture will be returned to you at no charge. You will be responsible for all other shipping charges.

### No Labor Reimbursement

All components and fixtures determined to be covered by this warranty as provided above, will be repaired or replaced at no charge to the customer, however, except as expressly provided above with respect to recessed and linear fixtures during the first year, the customer must hire and pay for an electrician to remove and reinstall such components and fixtures. No labor costs will be covered for the removal or reinstallation of any components or fixtures. The warranty does not cover modifications, repairs or replacements, or the related labor or materials costs, that may be necessary to facilities or third party products in connection with the removal, repair, or replacement of any LED product under this warranty.