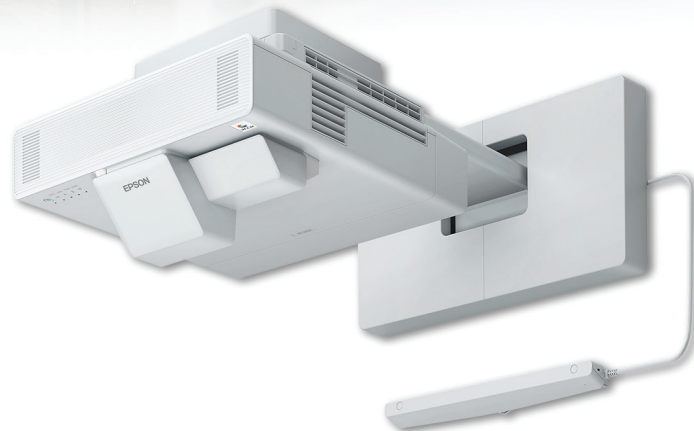
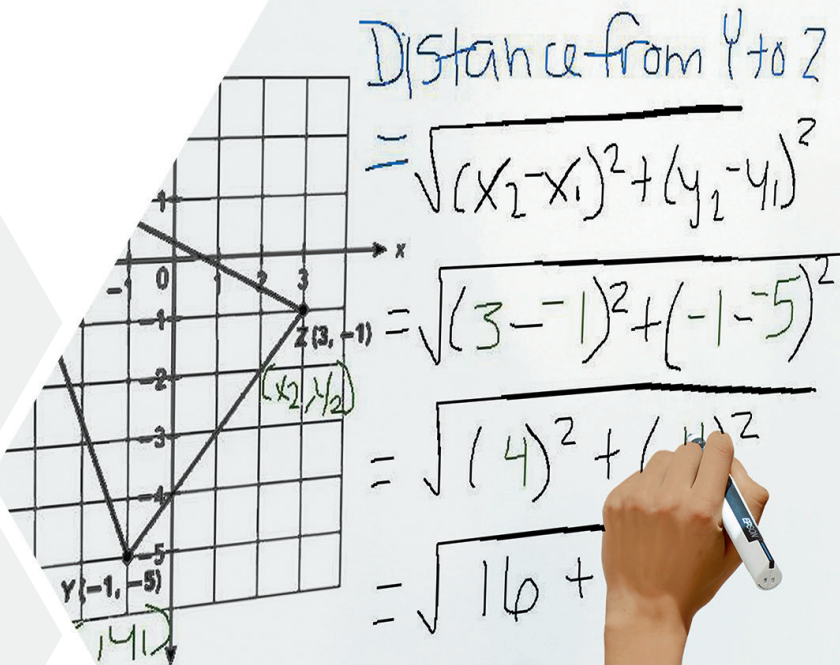


INTERACTIVE DISPLAY SOLUTIONS | SPRING 2023



All projected images simulated.

BrightLink — the world's best-selling interactive projector*.



Over **80%**
market share
in the U.S. and Canada*



A collaborative solution for today's classrooms

Epson's BrightLink collaborative display solution connects teachers, students, technology and ideas into one seamless digital experience, facilitating learning, communication and collaboration by turning virtually any flat surface into an interactive one. Available in laser and lamp-based models, BrightLink is the perfect display solution for classrooms, study spaces, administrative offices and more. Built for today's learning environments, these displays offer whiteboard sharing for local, on-campus collaboration as well as engagement with remote participants nearly anywhere in the world.

More than 10 million students learn on Epson® displays every day

Leading schools and universities across the globe rely on BrightLink to help bring their best ideas to life. BrightLink interactive displays change the way technology, users and their ideas converge by creating a seamless digital interactive experience. With a large, bright display that is optimized for outstanding readability, BrightLink's leading-edge interactive features and versatile connectivity options make it the ultimate interactive display for modern classrooms.

* Source: PMA, Mainstream and High-End, Worldwide Census 2020CYQ3.

Create, collaborate and share with the BrightLink interactive display solution.



PC-free whiteboarding

Save, print and email lessons directly from the display.

Up to 8 users*

Accommodate multiple users with dual pen and six points of touch.

Image size up to 120"¹

Scalable; adjust to the surface area you have available.


Collaborative²

Share content on other network-connected BrightLink displays.


Remote learning made easy

Share content with remote learners using leading conferencing applications, including Google Meet™, Zoom and Microsoft Teams®.


* Requires optional touch module on BL760Wi/770Fi/1480Fi.



Extra-large
digital whiteboard



Collaborate from
nearly anywhere



Connect from a range
of mobile devices³

Versatile

Delivers immersive images without compromising whiteboard space.

Engaging

Interactive up to 120"¹ on virtually any flat surface. Purpose-built for education.

Affordable

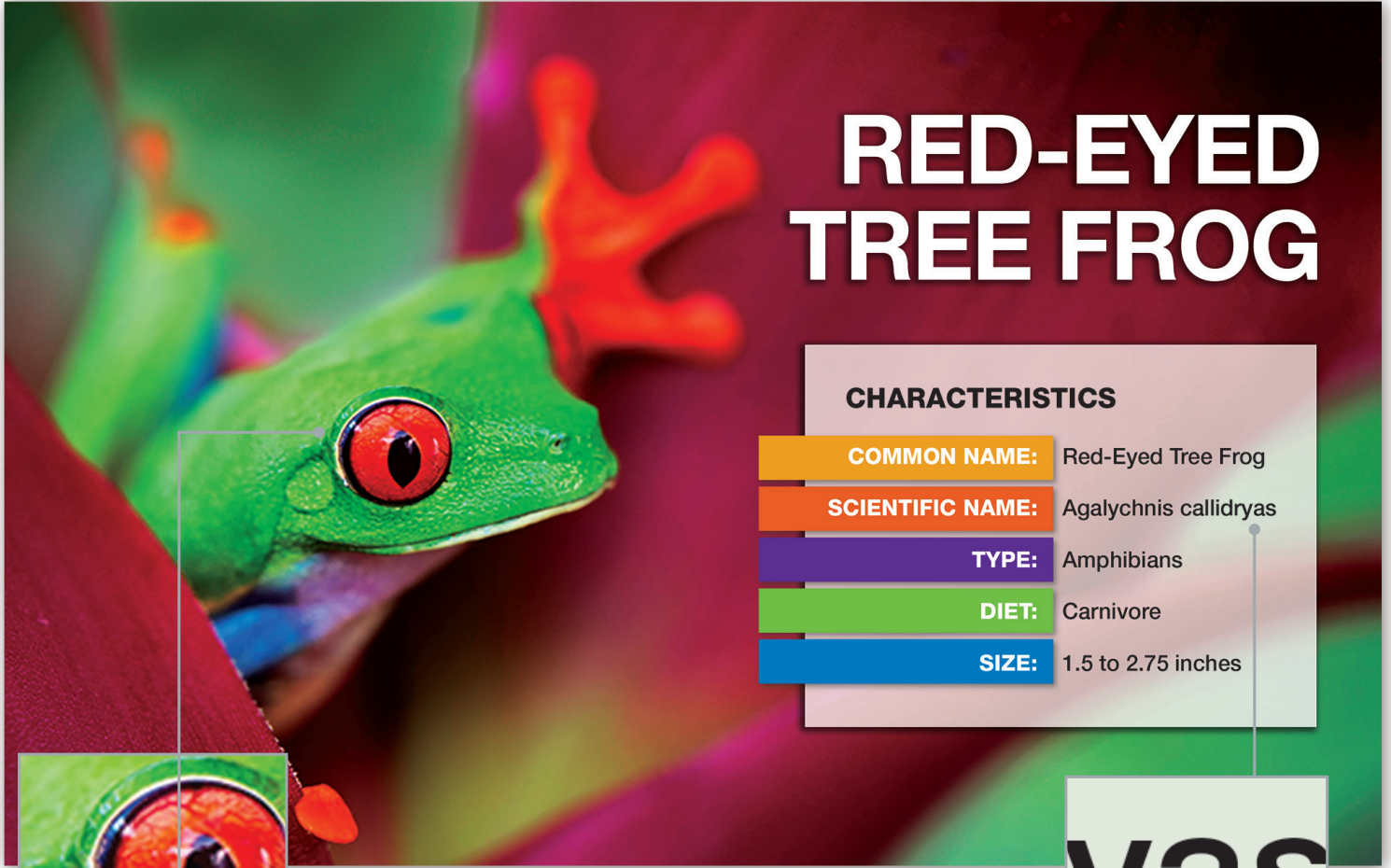
BrightLink offers the lowest-cost image per square inch vs. interactive flat panel displays⁴.

Connectivity

Seamlessly integrates with Chrome™, Mac®, Windows®, Android™ and iOS® devices³.

Reliable

Virtually maintenance-free 20,000-hour laser light source⁵ with no lamps to replace — ever.



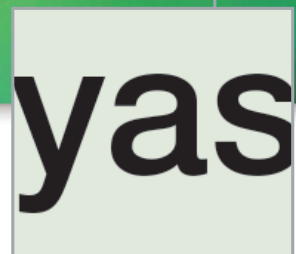
RED-EYED TREE FROG

CHARACTERISTICS

COMMON NAME:	Red-Eyed Tree Frog
SCIENTIFIC NAME:	Agalychnis callidryas
TYPE:	Amphibians
DIET:	Carnivore
SIZE:	1.5 to 2.75 inches



Make an impact with vibrant, true-to-life colors



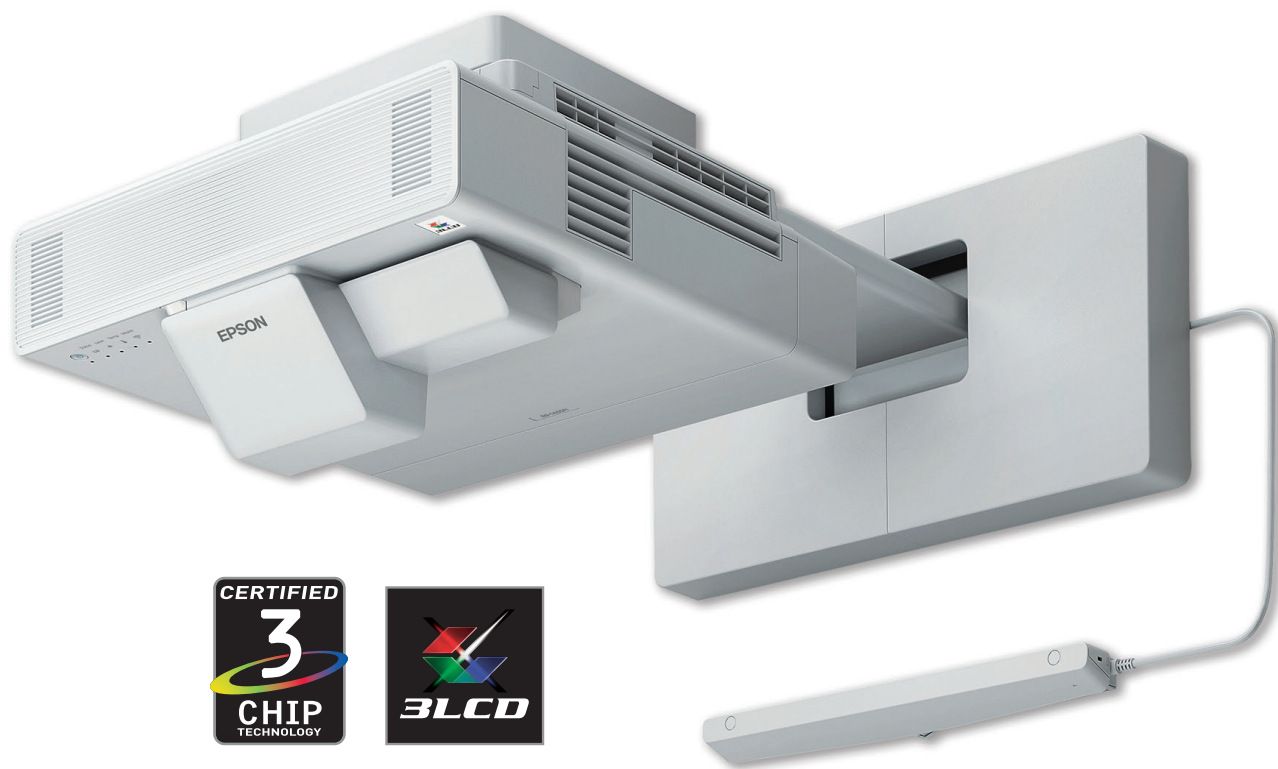
Command attention with sharp, detailed text

Amazing image quality.

The power of image quality

When it comes to creating captivating lesson plans that enhance collaboration, image quality makes all the difference. That's why BrightLink displays are engineered to deliver a stunning, true-to-life picture that can be seen from nearly anywhere in the classroom.

To achieve outstanding image quality, our displays utilize 3LCD technology. This sophisticated, innovative technology uses three chips to deliver bright, vibrant images that bring content to life.



BrightLink displays also offer:

- Accurate, color-rich presentations
- Convenient sharing and multitasking features
- Flexible design with easy installation
- 5-year limited warranty*

* Available on BrightLink 760Wi, BrightLink 770Fi, BrightLink 1480Fi and BrightLink 1485Fi. Brighter Futures® registration required.



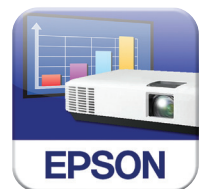
Connect, view, collaborate.

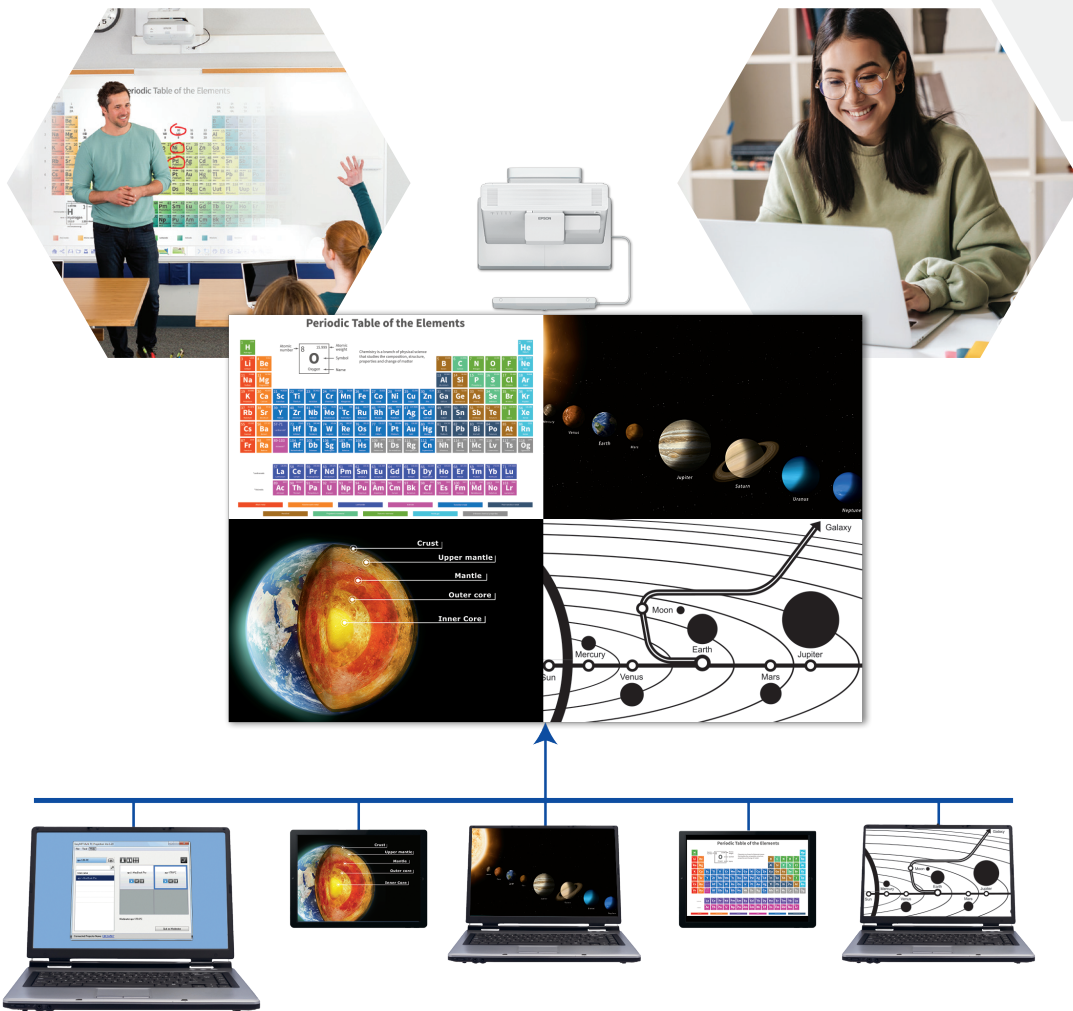
Enhance learning with dynamic software

Designed for collaboration, BrightLink displays provide the tools teachers need to maximize participation in classrooms and hybrid learning environments. From Epson iProjection™³ to the BrightLink GoBoard™ Wireless Collaboration and Integrated Whiteboard Solution, BrightLink displays offer connectivity to our most innovative software solutions⁶ for easy sharing while on the go.

Epson iProjection app

Complimentary Epson iProjection³ software enhances classroom collaboration by allowing teachers and students to connect, display and share content simultaneously to and from up to 50 connected devices³. Providing wireless connectivity to Chromebook™, iOS and Android mobile devices³, the app makes it easy to view learning materials from nearly any location.










BrightLink GoBoard

Optimized to enhance BrightLink displays, BrightLink GoBoard supports hybrid classrooms with dynamic, collaborative features, allowing both students and teachers to share and stream mirrored content in real time from multiple devices. BrightLink GoBoard works alongside popular video communication tools to enhance the virtual learning experience between student and teacher. The software hosts a variety of file types, including Microsoft® Office documents, PDFs, photos, videos, audio and some legacy files from SMART and Promethean®. Learn more at www.epson.com/goboard



BrightLink Interactive Displays

					
Feature	BrightLink 760Wi	BrightLink 770Fi	BrightLink GoBoard 780Fi	BrightLink 1480Fi	BrightLink 1485Fi
Brightness (Color/White)⁷	4,100 lumens	4,100 lumens	4,100 lumens	5,000 lumens	5,000 lumens
Display Resolution	1280 x 800	1920 x 1080	1920 x 1080	1920 x 1080 ⁸	1920 x 1080 ⁸
Native Aspect Ratio	16:10	16:9	16:9	16:9	16:9
Light Source⁵	Laser; 20,000 hours	Laser; 20,000 hours	Laser; 20,000 hours	Laser; 20,000 hours	Laser; 20,000 hours
Interactivity	Pen/Optional touch module	Pen/Optional touch module	Pen/Optional touch module	Pen/Optional touch module	Pen/Finger
PC-Free, Browser-Based Interactivity	–	–	✓	–	–
Network-Ready	✓	✓	✓	✓	✓
Built-in Wi-Fi[®]/Miracast[®]	✓	✓	✓	✓	✓
Epson iProjection Compatible³	✓	✓	✓	✓	✓
21:9 and 16:6 Ultra Wide Display	–	Up to 110"	Up to 110"	–	Up to 120"
PC-Free Annotation	✓	✓	✓	✓	✓
PC-Free Whiteboard with Email/Save/Print	✓	✓	✓	✓	✓
Sliding Split Screen⁹	✓	✓	✓	✓	✓
Whiteboard Sharing	Client only; connect up to 4 BrightLink displays	Client only; connect up to 4 BrightLink displays	Client only; connect up to 4 BrightLink displays	Host; connect up to 4 BrightLink displays	Host; connect up to 4 BrightLink displays
Wall Mount	Optional	Optional	Optional	Optional	Optional
Auto-Calibrating Touch Module	Optional	Optional	Optional	Optional	✓
Touch-Enabled Home Screen/Menu	With optional touch module	With optional touch module	With optional touch module	With optional touch module	✓
DuoLink¹⁰	–	Edge blending	–	–	Edge blending

Accessories/Software



**Ultra Short Throw
Wall Mount**
(V12HA06A05)



**Interactive Touch
Module**
(V12H007A23)



**100" Whiteboard for Projection
and Dry-Erase - 16:10**
(for BrightLink 760Wi)
(V12H831000)



100" Whiteboard - 16:9
(for BrightLink 1485Fi, 1480Fi,
BrightLink GoBoard 780Fi
and 770Fi)
(V12H006A02)



**Interactive Pens
Orange ELPPN05A**
(V12H773010)



Blue ELPPN05B
(V11H774010)



Document Cameras
DC-07 (V12H759020)
DC-13 (V12H757020)
DC-21 (V12H758020)



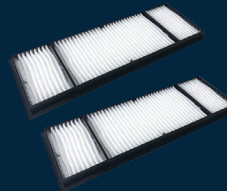
Active Speakers
ELPSP02
(V12H467020)



**PowerLite® Pilot™ 3 Connection
and Control Box ELPCB03**
(V12H927020)



**Wireless LAN
Module ELPAP11**
(V12H005A01)



Air Filters
BrightLink 1480 Display Series
(V12H134A56)
BrightLink 760Wi, 770Fi and
BrightLink GoBoard 780Fi
Display Series
(V13H134A60)



Replacement Pen Tips
Hard/Teflon™
(V12H775010)
Soft/Felt
(V12H776010)

Epson Education Solutions

Epson has been a trusted partner and innovator in the classroom for over 25 years. We partner with you to offer a seamless experience, working with and across devices, curriculum and infrastructure to best meet your specific needs, focusing on:

- Engaging students
- World-class customer service and support
- Cost-effective, high-quality solutions
- A commitment to the environment

Discover how Epson can help deliver laser-focused learning in your classrooms.

www.epson.com/education



EPSON®
EXCEED YOUR VISION

1 Varies by model/aspect ratio; BrightLink 760Wi is maximum 100" 16:10, BrightLink 770Fi is maximum 100" 16:9; up to 110" 16:6, BrightLink GoBoard 780Fi is up to 100" 16:9, BrightLink 1485Fi is up to 100" 16:9; 120" 16:6. | 2 Requires 1480 Series, compatible with 700 Series. | 3 For wireless functionality, including via the Epson iProjection App, the projector must be configured on a network, either through the Ethernet port on the projector (check model specifications for availability) or via a wireless connection. Check your owner's manual to determine if a wireless LAN module must be purchased separately to enable a wireless connection. Not all Epson projectors are able to be networked. The Epson iProjection App does not support all files and formats. See www.epson.com for details. | 4 Versus comparable interactive flat panel displays measuring 65-inches and above. PMA Research data for 2020 1Q, North America. | 5 No required maintenance for the light source for up to 20,000 hours. Approximate time until brightness decreases 50% from first usage. Measured by acceleration test assuming use of 0.04 – 0.20 mg/m³ of particulate matter. Time varies depending on usage conditions and environment. Replacement of parts other than the light source may be required in a shorter period. | 6 Internet connection required for download. Data usage fee may apply. | 7 Color brightness (color light output) and white brightness (white light output) will vary depending on usage conditions. Color light output measured in accordance with IDMS 15.4; white light output measured in accordance with ISO 21118. | 8 Pixel shifting technology achieves Full HD resolution on screen. | 9 Split Screen feature requires remote control. Consult your user manual for input combinations. | 10 Requires Easy Interactive Driver. Certain functionality is only available through Epson Interactive Tools (EIT) software. For a list of supported operating systems, visit www.epson.com

Epson America, Inc.
3131 Katella Ave., Los Alamitos, CA 90720

Epson Canada Limited
185 Renfrew Drive, Markham, Ontario L3R 6G3

www.epson.com
www.epson.ca

Better Products for a Better Future®
eco.epson.com

EPSON and PowerLite are registered trademarks, EPSON Exceed Your Vision is a registered logomark and Better Products for a Better Future and Epson iProjection are trademarks of Seiko Epson Corporation. Brighter Futures and BrightLink are registered trademarks and BrightLink GoBoard and Pilot are trademarks of Epson America, Inc. Mac is a trademark of Apple Inc., registered in the U.S. and other countries. Android, Chrome, Chromebook and Google Meet are trademarks of Google LLC. Microsoft, Microsoft Teams and Windows are either registered trademarks or trademarks of Microsoft Corporation in the United States and other countries. Miracast® and Wi-Fi® are registered trademarks of Wi-Fi Alliance®. All other product and brand names are trademarks and/or registered trademarks of their respective companies. Epson disclaims any and all rights in these marks. Copyright 2023 Epson America, Inc. CPD-60249R2 1/23