



# SUBMITTAL SHEETS

## ELECTRICAL FITTINGS - D

2015

# SUBMITTAL SHEET

## STEEL EMT CONNECTORS SET-SCREW TYPE

### DESCRIPTION:

Orbit Industries' non-insulated set-screw steel EMT connectors are used in dry locations to bond EMT thinwall conduits to electrical junction boxes or enclosures. The steel construction ensures mechanical protection to the conduit and designated electrical junction box or enclosure. In addition, set-screw connectors are zinc electroplated for excellent corrosion protection in damp locations. Orbit Industries set-screw connectors are made with a diverse combination head screw that can securely fasten one conduit to another using a slotted Phillips, or Robertson head screw driver.



### FEATURES:

- Steel
- Zinc Electro-Plated
- Concrete-Tight when Taped
- Suitable for applications above 600V
- Sizes 2-1/2" to 4" are also listed for RIGID and IMC Conduits

### CERTIFICATION:

UL file E310660, Conforms to UL 514B.



### CONFIGURATION DATA:

Part No.	UPC	Trade Size	Std.Pkg.	Master Ctn
OF7701	8-35243-05129-4	1/2"	50.00	500.00
OF7702	8-35243-05131-7	3/4"	25.00	250.00
OF7703	8-35243-05133-1	1"	10.00	100.00
OF7704	8-35243-05135-5	1-1/4"	10.00	100.00
OF7705	8-35243-05137-9	1-1/2"	10.00	50.00
OF7706	8-35243-05139-3	2"	5.00	50.00
OF7707	8-35243-05141-6	2-1/2"	-	12.00
OF7708	8-35243-05143-0	3"	-	12.00
OF7709	8-35243-05145-4	3-1/2"	-	6.00
OF7710	8-35243-05147-8	4"	-	6.00



# SUBMITTAL SHEET

## STEEL INSULATED EMT CONNECTORS SET-SCREW TYPE

### DESCRIPTION:

Orbit Industries' insulated set-screw steel EMT connectors are used in dry locations to bond EMT thinwall conduits to electrical junction boxes or enclosures. The steel construction ensures mechanical protection to the conduit and designated electrical junction box or enclosure. In addition, set-screw connectors are zinc electroplated for excellent corrosion protection in damp locations. Orbit Industries' set-screw connectors are made with a diverse combination head screw that can securely fasten one conduit to another using a slotted Phillips, or Robertson head screw driver.



### FEATURES:

- Steel
- Zinc Electro-Plated
- Concrete-Tight when Taped
- Suitable for applications above 600V
- Sizes 2-1/2 to 4 are also listed for RIGID and IMC Conduits

### CERTIFICATION:

UL file E310660, Conforms to UL 514B.



### CONFIGURATION DATA:

Part No.	UPC	Trade Size	Std.Pkg.	Master Ctn
OF7701-S	8-35243-05130-0	1/2"	50	500
OF7702-S	8-35243-05132-4	3/4"	25	250
OF7703-S	8-35243-05134-8	1"	10	100
OF7704-S	8-35243-05136-2	1-1/4"	10	100
OF7705-S	8-35243-05138-6	1-1/2"	10	50
OF7706-S	8-35243-05140-9	2"	5	50
OF7707-S	8-35243-05142-3	2-1/2"	-	12
OF7708-S	8-35243-05144-7	3"	-	12
OF7709-S	8-35243-05146-1	3-1/2"	-	6
OF7710-S	8-35243-05148-5	4"	-	6



# SUBMITTAL SHEET

## STEEL EMT COUPLINGS SET-SCREW TYPE

### DESCRIPTION:

Orbit Industries' set-screw steel EMT couplings are used in dry locations to connect the ends of two EMT thinwall conduits together to extend the raceway. The steel construction ensures mechanical protection and the connection between one conduit to another. In addition, set-screw couplings are zinc electroplated for excellent corrosion protection in damp locations. Orbit Industries' set-screw couplings are made with a diverse combination head screw that can securely fasten one conduit to another using a slotted Phillips, or Robertson head screw driver.



### FEATURES:

- Steel
- Zinc Electro-Plated
- Concrete-Tight when Taped
- Suitable for applications above 600V
- Sizes 2-1/2" to 4" are also listed for RIGID and IMC Conduits

### CERTIFICATION:

UL file E310660, Conforms to UL 514B.



### CONFIGURATION DATA:

Part No.	UPC	Trade Size	Std.Pkg.	Master Ctn
OF7711	8-35243-05149-2	1/2"	50	500
OF7712	8-35243-05150-8	3/4"	25	250
OF7713	8-35243-05151-5	1"	10	100
OF7714	8-35243-05152-2	1-1/4"	10	100
OF7715	8-35243-05153-9	1-1/2"	10	50
OF7716	8-35243-05154-6	2"	5	50
OF7717	8-35243-05155-3	2-1/2"	-	12
OF7718	8-35243-05156-0	3"	-	12
OF7719	8-35243-05157-7	3-1/2"	-	6
OF7720	8-35243-05158-4	4"	-	6



# SUBMITTAL SHEET

## STEEL EMT CONNECTORS COMPRESSION TYPE

### DESCRIPTION:

Orbit Industries' compression connectors are used to bond EMT thinwall conduits to electrical junction boxes or enclosures. The steel construction ensures mechanical protection and the conduit to the designated electrical junction box or enclosure. In addition, compression connectors are zinc electroplated for excellent corrosion protection in damp locations. With Orbit Industries' labor saving design, electrician can quickly tighten these connectors on EMT conduits.



### FEATURES:

- Steel
- Zinc Electro-Plated
- Concrete-Tight
- Suitable for applications above 600V

### CERTIFICATION:

UL file E310660, Conforms to UL 514B.



### CONFIGURATION DATA:

Part No.	UPC	Trade Size	Std.Pkg.	Master Ctn
OF7601	8-35243-05069-3	1/2"	25	250
OF7602	8-35243-05073-0	3/4"	25	250
OF7603	8-35243-05077-8	1"	10	100
OF7604	8-35243-05081-5	1-1/4"	10	100
OF7605	8-35243-05085-3	1-1/2"	10	50
OF7606	8-35243-05089-1	2"	5	50
OF7607	8-35243-05093-8	2-1/2"	-	12
OF7608	8-35243-05097-6	3"	-	12
OF7609	8-35243-05101-0	3-1/2"	-	6
OF7610	8-35243-05105-8	4"	-	6



# SUBMITTAL SHEET

## STEEL EMT CONNECTORS COMPRESSION TYPE & RAIN-TIGHT

### DESCRIPTION:

Orbit Industries' rain tight compression connectors are used in wet locations to bond EMT thinwall conduits to electrical junction boxes or enclosures. Orbit Industries' rain-tight EMT compression connectors have been designed to comply with the new rain-tight test requirements along with the 2008 NEC 358.42 and 314.15 requirements. The steel construction ensures mechanical protection and the conduit to the designated electrical junction box or enclosure. With Orbit Industries' labor saving design, electrician can quickly tighten these connectors on EMT conduits.



### FEATURES:

- Steel
- Zinc Electro-Plated
- Concrete-Tight
- Suitable for applications above 600V
- Compression Cap color may vary

### CERTIFICATION:

UL file E310660, Conforms to UL 514B.



### CONFIGURATION DATA:

Part No.	UPC	Trade Size	Std.Pkg.	Master Ctn
OF7601-W	8-35243-05072-3	1/2"	25	250
OF7602-W	8-35243-05076-1	3/4"	25	250
OF7603-W	8-35243-05080-8	1"	10	100
OF7604-W	8-35243-05084-6	1-1/4"	10	100
OF7605-W	8-35243-05088-4	1-1/2"	10	50
OF7606-W	8-35243-05092-1	2"	5	50
OF7607-W	8-35243-05092-1	2-1/2"	-	12
OF7608-W	8-35243-05100-3	3"	-	12
OF7609-W	8-35243-05104-1	3-1/2"	-	6
OF7610-W	8-35243-05108-9	4"	-	6



# SUBMITTAL SHEET

## STEEL INSULATED EMT CONNECTORS COMPRESSION TYPE

### DESCRIPTION:

Orbit Industries' compression connectors are used to bond EMT thinwall conduits to electrical junction boxes or enclosures. The steel construction ensures mechanical protection and the conduit to the designated electrical junction box or enclosure. In addition, connectors are zinc electroplated for excellent corrosion protection in damp locations. With Orbit Industries' labor saving design, electrician can quickly tighten these connectors on EMT conduits.



### FEATURES:

- Steel
- Zinc Electro-Plated
- Concrete-Tight
- Suitable for applications above 600V
- With Insulated Throat (Yellow, Throat color may vary)

### CERTIFICATION:

UL file E310660, Conforms to UL 514B.



### CONFIGURATION DATA:

Part No.	UPC	Trade Size	Std.Pkg.	Master Ctn
OF7601-S	8-35243-05070-9	1/2"	25	250
OF7602-S	8-35243-05074-7	3/4"	25	250
OF7603-S	8-35243-05078-5	1"	10	100
OF7604-S	8-35243-05082-2	1-1/4"	10	100
OF7605-S	8-35243-05086-0	1-1/2"	10	50
OF7606-S	8-35243-05090-7	2"	5	50
OF7607-S	8-35243-05094-5	2-1/2"	-	12
OF7608-S	8-35243-05098-3	3"	-	12
OF7609-S	8-35243-05102-7	3-1/2"	-	6
OF7610-S	8-35243-05106-5	4"	-	6



# SUBMITTAL SHEET

## STEEL INSULATED EMT CONNECTORS COMPRESSION TYPE & RAIN-TIGHT

### DESCRIPTION:

Orbit Industries' rain-tight compression connectors are used in wet locations to bond EMT thinwall conduits to electrical junction boxes or enclosures. Orbit Industries' rain-tight EMT compression connectors have been designed to comply with the new rain-tight test requirements along with the 2008 NEC 358.42 and 314.15 requirements. The steel construction ensures mechanical protection and the conduit to the designated electrical junction box or enclosure. With Orbit Industries' labor saving design, electrician can quickly tighten these connectors on EMT conduits.



### FEATURES:

- Steel
- Zinc Electro-Plated
- Concrete-Tight
- Suitable for applications above 600V
- With Insulated Throat (Yellow, Throat color may vary)

### CERTIFICATION:

UL file E310660, Conforms to UL 514B.



### CONFIGURATION DATA:

Part No.	UPC	Trade Size	Std.Pkg.	Master Ctn
OF7601-SW	8-35243-05071-6	1/2"	25	250
OF7602-SW	8-35243-05075-4	3/4"	25	250
OF7603-SW	8-35243-05079-2	1"	10	100
OF7604-SW	8-35243-05083-9	1-1/4"	10	100
OF7605-SW	8-35243-05087-7	1-1/2"	10	50
OF7606-SW	8-35243-05091-4	2"	5	50
OF7607-SW	8-35243-05095-2	2-1/2"	-	12
OF7608-SW	8-35243-05099-0	3"	-	12
OF7609-SW	8-35243-05103-4	3-1/2"	-	6
OF7610-SW	8-35243-05107-2	4"	-	6





# SUBMITTAL SHEET

## STEEL EMT COUPLINGS COMPRESSION TYPE

### DESCRIPTION:

Orbit Industries' steel EMT compression couplings are used to connect the ends of two EMT thinwall conduits together to extend the raceway. The steel construction ensures mechanical protection and the connection between one conduit to another. In addition, couplings are zinc electroplated for excellent corrosion protection in damp locations.



### FEATURES:

- Steel
- Zinc Electro-Plated
- Concrete-Tight when Taped
- Suitable for applications above 600V
- Compression Cap color may vary

### CERTIFICATION:

UL file E310660, Conforms to UL 514B.



### CONFIGURATION DATA:

Part No.	UPC	Trade Size	Std.Pkg.	Master Ctn
OF7611	8-35243-05109-6	1/2"	25	250
OF7612	8-35243-05111-9	3/4"	25	250
OF7613	8-35243-05113-3	1"	10	100
OF7614	8-35243-05115-7	1-1/4"	10	100
OF7615	8-35243-05117-1	1-1/2"	10	50
OF7616	8-35243-05119-5	2"	5	50
OF7617	8-35243-05121-8	2-1/2"	-	12
OF7618	8-35243-05123-2	3"	-	12
OF7619	8-35243-05125-6	3-1/2"	-	6
OF7620	8-35243-05127-0	4"	-	6



# SUBMITTAL SHEET

## STEEL EMT COUPLINGS COMPRESSION TYPE & RAIN-TIGHT

### DESCRIPTION:

Orbit Industries' rain-tight steel EMT compression couplings are used in wet locations to connect the ends of two EMT thinwall conduits together to extend the raceway. The rain-tight steel EMT compression couplings have been designed to comply with the new rain tight test requirements along with the 2008 NEC 358.42 and 314.15 requirements. The steel construction ensures mechanical protection and the connection between one conduit to another. In addition, couplings are zinc electroplated for excellent corrosion protection in damp locations. With Orbit Industries' labor saving design, electrician can quickly tighten these couplings



### FEATURES:

- Steel
- Zinc Electro-Plated
- Concrete-Tight
- Suitable for applications above 600V

### CERTIFICATION:

UL file E310660, Conforms to UL 514B.



### CONFIGURATION DATA:

Part No.	UPC	Trade Size	Std.Pkg.	Master Ctn
OF7611-W	8-35243-05110-2	1/2"	25	250
OF7612-W	8-35243-05112-6	3/4"	25	250
OF7613-W	8-35243-05114-0	1"	10	100
OF7614-W	8-35243-05116-4	1-1/4"	10	100
OF7615-W	8-35243-05118-8	1-1/2"	10	50
OF7616-W	8-35243-05120-1	2"	5	50
OF7617-W	8-35243-05122-5	2-1/2"	-	12
OF7618-W	8-35243-05124-9	3"	-	12
OF7619-W	8-35243-05126-3	3-1/2"	-	6
OF7620-W	8-35243-05128-7	4"	-	6



# SUBMITTAL SHEET

## ZINC DIE CAST EMT CONNECTORS SET-SCREW TYPE

### DESCRIPTION:

Orbit Industries' zinc die cast set-screw electrical connectors are used in dry locations to bond EMT thinwall conduits to electrical junction boxes or enclosures. In addition, connectors are zinc electroplated for excellent corrosion protection in damp locations. Orbit Industries' set-screw connectors are made with a diverse combination screw head that can securely fasten conduit to designated electrical junction box or enclosure using a slotted Phillips, or Robertson head screw driver.



### FEATURES:

- Zinc Die Cast
- Concrete-Tight when taped
- Combo Head Set-Screw
- Suitable for applications above 600V
- Sizes 2-1/2" to 4" are also listed for RIGID and IMC Conduits

### CERTIFICATION:

UL file E310660, Conforms to UL 514B.



### CONFIGURATION DATA:

Part No.	UPC	Trade Size	Std.Pkg.	Master Ctn
OF701	8-35243-05017-4	1/2"	100	1000
OF702	8-35243-05019-8	3/4"	50	500
OF703	8-35243-05021-1	1"	10	100
OF704	8-35243-05023-5	1-1/4"	10	100
OF705	8-35243-05025-9	1-1/2"	10	50
OF706	8-35243-05027-3	2"	5	50
OF707	8-35243-05029-7	2-1/2"	-	12
OF708	8-35243-05031-0	3"	-	12
OF709	8-35243-05033-4	3-1/2"	-	6
OF710	8-35243-05035-8	4"	-	6



# SUBMITTAL SHEET

## ZINC DIE CAST INSULATED EMT CONNECTORS SET-SCREW TYPE

### DESCRIPTION:

Orbit Industries' insulated zinc die cast set-screw electrical connectors are used in dry locations to bond EMT thinwall conduits to electrical junction boxes or enclosures. In addition, connectors are zinc electroplated for excellent corrosion protection in damp locations. Orbit Industries' set-screw connectors are made with a diverse combination screw head that can securely fasten conduit to designated electrical junction box or enclosure using a slotted Phillips, or Robertson head screw driver.



### FEATURES:

- Zinc Die Cast
- Concrete-Tight when taped
- Combo Head Set-Screw
- Suitable for applications above 600V
- Sizes 2-1/2" to 4" are also listed for RIGID and IMC Conduits

### CERTIFICATION:

UL file E310660, Conforms to UL 514B.



### CONFIGURATION DATA:

Part No.	UPC	Trade Size	Std.Pkg.	Master Ctn
OF701-S	8-35243-05018-1	1/2"	50	500
OF702-S	8-35243-05020-4	3/4"	25	250
OF703-S	8-35243-05022-8	1"	10	100
OF704-S	8-35243-05024-2	1-1/4"	10	100
OF705-S	8-35243-05026-6	1-1/2"	10	50
OF706-S	8-35243-05028-0	2"	5	50
OF707-S	8-35243-05030-3	2-1/2"	-	12
OF708-S	8-35243-05032-7	3"	-	12
OF709-S	8-35243-05034-1	3-1/2"	-	6
OF710-S	8-35243-05036-5	4"	-	6



# SUBMITTAL SHEET

## ZINC DIE CAST EMT COUPLINGS SET-SCREW TYPE

### DESCRIPTION:

Orbit Industries' zinc die-cast set-screw electrical couplings are used in dry locations to connect the ends of two EMT thinwall conduits together to extend the raceway. In addition, couplings are zinc electroplated for excellent corrosion protection in damp locations. Orbit Industries' set-screw couplings are made with a diverse combination screw head that can securely fasten one conduit to another using a slotted Phillips, or Robertson head screw driver.



### FEATURES:

- Zinc Die Cast
- Concrete-Tight when taped
- Combo Head Set-Screw
- Suitable for applications above 600V
- Sizes 2-1/2" to 4" are also listed for RIGID and IMC Conduits

### CERTIFICATION:

UL file E310660, Conforms to UL 514B.



### CONFIGURATION DATA:

Part No.	UPC	Trade Size	Std.Pkg.	Master Ctn
OF711	8-35243-05037-2	1/2"	50	500
OF712	8-35243-05038-9	3/4"	25	250
OF713	8-35243-05039-6	1"	10	100
OF714	8-35243-05040-2	1-1/4"	10	100
OF715	8-35243-05041-9	1-1/2"	10	50
OF716	8-35243-05042-6	2"	5	50
OF717	8-35243-05043-3	2-1/2"	-	12
OF718	8-35243-05044-0	3"	-	12
OF719	8-35243-05045-7	3-1/2"	-	6.00
OF720	8-35243-05046-4	4"	-	6.00



# SUBMITTAL SHEET

## ZINC DIE CAST EMT CONNECTORS COMPRESSION TYPE

### DESCRIPTION:

Orbit Industries' zinc die-cast compression connectors are used to bond EMT thinwall conduits to electrical junction boxes or enclosures. In addition, connectors are zinc electroplated for excellent corrosion protection in damp locations. With Orbit Industries' labor saving design, electricians can quickly tighten these connectors on EMT conduits.



### FEATURES:

- Zinc Die Cast
- Concrete-Tight
- Suitable for applications above 600V
- Sizes 2-1/2" to 4" are also listed for RIGID and IMC Conduits
- Compression Cap color may vary

### CERTIFICATION:

UL file E310660, Conforms to UL 514B.



### CONFIGURATION DATA:

Part No.	UPC	Trade Size	Std.Pkg.	Master Ctn
OF601	8-35243-04960-4	1/2"	50	500
OF602	8-35243-04962-8	3/4"	25	250
OF603	8-35243-04964-2	1"	10	100
OF604	8-35243-04966-6	1-1/4"	10	100
OF605	8-35243-04970-3	1-1/2"	10	50
OF606	8-35243-04974-1	2"	5	50
OF607	8-35243-04978-9	2-1/2"	-	12
OF608	8-35243-04980-2	3"	-	12
OF609	8-35243-04982-6	3-1/2"	-	6.00
OF610	8-35243-04984-0	4"	-	6.00



# SUBMITTAL SHEET

## ZINC DIE CAST EMT CONNECTORS COMPRESSION TYPE & RAIN-TIGHT

### DESCRIPTION:

Orbit Industries' zinc die-cast compression connectors are used to bond EMT thinwall conduits to electrical junction boxes or enclosures. In addition, connectors are zinc electroplated for excellent corrosion protection in damp locations. With Orbit Industries' labor saving design, electricians can quickly tighten these connectors on EMT conduits.



### FEATURES:

- Zinc Die Cast
- Concrete-Tight
- Suitable for applications above 600V
- Sizes 2-1/2" to 4" are also listed for RIGID and IMC Conduits
- Compression Cap color may vary

### CERTIFICATION:

UL file E310660, Conforms to UL 514B.



### CONFIGURATION DATA:

Part No.	UPC	Trade Size	Std.Pkg.	Master Ctn
OF601-W	8-35243-04868-3	1/2"	50	500
OF602-W	8-35243-04869-0	3/4"	25	250
OF603-W	8-35243-04870-6	1"	10	100
OF604-W	8-35243-04969-7	1-1/4"	10	100
OF605-W	8-35243-04973-4	1-1/2"	10	50
OF606-W	8-35243-04977-2	2"	5	50
OF607-W	8-35243-05255-0	2-1/2"	-	12
OF608-W	8-35243-05256-7	3"	-	12
OF609-W	8-35243-05257-4	3-1/2"	-	6.00
OF610-W	8-35243-05258-1	4"	-	6.00



# SUBMITTAL SHEET

## ZINC DIE CAST INSULATED EMT CONNECTORS COMPRESSION TYPE

### DESCRIPTION:

Orbit Industries' insulated zinc die-cast compression connectors are used to bond EMT thinwall conduits to electrical junction boxes or enclosures. In addition, connectors are zinc electroplated for excellent corrosion protection in damp locations. With Orbit Industries' labor saving design, electricians can quickly tighten these connectors on EMT conduits.



### FEATURES:

- Zinc Die Cast
- Concrete-Tight
- With Insulated Throat
- Suitable for applications above 600V
- Sizes 2-1/2" to 4" are also listed for RIGID and IMC Conduits

### CERTIFICATION:

UL file E310660, Conforms to UL 514B.



### CONFIGURATION DATA:

Part No.	UPC	Trade Size	Std.Pkg.	Master Ctn
OF601-S	8-35243-04961-1	1/2"	50.00	500.00
OF602-S	8-35243-04963-5	3/4"	25.00	250.00
OF603-S	8-35243-04965-9	1"	10.00	100.00
OF604-S	8-35243-04967-3	1-1/4"	10.00	100.00
OF605-S	8-35243-04971-0	1-1/2"	10.00	50.00
OF606-S	8-35243-04975-8	2"	5.00	50.00
OF607-S	8-35243-04979-6	2-1/2"	-	12.00
OF608-S	8-35243-04981-9	3"	-	12.00
OF609-S	8-35243-04983-3	3-1/2"	-	6.00
OF610-S	8-35243-04985-7	4"	-	6.00





# SUBMITTAL SHEET

## ZINC DIE CAST INSULATED EMT CONNECTORS COMPRESSION TYPE & RAIN-TIGHT

### DESCRIPTION:

Orbit Industries' rain tight and insulated zinc die cast compression connectors are used in wet locations to bond EMT thinwall conduits to electrical junction boxes or enclosures. Orbit Industries' rain-tight EMT compression connectors have been designed to comply with the new rain-tight test requirements along with the 2008 NEC 358.42 and 314.15 requirements. In addition, connectors are zinc electroplated for excellent corrosion protection in damp locations. With Orbit Industries' labor saving design, electricians can quickly tighten these connectors on EMT conduits.



### FEATURES:

- Zinc Die Cast
- Concrete-Tight
- With Insulated Throat
- Suitable for applications above 600V
- Sizes 2-1/2" to 4" are also listed for RIGID and IMC Conduits

### CERTIFICATION:

UL file E310660, Conforms to UL 514B.



### CONFIGURATION DATA:

Part No.	UPC	Trade Size	Std.Pkg.	Master Ctn
OF601-SW	8-35243-04871-3	1/2"	50	500
OF602-SW	8-35243-04872-0	3/4"	25	250
OF603-SW	8-35243-04873-7	1"	10	100
OF604-SW	8-35243-04968-0	1-1/4"	10	100
OF605-SW	8-35243-04972-7	1-1/2"	10	50
OF606-SW	8-35243-04976-5	2"	5	50
OF607-SW	8-35243-00338-5	2-1/2"	-	12
OF608-SW	8-35243-00339-2	3"	-	12
OF609-SW	8-35243-00340-8	3-1/2"	-	6.00
OF610-SW	8-35243-00341-5	4"	-	6.00



# SUBMITTAL SHEET

## ZINC DIE CAST EMT COUPLINGS COMPRESSION TYPE

### DESCRIPTION:

Orbit Industries' zinc die cast EMT compression couplings are used to connect the ends of two EMT thinwall conduits together to extend the raceway. In addition, couplings are zinc electroplated for excellent corrosion protection in damp locations.



### FEATURES:

- Zinc Die Cast
- Concrete-Tight
- Suitable for applications above 600V
- Sizes 2-1/2" to 4" are also listed for RIGID and IMC Conduits
- Compression Cap color may vary

### CERTIFICATION:

UL file E310660, Conforms to UL 514B.



### CONFIGURATION DATA:

Part No.	UPC	Trade Size	Std.Pkg.	Master Ctn
OF611	8-35243-04986-4	1/2"	50	500
OF612	8-35243-04987-1	3/4"	25	250
OF613	8-35243-04988-8	1"	10	100
OF614	8-35243-04989-5	1-1/4"	10	100
OF615	8-35243-04991-8	1-1/2"	10	50
OF616	8-35243-04993-2	2"	5	50
OF617	8-35243-04995-6	2-1/2"	-	12
OF618	8-35243-04996-3	3"	-	12
OF619	8-35243-04997-0	3-1/2"	-	6.00
OF620	8-35243-04998-7	4"	-	6.00



# SUBMITTAL SHEET

## ZINC DIE CAST EMT COUPLINGS COMPRESSION TYPE & RAIN-TIGHT

### DESCRIPTION:

Orbit Industries' rain tight zinc die cast EMT compression couplings are used to connect the ends of two EMT thinwall conduits together to extend the raceway. Orbit Industries' rain-tight EMT compression connectors have been designed to comply with the new rain-tight test requirements along with the 2008 NEC 358.42 and 314.15 requirements. In addition, couplings are zinc electroplated for excellent corrosion protection in damp locations.



### FEATURES:

- Zinc Die Cast
- Concrete-Tight
- Suitable for applications above 600V
- Sizes 2-1/2" to 4" are also listed for RIGID and IMC Conduits
- Compression Cap color may vary

### CERTIFICATION:

UL file E310660, Conforms to UL 514B.



### CONFIGURATION DATA:

Part No.	UPC	Trade Size	Std.Pkg.	Master Ctn
OF611-W	8-35243-04874-4	1/2"	50	500
OF612-W	8-35243-04875-1	3/4"	25	250
OF613-W	8-35243-04876-8	1"	10	100
OF614-W	8-35243-04990-1	1-1/4"	10	100
OF615-W	8-35243-04992-5	1-1/2"	10	50
OF616-W	8-35243-04994-9	2"	5	50
OF617-W	8-35243-05259-8	2-1/2"	-	12
OF618-W	8-35243-05260-4	3"	-	12
OF619-W	8-35243-05261-1	3-1/2"	-	6.00
OF620-W	8-35243-05262-8	4"	-	6.00



# SUBMITTAL SHEET

## EMT OFFSET CONNECTORS SET-SCREW TYPE

### DESCRIPTION:

Orbit Industries' zinc die cast offset set-screw connectors are used when electricians need to change the direction or slightly change the elevation of EMT conduits entering electrical boxes or enclosures. With Orbit Industries' labor saving design, electricians can save time consumed on offset conduit bending before connecting conduits to electrical junction boxes or enclosures.



### FEATURES:

- Zinc Die Cast
- Concrete-Tight when taped
- Combo-Head Set Screw
- Suitable for applications above 600V

### CERTIFICATION:

UL file E310660, Conforms to UL 514B.



### CONFIGURATION DATA:

Part No.	UPC	Trade Size	Std.Pkg.	Master Ctn
OCS-50	8-35243-04951-2	1/2"	100	1000
OCS-75	8-35243-04952-9	3/4"	50	500



# SUBMITTAL SHEET

## EMT OFFSET CONNECTORS COMPRESSION TYPE

### DESCRIPTION:

Orbit Industries' zinc die cast offset set-screw connectors are used when electricians need to change the direction or slightly change the elevation of EMT conduits entering electrical boxes or enclosures. With Orbit Industries' labor saving design, electricians can save time consumed on offset conduit bending before connecting conduits to electrical junction boxes or enclosures.



### FEATURES:

- Zinc Die Cast
- Concrete-Tight
- Combo-Head Set Screw
- Suitable for applications above 600V

### CERTIFICATION:

UL file E310660, Conforms to UL 514B.



### CONFIGURATION DATA:

Part No.	UPC	Trade Size	Std.Pkg.	Master Ctn
OCC-50	8-35243-04949-9	1/2"	100	1000
OCC-75	8-35243-04950-5	3/4"	50	500



# SUBMITTAL SHEET

## EMT INSIDE CORNER SET-SCREW TYPE

### DESCRIPTION:

Orbit Industries' 90° inside corner set-screw elbows are used to change the direction of EMT conduit runs in any direction by 90 angles. They are ideal for continuing the conduit run in tight spaces and areas where bending the conduit is not possible. Orbit Industries' 90 angle inside corner elbows are easy to install. When conduits cannot be bent, you can turn them by 90°. Orbit Industries' 90° inside corner set-screw elbows are of rugged zinc die-cast construction.



### FEATURES:

- Zinc Die Cast
- Combo Head Set-Screw
- Suitable for applications above 600V

### CERTIFICATION:

UL file E310660, Conforms to UL 514B.



### CONFIGURATION DATA:

Part No.	UPC	Trade Size	Std.Pkg.	Master Ctn
ECS-50	8-35243-04922-2	1/2"	100	1000
ECS-75	8-35243-04923-9	3/4"	50	500



# SUBMITTAL SHEET

## ZINC DIE CAST EMT "FASTLOCK" CONNECTORS (NO LOCKNUT)

### DESCRIPTION:

Orbit Industries' zinc die cast "fastlock" connectors are used in dry location to bond EMT thinwall conduits to electrical junction boxes or enclosures. The fast lock connectors snap on box knockout openings and require no locknuts to secure. Fast lock connectors are made with combination head screws that can be securely fastened using a slotted Phillips, or Robertson head screw driver.



### FEATURES:

- Zinc Die Cast
- Combo Head Set-Screw
- Suitable for dry location only

### CERTIFICATION:

Meets UL Standards: UL 514B.

### CONFIGURATION DATA:

Part No.	UPC	Trade Size	Std.Pkg.	Master Ctn
OF1701	8-35243-00342-2	1/2"	50	500
OF1702	8-35243-00343-9	3/4"	50	500



# SUBMITTAL SHEET

## FLEX CONNECTORS SCREW-IN TYPE

### DESCRIPTION:

Orbit Industries' screw-in type connectors screw in to the interior ridges of flexible metal conduits and provide a smooth pulling surface for wires when connected to electrical junction boxes or enclosures. Orbit Industries' screw-in connectors require no screws, clamps, or fasteners to secure the connectors. They save both time and money by connecting directly into flexible metal conduits interior threads.



### FEATURES:

- Zinc Die Cast

### CERTIFICATION:

UL file E310658, Conforms to UL 514B.



### CONFIGURATION DATA:

Part No.	UPC	Trade Size	Std.Pkg.	Master Ctn
OF671	8-35243-03440-2	3/8"	100	1000
OF672	8-35243-03441-9	1/2"	100	1000
OF673	8-35243-03442-6	3/4"	100	500
OF674	8-35243-03443-3	1"	25	250
OF675	8-35243-03444-0	1-1/4"	10	100
OF681	8-35243-03459-4	1-1/2"	5	50
OF682	8-35243-04878-2	2"	3	30





# SUBMITTAL SHEET

## INSULATED FLEX CONNECTORS SCREW-IN TYPE

### DESCRIPTION:

Orbit Industries' screw-in type connectors screw in to the interior ridges of flexible metal conduits and provide a smooth pulling surface for wires when connected to electrical junction boxes or enclosures. Orbit Industries' screw-in connectors with insulated throats require no screws, clamps, or fasteners to secure the connectors. They save both time and money by connecting directly into flexible metal conduits interior threads.



### FEATURES:

- Zinc Die Cast
- With Insulated Throat (Yellow, Insulated color may vary)

### CERTIFICATION:

UL file E310658, Conforms to UL 514B.



### CONFIGURATION DATA:

Part No.	UPC	Trade Size	Std.Pkg.	Master Ctn
OF671-S	8-35243-03450-1	3/8"	100	1000
OF672-S	8-35243-03451-8	1/2"	100	1000
OF673-S	8-35243-05011-2	3/4"	100	500
OF674-S	8-35243-05012-9	1"	25	250
OF675-S	8-35243-03453-2	1-1/4"	10	100
OF681-S	8-35243-05013-6	1-1/2"	5	50
OF682-S	8-35243-05014-3	2"	3	30



# SUBMITTAL SHEET

## FLEX COUPLINGS SCREW-IN TYPE

### DESCRIPTION:

Orbit Industries' screw-in couplings are used to join two flexible metal conduits together to form a single connected raceway for electrical wire pulls. The screw-in couplings make it possible to connect cut lengths of flexible metal conduits for running branch circuits.



### FEATURES:

- Zinc Die Cast

### CERTIFICATION:

UL file E310658, Conforms to UL 514B.



### CONFIGURATION DATA:

Part No.	UPC	Trade Size	Std.Pkg.	Master Ctn
OF676	8-35243-03445-7	1/2"	100	1000
OF677	8-35243-03446-4	3/4"	100	500
OF678	8-35243-03456-3	1"	25	250
OF679	8-35243-03457-0	1-1/4"	10	100
OF685	8-35243-05015-0	1-1/2"	5	50
OF686	8-35243-05016-7	2"	3	30



# SUBMITTAL SHEET

## FLEX BUSHING

### DESCRIPTION:

Orbit Industries' screw-in bushings provide protecting against sharp edges of flexible metal conduit so wires passing through the raceway will not be damaged. The screw-in bushings allow trouble free installation of low voltage fire alarm, security and data cables in flexible metal conduits. Cables exit the raceway without damage from sharp edges when termination of the devices is required in the field. In addition, bushings are zinc electroplated for excellent corrosion protection in damp locations.



### FEATURES:

- Steel
- Electroplated Zinc
- Used to insulate Cut Flex when the conduit is used for data cables without a junction box

### CERTIFICATION:

Meets UL Standards: UL 514B

### CONFIGURATION DATA:

Part No.	UPC	Trade Size	Std.Pkg.	Master Ctn
FB-50	8-35243-04880-5	1/2"	100	1000
FB-75	8-35243-04881-2	3/4"	100	500
FB-100	8-35243-04882-9	1"	25	250



# SUBMITTAL SHEET

## FLEX CONNECTORS SQUEEZE TYPE

### DESCRIPTION:

Orbit Industries' straight squeeze type connectors are used in dry locations to bond flexible metal conduits to boxes or enclosures. Orbit Industries' flex connectors have rugged steel construction and are durable. The rugged steel construction ensures mechanical protection from the conduit to the designated electrical junction box or enclosure.



### FEATURES:

- Zinc Die Cast
- Sizes 3/8" & 1/2" are also for AC (BX)

### CERTIFICATION:

UL file E310658, Conforms to UL 514B.



### CONFIGURATION DATA:

Part No.	UPC	Trade Size	Std.Pkg.	Master Ctn
OF730	8-35243-05047-1	3/8"	50	500
OF731	8-35243-05049-5	1/2"	25	250
OF732	8-35243-05051-8	3/4"	25	250
OF733	8-35243-05053-2	1"	10	100
OF734	8-35243-05055-6	1-1/4"	10	100
OF735	8-35243-05057-0	1-1/2"	5	50
OF736	8-35243-05059-4	2"	4	40
OF737	8-35243-05061-7	2-1/2"	2	6
OF738	8-35243-05063-1	3"	1.00	2.00
OF739	8-35243-05065-5	3-1/2"	1.00	2.00
OF740	8-35243-05067-9	4"	1	2



# SUBMITTAL SHEET

## INSULATED FLEX CONNECTORS SQUEEZE TYPE

### DESCRIPTION:

Orbit Industries' straight squeeze type connectors with insulated throats are used in dry locations to bond flexible metal conduits to boxes or enclosures. Orbit Industries' flex connectors have rugged steel construction and are durable. The rugged steel construction ensures mechanical protection from the conduit to the designated electrical junction box or enclosure. Their insulated plastic throat prevents wires from being cut or skinned by sharp edges when being pulled through conduits.



### FEATURES:

- Zinc Die Cast
- With Insulated Throat (Yellow, Insulated color may vary)
- Sizes 3/8" & 1/2" are also for AC (BX)

### CERTIFICATION:

UL file E310658, Conforms to UL 514B.



### CONFIGURATION DATA:

Part No.	UPC	Trade Size	Std.Pkg.	Master Ctn
OF730-S	8-35243-05048-8	3/8"	50	500
OF731-S	8-35243-05050-1	1/2"	25	250
OF732-S	8-35243-05052-5	3/4"	25	250
OF733-S	8-35243-05054-9	1"	10	100
OF734-S	8-35243-05056-3	1-1/4"	10	100
OF735-S	8-35243-05058-7	1-1/2"	5	50
OF736-S	8-35243-05060-0	2"	4	40
OF737-S	8-35243-05062-4	2-1/2"	2	6
OF738-S	8-35243-05064-8	3"	1.00	2.00
OF739-S	8-35243-05066-2	3-1/2"	1.00	2.00
OF740-S	8-35243-05068-6	4"	1	2



# SUBMITTAL SHEET

## FLEX CONNECTORS SET-SCREW TYPE

### DESCRIPTION:

Orbit Industries' set-screw connectors for conduit knockouts are used with steel flexible metal conduits and are not recommended for aluminum clad cables. Orbit Industries' set-screw type flexible metal conduit connectors have a tri head combo screw that makes installation fast and labor saving. The screws tight biting design ensures that cables will not loosen when subject to vibrations.



### FEATURES:

- Zinc Die Cast
- Steel screw
- For Steel FLEX only

### CERTIFICATION:

UL file E310658, Conforms to UL 514B.



### CONFIGURATION DATA:

Part No.	UPC	Trade Size	Std.Pkg.	Master Ctn
OF654	8-35243-03748-9	1/2"	100	500
OF655	8-35243-03749-6	3/4"	75	375



# SUBMITTAL SHEET

## 90° ANGLE AC(BX)/MC/FLEX CONNECTORS SQUEEZE TYPE

### DESCRIPTION:

Orbit Industries 90° angle squeeze type AC (BX)/MC connectors are used in dry locations to bond flexible metal conduit to a box or enclosure. Orbit Industries squeeze connectors have a rugged metallic construction and are durable. The rugged construction ensures mechanical protection for the raceway.



### FEATURES:

- Zinc Die Cast

### CERTIFICATION:

UL file E310658, Conforms to UL 514B.



### CONFIGURATION DATA:

Part No.	UPC	Trade Size	Std.Pkg.	Master Ctn
OF643	8-35243-04999-4	3/8"	25	250
OF644	8-35243-05000-6	1/2"	25	250
OF645	8-35243-05001-3	3/4"	25	250



# SUBMITTAL SHEET

## 90° ANGLE FLEX CONNECTORS SQUEEZE TYPE

### DESCRIPTION:

Orbit Industries' 90° angle squeeze type connectors with insulated throats are used in dry locations to bond flexible metal conduits to boxes or enclosures. Orbit Industries' flex connectors have rugged metallic construction and are durable. The rugged metallic construction ensures mechanical protection for the conduit and designated electrical junction box or enclosure. Their insulated plastic throat prevents wires from being cut or skinned by sharp edges when being pulled through conduits.



### FEATURES:

- Zinc Die Cast

### CERTIFICATION:

UL file E310658, Conforms to UL 514B.



### CONFIGURATION DATA:

Part No.	UPC	Trade Size	Std.Pkg.	Master Ctn
OF6463	8-35243-05002-0	1"	5	25
OF6464	8-35243-05003-7	1-1/4"	-	5
OF6465	8-35243-05004-4	1-1/2"	-	5
OF6466	8-35243-05005-1	2"	-	5
OF6467	8-35243-05006-8	2-1/2"	-	5
OF6468	8-35243-05007-5	3"	-	5
OF6469	8-35243-05008-2	3-1/2"	-	1
OF6470	8-35243-05009-9	4"	-	1





# SUBMITTAL SHEET

## EMT TO FLEX COUPLINGS COMPRESSION/SCREW-IN TYPE

### DESCRIPTION:

Orbit Industries' EMT to Flex Couplings Compression/Screw-In Type are used to connect EMT to flexible metal conduit. Coupling connects to EMT Conduit using compression type connections and to flexible metal conduit using screw-in type connections. Construction features zinc die cast to ensure protection of wires from EMT and flexible conduit to designated electrical junction box or enclosure.



### FEATURES:

- Zinc Die Cast

### CERTIFICATION:

UL file E310658, Conforms to UL 514B.



### CONFIGURATION DATA:

Part No.	UPC	Trade Size	Std.Pkg.	Master Ctn
OF1611	8-35243-04953-6	1/2"	50	500
OF1612	8-35243-04954-3	3/4"	25	250
OF1613	8-35243-04955-0	1"	10	100



# SUBMITTAL SHEET

## EMT TO FLEX COUPLINGS SET-SCREW/SQUEEZE TYPE

### DESCRIPTION:

Orbit Industries' EMT to flexible metal conduit squeeze-type combination couplings are used to connect EMT conduits to flexible metal conduits. Orbit Industries' flex connectors have rugged metallic construction and are durable. The rugged metallic construction ensures mechanical protection and connection between one conduit and another. Their smooth interior surface ensures a snag free wire pull every time. In addition, couplings are zinc electroplated for excellent corrosion protection in damp locations.



### FEATURES:

- Zinc Die Cast

### CERTIFICATION:

UL file E310658, Conforms to UL 514B.



### CONFIGURATION DATA:

Part No.	UPC	Trade Size	Std.Pkg.	Master Ctn
OF530	8-35243-04956-7	1/2" to 3/8"	50	500
OF531	8-35243-04957-4	1/2" to 1/2"	25	250
OF532	8-35243-04958-1	3/4" to 3/4"	25	100
OF533	8-35243-04959-8	1" to 1"	10	40



# SUBMITTAL SHEET

## EMT TO FLEX COUPLINGS SET-SCREW/CLAMP TYPE

### DESCRIPTION:

Orbit Industries' 90° angle squeeze type AC (BX)/MC connectors are used in dry locations to bond flexible metal conduit to a box or enclosure. Orbit Industries squeeze connectors have a rugged metallic construction and are durable. The rugged construction ensures mechanical protection for the raceway.



### FEATURES:

- Zinc Die Cast

### CERTIFICATION:

UL file E310658, Conforms to UL 514B.



### CONFIGURATION DATA:

Part No.	UPC	Trade Size	Std.Pkg.	Master Ctn
OF520	8-35243-03744-1	1/2" to 3/8"	50	500
OF521	8-35243-03745-8	1/2" to 1/2"	25	250
OF522	8-35243-03746-5	3/4" to 3/4"	25	250
OF523	8-35243-03747-2	1" to 1"	10	40



# SUBMITTAL SHEET

## FLEX CONNECTORS CLAMP TYPE

### DESCRIPTION:

Orbit Industries' Flex Connectors Clamp Type are used to connect flexible cables to junction boxes or enclosures. Flex connectors feature a clamp connection type to connect to flexible cables. Clamp uses a combo head set-screw for different screw tips for fast and easy installations. In addition, connectors are zinc electroplated for excellent corrosion protection in damp locations.



### FEATURES:

- Zinc Die Cast
- Combo Head Set-Screw

### CERTIFICATION:

Meets UL Standards: UL 514B

### CONFIGURATION DATA:

Part No.	UPC	Trade Size	Std.Pkg.	Master Ctn
OF657	8-35243-00351-4	1/2"	25	50



# SUBMITTAL SHEET

## 90° ANGLE FLEX CONNECTOR SCREW-IN TYPE

### DESCRIPTION:

Orbit Industries' 90° angle screw-in type connectors with sliding cover connect flexible conduit to junction boxes or enclosures. Eliminates the need of bending conduit when a change of angle is needed. Sliding cover allows for easy maintenance and pulling of wires during installation. In addition, connectors are zinc electroplated for excellent corrosion protection in damp locations.



### FEATURES:

- Zinc Die Cast
- Sliding Cover for easy wire pulls

### CERTIFICATION:

Meets UL Standards: UL 514B

### CONFIGURATION DATA:

Part No.	UPC	Trade Size	Std.Pkg.	Master Ctn
OF9673	8-35243-05160-7	3/4"	15	150
OF9674	8-35243-05161-4	1"	10	100

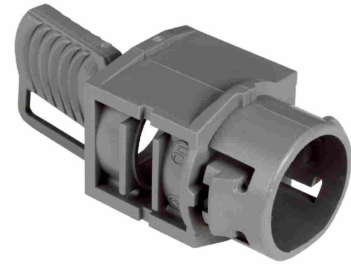


# SUBMITTAL SHEET

## PVC NON-METALLIC (NM) CABLE CONNECTOR

### DESCRIPTION:

Orbit Industries' PVC non-metallic cable connectors are used to connect non-metallic sheathed cable and flexible cord to a box or an enclosure.



### FEATURES:

- Heavy-Duty PVC

### CERTIFICATION:

Meets UL Standards: UL 514B

### CONFIGURATION DATA:

Part No.	For Use With	UPC	Trade Size	Std.Pkg.	Master Ctn
NM-50	One or Two 14/2, 14/3, 12/2 One 12/3, 10/2, 10/3 One or Two 0.300" or 0.600" cords	8-35243-04946-8	1/2"	50	500

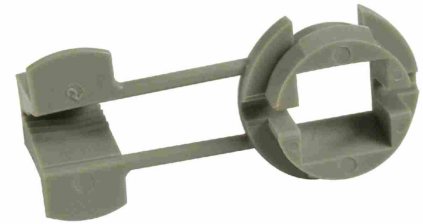


# SUBMITTAL SHEET

## NON-METALLIC CABLE CONNECTORS PUSH-IN TYPE

### DESCRIPTION:

Non-Metallic Push-in type cable connectors, for use with one 10, 12, 14 AWG two-conductor cables with or without ground wire.



### FEATURES:

- Flame-retardant polypropylene
- Special gripping arrangement for easy cable insertion
- For Use with:  
One 10, 12, 14 AWG two-conductor cables with or without ground wire

### CERTIFICATION:

Meets UL Standards: UL 514B

### CONFIGURATION DATA:

Part No.	For Use With:	UPC	Trade Size	Std.Pkg.	Master Ctn
NMP-50	One 10, 12, 14 AWG two-conductor cables with or without ground wire	8-35243-00337-8	1/2"	100	300



# SUBMITTAL SHEET

## NON-METALLIC CABLE CONNECTORS

### DESCRIPTION:

Orbit Industries' non-metallic cable connectors are used to connect nonmetallic cables to electrical junction boxes or enclosures. The two screw and single strap design clamps onto non-metallic cable. Threading allows for mounting to junction boxes or enclosures using a locknut.



### FEATURES:

- Zinc Die Cast
- Sizes 1" to 2" are also suitable for service entrance

### CERTIFICATION:

UL file E310662, Conforms to UL 514B.



### CONFIGURATION DATA:

Part No.	For Use With	UPC	Trade Size	Std.Pkg.
RX-50	(1) 14/12 To 10/2 NM, (2) 14/2 or (2) 12/2 NM 0.340" to 0.380" Dia, Flex Cord (Dry Location) 14/3, 16/2, and 16/3 SJO	8-35243-05192-8	1/2"	100
RX-75	(2) 14-2 NM, AWG 0.340" to 0.515" Dia. Flex Cod (Dry Location) 14/3, 14/2 SJO	8-35243-05193-5	3/4"	25
RX-100	(4) 14/2, (1) 8/3, 8/2, 6/2, 6/3, 4/2, 4/3 NM (1) 2 SE Cable	8-35243-05188-1	1"	10
RX-125	4/3 or 2/3 NM	8-35243-05189-8	1-1/4"	5
RX-150	3-2/0 or 3-4/0 NM	8-35243-05190-4	1-1/2"	5
RX-200	3-2/0 or 3-4/0 NM	8-35243-05191-1	2"	5





# SUBMITTAL SHEET

## METAL CLAD (MC) CONNECTORS SADDLE-TYPE

### DESCRIPTION:

Orbit Industries' Metal Clad Connectors are used to connect MC cables to electrical junction boxes or enclosures. A single set-screw tightens saddle onto MC cables while opposite threaded end mounts to a junction box or enclosure using a locknut. Insulation prevents wires from being damaged when pulled. In addition, connectors are zinc electroplated for excellent corrosion protection in damp locations.



### FEATURES:

- Zinc Die Cast
- Combo Head Set-Screw
- With Insulated Throat
- Suitable for Dry Location Only
- Insulated color may vary

### CERTIFICATION:

Meets UL Standards: UL 514B

### CONFIGURATION DATA:

Part No.	For Use With	UPC	Trade Size	Std.Pkg.
OF6231	AC & MC Interlocking Steel 0.450 to 0.590 Dia. AC & MC Interlocking AL 0.440 to 0.600 Dia. Round Corrugated AL, MC 0.574 to 12/4 Square Corrugated AL, MC 0.527, 0.254, 12/3 AL FMC, 3/8" Steel and RW FMC, 3/8" Steel	8-35243-04905-5	1/2"	100
OF6232	Interlocking Steel 0.661 to 0.711 Dia. Interlocking AL 0.775 to 0.825 Dia. AC, AL, & Steel 0.650 to 0.810 Dia. & Flex, 1/2" Steel	8-35243-04906-2	3/4"	50



# SUBMITTAL SHEET

## METAL CLAD (MC) & AC (BX) CONNECTORS SET-SCREW TYPE

### DESCRIPTION:

Orbit Industries' MC and AC Connectors are used to connect MC or AC cables to a junction box or enclosure. A single set-screw secures MC or AC cable to connector while opposite threaded side mounts to box using locknut. In addition, connectors are zinc electroplated for excellent corrosion protection in damp locations.



### FEATURES:

- Zinc Die Cast
- For Steel only

### CERTIFICATION:

UL file E362145, Conforms to UL 514B.



### CONFIGURATION DATA:

Part No.	For Use With	UPC	Trade Size	Std.Pkg.
OF653	AC, Steel, 14/2 AWG and MC 0.500 to 0.550 dia.	8-35243-05010-5	1/2"	100



# SUBMITTAL SHEET

## METAL CLAD (MC) & AC (BX) CONNECTORS

### DESCRIPTION:

Orbit Industries' MC and AC Connectors are used to connect MC or AC cables to a junction box or enclosure. A clamp secures MC or AC cable to connector while opposite threaded side mounts to box using locknut. In addition, connectors are zinc electroplated for excellent corrosion protection in damp locations.



### FEATURES:

- Zinc Die Cast
- For Steel and Aluminum

### CERTIFICATION:

Meets UL Standards: UL 514B

### CONFIGURATION DATA:

Part No.	For Use With	UPC	Trade Size	Std.Pkg.
OF6620	AC (BX) 14/2 to 10/2, MC 14/2 to 10/3	8-35243-04907-9	1/2"	100



# SUBMITTAL SHEET

## METAL CLAD (MC) CONNECTORS CLAMP TYPE

### DESCRIPTION:

Orbit Industries' MC Connectors are used to connect MC cables to a junction box or enclosure. A clamp secures MC cable to connector while opposite threaded side mounts to box using locknut. Insulation prevents wires from being damaged when being pulled. In addition, connectors are zinc electroplated for excellent corrosion protection in damp locations.



### FEATURES:

- Zinc Die Cast
- With Insulated Throat
- Suitable for dry location only
- Insulated color may vary

### CERTIFICATION:

UL file E310658, Conforms to UL 514B.



### CONFIGURATION DATA:

Part No.	UPC	Trade Size	Std.Pkg.	Master Ctn
MC-CL-100	8-35243-03752-6	1"	10	100
MC-CL-125	8-35243-03753-3	1-1/4"	25	100
MC-CL-150	8-35243-03754-0	1-1/2"	10	100
MC-CL-200	8-35243-03755-7	2"	10	100
MC-CL-250	8-35243-03756-4	2-1/2"	-	10
MC-CL-300	8-35243-03757-1	3"	-	5
MC-CL-350	8-35243-03758-8	3-1/2"	-	5



# SUBMITTAL SHEET

## COMBINATION AC (BX) & NON-METALLIC(NM) CONNECTORS

### DESCRIPTION:

Orbit Industries' MC and NM Connectors are used to connect MC or NM cables to a junction box or enclosure. A clamp secures MC or NM cable to connector while opposite threaded side mounts to box using locknut. In addition, connectors are zinc electroplated for excellent corrosion protection in damp locations.



### FEATURES:

- Zinc Die Cast

### CERTIFICATION:

Meets UL Standards: UL 514B

### CONFIGURATION DATA:

Part No.	For Use With	UPC	Trade Size	Std.Pkg.
OF623	14/2 AC(BX) 14/2 NM, 0.340 to 0.380 dia cord 14/3 & 14/3 SJO, 16/2 SO	8-35243-05404-2	1/2"	25



# SUBMITTAL SHEET

## DUPLEX AC (BX) FLEX/MC CONNECTORS

### DESCRIPTION:

Orbit Industries' duplex AC (BX) flex-MC connector is Zinc die-cast with single screw for Flex / AC / MC / NM cable / MCI-A cable.



### FEATURES:

- Zinc Die Cast
- Used with: 14/2 to 10/2 AC (BX) And (2)14/2 to 10/2 AL & Steel for FMC 3/8"

### CERTIFICATION:

UL file E310662, Conforms to UL 514B



### CONFIGURATION DATA:

Part No.	UPC	Trade Size	Std.Pkg.	Master Ctn
MC-DX-50	8-35243-04877-5	1/2"	25	250

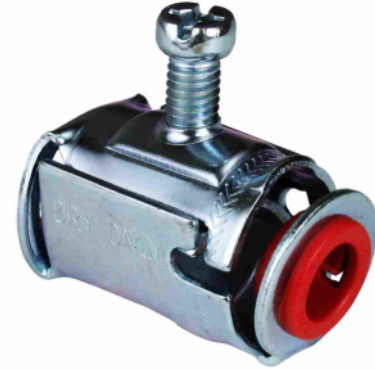


# SUBMITTAL SHEET

## STEEL "FASTLOCK" CONNECTOR

### DESCRIPTION:

Orbit Industries' fast lock connectors with insulated throats are used to connect flexible metal conduits like metal clad cables or armored cables to electrical junction boxes or enclosures. The fast lock connectors snap on box knockout openings and no locknuts are needed to secure them. They accept multiple cable sizes. Fast lock connectors are made with a different kinds of combination head screw that can be securely fastened using a slotted Phillips, or Robertson head screw driver. They are also of excellent corrosion protection with zinc electroplated.



### FEATURES:

- Steel
- Electroplated Zinc
- Saddle-Base Connector
- Combo Head Set-Screw
- For AC, MCI, RWFMC, ALFMC
- Insulated color may vary
- Used with:
  - Steel AC 14/2 (0.440) to 10/3;
  - AL AC 14/2 (0.475) to 10/3;
  - Steel MC Interlocking (MCI) 0.437" to 0.565" O.D.;
  - AL MC Interlocking (MCI) 0.525" to 0.629" O.D.;
  - AL Corrugated Continuous (MCC) 0.350" to 0.592" O.D.;
  - Steel & AL Flex RWFMC: 3/8"

### CERTIFICATION:

UL file E310658, Conforms to UL 514B



### CONFIGURATION DATA:

Part No.	UPC	Trade Size	Std.Pkg.	Master Ctn
FLC-50	8-35243-04924-6	1/2"	50	500



# SUBMITTAL SHEET

## STEEL "FASTLOCK" WIDE-THROAT CONNECTORS

### DESCRIPTION:

Orbit Industries' fast lock connectors with insulated throats are used to connect flexible metal conduits like metal clad cables or armored cables to electrical junction boxes or enclosures. The fast lock connectors snap on box knockout openings and no locknuts are needed to secure them. They accept multiple cable sizes. Fast lock connectors are made with a different kinds of combination head screw that can be securely fastened using a slotted Phillips, or Robertson head screw driver. They are also of excellent corrosion protection with zinc electroplated.



### FEATURES:

- Steel
- Electroplated Zinc
- Saddle-Base Connector
- Combo Head Set-Screw
- For AC, MCI, RWFCM, ALFMC
- Insulated color may vary

### CERTIFICATION:

Meet UL 514B Requirement

### CONFIGURATION DATA:

Part No.	UPC	Used With	Trade Size	Std.Pkg.	Master Ctn
FLC-50L	8-35243-03750-2	Steel AC 10/4 (0.625) to 6/3 (0.842) AL AC 10/4 (0.625) to 8/4 (0.770) Steel MC Interlocking (MCI) 10/3 (0.594) to 6/2 (0.740) AL MC Interlocking (MCI) 10/3 (0.594) to 8/2 (0.650) Steel RWFCM, AL RWFCM, AL FMC: 1/2"	1/2"	50	500
FLC-75L	8-35243-03751-9	Steel AC 10/4 (0.625) to 6/3 (0.840) AL AC 10/4 (0.622) to 8/4 (0.760) Steel MC Interlocking (MCI) 10/3 (0.594) to 6/2 (0.746) AL MC Interlocking (MCI) 10/3 (0.582) to 8/2 (0.650) Steel RWFCM, AL RWFCM & AL FMC 1/2"	3/4"	25	250





# SUBMITTAL SHEET

## STEEL "FASTLOCK" DUPLEX CONNECTORS

### DESCRIPTION:

Orbit Industries' fast lock connectors with insulated throats are used to connect flexible metal conduits like metal clad cables or armored cables to electrical junction boxes or enclosures. The fast lock connectors snap on box knockout openings and no locknuts are needed to secure them. They accept multiple cable sizes. Fast lock connectors are made with a different kinds of combination head screw that can be securely fastened using a slotted Phillips, or Robertson head screw driver. They are also of excellent corrosion protection with zinc electroplated.



### FEATURES:

- Steel
- Electroplated Zinc
- Combo Head Set-Screw
- For AC, MCI, RWFMC, ALFMC
- Insulated color may vary
- Used With:
  - Steel AC 14/2 (0.454) to 12/4 (0.556)
  - Aluminum AC 14/2 (0.485) to 12/4 (0.565)
  - Steel MC Interlocking (MCI) 14/2 (0.470) to 12/4 (0.520)
  - Aluminum MC Interlocking (MCI) 14/2 (0.460) to 12/4 (0.590)
  - Steel RWFMC 3/8"
  - Aluminum RWFMC 3/8" Aluminum FMC 3/8"

### CERTIFICATION:

UL file E310662, Conforms to UL 514B



### CONFIGURATION DATA:

Part No.	UPC	Trade Size	Std.Pkg.	Master Ctn
FLD-50	8-35243-04925-3	1/2"	25	250



# SUBMITTAL SHEET

## ANTI-SHORT BUSHINGS THERMOPLASTIC

### DESCRIPTION:

Orbit Industries' anti-short circuit bushings are used to create insulating barriers against sharp edges of flexible metal conduits that have been cut in the field. They protect wires passing through flexible metal conduits. The bushings snap in place on the cut edge of flexible metal conduits. They help prevent short circuits and rework. In addition, they help ensure wires are protected from damage.



### FEATURES:

- High-Temperature Plastic
- Fits BX (AC) and Flex Conduits

### CERTIFICATION:

Meet UL Standard: 514B

### CONFIGURATION DATA:

Part No.	For Use With	UPC	Trade Size	Std.Pkg.	Master Ctn
ASB-516	14/2, 14/3, 12/2	8-35243-03759-5	5/16"	35	3500
ASB-38	14/4, 12/3, 6/1, 4/1	8-35243-03760-1	3/8"	35	2100
ASB-716	12/4, 10/2, 10/3, 2/1	8-35243-03761-8	7/16"	35	700
ASB-50	10/4, 8/2, 8/3, 1/1	8-35243-03762-5	1/2"	20	400
ASB-75	8/4, 6/2, 4/2, 4/3, 6/4	8-35243-03763-2	3/4"	16	320



# SUBMITTAL SHEET

## NON-METALLIC (PVC) STRAIGHT LIQUID TIGHT CONNECTORS

### DESCRIPTION:

Orbit Industries' nonmetallic straight connectors are used in both wet and dry locations when conduits and fittings are not subjected to physical damage. Orbit Industries' gray nonmetallic, PVC plastic construction provides superior corrosion resistance and flexibility. It is designed to withstand harsh weather and extreme temperature changes. Each connector comes standard with a Neoprene O-ring and locknut.



### FEATURES:

- PVC Type-B
- Corrosion-Resistant
- Zinc Locknut

### CERTIFICATION:

UL file E310658, Conforms to UL 514B



### CONFIGURATION DATA:

Part No.	UPC	Trade Size	Std.Pkg.	Master Ctn
NMLT-38	8-35243-04947-5	3/8"	25	100
NMLT-50	8-35243-03066-4	1/2"	25	250
NMLT-75	8-35243-03067-1	3/4"	15	150
NMLT-100	8-35243-03068-8	1"	8	80
NMLT-125	8-35243-03306-1	1-1/4"	5	50
NMLT-150	8-35243-03307-8	1-1/2"	4	40
NMLT-200	8-35243-03308-5	2"	1	36



# SUBMITTAL SHEET

## NON-METALLIC (PVC) 90 DEG ANGLE LIQUID TIGHT CONNECTORS

### DESCRIPTION:

Orbit Industries' nonmetallic 90° angle connectors are used in both wet and dry locations when conduits and fittings are not subjected to physical damage. Orbit Industries' gray nonmetallic, PVC plastic construction provides superior corrosion resistance and flexibility. It is designed to withstand harsh weather and extreme temperature changes. Each connector comes standard with a Neoprene O-ring and locknut.



### FEATURES:

- PVC Type-B
- Corrosion-Resistant
- Zinc Locknut

### CERTIFICATION:

UL file E310658, Conforms to UL 514B



### CONFIGURATION DATA:

Part No.	UPC	Trade Size	Std.Pkg.	Master Ctn
NMLT90-38	8-35243-04948-2	3/8"	10	100
NMLT90-50	8-35243-03069-5	1/2"	15	150
NMLT90-75	8-35243-03070-1	3/4"	10	100
NMLT90-100	8-35243-03071-8	1"	5	50
NMLT-125	8-35243-03309-2	1-1/4"	4	40
NMLT90-150	8-35243-03310-8	1-1/2"	2	20
NMLT90-200	8-35243-03311-5	2"	1	10



# SUBMITTAL SHEET

## ZINC DIE CAST STRAIGHT LIQUID TIGHT CONNECTORS

### DESCRIPTION:

Orbit Industries' zinc die-cast liquid tight connectors are used with metallic and nonmetallic Type B liquid tight conduit. The trade size varies from 3/8" to 4".



### FEATURES:

- Zinc Die Cast
- Insulated color may vary

### CERTIFICATION:

UL file E310658, Conforms to UL 514B



### CONFIGURATION DATA:

Part No.	UPC	Trade Size	Std.Pkg.	Master Ctn
LT-38	8-35243-03020-6	3/8"	25	250
LT-50	8-35243-03021-3	1/2"	25	250
LT-75	8-35243-03022-0	3/4"	15	150
LT-100	8-35243-03023-7	1"	8	80
LT-125	8-35243-03024-4	1-1/4"	5	50
LT-150	8-35243-03025-1	1-1/2"	4	40
LT-200	8-35243-03026-8	2"	1	10
LT-250	8-35243-03027-5	2-1/2"	1	10
LT-300	8-35243-03028-2	3"	1	10
LT-350	8-35243-03029-9	3-1/2"	1	6
LT-400	8-35243-03030-5	4"	1	6



# SUBMITTAL SHEET

## ZINC DIE CAST 90 DEG ANGLE LIQUID TIGHT CONNECTORS

### DESCRIPTION:

Orbit Industries' zinc die-cast liquid tight connectors are used with metallic and nonmetallic Type B liquid tight conduit. The trade size varies from 3/8" to 4".



### FEATURES:

- Zinc Die Cast
- Insulated color may vary

### CERTIFICATION:

UL file E310658, Conforms to UL 514B



### CONFIGURATION DATA:

Part No.	UPC	Trade Size	Std.Pkg.	Master Ctn
LT90-38	8-35243-03031-2	3/8"	15	150
LT90-50	8-35243-03032-9	1/2"	15	150
LT90-75	8-35243-03033-6	3/4"	10	100
LT90-100	8-35243-03034-3	1"	5	50
LT90-125	8-35243-03035-0	1-1/4"	4	40
LT90-150	8-35243-03036-7	1-1/2"	2	20
LT90-200	8-35243-03037-4	2"	1	10
LT90-250	8-35243-03038-1	2-1/2"	1	10
LT90-300	8-35243-03039-8	3"	1	4
LT90-350	8-35243-03040-4	3-1/2"	1	3
LT90-400	8-35243-03041-1	4"	1	3



# SUBMITTAL SHEET

## ZINC DIE CAST INSULATED STRAIGHT LIQUID TIGHT CONNECTORS

### DESCRIPTION:

Orbit Industries' zinc die-cast insulated throat connectors are used with metallic and non-metallic liquid-tight conduit. When flexibility is required for the installation, operation, or maintenance of electrical appliances, type B conduits and fittings are used. The trade size varies from 3/8" to 4".



### FEATURES:

- Zinc Die Cast
- With Insulated Throat
- Insulated color may vary

### CERTIFICATION:

UL file E310658, Conforms to UL 514B



### CONFIGURATION DATA:

Part No.	UPC	Trade Size	Std.Pkg.	Master Ctn
LTI-38	8-35243-03764-9	3/8"	25	250
LTI-50	8-35243-03765-6	1/2"	25	250
LTI-75	8-35243-03766-3	3/4"	15	150
LTI-100	8-35243-03767-0	1"	8	80
LTI-125	8-35243-03768-7	1-1/4"	5	50
LTI-150	8-35243-03769-4	1-1/2"	4	40
LTI-200	8-35243-03770-0	2"	1	36
LTI-250	8-35243-03771-7	2-1/2"	1	10
LTI-300	8-35243-03772-4	3"	1	10
LTI-350	8-35243-03773-1	3-1/2"	1	6
LTI-400	8-35243-03774-8	4"	1	6



# SUBMITTAL SHEET

## ZINC DIE CAST INSULATED 90 ANGLE LIQUID TIGHT CONNECTORS

### DESCRIPTION:

Orbit Industries' zinc die-cast insulated throat connectors are used with metallic and non-metallic liquid-tight conduit. When flexibility is required for the installation, operation, or maintenance of electrical appliances, type B conduits and fittings are used. The trade size varies from 3/8" to 4".



### FEATURES:

- Zinc Die Cast
- With Insulated Throat
- Insulated color may vary

### CERTIFICATION:

UL file E310658, Conforms to UL 514B



### CONFIGURATION DATA:

Part No.	UPC	Trade Size	Std.Pkg.	Master Ctn
LT190-38	8-35243-03775-5	3/8"	15	150
LT190-50	8-35243-03776-2	1/2"	15	150
LT190-75	8-35243-03777-9	3/4"	10	100
LT190-100	8-35243-03778-6	1"	5	50
LT190-125	8-35243-03779-3	1-1/4"	4	40
LT190-150	8-35243-03780-9	1-1/2"	2	20
LT190-200	8-35243-03781-6	2"	1	10
LT190-250	8-35243-03782-3	2-1/2"	1	10
LT190-300	8-35243-03783-0	3"	1	4
LT190-350	8-35243-03784-7	3-1/2"	1	3
LT190-400	8-35243-03785-4	4"	1	3





# SUBMITTAL SHEET

## MALLEABLE IRON STRAIGHT LIQUIDTIGHT CONNECTORS

### DESCRIPTION:

Orbit Industries' malleable iron liquid tight connectors are used with metallic liquid tight conduit. The trade size varies from 3/8" to 4".



### FEATURES:

- Malleable Iron
- Electroplated Zinc
- Insulated color may vary

### CERTIFICATION:

UL file E310658, Conforms to UL 514B



### CONFIGURATION DATA:

Part No.	UPC	Trade Size	Std.Pkg.	Master Ctn
MLT-38	8-35243-03107-4	3/8"	25	250
MLT-50	8-35243-03108-1	1/2"	25	250
MLT-75	8-35243-03109-8	3/4"	15	150
MLT-100	8-35243-03110-4	1"	8	80
MLT-125	8-35243-03111-1	1-1/4"	5	50
MLT-150	8-35243-03112-8	1-1/2"	4	40
MLT-200	8-35243-03113-5	2"	1	20
MLT-250	8-35243-05314-4	2-1/2"	-	1
MLT-300	8-35243-05315-1	3"	-	1
MLT-350	8-35243-05316-8	3-1/2"	-	1
MLT-400	8-35243-05317-5	4"	-	1



# SUBMITTAL SHEET

## MALLEABLE IRON INSULATED STRAIGHT LIQUIDTIGHT CONNECTORS

### DESCRIPTION:

Orbit Industries' insulated straight connectors are used on flexible metallic liquid tight conduits and Type B flexible non metallic liquid tight conduits to positively bond conduits to boxes or enclosures in both wet and damp locations. The straight connectors are designed to slip on to the conduit quickly and to grip the conduit jacket, speeding up installation while ensuring a strong, liquid tight seal that decreases the risk of pullouts. All components of these connectors can be easily disassembled and reused. In addition, when connectors are terminated in threadless openings, the included sealing washers provide liquid tight seals. The heavy duty locknuts included with every Orbit liquid tight connector ensures the continuity of the grounding. In damp locations, the connectors are also of excellent corrosion protection with zinc electroplated. The trade size varies from 3/8" to 4".



### FEATURES:

- Malleable Iron
- Electroplated Zinc
- With Insulated Throat
- Insulated color may vary

### CERTIFICATION:

UL file E310658, Conforms to UL 514B



### CONFIGURATION DATA:

Part No.	UPC	Trade Size	Std.Pkg.	Master Ctn
MLTI-38	8-35243-03199-9	3/8"	25	250
MLTI-50	8-35243-03200-2	1/2"	25	250
MLTI-75	8-35243-03201-9	3/4"	15	150
MLTI-100	8-35243-03202-6	1"	8	80
MLTI-125	8-35243-03203-3	1-1/4"	5	50
MLTI-150	8-35243-03204-0	1-1/2"	4	40
MLTI-200	8-35243-03205-7	2"	1	20
MLTI-250	8-35243-05320-5	2-1/2"	-	1
MLTI-300	8-35243-05321-2	3"	-	1
MLTI-350	8-35243-05322-9	3-1/2"	-	1
MLTI-400	8-35243-05323-6	4"	-	1



# SUBMITTAL SHEET

## MALLEABLE IRON 45 DEG ANGLE LIQUIDTIGHT CONNECTORS

### DESCRIPTION:

Orbit Industries' malleable iron liquid tight connectors are used with metallic liquid tight conduit. The trade size varies from 3/8" to 4".



### FEATURES:

- Malleable Iron
- Electroplated Zinc
- Insulated color may vary

### CERTIFICATION:

UL file E310658, Conforms to UL 514B



### CONFIGURATION DATA:

Part No.	UPC	Trade Size	Std.Pkg.	Master Ctn
MLT45-38	8-35243-03114-2	3/8"	25	150
MLT45-50	8-35243-03115-9	1/2"	25	150
MLT45-75	8-35243-03116-6	3/4"	10	100
MLT45-100	8-35243-03117-3	1"	5	50
MLT45-125	8-35243-03118-0	1-1/4"	5	40
MLT45-150	8-35243-03119-7	1-1/2"	4	20
MLT45-200	8-35243-03120-3	2"	1	15
MLT45-250	8-35243-05326-7	2-1/2"	-	1
MLT45-300	8-35243-05327-4	3"	-	1
MLT45-350	8-35243-05328-1	3-1/2"	-	1
MLT45-400	8-35243-05329-8	4"	-	1



# SUBMITTAL SHEET

## MALLEABLE IRON INSULATED 45 DEG ANGLE LIQUIDTIGHT CONNECTORS

### DESCRIPTION:

Orbit Industries' insulated 45° angle connectors are used on flexible metallic liquid tight conduits and Type B flexible non metallic liquid tight conduits to positively bond conduits to boxes or enclosures in both wet and damp locations. The 45° angle connectors are designed to slip on to the conduit quickly and to grip the conduit jacket, speeding up installation while ensuring a strong, liquid tight seal that decreases the risk of pullouts. All components of these connectors can be easily disassembled and reused. In addition, when connectors are terminated in threadless openings, the included sealing washers provide liquid tight seals. The heavy duty locknuts included with every Orbit liquid tight connector ensures the continuity of the grounding. In damp locations, the connectors are also of excellent corrosion protection with zinc electroplated. The trade size varies from 3/8" to 4".



### FEATURES:

- Malleable Iron
- Electroplated Zinc
- With Insulated Throat
- Insulated color may vary

### CERTIFICATION:

Meet UL Standard: 514B

### CONFIGURATION DATA:

Part No.	UPC	Trade Size	Std.Pkg.	Master Ctn
MLT45-38	8-35243-03206-4	3/8"	25	150
MLT45-50	8-35243-03207-1	1/2"	25	150
MLT45-75	8-35243-03208-8	3/4"	10	100
MLT45-100	8-35243-03209-5	1"	5	50
MLT45-125	8-35243-03210-1	1-1/4"	5	40
MLT45-150	8-35243-03211-8	1-1/2"	4	20
MLT45-200	8-35243-03212-5	2"	1	15
MLT45-250	8-35243-05330-4	2-1/2"	-	1
MLT45-300	8-35243-05331-1	3"	-	1
MLT45-350	8-35243-05332-8	3-1/2"	-	1
MLT45-400	8-35243-05333-5	4"	-	1



# SUBMITTAL SHEET

## MALLEABLE IRON 90 DEG ANGLE LIQUIDTIGHT CONNECTORS

### DESCRIPTION:

Orbit Industries' malleable iron liquid tight connectors are used with metallic liquid tight conduit. The trade size varies from 3/8" to 4".



### FEATURES:

- Malleable Iron
- Electroplated Zinc
- Insulated color may vary

### CERTIFICATION:

UL file E310658, Conforms to UL 514B



### CONFIGURATION DATA:

Part No.	UPC	Trade Size	Std.Pkg.	Master Ctn
MLT90-38	8-35243-03121-0	3/8"	25	150
MLT90-50	8-35243-03122-7	1/2"	25	150
MLT90-75	8-35243-03123-4	3/4"	10	100
MLT90-100	8-35243-03124-1	1"	5	50
MLT90-125	8-35243-03125-8	1-1/4"	5	40
MLT90-150	8-35243-03126-5	1-1/2"	4	20
MLT90-200	8-35243-03127-2	2"	1	15
MLT90-250	8-35243-05334-2	2-1/2"	-	1
MLT90-300	8-35243-05335-9	3"	-	1
MLT90-350	8-35243-05336-6	3-1/2"	-	1
MLT90-400	8-35243-05337-3	4"	-	1



# SUBMITTAL SHEET

## MALLEABLE IRON INSULATED 90 DEG ANGLE LIQUIDTIGHT CONNECTORS

### DESCRIPTION:

Orbit Industries' insulated 90° angle connectors are used on flexible metallic liquid tight conduits and Type B flexible non metallic liquid tight conduits to positively bond conduits to boxes or enclosures in both wet and damp locations. The 90° angle connectors are designed to slip on to the conduit quickly and to grip the conduit jacket, speeding up installation while ensuring a strong, liquid tight seal that decreases the risk of pullouts. All components of these connectors can be easily disassembled and reused. In addition, when connectors are terminated in threadless openings, the included sealing washers provide liquid tight seals. The heavy duty locknuts included with every Orbit liquid tight connector ensures the continuity of the grounding. In damp locations, the connectors are also of excellent corrosion protection with zinc electroplated.



### FEATURES:

- Malleable Iron
- Electroplated Zinc
- With Insulated Throat
- Insulated color may vary

### CERTIFICATION:

Meet UL Standard: 514B

### CONFIGURATION DATA:

Part No.	UPC	Trade Size	Std.Pkg.	Master Ctn
MLTI90-38	8-35243-03213-2	3/8"	25	150
MLTI90-50	8-35243-03214-9	1/2"	25	150
MLTI90-75	8-35243-03215-6	3/4"	10	100
MLTI90-100	8-35243-03216-3	1"	5	50
MLTI90-125	8-35243-03217-0	1-1/4"	5	40
MLTI90-150	8-35243-03218-7	1-1/2"	4	20
MLTI90-200	8-35243-03219-4	2"	1	15
MLTI90-250	8-35243-05338-0	2-1/2"	-	1
MLTI90-300	8-35243-05339-7	3"	-	1
MLTI90-350	8-35243-05340-3	3-1/2"	-	1
MLTI90-400	8-35243-05341-0	4"	-	1



# SUBMITTAL SHEET

## STEEL RIGID CONNECTORS SET-SCREW TYPE

### DESCRIPTION:

Orbit Industries' set-screw connectors are used in dry locations to bond unthreaded rigid or IMC conduits to electrical junction boxes or electrical enclosures. The steel construction ensures mechanical protection to the conduit and designated electrical junction box or enclosure. These connectors eliminate the need to thread bald conduits to connect them to boxes or enclosures. In damp locations, set-screw connectors are also of excellent corrosion protection with zinc electroplated.



### FEATURES:

- Steel
- Electroplated Zinc
- For use in dry location

### CERTIFICATION:

Meet UL Standard: 514B

### CONFIGURATION DATA:

Part No.	UPC	Trade Size	Std.Pkg.	Master Ctn
RS-50	8-35243-05181-2	1/2"	25	250
RS-75	8-35243-05182-9	3/4"	25	250
RS-100	8-35243-05177-5	1"	10	100
RS-125	8-35243-05178-2	1-1/4"	1	25
RS-150	8-35243-05179-9	1-1/2"	1	25
RS-200	8-35243-05180-5	2"	1	10



# SUBMITTAL SHEET

## STEEL RIGID COUPLINGS SET-SCREW TYPE

### DESCRIPTION:

Orbit Industries' set-screw couplings are used in dry locations to connect the ends of two unthreaded rigid or IMC conduits together. The steel construction ensures mechanical protection and the connection from one conduit to another. These set-screw couplings eliminate the need to thread bald conduits to fit old threaded couplings. In damp locations, set-screw couplings are also of excellent corrosion protection with zinc electroplated.



### FEATURES:

- Steel
- Electroplated Zinc
- For use in dry location

### CERTIFICATION:

Meet UL Standard: 514B

### CONFIGURATION DATA:

Part No.	UPC	Trade Size	Std.Pkg.	Master Ctn
RSC-50	8-35243-05244-4	1/2"	25	250
RSC-75	8-35243-05187-4	3/4"	25	250
RSC-100	8-35243-05183-6	1"	10	100
RSC-125	8-35243-05184-3	1-1/4"	1	25
RSC-150	8-35243-05185-0	1-1/2"	1	25
RSC-200	8-35243-05186-7	2"	1	10





# SUBMITTAL SHEET

## STEEL THREADLESS RIGID CONNECTORS COMPRESSION TYPE

### DESCRIPTION:

Orbit Industries' compression connectors are used in dry locations to bond unthreaded rigid or IMC conduits to electrical junction boxes or electrical enclosures. The steel construction ensures mechanical protection to the conduit and designated electrical junction box or enclosure. They eliminate the need to thread bald conduits to attach them to electrical junction boxes or enclosures. In damp locations, compression connectors are also of excellent corrosion protection with zinc electroplated.



### FEATURES:

- Steel
- Electroplated Zinc
- Concrete-Tight

### CERTIFICATION:

Meet UL Standard: 514B

### CONFIGURATION DATA:

Part No.	UPC	Trade Size	Std.Pkg.	Master Ctn
RT-50	8-35243-03095-4	1/2"	25	250
RT-75	8-35243-03096-1	3/4"	25	250
RT-100	8-35243-03097-8	1"	10	100
RT-125	8-35243-03098-5	1-1/4"	1	25
RT-150	8-35243-03099-2	1-1/2"	1	25
RT-200	8-35243-03100-5	2"	1	10



# SUBMITTAL SHEET

## STEEL THREADLESS RIGID COUPLINGS COMPRESSION TYPE

### DESCRIPTION:

Orbit Industries' compression couplings are used in dry locations to connect the ends of two unthreaded rigid or IMC conduits together. The steel construction ensures mechanical protection and the connection from one conduit to another. These couplings eliminate the need to thread bald conduits to couple them together. In damp locations, compression couplings are also of excellent corrosion protection with zinc electroplated.



### FEATURES:

- Steel
- Electroplated Zinc
- Concrete-Tight

### CERTIFICATION:

Meet UL Standard: 514B

### CONFIGURATION DATA:

Part No.	UPC	Trade Size	Std.Pkg.	Master Ctn
RTC-50	8-35243-03101-2	1/2"	25	250
RTC-75	8-35243-03102-9	3/4"	25	250
RTC-100	8-35243-03103-6	1"	10	100
RTC-125	8-35243-03104-3	1-1/4"	1	25
RTC-150	8-35243-03105-0	1-1/2"	1	25
RTC-200	8-35243-03106-7	2"	1	10



# SUBMITTAL SHEET

## RIGID TO FLEX COUPLING CLAMP TYPE

### DESCRIPTION:

Orbit Industries' Rigid to flex clamp type couplings



### FEATURES:

- Zinc Die Cast
- For Steel FLEX Only

### CERTIFICATION:

UL file E310658, Conforms to UL 514B



### CONFIGURATION DATA:

Part No.	UPC	Trade Size	Std.Pkg.	Master Ctn
OF697	8-35243-05174-4	1/2"	25	250



# SUBMITTAL SHEET

## RIGID TO FLEX COUPLINGS SET-SCREW TYPE

### DESCRIPTION:

Orbit Industries' rigid to flex set-screw couplings are used to connect flexible metal conduits to Rigid thinwall conduits. They are commonly used then flexibility is needed for lighting fixtures in varying locations. Orbit Industries' combination couplings provide much needed flexibility in running conduits. They save both time and money with their quick screw type installation. There is no need to bend conduits.



### FEATURES:

- Zinc Die Cast
- For Steel FLEX Only

### CERTIFICATION:

UL file E310658, Conforms to UL 514B



### CONFIGURATION DATA:

Part No.	UPC	Trade Size	Std.Pkg.	Master Ctn
OF694	8-35243-05175-1	1/2"	25	250
OF695	8-35243-05176-8	3/4"	25	250

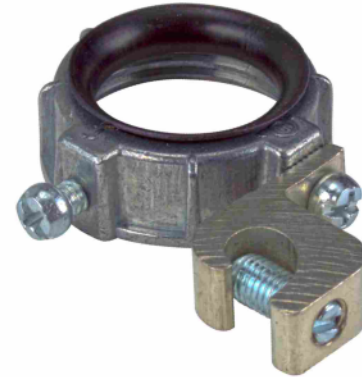


# SUBMITTAL SHEET

## GROUND BUSHINGS INSULATED WITH UNIVERSAL LAY-IN LUG

### DESCRIPTION:

Orbit Industries' grounding bushings insulated universal lay-in lug are used with locknut to terminate service conduit to cabinet. The lug provided for bonding jumper to neutral busbar. Plastic liner prevents damage to wire insulation, 105°C rated.  
Trade size varies from 1/2" to 6".



### FEATURES:

- Zinc Die Cast
- 105°C rated Throat Insulator

### CERTIFICATION:

UL file E310659, Conforms to UL 514B



### CONFIGURATION DATA:

Part No.	UPC	Trade Size	Lug Range	Std.Pkg.	Master Ctn
GBLL-50	8-35243-03085-5	1/2"	#14 - #4	50	500
GBLL-75	8-35243-03086-2	3/4"	#14 - #4	40	400
GBLL-100	8-35243-03087-9	1"	#14 - #4	15	150
GBLL-125	8-35243-03088-6	1-1/4"	#14 - #4	15	150
GBLL-150	8-35243-03089-3	1-1/2"	#14 - #4	10	100
GBLL-200	8-35243-03090-9	2"	#14 - #4	5	50
GBLL-250	8-35243-03091-6	2-1/2"	#6 - #250MCM	5	50
GBLL-300	8-35243-03092-3	3"	#6 - #250MCM	5	50
GBLL-350	8-35243-03093-0	3-1/2"	#6 - #250MCM	4	40
GBLL-400	8-35243-03094-7	4"	#6 - #250MCM	4	40
GBLL-500	8-35243-05312-0	5"	#6 - #250MCM	4	40
GBLL-600	8-35243-05313-7	6"	#6 - #250MCM	4	40



# SUBMITTAL SHEET

## MALLEABLE GROUND BUSHINGS INSULATED WITH UNIVERSAL LAY-IN LUG

### DESCRIPTION:

Malleable Ground Bushings Insulated with Universal Lay-In Lug  
Trade size varies from 1/2" to 4".



### FEATURES:

- Malleable Iron
- Full Machine-Cut Internal Threads
- Meets Federal Spec. A-A-50553

### CERTIFICATION:

Meet UL Standard: 514B

### CONFIGURATION DATA:

Part No.	UPC	Trade Size	Lug Range	Std.Pkg.	Master Ctn
MGBLL-50	835243053922	1/2"	#14 - #4	50	200
MGBLL-75	835243053939	3/4"	#14 - #4	25	100
MGBLL-100	835243053946	1"	#14 - #4	25	100
MGBLL-125	835243053953	1-1/4"	#14 - #4	10	50
MGBLL-150	835243053960	1-1/2"	#14 - #4	10	50
MGBLL-200	835243053977	2"	#14 - #4	10	50
MGBLL-250	835243053984	2-1/2"	#6 - #250MCM	5	25
MGBLL-300	835243053991	3"	#6 - #250MCM	5	25
MGBLL-350	835243054004	3-1/2"	#6 - #250MCM	-	5
MGBLL-400	835243054011	4"	#6 - #250MCM	-	5



# SUBMITTAL SHEET

## COPPER DIRECT BURIAL LAY-IN LUGS

### DESCRIPTION:

Orbit Industries' Copper direct burial mechanical lugs



### FEATURES:

- Stainless Steel Screws

### CERTIFICATION:

Meet UL Standard: 514B

### CONFIGURATION DATA:

Part No.	UPC	Wire Range	Std.Pkg.	Master Ctn
LLDB-14/4	835243002333	#14 - #4	25	250
LLTDB-14/4	835243002340	#14 - #4	25	250
LLTDB-SP-14/4	835243002357	#14 - #4	25	250



# SUBMITTAL SHEET

## COPPER DIRECT BURIAL MECHANICAL LUGS

### DESCRIPTION:

Orbit Industries' Copper direct burial mechanical lugs



### FEATURES:

- Stainless Steel screws
- Copper

### CERTIFICATION:

Meet UL Standard: 514B

### CONFIGURATION DATA:

Part No.	UPC	Wire Range	Std.Pkg.	Master Ctn
MLDB-14/10	835243002296	#14 - #10	50	400
MLDB-14/6	835243002302	#14 - #6	50	400
MLDB-14/4	835243002319	#14 - #4	25	200
MLDB-6/100	835243002326	#6 - #1/0	10	80





# SUBMITTAL SHEET

## GROUNDING (BONDING) RIGID LOCKNUTS

### DESCRIPTION:

Orbit Industries' grounding bonding rigid locknuts are used in harsh vibration environments to fasten threaded conduit to unthreaded opening in a box or enclosure.



### FEATURES:

- Steel
- Electroplated Zinc

### CERTIFICATION:

UL file E310658, Conforms to UL 514B



### CONFIGURATION DATA:

Part No.	UPC	Trade Size	Std.Pkg.	Master Ctn
GL-50	8-35243-03224-8	1/2"	50	200
GL-75	8-35243-03225-5	3/4"	25	100
GL-100	8-35243-03226-2	1"	25	100
GL-125	8-35243-03227-9	1-1/4"	10	50
GL-150	8-35243-03228-6	1-1/2"	10	50
GL-200	8-35243-03229-3	2"	10	50
GL-250	8-35243-03230-9	2-1/2"	5	25
GL-300	8-35243-03231-6	3"	5	25
GL-350	8-35243-03232-3	3-1/2"	-	5
GL-400	8-35243-03233-0	4"	-	5



# SUBMITTAL SHEET

## ZINC DIE CAST BARE GROUND CLAMP

### DESCRIPTION:

Orbit Industries' zinc die-cast bare grounding clamps with steel screw are used in grounding wire or conduit to water pipes or ground rods. Zinc die cast construction assures ground path continuity and they are of good corrosion resistance.



### FEATURES:

- Zinc Die Cast
- Steel Screws

### CERTIFICATION:

UL file E310659, Conforms to UL 514B



### CONFIGURATION DATA:

Part No.	UPC	Trade Size	Ground Wire Max.	Std.Pkg.	Master Ctn
GCBZ-50/100	8-35243-03076-3	1/2" to 1"	#10 - #2	25	200



# SUBMITTAL SHEET

## BRONZE BARE GROUND CLAMP

### DESCRIPTION:

Orbit Industries' bronze bare grounding clamps with brass screw are used in grounding wire or conduit to water pipes or ground rods. Bronze cast construction assures ground path continuity and they are of good corrosion resistance.



### FEATURES:

- Bronze
- Brass Screws

### CERTIFICATION:

UL file E310659, Conforms to UL 514B



### CONFIGURATION DATA:

Part No.	UPC	Trade Size	Ground Wire Max.	Std.Pkg.	Master Ctn
GCBR-50/100	8-35243-03072-5	1/2" to 1"	#10 - #2	25	200



# SUBMITTAL SHEET

## BRONZE BARE GROUND CLAMPS

### DESCRIPTION:

Orbit Industries' bronze bare grounding clamps with steel screw are used in grounding wire or conduit to water pipes or ground rods. Bronze cast construction assures ground path continuity and they are of good corrosion resistance.



### FEATURES:

- Bronze
- Steel Screws

### CERTIFICATION:

UL file E310659, Conforms to UL 514B



### CONFIGURATION DATA:

Part No.	UPC	Trade Size	Ground Wire Max.	Std.Pkg.	Master Ctn
GCB-50/100	8-35243-03007-7	1/2" to 1"	#10 - #2	25	200
GCB-125/200	8-35243-03008-4	1-1/4" to 2"	#10 - #2	10	80
GCB-250/400	8-35243-03009-1	2-1/2" to 4"	#10 - #2	-	15
GCB-450/600	8-35243-03010-7	4-1/2" to 6"	#10 - #2	-	5



# SUBMITTAL SHEET

## BRONZE ARMORED GROUND CLAMPS

### DESCRIPTION:

Orbit Industries' Bronze Armored ground clamps



### FEATURES:

- Steel Screws
- For use with #8, #6, #4 AWG Bare Wire or AC (BX) Armored Cable

### CERTIFICATION:

UL file E310659, Conforms to UL 514B



### CONFIGURATION DATA:

Part No.	UPC	Trade Size	Ground Wire Max.	Std.Pkg.	Master Ctn
GCA-50/100	8-35243-03001-5	1/2" to 1"	#8 - #4	25	160
GCA-125/200	8-35243-03002-2	1-1/4" to 2"	#8 - #4	10	80
GCA-250/400	8-35243-03003-9	2-1/2" to 4"	#8 - #4	-	15
GCA-450/600	8-35243-03004-6	4-1/2" to 6"	#8 - #4	-	5



# SUBMITTAL SHEET

## BRONZE DIRECT BURIAL BARE GROUND CLAMPS

### DESCRIPTION:

Orbit Industries' bronze direct burial bare ground clamps with bronze screw are used for making connection with bare ground wire and ground pipe or grounding electrode. Bronze cast construction assures ground path continuity and they are of good corrosion resistance.



### FEATURES:

- Bronze
- Bronze Screws

### CERTIFICATION:

UL file E310659, Conforms to UL 514B



### CONFIGURATION DATA:

Part No.	UPC	Trade Size	Ground Wire Max.	Std.Pkg.	Master Ctn
GCBB-50/100	8-35243-03005-3	1/2" to 1"	#10 - #2	25	200
GCBB-125/200	8-35243-03006-0	1-1/4" to 2"	#10 - #2	10	80



# SUBMITTAL SHEET

## BRONZE DIRECT BURIAL ARMORED GROUND CLAMP

### DESCRIPTION:

Orbit Industries' bronze direct burial armored ground clamps with bronze screw are used for making connection with armored copper ground wire and ground pipe or grounding electrode. Bronze cast construction assures ground path continuity and they are of good corrosion resistance.



### FEATURES:

- Bronze Screws
- For use with #8, #6, #4 AWG Bare Wire or AC (BX) Armored Cable

### CERTIFICATION:

UL file E310659, Conforms to UL 514B



### CONFIGURATION DATA:

Part No.	UPC	Trade Size	Ground Wire Max.	Std.Pkg.	Master Ctn
GCAB-50/100	8-35243-03000-8	1/2" to 1"	#8 - #4	25	200



# SUBMITTAL SHEET

## BRONZE GROUND CLAMPS WITH ADAPTER

### DESCRIPTION:

Orbit Industries' Bronze Ground Clamps with Adapter



### FEATURES:

- Steel Screws

### CERTIFICATION:

UL file E310659, Conforms to UL 514B



### CONFIGURATION DATA:

Part No.	UPC	Trade Size	Ground Wire Max.	Std.Pkg.	Master Ctn
GCAH-50/100	8-35243-03197-5	1/2" to 1"	#8 - #4/0	10	80
GCAH-125/200	8-35243-03198-2	1-1/4" to 2"	#8 - #4/0	5	40





# SUBMITTAL SHEET

## HEAVY DUTY BRONZE DIRECT BURIAL FOR REBAR GROUND CLAMP

### DESCRIPTION:

Orbit Industries' Heavy Duty Bronze Direct Burial for rebar ground clamp



### FEATURES:

- Brass Screws

### CERTIFICATION:

UL file E310659, Conforms to UL 514B



### CONFIGURATION DATA:

Part No.	UPC	Trade Size	Ground Wire Max.	Std.Pkg.	Master Ctn
GCR-50/100	8-35243-03073-2	1/2", 3/4" to 1"	#8 - #2	25	200



# SUBMITTAL SHEET

## BRONZE GROUND CLAMPS WITH ADAPTER

### DESCRIPTION:

Orbit Industries' Bronze Ground Clamps with Adapter



### FEATURES:

- Steel Screws

### CERTIFICATION:

UL file E310659, Conforms to UL 514B



### CONFIGURATION DATA:

Part No.	UPC	Trade Size	Ground Wire Max.	Std.Pkg.	Master Ctn
GCAH-50/100	8-35243-03197-5	1/2" to 1"	#8 - #4/0	10	80
GCAH-125/200	8-35243-03198-2	1-1/4" to 2"	#8 - #4/0	5	40



# SUBMITTAL SHEET

## BRONZE GROUND CLAMPS FOR RIGID CONDUIT WITH FLEXIBLE COPPER STRAP

### DESCRIPTION:

Orbit Industries' ground clamps are used to ground copper or aluminum wires to water pipes, ground rods, rebar or other structural members that will ensure positive grounding to the earth. These clamps may be used on pipe of different sizes and are made to accommodate bare or armored ground cable. Orbit Industries' unique labor saving design allows the upper portion of clamps to slide open easily and, attach to ground members without needing to remove the screws. The rotational movement of the clamps allows a quick removal if necessary. Their cast bronze construction assures ground path continuity and provides excellent corrosion protection in damp locations. They work on both solid and stranded ground wire. Their threaded hub provides a connection point when grounding wires must be run in conduits.



### FEATURES:

- Steel Screws

### CERTIFICATION:

UL file E310659, Conforms to UL 514B



### CONFIGURATION DATA:

Part No.	UPC	Water Pipe Size	Hub Size	Ground Wire Max.	Std.Pkg.
AGS-50	8-35243-03528-7	1/2" to 1"	1/2"	#10 - #4	50
AGS-75	8-35243-03529-4	1/2" to 1"	3/4"	#10 - #4	50
AGS-100	8-35243-03530-0	1/2" to 1"	1"	#10 - #4	50



# SUBMITTAL SHEET

## BRONZE DIRECT BURIAL GROUND ROD CLAMPS

### DESCRIPTION:

Orbit Industries' bronze direct burial ground rod clamps - bronze screw are approved for direct burial. Solid bronze alloy with bronze screw.



### FEATURES:

- Bronze Screw

### CERTIFICATION:

UL file E310659, Conforms to UL 514B



### CONFIGURATION DATA:

Part No.	UPC	Pipe Size	Ground Wire Max.	Std.Pkg.	Master Ctn
GRC-50	8-35243-03152-4	1/2"	#10 - #2	35	280
GRC-58	8-35243-03018-3	5/8"	#10 - #2	30	240
GRC-75	8-35243-03019-0	3/4"	#10 - #2	20	160



# SUBMITTAL SHEET

## BRONZE CONDUIT HUB 360° SWING TYPE

### DESCRIPTION:

Orbit Industries' 360° angle swing type conduit hubs are used with ground pipe clamps to connect rigid conduits to water pipes for grounding.



### FEATURES:

- Steel Screws

### CERTIFICATION:

UL file E310659, Conforms to UL 514B



### CONFIGURATION DATA:

Part No.	UPC	Pipe Size	Ground Wire Max.	Std.Pkg.	Master Ctn
H-50	8-35243-03014-5	1/2"	#10 - #2/0	25	200
H-75	8-35243-03015-2	3/4"	#10 - #2/0	25	200
H-100	8-35243-03016-9	1"	#10 - #2/0	20	160



# SUBMITTAL SHEET

## SPLIT BOLT COPPER TO COPPER CONNECTORS

### DESCRIPTION:

Orbit Industries' Split Bolt Copper to Copper connectors



### FEATURES:

- Brass

### CERTIFICATION:

UL file E468029, Conforms to UL 514B.



### CONFIGURATION DATA:

Part No.	UPC	Ground Wire Range	Std.Pkg.	Master Ctn
SBCC-8	835243003255	#8 STR - #12 STR	25	200
SBCC-6	835243003262	#6 SOL - #10 SOL	25	200
SBCC-4	835243003279	#4 SOL - #8 SOL	25	200
SBCC-2	835243003293	#2 STR - #6 SOL	10	80
SBCC-2S	835243003286	#2 SOL - #6 SOL	10	80
SBCC-10	835243003309	#1/0 STR - #4 SOL	10	80
SBCC-20	835243003316	#2/0 STR - #2 SOL	5	40
SBCC-30	835243003323	#3/0 STR - #2 SOL	5	40
SBCC-250	835243003330	250 MCM - #1/0 SOL	5	40
SBCC-350	835243003347	350MCM - #4/0 SOL	1	8
SBCC-500	835243003354	500MCM - 250 MCM	1	8
SBCC-750	835243003361	750 MCM - 350MCM	1	8



# SUBMITTAL SHEET

## EMT TO BOX PULL ELBOWS SET-SCREW TYPE WITH GASKET

### DESCRIPTION:

Orbit Industries' set-screw EMT to box pull elbows are used when 90° turns are needed in conduits and when wires must be pulled through elbows before making the turn into the electrical junction boxes or enclosures. The set-screw pull elbows are protected from dirt, dust and moisture by a gasket and cover and are ready to use immediately. Elbow uses a threaded end and locknut to mount to boxes or enclosures.



### FEATURES:

- Zinc Die Cast
- Aluminum Cover
- With Gasket

### CERTIFICATION:

UL file E310658, Conforms to UL 514B.



### CONFIGURATION DATA:

Part No.	UPC	Trade Size	Std.Pkg.	Master Ctn
SSPEB-G50	8-35243-05232-1	1/2"	10	100
SSPEB-G75	8-35243-05233-8	3/4"	5	50
SSPEB-G100	8-35243-05230-7	1"	-	25
SSPEB-G125	8-35243-05231-4	1-1/4"	-	20



# SUBMITTAL SHEET

## EMT TO BOX PULL ELBOWS SET-SCREW TYPE WITHOUT GASKET

### DESCRIPTION:

Orbit Industries' set-screw EMT to box pull elbows are used when 90° turns are needed in conduits and when wires must be pulled through elbows before making the turn into the electrical junction boxes or enclosures. Elbow uses a threaded end and locknut to mount to boxes or enclosures.



### FEATURES:

- Zinc Die Cast
- Aluminum Cover

### CERTIFICATION:

UL file E310658, Conforms to UL 514B.



### CONFIGURATION DATA:

Part No.	UPC	Trade Size	Std.Pkg.	Master Ctn
SSPEB-50	8-35243-05228-4	1/2"	10	100
SSPEB-75	8-35243-05229-1	3/4"	5	50
SSPEB-100	8-35243-05226-0	1"	-	25
SSPEB-125	8-35243-05227-7	1-1/4"	-	20





# SUBMITTAL SHEET

## EMT TO EMT PULL ELBOWS SET-SCREW TYPE WITH GASKET

### DESCRIPTION:

Orbit Industries' set-screw EMT to EMT pull elbows are used when 90° turns are needed in conduits and when wires must be pulled through elbows before making the turn. The set-screw pull elbows are protected from dirt, dust and moisture by a gasket and cover and are ready to use immediately. This removable gasket and cover allow for wires to be pulled and fed back into pipes at a 90° angle or turn.



### FEATURES:

- Zinc Die Cast
- Aluminum Cover
- With Gasket

### CERTIFICATION:

UL file E310658, Conforms to UL 514B.



### CONFIGURATION DATA:

Part No.	UPC	Trade Size	Std.Pkg.	Master Ctn
SSPE-G50	8-35243-05224-6	1/2"	10	100
SSPE-G75	8-35243-05225-3	3/4"	5	50
SSPE-G100	8-35243-05222-2	1"	-	25
SSPE-G125	8-35243-05223-9	1-1/4"	-	20



# SUBMITTAL SHEET

## EMT TO EMT PULL ELBOWS SET-SCREW TYPE WITHOUT GASKET

### DESCRIPTION:

Orbit Industries' set-screw EMT to EMT pull elbows are used when 90° turns are needed in conduits and when wires must be pulled through elbows before making the turn. The set-screw pull elbows are ready to use immediately.



### FEATURES:

- Zinc Die Cast
- Aluminum Cover

### CERTIFICATION:

UL file E310658, Conforms to UL 514B.



### CONFIGURATION DATA:

Part No.	UPC	Trade Size	Std.Pkg.	Master Ctn
SSPE-50	8-35243-05220-8	1/2"	10	100
SSPE-75	8-35243-05221-5	3/4"	5	50
SSPE-100	8-35243-05218-5	1"	-	25
SSPE-125	8-35243-05219-2	1-1/4"	-	20



# SUBMITTAL SHEET

## RIGID TO RIGID PULL ELBOWS WITH GASKET

### DESCRIPTION:

Orbit Industries' pull elbows are used to bond threaded rigid conduits to boxes to form 90° turns in conduit running to electrical junction boxes or enclosures. Orbit Industries' pull elbows come standard with a removable gasket and screw cover to aid in wire pulling through the fittings.



### FEATURES:

- Zinc Die Cast
- Aluminum Cover
- With Gasket

### CERTIFICATION:

UL file E310658, Conforms to UL 514B.



### CONFIGURATION DATA:

Part No.	UPC	Trade Size	Std.Pkg.	Master Ctn
PE-50	8-35243-03042-8	1/2"	10	100
PE-75	8-35243-03043-5	3/4"	5	50
PE-100	8-35243-03074-9	1"	-	25
PE-125	8-35243-04867-6	1-1/4"	-	20



# SUBMITTAL SHEET

## RIGID TO BOX PULL ELBOWS WITH GASKET

### DESCRIPTION:

Orbit Industries' pull elbows are used to bond threaded rigid conduits to boxes to form 90° turns in conduit running to electrical junction boxes or enclosures. Orbit Industries' pull elbows come standard with a removable gasket and screw cover to aid in wire pulling through the fittings.



### FEATURES:

- Zinc Die Cast
- Aluminum Cover

### CERTIFICATION:

UL file E310658, Conforms to UL 514B.



### CONFIGURATION DATA:

Part No.	UPC	Trade Size	Std.Pkg.	Master Ctn
PEB-50	8-35243-03044-2	1/2"	10	100
PEB-75	8-35243-03045-9	3/4"	5	50
PEB-100	8-35243-03075-6	1"	-	25
PEB-125	8-35243-04866-9	1-1/4"	-	20



# SUBMITTAL SHEET

## THREADED CONDUIT BODIES "C" SERIES

### DESCRIPTION:

Orbit Industries threaded conduit bodies are commonly used for electrical service entrance wires or as an economical convenience box when extra wire capacity is needed. They are attached to threaded rigid or IMC conduits when a change of direction is required. The removable cover makes general maintenance and wire pulling and feed through easy and convenient. Orbit Industries threaded conduit bodies save time and money by eliminating costly bending of large conduits in order to change the directions of conduit runs. Installers can easily bend wires into the smooth turns. Their powder-coated finish and water-tight gasket ensure a weatherproof installation.



### FEATURES:

- Die Cast Copper-Free Aluminum
- With Die Cast Cover
- Neoprene Gasket

### CERTIFICATION:

UL file E227970, Conforms to UL 514A



### CONFIGURATION DATA:

Part No.	UPC	Trade Size	Color	Std.Pkg.
C-50A	8-35243-00153-4	1/2"	Gray	10
C-75A	8-35243-00155-8	3/4"	Gray	10
C-100A	8-35243-00145-9	1"	Gray	5
C-125A	8-35243-00877-9	1-1/4"	Gray	2
C-150A	8-35243-00878-6	1-1/2"	Gray	2
C-200A	8-35243-00879-3	2"	Gray	1
C-250A	8-35243-00507-5	2-1/2"	Gray	1
C-300A	8-35243-00508-2	3"	Gray	1
C-400A	8-35243-00509-9	4"	Gray	1



# SUBMITTAL SHEET

## THREADED CONDUIT BODIES "LB" SERIES

### DESCRIPTION:

Orbit Industries threaded conduit bodies are commonly used for electrical service entrance wires or as an economical convenience box when extra wire capacity is needed. They are attached to threaded rigid or IMC conduits when a change of direction is required. The removable cover makes general maintenance and wire pulling and feed through easy and convenient. Orbit Industries threaded conduit bodies save time and money by eliminating costly bending of large conduits in order to change the directions of conduit runs. Installers can easily bend wires into the smooth turns. Their powder-coated finish and water-tight gasket ensure a weatherproof installation.



### FEATURES:

- Die Cast Copper-Free Aluminum
- With Die Cast Cover
- Neoprene Gasket

### CERTIFICATION:

UL file E227970, Conforms to UL 514A



### CONFIGURATION DATA:

Part No.	UPC	Trade Size	Color	Std.Pkg.
LB-50A	8-35243-00172-5	1/2"	Gray	10
LB-75A	8-35243-00174-9	3/4"	Gray	10
LB-100A	8-35243-00164-0	1"	Gray	5
LB-125A	8-35243-00217-3	1-1/4"	Gray	2
LB-150A	8-35243-00218-0	1-1/2"	Gray	2
LB-200A	8-35243-00219-7	2"	Gray	1
LB-250A	8-35243-00497-9	2-1/2"	Gray	1
LB-300A	8-35243-00498-6	3"	Gray	1
LB-350A	8-35243-00499-3	3-1/2"	Gray	1
LB-400A	8-35243-00500-6	4"	Gray	1



# SUBMITTAL SHEET

## THREADED CONDUIT BODIES "LL" SERIES

### DESCRIPTION:

Orbit Industries threaded conduit bodies are commonly used for electrical service entrance wires or as an economical convenience box when extra wire capacity is needed. They are attached to threaded rigid or IMC conduits when a change of direction is required. The removable cover makes general maintenance and wire pulling and feed through easy and convenient. Orbit Industries threaded conduit bodies save time and money by eliminating costly bending of large conduits in order to change the directions of conduit runs. Installers can easily bend wires into the smooth turns. Their powder-coated finish and water-tight gasket ensure a weatherproof installation.



### FEATURES:

- Die Cast Copper-Free Aluminum
- With Die Cast Cover
- Neoprene Gasket

### CERTIFICATION:

UL file E227970, Conforms to UL 514A



### CONFIGURATION DATA:

Part No.	UPC	Trade Size	Color	Std.Pkg.
LL-50A	8-35243-00184-8	1/2"	Gray	10
LL-75A	8-35243-00186-2	3/4"	Gray	10
LL-100A	8-35243-00176-3	1"	Gray	5
LL-125A	8-35243-00880-9	1-1/4"	Gray	2
LL-150A	8-35243-00881-6	1-1/2"	Gray	2
LL-200A	8-35243-00882-3	2"	Gray	1
LL-250A	8-35243-00501-3	2-1/2"	Gray	1
LL-300A	8-35243-00502-0	3"	Gray	1
LL-400A	8-35243-00503-7	4"	Gray	1



# SUBMITTAL SHEET

## THREADED CONDUIT BODIES "LR" SERIES

### DESCRIPTION:

Orbit Industries threaded conduit bodies are commonly used for electrical service entrance wires or as an economical convenience box when extra wire capacity is needed. They are attached to threaded rigid or IMC conduits when a change of direction is required. The removable cover makes general maintenance and wire pulling and feed through easy and convenient. Orbit Industries threaded conduit bodies save time and money by eliminating costly bending of large conduits in order to change the directions of conduit runs. Installers can easily bend wires into the smooth turns. Their powder-coated finish and water-tight gasket ensure a weatherproof installation.



### FEATURES:

- Die Cast Copper-Free Aluminum
- With Die Cast Cover
- Neoprene Gasket

### CERTIFICATION:

UL file E227970, Conforms to UL 514A



### CONFIGURATION DATA:

Part No.	UPC	Trade Size	Color	Std Pkg.
LR-50A	8-35243-00196-1	1/2"	Gray	10
LR-75A	8-35243-00198-5	3/4"	Gray	10
LR-100A	8-35243-00188-6	1"	Gray	5
LR-125A	8-35243-00883-0	1-1/4"	Gray	2
LR-150A	8-35243-00884-7	1-1/2"	Gray	2
LR-200A	8-35243-00885-4	2"	Gray	1
LR-250A	8-35243-00504-4	2-1/2"	Gray	1
LR-300A	8-35243-00505-1	3"	Gray	1
LR-400A	8-35243-00506-8	4"	Gray	1





# SUBMITTAL SHEET

## THREADED CONDUIT BODIES "T" SERIES

### DESCRIPTION:

Orbit Industries threaded conduit bodies are commonly used for electrical service entrance wires or as an economical convenience box when extra wire capacity is needed. They are attached to threaded rigid or IMC conduits when a change of direction is required. The removable cover makes general maintenance and wire pulling and feed through easy and convenient. Orbit Industries threaded conduit bodies save time and money by eliminating costly bending of large conduits in order to change the directions of conduit runs. Installers can easily bend wires into the smooth turns. Their powder-coated finish and water-tight gasket ensure a weatherproof installation.



### FEATURES:

- Die Cast Copper-Free Aluminum
- With Die Cast Cover
- Neoprene Gasket

### CERTIFICATION:

UL file E227970, Conforms to UL 514A



### CONFIGURATION DATA:

Part No.	UPC	Trade Size	Color	Std Pkg.
T-50A	8-35243-00214-2	1/2"	Gray	10
T-75A	8-35243-00216-6	3/4"	Gray	10
T-100A	8-35243-00206-7	1"	Gray	5
T-125A	8-35243-00886-1	1-1/4"	Gray	2
T-150A	8-35243-00887-8	1-1/2"	Gray	2
T-200A	8-35243-00888-5	2"	Gray	1
T-250A	8-35243-00510-5	2-1/2"	Gray	1
T-300A	8-35243-00511-2	3"	Gray	1
T-400A	8-35243-00512-9	4"	Gray	1



# SUBMITTAL SHEET

## THREADED SERVICE ENTRANCE CONDUIT BODIES "SLB" SERIES

### DESCRIPTION:

Orbit Industries threaded conduit bodies are commonly used for electrical service entrance wires or as an economical convenience box when extra wire capacity is needed. They are attached to threaded rigid or IMC conduits when a change of direction is required. The removable cover makes general maintenance and wire pulling and feed through easy and convenient. Orbit Industries threaded conduit bodies save time and money by eliminating costly bending of large conduits in order to change the directions of conduit runs. Installers can easily bend wires into the smooth turns. Their powder-coated finish and water-tight gasket ensure a weatherproof installation.



### FEATURES:

- Die Cast Copper-Free Aluminum
- With Die Cast Cover
- Neoprene Gasket

### CERTIFICATION:

Meets UL Standards: UL 514A.

### CONFIGURATION DATA:

Part No.	UPC	Trade Size	Std.Pkg.	Master Ctn
SLB-50	8-35243-00203-6	1/2"	Gray	20
SLB-75	8-35243-00204-3	3/4"	Gray	20
SLB-100	8-35243-00199-2	1"	Gray	10
SLB-125	8-35243-00200-5	1-1/4"	Gray	10
SLB-150	8-35243-00201-2	1-1/2"	Gray	6
SLB-200	8-35243-00202-9	2"	Gray	3



# SUBMITTAL SHEET

## THREADED CONDUIT BODIES "C" SERIES WITHOUT COVERS

### DESCRIPTION:

Orbit Industries threaded conduit bodies are commonly used for electrical service entrance wires or as an economical convenience box when extra wire capacity is needed. They are attached to threaded rigid or IMC conduits when a change of direction is required. Orbit Industries threaded conduit bodies save time and money by eliminating costly bending of large conduits in order to change the directions of conduit runs. Installers can easily bend wires into the smooth turns. Their powder-coated finish and water-tight gasket ensure a weatherproof installation.



### FEATURES:

- Die Cast Copper-Free Aluminum

### CERTIFICATION:

UL file E227970, Conforms to UL 514A.



### CONFIGURATION DATA:

Part No.	UPC	Trade Size	Std.Pkg.	Master Ctn
C-50	8-35243-00152-7	1/2"	Gray	10
C-75	8-35243-00154-1	3/4"	Gray	10
C-100	8-35243-00144-2	1"	Gray	5
C-125	8-35243-00146-6	1-1/4"	Gray	2
C-150	8-35243-00147-3	1-1/2"	Gray	2
C-200	8-35243-00148-0	2"	Gray	1
C-250	8-35243-00149-7	2-1/2"	Gray	1
C-300	8-35243-00150-3	3"	Gray	1
C-400	8-35243-00151-0	4"	Gray	1



# SUBMITTAL SHEET

## THREADED CONDUIT BODIES "LB" SERIES WITHOUT COVERS

### DESCRIPTION:

Orbit Industries threaded conduit bodies are commonly used for electrical service entrance wires or as an economical convenience box when extra wire capacity is needed. They are attached to threaded rigid or IMC conduits when a change of direction is required. Orbit Industries threaded conduit bodies save time and money by eliminating costly bending of large conduits in order to change the directions of conduit runs. Installers can easily bend wires into the smooth turns. Their powder-coated finish and water-tight gasket ensure a weatherproof installation.



### FEATURES:

- Die Cast Copper-Free Aluminum

### CERTIFICATION:

UL file E227970, Conforms to UL 514A.



### CONFIGURATION DATA:

Part No.	UPC	Trade Size	Std.Pkg.	Master Ctn
LB-50	8-35243-00171-8	1/2"	Gray	10
LB-75	8-35243-00173-2	3/4"	Gray	10
LB-100	8-35243-00163-3	1"	Gray	5
LB-125	8-35243-00165-7	1-1/4"	Gray	2
LB-150	8-35243-00166-4	1-1/2"	Gray	2
LB-200	8-35243-00167-1	2"	Gray	1
LB-250	8-35243-00168-8	2-1/2"	Gray	1
LB-300	8-35243-00169-5	3"	Gray	1
LB-350	8-35243-03797-7	3-1/2"	Gray	1
LB-400	8-35243-00170-1	4"	Gray	1



# SUBMITTAL SHEET

## THREADED CONDUIT BODIES "LL" SERIES WITHOUT COVERS

### DESCRIPTION:

Orbit Industries threaded conduit bodies are commonly used for electrical service entrance wires or as an economical convenience box when extra wire capacity is needed. They are attached to threaded rigid or IMC conduits when a change of direction is required. Orbit Industries threaded conduit bodies save time and money by eliminating costly bending of large conduits in order to change the directions of conduit runs. Installers can easily bend wires into the smooth turns. Their powder-coated finish and water-tight gasket ensure a weatherproof installation.



### FEATURES:

- Die Cast Copper-Free Aluminum

### CERTIFICATION:

UL file E227970, Conforms to UL 514A.



### CONFIGURATION DATA:

Part No.	UPC	Trade Size	Std.Pkg.	Master Ctn
LL-50	8-35243-00183-1	1/2"	Gray	10
LL-75	8-35243-00185-5	3/4"	Gray	10
LL-100	8-35243-00175-6	1"	Gray	5
LL-125	8-35243-00177-0	1-1/4"	Gray	2
LL-150	8-35243-00178-7	1-1/2"	Gray	2
LL-200	8-35243-00179-4	2"	Gray	1
LL-250	8-35243-00180-0	2-1/2"	Gray	1
LL-300	8-35243-00181-7	3"	Gray	1
LL-400	8-35243-00182-4	4"	Gray	1



# SUBMITTAL SHEET

## THREADED CONDUIT BODIES "LR" SERIES WITHOUT COVERS

### DESCRIPTION:

Orbit Industries threaded conduit bodies are commonly used for electrical service entrance wires or as an economical convenience box when extra wire capacity is needed. They are attached to threaded rigid or IMC conduits when a change of direction is required. Orbit Industries threaded conduit bodies save time and money by eliminating costly bending of large conduits in order to change the directions of conduit runs. Installers can easily bend wires into the smooth turns. Their powder-coated finish and water-tight gasket ensure a weatherproof installation.



### FEATURES:

- Die Cast Copper-Free Aluminum

### CERTIFICATION:

UL file E227970, Conforms to UL 514A.



### CONFIGURATION DATA:

Part No.	UPC	Trade Size	Std.Pkg.	Master Ctn
LR-50	8-35243-00195-4	1/2"	Gray	10
LR-75	8-35243-00197-8	3/4"	Gray	10
LR-100	8-35243-00187-9	1"	Gray	5
LR-125	8-35243-00189-3	1-1/4"	Gray	2
LR-150	8-35243-00190-9	1-1/2"	Gray	2
LR-200	8-35243-00191-6	2"	Gray	1
LR-250	8-35243-00192-3	2-1/2"	Gray	1
LR-300	8-35243-00193-0	3"	Gray	1
LR-400	8-35243-00194-7	4"	Gray	1



# SUBMITTAL SHEET

## THREADED CONDUIT BODIES "T" SERIES WITHOUT COVERS

### DESCRIPTION:

Orbit Industries threaded conduit bodies are commonly used for electrical service entrance wires or as an economical convenience box when extra wire capacity is needed. They are attached to threaded rigid or IMC conduits when a change of direction is required. Orbit Industries threaded conduit bodies save time and money by eliminating costly bending of large conduits in order to change the directions of conduit runs. Installers can easily bend wires into the smooth turns. Their powder-coated finish and water-tight gasket ensure a weatherproof installation.



### FEATURES:

- Die Cast Copper-Free Aluminum

### CERTIFICATION:

UL file E227970, Conforms to UL 514A.



### CONFIGURATION DATA:

Part No.	UPC	Trade Size	Std.Pkg.	Master Ctn
T-50	8-35243-00213-5	1/2"	Gray	10
T-75	8-35243-00215-9	3/4"	Gray	10
T-100	8-35243-00205-0	1"	Gray	5
T-125	8-35243-00207-4	1-1/4"	Gray	2
T-150	8-35243-00208-1	1-1/2"	Gray	2
T-200	8-35243-00209-8	2"	Gray	1
T-250	8-35243-00210-4	2-1/2"	Gray	1
T-300	8-35243-00211-1	3"	Gray	1
T-400	8-35243-00212-8	4"	Gray	1



# SUBMITTAL SHEET

## COVERS & GASKETS

### DESCRIPTION:

Orbit Industries die cast copper-free aluminum screw covers and neoprene gasket seals are used to protect wires from weather damage. In addition, they serve as an easy access panel for future wire pulls. Orbit Industries' covers include neoprene gasket.



### FEATURES:

- Die Cast Copper-Free Aluminum
- Neoprene Gasket

### CERTIFICATION:

Meets UL Standards: UL 514A.

### CONFIGURATION DATA:

Part No.	UPC	Trade Size	Std.Pkg.	Master Ctn
CG-50	8-35243-00161-9	1/2"	Gray	100
CG-75	8-35243-00162-6	3/4"	Gray	50
CG-100	8-35243-00156-5	1"	Gray	50
CG-125/150	8-35243-00157-2	1-1/4" ~ 1-1/2"	Gray	25
CG-200	8-35243-00158-9	2"	Gray	10
CG-250/300	8-35243-00159-6	2-1/2" ~ 3"	Gray	10
CG-350/400	8-35243-00736-9	3-1/2" ~ 4"	Gray	5





# SUBMITTAL SHEET

## GASKETS

### DESCRIPTION:

Orbit Industries conduit body gaskets are used to provide dust-tight seal between conduit body and cover. Neoprene gaskets are used with cast aluminum & malleable iron conduit bodies.



### FEATURES:

- Neoprene
- For use with Cast Aluminum & Malleable Iron Conduit Bodies

### CERTIFICATION:

Meets UL Standards: UL 514A.

### CONFIGURATION DATA:

Part No.	UPC	Trade Size	Std.Pkg.	Master Ctn
G-50	8-35243-00225-8	1/2"	Black	100
G-75	8-35243-00226-5	3/4"	Black	100
G-100	8-35243-00220-3	1"	Black	50
G-125/150	8-35243-00221-0	1-1/4" ~ 1-1/2"	Black	50
G-200	8-35243-00222-7	2"	Black	50
G-250/300	8-35243-00223-4	2-1/2" ~ 3"	Black	25
G-350/400	8-35243-00737-6	3-1/2" ~ 4"	Black	25



# SUBMITTAL SHEET

## MALLEABLE IRON THREADED CONDUIT BODIES "C" SERIES

### DESCRIPTION:

Orbit Industries' Malleable Conduit Bodies are zinc plated malleable iron with high tensile strength and ductility. In addition, conduit bodies feature corrosion-resistance, high impact and shock resistance. Integral bushings are smooth and rounded for protection of wire and insulation. They are interchangeable with Appleton Form 35 and Cooper Crouse Hinds Form 5 conduit bodies. Available with built-in easy-pulling rollers to eliminate damage when cable is pulled through hubs.



### FEATURES:

- Malleable Iron
- Electroplated Zinc

### CERTIFICATION:

UL file E227970, Conforms to UL 514A.



### CONFIGURATION DATA:

Part No.	UPC	Trade Size	Std.Pkg.	Master Ctn
MC-50	8-35243-00759-8	1/2"	Gray	10
MC-75	8-35243-00760-4	3/4"	Gray	10
MC-100	8-35243-00761-1	1"	Gray	5
MC-125	8-35243-00762-8	1-1/4"	Gray	2
MC-150	8-35243-00763-5	1-1/2"	Gray	2
MC-200	8-35243-00764-2	2"	Gray	1
MC-250	8-35243-00973-8	2-1/2"	Gray	1
MC-300	8-35243-00974-5	3"	Gray	1
MC-350	8-35243-00975-2	3-1/2"	Gray	1
MC-400	8-35243-00976-9	4"	Gray	1



# SUBMITTAL SHEET

## MALLEABLE IRON THREADED CONDUIT BODIES "LB" SERIES

### DESCRIPTION:

Orbit Industries' Malleable Conduit Bodies are zinc plated malleable iron with high tensile strength and ductility. In addition, conduit bodies feature corrosion-resistance, high impact and shock resistance. Integral bushings are smooth and rounded for protection of wire and insulation. They are interchangeable with Appleton Form 35 and Cooper Crouse Hinds Form 5 conduit bodies. Available with built-in easy-pulling rollers to eliminate damage when cable is pulled through hubs.



### FEATURES:

- Malleable Iron
- Electroplated Zinc

### CERTIFICATION:

UL file E227970, Conforms to UL 514A.



### CONFIGURATION DATA:

Part No.	UPC	Trade Size	Std.Pkg.	Master Ctn
MLB-50	8-35243-00738-3	1/2"	Gray	10
MLB-75	8-35243-00739-0	3/4"	Gray	10
MLB-100	8-35243-00740-6	1"	Gray	5
MLB-125	8-35243-00741-3	1-1/4"	Gray	2
MLB-150	8-35243-00742-0	1-1/2"	Gray	2
MLB-200	8-35243-00743-7	2"	Gray	1
MLB-250	8-35243-00744-4	2-1/2"	Gray	1
MLB-300	8-35243-00745-1	3"	Gray	1
MLB-350	8-35243-03802-8	3-1/2"	Gray	1
MLB-400	8-35243-00746-8	4"	Gray	1



# SUBMITTAL SHEET

## MALLEABLE IRON THREADED CONDUIT BODIES "LL" SERIES

### DESCRIPTION:

Orbit Industries' Malleable Conduit Bodies are zinc plated malleable iron with high tensile strength and ductility. In addition, conduit bodies feature corrosion-resistance, high impact and shock resistance. Integral bushings are smooth and rounded for protection of wire and insulation. They are interchangeable with Appleton Form 35 and Cooper Crouse Hinds Form 5 conduit bodies. Available with built-in easy-pulling rollers to eliminate damage when cable is pulled through hubs.



### FEATURES:

- Malleable Iron
- Electroplated Zinc

### CERTIFICATION:

UL file E227970, Conforms to UL 514A.



### CONFIGURATION DATA:

Part No.	UPC	Trade Size	Std.Pkg.	Master Ctn
MLL-50	8-35243-00747-5	1/2"	Gray	10
MLL-75	8-35243-00748-2	3/4"	Gray	10
MLL-100	8-35243-00749-9	1"	Gray	5
MLL-125	8-35243-00750-5	1-1/4"	Gray	2
MLL-150	8-35243-00751-2	1-1/2"	Gray	2
MLL-200	8-35243-00752-9	2"	Gray	1
MLL-250	8-35243-00965-3	2-1/2"	Gray	1
MLL-300	8-35243-00966-0	3"	Gray	1
MLL-350	8-35243-00967-7	3-1/2"	Gray	1
MLL-400	8-35243-00968-4	4"	Gray	1



# SUBMITTAL SHEET

## MALLEABLE IRON THREADED CONDUIT BODIES "LR" SERIES

### DESCRIPTION:

Orbit Industries' Malleable Conduit Bodies are zinc plated malleable iron with high tensile strength and ductility. In addition, conduit bodies feature corrosion-resistance, high impact and shock resistance. Integral bushings are smooth and rounded for protection of wire and insulation. They are interchangeable with Appleton Form 35 and Cooper Crouse Hinds Form 5 conduit bodies. Available with built-in easy-pulling rollers to eliminate damage when cable is pulled through hubs.



### FEATURES:

- Malleable Iron
- Electroplated Zinc

### CERTIFICATION:

UL file E227970, Conforms to UL 514A.



### CONFIGURATION DATA:

Part No.	UPC	Trade Size	Std.Pkg.	Master Ctn
MLR-50	8-35243-00753-6	1/2"	Gray	10
MLR-75	8-35243-00754-3	3/4"	Gray	10
MLR-100	8-35243-00755-0	1"	Gray	5
MLR-125	8-35243-00756-7	1-1/4"	Gray	2
MLR-150	8-35243-00757-4	1-1/2"	Gray	2
MLR-200	8-35243-00758-1	2"	Gray	1
MLR-250	8-35243-00969-1	2-1/2"	Gray	1
MLR-300	8-35243-00970-7	3"	Gray	1
MLR-350	8-35243-00971-4	3-1/2"	Gray	1
MLR-400	8-35243-00972-1	4"	Gray	1



# SUBMITTAL SHEET

## MALLEABLE IRON THREADED CONDUIT BODIES "T" SERIES

### DESCRIPTION:

Orbit Industries' Malleable Conduit Bodies are zinc plated malleable iron with high tensile strength and ductility. In addition, conduit bodies feature corrosion-resistance, high impact and shock resistance. Integral bushings are smooth and rounded for protection of wire and insulation. They are interchangeable with Appleton Form 35 and Cooper Crouse Hinds Form 5 conduit bodies. Available with built-in easy-pulling rollers to eliminate damage when cable is pulled through hubs.



### FEATURES:

- Malleable Iron
- Electroplated Zinc

### CERTIFICATION:

UL file E227970, Conforms to UL 514A.



### CONFIGURATION DATA:

Part No.	UPC	Trade Size	Std.Pkg.	Master Ctn
MT-50	8-35243-00765-9	1/2"	Gray	10
MT-75	8-35243-00766-6	3/4"	Gray	10
MT-100	8-35243-00767-3	1"	Gray	5
MT-125	8-35243-00768-0	1-1/4"	Gray	2
MT-150	8-35243-00769-7	1-1/2"	Gray	2
MT-200	8-35243-00770-3	2"	Gray	1
MT-250	8-35243-00977-6	2-1/2"	Gray	1
MT-300	8-35243-00978-3	3"	Gray	1
MT-350	8-35243-00979-0	3-1/2"	Gray	1
MT-400	8-35243-00980-6	4"	Gray	1



# SUBMITTAL SHEET

## RAISED DOME STEEL COVERS

### DESCRIPTION:

Orbit Industries' Raised Dome Steel Covers is made from stamped steel and available in a multitude of sizes for conduit bodies. Includes stainless steel screws and protects against dust and debris.



### FEATURES:

- Stamped Steel
- Stainless Steel Screws
- Gasket Not Included

### CERTIFICATION:

Meets UL Standards: UL 514A.

### CONFIGURATION DATA:

Part No.	UPC	Trade Size	Std.Pkg.
SC-50	8-35243-00771-0	1/2"	100
SC-75	8-35243-00772-7	3/4"	50
SC-100	8-35243-00773-4	1"	50
SC-125/150	8-35243-00774-1	1-1/4" ~ 1-1/2"	25
SC-200	8-35243-00775-8	2"	10
SC-250/300	8-35243-00776-5	2-1/2" ~ 3"	10
SC-350/400	8-35243-00777-2	3-1/2" ~ 4"	5



# SUBMITTAL SHEET

## EMT CONDUIT BODIES SET-SCREW TYPE "LL" SERIES

### DESCRIPTION:

Orbit Industries' EMT Conduit Bodies Set-Screw Type are used to route EMT conduits in different directions without bending. Conduit bodies are made of copper-free aluminum alloy and features set-screws for securing EMT conduit. Provides extra wire capacity and removable cover for pulling and maintenance of wires.



### FEATURES:

- Copper-Free Aluminum Alloy
- Plated Steel Set-Screws

### CERTIFICATION:

UL file E227970, Conforms to UL 514A



### CONFIGURATION DATA:

Part No.	UPC	Trade Size	Std.Pkg.	Master Ctn
SLL-50	8-35243-03590-4	1/2"	10	100
SLL-75	8-35243-03591-1	3/4"	10	50
SLL-100	8-35243-03592-8	1"	5	25
SLL-125	8-35243-03593-5	1-1/4"	2	10
SLL-150	8-35243-03594-2	1-1/2"	2	10
SLL-200	8-35243-03595-9	2"	1	5





# SUBMITTAL SHEET

## EMT CONDUIT BODIES SET-SCREW TYPE "LB" SERIES

### DESCRIPTION:

Orbit Industries' EMT Conduit Bodies Set-Screw Type are used to route EMT conduits in different directions without bending. Conduit bodies are made of copper-free aluminum alloy and features set-screws for securing EMT conduit. Provides extra wire capacity and removable cover for pulling and maintenance of wires.



### FEATURES:

- Copper-Free Aluminum Alloy
- Plated Steel Set-Screws

### CERTIFICATION:

UL file E227970, Conforms to UL 514A



### CONFIGURATION DATA:

Part No.	UPC	Trade Size	Std.Pkg.	Master Ctn
SSLB-50	8-35243-03574-4	1/2"	10	100
SSLB-75	8-35243-03575-1	3/4"	10	50
SSLB-100	8-35243-03576-8	1"	5	25
SSLB-125	8-35243-03577-5	1-1/4"	2	10
SSLB-150	8-35243-03578-2	1-1/2"	2	10
SSLB-200	8-35243-03579-9	2"	1	5
SSLB-250	8-35243-03580-5	2-1/2"	-	1
SSLB-300	8-35243-03581-2	3"	-	1
SSLB-350	8-35243-03582-9	3-1/2"	-	1
SSLB-400	8-35243-03583-6	4"	-	1



# SUBMITTAL SHEET

## EMT CONDUIT BODIES SET-SCREW TYPE "LL" SERIES

### DESCRIPTION:

Orbit Industries' EMT Conduit Bodies Set-Screw Type are used to route EMT conduits in different directions without bending. Conduit bodies are made of copper-free aluminum alloy and features set-screws for securing EMT conduit. Provides extra wire capacity and removable cover for pulling and maintenance of wires.



### FEATURES:

- Copper-Free Aluminum Alloy
- Plated Steel Set-Screws

### CERTIFICATION:

UL file E227970, Conforms to UL 514A



### CONFIGURATION DATA:

Part No.	UPC	Trade Size	Std.Pkg.	Master Ctn
SLL-50	8-35243-03590-4	1/2"	10	100
SLL-75	8-35243-03591-1	3/4"	10	50
SLL-100	8-35243-03592-8	1"	5	25
SLL-125	8-35243-03593-5	1-1/4"	2	10
SLL-150	8-35243-03594-2	1-1/2"	2	10
SLL-200	8-35243-03595-9	2"	1	5



# SUBMITTAL SHEET

## EMT CONDUIT BODIES SET-SCREW TYPE "LR" SERIES

### DESCRIPTION:

Orbit Industries' EMT Conduit Bodies Set-Screw Type are used to route EMT conduits in different directions without bending. Conduit bodies are made of copper-free aluminum alloy and features set-screws for securing EMT conduit. Provides extra wire capacity and removable cover for pulling and maintenance of wires.



### FEATURES:

- Copper-Free Aluminum Alloy
- Plated Steel Set-Screws

### CERTIFICATION:

UL file E227970, Conforms to UL 514A



### CONFIGURATION DATA:

Part No.	UPC	Trade Size	Std.Pkg.	Master Ctn
SSLR-50	8-35243-03584-3	1/2"	10	100
SSLR-75	8-35243-03585-0	3/4"	10	50
SSLR-100	8-35243-03586-7	1"	5	25
SSLR-125	8-35243-03587-4	1-1/4"	2	10
SSLR-150	8-35243-03588-1	1-1/2"	2	10
SSLR-200	8-35243-03589-8	2"	1	5



# SUBMITTAL SHEET

## EMT CONDUIT BODIES SET-SCREW TYPE "T" SERIES

### DESCRIPTION:

Orbit Industries' EMT Conduit Bodies Set-Screw Type are used to route EMT conduits in different directions without bending. Conduit bodies are made of copper-free aluminum alloy and features set-screws for securing EMT conduit. Provides extra wire capacity and removable cover for pulling and maintenance of wires.



### FEATURES:

- Copper-Free Aluminum Alloy
- Plated Steel Set-Screws

### CERTIFICATION:

UL file E227970, Conforms to UL 514A



### CONFIGURATION DATA:

Part No.	UPC	Trade Size	Std.Pkg.	Master Ctn
SST-50	8-35243-03602-4	1/2"	10	100
SST-75	8-35243-03603-1	3/4"	10	50
SST-100	8-35243-03604-8	1"	5	25
SST-125	8-35243-03605-5	1-1/4"	2	10
SST-150	8-35243-03606-2	1-1/2"	2	10
SST-200	8-35243-03607-9	2"	1	5



# SUBMITTAL SHEET

## ALUMINUM CONDUIT COVERS

### DESCRIPTION:

Orbit Industries' Aluminum Conduit Covers are made from stamped steel and available in a multitude of sizes for conduit bodies. Includes stainless steel screws and protects against dust and debris.



### FEATURES:

- Stamped Aluminum

### CERTIFICATION:

Meets UL Standards: UL 514A.

### CONFIGURATION DATA:

Part No.	UPC	Trade Size	Std.Pkg.	Master Ctn
AC-50	8-35243-00897-7	1/2"	100	AC-50
AC-75	8-35243-00964-6	3/4"	50	AC-75
AC-100	8-35243-00898-4	1"	50	AC-100
AC-125/150	8-35243-00899-1	1-1/4" ~ 1-1/2"	25	AC-125/150
AC-200	8-35243-00900-4	2"	10	AC-200
AC-250/300	8-35243-00901-1	2-1/2" ~ 3"	10	AC-250/300
AC-350/400	8-35243-00902-8	3-1/2" ~ 4"	5	AC-350/400



# SUBMITTAL SHEET

## EXTRA-LARGE MOGUL THREADED RIGID CONDUIT BODIES "LB" SERIES

### DESCRIPTION:

Orbit Industries Extra-Large Mogul Threaded Rigid Conduit Bodies are commonly used for electrical service entrance wires or as an economical convenience box when extra wire capacity is needed. They are attached to threaded rigid or IMC conduits when a change of direction is required. Orbit Industries threaded conduit bodies save time and money by eliminating costly bending of large conduits in order to change the directions of conduit runs. Installers can easily bend wires into the smooth turns. Their powder-coated finish and water-tight gasket ensure a weatherproof installation.



### FEATURES:

- Copper-Free Aluminum Alloy
- Die-Cast Aluminum Cover
- Fiber Gasket

### CERTIFICATION:

Meets UL Standards: UL 514A

### CONFIGURATION DATA:

Part No.	UPC	Trade Size	Master Ctn
LBM-150	8-35243-03795-3	1-1/2"	1
LBM-200	8-35243-03796-0	2"	1



# SUBMITTAL SHEET

## 1-HOLE RG6U CABLE STRAP

### DESCRIPTION:

Orbit Industries' 1-Hole Cable Straps are used to support and secure service entrance cables to building structures. Cable Straps are made from stamped steel and feature holes for using fasteners to mount straps to wall.



### FEATURES:

- Stamped Steel
- Electroplated Zinc
- RG6U (Coaxial Cable) 1-Hole Strap

### CERTIFICATION:

Meets UL Standards: 514B.

### CONFIGURATION DATA:

Part No.	UPC	Trade Size	Std.Pkg.	Master Ctn
S1-25	8-35243-03161-6	1/4"	100	1000



# SUBMITTAL SHEET

## 1-HOLE MC (BX) CABLE STRAP

### DESCRIPTION:

Orbit Industries' 1-Hole Cable Straps are used to support and secure service entrance cables to building structures. Cable Straps are made from stamped steel and feature holes for using fasteners to mount straps to wall. In addition, straps are finished with electroplated zinc for excellent corrosion-resistance.



### FEATURES:

- Stamped Steel
- Electroplated Zinc
- Corrosion-Resistant
- 12-2, 12-3, 10-2, 10-3 MC (BX) 1-Hole Strap

### CERTIFICATION:

Meets UL Standards: 514B.

### CONFIGURATION DATA:

Part No.	UPC	Trade Size	Std.Pkg.	Master Ctn
S1-38	8-35243-03162-3	3/8"	100	1000





# SUBMITTAL SHEET

## 1-HOLE EMT STRAPS

### DESCRIPTION:

Orbit Industries' 1-Hole EMT Straps are used to support and secure EMT conduit to building structures. Cable Straps are made from stamped steel and feature holes for using fasteners to mount straps to wall. In addition, straps are finished with electroplated zinc for excellent corrosion-resistance.



### FEATURES:

- Stamped Steel
- Electroplated Zinc
- Sizes 2-1/2" to 4" are also listed for Rigid and IMC Conduits

### CERTIFICATION:

UL file E328572, Conforms to UL 514B.



### CONFIGURATION DATA:

Part No.	UPC	Trade Size	Std.Pkg.	Master Ctn
SE1-50L	8-35243-03163-0	16GA, Standard Duty	1/2"	100
SE1-50	8-35243-03165-4	14GA, Heavy-Duty	1/2"	100
SE1-75	8-35243-03166-1	14GA, Heavy-Duty	3/4"	100
SE1-100	8-35243-03167-8	14GA, Heavy-Duty	1"	100
SE1-125	8-35243-03168-5	12GA, Heavy-Duty	1-1/4"	100
SE1-150	8-35243-03169-2	12GA, Heavy-Duty	1-1/2"	50
SE1-200	8-35243-03170-8	12GA, Heavy-Duty	2"	50
SU1-250	8-35243-03183-8	9GA, Heavy-Duty	2-1/2"	25
SU1-300	8-35243-03184-5	9GA, Heavy-Duty	3"	25
SU1-350	8-35243-03185-2	7GA, Heavy-Duty	3-1/2"	25
SU1-400	8-35243-03186-9	7GA, Heavy-Duty	4"	25



# SUBMITTAL SHEET

## 1-HOLE RIGID STRAPS

### DESCRIPTION:

Orbit Industries' Rigid Straps are used to support and secure Rigid conduit to building structures. Cable Straps are made from stamped steel and feature holes for using fasteners to mount straps to wall. In addition, straps are finished with electroplated zinc for excellent corrosion-resistance.



### FEATURES:

- Stamped Steel
- Electroplated Zinc
- Sizes 2-1/2" to 4" are also listed for EMT and IMC Conduits

### CERTIFICATION:

UL file E328572, Conforms to UL 514B.



### CONFIGURATION DATA:

Part No.	UPC	Trade Size	Std.Pkg.	Master Ctn
SR1-50	8-35243-03177-7	14GA, Heavy-Duty	1/2"	100
SR1-75	8-35243-03178-4	12GA, Heavy-Duty	3/4"	100
SR1-100	8-35243-03179-1	12GA, Heavy-Duty	1"	100
SR1-125	8-35243-03180-7	12GA, Heavy-Duty	1-1/4"	100
SR1-150	8-35243-03181-4	10GA, Heavy-Duty	1-1/2"	50
SR1-200	8-35243-03182-1	10GA, Heavy-Duty	2"	50
SU1-250	8-35243-03183-8	9GA, Heavy-Duty	2-1/2"	25
SU1-300	8-35243-03184-5	9GA, Heavy-Duty	3"	25
SU1-350	8-35243-03185-2	7GA, Heavy-Duty	3-1/2"	25
SU1-400	8-35243-03186-9	7GA, Heavy-Duty	4"	25



# SUBMITTAL SHEET

## 1-HOLE RIGID STRAPS MALLEABLE IRON

### DESCRIPTION:

Orbit Industries' Rigid Straps are used to support and secure Rigid and IMC conduit to building structures. Cable Straps are made from malleable iron and feature holes for using fasteners to mount straps to wall.



### FEATURES:

- Malleable Iron

### CERTIFICATION:

Meets UL Standards: UL 514B.

### CONFIGURATION DATA:

Part No.	UPC	Trade Size	Std.Pkg.	Master Ctn
SRM1-50	8-35243-03805-9	1/2"	100	1000
SRM1-75	8-35243-03806-6	3/4"	50	500
SRM1-100	8-35243-03807-3	1"	25	250
SRM1-125	8-35243-03808-0	1-1/4"	20	200
SRM1-150	8-35243-03809-7	1-1/2"	10	100
SRM1-200	8-35243-03810-3	2"	10	50
SRM1-250	8-35243-03811-0	2-1/2"	-	25
SRM1-300	8-35243-03812-7	3"	-	25
SRM1-350	8-35243-03813-4	3-1/2"	-	10
SRM1-400	8-35243-03814-1	4"	-	10



# SUBMITTAL SHEET

## 2-HOLE EMT STRAPS

### DESCRIPTION:

Orbit Industries' 2-Hole EMT Straps are used to support and secure EMT conduit to building structures. Cable Straps are made from stamped steel and feature holes for using fasteners to mount straps to wall. In addition, straps are finished with electroplated zinc for excellent corrosion-resistance.



### FEATURES:

- Stamped Steel
- Electroplated Zinc
- Sizes 2-1/2" to 4" are also listed for Rigid and IMC Conduits

### CERTIFICATION:

UL file E328572, Conforms to UL 514B.



### CONFIGURATION DATA:

Part No.	UPC	Trade Size	Std.Pkg.	Master Ctn
SE2-50	8-35243-03171-5	18GA, Heavy-Duty	1/2"	100
SE2-75	8-35243-03172-2	18GA, Heavy-Duty	3/4"	100
SE2-100	8-35243-03173-9	16GA, Heavy-Duty	1"	100
SE2-125	8-35243-03174-6	16GA, Heavy-Duty	1-1/4"	100
SE2-150	8-35243-03175-3	16GA, Heavy-Duty	1-1/2"	50
SE2-200	8-35243-03176-0	14GA, Heavy-Duty	2"	50
SU2-250	8-35243-03193-7	13GA, Heavy-Duty	37288	25
SU2-300	8-35243-03194-4	13GA, Heavy-Duty	3"	25
SU2-350	8-35243-03195-1	10GA, Heavy-Duty	3-1/2"	25
SU2-400	8-35243-03196-8	10GA, Heavy-Duty	4"	25



# SUBMITTAL SHEET

## 2-HOLE RIGID STRAPS

### DESCRIPTION:

Orbit Industries' Rigid Straps are used to support and secure Rigid conduit to building structures. Cable Straps are made from stamped steel and feature holes for using fasteners to mount straps to wall. In addition, straps are finished with electroplated zinc for excellent corrosion-resistance.



### FEATURES:

- Stamped Steel
- Electroplated Zinc
- Sizes 2-1/2" to 4" are also listed for EMT and IMC Conduits

### CERTIFICATION:

UL file E328572, Conforms to UL 514B.



### CONFIGURATION DATA:

Part No.	UPC	Trade Size	Std.Pkg.	Master Ctn
SR2-50	8-35243-03187-6	20GA, Heavy-Duty	1/2"	100
SR2-75	8-35243-03188-3	20GA, Heavy-Duty	3/4"	100
SR2-100	8-35243-03189-0	20GA, Heavy-Duty	1"	100
SR2-125	8-35243-03190-6	19GA, Heavy-Duty	1-1/4"	100
SR2-150	8-35243-03191-3	16GA, Heavy-Duty	1-1/2"	50
SR2-200	8-35243-03192-0	16GA, Heavy-Duty	2"	50
SU2-250	8-35243-03193-7	13GA, Heavy-Duty	2-1/2"	25
SU2-300	8-35243-03194-4	13GA, Heavy-Duty	3"	25
SU2-350	8-35243-03195-1	10GA, Heavy-Duty	3-1/2"	25
SU2-400	8-35243-03196-8	10GA, Heavy-Duty	4"	25



# SUBMITTAL SHEET

## MALLEABLE IRON CLAMP BACK SPACERS

### DESCRIPTION:

Orbit Industries' Malleable Iron Clamp Back Spacers are used to provide space between conduit and mounting surface when using malleable straps. Back spacers are made of malleable iron and feature holes for use with fasteners.



### FEATURES:

- Malleable Iron

### CERTIFICATION:

Meets UL Standards: UL 514B.

### CONFIGURATION DATA:

Part No.	UPC	Trade Size	Std.Pkg.	Master Ctn
CBS-50	8-35243-03815-8	1/2"	25	250
CBS-75	8-35243-03816-5	3/4"	25	250
CBS-100	8-35243-03817-2	1"	25	250
CBS-125	8-35243-03818-9	1-1/4"	10	100
CBS-150	8-35243-03819-6	1-1/2"	10	100
CBS-200	8-35243-04820-1	2"	5	50
CBS-250	8-35243-04821-8	2-1/2"	-	25
CBS-300	8-35243-04822-5	3"	-	10
CBS-350	8-35243-04823-2	3-1/2"	-	10
CBS-400	8-35243-04824-9	4"	-	10



# SUBMITTAL SHEET

## NAIL STRAPS

### DESCRIPTION:

Orbit Industries' Nail Straps are used to support EMT/Rigid conduit to mounting surface. Nail Straps are made from stamped steel and finished electroplated zinc for excellent corrosion-resistance.



### FEATURES:

- Stamped Steel
- Electroplated Zinc
- Varies according to sizes

### CERTIFICATION:

UL file E227970, Conforms to UL 514B.



### CONFIGURATION DATA:

Part No.	UPC	Trade Size	Std.Pkg.	Master Ctn
NS-50	8-35243-03803-5	1/2"	N/A	100
NS-50/75	8-35243-01117-5	3/4"	1/2"	100
NS-100	8-35243-01118-2	1"	3/4"	100



# SUBMITTAL SHEET

## UNIVERSAL STRUT CLAMPS

### DESCRIPTION:

Orbit Industries' Universal Strut Clamps mount EMT, IMC, and Rigid Conduit to struts. Clamps and nuts are assembled to prevent any loss of parts. In addition, clamps are made from steel and are finished by electroplated zinc for excellent corrosion-resistance.



### FEATURES:

- Steel
- Electroplated Zinc
- Listed for EMT, IMC and Rigid

### CERTIFICATION:

Meets UL Standards: UL 2239.

### CONFIGURATION DATA:

Part No.	UPC	Trade Size	Std.Pkg.
ST-50	8-35243-05253-6	1/2"	100
ST-75	8-35243-05254-3	3/4"	100
ST-100	8-35243-05245-1	1"	100
ST-125	8-35243-05246-8	1-1/4"	100
ST-150	8-35243-05247-5	1-1/2"	50
ST-200	8-35243-05248-2	2"	50
ST-250	8-35243-05249-9	2-1/2"	50
ST-300	8-35243-05250-5	3"	25
ST-350	8-35243-05251-2	3-1/2"	25
ST-400	8-35243-05252-9	4"	25





# SUBMITTAL SHEET

## STRUT CLAMP SADDLE TYPE

### DESCRIPTION:

Orbit Industries' Strut Clamp Saddle Type mount conduit to struts. Clamps use a single-screw-tight clamp action to secure conduits to struts. In addition, clamps are made with steel and are finished by electroplated zinc for excellent corrosion-resistance.



### FEATURES:

- Steel
- Electrogalvanized Zinc
- Single-Screw-Tight Clamping Action
- Supports MC/AC, EMT & Rigid conduit

### CERTIFICATION:

Meets UL Standards: UL 2239.

### CONFIGURATION DATA:

Part No.	UPC	Trade Size	EMT/RIGID Conduit Size	Design Load	Master Ctn
STS-50	835243054417	1/2"	5/16" - 1/2"	200 Lbs.	100
STS-75	835243054424	3/4"	3/4"	300 Lbs.	100
STS-100	835243054431	1"	1"	300 Lbs.	100
STS-125	835243054448	1-1/4"	1-1/4"	400 Lbs.	50
STS-150	835243054455	1-1/2"	1-1/2"	400 Lbs.	50
STS-200	835243054462	2"	2"	400 Lbs.	50
STS-250	835243054479	2-1/2"	2-1/2"	400 Lbs.	25
STS-300	835243054486	3"	3"	400 Lbs.	25
STS-350	835243054493	3-1/2"	3-1/2"	400 Lbs.	25
STS-400	835243054509	4"	4"	400 Lbs.	25



# SUBMITTAL SHEET

## CONDUIT HANGERS WITH BOLTS

### DESCRIPTION:

Orbit Industries' EMT Hangers With Bolts are used to secure EMT or Rigid conduit to threaded rod, insulator supports, or directly to mounting surface. All hangers have 2-way slotted/Philips screw to tighten hanger onto conduits.



### FEATURES:

- Steel
- Electroplated Zinc

### CERTIFICATION:

UL file E328572, Conforms to UL 2239.



### CONFIGURATION DATA:

Part No.	UPC	Trade Size	EMT Size	Pipe Size	Std. Pkg.	Master Ctn.
PH-50B	8-35243-01001-7	#0B	1/2"	1/2"&3/8"	50	500
PH-75B	8-35243-01002-4	#1B	3/4"	3/4"	50	500
PH-100B	8-35243-01003-1	#2B	1"	1"	25	250
PH-105B	8-35243-01004-8	#2-1/2B	1-1/4"	-	25	250
PH-125B	8-35243-01005-5	#3B	1-1/2"	1-1/4"	50	250
PH-150B	8-35243-01006-2	#4B	-	1-1/2"	50	250
PH-200B	8-35243-01007-9	#5B	2"	2"	20	100
PH-250B	8-35243-01008-6	#6B	2-1/2"	2-1/2"	10	50
PH-300B	8-35243-01009-3	#7B	3"	3"	10	50
PH-350B	8-35243-01010-9	#8B	3-1/2"	3-1/2"	10	50
PH-400B	8-35243-01011-6	#9B	4"	4"	5	25



# SUBMITTAL SHEET

## STEEL 1-HOLE SERVICE ENTRANCE STRAPS

### DESCRIPTION:

Orbit Industries' Entrance Straps are used to support and secure oval service entrance cables to building structures. Straps are made from stamped steel and feature holes for using fasteners to mount straps to wall. In addition, straps are corrosion-resistant.



### FEATURES:

- Stamped Steel
- Corrosion-Resistant

### CERTIFICATION:

Meets UL Standards: UL 2239.

### CONFIGURATION DATA:

Part No.	UPC	Trade Size	Std.Pkg.	Master Ctn
SES1-50	8-35243-03538-6	Three #8, #6, #4	100	500
SES1-75	8-35243-03539-3	Three #3, #2	100	500
SES1-100	8-35243-03540-9	Three #1, #1/0, #2/0	50	250
SES1-200	8-35243-03541-6	Three #3/0, #4/0	25	250



# SUBMITTAL SHEET

## STEEL 2-HOLE SERVICE ENTRANCE STRAPS

### DESCRIPTION:

Orbit Industries' Entrance Straps are used to support and secure oval service entrance cables to building structures. Straps are made from stamped steel and feature holes for using fasteners to mount straps to wall. In addition, straps are corrosion-resistant.



### FEATURES:

- Stamped Steel
- Corrosion-Resistant

### CERTIFICATION:

Meets UL Standards: UL 2239.

### CONFIGURATION DATA:

Part No.	UPC	Trade Size	Std.Pkg.	Master Ctn
SES2-50	8-35243-03542-3	Three #8, #6, #4	20	100
SES2-75	8-35243-03543-0	Three #3, #2	20	100
SES2-100	8-35243-03544-7	Three #1, #1/0, #2/0	20	100
SES2-200	8-35243-03545-4	Three #3/0, #4/0	20	100



# SUBMITTAL SHEET

## PVC SERVICE ENTRANCE CABLE CAPS

### DESCRIPTION:

Orbit Industries' Service Entrance Cable Caps are used as a connecting point in overhead service entrance for SEU Cables. Service Entrance Caps are made of Heavy-Duty PVC and are durable in harsh weather. Snap-on covers allow for wires to be secured and hung for utility power connections.



### FEATURES:

- Heavy-Duty PVC
- Snap-on Covers

### CERTIFICATION:

Meets UL Standards: UL 514B.

### CONFIGURATION DATA:

Part No.	UPC	Trade Size	Std.Pkg.
ECCP-50	8-35243-03552-2	#8, #6, #4, #2	10
ECCP-100	8-35243-03553-9	#1/0, #2/0	10
ECCP-200	8-35243-03554-6	#3/0, #4/0	10



# SUBMITTAL SHEET

## PVC SERVICE ENTRANCE HEADS

### DESCRIPTION:

Orbit Industries' Service Entrance Heads are used to attach to the end of PVC, Rigid, IMC, or EMT conduits to bring overhead power to buildings or homes. Removable EMT adapter sleeve and no-turn square nut allow for fast installation. Service Entrance Heads are made of Heavy-Duty PVC and are durable in harsh weather. Snap-on covers allow for wires to be secured and hung for utility power connections.



### FEATURES:

- Heavy-Duty PVC
- Snap-on Covers

### CERTIFICATION:

Meets UL Standards: UL 514B.

### CONFIGURATION DATA:

Part No.	UPC	Trade Size	Std.Pkg.	Master Ctn
ECP-50	8-35243-03546-1	1/2"	5	10
ECP-75	8-35243-03547-8	3/4"	2	10
ECP-100	8-35243-03548-5	1"	2	10
ECP-125	8-35243-03549-2	1-1/4"	-	5
ECP-150	8-35243-03550-8	1-1/2"	2	10
ECP-200	8-35243-03551-5	2"	2	10



# SUBMITTAL SHEET

## SERVICE ENTRANCE CAPS CLAMP TYPE

### DESCRIPTION:

Orbit Industries' Service Entrance Caps are used to attach to the end of conduits to bring overhead power to buildings or homes. The clamp design secures to conduit using two screws to allow for wires to be hung for utility power connections. Service Entrance Caps are made of Copper-Free Aluminum and are durable in harsh weather.



### FEATURES:

- Copper-Free Aluminum

### CERTIFICATION:

UL file E310661, Conforms to UL 514B.



### CONFIGURATION DATA:

Part No.	UPC	Trade Size	Std.Pkg.	Master Ctn
EC-50	8-35243-03046-6	1/2"	15	90
EC-75	8-35243-03047-3	3/4"	10	60
EC-100	8-35243-03048-0	1"	7	42
EC-125	8-35243-03049-7	1-1/4"	5	30
EC-150	8-35243-03050-3	1-1/2"	4	24
EC-200	8-35243-03051-0	2"	4	8
EC-250	8-35243-03052-7	2-1/2"	1	3
EC-300	8-35243-03053-4	3"	1	3
EC-300L (Large Body)	8-35243-03220-0	3"	1	3
EC-350	8-35243-03054-1	3-1/2"	1	2
EC-400	8-35243-03055-8	4"	1	2



# SUBMITTAL SHEET

## PVC SILL PLATE

### DESCRIPTION:

Orbit Industries' PVC Sill Plates are used with sealing compound and prevent water from entering the structure. Sill Plates are made of Heavy-Duty PVC and prevent dust and liquids.



### FEATURES:

- Heavy-Duty PVC

### CERTIFICATION:

Meets UL Standards: UL 514B.

### CONFIGURATION DATA:

Part No.	UPC	Description	Std.Pkg.	Master Ctn
SPP	8-35243-03555-3	3 - #4 THRU #3/0	5	15





# SUBMITTAL SHEET

## WATERTIGHT HUBS

### DESCRIPTION:

Orbit Industries' Watertight Hubs are used with threaded rigid or IMC conduits to connect and bond to threaded openings in boxes or enclosures. Watertight Hubs are made of zinc die cast and can be used in both wet and dry locations. In addition, hubs have insulation to protect wires when pulling. An O-ring on the Watertight Hub provides a rain-tight seal on electrical boxes or enclosures.



### FEATURES:

- Zinc Die Cast
- 105°C rated Throat Insulator
- Insulated color may vary

### CERTIFICATION:

UL file E310658, Conforms to UL 514B.



### CONFIGURATION DATA:

Part No.	UPC	Trade Size	Std.Pkg.	Master Ctn
WH-50	8-35243-03056-5	1/2"	25	125
WH-75	8-35243-03057-2	3/4"	25	125
WH-100	8-35243-03058-9	1"	25	125
WH-125	8-35243-03059-6	1-1/4"	10	50
WH-150	8-35243-03060-2	1-1/2"	10	50
WH-200	8-35243-03061-9	2"	10	50
WH-250	8-35243-03062-6	2-1/2"	5	25
WH-300	8-35243-03063-3	3"	2	10
WH-350	8-35243-03064-0	3-1/2"	2.00	10.00
WH-400	8-35243-03065-7	4"	2.00	10.00



# SUBMITTAL SHEET

## GROUNDING ZINC WATERTIGHT HUBS

### DESCRIPTION:

Orbit Industries' Watertight Hubs are used with threaded rigid or IMC conduits to connect and bond to threaded openings in boxes or enclosures. Watertight Hubs are made of zinc die cast and can be used in both wet and dry locations. In addition, hubs have insulation to protect wires when pulling. An O-ring on the Watertight Hub provides a rain-tight seal on electrical boxes or enclosures.



### FEATURES:

- Zinc Die Cast
- 105°C rated Throat Insulator
- Grounding Post & Screw
- Insulated color may vary

### CERTIFICATION:

UL file E310658, Conforms to UL 514B.



### CONFIGURATION DATA:

Part No.	UPC	Trade Size	Std.Pkg.	Master Ctn
WHG-50	8-35243-03624-6	1/2"	25	125
WHG-75	8-35243-03625-3	3/4"	25	125
WHG-100	8-35243-03626-0	1"	25	125
WHG-125	8-35243-03627-7	1-1/4"	10	50
WHG-150	8-35243-03628-4	1-1/2"	10	50
WHG-200	8-35243-03629-1	2"	10	50
WHG-250	8-35243-03630-7	2-1/2"	5	25
WHG-300	8-35243-03631-4	3"	2	10
WHG-350	8-35243-03632-1	3-1/2"	2	10
WHG-400	8-35243-03633-8	4"	2	10



# SUBMITTAL SHEET

## SNAP-IN KNOCKOUT SEALS

### DESCRIPTION:

Orbit Industries' Knockout Seals are inserted into unused open box knockouts to protect exposed wires. They are used in standard, air tight or dust tight applications. Orbit's Knockout Seals snap into knockouts without removing box devices or covers.



### FEATURES:

- Stamped Steel
- Electroplated Zinc
- For capping unused knockout holes
- Held by spring tension

### CERTIFICATION:

Meets UL Standards: UL 514B.

### CONFIGURATION DATA:

Part No.	UPC	Trade Size	Std.Pkg.	Master Ctn
KO-50	8-35243-04843-0	1/2"	100	1000
KO-75	8-35243-04844-7	3/4"	100	1000
KO-100	8-35243-04845-4	1"	100	500
KO-125	8-35243-04846-1	1-1/4"	50	100
KO-150	8-35243-04847-8	1-1/2"	-	50
KO-200	8-35243-04848-5	2"	-	25



# SUBMITTAL SHEET

## 3-PIECE KNOCKOUT SEALS

### DESCRIPTION:

Orbit Industries' 3-Piece Knockout Seals are used to cap unused knockout holes in electrical boxes. Seals come with circular embossed plate, screw and back plate. Back plate and circular plate sandwiches opening on box to protect wires.



### FEATURES:

- Stamped Steel
- Electroplated Zinc
- For capping unused knockout holes
- Embossed for quick self centering
- Installed using the screw and back strap

### CERTIFICATION:

Meets UL Standards: UL 514B.

### CONFIGURATION DATA:

Part No.	UPC	Trade Size	Std.Pkg.	Master Ctn
KO3P-50	8-35243-04934-5	1/2"	100	500
KO3P-75	8-35243-04935-2	3/4"	50	500
KO3P-100	8-35243-04926-0	1"	25	500
KO3P-125	8-35243-04927-7	1-1/4"	25	250
KO3P-150	8-35243-04928-4	1-1/2"	10	300
KO3P-200	8-35243-04929-1	2"	10	300
KO3P-250	8-35243-04930-7	2-1/2"	10	100
KO3P-300	8-35243-04931-4	3"	10	100
KO3P-350	8-35243-04932-1	3-1/2"	10	100
KO3P-400	8-35243-04933-8	4"	10	100



# SUBMITTAL SHEET

## STRAIN RELIEF CORD-GRIP CONNECTORS

### DESCRIPTION:

Orbit Industries' Strain Relief Cord-Grip Connectors are used to secure and seal cords or cables entering enclosures or raceways. Cords can be inserted easily without any disassembly. Orbit's cord-grip connectors have a minimum 0.19 to a maximum 0.985 cable range.



### FEATURES:

- Zinc Die Cast
- Watertight

### CERTIFICATION:

Meets UL Standards: UL 514B.

### CONFIGURATION DATA:

Part No.	UPC	Trade Size	Std.Pkg.	Master Ctn
CG-50-190/260	8-35243-04827-0	1/2"	25	100
CG-50-260/375	8-35243-04828-7	1/2"	25	100
CG-50-375/500	8-35243-04829-4	1/2"	25	100
CG-75-375/500	8-35243-04830-0	3/4"	10	50
CG-75-500/625	8-35243-04831-7	3/4"	10	50
CG-75-625/750	8-35243-04832-4	3/4"	10	50
CG-100-375/500	8-35243-04833-1	1"	10	50
CG-100-500/625	8-35243-04921-5	1"	10	50
CG-100-625/750	8-35243-04834-8	1"	10	50
CG-100-750/880	8-35243-04836-2	1"	10	50
CG-100-880/985	8-35243-04837-9	1"	10	50



# SUBMITTAL SHEET

## NYLON STRAIN RELIEF CORD-GRIP CONNECTORS

### DESCRIPTION:

Orbit Industries Nylon Strain Relief Cord-Grip Connectors are used in wet or dry locations to provide a liquidtight and strain relief termination for flexible cord and cable. Nylon construction is lightweight and can resist most common industrial corrosives.



### FEATURES:

- Nylon
- Watertight
- Lock Nut not included for 3/8"

### CERTIFICATION:

Meets UL Standards: UL 514B.

### CONFIGURATION DATA:

Part No.	UPC	Trade Size	Std.Pkg.	Master Ctn
NGC-38-197/394	8-35243-04838-6	3/8"	0.197" - 0.394"	25
NGC-50-384/551	8-35243-04839-3	1/2"	0.394" - 0.551"	25
NGC-75-551/709	8-35243-04840-9	3/4"	0.551" - 0.709"	10
NGC100-709/984	8-35243-04841-6	1"	0.709" - 0.984"	10



# SUBMITTAL SHEET

## PLASTIC LOCKNUTS

### DESCRIPTION:

Orbit Industries' Plastic Locknuts are used to secure conduits or connectors to electrical junction boxes or enclosures. Locknuts are made of Nylon and feature full-cut internal threads.



### FEATURES:

- Nylon
- Full-cut internal threads
- Meets Federal Spec. A-A-50553

### CERTIFICATION:

Meets UL Standards: UL 514B.

### CONFIGURATION DATA:

Part No.	UPC	Trade Size	Std.Pkg.
PLN-38	835243053854	3/8"	50



# SUBMITTAL SHEET

## BOX TO BOX CONNECTOR

### DESCRIPTION:

Orbit Industries' Box to Box Connectors are used to provide a connecting link between boxes, panels or chassis. Box to Box Connectors come with two locknuts to secure to electrical junction boxes and enclosures. In addition, connectors are made of zinc die-cast and provide excellent corrosion resistance.



### FEATURES:

- Zinc Die-Cast
- Meets Federal Spec. A-A-50553

### CERTIFICATION:

Meets UL Standards: UL 514B.

### CONFIGURATION DATA:

Part No.	UPC	Trade Size	Std.Pkg.	Master Ctn
OF781	835243048423	1/2"	100	500





# SUBMITTAL SHEET

## INSULATED BOX TO BOX CONNECTORS

### DESCRIPTION:

Orbit Industries' Box to Box Connectors are used to provide a connecting link between boxes, panels or chassis. Box to Box Connectors come with two locknuts to secure to electrical junction boxes and enclosures. Insulation protects wires when pulled. In addition, connectors are made of zinc die-cast and provide excellent corrosion resistance.



### FEATURES:

- Zinc Die Cast
- With Insulated Throat (Yellow, Throat color may vary)
- Meets Federal Spec. A-A-50553

### CERTIFICATION:

Meets UL Standards: UL 514B.

### CONFIGURATION DATA:

Part No.	UPC	Trade Size	Std.Pkg.	Master Ctn
OF781-S	835243003446	1/2"	100	500



# SUBMITTAL SHEET

## 3/4" OFFSET NIPPLES

### DESCRIPTION:

Orbit Industries' Offset Nipples are used to connect two boxes or enclosures when knockouts are not in line. Orbit's offset nipples have a rugged metallic construction and ensures mechanical protection. In addition, offset nipples prevent the need of bending conduits and allow for connection of boxes or enclosures when a change of angle is needed.



### FEATURES:

- Zinc Die Cast
- Meets Federal Spec. A-A-50553

### CERTIFICATION:

UL file E310658, Conforms to UL 514B.



### CONFIGURATION DATA:

Part No.	UPC	Trade Size	Std.Pkg.	Master Ctn
ON-50	8-35243-03083-1	1/2"	25	250
ON-75	8-35243-03084-8	3/4"	20	200
ON-100	8-35243-03155-5	1"	10	100
ON-125	8-35243-03156-2	1-1/4"	5	50
ON-150	8-35243-03157-9	1-1/2"	5	50
ON-200	8-35243-03158-6	2"	3	30



# SUBMITTAL SHEET

## 1" LONG CONDUIT CHASE NIPPLES

### DESCRIPTION:

Orbit Industries 1" Long Conduit Chase Nipples are serve as a short raceway between enclosures. They are made of zinc die cast and provide excellent corrosion resistance.



### FEATURES:

- Zinc Die Cast
- Meets Federal Spec. A-A-50553

### CERTIFICATION:

UL file E310658, Conforms to UL 514B.



### CONFIGURATION DATA:

Part No.	UPC	Trade Size	Std.Pkg.	Master Ctn
CN-50L	8-35243-04849-2	1/2"	100	1000
CN-75L	8-35243-04850-8	3/4"	50	500
CN-100L	8-35243-04851-5	1"	25	250



# SUBMITTAL SHEET

## CONDUIT CHASE NIPPLES

### DESCRIPTION:

Orbit Industries Conduit Chase Nipples are serve as a short raceway between enclosures. They are made of zinc die cast and provide excellent corrosion resistance.



### FEATURES:

- Zinc Die Cast
- Meets Federal Spec. A-A-50553

### CERTIFICATION:

UL file E310658, Conforms to UL 514B.



### CONFIGURATION DATA:

Part No.	UPC	Trade Size	Std.Pkg.	Master Ctn
CN-50	8-35243-03502-7	1/2"	100	1000
CN-75	8-35243-03503-4	3/4"	100	1000
CN-100	8-35243-03504-1	1"	50	500
CN-125	8-35243-03505-8	1-1/4"	25	250
CN-150	8-35243-03506-5	1-1/2"	25	250
CN-200	8-35243-03507-2	2"	15	90



# SUBMITTAL SHEET

## INSULATED CONDUIT CHASE NIPPLES

### DESCRIPTION:

Orbit Industries' Insulated Conduit Chase Nipples are used to effectively bush factory or field-punched, cut, or drilled holes in metal boxes or enclosures. Chase nipples can also be used to couple boxes back-to-back. Insulation protects wires when pulling. In addition, chase nipples are made of zinc die cast for excellent corrosion resistance.



### FEATURES:

- Zinc Die Cast
- With Insulated Throat (Yellow, Throat color may vary)
- Meets Federal Spec. A-A-50553

### CERTIFICATION:

UL file E310658, Conforms to UL 514B.



### CONFIGURATION DATA:

Part No.	UPC	Trade Size	Std.Pkg.	Master Ctn
CNI-50	8-35243-03512-6	1/2"	100	1000
CNI-75	8-35243-03513-3	3/4"	100	1000
CNI-100	8-35243-03514-0	1"	50	500
CNI-125	8-35243-03515-7	1-1/4"	25	250
CNI-150	8-35243-03516-4	1-1/2"	25	250
CNI-200	8-35243-03517-1	2"	15	90
CNI-250	8-35243-03518-8	2-1/2"	2	10
CNI-300	8-35243-03519-5	3"	2	10
CNI-350	8-35243-03520-1	3-1/2"	-	5
CNI-400	8-35243-03521-8	4"	-	5



# SUBMITTAL SHEET

## RIGID CONDUIT NIPPLES 1/2" TO 2"

### DESCRIPTION:

Orbit Industries' rigid conduit nipples are used with threaded rigid and IMC conduit knockout openings to connect two junction boxes using locknuts. The rigid conduit nipples have a rugged metallic construction and they are durable. The rugged construction ensures mechanical protection.



### FEATURES:

- Galvanized Steel
- Meet UL 6 and ANSI C80.1
- NPT Thread

### CERTIFICATION:

UL File E358012, Conforms to UL 6



### CONFIGURATION DATA:

Part No.	UPC	Trade Size	Length	Std. Pkg.	Part No.	UPC	Trade Size	Length	Std. Pkg.
RN-50-C	8-35243-03240-8	1/2"	1-1/8"	25	RN-125-C	8-35243-03256-9	1-1/4"	1-5/8"	25
RN-50-150	8-35243-03241-5	1/2"	1-1/2"	25	RN-125-200	8-35243-03257-6	1-1/4"	2"	25
RN-50-200	8-35243-03242-2	1/2"	2"	25	RN-125-250	8-35243-05428-8	1-1/4"	2-1/2"	25
RN-50-250	8-35243-05425-7	1/2"	2-1/2"	25	RN-125-300	8-35243-03258-3	1-1/4"	3"	25
RN-50-300	8-35243-03243-9	1/2"	3"	25	RN-125-350	8-35243-05347-2	1-1/4"	3-1/2"	25
RN-50-350	8-35243-05344-1	1/2"	3-1/2"	25	RN-125-400	8-35243-03259-0	1-1/4"	4"	25
RN-50-400	8-35243-03244-6	1/2"	4"	25	RN-125-500	8-35243-04857-7	1-1/4"	5"	25
RN-50-500	8-35243-04852-2	1/2"	5"	25	RN-125-600	8-35243-03260-6	1-1/4"	6"	25
RN-50-600	8-35243-03245-3	1/2"	6"	25	RN-125-800	8-35243-03298-9	1-1/4"	8"	25
RN-50-800	8-35243-03288-0	1/2"	8"	25	RN-125-1000	8-35243-03299-6	1-1/4"	10"	25
RN-50-1000	8-35243-03289-7	1/2"	10"	25	RN-125-1200	8-35243-03300-9	1-1/4"	12"	25
RN-50-1200	8-35243-03290-3	1/2"	12"	25	RN-150-C	8-35243-03261-3	1-1/2"	1-3/4"	25
RN-75-C	8-35243-03246-0	3/4"	1-3/8"	25	RN-150-200	8-35243-03262-0	1-1/2"	2"	25
RN-75-150	8-35243-03291-0	3/4"	1-1/2"	25	RN-150-250	8-35243-05429-5	1-1/2"	2-1/2"	25
RN-75-200	8-35243-03247-7	3/4"	2"	25	RN-150-300	8-35243-03263-7	1-1/2"	3"	25
RN-75-250	8-35243-05426-4	3/4"	2-1/2"	25	RN-150-350	8-35243-05348-9	1-1/2"	3-1/2"	25
RN-75-300	8-35243-03248-4	3/4"	3"	25	RN-150-400	8-35243-03264-4	1-1/2"	4"	25
RN-75-350	8-35243-05345-8	3/4"	3-1/2"	25	RN-150-500	8-35243-04859-1	1-1/2"	5"	25
RN-75-400	8-35243-03249-1	3/4"	4"	25	RN-150-600	8-35243-03265-1	1-1/2"	6"	25
RN-75-500	8-35243-04853-9	3/4"	5"	25	RN-150-800	8-35243-03301-6	1-1/2"	8"	25
RN-75-600	8-35243-03250-7	3/4"	6"	25	RN-150-1000	8-35243-03302-3	1-1/2"	10"	25
RN-75-800	8-35243-03292-7	3/4"	8"	25	RN-150-1200	8-35243-03303-0	1-1/2"	12"	25
RN-75-1000	8-35243-03293-4	3/4"	10"	25	RN-200-C	8-35243-03266-8	2"	2"	25
RN-75-1200	8-35243-03294-1	3/4"	12"	25	RN-200-250	8-35243-03267-5	2"	2-1/2"	25
RN-100-C	8-35243-03251-4	1"	1-1/2"	25	RN-200-300	8-35243-03268-2	2"	3"	25
RN-100-200	8-35243-03252-1	1"	2"	25	RN-200-350	8-35243-05349-6	2"	3-1/2"	25
RN-100-250	8-35243-05427-1	1"	2-1/2"	25	RN-200-400	8-35243-03269-9	2"	4"	25
RN-100-300	8-35243-03253-8	1"	3"	25	RN-200-500	8-35243-04861-4	2"	5"	25
RN-100-350	8-35243-05346-5	1"	3-1/2"	25	RN-200-600	8-35243-03270-5	2"	6"	25
RN-100-400	8-35243-03254-5	1"	4"	25	RN-200-800	8-35243-03272-9	2"	8"	25
RN-100-500	8-35243-04855-3	1"	5"	25	RN-200-1000	8-35243-03304-7	2"	10"	25
RN-100-600	8-35243-03255-2	1"	6"	25	RN-200-1200	8-35243-03305-4	2"	12"	25
RN-100-800	8-35243-03295-8	1"	8"	25					
RN-100-1000	8-35243-03296-5	1"	10"	25					
RN-100-1200	8-35243-03297-2	1"	12"	25					



# SUBMITTAL SHEET

## RIGID CONDUIT NIPPLES 2-1/2" TO 6"

### DESCRIPTION:

Orbit Industries' rigid conduit nipples are used with threaded rigid and IMC conduit knockout openings to connect two junction boxes using locknuts. The rigid conduit nipples have a rugged metallic construction and they are durable. The rugged construction ensures mechanical protection.



### FEATURES:

- Galvanized Steel
- Meet UL 6 and ANSI C80.1
- NPT Thread

### CERTIFICATION:

UL File E358012, Conforms to UL 6



### CONFIGURATION DATA:

Part No.	UPC	Trade Size	Length	Std. Pkg.	Part No.	UPC	Trade Size	Length	Std. Pkg.
RN-250-C	8-35243-05431-8	2-1/2"	2-1/2"	30	RN-400-C	8-35243-05366-3	4"	2-7/8"	9
RN-250-300	8-35243-05432-5	2-1/2"	3"	25	RN-400-400	8-35243-05367-0	4"	4"	9
RN-250-350	8-35243-05433-2	2-1/2"	3-1/2"	15	RN-400-500	8-35243-05368-7	4"	5"	9
RN-250-400	8-35243-05434-9	2-1/2"	4"	15	RN-400-600	8-35243-05369-4	4"	6"	9
RN-250-500	8-35243-05435-6	2-1/2"	5"	15	RN-400-800	8-35243-05370-0	4"	8"	4
RN-250-600	8-35243-05436-3	2-1/2"	6"	10	RN-400-1000	8-35243-05371-7	4"	10"	4
RN-250-800	8-35243-05437-0	2-1/2"	8"	5	RN-400-1200	8-35243-05372-4	4"	12"	4
RN-250-1000	8-35243-05438-7	2-1/2"	10"	5	RN-500-C	8-35243-05373-1	5"	3"	4
RN-250-1200	8-35243-05439-4	2-1/2"	12"	5	RN-500-500	8-35243-05374-8	5"	5"	4
RN-300-C	8-35243-05350-2	3"	2-5/8"	9	RN-500-600	8-35243-05375-5	5"	6"	4
RN-300-300	8-35243-05351-9	3"	3"	9	RN-500-800	8-35243-05376-2	5"	8"	4
RN-300-350	8-35243-05352-6	3"	3-1/2"	9	RN-500-1000	8-35243-05377-9	5"	10"	4
RN-300-400	8-35243-05353-3	3"	4"	9	RN-500-1200	8-35243-05378-6	5"	12"	4
RN-300-500	8-35243-05354-0	3"	5"	9	RN-600-C	8-35243-05379-3	6"	3-1/8"	4
RN-300-600	8-35243-05355-7	3"	6"	9	RN-600-500	8-35243-05380-9	6"	5"	4
RN-300-800	8-35243-05356-4	3"	8"	9	RN-600-600	8-35243-05381-6	6"	6"	4
RN-300-1000	8-35243-05357-1	3"	10"	9	RN-600-800	8-35243-05382-3	6"	8"	4
RN-300-1200	8-35243-05358-8	3"	12"	9	RN-600-1000	8-35243-05383-0	6"	10"	4
RN-350-C	8-35243-05359-5	3-1/2"	2-3/4"	9	RN-600-1200	8-35243-05384-7	6"	12"	4
RN-350-400	8-35243-05360-1	3-1/2"	4"	9					
RN-350-500	8-35243-05361-8	3-1/2"	5"	9					
RN-350-600	8-35243-05362-5	3-1/2"	6"	9					
RN-350-800	8-35243-05363-2	3-1/2"	8"	9					
RN-350-1000	8-35243-05364-9	3-1/2"	10"	9					
RN-350-1200	8-35243-05365-6	3-1/2"	12"	9					

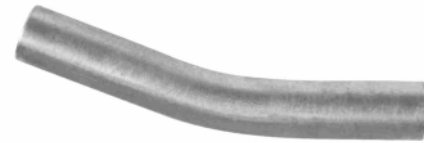


# SUBMITTAL SHEET

## 22.5° ANGLE EMT CONDUIT ELBOWS

### DESCRIPTION:

Orbit Industries' 22.5 Degree EMT elbow is manufactured from prime EMT conduit in accordance with the latest specifications and standards of ANSI C80.3 (UL797). The interior and exterior surface of elbows are free from defect with a smooth welded seam, and also are thoroughly and evenly coated with zinc using hot dip galvanizing process. Elbows are produced in normal trade sizes from 1/2" to 4" and used to connect the EMT conduit to change the way of the EMT conduit.



### FEATURES:

- Galvanized Steel
- Meet UL 797 and ANSI C80.3

### CERTIFICATION:

UL File E358011, Conforms to UL 797



### CONFIGURATION DATA:

Part No.	UPC	Trade Size	Std. Pkg.
EEL22-50	835243054059	1/2"	50
EEL22-75	835243054066	3/4"	50
EEL22-100	835243054073	1"	25
EEL22-125	835243054080	1-1/4"	20
EEL22-150	835243054097	1-1/2"	15
EEL22-200	835243054103	2"	10
EEL22-250	835243054110	2-1/2"	BULK
EEL22-300	835243054127	3"	BULK
EEL22-350	835243054134	3-1/2"	BULK
EEL22-400	835243054141	4"	BULK





# SUBMITTAL SHEET

## 22.5° ANGLE RIGID CONDUIT ELBOWS

### DESCRIPTION:

Orbit Industries' 22.5 Degree Rigid steel conduit elbow is manufactured from prime conduit shell with high-strength in accordance with the latest specifications and standard of ANSI C80.1(UL6). The interior and exterior surface of elbows are free from defect with a smooth welded seam, and are thoroughly and evenly coated with zinc using hot dip galvanizing process. Elbows are produced in normal trade sizes from 1/2" to 4" and used to connect the rigid steel conduit to change the way of the conduit. Elbows are threaded on both ends.



### FEATURES:

- Galvanized Steel
- Meet UL 6 and ANSI C80.1
- NPT Thread

### CERTIFICATION:

UL File E358012, Conforms to UL 6



### CONFIGURATION DATA:

Part No.	UPC	Trade Size	Std. Pkg.
REL22-50	835243054158	1/2"	50
REL22-75	835243054165	3/4"	50
REL22-100	835243054172	1"	25
REL22-125	835243054189	1-1/4"	20
REL22-150	835243054196	1-1/2"	15
REL22-200	835243054202	2"	10
REL22-250	835243054219	2-1/2"	BULK
REL22-300	835243054226	3"	BULK
REL22-350	835243054233	3-1/2"	BULK
REL22-400	835243054240	4"	BULK



# SUBMITTAL SHEET

## 45° ANGLE EMT CONDUIT ELBOWS

### DESCRIPTION:

Orbit Industries' 45 Degree EMT elbow is manufactured from prime EMT conduit in accordance with the latest specifications and standards of ANSI C80.3 (UL797). The interior and exterior surface of elbows are free from defect with a smooth welded seam, and also are thoroughly and evenly coated with zinc using hot dip galvanizing process. Elbows are produced in normal trade sizes from 1/2" to 4" and used to connect the EMT conduit to change the way of the EMT conduit.



### FEATURES:

- Galvanized Steel
- Meet UL 797 and ANSI C80.3

### CERTIFICATION:

UL File E358011, Conforms to UL 797



### CONFIGURATION DATA:

Part No.	UPC	Trade Size	Std. Pkg.
EEL45-50	8-35243-05291-8	1/2"	50
EEL45-75	8-35243-05292-5	3/4"	50
EEL45-100	8-35243-05293-2	1"	25
EEL45-125	8-35243-05294-9	1-1/4"	20
EEL45-150	8-35243-05295-6	1-1/2"	15
EEL45-200	8-35243-05296-3	2"	10
EEL45-250	8-35243-05297-0	2-1/2"	BULK
EEL45-300	8-35243-05298-7	3"	BULK
EEL45-350	8-35243-05299-4	3-1/2"	BULK
EEL45-400	8-35243-05300-7	4"	BULK



# SUBMITTAL SHEET

## 45° ANGLE RIGID CONDUIT ELBOWS

### DESCRIPTION:

Orbit Industries' 45 Degree Rigid steel conduit elbow is manufactured from prime conduit shell with high-strength in accordance with the latest specifications and standard of ANSI C80.1(UL6). The interior and exterior surface of elbows are free from defect with a smooth welded seam, and are thoroughly and evenly coated with zinc using hot dip galvanizing process. Elbows are produced in normal trade sizes from 1/2" to 4" and used to connect the rigid steel conduit to change the way of the conduit. Elbows are threaded on both ends.



### FEATURES:

- Galvanized Steel
- Meet UL 6 and ANSI C80.1
- NPT Thread

### CERTIFICATION:

UL File E358012, Conforms to UL 6



### CONFIGURATION DATA:

Part No.	UPC	Trade Size	Std. Pkg.
REL45-50	8-35243-05271-0	1/2"	50
REL45-75	8-35243-05272-7	3/4"	50
REL45-100	8-35243-05273-4	1"	25
REL45-125	8-35243-05274-1	1-1/4"	20
REL45-150	8-35243-05275-8	1-1/2"	15
REL45-200	8-35243-05276-5	2"	10
REL45-250	8-35243-05277-2	2-1/2"	BULK
REL45-300	8-35243-05278-9	3"	BULK
REL45-350	8-35243-05279-6	3-1/2"	BULK
REL45-400	8-35243-05280-2	4"	BULK



# SUBMITTAL SHEET

## 90° ANGLE EMT CONDUIT ELBOWS

### DESCRIPTION:

Orbit Industries' 90 Degree EMT elbow is manufactured from prime EMT conduit in accordance with the latest specifications and standards of ANSI C80.3 (UL797). The interior and exterior surface of elbows are free from defect with a smooth welded seam, and also are thoroughly and evenly coated with zinc using hot dip galvanizing process. Elbows are produced in normal trade sizes from 1/2" to 4" and used to connect the EMT conduit to change the way of the EMT conduit.



### FEATURES:

- Galvanized Steel
- Meet UL 797 and ANSI C80.3

### CERTIFICATION:

UL File E358011, Conforms to UL 797



### CONFIGURATION DATA:

Part No.	UPC	Trade Size	Std. Pkg.
EEL90-50	8-35243-05301-4	1/2"	50
EEL90-75	8-35243-05302-1	3/4"	50
EEL90-100	8-35243-05303-8	1"	25
EEL90-125	8-35243-05304-5	1-1/4"	20
EEL90-150	8-35243-05305-2	1-1/2"	15
EEL90-200	8-35243-05306-9	2"	10
EEL90-250	8-35243-05307-6	2-1/2"	BULK
EEL90-300	8-35243-053083	3"	BULK
EEL90-350	8-35243-05309-0	3-1/2"	BULK
EEL90-400	8-35243-05310-6	4"	BULK



# SUBMITTAL SHEET

## 90° ANGLE RIGID CONDUIT ELBOWS

### DESCRIPTION:

Orbit Industries' 90 Degree Rigid steel conduit elbow is manufactured from prime conduit shell with high-strength in accordance with the latest specifications and standard of ANSI C80.1(UL6). The interior and exterior surface of elbows are free from defect with a smooth welded seam, and are thoroughly and evenly coated with zinc using hot dip galvanizing process. Elbows are produced in normal trade sizes from 1/2" to 4" and used to connect the rigid steel conduit to change the way of the conduit. Elbows are threaded on both ends.



### FEATURES:

- Galvanized Steel
- Meet UL 6 and ANSI C80.1
- NPT Thread

### CERTIFICATION:

UL File E358012, Conforms to UL 6



### CONFIGURATION DATA:

Part No.	UPC	Trade Size	Std. Pkg.
REL90-50	835243052819	1/2"	50
REL90-75	835243052826	3/4"	50
REL90-100	835243052833	1"	25
REL90-125	835243052840	1-1/4"	20
REL90-150	835243052857	1-1/2"	15
REL90-200	835243052864	2"	10
REL90-250	835243052871	2-1/2"	BULK
REL90-300	835243052888	3"	BULK
REL90-350	835243052895	3-1/2"	BULK
REL90-400	835243052901	4"	BULK



# SUBMITTAL SHEET

# RIGID THREADED COUPLINGS

## DESCRIPTION:

Orbit Industries' threaded couplings are used to join two ends of threaded rigid conduits or IMC conduits together. They can also be used with chase nipples and connectors to bond threaded conduits to electrical junction boxes or enclosures. Orbit Industries' have versatile threaded design works and they are all standard threaded couplings. With related threaded connectors, these couplings are often used to convert flexible metal conduits to EMT thinwall, rigid conduit, and liquid tight conduits etc.



## FEATURES:

- Cast Steel
- Electroplated Zinc

## CERTIFICATION:

UL File E358012, Conforms to UL 6



## CONFIGURATION DATA:

Part No.	UPC	Trade Size	Std. Pkg.
RC-50	8-35243-03273-6	1/2"	100
RC-75	8-35243-03274-3	3/4"	50
RC-100	8-35243-03275-0	1"	30
RC-125	8-35243-03276-7	1-1/4"	20
RC-150	8-35243-03277-4	1-1/2"	20
RC-200	8-35243-03278-1	2"	20
RC-250	8-35243-03279-8	2-1/2"	24
RC-300	8-35243-03280-4	3"	16
RC-350	8-35243-03281-1	3-1/2"	12
RC-400	8-35243-03282-8	4"	10
RC-500	8-35243-00415-3	5"	1
RC-600	8-35243-00416-0	6"	1



# SUBMITTAL SHEET

## REDUCING BUSHINGS

### DESCRIPTION:

Orbit Industries' reducing bushings are used with threaded rigid or IMC conduits to reduce the size of female hubs in order to accommodate smaller sized conduits or male threaded hubs. Orbit Industries' reducing bushings have rugged steel construction and they are durable. The rugged steel construction ensures mechanical protection to the conduit and designated electrical junction box or enclosure. In damp locations, reducing bushings are also of excellent corrosion protection with zinc electroplated.



### FEATURES:

- Machined Steel
- Electroplated Zinc
- Meets Federal Spec. A-A-50553

### CERTIFICATION:

UL File E310658, Conforms to UL 514B



### CONFIGURATION DATA:

Part No.	UPC	Trade Size	Std. Pkg.	Master Ctn.
RB-50/38	8-35243-03234-7	1/2" to 3/8"	100	500
RB-75/50	8-35243-03221-7	3/4" to 1/2"	100	500
RB-100/50	8-35243-03222-4	1" to 1/2"	50	250
RB-100/75	8-35243-03223-1	1" to 3/4"	50	250
RB-125/50	8-35243-03732-8	1-1/4" to 1/2"	20	100
RB-125/75	8-35243-03733-5	1-1/4" to 3/4"	20	100
RB-125/100	8-35243-03734-2	1-1/4" to 1"	20	100
RB-150/50	8-35243-03735-9	1-1/2" to 1/2"	10	50
RB-150/75	8-35243-03736-6	1-1/2" to 3/4"	10	50
RB-150/100	8-35243-03737-3	1-1/2" to 1"	10	50
RB-150/125	8-35243-03738-0	1-1/2" to 1-1/4"	10	50
RB-200/50	8-35243-03739-7	2" to 1/2"	10	50
RB-200/75	8-35243-03740-3	2" to 3/4"	10	50
RB-200/100	8-35243-03741-0	2" to 1"	10	50
RB-200/125	8-35243-03742-7	2" to 1-1/4"	10	50
RB-200/150	8-35243-03743-4	2" to 1-1/2"	10	50
RB-300/200	8-35243-05342-7	3" to 2"	10	50
RB-300/250	8-35243-05343-4	3" to 2-1/2"	10	50



# SUBMITTAL SHEET

# CONDUIT BUSHINGS

## DESCRIPTION:

Orbit Industries' Conduit bushings



## FEATURES:

- Zinc Die Cast
- Full Machine-Cut Internal Threads
- Meets Federal Spec. A-A-50553

## CERTIFICATION:

UL File E310658, Conforms to UL 514B



## CONFIGURATION DATA:

Part No.	UPC	Trade Size	Std. Pkg.	Master Ctn.
CB-50	8-35243-03668-0	1/2"	100	1000
CB-75	8-35243-03669-7	3/4"	50	500
CB-100	8-35243-03670-3	1"	50	500





# SUBMITTAL SHEET

# CONDUIT BUSHINGS INSULATED

## DESCRIPTION:

Orbit Industries' threaded insulating bushings are used on threaded rigid or IMC conduits to prevent wires from being damaged by sharp edges on conduits. Orbit Industries' threaded insulating bushings easily screw on threaded conduits. You no longer need to worry about damaging wires during wire pulling because of their insulated throat design. It is safe and cost saving.



## FEATURES:

- Zinc Die Cast
- Full Machine-Cut Internal Threads
- Insulated Throat
- Meets Federal Spec. A-A-50553
- Insulated color may vary

## CERTIFICATION:

Meet UL Standard: 514B

## CONFIGURATION DATA:

Part No.	UPC	Trade Size	Std. Pkg.	Master Ctn.
CBI-50	8-35243-05263-5	1/2"	100	1000
CBI-75	8-35243-05264-2	3/4"	50	500
CBI-100	8-35243-05265-9	1"	50	500



# SUBMITTAL SHEET

## EMT BUSHINGS

### DESCRIPTION:

Orbit Industries' EMT Bushings



### FEATURES:

- Plastic
- Fits and Protects EMT Conduit
- Size 2-1/2" to 4" can be also used for Rigid, IMC and PVC conduit
- Color may vary

### CERTIFICATION:

Meet UL Standard: 514B

### CONFIGURATION DATA:

Part No.	UPC	Trade Size	Std. Pkg.	Master Ctn.
TPB-50	8-35243-05242-0	1/2"	100	1000
TPB-75	8-35243-05243-7	3/4"	100	1000
TPB-100	8-35243-05234-5	1"	50	500
TPB-125	8-35243-05235-2	1-1/4"	25	250
TPB-150	8-35243-05236-9	1-1/2"	25	250
TPB-200	8-35243-05237-6	2"	10	100
TPB-250	8-35243-05238-3	2-1/2"	10	100
TPB-300	8-35243-05239-0	3"	-	20
TPB-350	8-35243-05240-6	3-1/2"	-	20
TPB-400	8-35243-05241-3	4"	-	10



# SUBMITTAL SHEET

## PLASTIC INSULATING BUSHINGS

### DESCRIPTION:

Orbit Industries' threaded plastic insulating bushings are used on threaded rigid or IMC conduits. They prevent wires from being damaged as they pass through the end of the conduit. Orbit Industries' insulating bushings provide smoothly rounded surfaces at the end of raceways. Whats more, the threaded insulating bushings are made of high impact polypropylene that is temperature rated at 105° C and easily screws on to threaded conduits.



### FEATURES:

- PVC
- 105 °C Rated
- Meets Federal Spec. A-A-50553
- Insulated color may vary

### CERTIFICATION:

Meet UL Standard: 514B

### CONFIGURATION DATA:

Part No.	UPC	Trade Size	Std. Pkg.	Master Ctn.
PB-50	8-35243-05170-6	1/2"	100	1000
PB-75	8-35243-05173-7	3/4"	100	1000
PB-100	8-35243-05162-1	1"	50	500
PB-125	8-35243-05163-8	1-1/4"	25	250
PB-150	8-35243-05164-5	1-1/2"	25	250
PB-200	8-35243-05165-2	2"	10	100
PB-250	8-35243-05166-9	2-1/2"	10	100
PB-300	8-35243-05167-6	3"	-	20
PB-350	8-35243-05168-3	3-1/2"	-	20
PB-400	8-35243-05169-0	4"	-	10
PB-500	8-35243-05171-3	5"	-	10
PB-600	8-35243-05172-0	6"	-	10



# SUBMITTAL SHEET

## CONDUIT LOCKNUTS

### DESCRIPTION:

Orbit Industries' zinc die-cast locknuts are used to secure threaded conduits or connectors to electrical junction boxes or enclosures in wet locations. The conduit locknuts allow standard junction boxes to be used with unthreaded conduit knockout openings in wet locations. Serrated teeth on the locknut bite into the box and enclosure to prevent vibratory loosening of the connection.



### FEATURES:

- Die Cast Zinc
- Full-Cut Internal Threads
- Meets Federal Spec. A-A-50553

### CERTIFICATION:

UL File E310658, Conforms to UL 514B



### CONFIGURATION DATA:

Part No.	UPC	Trade Size	Std. Pkg.	Master Ctn.
LN-50	8-35243-04944-4	1/2"	100	1000
LN-75	8-35243-04945-1	3/4"	100	1000
LN-100	8-35243-04936-9	1"	100	1000
LN-125	8-35243-04937-6	1-1/4"	50	500
LN-150	8-35243-04938-3	1-1/2"	50	500
LN-200	8-35243-04939-0	2"	25	250
LN-250	8-35243-04940-6	2-1/2"	10	100
LN-300	8-35243-04941-3	3"	5	50
LN-350	8-35243-04942-0	3-1/2"	5	50
LN-400	8-35243-04943-7	4"	-	25



# SUBMITTAL SHEET

# STEEL CONDUIT LOCKNUTS

## DESCRIPTION:

Orbit Industries' steel locknuts are used to secure threaded conduits or connectors to electrical junction boxes or enclosures in wet locations. The conduit locknuts allow standard junction boxes to be used with unthreaded conduit knockout openings in wet locations. Serrated teeth on the locknut bite into the box and enclosure to prevent vibratory loosening of the connection. In damp locations, steel conduit locknuts are also of excellent corrosion protection with zinc electroplated.



## FEATURES:

- Steel
- Electroplated Zinc
- Full-Cut Internal Threads
- Meets Federal Spec. A-A-50553

## CERTIFICATION:

UL File E310658, Conforms to UL 514B



## CONFIGURATION DATA:

Part No.	UPC	Trade Size	Std. Pkg.	Master Ctn.
SLN-50	8-35243-05202-4	1/2"	100	1000
SLN-75	8-35243-05205-5	3/4"	100	1000
SLN-100	8-35243-05194-2	1"	100	1000
SLN-125	8-35243-05195-9	1-1/4"	50	500
SLN-150	8-35243-05196-6	1-1/2"	50	500
SLN-200	8-35243-05197-3	2"	25	250
SLN-250	8-35243-05198-0	2-1/2"	10	100
SLN-300	8-35243-05199-7	3"	5	50
SLN-350	8-35243-05200-0	3-1/2"	5	50
SLN-400	8-35243-05201-7	4"	-	25
SLN-500	8-35243-05203-1	5"	-	10
SLN-600	8-35243-05204-8	6"	-	10



# SUBMITTAL SHEET

# STEEL SEALING LOCKNUTS

## DESCRIPTION:

Orbit Industries' sealing locknuts are used to secure threaded conduits or connectors to electrical junction boxes or enclosures in wet locations. Their gasketed surface provides a water-tight seal against the box surface. Orbit Industries' sealing locknuts allow standard junction boxes to be used with unthreaded conduit knockout openings in wet locations. Serrated teeth on the locknut bite into the box and enclosure to prevent vibratory loosening of the connection. In damp locations, sealing locknuts are also of excellent corrosion protection with zinc electroplated.



## FEATURES:

- Steel
- Electroplated Zinc
- Bonded with Molten Sealing Material
- Meets Federal Spec. A-A-50553

## CERTIFICATION:

Meet UL Standard: 514B

## CONFIGURATION DATA:

Part No.	UPC	Trade Size	Std. Pkg.	Master Ctn.
SSLN-50	8-35243-05214-7	1/2"	100	1000
SSLN-75	8-35243-05217-8	3/4"	100	1000
SSLN-100	8-35243-05206-2	1"	100	1000
SSLN-125	8-35243-05207-9	1-1/4"	50	500
SSLN-150	8-35243-05208-6	1-1/2"	50	500
SSLN-200	8-35243-05209-3	2"	25	250
SSLN-250	8-35243-05210-9	2-1/2"	10	100
SSLN-300	8-35243-05211-6	3"	5	50
SSLN-350	8-35243-05212-3	3-1/2"	5	50
SSLN-400	8-35243-05213-0	4"	-	25
SSLN-500	8-35243-05215-4	5"	-	10
SSLN-600	8-35243-05216-1	6"	-	10



# SUBMITTAL SHEET

# STEEL REDUCING WASHERS

## DESCRIPTION:

Orbit Industries offers plated steel reducing washers in a variety of sizes.



## FEATURES:

- Galvanized Stamped Steel

## CERTIFICATION:

Meet UL Standard: 514B

## CONFIGURATION DATA:

Part No.	UPC	Trade Size	Std. Pkg.	Master Ctn.	Part No.	UPC	Trade Size	Std. Pkg.	Master Ctn.
RW-75/50	8-35243-03683-3	3/4" to 1/2"	250	1000	RW-300/50	8-35243-03704-5	3" to 1/2"	-	25
RW-100/50	8-35243-03684-0	1" to 1/2"	250	1000	RW-300/75	8-35243-03705-2	3" to 3/4"	-	25
RW-100/75	8-35243-03685-7	1" to 3/4"	250	1000	RW-300/100	8-35243-03706-9	3" to 1"	-	25
RW-125/50	8-35243-03686-4	1-1/4" to 1/2"	100	400	RW-300/125	8-35243-03707-6	3" to 1-1/4"	-	25
RW-125/75	8-35243-03687-1	1-1/4" to 3/4"	100	400	RW-300/150	8-35243-03708-3	3" to 1-1/2"	-	25
RW-125/100	8-35243-03688-8	1-1/4" to 1"	100	400	RW-300/200	8-35243-03709-0	3" to 2"	-	25
RW-150/50	8-35243-03689-5	1-1/2" to 1/2"	-	100	RW-300/250	8-35243-03710-6	3" to 2-1/2"	-	25
RW-150/75	8-35243-03690-1	1-1/2" to 3/4"	-	100	RW-350/50	8-35243-03711-3	3-1/2" to 1/2"	-	10
RW-150/100	8-35243-03691-8	1-1/2" to 1"	-	100	RW-350/75	8-35243-03712-0	3-1/2" to 3/4"	-	10
RW-150/125	8-35243-03692-5	1-1/2" to 1-1/4"	-	100	RW-350/100	8-35243-03713-7	3-1/2" to 1"	-	10
RW-200/50	8-35243-03693-2	2" to 1/2"	-	50	RW-350/125	8-35243-03714-4	3-1/2" to 1-1/4"	-	10
RW-200/75	8-35243-03694-9	2" to 3/4"	-	50	RW-350/150	8-35243-03715-1	3-1/2" to 1-1/2"	-	10
RW-200/100	8-35243-03695-6	2" to 1"	-	50	RW-350/200	8-35243-03716-8	3-1/2" to 2"	-	10
RW-200/125	8-35243-03696-3	2" to 1-1/4"	-	50	RW-350/250	8-35243-03717-5	3-1/2" to 2-1/2"	-	10
RW-200/150	8-35243-03697-0	2" to 1-1/2"	-	50	RW-350/300	8-35243-03718-2	3-1/2" to 3"	-	10
RW-250/50	8-35243-03698-7	2-1/2" to 1/2"	25	100	RW-400/50	8-35243-03719-9	4" to 1/2"	-	10
RW-250/75	8-35243-03699-4	2-1/2" to 3/4"	25	100	RW-400/75	8-35243-03720-5	4" to 3/4"	-	10
RW-250/100	8-35243-03700-7	2-1/2" to 1"	25	100	RW-400/100	8-35243-03721-2	4" to 1"	-	10
RW-250/125	8-35243-03701-4	2-1/2" to 1-1/4"	25	100	RW-400/125	8-35243-03722-9	4" to 1-1/4"	-	10
RW-250/150	8-35243-03702-1	2-1/2" to 1-1/2"	25	100	RW-400/150	8-35243-03723-6	4" to 1-1/2"	-	10
RW-250/200	8-35243-03703-8	2-1/2" to 2"	25	100	RW-400/200	8-35243-03724-3	4" to 2"	-	10
					RW-400/250	8-35243-03725-0	4" to 2-1/2"	-	10
					RW-400/300	8-35243-03726-7	4" to 3"	-	10
					RW-400/350	8-35243-03727-4	4" to 3-1/2"	-	10



# SUBMITTAL SHEET

## FIXED BAR HANGERS

### DESCRIPTION:

Orbit Industries' Fixed Bar Hangers.



### FEATURES:

- Steel
- Electroplated Zinc
- For Stud and T-Bar

### CERTIFICATION:

UL File E227970, Conforms to UL 514A



### CONFIGURATION DATA:

Part No.	UPC	Description	Master Ctn.
BHT-1	8-35243-00130-5	24" T-Bar bracket for use with boxes 1-1/2" or 2-1/8" Deep	50
BHT-1A	8-35243-00131-2	24" T-Bar bracket - 8" height adjustable	50
BH-1	8-35243-00135-0	24" Straight bar hanger for mounting ceiling boxes, Slotted, Includes 2 Stove Bolt / Unit	50
BH-1C	8-35243-01429-9	24" Straight bar hanger for mounting ceiling boxes, with BH-C Box Clip	50
BH-1S	8-35243-00136-7	20" Straight bar hanger for mounting ceiling boxes, Slotted, Includes 2 Stove Bolt / Unit	50
BH-1SC	8-35243-01295-0	20" Straight bar hanger for mounting ceiling boxes, With Box Clip BH-C	50
BH-2	8-35243-00125-1	21" Offset (1-1/2") bar hanger for mounting boxes with ring, Includes 2 Stove Bolt / Unit	50
BH-2NC	8-35243-01296-7	21" Offset (1-1/2") bar hanger for mounting boxes with ring, Slotted	50
BH-C	8-35243-01292-9	Additional box clip & screw set for use with BH-1, BH-1S & BH-2NC	100
BH-3	8-35243-00126-8	Straight bracket for architectural recess lights 25-1/4" long with notches 24" apart for use on T-Bar	50
BHT-C	8-35243-01293-6	Additional box clip & set screw for use with BHT-1 & BHT-1A	100





# SUBMITTAL SHEET

## ADJUSTABLE BAR HANGERS

### DESCRIPTION:

Orbit Industries' Adjustable Bar Hangers.



### FEATURES:

- Steel
- Electroplated Zinc
- For Stud and T-Bar

### CERTIFICATION:

UL File E227970, Conforms to UL 514A



### CONFIGURATION DATA:

Part No.	UPC	Description	Master Ctn.
BHA-1	8-35243-00127-5	Adjustable bar hanger with stud for joist spacing 16" to 24" with #3/8-18 NPS Threaded Stud	50
BHA-1C	8-35243-01417-6	Adjustable bar hanger with stud for joist spacing 16" to 24" with Box Clip	50
BHA-16	8-35243-00128-2	11" to 18" Adjustable box bracket - Mount Box with self-tapping screws on notches Ends bend and wrap around stud - Can be used with boxes 1-1/2" or 2-1/8" Deep	50
BHA-24	8-35243-00129-9	17" to 26" Adjustable box bracket - Mount Box with self-tapping screws on notches Ends bend and wrap around stud - Can be used with boxes 1-1/2" or 2-1/8" Deep	50
ABS	8-35243-01173-1	Far-Side Box Support for 1-1/2" & 2-1/8" Deep Boxes, For use with 4" Metal Studs	50
ABS-6	8-35243-01408-4	Far-Side Box Support for 1-1/2" & 2-1/8" Deep Boxes, For use with 6" Metal Studs	50
OWG	8-35243-01280-6	Clips and locks old-work steel boxes tightly to wall. 2 required per box.	100



# SUBMITTAL SHEET

# ROOF JACKS

## DESCRIPTION:

Orbit Industries' Roof Jacks.



## FEATURES:

- 24GA Galvanized Steel
- Uninsulated
- For Service Entrance Conduit or Ventilation Pipe
- Fits Flat to 40°

## CERTIFICATION:

Meet UL Standard: 514B

## CONFIGURATION DATA:

Part No.	UPC	Trade Size	Std. Pkg.
RJ-50	8-35243-01100-7	1/2"	24
RJ-75	8-35243-01101-4	3/4"	24
RJ-100	8-35243-01102-1	1"	24
RJ-125	8-35243-01103-8	1-1/4"	24
RJ-150	8-35243-01104-5	1-1/2"	24
RJ-200	8-35243-01105-2	2"	24
RJ-300	8-35243-01106-9	3"	12
RJ-400	8-35243-01107-6	4"	12



# SUBMITTAL SHEET

## SCREW KITS, PLASTIC ANCHOR KIT, & EASY ANCHOR KIT

### DESCRIPTION:

Orbit Industries' Screw Kits, Plastic anchor kit & Easy anchor kit.



### FEATURES:

- In Plastic Partition Kits

### CERTIFICATION:

Meet UL Standard: 514B

### CONFIGURATION DATA:

Part No.	UPC	Description	Trade Size	Screw Count/Kit	Std. Pkg.
KIT-632FH	8-35243-01270-7	6-32 Flat Head, 1/2" to 2", Slot	#6-32	370	10
KIT-632RH	8-35243-01271-4	6-32 Round Head, 1/2" to 2", Slot/Phillips	#6-32	370	10
KIT-832RH	8-35243-01272-1	8-32 Round Head, 1/2" to 2", Slot/Phillips	#8-32	370	10
KIT-10PAK	8-35243-03159-3	#10 x 1" Screws & Plastic Anchors, with Masonry Drill Bit	#10 x 1"	110	10
KIT-8EZ	8-35243-03160-9	#8 x 1-1/2" Zinc Dry Wall Easy Anchor Kit	#8 x 1-1/2"	50	10
KIT-1032TC	8-35243-05311-3	#10 x 1-1/4" Tri-Combo Screw (Hex/Phillips/Slot) Self-Tapping Screw & #8-10 x 1-1/4" Anchors (One 1/4" Masonry drill bit)	#10-32 x 1-1/4"	100	10



# SUBMITTAL SHEET

## STEEL BEAM CLAMPS

### DESCRIPTION:

Orbit Industries' steel beam clamps are single screw with 2 threaded holes. Orbit industries provides a variety of sizes.



### FEATURES:

- Single Screw
- 2 Threaded Holes

### CERTIFICATION:

Meet UL Standard: 514B

### CONFIGURATION DATA:

Part No.	UPC	Description	Std. Pkg.	Master Ctn.
BC-25	8-35243-03235-4	1/4"-20 Tap, 3/4" Jaw, 100 lb. Load	50	250
BC-38	8-35243-03236-1	3/8"-16 Tap, 7/8" Jaw, 200 lb. Load	25	100



# SUBMITTAL SHEET

## MALLEABLE IRON BEAM CLAMPS

### DESCRIPTION:

Orbit Industries' malleable iron beam clamps are single screw with 2 threaded holes. Orbit industries provides a variety of sizes.



### FEATURES:

- Single Screw
- 2 Threaded Holes

### CERTIFICATION:

Meet UL Standard: 514B

### CONFIGURATION DATA:

Part No.	UPC	Description	Std. Pkg.	Master Ctn.
BCM-25	8-35243-03237-8	1/4"-20 Tap, 3/4" Jaw, 125 lb. Load	50	250
BCM-38	8-35243-03238-5	3/8"-16 Tap, 7/8" Jaw, 300 lb. Load	25	100
BCM-50	8-35243-03239-2	1/2"-13 Tap, 1" Jaw, 600 lb. Load	10	50



# SUBMITTAL SHEET

# JACK CHAIN

## DESCRIPTION:

Orbit Industries' jack chains are steel with zinc plated. 100 feet per steel reel. Maximum load limit 25 lbs.



## FEATURES:

- Steel
- Electroplated Zinc
- 25 lbs. Max. Load
- In Steel Reel

## CERTIFICATION:

Meet UL Standard: 514B

## CONFIGURATION DATA:

Part No.	UPC	Trade Size	Std. Pkg.
JC-12	8-35243-03284-2	12GA	100



# SUBMITTAL SHEET

## “S” HOOK

### DESCRIPTION:

Orbit Industries’ S hooks are steel with zinc plated. Maximum load limit 25 lbs.




---

### FEATURES:

- Steel
- Electroplated Zinc
- 25 lbs. Max. Load

---

### CERTIFICATION:

Meet UL Standard: 514B

---

### CONFIGURATION DATA:

Part No.	UPC	Trade Size	Std. Pkg.	Master Ctn.
SH-2	8-35243-03285-9	12GA, 1-1/4”	100	1000



# SUBMITTAL SHEET

## HANGER SCREW WITH SINGLE HOLE

### DESCRIPTION:

Orbit Industries' Hanger Screw with Single Hole




---

### FEATURES:

- Steel
- Wood Screw Thread

---

### CERTIFICATION:

Meet UL Standard: 514B

---

### CONFIGURATION DATA:

---

Part No.	UPC	Description	Dimension	Std. Pkg.	Master Ctn.
H-SCREW	8-35243-04863-8	Flat Hanger Screw	1/4" x 3"	100	500



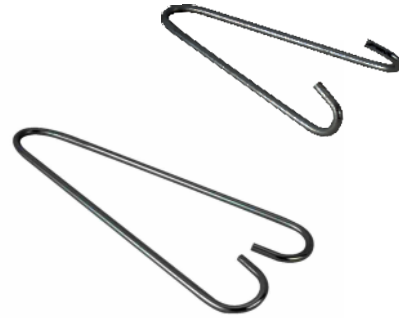


# SUBMITTAL SHEET

## FIXTURE HANGERS

### DESCRIPTION:

Orbit Industries fixture hangers are used with industrial fluorescent fixtures, side mount, they support S-hooks and Jack Chain. Maximum load limit 50 lbs.



### FEATURES:

- Steel

### CERTIFICATION:

Meet UL Standard: 514B

### CONFIGURATION DATA:

Part No.	UPC	For Use With	Mount Position	Std. Pkg.	Master Ctn.
FH-E	8-35243-04865-2	2, 3, or 4 Light Fixtures	End Mount	100	500
FH-S	8-35243-04864-5	2, 3, or 4 Light Fixtures	Side Mount	100	500



# SUBMITTAL SHEET

## PORCELAIN WIRE HOLDERS

### DESCRIPTION:

Orbit Industries' porcelain wire holders are with solid rivet through head. Porcelain and galvanized steel.



### FEATURES:

- Porcelain & Galvanized Steel
- Varies According to Sizes

### CERTIFICATION:

Meet UL Standard: 514B

### CONFIGURATION DATA:

Part No.	UPC	Description	Trade Size	Std. Pkg.	Master Ctn.
PWH-L	8-35243-04865-2	With 2-1/4" Lag Bolt	2-3/4"	5	20
PWH-M	8-35243-04864-5	With Steel Clip for 1-1/4" to 3" Mast	1-1/4" to 3"	5	20



# SUBMITTAL SHEET

## TIE WIRE

### DESCRIPTION:

Orbit Industries' Tie Wire




---

### FEATURES:

- Black Annealed Steel
- 16-1/2GA
- 

---

### CERTIFICATION:

Meet UL Standard: 514B

---

### CONFIGURATION DATA:

Part No.	UPC	Description	Trade Size	Std. Pkg.	Master Ctn.
TW	8-35243-03283-5	Tie Wire	16GA, 400'	20	20



# SUBMITTAL SHEET

# RIGID FLOOR FLANGES

## DESCRIPTION:

Orbit Industries' floor flanges are used to connect threaded rigid or IMC conduits to flat surfaces. The threaded hub allows pipes to be screwed in and securely fastened. Orbit Industries' floor flanges provide perfect support for threaded pipes. They are very useful for smoke detectors, hanging security cameras, fire alarm signals/strobes and other low-voltage and electronic signaling devices from ceilings. These floor flanges may also be used in a variety of other applications as required.



## FEATURES:

- Malleable Iron

## CERTIFICATION:

Meet UL Standard: 514B

## CONFIGURATION DATA:

Part No.	UPC	Trade Size	Std. Pkg.
FR-50	8-35243-03788-5	1/2"	50
FR-75	8-35243-03789-2	3/4"	50
FR-100	8-35243-03790-8	1"	50
FR-125	8-35243-03791-5	1-1/4"	25
FR-150	8-35243-03792-2	1-1/2"	25
FR-200	8-35243-03793-9	2"	25



# SUBMITTAL SHEET

## CONCRETE SLAB INSERTS 90 ANGLE

### DESCRIPTION:

Orbit Industries' Malleable Iron, 90 degree concrete slab insert



### FEATURES:

- Malleable Iron
- Zinc Coated

### CERTIFICATION:

UL file E310658, conforms to UL 514B

### CONFIGURATION DATA:

Part No.	UPC	Trade Size	Std. Pkg.	Master Ctn.
MCSI90-50	835243003484	1/2"	10	100
MCSI90-75	835243003491	3/4"	10	100
MCSI90-100	835243003507	1"	10	50



# SUBMITTAL SHEET

## CONCRETE SLAB INSERTS STRAIGHT

### DESCRIPTION:

Orbit Industries' Malleable Iron, Straight concrete slab insert



### FEATURES:

- Malleable Iron
- Zinc Coated

### CERTIFICATION:

UL file E310658, conforms to UL 514B

### CONFIGURATION DATA:

Part No.	UPC	Trade Size	Std. Pkg.	Master Ctn.
MCSI-50	835243003453	1/2"	10	100
MCSI-75	835243003460	3/4"	10	100
MCSI-100	835243003477	1"	10	50

