



GeoPak™ Series

- Includes Radius, Trapezoid and Quartersphere
- Normally On and Emergency Operation
- 4000K LED color, Lithium Iron Phosphate Battery
- Wet Location Listed

Part Number	Catalog Number	UPC Code	Description	CA 03	GA 27	IL 06	NJ 12	TX 04	Wt. each	Ctn. Qty
93066586	RDI14KUDBE	782520868376	Radius Hsg, Dark Brz, Emergency with Battery	●	●				11.5 lbs	1 ea
93066587	RDI14KUDBEH	782520868383	Radius Hsg, Dark Brz, Emergency with Battery and Heater			●	●		11.5 lbs	1 ea
93067831	RDI14KUWHE	782520868390	Radius Hsg, White, Emergency with Battery	●	●				11.5 lbs	1 ea
93067832	RDI14KUWHEH	782520868406	Radius Hsg, White, Emergency with Battery and Heater			●	●		11.5 lbs	1 ea
93068340	RDI14KUPSE	782520868413	Radius Hsg, Silver, Emergency with Battery	●	●				11.5 lbs	1 ea
93068341	RDI14KUPSEH	782520868420	Radius Hsg, Silver, Emergency with Battery and Heater			●	●		11.5 lbs	1 ea
93068342	RDI14KUBLE	782520868437	Radius Hsg, Black, Emergency with Battery	●					11.5 lbs	1 ea
93068343	RDI14KUBLEH	782520868444	Radius Hsg, Black, Emergency with Battery and Heater			●	●		11.5 lbs	1 ea
93066588	TRP14KUDBE	782520868451	Trapezoid Hsg, Dark Brz, Emergency with Battery	●	●				11.5 lbs	1 ea
93066589	TRP14KUDBEH	782520868468	Trapezoid Hsg, Dark Brz, Emergency with Battery and Heater			●	●		11.5 lbs	1 ea
93067833	TRP14KUWHE	782520868475	Trapezoid Hsg, White, Emergency with Battery	●	●				11.5 lbs	1 ea
93067834	TRP14KUWHEH	782520868482	Trapezoid Hsg, White, Emergency with Battery and Heater			●	●		11.5 lbs	1 ea
93067835	TRP14KUPSE	782520868499	Trapezoid Hsg, Silver, Emergency with Battery	●	●				11.5 lbs	1 ea
93067836	TRP14KUPSEH	782520868505	Trapezoid Hsg, Silver, Emergency with Battery and Heater			●	●		11.5 lbs	1 ea
93067837	TRP14KUBLE	782520868512	Trapezoid Hsg, Black, Emergency with Battery	●	●				11.5 lbs	1 ea
93067838	TRP14KUBLEH	782520868529	Trapezoid Hsg, Black, Emergency with Battery and Heater			●	●		11.5 lbs	1 ea
93066584	QSP14KUDBE	782520868291	Quartersphere Hsg, Dark Brz, Emergency with Battery	●	●				10.5 lbs	1 ea
93066585	QSP14KUDBEH	782520868307	Quartersphere Hsg, Dark Brz, Emergency with Battery and Heater			●	●		10.5 lbs	1 ea
93068344	QSP14KUWHE	782520868314	Quartersphere Hsg, White, Emergency with Battery	●	●				10.5 lbs	1 ea
93068345	QSP14KUWHEH	782520868321	Quartersphere Hsg, White, Emergency with Battery and Heater			●	●		10.5 lbs	1 ea
93068346	QSP14KUPSE	782520868338	Quartersphere Hsg, Silver, Emergency with Battery	●	●				10.5 lbs	1 ea
93068347	QSP14KUPSEH	782520868345	Quartersphere Hsg, Silver, Emergency with Battery and Heater			●	●		10.5 lbs	1 ea
93068348	QSP14KUBLE	782520868352	Quartersphere Hsg, Black, Emergency with Battery	●	●				10.5 lbs	1 ea
93068349	QSP14KUBLEH	782520868369	Quartersphere Hsg, Black, Emergency with Battery and Heater			●	●		10.5 lbs	1 ea



PG Series

- Outdoor Emergency Lighting Unit
- Wet Location Listed
- 120/277 VAC
- Wall Mounting

Part Number	Catalog Number	UPC Code	Description	CA 03	GA 27	IL 06	NJ 12	TX 04	Wt. each	Ctn. Qty
PGW	PGW	782520862060	Wet Location Outdoor Emergency Lighting Unit, White Housing, Spectron® Circuitry	•	•			•	6.20 lbs.	6
PGZ	PGZ	782520862077	Wet Location Outdoor Emergency Lighting Unit, Dark Bronze Housing, Spectron® Circuitry	•	•			•	6.20 lbs.	6
PGP	PGP	782520862084	Wet Location Outdoor Emergency Lighting Unit, Platinum Silver Housing, Spectron® Circuitry	•	•			•	6.20 lbs.	6
PGB	PGB	782520862459	Wet Location Outdoor Emergency Lighting Unit, Black Housing, Spectron® Circuitry	•	•			•	6.20 lbs.	6
PGW-HTR	PGW-HTR	782520862091	Wet Location Outdoor Emergency Lighting Unit, White Housing, With Battery Heater, Spectron® Circuitry			•	•	•	6.50 lbs.	6
PGZ-HTR	PGZ-HTR	782520862107	Wet Location Outdoor Emergency Lighting Unit, Dark Bronze Housing, With Battery Heater, Spectron® Circuitry			•	•	•	6.50 lbs.	6
PGP-HTR	PGP-HTR	782520862114	Wet Location Outdoor Emergency Lighting Unit, Platinum Silver Housing, With Battery Heater, Spectron® Circuitry			•	•	•	6.50 lbs.	6
PGB-HTR	PGB-HTR	782520862466	Wet Location Outdoor Emergency Lighting Unit, Black Housing, with Battery Heater, Spectron® Circuitry			•	•	•	6.50 lbs.	6



PGN Series

- Indoor/Outdoor Emergency Sconce
- 120/277 VAC
- Wet Location Listed
- Wall Mounting

Part Number	Catalog Number	UPC Code	Description	CA 03	GA 27	IL 06	NJ 12	TX 04	Wt. each	Ctn. Qty
PGNW	PGNW	782520862589	LED Emergency/Normally On Lighting Unit, White Housing, Wet Location	•	•				6.00 lbs.	6
PGNZ	PGNZ	782520862596	LED Emergency/Normally On Lighting Unit, Dark Bronze Housing, Wet Location	•	•	•		•	6.00 lbs.	6
PGNP	PGNP	782520862572	LED Emergency/Normally On Lighting Unit, Silver Housing, Wet Location	•					6.00 lbs.	6
PGNB	PGNB	782520862602	LED Emergency/Normally On Lighting Unit, Black Housing, Wet Location	•	•				6.00 lbs.	6



PGF1 Series

- High Performance LED Sconce
- 120/277 VAC
- Wet Location Listed
- Wall Mounting

Part Number	Catalog Number	UPC Code	Description	CA 03	GA 27	IL 06	NJ 12	TX 04	Wt. each	Ctn. Qty
93037696	PGF1Z	782520866082	LED Based Sconce, UL1598 Wet Location, Dark Bronze	•	•				6.00 lbs.	6
93037700	PGF1Z-PC1	782520866099	LED Based Sconce, UL1598 Wet Location, Dark Bronze, with 120VAC Photo-cell	•	•				6.00 lbs.	6
93037695	PGF1P	782520866105	LED Based Sconce, UL1598 Wet Location, Platinum Silver	•	•				6.00 lbs.	6
93037699	PGF1P-PC1	782520866112	LED Based Sconce, UL1598 Wet Location, Platinum Silver, with 120VAC Photo-cell	•	•				6.00 lbs.	6



EV Series

- Dual Voltage
- 120/277 VAC
- Wall or Ceiling Mounting

Part Number	Catalog Number	UPC Code	Description	CA 03	GA 27	IL 06	NJ 12	TX 04	Wt. each	Ctn. Qty
93036776	EV2	782520865405	2 Head White LED Emergency Unit	•	•	•	•		2.00 lbs.	12
93036777	EV2D	782520865412	2 Head White LED Emergency Unit, Damp Listed	•	•				2.00 lbs.	12
93036778	EV2DI	782520865429	2 Head White LED with Spectron® Self-Diag., Damp Listed	•	•	•			2.00 lbs.	12
93036779	EV2DI-24K	782520865436	2 Head White LED, Spectron® Self-Diag., 220-240VAC, Damp Listed		•				2.00 lbs.	12
93036780	EV2DB	782520865443	2 Head Black LED Emergency Unit, Damp Listed	•	•	•			2.00 lbs.	12
93036783	EV4D	782520865474	2 Head White LED, Remote Capacity, Damp Listed	•	•	•			2.00 lbs.	12
93036784	EV4DI	782520865481	2 Head White LED, Remote Capacity, Spectron® Self-Diag., Damp Listed	•	•				2.00 lbs.	12
93036786	EV4DB	782520865504	2 Head Black LED, Remote Capacity, Damp Listed	•					2.00 lbs.	12
93036789	EVR2	782520865535	Indoor LED Remote, Double Head, White Finish	•	•		•		2.00 lbs.	12
93036790	EVR2B	782520865542	Indoor LED Remote, Double Head, Black Finish	•	•				2.00 lbs.	12
93048744	EV4D-02L	782520866785	2 Head White LED, 2 Watt Lamps, Damp Listed	•	•				2.00 lbs.	12
93048745	EV4DI-02L	782520866792	2 Head White, 2 Watt Lamps, Spectron® Self-Diag., Damp Listed	•	•				2.00 lbs.	12
93052403	EV4D-02L-0	782520867058	No Heads Housing to Drive (2) 2 Watt Lamps, Damp Listed	•		•			2.00 lbs.	12
93052404	EV4DI-02L-0	782520867065	No Heads Housing to Drive (2) 2 Watt Lamps, Spectron®, Damp Listed	•	•				2.00 lbs.	12



EV4R Series

- Offers up to 42' spacing on a 6' path
- Compact, Non-intrusive design
- Rectangular or round trim-plate in white or black finish
- 30% greater battery life and Lifetime LED Warranty

Part Number	Catalog Number	UPC Code	Description	CA 03	GA 27	IL 06	NJ 12	TX 04	Wt. each	Ctn. Qty
93063484	EV4R	782520868772	Round or Square trim-plate, 4 LED, White finish	•	•	•			4 lbs.	6 ea.
93066307	EV4RI	782520868789	Round or Square trim-plate, 4 LED, White finish, Spectron	•	•	•			4 lbs.	6 ea.
93066306	EV4RB	782520868796	Round or Square trim-plate, 4 LED, Black finish	•	•				4 lbs.	6 ea.
93066308	EV4RIB	782520868802	Round or Square trim-plate, 4 LED, Black finish, Spectron	•	•				4 lbs.	6 ea.
93084665	KIT-EV4R-CP	782520869649	Kit for City of Chicago Plenum			•			n/a	1 ea.

EVHC Series

- High Output
- 120/277 VAC
- Damp Listed
- Wall or Ceiling Mounting



Part Number	Catalog Number	UPC Code	Description	CA 03	GA 27	IL 06	NJ 12	TX 04	Wt. each	Ctn. Qty
93050453	EVHC6	782520866839	326 Lumen Lamphead, White Finish	•	•	•			3.00 lbs.	6
93050454	EVHC6I	782520866846	326 Lumen Lamphead, Spectron® Self-Diag., White Finish	•	•	•		•	3.00 lbs.	6
93050457	EVHC12	782520866877	326 Lumen Lamphead, Remote Capacity, White Finish	•	•				3.22 lbs.	6
93050458	EVHC12I	782520866884	326 Lumen Lamphead, Remote Capacity, Spectron®, White Finish	•	•				3.22 lbs.	6
93050459	EVHC12-06L	782520866891	546 Lumen Lamphead, White Finish	•	•				3.22 lbs.	6
93050460	EVHC12I-06L	782520866907	546 Lumen Lamphead, Spectron® Self-Diag., White Finish	•	•			•	3.22 lbs.	6
93050456	EVHC6-B	782520866860	326 Lumen Lamphead, Black Finish	•	•				3.00 lbs.	6
93050690	EVHCR2	782520867249	326 lumen lamp-head remote head, white finish	•	•	•			2.50 lbs.	6
93059794	EVHC6-BC	782520867379	326 lumen lamp-head, white finish, battery compartment	•	•	•			3.00 lbs.	6
93059795	EVHC6I-BC	782520867386	326 lumen lamp-head, Spectron, white finish, battery compartment	•	•	•			3.00 lbs.	6
93059796	EVHC12-BC	782520867393	326 lumen lamp-head, remote capacity, white finish, battery comp.	•	•				3.50 lbs.	6
93059797	EVHC12I-BC	782520867409	326 lumen lamp-head, Spectron Self Diag., white finish, battery comp.	•	•				3.50 lbs.	6

LZ Series

- 5W MR16 Halogen Lamps
- 120/277 VAC
- Remote Capacity



Part Number	Catalog Number	UPC Code	Description	CA 03	GA 27	IL 06	NJ 12	TX 04	Wt. each	Ctn. Qty
LZ2	LZ2	782520836740	6V 10W, White Housing	•	•	•	•	•	5.00 lbs.	6
LZ2D	LZ2D	782520836788	6V 10W, White Housing, Damp Listed	•	•				5.00 lbs.	6
LZ15	LZ15	782520852450	6V 15W, White Housing, Remote Capacity	•		•	•		6.00 lbs.	6
LZ2-V	LZ2-V	782520837280	6V 10W, White Housing, Voltmeter				•		5.00 lbs.	6
LZ2-B	LZ2-B	782520859992	6V 10W, Black Housing	•	•	•			5.00 lbs.	6
LZ2DI	LZ2DI	782520849436	6V 10W, White Housing, Damp Listed, Spectron® Circuitry	•	•	•			5.00 lbs.	6
LZ30	LZ30	782520837907	6V 30W, White Housing	•	•	•	•		8.40 lbs.	4
LZ30-10W	LZ30-10W	782520851361	6V 30W, White Housing, Optional 10W Halogen Lamps	•	•	•			8.40 lbs.	4
LZ30I	LZ30I	782520840419	6V 30W, White Housing, Spectron® Circuitry	•					8.40 lbs.	4

EZ-2™ Series

- 120/277 VAC
- Surface Mounting
- UL924 Listed



Part Number	Catalog Number	UPC Code	Description	CA 03	GA 27	IL 06	NJ 12	TX 04	Wt. each	Ctn. Qty
EZ-2	EZ-2	782520430023	6V 10.8W, White Housing	•	•	•	•	•	5.00 lbs.	6
EZ-2-D	EZ-2-D	782520840365	6V 10.8W, White Housing, Damp Listed	•	•	•			6.00 lbs.	6
EZ-2-V	EZ-2-V	782520837495	6V 10.8W, White Housing, Voltmeter				•		5.20 lbs.	6
EZ-2I	EZ-2I	782520837501	6V 14.4W, White Housing, Spectron® Circuitry	•	•	•	•	•	6.00 lbs.	6

LM Series

- 120/277 VAC
- Metal Housing & Cover
- Remote Capacity
- Dual Voltage



Part Number	Catalog Number	UPC Code	Description	CA 03	GA 27	IL 06	NJ 12	TX 04	Wt. each	Ctn. Qty
93073247	LM2-03L	782520868918	6V 10.8W, White (No Remote Capacity), 3W LED lamps	•	•	•			9.0	1
93073249	LM33-03L	782520868949	6V 33W, White, 3W LED lamps	•	•				11.0	1
93073250	LM33I-03L	782520868956	6V 33W, White, 3W LED lamps with Spectron Circuitry	•	•				11.0	1
LM2	LM2	782520843724	6V 14.4W, White (No Remote Capacity)	•	•	•	•		9.01 lbs.	1
LM16	LM16	782520843731	6V 16W, White (No Remote Capacity)	•		•	•		9.10 lbs.	1
LM16I	LM16I	782520851651	6V 16W, White (No Remote Capacity), Spectron® Circuitry	•	•				9.10 lbs.	1
LM24CH	LM24CH	782520844288	6V 24W, Chicago Approved, White			•			10.00 lbs.	1
LM36CH	LM36CH	782520844295	6V, 36W, Chicago Approved, White			•			11.60 lbs.	1
LM33	LM33	782520843748	6V 33W, White	•	•	•	•		11.30 lbs.	1
LM33I	LM33I	782520851705	6V 33W, White, Spectron® Circuitry	•					11.30 lbs.	1
LM40	LM40	782520843755	6V 40W, White	•					12.40 lbs.	1
LM40-12V	LM40-12V	782520843816	12V 40W, White	•	•				12.40 lbs.	1
LM66	LM66	782520843779	6V 66W, White	•			•		19.10 lbs.	1
LM66-V	LM66-V	782520852092	6V 66W, White, Voltmeter				•		19.10 lbs.	1
LM66I	LM66I	782520851866	6V 66W, White, Spectron® Circuitry		•				19.01 lbs.	1
LM66-12V	LM66-12V	782520843830	12V 66W, White	•			•		19.10 lbs.	1
LM80	LM80	782520843786	6V 80W, White		•				22.00 lbs.	1
LM80-12V	LM80-12V	782520843847	12V 80W, White	•					21.70 lbs.	1
LM130	LM130	782520843809	6V 130W, White	•					28.60 lbs.	1
LM130-12V	LM130-12V	782520843861	12V 130W, White	•	•				28.40 lbs.	1



Dynamo Series

- NEMA4X Industrial High Lumen LED Emergency Light
- Fully Adjustable LED Lamphead
- Includes Universal Mounting Plate
- Wet Location or NEMA4X Application

Part Number	Catalog Number	UPC Code	Description	CA 03	GA 27	IL 06	NJ 12	TX 04	Wt. each	Ctn. Qty
93048720	DYN6	782520867416	6 Watt Capacity, 3 Watt Heads, Wet Location (10° to 50°C)	•	•				8.00 lbs.	4
93048722	DYN6I	782520867423	6 Watt Capacity, 3 Watt Heads, Self-diag., Wet Location (10° to 50°C)	•	•				8.00 lbs.	4
93048721	DYN6I-4X	782520867447	6 Watt Capacity, 3 Watt Heads, Self-diag., NEMA4X (10° to 50°C)	•	•				8.00 lbs.	4
93048723	DYN12	782520867478	12 Watt Capacity, 3 Watt Heads, Wet Location (10° to 50°C)	•	•				10.00 lbs.	4
93048725	DYN12-4X	782520867485	12 Watt Capacity, 3 Watt Heads, NEMA4X (10° to 50°C)	•	•				10.00 lbs.	4
93048727	DYN12I	782520867492	12 Watt Capacity, 3 Watt Heads, Self-diag., Wet Location (10° to 50°C)	•	•				10.00 lbs.	4
93048724	DYN12-06L	782520867539	12 Watt Capacity, 6 Watt Heads, Wet Location (10°-50°C)	•	•				10.00 lbs.	4
93048728	DYN12I-06L	782520867546	12 Watt Capacity, 6 Watt Heads, Self-diag., Wet Location (10° to 50°C)	•	•				10.00 lbs.	4
93048726	DYN12-4X-06L	782520867553	12 Watt Capacity, 6 Watt Heads, Self-diag., NEMA4X (10° to 50°C)	•	•				10.00 lbs.	4
93048729	DYN12I-4X-HTR-06L	782520867560	12 Watt Capacity, 6 Watt Heads, Self-diag., NEMA4X, with Heater (-30° to 50°C)	•	•				10.00 lbs.	4
Matching Remote Heads										
93059702	DYNRS-4X	782520867584	3 Watt Single Head Remote, -30° to 50°C	•	•				2.40 lbs	4
93059703	DYNRD-4X	782520867591	3 Watt Double Head Remote, -30° to 50°C	•	•				3.10 lbs.	4



Synchron™ Series

- Input/Output 120/120 VAC or 277/277 VAC
- Single Phase System
- Uninterruptible Emergency Power Supply

Part Number	Catalog Number	UPC Code	Description	CA 03	GA 27	IL 06	NJ 12	TX 04	Wt. each	Ctn. Qty
DLS-400-120	DLS-400-120	782520868833	400 VA/W, 120 VAC, Surface Wall Mount, True Sine Wave Output	•					143 lbs.	1
DLS-400-277	DLS-400-277	782520868840	400 VA/W, 277 VAC, Surface Wall Mount, True Sine Wave Output	•					143 lbs.	1
DLS-525-120	DLS-525-120	782520868819	525 VA/W, 120 VAC, Surface Wall Mount, True Sine Wave Output	•					173 lbs.	1
DLS-525-277	DLS-525-277	782520868826	525 VA/W, 277 VAC, Surface Wall Mount, True Sine Wave Output	•					173 lbs.	1



LiteGear® Series

- Input/Output 120/120 VAC or 277/277 VAC
- Single Phase System
- Interruptible Emergency Power Supply

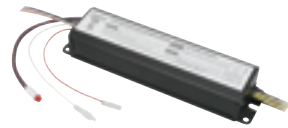
Part Number	Catalog Number	UPC Code	Description	CA 03	GA 27	IL 06	NJ 12	TX 04	Wt. each	Ctn. Qty
93062933	LG125S	782520867829	125VA/110W, Surface Wall Mount, True Sine Wave Output	•	•	•	•		42.00 lbs	1
93062932	LG125R	782520867850	125VA/110W, Recessed Wall Mount, True Sine Wave Output	•		•			42.00 lbs	1
93062931	LG125T	782520867836	125VA/110W, Recessed Ceiling T-Grid Mount, True Sine Wave Output	•		•			43.00 lbs	1
93066601	LG250S	782520868161	250VA/220W Surface Wall Mount, True Sine Wave Output	•		•	•		60.00 lbs	1
93081949	LG250SI	782520869564	250VA/220W Surface Wall Mount with Self Testing, True Sine Wave Output	•	•				61.00 lbs	1



LightPower™ Series

- Input/Output 120/120 VAC or 277/277 VAC
- Single Phase System
- Interruptible Emergency Power Supply

Part Number	Catalog Number	UPC Code	Description	CA 03	GA 27	IL 06	NJ 12	TX 04	Wt. each	Ctn. Qty
93062364	LPS20-S	782520867683	20W, Surface Mount			•			11.00 lbs.	1
93062365	LPS20-R	782520867690	20W, Recessed Wall Mount			•			12.00 lbs.	1
93062366	LPS20-T	782520867706	20W, T-grid Ceiling Mount			•			12.00 lbs.	1
93062358	LPS32-S	782520867713	32W, Surface Mount			•			14.00 lbs.	1
93062359	LPS32-R	782520867720	32W, Recessed Wall Mount			•			15.00 lbs.	1
93062360	LPS32-T	782520867737	32W, T-grid Ceiling Mount			•			15.00 lbs.	1
93062367	LPS35-S	782520867744	35W, Surface Mount			•			12.00 lbs.	1
93062368	LPS35-R	782520867751	35W, Recessed Wall Mount			•			13.00 lbs.	1
93062369	LPS35-T	782520867768	35W, T-grid Ceiling Mount			•			13.00 lbs.	1
93062361	LPS55-S	782520867775	55W, Surface Mount			•			18.00 lbs.	1
93062362	LPS55-R	782520867782	55W, Recessed Wall Mount			•			19.00 lbs.	1
93062363	LPS55-T	782520867799	55W, T-grid Ceiling Mount			•			19.00 lbs.	1
93062452	RTSLP	782520867812	Remote Test Switch for LPS			•			0.20 lbs.	1



Lampak® Series

- 120/277 VAC
- Powers Standard Lamps
- Dual Voltage

Part Number	Catalog Number	UPC Code	Description	CA 03	GA 27	IL 06	NJ 12	TX 04	Wt. each	Ctn. Qty
93039236	UFO-RP1	782520866174	500 Initial Lumens, Operates (1) T8, T10 or T12 Lamp, Ni-Cad Battery, 120/277VAC	•	•	•		•	1.70 lbs.	1
93039241	UFO-RP2	782520866181	700 Initial Lumens, Operates (1 or 2)T5, T5HO, T8, T10 or T12 Lamp, Ni-Cad Battery, 120/277VAC	•	•	•			2.70 lbs	1
93039246	UFO-RP3	782520866198	1400 Initial Lumens, Operates (1 or 2)T5, T5HO, T8, T10 or T12 Lamp, Ni-Cad Battery, 120/277VAC	•	•	•			3.30 lbs	1
93067812	UFO-LP1	782520868857	Low Profile for Linear or Long Fluorescent Lamp T5, T8 (Powers 1 Lamp), 750 Lumen Output		•	•			3.40 lbs.	1
93067813	UFO-LP2	782520868864	Low Profile for Linear or Long Fluorescent Lamp T5, T8 (Powers 1 Lamp), 1250 Lumen Output		•	•			3.40 lbs.	1
UFO-3AW	UFO-3AW	782520836320	350-450 Lumens (Powers 1 Lamp)	•	•	•	•	•	2.00 lbs.	1
UFO-4W	UFO-4W	782520821470	500-600 Lumens (Powers 1 Lamp)	•	•	•	•		2.50 lbs.	1
UFO-5W	UFO-5W	782520830007	600-700 Lumens (Powers 1 Lamp)	•		•	•		3.00 lbs.	1
UFO-5AW	UFO-5AW	782520840853	600-700 Lumens (Powers 1 or 2 Lamps)			•			3.00 lbs.	1
UFO-6W	UFO-6W	782520830014	1100-1400 Lumens (Powers 1 or 2 Lamps)	•	•	•			3.50 lbs.	1
UFO-6WI	UFO-6WI	782520856212	1100-1400 Lumens (Powers 1 or 2 Lamps), Spectron® Circuitry		•	•			3.60 lbs.	1
UFO-7W	UFO-7W	782520856151	1800-3500 Lumens (Powers 1 or 2 Lamps)		•	•			8.80 lbs.	1
UFO-7WI	UFO-7WI	782520856229	1800-3500 Lumens (Powers 1 or 2 Lamps), Spectron® Circuitry			•			8.80 lbs.	1
F-WC	F-WC	782520834425	Wire Bundle Cover (UFO-3AW through 6W only)		•				0.20 lbs.	1
SPRTS	SPRTS	782520856236	Single-pole Remote Test Switch/Charge Indicator (UFO-3AW through 6W, LP1 and LP2 only)		•	•			0.20 lbs.	1



Lampak® UFO-CF Series

- 120/277 VAC
- Powers Compact Lamps
- Dual Voltage

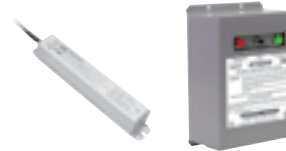
Part Number	Catalog Number	UPC Code	Description	CA 03	GA 27	IL 06	NJ 12	TX 04	Wt. each	Ctn. Qty
UFO-CF1	UFO-CF1	782520863982	300-750 Lumens (Powers 1 Lamp)	•	•	•		•	3.00 lbs	10
UFO-CF2	UFO-CF2	782520863999	700-1100 Lumens (Powers 1 Lamp)			•			4.30 lbs	10
UFO-CF2-CLD	UFO-CF2-CLD	782520864002	700-1100 Lumens (Powers 1 Lamp), -20°C to 55°C Cold Temp.			•			3.60 lbs.	10



Lampak® UFO-LED Series

- 120/277 VAC Inverter Output for 25 W/VA LED Luminaires

Part Number	Catalog Number	UPC Code	Description	CA 03	GA 27	IL 06	NJ 12	TX 04	Wt. each	Ctn. Qty
93046793	UFO-LED25	782520866501	Powers up to 25 VA/W of LED Luminaires with Full Lumen Output		•	•	•		7.40 lbs	6



ATSD Series

- Auxiliary Transfer Switch

Part Number	Catalog Number	UPC Code	Description	CA 03	GA 27	IL 06	NJ 12	TX 04	Wt. each	Ctn. Qty
ATSD	ATSD	782520856243	Luminaire Mount 3 Amp Capacity Auxiliary Transfer Switch		•				0.80 lbs	1
ATSD20	ATSD20	782520863494	Wall Mount 20 Amp Capacity Auxiliary Transfer Switch		•				5.00 lbs	6



PowerLED PLD Series

- 90 Minutes of Emergency Power for LED Fixtures
- Long Life, Ni-Cd Battery
- Universal 120 -277 VAC Input

Part Number	Catalog Number	UPC Code	Description	CA 03	GA 27	IL 06	NJ 12	TX 04	Wt. each	Ctn. Qty
93070839	PLD10	782520868888	10 Watt, 20-56 VDC Output, Polycarbonate Housing	•	•	•	•	•	2.10 lbs	1
93078803	PLD10M	782520869335	10 Watt, 20-56 VDC Output, Galvanized Steel Housing	•	•	•	•	•	3.40 lbs	1
93080406	PLRTS	782520869410	Remote Test Switch / Charge Indicator	•	•	•	•	•	0.20 lbs	1



EVC Series

- 120/277 VAC
- White or Black Finish
- LED Combination Exit/Light
- High Output LED

Part Number	Catalog Number	UPC Code	Description	CA 03	GA 27	IL 06	NJ 12	TX 04	Wt. each	Ctn. Qty
93041415	EVCURW	782520866372	Red Letters, White Housing	•	•	•	•		3.65 lbs.	6
93041416	EVCUGW	782520866389	Green Letters, White Housing	•	•	•			3.65 lbs.	6
93041418	EVCURWD	782520866396	Red Letters, White Housing, Damp Listed	•	•	•			3.65 lbs.	6
93041421	EVCURWD4	782520866402	Red letters, White Housing, Damp, Remote Capacity	•	•	•	•	•	3.65 lbs.	6
93041422	EVCUGWD4	782520866419	Green Letters, White Housing, Damp, Remote Capacity	•		•		•	3.65 lbs.	6
93041419	EVCURWDI	782520866426	Red Letters, White Housing, Damp, Spectron	•	•				3.65 lbs.	6
93041420	EVCUGWDI	782520866433	Green Letters, White Housing, Damp, Spectron	•	•				3.65 lbs.	6
93042770	EVCURWD4I	782520866440	Red Letters, White Housing, Damp, Remote Capacity, Spectron	•	•				3.65 lbs.	6
93042771	EVCURWD4-0	782520866457	Red Letters, White Housing, Damp, Remote Capacity, No Heads	•	•	•			3.65 lbs.	6
93041417	EVCURBD	782520866471	Red Letters, Black Housing, Damp Listed	•	•				3.65 lbs.	6
93041414	EVCURBD4	782520866488	Red letters, Black housing, Damp Listed, Remote Capacity	•					3.65 lbs.	6



EVE Series

- 120/277 VAC
- Thermoplastic Housing
- Nickel Metal Hydride
- LED

Part Number	Catalog Number	UPC Code	Description	CA 03	GA 27	IL 06	NJ 12	TX 04	Wt. each	Ctn. Qty
93048320	EVEURW	782520866662	Standard AC Exit, Red Letters, White Housing		•	•	•	•	2.50 lbs.	12
93048321	EVEURWE	782520866679	Standard Emergency Exit, Red Letters, White Housing		•	•		•	2.50 lbs.	12
93048322	EVEURWEI	782520866686	Standard Emer. Exit with SD, Red Letters, White Housing		•			•	2.50 lbs.	12
93048323	EVEUGW	782520866730	Standard AC Exit, Green Letters, White Housing		•			•	2.50 lbs.	12
93048324	EVEUGWE	782520866747	Standard Emergency Exit, Green Letters, White Housing		•			•	2.50 lbs.	12
93048325	EVEUGWEI	782520866754	Standard Emergency Exit with SD, Green Letters, White Housing		•				2.50 lbs.	12
93048326	EVEURB	782520866716	Standard AC Exit, Red Letters, Black Housing	•	•				2.50 lbs.	12
93048327	EVEURBE	782520866723	Standard Emergency Exit, Red Letters, Black Housing		•				2.50 lbs.	12
93049532	EVEUGBE	782520866761	Standard Emergency Exit, Green Letters, Black Housing		•				2.50 lbs.	12
93049531	EVEURW-2C	782520866709	Standard AC Exit, Red Letters, White Housing, 2-circuit	•	•				2.50 lbs.	12



EVE4X Series

- 120/277 VAC
- Thermoplastic Housing
- Wet Location Listed to UL924
- Long-Life Nickel Metal Hydride Battery

Part Number	Catalog Number	UPC Code	Description	CA 03	GA 27	IL 06	NJ 12	TX 04	Wt. each	Ctn. Qty
93075407	EVE4XRW	782520868994	AC Only, Red Letters, White Stencil/Housing, Clear Front Cover, Single Face		•				7.5 lbs.	1
93075411	EVE4XRWE	782520869038	Emergency with Battery, Red Letters, White Stencil/Housing, Clear Front Cover, Single Face		•				8.0 lbs.	1
93075412	EVE4XGWE	782520869045	Emergency with Battery, Green Letters, White Stencil/Housing, Clear Front Cover, Single Face	•					8.0 lbs.	1



LT Series

- 120/277 VAC
- Emergency Unit Plus LED Exit Sign
- Thermoplastic Housing

Part Number	Catalog Number	UPC Code	Description	CA 03	GA 27	IL 06	NJ 12	TX 04	Wt. each	Ctn. Qty
LTURWV11	LTURW	782520864187	Red Letters, White Housing, Single/Double Face	•	•	•	•		9.20 lbs.	4
LTURWDV11	LTURWD	782520864224	Red Letters, White Housing, Single/Double Face, Damp Location Listed		•				9.80 lbs.	4
LTURWDIV11	LTURWDI	782520864231	Red Letters, White Housing, Single/Double Face, Damp Location Listed, Spectron® Circuitry	•	•				9.80 lbs.	4
LTURW3V11	LTURW3	782520864217	Red Letters, White Housing, Single/Double Face, Remote Capacity		•	•	•		9.50 lbs.	4
LTURW3-0	LTURW3-0	782520849184	Red Letters, White Housing, Single/Double Face, Remote Capacity, No Lighting Heads		•	•			9.50 lbs.	
LTURBV11	LTURB	782520864200	Red Letters, Black Housing, Single/Double Face	•	•				9.20 lbs.	4
LTUGWV11	LTUGW	782520864194	Green Letters, White Housing, Single/Double Face	•	•	•			9.20 lbs.	4



LN4X Series

- 120/277 VAC
- Wet Location Listed
- Harsh Environmental Use
- Dual Voltage

Part Number	Catalog Number	UPC Code	Description	CA 03	GA 27	IL 06	NJ 12	TX 04	Wt. each	Ctn. Qty
LN4XRW	LN4XRW	782520837358	Red Letters, White Stencil/Housing, Clear Front Cover, Single Face		•	•			8.80 lbs.	1
LN4XRWE	LN4XRWE	782520837372	Red Letters, White Stencil/Housing, Clear Front Cover, Single Face		•				9.00 lbs.	1
LN4XRWEI	LN4XRWEI	782520837396	Red Letters, White Stencil/Housing, Clear Front Cover, Single Face with Spectron® Circuitry			•			9.00 lbs.	1



SE Series

- 120/277 VAC
- LED
- Cast Aluminum Housing

Part Number	Catalog Number	UPC Code	Description	CA 03	GA 27	IL 06	NJ 12	TX 04	Wt. each	Ctn. Qty
SESRWEV11	SESRWE	782520865191	Red Letters, White Housing, Single Face	•	•	•	•		6.00 lbs.	6
SESRWEIV11	SESRWEI	782520865207	Red Letters, White Housing, Spectron® Circuitry, Single Face	•	•	•			6.00 lbs.	6
SESRWE-VTRV11	SESRWE-VTR	782520865269	Red Letters, White Housing, Single Face	•					6.00 lbs.	6
SESRWEI-VTRV11	SESRWEI-VTR	782520865283	Red Letters, White Housing, Spectron® Circuitry, Single Face	•					6.00 lbs.	6
SESRWNEIV11	SESRWNEI	782520865238	Red Letters, White Housing, Brushed Aluminum Stencil, Spectron® Circuitry, Single Face	•					6.00 lbs.	6
SESRWNEV11	SESRWNE	782520865221	Red Letters, White Housing, Brushed Aluminum Stencil, Single Face	•	•				6.00 lbs.	6
SEDRWEV11	SEDRWE	782520864477	Red Letters, White Housing, Double Face	•	•	•			6.00 lbs.	6
SEDRWEIV11	SEDRWEI	782520864484	Red Letters, White Housing, Double Face, Spectron® Circuitry	•	•				6.00 lbs.	6
SEDRWNEV11	SEDRWNE	782520847654	Red Letters, White Housing, Brushed Aluminum Stencil, Double Face		•				6.00 lbs.	6
SESRBEV11	SESRBE	782520847562	Red Letters, Black Housing, Single Face	•	•				6.00 lbs.	6
SEDRBEV11	SEDRBE	782520847579	Red Letters, Black Housing, Double Face		•				6.00 lbs.	6
SESRBNEV11	SESRBNE	782520865160	Red Letters, Black Housing, Brushed Aluminum Stencil, Single Face	•	•	•	•		6.00 lbs.	6
SESRBNE-VTRV11	SESRBNE-VTR	782520865252	Red Letters, Black Housing, Brushed Aluminum Stencil, Single Face with Vandal/Tamper-resistant Option	•					6.00 lbs.	6
SESRBNEIV11	SESRBNEI	782520865177	Red Letters, Black Housing, Brushed Aluminum Stencil, Single Face, Spectron® Circuitry	•	•				6.00 lbs.	6
SEDRBNEV11	SEDRBNE	782520864446	Red Letters, Black Housing, Brushed Aluminum Stencil, Double Face	•	•				6.00 lbs.	6
SEDRBNEIV11	SEDRBNEI	782520847777	Red Letters, Black Housing, Brushed Aluminum Stencil, Double Face, Spectron® Circuitry	•					6.00 lbs.	6
SESGWEV11	SESGWE	782520865078	Green Letters, White Housing, Single Face	•	•				6.00 lbs.	6
SESGWEIV11	SESGWEI	782520865085	Green Letters, White Housing, Single Face Spectron® Circuitry	•	•				6.00 lbs.	6
SESGWE-VTRV11	SESGWE-VTR	782520865276	Green Letters, White Housing, Single Face with Vandal/Tamper-resistant Option	•					6.00 lbs.	6
SEDGWV11	SEDGW	782520864347	Green Letters, White Housing, Single Face	•					6.00 lbs.	6
SEDGWEV11	SEDGWE	782520864354	Green Letters, White Housing, Double Face	•					6.00 lbs.	6
SEDGWEIV11	SEDGWEI	782520847715	Green Letters, White Housing, Double Face Spectron® Circuitry	•					6.00 lbs.	6
SESGBNEV11	SESGBNE	782520865047	Green Letters, Black Housing, Brushed Aluminum Stencil, Single Face	•					6.00 lbs.	6
SESGBNEIV11	SESGBNEI	782520847784	Green Letters, Black Housing, Brushed Aluminum Stencil, Double Face, Spectron® Circuitry	•					6.00 lbs.	6
SEDGBNEV11	SEDGBNE	782520864323	Green Letters, Black Housing, Brushed Aluminum Stencil, Double Face		•				6.00 lbs.	6
RBB	RBB	782520849856	Rough-In Back Box Kit		•				2.70 lbs.	1



SE Series

- 120/277 VAC
- LED
- Cast Aluminum Housing

Part Number	Catalog Number	UPC Code	Description	CA 03	GA 27	IL 06	NJ 12	TX 04	Wt. each	Ctn. Qty
SEDGBNV11	SEDGBN	782520864316	Green Letters, Black Housing, Brushed Aluminum Stencil, Double Face	•	•				6.00 lbs.	6
SESRWV11	SESRW	782520865184	Red Letters, White Housing, Single Face	•	•	•			6.00 lbs.	6
SESRWNV11	SESRWN	782520865214	Red Letters, White Housing, Brushed Aluminum Stencil, Single Face	•					6.00 lbs.	6
SESRBV11	SESRB	782520865122	Red Letters, Black Housing, Single Face	•					6.00 lbs.	6
SEDRWV11	SEDRW	782520864460	Red Letters, White Housing, Double Face	•	•				6.00 lbs.	6
SEDRBV11	SEDRB	782520864408	Red Letters, White Housing, Double Face	•					6.00 lbs.	6
SEDRWNV11	SEDRWN	782520864491	Red Letters, White Housing, Brushed Aluminum Stencil, Double Face	•					6.00 lbs.	6
SESRBNV11	SESRBN	782520865153	Red Letters, Black Housing, Brushed Aluminum Stencil, Single Face	•	•	•	•		6.00 lbs.	6
SEDRBNV11	SEDRBN	782520864439	Red Letters, Black Housing, Brushed Aluminum Stencil, Double Face	•					6.00 lbs.	6
SESGWV11	SESGW	782520865061	Green Letters, White Housing, Single Face	•	•				6.00 lbs.	6
SESGWNV11	SESGWN	782520865092	Green Letters, White Housing, Brushed Aluminum Stencil, Single Face	•					6.00 lbs.	6
SESGBNV11	SESGBN	782520865030	Green Letters, Black Housing, Brushed Aluminum Stencil, Single Face	•	•				6.00 lbs.	6
SESGBV11	SESGB	782520865009	Green Letters, Black Housing, Single Face	•					6.00 lbs.	6
SEDGBNV11	SEDGBN	782520864316	Green Letters, Black Housing, Brushed Aluminum Stencil, Double Face	•	•				6.00 lbs.	6



HCX Series

- 120/277 VAC
- Emergency Unit Plus LED Exit Sign
- Halogen Emergency Lamps
- Thermoplastic Housing

Part Number	Catalog Number	UPC Code	Description	CA 03	GA 27	IL 06	NJ 12	TX 04	Wt. each	Ctn. Qty
HCXURW	HCXURW	782520860462	White Housing, Red Letters	•	•	•	•		8.10 lbs.	6
HCXUGW	HCXUGW	782520860479	White Housing, Green Letters	•	•	•			8.10 lbs.	6
HCXURB	HCXURB	782520861193	Red Letters, Black Housing	•					8.10 lbs.	6
HCXURWRC12	HCXURWRC12	782520861216	White Housing, Red Letters, Remote Capacity	•	•	•			9.70 lbs.	6
HCXUGWRC12	HCXUGWRC12	782520861223	White Housing, Green Letters, Remote Capacity	•					9.70 lbs.	6
HCXURW-0-RC12	HCXURW-0-RC12	782520862022	White Housing, Red Letters, No Heads, 23W Remote Capacity	•	•	•			9.00 lbs.	6
HCXUGW-0-RC12	HCXUGW-0-RC12	782520862039	White Housing, Green Letters, No Heads, 23W Remote Capacity	•	•				9.00 lbs.	6



LX Series

- 120/277 VAC
- Thermoplastic Housing
- Dual Voltage
- LED

Part Number	Catalog Number	UPC Code	Description	CA 03	GA 27	IL 06	NJ 12	TX 04	Wt. each	Ctn. Qty
LXURWV11	LXURW	782520836375	Red Letters, White Housing, Single/Double Face, AC Only	•	•	•	•		4.00 lbs.	12
LXUGBEV11	LXUGBE	782520864118	Green Letters, Black Housing, Single/Double Face, Emergency Use	•	•				4.50 lbs.	12
LXUGBV11	LXUGB	782520864101	Green Letters, Black Housing, Single/Double Face, AC Only	•	•				4.00 lbs.	12
LXUGW-2C	LXUGW-2C	782520836573	Green Letters, White Housing, Single Double Face, 2-circuit Operation, AC Only	•					4.50 lbs.	12
LXUGWEIV11	LXUGWEI	782520864095	Green Letters, White Housing, Single/Double Face, Spectron Circuitry, Emergency Use	•		•			4.50 lbs.	12
LXUGWEV11	LXUGWE	782520864088	Green Letters, White Housing, Single/Double Face, Emergency Use	•		•		•	4.50 lbs.	12
LXUGWV11	LXUGW	782520864071	Green Letters, White Housing, Single/Double Face, AC Only	•		•			4.00 lbs.	12
LXURBEV11	LXURBE	782520864170	Red Letters, Black Housing, Single/Double Face, Emergency Use	•	•	•	•		4.50 lbs.	12
LXURBV11	LXURB	782520864163	Red Letters, Black Housing, Single/Double Face, AC Only	•	•				4.00 lbs.	12
LXURW-2C	LXURW-2C	782520836535	Red Letters, White Housing, Single/Double Face, 2-circuit Operation, AC Only	•	•				5.00 lbs.	12
LXURWEIV11	LXURWEI	782520864149	Red Letters, White Housing, Single/Double Face, Spectron Circuitry, Emergency Use	•	•	•	•		4.20 lbs.	12
LXURWEV11	LXURWE	782520864132	Red Letters, White Housing, Single/Double Face, Emergency Use	•	•	•	•	•	4.20 lbs.	12
LXURWV11	LXURW	782520864125	Red Letters, White Housing, Single/Double Face, AC Only	•	•	•	•		4.00 lbs.	12
PMLXW	PMLXW	782520837884	Pendant Mounting Kit, 12.5", White		•				2.00 lbs.	1



SEWL Series

- 120/277 VAC
- Emergency Use
- Spectron Circuitry
- Heater

Part Number	Catalog Number	UPC Code	Description	CA 03	GA 27	IL 06	NJ 12	TX 04	Wt. each	Ctn. Qty
SEWLDGWE	SEWLDGWE	782520862398	Green Letters, White Housing, Double Face	•					13.10 lbs.	5
SEWLSGWE	SEWLSGWE	782520862350	Green Letters, White Housing, Single Face	•					13.10 lbs.	5
SEWLDRWE	SEWLDRWE	782520862381	Red Letters, White Housing, Double Face	•					13.10 lbs.	5
SEWLSRWE	SEWLSRWE	782520862343	Red Letters, White Housing, Single Face	•	•				13.10 lbs.	5
SEWLDGBE	SEWLDGBE	782520862374	Green Letters, Black Housing, Double Face	•					13.10 lbs.	5
SEWLSGBE	SEWLSGBE	782520862336	Green Letters, Black Housing, Single Face	•					13.10 lbs.	5
SEWLDRBE	SEWLDRBE	782520862367	Red Letters, Black Housing, Double Face	•					13.10 lbs.	5
SEWLSRBE	SEWLSRBE	782520862329	Red Letters, Black Housing, Single Face	•					13.10 lbs.	5



SEWL Series

- 120/277 VAC
- Emergency Use
- Spectron Circuitry
- Heater

QS 10 10-Day Quick Ship Ordering Guide
Order Limit Per Fixture Selection: 50

MODEL	FACES	LETTER COLOR	HOUSING COLOR	OPERATION	OPTIONS
SEWL	S Single D Double	R R G Green	W White B Black	Blank AC Only E Emergency	-HTR Internal Heater ¹ -4X NEMA 4X, IP66 rating ²

Ordering Notes:
1 For use with emergency models only
2 Heater comes standard with -4X option on emergency models



CLS Series

- 20-gauge steel enclosure in white finish
- 6" Red letters with directional arrow
- 120/277 VAC

Part Number	Catalog Number	UPC Code	Description	CA 03	GA 27	IL 06	NJ 12	TX 04	Wt. each	Ctn. Qty
93073297	CLSE3	782520868895	Chicago Approved, Steel LED Exit, Emergency, No Arrows			•			1.40 lbs.	10
93073299	CLSS3	782520868901	Chicago Approved, Steel LED Combo, Emergency, AC Only			•			1.40 lbs.	10



CLSC Series

- Chicago approved LED Combination Exit/Emergency Light
- 20-gauge steel enclosure in white finish
- 6" Red letters with directional arrow
- 120/277 VAC

Part Number	Catalog Number	UPC Code	Description	CA 03	IL 06	NJ 12	SC 07	Wt. each	Ctn. Qty	Price
93074313	CLSCSRW-3	856143002148	Steel Combination Exit/Unit, No Arrows(CP3-ENA)		•			16.00 lbs.	2	
93079447	CLSCSRW-NP	782520869236	Steel Combination Exit/Unit, No Panel Included		•			16.00 lbs.	2	
93079448	CLSCSRW-NPRC	782520869243	Steel Combination Exit/Unit, No Panel Included, with Remote Capacity		•			18.00 lbs.	2	
93079449	CP3-ENA	782520869250	Individual Panel, Exit No Arrow		•			0.50 lbs.	1	
93079450	CP12-EDA	782520869267	Individual Panel, Exit Double Arrow		•			0.50 lbs.	1	
93079451	CP6-ERA	782520869274	Individual Panel, Exit Right Arrow		•			0.50 lbs.	1	
93079452	CP9-ELA	782520869281	Individual Panel, Exit Left Arrow		•			0.50 lbs.	1	
93079453	CP2-SNA	782520869298	Individual Panel, Stairs No Arrow		•			0.50 lbs.	1	
93079454	CP11-SDA	782520869304	Individual Panel, Stairs Double Arrow		•			0.50 lbs.	1	
93079455	CP5-SRA	782520869311	Individual Panel, Stairs Right Arrow		•			0.50 lbs.	1	
93079456	CP8-SLA	782520869328	Individual Panel, Stairs Left Arrow		•			0.50 lbs.	1	



LES Series

- Surface Mounting Edge-Lit LED Exit Sign
- AC or Emergency
- Single/Double Face

10-Day Quick Ship Ordering Guide

Order Limit Per Fixture Selection: 50

LES							
MODEL	FACES	DIRECTIONAL ARROWS	TRIM/HOUSING FINISH	OPERATION	OPTIONS		
	S Single D Double* <i>* Not for use with wall mounted models</i>	X No arrows EXIT R Right arrow* L Left arrow* D Double arrows C L/R arrows** <i>* Not for use with double face models. Use "C" L/R arrow designator ** Double face models only. Provides reversible right or left arrow indicator.</i>	N Satin Aluminum	A AC only	-W White plaque background -M Mirror-plaque background ¹ -8L 8 inch letter plaque (red letters only) ^{2,3}		
MOUNTING	LETTER COLOR						
C Ceiling mount W Wall mount E End Mount	R Red G Green						

¹For use with single face models only. Standard on double face models.
²LES exit models with 8" plaques registered under NY-BEC Calendar number 42135 for use in New York City.
³Single face LES exit signs specified with the -8L option are supplied without backgrounds. Double face models specified with the -8L option are supplied with mirror backgrounds.



LE Series

- Surface Mounting Edge-Lit LED Exit Sign
- AC or Emergency
- Single/Double Face

10-Day Quick Ship Ordering Guide

Order Limit Per Fixture Selection: 50

LE							
MODEL	FACES	DIRECTIONAL ARROWS	TRIM/HOUSING FINISH	SELF-DIAGNOSTIC	OPERATION	OPTIONS	
	S Single D Double* <i>* Not for use with wall mounted models</i>	X No arrows EXIT R Right arrow* L Left arrow* D Double arrows C L/R arrows** <i>* Not for use with double face models. Use "C" L/R arrow designator ** Double face models only. Provides reversible right or left arrow indicator.</i>	N Satin Aluminum	Blank None I Spectron self-testing/self-diagnostic electronics* * For use with emergency models only	A AC only E Emergency	-2C 2-circuit operation ^{2,5} -FAP Fire alarm panel interface ^{3,5,6} -FM Flasher module ^{1,6} -AF Audible flasher module ^{1,6} -DC Remote DC operation ^{2,4,5} -24K 220-240VAC, 60Hz. operation ⁹ -XK Recessed mount exit sign less rough-in kit ^{7,9} -W White plaque background -M Mirror-plaque background ⁸ -8L 8 inch letter plaque (red letters only) ^{10,11}	
MOUNTING	LETTER COLOR						
C Ceiling mount W Wall mount E End Mount	R Red G Green						

ACCESSORIES (order separately)

URK Universal rough-in kit
URK2C Universal 2-circuit rough-in kit ^{a,b,c}

^aFor use with AC models only.
^bRough-in kit may not be ordered separately on models specified with -24K option.
^cMust be ordered in conjunction with -2C option on exit sign

To Order Rough-In Kit Separately
 To order rough-in kit only for field installation, add "-XK" option suffix to exit model number and order "URK" or "URK2C" kit separately.

¹For use with emergency models only.
²For use with AC models only.
³Operates with 24-volt AC or DC fire alarm panels.
⁴For emergency illumination of sign from remote 6-24VDC power sources.
⁵-DC option may not be specified with -2C or -FAP options.
⁶-AF, -FM and -FAP options may not be specified together.
⁷Allows ordering of rough-in kit separately for recessed mount (LE) models.
See "Accessories".
⁸For use with single face models only. Standard on double face models.
⁹Rough-in kit may not be ordered separately on models specified with -24K option.
¹⁰LE exit models with 8" plaques registered under NY-BEC Calendar number 42135 for use in New York City.
¹¹Single face LE exit signs specified with the -8L option are supplied without backgrounds. Double face models specified with the -8L option are supplied with mirror backgrounds.



CCU2 Series

- 20-gauge steel enclosure in white finish
- Chicago Approved Unit
- Dual 120/277 VAC Input
- UL924 Listed

Part Number	Catalog Number	UPC Code	Description	CA 03	GA 27	IL 06	NJ 12	TX 04	Wt. each	Ctn. Qty
93076245	CCU2	782520869113	2 head LED Unit			•			6.70 lbs.	4
93046246	CCU2RC	782520869120	2 head LED Unit, Remote Capacity			•			8.20 lbs.	4



CRU Series

- Chicago Approved Recessed Unit
- 10-gauge steel with white finish
- Dual 120/277 VAC Input

Part Number	Catalog Number	UPC Code	Description	CA 03	GA 27	IL 06	NJ 12	TX 04	Wt. each	Ctn. Qty
93076359	CRU	782520869175	Chicago Recessed Unit			•			31.0 lbs.	2
93076360	CRURC	782520869182	Chicago Recessed Unit, Remote Capacity			•			39.0 lbs.	2



CRH Remote Heads

- Indoor remote made of 20-gauge steel
- Outdoor remote made of Die-Cast Aluminum
- Glass Lens
- Single or Double remote heads

Part Number	Catalog Number	UPC Code	Description	CA 03	GA 27	IL 06	NJ 12	TX 04	Wt. each	Ctn. Qty
93076288	CRHI	782520869137	Indoor, Steel, Single Remote Head			•			0.70 lbs.	12
93076289	CRHI2	782520869144	Indoor, Steel, Double Remote Heads			•			1.10 lbs.	12
93076290	CRHO	782520869151	Outdoor, Die-Cast Aluminum, Single Remote Head			•			1.30 lbs.	12
93076291	CRHO2	782520869168	Outdoor, Die-Cast Aluminum, Double Remote Heads			•			2.40 lbs.	12



EVR Series

- LED Double Head Remote
- Indoor Use
- Powered by EV4 Emergency Light

Part Number	Catalog Number	UPC Code	Description	CA 03	GA 27	IL 06	NJ 12	TX 04	Wt. each	Ctn. Qty
93036789	EVR2	782520865535	Indoor LED Remote, Double Head, White Finish	•	•		•		2.00 lbs.	12
93036790	EVR2B	782520865542	Indoor LED Remote, Double Head, Black Finish	•	•				2.00 lbs.	12



EVHCR Series

- High Lumen Double Head Remote
- Indoor Use
- Powered by EVHC12 Emergency Light

Part Number	Catalog Number	UPC Code	Description	CA 03	GA 27	IL 06	NJ 12	TX 04	Wt. each	Ctn. Qty
93050690	EVHCR2	782520867249	346 Lumen Lamphead Remote, White Finish	•	•	•			2.80 lbs.	6



EVO Series

- LED Single or Double Head Remote
- White or Black Finish
- Outdoor Use
- Powered by EV4 Emergency Light

Part Number	Catalog Number	UPC Code	Description	CA 03	GA 27	IL 06	NJ 12	TX 04	Wt. each	Ctn. Qty
93041097	EVOSW	782520866228	Outdoor LED Remote, Single Head, White Finish	•	•	•	•		0.80 lbs.	12
93041098	EVODW	782520866235	Outdoor LED Remote, Double Head, White Finish	•	•	•	•	•	1.20 lbs.	12
93041099	EVOSB	782520866242	Outdoor LED Remote, Single Head, Black Finish	•	•	•		•	0.80 lbs.	12
93041100	EVODB	782520866259	Outdoor LED Remote, Double Head, Black Finish	•	•	•	•	•	1.20 lbs.	12



SRH Series

- Single or Double Head Remote
- Incandescent Lamps
- Indoor Use
- Thermoplastic Housing

Part Number	Catalog Number	UPC Code	Description	CA 03	GA 27	IL 06	NJ 12	TX 04	Wt. each	Ctn. Qty
SRHSW0607	SRHSW0607	782520857905	6V 7.2W Single Remote Head, White Housing				•		0.90 lbs.	1
SRHDW0607	SRHDW0607	782520858018	6V 7.2W Double Remote Head, White Housing				•		1.50 lbs.	1
SRHSW1207	SRHSW1207	782520857967	12V 7.2W Single Remote Head, White Housing				•		0.90 lbs.	1
SRHDW1207	SRHDW1207	782520858070	12V 7.2W Double Remote Head, White Housing				•		1.50 lbs.	1
SRHSW1212	SRHSW1212	782520857981	12V 12W Single Remote Head, White Housing				•		0.90 lbs.	1
SRHDW1212	SRHDW1212	782520858094	12V 12W Double Remote Head, White Housing				•		1.50 lbs.	1



CPR Series

- Single or Double Head Remote
- Thermoplastic Housing
- MR 16 Halogen Lamp(s)
- Supplied with Mounting Plate

Part Number	Catalog Number	UPC Code	Description	CA 03	GA 27	IL 06	NJ 12	TX 04	Wt. each	Ctn. Qty
CPRSW0605	CPRSW0605	782520861155	Single Remote Head, White, 6V, 5W		•				0.52 lbs.	12
CPRDW0605	CPRDW0605	782520861162	Twin Remote Heads, White, 6V, 5W		•				1.00 lbs.	12
CPRSB0605	CPRSB0605	782520861179	Single Remote Head, Black, 6V, 5W		•				0.52 lbs.	12
CPRDB0605	CPRDB0605	782520861186	Twin Remote Heads, Black, 6V, 5W		•				1.00 lbs.	12



OMS Series

- Single or Double Head Remote
- Aluminum Spot
- Outdoor Use

Part Number	Catalog Number	UPC Code	Description	CA 03	GA 27	IL 06	NJ 12	TX 04	Wt. each	Ctn. Qty
OMSSW0605	OMSSW0605	782520856472	6V 5W, Single Indoor/Outdoor White Remote Head			•	•		1.15 lbs.	1
OMSDW0605	OMSDW0605	782520856731	6V 5W, Twin White Remote Heads			•			1.50 lbs.	1
OMSDW0607	OMSDW0607	782520856748	6V 7.2W, Twin White Remote Heads			•			1.50 lbs.	1
OMSSB0605	OMSSB0605	782520856601	6V 5W, Single Black Outdoor Spot	•		•	•		1.15 lbs.	1
OMSSB0607	OMSSB0607	782520856618	6V 7.2W, Single Black Outdoor Spot	•					1.15 lbs.	1
OMSDB0605	OMSDB0605	782520856861	6V 5W, Twin Black Outdoor Spot		•	•			1.50 lbs.	1
OMSDB1208	OMSDB1208	782520856953	12V 8W, Double Black Outdoor Spot				•		1.15 lbs.	1
OMSDB1212	OMSDB1212	782520856960	12V 12W, Double Black Outdoor Spot				•		1.15 lbs.	1
OMSDW1208	OMSDW1208	782520856823	12V 8W, Double White Outdoor Spot				•		1.15 lbs.	1
OMSDW1212	OMSDW1212	782520856830	12V 12W, Double White Outdoor Spot				•		1.15 lbs.	1
OMSDW1225	OMSDW1225	782520856854	12V, 25W, Double White Outdoor Spot				•		1.15 lbs.	1



GNX Series

- Single or Double Head Remote
- Thermoplastic Housing
- Indoor Use
- Moisture Resistant

Part Number	Catalog Number	UPC Code	Description	CA 03	GA 27	IL 06	NJ 12	TX 04	Wt. each	Ctn. Qty
GNXSB0607	GNXSB0607	782520857677	6V 7.2W, Single Black Remote Head		•				1.02 lbs.	1
GNXSB1209	GNXSB1209	782520857738	12V 9W, Single Black Remote Head		•				1.02 lbs.	1



DYNR Series

- NEMA4X Industrial High Lumen LED Emergency Remote
- Fully Adjustable LED Lamphead
- Wet Location or NEMA4X Application

Part Number	Catalog Number	UPC Code	Description	CA 03	GA 27	IL 06	NJ 12	TX 04	Wt. each	Ctn. Qty
93059702	DYNRS-4X	782520867584	3 Watt Single Head Remote, -30° to 50°C	•	•				2.40 lbs.	4
93059703	DYNRD-4X	782520867591	3 Watt Double Head Remote, -30° to 50°C	•	•				3.10 lbs.	4



OCR Series

- MR 16 Halogen Lamp(s)
- Diecast Aluminum
- Supplied with Mounting Plate

Part Number	Catalog Number	UPC Code	Description	CA 03	GA 27	IL 06	NJ 12	TX 04	Wt. each	Ctn. Qty
OCRSW0605	OCRSW0605	782520861292	Single Remote Head, White, 6V, 5W	•		•			1.30 lbs.	10
OCRDW0605	OCRDW0605	782520861346	Twin Remote Heads, White, 6V, 5W	•			•		2.60 lbs.	5
OCRSB0605	OCRSB0605	782520861391	Single Remote Head, Black, 6V, 5W	•		•			1.30 lbs.	10
OCRDB0605	OCRDB0605	782520861445	Twin Remote Heads, Black, 6V, 5W				•		2.60 lbs.	5
OCRSZ0605	OCRSZ0605	782520861490	Single Remote Head, Dark Bronze, 6V, 5W	•	•	•	•		1.30 lbs.	10
OCRDZ0605	OCRDZ0605	782520861544	Twin Remote Heads, Dark Bronze, 6V, 5W	•		•			2.60 lbs.	5

Replacement lamps are available to convert the OCR Series 6V, 5W fixture to another rating:

Lamp Part Number	Description
0110261	Halogen, MR 16, 6V, 10W
0110263	Halogen, MR 16, 12V, 5W
0110264	Halogen, MR 16, 12V, 10W

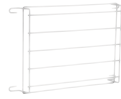
To order OCR replacement lamps, enter a purchase order with the Hubbell Lighting, Inc. Customer Service Department.



LZR Series

- Single Head Remote
- MR 16 Halogen Lamp(s)
- Supplied with Mounting Plate
- Thermoplastic Housing

Part Number	Catalog Number	UPC Code	Description	CA 03	GA 27	IL 06	NJ 12	TX 04	Wt. each	Ctn. Qty
LZRSW0605	LZRSW0605	782520858346	6V 5W, White Remote Head		•				1.10 lbs.	4
LZRSW1205	LZRSW1205	782520858360	12V 5W, White Remote Head				•		1.10 lbs.	4



Wire Guards

- For Emergency Lighting Units and Exit Signs
- See Catalog for Exact Dimensions

Part Number	Catalog Number	UPC Code	Description	CA 03	GA 27	IL 06	NJ 12	TX 04	Wt. each	Ctn. Qty
40G	40G	782520161101	LM-Top Mount Heads; AS, N4X, LN4X and NYX Tandem Units		•				3.90 lbs.	1
S6WG	S6WG	782520161132	Single Remote Heads, including LZRS Series		•				1.50 lbs.	1
WGEL	WGEL	782520572938	EZ-2, EZ-2R, LZ High Capacity, Twin Remote Heads	•	•				1.50 lbs.	1
WGTW	WGTW	782520572945	Freedom LED; LT and CVT Wall Mount Series, NYDC and NYX Series, LG1S, HCX Combo Units	•	•				2.00 lbs.	1
WGTCE	WGTCE	782520572952	Freedom LED, LT, Ceiling Mounted NYDC and NYX Exits	•	•				2.00 lbs.	1
WGLX	WGLX	782520837785	EXT-122-EM-K; Wall Mounted LX, LEDS and SE Exits	•	•	•	•		1.00 lbs.	1
WGLXC	WGLXC	782520837792	Ceiling-mounted LX, DK, CV3, LEDS, and SEMPRA Exits		•				1.90 lbs.	1
WGLXE	WGLXE	782520837808	End-mounted LX, CVD, CV3, LEDS and SEMPRA Exits		•				1.90 lbs.	1
WGLZ	WGLZ	782520837778	SL1, LZ2	•	•				1.00 lbs.	1
WG-MLT	WG-MLT	782520161156	Wall Mounted LX, CV3, SE and DVD Exits	•	•				2.00 lbs.	1
93066388	WGA1	782520868130	EV2, 8 1/2"X12"X4"	•	•				1.5 lbs.	1
93066389	WGA2	782520868147	DYN, 15"X14"X7"	•	•				1.5 lbs.	1
93066390	WGA3	782520868154	EVHC, 10"X14"X6"	•	•				1.5 lbs.	1



Vandal Resistant Shields

- For Emergency Lighting Units and Exit Signs
- See Catalog for Exact Dimensions

Part Number	Catalog Number	UPC Code	Description	CA 03	GA 27	IL 06	NJ 12	TX 04	Wt. each	Ctn. Qty
VRS	VRS	782520171407	EZ-2, LZ2, LZ High Capacity, EZ-2R	•	•		•		2.00 lbs.	1
VRS3	VRS3	782520846657	Freedom LED, LX, LEDS, SE	•	•				1.30 lbs.	1
VRS-4X	VRS-4X	782520171506	EZ-2, LZ2, LZ High Capacity, EZ-2R with Wall Gasket		•				2.00 lbs.	1

