

TALON

# Selection and application guide

For use in New England States (CT, NH, ME, RI, VT, MA)

Meter Mounting Equipment



[www.talonmetering.com](http://www.talonmetering.com)



# Meter Mounting Equipment

## Table of Contents

Service	Rating	Positions	Terminals	Page
Air Conditioning Disconnects	-	-	-	2
1 Phase, 3 Wire 600V AC Medium Duty	125A	1	4	3
1 Phase, 3 Wire 600V AC	200A	1	4	4
1 Phase, 3 Wire 600V AC Medium Duty, Lever Bypass	125A	1	5	5
1 Phase, 3 Wire 600V AC Medium Duty, Lever Bypass	200A	1	5	6
1 or 3 Phase, 3 Wire 600V AC Heavy Duty, Lever Bypass	200A	1	4 & 5	7
3 Phase, 4 Wire 600V AC, Lever Bypass	125/200A	1	7	8
3 Phase, 3 & 4 Wire 600V AC Heavy Duty, Lever Bypass	320A	1	4 & 7	9
Transformer Rated, Plunger Bypass	20A	1	8 & 13	10
Transformer Rated	20A	1	6, 8 & 13	11
Mobile Home Meter Pedestal, 1 Phase, 240V AC	200A	-	4	12
Mobile Home Meter Pedestal, 1 Phase, 240V AC, Lever Bypass	200A	-	5	13
Ringless Metered Powerhead / Meter-Loadcenter Combination	200A	1	4	14
Ringless vertical, No Bypass	100A/Pos.	2 & 3	4	15
Ringless Horizontal Multi-Position	100A/Pos.	2-6	4	16
Ringless Horizontal Multi-Position with Lever Bypass	100A/Pos.	2-6	5	17
Ringless Multi-Position with Owner's Meter Lever Bypass	125A/Pos.	3-5	5	18
Ringless Horizontal Multi-Position, No Bypass	100 & 200A/Pos.	2-6	4	19
Ringless Horizontal Multi-Position with Lever Bypass	200A/Pos.	2-6	4, 5 & 7	20
Ring & Ringless Multi-Position	100/200A	2	4	21
Ringless Meter Loadcenter Combination	100-200A	1	4	22
Ringless Meter Breaker Combination, Lever Bypass	100-200A	1	5	23
Ringless Meter Breaker Combination, Lever Bypass	100/200A	1	7	24
Ringless Meter Breaker / Loadcenter Combination, Lever Bypass	320A	1	4 & 5	25
Current Transformer Cabinet	-	-	4	26
Connector Lugs	-	-	-	27
Accessories	-	-	-	28
Repair Parts	-	-	-	29
Product Q & A	-	-	-	30
Meter Mounting Device Applications				31
Utility Approval Reference				32-37

### Represented by:

The Yanow Companies  
 220 East Ashland Street  
 Brockton, MA 02302  
 Tel: 508-894-8900  
 Email; sales@bnyanow.com  
 www.bnyanow.com



# Air Conditioning Disconnects

## Fused and Non-fused

### Features:

#### Flexibility

- 30-60 amperes
- 240 volts A.C.
- Padlock provisions
- Horsepower rated
- 10,000 A.I.C.
- Models available with internal GFCI receptacle
- Removable door
- Ample wiring space

#### Rugged Durability

- Noryl® thermoplastic and powder coated G90 steel enclosures are corrosion resistant and extremely durable giving long maintenance free service
- Copper conductors
- Raised mounting embosses



#### Steel AC Disconnects

Amp. rating	Disconnect type	Catalog no. Talon	HP rating	Dimensions (in.)		
				H	W	D
30	Fused pullout	LF2030	3	7.3	5.0	2.1
60	Fused pullout	LF2060	10	8.0	5.0	2.1
60	Non-fused pullout	LN2060	10	7.3	5.0	2.1
60	Non-automatic switch	LNAS2060	10	7.3	5.0	2.1

#### Plastic AC Disconnects

Amp. rating	Disconnect type	Catalog no. Talon	HP rating	Dimensions (in.)		
				H	W	D
30	Fused pullout	LF2030PL	3	8.0	5.3	3.1
60	Fused pullout	LF2060PL	10	8.0	5.3	3.1
60	Non-fused pullout	LN2060PL	10	7.3	5.0	2.1
60	Non-fused pullout	LN2060PLX	10	8.0	6.0	5.8

#### Steel AC Disconnects with 15 Amp GFCI Receptacle

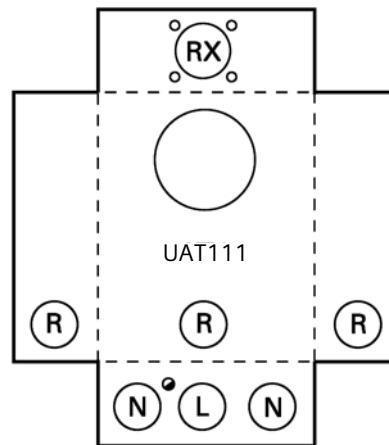
Amp. rating	Disconnect type	Catalog no. Talon	HP rating	Dimensions (in.)		
				H	W	D
30	Fused pullout	LF2030GFCI	3	9.0	6.1	5.1
60	Fused pullout	LF2060GFCI	10	9.0	6.1	5.1
60	Non-fused pullout	LN2060GFCI	10	7.1	5.8	5.1
60	Non-automatic switch	LNAS2060GFCI	10	7.1	5.8	5.1

#### Wire Range Table

Connector	Copper		Aluminum	
	Solid	Stranded	Solid	Stranded
Line	#14-8	#14-3	#12-8	#12-3
Load	#14-8	#14-3	#12-8	#12-3
Neutral	#12-8	#12-2	#12-8	#12-2
Equip. grnd.	#12-8	#12-2	#12-8	#12-2



UAT111-0G



Knockouts (inches):	
Ø:	1/4
L:	1/2, 3/4, 1, 1-1/4, 1-1/2
N:	3/4, 1, 1-1/4, 1-1/2, 2
R:	1, 1-1/4, 1-1/2, 2
RX:	Ø2.750 HUB OP

## 125 Amp Ringless 4 Terminal for 1 Phase, 3 Wire 600V AC

Service	Catalog Number	Hub Provisions	Bypass	Dimension			Connectors	Milbank Equivalent
				W	H	D		
OH/UG	UAT111-0G	RX Opening	None	8.0	11.7	3.6	#14-2/0	U7487-RL-TG
OH	UAT111-BG	1.25" Hub Installed	None	8.0	11.7	3.6	#14-2/0	U7487-YL-TG
UG	UAT111-XG	RX Cl. Plate	None	8.0	11.7	3.6	#14-2/0	U7487-O-TG

Hubs: Please see accessories on page 31  
 5th Terminal: order catalog number H659-0121 for 9 o'clock position  
 Connectors: Aluminum connectors, tin plated  
 Ground: units supplied with a quad ground





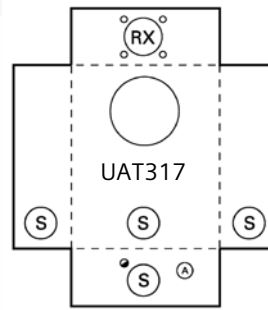
UAT317-0G



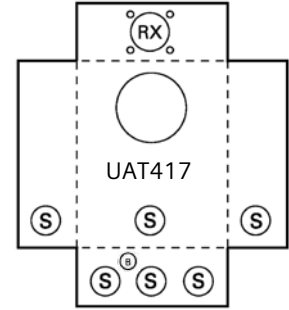
UAT417-0G



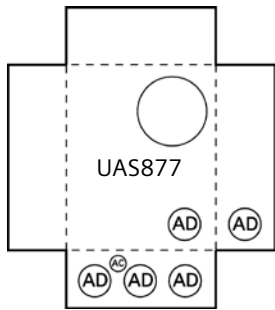
UAS877-PG



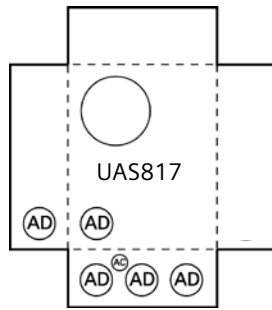
UAT317



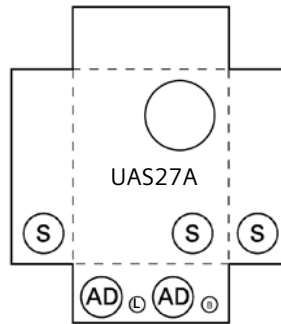
UAT417



UAS877



UAS817



UAS27A

**Knockouts (inches):**

●	1/4
A:	1/2
B:	1/2, 3/4
L	1/2, 3/4, 1, 1-1/4, 1-1/2
S:	1, 1-1/4, 1-1/2, 2, 2-1/2
AC:	1/4, 1/2
AD:	1-1/4, 1-1/2, 2, 2-1/2, 3
RX:	Ø2.750 HUB OP

**200 Amp Ringless****4 Terminal for 1 Phase, 3 Wire 600V AC**

Service	Catalog Number	Hub Provisions	Bypass	Dimension			Connectors	Milbank Equivalent
				W	H	D		
OH	UAT317-0G	RX Opening	None	8.0	14.8	4.5	#6-350 kcmil	U7021-RL-TG
OH/UG	UAT417-XG	RX Cl. Plate	None	11.0	14.5	4.5	#6-350 kcmil	U7040-XL-TG
UG	UAT417-PG	Blank	None	11.0	14.5	4.5	#6-350 kcmil	U7040-O-TG

**200 Amp Ringless****4 Terminal for 1 Phase, 3 Wire 600V AC**

Service	Catalog Number	Hub Provisions	Bypass	Dimension			Connectors	Milbank Equivalent
				W	H	D		
UG (LH)	UAS877-PG	Blank	None	13.0	14.0	5.1	#6-350 kcmil	U1980-O
UG (RH)	UAS817-PG	Blank	None	13.0	14.0	5.1	#6-350 kcmil	U4413-O

**200 Amp Ringless, Side Wired, Line Side Studs****4 Terminal for 1 Phase, 3 Wire 600V AC**

Service	Catalog Number	Hub Provisions	Bypass	Dimension			Connectors		Milbank Equivalent
				W	H	D	Line	Load	
UG	UAS27A-PG	Blank	None	13.0	19.0	5.1	3/8"-16 Studs	#6-350 kcmil	U5777-O

Hubs: Please see accessories on page 31

5th Terminal: order catalog number H659-0121 for 9 o'clock position

Connectors: Aluminum connectors, tin plated

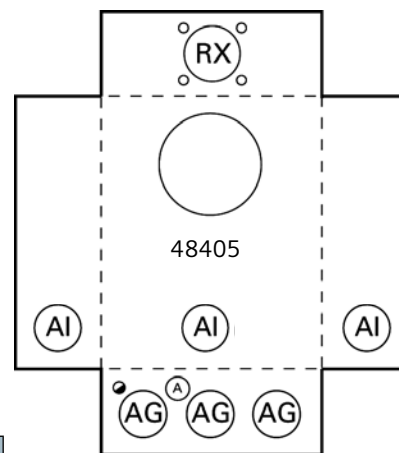
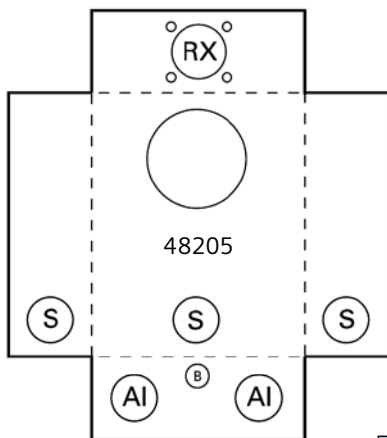
Ground: units supplied with a quad ground



48205-01NU



48405-02NU



Knockouts (inches):	
●:	1/4
A	1/2
B:	1/2, 3/4
S:	1, 1-1/4, 1-1/2, 2, 2-1/2
AG:	3/4, 1, 1-1/4, 1-1/2, 2, 2-1/2, 3
AI:	1, 1-1/4, 1-1/2, 2, 2-1/2, 3
RX:	∅2.750 HUB OP

## 125 Amp Ringless 5 Terminal for 1 Phase, 3 Wire 600V AC Medium Duty

Service	Catalog Number	Connectors	Bypass	Dimension			Hub Provisions	Milbank Equivalent
				W	H	D		
OH	48205-01NU	#6 - 2/0	Lever	10.0	17.0	5.2	RX Opening	U2272-RL-5T9-BL
OH/UG	48405-02NU	#6 - 2/0	Lever	13.0	19.0	5.2	RX Cl. Plate	U2860-XL-5T9-QG

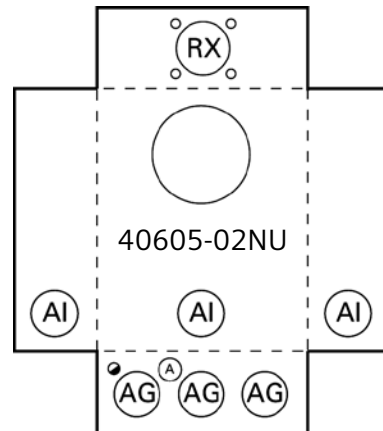
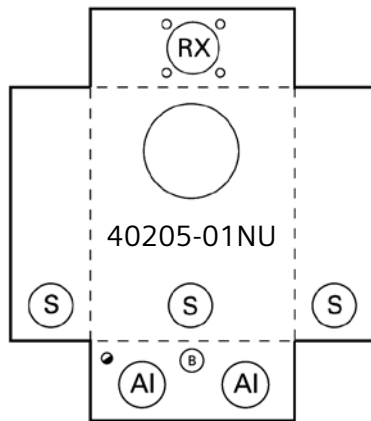
Hubs: Please see accessories on page 31  
 5th Terminal: factory installed in 9 o'clock position  
 Connectors: Aluminum connectors, tin plated  
 Bypass: non-jaw clamping lever bypass, type MQ  
 Ground: units supplied with a quad ground



40205-01NU



40605-02NU



Knockouts (inches):	
●:	1/4
A:	1/2
B:	1/2, 3/4
S:	1, 1-1/4, 1-1/2, 2, 2-1/2
AG:	3/4, 1, 1-1/4, 1-1/2, 2, 2-1/2, 3
AI:	1, 1-1/4, 1-1/2, 2, 2-1/2, 3
RX:	Ø2.750 HUB OP

## 200 Amp Ringless 5 Terminal for 1 Phase, 3 Wire 600V AC Medium Duty

Service	Catalog Number	Connectors	Bypass	Dimension W	H	D	Hub Provisions	Milbank Equivalent
OH	40205-01NU	#6 - 350 kcmil	Lever	10.0	18.0	5.2	RX Opening	U9318-RL
OH/UG	40605-02NU	#6 - 350 kcmil	Lever	13.0	19.0	5.2	RX Cl. Plate	U9319-XL

Hubs: Please see accessories on page 31

5th Terminal: factory installed in 9 o'clock position

Connectors: Aluminum connectors, tin plated

Bypass: non-jaw clamping lever bypass, type MQ

Ground: units supplied with a quad ground





41505-02QG



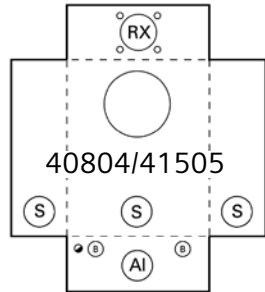
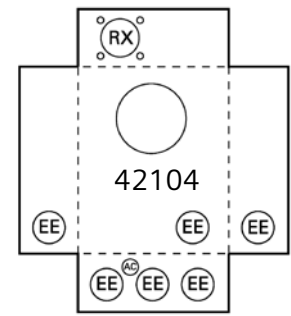
41605-02QG



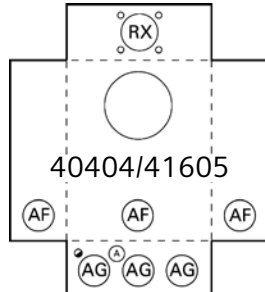
48804-02NU



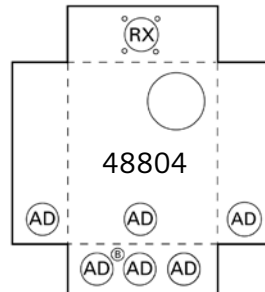
42104-02QG



40804/41505



40404/41605



48804

Knockouts (inches):	
●:	1/4
A:	1/2
B:	1/2, 3/4
S:	1, 1-1/4, 1-1/2, 2, 2-1/2
AC:	1/4, 1/2
AD:	1-1/4, 1-1/2, 2, 2-1/2, 3
AF:	1, 1-1/2, 2, 2-1/2, 3
AG:	3/4, 1, 1-1/4, 1-1/2, 2, 2-1/2, 3
AI:	1, 1-1/4, 1-1/2, 2, 2-1/2, 3
EE:	2, 2-1/2, 3
RX:	∅2.750 HUB OP

### 200 Amp Ringless 4 Terminal for 1 Phase, 3 Wire 600V AC Heavy Duty

Service	Catalog Number	Connectors	Bypass	Dimension			Hub Provisions	Milbank Equivalent
				W	H	D		
OH	40804-01NU	#6 - 350 kcmil	Lever	10.0	18.0	5.2	RX Opening	U9800-RRL-QG-BL-NE
OH/UG	40404-02QG	#6 - 350 kcmil	Lever	13.0	19.0	5.2	RX Cl. Plate	U9801-RXL-QG

Hubs: Please see accessories on page 31  
 5th Terminal: order kit number H35815-2 for 9 o'clock  
 Connectors: Aluminum connectors, tin plated  
 Bypass: Jaw clamping lever bypass, type HQ  
 Ground: units supplied with a ground

### 200 Amp Ringless, Side Wired 4 Terminal for 1 Phase, 3 Wire 600V AC Heavy Duty

Service	Catalog Number	Connectors	Bypass	Dimension			Hub Provisions	Milbank Equivalent
				W	H	D		
UG	42104-02QG	#6 - 350 kcmil	Lever	16.0	20.0	5.0	RX Cl. Plate	U3924-XL
UG	48804-02NU (1)	#6 - 350 kcmil	Lever	16.0	22.0	5.2	RX Cl. Plate	U4721-O-BL

1) Device is off-set design, no bussing from left to right side  
 Hubs: Please see accessories on page 31  
 5th Terminal: order kit number H35815-2 for 9 o'clock  
 Connectors: Aluminum connectors, tin plated  
 Bypass: Jaw clamping lever bypass, type HQ  
 Ground: units supplied with a ground

### 200 Amp Ringless 5 Terminal for 1 or 3 Phase, 3 Wire 600V AC Heavy Duty

Service	Catalog Number	Connectors	Bypass	Dimension			Hub Provisions	Milbank Equivalent
				W	H	D		
OH	41505-02QG	#6 - 350 kcmil	Lever	10.0	18.0	5.2	RX Cl. Plate	U9550-RRL-QG
OH/UG	40405-0BNU	#6 - 350 kcmil	Lever	13.0	19.0	5.2	RX Opening	--
OH/UG	41605-02QG	#6 - 350 kcmil	Lever	13.0	19.0	5.2	RX Cl. Plate	U9551-RXL-QG

Hubs: Please see accessories on page 31  
 5th Terminal: order kit number H35815-2 for 9 o'clock  
 Connectors: Aluminum connectors, tin plated  
 Bypass: Jaw clamping lever bypass, type HQ  
 Ground: units supplied with a ground



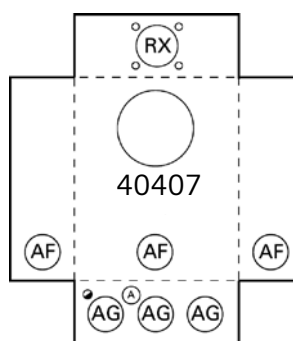
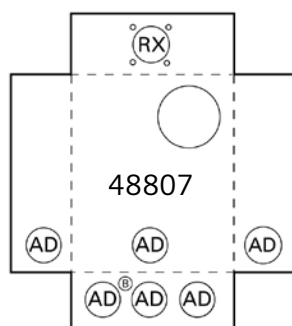
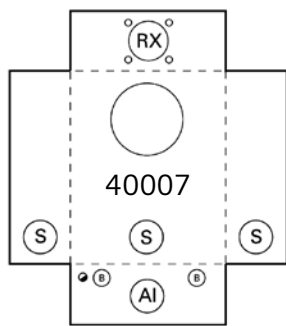
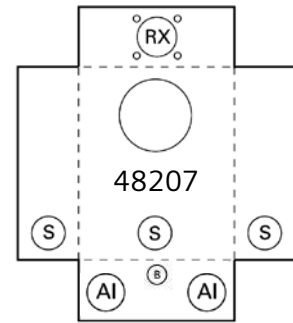
40007-01NU



48207-01NU



40407-02QG



Knockouts (inches):	
●:	1/4
A:	1/2
B:	1/2, 3/4
S:	1, 1-1/4, 1-1/2, 2, 2-1/2
AD:	1-1/4, 1-1/2, 2, 2-1/2, 3
AF:	1, 1-1/2, 2, 2-1/2, 3
AG:	3/4, 1, 1-1/4, 1-1/2, 2, 2-1/2, 3
AI:	1, 1-1/4, 1-1/2, 2, 2-1/2, 3
RX:	Ø2.750 HUB OP

## 125 Amp Ringless

### 7 Terminal for 3 Phase, 4 Wire 600V AC Medium Duty

Service	Catalog Number	Connectors	Bypass	Dimension			Hub Provisions	Milbank Equivalent
				W	H	D		
OH	48207-01NU	#6 - 2/0	Lever	10.0	18.0	5.2	RX Opening	U7573-RL

Hubs: Please see accessories on page 31

Connectors: Aluminum connectors, tin plated

Bypass: non-jaw clamping lever bypass, type MQ

Ground: units supplied with a quad ground

## 200 Amp Ringless, Side Wired

### 7 Terminal for 3 Phase, 4 Wire 600V AC Heavy Duty

Service	Catalog Number	Connectors	Bypass	Dimension			Hub Provisions	Milbank Equivalent
				W	H	D		
UG	48807-02NU (1)	#6 - 350 kcmil	Lever	16.0	22.0	5.2	RX Cl. Plate	U4910-O-BL

1) Device is off-set design, no bussing from left to right side

## 200 Amp Ringless

### 7 Terminal for 3 Phase, 4 Wire 600V AC Heavy Duty

Service	Catalog Number	Connectors	Bypass	Dimension			Hub Provisions	Milbank Equivalent
				W	H	D		
OH	40007-01NU	#6 - 350 kcmil	Lever	10.0	18.0	5.2	RX Cl. Plate	U9700-RRL-QG-BL
OH/UG	40407-02QG	#6 - 350 kcmil	Lever	13.0	19.0	5.2	RX Cl. Plate	U9701-RXL-QG

Hubs: Please see accessories on page 31

Connectors: Aluminum connectors, tin plated

Bypass: Jaw clamping lever bypass, type HQ

Ground: units supplied with a quad ground



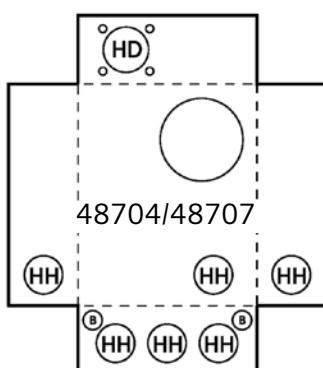
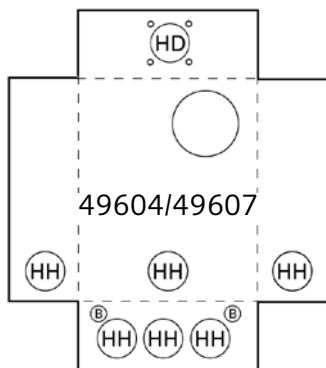
49604-02NU



49607-02NU



48707-02



Knockouts (inches):	
B:	1/2, 3/4
HD:	∅4.281 HUB OP
HH:	2-1/2, 3, 3-1/2, 4

### 320 Amp Ringless (400 Amp Max)

#### 4 Terminal for 1 Phase, 3 Wire 600V AC Heavy Duty

Service	Catalog Number	Connectors	Bypass	Dimension W	H	D	Hub Provisions	Milbank Equivalent
OH/UG	48704-02	3/8" - 16 Studs	Lever	20.0	34.0	6.1	HD Cl. Plate	U2448-X
OH/UG	49604-02NU (1)	3/8" - 16 Studs	Lever	20.0	34.0	6.1	HD Cl. Plate	U4778-X-BL

### 320 Amp Ringless (400 Amp Max)

#### 7 Terminal for 3 Phase, 4 Wire 600V AC Heavy Duty

Service	Catalog Number	Connectors	Bypass	Dimension W	H	D	Hub Provisions	Milbank Equivalent
OH/UG	48707-02	3/8" - 16 Studs	Lever	20.0	34.0	6.1	HD Cl. Plate	U2594-X
OH/UG	49607-02NU (1)	3/8" - 16 Studs	Lever	20.0	34.0	6.1	HD Cl. Plate	U4911-X-BL

1) Device is off-set design, no bussing from left to right side

Hubs: Please see accessories on page 31

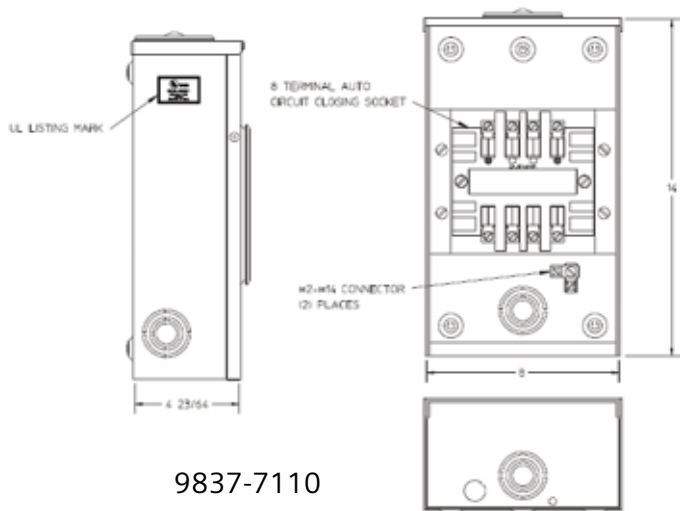
5th Terminal: order kit number H35815-2 for 9 o'clock for the 48704 & 49604

Bypass: Jaw clamping lever bypass, type HQ

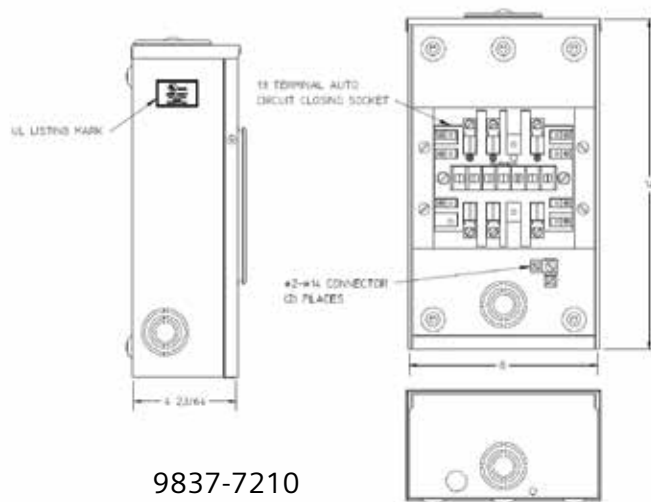
Ground: units supplied with a ground connection

Connector Kits (order 2 kits per socket for line & load connections)

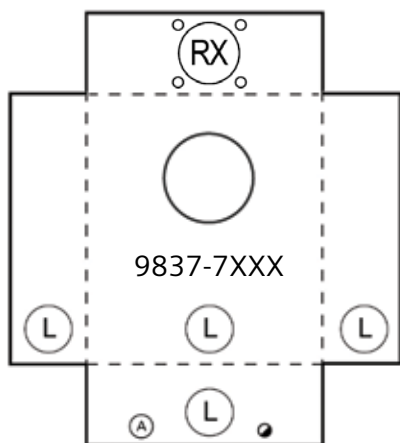
L&G Kit #	Milbank Equivalent	Wire Range	Fits Catalog Numbers:
LK11350	K1539	up to (1) 350 kcmil per phase	48704 & 49604
LK11600	K1540	up to (1) 600 kcmil per phase	48704 & 49604
LK12350	K1350	up to (2) 350 kcmil per phase	48704 & 49604
LK31600	K3441	up to (1) 600 kcmil per phase	48707 & 49607
LK32350	K3442	up to (2) 350 kcmil per phase	48707 & 49607



9837-7110



9837-7210



Knockouts (inches):	
●:	1/4
A:	1/2
L:	1/2, 3/4, 1, 1-1/4, 1-1/2

### 20 Amp, Transformer Rated, Plunger Bypass<sup>①</sup> 8 Terminal for 5S Meters

No. of Term.	Meter Form	Catalog Number	Connectors	Dimensions			Hub Opening	Cover Type	Bypass	Milbank Equivalent
				W	H	D				
8	5S	9837-7100	# 14 - # 4	14.0	8.0	4.4	RX Cl. Plate	Ringless	Plunger	NA
8	5S	9837-7110	# 14 - # 4	14.0	8.0	4.4	RX Cl. Plate	Ring	Plunger	UC7544-RL

### 20 Amp, Transformer Rated, Plunger Bypass<sup>①</sup> 13 Terminal for 6, 8, 9S, 10S Meters

No. of Term.	Meter Form	Catalog Number	Connectors	Dimensions			Hub Opening	Cover Type	Bypass	Milbank Equivalent
				W	H	D				
13	6, 8, 9S, 10S	9837-7200	# 14 - # 4	14.0	8.0	4.4	RX Cl. Plate	Ringless	Plunger	NA
13	6, 8, 9S, 10S	9837-7210	# 14 - # 4	14.0	8.0	4.4	RX Cl. Plate	Ring	Plunger	UC7545-RL

Hubs: Please see accessories on page 31

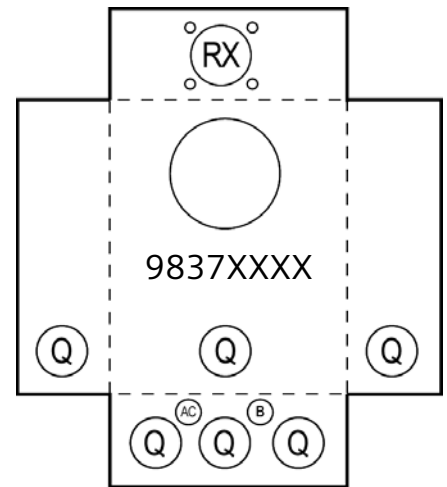
①Bypass: Plunger bypass closes when meter is removed (automatic)



9837-0903



9837-8503



Knockouts (inches):	
B:	1/2, 3/4
Q:	1, 1-1/4, 1-1/2
AC:	1/4, 1/2
RX:	∅2.750 HUB OP

## 20 Amp, Transformer Rated

Pre-wired for Northeast Utilities Specification, 1 Piece Ringless Cover, Test Switch Installed & Wired

No. of Term.	Catalog No.	Connectors	Bypass	Dimension			Hub Provisions	Milbank Equivalent
				W	H	D		
6	9837-0901	#14- #4	None	12.0	20.0	4.4	RX Cl. Plate	UC7478-O-81-NOE
8	9837-0902	#14- #4	None	12.0	20.0	4.4	RX Cl. Plate	UC7444-O-141-NOE
13	9837-0903	#14- #4	None	12.0	20.0	4.4	RX Cl. Plate	UC7445-O-311-NOE

## 20 Amp, Transformer Rated

For use with test switch, 2 Piece Ringless Cover, Test Switch Provision ONLY- not included

No. of Term.	Catalog No.	Connectors	Bypass	Dimension			Hub Provisions	Milbank Equivalent
				W	H	D		
6	9837-8203	#14- #4	None	12.0	20.0	4.4	RX Cl. Plate	UC7532-XL
8	9837-8403	#14- #4	None	12.0	20.0	4.4	RX Cl. Plate	UC7448-XL
13	9837-8503	#14- #4	None	12.0	20.0	4.4	RX Cl. Plate	UC7449-XL

## 20 Amp, Transformer Rated

Pre-wired for NSTAR Specification, 2 Piece Ringless Cover, Test Switch Installed & Wired

No. of Term.	Catalog No.	Connectors	Bypass	Dimension			Hub Provisions	Milbank Equivalent
				W	H	D		
6	9837-0904	#14- #4	None	12.0	20.0	4.4	RX Cl. Plate	UC4964-O-WC-21-NST
8	9837-0905	#14- #4	None	12.0	20.0	4.4	RX Cl. Plate	UC4965-O-WC-21-NST
13	9837-0906	#14- #4	None	12.0	20.0	4.4	RX Cl. Plate	UC4966-O-WC-21-NST

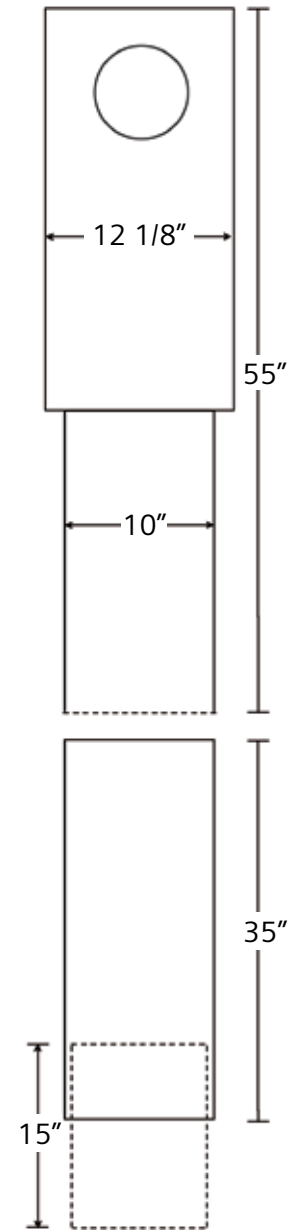
Hubs: Please see accessories on page 31



MP0606L1200R  
(Front)



MP0606L1200R  
(Reverse)



MPEXT

## 200 Amp Mobile Home Meter Pedestal Pad or Earth Mount, Ring or Ringless Design, 4 Jaw for 1 Phase 240V AC

Continuous Duty Amps Per Position	Catalog Number	Cover Type	Line Connectors (installed)	Dimensions			Milbank Equivalent
				H	W	D	
200	MP0406B1200R	Ringless	(2) #6-350 kcmil	55.00	10.00	4.00	none
	MP0606L1200R	Ringless	(2) #6-350 kcmil	55.00	10.00	4.00	U3730-O
	MP0606L1200	Ring	(2) #6-350 kcmil	55.00	10.00	4.00	none

Breakers: Units will accept up to (3) 2 pole breakers or (6) 1 pole breakers -

Siemens type QP or Murray type MP for up to 125amps and Siemens type QN for 200amp.

Filler Plates: Un-used openings that have had the factory twist-outs removed can use part the ECQF3 filler plate.

Required Accessories:

Direct Burial Kit: Use catalog number MPEXT. This lengthens the device to 84", 90", or 96" depending on adjustment of the stabilizer foot.

Pad Mount Kit: Use catalog number MPFLANGE. This kit bolts to the bottom of the MPEXT and will add 11" in length.

MP0606: accomodates (3) 2 pole breakers or (6) 1 pole breakers types Siemens QP/Murray MP-T (125amp max) and types Siemens QN/Murray MPD (150-200amp)

MP0406: Siemens type QN 200amp breaker factory installed. Additional space for 4 one pole or 2 two pole breakers types Siemens QP/Murray MP-T.

Branch circuits run in parallel to 200amp main breaker

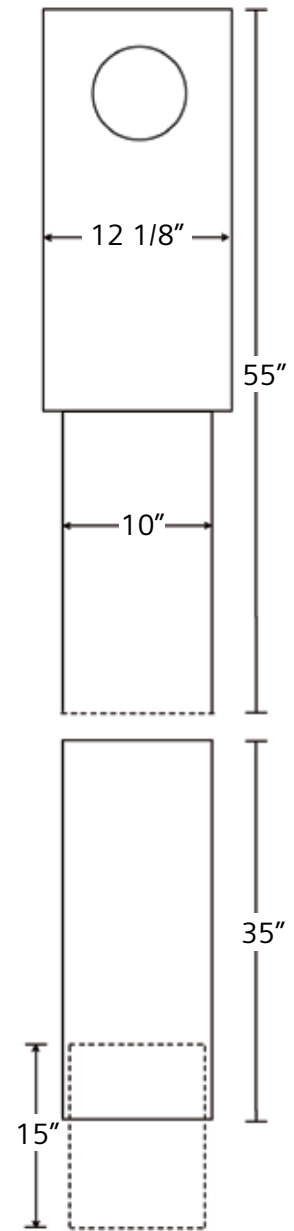




MP0606L1200RJL  
(Front)



MP0606L1200RJL  
(Reverse)



MPEXT

## 200 Amp Mobile Home Lever Bypass Meter Pedestal Pad or Earth Mount, Ringless, 5 Jaw for 1 Phase, 240V AC

Continuous Duty Amps Per Position	Catalog Number	Cover Type	Line Connectors (installed)	Dimensions H	W	D	Milbank Equivalent
200	MP0406B1200RJL	Ringless	(2) #6-350 kcmil	55.00	10.00	4.00	none
200	MP0606L1200RJL	Ringless	(2) #6-350 kcmil	55.00	10.00	4.00	U4322-O-BL

Breakers: Units will accept up to (3) 2 pole breakers or (6) 1 pole breakers -

Siemens type QP or Murray type MP for up to 125amps and Siemens type QN for 200amp.

Filler Plates: Un-used openings that have had the factory twist-outs removed can use part the ECQF3 filler plate.

Required Accessories:

Direct Burial Kit: Use catalog number MPEXT. This lengthens the device to 84", 90", or 96" depending on adjustment of the stabilizer foot.

Pad Mount Kit: Use catalog number MPFLANGE. This kit bolts to the bottom of the MPEXT and will add 11" in length.

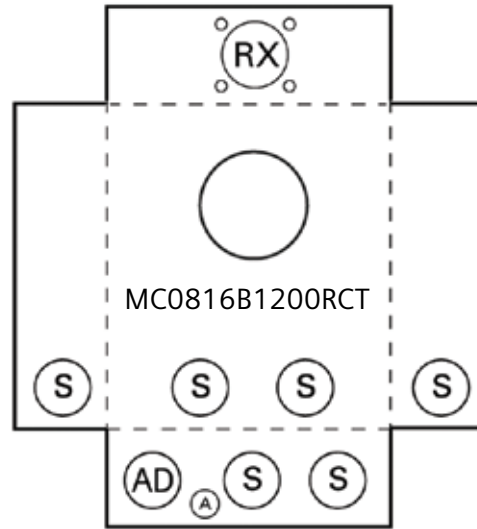
MP0606: accomodates (3) 2 pole breakers or (6) 1 pole breakers types Siemens QP/Murray MP-T (125amp max) and types Siemens QN/Murray MPD (150-200amp)

MP0406: Siemens type QN 200amp breaker factory installed. Additional space for 4 one pole or 2 two pole breakers types Siemens QP/Murray MP-T.

Branch circuits run in parallel to 200amp main breaker



LG0816B1200RCT



Knockouts (inches):	
●:	1/4
A:	1/2
R:	1, 1-1/4, 1-1/2, 2
S:	1, 1-1/4, 1-1/2, 2, 2-1/2
AD:	1-1/4, 1-1/2, 2, 2-1/2, 3

## 200 Amp Ringless Meter-Loadcenter Combination 4 Terminal for 1 Phase, 3 Wire 600V AC for mobile home applications

Service	Catalog Number	Connectors	Bypass	Dimension			Hub Provisions	Milbank Equivalent
				W	H	D		
OH/UG	LG0816B1200RCT	#6-350 kcmil	none	14.0	32.0	5.0	RX Cl. Plate	U5168-XTL-200

Hubs: Please see accessories on page 31

Breakers: Units will accept up to (8) 2 pole breakers or (16) 1 pole breakers - Talon type QP for up to 125amps and Talon type QN for 200amp.

Filler Plates: Un-used openings that have had the factory twist-outs removed can use part the ECQF3 filler plate.

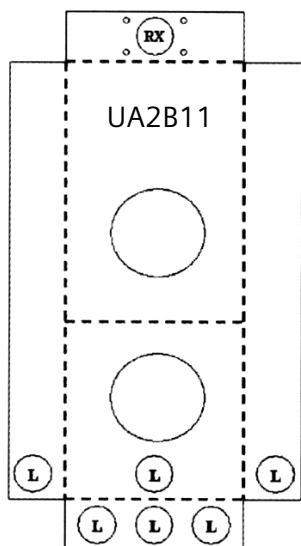
Feed thru lugs: Includes #6 - 350 KCMIL feed thru lugs.

Main Breaker: Factory installed.

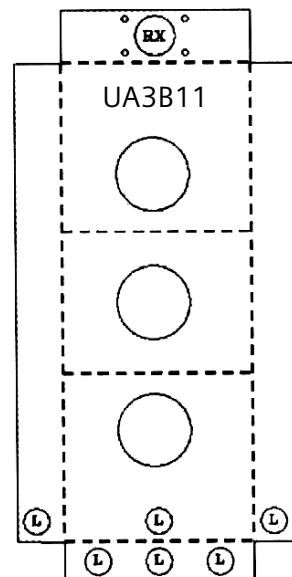
5th Terminal: Use Kit #EC5J2 for 9 o'clock.



UA2B11-XG



UA3B11-XG



Knockouts (inches):	
●:	1/4
L:	1/2, 3/4, 1, 1-1/4, 1-1/2
RX:	Ø2.750 HUB OP

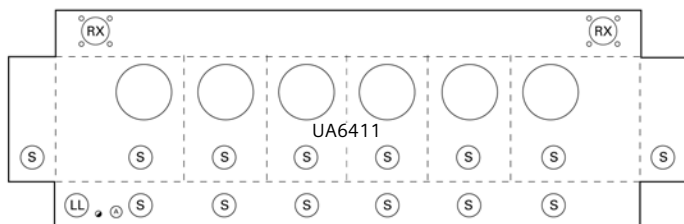
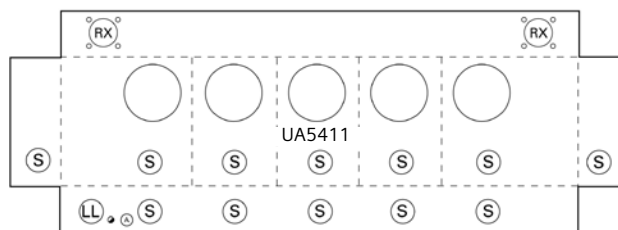
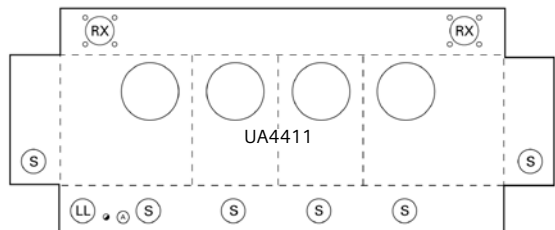
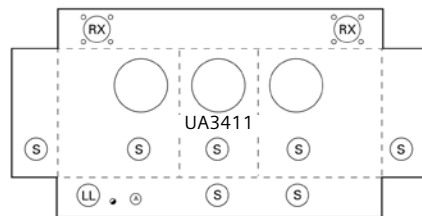
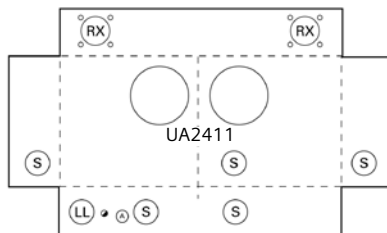
### 100 Amp / Position Ringless Vertical Multi-Position 4 Terminal for 1 Phase, 3 Wire 600V AC

No. of Pos.	Catalog No.	Hub Provisions	Connectors Line	Load	Bypass	Dimension W	H	D	Service	Milbank Equivalent
2	UA2B11-XG	RX Cl. Plate	#6-250 kcmil	#6- 2/0	none	8.0	25.6	4.4	OH/UG	U2692-XL
3	UA3B11-XG	RX Cl. Plate	#6-250 kcmil	#6- 2/0	none	8.0	35.9	4.4	OH/UG	U2693-XL

Hubs: Please see accessories on page 31  
 Connectors: Aluminum connectors, tin plated  
 Ground: units supplied with a ground lug  
 5th Terminal: Use Kit #RX112FJ for 9 o'clock.



UA2411-XG



Knockouts (inches):	
●	1/4
A:	1/2
S:	1, 1-1/4, 1-1/2, 2, 2-1/2
RX:	∅2.750 HUB OP

### 100 Amp / Position Ringless Horizontal Multi-Position 4 Terminal for 1 Phase, 3 Wire 600V AC, End Feed

No. of Pos.	Catalog Number	Hub Provisions	Connectors Line	Load	Bypass	Dimension W	H	D	Service	Milbank Equivalent
2	UA2411-XG	RX Cl. Plate	#6-250 kcmil	#6- 2/0	none	24.2	18.1	5.4	OH/UG	U8212-XL
3	UA3411-XG	RX Cl. Plate	#6-250 kcmil	#6- 2/0	none	34.4	18.1	5.4	OH/UG	U8213-XL
4	UA4411-XG	RX Cl. Plate	#6-250 kcmil	#6- 2/0	none	40.5	18.1	5.4	OH/UG	U8214-XL
5	UA5411-XG	RX Cl. Plate	#6-250 kcmil	#6- 2/0	none	48.6	18.1	5.4	OH/UG	U8215-XL
6	UA6411-XG	RX Cl. Plate	#6-350 kcmil	#6- 2/0	none	56.8	18.1	5.4	OH/UG	U8216-XL

### 100 Amp / Position Ringless Horizontal Multi-Position, with 2" Hub Installed

#### 4 Terminal for 1 Phase, 3 Wire 600V AC, End Feed

No. of Pos.	Catalog Number	Hub Provisions	Connectors Line	Load	Bypass	Dimension W	H	D	Service	Milbank Equivalent
2	UA2411-DG	2" Hub Installed	#6-250 kcmil	#6- 2/0	none	20.2	14.1	5.4	OH	U7362-DL
3	UA3411-DG	2" Hub Installed	#6-250 kcmil	#6- 2/0	none	28.3	14.1	5.4	OH	U7363-DL
4	UA4411-DG	2" Hub Installed	#6-250 kcmil	#6- 2/0	none	36.5	14.1	5.4	OH	U7364-DL
5	UA5411-DG	2" Hub Installed	#6-250 kcmil	#6- 2/0	none	44.6	14.1	5.4	OH	U7365-DL
6	UA6411-DG	2" Hub Installed	#6-350 kcmil	#6- 2/0	none	52.8	14.1	5.4	OH	U7366-DL

Hubs: Please see accessories on page 31 for hubs where needed

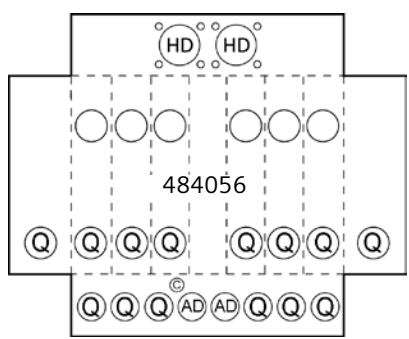
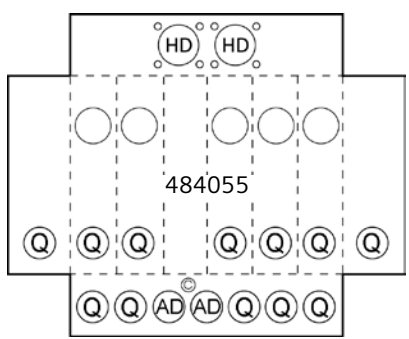
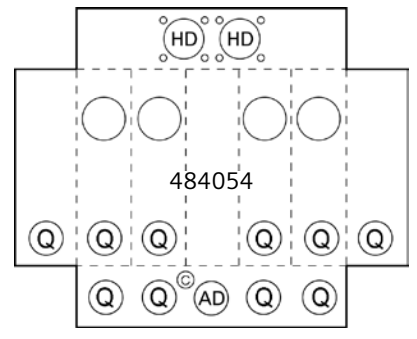
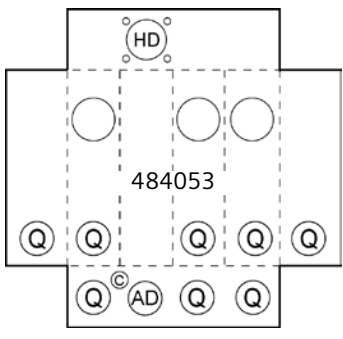
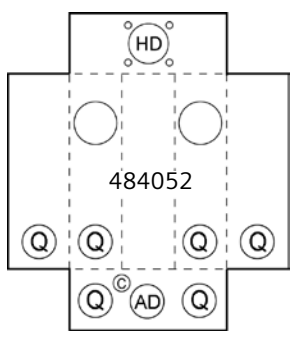
Connectors: Aluminum connectors, tin plated

Ground: units supplied with a ground lug

5th Terminal: order kit number H659-0121 for 9 o'clock



404052-023NU



Knockouts (inches):	
C:	1/2, 3/4, 1
Q:	1, 1-1/4, 1-1/2
AD:	1-1/4, 1-1/2, 2, 2-1/2, 3
HD:	Ø4.281 HUB OP

**100 Amp / Position Ringless Horizontal Multi-Position with lever bypass  
5 Terminal for 1 Phase, 3 Wire 600V AC Medium Duty**

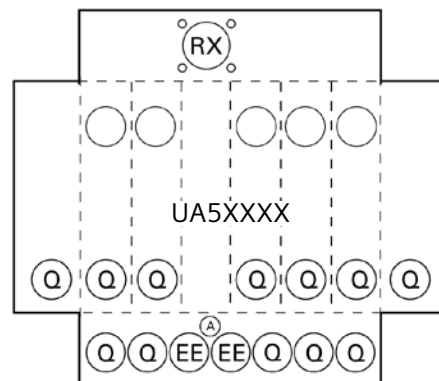
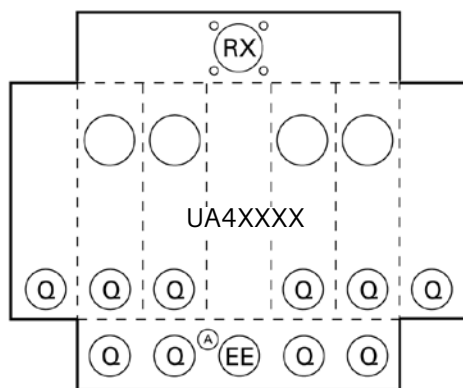
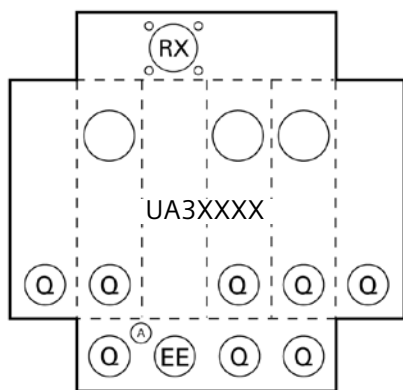
No. of Pos.	Catalog Number	Hub Provisions	Connectors			Dimension			Service	Milbank Equivalent
			Line	Load	Bypass	W	H	D		
2	484052-023NU	HD Cl. Plate	#4-500 kcmil	#6- 2/0	Lever	27.2	17.1	5.3	OH/UG	U2752-X-5T9
3	484053-023NU	HD Cl. Plate	#4-500 kcmil	#6- 2/0	Lever	36.2	17.1	5.3	OH/UG	U2753-X-5T9
4	484054-223NU	(2) HD Cl. Plates	(2) #4-500 kcmil	#6- 2/0	Lever	50.5	17.1	5.3	OH/UG	U2754-X-5T9
5	484055-223NU	(2) HD Cl. Plates	(2) #4-500 kcmil	#6- 2/0	Lever	59.5	17.1	5.3	OH/UG	U2755-X-5T9
6	484056-223NU	(2) HD Cl. Plates	(2) #4-500 kcmil	#6- 2/0	Lever	68.8	17.1	5.3	OH/UG	U2756-X-5T9

Hubs: Please see accessories on page 31  
 Connectors: Aluminum connectors, tin plated, *Factory Installed*  
 Bypass: non-jaw clamping lever bypass, type MQ  
 5th Terminal: factory installed in 9 o'clock position



UA3X11-XG

Knockouts (inches):	
A:	1/2
Q:	1, 1-1/4, 1-1/2
EE:	2, 2-1/2, 3
RX:	Ø2.750 HUB OP



### 125 Amp / Position Ringless Multi-Position with owner's meter lever bypass 5 Terminal for 1 Phase, 3 Wire 600V AC Medium Duty

No. of Pos.	Catalog Number	Hub Provisions	Connectors			Bypass	Dimension			Milbank Equivalent	
			Line	Load	Load- Bypass		W	H	D		
3	UA3X11-ZG	RX Cl. Plate	#6-250 kcmil	#6- 2/0	#6-350 kcmil	(1) Lever	34.0	14.0	4.0	OH/UG	U3763-XL
4	UA4X11-ZG	RX Cl. Plate	#6-350 kcmil	#6- 2/0	#6-350 kcmil	(1) Lever	42.0	14.0	4.0	OH/UG	U3764-XL
5	UA5X11-ZG	RX Cl. Plate	#6-350 kcmil	#6- 2/0	#6-350 kcmil	(1) Lever	50.0	16.0	4.0	OH/UG	U3765-XL

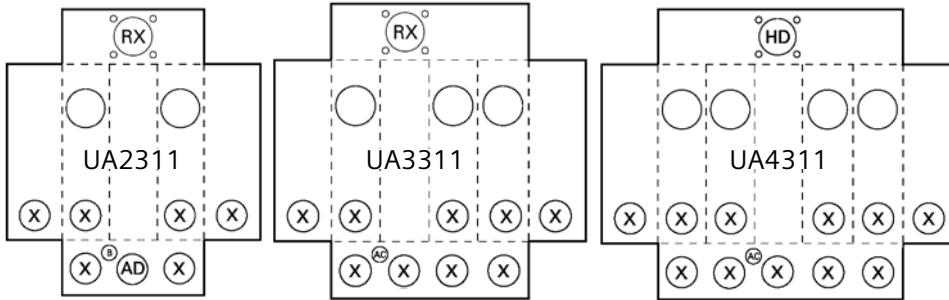
Hubs: Please see accessories on page 31

Connectors: Aluminum connectors, tin plated

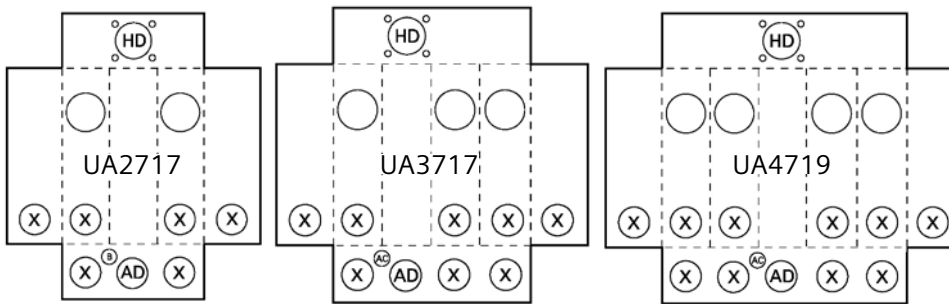
Bypass: non-jaw clamping lever bypass, type MQ , on far right meter position only. All other positions do not have a bypass

5th Terminal: Order part number H659-0121 for no bypass positions and H35815-2 for the bypass position (9 o'clock)

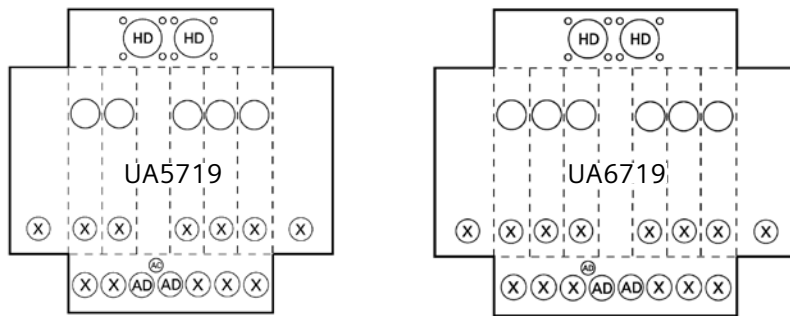




UA2311



UA2717-YG



Knockouts (inches):	
B:	1/2, 3/4
X:	1-1/4, 1-1/2, 2, 2-1/2
AC:	1/4, 1/2
AD:	1-1/4, 1-1/2, 2, 2-1/2, 3
HD:	Ø4.281 HUB OP
RX:	Ø2.750 HUB OP

### 100 Amp / Position Ringless Horizontal Multi-Position

4 Terminal for 1 Phase, 3 Wire 600V AC, Center Feed

No. of Pos.	Catalog Number	Hub Provisions	Connectors Line	Load	Bypass	Dimension			Milbank Service	Milbank Equivalent
						W	H	D		
2	UA2311-ØG	RX Hub Opening	#6-350 kcmil	#4-2/0	none	24.0	12.0	4.5	OH/UG	
3	UA3311-ØG	RX Hub Opening	#6-350 kcmil	#4-2/0	none	32.0	12.0	4.5	OH/UG	
4	UA4311-ØG	RX Hub Opening	#6-350 kcmil	#4-2/0	none	40.0	12.0	4.5	OH/UG	

### 200 Amp / Position Ringless Horizontal Multi-Position

4 Terminal for 1 Phase, 3 Wire 600V AC, Center Feed

No. of Pos.	Catalog Number	Hub Provisions	Connectors Line	Load	Bypass	Dimension			Milbank Service	Milbank Equivalent
						W	H	D		
2	UA2717-YG	HD Hub Opening	1/0-600 kcmil	#6-350 kcmil	none	24.0	14.5	5.1	OH/UG	U1252-X-K1
3	UA3717-YG	HD Hub Opening	1/0-600 kcmil	#6-350 kcmil	none	32.0	14.5	5.1	OH/UG	U1253-X-K3
4	UA4719-YG	HD Hub Opening	1/0-600 kcmil	#6-350 kcmil	none	43.0	14.5	5.1	OH/UG	U1254-X-K3
5	UA5719-KG	(2) HD Hub Openings	(2) 1/0-600 kcmil	#6-350 kcmil	none	51.0	14.5	5.1	OH/UG	U1255-X-K4
6	UA6719-KG	(2) HD Hub Openings	(2) 1/0-600 kcmil	#6-350 kcmil	none	59.0	14.5	5.1	OH/UG	U1256-X-K4

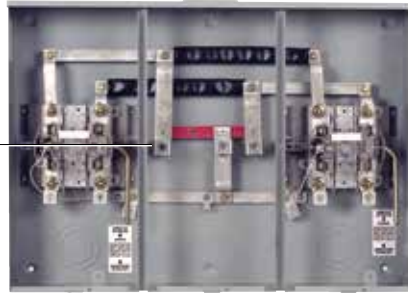
Hubs: Please see accessories on page 31 for hubs where needed

Connectors: Aluminum connectors, tin plated

Ground: units supplied with a ground lug

5th Terminal: order kit number H659-0121 for 9 o'clock

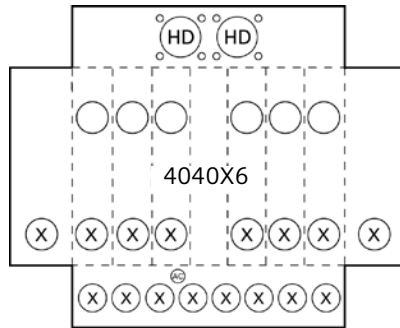
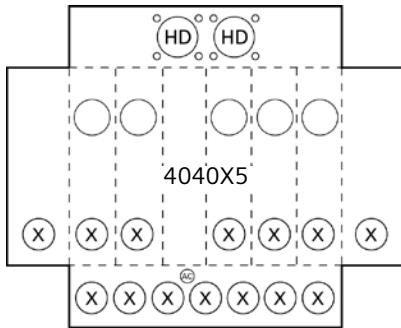
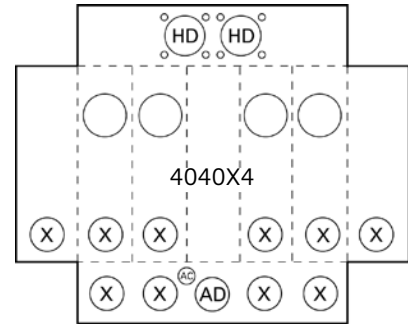
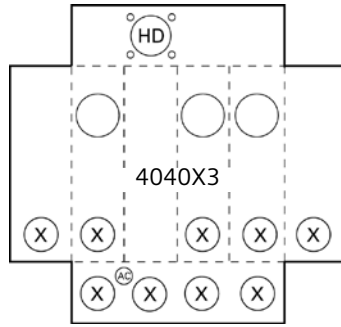
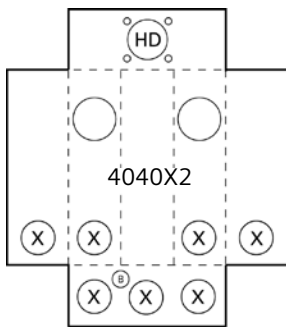
Lugs included!



404052-023NU



404073-023NU



Knockouts (inches):	
B:	1/2, 3/4
X:	1-1/4, 1-1/2, 2, 2-1/2
AC:	1/4, 1/2
AD:	1-1/4, 1-1/2, 2, 2-1/2, 3
HD:	Ø4.281 HUB OP

**200 Amp / Position Ringless Horizontal Multi-Position with lever bypass  
4 & 5 Terminal for 1 Phase, 3 Wire 600V AC Heavy Duty, Center Feed**

No. of Pos.	Catalog Number	Hub Provisions	Connectors			Dimension			Service	Milbank Equivalent
			Line	Load	Bypass	W	H	D		
2	404052-023NU	HD Cl. Plate	1/0-500 kcmil	#6-350 kcmil	Lever	32.8	23.2	6.0	OH/UG	U2872-XT-5T9
3	404053-023NU	HD Cl. Plate	1/0-500 kcmil	#6-350 kcmil	Lever	43.9	23.2	6.0	OH/UG	U2873-XT-5T9
4	404054-223NU	(2) HD Cl. Plates	(2) 1/0-500 kcmil	#6-350 kcmil	Lever	61.0	23.2	6.0	OH/UG	U2874-XT-5T9
5	404055-223NU	(2) HD Cl. Plates	(2) 1/0-500 kcmil	#6-350 kcmil	Lever	72.1	23.2	6.0	OH/UG	U2875-XT-5T9
6	404056-223NU	(2) HD Cl. Plates	(2) 1/0-500 kcmil	#6-350 kcmil	Lever	83.2	23.2	6.0	OH/UG	U2876-XT-5T9

**200 Amp / Position Ringless Horizontal Multi-Position with lever bypass  
7 Terminal for 3 Phase, 4 Wire 600V AC Heavy Duty, Center Feed**

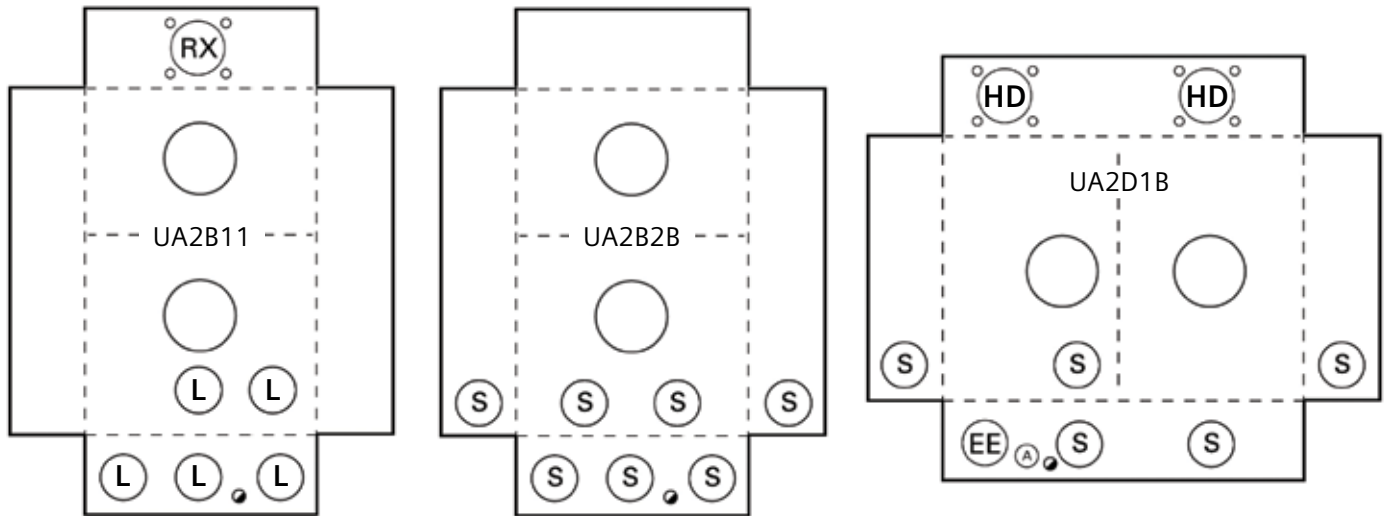
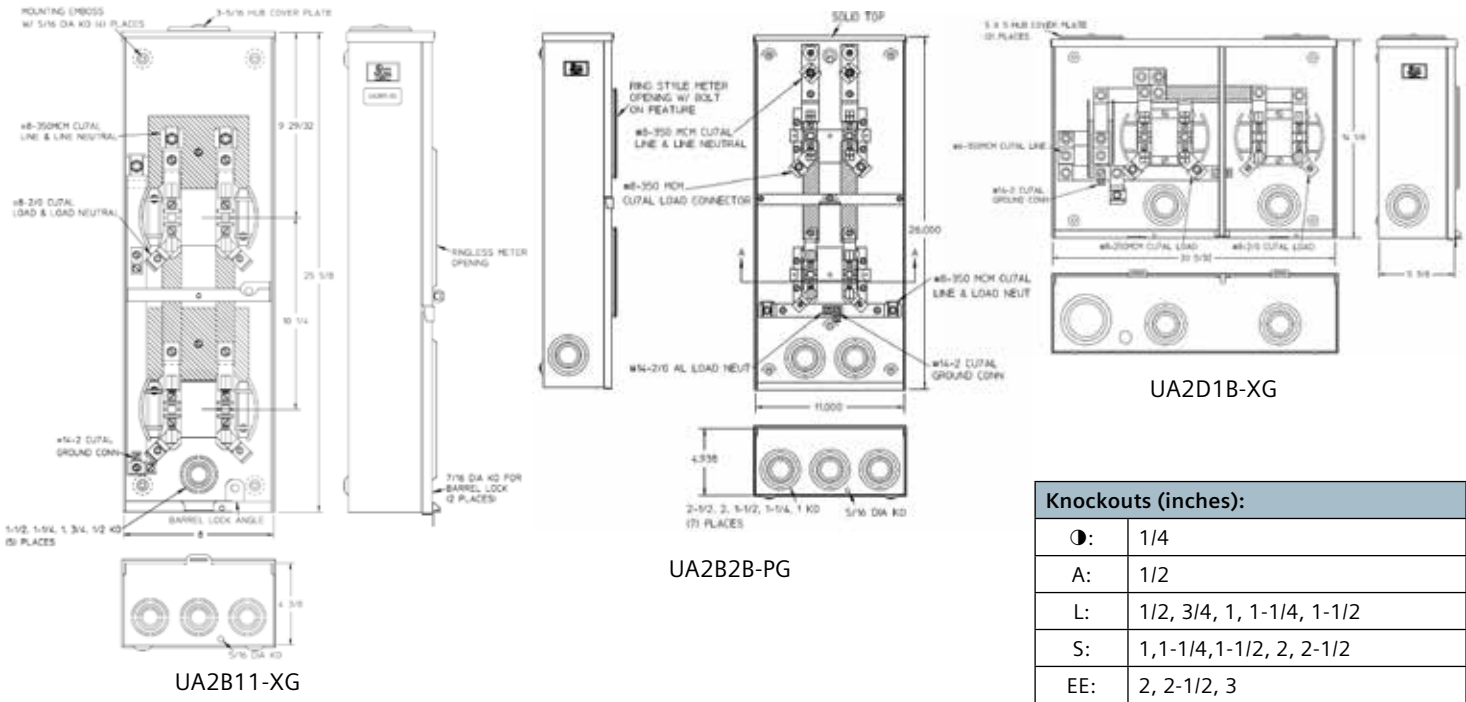
No. of Pos.	Catalog Number	Hub Provisions	Connectors			Dimension			Service	Milbank Equivalent
			Line	Load	Bypass	W	H	D		
2	404072-023NU	HD Cl. Plate	1/0-500 kcmil	#6-350 kcmil	Lever	32.8	23.2	6.0	OH/UG	U2732-XT
3	404073-023NU	HD Cl. Plate	1/0-500 kcmil	#6-350 kcmil	Lever	43.9	23.2	6.0	OH/UG	U2733-XT
4	404074-223NU	(2) HD Cl. Plates	(2) 1/0-500 kcmil	#6-350 kcmil	Lever	61.0	23.2	6.0	OH/UG	U2734-XT
5	404075-223NU	(2) HD Cl. Plates	(2) 1/0-500 kcmil	#6-350 kcmil	Lever	72.1	23.2	6.0	OH/UG	U2735-XT
6	404076-223NU	(2) HD Cl. Plates	(2) 1/0-500 kcmil	#6-350 kcmil	Lever	83.2	23.2	6.0	OH/UG	U2736-XT

Hubs: Please see accessories on page 31

Connectors: Factory installed. Please see chart above for wire ranges.

Bypass: Jaw clamping lever bypass, type HQ

5th Terminal: The fifth terminal is factory installed in the 9 o'clock position for 40405X catalog numbers.



### 100/200 Amp / Position Ring & Ringless Multi-Position 4 Terminal for 1 Phase, 3 Wire 600V AC, Horizontal & Vertical

Type	Catalog No.	Hub Provisions	Connectors			Bypass	Dimension			Service	Milbank Equivalent
			Line	Load-100amp	Load-200amp		W	H	D		
Vertical/ Ring Type	UA2B2B-PG	Blank	#8-350 kcmil	#8-350 kcmil	#8-2/0	None	11.0	26.0	4.9	UG	U1780-O
Horizontal/ Ringless	UA2D1B-XG	HD Cl. Plate	#8-350 kcmil	#8-250 kcmil	#8-2/0	None	20.2	14.1	5.4	OH/UG	U2601-XL
Vertical/ Ringless	UA2B11-XG	RX Cl. Plate	#8-350 kcmil	n/a	#8-2/0	None	8.0	26.0	4.5	OH	U2264-XL

Hubs: Please see accessories on page 31  
 Connectors: Aluminum connectors, tin plated  
 Ground: units supplied with a ground lug  
 5th Terminal: order kit number H659-0121 for 9 o'clock  
 Sealing Ring: The UA2B2B is furnished with a snap-type sealing ring



UAB111-XG

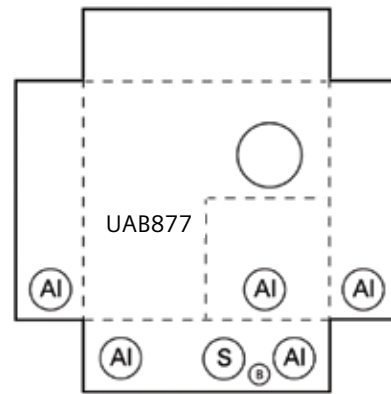
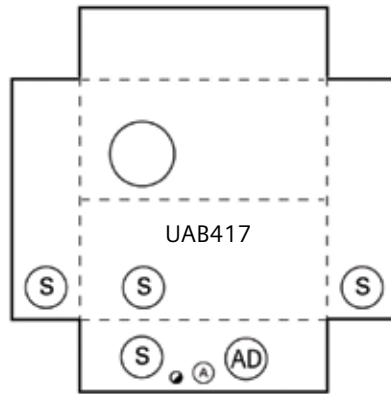
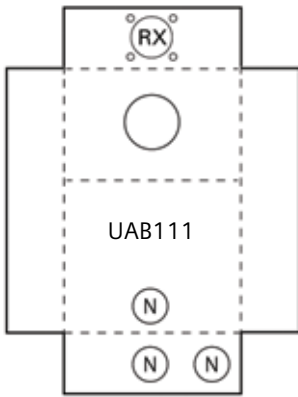


UAB417-XPG



UAB877-PG

Knockouts (inches):	
Ø:	1/4
A:	1/2
B:	1/2, 3/4
N:	3/4, 1, 1-1/4, 1-1/2, 2
S:	1, 1-1/4, 1-1/2, 2, 2-1/2
AD:	1-1/4, 1-1/2, 2, 2-1/2, 3
Al:	1, 1-1/4, 1-1/2, 2, 2-1/2, 3



## 100-200 Amp Ringless Meter-Loadcenter Combination 4 Terminal for 1 Phase, 3 Wire 240V AC

Amps	Service	Catalog Number	Hub Provisions	Bypass	Connectors		Dimension			Milbank Equivalent
					Line	Load	W	H	D	
100	OH/UG	UAB111-100	RX Cl. Plate	None	#14-2/0	#4-1/0	10.9	20.8	4.4	U3499-XL-100
125	OH/UG	UAB111-XG	RX Cl. Plate	None	#14-2/0	Blank	10.9	20.8	4.4	U3499-XL
150	OH/UG	UAB417-150	RX Cl. Plate	None	#6-350 kcmil	#1-300 kcmil	11.6	27.8	5.2	U3990-XL-150
200	OH/UG	UAB417-200	RX Cl. Plate	None	#6-350 kcmil	#1-300 kcmil	11.6	27.8	5.2	U3990-XL-200
200	OH/UG	UAB417-XPG	RX Cl. Plate	None	#6-350 kcmil	Blank	11.6	27.8	5.2	U3990-XL
200	UG	UAB877-200	Blank	None	#6-350 kcmil	#1-300 kcmil	13.2	25.2	5.2	U3798-O-200
200	UG	UAB877-PG	Blank	None	#6-350 kcmil	Blank	13.2	25.2	5.2	NA

Hubs: Please see accessories on page 31

5th Terminal: order kit number EC5J2 for 9 o'clock.

Ground Lugs: All catalog numbers come with (2) ground lugs

**UAB111:**

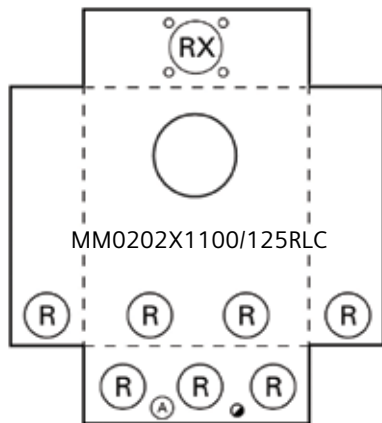
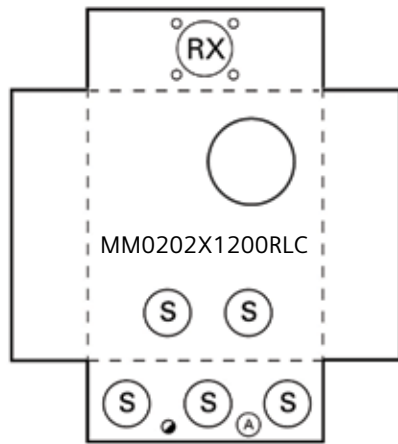
- UAB111-100 has a factory installed, Siemens catalog number Q2100
- UAB111-XG has provisions for a field installed Siemens type QP or Murray type MP-T breaker

**UAB417:**

- UAB417-150/200 has a factory installed, Siemens catalog number QN2200
- UAB417-XPG has provisions for a field installed Siemens type QN or Murray type MPD breaker
- All UAB417 catalog numbers will also accept 100-125amp Siemens type QP or Murray type MP-T breakers

**UAB877:**

- UAB877-200 has a factory installed, Siemens catalog number QN2200
- UAB877-PG has provisions for a field installed Siemens type QN or Murray type MPD breaker
- All UAB877 catalog numbers will also accept 100-125amp Siemens type QP or Murray type MP-T breakers
- UAB877 also an equal to Milbank U5757. Remove line side lugs for line side stud connections



MM0202B1200RLC

Knockouts (inches):	
●:	1/4
A:	1/2
R:	1, 1-1/4, 1-1/2, 2
S:	1, 1-1/4, 1-1/2, 2, 2-1/2

## 100-200 Amp Ringless Meter-Breaker Combination 5 Terminal for 1 Phase, 3 Wire 240V AC

Amps	Service	Catalog Number	Hub Provisions	Bypass	Connectors Line	Load	Dimension W	Dimension H	Dimension D	Milbank Equivalent
100	OH/UG	MM0202B1100RLC	RX Cl. Plate	Lever	#6 - 2/0	#4-1/0	14.0	27.0	4.9	U3741-XL-100-BL
125	OH/UG	MM0202L1125RLC	RX Cl. Plate	Lever	#6 - 2/0	Blank	14.0	27.0	4.9	NA
200	OH/UG	MM0202B1200RLC	RX Cl. Plate	Lever	#6-350 kcmil	#1-300 kcmil	16.0	36.2	4.9	U5140-RXL-200-BL
200	OH/UG	MM0202L1200RLC	RX Cl. Plate	Lever	#6-350 kcmil	Blank	16.0	36.2	4.9	NA

Hubs: Please see accessories on page 31

5th Terminal: Factory installed at the 9 o'clock position.

Ground Lugs: All catalog numbers come with (2) ground lugs

### MM0202B1100RLC:

-Factory installed breaker, Siemens catalog number Q2100

-non-jaw clamping lever bypass, type MQ

### MM0202L1125RLC

-provisions for a field installed Siemens type QP or Murray type MP-T breaker, 125amp maximum

-non-jaw clamping lever bypass, type MQ

### MM0202B1200RLC:

-Factory installed breaker, Siemens catalog number QN2200

-jaw clamping lever bypass, type HQ

### MM0202L1200RLC

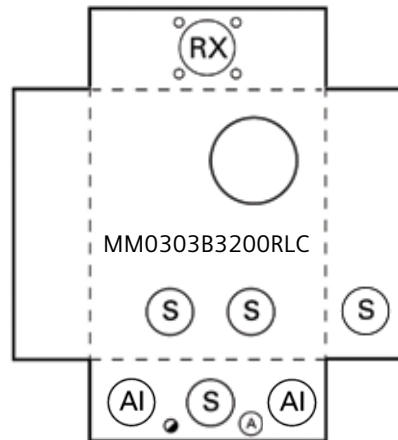
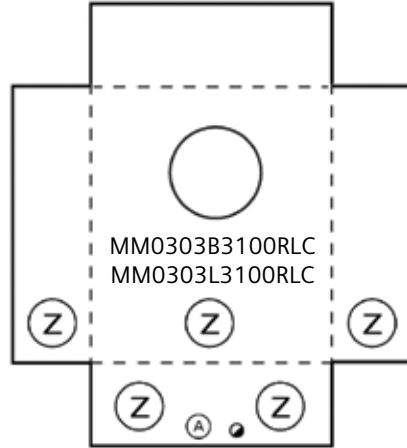
-Will accept 100-125amp Siemens type QP/Murray type MP-T OR 150-200amp Siemens type QN/Murray type MPD breakers

-Jaw clamping lever bypass, type HQ





MM0303B3200RLC



Knockouts (inches):	
●:	1/4
A:	1/2
S:	1, 1-1/4, 1-1/2, 2, 2-1/2
Z:	1-1/2, 2, 2-1/2
AI:	1, 1-1/4, 1-1/2, 2, 2-1/2, 3

## 100-200 Amp Ringless Meter-Breaker Combination 7 Terminal for 3 Phase, 4 Wire 240V AC

Amps	Service	Catalog Number	Hub Provisions	Bypass	Connectors		Dimension			Milbank Equivalent
					Line	Load	W	H	D	
100	OH/UG	MM0303B3100RLC	RX Cl. Plate	Lever	#6 - 2/0	#4-1/0	13.3	26.3	5.1	U3771-XL-100-BL
100	OH/UG	MM0303L3100RLC	RX Cl. Plate	Lever	#6 - 2/0	Blank	13.3	26.3	5.1	NA
200	OH/UG	MM0303B3200RLC	RX Cl. Plate	Lever	#6-350 kcmil	#1-300 kcmil	16.0	36.2	4.9	U5750-RXL-200-BL

Hubs: Please see accessories on page 31  
Ground Lugs: All catalog numbers come with (2) ground lugs

**MM0202B3100RLC:**  
-Factory installed breaker, Siemens catalog number Q3100  
-non-jaw clamping lever bypass, type MQ

**MM0202L3100RLC**  
-provisions for a field installed Siemens type QP or Murray type MP-T breaker, 100amp maximum  
-non-jaw clamping lever bypass, type MQ

**MM0202B1200RLC:**  
-Factory installed breaker, Siemens catalog number QJ23B200  
-Jaw clamping lever bypass, type HQ

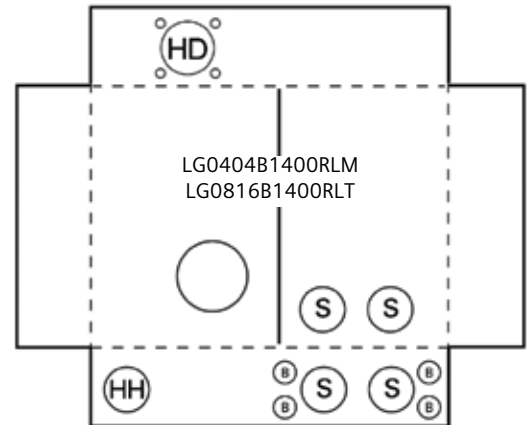




LG0404L1400RLM



LG0816B1400RLT



Knockouts (inches):	
B:	1/2, 3/4
S:	1, 1-1/4, 1-1/2, 2, 2-1/2
HD:	Ø4.281 HUB OP
HH:	2-1/2, 3, 3-1/2, 4

### 320 Amp Ringless Meter Breaker / Loadcenter Combination 4 Terminal for 1 Phase, 3 Wire 240V AC

Amps	Service	Catalog Number	Hub Provisions	Bypass	Connectors			Dimension			Milbank Equivalent
					Line	Load	Load-Subfeed	W	H	D	
320	OH/UG	LG0404L1400RLM	HD Cl. Plate	Lever	#1-600 or (2) 1/0-250	Blank	NA	27.0	29.0	6.0	none
320	OH/UG	LG0816B1400RLT	HD Cl. Plate	Lever	#1-600 or (2) 1/0-250	#1-300 kcmil	#6-350 kcmil	27.0	29.0	6.0	none

Hubs: Please see accessories on page 31

Ground Lugs: All catalog numbers come with (2) ground lugs

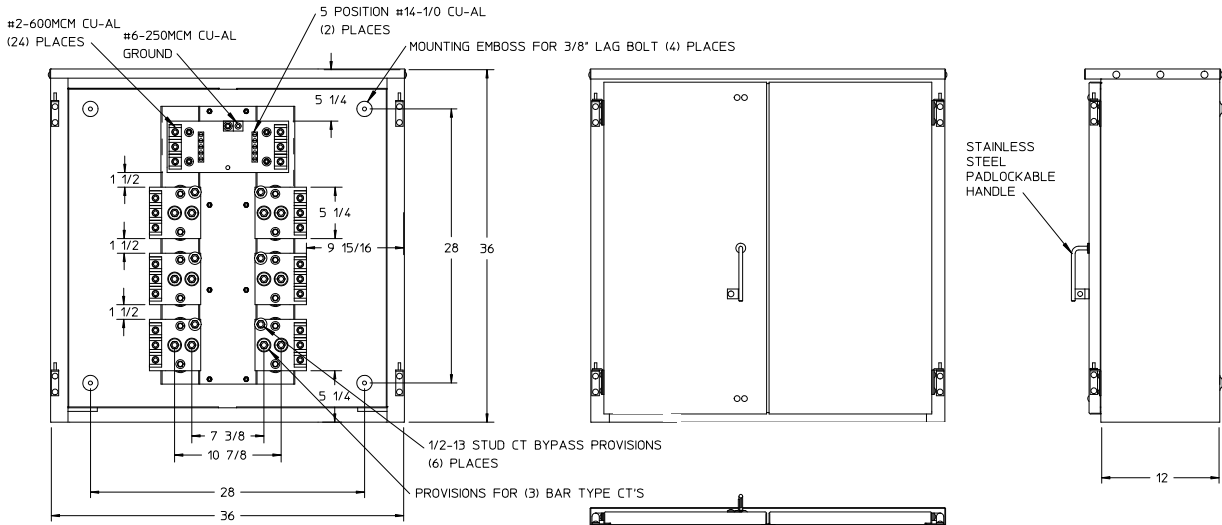
5th Terminal: Factory installed at the 9 o'clock position on devices ending in RLM or RLTM. Use part number H35815-2 for other devices (9 o'clock position).

**LG0404L1400RLM**

- Field installed breakers, breaker types Siemens QN / Murray MPD / Talon LN
- Jaw clamping lever bypass, type HQ
- 5th jaw factory installed

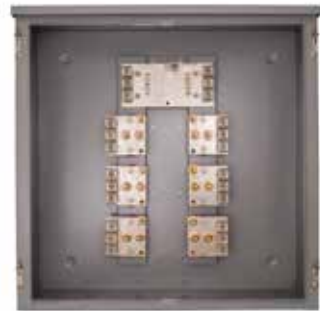
**LG0816B1400RLT**

- 8 space 16 circuit main breaker load center with feed thru lugs included.
- Provision for field installed breaker, breaker types Siemens QN / Murray MPD / Talon LN
- Jaw clamping lever bypass, type HQ

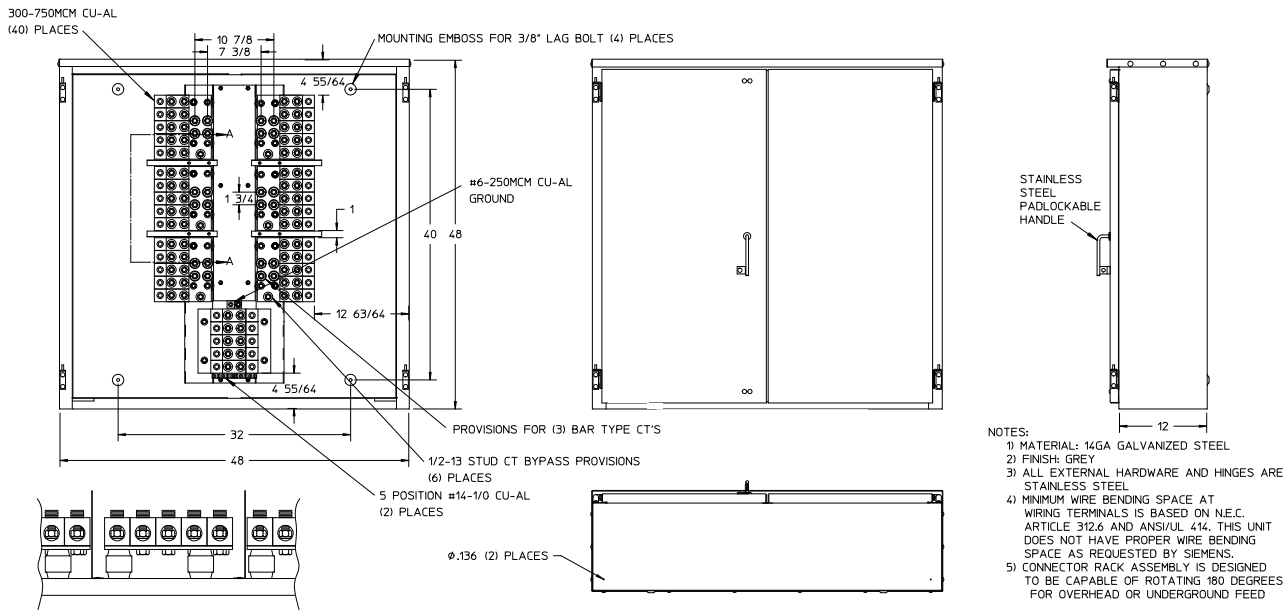


- NOTES:
- 1) MATERIAL: 14GA GALVANIZED STEEL
  - 2) FINISH: GREY
  - 3) ALL EXTERNAL HARDWARE AND HINGES ARE STAINLESS STEEL
  - 4) MINIMUM WIRE BENDING SPACE AT WIRING TERMINALS IS BASED ON N.E.C. ARTICLE 312.6 AND ANS/UL 414. THIS UNIT DOES NOT HAVE PROPER WIRE BENDING SPACE AS REQUESTED BY SIEMENS.
  - 5) CONNECTOR RACK ASSEMBLY IS DESIGNED TO BE CAPABLE OF ROTATING 180 DEGREES FOR OVERHEAD OR UNDERGROUND FEED

LG123636CTS2



LG123636CTS2



LG124848CTS2

- NOTES:
- 1) MATERIAL: 14GA GALVANIZED STEEL
  - 2) FINISH: GREY
  - 3) ALL EXTERNAL HARDWARE AND HINGES ARE STAINLESS STEEL
  - 4) MINIMUM WIRE BENDING SPACE AT WIRING TERMINALS IS BASED ON N.E.C. ARTICLE 312.6 AND ANS/UL 414. THIS UNIT DOES NOT HAVE PROPER WIRE BENDING SPACE AS REQUESTED BY SIEMENS.
  - 5) CONNECTOR RACK ASSEMBLY IS DESIGNED TO BE CAPABLE OF ROTATING 180 DEGREES FOR OVERHEAD OR UNDERGROUND FEED

## Current Transformer Cabinet 4 Terminal for 1 Phase, 3 Wire 240V AC

Amperage Rating	Catalog Number	Hub Provisions	Connectors	Dimension			Millbank Equivalent
				W	H	D	
400-800	LG123636CTS2	Blank	3 lugs per phase	36	36	12	S-1855-0
800-1200	LG124848CTS2	Blank	5 lugs per phase	48	48	12	S-1856-0


Devices are 2 door and include stainless steel handles. All devices are NEMA type 3R rated.

Lugs:  
#2-600 kcmil

# Connector Lugs

Pressure type lugs for Talon’s stud type meter mounting devices are made of 6061-T6 aluminum to provide high strength and high conductivity. All lugs are tin-plated to ensure low contact resistance and to reduce corrosion.

Allen or hex head pressure screws are furnished to provide excellent conductor spread for maximum binding action with the lug. All Talon lugs are listed with Underwriters Laboratories.

<b>H55890-1</b> #6-350 KCMIL	<b>3/8" Stud</b>	<b>H37892</b> #4-500 KCMIL	<b>1/2" Stud</b>	<b>H56476</b> #3/0-800 KCMIL	<b>1/2" Stud</b>	<b>H60162</b> (1) #4-600 KCMIL	<b>1/2" Stud</b>
							
<b>H58022</b> (2) #6-250 KCMIL	<b>3/8" Stud</b>	<b>H56732</b> (2) #4-350 KCMIL	<b>1/2" Stud</b>	<b>H56732-1</b> (2) #4-350 KCMIL	<b>1/2" Stud</b>	<b>H56732-2</b> (2) #4-350 KCMIL	<b>3/8" Stud</b>
							
<b>H56732-M</b> (2) #4-500 KCMIL	<b>1/2" Stud</b>	<b>Connector Kits (order 2 kits per socket for line &amp; load connections)</b>					
		<b>L&amp;G Kit #</b>	<b>Milbank Equivalent</b>	<b>Wire Range</b>			
		LK11350	K1539	up to (1) 350 kcmil per phase			
		LK11600	K1540	up to (1) 600 kcmil per phase			
		LK12350	K1350	up to (2) 350 kcmil per phase			
		LK31600	K3441	up to (1) 600 kcmil per phase			
		LK32350	K3442	up to (2) 350 kcmil per phase			

## Pressure lug connectors for meter mounting devices

Anti-rotation feature	Conductor size	Stud opening	Pressure screw head	Dimensions* (inches)			Catalog number
				L	W	H	
No	#6-350 KCMIL	13/32"	5/16" Allen	2-1/4	1-1/8	1-1/4	<b>H55890-1</b>
No	(2) #6-250 KCMIL	13/32"	5/16" Allen	2-3/16	1-5/8	1-3/16	<b>H58022</b>
No	#4-500 KCMIL	9/16"	3/8" Allen	2-13/16	1-1/2	1-9/16	<b>H37892</b>
Yes	(1) #4-600 KCMIL or (2) #1/0-250 KCMIL	9/16"	1/2" Allen	2-13/16	1-3/8	1-13/16	<b>H60162</b>
Yes	#3/0-800 KCMIL	9/16"	1/2" Allen	3-1/4	1-5/16	1-13/16	<b>H56476</b>
Yes	(2) #4-350 KCMIL	9/16"	5/16" Allen	2-7/8	1-59/64	1-1/4	<b>H56732</b>
No	(2) #4-350 KCMIL	9/16"	5/16" Allen	2-7/8	1-59/64	1-1/4	<b>H56732-1</b>
No	(2) #4-350 KCMIL	13/32"	5/16" Allen	2-7/8	1-59/64	1-1/4	<b>H56732-2</b>
Yes	(2) #4-500 KCMIL	9/16"	3/8" Allen	2-13/16	2-5/32	1-13/16	<b>H56732-M</b>

\* Dimensions do not include height of pressure screw with conductor installed.

# Accessories

## Removable hub kits

	Conduit Size (inches)	Catalog number
 <p>Removable hub</p>	<b>RX type hubs small</b>	
	1	H38596-2
	1-1/4	H38597-2
	1-1/2	H38598-2
	2	H38599-2
	2-1/2	H38600-2
	Cover plate - steel	H38595-1
Cover plate - aluminum	H38595-2	
 <p>Cover plate</p>	<b>HD Type Hubs Large</b>	
	3	H56856-2
	3-1/2	H56857-2
	4	H56858-2
	Cover plate - steel	H56933
	Cover plate - aluminum	H56933-1
	<b>Large to small adaptor</b>	
Steel HD to RX	H9747-1113	
Aluminum HD to RX	H9747-1112	

## Circuit Breakers

Description	Amps	Catalog No.
1-Pole 120V	15	L115
1-Pole 120V	20	L120
2-Pole 120/240V	20	L220
2-Pole 120/240V	30	L230
2-Pole 120/240V	40	L240
2-Pole 120/240V	50	L250
2-Pole 120/240V	60	L260
2-Pole 120/240V	100	L2100
2-Pole 120/240V	125	L2125
4-Pole 120/240V	150	LN2150R
4-Pole 120/240V	200	LN2200R



## Meter Combo Breakers

Catalog No.	Description	Amperage
LN2200R	4-Pole 120/240V	200
LN2150R	4-Pole 120/240V	150

## Accessories -Misc.

	Description	Catalog number
	Insulated 5th terminal kit	H659-0120
	Meter-loadcenter 5th terminal kit	EC5J2
	Grounded 5th terminal kit	H659-0121
	5th jaw kit - 9:00	RX112FFJ
	For devices UA2B11-XG, UA3b11-XG	
	HQ 5th terminal kit - 9:00 w/o wire	H35815-2
	HQ 5th terminal kit - 9:00 w/ wire	H35815-3
	HQSW 5th terminal kit - 9:00 w/ 9" lead	H35815-5*
*For use with side wired devices only.		
	Black plastic meter opening cover	H39968
	Clear plastic meter opening cover (with plug-in feet)	H659-0162
	HQ isolated neutral kit **Includes neutral and isolation block	H64685-1**
	Insulated Jumper	H36479
	Lug Kit (2/0 - #4) Meter Combos	ECLK1-2

## Sealing rings

	Description	Catalog number
	Stainless Steel Snap Type	H54602
	Stainless Steel Screw Type	H9738-8002

# Repair parts

Catalog Number	Block Assembly	Neutral Assembly	Connector Screw Assembly	Neutral Screw Assembly
UAT111-0G	500-5800H	500-5000H-2	67908-1 (screw only)	65000001 (complete lug asm.)
UAT111-BG				
UAT111-XG				
UAT317-0G	501-5830-2	5007593-2	200007 (nut) & 64542-3 (screw)	200009-1 (nut & screw)
UAT417-XG				
UAT417-PG				
UAS877-PG	5007933 (left) 5007934 (right)	5007859-2	Load side use: 200009-1 (nut & screw) Line side use: 200007 (nut) & 64542-3 (screw)	200009-1 (nut & screw)
UAS817-PG	5007868 (left) 5007867 (right)			
UAS27A-PG	5008264-6 (left) 5008265-6 (right)	5007958-3	Line side use: 200007 (nut) & 64542-3 (screw)	none
48205-01NU	88511-1	500-5000H-2	65000001 (complete lug asm.)	500-5000H-2 (complete Neutral asm.)
48405-02NU		64556-31A-AL	65000001 (complete lug asm.)	65000001 (complete lug asm.)
40205-01NU	88521-1	64556-3A-AL	200009-3 (nut / screw asm.)	200009-3 (nut / screw asm.)
40605-02NU				
200A HQ Heavy Duty Lever Bypass	Varies	Varies	200009-3 (nut / screw asm.)	200009-1 (nut / screw asm.)

**Note:**

- Above parts must be ordered by the distributor using catalog number TYZ:RESIMETERING. Include the part numbers above as a reference on the purchase order.
- Some parts are only available as an assembly. Dissassemble and use parts as needed.

# Product Q & A

**Q. How can I find a missing “lug” for a (Catalog No. \_\_\_\_\_) meter socket?**

A. If the socket is a residential type, the customer usually needs the nut/screw assembly that clamps the wire into place in a lay-in style connector. There are different types of nut/screws. You will need to determine the catalog number of the device, and if it is to be used on the line side, load side or neutral. With a commercial device, the customer may look for a ground lug or mechanical lug for a stud type meter socket. In these cases the customer should contact a technical support person, or refer to the specification sheet for the correct lug.

The customer may mistake the number, that is stamped on the part, (e.g. “6T0350”) as the catalog number. This is actually the wire size that is stamped into the nut/screw assembly for a HQ style device. “6 TO 350” refers to the wire size range of the connector.

**Q. How can I find a replacement insulator, block, or porcelain/ceramic insulator?**

A. First, determine the catalog number of the device. After the device has been identified you can then inquire if it is “left hand or right hand”, and if it is used on a side wired device or a multi-position gang socket. On standard residential sockets, the right and left hand blocks are identical, and are mounted in a mirror image of each other.

**Q. Are Talon meter sockets UL listed?**

A. Talon offers all of its product lines with the UL listing.

**Q. What label information can be found on the inside of the meter socket?**

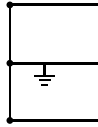
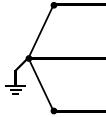
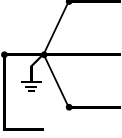
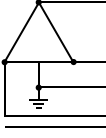
A. Every Talon meter socket has a white information label, approximately 2-1/2” x 4” in size. It is located on the upper left hand inside wall of the enclosure. This label contains the following information: Catalog Number, Socket Type (UAT4, HQ-7U etc.), Number of Terminals (jaws), Continuous/Maximum Amperage, Voltage Rating, Service (single phase or three phase), Short Circuit Withstand Rating, Other UL Information, Included lay-in connector sizes or recommended lugs if stud type, Conduit Hub Kit Options and Accessories, where the device is manufactured and the date it was manufactured.

**Q. How do I find the production date code for a Talon meter socket?**

A. The date code is printed towards the center of the bottom of the interior label. The date code will specify the month and year the socket was manufactured.



# Meter Mounting Device Applications

Electrical service	Service type	Meter form	Socket type	Standard socket Catalog number
1-phase 	Self-contained, 3 wire	2S	4 jaw 100A	AT-1
		2SE	4 jaw 200A	AT-3, AT-4, MQ-4, HQ-4
	Self-contained, bolt-in	2K	4 jaw 320A	HQ-4S, HQ-4D
	Transformer-rated, 2 wire	3S!	K4-400/480A	K-4, K-4UT
3-phase, 3 wire or network 	Self-contained	12S	5 jaw 20A	HQ-6T, HQ-6TS, PTS-6
		12SE	5 jaw 20A	HQ-6T, HQ-6TS
		12K	5 jaw 100A	MQ-5, HQ-5
	Self contained bolt-in	5S	5 jaw 200A	MQ-5, HQ-5
	Transformer-rated	5SE	5 jaw 320A	HQ-5SWT, HQ-5D
3-phase, 4 wire  <p>Wye</p>  <p>or Delta</p>	Self-contained	14S	7 jaw 100/200/320A	MQ-7, HW-7
		15S		
		16S		
	Self-contained, bolt-in	14K	K-7 480/600A	K-7, K-7T
		15K		
		16K		
	Transformer-rated	6S	13 jaw 20A	HQ-13T, HQ-13TS, PTS-13
		8S		
		9S		

Pg.	Amps	Term	5th term	Pos	Talon #	A NEU...	B UI...	C Nat. Grid	D UNITIL...	E NSTAR	F CMP...	G BHE	H MPSCO	I NHEC	J PSNH	K CVPS
3	125	4	avail	1	UAT111-0G	..	O/U	P	O/U	O/U	O/U	O/U	O/U	..	O/U	O/U
3	125	4	avail	1	UAT111-BG	..	OH	OH	OH	OH	OH	OH	OH	..	③	P
3	125	4	avail	1	UAT111-XG	..	O/U	OH	O/U	..	OH	OH	②	..	③	P
4	200	4	avail	1	UAT317-0G	..	OH	OH	OH	OH	O/U	O/U	O/U	..	O/U	..
4	200	4	avail	1	UAT417-XG	..	O/U	OH	O/U	P	O/U	..	②	..	O/U	..
4	200	4	avail	1	UAT417-PG	..	UG	..	UG	..	..	UG	②	..	③	..
4	200	4	avail	1	UAS877-PG	..	UG	UG	UG	UG	UG	UG	UG	..	UG	P
4	200	4	avail	1	UAS817-PG	..	UG	P	UG	..	UG	UG	UG	..	..	P
4	200	4	avail	1	UAS27A-PG	..	..	P	UG	P	UG	②	②	..	③	..
5	125	5	9:00	1	48205-01NU	OH	..	..	..	P	OH	..	②	..	③	..
5	125	5	9:00	1	48405-02NU	OH	O/U	..	..	P	O/U	..	②	..	..	P
6	200	5	9:00	1	40205-01NU	..	..	..	..	..	OH	..	OH	..	..	..
6	200	5	9:00	1	40605-02NU	..	..	..	..	..	OH	..	②	..	③	P
7	200	4	avail	1	40804-01NU	OH	OH	OH	..	P	OH	..	②	..	③	..
7	200	4	avail	1	40404-02QG	..	..	OH	..	P	O/U	..	②	..	③	P
7	200	4	avail	1	42104-02QG	..	..	P	..	P	O/U	..	②	..	③	P
7	200	4	avail	1	48804-02NU	O/U	O/U	P	..	..	O/U	..	②	..	③	P
7	200	5	9:00	1	41505-02QG	..	..	P	..	P	OH	..	②	..	③	..
7	200	5	9:00	1	40405-0BNU	O/U	O/U	OH	..	P	P	..	②	..	③	P
7	200	5	9:00	1	41605-02QG	..	..	O/U	..	P	OH	..	②	..	③	P
8	125	7	6:00	1	48207-01NU	..	..	..	..	P	P	..	..	..	③	..
8	200	7	6:00	1	48807-02NU	O/U	OH	P	..	..	O/U	O/U	②	..	③	P
8	200	7	6:00	1	40007-01NU	OH	OH	OH	OH	OH	OH	OH	OH	..	③	OH
8	200	7	6:00	1	40407-02QG	..	..	OH	..	P	O/U	O/U	②	..	③	P
9	320	4	avail	1	48704-02①	..	..	O/U	O/U	P	O/U	O/U	②	..	③	P
9	320	4	avail	1	49604-02NU①	O/U	O/U	P	O/U	..	O/U	O/U	②	..	③	P
9	320	7	6:00	1	48707-02①	..	..	O/U	O/U	P	P	O/U	O/U	P	③	P
9	320	7	6:00	1	49607-02NU①	O/U	O/U	O/U	O/U	..	O/U	O/U	②	P	③	P
10	20	8	na	1	9837-7100	..	..	..	..	..	..	..	..	..	..	..
10	20	8	na	1	9837-7110	..	..	..	..	..	..	..	..	..	..	..
10	20	13	na	1	9837-7200	..	..	..	..	..	..	..	..	..	..	..
10	20	13	na	1	9837-7210	..	..	..	..	..	..	..	..	..	..	..
11	20	6	na	1	9837-0901	O/U	..	P	..	..	..	..	..	P	..	..
11	20	8	na	1	9837-0902	O/U	..	P	..	..	..	..	..	P	..	..
11	20	13	na	1	9837-0903	O/U	..	P	..	..	..	..	..	P	..	..
11	20	6	na	1	9837-8203	..	O/U	..	..	..	O/U	..	②	..	..	..
11	20	8	na	1	9837-8403	..	..	..	..	..	O/U	..	②	..	..	..
11	20	13	na	1	9837-8503	..	O/U	..	..	..	O/U	..	②	..	..	..
11	20	6	na	1	9837-0904	..	..	P	..	O/U	..	..	..	..	..	..
11	20	8	na	1	9837-0905	..	..	P	..	O/U	..	..	..	..	..	..
11	20	13	na	1	9837-0906	..	..	P	..	O/U	..	..	..	..	..	..

Key
OH = Overhead feed only
UG = Underground feed only
O/U = Overhead (or) underground feed approved
P = Approval pending utility review/documentation

- A)** Northeast Utilities
- B)** United Illuminating
- C)** National Grid
- D)** UNITIL
- E)** NSTAR Electric
- F)** Central Maine Power
- G)** Bangor Hydro Electric
- H)** Maine Public Service Co.
- I)** New Hampshire Electric Coop
- J)** Public Service New Hampshire
- K)** Central Vermont Public Service

\*Utility specifications vary. Consult utility prior to installation.

	Milbank #	Talon #	Ring vs. RL	OH/UG/O/U	Lugs max kcmil	BPS	Brl Lock	Description
	U7487-RL-TG	UAT111-OG	RL	O/U	2/0	no	no	135A 4J RGLS 1POS NO BPS MS OH/UG
	U7487-YL-TG	UAT111-BG	RL	O/U	2/0	no	no	135A 4J RGLS 1POS NO BPS MS OH 1.25"HUB
	U7487-O-TG	UAT111-XG	RL	O/U	2/0	no	no	135A 4J RGLS 1POS NO BPS MS OH/UG CL PL.
	U7021-RL-TG	UAT317-OG	RL	OH	350	no	no	200A 4J RGLS 1POS NO BPS MS OH
	U7040-XL-TG	UAT417-XG	RL	O/U	350	no	no	200A 4J RGLS 1POS NO BPS MS OH/UG
	U7040-O-TG	UAT417-PG	RL	UG	350	no	no	200A 4J RGLS 1POS NO BPS MS UG ONLY
	U1980-O	UAS877-PG	RL	UG	350	no	no	200A 4J RGLS 1POS NO BPS MS UG-SW
	U4413-O	UAS817-PG	RL	UG	350	no	no	200A 4J RGLS 1POS NO BPS MS UG-SW
	U5777-O	UAS27A-PG	RL	UG	350	no	no	200A 4J RGLS 1POS NO BPS MS UG-SW STUDS
	U2272-RL-5T9-BL	48205-01NU	RL	OH	2/0	Lever-MQ	yes	125A 5J RGLS 1POS MD LVR MS OH 9:00
	U2860-XL-5T9-QG	48405-02NU	RL	O/U	2/0	Lever-MQ	yes	125A 5J RGLS 1POS MD LVR MS OH/UG 9:00
	U9318-RL	40205-01NU	RL	OH	350	Lever-MQ	yes	200A 5J RGLS 1POS MD LVR MS OH 9:00
	U9319-XL	40605-02NU	RL	O/U	350	Lever-MQ	yes	200A 5J RGLS 1POS MD LVR MS OH/UG 9:00
	U9800-RRL-QG-BL-NE	40804-01NU	RL	OH	350	Lever	yes	200A 4J RGLS 1POS LVRBPS MS OH BL
	U9801-RXL-QG	40404-02QG	RL	O/U	350	Lever	no	200A 4J RGLS 1POS LVRBPS MS OH/UG 2GRD
	U3924-XL	42104-02QG	RL	UG	350	Lever	no	200A 4J RGLS 1POS LVRBPS MS UG-SW
	U4721-O-BL	48804-02NU	RL	UG	350	Lever	yes	200A 4J RGLS 1POS LVRBPS MS OH/UG OFFSET
	U9550-RRL-QG	41505-02QG	RL	OH	350	Lever	no	200A 5J RGLS 1POS LVRBPS MS OH 6:00
	n/a	40405-0BNU	RL	O/U	350	Lever	yes	200A 5J RGLS 1POS LVRBPS MS OH/UG 7/16BL
	U9551-RXL-QG	41605-02QG	RL	O/U	350	Lever	no	200A 5J RGLS 1POS LVRBPS MS OH/UG 6:00
	U7573-RL	48207-01NU	RL	OH	2/0	Lever-MQ	yes	125A 7J RGLS 1POS MD LVR MS OH
	U4910-O-BL	48807-02NU	RL	UG	350	Lever	yes	200A 7J RGLS 1POS LVRBPS MS OH/UG 7/16BL
	U9700-RRL-QG-BL	40007-01NU	RL	OH	350	Lever	yes	200A 7J RGLS 1POS LVRBPS MS OH 7/16BL
	U9701-RXL-QG	40407-02QG	RL	O/U	350	Lever	no	200A 7J RGLS 1POS LVRBPS MS OH/UG 2 GRD
	U2448-X	48704-02	RL	O/U	3/8-stud	Lever	no	HQ4SSW ST CP /W RISER
	U4778-X-BL	49604-02NU	RL	O/U	3/8-stud	Lever	yes	320A 4J RGLS 1POS LVRBPS MS OH/UG BL
	U2594-X	48707-02	RL	O/U	3/8-stud	Lever	yes	320A 7J RGLS 1POS LVRBPS MS OH/UG-SW
	U4911-X-BL	49607-02NU	RL	O/U	3/8-stud	Lever	yes	320A 7J RGLS 1POS LVRBPS MS OH/UG BL
	n/a	9837-7100	RL	O/U	#4	Plunger	no	8J RGLS PLGRBPS CT SKT CVRPLATE STEEL
	UC7544-RL	9837-7110	Ring	O/U	#4	Plunger	no	8J RING PLGRBPS CT SKT CVRPLATE STEEL
	n/a	9837-7200	RL	O/U	#4	Plunger	no	13J RGLS PLGRBPS CT SKT CVRPLATE STEEL
	UC7545-RL	9837-7210	Ring	O/U	#4	Plunger	no	13J RING PLGRBPS CT SKT CVRPLATE STEEL
	UC7478-O-81-NOE	9837-0901	RL	O/U	#4	none	yes	6J RGLS SOLCVR CT SKT PW-NORTHEAST UTIL
	UC7444-O-141-NOE	9837-0902	RL	O/U	#4	none	yes	8J RGLS SOLCVR CT SKT PW-NORTHEAST UTIL
	UC7445-O-311-NOE	9837-0903	RL	O/U	#4	none	yes	13J RGLS SOLCVR CT SKT PW-NORTHEAST UTIL
	UC7532-XL	9837-8203	RL	O/U	#4	none	no	PTS-6, H/O W/CP STL, S/C RINGLESS
	UC7448-XL	9837-8403	RL	O/U	#4	none	no	PTS-8 MTG DEV
	UC7449-XL	9837-8503	RL	O/U	#4	none	no	PTS-13, STEEL, S/C RINGLESS, HO W/
	UC4964-O-WC-21-NST	9837-0904	RL	O/U	#4	none	yes	6J RGLS SPLCVR CT SKT PW-N-STAR
	UC4965-O-WC-21-NST	9837-0905	RL	O/U	#4	none	yes	8J RGLS SPLCVR CT SKT PW-N-STAR
	UC4966-O-WC-21-NST	9837-0906	RL	O/U	#4	none	yes	13J RGLS SPLCVR CT SKT PW-N-STAR

- ① Studs included. Lugs must be purchased separately.
- ② Bangor Hydro Electric is in process of merging with Maine Public Service Co. Requirements are being reviewed - These items are in process for review/approval.
- ③ PSNH allows customer owned meter mounting devices provided they meet UL requirements and are approved by the "Company's Meter and Service Supervisor" prior to installation. These devices meet requirements for the appropriate application. It is the customer's responsibility to select and install the appropriate device.

Pg.	Amps	Term	5th term	Pos	Talon #	A NEU...	B UI...	C Nat. Grid	D UNITIL...	E NSTAR	F CMP...	G BHE	H MPSCO	I NHEC	J PSNH	K CVPS
12	200	4	na	1	MP0406B1200R	..	..	P	UG	P	P	②	②	P	③	..
12	200	4	na	1	MP0606L1200R	..	..	P	UG	P	UG	②	②	P	③	..
12	200	4	na	1	MP0606L1200	..	..	..	..	P	..	..	..	P	③	..
13	200	5	9:00	1	MP0406B1200RJL	UG	UG	UG	UG	P	P	..	②	P	③	..
13	200	5	9:00	1	MP0606L1200RJL	UG	UG	UG	UG	P	UG	..	②	P	③	..
14	200	4	avail	1	LG0816B1200RCT	..	..	..	..	..	..	..	..	..	..	..
15	100	4	avail	2	UA2B11-XG	..	..	OH	OH	P	OH	②	②	..	③	P
15	100	4	avail	3	UA3B11-XG	..	..	OH	OH	P	OH	②	②	..	③	P
16	100	4	avail	2	UA2411-XG	..	..	OH	O/U	O/U	OH	O/U	O/U	..	③	..
16	100	4	avail	3	UA3411-XG	..	..	OH	O/U	O/U	OH	O/U	O/U	..	③	..
16	100	4	avail	4	UA4411-XG	..	..	OH	O/U	O/U	OH	O/U	O/U	..	③	..
16	100	4	avail	5	UA5411-XG	..	..	OH	O/U	O/U	OH	O/U	O/U	..	③	..
16	100	4	avail	6	UA6411-XG	..	..	OH	O/U	O/U	OH	O/U	O/U	..	③	..
16	100	4	avail	2	UA2411-DG	..	..	OH	O/U	O/U	OH	②	②	..	③	..
16	100	4	avail	3	UA3411-DG	..	..	OH	O/U	O/U	OH	②	②	..	③	..
16	100	4	avail	4	UA4411-DG	..	..	OH	O/U	O/U	OH	②	②	..	③	..
16	100	4	avail	5	UA5411-DG	..	..	OH	O/U	O/U	OH	②	②	..	③	..
16	100	4	avail	6	UA6411-DG	..	..	OH	O/U	O/U	OH	②	②	..	③	..
17	100	5	9:00	2	484052-023NU	O/U	O/U	..	..	P	O/U	..	②	..	..	..
17	100	5	9:00	3	484053-023NU	O/U	O/U	..	..	P	O/U	..	②	..	..	..
17	100	5	9:00	4	484054-223NU	O/U	O/U	..	..	P	O/U	..	②	..	..	..
17	100	5	9:00	5	484055-223NU	O/U	O/U	..	..	P	O/U	..	②	..	..	..
17	100	5	9:00	6	484056-223NU	O/U	O/U	..	..	P	O/U	..	②	..	..	..
18	125	5	avail	3	UA3X11-ZG	..	..	..	..	P	O/U	..	②	..	..	..
18	125	5	avail	4	UA4X11-ZG	..	..	..	..	P	O/U	..	②	..	..	..
18	125	5	avail	5	UA5X11-ZG	..	..	..	..	P	O/U	..	②	..	..	..
19	200	4	avail	2	UA2717-YG	..	..	O/U	O/U	O/U	O/U	O/U	O/U	..	..	..
19	200	4	avail	3	UA3717-YG	..	..	O/U	O/U	O/U	O/U	O/U	O/U	..	..	..
19	200	4	avail	4	UA4719-YG	..	..	O/U	O/U	O/U	O/U	O/U	O/U	..	..	..
19	200	4	avail	5	UA5719-KG	..	..	O/U	O/U	O/U	O/U	O/U	O/U	..	..	..
19	200	4	avail	6	UA6719-KG	..	..	O/U	O/U	O/U	O/U	O/U	O/U	..	..	..

Key
OH = Overhead feed only
UG = Underground feed only
O/U = Overhead (or) underground feed approved
P = Approval pending utility review/documentation

- A) Northeast Utilities
- B) United Illuminating
- C) National Grid
- D) UNITIL
- E) NSTAR Electric
- F) Central Maine Power
- G) Bangor Hydro Electric
- H) Maine Public Service Co.
- I) New Hampshire Electric Coop
- J) Public Service New Hampshire
- K) Central Vermont Public Service

\*Utility specifications vary. Consult utility prior to installation.

	Milbank #	Talon #	Ring vs. RL	OH/UG/O/U	Lugs max kcmil	BPS	Brl Lock	Description
	n/a	MP0406B1200R	RL	UG	350	none	yes	200A 4SP/6CIR METER PED W/QN2200
	U3730-O	MP0606L1200R	RL	UG	350	none	yes	MTR PED 200A 4J 06/06 NO BPS RGLS
	n/a	MP0606L1200	Ring	UG	350	none	no	MTR PED 200A 4J 06/06 NO BPS RING
	n/a	MP0406B1200RJL	RL	UG	350	Lever	yes	MTR PED 200A 5J 04/06 LVR BPS RGLSMTR PE
	U4322-O-BL	MP0606L1200RJL	RL	UG	350	Lever	yes	MTR PED 200A 5J 06/06 LVR BPS RGLS
	U5168-XTL-200	LG0816B1200RCT	RL	O/U	350	none	no	METER COMBO L/C 200A 8CKT W/SUBFEED LUGS
	U2692-XL	UA2B11-XG	RL	O/U	250	none	yes	100A 4J RGLS 2POS NO BPS MS OH VERTICAL
	U2693-XL	UA3B11-XG	RL	O/U	250	none	yes	100A 4J RGLS 3POS NO BPS MS OH VERTICAL
	U8212-XL	UA2411-XG	RL	O/U	250	none	no	100A 4J RGLS 2POS NO BPS MS OH/UG E.FED
	U8213-XL	UA3411-XG	RL	O/U	250	none	no	100A 4J RGLS 3POS NO BPS MS OH/UG E.FED
	U8214-XL	UA4411-XG	RL	O/U	250	none	no	100A 4J RGLS 4POS NO BPS MS OH/UG E.FED
	U8215-XL	UA5411-XG	RL	O/U	250	none	no	100A 4J RGLS 5POS NO BPS MS OH/UG E.FEED
	U8216-XL	UA6411-XG	RL	O/U	250	none	no	100A 4J RGLS 6POS NO BPS MS OH/UG E.FEED
	U7362-DL	UA2411-DG	RL	O/U	250	none	no	100A 4J RGLS 2POS NO BPS MS OH END FEED
	U7363-DL	UA3411-DG	RL	O/U	250	none	no	100A 4J RGLS 3POS NO BPS MS OH END FEED
	U7364-DL	UA4411-DG	RL	O/U	250	none	no	100A 4J RGLS 4POS NO BPS MS OH END FEED
	U7365-DL	UA5411-DG	RL	O/U	250	none	no	100A 4J RGLS 5POS NO BPS MS OH END FEED
	U7365-DL	UA6411-DG	RL	O/U	250	none	no	100A 4J RGLS 6POS NO BPS MS OH END FEED
	U2752-X-5T9	484052-023NU	RL	O/U	2/0	Lever-MQ	yes	125A 5J RGLS 2POS MD LVR MS OH/UG BL
	U2753-X-5T9	484053-023NU	RL	O/U	2/0	Lever-MQ	yes	125A 5J RGLS 3POS MD LVR MS OH/UG BL
	U2754-X-5T9	484054-223NU	RL	O/U	2/0	Lever-MQ	yes	125A 5J RGLS 4POS MD LVR MS OH/UG BL
	U2755-X-5T9	484055-223NU	RL	O/U	2/0	Lever-MQ	yes	125A 5J RGLS 5POS MD LVR MS OH/UG BL
	U2756-X-5T9	484056-223NU	RL	O/U	2/0	Lever-MQ	yes	125A 5J RGLS 6POS MD LVR MS OH/UG BL
	U3763-XL	UA3X11-ZG	RL	O/U	350	1-Lever-MQ	no	100A 4J RGLS 4POS 2-NO BPS/1LVRBPS SKT
	U3764-XL	UA4X11-ZG	RL	O/U	350	1-Lever-MQ	no	100A 4J RGLS 4POS 3-NO BPS/1LVRBPS SKT
	U3765-XL	UA5X11-ZG	RL	O/U	350	1-Lever-MQ	no	100A 4J RGLS 4POS 4-NO BPS/1LVRBPS SKT
	U1252-X-K1	UA2717-YG	RL	O/U	350	none	yes	200A 4J RGLS 2POS NO BPS MS OH/UG
	U1253-X-K3	UA3717-YG	RL	O/U	350	none	yes	200A 4J RGLS 3POS NO BPS MS OH/UG ST ENC
	U1254-X-K3	UA4719-YG	RL	O/U	350	none	yes	200A 4J RGLS 4POS NO BPS MS OH/UG ST ENC
	U1255-X-K4	UA5719-KG	RL	O/U	350	none	yes	200A 4J RGLS 5POS NO BPS MS OH/UG ST ENC
	U1256-X-K4	UA6719-KG	RL	O/U	350	none	yes	200A 4J RGLS 6POS NO BPS MS OH/UG ST ENC

- ① Studs included. Lugs must be purchased separately.
- ② Bangor Hydro Electric is in process of merging with Maine Public Service Co. Requirements are being reviewed - These items are in process for review/approval.
- ③ PSNH allows customer owned meter mounting devices provided they meet UL requirements and are approved by the "Company's Meter and Service Supervisor" prior to installation. These devices meet requirements for the appropriate application. It is the customer's responsibility to select and install the appropriate device.

Pg.	Amps	Term	5th term	Pos	Talon #	A NEU...	B UI...	C Nat. Grid	D UNITIL...	E NSTAR	F CMP...	G BHE	H MPSCO	I NHEC	J PSNH	K CVPS
19	100	4	avail	2	UA2311-0G	..	..	O/U	O/U	P	O/U	②	O/U	..	..	..
19	100	4	avail	3	UA3311-0G	..	..	O/U	O/U	P	O/U	②	O/U	..	..	..
19	100	4	avail	4	UA4311-0G	..	..	O/U	O/U	P	O/U	②	O/U	..	..	..
20	200	5	9:00	2	404052-023NU	O/U	P	O/U	..	P	O/U	..	O/U	..	..	..
20	200	5	9:00	3	404053-023NU	O/U	P	O/U	..	P	O/U	..	O/U	..	..	..
20	200	5	9:00	4	404054-223NU	O/U	P	O/U	..	P	O/U	..	O/U	..	..	..
20	200	5	9:00	5	404055-223NU	O/U	P	O/U	..	P	O/U	..	O/U	..	..	..
20	200	5	9:00	6	404056-223NU	O/U	P	O/U	..	P	O/U	..	O/U	..	..	..
20	200	7	6:00	2	404072-023NU	O/U	O/U	O/U	..	P	O/U	②	O/U	..	..	..
20	200	7	6:00	3	404073-023NU	O/U	O/U	O/U	..	P	O/U	②	O/U	..	..	..
20	200	7	6:00	4	404074-223NU	O/U	O/U	O/U	..	P	O/U	②	O/U	..	..	..
20	200	7	6:00	5	404075-223NU	O/U	O/U	O/U	..	P	O/U	②	O/U	..	..	..
20	200	7	6:00	6	404076-223NU	O/U	O/U	O/U	..	P	O/U	②	O/U	..	..	..
21	100/200	4	avail	2	UA2B2B-PG	..	..	..	..	P	..	..	..	..	③	..
21	100/200	4	avail	2	UA2D1B-XG	..	..	P	O/U	P	..	②	O/U	..	③	..
22	100	4	avail	1	UAB111-100	..	P	OH	O/U	P	O/U	O/U	②	P	③	..
22	125	4	avail	1	UAB111-XG	..	OH	P	O/U	P	O/U	②	②	P	③	..
22	150	4	avail	1	UAB417-150	..	P	P	OH	P	OH	OH	②	P	③	P
22	200	4	avail	1	UAB417-200	..	P	O/U	OH	P	OH	②	②	P	③	P
22	200	4	avail	1	UAB417-XPG	..	OH	OH	OH	P	O/U	②	②	P	③	P
22	200	4	avail	1	UAB877-200	..	P	P	UG	P	UG	UG	②	P	③	P
22	200	4	avail	1	UAB877-PG	..	UG	UG	UG	P	UG	②	UG	P	③	P
23	100	5	9:00	1	MM0202B1100RLC	OH	O/U	..	..	P	O/U	..	②	P	③	P
23	125	5	9:00	1	MM0202L1125RLC	OH	O/U	..	..	P	O/U	..	②	P	③	P
23	200	5	9:00	1	MM0202B1200RLC	O/U	O/U	O/U	..	P	O/U	O/U	②	P	③	P
23	200	5	9:00	1	MM0202L1200RLC	O/U	O/U	O/U	..	P	O/U	②	②	P	③	P
24	100	7	6:00	1	MM0303B3100RLC	..	..	OH	..	P	O/U	..	..	P	③	P
24	100	7	6:00	1	MM0303L3100RLC	..	..	OH	..	P	O/U	..	..	P	③	P
24	200	7	6:00	1	MM0303B3200RLC	O/U	..	P	..	P	O/U	②	②	P	③	P
25	320	4	9:00	1	LG0404L1400RLM	..	..	..	..	..	..	..	..	..	..	..
25	320	4	9:00	1	LG0816B1400RLTM	..	..	..	..	..	..	..	..	..	..	..
26	400-800	na	na	na	LG123636CTS2	O/U	O/U	O/U	O/U	..	O/U	..	..	P	③	..
26	800-1200	na	na	na	LG124848CTS2	..	O/U	O/U	O/U	..	O/U	..	..	P	③	..

Key
OH = Overhead feed only
UG = Underground feed only
O/U = Overhead (or) underground feed approved
P = Approval pending utility review/documentation

- A) Northeast Utilities
- B) United Illuminating
- C) National Grid
- D) UNITIL
- E) NSTAR Electric
- F) Central Maine Power

- G) Bangor Hydro Electric
- H) Maine Public Service Co.
- I) New Hampshire Electric Coop
- J) Public Service New Hampshire
- K) Central Vermont Public Service

\*Utility specifications vary. Consult utility prior to installation.



	Milbank #	Talon #	Ring vs. RL	OH/UG/O/U	Lugs max kcmil	BPS	Brl Lock	Description
	n/a	UA2311-OG	RL	O/U	2/0	none	yes	100A 4J RGLS 2POS NO BPS MS OH/UG
	n/a	UA3311-OG	RL	O/U	2/0	none	yes	100A 4J RGLS 3POS NO BPS MS OH/UG
	n/a	UA4311-OG	RL	O/U	2/0	none	yes	100A 4J RGLS 4POS NO BPS MS OH/UG
	U2872-XT-5T9	404052-023NU	RL	O/U	350	Lever	yes	200A 5J RGLS 2POS LVRBPS MS OH/UG B.L.
	U2873-XT-5T9	404053-023NU	RL	O/U	350	Lever	yes	200A 5J RGLS 3POS LVRBPS MS OH/UG B.L.
	U2874-XT-5T9	404054-223NU	RL	O/U	350	Lever	yes	200A 5J RGLS 4POS LVRBPS MS OH/UG B.L.
	U2875-XT-5T9	404055-223NU	RL	O/U	350	Lever	yes	200A 5J RGLS 5POS LVRBPS MS OH/UG B.L.
	U2876-XT-5T9	404056-223NU	RL	O/U	350	Lever	yes	200A 5J RGLS 6POS LVRBPS MS OH/UG B.L.
	U2732-XT	404072-023NU	RL	O/U	350	Lever	yes	200A 7J RGLS 2POS LVRBPS MS OH/UG B.L.
	U2733-XT	404073-023NU	RL	O/U	350	Lever	yes	200A 7J RGLS 3POS LVRBPS MS OH/UG B.L.
	U2734-XT	404074-223NU	RL	O/U	350	Lever	yes	200A 7J RGLS 4POS LVRBPS MS OH/UG B.L.
	U2735-XT	404075-223NU	RL	O/U	350	Lever	yes	200A 7J RGLS 5POS LVRBPS MS OH/UG B.L.
	U2736-XT	404076-223NU	RL	O/U	350	Lever	yes	200A 7J RGLS 6POS LVRBPS MS OH/UG B.L.
	U1780-O	UA2B2B-PG	Ring	UG	2/0	none	no	100A/200A 4J RING 2POS MS OH VERTICAL
	U2601-XL	UA2D1B-XG	RL	O/U	2/0	none	no	100A/200A 4J RGLS 2POS MS OH/UG RGLS
	U3499-XL-100	UAB111-100	RL	O/U	2/0	none	no	MM 100A 4J 1BRKR NO BPS RGLS
	U3499-XL	UAB111-XG	RL	O/U	2/0	none	no	METER MAIN 125A - Talon
	U3990-XL-150	UAB417-150	RL	O/U	350	none	no	MM 150A 4J 1BRKR OH/UG NO BPS RGLS
	U3990-XL-200	UAB417-200	RL	O/U	350	none	no	MM 200A 4J 1BRKR NO BPS RGLS
	U3990-XL	UAB417-XPG	RL	O/U	350	none	no	UAB4 RESIDENTIAL ST 200A TROUGH
	U3798-O-200	UAB877-200	RL	UG	350	none	no	MM 200A 1BRKR 4J UG-SW NO BPS RGLS
	n/a	UAB877-PG	RL	UG	350	none	no	Talon 200A 4J RGLS NO BPS MTRMAIN UG
	U3741-XL-100-BL	MM0202B1100RLC	RL	O/U	2/0	Lever-MQ	yes	MM 100A 5J 1BRKR OH/UG LVRBPS RGLS
	n/a	MM0202L1125RLC	RL	O/U	2/0	Lever-MQ	yes	125A RGLS LVR BPS ML OH/UG
	U5140-RXL-200-BL	MM0202B1200RLC	RL	O/U	350	Lever	yes	MM 200A 5J 1BRKR OH/UG LVRPBS RGLS
	n/a	MM0202L1200RLC	RL	O/U	350	Lever	yes	200A RGLS LVR BPS ML OH/UG-XCEL/LIPA/NEU
	U3771-XL-100-BL	MM0303B3100RLC	RL	O/U	2/0	Lever-MQ	yes	MM 100A 4J 1BRKR OH/UG LVRBPS RGLS
	n/a	MM0303L3100RLC	RL	O/U	2/0	Lever-MQ	yes	MM 100A 4J 1BRKR OH/UG LVRBPS RGLS
	U5750-RXL-200-BL	MM0303B3200RLC	RL	O/U	350	Lever	yes	200A RGLS LVR BPS 3P MTR MAIN OH/UG
	n/a	LG0404L1400RLM	RL	O/U	600	Lever	yes	M/M COMBO 400A 4 CKT TW MN PLUGIN
	n/a	Lg0816B1400RLT	RL	O/U	600	Lever	yes	400A 4J RGLS 8S/16C MTRCMB OH/UG SF PROV
	S1855-O	LG123636CTS2	na	na	na	na	no	36 X 36 X 12 STEEL CT ENCLOSURE
	S1856-O	LG124848CTS2	na	na	na	na	no	48 X 48 X 12 STEEL CT ENCLOSURE

① Studs included. Lugs must be purchased separately.

② Bangor Hydro Electric is in process of merging with Maine Public Service Co. Requirements are being reviewed - These items are in process for review/approval.

③ PSNH allows customer owned meter mounting devices provided they meet UL requirements and are approved by the "Company's Meter and Service Supervisor" prior to installation. These devices meet requirements for the appropriate application. It is the customer's responsibility to select and install the appropriate device.

Notes:

---

# Notes:

## Notes:



**Represented by:**

The Yanow Companies  
220 East Ashland Street  
Brockton, MA 02302  
Tel: 508-894-8900  
Email; sales@bnyanow.com  
www.bnyanow.com

Talon Meter Mounting Devices  
Siemens Industry, Inc.  
Building Technologies Division  
5400 Triangle Parkway  
Norcross, GA 30092

Subject to change without prior notice  
Order No.: RPSA-LG031-0613  
All rights reserved  
Printed in USA  
© 2013 Siemens Industry, Inc.

The information provided in this brochure contains merely general descriptions or characteristics of performance which in case of actual use do not always apply as described or which may change as a result of further development of the products. An obligation to provide the respective characteristics shall only exist if expressly agreed in the terms of contract.

All product designations may be trademarks or product names of Siemens AG or supplier companies whose use by third parties for their own purposes could violate the rights of the owners.

[www.talonmetering.com](http://www.talonmetering.com)