



Indoor Air Quality

Catalog



7 TIME ENERGY STAR® PARTNER OF THE YEAR
2020, 2019, 2014 Partner of the Year - Sustained Excellence
2018, 2017, 2013 and 2012 Partner of the Year, 2014 Climate Communications

Table of Contents

| | |
|--|---------------|
| Selecting Your Fan | Page 3 |
| Selecting Your Fan | |
| <hr/> | |
| OUTDOOR AIR SOLUTIONS | |
| Fresh Air Supply Units | Pages 4 - 5 |
| Fresh Air Supply Kits | Page 6 |
| Fresh Air Accessories | Page 7 |
| <hr/> | |
| ENERGY STAR® CERTIFIED EXHAUST FANS | |
| DC Motor Exhaust Fans | Page 8 |
| Variable Speed Fans | Page 9 |
| ECO-Exhaust Fans | Page 10 |
| Quiet Exhaust Fans | Page 11 |
| Snap-In Exhaust Fans | Page 12 |
| <hr/> | |
| EXHAUST FANS WITH LIGHTS | |
| Exhaust Fans with Light | Page 13 |
| Decorative Exhaust Fans with Light | Page 14 |
| <hr/> | |
| EXHAUST FANS | |
| Snap-In Exhaust Fans | Page 15 |
| Economical Series Exhaust Fans | Page 15 |
| <hr/> | |
| FIRE RATED EXHAUST FANS (UL263, UL555C) | |
| Fire Rated Exhaust Fans | Page 16 |
| ENERGY STAR Certified Fire Rated Exhaust Fans | Page 17 |
| <hr/> | |
| HEATERS | |
| Combination Heaters | Page 18 |
| Bulb Heater with Exhaust Fan | Page 18 |
| <hr/> | |
| HIGH CAPACITY EXHAUST FANS | Page 19 |
| <hr/> | |
| Contractor Packs | Page 20 |
| Controls | Page 20 |
| Accessories | Page 21 |
| Specifications | Pages 22 - 23 |

Selecting Your Fan

Air King offers a wide array of ventilation solutions including ENERGY STAR® certified, ASHRAE 62.2 options, fans to be used to comply with California Title 24 requirements, as well as UL555C and UL263 Fire Rated options to fit almost any residential application. Selecting the perfect Air King ventilation fan for your requirements can be done through the following considerations:

Determine Your CFM

CFM (Cubic Feet Per Minute) is the amount of air the fan is exhausting. Use the following equation to calculate the required CFM for a typical bathroom installation:

$$\text{Room Length} \times \text{Room Width} \times 1.1 = \text{Required CFM}$$

Choose The Sound Level (Sones)

The next consideration is the sound level which is measured in Sones. The lower the sone, the quieter the fan. A fan under one sone is considered very quiet. The sound level will have a direct impact on the cost of the fan - the lower the sound, typically the higher the price. Air King is unique in offering many products that are very quiet while still being budget friendly.



D4 Series
ENERGY STAR Certified Exhaust Fan

Choose Your Features

Features include lights, night lights, decorative grills, heaters, dual speed fans and more. Determine if you will need any of these features for your application and choose a fan accordingly.

Special Consideration

Before selecting any fan, you should consult all national and local codes to determine if any specialized requirements exist. Many municipalities have codes in place for CFM, Sones and efficiency.



Fresh Air Supply Unit



QFAM, FAS

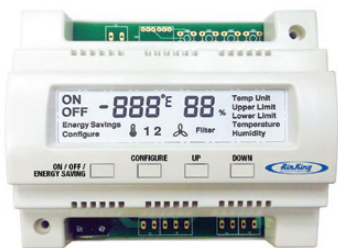


QUFRESH® by



The QuFRESH by Air King offers home builders and developers a cost effective mechanical outdoor air solution. Contractors and builders now have a practical offering for introducing constant fresh air from outside into the residence, meeting the outdoor air CFM requirements. The operator simply dials in the quantity (CFM) of outdoor air needed from the quiet energy efficient fan. **Can be combined with an Air King ASHRAE 62.2 range hood for balanced ventilation.**

QFAM Series Controller



CONTINUOUS OPERATION MODE:

Unit will run continuously at the established CFM level as required by ASHRAE 62.2.

ENERGY SAVINGS MODE:

Internally mounted sensors provide limits preventing the intake of outdoor air that is too humid, too hot, too cold or too dry. The operator simply dials in the quantity (CFM) of outdoor air needed from the quiet energy efficient fan and sets the desired intake levels for the outside humidity and temperature.

INSTALLATION

- Designed to surface mount to a wall or ceiling with the included mounting brackets, connect power & ductwork, you're ready to go
- Inexpensive first cost method to bring in outdoor air using an independent fan
- No connection to HVAC system required
- Mount in basement, attic, equipment closet, garage, laundry room, etc.
- 6" round duct connections for virtually unlimited duct length
- Suitable for single & multi-family projects

VERIFICATION

Includes easy access test port

COMPLIANT

- Component of ASHRAE 62.2 solution for outdoor air
- HVI Certified performance
- ETL listed

FEATURES

- Accepts nominal 10" x 10" x 2" up to MERV 16 filter through easy access filter door (Models AF16102 - MERV 16 filter, AF13102 - MERV 13 filter and AF8102 - MERV 8 filters available separately)
- Nearly silent operation, homeowner may not even know it is operating
- Can be used with a timer switch
- Continuous operation and Energy Savings modes (QFAM models only)
- White epoxy finish



| MODEL | CFM @ .2 SP | ASHRAE 62.2 | ENERGY STAR | CONTROLS | INCLUDED FILTER | LISTING | DUCT SIZE | HOUSING SIZE |
|--------------------------|-------------|-------------|-------------|------------------------------|-----------------|---------|-----------|--------------------------------|
| FRESH AIR MACHINE | | | | | | | | |
| QFAMD | 30 - 130 | Outdoor Air | YES | Speed, Humidity, Temperature | - | ETL | 6" | 14 7/8"W x 10 7/8"D x 11 1/2"H |
| QFAM16 | 30 - 100 | Outdoor Air | YES | Speed, Humidity, Temperature | MERV 16 | ETL | 6" | 14 7/8"W x 10 7/8"D x 11 1/2"H |
| QFAM | 40 - 120 | Outdoor Air | NO | Speed, Humidity, Temperature | - | ETL | 6" | 14 7/8"W x 10 7/8"D x 11 1/2"H |
| F130D | 30 - 130 | Outdoor Air | YES | Speed | - | ETL | 6" | 14 7/8"W x 10 7/8"D x 11 1/2"H |
| FAS | 40 - 120 | Outdoor Air | NO | Speed | - | ETL | 6" | 14 7/8"W x 10 7/8"D x 11 1/2"H |



Fresh Air Supply Unit



MQFAM, MFAS



QUFRESH® by



The QuFRESH by Air King offers home builders and developers a cost effective mechanical outdoor air solution in a compact shell that fits in places traditional units will not. Contractors and builders now have a practical offering for introducing constant fresh air from outside into the residence, meeting the outdoor air CFM requirements. **Can be combined with an Air King ASHRAE 62.2 range hood for balanced ventilation.**

INSTALLATION

- Designed to surface mount to a wall or ceiling with the included mounting brackets, connect power & ductwork, you're ready to go
- Inexpensive first cost method to bring in outdoor air using an independent fan
- No connection to HVAC system required
- Compact design fits nearly everywhere and is perfect for multi-family installations
- Mount in basement, attic, equipment closet, garage, laundry room, etc.
- 6" round duct connections for virtually unlimited duct length
- Suitable for single & multi-family projects

VERIFICATION

Includes easy access test port

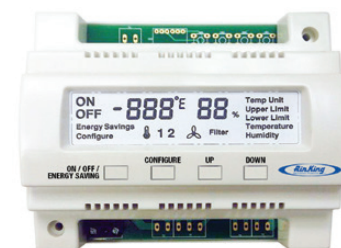
COMPLIANT

- Component of ASHRAE 62.2 solution for outdoor air
- HVI Certified performance
- ETL listed

FEATURES

- Accepts nominal 8" x 9" x 2" up to MERV 13 filter through easy access filter door (Models AF1382-2 - MERV 13 filter and AF882-2 - MERV 8 filters available separately)
- Nearly silent operation, homeowner may not even know it is operating
- Can be used with a timer switch
- Continuous operation and Energy Savings modes

MQFAM Series Controller



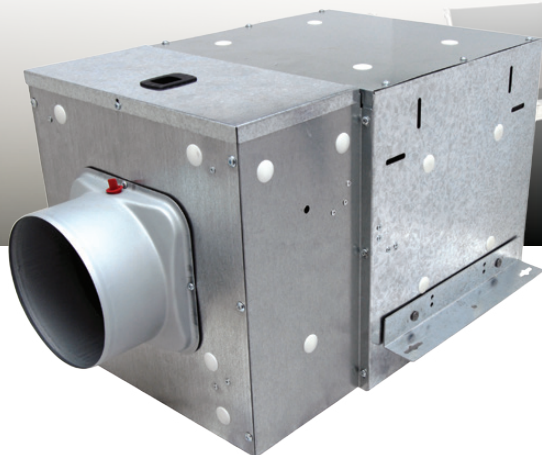
CONTINUOUS OPERATION MODE:
Unit will run continuously at the established CFM level as required by ASHRAE 62.2.

ENERGY SAVINGS MODE:
Internally mounted sensors provide limits preventing the intake of outdoor air that is too humid, too hot, too cold or too dry. The operator chooses either 50 or 80 CFM of outdoor air needed then set the desired intake levels for the outside humidity and temperature.

| MODEL | CFM @ .2 SP | ASHRAE 62.2 | ENERGY STAR | CONTROLS | INCLUDED FILTER | LISTING | DUCT SIZE | HOUSING SIZE |
|--------------------------|-------------|-------------|-------------|------------------------------|-----------------|---------|-----------|--------------------------|
| FRESH AIR MACHINE | | | | | | | | |
| MQFAM | 50 or 80 | Outdoor Air | NO | Speed, Humidity, Temperature | - | ETL | 6" | 9"W x 17 1/8"D x 8 1/4"H |
| MFAS | 50 or 80 | Outdoor Air | NO | Speed | - | ETL | 6" | 9"W x 17 1/8"D x 8 1/4"H |



Fresh Air Supply Unit



The QAKZA and FAKZA series offers home builders and developers a higher volume, cost effective mechanical outdoor air solution. Contractors and builders now have a practical offering for introducing constant fresh air from outside into the residence, meeting the outdoor air CFM requirements. The operator simply dials in the quantity (CFM) of outdoor air needed from the quiet energy efficient fan. **Can be combined with an Air King ASHRAE 62.2 range hood for balanced ventilation.**

INSTALLATION

- Designed to surface mount to a wall or ceiling with the included mounting brackets, connect power & ductwork, you're ready to go
- Inexpensive first cost method to bring in outdoor air using an independent fan
- No connection to HVAC system required
- Mount in basement, attic, equipment closet, garage, laundry room, etc.
- 6" round duct connections for virtually unlimited duct length
- Suitable for single & multi-family projects

VERIFICATION

Includes easy access test port

COMPLIANT

- Component of ASHRAE 62.2 solution for outdoor air
- ETL listed

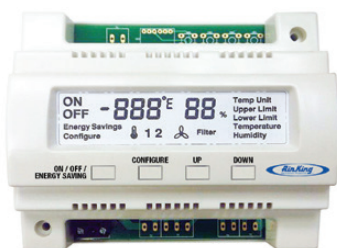
FEATURES

- Accepts nominal 10" x 10" x 2" up to MERV 16 filter through easy access filter door (Models AF16102 - MERV 16 filter, AF13102 - MERV 13 filter and AF8102 - MERV 8 filters available separately)
- Nearly silent operation, homeowner may not even know it is operating
- Can be used with a timer switch
- Continuous operation and Energy Savings modes (QAKZA models only)

KIT INCLUDES: AKZA Fan (see page 18 for more details) 6" Inlet Adapter
 Quick Release Bottom Access Panel FB13 or QFB13 Filter Box
 Qu Series Controller (QAKZA series only)



Qu Series Controller



CONTINUOUS OPERATION MODE:

Unit will run continuously at the established CFM level as required by ASHRAE 62.2.

ENERGY SAVINGS MODE:

Internally mounted sensors provide limits preventing the intake of outdoor air that is too humid, too hot, too cold or too dry. The operator simply dials in the quantity (CFM) of outdoor air needed from the quiet energy efficient fan and sets the desired intake levels for the outside humidity and temperature.

| MODEL | CFM @ .2 SP† | ASHRAE 62.2 | ENERGY STAR | CONTROLS | LISTING | DUCT / INLET SIZE | FILTER BOX | HOUSING SIZE |
|------------------------------|--------------|-------------|-------------|------------------------------|---------|-------------------|------------|--|
| FRESH AIR SUPPLY KITS | | | | | | | | |
| QAKZA200 | 210 | Outdoor Air | NO | Speed, Humidity, Temperature | ETL | 6" | FB13 | 12 ¹ / ₁₆ "W x 13 ¹ / ₁₆ "D x 13 ⁹ / ₁₆ "H |
| FAKZA200 | 210 | Outdoor Air | NO | Speed | ETL | 6" | FB13 | 12 ¹ / ₁₆ "W x 13 ¹ / ₁₆ "D x 13 ⁹ / ₁₆ "H |
| QZA200D | 200 / 80 | Outdoor Air | NO | Speed, Humidity, Temperature | ETL | 6" | FB13 | 12 ¹ / ₁₆ "W x 13 ¹ / ₁₆ "D x 13 ⁹ / ₁₆ "H |
| FZA200D | 200 / 80 | Outdoor Air | NO | Speed | ETL | 6" | FB13 | 12 ¹ / ₁₆ "W x 13 ¹ / ₁₆ "D x 13 ⁹ / ₁₆ "H |
| QAKZA290 | 270 | Outdoor Air | NO | Speed, Humidity, Temperature | ETL | 6" | FB13 | 12 ¹ / ₁₆ "W x 13 ¹ / ₁₆ "D x 13 ⁹ / ₁₆ "H |
| FAKZA290 | 270 | Outdoor Air | NO | Speed | ETL | 6" | FB13 | 12 ¹ / ₁₆ "W x 13 ¹ / ₁₆ "D x 13 ⁹ / ₁₆ "H |

† CFM performance listed is for AKZA base unit



Fresh Air Supply Unit Accessories

AIR FILTERS



An optional air filter can be added to the QFAM, FAS, QAKZA or FAKZA unit to filter out unwanted pollutants from entering the dwelling. As with all air filters, this will need to be replaced on a regular basis that will be dependent on usage and environment. Addition of the filter may cause a decrease in airflow. Adjustments can be made with the unit's airflow selector to compensate.

QFAMD / QFAM / FAS: **AF8102-2:** Nominal 10" x 10" x 2" MERV 8 filter (2 pack)
QAKZA, FAKZA **AF13102-2:** Nominal 10" x 10" x 2" MERV 13 filter (2 pack)
AF16102-2: Nominal 10" x 10" x 2" MERV 16 filter (2 pack)

MQFAM / MFAS: **AF882-2:** Nominal 9" x 8" x 2" MERV 8 filter (2 pack)
AF1382-2: Nominal 9" x 8" x 2" MERV 13 filter (2 pack)

HEATING UNIT



The QH series heating units provide a way to raise the temperature of air coming into the dwelling in colder climates. The unit attaches to the QFAM or QFAMD unit and is controlled by the unit controller. The self-regulating ceramic heating element is bonded to a large transfer surface that allows heating at a very low operating temperature. For use with Air King QFAM and QFAMD models only.

QFAMD / QFAM: **QH400:** 400 watt, 120V, 60Hz. Total of 4.8 amps (including unit)
QH900: 900 watt, 120V, 60Hz. Total of 8.0 amps (including unit)
MQFAM: **MQH400:** 400 watt, 120V, 60Hz. Total of 5.3 amps (including MQFAM unit)
MQH900: 900 watt, 120V, 60Hz. Total of 8.5 amps (including MQFAM unit)

MOTORIZED DAMPER



The MD624 motorized damper mounts inline with the ducting to Air King Fresh Air units. The lead wires from the unit connect to the included transformer that easily plugs into the receptacle of the QMDB. The single blade damper with an internal gasket tightly closes off ducting to minimize air leakage. When the Fresh Air unit is energized, the damper automatically opens, then closes when the main unit shuts off.



Also Available
BDD6R: Metal, spring loaded back draft damper, 6" round ducting

MD624: Galvanized steel, motorized damper, 24VAC, 60Hz - 6W power rating

MOTORIZED DAMPER CONNECTOR BOX



The QMDB allows the Air King MD624 motorized damper to be easily connected to an Air King Fresh Air unit. The box mounts directly to the Fresh Air unit and includes a wire harness to connect it directly to the electrical supply of the Fresh Air unit.

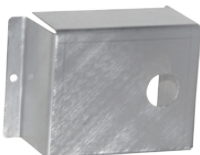
24 VOLT RELAY



The QR24 Relay provides a way to energize an Air King FAS, QFAM, MFAS, or MQFAM unit from a remote 24 volt signal. The relay mounts directly to the unit and includes a direct plug-in connection to the unit. For use with Air King Fresh Air units only.

QR24: 24 Volt Relay, 24VAC, 60 Hz, single pole 110V/15amp

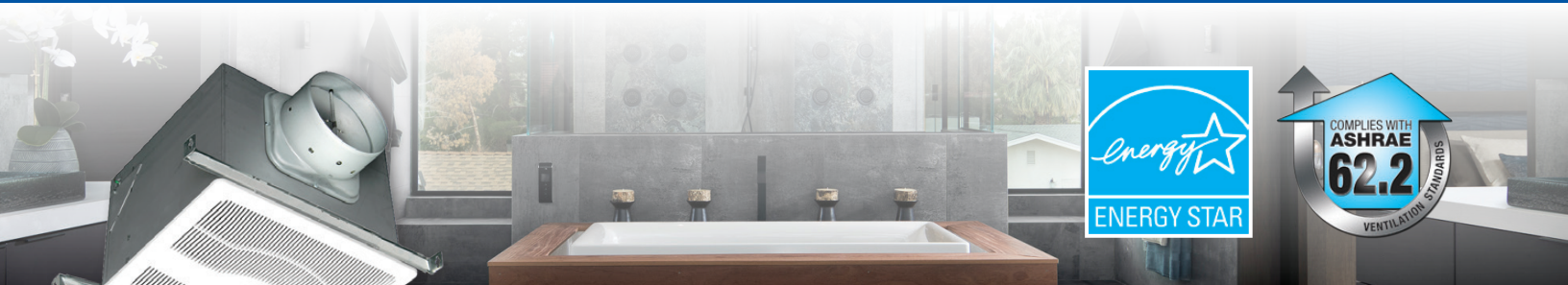
120 VOLT RELAY



The R120 Relay provides a way to energize an Air King FAS unit from another FAS, QFAM, MFAS or MQFAM unit when needing to balance ventilation. The relay mounts directly to the Fresh Air unit and includes a direct plug-in connection to the unit. For use with Air King Fresh Air units only.

R120: 120 Volt Relay, 24VAC, 60 Hz, single pole 110V/15amp

DC Motor Exhaust Fans



D4 Series



DL4 Series

- **ENERGY STAR® Certified**

- Energy efficient DC motor maintains CFM ratings across multiple static pressures and is suitable for continuous operation
- Solution for **ASHRAE 62.2** continuous whole house ventilation
Ventilation calculation: (Total sq. ft. of home/100) + ((# of bedrooms+1) x 7.5 cfm)
 For best fan selection round the min ventilation # up to the nearest 0 - ex. 45 CFM should be rounded up to 50 CFM
- 6" Round duct connector with gasketed damper protects against backdrafts and seals the duct better than any other damper on the market today
- Listed for installation over a tub or shower on a GFCI circuit
- Hanger bar installation
- Select models available in contractor packs (ask your representative for details)
- **DL SERIES: INCLUDED** LED lamp

| MODEL | CFM RANGE @ .1 SP | SONES @ .1 SP | MAX. FAN WATTS | SPEEDS | LIGHTING | LISTING | DUCT SIZE | HOUSING SIZE |
|---|-------------------|---------------|----------------|--------|----------|---------|-----------|--|
| ECO-EXHAUST FANS | | | | | | | | |
| D4S | 40 - 120 | <0.3 - 0.3 | 7.3 | Single | N/A | ETL | 6" | 12 ⁷ / ₈ "W x 12 ³ / ₄ "D x 9 ⁷ / ₈ "H |
| D4D | 40 - 120 | <0.3 - 0.3 | 7.3 | Dual | N/A | ETL | 6" | 12 ⁷ / ₈ "W x 12 ³ / ₄ "D x 9 ⁷ / ₈ "H |
| DL4S | 30 - 130 | <0.3 - 0.3 | 7.4 | Single | LED | ETL | 6" | 12 ⁷ / ₈ "W x 12 ³ / ₄ "D x 9 ⁷ / ₈ "H |
| DL4D | 30 - 130 | <0.3 - 0.3 | 7.4 | Dual | LED | ETL | 6" | 12 ⁷ / ₈ "W x 12 ³ / ₄ "D x 9 ⁷ / ₈ "H |
| ECO-EXHAUST FANS with HUMIDITY SENSOR | | | | | | | | |
| Integrated humidistat senses the humidity level of the room and turns the fan to high speed until the humidity level is below the preset level. Can be set up to 80% RH. The fan can also be activated through a wall control switch. | | | | | | | | |
| D4SH | 40 - 120 | <0.3 - 0.3 | 7.3 | Single | N/A | ETL | 6" | 12 ⁷ / ₈ "W x 12 ³ / ₄ "D x 9 ⁷ / ₈ "H |
| D4DH | 40 - 120 | <0.3 - 0.3 | 7.3 | Dual | N/A | ETL | 6" | 12 ⁷ / ₈ "W x 12 ³ / ₄ "D x 9 ⁷ / ₈ "H |
| DL4SH | 30 - 130 | <0.3 - 0.3 | 7.4 | Single | LED | ETL | 6" | 12 ⁷ / ₈ "W x 12 ³ / ₄ "D x 9 ⁷ / ₈ "H |
| DL4DH | 30 - 130 | <0.3 - 0.3 | 7.4 | Dual | LED | ETL | 6" | 12 ⁷ / ₈ "W x 12 ³ / ₄ "D x 9 ⁷ / ₈ "H |



Variable Speed Exhaust Fans



- **ENERGY STAR® Certified**

- Solution for **ASHRAE 62.2** continuous whole house ventilation

Ventilation calculation: (Total sq. ft. of home/100) + ((# of bedrooms+1) x 7.5 cfm)

For best fan selection round the min ventilation # up to the nearest 0 - ex. 45 CFM should be rounded up to 50 CFM

- 8 capacity settings on low speed allow the fan to be set to the required exhaust rate for continuous ventilation. Low speed set points include: 30, 40, 50, 60, 70, 90, 100 and 120 CFM
- High speed rapidly clears the air of moisture, odors or other contaminants. High speed set points include: 80, 110, 130 and Boost
- Boost speed provides extra ventilation for installation with higher static pressure and ensures airflow requirements are met when used to comply with ASHRAE 62.2
- 6" Round duct connector with gasketed damper protects against backdrafts and seals the duct better than any other damper on the market today
- Listed for installation over a tub or shower on a GFCI circuit
- Hanger bar installation
- Select models available in contractor packs (ask your representative for details)
- **EVL SERIES: INCLUDED** LED lamp

EVD Series



EVL Series

| MODEL | CFM RANGE @ .1 SP | BOOST SPEED | SONES @ .1 SP | MAX. FAN WATTS | LIGHTING | LISTING | DUCT SIZE | HOUSING SIZE |
|---|-------------------|------------------------------|-------------------|----------------|----------|---------|-----------|--|
| ECO-EXHAUST FANS | | | | | | | | |
| EVD | 30 - 150 | 150 @ 0.6 Sones ³ | <0.3 ³ | 37.0 | N/A | ETL | 6" | 12 ⁷ / ₈ "W x 12 ³ / ₄ "D x 9 ⁷ / ₈ "H |
| EVDL | 30 - 150 | 150 @ 0.6 Sones ⁴ | <0.3 ⁴ | 37.0 | LED | ETL | 6" | 12 ⁷ / ₈ "W x 12 ³ / ₄ "D x 9 ⁷ / ₈ "H |
| ECO-EXHAUST FANS with MOTION SENSOR and HUMIDITY SENSOR | | | | | | | | |
| Integrated motion sensor detects occupancy of the room and turns the fan to high speed and keeps it running for the preset time after the room is vacated before automatically turning the fan back to low speed. Timer can be set from 30 seconds to 80 minutes. Integrated humidistat senses the humidity level of the room and turns the fan to high speed until the humidity level is below the preset level. Can be set up to 80% RH. The fan can also be activated through a wall control switch. | | | | | | | | |
| EVDGH | 30 - 150 | 150 @ 0.6 Sones ³ | <0.3 ³ | 37.0 | N/A | ETL | 6" | 12 ⁷ / ₈ "W x 12 ³ / ₄ "D x 9 ⁷ / ₈ "H |
| EVDLGH | 30 - 150 | 150 @ 0.6 Sones ⁴ | <0.3 ⁴ | 37.0 | LED | ETL | 6" | 12 ⁷ / ₈ "W x 12 ³ / ₄ "D x 9 ⁷ / ₈ "H |
| ECO-EXHAUST FANS with HUMIDITY SENSOR | | | | | | | | |
| Integrated humidistat senses the humidity level of the room and turns the fan to high speed until the humidity level is below the preset level. Can be set up to 80% RH. The fan can also be activated through a wall control switch. | | | | | | | | |
| EVDH | 30 - 150 | 150 @ 0.6 Sones ³ | <0.3 ³ | 37.0 | N/A | ETL | 6" | 12 ⁷ / ₈ "W x 12 ³ / ₄ "D x 9 ⁷ / ₈ "H |
| EVDLH | 30 - 150 | 150 @ 0.6 Sones ⁴ | <0.3 ⁴ | 37.0 | LED | ETL | 6" | 12 ⁷ / ₈ "W x 12 ³ / ₄ "D x 9 ⁷ / ₈ "H |



ECO-Exhaust Fans



E Series



EL Series



- **ENERGY STAR® Certified**

- Solution for **ASHRAE 62.2** continuous whole house ventilation

Ventilation calculation: (Total sq. ft. of home/100) + ((# of bedrooms+1) x 7.5 cfm)

For best fan selection round the min ventilation # up to the nearest 0 - ex. 45 CFM should be rounded up to 50 CFM

- Boost speed provides extra ventilation for installation with higher static pressure and ensures airflow requirements are met when used to comply with ASHRAE 62.2
- 6" Round duct connector with gasketed damper protects against backdrafts and seals the duct better than any other damper on the market today
- Listed for installation over a tub or shower on a GFCI circuit
- Hanger bar installation
- Select models available in contractor packs (ask your representative for details)
- **EL SERIES: INCLUDED** LED lamp

| MODEL | CFM @ .1 SP | CFM @ .25 SP | SONES @ .1 SP | MAX. FAN WATTS | LIGHTING | LISTING | DUCT SIZE | HOUSING SIZE |
|--|-------------|------------------|-------------------|----------------|----------|---------|-----------|--|
| ECO-EXHAUST FANS | | | | | | | | |
| E80S | 80 | 84 ¹ | <0.3 ¹ | 37.0 | N/A | ETL | 6" | 12 ⁷ / ₈ "W x 12 ³ / ₄ "D x 9 ⁷ / ₈ "H |
| E110S | 110 | 111 ² | <0.3 ² | 37.0 | N/A | ETL | 6" | 12 ⁷ / ₈ "W x 12 ³ / ₄ "D x 9 ⁷ / ₈ "H |
| E130S | 130 | 113 ³ | <0.3 ³ | 37.0 | N/A | ETL | 6" | 12 ⁷ / ₈ "W x 12 ³ / ₄ "D x 9 ⁷ / ₈ "H |
| EL80S | 80 | 82 ¹ | <0.3 ¹ | 37.0 | LED | ETL | 6" | 12 ⁷ / ₈ "W x 12 ³ / ₄ "D x 9 ⁷ / ₈ "H |
| EL130S | 130 | 112 ⁴ | <0.3 ⁴ | 37.0 | LED | ETL | 6" | 12 ⁷ / ₈ "W x 12 ³ / ₄ "D x 9 ⁷ / ₈ "H |
| ECO-EXHAUST FANS with MOTION SENSOR and HUMIDITY SENSOR | | | | | | | | |
| Integrated motion sensor detects occupancy of the room and turns the fan on (or to high speed for dual speed models) and keeps it running for the preset time after the room is vacated before automatically turning the fan off (or back to low speed). Timer can be set from 30 seconds to 80 minutes. | | | | | | | | |
| Integrated humidistat senses the humidity level of the room and turns the fan on (or to high speed for dual speed models) until the humidity level is below the preset level. Can be set up to 80% RH. The fan can also be activated through a wall control switch. | | | | | | | | |
| E80SGH | 80 | 84 ¹ | <0.3 ¹ | 37.0 | N/A | ETL | 6" | 12 ⁷ / ₈ "W x 12 ³ / ₄ "D x 9 ⁷ / ₈ "H |
| E130SGH | 130 | 113 ³ | <0.3 ³ | 37.0 | N/A | ETL | 6" | 12 ⁷ / ₈ "W x 12 ³ / ₄ "D x 9 ⁷ / ₈ "H |
| EL80SGH | 80 | 82 ¹ | <0.3 ¹ | 37.0 | LED | ETL | 6" | 12 ⁷ / ₈ "W x 12 ³ / ₄ "D x 9 ⁷ / ₈ "H |
| EL130SGH | 130 | 112 ⁴ | <0.3 ⁴ | 37.0 | LED | ETL | 6" | 12 ⁷ / ₈ "W x 12 ³ / ₄ "D x 9 ⁷ / ₈ "H |
| ECO-EXHAUST FANS with HUMIDITY SENSOR | | | | | | | | |
| Integrated humidistat senses the humidity level of the room and turns the fan on (or to high speed for dual speed models) until the humidity level is below the preset level. Can be set up to 80% RH. The fan can also be activated through a wall control switch. | | | | | | | | |
| E80SH | 80 | 84 ¹ | <0.3 ¹ | 37.0 | N/A | ETL | 6" | 12 ⁷ / ₈ "W x 12 ³ / ₄ "D x 9 ⁷ / ₈ "H |
| E130SH | 130 | 113 ³ | <0.3 ³ | 37.0 | N/A | ETL | 6" | 12 ⁷ / ₈ "W x 12 ³ / ₄ "D x 9 ⁷ / ₈ "H |
| EL80SH | 80 | 82 ¹ | <0.3 ¹ | 37.0 | LED | ETL | 6" | 12 ⁷ / ₈ "W x 12 ³ / ₄ "D x 9 ⁷ / ₈ "H |
| EL130SH | 130 | 112 ⁴ | <0.3 ⁴ | 37.0 | LED | ETL | 6" | 12 ⁷ / ₈ "W x 12 ³ / ₄ "D x 9 ⁷ / ₈ "H |

¹ Boost speed provides 84 CFM @ .25 Static Pressure, 0.7 sones • ² Boost speed provides 111 CFM @ .25 Static Pressure, 0.6 sones
³ Boost speed provides 113 CFM @ .25 Static Pressure, 0.7 sones • ⁴ Boost speed provides 112 CFM @ .25 Static Pressure, 0.6 sones



Quiet Exhaust Fans



- **ENERGY STAR® Certified**

- Solutions for **ASHRAE 62.2** continuous whole house ventilation or local ventilation (models with a sone rating of 1.0 or below can be used for whole house ventilation)
- Round duct connector with damper protects against backdrafts
- Listed for installation over a tub or shower on a GFCI circuit
- Hanger bar installation
- Select models available in contractor packs (see page 20 for details)
- **LEDAK SERIES:** Moonstone glass light lens with **INCLUDED** LED lamp

AK150LS,
AK200LS, AK280LS



AKLS6, AKLS6H Series



AKLS Series



AK and AKH Series



BFC90 Series

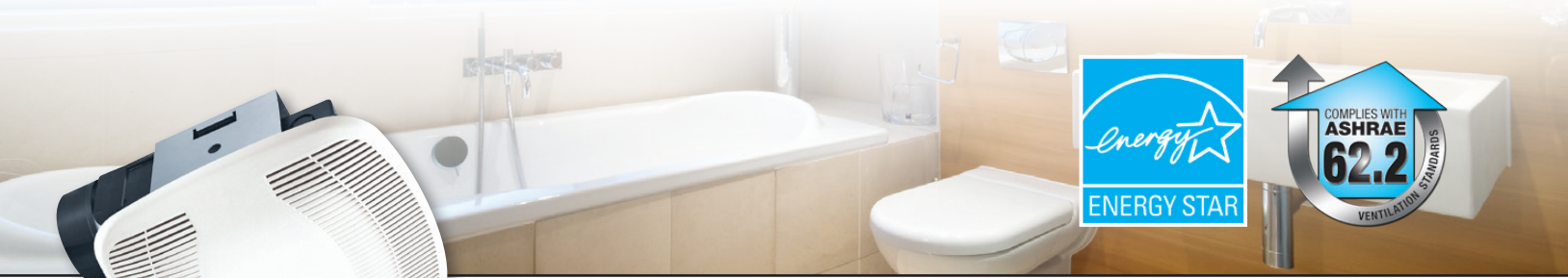


LED Series



| MODEL | CFM @ .1 SP | CFM @ .25 SP | SONES @ .1 SP | MAX. FAN WATTS | LIGHTING | LISTING | DUCT SIZE | HOUSING SIZE |
|---|-------------|--------------|---------------|----------------|----------|---------|-----------|--|
| QUIET EXHAUST FANS | | | | | | | | |
| AK80LS6 | 80 | 57 | 0.5 | 25.2 | N/A | UL | 6" | 10 ⁷ / ₈ "W x 9 ³ / ₈ "D x 7 ⁷ / ₈ "H |
| AK100LS6 | 100 | 78 | 1.0 | 26.6 | N/A | UL | 6" | 10 ⁷ / ₈ "W x 9 ³ / ₈ "D x 7 ⁷ / ₈ "H |
| AK110LS6 | 110 | 99 | 1.4 | 29.0 | N/A | UL | 6" | 10 ⁷ / ₈ "W x 9 ³ / ₈ "D x 7 ⁷ / ₈ "H |
| AK150LS | 150 | 116 | 0.8 | 37.0 | N/A | UL | 6" | 12 ⁷ / ₈ "W x 12 ³ / ₄ "D x 9 ³ / ₈ "H |
| AK200LS | 200 | 183 | 1.2 | 57.0 | N/A | UL | 6" | 12 ⁷ / ₈ "W x 12 ³ / ₄ "D x 9 ³ / ₈ "H |
| AK280LS | 280 | 257 | 3.0 | 65.7 | N/A | UL | 6" | 12 ⁷ / ₈ "W x 12 ³ / ₄ "D x 9 ³ / ₈ "H |
| AK80LS | 80 | 61 | 0.7 | 19.7 | N/A | UL | 4" | 10 ⁷ / ₈ "W x 9 ³ / ₈ "D x 7 ⁷ / ₈ "H |
| AK110LS | 110 | 90 | 1.5 | 28.5 | N/A | UL | 4" | 10 ⁷ / ₈ "W x 9 ³ / ₈ "D x 7 ⁷ / ₈ "H |
| AK80LS-1 | 80 | 68 | 1.0 | 28.1 | N/A | UL | 4" | 10 ⁷ / ₈ "W x 9 ³ / ₈ "D x 7 ⁷ / ₈ "H |
| AK50S | 50 | 40 | 0.5 | 14.5 | N/A | UL | 4" | 10 ⁷ / ₈ "W x 9 ³ / ₈ "D x 7 ⁷ / ₈ "H |
| LEDAK50 | 50 | 35 | 0.3 | 16.0 | LED | UL | 4" | 10 ⁷ / ₈ "W x 9 ³ / ₈ "D x 7 ⁷ / ₈ "H |
| AK80 | 80 | 63 | 1.5 | 27.6 | N/A | UL | 4" | 10 ⁷ / ₈ "W x 9 ³ / ₈ "D x 7 ⁷ / ₈ "H |
| LEDAK80 | 80 | 70 | 1.0 | 27.6 | LED | UL | 4" | 10 ⁷ / ₈ "W x 9 ³ / ₈ "D x 7 ⁷ / ₈ "H |
| AK90 | 90 | 75 | 1.5 | 25.4 | N/A | UL | 4" | 10 ⁷ / ₈ "W x 9 ³ / ₈ "D x 7 ⁷ / ₈ "H |
| BFC90 | 90 | 75 | 1.0 | 19.0 | N/A | ETL | 4" | 9"W x 9"D x 7 ⁷ / ₈ "H |
| AK110PN | 100 | 83 | 2.0 | 26.4 | N/A | UL | 4" | 10 ⁷ / ₈ "W x 9 ³ / ₈ "D x 7 ⁷ / ₈ "H |
| AK100D | 100 / 50 | 83 | 2.0 / 0.4 | 26.4 | N/A | UL | 4" | 10 ⁷ / ₈ "W x 9 ³ / ₈ "D x 7 ⁷ / ₈ "H |
| LEDAK100 | 100 | 83 | 2.0 | 26.5 | LED | UL | 4" | 10 ⁷ / ₈ "W x 9 ³ / ₈ "D x 7 ⁷ / ₈ "H |
| AKV | 30-100 | 82 | <0.3 - 2.0 | 25.8 | N/A | UL | 4" | 10 ⁷ / ₈ "W x 9 ³ / ₈ "D x 7 ⁷ / ₈ "H |
| QUIET EXHAUST FANS with HUMIDITY SENSOR | | | | | | | | |
| Integrated humidistat senses the humidity level of the room and turns the fan on (or to high speed for dual speed models) until the humidity level is below the preset level. Can be set up to 80% RH. The fan can also be activated through a wall control switch. | | | | | | | | |
| AK80H | 80 | 68 | 1.0 | 28.1 | N/A | UL | 4" | 10 ⁷ / ₈ "W x 9 ³ / ₈ "D x 7 ⁷ / ₈ "H |
| LEDAK80H | 80 | 70 | 1.0 | 27.6 | LED | UL | 4" | 10 ⁷ / ₈ "W x 9 ³ / ₈ "D x 7 ⁷ / ₈ "H |
| AK100H | 100 | 83 | 2.0 | 26.4 | N/A | UL | 4" | 10 ⁷ / ₈ "W x 9 ³ / ₈ "D x 7 ⁷ / ₈ "H |
| AK80LS6H | 80 | 57 | 0.5 | 25.2 | N/A | UL | 6" | 10 ⁷ / ₈ "W x 9 ³ / ₈ "D x 7 ⁷ / ₈ "H |

SNAP-IN Exhaust Fans



BFQ Series

- **ENERGY STAR® Certified**

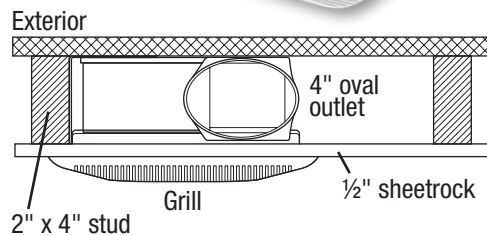
- Solutions for **ASHRAE 62.2** continuous whole house ventilation or local ventilation (models with a sone rating of 1.0 or below can be used for whole house ventilation)
- 4" Round duct connector with damper protects against backdrafts
- UL Listed high-impact plastic housing will not rust or corrode over time and is listed for installation over a tub or shower on a GFCI circuit
- Installs using the included SNAP-IN mounting system with wire nuts and a romex connector included and can be wall mounted in 2" x 6" construction
- Select models available in contractor packs (see page 20 for details)
- Higher volume models available (page 15)
- **BFQL SERIES: INCLUDED** LED lamp



BFQL Series

BFQW SERIES

- Can be wall mounted into standard 2" x 4" studs.
- **Sold in Contractor Packs ONLY (4 Housings / 4 Trims):**
 BFQ50W = BFQ50T + BFQ2HSG
 BFQ70W = BFQ75T + BFQ2HSG



SNAP-IN INSTALLATION



NAIL the included bracket in place.

SNAP the naturally sound absorbent molded plastic housing into the bracket.

WIRE the fan with the included wire nuts and strain relief. Attach the ducting and **YOU'RE DONE!**

| MODEL | CFM @ .1 SP | CFM @ .25 SP | SONES @ .1 SP | MAX. FAN WATTS | LIGHTING | LISTING | DUCT SIZE | HOUSING SIZE |
|---|-------------|--------------|---------------|----------------|----------|---------|-----------|------------------------------|
| SNAP-IN EXHAUST FAN | | | | | | | | |
| BFQ50 | 50 | 36 | 0.6 | 17.4 | N/A | UL | 4" | 9 1/8"W x 8 1/16"D x 4 3/4"H |
| BFQL50 | 50 | 39 | 0.8 | 17.8 | LED | UL | 4" | 9 1/8"W x 8 1/2"D x 5 3/4"H |
| BFQ75 | 70 | 55 | 1.5 | 23.5 | N/A | UL | 4" | 9 1/8"W x 8 1/16"D x 4 3/4"H |
| BFQL70 | 70 | 58 | 2.0 | 22.6 | LED | UL | 4" | 9 1/8"W x 8 1/2"D x 5 3/4"H |
| SNAP-IN EXHAUST FAN with OVAL DUCT CONNECTION | | | | | | | | |
| Can be wall mounted into standard 2" x 4" studs. Standard 4" round ducting can be formed to fit over oval duct connector. | | | | | | | | |
| BFQ50W | 50 | 39 | 0.7 | 13.5 | N/A | UL | 4" | 9 1/8"W x 8 1/16"D x 3 7/8"H |
| BFQ70W | 70 | 56 | 1.5 | 22.3 | N/A | UL | 4" | 9 1/8"W x 8 1/16"D x 3 7/8"H |



Exhaust Fans with Light



AK100L

Deluxe Series with Light (AK100L)

- Moonstone glass light lens disperses the light evenly throughout the room
- Utilizes up to a 100W medium base bulb or an equivalent energy efficient type bulb, 7 watt night-light feature*
- Plastic damper protects against backdrafts and ensures quiet operation
- Easily installs using the included adjustable hanging brackets

Deluxe Round Series with Light (AK863L)

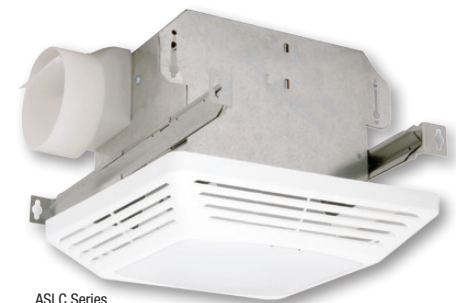
- Round grill makes unit easier to visually center within the room
- Moonstone glass light lens disperses the light evenly throughout the room
- Utilizes up to a 100W medium base bulb or an equivalent energy efficient type bulb, 7 watt night-light feature*
- Plastic damper protects against backdrafts and ensures quiet operation
- Easily installs using the included adjustable hanging brackets



AK863L

Economical Series with Light (ASLC)

- Utilizes up to a 100W medium base bulb or an equivalent energy efficient type bulb
- Plastic damper protects against backdrafts and ensures quiet operation
- Easily installs using the double thick keyhole mounting tabs or included hanging brackets
- Available in contractor packs (see page 20 for details)

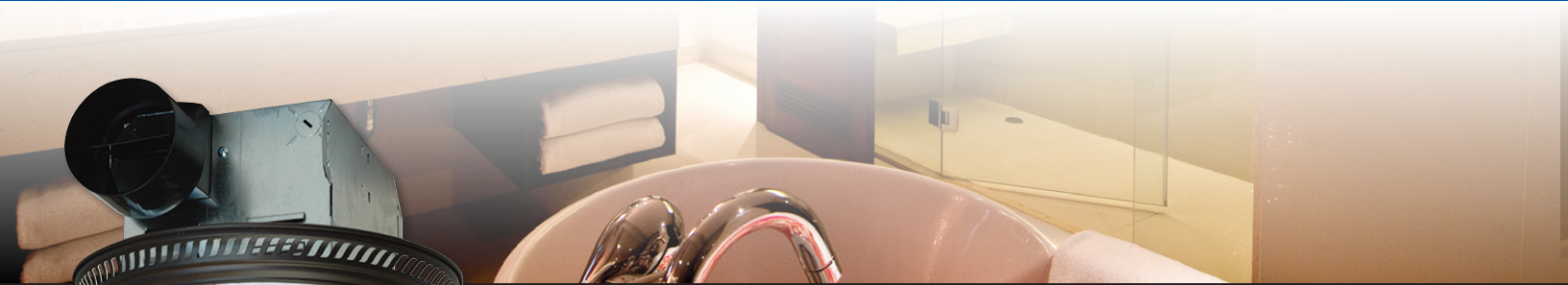


ASLC Series

| MODEL | FINISH | CFM @ .1 SP | SONES @ .1 SP | ASHRAE 62.2 | LIGHTING | LISTING | DUCT SIZE | HOUSING SIZE |
|--|--------|-------------|---------------|-------------|-------------------------------------|---------|-----------|---|
| DELUXE EXHAUST FAN with LIGHT | | | | | | | | |
| AK100L | White | 100 | 2.5 | Local | 100W or equivalent, 7W night light* | UL | 4" | 9 $\frac{3}{8}$ "W x 10 $\frac{7}{8}$ "D x 7 $\frac{7}{8}$ "H |
| AK863L | White | 100 | 3.5 | - | 100W or equivalent, 7W night light* | UL | 4" | 9 $\frac{3}{8}$ "W x 8 $\frac{1}{2}$ "D x 5 $\frac{3}{4}$ "H |
| ECONOMICAL EXHAUST FAN with LIGHT (AS Series) | | | | | | | | |
| ASLC50 | White | 50 | 3.0 | Local | 100W or equivalent* | UL | 4" | 7 $\frac{3}{8}$ "W x 7 $\frac{7}{8}$ "D x 5 $\frac{7}{8}$ "H |
| ASLC70 | White | 70 | 4.0 | - | 100W or equivalent* | UL | 4" | 7 $\frac{3}{8}$ "W x 7 $\frac{7}{8}$ "D x 5 $\frac{7}{8}$ "H |

* Bulbs not included

Decorative Exhaust Fans with Light



DRLC701



DRLC702



DRLC703



Decorative Series (DRLC)

- Decorative grills and light lenses enhance the decor of your bathroom
- 13½" diameter round grill makes unit easier to visually center within the room
- Utilizes up to 2 - 60W medium base bulbs or equivalent energy efficient type bulbs
- Glass light lens disperses light throughout the room
- Plastic damper protects against backdrafts and ensures quiet operation
- Easily installs using the included adjustable hanging brackets
- Available finishes: Oil Rubbed Bronze
Nickel
White

| MODEL | FINISH | CFM @ .1 SP | SONES @ .1 SP | ASHRAE 62.2 | LIGHTING | LISTING | DUCT SIZE | HOUSING SIZE |
|---|-------------------|-------------|---------------|-------------|------------------------|---------|-----------|--------------------|
| DECORATIVE ROUND EXHAUST FANS with LIGHT | | | | | | | | |
| DRLC701 | Oil Rubbed Bronze | 70 | 4.0 | - | 2 - 60W or equivalent* | UL | 4" | 7⅝"W x 7⅝"D x 5⅞"H |
| DRLC702 | Nickel | 70 | 4.0 | - | 2 - 60W or equivalent* | UL | 4" | 7⅝"W x 7⅝"D x 5⅞"H |
| DRLC703 | White | 70 | 4.0 | - | 2 - 60W or equivalent* | UL | 4" | 7⅝"W x 7⅝"D x 5⅞"H |

* Bulbs not included



SNAP-IN Series (BFQ)

- 4" Round duct connector with damper protects against backdrafts
- UL Listed high impact plastic housing will not rust or corrode over time and is listed for installation over a tub or shower on a GFCI circuit
- Installs using the included SNAP-IN mounting system with wire nuts and a romex connector included and can be wall mounted in 2" x 6" construction
- Select models available in contractor packs (see page 20 for details)

BFQ Series



Economical Series (AS)

- Plastic damper protects against backdrafts and ensures quiet operation
- Easily installs using the double thick keyhole mounting tabs
- Available in contractor packs (see page 20 for details)



AS54

Garage/Through the Wall Exhaust Fan (EWF-180)

- Spring loaded aluminum back draft damper prevents backdrafts
- 8" round diameter housing for maximum air flow can be installed into walls 4" to 9" thick
- Direct to outdoors exhaust design eliminates the need for ducting



AS Series



EWF-180

| MODEL | CFM @ .1 SP | SONES @ .1 SP | ASHRAE 62.2 | LIGHTING | LISTING | DUCT SIZE | HOUSING SIZE |
|---|------------------|------------------|-------------|----------|---------|-----------|--|
| SNAP-IN EXHAUST FAN (BFQ Series) | | | | | | | |
| BFQ80 | 80 | 2.0 | Local | N/A | UL | 4" | 9 ¹ / ₈ "W x 8 ¹ / ₁₆ "D x 4 ³ / ₄ "H |
| BFQ90 | 90 | 3.0 | Local | N/A | UL | 4" | 9 ¹ / ₈ "W x 8 ¹ / ₁₆ "D x 4 ³ / ₄ "H |
| BFQ110 | 100 | 3.5 | - | N/A | UL | 4" | 9 ¹ / ₈ "W x 8 ¹ / ₁₆ "D x 4 ³ / ₄ "H |
| BFQ140 | 120 | 5.0 | - | N/A | UL | 4" | 9 ¹ / ₈ "W x 8 ¹ / ₁₆ "D x 4 ³ / ₄ "H |
| ECONOMICAL EXHAUST FAN (AS Series) | | | | | | | |
| AS54 | 50 | 3.0 | Local | N/A | UL | 4" | 7 ¹ / ₄ "W x 7 ¹ / ₄ "D x 4 ³ / ₄ "H |
| AS50 | 50 | 3.0 | - | N/A | UL | 3" | 7 ¹ / ₄ "W x 7 ¹ / ₄ "D x 3 ³ / ₄ "H |
| AS70 | 70 | 4.0 | - | N/A | UL | 3" | 7 ¹ / ₄ "W x 7 ¹ / ₄ "D x 3 ³ / ₄ "H |
| GARAGE/WALL EXHAUST FAN (EWF-180) | | | | | | | |
| EWF-180 | 180 ⁵ | 6.5 ⁵ | - | N/A | UL | 8" | 11 ¹ / ₁₆ "W x 4 ⁵ / ₈ "-9 ¹ / ₂ "D x 11 ¹ / ₁₆ "H |

⁵ Measured at 0.03 Static Pressure

Fire Rated Exhaust Fans



FRAK Series

UL263/UL555C CLASSIFIED CLASSIFIED for Wood Frame Construction

Not all Fans are Created Equal

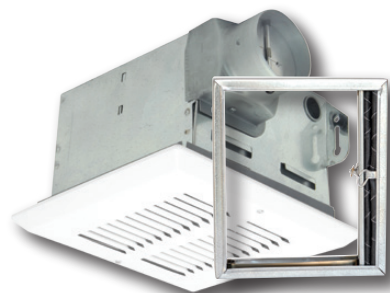
Life Safety Professionals work hard to develop and enforce building codes to eliminate or reduce potential threats. Nothing can be more frustrating and sometimes more costly than not having the correct product to comply with the building code for your project.

Wood is a Combustible Material

When you're building a multi-family residential project using wood frame construction you'll need to comply with stringent requirements to prevent the spread of fire. These are likely to include the use of fire rated products for ceiling penetrations such as bathroom exhaust fans. Air King Fire Rated Fans have been tested and are UL and/or ETL Classified for use in wood frame construction and have been successfully tested in more designs than any major manufacturer.

You will see competitor certifications that will say "For use in any fire resistive floor or roof-ceiling assembly". That doesn't necessarily mean listed for wood frame construction. Wood construction is NOT fire resistive; wood is a combustible material that fire fighters usually consider fuel. The UL/ETL requirement for listing in this case requires mounting and testing of the fan in each approved design above an actual fire. You know you have the right product for the application when the manufacturer provides the design numbers for which the product was tested. No design number - Not UL/ETL Listed for wood frame construction.

Air King Fire Rated Fans, on the other hand, are UL and/or ETL Classified for the greatest number of wood frame designs at the time of this printing. Be sure you have the right product and save yourself a lot of time and trouble by starting with Air King.



FRAS Series

Fire Rated Series

- Three part system that includes a housing, motor/blade/grill and damper
- Available in single packs or in contractor packs of 4
- Low profile and durable, all metal grill with a painted, white finish
- Easily installs using the included adjustable hanging brackets
- Listed as fan/damper assembly for the following Wood Frame design numbers:

ETL Classified UL263/E119:

L501, L502, L503, L506, L507, L508, L512, L513, L514, L515, L516, L517, L519, L521, L522, L523, L528, L530, L533, L537, L545, L546, L550, L562, L563, L570, L574, L579, L581, L583, L585, L586, M503, M530, M538, P522, P531, P538, P545, P552

cULus: L501, L502, L503, L506, L507, L508, L512, L513, L514, L515, L516, L517, L519, L522, L523, L533, L537, L545, L581, L583, M530, M538



| MODEL | CFM @ .1 SP | SONES @ .1 SP | ASHRAE 62.2 | CONTRACTOR PACK (MOTOR/HOUSING/DAMPER) | LISTING | DUCT SIZE | HOUSING SIZE |
|--|-------------|---------------|-------------|--|---------|-----------|---|
| FRAS SERIES FIRE RATED EXHAUST FANS | | | | | | | |
| FRAS50 | 50 | 3.0 | - | FA50T / AKFH1 / AKFD1 | UL | 3" | 7 ¹ / ₁₆ "W x 7 ¹⁵ / ₁₆ "D x 5 ⁷ / ₈ "H |
| FRAS70 | 70 | 5.0 | - | FA70T / AKFH1 / AKFD1 | UL | 3" | 7 ⁷ / ₁₆ "W x 7 ¹⁵ / ₁₆ "D x 5 ⁷ / ₈ "H |

Quiet Fire Rated Exhaust Fans



ENERGY STAR® Certified Fire Rated Series

• ENERGY STAR® Certified

- Solutions for **ASHRAE 62.2** continuous whole house ventilation or local ventilation (models with a sone rating of 1.0 or below can be used for whole house ventilation)
- Three part system that includes a housing, motor/blade/grill and damper
- 4" Round spring loaded metal damper protects against backdrafts
- Available in single packs or in contractor packs of 4
- Low profile and durable, all metal grill with a painted, white finish
- Easily installs using the included adjustable hanging brackets
- Listed as fan/damper assembly for the following Wood Frame design numbers:

ETL Classified UL263/E119:

L501, L502, L503, L506, L507, L508, L512, L513, L514, L515, L516, L517, L519, L521, L522, L523, L528, L530, L533, L537, L545, L546, L550, L562, L563, L570, L574, L579, L581, L583, L585, L586, M503, M530, M538, P522, P531, P538, P545, P552

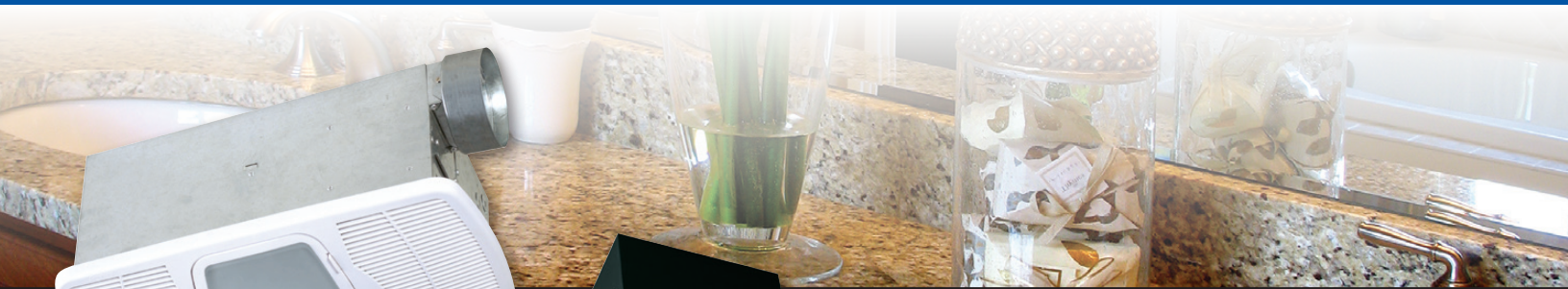
cULus: L501, L502, L503, L506, L507, L508, L512, L513, L514, L515, L516, L517, L519, L522, L523, L533, L537, L545, L581, L583, M530, M538

Additional configurations such as humidity sensing and dual speed models available in contractor packs. See page 20 for details or ask your local representative.

| MODEL | CFM @ .1 SP | CFM @ .25 SP | SONES @ .1 SP | MAX. FAN WATTS | CONTRACTOR PACK (MOTOR/HOUSING/DAMPER) | LISTING | DUCT SIZE | HOUSING SIZE |
|--------------------------------|-------------|--------------|---------------|----------------|--|---------|-----------|---------------------|
| FIRE RATED EXHAUST FANS | | | | | | | | |
| FRAK50S | 50 | 39 | 0.6 | 16.0 | FAK50T / AKFH2 / AKFD2 | UL | 4" | 10¼"W x 9¼"D x 7⅞"H |
| FRAK80 | 80 | 68 | 1.0 | 28.1 | FAK80T / AKFH2 / AKFD2 | UL | 4" | 10¼"W x 9¼"D x 7⅞"H |
| FRAK90 | 90 | 73 | 1.5 | 24.2 | FAK90T / AKFH2 / AKFD2 | UL | 4" | 10¼"W x 9¼"D x 7⅞"H |
| FRAK100 | 100 | 82 | 2.0 | 27.5 | FAK100T / AKFH2 / AKFD2 | UL | 4" | 10¼"W x 9¼"D x 7⅞"H |
| FRAKV | 30-100 | 82 | <0.3-2.0 | 25.8 | N/A | UL | 4" | 10¼"W x 9¼"D x 7⅞"H |



Heaters



AK55L, AK965L

AK917



Ceramic Heater Element

The ceramic heating element produces heat by passing current through a self regulating ceramic heating element. The element adjusts itself to the surface temperature, regulating it to produce a constant heat. As air is passed through the element, it will adjust to maintain the temperature.

Combination Ceramic Heaters (Heat/Light/Vent)

- Self-regulating ceramic heating element provides 1,350 watts of safe ceramic warmth
- Able to be installed on a 15 amp circuit
- Utilizes up to a 100W medium base bulb or an equivalent energy efficient type bulb
- Available in contractor pack (see page 20 for details)

Deluxe Combination Heaters (Heat/Light/Night Light/Vent)

- Control switches are included with the unit
- Utilizes up to a 100W medium base bulb or an equivalent energy efficient type bulb
- Easily installs using the included adjustable hanging brackets

Bulb Heater With Exhaust Fan

- Rated type IC for ceiling insulated to R-40
- Utilizes 250 watt maximum type R40 medium base infrared lamp (lamp not included)
- Easily installs using the included adjustable hanging brackets



| MODEL | CFM @ .1 SP | SONES @ .1 SP | HEATING ELEMENT | LIGHTING | LIGHT LENS | LISTING | DUCT SIZE | HOUSING SIZE |
|-----------------------------------|-------------|---------------|----------------------|---------------------|------------|---------|-----------|---------------------|
| COMBINATION CERAMIC HEATER | | | | | | | | |
| AK55L | 70 | 5.0 | 1,350W Ceramic | 100W or equivalent* | Glass | UL | 4" | 14½"W x 8¾"D x 6½"H |
| DELUXE COMBINATION HEATER | | | | | | | | |
| AK965L | 70 | 3.5 | 1,500W NiChrome Wire | 100W or equivalent* | Glass | UL | 4" | 14½"W x 8¾"D x 6½"H |
| BULB HEATER | | | | | | | | |
| AK917 | 70 | 3.5 | 250W Bulb | 250W Heat Bulb* | - | UL | 4" | 8"W x 8"D x 5¾"H |

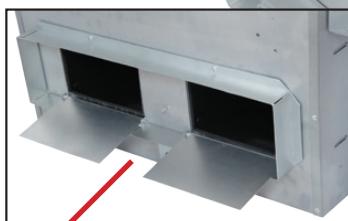
* Bulbs not included

High Capacity Exhaust Fans

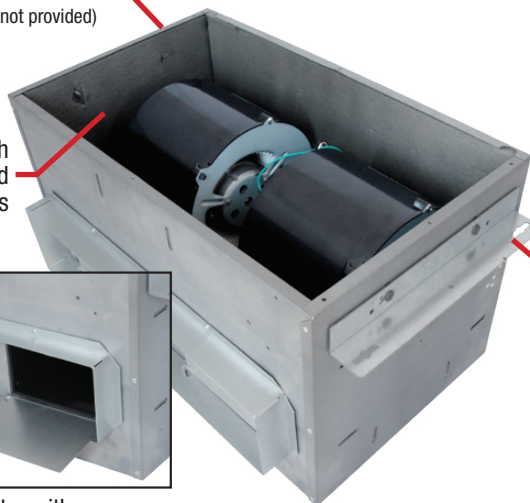


Can be adapted for top discharge mounting, straight through inline or right angle inline (hardware not provided)

Insulated housing with motors & blowers mounted on vibration isolators



4½" x 18½" duct connector with 2 aluminum backdraft dampers



24" on center joists mounting using the supplied mounting angles or hung for suspended ceilings using 1/4"-20 support rod



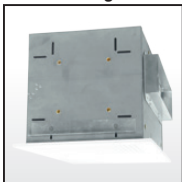
AK Series

High Capacity Series

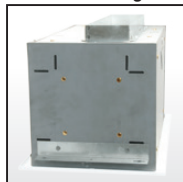
- Painted white, metal grill
- Uses forward curved non overloading polymeric blower wheels
- Wiring access from top or side
- Easy service access through large removable access panel or through the grill
- Convertible to inline with the addition of model IA418RE: 4½" x 18½" rectangular inlet adapter

MULTIPLE MOUNTING OPTIONS AK MODELS

Side Discharge

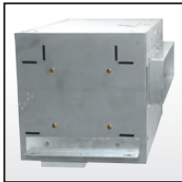


Vertical Discharge

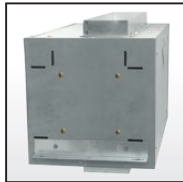


CONVERTIBLE TO INLINE (inlet adapters sold separately)

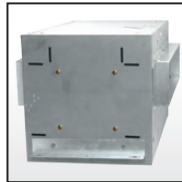
Inline Side (right angle)



Inline Vertical



Inline Horizontal



| MODEL | CFM @ .1 SP | SONES @ .1 SP | ASHRAE 62.2 | ENERGY STAR | GRILL | LISTING | DUCT SIZE | HOUSING SIZE |
|--------------------------------|-------------|---------------|------------------------|-------------|-------|---------|------------|-----------------------|
| HIGH VOLUME EXHAUST FAN | | | | | | | | |
| AK300 | 300 | 0.8 | Local / Whole Building | YES | Metal | ETL | 4½" x 18½" | 21½"W x 12¾"D x 12¾"H |
| AK400 | 420 | 1.5 | Local | NO | Metal | ETL | 4½" x 18½" | 21½"W x 12¾"D x 12¾"H |
| AK600 | 620 | 3.5 | - | NO | Metal | ETL | 4½" x 18½" | 21½"W x 12¾"D x 12¾"H |



Contractor Packs / Controls

Sold in bulk packs for larger projects, contractor packs allow the housing that is needed for rough-in installation to be sent first. Then after the interior is completed, the internal workings of the unit (motor/blade/grill) can be received and installed.

| HOUSINGS | MOTOR/ BLADE/GRILL | #PER PACK | CFM/ SONES | DUCT SIZE | SINGLE PACK MODEL # | SINGLE PACK PAGE |
|--|-----------------------|--------------|---------------|--------------|------------------------|---------------------|
| ENERGY STAR CERTIFIED HUMIDITY SENSING SERIES | | | | | | |
| AKX-1HA | AK80LS1T | 4 | 80/1.0 | 4" plastic | AK80H | 10 |
| | AK90MBG | 4 | 90/1.5 | 4" plastic | AK90H | - |
| | AK110PNT | 4 | 100/2.0 | 4" plastic | AK100H | 10 |
| ENERGY STAR CERTIFIED SERIES | | | | | | |
| AKX-4A | AK150LS | 2 | 150/0.8 | 6" metal | AK150LS | 10 |
| AK-2A6 | AK80LS6T | 4 | 80/0.5 | 6" plastic | AK80LS6 | 10 |
| | AK90LS6T | 4 | 90/0.8 | 6" plastic | AK90LS6 | 10 |
| | AK100LS6T | 4 | 100/1.0 | 6" plastic | AK100LS6 | 10 |
| | AK110LS6T | 4 | 110/1.4 | 6" plastic | AK110LS6 | 10 |
| AKX-1A | AK80LS1T | 4 | 80/1.0 | 4" plastic | AK80LS-1 | 10 |
| | AK80MBG | 4 | 80/1.5 | 4" plastic | AK80 | 10 |
| | AK90MBG | 4 | 90/1.5 | 4" plastic | AK90 | 10 |
| | AK110PNT | 4 | 100/2.0 | 4" plastic | AK110PN | 10 |
| BFQHSG | BFQ50T | 4 | 50/0.6 | 4" plastic | BFQ50 | 11 |
| | BFQ75T | 4 | 70/1.5 | 4" plastic | BFQ75 | 11 |
| BFQ2HSG | BFQ50T | 4 | 50/0.7 | 4" plastic | BFQ50W | 11 |
| | BFQ75T | 4 | 70/1.5 | 4" plastic | BFQ70W | 11 |
| ENERGY STAR CERTIFIED SERIES with LIGHT | | | | | | |
| BFQLHSG | BFQL50T | 4 | 50/0.5 | 4" plastic | BFQL50 | 11 |
| | BFQL70T | 4 | 70/1.5 | 4" plastic | BFQL70 | 11 |
| ADVANTAGE SERIES with LIGHT | | | | | | |
| ASLC12HSG | ASLC50MBG | 12 / 4 | 50/3.0 | 4" plastic | ASLC50 | 12 |
| | ASLC70MBG | 12 / 4 | 70/4.0 | 4" plastic | ASLC70 | 12 |
| SNAP-IN SERIES | | | | | | |
| BFQHSG | BFQ80T | 4 | 80/2.0 | 4" plastic | BFQ80 | 13 |
| | BFQ90MBG | 4 | 90/2.5 | 4" plastic | BFQ90 | 13 |
| | BFQ110MBG | 4 | 100/3.5 | 4" plastic | BFQ110 | 13 |
| | BFQ140MBG | 4 | 120/4.0 | 4" plastic | BFQ140 | 13 |
| BFQ2HSG | BFQ80T | 4 | 80/2.5 | 4" plastic | BFQ80W | 13 |
| | BFQ90T | 4 | 90/3.5 | 4" plastic | BFQ90W | 13 |

| HOUSINGS | MOTOR/ BLADE/GRILL | #PER PACK | CFM/ SONES | DUCT SIZE | SINGLE PACK MODEL # | SINGLE PACK PAGE |
|------------------------------------|-----------------------|--------------|---------------|--------------|------------------------|---------------------|
| ADVANTAGE SERIES | | | | | | |
| ASHSG | AS50MBG | 6 | 50/3.0 | 3" plastic | AS50 | 13 |
| | AS70MBG | 6 | 70/4.0 | 3" plastic | AS70 | 13 |
| ATL18HSG ⁵ | AS50MBG | 18 / 6 | 50/3.0 | 4" plastic | N/A | 13 |
| | AS70MBG | 18 / 6 | 70/4.0 | 4" plastic | N/A | 13 |
| COMBINATION CERAMIC HEATERS | | | | | | |
| AK55LHSG | AK55LT | 1 | 70/5.0 | 4" metal | AK55L | 15 |

⁵ ATL18HSG sold in packs of 18, model AS54 utilizes ATL18HSG and AS50MBG

| HOUSINGS | MOTOR/ BLADE/GRILL | DAMPER | #PER PACK | CFM/ SONES | DUCT SIZE | SINGLE PACK MODEL # | SINGLE PACK PAGE |
|---|-----------------------|--------|--------------|---------------|--------------|------------------------|---------------------|
| FIRE RATED SERIES | | | | | | | |
| AKFH1 | FA50T | AKFD1 | 4 | 50/3.0 | 3" metal | FRAS50 | 16 |
| | FA70T | AKFD1 | 4 | 70/5.0 | 3" metal | FRAS70 | 16 |
| ENERGY STAR CERTIFIED FIRE RATED SERIES | | | | | | | |
| AKFH2 | FAK50ST | AKFD2 | 4 | 50/0.6 | 4" metal | FRAK50S | 17 |
| | FAK80T | AKFD2 | 4 | 80/1.0 | 4" metal | FRAK80 | 17 |
| | FAK90T | AKFD2 | 4 | 90/1.5 | 4" metal | FRAK90 | 17 |
| | FAK100T | AKFD2 | 4 | 100/2.0 | 4" metal | FRAK100 | 17 |
| AKFH2D | FAK100DT | AKFD2 | 4 | 100/2.0 | 4" metal | FRAK100D | 17 |
| ENERGY STAR CERTIFIED FIRE RATED SERIES with HUMIDITY SENSOR | | | | | | | |
| AKFH2H | FAK50T | AKFD2 | 4 | 50/0.6 | 4" metal | FRAK50H | 17 |
| | FAK80T | AKFD2 | 4 | 80/1.0 | 4" metal | FRAK80H | 17 |
| | FAK90T | AKFD2 | 4 | 90/1.5 | 4" metal | FRAK90H | 17 |
| | FAK100T | AKFD2 | 4 | 100/2.0 | 4" metal | FRAK100H | 17 |
| AKFH2DH | FAK100DT | AKFD2 | 4 | 100/2.0 | 4" metal | FRAK100DH | 17 |

CONTROLS

HUMIDITY CONTROL

Model DH55: White, dehumidistat automatically turns the unit on/off according to the humidity level of the room and is easily adjusted to maximize the system. Can be used with most exhaust fans to comply with California **CALGreen**



TIMER SWITCH

For use with Air King exhaust fans only.

Model AKPT62: White, 24 hour - 7 day programmable switch with 7 On and 7 Off events per day and single push button controls. One touch push button override and LCD display screen. Includes rechargeable battery that provides up to 30 days of battery backup. **Rated for Fluorescent lights, Motors up to 1 HP, 15A Resistive/Tungsten.** Ideal for ASHRAE 62.2 installations and exhaust fans used to comply with the California Title 24 requirements.

High Capacity Exhaust Fans



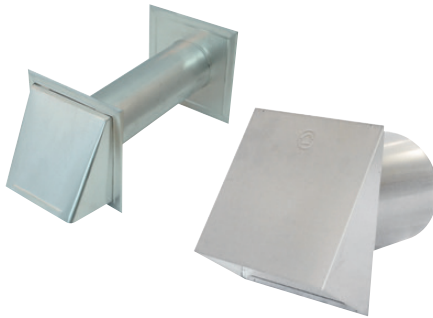
ROOF CAPS

RCB810: Includes plastic 4" round roof cap, 8' of 4" round flexible ducting, 3" to 4" adapter and 2 zip ties

PRC10R: Galvanized steel roof cap with bird screen and damper, accepts 10" round ducting

PRC8R: Galvanized steel roof cap with bird screen and damper, accepts 8" round ducting

PRC6R: Galvanized steel roof cap with bird screen and damper, accepts 6" round ducting



WALL CAPS

WC4NS: Aluminum wall cap with damper, 4" round ducting

PWC10R: Galvanized steel wall cap with damper, accepts 10" round ducting

PWC8R: Galvanized steel wall cap with damper, accepts 8" round ducting

PWC6R: Galvanized steel wall cap with damper, accepts 6" round ducting

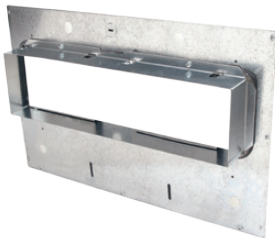


DAMPERS

BDD4R: Metal back draft damper, 4" round ducting

BDD6R: Metal back draft damper, 6" round ducting

BDD8R: Metal back draft damper, 8" round ducting



INLET ADAPTERS

IA418RE: 4½" x 18½" rectangular inlet adapter use with: AK300, AK400, AK500, AK600



INTAKE HOOD

IH6S: 6" screened intake wall cap for use with Fresh Air units and Fresh Air Intake Kits

Specifications

| MODEL | CFM | SONES | SOUND LEVEL | LIGHTING | ENERGY STAR | CALGREEN | ASHRAE 62.2 | LISTING | DUCT SIZE | HOUSING SIZE | PAGE |
|----------|----------|------------|---------------|----------|-------------|-------------|----------------------|---------|-----------|--|------|
| QFAMD | 30-130 | N/A | Almost Silent | N/A | YES | N/A | Outdoor Air | ETL | 6" | 14 ⁷ / ₈ "W x 10 ¹ / ₈ "D x 11 ¹ / ₂ "H | 4 |
| QFAM16 | 30-100 | N/A | Almost Silent | N/A | YES | N/A | Outdoor Air | ETL | 6" | 14 ⁷ / ₈ "W x 10 ¹ / ₈ "D x 11 ¹ / ₂ "H | 4 |
| QFAM | 40-120 | N/A | Almost Silent | N/A | NO | N/A | Outdoor Air | ETL | 6" | 14 ⁷ / ₈ "W x 10 ¹ / ₈ "D x 11 ¹ / ₂ "H | 4 |
| F130D | 40-120 | N/A | Almost Silent | N/A | YES | N/A | Outdoor Air | ETL | 6" | 14 ⁷ / ₈ "W x 10 ¹ / ₈ "D x 11 ¹ / ₂ "H | 4 |
| FAS | 40-120 | N/A | Almost Silent | N/A | NO | N/A | Outdoor Air | ETL | 6" | 14 ⁷ / ₈ "W x 10 ¹ / ₈ "D x 11 ¹ / ₂ "H | 4 |
| MQFAM | 50 / 80 | N/A | Almost Silent | N/A | NO | N/A | Outdoor Air | ETL | 6" | 9"W x 17 ³ / ₈ "D x 8 ¹ / ₄ "H | 5 |
| MFAS | 50 / 80 | N/A | Almost Silent | N/A | NO | N/A | Outdoor Air | ETL | 6" | 9"W x 17 ³ / ₈ "D x 8 ¹ / ₄ "H | 5 |
| QAKZA200 | 210 | N/A | Almost Silent | N/A | NO | N/A | Outdoor Air | ETL | 6" | 12 ¹ / ₁₆ "W x 13 ¹ / ₁₆ "D x 13 ⁹ / ₁₆ "H | 6 |
| FAKZA200 | 210 | N/A | Almost Silent | N/A | NO | N/A | Outdoor Air | ETL | 6" | 12 ¹ / ₁₆ "W x 13 ¹ / ₁₆ "D x 13 ⁹ / ₁₆ "H | 6 |
| QZA200D | 200 / 80 | N/A | Almost Silent | N/A | NO | N/A | Outdoor Air | ETL | 6" | 12 ¹ / ₁₆ "W x 13 ¹ / ₁₆ "D x 13 ⁹ / ₁₆ "H | 6 |
| FZA200D | 200 / 80 | N/A | Almost Silent | N/A | NO | N/A | Outdoor Air | ETL | 6" | 12 ¹ / ₁₆ "W x 13 ¹ / ₁₆ "D x 13 ⁹ / ₁₆ "H | 6 |
| QAKZA290 | 270 | N/A | Almost Silent | N/A | NO | N/A | Outdoor Air | ETL | 6" | 12 ¹ / ₁₆ "W x 13 ¹ / ₁₆ "D x 13 ⁹ / ₁₆ "H | 6 |
| FAKZA290 | 270 | N/A | Almost Silent | N/A | NO | N/A | Outdoor Air | ETL | 6" | 12 ¹ / ₁₆ "W x 13 ¹ / ₁₆ "D x 13 ⁹ / ₁₆ "H | 6 |
| D4S | 40-120 | <0.3 - 0.3 | Almost Silent | N/A | YES | Other Rooms | Whole Building/Local | ETL | 6" | 12 ⁷ / ₈ "W x 12 ³ / ₄ "D x 9 ⁷ / ₈ "H | 8 |
| D4D | 40-120 | <0.3 - 0.3 | Almost Silent | N/A | YES | Other Rooms | Whole Building/Local | ETL | 6" | 12 ⁷ / ₈ "W x 12 ³ / ₄ "D x 9 ⁷ / ₈ "H | 8 |
| D4SH | 40-120 | <0.3 - 0.3 | Almost Silent | N/A | YES | Other Rooms | Whole Building/Local | ETL | 6" | 12 ⁷ / ₈ "W x 12 ³ / ₄ "D x 9 ⁷ / ₈ "H | 8 |
| D4DH | 40-120 | <0.3 - 0.3 | Almost Silent | N/A | YES | Other Rooms | Whole Building/Local | ETL | 6" | 12 ⁷ / ₈ "W x 12 ³ / ₄ "D x 9 ⁷ / ₈ "H | 8 |
| DL4S | 30-130 | <0.3 - 0.3 | Almost Silent | LED | YES | NO | Whole Building/Local | ETL | 6" | 12 ⁷ / ₈ "W x 12 ³ / ₄ "D x 9 ⁷ / ₈ "H | 8 |
| DL4D | 30-130 | <0.3 - 0.3 | Almost Silent | LED | YES | NO | Whole Building/Local | ETL | 6" | 12 ⁷ / ₈ "W x 12 ³ / ₄ "D x 9 ⁷ / ₈ "H | 8 |
| DL4SH | 30-130 | <0.3 - 0.3 | Almost Silent | LED | YES | NO | Whole Building/Local | ETL | 6" | 12 ⁷ / ₈ "W x 12 ³ / ₄ "D x 9 ⁷ / ₈ "H | 8 |
| DL4DH | 30-130 | <0.3 - 0.3 | Almost Silent | LED | YES | NO | Whole Building/Local | ETL | 6" | 12 ⁷ / ₈ "W x 12 ³ / ₄ "D x 9 ⁷ / ₈ "H | 8 |
| EVD | 30-150 | <0.3 | Almost Silent | N/A | YES | Other Rooms | Whole Building/Local | ETL | 6" | 12 ⁷ / ₈ "W x 12 ³ / ₄ "D x 9 ⁷ / ₈ "H | 9 |
| EVDGH | 30-150 | <0.3 | Almost Silent | N/A | YES | Bathrooms | Whole Building/Local | ETL | 6" | 12 ⁷ / ₈ "W x 12 ³ / ₄ "D x 9 ⁷ / ₈ "H | 9 |
| EVDH | 30-150 | <0.3 | Almost Silent | N/A | YES | Bathrooms | Whole Building/Local | ETL | 6" | 12 ⁷ / ₈ "W x 12 ³ / ₄ "D x 9 ⁷ / ₈ "H | 9 |
| EVL | 30-150 | <0.3 | Almost Silent | LED | YES | NO | Whole Building/Local | ETL | 6" | 12 ⁷ / ₈ "W x 12 ³ / ₄ "D x 9 ⁷ / ₈ "H | 9 |
| EVLGH | 30-150 | <0.3 | Almost Silent | LED | YES | NO | Whole Building/Local | ETL | 6" | 12 ⁷ / ₈ "W x 12 ³ / ₄ "D x 9 ⁷ / ₈ "H | 9 |
| EVLH | 30-150 | <0.3 | Almost Silent | LED | YES | NO | Whole Building/Local | ETL | 6" | 12 ⁷ / ₈ "W x 12 ³ / ₄ "D x 9 ⁷ / ₈ "H | 9 |
| E80S | 80 | <0.3 | Almost Silent | N/A | YES | Other Rooms | Whole Building/Local | ETL | 6" | 12 ⁷ / ₈ "W x 12 ³ / ₄ "D x 9 ⁷ / ₈ "H | 10 |
| E110S | 110 | <0.3 | Almost Silent | N/A | YES | Other Rooms | Whole Building/Local | ETL | 6" | 12 ⁷ / ₈ "W x 12 ³ / ₄ "D x 9 ⁷ / ₈ "H | 10 |
| E130S | 130 | <0.3 | Almost Silent | N/A | YES | Other Rooms | Whole Building/Local | ETL | 6" | 12 ⁷ / ₈ "W x 12 ³ / ₄ "D x 9 ⁷ / ₈ "H | 10 |
| E80SGH | 80 | <0.3 | Almost Silent | N/A | YES | Bathrooms | Whole Building/Local | ETL | 6" | 12 ⁷ / ₈ "W x 12 ³ / ₄ "D x 9 ⁷ / ₈ "H | 10 |
| E130SGH | 130 | <0.3 | Almost Silent | N/A | YES | Bathrooms | Whole Building/Local | ETL | 6" | 12 ⁷ / ₈ "W x 12 ³ / ₄ "D x 9 ⁷ / ₈ "H | 10 |
| E80SH | 80 | <0.3 | Almost Silent | N/A | YES | Bathrooms | Whole Building/Local | ETL | 6" | 12 ⁷ / ₈ "W x 12 ³ / ₄ "D x 9 ⁷ / ₈ "H | 10 |
| E130SH | 130 | <0.3 | Almost Silent | N/A | YES | Bathrooms | Whole Building/Local | ETL | 6" | 12 ⁷ / ₈ "W x 12 ³ / ₄ "D x 9 ⁷ / ₈ "H | 10 |
| EL80S | 80 | <0.3 | Almost Silent | LED | YES | NO | Whole Building/Local | ETL | 6" | 12 ⁷ / ₈ "W x 12 ³ / ₄ "D x 9 ⁷ / ₈ "H | 10 |
| EL130S | 130 | <0.3 | Almost Silent | LED | YES | NO | Whole Building/Local | ETL | 6" | 12 ⁷ / ₈ "W x 12 ³ / ₄ "D x 9 ⁷ / ₈ "H | 10 |
| EL80SGH | 80 | <0.3 | Almost Silent | LED | YES | NO | Whole Building/Local | ETL | 6" | 12 ⁷ / ₈ "W x 12 ³ / ₄ "D x 9 ⁷ / ₈ "H | 10 |
| EL130SGH | 130 | <0.3 | Almost Silent | LED | YES | NO | Whole Building/Local | ETL | 6" | 12 ⁷ / ₈ "W x 12 ³ / ₄ "D x 9 ⁷ / ₈ "H | 10 |
| EL80SH | 80 | <0.3 | Almost Silent | LED | YES | NO | Whole Building/Local | ETL | 6" | 12 ⁷ / ₈ "W x 12 ³ / ₄ "D x 9 ⁷ / ₈ "H | 10 |
| EL130SH | 130 | <0.3 | Almost Silent | LED | YES | NO | Whole Building/Local | ETL | 6" | 12 ⁷ / ₈ "W x 12 ³ / ₄ "D x 9 ⁷ / ₈ "H | 10 |
| AK80LS6 | 80 | 0.5 | Very Quiet | N/A | YES | Other Rooms | Whole Building/Local | UL | 6" | 10 ⁷ / ₈ "W x 9 ³ / ₈ "D x 7 ⁷ / ₈ "H | 11 |
| AK100LS6 | 100 | 1.0 | Very Quiet | N/A | YES | Other Rooms | Whole Building/Local | UL | 6" | 10 ⁷ / ₈ "W x 9 ³ / ₈ "D x 7 ⁷ / ₈ "H | 11 |
| AK110LS6 | 110 | 1.4 | Quiet | N/A | YES | Other Rooms | Local | UL | 6" | 10 ⁷ / ₈ "W x 9 ³ / ₈ "D x 7 ⁷ / ₈ "H | 11 |
| AK150LS | 150 | 0.8 | Very Quiet | N/A | YES | Other Rooms | Whole Building/Local | UL | 6" | 12 ⁷ / ₈ "W x 12 ³ / ₄ "D x 9 ⁷ / ₈ "H | 11 |
| AK200LS | 200 | 1.2 | Quiet | N/A | YES | Other Rooms | Local | UL | 6" | 12 ⁷ / ₈ "W x 12 ³ / ₄ "D x 9 ⁷ / ₈ "H | 11 |
| AK280LS | 280 | 3.0 | Quiet | N/A | YES | Other Rooms | Local | UL | 6" | 12 ⁷ / ₈ "W x 12 ³ / ₄ "D x 9 ⁷ / ₈ "H | 11 |
| AK80LS | 80 | 0.7 | Very Quiet | N/A | YES | Other Rooms | Whole Building/Local | UL | 4" | 10 ⁷ / ₈ "W x 9 ³ / ₈ "D x 7 ⁷ / ₈ "H | 11 |
| AK110LS | 110 | 1.5 | Quiet | N/A | YES | Other Rooms | Whole Building/Local | UL | 4" | 10 ⁷ / ₈ "W x 9 ³ / ₈ "D x 7 ⁷ / ₈ "H | 11 |
| AK80LS-1 | 80 | 1.0 | Very Quiet | N/A | YES | Other Rooms | Whole Building/Local | UL | 4" | 10 ⁷ / ₈ "W x 9 ³ / ₈ "D x 7 ⁷ / ₈ "H | 11 |
| AK50S | 50 | 0.5 | Very Quiet | N/A | YES | Other Rooms | Whole Building/Local | UL | 4" | 10 ⁷ / ₈ "W x 9 ³ / ₈ "D x 7 ⁷ / ₈ "H | 11 |
| AK80 | 80 | 1.5 | Quiet | N/A | YES | Other Rooms | Local | UL | 4" | 10 ⁷ / ₈ "W x 9 ³ / ₈ "D x 7 ⁷ / ₈ "H | 11 |
| AK90 | 90 | 1.5 | Quiet | N/A | YES | Other Rooms | Local | UL | 4" | 10 ⁷ / ₈ "W x 9 ³ / ₈ "D x 7 ⁷ / ₈ "H | 11 |
| BFC90 | 90 | 1.0 | Very Quiet | N/A | YES | Other Rooms | Local | ETL | 4" | 9"W x 9"D x 7 ⁷ / ₈ "H | 11 |

Specifications

| MODEL | CFM | SONES | SOUND LEVEL | LIGHTING | ENERGY STAR | CALGREEN | ASHRAE 62.2 | LISTING | DUCT SIZE | HOUSING SIZE | PAGE |
|----------|----------|-----------|-------------|--------------|-------------|-------------|----------------------|---------|---|--|------|
| AK110PN | 100 | 2.0 | Quiet | N/A | YES | Other Rooms | Local | UL | 4" | 10 ⁷ / ₈ "W x 9 ⁹ / ₈ "D x 7 ⁷ / ₈ "H | 11 |
| AK100D | 100 / 50 | 2.0 / 0.4 | Quiet | N/A | YES | Other Rooms | Whole Building/Local | UL | 4" | 10 ⁷ / ₈ "W x 9 ⁹ / ₈ "D x 7 ⁷ / ₈ "H | 11 |
| AKV | 30-100 | <0.3-2.0 | Quiet | N/A | YES | Other Rooms | Whole Building/Local | UL | 4" | 10 ⁷ / ₈ "W x 9 ⁹ / ₈ "D x 7 ⁷ / ₈ "H | 11 |
| AK80H | 80 | 1.0 | Very Quiet | N/A | YES | Bathrooms | Whole Building/Local | UL | 4" | 10 ⁷ / ₈ "W x 9 ⁹ / ₈ "D x 7 ⁷ / ₈ "H | 11 |
| AK80LS6H | 80 | 0.5 | Very Quiet | N/A | YES | Bathrooms | Whole Building/Local | UL | 6" | 10 ⁷ / ₈ "W x 9 ⁹ / ₈ "D x 7 ⁷ / ₈ "H | 11 |
| AK100H | 100 | 2.0 | Quiet | N/A | YES | Bathrooms | Local | UL | 4" | 10 ⁷ / ₈ "W x 9 ⁹ / ₈ "D x 7 ⁷ / ₈ "H | 11 |
| LEDAK50 | 50 | 0.3 | Very Quiet | LED | YES | NO | Whole Building/Local | UL | 4" | 10 ⁷ / ₈ "W x 9 ⁹ / ₈ "D x 7 ⁷ / ₈ "H | 11 |
| LEDAK80 | 80 | 1.0 | Very Quiet | LED | YES | NO | Whole Building/Local | UL | 4" | 10 ⁷ / ₈ "W x 9 ⁹ / ₈ "D x 7 ⁷ / ₈ "H | 11 |
| LEDAK100 | 100 | 2.0 | Quiet | LED | YES | NO | Local | UL | 4" | 10 ⁷ / ₈ "W x 9 ⁹ / ₈ "D x 7 ⁷ / ₈ "H | 11 |
| LEDAK80H | 80 | 1.0 | Very Quiet | LED | YES | NO | Whole Building/Local | UL | 4" | 10 ⁷ / ₈ "W x 9 ⁹ / ₈ "D x 7 ⁷ / ₈ "H | 11 |
| BFQ50 | 50 | 0.6 | Very Quiet | N/A | YES | Other Rooms | Whole Building/Local | UL | 4" | 9 ⁹ / ₈ "W x 8 ¹ / ₁₆ "D x 4 ³ / ₄ "H | 12 |
| BFQ75 | 70 | 1.5 | Quiet | N/A | YES | Other Rooms | Local | UL | 4" | 9 ⁹ / ₈ "W x 8 ¹ / ₁₆ "D x 4 ³ / ₄ "H | 12 |
| BFQ50W | 50 | 0.7 | Very Quiet | N/A | YES | Other Rooms | Whole Building/Local | UL | 4" | 9 ⁹ / ₈ "W x 8 ¹ / ₁₆ "D x 3 ⁷ / ₈ "H | 12 |
| BFQ70W | 70 | 1.5 | Quiet | N/A | YES | Other Rooms | Local | UL | 4" | 9 ⁹ / ₈ "W x 8 ¹ / ₁₆ "D x 3 ⁷ / ₈ "H | 12 |
| BFQL50 | 50 | 0.8 | Very Quiet | LED | YES | NO | Whole Building/Local | UL | 4" | 9 ⁹ / ₈ "W x 8 ¹ / ₂ "D x 5 ³ / ₄ "H | 12 |
| BFQL70 | 70 | 2.0 | Quiet | LED | YES | NO | Local | UL | 4" | 9 ⁹ / ₈ "W x 8 ¹ / ₂ "D x 5 ³ / ₄ "H | 12 |
| AK100L | 100 | 2.5 | Quiet | Incandescent | NO | NO | Local | UL | 4" | 9 ⁹ / ₈ "W x 10 ⁷ / ₈ "D x 7 ⁷ / ₈ "H | 13 |
| AK863L | 100 | 3.5 | Quiet | Incandescent | NO | NO | NO | UL | 4" | 9 ⁹ / ₈ "W x 9 ¹ / ₄ "D x 5 ⁷ / ₈ "H | 13 |
| ASLC50 | 50 | 3.0 | Quiet | Incandescent | NO | NO | Local | UL | 4" | 7 ³ / ₈ "W x 7 ⁵ / ₈ "D x 5 ⁷ / ₈ "H | 13 |
| ASLC70 | 70 | 4.0 | Moderate | Incandescent | NO | NO | NO | UL | 4" | 7 ³ / ₈ "W x 7 ⁵ / ₈ "D x 5 ⁷ / ₈ "H | 13 |
| DRLC701 | 70 | 4.0 | Moderate | Incandescent | NO | NO | NO | UL | 4" | 7 ³ / ₈ "W x 7 ⁵ / ₈ "D x 5 ⁷ / ₈ "H | 14 |
| DRLC702 | 70 | 4.0 | Moderate | Incandescent | NO | NO | NO | UL | 4" | 7 ³ / ₈ "W x 7 ⁵ / ₈ "D x 5 ⁷ / ₈ "H | 14 |
| DRLC703 | 70 | 4.0 | Moderate | Incandescent | NO | NO | NO | UL | 4" | 7 ³ / ₈ "W x 7 ⁵ / ₈ "D x 5 ⁷ / ₈ "H | 14 |
| BFQ80 | 80 | 2.0 | Quiet | N/A | NO | NO | Local | UL | 4" | 9 ⁹ / ₈ "W x 8 ¹ / ₁₆ "D x 4 ³ / ₄ "H | 15 |
| BFQ90 | 90 | 3.0 | Quiet | N/A | NO | NO | Local | UL | 4" | 9 ⁹ / ₈ "W x 8 ¹ / ₁₆ "D x 4 ³ / ₄ "H | 15 |
| BFQ110 | 100 | 3.5 | Moderate | N/A | NO | NO | NO | UL | 4" | 9 ⁹ / ₈ "W x 8 ¹ / ₁₆ "D x 4 ³ / ₄ "H | 15 |
| BFQ140 | 120 | 5.0 | Moderate | N/A | NO | NO | NO | UL | 4" | 9 ⁹ / ₈ "W x 8 ¹ / ₁₆ "D x 4 ³ / ₄ "H | 15 |
| AS54 | 50 | 3.0 | Quiet | N/A | NO | NO | Local | UL | 4" | 7 ¹ / ₄ "W x 7 ¹ / ₄ "D x 4 ³ / ₄ "H | 15 |
| AS50 | 50 | 3.0 | Quiet | N/A | NO | NO | NO | UL | 3" | 7 ¹ / ₄ "W x 7 ¹ / ₄ "D x 3 ³ / ₄ "H | 15 |
| AS70 | 70 | 4.0 | High | N/A | NO | NO | NO | UL | 3" | 7 ¹ / ₄ "W x 7 ¹ / ₄ "D x 3 ³ / ₄ "H | 15 |
| EWf-180 | 180 | 6.5 | High | N/A | NO | NO | NO | UL | 8" | 11 ¹ / ₁₆ "W x 4 ⁵ / ₈ "-9 ¹ / ₂ "D x 11 ¹ / ₁₆ "H | 15 |
| FRAS50 | 50 | 3.0 | Quiet | N/A | NO | NO | NO | UL | 3" | 7 ⁷ / ₈ "W x 7 ⁵ / ₁₆ "D x 5 ⁷ / ₈ "H | 16 |
| FRAS70 | 70 | 5.0 | High | N/A | NO | NO | NO | UL | 3" | 7 ⁷ / ₈ "W x 7 ⁵ / ₁₆ "D x 5 ⁷ / ₈ "H | 16 |
| FRAK50S | 50 | 0.6 | Very Quiet | N/A | YES | Other Rooms | Whole Building/Local | UL | 4" | 11 ⁵ / ₁₆ "W x 9 ¹ / ₂ "D x 7 ⁷ / ₈ "H | 17 |
| FRAK80 | 80 | 1.0 | Very Quiet | N/A | YES | Other Rooms | Whole Building/Local | UL | 4" | 11 ⁵ / ₁₆ "W x 9 ¹ / ₂ "D x 7 ⁷ / ₈ "H | 17 |
| FRAK90 | 90 | 1.5 | Quiet | N/A | YES | Other Rooms | Local | UL | 4" | 11 ⁵ / ₁₆ "W x 9 ¹ / ₂ "D x 7 ⁷ / ₈ "H | 17 |
| FRAK100 | 100 | 2.0 | Quiet | N/A | YES | Other Rooms | Local | UL | 4" | 11 ⁵ / ₁₆ "W x 9 ¹ / ₂ "D x 7 ⁷ / ₈ "H | 17 |
| FRAKV | 30-100 | <0.3-2.0 | Quiet | N/A | YES | Other Rooms | Whole Building/Local | UL | 4" | 11 ⁵ / ₁₆ "W x 9 ¹ / ₂ "D x 7 ⁷ / ₈ "H | 17 |
| AK55L | 70 | 5.0 | High | Incandescent | NO | NO | NO | UL | 4" | 14 ¹ / ₂ "W x 8 ³ / ₈ "D x 6 ¹ / ₂ "H | 18 |
| AK965L | 70 | 3.5 | Moderate | Incandescent | NO | NO | NO | UL | 4" | 14 ¹ / ₂ "W x 8 ³ / ₈ "D x 6 ¹ / ₂ "H | 18 |
| AK917 | 70 | 3.5 | Moderate | Heat Lamp | NO | NO | NO | UL | 4" | 8"W x 8"D x 5 ⁵ / ₈ "H | 18 |
| AK300 | 300 | 0.8 | Very Quiet | N/A | YES | Other Rooms | Whole Building/Local | ETL | 4 ¹ / ₂ x18 ¹ / ₂ " | 21 ¹ / ₂ "W x 12 ³ / ₄ "D x 12 ³ / ₄ "H | 19 |
| AK400 | 420 | 1.5 | Quiet | N/A | NO | NO | Local | ETL | 4 ¹ / ₂ x18 ¹ / ₂ " | 21 ¹ / ₂ "W x 12 ³ / ₄ "D x 12 ³ / ₄ "H | 19 |
| AK600 | 620 | 3.5 | Moderate | N/A | NO | NO | NO | ETL | 4 ¹ / ₂ x18 ¹ / ₂ " | 21 ¹ / ₂ "W x 12 ³ / ₄ "D x 12 ³ / ₄ "H | 19 |

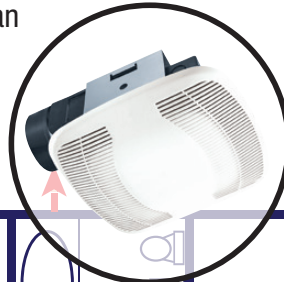
TOTAL HOME VENTILATION

EFFICIENT • EFFECTIVE • ECONOMICAL

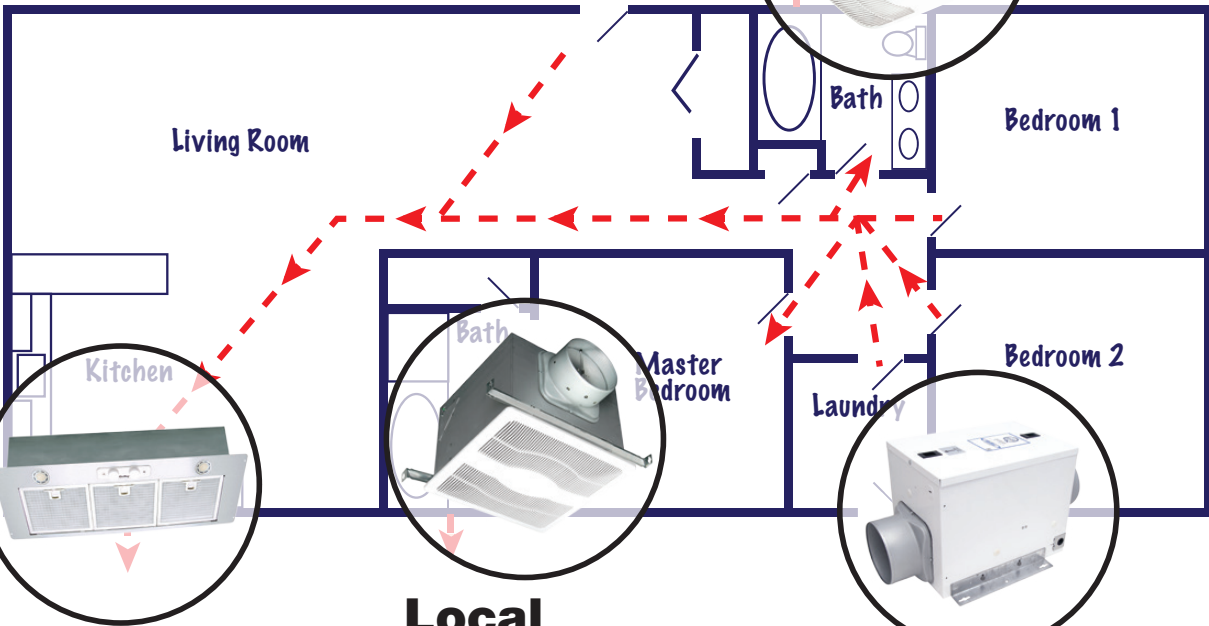


Local Ventilation

BFQ Series exhaust fan for small to medium sized bathrooms.

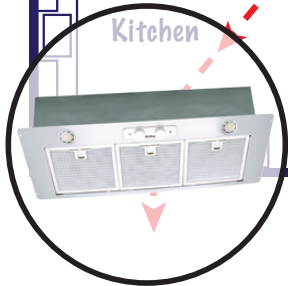


BEST AIR FLOW



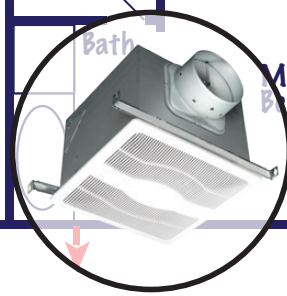
Continuous Ventilation

LE600A range hood insert for continuous ventilation **PLUS** local Kitchen ventilation



Local Ventilation

D4 or E Series exhaust fan for larger sized bathrooms.



OUTDOOR AIR

QFAM Fresh Air Machine brings controlled air in from the outside



LEARN MORE



7 TIME ENERGY STAR® PARTNER OF THE YEAR
2020, 2019, 2014 Partner of the Year - Sustained Excellence
2018, 2017, 2013 and 2012 Partner of the Year, 2014 Climate Communications



Printed using low VOC inks on a composite of post consumer fiber, recycled paper and virgin pulp derived from sustainably managed forests.

