

FUSO Value Parts

Safety, Reliable and Value Price.

FUSO Value Parts are created with *Omoiyari* spirit – an emotion expressed through loyalty, empathy, and sympathy.

With *Omoiyari*, customers always come first – we strive to understand our customers desires and deliver products that give our customers the security and reliability they are looking for.

That is why FUSO Value Parts are manufactured to support the vehicles on the long run- post warranty, while offering the best value.

You can rest assured that FUSO Value Parts will not let you down.

Why Should you use Fuso Value Parts?



We provide **high quality** and **excellent performance**

... Fuso Value Parts are tested according to FUSO's high quality standards



We offer **attractive price** for vehicles after warranty

... Fuso Value Parts are specifically developed for owners with vehicles after warranty



We help **save your costs**

... Fuso Value Parts have a wide range of parts, providing a cost-effective alternative to buying FUSO Genuine parts.

As we continue to expand the FUSO Value Parts range, contact your local FUSO dealer for more information and parts available in your area.



QUALITY PARTS, VALUE PRICE.

INDEX

3	AIR FILTER
5	FUEL FILTER
7	OIL FILTER
9	CLUTCH
11	WATER PUMP
13	V-BELT
15	WIPER
18	OIL SEAL
20	BRAKE LINING
22	BRAKE PAD
23	BULB
26	RADIATOR
28	AXLE SHAFT
29	OIL PUMP



Air Filter

- Designed to deliver consistent airflow to the engine
- Improves air quality and removes harmful impurities by using a wide paper surface
- Guaranteed leak tightness and vibration-resistant support in the housing
- Higher dust holding capacity without compromising life expectancy and fuel efficiency



Air Filters - Model Application

LIGHT DUTY TRUCKS AND BUSES

FVP Number	Genuine Parts Number	LDT																LDB					
		FE3	FE4	FG3	FG4	FB5	FB6	FE5	FE6	FG5	FG6	FB7	FB8	FE7	FD7	FE8	FF8	FG7	FG8	BE4	BG4	BE6	BG6
ME423398	ME033717		•		•															•			
QY012152	ME416839										•			•	•	•							
QY012156	MB120298	•	•	•	•															•	•		
QY012162	ME416846															•	•					•	•
QY012164	ME403477											•			•	•	•	•					
QY012194	ME403478														•		•						
QY012195	ME410341														•		•		•	•			
	ME416845														•		•		•	•			
QY012292	ME294400					•			•	•	•	•								•	•	•	•
	ME292262					•			•	•												•	
QY012293	ME423319					•	•	•	•		•	•	•		•	•		•	•	•	•	•	•

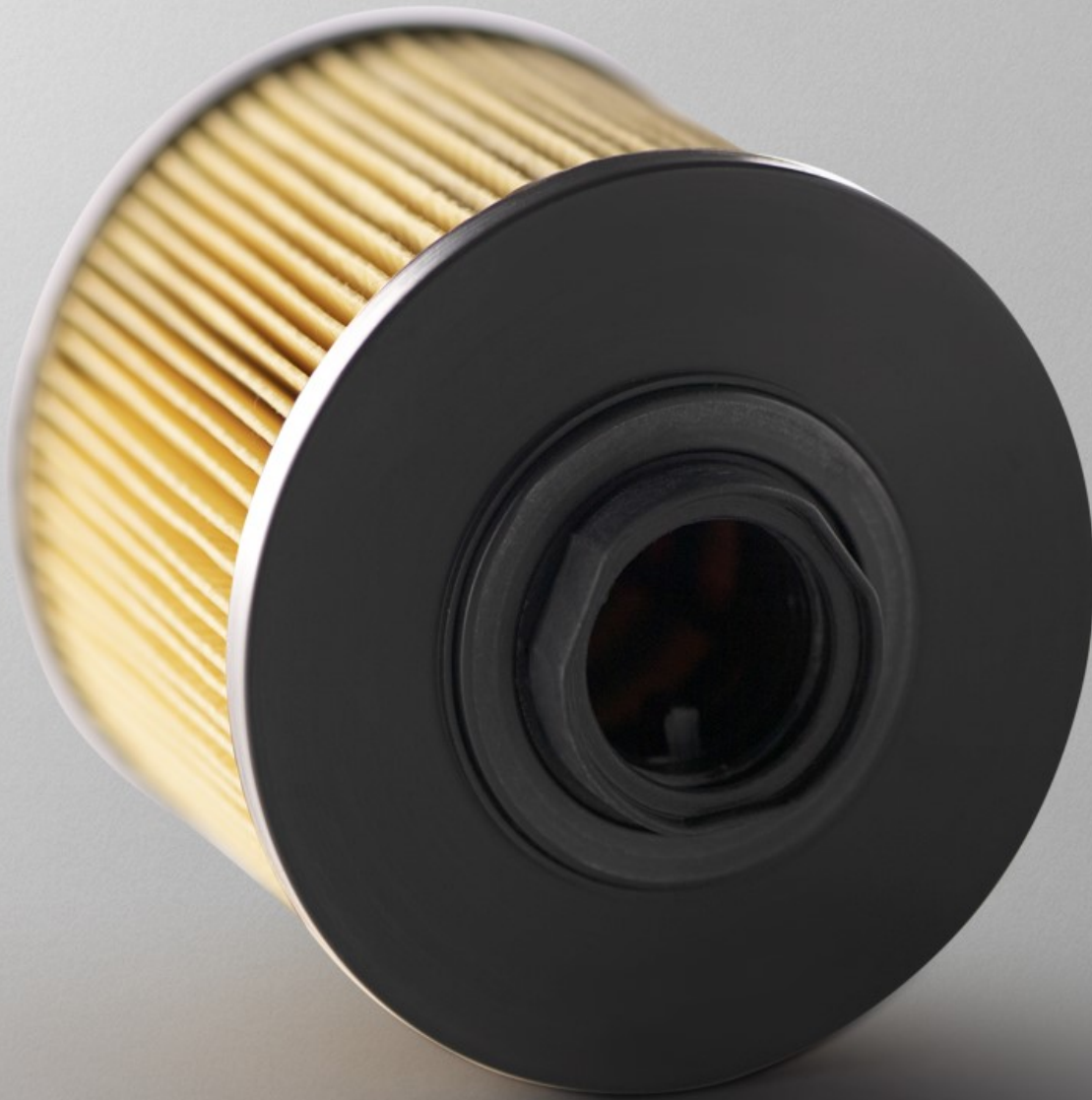
MEDIUM DUTY TRUCKS AND BUSES

FVP Number	Genuine Parts Number	MDT												MDB														
		FH1	FH2	FK3	FK4	FK5	FL4	FM5	FN5	FK6	FK7	FL6	FM6	FN6	FQ6	BM1	MK2	MK5	MK6	RK1	RM1	MM2	MM3	MM5	MM6	MM7	MM8	MM9
ME423133	ME073252				•	•		•	•							•	•		•				•			•	•	
ME423134	ME073385				•			•	•							•												
ME423398	ME033717	•	•	•	•	•	•	•	•	•	•	•	•															
QY000002	ME073160		•						•	•	•	•			•													
	ME073821								•	•	•	•	•	•														
QY012042	ME411297								•		•					•				•							•	
QY012141	3093035100															•		•	•	•	•		•	•				
QY012144	ME033773	•	•		•		•	•	•			•	•															
QY012151	ME413508								•		•					•				•								•
QY012158	ME033603		•		•	•		•								•		•				•						
QY012182	ME413507									•																		
	ME413506									•	•	•	•	•	•													

HEAVY DUTY TRUCKS AND BUSES

FVP Number	Genuine Parts Number	HDT															HDB																				
		FN4	FP4	FR4	FS4	FT4	FU4	FV4	FW4	FP5	FR5	FS5	FT5	FU5	FV5	FW5	FX5	FY5	FS6	FU6	FS7	FU7	FY7	MP2	MP3	MP6	MP7	MS7	MS8	MS9	MU5	MU6	RP1/5	RS1/5			
QY012141	3093035100																							•		•									•		
QY012142	3123060601																							•		•		•				•		•	•		
QY012145	ME063140		•		•		•	•																													
QY012147	ME413500													•																							
	ME291945									•		•	•		•																						
QY012150	ME413502										•	•	•					•	•	•	•	•	•														
QY012151	ME413508																								•		•										
QY012158	ME033603																								•												
QY012159	ME053214		•		•	•	•	•																					•								
QY012160	ME401628											•	•	•		•																					
	ME063135	•	•		•	•	•	•																													
	ME063130	•	•	•	•	•	•	•				•	•	•												•											
QY012165	ME413501								•	•	•	•	•	•			•							•				•				•					
QY012182	ME413506																								•												
QY012192	ME280389										•	•	•	•																							
QY012296	ME294850	•	•		•	•	•	•	•	•	•	•	•	•	•	•	•	•							•				•			•	•				
QY012297	ME160952		•				•	•		•		•	•				•												•								

Fuel Filter



- Superior filtration and aids higher fuel efficiency for respective FUSO engines
- Effective at removing water and impurities from the fuel
- Excellent pressure and vibration capacity

Fuel Filters - Model Application

LIGHT DUTY TRUCKS AND BUSES

FVP Number	Genuine Parts Number	LDT																								LDB								
		FB3	FB4	FE3	FE4	FG3	FG4	FB5	FB6	FE5	FE6	FG5	FG6	FB7	FB8	FE7	FD7	FE8	FF8	FG7	FG8	FBA	FDA	FEA	FEB	FEC	FED	FGA	FGB	BE4	BG4	BE6	BG6	
ME229273	ME229333				•		•			•		•						•			•												•	
QY009001	ME016841				•																													
QY010009	ME016862	•		•	•	•			•	•	•	•				•		•			•									•		•		
QY010011	MB220900		•					•	•	•				•			•																	
QY012137	ME222135													•	•	•	•	•	•	•	•											•	•	
QY012167	ME132525							•	•	•	•	•			•	•		•		•	•											•	•	
QY012173	ME240521								•	•																						•	•	
QY012429	ME229355	•		•	•	•			•	•	•	•																		•	•	•		
QY012450	ML239124																					•	•	•	•	•	•	•	•			•	•	

MEDIUM DUTY TRUCKS AND BUSES

FVP Number	Genuine Parts Number	MDT														MDB																
		FH1	FH2	FK3	FK4	FK5	FL4	FM5	FN5	FK6	FK7	FL6	FM6	FN6	FQ6	BK1	BM1	MK1	MK2	MK5	MK6	RK1	RM1	MM1	MM2	MM3	MM5	MM6	MM7	MM8	MM9	
ME229273	ME229333	•	•	•	•	•	•	•	•	•	•	•			•	•		•	•	•	•	•	•	•		•	•			•		
QY009001	ME016841	•	•		•		•	•	•		•	•	•		•	•		•				•	•									
QY009003	ME131824								•			•	•	•					•												•	
QY012167	ME132525		•						•	•																						
QY012171	ME056670	•	•		•			•			•	•	•						•		•	•	•		•	•			•	•	•	
QY012184	ME300361								•			•	•																			
QY012185	ME306306								•			•	•	•																		

HEAVY DUTY TRUCKS AND BUSES

FVP Number	Genuine Parts Number	HDT																HDB															
		FN4	FP4	FR4	FS4	FT4	FU4	FV4	FW4	FP5	FR5	FS5	FT5	FU5	FV5	FW5	FX5	FY5	FP6	FS6	FU6	FV6	MP2	MP3	MP6	MP7	MS7	MS8	MS9	MU5	MU6	RP1/5	RS1/5
QY008000	ME150631		•	•	•	•	•	•	•	•	•	•	•	•	•	•	•	•					•	•	•	•	•	•			•	•	
QY012171	ME056670	•	•	•	•	•	•	•	•					•									•		•		•	•			•	•	
QY012184	ME300647								•		•	•	•						•	•	•	•		•			•	•			•	•	
QY012299	ME165323								•	•	•	•	•	•	•	•	•	•					•				•	•			•	•	

Oil Filter



- Prevents oil deterioration to maintain smooth engine operation and engine life
- Traps dirt particles effectively by using thick filter paper with a large surface area
- Designed to ensure little to no loss of in- and out-flow pressure during filtering
- Undergone pressure resistance tests for optimum strength and durability at abnormally high levels of contamination and impurities

Oil Filters - Model Application

LIGHT DUTY TRUCKS AND BUSES

FVP Number	Genuine Parts Number	LDT																				LDB								
		FB3	FB4	FE3	FE4	FG3	FG4	FB5	FB6	FE5	FE6	FG5	FG6	FB7	FB8	FE7	FD7	FE8	FG7	FG8	FBA	FEA	FEB	FEC	FGB	BE4	BG4	BE6	BG6	
QY010014	ME084641									•	•	•	•				•	•	•							•		•		
QY010015V	ME013307			•	•		•	•	•	•																				
	ME013343			•	•			•	•	•	•	•	•	•	•	•	•	•	•				•			•	•	•		
	ME227821			•	•			•	•	•	•	•	•	•	•	•	•	•	•								•	•	•	
	ME202472							•	•	•				•	•	•	•	•												
QY012176	ME004099	•		•																										
	ME014833	•	•	•	•	•																					•	•		
QY012180	ME088532								•	•	•	•					•		•	•	•							•	•	
QY012190	MD360935							•		•				•																
QY012191	ME014838			•	•	•	•																				•	•		
QY012304	ME228898								•	•	•	•	•	•	•	•	•	•	•										•	•
QY012448	QC000001																				•	•	•	•	•				•	•

MEDIUM DUTY TRUCKS AND BUSES

FVP Number	Genuine Parts Number	MDT														MDB															
		FH1	FH2	FK3	FK4	FK5	FL4	FM5	FN5	FK6	FK7	FL6	FM6	FN6	FQ6	BK1	BM1	MK1	MK2	MK5	MK6	RK1	RM1	MM1	MM2	MM3	MM5	MM6	MM7	MM8	MM9
QY009004	ME130968		•	•	•	•	•	•	•	•	•	•	•	•		•		•	•	•	•	•	•	•	•	•	•	•	•	•	•
QY009005	ME034611		•	•	•	•	•	•	•		•	•	•	•		•	•		•		•	•									
QY010014	ME084641	•																													
QY010015V	ME013307	•	•	•																											
	ME013343	•	•	•						•																					
	ME227821									•																					
QY012180	ME088532		•							•																					
QY012191	ME014838	•		•																											
QY012199	ME995735		•		•		•	•	•	•		•	•	•		•	•		•		•	•									
QY012304	ME228898		•							•																					

HEAVY DUTY TRUCKS AND BUSES

FVP Number	Genuine Parts Number	HDT														HDB														
		FN4	FP4	FR4	FS4	FT4	FU4	FV4	FW4	FP5	FR5	FS5	FT5	FU5	FV5	FW5	FX5	FY5	MP2	MP3	MP6	MP7	MS7	MS8	MS9	MU5	MU6	RP1/5	RS1/5	
QY008002	ME356701									•	•	•	•	•	•	•	•		•					•	•			•	•	
QY008003	ME164857	•	•	•	•	•	•	•	•	•	•	•	•	•	•	•	•	•	•	•	•	•	•	•		•	•	•	•	
	ME165370	•	•	•	•	•	•	•	•	•	•	•	•	•	•	•	•	•	•	•	•	•	•	•		•	•	•	•	
QY008004	ME121788	•	•	•	•	•	•	•	•	•	•	•	•	•	•	•	•	•	•	•	•	•	•	•		•	•	•	•	
	ME130968																			•										
QY012174	ME356703									•	•	•	•	•	•	•	•	•		•				•	•		•	•		
QY012181	ME356702									•	•	•	•	•	•	•	•	•		•				•	•		•	•		
QY012303	ME121789	•	•	•	•	•	•	•	•	•	•	•	•	•	•	•	•	•	•	•	•	•	•	•		•	•	•	•	
	ME180514	•	•	•	•	•	•	•	•	•	•	•	•	•	•	•	•	•	•	•	•	•	•	•		•	•	•	•	

Clutch

- Designed to fit FUSO vehicles, offers excellent performance and resistance to wear
- Same power transmission ratio and durability as our genuine clutches
- Ensures minimal impact on the drivetrain with minimum shock at clutch engagement
- Allows quick shifting with its lightweight and simple construction as a single disc



Clutch - Model Application

Clutch Cover

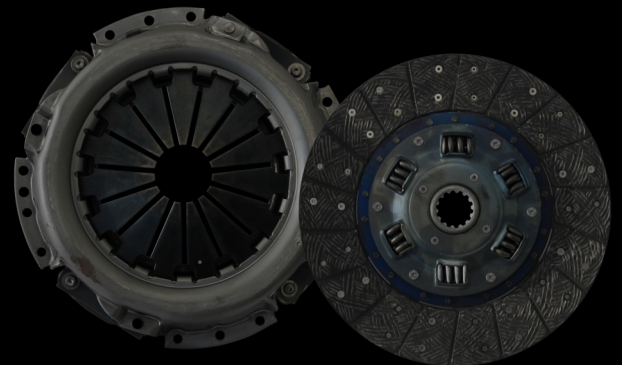
LIGHT DUTY TRUCKS & BUSES

FVP Number	Genuine Parts Number	Spec	LDT														LDB			
			FB4	FE3	FE4	FB5	FB6	FE5	FE6	FG5	FG6	FB7	FE7	FE8	FG7	FG8	BE4	BG4	BE6	BG6
QY006001	ME524932	φ260	●	●	●	●	●	●												
QY006003	ME521118	φ300						●	●	●	●		●	●	●	●	●	●	●	●

Clutch Disc

LIGHT AND MEDIUM DUTY TRUCKS & BUSES

FVP Number	Genuine Parts Number	Spec	LDT											LDB				MDT		
			FB5	FB6	FE5	FE6	FG5	FG6	FB7	FE7	FE8	FF8	FG7	FG8	BE4	BG4	BE6	BG6	FK6	FK7
QY006000	ME509444	φ260	●	●	●				●	●										
	ME538218	φ260	●	●	●				●	●										
QY006002	ME515796	φ300			●	●	●	●		●	●	●	●	●	●	●	●	●	●	●



Water Pump



- Designed for optimum and consistent flow of coolant
- Efficient shape results in high pump performance and low fuel consumption
- Maintains a level operating temperature and avoids engine overheating and ensures better performance

Water Pump - Model Application

LIGHT DUTY TRUCKS AND BUSES

FVP Number	Genuine Parts Number	LDT												LDB	
		FB3	FB4	FB5	FB6	FE5	FE6	FG5	FG6	FE7	FE8	FG7	FG8	BE6	BG6
ME993513	ME993513	•	•	•	•										
QY010000	ME991290					•	•	•	•	•	•	•	•	•	•
QY010001	ME991285					•	•	•	•	•	•	•	•	•	•



V- Belt



- Ensures length consistency through V-Belts' life-cycle
- Product quality strictly checked and approved by FUSO's engineers
- Surface guarantees high transmission generation and optimum grip even under extreme conditions

V-Belt - Model Application

LIGHT DUTY TRUCKS AND BUSES

FVP Number	Genuine Parts Number	LDT																LDB											
		FE3	FE4	FG4	FB5	FB6	FE5	FE6	FG5	FG6	FB7	FB8	FE7	FD7	FE8	FF8	FG7	FG8	FBA	FEA	FEB	FEC	FGB	BE4	BG4	BE6	BE7	BG6	BG7
QY009008	MH014378		•																					•	•				
QY010016	MH014385	•	•	•			•	•	•	•														•					
QY010019	MH014592										•	•	•		•														
QY012216	ME900214											•		•															
QY012217	MH014384		•				•	•	•	•																			
QY012218	MH014096																										•		
QY012219	MH014098																										•		
QY012220	MH014099											•		•			•										•		
QY012221	MH014093		•				•	•	•	•														•	•	•			
QY012222	MH014025											•		•			•				•	•							
QY012223	ME222487																									•		•	
QY012225	MH014050				•	•	•				•		•	•															
QY012227	ME223001											•		•	•	•	•												
QY012228	ME224118											•		•	•	•	•												
QY012229	ME241664					•	•	•	•			•		•	•	•	•									•		•	
QY012230	ME241665					•	•	•	•			•		•	•	•	•												
QY012231	ME241670								•					•		•	•												
QY012232	ME241667					•	•	•	•					•		•	•									•		•	
QY012233	ME241666					•	•	•	•																	•		•	
QY012446	MK667789																		•	•	•	•	•			•	•	•	•

MEDIUM DUTY TRUCKS AND BUSES

FVP Number	Genuine Parts Number	MDT												MDB														
		FH1	FH2	FK3	FK4	FK5	FM5	FN5	FK6	FK7	FL6	FM6	FN6	FQ6	BM1	MK1	MK2	MK6	RK1	RM1	MM1	MM2	MM3	MM5	MM6	MM7	MM8	
QY012206	ME902741		•	•	•	•	•	•	•	•	•	•	•	•	•	•	•	•	•	•	•	•	•	•	•	•	•	•
QY012205	ME300899								•	•	•	•	•															
QY009008	MH014378	•	•	•																								
QY012232	ME241667		•							•																		
QY012233	ME241666		•																									
QY012209	ME900741														•	•	•	•	•	•			•				•	
QY012212	MH014417		•						•	•	•	•	•															
QY012213	MH014447								•	•	•	•	•															
QY012214	MH014448								•		•	•	•															
QY012215	MH014449								•	•																		
QY012224	ME228896								•	•																		

HEAVY DUTY TRUCKS AND BUSES

FVP Number	Genuine Parts Number	HDT										HDB								
		FN4	FP4	FS4	FT4	FU4	FV4	FP5	FS5	FT5	FU5	FV5	FY5	MP2	MP3	MP6	MP7	RP1/5		
ME360569	MH014112		•	•	•	•	•	•	•	•	•	•								
QY012207	MH014510	•	•	•	•	•	•	•	•	•	•	•	•	•	•	•	•	•	•	•
QY012224	ME228896														•					

Wiper



- Developed to match the shape and curve of FUSO vehicle windshields
- Ensures maximum visibility while creating less noise during usage
- Adheres to homologation requirements

Wiper - Model Application

LIGHT DUTY TRUCKS AND BUSES

Position	FVP Number	Genuine Parts Number	LDT															LDB				
			FB5	FB6	FE5	FE6	FG5	FG6	FB7	FB8	FE7	FE8	FG7	FG8	FEA	FEB	FEC	BE6	BG6			
Wiper Blade	QY012011	MC181000																	•	•		
		MC185442																		•	•	
	QY012012	MK484589		•		•		•		•		•		•								
		MK484818		•		•		•														
		MK484819		•		•		•														
		MC896047		•		•		•														
		MK580542								•		•		•								
		MC181001																		•	•	
		MC185443																		•	•	
		QY012013	MK484673	•		•		•		•		•		•								
	MK581043																•	•				
	MC896048		•		•		•															
	MK580541									•		•		•								
	MK461328		•		•		•		•		•		•									
	QY012014	MK581040														•						
		MK581042														•						
	QY012015	MC344976																		•	•	
	Wiper Rubber	QY012017	MC187317																		•	•
		QY012018	MC899438		•		•		•													
			MR275310																		•	•
QY012019		MB821509	•		•		•															
		MC899437	•		•		•															
		MK581090															•	•				
		MR300303	•		•		•		•		•		•									
QY012020		MK581089													•							
QY012021		MC262423																		•	•	

Wiper - Model Application

MEDIUM DUTY TRUCKS

Position	FVP Number	Genuine Parts Number	MDT						
			FH2	FK6	FK7	FL6	FM6	FN6	FQ6
Wiper blade	QY012010	MK487222		•	•	•			
		MK487223		•	•	•			
	QY012012	MC896047	•						
		MK484818	•						
		MK484819	•						
Wiper rubber	QY012016	MC967535		•	•	•	•	•	•
		MK487576		•	•	•	•	•	•

HEAVY DUTY TRUCKS

Position	FVP Number	Genuine Parts Number	HDT											
			FP5	FS5	FT5	FU5	FV5	FY5	FP6	FS6	FU6	FV6	FY6	
Wiper blade	QY012011	MB848470	•	•	•	•	•	•	•	•	•	•	•	•
	QY012013	MC887350	•	•	•	•	•	•	•	•	•	•	•	•
Wiper rubber	QY012017	MB848810	•	•	•	•	•	•	•	•	•	•	•	•
	QY012019	MR300303	•	•	•	•	•	•	•	•	•	•	•	•



Oil Seal

- Balances both heat and cold resistance for a wide range of applications
- Designed and evaluated to have high service life even under minimum/maximum lubrication
- Every variant is tested in terms of fit and finish to address prematurely worn out seals
- Bore diameter precisely measured for better leakage control



Oil Seal - Model Application

LIGHT DUTY TRUCKS AND BUSES

FVP Number	Genuine Parts Number	LDT																								LDB								
		FB3	FB4	FE3	FE4	FG3	FG4	FB5	FB6	FE5	FE6	FG5	FG6	FB7	FB8	FE7	FD7	FE8	FF8	FG7	FG8	FBA	FDA	FEA	FEB	FEC	FED	FGA	FGB	BE4	BG4	BE6	BG6	
QY012251	MH034213	•	•	•	•	•	•	•	•	•	•	•	•	•	•	•	•	•	•	•	•	•	•	•	•	•	•	•	•	•	•	•	•	•
QY012252	MT119305			•	•			•		•	•	•	•			•		•		•	•			•							•		•	•
QY012253	MB308933			•	•	•	•	•		•	•	•	•			•		•	•	•	•	•	•	•		•			•	•	•	•	•	
QY012254	MB308966				•													•		•					•	•	•	•		•				
QY012256	MC827472																								•	•								
QY012258	MT327029		•	•																				•	•					•		•		

MEDIUM DUTY TRUCKS AND BUSES

FVP Number	Genuine Parts Number	MDT										MDB						
		FH1	FH2	FK3	FK4	FK5	FL4	FM5	FK6	FK7	FL6	FM6	BK1	MK1	MK2	MK5	MK6	RK1
QY012250	ME034976								•	•	•							
QY012251	MH034213						•		•		•							
QY012255	MC804949							•				•						
QY012256	MC827472	•	•	•	•	•	•		•	•	•		•	•	•	•	•	•

HEAVY DUTY TRUCKS AND BUSES

FVP Number	Genuine Parts Number	HDT																	HDB												
		FN4	FP4	FR4	FS4	FT4	FU4	FV4	FW4	FP5	FR5	FS5	FT5	FU5	FV5	FW5	FX5	FY5	MP2	MP3	MP6	MP7	MS7	MS8	MS9	MU5	MU6	RP1/5	RS1/5		
QY012255	MC804949		•		•		•	•		•	•	•			•	•	•					•	•	•		•	•	•	•	•	
QY012256	MC827472	•			•																										
QY012257	ME060124	•	•	•	•	•	•	•	•	•	•	•	•	•	•	•	•	•	•	•	•	•	•	•	•	•	•	•	•	•	•

Brake Lining



- Designed for continuous levels of quality and reliability
- Excellent friction pairing in combination with the FUSO Genuine brake drums
- Tested at maximum permitted conditions to ensure optimal protection of the surface during any braking

Brake Lining - Model Application

LIGHT DUTY TRUCKS AND BUSES

FVP Number	Genuine Parts Number	LDT															LDB							
		FE3	FE4	FG3	FG4	FE5	FE6	FG5	FG6	FE7	FD7	FE8	FF8	FG7	FG8	FG8	FG8	FG8	FG8	FG8	BE4	BG4	BE6	BG6
QY002000	MC112570	●	●			●	●	●	●	●		●		●	●		●	●	●	●	●	●	●	●
	MC865116		●				●		●								●		●					
	MC894611	●	●	●	●	●	●	●	●	●		●		●	●		●	●	●	●	●	●	●	●
	MK355498					●	●	●	●	●		●			●		●	●	●	●	●	●	●	●
	MK449868	●	●	●	●	●	●	●	●	●		●		●	●		●	●	●	●	●	●	●	●
	MK528483											●		●		●	●					●	●	
	MK585819																	●						
QY002003	MC838177	●	●															●						
	MC889852																					●		
	MC895732	●	●			●	●											●						
QY002005	MK321243	●	●			●	●	●		●		●	●											
	MK321851																	●				●		
	MK449267												●									●		
	MK499590						●																	
	MK528681					●	●			●		●	●									●	●	
	MK529233											●												
	MK529614									●		●				●								
	MK585700					●						●					●							

*Applicable for ASEAN / Asia / Hong Kong / Singapore / GCC / Africa / Latin American markets
 NOT Applicable for USA / Canada / Europe / Russia / Turkey / South Africa / Australia / New Zealand markets (NOT meeting AMECA nor ECE-R90 (EU) Certification)



Brake Pad

- Tested at maximum permitted conditions to ensure reliability and safety for the driver
- Designed and tested with reduction of fade resistance even during downhill braking
- Excellent friction pairing in combination with the FUSO Genuine brake discs and brake calipers
- Comes as a complete kit with child parts for easy installation
- Cleared ECE R90 and AMECA homologation



Brake Pad - Model Application

LIGHT DUTY TRUCKS AND BUSES

FVP Number	Genuine Parts Number	LDT																LDB	
		FE3	FE4	FB5	FE5	FE6	FG5	FB7	FB8	FE7	FD7	FE8	FG7	FG8	FEA	FEB	FEC	BE4	BE6
QY002019	MK449108									•		•	•						
	MK528945									•		•	•						
	MK528946											•							
	MK529833									•		•	•						
	MK529908									•		•							
	MK529909											•							
	MK530830									•		•	•						
	MK585937											•							
QY002031	MC894601				•	•													•
	MC894604				•	•													•
	MK328619					•													
	MK384894				•														
	MK499871				•														
	MK499872				•	•													
	MK529906				•	•													
	MK529907				•	•													
	MK529949				•	•													•
QY002040	MK585933														•	•	•		
	ML224649														•	•	•		
	ML225275														•	•	•		
	ML225279														•	•	•		
	ML252414														•	•			
	ML252416														•	•	•		
	ML253521														•	•	•		
QY004000	MK449107								•	•		•	•	•					
	MK528944								•										
	MK529948								•	•		•	•	•					
QY004010	MK529247							•			•								
	MK529567								•										
QY004016	MC869773	•	•	•	•	•	•											•	•
	MC869777	•	•	•	•	•	•											•	•
QY012447	MK528485											•							
	MK528486											•							

*FVP Number QY012447 meets AMECA homologation (NOT meeting ECE R90).

Bulb

- Tested for vehicle fitting to have better visibility with focused beam even during extreme weather conditions
- Designed to sustain vibration without failure



Bulb - Model Application

LIGHT DUTY TRUCKS AND BUSES

Position	FVP Number	Genuine Parts Number	LDT																								LDB					
			FB3	FB4	FE3	FE4	FG3	FG4	FE5	FE6	FG5	FG6	FB7	FB8	FE7	FD7	FE8	FF8	FG7	FG8	FEA	FEB	FEC	FED	FGA	FGB	BE4	BG4	BE6	BG6		
HEAD LAMP & LICENSE	QY012031	MH056095								•	•	•	•																•	•	•	•
		MH056097								•	•	•	•			•		•	•	•	•										•	•
	QY012032	MH056053	•	•	•	•	•	•	•	•	•	•																	•	•	•	•
		MH056061	•		•	•	•	•	•	•	•	•			•		•	•	•	•									•	•		
	QY012037	MS820968											•	•	•		•			•	•	•	•	•	•	•						
	QY012038	MH056054							•	•	•	•			•		•	•	•	•								•	•	•	•	
	QY012039	MS820970															•			•			•									
	QY012045	MH056202							•	•	•	•	•		•	•	•	•	•	•										•	•	
	QY012084	MK531284																												•	•	
TURN SIGNAL LAMP	QY012043	MH056009					•				•								•													
		MH056201	•		•	•	•	•	•	•	•					•		•	•	•	•								•	•		
	QY012044	MH056215						•	•						•		•	•	•	•									•	•		
	QY012046	MH056216													•		•	•	•	•									•	•		
	QY012203	MH056214							•	•	•	•			•		•	•	•	•										•	•	
TAIL LAMP	QY012040	MH056217													•		•	•	•	•										•	•	
	QY012041	MH056210							•	•	•	•																				

MEDIUM DUTY TRUCKS AND BUSES

Position	FVP Number	Genuine Parts Number	MDT														MDB																
			FH1	FH2	FK3	FK4	FK5	FL4	FM5	FN5	FK6	FK7	FL6	FM6	FN6	FQ6	BK1	BM1	RK1	RM1	MM9												
HEAD LAMP & LICENSE	QY012031	MH056095														•	•	•	•	•													
		MH056097															•	•	•	•	•	•											
	QY012032	MH056053	•	•	•	•	•	•	•	•	•					•	•	•	•	•	•		•	•	•	•							
		MH056061		•	•	•	•	•	•	•	•					•	•	•	•	•	•	•											
	QY012033	MH056221														•	•	•	•	•	•												
	QY012038	MH056054		•		•				•					•	•	•	•	•	•	•			•	•	•							
	QY012039	MS820970														•			•														
	QY012045	MH056006				•	•			•	•	•	•	•	•	•	•	•	•	•	•			•	•	•				•	•		
MH056202		•	•	•	•	•	•	•	•	•	•	•	•	•	•	•	•	•	•	•			•	•	•	•							
FOG LAMP	QY012202	MH056205				•	•	•	•	•								•					•	•									
	QY012204	MH056096														•	•	•	•	•	•												
TURN SIGNAL LAMP	QY012043	MH056009	•	•	•	•	•	•	•	•	•	•	•	•	•	•	•	•	•	•													
		MH056201	•	•	•	•	•	•	•	•	•	•	•	•	•	•	•	•	•	•	•			•	•	•	•						
	QY012044	MH056215		•												•	•	•	•	•	•												
	QY012046	MH056216														•	•	•	•	•	•									•			
	QY012203	MH056214														•	•	•	•	•	•												
TAIL LAMP	QY012040	MH056217		•												•	•	•	•	•													
	QY012041	MH056210		•												•	•	•	•	•	•												

Bulb - Model Application

HEAVY DUTY TRUCKS AND BUSES

Position	FVP Number	Genuine Parts Number	HDT																								HDB					
			FN4	FP4	FR4	FS4	FT4	FU4	FV4	FW4	FP5	FR5	FS5	FT5	FU5	FV5	FW5	FX5	FY5	FP6	FS6	FU6	FV6	FY6	FP7	FS7	FU7	FV7	FY7	MS7	RP1/5	RS1/5
HEAD LAMP & LICENSE	QY012031	MH056095	●	●		●	●	●	●		●	●	●	●	●	●	●	●	●	●	●	●	●									
		MH056097								●	●	●	●	●	●	●	●	●	●	●	●	●	●	●								
	QY012032	MH056053	●	●		●	●	●	●	●	●	●	●	●	●	●	●	●	●												●	●
		MH056061	●	●		●	●	●	●	●																						
	QY012033	MH056221								●	●	●	●	●																		
	QY012038	MH056054	●	●		●	●	●	●	●	●	●	●	●	●	●	●	●	●	●	●	●	●	●						●		
	QY012045	MH056006	●	●	●	●	●	●	●						●																	
		MH056202	●	●	●	●	●	●	●	●	●	●	●	●	●	●	●	●	●	●										●	●	●
FOG LAMP	QY012202	MH056205	●	●		●	●	●	●																					●	●	●
	QY012204	MH056096		●					●	●	●	●	●	●					●													
TURN SIGNAL LAMP	QY012043	MH056009	●	●	●	●	●	●	●	●	●	●	●	●	●	●	●	●	●													
	QY012043	MH056201	●	●	●	●	●	●	●	●	●	●	●	●	●	●	●	●	●	●	●	●	●	●	●	●	●	●	●	●	●	
	QY012203	MH056214							●	●	●	●	●	●	●	●	●	●	●	●	●	●	●	●	●	●	●	●	●	●	●	
	QY012044	MH056215						●	●	●	●	●	●	●	●	●	●	●	●	●	●	●	●	●	●	●	●	●	●	●	●	●
	QY012046	MH056216						●	●	●	●	●	●	●	●	●	●	●	●	●	●	●	●	●	●	●	●	●	●	●	●	●
TAIL LAMP	QY012040	MH056217							●	●	●	●	●	●	●	●	●	●	●	●	●	●	●	●	●	●	●	●	●	●	●	
	QY012041	MH056016							●																							
	QY012041	MH056210	●	●	●	●	●	●	●	●	●	●	●	●	●	●	●	●	●	●	●	●	●	●	●	●	●	●	●	●	●	



Radiator



- Thin-tube construction assures maximum cooling efficiency to maintain optimum engine performance
- Aluminum core increases the fuel-efficiency by weight optimization
- Combined with genuine coolant, superior fin waves provides best heat transfer and protects your engine from overheating

Radiator - Model Application

LIGHT DUTY TRUCKS AND BUSES

FVP Number	Genuine Parts Number	LDT															LDB
		FE6	FG6	FB7	FB8	FE7	FE8	FF8	FG7	FG8	FBA	FEA	FEB	FEC	FED	FGB	BE6
QY012361	ML280357	●	●														
QY012362	ME406044				●		●	●		●							
QY012363	ME406045						●			●							
QY012365	ME413765			●		●			●								
QY012368	ME417659					●											
QY012369	ME418348						●										
QY012370	ME418713												●	●	●	●	
QY012371	ME418714												●	●	●	●	
QY012373	ME418717										●	●					
QY012380	MK522889																●

MEDIUM DUTY TRUCKS AND BUSES

FVP Number	Genuine Parts Number	MDT					MDB
		FK6	FL6	FM6	FN6	FQ6	BM1
QY012374	ME418736	●		●	●	●	
QY012375	ME418737	●		●	●		
QY012376	ME298716	●	●	●	●		●
QY012377	ME298717			●	●	●	

HEAVY DUTY TRUCKS AND BUSES

FVP Number	Genuine Parts Number	HDT				
		FP5	FS5	FT5	FU5	FV5
QY012379	ME417755	●	●	●	●	●

Axle Shaft

*For Indonesia Market Only

- Precisely machined splines for excellent torque transmission
- Optimal strength and torsional durability
- High-quality forging parts manufactured to OEM safety standards



Axle Shaft - Model Application

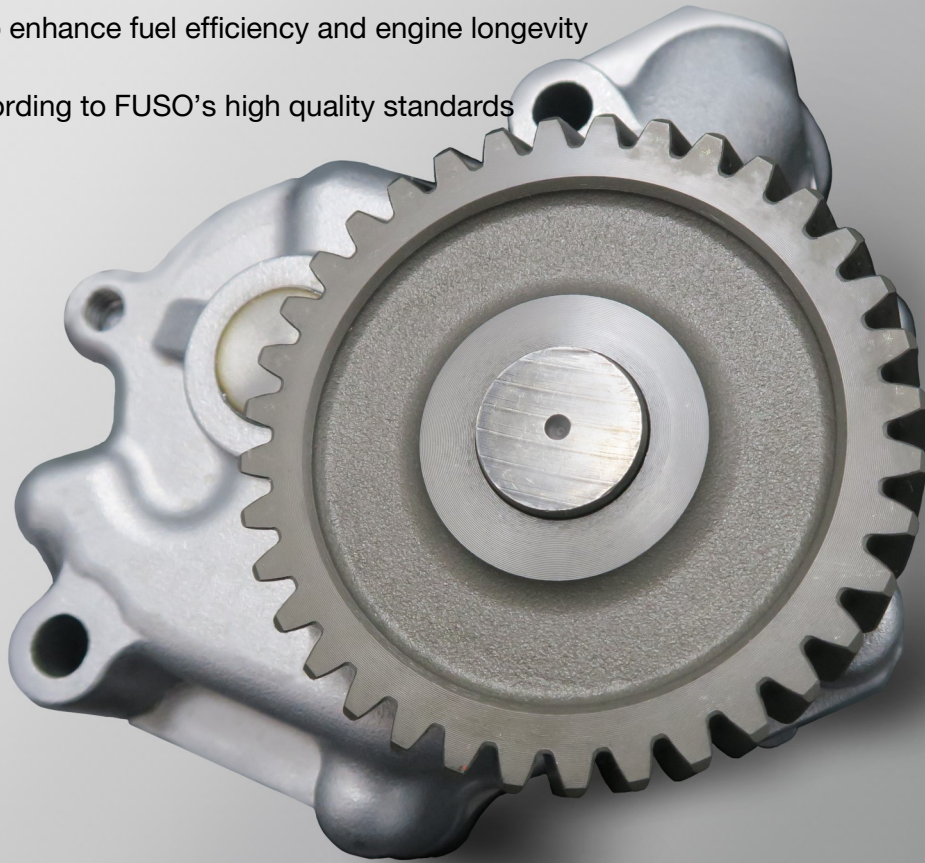
MEDIUM & HEAVY DUTY TRUCKS AND BUSES

FVP Number	Genuine Parts Number	MDT				MDB		HDT
		FM5	FN5	FM6	FN6	BM1	RM1	FV5
QY012452	ME506946		•	•	•	•	•	
QY012453	ME506948	•	•		•			•
QY012454	ME506949	•	•		•			•

Oil Pump

*For Indonesia Market Only

- Optimal oil supply regardless of engine speed
- Designed to enhance fuel efficiency and engine longevity
- Tested according to FUSO's high quality standards



Oil Pump - Model Application

LIGHT DUTY TRUCKS

FVP Number	Genuine Parts Number	LDT				
		FE3	FE4	FE7	FE8	FG8
QY012455	ME017484	•	•	•	•	•



*The photos used in this catalog can be slightly different from actual

MITSUBISHI FUSO TRUCK & BUS CORPORATION

www.mitsubishi-fuso.com