



ELECTRIC AND HYBRID-POWERED AERIAL WORK PLATFORMS

OEM: SINOBOOM

"We've been impressed with the performance and reliability of Discover batteries and are keen for our customers in Europe and the rest of the world to now benefit from reduced maintenance and lifetime costs."

Susan Xu – Sinoboom President.



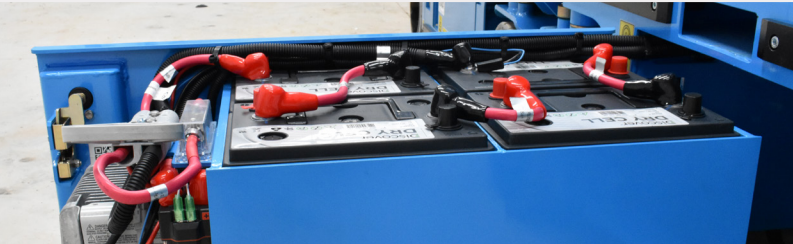
OVERVIEW

Sinoboom has supplied its platforms with Discover DRY CELL AGM batteries within the Asian market since 2018, offering customers a maintenance-free battery with top performance and reliability.

Elated by the benefits of reduced maintenance and lifetime costs provided to their customers, and with Sinoboom's recent launch of subsidiaries in Europe, North America, and Australia, DRY CELL

AGM batteries are now standard across all markets for its electric and hybrid-powered aerial work platforms.

"Sinoboom is committed to providing our customers with high-quality products which combine advanced technologies with a user-friendly design and feel; Discover's batteries fit perfectly with this philosophy," stated Susan Xu, Sinoboom's President.



24V SYSTEM

- 4 EVGC6A-A DRY CELL AGM Batteries
- GPSC3024 24V 30A

EQUIPMENT

- Sinoboom 1932ME - Scissor Lift

REQUIREMENTS

- High-current
- Long service life
- Maintenance-free, No-spill, No-gas

48V SYSTEM

- 8 x EVL16A-A DRY CELL AGM Batteries
- GPSC6048 48V 60A

EQUIPMENT

- Sinoboom A460EJ - Electric Articulating Boom Lift

REQUIREMENTS

- High-current
- High capacity
- Maintenance-free, No-spill, No-gas



OEM
TRUSTED



RESILIENCE



ENHANCED
RUNTIME



EXTENDED
SERVICE LIFE



EXTREME VIBRATION
RESISTANCE



RELIABLE, SAFE,
CERTIFIED

THE DISCOVER DIFFERENCE

Sinoboom has enhanced safety with the deployment of Discover batteries in their electric and hybrid-powered equipment and addressed safety and maintenance costs related to acid leaks, gassing, and terminal corrosion common on flooded lead-acid batteries.

Users now can work safer with DRY CELL AGM and perform maintenance by avoiding contact with hazardous liquids and breathing in fumes due to off-gassing during charge. Operators can also work smarter and longer, by eliminating call outs and delays in work schedules due to battery water topping and optimizing equipment productivity with faster charging (DRY CELL AGM batteries don't require equalization charge).

DRY CELL AGM batteries are being installed in the 40-foot 1218RE electric rough-terrain scissor lift and the 60-foot electric AB18EJ and hybrid AB18HJ articulating boom lifts, among other models. These batteries are ideally suited for MEWP applications because they are particularly resistant to vibration.

Discover Battery is committed to working with Original Equipment Manufacturers (OEM), rental companies, and end-users by providing a purpose-built battery for MEWP, offering global support and service, and supporting OEMs worldwide.

+ 1.778.776.3288

info@discoverbattery.com

discoverbattery.com