



Barracuda NextGen Firewall X

Simple Cloud-Based Network Management
for Small to Midsized Businesses

Product Overview



Content

About the Company	3	Available Subscriptions	18
Cloud-Connected, Easy-to-Use Next-Generation Firewall	4	Availability Matrix	18
Key Benefits	4	Available Support Subscriptions	18
Key Features	4	Energize Updates (EU)	18
Barracuda NextGen Firewall X	4	Instant Replacement (IR)	18
Easy as 1 - 2 - 3	6	Premium Support (PS)	18
Future-Proof Appliances	7	Available Feature Subscriptions	19
Future-Proof Licensing	7	Web Security (Bundle)	19
Automatic Hardware Upgrades	7	Advanced Threat Protection (ATP)	19
X-Series Product Lineup	7	Premium Remote Access	19
Model Comparison	8	Features & Capabilities	20
Application Control	9	Firewall / Packet Filter	20
Application Control	9	Application Control	21
Personalized Application Control	9	Intrusion Prevention	22
Application-Based Provider Selection	9	Remote Connectivity: VPN	23
Deep Application Context	9	Remote Connectivity: Browser	24
Application Monitor	10	Remote Connectivity: CudaLaunch	24
Reporting	11	Routing & Networking	25
Barracuda Report Creator	11	Identity & Authentication	25
Application Risk and Usage Report	11	DHCP	25
Authoritative DNS Server	26	Advanced Threat Protection	26
Web Security Subscription	27	Logging	29
Reporting	29	Reporting	29
User Awareness	12	Hardware Facts	32
External Authentication	12	Barracuda NextGen Firewall X50 / X51	32
Seamless Integration	12	Barracuda NextGen Firewall X100 / X101	33
Local Authentication	12	Barracuda NextGen Firewall X200 / X201	34
Guest Access	13	Barracuda NextGen Firewall X300	35
Confirmation Page	13	Barracuda NextGen Firewall X400	36
Guest Ticketing	13	Barracuda NextGen Firewall X600	37
Overview Authentication Clients	13	Additional Hardware Options	38
Unified Remote Access	14	Barracuda L-shape Rack Mount Bracket	39
Browser Remote Access (SSL VPN)	14	Built-in Wi-Fi Option	38
CudaLaunch	15	Wall Mount Bracket	38
VPN Clients (Barracuda Network Access Client)	15	Ordering Information	40
Centralized Management	17		
Cloud Control	17		
Management for MSPs	17		

About the Company

Barracuda Networks provides cloud-connected security and storage solutions that simplify IT. These powerful, easy-to-use, and affordable solutions are trusted by more than 150,000 organizations worldwide. Barracuda's expansive product portfolio delivers protection against threats targeting email, web, and network intrusions, as well as products that improve application delivery, network access, message archiving, backup, and data protection, on-premises or in the cloud.

Barracuda's high-value, subscription-based IT solutions provide end-to-end network and data security that helps customers address security threats, improve network performance, and protect and store their data.

Barracuda's international headquarters are in the heart of northern California's Silicon Valley.



Cloud-Connected, Easy-to-Use Next-Generation Firewall

Today, small organizations are leaner and more agile than ever. They heavily depend on the productivity benefits of collaborative, Web 2.0 applications hosted in the cloud. But using applications safely requires a next-generation firewall that combines security, application control, always-on connectivity, and ease-of use.

Manageable via an easy-to-use web interface supported by intelligent deployment wizards means there's no need for additional IT staff or special training. Plus, with affordable, all-inclusive pricing, the Barracuda NextGen Firewall X-Series lets you budget with total confidence that there won't be surprise costs down the road.

With the X-Series, antivirus and web filtering functionality is not simply bolted on top of the network stack but deeply integrated into the firewall engine to make sure your network does not get slowed down. Optionally, antivirus and web filtering may even be offloaded to the Barracuda Web Security Service cloud, freeing further CPU cycles for network scalability.

Key Benefits

- Secures your network edge against attacks and intrusions
- Controls thousands of applications beyond port and protocol
- Provides full user awareness
- Offers unlimited remote connectivity via VPN or SSL VPN
- Intelligent, on-the-fly traffic optimization

Key Features

Next-Generation Firewall

- Layer 7 Application Control to identify, filter, or throttle unwanted applications, such as P2P, IM, and Skype.
- Stateful packet inspection firewall with tightly integrated IPS
- Content security featuring web filtering, spyware, malware and advanced threat protection
- IPS, Application Control, and content security inspection on encrypted web traffic
- Integrated VPN with unlimited clients and site-to-site tunnels (IPsec, PPTP, SSL VPN)

Cloud Readiness

- Accelerate mission-critical applications hosted in the cloud
- Aggregate and link balance multiple WAN uplinks
- Central management via the Barracuda Appliance Control portal

WAN Optimization

- Quality of Service (QoS) and application-aware traffic routing across sites
- Application-based provider selection
- On-the-fly reprioritization and re-routing of traffic in case of link loss

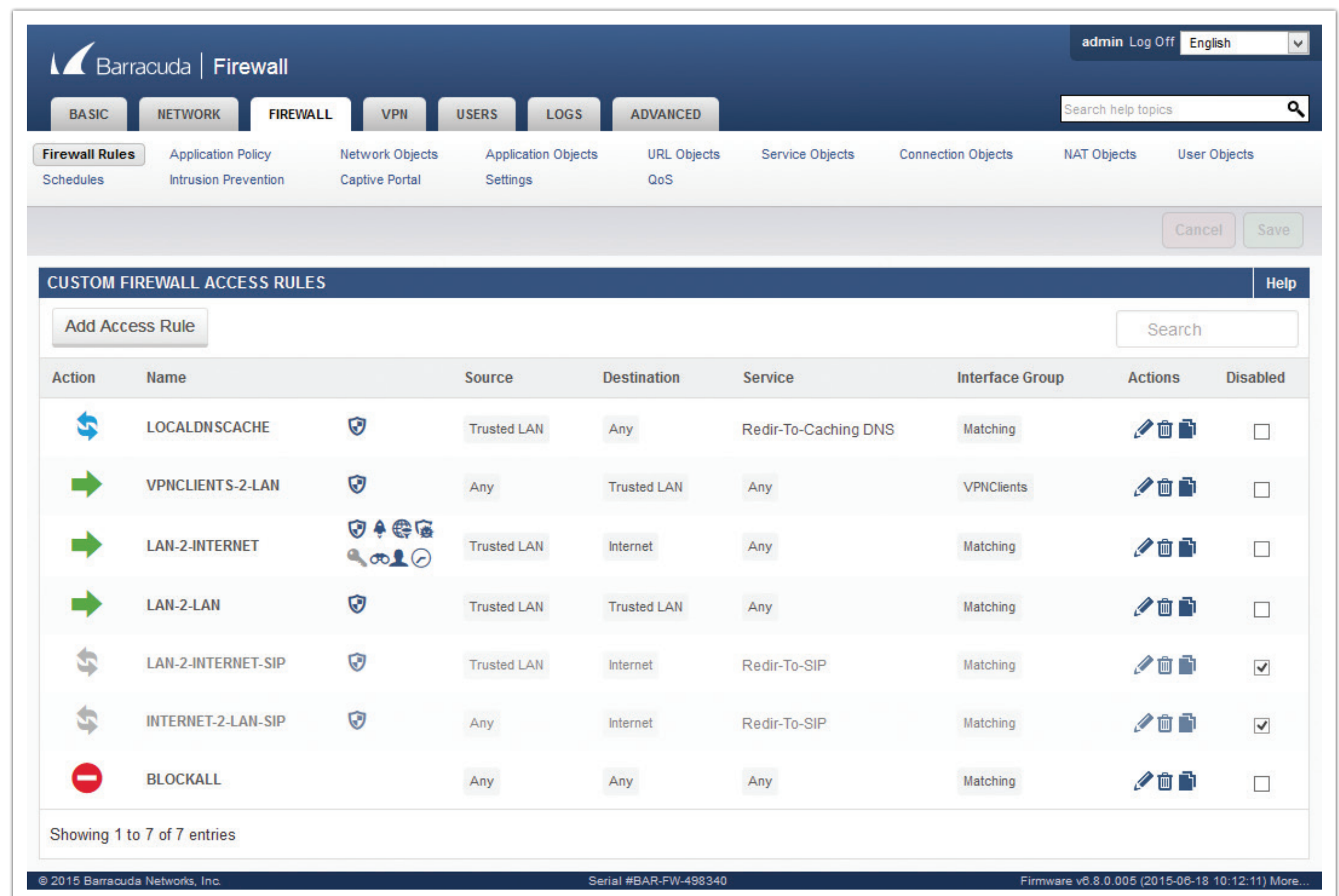
Quick to Deploy, Cost Effective

- Easy-to-use web-based UI
- Up and running in minutes with the provided deployment wizards
- No per-user fees



- 1 Application Control:** The Barracuda NextGen Firewall X-Series provides unprecedented control over users and applications. It goes way beyond blocking ports and protocols by providing deep granular control of thousands of applications such as Facebook, Twitter, Spotify, or Skype that otherwise evade the typical port and protocol.
- 2 User Awareness:** X-Series' application control combined with its breadth of user authentication features allow even small companies to improve productivity by setting policies defined by real username, group ID, application, or application feature (e.g., Facebook games), time of day, or day of week.
- 3 Full SSL Inspection:** More than half of all Internet traffic takes place over HTTPS and is therefore typically invisible to Content Security and Application Policy enforcement. With SSL Inspection - standard on all Barracuda NextGen Firewall X models - applying IPS, virus protection, application control, and web filtering to SSL-encrypted web traffic has become so easy that every small- to mid-sized business can afford closing this security blind spot. SSL Inspection can even be fine-tuned to exempt local networks, certain users or groups, web filter categories, or custom-defined domains.
- 4 Visibility and Reporting:** Barracuda NextGen Firewall X' provide unprecedented visibility into application traffic, typically provided only by dedicated high-end enterprise firewalls, but at an affordable price. Both current and recent connections are visualized in an easy-to-navigate structured log, including user and application information. Logs may be saved locally or streamed to an external log server.
- 5 Integrated Traffic Management & Optimization:** Application awareness and QoS features make sure business-critical applications such as "Salesforce and VoIP for sales group" have enough bandwidth, while bandwidth for non-essential traffic such as casual web browsing or Spotify is reduced. Dynamic uplink optimization aggregates and optimizes multiple high- and low-bandwidth links to ensure applications perform optimally and are always available.
- 6 Unlimited Connectivity:** Every Barracuda NextGen Firewall X appliance includes unlimited Site-to-Site VPN tunnels and Client-to-Site VPN tunnels, and even SSL-VPN. Android and iOS devices can easily be connected via Barracuda's very own CudaLaunch app.
- 7 Unlimited Firewall and IPS:** The X-Series comes with unlimited protected IPs and is built on the same underlying state-of-the-art firewall and IPS engine of its bigger brother, the F-Series, used by thousands of enterprises worldwide to protect their networks.
- 8 Cloud Managed:** Barracuda NextGen Firewall X-Series are integrated with a web-based management portal that leverages Barracuda's global cloud infrastructure to enable organizations to centrally manage all their devices through a "single pane of glass" interface. Administrators have a global view of all their devices and can centrally manage policies and configuration. The intuitive interface makes it easy for small- and medium-sized organizations to implement and manage their firewalls with minimal IT overhead. Barracuda Appliance Control access is optional and at no extra charge.

Simple, yet powerful, the Barracuda NextGen Firewall X-Series delivers the right capabilities for small- and mid-sized companies. Administration is done via a streamlined, intuitive web interface, making even complex configuration changes a breeze.



Rapid Deployment

Every Barracuda NextGen Firewall X comes preinstalled with a configuration that makes it easy to get the box into the network and activated. The provided wizards make sure the box is up and running within minutes rather than hours.

No CLI Needed, Ever

The X-Series is designed from the ground up to provide all necessary controls with a couple of mouse clicks from the web interface. You will never need to access any command line.

Cloud Manageable Everywhere

Optional and at no extra cost, all X-Series appliances may easily be joined to a customer's individual account. This allows the management of dozens of Barracuda products from around the world simultaneously through one virtual "pane of glass" provided by Barracuda Cloud Control.

Automatic Updates

Product and security definition updates are fully automatic to ensure continuous protection against the latest threats. URL filter classification takes place in the cloud on Barracuda's always up-to-date web security cloud infrastructure.

No Expertise required

The intuitive, self-explanatory web interface makes it easy for new customers to find their way around. Easy-to-use wizards are provided for the most commonly needed functions.

Partner-Enabled Management

X-Series appliances joined to the Barracuda Cloud Control portal may be remotely managed by a trusted security partner on behalf of the customer.

Since the Barracuda NextGen Firewall X-Series is meant to help small- and mid-sized companies grow, it has been designed to be future-proof with respect to performance, licensing, and imminent requirements on networking and security:

Future-Proof Appliances

With the X-Series, the content security functionality is not simply bolted on top of the network stack but deeply integrated into the firewall engine itself, allowing for extremely efficient use of resources.

Additionally, even small desktop Barracuda NextGen Firewall X appliances include high-powered Intel CPUs with two or more computing cores that are capable of running the latest 64-bit-based custom security Linux, purpose-built from the ground up to secure networks and provide enough room for future growth.

Future-Proof Licensing

Every Barracuda NextGen Firewall X appliance comes with unlimited protected IPs/users for firewall, IPS, and VPN, thereby ensuring scalability for seamless growth. Even the optional subscriptions Web Security and Advanced Threat Protection cover unlimited protected users per X-Series unit.

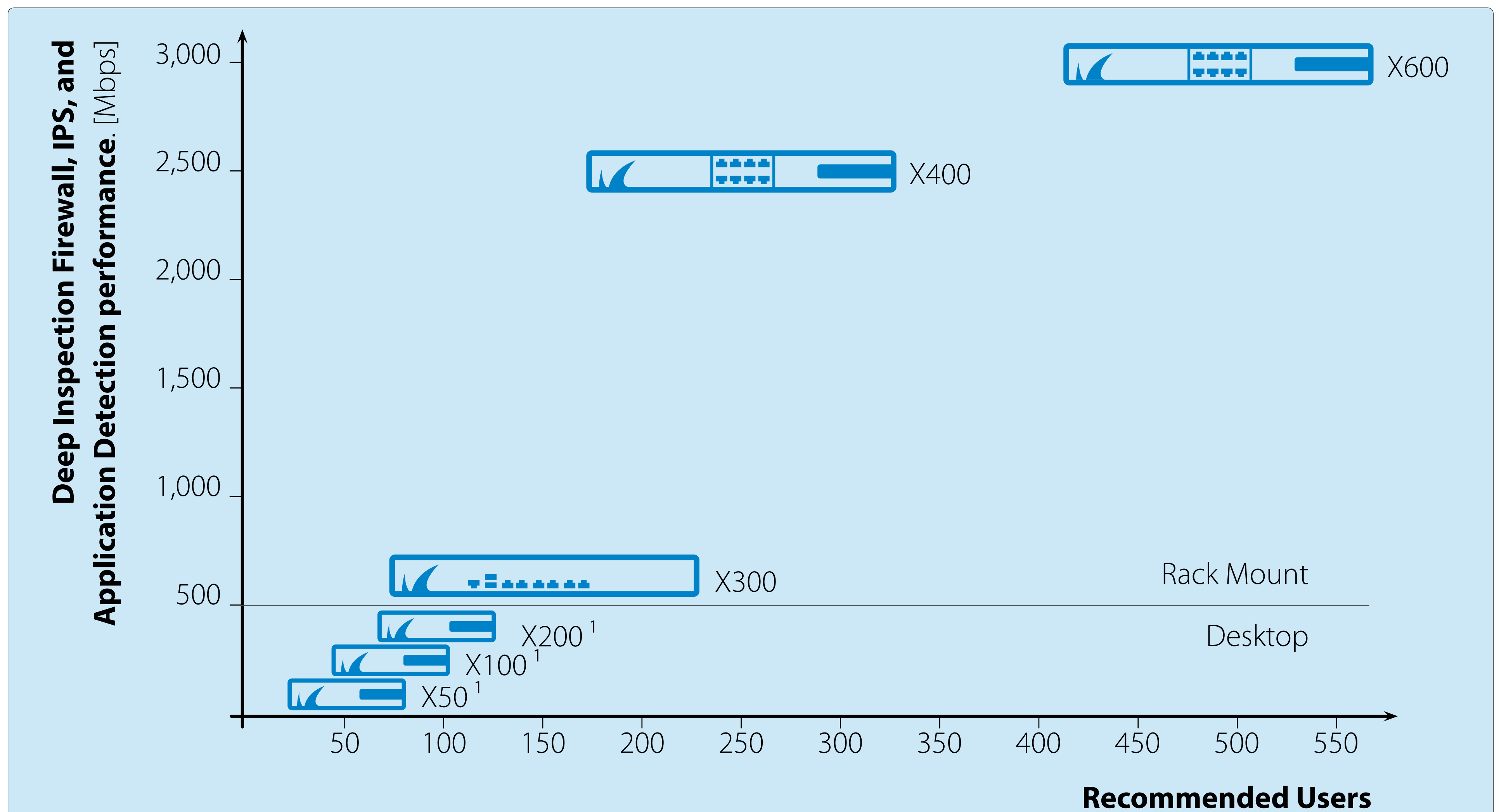
Automatic Hardware Upgrades

The Instant Replacement subscription provides free new appliances with the latest specifications after four years of continuous IR coverage.

Note:

For additional information on the Instant Replacement subscription, please consult page 18.

X-Series Product Lineup



¹ available with integrated Wi-Fi Access Point

Model Comparison	X50	X100	X200	X300	X400	X600
Hardware						
Form factor	Desktop	Desktop	Desktop	1U Rack	1U Rack	1U Rack
Ports (copper)	4x1 GbE	4x1 GbE	4x1 GbE	6x1 GbE	8x1 GbE	8x1 GbE
Integrated Wi-Fi access point	X51	X101	X201	Not available	Not available	Not available
Mass storage (SSD)	50 GB	80 GB	80 GB	80 GB	80 GB	160 GB
Available log space	20 GB	40 GB	40 GB	40 GB	40 GB	100 GB
Capacity						
Firewall throughput [Mbps]						
Maximum ¹	800	1,000	1,900	2,100	4,000	6,000
with Application Detection (AppDetect) ²	300	500	800	1,000	2,500	3,000
with AppDetect & IPS ²	100	300	400	650	2,500	3,000
with AppDetect & IPS & Web Filtering ²	90	190	290	330	1,100	2,500
with AppDetect & IPS & Web & Virus Protection ³	50	140	240	280	1,000	2,400
with AppDetect & IPS & Web & Virus Prot. & SSL inspection ³	25	50	110	150	450	1,100
VPN throughput [Mbps] ⁵	50	100	200	300	600	800
Max. concurrent sessions	8,000	8,000	60,000	120,000	300,000	500,000
Max. new sessions/s	2,000	2,000	8,000	12,000	15,000	20,000
Licensed protected IPs	Unlimited	Unlimited	Unlimited	Unlimited	Unlimited	Unlimited
Licensed VPN clients	Unlimited	Unlimited	Unlimited	Unlimited	Unlimited	Unlimited
Licensed Site-to-Site VPN tunnels	Unlimited	Unlimited	Unlimited	Unlimited	Unlimited	Unlimited
Licensed SSL VPN users	Unlimited	Unlimited	Unlimited	Unlimited	Unlimited	Unlimited
Recommended Users						
Firewall & AppDetect & VPN ⁶	50	100	200	300	500	1,000
Firewall & AppDetect & VPN & IPS ^{6,7}	25	50	100	150	250	500
Firewall & AppDetect & VPN & IPS & Web & Virus Protection ^{3,6}	15	25	50	100	200	400
Firewall & AppDetect & VPN & IPS & Web & Virus Prot. & SSL Inspection ^{3,6}	10	15	40	80	150	300
Network Security Overview						
Stateful firewall	●	●	●	●	●	●
Application control and monitor	●	●	●	●	●	●
IPS	●	●	●	●	●	●
Client-to-Site & Site-to-Site VPN	●	●	●	●	●	●
Web proxy forwarding	●	●	●	●	●	●
Quality of Service (QoS)	●	●	●	●	●	●
Uplink balancing	●	●	●	●	●	●
SafeSearch enforcement (Google, Bing, Yahoo)	●	●	●	●	●	●
YouTube SafeMode Enforcement	●	●	●	●	●	●
Web Security (Web Filter, Virus Protection) ⁷	Optional	Optional	Optional	Optional	Optional	Optional
Advanced Threat Protection ^{7,8}	Optional	Optional	Optional	Optional	Optional	Optional
SSL VPN	Optional	Optional	Optional	Optional	Optional	Optional
Premium Remote Access - CudaLaunch	Optional	Optional	Optional	Optional	Optional	Optional
Infrastructure						
VLAN support	●	●	●	●	●	●
Bridging	●	●	●	●	●	●
High Availability (hot standby)	●	●	●	●	●	●
DHCP server	●	●	●	●	●	●
DNS server (Authoritative)	●	●	●	●	●	●
Dyn DNS support	●	●	●	●	●	●
SIP proxy	●	●	●	●	●	●
SNMP support	●	●	●	●	●	●
Log streaming support (Syslog)	●	●	●	●	●	●
Time/day-based firewall rules	●	●	●	●	●	●
User/group-based firewall rules	●	●	●	●	●	●
Centrally manageable	Cloud-based	Cloud-based	Cloud-based	Cloud-based	Cloud-based	Cloud-based

¹ Measured with UDP, large packets.

² Measured with real world Internet traffic found at the gateway.

³ Measured with real world Internet traffic and 30% HTTPS traffic.

⁴ Measured with AES-128 encryption.

⁵ Assuming a maximum of one in four of the stated user count is connected via VPN or SSL VPN concurrently.

⁶ Assuming at least 0.5 Mbps Internet uplink bandwidth available per user.

⁷ Valid Web Security subscription required.

⁸ Valid Advanced Threat Protection subscription required.

Block unwanted applications, control acceptable traffic, and ensure business continuity

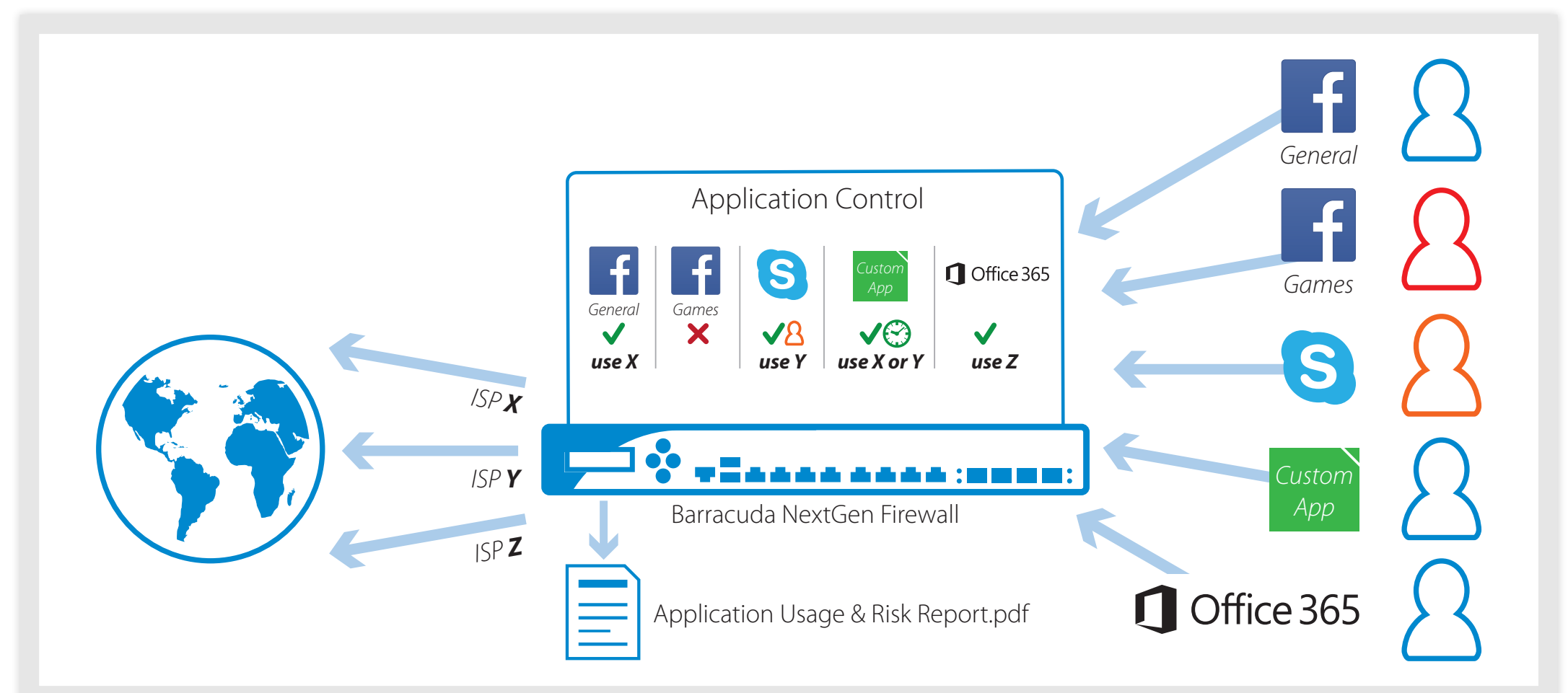
Mobile devices, online applications, social networks, and streaming media have caused an enormous increase in non-business network data traffic, pushing bandwidth capacities to their limits and causing degradation in performance of business-critical applications.

Barracuda NextGen Firewalls give administrators granular control over applications, allowing them to define rules for forwarding data traffic by using the best respective transmission channels based on type of application, user, content, time of day, and geographical location.

Application Control

Barracuda NextGen Firewalls provide powerful and extremely reliable detection and classification of thousands of applications and sub-applications by combining Deep Packet Inspection (DPI) and behavioral traffic analysis – no matter if the protocols are using advanced obfuscation, port hopping techniques, or encryption. It allows the creation of dynamic application policies and facilitates establishing and enforcing acceptable access and use policies for users and groups by application, application category, location, and time of day. Barracuda NextGen Firewalls combine application control with the seamless integration of authentication schemes like Active Directory, LDAP/S, NTLM, etc. As a consequence, administrators are always on top of what their users are doing on the organization's network. Barracuda NextGen Firewalls feature advanced application-based routing path selection and Quality of Service (QoS) capabilities. These provide additional business value and security by significantly improving network quality and availability, while also reducing direct line cost due to saved bandwidth.

For rich reporting and drill-down capabilities, Barracuda NextGen Firewalls come with real-time and historical application visibility that shows application traffic on the corporate network, thus providing a basis for deciding which connections should be given bandwidth



prioritization, crucial to QoS optimization for business-critical applications. Furthermore, it lets administrators adjust and refine corporate application use policies.

Personalized Application Control

On top of the thousands of applications that are delivered out of the box and constantly updated, Barracuda NextGen Firewalls provide a way to easily create user-defined application definitions for best-in-class application control that is tailored to an organization's specific needs.

Application-Based Provider Selection

The combination of next-generation security and adaptive WAN routing allows Barracuda NextGen Firewalls to dynamically assign available bandwidth for several links not only based on protocol, user, location, and content, but also based on applications and application categories. This keeps expensive, highly available lines free for business- and mission-critical applications, while significantly reducing response times and freeing up additional bandwidth.

Deep Application Context

The deep application context analysis allows for deeper inspection of the application data stream by continually evaluating the actual intention of applications and the respective users. By this means, administrators can gain detailed insight into what a specific application was used for or if a user was trying to circumvent the corporate application usage policy.

The Application Monitor provides a detailed view of what is happening in your network. Zooming in and learning more (including links to things like specific application details, websites access, games played, and videos watched) is just a few clicks away. In other words, it's a perfect tool for tuning security policies as needed.

Benefiting from the massive drill-down capabilities of the Application Monitor is simple and intuitive. Clicking on any of the presented entries (such as Application name or Category name) will apply the corresponding filter settings and provide all affected information for the entry. Thus, any information is just a few mouse clicks away.

Once a certain level of information has been reached, the element can be stored to the dashboard of the Barracuda NextGen Firewall X-Series page for quick monitoring.

The screenshot displays the Barracuda Firewall Application Monitor interface. At the top, there are navigation tabs for BASIC, NETWORK, FIREWALL, VPH, USERS, LOGS, and ADVANCED. The current view is the Application Monitor, showing data from 2015-07-11 to 2015-07-13 15:00. The interface includes several sections:

- FILTER SETTINGS:** Includes options for Limit to top (25), Last (2 Days), Type (Allowed), and Order by (Sessions).
- RISK RATING:** A progress bar showing a risk score of 3.1.
- APPLICATION CATEGORY:** A table with columns for #, Name, Bytes, and Sessions. The top entry is Media Streaming with 23.37 GB and 1158884 sessions.
- APPLICATION:** A pie chart showing the distribution of applications. The legend includes iTunes, Youtube Base, Vimeo Base, Veoh Base, Vimeo Watch Video, Youtube Watch Video, Ustream, and Brightcove Base.
- USER:** A horizontal bar chart showing the top users by session count. Steve Sun is the highest user with over 1.1 million sessions.
- APPLICATION DETAIL:** A horizontal bar chart showing the top application details. vimeo.com is the most accessed application with over 110k sessions.
- URL CATEGORY:** A table with columns for #, URL Category, Bytes, and Sessions. Business is the top category with 1.25 GB and 380345 sessions.
- GEO SOURCE:** A table with columns for #, Geo Source, Bytes, and Sessions. Non-routable or Private IP Addresses is the top source with 23.37 GB and 1158884 sessions.

Barracuda Report Creator

The Barracuda Report Creator is a free tool that allows administrators to collect and consolidate traffic and application usage statistics from multiple Barracuda NextGen Firewall units and to create easy-to-read reports in PDF format. Reports are fully customizable to comply with possible branding requirements.

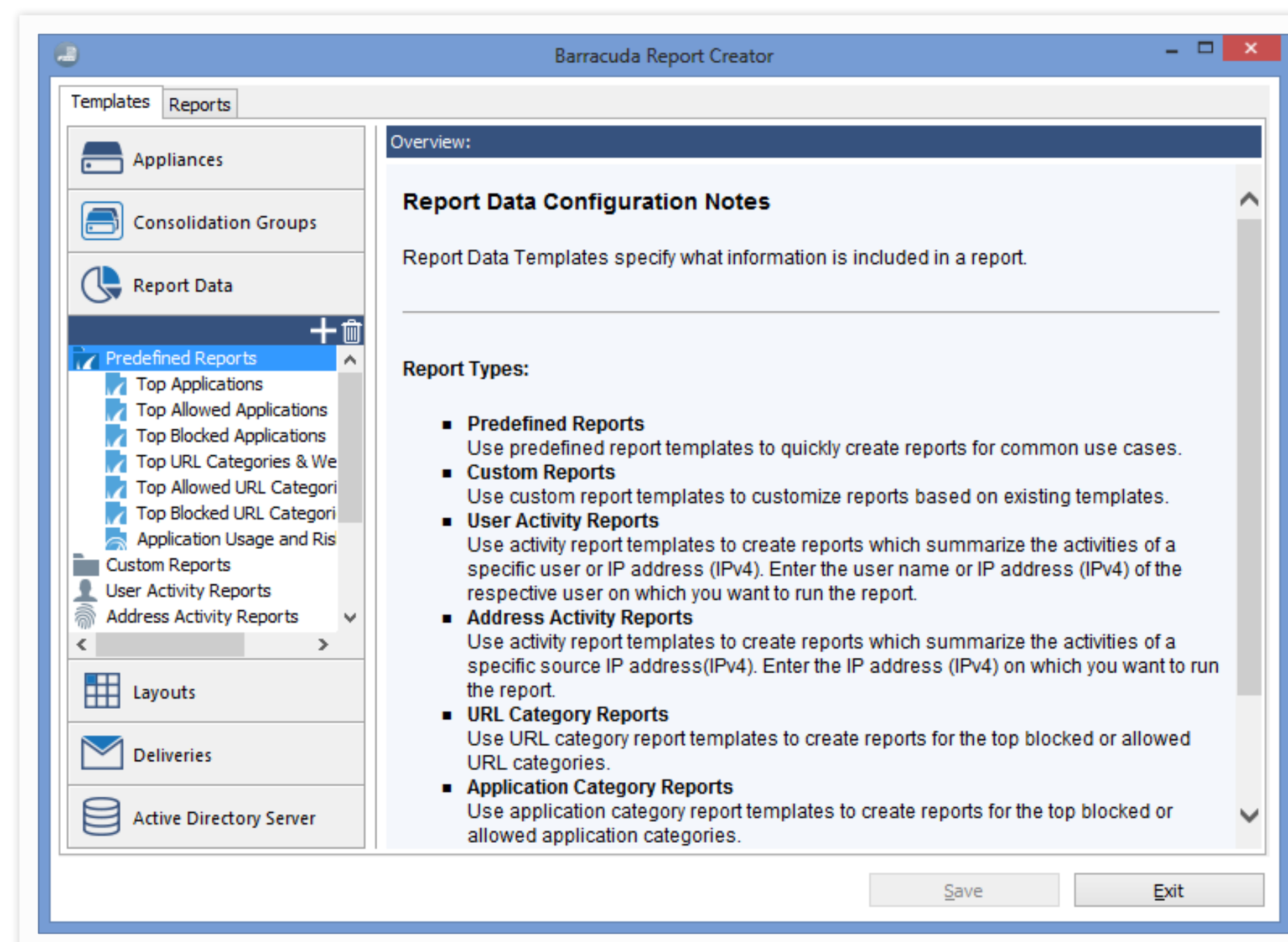
Report tasks can be scheduled at various times during the day or week and distributed automatically via email. Besides predefined, out-of-the-box reports such as Top Applications, Top Blocked URL Categories and Websites, Top Users by Bandwidth, as well as activity reports for specific users, the reporting engine provides customizable granular reports on user activity, activities during the last day/week/month, etc. For auditing purposes, IP addresses can be anonymized.

Barracuda Report Creator is available for download directly from the X-Series on the BASIC > Administration tab.

[For details, please see page 29](#)

Application Risk and Usage Report

The Application Usage and Risk Report is one of the many predefined report types in the Barracuda Report Creator tool providing automated reports and risk analysis based on the network traffic that is traversing the network. It provides an overview on how effective the currently deployed technologies are in detecting and enforcing the corporate application usage policies and gives recommendations on what should be taken into account when redefining these policies.



Application Usage and Risk Report

Top Application Traffic traversing the Network

The Barracuda NG Firewall provides powerful and extremely reliable detection and classification of applications and sub-applications by combining Deep Packet Inspection (DPI) and behavioral traffic analysis - no matter if the protocols are using advanced obfuscation, port hopping techniques or encryption. The Barracuda NG Firewall comes with real-time and historical application visibility that shows application traffic on the corporate network. This provides a basis for deciding which connections should be given bandwidth prioritization, which is crucial for QoS optimization of business-critical applications. Furthermore, it allows for adjusting and refining the corporate application use policy.

Barracuda Networks provides a risk rating for any identified application and protocol crossing the network. Based in the conducted traffic analysis the overall risk rating is as follows:

Mister Y Application Traffic Risk Rating:

1.1

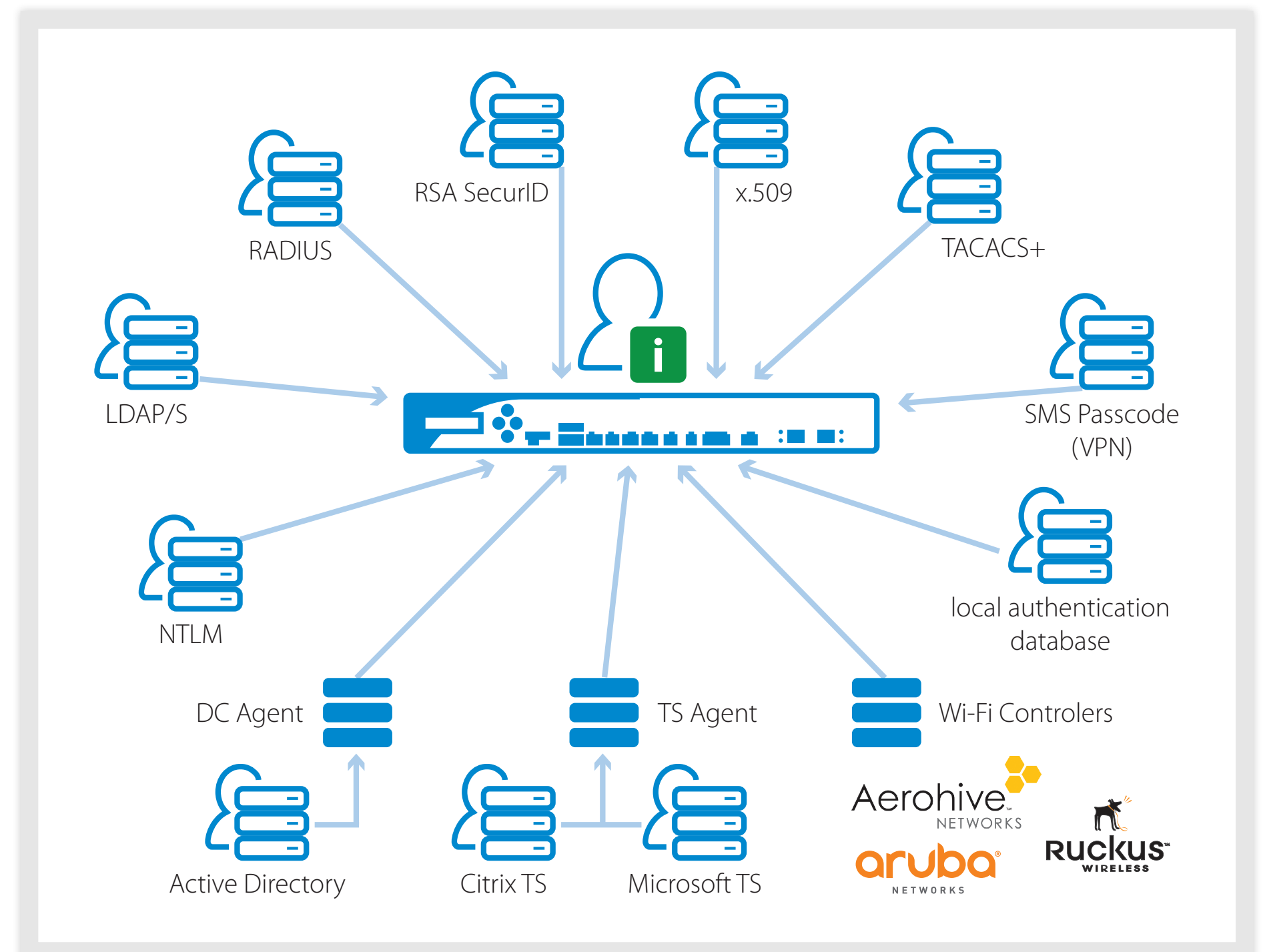
The following chart provides an overview of the top applications based on bandwidth consumption that are traversing the network of Mister Y:

#	APPLICATIONS	RISK	TRAFFIC	SESSIONS
1	Web browsing	1	10.9 GB	1232613
2	Microsoft Update	1	4.2 GB	4602
3	Google Play Base	2	495.1 MB	1511
4	Google Services Base	2	194.7 MB	3633
5	Amazon Webservices	1	180.7 MB	108
6	iTunes	2	179.4 MB	81
7	Apple Update	1	173.3 MB	3
8	Avira AV Update	1	134.3 MB	260
9	Facebook Base	2	78.9 MB	1016
10	Bing Search	1	33.1 MB	500
11	Google Safe Browsing	1	29.2 MB	228
12	Ubuntu Update	1	27.0 MB	15
13	Google Update	1	18.1 MB	11
14	Microsoft Account	1	13.8 MB	637
15	iCloud Base	2	12.2 MB	413
16	MSN General	3	9.5 MB	4512
17	OneDrive	4	8.7 MB	209
18	Youtube Watch Video	3	7.6 MB	10
19	Ooyala	3	6.6 MB	21
20	Google AdSense	3	5.3 MB	152

Page 4 of 16

External Authentication

The Barracuda NextGen Firewall X provides seamless integration with the most common external authentication methods, such as Active Directory, NTLM, RADIUS, and LDAP/s) in order to facilitate policy configuration based on the actual user and group information and not just IP addresses. Administrators can even allow access to specific applications only for specified users and/or user groups.



Seamless Integration

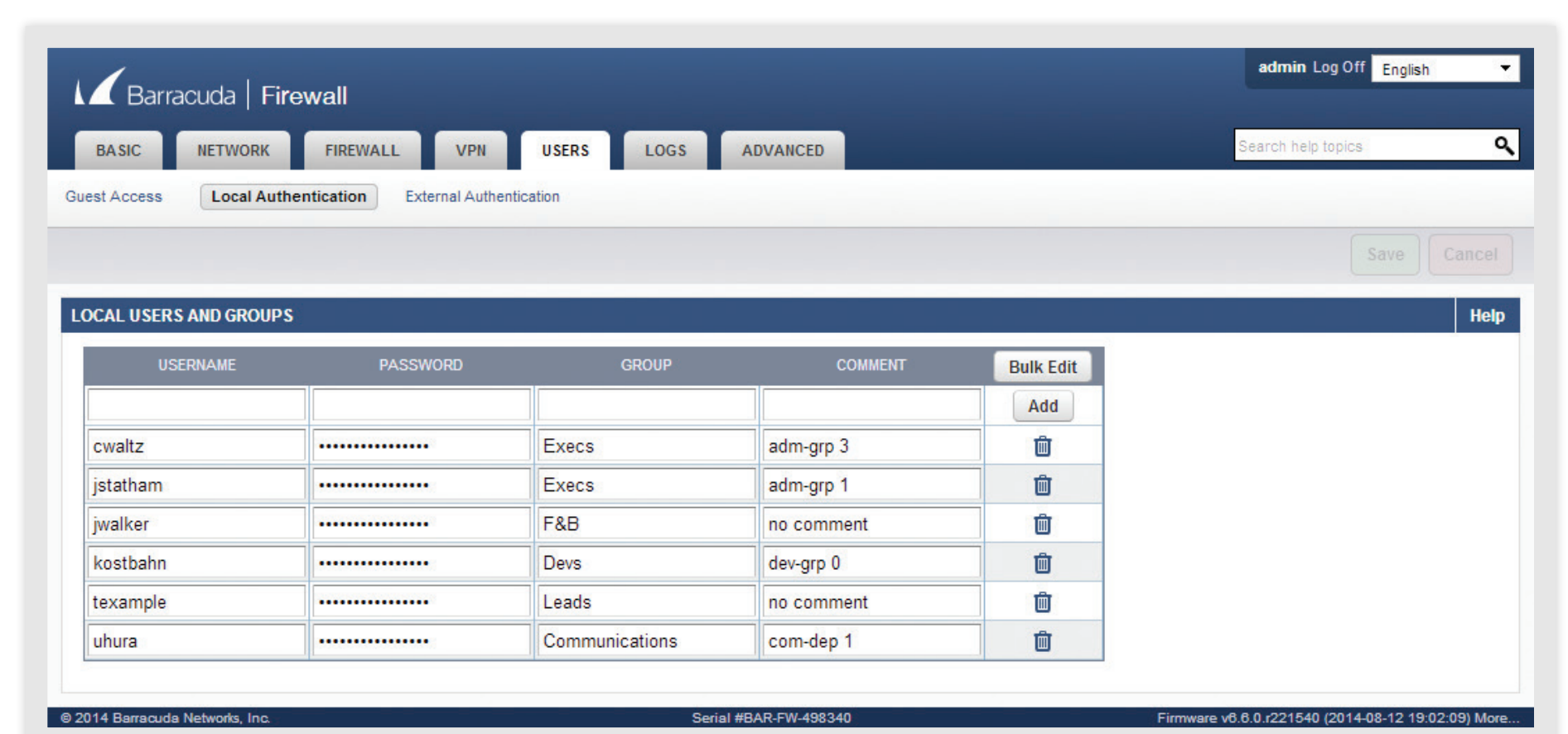
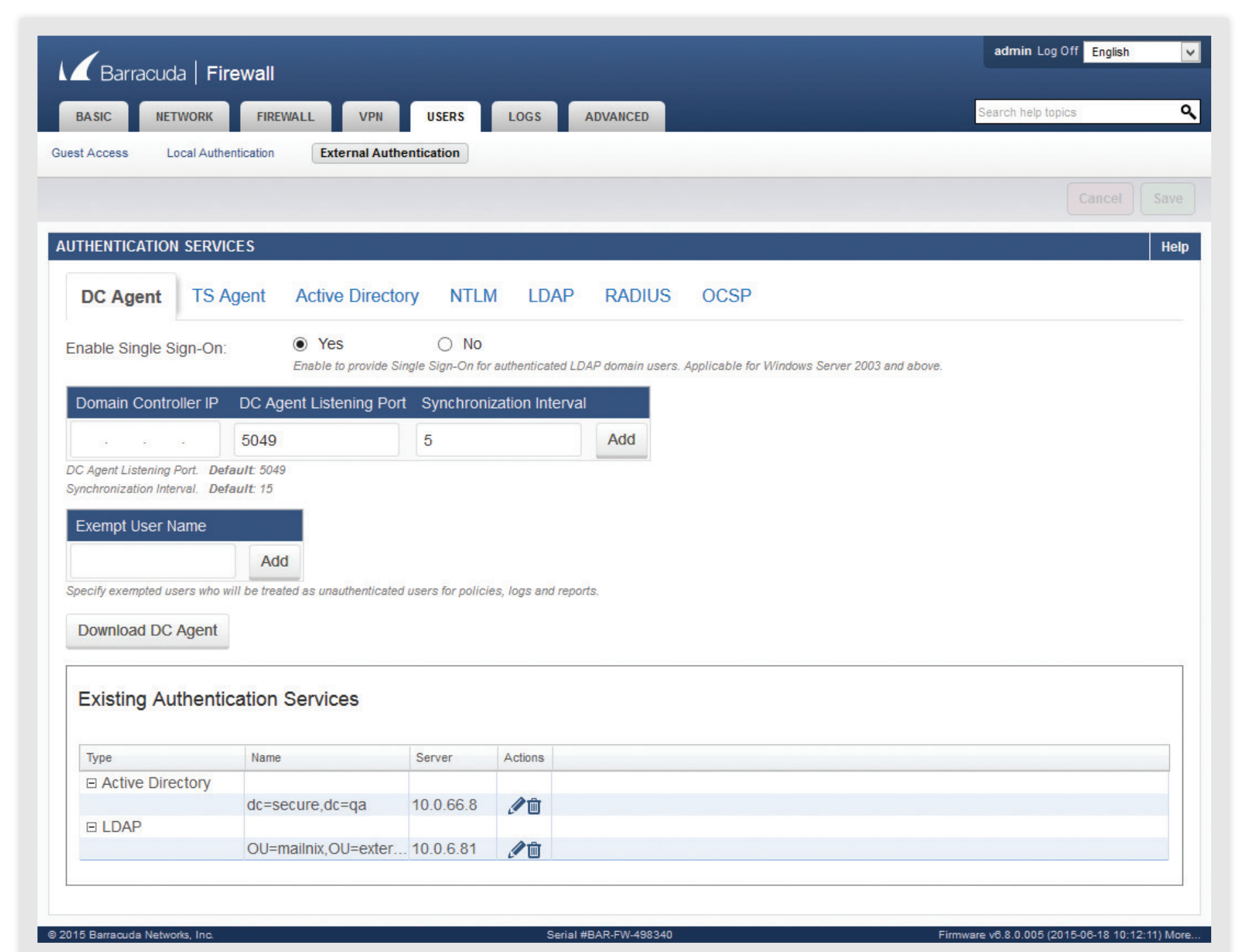
Barracuda NextGen Firewall X-Series acquires user and group information transparently without individual users having to log into the X-Series unit.

X-Series supports authentication of users and enforcement of user-aware firewall rules, web filter settings, and application control by seamlessly integrating with:

- Microsoft and Citrix terminal service environments
- Microsoft Active Directory
- NTLM
- RADIUS
- LDAP/LDAPS
- etc.

Local Authentication

If no external authentication service is available, such as for really small deployments or evaluation scenarios, the Barracuda NextGen Firewall X lets you create and maintain a list of local users and groups directly on the web user interface. These users and groups can then be used when creating firewall application policy rules, VPN logins, or captive portals.



Guest Access

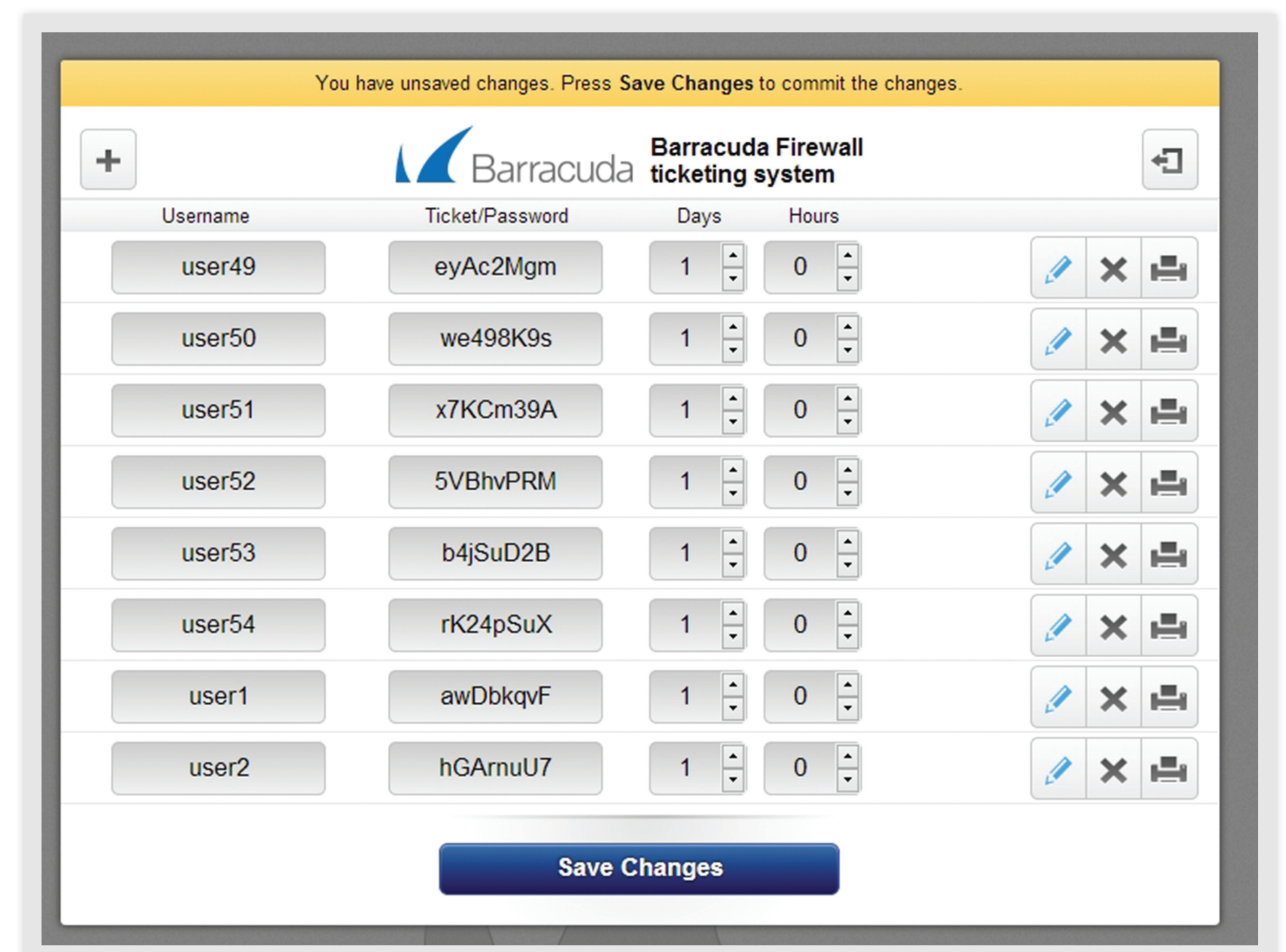
The X-Series provides two options to setting up guest access to the Internet. Both options are available for locally attached networks as well as for Wi-Fi networks on the X101 and X201 appliances.

Confirmation Page

The confirmation page option prompts guests to agree to a configurable Terms of Service page before they can access the network. Guests are subsequently tracked with the assigned IP address since no user information is available.

Guest Ticketing

The Guest Ticketing option will display a customizable logon page asking for user and passcode as set up on an admin website served by the X-Series unit. Guests are subsequently tracked with their assigned username.



Barracuda NextGen Firewall X Guest Admin page

Overview Authentication Clients

Authentication Client	Purpose
Barracuda DC Agent	Provides seamless User-to-IP mapping in Microsoft Windows networks with user management via Microsoft Active Directory. Needs to be installed on the directory server or a machine in the domain.
Barracuda TS Agent	Provides seamless User-to-Port-range mapping for Terminal Server connections. Needs to be installed on each Terminal Server.
FW Authentication Client	When installed on a windows client machine, automatically provides User-to-IP mapping to Barracuda NextGen Firewalls.

For more details, please see Barracuda Campus:

<https://campus.barracuda.com/>

The Barracuda NextGen Firewall X-Series incorporates advanced client-to-site VPN capabilities, using SSL, IPsec, and TINA protocols to ensure remote users can easily and securely access network resources without time-consuming client configuration and management. The communication protocols used with our clients are optimized to be fully roaming-capable by quickly reconnecting upon loss of communication. Smart pathfinder technology determines the nearest point of entry to the corporate network. By using different ports encapsulated in either TCP or UDP, the advanced NAT traversal technology can easily pass through web proxies.

The influx of private computing devices, be they smartphones, laptops, or tablets, into the workplace may help increase productivity, flexibility, and convenience. However, **BYOD** (Bring Your Own Device) adds new security challenges and risks, such as enabling and controlling access, as well as preventing data loss. The X-Series provides strong capabilities that give users the full advantage of their devices while reducing possible risks to their business. Unwanted applications can be blocked, LAN segmentation can protect sensitive data, and network access control can check the health state of each device connecting to the corporate network.

	X50 / X51	X100 / X101	X200 / X201	X300	X400	X600
CudaLaunch (App Remote Access for iOS, Android, Windows, and macOS) ¹	Unlimited [10]	Unlimited [15]	Unlimited [25]	Unlimited [50]	Unlimited [100]	Unlimited [200]
SSL VPN (Browser Remote Access) ¹	Unlimited [10]	Unlimited [15]	Unlimited [25]	Unlimited [50]	Unlimited [100]	Unlimited [200]
Barracuda Windows VPN Client ^{1,2,3,4}	Unlimited [10]	Unlimited [15]	Unlimited [25]	Unlimited [50]	Unlimited [100]	Unlimited [200]
Barracuda macOS VPN Client ^{1,2,4,5}	Unlimited [10]	Unlimited [15]	Unlimited [25]	Unlimited [50]	Unlimited [100]	Unlimited [200]
Barracuda Linux VPN Client ^{1,2,3}	Unlimited [10]	Unlimited [15]	Unlimited [25]	Unlimited [50]	Unlimited [100]	Unlimited [200]
Barracuda BSD VPN Client ^{1,2,3}	Unlimited [10]	Unlimited [15]	Unlimited [25]	Unlimited [50]	Unlimited [100]	Unlimited [200]
IPsec VPN ¹	Unlimited [10]	Unlimited [15]	Unlimited [25]	Unlimited [50]	Unlimited [100]	Unlimited [200]
PPTP VPN ¹	Unlimited [10]	Unlimited [15]	Unlimited [25]	Unlimited [50]	Unlimited [100]	Unlimited [200]

¹ Software Limitations [Recommended Users] - assuming an average use case for firewall, application detection, and VPN services. Individual results may vary.

² Requires an active Premium Remote Access subscription.

³ Directly downloadable from the admin web interface in the VPN (Client-to-Site VPN section).

⁴ Windows Vista, Windows 7, Windows 8, and Windows 10

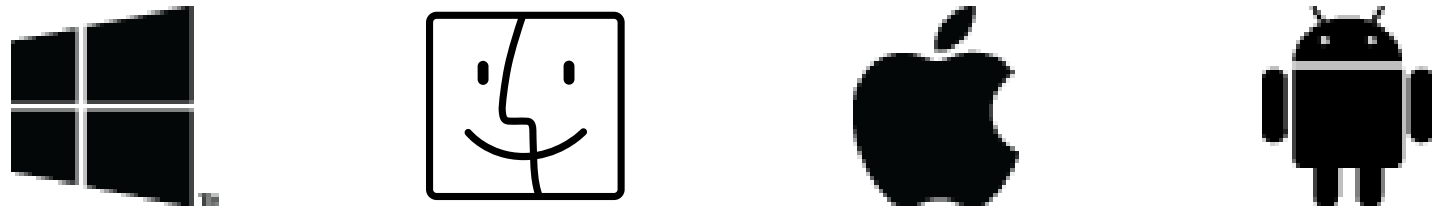
⁵ macOS 10.5 and higher

Browser Remote Access (SSL VPN)

The SSL VPN Portal enables you to easily access your internal apps and data via a browser on almost any device. The responsive UI optimizes the user experience for mobile or desktop browsers.



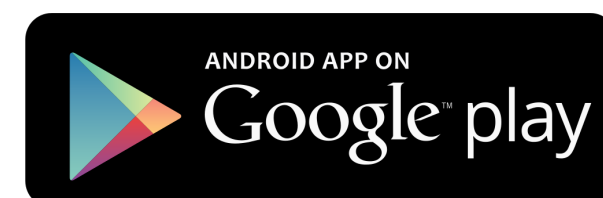
CudaLaunch



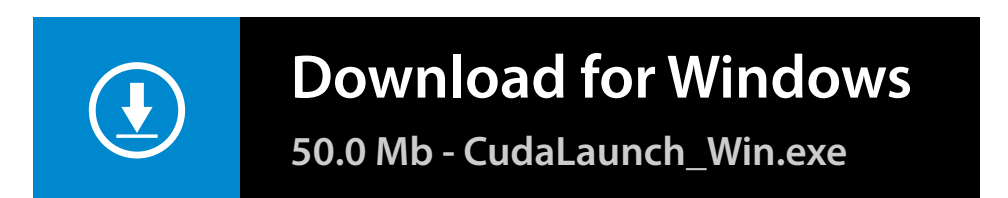
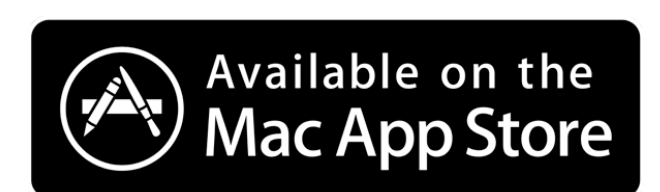
CudaLaunch is a simple-to-use remote connectivity application specifically designed to securely extend the company network to BYOD and mobile devices. The app is available for Windows, macOS, iOS, and Android, can be downloaded from the Apple App Store and Google Play Store. End users can install the app without elevated privileges on the device. CudaLaunch looks and feels the same on every platform and provides fast, Java-independent access to commonly used applications in the company network. CudaLaunch's Zero Touch Deployment drastically reduces support and sys admin costs for rapidly changing mobile and BYOD devices.

CudaLaunch is available for download here:

Mobile



Desktop



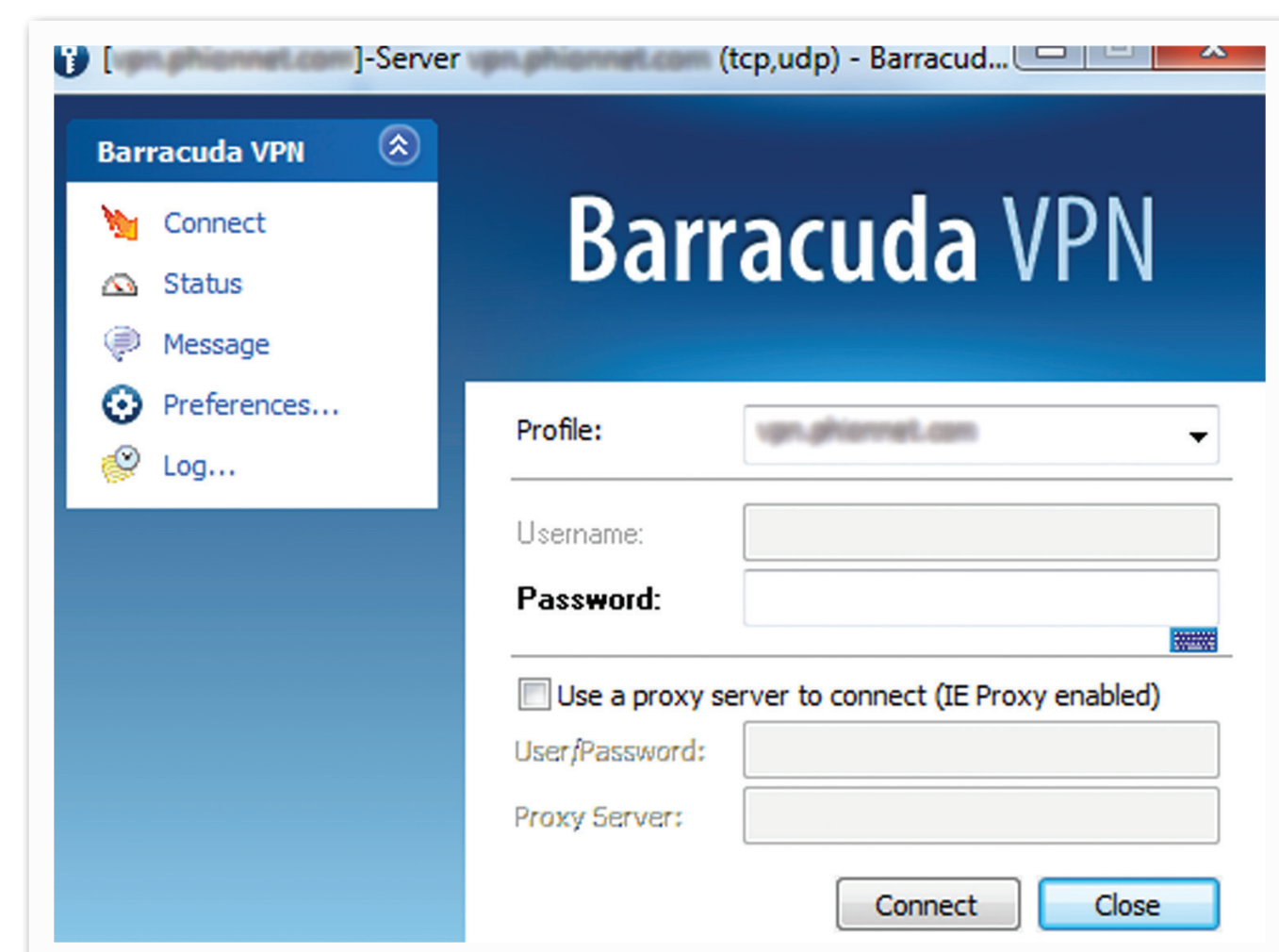
VPN Clients (Barracuda Network Access Client)



Every Barracuda NextGen Firewall supports an unlimited number of VPN clients at no extra cost. The Barracuda Network Access VPN Client provides a sophisticated VPN client for Windows¹, macOS², Linux, and openBSD that provides richer performance and functionality than standard IPsec client software. Benefits include quick restoration of VPN tunnels, "Always On" VPN connections for PCs, redundant VPN gateway support, selective routing of network traffic through the VPN tunnel, and optimal VPN-Gateway detection based on location. The Barracuda Network Access Client, when used with a Barracuda NextGen Firewall X, provides centrally managed Network Access Control (NAC) and an advanced Personal Firewall. This enforces client health and security policies for remote users connecting to the corporate network.



Barracuda VPN Client for macOS

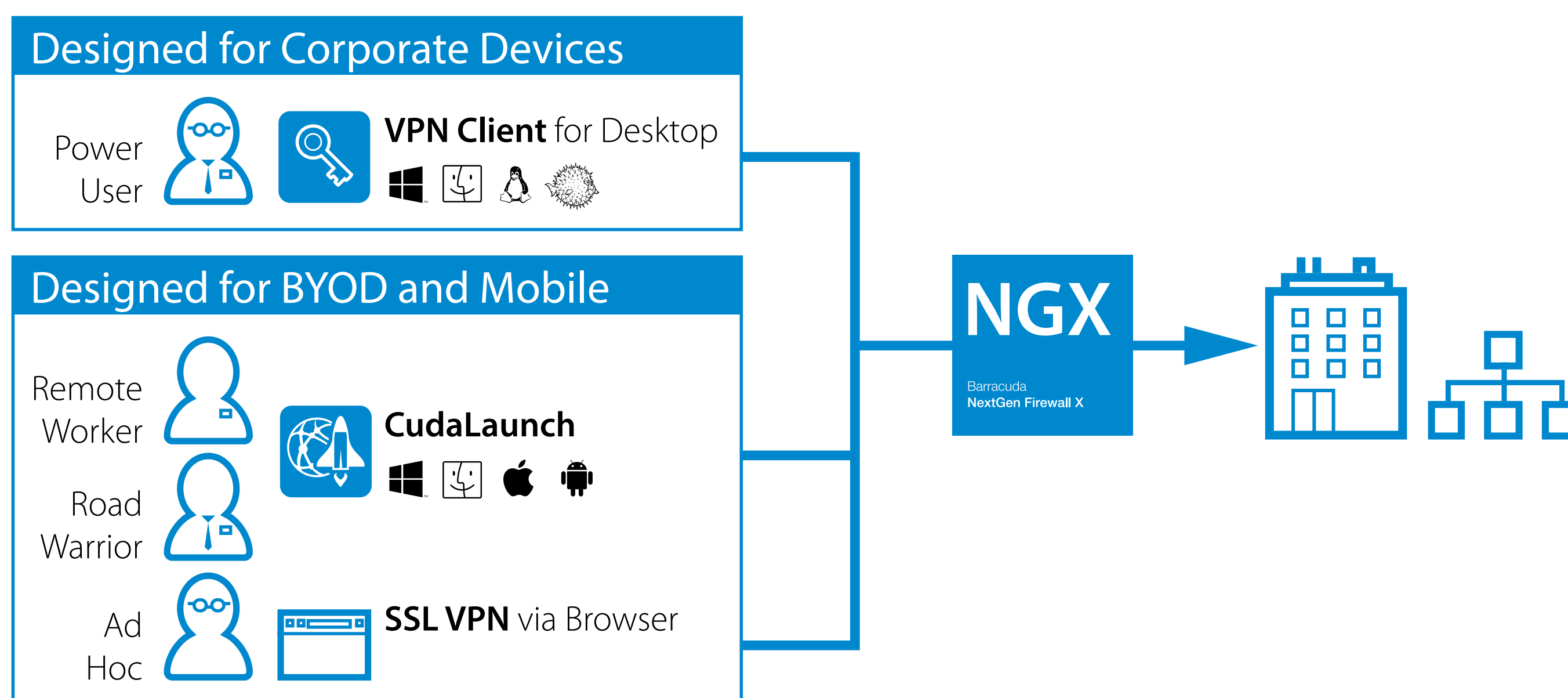


Barracuda VPN Client for Windows

⁶ Windows Vista, Windows 7, Windows 8, and Windows 10

⁷ macOS 10.5 and higher

	Base Licence	Premium Remote Access
One Concurrent CudaLaunch Session (for evaluation)	•	•
IPsec VPN (manually configured VPN connections)	•	•
Barracuda Networks Access Client		
TINA VPN Client (Windows, macOS, Linux & openBSD)	•	•
Browser-based Remote Access¹		
SSL VPN Portal (for desktop / mobile)	•	•
SSL VPN NAC	•	•
CudaLaunch¹		
Web Forwards		•
SSL Tunnels		•
Applications - RDP Launching (no Java)		•
VPN Connections (Windows, macOS, iOS, Android)		•
Multiple concurrent sessions by same user		•



About TINA Protocol

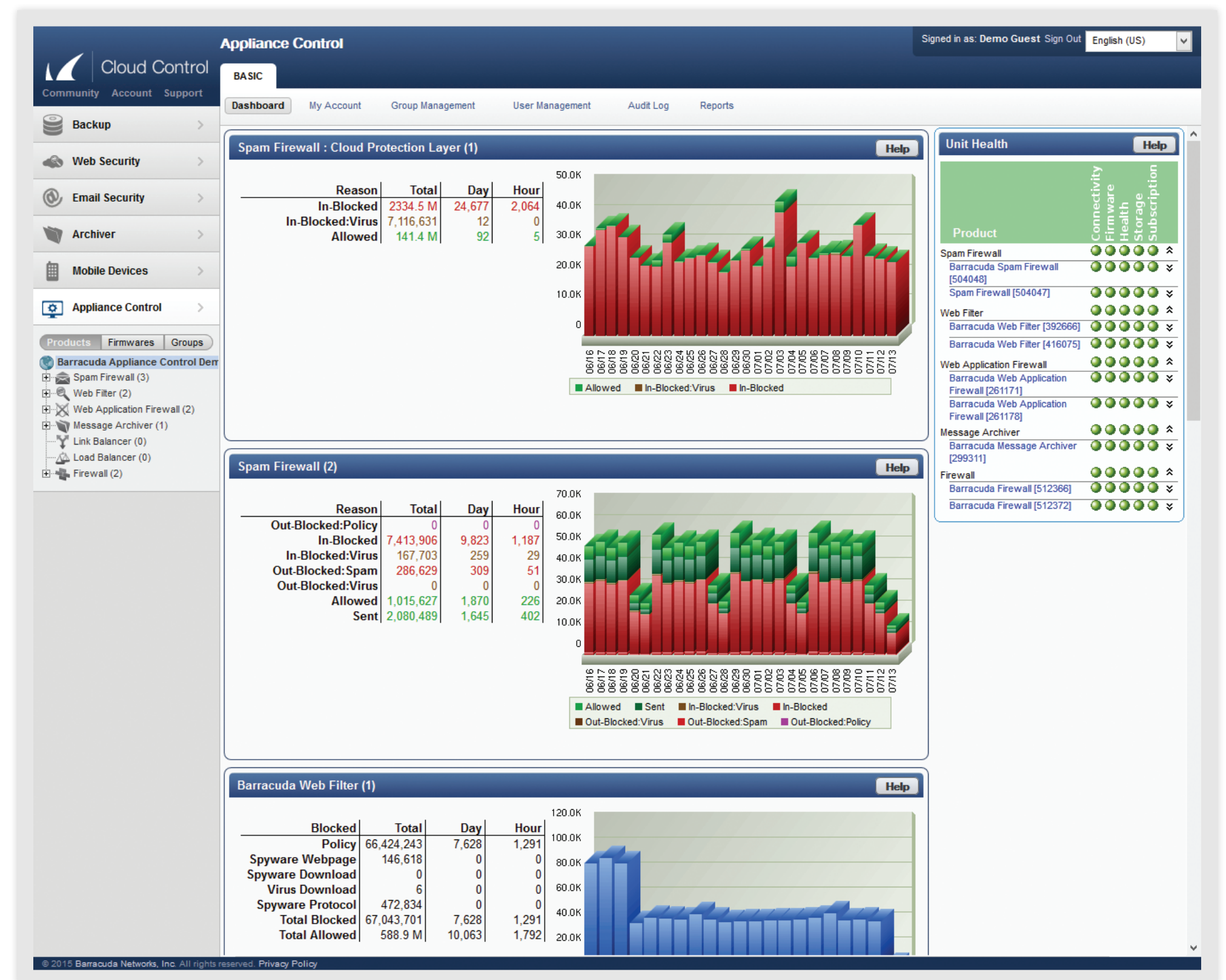
The TINA protocol encapsulates encrypted ESP payload in TCP or UDP packets, thus adapting to underlying transport network quality and providing failure resistant, high-speed VPN connections. It also improves VPN connectivity substantially by adding:

- Multiple concurrent physical transport paths per logical tunnel
- Session level or packet level transport aggregation for increased total tunnel throughput
- Adaptive traffic shaping depending on VPN transport availability
- Fallback transports in case of uplink failure
- Traffic compression and deduplication
- DHCP and NAT support

Cloud Control

Barracuda Cloud Control is a comprehensive cloud-based service that enables administrators to monitor and manage Barracuda NextGen Firewall X-Series as well as all other Barracuda Networks products from a single console. Because everything is hosted in Barracuda Networks datacenters, there is no need to install software or deploy hardware.

Key statistics can be viewed by device type at a glance on the Status page of the web interface with the ability to drill down for more detail into the individual web interfaces for each connected device. Central management via Cloud Control is provided as an option for every X-Series deployment free of charge.



Barracuda Cloud Control for central management of X-Series deployments

Management for MSPs

Barracuda Cloud Control also serves as the platform to enable delegated administration by trusted Barracuda Networks partners for a Barracuda NextGen Firewall X deployment (as well as all other Barracuda appliances). Barracuda customers can do so efficiently with Barracuda Cloud Control.

Barracuda Networks partners can create and manage customer accounts, request to manage existing customer accounts, and manage partner administrator's access to customer accounts.

Barracuda Networks customers can accept partner requests for access to their account, revoke access for partners to their account, and manage entitlement permissions for partners.

Availability Matrix

Barracuda NextGen Firewall X	Hardware Appliances								
	X50	X51	X100	X101	X200	X201	X300	X400	X600
Support Subscriptions									
Energize Updates	Mandatory								
Instant Replacement	Optional								
Premium Support	Optional ¹								
Feature Subscriptions									
Web Security	Optional								
Advanced Threat Protection	Optional ²								
Premium Remote Access	Optional								

¹ Requires valid Instant Replacement subscription.

² Requires valid Web Security subscription.

About Durations :

All subscriptions are available on a 1,3, or 5 year term. For further information, please contact your local partner or Barracuda sales at sales@barracuda.com.

Available Support Subscriptions

Energize Updates (EU)

Barracuda Energize Updates help you secure your investment in the ever-changing IT world. Benefit from security updates to patch or repair any security vulnerabilities, keep your Barracuda Networks product up-to-date and fully functional at all times, and get access to our award-winning support:

- Basic support, i.e., email support 24/7, and phone support Monday through Friday from 9:00 am to 5:00 pm
- Firmware maintenance, which includes new firmware updates with feature enhancements and bug fixes
- Barracuda Early Release Firmware program (optional)
- Security updates to patch or repair any security vulnerabilities
- Regular updates for Application Control database
- IPS signature and pattern updates

Instant Replacement (IR)

One hundred percent uptime is important in corporate environments, but sometimes equipment can fail. In the rare case that a Barracuda Networks product fails, Barracuda ships a replacement unit on the same or next business day. And by means of the Hardware Refresh Program, we ensure that customers benefit from the latest hardware improvements and firmware capabilities:

- Enhanced support providing phone and email support 24/7
- Hard disk replacement on models that have swappable RAID drives
- Free hardware refresh after four years of continuous IR coverage

Premium Support (PS)

Premium Support ensures that an organisation's network is running at its peak performance by providing the highest level of 24/7 technical support for mission-critical environments. A dedicated Premium Support Account Manager and a team of technical engineers provide fast solutions to high-priority support issues, thereby ensuring that Barracuda Networks equipment maintains continuous uptime:

- Dedicated phone and email support 24/7
- Priority response time to resolve mission-critical issues
- Priority Level Agreement (PLAs) to guarantee that issues are handled, resolved, and closed quickly
- Dedicated Support Account Manager who is familiar with the customer's environment
- Proactive ticket monitoring and reporting to provide comprehensive information and control

Available Feature Subscriptions

Web Security (Bundle)

This subscription includes web filter and malware protection capabilities.

The **Malware Protection** subscription provides gateway-based protection against malware, viruses, spyware, and other unwanted programs inside SMTP/S, HTTP/S, and FTP traffic.

- Configurable archive recursion depth
- Configurable unknown archive policy
- Configurable maximum archive size
- Archiver package support
- Office file-types support
- Proactive detection of new threats
- Advanced heuristics detection techniques
- Hundreds of thousands signatures

The **Web Filter** enables highly granular, real-time visibility into online activity. Broken down by individual users and applications, it lets administrators create and enforce effective Internet content and access policies. Includes:

- Customizable blacklists and whitelists
- 95 content categories
- Multiple category selection
- Temporal constraints
- User specific / group specific restrictions
- Block, Allow, Warn & Continue, Alert and Override actions
- Online categorization lookup
- Local categorization cache for fast response times
- Customizable block pages

Advanced Threat Protection (ATP)¹

Prevent malicious files—even unknown ones—from entering the organization. Avoid network breaches, identify zero-day malware exploits, targeted attacks, advanced persistent threats and other advanced malware that routinely bypass traditional signature based IPS and antivirus engines before they do harm to your network.

Environment and Number of Files Inspected Per Month²

Hardware	# of files per minute	# of files per month
X50 / X51	5	108,000
X100 / X101	5	108,000
X200 / X201	5	108,000
X300	10	216,000
X400	15	324,000
X600	25	540,000

¹ Requires a valid Web Security subscription.

² In case the monthly file capacity is reached, the system stops forwarding files to the ATP cloud for the rest of the current month.

Premium Remote Access

Enables CudaLaunch support.

CudaLaunch is a remote access application for Windows, macOS, iOS, and Android devices that blends the simplicity of SSL VPN with the advantages of a full Client-to-Site VPN connection. The application connects to a Barracuda NextGen Firewall X-Series in order to provide secure remote access to internal applications and data.

CudaLaunch

- Windows
- macOS
- iOS
- Android

User Session Limits

- Unlimited concurrent CudaLaunch sessions
- Multiple concurrent Client-to-Site VPN sessions by the same user

Barracuda NextGen Firewall X Firewall / Packet Filter	X50 / X51	X100 / X101	X200 / X201	X300	X400	X600
Stateful firewall	●	●	●	●	●	●
NAT (src, dst, nets), PAT	●	●	●	●	●	●
Transparent Destination NAT	●	●	●	●	●	●
Load Balancing Destination NAT	●	●	●	●	●	●
Routing	●	●	●	●	●	●
Bridging	●	●	●	●	●	●
Policy-based NAT	●	●	●	●	●	●
Protocol support IPv4	●	●	●	●	●	●
Virtual IP (proxyARP) support	●	●	●	●	●	●
Gigabit performance		●	●	●	●	●
Fully object-oriented rule set	●	●	●	●	●	●
Redirection to local application	●	●	●	●	●	●
Active connection status (realtime)	●	●	●	●	●	●
Active connection status queryable via UI	●	●	●	●	●	●
Realtime active connection termination	●	●	●	●	●	●
Realtime active connection QoS band change	●	●	●	●	●	●
Historical connection caches (access cache)	●	●	●	●	●	●
Historical connection caches queryable via UI	●	●	●	●	●	●
Historical connection cache IP to domain resolution	●	●	●	●	●	●
Event triggered notification	●	●	●	●	●	●
Firewall Rules based on						
Time of day	●	●	●	●	●	●
Date	●	●	●	●	●	●
User	●	●	●	●	●	●
User Group	●	●	●	●	●	●
Application (Layer 7)	●	●	●	●	●	●
Service	●	●	●	●	●	●
Transparent IP to user mapping	●	●	●	●	●	●
User authentication	Microsoft NTLM, RADIUS, LDAP/LDAPS, Microsoft Active Directory, local					
VoIP support (SIP Proxy)	●	●	●	●	●	●
DHCP relaying	●	●	●	●	●	●
High Availability (HA)						
Active-Active ¹ , Active-Passive	●	●	●	●	●	●
Encrypted HA communication	●	●	●	●	●	●
Transparent failover without session loss	●	●	●	●	●	●
Provider/link failover	●	●	●	●	●	●

¹ Active-Active requires external link balancer

Barracuda NextGen Firewall X Application Control	X50 / X51	X100 / X101	X200 / X201	X300	X400	X600
Application monitor and drill-down function	●	●	●	●	●	●
More than 1,400 applications supported	●	●	●	●	●	●
Facebook blocking	●	●	●	●	●	●
Google+ blocking	●	●	●	●	●	●
Skype blocking	●	●	●	●	●	●
Streaming application support	●	●	●	●	●	●
P2P application support	●	●	●	●	●	●
Proxy and anonymizer detection (Hide Me, Cyberghost, etc.)	●	●	●	●	●	●
TUNNELING application support	●	●	●	●	●	●
VOIP application support	●	●	●	●	●	●
IM (Instant Messaging) application support	●	●	●	●	●	●
GAME application support	●	●	●	●	●	●
Bandwidth assignment based on application	●	●	●	●	●	●
Application logging	●	●	●	●	●	●
Application blocking	●	●	●	●	●	●
Application objects based on category, risk, properties, and popularity	●	●	●	●	●	●
Predefined categories such as Business, Conferencing, Instant Messaging, Media Streaming, etc.	●	●	●	●	●	●
Inspection of SSL encrypted traffic	●	●	●	●	●	●
SSL lite mode	●	●	●	●	●	●
Creation of customized applications	●	●	●	●	●	●
Google SafeSearch enforcement	●	●	●	●	●	●
BING SafeSearch enforcement	●	●	●	●	●	●
Yahoo SafeSearch enforcement	●	●	●	●	●	●
YouTube SafeMode enforcement	●	●	●	●	●	●
Google Accounts enforcement	●	●	●	●	●	●
Application-based provider selection	●	●	●	●	●	●
Bandwidth and QoS assignment	●	●	●	●	●	●
Reporting on application usage	●	●	●	●	●	●

Barracuda NextGen Firewall X Intrusion Prevention	X50 / X51	X100 / X101	X200 / X201	X300	X400	X600
Inline intrusion prevention (pattern-based)	●	●	●	●	●	●
SYN / DoS / DDoS attack protection	●	●	●	●	●	●
Support for SSL-encrypted web traffic	●	●	●	●	●	●
Reverse routing path check	●	●	●	●	●	●
ICMP flood ping protection	●	●	●	●	●	●
Malformed packet check	●	●	●	●	●	●
TCP split handshake protection	●	●	●	●	●	●
TCP stream segmentation check	●	●	●	●	●	●
URL obfuscation check	●	●	●	●	●	●
FTP evasion check	●	●	●	●	●	●
RPC defragmentation check	●	●	●	●	●	●
HTML decoding	●	●	●	●	●	●
HTML decompression	●	●	●	●	●	●
Regular online pattern updates	●	●	●	●	●	●
Average number of IPS signatures	~ 4,000					
IPS exception (whitelisting)	●	●	●	●	●	●
IPS exceptions based on						
Source	●	●	●	●	●	●
Destination	●	●	●	●	●	●
Port & Port Range	●	●	●	●	●	●
Signature / CVE	●	●	●	●	●	●

Barracuda NextGen Firewall X Remote Connectivity: VPN	X50 / X51	X100 / X101	X200 / X201	X300	X400	X600
Unlimited client-to-site VPN	●	●	●	●	●	●
Unlimited site-to-site VPN	●	●	●	●	●	●
Encryption Support						
AES-128	●	●	●	●	●	●
AES-256	●	●	●	●	●	●
DES	●	●	●	●	●	●
3DES (Triple DES)	●	●	●	●	●	●
Blowfish	●	●	●	●	●	●
CAST	●	●	●	●	●	●
Null	●	●	●	●	●	●
Private CA (up to 4,096-bit RSA)	●	●	●	●	●	●
Certificate revocation (OCSP)	●	●	●	●	●	●
Star (hub and spoke) VPN network topology	●	●	●	●	●	●
Replay protection	●	●	●	●	●	●
NAT traversal	●	●	●	●	●	●
HTTPS and SOCKS proxy compatible	●	●	●	●	●	●
Redundant VPN gateways	●	●	●	●	●	●
Native IPsec for third-party connectivity	●	●	●	●	●	●
Optimized IPsec (TINA) for Barracuda – Barracuda VPN Tunnels	●	●	●	●	●	●
Internet Key Exchange protocol support (IKE)	●, IKEv1 only					
VPN clients available for						
Windows ²	●	●	●	●	●	●
macOS ²	●	●	●	●	●	●
Linux / Debian ²	●	●	●	●	●	●
Apple iOS ³	●	●	●	●	●	●
Google Android ³	●	●	●	●	●	●
IPsec client-to-site authentication:						
Active Directory	●	●	●	●	●	●
LDAP	●	●	●	●	●	●
RADIUS	●	●	●	●	●	●
Pre-shared key (PSK)	●	●	●	●	●	●
Combination of PSK and certificate authentication	●	●	●	●	●	●
Local user repository	●	●	●	●	●	●
PPTP authentication:						
Local user repository	●	●	●	●	●	●
MS-CHAPv2/NTML	●	●	●	●	●	●

² VPN client provided by Barracuda Networks, downloadable from within the management interface

³ Compatible to the built-in IPsec VPN client of the device.

Barracuda NextGen Firewall X Remote Connectivity: Browser	X50 / X51	X100 / X101	X200 / X201	X300	X400	X600
Browser Portal for						
Desktop Devices	●	●	●	●	●	●
Mobile Devices	●	●	●	●	●	●
Integration with Barracuda NextGen Firewall User Authentication (Active Directory, LDAP, RADIUS, Local Authentication)	●	●	●	●	●	●
Client certificate authentication	●	●	●	●	●	●
Access to Internal Applications and Data via						
Proxied & Tunneled Web Forwards	●	●	●	●	●	●
Network Folders (SMB)	●	●	●	●	●	●
Mail Access (SMTP, POP3, IMAP4)	●	●	●	●	●	●
Single Sign-On support	●	●	●	●	●	●
Customizable portal UI	●	●	●	●	●	●
User personalization (favorite apps or connections)	●	●	●	●	●	●
Built-in demo setup	●	●	●	●	●	●

Barracuda NextGen Firewall X Remote Connectivity: CudaLaunch	X50 / X51	X100 / X101	X200 / X201	X300	X400	X600
Clients/Apps for						
Windows	●	●	●	●	●	●
macOS	●	●	●	●	●	●
iOS	●	●	●	●	●	●
Android	●	●	●	●	●	●
Zero-configuration device provisioning & central management	●	●	●	●	●	●
Integration with Barracuda NextGen Firewall User Authentication (Active Directory, LDAP, RADIUS, Local Authentication)	●	●	●	●	●	●
Client certificate authentication	●	●	●	●	●	●
Access to Internal Applications and Data via						
Proxied & Tunneled Web Forwards	●	●	●	●	●	●
SSL Tunnels	●	●	●	●	●	●
Native Applications, e.g. RDP (no Java)	●	●	●	●	●	●
Mail Access (SMTP, POP3, IMAP4)	●	●	●	●	●	●
VPN Connections (with Zero Touch Configuration)						
Android (TINA)	●	●	●	●	●	●
iOS (IPsec)	●	●	●	●	●	●
Single Sign-On support	●	●	●	●	●	●
Customizable portal UI	●	●	●	●	●	●
User personalization (favorite apps or connections)	●	●	●	●	●	●
Multiple concurrent sessions by same user	●	●	●	●	●	●
Built-in demo setup	●	●	●	●	●	●

Barracuda NextGen Firewall X Routing & Networking	X50 / X51	X100 / X101	X200 / X201	X300	X400	X600
High Availability, transparent failover	●	●	●	●	●	●
Multiple provider / WAN link support	●	●	●	●	●	●
Internet uplink aggregation	●	●	●	●	●	●
Internet uplink failover	●	●	●	●	●	●
Ethernet support	●	●	●	●	●	●
Max. number of physical interfaces	4	4	4	6	8	8
Max. number of assigned IP addresses per interface	100					
802.1q VLAN support	●	●	●	●	●	●
Max. number of VLANs	256					
Bridging	●	●	●	●	●	●
Port trunking	●	●	●	●	●	●
xDSL support (PPPoE, PPTP (multi-link))	●	●	●	●	●	●
DHCP client support	●	●	●	●	●	●
Link monitoring (DHCP, 3G/UMTS, xDSL, cable)	●	●	●	●	●	●
Health checks for static links / routes (via ICMP)	●	●	●	●	●	●
Ethernet channel bonding	●	●	●	●	●	●
Multiple networks on interface	●	●	●	●	●	●
Multiple provider / WAN link support	●	●	●	●	●	●
Configurable MTU size	●	●	●	●	●	●
Jumbo frames	up to 8,000 bytes					
PPTP	●	●	●	●	●	●

Barracuda NextGen Firewall X Identity & Authentication	X50 / X51	X100 / X101	X200 / X201	X300	X400	X600
User / group-based firewall rules	●	●	●	●	●	●
User / group-based application rules	●	●	●	●	●	●
Domain control agent for transparent user-IP mapping	●	●	●	●	●	●
Terminal Server agent for transparent user-IP mapping	●	●	●	●	●	●
External authentication method						
Active Directory	●	●	●	●	●	●
LDAP / LDAPS	●	●	●	●	●	●
NTLM	●	●	●	●	●	●
Built-in authentication method: local user database	●	●	●	●	●	●
Web-based authentication (captive portal)	●	●	●	●	●	●

Barracuda NextGen Firewall X DHCP	X50 / X51	X100 / X101	X200 / X201	X300	X400	X600
DHCP server	●	●	●	●	●	●
Multi-homing, multi-netting	●	●	●	●	●	●
Dynamic DNS support	●	●	●	●	●	●
Lease DB visualization & management	●	●	●	●	●	●
Static lease support	●	●	●	●	●	●
Client ID	●	●	●	●	●	●
Vendor options	●	●	●	●	●	●

Barracuda NextGen Firewall X Authoritative DNS Server	X50 / X51	X100 / X101	X200 / X201	X300	X400	X600
Authoritative DNS server	●	●	●	●	●	●
Local DNS cache	●	●	●	●	●	●
Inbound link balancing	●	●	●	●	●	●
Multi-domain support	●	●	●	●	●	●
Zone transfer (Allow/Prevent)	●	●	●	●	●	●
Time-to-Live (TTL) enforcement	●	●	●	●	●	●
A Server record support (A)	●	●	●	●	●	●
Name Server record support (NS)	●	●	●	●	●	●
Mail Server record support (MX)	●	●	●	●	●	●
TXT / SPF record support (TXT)	●	●	●	●	●	●
Canonical Name support (CNAME)	●	●	●	●	●	●
Services Available record support (SRV)	●	●	●	●	●	●
Pointer Resource record support (PTR)	●	●	●	●	●	●
Customizable DNS record support (OTHER)	●	●	●	●	●	●
Health checks per IP	●	●	●	●	●	●
Configurable health check interval	●	●	●	●	●	●
Configurable update interval for dynamic IPs	●	●	●	●	●	●
Support for static uplinks	●	●	●	●	●	●
Support for dynamic uplinks	●	●	●	●	●	●

Barracuda NextGen Firewall X Advanced Threat Protection	X50 / X51	X100 / X101	X200 / X201	X300	X400	X600
Supported file types						
Microsoft Office files	●	●	●	●	●	●
Microsoft executables (exe, msi, dll)	●	●	●	●	●	●
Adobe PDF documents	●	●	●	●	●	●
Android APK files	●	●	●	●	●	●
ZIP archives	●	●	●	●	●	●
RAR archives	●	●	●	●	●	●
Supported protocols						
HTTP	●	●	●	●	●	●
HTTPS	●	●	●	●	●	●
FTP	●	●	●	●	●	●
SMTP	●	●	●	●	●	●
SMTPS	●	●	●	●	●	●
Dynamic analysis of documents with embedded exploits (PDF, Office, etc.)	●	●	●	●	●	●
Detailed forensics for both, malware binaries and web threats (exploits)	●	●	●	●	●	●
High resolution malware analysis (monitoring, execution from the inside)	●	●	●	●	●	●
Support for multiple operating systems (Windows, Android, etc.)	●	●	●	●	●	●
Flexible malware analysis in the cloud	●	●	●	●	●	●

Barracuda NextGen Firewall X Web Security Subscription	X50 / X51	X100 / X101	X200 / X201	X300	X400	X600
URL filter on-box or in the cloud	●	●	●	●	●	●
URL filtering on-box						
Online Category Database	●	●	●	●	●	●
Update interval	continuously					
HTTPS URL filtering	●	●	●	●	●	●
Whitelist domains	●	●	●	●	●	●
Blacklist domains	●	●	●	●	●	●
Filter categories	95					
Category groups	11					
Customizable block page	●	●	●	●	●	●
URL Filter Actions (Allow, Warn & Continue, Alert, Block)	●	●	●	●	●	●
Customizable Warn page	●	●	●	●	●	●
Number of URL filter policies	unlimited					
User/group-based constraints	●	●	●	●	●	●
Time based constraints	●	●	●	●	●	●
URL filtering as a service (cloud)						
Real-time page-content analysis and reputation scoring	●	●	●	●	●	●
Web page categorization in 95 categories	●	●	●	●	●	●
Web page categorization in 7 super categories	●	●	●	●	●	●
Time-based restrictions	●	●	●	●	●	●
User ID-based restrictions	●	●	●	●	●	●
Group-based restrictions	●	●	●	●	●	●
Consumed bandwidth-based restrictions	●	●	●	●	●	●
Browsing time-based restrictions	●	●	●	●	●	●
Whitelist and blacklist by domain	●	●	●	●	●	●
Upload / download blocking by content type	●	●	●	●	●	●
Upload / download blocking by file extension	●	●	●	●	●	●
URL policies based on mobile device type (iPhone, Android, BlackBerry, and others)	●	●	●	●	●	●
URL policies based on browser type (IE, Firefox, Opera, Safari, Chrome, Konqueror, and others)	●	●	●	●	●	●
Customizable block pages and alerts	●	●	●	●	●	●
Blocking override by password	●	●	●	●	●	●
Coaching / soft-blocking to warn users	●	●	●	●	●	●
Safe Search enforcement (Bing, Dogpile, Google, MSN, Yahoo)	●	●	●	●	●	●
Virus protection on-box or in the cloud	●	●	●	●	●	●
Virus protection on-box						
Configurable file types to be scanned	●	●	●	●	●	●
Proactive detection of new threats	●	●	●	●	●	●
Phishing protection	●	●	●	●	●	●
Spyware protection	●	●	●	●	●	●
Advanced heuristics detection techniques	●	●	●	●	●	●
Number of signatures	millions					
Frequency of signature updates	hourly					
Maximum file size limit for scanning	999 MB					
Exemptions (URL, Domain, IP)	●	●	●	●	●	●

Barracuda NextGen Firewall X Web Security Subscription	X50 / X51	X100 / X101	X200 / X201	X300	X400	X600
Virus protection on-box						
Configurable block policies for larger files than allowed	●	●	●	●	●	●
Configurable scan cache size	●	●	●	●	●	●
Configurable number of virus protection threads	●	●	●	●	●	●
Configurable virus protection block page	●	●	●	●	●	●
Configurable other access block page	●	●	●	●	●	●
Office file-types support	●	●	●	●	●	●
Configurable archive recursion depth	●	●	●	●	●	●
Configurable unknown archive policy	●	●	●	●	●	●
Configurable maximum archive size	●	●	●	●	●	●
Configurable archive inflation ratio	●	●	●	●	●	●
Archiver package support	●	●	●	●	●	●
Data trickling to prevent browser timeouts	●	●	●	●	●	●
Reporting via Barracuda Report Creator	●	●	●	●	●	●
Reporting on UserID	●	●	●	●	●	●
Reports exportable to PDF	●	●	●	●	●	●
Scheduled reports	●	●	●	●	●	●
Searchable logging in Recents Threats	●	●	●	●	●	●
Virus protection as a service (cloud)						
Botnet communication blocking	●	●	●	●	●	●
Antivirus signature updates in real time	●	●	●	●	●	●
Zero-Day protection	●	●	●	●	●	●
Advanced heuristics	●	●	●	●	●	●
HTTP behavior analysis	●	●	●	●	●	●
Malicious web app analysis (AJAX-aware)	●	●	●	●	●	●
Blended threats protection (email and web)	●	●	●	●	●	●
Reporting across entire company (web-based)						
Graphical dashboard summary	●	●	●	●	●	●
Customizable summary and detailed reports	●	●	●	●	●	●
Drill-down reporting	●	●	●	●	●	●
Interactive reports or scheduled delivery	●	●	●	●	●	●
Forensics log reporting	●	●	●	●	●	●
Reporting on user ID and group	●	●	●	●	●	●
Reports exportable to PDF, XML, or CSV	●	●	●	●	●	●

Barracuda NextGen Firewall X Logging	X50 / X51	X100 / X101	X200 / X201	X300	X400	X600
Logs on						
Firewall	●	●	●	●	●	●
HTTP proxy	●	●	●	●	●	●
Network	●	●	●	●	●	●
VPN	●	●	●	●	●	●
Services	●	●	●	●	●	●
Authentication	●	●	●	●	●	●
All logs instantly searchable via web interface	●	●	●	●	●	●
Log streaming support (syslog)	●	●	●	●	●	●
SNMP support (v2, v3)	●	●	●	●	●	●
ARP cache display	●	●	●	●	●	●
Built-in TCP dump utility	●	●	●	●	●	●
Logging and reporting on web traffic	With Barracuda Report Creator (see below) or Barracuda Web Security Subscription (see above)					

Barracuda NextGen Firewall X Reporting	X50 / X51	X100 / X101	X200 / X201	X300	X400	X600
Reporting via separate reporting App	●	●	●	●	●	●
Supported Operating System: Windows Vista,7,8,10	●	●	●	●	●	●
Directly downloadable from Web UI	●	●	●	●	●	●
Reporting across multiple X-Series units individually	●	●	●	●	●	●
Reporting across multiple X-Series units consolidated	●	●	●	●	●	●
Predefined Reports:						
Top Applications	●	●	●	●	●	●
Top Allowed Applications	●	●	●	●	●	●
Top Blocked Applications	●	●	●	●	●	●
Top URL Categories & Websites	●	●	●	●	●	●
Top Allowed URL Categories & Websites	●	●	●	●	●	●
Top Blocked URL Categories & Websites	●	●	●	●	●	●
Application Usage and Risk Report	●	●	●	●	●	●
Custom Reports based on:						
Time Span	●	●	●	●	●	●
Traffic Type	●	●	●	●	●	●
Applications	●	●	●	●	●	●
Protocols	●	●	●	●	●	●
Traffic by Categories / Traffic by Risk Rating	●	●	●	●	●	●
Users	●	●	●	●	●	●
URL Categories	●	●	●	●	●	●
URLs	●	●	●	●	●	●
Deep Application Context	●	●	●	●	●	●
Sources	●	●	●	●	●	●
Geo-Location (Source / Destination)	●	●	●	●	●	●
User Activity Reports	●	●	●	●	●	●
IP Address Activity Reports	●	●	●	●	●	●
URL Category Reports	●	●	●	●	●	●
Application Category Reports	●	●	●	●	●	●
Application Reports	●	●	●	●	●	●
Customizable Layout	●	●	●	●	●	●

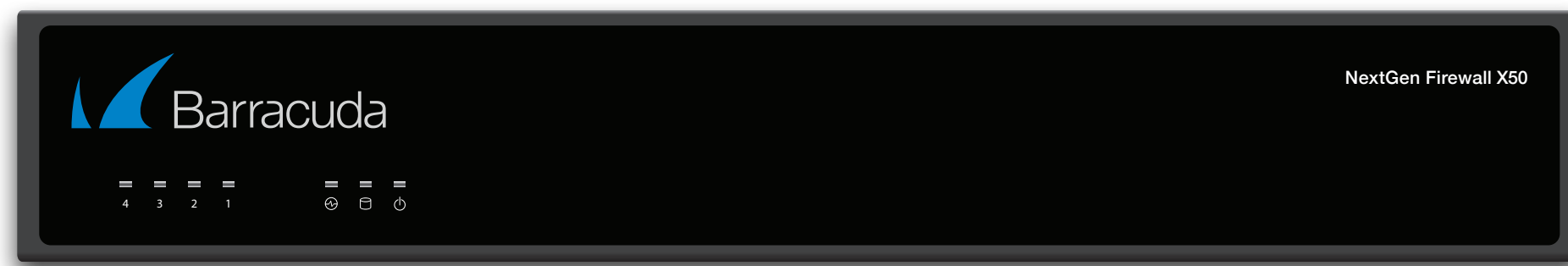
Barracuda NextGen Firewall X Reporting	X50 / X51	X100 / X101	X200 / X201	X300	X400	X600
IP Address Anonymization (optional)	●	●	●	●	●	●
On-Demand creation of reports	●	●	●	●	●	●
Scheduled creation of reports	●	●	●	●	●	●
Mailing of reports	●	●	●	●	●	●

Barracuda NextGen Firewall X Central Management via Barracuda Appliance Control (BAC)	X50 / X51	X100 / X101	X200 / X201	X300	X400	X600
Central management via BAC	●	●	●	●	●	●
Connection monitoring via current connections & recent connections	●	●	●	●	●	●
BASIC parameters available in BAC						
Status	●	●	●	●	●	●
IPS events	●	●	●	●	●	●
User activity	●	●	●	●	●	●
Alerts	●	●	●	●	●	●
Administration	●	●	●	●	●	●
NETWORK parameters available in BAC						
IP configuration available in BAC ⁵	●	●	●	●	●	●
Routing	●	●	●	●	●	●
Interface groups	●	●	●	●	●	●
Bridging	●	●	●	●	●	●
DHCP server	●	●	●	●	●	●
Authoritative DNS	●	●	●	●	●	●
Proxy	●	●	●	●	●	●
FIREWALL parameters available in BAC						
Network objects	●	●	●	●	●	●
Service objects	●	●	●	●	●	●
Connection objects	●	●	●	●	●	●
User objects	●	●	●	●	●	●
Time objects	●	●	●	●	●	●
Intrusion prevention	●	●	●	●	●	●
Captive portal	●	●	●	●	●	●
Settings	●	●	●	●	●	●
QoS	●	●	●	●	●	●
VPN parameters available in BAC						
Site-to-site VPN	●	●	●	●	●	●
Client-to-site VPN	●	●	●	●	●	●
SSL VPN	●	●	●	●	●	●
PPTP	●	●	●	●	●	●
Active clients	●	●	●	●	●	●
Certificates	●	●	●	●	●	●
USERS parameters available in BAC						
Guest access	●	●	●	●	●	●
Local authentication	●	●	●	●	●	●
External authentication	●	●	●	●	●	●

⁵ Management IP address (Mgmt IP) cannot be changed via BAC

Barracuda NextGen Firewall X Central Management via Barracuda Appliance Control (BAC)	X50 / X51	X100 / X101	X200 / X201	X300	X400	X600
LOGS parameters available in BAC						
Firewall log	●	●	●	●	●	●
HTTP log	●	●	●	●	●	●
Network log	●	●	●	●	●	●
VPN log	●	●	●	●	●	●
Service log	●	●	●	●	●	●
Authentication log	●	●	●	●	●	●
Log streaming	●	●	●	●	●	●
ADVANCED parameters available in BAC						
Backups	●	●	●	●	●	●
Energize Updates	●	●	●	●	●	●
Firmware updates	●	●	●	●	●	●
Troubleshooting	●	●	●	●	●	●
IPS exceptions	●	●	●	●	●	●
Task manager	●	●	●	●	●	●
Secure administration	●	●	●	●	●	●

Barracuda NextGen Firewall X50 / X51



Interface	
Copper Ethernet NICs	4x1 GbE
USB 2.0	4
Serial / console	1 [RJ45]
VGA interface	1
Integrated WiFi (IEEE 802.11b/g/n)	Yes (model X51)
Performance [as of firmware release 7.1.x]	
Firewall throughput [Mbps]	
Maximum ¹	800
with Application Detection (AppDetect) ²	300
with AppDetect & IPS ²	100
with AppDetect & IPS & URL Filtering ²	90
with AppDetect & IPS & URL Filtering & Virus Protection ²	50
with AppDetect & IPS & URL Filtering & Virus Protection & SSL Inspection ³	25
VPN throughput [Mbps] ⁴	50
Concurrent sessions	8,000
New sessions/s	2,000
Memory	
RAM [MB]	2,048
Mass storage	
Type	SSD
Size [GB]	50
SSD MTBF [hours]	1,200,000
Size, weight, dimensions	
Weight appliance [lbs]	3.1
Weight appliance [kg]	1.3
Appliance size: width x depth x height [in]	10.8 x 6.4 x 1.7
Appliance size: width x depth x height [mm]	274 x 162 x 44
Weight carton with appliance [lbs]	7.0
Weight carton with appliance [kg]	3.2
Carton size: width x depth x height [in]	25.6 x 15.5 x 19.2
Carton size: width x depth x height [mm]	650 x 394 x 487
Form factor	Compact
Hardware	
Display	-
Cooling	Fanless
Environmental	
Noise emission [db/A]	N/A
Operating temperature [°F]	+30 to +95
Operating temperature [°C]	0 to +40
Storage temperature [°F]	-5 to +160
Storage temperature [°C]	-20 to +70
Operating humidity (non-condensing)	5% to 95%

MTBF [system]	
MTBF [yrs.]	> 5
Power & efficiency	
Power supply	Single, external
Power supply type	External brick
Power type [AC/DC]	AC
Input rating [Volts]	100-240
Input frequency [Hz]	47 - 63
Auto sense	Yes
Wattage / max. power draw [W]	45
Max. power draw @ 120V [Amps.]	1.6
Max. power draw @ 230V [Amps.]	0.8
Max. heat dissipation [W]	36
Max. heat dissipation [BTU]	123
Energy efficiency [average]	> 80%
Certifications & compliance	
CE emissions	Yes
CE electrical safety	Yes
UL compliant	Yes
FCC emissions	Yes
ROHS compliant	Yes
Packaging content	
Appliance	Yes
Straight network cable	Yes
External power brick & cables	Yes
USB flash drive for recovery & installation	Yes
Quick start guide	Yes
2x Wireless antenna	Yes, for X51 only
2x Barracuda wall mount bracket	Yes

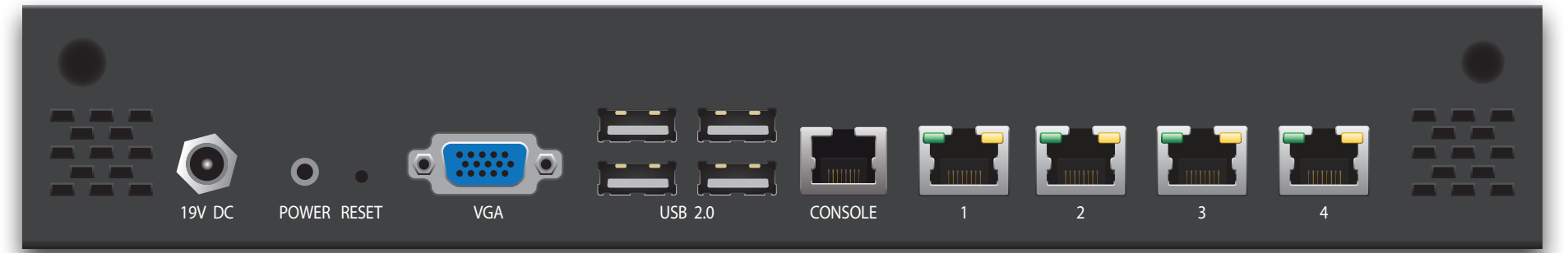
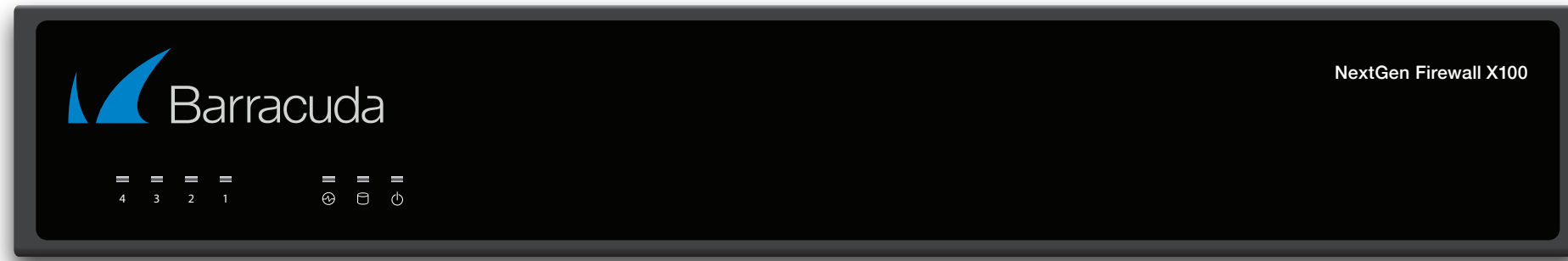
¹ Measured with UDP, large packets.

² Measured with real world Internet traffic found at the gateway.

³ Measured with real world Internet traffic and 50% HTTPS traffic.

⁴ Measured with AES-128 encryption.

Barracuda NextGen Firewall X100 / X101



Interface	
Copper Ethernet NICs	4x1 GbE
USB 2.0	4
Serial / console	1 [RJ45]
VGA Interface	1
Integrated WiFi (IEEE 802.11b/g/n)	Yes (model X101)
Performance [as of firmware release 7.1.x]	
Firewall throughput [Mbps]	
Maximum ¹	1,000
with Application Detection (AppDetect) ²	500
with AppDetect & IPS ²	300
with AppDetect & IPS & URL Filtering ²	190
with AppDetect & IPS & URL Filtering & Virus Protection ²	140
with AppDetect & IPS & URL Filtering & Virus Protection & SSL Inspection ³	50
VPN throughput [Mbps] ⁴	100
Concurrent sessions	8,000
New sessions/s	2,000
Memory	
RAM [MB]	4,096
Mass storage	
Type	SSD
Size [GB]	80
SSD MTBF [hours]	1,200,000
Size, weight, dimensions	
Weight appliance [lbs]	3.1
Weight appliance [kg]	1.3
Appliance size: width x depth x height [in]	10.8 x 6.4 x 1.7
Appliance size: width x depth x height [mm]	274 x 162 x 44
Weight carton with appliance [lbs]	7.0
Weight carton with appliance [kg]	3.2
Carton size: width x depth x height [in]	25.6 x 15.5 x 19.2
Carton size: width x depth x height [mm]	650 x 394 x 487
Form factor	Compact
Hardware	
Display	-
Cooling	Low- noise fan
Environmental	
Noise emission [db/A]	< 47
Operating temperature [°F]	+30 to +95
Operating temperature [°C]	0 to +40
Storage temperature [°F]	-5 to +160
Storage temperature [°C]	-20 to +70
Operating humidity (non-condensing)	5% to 95%

MTBF [system]	
MTBF [yrs.]	> 5
Power & efficiency	
Power supply	Single
Power supply type	External brick
Power type [AC/DC]	AC
Input rating [Volts]	100-240
Input frequency [Hz]	47-63
Auto sense	Yes
Wattage / max. power draw [W]	45
Max. power draw @ 120V [Amps.]	1.6
Max. power draw @ 230V [Amps.]	0.8
Max. heat dissipation [W]	36
Max. heat dissipation [BTU]	123
Energy efficiency [average]	> 80%
Certifications & compliance	
CE emissions	Yes
CE electrical safety	Yes
UL compliant	Yes
FCC emissions	Yes
ROHS compliant	Yes
Packaging content	
Appliance	Yes
Straight network cable	Yes
External power brick & cables	Yes
Quick start guide	Yes
2x Wireless antenna	Yes, for X101 only
2x Barracuda wall mount bracket	Yes

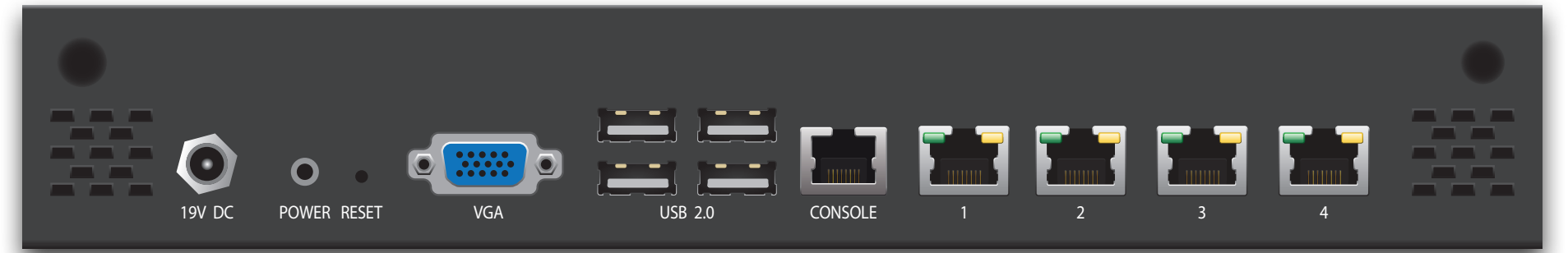
¹ Measured with UDP, large packets.

² Measured with real world Internet traffic found at the gateway.

³ Measured with real world Internet traffic and 50% HTTPS traffic.

⁴ Measured with AES-128 encryption.

Barracuda NextGen Firewall X200 / X201



Interface	
Copper Ethernet NICs	4x1 GbE
USB 2.0	4
Serial / console	1 [RJ45]
VGA Interface	1
Integrated WiFi (IEEE 802.11b/g/n)	Yes (model X201)
Performance [as of firmware release 7.1.x]	
Firewall throughput [Mbps]	
Maximum ¹	1,900
with Application Detection (AppDetect) ²	800
with AppDetect & IPS ²	400
with AppDetect & IPS & URL Filtering ²	290
with AppDetect & IPS & URL Filtering & Virus Protection ²	240
with AppDetect & IPS & URL Filtering & Virus Protection & SSL Inspection ³	110
IPS throughput [Mbps] ⁴	200
Concurrent sessions	60,000
New sessions/s	8,000
Memory	
RAM [MB]	4,096
Mass storage	
Type	SSD
Size [GB]	80
SSD MTBF [hours]	1,200,000
Size, weight, dimensions	
Weight appliance [lbs]	3.1
Weight appliance [kg]	1.3
Appliance size: width x depth x height [in]	10.8 x 6.4 x 1.7
Appliance size: width x depth x height [mm]	274 x 162 x 44
Weight carton with appliance [lbs]	7.0
Weight carton with appliance [kg]	3.2
Carton size: width x depth x height [in]	25.6 x 15.5 x 19.2
Carton size: width x depth x height [mm]	650 x 394 x 487
Form factor	Compact
Hardware	
Display	-
Cooling	Low-noise fan
Environmental	
Noise emission [db/A]	< 47
Operating temperature [°F]	+30 to +95
Operating temperature [°C]	0 to +40
Storage temperature [°F]	-5 to +160
Storage temperature [°C]	-20 to +70
Operating humidity (non-condensing)	5% to 95%

MTBF [system]	
MTBF [yrs.]	> 5
Power & efficiency	
Power supply	Single
Power supply type	External brick
Power type [AC/DC]	AC
Input rating [Volts]	100-240
Input frequency [Hz]	50-63
Auto sense	Yes
Wattage / max. power draw [W]	45
Max. power draw @ 120V [Amps.]	1.6
Max. power draw @ 230V [Amps.]	0.8
Max. heat dissipation [W]	36
Max. heat dissipation [BTU]	123
Energy efficiency [average]	> 80%
Certifications & compliance	
CE emissions	Yes
CE electrical safety	Yes
UL compliant	Yes
FCC emissions	Yes
ROHS compliant	Yes
Packaging content	
Appliance	Yes
Straight network cable	Yes
External power brick & cables	Yes
Quick start guide	Yes
2x Wireless antenna	Yes, for X201 only
2x Barracuda wall mount bracket	Yes

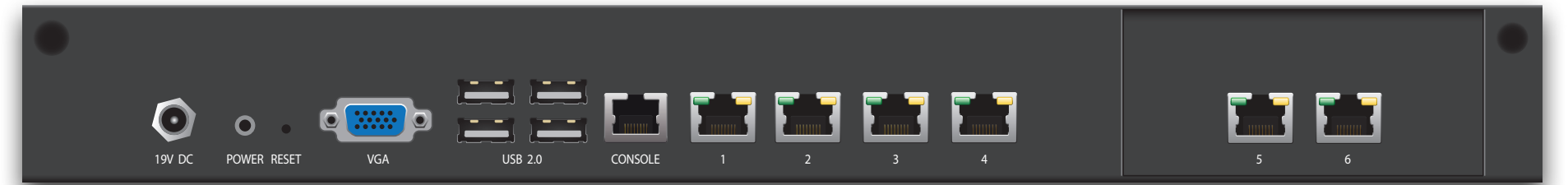
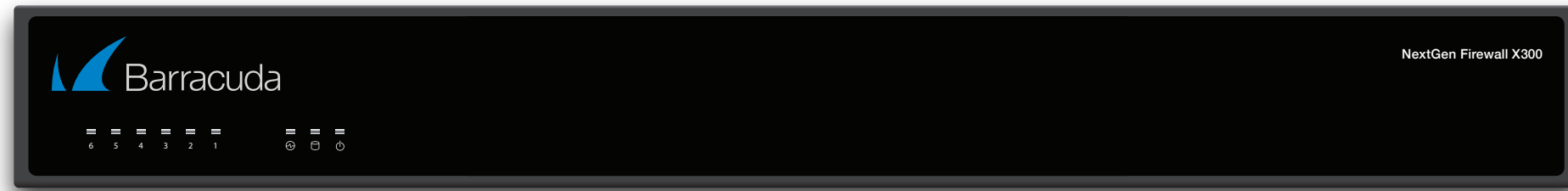
¹ Measured with UDP, large packets.

² Measured with real world Internet traffic found at the gateway.

³ Measured with real world Internet traffic and 50% HTTPS traffic.

⁴ Measured with AES-128 encryption.

Barracuda NextGen Firewall X300



Interface	
Copper Ethernet NICs	6x1 GbE
USB 2.0	2
Serial / console	1 [RJ45]
VGA Interface	1
Performance [as of firmware release 7.1.x]	
Firewall throughput [Mbps]	
Maximum ¹	2,100
with Application Detection (AppDetect) ²	1,000
with AppDetect & IPS ²	650
with AppDetect & IPS & URL Filtering ²	330
with AppDetect & IPS & URL Filtering & Virus Protection ²	280
with AppDetect & IPS & URL Filtering & Virus Protection & SSL Inspection ³	150
IPS throughput [Mbps] ⁴	300
Concurrent sessions	120,000
New sessions/s	12,000
Memory	
RAM [MB]	4,096
Mass storage	
Type	SSD
Size [GB]	80
SSD MTBF [hours]	1,200,000
Size, weight, dimensions	
Weight appliance [lbs]	4.9
Weight appliance [kg]	2.1
Appliance size: width x depth x height [in]	14.9 x 6.4 x 1.7
Appliance size: width x depth x height [mm]	378 x 162 x 44
Weight carton with appliance [lbs]	9.8
Weight carton with appliance [kg]	4.5
Carton size: width x depth x height [in]	30.9 x 19.5 x 18.5
Carton size: width x depth x height [mm]	786 x 495 x 471
Form factor	Compact
Hardware	
Display	-
Cooling	Fan
Environmental	
Noise emission [db/A]	< 40
Operating temperature [°F]	+30 to +95
Operating temperature [°C]	0 to +35
Storage temperature [°F]	-5 to +160
Storage temperature [°C]	-20 to +70
Operating humidity (non-condensing)	5% to 95%

MTBF [system]	
MTBF [yrs.]	> 5
Power & efficiency	
Power supply	Single
Power supply type	External brick
Power type [AC/DC]	AC
Input rating [Volts]	100-240
Input frequency [Hz]	50-60
Auto sense	Yes
Wattage / max. power draw [W]	45
Max. power draw @ 120V [Amps.]	1.6
Max. power draw @ 230V [Amps.]	0.8
Max. heat dissipation [W]	60
Max. heat dissipation [BTU]	205
Energy efficiency [average]	> 83%
Certifications & compliance	
CE emissions	Yes
CE electrical safety	Yes
UL compliant	Yes
FCC emissions	Yes
ROHS compliant	Yes
Packaging content	
Appliance	Yes
Straight network cable	Yes
External power brick & cables	Yes
Quick start guide	Yes
2x Barracuda L-shape rack mount bracket	Yes

¹ Measured with UDP, large packets.

² Measured with real world Internet traffic found at the gateway.

³ Measured with real world Internet traffic and 50% HTTPS traffic.

⁴ Measured with AES-128 encryption.

Barracuda NextGen Firewall X400



Interface	
Copper Ethernet NICs	8x1 GbE
USB 2.0	4
Serial / console	1 [RJ45]
VGA Interface	1
DVI Interface	1
Performance [as of firmware release 7.1.x]	
Firewall throughput [Mbps]	
Maximum ¹	4,000
with Application Detection (AppDetect) ²	2,500
with AppDetect & IPS ²	2,500
with AppDetect & IPS & URL Filtering ²	1,100
with AppDetect & IPS & URL Filtering & Virus Protection ²	1,000
with AppDetect & IPS & URL Filtering & Virus Protection & SSL Inspection ³	450
VPN throughput [Mbps] ⁴	600
Concurrent sessions	300,000
New sessions/s	15,000
Memory	
RAM [MB]	4,096
Mass storage	
Type	SSD
Size [GB]	80
SSD MTBF [hours]	1,200,000
Size, weight, dimensions	
Weight appliance [lbs]	11.3
Weight appliance [kg]	5.1
Appliance size: width x depth x height [in]	16.8 x 15.9 x 1.7
Appliance size: width x depth x height [mm]	427 x 405 x 44
Weight carton with appliance [lbs]	17.6
Weight carton with appliance [kg]	8.0
Carton size: width x depth x height [in]	22.6 x 19.1 x 7
Carton size: width x depth x height [mm]	575 x 484 x 178
Form factor	1U Rack Mount
Hardware	
Display	-
Cooling	Fan
Environmental	
Noise emission [db/A]	N/A
Operating temperature [°F]	+30 to +95
Operating temperature [°C]	0 to +40
Storage temperature [°F]	-5 to +160
Storage temperature [°C]	-20 to +70
Operating humidity (non-condensing)	5% to 95%

MTBF [system]	
MTBF [yrs.]	> 5
Power & efficiency	
Power supply	Single
Power supply type	Internal
Power type [AC/DC]	AC
Input rating [Volts]	100-240
Input frequency [Hz]	50-60
Auto sense	Yes
Wattage / max. power draw [W]	180
Max. power draw @ 120V [Amps.]	1.6
Max. power draw @ 230V [Amps.]	0.8
Max. heat dissipation [W]	180
Max. heat dissipation [BTU]	738
Energy efficiency [average]	> 80%
Certifications & compliance	
CE emissions	Yes
CE electrical safety	Yes
UL compliant	Yes
FCC emissions	Yes
ROHS compliant	Yes
Packaging content	
Appliance	Yes
Straight network cable	Yes
Power cord	Yes
Quick start guide	Yes
2x Barracuda L-shape rack mount bracket	Yes

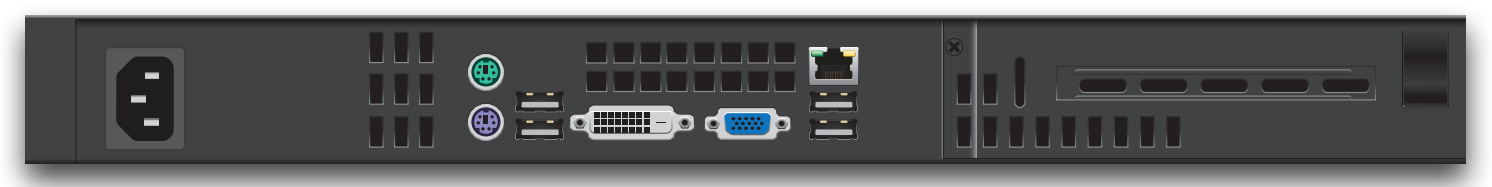
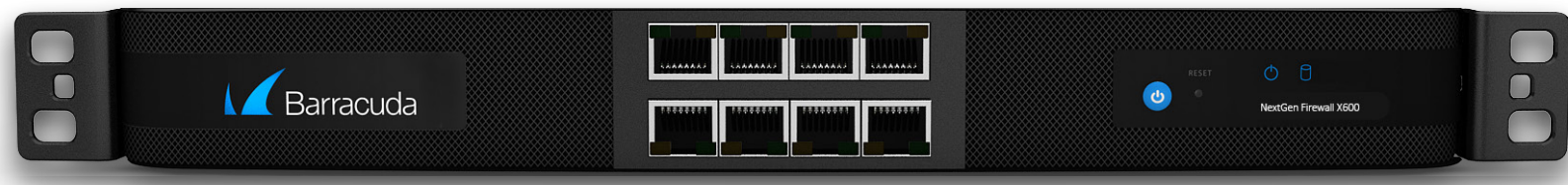
¹ Measured with UDP, large packets.

² Measured with real world Internet traffic found at the gateway.

³ Measured with real world Internet traffic and 50% HTTPS traffic.

⁴ Measured with AES-128 encryption.

Barracuda NextGen Firewall X600



Interface	
Copper Ethernet NICs	8x1 GbE
USB 2.0	4
Serial / console	1 [RJ45]
VGA Interface	1
DVI Interface	1
Performance [as of firmware release 7.1.x]	
Firewall throughput [Mbps]	
Maximum ¹	6,000
with Application Detection (AppDetect) ²	3,000
with AppDetect & IPS ²	3,000
with AppDetect & IPS & URL Filtering ²	2,500
with AppDetect & IPS & URL Filtering & Virus Protection ²	2,400
with AppDetect & IPS & URL Filtering & Virus Protection & SSL Inspection ³	1,100
VPN throughput [Mbps] ⁴	800
Concurrent sessions	500,000
New sessions/s	20,000
Memory	
RAM [MB]	8,192
Mass storage	
Type	SSD
Size [GB]	160
SSD MTBF [hours]	1,200,000
Size, weight, dimensions	
Weight appliance [lbs]	11.3
Weight appliance [kg]	5.1
Appliance size: width x depth x height [in]	16.8 x 15.9 x 1.7
Appliance size: width x depth x height [mm]	427 x 405 x 44
Weight carton with appliance [lbs]	22.5
Weight carton with appliance [kg]	8.1
Carton size: width x depth x height [in]	22.6 x 19.1 x 7
Carton size: width x depth x height [mm]	575 x 484 x 178
Form factor	1U Rack Mount
Hardware	
Display	-
Cooling	Fan
Environmental	
Noise emission [db/A]	N/A
Operating temperature [°F]	+30 to +95
Operating temperature [°C]	0 to +40
Storage temperature [°F]	-5 to +160
Storage temperature [°C]	-20 to +70
Operating humidity (non-condensing)	5% to 95%

MTBF [system]	
MTBF [yrs.]	> 5
Power & efficiency	
Power supply	Single
Power supply type	Internal
Power type [AC/DC]	AC
Input rating [Volts]	100-240
Input frequency [Hz]	50-60
Auto sense	Yes
Wattage / max. power draw [W]	180
Max. power draw @ 120V [Amps.]	1.6
Max. power draw @ 230V [Amps.]	0.8
Max. heat dissipation [W]	180
Max. heat dissipation [BTU]	738
Energy efficiency [average]	> 80%
Certifications & compliance	
CE emissions	Yes
CE electrical safety	Yes
UL compliant	Yes
FCC emissions	Yes
ROHS compliant	Yes
Packaging content	
Appliance	Yes
Straight network cable	Yes
Power cord	Yes
Quick start guide	Yes
2x Barracuda L-shape rack mount bracket	Yes

¹ Measured with UDP, large packets.

² Measured with real world Internet traffic found at the gateway.

³ Measured with real world Internet traffic and 50% HTTPS traffic.

⁴ Measured with AES-128 encryption.

Barracuda NextGen Firewall X	X50	X51	X100	X101	X200	X201	X300	X400	X600
Built-in WiFi option		●		●		●			
Wall mount bracket	●	●	●	●	●	●			
L-shape rack mount bracket (2x) for model years 2013-2015			○	○	○	○	●	●	●
L-shape rack mount bracket (2x) for model years 2016 and newer	○	○	○	○	○	○	●	●	●

○ optional ● included

Built-in Wi-Fi Option

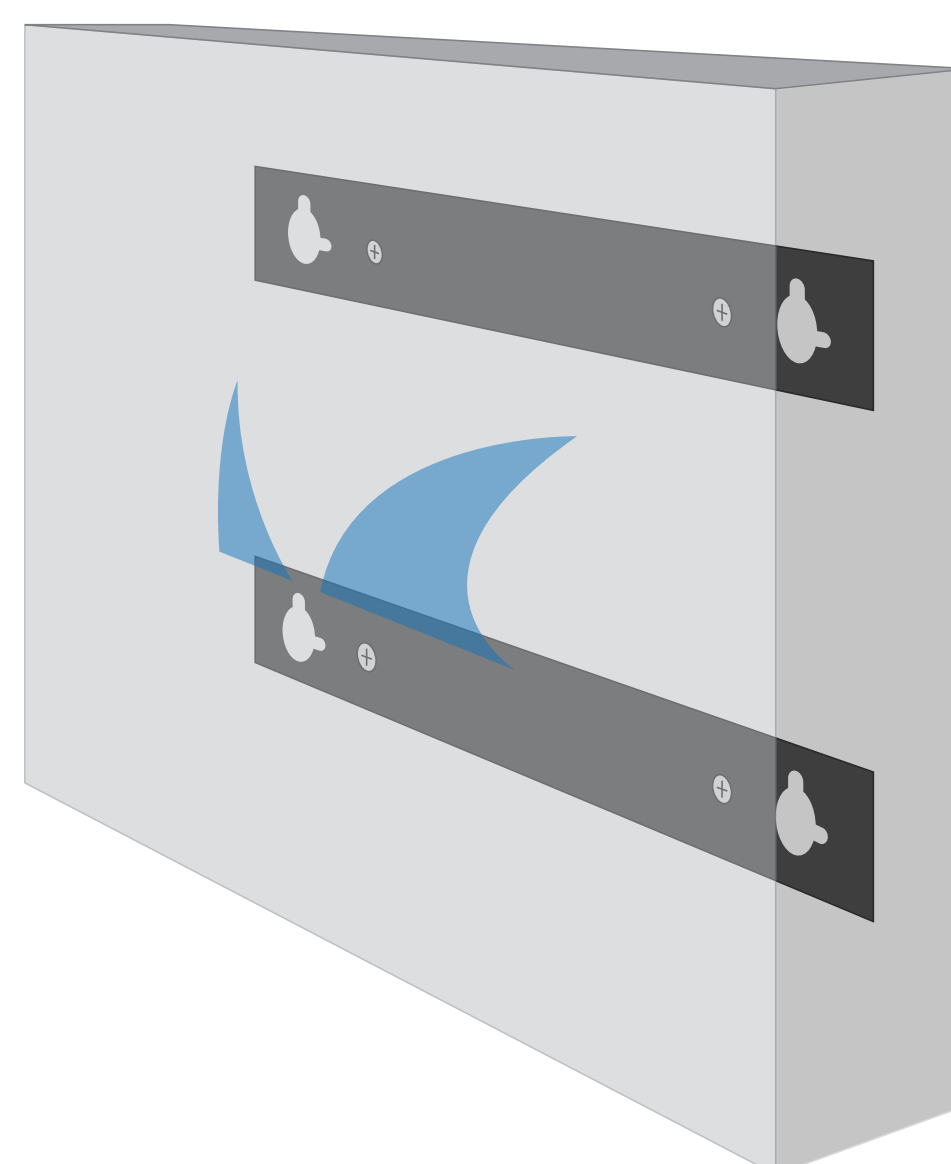
The Barracuda NextGen Firewall appliances X51, X101, and X201 offer built-in Wi-Fi.



Item	Specification
Standards	802.11b/g/n
Operating Frequency	802.11b/g/n ISM Band: 2.412 ~ 2.4835 GHz
Modulation	802.11b: DSSS (DBPSK, DQPSK, CCK)
	802.11g: OFDM (BPSK, QPSK, 16-QAM, 64-QAM)
	802.11n: OFDM (BPSK, QPSK, 16-QAM, 64-QAM)
Output Power	802.11b: 17dBm ± 2dBm
	802.11g: 16dBm ± 2dBm
	802.11gn HT20: 15dBm ± 2dBm@MCS7
	802.11gn HT40: 14dBm ± 2dBm@MCS7
Receive Sensitivity	802.11b: ≤ -85dBm@11Mbps
	802.11g: ≤ -76dBm@54Mbps
	802.11gn HT20: ≤ -75dBm@MCS7
	802.11gn HT40: ≤ -72dBm@MCS7
Wireless security	64/128-bits WEP
	WPA
	WPA2

Wall Mount Bracket

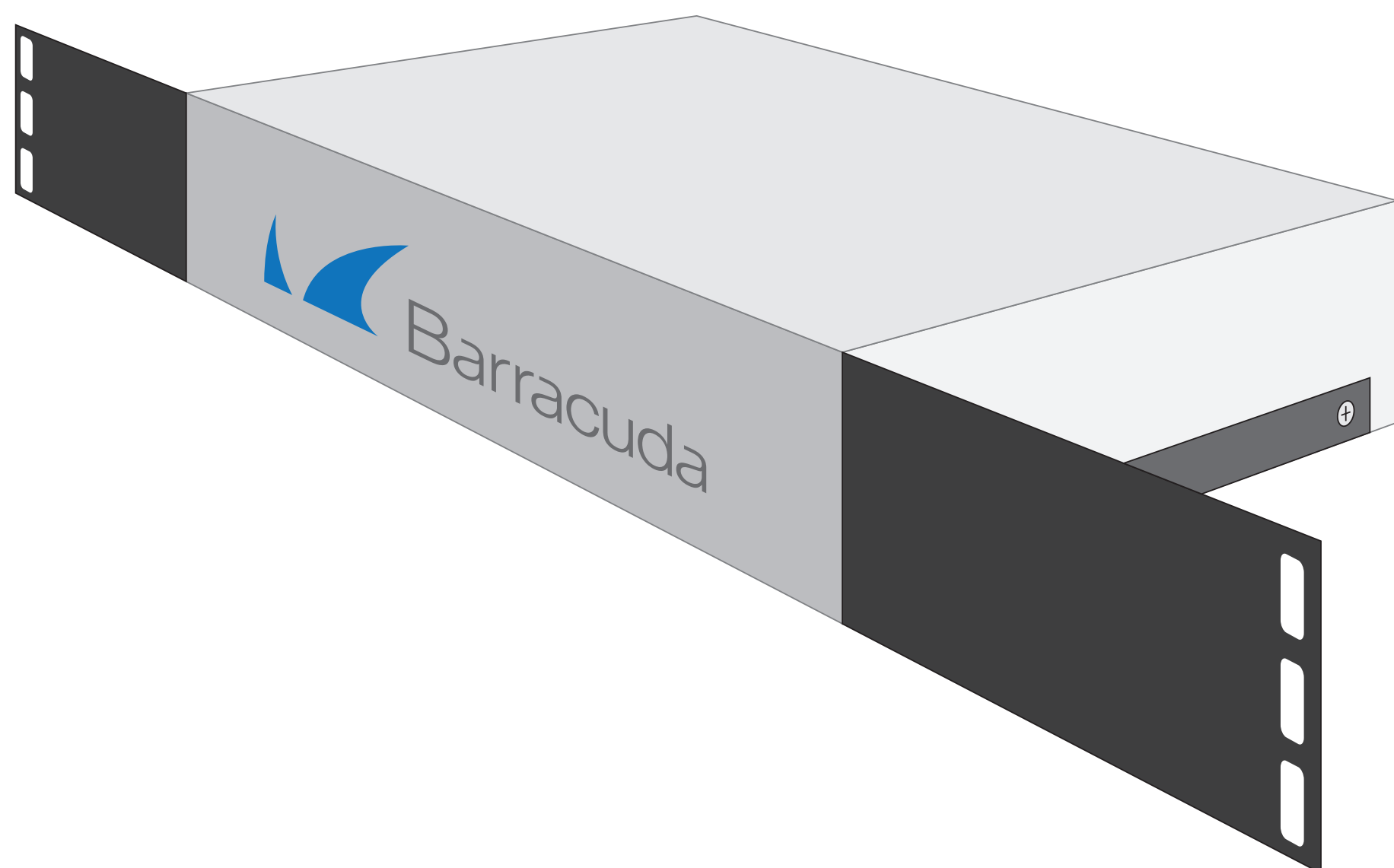
The wall mount bracket allows mounting Barracuda NextGen Firewalls X50, X51, X100, X101, X200, and X201 on a wall or similar.



Barracuda L-shape Rack Mount Bracket

Desktop models (years 2013-2015)

The rackmount kit (International order no: BPIRAC-02; North America order no: BPRAC-02) enables Barracuda NextGen Firewall units X100, X101, X200, and X201 with DC 12V power supply (shipped from 2013 to 2015) to be mounted in a 1U Standard 19" Rack slot.

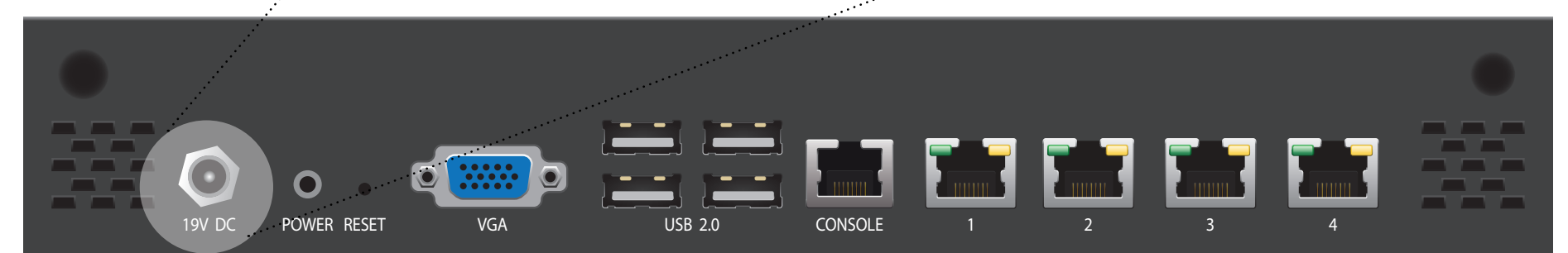
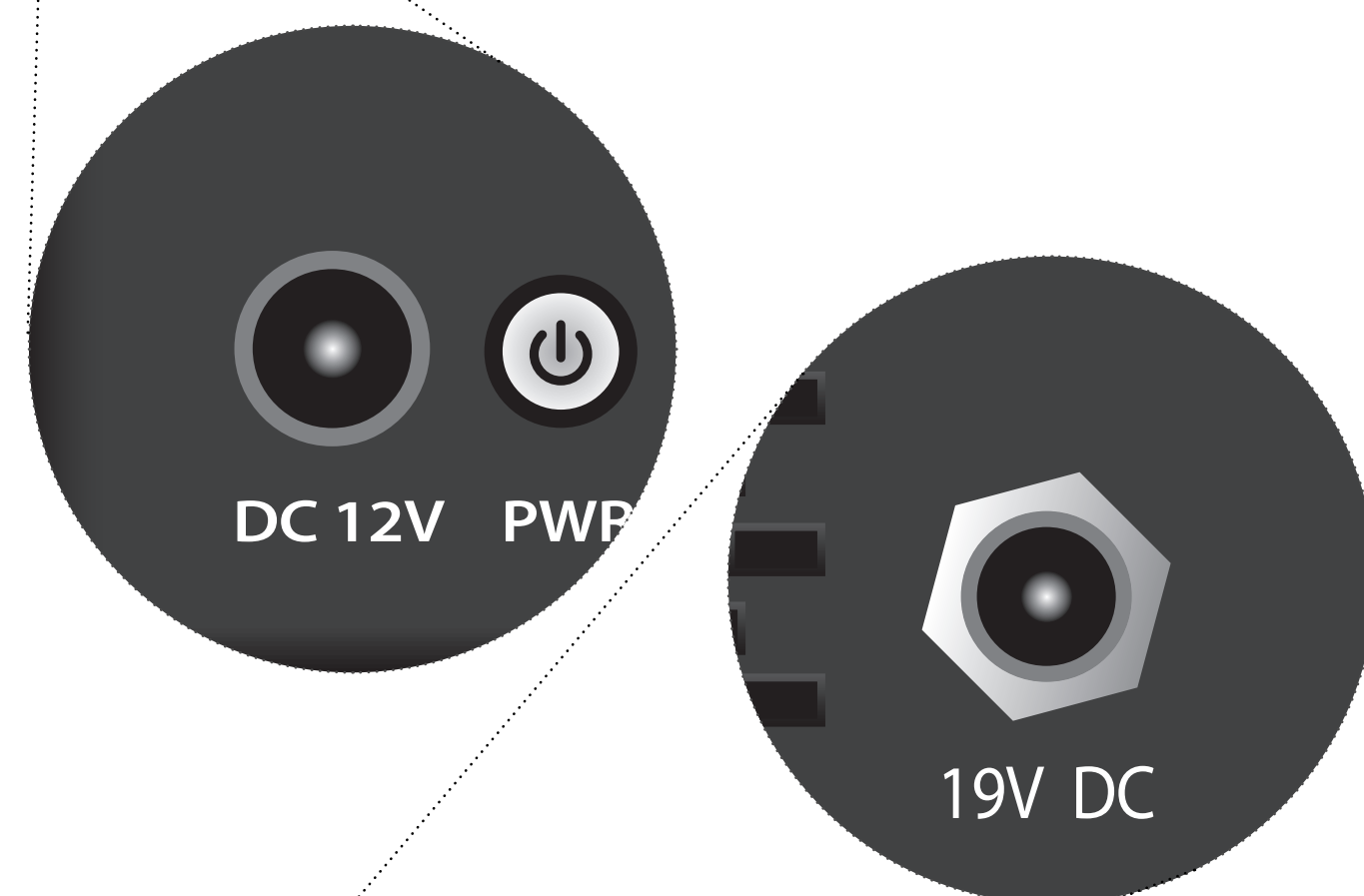
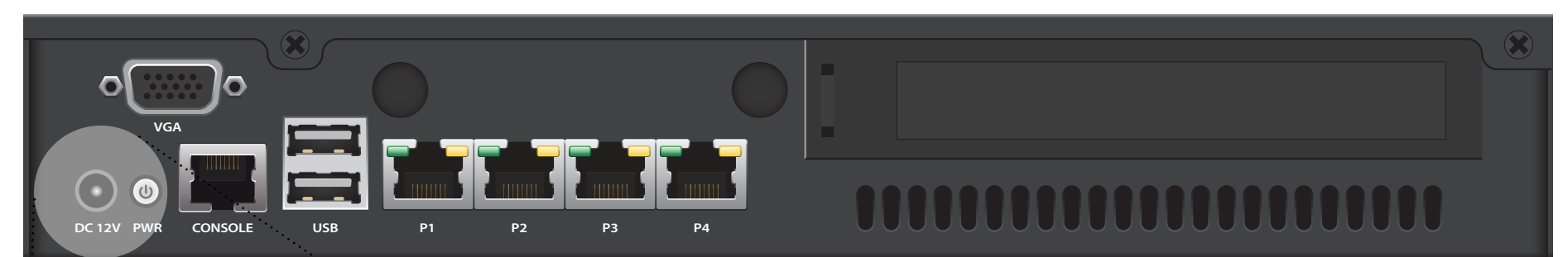


Desktop models (years 2016 and newer)

The rackmount kit (International order no: BPIRAC-04; North America order no: BPRAC-04) enables Barracuda NextGen Firewall units X50, X51, X100, X101, X200, and X201 with 19V power supply (shipped 2016 and later) to be mounted in a 1U Standard 19" Rack slot.

Barracuda Next Gen Firewall X300, X400 and X600 include rack mount equipment.

Desktop models (years 2013-2015)



Desktop models (years 2016 and newer)

Calculation of co-terminus subscriptions:

Daily rates for all subscription types are offered to allow customers to consolidate their maintenance and subscription offerings into a single end or renewal date. These daily rates should be used to extend expiring subscriptions to coincide with the dates of subscriptions expiring in the future. Barracuda Networks does credit early termination of subscriptions using these daily rates.

NextGen Firewall X50	EMEA / International	North America
Barracuda NextGen Firewall X50	BFWIX50a	BFWX50a
Energize Updates (1Y, 3Y, 5Y)	BFWIX50a-e1,3,5	BFWX50a-e1,3,5
Instant Replacement (1Y, 3Y, 5Y)	BFWIX50a-h1,3,5	BFWX50a-h1,3,5
Energize Updates & Instant Replacement (1Y, 3Y, 5Y)	BFWIX50a-eh1,3,5	BFWX50a-eh1,3,5
Web Security (1Y, 3Y, 5Y)	BFWIX50a-w1,3,5	BFWX50a-w1,3,5
Advanced Threat Protection (1Y, 3Y, 5Y)	BFWIX50a-a1,3,5	BFWX50a-a1,3,5
Premium Remote Access - CudaLaunch (1Y, 3Y, 5Y)	BFWIX50a-vp1,3,5	BFWX50a-vp1,3,5
L-shape rack mount bracket (2x) (model years 2016 and newer)	BPIRAC-04	BPRAC-04

NextGen Firewall X51 (with WiFi)	EMEA / International	North America
Barracuda NextGen Firewall X51 (with Wi-Fi)	BFWIX51a	BFWX51a
Energize Updates (1Y, 3Y, 5Y)	BFWIX51a-e1,3,5	BFWX51a-e1,3,5
Instant Replacement (1Y, 3Y, 5Y)	BFWIX51a-h1,3,5	BFWX51a-h1,3,5
Energize Updates & Instant Replacement (1Y, 3Y, 5Y)	BFWIX51a-eh1,3,5	BFWX51a-eh1,3,5
Web Security (1Y, 3Y, 5Y)	BFWIX51a-w1,3,5	BFWX51a-w1,3,5
Advanced Threat Protection (1Y, 3Y, 5Y)	BFWIX51a-a1,3,5	BFWX51a-a1,3,5
Premium Remote Access - CudaLaunch (1Y, 3Y, 5Y)	BFWIX51a-vp1,3,5	BFWX51a-vp1,3,5
L-shape rack mount bracket (2x) (model years 2016 and newer)	BPIRAC-04	BPRAC-04

NextGen Firewall X100	EMEA / International	North America
Barracuda NextGen Firewall X100	BFWIX100a	BFWX100a
Energize Updates (1Y, 3Y, 5Y)	BFWIX100a-e1,3,5	BFWX100a-e1,3,5
Instant Replacement (1Y, 3Y, 5Y)	BFWIX100a-h1,3,5	BFWX100a-h1,3,5
Energize Updates & Instant Replacement (1Y, 3Y, 5Y)	BFWIX100a-eh1,3,5	BFWX100a-eh1,3,5
Web Security Service (1Y, 3Y, 5Y)	BFWIX100a-w1,3,5	BFWX100a-w1,3,5
Advanced Threat Protection (1Y, 3Y, 5Y)	BFWIX100a-a1,3,5	BFWX100a-a1,3,5
Premium Remote Access - CudaLaunch (1Y, 3Y, 5Y)	BFWIX100a-vp1,3,5	BFWX100a-vp1,3,5
L-shape rack mount bracket (2x) (model years 2013-2015)	BPIRAC-02	BPRAC-02
L-shape rack mount bracket (2x) (model years 2016 and newer)	BPIRAC-04	BPRAC-04

NextGen Firewall X101 (with WiFi)	EMEA / International	North America
Barracuda NextGen Firewall X101 (with Wi-Fi)	BFWIX101a	BFWX101a
Energize Updates (1Y, 3Y, 5Y)	BFWIX101a-e1,3,5	BFWX101a-e1,3,5
Instant Replacement (1Y, 3Y, 5Y)	BFWIX101a-h1,3,5	BFWX101a-h1,3,5
Energize Updates & Instant Replacement (1Y, 3Y, 5Y)	BFWIX101a-eh1,3,5	BFWX101a-eh1,3,5
Web Security (1Y, 3Y, 5Y)	BFWIX101a-w1,3,5	BFWX101a-w1,3,5
Advanced Threat Protection (1Y, 3Y, 5Y)	BFWIX101a-a1,3,5	BFWX101a-a1,3,5
Premium Remote Access - CudaLaunch (1Y, 3Y, 5Y)	BFWIX101a-vp1,3,5	BFWX101a-vp1,3,5
L-shape rack mount bracket (2x) (model years 2013-2015)	BPIRAC-02	BPRAC-02
L-shape rack mount bracket (2x) (model years 2016 and newer)	BPIRAC-04	BPRAC-04

NextGen Firewall X200	EMEA / International	North America
NextGen Firewall X200	BFWIX200a	BFWX200a
Energize Updates (1Y, 3Y, 5Y)	BFWIX200a-e1,3,5	BFWX200a-e1,3,5
Instant Replacement (1Y, 3Y, 5Y)	BFWIX200a-h1,3,5	BFWX200a-h1,3,5
Energize Updates & Instant Replacement (1Y, 3Y, 5Y)	BFWIX200a-eh1,3,5	BFWX200a-eh1,3,5
Web Security Service (1Y, 3Y, 5Y)	BFWIX200a-w1,3,5	BFWX200a-w1,3,5
Advanced Threat Protection (1Y, 3Y, 5Y)	BFWIX200a-a1,3,5	BFWX200a-a1,3,5
Premium Remote Access - CudaLaunch (1Y, 3Y, 5Y)	BFWIX200a-vp1,3,5	BFWX200a-vp1,3,5
L-shape rack mount bracket (2x) (model years 2013-2015)	BPIRAC-02	BPRAC-02
L-shape rack mount bracket (2x) (model years 2016 and newer)	BPIRAC-04	BPRAC-04

NextGen Firewall X201 (with WiFi)	EMEA / International	North America
NextGen Firewall X201 (with Wi-Fi)	BFWIX201a	BFWX201a
Energize Updates (1Y, 3Y, 5Y)	BFWIX201a-e1,3,5	BFWX201a-e1,3,5
Instant Replacement (1Y, 3Y, 5Y)	BFWIX201a-h1,3,5	BFWX201a-h1,3,5
Energize Updates & Instant Replacement (1Y, 3Y, 5Y)	BFWIX201a-eh1,3,5	BFWX201a-eh1,3,5
Web Security (1Y, 3Y, 5Y)	BFWIX201a-w1,3,5	BFWX201a-w1,3,5
Advanced Threat Protection (1Y, 3Y, 5Y)	BFWIX201a-a1,3,5	BFWX201a-a1,3,5
Premium Remote Access - CudaLaunch (1Y, 3Y, 5Y)	BFWIX201a-vp1,3,5	BFWX201a-vp1,3,5
L-shape rack mount bracket (2x) (model years 2013-2015)	BPIRAC-02	BPRAC-02
L-shape rack mount bracket (2x) (model years 2016 and newer)	BPIRAC-04	BPRAC-04

NextGen Firewall X300	EMEA / International	North America
NextGen Firewall X300	BFWIX300a	BFWX300a
Energize Updates (1Y, 3Y, 5Y)	BFWIX300a-e1,3,5	BFWX300a-e1,3,5
Instant Replacement (1Y, 3Y, 5Y)	BFWIX300a-h1,3,5	BFWX300a-h1,3,5
Energize Updates & Instant Replacement (1Y, 3Y, 5Y)	BFWIX300a-eh1,3,5	BFWX300a-eh1,3,5
Web Security Service (1Y, 3Y, 5Y)	BFWIX300a-w1,3,5	BFWX300a-w1,3,5
Advanced Threat Protection (1Y, 3Y, 5Y)	BFWIX300a-a1,3,5	BFWX300a-a1,3,5
Premium Remote Access - CudaLaunch (1Y, 3Y, 5Y)	BFWIX300a-vp1,3,5	BFWX300a-vp1,3,5

NextGen Firewall X400	EMEA / International	North America
NextGen Firewall X400	BFWIX400a	BFWX400a
Energize Updates (1Y, 3Y, 5Y)	BFWIX400a-e1,3,5	BFWX400a-e1,3,5
Instant Replacement (1Y, 3Y, 5Y)	BFWIX400a-h1,3,5	BFWX400a-h1,3,5
Energize Updates & Instant Replacement (1Y, 3Y, 5Y)	BFWIX400a-eh1,3,5	BFWX400a-eh1,3,5
Web Security Service (1Y, 3Y, 5Y)	BFWIX400a-w1,3,5	BFWX400a-w1,3,5
Advanced Threat Protection (1Y, 3Y, 5Y)	BFWIX400a-a1,3,5	BFWX400a-a1,3,5
Premium Remote Access - CudaLaunch (1Y, 3Y, 5Y)	BFWIX400a-vp1,3,5	BFWX400a-vp1,3,5

NextGen Firewall X600	EMEA / International	North America
NextGen Firewall X600	BFWIX600a	BFWX600a
Energize Updates (1Y, 3Y, 5Y)	BFWIX600a-e1,3,5	BFWX600a-e1,3,5
Instant Replacement (1Y, 3Y, 5Y)	BFWIX600a-h1,3,5	BFWX600a-h1,3,5
Energize Updates & Instant Replacement (1Y, 3Y, 5Y)	BFWIX600a-eh1,3,5	BFWX600a-eh1,3,5
Premium Support (1Y, 3Y, 5Y)	BFWIX600a-p1,3,5	BFWX600a-p1,3,5
Premium Support Bundle (1Y, 3Y, 5Y) ¹	BFWIX600a-ehp1,3,5	BFWX600a-ehp1,3,5
Web Security Service (1Y, 3Y, 5Y)	BFWIX600a-w1,3,5	BFWX600a-w1,3,5
Advanced Threat Protection (1Y, 3Y, 5Y)	BFWIX600a-a1,3,5	BFWX600a-a1,3,5
Premium Remote Access - CudaLaunch (1Y, 3Y, 5Y)	BFWIX600a-vp1,3,5	BFWX600a-vp1,3,5

¹ Premium Support Bundle consists of Energize Updates, Instant Replacement, and Premium Support



Version 3.4

Applies for firmware version 7.1.x

Barracuda Networks, Inc.

barracuda.com