



# SCHMIDT® THOMPSON VALVE® II ABRASIVE METERING VALVES



**PART NUMBERS AND SCHEMATICS GUIDE**

## Company Profile

Allredi was formed in the early 2020, when two of the largest distributors in the blasting, coating, safety, and environmental industry, APE Companies and Marco Group International, joined forces. While the qualities both companies are known for have not changed, a lot about our business is new. New abilities. New agilities. New ways to help you win. This calls for a new name, Allredi.

This name exemplifies what we have become. It is completely oriented to the needs of our customers. To your needs. It says that when you call us for anything – products, service, expert advice, anything – you can consider it done. Or even better, Allredi done.

We are your right-now supplier. From skills to SKUs, we deliver the goods fast. So you can be more agile every minute, every day. This is who we are. This is what our new name means. Go ahead and expect excellence, because we're bringing it.

## Our Mission and Vision

To be the industry's preferred partner in surface preparation solutions through unrivaled technical expertise, customer experience, product availability, and tailored service offerings.

## The Allredi Difference

- **Industry Experience** – With Allredi on your team, you have access to expertise which can only come from decades of industry leadership. We have organized our engineering department, production specialists, customer operations, and safety support into a "Center of Competence." As an Allredi customer, you have access to hundreds of years of cumulative experience related to your operations.
- **Manufacturing Excellence** – Allredi is a U.S. based manufacturer of equipment for the Surface Preparation and Protective Coatings industries. Allredi's engineers benchmark the industry to ensure that we design and manufacture superior products that set the "Gold Standard" for performance, safety, and quality.
- **Legendary Customer Service** – Allredi's legendary customer service team is staffed by friendly, highly-trained individuals who are focused on providing the highest level of product support, order accuracy, and customer satisfaction.
- **Product Availability** – We stock over 10,000 SKU's and have over 45 shipping locations to serve North American and International markets for all major brands of blasting, coating, environmental, and safety equipment. Allredi is your right-now supplier, so you can keep your projects moving. From our foundation of strong relationships, we have built a nationwide network that puts vast inventory and ready service close to our customers. We provide advanced expertise, and we deliver the goods fast – so you can easily access the products and services you need to me more agile every minute, every day.
- **Technology Leadership** – Our website provides: Operator's Manuals, Part Numbers and Schematics Guides, SDS information, and key product features and specifications, providing access to information 24/7.

# TABLE OF CONTENTS

<b>Company Profile</b> .....	<b>2</b>
<b>Table of Contents</b> .....	<b>3</b>
<b>Schmidt® Thompson Valve® II Abrasive Metering Valve</b> .....	<b>4-7</b>
Part Numbers .....	4-5
Part Numbers & Schematics .....	6-7

## PART NUMBERS & SCHEMATICS GUIDE

<b>Part Numbers</b>	<b>SCHMIDT® THOMPSON VALVE® II ABRASIVE METERING VALVES</b>		
	<b>Base Size</b>	<b>Sleeve Style</b>	<b>Sleeve Material</b>
10S2152006	1"	Standard	Tungsten Carbide
10S2152106	1"	Standard	Urethane
10S2152007	1-1/4"	Standard	Tungsten Carbide
10S2152107	1-1/4"	Standard	Urethane
10S2152217	1-1/4"	Slotted	Tungsten Carbide
10S2152307	1-1/4"	Direct Down	Tungsten Carbide
10S2152407	1-1/4"	Multiport	Stainless Steel
10S2152437	1-1/4"	Multiport Range III	Stainless Steel
10S2152008	1-1/2"	Standard	Tungsten Carbide
10S2152108	1-1/2"	Standard	Urethane
10S2152218	1-1/2"	Slotted	Tungsten Carbide
10S2152408	1-1/2"	Multiport	Stainless Steel
10S2152438	1-1/2"	Multiport Range III	Stainless Steel

# PART NUMBERS & SCHEMATICS GUIDE



## PART NUMBERS & SCHEMATICS GUIDE

### Schmidt® Thompson Valve® II Abrasive Metering Valve

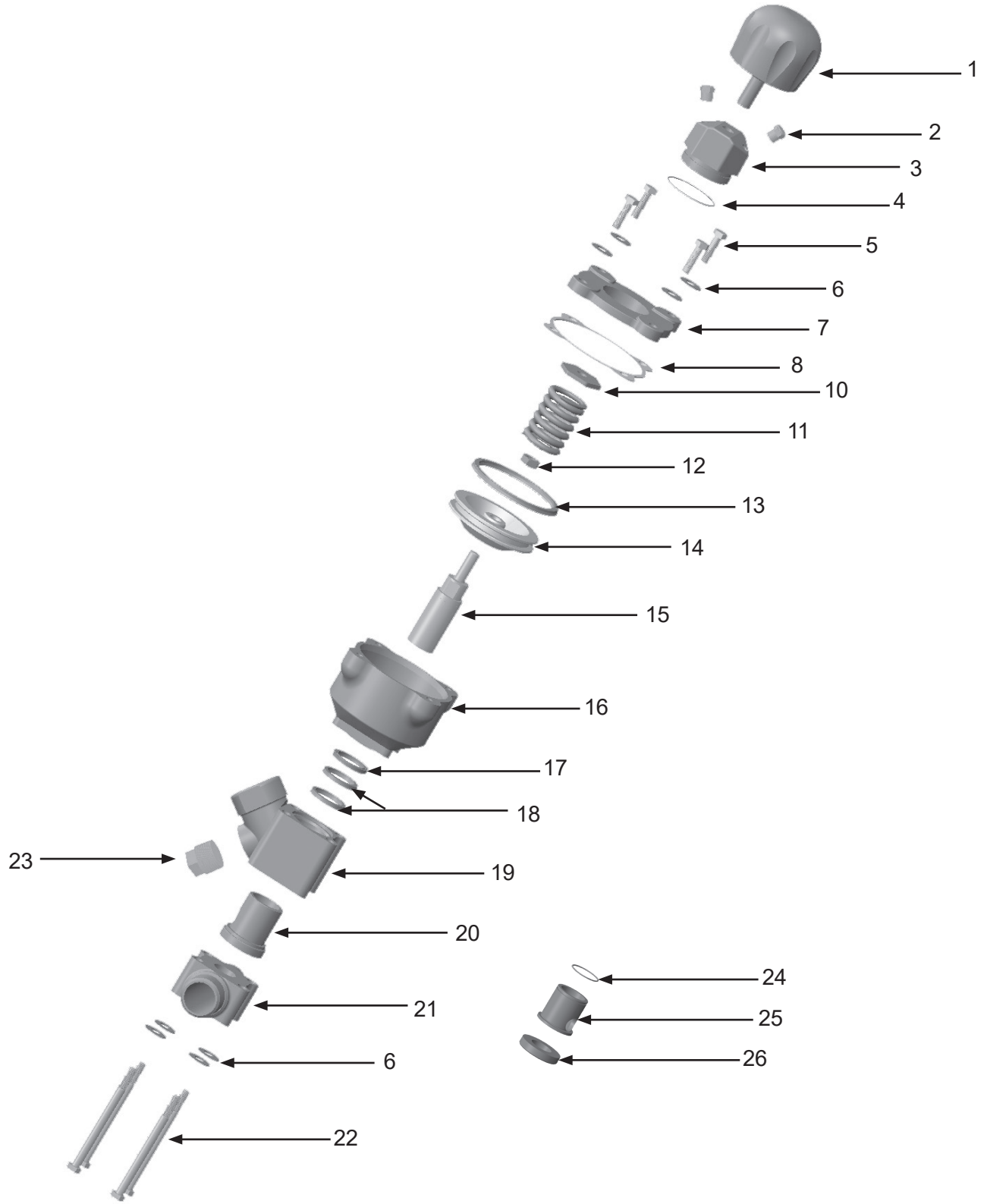
#### Item # Part #

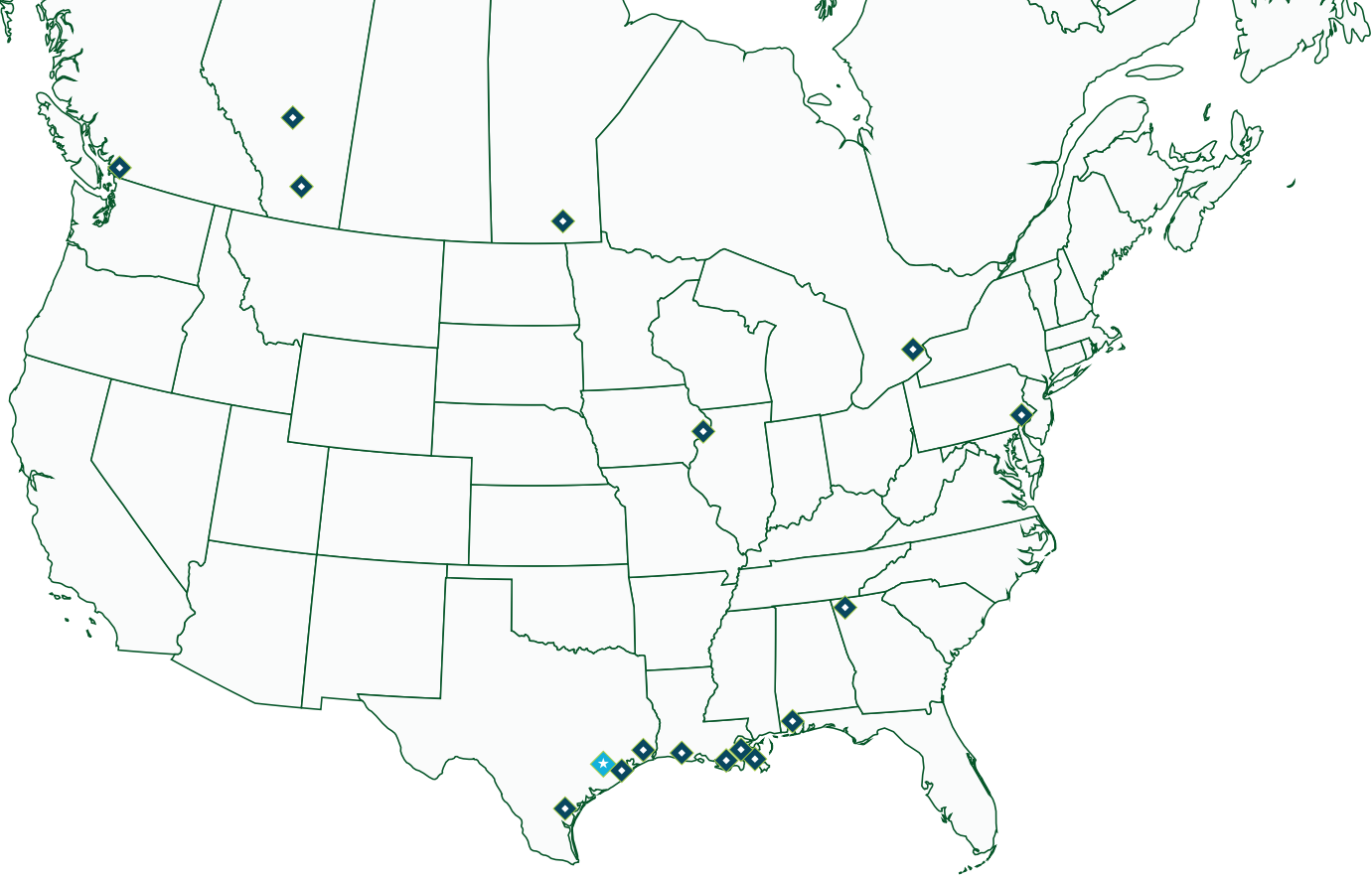
#### Fig. 1

1	10S215200001	Knob
2	10S215200017	Breather Vent ( <i>Two Required</i> )
3	10S215200012	Spring Retainer
4	10S215200018	O-ring
5	10101059	3/8" UNC x 1-1/4" Hex Bolt
6	1014241	3/8" Washer
7	10S215200002	Cap Plate
8	10S215200016	Cap Gasket
10	10S215200025	Vibration Disc
11	10S215200003	Spring
12	1014022	1/2-13 Nut
13	1014215	Piston Seal
14	10S215200005	Piston
15	10S215200007	Tungsten Carbide Plunger
16	10S215200009	Cylinder
17	10S215200006	Plunger Seal ( <i>purple urethane</i> )
18	10S215200006	Plunger Seal ( <i>purple urethane; Two Required</i> )
19	10S215200014	Body
20	10S215210013	Sleeve (standard), Urethane
21	10S215200019	Base 1" NPT (F) x 1-1/2" NPT
—	10S215200011	Base 1-1/2"
22	10S701050795	3/8" UNC x 4-3/4" Hex Bolt
23	10S3014806	1" Plug
24	10S215200021	O-Ring
25	10S215200013	Sleeve (standard), Tungsten Carbide
26	10S215200010	Urethane Seat
—	10S215200099	Replacement Parts Kit - Tungsten Carbide <i>Includes Item #'s: 4, 8, 13, 15, 17, 18, 24, 25 and 26</i>
—	10S215210099	Replacement Parts Kit - Urethane <i>Includes Item #'s: 4, 8, 13, 15, 17, 18, and 20</i>
—	10S215200098	Replacement Seals Kit - Tungsten Carbide <i>Includes Item #'s: 4, 8, 13, 17, 18, 24, 26</i>
—	10S215210098	Replacement Seals Kit - Urethane <i>Includes Item #'s: 4, 8, 13, 17, 18, 20</i>
—	10S215220013	Sleeve, Tungsten Carbide, 2-Stage Slotted
—	10S215232020	Sleeve, Stainless, Multiport
—	10S215232022	Sleeve, Stainless, Multiport, Range III
—	10S215232022XL	Sleeve, Tungsten Carbide, Multiport, Range III
—	106M527	Part Numbers and Schematics Guide – Schmidt® Thompson Valve® II Abrasive Metering Valve
—	109V527	Operator's Manual – Schmidt® Thompson Valve® II Abrasive Metering Valve

# PART NUMBERS & SCHEMATICS GUIDE

Figure 1: Schmidt® Thompson Valve® II Abrasive Metering Valve





## ALLREDI THERE

Serving these industries: Bridge, Pipeline, Tank & Tower, Concrete Services, Rail, Shipyard & Marine, Pools & Fountains and Foundry

### UNITED STATES

**Pasadena, TX** *(Headquarters)*

844.361.7038

**Beaumont, TX**

409.722.1284

**Bristol, PA**

215.826.8080

**Corpus Christi, TX**

361.887.2038

**Davenport, IA**

563.324.2519

**Deer Park, TX**

*(Service & Rental Location)*

281.930.0905

**Duluth, GA**

800.535.4564

**Gonzales, LA**

*(Service & Rental Location)*

225.647.7575

**Harvey, LA**

504.367.8090

**Houma, LA**

985.580.4273

**Jacksonville, FL**

800.535.4564

**Lafayette, LA**

337.267.1440

**Theodore, AL**

251.338.7525

**Youngstown, OH**

330.448.6267

### CANADA

**Calgary, Alberta**

403.279.1924

**Coquitlam, BC**

604.464.6979

**Edmonton, Alberta**

780.468.2588 (Manus)

780.425.5510 (Mod-U-Blast)

**Hamilton, Ontario**

905.527.6000 / 888.794.5665

**Mississauga, Ontario**

905.890.5837

**Winnipeg, Manitoba**

204.256.3324

**800.BLAST.IT / WWW.ALLREDI-US.COM**

Allredi® is a registered trademark of Allredi, LLC. All other brand names or marks are used for identification purposes and are trademarks of their respective owners.

**ALLREDI**™

Literature #106M527\_12/14/2020