



LITE DATA ACQUISITION SYSTEM

WDAS-L1

FEATURES

- ANSI C12.20 revenue-grade energy metering
- Universal compatibility with Modbus/RTU and Modbus/TCP devices
- Second-by-second monitoring and control for distributed generation assets
- Intuitive installation and configuration

SPECIFICATIONS

GENERAL	
Dimensions	11.82 x 15.75 x 7.37 in (300 x 400 x 187 mm)
Weight	12 lb (5.4 kg)
Ratings	UL 508A
Mounting	Non-penetrating surface-mount installation with included flange kit
Warranty	3 years against defects in materials and workmanship
ENVIRONMENTAL	
Operating Temperature	-20 to 70°C, 20-90% relative humidity non-condensing
Protection Ratings	NEMA 4X / IP67, outdoor-rated
POWER SUPPLY	
Input Voltage ¹	180-500Vrms L-L
Input Protection ²	2A Class CC fuses on L1, L2, and L3 inputs
Power Consumption ³	Average: 9W Peak: 43W
External	Up to 1A at 24V DC available for external devices and sensors Switched via UL 1077 supplementary protector

DATA ACQUISITION	
Resolution	10 second nominal Configurable down to 1 second
Device Limit	250 devices over ethernet 32 devices over RS-485 <i>Contact sales@wattch.io for options to increase device count</i>
Compatibility	Modbus/RTU or Modbus/TCP devices <i>Contact sales@wattch.io for an up-to-date hardware compatibility list</i>
Interfaces ⁴	(1) RS-485
Storage Capacity ⁵	Up to 3 months of offline data storage capacity
Connectivity	LTE Cat 4 Modem with multi-carrier compatibility (requires Wattch data plan)
METERING	
CT Inputs	(3) 300A CTs included Compatible with any 333 mV CT

¹ A neutral connection is required to power the meter

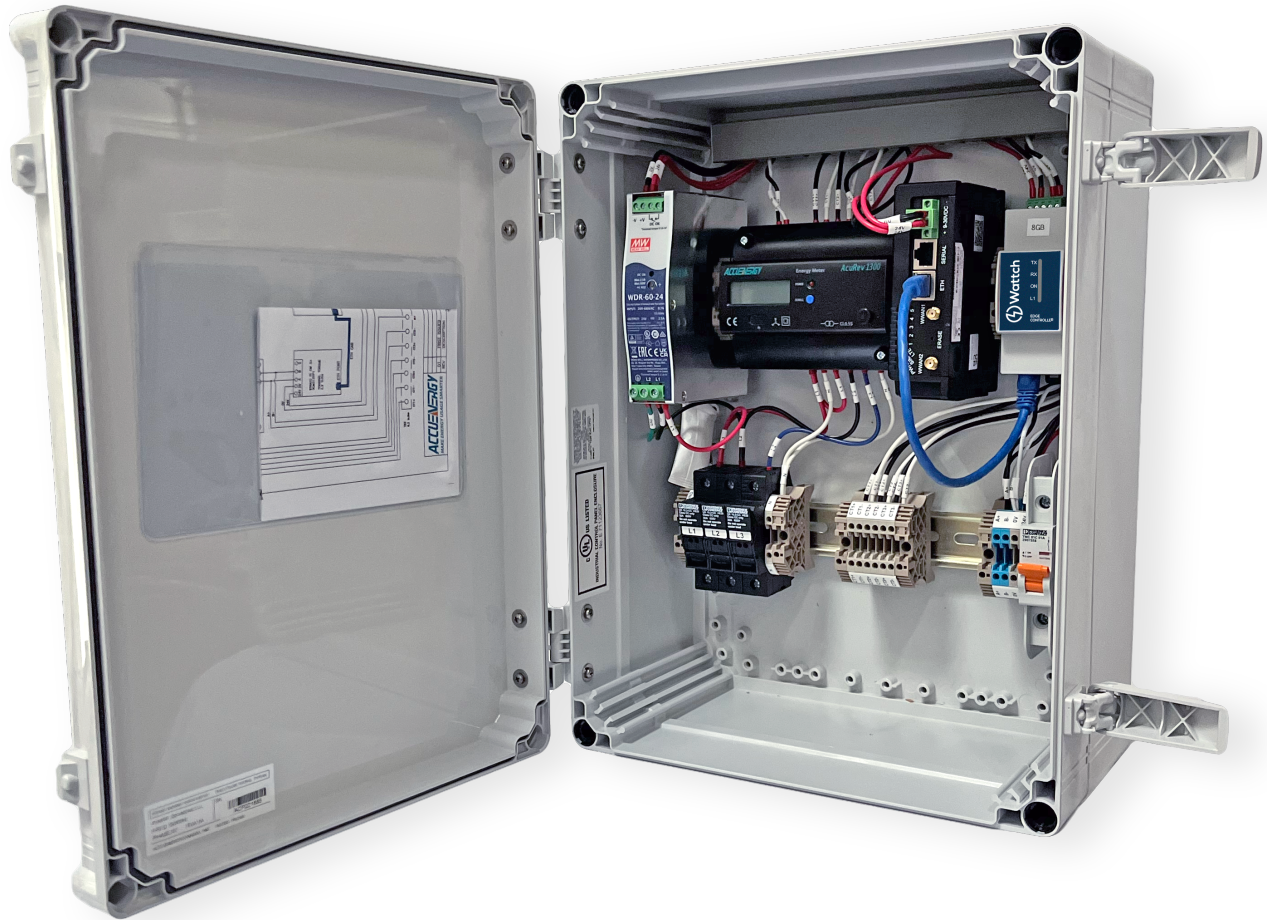
² An upstream means of disconnect must be provided in order to de-energize the DAS

³ Sum of all three phases (if connected), highest draw on L1 to power the 24V rail

⁴ If ethernet communication is desired, an ethernet switch needs to be used, please contact Wattch about our recommended solution

⁵ Exact value varies with the number of configured devices

⁶ Applies from 1% to 120% of rated CT current, NIST traceable calibration certificate available upon request for an additional fee



BILL OF MATERIALS

GENERAL

Enclosure	Ensto WPCP304018G
-----------	-------------------

POWER SUPPLY

Power Supply	Mean Well WDR-60-24
--------------	---------------------

Fuses	Edison HCLR1
-------	--------------

Fuse Holder	Edison EHCC3DU
-------------	----------------

RS-485 Supplementary Protector	Eaton FAZ-1-SP
--------------------------------	----------------

DATA ACQUISITION

Production Meter	AccuEnergy AcuRev 1313 Includes (3) AcuCT-125-300:333mV current transformers
------------------	---

Data Logger/Controller	Wattch Edge Controller
------------------------	------------------------

COMMUNICATIONS

LTE Modem	Digi International IX10-00G4
-----------	------------------------------