

## Features

- Suitable for: Indoor/outdoor FTTH Applications, fix and swing-frames and 19" and ETSI frames
- Panel swings to left or right (field-configurable) providing access to incoming cables from the front
- Holds 3.5 and 5 mm tubes and patch cord cables up to 3 mm cable diameter
- Fibre and cable guides and radius control
- Sturdy design
- Available as empty or pre-equipped units with FRM splice trays and/or optical components such as splitters and filters
- Cables and tubes can be strain relieved on the side bracket

## Standards

RoHS

Free of hazardous substances according to RoHS 2002/95/EG

The UNISUB family of optical interconnect hardware is designed for applications in small- and mid-size central offices, roadside cabinets and wall-mount boxes. Its size makes it particularly suitable for low-depth frames. The pivoting feature allows superior front access to patch and cable entry.

UNISUB lends itself to fusion splicing of field cables to pre-installed pigtails or the installation of pre-terminated cables. It can also be configured to hold various combinations of optical splitters or WDM filters to suit different network needs and transmission technologies.

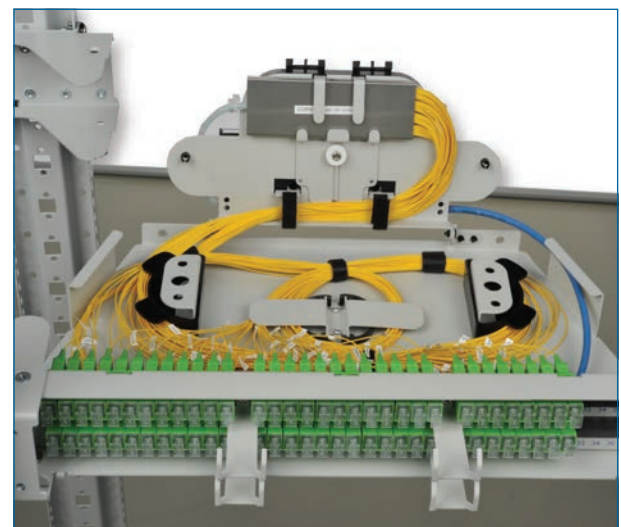
UNISUB family is designed to be installed at a 19" frame. Brackets are available for ETSI or 23" frames. The sub-rack can pivot to the left or the right, respectively.

UNISUB is available in three heights. Splicing is done in FRM splice trays in the back of the subrack, each of which holds 12 splices.

Patch cords are guided to the left or the right hand side through integrated patch cord holders.



**UNISUB 3U**  
| Photo CRR1486



**UNISUB 1.5U**  
| Photo CRR1479

## Ordering Information

Part Number	Height Unit	Fibre Count	Dimensions (HxWxD)	Packaging Dimensions (W x D x H)	Packing Weight
UP3E46C44JS9LT	3U	144	133 mm x 482 mm x 255 mm	500 mm x 300 mm x 350 mm	7,400 kg
US3C86C2164S442L	3U	128	133 mm x 482 mm x 255 mm	550 mm x 350 mm x 300 mm	4,800 kg
UPS726C44JS9LT	1.5U	72	66 mm x 482 mm x 285 mm	380 mm x 280 mm x 180 mm	2,100 kg
USS646C1164S442L	1.5U	64	66 mm x 482 mm x 285 mm	600 mm x 400 mm x 300 mm	5,700 kg
UP1366C44JS9LT	1U	36	66 mm x 482 mm x 283 mm	380 mm x 250 mm x 180 mm	2,100 kg
US1326C1132S442L	1U	36	66 mm x 482 mm x 283 mm	600 mm x 400 mm x 180 mm	4,800 kg

## Shipping Information

Part Number	Units Per Delivery	Packing contents
UP3E46C44JS9LT	1/1	PCE



Ordering Information



**1** Select height.  
 1 = 1 U  
 S = 1,5 U  
 3 = 3 U

**2** Select fibre count.\*  
 12 = 12 fibre  
 24 = 24 fibre  
 \*For fibre counts >99 See Table X

**3** Select adapter code.  
 00 = No adapters (pure splice)  
 6C = SC APC simplex  
 5C = SC UPC simplex  
 6S = SC APC shuttered  
 22 = LC APC duplex  
 02 = LC UPC duplex

**4** Select pigtail type.  
 00 = No pigtails  
 44 = SC APC pigtail  
 58 = SC UPC pigtail  
 22 = LC APC simplex pigtail  
 02 = LC UPC simplex pigtail

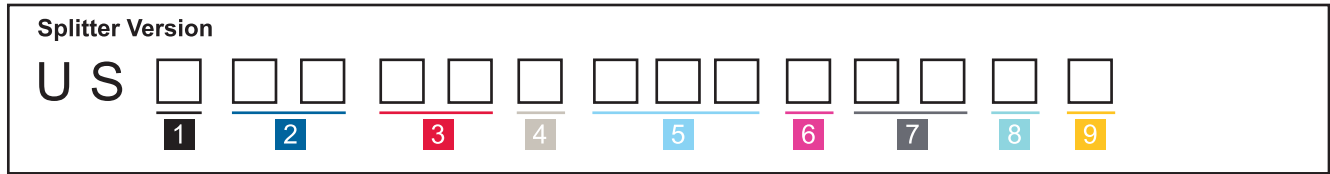
**5** Select pivoting option.  
 L = Left  
 R = Right

**Table X:  
 Fibre Counts > 99**

A	=	10_
B	=	11_
C	=	12_
D	=	13_
E	=	14_

**Examples:**  
 C8 = 128  
 E4 = 144

Ordering Information



**1** Select height.  
 1 = 1U  
 S = 1,5 U  
 3 = 3U

**2** Select fibre count.\*  
 12 = 12 fibres  
 24 = 24 fibres  
 32 = 32 fibres  
 48 = 48 fibres  
 64 = 64 fibres  
 72 = 72 fibres  
 96 = 96 fibres  
*\*For fibre counts >99 See Table X*

**3** Select adapter code.  
 00 = No adapters  
 6C = SC APC simplex  
 5C = SC UPC simplex  
 6S = SC APC shuttered  
 04 = LC UPC duplex  
 83 = LC APC duplex

**4** Select number of splitters.\*\*  
 1 = 1 splitter      B = 11 splitters  
 2 = 2 splitters    C = 12 splitters  
 3 = 3 splitters    D = 13 splitters  
 4 = 4 splitters    E = 14 splitters  
 5 = 5 splitters    F = 15 splitters  
 6 = 6 splitters    G = 16 splitters  
 7 = 7 splitters    H = 17 splitters  
 8 = 8 splitters    I = 18 splitters  
 9 = 9 splitters    J = 19 splitters  
 A = 10 splitters   K = 20 splitters  
*\*\*For maximum number of splitters, please check Table A.*

**5** Select splitter type.  
 000 = No splitter      202 = 2x2 splitter  
 102 = 1x2 splitter      204 = 2x4 splitter  
 104 = 1x4 splitter      208 = 2x8 splitter  
 108 = 1x8 splitter      216 = 2x16 splitter  
 116 = 1x16 splitter     232 = 2x32 splitter  
 132 = 1x32 splitter     264 = 2x64 splitter  
 164 = 1x64 splitter

**6** Select splitter input.  
 S = Spliced  
 C = Connectorized

**7** Select connectorized splitter input/output connector type.  
 44 = SC APC connector  
 58 = SC UPC connector  
 22 = LC APC connector  
 02 = LC UPC connector

**8** Select splice option (splitter input).  
 0 = No splice  
 1 = Heat shrink without protectors  
 2 = Heat shrink with protectors  
 3 = Crimp without protectors  
 4 = Crimp with protectors

**9** Select pivoting option.  
 L = Left  
 R = Right

**Table X: Fibre Counts > 99**

A = 10_
B = 11_
C = 12_
D = 13_
E = 14_

**Examples:**  
 C8 = 128  
 E4 = 144

**Table A: Maximum Number of Splitters**

		1x2/1x4	1x8	1x16	1x32	1x64
UNISUB	1U	8	4	2	1	0
	1,5U	11	8	4	2	1
	3U	20	18	8	4	2



Pigtail Colour Code Chart					
VDE DIN		Telcordia		France Telecom / Orange	
Faser Nr Fibre Number	Farbkennzeichnung Colour Code	Faser Nr Fibre Number	Farbkennzeichnung Colour Code	N° Fibre Fiber Number	Code de couleur Colour Code
1	Rot/Red	1	Blau/Blue	1	Rouge/Red
2	Grün/Green	2	Orange/Orange	2	Bleu/Blue
3	Blau/Blue	3	Grün/Green	3	Vert/Green
4	Gelb/Yellow	4	Braun/Brown	4	Jaune/Yellow
5	Weiß/White	5	Grau/Grey	5	Violet/Purple
6	Grau/Grey	6	Weiß/White	6	Blanc/White
7	Braun/Brown	7	Rot/Red	7	Orange/Orange
8	Violett/Violet	8	Schwarz/Black	8	Gris/Grey
9	Türkis/Turquoise	9	Gelb/Yellow	9	Marron/Brown
10	Schwarz/Black	10	Violett/Violet	10	Noir/Black
11	Orange/Orange	11	Rosa/Rose	11	Turquoise/Turquoise
12	Rosa/Pink	12	Türkis/Aqua	12	Rose/Pink
13 - 24* * Farbe 1 bis 12 wiederholen sich mit schwarzer Kennzeichnung/colours 1 through 12 repeated with black tracer					



Corning Optical Communications GmbH & Co. KG · Leipziger Strasse 121 · 10117 Berlin, GERMANY

00 800 2676 4641 · FAX: +49 30 5303 2335 · [www.corning.com/opcomm/emea](http://www.corning.com/opcomm/emea)

A complete listing of the trademarks of Corning Optical Communications is available at [www.corning.com/opcomm/emea/](http://www.corning.com/opcomm/emea/) trademarks. Corning Optical Communications is ISO 9001 and ISO 14001 certified. © 2016, 2020 Corning Optical Communications. All rights reserved. CRR-1481-BEN / September 2020.