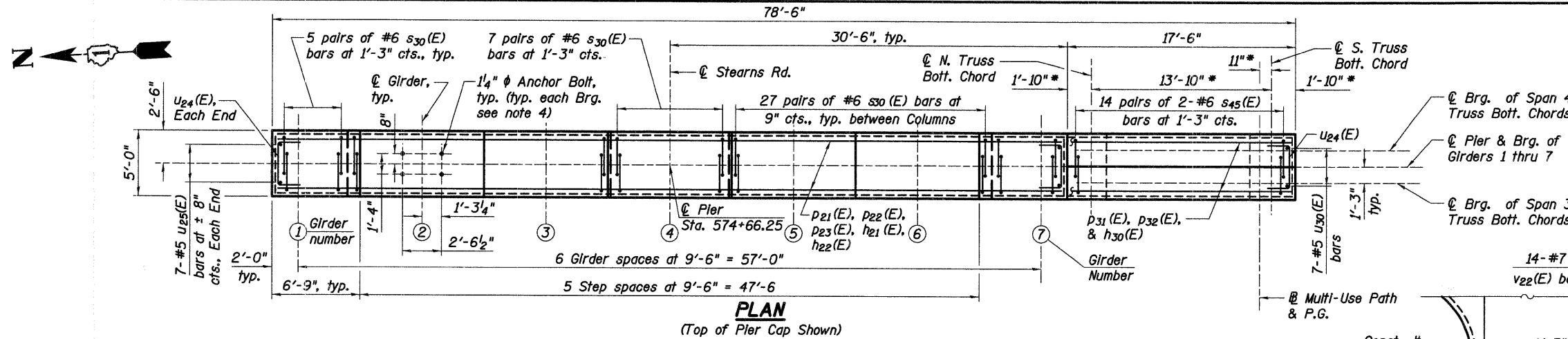
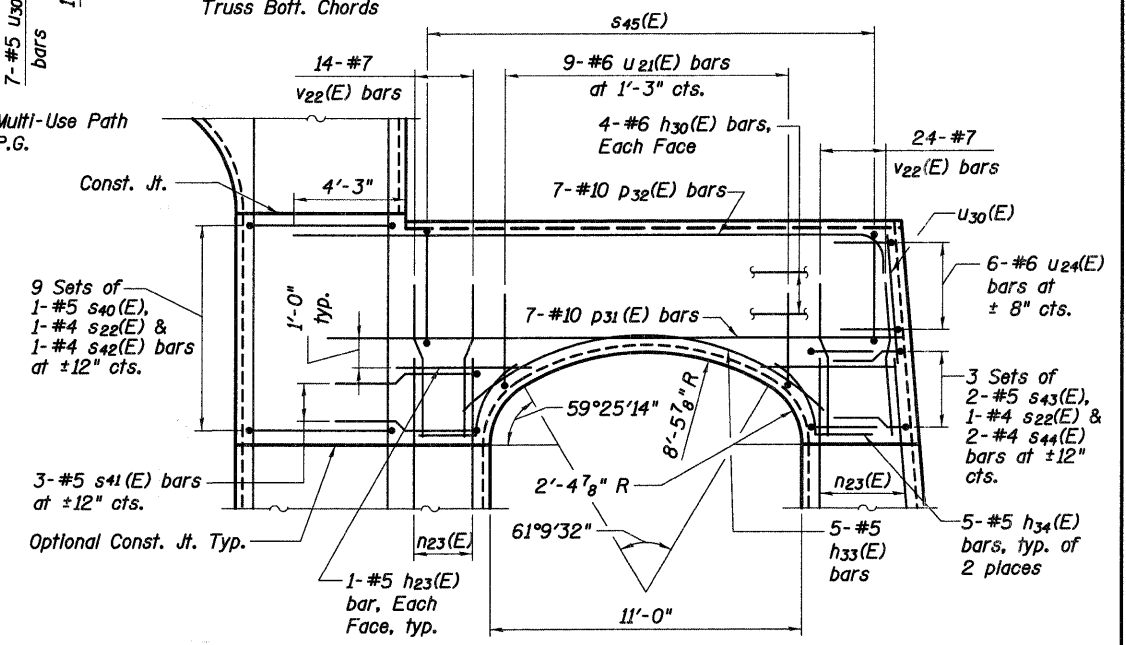


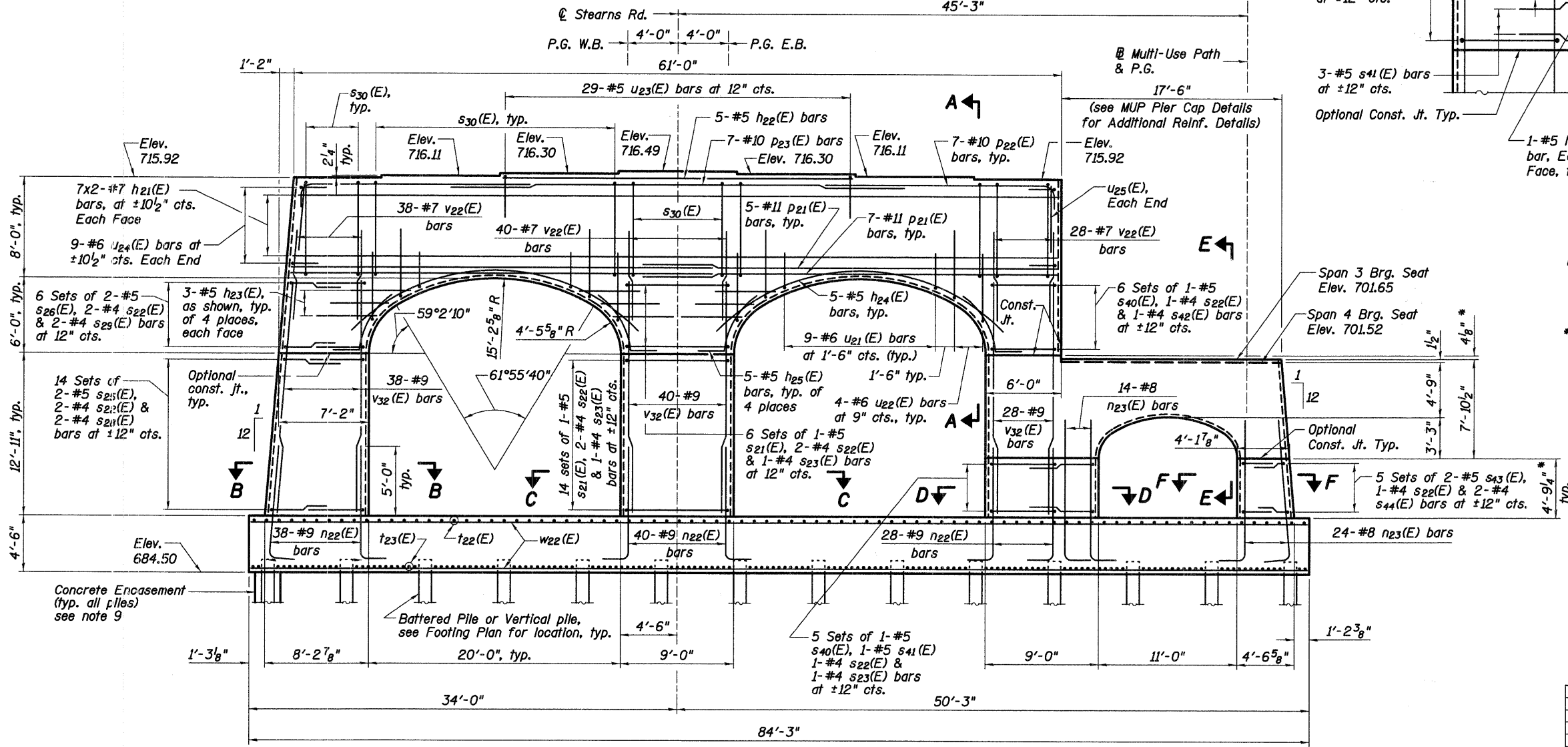
F.A.P. RTE.	SECTION	COUNTY	TOTAL SHEETS	SHEET NO.
361	06-00214-20-BR	KANE	320	153
STA. 511+80.00		TO STA. 609+14.92		
FED. ROAD DIST. NO. 7		ILLINOIS FED. AID PROJECT		
SHEET NO. S48 OF S108				



PLAN
(Top of Pler Cap Shown)



MUP PIER CAP DETAILS
(MUP Pler cap details shown, see Pler, Plan and Elevation for additional details)



ELEVATION

* May vary per Truss manufacturer's design, see "Section B-B" on sheet S60 of S108 and "MUP Bridge Truss Bearing" detail on sheet S69 of S108

Notes:

1. Space reinforcement in cap to miss anchor bolts.
2. Pour steps monolithically with cap.
3. For additional pier details, see sheets S49 and S50 of S108.
4. For bearing and bearing anchor bolt details see, sheets S31 and S33 of S108.
5. For form liner details see sheet S51 of S108.
6. Bars indicated thus 3x2-#5 etc. indicates 3 lines of bars with 2 lengths per line.
7. Concrete Sealer shall be applied to the MUP Bridge bearing seat as well as above elevation 698.00 on all sides of the MUP Pier Cap.
8. For details of piles and concrete encasement see sheet S52 of S108.

REVISIONS	
NAME	DATE

ILLINOIS DEPARTMENT OF TRANSPORTATION
PIER 4 DETAILS I
STEARNS ROAD OVER THE FOX RIVER PUBLIC WATER
STRUCTURE NUMBER 045-3166
KANE COUNTY FAP 361 SECTION 06-00214-20-BR
STATION 571+42.96 DESIGNED: DAP DRAWN: SGW
DATE: JANUARY 16, 2009 CHECKED: KPZ CHECKED: KPZ



H:\130005\3.0 Phase II deliverables\3.3 structure drawings\Final\045-3166 Pier_4 Details I.dgn 2/9/2009