

postal|bulletin

PUBLISHED SINCE MARCH 4, 1880

September is National Preparedness Month

See page 3.



ARE YOU PREPARED FOR AN EMERGENCY?



Contents

COVER STORY

Are You Prepared for an Emergency? 3

POLICIES, PROCEDURES, AND FORMS UPDATES

Manuals

DMM Revision: High-Density Carrier Route Mailpiece
and Postcard Clarifications 4
IMM Revision: Individual Country Listing for Austria 7

ORGANIZATION INFORMATION

Domestic Mail

Labeling List Changes 8

Environmental Management

Used Battery Handling, Storage, and Disposal 36

Finance

Finance Number Control Master and Account
Number Control Master Request Freeze 37

Human Resources

Know the Facts About Prostate Cancer Symptoms
and Risk Factors 38

Information Security

Act Now: USPS is Moving to New External File-sharing
Platform 38
Think Before You Post 39

Mailing and Shipping Services

Discontinuance of the Priority Mail Gift Card Flat
Rate Envelope 39
Discontinuance of the Cremated Remains Animal Kits 40
Mail Alert 40

Stamp Services

Stamp Announcement 21-31: Otters in Snow Stamps 41

Pictorial Postmarks Announcement 43
How to Order the First-Day-of-Issue Digital Color or
Traditional Postmarks 46

PULL-OUT INFORMATION

Fraud

Invalid USPS Corporate Account Numbers 19
Missing, Lost, or Stolen U.S. Money Order Forms 20
Missing, Lost, or Stolen Canadian Money Order Forms 26
Verifying U.S. Postal Service Money Orders 28
Counterfeit Canadian Money Order Forms 28
Toll-Free Number Available to Verify Canadian
Money Orders 28

Other Information

Overseas Military/Diplomatic Mail 29
Freely Associated States Restrictions 34

POSTAL BULLETIN 2021 SEMI-ANNUAL INDEX

2021 Semi-Annual Index PB 22578 (8-12-21)

Find the latest in mail and delivery information
and services offered by U.S. Postal®
in the *Postal Bulletin* at
about.usps.com/postal-bulletin

Mail Moment®

Cover Story

Are You Prepared for an Emergency?

September is National Preparedness Month, a time to remind the nation to prepare for potential emergencies. Tornadoes, hurricanes, wildfires, and floods can strike at almost any time, and are just some of the disasters we face each year.

Plan Today for Tomorrow's Emergencies

Disasters don't wait until you are ready, so take the time to prepare today. Planning ahead can mitigate response or recovery time and help relieve some of the anxiety caused by unexpected events. You and your loved ones are worth the investment.

Effective planning for emergencies starts at home:

- Know what type of threats are most likely to occur in the areas in which you live (e.g., earthquakes in California, flooding in a coastal city or town).
- Sign up to receive local emergency alerts and warnings.
- Replace any outdated stock in your personal emergency preparedness kit. This is particularly important for medications with expiration dates.
- Update your emergency contact information at work or at your children's school.

- Develop a plan for your family or household that you will follow in an emergency. Review it with the members of your household so everyone knows what to do and where to go when it counts.
- Develop a plan for a potential widespread power outage, such as how to charge your mobile phone, use an ATM, or fuel a vehicle.
- Familiarize yourself with all local evacuation routes and shelter locations. Keep this information in a single designated place so you can find it in an emergency.

For more information and valuable resources for emergency preparedness efforts, visit the following sites:

- USPS® National Preparedness page at blue.usps.gov/nationalpreparedness/personal-preparedness.htm.
- Department of Homeland Security at ready.gov/sep-tember.
- Centers for Disease Control and Prevention at cdc.gov/disasters/covid-19/disasters_severe_weather_and_covid-19.html?delivery-Name=USCDC_2062-DM33192.

— *Continuity and Preparedness,*
Corporate Affairs, 9-9-21

Policies, Procedures, and Forms Updates

Manuals

DMM Revision: High-Density Carrier Route Mailpiece and Postcard Clarifications

Effective November 1, 2021, the Postal Service™ will revise *Mailing Standards of the United States Postal Service, Domestic Mail Manual (DMM®)*, section 201.1.2.1a, to clarify the thickness required for postcards. The Postal Service will also revise various sections of the DMM to clarify the size required for card-size mailpieces to be bundled, and to reflect changes in high-density carrier route mailpiece price eligibility and label content requirements.

More specifically, the Postal Service will revise section 201.1.2.1a to clarify that postcards that measure more than 4-1/4 inches high or 6 inches long, or both, must be at least .009 inch thick. The Postal Service will also revise sections 203.4.3, 203.4.4, 235.5.2.1, and 235.6.4 to state that card-size pieces being bundled must be less than 7 inches long. Additionally, the Postal Service will revise new section 243.6.5.3, added among revisions for the August 29, 2021, DMM edition, which will post in September. That section is being revised to specify that high-density carrier route mailpieces must meet the criteria for high-density mail.

Finally, the Postal Service will revise sections 705.8.10.3, 705.12.2.3, and 705.13.2.4 to delete “HD+” and “High Density plus,” added to required Line 2 content for labels among revisions for the August 29, 2021, DMM edition.

Although the Postal Service will not publish these revisions in the DMM until November 1, 2021, the standards are effective immediately.

Mailing Standards of the United States Postal Service, Domestic Mail Manual (DMM)

	*	*	*	*	*
200	Commercial Mail Letters, Cards, Flats, and Parcels				
201	Physical Standards				
1.0	Physical Standards for Machinable Letters and Cards				
	*	*	*	*	*
1.2	Physical Standards for Cards Claimed at Card Prices				
1.2.1	Dimensional Standards for Cards				
	*	*	*	*	*

[Revise the text of item a. to read as follows:]

- a. Not less than 3-1/2 inches high, 5 inches long, and 0.007 inch thick. Cards more than 4-1/4 inches high or 6 inches long, or both, must be a minimum of 0.009 inch thick.

* * * * *

203 Basic Postage Statement, Documentation, and Preparation Standards

* * * * *

4.0 Bundles

* * * * *

4.3 Preparing Bundles of Letters

* * * * *

[Revise the text of item b. and item d. to read as follows:]

- b. Mailings consisting entirely of card-size pieces (only pieces less than 7 inches long) must be prepared in bundles.

* * * * *

- d. For mailings consisting entirely of card-size pieces, (only bundled cards that measure less than 7 inches long) and mail in less-than-full trays, mailers must secure bundles with rubber bands, elastic strapping, flat plastic strapping, or string. Elastic strapping must be approved by USPS Engineering.

* * * * *

4.4 Exception to Bundle Preparation — Full Trays

[Revise the first sentence of 4.4 to read as follows:]

In mailings not entirely of card-size pieces less than 7 inches long, mailers are not required to prepare bundles when placing mail in a full tray (if applicable for the class and shape of mail) when none of the mail in that tray would have been more finely sorted, if bundled.***

* * * * *

235 Mail Preparation

* * * * *

5.0 Preparing Nonautomation Letters

* * * * *

5.2 Machinable Preparation

5.2.1 Machinable Bundling

* * * * *

[Revise the text of item a. to read as follows:]

- a. Card-size pieces less than 7 inches long.

* * * * *

6.4 General Preparation

[Revise the text of 6.4 to read as follows:]

Grouping, bundling, and labeling are not generally required or permitted. However, bundling is required in any mailing consisting entirely of card-size pieces less than 7 inches long, and for pieces in overflow and less-than-full trays. Grouping is required under 6.5.

* * * * *

240 USPS Marketing Mail

243 Prices and Eligibility

* * * * *

6.0 Additional Eligibility Standards for Enhanced Carrier Route USPS Marketing Mail Letters and Flats

* * * * *

6.5 High Density and High Density Plus (Enhanced Carrier Route) Standards – Flats

* * * * *

6.5.3 High Density Carrier Route Bundles on a 5-Digit Pallet (High Density-CR Bundles/Pallet Price Eligibility) – Flats

[Revise the text of 6.5.3 to read as follows:]

High Density-CR Bundles/Pallet prices apply to 125 or more High Density eligible pieces that are palletized under 705.8.0 on a 5-digit carrier route, 5-digit carrier routes, or 5-digit scheme carrier route pallet entered at an Origin (None), DNDC, DSCF, or DDU entry, or palletized under 705.14.0 on a FSS scheme pallet (in a FSS scheme bundle).

* * * * *

700 Special Standards

* * * * *

705 Advanced Preparation and Special Postage Payment Systems

* * * * *

8.0 Preparing Pallets

* * * * *

8.6 Pallet Labels

* * * * *

8.6.5 Line 2 (Content Line)

* * * * *

CONTENT TYPE	CODE
--------------	------

* * * * *

[Revise the entry for “High Density/High Density Plus” to read as follows:]

High Density HD

* * * * *

8.10 Pallet Presort and Labeling

* * * * *

8.10.3 USPS Marketing Mail or Parcel Select Lightweight-Bundles, Sacks, or Trays

* * * * *

[Revise the text of 8.10.3a(2) to read as follows:]

- 2. Line 2: “STD” followed by “FLTS”; followed by “HD” DIRECT.”

* * * * *

[Revise the text of 8.10.3b(2) to read as follows:]

- 2. Line 2: “STD” followed by “FLTS”; followed by “HD” for High Density flats; followed by “CARRIER ROUTES” (or “CR-RTS”); followed by “SCHEME” (or “SCH”).

* * * * *

[Revise the text of 8.10.3c(2) to read as follows:]

- 2. Line 2: For flats and Marketing parcels (Product Samples only), “STD FLTS” or “STD MKTG,” as applicable; followed by “HD” for High Density flats pricing eligibility; followed by “CARRIER ROUTES” (or “CR-RTS”). For letters, “STD LTRS”; followed by “CARRIER ROUTES” (or “CR-RTS”); followed by “BC” if the pallet contains barcoded letters; followed by “MACH” if the pallet contains machinable letters; followed by “MAN” if the pallet contains nonmachinable letters.

* * * * *

10.0 Merging Bundles of Flats Using the City State Product

* * * * *

10.2 USPS Marketing Mail

* * * * *

10.2.5 Pallet Preparation and Labeling

* * * * *

[Revise the text of 10.2.5a(2) to read as follows:]

2. Line 2: “STD FLTS CR-RTS SCHEME” followed by “HD” if the pallet contains High Density flats.

* * * * *

[Revise the text of 10.2.5b(2) to read as follows:]

2. Line 2: “STD FLTS CR/5D SCHEME” followed by “HD” if the pallet contains High Density flats.

* * * * *

[Revise the text of 10.2.5c(2) to read as follows:]

2. Line 2: “STD FLTS”; followed by “CARRIER ROUTES” or “CR-RTS”; followed by “HD” if the pallet contains High Density flats.

* * * * *

[Revise the text of 10.2.5d(2) to read as follows:]

2. Line 2: “STD FLTS CR/5D” followed by “HD” if the pallet contains High Density flats.

* * * * *

12.0 Merging Bundles of Flats on Pallets Using a 5 Percent Threshold

* * * * *

12.2 USPS Marketing Mail

* * * * *

12.2.3 Pallet Preparation and Labeling

* * * * *

[Revise the text of 12.2.3a(2) to read as follows:]

2. Line 2: “STD FLTS CR-RTS SCHEME” followed by “HD” if the pallet contains High Density flats.

* * * * *

[Revise the text of 12.2.3b(2) to read as follows:]

2. Line 2: “STD FLTS CR/5D SCHEME” followed by “HD” if the pallet contains High Density flats.

* * * * *

[Revise the text of 12.2.3c(2) to read as follows:]

2. Line 2: “STD FLTS”; followed by “CARRIER ROUTES” or “CR-RTS” followed by “HD” if the pallet contains High Density flats.

* * * * *

[Revise the text of 12.2.3d(2) to read as follows:]

2. Line 2: “STD FLTS CR/5D” followed by “HD” if the pallet contains High Density flats.

* * * * *

13.0 Merging Bundles of Flats on Pallets Using the City State Product and a 5 Percent Threshold

* * * * *

13.2 USPS Marketing Mail

* * * * *

13.2.4 Pallet Preparation and Labeling

* * * * *

[Revise the text of 13.2.4a(2) to read as follows:]

2. Line 2: “STD FLTS CR-RTS SCHEME” followed by “HD” if the pallet contains High Density flats.

* * * * *

[Revise the text of 13.2.4b(2) to read as follows:]

2. Line 2: “STD FLTS CR/5D SCHEME” followed by “HD” if the pallet contains High Density flats.

* * * * *

[Revise the text of 13.2.4c(2) to read as follows:]

2. Line 2: “STD FLTS,” followed by “HD” if the pallet contains High Density flats; followed by “CARRIER ROUTES” or “CR-RTS.”

* * * * *

[Revise the text of 13.2.4d(2) to read as follows:]

2. Line 2: “STD FLTS CR/5D” followed by “HD” if the pallet contains High Density flats.

* * * * *

The Postal Service will incorporate these revisions into the November 1, 2021, edition of the online DMM, which is available via Postal Explorer[®] at pe.usps.com.

IMM Revision: Individual Country Listing for Austria

Effective September 9, 2021, the Postal Service™ is revising the Individual Country Listing for Austria in *Mailing Standards of the United States Postal Service*, International Mail Manual (IMM®) to note a revision to the prohibition relating to human remains.

This revision is based on a consultation with Österreichische Post AG (the designated postal operator of Austria) on June 16, 2021, and additional clarification received on August 24, 2021.

Mailing Standards of the United States Postal Service, International Mail Manual (IMM)

* * * * *

Individual Country Listings

* * * * *

Austria

Country Conditions for Mailing

Prohibitions

* * * * *

[Revise the entry “Human Remains” to read as follows:]

Human remains, including organs and tissues. However, cremated human remains are allowed provided that all of the following conditions are met:

- The remains are addressed to either a funeral director, mortician, or cemetery.
- The sender obtains official approval from the Austrian embassy or consulate in the United States.
- The sender coordinates with the recipient regarding any required documents.

* * * * *

Although effective September 9, 2021, the Postal Service will incorporate this revision into the next edition of the online IMM, which is available via Postal Explorer® at pe.usps.com.

— *Product Classification,
Product Solutions, 9-9-21*

Organization Information

Domestic Mail

Labeling List Changes

Effective October 1, 2021, the Postal Service™ will revise Labeling List(s) L001, L002, L005, L006, L007, L012, L201, L606, and L801 to reflect changes in mail processing operations. Mailers are expected to label according to these revised lists for mailings inducted on or after the October 1, 2021, effective date through the November 30, 2021, expiration date.

Labeling Lists

* * * * *

L001 5-Digit Scheme — Periodicals, Standard Mail, and Package Services Flats and Irregular Parcels

* * * * *

Newly Added

Column A Destination ZIP Codes	Column B Label Container To (Added To)
30061	MARIETTA GA 30060

Deleted

Column A Destination ZIP Codes	Column B Label Container To (Deleted From)
30008	MARIETTA GA 30060

L002 3-Digit ZIP Code Prefix Matrix

Changes

3-Digit ZIP Code Prefix	Column A 3-Digit Destinations Label To (Change From)	Column B 3-Digit/Scheme Destinations Label To (Change From)	Column C SCF Destinations Label To (Change From)	Column A 3-Digit Destinations Label To (Change To)	Column B 3-Digit/Scheme Destination Label To (Change To)	Column C SCF Destinations Label To (Change To)
394	HATTIESBURG MS 394	HATTIESBURG MS 394	HATTIESBURG MS 394 D	HATTIESBURG MS 394	HATTIESBURG MS 394	SCF MOBILE AL 365

* * * * *

L005 3-Digit ZIP Code Prefix Groups — SCF Sortation

Changes

Column A Destination ZIP Codes	Column B Label To (Change From)	Column B Label To (Change To)
394	HATTIESBURG MS 394 S	SCF MOBILE AL 365

* * * * *

L006 5-Digit FSS Scheme — Periodicals, Standard Mail, and Package Services Flats in Bundles

* * * * *

Deleted

Column A Destination ZIP Codes	Column B Scheme Bundle/ Container Placard (Deleted From)	Column C Facility Container Placard (Deleted From)
01001	FSS AGAWAM MA 01001	FSS NDC SPRINGFIELD MA 011
01007	FSS BELCHERTOWN MA 01007	FSS NDC SPRINGFIELD MA 011
01013	FSS CHICOPEE MA 01013	FSS NDC SPRINGFIELD MA 011
01020	FSS CHICOPEE MA 01013	FSS NDC SPRINGFIELD MA 011

Column A Destination ZIP Codes	Column B Scheme Bundle/ Container Placard (Deleted From)	Column C Facility Container Placard (Deleted From)
01022	FSS CHICOPEE MA 01013	FSS NDC SPRINGFIELD MA 011
01027	FSS EASTHAMPTON MA 01027	FSS NDC SPRINGFIELD MA 011
01028	FSS EAST LONGMEADOW MA 01028	FSS NDC SPRINGFIELD MA 011
01030	FSS AGAWAM MA 01001	FSS NDC SPRINGFIELD MA 011

Column A Destination ZIP Codes	Column B Scheme Bundle/ Container Placard (Deleted From)	Column C Facility Container Placard (Deleted From)
01036	FSS WILBRAHAM MA 01095	FSS NDC SPRINGFIELD MA 011
01040	FSS HOLYOKE MA 01040	FSS NDC SPRINGFIELD MA 011
01056	FSS WILBRAHAM MA 01095	FSS NDC SPRINGFIELD MA 011
01060	FSS EASTHAMPTON MA 01027	FSS NDC SPRINGFIELD MA 011
01062	FSS EASTHAMPTON MA 01027	FSS NDC SPRINGFIELD MA 011
01075	FSS HOLYOKE MA 01040	FSS NDC SPRINGFIELD MA 011
01077	FSS BELCHERTOWN MA 01007	FSS NDC SPRINGFIELD MA 011
01085	FSS BELCHERTOWN MA 01007	FSS NDC SPRINGFIELD MA 011
01089	FSS AGAWAM MA 01001	FSS NDC SPRINGFIELD MA 011
01095	FSS WILBRAHAM MA 01095	FSS NDC SPRINGFIELD MA 011
01106	FSS EAST LONGMEADOW MA 01028	FSS NDC SPRINGFIELD MA 011
01118	FSS EAST LONGMEADOW MA 01028	FSS NDC SPRINGFIELD MA 011
01128	FSS WILBRAHAM MA 01095	FSS NDC SPRINGFIELD MA 011
01151	FSS WILBRAHAM MA 01095	FSS NDC SPRINGFIELD MA 011
01201	FSS PITTSFIELD MA 01201	FSS NDC SPRINGFIELD MA 011
01220	FSS ADAMS MA 01220	FSS NDC SPRINGFIELD MA 011
01226	FSS ADAMS MA 01220	FSS NDC SPRINGFIELD MA 011
01230	FSS ADAMS MA 01220	FSS NDC SPRINGFIELD MA 011
01238	FSS ADAMS MA 01220	FSS NDC SPRINGFIELD MA 011
01240	FSS ADAMS MA 01220	FSS NDC SPRINGFIELD MA 011
01247	FSS ADAMS MA 01220	FSS NDC SPRINGFIELD MA 011
01267	FSS ADAMS MA 01220	FSS NDC SPRINGFIELD MA 011
06001	FSS AVON CT 06001	FSS NDC SPRINGFIELD MA 011
06002	FSS AVON CT 06001	FSS NDC SPRINGFIELD MA 011
06010	FSS BRISTOL CT 06010	FSS NDC SPRINGFIELD MA 011
06011	FSS BRISTOL CT 06010	FSS NDC SPRINGFIELD MA 011
06013	FSS BURLINGTON CT 06013	FSS NDC SPRINGFIELD MA 011
06016	FSS NEWINGTON CT 06111	FSS NDC SPRINGFIELD MA 011
06026	FSS AVON CT 06001	FSS NDC SPRINGFIELD MA 011
06029	FSS FARMINGTON CT 06032	FSS NDC SPRINGFIELD MA 011
06030	FSS FARMINGTON CT 06032	FSS NDC SPRINGFIELD MA 011

Column A Destination ZIP Codes	Column B Scheme Bundle/ Container Placard (Deleted From)	Column C Facility Container Placard (Deleted From)
06032	FSS FARMINGTON CT 06032	FSS NDC SPRINGFIELD MA 011
06033	FSS GLASTONBURY CT 06033	FSS NDC SPRINGFIELD MA 011
06037	FSS NEW BRITAIN CT 06051	FSS NDC SPRINGFIELD MA 011
06040	FSS MANCHESTER CT 06040	FSS NDC SPRINGFIELD MA 011
06042	FSS MANCHESTER CT 06040	FSS NDC SPRINGFIELD MA 011
06043	FSS BOLTON CT 06043	FSS NDC SPRINGFIELD MA 011
06051	FSS NEW BRITAIN CT 06051	FSS NDC SPRINGFIELD MA 011
06052	FSS NEW BRITAIN CT 06051	FSS NDC SPRINGFIELD MA 011
06053	FSS NEW BRITAIN CT 06051	FSS NDC SPRINGFIELD MA 011
06062	FSS FARMINGTON CT 06032	FSS NDC SPRINGFIELD MA 011
06066	FSS BOLTON CT 06043	FSS NDC SPRINGFIELD MA 011
06067	FSS GLASTONBURY CT 06033	FSS NDC SPRINGFIELD MA 011
06070	FSS BURLINGTON CT 06013	FSS NDC SPRINGFIELD MA 011
06071	FSS NEW BRITAIN CT 06051	FSS NDC SPRINGFIELD MA 011
06073	FSS GLASTONBURY CT 06033	FSS NDC SPRINGFIELD MA 011
06074	FSS BOLTON CT 06043	FSS NDC SPRINGFIELD MA 011
06078	FSS SUFFIELD CT 06078	FSS NDC SPRINGFIELD MA 011
06081	FSS BURLINGTON CT 06013	FSS NDC SPRINGFIELD MA 011
06082	FSS ENFIELD CT 06082	FSS NDC SPRINGFIELD MA 011
06083	FSS ENFIELD CT 06082	FSS NDC SPRINGFIELD MA 011
06084	FSS SUFFIELD CT 06078	FSS NDC SPRINGFIELD MA 011
06085	FSS AVON CT 06001	FSS NDC SPRINGFIELD MA 011
06088	FSS ENFIELD CT 06082	FSS NDC SPRINGFIELD MA 011
06089	FSS WETHERSFIELD CT 06109	FSS NDC SPRINGFIELD MA 011
06092	FSS ENFIELD CT 06082	FSS NDC SPRINGFIELD MA 011
06093	FSS SUFFIELD CT 06078	FSS NDC SPRINGFIELD MA 011
06095	FSS BURLINGTON CT 06013	FSS NDC SPRINGFIELD MA 011
06096	FSS ENFIELD CT 06082	FSS NDC SPRINGFIELD MA 011
06105	FSS HARTFORD CT 06105	FSS NDC SPRINGFIELD MA 011
06106	FSS HARTFORD CT 06105	FSS NDC SPRINGFIELD MA 011
06107	FSS SUFFIELD CT 06078	FSS NDC SPRINGFIELD MA 011
06108	FSS WETHERSFIELD CT 06109	FSS NDC SPRINGFIELD MA 011

Column A Destination ZIP Codes	Column B Scheme Bundle/ Container Placard (Deleted From)	Column C Facility Container Placard (Deleted From)
06109	FSS WETHERSFIELD CT 06109	FSS NDC SPRINGFIELD MA 011
06110	FSS HARTFORD CT 06105	FSS NDC SPRINGFIELD MA 011
06111	FSS NEWINGTON CT 06111	FSS NDC SPRINGFIELD MA 011
06112	FSS HARTFORD CT 06105	FSS NDC SPRINGFIELD MA 011
06114	FSS WETHERSFIELD CT 06109	FSS NDC SPRINGFIELD MA 011
06117	FSS NEWINGTON CT 06111	FSS NDC SPRINGFIELD MA 011
06118	FSS WETHERSFIELD CT 06109	FSS NDC SPRINGFIELD MA 011
06119	FSS HARTFORD CT 06105	FSS NDC SPRINGFIELD MA 011
06120	FSS HARTFORD CT 06105	FSS NDC SPRINGFIELD MA 011
06128	FSS WETHERSFIELD CT 06109	FSS NDC SPRINGFIELD MA 011
06133	FSS HARTFORD CT 06105	FSS NDC SPRINGFIELD MA 011
06138	FSS WETHERSFIELD CT 06109	FSS NDC SPRINGFIELD MA 011
06231	FSS PITTSFIELD MA 01201	FSS NDC SPRINGFIELD MA 011
06237	FSS PITTSFIELD MA 01201	FSS NDC SPRINGFIELD MA 011
06238	FSS NEW LONDON CT 06320	FSS NDC SPRINGFIELD MA 011
06241	FSS PITTSFIELD MA 01201	FSS NDC SPRINGFIELD MA 011
06250	FSS NEW LONDON CT 06320	FSS NDC SPRINGFIELD MA 011
06268	FSS NEW LONDON CT 06320	FSS NDC SPRINGFIELD MA 011
06279	FSS PITTSFIELD MA 01201	FSS NDC SPRINGFIELD MA 011
06281	FSS PITTSFIELD MA 01201	FSS NDC SPRINGFIELD MA 011
06320	FSS NEW LONDON CT 06320	FSS NDC SPRINGFIELD MA 011
06357	FSS NEW LONDON CT 06320	FSS NDC SPRINGFIELD MA 011
06371	FSS NEW LONDON CT 06320	FSS NDC SPRINGFIELD MA 011
06385	FSS NEW LONDON CT 06320	FSS NDC SPRINGFIELD MA 011
06401	FSS ANSONIA CT 06401	FSS NDC SPRINGFIELD MA 011
06403	FSS BRANFORD CT 06405	FSS NDC SPRINGFIELD MA 011
06405	FSS BRANFORD CT 06405	FSS NDC SPRINGFIELD MA 011
06410	FSS CHESHIRE CT 06410	FSS NDC SPRINGFIELD MA 011
06413	FSS SOUTHURY CT 06488	FSS NDC SPRINGFIELD MA 011
06415	FSS WALLINGFORD CT 06492	FSS NDC SPRINGFIELD MA 011
06416	FSS CROMWELL CT 06416	FSS NDC SPRINGFIELD MA 011
06417	FSS WALLINGFORD CT 06492	FSS NDC SPRINGFIELD MA 011
06418	FSS ANSONIA CT 06401	FSS NDC SPRINGFIELD MA 011

Column A Destination ZIP Codes	Column B Scheme Bundle/ Container Placard (Deleted From)	Column C Facility Container Placard (Deleted From)
06419	FSS ANSONIA CT 06401	FSS NDC SPRINGFIELD MA 011
06420	FSS GUILFORD CT 06437	FSS NDC SPRINGFIELD MA 011
06424	FSS NEW HAVEN CT 06511	FSS NDC SPRINGFIELD MA 011
06426	FSS ORANGE CT 06477	FSS NDC SPRINGFIELD MA 011
06437	FSS GUILFORD CT 06437	FSS NDC SPRINGFIELD MA 011
06443	FSS GUILFORD CT 06437	FSS NDC SPRINGFIELD MA 011
06447	FSS MERIDEN CT 06450	FSS NDC SPRINGFIELD MA 011
06450	FSS MERIDEN CT 06450	FSS NDC SPRINGFIELD MA 011
06451	FSS MERIDEN CT 06450	FSS NDC SPRINGFIELD MA 011
06457	FSS CROMWELL CT 06416	FSS NDC SPRINGFIELD MA 011
06460	FSS MILFORD CT 06460	FSS NDC SPRINGFIELD MA 011
06461	FSS MILFORD CT 06460	FSS NDC SPRINGFIELD MA 011
06468	FSS SOUTHURY CT 06488	FSS NDC SPRINGFIELD MA 011
06470	FSS NEWTOWN CT 06470	FSS NDC SPRINGFIELD MA 011
06472	FSS CHESHIRE CT 06410	FSS NDC SPRINGFIELD MA 011
06473	FSS NEWTOWN CT 06470	FSS NDC SPRINGFIELD MA 011
06475	FSS BRANFORD CT 06405	FSS NDC SPRINGFIELD MA 011
06477	FSS ORANGE CT 06477	FSS NDC SPRINGFIELD MA 011
06478	FSS ANSONIA CT 06401	FSS NDC SPRINGFIELD MA 011
06479	FSS NEWTOWN CT 06470	FSS NDC SPRINGFIELD MA 011
06480	FSS SOUTHURY CT 06488	FSS NDC SPRINGFIELD MA 011
06482	FSS NEW HAVEN CT 06511	FSS NDC SPRINGFIELD MA 011
06483	FSS ANSONIA CT 06401	FSS NDC SPRINGFIELD MA 011
06484	FSS SHELTON CT 06484	FSS NDC SPRINGFIELD MA 011
06488	FSS SOUTHURY CT 06488	FSS NDC SPRINGFIELD MA 011
06489	FSS CHESHIRE CT 06410	FSS NDC SPRINGFIELD MA 011
06492	FSS WALLINGFORD CT 06492	FSS NDC SPRINGFIELD MA 011
06511	FSS NEW HAVEN CT 06511	FSS NDC SPRINGFIELD MA 011
06512	FSS ORANGE CT 06477	FSS NDC SPRINGFIELD MA 011
06513	FSS PITTSFIELD MA 01201	FSS NDC SPRINGFIELD MA 011
06514	FSS HAMDEN CT 06514	FSS NDC SPRINGFIELD MA 011
06515	FSS ORANGE CT 06477	FSS NDC SPRINGFIELD MA 011
06516	FSS WEST HAVEN CT 06516	FSS NDC SPRINGFIELD MA 011

Column A Destination ZIP Codes	Column B Scheme Bundle/ Container Placard (Deleted From)	Column C Facility Container Placard (Deleted From)
06517	FSS HAMDEN CT 06514	FSS NDC SPRINGFIELD MA 011
06518	FSS HAMDEN CT 06514	FSS NDC SPRINGFIELD MA 011
06519	FSS PITTSFIELD MA 01201	FSS NDC SPRINGFIELD MA 011
06524	FSS WEST HAVEN CT 06516	FSS NDC SPRINGFIELD MA 011
06525	FSS WEST HAVEN CT 06516	FSS NDC SPRINGFIELD MA 011
06704	FSS WATERBURY CT 06704	FSS NDC SPRINGFIELD MA 011
06705	FSS WATERBURY CT 06705	FSS NDC SPRINGFIELD MA 011
06706	FSS WATERBURY CT 06706	FSS NDC SPRINGFIELD MA 011
06708	FSS WATERBURY CT 06706	FSS NDC SPRINGFIELD MA 011
06710	FSS WATERBURY CT 06705	FSS NDC SPRINGFIELD MA 011

Column A Destination ZIP Codes	Column B Scheme Bundle/ Container Placard (Deleted From)	Column C Facility Container Placard (Deleted From)
06712	FSS WATERBURY CT 06706	FSS NDC SPRINGFIELD MA 011
06716	FSS WATERBURY CT 06705	FSS NDC SPRINGFIELD MA 011
06762	FSS WATERBURY CT 06704	FSS NDC SPRINGFIELD MA 011
06770	FSS WATERBURY CT 06704	FSS NDC SPRINGFIELD MA 011
06779	FSS SHELTON CT 06484	FSS NDC SPRINGFIELD MA 011
06786	FSS WATERBURY CT 06705	FSS NDC SPRINGFIELD MA 011
06787	FSS WATERBURY CT 06706	FSS NDC SPRINGFIELD MA 011
06790	FSS TORRINGTON CT 06790	FSS NDC SPRINGFIELD MA 011
06791	FSS TORRINGTON CT 06790	FSS NDC SPRINGFIELD MA 011
06795	FSS SHELTON CT 06484	FSS NDC SPRINGFIELD MA 011
06798	FSS TORRINGTON CT 06790	FSS NDC SPRINGFIELD MA 011

L007 5-Digit Scheme – Periodicals, Standard Mail, and Package Services Flats in Bundles

Changes

Column A Destination ZIP Codes	Column B Label Container To (Change From)	Column B Label Container To (Change To)
01101	SPRINGFIELD MA 01101	SPRINGFIELD MA 01102
01104	SPRINGFIELD MA 01101	SPRINGFIELD MA 01107
01105	SPRINGFIELD MA 01101	SPRINGFIELD MA 01107
01107	SPRINGFIELD MA 01101	SPRINGFIELD MA 01107
06050	NEW BRITAIN CT 06050	CANTON CT 06019
06103	HARTFORD CT 06103	CANTON CT 06019
65102	JEFFERSON CITY MO 65101	JEFFERSON CITY MO 65102
65203	COLUMBIA MO 65201	COLUMBIA MO 65203
65205	COLUMBIA MO 65201	COLUMBIA MO 65203
65211	COLUMBIA MO 65201	COLUMBIA MO 65203
65212	COLUMBIA MO 65201	COLUMBIA MO 65203
65215	COLUMBIA MO 65201	COLUMBIA MO 65203
65216	COLUMBIA MO 65201	COLUMBIA MO 65203
65217	COLUMBIA MO 65201	COLUMBIA MO 65203
65218	COLUMBIA MO 65201	COLUMBIA MO 65203
65325	SEDALIA MO 65301	COLE CAMP MO 65325
65332	SEDALIA MO 65301	GREEN RIDGE MO 65332
65335	SEDALIA MO 65301	GREEN RIDGE MO 65332

Newly Added

Column A Destination ZIP Codes	Column B Label Container To (Added To)
01001	AGAWAM MA 01001
01002	AMHERST MA 01002
01003	AMHERST MA 01002
01004	AMHERST MA 01002
01007	BELCHERTOWN MA 01007
01013	CHICOPEE MA 01013
01020	CHICOPEE MA 01013
01022	CHICOPEE MA 01013
01027	BELCHERTOWN MA 01007
01028	EAST LONGMEADOW MA 01028
01030	AGAWAM MA 01001
01033	AMHERST MA 01002
01035	AMHERST MA 01002
01036	EAST LONGMEADOW MA 01028
01040	AGAWAM MA 01001
01056	EAST LONGMEADOW MA 01028
01057	AMHERST MA 01002
01059	AMHERST MA 01002
01060	BELCHERTOWN MA 01007
01062	BELCHERTOWN MA 01007
01069	AMHERST MA 01002
01073	AMHERST MA 01002
01075	AGAWAM MA 01001
01077	BELCHERTOWN MA 01007
01080	AMHERST MA 01002
01082	AMHERST MA 01002
01085	BELCHERTOWN MA 01007
01089	AGAWAM MA 01001
01095	EAST LONGMEADOW MA 01028
01106	EAST LONGMEADOW MA 01028
01118	EAST LONGMEADOW MA 01028
01128	EAST LONGMEADOW MA 01028
01151	EAST LONGMEADOW MA 01028

Column A Destination ZIP Codes	Column B Label Container To (Added To)
01201	PITTSFIELD MA 01201
01220	ADAMS MA 01220
01226	PITTSFIELD MA 01201
01230	ADAMS MA 01220
01238	ADAMS MA 01220
01240	PITTSFIELD MA 01201
01247	ADAMS MA 01220
01267	ADAMS MA 01220
06001	AVON CT 06001
06002	AVON CT 06001
06010	BRISTOL CT 06010
06011	BRISTOL CT 06010
06013	BURLINGTON CT 06013
06016	BROAD BROOK CT 06016
06019	CANTON CT 06019
06026	AVON CT 06001
06029	BROAD BROOK CT 06016
06030	BROAD BROOK CT 06016
06032	BROAD BROOK CT 06016
06033	BURLINGTON CT 06013
06035	CANTON CT 06019
06037	BERLIN CT 06037
06039	CANTON CT 06019
06040	MANCHESTER CT 06040
06042	MANCHESTER CT 06040
06043	MANCHESTER CT 06040
06051	BERLIN CT 06037
06052	BERLIN CT 06037
06053	BERLIN CT 06037
06060	CANTON CT 06019
06062	BROAD BROOK CT 06016
06063	CANTON CT 06019
06066	MANCHESTER CT 06040
06067	BURLINGTON CT 06013
06070	BURLINGTON CT 06013
06071	BERLIN CT 06037
06073	BURLINGTON CT 06013
06074	MANCHESTER CT 06040
06078	AVON CT 06001
06081	BURLINGTON CT 06013
06082	ENFIELD CT 06082
06083	ENFIELD CT 06082
06084	AVON CT 06001
06085	AVON CT 06001
06088	ENFIELD CT 06082
06089	AVON CT 06001
06092	ENFIELD CT 06082
06093	AVON CT 06001
06095	AVON CT 06001
06096	ENFIELD CT 06082
06105	HARTFORD CT 06105
06106	HARTFORD CT 06105
06107	WEST HARTFORD CT 06107
06108	EAST HARTFORD CT 06108
06109	EAST HARTFORD CT 06108
06110	HARTFORD CT 06105
06111	WEST HARTFORD CT 06107
06112	HARTFORD CT 06105
06114	EAST HARTFORD CT 06108
06117	WEST HARTFORD CT 06107
06118	EAST HARTFORD CT 06108
06119	HARTFORD CT 06105

Column A Destination ZIP Codes	Column B Label Container To (Added To)
06120	HARTFORD CT 06105
06126	CANTON CT 06019
06128	EAST HARTFORD CT 06108
06133	HARTFORD CT 06105
06138	EAST HARTFORD CT 06108
06226	WILLIMANTIC CT 06226
06231	AMSTON CT 06231
06234	WILLIMANTIC CT 06226
06237	AMSTON CT 06231
06238	AMSTON CT 06231
06239	WILLIMANTIC CT 06226
06241	AMSTON CT 06231
06248	WILLIMANTIC CT 06226
06249	WILLIMANTIC CT 06226
06250	AMSTON CT 06231
06254	WILLIMANTIC CT 06226
06255	WILLIMANTIC CT 06226
06260	WILLIMANTIC CT 06226
06268	AMSTON CT 06231
06277	WILLIMANTIC CT 06226
06279	AMSTON CT 06231
06281	AMSTON CT 06231
06320	AMSTON CT 06231
06357	AMSTON CT 06231
06360	WILLIMANTIC CT 06226
06371	AMSTON CT 06231
06385	AMSTON CT 06231
06401	ANSONIA CT 06401
06403	BEACON FALLS CT 06403
06405	BEACON FALLS CT 06403
06410	CHESHIRE CT 06410
06413	CLINTON CT 06413
06415	CHESHIRE CT 06410
06416	CROMWELL CT 06416
06417	CHESHIRE CT 06410
06418	ANSONIA CT 06401
06419	ANSONIA CT 06401
06420	SALEM CT 06420
06424	ANSONIA CT 06401
06426	CHESHIRE CT 06410
06437	SALEM CT 06420
06443	SALEM CT 06420
06447	ANSONIA CT 06401
06450	MERIDEN CT 06450
06451	MERIDEN CT 06450
06457	CROMWELL CT 06416
06460	CROMWELL CT 06416
06461	CROMWELL CT 06416
06468	CLINTON CT 06413
06470	CLINTON CT 06413
06472	CHESHIRE CT 06410
06473	CLINTON CT 06413
06475	BEACON FALLS CT 06403
06477	SALEM CT 06420
06478	MERIDEN CT 06450
06479	CLINTON CT 06413
06480	CLINTON CT 06413
06482	BEACON FALLS CT 06403
06483	MERIDEN CT 06450
06484	BEACON FALLS CT 06403
06488	CLINTON CT 06413
06489	CHESHIRE CT 06410

Column A Destination ZIP Codes	Column B Label Container To (Added To)
06492	CHESHIRE CT 06410
06510	CANTON CT 06019
06511	NEW HAVEN CT 06511
06512	EAST HAVEN CT 06512
06513	NEW HAVEN CT 06513
06514	NEW HAVEN CT 06511
06515	EAST HAVEN CT 06512
06516	EAST HAVEN CT 06512
06517	NEW HAVEN CT 06511
06518	NEW HAVEN CT 06511
06519	NEW HAVEN CT 06513
06520	CANTON CT 06019
06524	EAST HAVEN CT 06512
06525	EAST HAVEN CT 06512
06702	CANTON CT 06019
06704	WATERBURY CT 06704
06705	WATERBURY CT 06704
06706	WATERBURY CT 06706
06708	WATERBURY CT 06706
06710	WATERBURY CT 06704
06712	WATERBURY CT 06706

Column A Destination ZIP Codes	Column B Label Container To (Added To)
06716	WATERBURY CT 06704
06759	CANTON CT 06019
06762	WATERBURY CT 06704
06770	WATERBURY CT 06704
06776	CANTON CT 06019
06779	WATERBURY CT 06706
06786	WATERBURY CT 06704
06787	WATERBURY CT 06706
06790	WATERBURY CT 06706
06791	WATERBURY CT 06706
06795	WATERBURY CT 06704
06798	WATERBURY CT 06706
65082	TUSCUMBIA MO 65082
65083	TUSCUMBIA MO 65082
65103	JEFFERSON CITY MO 65102
65104	JEFFERSON CITY MO 65102
65105	JEFFERSON CITY MO 65102
65106	JEFFERSON CITY MO 65102
65107	JEFFERSON CITY MO 65102
65108	JEFFERSON CITY MO 65102
65345	COLE CAMP MO 65325

Deleted

Column A Destination ZIP Codes	Column B Label Container To (Deleted From)
06034	HARTFORD CT 06103
06080	NEW BRITAIN CT 06050
06123	HARTFORD CT 06103
65010	ASHLAND MO 65010
65014	ASHLAND MO 65010
65018	ASHLAND MO 65010
65020	ASHLAND MO 65010
65026	ASHLAND MO 65010
65037	ASHLAND MO 65010
65041	ASHLAND MO 65010
65049	ASHLAND MO 65010
65051	ASHLAND MO 65010
65052	ASHLAND MO 65010
65065	ASHLAND MO 65010
65066	ASHLAND MO 65010
65079	ASHLAND MO 65010
65081	ASHLAND MO 65010
65084	ASHLAND MO 65010
65201	COLUMBIA MO 65201
65202	COLUMBIA MO 65201
65231	AUXVASSE MO 65231
65233	AUXVASSE MO 65231
65240	AUXVASSE MO 65231
65248	AUXVASSE MO 65231
65251	AUXVASSE MO 65231
65255	AUXVASSE MO 65231
65259	AUXVASSE MO 65231
65265	AUXVASSE MO 65231

Column A Destination ZIP Codes	Column B Label Container To (Deleted From)
65270	AUXVASSE MO 65231
65275	AUXVASSE MO 65231
65281	AUXVASSE MO 65231
65320	SEDALIA MO 65301
65321	SEDALIA MO 65301
65322	SEDALIA MO 65301
65323	SEDALIA MO 65301
65324	SEDALIA MO 65301
65326	SEDALIA MO 65301
65327	SEDALIA MO 65301
65329	SEDALIA MO 65301
65330	SEDALIA MO 65301
65333	SEDALIA MO 65301
65334	SEDALIA MO 65301
65336	SEDALIA MO 65301
65337	SEDALIA MO 65301
65338	SEDALIA MO 65301
65339	SEDALIA MO 65301
65340	SEDALIA MO 65301
65344	SEDALIA MO 65301
65347	SEDALIA MO 65301
65348	SEDALIA MO 65301
65349	SEDALIA MO 65301
65350	SEDALIA MO 65301
65351	SEDALIA MO 65301
65354	SEDALIA MO 65301
65355	SEDALIA MO 65301
65360	SEDALIA MO 65301

* * * * *

L012 5-Digit ZIP Scheme Combination**Changes**

Column A Destination ZIP Codes	Column B Label Container To (Change From)	Column B Label Container To (Change To)
12008	GLOVERSVILLE NY 12078	REXFORD NY 12148
12009	AMSTERDAM NY 12010	DELMAR NY 12054
12018	EAST GREENBUSH NY 12061	REXFORD NY 12148
12019	CLIFTON PARK NY 12065	REXFORD NY 12148
12023	LATHAM NY 12110	DELMAR NY 12054
12027	CLIFTON PARK NY 12065	REXFORD NY 12148
12032	GLOVERSVILLE NY 12078	AMSTERDAM NY 12010
12033	EAST GREENBUSH NY 12061	RENSSELAER NY 12144
12037	ATHENS NY 12015	RENSSELAER NY 12144
12043	BALLSTON SPA NY 12020	DELMAR NY 12054
12047	BALLSTON SPA NY 12020	COHOES NY 12047
12053	CLIFTON PARK NY 12065	DELMAR NY 12054
12054	GLOVERSVILLE NY 12078	DELMAR NY 12054
12061	EAST GREENBUSH NY 12061	RENSSELAER NY 12144
12065	CLIFTON PARK NY 12065	BALLSTON SPA NY 12020
12066	ATHENS NY 12015	DELMAR NY 12054
12070	ATHENS NY 12015	AMSTERDAM NY 12010
12075	ATHENS NY 12015	RENSSELAER NY 12144
12077	ALBANY NY 12212	DELMAR NY 12054
12078	GLOVERSVILLE NY 12078	AMSTERDAM NY 12010
12084	EAST GREENBUSH NY 12061	DELMAR NY 12054
12090	HOOSICK FALLS NY 12090	REXFORD NY 12148
12094	HOOSICK FALLS NY 12090	REXFORD NY 12148
12095	GLOVERSVILLE NY 12078	AMSTERDAM NY 12010
12106	ATHENS NY 12015	RENSSELAER NY 12144
12110	LATHAM NY 12110	COHOES NY 12047
12118	HOOSICK FALLS NY 12090	COHOES NY 12047
12121	HOOSICK FALLS NY 12090	REXFORD NY 12148
12122	GLOVERSVILLE NY 12078	DELMAR NY 12054
12123	ATHENS NY 12015	RENSSELAER NY 12144
12128	LATHAM NY 12110	COHOES NY 12047
12137	ALBANY NY 12206	SCHENECTADY NY 12309
12138	HOOSICK FALLS NY 12090	REXFORD NY 12148
12144	EAST GREENBUSH NY 12061	RENSSELAER NY 12144

Column A Destination ZIP Codes	Column B Label Container To (Change From)	Column B Label Container To (Change To)
12148	LATHAM NY 12110	REXFORD NY 12148
12154	HOOSICK FALLS NY 12090	REXFORD NY 12148
12157	EAST GREENBUSH NY 12061	DELMAR NY 12054
12159	ALBANY NY 12212	DELMAR NY 12054
12167	BALLSTON SPA NY 12020	DELMAR NY 12054
12170	HOOSICK FALLS NY 12090	COHOES NY 12047
12182	HOOSICK FALLS NY 12090	COHOES NY 12047
12184	ATHENS NY 12015	RENSSELAER NY 12144
12186	ALBANY NY 12202	DELMAR NY 12054
12188	LATHAM NY 12110	RENSSELAER NY 12144
12189	SCHENECTADY NY 12303	RENSSELAER NY 12144
12196	SCHENECTADY NY 12309	REXFORD NY 12148
12198	HOOSICK FALLS NY 12090	REXFORD NY 12148
12208	SCHENECTADY NY 12309	ALBANY NY 12206
12212	ALBANY NY 12212	ALBANY NY 12201
12301	SCHENECTADY NY 12301	SCHENECTADY NY 12309
12302	SCHENECTADY NY 12301	SCHENECTADY NY 12309
12303	SCHENECTADY NY 12303	SCHENECTADY NY 12304
12304	ALBANY NY 12201	SCHENECTADY NY 12304
12305	SCHENECTADY NY 12301	SCHENECTADY NY 12309
12306	SCHENECTADY NY 12303	SCHENECTADY NY 12304
12307	ALBANY NY 12206	SCHENECTADY NY 12309
12308	SCHENECTADY NY 12301	SCHENECTADY NY 12309
12325	SCHENECTADY NY 12301	SCHENECTADY NY 12309
12404	PORT EWEN NY 12466	KINGSTON NY 12401
12406	POUGHKEEPSIE NY 12603	KINGSTON NY 12401
12409	POUGHKEEPSIE NY 12603	KINGSTON NY 12401
12412	POUGHKEEPSIE NY 12603	KINGSTON NY 12401
12430	POUGHKEEPSIE NY 12603	KINGSTON NY 12401
12434	KINGSTON NY 12401	PORT EWEN NY 12466
12440	PORT EWEN NY 12466	KINGSTON NY 12401
12442	POUGHKEEPSIE NY 12603	PORT EWEN NY 12466
12443	KINGSTON NY 12401	NEWBURGH NY 12551
12449	PORT EWEN NY 12466	NEWBURGH NY 12551
12455	POUGHKEEPSIE NY 12603	KINGSTON NY 12401

Column A Destination ZIP Codes	Column B Label Container To (Change From)	Column B Label Container To (Change To)
12464	PORT EWEN NY 12466	KINGSTON NY 12401
12468	POUGHKEEPSIE NY 12601	PORT EWEN NY 12466
12472	PORT EWEN NY 12466	KINGSTON NY 12401
12474	POUGHKEEPSIE NY 12601	KINGSTON NY 12401
12481	POUGHKEEPSIE NY 12601	PORT EWEN NY 12466
12485	POUGHKEEPSIE NY 12601	PORT EWEN NY 12466
12486	PORT EWEN NY 12466	KINGSTON NY 12401
12487	PORT EWEN NY 12466	KINGSTON NY 12401
12491	POUGHKEEPSIE NY 12601	KINGSTON NY 12401
12494	POUGHKEEPSIE NY 12601	KINGSTON NY 12401
12498	NEWBURGH NY 12550	NEWBURGH NY 12551
12550	NEWBURGH NY 12550	NEWBURGH NY 12551
12551	NEWBURGH NY 12550	NEWBURGH NY 12551
12552	NEWBURGH NY 12550	NEWBURGH NY 12551
12569	POUGHKEEPSIE NY 12603	POUGHKEEPSIE NY 12601
12603	POUGHKEEPSIE NY 12603	POUGHKEEPSIE NY 12601
12604	POUGHKEEPSIE NY 12603	POUGHKEEPSIE NY 12601
12721	BLOOMINGBURG NY 12721	PORT JERVIS NY 12771
12733	BLOOMINGBURG NY 12721	PORT JERVIS NY 12771
12747	BLOOMINGBURG NY 12721	PORT JERVIS NY 12771
12758	BLOOMINGBURG NY 12721	PORT JERVIS NY 12771
12759	BLOOMINGBURG NY 12721	PORT JERVIS NY 12771
12768	BLOOMINGBURG NY 12721	PORT JERVIS NY 12771
12775	BLOOMINGBURG NY 12721	PORT JERVIS NY 12771
12776	BLOOMINGBURG NY 12721	PORT JERVIS NY 12771
12779	BLOOMINGBURG NY 12721	PORT JERVIS NY 12771
12788	BLOOMINGBURG NY 12721	PORT JERVIS NY 12771
12789	BLOOMINGBURG NY 12721	PORT JERVIS NY 12771
12790	BLOOMINGBURG NY 12721	PORT JERVIS NY 12771
12803	FORT ANN NY 12827	GLENS FALLS NY 12801
12831	FORT ANN NY 12827	SARATOGA SPRINGS NY 12866
12833	GLENS FALLS NY 12801	SARATOGA SPRINGS NY 12866
12834	MALONE NY 12953	SARATOGA SPRINGS NY 12866
12845	FORT ANN NY 12827	GLENS FALLS NY 12801
12850	FORT ANN NY 12827	SARATOGA SPRINGS NY 12866
12865	PLATTSBURGH NY 12901	SARATOGA SPRINGS NY 12866

Column A Destination ZIP Codes	Column B Label Container To (Change From)	Column B Label Container To (Change To)
12885	PLATTSBURGH NY 12901	FORT ANN NY 12827
12887	PLATTSBURGH NY 12901	FORT ANN NY 12827
12901	PLATTSBURGH NY 12901	KEESEVILLE NY 12911
12903	PLATTSBURGH NY 12901	KEESEVILLE NY 12911
12918	KEESEVILLE NY 12911	MALONE NY 12953
12921	MALONE NY 12953	KEESEVILLE NY 12911
12928	KEESEVILLE NY 12911	MALONE NY 12953
12944	KEESEVILLE NY 12911	MALONE NY 12953
12962	KEESEVILLE NY 12911	MALONE NY 12953
12972	KEESEVILLE NY 12911	MALONE NY 12953
12974	KEESEVILLE NY 12911	MALONE NY 12953
12979	KEESEVILLE NY 12911	MALONE NY 12953
12981	KEESEVILLE NY 12911	MALONE NY 12953
12986	MALONE NY 12953	KEESEVILLE NY 12911
28037	HUNTERSVILLE NC 28070	CONCORD NC 28025
60901	BOURBONNAIS IL 60914	AROMA PARK IL 60910
60910	BOURBONNAIS IL 60914	AROMA PARK IL 60910
60911	PAXTON IL 60957	CLIFTON IL 60927
60912	MANTENO IL 60950	CLIFTON IL 60927
60913	BOURBONNAIS IL 60914	AROMA PARK IL 60910
60914	BOURBONNAIS IL 60914	AROMA PARK IL 60910
60915	BOURBONNAIS IL 60914	AROMA PARK IL 60910
60917	BOURBONNAIS IL 60914	AROMA PARK IL 60910
60918	PAXTON IL 60957	CLIFTON IL 60927
60919	BOURBONNAIS IL 60914	AROMA PARK IL 60910
60920	BOURBONNAIS IL 60914	AROMA PARK IL 60910
60921	MANTENO IL 60950	CLIFTON IL 60927
60922	PAXTON IL 60957	CLIFTON IL 60927
60924	PAXTON IL 60957	CLIFTON IL 60927
60926	PAXTON IL 60957	CLIFTON IL 60927
60927	PAXTON IL 60957	CLIFTON IL 60927
60928	MANTENO IL 60950	CLIFTON IL 60927
60929	PAXTON IL 60957	AROMA PARK IL 60910
60930	PAXTON IL 60957	CLIFTON IL 60927
60931	MANTENO IL 60950	CLIFTON IL 60927
60932	PAXTON IL 60957	CLIFTON IL 60927
60933	PAXTON IL 60957	CLIFTON IL 60927
60934	PAXTON IL 60957	AROMA PARK IL 60910
60935	PAXTON IL 60957	AROMA PARK IL 60910
60936	PAXTON IL 60957	CLIFTON IL 60927
60938	MANTENO IL 60950	CLIFTON IL 60927
60939	MANTENO IL 60950	CLIFTON IL 60927
60940	PAXTON IL 60957	CLIFTON IL 60927
60941	PAXTON IL 60957	AROMA PARK IL 60910
60942	PAXTON IL 60957	CLIFTON IL 60927
60944	PAXTON IL 60957	CLIFTON IL 60927
60945	MANTENO IL 60950	CLIFTON IL 60927
60946	PAXTON IL 60957	AROMA PARK IL 60910
60948	PAXTON IL 60957	CLIFTON IL 60927
60949	PAXTON IL 60957	CLIFTON IL 60927

Column A Destination ZIP Codes	Column B Label Container To (Change From)	Column B Label Container To (Change To)
60950	MANTENO IL 60950	AROMA PARK IL 60910
60951	MANTENO IL 60950	CLIFTON IL 60927
60952	MANTENO IL 60950	CLIFTON IL 60927
60953	MANTENO IL 60950	CLIFTON IL 60927
60954	PAXTON IL 60957	AROMA PARK IL 60910
60955	MANTENO IL 60950	CLIFTON IL 60927
60956	MANTENO IL 60950	CLIFTON IL 60927
60957	PAXTON IL 60957	CLIFTON IL 60927
60958	PAXTON IL 60957	CLIFTON IL 60927
60959	MANTENO IL 60950	CLIFTON IL 60927
60960	PAXTON IL 60957	CLIFTON IL 60927
60961	PAXTON IL 60957	AROMA PARK IL 60910
60962	MANTENO IL 60950	CLIFTON IL 60927
60963	MANTENO IL 60950	CLIFTON IL 60927
60964	PAXTON IL 60957	CLIFTON IL 60927
60966	MANTENO IL 60950	CLIFTON IL 60927
60967	MANTENO IL 60950	CLIFTON IL 60927
60968	MANTENO IL 60950	CLIFTON IL 60927
60969	PAXTON IL 60957	AROMA PARK IL 60910
60970	MANTENO IL 60950	CLIFTON IL 60927
60973	PAXTON IL 60957	CLIFTON IL 60927
60974	MANTENO IL 60950	CLIFTON IL 60927
61701	TOWANDA IL 61776	BLOOMINGTON IL 61709
61702	BLOOMINGTON IL 61702	BLOOMINGTON IL 61709
61704	TOWANDA IL 61776	BLOOMINGTON IL 61709
61705	BLOOMINGTON IL 61702	BLOOMINGTON IL 61709
61720	BLOOMINGTON IL 61702	MAHOMET IL 61853
61721	BLOOMINGTON IL 61702	ARMINGTON IL 61721
61722	BLOOMINGTON IL 61702	MAHOMET IL 61853
61723	PONTIAC IL 61764	ARMINGTON IL 61721
61724	BLOOMINGTON IL 61702	MAHOMET IL 61853
61725	PONTIAC IL 61764	ARMINGTON IL 61721
61726	PONTIAC IL 61764	MAHOMET IL 61853
61727	PONTIAC IL 61764	ARMINGTON IL 61721
61728	PONTIAC IL 61764	MAHOMET IL 61853
61729	BLOOMINGTON IL 61702	ARMINGTON IL 61721
61730	PONTIAC IL 61764	MAHOMET IL 61853
61731	PONTIAC IL 61764	MAHOMET IL 61853
61732	BLOOMINGTON IL 61702	ARMINGTON IL 61721
61733	PONTIAC IL 61764	ARMINGTON IL 61721
61734	BLOOMINGTON IL 61702	ARMINGTON IL 61721
61735	BLOOMINGTON IL 61702	ARMINGTON IL 61721
61736	PONTIAC IL 61764	ARMINGTON IL 61721
61737	PONTIAC IL 61764	MAHOMET IL 61853
61738	BLOOMINGTON IL 61702	MAHOMET IL 61853
61739	PONTIAC IL 61764	MAHOMET IL 61853
61740	BLOOMINGTON IL 61702	MAHOMET IL 61853
61741	BLOOMINGTON IL 61702	MAHOMET IL 61853
61742	PONTIAC IL 61764	ARMINGTON IL 61721

Column A Destination ZIP Codes	Column B Label Container To (Change From)	Column B Label Container To (Change To)
61743	BLOOMINGTON IL 61702	MAHOMET IL 61853
61744	BLOOMINGTON IL 61702	MAHOMET IL 61853
61745	PONTIAC IL 61764	ARMINGTON IL 61721
61747	BLOOMINGTON IL 61702	ARMINGTON IL 61721
61748	BLOOMINGTON IL 61702	BLOOMINGTON IL 61709
61749	PONTIAC IL 61764	ARMINGTON IL 61721
61752	PONTIAC IL 61764	MAHOMET IL 61853
61753	PONTIAC IL 61764	BLOOMINGTON IL 61709
61756	PONTIAC IL 61764	ARMINGTON IL 61721
61758	SHIRLEY IL 61772	BLOOMINGTON IL 61709
61759	BLOOMINGTON IL 61702	ARMINGTON IL 61721
61760	BLOOMINGTON IL 61702	MAHOMET IL 61853
61761	SHIRLEY IL 61772	ARMINGTON IL 61721
61764	PONTIAC IL 61764	MAHOMET IL 61853
61769	BLOOMINGTON IL 61702	ARMINGTON IL 61721
61770	PONTIAC IL 61764	ARMINGTON IL 61721
61771	BLOOMINGTON IL 61702	ARMINGTON IL 61721
61772	SHIRLEY IL 61772	ARMINGTON IL 61721
61774	BLOOMINGTON IL 61702	ARMINGTON IL 61721
61775	BLOOMINGTON IL 61702	MAHOMET IL 61853
61776	TOWANDA IL 61776	BLOOMINGTON IL 61709
61777	PONTIAC IL 61764	ARMINGTON IL 61721
61778	PONTIAC IL 61764	ARMINGTON IL 61721
61801	FAIRMOUNT IL 61841	URBANA IL 61803
61802	FAIRMOUNT IL 61841	URBANA IL 61803
61803	FAIRMOUNT IL 61841	URBANA IL 61803
61810	BROADLANDS IL 61816	ALLERTON IL 61810
61811	ALVIN IL 61811	DANVILLE IL 61834
61812	FAIRMOUNT IL 61841	URBANA IL 61803
61813	CISCO IL 61830	MAHOMET IL 61853
61814	ALVIN IL 61811	DANVILLE IL 61834
61815	CISCO IL 61830	CHAMPAIGN IL 61824
61816	BROADLANDS IL 61816	ALLERTON IL 61810
61817	ALVIN IL 61811	DANVILLE IL 61834
61818	CISCO IL 61830	CHAMPAIGN IL 61824
61820	CHAMPAIGN IL 61822	CHAMPAIGN IL 61824
61821	CHAMPAIGN IL 61822	CHAMPAIGN IL 61824
61822	CHAMPAIGN IL 61822	CHAMPAIGN IL 61824
61824	BROADLANDS IL 61816	CHAMPAIGN IL 61824
61825	BROADLANDS IL 61816	CHAMPAIGN IL 61824
61826	BROADLANDS IL 61816	CHAMPAIGN IL 61824
61830	CISCO IL 61830	CHAMPAIGN IL 61824
61831	FAIRMOUNT IL 61841	URBANA IL 61803
61832	ALVIN IL 61811	DANVILLE IL 61834
61833	ALVIN IL 61811	DANVILLE IL 61834
61834	ALVIN IL 61811	DANVILLE IL 61834
61839	CISCO IL 61830	MAHOMET IL 61853
61840	FAIRMOUNT IL 61841	URBANA IL 61803
61841	FAIRMOUNT IL 61841	URBANA IL 61803
61842	BROADLANDS IL 61816	MAHOMET IL 61853
61843	FAIRMOUNT IL 61841	URBANA IL 61803
61844	FAIRMOUNT IL 61841	URBANA IL 61803

Column A Destination ZIP Codes	Column B Label Container To (Change From)	Column B Label Container To (Change To)
61845	FAIRMOUNT IL 61841	URBANA IL 61803
61846	CISCO IL 61830	DANVILLE IL 61834
61847	FAIRMOUNT IL 61841	URBANA IL 61803
61848	CISCO IL 61830	URBANA IL 61803
61849	CISCO IL 61830	URBANA IL 61803
61850	CISCO IL 61830	DANVILLE IL 61834
61851	ALVIN IL 61811	ALLERTON IL 61810
61852	BROADLANDS IL 61816	ALLERTON IL 61810
61853	BROADLANDS IL 61816	MAHOMET IL 61853
61854	CISCO IL 61830	MAHOMET IL 61853
61855	CISCO IL 61830	MAHOMET IL 61853
61856	CISCO IL 61830	MAHOMET IL 61853
61857	FAIRMOUNT IL 61841	URBANA IL 61803
61858	ALVIN IL 61811	DANVILLE IL 61834
61859	FAIRMOUNT IL 61841	URBANA IL 61803
61862	CISCO IL 61830	URBANA IL 61803
61863	BROADLANDS IL 61816	DANVILLE IL 61834
61864	ALVIN IL 61811	URBANA IL 61803
61865	CISCO IL 61830	URBANA IL 61803
61866	CISCO IL 61830	URBANA IL 61803
61870	CISCO IL 61830	DANVILLE IL 61834
61871	FAIRMOUNT IL 61841	URBANA IL 61803
61872	ALVIN IL 61811	ALLERTON IL 61810
61873	FAIRMOUNT IL 61841	URBANA IL 61803
61874	BROADLANDS IL 61816	ALLERTON IL 61810
61875	CISCO IL 61830	CHAMPAIGN IL 61824
61876	CISCO IL 61830	DANVILLE IL 61834
61877	CISCO IL 61830	URBANA IL 61803
61878	CISCO IL 61830	URBANA IL 61803
61880	BROADLANDS IL 61816	ALLERTON IL 61810
61882	CISCO IL 61830	MAHOMET IL 61853
61883	WESTVILLE IL 61883	DANVILLE IL 61834
61884	CISCO IL 61830	MAHOMET IL 61853
61910	ALVIN IL 61811	ALLERTON IL 61810
61911	ALVIN IL 61811	ALLERTON IL 61810
61912	BROADLANDS IL 61816	DANVILLE IL 61834
61913	ALVIN IL 61811	ALLERTON IL 61810
61914	CISCO IL 61830	MAHOMET IL 61853
61917	ALVIN IL 61811	DANVILLE IL 61834
61919	BROADLANDS IL 61816	ALLERTON IL 61810
61920	WESTVILLE IL 61883	ALLERTON IL 61810
61924	CISCO IL 61830	DANVILLE IL 61834
61925	CISCO IL 61830	MAHOMET IL 61853
61928	ALVIN IL 61811	ALLERTON IL 61810
61929	CISCO IL 61830	MAHOMET IL 61853
61930	BROADLANDS IL 61816	DANVILLE IL 61834
61931	ALVIN IL 61811	ALLERTON IL 61810
61932	CISCO IL 61830	DANVILLE IL 61834
61933	BROADLANDS IL 61816	DANVILLE IL 61834
61936	CISCO IL 61830	MAHOMET IL 61853
61937	CISCO IL 61830	MAHOMET IL 61853
61938	WESTVILLE IL 61883	ALLERTON IL 61810
61940	CISCO IL 61830	DANVILLE IL 61834
61941	BROADLANDS IL 61816	ALLERTON IL 61810
61942	BROADLANDS IL 61816	ALLERTON IL 61810
61943	BROADLANDS IL 61816	DANVILLE IL 61834
61944	WESTVILLE IL 61883	DANVILLE IL 61834
61949	ALVIN IL 61811	DANVILLE IL 61834
61951	WESTVILLE IL 61883	ALLERTON IL 61810
61953	WESTVILLE IL 61883	ALLERTON IL 61810
61955	WESTVILLE IL 61883	DANVILLE IL 61834
61956	BROADLANDS IL 61816	ALLERTON IL 61810

Column A Destination ZIP Codes	Column B Label Container To (Change From)	Column B Label Container To (Change To)
61957	WESTVILLE IL 61883	ALLERTON IL 61810
62401	EFFINGHAM IL 62401	ALTAMONT IL 62411
62410	ANNAPOLIS IL 62413	OLNEY IL 62450
62411	ANNAPOLIS IL 62413	ALTAMONT IL 62411
62413	ANNAPOLIS IL 62413	OLNEY IL 62450
62414	ANNAPOLIS IL 62413	ALTAMONT IL 62411
62417	CASEY IL 62420	OLNEY IL 62450
62418	ANNAPOLIS IL 62413	ALTAMONT IL 62411
62419	ANNAPOLIS IL 62413	OLNEY IL 62450
62420	CASEY IL 62420	ALTAMONT IL 62411
62421	ANNAPOLIS IL 62413	OLNEY IL 62450
62422	ANNAPOLIS IL 62413	ALTAMONT IL 62411
62423	ANNAPOLIS IL 62413	ALTAMONT IL 62411
62424	ANNAPOLIS IL 62413	ALTAMONT IL 62411
62425	ANNAPOLIS IL 62413	OLNEY IL 62450
62426	ANNAPOLIS IL 62413	ALTAMONT IL 62411
62427	ANNAPOLIS IL 62413	OLNEY IL 62450
62428	ANNAPOLIS IL 62413	OLNEY IL 62450
62431	ANNAPOLIS IL 62413	ALTAMONT IL 62411
62432	ANNAPOLIS IL 62413	ALTAMONT IL 62411
62433	ANNAPOLIS IL 62413	OLNEY IL 62450
62434	ANNAPOLIS IL 62413	OLNEY IL 62450
62436	ANNAPOLIS IL 62413	ALTAMONT IL 62411
62438	ANNAPOLIS IL 62413	ALTAMONT IL 62411
62439	CASEY IL 62420	OLNEY IL 62450
62440	ANNAPOLIS IL 62413	ALTAMONT IL 62411
62441	EFFINGHAM IL 62401	ALTAMONT IL 62411
62442	ANNAPOLIS IL 62413	ALTAMONT IL 62411
62443	ANNAPOLIS IL 62413	ALTAMONT IL 62411
62444	ANNAPOLIS IL 62413	ALTAMONT IL 62411
62445	ANNAPOLIS IL 62413	ALTAMONT IL 62411
62446	ANNAPOLIS IL 62413	OLNEY IL 62450
62447	ANNAPOLIS IL 62413	ALTAMONT IL 62411
62448	CASEY IL 62420	OLNEY IL 62450
62449	CASEY IL 62420	OLNEY IL 62450
62450	CASEY IL 62420	OLNEY IL 62450
62451	CASEY IL 62420	OLNEY IL 62450
62452	CASEY IL 62420	OLNEY IL 62450
62454	CASEY IL 62420	OLNEY IL 62450
62458	ANNAPOLIS IL 62413	ALTAMONT IL 62411
62459	CASEY IL 62420	OLNEY IL 62450
62460	CASEY IL 62420	OLNEY IL 62450
62461	ANNAPOLIS IL 62413	ALTAMONT IL 62411
62462	ANNAPOLIS IL 62413	ALTAMONT IL 62411
62463	ANNAPOLIS IL 62413	ALTAMONT IL 62411
62464	CASEY IL 62420	OLNEY IL 62450
62465	ANNAPOLIS IL 62413	ALTAMONT IL 62411
62466	CASEY IL 62420	OLNEY IL 62450
62467	EFFINGHAM IL 62401	ALTAMONT IL 62411
62468	CASEY IL 62420	ALTAMONT IL 62411
62469	ANNAPOLIS IL 62413	ALTAMONT IL 62411
62471	EFFINGHAM IL 62401	ALTAMONT IL 62411
62473	ANNAPOLIS IL 62413	ALTAMONT IL 62411
62474	CASEY IL 62420	ALTAMONT IL 62411
62475	CASEY IL 62420	OLNEY IL 62450
62476	CASEY IL 62420	OLNEY IL 62450
62477	CASEY IL 62420	OLNEY IL 62450
62478	CASEY IL 62420	OLNEY IL 62450
62479	ANNAPOLIS IL 62413	ALTAMONT IL 62411
62480	CASEY IL 62420	ALTAMONT IL 62411
62481	ANNAPOLIS IL 62413	ALTAMONT IL 62411

Newly Added

Column A Destination ZIP Codes	Column B Label Container To (Added To)
12762	LONG EDDY NY 12760
12778	LONG EDDY NY 12760
61709	BLOOMINGTON IL 61709
61710	BLOOMINGTON IL 61709
61750	ARMINGTON IL 61721
61751	ARMINGTON IL 61721
61773	MAHOMET IL 61853
61790	BLOOMINGTON IL 61709
61791	BLOOMINGTON IL 61709
61799	BLOOMINGTON IL 61709

Deleted

Column A Destination ZIP Codes	Column B Label Container To (Deleted From)
12223	ALBANY NY 12202
12226	ALBANY NY 12206
61754	PONTIAC IL 61764
61755	BLOOMINGTON IL 61702

* * * * *

L201 Periodicals Origin Split and First-Class Mail Mixed ADC/AADC

Column A Originating ZIP Codes (Change From)	Column A Originating ZIP Codes (Change To)	Column B Label To (Change From)	Column B Label To (Change To)	Column C Label Container To (Change From)	Column C Label Container To (Change To)
540, 546-548, 550-551, 556- 559	540, 546-548, 550-551, 556-559	005, 066, 068-119, 130-201, 206-212, 214-232, 238-268, 270-277, 280-293, 295-297, 300-303, 305-307, 311, 324- 325, 350-352, 354-397, 399- 418, 420-427, 430-516, 520- 528, 530-532, 534-535, 537- 551, 553-567, 570-577, 580- 588, 590-597, 600-620, 622- 631, 633-641, 644-658, 660- 662, 664-678, 680-681, 683- 693, 700-701, 703-708, 710- 714, 716-731, 733-738, 740- 741, 743-767, 770, 772-778, 780-782, 786-789, 793-794, 800-812, 814-816, 820-832, 834, 840-847, 881-882, 898	005, 066, 068-119, 130-201, 206-212, 214-232, 238-268, 270-293, 295-297, 300-303, 305-307, 311, 324-325, 350- 352, 354-397, 399-418, 420- 427, 430-516, 520-528, 530- 532, 534-535, 537-551, 553- 567, 570-577, 580-588, 590- 597, 600-620, 622-631, 633- 641, 644-658, 660-662, 664- 678, 680-681, 683-693, 700- 701, 703-708, 710-714, 716- 731, 733-738, 740-741, 743- 767, 770, 772-778, 780-782, 786-789, 793-794, 800-812, 814-816, 820-832, 834, 840- 847, 881-882, 898	ST PAUL MN 550	ST PAUL MN 550

Column A: No change.
Column B added: 278-279.
Column C: No change.

Column A Originating ZIP Codes (Change From)	Column A Originating ZIP Codes (Change To)	Column B Label To (Change From)	Column B Label To (Change To)	Column C Label Container To (Change From)	Column C Label Container To (Change To)
553-555, 560- 564	553-555, 560-564	005, 066, 068-119, 130-201, 206-212, 214-232, 238-268, 270-277, 280-293, 295-297, 300-303, 305-307, 311, 324- 325, 350-352, 354-397, 399- 418, 420-427, 430-516, 520- 528, 530-532, 534-535, 537- 551, 553-567, 570-577, 580- 588, 590-597, 600-620, 622- 631, 633-641, 644-658, 660- 662, 664-678, 680-681, 683- 693, 700-701, 703-708, 710- 714, 716-731, 733-738, 740- 741, 743-767, 770, 772-778, 780-782, 786-789, 793-794, 800-812, 814-816, 820-832, 834, 840-847, 881-882, 898	005, 066, 068-119, 130-201, 206-212, 214-232, 238-268, 270-293, 295-297, 300-303, 305-307, 311, 324-325, 350- 352, 354-397, 399-418, 420- 427, 430-516, 520-528, 530- 532, 534-535, 537-551, 553- 567, 570-577, 580-588, 590- 597, 600-620, 622-631, 633- 641, 644-658, 660-662, 664- 678, 680-681, 683-693, 700- 701, 703-708, 710-714, 716- 731, 733-738, 740-741, 743- 767, 770, 772-778, 780-782, 786-789, 793-794, 800-812, 814-816, 820-832, 834, 840- 847, 881-882, 898	MINNEAPOLIS MN 553	MINNEAPOLIS MN 553

Column A: No change.
Column B added: 278-279.
Column C: No change.

Pull-Out Information

Fraud

Invalid USPS Corporate Account Numbers

Provide this listing to Contract Postal Units and acceptance clerks in non-POS locations without intranet access to validate a USPS Corporate Account (USPSCA) number online. For all other locations, online USPSCA validation is preferred. This list supersedes all previous notices, which you must recycle.

Acceptance clerks must not accept Priority Mail Express® shipments bearing an invalid USPSCA number in the “Payment by Account” or “Agreement Number” section of the label or form.

Note: The first 6 digits of a 9-digit Custom Designed Service and Next Day Pickup Agreement make up the Corporate Account Number.

005313	070331	115357	117069	117239	117600	118031	171309	403100	601386	627035	901791	983060
008479	071319	115393	117071	117246	117611	118036	171350	451044	601543	627083	902285	983100
008879	071722	115416	117083	117248	117764	118045	191092	452023	601785	630644	906258	985222
014767	075607	115528	117086	117249	117772	118070	198008	476029	603011	631228	925037	985225
015397	076022	115566	117091	117251	117780	118531	210778	481304	606069	633023	925084	988049
017005	076711	115756	117101	117264	117796	118583	300103	483727	606269	662190	931158	995245
018098	080055	117008	117105	117266	117855	119180	301007	490258	606692	662360	948344	995528
019913	080544	117017	117113	117270	117857	119191	302139	490555	607222	687030	950138	995685
020622	088001	117019	117167	117288	117924	119352	303116	494276	607894	701090	968389	995930
022476	100787	117038	117180	117303	117930	120144	303117	498240	608041	799030	981455	997080
032131	100975	117044	117181	117497	117961	121201	306766	531886	609100	809106	981892	997219
038090	104671	117058	117196	117523	117964	122047	381285	600287	617208	810018	982113	999200
070105	105714	117059	117211	117527	117974	152101	381382	601158	617608	841368	982365	
070169	115345	117061	117213	117584	118021	152891	403099	601289	618100	900021	982605	

— Product Information Requirements, Mail Entry and Payment Technology, 9-9-21

Missing, Lost, or Stolen U.S. Money Order Forms

Do Not Cash — Upon Receipt, Notify Local Postal Inspectors

Provide this listing to all Postal Service™ employees responsible for accepting and cashing postal money orders. Destroy all interim notices when the numbers listed appear in the *Postal Bulletin*. The new money order serial

numbers consist of the first 10 digits. The eleventh digit is a check digit only.

Do not cash outdated money orders **104 151 601 to 692 600 000**. Advise holders to send invalid money orders to Canada Post Corporation, Ottawa, Canada K1A 0B1. Check for altered dollar amounts by holding money orders to the light.

010 001 0200 to 0299	044 087 3457 to 3499	084 478 3920 to 3999	176 281 7963 to 7999
010 504 1932 to 1999	044 087 4000 to 4099	086 000 8271 to 8299	176 731 6586 to 6599
011 582 1889 to 1899	044 226 2487 to 2512	086 798 3840 to 3849	178 254 5000 to 9999
011 588 2900 to 3099	044 306 4200 to 4299	088 404 4472 to 4499	178 881 9900 to 9999
012 441 0784 to 0799	044 306 4370 to 4599	088 404 5584 to 5699	180 031 2089 to 2098
012 579 5675 to 5699	045 524 4121 to 4298	088 757 8688 to 8699	180 403 7723 to 7741
013 289 6176 to 6199	046 800 9870 to 9899	088 757 9400 to 9499	180 428 4580 to 0599
013 610 0014 to 0099	047 352 4000 to 4099	089 358 2248 to 2257	182 368 7544 to 0599
014 932 1000 to 1099	048 383 7650 to 7659	090 663 9678 to 9684	182 475 3229 to 3258
014 972 0800 to 0899	048 396 3647 to 3699	091 818 0071 to 0099	182 475 3904 to 3933
015 363 0065 to 0099	051 142 0755 to 0799	093 106 9346 to 9355	182 631 0031 to 0099
017 028 3200 to 3299	051 774 8857 to 8899	093 203 0500 to 0599	182 911 6539 to 6600
018 569 5333 to 5399	051 781 2875 to 2885	093 684 3630 to 3699	184 218 2760 to 2799
018 986 5264 to 5299	051 977 7010 to 7023	094 081 5074 to 5099	185 828 1474 to 1499
019 518 2814 to 2899	052 058 7115 to 7199	094 216 2555 to 2599	186 132 7583 to 0599
020 698 5159 to 5199	054 450 1130 to 1167	094 580 7062 to 7099	186 629 0589 to 0599
020 844 7307 to 7399	057 670 0563 to 0599	094 639 4200 to 4299	187 184 6177 to 0199
020 972 8948 to 8999	058 187 3836 to 3899	095 070 7186 to 7199	187 323 8200 to 8299
022 021 9110 to 9181	058 523 3003 to 3099	095 076 8300 to 8399	187 441 6080 to 6099
022 037 1411 to 1499	058 591 1153 to 1299	095 354 6864 to 6899	188 831 6774 to 6799
022 527 9201 to 9210	058 895 3746 to 3799	097 224 1350 to 1599	188 835 6370 to 6399
022 529 1882 to 1899	059 986 0814 to 0899	100 160 3800 to 3899	189 083 1064 to 1099
023 637 7169 to 7199	060 406 7650 to 7699	104 667 6400 to 6499	189 660 9583 to 9599
024 380 4100 to 4199	063 491 8122 to 8199	104 876 8937 to 8999	191 179 0377 to 0399
024 496 6870 to 6896	063 916 9968 to 9999	112 049 4413 to 4499	192 050 5762 to 5781
025 092 0987 to 0999	064 091 4500 to 4599	112 870 9765 to 9799	194 456 8600 to 0699
025 369 5535 to 5599	065 170 0471 to 0499	113 319 2000 to 2099	195 194 6881 to 6899
025 729 1151 to 1199	065 255 7909 to 7999	114 402 3850 to 3899	195 874 1112 to 1199
025 729 1643 to 1799	065 392 6345 to 6399	114 866 5368 to 5397	196 979 0524 to 0599
026 492 3180 to 3199	066 099 2014 to 2099	116 154 2800 to 2899	197 244 6100 to 6199
027 361 0430 to 0499	066 648 2880 to 2899	116 986 4400 to 4499	197 244 6300 to 6399
027 369 4482 to 4495	066 787 3639 to 3699	117 175 1647 to 5169	197 244 6400 to 6499
027 671 8762 to 8776	066 845 7500 to 9999	117 951 4687 to 4699	197 244 6500 to 6599
027 787 9886 to 9899	067 093 3869 to 3899	117 951 5200 to 5299	197 244 6600 to 6699
027 965 9487 to 9499	068 895 0334 to 0399	119 786 3051 to 3064	197 244 6700 to 6799
028 100 8069 to 8099	070 724 4488 to 4499	119 815 8961 to 6199	197 244 6800 to 8999
028 191 1852 to 1999	070 841 9181 to 9199	119 850 7400 to 7499	198 285 2556 to 2566
028 850 3000 to 3199	070 844 2546 to 2599	119 850 7700 to 7999	199 105 0778 to 0799
029 510 1500 to 1599	070 916 1340 to 1399	121 634 0460 to 0499	199 678 2968 to 2999
030 687 0903 to 0999	071 047 5768 to 5799	122 451 9879 to 9899	202 748 5133 to 5199
030 701 3442 to 3499	071 179 9800 to 9899	122 714 6805 to 6900	202 748 5245 to 5299
031 077 4507 to 4799	071 386 3682 to 3699	124 916 0304 to 0499	202 748 5300 to 5399
032 295 7500 to 9999	071 507 6840 to 6899	126 423 0136 to 0169	202 748 5400 to 5499
034 394 1000 to 1099	072 045 9641 to 9699	127 500 2328 to 2399	203 256 1240 to 1299
034 943 0400 to 0799	072 675 8287 to 8299	160 901 2254 to 2299	204 230 3577 to 3595
035 035 4337 to 4399	073 763 0867 to 0876	161 103 6581 to 6599	205 019 0174 to 0199
037 312 7500 to 7599	073 763 0878 to 0887	161 194 2857 to 0899	206 936 3184 to 3199
037 706 9578 to 9599	073 763 0889 to 0898	162 032 4447 to 4499	207 196 9900 to 9999
037 805 3677 to 3699	077 617 5481 to 5499	163 257 1085 to 1099	207 204 0700 to 0799
037 909 5490 to 5499	077 999 4001 to 4090	164 359 2406 to 2499	207 204 0800 to 0899
037 931 4660 to 4699	078 174 4475 to 4499	166 101 1433 to 1499	207 514 3857 to 3899
039 145 6521 to 6595	078 219 4931 to 4999	167 555 5201 to 5212	208 556 4707 to 4799
040 024 3901 to 3999	078 250 4756 to 4799	167 555 5214 to 5299	210 057 4038 to 4047
040 674 7100 to 7199	078 823 8312 to 8399	169 618 6274 to 6299	210 221 0548 to 0599
040 688 8816 to 8899	079 374 0300 to 2499	171 806 6878 to 6893	214 061 4711 to 4724
041 299 6752 to 6799	079 807 2342 to 2399	173 639 4685 to 4699	214 303 6311 to 6325
041 623 8889 to 8899	082 721 0228 to 0254	174 238 2779 to 2799	214 303 6239 to 6258
041 803 6565 to 6599	083 140 5000 to 7499	174 281 9347 to 9399	214 877 4251 to 4273
043 129 1968 to 1997	083 784 8886 to 8899	175 251 2600 to 0699	215 252 3918 to 3992
043 205 5922 to 5999	083 913 6915 to 6999	176 281 7937 to 7950	217 585 1400 to 1499

218 698 2157	to	2199	253 565 7400	to	7499	258 405 6900	to	6999	262 337 4600	to	4699
218 746 0800	to	0899	254 252 2800	to	2899	258 405 7000	to	7099	262 337 4700	to	4799
219 095 0100	to	0399	254 252 2900	to	2999	258 405 7100	to	7199	262 337 4800	to	4899
219 389 1885	to	1899	254 252 3000	to	3099	258 405 7200	to	7299	262 337 4900	to	4999
219 568 7435	to	7456	254 252 3100	to	3199	258 405 7300	to	7399	262 337 5000	to	5099
219 568 7469	to	7487	254 252 3200	to	3299	258 405 7400	to	7499	262 337 5100	to	5199
221 316 5757	to	5799	254 252 3300	to	3399	258 405 7800	to	7899	262 337 5200	to	5299
223 476 3914	to	3999	254 252 3400	to	3499	258 405 7900	to	7999	262 337 5300	to	5399
223 565 4921	to	4957	254 252 3500	to	3599	258 405 8000	to	8099	262 337 5400	to	5499
223 565 4979	to	4999	254 252 3600	to	3699	258 405 8100	to	8199	262 337 5500	to	5599
224 636 4745	to	4765	254 252 3700	to	3799	258 405 8200	to	8299	262 337 5600	to	5699
224 636 4776	to	4799	254 252 3800	to	3899	258 405 8300	to	8399	262 337 5700	to	5799
224 636 4855	to	4885	254 252 3900	to	3999	258 405 8400	to	8499	262 337 5800	to	5899
224 636 4932	to	4948	254 252 4000	to	4099	258 405 8500	to	8599	262 337 5900	to	5999
224 636 4950	to	4962	254 252 4100	to	4199	258 405 8600	to	8699	262 337 6000	to	6099
224 636 4985	to	4999	254 252 4200	to	4299	258 405 8700	to	8799	262 337 6100	to	6199
224 723 0757	to	0799	254 252 4300	to	4399	258 405 8800	to	8899	262 337 6200	to	6299
224 730 2207	to	2299	254 252 4400	to	4499	258 405 8900	to	8999	262 337 6300	to	6399
225 970 0500	to	0599	254 252 4500	to	4599	258 405 9600	to	9699	262 337 6400	to	6499
225 970 0600	to	0699	254 252 4600	to	4699	258 405 9700	to	9799	262 337 6500	to	6599
225 970 0700	to	0799	254 252 4700	to	4799	258 405 9800	to	9899	262 337 6600	to	6699
227 033 8679	to	8699	254 252 4800	to	4899	258 405 9900	to	9999	262 337 6700	to	6799
227 275 9400	to	9999	254 252 4900	to	4999	259 014 9989	to	9999	262 337 6800	to	6899
228 463 2456	to	2499	254 565 7607	to	7700	259 062 4788	to	4798	262 337 6900	to	6999
228 510 4852	to	4899	254 907 1203	to	1299	259 218 1400	to	1499	262 337 7000	to	7099
229 462 8451	to	8475	255 185 9527	to	9599	259 218 1500	to	1599	262 337 7100	to	7199
229 668 5977	to	5999	255 397 1557	to	1576	259 218 1600	to	1699	262 337 7200	to	7299
229 923 9176	to	9199	255 425 2989	to	2998	259 590 5654	to	5699	262 337 7300	to	7399
229 924 6696	to	6699	255 728 6412	to	6499	259 670 8268	to	8299	262 337 7400	to	7499
230 051 9500	to	9999	255 728 9842	to	9899	259 835 6238	to	6399	262 337 7500	to	7599
236 366 2431	to	2499	256 134 9833	to	9839	259 835 6701	to	6799	262 337 7600	to	7699
236 607 6882	to	6899	256 134 9840	to	9849	260 224 4600	to	4699	262 337 7700	to	7799
236 660 5853	to	5872	256 134 9850	to	9859	260 224 5941	to	5999	262 337 7800	to	7899
239 322 5200	to	5299	256 134 9860	to	9869	260 310 2821	to	2899	262 337 7900	to	7999
239 322 5400	to	5499	256 134 9870	to	9879	260 452 0010	to	0022	262 337 8000	to	8099
239 322 5600	to	5699	256 134 9880	to	9889	260 452 0049	to	4299	262 337 8100	to	8199
239 322 5800	to	5899	256 134 9890	to	9899	260 553 8200	to	8299	262 337 8200	to	8299
239 322 5900	to	5999	256 247 6900	to	6999	260 553 8600	to	8699	262 337 8300	to	8399
239 607 4783	to	4799	256 550 5536	to	5545	260 553 9600	to	9799	262 337 8400	to	8499
240 593 1879	to	1899	256 799 2257	to	2299	260 553 9800	to	9899	262 337 8500	to	8599
242 591 2048	to	2099	257 154 8763	to	8799	260 553 9900	to	9999	262 337 8600	to	8699
242 735 0388	to	0398	257 154 8800	to	8899	260 761 1603	to	1662	262 337 8700	to	8799
242 951 7276	to	7299	257 765 4567	to	4599	261 183 2100	to	2299	262 337 8800	to	8899
243 535 6370	to	6399	257 765 4610	to	4696	261 426 0408	to	0499	262 337 8900	to	8999
244 004 9985	to	9999	257 765 4737	to	4799	262 082 8000	to	8099	262 337 9000	to	9099
244 004 9985	to	9999	257 792 7800	to	7889	262 082 8100	to	8199	262 337 9100	to	9199
244 268 9765	to	9799	257 792 7900	to	7999	262 082 8200	to	8299	262 337 9200	to	9299
244 347 4471	to	4499	257 792 8000	to	8099	262 082 8300	to	8399	262 337 9300	to	9399
249 056 1551	to	1599	257 856 9863	to	9899	262 082 8400	to	8499	262 337 9400	to	9499
249 336 9438	to	9499	258 103 1773	to	1782	262 288 7302	to	7399	262 337 9500	to	9599
249 399 4000	to	4099	258 405 1800	to	1899	262 288 7400	to	7499	262 337 9600	to	9699
249 399 4100	to	4199	258 405 1900	to	1999	262 288 9900	to	9999	262 337 9700	to	9799
249 399 4200	to	4299	258 405 3300	to	3399	262 337 2600	to	2699	262 337 9800	to	9899
249 399 4300	to	4399	258 405 3400	to	3499	262 337 2700	to	2700	262 337 9900	to	9999
249 399 4400	to	4499	258 405 3500	to	3599	262 337 2800	to	2800	262 472 3188	to	3199
249 399 4500	to	4599	258 405 3700	to	3799	262 337 2900	to	2900	262 472 3200	to	3299
249 399 4600	to	4699	258 405 3800	to	3899	262 337 3000	to	3099	262 546 3100	to	3199
249 399 4700	to	4799	258 405 3900	to	3999	262 337 3100	to	3199	262 546 3200	to	3299
249 399 4800	to	4899	258 405 4000	to	4099	262 337 3200	to	3299	262 546 3300	to	3399
249 399 4900	to	4999	258 405 4100	to	4199	262 337 3300	to	3399	262 546 3400	to	3499
250 159 7502	to	7599	258 405 4200	to	4299	262 337 3400	to	3499	262 546 3500	to	3599
250 566 9644	to	9699	258 405 4600	to	4699	262 337 3500	to	3599	262 546 3600	to	3699
250 661 8425	to	8499	258 405 5600	to	5699	262 337 3600	to	3699	262 546 3900	to	3999
251 335 5731	to	5799	258 405 5700	to	5799	262 337 3700	to	3799	262 546 4300	to	4399
251 379 2380	to	2399	258 405 5800	to	5899	262 337 3800	to	3899	262 546 4400	to	4499
252 005 7626	to	7699	258 405 5900	to	5999	262 337 3900	to	3999	262 546 4500	to	4599
252 421 8401	to	8499	258 405 6000	to	6099	262 337 4000	to	4099	262 546 4600	to	4699
252 464 2810	to	2899	258 405 6100	to	6199	262 337 4100	to	4199	262 546 4700	to	4799
252 612 3683	to	3699	258 405 6200	to	6299	262 337 4200	to	4299	262 546 4800	to	4899
252 469 2125	to	2199	258 405 6300	to	6399	262 337 4300	to	4399	262 546 4900	to	4999
252 833 3286	to	3297	258 405 6400	to	6499	262 337 4400	to	4499	262 546 7100	to	7199
253 470 3948	to	3999	258 405 6800	to	6899	262 337 4500	to	4599	262 546 7200	to	7299

262 546 7300	to	7399	389 696 2400	to	2799	410 867 0970	to	0999	435 666 6092	to	6399
262 546 7400	to	7499	389 846 3104	to	3135	411 868 1023	to	1199	436 082 6400	to	6899
262 546 9800	to	9899	389 846 3145	to	3195	411 922 2322	to	2399	436 160 6441	to	6499
262 546 9900	to	9999	389 887 9211	to	9230	412 193 0900	to	0999	437 316 7115	to	7199
262 567 1788	to	1799	389 887 9234	to	9299	412 395 8599	to	8699	437 427 0500	to	3499
263 254 2500	to	2500	390 001 3182	to	3199	412 485 6500	to	6599	439 179 2300	to	2399
263 340 0000	to	0099	390 001 3500	to	3699	412 485 6610	to	6699	439 310 0458	to	0499
263 340 0100	to	0199	390 545 5974	to	5999	412 885 5953	to	5999	440 698 1947	to	1999
263 340 0500	to	0599	391 104 6146	to	6199	414 193 3608	to	3674	440 858 6300	to	6399
263 340 0600	to	0699	391 574 1466	to	1499	414 193 3677	to	3699	440 858 6420	to	7299
263 340 2700	to	2799	391 783 3020	to	3599	414 411 7348	to	7399	441 199 1655	to	1699
263 340 2800	to	2899	391 792 6100	to	6199	414 640 0757	to	0799	443 127 3648	to	3699
263 340 3000	to	3099	392 668 2956	to	2999	414 965 1727	to	1799	443 127 4000	to	4099
264 341 2360	to	2399	392 854 8500	to	8899	417 302 8104	to	8199	443 673 7900	to	7999
264 380 4000	to	4099	393 584 7566	to	7699	417 302 8104	to	8199	443 800 9335	to	9399
264 380 4100	to	4199	393 650 0074	to	0099	417 496 6800	to	6999	444 382 8822	to	8899
264 799 6049	to	6099	393 838 8316	to	8499	417 871 9250	to	9299	444 390 1667	to	1699
264 860 7832	to	7868	393 893 6007	to	6099	417 930 9533	to	9599	444 457 3854	to	3899
265 127 3658	to	3699	394 126 6907	to	6999	418 164 6500	to	6799	450 048 4173	to	4199
265 380 7111	to	7137	394 189 0405	to	0599	418 423 9863	to	9899	450 048 4442	to	4699
265 444 4762	to	4799	394 822 3243	to	3278	418 633 5922	to	5999	450 560 5173	to	5199
265 548 7074	to	7099	394 990 1810	to	1899	418 719 8520	to	8599	450 620 3077	to	3099
266 106 0000	to	2499	395 343 3264	to	3299	418 744 2235	to	2299	450 620 3135	to	3199
266 129 5809	to	5899	395 373 3035	to	3099	418 962 2848	to	2899	450 780 2716	to	2799
266 673 0000	to	2499	395 396 9649	to	9799	419 543 0286	to	0299	450 801 2700	to	2799
266 749 7900	to	7999	395 970 3240	to	3299	419 730 0300	to	0399	451 109 2967	to	2984
266 868 0952	to	0999	397 622 4054	to	4099	420 277 0015	to	0049	451 115 4110	to	4125
266 868 1028	to	1099	397 819 8902	to	8999	420 599 0734	to	0798	451 115 4127	to	4199
266 868 1100	to	1199	398 149 7200	to	7699	420 661 4115	to	4199	451 746 0700	to	0799
266 868 1200	to	1299	399 070 0872	to	0899	420 758 9500	to	9699	452 265 0074	to	0099
267 296 1237	to	1299	399 156 7119	to	7199	420 969 3951	to	3971	452 265 0246	to	0299
267 324 8946	to	8998	399 203 5064	to	5099	420 969 3973	to	3999	452 265 0335	to	0999
268 072 1203	to	1299	399 296 9910	to	9999	421 116 3565	to	3599	452 509 1169	to	1199
271 660 4333	to	4400	399 396 8935	to	8999	421 130 9300	to	9399	452 855 6471	to	6499
273 520 0000	to	9999	399 792 7775	to	7799	421 313 4500	to	4999	452 890 4679	to	4799
273 520 6000	to	8999	399 792 8300	to	8399	421 364 5537	to	5599	452 900 8215	to	8238
273 775 7700	to	7899	400 427 1051	to	1999	421 656 2609	to	2699	453 117 9146	to	9199
273 882 1913	to	1998	401 045 1505	to	1549	421 988 9700	to	9799	453 334 3631	to	3699
274 750 0300	to	0400	401 045 1571	to	1599	422 172 4667	to	4699	453 603 7841	to	7891
274 782 0549	to	0599	401 294 2700	to	2799	422 484 4212	to	4299	453 650 1140	to	1199
302 000 0000	to	9999	401 310 9505	to	9599	422 556 1270	to	1299	453 741 1300	to	1399
349 746 2056	to	2099	401 382 5312	to	5399	422 587 7024	to	7099	454 013 2919	to	2999
350 518 7350	to	7374	402 578 7876	to	7899	422 819 7533	to	7599	454 186 2411	to	2499
360 011 1690	to	1699	403 125 6744	to	6799	422 842 5073	to	5087	454 268 4883	to	4899
360 168 6008	to	6099	403 260 7000	to	7499	422 907 7563	to	7599	454 302 5400	to	5499
360 173 8800	to	8899	403 280 6470	to	6499	424 500 6050	to	6099	454 490 8300	to	8399
360 324 2326	to	2399	403 685 8600	to	8699	424 641 8500	to	8599	454 547 7434	to	7499
362 861 3064	to	3099	404 003 0300	to	0399	424 871 6600	to	6699	454 922 4867	to	4895
373 006 2176	to	2199	404 041 8838	to	8899	425 298 2352	to	2399	455 221 1348	to	1499
374 768 2600	to	2699	404 071 4268	to	4299	425 418 4269	to	4299	455 364 2147	to	2199
375 169 4400	to	4599	404 347 5356	to	5399	425 418 4405	to	4499	455 399 5400	to	5499
375 829 3400	to	3499	404 347 5548	to	5599	426 547 4566	to	4599	455 476 0676	to	0699
375 851 9100	to	9199	404 726 4500	to	4599	427 412 6337	to	6499	455 543 0618	to	0699
376 196 0911	to	0999	404 961 5001	to	5199	427 481 0900	to	0999	456 410 9006	to	9099
378 085 3679	to	3699	405 325 0188	to	0198	428 027 2742	to	2752	456 470 4146	to	4299
378 351 1063	to	1099	406 009 4587	to	4599	429 474 4172	to	4199	456 619 4460	to	4499
379 843 5100	to	5199	406 260 6830	to	6899	429 889 2900	to	2999	457 333 2686	to	2699
380 093 9600	to	9699	406 459 6641	to	6999	430 150 4401	to	4599	457 729 1767	to	1777
380 165 1165	to	1199	406 733 3000	to	3999	430 172 9800	to	9899	457 937 8615	to	8699
381 325 4500	to	4599	407 545 1557	to	1599	430 177 1900	to	2099	458 028 9810	to	9899
381 604 2510	to	2699	407 594 0412	to	0599	430 444 9500	to	9699	458 057 2712	to	2999
381 645 9525	to	9599	407 692 9100	to	9299	430 664 4070	to	4099	458 069 9537	to	9599
383 314 3968	to	3999	407 959 2190	to	2199	432 168 8419	to	8499	458 069 9665	to	9699
383 892 1000	to	1344	408 265 2275	to	2288	432 708 6800	to	6999	458 337 5222	to	5299
383 892 1382	to	1399	408 499 7700	to	7799	432 744 1544	to	1599	458 354 7653	to	7999
384 925 3641	to	3654	408 499 7900	to	7999	432 995 9775	to	9799	458 671 8678	to	8699
385 568 2331	to	2399	408 682 8484	to	8599	433 003 5800	to	5899	458 671 8721	to	8798
385 599 7554	to	7575	408 698 7015	to	7099	433 757 3047	to	3099	458 847 5044	to	5999
385 774 2024	to	2099	409 072 3941	to	3999	433 765 4003	to	4099	459 274 7624	to	7699
386 624 1412	to	1599	410 491 2311	to	2399	434 482 7060	to	7199	459 365 5432	to	5499
386 883 8936	to	8999	410 694 8400	to	8599	434 513 2386	to	2399	459 378 5764	to	5799
387 314 5574	to	5599	410 775 1500	to	1599	434 968 3076	to	3092	459 472 4816	to	4999
387 837 6300	to	6399	410 795 7927	to	7999	435 303 1831	to	1842	460 349 6878	to	6899
388 828 0656	to	0699	410 867 0917	to	0966	435 303 1986	to	1999	460 550 1909	to	1999

460 997 5234	to	5299	480 658 0568	to	0599	502 496 6923	to	6999	608 813 9950	to	9999
461 973 6443	to	6499	480 689 5100	to	5199	503 003 2700	to	2899	609 067 5325	to	5399
462 152 0107	to	0299	481 072 9463	to	9499	503 194 5144	to	5153	609 067 5488	to	5499
462 274 1072	to	1099	481 673 0074	to	0095	503 790 9922	to	9948	609 067 5600	to	5699
462 277 8373	to	8399	482 527 1500	to	1599	504 045 4030	to	4099	609 289 6123	to	6199
462 554 6051	to	6099	482 541 5255	to	5299	504 166 0200	to	0599	609 438 4400	to	4499
463 011 5529	to	5540	482 729 6800	to	6899	504 240 1062	to	1399	609 493 1100	to	1199
463 176 4115	to	4199	483 363 7207	to	7299	504 805 3300	to	3499	609 766 8091	to	8999
463 176 4229	to	4299	483 402 2356	to	2399	505 096 0662	to	0699	609 825 4100	to	4115
463 185 2600	to	2799	483 486 5100	to	5199	505 893 7739	to	7799	609 884 2981	to	2999
463 227 7711	to	7799	483 632 1521	to	1599	505 893 7800	to	7999	609 893 1000	to	1099
463 414 4869	to	4899	483 632 2600	to	2799	506 124 0800	to	0999	610 092 3200	to	3299
463 808 3484	to	3499	483 849 1615	to	1699	506 165 7027	to	0099	610 582 4200	to	4299
463 945 7400	to	7899	484 174 4803	to	5299	506 502 5209	to	5299	611 879 6939	to	6999
464 629 9000	to	9399	484 323 8900	to	9199	506 756 1682	to	1699	612 291 8013	to	8099
464 711 4332	to	4399	484 680 5000	to	5038	506 756 1700	to	1799	612 751 5171	to	5199
465 692 3963	to	3999	484 680 5040	to	5074	506 756 1800	to	1899	612 751 5226	to	5299
465 698 8300	to	8599	484 680 5077	to	5099	506 836 5326	to	5399	612 751 6083	to	6099
465 743 7745	to	7799	485 029 4913	to	4999	508 488 6226	to	6299	612 751 6268	to	6299
466 798 6056	to	6067	486 176 0600	to	0699	508 789 8332	to	8399	612 751 6572	to	6599
467 147 4300	to	4399	486 559 7555	to	7599	508 789 8400	to	8499	612 774 2111	to	2199
468 079 5782	to	5799	486 696 3023	to	3199	509 909 0425	to	0435	612 774 2254	to	2299
469 067 2817	to	2899	488 173 7900	to	7999	510 150 2400	to	2499	612 774 2500	to	2599
469 127 8000	to	8199	488 206 4100	to	4199	510 381 3200	to	3299	614 469 0979	to	0999
469 213 0359	to	0399	488 226 0200	to	0299	510 587 9500	to	9599	614 474 3000	to	3099
469 213 0500	to	0599	488 709 3906	to	3999	510 587 9659	to	9699	614 521 3490	to	3499
469 561 8011	to	8099	488 855 8359	to	8399	510 269 9770	to	9999	614 645 1800	to	1899
469 658 1961	to	1999	489 181 8963	to	8999	511 021 5042	to	5099	614 832 1100	to	2099
469 666 9900	to	9999	489 223 2000	to	2099	511 021 5100	to	5199	615 017 7505	to	7599
469 678 1900	to	1999	489 311 1930	to	1999	511 468 1747	to	1799	617 711 6609	to	6699
469 781 4900	to	4999	489 318 6200	to	6300	511 844 0100	to	0199	617 760 5266	to	5299
469 947 6960	to	6999	489 384 0027	to	0099	511 844 0340	to	0399	617 813 3601	to	3699
470 755 5800	to	5818	489 427 0658	to	0899	512 805 3913	to	3919	618 840 9200	to	9299
471 918 0300	to	0999	489 997 5252	to	5299	513 046 0700	to	0726	619 551 7229	to	7299
471 985 2408	to	2419	490 669 5850	to	6099	513 149 0600	to	0699	619 859 3000	to	3099
472 191 6700	to	6799	490 717 7080	to	7099	513 445 3000	to	3199	620 073 9400	to	9499
472 270 2555	to	2599	490 721 6000	to	6099	513 466 2034	to	2044	621 614 7907	to	7930
472 987 0213	to	0241	490 793 1500	to	2099	513 539 9052	to	9099	621 614 7932	to	7999
472 987 0290	to	0299	490 886 8171	to	8199	513 539 9267	to	9299	621 648 8021	to	8199
473 151 2069	to	2199	490 977 9221	to	9240	513 539 9800	to	9899	621 648 8500	to	8599
473 666 9138	to	9199	491 258 8100	to	9099	513 539 9985	to	9999	621 904 8351	to	8599
473 952 3429	to	3499	491 567 1376	to	1399	513 606 5459	to	5490	621 916 1978	to	1989
474 108 5402	to	5499	492 254 4800	to	4899	513 812 1751	to	1799	622 989 8032	to	8099
474 356 5193	to	5299	492 283 5100	to	5199	514 103 3600	to	3699	623 076 9300	to	9399
474 949 3366	to	3399	492 610 6813	to	6899	514 103 3700	to	3799	623 819 5006	to	5099
475 134 9362	to	9399	493 394 5568	to	5599	514 103 3800	to	3899	623 895 8200	to	8399
475 167 9667	to	9699	493 470 2562	to	2599	600 645 3223	to	3299	623 917 0000	to	0099
475 319 3415	to	3499	493 473 7700	to	7799	601 339 1200	to	1399	623 917 0200	to	0299
475 319 3649	to	3799	493 716 2153	to	2199	601 653 5884	to	5899	624 468 5288	to	5299
475 340 6400	to	6599	494 206 2972	to	2999	601 661 7700	to	7799	624 665 3162	to	3198
475 424 8410	to	8499	494 217 3446	to	3999	601 682 5343	to	5399	625 088 6735	to	6799
475 629 9156	to	9199	494 224 0500	to	0599	601 928 1600	to	1699	625 916 9500	to	9799
475 850 6101	to	6199	495 145 0600	to	0699	602 512 2972	to	2999	625 968 8956	to	8999
475 875 2500	to	2599	496 209 7425	to	7499	602 555 2400	to	2799	627 005 3938	to	3999
476 169 8264	to	8299	496 213 8728	to	8799	602 829 7061	to	7099	627 384 3907	to	4099
476 189 3000	to	3499	496 474 5226	to	5248	603 483 9572	to	9599	627 496 7549	to	7599
476 331 2480	to	2499	497 053 8517	to	8699	603 490 7200	to	7299	627 708 3605	to	3699
477 289 8601	to	8699	497 854 8673	to	8699	603 678 7100	to	7199	627 776 2500	to	2599
477 681 5206	to	5299	498 449 8888	to	8899	603 678 7662	to	7699	628 226 3100	to	3199
478 010 4243	to	4268	498 929 8285	to	8499	603 678 7902	to	7999	628 814 4702	to	4799
478 010 4270	to	4291	498 936 5310	to	5399	603 678 8418	to	8499	628 851 9689	to	9699
478 450 5071	to	5099	499 016 5425	to	5499	603 678 8700	to	9999	629 510 7200	to	7299
478 469 7838	to	7858	499 440 8575	to	8899	604 086 0880	to	0899	629 964 4200	to	4294
478 469 7883	to	7899	499 731 6717	to	6799	604 349 1414	to	1499	630 389 3056	to	3071
479 280 9800	to	9899	500 064 1858	to	1869	604 503 7776	to	7799	630 463 0588	to	0599
479 365 9116	to	9176	500 070 5725	to	7799	605 520 9037	to	9099	631 459 9117	to	9199
479 412 9900	to	9999	501 058 0016	to	0026	605 685 4010	to	4099	631 762 9325	to	9399
479 667 6190	to	6199	501 331 0300	to	0399	605 988 6467	to	6499	632 217 4933	to	4999
479 748 9680	to	9699	501 460 0977	to	0999	607 689 7951	to	7960	632 500 0000	to	640 3999
479 860 7000	to	7199	502 227 7645	to	7699	607 728 1276	to	1299	633 110 4165	to	4199
480 526 2000	to	2099	502 424 0200	to	0499	608 727 7100	to	7199	633 110 4303	to	4499
480 640 6330	to	6399	502 424 0600	to	0699	608 727 7273	to	7599	633 438 6429	to	6599

633 588 7173	to	7182	650 130 3400	to	3599	680 761 6800	to	6899	701 601 3457	to	3499
634 725 0700	to	0799	650 213 0406	to	0499	681 677 0540	to	0699	701 605 5913	to	5999
634 803 3239	to	3299	650 555 1749	to	1799	682 070 1029	to	1099	701 695 3982	to	3999
634 807 2474	to	2499	650 564 1900	to	1999	682 956 6280	to	6299	701 695 4148	to	4199
634 827 5900	to	5999	650 627 4212	to	4299	682 956 6490	to	6599	701 695 4227	to	4299
634 886 3428	to	3499	650 736 2043	to	2099	682 956 6700	to	6799	701 708 1741	to	1799
635 559 3449	to	3499	650 739 1540	to	1699	682 965 1178	to	1199	701 736 3966	to	3999
636 289 6214	to	6299	651 741 4415	to	4499	682 965 1201	to	1299	701 772 0870	to	0899
636 634 8007	to	8042	651 882 2800	to	2899	683 118 2389	to	2399	701 838 2800	to	2899
637 150 1200	to	1299	652 754 6317	to	6399	683 378 2000	to	2099	701 941 0600	to	0699
637 562 5828	to	5899	653 131 4945	to	4999	683 378 2117	to	2299	702 171 1603	to	1699
638 042 1647	to	1699	653 426 3300	to	3399	683 415 1200	to	1499	702 195 5109	to	5199
638 049 4984	to	4999	653 455 4874	to	4899	683 444 8159	to	8199	702 254 9300	to	9399
638 318 1115	to	1199	654 238 0000	to	0399	685 154 7780	to	7789	702 264 7569	to	7599
638 318 1453	to	1499	654 404 3065	to	3092	685 297 7645	to	7699	702 519 0513	to	0524
638 885 0000	to	0299	654 962 2900	to	3199	685 623 5264	to	5299	702 713 1800	to	1809
638 903 4362	to	4373	655 103 5081	to	5199	685 650 9487	to	9499	702 821 5730	to	5799
639 415 1929	to	1999	655 523 2600	to	2999	685 669 4200	to	4299	702 821 5805	to	5899
639 415 2019	to	2099	656 305 2448	to	2499	685 757 8452	to	8499	702 844 6975	to	6994
639 420 6200	to	6299	657 347 4438	to	4999	686 071 2694	to	2799	702 846 6331	to	6399
639 469 3517	to	3799	657 710 8100	to	8999	686 176 3333	to	3354	702 848 3900	to	3999
639 605 2143	to	2199	657 780 0985	to	0999	686 372 3200	to	3299	702 857 7302	to	7499
639 657 8600	to	8799	658 586 1400	to	1499	686 644 5879	to	5899	702 878 0114	to	0199
640 289 7500	to	7599	658 877 8000	to	8199	686 899 1371	to	1399	703 364 1707	to	1799
640 289 7700	to	7999	658 880 8000	to	8199	686 931 7636	to	7699	740 002 7710	to	7719
641 170 4420	to	4499	659 398 7300	to	7399	687 601 0973	to	0999	740 037 6730	to	6800
641 318 3133	to	3199	659 706 8113	to	8199	687 614 6774	to	6799	740 119 2275	to	2284
641 378 6500	to	6999	659 846 7837	to	7899	688 120 9000	to	9999	740 130 6688	to	6698
641 383 8739	to	8799	660 510 4100	to	4199	688 314 3107	to	3191	740 144 2780	to	2795
641 877 3187	to	3299	660 673 0400	to	0599	690 291 1361	to	1371	740 241 9049	to	9099
641 877 3310	to	3399	661 488 5000	to	5099	690 788 2877	to	2899	740 252 9265	to	9294
642 355 8094	to	8199	661 609 9100	to	9199	690 893 5344	to	5399	740 255 1718	to	1799
642 355 8308	to	8999	661 716 9420	to	9499	690 893 5512	to	5599	740 274 2602	to	2619
642 900 0018	to	0099	661 906 6522	to	6599	690 904 1300	to	1599	740 277 0366	to	0392
643 030 6254	to	6299	662 021 8332	to	8399	690 941 6000	to	6199	740 332 7658	to	7671
644 066 0882	to	0899	662 068 0700	to	0899	691 313 6383	to	6399	740 348 6641	to	6658
644 069 0600	to	0699	662 553 0774	to	0799	691 313 6600	to	6699	740 351 4790	to	4799
644 077 7506	to	7699	663 078 7034	to	7099	691 582 8003	to	8099	740 374 7416	to	7499
644 085 8157	to	8199	663 763 5300	to	5399	691 664 1800	to	1999	740 470 2420	to	2443
644 112 9839	to	9899	663 883 7039	to	7499	691 664 2400	to	2499	740 514 0300	to	0499
644 373 9083	to	9099	663 938 9200	to	9299	692 727 9362	to	9399	740 523 7432	to	7449
644 380 1460	to	1499	664 253 8000	to	8499	692 798 1800	to	1899	740 535 1555	to	1580
644 733 4715	to	4799	664 656 3055	to	3099	693 249 0779	to	0799	740 557 3570	to	3579
644 900 9712	to	9799	665 174 6400	to	6499	693 249 0877	to	1699	740 650 4104	to	4140
644 901 0109	to	1299	665 274 8208	to	8299	693 445 0566	to	0999	740 684 0620	to	0800
644 901 1325	to	1399	665 669 5400	to	5499	693 448 8500	to	8999	740 701 6105	to	6114
644 923 6800	to	7799	666 132 8226	to	8299	693 645 9583	to	9599	740 705 9790	to	9799
644 932 4655	to	4699	666 696 2209	to	2299	693 965 4200	to	4299	740 726 6400	to	6500
645 318 7240	to	7499	666 696 2309	to	2399	695 741 2906	to	2999	740 748 8319	to	8329
645 333 1766	to	1799	667 032 9300	to	9399	695 947 8518	to	8599	740 765 3306	to	3399
645 790 8632	to	8699	667 729 5529	to	5599	696 662 8247	to	8299	740 774 8434	to	8499
645 821 0657	to	0699	668 383 8400	to	8699	697 447 8285	to	8296	740 779 4259	to	4299
645 930 7948	to	7999	670 368 3400	to	3499	698 042 4816	to	4899	740 786 1885	to	1899
645 975 0737	to	0762	670 369 7336	to	7399	698 131 2138	to	2157	740 790 5989	to	5999
646 242 6200	to	6299	670 750 7169	to	7199	698 227 0000	to	0099	740 803 4870	to	4879
646 270 7639	to	7799	671 046 6200	to	6399	700 065 2570	to	2599	740 820 4854	to	7836
646 798 4000	to	4999	671 251 5448	to	5499	700 065 4800	to	4899	740 827 7578	to	7594
647 048 7035	to	7099	671 926 5600	to	5799	700 190 3350	to	3359	740 917 7490	to	7499
647 049 2900	to	2999	672 444 2000	to	2999	700 228 6048	to	6099	740 918 5531	to	5549
647 398 8300	to	8399	672 828 3410	to	3499	700 650 0452	to	0499	741 037 8528	to	8551
647 398 8481	to	8499	673 167 5776	to	5799	700 666 1323	to	1349	742 030 6135	to	6149
647 437 3000	to	4999	675 464 3700	to	3799	700 786 9106	to	9142	742 033 2663	to	2674
647 811 2188	to	2199	675 464 4000	to	4199	700 859 0744	to	0758	742 040 3300	to	3309
648 009 6057	to	6099	676 365 5958	to	5999	701 028 6780	to	6899	742 112 8155	to	8199
648 163 5300	to	5499	676 669 1024	to	1099	701 213 3900	to	3999	742 151 5000	to	5014
648 722 5283	to	5299	677 126 6734	to	6799	701 267 2000	to	3999	742 191 4640	to	4649
648 892 3164	to	3199	677 333 9979	to	9999	701 335 7312	to	7399	742 192 5210	to	5224
649 100 3989	to	3999	677 466 1088	to	1099	701 369 2005	to	2050	742 222 9200	to	9210
649 647 0370	to	0399	678 071 4500	to	4799	701 499 2260	to	2299	742 228 9660	to	9669
649 647 0522	to	0599	678 096 7531	to	7599	701 503 2247	to	2299	742 247 6980	to	6989
649 647 5237	to	5399	679 909 2578	to	2599	701 541 2271	to	2299	742 290 0936	to	0950
649 647 9100	to	9299	680 112 9565	to	9599	701 553 6557	to	6599	742 302 7600	to	7699
649 666 7800	to	8299	680 244 0903	to	0999	701 578 7460	to	7469	742 305 3711	to	3799
650 114 7707	to	7719	680 412 6046	to	6099	701 578 7475	to	7499	742 305 3800	to	3899

742 305 3900	to	3999	853 049 3646	to	3699	901 287 5143	to	5199	917 370 6300	to	6499
742 305 4000	to	4099	854 304 4089	to	4999	901 291 2789	to	2799	917 486 4900	to	4999
742 305 4100	to	4199	854 529 2200	to	2299	901 525 7122	to	7199	918 460 0602	to	0699
805 885 8411	to	8499	854 532 0000	to	2999	902 089 1253	to	1299	918 951 7231	to	7299
806 087 1100	to	1499	855 001 6204	to	6249	902 198 9769	to	9799	919 519 2786	to	2799
806 268 9275	to	9299	855 319 9364	to	9399	902 948 1269	to	1299	919 536 0770	to	0799
806 534 3400	to	3477	855 361 3390	to	3399	902 985 0833	to	0899	919 814 3095	to	3199
807 342 3283	to	3399	856 226 0490	to	0499	903 370 6934	to	6999	919 889 5110	to	5134
808 086 7100	to	7199	856 656 5800	to	5999	904 600 6523	to	6599	919 889 5137	to	5176
808 090 3440	to	3499	856 752 0200	to	0299	904 892 0378	to	0399	919 889 5178	to	5199
808 325 5161	to	5699	857 111 1352	to	1399	904 892 0648	to	1299	919 889 5030	to	5070
808 784 8000	to	8299	857 279 3450	to	3499	905 056 2216	to	2299	919 889 5090	to	5099
830 125 0672	to	0699	857 843 4000	to	4099	905 510 6647	to	6799	919 915 2774	to	2787
830 602 5800	to	5999	858 124 7644	to	7699	905 510 6900	to	7099	920 155 4662	to	4687
830 610 3700	to	3799	858 756 3111	to	3299	905 794 0000	to	0199	920 309 9039	to	9199
830 983 3500	to	3599	859 063 8200	to	8699	905 794 0288	to	0299	920 771 5321	to	5399
830 983 3635	to	3699	859 190 0600	to	0644	905 873 6900	to	6999	920 857 5500	to	5899
831 354 1387	to	1399	859 437 5538	to	5599	905 873 7100	to	7299	920 864 3480	to	3499
831 815 8240	to	8299	859 811 2888	to	2899	905 880 8900	to	8999	920 963 4567	to	4599
832 525 3810	to	3899	859 855 8873	to	8999	905 889 7100	to	7199	921 333 7400	to	7499
833 159 1884	to	1899	860 240 8520	to	8599	906 158 1508	to	1599	921 477 3762	to	3799
833 456 2567	to	2599	860 275 3900	to	3999	906 558 8812	to	8899	922 278 1048	to	1399
833 566 3015	to	3071	860 518 9629	to	9699	906 982 2214	to	2299	922 280 2019	to	2099
834 130 5200	to	5299	860 600 0021	to	0999	907 725 8500	to	8599	922 280 2233	to	2299
834 316 5444	to	5499	861 158 2350	to	2599	907 815 0216	to	0257	922 773 0459	to	0499
834 354 8747	to	8766	861 367 5400	to	5499	908 622 4225	to	4235	923 032 7000	to	7399
834 354 8824	to	8838	861 637 6010	to	6099	908 936 9254	to	9299	923 045 3630	to	3699
835 269 5700	to	5799	861 979 7292	to	7499	909 066 4494	to	7499	923 484 3600	to	3699
835 496 7303	to	7399	862 216 6100	to	6199	909 067 7400	to	7499	923 493 9403	to	9599
835 539 5200	to	5999	862 263 9213	to	9299	909 100 1787	to	1799	923 493 9681	to	9699
835 813 3015	to	3099	862 271 0800	to	0999	909 100 1900	to	2099	923 604 4424	to	4499
837 672 8967	to	8999	862 271 5000	to	5099	909 355 0422	to	0499	923 810 7800	to	8299
837 784 3282	to	3299	863 871 5138	to	5199	909 568 8900	to	9099	924 252 1200	to	1299
838 176 8377	to	8399	863 949 5300	to	5399	909 568 9300	to	9499	924 252 1400	to	1499
838 518 1257	to	1299	864 088 8200	to	8299	909 725 7307	to	7399	924 533 0711	to	0799
839 718 8257	to	8299	864 426 3972	to	3999	909 833 0947	to	0999	924 533 2343	to	2399
840 323 0600	to	0699	864 520 6117	to	6136	910 219 8631	to	8699	924 533 2428	to	2499
840 875 6235	to	6299	865 151 0526	to	0599	910 265 1100	to	1199	924 685 1957	to	1999
840 910 0900	to	0999	865 500 4034	to	4099	910 471 7273	to	7299	924 946 6300	to	6699
841 349 5000	to	5099	865 883 6082	to	6099	910 536 2505	to	2599	925 333 5900	to	6099
841 805 7747	to	7899	866 004 3000	to	3999	910 958 7499	to	7599	925 336 2300	to	2399
841 805 7944	to	8099	866 442 4100	to	4899	911 140 1000	to	2199	926 432 5907	to	5999
842 226 0685	to	0695	867 366 9108	to	9118	911 245 2545	to	2599	926 436 3600	to	3699
842 685 4600	to	4699	867 633 7403	to	7499	911 268 9077	to	9099	927 765 6257	to	6299
842 685 4742	to	4999	867 737 5623	to	5699	911 400 8948	to	8999	928 197 8100	to	8199
842 860 0300	to	0399	868 169 4529	to	4599	911 508 1620	to	1799	928 197 8283	to	8299
842 898 5582	to	5599	868 173 8400	to	8599	911 509 9310	to	9399	928 856 2059	to	2068
843 062 7100	to	7199	868 514 9000	to	9099	911 523 3000	to	3999	930 078 5800	to	5899
843 077 6288	to	6299	868 566 9200	to	9299	912 057 9922	to	9999	930 219 1722	to	1799
843 077 6378	to	6399	869 200 0000	to	9999	912 882 0563	to	0899	930 335 7810	to	7819
843 758 5769	to	5778	869 387 1150	to	1199	913 605 2218	to	2299	931 097 9259	to	9299
843 786 2554	to	2699	869 505 3500	to	3599	913 709 2429	to	2499	931 156 1502	to	1579
845 656 8165	to	8199	869 523 7033	to	7099	913 818 3501	to	3999	931 156 1600	to	1625
845 727 2100	to	2199	869 566 6150	to	6167	914 063 4300	to	4399	931 156 1671	to	1699
845 746 2618	to	2635	869 776 8785	to	8786	914 346 7621	to	7644	932 506 6400	to	6599
846 390 7531	to	7599	869 800 0000	to	999 9999	914 453 1366	to	1399	932 732 1796	to	1799
846 918 0572	to	0599	870 054 4814	to	4899	914 529 6185	to	6299	932 827 9026	to	9099
847 237 7690	to	7699	870 491 4812	to	4849	914 896 4658	to	4699	932 957 2300	to	2399
847 284 2481	to	2499	870 536 5820	to	5829	915 187 8774	to	8779	933 060 6160	to	6189
847 374 7055	to	7065	870 541 7167	to	7239	915 300 2783	to	2799	933 387 2541	to	2561
847 374 7055	to	7065	870 575 8155	to	8999	915 546 6822	to	6999	933 760 3609	to	4199
847 636 5304	to	5399	870 589 0485	to	0494	915 646 5183	to	5199	933 894 0928	to	0999
847 700 5447	to	5499	870 691 7060	to	7099	915 671 3963	to	3980	934 018 2729	to	2741
847 723 7500	to	7599	872 028 4850	to	4899	915 671 3982	to	3999	934 180 0300	to	0399
849 485 3427	to	3499	872 029 9306	to	9399	915 675 2217	to	2299	934 236 3954	to	3999
849 520 9850	to	9899	872 078 3709	to	3799	916 440 3377	to	3399	934 622 8717	to	8999
849 608 1357	to	1399	872 100 0445	to	0459	916 670 6352	to	6399	935 216 0312	to	0399
849 792 2600	to	2699	900 556 4178	to	4199	916 682 5300	to	5399	935 843 2202	to	2247
850 546 1862	to	1899	900 845 0044	to	0099	916 694 1414	to	1499	936 024 8889	to	8899
851 143 6826	to	6844	900 936 0217	to	0299	916 703 0802	to	0821	936 339 4455	to	4499
851 209 9880	to	9899	900 936 0435	to	0499	917 089 0709	to	0799			
851 928 9221	to	9299	901 058 5255	to	5280	917 089 0842	to	0899			
852 589 6560	to	6599	901 273 1082	to	1099	917 216 2928	to	2999			

Missing, Lost, or Stolen Canadian Money Order Forms

Do Not Cash — Upon Receipt, Notify Local Postal Inspectors

Provide this listing to all Postal Service™ employees responsible for accepting and cashing postal money orders. Destroy all interim notices when the numbers listed appear in the *Postal Bulletin*. The new money order serial

numbers consist of the first 9 digits. The tenth digit is a check digit only.

Do not cash outdated money orders **104 151 601 to 692 600 000**. Advise holders to send invalid money orders to Canada Post Corporation, Ottawa, Canada K1A 0B1. Check for altered dollar amounts by holding money orders to the light.

719 869 731	to	9 760	728 702 338	to	2 400	734 950 111	to	0 170	742 325 668	to	5 700
720 227 871	to	7 930	728 915 371	to	5 850	735 120 331	to	0 840	742 408 771	to	8 830
720 227 949	to	7 960	728 953 141	to	3 410	735 283 008	to	3 020	742 512 120	to	2 150
720 368 543	to	8 570	728 954 280	to	4 310	735 293 131	to	3 220	742 684 849	to	4 890
720 392 151	to	2 570	729 169 081	to	9 140	735 635 010	to	5 040	742 839 553	to	9 630
720 556 491	to	6 640	729 363 841	to	3 870	735 783 961	to	3 990	742 913 668	to	3 700
720 558 621	to	8 650	729 682 891	to	3 190	735 803 401	to	3 430	742 917 287	to	7 296
720 575 361	to	5 570	729 838 940	to	9 070	736 005 420	to	5 440	742 921 891	to	1 980
720 590 152	to	0 179	729 839 101	to	9 130	736 366 021	to	6 110	742 983 631	to	3 810
721 638 331	to	9 170	730 077 683	to	7 840	736 624 456	to	4 500	743 020 021	to	0 170
721 815 391	to	5 420	730 109 847	to	9 880	736 670 851	to	1 060	743 206 491	to	6 500
721 969 713	to	9 740	730 373 761	to	3 850	736 767 061	to	7 090	743 235 992	to	6 050
722 072 137	to	2 160	730 501 951	to	2 130	736 767 093	to	7 120	743 940 631	to	0 900
722 378 265	to	8 280	730 519 379	to	9 470	736 982 191	to	2 370	743 978 011	to	8 070
722 413 990	to	4 004	730 569 278	to	9 360	736 982 551	to	2 730	744 234 751	to	4 780
722 764 948	to	4 980	730 711 711	to	1 740	737 110 141	to	0 170	744 499 591	to	9 680
722 825 840	to	5 889	730 722 991	to	3 230	737 185 501	to	5 710	744 626 901	to	6 910
723 153 841	to	3 850	730 845 970	to	5 990	737 317 321	to	7 350	745 388 794	to	8 910
723 237 616	to	7 630	730 888 291	to	8 320	737 517 781	to	7 840	746 446 806	to	6 820
723 331 081	to	1 110	730 927 591	to	7 680	737 628 181	to	8 210	746 818 351	to	8 410
723 496 443	to	6 470	731 307 914	to	7 930	737 634 258	to	4 270	747 245 266	to	5 280
723 967 291	to	7 320	731 402 431	to	2 460	738 361 971	to	1 980	747 364 813	to	4 830
724 655 196	to	5 340	731 407 232	to	7 320	738 447 601	to	7 660	747 501 434	to	1 450
724 711 441	to	1 500	731 588 301	to	8 340	738 648 355	to	8 450	747 739 891	to	0 070
724 711 538	to	1 560	731 767 273	to	7 320	738 849 811	to	9 900	748 148 649	to	8 760
724 793 221	to	3 250	731 781 061	to	1 120	738 892 270	to	2 290	748 259 960	to	9 970
724 908 109	to	8 120	731 837 821	to	7 910	738 997 259	to	7 380	748 565 162	to	5 280
724 937 461	to	7 670	731 841 377	to	1 450	739 161 451	to	1 540	748 874 988	to	5 030
725 163 118	to	3 151	732 018 481	to	8 600	739 219 381	to	9 440	749 137 381	to	7 410
725 202 735	to	2 750	732 067 972	to	8 370	739 740 151	to	0 180	749 190 192	to	0 210
725 398 591	to	8 800	732 188 649	to	8 670	739 793 491	to	3 520	749 685 421	to	5 450
725 464 591	to	4 920	732 193 460	to	3 470	739 793 527	to	3 550	749 846 791	to	6 850
725 475 321	to	5 330	732 201 241	to	1 390	739 942 621	to	2 650	749 993 131	to	3 580
725 711 057	to	1 070	732 220 431	to	0 440	739 999 231	to	9 320	750 071 587	to	1 610
725 738 581	to	8 730	732 355 201	to	5 380	740 011 517	to	1 530	750 408 167	to	8 183
725 981 311	to	1 430	732 472 320	to	2 560	740 030 701	to	0 970	750 438 421	to	8 501
725 987 835	to	7 880	732 541 605	to	1 620	740 261 740	to	1 820	750 743 911	to	4 030
726 060 811	to	0 900	732 572 221	to	2 490	740 265 811	to	6 290	750 779 118	to	9 400
726 391 970	to	2 520	732 586 479	to	6 710	740 299 111	to	9 170	750 910 981	to	1 010
726 484 771	to	4 800	732 994 037	to	4 080	740 299 231	to	9 260	750 960 841	to	0 900
726 493 351	to	5 300	733 163 449	to	3 460	740 329 266	to	9 320	751 296 211	to	6 240
726 504 031	to	4 063	733 297 171	to	7 290	740 889 081	to	9 090	751 539 121	to	9 180
726 504 070	to	4 090	733 446 631	to	7 110	741 010 421	to	0 530	751 541 311	to	1 790
726 504 331	to	4 390	733 474 665	to	4 770	741 113 041	to	3 370	751 757 641	to	7 700
726 563 701	to	4 060	733 704 482	to	4 570	741 373 891	to	4 340	751 936 951	to	7 010
726 599 371	to	9 460	733 751 041	to	1 130	741 452 369	to	2 490	751 951 861	to	1 890
726 626 356	to	6 370	734 009 101	to	9 130	741 492 991	to	3 140	751 999 021	to	9 110
727 182 271	to	2 510	734 290 759	to	0 770	741 553 460	to	3 470	752 139 516	to	9 570
727 416 181	to	6 240	734 389 273	to	9 290	741 764 431	to	4 520	752 182 892	to	2 950
727 481 431	to	1 460	734 440 031	to	0 111	741 764 431	to	4 520	752 206 861	to	7 100
727 749 241	to	9 780	734 797 201	to	7 320	742 178 834	to	8 880	752 295 241	to	5 600
728 382 331	to	2 480	734 939 611	to	9 640	742 325 500	to	5 520	752 731 351	to	1 410

752 767 441	to	7 470	762 593 431	to	3 460	773 208 991	to	9 290	800 427 530	to	7 540
753 008 941	to	9 030	763 155 160	to	5 180	773 231 311	to	1 340	800 872 741	to	2 830
753 194 311	to	4 370	763 178 631	to	8 660	773 348 739	to	8 940	801 349 801	to	9 830
753 620 378	to	0 400	763 506 001	to	6 060	773 348 739	to	8 940	801 676 681	to	7 100
754 013 917	to	3 940	763 522 141	to	2 470	773 575 891	to	5 950	802 967 821	to	7 940
754 161 061	to	1 120	763 717 694	to	7 800	773 852 971	to	3 030	803 217 601	to	7 780
754 358 445	to	8 610	763 826 461	to	6 520	775 373 449	to	3 460	803 729 731	to	9 850
754 410 451	to	0 660	763 900 460	to	0 471	789 257 191	to	7 250	803 747 402	to	7 520
754 438 393	to	8 410	763 900 479	to	0 530	790 448 020	to	8 460	804 138 181	to	8 420
754 493 109	to	3 130	763 917 271	to	7 750	790 597 485	to	7 530	804 428 224	to	8 250
754 664 182	to	4 220	764 125 801	to	5 860	790 911 883	to	1 900	804 682 411	to	2 710
754 816 377	to	6 470	764 284 525	to	4 560	791 057 441	to	7 550	805 272 525	to	2 540
755 487 421	to	7 600	764 526 241	to	6 330	791 239 081	to	9 290	805 523 445	to	3 460
755 592 901	to	3 140	764 601 421	to	1 600	791 374 483	to	4 500	805 745 704	to	5 730
755 791 730	to	1 800	764 650 231	to	0 470	791 387 971	to	8 030	806 452 907	to	2 980
755 926 951	to	7 070	764 984 371	to	4 850	791 447 521	to	7 850	806 744 781	to	4 850
755 934 332	to	4 510	765 003 667	to	3 680	791 451 151	to	1 240	806 982 181	to	2 300
755 957 701	to	8 000	765 042 517	to	2 540	791 500 009	to	0 470	807 764 791	to	4 910
755 962 981	to	3 280	765 194 728	to	4 970	791 771 431	to	1 490	808 089 931	to	9 960
756 035 371	to	5 490	765 387 365	to	7 450	792 004 293	to	4 320	808 656 423	to	6 450
756 301 257	to	1 290	765 541 801	to	2 100	792 018 379	to	8 420	808 753 771	to	3 800
756 371 565	to	1 580	765 638 461	to	8 970	792 070 621	to	0 740	809 189 001	to	9 010
756 876 031	to	6 120	765 647 101	to	7 190	792 145 211	to	5 230	809 886 879	to	6 930
756 876 151	to	6 240	765 813 781	to	4 029	792 391 381	to	1 620	809 890 489	to	0 500
756 970 129	to	0 140	765 879 314	to	9 390	792 452 779	to	2 790	810 323 734	to	3 760
757 059 613	to	9 630	765 954 001	to	4 030	792 772 728	to	2 770	810 367 116	to	7 140
757 078 540	to	8 560	766 120 286	to	0 320	792 903 511	to	3 990	810 526 351	to	6 500
757 086 209	to	6 240	766 125 716	to	5 750	793 282 518	to	2 533	810 806 911	to	6 940
757 240 591	to	0 650	766 158 824	to	8 840	794 041 831	to	2 040	810 807 211	to	7 240
757 277 371	to	7 700	766 388 433	to	8 460	794 397 709	to	7 780	811 423 021	to	3 110
757 291 591	to	2 730	766 509 421	to	9 660	794 581 741	to	2 040	811 517 221	to	7 239
757 964 251	to	4 280	766 572 901	to	3 020	794 592 122	to	2 150	811 721 101	to	1 130
758 067 001	to	7 090	766 748 500	to	8 521	795 032 251	to	2 340	812 025 721	to	5 900
758 105 221	to	5 250	767 024 341	to	4 370	795 796 291	to	6 350	812 093 073	to	3 130
758 324 941	to	5 000	767 326 471	to	6 590	796 070 139	to	0 160	812 100 821	to	0 840
758 593 628	to	3 650	767 332 561	to	2 950	796 143 151	to	3 630	812 465 251	to	5 610
758 709 038	to	9 060	768 009 841	to	9 960	796 159 725	to	9 740	812 918 341	to	8 670
758 744 101	to	4 160	768 011 489	to	1 520	796 169 306	to	9 340	812 918 701	to	8 760
758 850 883	to	0 900	768 177 980	to	7 990	796 373 406	to	3 430	813 050 491	to	0 520
758 860 951	to	1 550	768 391 081	to	1 170	796 602 961	to	3 050	813 073 171	to	3 200
759 152 851	to	2 880	768 661 569	to	1 650	796 708 441	to	8 500	813 398 476	to	8 550
759 740 941	to	1 090	769 000 051	to	0 080	796 886 281	to	6 430	813 713 971	to	4 000
760 004 596	to	4 610	769 050 841	to	0 900	796 901 701	to	2 000	813 858 121	to	8 150
760 118 191	to	8 250	769 159 081	to	9 178	796 975 466	to	5 590	814 789 330	to	9 349
760 155 001	to	5 090	769 737 496	to	7 510	797 272 917	to	2 950	814 984 656	to	4 680
760 378 002	to	8 020	769 778 491	to	8 730	797 519 441	to	9 460	815 016 020	to	6 030
760 692 722	to	2 749	769 827 331	to	7 450	797 519 731	to	0 240	815 199 410	to	9 420
761 055 460	to	5 480	770 216 071	to	6 100	797 535 181	to	5 330	815 240 491	to	0 520
761 169 781	to	9 810	770 723 281	to	3 400	797 646 151	to	6 180	815 755 591	to	5 620
761 504 941	to	5 120	770 790 451	to	0 480	798 040 053	to	0 080	815 755 622	to	5 650
761 516 836	to	6 910	770 915 150	to	5 490	798 055 813	to	5 830	815 806 381	to	6 680
761 613 588	to	3 600	771 455 551	to	5 610	798 055 891	to	5 950	816 126 834	to	6 870
761 688 631	to	8 690	771 609 661	to	9 690	798 326 371	to	6 520	816 156 721	to	6 780
761 805 199	to	5 240	771 932 551	to	2 580	798 339 167	to	9 210	816 580 903	to	0 920
761 826 106	to	6 120	772 057 224	to	7 440	798 562 411	to	2 440	816 945 571	to	5 600
761 881 171	to	1 560	772 162 660	to	3 070	798 632 461	to	2 490	817 253 011	to	3 280
761 975 641	to	5 670	772 718 615	to	8 640	798 807 151	to	7 510	817 763 881	to	4 060
761 975 886	to	5 895	772 940 140	to	0 160	798 944 761	to	5 030	818 330 562	to	0 610
762 304 144	to	4 170	772 970 886	to	0 940	799 118 616	to	8 640	818 459 641	to	9 670
762 324 931	to	4 960	773 009 419	to	9 430	799 133 191	to	3 220	818 926 273	to	6 320
762 439 261	to	9 290	773 112 031	to	2 060	799 177 626	to	7 650	818 950 351	to	0 380
762 524 158	to	4 220	773 125 387	to	5 410	799 854 751	to	5 200	818 962 492	to	2 530
762 584 872	to	4 970	773 179 320	to	9 410	800 044 320	to	4 410	819 032 341	to	2 730
			773 202 989	to	3 140	800 211 901	to	2 440	819 127 054	to	7 080

819 278 540	to 8 670	822 703 442	to 3 470	826 226 644	to 6 670	828 539 341	to 9 370
819 544 681	to 4 740	822 900 991	to 1 020	826 582 951	to 3 430	828 732 331	to 2 390
819 928 441	to 8 650	822 925 951	to 6 100	826 720 201	to 0 230	828 807 781	to 7 840
820 034 406	to 4 430	823 284 931	to 4 990	827 005 671	to 5 830	828 830 952	to 0 963
820 070 761	to 1 540	823 293 031	to 3 210	827 287 861	to 7 950	828 939 781	to 0 050
820 191 342	to 1 360	823 556 011	to 6 100	827 291 502	to 1 520	829 002 721	to 2 870
820 274 856	to 4 880	824 078 341	to 8 370	827 575 381	to 5 470	829 005 301	to 5 540
820 600 171	to 0 230	824 156 325	to 6 340	827 609 085	to 9 100	829 080 241	to 0 330
821 172 241	to 2 360	824 511 252	to 1 270	827 619 811	to 9 840	829 160 986	to 1 000
821 229 661	to 9 720	824 588 281	to 8 370	827 883 511	to 3 600	829 176 841	to 6 930
821 229 743	to 9 780	825 140 397	to 0 460	828 160 441	to 0 530	829 471 561	to 1 590
821 903 731	to 3 910	825 409 651	to 9 680	828 376 201	to 6 260	829 561 065	to 1 080
821 927 841	to 7 850	825 472 171	to 2 200	828 441 602	to 1 630	829 566 481	to 6 510
822 505 801	to 5 830	826 042 898	to 2 920	828 539 316	to 9 340	829 569 931	to 9 960

— Criminal Investigations Group, U.S. Postal Inspection Service, 9-9-21

Verifying U.S. Postal Service Money Orders

Follow these steps to cash a Postal Service™ money order:

1. Check that the amount does not exceed the legal limit: \$1,000 for domestic, and \$700 for international Postal Service money orders.
2. Check that the proper security features are present:
 - When held to the light, a watermark of Benjamin Franklin is repeated from top to bottom on the left side.
 - When held to the light, a dark line (security thread) runs from top to bottom with the word “USPS” repeated.
 - When there is discoloration around the dollar amounts, this might indicate the amounts were changed.

These appear in Postal Service Notice 299, *U.S. Postal Money Order Reference Card*, or online at usps.com/shop/money-orders.htm.

3. If the money order seems suspicious, call the U.S. Postal Service Money Orderxxer Verification System at 866-459-7822.

Provide this information to local banks and retailers, as they also receive Postal Service money orders for cashing.

— Delivery and Retail
Customer Service Operations, 9-9-21

Counterfeit Canadian Money Order Forms

Do Not Cash

To be posted and used by retail window employees. As directed, destroy previous notices. Destroy all interim notices when the numbers listed appear in the *Postal Bulletin*.

671,819,086	683,594,542	687,262,503
676,612,640	684,683,610	687,262,525
677,891,039	686,619,878	687,262,526
678,282,493	686,619,886	687,287,578
678,916,031	686,619,887	687,287,581
679,552,215	686,794,382	687,287,582
679,694,334	686,794,426	694,063,898
679,751,983	686,794,427	694,063,899
679,800,207	686,794,431	694,063,980
681,130,536	687,262,502	701,321,725
681,844,376		

— Criminal Investigations Group,
U.S. Postal Inspection Service, 9-9-21

Toll-Free Number Available to Verify Canadian Money Orders

The Canada Post Corporation has a toll-free number that cashing agents can call to verify the validity of Canadian Postal Money Orders. The number is 800-563-0444.

This toll-free number is printed on the back of the Canadian Postal Money Orders.

— Criminal Investigations Group,
U.S. Postal Inspection Service, 9-9-21

Other Information

Overseas Military/Diplomatic Mail

Mail addressed to military and diplomatic post offices overseas is subject to certain conditions or restrictions of mailing regarding content, preparation, and handling. The APO/FPO/DPO table outlines these conditions by APO/FPO/DPO ZIP Codes™ through the use of footnoted mailing restrictions codes (see the [Restrictions](#) page following the table).

Acceptance clerks must use the table with the Retail System Software terminal to determine which APO/FPO/DPO ZIP Codes are active and which conditions of mailing apply.

The entries under “Changes” appear in bold in the following APO/FPO/DPO table:

Changes

APO/FPO/DPO	Action	Effective Date	See Restrictions
DPO AE 09806	Close	08/26/2021	

We have eliminated “Not Active” entries from the table below to save space and paper.

APO/FPO/DPO Table

APO/FPO/DPO	See Restrictions	APO/FPO/DPO	See Restrictions	APO/FPO/DPO	See Restrictions	APO/FPO/DPO	See Restrictions
09002	A-B-F-F3-H-N-Q-R-S-V-Z1	09069	A-B-C-D-E-F3-H-N-R-S-U-V	09172	B-C-D-E-F3-H-M-R-S-U	09277	A-B-E-E1-E2-F1-F3-I3-L-N-R-S-T-V-X-Z1
09003	B-C-D-E-F3-H-M-P-R-S-U	09079	B-C-D-E-F3-H-M-R-S-U	09173	B-C-D-E-F3-H-M-R-S-U	09278	A-B-F-F3-I3-L-M-N-R-S-T-V-X-Z1
09004	B-C-D-E-F3-H-M-R-S-U	09094	B-C-D-F3-H-M-P-R-S-Z1	09174	B-C-C2-F-F1-F3-I3-L-N-R-R1-S-T-V-X-Z1	09279	A-B-E-E1-F-F3-I3-L-M-N-R-S-T-V-X-Z1
09005	B-C-D-E-F3-H-M-P-R-S-U	09095	B-C-D-E-H-M-R-U	09175	A-B-C1-C2-E2-F-F1-F3-H1-J-L-M-N-R-R1-S-T-V-W-X-Z1	09283	A-B-E-E1-F-F3-L-M-N-R-S-T-V-X-Z1
09006	B-C-D-E-F3-H-M-R-S-U	09096	B-C-D-E-F3-H-M-R-S-U	09176	A-B-C2-F-F1-F3-J-L-M-N-R-R1-S-T-V-X-Z1	09285	A-B-C-E-E-1-F1-F3-H-I3-L-M-N-R-S-T-V-X-Z1
09008	A-B-F-F3-H-N-Q-R-S-V-Z1	09103	A-B-F-F3-H-N-Q-R-S-V-Z1	09177	B-C-D-E-F3-H-M-R-S-U	09287	B-C2-E1-F1-F3-J-L-N-R-S-T-V-X-Z1
09009	B-C-D-E-F3-H-M-R-S-U-Z1	09104	B-C-D-F3-H-M-R-S-U-Z1	09178	B-C1-C2-E2-F1-F3-I3-L-M-N-R-S-T-V-X-Z1	09289	B-E2-F1-F3-H1-J-L-M-N-R-R1-S-T-U2-V-X-Z1
09010	B-C-D-E-F3-H-M-R-S-U2	09107	B-C-D-E-F3-H-M-R-S-U	09180	B-C-D-E-F3-H-M-R-S-U	09290	A-B-F1-F3-J-L-M-N-R-S-T-U2-V-X-Z1
09011	B-C-D-E-F3-H-M-R-S-U	09112	B-C-D-E-F3-H-M-R-S-U	09186	B-C-D-E-F3-H-M-P-R-S-U	09291	B-C-C1-C2-E2-F1-F3-H1-L-N-R-R1-S-T-V-X-Z1
09012	B-C-D-E-F3-H-M-R-S-U-Z1	09113	A-B-F-F3-H-N-Q-R-S-V-Z1	09203	A-B-C-C1-C2-F-F1-F3-I3-J-L-M-N-R-R1-T-V-Z1	09292	A-B-C-C2-E-E2-E3-F1-F3-H-H1-J-L-M-N-R-R1-S-T-V-X-Z1
09013	B-C-D-E-F-F1-F3-H-M-R-S-U-Z1	09114	B-C-D-E-F3-H-M-R-S-U	09204	B-C-F3-M-N-R-S-V-Z1	09301	A-B-C1-C2-E2-F-F1-F3-H1-I3-L-M-N-R-R1-S-T-U4-V-Z1
09014	B-C-D-E-F3-H-M-P-R-S-U	09115	A-B-F-F3-H-N-Q-R-S-V-Z1	09211	B-C-D-E-F3-H-M-P-R-S-U	09302	A-B-C1-F-F1-F3-H-M-N-R-S-V-Z1
09015	A-B-C-C1-C2-F-F1-F3-J-L-M-N-R-R1-S-V-Z1	09116	A-B-F-F3-H-N-Q-R-S-V-Z1	09213	B-C2-F-F1-F3-H-J-L-M-N-R-R1-T-U-V-Z1	09305	A-B-C1-E2-F-F1-F3-H1-I3-M-N-R-R1-S-T-V-Z1
09016	B-C-D-E-F1-F3-H-M-R-S-U	09123	B-C-D-E-F3-H-M-R-S-U-Z1	09214	B-C-D-E-F3-H-M-R-S-U-Z1	09306	A-B-C1-E2-F-F1-F3-H1-R-R1-S-U2-V-Z1
09017	A-B-F-F3-H-N-Q-R-S-V-Z1	09125	A-B-C-F-F1-F3-H-N-R-R1-S-V-V1	09216	B,C,F1,F3,M,N,R,S,V,Z1	09307	B-C-C2-F-F3-N-R-R1-S-Z1
09018	A-B-F-F3-H-N-Q-R-S-V-Z1	09126	B-C-D-F3-H-M-P-R-S-Z1	09227	B-C-D-E-F3-H-M-R-S-U	09309	A-B-C-C1-C2-E2-F-F1-F3-H1-M-N-R-R1-S-V-Z1
09020	B-C-D-E-F3-H-M-R-S-U	09128	B-C-D-E-F3-H-M-R-S-U	09240	A-B-C1-F-F3-H-N-R-S-V	09310	A-B-C1-C2-E2-F-F1-F3-H1-I3-L-M-N-R-R1-S-T-U4-V-Z1
09021	B-C-D-E-F3-H-M-R-S-U-Z1	09131	B-C-D-E-F3-H-M-R-S-U	09241	A-B-F3-N-R-S-U-Z1	09311	A-B-C1-C2-E2-F-F1-F3-H1-I3-L-M-N-R-R1-S-T-U4-V-Z1
09034	B-C-D-E-F3-H-M-R-S-U	09135	A-B-F-F3-H-N-R-S-U-V-Z1	09242	A-B-C1-F-F3-H-N-R-S-V		
09044	B-C-D-F1-F3-H-R-S-U	09136	B-C-D-E-F1-F3-H-M-P-R-S-U	09250	B-C-D-E-F3-H-M-R-S-U		
09046	B-C-D-E-F3-H-M-R-S-U	09138	B-C-D-F3-H-M-R-S-U	09261	B-C-D-E-F3-H-M-N-R-S-U-V-Z1		
09049	B-C-D-E-F3-H-M-R-S-U	09140	B-C-D-E-F3-H-M-R-S-U	09263	B-C-D-E-F3-H-M-R-S-U		
09053	B-C-D-E-F3-H-M-R-S-U	09142	B-C-D-E-F3-H-M-R-S-U	09264	B-C-E-F3-H-M-R-S-U		
09060	B-C-D-E-F1-F3-H-M-N-R-S-U-Z1	09154	B-C-D-E-F3-H-M-R-S-U	09265	B-C-D-F-F1-F3-J-L-M-N-R-R1-S-T-U-V-Z1		
09067	B-C-D-E-F3-H-M-R-S-U	09160	B-C-C2-D-F-F1-F3-H-J-L-M-N-R-R1-T-U-V-Z1	09266	A-B-F3-R-S-U-V-Z1		
09068	B-C-D-E-F3-H-R-S-U-Z1	09170	A-B-C2-F-F1-F3-J-L-M-N-R-R1-S-T-V-X-Z1	09276	A-B-F-F3-I3-L-M-N-R-S-T-V-X-Z1		
		09171	A-B-C1-C2-E3-F-F1-F3-J-L-M-N-R-R1-S-T-V-X-Z1				

APO/ FPO/ DPO	See Restrictions	APO/ FPO/ DPO	See Restrictions	APO/ FPO/ DPO	See Restrictions	APO/ FPO/ DPO	See Restrictions
09312	A-B-C1-C2-E2-F-F1-F3-H1-I3-L-M-N-R-R1-S-T-U-U4-V-Z-Z1	09490	A-B-C1-C2-E2-F-F1-F3-H1-J-L-M-N-R-R1-S-T-V-X-Z1	09583	B-F-F1-F3-I3-J-R-R1-S-V-V1	09706	B-C-F3-M-N-R-S-U-V-Z1
09313	A-B-C-C1-E2-F-F1-F2-F3-H1-R-R1-S-V-Z1	09491	A-B-C1-C2-E2-F1-F3-H1-J-L-M-N-R-R1-S-T-V-Z1	09586	B-C2-F-F1-F3-R-R1-S-V	09707	B-C2-F-F1-F3-J-L-M-N-R-R1-T-V-Z1
09315	A-B-C1-E2-F-F3-N-R-R1-S-V-Z1	09494	B-C-C1-F3-M-R-S-U-Z1	09587	B-C2-E2-E3-F-F1-F3-R-R1-S-V-Z1	09708	B-C-C1-F1-F3-M-R-R1-S-U
09316	A-B-C1-E2-F-F1-F3-H1-I3-M-N-R-R1-S-T-V-Z-Z1	09498	B-C1-C2-F-F1-F3-J-L-N-R-R1-T-V-Z1	09588	B-F-F1-F3-R-R1-S-V	09709	B-C1-C2-E2-F-F1-F3-H1-J-L-N-R-R1-T-V-Z1
09319	A-B-C-C1-C2-E2-F-F1-F2-F3-H1-R-R1-S-U2-V-Z1	09501	B-V	09589	B-F-F1-F3-R-S-V	09710	B-C-C1-F-F1-J-L-M-N-R-R1-T-U-V-Z1
09320	A-B-C1-E2-F-F3-H1-M-N-R-R1-S-V-Z1	09502	B-V	09590	B-V	09712	A-B-F-F3-H-R-S-U-V-Z1
09321	A-B-C1-C2-E2-F-F3-H1-M-N-R-R1-S-V-Z1	09503	B-F-F1-R-R1-V	09591	B-C2-E2-E3-F-F1-F3-R-R1-S-V-Z1	09714	B-C-C1-F1-F3-M-R-R1-S-U
09330	A-B-C1-C2-D-E-E2-F-F1-F3-H-H1-M-R-R1-S-V-Z1	09504	B-V	09592	B-F-F1-F3-R-R1-S-V	09715	B-F-F1-J-L-M-N-R-T-V-Z1
09333	A-B-C-C1-E2-F-F1-F3-H1-I3-M-N-R-R1-S-V-V1-Z-Z1	09505	B-V	09593	B-F-F1-F3-R-S-V	09716	B-C-C2-F-F1-F3-J-L-M-N-R-R1-T-V-Z1
09343	A-B-C1-F-F3-M-N-R-R1-S-V-Z1	09506	B-V	09594	B-C1-E2-F-F1-F3-R-R1-S-V	09717	A-B-F3-M-R-S-V-W-Z1
09348	A-B-C1-E2-F-F1-F3-H1-I3-M-N-R-R1-S-T-V-Z-Z1	09507	B-V	09595	B-F-F1-F3-I3-J-R-R1-S-V-V1-Z1	09718	B-F-F1-J-L-M-N-R-T-U-V-Z1
09356	A-B-C1-E2-F-F3-H1-M-N-R-V-Z1	09508	B-F-F1-R-R1-V	09596	B-F-F1-R-R1-V	09719	B-C-D-F3-M-R-S-U-V-Z1
09357	A-B-C1-E2-F-F3-H1-M-R-V-Z1	09509	B-F-F1-R-R1-V	09599	B-F-F1-R-R1-V	09720	B-F3-M-R-S-U-V-Z1
09363	A-B-C1-E2-F-F3-H1-M-R-R1-S-V-Z1	09510	A-B-C1-E2-F-H1-M-R-R1-V-Z1	09600	B-C-C2-F-F1-F3-R-S-U-Z1	09722	A-B-F-F3-H-N-Q-S-V-Z-Z1
09365	A-B-C-C1-E2-F-F3-H1-M-N-R-V-Z1	09511	B-F-F1-R-R1-V	09602	B-C-F-F1-N-R-U-V	09723	B-C2-F-F1-F3-J-L-M-N-R-R1-T-V-Z1
09366	A-B-C-C1-E2-F-F1-F3-H-H1-M-R-R1-S-V-Z1	09512	B-F-F1-F3-R-R1-S-V	09603	B-C-F-F1-F3-R-S-U-V-Z1	09724	B-C-C1-F1-F3-M-R-R1-S-U
09401	B-C-C1-F3-M-R-S-U-Z1	09513	B-F-F1-F3-R-R1-S-V-V1	09604	B-C-F-F1-F3-P-R-S-U-V-Z1	09725	A-B-F-F3-H-N-Q-R-S-V-V1-Z-Z1
09403	B-C-C1-F3-M-R-S-U-Z1	09514	B-F-F1-F3-R-R1-S-V-V1	09605	B-C-D-F3-H-M-R-S-U-V	09726	B-F-F1-J-L-M-N-R-T-U-V-Z1
09410	C2-F-F1-F3-N-R-S-U2	09517	B-F-F1-F3-R-R1-S-V	09606	B-C-D-F3-H-M-R-S-U-V	09727	A-B-C1-C2-F-F1-F3-J-L-M-N-R-R1-T-V-Z1
09421	B-C-C1-F3-M-R-S-U-Z1	09520	B-F-F1-F3-R-R1-S-V	09608	B-C-F-F3-N-R-S-U-V-Z1	09728	A-B-C-C1-C2-F-F1-F3-J-L-N-R-R1-T-V-Z1
09447	B-C-C1-F3-M-R-S-U-V-Z1	09522	B-F-F1-F3-R-S-V	09609	B-C-F-F3-N-R-S-U-Z1	09729	B-C-F-F3-N-R-R1-S-U-V-Z1
09454	B-C-C1-F3-M-R-S-U-V-Z1	09523	B-F-F1-F3-R-R1-S-V	09610	B-C-F-F1-F3-M-R-S-U-V-Z1	09730	A-B-C1-C2-F-F1-F3-J-L-M-N-R-R1-T-V-Z1
09456	B-C-C1-F3-M-N-R-S-U-V-Z1	09524	B-F-F1-R-R1-V	09613	B-C-F-F3-N-R-S-U-V	09731	A-B-C1-C2-F-F1-F3-J-L-M-N-R-R1-T-V-Z1
09459	B-C-C1-F3-M-R-S-U-Z1	09532	B-F-F1-F3-R-R1-S-V	09614	A-B-C1-C2-E2-F-F1-F3-H1-J-L-M-N-R-R1-T-V-W-Z1	09732	B-F-F3-N-S-V-Z-Z1
09461	B-C-C1-F3-M-P-R-S-U-Z1	09533	B-V	09618	B-C-F-F3-R-S-U-V-Z1	09733	B-F-F3-N-R-S-V-Z
09463	B-C-C1-F3-M-R-S-U-Z1	09534	B-F-F1-F3-R-R1-S-V	09620	B-C-F-F3-R-S-U-V-Z1	09734	A-B-C-C1-C2-F-F1-F3-I3-J-L-M-N-R-R1-T-V-Z-Z1
09464	B-C-C1-F3-R-S-U-Z1	09541	A-B-C-F-F3-M-N-S-V-Z1	09621	B-C-F-F3-R-U-Z1	09735	B-F3-N-R-S-V-Z-Z1
09467	B-E-E1-F-F3-J-L-M-N-R-S-T-V-X-Z1	09542	A-B-C-F-F3-M-N-S-V-Z1	09622	B-C-F-F3-R-S-U-V-Z1	09736	A-B-C1-F-F1-F3-J-L-M-N-R-R1-T-V-Z1
09468	B-C-C1-F3-M-R-S-U-Z1	09543	A-B-C-F-F3-M-N-S-V-Z1	09623	B-C-F-F3-R-S-U-V-Z1	09737	A-B-C1-C2-F-F1-F3-I3-J-L-M-N-R-R1-T-V-W-Y-Z-Z1
09469	B-C-C1-F3-R-S-U-Z1	09544	A-B-C-F-F3-M-N-S-V-Z1	09624	B-C-C2-F-F1-F3-I3-L-N-R-R1-T-U-V-Z-Z1	09738	A-B-C1-C2-F-F1-F3-J-L-M-N-R-R1-T-V-Z1
09470	B-C-C1-F3-M-R-S-U-Z1	09545	A-B-C-F-F3-M-N-S-V-Z1	09625	B-C-F-F3-N-R-S-U-Z1	09739	A-B-C1-C2-F-F1-F3-J-L-M-N-R-R1-T-V-Z1
09487	A-B-C-C1-C2-E2-F1-F3-I3-L-M-N-R-R1-S-T-V-W-X-Z-Z1	09550	B-F-F1-R-R1-V	09627	B-C-F-F3-R-S-U-V-Z1	09741	A-B-C1-C2-E2-F-F1-F3-H1-J-L-M-N-R-R1-T-V-W-Y-Z1
09488	A-B-C-C1-C2-E2-F3-J-L-M-N-S-T-V-W-X-Z1	09554	B-F-F1-R-R1-V	09630	B-C-F-F3-R-S-U-V	09742	A-B-C2-F-F1-F3-J-L-M-N-R-S-T-V-Z1
09489	A-B-C-C1-C2-E2-F1-F3-L-M-N-R-R1-S-T-V-W-X-Z1	09556	B-F-F1-R-R1-V	09633	B-C-D-F-F1-F3-M-R-S-U-U1-U2-U3-V-Z1	09743	A-B-F-F3-H-N-Q-R-S-V-Z-Z1
		09564	B-F-F1-R-R1-V	09634	A-B-F-F3-M-N-R-S-V		
		09565	B-F-F1-F3-R-R1-S-V	09636	B-C-F-F3-R-U-V-Z1		
		09566	B-C2-E2-E3-F-F1-F3-R-R1-S-V-Z1	09642	B-C2-F-F1-F3-J-L-M-N-R-T-U-V		
		09567	B-C2-E2-E3-F-F1-F3-R-R1-V-Z1	09643	B-C-F3-M-R-S-U-V-Z1		
		09568	B-V	09645	B-C-C1-E1-E2-F-F1-F3-M-R-S-U-X-Z1		
		09569	B-C2-E2-E3-F-F1-F3-R-R1-V-Z1	09647	B-F1-F3-M-N-R-S-U-Z1		
		09570	A-B-F-F1-F3-R-R1-S-V	09648	B-F3-N-R-S-U-V-Z1		
		09573	B-C2-E2-E3-F-F1-F3-R-R1-S-V-Z1	09649	B-F3-N-R-S-U-Z1		
		09574	B-F-F1-R-R1-V	09701	A-B-C1-C2-F-F1-F3-J-L-M-N-R-R1-T-V-Z1		
		09575	B-F-F1-R-R1-V	09702	B-C-C1-F1-F3-M-R-R1-S-U		
		09576	B-F-F1-R-R1-V	09704	B-C-V-V1		
		09577	B-F3-S-V	09705	B-C-C1-F1-F3-M-R-R1-S-U		
		09578	B-F-F1-F3-R-R1-S-V-Z1				
		09579	B-F-F1-R-R1-V				
		09581	B-F-F1-F3-R-R1-S-V				
		09582	B-C2-F-F1-F3-R-R1-S-V				

APO/ FPO/ DPO	See Restrictions	APO/ FPO/ DPO	See Restrictions	APO/ FPO/ DPO	See Restrictions	APO/ FPO/ DPO	See Restrictions
09744	A-B-C1-C2-F-F1-F3-J-L-M-N-R-R1-T-V-Z1	09817	A-B-C1-C2-E2-E3-F-F1-F3-H-H1-J-L-M-N-R-R1-T-V-Z1	09859	B-C-C1-C2-E2-E3-F-F1-F3-H1-R-R1-S-U-Z1	34008	B-C1-C2-D-E1-F-F1-H-H1-J-L-M-N-R-R1-T-V-Z1
09745	A-B-F-F1-F3-M-N-R-R1-S-V-Z1	09818	A-B-C-F-F3-M-S-V-Z1	09860	A-B-C2-F-F1-F3-J-L-M-N-R-R1-S-T-V-Z1	34011	B-C1-C2-E2-F-F1-F3-J-L-M-N-R-R1-T-V-Z1
09748	A-B-C1-C2-F-F1-F3-J-L-M-N-R-R1-T-V-Z1	09820	A-B-C2-F-F1-F3-H-H1-J-L-M-N-R-R1-T-V-Z1	09862	A-B-C2-F-F1-F3-I3-L-M-N-R-R1-S-T-V-X-Z-Z1	34020	B-C1-C2-F-F1-F3-J-L-M-N-R-R1-T-V-Z1
09749	A-B-F-F3-H-N-R-S-U-V-Z1	09821	A-B-C-F-F3-N-R-S-V-Z1	09864	A-B-C-C1-C2-E2-F1-F3-L-M-N-R-R1-S-T-V-W-Z1	34021	B-C1-C2-F-F1-F3-J-L-M-N-R-R1-T-V-Z1
09750	A-B-C1-C2-F-F1-F3-J-L-M-N-R-R1-T-V-Z1	09822	A-B-C-F-F3-M-R-S-V-Z1	09865	A-B-F3-R-S-U-V-Z1	34022	B-C1-C2-F-F1-F3-J-L-M-N-R-R1-T-V-Z1
09751	B-C-D-E-F3-H-M-R-S-U	09823	A-B-C1-C2-F-F1-F3-J-L-M-N-R-R1-T-V-Z1	09867	A-B-C-C1-C2-E2-F1-F3-L-M-N-R-R1-S-T-V-W-Z1	34023	B-C1-C2-F-F1-F3-J-L-M-N-R-R1-T-V-Z1
09752	B-C-D-F1-F3-H-R-S-U	09824	A-B-C-F-F3-M-R-S-V-Z1	09868	A-B-E1-E2-E3-F1-F3-M-N-R-S-U-V-Z1	34024	B-C1-C2-F-F1-F3-J-L-M-N-R-R1-T-V-Z1
09753	A-B-F-F3-N-R-S-V-Z1	09825	A-B-C1-C2-F-F1-F3-J-L-M-N-R-R1-T-V-Z1	09869	A-B-C1-C2-E2-F1-F3-L-M-N-R-R1-S-T-V-W-Z1	34025	B-F-F1-F3-J-L-M-N-R-R1-T-V-Z1
09754	A-B-F-F3-H-L-N-Q-R-S-V-Z-Z1	09826	A-B-C1-C2-E1-E2-E3-F1-F3-J-L-M-N-R-R1-T-V-W-Z1	09870	A-B-C1-C2-E2-F-F1-F3-H1-I3-L-M-N-R-R1-S-T-U4-V-Z-Z1	34030	B-C1-C2-F-F1-F3-J-L-M-N-R-R1-T-V-Z1
09755	A-B-C-C1-D-F-F1-F3-J-L-M-N-Q-R-R1-S-T-V-Z1	09827	A-B-F-F1-J-L-M-N-R-T-V-Z1	09873	A-B-C1-C2-E2-F-F1-F3-H1-I3-L-M-N-R-R1-S-T-U-U4-V-Z-Z1	34031	B-C1-C2-F-F1-F3-J-L-M-N-R-R1-T-V-Z1
09758	A-B-F-F1-F3-M-N-R-R1-S-V-Z1	09828	A-B-C1-C2-F-F1-F3-I3-L-N-R-R1-T-V-Z-Z1	09874	A-B-C1-C2-E2-F-F1-F3-H1-I3-L-M-N-R-R1-S-T-U-U4-V-Z-Z1	34032	B-C1-C2-F-F1-F3-J-L-M-N-R-R1-T-V-Z1
09759	A-B-C-C1-C2-E2-F-F1-F3-J-L-N-R-R1-T-V-Z1	09829	B-C-N-R-V-Z1	09875	A-B-C1-C2-E2-F-F1-F3-H1-I3-L-M-N-R-R1-S-T-U-U4-V-Z-Z1	34033	B-C1-C2-F-F1-F3-I3-L-M-N-R-T-V-Z-Z1
09761	B-F-F1-F3-M-R-R1-S-V-Z-Z1	09830	B-C-F-F1-F3-J-L-M-N-R-R1-S-T-V-Z1	09877	A-B-C-C2-E-E2-E3-F1-F3-H-H1-J-M-N-R-R1-S-U-V-Z1	34034	B-C1-C2-F-F1-F3-I3-L-M-N-R-R1-T-V-Z-Z1
09762	A-B-C2-E3-F-F1-F3-J-L-N-R-R1-T-V-Z1	09831	B-C1-C2-F-F1-F3-J-L-N-R-R1-T-V-Z1	09880	A-B-C1-C2-E2-F-F1-F3-H1J-L--N-R-R1-S-T-U-V-Z1	34035	B-C1-C2-F-F1-F3-H-J-L-M-N-R-R1-T-V-Z1
09769	A-B-C-C1-C2-F-F1-F3-J-L-M-N-R-R1-T-V-Z1	09832	B-C1-E2-F1-F3-N-R-S-V-Z1	09889	B-E2-F-H1-N-R-R1-U2-V-Z1	34036	B-C1-C2-F-F1-F3-J-L-M-N-R-R1-T-V-Z1
09777	A-B-C-C1-C2-E1-F-F1-F3-J-L-M-N-R-R1-T-V-Z1	09833	B-C1-E2-F1-F3-N-R-S-V-Z1	09892	A-B-C1-C2-E2-F-F1-F3-J-L-M-N-R-R1-T-V-Z1	34037	B-C-C1-C2-F-F1-F3-H-J-L-M-N-R-R1-T-V-Z1
09780	A-B-F-F3-H-N-R-S-V	09834	B-C-C2-E2-E3-F-F1-F3-R-R1-S-U-Z1	09895	A-B-C1-C2-E2-F-F1-F3-J-L-M-N-R-T-V-W-Z1	34039	B-C1-C2-F-F1-J-L-M-N-T-V-Z1
09789	A-B-C2-F-F3-N-R-S-V-Z1	09836	A-B-C1-C2-F-F1-F3-J-L-M-N-R-R1-V-Z1	09898	B-C-C1-C2-E2-F-F1-F2-H1-N-R-R1-S-U2-V-Z1	34041	B-C1-C2-F-F1-F3-J-L-M-N-R-R1-T-V-Z1
09801	A-B-C1-E2-F-F3-H1-M-N-R-R1-S-V-Z1	09837	B-E2-E3-F1-F3-R-S-V-Z1	09902	A-B-C1-E2-F-F3-H1-M-R-R1-S-V-Z1	34042	A-B-C-F-F1-F3-M-N-R-S-U-V-W-Z1
09802	A-B-C-C2-D-F-F1-F3-H-H1-I3-L-M-N-R-R1-S-T-V-W-Z-Z1	09838	B-C-C2-E2-E3-F-F1-F3-R-S-U-Z1	09903	B-C1-E2-F1-F3-S-V-Z1	34050	B-V
09803	A-B-C-C2-E-E2-E3-F1-F3-H-H1-J-M-N-R-R1-S-U-V-Z1	09841	A-B-F3-N-R-S-U-Z1	09904	B-C1-E2-F1-F3-S-V-Z1	34051	B-V
09804	A-B-F-F1-F3-M-N-R-S-V-Z1	09842	A-B-C1-C2-F-F1-F3-J-L-N-R-R1-T-V-Z1	09908	A-B-F-F1-F3-N-R-R1-S-V-Z1	34052	B-V
09805	B-C-C2-E2-E3-F-F1-F3-R-R1-S-Z1	09844	A-B-C1-C2-F-F1-F3-J-L-M-N-R-R1-T-V-Z1	09909	A-B-F-F1-F3-N-R-R1-S-V-V1-Z1	34053	B-V
09807	A-B-C1-E2-F-F1-F3-H1-I3-M-N-R-R1-S-T-V-Z-Z1	09845	A-B-C1-C2-E3-F-F1-F3-J-L-M-N-R-R1-T-V-Z1	09974	B-F1-F3-J-L-M-N-R-S-T-U2-V-X-Z1	34054	B-V
09808	A-B-C1-C2-E2-F-F1-F3-H-H1-J-L-N-R-R1-T-V-Z1	09846	A-B-C1-C2-F-F1-F3-J-L-N-R-R1-T-V-Z1	09975	B-F1-F3-I3-L-M-N-R-S-T-U2-V-X-Z-Z1	34055	B-C1-C2-F-F1-F3-J-L-M-N-R-R1-T-V-Z1
09809	B-C1-C2-E3-F-F1-F3-J-L-N-T-V-Z1	09847	B-C-C2-F-F1-F3-J-L-M-N-R-R1-S-T-V-Z1	09976	B-F1-F3-J-L-M-N-R-S-T-U2-V-X-Z1	34058	B-F-F1-F3-R-R1-S-V-Z1
09810	A-B-F-F1-F3-N-R-S-V-Z1	09848	A-B-F-F3-M-R-S-V-Z1	09977	B-F1-F3-J-L-M-N-R-S-T-U2-V-X-Z1	34060	B-C1-C2-E2-F-F1-F3-J-L-M-N-R-R1-T-V-Z1
09811	A-B-C-C2-E-E2-E3-F1-F3-H-H1-J-M-N-R-R1-S-U-V-Z1	09853	B-C1-E2-F-F1-F3-H1-N-R-R1-S-U2-V-Z1	34001	A-B-C1-C2-F-F1-F3-J-L-M-N-R-R1-S-T-V-Z1	34066	B-C1-C2-F-F1-F3-I3-J-L-M-N-R-R1-S-T-V-X-Z-Z1
09812	B-E2-E3-F-F1-I-J-L-N-R-R-T-U-V-Z-Z1	09854	A-B-C1-C2-F-F1-F3-J-L-N-R-R1-S-T-V-Z1	34002	B-C1-C2-F-F1-F3-J-L-M-N-R-R1-T-V-Z1	34067	B-C1-C2-F-F1-F3-J-L-M-N-R-R1-S-T-V-X-Z1
09813	A-B-C1-C2-E2-E3-F-F1-F3-J-L-N-R-R1-T-V-Z1	09855	A-B-C-C1-C2-E2-F-F1-F3-H1-M-R-R1-S-U2-V-Z1	34004	B-C1-C2-F-F1-F3-J-L-M-N-R-R1-T-V-Z1	34068	B-C1-C2-F-F1-F3-J-L-M-N-R-R1-S-T-V-X-Z1
09814	B-C2-E2-E3-F-F1-F3-I3-J-L-N-R-R1-T-V-Z-Z1	09856	B-C-C1-C2-F-F1-F3-H-H1-J-L-M-N-S-T-V-Z1	34007	B-F-F1-H-J-M-N-R-R1-V-Z1	34069	B-C1-C2-F-F1-F3-I3-J-L-M-N-R-R1-S-T-V-X-Z-Z1
09816	A-B-C1-C2-E2-E3-F-F1-F3-J-L-N-R-R1-T-V-Z1	09857	A-B-C2-E2-F-F1-F3-I3-L-M-N-R-R1-S-T-V-Z-Z1			34078	B-F1-F3-N-R-S-V-Z1
		09858	A-B-C-C1-C2-E2-E3-F1-F3-H-H1-J-M-N-R-R1-S-U-V-Z1			34080	B-F-F1-R-R1-V
						34081	B-F-F1-R-R1-V
						34082	B-F-F1-R-R1-V
						34083	B-F-F1-R-R1-V
						34084	B-F-F1-R-R1-V
						34085	B-F-F1-F3-R-R1-S-V

APO/ FPO/ DPO	See Restrictions	APO/ FPO/ DPO	See Restrictions	APO/ FPO/ DPO	See Restrictions	APO/ FPO/ DPO	See Restrictions
34086	B-F-F1-F3-R-R1-S-V	96311	B-F3-M-R-S-W	96505	A-B-C-C1-C2-F-F1-F3-I3-L-M-N-R-R1-S-T-V-W-Z-Z1	96607	B-V
34087	B-E2-F-F1-F3-R-R1-S-V	96315	B-F-F1-F3-H-M-R-S-W			96608	B-E2-F-H1-R1-U2-V-Z1
34088	B-F-F1-R-R1-V	96319	B-C-F3-M-R-S-V-W			96609	B-E2-F-H1-R1-U2-V-Z1
34089	B-F-F1-R-R1-S-V	96321	B-F-F1-F2-F3-H-M-R-S-W-Z1	96507	A-B-C1-C2-F-F1-H-J-L-M-N-T-V-Z1	96610	B-E2-F-H1-R1-U2-V-Z1
34090	B-F-F1-R-R1-V			96510	B-I3-N-V	96611	B-E2-F-H1-R1-U2-V-Z1
34091	B-E2-E3-F-F1-F3-R-R1-S-V-Z1	96322	B-F-F1-F2-F3-H-M-R-S-W-Z1	96511	B-I3-N-V	96612	B-V
				96515	B-C-D-E1-F-F1-F3-H1-M-N-R-S-T-Z1	96613	B-V
34092	B-F-F1-F3-R-R1-S-V	96326	B-C-F-F3-M-R-S-W			96615	B-F-F1-R-R1-V
34093	B-F-F1-F3-R-R1-S-V	96328	B-C-F3-M-R-S-W			96616	B-C2-F-F1-F3-R-R1-S-V
34094	B-F-F1-F3-R-R1-S-V	96331	A-B-F-F1-F3-J-L-M-N-R-S-U2-W	96516	B-C-D-E1-E2-F-F1-F3-H-H1-M-N-R-S-T-Z1	96619	B-F1-F3-R-S-V
34095	B-F-F1-R-R1-V			96517	B-C-D-E1-E2-F-F1-F3-H-H1-M-N-R-T-U-V-Z1	96620	B-F-F1-F3-R-R1-S-V
96201	A-B-F-F1-F3-M-R-S-U	96336	B-C-F3-M-R-S-V-W			96628	B-F-F1-F3-R-R1-S-V
96202	A-B-F-F1-F3-M-R-S-U	96337	B-F-F1-F3-M-R-R1-S-W	96520	B-F-N-U3-V	96629	B-F-F1-F3-R-R1-S-V
96203	A-B-F-F1-F3-M-R-S-U	96338	A-B-F-F3-M-R-S-U2-W	96521	B-C1-C2-F-F1-J-L-M-N-R-R1-S-T-V-Z1	96632	B-F-F1-F3-R-R1-S-V
96204	A-B-F-F1-F3-M-R-S-U	96339	A-B-F-F3-M-R-S-U2-W			96633	B-V
96205	A-B-F-F1-F3-M-R-S-U	96343	A-F-F3-M-P-R-S-U2	96530	A-B-C1-C2-F-F1-H-H1-J-L-M-N-R-R1-S-T-V-Z1	96641	B-V
96206	A-B-F-F1-F3-M-R-S-U	96346	B-F-F1-F2-F3-H-M-R-S-W-Z1	96531	A-B-C-F-F1-F3-H-M-N-R-S-U-V	96642	B-V
96207	A-B-F-F1-F3-M-R-S-U-V	96347	B-F-F1-F2-H-M-W-Z1			96643	B-F-F1-F3-R-R1-S-V
96208	A-B-F-F1-F3-M-R-S-U	96349	B-F-F1-F2-F3-H-M-R-S-W-Z1	96532	A-B-C1-C2-F-F1-H-J-L-M-N-R-R1-S-T-V-Z1	96644	B-V
96209	A-B-C1-C2-F-F1-J-L-M-N-T-U-V-Z1			96534	A-B-F-F1-F2-F3-S-U-Z1	96645	B-V
96210	A-B-C1-C2-F-F1-F3-I3-L-M-N-R-R1-T-V-Z-Z1	96350	B-F-F1-F2-F3-H-M-R-S-W-Z1	96535	A-B-C1-C2-F-F1-J-L-M-N-R-R1-S-T-V-Z1	96649	B-F-F1-F3-R-R1-S-V
96212	B-F-F1-F2-H-M-W-Z1	96351	B-F-F1-F2-F3-H-M-R-S-W-Z1	96537	B-V-Z1	96650	B-F-F1-R-R1-V
96213	A-B-C-F1-F3-R-S-U	96362	B-F-F1-F2-M-W-Z1	96540	B-F1-F2-F3-S-Z1	96657	B-F-F1-F3-R-R1-S-V
96214	A-B-C-F1-F3-R-S-U	96365	B-C-F3-M-R-S-V-W	96542	B-V-Z1	96660	B-F-F1-F3-R-R1-S-V
96218	A-B-F-F1-F3-M-R-S-U	96367	B-C-F3-L-M-R-S-W	96543	B-F-F1-F2-F3-P-S-V-Z1	96661	B-F-F1-F3-R-R1-S-V
96224	A-B-F-F1-F3-M-R-S-U	96368	B-C-F3-M-R-S-W	96548	A-B-F-F1-F3-H-M-R-S-U	96662	B-F-F1-F3-R-R1-S-V
96251	A-B-F-F1-F3-M-R-S-U	96370	B-F-F1-F2-H-M-W-Z1			96663	B-F-F1-F3-R-R1-S-V-V1
96257	A-B-F-F1-F3-S-U	96371	B-F-F3-M-R-S-W	96549	A-B-C1-C2-F-F1-H-J-L-M-N-R-R1-S-T-V-Z1	96664	B-V
96258	A-F-F3-M-P-R-S-U	96372	B-M-W			96665	B-V
96260	A-B-F-F1-F3-M-R-S-U	96373	B-M-W	96550	A-B-H-M-N-U-V-Z1	96666	B-F3-R-S-V
96262	A-B-F-F1-F3-R-S-U-V-Z1	96374	B-M-W	96551	A-B-C1-C2-F-F1-H-J-L-M-N-R-R1-S-T-V-Z1	96667	B-F-F1-F3-R-R1-S-V
		96375	B-F3-M-R-S-W			96668	B-F-F1-R-R1-V
96264	A-B-C-F1-F3-R-S-U	96376	B-F3-M-R-S-W	96552	B-Z1	96669	B-F-F3-R-R1-S-V
96266	A-B-C-F1-F3-R-S-U	96377	B-F-F3-M-R-S-W	96553	A-B-F-F1-H-M-N-R-U	96670	B-V
96267	A-B-C-F1-R-U-V	96378	B-M-W	96554	A-B-C1-C2-F-F1-H-J-L-M-N-R-R1-S-T-V-Z1	96671	B-F-F1-F3-R-R1-S-V
96269	A-B-F1-F2-F3-R-S-U-Z1	96379	B-F3-M-R-S-W			96672	B-F-F1-F3-R-R1-S-V
96271	A-F-F3-M-P-R-S-U	96380	B-F3-M-R-S-W	96555	A-B-F-F3-M-R-S-V	96673	B-F3-S-V
96273	A-B-F-F1-F3-M-R-S-U	96382	B-F-F3-M-R-S-W	96557	A-B-F-F3-M-R-S-V	96674	B-F-F1-F3-R-R1-S-V
96275	A-B-F-F1-F3-M-R-S-U	96384	B-F-F3-M-R-S-W	96562	A-B-C1-C2-D-E2-E3-F1-H-H1-I3-L-M-N-R-R1-S-T-V-Z1	96675	B-F-F1-F3-R-R1-S-V
96276	A-B-C-F1-R	96385	B-F-F3-M-R-S-W			96677	B-F-F1-F3-R-R1-S-V
96278	A-B-C-F1-F3-R-S-U	96386	B-F3-M-S-W	96577	A-B-F-F3-H-M-N-R-S-U	96678	B-F-F1-F3-R-R1-S-V
96283	A-B-F-F1-F3-S-U	96387	B-F3-M-R-S-W	96578	B-F1-F3-H-J-N-R-S	96679	B-F-F1-R-R1-V
96284	A-B-F-F1-F3-R-S-U	96388	B-F3-M-R-S-W	96595	B-F-F3-R-S-V-Z1	96681	B-V
96297	A-B-F-F1-F3-R-S-U	96389	B-M-W	96598	B-F3-I3-N-R-S-V-V1	96682	B-V
96300	A-B-F3-M-R-S-V-Z1	96401	B-C-F-F3-N-R-S-V-V1-Z1	96599	B-F3-N-R-S-V	96683	B-F-F1-F3-R-R1-S-V
96301	A-B-F-F3-M-N-R-S-U2-W	96502	A-C1-F-F1-F3-M-N-Q-R-R1-S-T-U2-V	96601	B-V	96686	B-V
96303	B-C1-C2-F-F1-H-J-L-M-N-T-V-W-Z1	96504	A-B-C-C1-C2-F-F1-F3-I3-L-M-N-R-R1-T-V-W-Z-Z1	96602	B-V	96691	B-F-F1-F3-R-R1-S-V
96306	B-F-F1-F2-F3-H-M-R-S-W-Z1			96603	B-V	96692	B-F-F1-F3-R-R1-S-V
				96604	B-V	96693	E2-F-F3-R-R1-S-V
96310	B-F3-M-R-S-W			96605	B-V+B559	96694	B-E2-F-F1-F3-I3-J-R-R1-S-V-V1-Z
				96606	B-F3-R-S-V	96695	B-F-F1-R-R1-V
						96696	B-F-F1-R-R1-V
						96698	B-V

RESTRICTIONS

LEGEND

PS Form 2976, *Customs — CN 22 (Old C 1) and Sender's Declaration* (green label)

PS Form 2976-A, *Customs Declaration and Dispatch Note*

PS Form 2976-B, *Priority Mail Express International Shipping Label and Customs Form*

ATF	= Bureau of Alcohol, Tobacco, Firearms, and Explosives
Box C	= Department of State (DOS) contractor personnel
Box R	= Retired military personnel
DPO	= Diplomatic Post Office
MPO	= Military Post Office
PACT	= Prevent All Cigarette Trafficking Act
PAL	= Parcel Airlift
PMEMS	= Priority Mail Express Military Service
PUB 52	= Publication 52, <i>Hazardous, Restricted, and Perishable Mail</i>
SAM	= Space Available Mail
USDA	= United States Department of Agriculture

Note: Mail order catalogs are prohibited as SAM or PAL mail.

A. Securities, currency, or precious metals, including in their raw, unmanufactured state, are prohibited. Official Mail shipments are exempt from this restriction.

A1. Reserved for future use.

A2. Reserved for future use.

B. Other than for PMEMS and the exceptions listed below, a customs declaration PS Form 2976 or PS Form 2976-A is required for all items weighing 16 ounces or more, and for all items (regardless of weight) containing potentially dutiable mail contents (e.g., merchandise or goods) addressed to or from this ZIP Code. Other than the exceptions listed below, all PMEMS mailpieces (regardless of mail contents or weight) addressed to or from this ZIP Code must bear a properly completed PS Form 2976-B. The surface area of the address side of the mailpiece must be large enough to contain the applicable customs declaration. The following exceptions apply to known mailers, who for this purpose are defined as follows:

- Business mailers who enter volume mailings through business mail entry units or other bulk mail acceptance locations, pay postage through advance deposit accounts, use permit imprints for postage payment, and submit completed postage statements at the time of entry that certify that the mailpieces contain no dangerous materials that are prohibited by postal regulations. Such business mailers are exempt from providing customs documentation on non-dutiable letters and printed matter.
- All federal, state, and local government agencies whose mailings are regarded as "Official Mail." Such agencies are exempt from providing customs documentation, except for any items addressed to an MPO or DPO to which restriction "B2" applies.

B2. All federal, state, and local government agencies must complete customs documentation when sending potentially dutiable mail addressed to or from this MPO or DPO.

C. Cigarettes and other tobacco products, including tobacco leaves, chewing and pipe tobacco, snuff, and cigars are prohibited, including those that are authorized in Publication 52 under PACT.

C1. Obscene and horror articles, images, prints, paintings, cards, films, videotapes, comic books, etc., are prohibited.

C2. E-cigarettes and related products (e.g., nicotine liquids, e-liquids, parts, or supplies) are prohibited.

D. Coffee is prohibited.

E. Medicines (prescription, over-the-counter, vitamins, and supplements) are prohibited when mailed to individuals for human or animal use. This prohibition does not apply when medicines are sent as Official Mail only between specifically designated agencies such as pharmaceutical distributors, hospitals, clinics, and pharmacies.

E1. Mailers are responsible to ensure that all medicines and vaccines conform to host nation laws.

E2. Any matter depicting nude or seminude persons, pornographic, or sexual items are prohibited. Non-authorized political materials are prohibited. Religious materials contrary to the Islamic faith are prohibited in bulk quantities, but individual items for the personal use of the addressee are permissible.

E3. Radio transceivers, cordless/cellular telephones, global positioning systems, scanners, base stations, and handheld transmitters are prohibited.

F. Firearms of any type are prohibited, except firearms mailed to or by official U.S. government agencies. This restriction does not apply to firearms mailed from this MPO ZIP Code, provided ATF and USPS regulations are met. Antique firearms do not require an ATF form.

F1. Weapons of any type are prohibited.

F2. Mailing firearms to or from this MPO ZIP Code is restricted to one shotgun and one single shot .22 caliber rifle per individual.

F3. Replica weapons and inert explosive devices (such as grenades) and weapons parts are prohibited.

G. Parcels of any class are prohibited.

H. Meats, including preserved meats, bones, skin, hair, feathers, horns or hoofs of hoofed animals, and wool samples whether hermetically sealed or not, are prohibited.

H1. Pork or pork by-products are prohibited.

I. Reserved for future use.

I1. Reserved for future use.

I2. Reserved for future use.

I3. Mail of all classes must fit in a mail sack. Mail may not exceed the following dimensions:

- Maximum length 27 inches.
- Maximum width 14 inches.
- Maximum height 14 inches.

J. Standard Post and Parcel Select parcels may not exceed 108 inches in length and girth combined.

K. Reserved for future use.

L. All Official Mail is prohibited.

M. Fruits, vegetables, live animals, and live plants are prohibited.

N. Registered Mail service is prohibited.

O. Reserved for future use.

P. Official Mail only.

Q. Mail may not exceed 66 pounds, and size is limited to 42 inches maximum length and 72 inches maximum length and girth combined.

R. All alcoholic beverages, including those mailable under Publication 52, Part 421, are prohibited.

R1. Materials used in the production of alcoholic beverages (i.e., distilling material, hops, malts, yeast, etc.) are prohibited.

S. Synthetic cannabinoids used to stimulate the central nervous system commonly known as "synthetic marijuana," "K2," or "Spice" are prohibited.

T. Mailings of household shipments and case lots of food to or from an MPO require military transportation office approval prior to mailing. Mailings to or from a DPO require pre-approval from the Diplomatic Pouch and Mail Director.

U. Mail addressed to Retirees (Box R) is limited to 16 ounces and up to a 90-day supply of TRICARE medications. This restriction does not apply to mail endorsed "Free Matter for the Blind or Handicapped."

U1. Mail is limited to First-Class Mail items, including audio and video media, weighing 13 ounces or less. This limitation does not apply to Official Mail.

U2. Retirees (Box R) are not authorized mail service.

U3. Reserved for future use.

U4. Mail addressed to Box C is limited to 2 lbs.

V. PMEMS is not available.

V1. Electronic Delivery status information for Extra Services is not available on *USPS.com*. Manual record of delivery may be available upon request.

W. Hermetically sealed packages of meat products bearing USDA certification, such as dried beef, salami, and sausage, may be mailed. 200 grams of tobacco per parcel are permitted duty free.

X. Cremated remains are prohibited.

Y. Mail is limited to First-Class Mail and Priority Mail items only. This restriction also applies to Official Mail.

Z. No outside pieces (OSPs).

Z1. The following restriction is applicable only to International Service Centers (ISC)/Exchange Offices. An Anti-Pilferage Seal (Item No O817E or O818A) is required on all pouches and sacks.

Freely Associated States Restrictions

We list the mailing restrictions for Freely Associated States (FAS) in the Pull-Out section of the *Postal Bulletin*. All FAS Restrictions will be updated periodically.

Freely Associated States

Mail addressed to freely associated states is subject to certain conditions or restrictions of mailing regarding content, preparation, and handling. The following FAS Restrictions table outlines these conditions as listed by each affected FAS ZIP Code™ through the use of footnoted mailing restrictions codes (see the [Restrictions](#) following the table). For more information on available extra services for FAS destinations, see *Mailing Standards of the United States Postal Service, Domestic Mail Manual (DMM®)*, part 503.

Acceptance clerks must use the table with the Retail System Software terminal to determine which FAS ZIP Codes are active and which conditions of mailing apply.

FAS Restrictions Table

FAS Table	See Restrictions
96939	A, B
96940	A, B
96941	A, B
96942	A, B
96943	A, B
96944	A, B
96960	A, B
96970	A, B, D
Marshall Islands	C
Federated States of Micronesia	C

RESTRICTIONS LEGEND

PS Form 2976, *Customs Declaration CN 22 – Sender's Declaration*

PS Form 2976-A, *Customs Declaration and Dispatch Note*

FAS = Freely Associated State

- A.** Bank currency (coin and paper) is prohibited.
- B.** Signature Confirmation, Signature Confirmation Restricted Delivery, Adult Signature Requested, Adult Signature Restricted Delivery, Certified Mail Adult Signature Required, and Certified Mail Adult Signature Restricted Delivery not available.
- C.** Collect on Delivery is prohibited.
- D.** Betel nut (Areca catechu) is prohibited.

— *Asia-Pacific Relations,
Global Business, 9-9-21*

Labeling List Changes (continued)

Column A Originating ZIP Codes (Change From)	Column A Originating ZIP Codes (Change To)	Column B Label To (Change From)	Column B Label To (Change To)	Column C Label Container To (Change From)	Column C Label Container To (Change To)
566	566	005, 066, 068-119, 130-201, 206-212, 214-232, 238-268, 270-277, 280-293, 295-297, 300-307, 310-312, 318-319, 324-325, 350-352, 354-397, 399-418, 420-427, 430-516, 520-528, 530-532, 534-535, 537-551, 553-567, 570-577, 580-588, 590-597, 600-631, 633-641, 644-658, 660-662, 664-678, 680-681, 683-693, 700-701, 703-708, 710-714, 716-731, 733-738, 740-741, 743-767, 770, 772-778, 780-782, 786-789, 793-794, 800-812, 814-816, 820-832, 834, 840-847, 881-882, 898	005, 066, 068-119, 130-201, 206-212, 214-232, 238-268, 270-293, 295-297, 300-303, 305-307, 311, 324-325, 350-352, 354-397, 399-418, 420-427, 430-516, 520-528, 530-532, 534-535, 537-551, 553-567, 570-577, 580-588, 590-597, 600-631, 633-641, 644-658, 660-662, 664-678, 680-681, 683-693, 700-701, 703-708, 710-714, 716-731, 733-738, 740-741, 743-767, 770, 772-778, 780-782, 786-789, 793-794, 800-812, 814-816, 820-832, 834, 840-847, 881-882, 898	BEMIDJI MN 566	BEMIDJI MN 566

Column A: No change.
 Column B added: 278-279.
 Column B deleted: 304, 310, 312, and 318-319.
 Column C: No change

Column A Originating ZIP Codes (Change From)	Column A Originating ZIP Codes (Change To)	Column B Label To (Change From)	Column B Label To (Change To)	Column C Label Container To (Change From)	Column C Label Container To (Change To)
814-816	814-816	515-516, 590-599, 677, 679-681, 683-693, 730-731, 734-741, 743-749, 790-794, 798-816, 820-838, 840-847, 850-853, 855-857, 859-860, 863-865, 870-871, 873-885, 889-891, 893-895, 897-898, 900-908, 910-928, 930-935, 942, 952-953, 956-961, 970-973, 977-986, 988, 990-994	515-516, 590-599, 677, 679-681, 683-693, 730-731, 734-741, 743-749, 790-794, 798-816, 820-838, 840-847, 850-853, 855-857, 859-860, 863-865, 870-871, 873-885, 889-891, 893-895, 897-898, 900-908, 910-928, 930-935, 942, 952-953, 956-961, 970-973, 977-982, 986, 988, 990-994	GRAND JUNCTION CO 814	GRAND JUNCTION CO 814

Column A: No change.
 Column B deleted: 983-985.
 Column C: No change.

Column A Originating ZIP Codes (Change From)	Column A Originating ZIP Codes (Change To)	Column B Label To (Change From)	Column B Label To (Change To)	Column C Label Container To (Change From)	Column C Label Container To (Change To)
850-853, 855-857, 859-860, 863	850-853, 855-857, 859-860, 863	590-597, 635, 640-641, 644-658, 660-662, 664-668, 679, 730-731, 733-741, 743-754, 757-758, 760-770, 772-778, 780-782, 786-816, 820-834, 836-837, 840-847, 850-853, 855-857, 859-860, 863-865, 870-871, 873-885, 889-891, 893-895, 897-898, 900-908, 910-928, 930-961, 979	590-597, 665-667, 679, 730-731, 733-741, 743-754, 757-758, 760-770, 772-778, 780-782, 786-816, 820-834, 836-837, 840-847, 850-853, 855-857, 859-860, 863-865, 870-871, 873-885, 889-891, 893-895, 897-898, 900-908, 910-928, 930-961, 979	PHOENIX AZ 852	PHOENIX AZ 852

Column A: No change.
 Column B deleted: 635, 640-641, 644-658, 660-662, 664, and 668.
 Column C: No change.

* * * * *

L606 5-Digit Scheme — Standard Mail, First-Class Mail, and Package Services Parcels

* * * * *

Newly Added

Column A Destination ZIP Codes	Column B Label Container To (Added To)
63020	FESTUS MO 63028
63030	FESTUS MO 63028
63036	FESTUS MO 63028
63037	FESTUS MO 63028
63048	FESTUS MO 63028
63065	FESTUS MO 63028
63070	FESTUS MO 63028
63071	FESTUS MO 63028
63074	FESTUS MO 63028
63089	FESTUS MO 63028

Deleted

Column A Destination ZIP Codes	Column B Label Container To (Deleted From)
28056	GASTONIA NC 28054
28146	SALISBURY NC 28144
28147	SALISBURY NC 28144
28806	ASHEVILLE NC 28806
28816	ASHEVILLE NC 28806
47901	LAFAYETTE IN 47905
47905	LAFAYETTE IN 47905
78041	LAREDO TX 78041
78045	LAREDO TX 78041

* * * * *

L801 AADCs — Letter-Size Mailings**Changes**

Column A Destination ZIP Codes	Column B Label To (Change From)	Column B Label To (Change To)
808	AADC DENVER CO 800	AADC DENVER CO 808
809	AADC DENVER CO 800	AADC DENVER CO 808
810	AADC DENVER CO 800	AADC DENVER CO 808
811	AADC DENVER CO 800	AADC DENVER CO 808
812	AADC DENVER CO 800	AADC DENVER CO 808

Column A Destination ZIP Codes	Column B Label To (Change From)	Column B Label To (Change To)
906	AADC SANTA ANA CA 917	AADC INDUSTRY CA 917
917	AADC SANTA ANA CA 917	AADC INDUSTRY CA 917
918	AADC SANTA ANA CA 917	AADC INDUSTRY CA 917

— Logistics, Network Development, and Support,
Network Operations, 9-9-21

Environmental Management

Used Battery Handling, Storage, and Disposal

Most used batteries, such as small non-alkaline dry cell batteries and small sealed lead-acid batteries, contain hazardous components and must be managed as universal waste. These batteries can be recycled through the USPS® National Universal Waste Management Service contractor, Cleanlites Recycling, Inc. (Cleanlites). Both direct pickup and mailback recycling services are available from Cleanlites in eBuy+.

Examples of dry cell and small sealed lead-acid batteries are shown in the table.

Nickel-Cadmium (Ni-Cd) and Nickel Metal Hydride	Cell phones, cameras, power tools, emergency lighting, and other types of portable electronic equipment.
Lithium Ion (Li-Ion)	Cell phones, laptops, cameras, Intelligent Mail Data Acquisition System, Mobile Delivery Device, SVMobile and Ring scanners, and Transportation SweepSide Assignment printers.
Lithium (Li)	Small flashlights, cameras, watches, calculators, remote car locks, and other portable electronic devices.
Silver/Mercury Oxide	Small electronics, such as watches and hearing aids.
Small Sealed Lead-Acid	Backups for emergency lighting, alarm systems, and other powered systems and equipment.

Universal Waste Management

Use the following steps to recycle eligible batteries through Cleanlites:

- Cover battery terminals with tape to prevent short-circuiting. Store batteries in a closable, impermeable container designed to contain releases (e.g., a 5-gallon plastic container or other non-reactive container). Keep container closed.
- Store batteries that show any evidence of leakage or damage separately in impermeable containers or wrapped in plastic to prevent further releases. Do not mix incompatible batteries in the same container. Keep small sealed lead-acid batteries in separate containers. Keep Li and Li-Ion batteries in separate containers from other battery types when stored for on-site pickup.
- Label all containers as “UNIVERSAL WASTE: Batteries,” “Waste Batteries,” or “Used Batteries,” and include the accumulation start date, which indicates when the first battery was placed in the container.

- Store containers in a secure designated universal waste accumulation area that is clearly labeled “Universal Waste Accumulation Storage Area.” Conduct regular monthly inspections of accumulation storage areas.
- Arrange for waste battery pickup or use mailback recycling service through eBay+ within one year (365 days) of accumulation start date. Keep all shipment and disposal records.

Important: Do *not* send waste batteries through the mail to the Atlanta Mail Recovery Center, Ybor City Processing and Distribution Center (Tampa Logistics and Distribution Center), or the Topeka Material Distribution Center. The internal

battery mail-back programs were canceled due to USPS mailing restrictions and safety concerns.

For more information, review the following guidance information or consult your designated environmental contact (blue.usps.gov/sustainability/contact.htm):

- Environmental compliance bulletin for used battery management at blue.usps.gov/sustainability/environmental/_pdf/waste/ecb-used-batteries.pdf.
- The Office of Sustainability battery recycling website at blue.usps.gov/sustainability/battery-recycling.htm.

— *Environmental Affairs and Corporate Sustainability, Corporate Affairs, 9-9-21*

Finance

Finance Number Control Master and Account Number Control Master Request Freeze

In preparation for the fiscal year 2021 closeout, there will be a freeze period from September 26 to October 22, 2021, for all 6-digit Finance Number Control Master (FNCM) requests and General Ledger Account (GLA)/Account Identifier Code (AIC) changes. You can submit requests for 6-digit finance numbers and GLA updates, but we will not implement them until after the freeze period.

You must submit requests by the following dates to be effective before the freeze period:

- 6-digit finance numbers requests:
 - The date to submit discontinued finance numbers was Tuesday, August 24. The first effective date after the freeze period will be November 1.
 - The date to submit new finance numbers, name changes, and realignments is Wednesday, September 15. The first effective date after the freeze period will be October 23.

- GLA/AIC changes:
 - The date to submit requests for new GLA/AIC codes was Thursday, August 26. The first effective date after the freeze period will be November 1.

During the freeze, the Postal Service™ will continue to process 10-digit finance number requests. For exceptions, please send an email to FNCM Headquarters at TC48H0@usps.gov. We will consider each request on a case-by-case basis.

FNCM Resources

For more information:

- Visit the FNCM User's Guide on *Blue* at blue.usps.gov/accounting/_pdf/FNCMUser-Guide.pdf.
- Send an email to FNCM FSB at Q5X6J0@usps.gov for 10-digit unit finance number requests and questions (include your District name in the subject line). Requests that cannot be completed will be returned to the sender with an explanation.

— *Revenue and Field Accounting, Controller, 9-9-21*

Human Resources

Know the Facts About Prostate Cancer Symptoms and Risk Factors

September is Prostate Cancer Awareness Month, a time to learn more about prostate cancer, which is one of the most common cancers found in American men.

Prostate cancer develops slowly when cells in the prostate gland become abnormal. The cancer is normally confined to the prostate gland, where it may be controlled with minimal treatment. However, in some cases, prostate cancer can be aggressive and spread quickly.

All men are at risk for prostate cancer. Factors that may increase the risk of the disease include old age, obesity, and race (African-American men have a greater risk of prostate cancer than men of other races).

Healthy lifestyle choices — such as regular exercise, maintaining a healthy weight, and eating nutritious meals — may lower the risk of prostate cancer.

Symptoms vary for individuals. Some men don't experience any signs or symptoms, especially during the early stages of prostate cancer.

In more advanced stages, these symptoms are possible:

- Pain or burning during urination.
- Weak or interrupted flow of urine.

- Frequent urination, especially at night.
- Blood in urine or semen.
- Pain in the pelvis, back, or hips.

There is no definitive test that completely screens for prostate cancer, although blood tests and digital rectal exams are the most commonly used screening tools. Different types of treatments are available, including surgery and radiation therapy.

For more information about prostate cancer, visit:

- The Centers for Disease Control and Prevention at cdc.gov/cancer/prostate/basic_info/index.htm.
- The Cancer.gov website at cancer.gov/types/prostate.

For general information about physical and mental health, visit the USPS® Wellness page on *LiteBlue* at lite-blue.usps.gov/humanresources/benefits/health-wellness/welcome.shtml?

— *Benefits and Wellness,*
Human Resources, 9-9-21

Information Security

Act Now: USPS is Moving to New External File-sharing Platform

The United States Postal Service® is transitioning from using Secure Large File Transfer (SLFT) to SharePoint Online External Large File Sharing (ELFS). This change impacts all SLFT users, and SLFT content owners must take immediate action.

In addition to allowing large files — such as presentations, photos, and videos — to be shared with external entities, ELFS offers enhanced capabilities, including unlimited file size restrictions and real-time editing of shared files.

Before September 17, current SLFT content owners must remove all files and folders from the application and save them to an alternate storage location. SLFT will be decommissioned on September 17 — any files and folders remaining in the application will not be retrievable.

SLFT content owners must take these three steps:

1. Log in to the SLFT application.
2. Download all files and folders from SLFT and save them to an alternative storage location (e.g., OneDrive).

3. Send an email to CISO Engineering Data Security Services at CISOEngineeringDataSecurityServices@usps.gov once all files and folders have been removed from SLFT.

If the files and folders removed from SLFT need to be shared with external entities, upload them to ELFS with the help of this training video: blue.usps.gov/cyber/video/GMT20210811-201832_ELFS-Infor_1920x1080.mp4.

All current SLFT content owners automatically have access to the new ELFS platform. Until ELFS is available in eAccess, ACE users who need large file-sharing capabilities must request access to SLFT (via eAccess). They will be granted ELFS access instead.

For more information about ELFS, visit the SLFT and ELFS page on *Blue* at blue.usps.gov/cyber/slft-web-application.htm.

If you have questions or comments, send an email to CISO Engineering Data Security Services at CISOEngineeringDataSecurityServices@usps.gov.

— *Corporate Information Security Office,*
Chief Information Security Officer
and Digital Solutions, 9-9-21

Think Before You Post

Did you know that social media profiles are an invaluable resource for cybercriminals?

Social media users openly share a lot of information (e.g., photos, vacations, and locations) with their friends and family. Some users even voluntarily share their personally identifiable information on their social media accounts. However, sharing excessive personal content may have adverse effects on social media users.

For example, attackers can use your information — sourced from social media platforms like LinkedIn and Facebook — to impersonate you or your contacts.

Known as pretexting, this social engineering method gives cybercriminals the information needed to duplicate account profiles and present themselves as someone they aren't. Using your social media connections, attackers often send friend requests to targets with the aim of infiltrating his or her social circle to gain private or confidential information.

To securely share information on social media, remember these helpful tips:

- **Privacy settings.** Carefully create and frequently review privacy settings for all social media accounts, especially when changes to terms of service and privacy policies occur.
- **Unintentional disclosure.** The information you post about yourself may reveal much of your personal history, as well as the answers to your online secret security questions.
- **Data is forever.** Remember that even if you have secured your settings and determined who can view your posts, all of your information is being collected, mined, and stored on the social media platform servers — perhaps forever.

For more information about social media security, visit the CyberSafe at USPS® pages on *Blue* (blue.usps.gov/cyber) and *LiteBlue* (liteblue.usps.gov/cyber).

— Corporate Information Security Office,
Chief Information Security Officer
and Digital Solutions, 9-9-21

Mailing and Shipping Services

Discontinuance of the Priority Mail Gift Card Flat Rate Envelope

The United States Postal Service® introduced the Priority Mail® Gift Card Flat Rate Envelope (EP14GT) in 2010. After conducting a return on investment analysis, the Postal Service™ decided to discontinue further production of this envelope.

Currently, the Priority Mail Gift Card Flat Rate Envelope (EP14GT) is available at The Postal Store® website (store.usps.com/store/home) in packs of 2 and 5 at no charge. The Priority Mail Gift Card Flat Rate Envelope (Dimensions: 10" L x 7" W) was designed with a special pocket to hold a greeting card and a gift card in a Priority Mail Flat Rate envelope as a customer convenience.

The recommended alternative option for the discontinued Priority Mail Gift Card Flat Rate Envelope (EP14GT) is

the Priority Mail Small Flat Rate Envelope (EP14B). The Priority Mail Small Flat Rate Envelope (EP14B) (Dimensions: 10" L x 6" W) is available for customers to order in packs of 10 at store.usps.com/store/home. The Priority Mail Small Flat Rate Envelope (EP14B) has the same construction and physical integrity as the Priority Mail Gift Card Flat Rate Envelope (EP14GT), as well as similar dimensions.

The Priority Mail Gift Card Flat Rate Envelope (EP14GT) will remain available at store.usps.com/store/home while supplies last. Customers who use these envelopes are encouraged to place their orders before supplies are depleted.

If you have any questions about the discontinuance of the Priority Mail Gift Card Flat Rate Envelope (EP14GT), send an email to Expeditedpackaging@usps.gov.

— Product Management Mailing Services,
Product Solutions, 9-9-21

Discontinuance of the Cremated Remains Animal Kits

The United States Postal Service® introduced Cremated Remains Animal Kits in February 2020. Since inception, the volume ordered remains extremely low. After conducting a return on investment analysis, the Postal Service™ decided to discontinue further production of the Cremated Remains Animal Kits.

Currently, there are two Cremated Remains Animal Kits available at The Postal Store® website (store.usps.com/store/home):

- Kit 1 includes the Priority Mail Express® Animal box (Dimensions: 9" L x 7-1/4" W x 5" H) and one roll of Priority Mail Express tape.
- Kit 2 includes the Priority Mail Express Animal box (Dimensions: 9" L x 7-1/4" W x 5" H), one roll of tape, bubble cushioning, a self-sealing plastic bag, and Publication 139, *How to Package and Ship Cremated Remains*.

Recommended alternatives for the discontinued Cremated Remains Animal Kits are the Cremated Remains Human Kits 1 and 2:

- Kit 1 includes the Priority Mail Express Cremated Remains Human box (Dimensions: 14-3/4" L x 10-1/4" W x 10" H) and one roll of Priority Mail Express tape.
- Kit 2 includes the Priority Mail Express Cremated Remains Human box (Dimensions: 14-3/4" L x 10-1/4" W x 10" H), one roll of Priority Mail Express tape, bubble cushioning, a self-sealing plastic bag, and Publication 139, *How to Package and Ship Cremated Remains*.

Cremated Remains Animal Kits will remain available at store.usps.com/store/home while supplies last. Once the Animal kits have been discontinued, the word "Human" will be removed from the Cremated Remains Kits available at The Postal Store website.

If you have any questions about the discontinuance of Cremated Remains Animals Kit, send an email to Expeditedpackaging@usps.gov.

— Product Management Mailing Services,
Product Solutions, 9-9-21

Mail Alert

The mailings below will be deposited in the near future. Offices must process this mail according to applicable service standards with the in-home dates in mind. Mailers wishing to participate in these alerts, for mailings of 1 mil-

lion pieces or more, must contact Business Service Network Integration at 202-268-3258 at least 1 month before the requested delivery dates.

Requested Delivery Dates	Title of Mailing	Class and Type of Mail	Number of Pieces (Millions)	Distribution	Presort Level	Comments
09/13/21–09/16/21	Be Well Now	Standard Catalog	2.0	Nationwide	3/5 Digit	Quad Graphics
09/13/21–09/16/21	Country Door	Standard Catalog	1.0	Nationwide	3/5 Digit	Quad Graphics
09/13/21–09/16/21	Seventh Avenue	Standard Catalog	2.0	Nationwide	3/5 Digit	Quad Graphics

— Business Customer Support and Services, Sales and Customer Relations, 9-9-21

Stamp Services

Stamp Announcement 21-31: Otters in Snow Stamps



©2021 USPS

On October 12, 2021, in Otter, MT, the United States Postal Service® will issue the *Otters in Snow* stamps (Forever® priced at the First-Class Mail® rate) in four designs, in a pressure-sensitive adhesive (PSA) double-sided booklet of 20 stamps (Item 683500). These stamps will go on sale nationwide October 12, 2021, and must not be sold or canceled before the first-day-of-issue.

Otters in Snow, a new booklet of 20 stamps from the Postal Service™, features four different scenes of the alert and playful North American river otter reveling in winter's white landscape. The original illustrations were rendered in pen and ink with watercolor, in a color palette consisting of shades of brown for the otters, with black facial features and crosshatching. The wintry background is white, with

blue water, light blue and violet shadows, and black cross-hatching. Art director Derry Noyes designed the stamps with artwork from illustrator John Burgoyne.

Availability to Post Offices: Item 683500, Otters in Snow (Forever Priced at the First-Class Mail Rate) PSA Double-sided Booklet of 20 Stamps

Stamp Fulfillment Services will not make an automatic push distribution to Post Offices. Post Offices may begin ordering stamps before the first-day-of-issue through SFS Web at sfsweb.usps.gov.

How to Order the First-Day-of-Issue Postmark

Customers have 120 days to obtain the first-day-of-issue postmark by mail. They may purchase new stamps at their local Post Office™ or at The Postal Store® website at usps.com/shop. They must affix the stamps to envelopes of their choice, address the envelopes (to themselves or others), and place them in a larger envelope addressed to:

FD01 – Otters in Snow Stamps
USPS Stamp Fulfillment Services
8300 NE Underground Drive, Suite 300
Kansas City, MO 64144-9900

After applying the first-day-of-issue postmark, the Postal Service will return the envelopes through the mail. There is no charge for the postmark up to a quantity of 50. There is a 5-cent charge for each additional postmark over 50. All orders must be postmarked by February 12, 2022.

How to Order First-Day Covers

The Postal Service also offers first-day covers for new stamp issues and Postal Service stationery items postmarked with the official first-day-of-issue cancellation. Each item has an individual catalog number and is offered in the *USA Philatelic* catalog and online at usps.com/shop. Customers may register to receive a free *USA Philatelic* catalog online at usps.com/philatelic.

Locally produced items are not authorized. Only merchandise that has been approved and assigned an item number by Headquarters Retail Marketing may be produced and sold.

Issue:	<i>Otters in Snow</i> Stamps
Item Number:	683500
Denomination & Type of Issue:	First-Class Mail Forever
Format:	Double-sided Booklet of 20 (4 designs)
Series:	N/A
Issue Date & City:	October 12, 2021, Otter, MT 59062
Art Director:	Derry Noyes, Washington, DC
Designer:	Derry Noyes, Washington, DC
Illustrator:	John Burgoyne, West Barnstable, MA
Modeler:	Sandra Lane/Michelle Finn
Manufacturing Process:	Offset
Printer:	Banknote Corporation of America
Press Type:	Alprinta 74
Stamps per Booklet:	20
Print Quantity:	300,000,000 stamps
Paper Type:	Phosphor Tagged Paper, Block Tag
Adhesive Type:	Pressure-sensitive
Stamp Orientation:	Vertical
Image Area (w x h):	0.77 x 1.05 in./19.558 x 26.67 mm
Stamp Size (w x h):	0.91 x 1.19 in./23.114 x 30.226 mm
Full Booklet Size (w x h):	5.743 x 2.375 in./145.872 x 60.325 mm
Colors:	Cyan, Magenta, Yellow, Black, Pantone 4261
Plate Size:	800 stamps per revolution
Plate Number:	"B" followed by five (5) single digits
Marginal Markings:	Header: OTTERS in SNOW • Twenty First-Class Forever Stamps • USPS logo • Barcode • Plate number in peel strip area • ©2021 USPS in peel strip area • Promotional text in peel strip area

— *Stamp Services, Marketing, 9-9-21*

Pictorial Postmarks Announcement

As a community service, the Postal Service™ offers pictorial postmarks to commemorate local events celebrated in communities throughout the nation. A list of events for which pictorial postmarks are authorized appears on the following pages. The sponsor of the pictorial postmark appears in italics under the date. Also provided are illustrations of these postmarks.

People attending these local events may obtain the postmark in person at the temporary Post Office™ station established there. Those who cannot attend the event but who wish to obtain the postmark may submit a mail order request. Pictorial postmarks are available only for the dates indicated, and *requests must be postmarked no later than 30 days following the requested pictorial postmark date.*

All requests must include a stamped envelope or postcard bearing at least the minimum First-Class Mail® postage. Items submitted for postmark may not include

postage issued after the date of the requested postmark. Such items will be returned unserved.

Customers wishing to obtain a postmark must affix stamps to any envelope or postcard of their choice, address the envelope or postcard to themselves or others, insert a card of postcard thickness in envelopes for sturdiness, and tuck in the flap. Place the envelope or postcard in a larger envelope and address it to: Pictorial Postmarks, followed by the Name of the Station, Address, City, State, ZIP+4® Code, as listed next to the postmark.

Customers can also send stamped envelopes and postcards without addresses for postmark, as long as they supply a larger envelope with adequate postage and their return address. After applying the pictorial postmark, the Postal Service returns the items (with or without addresses) under addressed protective cover.

The following pictorial postmark has been extended for 60 days:



June 29, 2021
United States Postal Service
 Lansing, MI Station
 Postmaster
 PO Box 9998
 Lansing, MI 48924-9998

The following pictorial postmarks have been extended for 30 days:



August 6–8, 2021
Macungie Memorial Park
 Das Awkscht Fesch Station
 Postmaster
 51 West End Trail
 Macungie, PA 18062-9998



September 2, 2021
United States Postal Service
 Date Meets ZIP Station
 Postmaster
 7001 South Central Avenue, Room 338
 Los Angeles, CA 90052-9601



September 10, 2021
Seattle Philatelic Exhibition (SEAPEX)
 SEAPEX Station
 Manager
 225 Andover Park West
 Seattle, WA 98188-9998

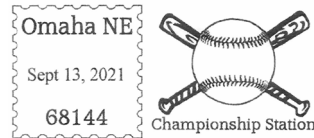


September 11, 2021
Seattle Philatelic Exhibition (SEAPEX)
 SEAPEX Station
 Manager
 225 Andover Park West
 Seattle, WA 98188-9998



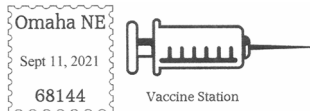
September 11, 2021

United States Postal Service
 PRI Station
 Postmaster
 PO Box 9998
 Princeton, IL 61356-9998



September 13, 2021

Omaha Philatelic Society
 Championship Station
 Postmaster
 PO Box 9998
 Omaha, NE 68144-9998



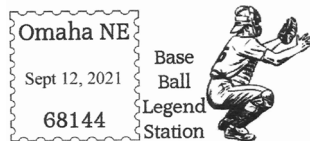
September 11, 2021

Omaha Philatelic Society
 Vaccine Station
 Postmaster
 PO Box 9998
 Omaha, NE 68144-9998



September 17, 2021

Albany Pioneer Days
 Pioneer Days Station
 Postmaster
 141 Railroad Avenue
 Albany, MN 56307-9998



September 12, 2021

Omaha Philatelic Society
 Baseball Legend Station
 Postmaster
 PO Box 9998
 Omaha, NE 68144-9998



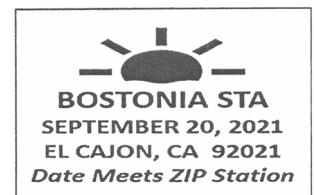
September 18, 2021

Pope County Historical Foundation
 Butterfield Days Station
 Postmaster
 5580 U.S. Highway 64 East
 Pottsville, AR 72858-9998



September 12, 2021

Seattle Philatelic Exhibition (SEAPEX)
 SEAPEX Station
 Manager
 225 Andover Park West
 Seattle, WA 98188-9998



September 20, 2021

United States Postal Service
 Date Meets ZIP Bostonia Station
 Postmaster
 867 North 2nd Street
 El Cajon, CA 92021-9998



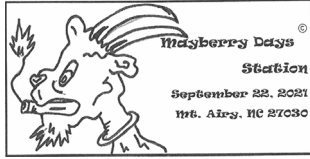
September 12, 2021

San Juan Municipal Government
 San Juan, PR Station
 c/o BDS
 585 Avenue FD Roosevelt,
 Suite 223
 San Juan, PR 00936-9681



September 21, 2021

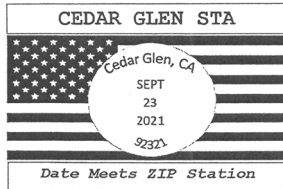
United States Postal Service
 Date Meets ZIP Sorrento Valley Station
 Postmaster
 3974 Sorrento Valley Boulevard, Suite 100
 San Diego, CA 92121-9998



September 22–24, 2021
Surry Arts Council
Mayberry Days Station
Postmaster
111 South Main Street
Mount Airy, NC 27030-9998



September 23–24, 2021
Convention Chairman
Postmark Collectors Club
2021 Convention Station
Postmaster
131 West High Street, Room
104
Jefferson City, MO 65101-
9998



September 23, 2021
United States Postal Service
Date Meets ZIP Cedar Glen
Station
Postmaster
28982 Hook Creek Road
Cedar Glen, CA 92321-
9998

– *Stamp Services,
Marketing, 9-9-21*

How to Order the First-Day-of-Issue Digital Color or Traditional Postmarks

Customers have 120 days to obtain the first-day-of-issue postmarks by mail. Each cover must have sufficient postage to meet First-Class Mail® requirements. Customers may purchase new stamps at their local Post Office™, by phone at 800-782-6724, or on The Postal Store® website at usps.com/shop.

Digital Color Postmarks

Only select stamp issues offer a digital color postmark. Customers may submit #6 or #10 envelopes constructed of paper rated as “laser safe.” The Postal Service™ recommends envelopes of 80-pound Accent Opaque, acid-free, 9/16-inch side seams with no glue on the flap. The maximum size of all digital color postmarks is 2 inches (vertically) by 4 inches (horizontally). Allow sufficient space on the envelope to accommodate the postmark. Do not use self-adhesive labels for addresses on the envelope. Two test envelopes must be included. There is a minimum of 10 envelopes at 50 cents per postmark required at the time of servicing. Customers must submit a check, money order, or credit card for payment.

The Postal Service reserves the right to not accept hand-painted and other cachet envelopes that are not compatible with our digital color postmark equipment. The Postal Service also reserves the right to substitute traditional black rubber postmarks if use of nonspecified envelopes results in poor image quality or damage to equipment.

Customers must affix the stamps to the envelopes and address them to themselves or others for return through the mail. Or, they may include an additional self-addressed return envelope, large enough to accommodate their canceled items, with sufficient postage affixed for return of

their postmarked items. Address customer requests for digital color postmarks to:

FDOI – (Name of Stamp Issue)
USPS Stamp Fulfillment Services
8300 NE Underground Drive, Suite 300
Kansas City, MO 64144-9900

After applying the first-day-of-issue postmark, the Postal Service will return the envelopes to the customer by U.S. Mail®.

Traditional Postmarks

Customers must affix the stamps to the envelopes and address them to themselves or others for return through the mail. Or, they may include an additional self-addressed return envelope, large enough to accommodate their canceled items, with sufficient postage affixed for return of their postmarked items. Address customer requests for traditional postmarks to:

FDOI – (Name of Stamp Issue)
USPS Stamp Fulfillment Services
8300 NE Underground Drive, Suite 300
Kansas City, MO 64144-9900

After applying the first-day-of-issue postmark, the Postal Service will return the envelopes to the customer by U.S. Mail™. There is no charge for the first 50 postmarks. There is a 5-cent charge for each additional postmark over 50. Customers must submit a check, money order, or credit card for payment.

Locally produced items are not authorized. Only merchandise that has been approved and assigned an item number by Headquarters Retail Marketing may be produced and sold.



Digital Color Pictorial

FDOI – Heritage Breeds Stamps

USPS Stamp Fulfillment Services
8300 NE Underground Drive, Suite 300
Kansas City, MO 64144-9900

September 17, 2021



Black and White Pictorial

FDOI – Heritage Breeds Stamps

USPS Stamp Fulfillment Services
8300 NE Underground Drive, Suite 300
Kansas City, MO 64144-9900

September 17, 2021



FDOI – Go for Broke: Japanese American Soldiers of WWII
 USPS Stamp Fulfillment Services
 8300 NE Underground Drive, Suite 300
 Kansas City, MO 64144-9900

October 3, 2021

Digital Color Pictorial



FDOI – Go for Broke: Japanese American Soldiers of WWII
 USPS Stamp Fulfillment Services
 8300 NE Underground Drive, Suite 300
 Kansas City, MO 64144-9900

October 3, 2021

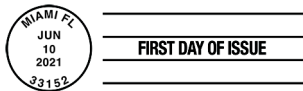
Black and White Pictorial



FDOI – Emilio Sanchez Stamps
 USPS Stamp Fulfillment Services
 8300 NE Underground Drive, Suite 300
 Kansas City, MO 64144-9900

October 10, 2021

Digital Color Pictorial



FDOI – Emilio Sanchez Stamps
 USPS Stamp Fulfillment Services
 8300 NE Underground Drive, Suite 300
 Kansas City, MO 64144-9900

October 10, 2021

Black and White Pictorial



FDOI – Sun Science Stamps
 USPS Stamp Fulfillment Services
 8300 NE Underground Drive, Suite 300
 Kansas City, MO 64144-9900

October 18, 2021

Digital Color Pictorial



FDOI – Sun Science Stamps
 USPS Stamp Fulfillment Services
 8300 NE Underground Drive, Suite 300
 Kansas City, MO 64144-9900

October 18, 2021

Black and White Pictorial



FDOI – Tap Dance Stamps
 USPS Stamp Fulfillment Services
 8300 NE Underground Drive, Suite 300
 Kansas City, MO 64144-9900

November 10, 2021

Digital Color Pictorial



Black and White Pictorial

FDOI – Tap Dance Stamps

USPS Stamp Fulfillment Services
8300 NE Underground Drive, Suite 300
Kansas City, MO 64144-9900

November 10, 2021



Digital Color Pictorial

FDOI – Yogi Berra Stamp

USPS Stamp Fulfillment Services
8300 NE Underground Drive, Suite 300
Kansas City, MO 64144-9900

October 24, 2021



Black and White Pictorial

FDOI – Yogi Berra Stamp

USPS Stamp Fulfillment Services
8300 NE Underground Drive, Suite 300
Kansas City, MO 64144-9900

October 24, 2021



Digital Color Pictorial

FDOI – Mystery Message Stamp

USPS Stamp Fulfillment Services
8300 NE Underground Drive, Suite 300
Kansas City, MO 64144-9900

November 14, 2021



Black and White Pictorial

FDOI – Mystery Message Stamp

USPS Stamp Fulfillment Services
8300 NE Underground Drive, Suite 300
Kansas City, MO 64144-9900

November 14, 2021

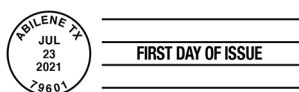


Digital Color Pictorial

FDOI – Western Wear Stamps

USPS Stamp Fulfillment Services
8300 NE Underground Drive, Suite 300
Kansas City, MO 64144-9900

November 23, 2021



Black and White Pictorial

FDOI – Western Wear Stamps

USPS Stamp Fulfillment Services
8300 NE Underground Drive, Suite 300
Kansas City, MO 64144-9900

November 23, 2021

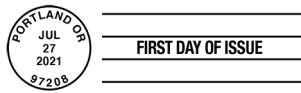


Digital Color Pictorial

FDOI – Ursula K. Le Guin Stamp

USPS Stamp Fulfillment Services
8300 NE Underground Drive, Suite 300
Kansas City, MO 64144-9900

November 27, 2021



Black and White Pictorial

FDOI – Ursula K. Le Guin Stamp

USPS Stamp Fulfillment Services
8300 NE Underground Drive, Suite 300
Kansas City, MO 64144-9900

November 27, 2021



Digital Color Pictorial

FDOI – Raven Story Stamp

USPS Stamp Fulfillment Services
8300 NE Underground Drive, Suite 300
Kansas City, MO 64144-9900

November 30, 2021



Black and White Pictorial

FDOI – Raven Story Stamp

USPS Stamp Fulfillment Services
8300 NE Underground Drive, Suite 300
Kansas City, MO 64144-9900

November 30, 2021



Digital Color Pictorial

FDOI – Mid-Atlantic Lighthouses Stamps

USPS Stamp Fulfillment Services
8300 NE Underground Drive, Suite 300
Kansas City, MO 64144-9900

December 6, 2021



Black and White Pictorial

FDOI – Mid-Atlantic Lighthouses Stamps

USPS Stamp Fulfillment Services
8300 NE Underground Drive, Suite 300
Kansas City, MO 64144-9900

December 6, 2021



Digital Color Pictorial

FDOI – Missouri Statehood Stamp

USPS Stamp Fulfillment Services
8300 NE Underground Drive, Suite 300
Kansas City, MO 64144-9900

December 10, 2021

**FDOI – Missouri Statehood Stamp**

USPS Stamp Fulfillment Services
8300 NE Underground Drive, Suite 300
Kansas City, MO 64144-9900

December 10, 2021

Black and White Pictorial**FDOI – Backyard Games Stamps**

USPS Stamp Fulfillment Services
8300 NE Underground Drive, Suite 300
Kansas City, MO 64144-9900

December 12, 2021

Digital Color Pictorial**FDOI – Backyard Games Stamps**

USPS Stamp Fulfillment Services
8300 NE Underground Drive, Suite 300
Kansas City, MO 64144-9900

December 12, 2021

Black and White Pictorial**FDOI – Happy Birthday Stamp**

USPS Stamp Fulfillment Services
8300 NE Underground Drive, Suite 300
Kansas City, MO 64144-9900

January 9, 2022

Digital Color Pictorial**FDOI – Happy Birthday Stamp**

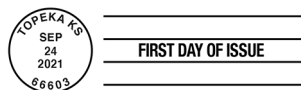
USPS Stamp Fulfillment Services
8300 NE Underground Drive, Suite 300
Kansas City, MO 64144-9900

January 9, 2022

Black and White Pictorial**FDOI – Message Monsters Stamps**

USPS Stamp Fulfillment Services
8300 NE Underground Drive, Suite 300
Kansas City, MO 64144-9900

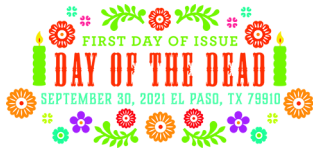
January 24, 2022

Digital Color Pictorial**FDOI – Message Monsters Stamps**

USPS Stamp Fulfillment Services
8300 NE Underground Drive, Suite 300
Kansas City, MO 64144-9900

January 24, 2022

Black and White Pictorial

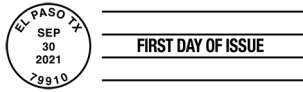


FDI – Day of the Dead Stamps

USPS Stamp Fulfillment Services
8300 NE Underground Drive, Suite 300
Kansas City, MO 64144-9900

January 30, 2022

Digital Color Pictorial



FDI – Day of the Dead Stamps

USPS Stamp Fulfillment Services
8300 NE Underground Drive, Suite 300
Kansas City, MO 64144-9900

January 30, 2022

Black and White Pictorial



FDI – A Visit from St. Nick Stamps

USPS Stamp Fulfillment Services
8300 NE Underground Drive, Suite 300
Kansas City, MO 64144-9900

February 7, 2022

Digital Color Pictorial

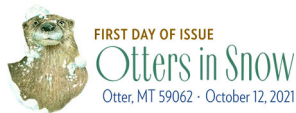


FDI – A Visit from St. Nick Stamps

USPS Stamp Fulfillment Services
8300 NE Underground Drive, Suite 300
Kansas City, MO 64144-9900

February 7, 2022

Black and White Pictorial

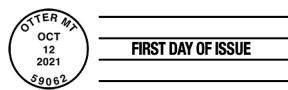


FDI – Otters in Snow Stamps

USPS Stamp Fulfillment Services
8300 NE Underground Drive, Suite 300
Kansas City, MO 64144-9900

February 12, 2022

Digital Color Pictorial



FDI – Otters in Snow Stamps

USPS Stamp Fulfillment Services
8300 NE Underground Drive, Suite 300
Kansas City, MO 64144-9900

February 12, 2022

Black and White Pictorial

USPS® Celebrates Outdoor Recreation with

Backyard Games Forever® Stamps



ON SALE
NATIONWIDE:
AUGUST 12, 2021

Sold as a full pane.