

postal|bulletin

PUBLISHED SINCE MARCH 4, 1880



**SAFETY
DEPENDS
ON ME!**

UNITED STATES
POSTAL SERVICE

**Slip, Trip,
and Fall
Prevention
Deserves
Your
Attention**

See page 3.



Contents

COVER STORY

Slip, Trip, and Fall Prevention Deserves Your Attention 3

POLICIES, PROCEDURES, AND FORMS UPDATES

Manuals

IMM Revision: IPA and ISAL Drop Shipments for San Francisco, CA 4

Publications

Publication 52 Revision: Hemp-based Products Update 5

ORGANIZATION INFORMATION

Environmental Management

Spill Reporting for the Release of Hazardous and Regulated Substances to the Environment. 6

Universal Waste Management: Waste Bulbs and Lamps Disposal Reminder 6

Finance

Fiscal Year 2021 Closing Guidance: Message from the Vice President, Controller 7

Human Resources

National Immunization Month: Your Best Shot 10

Information Security

Managing User Access 12

Mailing and Shipping Services

Mail Alert 12

Stamp Services

Stamp Announcement 21-29: Day of the Dead Stamps 13

Stamp Announcement 21-30: A Visit from St. Nick Stamps 36

Stamp Stock Items Withdrawn from Regular Sale and from Sale at Philatelic Centers 36

Pictorial Postmarks Announcement 38

How to Order the First-Day-of-Issue Digital Color or Traditional Postmarks 40

PULL-OUT INFORMATION

Fraud

Invalid USPS Corporate Account Numbers 15

Missing, Lost, or Stolen U.S. Money Order Forms 17

Missing, Lost, or Stolen Canadian Money Order Forms 23

Verifying U.S. Postal Service Money Orders 25

Counterfeit Canadian Money Order Forms 25

Toll-Free Number Available to Verify Canadian Money Orders 25

Other Information

Overseas Military/Diplomatic Mail 26

Thrift Savings Plan Fact Sheet 32

Freely Associated States Restrictions 34

POSTAL BULLETIN 2021 SEMI-ANNUAL INDEX

2021 Semi-Annual Index PB 22578 (8-12-21)

Find the latest in mail and delivery information
and services offered by U.S. Postal®
in the *Postal Bulletin* at
about.usps.com/postal-bulletin

Mail Moment®

Cover Story

Slip, Trip, and Fall Prevention Deserves Your Attention

Hazards such as uneven surfaces or distracted walking can pose a serious threat to Postal Service™ employees. Last year, the United States Postal Service® reported over 16,000 Postal Service employees were victims of a slip, trip, or fall.

To bring awareness to this issue, USPS® is sponsoring National Slip, Trip, and Fall Prevention Week, a public service campaign that offers safety tips and emphasizes the impact that slip, trip, and fall incidents have on employees, customers, and the organization. USPS National Slip, Trip and Fall Prevention Week runs October 16–22, 2021, and this year’s theme is “Slip, Trip, and Fall Prevention Deserves Your Attention.”

Last year, most slip, trip, and fall incidents involved mail carriers. They tripped stepping onto a curb or uneven sidewalks, slipped on wet surfaces and fell because they missed steps exiting vehicles, didn’t use handrails on stairs, or stepped into a hole in a customer’s yard. The common factor in all these accidents was inattention, and almost half of the injuries resulted in at least one day away from work.

The following tips can help prevent these incidents:

- Wear proper footwear. Choose high-traction, slip-resistant footwear.
- Stay away from wet leaves, slippery surfaces, or icy areas, whenever possible. Shorten your steps and shuffle your feet when near slippery surfaces.
- Be alert. On the work room floor or out on the route, things change quickly. Always remain focused, alert, and ready to react to the conditions in front of you.
- Where available, use handrails or other stable supports. Holding on to something keeps you steady when ascending and descending stairs.
- When entering and exiting vehicles, keep one hand on the vehicle or grab bar, so you can catch yourself if you start to slip.
- Don’t carry a load you can’t see over.

Housekeeping is also important for preventing slips, trips, and falls:

- Keep walkways, aisles, and stairs free of tools, materials, and other hazards.
- Keep cords, power cables, and air hoses out of walkways.
- Keep the floor clear of trash and plastic straps.
- Block off and mark floors or areas that are being cleaned or repaired.
- Promptly clean leaks or spills on floors, stairs, entryways, and loading docks.

When it’s rainy or snowy, wipe your shoes thoroughly on the doormat. Floor mats can keep floors dry by removing moisture and soil from footwear; however, improper or poorly maintained mats can pose a hazard and cause falls or other types of accidents. As a preventative measure, use these essential floor mat safety practices:

- When inspecting mats (particularly lightweight mats), ensure they are not aged, worn, or improperly placed.
- Make sure mats are lying flat against the floor without curls, ridges, or puckering.
- Mats near doors must align with the door threshold and cover the width of the door opening.
- Mat colors must contrast with the color of the floor for high visibility. Poor visibility may increase the tripping hazard.
- Make sure the mats are slip resistant under all foreseeable conditions.

Falls from standing on chairs or other unauthorized surfaces can also cause injuries that are easily prevented:

- Make step stools readily available.
- Always use an approved step stool or ladder instead of a chair or table.
- Do not place the step stool on a desk or other unstable surface. Place the step stool on a firm surface and make sure it is fully open.
- Check the rated weight capacity of the step stool or ladder before using it.
- Move step stool or ladder close to your work instead of leaning or reaching to the side.

Employees must be diligent about examining their path and work area for hazards. Report hazards to your supervisor using PS Form 1767, *Report of Hazard, Unsafe Condition, or Practice*. Supervisors can be proactive in preventing slips, trips, and falls by documenting unsafe practices and conditions, while conducting employee observations and removing reported hazards.

For more information and resources to help prevent slip, trip, and fall incidents, visit the Safety Resource Toolbox at blue.usps.gov/hr/safety/slips-trips-falls-2.htm.

USPS National Slip, Trip and Fall Prevention Week is coming soon to a facility near you. In October, watch for upcoming Slip, Trip, and Fall Prevention Week campaign information and scheduled employee activities.

— Occupational Safety and Health,
Human Resources, 8-26-21

Policies, Procedures, and Forms Updates

Manuals

IMM Revision: IPA and ISAL Drop Shipments for San Francisco, CA

Effective October 4, 2021, the Postal Service™ will revise *Mailing Standards of the United States Postal Service*, International Mail Manual (IMM®), Exhibit 292.532 and Exhibit 293.532, to reflect a change in the drop shipment location for International Priority Airmail® (IPA®) and International Surface Air Lift® (ISAL®) mailings from the San Francisco International Service Center to the San Francisco Processing and Distribution Center. This change will not affect any other IPA or ISAL requirements.

Mailing Standards of the United States Postal Service, International Mail Manual (IMM)

* * * * *

2 Conditions for Mailing

* * * * *

290 Commercial Services

* * * * *

292 International Priority Airmail (IPA) Service

* * * * *

292.5 Mail Entry and Deposit

* * * * *

292.53 Drop Shipment

* * * * *

292.532 Drop Shipment Locations

* * * * *

Exhibit 292.532

IPA Drop Shipment Locations

[In the entry for California, revise the address for San Francisco to read as follows:]

SAN FRANCISCO PROCESSING AND
DISTRIBUTION CTR
US POSTAL SERVICE
1300 EVANS AVE
SAN FRANCISCO CA 94188-9151

* * * * *

293 International Surface Air Lift (ISAL) Service

* * * * *

293.5 Mail Entry and Deposit

* * * * *

293.53 Drop Shipment

* * * * *

293.532 Drop Shipment Locations

* * * * *

Exhibit 293.532

ISAL Drop Shipment Locations

[In the entry for California, revise the address for San Francisco to read as follows:]

SAN FRANCISCO PROCESSING AND
DISTRIBUTION CTR
US POSTAL SERVICE
1300 EVANS AVE
SAN FRANCISCO CA 94188-9151

* * * * *

Although effective October 4, 2021, the Postal Service will incorporate these revisions into a later edition of the online IMM, which is available via Postal Explorer® at pe.usps.com.

— Product Classification,
Product Solutions, 8-26-21

Publications

Publication 52 Revision: Hemp-based Products Update

Effective August 26, 2021, the Postal Service™ is revising Publication 52, *Hazardous, Restricted, and Perishable Mail*, section 453.37, to update the hemp mailer laboratory test result records retention period and add a provision that hemp and hemp-based products, including Cannabidiol (CBD), are prohibited in mailings to international locations.

This revision will align Postal Service policy with the U.S. Department of Agriculture’s Domestic Hemp Production Program.

Publication 52, *Hazardous, Restricted, and Perishable Mail*

	*	*	*	*	*
4	Restricted Matter				
	*	*	*	*	*
45	Other Restricted Materials				
	*	*	*	*	*
453	Controlled Substances and Drugs				
	*	*	*	*	*
453.3	Mailability				
	*	*	*	*	*

453.37 Hemp-based Products

[Revise the second paragraph and items a. and b., then add a new third paragraph after the bullets to read as follows:]

* * * * *

Hemp and hemp-based products, including cannabidiol (CBD) with the tetrahydrocannabinol (THC) concentration of such hemp (or its derivatives) not exceeding a .03 percent limit are permitted to be mailed in domestic mail only when:

- a. The mailer complies with all applicable federal, state, and local laws, and plans approved by the USDA under 7 CFR Part 990 pertaining to hemp production, processing, distribution, and sales; and
- b. The mailer retains records establishing compliance with such laws and plans, including laboratory test results, licenses, or compliance reports, for no less than 3 years after the date of mailing.

Shipments of hemp and hemp-based products, including cannabidiol (CBD) are prohibited in international mail including items for delivery to overseas military and diplomatic Post Office addresses (APO, FPO, and DPO).

* * * * *

The Postal Service will incorporate these revisions into a later edition of online Publication 52, *Hazardous, Restricted, and Perishable Mail*, which is available via Postal Explorer® at pe.usps.com.

Organization Information

Environmental Management

Spill Reporting for the Release of Hazardous and Regulated Substances to the Environment

The United States Postal Service® must report hazardous and regulated material spills into the environment to the U.S. Environmental Protection Agency (EPA), as well as state and local agencies. Additionally, Postal Service™ policy requires completion of PS Form 8187, *Hazardous and Regulated Substance Release Notification*, to internally report the release of these materials.

Common reportable materials for USPS® sites, which may prompt reporting requirements depending on the quantity released into the environment, are listed in the following tables:

Oils		
Motor oil	Hydraulic fluid	
Gasoline	Transmission fluid	
Kerosene	Grease (including cafeteria grease)	
Mineral spirits	Diesel fuel	
Heating oil	Brake fluid	
Used oil	Gear oil	
	Petroleum Naphtha	
Chemicals		
Sulfuric acid	Propylene glycol	Polychlorinated Biphenyls
Friable asbestos	Lead	Soaps and detergents
Mercury	CFC-12 (R-12 refrigerant)	Floor wax
Mineral spirits	De-Icing products (e.g., calcium chloride, sodium chloride, calcium magnesium acetate)	Water treatment chemicals
Ethylene glycol (Antifreeze)	Diesel exhaust fluid	Windshield washer fluid

In general, spills must be reported if they reach:

- Stormwater drains, surface water, and waterways.
- Soil and ground water.
- Sanitary sewer drains.

As soon as any known release to the environment has occurred, Postal Service employees must immediately contact the site installation head. The site installation head, or their designee, must do the following:

- Immediately report spills to the appropriate Environmental Implementation regional manager and the designated safety specialist for the site (see blue.usps.gov/sustainability/contact.htm).
- Notify the appropriate federal, state, and local environmental agencies. The applicable reporting requirements vary depending on location, and the type and quantity of the material released.
- Complete and submit PS Form 8187, *Hazardous and Regulated Substance Release Notification* (see blue.usps.gov/formmgmt/forms/LiveCycle/psform8187_042016_lc.pdf).

For more information, visit the USPS Spills and Release Reporting page at blue.usps.gov/sustainability/environmental/spills_and_regulatory_reporting.htm or consult your designated environmental contact.

— *Environmental Affairs and Corporate Sustainability, Corporate Affairs, 8-26-21*

Universal Waste Management: Waste Bulbs and Lamps Disposal Reminder

Waste lamps include inoperable or broken electric lamps or bulbs. Waste lamps are a potential safety and environmental concern because they may contain mercury or other toxic heavy metals. For this reason, several types of waste lamps are regulated as universal waste.

Since they contain toxic materials, universal waste lamps have specific federally mandated management and recycling requirements. Postal Service™ sites must store universal waste lamps in closed containers that are clearly labeled and properly train employees that manage these wastes. Additionally, sites must arrange for universal waste bulb and lamp pick-up (or mailback) and subsequent off-site recycling within 1 year (365 days) of the day the wastes

were generated. Employees must also maintain accurate recycling records.

Common types of lamps that must be managed as universal waste include:

- **Fluorescent lamps.** This category includes 4-foot and 8-foot linear, U-shaped, circular, and compact fluorescent lamp (CFL) bulbs. Also included are “green-tipped” or low-mercury lamps, which must be managed the same as other fluorescent lamps.
- **Neon lamps.** Often used in brightly colored signs, neon lights that emit colors other than red use gases that may contain mercury.

- **High Intensity Discharge (HID) lamps.** HID lamps are often associated with large interior spaces with high ceilings, such as warehouses, exterior lighting, peripheral security lighting, streetlights, and fuel island lighting. They may also be found in motor vehicle headlights, as well as LCD or DLP projection television sets or projection displays.
- **LED lamps.** LED lamps may contain federally regulated metals, such as lead, chromium, or selenium. LED lamps are now available in 4-foot and 8-foot linear tube sizes and as replacements for traditional incandescent lamps and CFLs. Note that multiple, individual LED bulbs are typically contained in an LED lamp.
- **Ultraviolet (UV) lamps.** UV lamps emit high intensity UV light. Small UV lamps may be present in USPS® mail sorting automation platforms, such as the Advanced Facer Canceler System. UV bulbs may also be used in disinfection and germicidal lighting systems.

Important Safety Reminder: Do not send waste bulbs or lamps through the mail to the Atlanta Mail Recovery Center or the Topeka Material Distribution Center.

Recycling Options

The Postal Service has contracts for universal waste management with Cleanlites Recycling, Inc. (Cleanlites). The scope of services is available in eBuy+ and includes both mailback recycling containers and on-site waste pick-up.

For more information about waste management, check out the following guidance:

- Consult your designated environmental contact at blue.usps.gov/sustainability/contact.htm.
- Visit the Office of Sustainability Bulb/Lamp page at: blue.usps.gov/sustainability/bulb-recycling.htm.

— *Environmental Affairs and Corporate Sustainability, Corporate Affairs, 8-26-21*

Finance

Fiscal Year 2021 Closing Guidance: Message from the Vice President, Controller

Thank you for all of your efforts to control expenses during fiscal year (FY) 2021 and provide timely updates on your expenses so that we maintain complete and accurate financial statements. It is important that we carry this effort through to the end of the fiscal year by controlling discretionary activity. This does not mean curtailing business, but it does mean making prudent choices by deferring or eliminating noncritical activity, and purchasing goods or services throughout the fiscal year, rather than at the end of it, simply because budgeted funds are available. Please encourage your contractors to bill us in a timely manner for goods received and services rendered, or inform us of any billing delays so we can recognize the expense before the end of the fiscal year.

The following instructions will assist you, when appropriate, in helping the Postal Service™ close its financial books in a timely and efficient manner so that we meet our mandate with the Postal Regulatory Commission.

Cara M. Greene
Vice President, Controller

I. Instructions for Fiscal Year 2021 Closing

We request that all organizations limit their expense and capital expenditures, particularly for Postal Service support equipment, to essential needs. Accordingly, all vice presidents should review discretionary spending to ensure the Postal Service attains its financial target for this fiscal year.

The instruction and reporting dates in this *Postal Bulletin* supplement procedures followed during the normal monthly or quarterly reporting schedule.

II. Fiscal Year

The Postal Service prepares its annual reports on a government FY basis, which comprises 365 days (366 in leap years), always ending on September 30.

III. End of Year Processing Activities and Timelines, Requisitions, and Contract Actions

To ensure timely processing, submit purchase requests, expense and capital requisitions, requests for contract awards, and contract modifications for FY 2021 to Supply Management for processing by the dates specified in this article.

Requisitions for Contract Actions (Other than IT and Telecom)

For FY 2021, submit expense requisitions and requests for contract actions to Supply Management before August 31, 2020. Any requests received after this date may not be processed for award and delivery by September 30.

Requisitions for Contract Actions (Capital Purchases)

For FY 2021, submit capital requisitions and requests for contract actions to Supply Management on or before September 8, 2021. Any requests received after this date may not be processed for award by September 30.

Urgency and Prioritization of Peak Season Purchases

In anticipation of peak season needs, submit requisitions with proper supporting documentation in a timely manner to avoid delays. Supplies and equipment used in the prior year's peak season and likely to be used again in the coming peak season must be adequately inventoried and stocked well ahead of time.

Requisitions for FY 2022 Contract Actions

For FY 2022, submit expense and capital requisition requests for contract actions that require a start date before October 1, 2021, to Supply Management by August 31, 2021. Any requests received after this date may not be processed for award by the required start date.

FY Processing of Funds

The St. Louis Accounting Service Center (ASC) and the St. Louis ASC Satellite Office based in San Mateo (formerly known as the San Mateo ASC) will process against the appropriate fiscal year funds based on contract or modification issuance in accordance with the table shown here. Your actual expense may vary as we are required to record our expenses in the month in which the expense is incurred in accordance with U.S. Generally Accepted Accounting Principles (US GAAP). Processing performed by Accounting Services, St. Louis ASC Satellite Office, is adjusted through the accrual process further explained in the table.

Types of contracts or modifications	Issue Date	For requisitions received	Funds will be processed against
All contracts or modifications other than IT and telecom	Issued by September 30, 2021	On or before August 31, 2021	FY 2021 funds
Capital purchases		On or before September 8, 2021	FY 2021 funds
All contracts or modifications	Issued after September 30, 2021	On or after September 1, 2021 (Expense) and September 8, 2021 (Capital)	FY 2021 funds

Transmit electronic files to Accounting Services as follows:

Send electronic files for...	To...	No later than...
Contract Authoring and Management System	St. Louis ASC Satellite Office	September 30, 2021
Facilities capital commitments and expense payments	St. Louis ASC	September 30, 2021

IV. Payments and Accruals for Year-End Closing FY 2021

Payments

Submit appropriate receiving reports or certified invoices for goods and services (received by September 30) to Accounting Services, St. Louis ASC Satellite Office, no later than Friday, October 1, 2021.

1. Expedite processing of receiving reports and certified invoices, as these documents are used to charge expense to the proper FY.
2. Additionally, review contracts to ensure sufficient funds are available by Monday, August 30, to process invoices.
3. Supply Management will process all requisitions for the issuance of contracts against FY 2021 funds according to the following priorities:
 - Priority 1 — Capital commitment requisitions.
 - Priority 2 — Expense commitment requisitions.

Accruals

We will process monthly accruals for Headquarters (HQ) expense as normal and as communicated to the Executive Leadership Team (ELT) and their budget coordinators.

Note: Any unusual or non-recurring expense must be communicated to the ELT budget coordinators as a possible adjustment to the normal ELT accrual.

1. All HQ accruals will occur at the ELT or VP finance level.
2. Certified invoices for goods and services received by September 30 must be received by Accounting Services, St. Louis ASC Satellite Office, no later than Friday, October 1. All invoices not received by St. Louis ASC Satellite Office by October 1, 2021, will be processed in October 2021 and charged in FY 2022.
3. If goods or services have been received as of September 30, 2021, but the vendor invoice has not been received, approved, and submitted to the St. Louis ASC and the St. Louis ASC Satellite Office for payment, these expenses will need to be accrued. Please contact your respective Budget Coordinator to complete the accrual. This process ensures we record our expenses in the right month and remain compliant with US GAAP.

V. Forms and Other Required Submissions Schedule (Appendix)

This table describes the schedule for submitting forms and other required submissions for FY 2021 Year-End Closing.

Form #	Item	Submit by	Submit to	Received by Date
PS Form 1839	Payment Record for Carrier Drive Out Agreements	Field offices	eIWS Online Forms	September 8, 2021
PS Form 1164-A	Claim for Reimbursement for Postal Supervisors (for Employee Business Expenses only)	Field offices	eIWS Online Forms	September 8, 2021
PS Form 17	Stamp Requisition/ Stamp Return	Field offices	Stamp Fulfillment Services	September 8, 2021
NA	All Recognition and Incentive Awards	All offices	eAwards	September 8, 2021
PS Form 1233	Project Financial Change/Completion Report – to add site prep cost to existing assets or Construction-In-Progress (CIP)	St. Louis	St. Louis ASC Satellite Office	September 15, 2021
NA	Email from accounting assistant to add inventory items to fixed assets or CIP	Topeka Material Distribution Center (MDC)	St. Louis ASC Satellite Office	September 15, 2021
NA	Government Printing Office	Supply Management (HQ)	St. Louis ASC Satellite Office	September 21, 2021
PS Form 1902	Justification for Billing Accounts Receivable (Non-Payroll)	Field offices	St. Louis ASC Satellite Office	September 21, 2021
NA	Tort claims	All offices	District Tort Claims Coordinator	September 21, 2021
NA	Project facility system	Facilities	St. Louis ASC	September 21, 2021
PS Form 2880	Physical Inventory – Adjustments (Additions/ Reinstatements)	Asset Accountability Service Center	St. Louis ASC Satellite Office	September 21, 2021
NA	Hard copy paper commitment documents	Supply Management (HQ)	St. Louis ASC Satellite Office	September 21, 2021
SF 97	The U.S. Government Certificate of Release of a Motor Vehicle	Field offices	St. Louis ASC Satellite Office	September 21, 2021
NA	Vehicle hire payment certification reports	Field offices	Local Vehicle Maintenance Facility (VMF) Manager	September 21, 2021
NA	Inter-Agency Payment and Collection Certified invoices	Field offices	St. Louis ASC Satellite Office	September 21, 2021
NA	Government travel account	St. Louis	St. Louis ASC	September 21, 2021
NA	eTravel (approving official)	All offices	St. Louis ASC	September 23, 2021
PS Form 2551	Non-good and Non-service Payment Authorization	All offices	eIWS Online Forms	September 23, 2021
PS Form 3533	Application for Refund of Fees, Products, and Withdrawal of Customer Accounts	Field offices	eIWS Online Forms	September 23, 2021
PS Form 4587	Request to Repair, Replace, or Dispose of Postal Service-Owned Vehicle	Marlene Kocken – Fleet Management	St. Louis ASC Satellite Office	September 27, 2021
PS Form 1129	Cashier Reimbursement Voucher and Accountability Report (Imprest fund)	All offices (Imprest)	St. Louis ASC Satellite Office	September 28, 2021
NA	Gasoline credit card (fleet card)	U.S. Bank	St. Louis ASC Satellite Office	September 28, 2021
PS Form 2146	Employee’s Claim for Personal Property	All offices	St. Louis ASC Satellite Office	September 28, 2021
PS Form 4503	Vehicle Delivery Control Sheet	VMF	Marlene Kocken– Fleet Management	September 30, 2021
PS Form 4541	Order-Invoice for Vehicle Repair (Commercial work order)	Field offices	Local VMF Manager	September 30, 2021
NA	USPS Telecom Data invoices	Calero	St. Louis ASC Satellite Office	September 30, 2021
N/A	National Transportation Services	Supply Management (HQ)	St. Louis ASC Satellite Office	September 30, 2021
NA	eBuy+ utilities	All offices	eBuy+ Post/ Certify Module	September 30, 2021
NA	Commitments through APEX-CAMS electronic interface	Supply Management (HQ)	St. Louis ASC Satellite Office	September 30, 2021
NA	Direct Vendor Delivery and eBuy+*	Topeka MDC	St. Louis ASC Satellite Office	September 30, 2021
NA	Telecommunications Expense Management	Raleigh Network Operations	St. Louis ASC Satellite Office	September 30, 2021
NA	Material Distribution Inventory Management System invoices	Topeka MDC	St. Louis ASC Satellite Office	September 30, 2021
NA	National Customer Management System invoices	Stamp Fulfillment Services	St. Louis ASC Satellite Office	September 30, 2021

Form #	Item	Submit by	Submit to	Received by Date
NA	Program Cost Tracking System invoices (PCTS)	PCTS Systems Administrator	St. Louis ASC Satellite Office	September 30, 2021
NA	UTIL – Energy Initiatives	Energy United/NISC	St. Louis ASC Satellite Office	September 30, 2021
NA	Solution for Enterprise Asset Management invoices	Topeka MDC	St. Louis ASC Satellite Office	September 30, 2021
NA	Supplier invoices and contracting officer (CO)/ Contracting officer representative (COR) Invoice approvals and receipt of goods and services	All offices	St. Louis ASC Satellite Office	September 30, 2021
NA	Basic Pricing Agreement cover sheets	All offices	St. Louis ASC Satellite Office	October 1, 2021
NA	Capital and expense receiving report	All offices	St. Louis ASC Satellite Office	October 1, 2021
NA	Certified Invoices – supplies and services, bulk fuel and oil purchases, motor vehicle parts, non-metered heating fuel	All offices	St. Louis ASC Satellite Office	October 1, 2021
NA	U.S. Bank Visa accrual	U.S. Bank	St. Louis ASC Satellite Office	October 1, 2021
NA	Relocation Management Firm accruals	Accounting (HQ)	Relocation	October 1, 2021
NA	Commercial Bank Reconciliations	JP Morgan Chase and Citibank	Eagan ASC	October 11, 2021

*Do not place orders for DVD or eBuy+ purchases from September 28 through October 1, 2021, except for critical needs.

Address questions concerning these instructions to the appropriate Accounting Services Center locations or Finance office indicated in the table above.

– Corporate Accounting, Controller, 8-26-21

Human Resources

National Immunization Month: Your Best Shot

August is National Immunization Month, a time to check your health records and make sure you've received all relevant vaccinations and boosters. Immunity from childhood vaccines can subside over time, and we become susceptible to different diseases as adults.

While the COVID-19 vaccine is at the forefront of our national conversation, you may find that several of your childhood immunizations need boosters. These may include MMR (measles, mumps, and rubella), Tdap (tetanus, diphtheria, and pertussis), and varicella (chickenpox).

Depending on your age and health condition, vaccines or boosters also may be required for hepatitis B, meningitis, HPV, and shingles.

Of course, the COVID-19 vaccine and the flu shot are strongly encouraged for all adults. With the prevalence of coronavirus, and with flu season just around the corner, it is especially important that you receive these vaccines this year.

The Centers for Disease Control and Prevention (CDC) offers VaccineFinder ([vaccines.gov](https://www.vaccines.gov)), a free online service that searches for COVID-19 vaccination sites with open appointments nearby. The agency works with clinics, pharmacies, and health departments to provide accurate and current information, updated daily.

For more information about immunization, check out the following resources:

- An online assessment tool to help you determine what other general vaccinations you may need at cdc.gov/nip/adultimmsched.
- CDC website at cdc.gov/vaccines/index.html.
- The Wellness page on LiteBlue at liteblue.usps.gov/humanresources/benefits/health-wellness/welcome.shtml.

– Benefits and Wellness,
Human Resources, 8-26-21

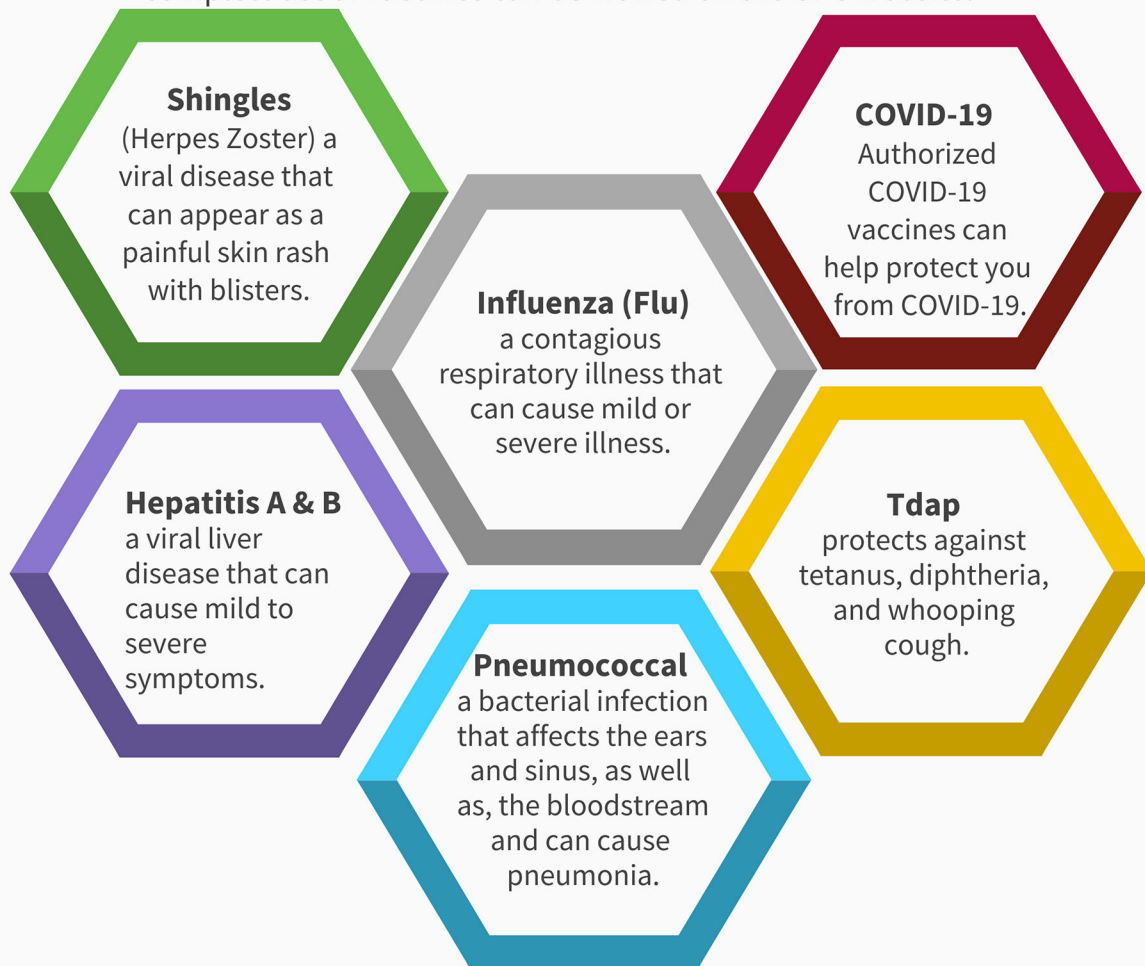
Immunizations

Are they up-to-date?

Employees are encouraged to get recommended vaccine shots.



Vaccines, which are typically administered orally or as an injection, produce immunity against certain disease-causing organisms in your body. Employees should consult a doctor or health care provider to discuss which vaccines are appropriate for them including the COVID-19 and the flu vaccine. A complete list of vaccines can be viewed on the CDC website.



Source: www.cdc.gov/vaccine

Information Security

Managing User Access

Greek philosopher Heraclitus once said, “There is nothing permanent except change.” With the many recent leadership changes and employee reassignments, user access must change as well.

Among the many roles and responsibilities of USPS® managers and supervisors, controlling user access to systems by approving, denying, suspending, or terminating access rights through eAccess — and being proactive in managing future user access — is important.

The principle of least privileges limits access rights for users to the bare minimum needed to do their work. Access to a system or resource is not granted unless it’s necessary.

When approving or reviewing user privileges, think about who needs the access, what they are accessing, and why access is needed for their specific role. Here are a few more things to consider before taking action:

- **Revoking access.** Managers must ensure that access to information is immediately revoked for personnel because of a change in job, transfer, or termination.

- **Manager periodic review (MPR).** Managers and functional system coordinators are required to review the access rights for each of their assigned users on a predetermined schedule:
 - Employee access must be reviewed semi-annually.
 - Contractor access must be reviewed quarterly.
- **Pending actions.** eAccess will send an email with a link directing you to the pending task whenever an MPR is due. MPRs will also appear in the pending actions area of the manager tab in eAccess.

For more information and to ensure USPS security using the principle of least privileges, review the user access management policies in section 9-3 of Handbook AS-805, *Information Security*, at about.usps.com/handbooks/as805/as805c9_003.htm.

— *Corporate Information Security Office,
Chief Information Security Officer
and Digital Solutions, 8-26-21*

Mailing and Shipping Services

Mail Alert

The mailings below will be deposited in the near future. Offices must process this mail according to applicable service standards with the in-home dates in mind. Mailers wishing to participate in these alerts, for mailings of 1 mil-

lion pieces or more, must contact Business Service Network Integration at 202-268-3258 at least 1 month before the requested delivery dates.

Requested Delivery Dates	Title of Mailing	Class and Type of Mail	Number of Pieces (Millions)	Distribution	Presort Level	Comments
09/01/21–09/04/21	The Swiss Colony	Standard Catalog	1.0	Nationwide	3/5 Digit	Quad Graphics

— *Business Customer Support and Services, Sales and Customer Relations, 8-26-21*

Stamp Services

Stamp Announcement 21-29: Day of the Dead Stamps



©2020 USPS

On September 30, 2021, in El Paso, TX, the United States Postal Service® will issue the *Day of the Dead* stamps (Forever® priced at the First-Class Mail® rate) in four designs, in a pressure-sensitive adhesive (PSA) pane of 20 stamps (Item 481400). These stamps will go on sale nationwide September 30, 2021, and must not be sold or canceled before the first-day-of-issue. **The *Day of the Dead* pane of 20 stamps may not be split and the stamps may not be sold individually.**

With the release of four colorful new stamps, the Postal Service™ celebrates Day of the Dead, an increasingly popular holiday in the United States. The stamp art features several iconic elements of a traditional Day of the Dead *ofrenda*, or offering, which honors departed relatives as well as heroes. Stylized, decorated “sugar skulls” are personalized as four family members, one per stamp. The lit candles flanking each sugar skull are beacons to guide deceased loved ones on their annual return journey to the land of the living. Dotting each stamp and embellishing their shared vertical borders are marigolds (*cempazuchitles*), the most popular Day of the Dead flower. Luis Fitch designed and illustrated the stamps. Antonio Alcalá was the art director.

Availability to Post Offices: Item 481400, Day of the Dead (Forever Priced at the First-Class Mail Rate) Commemorative PSA Pane of 20 Stamps

Stamp Fulfillment Services will not make an automatic push distribution to Post Offices. Post Offices may begin ordering stamps before the first-day-of-issue through SFS Web at sfsweb.usps.gov.

How to Order the First-Day-of-Issue Postmark

Customers have 120 days to obtain the first-day-of-issue postmark by mail. They may purchase new stamps at their local Post Office™ or at The Postal Store® website at usps.com/shop. They must affix the stamps to envelopes of their choice, address the envelopes (to themselves or others), and place them in a larger envelope addressed to:

FDOI – Day of the Dead Stamps
USPS Stamp Fulfillment Services
8300 NE Underground Drive, Suite 300
Kansas City, MO 64144-9900

After applying the first-day-of-issue postmark, the Postal Service will return the envelopes through the mail. There is no charge for the postmark up to a quantity of 50. There is a 5-cent charge for each additional postmark over 50. All orders must be postmarked by January 30, 2022.

How to Order First-Day Covers

The Postal Service also offers first-day covers for new stamp issues and Postal Service stationery items postmarked with the official first-day-of-issue cancellation. Each item has an individual catalog number and is offered in the *USA Philatelic* catalog and online at usps.com/shop. Customers may register to receive a free *USA Philatelic* catalog online at usps.com/philatelic.

Locally produced items are not authorized. Only merchandise that has been approved and assigned an item number by Headquarters Retail Marketing may be produced and sold.

Issue:	<i>Day of the Dead Stamps</i>
Item Number:	481400
Denomination & Type of Issue:	First-Class Mail Forever
Format:	Pane of 20 (4 designs)
Series:	N/A
Issue Date & City:	September 30, 2021, El Paso, TX 79910
Art Director:	Antonio Alcalá, Alexandria, VA
Designer:	Luis Fitch, Minneapolis, MN
Artist:	Luis Fitch, Minneapolis, MN
Modeler:	Sandra Lane/Michelle Finn
Manufacturing Process:	Offset
Printer:	Banknote Corporation of America
Press Type:	Alprinta
Stamps per Pane:	20
Print Quantity:	35,000,000 stamps
Paper Type:	Phosphor, Overall
Adhesive Type:	Pressure-sensitive
Colors:	PMS 185 C, PMS 191 C, PMS 3262 C, PMS 376 C, PMS 021 C, PMS Purple C, PMS 213 C, PMS Yellow C, PMS Black 6 C
Stamp Orientation:	Horizontal
Image Area (w x h):	1.05 x 0.77 in./ 26.67 x 19.558 mm
Overall Size (w x h):	1.19 x 0.91 in./30.226 x 23.114 mm
Full Pane Size (w x h):	5.76 x 5.55 in./146.304 x 140.97 mm
Press Sheets Size (w x h):	23.04 x 11.1 in./585.216 x 281.94 mm
Plate Size:	320 stamps per revolution
Plate Number:	"B" followed by nine (9) single digits in four corners
Marginal Markings:	
Front:	Plate number in four corners
Back:	©2020 USPS • USPS logo • 2 barcodes (481400) • Plate position diagram (8) • Promotional text

— Stamp Services, Marketing, 8-26-21

Pull-Out Information

Fraud

Invalid USPS Corporate Account Numbers

Provide this listing to Contract Postal Units and acceptance clerks in non-POS locations without intranet access to validate a USPS Corporate Account (USPSCA) number online. For all other locations, online USPSCA validation is preferred. This list supersedes all previous notices, which you must recycle.

Acceptance clerks must not accept Priority Mail Express® shipments bearing an invalid USPSCA number in the “Payment by Account” or “Agreement Number” section of the label or form.

Note: The first 6 digits of a 9-digit Custom Designed Service and Next Day Pickup Agreement make up the Corporate Account Number.

005142	019913	088001	115209	117017	117181	117584	118045	302139	531886	617208	900021	985214
005260	020622	100787	115211	117019	117196	117600	118070	303116	554064	617608	901791	985222
005268	022476	100975	115217	117038	117211	117611	118531	303117	581081	618100	902285	985225
005313	032131	104671	115248	117044	117213	117764	118583	306766	600287	627035	906258	988049
005315	038090	105361	115254	117058	117239	117772	119180	330760	601158	627083	920217	995245
005362	061294	105714	115289	117059	117246	117780	119191	381382	601289	630644	925037	995528
005412	069804	115021	115300	117061	117248	117796	119352	403099	601386	631228	925084	995685
005443	070105	115022	115322	117069	117249	117855	120144	403100	601543	633023	931158	995930
005555	070169	115045	115324	117071	117251	117857	121201	451044	601785	662190	948344	997080
005559	070331	115046	115345	117083	117264	117924	122047	452023	603011	662360	950138	997083
005800	071319	115093	115357	117086	117266	117930	152101	476029	606069	685309	968389	997219
005844	071722	115128	115393	117091	117270	117961	171350	481304	606269	687030	981455	999200
005929	075607	115132	115416	117101	117288	117964	191092	483727	606692	701090	981892	
008479	076022	115146	115528	117105	117303	117974	198008	490258	607222	799030	982365	
014767	076711	115155	115566	117113	117497	118021	210778	490555	607894	809106	982605	
015397	080055	115202	115756	117167	117523	118031	300103	494276	608041	810018	983060	
018098	080544	115207	117008	117180	117527	118036	301007	498240	609100	841368	983100	

— Product Information Requirements, Mail Entry and Payment Technology, 8-26-21

USPS® Features *Heritage Breeds* Forever® Stamps



Mulefoot Hog
USA / FOREVER



Wyandotte Chicken
USA / FOREVER



Milking Devon Cow
USA / FOREVER



American Cream Draft Horse
USA / FOREVER



Cotton Patch Goose
USA / FOREVER



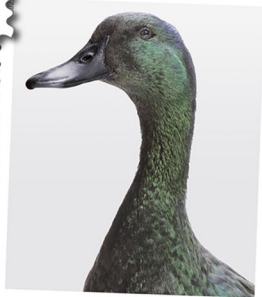
San Clemente Island Goat
USA / FOREVER



Narragansett Turkey
USA / FOREVER



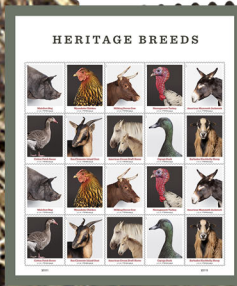
American Mammoth Jackstock
USA / FOREVER



Cayuga Duck
USA / FOREVER



Barbados Blackbelly Sheep
USA / FOREVER



On Sale
Nationwide:
May 17, 2021
Sold as a full pane.

Missing, Lost, or Stolen U.S. Money Order Forms

Do Not Cash — Upon Receipt, Notify Local Postal Inspectors

Provide this listing to all Postal Service™ employees responsible for accepting and cashing postal money orders. Destroy all interim notices when the numbers listed appear in the *Postal Bulletin*. The new money order serial

numbers consist of the first 10 digits. The eleventh digit is a check digit only.

Do not cash outdated money orders **104 151 601 to 692 600 000**. Advise holders to send invalid money orders to Canada Post Corporation, Ottawa, Canada K1A 0B1. Check for altered dollar amounts by holding money orders to the light.

010 001 0200 to 0299	044 087 3457 to 3499	084 478 3920 to 3999	176 281 7963 to 7999
010 504 1932 to 1999	044 087 4000 to 4099	086 000 8271 to 8299	176 731 6586 to 6599
011 582 1889 to 1899	044 226 2487 to 2512	086 798 3840 to 3849	178 254 5000 to 9999
011 588 2900 to 3099	044 306 4200 to 4299	088 404 4472 to 4499	178 881 9900 to 9999
012 441 0784 to 0799	044 306 4370 to 4599	088 404 5584 to 5699	180 031 2089 to 2098
012 579 5675 to 5699	045 524 4121 to 4298	088 757 8688 to 8699	180 403 7723 to 7741
013 289 6176 to 6199	046 800 9870 to 9899	088 757 9400 to 9499	180 428 4580 to 0599
013 610 0014 to 0099	047 352 4000 to 4099	089 358 2248 to 2257	182 368 7544 to 0599
014 932 1000 to 1099	048 383 7650 to 7659	090 663 9678 to 9684	182 475 3229 to 3258
014 972 0800 to 0899	048 396 3647 to 3699	091 818 0071 to 0099	180 403 7723 to 7741
015 363 0065 to 0099	051 142 0755 to 0799	093 106 9346 to 9355	182 631 0031 to 0099
017 028 3200 to 3299	051 774 8857 to 8899	093 203 0500 to 0599	182 911 6539 to 6600
018 569 5333 to 5399	051 781 2875 to 2885	093 684 3630 to 3699	184 218 2760 to 2799
018 986 5264 to 5299	051 977 7010 to 7023	094 081 5074 to 5099	185 828 1474 to 1499
019 518 2814 to 2899	052 058 7115 to 7199	094 216 2555 to 2599	186 132 7583 to 0599
020 698 5159 to 5199	054 450 1130 to 1167	094 580 7062 to 7099	186 629 0589 to 0599
020 844 7307 to 7399	057 670 0563 to 0599	094 639 4200 to 4299	187 184 6177 to 0199
020 972 8948 to 8999	058 187 3836 to 3899	095 070 7186 to 7199	187 323 8200 to 8299
022 021 9110 to 9181	058 523 3003 to 3099	095 076 8300 to 8399	187 441 6080 to 6099
022 037 1411 to 1499	058 591 1153 to 1299	095 354 6864 to 6899	188 831 6774 to 6799
022 527 9201 to 9210	058 895 3746 to 3799	097 224 1350 to 1599	188 835 6370 to 6399
022 529 1882 to 1899	059 986 0814 to 0899	100 160 3800 to 3899	189 083 1064 to 1099
023 637 7169 to 7199	060 406 7650 to 7699	104 667 6400 to 6499	189 660 9583 to 9599
024 380 4100 to 4199	063 491 8122 to 8199	104 876 8937 to 8999	191 179 0377 to 0399
024 496 6870 to 6896	063 916 9968 to 9999	112 049 4413 to 4499	192 050 5762 to 5781
025 092 0987 to 0999	064 091 4500 to 4599	112 870 9765 to 9799	194 456 8600 to 0699
025 369 5535 to 5599	065 170 0471 to 0499	113 319 2000 to 2099	195 194 6881 to 6899
025 729 1151 to 1199	065 255 7909 to 7999	114 402 3850 to 3899	195 874 1112 to 1199
025 729 1643 to 1799	065 392 6345 to 6399	114 866 5368 to 5397	196 979 0524 to 0599
026 492 3180 to 3199	066 099 2014 to 2099	116 154 2800 to 2899	197 244 6100 to 6199
027 361 0430 to 0499	066 648 2880 to 2899	116 986 4400 to 4499	197 244 6300 to 6399
027 369 4482 to 4495	066 787 3639 to 3699	117 175 1647 to 5169	197 244 6400 to 6499
027 671 8762 to 8776	066 845 7500 to 9999	117 951 4687 to 4699	197 244 6500 to 6599
027 787 9886 to 9899	067 093 3869 to 3899	117 951 5200 to 5299	197 244 6600 to 6699
027 965 9487 to 9499	068 895 0334 to 0399	119 786 3051 to 3064	197 244 6700 to 6799
028 100 8069 to 8099	070 724 4488 to 4499	119 815 8961 to 6199	197 244 6800 to 8999
028 191 1852 to 1999	070 841 9181 to 9199	119 850 7400 to 7499	198 285 2556 to 2566
028 850 3000 to 3199	070 844 2546 to 2599	119 850 7700 to 7999	199 105 0778 to 0799
029 510 1500 to 1599	070 916 1340 to 1399	121 634 0460 to 0499	199 678 2968 to 2999
030 687 0903 to 0999	071 047 5768 to 5799	122 451 9879 to 9899	202 748 5133 to 5199
030 701 3442 to 3499	071 179 9800 to 9899	122 714 6805 to 6900	202 748 5245 to 5299
031 077 4507 to 4799	071 386 3682 to 3699	124 916 0304 to 0499	202 748 5300 to 5399
032 295 7500 to 9999	071 507 6840 to 6899	126 423 0136 to 0169	202 748 5400 to 5499
034 394 1000 to 1099	072 045 9641 to 9699	127 500 2328 to 2399	203 256 1240 to 1299
034 943 0400 to 0799	072 675 8287 to 8299	160 901 2254 to 2299	204 230 3577 to 3595
035 035 4337 to 4399	073 763 0867 to 0876	161 103 6581 to 6599	205 019 0174 to 0199
037 312 7500 to 7599	073 763 0878 to 0887	161 194 2857 to 0899	206 936 3184 to 3199
037 706 9578 to 9599	073 763 0889 to 0898	162 032 4447 to 4499	207 196 9900 to 9999
037 805 3677 to 3699	077 617 5481 to 5499	163 257 1085 to 1099	207 204 0700 to 0799
037 909 5490 to 5499	077 999 4001 to 4090	164 359 2406 to 2499	207 204 0800 to 0899
037 931 4660 to 4699	078 174 4475 to 4499	166 101 1433 to 1499	207 514 3857 to 3899
039 145 6521 to 6595	078 219 4931 to 4999	167 555 5201 to 5212	208 556 4707 to 4799
040 024 3901 to 3999	078 250 4756 to 4799	167 555 5214 to 5299	210 057 4038 to 4047
040 674 7100 to 7199	078 823 8312 to 8399	169 618 6274 to 6299	210 221 0548 to 0599
040 688 8816 to 8899	079 374 0300 to 2499	171 806 6878 to 6893	214 061 4711 to 4724
041 299 6752 to 6799	079 807 2342 to 2399	173 639 4685 to 4699	214 303 6311 to 6325
041 623 8889 to 8899	082 721 0228 to 0254	174 238 2779 to 2799	214 303 6239 to 6258
041 803 6565 to 6599	083 140 5000 to 7499	174 281 9347 to 9399	214 877 4251 to 4273
043 129 1968 to 1997	083 784 8886 to 8899	175 251 2600 to 0699	215 252 3918 to 3992
043 205 5922 to 5999	083 913 6915 to 6999	176 281 7937 to 7950	217 585 1400 to 1499

218 698 2157	to	2199	254 252 2900	to	2999	258 405 7300	to	7399	262 337 5200	to	5299
218 746 0800	to	0899	254 252 3000	to	3099	258 405 7400	to	7499	262 337 5300	to	5399
219 095 0100	to	0399	254 252 3100	to	3199	258 405 7800	to	7899	262 337 5400	to	5499
219 389 1885	to	1899	254 252 3200	to	3299	258 405 7900	to	7999	262 337 5500	to	5599
219 568 7435	to	7456	254 252 3300	to	3399	258 405 8000	to	8099	262 337 5600	to	5699
219 568 7469	to	7487	254 252 3400	to	3499	258 405 8100	to	8199	262 337 5700	to	5799
221 316 5757	to	5799	254 252 3500	to	3599	258 405 8200	to	8299	262 337 5800	to	5899
223 476 3914	to	3999	254 252 3600	to	3699	258 405 8300	to	8399	262 337 5900	to	5999
223 565 4921	to	4957	254 252 3700	to	3799	258 405 8400	to	8499	262 337 6000	to	6099
223 565 4979	to	4999	254 252 3800	to	3899	258 405 8500	to	8599	262 337 6100	to	6199
224 636 4745	to	4765	254 252 3900	to	3999	258 405 8600	to	8699	262 337 6200	to	6299
224 636 4776	to	4799	254 252 4000	to	4099	258 405 8700	to	8799	262 337 6300	to	6399
224 636 4855	to	4885	254 252 4100	to	4199	258 405 8800	to	8899	262 337 6400	to	6499
224 636 4932	to	4948	254 252 4200	to	4299	258 405 8900	to	8999	262 337 6500	to	6599
224 636 4950	to	4962	254 252 4300	to	4399	258 405 9600	to	9699	262 337 6600	to	6699
224 636 4985	to	4999	254 252 4400	to	4499	258 405 9700	to	9799	262 337 6700	to	6799
224 723 0757	to	0799	254 252 4500	to	4599	258 405 9800	to	9899	262 337 6800	to	6899
224 730 2207	to	2299	254 252 4600	to	4699	258 405 9900	to	9999	262 337 6900	to	6999
225 970 0500	to	0599	254 252 4700	to	4799	259 014 9989	to	9999	262 337 7000	to	7099
225 970 0600	to	0699	254 252 4800	to	4899	259 062 4788	to	4798	262 337 7100	to	7199
225 970 0700	to	0799	254 252 4900	to	4999	259 218 1400	to	1499	262 337 7200	to	7299
227 033 8679	to	8699	254 565 7607	to	7700	259 218 1500	to	1599	262 337 7300	to	7399
227 275 9400	to	9999	254 907 1203	to	1299	259 218 1600	to	1699	262 337 7400	to	7499
228 463 2456	to	2499	255 185 9527	to	9599	259 590 5654	to	5699	262 337 7500	to	7599
228 510 4852	to	4899	255 397 1557	to	1576	259 670 8268	to	8299	262 337 7600	to	7699
229 462 8451	to	8475	255 425 2989	to	2998	259 835 6238	to	6399	262 337 7700	to	7799
229 668 5977	to	5999	255 728 6412	to	6499	259 835 6701	to	6799	262 337 7800	to	7899
229 923 9176	to	9199	255 728 9842	to	9899	260 224 4600	to	4699	262 337 7900	to	7999
229 924 6696	to	6699	256 134 9833	to	9839	260 224 5941	to	5999	262 337 8000	to	8099
230 051 9500	to	9999	256 134 9840	to	9849	260 310 2821	to	2899	262 337 8100	to	8199
236 366 2431	to	2499	256 134 9850	to	9859	260 452 0010	to	0022	262 337 8200	to	8299
236 607 6882	to	6899	256 134 9860	to	9869	260 452 0049	to	4299	262 337 8300	to	8399
236 660 5853	to	5872	256 134 9870	to	9879	260 553 8200	to	8299	262 337 8400	to	8499
239 322 5200	to	5299	256 134 9880	to	9889	260 553 8600	to	8699	262 337 8500	to	8599
239 322 5400	to	5499	256 134 9890	to	9899	260 553 9600	to	9799	262 337 8600	to	8699
239 322 5600	to	5699	256 247 6900	to	6999	260 553 9800	to	9899	262 337 8700	to	8799
239 322 5800	to	5899	256 550 5536	to	5545	260 553 9900	to	9999	262 337 8800	to	8899
239 322 5900	to	5999	256 799 2257	to	2299	260 761 1603	to	1662	262 337 8900	to	8999
239 607 4783	to	4799	257 154 8763	to	8799	261 183 2100	to	2299	262 337 9000	to	9099
240 593 1879	to	1899	257 154 8800	to	8899	261 426 0408	to	0499	262 337 9100	to	9199
242 591 2048	to	2099	257 765 4567	to	4599	262 082 8000	to	8099	262 337 9200	to	9299
242 735 0388	to	0398	257 765 4610	to	4696	262 082 8100	to	8199	262 337 9300	to	9399
242 951 7276	to	7299	257 765 4737	to	4799	262 082 8200	to	8299	262 337 9400	to	9499
243 535 6370	to	6399	257 792 7800	to	7889	262 082 8300	to	8399	262 337 9500	to	9599
244 004 9985	to	9999	257 792 7900	to	7999	262 082 8400	to	8499	262 337 9600	to	9699
244 004 9985	to	9999	257 792 8000	to	8099	262 288 7302	to	7399	262 337 9700	to	9799
244 268 9765	to	9799	257 856 9863	to	9899	262 288 7400	to	7499	262 337 9800	to	9899
244 347 4471	to	4499	258 103 1773	to	1782	262 288 9900	to	9999	262 337 9900	to	9999
249 056 1551	to	1599	258 405 1800	to	1899	262 337 2600	to	2699	262 472 3188	to	3199
249 336 9438	to	9499	258 405 1900	to	1999	262 337 2700	to	2700	262 472 3200	to	3299
249 399 4000	to	4099	258 405 3300	to	3399	262 337 2800	to	2800	262 546 3100	to	3199
249 399 4100	to	4199	258 405 3400	to	3499	262 337 2900	to	2900	262 546 3200	to	3299
249 399 4200	to	4299	258 405 3500	to	3599	262 337 3000	to	3099	262 546 3300	to	3399
249 399 4300	to	4399	258 405 3700	to	3799	262 337 3100	to	3199	262 546 3400	to	3499
249 399 4400	to	4499	258 405 3800	to	3899	262 337 3200	to	3299	262 546 3500	to	3599
249 399 4500	to	4599	258 405 3900	to	3999	262 337 3300	to	3399	262 546 3600	to	3699
249 399 4600	to	4699	258 405 4000	to	4099	262 337 3400	to	3499	262 546 3900	to	3999
249 399 4700	to	4799	258 405 4100	to	4199	262 337 3500	to	3599	262 546 4300	to	4399
249 399 4800	to	4899	258 405 4200	to	4299	262 337 3600	to	3699	262 546 4400	to	4499
249 399 4900	to	4999	258 405 4600	to	4699	262 337 3700	to	3799	262 546 4500	to	4599
250 159 7502	to	7599	258 405 5600	to	5699	262 337 3800	to	3899	262 546 4600	to	4699
250 566 9644	to	9699	258 405 5700	to	5799	262 337 3900	to	3999	262 546 4700	to	4799
250 661 8425	to	8499	258 405 5800	to	5899	262 337 4000	to	4099	262 546 4800	to	4899
251 335 5731	to	5799	258 405 5900	to	5999	262 337 4100	to	4199	262 546 4900	to	4999
251 379 2380	to	2399	258 405 6000	to	6099	262 337 4200	to	4299	262 546 7100	to	7199
252 005 7626	to	7699	258 405 6100	to	6199	262 337 4300	to	4399	262 546 7200	to	7299
252 421 8401	to	8499	258 405 6200	to	6299	262 337 4400	to	4499	262 546 7300	to	7399
252 464 2810	to	2899	258 405 6300	to	6399	262 337 4500	to	4599	262 546 7400	to	7499
252 612 3683	to	3699	258 405 6400	to	6499	262 337 4600	to	4699	262 546 9800	to	9899
252 469 2125	to	2199	258 405 6800	to	6899	262 337 4700	to	4799	262 546 9900	to	9999
252 833 3286	to	3297	258 405 6900	to	6999	262 337 4800	to	4899	262 567 1788	to	1799
253 470 3948	to	3999	258 405 7000	to	7099	262 337 4900	to	4999	263 254 2500	to	2500
253 565 7400	to	7499	258 405 7100	to	7199	262 337 5000	to	5099	263 340 0000	to	0099
254 252 2800	to	2899	258 405 7200	to	7299	262 337 5100	to	5199	263 340 0100	to	0199

263 340 0500	to	0599	391 104 6146	to	6199	414 193 3608	to	3674	440 858 6300	to	6399
263 340 0600	to	0699	391 574 1466	to	1499	414 193 3677	to	3699	440 858 6420	to	7299
263 340 2700	to	2799	391 783 3020	to	3599	414 411 7348	to	7399	441 199 1655	to	1699
263 340 2800	to	2899	391 792 6100	to	6199	414 640 0757	to	0799	443 127 3648	to	3699
263 340 3000	to	3099	392 668 2956	to	2999	414 965 1727	to	1799	443 127 4000	to	4099
264 341 2360	to	2399	392 854 8500	to	8899	417 302 8104	to	8199	443 673 7900	to	7999
264 380 4000	to	4099	393 584 7566	to	7699	417 387 6532	to	6599	443 800 9335	to	9399
264 380 4100	to	4199	393 650 0074	to	0099	417 496 6800	to	6999	444 382 8822	to	8899
264 799 6049	to	6099	393 838 8316	to	8499	417 871 9250	to	9299	444 390 1667	to	1699
264 860 7832	to	7868	393 893 6007	to	6099	417 930 9533	to	9599	444 457 3854	to	3899
265 127 3658	to	3699	394 126 6907	to	6999	418 164 6500	to	6799	450 048 4173	to	4199
265 380 7111	to	7137	394 189 0405	to	0599	418 423 9863	to	9899	450 048 4442	to	4699
265 444 4762	to	4799	394 822 3243	to	3278	418 633 5922	to	5999	450 560 5173	to	5199
265 548 7074	to	7099	394 990 1810	to	1899	418 719 8520	to	8599	450 620 3077	to	3099
266 106 0000	to	2499	395 343 3264	to	3299	418 747 2235	to	2299	450 620 3135	to	3199
266 129 5809	to	5899	395 373 3035	to	3099	418 962 2848	to	2899	450 780 2716	to	2799
266 673 0000	to	2499	395 396 9649	to	9799	419 543 0286	to	0299	450 801 2700	to	2799
266 749 7900	to	7999	395 970 3240	to	3299	419 730 0300	to	0399	451 109 2967	to	2984
266 868 0952	to	0999	397 622 4054	to	4099	420 277 0015	to	0049	451 115 4110	to	4125
266 868 1028	to	1099	397 819 8902	to	8999	420 599 0734	to	0798	451 115 4127	to	4199
266 868 1100	to	1199	398 149 7200	to	7699	420 661 4115	to	4199	451 746 0700	to	0799
266 868 1200	to	1299	399 070 0872	to	0899	420 758 9500	to	9699	452 265 0074	to	0099
267 296 1237	to	1299	399 156 7119	to	7199	420 969 3951	to	3971	452 265 0246	to	0299
267 324 8946	to	8998	399 203 5064	to	5099	420 969 3973	to	3999	452 265 0335	to	0999
268 072 1203	to	1299	399 296 9910	to	9999	421 116 3565	to	3599	452 509 1169	to	1199
271 660 4333	to	4400	399 396 8935	to	8999	421 130 9300	to	9399	452 855 6471	to	6499
273 520 0000	to	9999	399 792 7775	to	7799	421 313 4500	to	4999	452 890 4679	to	4799
273 520 6000	to	8999	399 792 8300	to	8399	421 364 5537	to	5599	452 900 8215	to	8238
273 775 7700	to	7899	400 427 1051	to	1999	421 656 2609	to	2699	453 117 9146	to	9199
273 882 1913	to	1998	401 045 1505	to	1549	421 988 9700	to	9799	453 334 3631	to	3699
274 750 0300	to	0400	401 045 1571	to	1599	422 172 4667	to	4699	453 603 7841	to	7891
274 782 0549	to	0599	401 294 2700	to	2799	422 484 4212	to	4299	453 650 1140	to	1199
302 000 0000	to	9999	401 310 9505	to	9599	422 556 1270	to	1299	453 741 1300	to	1399
349 746 2056	to	2099	401 382 5312	to	5399	422 587 7024	to	7099	454 013 2919	to	2999
350 518 7350	to	7374	402 578 7876	to	7899	422 819 7533	to	7599	454 186 2411	to	2499
360 011 1690	to	1699	403 125 6744	to	6799	422 842 5073	to	5087	454 268 4883	to	4899
360 168 6008	to	6099	403 260 7000	to	7499	422 907 7563	to	7599	454 302 5400	to	5499
360 173 8800	to	8899	403 280 6470	to	6499	424 500 6050	to	6099	454 490 8300	to	8399
360 324 2326	to	2399	403 685 8600	to	8699	424 641 8500	to	8599	454 547 7434	to	7499
362 861 3064	to	3099	404 003 0300	to	0399	424 871 6600	to	6699	454 922 4867	to	4895
373 006 2176	to	2199	404 041 8838	to	8899	425 298 2352	to	2399	455 221 1348	to	1499
374 768 2600	to	2699	404 071 4268	to	4299	425 418 4269	to	4299	455 364 2147	to	2199
375 169 4400	to	4599	404 347 5356	to	5399	425 418 4405	to	4499	455 399 5400	to	5499
375 829 3400	to	3499	404 347 5548	to	5599	426 547 4566	to	4599	455 476 0676	to	0699
375 851 9100	to	9199	404 726 4500	to	4599	427 412 6337	to	6499	455 543 0618	to	0699
376 196 0911	to	0999	404 961 5001	to	5199	427 481 0900	to	0999	456 410 9006	to	9099
378 085 3679	to	3699	405 325 0188	to	0198	428 027 2742	to	2752	456 470 4146	to	4299
378 351 1063	to	1099	406 009 4587	to	4599	429 474 4172	to	4199	456 619 4460	to	4499
379 843 5100	to	5199	406 260 6830	to	6899	429 889 2900	to	2999	457 333 2686	to	2699
380 093 9600	to	9699	406 459 6641	to	6999	430 150 4401	to	4599	457 729 1767	to	1777
380 165 1165	to	1199	406 733 3000	to	3999	430 172 9800	to	9899	457 937 8615	to	8699
381 325 4500	to	4599	407 545 1557	to	1599	430 177 1900	to	2099	458 028 9810	to	9899
381 604 2510	to	2699	407 594 0412	to	0599	430 444 9500	to	9699	458 057 2712	to	2999
381 645 9525	to	9599	407 692 9100	to	9299	430 664 4070	to	4099	458 069 9537	to	9599
383 314 3968	to	3999	407 959 2190	to	2199	432 168 8419	to	8499	458 069 9665	to	9699
383 892 1000	to	1344	408 265 2275	to	2288	432 708 6800	to	6999	458 337 5222	to	5299
383 892 1382	to	1399	408 499 7700	to	7799	432 744 1544	to	1599	458 354 7653	to	7999
384 925 3641	to	3654	408 499 7900	to	7999	432 995 9775	to	9799	458 671 8678	to	8699
385 568 2331	to	2399	408 682 8484	to	8599	433 003 5800	to	5899	458 671 8721	to	8798
385 599 7554	to	7575	408 698 7015	to	7099	433 757 3047	to	3099	458 847 5044	to	5999
385 774 2024	to	2099	409 072 3941	to	3999	433 765 4003	to	4099	459 274 7624	to	7699
386 624 1412	to	1599	410 491 2311	to	2399	434 482 7060	to	7199	459 365 5432	to	5499
386 883 8936	to	8999	410 694 8400	to	8599	434 513 2386	to	2399	459 378 5764	to	5799
387 314 5574	to	5599	410 775 1500	to	1599	434 968 3076	to	3092	459 472 4816	to	4999
387 837 6300	to	6399	410 795 7927	to	7999	435 303 1831	to	1842	460 349 6878	to	6899
388 828 0656	to	0699	410 867 0917	to	0966	435 303 1986	to	1999	460 550 1909	to	1999
389 696 2400	to	2799	410 867 0970	to	0999	435 666 6092	to	6399	460 997 5234	to	5299
389 846 3104	to	3135	411 868 1023	to	1199	436 082 6400	to	6899	461 973 6443	to	6499
389 846 3145	to	3195	411 922 2322	to	2399	436 160 6441	to	6499	462 152 0107	to	0299
389 887 9211	to	9230	412 193 0900	to	0999	437 316 7115	to	7199	462 274 1072	to	1099
389 887 9234	to	9299	412 395 8599	to	8699	437 427 0500	to	3499	462 277 8373	to	8399
390 001 3182	to	3199	412 485 6500	to	6599	439 179 2300	to	2399	462 554 6051	to	6099
390 001 3500	to	3699	412 485 6610	to	6699	439 310 0458	to	0499	463 011 5529	to	5540
390 545 5974	to	5999	412 885 5953	to	5999	440 698 1947	to	1999	463 176 4115	to	4199

463 176 4229	to 4299	483 486 5100	to 5199	505 893 7800	to 7999	610 092 3200	to 3299
463 185 2600	to 2799	483 632 1521	to 1599	506 124 0800	to 0999	610 582 4200	to 4299
463 227 7711	to 7799	483 632 2600	to 2799	506 165 7027	to 0099	611 879 6939	to 6999
463 414 4869	to 4899	483 849 1615	to 1699	506 502 5209	to 5299	612 291 8013	to 8099
463 808 3484	to 3499	484 174 4803	to 5299	506 756 1682	to 1699	612 751 5171	to 5199
463 945 7400	to 7899	484 323 8900	to 9199	506 756 1700	to 1799	612 751 5226	to 5299
464 629 9000	to 9399	484 680 5000	to 5038	506 756 1800	to 1899	612 751 6083	to 6099
464 711 4332	to 4399	484 680 5040	to 5074	506 836 5326	to 5399	612 751 6268	to 6299
465 692 3963	to 3999	484 680 5077	to 5099	508 488 6226	to 6299	612 751 6572	to 6599
465 698 8300	to 8599	485 029 4913	to 4999	508 789 8332	to 8399	612 774 2111	to 2199
465 743 7745	to 7799	486 176 0600	to 0699	508 789 8400	to 8499	612 774 2254	to 2299
466 798 6056	to 6067	486 559 7555	to 7599	509 909 0425	to 0435	612 774 2500	to 2599
467 147 4300	to 4399	486 696 3023	to 3199	510 150 2400	to 2499	614 469 0979	to 0999
468 079 5782	to 5799	488 173 7900	to 7999	510 381 3200	to 3299	614 474 3000	to 3099
469 067 2817	to 2899	488 206 4100	to 4199	510 587 9500	to 9599	614 521 3490	to 3499
469 127 8000	to 8199	488 226 0200	to 0299	510 587 9659	to 9699	614 645 1800	to 1899
469 213 0359	to 0399	488 709 3906	to 3999	510 269 9770	to 9999	614 832 1100	to 2099
469 213 0500	to 0599	488 855 8359	to 8399	511 021 5042	to 5099	615 017 7505	to 7599
469 561 8011	to 8099	489 181 8963	to 8999	511 021 5100	to 5199	617 711 6609	to 6699
469 658 1961	to 1999	489 223 2000	to 2099	511 468 1747	to 1799	617 760 5266	to 5299
469 666 9900	to 9999	489 311 1930	to 1999	511 844 0100	to 0199	617 813 3601	to 3699
469 678 1900	to 1999	489 318 6200	to 6300	511 844 0340	to 0399	618 840 9200	to 9299
469 781 4900	to 4999	489 384 0027	to 0099	512 805 3913	to 3919	619 551 7229	to 7299
469 947 6960	to 6999	489 427 0658	to 0899	513 046 0700	to 0726	619 859 3000	to 3099
470 755 5800	to 5818	489 997 5252	to 5299	513 149 0600	to 0699	620 073 9400	to 9499
471 918 0300	to 0999	490 669 5850	to 6099	513 445 3000	to 3199	621 614 7907	to 7930
471 985 2408	to 2419	490 717 7080	to 7099	513 466 2034	to 2044	621 614 7932	to 7999
472 191 6700	to 6799	490 721 6000	to 6099	513 539 9052	to 9099	621 648 8021	to 8199
472 270 2555	to 2599	490 793 1500	to 2099	513 539 9267	to 9299	621 648 8500	to 8599
472 987 0213	to 0241	490 886 8171	to 8199	513 539 9800	to 9899	621 904 8351	to 8599
472 987 0290	to 0299	490 977 9221	to 9240	513 539 9985	to 9999	621 916 1978	to 1989
473 151 2069	to 2199	491 258 8100	to 9099	513 606 5459	to 5490	622 989 8032	to 8099
473 666 9138	to 9199	491 567 1376	to 1399	513 812 1751	to 1799	623 076 9300	to 9399
473 952 3429	to 3499	492 254 4800	to 4899	514 103 3600	to 3699	623 819 5006	to 5099
474 108 5402	to 5499	492 283 5100	to 5199	514 103 3700	to 3799	623 895 8200	to 8399
474 356 5193	to 5299	492 610 6813	to 6899	514 103 3800	to 3899	623 917 0000	to 0099
474 949 3366	to 3399	493 394 5568	to 5599	600 645 3223	to 3299	623 917 0200	to 0299
475 134 9362	to 9399	493 470 2562	to 2599	601 339 1200	to 1399	624 468 5288	to 5299
475 167 9667	to 9699	493 473 7700	to 7799	601 653 5884	to 5899	624 665 3162	to 3198
475 319 3415	to 3499	493 716 2153	to 2199	601 661 7700	to 7799	625 088 6735	to 6799
475 319 3649	to 3799	494 206 2972	to 2999	601 682 5343	to 5399	625 916 9500	to 9799
475 340 6400	to 6599	494 217 3446	to 3999	601 928 1600	to 1699	625 968 8956	to 8999
475 424 8410	to 8499	494 224 0500	to 0599	602 512 2972	to 2999	627 005 3938	to 3999
475 629 9156	to 9199	495 145 0600	to 0699	602 555 2400	to 2799	627 384 3907	to 4099
475 850 6101	to 6199	496 209 7425	to 7499	602 829 7061	to 7099	627 496 7549	to 7599
475 875 2500	to 2599	496 213 8728	to 8799	603 483 9572	to 9599	627 708 3605	to 3699
476 169 8264	to 8299	496 474 5226	to 5248	603 490 7200	to 7299	627 776 2500	to 2599
476 189 3000	to 3499	497 053 8517	to 8699	603 678 7100	to 7199	628 226 3100	to 3199
476 331 2480	to 2499	497 854 8673	to 8699	603 678 7662	to 7699	628 814 4702	to 4799
477 289 8601	to 8699	498 449 8888	to 8899	603 678 7902	to 7999	628 851 9689	to 9699
477 681 5206	to 5299	498 929 8285	to 8499	603 678 8418	to 8499	629 510 7200	to 7299
478 010 4243	to 4268	498 936 5310	to 5399	603 678 8700	to 9999	629 964 4200	to 4294
478 010 4270	to 4291	499 016 5425	to 5499	604 086 0880	to 0899	630 389 3056	to 3071
478 450 5071	to 5099	499 440 8575	to 8899	604 349 1414	to 1499	630 463 0588	to 0599
478 469 7838	to 7858	499 731 6717	to 6799	604 503 7776	to 7799	631 459 9117	to 9199
478 469 7883	to 7899	500 064 1858	to 1869	605 520 9037	to 9099	631 762 9325	to 9399
479 280 9800	to 9899	500 070 5725	to 7799	605 685 4010	to 4099	632 217 4933	to 4999
479 365 9116	to 9176	501 058 0016	to 0026	605 988 6467	to 6499	632 500 0000	to 640 3999
479 412 9900	to 9999	501 331 0300	to 0399	607 689 7951	to 7960	633 110 4165	to 4199
479 667 6190	to 6199	501 460 0977	to 0999	607 728 1276	to 1299	633 110 4303	to 4499
479 748 9680	to 9699	502 227 7645	to 7699	608 727 7100	to 7199	633 438 6429	to 6599
479 860 7000	to 7199	502 424 0200	to 0499	608 727 7273	to 7599	633 588 7173	to 7182
480 526 2000	to 2099	502 424 0600	to 0699	608 813 9950	to 9999	634 725 0700	to 0999
480 640 6330	to 6399	502 496 6923	to 6999	609 067 5325	to 5399	634 803 3239	to 3299
480 658 0568	to 0599	503 003 2700	to 2899	609 067 5488	to 5499	634 807 2474	to 2499
480 689 5100	to 5199	503 194 5144	to 5153	609 067 5600	to 5699	634 827 5900	to 5999
481 072 9463	to 9499	503 790 9922	to 9948	609 289 6123	to 6199	634 886 3428	to 3499
481 673 0074	to 0095	504 045 4030	to 4099	609 438 4400	to 4499	635 559 3449	to 3499
482 527 1500	to 1599	504 166 0200	to 0599	609 493 1100	to 1199	636 289 6214	to 6299
482 541 5255	to 5299	504 240 1062	to 1399	609 766 8091	to 8999	636 634 8007	to 8042
482 729 6800	to 6899	504 805 3300	to 3499	609 825 4100	to 4115	637 150 1200	to 1299
483 363 7207	to 7299	505 096 0662	to 0699	609 884 2981	to 2999	637 562 5828	to 5899
483 402 2356	to 2399	505 893 7739	to 7799	609 893 1000	to 1099	638 042 1647	to 1699

638 049 4984	to 4999	653 455 4874	to 4899	683 444 8159	to 8199	702 254 9300	to 9399
638 318 1115	to 1199	654 238 0000	to 0399	685 154 7780	to 7789	702 264 7569	to 7599
638 318 1453	to 1499	654 404 3065	to 3092	685 297 7645	to 7699	702 519 0513	to 0524
638 885 0000	to 0299	654 962 2900	to 3199	685 623 5264	to 5299	702 713 1800	to 1809
638 903 4362	to 4373	655 103 5081	to 5199	685 650 9487	to 9499	702 821 5730	to 5799
639 415 1929	to 1999	655 523 2600	to 2999	685 669 4200	to 4299	702 821 5805	to 5899
639 415 2019	to 2099	656 305 2448	to 2499	685 757 8452	to 8499	702 844 6975	to 6994
639 420 6200	to 6299	657 347 4438	to 4999	686 071 2694	to 2799	702 846 6331	to 6399
639 469 3517	to 3799	657 710 8100	to 8999	686 176 3333	to 3354	702 848 3900	to 3999
639 605 2143	to 2199	657 780 0985	to 0999	686 372 3200	to 3299	702 857 7302	to 7499
639 657 8600	to 8799	658 586 1400	to 1499	686 644 5879	to 5899	702 878 0114	to 0199
640 289 7500 to 7599		658 877 8000	to 8199	686 899 1371	to 1399	703 364 1707	to 1799
640 289 7700	to 7999	658 880 8000	to 8199	686 931 7636	to 7699	740 002 7710 to 7719	
641 170 4420	to 4499	659 398 7300	to 7399	687 601 0973	to 0999	740 037 6730	to 6800
641 318 3133	to 3199	659 706 8113	to 8199	687 614 6774	to 6799	740 119 2275	to 2284
641 378 6500	to 6999	659 846 7837	to 7899	688 120 9000	to 9999	740 130 6688	to 6698
641 383 8739	to 8799	660 510 4100 to 4199		688 314 3107	to 3191	740 144 2780	to 2795
641 877 3187	to 3299	660 673 0400	to 0599	690 291 1361 to 1371		740 241 9049	to 9099
641 877 3310	to 3399	661 488 5000	to 5099	690 788 2877	to 2899	740 252 9265	to 9294
642 355 8094	to 8199	661 609 9100	to 9199	690 893 5344	to 5399	740 255 1718	to 1799
642 355 8308	to 8999	661 716 9420	to 9499	690 893 5512	to 5599	740 274 2602	to 2619
642 900 0018	to 0099	661 906 6522	to 6599	690 904 1300	to 1599	740 277 0366	to 0392
643 030 6254	to 6299	662 021 8332	to 8399	690 941 6000	to 6199	740 332 7658	to 7671
644 066 0882	to 0899	662 068 0700	to 0899	691 313 6383	to 6399	740 348 6641	to 6658
644 069 0600	to 0699	662 553 0774	to 0799	691 313 6600	to 6699	740 351 4790	to 4799
644 077 7506	to 7699	663 078 7034	to 7099	691 582 8003	to 8099	740 374 7416	to 7499
644 085 8157	to 8199	663 763 5300	to 5399	691 664 1800	to 1999	740 470 2420	to 2443
644 112 9839	to 9899	663 883 7039	to 7499	691 664 2400	to 2499	740 514 0300	to 0499
644 373 9083	to 9099	663 938 9200	to 9299	692 727 9362	to 9399	740 523 7432	to 7449
644 380 1460	to 1499	664 253 8000	to 8499	692 798 1800	to 1899	740 535 1555	to 1580
644 733 4715	to 4799	664 656 3055	to 3099	693 249 0779	to 0799	740 557 3570	to 3579
644 900 9712	to 9799	665 174 6400	to 6499	693 249 0877	to 1699	740 650 4104	to 4140
644 901 0109	to 1299	665 274 8208	to 8299	693 445 0566	to 0999	740 684 0620	to 0800
644 901 1325	to 1399	665 669 5400	to 5499	693 448 8500	to 8999	740 701 6105	to 6114
644 923 6800	to 7799	666 132 8226	to 8299	693 645 9583	to 9599	740 705 9790	to 9799
644 932 4655	to 4699	666 696 2209	to 2299	693 965 4200	to 4299	740 726 6400	to 6500
645 318 7240	to 7499	666 696 2309	to 2399	695 741 2906	to 2999	740 748 8319	to 8329
645 333 1766	to 1799	667 032 9300	to 9399	695 947 8518	to 8599	740 765 3306	to 3399
645 790 8632	to 8699	667 729 5529	to 5599	696 662 8247	to 8299	740 774 8434	to 8499
645 821 0657	to 0699	668 383 8400	to 8699	697 447 8285	to 8296	740 779 4259	to 4299
645 930 7948	to 7999	670 368 3400 to 3499		698 042 4816	to 4899	740 786 1885	to 1899
645 975 0737	to 0762	670 369 7336	to 7399	698 131 2138	to 2157	740 790 5989	to 5999
646 242 6200	to 6299	670 750 7169	to 7199	698 227 0000	to 0099	740 803 4870	to 4879
646 270 7639	to 7799	671 046 6200	to 6399	700 065 2570 to 2599		740 820 4854	to 7836
646 798 4000	to 4999	671 251 5448	to 5499	700 065 4800	to 4899	740 827 7578	to 7594
647 048 7035	to 7099	671 926 5600	to 5799	700 190 3350	to 3359	740 917 7490	to 7499
647 049 2900	to 2999	672 444 2000	to 2999	700 228 6048	to 6099	740 918 5531	to 5549
647 398 8300	to 8399	672 828 3410	to 3499	700 650 0452	to 0499	741 037 8528	to 8551
647 398 8481	to 8499	673 167 5776	to 5799	700 666 1323	to 1349	742 030 6135	to 6149
647 437 3000	to 4999	675 464 3700	to 3799	700 786 9106	to 9142	742 033 2663	to 2674
647 811 2188	to 2199	675 464 4000	to 4199	700 859 0744	to 0758	742 040 3300	to 3309
648 009 6057	to 6099	676 365 5958	to 5999	701 028 6780	to 6899	742 112 8155	to 8199
648 163 5300	to 5499	676 669 1024	to 1099	701 213 3900	to 3999	742 151 5000	to 5014
648 722 5283	to 5299	677 126 6734	to 6799	701 267 2000	to 3999	742 191 4640	to 4649
648 892 3164	to 3199	677 333 9979	to 9999	701 335 7312	to 7399	742 192 5210	to 5224
649 100 3989	to 3999	677 466 1088	to 1099	701 369 2005	to 2050	742 222 9200	to 9210
649 647 0370	to 0399	678 071 4500	to 4799	701 499 2260	to 2299	742 228 9660	to 9669
649 647 0522	to 0599	678 096 7531	to 7599	701 503 2247	to 2299	742 247 6980	to 6989
649 647 5237	to 5399	679 909 2578	to 2599	701 541 2271	to 2299	742 290 0936	to 0950
649 647 9100	to 9299	680 112 9565 to 9599		701 553 6557	to 6599	742 302 7600	to 7699
649 666 7800	to 8299	680 244 0903	to 0999	701 578 7460	to 7469	742 305 3711	to 3799
650 114 7707 to 7719		680 412 6046	to 6099	701 578 7475	to 7499	742 305 3800	to 3899
650 130 3400	to 3599	680 761 6800	to 6899	701 601 3457	to 3499	742 305 3900	to 3999
650 213 0406	to 0499	681 677 0540	to 0699	701 605 5913	to 5999	742 305 4000	to 4099
650 555 1749	to 1799	682 070 1029	to 1099	701 695 3982	to 3999	742 305 4100	to 4199
650 564 1900	to 1999	682 956 6280	to 6299	701 695 4148	to 4199	805 885 8411 to 8499	
650 627 4212	to 4299	682 956 6490	to 6599	701 695 4227	to 4299	806 087 1100	to 1499
650 736 2043	to 2099	682 956 6700	to 6799	701 708 1741	to 1799	806 268 9275	to 9299
650 739 1540	to 1699	682 965 1178	to 1199	701 736 3966	to 3999	806 534 3400	to 3477
651 741 4415	to 4499	682 965 1201	to 1299	701 772 0870	to 0899	807 342 3283	to 3399
651 882 2800	to 2899	683 118 2389	to 2399	701 838 2800	to 2899	808 086 7100	to 7199
652 754 6317	to 6399	683 378 2000	to 2099	701 941 0600	to 0699	808 090 3440	to 3499
653 131 4945	to 4999	683 378 2117	to 2299	702 171 1603	to 1699	808 325 5161	to 5699
653 426 3300	to 3399	683 415 1200	to 1499	702 195 5109	to 5199	808 784 8000	to 8299

830 125 0672 to 0699	856 752 0200 to 0299	902 985 0833 to 0899	918 951 7231 to 7299
830 602 5800 to 5999	857 111 1352 to 1399	903 370 6934 to 6999	919 519 2786 to 2799
830 610 3700 to 3799	857 279 3450 to 3499	904 600 6523 to 6599	919 536 0770 to 0799
830 983 3500 to 3599	857 843 4000 to 4099	904 892 0378 to 0399	919 814 3095 to 3199
830 983 3635 to 3699	858 124 7644 to 7699	904 892 0648 to 1299	919 889 5110 to 5134
831 354 1387 to 1399	858 756 3111 to 3299	905 056 2216 to 2299	919 889 5137 to 5176
831 815 8240 to 8299	859 063 8200 to 8699	905 510 6647 to 6799	919 889 5178 to 5199
832 525 3810 to 3899	859 190 0600 to 0644	905 510 6900 to 7099	919 889 5030 to 5070
833 159 1884 to 1899	859 437 5538 to 5599	905 794 0000 to 0199	919 889 5090 to 5099
833 456 2567 to 2599	859 811 2888 to 2899	905 794 0288 to 0299	919 915 2774 to 2787
833 566 3015 to 3071	859 855 8873 to 8999	905 873 6900 to 6999	920 155 4662 to 4687
834 130 5200 to 5299	860 240 8520 to 8599	905 873 7100 to 7299	920 309 9039 to 9199
834 316 5444 to 5499	860 275 3900 to 3999	905 880 8900 to 8999	920 771 5321 to 5399
834 354 8747 to 8766	860 518 9629 to 9699	905 889 7100 to 7199	920 857 5500 to 5899
834 354 8824 to 8838	860 600 0021 to 0999	906 158 1508 to 1599	920 864 3480 to 3499
835 269 5700 to 5799	861 158 2350 to 2599	906 558 8812 to 8899	920 963 4567 to 4599
835 496 7303 to 7399	861 367 5400 to 5499	906 982 2214 to 2299	921 333 7400 to 7499
835 539 5200 to 5999	861 637 6010 to 6099	907 725 8500 to 8599	921 477 3762 to 3799
835 813 3015 to 3099	861 979 7292 to 7499	907 815 0216 to 0257	922 278 1048 to 1399
837 672 8967 to 8999	862 216 6100 to 6199	908 622 4225 to 4235	922 280 2019 to 2099
837 784 3282 to 3299	862 263 9213 to 9299	908 936 9254 to 9299	922 280 2233 to 2299
838 176 8377 to 8399	862 271 0800 to 0999	909 066 4494 to 7499	922 773 0459 to 0499
838 518 1257 to 1299	862 271 5000 to 5099	909 067 7400 to 7499	923 032 7000 to 7399
839 718 8257 to 8299	863 871 5138 to 5199	909 100 1787 to 1799	923 045 3630 to 3699
840 323 0600 to 0699	863 949 5300 to 5399	909 100 1900 to 2099	923 484 3600 to 3699
840 875 6235 to 6299	864 088 8200 to 8299	909 355 0422 to 0499	923 493 9403 to 9599
840 910 0900 to 0999	864 426 3972 to 3999	909 568 8900 to 9099	923 493 9681 to 9699
841 349 5000 to 5099	864 520 6117 to 6136	909 568 9300 to 9499	923 604 4424 to 4499
841 805 7747 to 7899	865 151 0526 to 0599	909 725 7307 to 7399	923 810 7800 to 8299
841 805 7944 to 8099	865 500 4034 to 4099	909 833 0947 to 0999	924 252 1200 to 1299
842 226 0685 to 0695	865 883 6082 to 6099	910 219 8631 to 8699	924 252 1400 to 1499
842 685 4600 to 4699	866 004 3000 to 3999	910 265 1100 to 1199	924 533 0711 to 0799
842 685 4742 to 4999	866 442 4100 to 4899	910 471 7273 to 7299	924 533 2343 to 2399
842 860 0300 to 0399	867 366 9108 to 9118	910 536 2505 to 2599	924 533 2428 to 2499
842 898 5582 to 5599	867 633 7403 to 7499	910 958 7499 to 7599	924 685 1957 to 1999
843 062 7100 to 7199	867 737 5623 to 5699	911 140 1000 to 2199	924 946 6300 to 6699
843 077 6288 to 6299	868 169 4529 to 4599	911 245 2545 to 2599	925 333 5900 to 6099
843 077 6378 to 6399	868 173 8400 to 8599	911 268 9077 to 9099	925 336 2300 to 2399
843 758 5769 to 5778	868 514 9000 to 9099	911 400 8948 to 8999	926 432 5907 to 5999
843 786 2554 to 2699	868 566 9200 to 9299	911 508 1620 to 1799	926 436 3600 to 3699
845 656 8165 to 8199	869 200 0000 to 9999	911 509 9310 to 9399	927 765 6257 to 6299
845 727 2100 to 2199	869 387 1150 to 1199	911 523 3000 to 3999	928 197 8100 to 8199
845 746 2618 to 2635	869 505 3500 to 3599	912 057 9922 to 9999	928 197 8283 to 8299
846 390 7531 to 7599	869 523 7033 to 7099	912 882 0563 to 0899	928 856 2059 to 2068
846 918 0572 to 0599	869 566 6150 to 6167	913 605 2218 to 2299	930 078 5800 to 5899
847 237 7690 to 7699	869 776 8785 to 8786	913 709 2429 to 2499	930 219 1722 to 1799
847 284 2481 to 2499	869 800 0000 to 9999	913 818 3501 to 3999	930 335 7810 to 7819
847 374 7055 to 7065	870 054 4814 to 4899	914 063 4300 to 4399	931 097 9259 to 9299
847 374 7055 to 7065	870 491 4812 to 4849	914 346 7621 to 7644	931 156 1502 to 1579
847 636 5304 to 5399	870 536 5820 to 5829	914 453 1366 to 1399	931 156 1600 to 1625
847 700 5447 to 5499	870 541 7167 to 7239	914 529 6185 to 6299	931 156 1671 to 1699
847 723 7500 to 7599	870 575 8155 to 8999	914 896 4658 to 4699	932 506 6400 to 6599
849 485 3427 to 3499	870 589 0485 to 0494	915 187 8774 to 8779	932 732 1796 to 1799
849 520 9850 to 9899	870 691 7060 to 7099	915 300 2783 to 2799	932 827 9026 to 9099
849 608 1357 to 1399	872 028 4850 to 4899	915 546 6822 to 6999	932 957 2300 to 2399
849 792 2600 to 2699	872 029 9306 to 9399	915 646 5183 to 5199	933 060 6160 to 6189
850 546 1862 to 1899	872 078 3709 to 3799	915 671 3963 to 3980	933 387 2541 to 2561
851 143 6826 to 6844	872 100 0445 to 0459	915 671 3982 to 3999	933 760 3609 to 4199
851 209 9880 to 9899	900 556 4178 to 4199	915 675 2217 to 2299	933 894 0928 to 0999
851 928 9221 to 9299	900 845 0044 to 0099	916 440 3377 to 3399	934 018 2729 to 2741
852 589 6560 to 6599	900 936 0217 to 0299	916 670 6352 to 6399	934 180 0300 to 0399
853 049 3646 to 3699	900 936 0435 to 0499	916 682 5300 to 5399	934 236 3954 to 3999
854 304 4089 to 4999	901 058 5255 to 5280	916 694 1414 to 1499	934 622 8717 to 8999
854 529 2200 to 2299	901 273 1082 to 1099	916 703 0802 to 0821	935 216 0312 to 0399
854 532 0000 to 2999	901 287 5143 to 5199	917 089 0709 to 0799	935 843 2202 to 2247
855 001 6204 to 6249	901 291 2789 to 2799	917 089 0842 to 0899	936 024 8889 to 8899
855 319 9364 to 9399	901 525 7122 to 7199	917 216 2928 to 2999	936 339 4455 to 4499
855 361 3390 to 3399	902 089 1253 to 1299	917 370 6300 to 6499	
856 226 0490 to 0499	902 198 9769 to 9799	917 486 4900 to 4999	
856 656 5800 to 5999	902 948 1269 to 1299	918 460 0602 to 0699	

Missing, Lost, or Stolen Canadian Money Order Forms

Do Not Cash — Upon Receipt, Notify Local Postal Inspectors

Provide this listing to all Postal Service™ employees responsible for accepting and cashing postal money orders. Destroy all interim notices when the numbers listed appear in the *Postal Bulletin*. The new money order serial

numbers consist of the first 9 digits. The tenth digit is a check digit only.

Do not cash outdated money orders **104 151 601 to 692 600 000**. Advise holders to send invalid money orders to Canada Post Corporation, Ottawa, Canada K1A 0B1. Check for altered dollar amounts by holding money orders to the light.

719 869 731	to	9 760	728 702 338	to	2 400	734 950 111	to	0 170	742 325 668	to	5 700
720 227 871	to	7 930	728 915 371	to	5 850	735 120 331	to	0 840	742 408 771	to	8 830
720 227 949	to	7 960	728 953 141	to	3 410	735 283 008	to	3 020	742 512 120	to	2 150
720 368 543	to	8 570	728 954 280	to	4 310	735 293 131	to	3 220	742 684 849	to	4 890
720 392 151	to	2 570	729 169 081	to	9 140	735 635 010	to	5 040	742 839 553	to	9 630
720 556 491	to	6 640	729 363 841	to	3 870	735 783 961	to	3 990	742 913 668	to	3 700
720 558 621	to	8 650	729 682 891	to	3 190	735 803 401	to	3 430	742 917 287	to	7 296
720 575 361	to	5 570	729 838 940	to	9 070	736 005 420	to	5 440	742 921 891	to	1 980
720 590 152	to	0 179	729 839 101	to	9 130	736 366 021	to	6 110	742 983 631	to	3 810
721 638 331	to	9 170	730 077 683	to	7 840	736 624 456	to	4 500	743 020 021	to	0 170
721 815 391	to	5 420	730 109 847	to	9 880	736 670 851	to	1 060	743 206 491	to	6 500
721 969 713	to	9 740	730 373 761	to	3 850	736 767 061	to	7 090	743 235 992	to	6 050
722 072 137	to	2 160	730 501 951	to	2 130	736 767 093	to	7 120	743 940 631	to	0 900
722 378 265	to	8 280	730 519 379	to	9 470	736 982 191	to	2 370	743 978 011	to	8 070
722 413 990	to	4 004	730 569 278	to	9 360	736 982 551	to	2 730	744 234 751	to	4 780
722 764 948	to	4 980	730 711 711	to	1 740	737 110 141	to	0 170	744 499 591	to	9 680
722 825 840	to	5 889	730 722 991	to	3 230	737 185 501	to	5 710	744 626 901	to	6 910
723 153 841	to	3 850	730 845 970	to	5 990	737 317 321	to	7 350	745 388 794	to	8 910
723 237 616	to	7 630	730 888 291	to	8 320	737 517 781	to	7 840	746 446 806	to	6 820
723 331 081	to	1 110	730 927 591	to	7 680	737 628 181	to	8 210	746 818 351	to	8 410
723 496 443	to	6 470	731 307 914	to	7 930	737 634 258	to	4 270	747 245 266	to	5 280
723 967 291	to	7 320	731 402 431	to	2 460	738 361 971	to	1 980	747 364 813	to	4 830
724 655 196	to	5 340	731 407 232	to	7 320	738 447 601	to	7 660	747 501 434	to	1 450
724 711 441	to	1 500	731 588 301	to	8 340	738 648 355	to	8 450	747 739 891	to	0 070
724 711 538	to	1 560	731 767 273	to	7 320	738 849 811	to	9 900	748 148 649	to	8 760
724 793 221	to	3 250	731 781 061	to	1 120	738 892 270	to	2 290	748 259 960	to	9 970
724 908 109	to	8 120	731 837 821	to	7 910	738 997 259	to	7 380	748 565 162	to	5 280
724 937 461	to	7 670	731 841 377	to	1 450	739 161 451	to	1 540	748 874 988	to	5 030
725 163 118	to	3 151	732 018 481	to	8 600	739 219 381	to	9 440	749 137 381	to	7 410
725 202 735	to	2 750	732 067 972	to	8 370	739 740 151	to	0 180	749 190 192	to	0 210
725 398 591	to	8 800	732 188 649	to	8 670	739 793 491	to	3 520	749 685 421	to	5 450
725 464 591	to	4 920	732 193 460	to	3 470	739 793 527	to	3 550	749 846 791	to	6 850
725 475 321	to	5 330	732 201 241	to	1 390	739 942 621	to	2 650	749 993 131	to	3 580
725 711 057	to	1 070	732 220 431	to	0 440	739 999 231	to	9 320	750 071 587	to	1 610
725 738 581	to	8 730	732 355 201	to	5 380	740 011 517	to	1 530	750 408 167	to	8 183
725 981 311	to	1 430	732 472 320	to	2 560	740 030 701	to	0 970	750 438 421	to	8 501
725 987 835	to	7 880	732 541 605	to	1 620	740 261 740	to	1 820	750 743 911	to	4 030
726 060 811	to	0 900	732 572 221	to	2 490	740 265 811	to	6 290	750 779 118	to	9 400
726 391 970	to	2 520	732 586 479	to	6 710	740 299 111	to	9 170	750 910 981	to	1 010
726 484 771	to	4 800	732 994 037	to	4 080	740 299 231	to	9 260	750 960 841	to	0 900
726 493 351	to	5 300	733 163 449	to	3 460	740 329 266	to	9 320	751 296 211	to	6 240
726 504 031	to	4 063	733 297 171	to	7 290	740 889 081	to	9 090	751 539 121	to	9 180
726 504 070	to	4 090	733 446 631	to	7 110	741 010 421	to	0 530	751 541 311	to	1 790
726 504 331	to	4 390	733 474 665	to	4 770	741 113 041	to	3 370	751 757 641	to	7 700
726 563 701	to	4 060	733 704 482	to	4 570	741 373 891	to	4 340	751 936 951	to	7 010
726 599 371	to	9 460	733 751 041	to	1 130	741 452 369	to	2 490	751 951 861	to	1 890
726 626 356	to	6 370	734 009 101	to	9 130	741 492 991	to	3 140	751 999 021	to	9 110
727 182 271	to	2 510	734 290 759	to	0 770	741 553 460	to	3 470	752 139 516	to	9 570
727 416 181	to	6 240	734 389 273	to	9 290	741 764 431	to	4 520	752 182 892	to	2 950
727 481 431	to	1 460	734 440 031	to	0 111	741 764 431	to	4 520	752 206 861	to	7 100
727 749 241	to	9 780	734 797 201	to	7 320	742 178 834	to	8 880	752 295 241	to	5 600
728 382 331	to	2 480	734 939 611	to	9 640	742 325 500	to	5 520	752 731 351	to	1 410

752 767 441	to	7 470	762 593 431	to	3 460	773 208 991	to	9 290	800 427 530	to	7 540
753 008 941	to	9 030	763 155 160	to	5 180	773 231 311	to	1 340	800 872 741	to	2 830
753 194 311	to	4 370	763 178 631	to	8 660	773 348 739	to	8 940	801 349 801	to	9 830
753 620 378	to	0 400	763 506 001	to	6 060	773 348 739	to	8 940	801 676 681	to	7 100
754 013 917	to	3 940	763 522 141	to	2 470	773 575 891	to	5 950	802 967 821	to	7 940
754 161 061	to	1 120	763 717 694	to	7 800	773 852 971	to	3 030	803 217 601	to	7 780
754 358 445	to	8 610	763 826 461	to	6 520	775 373 449	to	3 460	803 729 731	to	9 850
754 410 451	to	0 660	763 900 460	to	0 471	789 257 191	to	7 250	803 747 402	to	7 520
754 438 393	to	8 410	763 900 479	to	0 530	790 448 020	to	8 460	804 138 181	to	8 420
754 493 109	to	3 130	763 917 271	to	7 750	790 597 485	to	7 530	804 428 224	to	8 250
754 664 182	to	4 220	764 125 801	to	5 860	790 911 883	to	1 900	804 682 411	to	2 710
754 816 377	to	6 470	764 284 525	to	4 560	791 057 441	to	7 550	805 272 525	to	2 540
755 487 421	to	7 600	764 526 241	to	6 330	791 239 081	to	9 290	805 523 445	to	3 460
755 592 901	to	3 140	764 601 421	to	1 600	791 374 483	to	4 500	805 745 704	to	5 730
755 790 020	to	0 030	764 650 231	to	0 470	791 387 971	to	8 030	806 452 907	to	2 980
755 791 730	to	1 800	764 984 371	to	4 850	791 447 521	to	7 850	806 744 781	to	4 850
755 926 951	to	7 070	765 003 667	to	3 680	791 451 151	to	1 240	806 982 181	to	2 300
755 934 332	to	4 510	765 042 517	to	2 540	791 500 009	to	0 470	807 764 791	to	4 910
755 957 701	to	8 000	765 194 728	to	4 970	791 771 431	to	1 490	808 089 931	to	9 960
755 962 981	to	3 280	765 387 365	to	7 450	792 004 293	to	4 320	808 656 423	to	6 450
756 035 371	to	5 490	765 541 801	to	2 100	792 018 379	to	8 420	808 753 771	to	3 800
756 301 257	to	1 290	765 638 461	to	8 970	792 070 621	to	0 740	809 189 001	to	9 010
756 371 565	to	1 580	765 647 101	to	7 190	792 145 211	to	5 230	809 886 879	to	6 930
756 876 031	to	6 120	765 813 781	to	4 029	792 391 381	to	1 620	809 890 489	to	0 500
756 876 151	to	6 240	765 879 314	to	9 390	792 452 779	to	2 790	810 323 734	to	3 760
756 970 129	to	0 140	765 954 001	to	4 030	792 772 728	to	2 770	810 367 116	to	7 140
757 059 613	to	9 630	766 120 286	to	0 320	792 903 511	to	3 990	810 526 351	to	6 500
757 078 540	to	8 560	766 125 716	to	5 750	793 282 518	to	2 533	810 806 911	to	6 940
757 086 209	to	6 240	766 158 824	to	8 840	794 041 831	to	2 040	810 807 211	to	7 240
757 240 591	to	0 650	766 388 433	to	8 460	794 397 709	to	7 780	811 423 021	to	3 110
757 277 371	to	7 700	766 509 421	to	9 660	794 581 741	to	2 040	811 517 221	to	7 239
757 291 591	to	2 730	766 572 901	to	3 020	794 592 122	to	2 150	811 721 101	to	1 130
757 964 251	to	4 280	766 748 500	to	8 521	795 032 251	to	2 340	812 025 721	to	5 900
758 067 001	to	7 090	767 024 341	to	4 370	795 796 291	to	6 350	812 093 073	to	3 130
758 105 221	to	5 250	767 326 471	to	6 590	796 070 139	to	0 160	812 100 821	to	0 840
758 324 941	to	5 000	767 332 561	to	2 950	796 143 151	to	3 630	812 465 251	to	5 610
758 593 628	to	3 650	768 009 841	to	9 960	796 159 725	to	9 740	812 918 341	to	8 670
758 709 038	to	9 060	768 011 489	to	1 520	796 169 306	to	9 340	812 918 701	to	8 760
758 744 101	to	4 160	768 177 980	to	7 990	796 373 406	to	3 430	813 050 491	to	0 520
758 850 883	to	0 900	768 391 081	to	1 170	796 602 961	to	3 050	813 073 171	to	3 200
758 860 951	to	1 550	768 661 569	to	1 650	796 708 441	to	8 500	813 398 476	to	8 550
759 152 851	to	2 880	769 000 051	to	0 080	796 886 281	to	6 430	813 713 971	to	4 000
759 740 941	to	1 090	769 050 841	to	0 900	796 901 701	to	2 000	813 858 121	to	8 150
760 004 596	to	4 610	769 159 081	to	9 178	796 975 466	to	5 590	814 789 330	to	9 349
760 118 191	to	8 250	769 737 496	to	7 510	797 272 917	to	2 950	814 984 656	to	4 680
760 155 001	to	5 090	769 778 491	to	8 730	797 519 441	to	9 460	815 016 020	to	6 030
760 378 002	to	8 020	769 827 331	to	7 450	797 519 731	to	0 240	815 199 410	to	9 420
760 692 722	to	2 749	770 216 071	to	6 100	797 535 181	to	5 330	815 240 491	to	0 520
761 055 460	to	5 480	770 723 281	to	3 400	797 646 151	to	6 180	815 755 591	to	5 620
761 169 781	to	9 810	770 790 451	to	0 480	798 040 053	to	0 080	815 755 622	to	5 650
761 504 941	to	5 120	770 915 150	to	5 490	798 055 813	to	5 830	815 806 381	to	6 680
761 516 836	to	6 910	771 455 551	to	5 610	798 055 891	to	5 950	816 126 834	to	6 870
761 613 588	to	3 600	771 609 661	to	9 690	798 326 371	to	6 520	816 156 721	to	6 780
761 688 631	to	8 690	771 932 551	to	2 580	798 339 167	to	9 210	816 580 903	to	0 920
761 805 199	to	5 240	772 057 224	to	7 440	798 562 411	to	2 440	816 945 571	to	5 600
761 826 106	to	6 120	772 162 660	to	3 070	798 632 461	to	2 490	817 253 011	to	3 280
761 881 171	to	1 560	772 718 615	to	8 640	798 807 151	to	7 510	817 763 881	to	4 060
761 975 641	to	5 670	772 940 140	to	0 160	798 944 761	to	5 030	818 330 562	to	0 610
761 975 886	to	5 895	772 970 886	to	0 940	799 118 616	to	8 640	818 459 641	to	9 670
762 304 144	to	4 170	773 009 419	to	9 430	799 133 191	to	3 220	818 926 273	to	6 320
762 324 931	to	4 960	773 112 031	to	2 060	799 177 626	to	7 650	818 950 351	to	0 380
762 439 261	to	9 290	773 125 387	to	5 410	799 854 751	to	5 200	818 962 492	to	2 530
762 524 158	to	4 220	773 179 320	to	9 410	800 044 320	to	4 410	819 032 341	to	2 730
762 584 872	to	4 970	773 202 989	to	3 140	800 211 901	to	2 440	819 127 054	to	7 080

819 278 540	to 8 670	822 703 442	to 3 470	826 226 644	to 6 670	828 539 341	to 9 370
819 544 681	to 4 740	822 900 991	to 1 020	826 582 951	to 3 430	828 732 331	to 2 390
819 928 441	to 8 650	822 925 951	to 6 100	826 720 201	to 0 230	828 807 781	to 7 840
820 034 406	to 4 430	823 284 931	to 4 990	827 005 671	to 5 830	828 830 952	to 0 963
820 070 761	to 1 540	823 293 031	to 3 210	827 287 861	to 7 950	828 939 781	to 0 050
820 191 342	to 1 360	823 556 011	to 6 100	827 291 502	to 1 520	829 002 721	to 2 870
820 274 856	to 4 880	824 078 341	to 8 370	827 575 381	to 5 470	829 005 301	to 5 540
820 600 171	to 0 230	824 156 325	to 6 340	827 609 085	to 9 100	829 080 241	to 0 330
821 172 241	to 2 360	824 511 252	to 1 270	827 619 811	to 9 840	829 160 986	to 1 000
821 229 661	to 9 720	824 588 281	to 8 370	827 883 511	to 3 600	829 176 841	to 6 930
821 229 743	to 9 780	825 140 397	to 0 460	828 160 441	to 0 530	829 471 561	to 1 590
821 903 731	to 3 910	825 409 651	to 9 680	828 376 201	to 6 260	829 561 065	to 1 080
821 927 841	to 7 850	825 472 171	to 2 200	828 441 602	to 1 630	829 566 481	to 6 510
822 505 801	to 5 830	826 042 898	to 2 920	828 539 316	to 9 340	829 569 931	to 9 960

— Criminal Investigations Group, U.S. Postal Inspection Service, 8-26-21

Verifying U.S. Postal Service Money Orders

Follow these steps to cash a Postal Service™ money order:

1. Check that the amount does not exceed the legal limit: \$1,000 for domestic, and \$700 for international Postal Service money orders.
2. Check that the proper security features are present:
 - When held to the light, a watermark of Benjamin Franklin is repeated from top to bottom on the left side.
 - When held to the light, a dark line (security thread) runs from top to bottom with the word “USPS” repeated.
 - When there is discoloration around the dollar amounts, this might indicate the amounts were changed.

These appear in Postal Service Notice 299, *U.S. Postal Money Order Reference Card*, or online at usps.com/shop/money-orders.htm.

3. If the money order seems suspicious, call the U.S. Postal Service Money Ordxxxer Verification System at 866-459-7822.

Provide this information to local banks and retailers, as they also receive Postal Service money orders for cashing.

— *Delivery and Retail Customer Service Operations*, 8-26-21

Counterfeit Canadian Money Order Forms

Do Not Cash

To be posted and used by retail window employees. As directed, destroy previous notices. Destroy all interim notices when the numbers listed appear in the *Postal Bulletin*.

671,819,086	683,594,542	687,262,503
676,612,640	684,683,610	687,262,525
677,891,039	686,619,878	687,262,526
678,282,493	686,619,886	687,287,578
678,916,031	686,619,887	687,287,581
679,552,215	686,794,382	687,287,582
679,694,334	686,794,426	694,063,898
679,751,983	686,794,427	694,063,899
679,800,207	686,794,431	694,063,980
681,130,536	687,262,502	701,321,725
681,844,376		

— *Criminal Investigations Group, U.S. Postal Inspection Service*, 8-26-21

Toll-Free Number Available to Verify Canadian Money Orders

The Canada Post Corporation has a toll-free number that cashing agents can call to verify the validity of Canadian Postal Money Orders. The number is 800-563-0444.

This toll-free number is printed on the back of the Canadian Postal Money Orders.

— *Criminal Investigations Group, U.S. Postal Inspection Service*, 8-26-21

Other Information

Overseas Military/Diplomatic Mail

Mail addressed to military and diplomatic post offices overseas is subject to certain conditions or restrictions of mailing regarding content, preparation, and handling. The APO/FPO/DPO table outlines these conditions by APO/FPO/DPO ZIP Codes™ through the use of footnoted mailing restrictions codes (see the [Restrictions](#) page following the table).

Acceptance clerks must use the table with the Retail System Software terminal to determine which APO/FPO/DPO ZIP Codes are active and which conditions of mailing apply.

APO/ FPO/ DPO	See Restrictions	APO/ FPO/ DPO	See Restrictions	APO/ FPO/ DPO	See Restrictions	APO/ FPO/ DPO	See Restrictions
09002	A-B-F-F3-H-N-Q-R-S-V-Z-Z1	09067	B-C-D-E-F3-H-M-R-S-U	09154	B-C-D-E-F3-H-M-R-S-U	09241	A-B-F3-N-R-S-U-Z1
09003	B-C-D-E-F3-H-M-P-R-S-U	09068	B-C-D-E-F3-H-R-S-U-Z1	09160	B-C-C2-D-F-F1-F3-H-J-L-M-N-R-R1-T-U-V-Z1	09242	A-B-C1-F-F3-H-N-R-S-V
09004	B-C-D-E-F3-H-M-R-S-U	09069	A-B-C-D-E-F3-H-N-R-S-U-V	09170	A-B-C2-F-F1-F3-J-L-M-N-R-R1-S-T-V-X-Z1	09250	B-C-D-E-F3-H-M-R-S-U
09005	B-C-D-E-F3-H-M-P-R-S-U	09079	B-C-D-E-F3-H-M-R-S-U	09171	A-B-C1-C2-E3-F-F1-F3-J-L-M-N-R-R1-S-T-V-X-Z1	09261	B-C-D-E-F3-H-M-N-R-S-U-V-Z1
09006	B-C-D-E-F3-H-M-R-S-U	09094	B-C-D-F3-H-M-P-R-S-Z1	09172	B-C-D-E-F3-H-M-R-S-U	09263	B-C-D-E-F3-H-M-R-S-U
09008	A-B-F-F3-H-N-Q-R-S-V-Z-Z1	09095	B-C-D-E-H-M-R-U	09173	B-C-D-E-F3-H-M-R-S-U	09264	B-C-E-F3-H-M-R-S-U
09009	B-C-D-E-F3-H-M-R-S-U-Z1	09096	B-C-D-E-F3-H-M-R-S-U	09174	B-C-C2-F-F1-F3-I3-L-N-R-R1-S-T-V-X-Z1	09265	B-C-D-F-F1-H-J-L-M-N-R-S-T-U-V-Z1
09010	B-C-D-E-F3-H-M-R-S-U2	09103	A-B-F-F3-H-N-Q-R-S-V-Z-Z1	09175	A-B-C1-C2-E2-F-F1-F3-H1-J-L-M-N-R-R1-S-T-V-W-X-Z1	09266	A-B-F3-R-S-U-V-Z1
09011	B-C-D-E-F3-H-M-R-S-U	09104	B-C-D-F3-H-M-R-S-U-Z1	09176	A-B-C2-F-F1-F3-J-L-M-N-R-R1-S-T-V-X-Z1	09276	A-B-F-F3-I3-L-M-N-R-S-T-V-X-Z1
09012	B-C-D-E-F3-H-M-R-S-U-Z1	09107	B-C-D-E-F3-H-M-R-S-U	09177	B-C-D-E-F3-H-M-R-S-U	09277	A-B-E-E1-E2-F1-F3-I3-L-N-R-S-T-V-X-Z1
09013	B-C-D-E-F-F1-F3-H-M-R-S-U-Z1	09112	B-C-D-E-F3-H-M-R-S-U	09178	B-C1-C2-E2-F1-F3-I3-L-M-N-R-S-T-V-X-Z1	09278	A-B-F-F3-I3-L-M-N-R-S-T-V-X-Z1
09014	B-C-D-E-F3-H-M-P-R-S-U	09113	A-B-F-F3-H-N-Q-R-S-V-Z-Z1	09180	B-C-D-E-F3-H-M-R-S-U	09279	A-B-E-E1-F-F3-I3-L-M-N-R-S-T-V-X-Z1
09015	A-B-C-C1-C2-F-F1-F3-J-L-M-N-R-R1-S-V-Z1	09114	B-C-D-E-F3-H-M-R-S-U	09186	B-C-D-E-F3-H-M-P-R-S-U	09283	A-B-E-E1-F-F3-L-M-N-R-S-T-V-X-Z1
09016	B-C-D-E-F1-F3-H-M-R-S-U	09115	A-B-F-F3-H-N-Q-R-S-V-Z-Z1	09188	B-C-D-E-F3-H-M-P-R-S-U	09285	A-B-C-E-E1-F1-F3-H-I3-L-M-N-R-S-T-V-X-Z1
09017	A-B-F-F3-H-N-Q-R-S-V-Z-Z1	09116	A-B-F-F3-H-N-Q-R-S-V-Z-Z1	09203	A-B-C-C1-C2-F-F1-F3-I3-J-L-M-N-R-R1-T-V-Z-Z1	09287	B-C2-E1-F1-F3-J-L-N-R-S-T-V-X-Z1
09018	A-B-F-F3-H-N-Q-R-S-V-Z-Z1	09123	B-C-D-E-F3-H-M-R-S-U-Z1	09204	B-C-F3-M-N-R-S-V-Z1	09289	B-E2-F1-F3-H1-J-L-M-N-R-R1-S-T-U2-V-X-Z1
09020	B-C-D-E-F3-H-M-R-S-U	09125	A-B-C-F-F1-F3-H-N-R-R1-S-V-V1	09211	B-C-D-E-F3-H-M-P-R-S-U	09290	A-B-F1-F3-J-L-M-N-R-S-T-U2-V-X-Z1
09021	B-C-D-E-F3-H-M-R-S-U-Z1	09126	B-C-D-F3-H-M-P-R-S-Z1	09213	B-C2-F-F1-F3-H-J-L-M-N-R-R1-T-U-V-Z1	09291	B-C-C1-C2-E2-F1-F3-H1-L-N-R-R1-S-T-V-X-Z1
09034	B-C-D-E-F3-H-M-R-S-U	09128	B-C-D-E-F3-H-M-R-S-U	09214	B-C-D-E-F3-H-M-R-S-U-Z1	09301	A-B-C1-C2-E2-F-F1-F3-H1-I3-L-M-N-R-R1-S-T-U4-V-Z-Z1
09044	B-C-D-F1-F3-H-R-S-U	09131	B-C-D-E-F3-H-M-R-S-U	09216	B,C,F1,F3,M,N,R,S,V,Z1	09302	A-B-C1-F-F1-F3-H-M-N-R-S-V-Z-Z1
09046	B-C-D-E-F3-H-M-R-S-U	09135	A-B-F-F3-H-N-R-S-U-V-Z1	09227	B-C-D-E-F3-H-M-R-S-U	09305	A-B-C1-E2-F-F1-F3-H1-I3-M-N-R-R1-S-T-V-Z-Z1
09049	B-C-D-E-F3-H-M-R-S-U	09136	B-C-D-E-F1-F3-H-M-P-R-S-U	09240	A-B-C1-F-F3-H-N-R-S-V		
09053	B-C-D-E-F3-H-M-R-S-U	09138	B-C-D-F3-H-M-R-S-U				
09060	B-C-D-E-F1-F3-H-M-N-R-S-U-Z1	09140	B-C-D-E-F3-H-M-R-S-U				
		09142	B-C-D-E-F3-H-M-R-S-U				

APO/ FPO/ DPO	See Restrictions	APO/ FPO/ DPO	See Restrictions	APO/ FPO/ DPO	See Restrictions	APO/ FPO/ DPO	See Restrictions
09306	A-B-C1-E2-F-F1-F3-H1-R-R1-S-U2-V-Z1	09454	B-C-C1-F3-M-R-S-U-V-Z1	09534	B-F-F1-F3-R-R1-S-V	09604	B-C-F-F1-F3-P-R-S-U-V-Z1
09307	B-C-C2-F-F3-N-R-R1-S-Z1	09456	B-C-C1-F3-M-N-R-S-U-V-Z1	09541	A-B-C-F-F3-M-N-S-V-Z1	09605	B-C-D-F3-H-M-R-S-U-V
09309	A-B-C-C1-C2-E2-F-F1-F3-H1-M-N-R-R1-S-V-Z1	09459	B-C-C1-F3-M-R-S-U-Z1	09542	A-B-C-F-F3-M-N-S-V-Z1	09606	B-C-D-F3-H-M-R-S-U-V
09310	A-B-C1-C2-E2-F-F1-F3-H1-I3-L-M-N-R-R1-S-T-U4-V-Z1	09461	B-C-C1-F3-M-P-R-S-U-Z1	09543	A-B-C-F-F3-M-N-S-V-Z1	09608	B-C-F-F3-N-R-S-U-V-Z1
09311	A-B-C1-C2-E2-F-F1-F3-H1-I3-L-M-N-R-R1-S-T-U4-V-Z1	09463	B-C-C1-F3-M-R-S-U-Z1	09544	A-B-C-F-F3-M-N-S-V-Z1	09609	B-C-F-F3-N-R-S-U-Z1
09312	A-B-C1-C2-E2-F-F1-F3-H1-I3-L-M-N-R-R1-S-T-U4-V-Z1	09464	B-C-C1-F3-R-S-U-Z1	09545	A-B-C-F-F3-M-N-S-V-Z1	09610	B-C-F-F1-F3-M-R-S-U-V-Z1
09313	A-B-C-C1-E2-F-F1-F2-F3-H1-R-R1-S-V-Z1	09467	B-E-E1-F-F3-J-L-M-N-R-S-T-V-X-Z1	09550	B-F-F1-R-R1-V	09613	B-C-F-F3-N-R-S-U-V
09315	A-B-C1-E2-F-F3-N-R-R1-S-V-Z1	09468	B-C-C1-F3-M-R-S-U-Z1	09554	B-F-F1-R-R1-V	09614	A-B-C1-C2-E2-F-F1-F3-H1-J-L-M-N-R-R1-T-V-W-Z1
09316	A-B-C1-E2-F-F1-F3-H1-I3-M-N-R-R1-S-T-V-Z1	09469	B-C-C1-F3-R-S-U-Z1	09556	B-F-F1-R-R1-V	09618	B-C-F-F3-R-S-U-V-Z1
09319	A-B-C-C1-C2-E2-F-F1-F2-F3-H1-R-R1-S-U2-V-Z1	09470	B-C-C1-F3-M-R-S-U-Z1	09564	B-F-F1-R-R1-V	09620	B-C-F-F3-R-S-U-V-Z1
09320	A-B-C1-E2-F-F3-H1-M-N-R-R1-S-V-Z1	09487	A-B-C-C1-C2-E2-F1-F3-I3-L-M-N-R-R1-S-T-V-W-X-Z1	09565	B-F-F1-F3-R-R1-S-V	09621	B-C-F-F3-R-U-Z1
09321	A-B-C1-C2-E2-F-F3-H1-M-N-R-R1-S-V-Z1	09488	A-B-C-C1-C2-E2-F3-J-L-M-N-S-T-V-W-X-Z1	09566	B-C2-E2-E3-F-F1-F3-R-R1-S-V-Z1	09622	B-C-F-F3-R-S-U-V-Z1
09330	A-B-C1-C2-D-E-E2-F-F1-F3-H-H1-M-R-R1-S-V-Z1	09489	A-B-C-C1-C2-E2-F1-F3-L-M-N-R-R1-S-T-V-W-X-Z1	09567	B-C2-E2-E3-F-F1-F3-R-R1-V-Z1	09623	B-C-F-F3-R-S-U-V-Z1
09333	A-B-C-C1-E2-F-F1-F3-H1-I3-M-N-R-R1-S-V-V1-Z1	09490	A-B-C1-C2-E2-F-F1-F3-H1-J-L-M-N-R-R1-S-T-V-X-Z1	09568	B-V	09624	B-C-C2-F-F1-F3-I3-L-N-R-R1-T-U-V-Z1
09343	A-B-C1-F-F3-M-N-R-R1-S-V-Z1	09491	A-B-C1-C2-E2-F1-F3-H1-J-L-M-N-R-R1-S-T-V-Z1	09569	B-C2-E2-E3-F-F1-F3-R-R1-V-Z1	09625	B-C-F-F3-N-R-S-U-Z1
09348	A-B-C1-E2-F-F1-F3-H1-I3-M-N-R-R1-S-T-V-Z1	09494	B-C-C1-F3-M-R-S-U-Z1	09570	A-B-F-F1-F3-R-R1-S-V	09627	B-C-F-F3-R-S-U-V-Z1
09356	A-B-C1-E2-F-F3-H1-M-N-R-V-Z1	09498	B-C1-C2-F-F1-F3-J-L-N-R-R1-T-V-Z1	09573	B-C2-E2-E3-F-F1-F3-R-R1-S-V-Z1	09630	B-C-F-F3-R-S-U-V
09357	A-B-C1-E2-F-F3-H1-M-R-V-Z1	09501	B-V	09574	B-F-F1-R-R1-V	09633	B-C-D-F-F1-F3-M-R-S-U-U1-U2-U3-V-Z1
09363	A-B-C1-E2-F-F3-H1-M-R-R1-S-V-Z1	09502	B-V	09575	B-F-F1-R-R1-V	09634	A-B-F-F3-M-N-R-S-V
09365	A-B-C-C1-E2-F-F3-H1-M-N-R-V-Z1	09503	B-F-F1-R-R1-V	09576	B-F-F1-R-R1-V	09636	B-C-F-F3-R-U-V-Z1
09366	A-B-C-C1-E2-F-F1-F3-H-H1-M-R-R1-S-V-Z1	09504	B-V	09577	B-F3-S-V	09642	B-C2-F-F1-F3-J-L-M-N-R-T-U-V
09401	B-C-C1-F3-M-R-S-U-Z1	09505	B-V	09578	B-F-F1-F3-R-R1-S-V-Z1	09643	B-C-F3-M-R-S-U-V-Z1
09403	B-C-C1-F3-M-R-S-U-Z1	09506	B-V	09579	B-F-F1-R-R1-V	09645	B-C-C1-E1-E2-F-F1-F3-M-R-S-U-X-Z1
09410	C2-F-F1-F3-N-R-S-U2	09507	B-V	09581	B-F-F1-F3-R-R1-S-V	09647	B-F1-F3-M-N-R-S-U-Z1
09421	B-C-C1-F3-M-R-S-U-Z1	09508	B-F-F1-R-R1-V	09582	B-C2-F-F1-F3-R-R1-S-V	09648	B-F3-N-R-S-U-V-Z1
09447	B-C-C1-F3-M-R-S-U-V-Z1	09509	B-F-F1-R-R1-V	09583	B-F-F1-F3-I3-J-R-R1-S-V-V1	09649	B-F3-N-R-S-U-Z1
		09510	A-B-C1-E2-F-F1-M-R-R1-V-Z1	09586	B-C2-F-F1-F3-R-R1-S-V	09701	A-B-C1-C2-F-F1-F3-J-L-M-N-R-R1-T-V-Z1
		09511	B-F-F1-R-R1-V	09587	B-C2-E2-E3-F-F1-F3-R-R1-S-V-Z1	09702	B-C-C1-F1-F3-M-R-R1-S-U
		09512	B-F-F1-F3-R-R1-S-V	09588	B-F-F1-F3-R-R1-S-V	09704	B-C-V-V1
		09513	B-F-F1-F3-R-R1-S-V-V1	09589	B-F-F1-F3-R-S-V	09705	B-C-C1-F1-F3-M-R-R1-S-U
		09514	B-F-F1-F3-R-R1-S-V-V1	09590	B-V	09706	B-C-F3-M-N-R-S-U-V-Z1
		09517	B-F-F1-F3-R-R1-S-V	09591	B-C2-E2-E3-F-F1-F3-R-R1-S-V-Z1	09707	B-C2-F-F1-F3-J-L-M-N-R-R1-T-V-Z1
		09520	B-F-F1-F3-R-R1-S-V	09592	B-F-F1-F3-R-R1-S-V	09708	B-C-C1-F1-F3-M-R-R1-S-U
		09522	B-F-F1-F3-R-S-V	09593	B-F-F1-F3-R-S-V	09709	B-C1-C2-E2-F-F1-F3-H-H1-J-L-N-R-R1-T-V-Z1
		09523	B-F-F1-F3-R-R1-S-V	09594	B-C1-E2-F-F1-F3-R-R1-S-V	09710	B-C-C1-F-F1-J-L-M-N-R-R1-T-U-V-Z1
		09524	B-F-F1-R-R1-V	09595	B-F-F1-F3-I3-J-R-R1-S-V-V1-Z1	09712	A-B-F-F3-H-R-S-U-V-Z1
		09532	B-F-F1-F3-R-R1-S-V	09596	B-F-F1-R-R1-V		
		09533	B-V	09599	B-F-F1-R-R1-V		
				09600	B-C-C2-F-F1-F3-R-S-U-Z1		
				09602	B-C-F-F1-N-R-U-V		
				09603	B-C-F-F1-F3-R-S-U-V-Z1		

APO/ FPO/ DPO	See Restrictions	APO/ FPO/ DPO	See Restrictions	APO/ FPO/ DPO	See Restrictions	APO/ FPO/ DPO	See Restrictions
09714	B-C-C1-F1-F3-M-R-R1-S-U	09749	A-B-F-F3-H-N-R-S-U-V-Z1	09813	A-B-C1-C2-E2-E3-F1-F3-J-L-N-R-R1-T-V-Z1	09848	A-B-F-F3-M-R-S-V-Z1
09715	B-F-F1-J-L-M-N-R-T-V-Z1	09750	A-B-C1-C2-F-F1-F3-J-L-M-N-R-R1-T-V-Z1	09814	B-C2-E2-E3-F-F1-F3-I3-J-L-N-R-R1-T-V-Z1	09853	B-C1-E2-F-F1-F3-H1-N-R-R1-S-U2-V-Z1
09716	B-C-C2-F-F1-F3-J-L-M-N-R-R1-T-V-Z1	09751	B-C-D-E-F3-H-M-R-S-U	09816	A-B-C1-C2-E2-E3-F1-F3-J-L-N-R-R1-T-V-Z1	09854	A-B-C1-C2-F-F1-F3-J-L-N-R-R1-S-T-V-Z1
09717	A-B-F3-M-R-S-V-W-Z1	09752	B-C-D-F1-F3-H-R-S-U	09817	A-B-C1-C2-E2-E3-F1-F3-H-H1-J-L-M-N-R-R1-T-V-Z1	09855	A-B-C1-C2-E2-F-F1-F3-H1-M-R-R1-S-U2-V-Z1
09718	B-F-F1-J-L-M-N-R-T-U-V-Z1	09753	A-B-F-F3-N-R-S-V-Z1	09818	A-B-C-F-F3-M-S-V-Z1	09856	B-C-C1-C2-F-F1-F3-H-H1-J-L-M-N-S-T-V-Z1
09719	B-C-D-F3-M-R-S-U-V-Z1	09754	A-B-F-F3-H-L-N-Q-R-S-V-Z1	09820	A-B-C2-F-F1-F3-H-H1-J-L-M-N-R-R1-T-V-Z1	09857	A-B-C2-E2-F-F1-F3-13-L-M-N-R-R1-S-T-V-Z1
09720	B-F3-M-R-S-U-V-Z1	09755	A-B-C-C1-D-F-F1-F3-J-L-M-N-Q-R-R1-S-T-V-Z1	09821	A-B-C-F-F3-N-R-S-V-Z1	09858	A-B-C-C1-C2-E2-E3-F1-F3-H-H1-J-M-N-R-R1-S-U-V-Z1
09722	A-B-F-F3-H-N-Q-S-V-Z1	09758	A-B-F-F1-F3-M-N-R-R1-S-V-Z1	09822	A-B-C-F-F3-M-R-S-V-Z1	09859	B-C-C1-C2-E2-E3-F1-F3-H1-R-R1-S-U-Z1
09723	B-C2-F-F1-F3-J-L-M-N-R-R1-T-V-Z1	09759	A-B-C-C1-C2-E2-F-F1-F3-J-L-N-R-R1-T-V-Z1	09823	A-B-C1-C2-F-F1-F3-J-L-M-N-R-R1-T-V-Z1	09860	A-B-C2-F-F1-F3-J-L-M-N-R-R1-S-T-V-Z1
09724	B-C-C1-F1-F3-M-R-R1-S-U	09761	B-F-F1-F3-M-R-R1-S-V-Z1	09824	A-B-C-F-F3-M-R-S-V-Z1	09862	A-B-C-C2-F-F1-F3-I3-L-M-N-R-R1-S-T-V-X-Z1
09725	A-B-F-F3-H-N-Q-R-S-V-V1-Z1	09762	A-B-C2-E3-F-F1-F3-J-L-N-R-R1-T-V-Z1	09825	A-B-C1-C2-F-F1-F3-J-L-M-N-R-R1-T-V-Z1	09864	A-B-C-C1-C2-E2-F1-F3-L-M-N-R-R1-S-T-V-W-Z1
09726	B-F-F1-J-L-M-N-R-T-U-V-Z1	09769	A-B-C-C1-C2-F-F1-F3-J-L-M-N-R-R1-T-V-Z1	09826	A-B-C1-C2-E1-E2-E3-F-F1-F3-J-L-M-N-R-R1-T-V-W-Z1	09865	A-B-F3-R-S-U-V-Z1
09727	A-B-C1-C2-F-F1-F3-J-L-M-N-R-R1-T-V-Z1	09777	A-B-C-C1-C2-E1-F-F1-F3-J-L-M-N-R-R1-T-V-Z1	09827	A-B-F-F1-J-L-M-N-R-T-V-Z1	09867	A-B-C-C1-C2-E2-F1-F3-L-M-N-R-R1-S-T-V-W-Z1
09728	A-B-C-C1-C2-F-F1-F3-J-L-N-R-R1-T-V-Z1	09780	A-B-F-F3-H-N-R-S-V	09828	A-B-C1-C2-F-F1-F3-I3-L-N-R-R1-T-V-Z1	09868	A-B-E1-E2-E3-F1-F3-M-N-R-S-U-V-Z1
09729	B-C-F-F3-N-R-R1-S-U-V-Z1	09789	A-B-C2-F-F3-N-R-S-V-Z1	09829	B-C-N-R-V-Z1	09869	A-B-C1-C2-E2-F1-F3-L-M-N-R-R1-S-T-V-W-Z1
09730	A-B-C1-C2-F-F1-F3-J-L-M-N-R-R1-T-V-Z1	09801	A-B-C1-E2-F-F3-H1-M-N-R-R1-S-V-Z1	09830	B-C-F-F1-F3-J-L-M-N-R-R1-S-T-V-Z1	09870	A-B-C1-C2-E2-F-F1-F3-H1-I3-L-M-N-R-R1-S-T-U4-V-Z1
09731	A-B-C1-C2-F-F1-F3-J-L-M-N-R-R1-T-V-Z1	09802	A-B-C-C2-D-F-F1-F3-H-H1-I3-L-M-N-R-R1-S-T-V-W-Z1	09831	B-C1-C2-F-F1-F3-J-L-N-R-R1-T-V-Z1	09873	A-B-C1-C2-E2-F-F1-F3-H1-I3-L-M-N-R-R1-S-T-U4-V-Z1
09732	B-F-F3-N-S-V-Z1	09803	A-B-C-C2-E-E2-E3-F1-F3-H-H1-J-M-N-R-R1-S-U-V-Z1	09832	B-C1-E2-F1-F3-N-R-S-V-Z1	09874	A-B-C1-C2-E2-F-F1-F3-H1-I3-L-M-N-R-R1-S-T-U4-V-Z1
09733	B-F-F3-N-R-S-V-Z	09804	A-B-F-F1-F3-M-N-R-S-V-Z1	09833	B-C1-E2-F1-F3-N-R-S-V-Z1	09875	A-B-C1-C2-E2-F-F1-F3-H1-I3-L-M-N-R-R1-S-T-U4-V-Z1
09734	A-B-C-C1-C2-F-F1-F3-I3-J-L-M-N-R-R1-T-V-Z1	09805	B-C-C2-E2-E3-F-F1-F3-R-R1-S-Z1	09834	B-C-C2-E2-E3-F-F1-F3-R-R1-S-U-Z1	09877	A-B-C-C2-E-E2-E3-F1-F3-H-H1-J-M-N-R-R1-S-U-V-Z1
09735	B-F3-N-R-S-V-Z1	09806	A-B-C1-C2-E2-F-F1-F3-H1-J-L-M-N-R-R1-T-V-Z1	09836	A-B-C1-C2-F-F1-F3-J-L-M-N-R-R1-V-Z1	09880	A-B-C1-C2-E2-F-F1-F3-H1J-L--N-R-R1-S-T-U-V-Z1
09736	A-B-C1-F-F1-F3-J-L-M-N-R-R1-T-V-Z1	09807	A-B-C1-E2-F-F1-F3-H1-I3-M-N-R-R1-S-T-V-Z1	09837	B-E2-E3-F1-F3-R-S-V-Z1	09890	B-E2-F-H1-N-R-R1-U2-V-Z1
09737	A-B-C1-C2-F-F1-F3-I3-J-L-M-N-R-R1-T-V-W-Y-Z1	09808	A-B-C1-C2-E2-F-F1-F3-H-H1-J-L-N-R-R1-T-V-Z1	09838	B-C-C2-E2-E3-F-F1-F3-R-S-U-Z1	09892	A-B-C1-C2-E2-F-F1-F3-J-L-M-N-R-R1-T-V-Z1
09738	A-B-C1-C2-F-F1-F3-J-L-M-N-R-R1-T-V-Z1	09809	B-C1-C2-E3-F-F1-F3-J-L-N-T-V-Z1	09841	A-B-F3-N-R-S-U-Z1	09895	A-B-C1-C2-E2-F-F1-F3-J-L-M-N-R-T-V-W-Z1
09739	A-B-C1-C2-F-F1-F3-J-L-M-N-R-R1-T-V-Z1	09810	A-B-F-F1-F3-N-R-S-V-Z1	09842	A-B-C1-C2-F-F1-F3-J-L-N-R-R1-T-V-Z1		
09741	A-B-C1-C2-E2-F-F1-F3-H1-J-L-M-N-R-R1-T-V-W-Y-Z1	09811	A-B-C-C2-E-E2-E3-F1-F3-H-H1-J-M-N-R-R1-S-U-V-Z1	09844	A-B-C1-C2-F-F1-F3-J-L-M-N-R-R1-T-V-Z1		
09742	A-B-C2-F-F1-F3-J-L-M-N-R-S-T-V-Z1	09812	B-E2-E3-F-F1-I-J-L-N-R-T-U-V-Z1	09845	A-B-C1-C2-E3-F-F1-F3-J-L-M-N-R-R1-T-V-Z1		
09743	A-B-F-F3-H-N-Q-R-S-V-Z1			09846	A-B-C1-C2-F-F1-F3-J-L-N-R-R1-T-V-Z1		
09744	A-B-C1-C2-F-F1-F3-J-L-M-N-R-R1-T-V-Z1			09847	B-C-C2-F-F1-F3-J-L-M-N-R-R1-S-T-V-Z1		
09745	A-B-F-F1-F3-M-N-R-R1-S-V-Z1						
09748	A-B-C1-C2-F-F1-F3-J-L-M-N-R-R1-T-V-Z1						

APO/ FPO/ DPO	See Restrictions	APO/ FPO/ DPO	See Restrictions	APO/ FPO/ DPO	See Restrictions	APO/ FPO/ DPO	See Restrictions
09898	B-C-C1-C2-E2-F-F1-F2-H1-N-R-R1-S-U2-V-Z1	34037	B-C-C1-C2-F-F1-F3-H-J-L-M-N-R-R1-T-V-Z1	96205	A-B-F-F1-F3-M-R-S-U	96328	B-C-F3-M-R-S-W
09902	A-B-C1-E2-F-F3-H1-M-R-R1-S-V-Z1	34039	B-C1-C2-F-F1-J-L-M-N-T-V-Z1	96206	A-B-F-F1-F3-M-R-S-U	96331	A-B-F-F1-F3-J-L-M-N-R-S-U2-W
09903	B-C1-E2-F1-F3-S-V-Z1	34041	B-C1-C2-F-F1-F3-J-L-M-N-R-R1-T-V-Z1	96207	A-B-F-F1-F3-M-R-S-U-V	96336	B-C-F3-M-R-S-V-W
09904	B-C1-E2-F1-F3-S-V-Z1	34042	A-B-C-F-F1-F3-M-N-R-S-U-V-W-Z1	96208	A-B-F-F1-F3-M-R-S-U	96337	B-F-F1-F3-M-R-R1-S-W
09908	A-B-F-F1-F3-N-R-R1-S-V-Z1	34050	B-V	96209	A-B-C1-C2-F-F1-J-L-M-N-T-U-V-Z1	96338	A-B-F-F3-M-R-S-U2-W
09909	A-B-F-F1-F3-N-R-R1-S-V-V1-Z1	34051	B-V	96210	A-B-C1-C2-F-F1-F3-I3-L-M-N-R-R1-T-V-Z1	96339	A-B-F-F3-M-R-S-U2-W
09974	B-F1-F3-J-L-M-N-R-S-T-U2-V-X-Z1	34052	B-V	96212	B-F-F1-F2-H-M-W-Z1	96343	A-F-F3-M-P-R-S-U2
09975	B-F1-F3-I3-L-M-N-R-S-T-U2-V-X-Z1	34053	B-V	96213	A-B-C-F1-F3-R-S-U	96346	B-F-F1-F2-F3-H-M-R-S-W-Z1
09976	B-F1-F3-J-L-M-N-R-S-T-U2-V-X-Z1	34054	B-V	96214	A-B-C-F1-F3-R-S-U	96347	B-F-F1-F2-H-M-W-Z1
09977	B-F1-F3-J-L-M-N-R-S-T-U2-V-X-Z1	34055	B-C1-C2-F-F1-F3-J-L-M-N-R-R1-T-V-Z1	96218	A-B-F-F1-F3-M-R-S-U	96349	B-F-F1-F2-F3-H-M-R-S-W-Z1
34001	A-B-C1-C2-F-F1-F3-J-L-M-N-R-R1-S-T-V-Z1	34058	B-F-F1-F3-R-R1-S-V-Z1	96224	A-B-F-F1-F3-M-R-S-U	96350	B-F-F1-F2-F3-H-M-R-S-W-Z1
34002	B-C1-C2-F-F1-F3-J-L-M-N-R-R1-T-V-Z1	34060	B-C1-C2-E2-F-F1-F3-J-L-M-N-R-R1-T-V-Z1	96251	A-B-F-F1-F3-M-R-S-U	96351	B-F-F1-F2-F3-H-M-R-S-W-Z1
34004	B-C1-C2-F-F1-F3-J-L-M-N-R-R1-T-V-Z1	34066	B-C1-C2-F-F1-F3-I3-J-L-M-N-R-R1-S-T-V-X-Z1	96257	A-B-F-F1-F3-S-U	96362	B-F-F1-F2-M-W-Z1
34007	B-F-F1-H-J-M-N-R-R1-V-Z1	34067	B-C1-C2-F-F1-F3-J-L-M-N-R-R1-S-T-V-X-Z1	96258	A-F-F3-M-P-R-S-U	96365	B-C-F3-M-R-S-V-W
34008	B-C1-C2-D-E1-F-F1-H-H1-J-L-M-N-R-R1-T-V-Z1	34068	B-C1-C2-F-F1-F3-J-L-M-N-R-R1-S-T-V-X-Z1	96260	A-B-F-F1-F3-M-R-S-U	96367	B-C-F3-L-M-R-S-W
34011	B-C1-C2-E2-F-F1-F3-J-L-M-N-R-R1-T-V-Z1	34069	B-C1-C2-F-F1-F3-I3-J-L-M-N-R-R1-S-T-V-X-Z1	96262	A-B-F-F1-F3-R-S-U-V-Z1	96368	B-C-F3-M-R-S-W
34020	B-C1-C2-F-F1-F3-J-L-M-N-R-R1-T-V-Z1	34078	B-F1-F3-N-R-S-V-Z1	96264	A-B-C-F1-F3-R-S-U	96370	B-F-F1-F2-H-M-W-Z1
34021	B-C1-C2-F-F1-F3-J-L-M-N-R-R1-T-V-Z1	34080	B-F-F1-R-R1-V	96266	A-B-C-F1-F3-R-S-U	96371	B-F-F3-M-R-S-W
34022	B-C1-C2-F-F1-F3-J-L-M-N-R-R1-T-V-Z1	34081	B-F-F1-R-R1-V	96267	A-B-C-F1-R-U-V	96372	B-M-W
34023	B-C1-C2-F-F1-F3-J-L-M-N-R-R1-T-V-Z1	34082	B-F-F1-R-R1-V	96269	A-B-F1-F2-F3-R-S-U-Z1	96373	B-M-W
34024	B-C1-C2-F-F1-F3-J-L-M-N-R-R1-T-V-Z1	34083	B-F-F1-R-R1-V	96271	A-F-F3-M-P-R-S-U	96374	B-M-W
34025	B-F-F1-F3-J-L-M-N-R-R1-T-V-Z1	34084	B-F-F1-R-R1-V	96273	A-B-F-F1-F3-M-R-S-U	96375	B-F3-M-R-S-W
34030	B-C1-C2-F-F1-F3-J-L-M-N-R-R1-T-V-Z1	34085	B-F-F1-F3-R-R1-S-V	96275	A-B-F-F1-F3-M-R-S-U	96376	B-F3-M-R-S-W
34031	B-C1-C2-F-F1-F3-J-L-M-N-R-R1-T-V-Z1	34086	B-F-F1-F3-R-R1-S-V	96276	A-B-C-F1-R	96377	B-F-F3-M-R-S-W
34032	B-C1-C2-F-F1-F3-J-L-M-N-R-R1-T-V-Z1	34087	B-E2-F-F1-F3-R-R1-S-V	96278	A-B-C-F1-F3-R-S-U	96378	B-M-W
34033	B-C1-C2-F-F1-F3-I3-L-M-N-R-T-V-Z1	34088	B-F-F1-R-R1-V	96283	A-B-F-F1-F3-S-U	96379	B-F3-M-R-S-W
34034	B-C1-C2-F-F1-F3-I3-L-M-N-R-R1-T-V-Z1	34089	B-F-F1-R-R1-S-V	96284	A-B-F-F1-F3-R-S-U	96380	B-F3-M-R-S-W
34035	B-C1-C2-F-F1-F3-H-J-L-M-N-R-R1-T-V-Z1	34090	B-F-F1-R-R1-S-V	96297	A-B-F-F1-F3-R-S-U	96382	B-F-F3-M-R-S-W
34036	B-C1-C2-F-F1-F3-J-L-M-N-R-R1-T-V-Z1	34091	B-E2-E3-F-F1-F3-R-R1-S-V-Z1	96300	A-B-F3-M-R-S-V-Z1	96384	B-F-F3-M-R-S-W
		34092	B-F-F1-F3-R-R1-S-V	96301	A-B-F-F3-M-N-R-S-U2-W	96385	B-F-F3-M-R-S-W
		34093	B-F-F1-F3-R-R1-S-V	96303	B-C1-C2-F-F1-H-J-L-M-N-T-V-W-Z1	96386	B-F3-M-S-W
		34094	B-F-F1-F3-R-R1-S-V	96306	B-F-F1-F2-F3-H-M-R-S-W-Z1	96387	B-F3-M-R-S-W
		34095	B-F-F1-R-R1-V	96310	B-F3-M-R-S-W	96388	B-F3-M-R-S-W
		96201	A-B-F-F1-F3-M-R-S-U	96311	B-F3-M-R-S-W	96389	B-M-W
		96202	A-B-F-F1-F3-M-R-S-U	96315	B-F-F1-F3-H-M-R-S-W	96401	B-C-F-F3-N-R-S-V-V1-Z1
		96203	A-B-F-F1-F3-M-R-S-U	96319	B-C-F3-M-R-S-V-W	96502	A-C1-F-F1-F3-M-N-Q-R-R1-S-T-U2-V
		96204	A-B-F-F1-F3-M-R-S-U	96321	B-F-F1-F2-F3-H-M-R-S-W-Z1	96504	A-B-C-C1-C2-F-F1-F3-I3-L-M-N-R-R1-T-V-W-Z1
				96322	B-F-F1-F2-F3-H-M-R-S-W-Z1	96505	A-B-C-C1-C2-F-F1-F3-I3-L-M-N-R-R1-S-T-V-W-Z1
				96326	B-C-F-F3-M-R-S-W	96507	A-B-C1-C2-F-F1-H-J-L-M-N-T-V-Z1
						96510	B-I3-N-V
						96511	B-I3-N-V
						96515	B-C-D-E1-F-F1-F3-H-H1-M-N-R-S-T-Z1

APO/ FPO/ DPO	See Restrictions	APO/ FPO/ DPO	See Restrictions	APO/ FPO/ DPO	See Restrictions	APO/ FPO/ DPO	See Restrictions
96516	B-C-D-E1-E2-F-F1-F3-H-H1-M-N-R-S-T-Z1	96551	A-B-C1-C2-F-F1-H-J-L-M-N-R-R1-S-T-V-Z1	96610	B-E2-F-H1-R1-U2-V-Z1	96664	B-V
96517	B-C-D-E1-E2-F-F1-F3-H-H1-M-N-R-T-U-V-Z1	96552	B-Z1	96611	B-E2-F-H1-R1-U2-V-Z1	96665	B-V
96520	B-F-N-U3-V	96553	A-B-F-F1-H-M-N-R-U	96612	B-V	96666	B-F3-R-S-V
96521	B-C1-C2-F-F1-J-L-M-N-R-R1-S-T-V-Z1	96554	A-B-C1-C2-F-F1-H-J-L-M-N-R-R1-S-T-V-Z1	96613	B-V	96667	B-F-F1-F3-R-R1-S-V
96530	A-B-C1-C2-F-F1-H-H1-J-L-M-N-R-R1-S-T-V-Z1	96555	A-B-F-F3-M-R-S-V	96615	B-F-F1-R-R1-V	96668	B-F-F1-R-R1-V
96531	A-B-C-F-F1-F3-H-M-N-R-S-U-V	96557	A-B-F-F3-M-R-S-V	96616	B-C2-F-F1-F3-R-R1-S-V	96669	B-F-F3-R-R1-S-V
96532	A-B-C1-C2-F-F1-H-J-L-M-N-R-R1-S-T-V-Z1	96562	A-B-C1-C2-D-E2-E3-F-F1-H-H1-I3-L-M-N-R-R1-S-T-V-Z1	96619	B-F1-F3-R-S-V	96670	B-V
96534	A-B-F-F1-F2-F3-S-U-Z1	96577	A-B-F-F3-H-M-N-R-S-U	96620	B-F-F1-F3-R-R1-S-V	96671	B-F-F1-F3-R-R1-S-V
96535	A-B-C1-C2-F-F1-J-L-M-N-R-R1-S-T-V-Z1	96578	B-F1-F3-H-J-N-R-S	96628	B-F-F1-F3-R-R1-S-V	96672	B-F-F1-F3-R-R1-S-V
96537	B-V-Z1	96595	B-F-F3-R-S-V-Z1	96629	B-F-F1-F3-R-R1-S-V	96673	B-F3-S-V
96540	B-F1-F2-F3-S-Z1	96598	B-F3-I3-N-R-S-V-V1	96632	B-F-F1-F3-R-R1-S-V	96674	B-F-F1-F3-R-R1-S-V
96542	B-V-Z1	96599	B-F3-N-R-S-V	96633	B-V	96675	B-F-F1-F3-R-R1-S-V
96543	B-F-F1-F2-F3-P-S-V-Z1	96601	B-V	96641	B-V	96677	B-F-F1-F3-R-R1-S-V
96548	A-B-F-F1-F3-H-M-R-S-U	96602	B-V	96642	B-V	96678	B-F-F1-F3-R-R1-S-V
96549	A-B-C1-C2-F-F1-H-J-L-M-N-R-R1-S-T-V-Z1	96603	B-V	96643	B-F-F1-F3-R-R1-S-V	96679	B-F-F1-R-R1-V
96550	A-B-H-M-N-U-V-Z1	96604	B-V	96644	B-V	96681	B-V
		96605	B-V+B559	96645	B-V	96682	B-V
		96606	B-F3-R-S-V	96649	B-F-F1-F3-R-R1-S-V	96683	B-F-F1-F3-R-R1-S-V
		96607	B-V	96650	B-F-F1-R-R1-V	96686	B-V
		96608	B-E2-F-H1-R1-U2-V-Z1	96657	B-F-F1-F3-R-R1-S-V	96691	B-F-F1-F3-R-R1-S-V
		96609	B-E2-F-H1-R1-U2-V-Z1	96660	B-F-F1-F3-R-R1-S-V	96692	B-F-F1-F3-R-R1-S-V
				96661	B-F-F1-F3-R-R1-S-V	96693	E2-F-F3-R-R1-S-V
				96662	B-F-F1-F3-R-R1-S-V	96694	B-E2-F-F1-F3-I3-J-R-R1-S-V-V1-Z
				96663	B-F-F1-F3-R-R1-S-V-V1	96695	B-F-F1-R-R1-V
						96696	B-F-F1-R-R1-V
						96698	B-V

RESTRICTIONS

LEGEND

PS Form 2976, *Customs — CN 22 (Old C 1) and Sender's Declaration* (green label)

PS Form 2976-A, *Customs Declaration and Dispatch Note*

PS Form 2976-B, *Priority Mail Express International Shipping Label and Customs Form*

ATF	= Bureau of Alcohol, Tobacco, Firearms, and Explosives
Box C	= Department of State (DOS) contractor personnel
Box R	= Retired military personnel
DPO	= Diplomatic Post Office
MPO	= Military Post Office
PACT	= Prevent All Cigarette Trafficking Act
PAL	= Parcel Airlift
PMEMS	= Priority Mail Express Military Service
PUB 52	= Publication 52, <i>Hazardous, Restricted, and Perishable Mail</i>
SAM	= Space Available Mail
USDA	= United States Department of Agriculture

Note: Mail order catalogs are prohibited as SAM or PAL mail.

A. Securities, currency, or precious metals, including in their raw, unmanufactured state, are prohibited. Official Mail shipments are exempt from this restriction.

A1. Reserved for future use.

A2. Reserved for future use.

B. Other than for PMEMS and the exceptions listed below, a customs declaration PS Form 2976 or PS Form 2976-A is required for all items weighing 16 ounces or more, and for all items (regardless of weight) containing potentially dutiable mail contents (e.g., merchandise or goods) addressed to or from this ZIP Code. Other than the exceptions listed below, all PMEMS mailpieces (regardless of mail contents or weight) addressed to or from this ZIP Code must bear a properly completed PS Form 2976-B. The surface area of the address side of the mailpiece must be large enough to contain the applicable customs declaration. The following exceptions apply to known mailers, who for this purpose are defined as follows:

- Business mailers who enter volume mailings through business mail entry units or other bulk mail acceptance locations, pay postage through advance deposit accounts, use permit imprints for postage payment, and submit completed postage statements at the time of entry that certify that the mailpieces contain no dangerous materials that are prohibited by postal regulations. Such business mailers are exempt from providing customs documentation on non-dutiable letters and printed matter.
- All federal, state, and local government agencies whose mailings are regarded as "Official Mail." Such agencies are exempt from providing customs documentation, except for any items addressed to an MPO or DPO to which restriction "B2" applies.

B2. All federal, state, and local government agencies must complete customs documentation when sending potentially dutiable mail addressed to or from this MPO or DPO.

C. Cigarettes and other tobacco products, including tobacco leaves, chewing and pipe tobacco, snuff, and cigars are prohibited, including those that are authorized in Publication 52 under PACT.

C1. Obscene and horror articles, images, prints, paintings, cards, films, videotapes, comic books, etc., are prohibited.

C2. E-cigarettes and related products (e.g., nicotine liquids, e-liquids, parts, or supplies) are prohibited.

D. Coffee is prohibited.

E. Medicines (prescription, over-the-counter, vitamins, and supplements) are prohibited when mailed to individuals for human or animal use. This prohibition does not apply when medicines are sent as Official Mail only between specifically designated agencies such as pharmaceutical distributors, hospitals, clinics, and pharmacies.

E1. Mailers are responsible to ensure that all medicines and vaccines conform to host nation laws.

E2. Any matter depicting nude or seminude persons, pornographic, or sexual items are prohibited. Non-authorized political materials are prohibited. Religious materials contrary to the Islamic faith are prohibited in bulk quantities, but individual items for the personal use of the addressee are permissible.

E3. Radio transceivers, cordless/cellular telephones, global positioning systems, scanners, base stations, and handheld transmitters are prohibited.

F. Firearms of any type are prohibited, except firearms mailed to or by official U.S. government agencies. This restriction does not apply to firearms mailed from this MPO ZIP Code, provided ATF and USPS regulations are met. Antique firearms do not require an ATF form.

F1. Weapons of any type are prohibited.

F2. Mailing firearms to or from this MPO ZIP Code is restricted to one shotgun and one single shot .22 caliber rifle per individual.

F3. Replica weapons and inert explosive devices (such as grenades) and weapons parts are prohibited.

G. Parcels of any class are prohibited.

H. Meats, including preserved meats, bones, skin, hair, feathers, horns or hoofs of hoofed animals, and wool samples whether hermetically sealed or not, are prohibited.

H1. Pork or pork by-products are prohibited.

I. Reserved for future use.

I1. Reserved for future use.

I2. Reserved for future use.

I3. Mail of all classes must fit in a mail sack. Mail may not exceed the following dimensions:

- Maximum length 27 inches.
- Maximum width 14 inches.
- Maximum height 14 inches.

J. Standard Post and Parcel Select parcels may not exceed 108 inches in length and girth combined.

K. Reserved for future use.

L. All Official Mail is prohibited.

M. Fruits, vegetables, live animals, and live plants are prohibited.

N. Registered Mail service is prohibited.

O. Reserved for future use.

P. Official Mail only.

Q. Mail may not exceed 66 pounds, and size is limited to 42 inches maximum length and 72 inches maximum length and girth combined.

R. All alcoholic beverages, including those mailable under Publication 52, Part 421, are prohibited.

R1. Materials used in the production of alcoholic beverages (i.e., distilling material, hops, malts, yeast, etc.) are prohibited.

S. Synthetic cannabinoids used to stimulate the central nervous system commonly known as "synthetic marijuana," "K2," or "Spice" are prohibited.

T. Mailings of household shipments and case lots of food to or from an MPO require military transportation office approval prior to mailing. Mailings to or from a DPO require pre-approval from the Diplomatic Pouch and Mail Director.

U. Mail addressed to Retirees (Box R) is limited to 16 ounces and up to a 90-day supply of TRICARE medications. This restriction does not apply to mail endorsed "Free Matter for the Blind or Handicapped."

U1. Mail is limited to First-Class Mail items, including audio and video media, weighing 13 ounces or less. This limitation does not apply to Official Mail.

U2. Retirees (Box R) are not authorized mail service.

U3. Reserved for future use.

U4. Mail addressed to Box C is limited to 2 lbs.

V. PMEMS is not available.

V1. Electronic Delivery status information for Extra Services is not available on *USPS.com*. Manual record of delivery may be available upon request.

W. Hermetically sealed packages of meat products bearing USDA certification, such as dried beef, salami, and sausage, may be mailed. 200 grams of tobacco per parcel are permitted duty free.

X. Cremated remains are prohibited.

Y. Mail is limited to First-Class Mail and Priority Mail items only. This restriction also applies to Official Mail.

Z. No outside pieces (OSPs).

Z1. The following restriction is applicable only to International Service Centers (ISC)/Exchange Offices. An Anti-Pilferage Seal (Item No O817E or O818A) is required on all pouches and sacks.

— *International Network Operations,
Global Business, 8-26-21*

Thrift Savings Plan Fact Sheet

ANNUAL RETURNS	G Fund	F Fund	U.S. Aggregate Index	C Fund	S&P 500 Stock Index	S Fund	Dow Jones U.S. Completion TSM Index	I Fund	EAFE Stock Index
2006	4.93	4.40	4.33	15.79	15.79	15.30	15.28	26.32	26.34
2007	4.87	7.09	6.97	5.54	5.49	5.49	5.39	11.43	11.17
2008	3.75	5.45	5.24	-36.99	-37.00	-38.32	-39.03	-42.43	-43.38
2009	2.97	5.99	5.93	26.68	26.46	34.85	37.43	30.04	31.78
2010	2.81	6.71	6.54	15.06	15.06	29.06	28.62	7.94	7.75
2011	2.45	7.89	7.84	2.11	2.11	-3.38	-3.76	-11.81	-12.14
2012	1.47	4.29	4.22	16.07	16.00	18.57	17.89	18.62	17.32
2013	1.89	-1.68	-2.02	32.45	32.39	38.35	38.05	22.13	22.78
2014	2.31	6.73	5.97	13.78	13.69	7.80	7.63	-5.27	-4.90
2015	2.04	0.91	0.55	1.46	1.38	-2.92	-3.42	-0.51	-0.81
2016	1.82	2.91	2.65	12.01	11.96	16.35	15.75	2.10	1.00
2017	2.33	3.82	3.54	21.82	21.83	18.22	18.12	25.42	25.03
2018	2.91	0.15	0.01	-4.41	-4.38	-9.26	-9.57	-13.43	-13.79
2019	2.24	8.68	8.72	31.45	31.49	27.97	27.94	22.47	22.01
2020	0.87	4.73	4.72	17.16	17.25	36.45	36.67	9.99	8.94

MONTHLY RETURNS	G Fund	F Fund	U.S. Aggregate Index	C Fund	S&P 500 Stock Index	S * Fund	Dow Jones U.S. Completion TSM Index	I * Fund	EAFE Stock Index
2020									
Aug	0.05	-0.81	-0.81	7.19	7.19	7.20	7.18	5.12	5.14
Sept	0.06	-0.03	-0.05	-3.80	-3.80	-3.04	-2.99	-2.60	-2.60
Oct	0.06	-0.42	-0.45	-2.66	-2.66	0.50	0.45	-3.97	-3.99
Nov	0.07	0.99	0.98	10.95	10.95	18.26	18.27	15.54	15.50
Dec	0.07	0.14	0.14	3.84	3.84	7.24	7.24	4.64	4.65
2021									
Jan	0.07	-0.71	-0.72	-1.01	-1.01	2.85	2.84	-1.09	-1.07
Feb	0.08	-1.45	-1.44	2.76	2.76	5.21	5.19	2.26	2.24
Mar	0.11	-1.23	-1.25	4.38	4.38	-0.39	-0.40	2.35	2.30
Apr	0.13	0.82	0.79	5.33	5.34	4.23	4.22	3.09	3.01
May	0.13	0.34	0.33	0.69	0.70	-0.66	-0.66	3.61	3.26
June	0.12	0.74	0.70	2.33	2.33	3.46	3.46	-1.44	-1.13
July	0.13	1.15	1.12	2.37	2.38	-1.24	-1.23	0.72	0.75
YTD	0.77	-0.37	-0.50	17.98	17.99	14.04	13.99	9.77	9.65

The G Fund is managed internally by the Federal Retirement Thrift Investment Board. Assets of the F, C, S, and I Funds are managed externally. The Board currently has contracts with BlackRock Institutional Trust Company, N.A., to manage the F, C, S, and I Fund assets. The F, C, S, and I Funds invest in commingled trust funds, in which the assets of tax-deferred employee benefit plans are combined and invested together. The F, C, S, and I Funds and the BlackRock funds are passively managed index funds.

Future performance of the funds will vary and may be significantly different from the returns shown above. See the *Summary of the*

Thrift Savings Plan for detailed information about the funds and their investment risks. The monthly returns of the TSP Funds represent net earnings for the month after deduction of accrued administrative expenses and, except for the G Fund, after deduction of trading costs and accrued investment management fees as well. The returns for the four indexes shown do not include any of these deductions.

* Implemented May 2001.

See next page for L Funds.

L Funds

Annual Returns	L Income	L 2020	L 2030	L 2040	L 2050
2006	7.59	13.72	15.00	16.53	
2007	5.56	6.87	7.14	7.36	
2008	-5.09	-22.77	-27.50	-31.53	
2009	8.57	19.14	22.48	25.19	
2010	5.74	10.59	12.48	13.89	
2011	2.23	0.41	-0.31	-0.96	
2012	4.77	10.42	12.61	14.27	15.85
2013	6.97	16.03	20.16	23.23	26.20
2014	3.77	5.06	5.74	6.22	6.37
2015	1.85	1.35	1.04	0.73	0.45
2016	3.58	5.47	7.07	7.90	8.65
2017	6.19	9.86	14.54	16.77	18.81
2018	0.71	-0.36	-3.58	-4.89	-6.02
2019	7.60	9.38	17.60	20.69	23.33
2020	5.04		11.41	13.41	15.14

Monthly Returns	L Income	L 2025	L 2030	L 2035	L 2040	L 2045	L 2050	L 2055	L 2060	L 2065
2020										
Aug	1.39	3.17	3.81	4.18	4.56	4.88	5.21	6.41	6.40	6.40
Sept	-0.66	-1.58	-1.92	-2.11	-2.30	-2.46	-2.63	-3.20	-3.20	-3.20
Oct	-0.58	-1.30	-1.61	-1.76	-1.91	-2.04	-2.17	-2.60	-2.60	-2.60
Nov	3.00	6.56	8.10	8.92	9.74	10.47	11.19	13.55	13.55	13.55
Dec	1.07	2.27	2.79	3.06	3.34	3.59	3.83	4.63	4.63	4.63
2021										
Jan	-0.10	-0.24	-0.32	-0.35	-0.37	-0.39	-0.41	-0.44	-0.44	-0.44
Feb	0.63	1.35	1.70	1.86	2.03	2.17	2.32	2.93	2.93	2.93
Mar	0.71	1.44	1.78	1.93	2.08	2.20	2.33	2.92	2.92	2.91
Apr	1.14	2.15	2.74	2.99	3.24	3.45	3.66	4.35	4.35	4.35
May	0.47	0.81	1.00	1.08	1.16	1.22	1.28	1.50	1.50	1.50
June	0.39	0.64	0.79	0.86	0.92	0.98	1.03	1.17	1.17	1.17
July	0.47	0.75	0.92	0.99	1.05	1.10	1.15	1.26	1.26	1.26
YTD	3.77	7.09	8.91	9.70	10.51	11.19	11.89	14.42	14.42	14.42

The TSP added six new L Funds that have 5-year increments rather than the previous 10-year increments.

Freely Associated States Restrictions

We list the mailing restrictions for Freely Associated States (FAS) in the Pull-Out section of the *Postal Bulletin*. All FAS Restrictions will be updated periodically.

Freely Associated States

Mail addressed to freely associated states is subject to certain conditions or restrictions of mailing regarding content, preparation, and handling. The following FAS Restrictions table outlines these conditions as listed by each affected FAS ZIP Code™ through the use of footnoted mailing restrictions codes (see the [Restrictions](#) following the table). For more information on available extra services for FAS destinations, see *Mailing Standards of the United States Postal Service, Domestic Mail Manual (DMM®)*, part 503.

Acceptance clerks must use the table with the Retail System Software terminal to determine which FAS ZIP Codes are active and which conditions of mailing apply.

FAS Restrictions Table

FAS Table	See Restrictions
96939	A, B
96940	A, B
96941	A, B
96942	A, B
96943	A, B
96944	A, B
96960	A, B
96970	A, B, D
Marshall Islands	C
Federated States of Micronesia	C

RESTRICTIONS LEGEND

PS Form 2976, *Customs Declaration CN 22 – Sender's Declaration*

PS Form 2976-A, *Customs Declaration and Dispatch Note*

FAS = Freely Associated State

- A.** Bank currency (coin and paper) is prohibited.
- B.** Signature Confirmation, Signature Confirmation Restricted Delivery, Adult Signature Requested, Adult Signature Restricted Delivery, Certified Mail Adult Signature Required, and Certified Mail Adult Signature Restricted Delivery not available.
- C.** Collect on Delivery is prohibited.
- D.** Betel nut (Areca catechu) is prohibited.

— *Asia-Pacific Relations,
Global Business, 8-26-21*

Stamp Announcement 21-30: A Visit from St. Nick Stamps



©2021 USPS

On October 7, 2021, in Santa Claus, IN, the United States Postal Service® will issue *A Visit from St. Nick* stamps (Forever® priced at the First-Class Mail® rate) in four designs, in a pressure-sensitive adhesive (PSA) booklet of 20 stamps (Item 683400). These stamps will go on sale nationwide October 7, 2021, and must not be sold or canceled before the first-day-of-issue.

Four new designs in this booklet of 20 stamps tell the story of Santa’s visit on Christmas Eve:

- Santa stands on a snowy rooftop, sack slung across his back, with one leg inside the red-brick chimney;
- Santa descends through the chimney, his legs dangling over the hearth;
- Close-up view of a winking Santa; and

- Santa in his sleigh, with four reindeer visible as they fly across the face of the full moon and into a starlit sky.

Art director Greg Breeding designed the stamps with original art by Brad Woodard.

Availability to Post Offices: Item 683400, A Visit from St. Nick (Forever Priced at the First-Class Mail Rate) Double-sided Booklet of 20 Stamps

Stamp Fulfillment Services will not make an automatic push distribution to Post Offices. Post Offices may begin ordering stamps before the first-day-of-issue through SFS Web at sfsweb.usps.gov.

How to Order the First-Day-of-Issue Postmark

Customers have 120 days to obtain the first-day-of-issue postmark by mail. They may purchase new stamps at their local Post Office™ or at The Postal Store® website at usps.com/shop. They must affix the stamps to envelopes of their choice, address the envelopes (to themselves or others), and place them in a larger envelope addressed to:

FDOI – A Visit from St. Nick Stamps
 USPS Stamp Fulfillment Services
 8300 NE Underground Drive, Suite 300
 Kansas City, MO 64144-9900

After applying the first-day-of-issue postmark, the Postal Service™ will return the envelopes through the mail. There is no charge for the postmark up to a quantity of 50. There is a 5-cent charge for each additional postmark over 50. All orders must be postmarked by February 7, 2022.

How to Order First-Day Covers

The Postal Service also offers first-day covers for new stamp issues and Postal Service stationery items postmarked with the official first-day-of-issue cancellation. Each item has an individual catalog number and is offered in the *USA Philatelic* catalog and online at usps.com/shop. Customers may register to receive a free *USA Philatelic* catalog online at usps.com/philatelic.

Locally produced items are not authorized. Only merchandise that has been approved and assigned an item number by Headquarters Retail Marketing may be produced and sold.

Issue:	<i>A Visit from St. Nick</i> Stamps
Item Number:	683400
Denomination & Type of Issue:	First-Class Mail Forever
Format:	Double-sided Booklet of 20 (4 designs)
Series:	N/A
Issue Date & City:	October 7, 2021, Santa Claus, IN 47579
Art Director:	Greg Breeding, Charlottesville, VA
Designer:	Greg Breeding, Charlottesville, VA
Illustrator:	Brad Woodard, Manchaca, TX
Modeler:	Joseph Sheeran
Manufacturing Process:	Offset
Printer:	Ashton Potter (USA) Ltd. (APU)
Press Type:	Muller A76
Stamps per Booklet:	20
Print Quantity:	400,000,000 stamps
Paper Type:	Nonphosphored Type III, Block Tag
Adhesive Type:	Pressure-sensitive
Stamp Orientation:	Vertical
Image Area (w x h):	0.77 x 1.05 in./19.558 x 26.67 mm
Stamp Size (w x h):	0.91 x 1.19 in./23.114 x 30.226 mm
Full Booklet Size (w x h):	5.76 x 2.38 in./146.304 x 60.452 mm
Colors:	Black, Cyan, Magenta, Yellow
Plate Size:	880 stamps per revolution
Plate Numbers:	"P" followed by four (4) single digits in four corners
Marginal Markings:	Header: "A Visit From St. Nick" Twenty First-Class Forever Stamps <ul style="list-style-type: none"> • Plate number in peel strip area • ©2021 USPS in peel strip area • Barcode • Promotional text in peel strip area

— *Stamp Services, Marketing, 8-26-21*

Stamp Stock Items Withdrawn from Regular Sale and from Sale at Philatelic Centers

Effective close-of-business September 30, 2021, all Post Offices, stations, branches, postal stores, vending outlets, and authorized philatelic centers must:

- Completely withdraw the stamp stock items listed in the table and their related vending and store-prepared stamp items from sale, and
- Prepare them for destruction.

Only during your return cycle may you submit items to destruction sites according to local established procedures, under the guidelines in Handbook F-101, *Field Accounting Procedures*, and subchapter 11-6, "Returning Stock to the Stamp Distribution Office or Stamp Distribution Center."

Do not permit sales of the stamp stock items and their related vending and store-prepared stamp items listed in the table at retail counters and outlets after September 30, 2021.

Stamps to be Completely Withdrawn from Sale

Item	Description
114000	(2 oz) <i>Robert Panara</i> NDN
119400	(3 oz) <i>Henry James</i> NDN
476100	(Forever) <i>Maine Statehood</i>
678200	(Forever) 2018 <i>US Flag</i> Booklet/20
680100	(Forever) <i>Frogs</i> Booklet/20
749700	(Forever) 2018 <i>US Flag</i> Coil/100

— *Stamp Services, Marketing, 8-26-21*

USPS® Serves Up *Espresso Drinks*

Forever®
Stamps

On Sale
Nationwide:
April 9, 2021



Pictorial Postmarks Announcement

As a community service, the Postal Service™ offers pictorial postmarks to commemorate local events celebrated in communities throughout the nation. A list of events for which pictorial postmarks are authorized appears on the following pages. The sponsor of the pictorial postmark appears in italics under the date. Also provided are illustrations of these postmarks.

People attending these local events may obtain the postmark in person at the temporary Post Office™ station established there. Those who cannot attend the event but who wish to obtain the postmark may submit a mail order request. Pictorial postmarks are available only for the dates indicated, and *requests must be postmarked no later than 30 days following the requested pictorial postmark date.*

All requests must include a stamped envelope or postcard bearing at least the minimum First-Class Mail® postage. Items submitted for postmark may not include

postage issued after the date of the requested postmark. Such items will be returned unserved.

Customers wishing to obtain a postmark must affix stamps to any envelope or postcard of their choice, address the envelope or postcard to themselves or others, insert a card of postcard thickness in envelopes for sturdiness, and tuck in the flap. Place the envelope or postcard in a larger envelope and address it to: Pictorial Postmarks, followed by the Name of the Station, Address, City, State, ZIP+4® Code, as listed next to the postmark.

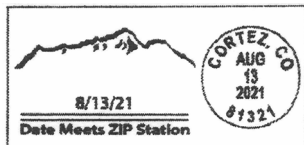
Customers can also send stamped envelopes and postcards without addresses for postmark, as long as they supply a larger envelope with adequate postage and their return address. After applying the pictorial postmark, the Postal Service returns the items (with or without addresses) under addressed protective cover.

The following pictorial postmarks have been extended for 30 days:



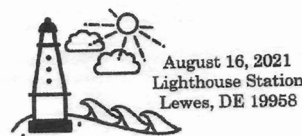
August 12, 2021

Boston 2026
Boston 2026 Station
Stamp Fulfillment Services / Cancellation Services
8300 NE Underground Drive, Pillar 210
Kansas City, MO 64144-9998



August 13, 2021

Cortez Retail Enhancement Association
Date Meets ZIP Station
Postmaster
35 South Beech Street
Cortez, CO 81321-9998



August 16, 2021

Pink Pueblo Studios
Lighthouse Station
Postmaster
116 Front Street
Lewes, DE 19958-9998

CLARA LUPER STATION
August 21, 2021
Oklahoma City OK 73102



August 21, 2021

United States Postal Service
Clara Luper Station
Postmaster
305 Northwest 5th Street
Oklahoma City, OK 73102-9998



August 27–29, 2021
 United States Postal Service
 Fudge Station
 Postmaster
 PO Box 9998
 Mackinac Island, MI 49757-9998



September 4–7, 2021
 Western Minnesota Steam Threshers Reunion
 Rollag Station
 Postmaster
 503 Front Street
 Hawley, MN 56549-9998



August 29, 2021
 Thames Stamp Club
 THAMESPEX Station
 Postmaster
 222 Boston Post Road
 Waterford, CT 06385-9998



September 8–12, 2021
 Sandwich Fair Association
 Sandwich Fair Station
 Postmaster
 22 North Eddy Street
 Sandwich, IL 60548-9998



September 3, 2021
 Stephen Decatur Chapter #4, Universal Ship Cancellation Society
 BALPEX 2021 Station
 Postmaster
 115 Wright Avenue
 Cockeysville, MD 21030-9998



September 9–12, 2021
 White River Valley Antique Association
 WRVAA Station
 Postmaster
 118 North Odon Street
 Elnora, IN 47529-9998

— Stamp Services, Marketing, 8-26-21

How to Order the First-Day-of-Issue Digital Color or Traditional Postmarks

Customers have 120 days to obtain the first-day-of-issue postmarks by mail. Each cover must have sufficient postage to meet First-Class Mail® requirements. Customers may purchase new stamps at their local Post Office™, by phone at 800-782-6724, or on The Postal Store® website at usps.com/shop.

Digital Color Postmarks

Only select stamp issues offer a digital color postmark. Customers may submit #6 or #10 envelopes constructed of paper rated as “laser safe.” The Postal Service™ recommends envelopes of 80-pound Accent Opaque, acid-free, 9/16-inch side seams with no glue on the flap. The maximum size of all digital color postmarks is 2 inches (vertically) by 4 inches (horizontally). Allow sufficient space on the envelope to accommodate the postmark. Do not use self-adhesive labels for addresses on the envelope. Two test envelopes must be included. There is a minimum of 10 envelopes at 50 cents per postmark required at the time of servicing. Customers must submit a check, money order, or credit card for payment.

The Postal Service reserves the right to not accept hand-painted and other cachet envelopes that are not compatible with our digital color postmark equipment. The Postal Service also reserves the right to substitute traditional black rubber postmarks if use of nonspecified envelopes results in poor image quality or damage to equipment.

Customers must affix the stamps to the envelopes and address them to themselves or others for return through the mail. Or, they may include an additional self-addressed return envelope, large enough to accommodate their canceled items, with sufficient postage affixed for return of

their postmarked items. Address customer requests for digital color postmarks to:

FDOI – (Name of Stamp Issue)
USPS Stamp Fulfillment Services
8300 NE Underground Drive, Suite 300
Kansas City, MO 64144-9900

After applying the first-day-of-issue postmark, the Postal Service will return the envelopes to the customer by U.S. Mail®.

Traditional Postmarks

Customers must affix the stamps to the envelopes and address them to themselves or others for return through the mail. Or, they may include an additional self-addressed return envelope, large enough to accommodate their canceled items, with sufficient postage affixed for return of their postmarked items. Address customer requests for traditional postmarks to:

FDOI – (Name of Stamp Issue)
USPS Stamp Fulfillment Services
8300 NE Underground Drive, Suite 300
Kansas City, MO 64144-9900

After applying the first-day-of-issue postmark, the Postal Service will return the envelopes to the customer by U.S. Mail™. There is no charge for the first 50 postmarks. There is a 5-cent charge for each additional postmark over 50. Customers must submit a check, money order, or credit card for payment.

Locally produced items are not authorized. Only merchandise that has been approved and assigned an item number by Headquarters Retail Marketing may be produced and sold.



Digital Color Pictorial

FDOI – Star Wars Droids Stamps

USPS Stamp Fulfillment Services
8300 NE Underground Drive, Suite 300
Kansas City, MO 64144-9900

September 4, 2021



Digital Color Pictorial

FDOI – Star Wars Droids Stamps

USPS Stamp Fulfillment Services
8300 NE Underground Drive, Suite 300
Kansas City, MO 64144-9900

September 4, 2021



Digital Color Pictorial

FDOI – Star Wars Droids Stamps

USPS Stamp Fulfillment Services
8300 NE Underground Drive, Suite 300
Kansas City, MO 64144-9900

September 4, 2021



Digital Color Pictorial

FDOI – Star Wars Droids Stamps

USPS Stamp Fulfillment Services
8300 NE Underground Drive, Suite 300
Kansas City, MO 64144-9900

September 4, 2021



Digital Color Pictorial

FDOI – Star Wars Droids Stamps

USPS Stamp Fulfillment Services
8300 NE Underground Drive, Suite 300
Kansas City, MO 64144-9900

September 4, 2021



Digital Color Pictorial

FDOI – Star Wars Droids Stamps

USPS Stamp Fulfillment Services
8300 NE Underground Drive, Suite 300
Kansas City, MO 64144-9900

September 4, 2021



Digital Color Pictorial

FDOI – Star Wars Droids Stamps

USPS Stamp Fulfillment Services
8300 NE Underground Drive, Suite 300
Kansas City, MO 64144-9900

September 4, 2021



Digital Color Pictorial

FDOI – Star Wars Droids Stamps

USPS Stamp Fulfillment Services
8300 NE Underground Drive, Suite 300
Kansas City, MO 64144-9900

September 4, 2021



Digital Color Pictorial

FDOI – Star Wars Droids Stamps

USPS Stamp Fulfillment Services
8300 NE Underground Drive, Suite 300
Kansas City, MO 64144-9900

September 4, 2021

**FDOI – Star Wars Droids Stamps**

USPS Stamp Fulfillment Services
8300 NE Underground Drive, Suite 300
Kansas City, MO 64144-9900

September 4, 2021

Digital Color Pictorial

**FDOI – Star Wars Droids Stamps**

USPS Stamp Fulfillment Services
8300 NE Underground Drive, Suite 300
Kansas City, MO 64144-9900

September 4, 2021

Black and White Pictorial

**FDOI – Heritage Breeds Stamps**

USPS Stamp Fulfillment Services
8300 NE Underground Drive, Suite 300
Kansas City, MO 64144-9900

September 17, 2021

Digital Color Pictorial

**FDOI – Heritage Breeds Stamps**

USPS Stamp Fulfillment Services
8300 NE Underground Drive, Suite 300
Kansas City, MO 64144-9900

September 17, 2021

Black and White Pictorial

**FDOI – Go for Broke: Japanese American Soldiers of WWII**

USPS Stamp Fulfillment Services
8300 NE Underground Drive, Suite 300
Kansas City, MO 64144-9900

October 3, 2021

Digital Color Pictorial

**FDOI – Go for Broke: Japanese American Soldiers of WWII**

USPS Stamp Fulfillment Services
8300 NE Underground Drive, Suite 300
Kansas City, MO 64144-9900

October 3, 2021

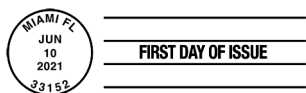
Black and White Pictorial

**FDOI – Emilio Sanchez Stamps**

USPS Stamp Fulfillment Services
8300 NE Underground Drive, Suite 300
Kansas City, MO 64144-9900

October 10, 2021

Digital Color Pictorial



FDOI – Emilio Sanchez Stamps
USPS Stamp Fulfillment Services
8300 NE Underground Drive, Suite 300
Kansas City, MO 64144-9900
October 10, 2021

Black and White Pictorial



FDOI – Sun Science Stamps
USPS Stamp Fulfillment Services
8300 NE Underground Drive, Suite 300
Kansas City, MO 64144-9900
October 18, 2021

Digital Color Pictorial



FDOI – Sun Science Stamps
USPS Stamp Fulfillment Services
8300 NE Underground Drive, Suite 300
Kansas City, MO 64144-9900
October 18, 2021

Black and White Pictorial



FDOI – Tap Dance Stamps
USPS Stamp Fulfillment Services
8300 NE Underground Drive, Suite 300
Kansas City, MO 64144-9900
November 10, 2021

Digital Color Pictorial



FDOI – Tap Dance Stamps
USPS Stamp Fulfillment Services
8300 NE Underground Drive, Suite 300
Kansas City, MO 64144-9900
November 10, 2021

Black and White Pictorial



FDOI – Yogi Berra Stamp
USPS Stamp Fulfillment Services
8300 NE Underground Drive, Suite 300
Kansas City, MO 64144-9900
October 24, 2021

Digital Color Pictorial



FDOI – Yogi Berra Stamp
USPS Stamp Fulfillment Services
8300 NE Underground Drive, Suite 300
Kansas City, MO 64144-9900
October 24, 2021

Black and White Pictorial

FIRST DAY OF ISSUE



JULY 14, 2021 / WASHINGTON, DC 20066

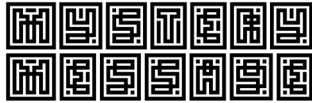
FDOI – Mystery Message Stamp

USPS Stamp Fulfillment Services
8300 NE Underground Drive, Suite 300
Kansas City, MO 64144-9900

November 14, 2021

Digital Color Pictorial

FIRST DAY OF ISSUE



JULY 14, 2021 / WASHINGTON, DC 20066

FDOI – Mystery Message Stamp

USPS Stamp Fulfillment Services
8300 NE Underground Drive, Suite 300
Kansas City, MO 64144-9900

November 14, 2021

Black and White Pictorial

JULY 23, 2021 • ABILENE, TX 79601

FDOI – Western Wear Stamps

USPS Stamp Fulfillment Services
8300 NE Underground Drive, Suite 300
Kansas City, MO 64144-9900

November 23, 2021

Digital Color Pictorial

FIRST DAY OF ISSUE

FDOI – Western Wear Stamps

USPS Stamp Fulfillment Services
8300 NE Underground Drive, Suite 300
Kansas City, MO 64144-9900

November 23, 2021

Black and White Pictorial

JULY 27, 2021 | PORTLAND, OR 97208

FDOI – Ursula K. Le Guin Stamp

USPS Stamp Fulfillment Services
8300 NE Underground Drive, Suite 300
Kansas City, MO 64144-9900

November 27, 2021

Digital Color Pictorial

FIRST DAY OF ISSUE

FDOI – Ursula K. Le Guin Stamp

USPS Stamp Fulfillment Services
8300 NE Underground Drive, Suite 300
Kansas City, MO 64144-9900

November 27, 2021

Black and White Pictorial



FDOI – Raven Story Stamp

USPS Stamp Fulfillment Services
8300 NE Underground Drive, Suite 300
Kansas City, MO 64144-9900

November 30, 2021

Digital Color Pictorial



FDOI – Raven Story Stamp

USPS Stamp Fulfillment Services
8300 NE Underground Drive, Suite 300
Kansas City, MO 64144-9900

November 30, 2021

Black and White Pictorial



FDOI – Mid-Atlantic Lighthouses Stamps

USPS Stamp Fulfillment Services
8300 NE Underground Drive, Suite 300
Kansas City, MO 64144-9900

December 6, 2021

Digital Color Pictorial



FDOI – Mid-Atlantic Lighthouses Stamps

USPS Stamp Fulfillment Services
8300 NE Underground Drive, Suite 300
Kansas City, MO 64144-9900

December 6, 2021

Black and White Pictorial



FDOI – Missouri Statehood Stamp

USPS Stamp Fulfillment Services
8300 NE Underground Drive, Suite 300
Kansas City, MO 64144-9900

December 10, 2021

Digital Color Pictorial



FDOI – Missouri Statehood Stamp

USPS Stamp Fulfillment Services
8300 NE Underground Drive, Suite 300
Kansas City, MO 64144-9900

December 10, 2021

Black and White Pictorial

**FDOI – Backyard Games Stamps**

USPS Stamp Fulfillment Services
8300 NE Underground Drive, Suite 300
Kansas City, MO 64144-9900

December 12, 2021

Digital Color Pictorial**FDOI – Backyard Games Stamps**

USPS Stamp Fulfillment Services
8300 NE Underground Drive, Suite 300
Kansas City, MO 64144-9900

December 12, 2021

Black and White Pictorial**FDOI – Happy Birthday Stamp**

USPS Stamp Fulfillment Services
8300 NE Underground Drive, Suite 300
Kansas City, MO 64144-9900

January 9, 2022

Digital Color Pictorial**FDOI – Happy Birthday Stamp**

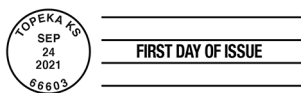
USPS Stamp Fulfillment Services
8300 NE Underground Drive, Suite 300
Kansas City, MO 64144-9900

January 9, 2022

Black and White Pictorial**FDOI – Message Monsters Stamps**

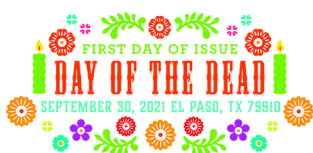
USPS Stamp Fulfillment Services
8300 NE Underground Drive, Suite 300
Kansas City, MO 64144-9900

January 24, 2022

Digital Color Pictorial**FDOI – Message Monsters Stamps**

USPS Stamp Fulfillment Services
8300 NE Underground Drive, Suite 300
Kansas City, MO 64144-9900

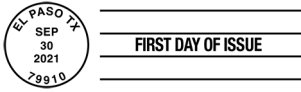
January 24, 2022

Black and White Pictorial**FDOI – Day of the Dead Stamps**

USPS Stamp Fulfillment Services
8300 NE Underground Drive, Suite 300
Kansas City, MO 64144-9900

January 30, 2022

Digital Color Pictorial



FDOI – Day of the Dead Stamps

USPS Stamp Fulfillment Services
8300 NE Underground Drive, Suite 300
Kansas City, MO 64144-9900

January 30, 2022

Black and White Pictorial



FDOI – A Visit from St. Nick Stamps

USPS Stamp Fulfillment Services
8300 NE Underground Drive, Suite 300
Kansas City, MO 64144-9900

February 7, 2022

Digital Color Pictorial



FDOI – A Visit from St. Nick Stamps

USPS Stamp Fulfillment Services
8300 NE Underground Drive, Suite 300
Kansas City, MO 64144-9900

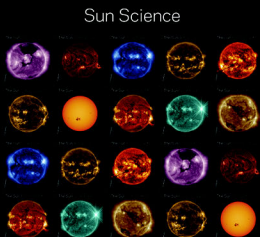
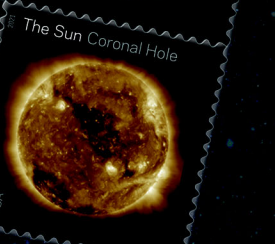
February 7, 2022

Black and White Pictorial

USPS® Highlights

Stunning Images of the Sun with

SUN SCIENCE FOREVER® STAMPS



Sun Science

**ON SALE
NATIONWIDE:
JUNE 18, 2021**

Sold as a full pane.

