

postal|bulletin

PUBLISHED SINCE MARCH 4, 1880



**DO YOU
REALLY
KNOW
WHO IS
CALLING?**

**If you're not sure,
don't answer.**

See page 3



Contents

COVER STORY

Do You Really Know Who Is Calling? Beware of Imposters	3
--	---

POLICIES, PROCEDURES, AND FORMS UPDATES

Manuals

ELM Revision Rescinded: Acceptable Reasons and Instructions for LWOP	4
IMM Revision: Free Matter for the Blind	4
IMM Revision: Individual Country Listing for Canada	5
IMM Revision: Updates to U.S. Sanctions	5
IMM Revision: Termination of International Postal Money Order Service	6

Publications

Publication 431 Revision: Changes to Post Office Box Service and Caller Service Fee Groups	8
--	---

Forms

PS Form 3971 Revision Rescinded: Request for or Notification of Absence	9
---	---

ORGANIZATION INFORMATION

Corporate Communications

USPS Promotes Good Work Attendance	11
--	----

Mailing and Shipping Services

Mail Alert	12
------------------	----

Small Business Sales

Business Connect Kits are Coming Soon	33
---	----

Stamp Services

Stamp Announcement 21-27: Happy Birthday Stamp	34
Pictorial Postmarks Announcement	35

How to Order the First-Day-of-Issue Digital Color or Traditional Postmarks	37
--	----

PULL-OUT INFORMATION

Fraud

Invalid USPS Corporate Account Numbers	13
Missing, Lost, or Stolen U.S. Money Order Forms	15
Missing, Lost, or Stolen Canadian Money Order Forms	21
Verifying U.S. Postal Service Money Orders	23
Counterfeit Canadian Money Order Forms	23
Toll-Free Number Available to Verify Canadian Money Orders	23

Other Information

Overseas Military/Diplomatic Mail	24
Thrift Savings Plan Fact Sheet	30
Freely Associated States Restrictions	32

POSTAL BULLETIN 2020 ANNUAL INDEX

2020 Annual Index	PB 22564 (1-28-21)
-------------------------	--------------------

Find the latest in mail and delivery information and services offered by U.S. Postal® in the *Postal Bulletin* at about.usps.com/postal-bulletin

Mail Moment®

Cover Story

Do You Really Know Who Is Calling? Beware of Imposters

To protect consumers, the U.S. Postal Inspection Service is calling attention to scammers who impersonate the Postal Service™, the Social Security Administration, and the Internal Revenue Service (IRS).

According to recent reporting from the Federal Trade Commission, imposter scams are currently the leading type of fraud reported, with over \$1 billion in losses for the first quarter of 2021. Though business imposter scams presently lead in the number of reports filed, government imposter scams remain a top fraud type.¹ Over the past year, the U.S. Postal Inspection Service has also seen an increase in scammers who impersonate the Postal Service through email scams.

In government imposter scams, victims are initially contacted via phone or email by a scammer who impersonates a government agency official. The victim is then informed through misrepresentations and threats that they need to remit payment to resolve an issue specific to the scam. The scammers try to create a sense of urgency and isolate victims in order to induce the victims to remit payments. Anyone can be a victim of these scams, but they most often affect the elderly and vulnerable.

The scammers will direct victims to remit payment through a variety of methods, including cash or check in the U.S. Mail®, FedEx, or UPS. Victims may also be directed to remit payment via gift cards, virtual currency, or wire transfer.

The U.S. Postal Inspection Service reminds Postal Service employees and customers:

- Don't be pressured into making immediate financial decisions.
- Consult with a trusted friend or family member before making a payment.
- Don't give your financial or personal information to anyone you don't know and don't trust.
- Reduce unwanted telemarketing calls by taking advantage of call blocking services, some of which are free. Contact your telephone carrier for more information.
- The Postal Service, IRS, Social Security Administration, and other government agencies will never call you and ask for payment over the phone or ask for your personal information.
- Report scams to the U.S. Postal Inspection Service at uspis.gov/report.

For more information about fraud prevention and consumer protection tips, Postal Service employees and their families can use the following resources:

- U.S. Postal Inspection Service website: uspis.gov.
- Free AARP helpline staffed by volunteers trained in fraud counseling: 877-908-3360.
- Federal Trade Commission website: ftc.gov.

— *Communications, Governance, and Strategy*,
U.S. Postal Inspection Service, 7-29-21

1. Data source: consumer.ftc.gov/blog/2020/01/top-frauds-2019.

Policies, Procedures, and Forms Updates

Manuals

ELM Revision Rescinded: Acceptable Reasons and Instructions for LWOP

Effective July 29, 2021, the revision planned for *Employee and Labor Relations Manual* (ELM), Exhibit 514.4, “Acceptable Reasons and Instructions for LWOP,” as detailed in the article “ELM Revision: Leave” published in *Postal Bulletin* 22492 (4-26-18, page 4), is rescinded.

The ELM is available on the Postal Service™ PolicyNet website:

- Go to blue.usps.gov.
- In the left-hand column, click *Essential Links*, and then click *PolicyNet*.
- Go to the right-hand side under “Published Forms and Directives.”
- Click *Manuals*.

The direct URL for the Postal Service PolicyNet website is blue.usps.gov/cpim.

— *Benefits and Wellness,
Human Resources, 7-29-21*

IMM Revision: Free Matter for the Blind

Effective July 29, 2021, the Postal Service™ is revising *Mailing Standards of the United States Postal Service, International Mail Manual* (IMM®), section 274.2, to note that the marking requirements for Free Matter for the Blind items must include the phrase “Envois pour les Aveugles” (a French phrase meaning “mailings for the blind”) as well as the phrase “Free Matter for the Blind.”

This revision is based on the Universal Postal Union regulations Article 16-002.

Mailing Standards of the United States Postal Service, International Mail Manual (IMM)

* * * * *

2 Conditions for Mailing

* * * * *

274 Mail Preparation

* * * * *

274.2 Markings

[Revise the first sentence to read as follows:]

In addition to the markings required in 234.2 for Priority Mail International parcels, in 244.2 for First-Class Mail International items, and in 254.2 for First-Class Package International Service items, the mailer must mark the item in the upper right-hand corner of the address side of the mailpiece with both of the following phrases: “Envois pour les Aveugles” and “Free Matter for the Blind.” ***

* * * * *

Although effective July 29, 2021, the Postal Service will incorporate this revision into the next edition of the online IMM, which is available via Postal Explorer® at pe.usps.com.

— *Product Classification,
Product Solutions, 7-29-21*

IMM Revision: Individual Country Listing for Canada

Effective July 29, 2021, the Postal Service™ is revising the Individual Country Listing for Canada in *Mailing Standards of the United States Postal Service*, International Mail Manual (IMM®) to note a revision to the prohibition relating to firearms.

This revision is based on a consultation with Canada Post (the designated postal operator of Canada) on July 6, 2021.

Mailing Standards of the United States Postal Service, International Mail Manual (IMM)

* * * * *

Individual Country Listings

* * * * *

Canada

Country Conditions for Mailing

Prohibitions

* * * * *

[Revise the entry that begins with “Firearms ...” to read as follows:]

Firearms.

* * * * *

Although effective July 29, 2021, the Postal Service will incorporate this revision into the next edition of the online IMM, which is available via Postal Explorer® at pe.usps.com.

— Product Classification, Product Solutions, 7-29-21

IMM Revision: Updates to U.S. Sanctions

Effective July 29, 2021, the Postal Service™ is revising *Mailing Standards of the United States Postal Service*, International Mail Manual (IMM®), section 541.3, to reflect changes in U.S. sanctions to Russia and South Sudan, and is revising sections 524.21b, 526.2e, and 527c and the Individual Country Listing (ICL) for Sudan to reflect changes in U.S. sanctions to Sudan.

The Postal Service is revising IMM 541.3 to reflect the following amendments made by the Directorate of Defense Trade Controls to the International Traffic in Arms Regulations (ITAR):

- Effective February 14, 2018, Russia is subject to a policy of denial for exports of defense articles and services.
- Effective March 18, 2021, South Sudan is subject to a policy of denial for exports of defense-related articles and services.

On October 26, 2020, President Donald J. Trump submitted a report to Congress justifying the rescission of Sudan’s designation as a State Sponsor of Terrorism and certifying that Sudan had not provided any support for acts of international terrorism during the preceding 6-month period and that Sudan had provided assurances that it would not support acts of international terrorism in the future. Accordingly, the secretary of state rescinded this designation effective December 14, 2020, and the Bureau of Industry and Security amended the Export Administration Regulations effective January 14, 2021. These changes also affect the applicability of certain requirements for filing electronic export information with the Census Bureau. The Postal Service is revising Chapter 5 and the ICL for Sudan to reflect these changes.

Mailing Standards of the United States Postal Service, International Mail Manual (IMM)

* * * * *

5 Nonpostal Export Regulations

* * * * *

520 Foreign Trade Regulations — U.S. Census Bureau

* * * * *

524 Internal Transaction Number (ITN)

* * * * *

524.2 Filing Requirements

524.21 Mandatory Filing

* * * * *

[Revise item b. to read as follows (removing the reference to Sudan):]

- b. The shipment is destined to Iran or Syria and does not qualify for the “foreign libraries” exemption described in 526.2e (for example, the shipment contains goods other than exempt items, or the shipment contains exempt items but is not being sent to a library or similar institution).

* * * * *

526 AES Exemption

* * * * *

526.2 When Applicable

[Revise item e. to read as follows (removing the reference to Sudan):]

- e. “NOEEI 30.37(y)” for shipments of published books, software, maps, charts, pamphlets, or any other similar media available for general distribution that are eligible to be sent to a library or similar institution in Cuba, Iran, North Korea, or Syria.

* * * * *

527 Placement of ITN, AES Downtime Citation, or AES Exemption

* * * * *

[Revise item c. to read as follows (removing the reference to Sudan):]

- c. On PS Form 2976, *Customs Declaration CN 22 – Sender’s Declaration*, if the customer is sending items to Cuba, Iran, North Korea, or Syria under the “foreign libraries” exemption described in 526.2e, the customer must enter “NOEEI § 30.37(y).”

* * * * *

540 Munitions (Defense Articles) and Related Technical Data**541 Licensing Requirements**

* * * * *

541.3 Restricted Countries

[Revise the last sentence of the paragraph to read as follows (changing the date), and revise the list to read as

follows (adding Russia in alphabetical order and including the full name for South Sudan):]

***As of March 2021, these countries include the following:

- a. Afghanistan.
- b. Central African Republic.
- c. Congo, Democratic Republic of the.
- d. Cyprus.
- e. Eritrea.
- f. Haiti.
- g. Iraq.
- h. Lebanon.
- i. Libya.
- j. Russia.
- k. Somalia.
- l. South Sudan, Republic of.
- m. Sudan.
- n. Zimbabwe.

* * * * *

Individual Country Listings

* * * * *

Sudan**Country Conditions for Mailing**

[Remove the bold paragraph before the “Prohibitions” section.]

* * * * *

Although effective July 29, 2021, the Postal Service will incorporate these revisions into the next edition of the online IMM, which is available via Postal Explorer® at pe.usps.com.

— Product Classification,
Product Solutions, 7-29-21

IMM Revision: Termination of International Postal Money Order Service

Effective July 29, 2021, the Postal Service™ is revising *Mailing Standards of the United States Postal Service*, International Mail Manual (IMM®), Exhibit 371.2, to reflect that the exchange of international postal money orders between the Postal Service™ and the following countries will be discontinued as of October 1, 2021:

- Anguilla.
- Antigua and Barbuda.
- Bahamas.
- Barbados.
- British Virgin Islands.

- Dominica.
- Grenada.
- Jamaica.
- Montserrat.
- Saint Kitts and Nevis.
- Saint Lucia.
- Saint Vincent and the Grenadines.

Effective October 1, 2021, the foreign posts for these countries will stop selling international postal money orders destined for the United States. Likewise, effective October 1, 2021, the Postal Service will stop selling international postal

money orders destined to these posts. A customer who wishes to purchase an international postal money order destined for these countries must do so before October 1, 2021.

Effective October 1, 2022, the foreign posts for these countries will stop cashing international postal money orders issued by the Postal Service. Likewise, effective October 1, 2022, the Postal Service will stop cashing international postal money orders issued by these posts. Consequently, in accordance with IMM 371.5, a customer in possession of an international postal money order issued by these posts must cash it at a U.S. Post Office® facility by the validity date on the money order or before October 1, 2022, whichever comes first.

A customer who is in possession of a USPS-issued international postal money order but who does not cash it before October 1, 2022, may redeem it at a U.S. Post Office facility at face value.

In addition, the Postal Service is updating Exhibit 371.2 to reflect that Albania, El Salvador, and Guyana will not issue money orders for payment in the United States.

Mailing Standards of the United States Postal Service, International Mail Manual (IMM)

	*	*	*	*	*
3					
	*	*	*	*	*
370					
371					
	*	*	*	*	*
371.2					
	*	*	*	*	*

**Exhibit 371.2
Countries Accepting the International Postal Money Order Form (MP1)**

[Revise the exhibit (both footnotes and footnote markers) to read as follows (revising previous footnote 2 to be footnote 1, and adding Albania, El Salvador, and Guyana to the list of countries that will not issue money orders for payment in the United States; adding a new footnote 2 along with a

footnote marker for it to Anguilla, Antigua and Barbuda, Bahamas, Barbados, British Virgin Islands, Dominica, Grenada, Jamaica, Montserrat, Saint Kitts and Nevis, Saint Lucia, and Saint Vincent and the Grenadines; revising previous footnote 1 to become footnote 3; and revising previous footnote 3 to become footnote 4);]

Albania ¹	Guinea ¹
Anguilla ²	Guyana (\$500) ¹
Antigua and Barbuda ²	Honduras ¹
Bahamas ²	Jamaica ^{2, 4}
Barbados ^{2, 3}	Mali ¹
Belize	Montserrat ²
Bolivia ¹	Peru
British Virgin Islands ²	Saint Kitts and Nevis ²
Cape Verde ¹	Saint Lucia ²
Dominica ²	Saint Vincent and the Grenadines ²
Dominican Republic ¹	Sierra Leone ¹
Ecuador ¹	Trinidad and Tobago ⁴
El Salvador (\$500) ¹	
Grenada ²	

- (1) Albania, Bolivia, Cape Verde, Dominican Republic, Ecuador, El Salvador, Guinea, Guyana, Honduras, Mali, and Sierra Leone will not issue money orders for payment in the United States.
- (2) Effective October 1, 2021, the foreign post will stop selling international postal money orders destined for the United States. Likewise, effective October 1, 2021, the Postal Service will stop selling international postal money orders destined to the foreign post. Effective October 1, 2022, the foreign post will stop cashing international postal money orders issued by the Postal Service. Likewise, effective October 1, 2022, the Postal Service will stop cashing international postal money orders issued by the post.
- (3) In Barbados, the amount of the money due for payment will no longer be handwritten on Form MP1 (the form currently states "Amount To Be Written In Words") but will be electronically applied.
- (4) Jamaica and Trinidad and Tobago will not issue money orders in U.S. dollars.

	*	*	*	*	*
--	---	---	---	---	---

Although effective July 29, 2021 (even though the policy itself is not effective until October 1, 2021), the Postal Service will incorporate these revisions into the next edition of the online IMM, which is available via Postal Explorer® at pe.usps.com.

Publications

Publication 431 Revision: Changes to Post Office Box Service and Caller Service Fee Groups

Effective July 29, 2021, Publication 431, *Post Office Box Service and Caller Service Fee Groups*, is revised to include the following changes.

Publication 431, *Post Office Box Service and Caller Service Fee Groups*

* * * *

[Add the following entries:]

ZIP Code	Fee Group
92415	33

* * * *

[Delete the following entries:]

ZIP Code	Fee Group
60804A	35
60805A	34

* * * *

The online version of Publication 431 is dated July 2013. Publication 431 is currently available on the Postal Service™ PolicyNet website (blue.usps.gov/cpim):

- Go to blue.usps.gov.
- In the left-hand column, click *Essential Links*, and then click *PolicyNet*.
- Go to the right-hand side under “Published Forms and Directives.”
- Click *Publications*.

Offices with WebBATS Manager/Supervisor access can view current Publication 431 information by going to the WebBATS Edit Facility Information page, as follows:

1. Go to the WebBATS main menu, and select Utility> Facility>Edit Facility option.
2. View the Fee Group field on the Edit Facility Information page.

— *Post Office Operations,
Retail and Post Office Operations, 7-29-21*

Forms

PS Form 3971 Revision Rescinded: Request for or Notification of Absence

The article “PS Form 3971 Revision: Notification of Absence,” published in *Postal Bulletin* 22482 (12-7-17, page 48), announced a revision to PS Form 3971, *Request for or Notification of Absence*, with an edition date of October 2017 — however, that revision has been rescinded, and the Postal Service™ has released a revision of PS Form 3971 with an edition date of July 2021.

Use only the July 2021 edition of PS Form 3971. All previous editions of PS Form 3971 are obsolete and must be recycled.

The July 2021 edition of PS Form 3971 is now available from the Material Distribution Center (MDC) in Topeka, KS. You can order the revised PS Form 3971 through the MDC eBuy+ catalog.

Note: Some military sites without eBuy+ access can place orders by contacting their Joint Military Postal Activity (JMPA).

Use the following information to order PS Form 3971:

PSIN:	PS 3971
PSN:	7530-02-000-9136
Unit of Issue:	PD (Each pad has 100 forms)
Minimum Order Quantity:	5 pads
Quick Pick Number:	227
Price*:	\$0.6699/pad
Edition Date:	7/21

* Price is current as of this date but is subject to change.

The July 2021 edition of PS Form 3971 is now available on the Postal Service PolicyNet website:

- Go to blue.usps.gov.
- In the left-hand column, click *Essential Links*, and then click *PolicyNet*.
- Go to the right-hand side under “Published Forms and Directives,” click *Forms*, and then click on the range 3000–3999.
- Scroll down to the form entry and click the PDF icon.

The direct URL for the Postal Service PolicyNet website is blue.usps.gov/cpim.

— Payroll,
Controller, 7-29-21

USPS®
Celebrates
the Beauty of
Flowers with
***Garden
Beauty***

Forever®
Stamps

On Sale Nationwide:
February 23, 2021



Organization Information

Corporate Communications

USPS Promotes Good Work Attendance



The Postal Service™ is reemphasizing the importance of good work attendance in a new informational campaign.

The campaign centers on this message: While it is vitally important for employees to stay home when they are ill, it is equally important — for the organization’s success — to have employees report on time for their assigned duties when they are able to work. Regular attendance is critical to the Postal Service’s success.

“In every community across the nation, our customers count on us — as part of the nation’s critical infrastructure — to accept, process, and deliver mail and packages for them. Employees who are able to work have a responsibility to help us continue to provide the public with the level and quality of service they expect,” said Simon Storey, the organization’s human resources vice president.

The campaign will remind employees who are able to work that absences must align with the policies outlined in the following publications:

- *Employee and Labor Relations Manual (ELM)* at about.usps.com/manuals/elm/html/welcome.htm
- Handbook F-21, *Time and Attendance*, at blue.usps.gov/cpim/ftp/hand/f21/welcome.htm.

Under these policies, employees are required to be regular in attendance. Failure to be regular in attendance impedes the Postal Service’s ability to provide quality service to its customers.

Managers and supervisors are encouraged to review attendance and leave-related policies in the ELM, as well as other relevant handbooks and manuals to become familiar with them. Additionally, managers and supervisors are expected to conduct regular attendance reviews and manage unscheduled absences.

Online training courses and study guides related to attendance management, including the Time and Attendance Collection System, can be found through the HERO platform and the Rural Delivery website. All training is available for immediate access.

Except for courses taken solely for self-development, nonexempt employees may only complete HERO training courses during authorized work hours.

— Public Relations,
Corporate Communications, 7-29-21

Mailing and Shipping Services

Mail Alert

The mailings below will be deposited in the near future. Offices must process this mail according to applicable service standards with the in-home dates in mind. Mailers wishing to participate in these alerts, for mailings of 1 mil-

lion pieces or more, must contact Business Service Network Integration at 202-268-3258 at least 1 month before the requested delivery dates.

Requested Delivery Dates	Title of Mailing	Class and Type of Mail	Number of Pieces (Millions)	Distribution	Presort Level	Comments
08/11/21–08/14/21	Ashro	Standard Catalog	2.0	Nationwide	3/5 Digit	RR Donnelly
08/11/21–08/14/21	Ginny's	Standard Catalog	2.0	Nationwide	3/5 Digit	Quad Graphics
08/11/21–08/14/21	Midnight Velvet	Standard Catalog	3.0	Nationwide	3/5 Digit	Quad Graphics

– Business Customer Support and Services, Sales and Customer Relations, 7-29-21

Pull-Out Information

Fraud

Invalid USPS Corporate Account Numbers

Provide this listing to Contract Postal Units and acceptance clerks in non-POS locations without intranet access to validate a USPS Corporate Account (USPSCA) number online. For all other locations, online USPSCA validation is preferred. This list supersedes all previous notices, which you must recycle.

Acceptance clerks must not accept Priority Mail Express® shipments bearing an invalid USPSCA number in the “Payment by Account” or “Agreement Number” section of the label or form.

Note: The first 6 digits of a 9-digit Custom Designed Service and Next Day Pickup Agreement make up the Corporate Account Number.

005003	005844	076022	115206	115566	117090	117473	118045	119153	301007	554064	782005	982605
005019	005860	076711	115207	115604	117091	117497	118051	119163	301521	581081	799030	982615
005090	005929	080544	115209	115606	117101	117523	118052	119191	303116	600287	809106	982631
005099	005936	088001	115211	115621	117105	117524	118070	119208	303117	601158	810018	982662
005106	005978	100640	115217	115730	117110	117527	118172	119220	306766	601386	820100	982672
005127	008474	104671	115230	115732	117113	117530	118197	119234	320011	601543	841368	982702
005131	008479	105361	115232	115756	117136	117538	118225	119241	320014	601785	901791	983060
005142	014767	105714	115244	115785	117144	117584	118242	119289	330760	603011	902285	983100
005168	015397	115014	115248	115888	117153	117598	118257	119331	340593	606069	906258	985214
005260	018098	115021	115254	115938	117158	117600	118321	119408	341002	606269	920217	985222
005268	019913	115022	115261	115959	117167	117611	118371	119471	370013	606440	925084	985225
005313	020299	115039	115285	117002	117180	117688	118390	119501	381382	606692	931158	985241
005315	020622	115045	115289	117008	117181	117759	118475	119533	403099	607222	948344	988049
005341	022476	115046	115300	117017	117196	117764	118531	119541	451044	607377	950138	988054
005362	023437	115051	115306	117019	117211	117772	118583	119551	452023	607894	968389	992775
005412	028004	115053	115322	117021	117213	117780	118689	119588	461155	608041	970835	995109
005443	032131	115074	115324	117024	117236	117795	118810	119598	464189	608128	975038	995461
005512	038090	115081	115345	117038	117239	117796	118846	119655	476029	608239	980135	995685
005514	061294	115086	115357	117040	117246	117855	118866	122047	480090	609100	980615	995787
005519	064600	115093	115372	117041	117248	117857	118883	129908	481233	617208	980755	997083
005525	069804	115103	115393	117044	117249	117918	118931	152046	481304	617608	980878	997179
005555	070105	115107	115416	117052	117251	117924	118943	152101	481516	618100	981455	998100
005559	070169	115128	115472	117058	117264	117930	118966	174053	481600	627035	981663	999200
005625	070331	115130	115483	117059	117266	117961	119034	178059	483464	627083	981674	
005627	070644	115132	115494	117061	117270	117964	119048	178074	483727	630644	981892	
005639	071054	115137	115514	117069	117288	117974	119072	191092	489493	631228	982306	
005667	071319	115146	115515	117071	117303	117977	119084	192390	490258	633023	982365	
005717	071722	115152	115528	117072	117308	118021	119099	198008	490555	685309	982429	
005758	075017	115155	115539	117078	117390	118031	119105	207595	494276	687030	982526	
005762	075511	115187	115545	117083	117424	118036	119148	210778	498240	701002	982548	
005800	075607	115202	115559	117086	117446	118043	119151	300103	528014	708402	982604	

— Product Information Requirements, Mail Entry and Payment Technology, 7-29-21

USPS® Serves Up *Espresso Drinks*

Forever®
Stamps

On Sale
Nationwide:
April 9, 2021



Missing, Lost, or Stolen U.S. Money Order Forms

Do Not Cash — Upon Receipt, Notify Local Postal Inspectors

Provide this listing to all Postal Service™ employees responsible for accepting and cashing postal money orders. Destroy all interim notices when the numbers listed appear in the *Postal Bulletin*. The new money order serial

numbers consist of the first 10 digits. The eleventh digit is a check digit only.

Do not cash outdated money orders **104 151 601 to 692 600 000**. Advise holders to send invalid money orders to Canada Post Corporation, Ottawa, Canada K1A 0B1. Check for altered dollar amounts by holding money orders to the light.

010 001 0200	to	0299	043 205 5922	to	5999	083 784 8886	to	8899	174 281 9347	to	9399
010 504 1932	to	1999	044 087 3457	to	3499	083 913 6915	to	6999	175 251 2600	to	0699
011 582 1889	to	1899	044 087 4000	to	4099	084 478 3920	to	3999	176 281 7937	to	7950
011 588 2900	to	3099	044 226 2487	to	2512	086 000 8271	to	8299	176 281 7963	to	7999
012 441 0784	to	0799	044 306 4200	to	4299	086 798 3840	to	3849	176 731 6586	to	6599
012 579 5675	to	5699	044 306 4370	to	4599	088 404 4472	to	4499	178 254 5000	to	9999
013 289 6176	to	6199	045 524 4121	to	4298	088 404 5584	to	5699	178 881 9900	to	9999
013 610 0014	to	0099	046 800 9870	to	9899	088 757 8688	to	8699	180 031 2089	to	2098
014 932 1000	to	1099	047 352 4000	to	4099	088 757 9400	to	9499	180 403 7723	to	7741
014 972 0800	to	0899	048 383 7650	to	7659	089 358 2248	to	2257	180 428 4580	to	0599
015 363 0065	to	0099	048 396 3647	to	3699	090 663 9678	to	9684	182 368 7544	to	0599
017 028 3200	to	3299	051 142 0755	to	0799	091 818 0071	to	0099	182 475 3229	to	3258
018 569 5333	to	5399	051 774 8857	to	8899	093 106 9346	to	9355	182 475 3904	to	3933
018 986 5264	to	5299	051 781 2875	to	2885	093 203 0500	to	0599	182 631 0031	to	0099
019 518 2814	to	2899	051 977 7010	to	7023	093 684 3630	to	3699	182 911 6539	to	6600
020 698 5159	to	5199	052 058 7115	to	7199	094 081 5074	to	5099	184 218 2760	to	2799
020 844 7307	to	7399	054 450 1130	to	1167	094 216 2555	to	2599	185 828 1474	to	1499
020 972 8948	to	8999	057 670 0563	to	0599	094 580 7062	to	7099	186 132 7583	to	0599
022 021 9110	to	9181	058 187 3836	to	3899	094 639 4200	to	4299	186 629 0589	to	0599
022 037 1411	to	1499	058 523 3003	to	3099	095 070 7186	to	7199	187 184 6177	to	0199
022 527 9201	to	9210	058 591 1153	to	1299	095 076 8300	to	8399	187 323 8200	to	8299
022 529 1882	to	1899	058 895 3746	to	3799	095 354 6864	to	6899	187 441 6080	to	6099
023 637 7169	to	7199	059 986 0814	to	0899	097 224 1350	to	1599	188 831 6774	to	6799
024 380 4100	to	4199	060 406 7650	to	7699	100 160 3800	to	3899	188 835 6370	to	6399
024 496 6870	to	6896	063 491 8122	to	8199	104 667 6400	to	6499	189 083 1064	to	1099
025 092 0987	to	0999	063 916 9968	to	9999	104 876 8937	to	8999	189 660 9583	to	9599
025 369 5535	to	5599	064 091 4500	to	4599	112 049 4413	to	4499	191 179 0377	to	0399
025 729 1151	to	1199	065 170 0471	to	0499	112 870 9765	to	9799	192 050 5762	to	5781
025 729 1643	to	1799	065 255 7909	to	7999	113 319 2000	to	2099	194 456 8600	to	0699
026 492 3180	to	3199	065 392 6345	to	6399	114 402 3850	to	3899	195 194 6881	to	6899
027 361 0430	to	0499	066 099 2014	to	2099	114 866 5368	to	5397	195 874 1112	to	1199
027 369 4482	to	4495	066 648 2880	to	2899	116 154 2800	to	2899	196 979 0524	to	0599
027 671 8762	to	8776	066 787 3639	to	3699	116 986 4400	to	4499	197 244 6100	to	6199
027 787 9886	to	9899	066 845 7500	to	9999	117 175 1647	to	5169	197 244 6300	to	6399
027 965 9487	to	9499	067 093 3869	to	3899	117 951 4687	to	4699	197 244 6400	to	6499
028 100 8069	to	8099	068 895 0334	to	0399	117 951 5200	to	5299	197 244 6500	to	6599
028 191 1852	to	1999	070 724 4488	to	4499	119 786 3051	to	3064	197 244 6600	to	6699
028 850 3000	to	3199	070 841 9181	to	9199	119 815 8961	to	6199	197 244 6700	to	6799
029 510 1500	to	1599	070 844 2546	to	2599	119 850 7400	to	7499	197 244 6800	to	8999
030 687 0903	to	0999	070 916 1340	to	1399	119 850 7700	to	7999	198 285 2556	to	2566
030 701 3442	to	3499	071 047 5768	to	5799	121 634 0460	to	0499	199 105 0778	to	0799
031 077 4507	to	4799	071 179 9800	to	9899	122 451 9879	to	9899	199 678 2968	to	2999
032 295 7500	to	9999	071 386 3682	to	3699	122 714 6805	to	6900	202 748 5133	to	5199
034 394 1000	to	1099	071 507 6840	to	6899	124 916 0304	to	0499	202 748 5245	to	5299
034 943 0400	to	0799	072 045 9641	to	9699	126 423 0136	to	0169	202 748 5300	to	5399
035 035 4337	to	4399	072 675 8287	to	8299	127 500 2328	to	2399	202 748 5400	to	5499
037 312 7500	to	7599	073 763 0867	to	0876	160 901 2254	to	2299	203 256 1240	to	1299
037 706 9578	to	9599	073 763 0878	to	0887	161 103 6581	to	6599	204 230 3577	to	3595
037 805 3677	to	3699	073 763 0889	to	0898	161 194 2857	to	0899	205 019 0174	to	0199
037 909 5490	to	5499	077 617 5481	to	5499	162 032 4447	to	4499	206 936 3184	to	3199
037 931 4660	to	4699	077 999 4001	to	4090	163 257 1085	to	1099	207 196 9900	to	9999
039 145 6521	to	6595	078 174 4475	to	4499	164 359 2406	to	2499	207 204 0700	to	0799
040 024 3901	to	3999	078 219 4931	to	4999	166 101 1433	to	1499	207 204 0800	to	0899
040 674 7100	to	7199	078 250 4756	to	4799	167 555 5201	to	5212	207 514 3857	to	3899
040 688 8816	to	8899	078 823 8312	to	8399	167 555 5214	to	5299	208 556 4707	to	4799
041 299 6752	to	6799	079 374 0300	to	2499	169 618 6274	to	6299	210 057 4038	to	4047
041 623 8889	to	8899	079 807 2342	to	2399	171 806 6878	to	6893	210 221 0548	to	0599
041 803 6565	to	6599	082 721 0228	to	0254	173 639 4685	to	4699	214 061 4711	to	4724
043 129 1968	to	1997	083 140 5000	to	7499	174 238 2779	to	2799	214 303 6311	to	6325

214 303 6239	to	6258	252 469 2125	to	2199	258 405 6400	to	6499	262 337 4500	to	4599
214 877 4251	to	4273	252 833 3286	to	3297	258 405 6800	to	6899	262 337 4600	to	4699
215 252 3918	to	3992	253 470 3948	to	3999	258 405 6900	to	6999	262 337 4700	to	4799
217 585 1400	to	1499	253 565 7400	to	7499	258 405 7000	to	7099	262 337 4800	to	4899
218 698 2157	to	2199	254 252 2800	to	2899	258 405 7100	to	7199	262 337 4900	to	4999
218 746 0800	to	0899	254 252 2900	to	2999	258 405 7200	to	7299	262 337 5000	to	5099
219 095 0100	to	0399	254 252 3000	to	3099	258 405 7300	to	7399	262 337 5100	to	5199
219 389 1885	to	1899	254 252 3100	to	3199	258 405 7400	to	7499	262 337 5200	to	5299
219 568 7435	to	7456	254 252 3200	to	3299	258 405 7800	to	7899	262 337 5300	to	5399
219 568 7469	to	7487	254 252 3300	to	3399	258 405 7900	to	7999	262 337 5400	to	5499
221 316 5757	to	5799	254 252 3400	to	3499	258 405 8000	to	8099	262 337 5500	to	5599
223 476 3914	to	3999	254 252 3500	to	3599	258 405 8100	to	8199	262 337 5600	to	5699
223 565 4921	to	4957	254 252 3600	to	3699	258 405 8200	to	8299	262 337 5700	to	5799
223 565 4979	to	4999	254 252 3700	to	3799	258 405 8300	to	8399	262 337 5800	to	5899
224 636 4745	to	4765	254 252 3800	to	3899	258 405 8400	to	8499	262 337 5900	to	5999
224 636 4776	to	4799	254 252 3900	to	3999	258 405 8500	to	8599	262 337 6000	to	6099
224 636 4855	to	4885	254 252 4000	to	4099	258 405 8600	to	8699	262 337 6100	to	6199
224 636 4932	to	4948	254 252 4100	to	4199	258 405 8700	to	8799	262 337 6200	to	6299
224 636 4950	to	4962	254 252 4200	to	4299	258 405 8800	to	8899	262 337 6300	to	6399
224 636 4985	to	4999	254 252 4300	to	4399	258 405 8900	to	8999	262 337 6400	to	6499
224 723 0757	to	0799	254 252 4400	to	4499	258 405 9600	to	9699	262 337 6500	to	6599
224 730 2207	to	2299	254 252 4500	to	4599	258 405 9700	to	9799	262 337 6600	to	6699
225 970 0500	to	0599	254 252 4600	to	4699	258 405 9800	to	9899	262 337 6700	to	6799
225 970 0600	to	0699	254 252 4700	to	4799	258 405 9900	to	9999	262 337 6800	to	6899
225 970 0700	to	0799	254 252 4800	to	4899	259 014 9989	to	9999	262 337 6900	to	6999
227 033 8679	to	8699	254 252 4900	to	4999	259 062 4788	to	4798	262 337 7000	to	7099
227 275 9400	to	9999	254 565 7607	to	7700	259 218 1400	to	1499	262 337 7100	to	7199
228 463 2456	to	2499	254 907 1203	to	1299	259 218 1500	to	1599	262 337 7200	to	7299
228 510 4852	to	4899	255 185 9527	to	9599	259 218 1600	to	1699	262 337 7300	to	7399
229 462 8451	to	8475	255 397 1557	to	1576	259 590 5654	to	5699	262 337 7400	to	7499
229 668 5977	to	5999	255 425 2989	to	2998	259 670 8268	to	8299	262 337 7500	to	7599
229 923 9176	to	9199	255 728 6412	to	6499	259 835 6238	to	6399	262 337 7600	to	7699
229 924 6696	to	6699	255 728 9842	to	9899	259 835 6701	to	6799	262 337 7700	to	7799
230 051 9500	to	9999	256 134 9833	to	9839	260 224 4600	to	4699	262 337 7800	to	7899
236 366 2431	to	2499	256 134 9840	to	9849	260 224 5941	to	5999	262 337 7900	to	7999
236 607 6882	to	6899	256 134 9850	to	9859	260 310 2821	to	2899	262 337 8000	to	8099
236 660 5853	to	5872	256 134 9860	to	9869	260 452 0010	to	0022	262 337 8100	to	8199
239 322 5200	to	5299	256 134 9870	to	9879	260 452 0049	to	4299	262 337 8200	to	8299
239 322 5400	to	5499	256 134 9880	to	9889	260 553 8200	to	8299	262 337 8300	to	8399
239 322 5600	to	5699	256 134 9890	to	9899	260 553 8600	to	8699	262 337 8400	to	8499
239 322 5800	to	5899	256 247 6900	to	6999	260 553 9600	to	9799	262 337 8500	to	8599
239 322 5900	to	5999	256 550 5536	to	5545	260 553 9800	to	9899	262 337 8600	to	8699
239 607 4783	to	4799	256 799 2257	to	2299	260 553 9900	to	9999	262 337 8700	to	8799
240 593 1879	to	1899	257 154 8763	to	8799	260 761 1603	to	1662	262 337 8800	to	8899
242 591 2048	to	2099	257 154 8800	to	8899	261 183 2100	to	2299	262 337 8900	to	8999
242 735 0388	to	0398	257 765 4567	to	4599	261 426 0408	to	0499	262 337 9000	to	9099
242 951 7276	to	7299	257 765 4610	to	4696	262 082 8000	to	8099	262 337 9100	to	9199
243 535 6370	to	6399	257 765 4737	to	4799	262 082 8100	to	8199	262 337 9200	to	9299
244 004 9985	to	9999	257 792 7800	to	7889	262 082 8200	to	8299	262 337 9300	to	9399
244 004 9985	to	9999	257 792 7900	to	7999	262 082 8300	to	8399	262 337 9400	to	9499
244 268 9765	to	9799	257 792 8000	to	8099	262 082 8400	to	8499	262 337 9500	to	9599
244 347 4471	to	4499	257 856 9863	to	9899	262 288 7302	to	7399	262 337 9600	to	9699
249 056 1551	to	1599	258 103 1773	to	1782	262 288 7400	to	7499	262 337 9700	to	9799
249 336 9438	to	9499	258 405 1800	to	1899	262 288 9900	to	9999	262 337 9800	to	9899
249 399 4000	to	4099	258 405 1900	to	1999	262 337 2600	to	2699	262 337 9900	to	9999
249 399 4100	to	4199	258 405 3300	to	3399	262 337 2700	to	2700	262 472 3188	to	3199
249 399 4200	to	4299	258 405 3400	to	3499	262 337 2800	to	2800	262 472 3200	to	3299
249 399 4300	to	4399	258 405 3500	to	3599	262 337 2900	to	2900	262 546 3100	to	3199
249 399 4400	to	4499	258 405 3700	to	3799	262 337 3000	to	3099	262 546 3200	to	3299
249 399 4500	to	4599	258 405 3800	to	3899	262 337 3100	to	3199	262 546 3300	to	3399
249 399 4600	to	4699	258 405 3900	to	3999	262 337 3200	to	3299	262 546 3400	to	3499
249 399 4700	to	4799	258 405 4000	to	4099	262 337 3300	to	3399	262 546 3500	to	3599
249 399 4800	to	4899	258 405 4100	to	4199	262 337 3400	to	3499	262 546 3600	to	3699
249 399 4900	to	4999	258 405 4200	to	4299	262 337 3500	to	3599	262 546 3900	to	3999
250 159 7502	to	7599	258 405 4600	to	4699	262 337 3600	to	3699	262 546 4300	to	4399
250 566 9644	to	9699	258 405 5600	to	5699	262 337 3700	to	3799	262 546 4400	to	4499
250 661 8425	to	8499	258 405 5700	to	5799	262 337 3800	to	3899	262 546 4500	to	4599
251 335 5731	to	5799	258 405 5800	to	5899	262 337 3900	to	3999	262 546 4600	to	4699
251 379 2380	to	2399	258 405 5900	to	5999	262 337 4000	to	4099	262 546 4700	to	4799
252 005 7626	to	7699	258 405 6000	to	6099	262 337 4100	to	4199	262 546 4800	to	4899
252 421 8401	to	8499	258 405 6100	to	6199	262 337 4200	to	4299	262 546 4900	to	4999
252 464 2810	to	2899	258 405 6200	to	6299	262 337 4300	to	4399	262 546 7100	to	7199
252 612 3683	to	3699	258 405 6300	to	6399	262 337 4400	to	4499	262 546 7200	to	7299

262 546 7300 to 7399	389 846 3145 to 3195	411 922 2322 to 2399	436 160 6441 to 6499
262 546 7400 to 7499	389 887 9211 to 9230	412 193 0900 to 0999	437 316 7115 to 7199
262 546 9800 to 9899	389 887 9234 to 9299	412 395 8599 to 8699	437 427 0500 to 3499
262 546 9900 to 9999	390 001 3182 to 3199	412 485 6500 to 6599	439 179 2300 to 2399
262 567 1788 to 1799	390 001 3500 to 3699	412 485 6610 to 6699	439 310 0458 to 0499
263 254 2500 to 2500	390 545 5974 to 5999	412 885 5953 to 5999	440 698 1947 to 1999
263 340 0000 to 0099	391 104 6146 to 6199	414 193 3608 to 3674	440 858 6300 to 6399
263 340 0100 to 0199	391 574 1466 to 1499	414 193 3677 to 3699	440 858 6420 to 7299
263 340 0500 to 0599	391 783 3020 to 3599	414 411 7348 to 7399	441 199 1655 to 1699
263 340 0600 to 0699	391 792 6100 to 6199	414 640 0757 to 0799	443 127 3648 to 3699
263 340 2700 to 2799	392 668 2956 to 2999	414 965 1727 to 1799	443 127 4000 to 4099
263 340 2800 to 2899	392 854 8500 to 8899	417 302 8104 to 8199	443 673 7900 to 7999
263 340 3000 to 3099	393 584 7566 to 7699	417 387 6532 to 6599	443 800 9335 to 9399
264 341 2360 to 2399	393 650 0074 to 0099	417 496 6800 to 6999	444 382 8822 to 8899
264 380 4000 to 4099	393 838 8316 to 8499	417 871 9250 to 9299	444 390 1667 to 1699
264 380 4100 to 4199	393 893 6007 to 6099	417 930 9533 to 9599	444 457 3854 to 3899
264 799 6049 to 6099	394 126 6907 to 6999	418 164 6500 to 6799	450 048 4173 to 4199
264 860 7832 to 7868	394 189 0405 to 0599	418 423 9863 to 9899	450 048 4442 to 4699
265 127 3658 to 3699	394 822 3243 to 3278	418 633 5922 to 5999	450 560 5173 to 5199
265 380 7111 to 7137	394 990 1810 to 1899	418 719 8520 to 8599	450 620 3077 to 3099
265 444 4762 to 4799	395 343 3264 to 3299	418 744 2235 to 2299	450 620 3135 to 3199
265 548 7074 to 7099	395 373 3035 to 3099	418 962 2848 to 2899	450 780 2716 to 2799
266 106 0000 to 2499	395 396 9649 to 9799	419 543 0286 to 0299	450 801 2700 to 2799
266 129 5809 to 5899	395 970 3240 to 3299	419 730 0300 to 0399	451 109 2967 to 2984
266 673 0000 to 2499	397 622 4054 to 4099	420 277 0015 to 0049	451 115 4110 to 4125
266 749 7900 to 7999	397 819 8902 to 8999	420 599 0734 to 0798	451 115 4127 to 4199
266 868 0952 to 0999	398 149 7200 to 7699	420 661 4115 to 4199	451 746 0700 to 0799
266 868 1028 to 1099	399 070 0872 to 0899	420 758 9500 to 9699	452 265 0074 to 0099
266 868 1100 to 1199	399 156 7119 to 7199	420 969 3951 to 3971	452 265 0246 to 0299
266 868 1200 to 1299	399 203 5064 to 5099	420 969 3973 to 3999	452 265 0335 to 0999
267 296 1237 to 1299	399 296 9910 to 9999	421 116 3565 to 3599	452 509 1169 to 1199
267 324 8946 to 8998	399 396 8935 to 8999	421 130 9300 to 9399	452 855 6471 to 6499
268 072 1203 to 1299	399 792 7775 to 7799	421 313 4500 to 4999	452 890 4679 to 4799
271 660 4333 to 4400	399 792 8300 to 8399	421 364 5537 to 5599	452 900 8215 to 8238
273 520 6000 to 8999	400 427 1051 to 1999	421 656 2609 to 2699	453 117 9146 to 9199
273 775 7700 to 7899	401 045 1505 to 1549	421 988 9700 to 9799	453 334 3631 to 3699
274 750 0300 to 0400	401 045 1571 to 1599	422 172 4667 to 4699	453 603 7841 to 7891
274 782 0549 to 0599	401 294 2700 to 2799	422 484 4212 to 4299	453 650 1140 to 1199
302 000 0000 to 9999	401 310 9505 to 9599	422 556 1270 to 1299	453 741 1300 to 1399
349 746 2056 to 2099	401 382 5312 to 5399	422 587 7024 to 7099	454 013 2919 to 2999
350 518 7350 to 7374	402 578 7876 to 7899	422 819 7533 to 7599	454 186 2411 to 2499
360 011 1690 to 1699	403 125 6744 to 6799	422 842 5073 to 5087	454 268 4883 to 4899
360 168 6008 to 6099	403 260 7000 to 7499	422 907 7563 to 7599	454 302 5400 to 5499
360 173 8800 to 8899	403 280 6470 to 6499	424 500 6050 to 6099	454 490 8300 to 8399
360 324 2326 to 2399	403 685 8600 to 8699	424 641 8500 to 8599	454 547 7434 to 7499
362 861 3064 to 3099	404 003 0300 to 0399	424 871 6600 to 6699	454 922 4867 to 4895
373 006 2176 to 2199	404 041 8838 to 8899	425 298 2352 to 2399	455 221 1348 to 1499
374 768 2600 to 2699	404 071 4268 to 4299	425 418 4269 to 4299	455 364 2147 to 2199
375 169 4400 to 4599	404 347 5356 to 5399	425 418 4405 to 4499	455 399 5400 to 5499
375 829 3400 to 3499	404 347 5548 to 5599	426 547 4566 to 4599	455 476 0676 to 0699
375 851 9100 to 9199	404 726 4500 to 4599	427 412 6337 to 6499	455 543 0618 to 0699
376 196 0911 to 0999	404 961 5001 to 5199	427 481 0900 to 0999	456 410 9006 to 9099
378 085 3679 to 3699	405 325 0188 to 0198	428 027 2742 to 2752	456 470 4146 to 4299
378 351 1063 to 1099	406 009 4587 to 4599	429 474 4172 to 4199	456 619 4460 to 4499
379 843 5100 to 5199	406 260 6830 to 6899	429 889 2900 to 2999	457 333 2686 to 2699
380 093 9600 to 9699	406 459 6641 to 6999	430 150 4401 to 4599	457 729 1767 to 1777
380 165 1165 to 1199	406 733 3000 to 3999	430 172 9800 to 9899	457 937 8615 to 8699
381 325 4500 to 4599	407 545 1557 to 1599	430 177 1900 to 2099	458 028 9810 to 9899
381 604 2510 to 2699	407 594 0412 to 0599	430 444 9500 to 9699	458 057 2712 to 2999
381 645 9525 to 9599	407 692 9100 to 9299	430 664 4070 to 4099	458 069 9537 to 9599
383 314 3968 to 3999	407 959 2190 to 2199	432 168 8419 to 8499	458 069 9665 to 9699
383 892 1000 to 1344	408 265 2275 to 2288	432 708 6800 to 6999	458 337 5222 to 5299
383 892 1382 to 1399	408 499 7700 to 7799	432 744 1544 to 1599	458 354 7653 to 7999
384 925 3641 to 3654	408 499 7900 to 7999	432 995 9775 to 9799	458 671 8678 to 8699
385 568 2331 to 2399	408 682 8484 to 8599	433 003 5800 to 5899	458 671 8721 to 8798
385 599 7554 to 7575	408 698 7015 to 7099	433 757 3047 to 3099	458 847 5044 to 5999
385 774 2024 to 2099	409 072 3941 to 3999	433 765 4003 to 4099	459 274 7624 to 7699
386 624 1412 to 1599	410 491 2311 to 2399	434 482 7060 to 7199	459 365 5432 to 5499
386 883 8936 to 8999	410 694 8400 to 8599	434 513 2386 to 2399	459 378 5764 to 5799
387 314 5574 to 5599	410 775 1500 to 1599	434 968 3076 to 3092	459 472 4816 to 4999
387 837 6300 to 6399	410 795 7927 to 7999	435 303 1831 to 1842	460 349 6878 to 6899
388 828 0656 to 0699	410 867 0917 to 0966	435 303 1986 to 1999	460 550 1909 to 1999
389 696 2400 to 2799	410 867 0970 to 0999	435 666 6092 to 6399	460 997 5234 to 5299
389 846 3104 to 3135	411 868 1023 to 1199	436 082 6400 to 6899	461 973 6443 to 6499

462 152 0107	to	0299	481 673 0074	to	0095	504 045 4030	to	4099	609 438 4400	to	4499
462 274 1072	to	1099	482 527 1500	to	1599	504 166 0200	to	0599	609 493 1100	to	1199
462 277 8373	to	8399	482 541 5255	to	5299	504 240 1062	to	1399	609 766 8091	to	8999
462 554 6051	to	6099	482 729 6800	to	6899	504 805 3300	to	3499	609 825 4100	to	4115
463 011 5529	to	5540	483 363 7207	to	7299	505 096 0662	to	0699	609 884 2981	to	2999
463 176 4115	to	4199	483 402 2356	to	2399	505 893 7739	to	7799	609 893 1000	to	1099
463 176 4229	to	4299	483 486 5100	to	5199	505 893 7800	to	7999	610 092 3200 to 3299		
463 185 2600	to	2799	483 632 1521	to	1599	506 124 0800	to	0999	610 582 4200	to	4299
463 227 7711	to	7799	483 632 2600	to	2799	506 165 7027	to	0099	611 879 6939	to	6999
463 414 4869	to	4899	483 849 1615	to	1699	506 502 5209	to	5299	612 291 8013	to	8099
463 808 3484	to	3499	484 174 4803	to	5299	506 756 1682	to	1699	612 751 5171	to	5199
463 945 7400	to	7899	484 323 8900	to	9199	506 756 1700	to	1799	612 751 5226	to	5299
464 629 9000	to	9399	484 680 5000	to	5038	506 756 1800	to	1899	612 751 6083	to	6099
464 711 4332	to	4399	484 680 5040	to	5074	506 836 5326	to	5399	612 751 6268	to	6299
465 692 3963	to	3999	484 680 5077	to	5099	508 488 6226	to	6299	612 751 6572	to	6599
465 698 8300	to	8599	485 029 4913	to	4999	508 789 8332	to	8399	612 774 2111	to	2199
465 743 7745	to	7799	486 176 0600	to	0699	508 789 8400	to	8499	612 774 2254	to	2299
466 798 6056	to	6067	486 559 7555	to	7599	509 909 0425	to	0435	612 774 2500	to	2599
467 147 4300	to	4399	486 696 3023	to	3199	510 150 2400 to 2499			614 469 0979	to	0999
468 079 5782	to	5799	488 173 7900	to	7999	510 381 3200	to	3299	614 474 3000	to	3099
469 067 2817	to	2899	488 206 4100	to	4199	510 587 9500	to	9599	614 521 3490	to	3499
469 127 8000	to	8199	488 226 0200	to	0299	510 587 9659	to	9699	614 645 1800	to	1899
469 213 0359	to	0399	488 709 3906	to	3999	510 269 9770	to	9999	614 832 1100	to	2099
469 213 0500	to	0599	488 855 8359	to	8399	511 021 5042	to	5099	615 017 7505	to	7599
469 561 8011	to	8099	489 181 8963	to	8999	511 021 5100	to	5199	617 711 6609	to	6699
469 658 1961	to	1999	489 223 2000	to	2099	511 468 1747	to	1799	617 760 5266	to	5299
469 666 9900	to	9999	489 311 1930	to	1999	511 844 0100	to	0199	617 813 3601	to	3699
469 678 1900	to	1999	489 318 6200	to	6300	511 844 0340	to	0399	618 840 9200	to	9299
469 781 4900	to	4999	489 384 0027	to	0099	512 805 3913	to	3919	619 551 7229	to	7299
469 947 6960	to	6999	489 427 0658	to	0899	513 046 0700	to	0726	619 859 3000	to	3099
470 755 5800 to 5818			489 997 5252	to	5299	513 149 0600	to	0699	620 073 9400 to 9499		
471 918 0300	to	0999	490 669 5850 to 6099			513 445 3000	to	3199	621 614 7907	to	7930
471 985 2408	to	2419	490 717 7080	to	7099	513 466 2034	to	2044	621 614 7932	to	7999
472 191 6700	to	6799	490 721 6000	to	6099	513 539 9052	to	9099	621 648 8021	to	8199
472 270 2555	to	2599	490 793 1500	to	2099	513 539 9267	to	9299	621 648 8500	to	8599
472 987 0213	to	0241	490 886 8171	to	8199	513 539 9800	to	9899	621 904 8351	to	8599
472 987 0290	to	0299	490 977 9221	to	9240	513 539 9985	to	9999	621 916 1978	to	1989
473 151 2069	to	2199	491 258 8100	to	9099	513 606 5459	to	5490	622 989 8032	to	8099
473 666 9138	to	9199	491 567 1376	to	1399	513 812 1751	to	1799	623 076 9300	to	9399
473 952 3429	to	3499	492 254 4800	to	4899	514 103 3600	to	3699	623 819 5006	to	5099
474 108 5402	to	5499	492 283 5100	to	5199	514 103 3700	to	3799	623 895 8200	to	8399
474 356 5193	to	5299	492 610 6813	to	6899	514 103 3800	to	3899	623 917 0000	to	0099
474 949 3366	to	3399	493 394 5568	to	5599	600 645 3223 to 3299			623 917 0200	to	0299
475 134 9362	to	9399	493 470 2562	to	2599	601 339 1200	to	1399	624 468 5288	to	5299
475 167 9667	to	9699	493 473 7700	to	7799	601 653 5884	to	5899	624 665 3162	to	3198
475 319 3415	to	3499	493 716 2153	to	2199	601 661 7700	to	7799	625 088 6735	to	6799
475 319 3649	to	3799	494 206 2972	to	2999	601 682 5343	to	5399	625 916 9500	to	9799
475 340 6400	to	6599	494 217 3446	to	3999	601 928 1600	to	1699	625 968 8956	to	8999
475 424 8410	to	8499	494 224 0500	to	0599	602 512 2972	to	2999	627 005 3938	to	3999
475 629 9156	to	9199	495 145 0600	to	0699	602 555 2400	to	2799	627 384 3907	to	4099
475 850 6101	to	6199	496 209 7425	to	7499	602 829 7061	to	7099	627 496 7549	to	7599
475 875 2500	to	2599	496 213 8728	to	8799	603 483 9572	to	9599	627 708 3605	to	3699
476 169 8264	to	8299	496 474 5226	to	5248	603 490 7200	to	7299	627 776 2500	to	2599
476 189 3000	to	3499	497 053 8517	to	8699	603 678 7100	to	7199	628 226 3100	to	3199
476 331 2480	to	2499	497 854 8673	to	8699	603 678 7662	to	7699	628 814 4702	to	4799
477 289 8601	to	8699	498 449 8888	to	8899	603 678 7902	to	7999	628 851 9689	to	9699
477 681 5206	to	5299	498 929 8285	to	8499	603 678 8418	to	8499	629 510 7200	to	7299
478 010 4243	to	4268	498 936 5310	to	5399	603 678 8700	to	9999	629 964 4200	to	4294
478 010 4270	to	4291	499 016 5425	to	5499	604 086 0880	to	0899	630 389 3056 to 3071		
478 450 5071	to	5099	499 440 8575	to	8899	604 349 1414	to	1499	630 463 0588	to	0599
478 469 7838	to	7858	499 731 6717	to	6799	604 503 7776	to	7799	631 459 9117	to	9199
478 469 7883	to	7899	500 064 1858 to 1869			605 520 9037	to	9099	631 762 9325	to	9399
479 280 9800	to	9899	500 070 5725	to	7799	605 685 4010	to	4099	632 217 4933	to	4999
479 365 9116	to	9176	501 058 0016	to	0026	605 988 6467	to	6499	632 500 0000	to	640 3999
479 412 9900	to	9999	501 331 0300	to	0399	607 689 7951	to	7960	633 110 4165	to	4199
479 667 6190	to	6199	501 460 0977	to	0999	607 728 1276	to	1299	633 110 4303	to	4499
479 748 9680	to	9699	502 227 7645	to	7699	608 727 7100	to	7199	633 438 6429	to	6599
479 860 7000	to	7199	502 424 0200	to	0499	608 727 7273	to	7599	633 588 7173	to	7182
480 526 2000 to 2099			502 424 0600	to	0699	608 813 9950	to	9999	634 725 0700	to	0799
480 640 6330	to	6399	502 496 6923	to	6999	609 067 5325	to	5399	634 803 3239	to	3299
480 658 0568	to	0599	503 003 2700	to	2899	609 067 5488	to	5499	634 807 2474	to	2499
480 689 5100	to	5199	503 194 5144	to	5153	609 067 5600	to	5699	634 827 5900	to	5999
481 072 9463	to	9499	503 790 9922	to	9948	609 289 6123	to	6199	634 886 3428	to	3499

635 559 3449	to 3499	650 739 1540	to 1699	682 965 1178	to 1199	701 736 3966	to 3999
636 289 6214	to 6299	651 741 4415	to 4499	682 965 1201	to 1299	701 772 0870	to 0899
636 634 8007	to 8042	651 882 2800	to 2899	683 118 2389	to 2399	701 838 2800	to 2899
637 150 1200	to 1299	652 754 6317	to 6399	683 378 2000	to 2099	701 941 0600	to 0699
637 562 5828	to 5899	653 131 4945	to 4999	683 378 2117	to 2299	702 171 1603	to 1699
638 042 1647	to 1699	653 426 3300	to 3399	683 415 1200	to 1499	702 195 5109	to 5199
638 049 4984	to 4999	653 455 4874	to 4899	683 444 8159	to 8199	702 254 9300	to 9399
638 318 1115	to 1199	654 238 0000	to 0399	685 154 7780	to 7789	702 264 7569	to 7599
638 318 1453	to 1499	654 404 3065	to 3092	685 297 7645	to 7699	702 519 0513	to 0524
638 885 0000	to 0299	654 962 2900	to 3199	685 623 5264	to 5299	702 713 1800	to 1809
638 903 4362	to 4373	655 103 5081	to 5199	685 650 9487	to 9499	702 821 5730	to 5799
639 415 1929	to 1999	655 523 2600	to 2999	685 669 4200	to 4299	702 821 5805	to 5899
639 415 2019	to 2099	656 305 2448	to 2499	685 757 8452	to 8499	702 844 6975	to 6994
639 420 6200	to 6299	657 347 4438	to 4999	686 071 2694	to 2799	702 846 6331	to 6399
639 469 3517	to 3799	657 710 8100	to 8999	686 176 3333	to 3354	702 848 3900	to 3999
639 605 2143	to 2199	657 780 0985	to 0999	686 372 3200	to 3299	702 857 7302	to 7499
639 657 8600	to 8799	658 586 1400	to 1499	686 644 5879	to 5899	702 878 0114	to 0199
640 289 7500 to 7599		658 877 8000	to 8199	686 899 1371	to 1399	703 364 1707	to 1799
640 289 7700	to 7999	658 880 8000	to 8199	686 931 7636	to 7699	740 002 7710 to 7719	
641 170 4420	to 4499	659 398 7300	to 7399	687 601 0973	to 0999	740 037 6730	to 6800
641 318 3133	to 3199	659 706 8113	to 8199	687 614 6774	to 6799	740 119 2275	to 2284
641 378 6500	to 6999	659 846 7837	to 7899	688 120 9000	to 9999	740 130 6688	to 6698
641 383 8739	to 8799	660 510 4100 to 4199		688 314 3107	to 3191	740 144 2780	to 2795
641 877 3187	to 3299	660 673 0400	to 0599	690 291 1361 to 1371		740 241 9049	to 9099
641 877 3310	to 3399	661 488 5000	to 5099	690 788 2877	to 2899	740 252 9265	to 9294
642 355 8094	to 8199	661 609 9100	to 9199	690 893 5344	to 5399	740 255 1718	to 1799
642 355 8308	to 8999	661 716 9420	to 9499	690 893 5512	to 5599	740 274 2602	to 2619
642 900 0018	to 0099	661 906 6522	to 6599	690 904 1300	to 1599	740 277 0366	to 0392
643 030 6254	to 6299	662 021 8332	to 8399	690 941 6000	to 6199	740 332 7658	to 7671
644 066 0882	to 0899	662 068 0700	to 0899	691 313 6383	to 6399	740 348 6641	to 6658
644 069 0600	to 0699	662 553 0774	to 0799	691 313 6600	to 6699	740 351 4790	to 4799
644 077 7506	to 7699	663 078 7034	to 7099	691 582 8003	to 8099	740 374 7416	to 7499
644 085 8157	to 8199	663 763 5300	to 5399	691 664 1800	to 1999	740 470 2420	to 2443
644 112 9839	to 9899	663 883 7039	to 7499	691 664 2400	to 2499	740 514 0300	to 0499
644 373 9083	to 9099	663 938 9200	to 9299	692 727 9362	to 9399	740 523 7432	to 7449
644 380 1460	to 1499	664 253 8000	to 8499	692 798 1800	to 1899	740 535 1555	to 1580
644 733 4715	to 4799	664 656 3055	to 3099	693 249 0779	to 0799	740 557 3570	to 3579
644 900 9712	to 9799	665 174 6400	to 6499	693 249 0877	to 1699	740 650 4104	to 4140
644 901 0109	to 1299	665 274 8208	to 8299	693 445 0566	to 0999	740 684 0620	to 0800
644 901 1325	to 1399	665 669 5400	to 5499	693 448 8500	to 8999	740 701 6105	to 6114
644 923 6800	to 7799	666 132 8226	to 8299	693 645 9583	to 9599	740 705 9790	to 9799
644 932 4655	to 4699	666 696 2209	to 2299	693 965 4200	to 4299	740 726 6400	to 6500
645 318 7240	to 7499	666 696 2309	to 2399	695 741 2906	to 2999	740 748 8319	to 8329
645 333 1766	to 1799	667 032 9300	to 9399	695 947 8518	to 8599	740 765 3306	to 3399
645 790 8632	to 8699	667 729 5529	to 5599	696 662 8247	to 8299	740 774 8434	to 8499
645 821 0657	to 0699	668 383 8400	to 8699	697 447 8285	to 8296	740 779 4259	to 4299
645 930 7948	to 7999	670 368 3400 to 3499		698 042 4816	to 4899	740 786 1885	to 1899
645 975 0737	to 0762	670 369 7336	to 7399	698 131 2138	to 2157	740 790 5989	to 5999
646 242 6200	to 6299	670 750 7169	to 7199	698 227 0000	to 0099	740 803 4870	to 4879
646 270 7639	to 7799	671 046 6200	to 6399	700 065 2570 to 2599		740 820 4854	to 7836
646 798 4000	to 4999	671 251 5448	to 5499	700 065 4800	to 4899	740 827 7578	to 7594
647 048 7035	to 7099	671 926 5600	to 5799	700 190 3350	to 3359	740 917 7490	to 7499
647 049 2900	to 2999	672 444 2000	to 2999	700 228 6048	to 6099	740 918 5531	to 5549
647 398 8300	to 8399	672 828 3410	to 3499	700 650 0452	to 0499	741 037 8528	to 8551
647 398 8481	to 8499	673 167 5776	to 5799	700 666 1323	to 1349	742 030 6135	to 6149
647 437 3000	to 4999	675 464 3700	to 3799	700 786 9106	to 9142	742 033 2663	to 2674
647 811 2188	to 2199	675 464 4000	to 4199	700 859 0744	to 0758	742 040 3300	to 3309
648 009 6057	to 6099	676 365 5958	to 5999	701 028 6780	to 6899	742 112 8155	to 8199
648 163 5300	to 5499	676 669 1024	to 1099	701 213 3900	to 3999	742 151 5000	to 5014
648 722 5283	to 5299	677 126 6734	to 6799	701 267 2000	to 3999	742 191 4640	to 4649
648 892 3164	to 3199	677 333 9979	to 9999	701 335 7312	to 7399	742 192 5210	to 5224
649 100 3989	to 3999	677 466 1088	to 1099	701 369 2005	to 2050	742 222 9200	to 9210
649 647 0370	to 0399	678 071 4500	to 4799	701 499 2260	to 2299	742 228 9660	to 9669
649 647 0522	to 0599	678 096 7531	to 7599	701 503 2247	to 2299	742 247 6980	to 6989
649 647 5237	to 5399	679 909 2578	to 2599	701 541 2271	to 2299	742 290 0936	to 0950
649 647 9100	to 9299	680 112 9565 to 9599		701 553 6557	to 6599	742 302 7600	to 7699
649 666 7800	to 8299	680 244 0903	to 0999	701 578 7460	to 7469	742 305 3711	to 3799
650 114 7707 to 7719		680 412 6046	to 6099	701 578 7475	to 7499	742 305 3800	to 3899
650 130 3400	to 3599	680 761 6800	to 6899	701 601 3457	to 3499	742 305 3900	to 3999
650 213 0406	to 0499	681 677 0540	to 0699	701 605 5913	to 5999	742 305 4000	to 4099
650 555 1749	to 1799	682 070 1029	to 1099	701 695 3982	to 3999	742 305 4100	to 4199
650 564 1900	to 1999	682 956 6280	to 6299	701 695 4148	to 4199	805 885 8411 to 8499	
650 627 4212	to 4299	682 956 6490	to 6599	701 695 4227	to 4299	806 087 1100	to 1499
650 736 2043	to 2099	682 956 6700	to 6799	701 708 1741	to 1799	806 268 9275	to 9299

Missing, Lost, or Stolen Canadian Money Order Forms

Do Not Cash — Upon Receipt, Notify Local Postal Inspectors

Provide this listing to all Postal Service™ employees responsible for accepting and cashing postal money orders. Destroy all interim notices when the numbers listed appear in the *Postal Bulletin*. The new money order serial

numbers consist of the first 9 digits. The tenth digit is a check digit only.

Do not cash outdated money orders **104 151 601 to 692 600 000**. Advise holders to send invalid money orders to Canada Post Corporation, Ottawa, Canada K1A 0B1. Check for altered dollar amounts by holding money orders to the light.

719 869 731	to	9 760	728 702 338	to	2 400	734 950 111	to	0 170	742 325 668	to	5 700
720 227 871	to	7 930	728 915 371	to	5 850	735 120 331	to	0 840	742 408 771	to	8 830
720 227 949	to	7 960	728 953 141	to	3 410	735 283 008	to	3 020	742 512 120	to	2 150
720 368 543	to	8 570	728 954 280	to	4 310	735 293 131	to	3 220	742 684 849	to	4 890
720 392 151	to	2 570	729 169 081	to	9 140	735 635 010	to	5 040	742 839 553	to	9 630
720 556 491	to	6 640	729 363 841	to	3 870	735 783 961	to	3 990	742 913 668	to	3 700
720 558 621	to	8 650	729 682 891	to	3 190	735 803 401	to	3 430	742 917 287	to	7 296
720 575 361	to	5 570	729 838 940	to	9 070	736 005 420	to	5 440	742 921 891	to	1 980
720 590 152	to	0 179	729 839 101	to	9 130	736 366 021	to	6 110	742 983 631	to	3 810
721 638 331	to	9 170	730 077 683	to	7 840	736 624 456	to	4 500	743 020 021	to	0 170
721 815 391	to	5 420	730 109 847	to	9 880	736 670 851	to	1 060	743 206 491	to	6 500
721 969 713	to	9 740	730 373 761	to	3 850	736 767 061	to	7 090	743 235 992	to	6 050
722 072 137	to	2 160	730 501 951	to	2 130	736 767 093	to	7 120	743 940 631	to	0 900
722 378 265	to	8 280	730 519 379	to	9 470	736 982 191	to	2 370	743 978 011	to	8 070
722 413 990	to	4 004	730 569 278	to	9 360	736 982 551	to	2 730	744 234 751	to	4 780
722 764 948	to	4 980	730 711 711	to	1 740	737 110 141	to	0 170	744 499 591	to	9 680
722 825 840	to	5 889	730 722 991	to	3 230	737 185 501	to	5 710	744 626 901	to	6 910
723 153 841	to	3 850	730 845 970	to	5 990	737 317 321	to	7 350	745 388 794	to	8 910
723 237 616	to	7 630	730 888 291	to	8 320	737 517 781	to	7 840	746 446 806	to	6 820
723 331 081	to	1 110	730 927 591	to	7 680	737 628 181	to	8 210	746 818 351	to	8 410
723 496 443	to	6 470	731 307 914	to	7 930	737 634 258	to	4 270	747 245 266	to	5 280
723 967 291	to	7 320	731 402 431	to	2 460	738 361 971	to	1 980	747 364 813	to	4 830
724 655 196	to	5 340	731 407 232	to	7 320	738 447 601	to	7 660	747 501 434	to	1 450
724 711 441	to	1 500	731 588 301	to	8 340	738 648 355	to	8 450	747 739 891	to	0 070
724 711 538	to	1 560	731 767 273	to	7 320	738 849 811	to	9 900	748 148 649	to	8 760
724 793 221	to	3 250	731 781 061	to	1 120	738 892 270	to	2 290	748 259 960	to	9 970
724 908 109	to	8 120	731 837 821	to	7 910	738 997 259	to	7 380	748 565 162	to	5 280
724 937 461	to	7 670	731 841 377	to	1 450	739 161 451	to	1 540	748 874 988	to	5 030
725 163 118	to	3 151	732 018 481	to	8 600	739 219 381	to	9 440	749 137 381	to	7 410
725 202 735	to	2 750	732 067 972	to	8 370	739 740 151	to	0 180	749 190 192	to	0 210
725 398 591	to	8 800	732 188 649	to	8 670	739 793 491	to	3 520	749 685 421	to	5 450
725 464 591	to	4 920	732 193 460	to	3 470	739 793 527	to	3 550	749 846 791	to	6 850
725 475 321	to	5 330	732 201 241	to	1 390	739 942 621	to	2 650	749 993 131	to	3 580
725 711 057	to	1 070	732 220 431	to	0 440	739 999 231	to	9 320	750 071 587	to	1 610
725 738 581	to	8 730	732 355 201	to	5 380	740 011 517	to	1 530	750 408 167	to	8 183
725 981 311	to	1 430	732 472 320	to	2 560	740 030 701	to	0 970	750 438 421	to	8 501
725 987 835	to	7 880	732 541 605	to	1 620	740 261 740	to	1 820	750 743 911	to	4 030
726 060 811	to	0 900	732 572 221	to	2 490	740 265 811	to	6 290	750 779 118	to	9 400
726 391 970	to	2 520	732 586 479	to	6 710	740 299 111	to	9 170	750 910 981	to	1 010
726 484 771	to	4 800	732 994 037	to	4 080	740 299 231	to	9 260	750 960 841	to	0 900
726 493 351	to	5 300	733 163 449	to	3 460	740 329 266	to	9 320	751 296 211	to	6 240
726 504 031	to	4 063	733 297 171	to	7 290	740 889 081	to	9 090	751 539 121	to	9 180
726 504 070	to	4 090	733 446 631	to	7 110	741 010 421	to	0 530	751 541 311	to	1 790
726 504 331	to	4 390	733 474 665	to	4 770	741 113 041	to	3 370	751 757 641	to	7 700
726 563 701	to	4 060	733 704 482	to	4 570	741 373 891	to	4 340	751 936 951	to	7 010
726 599 371	to	9 460	733 751 041	to	1 130	741 452 369	to	2 490	751 951 861	to	1 890
726 626 356	to	6 370	734 009 101	to	9 130	741 492 991	to	3 140	751 999 021	to	9 110
727 182 271	to	2 510	734 290 759	to	0 770	741 553 460	to	3 470	752 139 516	to	9 570
727 416 181	to	6 240	734 389 273	to	9 290	741 764 431	to	4 520	752 182 892	to	2 950
727 481 431	to	1 460	734 440 031	to	0 111	741 764 431	to	4 520	752 206 861	to	7 100
727 749 241	to	9 780	734 797 201	to	7 320	742 178 834	to	8 880	752 295 241	to	5 600
728 382 331	to	2 480	734 939 611	to	9 640	742 325 500	to	5 520	752 731 351	to	1 410

752 767 441	to	7 470	762 593 431	to	3 460	773 208 991	to	9 290	800 427 530	to	7 540
753 008 941	to	9 030	763 155 160	to	5 180	773 231 311	to	1 340	800 872 741	to	2 830
753 194 311	to	4 370	763 178 631	to	8 660	773 348 739	to	8 940	801 349 801	to	9 830
753 620 378	to	0 400	763 506 001	to	6 060	773 348 739	to	8 940	801 676 681	to	7 100
754 013 917	to	3 940	763 522 141	to	2 470	773 575 891	to	5 950	802 967 821	to	7 940
754 161 061	to	1 120	763 717 694	to	7 800	773 852 971	to	3 030	803 217 601	to	7 780
754 358 445	to	8 610	763 826 461	to	6 520	775 373 449	to	3 460	803 729 731	to	9 850
754 410 451	to	0 660	763 900 460	to	0 471	789 257 191	to	7 250	803 747 402	to	7 520
754 438 393	to	8 410	763 900 479	to	0 530	790 448 020	to	8 460	804 138 181	to	8 420
754 493 109	to	3 130	763 917 271	to	7 750	790 597 485	to	7 530	804 428 224	to	8 250
754 664 182	to	4 220	764 125 801	to	5 860	790 911 883	to	1 900	804 682 411	to	2 710
754 816 377	to	6 470	764 284 525	to	4 560	791 057 441	to	7 550	805 272 525	to	2 540
755 487 421	to	7 600	764 526 241	to	6 330	791 239 081	to	9 290	805 523 445	to	3 460
755 592 901	to	3 140	764 601 421	to	1 600	791 374 483	to	4 500	805 745 704	to	5 730
755 790 020	to	0 030	764 650 231	to	0 470	791 387 971	to	8 030	806 452 907	to	2 980
755 791 730	to	1 800	764 984 371	to	4 850	791 447 521	to	7 850	806 744 781	to	4 850
755 926 951	to	7 070	765 003 667	to	3 680	791 451 151	to	1 240	806 982 181	to	2 300
755 934 332	to	4 510	765 042 517	to	2 540	791 500 009	to	0 470	807 764 791	to	4 910
755 957 701	to	8 000	765 194 728	to	4 970	791 771 431	to	1 490	808 089 931	to	9 960
755 962 981	to	3 280	765 387 365	to	7 450	792 004 293	to	4 320	808 656 423	to	6 450
756 035 371	to	5 490	765 541 801	to	2 100	792 018 379	to	8 420	808 753 771	to	3 800
756 301 257	to	1 290	765 638 461	to	8 970	792 070 621	to	0 740	809 189 001	to	9 010
756 371 565	to	1 580	765 647 101	to	7 190	792 145 211	to	5 230	809 886 879	to	6 930
756 876 031	to	6 120	765 813 781	to	4 029	792 391 381	to	1 620	809 890 489	to	0 500
756 876 151	to	6 240	765 879 314	to	9 390	792 452 779	to	2 790	810 323 734	to	3 760
756 970 129	to	0 140	765 954 001	to	4 030	792 772 728	to	2 770	810 367 116	to	7 140
757 059 613	to	9 630	766 120 286	to	0 320	792 903 511	to	3 990	810 526 351	to	6 500
757 078 540	to	8 560	766 125 716	to	5 750	793 282 518	to	2 533	810 806 911	to	6 940
757 086 209	to	6 240	766 158 824	to	8 840	794 041 831	to	2 040	810 807 211	to	7 240
757 240 591	to	0 650	766 388 433	to	8 460	794 397 709	to	7 780	811 423 021	to	3 110
757 277 371	to	7 700	766 509 421	to	9 660	794 581 741	to	2 040	811 517 221	to	7 239
757 291 591	to	2 730	766 572 901	to	3 020	794 592 122	to	2 150	811 721 101	to	1 130
757 964 251	to	4 280	766 748 500	to	8 521	795 032 251	to	2 340	812 025 721	to	5 900
758 067 001	to	7 090	767 024 341	to	4 370	795 796 291	to	6 350	812 093 073	to	3 130
758 105 221	to	5 250	767 326 471	to	6 590	796 070 139	to	0 160	812 100 821	to	0 840
758 324 941	to	5 000	767 332 561	to	2 950	796 143 151	to	3 630	812 465 251	to	5 610
758 593 628	to	3 650	768 009 841	to	9 960	796 159 725	to	9 740	812 918 341	to	8 670
758 709 038	to	9 060	768 011 489	to	1 520	796 169 306	to	9 340	812 918 701	to	8 760
758 744 101	to	4 160	768 177 980	to	7 990	796 373 406	to	3 430	813 050 491	to	0 520
758 850 883	to	0 900	768 391 081	to	1 170	796 602 961	to	3 050	813 073 171	to	3 200
758 860 951	to	1 550	768 661 569	to	1 650	796 708 441	to	8 500	813 398 476	to	8 550
759 152 851	to	2 880	769 000 051	to	0 080	796 886 281	to	6 430	813 713 971	to	4 000
759 740 941	to	1 090	769 050 841	to	0 900	796 901 701	to	2 000	813 858 121	to	8 150
760 004 596	to	4 610	769 159 081	to	9 178	796 975 466	to	5 590	814 789 330	to	9 349
760 118 191	to	8 250	769 737 496	to	7 510	797 272 917	to	2 950	814 984 656	to	4 680
760 155 001	to	5 090	769 778 491	to	8 730	797 519 441	to	9 460	815 016 020	to	6 030
760 378 002	to	8 020	769 827 331	to	7 450	797 519 731	to	0 240	815 199 410	to	9 420
760 692 722	to	2 749	770 216 071	to	6 100	797 535 181	to	5 330	815 240 491	to	0 520
761 055 460	to	5 480	770 723 281	to	3 400	797 646 151	to	6 180	815 755 591	to	5 620
761 169 781	to	9 810	770 790 451	to	0 480	798 040 053	to	0 080	815 755 622	to	5 650
761 504 941	to	5 120	770 915 150	to	5 490	798 055 813	to	5 830	815 806 381	to	6 680
761 516 836	to	6 910	771 455 551	to	5 610	798 055 891	to	5 950	816 126 834	to	6 870
761 613 588	to	3 600	771 609 661	to	9 690	798 326 371	to	6 520	816 156 721	to	6 780
761 688 631	to	8 690	771 932 551	to	2 580	798 339 167	to	9 210	816 580 903	to	0 920
761 805 199	to	5 240	772 057 224	to	7 440	798 562 411	to	2 440	816 945 571	to	5 600
761 826 106	to	6 120	772 162 660	to	3 070	798 632 461	to	2 490	817 253 011	to	3 280
761 881 171	to	1 560	772 718 615	to	8 640	798 807 151	to	7 510	817 763 881	to	4 060
761 975 641	to	5 670	772 940 140	to	0 160	798 944 761	to	5 030	818 330 562	to	0 610
761 975 886	to	5 895	772 970 886	to	0 940	799 118 616	to	8 640	818 459 641	to	9 670
762 304 144	to	4 170	773 009 419	to	9 430	799 133 191	to	3 220	818 926 273	to	6 320
762 324 931	to	4 960	773 112 031	to	2 060	799 177 626	to	7 650	818 950 351	to	0 380
762 439 261	to	9 290	773 125 387	to	5 410	799 854 751	to	5 200	818 962 492	to	2 530
762 524 158	to	4 220	773 179 320	to	9 410	800 044 320	to	4 410	819 032 341	to	2 730
762 584 872	to	4 970	773 202 989	to	3 140	800 211 901	to	2 440	819 127 054	to	7 080

819 278 540	to 8 670	822 703 442	to 3 470	826 226 644	to 6 670	828 539 341	to 9 370
819 544 681	to 4 740	822 900 991	to 1 020	826 582 951	to 3 430	828 732 331	to 2 390
819 928 441	to 8 650	822 925 951	to 6 100	826 720 201	to 0 230	828 807 781	to 7 840
820 034 406	to 4 430	823 284 931	to 4 990	827 005 671	to 5 830	828 830 952	to 0 963
820 070 761	to 1 540	823 293 031	to 3 210	827 287 861	to 7 950	828 939 781	to 0 050
820 191 342	to 1 360	823 556 011	to 6 100	827 291 502	to 1 520	829 002 721	to 2 870
820 274 856	to 4 880	824 078 341	to 8 370	827 575 381	to 5 470	829 005 301	to 5 540
820 600 171	to 0 230	824 156 325	to 6 340	827 609 085	to 9 100	829 080 241	to 0 330
821 172 241	to 2 360	824 511 252	to 1 270	827 619 811	to 9 840	829 160 986	to 1 000
821 229 661	to 9 720	824 588 281	to 8 370	827 883 511	to 3 600	829 176 841	to 6 930
821 229 743	to 9 780	825 140 397	to 0 460	828 160 441	to 0 530	829 471 561	to 1 590
821 903 731	to 3 910	825 409 651	to 9 680	828 376 201	to 6 260	829 561 065	to 1 080
821 927 841	to 7 850	825 472 171	to 2 200	828 441 602	to 1 630	829 566 481	to 6 510
822 505 801	to 5 830	826 042 898	to 2 920	828 539 316	to 9 340	829 569 931	to 9 960

— Criminal Investigations Group, U.S. Postal Inspection Service, 7-29-21

Verifying U.S. Postal Service Money Orders

Follow these steps to cash a Postal Service™ money order:

1. Check that the amount does not exceed the legal limit: \$1,000 for domestic, and \$700 for international Postal Service money orders.
2. Check that the proper security features are present:
 - When held to the light, a watermark of Benjamin Franklin is repeated from top to bottom on the left side.
 - When held to the light, a dark line (security thread) runs from top to bottom with the word “USPS” repeated.
 - When there is discoloration around the dollar amounts, this might indicate the amounts were changed.

These appear in Postal Service Notice 299, *U.S. Postal Money Order Reference Card*, or online at usps.com/shop/money-orders.htm.

3. If the money order seems suspicious, call the U.S. Postal Service Money Orderxxer Verification System at 866-459-7822.

Provide this information to local banks and retailers, as they also receive Postal Service money orders for cashing.

— Delivery and Retail Customer Service Operations, 7-29-21

Counterfeit Canadian Money Order Forms

Do Not Cash

To be posted and used by retail window employees. As directed, destroy previous notices. Destroy all interim notices when the numbers listed appear in the *Postal Bulletin*.

671,819,086	683,594,542	687,262,503
676,612,640	684,683,610	687,262,525
677,891,039	686,619,878	687,262,526
678,282,493	686,619,886	687,287,578
678,916,031	686,619,887	687,287,581
679,552,215	686,794,382	687,287,582
679,694,334	686,794,426	694,063,898
679,751,983	686,794,427	694,063,899
679,800,207	686,794,431	694,063,980
681,130,536	687,262,502	701,321,725
681,844,376		

— Criminal Investigations Group, U.S. Postal Inspection Service, 7-29-21

Toll-Free Number Available to Verify Canadian Money Orders

The Canada Post Corporation has a toll-free number that cashing agents can call to verify the validity of Canadian Postal Money Orders. The number is 800-563-0444.

This toll-free number is printed on the back of the Canadian Postal Money Orders.

— Criminal Investigations Group, U.S. Postal Inspection Service, 7-29-21

Other Information

Overseas Military/Diplomatic Mail

Mail addressed to military and diplomatic post offices overseas is subject to certain conditions or restrictions of mailing regarding content, preparation, and handling. The APO/FPO/DPO table outlines these conditions by APO/FPO/DPO ZIP Codes™ through the use of footnoted mailing restrictions codes (see the [Restrictions](#) page following the table).

Acceptance clerks must use the table with the Retail System Software terminal to determine which APO/FPO/DPO ZIP Codes are active and which conditions of mailing apply.

The entries under “Changes” appear in bold in the following APO/FPO/DPO table:

Changes

APO/FPO/DPO	Action	Effective Date	See Restrictions
APO AE 09352	Close	07/15/2021	
APO AE 09354	Close	07/29/2021	
APO AE 09898	Open	07/29/2021	B-C-C1-C2-E2-F-F1-F2-H1-N-R-R1-S-U2-V-Z1

We have eliminated “Not Active” entries from the table below to save space and paper.

APO/FPO/DPO Table

APO/ FPO/ DPO	See Restrictions	APO/ FPO/ DPO	See Restrictions	APO/ FPO/ DPO	See Restrictions	APO/ FPO/ DPO	See Restrictions
09002	A-B-F-F3-H-N-Q-R-S-V-Z-Z1	09046	B-C-D-E-F3-H-M-R-S-U	09125	A-B-C-F-F1-F3-H-N-R-R1-S-V-V1	09177	B-C-D-E-F3-H-M-R-S-U
09003	B-C-D-E-F3-H-M-P-R-S-U	09049	B-C-D-E-F3-H-M-R-S-U	09126	B-C-D-F3-H-M-P-R-S-Z1	09178	B-C1-C2-E2-F1-F3-I3-L-M-N-R-S-T-V-X-Z-Z1
09004	B-C-D-E-F3-H-M-R-S-U	09053	B-C-D-E-F3-H-M-R-S-U	09128	B-C-D-E-F3-H-M-R-S-U	09180	B-C-D-E-F3-H-M-R-S-U
09005	B-C-D-E-F3-H-M-P-R-S-U	09060	B-C-D-E-F1-F3-H-M-N-R-S-U-Z1	09131	B-C-D-E-F3-H-M-R-S-U	09186	B-C-D-E-F3-H-M-P-R-S-U
09006	B-C-D-E-F3-H-M-R-S-U	09067	B-C-D-E-F3-H-M-R-S-U	09135	A-B-F-F3-H-N-R-S-U-V-Z1	09203	A-B-C-C1-C2-F-F1-F3-I3-J-L-M-N-R-R1-T-V-Z-Z1
09008	A-B-F-F3-H-N-Q-R-S-V-Z-Z1	09068	B-C-D-E-F3-H-R-S-U-Z1	09136	B-C-D-E-F1-F3-H-M-P-R-S-U	09204	B-C-F3-M-N-R-S-V-Z1
09009	B-C-D-E-F3-H-M-R-S-U-Z1	09069	A-B-C-D-E-F3-H-N-R-S-U-V	09138	B-C-D-F3-H-M-R-S-U	09211	B-C-D-E-F3-H-M-P-R-S-U
09010	B-C-D-E-F3-H-M-R-S-U2	09079	B-C-D-E-F3-H-M-R-S-U	09140	B-C-D-E-F3-H-M-R-S-U	09213	B-C2-F-F1-F3-H-J-L-M-N-R-R1-T-U-V-Z1
09011	B-C-D-E-F3-H-M-R-S-U	09094	B-C-D-F3-H-M-P-R-S-Z1	09142	B-C-D-E-F3-H-M-R-S-U	09214	B-C-D-E-F3-H-M-R-S-U-Z1
09012	B-C-D-E-F3-H-M-R-S-U-Z1	09095	B-C-D-E-H-M-R-U	09154	B-C-D-E-F3-H-M-R-S-U	09216	B,C,F1,F3,M,N,R,S,V,Z1
09013	B-C-D-E-F-F1-F3-H-M-R-S-U-Z1	09096	B-C-D-E-F3-H-M-R-S-U	09160	B-C-C2-D-F-F1-F3-H-J-L-M-N-R-R1-T-U-V-Z1	09227	B-C-D-E-F3-H-M-R-S-U
09014	B-C-D-E-F3-H-M-P-R-S-U	09103	A-B-F-F3-H-N-Q-R-S-V-Z-Z1	09170	A-B-C2-F-F1-F3-J-L-M-N-R-R1-S-T-V-X-Z1	09240	A-B-C1-F-F3-H-N-R-S-V
09015	A-B-C-C1-C2-F-F1-F3-J-L-M-N-R-R1-S-V-Z1	09104	B-C-D-F3-H-M-R-S-U-Z1	09171	A-B-C1-C2-E3-F-F1-F3-J-L-M-N-R-R1-S-T-V-X-Z1	09241	A-B-F3-N-R-S-U-Z1
09016	B-C-D-E-F1-F3-H-M-R-S-U	09107	B-C-D-E-F3-H-M-R-S-U	09172	B-C-D-E-F3-H-M-R-S-U	09242	A-B-C1-F-F3-H-N-R-S-V
09017	A-B-F-F3-H-N-Q-R-S-V-Z-Z1	09112	B-C-D-E-F3-H-M-R-S-U	09173	B-C-D-E-F3-H-M-R-S-U	09250	B-C-D-E-F3-H-M-R-S-U
09018	A-B-F-F3-H-N-Q-R-S-V-Z-Z1	09113	A-B-F-F3-H-N-Q-R-S-V-Z-Z1	09174	B-C-C2-F-F1-F3-I3-L-N-R-R1-S-T-V-X-Z-Z1	09261	B-C-D-E-F3-H-M-N-R-S-U-V-Z1
09020	B-C-D-E-F3-H-M-R-S-U	09114	B-C-D-E-F3-H-M-R-S-U	09175	A-B-C1-C2-E2-F-F1-F3-H1-J-L-M-N-R-R1-S-T-V-W-X-Z1	09263	B-C-D-E-F3-H-M-R-S-U
09021	B-C-D-E-F3-H-M-R-S-U-Z1	09115	A-B-F-F3-H-N-Q-R-S-V-Z-Z1	09176	A-B-C2-F-F1-F3-J-L-M-N-R-R1-S-T-V-X-Z1	09264	B-C-E-F3-H-M-R-S-U
09034	B-C-D-E-F3-H-M-R-S-U	09116	A-B-F-F3-H-N-Q-R-S-V-Z-Z1			09265	B-C-D-F-F1-H-J-L-M-N-R-S-T-U-V-Z1
09044	B-C-D-F1-F3-H-R-S-U	09123	B-C-D-E-F3-H-M-R-S-U-Z1			09266	A-B-F3-R-S-U-V-Z1
						09276	A-B-F-F3-I3-L-M-N-R-S-T-V-X-Z-Z1

APO/ FPO/ DPO	See Restrictions	APO/ FPO/ DPO	See Restrictions	APO/ FPO/ DPO	See Restrictions	APO/ FPO/ DPO	See Restrictions
09277	A-B-E-E1-F-F3-I3-L-N-R-S-T-V-X-Z1	09333	A-B-C-C1-E2-F-F1-F3-H1-I3-M-N-R-R1-S-V-V1-Z-Z1	09502	B-V	09587	B-C2-E2-E3-F-F1-F3-R-R1-S-V-Z1
09278	A-B-F-F3-I3-L-M-N-R-S-T-V-X-Z1	09343	A-B-C1-F-F3-M-N-R-R1-S-V-Z1	09503	B-F-F1-R-R1-V	09588	B-F-F1-F3-R-R1-S-V
09279	A-B-E-E1-F-F3-I3-L-M-N-R-S-T-V-X-Z1	09348	A-B-C1-E2-F-F1-F3-H1-I3-M-N-R-R1-S-T-V-Z1	09504	B-V	09589	B-F-F1-F3-R-S-V
09283	A-B-E-E1-F-F3-L-M-N-R-S-T-V-X-Z1	09356	A-B-C1-E2-F-F3-H1-M-N-R-V-Z1	09505	B-V	09590	B-V
09285	A-B-C-E-E1-F1-F3-H-I3-L-M-N-R-S-T-V-X-Z1	09357	A-B-C1-E2-F-F3-H1-M-R-V-Z1	09506	B-V	09591	B-C2-E2-E3-F-F1-F3-R-R1-S-V-Z1
09287	B-C2-E1-F1-F3-J-L-N-R-S-T-V-X-Z1	09363	A-B-C1-E2-F-F3-H1-M-R-R1-S-V-Z1	09507	B-V	09592	B-F-F1-F3-R-R1-S-V
09289	B-E2-F1-F3-H1-J-L-M-N-R-R1-S-T-U2-V-X-Z1	09365	A-B-C-C1-E2-F-F3-H1-M-N-R-V-Z1	09508	B-F-F1-R-R1-V	09593	B-F-F1-F3-R-S-V
09290	A-B-F1-F3-J-L-M-N-R-S-T-U2-V-X-Z1	09366	A-B-C-C1-E2-F-F1-F3-H-H1-M-R-R1-S-V-Z1	09509	B-F-F1-R-R1-V	09594	B-C1-E2-F-F1-F3-R-R1-S-V
09291	B-C-C1-C2-E2-F1-F3-H1-L-N-R-R1-S-T-V-X-Z1	09401	B-C-C1-F3-M-R-S-U-Z1	09510	A-B-C1-E2-F-H1-M-R-R1-V-Z1	09595	B-F-F1-F3-I3-J-R-R1-S-V-V1-Z1
09292	A-B-C-C2-E-E2-E3-F1-F3-H-H1-J-L-M-N-R-R1-S-T-V-X-Z1	09403	B-C-C1-F3-M-R-S-U-Z1	09511	B-F-F1-R-R1-V	09596	B-F-F1-R-R1-V
09301	A-B-C1-C2-E2-F-F1-F3-H1-I3-L-M-N-R-R1-S-T-U4-V-Z1	09410	C2-F-F1-F3-N-R-S-U2	09512	B-F-F1-F3-R-R1-S-V	09599	B-F-F1-R-R1-V
09302	A-B-C1-F-F1-F3-H-M-N-R-S-V-Z1	09421	B-C-C1-F3-M-R-S-U-Z1	09513	B-F-F1-F3-R-R1-S-V-V1	09600	B-C-C2-F-F1-F3-R-S-U-Z1
09305	A-B-C1-E2-F-F1-F3-H1-I3-M-N-R-R1-S-T-V-Z1	09447	B-C-C1-F3-M-R-S-U-V-Z1	09514	B-F-F1-F3-R-R1-S-V-V1	09602	B-C-F-F1-N-R-U-V
09306	A-B-C1-E2-F-F1-F3-H1-R-R1-S-U2-V-Z1	09454	B-C-C1-F3-M-R-S-U-V-Z1	09517	B-F-F1-F3-R-R1-S-V	09603	B-C-F-F1-F3-R-S-U-V-Z1
09307	B-C-C2-F-F3-N-R-R1-S-Z1	09456	B-C-C1-F3-M-N-R-S-U-V-Z1	09520	B-F-F1-F3-R-R1-S-V	09604	B-C-F-F1-F3-P-R-S-U-V-Z1
09309	A-B-C-C1-C2-E2-F-F1-F3-H1-M-N-R-R1-S-V-Z1	09459	B-C-C1-F3-M-R-S-U-Z1	09522	B-F-F1-F3-R-S-V	09605	B-C-D-F3-H-M-R-S-U-V
09310	A-B-C1-C2-E2-F-F1-F3-H1-I3-L-M-N-R-R1-S-T-U4-V-Z1	09461	B-C-C1-F3-M-P-R-S-U-Z1	09523	B-F-F1-F3-R-R1-S-V	09606	B-C-D-F3-H-M-R-S-U-V
09311	A-B-C1-C2-E2-F-F1-F3-H1-I3-L-M-N-R-R1-S-T-U4-V-Z1	09463	B-C-C1-F3-M-R-S-U-Z1	09524	B-F-F1-R-R1-V	09608	B-C-F-F3-N-R-S-U-V-Z1
09312	A-B-C1-C2-E2-F-F1-F3-H1-I3-L-M-N-R-R1-S-T-U4-V-Z1	09464	B-C-C1-F3-R-S-U-Z1	09532	B-F-F1-F3-R-R1-S-V	09609	B-C-F-F3-N-R-S-U-Z1
09313	A-B-C-C1-E2-F-F1-F2-F3-H1-R-R1-S-V-Z1	09467	B-E-E1-F-F3-J-L-M-N-R-S-T-V-X-Z1	09533	B-V	09610	B-C-F-F1-F3-M-R-S-U-V-Z1
09315	A-B-C1-E2-F-F3-N-R-R1-S-V-Z1	09468	B-C-C1-F3-M-R-S-U-Z1	09534	B-F-F1-F3-R-R1-S-V	09613	B-C-F-F3-N-R-S-U-V
09316	A-B-C1-E2-F-F1-F3-H1-I3-M-N-R-R1-S-T-V-Z1	09469	B-C-C1-F3-R-S-U-Z1	09541	A-B-C-F-F3-M-N-S-V-Z1	09614	A-B-C1-C2-E2-F-F1-F3-H1-J-L-M-N-R-R1-T-V-W-Z1
09319	A-B-C-C1-C2-E2-F-F1-F2-F3-H1-R-R1-S-U2-V-Z1	09470	B-C-C1-F3-M-R-S-U-Z1	09542	A-B-C-F-F3-M-N-S-V-Z1	09618	B-C-F-F3-R-S-U-V-Z1
09320	A-B-C1-E2-F-F3-H1-M-N-R-R1-S-V-Z1	09487	A-B-C-C1-C2-E2-F1-F3-I3-L-M-N-R-R1-S-T-V-W-X-Z1	09543	A-B-C-F-F3-M-N-S-V-Z1	09620	B-C-F-F3-R-S-U-V-Z1
09321	A-B-C1-C2-E2-F-F3-H1-M-N-R-R1-S-V-Z1	09488	A-B-C-C1-C2-E2-F3-J-L-M-N-S-T-V-W-X-Z1	09544	A-B-C-F-F3-M-N-S-V-Z1	09621	B-C-F-F3-R-U-Z1
09330	A-B-C1-C2-D-E-E2-F-F1-F3-H-H1-M-R-R1-S-V-Z1	09489	A-B-C-C1-C2-E2-F1-F3-L-M-N-R-R1-S-T-V-W-X-Z1	09545	A-B-C-F-F3-M-N-S-V-Z1	09622	B-C-F-F3-R-S-U-V-Z1
		09490	A-B-C1-C2-E2-F-F1-F3-H1-J-L-M-N-R-R1-S-T-V-X-Z1	09550	B-F-F1-R-R1-V	09623	B-C-F-F3-R-S-U-V-Z1
		09491	A-B-C1-C2-E2-F1-F3-H1-J-L-M-N-R-R1-S-T-V-Z1	09554	B-F-F1-R-R1-V	09624	B-C-C2-F-F1-F3-I3-L-N-R-R1-T-U-V-Z1
		09494	B-C-C1-F3-M-R-S-U-Z1	09556	B-F-F1-R-R1-V	09625	B-C-F-F3-N-R-S-U-Z1
		09498	B-C1-C2-F-F1-F3-J-L-N-R-R1-T-V-Z1	09564	B-F-F1-R-R1-V	09627	B-C-F-F3-R-S-U-V-Z1
		09501	B-V	09565	B-F-F1-F3-R-R1-S-V	09630	B-C-F-F3-R-S-U-V
				09566	B-C2-E2-E3-F-F1-F3-R-R1-S-V-Z1	09633	B-C-D-F-F1-F3-M-R-S-U-U1-U2-U3-V-Z1
				09567	B-C2-E2-E3-F-F1-F3-R-R1-V-Z1	09634	A-B-F-F3-M-N-R-S-V
				09568	B-V	09636	B-C-F-F3-R-U-V-Z1
				09569	B-C2-E2-E3-F-F1-F3-R-R1-V-Z1	09642	B-C2-F-F1-F3-J-L-M-N-R-T-U-V
				09570	A-B-F-F1-F3-R-R1-S-V	09643	B-C-F3-M-R-S-U-V-Z1
				09573	B-C2-E2-E3-F-F1-F3-R-R1-S-V-Z1	09645	B-C-F-F1-F3-R-S-U-Z1
				09574	B-F-F1-R-R1-V	09647	B-F1-F3-M-N-R-S-U-Z1
				09575	B-F-F1-R-R1-V	09648	B-F3-N-R-S-U-V-Z1
				09576	B-F-F1-R-R1-V	09649	B-F3-N-R-S-U-Z1
				09577	B-F3-S-V	09701	A-B-C1-C2-F-F1-F3-J-L-M-N-R-R1-T-V-Z1
				09578	B-F-F1-F3-R-R1-S-V-Z1	09702	B-C-C1-F1-F3-M-R-R1-S-U
				09579	B-F-F1-R-R1-V	09704	B-C-V-V1
				09581	B-F-F1-F3-R-R1-S-V	09705	B-C-C1-F1-F3-M-R-R1-S-U
				09582	B-C2-F-F1-F3-R-R1-S-V		
				09583	B-F-F1-F3-I3-J-R-R1-S-V-V1		
				09586	B-C2-F-F1-F3-R-R1-S-V		

APO/ FPO/ DPO	See Restrictions	APO/ FPO/ DPO	See Restrictions	APO/ FPO/ DPO	See Restrictions	APO/ FPO/ DPO	See Restrictions
09706	B-C-F3-M-N-R-S-U-V-Z1	09743	A-B-F-F3-H-N-Q-R-S-V-Z1	09812	B-E2-E3-F-F1-I-J-L-N-R-T-U-V-Z1	09854	A-B-C1-C2-F-F1-F3-J-L-N-R-R1-S-T-V-Z1
09707	B-C2-F-F1-F3-J-L-M-N-R-R1-T-V-Z1	09744	A-B-C1-C2-F-F1-F3-J-L-M-N-R-R1-T-V-Z1	09813	A-B-C1-C2-E2-E3-F-F1-F3-J-L-N-R-R1-T-V-Z1	09855	A-B-C-C1-C2-E2-F-F1-F3-H1-M-R-R1-S-U2-V-Z1
09708	B-C-C1-F1-F3-M-R-R1-S-U	09745	A-B-F-F1-F3-M-N-R-R1-S-V-Z1	09814	B-C2-E2-E3-F-F1-F3-I3-J-L-N-R-R1-T-V-Z1	09856	B-C-C1-C2-F-F1-F3-H1-J-L-M-N-S-T-V-Z1
09709	B-C1-C2-E2-F-F1-F3-H-H1-J-L-N-R-R1-T-V-Z1	09748	A-B-C1-C2-F-F1-F3-J-L-M-N-R-R1-T-V-Z1	09816	A-B-C1-C2-E2-E3-F-F1-F3-J-L-N-R-R1-T-V-Z1	09857	A-B-C2-E2-F-F1-F3-13-L-M-N-R-R1-S-T-V-Z1
09710	B-C-C1-F-F1-J-L-M-N-R-R1-T-U-V-Z1	09749	A-B-F-F3-H-N-R-S-U-V-Z1	09817	A-B-C1-C2-E2-E3-F-F1-F3-H-H1-J-L-M-N-R-R1-T-V-Z1	09858	A-B-C-C1-C2-E2-E3-F1-F3-H-H1-J-M-N-R-R1-S-U-V-Z1
09712	A-B-F-F3-H-R-S-U-V-Z1	09750	A-B-C1-C2-F-F1-F3-J-L-M-N-R-R1-T-V-Z1	09818	A-B-C-F-F3-M-S-V-Z1	09859	B-C-C1-C2-E2-E3-F-F1-F3-H1-R-R1-S-U-Z1
09714	B-C-C1-F1-F3-M-R-R1-S-U	09751	B-C-D-E-F3-H-M-R-S-U	09820	A-B-C2-F-F1-F3-H-H1-J-L-M-N-R-R1-T-V-Z1	09860	A-B-C2-F-F1-F3-J-L-M-N-R-R1-S-T-V-Z1
09715	B-F-F1-J-L-M-N-R-T-V-Z1	09752	B-C-D-F1-F3-H-R-S-U	09821	A-B-C-F-F3-N-R-S-V-Z1	09862	A-B-C-C2-F-F1-F3-I3-L-M-N-R-R1-S-T-V-X-Z1
09716	B-C-C2-F-F1-F3-J-L-M-N-R-R1-T-V-Z1	09753	A-B-F-F3-N-R-S-V-Z1	09822	A-B-C-F-F3-M-R-S-V-Z1	09864	A-B-C-C1-C2-E2-F1-F3-L-M-N-R-R1-S-T-V-W-Z1
09717	A-B-F3-M-R-S-V-W-Z1	09754	A-B-F-F3-H-L-N-Q-R-S-V-Z1	09823	A-B-C1-C2-F-F1-F3-J-L-M-N-R-R1-T-V-Z1	09865	A-B-F3-R-S-U-V-Z1
09718	B-F-F1-J-L-M-N-R-T-U-V-Z1	09755	A-B-C-C1-D-F-F1-F3-J-L-M-N-Q-R-R1-S-T-V-Z1	09824	A-B-C-F-F3-M-R-S-V-Z1	09867	A-B-C-C1-C2-E2-F1-F3-L-M-N-R-R1-S-T-V-W-Z1
09719	B-C-D-F3-M-R-S-U-V-Z1	09758	A-B-F-F1-F3-M-N-R-R1-S-V-Z1	09825	A-B-C1-C2-F-F1-F3-J-L-M-N-R-R1-T-V-Z1	09868	A-B-E1-E2-E3-F1-F3-M-N-R-S-U-V-Z1
09720	B-F3-M-R-S-U-V-Z1	09759	A-B-C-C1-C2-E2-F-F1-F3-J-L-N-R-R1-T-V-Z1	09826	A-B-C1-C2-E1-E2-E3-F-F1-F3-J-L-M-N-R-R1-T-V-W-Z1	09869	A-B-C1-C2-E2-F1-F3-L-M-N-R-R1-S-T-V-W-Z1
09722	A-B-F-F3-H-N-Q-S-V-Z1	09761	B-F-F1-F3-M-R-R1-S-V-Z1	09827	A-B-F-F1-J-L-M-N-R-T-V-Z1	09870	A-B-C1-C2-E2-F-F1-F3-H1-I3-L-M-N-R-R1-S-T-U4-V-Z1
09723	B-C2-F-F1-F3-J-L-M-N-R-R1-T-V-Z1	09762	A-B-C2-E3-F-F1-F3-J-L-N-R-R1-T-V-Z1	09828	A-B-C1-C2-F-F1-F3-I3-L-N-R-R1-T-V-Z1	09873	A-B-C1-C2-E2-F-F1-F3-H1-I3-L-M-N-R-R1-S-T-U-U4-V-Z1
09724	B-C-C1-F1-F3-M-R-R1-S-U	09769	A-B-C-C1-C2-F-F1-F3-J-L-M-N-R-R1-T-V-Z1	09829	B-C-N-R-V-Z1	09874	A-B-C1-C2-E2-F-F1-F3-H1-I3-L-M-N-R-R1-S-T-U-U4-V-Z1
09725	A-B-F-F3-H-N-Q-R-S-V-V1-Z1	09777	A-B-C-C1-C2-E1-F-F1-F3-J-L-M-N-R-R1-T-V-Z1	09830	B-C-F-F1-F3-J-L-M-N-R-R1-S-T-V-Z1	09875	A-B-C1-C2-E2-F-F1-F3-H1-I3-L-M-N-R-R1-S-T-U-U4-V-Z1
09726	B-F-F1-J-L-M-N-R-T-U-V-Z1	09780	A-B-F-F3-H-N-R-S-V	09831	B-C1-C2-F-F1-F3-J-L-N-R-R1-T-V-Z1	09877	A-B-C-C2-E-E2-E3-F1-F3-H-H1-J-M-N-R-R1-S-U-V-Z1
09727	A-B-C1-C2-F-F1-F3-J-L-M-N-R-R1-T-V-Z1	09789	A-B-C2-F-F3-N-R-S-V-Z1	09832	B-C1-E2-F1-F3-N-R-S-V-Z1	09880	A-B-C1-C2-E2-F-F1-F3-H1J-L-N-R-R1-S-T-U-V-Z1
09728	A-B-C-C1-C2-F-F1-F3-J-L-N-R-R1-T-V-Z1	09801	A-B-C1-E2-F-F3-H1-M-N-R-R1-S-V-Z1	09833	B-C1-E2-F1-F3-N-R-S-V-Z1	09890	B-E2-F-H1-N-R-R1-U2-V-Z1
09729	B-C-F-F3-N-R-R1-S-U-V-Z1	09802	A-B-C-C2-D-F-F1-F3-H-H1-I3-L-M-N-R-R1-S-T-V-W-Z1	09834	B-C-C2-E2-E3-F-F1-F3-R-R1-S-U-Z1	09892	A-B-C1-C2-E2-F-F1-F3-J-L-M-N-R-R1-T-V-Z1
09730	A-B-C1-C2-F-F1-F3-J-L-M-N-R-R1-T-V-Z1	09803	A-B-C-C2-E-E2-E3-F1-F3-H-H1-J-M-N-R-R1-S-U-V-Z1	09836	A-B-C1-C2-F-F1-F3-J-L-M-N-R-R1-V-Z1	09895	A-B-C1-C2-E2-F-F1-F3-J-L-M-N-R-T-V-W-Z1
09731	A-B-C1-C2-F-F1-F3-J-L-M-N-R-R1-T-V-Z1	09804	A-B-F-F1-F3-M-N-R-S-V-Z1	09837	B-E2-E3-F1-F3-R-S-V-Z1	09898	B-C-C1-C2-E2-F-F1-F2-H1-N-R-R1-S-U2-V-Z1
09732	B-F-F3-N-S-V-Z1	09805	B-C-C2-E2-E3-F-F1-F3-R-R1-S-Z1	09838	B-C-C2-E2-E3-F-F1-F3-R-S-U-Z1	09902	A-B-C1-E2-F-F3-H1-M-R-R1-S-V-Z1
09733	B-F-F3-N-R-S-V-Z1	09806	A-B-C1-C2-E2-F-F1-F3-H1-J-L-M-N-R-R1-T-V-Z1	09841	A-B-F3-N-R-S-U-Z1	09903	B-C1-E2-F1-F3-S-V-Z1
09734	A-B-C-C1-C2-F-F1-F3-I3-J-L-M-N-R-R1-T-V-Z1	09807	A-B-C1-E2-F-F1-F3-H1-I3-M-N-R-R1-S-T-V-Z1	09842	A-B-C1-C2-F-F1-F3-J-L-N-R-R1-T-V-Z1	09904	B-C1-E2-F1-F3-S-V-Z1
09735	B-F3-N-R-S-V-Z1	09808	A-B-C1-C2-E2-F-F1-F3-H-H1-J-L-N-R-R1-T-V-Z1	09844	A-B-C1-C2-F-F1-F3-J-L-M-N-R-R1-T-V-Z1		
09736	A-B-C1-F-F1-F3-J-L-M-N-R-R1-T-V-Z1	09809	B-C1-C2-E3-F-F1-F3-J-L-N-T-V-Z1	09845	A-B-C1-C2-E3-F-F1-F3-J-L-M-N-R-R1-T-V-Z1		
09737	A-B-C1-C2-F-F1-F3-I3-J-L-M-N-R-R1-T-V-W-Y-Z1	09810	A-B-F-F1-F3-N-R-S-V-Z1	09846	A-B-C1-C2-F-F1-F3-J-L-N-R-R1-T-V-Z1		
09738	A-B-C1-C2-F-F1-F3-J-L-M-N-R-R1-T-V-Z1	09811	A-B-C-C2-E-E2-E3-F1-F3-H-H1-J-M-N-R-R1-S-U-V-Z1	09847	B-C-C2-F-F1-F3-J-L-M-N-R-R1-S-T-V-Z1		
09739	A-B-C1-C2-F-F1-F3-J-L-M-N-R-R1-T-V-Z1			09848	A-B-F-F3-M-R-S-V-Z1		
09741	A-B-C1-C2-E2-F-F1-F3-H1-J-L-M-N-R-R1-T-V-W-Y-Z1			09853	B-C1-E2-F-F1-F3-H1-N-R-R1-S-U2-V-Z1		
09742	A-B-C2-F-F1-F3-J-L-M-N-R-S-T-V-Z1						

APO/ FPO/ DPO	See Restrictions	APO/ FPO/ DPO	See Restrictions	APO/ FPO/ DPO	See Restrictions	APO/ FPO/ DPO	See Restrictions
09908	A-B-F-F1-F3-N-R-R1-S-V-Z1	34055	B-C1-C2-F-F1-F3-J-L-M-N-R-R1-T-V-Z1	96269	A-B-F1-F2-F3-R-S-U-Z1	96386	B-F3-M-S-W
09909	A-B-F-F1-F3-N-R-R1-S-V-V1-Z1	34058	B-F-F1-F3-R-R1-S-V-Z1	96271	A-F-F3-M-P-R-S-U	96387	B-F3-M-R-S-W
09974	B-F1-F3-J-L-M-N-R-S-T-U2-V-X-Z1	34060	B-C1-C2-E2-F-F1-F3-J-L-M-N-R-R1-T-V-Z1	96273	A-B-F-F1-F3-M-R-S-U	96388	B-F3-M-R-S-W
09975	B-F1-F3-I3-L-M-N-R-S-T-U2-V-X-Z1	34066	B-C1-C2-F-F1-F3-I3-J-L-M-N-R-R1-S-T-V-X-Z1	96275	A-B-F-F1-F3-M-R-S-U	96389	B-M-W
09976	B-F1-F3-J-L-M-N-R-S-T-U2-V-X-Z1	34067	B-C1-C2-F-F1-F3-J-L-M-N-R-R1-S-T-V-X-Z1	96276	A-B-C-F1-R	96401	B-C-F-F3-N-R-S-V-V1-Z1
09977	B-F1-F3-J-L-M-N-R-S-T-U2-V-X-Z1	34068	B-C1-C2-F-F1-F3-J-L-M-N-R-R1-S-T-V-X-Z1	96278	A-B-C-F1-F3-R-S-U	96502	A-C1-F-F1-F3-M-N-Q-R-R1-S-T-U2-V
34001	A-B-C1-C2-F-F1-F3-J-L-M-N-R-R1-S-T-V-Z1	34069	B-C1-C2-F-F1-F3-I3-J-L-M-N-R-R1-S-T-V-X-Z1	96283	A-B-F-F1-F3-S-U	96504	A-B-C-C1-C2-F-F1-F3-I3-L-M-N-R-R1-T-V-W-Z1
34002	B-C1-C2-F-F1-F3-J-L-M-N-R-R1-T-V-Z1	34078	B-F1-F3-N-R-S-V-Z1	96284	A-B-F-F1-F3-R-S-U	96505	A-B-C-C1-C2-F-F1-F3-I3-L-M-N-R-R1-S-T-V-W-Z1
34004	B-C1-C2-F-F1-F3-J-L-M-N-R-R1-T-V-Z1	34080	B-F-F1-R-R1-V	96297	A-B-F-F1-F3-R-S-U	96507	A-B-C1-C2-F-F1-H-J-L-M-N-T-V-Z1
34007	B-F-F1-H-J-M-N-R-R1-V-Z1	34081	B-F-F1-R-R1-V	96300	A-B-F3-M-R-S-V-Z1	96510	B-I3-N-V
34008	B-C1-C2-D-E1-F-F1-H-H1-J-L-M-N-R-R1-T-V-Z1	34082	B-F-F1-R-R1-V	96301	A-B-F-F3-M-N-R-S-U2-W	96511	B-I3-N-V
34011	B-C1-C2-E2-F-F1-F3-J-L-M-N-R-R1-T-V-Z1	34083	B-F-F1-R-R1-V	96303	B-C1-C2-F-F1-H-J-L-M-N-T-V-W-Z1	96515	B-C-D-E1-F-F1-F3-H-H1-M-N-R-S-T-Z1
34020	B-C1-C2-F-F1-F3-J-L-M-N-R-R1-T-V-Z1	34084	B-F-F1-R-R1-V	96306	B-F-F1-F2-F3-H-M-R-S-W-Z1	96516	B-C-D-E1-E2-F-F1-F3-H-H1-M-N-R-S-T-Z1
34021	B-C1-C2-F-F1-F3-J-L-M-N-R-R1-T-V-Z1	34085	B-F-F1-F3-R-R1-S-V	96310	B-F3-M-R-S-W	96517	B-C-D-E1-E2-F-F1-F3-H-H1-M-N-R-T-U-V-Z1
34022	B-C1-C2-F-F1-F3-J-L-M-N-R-R1-T-V-Z1	34086	B-F-F1-F3-R-R1-S-V	96311	B-F3-M-R-S-W	96520	B-F-N-U3-V
34023	B-C1-C2-F-F1-F3-J-L-M-N-R-R1-T-V-Z1	34087	B-E2-F-F1-F3-R-R1-S-V	96315	B-F-F1-F3-H-M-R-S-W	96521	B-C1-C2-F-F1-J-L-M-N-R-R1-S-T-V-Z1
34024	B-C1-C2-F-F1-F3-J-L-M-N-R-R1-T-V-Z1	34088	B-F-F1-R-R1-V	96319	B-C-F3-M-R-S-V-W	96530	A-B-C1-C2-F-F1-H-H1-J-L-M-N-R-R1-S-T-V-Z1
34025	B-F-F1-F3-J-L-M-N-R-R1-T-V-Z1	34089	B-F-F1-R-R1-S-V	96321	B-F-F1-F2-F3-H-M-R-S-W-Z1	96531	A-B-C-F-F1-F3-H-M-N-R-S-U-V
34030	B-C1-C2-F-F1-F3-J-L-M-N-R-R1-T-V-Z1	34090	B-F-F1-R-R1-V	96322	B-F-F1-F2-F3-H-M-R-S-W-Z1	96532	A-B-C1-C2-F-F1-H-J-L-M-N-R-R1-S-T-V-Z1
34031	B-C1-C2-F-F1-F3-J-L-M-N-R-R1-T-V-Z1	34091	B-E2-E3-F-F1-F3-R-R1-S-V-Z1	96326	B-C-F-F3-M-R-S-W	96534	A-B-F-F1-F2-F3-S-U-Z1
34032	B-C1-C2-F-F1-F3-J-L-M-N-R-R1-T-V-Z1	34092	B-F-F1-F3-R-R1-S-V	96328	B-C-F3-M-R-S-W	96535	A-B-C1-C2-F-F1-J-L-M-N-R-R1-S-T-V-Z1
34033	B-C1-C2-F-F1-F3-I3-L-M-N-R-T-V-Z1	34093	B-F-F1-F3-R-R1-S-V	96331	A-B-F-F1-F3-J-L-M-N-R-S-U2-W	96537	B-V-Z1
34034	B-C1-C2-F-F1-F3-I3-L-M-N-R-R1-T-V-Z1	34094	B-F-F1-F3-R-R1-S-V	96333	B-C-F3-M-R-S-W	96540	B-F1-F2-F3-S-Z1
34035	B-C1-C2-F-F1-F3-H-J-L-M-N-R-R1-T-V-Z1	34095	B-F-F1-R-R1-V	96336	B-C-F3-M-R-S-V-W	96542	B-V-Z1
34036	B-C1-C2-F-F1-F3-J-L-M-N-R-R1-T-V-Z1	96201	A-B-F-F1-F3-M-R-S-U	96337	B-F-F1-F3-M-R-R1-S-W	96543	B-F-F1-F2-F3-P-S-V-Z1
34037	B-C-C1-C2-F-F1-F3-H-J-L-M-N-R-R1-T-V-Z1	96202	A-B-F-F1-F3-M-R-S-U	96338	A-B-F-F3-M-R-S-U2-W	96548	A-B-F-F1-F3-H-M-R-S-U
34039	B-C1-C2-F-F1-J-L-M-N-T-V-Z1	96203	A-B-F-F1-F3-M-R-S-U	96339	A-B-F-F3-M-R-S-U2-W	96549	A-B-C1-C2-F-F1-H-J-L-M-N-R-R1-S-T-V-Z1
34041	B-C1-C2-F-F1-F3-J-L-M-N-R-R1-T-V-Z1	96204	A-B-F-F1-F3-M-R-S-U	96343	A-F-F3-M-P-R-S-U2	96550	A-B-H-M-N-U-V-Z1
34042	A-B-C-F-F1-F3-M-N-R-S-U-V-W-Z1	96205	A-B-F-F1-F3-M-R-S-U	96346	B-F-F1-F2-F3-H-M-R-S-W-Z1	96551	A-B-C1-C2-F-F1-H-J-L-M-N-R-R1-S-T-V-Z1
34050	B-V	96206	A-B-F-F1-F3-M-R-S-U	96347	B-F-F1-F2-H-M-W-Z1	96552	B-Z1
34051	B-V	96207	A-B-F-F1-F3-M-R-S-U-V	96349	B-F-F1-F2-F3-H-M-R-S-W-Z1	96553	A-B-F-F1-H-M-N-R-U
34052	B-V	96208	A-B-F-F1-F3-M-R-S-U	96350	B-F-F1-F2-F3-H-M-R-S-W-Z1	96554	A-B-C1-C2-F-F1-H-J-L-M-N-R-R1-S-T-V-Z1
34053	B-V	96209	A-B-C1-C2-F-F1-J-L-M-N-T-U-V-Z1	96351	B-F-F1-F2-F3-H-M-R-S-W-Z1	96555	A-B-F-F3-M-R-S-V
34054	B-V	96210	A-B-C1-C2-F-F1-F3-I3-L-M-N-R-R1-T-V-Z1	96362	B-F-F1-F2-M-W-Z1	96557	A-B-F-F3-M-R-S-V
		96212	B-F-F1-F2-H-M-W-Z1	96365	B-C-F3-M-R-S-V-W	96562	A-B-C1-C2-D-E2-E3-F1-H-H1-I3-L-M-N-R-R1-S-T-V-Z1
		96213	A-B-C-F1-F3-R-S-U	96367	B-C-F3-L-M-R-S-W	96577	A-B-F-F3-H-M-N-R-S-U
		96214	A-B-C-F1-F3-R-S-U	96368	B-C-F3-M-R-S-W	96578	B-F1-F3-H-J-N-R-S
		96218	A-B-F-F1-F3-M-R-S-U	96370	B-F-F1-F2-H-M-W-Z1	96595	B-F-F3-R-S-V-Z1
		96224	A-B-F-F1-F3-M-R-S-U	96371	B-F-F3-M-R-S-W	96598	B-F3-I3-N-R-S-V-V1
		96251	A-B-F-F1-F3-M-R-S-U	96372	B-M-W	96599	B-F3-N-R-S-V
		96257	A-B-F-F1-F3-S-U	96373	B-M-W		
		96258	A-F-F3-M-P-R-S-U	96374	B-M-W		
		96260	A-B-F-F1-F3-M-R-S-U	96375	B-F3-M-R-S-W		
		96262	A-B-F-F1-F3-R-S-U-V-Z1	96376	B-F3-M-R-S-W		
		96264	A-B-C-F1-F3-R-S-U	96377	B-F-F3-M-R-S-W		
		96266	A-B-C-F1-F3-R-S-U	96378	B-M-W		
		96267	A-B-C-F1-R-U-V	96379	B-F3-M-R-S-W		
				96380	B-F3-M-R-S-W		
				96382	B-F-F3-M-R-S-W		
				96384	B-F-F3-M-R-S-W		
				96385	B-F-F3-M-R-S-W		

APO/ FPO/ DPO	See Restrictions	APO/ FPO/ DPO	See Restrictions	APO/ FPO/ DPO	See Restrictions	APO/ FPO/ DPO	See Restrictions
96601	B-V	96619	B-F1-F3-R-S-V	96662	B-F-F1-F3-R-R1-S-V	96678	B-F-F1-F3-R-R1-S-V
96602	B-V	96620	B-F-F1-F3-R-R1-S-V	96663	B-F-F1-F3-R-R1-S-V-	96679	B-F-F1-R-R1-V
96603	B-V	96628	B-F-F1-F3-R-R1-S-V		V1	96681	B-V
96604	B-V	96629	B-F-F1-F3-R-R1-S-V	96664	B-V	96682	B-V
96605	B-V+B559	96632	B-F-F1-F3-R-R1-S-V	96665	B-V	96683	B-F-F1-F3-R-R1-S-V
96606	B-F3-R-S-V	96633	B-V	96666	B-F3-R-S-V	96686	B-V
96607	B-V	96641	B-V	96667	B-F-F1-F3-R-R1-S-V	96691	B-F-F1-F3-R-R1-S-V
96608	B-E2-F-H1-R1-U2-V-Z1	96642	B-V	96668	B-F-F1-R-R1-V	96692	B-F-F1-F3-R-R1-S-V
96609	B-E2-F-H1-R1-U2-V-Z1	96643	B-F-F1-F3-R-R1-S-V	96669	B-F-F3-R-R1-S-V	96693	E2-F-F3-R-R1-S-V
96610	B-E2-F-H1-R1-U2-V-Z1	96644	B-V	96670	B-V	96694	B-E2-F-F1-F3-I3-J-R-
96611	B-E2-F-H1-R1-U2-V-Z1	96645	B-V	96671	B-F-F1-F3-R-R1-S-V		R1-S-V-V1-Z
96612	B-V	96649	B-F-F1-F3-R-R1-S-V	96672	B-F-F1-F3-R-R1-S-V	96695	B-F-F1-R-R1-V
96613	B-V	96650	B-F-F1-R-R1-V	96673	B-F3-S-V	96696	B-F-F1-R-R1-V
96615	B-F-F1-R-R1-V	96657	B-F-F1-F3-R-R1-S-V	96674	B-F-F1-F3-R-R1-S-V	96698	B-V
96616	B-C2-F-F1-F3-R-R1-S-	96660	B-F-F1-F3-R-R1-S-V	96675	B-F-F1-F3-R-R1-S-V		
	V	96661	B-F-F1-F3-R-R1-S-V	96677	B-F-F1-F3-R-R1-S-V		

RESTRICTIONS

LEGEND

PS Form 2976, *Customs — CN 22 (Old C 1) and Sender's Declaration* (green label)

PS Form 2976-A, *Customs Declaration and Dispatch Note*

PS Form 2976-B, *Priority Mail Express International Shipping Label and Customs Form*

ATF	= Bureau of Alcohol, Tobacco, Firearms, and Explosives
Box C	= Department of State (DOS) contractor personnel
Box R	= Retired military personnel
DPO	= Diplomatic Post Office
MPO	= Military Post Office
PACT	= Prevent All Cigarette Trafficking Act
PAL	= Parcel Airlift
PMEMS	= Priority Mail Express Military Service
PUB 52	= Publication 52, <i>Hazardous, Restricted, and Perishable Mail</i>
SAM	= Space Available Mail
USDA	= United States Department of Agriculture

Note: Mail order catalogs are prohibited as SAM or PAL mail.

A. Securities, currency, or precious metals, including in their raw, unmanufactured state, are prohibited. Official Mail shipments are exempt from this restriction.

A1. Reserved for future use.

A2. Reserved for future use.

B. Other than for PMEMS and the exceptions listed below, a customs declaration PS Form 2976 or PS Form 2976-A is required for all items weighing 16 ounces or more, and for all items (regardless of weight) containing potentially dutiable mail contents (e.g., merchandise or goods) addressed to or from this ZIP Code. Other than the exceptions listed below, all PMEMS mailpieces (regardless of mail contents or weight) addressed to or from this ZIP Code must bear a properly completed PS Form 2976-B. The surface area of the address side of the mailpiece must be large enough to contain the applicable customs declaration. The following exceptions apply to known mailers, who for this purpose are defined as follows:

- Business mailers who enter volume mailings through business mail entry units or other bulk mail acceptance locations, pay postage through advance deposit accounts, use permit imprints for postage payment, and submit completed postage statements at the time of entry that certify that the mailpieces contain no dangerous materials that are prohibited by postal regulations. Such business mailers are exempt from providing customs documentation on non-dutiable letters and printed matter.
- All federal, state, and local government agencies whose mailings are regarded as "Official Mail." Such agencies are exempt from providing customs documentation, except for any items addressed to an MPO or DPO to which restriction "B2" applies.

B2. All federal, state, and local government agencies must complete customs documentation when sending potentially dutiable mail addressed to or from this MPO or DPO.

C. Cigarettes and other tobacco products, including tobacco leaves, chewing and pipe tobacco, snuff, and cigars are prohibited, including those that are authorized in Publication 52 under PACT.

C1. Obscene and horror articles, images, prints, paintings, cards, films, videotapes, comic books, etc., are prohibited.

C2. E-cigarettes and related products (e.g., nicotine liquids, e-liquids, parts, or supplies) are prohibited.

D. Coffee is prohibited.

E. Medicines (prescription, over-the-counter, vitamins, and supplements) are prohibited when mailed to individuals for human or animal use. This prohibition does not apply when medicines are sent as Official Mail only between specifically designated agencies such as pharmaceutical distributors, hospitals, clinics, and pharmacies.

E1. Mailers are responsible to ensure that all medicines and vaccines conform to host nation laws.

E2. Any matter depicting nude or seminude persons, pornographic, or sexual items are prohibited. Non-authorized political materials are prohibited. Religious materials contrary to the Islamic faith are prohibited in bulk quantities, but individual items for the personal use of the addressee are permissible.

E3. Radio transceivers, cordless/cellular telephones, global positioning systems, scanners, base stations, and handheld transmitters are prohibited.

F. Firearms of any type are prohibited, except firearms mailed to or by official U.S. government agencies. This restriction does not apply to firearms mailed from this MPO ZIP Code, provided ATF and USPS regulations are met. Antique firearms do not require an ATF form.

F1. Weapons of any type are prohibited.

F2. Mailing firearms to or from this MPO ZIP Code is restricted to one shotgun and one single shot .22 caliber rifle per individual.

F3. Replica weapons and inert explosive devices (such as grenades) and weapons parts are prohibited.

G. Parcels of any class are prohibited.

H. Meats, including preserved meats, bones, skin, hair, feathers, horns or hoofs of hoofed animals, and wool samples whether hermetically sealed or not, are prohibited.

H1. Pork or pork by-products are prohibited.

I. Reserved for future use.

I1. Reserved for future use.

I2. Reserved for future use.

I3. Mail of all classes must fit in a mail sack. Mail may not exceed the following dimensions:

- Maximum length 27 inches.
- Maximum width 14 inches.
- Maximum height 14 inches.

J. Standard Post and Parcel Select parcels may not exceed 108 inches in length and girth combined.

K. Reserved for future use.

L. All Official Mail is prohibited.

M. Fruits, vegetables, live animals, and live plants are prohibited.

N. Registered Mail service is prohibited.

O. Reserved for future use.

P. Official Mail only.

Q. Mail may not exceed 66 pounds, and size is limited to 42 inches maximum length and 72 inches maximum length and girth combined.

R. All alcoholic beverages, including those mailable under Publication 52, Part 421, are prohibited.

R1. Materials used in the production of alcoholic beverages (i.e., distilling material, hops, malts, yeast, etc.) are prohibited.

S. Synthetic cannabinoids used to stimulate the central nervous system commonly known as "synthetic marijuana," "K2," or "Spice" are prohibited.

T. Mailings of household shipments and case lots of food to or from an MPO require military transportation office approval prior to mailing. Mailings to or from a DPO require pre-approval from the Diplomatic Pouch and Mail Director.

U. Mail addressed to Retirees (Box R) is limited to 16 ounces and up to a 90-day supply of TRICARE medications. This restriction does not apply to mail endorsed "Free Matter for the Blind or Handicapped."

U1. Mail is limited to First-Class Mail items, including audio and video media, weighing 13 ounces or less. This limitation does not apply to Official Mail.

U2. Retirees (Box R) are not authorized mail service.

U3. Reserved for future use.

U4. Mail addressed to Box C is limited to 2 lbs.

V. PMEMS is not available.

V1. Electronic Delivery status information for Extra Services is not available on *USPS.com*. Manual record of delivery may be available upon request.

W. Hermetically sealed packages of meat products bearing USDA certification, such as dried beef, salami, and sausage, may be mailed. 200 grams of tobacco per parcel are permitted duty free.

X. Cremated remains are prohibited.

Y. Mail is limited to First-Class Mail and Priority Mail items only. This restriction also applies to Official Mail.

Z. No outside pieces (OSPs).

Z1. The following restriction is applicable only to International Service Centers (ISC)/Exchange Offices. An Anti-Pilferage Seal (Item No O817E or O818A) is required on all pouches and sacks.

Thrift Savings Plan Fact Sheet

ANNUAL RETURNS	G Fund	F Fund	U.S. Aggregate Index	C Fund	S&P 500 Stock Index	S Fund	Dow Jones U.S. Completion TSM Index	I Fund	EAFE Stock Index
2006	4.93	4.40	4.33	15.79	15.79	15.30	15.28	26.32	26.34
2007	4.87	7.09	6.97	5.54	5.49	5.49	5.39	11.43	11.17
2008	3.75	5.45	5.24	-36.99	-37.00	-38.32	-39.03	-42.43	-43.38
2009	2.97	5.99	5.93	26.68	26.46	34.85	37.43	30.04	31.78
2010	2.81	6.71	6.54	15.06	15.06	29.06	28.62	7.94	7.75
2011	2.45	7.89	7.84	2.11	2.11	-3.38	-3.76	-11.81	-12.14
2012	1.47	4.29	4.22	16.07	16.00	18.57	17.89	18.62	17.32
2013	1.89	-1.68	-2.02	32.45	32.39	38.35	38.05	22.13	22.78
2014	2.31	6.73	5.97	13.78	13.69	7.80	7.63	-5.27	-4.90
2015	2.04	0.91	0.55	1.46	1.38	-2.92	-3.42	-0.51	-0.81
2016	1.82	2.91	2.65	12.01	11.96	16.35	15.75	2.10	1.00
2017	2.33	3.82	3.54	21.82	21.83	18.22	18.12	25.42	25.03
2018	2.91	0.15	0.01	-4.41	-4.38	-9.26	-9.57	-13.43	-13.79
2019	2.24	8.68	8.72	31.45	31.49	27.97	27.94	22.47	22.01
2020	0.87	4.73	4.72	17.16	17.25	36.45	36.67	9.99	8.94

MONTHLY RETURNS	G Fund	F Fund	U.S. Aggregate Index	C Fund	S&P 500 Stock Index	S * Fund	Dow Jones U.S. Completion TSM Index	I * Fund	EAFE Stock Index
2020									
July	0.06	1.49	1.49	5.64	5.64	5.71	5.70	2.33	2.33
Aug	0.05	-0.81	-0.81	7.19	7.19	7.20	7.18	5.12	5.14
Sept	0.06	-0.03	-0.05	-3.80	-3.80	-3.04	-2.99	-2.60	-2.60
Oct	0.06	-0.42	-0.45	-2.66	-2.66	0.50	0.45	-3.97	-3.99
Nov	0.07	0.99	0.98	10.95	10.95	18.26	18.27	15.54	15.50
Dec	0.07	0.14	0.14	3.84	3.84	7.24	7.24	4.64	4.65
2021									
Jan	0.07	-0.71	-0.72	-1.01	-1.01	2.85	2.84	-1.09	-1.07
Feb	0.08	-1.45	-1.44	2.76	2.76	5.21	5.19	2.26	2.24
Mar	0.11	-1.23	-1.25	4.38	4.38	-0.39	-0.40	2.35	2.30
Apr	0.13	0.82	0.79	5.33	5.34	4.23	4.22	3.09	3.01
May	0.13	0.34	0.33	0.69	0.70	-0.66	-0.66	3.61	3.26
June	0.12	0.74	0.70	2.33	2.33	3.46	3.46	-1.44	-1.13
YTD	0.65	-1.49	-1.60	15.24	15.25	15.47	15.42	8.99	8.83

The G Fund is managed internally by the Federal Retirement Thrift Investment Board. Assets of the F, C, S, and I Funds are managed externally. The Board currently has contracts with BlackRock Institutional Trust Company, N.A., to manage the F, C, S, and I Fund assets. The F, C, S, and I Funds invest in commingled trust funds, in which the assets of tax-deferred employee benefit plans are combined and invested together. The F, C, S, and I Funds and the BlackRock funds are passively managed index funds.

Future performance of the funds will vary and may be significantly different from the returns shown above. See the *Summary of the*

Thrift Savings Plan for detailed information about the funds and their investment risks. The monthly returns of the TSP Funds represent net earnings for the month after deduction of accrued administrative expenses and, except for the G Fund, after deduction of trading costs and accrued investment management fees as well. The returns for the four indexes shown do not include any of these deductions.

* Implemented May 2001.

See next page for L Funds.

L Funds

Annual Returns	L Income	L 2020	L 2030	L 2040	L 2050
2006	7.59	13.72	15.00	16.53	
2007	5.56	6.87	7.14	7.36	
2008	-5.09	-22.77	-27.50	-31.53	
2009	8.57	19.14	22.48	25.19	
2010	5.74	10.59	12.48	13.89	
2011	2.23	0.41	-0.31	-0.96	
2012	4.77	10.42	12.61	14.27	15.85
2013	6.97	16.03	20.16	23.23	26.20
2014	3.77	5.06	5.74	6.22	6.37
2015	1.85	1.35	1.04	0.73	0.45
2016	3.58	5.47	7.07	7.90	8.65
2017	6.19	9.86	14.54	16.77	18.81
2018	0.71	-0.36	-3.58	-4.89	-6.02
2019	7.60	9.38	17.60	20.69	23.33
2020	5.04		11.41	13.41	15.14

Monthly Returns	L Income	L 2025	L 2030	L 2035	L 2040	L 2045	L 2050	L 2055	L 2060	L 2065
2020										
July	1.11	2.19	2.82	2.86	3.35	3.32	3.80	4.13	4.13	4.13
Aug	1.39	3.17	3.81	4.18	4.56	4.88	5.21	6.41	6.40	6.40
Sept	-0.66	-1.58	-1.92	-2.11	-2.30	-2.46	-2.63	-3.20	-3.20	-3.20
Oct	-0.58	-1.30	-1.61	-1.76	-1.91	-2.04	-2.17	-2.60	-2.60	-2.60
Nov	3.00	6.56	8.10	8.92	9.74	10.47	11.19	13.55	13.55	13.55
Dec	1.07	2.27	2.79	3.06	3.34	3.59	3.83	4.63	4.63	4.63
2021										
Jan	-0.10	-0.24	-0.32	-0.35	-0.37	-0.39	-0.41	-0.44	-0.44	-0.44
Feb	0.63	1.35	1.70	1.86	2.03	2.17	2.32	2.93	2.93	2.93
Mar	0.71	1.44	1.78	1.93	2.08	2.20	2.33	2.92	2.92	2.91
Apr	1.14	2.15	2.74	2.99	3.24	3.45	3.66	4.35	4.35	4.35
May	0.47	0.81	1.00	1.08	1.16	1.22	1.28	1.50	1.50	1.50
June	0.39	0.64	0.79	0.86	0.92	0.98	1.03	1.17	1.17	1.17
YTD	3.28	6.29	7.91	8.63	9.36	9.98	10.62	13.00	13.00	13.00

The TSP added six new L Funds that have 5-year increments rather than the previous 10-year increments.

Freely Associated States Restrictions

We list the mailing restrictions for Freely Associated States (FAS) in the Pull-Out section of the *Postal Bulletin*. All FAS Restrictions will be updated periodically.

Freely Associated States

Mail addressed to freely associated states is subject to certain conditions or restrictions of mailing regarding content, preparation, and handling. The following FAS Restrictions table outlines these conditions as listed by each affected FAS ZIP Code™ through the use of footnoted mailing restrictions codes (see the [Restrictions](#) following the table). For more information on available extra services for FAS destinations, see *Mailing Standards of the United States Postal Service, Domestic Mail Manual (DMM®)*, part 503.

Acceptance clerks must use the table with the Retail System Software terminal to determine which FAS ZIP Codes are active and which conditions of mailing apply.

FAS Restrictions Table

FAS Table	See Restrictions
96939	A, B
96940	A, B
96941	A, B
96942	A, B
96943	A, B
96944	A, B
96960	A, B
96970	A, B, D
Marshall Islands	C
Federated States of Micronesia	C

RESTRICTIONS LEGEND

PS Form 2976, *Customs Declaration CN 22 – Sender's Declaration*

PS Form 2976-A, *Customs Declaration and Dispatch Note*

FAS = Freely Associated State

- A.** Bank currency (coin and paper) is prohibited.
- B.** Signature Confirmation, Signature Confirmation Restricted Delivery, Adult Signature Requested, Adult Signature Restricted Delivery, Certified Mail Adult Signature Required, and Certified Mail Adult Signature Restricted Delivery not available.
- C.** Collect on Delivery is prohibited.
- D.** Betel nut (Areca catechu) is prohibited.

— *Asia-Pacific Relations,
Global Business, 7-29-21*

Small Business Sales

Business Connect Kits are Coming Soon

A graphic for the Business Connect Kit. The left side is a dark blue rectangle with white text. The right side is a red rectangle with a grid of holiday-themed icons: a candy cane, a Christmas ornament, a snowflake, and a striped pattern. The top right corner features the USPS logo and 'Small Business' text.

New Business Connect® Materials Enclosed

Deliver the holidays for your community

Help local small business owners deliver the holidays for your community with shipping services from USPS.

OPEN NOW!

21Q4BCHOLIDAYLABEL

©2021 United States Postal Service®. All Rights Reserved.
The Eagle Logo is among the many trademarks of the U.S. Postal Service®.

UNITED STATES
POSTAL SERVICE®
Small Business

The Business Connect® kit for small businesses, a great resource for highlighting USPS® products and services, will be mailed out to postmasters and managers the week of July 29. The quarterly Business Connect kit (SKU# 21Q4BCKIT) supports postmasters and managers, demonstrates how to have the right conversation with potential customers, and shows how to document these activities in the Business Connect Portal.

Please take a moment to familiarize yourself with the enclosed materials and use the tools provided to have productive conversations with potential customers about USPS products and services. Our generous offering can help small business owners build relationships within their communities and enhance their bottom line.

The Business Connect kit includes:

- **Welcome letter.** Thanking you for your support and promoting USPS products and services.
- **Business Connect information sheet.** Informs your customer about various USPS products, services, and tools tailored to help them get the most return for every dollar they spend to drive business growth.
- **Business Connect quick reference guide.** A helpful conversation starter for building relationships.
- **Business Connect tear pad.** A customer leave-behind with information about USPS Tracking® and Informed Delivery®.

Now is the time to show small businesses how USPS can help them grow.

— *Small Business Engagement,
Small Business Sales, 7-29-21*

Stamp Services

Stamp Announcement 21-27: Happy Birthday Stamp



©2020 USPS

On September 9, 2021, in Toast, NC, the United States Postal Service® will issue the *Happy Birthday* stamp (Forever® priced at the First-Class Mail® rate) in one design, in a pressure-sensitive adhesive (PSA) pane of 20 stamps (Item 577700). This stamp will go on sale nationwide September 9, 2021, and must not be sold or canceled before the first-day-of-issue.

This *Happy Birthday* stamp conveys exuberant greetings by calling to mind the childhood excitement of a birthday party. Each of the five letters in the word “HAPPY” is inspired by a different party decoration in the midst of a flurry of multicolored ribbons and confetti. Featuring a digital illustration by Rodolfo Castro, this stamp was designed by Lisa Catalone Castro and Rodolfo Castro. Ethel Kessler served as art director.

Availability to Post Offices: Item 577700, Happy Birthday (Forever Priced at the First-Class Mail Rate) PSA Pane of 20 Stamps

Stamp Fulfillment Services will not make an automatic push distribution to Post Offices. Post Offices may begin ordering stamps before the first-day-of-issue through SFS Web at sfsweb.usps.gov.

How to Order the First-Day-of-Issue Postmark

Customers have 120 days to obtain the first-day-of-issue postmark by mail. They may purchase new stamps at their local Post Office™ or at The Postal Store® website at usps.com/shop. They must affix the stamps to envelopes of their choice, address the envelopes (to themselves or others), and place them in a larger envelope addressed to:

FDOI – Happy Birthday Stamp
USPS Stamp Fulfillment Services
8300 NE Underground Drive, Suite 300
Kansas City, MO 64144-9900

After applying the first-day-of-issue postmark, the Postal Service™ will return the envelopes through the mail. There is no charge for the postmark up to a quantity of 50. There is a 5-cent charge for each additional postmark over 50. All orders must be postmarked by January 9, 2022.

How to Order First-Day Covers

The Postal Service also offers first-day covers for new stamp issues and Postal Service stationery items postmarked with the official first-day-of-issue cancellation. Each item has an individual catalog number and is offered in the *USA Philatelic* catalog and online at usps.com/shop. Customers may register to receive a free *USA Philatelic* catalog online at usps.com/philatelic.

Locally produced items are not authorized. Only merchandise that has been approved and assigned an item number by Headquarters Retail Marketing may be produced and sold.

Issue:	<i>Happy Birthday</i> Stamp
Item Number:	577700
Denomination & Type of Issue:	First-Class Mail Forever
Format:	Pane of 20 (1 design)
Series:	N/A
Issue Date & City:	September 9, 2021, Toast, NC 27049
Art Director:	Ethel Kessler, Bethesda, MD
Designer:	Lisa Catalone Castro, Bethesda, MD
Designer:	Rodolfo Castro, Bethesda, MD
Illustrator:	Rodolfo Castro, Bethesda, MD
Modeler:	Joseph Sheeran
Manufacturing Process:	Offset, Microprint
Printer:	Ashton Potter (USA) Ltd. (APU)
Press Type:	Muller A76
Stamps per Pane:	20
Print Quantity:	50,000,000 stamps
Paper Type:	Nonphosphored Type III, Block Tag
Adhesive Type:	Pressure-sensitive
Colors:	Black, Cyan, Magenta, Yellow
Stamp Orientation:	Horizontal
Image Area (w x h):	1.05 x 0.77 in. / 26.67 x 19.558 mm
Overall Size (w x h):	1.19 x 0.91 in. / 30.226 x 23.114 mm
Full Pane Size (w x h):	5.76 x 5.55 in. / 146.304 x 140.97 mm
Plate Size:	320 stamps per revolution
Plate Number:	“P” followed by four (4) single digits in four corners
Marginal Markings:	
Front:	Plate number in four corners
Back:	©2020 USPS • USPS logo • Two barcodes (577700) • Plate position diagram (8) • Promotional text

– Stamp Services, Marketing, 7-29-21

Pictorial Postmarks Announcement

As a community service, the Postal Service™ offers pictorial postmarks to commemorate local events celebrated in communities throughout the nation. A list of events for which pictorial postmarks are authorized appears on the following pages. The sponsor of the pictorial postmark appears in italics under the date. Also provided are illustrations of these postmarks.

People attending these local events may obtain the postmark in person at the temporary Post Office™ station established there. Those who cannot attend the event but who wish to obtain the postmark may submit a mail order request. Pictorial postmarks are available only for the dates indicated, and *requests must be postmarked no later than 30 days following the requested pictorial postmark date.*

All requests must include a stamped envelope or postcard bearing at least the minimum First-Class Mail® postage. Items submitted for postmark may not include

postage issued after the date of the requested postmark. Such items will be returned unserved.

Customers wishing to obtain a postmark must affix stamps to any envelope or postcard of their choice, address the envelope or postcard to themselves or others, insert a card of postcard thickness in envelopes for sturdiness, and tuck in the flap. Place the envelope or postcard in a larger envelope and address it to: Pictorial Postmarks, followed by the Name of the Station, Address, City, State, ZIP+4® Code, as listed next to the postmark.

Customers can also send stamped envelopes and postcards without addresses for postmark, as long as they supply a larger envelope with adequate postage and their return address. After applying the pictorial postmark, the Postal Service returns the items (with or without addresses) under addressed protective cover.

The following pictorial postmark has been extended for 60 days:



July 1, 2021

United States Postal Service
Washington, DC Station
Philatelic Clerk
2 Massachusetts Avenue NE
Washington, DC 20002-9997

The following pictorial postmarks have been extended for 30 days:



FORTUNA RODEO STATION
FORTUNA, CA 95540
JULY 17, 2021

July 17, 2021

United States Postal Service
Fortuna Rodeo Station
Postmaster
PO Box 7838
San Francisco, CA 94120-9998



KNIK MUSEUM
INDUCTION OF
JEFF SCHULTZ
TO THE
MUSHERS' HALL OF FAME
JULY 18, 2021
KNIK, ALASKA 99654

July 18, 2021

Wasilla Knik Historical Society
Celebration Station
Postmaster
401 North Main Street
Wasilla, AK 99654-9998



July 30, 2021

United States Postal Service
WESTPEX Station
Postmaster
PO Box 7838
San Francisco, CA 94120-7838



July 30–31, 2021

Nebraska's Big Rodeo
Burwell, NE Station
Postmaster
PO Box 9998
Burwell, NE 68823-9998



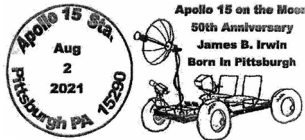
July 30–31, 2021

Town of Monticello
175th Birthday Celebration
Station
Postmaster
428 US Highway 1
Monticello, ME 04760-9998



August 12, 2021

United States Post Office
Miami, AZ Station
Postmaster
161 West Live Oak Street
Miami, AZ 85539-9998



August 2, 2021

Space Topics Study Group
Apollo 15 Station
Retail Manager
1001 California Avenue,
Room 2036
Pittsburgh, PA 15290-9998



August 12, 2021

American Topical Association
Stamp Show Station
Postmaster
9507 West Higgins Road
Rosemont, IL 60018-4934



August 6, 2021

Braham Pie Day
Braham Station
Postmaster
PO Box 9998
Braham, MN 55006-9998



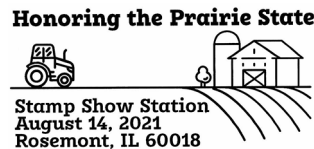
August 13, 2021

American Topical Association
Stamp Show Station
Postmaster
9507 West Higgins Road
Rosemont, IL 60018-4934



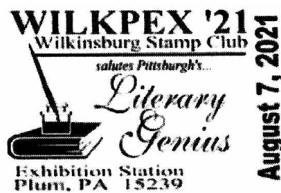
August 7, 2021

Wilber Czech Festival
Wilber Station
Postmaster
PO Box 9998
Wilber, NE 68465-9998



August 14, 2021

American Topical Association
Stamp Show Station
Postmaster
9507 West Higgins Road
Rosemont, IL 60018-4934



August 7–8, 2021

Wilksburg Stamp Club
Exhibition Station
Retail Manager
1001 California Avenue,
Room 2036
Pittsburgh, PA 15290-9998



August 15, 2021

American Topical Association
Stamp Show Station
Postmaster
9507 West Higgins Road
Rosemont, IL 60018-4934



August 9, 2021

Montauk Lighthouse Museum – Historical Society
Montauk Station
Postmaster
PO Box 9998
Montauk, NY 11954-9998

– *Stamp Services, Marketing, 7-29-21*

How to Order the First-Day-of-Issue Digital Color or Traditional Postmarks

Customers have 120 days to obtain the first-day-of-issue postmarks by mail. Each cover must have sufficient postage to meet First-Class Mail® requirements. Customers may purchase new stamps at their local Post Office™, by phone at 800-782-6724, or on The Postal Store® website at usps.com/shop.

Digital Color Postmarks

Only select stamp issues offer a digital color postmark. Customers may submit #6 or #10 envelopes constructed of paper rated as "laser safe." The Postal Service™ recommends envelopes of 80-pound Accent Opaque, acid-free, 9/16-inch side seams with no glue on the flap. The maximum size of all digital color postmarks is 2 inches (vertically) by 4 inches (horizontally). Allow sufficient space on the envelope to accommodate the postmark. Do not use self-adhesive labels for addresses on the envelope. Two test envelopes must be included. There is a minimum of 10 envelopes at 50 cents per postmark required at the time of servicing. Customers must submit a check, money order, or credit card for payment.

The Postal Service reserves the right to not accept hand-painted and other cachet envelopes that are not compatible with our digital color postmark equipment. The Postal Service also reserves the right to substitute traditional black rubber postmarks if use of nonspecified envelopes results in poor image quality or damage to equipment.

Customers must affix the stamps to the envelopes and address them to themselves or others for return through the mail. Or, they may include an additional self-addressed return envelope, large enough to accommodate their canceled items, with sufficient postage affixed for return of

their postmarked items. Address customer requests for digital color postmarks to:

FDOI – (Name of Stamp Issue)
USPS Stamp Fulfillment Services
8300 NE Underground Drive, Suite 300
Kansas City, MO 64144-9900

After applying the first-day-of-issue postmark, the Postal Service will return the envelopes to the customer by U.S. Mail®.

Traditional Postmarks

Customers must affix the stamps to the envelopes and address them to themselves or others for return through the mail. Or, they may include an additional self-addressed return envelope, large enough to accommodate their canceled items, with sufficient postage affixed for return of their postmarked items. Address customer requests for traditional postmarks to:

FDOI – (Name of Stamp Issue)
USPS Stamp Fulfillment Services
8300 NE Underground Drive, Suite 300
Kansas City, MO 64144-9900

After applying the first-day-of-issue postmark, the Postal Service will return the envelopes to the customer by U.S. Mail™. There is no charge for the first 50 postmarks. There is a 5-cent charge for each additional postmark over 50. Customers must submit a check, money order, or credit card for payment.

Locally produced items are not authorized. Only merchandise that has been approved and assigned an item number by Headquarters Retail Marketing may be produced and sold.

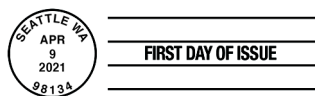


Digital Color Pictorial

FDOI – Espresso Drinks Stamps

USPS Stamp Fulfillment Services
8300 NE Underground Drive, Suite 300
Kansas City, MO 64144-9900

August 9, 2021



Black and White Pictorial

FDOI – Espresso Drinks Stamps

USPS Stamp Fulfillment Services
8300 NE Underground Drive, Suite 300
Kansas City, MO 64144-9900

August 9, 2021



Digital Color Pictorial

FDOI – Star Wars Droids Stamps

USPS Stamp Fulfillment Services
8300 NE Underground Drive, Suite 300
Kansas City, MO 64144-9900

September 4, 2021



Digital Color Pictorial

FDOI – Star Wars Droids Stamps

USPS Stamp Fulfillment Services
8300 NE Underground Drive, Suite 300
Kansas City, MO 64144-9900

September 4, 2021



Digital Color Pictorial

FDOI – Star Wars Droids Stamps

USPS Stamp Fulfillment Services
8300 NE Underground Drive, Suite 300
Kansas City, MO 64144-9900

September 4, 2021



Digital Color Pictorial

FDOI – Star Wars Droids Stamps

USPS Stamp Fulfillment Services
8300 NE Underground Drive, Suite 300
Kansas City, MO 64144-9900

September 4, 2021



Digital Color Pictorial

FDOI – Star Wars Droids Stamps

USPS Stamp Fulfillment Services
8300 NE Underground Drive, Suite 300
Kansas City, MO 64144-9900

September 4, 2021



Digital Color Pictorial

FDOI – Star Wars Droids Stamps

USPS Stamp Fulfillment Services
8300 NE Underground Drive, Suite 300
Kansas City, MO 64144-9900

September 4, 2021



Digital Color Pictorial

FDOI – Star Wars Droids Stamps

USPS Stamp Fulfillment Services
8300 NE Underground Drive, Suite 300
Kansas City, MO 64144-9900

September 4, 2021



Digital Color Pictorial

FDOI – Star Wars Droids Stamps

USPS Stamp Fulfillment Services
8300 NE Underground Drive, Suite 300
Kansas City, MO 64144-9900

September 4, 2021



Digital Color Pictorial

FDOI – Star Wars Droids Stamps

USPS Stamp Fulfillment Services
8300 NE Underground Drive, Suite 300
Kansas City, MO 64144-9900

September 4, 2021



Digital Color Pictorial

FDOI – Star Wars Droids Stamps

USPS Stamp Fulfillment Services
8300 NE Underground Drive, Suite 300
Kansas City, MO 64144-9900

September 4, 2021



Black and White Pictorial

FDOI – Star Wars Droids Stamps

USPS Stamp Fulfillment Services
8300 NE Underground Drive, Suite 300
Kansas City, MO 64144-9900

September 4, 2021



Digital Color Pictorial

FDOI – Heritage Breeds Stamps

USPS Stamp Fulfillment Services
8300 NE Underground Drive, Suite 300
Kansas City, MO 64144-9900

September 17, 2021



Black and White Pictorial

FDOI – Heritage Breeds Stamps

USPS Stamp Fulfillment Services
8300 NE Underground Drive, Suite 300
Kansas City, MO 64144-9900

September 17, 2021



Digital Color Pictorial

FDOI – Go for Broke: Japanese American Soldiers of WWII

USPS Stamp Fulfillment Services
8300 NE Underground Drive, Suite 300
Kansas City, MO 64144-9900

October 3, 2021



FDOI – Go for Broke: Japanese American Soldiers of WWII
USPS Stamp Fulfillment Services
8300 NE Underground Drive, Suite 300
Kansas City, MO 64144-9900

October 3, 2021

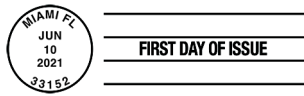
Black and White Pictorial



FDOI – Emilio Sanchez Stamps
USPS Stamp Fulfillment Services
8300 NE Underground Drive, Suite 300
Kansas City, MO 64144-9900

October 10, 2021

Digital Color Pictorial



FDOI – Emilio Sanchez Stamps
USPS Stamp Fulfillment Services
8300 NE Underground Drive, Suite 300
Kansas City, MO 64144-9900

October 10, 2021

Black and White Pictorial



FDOI – Sun Science Stamps
USPS Stamp Fulfillment Services
8300 NE Underground Drive, Suite 300
Kansas City, MO 64144-9900

October 18, 2021

Digital Color Pictorial



FDOI – Sun Science Stamps
USPS Stamp Fulfillment Services
8300 NE Underground Drive, Suite 300
Kansas City, MO 64144-9900

October 18, 2021

Black and White Pictorial



FDOI – Tap Dance Stamps
USPS Stamp Fulfillment Services
8300 NE Underground Drive, Suite 300
Kansas City, MO 64144-9900

November 10, 2021

Digital Color Pictorial



FDOI – Tap Dance Stamps
USPS Stamp Fulfillment Services
8300 NE Underground Drive, Suite 300
Kansas City, MO 64144-9900

November 10, 2021

Black and White Pictorial



FDOI – Yogi Berra Stamp

USPS Stamp Fulfillment Services
8300 NE Underground Drive, Suite 300
Kansas City, MO 64144-9900

October 24, 2021

Digital Color Pictorial



FDOI – Yogi Berra Stamp

USPS Stamp Fulfillment Services
8300 NE Underground Drive, Suite 300
Kansas City, MO 64144-9900

October 24, 2021

Black and White Pictorial



FDOI – Mystery Message Stamp

USPS Stamp Fulfillment Services
8300 NE Underground Drive, Suite 300
Kansas City, MO 64144-9900

November 14, 2021

Digital Color Pictorial



FDOI – Mystery Message Stamp

USPS Stamp Fulfillment Services
8300 NE Underground Drive, Suite 300
Kansas City, MO 64144-9900

November 14, 2021

Black and White Pictorial

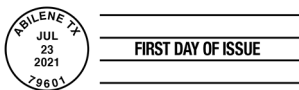


FDOI – Western Wear Stamps

USPS Stamp Fulfillment Services
8300 NE Underground Drive, Suite 300
Kansas City, MO 64144-9900

November 23, 2021

Digital Color Pictorial



FDOI – Western Wear Stamps

USPS Stamp Fulfillment Services
8300 NE Underground Drive, Suite 300
Kansas City, MO 64144-9900

November 23, 2021

Black and White Pictorial

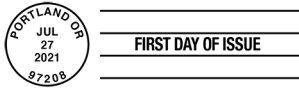


FDOI – Ursula K. Le Guin Stamp

USPS Stamp Fulfillment Services
8300 NE Underground Drive, Suite 300
Kansas City, MO 64144-9900

November 27, 2021

Digital Color Pictorial

**FDOI – Ursula K. Le Guin Stamp**

USPS Stamp Fulfillment Services
8300 NE Underground Drive, Suite 300
Kansas City, MO 64144-9900

November 27, 2021

Black and White Pictorial**FDOI – Raven Story Stamp**

USPS Stamp Fulfillment Services
8300 NE Underground Drive, Suite 300
Kansas City, MO 64144-9900

November 30, 2021

Digital Color Pictorial**FDOI – Raven Story Stamp**

USPS Stamp Fulfillment Services
8300 NE Underground Drive, Suite 300
Kansas City, MO 64144-9900

November 30, 2021

Black and White Pictorial**FDOI – Mid-Atlantic Lighthouses Stamps**

USPS Stamp Fulfillment Services
8300 NE Underground Drive, Suite 300
Kansas City, MO 64144-9900

December 6, 2021

Digital Color Pictorial**FDOI – Mid-Atlantic Lighthouses Stamps**

USPS Stamp Fulfillment Services
8300 NE Underground Drive, Suite 300
Kansas City, MO 64144-9900

December 6, 2021

Black and White Pictorial**FDOI – Missouri Statehood Stamp**

USPS Stamp Fulfillment Services
8300 NE Underground Drive, Suite 300
Kansas City, MO 64144-9900

December 10, 2021

Digital Color Pictorial



FDOI – Missouri Statehood Stamp

USPS Stamp Fulfillment Services
8300 NE Underground Drive, Suite 300
Kansas City, MO 64144-9900

December 10, 2021

Black and White Pictorial



FDOI – Backyard Games Stamps

USPS Stamp Fulfillment Services
8300 NE Underground Drive, Suite 300
Kansas City, MO 64144-9900

December 12, 2021

Digital Color Pictorial



FDOI – Backyard Games Stamps

USPS Stamp Fulfillment Services
8300 NE Underground Drive, Suite 300
Kansas City, MO 64144-9900

December 12, 2021

Black and White Pictorial



FDOI – Happy Birthday Stamp

USPS Stamp Fulfillment Services
8300 NE Underground Drive, Suite 300
Kansas City, MO 64144-9900

January 9, 2022

Digital Color Pictorial



FDOI – Happy Birthday Stamp

USPS Stamp Fulfillment Services
8300 NE Underground Drive, Suite 300
Kansas City, MO 64144-9900

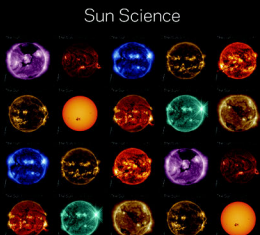
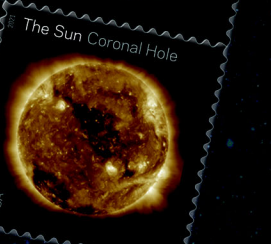
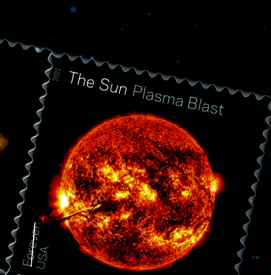
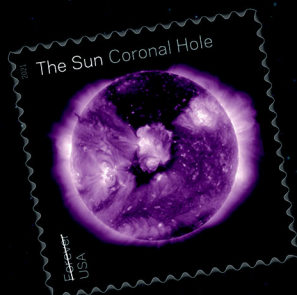
January 9, 2022

Black and White Pictorial

USPS® Highlights

Stunning Images of the Sun with

SUN SCIENCE FOREVER® STAMPS



Sun Science

**ON SALE
NATIONWIDE:
JUNE 18, 2021**

Sold as a full pane.

