

postal|bulletin

PUBLISHED SINCE MARCH 4, 1880

NEED A PASSPORT?
Schedule your
appointment online
at *usps.com*®.



See page 3.



Contents

COVER STORY

A U.S. Passport is Your Key to International Travel 3

POLICIES, PROCEDURES, AND FORMS UPDATES

Manuals

DMM Revision: Authorized Meter Providers 4

Handbooks

Handbook AS-805-D Revision: Information Security
Network Change Review Process. 5

Publications

Publication 431 Revision: Changes to Post Office Box
Service and Caller Service Fee Groups 5

ORGANIZATION INFORMATION

Address Management

Post Office Changes 6

Environmental Management

Federal Reporting Requirements for Hazardous and
Toxic Chemicals 7

Mailing and Shipping Services

Mail Alert 8

Sales

Business Connect Kit: Providing Inspiration and
Opportunity 9

Stamp Services

Stamp Announcement 20-09: Arnold Palmer Stamp 10

Pictorial Postmarks Announcement 12

How to Order the First-Day-of-Issue Digital Color or
Traditional Postmarks 14

PULL-OUT INFORMATION

Fraud

Invalid USPS Corporate Account Numbers 15

Missing, Lost, or Stolen U.S. Money Order Forms 16

Missing, Lost, or Stolen Canadian Money Order Forms 23

Verifying U.S. Postal Service Money Orders 25

Counterfeit Canadian Money Order Forms 25

Toll-Free Number Available to Verify Canadian
Money Orders 25

Other Information

Overseas Military/Diplomatic Mail 26

Thrift Savings Plan Fact Sheet. 32

Freely Associated States Restrictions 34

POSTAL BULLETIN 2019 ANNUAL INDEX 38

Mail Moment®

Cover Story

A U.S. Passport is Your Key to International Travel

The U.S. Department of State's Passport Services Directorate issues U.S. passports to traveling Americans. Passports are a request to foreign governments to permit you to travel, and also allow you to re-enter the United States.

A passport book or card is proof of identity and U.S. citizenship. U.S. citizens can use each as follows:

- The passport book for all international travel by air, land, or sea.
- The passport card to enter the United States from Canada, Mexico, the Caribbean, and Bermuda, and at land border crossings or sea ports-of-entry. U.S. citizens cannot use the passport card for international air travel. The wallet size passport card is convenient and less expensive than the passport book.

Whether you plan to apply for a first-time passport book, passport card, or both, submitting your passport application is easy. The United States Postal Service® makes it convenient to apply for a passport with the Retail Customer Appointment Scheduler (RCAS) tool. Customers now have the opportunity to self-schedule a first-time passport application appointment online or on a mobile device at usps.com/scheduler.

The RCAS tool guides you through the appointment process in four easy steps:

1. Choose a service.
2. Find available appointments.
3. Select your appointment time.
4. Provide contact information.

The RCAS tool will display available appointment times for participating Post Office™ locations that offer passport appointment services within the selected radius. Users will receive notifications of their scheduled appointment via email or text.

If you are renewing your passport, you must do so by mail. You do not need to make an appointment. Simply take your documents and payment to the nearest Post Office and mail everything to the U.S. Department of State using Priority Mail® or Priority Mail Express® service.

For best results, follow these passport and international travel tips:

- Apply for your passport book or card early.
- Check the expiration date of your current passport. U.S. passports are issued to adults for 10 years and children under the age of 16 for 5 years.
- Visit the U.S. Department of State website (travel.state.gov/content/travel/en/passports.html) for the following information:
 - Find out how to apply for or renew your passport;
 - Get passport fees and forms;
 - Track your application; and
 - Report your passport lost or stolen.
- Enroll in the Smart Traveler Enrollment Program at step.state.gov/step. U.S. citizens and nationals who travel and live abroad can use this free service to register their trip with the nearest U.S. Embassy or Consulate.

— Retail Services,
Delivery and Retail Customer Service Operations, 1-30-20

Policies, Procedures, and Forms Updates

Manuals

DMM Revision: Authorized Meter Providers

Effective March 2, 2020, the Postal Service™ will revise *Mailing Standards of the United States Postal Service*, Domestic Mail Manual (DMM®), section 604.4.1.3, to update authorized meter providers.

The Postal Service has been advised that Neopost, Inc. is changing its corporate name to Quadient, Inc. As a result, the Postal Service will revise section 604.4.1.3, “Authorized Meter Providers,” to reflect the new Neopost name and website address. The street address and telephone number will remain the same.

In addition, the Postal Service will update Quick Service Guide 604c, “Postage Meters and PC Postage Systems,” to reflect these changes.

Mailing Standards of the United States Postal Service, Domestic Mail Manual (DMM)

* * * * *

600 Basic Standards For All Mailing Services

* * * * *

604 Postage Payment Methods and Refunds

* * * * *

4.0 Postage Meters and PC Postage Products (“Postage Evidencing Systems”)

4.1 Basic Information

* * * * *

4.1.3 Authorized Meter Providers

* * * * *

[Revise the entry for “NEOPOST INC” (changing the corporate name and website address), then place in alphabetical order:]

QUADIENT INC
478 WHEELERS FARMS RD
MILFORD CT 06461
800-624-7892
www.quadient.com

* * * * *

The Postal Service will incorporate this revision into the next edition of the online DMM, which is available via Postal Explorer® at pe.usps.com.

— Product Classification, Marketing, 1-30-20

Handbooks

Handbook AS-805-D Revision: Information Security Network Change Review Process

Effective December 2019, the Postal Service™ revised Handbook AS-805-D, *Information Security Network Change Review Process*, to update procedures for requesting changes to the Postal Service network infrastructure and for establishing the framework for the Postal Service Network Change Review Board (NCRB). The NCRB oversees the implementation of Postal Service policies and procedures related to the addition of, or modification to, specified Postal and non-Postal Service systems or networks to the Postal Service network infrastructure.

In summary, the revisions to Handbook AS-805-D are as follows:

- Chapter 1, “Introduction: Information Security Network Change Review Process” was revised to provide the updated purpose of the NCRB process.
- Chapter 2, “Roles and Responsibilities” was revised to update role titles as well as updating and removing responsibilities.
- Chapter 3, “Network Change Review Process” was revised to reflect new section title name, and move applicable responsibilities for improved alignment.

- Chapter 4, “Network Change Process” was revised to update the applicable image.
- Chapter 5, “Change Request Documentation Requirements” was revised to correct minor verbiage and remove non-applicable responsibilities.
- Chapter 6, “Contact Information” was revised to update the email address.

Revised Handbook AS-805-D is now available on the Postal Service PolicyNet website:

- Go to blue.usps.gov.
- In the left-hand column, click *Essential Links*, and then click *PolicyNet*.
- Go to the right-hand side under “Published Forms and Directives.”
- Click *Handbooks*.

The direct URL for the Postal Service PolicyNet website is blue.usps.gov/cpim.

— Policy, Quality, and Compliance,
Chief Information Security Officer
and Digital Solutions, 1-30-20

Publications

Publication 431 Revision: Changes to Post Office Box Service and Caller Service Fee Groups

Effective January 30, 2020, Publication 431, *Post Office Box Service and Caller Service Fee Groups*, is revised to include the following changes.

Publication 431, *Post Office Box Service and Caller Service Fee Groups*

* * * * *

[Delete the following entries:]

ZIP Code	Fee Group
28464B	5
28466A	33
68623	5
94208	33
94245	33
94246	33
94278	33
94282	33
94291	33

* * * * *

The online version of Publication 431 is dated July 2013. Publication 431 is currently available on the Postal Service™ PolicyNet website (blue.usps.gov/cpim):

- Go to blue.usps.gov.
- In the left-hand column, click *Essential Links*, and then click *PolicyNet*.
- Go to the right-hand side under “Published Forms and Directives.”
- Click *Publications*.

Offices with WebBATS Manager/Supervisor access can view current Publication 431 information by going to the WebBATS Edit Facility Information page, as follows:

1. Go to the WebBATS main menu, and select Utility>Facility>Edit Facility option.
2. View the Fee Group field on the Edit Facility Information page.

— Retail Operations,
Retail and Customer Service Operations, 1-30-20

Organization Information

Address Management

Post Office Changes

Old/ New	Finance No.	ZIP Code	State	P.O. Name	County/ Parish	Station/Branch/ Unit	Unit Type	Effective Date	Comments
Old New	47-4632 47-4632	37934 37934	TN TN	Knoxville Knoxville	Knox Knox	Main Office Farragut	Post Office Classified Branch	01/11/2020	This announcement changes the preferred last line of this ZIP Code™ from Knoxville, TN to Farragut, TN. Use Farragut, TN 37934 as the last line of address.

— Address Management, Addressing and Geospatial Technology, 1-30-20

Environmental Management

Federal Reporting Requirements for Hazardous and Toxic Chemicals

Postal Service™ policy requires that all USPS® facilities comply with the reporting requirements of the Emergency Planning and Community Right-to-Know Act (EPCRA), if applicable. Postal Service sites that store certain quantities of hazardous and toxic chemicals must complete and submit the EPCRA Tier II Form by March 1 every year.

Reporting requirements apply to any location that stores threshold quantities of EPCRA-regulated hazardous and toxic chemicals.

Applicable Chemicals

Commonly reported chemicals and thresholds applicable to USPS facilities include the following:

- **Lead-acid batteries.** USPS facilities can meet the 500-pound threshold for sulfuric acid by having more than six tow motor batteries or more than two forklift batteries, or a combination of these batteries, onsite. Estimate the percent weight of sulfuric acid in each battery by multiplying the battery weight by 18 percent.
- **Gasoline, diesel, or heating fuel.** The 10,000 pound threshold for these fuels is equivalent to 1,639 gallons of gasoline (6.1 pounds/gallon) or 1,351 gallons of diesel/heating fuel (7.4 pounds/gallon).
- **Ice melt/anti-skid products.** Rock salt, calcium magnesium acetate, and sand have a 10,000-pound threshold. The threshold applies whether the materials are stored in one bulk location, or dispersed in bags or on pallets throughout the site.

Reporting Process

By March 1, 2020, USPS Installation Heads must submit the emergency and hazardous chemical inventory reporting form, known as the EPCRA Tier II Form, based on the chemicals stored in 2019, to the following organizations:

- The State Emergency Response Commission;
- The Local Emergency Planning Committee; and
- The local Fire Department that would respond to an emergency at your facility.

States may require report submission via the following ways:

- Submittal of the hard copy EPCRA Tier II Form,
- Electronic reporting through the EPA Tier2 Submit software program, or
- Through state-specific software programs or websites. Each state's individual reporting requirements, procedures, and forms can be accessed at epa.gov/epcra

For states that require report submission through the EPA Tier2 Submit 2019 software, USPS facilities can request a download of the Tier2 Submit 2019 software through eAccess. If other state electronic reporting software or website applications are not accessible or authorized on your USPS ACE computer system, you must submit the EPCRA Tier II Form in a hard copy format.

Note: USPS facilities are not required to pay any fees associated with reporting (including electronic reporting user and registration fees); however, as a matter of individual discretion, electronic submittal fees may be paid if the convenience benefits the Postal Service.

Additional detailed reporting instructions are available through the appropriate regional manager of Environmental Compliance and Sustainability, or by visiting the Sustainability website at blue.usps.gov/sustainability/environmental/tier-ii-reporting.htm.

If you have questions about your need to report under EPCRA, contact your designated manager, Regional Environmental Compliance:

- For the East region (Northeast, Eastern, Capital Metro Areas, and Headquarters-related facilities), contact Nicholas DeCarlo at nicholas.decarlo@usps.gov.
- For the West region (Great Lakes, Western, Southern, and Pacific Areas), contact Judy Wingo-Stalinger at judy.wingo-stalinger@usps.gov.

— *Environmental Compliance and Risk Management,
Office of Sustainability, 1-30-20*

Mailing and Shipping Services

Mail Alert

The mailings below will be deposited in the near future. Offices must process this mail according to applicable service standards with the in-home dates in mind. Mailers wishing to participate in these alerts, for mailings of 1 mil-

lion pieces or more, must contact Business Service Network Integration at 202-268-3258 at least 1 month before the requested delivery dates.

Requested Delivery Dates	Title of Mailing	Class and Type of Mail	Number of Pieces (Millions)	Distribution	Presort Level	Comments
02/10/20–02/13/20	Midnight Velvet	Standard Catalog	3.0	Nationwide	3/5 Digit	Quad Graphics
02/12/20–02/15/20	Through the Country Door	Standard Catalog	1.0	Nationwide	3/5 Digit	Quad Graphics

– Business Customer Support and Services, Sales and Customer Relations, 1-30-20

Sales

Business Connect Kit: Providing Inspiration and Opportunity

Starting February 3, 2020, the Q2 Business Connect[®] Kit will be mailed to Postal Service[™] Executive and Administrative Schedule Field Customer Service employees in a Priority Mail[®] envelope with an identifying Business Connect address label.

The graphic features the USPS logo and 'Small Business' text at the top left. Below it, the main heading reads 'Business Connect Materials Enclosed' in a large, bold, blue font. Underneath the heading, the text 'OPEN IMMEDIATELY' is written in red, flanked by two red stars. A red horizontal line is positioned below this text. Further down, a smaller blue font text says 'Promote small and lightweight package shipping to small businesses and earn your chance to meet with USPS Postal Leaders.' At the bottom left of the graphic, there is a small code '20Q2BCSTICKR-LAB' and a copyright notice: '©2020 United States Postal Service. All Rights Reserved. The Eagle Logo is among the many trademarks of the U.S. Postal Service.' The background of the graphic shows a person's hands working at a desk with a laptop, a pen, and some papers, overlaid with a large blue circular graphic element.

Take our survey! The first 100 respondents will be rewarded.

UNITED STATES POSTAL SERVICE[®]
Small Business

Business Connect[®]
Materials Enclosed

★ **OPEN IMMEDIATELY** ★

Promote small and lightweight package shipping to small businesses and earn your chance to meet with USPS Postal Leaders.

20Q2BCSTICKR-LAB
©2020 United States Postal Service. All Rights Reserved.
The Eagle Logo is among the many trademarks of the U.S. Postal Service.

The Q2 Business Connect Kit was designed to provide postmasters, managers, and supervisors in Customer Service with strategies to grow our shipping segment in the small or lightweight packages arena, along with suggestions on how to increase revenue for both domestic and international lightweight options.

To engage new customers and help identify potential shipping businesses, the Q2 Business Connect Kit includes the following collateral:

- Business Connect folder with welcome letter;
- Business Connect guide: What, Why, Who, How — Everything you need to know to make the most of the Business Connect program;

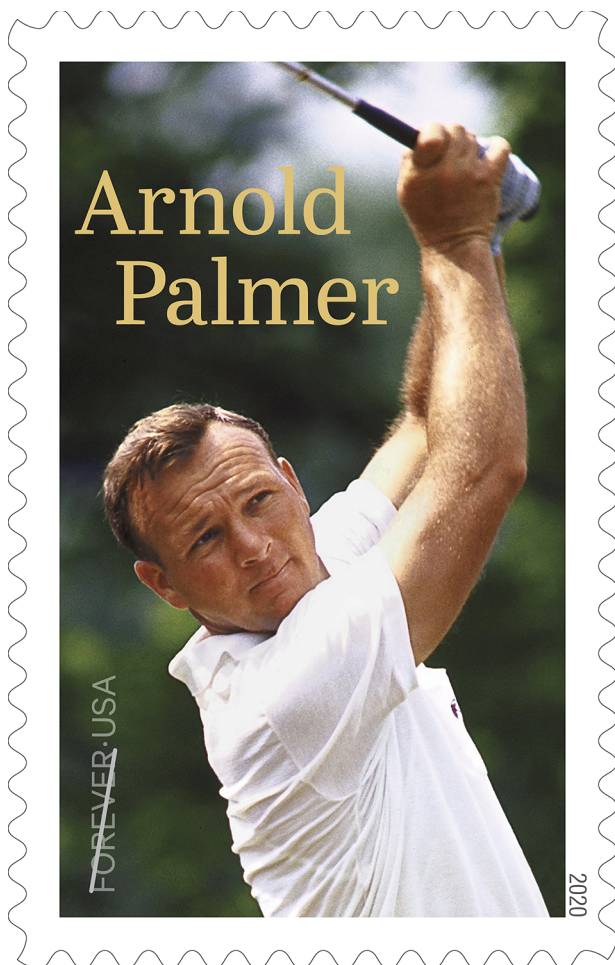
- Business Connect activity guide: Small business is a big opportunity for USPS;
- Quick Reference card: Opportunities are everywhere; and
- A Click-N-Ship[®] leave-behind tear pad.

For questions about the Business Connect Kit, contact your local district business development specialist or email the Small Business team at SmallBiz@usps.gov.

— Small Business Team, Sales, 1-30-20

Stamp Services

Stamp Announcement 20-09: Arnold Palmer Stamp



©2019 USPS

On March 4, 2020, in Orlando, FL, the United States Postal Service® will issue the *Arnold Palmer* stamp (Forever® priced at the First-Class Mail® rate) in one design, in a pressure-sensitive adhesive pane of 20 stamps (Item 475900). The stamp will go on sale nationwide March 4, 2020, and must not be sold or canceled before the first-day-of-issue.

This stamp honors champion golfer Arnold Palmer (1929–2016). With drive and charisma, he helped transform a game once seen as a pastime for the elite into a sport enjoyed by the masses. The stamp art features James Drake’s action photograph of Palmer at the 1964 United States Open at Congressional Country Club in Bethesda, MD. Art director Antonio Alcalá designed the stamp.

Availability to Post Offices: Item 475900, Arnold Palmer (Forever Priced at the First-Class Mail Rate) Pane of 20 Stamps

Stamp Fulfillment Services will make an automatic push distribution to Post Offices of a quantity to cover approximately 30 days of sales. Distribution quantities for the automatic push distribution will be available by logging on to SFS Web at sfsweb.usps.gov. Post Offices may begin ordering stamps on the first-day-of-issue through SFS Web; offices must also check the amount they will receive on their automatic push distribution.

Special Dedication Postmarks

Only the following pictorial postmark is permitted for the *Arnold Palmer* stamp. The word “Station” or the abbreviation “STA” is required somewhere in the design, because it will be a temporary station. **Use of any image other than the following special pictorial image is prohibited.**

Guidelines for Finalizing Arnold Palmer Stamp Pictorial Postmark Art



To finalize the *Arnold Palmer* stamp pictorial postmark art, insert the date, city, state, and ZIP Code™ of the physical location of your event adjacent to the stamp image. Overall dimensions of the pictorial postmark must not exceed 4 inches (horizontally) by 2 inches (vertically). Collectors prefer the dimensions 3-1/2 inches by 1 inch.

The Postal Service™ must make all special postmarks known to collectors through advance publicity in the *Postal Bulletin*. Therefore, all special dedication cancellations must be reported to Stamp Services 4 weeks before the event using PS Form 413, *Pictorial Postmark Announcement/*

Report. To get a copy of the form, go to blue.usps.gov/formmgmt/forms/ps413.pdf.

How to Order the First-Day-of-Issue Postmark

Customers have 120 days to obtain the first-day-of-issue postmark by mail. They may purchase new stamps at their local Post Office™ or at The Postal Store® website at usps.com/shop. They must affix the stamps to envelopes of their choice, address the envelopes (to themselves or others), and place them in a larger envelope addressed to:

FDOI – Arnold Palmer Stamp
 USPS Stamp Fulfillment Services
 8300 NE Underground Drive, Suite 300
 Kansas City, MO 64144-9900

After applying the first-day-of-issue postmark, the Postal Service will return the envelopes through the mail. There is no charge for the postmark up to a quantity of 50. There is a 5-cent charge for each additional postmark over 50. All orders must be postmarked by July 4, 2020.

How to Order First-Day Covers

The Postal Service also offers first-day covers for new stamp issues and Postal Service stationery items post-marked with the official first-day-of-issue cancellation. Each item has an individual catalog number and is offered in the *USA Philatelic* catalog and online at usps.com/shop. Customers may register to receive a free *USA Philatelic* catalog online at usps.com/philatelic.

Locally produced items are not authorized. Only merchandise that has been approved and assigned an item number by Headquarters Retail Marketing may be produced and sold.

Issue:	Arnold Palmer Stamp
Item Number:	475900
Denomination & Type of Issue:	First-Class Mail Forever
Format:	Pane of 20 (1 design)
Series:	N/A
Issue Date & City:	March 4, 2020, Orlando, FL 32862
Art Director:	Antonio Alcalá, Alexandria, VA
Designer:	Antonio Alcalá, Alexandria, VA
Typographer:	Antonio Alcalá, Alexandria, VA
Existing Photo:	James Drake
Modeler:	Joseph Sheeran
Manufacturing Process:	Offset, Microprint
Printer:	Ashton Potter (USA) Ltd. (APU)
Press Type:	Muller A76
Stamps per Pane:	20
Print Quantity:	25,000,000 stamps
Paper Type:	Nonphosphored Type III, Block Tag
Adhesive Type:	Pressure-sensitive
Processed at:	Ashton Potter (USA) Ltd. (APU)
Stamp Orientation:	Vertical
Image Area (w x h):	0.84 x 1.42 in./21.336 x 36.068 mm
Stamp Size (w x h):	0.98 x 1.56 in./24.892 x 39.624 mm
Pane Size (w x h):	5.92 x 7.5 in./150.368 x 190.5 mm
Press Sheet Size (w x h):	11.84 x 22.75 in./300.736 x 577.85 mm
Colors:	Black, Cyan, Magenta, Yellow
Plate Size:	240 stamps per revolution
Plate Number:	“P” followed by four (4) single digits
Marginal Markings:	
Front:	Header: Arnold Palmer: Professional Golfer • Plate number in bottom two corners
Back:	Plate position diagram (6) • 2 Barcodes (475900) • ©2019 USPS • USPS logo • Promotional text

Pictorial Postmarks Announcement

As a community service, the Postal Service™ offers pictorial postmarks to commemorate local events celebrated in communities throughout the nation. A list of events for which pictorial postmarks are authorized appears on the following pages. The sponsor of the pictorial postmark appears in italics under the date. Also provided are illustrations of these postmarks.

People attending these local events may obtain the postmark in person at the temporary Post Office™ station established there. Those who cannot attend the event but who wish to obtain the postmark may submit a mail order request. Pictorial postmarks are available only for the dates indicated, and *requests must be postmarked no later than 30 days following the requested pictorial postmark date.*

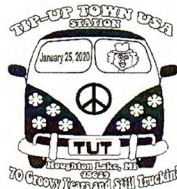
All requests must include a stamped envelope or postcard bearing at least the minimum First-Class Mail® postage. Items submitted for postmark may not include

postage issued after the date of the requested postmark. Such items will be returned unserved.

Customers wishing to obtain a postmark must affix stamps to any envelope or postcard of their choice, address the envelope or postcard to themselves or others, insert a card of postcard thickness in envelopes for sturdiness, and tuck in the flap. Place the envelope or postcard in a larger envelope and address it to: Pictorial Postmarks, followed by the Name of the Station, Address, City, State, ZIP+4® Code, as listed next to the postmark.

Customers can also send stamped envelopes and postcards without addresses for postmark, as long as they supply a larger envelope with adequate postage and their return address. After applying the pictorial postmark, the Postal Service returns the items (with or without addresses) under addressed protective cover.

The following pictorial postmark has been extended for 30 days:



January 25, 2020

Houghton Lake Chamber of Commerce
Tip-Up Town USA Station
Postmaster
PO Box 9998
Houghton Lake, MI 48629-9998

Embracing and Celebrating Love



February 1, 2020

United States Postal Service
Valentine's Day Station
Postmaster
119 Church Street
Romeo, MI 48065-9998



February 1, 2020

Quincy Stamp Club
Quincy Station
Postmaster
3535 Locust Street
Quincy, IL 62301-9998

Embracing and Celebrating Love



February 1, 2020

United States Postal Service
Valentine's Day Station
Postmaster
356 Bowdoin Road
Juliette, GA 31046-9998



February 1, 2020

Girl Scouts
Valentine's Day Station
Postmaster
6664 Route 362
Bliss, NY 14024-9998



February 4, 2020
Simmons University
The Gwen Ifill Station
Postmaster
25 Dorchester Avenue,
Room 4009
Boston, MA 02205-9998

<i>Year of the Rat</i>
<i>February 8, 2020</i>
<i>Purchase, NY Station 10577</i>

February 8, 2020
Westchester Association of Chinese Americans
Purchase, NY Station
Postmaster
3003 Purchase Street
Purchase, NY 10577-9998



February 5, 2020
United States Postal Service
Chinatown Station
Strategic Communication
433 West Harrison Street,
Room 4010
Chicago, IL 60699-9996

– *Stamp Services, Marketing, 1-30-20*

How to Order the First-Day-of-Issue Digital Color or Traditional Postmarks

Customers have 120 days to obtain the first-day-of-issue postmarks by mail. Each cover must have sufficient postage to meet First-Class Mail® requirements. Customers may purchase new stamps at their local Post Office™, by phone at 800-782-6724, or on The Postal Store® website at usps.com/shop.

Digital Color Postmarks

Only select stamp issues offer a digital color postmark. Customers may submit #6 or #10 envelopes constructed of paper rated as “laser safe.” The Postal Service™ recommends envelopes of 80-pound Accent Opaque, acid-free, 9/16-inch side seams with no glue on the flap. The maximum size of all digital color postmarks is 2 inches (vertically) by 4 inches (horizontally). Allow sufficient space on the envelope to accommodate the postmark. Do not use self-adhesive labels for addresses on the envelope. Two test envelopes must be included. There is a minimum of 10 envelopes at 50 cents per postmark required at the time of servicing. Customers must submit a check, money order, or credit card for payment.

The Postal Service reserves the right to not accept hand-painted and other cachet envelopes that are not compatible with our digital color postmark equipment. The Postal Service also reserves the right to substitute traditional black rubber postmarks if use of nonspecified envelopes results in poor image quality or damage to equipment.

Customers must affix the stamps to the envelopes and address them to themselves or others for return through the mail. Or, they may include an additional self-addressed return envelope, large enough to accommodate their canceled items, with sufficient postage affixed for return of

their postmarked items. Address customer requests for digital color postmarks to:

FDOI – (Name of Stamp Issue)
USPS Stamp Fulfillment Services
8300 NE Underground Drive, Suite 300
Kansas City, MO 64144-9900

After applying the first-day-of-issue postmark, the Postal Service will return the envelopes to the customer by U.S. Mail®.

Traditional Postmarks

Customers must affix the stamps to the envelopes and address them to themselves or others for return through the mail. Or, they may include an additional self-addressed return envelope, large enough to accommodate their canceled items, with sufficient postage affixed for return of their postmarked items. Address customer requests for traditional postmarks to:

FDOI – (Name of Stamp Issue)
USPS Stamp Fulfillment Services
8300 NE Underground Drive, Suite 300
Kansas City, MO 64144-9900

After applying the first-day-of-issue postmark, the Postal Service will return the envelopes to the customer by U.S. Mail™. There is no charge for the first 50 postmarks. There is a 5-cent charge for each additional postmark over 50. Customers must submit a check, money order, or credit card for payment.

Locally produced items are not authorized. Only merchandise that has been approved and assigned an item number by Headquarters Retail Marketing may be produced and sold.



Black and White Pictorial

FDOI – Purple Heart Medal 2019 Stamp

USPS Stamp Fulfillment Services February 4, 2020
8300 NE Underground Drive, Suite 300
Kansas City, MO 64144-9900



Digital Color Pictorial

FDOI – Spooky Silhouettes Stamps

USPS Stamp Fulfillment Services February 11, 2020
8300 NE Underground Drive, Suite 300
Kansas City, MO 64144-9900

Pull-Out Information

Fraud

Invalid USPS Corporate Account Numbers

Provide this listing to Contract Postal Units and acceptance clerks in non-POS locations without intranet access to validate a USPS Corporate Account (USPSCA) number online. For all other locations, online USPSCA validation is preferred. This list supersedes all previous notices, which you must recycle.

Acceptance clerks must not accept Priority Mail Express® shipments bearing an invalid USPSCA number in the “Payment by Account” or “Agreement Number” section of the label or form.

Note: The first 6 digits of a 9-digit Custom Designed Service and Next Day Pickup Agreement make up the Corporate Account Number.

005745	008142	008331	008671	009084	009506	009823	067140	152298	329671	601094	910023	958262
006129	008143	008337	008678	009103	009511	009832	067279	198099	330189	601171	910238	968377
006903	008147	008340	008700	009127	009530	009841	068418	200463	330333	609345	911040	968405
006914	008151	008369	008703	009131	009531	009881	070630	206145	330606	641170	913019	968464
007034	008160	008376	008704	009195	009541	009936	071318	210225	340607	721051	913450	968885
007036	008161	008385	008709	009272	009547	011081	076214	210238	341021	738002	913971	968992
007051	008163	008389	008719	009285	009552	012171	076521	210529	344019	740297	914027	970158
007216	008175	008401	008720	009303	009556	021812	080250	210548	349554	740705	914996	980553
007238	008177	008421	008721	009358	009560	023586	080601	210570	402663	740734	920067	982501
007241	008180	008434	008743	009360	009565	025182	085133	212361	405124	744164	921469	995482
007245	008200	008444	008745	009366	009574	027865	088521	222220	460158	752027	925197	995818
007247	008204	008451	008749	009380	009575	028564	096311	240003	467102	752291	926376	995868
007251	008215	008461	008758	009383	009576	028900	102867	240022	468570	770226	930010	997060
007253	008221	008473	008787	009407	009579	029056	105013	240045	481330	771264	930028	
007271	008228	008486	008789	009411	009580	029078	105305	241002	481331	773533	931254	
007276	008246	008493	008792	009417	009582	029720	105645	243120	481839	803223	934018	
007297	008258	008506	008797	009422	009583	029885	105825	245314	481912	851056	935239	
008019	008275	008511	008871	009444	009593	033245	109025	254013	486171	851057	937840	
008022	008283	008531	008887	009453	009668	056087	115323	261037	488972	852376	939006	
008035	008294	008541	008897	009458	009669	058079	115518	263016	490293	853677	939015	
008068	008299	008567	008932	009460	009687	064301	116023	296486	493324	900052	948873	
008081	008301	008603	008965	009472	009699	065352	118330	300829	495119	900053	950034	
008129	008307	008607	008971	009486	009704	065857	118955	301435	530036	901354	951020	
008132	008315	008626	008984	009489	009741	066227	119020	305652	571005	901743	951314	
008139	008318	008642	009019	009503	009761	066464	119529	311634	601007	902521	958250	

— Product Information Requirements, Mail Entry and Payment Technology, 1-30-20

Missing, Lost, or Stolen U.S. Money Order Forms

Do Not Cash — Upon Receipt, Notify Local Postal Inspectors

Provide this listing to all Postal Service™ employees responsible for accepting and cashing postal money orders. Destroy all interim notices when the numbers listed appear in the *Postal Bulletin*. The new money order serial

numbers consist of the first 9 digits. The tenth digit is a check digit only.

Do not cash outdated money orders **104 151 601 to 692 600 000**. Advise holders to send invalid money orders to Canada Post Corporation, Ottawa, Canada K1A 0B1. Check for altered dollar amounts by holding money orders to the light.

010 001 0200 to 0299	037 909 5490 to 5499	070 916 1340 to 1399	114 402 3850 to 3899
010 504 1932 to 1999	037 931 4660 to 4699	071 047 5768 to 5799	114 866 5368 to 5397
011 582 1889 to 1899	039 145 6521 to 6599	071 179 9800 to 9899	116 154 2800 to 2899
011 588 2900 to 3099	040 024 3901 to 3999	071 386 3682 to 3699	116 986 4400 to 4499
012 441 0784 to 0799	040 674 7100 to 7199	071 507 6840 to 6899	117 175 1647 to 5169
012 579 5675 to 5699	040 688 8816 to 8899	072 045 9641 to 9699	117 951 4687 to 4699
013 289 6176 to 6199	041 299 6752 to 6799	072 675 8287 to 8299	117 951 5200 to 5299
013 610 0014 to 0099	041 623 8889 to 8899	073 763 0867 to 0876	119 786 3051 to 3064
014 932 1000 to 1099	041 803 6565 to 6599	073 763 0878 to 0887	119 815 8961 to 6199
014 972 0800 to 0899	043 129 1968 to 1997	073 763 0889 to 0898	119 850 7400 to 7499
015 363 0065 to 0099	043 205 5922 to 5999	077 617 5481 to 5499	119 850 7700 to 7999
017 028 3200 to 3299	044 087 3457 to 3499	077 999 4001 to 4090	121 634 0460 to 0499
018 569 5333 to 5399	044 087 4000 to 4099	078 174 4475 to 4499	122 451 9879 to 9899
018 986 5264 to 5299	044 226 2487 to 2512	078 219 4931 to 4999	122 714 6805 to 6900
019 518 2814 to 2899	044 306 4200 to 4299	078 250 4756 to 4799	124 916 0304 to 0499
020 698 5159 to 5199	044 306 4370 to 4599	078 823 8312 to 8399	126 423 0136 to 0169
020 844 7307 to 7399	045 524 4121 to 4298	079 374 0300 to 2499	127 500 2328 to 2399
020 972 8948 to 8999	046 800 9870 to 9899	079 807 2342 to 2399	160 901 2254 to 2299
022 021 9110 to 9181	047 352 4000 to 4099	082 721 0228 to 0254	161 103 6581 to 6599
022 037 1411 to 1499	048 383 7650 to 7659	083 140 5000 to 7499	161 194 2857 to 0899
022 527 9201 to 9210	048 396 3647 to 3699	083 784 8886 to 8899	162 032 4447 to 4499
022 529 1882 to 1899	051 142 0755 to 0799	083 913 6915 to 6999	163 257 1085 to 1099
023 637 7169 to 7199	051 774 8857 to 8899	084 478 3920 to 3999	164 359 2406 to 2499
024 380 4100 to 4199	051 781 2875 to 2885	086 000 8271 to 8299	166 101 1433 to 1499
024 496 6870 to 6896	051 977 7010 to 7023	086 798 3840 to 3849	167 555 5201 to 5212
025 092 0987 to 0999	052 058 7115 to 7199	088 404 4472 to 4499	167 555 5214 to 5299
025 369 5535 to 5599	054 450 1130 to 1167	088 404 5584 to 5699	169 618 6274 to 6299
025 729 1151 to 1199	057 670 0563 to 0599	088 757 8688 to 8699	171 806 6878 to 6893
025 729 1643 to 1799	058 187 3836 to 3899	088 757 9400 to 9499	173 639 4685 to 4699
026 492 3180 to 3199	058 523 3003 to 3099	089 358 2248 to 2257	174 238 2779 to 2799
027 361 0430 to 0499	058 591 1153 to 1299	090 663 9678 to 9684	174 281 9347 to 9399
027 369 4482 to 4495	058 895 3746 to 3799	091 818 0071 to 0099	175 251 2600 to 0699
027 671 8762 to 8776	059 986 0814 to 0899	093 106 9346 to 9355	176 281 7937 to 7950
027 787 9886 to 9899	060 406 7650 to 7699	093 203 0500 to 0599	176 281 7963 to 7999
027 965 9487 to 9499	063 491 8122 to 8199	093 684 3630 to 3699	176 731 6586 to 6599
028 100 8069 to 8099	063 916 9968 to 9999	094 081 5074 to 5099	178 254 5000 to 9999
028 191 1852 to 1999	064 091 4500 to 4599	094 216 2555 to 2599	178 881 9900 to 9999
028 850 3000 to 3199	065 170 0471 to 0499	094 580 7062 to 7099	180 031 2089 to 2098
029 510 1500 to 1599	065 255 7909 to 7999	094 639 4200 to 4299	180 403 7723 to 7741
030 687 0903 to 0999	065 392 6345 to 6399	095 070 7186 to 7199	180 428 4580 to 0599
030 701 3442 to 3499	066 099 2014 to 2099	095 076 8300 to 8399	182 368 7544 to 0599
031 077 4507 to 4799	066 648 2880 to 2899	095 354 6864 to 6899	182 475 3229 to 3258
032 295 7500 to 9999	066 787 3639 to 3699	097 224 1350 to 1599	182 475 3904 to 3933
034 394 1000 to 1099	066 845 7500 to 9999	100 160 3800 to 3899	182 631 0031 to 0099
034 943 0400 to 0799	067 093 3869 to 3899	104 667 6400 to 6499	182 911 6539 to 6600
035 035 4337 to 4399	068 895 0334 to 0399	104 876 8937 to 8999	184 218 2760 to 2799
037 312 7500 to 7599	070 724 4488 to 4499	112 049 4413 to 4499	185 828 1474 to 1499
037 706 9578 to 9599	070 841 9181 to 9199	112 870 9765 to 9799	186 132 7583 to 0599
037 805 3677 to 3699	070 844 2546 to 2599	113 319 2000 to 2099	186 629 0589 to 0599

187 184 6177	to	0199	225 970 0500	to	0599	254 252 3400	to	3499	258 405 6300	to	6399
187 323 8200	to	8299	225 970 0600	to	0699	254 252 3500	to	3599	258 405 6400	to	6499
187 441 6080	to	6099	225 970 0700	to	0799	254 252 3600	to	3699	258 405 6800	to	6899
188 831 6774	to	6799	227 033 8679	to	8699	254 252 3700	to	3799	258 405 6900	to	6999
188 835 6370	to	6399	227 275 9400	to	9999	254 252 3800	to	3899	258 405 7000	to	7099
189 083 1064	to	1099	228 463 2456	to	2499	254 252 3900	to	3999	258 405 7100	to	7199
189 660 9583	to	9599	228 510 4852	to	4899	254 252 4000	to	4099	258 405 7200	to	7299
191 179 0377	to	0399	229 462 8451	to	8475	254 252 4100	to	4199	258 405 7300	to	7399
192 050 5762	to	5781	229 668 5977	to	5999	254 252 4200	to	4299	258 405 7400	to	7499
194 456 8600	to	0699	229 923 9176	to	9199	254 252 4300	to	4399	258 405 7800	to	7899
195 194 6881	to	6899	229 924 6696	to	6699	254 252 4400	to	4499	258 405 7900	to	7999
195 874 1112	to	1199	230 051 9500	to	9999	254 252 4500	to	4599	258 405 8000	to	8099
196 979 0524	to	0599	236 366 2431	to	2499	254 252 4600	to	4699	258 405 8100	to	8199
197 244 6100	to	6199	236 607 6882	to	6899	254 252 4700	to	4799	258 405 8200	to	8299
197 244 6300	to	6399	236 660 5853	to	5872	254 252 4800	to	4899	258 405 8300	to	8399
197 244 6400	to	6499	239 322 5200	to	5299	254 252 4900	to	4999	258 405 8400	to	8499
197 244 6500	to	6599	239 322 5400	to	5499	254 565 7607	to	7700	258 405 8500	to	8599
197 244 6600	to	6699	239 322 5600	to	5699	254 907 1203	to	1299	258 405 8600	to	8699
197 244 6700	to	6799	239 322 5800	to	5899	255 397 1557	to	1576	258 405 8700	to	8799
197 244 6800	to	8999	239 322 5900	to	5999	255 425 2989	to	2998	258 405 8800	to	8899
198 285 2556	to	2566	239 607 4783	to	4799	255 728 6412	to	6499	258 405 8900	to	8999
199 105 0778	to	0799	240 593 1879	to	1899	255 728 9842	to	9899	258 405 9600	to	9699
199 678 2968	to	2999	242 591 2048	to	2099	256 134 9833	to	9839	258 405 9700	to	9799
202 748 5133	to	5199	242 735 0388	to	0398	256 134 9840	to	9849	258 405 9800	to	9899
202 748 5245	to	5299	242 951 7276	to	7299	256 134 9850	to	9859	258 405 9900	to	9999
202 748 5300	to	5399	243 535 6370	to	6399	256 134 9860	to	9869	259 062 4788	to	4798
202 748 5400	to	5499	244 004 9985	to	9999	256 134 9870	to	9879	259 218 1400	to	1499
203 256 1240	to	1299	244 004 9985	to	9999	256 134 9880	to	9889	259 218 1500	to	1599
204 230 3577	to	3595	244 268 9765	to	9799	256 134 9890	to	9899	259 218 1600	to	1699
205 019 0174	to	0199	244 347 4471	to	4499	256 247 6900	to	6999	259 590 5654	to	5699
206 936 3184	to	3199	249 056 1551	to	1599	256 550 5536	to	5545	259 670 8268	to	8299
207 196 9900	to	9999	249 336 9438	to	9499	256 799 2257	to	2299	259 835 6238	to	6399
207 204 0700	to	0799	249 399 4000	to	4099	257 154 8763	to	8799	259 835 6701	to	6799
207 204 0800	to	0899	249 399 4100	to	4199	257 154 8800	to	8899	260 224 4600	to	4699
207 514 3857	to	3899	249 399 4200	to	4299	257 765 4567	to	4599	260 224 5941	to	5999
208 556 4707	to	4799	249 399 4300	to	4399	257 765 4610	to	4696	260 310 2821	to	2899
210 057 4038	to	4047	249 399 4400	to	4499	257 765 4737	to	4799	260 452 0010	to	0022
210 221 0548	to	0599	249 399 4500	to	4599	257 792 7800	to	7889	260 452 0049	to	4299
214 061 4711	to	4724	249 399 4600	to	4699	257 792 7900	to	7999	260 761 1603	to	1662
214 303 6311	to	6325	249 399 4700	to	4799	257 792 8000	to	8099	261 426 0408	to	0499
214 303 6239	to	6258	249 399 4800	to	4899	257 856 9863	to	9899	262 337 2600	to	2699
214 877 4251	to	4273	249 399 4900	to	4999	258 103 1773	to	1782	262 337 2700	to	2700
215 252 3918	to	3992	250 159 7502	to	7599	258 405 1800	to	1899	262 337 2800	to	2800
217 585 1400	to	1499	250 566 9644	to	9699	258 405 1900	to	1999	262 337 2900	to	2900
218 698 2157	to	2199	250 661 8425	to	8499	258 405 3300	to	3399	262 337 3000	to	3099
218 746 0800	to	0899	251 335 5731	to	5799	258 405 3400	to	3499	262 337 3100	to	3199
219 095 0100	to	0399	251 379 2380	to	2399	258 405 3500	to	3599	262 337 3200	to	3299
219 389 1885	to	1899	252 005 7626	to	7699	258 405 3700	to	3799	262 337 3300	to	3399
219 568 7435	to	7456	252 421 8401	to	8499	258 405 3800	to	3899	262 337 3400	to	3499
219 568 7469	to	7487	252 464 2810	to	2899	258 405 3900	to	3999	262 337 3500	to	3599
221 316 5757	to	5799	252 612 3683	to	3699	258 405 4000	to	4099	262 337 3600	to	3699
223 476 3914	to	3999	252 469 2125	to	2199	258 405 4100	to	4199	262 337 3700	to	3799
223 565 4921	to	4957	252 833 3286	to	3297	258 405 4200	to	4299	262 337 3800	to	3899
223 565 4979	to	4999	253 470 3948	to	3999	258 405 4600	to	4699	262 337 3900	to	3999
224 636 4745	to	4765	253 565 7400	to	7499	258 405 5600	to	5699	262 337 4000	to	4099
224 636 4776	to	4799	254 252 2800	to	2899	258 405 5700	to	5799	262 337 4100	to	4199
224 636 4855	to	4885	254 252 2900	to	2999	258 405 5800	to	5899	262 337 4200	to	4299
224 636 4932	to	4948	254 252 3000	to	3099	258 405 5900	to	5999	262 337 4300	to	4399
224 636 4950	to	4962	254 252 3100	to	3199	258 405 6000	to	6099	262 337 4400	to	4499
224 636 4985	to	4999	254 252 3200	to	3299	258 405 6100	to	6199	262 337 4500	to	4599
224 730 2207	to	2299	254 252 3300	to	3399	258 405 6200	to	6299	262 337 4600	to	4699

262 337 4700	to	4799	262 546 4400	to	4499	391 574 1466	to	1499	410 694 8400	to	8599
262 337 4800	to	4899	262 546 4500	to	4599	391 783 3020	to	3599	410 775 1500	to	1599
262 337 4900	to	4999	262 546 4600	to	4699	391 792 6100	to	6199	410 795 7927	to	7999
262 337 5000	to	5099	262 546 4700	to	4799	392 668 2956	to	2999	410 867 0917	to	0966
262 337 5100	to	5199	262 546 4800	to	4899	392 854 8500	to	8899	410 867 0970	to	0999
262 337 5200	to	5299	262 546 4900	to	4999	393 584 7566	to	7699	411 868 1023	to	1199
262 337 5300	to	5399	262 546 7100	to	7199	393 650 0074	to	0099	411 922 2322	to	2399
262 337 5400	to	5499	262 546 7300	to	7399	393 838 8316	to	8499	412 193 0900	to	0999
262 337 5500	to	5599	262 546 7400	to	7499	393 893 6007	to	6099	412 395 8599	to	8699
262 337 5600	to	5699	263 254 2500	to	2500	394 126 6907	to	6999	412 485 6500	to	6599
262 337 5700	to	5799	263 340 0000	to	0099	394 189 0405	to	0599	412 485 6610	to	6699
262 337 5800	to	5899	263 340 0100	to	0199	394 822 3243	to	3278	412 885 5953	to	5999
262 337 5900	to	5999	263 340 0500	to	0599	394 990 1810	to	1899	414 193 3608	to	3674
262 337 6000	to	6099	263 340 0600	to	0699	395 343 3264	to	3299	414 193 3677	to	3699
262 337 6100	to	6199	263 340 2700	to	2799	395 373 3035	to	3099	414 411 7348	to	7399
262 337 6200	to	6299	263 340 2800	to	2899	395 396 9649	to	9799	414 640 0757	to	0799
262 337 6300	to	6399	263 340 3000	to	3099	395 970 3240	to	3299	414 965 1727	to	1799
262 337 6400	to	6499	273 775 7700 to 7899			397 622 4054	to	4099	417 302 8104	to	8199
262 337 6500	to	6599	302 000 0000 to 9999			397 819 8902	to	8999	417 387 6532	to	6599
262 337 6600	to	6699	349 746 2056 to 2099			398 149 7200	to	7699	417 496 6800	to	6999
262 337 6700	to	6799	350 518 7350 to 7374			399 070 0872	to	0899	417 871 9250	to	9299
262 337 6800	to	6899	360 011 1690 to 1699			399 156 7119	to	7199	417 930 9533	to	9599
262 337 6900	to	6999	360 168 6008	to	6099	399 203 5064	to	5099	418 164 6500	to	6799
262 337 7000	to	7099	360 173 8800	to	8899	399 296 9910	to	9999	418 423 9863	to	9899
262 337 7100	to	7199	360 324 2326	to	2399	399 396 8935	to	8999	418 633 5922	to	5999
262 337 7200	to	7299	362 861 3064	to	3099	399 792 7775	to	7799	418 719 8520	to	8599
262 337 7300	to	7399	373 006 2176 to 2199			399 792 8300	to	8399	418 744 2235	to	2299
262 337 7400	to	7499	374 768 2600	to	2699	400 427 1051 to 1999			418 962 2848	to	2899
262 337 7500	to	7599	375 169 4400	to	4599	401 045 1505	to	1549	419 543 0286	to	0299
262 337 7600	to	7699	375 829 3400	to	3499	401 045 1571	to	1599	419 730 0300	to	0399
262 337 7700	to	7799	375 851 9100	to	9199	401 294 2700	to	2799	420 277 0015 to 0049		
262 337 7800	to	7899	376 196 0911	to	0999	401 310 9505	to	9599	420 599 0734	to	0798
262 337 7900	to	7999	378 085 3679	to	3699	401 382 5312	to	5399	420 661 4115	to	4199
262 337 8000	to	8099	378 351 1063	to	1099	402 578 7876	to	7899	420 758 9500	to	9699
262 337 8100	to	8199	379 843 5100	to	5199	403 125 6744	to	6799	420 969 3951	to	3971
262 337 8200	to	8299	380 093 9600 to 9699			403 260 7000	to	7499	420 969 3973	to	3999
262 337 8300	to	8399	380 165 1165	to	1199	403 280 6470	to	6499	421 116 3565	to	3599
262 337 8400	to	8499	381 325 4500	to	4599	403 685 8600	to	8699	421 130 9300	to	9399
262 337 8500	to	8599	381 604 2510	to	2699	404 003 0300	to	0399	421 313 4500	to	4999
262 337 8600	to	8699	381 645 9525	to	9599	404 041 8838	to	8899	421 364 5537	to	5599
262 337 8700	to	8799	383 314 3968	to	3999	404 071 4268	to	4299	421 656 2609	to	2699
262 337 8800	to	8899	383 892 1000	to	1344	404 347 5356	to	5399	421 988 9700	to	9799
262 337 8900	to	8999	383 892 1382	to	1399	404 347 5548	to	5599	422 172 4667	to	4699
262 337 9000	to	9099	384 925 3641	to	3654	404 726 4500	to	4599	422 484 4212	to	4299
262 337 9100	to	9199	385 568 2331	to	2399	404 961 5001	to	5199	422 556 1270	to	1299
262 337 9200	to	9299	385 599 7554	to	7575	405 325 0188	to	0198	422 587 7024	to	7099
262 337 9300	to	9399	385 774 2024	to	2099	406 009 4587	to	4599	422 819 7533	to	7599
262 337 9400	to	9499	386 624 1412	to	1599	406 260 6830	to	6899	422 842 5073	to	5087
262 337 9500	to	9599	386 883 8936	to	8999	406 459 6641	to	6999	422 907 7563	to	7599
262 337 9600	to	9699	387 314 5574	to	5599	406 733 3000	to	3999	424 500 6050	to	6099
262 337 9700	to	9799	387 837 6300	to	6399	407 545 1557	to	1599	424 641 8500	to	8599
262 337 9800	to	9899	388 828 0656	to	0699	407 594 0412	to	0599	424 871 6600	to	6699
262 337 9900	to	9999	389 696 2400	to	2799	407 692 9100	to	9299	425 298 2352	to	2399
262 546 3100	to	3199	389 846 3104	to	3135	407 959 2190	to	2199	425 418 4269	to	4299
262 546 3200	to	3299	389 846 3145	to	3195	408 265 2275	to	2288	425 418 4405	to	4499
262 546 3300	to	3399	389 887 9211	to	9230	408 499 7700	to	7799	426 547 4566	to	4599
262 546 3400	to	3499	389 887 9234	to	9299	408 499 7900	to	7999	427 412 6337	to	6499
262 546 3500	to	3599	390 001 3182 to 3199			408 682 8484	to	8599	427 481 0900	to	0999
262 546 3600	to	3699	390 001 3500	to	3699	408 698 7015	to	7099	428 027 2742	to	2752
262 546 3900	to	3999	390 545 5974	to	5999	409 072 3941	to	3999	429 474 4172	to	4199
262 546 4300	to	4399	391 104 6146	to	6199	410 491 2311 to 2399			429 889 2900	to	2999

430 150 4401 to 4599	454 302 5400 to 5499	469 947 6960 to 6999	486 559 7555 to 7599
430 172 9800 to 9899	454 490 8300 to 8399	470 755 5800 to 5818	486 696 3023 to 3199
430 177 1900 to 2099	454 547 7434 to 7499	471 918 0300 to 0999	488 173 7900 to 7999
430 444 9500 to 9699	454 922 4867 to 4895	471 985 2408 to 2419	488 206 4100 to 4199
430 664 4070 to 4099	455 221 1348 to 1499	472 191 6700 to 6799	488 226 0200 to 0299
432 168 8419 to 8499	455 364 2147 to 2199	472 270 2555 to 2599	488 709 3906 to 3999
432 708 6800 to 6999	455 399 5400 to 5499	472 987 0213 to 0241	488 855 8359 to 8399
432 744 1544 to 1599	455 476 0676 to 0699	472 987 0290 to 0299	489 181 8963 to 8999
432 995 9775 to 9799	455 543 0618 to 0699	473 151 2069 to 2199	489 223 2000 to 2099
433 003 5800 to 5899	456 410 9006 to 9099	473 666 9138 to 9199	489 311 1930 to 1999
433 757 3047 to 3099	456 470 4146 to 4299	473 952 3429 to 3499	489 318 6200 to 6300
433 765 4003 to 4099	456 619 4460 to 4499	474 108 5402 to 5499	489 384 0027 to 0099
434 482 7060 to 7199	457 333 2686 to 2699	474 356 5193 to 5299	489 427 0658 to 0899
434 513 2386 to 2399	457 729 1767 to 1777	474 949 3366 to 3399	489 997 5252 to 5299
434 968 3076 to 3092	457 937 8615 to 8699	475 134 9362 to 9399	490 669 5850 to 6099
435 303 1831 to 1842	458 028 9810 to 9899	475 167 9667 to 9699	490 717 7080 to 7099
435 303 1986 to 1999	458 057 2712 to 2999	475 319 3415 to 3499	490 721 6000 to 6099
435 666 6092 to 6399	458 069 9537 to 9599	475 319 3649 to 3799	490 793 1500 to 2099
436 082 6400 to 6899	458 069 9665 to 9699	475 340 6400 to 6599	490 886 8171 to 8199
436 160 6441 to 6499	458 337 5222 to 5299	475 424 8410 to 8499	490 977 9221 to 9240
437 316 7115 to 7199	458 354 7653 to 7999	475 629 9156 to 9199	491 258 8100 to 9099
437 427 0500 to 3499	458 671 8678 to 8699	475 850 6101 to 6199	491 567 1376 to 1399
439 179 2300 to 2399	458 671 8721 to 8798	475 875 2500 to 2599	492 254 4800 to 4899
439 310 0458 to 0499	458 847 5044 to 5999	476 169 8264 to 8299	492 283 5100 to 5199
440 698 1947 to 1999	459 274 7624 to 7699	476 189 3000 to 3499	492 610 6813 to 6899
440 858 6300 to 6399	459 365 5432 to 5499	476 331 2480 to 2499	493 394 5568 to 5599
440 858 6420 to 7299	459 378 5764 to 5799	477 289 8601 to 8699	493 470 2562 to 2599
441 199 1655 to 1699	459 472 4816 to 4999	477 681 5206 to 5299	493 473 7700 to 7799
443 127 3648 to 3699	460 349 6878 to 6899	478 010 4243 to 4268	493 716 2153 to 2199
443 127 4000 to 4099	460 550 1909 to 1999	478 010 4270 to 4291	494 206 2972 to 2999
443 673 7900 to 7999	460 997 5234 to 5299	478 450 5071 to 5099	494 217 3446 to 3999
443 800 9335 to 9399	461 973 6443 to 6499	478 469 7838 to 7858	494 224 0500 to 0599
444 382 8822 to 8899	462 152 0107 to 0299	478 469 7883 to 7899	495 145 0600 to 0699
444 390 1667 to 1699	462 274 1072 to 1099	479 280 9800 to 9899	496 209 7425 to 7499
444 457 3854 to 3899	462 277 8373 to 8399	479 365 9116 to 9176	496 213 8728 to 8799
450 048 4173 to 4199	462 554 6051 to 6099	479 412 9900 to 9999	496 474 5226 to 5248
450 048 4442 to 4699	463 011 5529 to 5540	479 667 6190 to 6199	497 053 8517 to 8699
450 560 5173 to 5199	463 176 4115 to 4199	479 748 9680 to 9699	497 854 8673 to 8699
450 620 3077 to 3099	463 176 4229 to 4299	479 860 7000 to 7199	498 449 8888 to 8899
450 620 3135 to 3199	463 185 2600 to 2799	480 526 2000 to 2099	498 929 8285 to 8499
450 780 2716 to 2799	463 227 7711 to 7799	480 640 6330 to 6399	498 936 5310 to 5399
450 801 2700 to 2799	463 414 4869 to 4899	480 658 0568 to 0599	499 016 5425 to 5499
451 109 2967 to 2984	463 808 3484 to 3499	480 689 5100 to 5199	499 440 8575 to 8899
451 115 4110 to 4125	463 945 7400 to 7899	481 072 9463 to 9499	499 731 6717 to 6799
451 115 4127 to 4199	464 629 9000 to 9399	481 673 0074 to 0095	500 064 1858 to 1869
451 746 0700 to 0799	464 711 4332 to 4399	482 527 1500 to 1599	500 070 5725 to 7799
452 265 0074 to 0099	465 692 3963 to 3999	482 541 5255 to 5299	501 058 0016 to 0026
452 265 0246 to 0299	465 698 8300 to 8599	482 729 6800 to 6899	501 331 0300 to 0399
452 265 0335 to 0999	465 743 7745 to 7799	483 363 7207 to 7299	501 460 0977 to 0999
452 509 1169 to 1199	466 798 6056 to 6067	483 402 2356 to 2399	502 227 7645 to 7699
452 855 6471 to 6499	467 147 4300 to 4399	483 486 5100 to 5199	502 424 0200 to 0499
452 890 4679 to 4799	468 079 5782 to 5799	483 632 1521 to 1599	502 424 0600 to 0699
452 900 8215 to 8238	469 067 2817 to 2899	483 632 2600 to 2799	502 496 6923 to 6999
453 117 9146 to 9199	469 127 8000 to 8199	483 849 1615 to 1699	503 003 2700 to 2899
453 334 3631 to 3699	469 213 0359 to 0399	484 174 4803 to 5299	503 194 5144 to 5153
453 603 7841 to 7891	469 213 0500 to 0599	484 323 8900 to 9199	503 790 9922 to 9948
453 650 1140 to 1199	469 561 8011 to 8099	484 680 5000 to 5038	504 045 4030 to 4099
453 741 1300 to 1399	469 658 1961 to 1999	484 680 5040 to 5074	504 166 0200 to 0599
454 013 2919 to 2999	469 666 9900 to 9999	484 680 5077 to 5099	504 240 1062 to 1399
454 186 2411 to 2499	469 678 1900 to 1999	485 029 4913 to 4999	504 805 3300 to 3499
454 268 4883 to 4899	469 781 4900 to 4999	486 176 0600 to 0699	505 096 0662 to 0699

505 893 7739	to	7799	609 289 6123	to	6199	631 459 9117	to	9199	646 242 6200	to	6299
505 893 7800	to	7999	609 438 4400	to	4499	631 762 9325	to	9399	646 270 7639	to	7799
506 124 0800	to	0999	609 493 1100	to	1199	632 217 4933	to	4999	646 798 4000	to	4999
506 165 7027	to	0099	609 766 8091	to	8999	632 500 0000	to	640 3999	647 048 7035	to	7099
506 502 5209	to	5299	609 825 4100	to	4115	633 110 4165	to	4199	647 049 2900	to	2999
506 756 1682	to	1699	609 884 2981	to	2999	633 110 4303	to	4499	647 398 8300	to	8399
506 756 1700	to	1799	609 893 1000	to	1099	633 438 6429	to	6599	647 398 8481	to	8499
506 756 1800	to	1899	610 092 3200 to 3299			633 588 7173	to	7182	647 437 3000	to	4999
506 836 5326	to	5399	610 582 4200	to	4299	634 725 0700	to	0799	647 811 2188	to	2199
508 488 6226	to	6299	611 879 6939	to	6999	634 803 3239	to	3299	648 009 6057	to	6099
508 789 8332	to	8399	612 291 8013	to	8099	634 807 2474	to	2499	648 163 5300	to	5499
508 789 8400	to	8499	612 751 5171	to	5199	634 827 5900	to	5999	648 722 5283	to	5299
509 909 0425	to	0435	612 751 5226	to	5299	634 886 3428	to	3499	648 892 3164	to	3199
510 150 2400 to 2499			612 751 6083	to	6099	635 559 3449	to	3499	649 100 3989	to	3999
510 381 3200	to	3299	612 751 6268	to	6299	636 289 6214	to	6299	649 647 0370	to	0399
510 587 9500	to	9599	612 751 6572	to	6599	636 634 8007	to	8042	649 647 0522	to	0599
510 587 9659	to	9699	612 774 2111	to	2199	637 150 1200	to	1299	649 647 5237	to	5399
510 269 9770	to	9999	612 774 2254	to	2299	637 562 5828	to	5899	649 647 9100	to	9299
511 021 5042	to	5099	612 774 2500	to	2599	638 042 1647	to	1699	649 666 7800	to	8299
511 021 5100	to	5199	614 469 0979	to	0999	638 049 4984	to	4999	650 114 7707 to 7719		
511 468 1747	to	1799	614 474 3000	to	3099	638 318 1115	to	1199	650 130 3400	to	3599
511 844 0100	to	0199	614 521 3490	to	3499	638 318 1453	to	1499	650 213 0406	to	0499
511 844 0340	to	0399	614 645 1800	to	1899	638 885 0000	to	0299	650 555 1749	to	1799
513 046 0700	to	0726	614 832 1100	to	2099	638 903 4362	to	4373	650 564 1900	to	1999
513 445 3000	to	3199	615 017 7505	to	7599	639 415 1929	to	1999	650 627 4212	to	4299
513 466 2034	to	2044	617 711 6609	to	6699	639 415 2019	to	2099	650 736 2043	to	2099
513 539 9052	to	9099	617 760 5266	to	5299	639 420 6200	to	6299	650 739 1540	to	1699
513 539 9267	to	9299	617 813 3601	to	3699	639 469 3517	to	3799	651 741 4415	to	4499
513 539 9800	to	9899	618 840 9200	to	9299	639 605 2143	to	2199	651 882 2800	to	2899
513 539 9985	to	9999	619 551 7229	to	7299	639 657 8600	to	8799	652 754 6317	to	6399
513 606 5459	to	5490	619 859 3000	to	3099	640 289 7500 to 7599			653 131 4945	to	4999
600 645 3223 to 3299			620 073 9400 to 9499			640 289 7700	to	7999	653 426 3300	to	3399
601 339 1200	to	1399	621 614 7907	to	7930	641 170 4420	to	4499	653 455 4874	to	4899
601 653 5884	to	5899	621 614 7932	to	7999	641 318 3133	to	3199	654 238 0000	to	0399
601 661 7700	to	7799	621 648 8021	to	8199	641 378 6500	to	6999	654 404 3065	to	3092
601 682 5343	to	5399	621 648 8500	to	8599	641 383 8739	to	8799	654 962 2900	to	3199
601 928 1600	to	1699	621 904 8351	to	8599	641 877 3187	to	3299	655 103 5081	to	5199
602 512 2972	to	2999	621 916 1978	to	1989	641 877 3310	to	3399	655 523 2600	to	2999
602 555 2400	to	2799	622 989 8032	to	8099	642 355 8094	to	8199	656 305 2448	to	2499
602 829 7061	to	7099	623 076 9300	to	9399	642 355 8308	to	8999	657 347 4438	to	4999
603 483 9572	to	9599	623 819 5006	to	5099	642 900 0018	to	0099	657 710 8100	to	8999
603 490 7200	to	7299	623 895 8200	to	8399	643 030 6254	to	6299	657 780 0985	to	0999
603 678 7100	to	7199	623 917 0000	to	0099	644 066 0882	to	0899	658 586 1400	to	1499
603 678 7662	to	7699	623 917 0200	to	0299	644 069 0600	to	0699	658 877 8000	to	8199
603 678 7902	to	7999	624 468 5288	to	5299	644 077 7506	to	7699	658 880 8000	to	8199
603 678 8418	to	8499	624 665 3162	to	3198	644 085 8157	to	8199	659 398 7300	to	7399
603 678 8700	to	9999	625 088 6735	to	6799	644 112 9839	to	9899	659 706 8113	to	8199
604 086 0880	to	0899	625 916 9500	to	9799	644 373 9083	to	9099	659 846 7837	to	7899
604 349 1414	to	1499	625 968 8956	to	8999	644 380 1460	to	1499	660 510 4100 to 4199		
604 503 7776	to	7799	627 005 3938	to	3999	644 733 4715	to	4799	660 673 0400	to	0599
605 520 9037	to	9099	627 384 3907	to	4099	644 900 9712	to	9799	661 488 5000	to	5099
605 685 4010	to	4099	627 496 7549	to	7599	644 901 0109	to	1299	661 609 9100	to	9199
605 988 6467	to	6499	627 708 3605	to	3699	644 901 1325	to	1399	661 716 9420	to	9499
607 689 7951	to	7960	627 776 2500	to	2599	644 923 6800	to	7799	661 906 6522	to	6599
607 728 1276	to	1299	628 226 3100	to	3199	644 932 4655	to	4699	662 021 8332	to	8399
608 727 7100	to	7199	628 814 4702	to	4799	645 318 7240	to	7499	662 068 0700	to	0899
608 727 7273	to	7599	628 851 9689	to	9699	645 333 1766	to	1799	662 553 0774	to	0799
608 813 9950	to	9999	629 510 7200	to	7299	645 790 8632	to	8699	663 078 7034	to	7099
609 067 5325	to	5399	629 964 4200	to	4294	645 821 0657	to	0699	663 763 5300	to	5399
609 067 5488	to	5499	630 389 3056 to 3071			645 930 7948	to	7999	663 883 7039	to	7499
609 067 5600	to	5699	630 463 0588	to	0599	645 975 0737	to	0762	663 938 9200	to	9299

664 253 8000 to 8499	688 314 3107 to 3191	702 713 1800 to 1809	807 342 3283 to 3399
664 656 3055 to 3099	690 291 1361 to 1371	702 821 5730 to 5799	808 086 7100 to 7199
665 174 6400 to 6499	690 788 2877 to 2899	702 821 5805 to 5899	808 090 3440 to 3499
665 274 8208 to 8299	690 893 5344 to 5399	702 844 6975 to 6994	808 325 5161 to 5699
665 669 5400 to 5499	690 893 5512 to 5599	702 846 6331 to 6399	808 784 8000 to 8299
666 132 8226 to 8299	690 904 1300 to 1599	702 848 3900 to 3999	830 125 0672 to 0699
666 696 2209 to 2299	690 941 6000 to 6199	702 857 7302 to 7499	830 602 5800 to 5999
666 696 2309 to 2399	691 313 6383 to 6399	702 878 0114 to 0199	830 610 3700 to 3799
667 032 9300 to 9399	691 313 6600 to 6699	703 364 1707 to 1799	830 983 3500 to 3599
667 729 5529 to 5599	691 582 8003 to 8099	740 002 7710 to 7719	830 983 3635 to 3699
668 383 8400 to 8699	691 664 1800 to 1999	740 037 6730 to 6800	831 354 1387 to 1399
670 368 3400 to 3499	691 664 2400 to 2499	740 119 2275 to 2284	831 815 8240 to 8299
670 369 7336 to 7399	692 727 9362 to 9399	740 130 6688 to 6698	832 525 3810 to 3899
670 750 7169 to 7199	692 798 1800 to 1899	740 144 2780 to 2795	833 159 1884 to 1899
671 046 6200 to 6399	693 249 0779 to 0799	740 241 9049 to 9099	833 456 2567 to 2599
671 251 5448 to 5499	693 249 0877 to 1699	740 252 9265 to 9294	833 566 3015 to 3071
671 926 5600 to 5799	693 445 0566 to 0999	740 255 1718 to 1799	834 130 5200 to 5299
672 444 2000 to 2999	693 448 8500 to 8999	740 274 2602 to 2619	834 316 5444 to 5499
672 828 3410 to 3499	693 645 9583 to 9599	740 277 0366 to 0392	834 354 8747 to 8766
673 167 5776 to 5799	693 965 4200 to 4299	740 332 7658 to 7671	834 354 8824 to 8838
675 464 3700 to 3799	695 741 2906 to 2999	740 348 6641 to 6658	835 269 5700 to 5799
675 464 4000 to 4199	695 947 8518 to 8599	740 351 4790 to 4799	835 496 7303 to 7399
676 365 5958 to 5999	696 662 8247 to 8299	740 374 7416 to 7499	835 539 5200 to 5999
676 669 1024 to 1099	697 447 8285 to 8296	740 470 2420 to 2443	835 813 3015 to 3099
677 126 6734 to 6799	698 042 4816 to 4899	740 514 0300 to 0499	837 672 8967 to 8999
677 333 9979 to 9999	698 131 2138 to 2157	740 523 7432 to 7449	837 784 3282 to 3299
677 466 1088 to 1099	698 227 0000 to 0099	740 535 1555 to 1580	838 176 8377 to 8399
678 071 4500 to 4799	700 065 2570 to 2599	740 557 3570 to 3579	838 518 1257 to 1299
678 096 7531 to 7599	700 065 4800 to 4899	740 650 4104 to 4140	839 718 8257 to 8299
679 909 2578 to 2599	700 190 3350 to 3359	740 684 0620 to 0800	840 323 0600 to 0699
680 112 9565 to 9599	700 228 6048 to 6099	740 701 6105 to 6114	840 875 6235 to 6299
680 244 0903 to 0999	700 650 0452 to 0499	740 705 9790 to 9799	840 910 0900 to 0999
680 412 6046 to 6099	700 666 1323 to 1349	740 726 6400 to 6500	841 349 5000 to 5099
680 761 6800 to 6899	700 786 9106 to 9142	740 748 8319 to 8329	841 805 7747 to 7899
681 677 0540 to 0699	700 859 0744 to 0758	740 765 3306 to 3399	841 805 7944 to 8099
682 070 1029 to 1099	701 028 6780 to 6899	740 774 8434 to 8499	842 226 0685 to 0695
682 956 6280 to 6299	701 213 3900 to 3999	740 779 4259 to 4299	842 685 4600 to 4699
682 956 6490 to 6599	701 267 2000 to 3999	740 786 1885 to 1899	842 685 4742 to 4999
682 956 6700 to 6799	701 335 7312 to 7399	740 790 5989 to 5999	842 860 0300 to 0399
682 965 1178 to 1199	701 369 2005 to 2050	740 803 4870 to 4879	842 898 5582 to 5599
682 965 1201 to 1299	701 499 2260 to 2299	740 820 4854 to 7836	843 062 7100 to 7199
683 118 2389 to 2399	701 503 2247 to 2299	740 827 7578 to 7594	843 077 6288 to 6299
683 378 2000 to 2099	701 541 2271 to 2299	740 917 7490 to 7499	843 077 6378 to 6399
683 378 2117 to 2299	701 553 6557 to 6599	740 918 5531 to 5549	843 758 5769 to 5778
683 415 1200 to 1499	701 578 7460 to 7469	741 037 8528 to 8551	843 786 2554 to 2699
683 444 8159 to 8199	701 578 7475 to 7499	742 030 6135 to 6149	845 656 8165 to 8199
685 154 7780 to 7789	701 601 3457 to 3499	742 033 2663 to 2674	845 727 2100 to 2199
685 297 7645 to 7699	701 605 5913 to 5999	742 040 3300 to 3309	845 746 2618 to 2635
685 623 5264 to 5299	701 695 3982 to 3999	742 112 8155 to 8199	846 390 7531 to 7599
685 650 9487 to 9499	701 695 4148 to 4199	742 151 5000 to 5014	846 918 0572 to 0599
685 669 4200 to 4299	701 695 4227 to 4299	742 191 4640 to 4649	847 237 7690 to 7699
685 757 8452 to 8499	701 708 1741 to 1799	742 192 5210 to 5224	847 284 2481 to 2499
686 071 2694 to 2799	701 736 3966 to 3999	742 222 9200 to 9210	847 374 7055 to 7065
686 176 3333 to 3354	701 772 0870 to 0899	742 228 9660 to 9669	847 374 7055 to 7065
686 372 3200 to 3299	701 838 2800 to 2899	742 247 6980 to 6989	847 636 5304 to 5399
686 644 5879 to 5899	701 941 0600 to 0699	742 290 0936 to 0950	847 700 5447 to 5499
686 899 1371 to 1399	702 171 1603 to 1699	742 302 7600 to 7699	847 723 7500 to 7599
686 931 7636 to 7699	702 195 5109 to 5199	805 885 8411 to 8499	849 485 3427 to 3499
687 601 0973 to 0999	702 254 9300 to 9399	806 087 1100 to 1499	849 520 9850 to 9899
687 614 6774 to 6799	702 264 7569 to 7599	806 268 9275 to 9299	849 608 1357 to 1399
688 120 9000 to 9999	702 519 0513 to 0524	806 534 3400 to 3477	849 792 2600 to 2699

850 546 1862 to 1899	869 387 1150 to 1199	909 568 9300 to 9499	920 771 5321 to 5399
851 143 6826 to 6844	869 505 3500 to 3599	909 725 7307 to 7399	920 857 5500 to 5899
851 209 9880 to 9899	869 523 7033 to 7099	909 833 0947 to 0999	920 864 3480 to 3499
851 928 9221 to 9299	869 566 6150 to 6167	910 219 8631 to 8699	920 963 4567 to 4599
852 589 6560 to 6599	869 800 0000 to 999 9999	910 265 1100 to 1199	921 333 7400 to 7499
853 049 3646 to 3699	870 054 4814 to 4899	910 471 7273 to 7299	921 477 3762 to 3799
854 304 4089 to 4999	870 491 4812 to 4849	910 536 2505 to 2599	922 278 1048 to 1399
854 529 2200 to 2299	870 536 5820 to 5829	910 958 7499 to 7599	922 280 2019 to 2099
854 532 0000 to 2999	870 541 7167 to 7239	911 140 1000 to 2199	922 280 2233 to 2299
855 001 6204 to 6249	870 575 8155 to 8999	911 245 2545 to 2599	922 773 0459 to 0499
855 319 9364 to 9399	870 589 0485 to 0494	911 268 9077 to 9099	923 032 7000 to 7399
855 361 3390 to 3399	870 691 7060 to 7099	911 400 8948 to 8999	923 045 3630 to 3699
856 226 0490 to 0499	872 028 4850 to 4899	911 508 1620 to 1799	923 484 3600 to 3699
856 656 5800 to 5999	872 029 9306 to 9399	911 509 9310 to 9399	923 493 9403 to 9599
856 752 0200 to 0299	872 078 3709 to 3799	911 523 3000 to 3999	923 493 9681 to 9699
857 111 1352 to 1399	872 100 0445 to 0459	912 057 9922 to 9999	923 604 4424 to 4499
857 279 3450 to 3499	900 556 4178 to 4199	912 882 0563 to 0899	923 810 7800 to 8299
857 843 4000 to 4099	900 845 0044 to 0099	913 605 2218 to 2299	924 252 1200 to 1299
858 124 7644 to 7699	900 936 0217 to 0299	913 709 2429 to 2499	924 252 1400 to 1499
858 756 3111 to 3299	900 936 0435 to 0499	913 818 3501 to 3999	924 533 0711 to 0799
859 063 8200 to 8699	901 058 5255 to 5280	914 063 4300 to 4399	924 533 2343 to 2399
859 190 0600 to 0644	901 273 1082 to 1099	914 346 7621 to 7644	924 533 2428 to 2499
859 437 5538 to 5599	901 287 5143 to 5199	914 453 1366 to 1399	924 685 1957 to 1999
859 811 2888 to 2899	901 291 2789 to 2799	914 529 6185 to 6299	924 946 6300 to 6699
859 855 8873 to 8999	901 525 7122 to 7199	914 896 4658 to 4699	925 333 5900 to 6099
860 240 8520 to 8599	902 089 1253 to 1299	915 187 8774 to 8779	925 336 2300 to 2399
860 275 3900 to 3999	902 198 9769 to 9799	915 300 2783 to 2799	926 432 5907 to 5999
860 518 9629 to 9699	902 948 1269 to 1299	915 546 6822 to 6999	926 436 3600 to 3699
860 600 0021 to 0999	902 985 0833 to 0899	915 646 5183 to 5199	927 765 6257 to 6299
861 158 2350 to 2599	903 370 6934 to 6999	915 671 3963 to 3980	928 197 8100 to 8199
861 367 5400 to 5499	904 600 6523 to 6599	915 671 3982 to 3999	928 197 8283 to 8299
861 637 6010 to 6099	904 892 0378 to 0399	915 675 2217 to 2299	928 856 2059 to 2068
861 979 7292 to 7499	904 892 0648 to 1299	916 440 3377 to 3399	930 078 5800 to 5899
862 216 6100 to 6199	905 056 2216 to 2299	916 670 6352 to 6399	930 219 1722 to 1799
862 263 9213 to 9299	905 510 6647 to 6799	916 682 5300 to 5399	930 335 7810 to 7819
862 271 0800 to 0999	905 510 6900 to 7099	916 694 1414 to 1499	931 097 9259 to 9299
862 271 5000 to 5099	905 794 0000 to 0199	916 703 0802 to 0821	931 156 1502 to 1579
863 871 5138 to 5199	905 794 0288 to 0299	917 089 0709 to 0799	931 156 1600 to 1625
863 949 5300 to 5399	905 873 6900 to 6999	917 089 0842 to 0899	931 156 1671 to 1699
864 088 8200 to 8299	905 873 7100 to 7299	917 216 2928 to 2999	932 506 6400 to 6599
864 426 3972 to 3999	905 880 8900 to 8999	917 370 6300 to 6499	932 732 1796 to 1799
864 520 6117 to 6136	905 889 7100 to 7199	917 486 4900 to 4999	932 827 9026 to 9099
865 151 0526 to 0599	906 158 1508 to 1599	918 460 0602 to 0699	932 957 2300 to 2399
865 500 4034 to 4099	906 558 8812 to 8899	918 951 7231 to 7299	933 060 6160 to 6189
865 883 6082 to 6099	906 982 2214 to 2299	919 519 2786 to 2799	933 387 2541 to 2561
866 004 3000 to 3999	907 725 8500 to 8599	919 536 0770 to 0799	933 760 3609 to 4199
866 442 4100 to 4899	907 815 0216 to 0257	919 814 3095 to 3199	933 894 0928 to 0999
867 366 9108 to 9118	908 622 4225 to 4235	919 889 5110 to 5134	934 018 2729 to 2741
867 633 7403 to 7499	908 936 9254 to 9299	919 889 5137 to 5176	934 180 0300 to 0399
867 737 5623 to 5699	909 066 4494 to 7499	919 889 5178 to 5199	934 236 3954 to 3999
868 169 4529 to 4599	909 067 7400 to 7499	919 889 5030 to 5070	934 622 8717 to 8999
868 173 8400 to 8599	909 100 1787 to 1799	919 889 5090 to 5099	935 216 0312 to 0399
868 514 9000 to 9099	909 100 1900 to 2099	919 915 2774 to 2787	935 843 2202 to 2247
868 566 9200 to 9299	909 355 0422 to 0499	920 155 4662 to 4687	936 024 8889 to 8899
869 200 0000 to 9999	909 568 8900 to 9099	920 309 9039 to 9199	936 339 4455 to 4499

Missing, Lost, or Stolen Canadian Money Order Forms

Do Not Cash — Upon Receipt, Notify Local Postal Inspectors

Provide this listing to all Postal Service™ employees responsible for accepting and cashing postal money orders. Destroy all interim notices when the numbers listed appear in the *Postal Bulletin*. The new money order serial

numbers consist of the first 9 digits. The tenth digit is a check digit only.

Do not cash outdated money orders **104 151 601 to 692 600 000**. Advise holders to send invalid money orders to Canada Post Corporation, Ottawa, Canada K1A 0B1. Check for altered dollar amounts by holding money orders to the light.

719 869 731	to	9 760	727 416 181	to	6 240	733 704 482	to	4 570	740 329 266	to	9 320
720 227 871	to	7 930	727 481 431	to	1 460	733 751 041	to	1 130	740 889 081	to	9 090
720 227 949	to	7 960	727 749 241	to	9 780	734 009 101	to	9 130	741 010 421	to	0 530
720 368 543	to	8 570	728 382 331	to	2 480	734 290 759	to	0 770	741 113 041	to	3 370
720 392 151	to	2 570	728 702 338	to	2 400	734 389 273	to	9 290	741 373 891	to	4 340
720 556 491	to	6 640	728 915 371	to	5 850	734 440 031	to	0 111	741 452 369	to	2 490
720 558 621	to	8 650	728 953 141	to	3 410	734 797 201	to	7 320	741 492 991	to	3 140
720 575 361	to	5 570	728 954 280	to	4 310	734 939 611	to	9 640	741 553 460	to	3 470
720 590 152	to	0 179	729 169 081	to	9 140	734 950 111	to	0 170	741 764 431	to	4 520
721 638 331	to	9 170	729 363 841	to	3 870	735 120 331	to	0 840	741 764 431	to	4 520
721 815 391	to	5 420	729 682 891	to	3 190	735 283 008	to	3 020	742 178 834	to	8 880
721 969 713	to	9 740	729 838 940	to	9 070	735 293 131	to	3 220	742 325 500	to	5 520
722 072 137	to	2 160	729 839 101	to	9 130	735 635 010	to	5 040	742 325 668	to	5 700
722 378 265	to	8 280	730 077 683	to	7 840	735 783 961	to	3 990	742 408 771	to	8 830
722 413 990	to	4 004	730 109 847	to	9 880	735 803 401	to	3 430	742 512 120	to	2 150
722 764 948	to	4 980	730 373 761	to	3 850	735 005 420	to	5 440	742 684 849	to	4 890
722 825 840	to	5 889	730 501 951	to	2 130	736 366 021	to	6 110	742 839 553	to	9 630
723 153 841	to	3 850	730 519 379	to	9 470	736 624 456	to	4 500	742 913 668	to	3 700
723 237 616	to	7 630	730 569 278	to	9 360	736 670 851	to	1 060	742 917 287	to	7 296
723 331 081	to	1 110	730 711 711	to	1 740	736 767 061	to	7 090	742 921 891	to	1 980
723 496 443	to	6 470	730 722 991	to	3 230	736 767 093	to	7 120	742 983 631	to	3 810
723 967 291	to	7 320	730 845 970	to	5 990	736 982 191	to	2 370	743 020 021	to	0 170
724 655 196	to	5 340	730 888 291	to	8 320	736 982 551	to	2 730	743 206 491	to	6 500
724 711 441	to	1 500	730 927 591	to	7 680	737 110 141	to	0 170	743 235 992	to	6 050
724 711 538	to	1 560	731 307 914	to	7 930	737 185 501	to	5 710	743 940 631	to	0 900
724 793 221	to	3 250	731 402 431	to	2 460	737 317 321	to	7 350	743 978 011	to	8 070
724 908 109	to	8 120	731 407 232	to	7 320	737 517 781	to	7 840	744 234 751	to	4 780
724 937 461	to	7 670	731 588 301	to	8 340	737 628 181	to	8 210	744 499 591	to	9 680
725 163 118	to	3 151	731 767 273	to	7 320	737 634 258	to	4 270	744 626 901	to	6 910
725 202 735	to	2 750	731 781 061	to	1 120	738 361 971	to	1 980	745 388 794	to	8 910
725 398 591	to	8 800	731 837 821	to	7 910	738 447 601	to	7 660	746 446 806	to	6 820
725 464 591	to	4 920	731 841 377	to	1 450	738 648 355	to	8 450	746 818 351	to	8 410
725 475 321	to	5 330	732 018 481	to	8 600	738 849 811	to	9 900	747 245 266	to	5 280
725 711 057	to	1 070	732 067 972	to	8 370	738 892 270	to	2 290	747 364 813	to	4 830
725 738 581	to	8 730	732 188 649	to	8 670	738 997 259	to	7 380	747 501 434	to	1 450
725 981 311	to	1 430	732 193 460	to	3 470	739 161 451	to	1 540	747 739 891	to	0 070
725 987 835	to	7 880	732 201 241	to	1 390	739 219 381	to	9 440	748 148 649	to	8 760
726 060 811	to	0 900	732 220 431	to	0 440	739 740 151	to	0 180	748 259 960	to	9 970
726 391 970	to	2 520	732 355 201	to	5 380	739 793 491	to	3 520	748 565 162	to	5 280
726 484 771	to	4 800	732 472 320	to	2 560	739 793 527	to	3 550	748 874 988	to	5 030
726 493 351	to	5 300	732 541 605	to	1 620	739 942 621	to	2 650	749 137 381	to	7 410
726 504 031	to	4 063	732 572 221	to	2 490	739 999 231	to	9 320	749 190 192	to	0 210
726 504 070	to	4 090	732 586 479	to	6 710	740 011 517	to	1 530	749 685 421	to	5 450
726 504 331	to	4 390	732 994 037	to	4 080	740 030 701	to	0 970	749 846 791	to	6 850
726 563 701	to	4 060	733 163 449	to	3 460	740 261 740	to	1 820	749 993 131	to	3 580
726 599 371	to	9 460	733 297 171	to	7 290	740 265 811	to	6 290	750 071 587	to	1 610
726 626 356	to	6 370	733 446 631	to	7 110	740 299 111	to	9 170	750 408 167	to	8 183
727 182 271	to	2 510	733 474 665	to	4 770	740 299 231	to	9 260	750 438 421	to	8 501

750 743 911	to	4 030	760 118 191	to	8 250	768 661 569	to	1 650	796 159 725	to	9 740
750 779 118	to	9 400	760 155 001	to	5 090	769 000 051	to	0 080	796 169 306	to	9 340
750 910 981	to	1 010	760 378 002	to	8 020	769 050 841	to	0 900	796 373 406	to	3 430
750 960 841	to	0 900	760 692 722	to	2 749	769 159 081	to	9 178	796 602 961	to	3 050
751 296 211	to	6 240	761 055 460	to	5 480	769 737 496	to	7 510	796 708 441	to	8 500
751 539 121	to	9 180	761 169 781	to	9 810	769 778 491	to	8 730	796 886 281	to	6 430
751 541 311	to	1 790	761 504 941	to	5 120	769 827 331	to	7 450	796 901 701	to	2 000
751 757 641	to	7 700	761 516 836	to	6 910	770 216 071	to	6 100	796 975 466	to	5 590
751 936 951	to	7 010	761 613 588	to	3 600	770 723 281	to	3 400	797 272 917	to	2 950
751 951 861	to	1 890	761 688 631	to	8 690	770 790 451	to	0 480	797 519 441	to	9 460
751 999 021	to	9 110	761 805 199	to	5 240	770 915 150	to	5 490	797 519 731	to	0 240
752 139 516	to	9 570	761 826 106	to	6 120	771 455 551	to	5 610	797 535 181	to	5 330
752 182 892	to	2 950	761 881 171	to	1 560	771 609 661	to	9 690	797 646 151	to	6 180
752 206 861	to	7 100	761 975 641	to	5 670	771 932 551	to	2 580	798 040 053	to	0 080
752 295 241	to	5 600	761 975 886	to	5 895	772 057 224	to	7 440	798 055 813	to	5 830
752 731 351	to	1 410	762 304 144	to	4 170	772 162 660	to	3 070	798 055 891	to	5 950
752 767 441	to	7 470	762 324 931	to	4 960	772 718 615	to	8 640	798 326 371	to	6 520
753 008 941	to	9 030	762 439 261	to	9 290	772 940 140	to	0 160	798 339 167	to	9 210
753 194 311	to	4 370	762 524 158	to	4 220	772 970 886	to	0 940	798 562 411	to	2 440
753 620 378	to	0 400	762 584 872	to	4 970	773 009 419	to	9 430	798 632 461	to	2 490
754 013 917	to	3 940	762 593 431	to	3 460	773 112 031	to	2 060	798 807 151	to	7 510
754 161 061	to	1 120	763 155 160	to	5 180	773 125 387	to	5 410	798 944 761	to	5 030
754 358 445	to	8 610	763 178 631	to	8 660	773 179 320	to	9 410	799 118 616	to	8 640
754 410 451	to	0 660	763 506 001	to	6 060	773 202 989	to	3 140	799 133 191	to	3 220
754 438 393	to	8 410	763 522 141	to	2 470	773 208 991	to	9 290	799 177 626	to	7 650
754 493 109	to	3 130	763 717 694	to	7 800	773 231 311	to	1 340	799 854 751	to	5 200
754 664 182	to	4 220	763 826 461	to	6 520	773 348 739	to	8 940	800 044 320	to	4 410
754 816 377	to	6 470	763 900 460	to	0 471	773 348 739	to	8 940	800 211 901	to	2 440
755 487 421	to	7 600	763 900 479	to	0 530	773 575 891	to	5 950	800 427 530	to	7 540
755 592 901	to	3 140	763 917 271	to	7 750	773 852 971	to	3 030	800 872 741	to	2 830
755 790 020	to	0 030	764 125 801	to	5 860	775 373 449	to	3 460	801 349 801	to	9 830
755 791 730	to	1 800	764 284 525	to	4 560	789 257 191	to	7 250	801 676 681	to	7 100
755 926 951	to	7 070	764 526 241	to	6 330	790 448 020	to	8 460	802 967 821	to	7 940
755 934 332	to	4 510	764 601 421	to	1 600	790 597 485	to	7 530	803 217 601	to	7 780
755 957 701	to	8 000	764 650 231	to	0 470	790 911 883	to	1 900	803 729 731	to	9 850
755 962 981	to	3 280	764 984 371	to	4 850	791 057 441	to	7 550	803 747 402	to	7 520
756 035 371	to	5 490	765 003 667	to	3 680	791 239 081	to	9 290	804 138 181	to	8 420
756 301 257	to	1 290	765 042 517	to	2 540	791 374 483	to	4 500	804 428 224	to	8 250
756 371 565	to	1 580	765 194 728	to	4 970	791 387 971	to	8 030	804 682 411	to	2 710
756 876 031	to	6 120	765 387 365	to	7 450	791 447 521	to	7 850	805 272 525	to	2 540
756 876 151	to	6 240	765 541 801	to	2 100	791 451 151	to	1 240	805 523 445	to	3 460
756 970 129	to	0 140	765 638 461	to	8 970	791 500 009	to	0 470	805 745 704	to	5 730
757 059 613	to	9 630	765 647 101	to	7 190	791 771 431	to	1 490	806 452 907	to	2 980
757 078 540	to	8 560	765 813 781	to	4 029	792 004 293	to	4 320	806 744 781	to	4 850
757 086 209	to	6 240	765 879 314	to	9 390	792 018 379	to	8 420	806 982 181	to	2 300
757 240 591	to	0 650	765 954 001	to	4 030	792 070 621	to	0 740	807 764 791	to	4 910
757 277 371	to	7 700	766 120 286	to	0 320	792 145 211	to	5 230	808 089 931	to	9 960
757 291 591	to	2 730	766 125 716	to	5 750	792 391 381	to	1 620	808 656 423	to	6 450
757 964 251	to	4 280	766 158 824	to	8 840	792 452 779	to	2 790	808 753 771	to	3 800
758 067 001	to	7 090	766 388 433	to	8 460	792 772 728	to	2 770	809 189 001	to	9 010
758 105 221	to	5 250	766 509 421	to	9 660	792 903 511	to	3 990	809 886 879	to	6 930
758 324 941	to	5 000	766 572 901	to	3 020	793 282 518	to	2 533	809 890 489	to	0 500
758 593 628	to	3 650	766 748 500	to	8 521	794 041 831	to	2 040	810 323 734	to	3 760
758 709 038	to	9 060	767 024 341	to	4 370	794 397 709	to	7 780	810 367 116	to	7 140
758 744 101	to	4 160	767 326 471	to	6 590	794 581 741	to	2 040	810 526 351	to	6 500
758 850 883	to	0 900	767 332 561	to	2 950	794 592 122	to	2 150	810 806 911	to	6 940
758 860 951	to	1 550	768 009 841	to	9 960	795 032 251	to	2 340	810 807 211	to	7 240
759 152 851	to	2 880	768 011 489	to	1 520	795 796 291	to	6 350	811 423 021	to	3 110
759 740 941	to	1 090	768 177 980	to	7 990	796 070 139	to	0 160	811 517 221	to	7 239
760 004 596	to	4 610	768 391 081	to	1 170	796 143 151	to	3 630	811 721 101	to	1 130

812 025 721 to 5 900	816 945 571 to 5 600	821 927 841 to 7 850	827 575 381 to 5 470
812 093 073 to 3 130	817 253 011 to 3 280	822 505 801 to 5 830	827 609 085 to 9 100
812 100 821 to 0 840	817 763 881 to 4 060	822 703 442 to 3 470	827 619 811 to 9 840
812 465 251 to 5 610	818 330 562 to 0 610	822 900 991 to 1 020	827 883 511 to 3 600
812 918 341 to 8 670	818 459 641 to 9 670	822 925 951 to 6 100	828 160 441 to 0 530
812 918 701 to 8 760	818 926 273 to 6 320	823 284 931 to 4 990	828 376 201 to 6 260
813 050 491 to 0 520	818 950 351 to 0 380	823 293 031 to 3 210	828 441 602 to 1 630
813 073 171 to 3 200	818 962 492 to 2 530	823 556 011 to 6 100	828 539 316 to 9 340
813 398 476 to 8 550	819 032 341 to 2 730	824 078 341 to 8 370	828 539 341 to 9 370
813 713 971 to 4 000	819 127 054 to 7 080	824 156 325 to 6 340	828 732 331 to 2 390
813 858 121 to 8 150	819 278 540 to 8 670	824 511 252 to 1 270	828 807 781 to 7 840
814 789 330 to 9 349	819 544 681 to 4 740	824 588 281 to 8 370	828 830 952 to 0 963
814 984 656 to 4 680	819 928 441 to 8 650	825 140 397 to 0 460	828 939 781 to 0 050
815 016 020 to 6 030	820 034 406 to 4 430	825 409 651 to 9 680	829 002 721 to 2 870
815 199 410 to 9 420	820 070 761 to 1 540	825 472 171 to 2 200	829 005 301 to 5 540
815 240 491 to 0 520	820 191 342 to 1 360	826 042 898 to 2 920	829 080 241 to 0 330
815 755 591 to 5 620	820 274 856 to 4 880	826 226 644 to 6 670	829 160 986 to 1 000
815 755 622 to 5 650	820 600 171 to 0 230	826 582 951 to 3 430	829 176 841 to 6 930
815 806 381 to 6 680	821 172 241 to 2 360	826 720 201 to 0 230	829 471 561 to 1 590
816 126 834 to 6 870	821 229 661 to 9 720	827 005 671 to 5 830	829 561 065 to 1 080
816 156 721 to 6 780	821 229 743 to 9 780	827 287 861 to 7 950	829 566 481 to 6 510
816 580 903 to 0 920	821 903 731 to 3 910	827 291 502 to 1 520	829 569 931 to 9 960

— Criminal Investigations Group, U.S. Postal Inspection Service, 1-30-20

Verifying U.S. Postal Service Money Orders

Follow these steps to cash a Postal Service™ money order:

1. Check that the amount does not exceed the legal limit: \$1,000 for domestic, and \$700 for international Postal Service money orders.
2. Check that the proper security features are present:
 - When held to the light, a watermark of Benjamin Franklin is repeated from top to bottom on the left side.
 - When held to the light, a dark line (security thread) runs from top to bottom with the word “USPS” repeated.
 - When there is discoloration around the dollar amounts, this might indicate the amounts were changed.

These appear in Postal Service Notice 299, *U.S. Postal Money Order Reference Card*, or online at usps.com/shop/money-orders.htm.

3. If the money order seems suspicious, call the U.S. Postal Service Money Order Verification System at 866-459-7822.

Provide this information to local banks and retailers, as they also receive Postal Service money orders for cashing.

— Delivery and Retail Customer Service Operations, 1-30-20

Counterfeit Canadian Money Order Forms

Do Not Cash

To be posted and used by retail window employees. As directed, destroy previous notices. Destroy all interim notices when the numbers listed appear in the *Postal Bulletin*.

671,819,086	683,594,542	687,262,503
676,612,640	684,683,610	687,262,525
677,891,039	686,619,878	687,262,526
678,282,493	686,619,886	687,287,578
678,916,031	686,619,887	687,287,581
679,552,215	686,794,382	687,287,582
679,694,334	686,794,426	694,063,898
679,751,983	686,794,427	694,063,899
679,800,207	686,794,431	694,063,980
681,130,536	687,262,502	701,321,725
681,844,376		

— Criminal Investigations Group, U.S. Postal Inspection Service, 1-30-20

Toll-Free Number Available to Verify Canadian Money Orders

The Canada Post Corporation has a toll-free number that cashing agents can call to verify the validity of Canadian Postal Money Orders. The number is 800-563-0444.

This toll-free number is printed on the back of the Canadian Postal Money Orders.

— Criminal Investigations Group, U.S. Postal Inspection Service, 1-30-20

Other Information

Overseas Military/Diplomatic Mail

Mail addressed to military and diplomatic post offices overseas is subject to certain conditions or restrictions of mailing regarding content, preparation, and handling. The APO/FPO/DPO table outlines these conditions by APO/FPO/DPO ZIP Codes™ through the use of footnoted mailing restrictions codes (see the [Restrictions](#) page following the table).

Acceptance clerks must use the table with the Retail System Software terminal to determine which APO/FPO/DPO ZIP Codes are active and which conditions of mailing apply.

The entries under “Changes” appear in bold in the following APO/FPO/DPO table:

Changes

APO/FPO/DPO	Action	Effective Date	See Restrictions
APO AE 09015	Open	01/20/2020	A-B-C-C1-C2-F-F1-F3-J-L-M-N-R-R1-S-T-V-Z1
APO AE 09103	Open	02/01/2020	A-B-F-F3-H-N-Q-R-S-V-Z1
FPO AA 34091	Add S	01/06/2020	B-E2-E3-F-F1-F3-R-R1-S-V-Z1
APO AP 96202	Add R	12/27/2019	A-B-F-F1-F3-R-S-U
APO AP 96203	Add R	12/27/2019	A-B-F-F1-F3-R-S-U
APO AP 96258	Add R	12/27/2019	A-B-F-F1-F3-R-S-U
APO AP 96284	Add R	12/27/2019	A-B-F-F1-F3-R-S-U
APO AP 96502	Open	01/31/2020	A-C1-F-F1-F3-M-N-Q-R-R1-S-T-U2-V
FPO AP 96595	Add R	12/27/2019	B-F-F3-R-S-V-Z1
APO AP 96599	Add F3, R, S	12/27/2019	B-F3-N-R-S-V
FPO AP 96663	Add F3, S, V1	12/27/2019	B-F-F1-F3-R-R1-S-V-V1

We have eliminated “Not Active” entries from the table below to save space and paper.

APO/FPO/DPO Table

APO/ FPO/ DPO	See Restrictions	APO/ FPO/ DPO	See Restrictions	APO/ FPO/ DPO	See Restrictions	APO/ FPO/ DPO	See Restrictions
09002	A-B-F-F3-H-N-Q-R-S-V-Z1	09021	B-C-D-E-F3-H-M-R-S-U-Z1	09125	A-B-C-F-F1-F3-H-N-R-R1-S-V-V1	09186	B-C-D-E-F3-H-M-P-R-S-U
09003	B-C-D-E-F3-H-M-P-R-S-U	09028	B-C-D-E-F1-H-M-R-S-U	09126	B-C-D-F3-H-M-P-R-S-Z1	09203	A-B-C-C1-C2-F-F1-F3-I3-J-L-M-N-R-R1-T-V-Z1
09004	B-C-D-E-F3-H-M-R-S-U	09034	B-C-D-E-F3-H-M-R-S-U	09128	B-C-D-E-F3-H-M-R-S-U	09204	B-C-F3-M-N-R-S-V-Z1
09005	B-C-D-E-F3-H-M-P-R-S-U	09044	B-C-D-F1-F3-H-R-S-U	09131	B-C-D-E-F3-H-M-R-S-U	09211	B-C-D-E-F3-H-M-P-R-S-U
09006	B-C-D-E-F3-H-M-R-S-U	09046	B-C-D-E-F3-H-M-R-S-U	09136	B-C-D-E-F1-F3-H-M-P-R-S-U	09213	B-C2-F-F1-F3-H-J-L-M-N-R-R1-T-U-V-Z1
09008	A-B-F-F3-H-N-Q-R-S-V-Z1	09049	B-C-D-E-F3-H-M-R-S-U	09138	B-C-D-F3-H-M-R-S-U	09214	B-C-D-E-F3-H-M-R-S-U-Z1
09009	B-C-D-E-F3-H-M-R-S-U-Z1	09053	B-C-D-E-F3-H-M-R-S-U	09140	B-C-D-E-F3-H-M-R-S-U	09227	B-C-D-E-F3-H-M-R-S-U
09010	B-C-D-E-F3-H-M-R-S-U2	09060	B-C-D-E-F1-F3-H-M-N-R-S-U-Z1	09142	B-C-D-E-F3-H-M-R-S-U	09240	A-B-C1-F-F3-H-N-R-S-V
09011	B-C-D-E-F3-H-M-R-S-U	09067	B-C-D-E-F3-H-M-R-S-U	09154	B-C-D-E-F3-H-M-R-S-U	09241	A-B-F3-N-R-S-U-Z1
09012	B-C-D-E-F3-H-M-R-S-U-Z1	09068	B-C-D-E-H-U-Z1	09160	B-C-C2-D-F-F1-F3-H-J-L-M-N-R-R1-T-U-V-Z1	09242	A-B-C1-F-F3-H-N-R-S-V
09013	B-C-D-E-F-F1-F3-H-M-R-S-U-Z1	09069	A-B-C-D-E-F3-H-N-S-U-V	09170	A-B-C2-F-F1-F3-J-L-M-N-R-R1-S-T-V-X-Z1	09250	B-C-D-E-F3-H-M-R-S-U
09014	B-C-D-E-F3-H-M-P-R-S-U	09079	B-C-D-E-F3-H-M-R-S-U	09171	A-B-C1-C2-E3-F-F1-F3-J-L-M-N-R-R1-S-T-V-X-Z1	09261	B-C-D-E-F3-H-M-N-R-S-U-V-Z1
09015	A-B-C-C1-C2-F-F1-F3-J-L-M-N-R-R1-S-T-V-Z1	09090	B-C-D-E-F3-H-M-R-S-U	09172	B-C-D-E-F3-H-M-R-S-U	09263	B-C-D-E-F3-H-M-R-S-U
09016	B-C-D-E-F1-H-M-R-S-U	09094	B-C-D-F3-H-M-P-R-S-Z1	09173	B-C-D-E-F3-H-M-R-S-U	09264	B-C-E-F3-H-M-R-S-U
09017	A-B-F-F3-H-N-Q-R-S-V-Z1	09095	B-C-D-E-H-M-R-U	09174	B-C-C2-F-F1-F3-I3-L-N-R-R1-S-T-V-X-Z1	09265	B-C-D-F-F1-H-J-L-M-N-R-S-T-U-V-Z1
09018	A-B-F-F3-H-N-Q-S-V-Z1	09096	B-C-D-E-F3-H-M-R-S-U	09175	A-B-C1-C2-E2-F-F1-F3-H1-J-L-M-N-R-R1-S-T-V-W-X-Z1	09266	A-B-F3-R-S-U-V-Z1
09020	B-C-D-E-F3-H-M-R-S-U	09103	A-B-F-F3-H-N-Q-R-S-V-Z1	09176	A-B-C2-F-F1-F3-J-L-M-N-R-R1-S-T-V-X-Z1	09276	A-B-F-F3-I3-L-M-N-R-S-T-V-X-Z1
		09104	B-C-D-F3-H-M-R-S-U-Z1	09177	B-C-D-E-F3-H-M-R-S-U	09277	A-B-E-E1-E2-F1-F3-I3-L-N-R-S-T-V-X-Z1
		09107	B-C-D-E-F3-H-M-R-S-U	09180	B-C-D-E-F3-H-M-R-S-U		
		09112	B-C-D-E-F3-H-M-R-S-U				
		09114	B-C-D-E-F3-H-M-R-S-U				
		09123	B-C-D-E-F3-H-M-R-S-U-Z1				

APO/ FPO/ DPO	See Restrictions	APO/ FPO/ DPO	See Restrictions	APO/ FPO/ DPO	See Restrictions	APO/ FPO/ DPO	See Restrictions
09278	A-B-F-F3-I3-L-M-N-R-S-T-V-X-Z-Z1	09333	A-B-C-C1-E2-F-F1-F3-H1-I3-M-N-R-R1-S-V-V1-Z-Z1	09470	B-C-C1-F3-M-R-S-U-Z1	09583	B-F-F1-F3-I3-J-R-R1-S-V-V1
09279	A-B-E-E1-F-F3-I3-L-M-N-R-S-T-V-X-Z-Z1	09340	A-B-C1-F-F3-H-N-R-S-V	09494	B-C-C1-F3-M-R-S-U-Z1	09586	B-C2-F-F1-F3-R-R1-S-V
09283	A-B-E-E1-F-F3-I3-L-M-N-R-S-T-V-X-Z-Z1	09343	A-B-C1-F-M-N-V-Z1	09497	A-B-C1-E2-F3-H1-M-N-R-R1-S-V-Z1	09587	B-C2-E2-E3-F-F1-F3-R-R1-S-V-Z1
09289	B-E2-F1-F3-H1-J-L-M-N-R-R1-S-T-U2-V-X-Z1	09347	A-B-C1-E2-F-F3-H1-M-R-R1-S-V-Z1	09498	B-C1-C2-F-F1-F3-J-L-N-R-R1-T-V-Z1	09588	B-F-F1-F3-R-R1-S-V
09290	A-B-F1-F3-J-L-M-N-R-S-T-U2-V-X-Z1	09348	A-B-C1-E2-F-F1-F3-H1-I3-M-N-R-R1-S-T-V-Z-Z1	09501	B-V	09589	B-F-F1-F3-R-S-V
09301	A-B-C1-C2-E2-F-F1-F3-H1-I3-L-M-N-R-R1-S-T-U4-V-Z-Z1	09351	A-B-C1-E2-E3-F-F1-F3-H-H1-I3-M-N-R-R1-S-T-V-X-Z-Z1	09502	B-V	09590	B-V
09302	A-B-C1-F-F1-H-M-N-V-Z-Z1	09352	A-B-C1-E2-F-F3-H1-M-R-R1-S-V-Z1	09503	B-F-F1-R-R1-V	09591	B-C2-E2-E3-F-F1-F3-R-R1-S-V-Z1
09304	A-B-C-C1-D-E2-F-F1-F3-H1-J-L-M-N-R-R1-S-T-V-Z1	09354	A-B-C1-E2-F-F3-H1-M-R-R1-S-V-Z1	09504	B-V	09592	B-F-F1-F3-R-R1-S-V
09305	A-B-C1-E2-F-F1-F3-H1-I3-M-N-R-R1-S-T-V-Z-Z1	09355	A-B-C1-E2-F-F3-H1-M-R-R1-S-V-Z1	09505	B-V	09593	B-F-F1-F3-R-S-V
09306	A-B-C1-E2-F-F1-F3-H1-R-R1-U2-V-Z1	09356	A-B-C1-E2-F-F3-H1-M-N-R-V-Z1	09506	B-V	09594	B-F-F1-F3-I3-R-R1-S-V-V1
09307	B-F3-N-S-V-Z1	09357	A-B-C1-E2-F-F3-H1-M-R-V-Z1	09507	B-V	09595	B-F-F1-F3-I3-J-R-R1-S-V-V1-Z1
09308	A-B-C1-E2-F-F1-F3-H1-I3-M-N-R-R1-S-T-V-Z-Z1	09363	A-B-C1-E2-F-F3-H1-M-R-R1-S-V-Z1	09508	B-F-F1-R-R1-V	09596	B-F-F1-R-R1-V
09309	A-B-C-C1-C2-E2-F-F1-F3-H1-M-N-R-R1-S-V-Z1	09365	A-B-C-C1-E2-F-F3-H1-M-N-R-V-Z1	09509	B-F-F1-R-R1-V	09599	B-F-F1-R-R1-V
09310	A-B-C1-C2-E2-F-F1-F3-H1-I3-L-M-N-R-R1-S-T-U4-V-Z-Z1	09366	A-B-C1-E2-F-F1-F3-H1-M-R-R1-V-Z1	09510	A-B-C1-E2-F-H1-M-R-R1-V-Z1	09600	B-C-C2-F-F1-F3-R-U-Z1
09311	A-B-C1-C2-E2-F-F1-F3-H1-I3-L-M-N-R-R1-S-T-U4-V-Z-Z1	09378	A-B-C1-E2-F-F1-F3-H1-I3-M-N-R-R1-S-T-V-Z-Z1	09511	B-F-F1-R-R1-V	09602	B-C-F-F1-N-R-U-V
09312	A-B-C1-C2-E2-F-F1-F3-H1-I3-L-M-N-R-R1-S-T-U4-V-Z-Z1	09381	A-B-C1-E2-F-F1-F3-H1-I3-M-N-R-R1-S-T-V-Z-Z1	09512	B-F-F1-F3-R-R1-S-V	09603	B-C-F-F1-F3-R-S-U-V-Z1
09313	A-B-C-C1-E2-F-F1-F2-H1-R-R1-V-Z1	09401	B-C-C1-F3-M-R-S-U-Z1	09513	B-F-F1-F3-R-R1-S-V-V1	09604	B-C-F-F1-F3-P-R-S-U-V-Z1
09315	A-B-C1-E2-F-F3-N-R-R1-V-Z1	09403	B-C-C1-F3-M-R-S-U-Z1	09514	B-F-F1-F3-R-R1-S-V-V1	09605	B-C-D-F3-H-M-R-S-U-V
09316	A-B-C1-E2-F-F1-F3-H1-I3-M-N-R-R1-S-T-V-Z-Z1	09421	B-C-C1-F3-M-R-S-U-Z1	09517	B-F-F1-R-R1-V	09606	B-C-D-F3-H-M-R-S-U-V
09318	A-B-C1-E2-F-F3-H1-M-N-R-R1-S-V-Z1	09447	B-C-C1-F3-M-R-S-U-V-Z1	09520	B-F-F1-F3-R-R1-S-V	09608	B-C-F-F3-N-R-S-U-V-Z1
09319	A-B-C-C1-E2-F-F1-F2-F3-H1-R-R1-S-U2-V-Z1	09454	B-C-C1-F3-M-R-S-U-V-Z1	09522	B-F-F1-F3-R-S-V	09609	B-C-F-F3-N-R-S-U-Z1
09320	A-B-C1-E2-F-F3-H1-M-N-R-R1-S-V-Z1	09456	B-C-C1-F3-M-N-Q-R-S-U-V-Z1	09523	B-F-F1-R-R1-V	09610	B-C-F-F1-F3-M-R-S-U-V-Z1
09321	A-B-C1-E2-F-F3-H1-M-N-R-R1-S-V-Z1	09459	B-C-C1-F3-M-R-S-U-Z1	09524	B-F-F1-R-R1-V	09613	B-C-F-N-U-V
09322	A-B-C1-E2-F-F3-H1-M-R-R1-S-V-Z1	09461	B-C-C1-F3-M-P-R-S-U-Z1	09532	B-F-F1-F3-R-R1-S-V	09614	A-B-C1-C2-E2-F-F1-F3-H1-J-L-M-N-R-R1-T-V-W-Z1
09323	A-B-C1-E2-F3-H1-M-N-R-R1-V-Z1	09463	B-C-C1-F3-M-R-S-U-Z1	09533	B-V	09616	B-C-F3-M-R-S-U-V-Z1
09330	A-B-C1-C2-D-E-E2-F-F1-F3-H-H1-M-R-R1-S-V-Z1	09464	B-C-C1-F3-R-S-U-Z1	09534	B-F-F1-F3-R-R1-S-V	09617	B-C-F-F3-R-U-Z1
		09467	B-E-E1-F-F3-J-L-M-N-R-S-T-V-X-Z1	09541	B-V	09618	B-C-F-F3-R-S-U-Z1
		09468	B-C-C1-F3-M-R-S-U-Z1	09542	B-V	09620	B-C-F-F3-R-S-U-Z1
		09469	B-C-C1-F3-R-S-U-Z1	09544	B-V	09621	B-C-F-F3-R-U-Z1
		09487	A-B-C-C1-C2-E2-F1-F3-I3-L-M-N-R-R1-S-T-V-W-X-Z-Z1	09545	B-V	09622	B-C-F-F3-R-S-U-Z1
		09488	A-B-C-C1-C2-E2-F3-J-L-M-N-S-T-V-W-X-Z1	09550	B-F-F1-R-R1-V	09623	B-C-F-F3-R-U-V-Z1
		09489	A-B-C-C1-C2-E2-F1-F3-L-M-N-R-R1-S-T-V-W-X-Z1	09554	B-F-F1-R-R1-V	09624	B-C-C2-F-F1-F3-I3-L-N-R-R1-T-U-V-Z-Z1
				09556	B-F-F1-R-R1-V	09625	B-C-F-F3-N-R-S-U-Z1
				09564	B-F-F1-R-R1-V	09626	B-C-F-F3-R-U-Z1
				09565	B-F-F1-R-R1-V	09627	B-C-F-F3-R-S-U-V-Z1
				09566	B-C2-E2-E3-F-F1-F3-R-R1-S-V-Z1	09630	B-C-F-U-V
				09567	B-C2-E2-E3-F-F1-F3-R-R1-V-Z1	09631	B-C-F-F3-R-S-U-V-Z1
				09568	B-V	09633	B-C-D-F-F1-F3-M-R-S-U-U1-U2-U3-V-Z1
				09569	B-C2-E2-E3-F-F1-F3-R-R1-V-Z1	09634	A-B-F-F3-M-N-R-S-V
				09570	B-F-F1-F3-R-R1-S-V	09635	A-B-F1-F3-H-M-N-R-R1-S-U2-V
				09573	B-C2-E2-E3-F-F1-F3-R-R1-S-V-Z1	09636	B-C-F-F3-R-U-V-Z1
				09574	B-F-F1-R-R1-V	09642	B-C2-F-F1-F3-J-L-M-N-R-T-U-V
				09575	B-F-F1-R-R1-V	09643	B-C-F3-M-R-S-U-V-Z1
				09576	B-F-F1-R-R1-V	09645	B-C-F-F1-F3-R-S-U-Z1
				09577	B-F3-S-V		
				09578	B-F-F1-F3-R-R1-S-V-Z1		
				09579	B-F-F1-R-R1-V		
				09581	B-F-F1-R-R1-V		
				09582	B-E2-E3-F-F1-F3-R-R1-V-Z1		

APO/ FPO/ DPO	See Restrictions	APO/ FPO/ DPO	See Restrictions	APO/ FPO/ DPO	See Restrictions	APO/ FPO/ DPO	See Restrictions
09647	B-F1-F3-M-N-R-S-U-Z1	09736	A-B-C1-F-F1-F3-J-L-M-N-R-R1-T-V-Z1	09805	B-E2-E3-F-F1-F3-R-R1-S-Z1	09838	B-E2-E3-F-F1-F3-R-S-U-Z1
09648	B-F3-N-R-S-U-V-Z1	09737	A-B-C1-C2-F-F1-F3-I3-J-L-M-N-R-R1-T-V-W-Y-Z-Z1	09806	A-B-C1-C2-E2-F-F1-F3-H1-J-L-M-N-R-R1-T-V-Z1	09841	A-B-F3-N-R-S-U-Z1
09649	B-F3-N-R-S-U-Z1	09738	A-B-C1-C2-F-F1-F3-J-L-M-N-R-R1-T-V-Z1	09808	A-B-C1-C2-E2-F-F1-F3-H-H1-J-L-N-R-R1-T-V-Z1	09842	A-B-C1-C2-F-F1-F3-J-L-N-R-R1-T-V-Z1
09701	A-B-C1-C2-F-F1-F3-J-L-M-N-R-R1-T-V-Z1	09739	A-B-C1-C2-F-F1-F3-J-L-M-N-R-R1-T-V-Z1	09809	B-C1-C2-F-F1-F3-J-L-N-T-V-Z1	09844	A-B-C1-C2-F-F1-F3-J-L-M-N-R-R1-T-V-Z1
09702	B-C-C1-F1-F3-M-R-R1-S-U	09741	A-B-C1-C2-E2-F-F1-F3-H1-J-L-M-N-R-R1-T-V-W-Y-Z1	09810	A-B-F-F1-F3-N-R-S-V-Z1	09845	A-B-C1-C2-E3-F-F1-F3-J-L-M-N-R-R1-T-V-Z1
09703	B-C-D-F1-F3-H-R-S-U	09742	A-B-C2-F-F1-F3-J-L-M-N-R-S-T-V-Z1	09811	A-B-C-C2-E-E2-E3-F1-F3-H-H1-J-M-N-R-R1-S-U-V-Z1	09846	A-B-C1-C2-F-F1-F3-J-L-N-R-R1-T-V-Z1
09704	B-C-V-V1	09743	A-B-F-F3-H-N-Q-R-S-V-Z-Z1	09812	B-E2-E3-F-F1-I-J-L-N-R-T-U-V-Z-Z1	09847	B-C-C2-F-F1-F3-J-L-M-N-R-R1-S-T-V-Z1
09705	B-C-C1-F1-M-R-R1-U	09744	A-B-C1-C2-F-F1-F3-J-L-M-N-R-R1-T-V-Z1	09813	A-B-C1-C2-E2-E3-F-F1-F3-J-L-N-R-R1-T-V-Z1	09848	A-B-F-F3-M-R-S-V-Z1
09706	B-C-F3-M-N-R-S-U-V-Z1	09745	A-B-F-F1-F3-M-N-R-R1-S-V-Z1	09814	B-C2-E2-E3-F-F1-F3-I3-J-L-N-R-R1-T-V-Z-Z1	09852	B-C-E2-E3-F-F1-F3-H1-N-R-R1-S-U-V-Z1
09707	B-C2-F-F1-F3-J-L-M-N-R-R1-T-V-Z1	09748	A-B-C1-C2-F-F1-F3-J-L-M-N-R-R1-T-V-Z1	09816	A-B-C1-C2-E2-E3-F-F1-F3-J-L-N-R-R1-T-V-Z1	09853	B-C1-E2-F-F1-F3-H1-N-R-R1-S-U2-V-Z1
09708	B-C-C1-F1-M-R-R1-U	09749	A-B-F-H-N-U-V-Z1	09817	A-B-C1-C2-E2-E3-F-F1-F3-H-H1-J-L-M-N-R-R1-T-V-Z1	09854	A-B-C1-C2-F-F1-F3-J-L-N-R-R1-S-T-V-Z1
09709	B-C1-C2-E2-F-F1-F3-H1-J-L-N-R-R1-T-V-Z1	09750	A-B-C1-C2-F-F1-F3-J-L-M-N-R-R1-T-V-Z1	09818	A-B-C-F-F3-M-S-V-Z1	09855	A-B-C1-E2-F-F1-F3-H1-M-R-R1-S-U2-V-Z1
09710	B-C-C1-F-F1-J-L-M-N-R-R1-T-U-V-Z1	09751	B-C-D-E-F3-H-M-R-S-U	09820	A-B-C2-F-F1-F3-H-H1-J-L-M-N-R-R1-T-V-Z1	09856	B-C-C1-C2-F-F1-F3-H-H1-J-L-M-N-S-T-V-Z1
09711	A-B-F-F1-F3-N-R-R1-S-V-Z1	09752	B-C-D-F1-F3-H-R-S-U	09821	A-B-C-F-F3-N-R-S-V-Z1	09857	A-B-C2-E2-F-F1-F3-13-L-M-N-R-R1-S-T-V-Z-Z1
09712	A-B-F-F3-H-R-S-U-V-Z1	09753	A-B-F-N-V-Z1	09822	A-B-C-F-F3-M-R-S-V-Z1	09858	A-B-C-C1-C2-E2-E3-F1-F3-H-H1-J-M-N-R-R1-S-U-V-Z1
09714	B-C-C1-F1-F3-M-R-R1-S-U	09754	A-B-F-F3-H-L-N-Q-R-S-V-Z-Z1	09823	A-B-C1-C2-F-F1-F3-J-L-M-N-R-R1-T-V-Z1	09859	B-C1-E2-E3-F-F1-F3-H1-R-R1-S-U-Z1
09715	B-F-F1-J-L-M-N-R-T-V-Z1	09755	A-B-C-C1-D-F-F1-J-L-M-N-Q-R-R1-S-T-V-Z1	09824	A-B-C-F-F3-M-R-S-V-Z1	09860	A-B-C2-F-F1-F3-J-L-M-N-R-R1-S-T-V-Z1
09716	B-C-C2-F-F1-F3-J-L-M-N-R-R1-T-V-Z1	09756	A-B-E3-F-F1-J-L-N-Q-R-R1-S-T-V-Z1	09825	A-B-C1-C2-F-F1-F3-J-L-M-N-R-R1-T-V-Z1	09861	A-B-F-F1-F3-N-R-R1-S-V-Z1
09717	A-B-F3-M-R-S-V-W-Z1	09758	A-B-F-F1-F3-M-N-R-R1-S-V-Z1	09826	A-B-C1-C2-F-F1-F3-J-L-M-N-R-R1-T-V-Z1	09862	A-B-C-C2-F-F1-F3-I3-L-M-N-R-R1-S-T-V-X-Z-Z1
09718	B-F-F1-J-L-M-N-R-T-U-V-Z1	09759	A-B-C-C1-C2-E2-F-F1-F3-J-L-N-R-R1-T-V-Z1	09827	A-B-F-F1-J-L-M-N-R-T-V-Z1	09863	A-B-F-F1-F3-N-R-R1-S-V-V1-Z1
09719	B-C-D-F3-M-R-S-U-V-Z1	09761	B-F-F1-F3-M-N-R-R1-V-Z-Z1	09828	A-B-C1-C2-F-F1-F3-I3-L-N-R-R1-T-V-Z-Z1	09864	A-B-C-C1-C2-E2-F1-F3-L-M-N-R-R1-S-T-V-W-Z1
09720	B-F3-M-R-S-U-V-Z1	09762	A-B-C2-E3-F-F1-F3-J-L-N-R-R1-T-V-Z1	09829	B-C-N-R-V-Z1	09865	A-B-F3-R-S-U-V-Z1
09722	A-B-F-F3-H-N-Q-S-V-Z-Z1	09769	A-B-B2-C1-C2-F-F1-F3-J-L-M-N-R-R1-T-V-Z1	09830	B-C-F-F1-F3-J-L-M-N-R-R1-S-T-V-Z1	09867	A-B-C-C1-C2-E2-F1-F3-L-M-N-R-R1-S-T-V-W-Z1
09723	B-C2-F-F1-F3-J-L-M-N-R-R1-T-V-Z1	09777	A-B-C-C1-C2-E1-F-F1-F3-J-L-M-N-R-R1-T-V-Z1	09831	B-C1-C2-F-F1-F3-J-L-N-R-R1-T-V-Z1	09868	A-B-E1-E2-E3-F1-F3-M-N-R-S-U-V-Z1
09724	B-C-C1-F1-M-R-R1-U	09780	A-B-F-F3-H-N-R-S-V	09832	B-C1-E2-F1-F3-N-R-S-V-Z1	09869	A-B-C1-C2-E2-F1-F3-L-M-N-R-R1-S-T-V-W-Z1
09725	A-B-F-F3-H-N-Q-R-S-V-V1-Z-Z1	09789	A-B-C2-F-F3-N-R-S-V-Z1	09833	B-C1-E2-F1-F3-N-R-S-V-Z1	09870	A-B-C1-C2-E2-F-F1-F3-H1-I3-L-M-N-R-R1-S-T-U4-V-Z-Z1
09726	B-F-F1-J-L-M-N-R-T-U-V-Z1	09801	A-B-C1-E2-F-F3-H1-M-N-R-R1-S-V-Z1	09834	B-E2-E3-F-F1-F3-R-R1-S-U-Z1	09873	A-B-C1-C2-E2-F-F1-F3-H1-I3-L-M-N-R-R1-S-T-U-U4-V-Z-Z1
09727	A-B-C1-C2-F-F1-F3-J-L-M-N-R-R1-T-V-Z1	09802	A-B-C-C2-D-F-F1-F3-H1-I3-L-M-N-R-R1-S-T-V-W-Z-Z1	09836	A-B-C1-C2-F-F1-F3-J-L-M-N-R-R1-V-Z1	09874	A-B-C1-C2-E2-F-F1-F3-H1-I3-L-M-N-R-R1-S-T-U-U4-V-Z-Z1
09728	A-B-C-C1-C2-F-F1-F3-J-L-N-R-R1-T-V-Z1	09803	A-B-C-C2-E-E2-E3-F1-F3-H-H1-J-M-N-R-R1-S-U-V-Z1	09837	B-E2-E3-F1-F3-R-S-V-Z1		
09729	B-C-F-F3-N-R-R1-S-U-V-Z1	09804	A-B-F-F1-F3-M-N-R-S-V-Z1				
09730	A-B-C1-C2-F-F1-F3-J-L-M-N-R-R1-T-V-Z1						
09731	A-B-C1-C2-F-F1-F3-J-L-M-N-R-R1-T-V-Z1						
09732	B-N-V-Z1						
09733	B-F-F3-N-R-S-V						
09734	A-B-C-C1-C2-F-F1-F3-I3-J-L-M-N-R-R1-T-V-Z-Z1						
09735	B-F3-N-R-S-V-Z1						

APO/ FPO/ DPO	See Restrictions	APO/ FPO/ DPO	See Restrictions	APO/ FPO/ DPO	See Restrictions	APO/ FPO/ DPO	See Restrictions
09875	A-B-C1-C2-E2-F-F1-F3-H1-I3-L-M-N-R-R1-S-T-U-U4-V-Z-Z1	34030	B-C1-C2-F-F1-F3-J-L-M-N-R-R1-T-V-Z1	34095	B-F-F1-R-R1-V	96347	B-F-F1-F2-H-M-W-Z1
09877	A-B-C-C2-E-E2-E3-F1-F3-H-H1-J-M-N-R-R1-S-U-V-Z1	34031	B-C1-C2-F-F1-F3-J-L-M-N-R-R1-T-V-Z1	96201	A-B-F-F1-F3-S-U	96349	B-F-F1-F2-F3-H-M-S-W-Z1
09880	A-B-C1-E2-F-F1-H1-N-R-R1-U-V-Z1	34032	B-C1-C2-F-F1-F3-J-L-M-N-R-R1-T-V-Z1	96202 A-B-F-F1-F3-R-S-U		96350	B-F-F1-F2-F3-H-M-R-S-W-Z1
09890	B-E2-F-H1-N-R-R1-U2-V-Z1	34033	B-C1-C2-F-F1-F3-I3-J-L-M-N-R-R1-T-V-Z-Z1	96204	A-B-F-F1-F3-R-S-U	96351	B-F-F1-F2-F3-H-M-R-S-W-Z1
09892	A-B-C1-C2-E2-F-F1-F3-J-L-M-N-R-R1-T-V-Z1	34034	B-C1-C2-F-F1-F3-I3-L-M-N-R-R1-T-V-Z-Z1	96205	A-B-F-F1-F3-R-S-U	96362	B-F-F1-F2-M-W-Z1
09895	A-B-C1-C2-E2-F-F1-F3-J-L-M-N-R-T-V-W-Z1	34035	B-C1-C2-F-F1-F3-H-J-L-M-N-R-R1-T-V-Z1	96206	A-B-F-F1-F3-R-S-U	96365	B-C-F3-M-R-S-V-W
09898	B-C-C1-C2-E2-F-F1-F3-H1-N-R-R1-S-U2-V-Z1	34036	B-C1-C2-F-F1-F3-J-L-M-N-R-R1-T-V-Z1	96207	A-B-F-F1-F3-R-S-U-V	96367	B-C-F3-L-M-R-S-W
09901	A-B-C2-F-F3-N-R-S-V-Z1	34037	B-C-C1-C2-F-F1-F3-H-J-L-M-N-R-R1-T-V-Z1	96208	A-B-F-F1-F3-R-S-U	96368	B-C-F3-M-R-S-W
09902	A-B-C1-E2-F-F3-H1-M-R-R1-S-V-Z1	34039	B-C1-C2-F-F1-J-L-M-N-T-V-Z1	96209	A-B-C1-C2-F-F1-J-L-M-N-T-U-V-Z1	96370	B-F-F1-F2-H-M-W-Z1
09903	B-C1-E2-F1-F3-S-V-Z1	34041	B-C1-C2-F-F1-F3-J-L-M-N-R-R1-T-V-Z1	96210	A-B-C1-C2-F-F1-F3-I3-L-M-N-R-R1-T-V-Z-Z1	96371	B-F-F3-M-S-W
09904	B-C1-E2-F1-F3-S-V-Z1	34042	A-B-C-F-F1-M-N-R-S-U-V-W-Z1	96212	B-F-F1-F2-H-M-W-Z1	96372	B-M-W
09908	A-B-F-F1-F3-N-R-R1-S-V-Z1	34050	B-V	96213	A-B-C-F1-R-U	96373	B-M-W
09909	A-B-F-F1-F3-N-R-R1-S-V-V1-Z1	34051	B-V	96214	A-B-C-F1-F3-R-S-U	96374	B-M-W
09910	A-B-F-F1-F3-N-R-R1-S-V-Z1	34052	B-V	96218	A-B-F-F1-F3-S-U	96375	B-F3-M-S-W
09974	B-F1-F3-J-L-M-N-R-S-T-U2-V-X-Z1	34053	B-V	96224	A-B-F-F1-F3-R-S-U	96376	B-M-W
09975	B-F1-F3-J-L-M-N-R-S-T-U2-V-X-Z1	34054	B-V	96251	A-B-F-F1-F3-S-U	96377	B-F3-M-S-W
09976	B-F1-F3-J-L-M-N-R-S-T-U2-V-X-Z1	34055	B-C1-C2-F-F1-F3-J-L-M-N-R-R1-T-V-Z1	96257	A-B-F-F1-F3-S-U	96378	B-M-W
09977	B-F1-F3-J-L-M-N-R-S-T-U2-V-X-Z1	34058	B-F-F1-F3-R-R1-S-V-Z1	96258 A-B-F-F1-F3-R-S-U		96379	B-F3-M-R-S-W
34001	A-B-C1-C2-F-F1-F3-J-L-M-N-R-R1-S-T-V-Z1	34060	B-C1-C2-E2-F-F1-F3-J-L-M-N-R-R1-T-V-Z1	96260	A-B-F-F1-F3-S-U	96380	B-M-W
34002	B-C1-C2-F-F1-F3-J-L-M-N-R-R1-T-V-Z1	34066	B-C1-C2-F-F1-F3-I3-J-L-M-N-R-R1-S-T-V-X-Z-Z1	96262	A-B-F-F1-F3-R-S-U-V-Z1	96382	B-M-W
34004	B-C1-C2-F-F1-F3-J-L-M-N-R-R1-T-V-Z1	34067	B-C1-C2-F-F1-F3-J-L-M-N-R-R1-S-T-V-X-Z1	96264	A-B-C-F1-R-U	96384	B-F3-M-S-W
34007	B-F-F1-H-J-M-N-R-R1-V-Z1	34068	B-C1-C2-F-F1-F3-J-L-M-N-R-R1-S-T-V-X-Z1	96266	A-B-C-F1-R-U	96385	B-M-W
34008	B-C1-C2-D-E1-F-F1-H1-J-L-M-N-R-R1-T-V-Z1	34069	B-C1-C2-F-F1-F3-I3-J-L-M-N-R-R1-S-T-V-X-Z-Z1	96267	A-B-C-F1-R-U-V	96386	B-F3-M-S-W
34011	B-C1-C2-E2-F-F1-F3-J-L-M-N-R-R1-T-V-Z1	34078	B-F1-F3-N-R-S-V-Z1	96269	A-B-F1-F2-F3-S-U-Z1	96387	B-F3-M-S-W
34020	B-C1-C2-F-F1-F3-J-L-M-N-R-R1-T-V-Z1	34080	B-F-F1-R-R1-V	96271	A-B-F-F1-F3-R-S-U	96388	B-F3-M-S-W
34021	B-C1-C2-F-F1-F3-J-L-M-N-R-R1-T-V-Z1	34081	B-F-F1-R-R1-V	96273	A-B-F-F1-F3-R-S-U	96389	B-M-W
34022	B-C1-C2-F-F1-F3-J-L-M-N-R-R1-T-V-Z1	34082	B-F-F1-R-R1-V	96275	A-B-F-F1-F3-R-S-U	96401	B-C-F-N-O-R-V-V1-Z1
34023	B-C1-C2-F-F1-F3-J-L-M-N-R-R1-T-V-Z1	34083	B-F-F1-R-R1-V	96276	A-B-C-F1-R	96501	A-B-N-V
34024	B-C1-C2-F-F1-F3-J-L-M-N-R-R1-T-V-Z1	34084	B-F-F1-R-R1-V	96278	A-B-C-F1-F3-R-S-U	96502 A-C1-F-F1-F3-M-N-Q-R-R1-S-T-U2-V	
34025	B-F-F1-F3-J-L-M-N-R-R1-T-V-Z1	34085	B-F-F1-F3-R-R1-S-V	96283	A-B-F-F1-F3-S-U	96504	A-B-C-C1-C2-F-F1-F3-I3-L-M-N-R-R1-T-V-W-Z-Z1
		34086	B-F-F1-F3-R-R1-S-V	96284 A-B-F-F1-F3-R-S-U		96505	A-B-C-C1-C2-F-F1-F3-I3-L-M-N-R-R1-S-T-V-W-Z-Z1
		34087	B-B2-E2-F-F1-F3-R-R1-S-V	96297	A-B-F-F1-F3-R-S-U	96507	A-B-C1-C2-F-F1-H-J-L-M-N-T-V-Z1
		34088	B-F-F1-R-R1-V	96301	A-B-F3-M-R-S-W	96510	B-I3-N-V
		34089	B-F-F1-R-R1-S-V	96303	B-C1-C2-F-F1-H-J-L-M-N-T-V-W-Z1	96511	B-I3-N-V
		34090	B-F-F1-R-R1-V	96306	B-F-F1-F2-F3-H-M-S-W-Z1	96515	B-C-D-E1-F-F1-F3-H1-M-R-S-T-Z1
		34091 B-E2-E3-F-F1-F3-R1-S-V-Z1		96310	B-M-W	96516	B-C-D-E1-E2-F-F1-F3-H1-M-R-S-T-Z1
		34092	B-F-F1-F3-R-R1-S-V	96311	B-F3-M-S-W	96517	B-C-D-E1-E2-F-F1-F3-H1-M-N-R-T-U-V-Z1
		34093	B-F-F1-R-R1-V	96319	B-C-M-R-W	96520	B-F-N-U3-V
		34094	B-F-F1-R-R1-V	96321	B-F-F1-F2-F3-H-M-S-W-Z1	96521	B-C1-C2-F-F1-J-L-M-N-R-R1-S-T-V-Z1
				96322	B-F-F1-F2-F3-H-M-R-S-W-Z1	96530	A-B-C1-C2-F-F1-H-H1-J-L-M-N-R-R1-S-T-V-Z1
				96326	B-C-F-M-R-W	96531	A-B-C-F-F1-F3-H-M-N-R-S-U-V
				96328	B-C-F3-M-R-S-W	96532	A-B-C1-C2-F-F1-H-J-L-M-N-R-R1-S-T-V-Z1
				96331	A-B-F1-J-L-M-N-S-W	96534	A-B-F-F1-F2-F3-S-U-Z1
				96336	B-C-M-R-V-W		
				96337	B-M-W		
				96338	A-B-F3-M-R-S-W		
				96339	A-B-F3-M-R-S-W		
				96343	P		
				96346	B-F-F1-F2-H-M-W-Z1		

APO/ FPO/ DPO	See Restrictions	APO/ FPO/ DPO	See Restrictions	APO/ FPO/ DPO	See Restrictions	APO/ FPO/ DPO	See Restrictions
96535	A-B-C1-C2-F-F1-J-L-M-N-R-R1-S-T-V-Z1	96577	A-B-F-H-M-N-R-U	96628	B-F-F1-F3-R-R1-S-V	96670	B-V
96537	B-V-Z1	96578	B-F1-H-J-N-R-S	96629	B-F-F1-F3-R-R1-S-V	96671	B-F-F1-F3-R-R1-S-V
96539	C1-F-F3-M-N-R-R1-S-T-U2-V	96595	B-F-F3-R-S-V-Z1	96632	B-F-F1-R-R1-V	96672	B-F-F1-F3-R-R1-S-V
96540	B-F1-F2-F3-S-Z1	96598	B-F3-N-R-S-V-V1	96633	B-V	96673	B-F3-S-V
96542	B-V-Z1	96599	B-F3-N-R-S-V	96641	B-V	96674	B-F-F1-F3-R-R1-S-V
96543	B-F-F1-F2-F3-P-S-V-Z1	96601	B-V	96642	B-V	96675	B-F-F1-F3-R-R1-S-V
96548	A-B-F-F1-F3-H-M-R-S-U	96602	B-V	96643	B-F-F1-R-R1-V	96677	B-F-F1-F3-R-R1-S-V
96549	A-B-C1-C2-F-F1-H-J-L-M-N-R-R1-S-T-V-Z1	96603	B-V	96644	B-V	96678	B-F-F1-F3-R-R1-S-V
96550	A-B-H-M-N-U-V-Z1	96604	B-V	96645	B-V	96679	B-F-F1-R-R1-V
96551	A-B-C1-C2-F-F1-H-J-L-M-N-R-R1-S-T-V-Z1	96605	B-V	96649	B-F-F1-F3-R-R1-S-V	96681	B-V
96552	B-Z1	96606	B-V	96650	B-F-F1-R-R1-V	96682	B-V
96553	A-B-F-F1-H-M-N-R-U	96607	B-V	96657	B-F-F1-R-R1-V	96683	B-V
96554	A-B-C1-C2-F-F1-H-J-L-M-N-R-R1-S-T-V-Z1	96608	B-E2-F-H1-R1-U2-V-Z1	96660	B-F-F1-F3-R-R1-S-V	96686	B-V
96555	B-F-F3-M-S-V	96609	B-E2-F-H1-R1-U2-V-Z1	96661	B-F-F1-R-R1-V	96691	B-F-F1-F3-R-R1-S-V
96557	B-F-F3-M-S-V	96610	B-E2-F-H1-R1-U2-V-Z1	96662	B-F-F1-F3-R-R1-S-V	96692	B-F-F1-F3-R-R1-S-V
96562	A-B-C1-C2-D-E2-E3-F-F1-H-H1-I3-L-M-N-R-R1-S-T-V-Z1	96611	B-E2-F-H1-R1-U2-V-Z1	96663	B-F-F1-F3-R-R1-S-V-V1	96693	E2-F-F3-R-R1-S-V
		96612	B-V	96664	B-V	96694	B-F-F1-I3-J-R-R1-V-V1-Z
		96613	B-V	96665	B-V	96695	B-F-F1-R-R1-V
		96615	B-F-F1-R-R1-V	96666	B-V	96696	B-F-F1-R-R1-V
		96616	B-C2F-F1-R-R1-S-V	96667	B-F-F1-F3-R-R1-S-V	96698	B-V
		96617	B-F-F1-F3-R-R1-S-V	96668	B-F-F1-R-R1-V		
		96619	B-V	96669	B-F3-S-V		
		96620	B-F-F1-R-R1-V				

RESTRICTIONS

LEGEND

PS Form 2976, *Customs — CN 22 (Old C 1) and Sender's Declaration* (green label)

PS Form 2976-A, *Customs Declaration and Dispatch Note*

PS Form 2976-B, *Priority Mail Express International Shipping Label and Customs Form*

ATF	= Bureau of Alcohol, Tobacco, Firearms, and Explosives
Box C	= Department of State (DOS) contractor personnel
Box R	= Retired military personnel
DPO	= Diplomatic Post Office
MPO	= Military Post Office
PACT	= Prevent All Cigarette Trafficking Act
PAL	= Parcel Airlift
PMEMS	= Priority Mail Express Military Service
PUB 52	= Publication 52, <i>Hazardous, Restricted, and Perishable Mail</i>
SAM	= Space Available Mail
USDA	= United States Department of Agriculture

Note: Mail order catalogs are prohibited as SAM or PAL mail.

A. Securities, currency, or precious metals, including in their raw, unmanufactured state, are prohibited. Official Mail shipments are exempt from this restriction.

A1. Reserved for future use.

A2. Reserved for future use.

B. Other than for PMEMS and the exceptions listed below, a customs declaration PS Form 2976 or PS Form 2976-A is required for all items weighing 16 ounces or more, and for all items (regardless of weight) containing potentially dutiable mail contents (e.g., merchandise or goods) addressed to or from this ZIP Code. Other than the exceptions listed below, all PMEMS mailpieces (regardless of mail contents or weight) addressed to or from this ZIP Code must bear a properly completed PS Form 2976-B. The surface area of the address side of the mailpiece must be large enough to contain the applicable customs declaration. The following exceptions apply to known mailers, who for this purpose are defined as follows:

- Business mailers who enter volume mailings through business mail entry units or other bulk mail acceptance locations, pay postage through advance deposit accounts, use permit imprints for postage payment, and submit completed postage statements at the time of entry that certify that the mailpieces contain no dangerous materials that are prohibited by postal regulations. Such business mailers are exempt from providing customs documentation on non-dutiable letters and printed matter.
- All federal, state, and local government agencies whose mailings are regarded as "Official Mail." Such agencies are exempt from providing customs documentation, except for any items addressed to an MPO or DPO to which restriction "B2" applies.

B2. All federal, state, and local government agencies must complete customs documentation when sending potentially dutiable mail addressed to or from this MPO or DPO.

C. Cigarettes and other tobacco products, including tobacco leaves, chewing and pipe tobacco, snuff, and cigars are prohibited, including those that are authorized in Publication 52 under PACT.

C1. Obscene and horror articles, images, prints, paintings, cards, films, videotapes, comic books, etc., are prohibited.

C2. E-cigarettes and related products (e.g., nicotine liquids, e-liquids, parts, or supplies) are prohibited.

D. Coffee is prohibited.

E. Medicines (prescription, over-the-counter, vitamins, and supplements) are prohibited when mailed to individuals for human or animal use. This prohibition does not apply when medicines are sent as Official Mail only between specifically designated agencies such as pharmaceutical distributors, hospitals, clinics, and pharmacies.

E1. Mailers are responsible to ensure that all medicines and vaccines conform to host nation laws.

E2. Any matter depicting nude or seminude persons, pornographic, or sexual items are prohibited. Non-authorized political materials are prohibited. Religious materials contrary to the Islamic faith are prohibited in bulk quantities, but individual items for the personal use of the addressee are permissible.

E3. Radio transceivers, cordless/cellular telephones, global positioning systems, scanners, base stations, and handheld transmitters are prohibited.

F. Firearms of any type are prohibited, except firearms mailed to or by official U.S. government agencies. This restriction does not apply to firearms mailed from this MPO ZIP Code, provided ATF and USPS regulations are met. Antique firearms do not require an ATF form.

F1. Weapons of any type are prohibited.

F2. Mailing firearms to or from this MPO ZIP Code is restricted to one shotgun and one single shot .22 caliber rifle per individual.

F3. Replica weapons and inert explosive devices (such as grenades) and weapons parts are prohibited.

G. Parcels of any class are prohibited.

H. Meats, including preserved meats, bones, skin, hair, feathers, horns or hoofs of hoofed animals, and wool samples whether hermetically sealed or not, are prohibited.

H1. Pork or pork by-products are prohibited.

I. Reserved for future use.

I1. Reserved for future use.

I2. Reserved for future use.

I3. Mail of all classes must fit in a mail sack. Mail may not exceed the following dimensions:

- Maximum length 27 inches.
- Maximum width 14 inches.
- Maximum height 14 inches.

J. Standard Post and Parcel Select parcels may not exceed 108 inches in length and girth combined.

K. Reserved for future use.

L. All Official Mail is prohibited.

M. Fruits, vegetables, live animals, and live plants are prohibited.

N. Registered Mail service is prohibited.

O. Reserved for future use.

P. Official Mail only.

Q. Mail may not exceed 66 pounds, and size is limited to 42 inches maximum length and 72 inches maximum length and girth combined.

R. All alcoholic beverages, including those mailable under Publication 52, Part 421, are prohibited.

R1. Materials used in the production of alcoholic beverages (i.e., distilling material, hops, malts, yeast, etc.) are prohibited.

S. Synthetic cannabinoids used to stimulate the central nervous system commonly known as "synthetic marijuana," "K2," or "Spice" are prohibited.

T. Mailings of household shipments and case lots of food to or from an MPO require military transportation office approval prior to mailing. Mailings to or from a DPO require pre-approval from the Diplomatic Pouch and Mail Director.

U. Mail addressed to Retirees (Box R) is limited to 16 ounces and up to a 90-day supply of TRICARE medications. This restriction does not apply to mail endorsed "Free Matter for the Blind or Handicapped."

U1. Mail is limited to First-Class Mail items, including audio and video media, weighing 13 ounces or less. This limitation does not apply to Official Mail.

U2. Retirees (Box R) are not authorized mail service.

U3. Reserved for future use.

U4. Mail addressed to Box C is limited to 2 lbs.

V. PMEMS is not available.

V1. Electronic Delivery status information for Extra Services is not available on *USPS.com*. Manual record of delivery may be available upon request.

W. Hermetically sealed packages of meat products bearing USDA certification, such as dried beef, salami, and sausage, may be mailed. 200 grams of tobacco per parcel are permitted duty free.

X. Cremated remains are prohibited.

Y. Mail is limited to First-Class Mail and Priority Mail items only. This restriction also applies to Official Mail.

Z. No outside pieces (OSPs).

Z1. The following restriction is applicable only to International Service Centers (ISC)/Exchange Offices. An Anti-Pilferage Seal (Item No O817E or O818A) is required on all pouches and sacks.

— *International Network Operations,
Global Business, 1-30-20*

Thrift Savings Plan Fact Sheet

ANNUAL RETURNS	G Fund	F Fund	U.S. Aggregate Index	C Fund	S&P 500 Stock Index	S Fund	Dow Jones U.S. Completion TSM Index	I Fund	EAFE Stock Index
2006	4.93	4.40	4.33	15.79	15.79	15.30	15.28	26.32	26.34
2007	4.87	7.09	6.97	5.54	5.49	5.49	5.39	11.43	11.17
2008	3.75	5.45	5.24	-36.99	-37.00	-38.32	-39.03	-42.43	-43.38
2009	2.97	5.99	5.93	26.68	26.46	34.85	37.43	30.04	31.78
2010	2.81	6.71	6.54	15.06	15.06	29.06	28.62	7.94	7.75
2011	2.45	7.89	7.84	2.11	2.11	-3.38	-3.76	-11.81	-12.14
2012	1.47	4.29	4.22	16.07	16.00	18.57	17.89	18.62	17.32
2013	1.89	-1.68	-2.02	32.45	32.39	38.35	38.05	22.13	22.78
2014	2.31	6.73	5.97	13.78	13.69	7.80	7.63	-5.27	-4.90
2015	2.04	0.91	0.55	1.46	1.38	-2.92	-3.42	-0.51	-0.81
2016	1.82	2.91	2.65	12.01	11.96	16.35	15.75	2.10	1.00
2017	2.33	3.82	3.54	21.82	21.83	18.22	18.12	25.42	25.03
2018	2.91	0.15	0.01	-4.41	-4.38	-9.26	-9.57	-13.43	-13.79

MONTHLY RETURNS	G Fund	F Fund	U.S. Aggregate Index	C Fund	S&P 500 Stock Index	S * Fund	Dow Jones U.S. Completion TSM Index	I * Fund	EAFE Stock Index
2019									
Jan	0.23	1.07	1.06	8.01	8.01	11.64	11.60	6.60	6.57
Feb	0.20	-0.06	-0.06	3.21	3.21	4.98	4.97	2.55	2.55
Mar	0.23	1.93	1.92	1.95	1.94	-1.03	-0.99	0.71	0.63
Apr	0.21	0.02	0.03	4.05	4.05	3.69	3.66	2.92	2.81
May	0.21	1.77	1.78	-6.36	-6.35	-6.99	-6.95	-4.69	-4.80
June	0.19	1.26	1.26	7.04	7.05	6.80	6.81	5.94	5.93
July	0.18	0.21	0.22	1.44	1.44	1.64	1.63	-2.09	-1.27
Aug	0.18	2.60	2.59	-1.59	-1.59	-4.19	-4.18	-1.77	-2.59
Sept	0.14	-0.54	-0.53	1.87	1.87	1.06	1.00	2.87	2.87
Oct	0.14	0.28	0.30	2.16	2.17	1.93	1.89	3.60	3.59
Nov	0.14	-0.05	-0.05	3.63	3.63	4.54	4.58	1.15	1.13
Dec	0.16	-0.08	-0.07	3.01	3.02	2.15	2.16	3.24	3.25
LAST 12 MONTHS	2.24	8.68	8.72	31.45	31.49	27.97	27.94	22.47	22.01

The G Fund is managed internally by the Federal Retirement Thrift Investment Board. Assets of the F, C, S, and I Funds are managed externally. The Board currently has contracts with BlackRock Institutional Trust Company, N.A., to manage the F, C, S, and I Fund assets. The F, C, S, and I Funds invest in commingled trust funds, in which the assets of tax-deferred employee benefit plans are combined and invested together. The F, C, S, and I Funds and the BlackRock funds are passively managed index funds.

Future performance of the funds will vary and may be significantly different from the returns shown above. See the *Summary of the Thrift Savings Plan* for detailed information about the funds and their investment risks. The monthly returns of the TSP Funds represent net earnings for the month after deduction of accrued administrative expenses and, except for the G Fund, after deduction of trading costs and accrued investment management fees as well. The returns for the four indexes shown do not include any of these deductions.

* Implemented May 2001.

See next page for L Funds.

L Funds

Annual Returns	L Income	L 2020	L 2030	L 2040	L 2050
2006	7.59	13.72	15.00	16.53	
2007	5.56	6.87	7.14	7.36	
2008	-5.09	-22.77	-27.50	-31.53	
2009	8.57	19.14	22.48	25.19	
2010	5.74	10.59	12.48	13.89	
2011	2.23	0.41	-0.31	-0.96	
2012	4.77	10.42	12.61	14.27	15.85
2013	6.97	16.03	20.16	23.23	26.20
2014	3.77	5.06	5.74	6.22	6.37
2015	1.85	1.35	1.04	0.73	0.45
2016	3.58	5.47	7.07	7.90	8.65
2017	6.19	9.86	14.54	16.77	18.81
2018	0.71	-0.36	-3.58	-4.89	-6.02

Monthly Returns	L Income	L 2020	L 2030	L 2040	L 2050
2019					
Jan	1.83	2.53	4.92	5.86	6.67
Feb	0.80	1.06	2.00	2.36	2.68
Mar	0.52	0.61	0.87	0.96	1.02
Apr	0.89	1.16	2.23	2.62	2.96
May	-0.98	-1.42	-3.36	-4.06	-4.67
June	1.57	2.04	4.11	4.87	5.52
July	0.19	0.21	0.21	0.22	0.22
Aug	-0.12	-0.24	-0.96	-1.22	-1.46
Sept	0.51	0.63	1.28	1.50	1.69
Oct	0.70	0.79	1.67	1.95	2.20
Nov	0.71	0.83	1.77	2.10	2.38
Dec	0.74	0.86	1.83	2.15	2.43
LAST 12 MONTHS	7.60	9.38	17.60	20.69	23.33

Freely Associated States Restrictions

We list the mailing restrictions for Freely Associated States (FAS) in the Pull-Out section of the *Postal Bulletin*. All FAS Restrictions will be updated periodically.

Freely Associated States

Mail addressed to freely associated states is subject to certain conditions or restrictions of mailing regarding content, preparation, and handling. The following FAS Restrictions table outlines these conditions as listed by each affected FAS ZIP Code™ through the use of footnoted mailing restrictions codes (see the [Restrictions](#) following the table). For more information on available extra services for FAS destinations, see *Mailing Standards of the United States Postal Service, Domestic Mail Manual (DMM®)*, part 503.

Acceptance clerks must use the table with the Retail System Software terminal to determine which FAS ZIP Codes are active and which conditions of mailing apply.

FAS Restrictions Table

FAS Table	See Restrictions
96939	A, B
96940	A, B
96941	A, B
96942	A, B
96943	A, B
96944	A, B
96960	A, B
96970	A, B, D
Marshall Islands	C
Federated States of Micronesia	C

RESTRICTIONS LEGEND

PS Form 2976, *Customs Declaration CN 22 – Sender's Declaration*

PS Form 2976-A, *Customs Declaration and Dispatch Note*

FAS = Freely Associated State

- A.** Bank currency (coin and paper) is prohibited.
- B.** Signature Confirmation, Signature Confirmation Restricted Delivery, Adult Signature Requested, Adult Signature Restricted Delivery, Certified Mail Adult Signature Required, and Certified Mail Adult Signature Restricted Delivery not available.
- C.** Collect on Delivery is prohibited.
- D.** Betel nut (Areca catechu) is prohibited.

— *Asia-Pacific Relations,
Global Business, 1-30-20*

How to Order the First-Day-of-Issue Digital Color or Traditional Postmarks (continued)



Black and White Pictorial

FDOI – Spooky Silhouettes Stamps
 USPS Stamp Fulfillment Services
 8300 NE Underground Drive, Suite 300
 Kansas City, MO 64144-9900

February 11, 2020



Digital Color Pictorial

FDOI – Holiday Wreaths Stamps
 USPS Stamp Fulfillment Services
 8300 NE Underground Drive, Suite 300
 Kansas City, MO 64144-9900

February 25, 2020



Black and White Pictorial

FDOI – Holiday Wreaths Stamps
 USPS Stamp Fulfillment Services
 8300 NE Underground Drive, Suite 300
 Kansas City, MO 64144-9900

February 25, 2020



Digital Color Pictorial

FDOI – Healing PTSD Semipostal Stamp
 USPS Stamp Fulfillment Services
 8300 NE Underground Drive, Suite 300
 Kansas City, MO 64144-9900

April 2, 2020



Black and White Pictorial

FDOI – Healing PTSD Semipostal Stamp
 USPS Stamp Fulfillment Services
 8300 NE Underground Drive, Suite 300
 Kansas City, MO 64144-9900

April 2, 2020



Digital Color Pictorial

FDOI – Lunar New Year: Year of the Rat Stamp
 USPS Stamp Fulfillment Services
 8300 NE Underground Drive, Suite 300
 Kansas City, MO 64144-9900

May 11, 2020



Black and White Pictorial

FDOI – Lunar New Year: Year of the Rat Stamp
 USPS Stamp Fulfillment Services
 8300 NE Underground Drive, Suite 300
 Kansas City, MO 64144-9900

May 11, 2020



Digital Color Pictorial

FDOI – Big Bend Stamp

USPS Stamp Fulfillment Services
8300 NE Underground Drive, Suite 300
Kansas City, MO 64144-9900

May 18, 2020



Black and White Pictorial

FDOI – Big Bend Stamp

USPS Stamp Fulfillment Services
8300 NE Underground Drive, Suite 300
Kansas City, MO 64144-9900

May 18, 2020



Digital Color Pictorial

FDOI – Grand Island Ice Caves Stamp

USPS Stamp Fulfillment Services
8300 NE Underground Drive, Suite 300
Kansas City, MO 64144-9900

May 18, 2020



Black and White Pictorial

FDOI – Grand Island Ice Caves Stamp

USPS Stamp Fulfillment Services
8300 NE Underground Drive, Suite 300
Kansas City, MO 64144-9900

May 18, 2020



Digital Color Pictorial

FDOI – Made of Hearts Stamp

USPS Stamp Fulfillment Services
8300 NE Underground Drive, Suite 300
Kansas City, MO 64144-9900

May 23, 2020



Black and White Pictorial

FDOI – Made of Hearts Stamp

USPS Stamp Fulfillment Services
8300 NE Underground Drive, Suite 300
Kansas City, MO 64144-9900

May 23, 2020

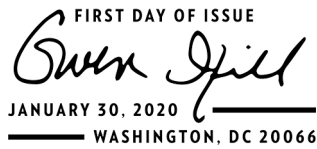


Digital Color Pictorial

FDOI – Gwen Ifill Stamp

USPS Stamp Fulfillment Services
8300 NE Underground Drive, Suite 300
Kansas City, MO 64144-9900

May 30, 2020



Black and White Pictorial

FDOI – Gwen Ifill Stamp

USPS Stamp Fulfillment Services
8300 NE Underground Drive, Suite 300
Kansas City, MO 64144-9900

May 30, 2020



Digital Color Pictorial

FDOI – Let's Celebrate! Stamp

USPS Stamp Fulfillment Services
8300 NE Underground Drive, Suite 300
Kansas City, MO 64144-9900

June 14, 2020



Black and White Pictorial

FDOI – Let's Celebrate! Stamp

USPS Stamp Fulfillment Services
8300 NE Underground Drive, Suite 300
Kansas City, MO 64144-9900

June 14, 2020



Digital Color Pictorial

FDOI – Wild Orchids Stamps

USPS Stamp Fulfillment Services
8300 NE Underground Drive, Suite 300
Kansas City, MO 64144-9900

June 21, 2020



Black and White Pictorial

FDOI – Wild Orchids Stamps

USPS Stamp Fulfillment Services
8300 NE Underground Drive, Suite 300
Kansas City, MO 64144-9900

June 21, 2020



Digital Color Pictorial

FDOI – Arnold Palmer Stamp

USPS Stamp Fulfillment Services
8300 NE Underground Drive, Suite 300
Kansas City, MO 64144-9900

July 4, 2020



Black and White Pictorial

FDOI – Arnold Palmer Stamp

USPS Stamp Fulfillment Services
8300 NE Underground Drive, Suite 300
Kansas City, MO 64144-9900

July 4, 2020

Postal Bulletin 2019 Annual Index

January – December 2019

PB 22510 – 22535

The following articles are updated regularly in the *Postal Bulletin* and are not listed in the index:

- Counterfeit Canadian Money Order Forms.
- Domestic Orders.
- Freely Associated States Restrictions.
- How to Order the First-Day-of-Issue Digital Color or Traditional Postmarks.
- Invalid USPS Corporate Account Numbers.
- Mail Alert.
- Missing, Lost, or Stolen Canadian Money Order Forms.
- Missing, Lost, or Stolen U.S. Money Order Forms.
- Overseas Military/Diplomatic Mail.
- Pictorial Postmarks Announcement.
- Postmark America.
- Post Office Changes.
- Stamps by Mail – Brochure Ordering Information.
- Thrift Savings Plan Fact Sheet.
- Toll-Free Number Available to Verify Canadian Money Orders.
- Verifying U.S. Postal Service Money Orders.
- Withholding of Mail Orders.

- A -

ADMINISTRATIVE SUPPORT MANUAL

POW-MIA Flag Policy Change	22534 (12-05-19)
Regulations for Proper Flag Display	22520 (05-23-19)

- C -

CONSUMER/CUSTOMER RELATIONS

See also Field Information Kits.

Heroes Among Us: USPS Employees Go Above and Beyond	22522 (06-20-19)
Mailbox Improvement Week, May 19–25, 2019 (<i>Field Information Kit</i>)	22519 (05-09-19)
National Dog Bite Prevention Week, April 14–20, 2019 (<i>Field Information Kit</i>)	22516 (03-28-19)
National Small Business Week, May 5–11, 2019 (<i>Postmaster Promotional Kit</i>)	22518 (04-25-19)
They Protected Us. Now It's Our Turn to Protect Veterans From Scams	22514 (02-28-19)

CUSTOMS FORMS

Customs Declaration and Dispatch Note PS Form 2976-R Phase-in Complete at Retail	22511 (01-17-19)
PS Form 2976-R, USPS Customs Declaration and Dispatch Note, for Mailpieces to APO/FPO/DPO and U.S. Possessions, Territories, and Freely Associated States (<i>DMM Revision</i>)	22511 (01-17-19)

- D -

DELIVERY OPERATIONS

Keeping the U.S. Mail Safe	22529 (09-26-19)
--------------------------------------	------------------

DIRECTIVES

See also Administrative Support Manual, Domestic Mail Manual, Employee and Labor Relations Manual, Handbooks, International Mail Manual, Management Instructions, Memorandums of Policy, Postal Operations Manual, and Publications.

DIRECTIVES AND FORMS UPDATE

Directives and Forms Update (<i>Publication 223 Revision</i>)	22517 (04-11-19)
Directives and Forms Update (<i>Publication 223 Revision</i>)	22523 (07-04-19)
Directives and Forms Update (<i>Publication 223 Revision</i>)	22530 (10-10-19)

DIVERSITY

Equal Employment Opportunity Policy Statement	22516 (03-28-19)
---	------------------

DOMESTIC MAIL MANUAL

See also Labeling Lists.

Affixing Postage (<i>DMM Revision</i>)	22513 (02-14-19)
--	------------------

Business Reply Mail Cards, Envelopes, and Labels (<i>DMM Revision</i>)	22525 (08-01-19)
Clarification of Picture Permit Imprint Mailpiece Eligibility (<i>DMM Revision</i>)	22511 (01-17-19)
Competitive Post Office Box Service (<i>DMM Revision</i>)	22531 (10-24-19)
Domestic Competitive Products Pricing and Mailing Standards Changes (<i>DMM Revision</i>)	22535 (12-19-19)
Electronic Export Information Filing Requirements (<i>DMM Revision</i>)	22524 (07-18-19)
Flat-Size Mail with Polywrap Coverings (<i>DMM Revision</i>)	22535 (12-19-19)
Full-Service Automation Option — Address Correction Notices (<i>DMM Revision</i>)	22519 (05-09-19)
Hold Mail Service (<i>DMM Revision</i>)	22531 (10-24-19)
Hold Mail Service Standards Modification (<i>DMM Revision</i>)	22533 (11-21-19)
Mail Entry and Payment Technology Organization Structural Changes (<i>DMM Revision</i>)	22533 (11-21-19)
Mailing Cremated Remains (<i>DMM Revision</i>)	22532 (11-07-19)
New Electronic Signature Option (<i>DMM Revision</i>)	22519 (05-09-19)
New Mailing Standards for Mailpieces Containing Liquids (<i>DMM Revision</i>)	22516 (03-28-19)
Overweight Items Clarification (<i>DMM Revision</i>)	22517 (04-11-19)
Pallet Label Clarification (<i>DMM Revision</i>)	22535 (12-19-19)
Parcel Return Service (<i>DMM Revision</i>)	22529 (09-26-19)
Parcel Select Postage Payment Methods (<i>DMM Revision</i>)	22526 (08-15-19)
Periodicals Reentry (<i>DMM Revision</i>)	22532 (11-07-19)
Priority Mail Commercial Plus Cubic Soft Pack (<i>DMM Revision</i>)	22535 (12-19-19)
Priority Mail Express and Priority Mail Open and Distribute Labeling Change Transition Period (<i>DMM Notice</i>)	22511 (01-17-19)
Products Mailable at Nonprofit USPS Marketing Mail Prices (<i>DMM Revision</i>)	22534 (12-05-19)
Prohibited Use of Precanceled Stamps on Reusable Containers (<i>DMM Revision</i>)	22515 (03-14-19)
PS Form 2976-R, USPS Customs Declaration and Dispatch Note, for Mailpieces to APO/FPO/DPO and U.S. Possessions, Territories, and Freely Associated States (<i>DMM Revision</i>)	22511 (01-17-19)
Required Forms of Identification (<i>DMM Revision</i>)	22519 (05-09-19)
Stamped Mail (<i>DMM Revision</i>)	22530 (10-10-19)
USPS Marketing Mail Nonautomation Flat-Size Pieces Failing Deflection (<i>DMM Revision</i>)	22521 (06-06-19)
USPS Retail Ground Eligibility (<i>DMM Reminder</i>)	22511 (01-17-19)

- E -**EARTH DAY**

Earth Day 2019: Recycle for America	22517 (04-11-19)
---	------------------

ELECTRONIC SIGNATURES

New Electronic Signature Option (<i>DMM Revision</i>)	22519 (05-09-19)
---	------------------

EMPLOYEE AND LABOR RELATIONS MANUAL

Changes to Thrift Savings Plan (<i>ELM Revision</i>)	22510 (01-03-19)
City Carrier Schedule (<i>ELM Revision</i>)	22535 (12-19-19)
Drivers' Phone Use Policy (<i>ELM Revision</i>)	22513 (02-14-19)
Equivalent Grades (<i>ELM Revision</i>)	22523 (07-04-19)
Special Circumstances Affecting Health Insurance Coverage (<i>ELM Revision</i>)	22528 (09-12-19)
Uniform Requirements (<i>ELM Revision</i>)	22513 (02-14-19)

EMPLOYEE ENGAGEMENT

Focus on Actions That Engage Employees	22518 (04-25-19)
Take the Postal Pulse Survey — Your Opinion Counts	22519 (05-09-19)
Take the Postal Pulse Survey — Your Opinion Counts	22520 (05-23-19)

EMPLOYEES

See also Diversity, Employee and Labor Relations Manual, and Safety and Health.

General

Additional Wounded Warriors Leave Available	22510 (01-03-19)
Annual Leave Sharing Program	22528 (09-12-19)
August is National Immunization Awareness Month	22526 (08-15-19)
Best Practices for Supporting Gender Transition in the Workplace	22512 (01-31-19)
Equal Employment Opportunity Policy Statement	22516 (03-28-19)
Focus on Actions that Engage Employees	22518 (04-25-19)
Focusing on Men's Health	22520 (05-23-19)
Heroes Among Us: USPS Employees Go Above and Beyond	22522 (06-20-19)
Know Your Numbers	22513 (02-14-19)

It's Time to Set Your New Year's Resolution	22510 (01-03-19)
Living Healthy Lives	22519 (05-09-19)
National Park and Recreation Month	22523 (07-04-19)
Notice to All Post Offices with Rural Delivery Service: Rural Carrier Guarantee Period	22529 (09-26-19)
Penalty Overtime Exclusion	22530 (10-10-19)
Prevent Heat Illnesses: Know the Signs and Act	22521 (06-06-19)
Prevent Heat Illnesses: Know the Signs and Act	22525 (08-01-19)
Postal Service Policy on Workplace Harassment	22516 (03-28-19)
PS Form 3972 Revision: Leave Absence Analysis	22535 (12-19-19)
Self-development is Available to All Employees	22535 (12-19-19)
September is World Alzheimer's Month	22529 (09-26-19)
Special Circumstances Affecting Health Insurance Coverage (<i>ELM Revision</i>)	22528 (09-12-19)
Take the Postal Pulse Survey — Your Opinion Counts	22519 (05-09-19)
Take the Postal Pulse Survey — Your Opinion Counts	22520 (05-23-19)
Why Sleep is Important to Your Health	22515 (03-14-19)
Work Safely This Winter	22510 (01-03-19)
Work Safely This Winter	22512 (01-31-19)

ENVIRONMENT

See **Sustainability**.

ENVIRONMENTAL MANAGEMENT

Environmental Compliance Reminder: Storing Deicing Materials	22510 (01-03-19)
Federal Reporting Requirements for Hazardous and Toxic Chemicals	22512 (01-31-19)
Reporting Releases of Hazardous and Regulated Substances to the Environment	22528 (09-12-19)
Required Procedures for Environmental Regulatory Agency Site Visits and Notices of Violation	22535 (12-19-19)

EQUAL EMPLOYMENT OPPORTUNITY

Equal Employment Opportunity Policy Statement	22516 (03-28-19)
---	------------------

EQUIPMENT MAINTENANCE ALLOWANCE SCHEDULE

Equipment Maintenance Allowance Schedule for Rural Routes	22510 (01-03-19)
Equipment Maintenance Allowance Schedule for Rural Routes	22516 (03-28-19)
Equipment Maintenance Allowance Schedule for Rural Routes	22523 (07-04-19)
Equipment Maintenance Allowance Schedule for Rural Routes	22529 (09-26-19)

- F -

FIELD INFORMATION KITS

Mailbox Improvement Week, May 19–25, 2019 (<i>Field Information Kit</i>)	22519 (05-09-19)
National Dog Bite Prevention Week, April 14–20, 2019 (<i>Field Information Kit</i>)	22516 (03-28-19)
They Protected Us. Now It's Our Turn to Protect Veterans From Scams	22514 (02-28-19)

FINANCE

See **also Employees, Equipment Maintenance Allowance Schedule, Forms, and Handbooks**.

2018 Tax Information: Form W-2 Wage and Tax Statement; Form 1099	22510 (01-03-19)
2020 Pay Dates and Leave Year	22534 (12-05-19)
2020 Social Security and Medicare Tax Withholding Rates and Limits	22534 (12-05-19)
Christmas Pay Procedures for Rural Carriers	22531 (10-24-19)
Federal Income Tax Withholding	22511 (01-17-19)
Finance Number Control Master and Account Number Control Master Request Freeze	22526 (08-15-19)
Fiscal Year 2019 Closing Guidance: Message from the Controller	22526 (08-15-19)
Form W-2, Wage and Tax Statement — Changing Your Current Mailing Address	22532 (11-07-19)
Form W-4 Completion for Employees Claiming Exempt Status for 2019	22510 (01-03-19)
Garnishment Administrative Fee Structure Change	22513 (02-14-19)
Interest Rate on Contract Claims	22510 (01-03-19)
Interest Rate on Contract Claims	22523 (07-04-19)
IRS Reporting Requirements of Attorney Fees, Back Pay, or Wages	22532 (11-07-19)
Local Tax Code Information	22532 (11-07-19)
Mail Entry and Payment Technology Organization Structural Changes (<i>DMM Revision</i>)	22533 (11-21-19)
Reminder: International Reply Coupons (Return Dates: January 1–31, 2019)	22511 (01-17-19)
Reminder: International Reply Coupons (Return Dates: January 1–31, 2020)	22535 (12-19-19)
Savings Success: Preparing for Major Life Events	22517 (04-11-19)
Wage Overpayment Indebtedness — Tax Treatment	22532 (11-07-19)

FIRE PREVENTION WEEK

Fire Prevention Week is October 6–12, 2019. 22529 (09-26-19)

FLAG DAY

POW-MIA Flag Policy Change. 22534 (12-05-19)
Regulations for Proper Flag Display 22520 (05-23-19)

FORMS

PS Form 1188 Revision: Address Change. 22519 (05-09-19)
PS Form 2976-R, USPS Customs Declaration and Dispatch Note, for Mailpieces to APO/FPO/DPO and
U.S. Possessions, Territories, and Freely Associated States (*DMM Revision*) 22511 (01-17-19)
PS Form 3972 Revision: Leave Absence Analysis 22535 (12-19-19)

FORMS OF IDENTIFICATION

Cross-Reference to Acceptable Forms of Identification (*IMM Revision*) 22520 (05-23-19)
Required Forms of Identification (*DMM Revision*) 22519 (05-09-19)

- H -**HANDBOOKS**

Handbook AS-353 Revision: Appendix — Privacy Act System of Records 22514 (02-28-19)
Handbook AS-805 Revision: Information Security 22510 (01-03-19)
Handbook AS-805 Revision: Information Security Updates 22535 (12-19-19)
Handbook AS-805-H Revision: Cloud Security. 22533 (11-21-19)

HAZMAT AWARENESS MONTH

November is HAZMAT Awareness Month 22533 (11-21-19)

HEROES

Heroes Among Us: USPS Employees Go Above and Beyond 22522 (06-20-19)

HOLIDAY KIT

Holiday Season 2019. 22531 (10-24-19)
Holiday Season 2019. 22533 (11-21-19)

HUMAN RESOURCES

See Employees.

- I -**INFORMATION SECURITY**

2019 CyberSafe Courses for Contractors are Launching Soon 22510 (01-03-19)
Close to Home: Some Cyber Threats Come from Within 22526 (08-15-19)
Conference Call Security: Do You Know Who is Listening? 22529 (09-26-19)
Cybersecurity Awareness Fair Brings Industry and Academia to USPS Headquarters 22533 (11-21-19)
FY 2019 Cybersecurity Courses Now Open for USPS Employees 22524 (07-18-19)
FY 2020 CyberSafe Training Courses for Contractors are Now Open 22529 (09-26-19)
FY 2020 CyberSafe Training Now Available for Contractors. 22533 (11-21-19)
Handbook AS-805 Revision: Information Security 22510 (01-03-19)
Handbook AS-805 Revision: Information Security Updates 22535 (12-19-19)
Handbook AS-805-H Revision: Cloud Security. 22533 (11-21-19)
Information Security Course for USPS Smart Mobile Device Users is Now Available 22515 (03-14-19)
Information Security Courses for USPS Business System Owners are Now Available. 22512 (01-31-19)
International Travel: Protecting USPS-Issued Electronic Devices. 22521 (06-06-19)
IoT Devices: One of Those Things. 22514 (02-28-19)
Malvertising — The Gift You Don't Want This Season. 22534 (12-05-19)
New Year, New Passwords 22511 (01-17-19)
Protect USPS Networks: Separate for Security. 22515 (03-14-19)
Social Engineering Scams: Watch Out for These Deceptive Tactics. 22524 (07-18-19)
Tax Talk: Avoid Scams and File Securely. 22516 (03-28-19)
Third-Party Cyber Threats: How to Protect the USPS Network 22520 (05-23-19)
USPS Launches Insider Threat Program. 22512 (01-31-19)
Welcome to the New Cyber Frontier: What You Need to Know to Stay Safe 22530 (10-10-19)

INTERNATIONAL MAIL

Canada Post to Terminate International Postal Money Order Service	22526 (08-15-19)
Japan Post to Stop Issuing International Postal Money Orders Destined for the United States	22535 (12-19-19)
Resumption of Mail Service to Guatemala	22518 (04-25-19)

INTERNATIONAL MAIL MANUAL

Additional Availability of Electronic USPS Delivery Confirmation International Service (<i>IMM Revision</i>)	22519 (05-09-19)
Changes to Anonymous Mail Characteristics (<i>IMM Revision</i>)	22530 (10-10-19)
Changes to International Inquiry Online (<i>IMM Revision</i>)	22512 (01-31-19)
Cross-Reference to Acceptable Forms of Identification (<i>IMM Revision</i>)	22520 (05-23-19)
Electronic Export Information Filing Requirements (<i>IMM Revision</i>)	22524 (07-18-19)
First-Class Mail International Flats Weight Limit (<i>IMM Correction</i>)	22523 (07-04-19)
First-Class Mail International Flats Weight Limit (<i>IMM Revision</i>)	22520 (05-23-19)
Indemnity Limits for International Registered Mail Service (<i>IMM Revision</i>)	22510 (01-03-19)
Indemnity Limits for International Registered Mail Service (<i>IMM Revision</i>)	22535 (12-19-19)
Individual Country Listing for Australia (<i>IMM Revision</i>)	22524 (07-18-19)
Individual Country Listing for Australia (<i>IMM Revision</i>)	22528 (09-12-19)
Individual Country Listing for Belarus (<i>IMM Revision</i>)	22515 (03-14-19)
Individual Country Listing for Brazil (<i>IMM Revision</i>)	22513 (02-14-19)
Individual Country Listing for Brazil (<i>IMM Revision</i>)	22520 (05-23-19)
Individual Country Listing for Canada (<i>IMM Revision</i>)	22523 (07-04-19)
Individual Country Listing for Chile (<i>IMM Revision</i>)	22528 (09-12-19)
Individual Country Listing for China (<i>IMM Revision</i>)	22515 (03-14-19)
Individual Country Listing for Denmark (<i>IMM Revision</i>)	22517 (04-11-19)
Individual Country Listing for Djibouti (<i>IMM Revision</i>)	22512 (01-31-19)
Individual Country Listing for Dominica (<i>IMM Revision</i>)	22516 (03-28-19)
Individual Country Listing for Ghana (<i>IMM Revision</i>)	22519 (05-09-19)
Individual Country Listing for Guatemala (<i>IMM Revision</i>)	22530 (10-10-19)
Individual Country Listing for Japan (<i>IMM Revision</i>)	22517 (04-11-19)
Individual Country Listing for Kazakhstan (<i>IMM Revision</i>)	22512 (01-31-19)
Individual Country Listing for Kazakhstan (<i>IMM Revision</i>)	22515 (03-14-19)
Individual Country Listing for Latvia (<i>IMM Revision</i>)	22513 (02-14-19)
Individual Country Listing for Macao (<i>IMM Revision</i>)	22515 (03-14-19)
Individual Country Listing for Malta (<i>IMM Revision</i>)	22528 (09-12-19)
Individual Country Listing for Mexico (<i>IMM Revision</i>)	22519 (05-09-19)
Individual Country Listing for Mexico (<i>IMM Revision</i>)	22526 (08-15-19)
Individual Country Listing for Nauru (<i>IMM Revision</i>)	22517 (04-11-19)
Individual Country Listing for New Zealand (<i>IMM Revision</i>)	22518 (04-25-19)
Individual Country Listing for New Zealand (<i>IMM Revision</i>)	22520 (05-23-19)
Individual Country Listing for New Zealand (<i>IMM Revision</i>)	22531 (10-24-19)
Individual Country Listing for the Philippines (<i>IMM Revision</i>)	22512 (01-31-19)
Individual Country Listing for the Philippines Updated (<i>IMM Revision</i>)	22513 (02-14-19)
Individual Country Listing for the Republic of Korea (South Korea) (<i>IMM Revision</i>)	22528 (09-12-19)
Individual Country Listing for Russia (<i>IMM Revision</i>)	22517 (04-11-19)
Individual Country Listing for Saudi Arabia (<i>IMM Revision</i>)	22520 (05-23-19)
Individual Country Listing for Sweden (<i>IMM Revision</i>)	22516 (03-28-19)
Individual Country Listing for Switzerland (<i>IMM Revision</i>)	22516 (03-28-19)
Individual Country Listing for Thailand (<i>IMM Revision</i>)	22520 (05-23-19)
Individual Country Listing for Turkey (<i>IMM Revision</i>)	22525 (08-01-19)
Individual Country Listing for Uganda (<i>IMM Revision</i>)	22513 (02-14-19)
Individual Country Listing for Ukraine (<i>IMM Revision</i>)	22525 (08-01-19)
Individual Country Listing for United Arab Emirates (<i>IMM Revision</i>)	22527 (08-29-19)
Individual Country Listing for United Kingdom of Great Britain and Northern Ireland (<i>IMM Revision</i>)	22512 (01-31-19)
Individual Country Listing for United Kingdom of Great Britain and Northern Ireland (<i>IMM Revision</i>)	22531 (10-24-19)
Individual Country Listing for United Kingdom of Great Britain and Northern Ireland (<i>IMM Revision</i>)	22533 (11-21-19)
Individual Country Listing for Uzbekistan (<i>IMM Revision</i>)	22513 (02-14-19)
Individual Country Listing for Venezuela (<i>IMM Revision</i>)	22522 (06-20-19)
Individual Country Listing for Vietnam (<i>IMM Revision</i>)	22518 (04-25-19)
IPA and ISAL Foreign Office of Exchange Codes to France (<i>IMM Revision</i>)	22532 (11-07-19)

IPA and ISAL Office of Exchange Codes (<i>IMM Revision</i>)	22525 (08-01-19)
IPA and ISAL Service to Monaco (<i>IMM Revision</i>)	22518 (04-25-19)
Mailing Standards for the Republic of South Sudan (<i>IMM Revision</i>)	22535 (12-19-19)
Republic of North Macedonia Name Change (<i>IMM Revision</i>)	22535 (12-19-19)
Termination of International Postal Money Order Service with Canada Post (<i>IMM Revision</i>)	22527 (08-29-19)

- L -**LABELS**

New Label 139 is Now Available	22530 (10-10-19)
Pallet Label Clarification (<i>DMM Revision</i>)	22535 (12-19-19)
Priority Mail Express and Priority Mail Open and Distribute Labeling Change Transition Period (<i>DMM Notice</i>)	22511 (01-17-19)

LABELING LISTS

Labeling List Changes	22511 (01-17-19)
Labeling List Changes	22513 (02-14-19)
Labeling List Changes	22515 (03-14-19)
Labeling List Changes	22517 (04-11-19)
Labeling List Changes	22519 (05-09-19)
Labeling List Changes	22521 (06-06-19)
Labeling List Changes	22526 (08-15-19)
Labeling List Changes	22528 (09-12-19)
Labeling List Changes	22531 (10-24-19)
Labeling List Changes	22532 (11-07-19)
Labeling List Changes	22535 (12-19-19)

LETTERS

Equal Employment Opportunity Policy Statement	22516 (03-28-19)
Postal Service Policy on Workplace Harassment	22516 (03-28-19)

- M -**MAILBOX IMPROVEMENT WEEK**

Mailbox Improvement Week, May 19–25, 2019 (<i>Field Information Kit</i>)	22519 (05-09-19)
--	------------------

MAIL TRANSPORT EQUIPMENT

Orange Plastic Mailbags Now Available at Mail Transport Equipment Service Centers	22531 (10-24-19)
Removing MTE Labels Makes a Big Difference	22513 (02-14-19)

MAILING AND SHIPPING SERVICES

New Label 139 is Now Available	22530 (10-10-19)
New Shipping Process for Cremated Remains	22529 (09-26-19)
Participation Opportunity for United States Postal Service Approved Shipping and Returns Consolidator's Webpage	22529 (09-26-19)

MAILING STANDARDS

Domestic Competitive Products Pricing and Mailing Standards Changes (<i>DMM Revision</i>)	22535 (12-19-19)
Mailing Standards for the Republic of South Sudan (<i>IMM Revision</i>)	22535 (12-19-19)
New Mailing Standards for Mailpieces Containing Liquids (<i>DMM Revision</i>)	22516 (03-28-19)
Updates to Mailing Standards for Hazardous, Restricted, and Perishable Materials (<i>Publication 52 Revision</i>)	22516 (03-28-19)

MANAGEMENT INSTRUCTIONS

Additional Wounded Warriors Leave Available	22510 (01-03-19)
Annual Leave Sharing Program	22528 (09-12-19)
Best Practices for Supporting Gender Transition in the Workplace	22512 (01-31-19)

MARKETING MAIL

USPS Marketing Mail Nonautomation Flat-Size Pieces Failing Deflection (<i>DMM Revision</i>)	22521 (06-06-19)
---	------------------

MEMORANDUMS OF POLICY

Obsoleting Statistical Programs Letters From FY 1998 Through FY 2014	22513 (02-14-19)
--	------------------

MOTOR VEHICLE SAFETY MONTH

December is Motor Vehicle Safety Month	22534 (12-05-19)
--	------------------

MOVER'S GUIDE

Mover's Guides and Internet Change of Address Message Cards	22510 (01-03-19)
Mover's Guides and Internet Change of Address Message Cards	22511 (01-17-19)
Mover's Guides and Internet Change of Address Message Cards	22512 (01-31-19)
Mover's Guides and Internet Change of Address Message Cards	22522 (06-20-19)
Mover's Guides and Internet Change of Address Message Cards	22523 (07-04-19)
Mover's Guides and Internet Change of Address Message Cards	22524 (07-18-19)
Mover's Guides and Internet Change of Address Message Cards	22525 (08-01-19)

- N -**NATIONAL CONSUMER PROTECTION WEEK**

They Protected Us. Now It's Our Turn to Protect Veterans From Scams	22514 (02-28-19)
---	------------------

NATIONAL DOG BITE PREVENTION WEEK

National Dog Bite Prevention Week, April 14–20, 2019 (<i>Field Information Kit</i>)	22516 (03-28-19)
National Small Business Week	
National Small Business Week, May 5–11, 2019 (<i>Postmaster Promotional Kit</i>)	22518 (04-25-19)

- O -**ONLINE SERVICES**

Upcoming Changes to the Hold Mail Process.	22530 (10-10-19)
--	------------------

OPEN SEASON

Open Season is Coming	22532 (11-07-19)
Benefits Programs and Key Dates.	22532 (11-07-19)
Short Message Service Flyer.	22532 (11-07-19)
Checkbook's 2020 Online Guide.	22532 (11-07-19)
Save Money with Flexible Spending Accounts	22532 (11-07-19)
Annual Leave Exchange Option Poster	22532 (11-07-19)
Annual Leave Exchange Flyer	22532 (11-07-19)

- P -**PASSPORTS**

A U.S. Passport is Your Key to International Travel	22511 (01-17-19)
A U.S. Passport is Your Key to International Travel	22523 (07-04-19)

PENALTY OVERTIME EXCLUSION

Penalty Overtime Exclusion	22530 (10-10-19)
--------------------------------------	------------------

PERSONNEL

See Employees.

PHILATELY**General**

Update: Low Denomination Coils	22511 (01-17-19)
Update: Stamp Announcement 19-03: Joshua Tree Stamp	22510 (01-03-19)
Update: Stamp Announcement 19-04: Bethesda Fountain Stamp	22510 (01-03-19)
Update: Stamp Announcement 19-07: Uncle Sam's Hat Stamp	22510 (01-03-19)
Update: Stamp Announcement 19-11: Star Ribbon Stamp	22514 (02-28-19)
Update: Stamp Announcement 19-25: State and Country Fairs.	22524 (07-18-19)
Update: Stamp Announcement 19-27: Woodstock.	22524 (07-18-19)
Update: Stamp Announcement 19-30: Purple Heart Medal 2019.	22529 (09-26-19)
Update: Stamp Announcement 19-32: Spooky Silhouettes	22529 (09-26-19)

New Issues

1969: First Moon Landing (<i>Stamp Announcement 19-24</i>).	22521 (06-06-19)
Alabama Statehood (<i>Stamp Announcement 19-10</i>)	22511 (01-17-19)
Big Bend (<i>Stamp Announcement 20-02</i>).	22535 (12-19-19)
Cactus Flowers (<i>Stamp Announcement 19-09</i>).	22510 (01-03-19)
Coral Reefs (<i>Stamp Announcement 19-12</i>).	22514 (02-28-19)
Ellsworth Kelly (<i>Stamp Announcement 19-18</i>)	22518 (04-25-19)

Frogs (<i>Stamp Announcement 19-23</i>)	22521 (06-06-19)
George H.W. Bush (<i>Stamp Announcement 19-20</i>)	22519 (05-09-19)
Grand Island Ice Caves (<i>Stamp Announcement 20-03</i>)	22535 (12-19-19)
Gwen Ifill (<i>Stamp Announcement 20-05</i>)	22535 (12-19-19)
Healing PTSD Semipostal Stamp (<i>Stamp Announcement 19-34</i>)	22533 (11-21-19)
Holiday Wreaths (<i>Stamp Announcement 19-33</i>)	22530 (10-10-19)
“Little Mo” (<i>Stamp Announcement 19-15</i>)	22515 (03-14-19)
Lunar New Year: Year of the Rat (<i>Stamp Announcement 20-01</i>)	22535 (12-19-19)
Made of Hearts (<i>Stamp Announcement 20-04</i>)	22535 (12-19-19)
Marvin Gaye (<i>Stamp Announcement 19-13</i>)	22514 (02-28-19)
Migratory Bird Hunting and Conservation (<i>Stamp Announcement 19-21</i>)	22520 (05-23-19)
Military Working Dogs (<i>Stamp Announcement 19-26</i>)	22522 (06-20-19)
Post Office Murals (<i>Stamp Announcement 19-14</i>)	22514 (02-28-19)
Purple Heart Medal 2019 (<i>Stamp Announcement 19-31</i>)	22527 (08-29-19)
Sesame Street (<i>Stamp Announcement 19-22</i>)	22521 (06-06-19)
Spooky Silhouettes (<i>Stamp Announcement 19-32</i>)	22528 (09-12-19)
Star Ribbon (<i>Stamp Announcement 19-11</i>)	22513 (02-14-19)
State and County Fairs (<i>Stamp Announcement 19-25</i>)	22522 (06-20-19)
Transcontinental Railroad (<i>Stamp Announcement 19-16</i>)	22516 (03-28-19)
Tyrannosaurus Rex (<i>Stamp Announcement 19-28</i>)	22525 (08-01-19)
USS Missouri (<i>Stamp Announcement 19-19</i>)	22519 (05-09-19)
Walt Whitman (<i>Stamp Announcement 19-29</i>)	22525 (08-01-19)
Wild and Scenic Rivers (<i>Stamp Announcement 19-17</i>)	22517 (04-11-19)
Winter Berries (<i>Stamp Announcement 19-30</i>)	22526 (08-15-19)
Woodstock (<i>Stamp Announcement 19-27</i>)	22523 (07-04-19)
Remaining on Sale, Removed From Sale, and Approved for Sale	
Alzheimer’s Semipostal Stamps to be Withdrawn From Sale	22532 (11-07-19)
Save Vanishing Species Semipostal Stamps Withdrawn From Sale — Statutory Authority Expired December 31, 2018	22519 (05-09-19)
Stamp Stock Items Withdrawn From Regular Sale and From Sale at Philatelic Centers	22514 (02-28-19)
Stamp Stock Items Withdrawn From Regular Sale and From Sale at Philatelic Centers	22520 (05-23-19)
Stamp Stock Items Withdrawn From Regular Sale and From Sale at Philatelic Centers	22527 (08-29-19)
Stamp Stock Items Withdrawn From Regular Sale and From Sale at Philatelic Centers	22533 (11-21-19)
PICTURE PERMIT IMPRINT	
Clarification of Picture Permit Imprint Mailpiece Eligibility (<i>DMM Revision</i>)	22511 (01-17-19)
POSTAL OPERATIONS MANUAL	
Mail Transportation and Postal Vehicle Safety (<i>POM Revision</i>)	22516 (03-28-19)
POSTAL PULSE SURVEY	
Take the Postal Pulse Survey — Your Opinion Counts	22519 (05-09-19)
Take the Postal Pulse Survey — Your Opinion Counts	22520 (05-23-19)
POSTAL SERVICE POLICY ON WORKPLACE HARASSMENT	
Postal Service Policy on Workplace Harassment	22516 (03-28-19)
POSTMASTER GENERAL	
Equal Employment Opportunity Policy Statement	22516 (03-28-19)
Postal Service Policy on Workplace Harassment	22516 (03-28-19)
PUBLICATIONS	
See also Directives and Forms Update and Mover’s Guide.	
Lottery Matter (<i>Publication 52 Revision</i>)	22534 (12-05-19)
Mailing Cremated Remains (<i>Publication 52 Revision</i>)	22532 (11-07-19)
New Mailability Policy for Cannabis and Hemp-Related Products (<i>Publication 52 Revision</i>)	22521 (06-06-19)
New Options for Hazardous Materials Markings (<i>Publication 52 Revision</i>)	22522 (06-20-19)
Stamp Mailpieces Over 10 Ounces (<i>Publication 52 Revision</i>)	22530 (10-10-19)
Updates to Mailing Standards for Hazardous, Restricted, and Perishable Materials (<i>Publication 52 Revision</i>)	22516 (03-28-19)
REDRESS: Conflict Resolution That Works (<i>Publication 94 Revision</i>)	22512 (01-31-19)
What You Need to Know About EEO (<i>Publication 133 Revision</i>)	22515 (03-14-19)
For the Record, an Employee’s Guide to the Freedom of Information Act and The Privacy Act of 1974 (<i>Publication 550 Revision</i>)	22529 (09-26-19)

Manager's Guide to Understanding, Investigating, and Preventing Harassment (<i>Publication 552 Revision</i>)	22515 (03-14-19)
Employee's Guide to Understanding, Preventing, and Reporting Harassment (<i>Publication 553 Revision</i>)	22512 (01-31-19)
Fax Number Change for Resignation Withdrawals (<i>Publication 2574 Revision</i>)	22520 (05-23-19)
Changes to Post Office Box Service and Caller Service Fee Groups (<i>Publication 431 Revision</i>)	22515 (03-14-19)
Changes to Post Office Box Service and Caller Service Fee Groups (<i>Publication 431 Revision</i>)	22517 (04-11-19)
Changes to Post Office Box Service and Caller Service Fee Groups (<i>Publication 431 Revision</i>)	22518 (04-25-19)
Changes to Post Office Box Service and Caller Service Fee Groups (<i>Publication 431 Revision</i>)	22519 (05-09-19)
Changes to Post Office Box Service and Caller Service Fee Groups (<i>Publication 431 Revision</i>)	22520 (05-23-19)
Changes to Post Office Box Service and Caller Service Fee Groups (<i>Publication 431 Revision</i>)	22521 (06-06-19)
Changes to Post Office Box Service and Caller Service Fee Groups (<i>Publication 431 Revision</i>)	22522 (06-20-19)
Changes to Post Office Box Service and Caller Service Fee Groups (<i>Publication 431 Revision</i>)	22523 (07-04-19)
Changes to Post Office Box Service and Caller Service Fee Groups (<i>Publication 431 Revision</i>)	22524 (07-18-19)
Changes to Post Office Box Service and Caller Service Fee Groups (<i>Publication 431 Revision</i>)	22525 (08-01-19)
Changes to Post Office Box Service and Caller Service Fee Groups (<i>Publication 431 Revision</i>)	22526 (08-15-19)
Changes to Post Office Box Service and Caller Service Fee Groups (<i>Publication 431 Revision</i>)	22527 (08-29-19)
Changes to Post Office Box Service and Caller Service Fee Groups (<i>Publication 431 Revision</i>)	22529 (09-26-19)
Changes to Post Office Box Service and Caller Service Fee Groups (<i>Publication 431 Revision</i>)	22531 (10-24-19)
Changes to Post Office Box Service and Caller Service Fee Groups (<i>Publication 431 Revision</i>)	22532 (11-07-19)

- R -**RETAIL**

Competitive Fees for PO Boxes	22510 (01-03-19)
Customs Declaration and Dispatch Note PS Form 2976-R Phase-in Complete at Retail	22511 (01-17-19)
Holiday Season 2019	22531 (10-24-19)
Holiday Season 2019	22533 (11-21-19)
USPS Retail Ground Eligibility (<i>DMM Reminder</i>)	22511 (01-17-19)

- S -**SAFETY AND HEALTH**

Focusing on Men's Health	22520 (05-23-19)
Help Prevent Cold Stress	22531 (10-24-19)
Know Your Numbers	22513 (02-14-19)
Learn Proper Lifting Techniques	22533 (11-21-19)
Living Healthy Lives	22519 (05-09-19)
Mail Transportation and Postal Vehicle Safety (<i>POM Revision</i>)	22516 (03-28-19)
National Park and Recreation Month	22523 (07-04-19)
November is HAZMAT Awareness Month	22533 (11-21-19)
Peak Safety for Peak Season	22535 (12-19-19)
Prevent Heat Illnesses: Know the Signs and Act	22521 (06-06-19)
Prevent Heat Illnesses: Know the Signs and Act	22525 (08-01-19)
School is in Session. Watch Out for Distracted Children	22526 (08-15-19)
Statutory Requirement to Review and Post OSHA Form 300A Summary for Calendar Year 2018	22511 (01-17-19)
USPS National Slips, Trips, and Falls Prevention Week: October 19–25, 2019	22527 (08-29-19)
USPS National Slips, Trips, and Falls Prevention Week: October 26–November 1, 2019	22531 (10-24-19)
Why Sleep is Important to Your Health	22515 (03-14-19)
Work Safely This Winter	22510 (01-03-19)
Work Safely This Winter	22512 (01-31-19)

SALES

Business Connect Kit: Host Grow Your Business Day Events	22514 (02-28-19)
National Small Business Week, May 5–11, 2019 (<i>Postmaster Promotional Kit</i>)	22518 (04-25-19)

SEMIPOSTAL STAMPS

Alzheimer's Semipostal Stamps to be Withdrawn From Sale	22532 (11-07-19)
Save Vanishing Species Semipostal Stamps Withdrawn From Sale — Statutory Authority Expired December 31, 2018	22519 (05-09-19)

STAMPS**See Philately.****SUPPLY MANAGEMENT**

5-Gallon Bottled Drinking Water Service	22510 (01-03-19)
5-Gallon Bottled Drinking Water Service	22512 (01-31-19)
5-Gallon Bottled Drinking Water Service	22530 (10-10-19)
Interest Rate on Contract Claims	22510 (01-03-19)
Interest Rate on Contract Claims	22523 (07-04-19)
Preferred Fueling Network: USPS Drivers May Obtain Lower Fuel Prices for Postal-owned Vehicles	22525 (08-01-19)
USPS Headquarters Managers and Field Installation Heads: March 2019 Annual Capital Property Review	22513 (02-14-19)

SUSTAINABILITY

Announcing the 2018 Postmaster General Sustainability Excellence Award Winners	22534 (12-05-19)
Battery and Light Bulb Recycling Update	22525 (08-01-19)
Change Starts with You — Sustainable Practices Benefit All of Us	22528 (09-12-19)
Earth Day 2019: Recycle for America	22517 (04-11-19)
Environmental Compliance Reminder: Storing Deicing Materials	22510 (01-03-19)
Federal Reporting Requirements for Hazardous and Toxic Chemicals	22512 (01-31-19)
November is HAZMAT Awareness Month	22533 (11-21-19)
Pest Management Reminder	22530 (10-10-19)
Reporting Releases of Hazardous and Regulated Substances to the Environment	22528 (09-12-19)
Required Procedures for Environmental Regulatory Agency Site Visits and Notices of Violation	22535 (12-19-19)
Share Your Sustainability Stories	22534 (12-05-19)
Update: Smoke Detector Disposal	22529 (09-26-19)
USPS Stormwater Policy Protects the Environment	22523 (07-04-19)
WasteWise — Partnering with the U.S. Environmental Protection Agency to Reduce Waste for Over Two Decades	22534 (12-05-19)

-T-**THRIFT SAVINGS PLAN**

Changes to Thrift Savings Plan (<i>ELM Revision</i>)	22510 (01-03-19)
--	------------------

-U-**UNIFORMS**

Uniform Requirements (<i>ELM Revision</i>)	22513 (02-14-19)
--	------------------

UPDATES

Directives and Forms Update (<i>Publication 223 Revision</i>)	22517 (04-11-19)
Directives and Forms Update (<i>Publication 223 Revision</i>)	22523 (07-04-19)
Individual Country Listing for the Philippines Updated (<i>IMM Revision</i>)	22513 (02-14-19)
Update: Low Denomination Coils	22511 (01-17-19)
Update: Smoke Detector Disposal	22529 (09-26-19)
Update: Spooky Silhouettes Stamps First-Day-of-Issue State	22530 (10-10-19)
Update: Stamp Announcement 19-03: Joshua Tree Stamp	22510 (01-03-19)
Update: Stamp Announcement 19-04: Bethesda Fountain Stamp	22510 (01-03-19)
Update: Stamp Announcement 19-07: Uncle Sam's Hat Stamp	22510 (01-03-19)
Update: Stamp Announcement 19-11: Star Ribbon Stamp	22514 (02-28-19)
Update: Stamp Announcement 19-25: State and Country Fairs	22524 (07-18-19)
Update: Stamp Announcement 19-27: Woodstock	22524 (07-18-19)
Update: Stamp Announcement 19-30: Purple Heart Medal 2019	22529 (09-26-19)
Update: Stamp Announcement 19-32: Spooky Silhouettes	22529 (09-26-19)
Updates to Mailing Standards for Hazardous, Restricted, and Perishable Materials (<i>Publication 52 Revision</i>)	22516 (03-28-19)

U.S. POSTAL INSPECTION SERVICE

Delivering Protection to Every Address in America	22524 (07-18-19)
Mailpiece Incident Reporting Tool	22511 (01-17-19)
They Protected Us. Now It's Our Turn to Protect Veterans From Scams	22514 (02-28-19)

USPS® Issues
New Forever®
Stamp

*Lunar
New Year:
Year of
the Rat*

On Sale Nationwide:
January 11, 2020.



LUNAR NEW YEAR

* FOREVER USA *

2020