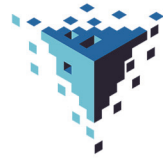


postal|bulletin

PUBLISHED SINCE MARCH 4, 1880



CyberSafe
at USPS™

Separate for Security

NEVER

Never connect your personal or work devices to USPS® computers, equipment or networks.



MOBILE PHONES • TABLETS • WEARABLE TECHNOLOGY • HEADPHONES • HOUSEHOLD EQUIPMENT • WI-FI ENABLED TOYS AND GADGETS



KEEP USPS® NETWORKS SAFE

If you need to charge a device, use an outlet in an approved area.



Report information security incidents to cybersafe@usps.gov or [866-877-7247](tel:866-877-7247).



Contents

COVER STORY

Disconnect to Protect! 3

POLICIES, PROCEDURES, AND FORMS UPDATES

Manuals

DMM Revision: Additional Domestic Mailing Services
 Products Changes 4
 DMM Revision: Customized MarketMail Prices. 5
 DMM Revision: Domestic Certificates of Mailing
 Conversion Update 5
 DMM Revision: Electronic Induction (eInduction®)
 Option 6
 DMM Revision: Seamless Acceptance Program 7
 DMM Revision: USPS Marketing Mail Markings 8

ORGANIZATION INFORMATION

Delivery and Retail

Customer Change-of-Address Move Validation Letter
 Procedures 11

Domestic Mail

Labeling List Changes 11

Information Security

The Taxing Truth About Identity Theft 46

Stamp Services

Stamp Announcement 17-19: Robert Panara Stamp 47
 Stamp Announcement 17-20: Delizioso Stamps. 49
 USA Philatelic Redesign 51
 Pictorial Postmarks Announcement 52
 How to Order the First-Day-of-Issue Digital Color or
 Traditional Postmarks 55

PULL-OUT INFORMATION

Fraud

Withholding of Mail Orders 21
 Invalid USPS Corporate Account Numbers. 21
 Missing, Lost, or Stolen U.S. Money Order Forms 23
 Missing, Lost, or Stolen Canadian Money Order Forms 30
 Verifying U.S. Postal Service Money Orders 33
 Counterfeit Canadian Money Order Forms 33
 Toll-Free Number Available to Verify Canadian Money
 Orders 33

Other Information

Overseas Military/Diplomatic Mail 34
 Freely Associated States Restrictions 40

POSTAL BULLETIN INDEX

2016 Semi-Annual Index PB 22458 (1-5-17)

USPS National Emergency Hotline
Is your facility operating? Call 888-363-7462

**Find the latest in mail and delivery information
 and services offered by U.S. Postal™
 in the *Postal Bulletin* at**
[http://about.usps.com/postal-bulletin.](http://about.usps.com/postal-bulletin)

Cover Story

Disconnect to Protect!

Hackers these days use a variety of techniques to infiltrate networks, systems, and devices to steal your information, or even your identity. Targets include all mobile devices, such as phones, tablets, fitness trackers, or other Wi-Fi and Bluetooth-enabled devices, or devices that use a USB cable.

Hackers target mobile devices with malicious text messages, voicemails, and fake downloads or applications. If you receive a text message or voicemail from an unknown person or organization that asks you to click on a link or provide account information, delete it immediately and report the incident to the CyberSecurity Operations Center (CSOC) at cybersafe@usps.gov if using a Postal Service™ device.

Protect your mobile devices against potential cyber threats using these tips:

- **Watch out for suspicious messages.** Don't open links or attachments sent via text messages or emails from people you do not know.
- **Stay up to date.** Regularly update your operating system and security software on all of your mobile devices. Do not download applications from unknown or disreputable sources. Only download USPS-approved updates on Postal Service devices.

- **Connect selectively.** Disable your Wi-Fi and/or Bluetooth when not in use. Additionally, do not use public Wi-Fi networks unless you have submitted an electronic request for computer access through a VPN. Avoid logging into accounts with personal information, such as your email or banking websites.
- **Never plug personal devices into a Postal Service network or computer.** Similarly, do not plug USPS-issued devices into other computer equipment. Even if the device does not have internet access or access to the Postal Service intranet, connecting your device still poses the risk of a cyber breach. If you need to charge your device, always use an outlet in an approved area.

When employees properly report suspicious activity, the Postal Service can step in to combat the threat, protect its network, and prevent other employees from being compromised. If you notice any suspicious activity, report it immediately to the CSOC (cybersafe@usps.gov).

For more information on how to stay cybersafe, or report suspected threats, check out the new public-facing CyberSafe at USPS™ website at <https://uspscybersafe.com> or the CyberSafe at USPS pages on *Blue* (<https://blue.usps.gov/cyber/>) and *LiteBlue* (<https://liteblue.usps.gov/cyber/>).

— Corporate Information Security Office,
Chief Information Security Officer
and Digital Solutions, 3-16-17

Policies, Procedures, and Forms Updates

Manuals

DMM Revision: Additional Domestic Mailing Services Products Changes

Effective April 3, 2017, the Postal Service™ will revise *Mailing Standards of the United States Postal Service*, Domestic Mail Manual (DMM®) in various sections as a result of the increase in the letter-size mail weight limit to 3.5 ounces published in the *Federal Register* on December 21, 2016. These revisions include other related changes for clarification.

Although these revisions will not be published in the DMM until April 3, 2017, the standards are effective immediately.

Mailing Standards of the United States Postal Service, Domestic Mail Manual (DMM)

* * * * *

200 Commercial Mail Letters, Cards, Flats, and Parcels

201 Physical Standards

* * * * *

2.0 Physical Standards for Nonmachinable Letters

2.1 Criteria for Nonmachinable Letters

[Revise the last sentence of 2.1 to read as follows:]

***In addition, a letter-size piece is nonmachinable if it weighs more than 3.5 ounces.

* * * * *

3.0 Physical Standards for Machinable and Automation Letters and Cards

* * * * *

3.6 Heavy Letter Mail (over 3 ounces)

[Revise the text of 3.6 to read as follows:]

Heavy letter mail (letter-size pieces over 3 ounces) must be prepared in a sealed envelope, must not contain stiff enclosures, and must have an Intelligent Mail barcode with a routing code in the address block (see 202.5.0) to be eligible for automation prices.

* * * * *

240 Commercial Mail USPS Marketing Mail

243 Prices and Eligibility

1.0 Prices and Fees

* * * * *

1.5 Computing Postage for USPS Marketing Mail

* * * * *

[Delete 1.5.6, Computing Affixed Postage — Heavy Letters, 1.5.8, Discount for Heavy Automation Letters, and 1.5.9, Discount for Heavy ECR Letters, in their entirety. Renumber current 1.5.7 as new 1.5.6.]

* * * * *

3.0 Basic Eligibility Standards for USPS Marketing Mail

* * * * *

3.2 Defining Characteristics

3.2.1 Mailpiece Weight

* * * * *

[Revise the text of items a. and b. to read as follows:]

- a. Pieces mailed at automation or machinable letter prices may weigh up to 3.5 ounces. Automation or machinable letter-size pieces weighing more than 3.5 ounces are available at the nonautomation, nonmachinable letter prices.
- b. Pieces mailed at automation carrier route (saturation, high density, high density plus, and basic) letter prices may weigh up to 3.5 ounces. Automation carrier route letters weighing more than 3.5 ounces are available at the applicable nonautomation carrier route letter prices.

* * * * *

4.0 Price Eligibility for USPS Marketing Mail

* * * * *

4.3 Piece/Pound Prices

[Revise the first sentence of 4.3 to read as follows:]

Letters that exceed 4 ounces are subject to a two-part piece/pound price that includes a fixed charge per piece and a variable pound charge based on weight.***

* * * * *

7.0 Eligibility Standards for Automation USPS Marketing Mail

* * * * *

[Delete 7.7 in its entirety.]

* * * * *

We will incorporate these revisions into the next online update of the DMM, which is available via Postal Explorer® at <http://pe.usps.com>.

— Product Classification, Marketing, 3-16-17

DMM Revision: Customized MarketMail Prices

Effective April 3, 2017, the Postal Service™ will revise *Mailing Standards of the United States Postal Service*, Domestic Mail Manual (DMM®), section 243.1.0, to add price information for Customized MarketMail®. This revision is for clarity only, and does not affect the price paid.

In addition to the above DMM revision, the Postal Service will also revise Notice 123, *Price List*. Although these revisions will not be published in the DMM until April 3, 2017, this standard is effective immediately.

Mailing Standards of the United States Postal Service, Domestic Mail Manual (DMM)

* * * * *

200 Commercial Mail Letters, Cards, Flats, and Parcels

* * * * *

240 Commercial Mail USPS Marketing Mail

* * * * *

243 Prices and Eligibility

1.0 Prices and Fees

* * * * *

[Revise the title and intro text of 1.3 to read as follows:]

1.2 USPS Marketing Mail Prices

USPS Marketing Mail prices are applied as follows:

* * * * *

[Add new item c. to read as follows:]

- c .A regular or nonprofit per piece price applies to Customized MarketMail.

[Revise the title of 1.3 to read as follows:]

1.3 Regular and Nonprofit USPS Marketing Mail and Customized MarketMail Prices

* * * * *

We will incorporate these revisions into the next online update of the DMM, which is available via Postal Explorer® at <http://pe.usps.com>.

— Product Classification, Marketing, 3-16-17

DMM Revision: Domestic Certificates of Mailing Conversion Update

Effective March 16, 2017, the Postal Service™ is revising *Mailing Standards of the United States Postal Service*, Domestic Mail Manual (DMM®), part 503, to extend the conversion date from December 7, 2017, to February 28, 2018, for the following mailers:

- Mailers using USPS-approved PS Form 3877 facsimiles in lieu of PS Form 3665; and
- Mailers using PS Form 3606 facsimiles in lieu of PS Form 3606-D.

This conversion:

- Centralizes USPS® approval of facsimile Certificate of Mailing forms to simplify the current process; and

- Clarifies the standards required for Certificate of Mailing facsimiles to ensure consistency for all users of this service.

Although these revisions will not be published in the DMM until April 3, 2017, the standards are effective immediately.

Mailing Standards of the United States Postal Service, Domestic Mail Manual (DMM)

* * * * *

500 Additional Mailing Services

* * * * *

503 Extra and Additional Services

* * * * *

5.0 Certificates of Mailing

* * * * *

5.1.7 Privately Printed Forms*[Revise the last sentence of 5.1.7 to read as follows:]*

***Mailers may use their current USPS-approved privately printed PS Form 3877 firm sheets as a domestic Certificate of Mailing, in lieu of PS Form 3665 until February 28, 2018.

5.2 Other Bulk Quantities — Certificate of Bulk Mailing**5.2.1 Description***[Revise the last sentence of 5.2.1 to read as follows:]*

***Mailers may use their current USPS-approved privately printed PS Form 3606 as a domestic Certificate of Bulk Mailing in lieu of PS Form 3606-D until February 28, 2018.

* * * * *

We will incorporate these revisions into the next update of the online DMM, which is available via Postal Explorer[®] at <http://pe.usps.com>.

— Product Classification, Marketing, 3-16-17

DMM Revision: Electronic Induction (eInduction[®]) Option

Effective March 16, 2017, the Postal Service[™] is revising *Mailing Standards of the United States Postal Service, Domestic Mail Manual (DMM[®])*, section 705.20, to add the Electronic Induction (eInduction[®]) Option, which will streamline the processing of drop shipments and expedited plant load mailings.

Although this revision will not be published in the DMM until April 3, 2017, the eInduction Option is available immediately.

Mailing Standards of the United States Postal Service, Domestic Mail Manual (DMM)

* * * * *

700 Special Standards

* * * * *

705 Advanced Preparation and Special Postage Payment Systems

* * * * *

*[Add new section 20.0 to read as follows:]***20.0 eInduction Option****20.1 Description**

Electronic Induction (eInduction) is an electronic alternative to using the following paper PS Forms: 8125, 8125C, 8125CD, and 8017, for all containers entered at the dock of a processing facility or claiming a Destination Delivery Unit (DDU) discount. eInduction uses Intelligent Mail container barcode (IMcb) scans to determine container payment and delivery status, and verifies payment and entry location by matching IMcb scan data to electronic documentation (eDoc) information. Containers are eligible for eInduction at

certain designated facilities. Additional information, including information regarding verification and associated assessments, is provided in Publication 6850, *Publication for Streamlined Mail Acceptance for Letters and Flats*, at <https://postalpro.usps.com/node/581>.

20.2 Approval

Mailers may seek authorization to participate in the eInduction program by contacting Business Mailer Support (BMS); see 608.8 for contact information.

20.3 General Eligibility Standards

First-Class Mail, Periodicals, USPS Marketing Mail letters and flats, and Bound Printed Matter presorted or carrier route barcoded flats and packages are eligible for eInduction. All containers entered under eInduction must:

- a. Be labeled with a USPS placard and a unique Intelligent Mail container barcode. All required pallets and similar containers (such as all-purpose containers, hampers, and gaylords) and all containers prepared under 8.0 must display container placards that include accurately encoded Intelligent Mail container barcodes (IMcb) as described in 708.6.4.4. Mailing documentation must indicate each container participating in eInduction.
- b. Be part of a mailing using an approved electronic method to transmit a postage statement and mailing documentation to the *PostalOne!* system.
- c. Not include containers included on PS Forms 8125/8017.
- d. Be included on a scheduled FAST appointment when entered at a USPS processing facility.

20.4 Additional Standards

20.4.1 Special Support for Continuous Mailers

Mailers who cannot generate a finalized postage statement 2 hours before container entry may request approval for an eInduction Continuous Mailer ID (MID). Once approved, mailers using an authorized Continuous MID in the IMcb may enter any container with the approved MID in the IMcb prior to the receipt of electronic documentation. Mailers are required to submit an eDoc and generate a finalized postage statement for all eInduction Continuous MID containers within 1 calendar day of the unload scan. Mailers may request authorization for a continuous MID through the

Business Customer Gateway. The USPS must approve the mailer request before the mailer may participate in the continuous MID process.

* * * * *

We will incorporate this revision into the next update of the online DMM, which is available via Postal Explorer® at <http://pe.usps.com>.

— Product Classification, Marketing, 3-16-17

DMM Revision: Seamless Acceptance Program

Effective March 16, 2017, the Postal Service™ is revising *Mailing Standards of the United States Postal Service*, Domestic Mail Manual (DMM®), section 705.22, to add the Seamless Acceptance Program, which is an option for entering commercial mailings using scans from USPS® mail processing equipment and handheld devices to automate verification and payment for commercial First-Class Mail® cards, letters, and flats, Periodicals, USPS Marketing Mail™ letters and flats, and Bound Printed Matter Flats.

Although these revisions will not be published in the DMM until April 3, 2017, the Seamless Acceptance Program is available immediately.

Mailing Standards of the United States Postal Service, Domestic Mail Manual (DMM)

* * * * *

700 Special Standards

* * * * *

705 Advanced Preparation and Special Postage Payment Systems

* * * * *

[Add new section 22.0 to read as follows:]

22.0 Seamless Acceptance Program

22.1 Description

Seamless Acceptance uses Intelligent Mail barcodes, electronic documentation (eDoc), and scans from USPS mail processing equipment and handheld devices to automate verification of and payment for First-Class Mail cards, letters, and flats, Periodicals, USPS Marketing Mail letters and flats, and Bound Printed Matter flats. Additional infor-

mation, including information regarding verification and associated assessments on the Seamless Acceptance Program, is available in Publication 6850, *Publication for Streamlined Mail Acceptance for Letters and Flats*, available at <https://postalpro.usps.com/node/581>.

22.2 Approval

Mailers may seek authorization to participate in the Seamless Acceptance Program by contacting the *PostalOne!* Helpdesk at 800-522-9085.

22.3 Basic Standards

First-Class Mail, Periodicals, USPS Marketing Mail letters and flats, and BPM barcoded flats are potentially eligible for Seamless Acceptance. All mailpieces, including basic and nonautomation, must be prepared as outlined in 23.0; mailers must meet the following standards:

- a. Meet all the content and price eligibility standards for the price claimed;
b. Prepare 90% Full-Service eligible volume;
c. Participate in the Seamless Parallel Program; and
d. Participate in eInduction under 20.0 for DMU-verified origin entry or destination entry-drop shipments.

22.3.1 Intelligent Mail Barcode Exception

Under special circumstances where mailers are unable to use an Intelligent Mail barcode on every piece, an exception may be granted by Business Mailer Support (BMS); see 608.8 for contact information.

* * * * *

We will incorporate these revisions into the next update of the online DMM, which is available via Postal Explorer® at <http://pe.usps.com>.

— Product Classification, Marketing, 3-16-17

DMM Revision: USPS Marketing Mail Markings

Effective April 3, 2017, the Postal Service™ will revise *Mailing Standards of the United States Postal Service*, Domestic Mail Manual (DMM®), sections 202.3.5 and 604.5.3, in reference to USPS Marketing Mail™ markings.

On December 21, 2016, the Postal Service published a *Federal Register* final rule (81 FR 93606–93620) to revise the DMM in various sections to rename Standard Mail® as USPS Marketing Mail. The Postal Service and industry continue to collaborate on a timeline to implement the required use of the new postage markings and permit imprint indicia. We will announce the implementation timeline at a later date. Until then, mailers must continue to use the “Standard Mail” markings. The Postal Service will revise DMM sections 202.3.5 and 604.5.3 to provide some examples of the new markings and add information on the pending implementation in each section.

In addition to the above DMM revisions, the Postal Service will also revise Quick Service Guide 604d.

Mailing Standards of the United States Postal Service, Domestic Mail Manual (DMM)

	*	*	*	*	*
200	Commercial Mail Letters, Cards, Flats, and Parcels				
	*	*	*	*	*
202	Elements on the Face of a Mailpiece				
	*	*	*	*	*

Exhibit 5.3.11 Indicia Formats for Official Mail and Other Classes

* * * * *

[Revise the heading of Standard Mail Official Mail to read as follows:]

USPS Marketing Mail Official Mail: (Customers should not convert to the USPS Marketing Mail markings until a date is announced.)

[Revise the examples with new USPS Marketing Mail markings:]

PRSRT MKTG POSTAGE & FEES PAID AGENCY NAME PERMIT NO. G-999
--

PRESORTED STANDARD POSTAGE & FEES PAID AGENCY NAME PERMIT NO. G-999
--

PRSRT MKT AUTO POSTAGE & FEES PAID AGENCY NAME PERMIT NO. G-999

Note: “Standard” (or “STD”) may also be used. These are only examples; not all possible variations are shown. When not in indicia, class or price must be marked on mailpiece, directly below or to the left of the indicia.

3.0 Placement and Content of Mail Markings

* * * * *

3.5 First-Class Mail and USPS Marketing Mail Markings

* * * * *

[Revise the text of items a2 and a3 to read as follows:]

- “Marketing” or “MKTG” or “MKT”¹
- “Presorted USPS Marketing” or “PRSRT MKTG” or “PRSRT MKT”¹

* * * * *

[Add a footnote below item a4 to read as follows:]

¹Customers should not convert to the USPS Marketing Mail markings until a date is announced.

* * * * *

600 Basic Standards for all Mailing Services

* * * * *

604 Postage Payment Methods and Refunds

* * * * *

5.0 Permit Imprint (Indicia)

* * * * *

5.3 Indicia Design, Placement, and Content

* * * * *

5.3. Indicia Formats

* * * * *

* * * * *

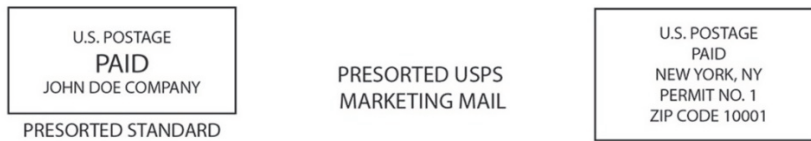
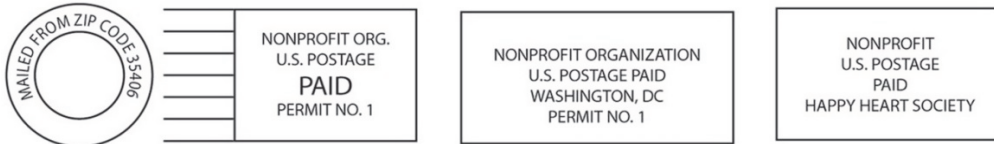
[Revise the heading of Standard Mail to read as follows:]

USPS Marketing Mail: (Customers should not convert to the USPS Marketing Mail markings until a date is announced.)

[Revise the examples with new USPS Marketing Mail markings.]



Note: "Standard" (or "STD") May also be used.



(Class omitted from indicia - see note below)

Note: These are only examples; not all possible variations are shown. When not in indicia, class or price must be marked on mailpiece, directly below or to the left of the indicia.

* * * * *

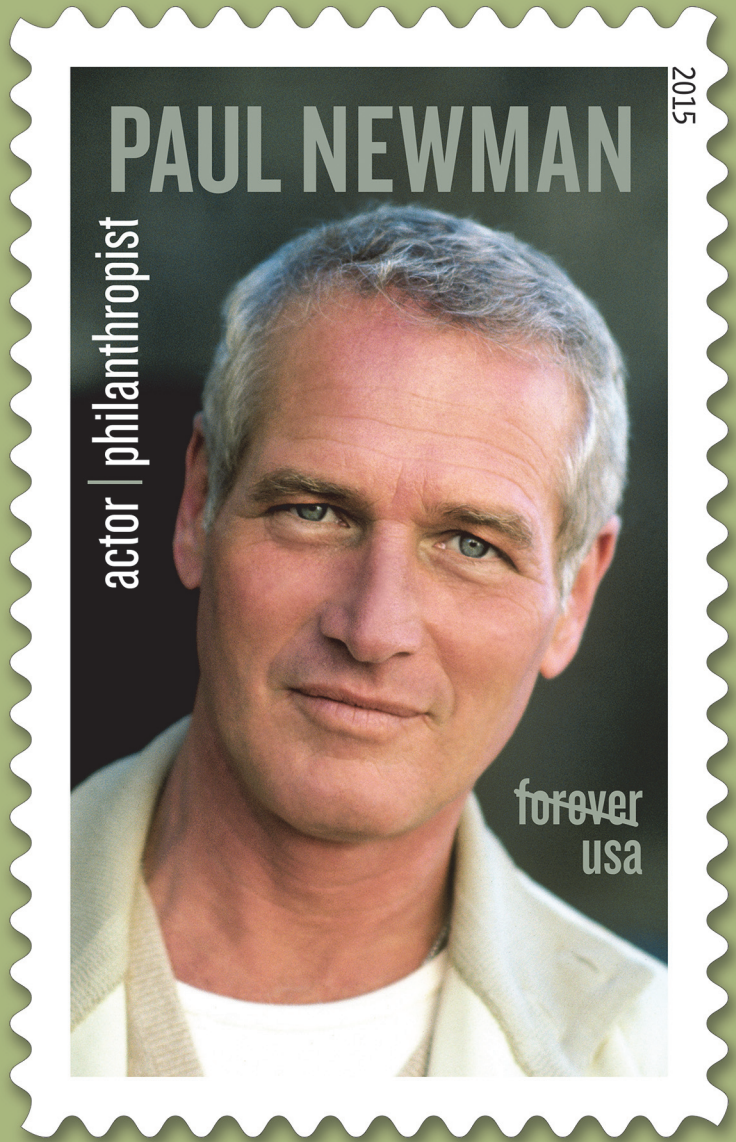
We will incorporate these revisions into the next online update of the DMM, which is available via Postal Explorer[®] at <http://pe.usps.com>.

USPS®
Issues

Paul Newman

Forever®
Stamp

On Sale Nationwide:
September 18, 2015.



Paul Newman photo © Steve Schapiro/Corbis

Organization Information

Delivery and Retail

Customer Change-of-Address Move Validation Letter Procedures

We implemented the move validation letter (MVL) in 1996 to:

- Help validate change-of-address orders (COAs); and
- Provide increased protection for customers filing COAs.

You are required to handle MVLs as follows:

- MVLs are sent as First-Class Mail® items and must always be delivered as addressed based on the “Or Current Resident” endorsement.
- MVLs must be delivered as addressed, even though the person (or family) named on the MVL has moved, and even if the address appears to be vacant. Only return the mailpiece if it is refused, the address is not valid, or the address no longer exists.
- Send returned MVLs to the processing and distribution center for processing on Postal Automated Redirection System equipment. Mail must be individually endorsed to show the reason for nondelivery

(e.g., refused or no such address), or separated by reason for nondelivery, bundled with the top piece endorsed, and placed in the throwback case.

We have also revised the MVL to show information on the outside envelope for the addressee, the new (current) resident(s) at the address, and the carrier.

Area vice presidents and district managers must ensure that all MVLs received in Post Offices™ under their area and district are delivered to the address on the piece, and that all carriers delivering to street addresses and employees delivering PO Box mail are aware of these requirements. When reviewing operations at Post Offices under a jurisdiction, please review the handling of MVLs for compliance with these requirements.

— *Addressing and Geospatial Technology, Enterprise Analytics, 3-16-17*

Domestic Mail

Labeling List Changes

Effective April 1, 2017, we are revising Labeling List(s) L001, L002, L003, L004, L005, L006, L007, L009, L011, L012, L014, L201, L601, L605, L606, and L801 to reflect changes in mail processing operations. Mailers are expected to label according to these revised lists for mailings inducted on or after the April 1, 2017, effective date through the May 31, 2017, expiration date.

Labeling Lists

L000 General Use

* * * * *

L001 5-Digit Scheme — Periodicals, Standard Mail, and Package Services Flats and Irregular Parcels

* * * * *

Newly Added

Column A Destination ZIP Codes	Column B Label Container To (Added To)	Column B Status
80305	BOULDER CO 80305	New
80307	BOULDER CO 80305	New
80309	BOULDER CO 80301	Existing
80310	BOULDER CO 80301	Existing

Deleted

Column A Destination ZIP Codes	Column B Label (Deleted From)
81120	LA JARA CO 81140
81140	LA JARA CO 81140

L002 3-Digit ZIP Code Prefix Matrix**Changes**

3-Digit ZIP Code Prefix	Column A 3-Digit Destinations Label To	Column B 3-Digit/Scheme Destinations Label To (Change From)	Column C SCF Destinations Label To (Change From)	Column A 3-Digit Destinations Label To (Change To)	Column B 3-Digit/Scheme Destinations Label To (Change To)	Column C SCF Destinations Label To (Change To)	Prefix 3- Digit Change Status
018	MIDDLESEX- ESX MA 018	N MIDDLESEX- ESX MA 018 S	SCF MIDDLESEX- ESX MA 018	MIDDLESEX- ESX MA 018	MIDDLESEX- ESX MA 018 S	SCF MIDDLESEX- ESX MA 018	Existing
019	MIDDLESEX- ESX MA 019	N MIDDLESEX- ESX MA 018 S	SCF MIDDLESEX- ESX MA 018	MIDDLESEX- ESX MA 019	MIDDLESEX- ESX MA 018 S	SCF MIDDLESEX- ESX MA 018	Existing
055				MIDDLESEX- ESX MA 055	MIDDLESEX- ESX MA 018 S	SCF MIDDLESEX- ESX MA 018	New
605	FOX VALLEY IL 605	S SUBURBAN IL 604 S	FOX VALLEY IL 605 D	FOX VALLEY IL 605	S SUBURBAN IL 604 S	S SUBURBAN IL 604 D	Existing

* * * * *

L003 3-Digit ZIP Code Prefix Groups – 3-Digit Scheme Sortation

* * * * *

Newly Added

Column A 3-Digit ZIP Code Prefix Group	Column B Label To (Added To)	Column B Change Status
055	MIDDLESEX-ESX MA 018	Existing

* * * * *

L004 3-Digit ZIP Code Prefix Groups – ADC Sortation

* * * * *

Newly Added

Column A 3-Digit ZIP Code Prefix Group	Column B Label To (Added To)	Column B Change Status
055	ADC BOSTON MA 021	Existing

* * * * *

L005 3-Digit ZIP Code Prefix Groups – SCF Sortation**Changes**

Column A Destination ZIP Codes	Column B Label To (Change From)	Column B Label To (Change To)	Column B Change Status
605	FOX VALLEY IL 605	S SUBURBAN IL 604	Existing

Newly Added

Column A Destination ZIP Codes	Column B Label To (Added To)	Column B Change Status
055	SCF MIDDLESEX-ESX MA 018	Existing
*	* * *	

L006 5-Digit FSS Scheme – Periodical, Standard Mail, and Package Services Flats in Bundles

* * * * *

Newly Added

Column A Destination ZIP Codes	Column B Scheme Bundle/Container Placard (Added To)	Column C Facility Container Placard (Added To)	Column B Status
55024	FARMINGTON MN 55024	FSS SAINT PAUL MN 550	New
60101	ADDISON IL 60101	FSS FOX VALLEY IL 605	New
64052	INDEPENDENCE MO 64052	FSS KANSAS CITY MO 640	New
64053	INDEPENDENCE MO 64052	FSS KANSAS CITY MO 640	New
64054	INDEPENDENCE MO 64052	FSS KANSAS CITY MO 640	New
*	* * *		

L007 5-Digit Scheme – Periodical, Standard Mail, and Package Services Flats in Bundles

Changes

Column A Destination ZIP Codes	Column B Label Container To (Change From)	Column B Label Container To (Change To)	Column B Change To Status
64052	INDEPENDENCE MO 64052	INDEPENDENCE MO 64050	Existing
64053	INDEPENDENCE MO 64052	INDEPENDENCE MO 64050	Existing
64054	INDEPENDENCE MO 64052	INDEPENDENCE MO 64050	Existing
*	* * *		

L009 Mixed ADCs – Periodicals, Package Services Flats and Irregular Parcels and Standard Mail Flats

Changes

Column A Originating 3-Digit ZIP Code Prefix Group	Column B Label To (Change From)	Column B Label To (Change To)	Column B Change Status
005	(PER) MXD DV DANIELS NJ 07099	(PER) MXD NORTHERN NJ METRO NJ 076	New
066	(PER) MXD DV DANIELS NJ 07099	(PER) MXD NORTHERN NJ METRO NJ 076	New
068	(PER) MXD DV DANIELS NJ 07099	(PER) MXD NORTHERN NJ METRO NJ 076	New
069	(PER) MXD DV DANIELS NJ 07099	(PER) MXD NORTHERN NJ METRO NJ 076	New
070	(PER) MXD DV DANIELS NJ 07099	(PER) MXD NORTHERN NJ METRO NJ 076	New
071	(PER) MXD DV DANIELS NJ 07099	(PER) MXD NORTHERN NJ METRO NJ 076	New
072	(PER) MXD DV DANIELS NJ 07099	(PER) MXD NORTHERN NJ METRO NJ 076	New
073	(PER) MXD DV DANIELS NJ 07099	(PER) MXD NORTHERN NJ METRO NJ 076	New
074	(PER) MXD DV DANIELS NJ 07099	(PER) MXD NORTHERN NJ METRO NJ 076	New
075	(PER) MXD DV DANIELS NJ 07099	(PER) MXD NORTHERN NJ METRO NJ 076	New
076	(PER) MXD DV DANIELS NJ 07099	(PER) MXD NORTHERN NJ METRO NJ 076	New
077	(PER) MXD DV DANIELS NJ 07099	(PER) MXD NORTHERN NJ METRO NJ 076	New
078	(PER) MXD DV DANIELS NJ 07099	(PER) MXD NORTHERN NJ METRO NJ 076	New
079	(PER) MXD DV DANIELS NJ 07099	(PER) MXD NORTHERN NJ METRO NJ 076	New
085	(PER) MXD DV DANIELS NJ 07099	(PER) MXD NORTHERN NJ METRO NJ 076	New
086	(PER) MXD DV DANIELS NJ 07099	(PER) MXD NORTHERN NJ METRO NJ 076	New
087	(PER) MXD DV DANIELS NJ 07099	(PER) MXD NORTHERN NJ METRO NJ 076	New
088	(PER) MXD DV DANIELS NJ 07099	(PER) MXD NORTHERN NJ METRO NJ 076	New
089	(PER) MXD DV DANIELS NJ 07099	(PER) MXD NORTHERN NJ METRO NJ 076	New
100	(PER) MXD DV DANIELS NJ 07099	(PER) MXD NORTHERN NJ METRO NJ 076	New
101	(PER) MXD DV DANIELS NJ 07099	(PER) MXD NORTHERN NJ METRO NJ 076	New
102	(PER) MXD DV DANIELS NJ 07099	(PER) MXD NORTHERN NJ METRO NJ 076	New

Column A Originating 3-Digit ZIP Code Prefix Group	Column B Label To (Change From)	Column B Label To (Change To)	Column B Change Status
103	(PER) MXD DV DANIELS NJ 07099	(PER) MXD NORTHERN NJ METRO NJ 076	New
104	(PER) MXD DV DANIELS NJ 07099	(PER) MXD NORTHERN NJ METRO NJ 076	New
105	(PER) MXD DV DANIELS NJ 07099	(PER) MXD NORTHERN NJ METRO NJ 076	New
106	(PER) MXD DV DANIELS NJ 07099	(PER) MXD NORTHERN NJ METRO NJ 076	New
107	(PER) MXD DV DANIELS NJ 07099	(PER) MXD NORTHERN NJ METRO NJ 076	New
108	(PER) MXD DV DANIELS NJ 07099	(PER) MXD NORTHERN NJ METRO NJ 076	New
109	(PER) MXD DV DANIELS NJ 07099	(PER) MXD NORTHERN NJ METRO NJ 076	New
110	(PER) MXD DV DANIELS NJ 07099	(PER) MXD NORTHERN NJ METRO NJ 076	New
111	(PER) MXD DV DANIELS NJ 07099	(PER) MXD NORTHERN NJ METRO NJ 076	New
112	(PER) MXD DV DANIELS NJ 07099	(PER) MXD NORTHERN NJ METRO NJ 076	New
113	(PER) MXD DV DANIELS NJ 07099	(PER) MXD NORTHERN NJ METRO NJ 076	New
114	(PER) MXD DV DANIELS NJ 07099	(PER) MXD NORTHERN NJ METRO NJ 076	New
115	(PER) MXD DV DANIELS NJ 07099	(PER) MXD NORTHERN NJ METRO NJ 076	New
116	(PER) MXD DV DANIELS NJ 07099	(PER) MXD NORTHERN NJ METRO NJ 076	New
117	(PER) MXD DV DANIELS NJ 07099	(PER) MXD NORTHERN NJ METRO NJ 076	New
118	(PER) MXD DV DANIELS NJ 07099	(PER) MXD NORTHERN NJ METRO NJ 076	New
119	(PER) MXD DV DANIELS NJ 07099	(PER) MXD NORTHERN NJ METRO NJ 076	New
124	(PER) MXD DV DANIELS NJ 07099	(PER) MXD NORTHERN NJ METRO NJ 076	New
125	(PER) MXD DV DANIELS NJ 07099	(PER) MXD NORTHERN NJ METRO NJ 076	New
126	(PER) MXD DV DANIELS NJ 07099	(PER) MXD NORTHERN NJ METRO NJ 076	New
127	(PER) MXD DV DANIELS NJ 07099	(PER) MXD NORTHERN NJ METRO NJ 076	New

Newly Added

Column A Originating 3- Digit ZIP Code Prefix Group	Column B Label To (Added To)	Column B Change Status
055	MXD HARTFORD CT 010	Existing
* * * * *		

L011 Non-NDC/ASF Entry – Periodicals and Standard Mail Letters

* * * * *

Newly Added

Column A Originating ZIP Codes	Column B Label To (Added To)	Column B Change Status
055	MXD HARTFORD CT 010	Existing
* * * * *		

L012 5-Digit ZIP Scheme Combination**Changes**

Column A Destination ZIP Codes	Column B Label Container To (Change From)col	Column B Label Container To (Change To)	Column B ChangeTo Status
01340	GREENFIELD MA 01301	ATHOL MA 01331	Existing
01420	FITCHBURG MA 01420	ASHLAND MA 01721	Existing
01431	FITCHBURG MA 01420	LEOMINSTER MA 01453	Existing
01432	AYER MA 01432	HUDSON MA 01749	Existing
01434	AYER MA 01432	HUDSON MA 01749	Existing
01450	AYER MA 01432	HUDSON MA 01749	Existing
01460	AYER MA 01432	HUDSON MA 01749	Existing
01463	FRAMINGHAM MA 01702	ACTON MA 01720	Existing
01543	FRAMINGHAM MA 01702	ACTON MA 01720	Existing
01702	FRAMINGHAM MA 01702	NATICK MA 01760	New
01703	FRAMINGHAM MA 01702	NATICK MA 01760	New

Column A Destination ZIP Codes	Column B Label Container To (Change From)col	Column B Label Container To (Change To)	Column B ChangeTo Status
01704	FRAMINGHAM MA 01702	NATICK MA 01760	New
01742	CONCORD MA 01742	SUDBURY MA 01776	Existing
01754	CONCORD MA 01742	SUDBURY MA 01776	Existing
02025	SCITUATE MA 02066	NORWELL MA 02061	New
02032	SOUTH WALPOLE MA 02071	WRENTHAM MA 02093	New
02035	SOUTH WALPOLE MA 02071	WRENTHAM MA 02093	New
02061	SCITUATE MA 02066	NORWELL MA 02061	New
02066	SCITUATE MA 02066	NORWELL MA 02061	New
02071	SOUTH WALPOLE MA 02071	WRENTHAM MA 02093	New
02072	STOUGHTON MA 02072	RANDOLPH MA 02368	New
02081	SOUTH WALPOLE MA 02071	WRENTHAM MA 02093	New
02093	SOUTH WALPOLE MA 02071	WRENTHAM MA 02093	New
02301	BROCKTON MA 02305	BROCKTON MA 02301	New
02302	BROCKTON MA 02304	BROCKTON MA 02302	New
02303	BROCKTON MA 02305	BROCKTON MA 02301	New
02304	BROCKTON MA 02304	BROCKTON MA 02302	New
02305	BROCKTON MA 02305	BROCKTON MA 02301	New
02322	STOUGHTON MA 02072	RANDOLPH MA 02368	New
02324	WEST BRIDGEWATER MA 02379	EAST BRIDGEWATER MA 02333	New
02325	WEST BRIDGEWATER MA 02379	EAST BRIDGEWATER MA 02333	New
02330	HALIFAX MA 02338	CARVER MA 02330	New
02333	WEST BRIDGEWATER MA 02379	EAST BRIDGEWATER MA 02333	New
02334	EASTON MA 02334	BROCKTON MA 02302	New
02338	HALIFAX MA 02338	CARVER MA 02330	New
02344	MIDDLEBORO MA 02344	CARVER MA 02330	New
02346	MIDDLEBORO MA 02344	CARVER MA 02330	New
02347	LAKEVILLE MA 02347	CARVER MA 02330	New
02348	LAKEVILLE MA 02347	CARVER MA 02330	New
02349	MIDDLEBORO MA 02344	CARVER MA 02330	New
02356	EASTON MA 02334	BROCKTON MA 02302	New
02357	EASTON MA 02334	BROCKTON MA 02302	New
02368	STOUGHTON MA 02072	RANDOLPH MA 02368	New
02375	EASTON MA 02334	BROCKTON MA 02302	New
02379	WEST BRIDGEWATER MA 02379	EAST BRIDGEWATER MA 02333	New
07001	RAHWAY NJ 07065	WOODBIDGE NJ 07095	New
07008	RAHWAY NJ 07065	WOODBIDGE NJ 07095	New
07010	FORT LEE NJ 07024	CLIFFSIDE PARK NJ 07010	New
07011	CLIFTON NJ 07013	CLIFTON NJ 07011	New
07012	CLIFTON NJ 07013	CLIFTON NJ 07012	New
07013	CLIFTON NJ 07013	CLIFTON NJ 07011	New
07014	CLIFTON NJ 07013	CLIFTON NJ 07012	New
07015	CLIFTON NJ 07013	CLIFTON NJ 07011	New
07020	FORT LEE NJ 07024	CLIFFSIDE PARK NJ 07010	New
07027	CLARK NJ 07066	LINDEN NJ 07036	New
07029	EAST ORANGE NJ 07017	KEARNY NJ 07032	New
07032	EAST ORANGE NJ 07017	KEARNY NJ 07032	New
07033	CLARK NJ 07066	LINDEN NJ 07036	New
07034	PARSIPPANY NJ 07054	LINCOLN PARK NJ 07035	New
07035	PARSIPPANY NJ 07054	LINCOLN PARK NJ 07035	New
07036	CLARK NJ 07066	LINDEN NJ 07036	New
07042	BLOOMFIELD NJ 07003	MONTCLAIR NJ 07042	New
07043	BLOOMFIELD NJ 07003	MONTCLAIR NJ 07042	New
07044	BLOOMFIELD NJ 07003	MONTCLAIR NJ 07042	New
07050	WEST ORANGE NJ 07052	ORANGE NJ 07050	New
07051	WEST ORANGE NJ 07052	ORANGE NJ 07050	New
07055	GARFIELD NJ 07026	PASSAIC NJ 07055	New
07057	GARFIELD NJ 07026	PASSAIC NJ 07055	New
07069	PLAINFIELD NJ 07060	SCOTCH PLAINS NJ 07076	New
07071	RUTHERFORD NJ 07070	LYNDHURST NJ 07071	New
07073	RUTHERFORD NJ 07070	LYNDHURST NJ 07071	New
07074	RUTHERFORD NJ 07070	LYNDHURST NJ 07071	New
07075	RUTHERFORD NJ 07070	LYNDHURST NJ 07071	New

Column A Destination ZIP Codes	Column B Label Container To (Change From)col	Column B Label Container To (Change To)	Column B ChangeTo Status
07076	PLAINFIELD NJ 07060	SCOTCH PLAINS NJ 07076	New
07078	MAPLEWOOD NJ 07040	SPRINGFIELD NJ 07081	New
07079	WEST ORANGE NJ 07052	ORANGE NJ 07050	New
07080	PLAINFIELD NJ 07060	SCOTCH PLAINS NJ 07076	New
07081	MAPLEWOOD NJ 07040	SPRINGFIELD NJ 07081	New
07087	HOBOKEN NJ 07030	UNION CITY NJ 07087	New
07090	LIVINGSTON NJ 07039	WESTFIELD NJ 07090	New
07091	LIVINGSTON NJ 07039	WESTFIELD NJ 07090	New
07092	LIVINGSTON NJ 07039	WESTFIELD NJ 07090	New
07094	HOBOKEN NJ 07030	UNION CITY NJ 07087	New
07095	RAHWAY NJ 07065	WOODBIDGE NJ 07095	New
07096	HOBOKEN NJ 07030	UNION CITY NJ 07087	New
07097	JERSEY CITY NJ 07304	JERSEY CITY NJ 07306	New
07099	EAST ORANGE NJ 07017	KEARNY NJ 07032	New
07103	NEWARK NJ 07103	NEWARK NJ 07106	New
07104	NEWARK NJ 07104	BELLEVILLE NJ 07109	New
07106	NEWARK NJ 07103	NEWARK NJ 07106	New
07108	NEWARK NJ 07103	NEWARK NJ 07106	New
07109	NEWARK NJ 07104	BELLEVILLE NJ 07109	New
07201	ELIZABETH NJ 07201	ELIZABETH NJ 07202	New
07202	ELIZABETH NJ 07201	ELIZABETH NJ 07202	New
07204	ELIZABETH NJ 07204	ELIZABETH NJ 07208	New
07205	ELIZABETH NJ 07204	ELIZABETH NJ 07208	New
07207	ELIZABETH NJ 07204	ELIZABETH NJ 07208	New
07303	JERSEY CITY NJ 07302	JERSEY CITY NJ 07310	New
07306	JERSEY CITY NJ 07304	JERSEY CITY NJ 07306	New
07307	JERSEY CITY NJ 07304	JERSEY CITY NJ 07306	New
07308	JERSEY CITY NJ 07304	JERSEY CITY NJ 07306	New
07310	JERSEY CITY NJ 07302	JERSEY CITY NJ 07310	New
07311	JERSEY CITY NJ 07302	JERSEY CITY NJ 07310	New
07399	JERSEY CITY NJ 07302	JERSEY CITY NJ 07310	New
07921	MORRIS PLAINS NJ 07950	CHESTER NJ 07930	New
07924	MORRIS PLAINS NJ 07950	CHESTER NJ 07930	New
07926	MORRISTOWN NJ 07962	WHIPPANY NJ 07981	New
07927	MORRISTOWN NJ 07962	WHIPPANY NJ 07981	New
07928	SUMMIT NJ 07901	CHATHAM NJ 07928	New
07930	MORRIS PLAINS NJ 07950	CHESTER NJ 07930	New
07931	MORRIS PLAINS NJ 07950	CHESTER NJ 07930	New
07933	SUMMIT NJ 07901	CHATHAM NJ 07928	New
07934	MORRIS PLAINS NJ 07950	CHESTER NJ 07930	New
07935	BASKING RIDGE NJ 07920	MADISON NJ 07940	New
07936	BASKING RIDGE NJ 07920	MADISON NJ 07940	New
07938	BASKING RIDGE NJ 07920	MADISON NJ 07940	New
07939	BASKING RIDGE NJ 07920	MADISON NJ 07940	New
07940	BASKING RIDGE NJ 07920	MADISON NJ 07940	New
07960	MORRISTOWN NJ 07962	MORRISTOWN NJ 07960	New
07961	MORRISTOWN NJ 07962	MORRISTOWN NJ 07960	New
07962	MORRISTOWN NJ 07962	MORRISTOWN NJ 07960	New
07963	MORRISTOWN NJ 07962	MORRISTOWN NJ 07960	New
07970	MORRISTOWN NJ 07962	WHIPPANY NJ 07981	New
07974	SUMMIT NJ 07901	CHATHAM NJ 07928	New
07980	SUMMIT NJ 07901	CHATHAM NJ 07928	New
07981	MORRISTOWN NJ 07962	WHIPPANY NJ 07981	New
08802	PHILLIPSBURG NJ 08865	CLINTON NJ 08809	New
08804	PHILLIPSBURG NJ 08865	CLINTON NJ 08809	New
08805	PISCATAWAY NJ 08854	MIDDLESEX NJ 08846	New
08808	PHILLIPSBURG NJ 08865	CLINTON NJ 08809	New
08809	PHILLIPSBURG NJ 08865	CLINTON NJ 08809	New
08810	SOMERSET NJ 08873	DAYTON NJ 08810	New
08812	PISCATAWAY NJ 08854	MIDDLESEX NJ 08846	New
08817	EDISON NJ 08818	EDISON NJ 08817	New
08818	EDISON NJ 08818	EDISON NJ 08817	New

Column A Destination ZIP Codes	Column B Label Container To (Change From)col	Column B Label Container To (Change To)	Column B ChangeTo Status
08820	EDISON NJ 08818	EDISON NJ 08820	New
08823	SOMERSET NJ 08873	DAYTON NJ 08810	New
08824	SOMERSET NJ 08873	DAYTON NJ 08810	New
08825	PHILLIPSBURG NJ 08865	CLINTON NJ 08809	New
08826	PHILLIPSBURG NJ 08865	CLINTON NJ 08809	New
08827	PHILLIPSBURG NJ 08865	CLINTON NJ 08809	New
08829	PHILLIPSBURG NJ 08865	CLINTON NJ 08809	New
08830	PERTH AMBOY NJ 08861	METUCHEN NJ 08840	New
08836	PISCATAWAY NJ 08854	MIDDLESEX NJ 08846	New
08837	EDISON NJ 08818	EDISON NJ 08820	New
08840	PERTH AMBOY NJ 08861	METUCHEN NJ 08840	New
08844	BRIDGEWATER NJ 08807	HILLSBOROUGH NJ 08844	New
08846	PISCATAWAY NJ 08854	MIDDLESEX NJ 08846	New
08852	SOMERSET NJ 08873	DAYTON NJ 08810	New
08853	BRIDGEWATER NJ 08807	HILLSBOROUGH NJ 08844	New
08858	FLEMINGTON NJ 08822	SOMERVILLE NJ 08876	New
08871	PARLIN NJ 08859	SAYREVILLE NJ 08871	New
08872	PARLIN NJ 08859	SAYREVILLE NJ 08871	New
08876	FLEMINGTON NJ 08822	SOMERVILLE NJ 08876	New
08882	PARLIN NJ 08859	SAYREVILLE NJ 08871	New
08887	FLEMINGTON NJ 08822	SOMERVILLE NJ 08876	New
08888	FLEMINGTON NJ 08822	SOMERVILLE NJ 08876	New
08889	FLEMINGTON NJ 08822	SOMERVILLE NJ 08876	New
08899	EDISON NJ 08818	NEW BRUNSWICK NJ 08901	Existing
08902	NEW BRUNSWICK NJ 08901	NORTH BRUNSWICK NJ 08902	New
08903	NEW BRUNSWICK NJ 08901	NORTH BRUNSWICK NJ 08902	New
08989	NEW BRUNSWICK NJ 08901	NORTH BRUNSWICK NJ 08902	New
29302	SIMPSONVILLE SC 29680	SPARTANBURG SC 29302	New
29307	COWPENS SC 29330	SPARTANBURG SC 29307	New
29316	BOILING SPRINGS SC 29316	SPARTANBURG SC 29302	New
29322	CAMPOBELLO SC 29322	SPARTANBURG SC 29307	New
29323	GAFFNEY SC 29342	GAFFNEY SC 29341	New
29330	COWPENS SC 29330	GAFFNEY SC 29341	New
29335	BOILING SPRINGS SC 29316	ROEBUCK SC 29376	New
29341	GAFFNEY SC 29342	GAFFNEY SC 29341	New
29376	BOILING SPRINGS SC 29316	ROEBUCK SC 29376	New
29385	BOILING SPRINGS SC 29316	ROEBUCK SC 29376	New
29603	GREENVILLE SC 29608	GREENVILLE SC 29605	New
29604	GREENVILLE SC 29608	GREENVILLE SC 29605	New
29606	GREENVILLE SC 29608	SIMPSONVILLE SC 29680	Existing
29608	GREENVILLE SC 29608	GREENVILLE SC 29605	New
29610	GREENVILLE SC 29608	SIMPSONVILLE SC 29680	Existing
29635	COWPENS SC 29330	LIBERTY SC 29657	New
29638	GAFFNEY SC 29342	GREENWOOD SC 29649	Existing
29639	GAFFNEY SC 29342	GREENWOOD SC 29649	Existing
29657	CAMPOBELLO SC 29322	LIBERTY SC 29657	New
29661	COWPENS SC 29330	LIBERTY SC 29657	New
29667	CAMPOBELLO SC 29322	FAIR PLAY SC 29643	Existing
29690	CAMPOBELLO SC 29322	LIBERTY SC 29657	New
39038	YAZOO CITY MS 39194	SATARTIA MS 39162	New
39039	YAZOO CITY MS 39194	SATARTIA MS 39162	New
39040	YAZOO CITY MS 39194	SATARTIA MS 39162	New
39045	CANTON MS 39046	WEST MS 39192	New
39046	CANTON MS 39046	WEST MS 39192	New
39051	CARTHAGE MS 39051	WEST MS 39192	New
39056	JACKSON MS 39204	NATCHEZ MS 39120	Existing
39058	JACKSON MS 39204	NATCHEZ MS 39120	Existing
39060	JACKSON MS 39204	NATCHEZ MS 39120	Existing
39063	CANTON MS 39046	WEST MS 39192	New
39067	CARTHAGE MS 39051	SATARTIA MS 39162	New
39069	BUDE MS 39630	VICKSBURG MS 39180	Existing
39071	YAZOO CITY MS 39194	SATARTIA MS 39162	New

Column A Destination ZIP Codes	Column B Label Container To (Change From)col	Column B Label Container To (Change To)	Column B ChangeTo Status
39074	LAKE MS 39092	BRANDON MS 39042	Existing
39079	CANTON MS 39046	WEST MS 39192	New
39090	CARTHAGE MS 39051	SATARTIA MS 39162	New
39092	LAKE MS 39092	BRANDON MS 39042	Existing
39094	CARTHAGE MS 39051	SATARTIA MS 39162	New
39095	CANTON MS 39046	WEST MS 39192	New
39096	BUDE MS 39630	VICKSBURG MS 39180	Existing
39097	YAZOO CITY MS 39194	SATARTIA MS 39162	New
39108	CARTHAGE MS 39051	SATARTIA MS 39162	New
39146	CANTON MS 39046	WEST MS 39192	New
39159	YAZOO CITY MS 39194	SATARTIA MS 39162	New
39160	CARTHAGE MS 39051	SATARTIA MS 39162	New
39162	YAZOO CITY MS 39194	SATARTIA MS 39162	New
39166	YAZOO CITY MS 39194	SATARTIA MS 39162	New
39169	CANTON MS 39046	WEST MS 39192	New
39173	YAZOO CITY MS 39194	SATARTIA MS 39162	New
39174	RIDGELAND MS 39157	WEST MS 39192	New
39176	CANTON MS 39046	WEST MS 39192	New
39179	CANTON MS 39046	WEST MS 39192	New
39192	CANTON MS 39046	WEST MS 39192	New
39194	YAZOO CITY MS 39194	SATARTIA MS 39162	New
39204	JACKSON MS 39204	BYRAM MS 39272	Existing
39212	JACKSON MS 39212	BYRAM MS 39272	Existing
39282	JACKSON MS 39212	BYRAM MS 39272	Existing
39284	JACKSON MS 39204	BYRAM MS 39272	Existing
39301	MERIDIAN MS 39301	CHUNKY MS 39323	New
39302	MERIDIAN MS 39301	CHUNKY MS 39323	New
39309	MERIDIAN MS 39301	CHUNKY MS 39323	New
39320	MERIDIAN MS 39301	CHUNKY MS 39323	New
39322	QUITMAN MS 39355	NOXAPATER MS 39346	New
39323	MERIDIAN MS 39301	CHUNKY MS 39323	New
39326	MERIDIAN MS 39301	CHUNKY MS 39323	New
39327	MERIDIAN MS 39301	CHUNKY MS 39323	New
39328	MERIDIAN MS 39301	CHUNKY MS 39323	New
39330	QUITMAN MS 39355	NOXAPATER MS 39346	New
39332	MERIDIAN MS 39301	CHUNKY MS 39323	New
39336	MERIDIAN MS 39301	CHUNKY MS 39323	New
39338	MERIDIAN MS 39301	CHUNKY MS 39323	New
39339	LOUISVILLE MS 39339	NOXAPATER MS 39346	New
39345	MERIDIAN MS 39301	CHUNKY MS 39323	New
39346	LOUISVILLE MS 39339	NOXAPATER MS 39346	New
39347	QUITMAN MS 39355	NOXAPATER MS 39346	New
39348	QUITMAN MS 39355	NOXAPATER MS 39346	New
39350	LOUISVILLE MS 39339	MERIDIAN MS 39304	Existing
39354	MERIDIAN MS 39301	CHUNKY MS 39323	New
39355	QUITMAN MS 39355	NOXAPATER MS 39346	New
39356	QUITMAN MS 39355	NOXAPATER MS 39346	New
39360	QUITMAN MS 39355	NOXAPATER MS 39346	New
39362	QUITMAN MS 39355	NOXAPATER MS 39346	New
39364	MERIDIAN MS 39301	CHUNKY MS 39323	New
39366	QUITMAN MS 39355	NOXAPATER MS 39346	New
39367	QUITMAN MS 39355	NOXAPATER MS 39346	New
39648	BROOKHAVEN MS 39602	BUDE MS 39630	Existing
39649	BROOKHAVEN MS 39602	BUDE MS 39630	Existing
59725	BELGRADE MT 59714	BUTTE MT 59701	Existing
68007	PLATTSMOUTH NE 68048	BENNINGTON NE 68007	New
78627	GEORGETOWN TX 78628	GEORGETOWN TX 78627	New
78673	GEORGETOWN TX 78628	GEORGETOWN TX 78627	New
78674	GEORGETOWN TX 78628	GEORGETOWN TX 78627	New
94026	MENLO PARK CA 94025	MENLO PARK CA 94026	New
94027	MENLO PARK CA 94025	MENLO PARK CA 94026	New
94028	MENLO PARK CA 94025	MENLO PARK CA 94026	New

Column A Destination ZIP Codes	Column B Label Container To (Change From)col	Column B Label Container To (Change To)	Column B ChangeTo Status
94105	SAN FRANCISCO CA 94104	SAN FRANCISCO CA 94105	New
94118	SAN FRANCISCO CA 94115	SAN FRANCISCO CA 94118	New
94124	SAN FRANCISCO CA 94116	SAN FRANCISCO CA 94124	New
94125	SAN FRANCISCO CA 94116	SAN FRANCISCO CA 94124	New
94126	SAN FRANCISCO CA 94123	SAN FRANCISCO CA 94133	New
94128	SAN FRANCISCO CA 94116	SAN FRANCISCO CA 94124	New
94133	SAN FRANCISCO CA 94123	SAN FRANCISCO CA 94133	New
94158	SAN FRANCISCO CA 94104	SAN FRANCISCO CA 94105	New
94159	SAN FRANCISCO CA 94115	SAN FRANCISCO CA 94118	New
94305	PALO ALTO CA 94304	STANFORD CA 94305	New
94309	PALO ALTO CA 94304	STANFORD CA 94305	New
94965	SAN ANSELMO CA 94960	SAUSALITO CA 94965	New
94966	SAN ANSELMO CA 94960	SAUSALITO CA 94965	New

Newly Added

Column A Destination ZIP Codes	Column B Label Container To (Added To)	Column B Status
01470	HUDSON MA 01749	Existing
01471	HUDSON MA 01749	Existing
01586	MILLBURY MA 01527	Existing
01705	NATICK MA 01760	New
01760	NATICK MA 01760	New
02019	CANTON MA 02021	Existing
02020	WHITMAN MA 02382	New
02030	DEDHAM MA 02027	Existing
02038	HANSON MA 02341	New
02040	NORWELL MA 02061	New
02041	NORWELL MA 02061	New
02047	NORWELL MA 02061	New
02048	DEDHAM MA 02027	Existing
02050	WHITMAN MA 02382	New
02051	WHITMAN MA 02382	New
02052	RANDOLPH MA 02368	New
02053	WHITMAN MA 02382	New
02054	WHITMAN MA 02382	New
02055	NORWELL MA 02061	New
02056	WESTWOOD MA 02090	Existing
02059	WHITMAN MA 02382	New
02060	NORWELL MA 02061	New
02065	WHITMAN MA 02382	New
02070	CANTON MA 02021	Existing
02327	HANSON MA 02341	New
02337	EAST BRIDGEWATER MA 02333	New
02339	NORWELL MA 02061	New
02340	NORWELL MA 02061	New
02341	HANSON MA 02341	New
02343	BROCKTON MA 02301	New
02345	PLYMOUTH MA 02361	Existing
02350	HANSON MA 02341	New
02351	BROCKTON MA 02302	New
02355	CARVER MA 02330	New
02358	EAST BRIDGEWATER MA 02333	New
02359	EAST BRIDGEWATER MA 02333	New
02364	CARVER MA 02330	New
02366	CARVER MA 02330	New
02367	EAST BRIDGEWATER MA 02333	New
02370	HANSON MA 02341	New
02381	PLYMOUTH MA 02361	Existing
02382	WHITMAN MA 02382	New
07102	IRVINGTON NJ 07111	New
07107	NUTLEY NJ 07110	New
07110	NUTLEY NJ 07110	New
07111	IRVINGTON NJ 07111	New
07208	ELIZABETH NJ 07208	New

Column A Destination ZIP Codes	Column B Label Container To (Added To)	Column B Status
29605	GREENVILLE SC 29605	New
36901	CUBA AL 36907	Existing
36910	CUBA AL 36907	Existing
36913	CUBA AL 36907	Existing
36915	CUBA AL 36907	Existing
36916	CUBA AL 36907	Existing
39061	SATARTIA MS 39162	New
39080	BRANDON MS 39042	Existing
39087	BRANDON MS 39042	Existing
39088	SATARTIA MS 39162	New
39098	VICKSBURG MS 39180	Existing
39109	BRANDON MS 39042	Existing
39113	SATARTIA MS 39162	New
39115	SATARTIA MS 39162	New
39161	WEST MS 39192	New
39163	WEST MS 39192	New
39165	NATCHEZ MS 39120	Existing
39171	WEST MS 39192	New
39193	PEARL MS 39208	Existing
39210	JACKSON MS 39205	Existing
39269	JACKSON MS 39205	Existing
39324	NOXAPATER MS 39346	New
39632	BOGUE CHITTO MS 39629	Existing
39635	BOGUE CHITTO MS 39629	Existing
59716	BELGRADE MT 59714	Existing
59730	BELGRADE MT 59714	Existing
59758	BELGRADE MT 59714	Existing
65603	REPUBLIC MO 65738	New
65604	REPUBLIC MO 65738	New
65606	THAYER MO 65791	New
65609	THAYER MO 65791	New
65610	REPUBLIC MO 65738	New
65619	REPUBLIC MO 65738	New
65626	THAYER MO 65791	New
65631	REPUBLIC MO 65738	New
65635	REPUBLIC MO 65738	New
65646	REPUBLIC MO 65738	New
65661	REPUBLIC MO 65738	New
65682	REPUBLIC MO 65738	New
65688	THAYER MO 65791	New
65690	THAYER MO 65791	New
65692	THAYER MO 65791	New
65705	REPUBLIC MO 65738	New
65738	REPUBLIC MO 65738	New
65752	REPUBLIC MO 65738	New
65766	THAYER MO 65791	New
65769	REPUBLIC MO 65738	New
65770	REPUBLIC MO 65738	New
65775	THAYER MO 65791	New
65777	THAYER MO 65791	New
65778	THAYER MO 65791	New
65788	THAYER MO 65791	New
65789	THAYER MO 65791	New
65790	THAYER MO 65791	New
65791	THAYER MO 65791	New
68068	BENNINGTON NE 68007	New
95420	SEBASTOPOL CA 95472	Existing

(Article continues on page [41](#))

Pull-Out Information

Fraud

Withholding of Mail Orders

Withholding of Mail Orders is enforced by Postmasters at the cities listed below.

State, City, ZIP Code	Names and Addresses Covered
CA, Huntington Beach 92647-4848	Any and All of Various Names, 16787 Beach Boulevard, PMB 1033

— Judicial Officer, 3-16-17

Invalid USPS Corporate Account Numbers

Please provide this listing to Contract Postal Units and acceptance clerks in non-POS locations without intranet access to validate a USPS Corporate Account (USPSCA) number online. For all other locations, online USPSCA validation is preferred. The online validation process is outlined in the USPSCA Validation SOP on the Retail webpage. This list supersedes all previous notices, which

must be recycled. Acceptance clerks must not accept Priority Mail Express™ shipments bearing an invalid USPSCA number in the “Payment by Account” or “Agreement Number” section of the label or form.

Note: The first 6 digits of a 9-digit Custom Designed Service and Next Day Pickup Agreement make up the Corporate Account Number.

005605	071216	146067	331618	461131	474075	672004	806207	900093	900430	901479	920240	933495
007146	075410	146132	331627	461135	477081	672024	816145	900096	900444	901504	921163	937720
007167	076454	146142	333046	461160	480671	672041	840053	900101	900451	901557	921500	939120
008077	076743	146307	333406	461170	481261	672043	840059	900102	900458	901843	922348	940419
008118	077033	146439	333764	462010	481336	672060	841222	900105	900469	901883	924677	941018
008122	080192	146471	333838	462011	485003	672250	841347	900113	900472	901994	925127	945756
008254	080709	146485	335288	462015	495135	672287	844007	900119	900475	902073	925128	945793
008928	085513	146680	336305	462016	531803	672294	847011	900128	900476	902082	925243	945907
009077	100898	175055	336613	462019	532016	672475	850610	900170	900480	902104	926031	946547
009173	100955	179031	337146	462030	558097	674001	850881	900172	900495	902255	926032	947114
009341	100965	180121	339642	462031	570134	676635	851029	900183	900497	902435	926043	948482
009353	102332	191243	358053	462050	575080	681342	851032	900187	900499	902502	926050	948558
009427	103512	192537	370060	462061	582013	730028	851035	900193	900500	902951	926126	951196
011175	105528	192940	371140	462069	585204	730122	851036	900197	900501	903388	926198	951378
012168	106230	196071	372029	462085	585215	730176	851038	900203	900503	903913	926282	958361
015012	108045	206531	372105	462089	585246	730570	851039	900207	900507	904007	926370	958887
018002	108316	207106	372588	462100	585293	730746	852376	900208	900510	904480	926467	967127
018167	109045	207481	379532	462102	597534	735002	852537	900211	900511	904549	926518	967239
019213	109305	208492	402002	462103	600560	740485	852809	900217	900512	904620	926597	968222
019516	109995	210104	402219	462150	601008	741161	852833	900218	900516	904662	926619	968272
019923	112143	210154	402378	462249	601688	741467	852955	900219	900520	906336	926749	971138
020531	115099	220497	432009	462251	601866	741975	853997	900222	900527	907343	926814	980607
020627	115399	220498	432442	462382	601997	749173	860068	900224	900529	912454	926878	982368
026550	115855	221201	432722	462421	605094	750485	871092	900232	900534	914929	927261	982726
027336	117009	271205	436483	462423	606339	752031	890206	900235	900540	915519	927274	992548
029255	117117	275051	444854	462489	607453	767589	891256	900237	900546	915725	927311	995006
030500	117697	281150	454750	462516	616133	770565	891612	900257	900549	917236	927323	995250
034021	117946	300793	458140	462531	627066	773083	891613	900283	900754	917292	927409	995302
052013	117957	305018	460080	462584	631031	801107	891744	900317	900853	917378	927570	995484
060062	118342	306208	460119	462688	631221	801183	891999	900358	900971	917605	927641	995685
060373	120343	322693	460163	462705	631943	801507	900006	900360	900999	917612	928342	997238
062010	129960	327319	460164	462744	641233	801572	900014	900367	901023	917624	928551	997255
065939	130910	327335	460165	462828	641400	802051	900023	900380	901031	917639	928558	998033
068026	130915	328106	460170	462833	665125	802371	900042	900385	901144	918180	928866	
068197	134070	328433	461007	462927	666001	802460	900071	900397	901223	920098	930035	
068447	135192	328647	461115	463097	666008	802494	900073	900418	901227	920189	930058	
068599	142058	329382	461127	466110	666011	805249	900083	900423	901245	920195	931906	
070255	142537	331418	461128	468560	671010	805618	900087	900426	901301	920234	933332	

USPS® Features *Songbirds in Snow* Forever® Stamps for Winter 2016/17



On Sale Nationwide: August 4, 2016.

Missing, Lost, or Stolen U.S. Money Order Forms

Do Not Cash — Upon Receipt, Notify Local Postal Inspectors

This listing will be provided to all Postal Service™ employees responsible for accepting and cashing postal money orders. Destroy all interim notices when the num-

bers listed appear in the *Postal Bulletin*. The actual serial numbers consist of the first 10 digits on the money orders. Check for altered dollar amounts by holding money orders to the light.

010 001 0200 to 0299	037 312 7500 to 7599	066 845 7500 to 9999	095 076 8300 to 8399
010 504 1932 to 1999	037 706 9578 to 9599	067 093 3869 to 3899	095 354 6864 to 6899
011 582 1889 to 1899	037 805 3677 to 3699	068 895 0334 to 0399	097 224 1350 to 1599
011 588 2900 to 3099	037 909 5490 to 5499	070 724 4488 to 4499	100 160 3800 to 3899
012 441 0784 to 0799	037 931 4660 to 4699	070 841 9181 to 9199	104 667 6400 to 6499
012 579 5675 to 5699	039 145 6521 to 6595	070 844 2546 to 2599	104 876 8937 to 8999
013 289 6176 to 6199	040 024 3901 to 3999	070 916 1340 to 1399	112 049 4413 to 4499
013 610 0014 to 0099	040 674 7100 to 7199	071 047 5768 to 5799	112 870 9765 to 9799
014 932 1000 to 1099	040 688 8816 to 8899	071 179 9800 to 9899	113 319 2000 to 2099
014 972 0800 to 0899	041 299 6752 to 6799	071 386 3682 to 3699	114 402 3850 to 3899
015 363 0065 to 0099	041 623 8889 to 8899	071 507 6840 to 6899	114 866 5368 to 5397
017 028 3200 to 3299	041 803 6565 to 6599	072 045 9641 to 9699	116 154 2800 to 2899
018 569 5333 to 5399	043 129 1968 to 1997	072 675 8287 to 8299	116 986 4400 to 4499
018 986 5264 to 5299	043 205 5922 to 5999	073 763 0867 to 0876	117 175 1647 to 5169
019 518 2814 to 2899	044 087 3457 to 3499	073 763 0878 to 0887	117 951 4687 to 4699
020 698 5159 to 5199	044 087 4000 to 4099	073 763 0889 to 0898	117 951 5200 to 5299
020 844 7307 to 7399	044 226 2487 to 2512	077 617 5481 to 5499	119 786 3051 to 3064
020 972 8948 to 8999	044 306 4200 to 4299	077 999 4001 to 4090	119 815 8961 to 6199
022 021 9110 to 9181	044 306 4370 to 4599	078 174 4475 to 4499	119 850 7400 to 7499
022 037 1411 to 1499	045 524 4121 to 4298	078 219 4931 to 4999	119 850 7700 to 7999
022 527 9201 to 9210	046 800 9870 to 9899	078 250 4756 to 4799	121 634 0460 to 0499
022 529 1882 to 1899	047 352 4000 to 4099	078 823 8312 to 8399	122 451 9879 to 9899
023 637 7169 to 7199	048 383 7650 to 7659	079 374 0300 to 2499	122 714 6805 to 6900
024 380 4100 to 4199	048 396 3647 to 3699	079 807 2342 to 2399	124 916 0304 to 0499
024 496 6870 to 6896	051 142 0755 to 0799	082 721 0228 to 0254	126 423 0136 to 0169
025 092 0987 to 0999	051 774 8857 to 8899	083 140 5000 to 7499	127 500 2328 to 2399
025 369 5535 to 5599	051 781 2875 to 2885	083 784 8886 to 8899	160 901 2254 to 2299
025 729 1151 to 1199	051 977 7010 to 7023	083 913 6915 to 6999	161 103 6581 to 6599
025 729 1643 to 1799	052 058 7115 to 7199	084 478 3920 to 3999	161 194 2857 to 0899
026 492 3180 to 3199	054 450 1130 to 1167	086 000 8271 to 8299	162 032 4447 to 4499
027 361 0430 to 0499	057 670 0563 to 0599	086 798 3840 to 3849	163 257 1085 to 1099
027 369 4482 to 4495	058 187 3836 to 3899	088 404 4472 to 4499	164 359 2406 to 2499
027 671 8762 to 8776	058 523 3003 to 3099	088 404 5584 to 5699	166 101 1433 to 1499
027 787 9886 to 9899	058 591 1153 to 1299	088 757 8688 to 8699	167 555 5201 to 5212
027 965 9487 to 9499	058 895 3746 to 3799	088 757 9400 to 9499	167 555 5214 to 5299
028 100 8069 to 8099	059 986 0814 to 0899	089 358 2248 to 2257	169 618 6274 to 6299
028 191 1852 to 1999	060 406 7650 to 7699	090 663 9678 to 9684	171 806 6878 to 6893
028 850 3000 to 3199	063 491 8122 to 8199	091 818 0071 to 0099	173 639 4685 to 4699
029 510 1500 to 1599	063 916 9968 to 9999	093 106 9346 to 9355	174 238 2779 to 2799
030 687 0903 to 0999	064 091 4500 to 4599	093 203 0500 to 0599	174 281 9347 to 9399
030 701 3442 to 3499	065 170 0471 to 0499	093 684 3630 to 3699	175 251 2600 to 0699
031 077 4507 to 4799	065 255 7909 to 7999	094 081 5074 to 5099	176 281 7937 to 7950
032 295 7500 to 9999	065 392 6345 to 6399	094 216 2555 to 2599	176 281 7963 to 7999
034 394 1000 to 1099	066 099 2014 to 2099	094 580 7062 to 7099	176 731 6586 to 6599
034 943 0400 to 0799	066 648 2880 to 2899	094 639 4200 to 4299	178 254 5000 to 9999
035 035 4337 to 4399	066 787 3639 to 3699	095 070 7186 to 7199	178 881 9900 to 9999

180 031 2089 to 2098	218 698 2157 to 2199	376 196 0911 to 0999	399 396 8935 to 8999
180 403 7723 to 7741	218 746 0800 to 0899	378 085 3679 to 3699	399 792 7775 to 7799
180 428 4580 to 0599	219 095 0100 to 0399	378 351 1063 to 1099	399 792 8300 to 8399
182 368 7544 to 0599	219 389 1885 to 1899	379 843 5100 to 5199	400 427 1051 to 1999
182 475 3229 to 3258	219 568 7435 to 7456	380 093 9600 to 9699	401 045 1505 to 1549
182 475 3904 to 3933	219 568 7469 to 7487	380 165 1165 to 1199	401 045 1571 to 1599
182 631 0031 to 0099	221 316 5757 to 5799	381 325 4500 to 4599	401 294 2700 to 2799
182 911 6539 to 6600	223 476 3914 to 3999	381 604 2510 to 2699	401 310 9505 to 9599
184 218 2760 to 2799	223 565 4921 to 4957	381 645 9525 to 9599	401 382 5312 to 5399
185 828 1474 to 1499	223 565 4979 to 4999	383 314 3968 to 3999	402 578 7876 to 7899
186 132 7583 to 0599	224 636 4745 to 4765	383 892 1000 to 1344	403 125 6744 to 6799
186 629 0589 to 0599	224 636 4776 to 4799	383 892 1382 to 1399	403 260 7000 to 7499
187 184 6177 to 0199	224 636 4855 to 4885	384 925 3641 to 3654	403 280 6470 to 6499
187 323 8200 to 8299	224 636 4932 to 4948	385 568 2331 to 2399	403 685 8600 to 8699
187 441 6080 to 6099	224 636 4950 to 4962	385 599 7554 to 7575	404 003 0300 to 0399
188 831 6774 to 6799	224 636 4985 to 4999	385 774 2024 to 2099	404 041 8838 to 8899
188 835 6370 to 6399	224 730 2207 to 2299	386 624 1412 to 1599	404 071 4268 to 4299
189 083 1064 to 1099	225 970 0500 to 0599	386 883 8936 to 8999	404 347 5356 to 5399
189 660 9583 to 9599	225 970 0600 to 0699	387 314 5574 to 5599	404 347 5548 to 5599
191 179 0377 to 0399	225 970 0700 to 0799	387 837 6300 to 6399	404 726 4500 to 4599
192 050 5762 to 5781	227 033 8679 to 8699	388 828 0656 to 0699	404 961 5001 to 5199
194 456 8600 to 0699	227 275 9400 to 9999	389 696 2400 to 2799	405 325 0188 to 0198
195 194 6881 to 6899	228 463 2456 to 2499	389 846 3104 to 3135	406 009 4587 to 4599
195 874 1112 to 1199	228 510 4852 to 4899	389 846 3145 to 3195	406 260 6830 to 6899
196 979 0524 to 0599	229 462 8451 to 8475	389 887 9211 to 9230	406 459 6641 to 6999
197 244 6100 to 6199	229 668 5977 to 5999	389 887 9234 to 9299	406 733 3000 to 3999
197 244 6300 to 6399	229 923 9176 to 9199	390 001 3182 to 3199	407 545 1557 to 1599
197 244 6400 to 6499	229 924 6696 to 6699	390 001 3500 to 3699	407 594 0412 to 0599
197 244 6500 to 6599	230 051 9500 to 9999	390 545 5974 to 5999	407 692 9100 to 9299
197 244 6600 to 6699	236 366 2431 to 2499	391 104 6146 to 6199	407 959 2190 to 2199
197 244 6700 to 6799	236 607 6882 to 6899	391 574 1466 to 1499	408 265 2275 to 2288
197 244 6800 to 8999	236 660 5853 to 5872	391 783 3020 to 3599	408 499 7700 to 7799
198 285 2556 to 2566	239 322 5200 to 5299	391 792 6100 to 6199	408 499 7900 to 7999
199 105 0778 to 0799	239 322 5400 to 5499	392 668 2956 to 2999	408 682 8484 to 8599
199 678 2968 to 2999	239 322 5600 to 5699	392 854 8500 to 8899	408 698 7015 to 7099
202 748 5133 to 5199	239 322 5800 to 5899	393 584 7566 to 7699	409 072 3941 to 3999
202 748 5245 to 5299	239 322 5900 to 5999	393 650 0074 to 0099	410 491 2311 to 2399
202 748 5300 to 5399	240 593 1879 to 1899	393 838 8316 to 8499	410 694 8400 to 8599
202 748 5400 to 5499	242 735 0388 to 0398	393 893 6007 to 6099	410 775 1500 to 1599
203 256 1240 to 1299	273 070 8059 to 8099	394 126 6907 to 6999	410 795 7927 to 7999
204 230 3577 to 3595	273 775 7700 to 7899	394 189 0405 to 0599	410 867 0917 to 0966
205 019 0174 to 0199	302 000 0000 to 9999	394 822 3243 to 3278	410 867 0970 to 0999
207 196 9900 to 9999	349 746 2056 to 2099	394 990 1810 to 1899	411 868 1023 to 1199
207 204 0700 to 0799	350 518 7350 to 7374	395 343 3264 to 3299	411 922 2322 to 2399
207 204 0800 to 0899	360 011 1690 to 1699	395 373 3035 to 3099	412 193 0900 to 0999
207 514 3857 to 3899	360 168 6008 to 6099	395 396 9649 to 9799	412 395 8599 to 8699
208 556 4707 to 4799	360 173 8800 to 8899	395 970 3240 to 3299	412 485 6500 to 6599
210 057 4038 to 4047	360 324 2326 to 2399	397 622 4054 to 4099	412 485 6610 to 6699
210 221 0548 to 0599	362 861 3064 to 3099	397 819 8902 to 8999	412 885 5953 to 5999
214 061 4711 to 4724	373 006 2176 to 2199	398 149 7200 to 7699	414 193 3608 to 3674
214 303 6311 to 6325	374 768 2600 to 2699	399 070 0872 to 0899	414 193 3677 to 3699
214 303 6239 to 6258	375 169 4400 to 4599	399 156 7119 to 7199	414 411 7348 to 7399
214 877 4251 to 4273	375 829 3400 to 3499	399 203 5064 to 5099	414 640 0757 to 0799
215 252 3918 to 3992	375 851 9100 to 9199	399 296 9910 to 9999	414 965 1727 to 1799

417 302 8104	to	8199	433 757 3047	to	3099	454 922 4867	to	4895	469 658 1961	to	1999
417 387 6532	to	6599	433 765 4003	to	4099	455 221 1348	to	1499	469 666 9900	to	9999
417 496 6800	to	6999	434 482 7060	to	7199	455 364 2147	to	2199	469 678 1900	to	1999
417 871 9250	to	9299	434 513 2386	to	2399	455 399 5400	to	5499	469 781 4900	to	4999
417 930 9533	to	9599	434 968 3076	to	3092	455 476 0676	to	0699	469 947 6960	to	6999
418 164 6500	to	6799	435 303 1831	to	1842	455 543 0618	to	0699	470 755 5800	to	5818
418 423 9863	to	9899	435 303 1986	to	1999	456 410 9006	to	9099	471 918 0300	to	0999
418 633 5922	to	5999	435 666 6092	to	6399	456 470 4146	to	4299	471 985 2408	to	2419
418 719 8520	to	8599	436 082 6400	to	6899	456 619 4460	to	4499	472 191 6700	to	6799
418 744 2235	to	2299	436 160 6441	to	6499	457 333 2686	to	2699	472 270 2555	to	2599
418 962 2848	to	2899	437 316 7115	to	7199	457 729 1767	to	1777	472 987 0213	to	0241
419 543 0286	to	0299	437 427 0500	to	3499	457 937 8615	to	8699	472 987 0290	to	0299
419 730 0300	to	0399	439 179 2300	to	2399	458 028 9810	to	9899	473 151 2069	to	2199
420 277 0015	to	0049	439 310 0458	to	0499	458 057 2712	to	2999	473 666 9138	to	9199
420 599 0734	to	0798	440 698 1947	to	1999	458 069 9537	to	9599	473 952 3429	to	3499
420 661 4115	to	4199	440 858 6300	to	6399	458 069 9665	to	9699	474 108 5402	to	5499
420 758 9500	to	9699	440 858 6420	to	7299	458 337 5222	to	5299	474 356 5193	to	5299
420 969 3951	to	3971	441 199 1655	to	1699	458 354 7653	to	7999	474 949 3366	to	3399
420 969 3973	to	3999	443 127 3648	to	3699	458 671 8678	to	8699	475 134 9362	to	9399
421 116 3565	to	3599	443 127 4000	to	4099	458 671 8721	to	8798	475 167 9667	to	9699
421 130 9300	to	9399	443 673 7900	to	7999	458 847 5044	to	5999	475 319 3415	to	3499
421 313 4500	to	4999	443 800 9335	to	9399	459 274 7624	to	7699	475 319 3649	to	3799
421 364 5537	to	5599	444 382 8822	to	8899	459 365 5432	to	5499	475 340 6400	to	6599
421 656 2609	to	2699	444 390 1667	to	1699	459 378 5764	to	5799	475 424 8410	to	8499
421 988 9700	to	9799	444 457 3854	to	3899	459 472 4816	to	4999	475 629 9156	to	9199
422 172 4667	to	4699	450 048 4173	to	4199	460 349 6878	to	6899	475 850 6101	to	6199
422 484 4212	to	4299	450 048 4442	to	4699	460 550 1909	to	1999	475 875 2500	to	2599
422 556 1270	to	1299	450 560 5173	to	5199	460 997 5234	to	5299	476 169 8264	to	8299
422 587 7024	to	7099	450 620 3077	to	3099	461 973 6443	to	6499	476 189 3000	to	3499
422 819 7533	to	7599	450 620 3135	to	3199	462 152 0107	to	0299	476 331 2480	to	2499
422 842 5073	to	5087	450 780 2716	to	2799	462 274 1072	to	1099	477 289 8601	to	8699
422 907 7563	to	7599	450 801 2700	to	2799	462 277 8373	to	8399	477 681 5206	to	5299
424 500 6050	to	6099	451 109 2967	to	2984	462 554 6051	to	6099	478 010 4243	to	4268
424 641 8500	to	8599	451 115 4110	to	4125	463 011 5529	to	5540	478 010 4270	to	4291
424 871 6600	to	6699	451 115 4127	to	4199	463 176 4115	to	4199	478 450 5071	to	5099
425 298 2352	to	2399	451 746 0700	to	0799	463 176 4229	to	4299	478 469 7838	to	7858
425 418 4269	to	4299	452 265 0074	to	0099	463 185 2600	to	2799	478 469 7883	to	7899
425 418 4405	to	4499	452 265 0246	to	0299	463 227 7711	to	7799	479 280 9800	to	9899
426 547 4566	to	4599	452 265 0335	to	0999	463 414 4869	to	4899	479 365 9116	to	9176
427 412 6337	to	6499	452 509 1169	to	1199	463 808 3484	to	3499	479 412 9900	to	9999
427 481 0900	to	0999	452 855 6471	to	6499	463 945 7400	to	7899	479 667 6190	to	6199
428 027 2742	to	2752	452 890 4679	to	4799	464 629 9000	to	9399	479 748 9680	to	9699
429 474 4172	to	4199	452 900 8215	to	8238	464 711 4332	to	4399	479 860 7000	to	7199
429 889 2900	to	2999	453 117 9146	to	9199	465 692 3963	to	3999	480 526 2000	to	2099
430 150 4401	to	4599	453 334 3631	to	3699	465 698 8300	to	8599	480 640 6330	to	6399
430 172 9800	to	9899	453 603 7841	to	7891	465 743 7745	to	7799	480 658 0568	to	0599
430 177 1900	to	2099	453 650 1140	to	1199	466 798 6056	to	6067	480 689 5100	to	5199
430 444 9500	to	9699	453 741 1300	to	1399	467 147 4300	to	4399	481 072 9463	to	9499
430 664 4070	to	4099	454 013 2919	to	2999	468 079 5782	to	5799	481 673 0074	to	0095
432 168 8419	to	8499	454 186 2411	to	2499	469 067 2817	to	2899	482 527 1500	to	1599
432 708 6800	to	6999	454 268 4883	to	4899	469 127 8000	to	8199	482 541 5255	to	5299
432 744 1544	to	1599	454 302 5400	to	5499	469 213 0359	to	0399	482 729 6800	to	6899
432 995 9775	to	9799	454 490 8300	to	8399	469 213 0500	to	0599	483 363 7207	to	7299
433 003 5800	to	5899	454 547 7434	to	7499	469 561 8011	to	8099	483 402 2356	to	2399

483 486 5100	to	5199	499 731 6717	to	6799	603 678 7902	to	7999	621 916 1978	to	1989
483 632 1521	to	1599	500 064 1858	to	1869	603 678 8418	to	8499	622 989 8032	to	8099
483 632 2600	to	2799	500 070 5725	to	7799	603 678 8700	to	9999	623 076 9300	to	9399
483 849 1615	to	1699	501 058 0016	to	0026	604 086 0880	to	0899	623 819 5006	to	5099
484 174 4803	to	5299	501 331 0300	to	0399	604 349 1414	to	1499	623 895 8200	to	8399
484 323 8900	to	9199	501 460 0977	to	0999	604 503 7776	to	7799	623 917 0000	to	0099
484 680 5000	to	5038	502 227 7645	to	7699	605 520 9037	to	9099	623 917 0200	to	0299
484 680 5040	to	5074	502 424 0200	to	0499	605 685 4010	to	4099	624 468 5288	to	5299
484 680 5077	to	5099	502 424 0600	to	0699	605 988 6467	to	6499	624 665 3162	to	3198
485 029 4913	to	4999	502 496 6923	to	6999	607 689 7951	to	7960	625 088 6735	to	6799
486 176 0600	to	0699	503 003 2700	to	2899	607 728 1276	to	1299	625 916 9500	to	9799
486 559 7555	to	7599	503 194 5144	to	5153	608 727 7100	to	7199	625 968 8956	to	8999
486 696 3023	to	3199	503 790 9922	to	9948	608 727 7273	to	7599	627 005 3938	to	3999
488 173 7900	to	7999	504 045 4030	to	4099	608 813 9950	to	9999	627 384 3907	to	4099
488 206 4100	to	4199	504 166 0200	to	0599	609 067 5325	to	5399	627 496 7549	to	7599
488 226 0200	to	0299	504 240 1062	to	1399	609 067 5488	to	5499	627 708 3605	to	3699
488 709 3906	to	3999	504 805 3300	to	3499	609 067 5600	to	5699	627 776 2500	to	2599
488 855 8359	to	8399	505 096 0662	to	0699	609 289 6123	to	6199	628 226 3100	to	3199
489 181 8963	to	8999	505 893 7739	to	7799	609 438 4400	to	4499	628 814 4702	to	4799
489 223 2000	to	2099	505 893 7800	to	7999	609 493 1100	to	1199	628 851 9689	to	9699
489 311 1930	to	1999	506 124 0800	to	0999	609 766 8091	to	8999	629 510 7200	to	7299
489 318 6200	to	6300	506 165 7027	to	0099	609 825 4100	to	4115	629 964 4200	to	4294
489 384 0027	to	0099	506 502 5209	to	5299	609 884 2981	to	2999	630 389 3056	to	3071
489 427 0658	to	0899	506 756 1682	to	1699	609 893 1000	to	1099	630 463 0588	to	0599
489 997 5252	to	5299	506 756 1700	to	1799	610 092 3200	to	3299	631 459 9117	to	9199
490 669 5850	to	6099	506 756 1800	to	1899	610 582 4200	to	4299	631 762 9325	to	9399
490 717 7080	to	7099	506 836 5326	to	5399	611 879 6939	to	6999	632 217 4933	to	4999
490 721 6000	to	6099	508 488 6226	to	6299	612 291 8013	to	8099	632 500 0000	to	640 3999
490 793 1500	to	2099	508 789 8332	to	8399	612 751 5171	to	5199	633 110 4165	to	4199
490 886 8171	to	8199	508 789 8400	to	8499	612 751 5226	to	5299	633 110 4303	to	4499
490 977 9221	to	9240	509 909 0425	to	0435	612 751 6083	to	6099	633 438 6429	to	6599
491 258 8100	to	9099	510 150 2400	to	2499	612 751 6268	to	6299	633 588 7173	to	7182
491 567 1376	to	1399	510 381 3200	to	3299	612 751 6572	to	6599	634 725 0700	to	0799
492 254 4800	to	4899	510 587 9500	to	9599	612 774 2111	to	2199	634 803 3239	to	3299
492 283 5100	to	5199	510 587 9659	to	9699	612 774 2254	to	2299	634 807 2474	to	2499
492 610 6813	to	6899	510 269 9770	to	9999	612 774 2500	to	2599	634 827 5900	to	5999
493 394 5568	to	5599	511 021 5042	to	5099	614 469 0979	to	0999	634 886 3428	to	3499
493 470 2562	to	2599	511 021 5100	to	5199	614 474 3000	to	3099	635 559 3449	to	3499
493 473 7700	to	7799	511 468 1747	to	1799	614 521 3490	to	3499	636 289 6214	to	6299
493 716 2153	to	2199	511 844 0100	to	0199	614 645 1800	to	1899	636 634 8007	to	8042
494 206 2972	to	2999	511 844 0340	to	0399	614 832 1100	to	2099	637 150 1200	to	1299
494 217 3446	to	3999	600 645 3223	to	3299	615 017 7505	to	7599	637 562 5828	to	5899
494 224 0500	to	0599	601 339 1200	to	1399	617 711 6609	to	6699	638 042 1647	to	1699
495 145 0600	to	0699	601 653 5884	to	5899	617 760 5266	to	5299	638 049 4984	to	4999
496 209 7425	to	7499	601 661 7700	to	7799	617 813 3601	to	3699	638 318 1115	to	1199
496 213 8728	to	8799	601 682 5343	to	5399	618 840 9200	to	9299	638 318 1453	to	1499
496 474 5226	to	5248	601 928 1600	to	1699	619 551 7229	to	7299	638 885 0000	to	0299
497 053 8517	to	8699	602 512 2972	to	2999	619 859 3000	to	3099	638 903 4362	to	4373
497 854 8673	to	8699	602 555 2400	to	2799	620 073 9400	to	9499	639 415 1929	to	1999
498 449 8888	to	8899	602 829 7061	to	7099	621 614 7907	to	7930	639 415 2019	to	2099
498 929 8285	to	8499	603 483 9572	to	9599	621 614 7932	to	7999	639 420 6200	to	6299
498 936 5310	to	5399	603 490 7200	to	7299	621 648 8021	to	8199	639 469 3517	to	3799
499 016 5425	to	5499	603 678 7100	to	7199	621 648 8500	to	8599	639 605 2143	to	2199
499 440 8575	to	8899	603 678 7662	to	7699	621 904 8351	to	8599	639 657 8600	to	8799

640 289 7500 to 7599	650 564 1900 to 1999	671 926 5600 to 5799	691 582 8003 to 8099
640 289 7700 to 7999	650 627 4212 to 4299	672 444 2000 to 2999	691 664 1800 to 1999
641 170 4420 to 4499	650 736 2043 to 2099	672 828 3410 to 3499	691 664 2400 to 2499
641 318 3133 to 3199	650 739 1540 to 1699	673 167 5776 to 5799	692 727 9362 to 9399
641 378 6500 to 6999	651 741 4415 to 4499	675 464 3700 to 3799	692 798 1800 to 1899
641 383 8739 to 8799	651 882 2800 to 2899	675 464 4000 to 4199	693 249 0779 to 0799
641 877 3187 to 3299	652 754 6317 to 6399	676 365 5958 to 5999	693 249 0877 to 1699
641 877 3310 to 3399	653 131 4945 to 4999	676 669 1024 to 1099	693 445 0566 to 0999
642 355 8094 to 8199	653 426 3300 to 3399	677 126 6734 to 6799	693 448 8500 to 8999
642 355 8308 to 8999	653 455 4874 to 4899	677 333 9979 to 9999	693 645 9583 to 9599
642 900 0018 to 0099	654 238 0000 to 0399	677 466 1088 to 1099	693 965 4200 to 4299
643 030 6254 to 6299	654 404 3065 to 3092	678 071 4500 to 4799	695 741 2906 to 2999
644 066 0882 to 0899	654 962 2900 to 3199	678 096 7531 to 7599	695 947 8518 to 8599
644 069 0600 to 0699	655 103 5081 to 5199	679 909 2578 to 2599	696 662 8247 to 8299
644 077 7506 to 7699	655 523 2600 to 2999	680 112 9565 to 9599	697 447 8285 to 8296
644 085 8157 to 8199	656 305 2448 to 2499	680 244 0903 to 0999	698 042 4816 to 4899
644 112 9839 to 9899	657 347 4438 to 4999	680 412 6046 to 6099	698 131 2138 to 2157
644 373 9083 to 9099	657 710 8100 to 8999	680 761 6800 to 6899	698 227 0000 to 0099
644 380 1460 to 1499	657 780 0985 to 0999	681 677 0540 to 0699	700 065 2570 to 2599
644 733 4715 to 4799	658 586 1400 to 1499	682 070 1029 to 1099	700 065 4800 to 4899
644 900 9712 to 9799	658 877 8000 to 8199	682 956 6280 to 6299	700 190 3350 to 3359
644 901 0109 to 1299	658 880 8000 to 8199	682 956 6490 to 6599	700 228 6048 to 6099
644 901 1325 to 1399	659 398 7300 to 7399	682 956 6700 to 6799	700 650 0452 to 0499
644 923 6800 to 7799	659 706 8113 to 8199	682 965 1178 to 1199	700 666 1323 to 1349
644 932 4655 to 4699	659 846 7837 to 7899	682 965 1201 to 1299	700 786 9106 to 9142
645 318 7240 to 7499	660 510 4100 to 4199	683 118 2389 to 2399	700 859 0744 to 0758
645 333 1766 to 1799	660 673 0400 to 0599	683 378 2000 to 2099	701 028 6780 to 6899
645 790 8632 to 8699	661 488 5000 to 5099	683 378 2117 to 2299	701 213 3900 to 3999
645 821 0657 to 0699	661 609 9100 to 9199	683 415 1200 to 1499	701 267 2000 to 3999
645 930 7948 to 7999	661 716 9420 to 9499	683 444 8159 to 8199	701 335 7312 to 7399
645 975 0737 to 0762	661 906 6522 to 6599	685 154 7780 to 7789	701 369 2005 to 2050
646 242 6200 to 6299	662 021 8332 to 8399	685 297 7645 to 7699	701 499 2260 to 2299
646 270 7639 to 7799	662 068 0700 to 0899	685 623 5264 to 5299	701 503 2247 to 2299
646 798 4000 to 4999	662 553 0774 to 0799	685 650 9487 to 9499	701 541 2271 to 2299
647 048 7035 to 7099	663 078 7034 to 7099	685 669 4200 to 4299	701 553 6557 to 6599
647 049 2900 to 2999	663 763 5300 to 5399	685 757 8452 to 8499	701 578 7460 to 7469
647 398 8300 to 8399	663 883 7039 to 7499	686 071 2694 to 2799	701 578 7475 to 7499
647 398 8481 to 8499	663 938 9200 to 9299	686 176 3333 to 3354	701 601 3457 to 3499
647 437 3000 to 4999	664 253 8000 to 8499	686 372 3200 to 3299	701 605 5913 to 5999
647 811 2188 to 2199	664 656 3055 to 3099	686 644 5879 to 5899	701 695 3982 to 3999
648 009 6057 to 6099	665 174 6400 to 6499	686 899 1371 to 1399	701 695 4148 to 4199
648 163 5300 to 5499	665 274 8208 to 8299	686 931 7636 to 7699	701 695 4227 to 4299
648 722 5283 to 5299	665 669 5400 to 5499	687 601 0973 to 0999	701 708 1741 to 1799
648 892 3164 to 3199	666 132 8226 to 8299	687 614 6774 to 6799	701 736 3966 to 3999
649 100 3989 to 3999	666 696 2209 to 2299	688 120 9000 to 9999	701 772 0870 to 0899
649 647 0370 to 0399	666 696 2309 to 2399	688 314 3107 to 3191	701 838 2800 to 2899
649 647 0522 to 0599	667 032 9300 to 9399	690 291 1361 to 1371	701 941 0600 to 0699
649 647 5237 to 5399	667 729 5529 to 5599	690 788 2877 to 2899	702 171 1603 to 1699
649 647 9100 to 9299	668 383 8400 to 8699	690 893 5344 to 5399	702 195 5109 to 5199
649 666 7800 to 8299	670 368 3400 to 3499	690 893 5512 to 5599	702 254 9300 to 9399
650 114 7707 to 7719	670 369 7336 to 7399	690 904 1300 to 1599	702 264 7569 to 7599
650 130 3400 to 3599	670 750 7169 to 7199	690 941 6000 to 6199	702 519 0513 to 0524
650 213 0406 to 0499	671 046 6200 to 6399	691 313 6383 to 6399	702 713 1800 to 1809
650 555 1749 to 1799	671 251 5448 to 5499	691 313 6600 to 6699	702 821 5730 to 5799

702 821 5805	to	5899	805 885 8411	to	8499	847 237 7690	to	7699	865 500 4034	to	4099
702 844 6975	to	6994	806 087 1100	to	1499	847 284 2481	to	2499	865 883 6082	to	6099
702 846 6331	to	6399	806 268 9275	to	9299	847 374 7055	to	7065	866 004 3000	to	3999
702 848 3900	to	3999	806 534 3400	to	3477	847 374 7055	to	7065	866 442 4100	to	4899
702 857 7302	to	7499	807 342 3283	to	3399	847 636 5304	to	5399	867 366 9108	to	9118
702 878 0114	to	0199	808 086 7100	to	7199	847 700 5447	to	5499	867 633 7403	to	7499
703 364 1707	to	1799	808 090 3440	to	3499	847 723 7500	to	7599	867 737 5623	to	5699
740 002 7710	to	7719	808 325 5161	to	5699	849 485 3427	to	3499	868 169 4529	to	4599
740 037 6730	to	6800	808 784 8000	to	8299	849 520 9850	to	9899	868 173 8400	to	8599
740 119 2275	to	2284	830 125 0672	to	0699	849 608 1357	to	1399	868 514 9000	to	9099
740 130 6688	to	6698	830 602 5800	to	5999	849 792 2600	to	2699	868 566 9200	to	9299
740 144 2780	to	2795	830 610 3700	to	3799	850 546 1862	to	1899	869 200 0000	to	9999
740 241 9049	to	9099	830 983 3500	to	3599	851 143 6826	to	6844	869 387 1150	to	1199
740 252 9265	to	9294	830 983 3635	to	3699	851 209 9880	to	9899	869 505 3500	to	3599
740 255 1718	to	1799	831 354 1387	to	1399	851 928 9221	to	9299	869 523 7033	to	7099
740 274 2602	to	2619	831 815 8240	to	8299	852 589 6560	to	6599	869 566 6150	to	6167
740 277 0366	to	0392	832 525 3810	to	3899	853 049 3646	to	3699	869 800 0000	to	999 9999
740 332 7658	to	7671	833 159 1884	to	1899	854 304 4089	to	4999	870 054 4814	to	4899
740 348 6641	to	6658	833 456 2567	to	2599	854 529 2200	to	2299	870 491 4812	to	4849
740 351 4790	to	4799	833 566 3015	to	3071	854 532 0000	to	2999	870 536 5820	to	5829
740 374 7416	to	7499	834 130 5200	to	5299	855 001 6204	to	6249	870 541 7167	to	7239
740 470 2420	to	2443	834 316 5444	to	5499	855 319 9364	to	9399	870 575 8155	to	8999
740 514 0300	to	0499	834 354 8747	to	8766	855 361 3390	to	3399	870 589 0485	to	0494
740 523 7432	to	7449	834 354 8824	to	8838	856 226 0490	to	0499	870 691 7060	to	7099
740 535 1555	to	1580	835 269 5700	to	5799	856 656 5800	to	5999	872 028 4850	to	4899
740 557 3570	to	3579	835 496 7303	to	7399	856 752 0200	to	0299	872 029 9306	to	9399
740 650 4104	to	4140	835 539 5200	to	5999	857 111 1352	to	1399	872 078 3709	to	3799
740 684 0620	to	0800	835 813 3015	to	3099	857 279 3450	to	3499	872 100 0445	to	0459
740 701 6105	to	6114	837 672 8967	to	8999	857 843 4000	to	4099	900 556 4178	to	4199
740 705 9790	to	9799	837 784 3282	to	3299	858 124 7644	to	7699	900 845 0044	to	0099
740 726 6400	to	6500	838 176 8377	to	8399	858 756 3111	to	3299	900 936 0217	to	0299
740 748 8319	to	8329	838 518 1257	to	1299	859 063 8200	to	8699	900 936 0435	to	0499
740 765 3306	to	3399	839 718 8257	to	8299	859 190 0600	to	0644	901 058 5255	to	5280
740 774 8434	to	8499	840 323 0600	to	0699	859 437 5538	to	5599	901 273 1082	to	1099
740 779 4259	to	4299	840 875 6235	to	6299	859 811 2888	to	2899	901 287 5143	to	5199
740 786 1885	to	1899	840 910 0900	to	0999	859 855 8873	to	8999	901 291 2789	to	2799
740 790 5989	to	5999	841 349 5000	to	5099	860 240 8520	to	8599	901 525 7122	to	7199
740 803 4870	to	4879	841 805 7747	to	7899	860 275 3900	to	3999	902 089 1253	to	1299
740 820 4854	to	7836	841 805 7944	to	8099	860 518 9629	to	9699	902 198 9769	to	9799
740 827 7578	to	7594	842 226 0685	to	0695	860 600 0021	to	0999	902 948 1269	to	1299
740 917 7490	to	7499	842 685 4600	to	4699	861 158 2350	to	2599	902 985 0833	to	0899
740 918 5531	to	5549	842 685 4742	to	4999	861 367 5400	to	5499	903 370 6934	to	6999
741 037 8528	to	8551	842 860 0300	to	0399	861 637 6010	to	6099	904 600 6523	to	6599
742 030 6135	to	6149	842 898 5582	to	5599	861 979 7292	to	7499	904 892 0378	to	0399
742 033 2663	to	2674	843 062 7100	to	7199	862 216 6100	to	6199	904 892 0648	to	1299
742 040 3300	to	3309	843 077 6288	to	6299	862 263 9213	to	9299	905 056 2216	to	2299
742 151 5000	to	5014	843 077 6378	to	6399	862 271 0800	to	0999	905 510 6647	to	6799
742 191 4640	to	4649	843 758 5769	to	5778	862 271 5000	to	5099	905 510 6900	to	7099
742 192 5210	to	5224	843 786 2554	to	2699	863 871 5138	to	5199	905 794 0000	to	0199
742 222 9200	to	9210	845 656 8165	to	8199	863 949 5300	to	5399	905 794 0288	to	0299
742 228 9660	to	9669	845 727 2100	to	2199	864 088 8200	to	8299	905 873 6900	to	6999
742 247 6980	to	6989	845 746 2618	to	2635	864 426 3972	to	3999	905 873 7100	to	7299
742 290 0936	to	0950	846 390 7531	to	7599	864 520 6117	to	6136	905 880 8900	to	8999
742 302 7600	to	7699	846 918 0572	to	0599	865 151 0526	to	0599	905 889 7100	to	7199

906 158 1508 to 1599	913 709 2429 to 2499	919 889 5178 to 5199	925 336 2300 to 2399
906 558 8812 to 8899	913 818 3501 to 3999	919 889 5030 to 5070	926 432 5907 to 5999
906 982 2214 to 2299	914 063 4300 to 4399	919 889 5090 to 5099	926 436 3600 to 3699
907 725 8500 to 8599	914 346 7621 to 7644	919 915 2774 to 2787	927 765 6257 to 6299
907 815 0216 to 0257	914 453 1366 to 1399	920 155 4662 to 4687	928 197 8100 to 8199
908 622 4225 to 4235	914 529 6185 to 6299	920 309 9039 to 9199	928 197 8283 to 8299
908 936 9254 to 9299	914 896 4658 to 4699	920 771 5321 to 5399	928 856 2059 to 2068
909 066 4494 to 7499	915 187 8774 to 8779	920 857 5500 to 5899	930 078 5800 to 5899
909 067 7400 to 7499	915 300 2783 to 2799	920 864 3480 to 3499	930 219 1722 to 1799
909 100 1787 to 1799	915 546 6822 to 6999	920 963 4567 to 4599	930 335 7810 to 7819
909 100 1900 to 2099	915 646 5183 to 5199	921 333 7400 to 7499	931 097 9259 to 9299
909 355 0422 to 0499	915 671 3963 to 3980	921 477 3762 to 3799	931 156 1502 to 1579
909 568 8900 to 9099	915 671 3982 to 3999	922 278 1048 to 1399	931 156 1600 to 1625
909 568 9300 to 9499	915 675 2217 to 2299	922 280 2019 to 2099	931 156 1671 to 1699
909 725 7307 to 7399	916 440 3377 to 3399	922 280 2233 to 2299	932 506 6400 to 6599
909 833 0947 to 0999	916 670 6352 to 6399	922 773 0459 to 0499	932 732 1796 to 1799
910 219 8631 to 8699	916 682 5300 to 5399	923 032 7000 to 7399	932 827 9026 to 9099
910 265 1100 to 1199	916 694 1414 to 1499	923 045 3630 to 3699	932 957 2300 to 2399
910 471 7273 to 7299	916 703 0802 to 0821	923 484 3600 to 3699	933 060 6160 to 6189
910 536 2505 to 2599	917 089 0709 to 0799	923 493 9403 to 9599	933 387 2541 to 2561
910 958 7499 to 7599	917 089 0842 to 0899	923 493 9681 to 9699	933 760 3609 to 4199
911 140 1000 to 2199	917 216 2928 to 2999	923 604 4424 to 4499	933 894 0928 to 0999
911 245 2545 to 2599	917 370 6300 to 6499	923 810 7800 to 8299	934 018 2729 to 2741
911 268 9077 to 9099	917 486 4900 to 4999	924 252 1200 to 1299	934 180 0300 to 0399
911 400 8948 to 8999	918 460 0602 to 0699	924 252 1400 to 1499	934 236 3954 to 3999
911 508 1620 to 1799	918 951 7231 to 7299	924 533 0711 to 0799	934 622 8717 to 8999
911 509 9310 to 9399	919 519 2786 to 2799	924 533 2343 to 2399	935 216 0312 to 0399
911 523 3000 to 3999	919 536 0770 to 0799	924 533 2428 to 2499	935 843 2202 to 2247
912 057 9922 to 9999	919 814 3095 to 3199	924 685 1957 to 1999	936 024 8889 to 8899
912 882 0563 to 0899	919 889 5110 to 5134	924 946 6300 to 6699	936 339 4455 to 4499
913 605 2218 to 2299	919 889 5137 to 5176	925 333 5900 to 6099	

Missing, Lost, or Stolen Canadian Money Order Forms

Do Not Cash — Upon Receipt, Notify Local Postal Inspectors

This listing will be provided to all Postal Service™ employees responsible for accepting and cashing postal money orders. Destroy all interim notices when the numbers listed appear in the *Postal Bulletin*. The new money

order serial numbers consist of the first 9 digits. The 10th digit is a check digit only.

Do not cash outdated money orders **104 151 601 to 692 600 000**. Advise holders to send invalid money orders To Canada Post Corporation, Ottawa, Canada K1A 0B1. Check for altered dollar amounts by holding money orders to the light.

719 869 731	to	9 760	726 563 701	to	4 060	732 541 605	to	1 620	739 219 381	to	9 440
720 227 871	to	7 930	726 599 371	to	9 460	732 572 221	to	2 490	739 740 151	to	0 180
720 227 949	to	7 960	726 626 356	to	6 370	732 586 479	to	6 710	739 793 491	to	3 520
720 368 543	to	8 570	727 182 271	to	2 510	732 994 037	to	4 080	739 793 527	to	3 550
720 392 151	to	2 570	727 416 181	to	6 240	733 163 449	to	3 460	739 942 621	to	2 650
720 556 491	to	6 640	727 481 431	to	1 460	733 297 171	to	7 290	739 999 231	to	9 320
720 558 621	to	8 650	727 749 241	to	9 780	733 446 631	to	7 110	740 011 517	to	1 530
720 575 361	to	5 570	728 382 331	to	2 480	733 474 665	to	4 770	740 030 701	to	0 970
720 590 152	to	0 179	728 702 338	to	2 400	733 704 482	to	4 570	740 261 740	to	1 820
721 638 331	to	9 170	728 915 371	to	5 850	733 751 041	to	1 130	740 265 811	to	6 290
721 815 391	to	5 420	728 953 141	to	3 410	734 009 101	to	9 130	740 299 111	to	9 170
721 969 713	to	9 740	728 954 280	to	4 310	734 290 759	to	0 770	740 299 231	to	9 260
722 072 137	to	2 160	729 169 081	to	9 140	734 389 273	to	9 290	740 329 266	to	9 320
722 378 265	to	8 280	729 363 841	to	3 870	734 440 031	to	0 111	740 889 081	to	9 090
722 413 990	to	4 004	729 682 891	to	3 190	734 797 201	to	7 320	741 010 421	to	0 530
722 764 948	to	4 980	729 838 940	to	9 070	734 939 611	to	9 640	741 113 041	to	3 370
722 825 840	to	5 889	729 839 101	to	9 130	734 950 111	to	0 170	741 373 891	to	4 340
723 153 841	to	3 850	730 077 683	to	7 840	735 120 331	to	0 840	741 452 369	to	2 490
723 237 616	to	7 630	730 109 847	to	9 880	735 283 008	to	3 020	741 492 991	to	3 140
723 331 081	to	1 110	730 373 761	to	3 850	735 293 131	to	3 220	741 553 460	to	3 470
723 496 443	to	6 470	730 501 951	to	2 130	735 635 010	to	5 040	741 764 431	to	4 520
723 967 291	to	7 320	730 519 379	to	9 470	735 783 961	to	3 990	741 764 431	to	4 520
724 655 196	to	5 340	730 569 278	to	9 360	735 803 401	to	3 430	742 178 834	to	8 880
724 711 441	to	1 500	730 711 711	to	1 740	736 005 420	to	5 440	742 325 500	to	5 520
724 711 538	to	1 560	730 722 991	to	3 230	736 366 021	to	6 110	742 325 668	to	5 700
724 793 221	to	3 250	730 845 970	to	5 990	736 624 456	to	4 500	742 408 771	to	8 830
724 908 109	to	8 120	730 888 291	to	8 320	736 670 851	to	1 060	742 512 120	to	2 150
724 937 461	to	7 670	730 927 591	to	7 680	736 767 061	to	7 090	742 684 849	to	4 890
725 163 118	to	3 151	731 307 914	to	7 930	736 767 093	to	7 120	742 839 553	to	9 630
725 202 735	to	2 750	731 402 431	to	2 460	736 982 191	to	2 370	742 913 668	to	3 700
725 398 591	to	8 800	731 407 232	to	7 320	736 982 551	to	2 730	742 917 287	to	7 296
725 464 591	to	4 920	731 588 301	to	8 340	737 110 141	to	0 170	742 921 891	to	1 980
725 475 321	to	5 330	731 767 273	to	7 320	737 185 501	to	5 710	742 983 631	to	3 810
725 711 057	to	1 070	731 781 061	to	1 120	737 317 321	to	7 350	743 020 021	to	0 170
725 738 581	to	8 730	731 837 821	to	7 910	737 517 781	to	7 840	743 206 491	to	6 500
725 981 311	to	1 430	731 841 377	to	1 450	737 628 181	to	8 210	743 235 992	to	6 050
725 987 835	to	7 880	732 018 481	to	8 600	737 634 258	to	4 270	743 940 631	to	0 900
726 060 811	to	0 900	732 067 972	to	8 370	738 361 971	to	1 980	743 978 011	to	8 070
726 391 970	to	2 520	732 188 649	to	8 670	738 447 601	to	7 660	744 234 751	to	4 780
726 484 771	to	4 800	732 193 460	to	3 470	738 648 355	to	8 450	744 499 591	to	9 680
726 493 351	to	5 300	732 201 241	to	1 390	738 849 811	to	9 900	744 626 901	to	6 910
726 504 031	to	4 063	732 220 431	to	0 440	738 892 270	to	2 290	745 388 794	to	8 910
726 504 070	to	4 090	732 355 201	to	5 380	738 997 259	to	7 380	746 446 806	to	6 820
726 504 331	to	4 390	732 472 320	to	2 560	739 161 451	to	1 540	746 818 351	to	8 410

747 245 266	to	5 280	756 371 565	to	1 580	764 526 241	to	6 330	773 348 739	to	8 940
747 364 813	to	4 830	756 876 031	to	6 120	764 601 421	to	1 600	773 348 739	to	8 940
747 501 434	to	1 450	756 876 151	to	6 240	764 650 231	to	0 470	773 575 891	to	5 950
747 739 891	to	0 070	756 970 129	to	0 140	764 984 371	to	4 850	773 852 971	to	3 030
748 148 649	to	8 760	757 059 613	to	9 630	765 003 667	to	3 680	775 373 449	to	3 460
748 259 960	to	9 970	757 078 540	to	8 560	765 042 517	to	2 540	789 257 191	to	7 250
748 565 162	to	5 280	757 086 209	to	6 240	765 194 728	to	4 970	790 448 020	to	8 460
748 874 988	to	5 030	757 240 591	to	0 650	765 387 365	to	7 450	790 597 485	to	7 530
749 137 381	to	7 410	757 277 371	to	7 700	765 541 801	to	2 100	790 911 883	to	1 900
749 190 192	to	0 210	757 291 591	to	2 730	765 638 461	to	8 970	791 057 441	to	7 550
749 685 421	to	5 450	757 964 251	to	4 280	765 647 101	to	7 190	791 239 081	to	9 290
749 846 791	to	6 850	758 067 001	to	7 090	765 813 781	to	4 029	791 374 483	to	4 500
749 993 131	to	3 580	758 105 221	to	5 250	765 879 314	to	9 390	791 387 971	to	8 030
750 071 587	to	1 610	758 324 941	to	5 000	765 954 001	to	4 030	791 447 521	to	7 850
750 408 167	to	8 183	758 593 628	to	3 650	766 120 286	to	0 320	791 451 151	to	1 240
750 438 421	to	8 501	758 709 038	to	9 060	766 125 716	to	5 750	791 500 009	to	0 470
750 743 911	to	4 030	758 744 101	to	4 160	766 158 824	to	8 840	791 771 431	to	1 490
750 779 118	to	9 400	758 850 883	to	0 900	766 388 433	to	8 460	792 004 293	to	4 320
750 910 981	to	1 010	758 860 951	to	1 550	766 509 421	to	9 660	792 018 379	to	8 420
750 960 841	to	0 900	759 152 851	to	2 880	766 572 901	to	3 020	792 070 621	to	0 740
751 296 211	to	6 240	759 740 941	to	1 090	766 748 500	to	8 521	792 145 211	to	5 230
751 539 121	to	9 180	760 004 596	to	4 610	767 024 341	to	4 370	792 391 381	to	1 620
751 541 311	to	1 790	760 118 191	to	8 250	767 326 471	to	6 590	792 452 779	to	2 790
751 757 641	to	7 700	760 155 001	to	5 090	767 332 561	to	2 950	792 772 728	to	2 770
751 936 951	to	7 010	760 378 002	to	8 020	768 009 841	to	9 960	792 903 511	to	3 990
751 951 861	to	1 890	760 692 722	to	2 749	768 011 489	to	1 520	793 282 518	to	2 533
751 999 021	to	9 110	761 055 460	to	5 480	768 177 980	to	7 990	794 041 831	to	2 040
752 139 516	to	9 570	761 169 781	to	9 810	768 391 081	to	1 170	794 397 709	to	7 780
752 182 892	to	2 950	761 504 941	to	5 120	768 661 569	to	1 650	794 581 741	to	2 040
752 206 861	to	7 100	761 516 836	to	6 910	769 000 051	to	0 080	794 592 122	to	2 150
752 295 241	to	5 600	761 613 588	to	3 600	769 050 841	to	0 900	795 032 251	to	2 340
752 731 351	to	1 410	761 688 631	to	8 690	769 159 081	to	9 178	795 796 291	to	6 350
752 767 441	to	7 470	761 805 199	to	5 240	769 737 496	to	7 510	796 070 139	to	0 160
753 008 941	to	9 030	761 826 106	to	6 120	769 778 491	to	8 730	796 143 151	to	3 630
753 194 311	to	4 370	761 881 171	to	1 560	769 827 331	to	7 450	796 159 725	to	9 740
753 620 378	to	0 400	761 975 641	to	5 670	770 216 071	to	6 100	796 169 306	to	9 340
754 013 917	to	3 940	761 975 886	to	5 895	770 723 281	to	3 400	796 373 406	to	3 430
754 161 061	to	1 120	762 304 144	to	4 170	770 790 451	to	0 480	796 602 961	to	3 050
754 358 445	to	8 610	762 324 931	to	4 960	770 915 150	to	5 490	796 708 441	to	8 500
754 410 451	to	0 660	762 439 261	to	9 290	771 455 551	to	5 610	796 886 281	to	6 430
754 438 393	to	8 410	762 524 158	to	4 220	771 609 661	to	9 690	796 901 701	to	2 000
754 493 109	to	3 130	762 584 872	to	4 970	771 932 551	to	2 580	796 975 466	to	5 590
754 664 182	to	4 220	762 593 431	to	3 460	772 057 224	to	7 440	797 272 917	to	2 950
754 816 377	to	6 470	763 155 160	to	5 180	772 162 660	to	3 070	797 519 441	to	9 460
755 487 421	to	7 600	763 178 631	to	8 660	772 718 615	to	8 640	797 519 731	to	0 240
755 592 901	to	3 140	763 506 001	to	6 060	772 940 140	to	0 160	797 535 181	to	5 330
755 790 020	to	0 030	763 522 141	to	2 470	772 970 886	to	0 940	797 646 151	to	6 180
755 791 730	to	1 800	763 717 694	to	7 800	773 009 419	to	9 430	798 040 053	to	0 080
755 926 951	to	7 070	763 826 461	to	6 520	773 112 031	to	2 060	798 055 813	to	5 830
755 934 332	to	4 510	763 900 460	to	0 471	773 125 387	to	5 410	798 055 891	to	5 950
755 957 701	to	8 000	763 900 479	to	0 530	773 179 320	to	9 410	798 326 371	to	6 520
755 962 981	to	3 280	763 917 271	to	7 750	773 202 989	to	3 140	798 339 167	to	9 210
756 035 371	to	5 490	764 125 801	to	5 860	773 208 991	to	9 290	798 562 411	to	2 440
756 301 257	to	1 290	764 284 525	to	4 560	773 231 311	to	1 340	798 632 461	to	2 490

798 807 151	to 7 510	810 323 734	to 3 760	817 763 881	to 4 060	825 140 397	to 0 460
798 944 761	to 5 030	810 367 116	to 7 140	818 330 562	to 0 610	825 409 651	to 9 680
799 118 616	to 8 640	810 526 351	to 6 500	818 459 641	to 9 670	825 472 171	to 2 200
799 133 191	to 3 220	810 806 911	to 6 940	818 926 273	to 6 320	826 042 898	to 2 920
799 177 626	to 7 650	810 807 211	to 7 240	818 950 351	to 0 380	826 226 644	to 6 670
799 854 751	to 5 200	811 423 021	to 3 110	818 962 492	to 2 530	826 582 951	to 3 430
800 044 320	to 4 410	811 517 221	to 7 239	819 032 341	to 2 730	826 720 201	to 0 230
800 211 901	to 2 440	811 721 101	to 1 130	819 127 054	to 7 080	827 005 671	to 5 830
800 427 530	to 7 540	812 025 721	to 5 900	819 278 540	to 8 670	827 287 861	to 7 950
800 872 741	to 2 830	812 093 073	to 3 130	819 544 681	to 4 740	827 291 502	to 1 520
801 349 801	to 9 830	812 100 821	to 0 840	819 928 441	to 8 650	827 575 381	to 5 470
801 676 681	to 7 100	812 465 251	to 5 610	820 034 406	to 4 430	827 609 085	to 9 100
802 967 821	to 7 940	812 918 341	to 8 670	820 070 761	to 1 540	827 619 811	to 9 840
803 217 601	to 7 780	812 918 701	to 8 760	820 191 342	to 1 360	827 883 511	to 3 600
803 729 731	to 9 850	813 050 491	to 0 520	820 274 856	to 4 880	828 160 441	to 0 530
803 747 402	to 7 520	813 073 171	to 3 200	820 600 171	to 0 230	828 376 201	to 6 260
804 138 181	to 8 420	813 398 476	to 8 550	821 172 241	to 2 360	828 441 602	to 1 630
804 428 224	to 8 250	813 713 971	to 4 000	821 229 661	to 9 720	828 539 316	to 9 340
804 682 411	to 2 710	813 858 121	to 8 150	821 229 743	to 9 780	828 539 341	to 9 370
805 272 525	to 2 540	814 789 330	to 9 349	821 903 731	to 3 910	828 732 331	to 2 390
805 523 445	to 3 460	814 984 656	to 4 680	821 927 841	to 7 850	828 807 781	to 7 840
805 745 704	to 5 730	815 016 020	to 6 030	822 505 801	to 5 830	828 830 952	to 0 963
806 452 907	to 2 980	815 199 410	to 9 420	822 703 442	to 3 470	828 939 781	to 0 050
806 744 781	to 4 850	815 240 491	to 0 520	822 900 991	to 1 020	829 002 721	to 2 870
806 982 181	to 2 300	815 755 591	to 5 620	822 925 951	to 6 100	829 005 301	to 5 540
807 764 791	to 4 910	815 755 622	to 5 650	823 284 931	to 4 990	829 080 241	to 0 330
808 089 931	to 9 960	815 806 381	to 6 680	823 293 031	to 3 210	829 160 986	to 1 000
808 656 423	to 6 450	816 126 834	to 6 870	823 556 011	to 6 100	829 176 841	to 6 930
808 753 771	to 3 800	816 156 721	to 6 780	824 078 341	to 8 370	829 471 561	to 1 590
809 189 001	to 9 010	816 580 903	to 0 920	824 156 325	to 6 340	829 561 065	to 1 080
809 886 879	to 6 930	816 945 571	to 5 600	824 511 252	to 1 270	829 566 481	to 6 510
809 890 489	to 0 500	817 253 011	to 3 280	824 588 281	to 8 370	829 569 931	to 9 960

— Criminal Investigations Group,
Postal Inspection Service, 3-16-17

Verifying U.S. Postal Service Money Orders

Follow these steps to cash a Postal Service™ money order:

1. Check that the amount does not exceed the legal limit: \$1,000 for domestic, and \$700 for international postal money orders.
2. Check that the proper security features are present:
 - When held to the light, a watermark of Benjamin Franklin is repeated from top to bottom on the left side.
 - When held to the light, a dark line (security thread) runs from top to bottom with the word “USPS” repeated.
 - There should be no discoloration around the dollar amounts, which might indicate the amounts were changed.

These appear in Postal Service Notice 299, *U.S. Postal Money Order Reference Card*, or online at <https://www.usps.com/shop/money-orders.htm>.

3. If the money order seems suspicious, call the U.S. Postal Service Money Order Verification System at 866-459-7822.

Please provide this information to local banks and retailers, as they also receive Postal Service money orders for cashing.

— *Retail and Customer Service Operations, 3-16-17*

Counterfeit Canadian Money Order Forms

Do Not Cash

To be posted and used by retail window employees. As directed, destroy previous notices. Destroy all interim notices when the numbers listed appear in the *Postal Bulletin*.

671,819,086	683,594,542	687,262,503
676,612,640	684,683,610	687,262,525
677,891,039	686,619,878	687,262,526
678,282,493	686,619,886	687,287,578
678,916,031	686,619,887	687,287,581
679,552,215	686,794,382	687,287,582
679,694,334	686,794,426	694,063,898
679,751,983	686,794,427	694,063,899
679,800,207	686,794,431	694,063,980
681,130,536	687,262,502	701,321,725
681,844,376		

— *Criminal Investigations Group,
Postal Inspection Service, 3-16-17*

Toll-Free Number Available to Verify Canadian Money Orders

The Canada Post Corporation is now providing a toll-free number that cashing agents can call to verify the validity of Canadian Postal Money Orders. The number is 800-563-0444.

This toll-free number is printed on the back of the Canadian Postal Money Orders.

— *Criminal Investigations Group,
Postal Inspection Service, 3-16-17*

Other Information

Overseas Military/Diplomatic Mail

Mail addressed to military and diplomatic post offices overseas is subject to certain conditions or restrictions of mailing regarding content, preparation, and handling. The APO/FPO/DPO table below outlines these conditions by APO/FPO/DPO ZIP Codes™ through the use of footnoted mailing restrictions codes (see the [Restrictions](#) page following the table).

Acceptance clerks must use the table with the RSS terminal to determine which APO/FPO/DPO ZIP Codes are active and which conditions of mailing apply. Send inquiries to the Military Postal Service Agency at <https://amps.usps.gov/jy2/frm.htm>.

The entries under “Changes” appear in bold in the APO/FPO/DPO table starting below.

Changes

APO/FPO/DPO	Action	Effective Date	See Restrictions
FPO AE 09747	Close	03/16/2017	

We have eliminated “Not Active” entries from the table below to save space and paper.

APO/FPO/DPO Table

APO/ FPO/ DPO	See Restrictions	APO/ FPO/ DPO	See Restrictions	APO/ FPO/ DPO	See Restrictions	APO/ FPO/ DPO	See Restrictions
09001	B-C-D-E3-F1-F3-H-H1-I3-J-L-M-R-R1-S-T-V-X-Z-Z1	09055	B-C-D-E-F-H-M-R-R1-U-V	09143	B-C-D-E-F3-H-M-R-S-U	09304	A-B-C-C1-D-E2-F-F1-F3-H1-J-L-M-N-R-R1-T-V-Z1
09003	B-C-D-E-F3-H-M-P-R-S-U	09060	B-C-D-E-F1-F3-H-M-R-S-U-Z1	09154	B-C-D-E-F3-H-M-R-S-U	09305	A-B-C1-E2-F-F1-H1-I3-M-N-R-R1-T-V-Z-Z1
09004	B-C-D-E-F3-H-M-R-S-U	09067	B-C-D-E-F3-H-M-R-S-U	09160	B-C-D-F-F1-F3-H-J-L-M-N-R-R1-T-U-V-Z1	09306	A-B-C1-E2-F-F1-F3-H1-R-R1-U2-V-Z1
09005	B-C-D-E-F3-H-M-P-R-S-U	09068	B-C-D-E-H-U-Z1	09161	A-B-C-E1-F-F1-M-N-R-R1-S-V	09307	B-N-V-Z1
09006	B-C-D-E-F3-H-M-R-S-U	09069	A-B-C-D-E-H-N-U-V	09172	B-C-D-E-F3-H-M-R-S-U	09308	A-B-C1-E2-F-F1-F3-H1-I3-M-N-R-R1-T-V-Z-Z1
09008	B-C-F-F3-R-U-V-Z1	09079	B-C-D-E-F3-H-M-R-S-U	09173	B-C-D-E-F3-H-M-R-S-U	09309	A-B-C-C1-E2-F-H1-M-N-R-V-Z1
09009	B-C-D-E-F3-H-M-R-S-U-Z1	09090	B-C-D-E-F3-H-M-R-S-U	09177	B-C-D-E-F3-H-M-R-S-U	09310	A-B-C1-E2-F-F1-F3-H1-I3-J-L-M-N-R-R1-T-U4-V-Z-Z1
09011	B-C-D-E-F3-H-M-R-S-U	09094	B-C-D-F3-H-M-P-R-S-Z1	09180	B-C-D-F3-H-M-R-S-U	09311	A-B-C1-E2-F-F1-F3-H1-I3-J-L-M-N-R-R1-T-U4-V-Z-Z1
09012	B-C-D-E-F3-H-M-R-S-U-Z1	09095	B-C-D-E-H-M-R-U	09186	B-C-D-E-F3-H-M-P-R-S-U	09312	A-B-C1-E2-F-F1-F3-H1-I3-J-L-M-N-R-R1-T-U-U4-V-Z-Z1
09013	B-C-D-E-F-F1-H-M-R-U-Z1	09096	B-C-D-E-F3-H-M-R-S-U	09203	A-B-C-C1-F-F1-F3-I3-J-L-M-N-R-R1-T-V-X-Z-Z1	09313	A-B-C-C1-E2-F-F1-F2-H1-R-R1-V-Z1
09014	B-C-D-E-F3-H-M-P-R-S-U	09103	B-C-D-E-H-U	09204	B-C-F3-M-N-R-S-V-Z1	09315	A-B-C1-E2-F-F3-N-R-R1-V-Z1
09016	B-C-D-E-F1-H-M-R-S-U	09104	B-C-D-F3-H-M-R-S-U-Z1	09211	B-C-D-E-F3-H-M-P-R-S-U	09316	A-B-C1-E2-F-F1-F3-H1-I3-M-N-R-R1-T-V-Z-Z1
09017	B-C-D-E-F1-H-M-R-S-U	09107	B-C-D-E-F3-H-M-R-S-U	09213	B-C-D-F-F1-F3-H-J-L-M-N-R-R1-T-U-V-Z1	09319	A-B-C-C1-E2-F-F1-F2-H1-R-R1-U2-V-Z1
09018	A-B-F-H-N-Q-V-Z-Z1	09112	B-C-D-E-F3-H-M-R-S-U	09214	B-C-D-E-F3-H-M-R-S-U-Z1	09320	A-B-C1-E2-F-F3-H1-M-N-R-R1-V-Z1
09020	B-C-D-E-F3-H-M-R-S-U	09114	B-C-D-E-F3-H-M-R-S-U	09227	B-C-D-E-F3-H-M-R-S-U	09321	A-B-C1-E2-F-H1-M-N-R-R1-V-Z1
09021	B-C-D-E-F3-H-M-R-S-U-Z1	09123	B-C-D-E-F3-H-M-R-S-U-Z1	09250	B-C-D-E-F3-H-M-R-S-U	09330	A-B-C1-E2-F-F1-F3-H1-M-R-R1-V-Z1
09022	B-C-D-E-F1-H-M-R-S-U	09125	A-B-C-F-F1-F3-H-N-O-R-R1-S-V-V1	09261	B-C-D-E-F3-H-M-R-S-U-V-Z1	09333	A-B-C1-E2-F-F1-F3-H1-I3-M-N-R-R1-V-Z-Z1
09034	B-C-D-E-F3-H-M-R-S-U	09126	B-C-D-F3-H-M-P-R-S-Z1	09263	B-C-D-E-F3-H-M-R-S-U	09337	A-B-C1-E2-F-F1-F3-H1-M-R-R1-V-Z1
09044	B-C-D-F1-H-U	09128	B-C-D-E-F3-H-M-R-S-U	09264	B-C-D-E-F3-H-M-R-S-U		
09046	B-C-D-E-F3-H-M-R-S-U	09131	B-C-D-E-F3-H-M-R-S-U	09265	B-C-D-F-F1-H-J-L-M-N-R-T-U-V-Z1		
09049	B-C-D-E-F3-H-M-R-S-U	09136	B-C-D-E-F1-F3-H-M-P-R-S-U	09301	A-B-C1-E2-F-F1-F3-H1-I3-J-L-M-N-R-R1-T-U4-V-Z-Z1		
09053	B-C-D-E-F3-H-M-R-S-U	09138	B-C-D-F3-H-M-R-S-U	09302	A-B-C1-F-F1-H-M-N-V-Z-Z1		
09054	B-C-D-E-F3-H-M-R-S-U	09140	B-C-D-E-F3-H-M-R-S-U				
		09142	B-C-D-E-F3-H-M-R-S-U				

APO/ FPO/ DPO	See Restrictions	APO/ FPO/ DPO	See Restrictions	APO/ FPO/ DPO	See Restrictions	APO/ FPO/ DPO	See Restrictions
09340	A-B-C1-F-H-N-R-V	09508	B-F-F1-R-R1-V	09592	B-F-F1-R-R1-V	09702	B-C-C1-F1-M-R-R1-U
09343	A-B-C1-F-M-N-V-Z1	09509	B-F-F1-R-R1-V	09593	B-F-F1-F3-R-S-V	09703	B-C-D-F1-H-U
09347	A-B-C1-E2-F-H1-M-R-R1-V-Z1	09510	A-B-C1-E2-F-H1-M-R-R1-V-Z1	09594	B-F-F1-R-R1-V	09704	B-C-O-V-V1
09348	A-B-C1-E2-F-F1-F3-H1-I3-M-N-R-R1-T-V-Z1	09511	B-F-F1-R-R1-V	09595	B-F-F1-R-R1-V	09705	B-C-C1-F1-M-R-R1-U
09351	A-B-C1-E2-E3-F-F1-F3-H-H1-I3-M-N-R-R1-S-T-V-X-Z-Z1	09513	B-F-F1-R-R1-V	09596	B-F-F1-R-R1-V	09706	B-C-F3-M-N-R-S-U-V-Z1
09352	A-B-C1-E2-F-F3-H1-M-R-R1-V-Z1	09517	B-F-F1-R-R1-V	09599	B-F-F1-R-R1-V	09707	B-C-F-F1-F3-J-L-M-N-R-R1-T-V-Z1
09354	A-B-C1-E2-F-F3-H1-M-R-R1-V-Z1	09520	B-F-F1-R-R1-V	09600	B-C-F-F1-F3-R-U-Z1	09708	B-C-C1-F1-M-R-R1-U
09355	A-B-C1-E2-F-F3-H1-M-R-R1-V-Z1	09522	B-V	09601	B-B2-E1-F-F1-F3-I3-J-L-N-R-R1-S-T-V-X-Z-Z1	09709	B-B2-C1-E2-F-F1-F3-H1-J-L-N-R-R1-T-V-Z1
09356	A-B-C1-E2-F-F3-H1-M-N-R-V-Z1	09523	B-F-F1-R-R1-V	09602	B-C-F-F1-N-R-U-V	09710	B-C-C1-F-F1-J-L-M-N-R-R1-T-U-V-Z1
09357	A-B-C1-E2-F-F3-H1-M-R-V-Z1	09524	B-F-F1-R-R1-V	09603	B-C-F-F1-F3-R-S-U-V-Z1	09711	A-B-F-F1-F3-N-R-R1-S-V-Z1
09363	A-B-C1-E2-F-F3-H1-M-R-V-Z1	09532	B-F-F1-R-R1-V	09604	B-C-F-F1-F3-P-R-S-U-V-Z1	09712	A-B-F-F3-H-R-U-V-Z1
09365	A-B-C-C1-E2-F-F3-H1-M-N-R-V-Z1	09534	B-F-F1-R-R1-V	09605	B-C-D-H-M-R-U-V	09714	B-C-C1-F1-M-R-R1-U
09366	A-B-C1-E2-F-F1-F3-H1-M-R-R1-V-Z1	09543	B-F-F1-R-R1-V	09606	B-C-D-H-M-R-U-V	09715	B-F-F1-J-L-M-N-R-T-V-Z1
09378	A-B-C1-E2-F-F1-F3-H1-I3-M-N-R-R1-T-V-Z1	09550	B-F-F1-R-R1-V	09607	A-B-C-F-F1-F3-M-N-R-R1-U-U3-V-W-Z1	09716	B-C-F-F1-F3-J-L-M-N-R-R1-T-V-Z1
09381	A-B-C1-E2-F-F1-F3-H1-I3-M-N-R-R1-T-V-Z1	09554	B-F-F1-R-R1-V	09608	B-C-F-F3-N-R-U-V-Z1	09717	A-B-F3-M-R-S-V-W-Z1
09403	B-C-C1-F3-M-R-S-U-Z1	09556	B-F-F1-R-R1-V	09609	B-C-F-F3-R-U-Z1	09718	B-F-F1-J-L-M-N-R-T-U-V-Z1
09421	B-C-C1-F3-M-R-S-U-Z1	09564	B-F-F1-R-R1-V	09610	B-C-F-F1-F3-M-R-S-U-V-Z1	09719	B-C-D-F3-M-R-S-U-V-Z1
09447	B-C-C1-F3-M-R-S-U-V-Z1	09565	B-F-F1-R-R1-V	09613	B-C-F-N-U-V	09720	B-M-R-S-U-V-Z1
09454	B-C-C1-F3-M-R-S-U-V-Z1	09566	B-E2-E3-F-F1-F3-R-R1-V-Z1	09617	B-C-F-F3-R-U-Z1	09722	A-B-F-H-N-Q-V-Z-Z1
09459	B-C-C1-F3-M-R-S-U-Z1	09567	B-E2-E3-F-F1-F3-R-R1-V-Z1	09618	B-C-F-F3-R-U-Z1	09723	B-F-F1-F3-J-L-M-N-R-R1-T-V-Z1
09461	B-C-C1-F3-M-P-R-S-U-Z1	09568	B-V	09620	B-C-F-R-U-Z1	09724	B-C-C1-F1-M-R-R1-U
09463	B-C-C1-F3-M-R-S-U-Z1	09569	B-E2-E3-F-F1-F3-R-R1-V-Z1	09621	B-C-F-F3-R-U-Z1	09725	A-B-F-F3-H-N-O-Q-S-V-V1-Z-Z1
09464	B-C-C1-F3-R-S-U-Z1	09570	B-F-F1-R-R1-V	09622	B-C-F-F3-R-U-Z1	09726	B-F-F1-J-L-M-N-R-T-U-V-Z1
09468	B-C-C1-F3-M-R-S-U-Z1	09573	B-E2-E3-F-F1-F3-R-R1-V-Z1	09623	B-C-F-F3-R-U-V-Z1	09727	A-B-B2-C-C1-D-F-F1-F3-J-L-M-N-R-R1-T-V-Z1
09469	B-C-C1-R-U-Z1	09574	B-F-F1-R-R1-V	09624	B-C-F-F1-F3-I3-J-L-N-R-R1-T-U-V-Z1	09728	A-B-B2-C-C1-F-F1-F3-J-L-N-R-R1-T-V-Z1
09470	B-C-C1-M-R-U-Z1	09575	B-F-F1-R-R1-V	09625	B-C-F-F3-N-R-U-Z1	09729	B-C-F-F3-N-R-R1-U-V-Z1
09494	B-C-C1-F3-M-R-S-U-Z1	09576	B-F-F1-R-R1-V	09626	B-C-F-F3-R-U-Z1	09730	A-B-B2-C-C1-F-F1-F3-J-L-M-N-R-R1-T-V-Z1
09498	B-C-C1-F-F1-F3-J-L-N-R-R1-T-V-Z1	09577	B-V	09627	B-C-F-F3-R-U-V-Z1	09731	A-B-B2-C-C1-F-F1-F3-J-L-M-N-R-R1-T-V-Z1
09501	B-V	09578	B-E2-E3-F-F1-F3-R-R1-V-Z1	09630	B-C-F-U-V	09732	B-N-V-Z1
09502	B-V	09579	B-F-F1-R-R1-V	09631	B-C-F-F3-R-U-V-Z1	09733	B-I3-L-N-V
09503	B-F-F1-R-R1-V	09581	B-F-F1-R-R1-V	09633	B-B2-C-D-F-F1-M-R-U-U1-U2-U3-V-Z1	09734	A-B-C-C1-F-F1-F3-I3-J-L-M-N-R-R1-T-V-Z1
09504	B-V	09582	B-E2-E3-F-F1-F3-R-R1-V-Z1	09636	B-C-F-F3-R-U-V-Z1	09735	B-N-V-Z1
09505	B-V	09583	B-F-F1-R-R1-V	09642	B-F-F1-F3-J-L-M-N-R-T-U-V	09736	A-B-B2-C-C1-D-F-F1-F3-J-L-M-N-R-R1-T-V-Z1
09506	B-V	09586	B-F-F1-R-R1-V	09643	B-C-F3-M-R-S-U-V-Z1		
09507	B-V	09587	B-E2-E3-F-F1-F3-R-R1-S-V-Z1	09645	B-C-F-F1-F3-R-U-Z1		
		09588	B-C-E2-E3-F-F1-F3-H-R-R1-S-V-Z1	09647	B-F3-M-N-R-U-Z1		
		09589	B-F-F1-F3-R-S-V	09648	B-F3-N-R-U-V-Z1		
		09590	B-V	09649	B-F3-N-R-U-Z1		
		09591	B-E2-E3-F-F1-F2-F3-R-R1-V-Z1	09701	A-B-B2-C1-F-F1-F3-J-L-M-N-R-R1-T-V-Z1		

APO/ FPO/ DPO	See Restrictions	APO/ FPO/ DPO	See Restrictions	APO/ FPO/ DPO	See Restrictions	APO/ FPO/ DPO	See Restrictions
09737	A-B-B2-C-C1-F-F1-F3-I3-J-L-M-N-R-R1-T-V-W-Y-Z-Z1	09806	A-B-C1-E2-F-F1-F3-H1-J-L-M-N-R-R1-T-V-Z1	09838	B-E2-E3-F-F1-F3-U-Z1	34007	B-F-F1-H-J-M-N-R-R1-V-Z1
09738	A-B-B2-C-C1-D-F-F1-F3-J-L-M-N-R-R1-T-V-Z1	09807	A-B-B2-C1-E2-F-F1-F3-I3-J-L-N-R-R1-T-V-Z-Z1	09839	A-B-U-V-Z1	34008	B-B2-D-E1-F-F1-H-H1-J-L-M-N-R-R1-T-V-Z1
09739	A-B-B2-C-C1-D-F-F1-F3-J-L-M-N-R-R1-T-V-Z1	09808	A-B-B2-C1-E2-F-F1-F3-H-H1-J-L-N-R-R1-T-V-Z1	09841	A-B-F3-N-R-U-Z1	34011	B-B2-C1-E2-F-F1-F3-J-L-M-N-R-R1-T-V-Z1
09741	A-B-C1-E2-F-F1-F3-H1-J-L-M-N-R-R1-T-V-W-Y-Z1	09809	B-F-F1-F3-J-L-N-T-V-Z1	09842	A-B-F-F1-F3-J-L-N-R-R1-T-V-Z1	34020	B-F-F1-F3-J-L-M-N-R-R1-T-V-Z1
09742	A-B-B2-F-F1-F3-J-L-M-N-R-R1-T-V-Z1	09810	A-B-F-F1-F3-N-R-S-V-Z1	09844	A-B-C1-F-F1-F3-J-L-M-N-R-R1-T-V-Z1	34021	B-F-F1-F3-T-J-L-M-N-R-R1-V-Z1
09743	A-B-F-H-N-Q-V-Z-Z1	09811	B-E2-E3-F-F1-F3-H1-N-R-R1-U-V-Z1	09845	A-B-B2-E3-F-F1-F3-J-L-M-N-R-R1-T-V-Z1	34022	B-F-F1-F3-J-L-M-N-R-R1-T-V-Z1
09744	A-B-B2-C-C1-F-F1-F3-J-L-M-N-R-R1-T-V-Z1	09812	B-E2-E3-F-F1-I-J-L-N-R-T-U-V-Z-Z1	09846	A-B-B2-C1-F-F1-F3-J-L-N-R-R1-T-V-Z1	34023	B-F-F1-F3-J-L-M-N-R-R1-T-V-Z1
09745	A-B-F-F1-F3-M-N-R-R1-S-V-Z1	09813	B-E2-E3-F-F1-F3-I3-J-L-N-R-T-U-V-Z-Z1	09848	A-B-F-M-R-V-Z1	34024	B-F-F1-F3-J-L-M-N-R-R1-T-V-Z1
09748	A-B-B2-C-C1-D-F-F1-F3-J-L-M-N-R-R1-T-V-Z1	09814	B-E2-E3-F-F1-F3-I3-J-L-N-R-R1-T-V-Z-Z1	09851	A-B-C-F-F3-N-R-S-V-Z1	34025	B-F-F1-F3-J-L-M-N-R-R1-T-V-Z1
09749	A-B-F-H-N-U-V-Z1	09815	A-B-F-F3-N-R-S-V-Z1	09852	B-E2-E3-F-F1-F3-H1-N-R-R1-U-V-Z1	34030	B-F-F1-F3-J-L-M-N-R-R1-T-V-Z1
09750	A-B-B2-C-C1-F-F1-F3-J-L-M-N-R-R1-T-V-Z1	09816	A-B-B2-C-C1-E2-E3-F-F1-F3-J-L-N-R-R1-T-V-Z1	09853	B-E2-F-H1-R-R1-U2-V-Z1	34031	B-F-F1-F3-J-L-M-N-R-R1-T-V-Z1
09751	B-C-D-E-F3-H-M-R-S-U	09817	A-B-B2-C1-E2-E3-F-F1-F3-H-H1-J-L-M-N-R-R1-T-V-Z1	09854	A-B-B2-C1-F-F1-F3-I3-L-N-R-R1-T-V-Z-Z1	34032	B-F-F1-F3-J-L-M-N-R-R1-T-V-Z1
09752	B-C-D-F1-H-U	09818	A-B-C-F-F3-M-S-V-Z1	09855	A-B-C1-E2-F-F1-H1-M-R-R1-U2-V-Z1	34033	B-C-F-F1-F3-J-L-M-N-R-R1-T-V-Z1
09753	A-B-F-N-V-Z1	09820	A-B-B2-F-F1-F3-H-H1-J-L-M-N-R-R1-T-V-Z1	09858	B-C1-E2-E3-F-F1-F3-H1-N-R-R1-U-V-Z1	34034	B-F-F1-F3-I3-J-L-M-N-R-R1-T-V-Z-Z1
09754	A-B-F-H-N-Q-V-Z-Z1	09821	A-B-C-F-F3-N-R-S-V-Z1	09859	B-C1-E2-E3-F-F1-F3-H1-R-R1-U-V-Z1	34035	B-F-F1-F3-H-J-L-M-N-R-R1-T-V-Z1
09755	A-B-B2-C-C1-D-F-F1-J-L-M-N-Q-R-R1-T-V-Z1	09822	A-B-C-F-F3-M-R-S-V-Z1	09861	A-B-F-F1-F3-N-R-R1-S-V-Z1	34036	B-F-F1-F3-J-L-M-N-R-R1-T-V-Z1
09756	A-B-B2-E3-F-F1-J-L-N-Q-R-R1-T-V-Z1	09823	A-B-F-F1-F3-J-L-N-R-R1-T-V-Z1	09863	A-B-F-F1-F3-N-O-R-R1-S-V-Z1	34037	B-C-F-F1-F3-H-J-L-M-N-R-R1-T-V-Z1
09758	A-B-F-F1-M-N-R-R1-V-Z1	09824	A-B-C-F-F3-M-R-S-V-Z1	09865	A-B-F3-R-U-V-Z1	34038	B-L-M-N-U-V-Z1
09759	A-B-B2-C-C1-E2-F-F1-F3-J-L-N-R-R1-T-V-Z1	09825	A-B-C1-F-F1-F3-J-L-M-N-R-R1-T-V-Z1	09866	A-B-E2-F-N-U-V-Z1	34039	B-F-F1-J-L-M-N-T-V-Z1
09760	A-B-B2-C-C1-D-F-F1-J-L-M-N-Q-R-R1-S-T-V-Z1	09826	A-B-B2-C1-E1-E2-E3-F-F1-F3-J-L-M-N-R-R1-T-V-W-Z1	09870	A-B-C1-E2-F-F1-F3-H1-I3-J-L-M-N-R-R1-T-U4-V-Z-Z1	34041	B-F-F1-F3-J-L-M-N-R-R1-T-V-Z1
09761	B-F-F1-F3-M-N-R-R1-V-Z-Z1	09827	A-B-F-F1-J-L-M-N-R-T-V-Z1	09873	A-B-C1-E2-F-F1-F3-H1-I3-J-L-M-N-R-R1-T-U4-V-Z-Z1	34042	A-B-C-F-F1-M-N-R-U-V-W-Z1
09762	A-B-B2-E3-F-F1-F3-J-L-N-R-R1-T-V-Z1	09828	A-B-F-F1-F3-I3-J-L-N-R-R1-T-V-Z-Z1	09874	A-B-C1-E2-F-F1-F3-H1-I3-J-L-M-N-R-R1-T-U4-V-Z-Z1	34055	B-F-F1-F3-J-L-M-N-R-R1-T-V-Z1
09769	A-B-B2-C-C1-D-F-F1-F3-J-L-M-N-R-R1-T-V-Z1	09829	B-C-N-R-V-Z1	09875	A-B-C1-E2-F-F1-F3-H1-I3-J-L-M-N-R-R1-T-U4-V-Z-Z1	34058	B-F-F1-R-R1-V-Z1
09777	A-B-C-E1-F-F1-F3-L-M-N-R-R1-T	09830	B-C-F-F1-F3-J-L-M-N-R-R1-S-T-V-Z1	09880	A-B-C1-E2-F-F1-H1-N-R-R1-U-V-Z1	34060	B-B2-C1-E2-F-F1-F3-J-L-N-R-R1-T-V-Z1
09780	A-B-F-H-N-R-V	09831	B-F-F1-F3-J-L-N-R-R1-T-V-Z1	09889	B-E2-F-H1-N-R-R1-U2-V-Z1	34078	B-F1-N-V-Z1
09789	A-B-F-F3-N-R-S-V-Z1	09832	B-C1-E2-F1-F3-U1-Z1	09890	B-E2-F-H1-N-R-R1-U2-V-Z1	34080	B-F-F1-R-R1-V
09801	A-B-C1-E2-F-H1-M-N-R-R1-V-Z1	09833	B-C1-E2-F1-F3-U1-V-Z1	09892	A-B-E2-F-F1-F3-J-L-N-R-R1-T-V-Z1	34081	B-F-F1-R-R1-V
09803	B-E2-E3-F-F1-F3-H1-N-R-R1-U-V-Z1	09834	B-E2-E3-F-F1-F3-R-R1-U-Z1	09895	A-B-B2-C1-E2-F-F1-F3-J-L-N-R-T-V-W-Z1	34082	B-F-F1-R-R1-V
09804	A-B-F-F1-F3-M-N-R-S-V-Z1	09835	A-B-C1-F1-F3-N-V-Z1	09898	B-C-C1-E2-F-F1-F3-H1-N-R-R1-U2-V-Z1	34083	B-F-F1-R-R1-V
09805	B-E2-E3-F-F1-F3-R-R1-Z1	09836	A-B-C-F-F1-F3-J-L-M-N-R-R1-V-Z1	34001	A-B-F-F1-F3-I3-J-L-N-R-R1-T-V-Z-Z1	34084	B-F-F1-R-R1-V
		09837	B-E2-E3-F1-F3-V-Z1	34002	B-F-F1-F3-J-L-N-R-R1-T-V-Z1	34085	B-F-F1-R-R1-V
				34004	B-F-F1-F3-J-L-N-R-R1-T-V-Z1	34086	B-F-F1-R-R1-V
						34087	B-F-F1-R-R1-V
						34088	B-F-F1-R-R1-V

APO/ FPO/ DPO	See Restrictions	APO/ FPO/ DPO	See Restrictions	APO/ FPO/ DPO	See Restrictions	APO/ FPO/ DPO	See Restrictions
34089	B-F-F1-R-R1-V	96323	B-C-M-R-V-W	96516	B-D-F-Z1	96613	B-V
34090	B-F-F1-R-R1-V	96326	B-C-F-M-R-W	96517	B-F-U3-V-Z1	96615	B-F-F1-R-R1-V
34091	B-E2-E3-F-F1-F3-R-R1-V-Z1	96328	B-C-M-R-W	96520	B-F-N-U3-V	96616	B-F-F1-R-R1-V
34092	B-F-F1-R-R1-V	96330	B-C-M-R-W	96521	B-F-F1-J-L-N-T-U3-V-Z1	96617	B-F-F1-R-R1-V
34093	B-F-F1-R-R1-V	96331	A-B-F1-J-L-M-N-S-W	96530	A-B-F-F1-H-H1-J-L-M-N-T-U-V-Z1	96619	B-V
34094	B-F-F1-R-R1-V	96336	B-C-M-R-V-W	96531	A-B-C-F-F1-H-M-N-R-U-V	96620	B-F-F1-R-R1-V
34095	B-F-F1-R-R1-V	96337	B-M-W	96532	A-B-F-F1-H-J-L-M-N-T-U-V-Z1	96628	B-F-F1-R-R1-V
96201	A-B-F1	96338	A-B-F3-M-R-S-W	96533	A-B-F-F1-H-J-L-M-N-T-U-V-Z1	96629	B-F-F1-R-R1-V
96202	A-B-F1-U	96339	B-M-V-W	96534	A-B-F-U-Z1	96632	B-F-F1-R-R1-V
96203	A-B-F1	96343	B-M-W	96535	A-B-F-F1-J-L-N-T-V-Z1	96643	B-F-F1-R-R1-V
96204	A-B-F1	96346	B-F-F1-F2-H-M-V-W-Z1	96537	B-V-Z1	96649	B-F-F1-R-R1-V
96205	A-B-F1-U	96347	B-F-F1-F2-H-M-W-Z1	96537	B-V-Z1	96650	B-F-F1-R-R1-V
96206	A-B-F1-U	96349	B-F-F1-F2-H-M-W-Z1	96540	B-V-Z1	96657	B-F-F1-R-R1-V
96207	A-B-F1-V	96350	B-F-F1-F2-H-M-W-Z1	96542	B-V-Z1	96660	B-F-F1-R-R1-V
96208	A-B-F1-U	96351	B-F-F1-F2-H-M-W-Z1	96543	B-P-V-Z1	96661	B-F-F1-R-R1-V
96209	A-B-F-F1-J-L-N-T-U-V-Z1	96362	B-F-F1-F2-M-W-Z1	96546	B-F-N-R-U3	96662	B-F-F1-R-R1-V
96210	A-B-B2-C1-F-F1-F3-I3-L-N-R-R1-T-V-Z-Z1	96365	B-C-M-R-V-W	96548	A-B-H-M-R-U	96663	B-F-F1-R-R1-V
96212	B-F-F1-F2-H-M-W-Z1	96367	B-C-L-M-R-W	96549	A-B-F-F1-H-J-L-M-N-T-U-V-Z1	96664	B-V
96213	A-B-C-F1-R-U	96368	B-C-M-R-W	96550	A-B-H-M-U-V-Z1	96665	B-V
96214	A-B-C-F1-R-U	96370	B-F-F1-F2-H-M-W-Z1	96551	A-B-F-F1-H-J-L-M-N-T-U-V-Z1	96666	B-V
96218	A-B-F1-U	96372	B-M-W	96552	B-Z1	96667	B-F-F1-R-R1-V
96224	A-B-F1-U	96373	B-M-W	96553	A-B-F-F1-H-M-R-U	96668	B-F-F1-R-R1-V
96251	A-B-F1-U	96374	B-M-W	96554	A-B-F-F1-H-J-L-M-N-T-U-V-Z1	96669	B-F-F1-R-R1-V
96257	A-B-F1-U	96375	B-M-W	96555	B-F-M-V	96670	B-V
96258	A-B-F1-U	96376	B-M-W	96555	B-F-M-V	96671	B-F-F1-R-R1-V
96260	A-B-F1-U	96377	B-M-W	96557	B-F-M-V	96672	B-F-F1-R-R1-V
96264	A-B-C-F1-R-U	96378	B-M-W	96562	A-B-B2-C-C1-D-E2-E3-F-F1-H-H1-I3-L-M-N-R-T-V-Z-Z1	96673	B-V
96266	A-B-C-F1-R-U	96379	B-M-W	96577	A-B-F-H-M-N-R-U	96674	B-F-F1-R-R1-V
96267	A-B-C-F1-R-U-V	96380	B-M-W	96578	B-B2-F1-H-J-N-R	96675	B-F-F1-R-R1-V
96269	A-B-F1-U-Z1	96382	B-M-W	96595	B-F-S-V-Z1	96677	B-F-F1-R-R1-V
96271	A-B-F1-F3-S-U	96384	B-M-W	96598	B-N-O-V-V1	96678	B-F-F1-R-R1-V
96275	A-B-F1-U	96385	B-M-W	96599	B-N-V	96679	B-F-F1-R-R1-V
96276	A-B-C-F1-R	96386	B-M-W	96601	B-V	96681	B-V
96278	A-B-C-F1-R-U	96387	B-M-W	96602	B-V	96682	B-V
96283	A-B-F1-U	96388	B-M-W	96603	B-V	96683	B-V
96284	A-B-F1-U	96389	B-M-W	96604	B-V	96686	B-V
96301	B-M-S-W	96401	B-C-F-N-O-R-V-V1-Z1	96605	B-V	96691	B-F-F1-R-R1-V
96303	B-F-F1-H-J-L-M-N-T-V-W-Z1	96501	A-B-N-V	96606	B-V	96692	B-F-F1-R-R1-V
96306	B-F-F1-F2-H-M-W-Z1	96504	A-B-C-C1-F-F1-F3-I3-L-N-R-R1-T-V-W-Z-Z1	96607	B-V	96693	B-F-F1-R-R1-V
96309	B-C-M-R-V-W	96505	A-B-C-C1-F-F1-F3-I3-L-N-R-R1-T-V-W-Z-Z1	96608	B-E2-F-H1-R1-U2-V-Z1	96694	B-F-F1-R-R1-V
96310	B-M-W	96507	A-B-F-F1-H-J-L-N-T-V-Z1	96609	B-E2-F-H1-R1-U2-V-Z1	96695	B-F-F1-R-R1-V
96319	B-C-M-R-W	96510	B-I3-N-V	96610	B-E2-F-H1-R1-U2-V-Z1	96696	B-F-F1-R-R1-V
96321	B-F-F1-F2-H-M-W-Z1	96511	B-I3-N-V	96611	B-E2-F-H1-R1-U2-V-Z1	96698	B-V
96322	B-F-F1-F2-H-M-W-Z1	96515	B-D-F-U3	96612	B-V		

RESTRICTIONS

LEGEND

PS Form 2976, *Customs — CN 22 (Old C 1) and Sender's Declaration* (green label)

PS Form 2976-A, *Customs Declaration and Dispatch Note*

PS Form 2976-B, *Priority Mail Express International Shipping Label and Customs Form*

ATF	= Bureau of Alcohol, Tobacco, Firearms, and Explosives
Box C	= Department of State (DOS) contractor personnel
Box R	= Retired military personnel
DPO	= Diplomatic Post Office
MPO	= Military Post Office
PACT	= Prevent All Cigarette Trafficking Act
PAL	= Parcel Airlift
PMEMS	= Priority Mail Express Military Service
PUB 52	= Publication 52, <i>Hazardous, Restricted, and Perishable Mail</i>
SAM	= Space Available Mail
USDA	= United States Department of Agriculture

Note: Mail order catalogs are prohibited as SAM or PAL mail.

A. Securities, currency, or precious metals, including in their raw, unmanufactured state, are prohibited. Official Mail shipments are exempt from this restriction.

A1. Reserved for future use.

A2. Reserved for future use.

B. Regardless of mail class, a customs declaration (PS Form 2976, PS Form 2976-A, or PS Form 2976-B) is required for all items weighing 16 ounces or more or any item (regardless of weight) containing potentially dutiable mail contents (e.g., merchandise or goods) addressed to or from this ZIP Code. All PMEMS mailpieces (regardless of mail contents or weight) addressed to or from this ZIP Code must bear a properly completed PS Form 2976-B. The surface area of the address side of the mailpiece must be large enough to contain the applicable customs declaration. The following exceptions apply:

- Known mailers are exempt from providing customs documentation on non-dutiable letters or printed matter, except for Priority Mail Express, which requires a customs form for all contents and weights. (A known mailer is a business mailer who enters volume mailings through a business mail entry unit (BMEU) or other bulk mail acceptance location, pays postage through an advance deposit account, uses a permit imprint for postage payment, and submits a completed postage statement at the time of entry that certifies that the mailpieces contain no dangerous materials that are prohibited by postal regulations.)
- All federal, state, and local government agencies whose mailings are regarded as "Official Mail" are exempt from providing customs documentation on any item addressed to an MPO except for those MPOs to which restriction "B2" applies and except for Priority Mail Express, which requires a customs form from all mailers.
- If mailpiece is endorsed "Contents for Official Use — Exempt from Customs Requirements."

B2. All federal, state, and local government agencies must complete customs documentation when sending potentially dutiable mail addressed to or from this MPO or DPO.

C. Cigarettes and other tobacco products, including tobacco leaves, chewing and pipe tobacco, snuff, and cigars are prohibited, including those that are authorized in Publication 52 under PACT.

C1. Obscene and horror articles, images, prints, paintings, cards, films, videotapes, comic books, etc., are prohibited.

D. Coffee is prohibited.

E. Medicines (prescription, over-the-counter, vitamins, and supplements) are prohibited when mailed to individuals for human or animal use. This prohibition does not apply when medicines are sent as Official Mail only between specifically designated agencies such as pharmaceutical distributors, hospitals, clinics, and pharmacies.

E1. Mailers are responsible to ensure that all medicines and vaccines conform to host nation laws.

E2. Any matter depicting nude or seminude persons, pornographic, or sexual items are prohibited. Non-authorized political materials are prohibited. Religious materials contrary to the Islamic faith are prohibited in bulk quantities, but individual items for the personal use of the addressee are permissible.

E3. Radio transceivers, cordless/cellular telephones, global positioning systems, scanners, base stations, and handheld transmitters are prohibited.

F. Firearms of any type are prohibited, except firearms mailed to or by official U.S. government agencies. This restriction does not apply to firearms mailed from this MPO ZIP Code, provided ATF and USPS regulations are met. Antique firearms do not require an ATF form.

F1. Weapons of any type are prohibited.

F2. Mailing firearms to or from this MPO ZIP Code is restricted to one shotgun and one single shot .22 caliber rifle per individual.

F3. Replica weapons and inert explosive devices (such as grenades) and weapons parts are prohibited.

G. Parcels of any class are prohibited.

H. Meats, including preserved meats, bones, skin, hair, feathers, horns or hoofs of hoofed animals, and wool samples whether hermetically sealed or not, are prohibited.

H1. Pork or pork by-products are prohibited.

I. Reserved for future use.

I1. Reserved for future use.

I2. Reserved for future use.

I3. Mail of all classes must fit in a mail sack. Mail may not exceed the following dimensions:

- Maximum length 27 inches.
- Maximum width 14 inches.
- Maximum height 14 inches.

J. Standard Post and Parcel Select parcels may not exceed 108 inches in length and girth combined.

K. Reserved for future use.

L. All Official Mail is prohibited.

M. Fruits, vegetables, live animals, and live plants are prohibited.

N. Registered Mail service is prohibited.

O. Reserved for future use.

P. Official Mail only.

Q. Mail may not exceed 66 pounds, and size is limited to 42 inches maximum length and 72 inches maximum length and girth combined.

R. All alcoholic beverages, including those mailable under Publication 52, Part 421, are prohibited.

R1. Materials used in the production of alcoholic beverages (i.e., distilling material, hops, malts, yeast, etc.) are prohibited.

S. Synthetic cannabinoids used to stimulate the central nervous system commonly known as "synthetic marijuana," "K2," or "Spice" are prohibited.

T. Mailings of household shipments and case lots of food to or from an MPO require military transportation office approval prior to mailing. Mailings to or from a DPO require pre-approval from the Diplomatic Pouch and Mail Director.

U. Mail addressed to Retirees (Box R) is limited to 16 ounces and up to a 90-day supply of TRICARE medications. This restriction does not apply to mail endorsed "Free Matter for the Blind or Handicapped."

U1. Mail is limited to First-Class Mail items, including audio and video media, weighing 13 ounces or less. This limitation does not apply to Official Mail.

U2. Retirees (Box R) are not authorized mail service.

U3. Reserved for future use.

U4. Mail addressed to Box C is limited to 2 lbs.

V. PMEMS is not available.

V1. Electronic Delivery status information for Extra Services is not available on *USPS.com*. Manual record of delivery may be available upon request.

W. Hermetically sealed packages of meat products bearing USDA certification, such as dried beef, salami, and sausage, may be mailed. 200 grams of tobacco per parcel are permitted duty free.

X. Cremated remains are prohibited.

Y. Mail is limited to First-Class Mail and Priority Mail items only. This restriction also applies to Official Mail.

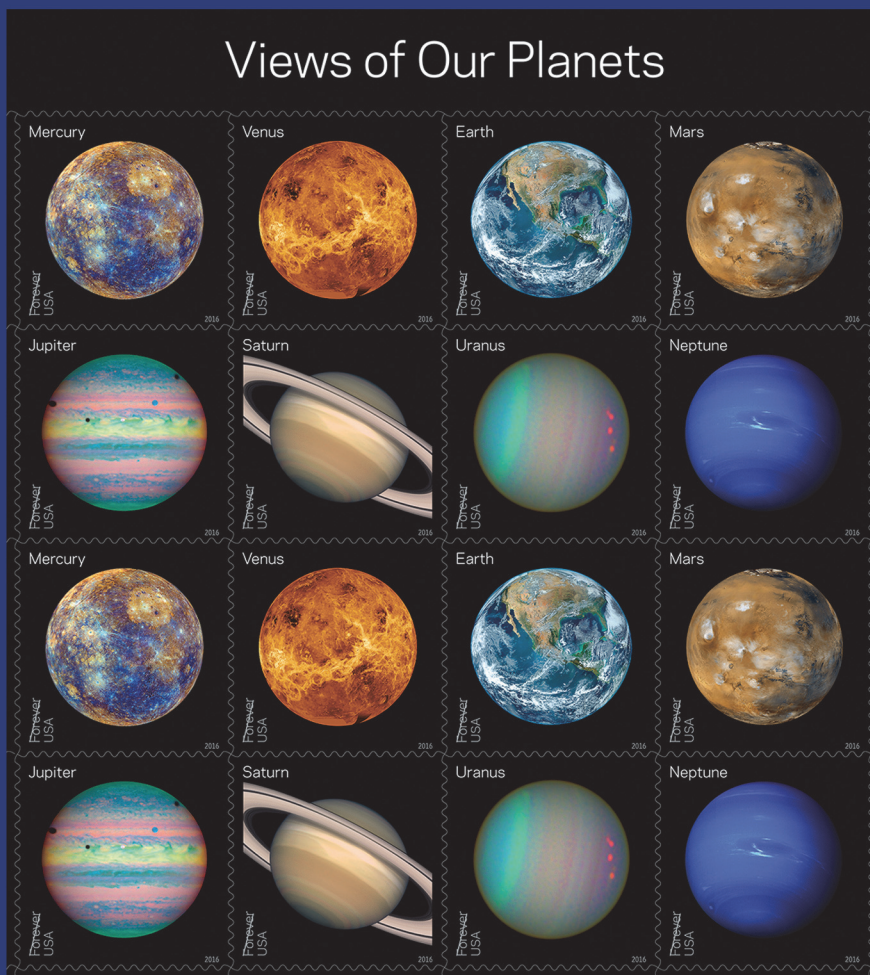
Z. No outside pieces (OSPs).

Z1. The following restriction is applicable only to International Service Centers (ISC)/Exchange Offices. An Anti-Pilferage Seal (Item No O817E or O818A) is required on all pouches and sacks.

— *International Network Operations,
Global Business, 3-16-17*

USPS® Issues *Views of Our Planets* Forever® Stamps

Views of Our Planets



Venus: NASA/JPL-Caltech

Earth: NASA

Mars: NASA/JPL-Caltech/MSSS

Jupiter: NASA, ESA, and E. Karkoschka (Arizona Board of Regents, University of Arizona)

Saturn: NASA and The Hubble Heritage Team (STScI/AURA)

Uranus: NASA, ESA, and E. Karkoschka (Arizona Board of Regents, University of Arizona)

Neptune: NASA/JPL-Caltech

Mercury: NASA/The Johns Hopkins University Applied Physics Laboratory/Carnegie Institution of Washington

On Sale Nationwide: May 31, 2016.

Freely Associated States Restrictions

Effective March 19, 2015, the mailing restrictions for Freely Associated States (FAS) will be listed in the Pull-Out section of the *Postal Bulletin* and updated periodically.

Freely Associated States

Mail addressed to freely associated states is subject to certain conditions or restrictions of mailing regarding content, preparation, and handling. The following FAS Restrictions table outlines these conditions as listed by each affected FAS ZIP Code™ through the use of footnoted mailing restrictions codes (see the [Restrictions](#) following the table). For additional information on available extra services for FAS destinations, see *Mailing Standards of the United States Postal Service, Domestic Mail Manual (DMM®)*, part 503.

Acceptance clerks must use the table with the POS ONE terminal to determine which FAS ZIP Codes are active and which conditions of mailing apply. Send inquiries to Randall Sobol at randall.f.sobol@usps.gov.

FAS Restrictions Table

FAS Table	See Restrictions
96939	A, B
96940	A, B
96941	A, B
96942	A, B
96943	A, B
96944	A, B
96960	A, B
96970	A, B
Marshall Islands	C
Federated States of Micronesia	C

RESTRICTIONS LEGEND

PS Form 2976, *Customs* — CN 22 (Old C 1) and *Sender's Declaration* (green label)

PS Form 2976-A, *Customs Declaration and Dispatch Note*

FAS = Freely Associated State

- A.** Bank currency (coin and paper) is prohibited.
- B.** Signature Confirmation, Signature Confirmation Restricted Delivery, Adult Signature Requested, Adult Signature Restricted Delivery, Certified Mail Adult Signature Required, and Certified Mail Adult Signature Restricted Delivery not available.
- C.** COD is prohibited.

— *Asia-Pacific Relations, Global Business, 3-16-17*

Labeling List Changes (continued)

Deleted

Column A Destination ZIP Codes	Column B Label (Deleted From)
01474	ACTON MA 01720
01516	PRINCETON MA 01541
07003	BLOOMFIELD NJ 07003
07016	UNION NJ 07083
07030	HOBOKEN NJ 07030
07041	UNION NJ 07083
07052	WEST ORANGE NJ 07052
07093	NORTH BERGEN NJ 07047
07302	JERSEY CITY NJ 07302
08831	MONROE NJ 08831
08857	MONROE NJ 08831
08873	SOMERSET NJ 08873
29342	GAFFNEY SC 29342
39044	TAYLORSVILLE MS 39168
39057	LAKE MS 39092
39059	BROOKHAVEN MS 39602
39062	TAYLORSVILLE MS 39168
39081	BUDE MS 39630
39082	TAYLORSVILLE MS 39168
39111	TAYLORSVILLE MS 39168
39112	TAYLORSVILLE MS 39168
39116	TAYLORSVILLE MS 39168
39117	LAKE MS 39092
39119	TAYLORSVILLE MS 39168
39140	TAYLORSVILLE MS 39168
39145	LAKE MS 39092
39149	TAYLORSVILLE MS 39168
39152	LAKE MS 39092
39153	TAYLORSVILLE MS 39168
39157	RIDGELAND MS 39157
39158	RIDGELAND MS 39157
39168	TAYLORSVILLE MS 39168
39189	LAKE MS 39092
39203	JACKSON MS 39209
39209	JACKSON MS 39209
39289	JACKSON MS 39209
39363	QUITMAN MS 39355
39601	BROOKHAVEN MS 39602
39602	BROOKHAVEN MS 39602
39603	BROOKHAVEN MS 39602
60001	GLENCOE IL 60022
60004	ARLINGTON HEIGHTS IL 60004
60008	ROLLING MEADOWS IL 60008
60012	CRYSTAL LAKE IL 60012
60013	CARY IL 60013
60014	CRYSTAL LAKE IL 60012
60015	DEERFIELD IL 60015
60018	DES PLAINES IL 60018
60019	ROLLING MEADOWS IL 60008
60020	FOX LAKE IL 60020
60021	FOX RIVER GROVE IL 60021
60022	GLENCOE IL 60022
60025	FOX RIVER GROVE IL 60021
60026	FOX RIVER GROVE IL 60021
60029	GOLF IL 60029
60030	GRAYSLAKE IL 60030
60033	GLENCOE IL 60022
60034	ARLINGTON HEIGHTS IL 60004
60035	HIGHLAND PARK IL 60035
60037	HIGHLAND PARK IL 60035
60039	CRYSTAL LAKE IL 60012

Column A Destination ZIP Codes	Column B Label (Deleted From)
60040	HIGHWOOD IL 60040
60041	FOX LAKE IL 60020
60042	HIGHWOOD IL 60040
60043	KENILWORTH IL 60043
60044	GLENCOE IL 60022
60045	LAKE FOREST IL 60045
60047	LAKE ZURICH IL 60047
60048	DES PLAINES IL 60018
60050	MCHENRY IL 60050
60051	MCHENRY IL 60050
60053	GOLF IL 60029
60056	MOUNT PROSPECT IL 60056
60060	GOLF IL 60029
60061	VERNON HILLS IL 60061
60064	GLENCOE IL 60022
60067	KENILWORTH IL 60043
60068	ROLLING MEADOWS IL 60008
60069	MOUNT PROSPECT IL 60056
60070	PROSPECT HEIGHTS IL 60070
60071	HIGHWOOD IL 60040
60072	MCHENRY IL 60050
60074	PROSPECT HEIGHTS IL 60070
60076	LAKE FOREST IL 60045
60077	DEERFIELD IL 60015
60078	PROSPECT HEIGHTS IL 60070
60079	WAUKEGAN IL 60085
60081	VERNON HILLS IL 60061
60083	HIGHWOOD IL 60040
60084	VERNON HILLS IL 60061
60085	WAUKEGAN IL 60085
60087	LAKE ZURICH IL 60047
60088	HIGHWOOD IL 60040
60089	BUFFALO IL 60089
60090	FOX LAKE IL 60020
60091	HIGHLAND PARK IL 60035
60093	GRAYSLAKE IL 60030
60096	BUFFALO IL 60089
60097	HIGHWOOD IL 60040
60098	WOODSTOCK IL 60098
60099	WOODSTOCK IL 60098
60201	EVANSTON IL 60201
60202	CARY IL 60013
60203	EVANSTON IL 60201
60204	EVANSTON IL 60201
68037	PLATTSMOUTH NE 68048
68040	PLATTSMOUTH NE 68048
68066	PLATTSMOUTH NE 68048
76518	BUCKHOLTS TX 76518
76519	BUCKHOLTS TX 76518
76520	BUCKHOLTS TX 76518
76537	BARTLETT TX 76511
76554	BARTLETT TX 76511
76556	BUCKHOLTS TX 76518
76567	BUCKHOLTS TX 76518
76569	BUCKHOLTS TX 76518
76570	BUCKHOLTS TX 76518
76571	BARTLETT TX 76511
76577	BUCKHOLTS TX 76518
76578	BUCKHOLTS TX 76518
78605	BERTRAM TX 78605
78607	BASTROP TX 78602

Column A Destination ZIP Codes	Column B Label (Deleted From)
78608	BERTRAM TX 78605
78609	BASTROP TX 78602
78610	BUDA TX 78610
78612	BERTRAM TX 78605
78615	COUPLAND TX 78615
78628	GEORGETOWN TX 78628
78634	COUPLAND TX 78615
78642	COUPLAND TX 78615
78643	BERTRAM TX 78605
78644	BERTRAM TX 78605
78652	BUDA TX 78610
78660	PFLUGERVILLE TX 78660
78664	ROUND ROCK TX 78664
78669	BERTRAM TX 78605
78672	BASTROP TX 78602
78680	ROUND ROCK TX 78681
78681	ROUND ROCK TX 78681
78683	ROUND ROCK TX 78664
78691	PFLUGERVILLE TX 78660
78715	AUSTIN TX 78747
78755	AUSTIN TX 78731

Column A Destination ZIP Codes	Column B Label (Deleted From)
78761	AUSTIN TX 78752
78933	BLEIBLERVILLE TX 78931
78957	COLUMBUS TX 78934
94022	LOS ALTOS CA 94022
94023	LOS ALTOS CA 94022
94024	LOS ALTOS CA 94022
94025	MENLO PARK CA 94025
94086	SUNNYVALE CA 94085
94102	SAN FRANCISCO CA 94102
94104	SAN FRANCISCO CA 94104
94107	SAN FRANCISCO CA 94102
94108	SAN FRANCISCO CA 94109
94112	SAN FRANCISCO CA 94112
94115	SAN FRANCISCO CA 94115
94116	SAN FRANCISCO CA 94116
94127	SAN FRANCISCO CA 94112
94401	SAN MATEO CA 94401
94402	SAN MATEO CA 94401
94403	SAN MATEO CA 94403
94404	SAN MATEO CA 94403

* * * * *

L014 5-Digit ZIP Scheme Combinations for Hubs**Changes**

Column A Destination ZIP Codes	Column B Label Container To (Changed From)	Column C HUB (Changed To)col	Column B Label Container To (Changed To)	Column C HUB (Changed To)	Column B Change To Status
10301	STATEN ISLAND NY 10301	STATEN ISLAND NY	STATEN ISLAND NY 10301	STATEN ISLAND NY 103	Existing
10302	STATEN ISLAND NY 10302	STATEN ISLAND NY	STATEN ISLAND NY 10302	STATEN ISLAND NY 103	Existing
10303	STATEN ISLAND NY 10303	STATEN ISLAND NY	STATEN ISLAND NY 10303	STATEN ISLAND NY 103	Existing
10304	STATEN ISLAND NY 10304	STATEN ISLAND NY	STATEN ISLAND NY 10304	STATEN ISLAND NY 103	Existing
10305	STATEN ISLAND NY 10305	STATEN ISLAND NY	STATEN ISLAND NY 10305	STATEN ISLAND NY 103	Existing
10306	STATEN ISLAND NY 10306	STATEN ISLAND NY	STATEN ISLAND NY 10306	STATEN ISLAND NY 103	Existing
10307	STATEN ISLAND NY 10307	STATEN ISLAND NY	STATEN ISLAND NY 10307	STATEN ISLAND NY 103	Existing
10308	STATEN ISLAND NY 10308	STATEN ISLAND NY	STATEN ISLAND NY 10308	STATEN ISLAND NY 103	Existing
10309	STATEN ISLAND NY 10309	STATEN ISLAND NY	STATEN ISLAND NY 10309	STATEN ISLAND NY 103	Existing
10310	STATEN ISLAND NY 10310	STATEN ISLAND NY	STATEN ISLAND NY 10310	STATEN ISLAND NY 103	Existing
10314	STATEN ISLAND NY 10314	STATEN ISLAND NY	STATEN ISLAND NY 10314	STATEN ISLAND NY 103	Existing
54806	ASHLAND WI 54806	SPOONER WI 548	ASHLAND WI 54806	DULUTH MN 556	Existing
54810	BALSAM LAKE WI 54810	SPOONER WI 548	BALSAM LAKE WI 54810	EAU CLAIRE WI 547	Existing
54812	BARRON WI 54812	SPOONER WI 548	BARRON WI 54812	EAU CLAIRE WI 547	Existing
54814	BAYFIELD WI 54814	SPOONER WI 548	BAYFIELD WI 54814	DULUTH MN 556	Existing
54817	BIRCHWOOD WI 54817	SPOONER WI 548	BIRCHWOOD WI 54817	EAU CLAIRE WI 547	Existing
54819	BRUCE WI 54819	SPOONER WI 548	BRUCE WI 54819	EAU CLAIRE WI 547	Existing
54821	CABLE WI 54821	SPOONER WI 548	CABLE WI 54821	EAU CLAIRE WI 547	Existing
54822	CAMERON WI 54822	SPOONER WI 548	CAMERON WI 54822	EAU CLAIRE WI 547	Existing
54829	CUMBERLAND WI 54829	SPOONER WI 548	CUMBERLAND WI 54829	EAU CLAIRE WI 547	Existing
54830	DANBURY WI 54830	SPOONER WI 548	DANBURY WI 54830	EAU CLAIRE WI 547	Existing

Column A Destination ZIP Codes	Column B Label Container To (Changed From)	Column C HUB (Changed To)	Column B Label Container To (Changed To)	Column C HUB (Changed To)	Column B Change To Status
54832	DRUMMOND WI 54832	SPOONER WI 548	DRUMMOND WI 54832	EAU CLAIRE WI 547	Existing
54837	FREDERIC WI 54837	SPOONER WI 548	FREDERIC WI 54837	EAU CLAIRE WI 547	Existing
54838	GORDON WI 54838	SPOONER WI 548	GORDON WI 54838	EAU CLAIRE WI 547	Existing
54843	HAYWARD WI 54843	SPOONER WI 548	HAYWARD WI 54843	EAU CLAIRE WI 547	Existing
54846	HIGHBRIDGE WI 54846	SPOONER WI 548	HIGHBRIDGE WI 54846	DULUTH MN 556	Existing
54847	IRON RIVER WI 54847	SPOONER WI 548	IRON RIVER WI 54847	DULUTH MN 556	Existing
54848	LADYSMITH WI 54848	SPOONER WI 548	LADYSMITH WI 54848	EAU CLAIRE WI 547	Existing
54849	LAKE NEBAGAMON WI 54849	SPOONER WI 548	LAKE NEBAGAMON WI 54849	DULUTH MN 556	Existing
54853	LUCK WI 54853	SPOONER WI 548	LUCK WI 54853	EAU CLAIRE WI 547	Existing
54856	MASON WI 54856	SPOONER WI 548	MASON WI 54856	EAU CLAIRE WI 547	Existing
54857	MIKANA WI 54857	SPOONER WI 548	MIKANA WI 54857	EAU CLAIRE WI 547	Existing
54859	MINONG WI 54859	SPOONER WI 548	MINONG WI 54859	EAU CLAIRE WI 547	Existing
54861	ODANAH WI 54861	SPOONER WI 548	ODANAH WI 54861	DULUTH MN 556	Existing
54865	PORT WING WI 54865	SPOONER WI 548	PORT WING WI 54865	DULUTH MN 556	Existing
54867	RADISSON WI 54867	SPOONER WI 548	RADISSON WI 54865	EAU CLAIRE WI 547	Existing
54868	RICE LAKE WI 54868	SPOONER WI 548	RICE LAKE WI 54868	EAU CLAIRE WI 547	Existing
54871	SHELL LAKE WI 54871	SPOONER WI 548	SHELL LAKE WI 54871	EAU CLAIRE WI 547	Existing
54872	SIREN WI 54872	SPOONER WI 548	SIREN WI 54872	EAU CLAIRE WI 547	Existing
54873	SOLO SPRINGS WI 54873	SPOONER WI 548	SOLO SPRINGS WI 54873	EAU CLAIRE WI 547	Existing
54874	SOUTH RANGE WI 54874	SPOONER WI 548	SOUTH RANGE WI 54874	DULUTH MN 556	Existing
54876	STONE LAKE WI 54876	SPOONER WI 548	STONE LAKE WI 54876	EAU CLAIRE WI 547	Existing
54880	SUPERIOR WI 54880	SPOONER WI 548	SUPERIOR WI 54880	DULUTH MN 556	Existing
54889	TURTLE LAKE WI 54889	SPOONER WI 548	TURTLE LAKE WI 54889	EAU CLAIRE WI 547	Existing
54891	WASHBURN WI 54891	SPOONER WI 548	WASHBURN WI 54891	DULUTH MN 556	Existing
54893	WEBSTER WI 54893	SPOONER WI 548	WEBSTER WI 54893	EAU CLAIRE WI 547	Existing
54895	WEYERHAEUSER WI 54895	SPOONER WI 548	WEYERHAEUSER WI 54895	EAU CLAIRE WI 547	Existing
54896	WINTER WI 54896	SPOONER WI 548	WINTER WI 54896	EAU CLAIRE WI 547	Existing

Newly Added

Column A Destination ZIP Codes	Column B Label Container To (Added To)	Column C HUB (Added To)	Column B Status
54820	BRULE WI 54820	DULUTH MN 556	New
54827	CORNUCOPIA WI 54827	DULUTH MN 556	New
54836	FOXBORO WI 54836	DULUTH MN 556	New
54839	GRAND VIEW WI 54839	EAU CLAIRE WI 547	New
54840	GRANTSBURG WI 54840	EAU CLAIRE WI 547	New
54841	HAUGEN WI 54841	EAU CLAIRE WI 547	New
54842	HAWTHORNE WI 54842	EAU CLAIRE WI 547	New
54844	HERBSTER WI 54844	DULUTH MN 556	New
54845	HERTEL WI 54845	EAU CLAIRE WI 547	New
54850	LA POINTE WI 54850	DULUTH MN 556	New
54854	MAPLE WI 54854	DULUTH MN 556	New
54858	MILLTOWN WI 54858	EAU CLAIRE WI 547	New
54862	OJIBWA WI 54862	DULUTH MN 556	New
54864	POPLAR WI 54864	DULUTH MN 556	New
54870	SARONA WI 54870	EAU CLAIRE WI 547	New
54875	SPRINGBROOK WI 54875	EAU CLAIRE WI 547	New
54888	TREGO WI 54888	EAU CLAIRE WI 547	New

* * * * *

L201 Periodicals Origin Split and First-Class Mail Mixed ADC/AADC

* * * * *

Changes to Column A*The following zip has been deleted from Column B for OMX records: 566.*

Column A Originating ZIP Codes	Column B Label To (Change From)	Column B Label To (Change To)	Column C Label Container To	Column C Change To Status
070-076, 078-079, 088-089	005, 010-201, 206-212, 214-268, 270-315, 318-322, 326-329, 335-338, 342, 344, 346-347, 350-352, 354-364, 367-393, 396-397, 399-418, 420-427, 430-452, 456-503, 505, 508-509, 514, 520, 522-528, 530-532, 534-535, 537-551, 553-564, 566, 600-631, 633-641, 644-647, 649-653, 660-662, 664-668, 716-717, 719-725, 728, 962-966	005, 010-201, 206-212, 214-268, 270-315, 318-322, 326-329, 335-338, 342, 344, 346-347, 350-352, 354-364, 367-393, 396-397, 399-418, 420-427, 430-452, 456-503, 505, 508-509, 514, 520, 522-528, 530-532, 534-535, 537-551, 553-564, 600-631, 633-641, 644-647, 649-653, 660-662, 664-668, 716-717, 719-725, 728, 962-966	DV DANIELS NJ 07099	Existing

The following zip has been deleted from Column B for OMX records: 342.

Column A Originating ZIP Codes	Column B Label To (Change From)	Column B Label To (Change To)	Column C Label Container To	Column C Change To Status
066, 068-069, 105-109	005, 010-201, 206-212, 214-268, 270-315, 318-322, 326-329, 335-338, 342, 344, 346-347, 350-352, 354-364, 367-393, 396-397, 399-418, 420-427, 430-452, 456-503, 505, 508-509, 514, 520, 522-528, 530-532, 534-535, 537-551, 553-564, 566, 600-631, 633-641, 644-647, 649-653, 660-662, 664-668, 716-717, 719-725, 728, 962-966	005, 010-201, 206-212, 214-268, 270-315, 318-322, 326-329, 335-336, 344, 346-347, 350-352, 354-364, 367-393, 396-397, 399-418, 420-427, 430-452, 456-503, 505, 508-509, 514, 520, 522-528, 530-532, 534-535, 537-551, 553-564, 566, 600-631, 633-641, 644-647, 649-653, 660-662, 664-668, 716-717, 719-725, 728, 962-966	WESTCHESTER NY 105	Existing

Newly Added to Column A*The following zip has been added to Column A: 055.*

Column A Originating ZIP Codes	Column B Label To (Change From)	Column B Label To (Change To)	Column C Label Container To	Column B Change To Status
013-019, 021-022, 024, 055	005, 010-201, 206-212, 214-268, 270-315, 318-322, 326-329, 344, 347, 370-386, 388, 399-418, 420-427, 430-499, 530-532, 534-535, 537-539, 541-545, 549, 600-631, 633-634, 636-639, 723-724, 962-966	005, 010-201, 206-212, 214-268, 270-315, 318-322, 326-329, 344, 347, 370-386, 388, 399-418, 420-427, 430-499, 530-532, 534-535, 537-539, 541-545, 549, 600-631, 633-634, 636-639, 723-724, 962-966	BOSTON MA 021	Existing

* * * * *

L601 Network Distribution Centers (NDCs)

* * * * *

Newly Added

Column A Destination ZIP Codes	Column B Label To (Added To)	Column B Change Status
055	NDC SPFLD MA 05500	Existing

* * * * *

L605 NDCs/ASFs — Nonmachinable Parcel Select

* * * * *

Newly Added

Column A Destination ZIP Codes	Column B Label To (Added To)	Column B Change Status
055	NDC SPRINGFIELD MA 05500	Existing
*	* * * *	*

L606 5-Digit Scheme – Standard Mail, First-Class Mail, and Package Services Parcels

Changes

Column A Destination ZIP Codes	Column B Label Container To (Change From)	Column B Label Container To (Change To)	Column B Change To Status
27106	WINSTON SALEM NC 27105	WINSTON SALEM NC 27106	New
27116	WINSTON SALEM NC 27105	WINSTON SALEM NC 27106	New
89140	LAS VEGAS NV 89140	LAS VEGAS NV 89113	Existing

Newly Added

Column A Destination ZIP Codes	Column B Label Container To (Added To)	Column B Status
80309	BOULDER CO 80301	Existing

Deleted

Column A Destination ZIP Codes	Column B Label (Deleted From)
27101	WINSTON SALEM NC 27105
27105	WINSTON SALEM NC 27105
73026	NORMAN OK 73026
73069	NORMAN OK 73026
73071	NORMAN OK 73026
73401	ARDMORE OK 73401
73402	ARDMORE OK 73401
73403	ARDMORE OK 73401
73701	ENID OK 73701
73703	ENID OK 73701
80303	BOULDER CO 80303
80304	BOULDER CO 80303
89147	LAS VEGAS NV 89140
95242	LODI CA 95240
*	* * * *

L801 AADCs – Letter-Size Mailings

* * * *

Newly Added

Column A Destination ZIP Codes	Column B Label To (Added To)	Column B Change Status
055	AADC BOSTON MA 021	Existing

Information Security

The Taxing Truth About Identity Theft

Have you filed your tax return yet? If not, someone else might have filed one for you. During tax season, cyber criminals are eager to steal personal and financial information. Identity theft is a common tax crime and taxpayers are estimated to lose up to \$5.2 billion annually due to tax identity theft.¹ If a scammer obtains personally identifiable information (PII), they can easily take advantage of individuals by filing tax returns on their behalf and pocketing the refund issued by the Internal Revenue Service (IRS).

To safeguard your personal information:

- **File your taxes as early as possible.** This reduces the risk of tax fraud, as scammers depend on taxpayers filing taxes late in order to steal their refunds.
- **Actively monitor and review your credit report for suspicious activity.** Use free credit reports to monitor for suspicious account activities.
- **Avoid giving out your social security number.** Ask if there are other forms of identification you can use such as your driver's license identification number or mailing address.
- **Check your annual Social Security Administration earnings statement.** If you see earnings that you do not recognize, report them to the IRS. This could be a scammer using your identity to obtain employment.

Watch out for these warning signs that your identity has been compromised:

- Your tax return is rejected because a tax return with a duplicate social security number has already been filed.
- You received income information from an unknown employer showing wages that you did not earn.

- You received a notice from the IRS that your tax refund has already been issued even though you haven't filed your tax return yet.
- You received a notice from the IRS that you failed to declare all of your income when you accurately filed your taxes.
- You received a tax transcript that you did not request in the mail.
- You received a collections notice from the IRS even though you did not have to file taxes based on income threshold.

Please report any suspicious activity encountered on Postal Service™ systems, networks, or equipment to the CyberSecurity Operations Center (CSOC) at CyberSafe@usps.gov. For more information, see the following:

- For tax identity theft, visit the IRS website at <https://www.irs.gov/individuals/identity-protection>. If you believe you've been a victim of tax fraud, report it the IRS².
- To report suspected threats to the Postal Service, visit the public-facing CyberSafe at USPS™ website at <https://uspscybersafe.com> or the CyberSafe at USPS pages on *Blue* (<https://blue.usps.gov/cyber/>) and *LiteBlue* (<https://liteblue.usps.gov/cyber/>).

— Corporate Information Security Office,
Chief Information Security Officer
and Digital Solutions, 3-16-17

1. Data sourced from Fraud.org: http://www.fraud.org/tax_id_theft

2. Data sourced from the IRS: <https://www.irs.gov/individuals/how-do-you-report-suspected-tax-fraud-activity>

Stamp Services

Stamp Announcement 17-19: Robert Panara Stamp



© 2016 USPS

On April 11, 2017, in Rochester, NY, the U.S. Postal Service® will issue the *Robert Panara* two ounce rate mail use stamp (Nondenominated, priced at 70 cents) in one design, in a pressure-sensitive (PSA) pane of 20 stamps (Item 114000). The stamp will go on sale nationwide April 11, 2017.

The 16th stamp in the *Distinguished Americans* series honors Robert Panara (1920-2014), an influential teacher and a pioneer in the field of Deaf Studies. The *Distinguished Americans* series is primarily for rates over the first ounce. The stamp features a photograph of Panara taken in 2009 by Mark Benjamin, official photographer of the National Technical Institute for the Deaf at the Rochester Institute of Technology. Panara is shown signing the word “respect.” Art director Ethel Kessler designed this two ounce stamp.

Availability to Post Offices: Item 114000, Robert Panara Two Ounce Rate (Nondenominated, priced at 70 cents), PSA Pane of 20 Stamps

Stamp Fulfillment Services will not make an automatic push distribution to Post Offices™. Post Offices may begin ordering stamps before the first-day-of-issue through SFS Web at <https://sfsweb.usps.gov>.

How to Order the First-Day-of-Issue Postmark

Customers have 60 days to obtain the first-day-of-issue postmark by mail. They may purchase new stamps at their local Post Office, at The Postal Store® website at <http://www.usps.com/shop>, or by calling 800-782-6724. They should affix the stamps to envelopes of their choice, address the envelopes (to themselves or others), and place them in a larger envelope addressed to:

FDI – Robert Panara Stamp
USPS Stamp Fulfillment Services
8300 NE Underground Drive, Suite 300
Kansas City, MO 64144-9900

After applying the first-day-of-issue postmark, the Postal Service™ will return the envelopes through the mail. There is no charge for the postmark up to a quantity of 50. There is a 5-cent charge for each additional postmark over 50. All orders must be postmarked by June 11, 2017.

How to Order First-Day Covers

The Postal Service also offers first-day covers for new stamp issues and Postal Service stationery items postmarked with the official first-day-of-issue cancellation. Each item has an individual catalog number and is offered in the quarterly *USA Philatelic* catalog, online at www.usps.com/shop, or by calling 800-782-6724. Customers may request a free catalog by calling 800-782-6724 or writing to:

U.S. Postal Service
Catalog Request
PO Box 219014
Kansas City, MO 64121-9014

Philatelic Products

Philatelic products for this stamp issue are as follows:

- 114010*, Digital Color Postmark Keepsake, \$15.95.
- 114016*, First-Day Cover, \$1.14.
- 114021*, Digital Color Postmark, \$1.85.
- 114024*, Framed Art, \$39.95.
- 114030*, Ceremony Program, \$6.95.

Items with an asterisk (*) will use the 128 barcode from Stamp Fulfillment Services. All other philatelic products will continue to use barcode series A, with the exception of the Yearbook and the Guide Book.

Issue:	<i>Robert Panara Stamp</i>
Item Number:	114000
Denomination & Type of Issue:	Two Ounce Rate, Nondenominated, Mail Use
Format:	Pane of 20 (1 design)
Series:	<i>Distinguished Americans</i>
Issue Date & City:	April 11, 2017, Rochester, NY 14692
Designer:	Ethel Kessler, Bethesda, MD
Art Director:	Ethel Kessler, Bethesda, MD
Typographer:	Ethel Kessler, Bethesda, MD
Existing Photo:	Mark Benjamin
Modeler:	Sandra Lane/Michelle Finn
Manufacturing Process:	Offset, Microprint
Printer:	Banknote Corporation of America
Printed at:	Browns Summit, NC
Press Type:	Alprinta 74
Stamps per Pane:	20
Print Quantity:	25,000,000 stamps
Paper Type:	Phosphor Tagged Paper, Overall
Adhesive Type:	Pressure-sensitive
Processed at:	Banknote Corporation of America, Browns Summit SC
Colors:	Cyan, Magenta, Yellow, Black
Stamp Orientation:	Vertical
Image Area (w x h):	0.77 x 1.05 in./19.56 x 26.67 mm
Overall Size (w x h):	0.91 x 1.19 in./23.11 x 30.23 mm
Full Pane Size (w x h):	6.11 x 6.23 in./155.19 x 158.24 mm
Plate Size:	240 stamps per revolution
Plate Numbers:	"B" followed by four (4) single digits
Marginal Markings:	
Front:	Plate numbers in two corners of pane
Back:	© 2016 USPS • USPS logo • Plate position diagram • Barcode (114000) in upper right and lower left corners of pane • Promotional text

— Stamp Services, Marketing, 3-16-17

Stamp Announcement 17-20: Delicioso Stamps



© 2016 USPS

On April 20, 2017, in Albuquerque, NM, the U.S. Postal Service® will issue the *Delicioso* stamps (Forever® priced at 49 cents), in 6 designs, in a pressure-sensitive adhesive (PSA) booklet of 20 stamps (Item 672700). The stamps will go on sale nationwide April 20, 2017.

With the release of the new *Delicioso* Forever stamps, the U.S. Postal Service celebrates the influence of Central and South American, Mexican, and Caribbean foods and flavors on American cuisine. This booklet of 20 stamps features six dishes from a variety of Latin American culinary traditions that have found new life and variations in the United States. Each stamp showcases a bright and playful illustration of one of the following dishes: tamales, flan, sancocho, empanadas, chile relleno, and ceviche. The names of the six dishes appear in a festive font above each mouthwatering image. Artist John Parra designed the stamp artwork under the direction of Antonio Alcalá.

**Availability to Post Offices: Item 672700, \$9.80
Delicioso (Forever priced at 49 cents) Double-sided Booklet of 20 Stamps**

Stamp Fulfillment Services will not make an automatic push distribution to Post Offices™. Post Offices may begin ordering stamps prior to the first-day-of-issue through SFS Web at <https://sfsweb.usps.gov>.

How to Order the First-Day-of-Issue Postmark

Customers have 60 days to obtain the first-day-of-issue postmark by mail. They may purchase new stamps at their local Post Office, at The Postal Store® website at <http://www.usps.com/shop>, or by calling 800-782-6724. They should affix the stamps to envelopes of their choice, address the envelopes (to themselves or others), and place them in a larger envelope addressed to:

FDOI – Delicioso
USPS Stamp Fulfillment Services
8300 NE Underground Drive, Suite 300
Kansas City, MO 64144-9900

After applying the first-day-of-issue postmark, the Postal Service™ will return the envelopes through the mail. There is no charge for the postmark up to a quantity of 50. There is a 5-cent charge for each additional postmark over 50. All orders must be postmarked by June 20, 2017.

How to Order First-Day Covers

The Postal Service also offers first-day covers for new stamp issues and Postal Service stationery items postmarked with the official first-day-of-issue cancellation. Each item has an individual catalog number and is offered in the quarterly *USA Philatelic* catalog, online at www.usps.com/shop, or by calling 800-782-6724. Customers may request a free catalog by calling 800-782-6724 or writing to:

U.S. Postal Service
Catalog Request
PO Box 219014
Kansas City, MO 64121-9014

Philatelic Products

Philatelic products for this stamp issue are as follows:

- 672706, Press Sheet with Die-cut, \$78.40.
- 672710, Digital Color Postmark Keepsake, \$19.95.
- 672716*, First-Day Cover set of 6, \$5.58.
- 672721*, Digital Color Postmark set of 6, \$9.84.
- 672730*, Ceremony Program, \$6.95.

Items with an asterisk (*) will use the 128 barcode from Stamp Fulfillment Services. All other philatelic products will continue to use barcode series A, with the exception of the Yearbook and the Guide Book.

Issue:	<i>Delicioso</i> Stamps
Item Number:	672700
Denomination & Type of Issue:	First-Class Mail [®] , Forever
Format:	Double-Sided Booklet of 20 (6 designs)
Series:	N/A
Issue Date & City:	April 20, 2017, Albuquerque, NM
Art Director:	Antonio Alcalá, Alexandria, VA
Designer:	John Parra, Jamaica, NY
Typographer:	Antonio Alcalá, Alexandria, VA
Artist:	John Parra, Jamaica, NY
Modeler:	Sandra Lane/Michelle Finn
Manufacturing Process:	Offset, Microprint
Printer:	Banknote Corporation of America
Printed at:	Browns Summit, NC
Press Type:	Alprinta 74
Stamps per Booklet:	20
Print Quantity:	200,000,000 stamps
Paper Type:	Phosphor Tagged Paper, Block
Adhesive Type:	Pressure-sensitive
Processed at:	Banknote Corporation of America, Browns Summit, NC
Stamp Orientation:	Horizontal
Image Area (w x h):	1.05 x .77 in./26.67 x 19.56 mm
Stamp Size (w x h):	1.19 x .91 in./30.23 x 23.11 mm
Full Booklet Size (w x h):	2.375 x 5.743 in./60.33 x 145.87 mm
Press Sheet Size (w x h):	9.5 x 11.486 in./ 241.30 x 291.74 mm
Colors:	PMS Cool Gray 8/Gray, Cyan, Magenta, Yellow, Black
Plate Size:	800 stamps per revolution
Plate Numbers:	"B" followed by five (5) single digits
Marginal Markings:	Cover: "Delicioso" • Twenty First Class Forever Stamps • Barcode • Plate number in peel strip area • © 2016 • USPS [®] in peel strip area • Promotional Text in peel strip area

— Stamp Services, Marketing, 3-16-17

USA Philatelic Redesign

USA Philatelic
THE OFFICIAL SOURCE FOR STAMP ENTHUSIASTS
2017 / Volume 22 / Spring

We are excited to announce the redesign of *USA Philatelic*, a robust vehicle that provides knowledge and personal insight into the creativity of stamps to inspire stamp collecting. Readers will now have access to exclusive background information about stamps, learn new ways to create beautiful mail, and explore new philatelic products in the Product Spotlight section.

Throughout *USA Philatelic*, readers will also find opportunities to enhance their experience with the USPS® Augmented Reality (AR) app. By scanning the page with the USPS AR icon, readers will discover interesting information about stamps and products, or gain a glimpse of the first-day-of-issue stamp ceremony — and that's just the beginning of the *USA Philatelic* transformation!

We have distributed the *USA Philatelic* spring edition (SKU 00000014) to Postal Retail Units nationwide, and additional copies can be requested through eBay2 by searching for the appropriate SKU number. The Material Distribution Center will fill all orders.

Customers who are interested in receiving a free issue should call 800-STAMP-24 or go to www.usps.com/philatelic to add themselves to the *USA Philatelic* subscription listing.

— Stamp Services,
Marketing, 3-16-17

Pictorial Postmarks Announcement

As a community service, the Postal Service™ offers pictorial postmarks to commemorate local events celebrated in communities throughout the nation. A list of events for which pictorial postmarks are authorized appears below. The sponsor of the pictorial postmark appears in italics under the date. Also provided are illustrations of these postmarks.

People attending these local events may obtain the postmark in person at the temporary Post Office™ station established there. Those who cannot attend the event but who wish to obtain the postmark may submit a mail order request. Pictorial postmarks are available only for the dates indicated, and *requests must be postmarked no later than 30 days following the requested pictorial postmark date.*

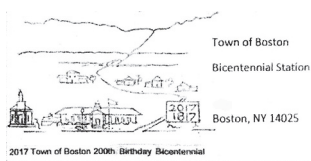
All requests must include a stamped envelope or postcard bearing at least the minimum First-Class Mail® postage. Items submitted for postmark may not include

postage issued after the date of the requested postmark. Such items will be returned unserved.

Customers wishing to obtain a postmark must affix stamps to any envelope or postcard of their choice, address the envelope or postcard to themselves or others, insert a card of postcard thickness in envelopes for sturdiness, and tuck in the flap. Place the envelope or postcard in a larger envelope and address it to: Pictorial Postmarks, followed by the Name of the Station, Address, City, State, ZIP+4® Code, as listed below.

Customers can also send stamped envelopes and postcards without addresses for postmark, as long as they supply a larger envelope with adequate postage and their return address. After applying the pictorial postmark, the Postal Service returns the items (with or without addresses) under addressed protective cover.

The following pictorial postmarks have been extended for 90 days:



January 2 – April 2, 2017

Town of Boston
Town of Boston Bicentennial Station
Postmaster
9025 Boston State Road
Boston, NY 14025-9998



March 1, 2017

United States Postal Service
Lincoln, NE Station
Postmaster
PO Box 9998
Lincoln, NE 68501-9998

The following pictorial postmark has been extended for 60 days:



March 10 – May 10, 2017

United States Postal Service
Mule Town Station
Postmaster
PO Box 9998
Columbia, TN 38401-9998

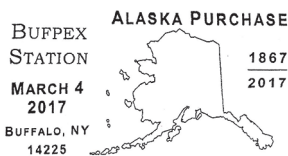
The following pictorial postmarks have been extended for 30 days:



February 28, 2017
Stephen Decatur Chapter #4, Universal Ship Cancellation Society
25th Anniversary Station USS Jefferson City SSN-759
Postmaster
PO Box 719
Norfolk, VA 23501-9998



March 3 – 6, 2017
Anchorage Philatelic Society
APEX Station
Postmaster
3720 Barrow Street
Anchorage, AK 99599-9996



March 4 – 5, 2017
Buffalo Stamp Club
Bufpex Station
Postmaster
1200 William Street, Room 200
Buffalo, NY 14240-9998



March 11, 2017
Rockford Stamp Club
Rockford Stamp Club Station
Postmaster
5225 Harrison Avenue
Rockford, IL 61125-9998



March 13, 2017
The National Council of Negro Women
Atlanta, GA Station Dorothy Height
Postmaster
3900 Crown Road
Atlanta, GA 30304-9998



March 17, 2017
City of Elyria, OH
Bicentennial Station
Customer Relations
Coordinator
2200 Orange Avenue, #234
Cleveland, OH 44101-9998



TOWN OF MINERVA
1817 - 2017
BICENTENNIAL STATION
MINERVA, NY 12851
MARCH 17, 2017

March 17, 2017
Minerva Bicentennial Committee
Bicentennial Station
Postmaster
1709 State Route 28N
Minerva, NY 12851-9998



March 17, 2017
Shamrock CEOs Club – Irish Spring Festival
Shamrock Station
Postmaster
234 Wildcat Road
Ireland, WV 26376-9998



TOWN OF MINERVA
1817 - 2017
BICENTENNIAL STATION
OLMSTEDVILLE, NY 12857
MARCH 17, 2017

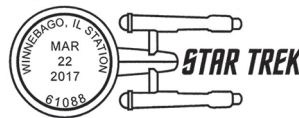
March 17, 2017
Minerva Bicentennial Committee
Bicentennial Station
Postmaster
622 Church Road
Olmstedville, NY 12857-9998



March 18, 2017

Holt County Historical Society

Kinkaid Station
Postmaster
201 North 4th Street
O'Neill, NE 68763-1517



March 22, 2017

United States Postal Service

Winnebago, IL Station Star Trek
Postmaster
105 Landmark Drive
Winnebago, IL 61088-9998



March 21, 2017

The Ebony Society of Philatelic Events and Reflections and the Seniors in the Spotlight

Charlotte, NC Station
Dorothy Height
Postmaster
2901 Scott Futrell Drive
Charlotte, NC 28228-9998

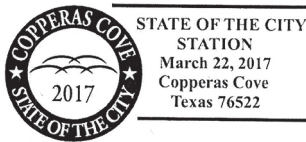


March 23, 2017
Garfield-Perry Station
Cleveland, OH 44101

March 23 – 25, 2017

Garfield-Perry Stamp Club

Garfield-Perry Station
Customer Relations
Coordinator
2200 Orange Avenue, #234
Cleveland, OH 44101-9998



March 22, 2017

City of Copperas Cove

State of The City Station
Postmaster
802 East Avenue D
Copperas Cove, TX 76522-9998



80th NATIONAL CONFERENCE STATION
American Criminal Justice Association
Lambda Alpha Epsilon
March 27, 2017
Austin, Tx 78752

March 27, 2017

American Criminal Justice Association

80th National Conference
Station
Postmaster
8225 Cross Park Drive
Austin, TX 78710-9998

— Stamp Services, Marketing, 3-16-17

How to Order the First-Day-of-Issue Digital Color or Traditional Postmarks

Customers have 60 days to obtain the first-day-of-issue postmarks by mail. Each cover must have sufficient postage to meet First-Class Mail® requirements. Customers may purchase new stamps at their local Post Office™, by telephone at 800-782-6724, or at The Postal Store® website at www.usps.com/shop.

Digital Color Postmarks

Only select stamp issues offer a digital color postmark. Customers may submit #6 or #10 envelopes constructed of paper rated as “laser safe.” The Postal Service recommends envelopes of 80-pound Accent Opaque, acid-free, 9/16 inches side seams with no glue on the flap. The maximum size of all digital color postmarks is 2 inches high x 4 inches long. Allow sufficient space on the envelope to accommodate the postmark. Do not use self-adhesive labels for addresses on the envelope. Two test envelopes must be included. There is a minimum of 10 envelopes at 50 cents per postmark required at the time of servicing. Customers must submit a check, money order, or credit card for payment.

The Postal Service reserves the right to not accept hand-painted and other cachet envelopes that are not compatible with our digital color postmark equipment. The Postal Service also reserves the right to substitute traditional black rubber postmarks if use of nonspecified envelopes results in poor image quality or damage to equipment.

Customers must affix the stamps to the envelopes and address them to themselves or others for return through

the mail. Or, they may include an additional self-addressed return envelope, large enough to accommodate their canceled items, with sufficient postage affixed for return of their postmarked items. Address customer requests for digital color postmarks to:

FDOI – (Name of Stamp Issue)
 USPS Stamp Fulfillment Services
 8300 NE Underground Drive, Suite 300
 Kansas City, MO 64144-9900

After applying the first-day-of-issue postmark, the Postal Service will return the envelopes to the customer by U.S. Mail.

Traditional Postmarks

Customers must affix the stamps to the envelopes and address them to themselves or others for return through the mail. Or, they may include an additional self-addressed return envelope, large enough to accommodate their canceled items, with sufficient postage affixed for return of their postmarked items. Address customer requests for traditional postmarks to:

FDOI – (Name of Stamp Issue)
 USPS Stamp Fulfillment Services
 8300 NE Underground Drive, Suite 300
 Kansas City, MO 64144-9900

After applying the first-day-of-issue postmark, the Postal Service™ will return the envelopes to the customer by U.S. Mail. There is no charge for the first 50 postmarks. There is a 5-cent charge for each additional postmark over 50. Customers must submit a check, money order, or credit card for payment.



FDOI – Gateway Arch Stamp
 USPS Stamp Fulfillment Services
 8300 NE Underground Drive, Suite 300
 Kansas City, MO 64144-9900

March 22, 2017

Digital Color Pictorial



FDOI – Lili'uokalani Gardens Stamp
 USPS Stamp Fulfillment Services
 8300 NE Underground Drive, Suite 300
 Kansas City, MO 64144-9900

March 22, 2017

Digital Color Pictorial

**U.S. Flag Stamp**

Stamp Fulfillment Services
8300 NE Underground Drive, Suite 300
Kansas City, MO 64144-9900

March 27, 2017

Black and White Pictorial

**FDOI – Seashells**

Stamp Fulfillment Services
8300 NE Underground Drive, Suite 300
Kansas City, MO 64144-9900

March 28, 2017

Black and White Pictorial

**FDOI – Dorothy Height Stamp**

USPS Stamp Fulfillment Services
8300 NE Underground Drive, Suite 300
Kansas City, MO 64144-9900

April 1, 2017

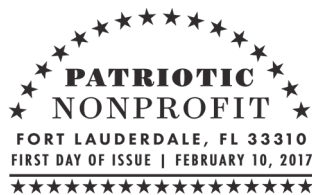
Digital Color Pictorial

**FDOI – Dorothy Height Stamp**

USPS Stamp Fulfillment Services
8300 NE Underground Drive, Suite 300
Kansas City, MO 64144-9900

April 1, 2017

Black and White Pictorial

**FDOI – Patriotic Nonprofit Stamp**

USPS Stamp Fulfillment Services
8300 NE Underground Drive, Suite 300
Kansas City, MO 64144-9900

April 10, 2017

Black and White Pictorial

**FDOI – Oscar de la Renta Stamp**

USPS Stamp Fulfillment Services
8300 NE Underground Drive, Suite 300
Kansas City, MO 64144-9900

April 16, 2017

Digital Color Pictorial



FDOI – Oscar de la Renta Stamp
 USPS Stamp Fulfillment Services
 8300 NE Underground Drive, Suite 300
 Kansas City, MO 64144-9900

April 16, 2017

Black and White Pictorial



FDOI – Uncle Sam's Hat Stamp
 USPS Stamp Fulfillment Services
 8300 NE Underground Drive, Suite 300
 Kansas City, MO 64144-9900

April 18, 2017

Black and White Pictorial



FDOI – John Fitzgerald Kennedy Stamp
 USPS Stamp Fulfillment Services
 8300 NE Underground Drive, Suite 300
 Kansas City, MO 64144-9900

April 20, 2017

Digital Color Pictorial



FDOI – John Fitzgerald Kennedy Stamp
 USPS Stamp Fulfillment Services
 8300 NE Underground Drive, Suite 300
 Kansas City, MO 64144-9900

April 20, 2017

Black and White Pictorial



FDOI – Grapes Stamp
 USPS Stamp Fulfillment Services
 8300 NE Underground Drive, Suite 300
 Kansas City, MO 64144-9900

April 24, 2017

Black and White Pictorial



FDOI – Nebraska Statehood Stamp
 USPS Stamp Fulfillment Services
 8300 NE Underground Drive, Suite 300
 Kansas City, MO 64144-9900

May 1, 2017

Digital Color Pictorial



FDOI – Barn Swallow Stamped Envelope

USPS Stamp Fulfillment Services
8300 NE Underground Drive, Suite 300
Kansas City, MO 64144-9900

May 3, 2017

Black and White Pictorial

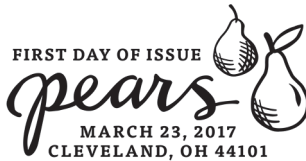


FDOI – WPA Posters Stamps

USPS Stamp Fulfillment Services
8300 NE Underground Drive, Suite 300
Kansas City, MO 64144-9900

May 7, 2017

Digital Color Pictorial



FDOI – Pears Stamp

USPS Stamp Fulfillment Services
8300 NE Underground Drive, Suite 300
Kansas City, MO 64144-9900

May 23, 2017

Black and White Pictorial



FDOI – Mississippi Statehood Stamp

USPS Stamp Fulfillment Services
8300 NE Underground Drive, Suite 300
Kansas City, MO 64144-9900

May 31, 2017

Digital Color Pictorial



FDOI – Robert Panara Stamp

USPS Stamp Fulfillment Services
8300 NE Underground Drive, Suite 300
Kansas City, MO 64144-9900

June 11, 2017

Digital Color Pictorial

USPS® Introduces *Botanical Art* Forever® Stamps



For more stamps and collectibles, visit usps.com/stamps

Design details courtesy of The New York Botanical Garden

On Sale Nationwide: January 29, 2016.



UNITED STATES
POSTAL SERVICE

475 L'ENFANT PLAZA SW
WASHINGTON DC 20260-5540

First-Class Mail
Postage & Fees Paid
USPS
Permit No. G-10

USPS® Issues New Forever® Stamp in the *Celebrating Lunar New Year* Series: *Year of the Rooster*



On Sale Nationwide: January 5, 2017.

Please recycle. 