

postal|bulletin

PUBLISHED SINCE MARCH 4, 1880

NEED A PASSPORT?

Get the paperwork and locate a facility
online @ *usps.com*[®].

See page 3



Contents

COVER STORY

A U.S. Passport is Your Key to International Travel 3

POLICIES, PROCEDURES, AND FORMS UPDATES

Manuals

IMM Revision: Individual Country Listings for
Brazil and the Cayman Islands 4
IMM Revision: Mailing Free Matter for the Blind 5
IMM Revision: New Contact Information for
Requesting Postage Refunds from Foreign Countries 8

Handbooks

Handbook AS-353 Revision: Guide to Privacy,
the Freedom of Information Act, and Records
Management 8

ORGANIZATION INFORMATION

Information Technology

FY 2014 Delivery Unit 802.11 Wireless Local Area
Network Installations 10

Mailing and Shipping Services

Mail Alert 11

Stamp Services

Update: Stamp Announcement 14-3: Love: Cut
Paper Heart Stamp 11
Update: Stamp Announcement 14-6: The Star
Spangled Banner Stamp 12
Update: Stamp Stock Items Withdrawn From
Regular Sale and From Sale at Philatelic Centers 12
Stamp Announcement 14-11: Ralph Ellison Stamp 37
Stamp Announcement 14-12: Wedding Cake 39
Update: Technical Details Tables for Stamp
Announcements 40
Pictorial Postmarks Announcement 42
How to Order the First-Day-of-Issue Digital Color
or Traditional Postmarks 44

Supply Management

Keep Your Elevator Moving — Get an Elevator
Preventative Maintenance Service Contract 46

Sustainability

Federal Reporting Requirements on Hazardous
and Toxic Chemicals 47

PULL-OUT INFORMATION

Fraud

Domestic Orders 13
Withholding of Mail Orders 13
Invalid USPS Corporate Account Numbers 14
Missing, Lost, or Stolen U.S. Money Order Forms 16
Missing, Lost, or Stolen Canadian Money Order
Forms 22
Verifying U.S. Postal Service Money Orders 25
Counterfeit Canadian Money Order Forms 25
Toll-Free Number Available to Verify Canadian
Money Orders 25

Other Information

Overseas Military/Diplomatic Mail 26
Missing Children Posters 31

Postal Bulletin Index

Annual Index PB 22381 (1-23-14)

USPS National Emergency Hotline
Is your facility operating? Call 888-363-7462



Cover Story

A U.S. Passport is Your Key to International Travel

The Department of State's Passport Services Directorate issues U.S. passports to traveling Americans. Passports are a request to foreign governments to permit you to travel, and also allow you to re-enter the United States. They provide proof of U.S. citizenship at home and around the world.

What is a U.S. Passport Book and Passport Card?

The passport book is proof of identity and U.S. citizenship. It can be used for all international travel: air, land, or sea. The passport card can be used to enter the United States from Canada, Mexico, the Caribbean, and Bermuda, at land border crossings or sea ports-of-entry. It cannot be used for international air travel. The wallet-size passport card is convenient and less expensive than the passport book.

Whether you plan to apply for a passport book, passport card, or both, submitting your passport application is easy. The U.S. Postal Service® makes it convenient to apply for your passport. Visit travel.state.gov or contact the National Passport Information Center (NPIC) at 877-487-2778 or TDD/TTY 888-874-7793 for more information on how to apply for a passport. Visit <http://usps.com/passport> to locate a Post Office™ near you that offers passport services.

Passport and International Travel Tips:

- Apply as early as possible before a trip.
- Check the expiration date of your passport well in advance of your departure date. Some countries may not permit you to enter if your passport will expire in six months or less.
- U.S. passports are issued to adults for 10 years and children under the age of 16 for five years.
- Passport forms can be filled out online and printed from <http://travel.state.gov> or obtained at your local Passport Application Acceptance Facility.
- Before traveling abroad, copy the identification page in case your passport is lost or stolen. If your passport is lost or stolen abroad, report the loss immediately to local police authorities and the nearest U.S. embassy or consulate.
- Visit the Country Information pages on <http://travel.state.gov> to learn about the countries in which you are traveling.
- Register for the Smart Traveler Enrollment Program (STEP) at <http://step.state.gov>. When you sign up, you will automatically receive the most current information we compile about the country where you will be traveling or living. You will also receive updates, including Travel Warnings and Travel Alerts (where appropriate).

— Retail Services,
Retail Channel Operations, 2-6-14

Policies, Procedures, and Forms Updates

Manuals

IMM Revision: Individual Country Listings for Brazil and the Cayman Islands

Effective March 3, 2014, the Postal Service™ will revise *Mailing Standards of the United States Postal Service, International Mail Manual (IMM®)* to reflect changes to the Individual Country Listings (ICLs) for Brazil and the Cayman Islands.

The following ICL changes are a result of formal requests made through the Universal Postal Union (UPU) via *International Bureau Circulars (IBC)*:

- Brazil: As indicated in UPU IBC 196, dated November 25, 2013, Brazil is prohibiting from entering its postal network items whose fragility (due either to nature or inadequate packing) could cause harm to individuals or equipment.
- Cayman Islands: As indicated in UPU IBC 199, dated November 25, 2013, the Cayman Islands updated its Observations to state that all mail items containing merchandise valued over \$60 USD, whether purchased or received as a gift, should be accompanied by an invoice. Failure to include an invoice could result in delivery delays.

In addition, we are updating the ICL for the Cayman Islands to incorporate that country's complete lists of Prohibitions and Restrictions (currently, each section states, "Same as Jamaica").

Mailing Standards of the United States Postal Service, International Mail Manual (IMM)

* * * * *

Individual Country Listings

* * * * *

Brazil

Country Conditions for Mailing

Prohibitions

[Add a new prohibition in alphabetical order to read as follows:]

Items whose fragility (due either to nature or inadequate packing) could cause harm to individuals or equipment.

* * * * *

Cayman Islands

Country Conditions for Mailing

Prohibitions

[Revise the list of Prohibitions to read as follows:]

Bees and materials used by beekeepers.

Citrus fruits and plants and parts thereof.

Cocoa; coffee; condensed milk; cornmeal; edible oils; honey and beeswax; paints; and sugar.

Cotton seed and plants and parts thereof.

Lighters containing butane gas.

Meats.

Radioactive materials.

Switchblade knives.

Restrictions

[Revise the list of Restrictions to read as follows:]

Electronic items, including cellular telephones, are not accepted unless they are sent in the original manufacturer's packaging. In addition, the items must be packed in accordance with UPU requirements.

Medications must have the name and formula printed in English on the container and wrapper. Also, medications for treatments of venereal disease must be accompanied with directions for their use.

Observations

[Add a new Observation in alphabetical order to read as follows:]

Merchandise valued over \$60 USD, whether purchased or received as a gift, should be accompanied by an invoice. Failure to include an invoice could result in delivery delays.

* * * * *

We will incorporate these revisions into the next update of the online IMM, which is available via Postal Explorer® at <http://pe.usps.com>.

— Product Classification,
Pricing, 2-6-14

IMM Revision: Mailing Free Matter for the Blind

Effective March 3, 2014, the Postal Service™ will revise *Mailing Standards of the United States Postal Service*, International Mail Manual (IMM®) part 254, subchapter 270, and part 334, as well as the Individual Country Listings for countries that offer Registered Mail™ service, to update eligibility and mail preparation standards for Free Matter for the Blind items sent internationally.

This revision is based on current Universal Postal Union (UPU) regulations that reflect changes adopted by the Postal Operations Council of the UPU in Berne, Switzerland, in April 2013, and that became effective January 1, 2014.

Mailing Standards of the United States Postal Service, International Mail Manual (IMM)

* * * * *

1 International Mail Services
* * * * *

120 Preparation for Mailing
* * * * *

123 Customs Forms and Online Shipping Labels
* * * * *

123.6 Required Usage

123.61 Conditions
* * * * *

Exhibit 123.61 Customs Declaration Form Usage by Mail Category

[In the second-to-last section of the table, revise the title and text to read as follows:]

Type of Item	Declared Value, Weight, or Physical Characteristic	Required PS Form	Comment (if applicable)
* * * * *			
Free Matter for the Blind			
All items.	Follow above requirements for relevant mail category, as appropriate.	Follow above requirements for relevant mail category, as appropriate.	See 270 for authorized mail classes and eligibility.
* * * * *			

2 Conditions for Mailing
* * * * *

250 First-Class Package International Service
* * * * *

254 Mail Preparation
* * * * *

254.2 Markings
The following markings apply to First-Class Package International Service items:
* * * * *

address side of the package a copy of the label shown in Exhibit 274.2.
* * * * *

[Revise 270 in its entirety to read as follows:]

270 Free Matter for the Blind

271 Description and Physical Characteristics

271.1 General

Matter may be entered free of postage provided that at least one of the following criteria is met:

- a. The item is sent to or by an organization for the blind.
- b. The item is sent to or by a person who is registered as blind or who meets the World Health Organization’s definition of a blind person or a person with low vision.

Note: An “organization for the blind” (see 271.1a) means an institution or association serving or officially representing blind persons.

[Revise item 254.2b to read as follows:]

- b. First-Class Package International Service items that qualify as Free Matter for the Blind must bear on the

271.2 Weight Limits

The following weight limits apply to the mail classes identified in 273:

Maximum Weight Limit	Mail Service
4 Pounds	Priority Mail International Flat Rate Envelopes and Small Flat Rate Priced Boxes
	First-Class Mail International
	First-Class Package International Service
15 pounds	Priority Mail International parcels
	Priority Mail International Flat Rate Medium and Large Flat Rate Boxes

272 Eligibility

272.1 Eligible Participants

Mailers may send Free Matter for the Blind free of postage provided that at least one of the following conditions is met:

- a. The item is sent to or by an organization for the blind.
- b. The item is sent to or by a blind person.

272.2 Eligible Matter

Mailers may send the following items as Free Matter for the Blind:

- a. Letters bearing writing used by the blind and plates bearing the characters of writing used by the blind.
- b. Books, periodicals, literature, and other correspondence.
- c. Paper, records, tapes, musical scores, or sound recordings.
- d. Equipment or materials of any kind adapted to assist blind persons in overcoming the problems of blindness, including reproducers or parts of them for sound reproductions.
- e. Specially adapted CDs.
- f. Braille writing equipment, typewriters, educational or other materials or devices, or parts thereof used for writing by a blind person or designed or adapted for use by a blind person.
- g. Braille watches.
- h. White canes.
- i. Recording equipment.

272.3 Ineligible Matter

Free Matter for the Blind items are solely intended for the use of an eligible participant who is unable to read conventional materials. The following list is not inclusive, but provides guidance of ineligible items:

- a. The item is for purposes of advertisement.
- b. The item is intended as a profit-making transaction. There should be no charge (rental, subscription, or

other associated fee) that is in excess of the actual cost.

272.4 Customs Forms Required

When required (see IMM Exhibit 123.61), the mailer must affix a fully completed PS Form 2976 or 2976-A to each item. The known mailer exemption in IMM 123.62 does not apply to Free Matter for the Blind items.

272.5 Mail Not Sealed Against Inspection

Free Matter for the Blind is not sealed against inspection (see ASM 274). Mailers must prepare items in such a way that the contents are sufficiently protected while permitting quick and easy inspection or verification of the contents.

272.6 Extra Services

Mailers must pay for any extra services requested for Free Matter for the Blind items. The Postal Service authorizes only the following extra services:

- a. Registered Mail service for First-Class Mail International items, First-Class Package International Service items, and Priority Mail International Flat Rate Envelopes or Small Flat Rate Priced Boxes.
- b. Insurance service for Priority Mail International parcels up to 15 pounds.

273 Postage Prices and Fees

Postage is provided at no charge for Free Matter for the Blind items only for the following classes of mail and products:

- a. First-Class Mail International.
- b. First-Class Package International Service.
- c. Priority Mail International Flat Rate Envelopes.
- d. Priority Mail International Small Flat Rate Priced Boxes.
- e. Priority Mail International parcels weighing up to 15 pounds.

The sender must pay the applicable total postage based on the weight and destination price group of the article when sending eligible free matter as a Priority Mail International parcel weighing more than 15 pounds.

The sender must pay the applicable fees for Registered Mail or insured services (see 272.6).

274 Mail Preparation

274.1 Addressing

All international addressing standards apply. See 122.

274.2 Markings

In addition to the markings required in 234.2 for Priority Mail International parcels, in 244.2 for First-Class Mail International items, and in 254.2 for First-Class Package International Service items, the mailer must mark the item "Free

Matter for the Blind” in the upper right-hand corner of the address side of the mailpiece. In addition, the mailer must affix to the address side of the mailpiece a copy of the label depicted in Exhibit 274.2. The mailer may photocopy the image and apply it to the item.

Exhibit 274.2 Free Matter for the Blind Label



275 Mail Entry and Deposit

275.1 Items Eligible for Deposit or Pickup

Eligible Free Matter for the Blind items bearing a computer-generated customs form with customs data that has been electronically transmitted may be deposited through any of the following methods provided any extra service fees have been paid by a means other than the use of postage stamps:

- a. In a private mailbox bearing a return address that matches the address at the point of pickup, when the customer or business is known to reside or do business at that location.
- b. At a Postal Service retail counter.
- c. Into a Postal Service lobby drop.
- d. In a collection box.
- e. At a Contract Postal Unit (CPU).
- f. At a USPS Approved Shipper location.

Note: The following items may also be deposited through the aforementioned methods:

- a. Priority Mail International Flat Rate Envelopes weighing 13 ounces or less, bearing “Free Matter for the Blind” as postage, and not requiring a customs form (see 123.6).
- b. First-Class Mail International letter-size and flat-size items weighing 13 ounces or less, bearing “Free Matter for the Blind” as postage, and not requiring a customs form (see 123.6).

275.2 Items Not Eligible for Deposit or Pickup

Customers must present the following eligible Free Matter for the Blind items requiring a customs form to an employee at a Post Office retail service counter. Deposit and pickup methods listed in 275.1 are prohibited. The Postal Service will return improperly presented items to the sender for proper entry and acceptance.

- a. Any item bearing a handwritten customs form.
- b. Any item bearing a customs form that was not computer-generated.
- c. Any item for which the customs data was not electronically transmitted.

* * * * *

3 Extra Services

* * * * *

330 Registered Mail

* * * * *

334 Processing Requests

* * * * *

334.4 Sealing

* * * * *

[Revise the title and text of 334.42 to read as follows:]

334.42 Registered Mail Service With Free Matter for the Blind

Registered Mail service is available when the mailer has paid all applicable Registered Mail service fees. Free Matter for the Blind items sent by Registered Mail service are not sealed against inspection.

* * * * *

Individual Country Listings

Country Conditions for Mailing

* * * * *

[For all countries that offer Free Matter for the Blind service (currently referred to in each ICL as “Matter for the Blind or Other Physically Handicapped Persons”), revise the heading to read as follows:]

Free Matter for the Blind (270)

* * * * *

Extra Services

* * * * *

Registered Mail (330)

* * * * *

[For all countries that offer Registered Mail service, revise the statement following the maximum indemnity price to read as follows (revising the last item in the text):]

Available only for First-Class Mail International, including postcards, First-Class Package International Service, Priority Mail International Flat Rate Envelopes, Priority Mail International Small Flat Rate Priced Boxes, and Free Matter for the Blind.

* * * * *

We will incorporate these revisions into the next update of the online IMM, which is available via Postal Explorer® at <http://pe.usps.com>.

— *Product Classification,
Pricing, 2-6-14*

IMM Revision: New Contact Information for Requesting Postage Refunds from Foreign Countries

Effective March 3, 2014, the Postal Service™ will revise *Mailing Standards of the United States Postal Service, International Mail Manual (IMM®)* section 941.32 to reflect new contact information for mailers requesting postage refunds from foreign countries.

Mailing Standards of the United States Postal Service, International Mail Manual (IMM)

* * * * *

9 Inquiries, Indemnities, and Refunds

* * * * *

940 Postage Refunds

941 Postage Refunds for First-Class Mail International, First-Class Package International Service, and Priority Mail International

* * * * *

941.3 Processing Refund Applications

* * * * *

941.32 Items Originating in a Country Other Than the United States

[Revise the section in its entirety to read as follows:]

When there is reason to believe that the other country is at fault, or when the request relates to mail originating in another country, forward the application with the wrapper and all supporting papers to the following address:

INTERNATIONAL RESEARCH GROUP
UNITED STATES POSTAL SERVICE
PO BOX 512318
LOS ANGELES, CA 90051-0318

* * * * *

We will incorporate this revision into the next update of the online IMM, which is available via Postal Explorer® at <http://pe.usps.com>.

— *Product Classification,
Pricing, 2-6-14*

Handbooks

Handbook AS-353 Revision: Guide to Privacy, the Freedom of Information Act, and Records Management

The U.S. Postal Service® has entered into a settlement to resolve all claims in a national employment discrimination class action lawsuit filed by Postal Service™ deaf and hard of hearing employees and applicants. Among other things, the settlement requires the Postal Service to select an independent ombudsperson who will serve for a period of three years, beginning October 29, 2013. In cooperation with the Postal Service headquarters disability program manager, the ombudsperson will monitor the Postal Service's compliance with the injunctive relief provisions of the settlement through the establishment of a call center and

designated email address. Deaf and hard of hearing Postal Service employees will be advised that they can register a comment or concern about communication accommodation issues via a designated email address and/or through a toll-free number or other device provided by the call center. Deaf and hard of hearing Postal Service employees will further be advised that use of the email address and toll-free number or device to register a comment or concern does not affect their rights to file a grievance or complaint in any other process, nor does it serve as initial contact for

any other process such as a grievance or EEO pre-complaint processing pursuant to 29 CFR 1614.105.

The Disability Program Manager will provide qualifying deaf and hard of hearing employees and applicants with information regarding how to contact the ombudsperson. Such individuals may register a comment or concern about communication and accommodation issues they have experienced in the workplace or during their employment application process with the Postal Service call center and/or designated email address. To be able to identify and address specific comments and/or concerns, individuals will be asked to supply information specific to them, such as their name, residential addresses, Employee Identification Number (EIN) or Applicant Identification Number (AIN). If necessary, the ombudsperson will investigate the comments and/or concerns in order to make an independent assessment.

The Postal Service is amending system of records (SOR) 100.900 *Employee Inquiry, Complaint, and Investigative Records* to account for the collection of applicant identification numbers from applicants who file an inquiry or complaint with the ombudsperson via the call center or designated email address. Additionally, to facilitate the record location process, retrievability is being updated to include Employee Identification Numbers and Applicant Identification Numbers.

Handbook AS-353, *Guide to Privacy, the Freedom of Information Act, and Records Management*, was revised to include these modifications, which were published in the *Federal Register* on December 27, 2013 (78 FR 79026-79027).

Handbook AS-353, Guide to Privacy, the Freedom of Information Act, and Records Management

* * * * *

Appendix — Privacy Act Systems of Records

* * * * *

Section E. Complete Text of Systems of Records

* * * * *

USPS 100.900

SYSTEM NAME:

Employee Inquiry, Complaint, and Investigative Record

CATEGORIES OF RECORDS IN THE SYSTEM

[Revise the text of (2) to read as follows:]

* * * * *

- 2. Non-employee information: Name, gender, Applicant Identification Number, and contact information.***

* * * * *

RETREIVABILITY

[Revise the text to read as follows:]

* * * * *

By employee and non-employee name, Employee Identification Number, Applicant Identification Number, subject category, facility, finance number, district, area, nationally, or case number.

* * * * *

We will incorporate these revisions into the next online issue of Handbook AS-353, *Guide to Privacy, the Freedom of Information Act, and Records Management*, which is available on the Postal Service PolicyNet website:

- Go to <http://blue.usps.gov>.
- Under “Essential Links” in the left-hand column, click *PolicyNet*.
- Click *HBKs*.

(The direct URL for the Postal Service PolicyNet website is <http://blue.usps.gov/cpim>.)

— Privacy Office,
General Counsel and Executive VP, 2-6-14

Organization Information

Information Technology

FY 2014 Delivery Unit 802.11 Wireless Local Area Network Installations

This notification is to advise Delivery Unit personnel of the 802.11 wireless local area network installations that will occur at Postal Delivery Unit facilities throughout FY 2014. The wireless local area network equipment is being installed to support deployment of existing and future Delivery Unit Infrastructure Technology (DUI) initiatives, such as Delivery Schemeless Sortation (DSS), Passive Adaptive Scanning System (PASS) and Mobile Point of Sale (mPOS).

Currently, over 12,000 Postal Delivery Unit locations are slated to receive this new 802.11 wireless local area network equipment sometime during the year. The equipment consists of one or more wireless access points (WAP) connected to the existing local area network that currently support POS terminals, PCs, cradles, and printers. The equipment is intended to provide broad 802.11 wireless coverage for the facility, especially throughout the carrier and retail areas.

In addition to installations being performed by local USPS® maintenance personnel, the Postal Service has awarded contracts to three nationwide installation vendors — Verizon, Granite, and UNSi.* Installations will be assigned to maintenance or one of our vendors on a site-by-site basis, based on District, priority, availability, and other factors.

It is important for Postmasters, customer service managers, clerks, and other personnel to be aware that vendors may contact your site via phone to schedule installation of this equipment. The call will occur one to two weeks ahead of the projected installation timeframe. The callers will identify themselves as a representative of Verizon, Granite, or UNSi, and ask for the primary point of contact for each site, typically the Postmaster or customer service manager.

The vendor representative who contacts your site will coordinate a time and date for the installation, and ask a brief series of questions about your facility.

Information you may be asked to provide includes, but is not limited to, the following:

- Ceiling height.
- Ceiling type (e.g. solid, open beams, drop tile).
- Facility layout and confirmation of square footage.
- Door width (for access and egress of installation equipment).
- Loading dock height (if applicable).
- Existing ethernet switch/router location.

Based on the information you provide during the pre-installation phone survey, an installation date and time will be scheduled. Depending on the size of your facility, these installations require a technician to be on-site for one to four hours to complete the work. When the installation technician arrives at the scheduled date and time, he or she will present an official USPS Letter of Agency (LoA) specific to the vendor he or she represents, and a valid driver's license for identification. Please accept this LoA as his or her credentials and authorization to perform the installation work described.

*Communication and installation scheduling between USPS maintenance organizations and the delivery unit locations is coordinated by each District.

If you become aware of any current or future status changes at your facility (e.g. facility moving, closing, lease expiring, change in operational status, etc.), immediately notify the IT Manager for your District. A list of District IT contacts can be found here: <http://fccco/phonebook/fieldis.cfm>. Contacting District IT to notify them of facility status changes helps us avoid unnecessary costs to the Postal Service™, as we are charged for the installation if it is not cancelled within 14 days of the scheduled date. All questions should be directed to the IT Service Desk at 800-USPS HELP (800-877-7435).

— IT Business Management,
Information Technology, 2-6-14

Mailing and Shipping Services

Mail Alert

The mailings below will be deposited in the near future. Offices should process this mail according to applicable service standards with the in-home dates in mind. Mailers wishing to participate in these alerts, for mailings of 1 million pieces or more, should contact Business Service Network Integration at 202-268-3258 at least 1 month preceding the requested delivery dates. The Postal Ser-

vice™ also offers electronic Mail Alerts via ADVANCE. For more information, see the *ADVANCE Notification & Tracking System Technical Guide* on the Internet at http://ribbs.usps.gov/advance/documents/tech_guides/advtech.pdf or contact the National Customer Support Center at 800-238-3150.

Requested Delivery Dates	Title of Mailing	Class and Type of Mail	Number of Pieces (Millions)	Distribution	Presort Level	Comments
2/03/14–2/05/14	jcp–WK1 February Mailer	Standard A/Letter	10.0	National	3/5 Digit	Harte-Hanks/RRD
20/3/14–2/07/14	jcp–WK1 Sephora Fragrance	Standard A/Letter	1.3	National	3/5 Digit	Harte-Hanks/RRD
2/10/14–2/12/14	jcp–WK2 Reactivation PC	Standard A/Letter	2.0	National	3/5 Digit	Harte-Hanks/RRD
2/14/14–2/18/14	jcp–WK3 Customer Appreciation	Standard A/Letter	4.0	National	3/5 Digit	Harte-Hanks/RRD
2/20/14–2/22/14	jcp–WK4 Big One Day Sale	Standard A/Letter	8.0	National	3/5 Digit	Harte-Hanks/RRD

– Business Customer Support and Services, Consumer and Industry Affairs, 2-6-14

Stamp Services

Update: Stamp Announcement 14-3: Love: Cut Paper Heart Stamp

Stamp Announcement 14-3: *Love: Cut Paper Heart Stamp* (Postal Bulletin 22381, 1-23-14, Page 23) Special Dedication Postmarks information is as follows:

Special Dedication Postmarks

Only the following pictorial postmark is permitted for the *Love: Cut Paper Heart* stamp. The word “Station” or the abbreviation “STA” is required somewhere in the design, because it will be a temporary station.

Guidelines for Finalizing Love: Cut Paper Heart Stamp Pictorial Postmark Art



To finalize the *Love: Cut Paper Heart* stamp pictorial postmark art, insert the date, city, state and ZIP™ Code of the physical location of your event adjacent to the stamp image. Overall dimensions of the pictorial postmark must not exceed 4 inches horizontally by 2 inches vertically. Collectors prefer the dimensions 3-1/2 inches by 1.

The Postal Service™ must make all special postmarks known to collectors through advance publicity in the *Postal Bulletin*. Therefore, all special dedication cancellations must be reported to Stamp Services four weeks before the events using PS Form 413, *Pictorial Postmark Announcement/Report*. To get a copy of the form, go to <http://blue.usps.gov/formmgmt/forms/ps413.pdf>.

– Stamp Services, Marketing and Sales, 2-6-14

Update: Stamp Announcement 14-6: The Star Spangled Banner Stamp

In *Postal Bulletin* 22381 (1-23-14, page 49), Stamp Announcement 14-6: *The Star Spangled Banner* Stamp, Technical Details Table, for Ashton Potter's coil of 100 stamps, the Print Quantity should be 1.5 billion stamps.

There is also a Special Dedication Postmark for *The Star-Spangled Banner*.

Special Dedication Postmarks

Only the following pictorial postmark is permitted for *The Star-Spangled Banner* stamp. The word "Station" or the abbreviation "STA" is required somewhere in the design, because it will be a temporary station.

Guidelines for Finalizing The Star-Spangled Banner Stamp Pictorial Postmark Art



To finalize *The Star-Spangled Banner* stamp pictorial postmark art, insert the date, city, state and ZIP™ Code of the physical location of your event adjacent to the stamp image. Overall dimensions of the pictorial postmark must not exceed 4 inches horizontally by 2 inches vertically. Collectors prefer the dimensions 3-1/2 inches by 1.

The Postal Service™ must make all special postmarks known to collectors through advance publicity in the *Postal Bulletin*. Therefore, all special dedication cancellations must be reported to Stamp Services four weeks before the events using PS Form 413, *Pictorial Postmark Announcement/Report*. To get a copy of the form, go to <http://blue.usps.gov/formmgmt/forms/ps413.pdf>.

— Stamp Services, Marketing and Sales, 2-6-14

Update: Stamp Stock Items Withdrawn From Regular Sale and From Sale at Philatelic Centers

Effective close of business December 31, 2013, all Post Offices™, stations, branches, postal stores, vending outlets, and authorized philatelic centers must (1) withdraw the stamp stock items and products listed in the table and their related vending and store-prepared stamp items from sale, and (2) prepare for destruction. Submit items to destruction sites according to local established procedures, under the guidelines in Handbook F-101, *Field Accounting Proce-*

dures, and subchapter 11-6, Returning Stock to the Stamp Distribution Office or Stamp Distribution Center.

575700	Forever Lady Liberty and Flag ATM pane of 18
679400	Forever Lady Liberty and Flag booklet of 20
787900	Forever Lady Liberty and Flag coil of 100

— Stamp Services,
Marketing and Sales, 2-6-14

Pull-Out Information

Fraud

Domestic Orders

False representation is enforced by Postmasters at the cities listed below.

State, City, ZIP Code	Names and Addresses Covered	Product
UT, Sandy 84093-3002	Rick Campbell d/b/a National Safety Compliance, 1914 E. 9400 S. #112	False billing scheme
WA, Concrete 98237-8495	Anthony James Williams, 41983 Pine Street	Fraudulent sweepstakes and lottery scheme

— Judicial Officer, 2-6-14

Withholding of Mail Orders

Withholding of Mail Orders is enforced by Postmasters at the cities listed below.

State, City, ZIP Code	Names and Addresses Covered
NC, Huntersville 28078-6637	Any and all of various names except the surname Reyes, 13016 Eastfield Road, Suite 200, PMB 128
NJ, Montague 07827-0225	Any and all names except the surname Stato, PO Box 1225
NY, Cuddebackville 12729-0238	Any and all names except the surname Stato, PO Box 238
NY, Huguenot 12746-0050	Any and all names except the surname Stato, PO Box 50
NY, Port Jervis 12771-0182	Any and all names except the surname Stato, PO Box 3121
NY, Sparrow Bush 12780-0191	Any and all names except the surname Stato, PO Box 191
PA, Milford 18337-2315	Any and all names except the surname Stato, PO Box 1315

— Judicial Officer, 2-6-14

Invalid USPS Corporate Account Numbers

This listing should be provided to Contract Postal Units and used by acceptance clerks in non-POS locations without intranet access to validate a USPS Corporate Account (USPSCA) number online. For all other locations, online USPSCA validation is preferred. The online validation process is outlined in the USPSCA Validation SOP on the Retail webpage. This list supersedes all previous notices,

which must be recycled. Acceptance clerks must not accept Priority Mail Express™ shipments bearing an invalid USPSCA number in the “Payment by Account” or “Agreement Number” section of the label or form.

Note: The first 6 digits of a 9-digit Custom Designed Service and Next Day Pickup Agreement make up the Corporate Account Number.

006074	009183	019346	091202	104521	292726	339059	503140	605105	608166	805123	920068	968530
006181	009224	020163	091460	104533	293110	340688	531307	605132	608205	809022	920184	970020
006637	009258	020388	091966	104612	296468	340801	531513	606005	608238	809135	920202	970116
006711	009315	022835	092310	115148	299796	349031	531544	606053	608424	809431	921068	970188
006772	009369	027533	092604	117252	300287	350090	531698	606056	608535	811010	921223	970189
006790	009394	027627	093211	117260	300602	352713	531818	606062	608580	826126	921454	970280
006867	009419	028147	094015	122055	300616	358058	532019	606066	611219	837010	921739	970390
007010	009550	029769	095784	122422	300665	361355	534001	606086	617607	840606	926022	970443
007158	009689	038582	096173	142188	301057	365080	537001	606106	629138	841211	926023	970564
007221	009713	041101	096312	146138	301522	366067	544078	606129	631103	841222	926044	970591
007242	009830	050028	097439	159049	301936	372005	545001	606415	631414	841241	926047	970596
007246	009873	055069	097558	170133	306110	379775	551333	606566	631796	841291	926257	970610
007249	009912	060011	098032	171236	311559	392719	551569	606666	631965	841628	926324	971114
007254	009961	062054	098172	182001	312016	432021	551841	606680	641199	844205	926325	972796
007328	009982	064053	098413	191275	312473	436180	551972	606710	660612	847193	926383	972807
007343	011398	064650	100058	193125	314755	441328	553025	606781	672012	853992	926496	973329
007364	014035	068196	100234	197008	319137	441397	553137	606837	681278	875003	926513	981713
007396	014078	068411	100349	200367	319153	443567	553507	606849	740091	891229	926595	982354
008071	014177	070221	100441	200765	321210	445022	553513	606883	741202	895905	926729	982402
008136	014298	070285	100468	200821	327350	450010	553830	607130	744069	906372	927833	982547
008207	014439	070988	100502	208295	330007	452002	554213	607138	766510	907415	928856	982701
008313	014525	071420	100576	210523	330444	452311	554243	607229	770472	907829	930402	983035
008324	014898	071491	100605	210539	330469	454605	554357	607290	782111	911038	932725	983099
008537	014961	076016	100771	210540	330624	460060	554706	607346	782159	912441	935002	992264
008705	015002	076212	100845	220448	330961	462065	554708	607361	787809	914029	937500	992792
008957	015014	076383	100852	220449	331037	481288	581020	607453	800306	914081	937544	995816
008962	015375	079900	100867	220765	331049	481291	600009	607505	801635	914368	941164	997140
009004	015485	090104	100883	232424	331613	483500	600043	607531	801705	914766	949146	
009065	015609	090133	101799	232599	333275	487279	600108	607999	801725	915129	950385	
009110	015627	090530	102620	274040	334177	488053	600784	608065	802318	915669	951071	
009147	018732	090686	102628	284005	335864	490733	602245	608108	802471	915705	951850	
009169	018739	090778	104179	286082	336539	496097	604889	608110	802638	917578	958115	

**DID YOU
KNOW ?**

**The United States
Postal Service
receives no federal
tax dollars for
its operations.**



Missing, Lost, or Stolen U.S. Money Order Forms

Do Not Cash — Upon Receipt, Notify Local Postal Inspectors

This listing will be provided to all Postal Service™ employees responsible for accepting and cashing postal money orders. Destroy all interim notices when the num-

bers listed appear in the *Postal Bulletin*. The actual serial numbers consist of the first 10 digits on the money orders. Check for altered dollar amounts by holding money orders to the light.

010 001 0200 to 0299	040 688 8816 to 8899	077 999 4001 to 4090	127 500 2328 to 2399
010 504 1932 to 1999	041 299 6752 to 6799	078 174 4475 to 4499	160 901 2254 to 2299
011 582 1889 to 1899	041 623 8889 to 8899	078 219 4931 to 4999	161 103 6581 to 6599
011 588 2900 to 3099	041 803 6565 to 6599	078 250 4756 to 4799	161 194 2857 to 0899
012 441 0784 to 0799	043 129 1968 to 1997	078 823 8312 to 8399	162 032 4447 to 4499
012 579 5675 to 5699	043 205 5922 to 5999	079 374 0300 to 2499	163 257 1085 to 1099
013 289 6176 to 6199	044 087 3457 to 3499	079 807 2342 to 2399	164 359 2406 to 2499
013 610 0014 to 0099	044 087 4000 to 4099	082 721 0228 to 0254	166 101 1433 to 1499
014 932 1000 to 1099	044 306 4200 to 4299	083 140 5000 to 7499	167 555 5201 to 5212
014 972 0800 to 0899	044 306 4370 to 4599	083 784 8886 to 8899	167 555 5214 to 5299
015 363 0065 to 0099	045 524 4121 to 4298	083 913 6915 to 6999	169 618 6274 to 6299
017 028 3200 to 3299	046 800 9870 to 9899	084 478 3920 to 3999	173 639 4685 to 4699
018 569 5333 to 5399	047 352 4000 to 4099	086 000 8271 to 8299	174 238 2779 to 2799
018 986 5264 to 5299	048 383 7650 to 7659	086 798 3840 to 3849	174 281 9347 to 9399
019 518 2814 to 2899	048 396 3647 to 3699	088 404 4472 to 4499	175 251 2600 to 0699
020 698 5159 to 5199	051 142 0755 to 0799	088 404 5584 to 5699	176 281 7937 to 7950
020 844 7307 to 7399	051 774 8857 to 8899	088 757 8688 to 8699	176 281 7963 to 7999
020 972 8948 to 8999	051 781 2875 to 2885	088 757 9400 to 9499	176 731 6586 to 6599
022 021 9110 to 9181	051 977 7010 to 7023	089 358 2248 to 2257	178 254 5000 to 9999
022 037 1411 to 1499	052 058 7115 to 7199	090 663 9678 to 9684	178 881 9900 to 9999
022 527 9201 to 9210	054 450 1130 to 1167	091 818 0071 to 0099	180 031 2089 to 2098
022 529 1882 to 1899	057 670 0563 to 0599	093 106 9346 to 9355	180 403 7723 to 7741
023 637 7169 to 7199	058 187 3836 to 3899	093 203 0500 to 0599	180 428 4580 to 0599
024 380 4100 to 4199	058 523 3003 to 3099	093 684 3630 to 3699	182 368 7544 to 0599
024 496 6870 to 6896	058 591 1153 to 1299	094 081 5074 to 5099	182 475 3229 to 3258
025 092 0987 to 0999	058 895 3746 to 3799	094 216 2555 to 2599	182 475 3904 to 3933
025 369 5535 to 5599	059 986 0814 to 0899	094 580 7062 to 7099	182 631 0031 to 0099
025 729 1151 to 1199	060 406 7650 to 7699	094 639 4200 to 4299	184 218 2760 to 2799
025 729 1643 to 1799	063 491 8122 to 8199	095 070 7186 to 7199	185 828 1474 to 1499
026 492 3180 to 3199	063 916 9968 to 9999	095 076 8300 to 8399	186 132 7583 to 0599
027 361 0430 to 0499	064 091 4500 to 4599	095 354 6864 to 6899	186 629 0589 to 0599
027 369 4482 to 4495	065 170 0471 to 0499	097 224 1350 to 1599	187 184 6177 to 0199
027 671 8762 to 8776	065 255 7909 to 7999	100 160 3800 to 3899	187 323 8200 to 8299
027 787 9886 to 9899	065 392 6345 to 6399	104 667 6400 to 6499	187 441 6080 to 6099
027 965 9487 to 9499	066 099 2014 to 2099	104 876 8937 to 8999	188 831 6774 to 6799
028 100 8069 to 8099	066 648 2880 to 2899	112 049 4413 to 4499	188 835 6370 to 6399
028 191 1852 to 1999	066 787 3639 to 3699	112 870 9765 to 9799	189 083 1064 to 1099
028 850 3000 to 3199	066 845 7500 to 9999	113 319 2000 to 2099	189 660 9583 to 9599
029 510 1500 to 1599	067 093 3869 to 3899	114 402 3850 to 3899	191 179 0377 to 0399
030 687 0903 to 0999	068 895 0334 to 0399	114 866 5368 to 5397	192 050 5762 to 5781
030 701 3442 to 3499	070 724 4488 to 4499	116 154 2800 to 2899	194 456 8600 to 0699
031 077 4507 to 4799	070 841 9181 to 9199	116 986 4400 to 4499	195 194 6881 to 6899
032 295 7500 to 9999	070 844 2546 to 2599	117 175 1647 to 5169	199 105 0778 to 0799
034 394 1000 to 1099	070 916 1340 to 1399	117 951 4687 to 4699	199 678 2968 to 2999
034 943 0400 to 0799	071 047 5768 to 5799	117 951 5200 to 5299	202 748 5133 to 5199
035 035 4337 to 4399	071 179 9800 to 9899	119 786 3051 to 3064	202 748 5245 to 5299
037 312 7500 to 7599	071 386 3682 to 3699	119 815 8961 to 6199	202 748 5300 to 5399
037 706 9578 to 9599	071 507 6840 to 6899	119 850 7400 to 7499	202 748 5400 to 5499
037 805 3677 to 3699	072 045 9641 to 9699	119 850 7700 to 7999	203 256 1240 to 1299
037 909 5490 to 5499	072 675 8287 to 8299	121 634 0460 to 0499	205 019 0174 to 0199
037 931 4660 to 4699	073 763 0867 to 0876	122 451 9879 to 9899	207 196 9900 to 9999
039 145 6521 to 6595	073 763 0878 to 0887	122 714 6805 to 6900	207 204 0700 to 0799
040 024 3901 to 3999	073 763 0889 to 0898	124 916 0304 to 0499	207 204 0800 to 0899
040 674 7100 to 7199	077 617 5481 to 5499	126 423 0136 to 0169	207 514 3857 to 3899

628 226 3100 to 3199
 628 814 4702 to 4799
 628 851 9689 to 9699
 629 510 7200 to 7299
 629 964 4200 to 4294
630 389 3056 to 3071
 630 463 0588 to 0599
 631 459 9117 to 9199
 631 762 9325 to 9399
 632 217 4933 to 4999
 632 500 0000 to 640 3999
 633 110 4165 to 4199
 633 110 4303 to 4499
 633 438 6429 to 6599
 633 588 7173 to 7182
 634 725 0700 to 0799
 634 803 3239 to 3299
 634 807 2474 to 2499
 634 827 5900 to 5999
 634 886 3428 to 3499
 635 559 3449 to 3499
 636 289 6214 to 6299
 636 634 8007 to 8042
 637 150 1200 to 1299
 637 562 5828 to 5899
 638 042 1647 to 1699
 638 049 4984 to 4999
 638 318 1115 to 1199
 638 318 1453 to 1499
 638 885 0000 to 0299
 638 903 4362 to 4373
 639 415 1929 to 1999
 639 415 2019 to 2099
 639 420 6200 to 6299
 639 469 3517 to 3799
 639 605 2143 to 2199
 639 657 8600 to 8799
640 289 7500 to 7599
 640 289 7700 to 7999
 641 170 4420 to 4499
 641 318 3133 to 3199
 641 378 6500 to 6999
 641 383 8739 to 8799
 641 877 3187 to 3299
 641 877 3310 to 3399
 642 355 8094 to 8199
 642 355 8308 to 8999
 642 900 0018 to 0099
 643 030 6254 to 6299
 644 066 0882 to 0899
 644 069 0600 to 0699
 644 077 7506 to 7699
 644 085 8157 to 8199
 644 112 9839 to 9899
 644 373 9083 to 9099
 644 380 1460 to 1499
 644 733 4715 to 4799
 644 900 9712 to 9799
 644 901 0109 to 1299
 644 901 1325 to 1399
 644 923 6800 to 7799
 644 932 4655 to 4699
 645 318 7240 to 7499
 645 333 1766 to 1799

645 790 8632 to 8699
 645 821 0657 to 0699
 645 930 7948 to 7999
 645 975 0737 to 0762
 646 242 6200 to 6299
 646 270 7639 to 7799
 646 798 4000 to 4999
 647 048 7035 to 7099
 647 049 2900 to 2999
 647 398 8300 to 8399
 647 398 8481 to 8499
 647 437 3000 to 4999
 647 811 2188 to 2199
 648 009 6057 to 6099
 648 163 5300 to 5499
 648 722 5283 to 5299
 648 892 3164 to 3199
 649 100 3989 to 3999
 649 647 0370 to 0399
 649 647 0522 to 0599
 649 647 5237 to 5399
 649 647 9100 to 9299
 649 666 7800 to 8299
650 114 7707 to 7719
 650 130 3400 to 3599
 650 213 0406 to 0499
 650 555 1749 to 1799
 650 564 1900 to 1999
 650 627 4212 to 4299
 650 736 2043 to 2099
 650 739 1540 to 1699
 651 741 4415 to 4499
 651 882 2800 to 2899
 652 754 6317 to 6399
 653 131 4945 to 4999
 653 426 3300 to 3399
 653 455 4874 to 4899
 654 238 0000 to 0399
 654 404 3065 to 3092
 654 962 2900 to 3199
 655 103 5081 to 5199
 655 523 2600 to 2999
 656 305 2448 to 2499
 657 347 4438 to 4999
 657 710 8100 to 8999
 657 780 0985 to 0999
 658 586 1400 to 1499
 658 877 8000 to 8199
 658 880 8000 to 8199
 659 398 7300 to 7399
 659 706 8113 to 8199
 659 846 7837 to 7899
660 510 4100 to 4199
 660 673 0400 to 0599
 661 488 5000 to 5099
 661 609 9100 to 9199
 661 716 9420 to 9499
 661 906 6522 to 6599
 662 021 8332 to 8399
 662 068 0700 to 0899
 662 553 0774 to 0799
 663 078 7034 to 7099
 663 763 5300 to 5399
 663 883 7039 to 7499

663 938 9200 to 9299
 664 253 8000 to 8499
 664 656 3055 to 3099
 665 174 6400 to 6499
 665 274 8208 to 8299
 665 669 5400 to 5499
 666 132 8226 to 8299
 666 696 2209 to 2299
 666 696 2309 to 2399
 667 029 9300 to 9399
 667 729 5529 to 5599
 668 383 8400 to 8699
670 368 3400 to 3499
 670 369 7336 to 7399
 670 750 7169 to 7199
 671 046 6200 to 6399
 671 251 5448 to 5499
 671 926 5600 to 5799
 672 444 2000 to 2999
 672 828 3410 to 3499
 673 167 5776 to 5799
 675 464 3700 to 3799
 675 464 4000 to 4199
 676 365 5958 to 5999
 676 669 1024 to 1099
 677 126 6734 to 6799
 677 333 9979 to 9999
 677 466 1088 to 1099
 678 071 4500 to 4799
 678 096 7531 to 7599
 679 909 2578 to 2599
680 112 9565 to 9599
 680 244 0903 to 0999
 680 412 6046 to 6099
 680 761 6800 to 6899
 681 677 0540 to 0699
 682 070 1029 to 1099
 682 956 6280 to 6299
 682 956 6490 to 6599
 682 956 6700 to 6799
 682 965 1178 to 1199
 682 965 1201 to 1299
 683 118 2389 to 2399
 683 378 2000 to 2099
 683 378 2117 to 2299
 683 415 1200 to 1499
 683 444 8159 to 8199
 685 154 7780 to 7789
 685 297 7645 to 7699
 685 623 5264 to 5299
 685 650 9487 to 9499
 685 669 4200 to 4299
 685 757 8452 to 8499
 686 071 2694 to 2799
 686 176 3333 to 3354
 686 372 3200 to 3299
 686 644 5879 to 5899
 686 899 1371 to 1399
 686 931 7636 to 7699
 687 601 0973 to 0999
 687 614 6774 to 6799
 688 120 9000 to 9999
 688 314 3107 to 3191
690 291 1361 to 1371

690 788 2877 to 2899
 690 893 5344 to 5399
 690 893 5512 to 5599
 690 904 1300 to 1599
 690 941 6000 to 6199
 691 313 6383 to 6399
 691 313 6600 to 6699
 691 582 8003 to 8099
 691 664 1800 to 1999
 691 664 2400 to 2499
 692 727 9362 to 9399
 692 798 1800 to 1899
 693 249 0779 to 0799
 693 249 0877 to 1699
 693 445 0566 to 0999
 693 448 8500 to 8999
 693 645 9583 to 9599
 693 965 4200 to 4299
 695 741 2906 to 2999
 695 947 8518 to 8599
 696 662 8247 to 8299
 697 447 8285 to 8296
 698 042 4816 to 4899
 698 131 2138 to 2157
 698 227 0000 to 0099
700 065 2570 to 2599
 700 065 4800 to 4899
 700 190 3350 to 3359
 700 228 6048 to 6099
 700 650 0452 to 0499
 700 666 1323 to 1349
 700 786 9106 to 9142
 700 859 0744 to 0758
 701 028 6780 to 6899
 701 213 3900 to 3999
 701 267 2000 to 3999
 701 335 7312 to 7399
 701 369 2005 to 2050
 701 499 2260 to 2299
 701 503 2247 to 2299
 701 541 2271 to 2299
 701 553 6557 to 6599
 701 578 7460 to 7469
 701 578 7475 to 7499
 701 601 3457 to 3499
 701 605 5913 to 5999
 701 695 3982 to 3999
 701 695 4148 to 4199
 701 695 4227 to 4299
 701 708 1741 to 1799
 701 736 3966 to 3999
 701 772 0870 to 0899
 701 838 2800 to 2899
 701 941 0600 to 0699
 702 171 1603 to 1699
 702 195 5109 to 5199
 702 254 9300 to 9399
 702 264 7569 to 7599
 702 519 0513 to 0524
 702 713 1800 to 1809
 702 821 5730 to 5799
 702 821 5805 to 5899
 702 844 6975 to 6994
 702 846 6331 to 6399

702 848 3900 to 3999	834 316 5444 to 5499	859 063 8200 to 8699	903 370 6934 to 6999
702 857 7302 to 7499	834 354 8747 to 8766	859 190 0600 to 0644	904 600 6523 to 6599
702 878 0114 to 0199	834 354 8824 to 8838	859 437 5538 to 5599	904 892 0378 to 0399
703 364 1707 to 1799	835 269 5700 to 5799	859 811 2888 to 2899	904 892 0648 to 1299
740 002 7710 to 7719	835 496 7303 to 7399	859 855 8873 to 8999	905 056 2216 to 2299
740 119 2275 to 2284	835 539 5200 to 5999	860 240 8520 to 8599	905 510 6647 to 6799
740 130 6688 to 6698	835 813 3015 to 3099	860 275 3900 to 3999	905 510 6900 to 7099
740 144 2780 to 2795	837 672 8967 to 8999	860 518 9629 to 9699	905 794 0000 to 0199
740 241 9049 to 9099	837 784 3282 to 3299	860 600 0021 to 0999	905 794 0288 to 0299
740 252 9265 to 9294	838 176 8377 to 8399	861 158 2350 to 2599	905 873 6900 to 6999
740 255 1718 to 1799	838 518 1257 to 1299	861 367 5400 to 5499	905 873 7100 to 7299
740 274 2602 to 2619	839 718 8257 to 8299	861 637 6010 to 6099	905 880 8900 to 8999
740 277 0366 to 0392	840 323 0600 to 0699	861 979 7292 to 7499	905 889 7100 to 7199
740 332 7658 to 7671	840 875 6235 to 6299	862 216 6100 to 6199	906 158 1508 to 1599
740 348 6641 to 6658	840 910 0900 to 0999	862 263 9213 to 9299	906 558 8812 to 8899
740 351 4790 to 4799	841 349 5000 to 5099	862 271 0800 to 0999	906 982 2214 to 2299
740 374 7416 to 7499	841 805 7747 to 7899	862 271 5000 to 5099	907 725 8500 to 8599
740 470 2420 to 2443	841 805 7944 to 8099	863 871 5138 to 5199	907 815 0216 to 0257
740 514 0300 to 0499	842 226 0685 to 0695	863 949 5300 to 5399	908 622 4225 to 4235
740 523 7432 to 7449	842 685 4600 to 4699	864 088 8200 to 8299	908 936 9254 to 9299
740 535 1555 to 1580	842 685 4742 to 4999	864 426 3972 to 3999	909 066 4494 to 7499
740 557 3570 to 3579	842 860 0300 to 0399	864 520 6117 to 6136	909 067 7400 to 7499
740 650 4104 to 4140	842 898 5582 to 5599	865 151 0526 to 0599	909 100 1787 to 1799
740 684 0620 to 0800	843 062 7100 to 7199	865 500 4034 to 4099	909 100 1900 to 2099
740 701 6105 to 6114	843 077 6288 to 6299	865 883 6082 to 6099	909 355 0422 to 0499
740 705 9790 to 9799	843 077 6378 to 6399	866 004 3000 to 3999	909 568 8900 to 9099
740 726 6400 to 6500	843 758 5769 to 5778	866 442 4100 to 4899	909 568 9300 to 9499
740 748 8319 to 8329	843 786 2554 to 2699	867 366 9108 to 9118	909 725 7307 to 7399
740 765 3306 to 3399	845 656 8165 to 8199	867 633 7403 to 7499	909 833 0947 to 0999
740 774 8434 to 8499	845 727 2100 to 2199	867 737 5623 to 5699	910 219 8631 to 8699
740 786 1885 to 1899	845 746 2618 to 2635	868 169 4529 to 4599	910 265 1100 to 1199
740 790 5989 to 5999	846 390 7531 to 7599	868 173 8400 to 8599	910 471 7273 to 7299
740 820 4854 to 7836	846 918 0572 to 0599	868 514 9000 to 9099	910 536 2505 to 2599
740 827 7578 to 7594	847 237 7690 to 7699	868 566 9200 to 9299	910 958 7499 to 7599
740 917 7490 to 7499	847 284 2481 to 2499	869 200 0000 to 9999	911 140 1000 to 2199
740 918 5531 to 5549	847 374 7055 to 7065	869 387 1150 to 1199	911 245 2545 to 2599
741 037 8528 to 8551	847 374 7055 to 7065	869 505 3500 to 3599	911 268 9077 to 9099
742 030 6135 to 6149	847 636 5304 to 5399	869 523 7033 to 7099	911 400 8948 to 8999
742 033 2663 to 2674	847 700 5447 to 5499	869 566 6150 to 6167	911 508 1620 to 1799
742 040 3300 to 3309	847 723 7500 to 7599	869 800 0000 to 999 9999	911 509 9310 to 9399
742 151 5000 to 5014	849 485 3427 to 3499	870 054 4814 to 4899	911 523 3000 to 3999
742 192 5210 to 5224	849 520 9850 to 9899	870 491 4812 to 4849	912 057 9922 to 9999
742 228 9660 to 9669	849 608 1357 to 1399	870 536 5820 to 5829	912 882 0563 to 0899
805 885 8411 to 8499	849 792 2600 to 2699	870 541 7167 to 7239	913 605 2218 to 2299
806 087 1100 to 1499	850 546 1862 to 1899	870 575 8155 to 8999	913 709 2429 to 2499
806 268 9275 to 9299	851 143 6826 to 6844	870 589 0485 to 0494	913 818 3501 to 3999
806 534 3400 to 3477	851 209 9880 to 9899	870 691 7060 to 7099	914 063 4300 to 4399
807 342 3283 to 3399	851 928 9221 to 9299	872 028 4850 to 4899	914 346 7621 to 7644
808 086 7100 to 7199	852 589 6560 to 6599	872 029 9306 to 9399	914 453 1366 to 1399
808 090 3440 to 3499	853 049 3646 to 3699	872 078 3709 to 3799	914 529 6185 to 6299
808 325 5161 to 5699	854 304 4089 to 4999	872 100 0445 to 0459	914 896 4658 to 4699
808 784 8000 to 8299	854 529 2200 to 2299	900 556 4178 to 4199	915 187 8774 to 8779
830 125 0672 to 0699	854 532 0000 to 2999	900 845 0044 to 0099	915 300 2783 to 2799
830 602 5800 to 5999	855 001 6204 to 6249	900 936 0217 to 0299	915 546 6822 to 6999
830 610 3700 to 3799	855 319 9364 to 9399	900 936 0435 to 0499	915 646 5183 to 5199
830 983 3500 to 3599	855 361 3390 to 3399	901 058 5255 to 5280	915 671 3963 to 3980
830 983 3635 to 3699	856 226 0490 to 0499	901 273 1082 to 1099	915 671 3982 to 3999
831 354 1387 to 1399	856 656 5800 to 5999	901 287 5143 to 5199	915 675 2217 to 2299
831 815 8240 to 8299	856 752 0200 to 0299	901 291 2789 to 2799	916 440 3377 to 3399
832 525 3810 to 3899	857 111 1352 to 1399	901 525 7122 to 7199	916 670 6352 to 6399
833 159 1884 to 1899	857 279 3450 to 3499	902 089 1253 to 1299	916 682 5300 to 5399
833 456 2567 to 2599	857 843 4000 to 4099	902 198 9769 to 9799	916 694 1414 to 1499
833 566 3015 to 3071	858 124 7644 to 7699	902 948 1269 to 1299	916 703 0802 to 0821
834 130 5200 to 5299	858 756 3111 to 3299	902 985 0833 to 0899	917 089 0709 to 0799

917 089 0842 to 0899	920 857 5500 to 5899	924 533 0711 to 0799	931 156 1671 to 1699
917 216 2928 to 2999	920 864 3480 to 3499	924 533 2343 to 2399	932 506 6400 to 6599
917 370 6300 to 6499	920 963 4567 to 4599	924 533 2428 to 2499	932 732 1796 to 1799
917 486 4900 to 4999	921 333 7400 to 7499	924 685 1957 to 1999	932 827 9026 to 9099
918 460 0602 to 0699	921 477 3762 to 3799	924 946 6300 to 6699	932 957 2300 to 2399
918 951 7231 to 7299	922 278 1048 to 1399	925 333 5900 to 6099	933 060 6160 to 6189
919 519 2786 to 2799	922 280 2019 to 2099	925 336 2300 to 2399	933 387 2541 to 2561
919 536 0770 to 0799	922 280 2233 to 2299	926 432 5907 to 5999	933 760 3609 to 4199
919 814 3095 to 3199	922 773 0459 to 0499	926 436 3600 to 3699	933 894 0928 to 0999
919 889 5110 to 5134	923 032 7000 to 7399	927 765 6257 to 6299	934 018 2729 to 2741
919 889 5137 to 5176	923 045 3630 to 3699	928 197 8100 to 8199	934 180 0300 to 0399
919 889 5178 to 5199	923 484 3600 to 3699	928 197 8283 to 8299	934 236 3954 to 3999
919 889 5030 to 5070	923 493 9403 to 9599	928 856 2059 to 2068	934 622 8717 to 8999
919 889 5090 to 5099	923 493 9681 to 9699	930 219 1722 to 1799	935 216 0312 to 0399
919 915 2774 to 2787	923 604 4424 to 4499	930 335 7810 to 7819	935 843 2202 to 2247
920 155 4662 to 4687	923 810 7800 to 8299	931 097 9259 to 9299	936 024 8889 to 8899
920 309 9039 to 9199	924 252 1200 to 1299	931 156 1502 to 1579	936 339 4455 to 4499
920 771 5321 to 5399	924 252 1400 to 1499	931 156 1600 to 1625	

— Criminal Investigations Group, Postal Inspection Service, 2-6-14

Missing, Lost, or Stolen Canadian Money Order Forms

Do Not Cash — Upon Receipt, Notify Local Postal Inspectors

This listing will be provided to all Postal Service™ employees responsible for accepting and cashing postal money orders. Destroy all interim notices when the numbers listed appear in the *Postal Bulletin*. The new money

order serial numbers consist of the first 9 digits. The 10th digit is a check digit only.

Do not cash outdated money orders **104 151 601 to 692 600 000**. Advise holders to send invalid money orders to: Canada Post Corporation, Ottawa, Canada K1A 0B1. Check for altered dollar amounts by holding money orders to the light.

719 869 731	to	9 760	728 702 338	to	2 400	734 950 111	to	0 170	742 408 771	to	8 830
720 227 871	to	7 930	728 915 371	to	5 850	735 120 331	to	0 840	742 512 120	to	2 150
720 227 949	to	7 960	728 953 141	to	3 410	735 283 008	to	3 020	742 684 849	to	4 890
720 368 543	to	8 570	728 954 280	to	4 310	735 293 131	to	3 220	742 839 553	to	9 630
720 392 151	to	2 570	729 169 081	to	9 140	735 635 010	to	5 040	742 913 668	to	3 700
720 556 491	to	6 640	729 363 841	to	3 870	735 783 961	to	3 990	742 917 287	to	7 296
720 558 621	to	8 650	729 682 891	to	3 190	735 803 401	to	3 430	742 921 891	to	1 980
720 575 361	to	5 570	729 838 940	to	9 070	736 005 420	to	5 440	742 983 631	to	3 810
720 590 152	to	0 179	729 839 101	to	9 130	736 366 021	to	6 110	743 020 021	to	0 170
721 638 331	to	9 170	730 077 683	to	7 840	736 624 456	to	4 500	743 206 491	to	6 500
721 815 391	to	5 420	730 109 847	to	9 880	736 670 851	to	1 060	743 235 992	to	6 050
721 969 713	to	9 740	730 373 761	to	3 850	736 767 061	to	7 090	743 940 631	to	0 900
722 072 137	to	2 160	730 501 951	to	2 130	736 767 093	to	7 120	743 978 011	to	8 070
722 378 265	to	8 280	730 519 379	to	9 470	736 982 191	to	2 370	744 234 751	to	4 780
722 413 990	to	4 004	730 569 278	to	9 360	736 982 551	to	2 730	744 499 591	to	9 680
722 764 948	to	4 980	730 711 711	to	1 740	737 110 141	to	0 170	744 626 901	to	6 910
722 825 840	to	5 889	730 722 991	to	3 230	737 185 501	to	5 710	745 388 794	to	8 910
723 153 841	to	3 850	730 845 970	to	5 990	737 317 321	to	7 350	746 446 806	to	6 820
723 237 616	to	7 630	730 888 291	to	8 320	737 517 781	to	7 840	746 818 351	to	8 410
723 331 081	to	1 110	730 927 591	to	7 680	737 628 181	to	8 210	747 245 266	to	5 280
723 496 443	to	6 470	731 307 914	to	7 930	737 634 258	to	4 270	747 364 813	to	4 830
723 967 291	to	7 320	731 402 431	to	2 460	738 361 971	to	1 980	747 501 434	to	1 450
724 655 196	to	5 340	731 407 232	to	7 320	738 447 601	to	7 660	747 739 891	to	0 070
724 711 441	to	1 500	731 588 301	to	8 340	738 648 355	to	8 450	748 148 649	to	8 760
724 711 538	to	1 560	731 767 273	to	7 320	738 849 811	to	9 900	748 259 960	to	9 970
724 793 221	to	3 250	731 781 061	to	1 120	738 892 270	to	2 290	748 565 162	to	5 280
724 908 109	to	8 120	731 837 821	to	7 910	738 997 259	to	7 380	748 874 988	to	5 030
724 937 461	to	7 670	731 841 377	to	1 450	739 161 451	to	1 540	749 137 381	to	7 410
725 163 118	to	3 151	732 018 481	to	8 600	739 219 381	to	9 440	749 190 192	to	0 210
725 202 735	to	2 750	732 067 972	to	8 370	739 740 151	to	0 180	749 685 421	to	5 450
725 398 591	to	8 800	732 188 649	to	8 670	739 793 491	to	3 520	749 846 791	to	6 850
725 464 591	to	4 920	732 193 460	to	3 470	739 793 527	to	3 550	749 993 131	to	3 580
725 475 321	to	5 330	732 201 241	to	1 390	739 942 621	to	2 650	750 071 587	to	1 610
725 711 057	to	1 070	732 220 431	to	0 440	739 999 231	to	9 320	750 408 167	to	8 183
725 738 581	to	8 730	732 355 201	to	5 380	740 011 517	to	1 530	750 438 421	to	8 501
725 981 311	to	1 430	732 472 320	to	2 560	740 030 701	to	0 970	750 743 911	to	4 030
725 987 835	to	7 880	732 541 605	to	1 620	740 261 740	to	1 820	750 779 118	to	9 400
726 060 811	to	0 900	732 572 221	to	2 490	740 265 811	to	6 290	750 910 981	to	1 010
726 391 970	to	2 520	732 586 479	to	6 710	740 299 111	to	9 170	750 960 841	to	0 900
726 484 771	to	4 800	732 994 037	to	4 080	740 299 231	to	9 260	751 296 211	to	6 240
726 493 351	to	5 300	733 163 449	to	3 460	740 329 266	to	9 320	751 539 121	to	9 180
726 504 031	to	4 063	733 297 171	to	7 290	740 889 081	to	9 090	751 541 311	to	1 790
726 504 070	to	4 090	733 446 631	to	7 110	741 010 421	to	0 530	751 757 641	to	7 700
726 504 331	to	4 390	733 474 665	to	4 770	741 113 041	to	3 370	751 936 951	to	7 010
726 563 701	to	4 060	733 704 482	to	4 570	741 373 891	to	4 340	751 951 861	to	1 890
726 599 371	to	9 460	733 751 041	to	1 130	741 452 369	to	2 490	751 999 021	to	9 110
726 626 356	to	6 370	734 009 101	to	9 130	741 492 991	to	3 140	752 139 516	to	9 570
727 182 271	to	2 510	734 290 759	to	0 770	741 553 460	to	3 470	752 182 892	to	2 950
727 416 181	to	6 240	734 389 273	to	9 290	741 764 431	to	4 520	752 206 861	to	7 100
727 481 431	to	1 460	734 440 031	to	0 111	742 178 834	to	8 880	752 295 241	to	5 600
727 749 241	to	9 780	734 797 201	to	7 320	742 325 500	to	5 520	752 731 351	to	1 410
728 382 331	to	2 480	734 939 611	to	9 640	742 325 668	to	5 700	752 767 441	to	7 470

819 544 681	to	4 740	822 900 991	to	1 020	826 582 951	to	3 430	828 732 331	to	2 390
819 928 441	to	8 650	822 925 951	to	6 100	826 720 201	to	0 230	828 807 781	to	7 840
820 034 406	to	4 430	823 284 931	to	4 990	827 005 671	to	5 830	828 830 952	to	0 963
820 070 761	to	1 540	823 293 031	to	3 210	827 287 861	to	7 950	828 939 781	to	0 050
820 191 342	to	1 360	823 556 011	to	6 100	827 291 502	to	1 520	829 002 721	to	2 870
820 274 856	to	4 880	824 078 341	to	8 370	827 575 381	to	5 470	829 005 301	to	5 540
820 600 171	to	0 230	824 156 325	to	6 340	827 609 085	to	9 100	829 080 241	to	0 330
821 172 241	to	2 360	824 511 252	to	1 270	827 619 811	to	9 840	829 160 986	to	1 000
821 229 661	to	9 720	824 588 281	to	8 370	827 883 511	to	3 600	829 176 841	to	6 930
821 229 743	to	9 780	825 140 397	to	0 460	828 160 441	to	0 530	829 471 561	to	1 590
821 903 731	to	3 910	825 409 651	to	9 680	828 376 201	to	6 260	829 561 065	to	1 080
821 927 841	to	7 850	825 472 171	to	2 200	828 441 602	to	1 630	829 566 481	to	6 510
822 505 801	to	5 830	826 042 898	to	2 920	828 539 316	to	9 340	829 569 931	to	9 960
822 703 442	to	3 470	826 226 644	to	6 670	828 539 341	to	9 370			

— Criminal Investigations Group, Postal Inspection Service, 2-6-14

Verifying U.S. Postal Service Money Orders

Follow these steps to cash a Postal Service™ money order:

1. Check that the amount does not exceed the legal limit: \$1,000 for domestic, and \$700 for international postal money orders.
2. Check that the proper security features are present:
 - When held to the light, a watermark of Benjamin Franklin is repeated from top to bottom on the left side.
 - When held to the light, a dark line (security thread) runs from top to bottom with the word “USPS” repeated.
 - There should be no discoloration around the dollar amounts, which might indicate the amounts were changes.

These appear in Postal Service Notice 299, *U.S. Postal Money Order Reference Card*, or online at <https://www.usps.com/shop/accepting-money-orders.htm>.

3. If the money order seems suspicious, call the U.S. Postal Service Money Order Verification System at 866-459-7822.

Please provide this information to local banks and retailers, as they also receive Postal Service money orders for cashing.

— Retail Channel Operations, 2-6-14

Counterfeit Canadian Money Order Forms

Do Not Cash

To be posted and used by retail window employees. As directed, destroy previous notices. Destroy all interim notices when the numbers listed appear in the *Postal Bulletin*.

671,819,086	686,794,382
676,612,640	686,794,426
677,891,039	686,794,427
678,282,493	686,794,431
678,916,031	687,262,502
679,552,215	687,262,503
679,694,334	687,262,525
679,751,983	687,262,526
679,800,207	687,287,578
681,130,536	687,287,581
681,844,376	687,287,582
683,594,542	694,063,898
684,683,610	694,063,899
686,619,878	694,063,980
686,619,886	701,321,725
686,619,887	

— Criminal Investigations Group, Postal Inspection Service, 2-6-14

Toll-Free Number Available to Verify Canadian Money Orders

The Canada Post Corporation is now providing a toll-free number that cashing agents can call to verify the validity of Canadian Postal Money Orders. The number is 800-563-0444.

This toll-free number is printed on the back of the Canadian Postal Money Orders.

— Criminal Investigations Group, Postal Inspection Service, 2-6-14

Other Information

Overseas Military/Diplomatic Mail

Mail addressed to military and diplomatic post offices overseas is subject to certain conditions or restrictions of mailing regarding content, preparation, and handling. The APO/FPO/DPO table below outlines these conditions by APO/FPO/DPO ZIP Codes™ through the use of footnoted mailing restrictions codes (see the [Restrictions](#) page following the table).

Acceptance clerks should use the table with the POS ONE terminal to determine which APO/FPO/DPO ZIP Codes are active and which conditions of mailing apply. Inquiries may be sent to the Military Postal Service Agency at <https://amps.mpsa.mil/jy2/frm.htm>.

The entries under “Changes” appear in bold in the APO/FPO/DPO table starting below.

Changes

APO/FPO/DPO	Action	Effective Date	See Restrictions
APO AE 09069	Add N	02/06/2014	A-A1-A2-B-C-D-E-H-N-U-V
APO AE 09397	Remove S	02/06/2014	A-A1-A2-B-C1-E2-F-F1-H1-M-N-R-R1-T-V-Z-Z1
FPO AE 09712	Open	02/06/2014	A-A1-A2-B-F-H-N-U-V-Z1
APO AE 09749	Add U	02/06/2014	A-A1-A2-B-F-H-N-U-V-Z1
APO AE 09861	Open	02/06/2014	A-A1-A2-B-F-F1-N-O-R-R1-Z-Z1

We have eliminated “Not Active” entries from the table below to save space and paper.

APO/FPO/DPO Table

APO/ FPO/ DPO	See Restrictions	APO/ FPO/ DPO	See Restrictions	APO/ FPO/ DPO	See Restrictions	APO/ FPO/ DPO	See Restrictions
09002	A1-A2-B-C-D-E-H-M-R-U	09046	A1-A2-B-C-D-E-H-M-R-U	09107	A1-A2-B-C-D-E-H-M-R-U	09186	A1-A2-B-C-D-E-H-M-R-U
09003	A1-A2-B-C-D-E-H-M-P-R-U	09049	A1-A2-B-C-D-E-H-M-R-U	09112	A1-A2-B-C-D-E-H-M-R-U	09211	A1-A2-B-C-D-E-H-M-P-R-U
09004	A1-A2-B-C-D-E-H-M-R-U	09053	A1-A2-B-C-D-E-H-M-R-U	09114	A1-A2-B-C-D-E-H-M-R-U	09213	A1-A2-B-C-D-F-F1-H-L-M-N-R-U
09005	A1-A2-B-C-D-E-H-M-P-R-U	09054	A1-A2-B-C-D-E-H-M-R-U	09123	A1-A2-B-C-D-E-H-M-R-U	09214	A1-A2-B-C-D-E-H-M-R-U
09006	A1-A2-B-C-D-E-H-M-R-U	09055	A1-A2-B-C-D-E-F-H-M-R-R1-U-V	09126	A1-A2-B-C-D-H-M-P-R	09226	A1-A2-B-C-D-E-H-M-R-U
09009	A1-A2-B-C-D-E-H-M-R-U	09059	A1-A2-B-C-D-E-H-M-R-U	09128	A1-A2-B-C-D-E-H-M-R-U	09227	A1-A2-B-C-D-E-H-M-R-U
09011	A1-A2-B-C-D-E-H-M-R-U	09060	A1-A2-B-C-D-E-F1-H-M-R-U	09131	A1-A2-B-C-D-E-H-M-R-U	09245	A1-A2-B-C-D-E-H-M-R-U
09012	A1-A2-B-C-D-E-H-M-R-U	09067	A1-A2-B-C-D-E-H-M-R-U	09136	A1-A2-B-C-D-E-F1-H-M-P-R	09250	A1-A2-B-C-D-E-H-M-R-U
09013	A1-A2-B-C-D-E-F-F1-H-M-R-U-Z1	09068	A1-A2-B-C-D-E-H-U-Z1	09138	A1-A2-B-C-D-H-M-R-U	09261	A1-A2-B-C-D-E-F1-H-M-R-U-V
09014	A1-A2-B-C-D-E-H-M-R-U	09069	A-A1-A2-B-C-D-E-H-N-U-V	09139	A1-A2-B-C-D-E-H-M-R-U	09263	A1-A2-B-C-D-E-H-M-R-U
09020	A1-A2-B-C-D-E-H-M-R-U	09075	A1-A2-B-C-D-E-H-M-R-U	09140	A1-A2-B-C-D-E-H-M-R-U	09264	A1-A2-B-C-D-E-H-M-R-U
09021	A1-A2-B-C-D-E-H-M-R-U	09079	A1-A2-B-C-D-E-H-M-R-U	09142	A1-A2-B-C-D-E-H-M-R-U	09265	A1-A2-B-C-D-F-F1-H-L-M-N-R-T-U
09028	A1-A2-B-C-D-E-H-M-R-U	09090	A1-A2-B-C-D-E-H-M-P-R-U	09143	A1-A2-B-C-D-E-H-M-R-U	09301	A-A1-A2-B-C1-E2-F-H1-I-M-N-R-R1-V-Z-Z1
09033	A1-A2-B-C-D-E-H-M-R-U	09094	A1-A2-B-C-D-H-M-P-R	09154	A1-A2-B-C-D-E-H-M-R-U	09302	A-A1-A2-B-C1-F-F1-H-M-N-V-Z-Z1
09034	A1-A2-B-C-D-E-H-M-R-U	09095	A1-A2-B-C-D-E-H-M-R-U	09172	A1-A2-B-C-D-E-H-M-R-U	09304	A-A1-A2-C-C1-D-E2-F-F1-H1-J-K-L-M-N-R-R1-T-V-Z1
09038	A1-A2-B-C-D-E-H-M-R-U	09096	A1-A2-B-C-D-E-H-M-R-U	09173	A1-A2-B-C-D-E-H-M-R-U	09306	A-A1-A2-B-C1-E2-F-F1-H1-R-R1-U2-V-Z1
		09103	A1-A2-B-C-D-E-H-U	09177	A1-A2-B-C-D-E-H-M-R-U		
		09104	A1-A2-B-C-D-H-M-R-U	09180	A1-A2-B-C-D-H-M-R-U		

APO/ FPO/ DPO	See Restrictions	APO/ FPO/ DPO	See Restrictions	APO/ FPO/ DPO	See Restrictions	APO/ FPO/ DPO	See Restrictions
09307	A1-A2-B-N-V-Z1	09397	A-A1-A2-B-C1-E2-F-F1-H1-M-N-R-R1-T-V-Z-Z1	09591	A1-A2-B-F-F1-R-R1-V	09712	A-A1-A2-B-F-H-N-U-V-Z1
09309	A-A1-A2-B-C1-E2-F-H1-M-N-R-V-Z1			09593	A1-A2-B-V	09713	A1-A2-B-C-F1-R
09310	A-A1-A2-B-C1-E2-F-H1-M-R-V-Z1	09403	A1-A2-B-C-C1-M-R-U	09594	A1-A2-B-V	09714	A1-A2-B-C-C1-F1-M-R-R1-U
09315	A-A1-A2-B-C1-E2-F-N-R-R1-V-Z1	09421	A1-A2-B-C-C1-M-R-U	09595	A1-A2-B-F-F1-R-R1-V	09715	A1-A2-B-F1-L-M-N-R-T-V
09320	A-A1-A2-B-C1-E2-F-H1-M-R-R1-V-Z1	09447	A1-A2-B-C-C1-R-U-V	09599	A1-A2-B-F-F1-R-R1-V	09716	A1-A2-B-C-F-F1-L-M-N-R-V
09321	A-A1-A2-B-C1-E2-F-H1-N-R-R1-V-Z1	09454	A1-A2-B-C-C1-M-R-U-V	09602	A1-A2-B-C-F-F1-N-R-U-V	09717	A-A1-A2-B-M-R-V-W
09328	A-A1-A2-B-C1-E2-F-H1-R-R1-V-Z1	09459	A1-A2-B-C-C1-M-R-U	09603	A1-A2-B-C-F-F1-R-U-V	09718	A1-A2-B-F-F1-L-M-N-R-T-U-V
09330	A-A1-A2-B-C1-E2-F-F1-H1-M-R-R1-V-Z1	09461	A1-A2-B-C-C1-M-P-R-U	09604	A1-A2-B-C-F-F1-P-R-U-V	09719	A1-A2-B-C-D-M-R-U-V
09337	A-A1-A2-B-C1-E2-F-F1-H1-M-R-R1-V-Z1	09463	A1-A2-B-C-C1-R-U	09605	A1-A2-B-C-D-H-M-R-U-V	09720	A1-A2-B-M-R-U-V
09340	A-A1-A2-B-C1-F-H-N-R-V	09464	A1-A2-B-C-C1-R-U	09606	A1-A2-B-C-D-H-M-R-U-V	09722	A-A1-A2-B-F-H-N-Q-V-Z-Z1
09343	A-A1-A2-B-C1-F-M-N-V-Z1	09468	A1-A2-B-C-C1-M-R-U	09607	A-A1-A2-B-C-F-F1-M-R-R1-U-U3-V-W	09723	A1-A2-B-F-F1-L-M-N-R-T-U-V-Z1
09347	A-A1-A2-B-C1-E2-F-H1-M-R-R1-V-Z1	09469	A1-A2-B-C-C1-R-U	09608	A1-A2-B-C-F-N-U-V	09724	A1-A2-B-C-C1-F1-M-R-R1-U
09352	A-A1-A2-B-C1-E2-F-H1-M-R-R1-V-Z1	09470	A1-A2-B-C-C1-M-R-U	09609	A1-A2-B-C-F-U	09725	A-A1-A2-B-F-H-N-O-Q-V-V1-Z-Z1
09353	A-A1-A2-B-C1-E2-F-H1-M-R-R1-V-Z1	09494	A1-A2-B-C-C1-M-R-U	09610	A1-A2-B-C-F-F1-M-R-U-V	09726	A1-A2-B-F-F1-L-M-N-R-T-U-V
09354	A-A1-A2-B-C1-E2-F-H1-M-R-R1-V-Z1	09496	A1-A2-B-C-C1-R-U-V	09613	A1-A2-B-C-F-U-V	09727	A-A1-A2-B-B2-C-C1-D-F-F1-J-L-M-N-R-R1-T-V-Z1
09355	A-A1-A2-B-C1-E2-F-H1-M-R-R1-V-Z1	09498	A1-A2-B-C-C1-F-F1-F2-J-L-N-R-R1-T-V-Z1	09617	A1-A2-B-C-F-U	09728	A-A1-A2-B-B2-C-C1-F-F1-J-L-N-R-R1-T-V-Z1
09356	A-A1-A2-B-C1-E2-F-H1-M-R-R1-V-Z1	09501	A1-A2-B-V	09618	A1-A2-B-C-F-U	09729	A1-A2-B-C-F-N-R-R1-U-V
09357	A-A1-A2-B-C1-E2-F-H1-M-R-R1-V-Z1	09502	A1-A2-B-V	09620	A1-A2-B-C-F-U	09730	A-A2-B-B2-C-C1-F-F1-J-L-M-N-R-R1-T-V-Z1
09360	A1-A2-B-V	09504	A1-A2-B-V	09621	A1-A2-B-C-F-U	09731	A-A2-B-B2-C-C1-F-F1-J-L-M-N-R-R1-T-V-Z1
09363	A-A1-A2-B-C1-E2-F-H1-M-R-R1-V-Z1	09505	A1-A2-B-V	09622	A1-A2-B-C-F-U	09732	A1-A2-B-N-V-Z1
09364	A-A1-A2-B-C1-E2-F-H1-M-N-R-R1-V-Z1	09506	A1-A2-B-V	09623	A1-A2-B-C-F-U	09733	A1-A2-B-N-V
09365	A-A1-A2-B-C1-E2-F-H1-M-N-R-V-Z1	09507	A1-A2-B-V	09624	A1-A2-B-C-F-N-U	09734	A-A1-A2-B-C-C1-F-F1-J-L-M-N-R-R1-T-V-Z1
09366	A-A1-A2-B-C1-E2-F-F1-H1-M-R-R1-V-Z1	09510	A-A1-A2-B-C1-E2-F-H1-M-R-R1-V-Z1	09625	A1-A2-B-C-F-U	09735	A1-A2-B-N-V-Z1
09367	A-A1-A2-B-B2-C1-E2-F-H1-M-N-R-R1-V-Z1	09513	A1-A2-B-F-F1-R-R1-V	09626	A1-A2-B-C-F-U	09736	A-A1-A2-B-B2-C-C1-D-F-F1-J-L-M-N-R-R1-T-V-Z1
09368	A-A1-A2-B-C1-E2-F-H1-M-N-R-V-Z1	09517	A1-A2-B-F-F1-R-R1-V	09627	A1-A2-B-C-F-U	09737	A-A1-A2-B-B2-C-C1-F-F1-I-L-M-N-R-R1-T-V-W-Y-Z-Z1
09369	A-A1-A2-B-C1-E2-F-H1-M-R-R1-V	09520	A1-A2-B-F-F1-R-R1-V	09630	A1-A2-B-C-F-U-V	09738	A-A1-A2-B-B2-C-C1-D-F-F1-J-L-M-N-R-R1-T-V-Z1
09370	A-A1-A2-B-C1-E2-F-H1-M-N-R-R1-V-Z1	09522	A1-A2-B-V	09631	A1-A2-B-C-F-U	09739	A-A1-A2-B-B2-C-C1-D-F-F1-J-L-M-N-R-R1-T-V-Z1
09372	A-A1-A2-B-C1-E2-F-H1-M-R-R1-V	09524	A1-A2-B-F-F1-R-R1-V	09633	A1-A2-B-B2-C-D-F-F1-M-R-U-U1-U2-U3-V-Z1	09741	A-A1-A2-B-C1-E2-F-F1-H1-J-L-M-N-R-R1-T-V-W-Y-Z1
09373	A-A1-A2-B-C1-E2-F-H1-M-R-R1-V	09532	A1-A2-B-F-F1-R-R1-V	09636	A1-A2-B-C-F-U	09742	A-A1-A2-B-B2-F-F1-J-L-M-N-R-R1-T-V-Z1
09382	A-A1-A2-B-C1-E2-F-H1-M-N-R-R1-V-Z1	09533	A1-A2-B-F-F1-R-R1-V	09642	A1-A2-B-M-N-R-U	09743	A-A1-A2-B-F-H-N-Q-V-Z-Z1
09383	A-A1-A2-B-C1-E2-F-H1-M-N-R-R1-V-Z1	09534	A1-A2-B-F-F1-R-R1-V	09643	A1-A2-B-M-R-U-V	09744	A-A2-B-B2-C-C1-F-F1-J-L-M-N-R-R1-T-V-Z1
		09543	A1-A2-B-F-F1-R-R1-V	09645	A1-A2-B-C-F-F1-U		
		09544	A1-A2-B-F-F1-R-R1-V	09647	A1-A2-B-N-R-U		
		09554	A1-A2-B-F-F1-R-R1-V	09648	A1-A2-B-N-U-V-Z1		
		09556	A1-A2-B-F-F1-R-R1-V	09649	A1-A2-B-N-U-Z1		
		09564	A1-A2-B-F-F1-R-R1-V	09701	A-A1-A2-B-B2-C-C1-D-F-F1-J-L-M-N-R-R1-T-V-Z1		
		09565	A1-A2-B-F-F1-R-R1-V	09702	A1-A2-B-C-C1-F1-M-R-R1-U		
		09566	A1-A2-B-F-F1-R-R1-V	09703	A1-A2-B-C-F1-H-U		
		09567	A1-A2-B-F-F1-R-R1-V	09704	A1-A2-B-C-O-V-V1		
		09568	A1-A2-B-V	09705	A1-A2-B-U		
		09569	A1-A2-B-F-F1-R-R1-V	09706	A1-A2-B-C-N-R-U-V		
		09570	A1-A2-B-F-F1-R-R1-V	09707	A1-A2-B-C-F1-J-L-M-N-R-T-U-V		
		09573	A1-A2-B-F-F1-R-R1-V	09708	A1-A2-B		
		09574	A1-A2-B-F-F1-R-R1-V	09710	A1-A2-B-C-C1-F1-L-M-N-R-R1-T-U-V		
		09575	A1-A2-B-F-F1-R-R1-V	09711	A1-A2-B-F1-N-R-Z1		
		09576	A1-A2-B-F-F1-R-R1-V				
		09577	A1-A2-B-V				
		09578	A1-A2-B-F-F1-R-R1-V				
		09579	A1-A2-B-F-F1-R-R1-V				
		09581	A1-A2-B-F-F1-R-R1-V				
		09582	A1-A2-B-F-F1-R-R1-V				
		09586	A1-A2-B-F-F1-R-R1-V				
		09587	A1-A2-B-F-F1-R-R1-V				
		09588	A1-A2-B-V				
		09589	A1-A2-B-V				
		09590	A1-A2-B-V				

APO/ FPO/ DPO	See Restrictions	APO/ FPO/ DPO	See Restrictions	APO/ FPO/ DPO	See Restrictions	APO/ FPO/ DPO	See Restrictions
09745	A-A1-A2-B-F-F1-M-N-R-R1-V-Z1	09821	A-A1-A2-B-F-N-R-V-Z1	09875	A-A1-A2-B-C1-E2-F-F1-H1-I-L-M-N-R-R1-T-U-U4-V-Z-Z1	34060	A1-A2-B-B2-C1-E2-F-F1-J-L-N-R-R1-T-V-Z1
09747	A1-A2-B-F-J-N-U-V-Z1	09822	A-A1-A2-B-F-R-V-Z1			34078	A1-A2-B-F1-N-V-Z1
09748	A-A1-A2-B-B2-C-C1-D-F-F1-J-L-M-N-R-R1-T-V-Z1	09823	A-A1-A2-B-F-F1-L-N-R-T-V-Z1	09880	A-A1-A2-B-C1-E2-F-F1-H1-R-R1-U-V-Z1	34090	A1-A2-B-F-F1-R-R1-V
09749	A-A1-A2-B-F-H-N-U-V-Z1	09824	A-A1-A2-B-F-R-V-Z1	09890	A1-A2-B-E2-F-H1-N-R-R1-U2-V-Z1	34091	A1-A2-B-F-F1-R-R1-V
09750	A-A2-B-B2-C-C1-F-F1-J-L-M-N-R-R1-T-V-Z1	09825	A-A1-A2-B-C-C1-D-F-F1-J-L-M-N-R-R1-T-V-Z1	09892	A-A1-A2-B-E2-F-F1-L-N-R-R1-T-V-Z1	34092	A1-A2-B-F-F1-R-R1-V
09751	A1-A2-B-C-D-E-H-M-R-U	09826	A-A1-A2-B-B2-C1-E1-E2-E3-F-F1-L-M-N-R-R1-T-V-W-Z1	09898	A1-A2-B-E2-F-H1-N-R-R1-U2-V-Z1	34093	A1-A2-B-F-F1-R-R1-V
09752	A1-A2-B-C-D-H-U	09827	A-A1-A2-B-F-F1-L-N-R-T-V-Z1	34002	A1-A2-B-F-F1-J-L-N-T-U-Z1	34098	A1-A2-B-V
09759	A-A1-A2-B-B2-C-C1-E2-F-F1-F2-J-L-N-R-R1-T-V-Z1	09828	A-A1-A2-B-F-F1-J-L-N-T-V-Z1	34004	A1-A2-B-F-F1-J-L-N-T-V	34099	A1-A2-B-V
09762	A-A1-A2-B-B2-E3-F-F1-J-L-N-R-R1-T-V-Z1	09829	A1-A2-B-C-N-R-V-Z1	34007	A-A1-A2-B-C1-F-F1-M-N-R-R1-V-Z1	96201	A-A1-A2-B
09769	A-A1-A2-B-B2-C-C1-D-F-F1-J-L-M-N-R-R1-T-V-Z1	09830	A1-A2-B-C-M-N-R-V-Z1	34008	A1-A2-B-B2-D-E1-F-F1-H-H1-J-L-M-N-R-R1-T-V-Z1	96202	A-A1-A2-B-U
09777	A-A1-A2-B-C-E1-F-F1-L-M-N-R-T	09831	A1-A2-B-F-F1-L-N-T-U-V-Z1	34011	A1-A2-B-B2-C1-E2-F-F1-J-L-M-N-R-R1-T-V-Z1	96203	A-A1-A2-B
09780	A-A1-A2-B-F-H-N-R-V	09832	A-A1-A2-B-U1-V-Z1			96204	A-A1-A2-B
09798	A1-A2-B-C-D-H-L-U-V	09833	A1-A2-B-U1-V-Z1			96205	A-A1-A2-B-U
09801	A-A1-A2-B-C1-E2-F-H1-M-N-R-R1-V-Z1	09834	A1-A2-B-E2-E3-F-F1-R-R1-U-V-Z1	34020	A1-A2-B-F-F1-J-L-M-N-T-V-Z1	96206	A-A1-A2-B-U
09802	A-A1-A2-B-F-R-V-Z1	09835	A-A1-A2-B-N-V-Z1	34021	A1-A2-B-F-F1-T-J-L-M-N-V-Z1	96207	A-A1-A2-B-V
09803	A1-A2-B-E2-E3-F-F1-H1-N-R-R1-U-V-Z1	09836	A-A1-A2-B-C-F-F1-L-M-N-T-V-Z1	34022	A1-A2-B-D-F-F1-J-L-M-N-T-V-Z1	96209	A-A1-A2-B-F-F1-J-L-N-T-U
09804	A-A1-A2-B-F-F1-N-R-V-Z1	09837	A1-A2-B-E2-E3-V-Z1	34023	A1-A2-B-F-F1-J-L-M-N-T-V-Z1	96213	A-A1-A2-B-U
09805	A-A2-B-E2-E3-F-F1-R-R1-V-Z1	09838	A1-A2-B-E2-E3-U-V-Z1	34024	A1-A2-B-F-F1-L-M-N-T-V-Z1	96214	A-A1-A2-B-U
09806	A-A1-A2-B-C1-E2-F-F1-H1-L-M-N-R-R1-T-V-Z1	09839	A-A1-A2-B-U-V-Z1	34025	A1-A2-B-F-F1-J-L-M-N-T-V-Z1	96218	A-A1-A2-B-U
09807	A-A1-A2-B-C1-E2-F-H1-M-N-R-R1-V-Z1	09840	A-A1-A2-B-E2-E3-V-Z1	34030	A1-A2-B-F-F1-J-L-M-N-T-V-Z1	96224	A-A1-A2-B-U
09809	A1-A2-B-F-F1-L-N-T-V-Z1	09841	A-A1-A2-B-N-R-U-Z1	34031	A1-A2-B-F-F1-J-L-M-N-T-V-Z1	96257	A-A1-A2-B-U
09810	A-A1-A2-B-F-F1-N-R-V-Z1	09842	A-A1-A2-B-M-N-R-Z1	34032	A1-A2-B-F-F1-J-L-M-N-T-V-Z1	96258	A-A1-A2-B-U
09811	A1-A2-B-E2-E3-F-F1-H1-N-R-R1-U-V-Z1	09845	A-A1-A2-B-B2-E3-F-F1-L-M-N-T-V-Z1	34033	A1-A2-B-C-F-F1-J-L-M-N-T-V-Z1	96260	A-A1-A2-B-U
09812	A1-A2-B-E2-E3-F-F1-I-L-N-R-T-U-V-Z1	09846	A-A1-A2-B-B2-C1-F-F1-J-L-N-R-R1-T-V-Z1	34034	A1-A2-B-F-F1-J-L-M-N-T-V-Z1	96264	A-A1-A2-B-U
09813	A-A1-A2-B-B2-C1-E2-E3-F-F1-J-L-N-R-R1-T-V-Z1	09848	A-A1-A2-B-F-M-R-V-Z1	34035	A1-A2-B-F-F1-H-J-L-M-N-T-V-Z1	96266	A-A1-A2-B-U
09814	A1-A2-B-E2-E3-F-F1-I-L-N-R-T-U-V-Z1	09852	A1-A2-B-E2-E3-F-F1-H1-N-R-R1-U-V-Z1	34036	A1-A2-B-F-F1-J-L-M-N-T-V-Z1	96267	A-A1-A2-B-U-V
09816	A-A1-A2-B-B2-C-C1-E2-E3-F-F1-J-L-N-R-R1-T-V-Z1	09853	A1-A2-B-E2-F-H1-R-R1-U2-V-Z1	34037	A1-A2-B-C-F-F1-H-I-L-M-N-T-V-Z1	96269	A-A1-A2-B-U-Z1
09817	A-A1-A2-B-B2-C1-E2-E3-F-F1-H-H1-J-L-M-N-R-T-V-Z1	09855	A-A1-A2-B-C1-E2-F-F1-H1-R-R1-U2-V-Z1	34038	A1-A2-B-L-M-N-U-V-Z1	96271	A-A1-A2-B-U
09818	A-A1-A2-B-C-F-M-V-Z1	09858	A1-A2-B-E2-E3-F-F1-H1-N-R-R1-U-V-Z1	34039	A1-A2-B-F-F1-J-L-M-N-T-V-Z1	96275	A-A1-A2-B-V
09820	A-A1-A2-B-B2-F-F1-H1-J-L-M-N-R-R1-T-V-Z1	09859	A1-A2-B-C1-E2-E3-F-F1-H1-R-R1-V-Z1	34041	A1-A2-B-F-F1-J-L-M-N-T-V-Z1	96276	A-A1-A2-B
		09861	A-A1-A2-B-F-F1-N-O-R-R1-Z-Z1	34042	A1-A2-B-D-F-M-N-V-Z1	96278	A-A1-A2-B-U
		09865	A-A1-A2-B-V-Z1	34043	A1-A2-B-F-F1-J-L-M-N-T-V-Z1	96283	A-A1-A2-B-U
		09868	A-A1-A2-B-N-U-V-Z1	34044	A1-A2-B-F-F1-H-I-L-M-N-T-V-Z1	96284	A-A1-A2-B-U-V
		09870	A-A1-A2-B-C1-E2-F-F1-H1-I-L-M-N-R-R1-T-U-U4-V-Z-Z1	34045	A1-A2-B-F-F1-J-L-M-N-T-V-Z1	96303	A1-A2-B-F-F1-H-J-L-M-N-T-W
		09873	A-A1-A2-B-C1-E2-F-F1-H1-I-L-M-N-R-R1-T-U-U4-V-Z-Z1	34058	A1-A2-B-F-F1-R-R1-V-Z1	96306	A1-A2-B-F-F1-F2-H-M-W-Z1
		09874	A-A1-A2-B-C1-E2-F-F1-H1-I-L-M-N-R-R1-T-U-U4-V-Z-Z1			96309	A1-A2-B-M-V-W
						96310	A1-A2-B-M-W
						96319	A1-A2-B-M-W
						96321	A1-A2-B-F-F1-F2-H-M-W-Z1
						96322	A1-A2-B-F-F1-F2-H-M-W-Z1
						96323	A1-A2-B-M-V-W
						96326	A1-A2-B-M-W
						96328	A1-A2-B-M-W
						96330	A1-A2-B-M-W
						96336	A1-A2-B-M-V-W
						96337	A1-A2-B-M-W
						96338	A1-A2-B-M-W
						96339	A1-A2-B-M-V-W
						96343	A1-A2-B-M-W
						96346	A1-A2-B-F-F1-F2-H-M-V-W-Z1

APO/ FPO/ DPO	See Restrictions	APO/ FPO/ DPO	See Restrictions	APO/ FPO/ DPO	See Restrictions	APO/ FPO/ DPO	See Restrictions
96347	A1-A2-B-F-F1-F2-H-M-W-Z1	96427	A-A1-A2-B-C1-E2-F-H1-M-R-R1-V	96550	A-A1-A2-B-H-M-U-V-Z1	96621	A1-A2-B-V
96348	A1-A2-B-F-F1-F2-H-M-W-Z1	96447	A1-A2-B-F-N-U3-V-V1	96551	A-A1-A2-B-F-F1-H-L-M-N-T-U	96622	A1-A2-B-F-F1-R-R1-V
96349	A1-A2-B-F-F1-F2-H-M-W-Z1	96501	A-A1-A2-B-N-V	96552	A1-A2-B-Z1	96624	A1-A2-B-F-F1-R-R1-V
96350	A1-A2-B-F-F1-F2-H-M-W-Z1	96502	A1-A2-B-F-N-U3-V-Z1	96553	A-A1-A2-B-F-F1-H-M-U	96628	A1-A2-B-F-F1-R-R1-V
96351	A1-A2-B-F-F1-F2-H-M-W-Z1	96503	A1-A2-B-F-N-U3-V	96554	A-A1-A2-B-F-F1-H-L-M-N-T-U	96629	A1-A2-B-F-F1-R-R1-V
96362	A1-A2-B-F-F1-F2-M-W-Z1	96507	A-A1-A2-B-F-F1-H-L-N-T-V	96555	A1-A2-B-F-M-V	96643	A1-A2-B-F-F1-R-R1-V
96365	A1-A2-B-M-V-W	96510	A1-A2-B-I-N-V	96557	A1-A2-B-F-M-V	96650	A1-A2-B-F-F1-R-R1-V
96367	A1-A2-B-L-M-W	96511	A1-A2-B-I-N-V	96562	A-A1-A2-B-B2-C-C1-D-E2-E3-F-F1-H-H1-I-L-M-N-R-T-V-Z-Z1	96657	A1-A2-B-F-F1-R-R1-V
96368	A1-A2-B-M-W	96515	A1-A2-B-D-F-U3	96577	A-A1-A2-B-F-H-M-N-U	96660	A1-A2-B-F-F1-R-R1-V
96370	A1-A2-B-F-F1-F2-H-M-W-Z1	96516	A1-A2-B-D-F-Z1	96578	A1-A2-B-B2-F1-H-J-N-R	96661	A1-A2-B-F-F1-R-R1-V
96372	A1-A2-B-M-W	96517	A1-A2-B-F-U3-V-Z1	96595	A1-A2-B-F-U3-V-Z1	96662	A1-A2-B-F-F1-R-R1-V
96373	A1-A2-B-M-W	96520	A1-A2-B-F-N-U3-V	96598	A1-A2-B-N-O-V-V1	96663	A1-A2-B-F-F1-R-R1-V
96374	A1-A2-B-M-W	96521	A1-A2-B-F-F1-L-N-T-U3	96599	A1-A2-B-N-V	96669	A1-A2-B-F-F1-R-R1-V
96375	A1-A2-B-M-W	96522	A1-A2-B-F-N-U-Z1	96601	A1-A2-B-V	96670	A1-A2-B-V
96376	A1-A2-B-M-W	96530	A-A1-A2-B-F-F1-H-H1-L-M-N-T-U-V	96602	A1-A2-B-V	96671	A1-A2-B-F-F1-R-R1-V
96377	A1-A2-B-M-W	96531	A-A1-A2-B-F-F1-H-M-N-U-V	96603	A1-A2-B-V	96672	A1-A2-B-F-F1-R-R1-V
96378	A1-A2-B-M-W	96532	A-A1-A2-B-F-F1-H-J-L-M-N-T-U-V	96604	A1-A2-B-V	96673	A1-A2-B-V
96379	A1-A2-B-M-W	96533	A-A1-A2-B-F-U-Z1	96605	A1-A2-B-V	96674	A1-A2-B-F-F1-R-R1-V
96380	A1-A2-B-M-W	96534	A-A1-A2-B-F-F1-L-N-T-V	96606	A1-A2-B-V	96675	A1-A2-B-F-F1-R-R1-V
96382	A1-A2-B-M-W	96537	A1-A2-B-V-Z1	96607	A1-A2-B-V	96677	A1-A2-B-F-F1-R-R1-V
96384	A1-A2-B-M-W	96538	A1-A2-B-V-Z1	96608	A1-A2-B-V	96678	A1-A2-B-F-F1-R-R1-V
96385	A1-A2-B-M-W	96540	A1-A2-B-V-Z1	96609	A1-A2-B-V	96679	A1-A2-B-F-F1-R-R1-V
96386	A1-A2-B-M-W	96541	A1-A2-B-V	96610	A1-A2-B-V	96681	A1-A2-B-V
96387	A1-A2-B-M-W	96542	A1-A2-B-V-Z1	96611	A1-A2-B-V	96682	A1-A2-B-V
96388	A1-A2-B-M-W	96543	A1-A2-B-P-V-Z1	96615	A1-A2-B-F-F1-R-R1-V	96683	A1-A2-B-V
96389	A1-A2-B-M-W	96544	A1-A2-B-F-U3	96616	A1-A2-B-F-F1-R-R1-V	96686	A1-A2-B-V
96401	A1-A2-B-F-N-O-V-V1-Z1	96546	A1-A2-B-F-U3	96617	A1-A2-B-F-F1-R-R1-V	96698	A1-A2-B-V
		96548	A-A1-A2-B-H-M-U	96619	A1-A2-B-V		
		96549	A-A1-A2-B-H-M-N-U	96620	A1-A2-B-F-F1-R-R1-V		

RESTRICTIONS

LEGEND

PS Form 2976, *Customs — CN 22 (Old C 1) and Sender's Declaration* (green label)

PS Form 2976-A, *Customs Declaration and Dispatch Note*

AAFES	= Army and Air Force Exchange Service
APO	= Army/Air Force Post Office
Box R	= Retired military personnel
DMM	= <i>Domestic Mail Manual</i>
DPO	= Diplomatic Post Office
FPO	= Fleet Post Office
MOM	= Military Ordinary Mail
MPO	= Military Post Office
PAL	= Parcel Airlift
PSC	= Postal Service Center
SAM	= Space Available Mail
USDA	= United States Department of Agriculture

Note: Mail order catalogs are prohibited as SAM or PAL mail.

A. Securities, currency, or precious metals in their raw, unmanufactured state are prohibited. Official shipments are exempt from this restriction.

A1. Mail addressed to "Any Servicemember," or similar wording such as "Any Soldier," "Sailor," "Airman," or "Marine"; "Military Mail"; etc., is prohibited. Mail must be addressed to an individual or job title such as "Commander," "Commanding Officer," etc.

A2. APO/FPO/DPO addresses shall not include a city and/or country name.

B. Regardless of mail class, a customs declaration (PS Form 2976 or, if the customer prefers, PS Form 2976-A) is required for all items weighing 16 ounces or more or any item (regardless of weight) containing potentially dutiable mail contents (e.g., merchandise or goods) addressed to or from an APO, FPO, or DPO ZIP Code. No customs form is required for items weighing less than 16 ounces when the contents are not potentially dutiable (e.g., documents). The surface area of the address side of the mailpiece must be large enough to contain the applicable customs declaration. The following exceptions apply:

- Known mailers are exempt from providing customs documentation on non-dutiable letters or printed matter. (A known mailer is a business mailer who enters volume mailings through a business mail entry unit (BMEU) or other bulk mail acceptance location, pays postage through an advance deposit account, uses a permit imprint for postage payment, and submits a completed postage statement at the time of entry that certifies that the mailpieces contain no dangerous materials that are prohibited by postal regulations.)
- All federal, state, and local government agencies whose mailings are regarded as "Official Mail" are exempt from providing customs documentation on any item addressed to an APO, FPO, or DPO except for those APOs/FPOs/DPOs to which restriction "B2" applies.
- Prepaid mail from military contractors is exempt, providing the mailpiece is endorsed "Contents for Official Use — Exempt from Customs Requirements."

B2. All federal, state, and local government agencies must complete customs documentation when sending potentially dutiable mail addressed to or from this APO, FPO, or DPO.

C. Cigarettes and other tobacco products are prohibited.

C1. Obscene articles, prints, paintings, cards, films, videotapes, etc., and horror comics and matrices are prohibited.

D. Coffee is prohibited.

E. Medicines (prescription, over-the-counter, vitamins, and supplements) are prohibited when mailed to individuals for human or animal use. This prohibition does not apply when medicines are sent as official mail only between specifically designated agencies such as pharmaceutical distributors, hospitals, clinics, and pharmacies.

E1. Medicines or vaccines not conforming to French laws are prohibited.

E2. Any matter depicting nude or seminude persons, pornographic or sexual items, or nonauthorized political materials is prohibited. Although religious materials contrary to the Islamic faith are prohibited in bulk quantities, items for the personal use of the addressee are permissible.

E3. Radio transceivers, cordless telephones, global positioning systems, scanners, base stations, and handheld transmitters are prohibited.

F. Firearms of any type are prohibited in all classes of mail. See definitions of firearms in DMM 601.12.1.1. This restriction does not apply to firearms mailed to or by official U.S. government agencies. The restriction for mail to this APO/FPO/DPO ZIP Code does not apply to firearms mailed from this APO/FPO/DPO ZIP Code, provided ATF and USPS regulations are met. Antique firearms are a separate category defined in DMM 601.12.1.1h and ATF regulations; they do not require an ATF form.

F1. Privately owned weapons addressed to an individual are prohibited in any class of mail.

F2. Importation of firearms is restricted to one shotgun and one single shot.22 caliber rifle per individual.

G. Only letters, flats, and Periodicals are authorized. Parcels of any class are prohibited.

H. Meats, including preserved meats, whether hermetically sealed or not, are prohibited.

H1. Pork or pork by-products are prohibited.

I. Mail of all classes must fit in a mail sack. Mail may not exceed the following dimensions:

- Maximum length 20 inches.
- Maximum width 12 inches.
- Maximum height 12 inches.

The maximum length and girth combined may not exceed 68 inches.

This restriction does not apply to registered mail and official government mail marked MOM.

I1. This restriction does not apply to registered mail.

I2. This restriction does not apply to official government mail marked MOM.

J. Parcels may not exceed 108 inches in length and girth combined.

K. Mail that includes in the address the words, "Dependent Mail Section," may consist only of letter mail, newspapers, magazines, and books. No parcel of any class containing any other matter may be mailed to the Dependent Mail section. This restriction does not apply if the address does not include the words "Dependent Mail Section."

L. All official mail is prohibited.

M. Fruits, vegetables, animals, and living plants are prohibited.

N. Registered mail is prohibited.

O. Delivery status information for Extra Services is not available on USPS.com.

P. APO is used for the receipt and dispatch of official mail only.

Q. Mail may not exceed 66 pounds, and size is limited to 42 inches maximum length and 72 inches maximum length and girth combined.

R. All alcoholic beverages, including those mailable under DMM 601.12.7, are prohibited.

R1. Materials used in the production of alcoholic beverages (i.e., distilling material, hops, malts, yeast, etc.) are prohibited.

S. Mail of all classes must fit in a mail sack. Mail may not exceed the following dimensions and weight:

- Maximum length 12 inches.
- Maximum width 12 inches.
- Maximum height 5 1/2 inches.
- Maximum weight 25 pounds.

The maximum length and girth combined may not exceed 47 inches.

T. Mailings of case lots of food and supplemental household shipments must be approved by the sender's parent agency prior to mailing.

U. Parcels must weigh less than 16 ounces when addressed to Box R. This restriction does not apply to mail endorsed "Free Matter for the Blind or Handicapped."

U1. Mail is limited to First-Class Mail weighing 13 ounces or less when addressed to Box R. This restriction does not apply to mail endorsed "Free Matter for the Blind or Handicapped." Videotapes are prohibited when addressed to Box R, regardless of weight.

U2. Mail is limited to First-Class Mail letters only when addressed to Box R.

U3. Mail is limited to First-Class Mail correspondence (including voice and video cassettes), newspapers, magazines, photographs, not exceeding 16 ounces, when addressed to Box R.

U4. Mail addressed to Box C is limited to 2 pounds, regardless of class.

V. Express Mail Military Service (EMMS) not available from any origin.

V1. USPS Tracking is not available.

W. Meat products, such as dried beef, salami, and sausage, may be mailed, provided they remain in their original, hermetically sealed packages and bear USDA certification. Other meats, bones, skin, hair, feathers, horns or hoofs of hoofed animals, wool samples, tobacco leaves, including chewing and pipe tobacco, snuff, cigars, and cigarettes, or obscene material, including obscene drawings, photographs, films, and carvings, are prohibited. Exception: 200 grams of tobacco per parcel are permitted duty free.

X. Personal mail is limited to First-Class Mail items (to include audio cassettes and voice tapes) weighing 13 ounces or less. This limitation does not apply to official mail.

Y. Mail is limited to First-Class and Priority Mail items only. All Periodicals, Standard Mail items, and Package Services items (including SAM and PAL) are not authorized. This restriction also applies to official mail.

Z. No outside pieces (OSPs).

Z1. The following restriction is applicable only to International Service Centers (ISC)/Exchange Offices. An Anti-Pilferage Seal (Item No O817E or O818A) is required on all pouches and sacks.

February 2014

Have You Seen Any of These Missing Children?

Please participate in the NALC/USPS Child Alert Program. Tear out this page and carry it with you. If you have information on any of these missing persons, tell your Postal Service™ supervisor.



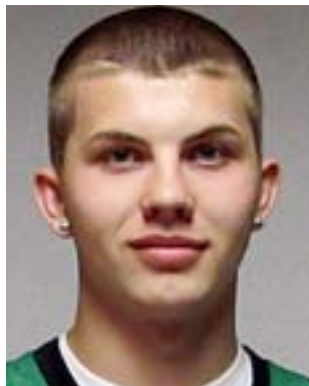
Name: Alyssa Aday
Born: 7-27-96
Date Missing: 10-28-13
Missing From: Birmingham, AL



Name: Sommer Dowda
Born: 4-3-98
Date Missing: 6-23-13
Missing From: Lake City, FL



Name: Holli Gerkan
Born: 8-11-96
Date Missing: 10-22-13
Missing From: Lincoln, CA



Name: Adam Henderson
Born: 12-5-96
Date Missing: 10-15-13
Missing From: Hanford, CA



Name: Tashanti Hodge
Born: 12-12-95
Date Missing: 10-21-13
Missing From: Springfield, IL

**Please call the National Center for Missing and Exploited Children
Hot Line 1-800-843-5678
TDD 1-800-826-7653**

Missing Children Poster Display Instructions

Post Offices, classified stations, branches, and contract postal units may display this poster at their option. If the poster is displayed, it should be placed on the community bulletin board located in the Post Office™ box lobby and not in the main retail (full service) lobby. Alternatively, Missing Children posters can be maintained in a binder behind the counter to be used as a reference guide. The posters also may be posted in a prominent location where letter carriers will be able to see them before or after they go out on their routes. Making this information available to letter carriers is consistent with the NALC/USPS Child Alert Program to facilitate identification of missing children.

Companion posters, authorized for display on bulletin boards maintained by employee organizations, appear periodically in *The Postal Record*, a publication for members of the National Association of Letter Carriers.

This poster is published in cooperation with the National Center for Missing and Exploited Children, the United States Department of Justice, and the National Association of Letter Carriers. Information appearing on this poster is selected solely by the National Center for Missing and Exploited Children (NCMEC).

In addition to *Postal Bulletin* updates, NCMEC distributes information periodically. Notification of newly reported missing children is sent to designated district “Missing Children” coordinators via e-mail addresses provided by district managers. Within 24 hours of receipt of an e-mailed Missing Children poster, district coordinators should distribute copies to all Postal Service™ facilities in their districts. Missing Children posters are to be displayed as noted above for 30 days unless notification is received (from NCMEC) to remove a particular poster sooner. The e-mail network is used to distribute posters and information in only the most urgent cases of missing children. This system supplements, but does not replace, the missing children information in this *Postal Bulletin*.

Missing Children posters are available to the U.S. Postal Service® only as described above. If Postal Service employees are contacted by individuals or local agencies about displaying a sign or poster of a missing child in local Post Offices, the individual or agency should be politely informed that the U.S. Postal Service displays only those posters provided by NCMEC, because it has been designated by the U.S. Department of Justice to be the national clearinghouse and resource center for missing and exploited children. The individual or agency should then be referred to NCMEC at 800-843-5678.

If you have any information, or for free prevention tips, please call 800-THE-LOST (800-843-5678).

February 2014

Have You Seen Any of These Missing Children?

Please participate in the NALC/USPS Child Alert Program. Tear out this page and carry it with you. If you have information on any of these missing persons, tell your Postal Service™ supervisor.



Name: Harold Jones
Born: 4-18-97
Date Missing: 10-25-13
Missing From: Benet Lake, WI



Name: Brenda McClure
Born: 5-3-96
Date Missing: 10-24-13
Missing From: Dolton, IL



Name: Natalia Szypulska
Born: 11-10-98
Date Missing: 10-27-13
Missing From: Lindenhurst, NY



Name: Kaitlin Toussaint
Born: 5-24-96
Date Missing: 10-24-13
Missing From: Fort Lauderdale, FL

**Please call the National Center for Missing and Exploited Children
Hot Line 1-800-843-5678
TDD 1-800-826-7653**

Missing Children Poster Display Instructions

Post Offices, classified stations, branches, and contract postal units may display this poster at their option. If the poster is displayed, it should be placed on the community bulletin board located in the Post Office™ box lobby and not in the main retail (full service) lobby. Alternatively, Missing Children posters can be maintained in a binder behind the counter to be used as a reference guide. The posters also may be posted in a prominent location where letter carriers will be able to see them before or after they go out on their routes. Making this information available to letter carriers is consistent with the NALC/USPS Child Alert Program to facilitate identification of missing children.

Companion posters, authorized for display on bulletin boards maintained by employee organizations, appear periodically in *The Postal Record*, a publication for members of the National Association of Letter Carriers.

This poster is published in cooperation with the National Center for Missing and Exploited Children, the United States Department of Justice, and the National Association of Letter Carriers. Information appearing on this poster is selected solely by the National Center for Missing and Exploited Children (NCMEC).

In addition to *Postal Bulletin* updates, NCMEC distributes information periodically. Notification of newly reported missing children is sent to designated district “Missing Children” coordinators via e-mail addresses provided by district managers. Within 24 hours of receipt of an e-mailed Missing Children poster, district coordinators should distribute copies to all Postal Service™ facilities in their districts. Missing Children posters are to be displayed as noted above for 30 days unless notification is received (from NCMEC) to remove a particular poster sooner. The e-mail network is used to distribute posters and information in only the most urgent cases of missing children. This system supplements, but does not replace, the missing children information in this *Postal Bulletin*.

Missing Children posters are available to the U.S. Postal Service® only as described above. If Postal Service employees are contacted by individuals or local agencies about displaying a sign or poster of a missing child in local Post Offices, the individual or agency should be politely informed that the U.S. Postal Service displays only those posters provided by NCMEC, because it has been designated by the U.S. Department of Justice to be the national clearinghouse and resource center for missing and exploited children. The individual or agency should then be referred to NCMEC at 800-843-5678.

If you have any information, or for free prevention tips, please call 800-THE-LOST (800-843-5678).

February 2014

Have You Seen Any of These Missing Children?

Please participate in the NALC/USPS Child Alert Program. Tear out this page and carry it with you. If you have information on any of these missing persons, tell your Postal Service™ supervisor.



Name: Charniece Walton
Born: 9-2-96
Date Missing: 10-25-13
Missing From: Bossier City, LA



Name: Victoria Williams
Born: 11-15-99
Date Missing: 10-19-13
Missing From: Newark, NJ



Name: Jeremy Wilson
Born: 5-19-96
Date Missing: 10-22-13
Missing From: Fort Lauderdale,
FL



Name: Makala Woods
Born: 1-16-97
Date Missing: 10-24-13
Missing From: Andrews, SC

**Please call the National Center for Missing and Exploited Children
Hot Line 1-800-843-5678
TDD 1-800-826-7653**

Missing Children Poster Display Instructions

Post Offices, classified stations, branches, and contract postal units may display this poster at their option. If the poster is displayed, it should be placed on the community bulletin board located in the Post Office™ box lobby and not in the main retail (full service) lobby. Alternatively, Missing Children posters can be maintained in a binder behind the counter to be used as a reference guide. The posters also may be posted in a prominent location where letter carriers will be able to see them before or after they go out on their routes. Making this information available to letter carriers is consistent with the NALC/USPS Child Alert Program to facilitate identification of missing children.

Companion posters, authorized for display on bulletin boards maintained by employee organizations, appear periodically in *The Postal Record*, a publication for members of the National Association of Letter Carriers.

This poster is published in cooperation with the National Center for Missing and Exploited Children, the United States Department of Justice, and the National Association of Letter Carriers. Information appearing on this poster is selected solely by the National Center for Missing and Exploited Children (NCMEC).

In addition to *Postal Bulletin* updates, NCMEC distributes information periodically. Notification of newly reported missing children is sent to designated district “Missing Children” coordinators via e-mail addresses provided by district managers. Within 24 hours of receipt of an e-mailed Missing Children poster, district coordinators should distribute copies to all Postal Service™ facilities in their districts. Missing Children posters are to be displayed as noted above for 30 days unless notification is received (from NCMEC) to remove a particular poster sooner. The e-mail network is used to distribute posters and information in only the most urgent cases of missing children. This system supplements, but does not replace, the missing children information in this *Postal Bulletin*.

Missing Children posters are available to the U.S. Postal Service® only as described above. If Postal Service employees are contacted by individuals or local agencies about displaying a sign or poster of a missing child in local Post Offices, the individual or agency should be politely informed that the U.S. Postal Service displays only those posters provided by NCMEC, because it has been designated by the U.S. Department of Justice to be the national clearinghouse and resource center for missing and exploited children. The individual or agency should then be referred to NCMEC at 800-843-5678.

If you have any information, or for free prevention tips, please call 800-THE-LOST (800-843-5678).

Stamp Announcement 14-11: Ralph Ellison Stamp



© 2013 USPS

On February 18, 2014, in Kansas City, Missouri, the U.S. Postal Service® will issue the *Ralph Ellison* 91-cent definitive stamp, in one design, in a pressure-sensitive adhesive (PSA) pane of 20 stamps (Item 116500). The 91-cent value meets the new rate for First-Class Mail® weighing up to three ounces.

The stamp will go on sale nationwide February 18, 2014.

The 29th stamp in the *Literary Arts* series honors author Ralph Ellison (1913-1994). With his 1952 novel, *Invisible Man*, a masterpiece of 20th-century fiction, Ellison drew on a wide range of narrative and cultural traditions, shedding vivid light on the African-American experience. The stamp art, an oil-on-wood painting by Kadir Nelson, shows Ellison circa 1950; the background shows Harlem at twilight. Art director Ethel Kessler designed the stamp. Photo of Ralph Ellison courtesy of the Gordon Parks Foundation.

To learn more about the stories behind the stamps, visit <http://uspsstamps.com>.

Distribution: Item 116500, 91-cent Ralph Ellison Definitive PSA Pane of 20 Stamps

Stamp Distribution Offices (SDOs) and Stamp Distribution Centers (SDCs) will receive their standard automatic distribution quantity for a PSA pane of 20 stamps. Distribution for panes are rounded up to the nearest master carton size of 40,000 stamps.

Initial Supply to Post Offices

There will be no automatic distribution of these stamps to Post Offices™, and the availability of these stamps for individual Post Offices to order from their normal SDC/SDO could be two to three weeks after the first-day-of-issue. Offices will be notified when these stamps are available to order through eBuy2.

How to Order the First-Day-of-Issue Postmark

Customers have 60 days to obtain the first-day-of-issue postmark by mail. They may purchase new stamps at their local Post Office, at The Postal Store® website at <http://usps.com/shop>, or by calling 800-STAMP-24. They should affix the stamps to envelopes of their choice, address the envelopes (to themselves or others), and place them in a larger envelope addressed to:

Ralph Ellison Stamp
Cancellation Services
8300 NE Underground Drive, Pillar 210
Kansas City, MO 64144-0001

After applying the first-day-of-issue postmark, the Postal Service will return the envelopes through the mail. There is no charge for the postmark up to a quantity of 50. For more than 50, customers have to pay five cents each. All orders must be postmarked by April 19, 2014.

How to Order First-Day Covers

The Postal Service also offers first-day covers for new stamp issues and Postal Service stationery items postmarked with the official first-day-of-issue cancellation. Each item has an individual catalog number and is offered in the quarterly *USA Philatelic* catalog, online at <http://usps.com/shop>, or by calling 800-782-6724. Customers may request a free catalog by calling 800-782-6724 or writing to:

U.S. Postal Service
Catalog Request
PO Box 219014
Kansas City, MO 64121-9014

Philatelic Products

There are seven philatelic products available for this stamp issue:

- 116506, Press Sheet w/Die Cuts, \$182.00 (Print Quantity of 2,500).
- 116508, Press Sheet w/o Die Cuts, \$182.00 (Print Quantity of 2,500).
- 116510*, Keepsake (Pane and DCP Set), \$20.95.
- 116516*, First-Day Cover, \$1.35.
- 116521*, Digital Color Postmark, \$2.06.
- 116531*, Stamp Deck Card, \$0.95.
- 116532*, Stamp Deck Card w/DCP, \$2.41.

Items with an asterisk (*) will use the 128 barcode from Stamp Fulfillment Services. All other philatelic products will continue to use barcode series A, with the exception of the Yearbook and the Guide Book.

Issue:	<i>Ralph Ellison</i> Stamp
Item Number:	116500
Denomination & Type of Issue:	91-cent Definitive
Format:	Pane of 20 (1 design)
Series:	<i>Literary Arts</i>
Issue Date & City:	February 18, 2014, Kansas City, MO 64108 (No Event)
Designer:	Ethel Kessler, Bethesda, MD
Art Director:	Ethel Kessler, Bethesda, MD
Typographer:	Ethel Kessler, Bethesda, MD
Artist:	Kadir Nelson, Los Angeles, CA
Engraver:	WRE
Modeler:	CCL Label, Inc.
Manufacturing Process:	Gravure
Printer:	CCL Label, Inc.
Printed at:	Clinton, SC 29325
Press Type:	Dia Nippon Kiko (DNK)
Stamps per Pane:	20
Print Quantity:	30 million stamps
Paper Type:	Phosphor Tagged, Block; Nonphosphored, Type III
Adhesive Type:	Pressure-sensitive
Processed at:	CCL Label, Inc., Clinton, SC
Colors:	Cyan, Magenta, Yellow, Black, 121 (Yellow)
Stamp Orientation:	Horizontal
Image Area (w x h):	1.42 x 0.84 in./36.07 x 21.34 mm
Overall Size (w x h):	1.56 x 0.99 in./39.62 x 25.15 mm
Full Pane Size (w x h):	7.25 x 5.85 in./184.15 x 148.59 mm
Plate Size:	200 stamps per revolution
Plate Numbers:	"C" followed by five (5) single digits
Marginal Markings:	
Front:	Header: "LITERARY ARTS" • "29TH IN A SERIES" • Plate numbers in four corners of pane
Back:	Quote: "I am an invisible man." • Verso text (Ellison's biography) • ©2014 USPS • USPS logo • Plate position diagram • Barcode (116500) in upper right and lower left corners of pane • Promotional text

— Stamp Services,
Marketing and Sales, 2-6-14

Stamp Announcement 14-12: Wedding Cake Stamp



© 2009 USPS

On February 22, 2014, in Mesa, Arizona, the U.S. Postal Service® will issue the *Wedding Cake*, 70-cent definitive stamp, in one design in a pressure-sensitive adhesive (PSA) pane of 20 stamps (Item 587500).

The stamp will go on sale nationwide February 22, 2014.

The *Wedding Cake* issuance, first introduced in 2009 and sold at the two-ounce stamp rate, accommodates the heavier weight of an invitation, as well as other mailings such as oversize cards or small gifts that require extra postage. The stamp art features a photograph taken by Renee' Comet of a three-tier wedding cake topped with white flowers. Art director Ethel Kessler designed the stamp.

To learn more about the stories behind the stamps, visit <http://uspsstamps.com>.

Distribution: Item 587500, 70-cent Wedding Cake Stamp Definitive PSA Pane of 20 Stamps

Stamp Distribution Offices (SDOs) and Stamp Distribution Centers (SDCs) will receive their standard automatic distribution quantity for a PSA pane of 20 stamps. Distributions for panes are rounded up to the nearest master carton size of 40,000 stamps.

Initial Supply to Post Offices

There will be no automatic distribution of these stamps to Post Offices™, and the availability of these stamps for individual Post Offices to order from their normal SDC/SDO could be two to three weeks after the first-day-of-issue. Offices will be notified when these stamps are available to order through eBuy2.

How to Order the First-Day-of-Issue Postmark

Customers have 60 days to obtain the first-day-of-issue postmark by mail. They may purchase new stamps at their local Post Office, at The Postal Store® website at <http://usps.com/shop>, or by calling 800-STAMP-24. They should affix the stamps to envelopes of their choice, address the envelopes (to themselves or others), and place them in a larger envelope addressed to:

Wedding Cake Stamp
Postmaster
Main Post Office
135 N. Center Street
Mesa, AZ 85201-9998

After applying the first-day-of-issue postmark, the Postal Service will return the envelopes through the mail. There is no charge for the postmark up to a quantity of 50. For more than 50, customers have to pay five cents each. All orders must be postmarked by April 23, 2014.

How to Order First-Day Covers

The Postal Service also offers first-day covers for new stamp issues and Postal Service stationery items postmarked with the official first-day-of-issue cancellation. Each item has an individual catalog number and is offered in the quarterly *USA Philatelic* catalog, online at <http://usps.com/shop>, or by calling 800-782-6724. Customers may request a free catalog by calling 800-782-6724 or writing to:

U.S. Postal Service
Catalog Request
PO Box 219014
Kansas City, MO 64121-9014

Philatelic Products

There are five philatelic products available for this stamp issue:

- 587510*, Keepsake (Pane and DCP Set), \$15.95.
- 587516*, First-Day Cover, \$1.14.
- 587521*, Digital Color Postmark, \$1.85.
- 587531*, Stamp Deck Card, \$0.95.
- 587532*, Stamp Deck Card w/DCP, \$2.20.

Items with an asterisk (*) will use the 128 barcode from Stamp Fulfillment Services. All other philatelic products will continue to use barcode series A, with the exception of the Yearbook and the Guide Book.

Issue:	<i>Wedding Cake</i> Stamp
Item Number:	587500
Denomination & Type of Issue:	70-cent Definitive
Format:	Pane of 20 (1 design)
Series:	<i>Weddings</i>
Issue Date & City:	February 22, 2014, Mesa, AZ 85201
Art Director:	Ethel Kessler, Bethesda, MD
Designer:	Ethel Kessler, Bethesda, MD
Typographer:	Ethel Kessler, Bethesda, MD
Photographer:	Renee' Comet, Washington, DC
Modeler:	Donald Woo
Manufacturing Process:	Offset/Microprint "USPS"
Engraver:	N/A
Printer:	Banknote Corporation of America, Inc./SSP
Printed at:	Browns Summit, NC
Press Type:	Alprinta, 74
Stamps per Pane:	20
Print Quantity:	30 million stamps
Paper Type:	Phosphor Tagged, Overall

Adhesive Type:	Pressure-sensitive
Processed at:	Banknote Corporation of America, Browns Summit, NC
Stamp Orientation:	Vertical
Image Area (w x h):	0.7553 x 0.8667 in./19.18 x 22.01 mm
Stamp Size (w x h):	0.91 x 1.19 in./23.11 x 30.22 mm
Pane Size (w x h):	5.425 x 5.635 in./137.80 x 143.13 mm
Colors:	Cyan, Magenta, Yellow, Black, PMS 874, PMS 9 (Warm Gray)
Plate Size:	200 stamps per revolution
Plate Numbers:	"S" followed by six (6) single digits
Marginal Markings:	
Front:	Plate numbers in four corners of pane
Back:	© 2008 USPS • USPS logo • Plate position diagram • Barcode (587500) In upper right and lower left hand corners of pane • Promotional text

— Stamp Services,
Marketing and Sales, 2-6-14

Update: Technical Details Tables for Stamp Announcements

In *Postal Bulletin 22381* (1-23-14), for the following stamp announcements, the technical details tables were unavailable. The following information is provided as an update for each stamp announcement:

Stamp Announcement 14-4: Ferns Stamp, page 25.

Issue:	<i>Ferns</i> Stamp
Item Number:	790000
Denomination & Type of Issue:	First-Class Mail Forever
Format:	Coil of 3,000 (5 designs)
Series:	N/A
Issue Date & City:	January 27, 2014, Kansas City, MO (No Ceremony)
Art Director:	Phil Jordan, Falls Church, VA
Designer:	Phil Jordan, Falls Church, VA
Typographer:	Phil Jordan, Falls Church, VA
Existing Photos:	Cindy Dyer
Engraver:	WRE
Modeler:	CCL Label, Inc.
Manufacturing Process:	Gravure
Printer:	CCL Label, Inc.
Printed at:	Clinton, SC
Press Type:	Dia Nippon Kiko (DNK)
Stamps per Coil:	3,000
Print Quantity:	4 million stamps
Paper Type:	Nonphosphored, Type III; Phosphor Tagged Overall
Adhesive Type:	Pressure-sensitive
Processed at:	AVR, Clinton, SC
Colors:	Yellow, Magenta, Green (7482), Black
Stamp Orientation:	Vertical
Image Area (w x h):	0.84 x 0.73 in./21.34 x 18.54 mm
Stamp Size (w x h):	0.98 x 0.87 in./24.89 x 22.09 mm
Plate Size:	300 stamps per revolution
Plate Numbers:	"C" followed by four (4) single digits
Coil Number Frequency:	Plate numbers every 30th stamp below stamp image

Issue:	<i>Ferns</i> Stamp
Item Number:	790800

Denomination & Type of Issue:	First-Class Mail Forever
Format:	Coil of 10,000 (5 designs)
Series:	N/A
Issue Date & City:	January 27, 2014, Kansas City, MO 64108 (No Ceremony)
Art Director:	Phil Jordan, Falls Church, VA
Designer:	Phil Jordan, Falls Church, VA
Typographer:	Phil Jordan, Falls Church, VA
Existing Photos:	Cindy Dyer
Engraver:	WRE
Modeler:	CCL Label, Inc.
Manufacturing Process:	Gravure
Printer:	CCL Label, Inc.
Printed at:	Clinton, SC
Press Type:	Dia Nippon Kiko (DNK)
Stamps per Coil:	10,000
Print Quantity:	100 million stamps
Paper Type:	Nonphosphored, Type III; Phosphor Tagged Overall
Adhesive Type:	Pressure-sensitive
Processed at:	AVR, Clinton, SC
Colors:	Yellow, Magenta, Green (7482), Black
Stamp Orientation:	Vertical
Image Area (w x h):	0.84 x 0.73 in./21.34 x 18.54 mm
Stamp Size (w x h):	0.98 x 0.87 in./24.89 x 22.09 mm
Plate Size:	300 stamps per revolution
Plate Numbers:	"C" followed by four (4) single digits
Coil Number Frequency:	Plate numbers every 30th stamp below stamp image

Stamp Announcement 14-7: Hummingbird Stamp, page 51.

Issue:	<i>Hummingbird</i> Stamp
Item Number:	117200
Denomination & Type of Issue:	34-cent Definitive
Format:	Pane of 20 (1 design)
Series:	N/A
Issue Date & City:	February 7, 2014, Kansas City, MO 64108 (No Ceremony)
Designer:	Carl T. Herrman, North Las Vegas, NV

Art Director:	Carl T. Herrman, North Las Vegas, NV
Typographer:	Carl T. Herrman, North Las Vegas, NV
Artist:	Nancy Stahl, New York, NY
Modeler:	Joseph Sheeran
Manufacturing Process:	Offset/Microprint "USPS"
Printer:	Ashton Potter (USA) Ltd. (APU)
Printed at:	Williamsville, NY
Press Type:	Mueller Martini, A76
Stamps Per Pane	20
Print Quantity:	100 million stamps
Paper Type:	Nonphosphored Type III
Adhesive Type:	Pressure-sensitive
Processed at:	Ashton Potter (USA) Ltd. (APU)
Colors:	Black, Cyan, Magenta, Yellow, PMS 625 (C Blue)
Image Orientation:	Vertical
Image Area (w x h):	0.73 x 0.84 in./18.54 x 21.34
Stamp Size (w x h):	0.87 x 0.98 in./22.10 x 24.89 mm
Full Pane Size (w x h):	5.35 x 4.93 in./135.89 x 125.22 mm
Plate Size:	400 stamps per revolution
Plate Numbers:	"P" followed by five (5) single digits
Marginal Markings:	
Front:	Plate numbers in four corners of pane
Back:	© 2013 USPS • USPS logo • Plate position diagram • Barcode (117200) in upper and lower left corners of pane • Promotional text

Issue:	<i>Hummingbird</i> Stamp
Item Number:	774600
Denomination & Type of Issue:	34-cent Definitive (Postcard Rate)
Format:	Coil of 100
Series:	N/A
Issue Date & City:	February 7, 2014, Kansas City, MO 64108 (No Ceremony)
Designer:	Carl T. Herrman, North Las Vegas, NV
Art Director:	Carl T. Herrman, North Las Vegas, NV
Typographer:	Carl T. Herrman, North Las Vegas, NV
Artist:	Nancy Stahl, New York, NY
Modeler:	Joseph Sheeran
Manufacturing Process:	Offset/Microprint "USPS"
Printer:	Ashton Potter (USA) Ltd. (APU)
Printed at:	Williamsville, NY
Press Type:	Mueller Martini, A76
Stamps Per Coil:	100
Print Quantity:	400 million stamps
Paper Type:	Prephosphored Type I, Block Tag Applied
Adhesive Type:	Pressure-sensitive
Processed at:	Ashton Potter (USA) Ltd. (APU)
Colors:	Black, Cyan, Magenta, Yellow, PMS 625 (C Blue)
Stamp Orientation:	Vertical
Image Area (w x h):	0.73 x 0.84 in./18.54 x 21.34 mm
Stamp Size (w x h):	0.87096 x 0.98 in./22.12 x 24.89 mm
Coil Size (w x h):	0.98 x 87.000 in./24.89 x 2209.80 mm
Plate Size:	744 stamps per revolution
Plate Numbers:	"P" followed by five (5) single digits
Coil Number Frequency:	Plate numbers located under first stamp of impression • Barcode (07746004)

Stamp Announcement 14-8: Great Spangled Fritillary (Butterfly) Stamp, page 52.

Issue:	<i>Great Spangled Fritillary</i> Stamp
Item Number:	116600

Denomination & Type of Issue:	70-cent Definitive
Format:	Pane of 20 (1 design)
Series:	N/A
Issue Date & City:	February 10, 2014, Kansas, MO 64108 (No Ceremony)
Designer:	Derry Noyes, Washington, DC
Art Director:	Derry Noyes, Washington, DC
Typographer:	Derry Noyes, Washington, DC
Artist:	Tom Engeman, Bethany Beach, DE
Engraver:	Trident
Modeler:	CCL Label, Inc.
Manufacturing Process:	Gravure
Printer:	CCL Label, Inc.
Printed at:	Clinton, SC 29325
Press Type:	Dia Nippon Kiko (DNK)
Stamps per Pane:	20
Print Quantity:	60 million stamps
Paper Type:	Prephosphored, Type I
Adhesive Type:	Pressure-sensitive
Processed at:	CCL Label, Inc, Clinton, SC
Colors:	476 (Brown); 160 (Lt. Brown); 145 (Dk. Yellow); 1595 (Dk. Orange); 021 (Orange); 8 (Cool Grey); Black
Stamp Orientation:	Horizontal
Image Area (w x h):	1.121 x 1.085 in./28.47 x 27.56 mm
Overall Size (w x h):	1.225 x 1.225 in./31.12 x 31.12 mm
Full Pane Size (w x h):	5.75 x 7.125 in./146.05 x 180.98 mm
Plate Size:	200 stamps per revolution
Plate Numbers:	"C" followed by seven (7) single digits
Marginal Markings:	
Front:	Header: "GREAT SPANGLED FRITILLARY" • FIRST-CLASS SURCHARGE RATE • Plate numbers in all four corners
Back:	© 2013 USPS • USPS logo • Plate position diagram • Barcode (116600) at upper right and lower left corners of pane • Promotional text

Stamp Announcement 14-9: Abraham Lincoln, page 53.

Issue:	<i>Abraham Lincoln</i> Stamp
Item Number:	116800
Denomination & Type of Issue:	21-cent Definitive
Format:	Pane of 20 (1 design)
Series:	N/A
Issue Date & City:	February 12, 2014, Springfield, IL 62701
Designer:	Derry Noyes, Washington, DC
Art Director:	Derry Noyes, Washington, DC
Typographer:	Derry Noyes, Washington, DC
Existing Photo:	Carol M. Highsmith
Engraver:	WRE
Modeler:	CCL Label, Inc.
Manufacturing Process:	Gravure
Printer:	CCL Label, Inc.
Printed at:	Clinton, SC 29325
Press Type:	Dia Nippon Kiko (DNK)
Stamps per Pane:	20
Print Quantity:	120 million stamps
Paper Type:	Prephosphored, Type II
Adhesive Type:	Pressure-sensitive
Processed at:	CCL Label, Inc., Clinton, SC
Colors:	8 (Cool Gray), 7 (Cool Gray), Black
Stamp Orientation:	Vertical
Image Area (w x h):	0.73 x 0.84 in./18.54 x 21.34 mm

Overall Size (w x h):	0.87 x 0.98 in./22.10 x 24.89 mm
Full Pane Size (w x h):	5.25 x 4.825 in./133.35 x 122.56 mm
Plate Size:	60 stamps per revolution
Plate Numbers:	"C" followed by three (3) single digits
Marginal Markings:	
Front:	Plate numbers in four corners of pane
Back:	© 2013 USPS • USPS logo • Plate position diagram • Barcode (116800) in upper right and lower left corners of pane • Promotional text

Issue:	<i>Abraham Lincoln</i> Stamp
Item Number:	774400
Denomination & Type of Issue:	21-cent Definitive
Format:	Coil of 100 (1 design)
Series:	N/A
Issue Date & City:	February 12, 2014, Springfield, IL 62701
Designer:	Derry Noyes, Washington, DC
Art Director:	Derry Noyes, Washington, DC
Typographer:	Derry Noyes, Washington, DC
Existing Photo:	Carol M. Highsmith
Engraver:	WRE
Modeler:	CCL Label, Inc.

Manufacturing Process:	Gravure
Printer:	CCL Label, Inc.
Printed at:	Clinton, SC 29325
Press Type:	Dia Nippon Kiko (DNK)
Stamps per Coil:	100
Print Quantity:	200 million stamps
Paper Type:	Nonphosphored, Type III; Phosphor Tagged
Adhesive Type:	Pressure-sensitive
Processed at:	CCL Label, Inc., Clinton, SC
Colors:	8 (Cool Gray), 7 (Cool Gray), Black
Stamp Orientation:	Vertical
Image Area (w x h):	0.73 x 0.84 in./18.54 x 21.34 mm
Overall Size (w x h):	0.87 x 0.98 in./22.10 x 24.89 mm
Full Pane Size (w x h):	N/A
Plate Size:	480 stamps per revolution
Plate Numbers:	"C" followed by three (3) single digits
Coil Number Frequency:	Plate numbers every 20th stamp

— Stamp Services,
Marketing and Sales, 2-6-14

Pictorial Postmarks Announcement

As a community service, the Postal Service™ offers pictorial postmarks to commemorate local events celebrated in communities throughout the nation. A list of events for which pictorial postmarks are authorized appears below. The sponsor of the pictorial postmark appears in italics under the date. Also provided are illustrations of these postmarks.

People attending these local events may obtain the postmark in person at the temporary Post Office™ station established there. Those who cannot attend the event but who wish to obtain the postmark may submit a mail order request. Pictorial postmarks are available only for the dates indicated, and *requests must be postmarked no later than 30 days following the requested pictorial postmark date.*

All requests must include a stamped envelope or postcard bearing at least the minimum First-Class Mail® postage. Items submitted for postmark may not include

postage issued after the date of the requested postmark. Such items will be returned unserved.

Customers wishing to obtain a postmark should affix stamps to any envelope or postcard of their choice, address the envelope or postcard to themselves or others, insert a card of postcard thickness in envelopes for sturdiness, and tuck in the flap. Place the envelope or postcard in a larger envelope and address it to: Pictorial Postmarks, followed by the Name of the Station, Address, City, State, ZIP+4® Code, as listed below.

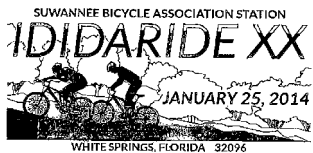
Customers can also send stamped envelopes and postcards without addresses for postmark, as long as they supply a larger envelope with adequate postage and their return address. After applying the pictorial postmark, the Postal Service returns the items (with or without addresses) under addressed protective cover.

The following pictorial postmarks have been extended for 30 days:



January 18-19, 2014

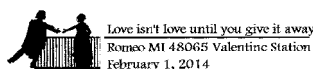
United States Postal Service
Lunar New Year Bazaar Station
Postmaster
201 13th Street
Oakland, CA 94612-9998



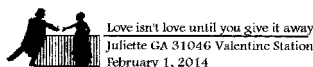
January 25, 2014
Suwannee Bicycle Assoc Station
Suwannee Bicycle Assoc Station
Postmaster
16555 Springs Street
White Springs, FL 32096-9998



January 25, 2014
United States Postal Service
Lunar New Year Festival Station
Postmaster, 2014
245 West Garvey Avenue
Monterey Park, CA 91754-9998



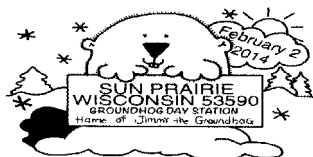
February 1, 2014
Merchants, Restaurants, and Professionals of Romeo MI
Romeo and Juliette Valentine Romantic Station
Postmaster
119 Church Street
Romeo, MI 48065-9998



February 1, 2014
Merchants, Restaurants, and Professionals of Romeo MI
Romeo and Juliette Valentine Station
Postmaster
356 Bowdoin Road
Juliette, GA 31046-9998



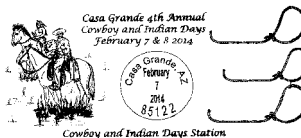
February 1- 14, 2014
United States Postal Service
Romance Post Office
Postmaster
292 Highway 31
Romance, AR 72136-9998



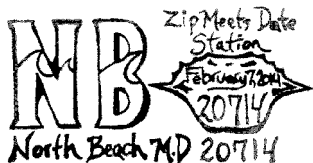
February 2, 2014
Business Improvement District of Sun Prairie
Groundhog Day Station
Postmaster
PO Box 9998
Sun Prairie, WI 53590-9998



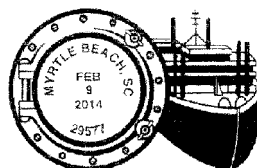
February 7, 2014
United States Postal Service
Great Baltimore Fire 110th Anniversary Station
Main Office Window Service
900 East Fayette Street,
Room 118
Baltimore, MD 21233-9998



February 7-8, 2014
West Pinal County Mounted Sheriff Posse
Casa Grande Cowboy & Indian Days Station
Postmaster
1670 North Pinal Avenue
Casa Grande, AZ
85122-9998



February 7, 2014
United States Postal Service
Zip Meets Date Station
Postmaster
9132 A Bay Avenue
North Beach, MD
20714-9998



STAMP SHOW STATION

February 8-9, 2014
United States Postal Service
Stamp Show Station
Postmaster
505 North Kings Highway
Myrtle Beach, SC
29577-9998



February 12, 2014

United States Postal Service
Hamilton Zip Code Station
Main Office Window Service
900 East Fayette Street,
Room 118
Baltimore, MD 21233-9998



February 14-16, 2014

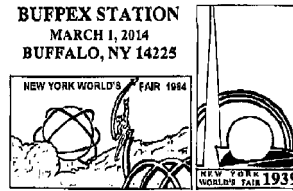
AmeriStamp Expo
AmeriStamp Expo Station
Postmaster
600 East Capitol Avenue
Little Rock, AR 72202-9998

February 28 – March 1, 2014



TEXPEX 2014
IS OUTTA SIGHT!
A PHILATELIC EXPERIENCE
OF AIR AND SPACE

United States Postal Service
TEXPEX Station
Postmaster
1251 William D. Tate
Grapevine, TX 76051-9998



March 1-2, 2014

Buffalo Stamp Club
BUFPEX Station
Postmaster
1200 William Street,
Room 200
Buffalo, NY 14240-9998



March 1-2, 2014

Redding Stamp Club
Sundial Bridge Tenth
Anniversary
Postmaster
2323 Churn Creek Road
Redding, CA 96049-9998

— Stamp Services,
Marketing and Sales, 2-6-14

How to Order the First-Day-of-Issue Digital Color or Traditional Postmarks

Customers have 60 days to obtain the first-day-of-issue postmarks by mail. They may purchase new stamps at their local Post Office™, by telephone at 800-STAMP-24, or at The Postal Store® website at www.usps.com/shop.

Traditional Postmarks

Customers should affix the stamps to envelopes of their choice, address them to themselves or others, or provide a self-addressed return envelope with sufficient postage large enough to accommodate the canceled item. Mail the request to the corresponding city of issuance. There is no charge for the first 50 postmarks. There is a 5-cent charge for each additional postmark over 50. Customers should submit a check, money order, or credit card for payment. After applying the first-day-of-issue postmark, the Postal Service™ will return the envelopes to the customer by U.S. Mail.

All postmark requests should go to the first-day-of-issue city. The first-day-of-issue city Post Office will then forward in bulk all postmark requests to Cancellation Services, Stamp Fulfillment Services, PO Box 449992, Kansas City, MO 64144-9992 by respective Post Offices.

Digital Color Postmarks

Only select stamp issues offer a digital color postmark. Customers may submit #6 or #10 envelopes constructed of paper rated as "laser safe." The Postal Service recommends envelopes of 80-pound Accent Opaque, acid-free, 9/16" side seams with no glue on the flap. The maximum

size of all digital color postmarks is 2" high x 4" long. Allow sufficient space on the envelope to accommodate the postmark. Do not use self-adhesive labels for addresses on the envelope. Two test envelopes must be included. There is a minimum of 10 envelopes at 50 cents per postmark required at the time of servicing. Customers should submit a check, money order, or credit card for payment.

The Postal Service reserves the right to not accept hand-painted and other cachet envelopes that are not compatible with our digital color postmark equipment. The Postal Service also reserves the right to substitute traditional black rubber postmarks if use of nonspecified envelopes results in poor image quality or damage to equipment.

Customers should affix the stamps to the envelopes and address them to themselves or others for return through the mail. Or, they may include an additional self-addressed return envelope, large enough to accommodate their canceled items, with sufficient postage affixed for return of their postmarked items. Mail the request for a first-day-of-issue digital color postmark to the corresponding city of issuance. Post Offices will then forward all customer requests for digital color postmarks to Cancellation Services, Stamp Fulfillment Services, PO Box 449992, Kansas City, MO 64144-9992.

After applying the first-day-of-issue postmark, the Postal Service will return the envelopes to the customer by U.S. Mail.



Lunar New Year: Year of the Horse Stamp

Chinatown Station
867 Stockton Street
San Francisco, CA 94108-9998

March 15, 2014

Digital Color Pictorial



Love: Cut Paper Heart Stamp

Special Events Coordinator
380 West 33rd Street, Room 4032
New York, NY 10199-9998

March 28, 2014

Digital Color Pictorial



Ferns Stamp (3K & 10K)

Cancellation Services
8300 NE Underground Drive, Pillar 210
Kansas City, MO 64144-0001

April 1, 2014

Digital Color Pictorial



Shirley Chisholm Stamp

Retail Manager
1050 Forbell Street
Brooklyn, NY 11256-9998

April 2, 2014

Digital Color Pictorial



Shirley Chisholm Stamp

Retail Manager
1050 Forbell Street
Brooklyn, NY 11256-9998

April 2, 2014

Black and White Pictorial



The Star-Spangled Banner Stamp

Postmaster
Independence Station
301 West Lexington Avenue
Independence, MO 64050-9998

April 2, 2014

Digital Color Pictorial



Hummingbird Stamp

Cancellation Services
8300 NE Underground Drive, Pillar 210
Kansas City, MO 64144-0001

April 11, 2014

Digital Color Pictorial

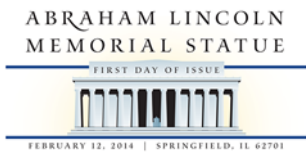


Digital Color Pictorial

Great Spangled Fritillary (Butterfly) Stamp

Cancellation Services
8300 NE Underground Drive, Pillar 210
Kansas City, MO 64144-0001

April 13, 2014



Digital Color Pictorial

Abraham Lincoln Stamp

Postmaster
FDOI Postmark
2105 East Cook Street
Springfield, IL 62703-9998

April 15, 2014



Digital Color Pictorial

Winter Flowers Stamp

Little Rock Main Post Office
Attn: Station Manager
600 East Capital Avenue
Little Rock, AR 72202-9998

April 19, 2014



Digital Color Pictorial

Ralph Ellison Stamp

Cancellation Services
8300 NE Underground Drive, Pillar 210
Kansas City, MO 64144-0001

April 19, 2014



Digital Color Pictorial

Wedding Cake Stamp

Postmaster
Main Post Office
135 N. Center Street
Mesa, AZ 85201-9998

April 23, 2014

— Stamp Services, Marketing and Sales, 2-6-14

Supply Management

Keep Your Elevator Moving — Get an Elevator Preventative Maintenance Service Contract

The Facility Services Category Management Center (CMC) in Windsor, CT has awarded new area-wide elevator preventative maintenance service contracts with Schindler Elevator Corporation and is available to process your requests for new elevator PM Service.

Facility Services CMC Elevator Services Website:

- <http://blue.usps.gov/purchase/facilities/FSCMC/fselevator.htm>

The following is a link to the "December Special Edition" Maintenance Line regarding Elevator and Escalator Maintenance Services:

- <http://blue.usps.gov/purchase/facilities/FSCMC/elevatorMU.pdf>

The following link to MLB-CO-14-001 provides an understanding of the services and repairs covered under our national area-wide contracts:

- *Material Logistics' Bulletin (MLB) MLB-CO-14-001:*
http://blue.usps.gov/purchase/_pdf/ops_mlb14-001.pdf

To order elevator preventative maintenance services:

- Process on eBuy2 with sufficient funding and route to Purchasing Method: CAMS, Supply Management, Facility Services CMC. If you are not sure how much funding to add or have other questions, contact Robert.J.Wilczynski@usps.gov via email.
- The Facility Services CMC will do the rest.

— Facility Services,
Supply Management, 2-6-14

Sustainability

Federal Reporting Requirements on Hazardous and Toxic Chemicals

Postal Service™ policy requires all USPS® facilities to comply with the reporting requirements of the Emergency Planning and Community Right-to-Know Act (EPCRA), if applicable. Postal Service sites that store certain quantities of hazardous and toxic chemicals must complete and submit the EPCRA Tier II Form by March 1 every year.

Reporting requirements apply to any location that stores threshold quantities of EPCRA-regulated hazardous and toxic chemicals. Regulated chemicals used by the Postal Service include sulfuric acid in lead-acid batteries, gasoline, diesel, heating oil, and ice melt/anti-skid products, as discussed below.

Applicability

Commonly reported chemicals and thresholds applicable to USPS facilities include:

- **Lead-acid batteries.** The 500 pound threshold for sulfuric acid can be met by having more than six (6) tow motor batteries or more than two (2) forklift batteries, or a combination of these batteries on site. The percent weight of sulfuric acid in the battery can be estimated by multiplying the battery weight by 18 percent.
- **Gasoline, diesel, or heating fuel.** The 10,000 pound threshold is equivalent to 1,433 gallons of gasoline or 1,223 gallons of diesel/heating fuel.
- **Ice melt/anti-skid products.** Rock salt, calcium magnesium acetate, and sand have a 10,000 pound threshold. This threshold applies whether or not the materials are stored in one bulk location or dispersed on bags or pallets throughout the site.

Reporting Process

USPS Installation Heads should submit the emergency and hazardous chemical inventory reporting form, known as the Tier II Form, annually by March 1 to the following organizations:

- The State Emergency Response Commission (SERC);

- The Local Emergency Planning Committee (LEPC); and
- The local Fire Department that would respond to an emergency at your facility.

States may require reporting through submittal of the hard-copy Tier II Form, electronic reporting through the EPA's "Tier2 Submit" software program, or through their own state-specific software programs or websites. Each state's individual reporting requirements, procedures, and forms can be accessed at: <http://www2.epa.gov/epcra-tier-i-and-tier-ii-reporting>.

For states that recommend the EPA's Tier2 Submit 2013 software, Postal Service facilities should be able to use eAccess to request a download of the Tier2 Submit 2013 software for use in electronic reporting. If other state electronic reporting software or website applications are not accessible or authorized on your USPS ACE computer system, you should use the paper Tier II Form to report by hard copy.

Note: USPS facilities are not required to pay any fees associated with reporting (including electronic reporting user and registration fees).

Additional detailed reporting instructions are available through the appropriate regional manager of Environmental Compliance and Sustainability, and on the Sustainability website at http://blue.usps.gov/sustainability/environmental/spills_and_regulatory_reporting.htm. If you have questions regarding your need to report under EPCRA, contact your regional manager. For Northeast, Eastern, Capital Metro Areas, and Headquarters-related facilities, contact Nicholas DeCarlo at nicholas.decarlo@usps.gov. For questions related to EPCRA reporting in the Great Lakes, Western, Southern, and Pacific Areas, contact Judy Wingo-Stalinger at judy.wingo-stalinger@usps.gov.

— Environmental Compliance and Risk Management,
Office of Sustainability, 2-6-14



475 L'ENFANT PLAZA SW
WASHINGTON DC 20260-5540

First-Class Mail
Postage & Fees Paid
USPS
Permit No. G-10

USPS® Presents
Shirley Chisholm
Forever® Stamp for the
Black Heritage Series.

