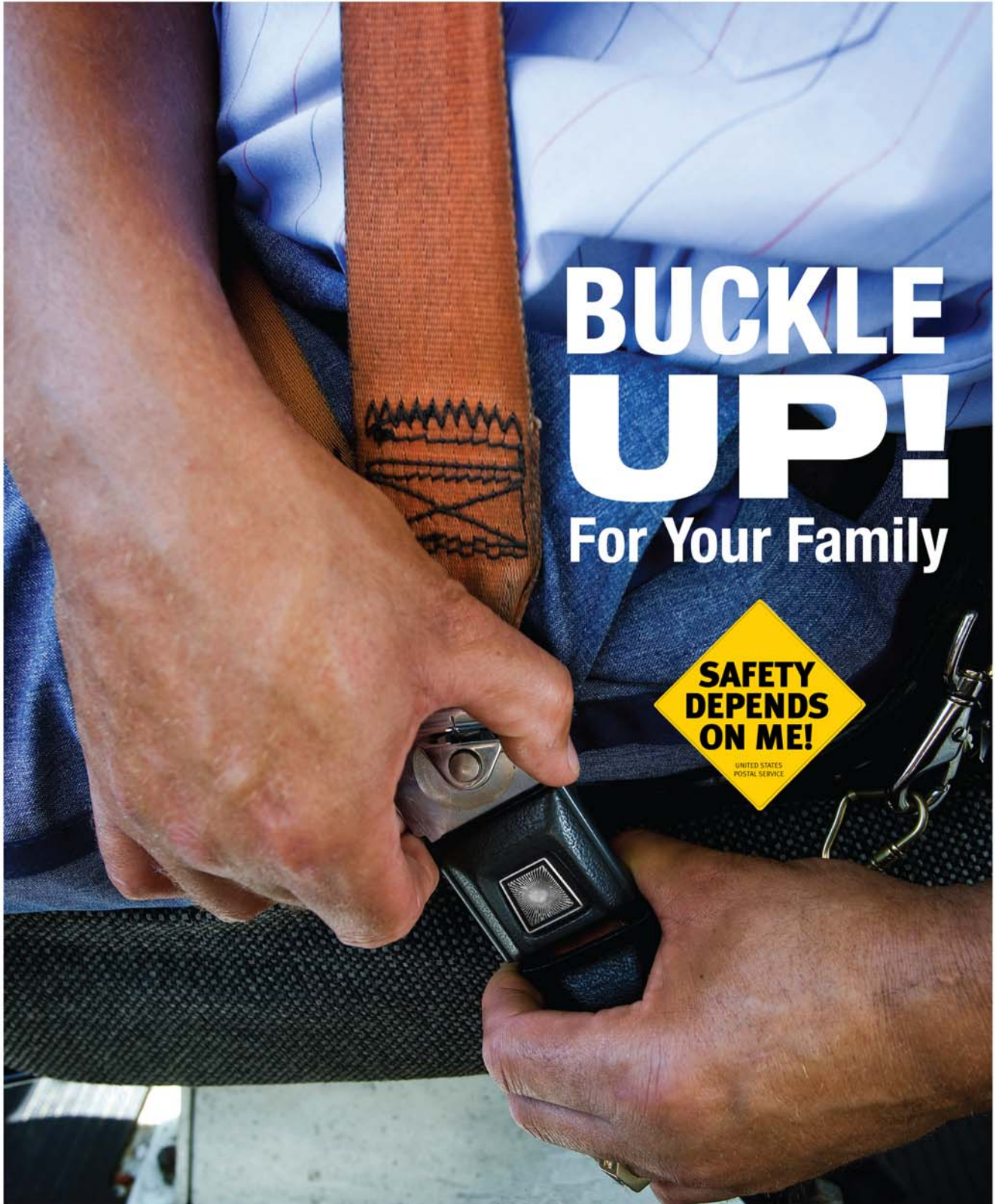


usps postal|bulletin

PUBLISHED SINCE MARCH 4, 1880



BUCKLE UP!

For Your Family

**SAFETY
DEPENDS
ON ME!**

UNITED STATES
POSTAL SERVICE



Contents

POLICIES, PROCEDURES, AND FORMS UPDATES

Manuals

DMM Revision: Nonprofit Standard Mail — Cooperative Mailings	3
DMM Revision Correction: Domestic and International Mailing Services	3
IMM Revision: Entering and Depositing International Mail Items	4
IMM Revision: Inbound International Registered Mail Change	4

Publications

Publication 431 Revision: Changes to Post Office Box Service and Caller Service Fee Groups	5
---	---

Management Instructions

New Management Instruction AS-300-2009-2, Advertising Policy and Guidelines	5
--	---

ORGANIZATION INFORMATION

Address Management

Post Office Changes	6
-------------------------------	---

Finance

Household Diary Study	12
---------------------------------	----

Global Business

Free Mail Program for U.S. Armed Forces	12
---	----

Human Resources

Equal Employment Opportunity Policy Statement	13
---	----

Mailing and Shipping Services

Mail Alert	15
----------------------	----

Philately

Stamp Announcement 09-33: Grand Teton National Park, Wyoming	16
Stamp Announcement 09-34: Zion National Park, Utah	17
Stamp Announcement 09-35: Migratory Bird Hunting and Conservation Stamp	19
Update: Seabiscuit Stamped Envelope	45
Stamp Stock Items Withdrawn From Regular Sale and From Sale at Philatelic Centers	46
Announcement 09-F: 2009 Stamps and Postal Stationery	49
Pictorial Postmarks Announcement	53

Supply Management

Coin-Operated Copiers — TRM Copy Centers, LLC	61
---	----

PULL-OUT INFORMATION

Domestic Orders	21
Invalid Express Mail Corporate Account Numbers	22
Missing, Lost, or Stolen U.S. Money Order Forms	24
Missing, Lost, or Stolen Canadian Money Order Forms	29
Verifying U.S. Postal Service Money Orders	31
Counterfeit Canadian Money Order Forms	31
Toll-Free Number Available to Verify Canadian Money Orders	31

Other Information

Overseas Military/Diplomatic Mail	32
Thrift Savings Plan Fact Sheet	37
Displaying the U.S. Flag and the POW-MIA Flag	39
Missing Children Posters	41

Postal Bulletin Index

Annual Index	PB 22251 (1-29-09)
------------------------	--------------------



Grand Teton National Park, Wyoming
stamp

USPS National Emergency Hotline
Is your facility operating? Call 888-363-7462

Policies, Procedures, and Forms Updates

Manuals

DMM Revision: Nonprofit Standard Mail — Cooperative Mailings

Effective May 11, 2009, the Postal Service™ revised *Mailing Standards of the United States Postal Service*, Domestic Mail Manual (DMM®) 703.1.6.3, Cooperative Mailing, to provide clarity and to align the formatting of this section with other DMM sections. With this revision, DMM 703.1.6.3 will be displayed in an easy-to-read format outlining the standards pertaining to cooperative mailings, including the exception for using the services of a commercial fundraiser to mail at the Nonprofit Standard Mail® prices when meeting specific criteria.

These revisions were included in the May 2009 version of the online DMM available via Postal Explorer® at <http://pe.usps.com> and will be incorporated into the next printed version of the DMM.

— *Mailing Standards,
Pricing, 5-21-09*

DMM Revision Correction: Domestic and International Mailing Services

In *Postal Bulletin 22256* (4-9-09, pages 55–58), the Postal Service™ published “Highlights of Changes” for the May 2009 prices and standards change. The highlights contained an overview of the standards that were incorporated into the *Mailing Standards of the United States Postal Service*, Domestic Mail Manual (DMM®), *Mailing Standards of the United States Postal Service*, International Mail Manual (IMM®), and Quick Service Guides (QSGs). This corrects the clerical errors in the online May 2009 DMM version found on Postal Explorer® at <http://pe.usps.com>.

The following online DMM references have been rectified:

243.3.2.1 Mailpiece Weight

All Standard Mail pieces must weigh less than 16 ounces. The following weight limits also apply to pieces mailed at Standard Mail letter prices:

[The second sentence of item 3.2.1a has been revised to remove the reference to Not Flat-Machinable pieces as follows:]

- a. ***Letter-size pieces weighing more than 3.3 ounces and prepared as nonmachinable letters are mailable at nonautomation flats prices, unless they are bar-coded and eligible to be mailed as automation flats under 301.3.0.

302.5.4 5-Digit and ZIP+4 Barcodes

[Item 5.4 was revised to add delivery point barcode and to clarify that a ZIP+4 barcode could not be used as follows:]

The delivery point barcode may appear in the address block when printed on an insert that appears through a window or on an address label affixed directly to the piece; or it may appear in the lower right corner either printed directly on the mailpiece, or on an insert that appears through a window. An automation price flat-size piece must not bear a 5-digit or a ZIP+4 barcode.

443.4.4 Surcharge

[The introductory paragraph of 4.4. has been revised to update the surcharge price as follows:]

Unless prepared in carrier route (irregular parcels only) or 5-digit/scheme containers, Standard Mail parcels and Not Flat-Machinable pieces are subject to a \$0.07 surcharge if:***

* * * * *

Minor miscellaneous editorial corrections were also made in the Index and the DMM. The printed version of the DMM will be available at the Material Distribution Center (MDC) in the near future and will reflect the changes listed above. A separate notice will be published in the *Postal Bulletin* advising when copies are available.

— *Mailing Standards,
Pricing, 5-21-09*

IMM Revision: Entering and Depositing International Mail Items

Effective June 1, 2009, the Postal Service™ is revising *Mailing Standards of the United States Postal Service*, International Mail Manual (IMM®) section 123.5 to clarify the proper places mailers may deposit international mail items. We are also deleting section 123.8.

These revisions will clarify for our employees and customers that an item prepared and mailed online must contain an *electronic* round stamp on the customs declaration before the customer deposits the item in a Postal Service collection box or has it picked up via Pickup on Demand® service or Carrier Pickup™ service.

Also, we have added to 123.5 the online customs forms requirement that was previously listed in 123.8, which is deleted.

Mailing Standards of the United States Postal Service, International Mail Manual (IMM)

1 International Mail Services

* * * * *

120 Preparation for Mailing

* * * * *

123 Customs Forms and Online Shipping Labels

* * * * *

123.5 Place of Mailing

[Revise the text to read as follows (expanding and clarifying the places of mailing for items requiring a customs form):]

Except as specified in items a and b, a mailer may not deposit a postal item that requires a completed customs

declaration form into a collection box, lobby drop, Automated Postal Center® (APC®) drop, postal lobby, postal dock, or other unattended location. In addition, items that require a customs declaration are precluded from pickup service as defined in 213.3, 222.23, and 234.6. Mailers must present such items to a Postal Service employee at a Post Office™ facility or other location as designated by the postmaster. The Postal Service will return improperly presented items to the sender for proper entry and acceptance. Exceptions are as follows:

- a. Express Mail International® shipments paid through an Express Mail corporate account (EMCA).
- b. Express Mail International and Priority Mail International™ items that have the mailing label, customs declaration (including an electronic round stamp), and postage prepared and paid online through Click-N-Ship® service on usps.com, through the eBay/PayPal integrated shipping solution, or through an authorized PC Postage® vendor website.

* * * * *

[Delete 123.8 in its entirety.]

* * * * *

We will incorporate these revisions into the next printed version of the IMM and into the monthly update of the online IMM, which is available via Postal Explorer® at <http://pe.usps.com>.

— Mailing Standards,
Pricing, 5-21-09

IMM Revision: Inbound International Registered Mail Change

Effective June 1, 2009, the Postal Service™ is revising *Mailing Standards of the United States Postal Service*, International Mail Manual (IMM®) section 752.13 to change the process for inbound international Registered Mail™ service.

A final rule was published in the *Federal Register* on April 2, 2009 (74 FR 14932–14933). It detailed new procedures on how inbound international Registered Mail items would be processed after receipt at an International Service Center from foreign posts. These new procedures are consistent with international agreements of the Universal Postal Union (UPU), U.S. law, and the regulations of the United States Postal Service®.

Inbound international Registered Mail service, as defined by the UPU's agreement, limits the compensation the Postal Service receives for providing this service and markedly limits the indemnity available to customers compared to domestic service. Finally, and also in contrast to U.S. domestic mail, the UPU agreement does not require hand-to-hand processing of inbound international Registered Mail items. Therefore, we will no longer handle inbound international Registered Mail items in the domestic Registered Mail system.

International senders of Registered Mail items will continue to receive features that distinguish this service. For example, the Postal Service will verify receipt of a

Registered Mail item to the postal administration of origin. In addition, the Postal Service will obtain a signature at the time of delivery in accordance with domestic standards governing the delivery of accountable mail. Also, senders will continue to have access to the inquiry process and may receive indemnity based on UPU limits for loss, damage, or missing contents.

We will incorporate this revision into the next printed version of the IMM and into the monthly update of the online IMM, which is available via Postal Explorer® at <http://pe.usps.com>.

— *Mailing Standards, Pricing, 5-21-09*

Publications

Publication 431 Revision: Changes to Post Office Box Service and Caller Service Fee Groups

Effective May 21, 2009, Publication 431, *Post Office Box Service and Caller Service Fee Groups*, is revised to include the following change.

Publication 431, *Post Office Box Service and Caller Service Fee Groups*

* * * * *

[Add the following entry:]

ZIP Code	Fee Group
75071	5

[Remove the entry for the following ZIP™ Codes:]

ZIP Code
30334

[Change the following entries:]

ZIP Code	Fee Group
20689	5
74150	4

* * * * *

The online version of Publication 431 is dated January 31, 2008. Changes made after January 31, 2008, have been

published in the *Postal Bulletin*, and are also reflected in WebBATS. Publication 431 is currently available on the Postal Service™ PolicyNet website (<http://blue.usps.gov/cpim>):

- Go to <http://blue.usps.gov>.
- Under “Essential Links,” in the left-hand column, click *PolicyNet*.
- Click *PUBs*.

Offices with WebBATS access can view current Publication 431 information by generating a WebBATS Facility Information Report as follows:

1. Go to the “WebBATS main menu,” and select Reports. The reports page opens.
2. Under the “Clients/System column,” System category, click *Facility Information*.
3. View the “Fee Group” field in the report.

— *Value Added and Special Services, Mailing Services, 5-21-09*

Management Instructions

New Management Instruction AS-300-2009-2, Advertising Policy and Guidelines

New management instruction (MI) AS-300-2009-2, *Advertising Policy and Guidelines*, is effective immediately. This MI:

- Supersedes “Field Advertising Guidelines and Policy,” *Postal Bulletin* 22156 (6-9-05, page 79).
- Defines “authorized advertising materials.”
- Sets forth Postal Service™ policy for postmasters and managers who wish to advertise or provide information to Postal Service customers via postcards, letters, flyers, signs, and mass media elements.
- Provides information about messaging and other advertising materials available, including MessageMaker4.

MI AS-300-2009-2 is available on the Postal Service PolicyNet website:

- Go to <http://blue.usps.gov>.
- Under “Essential Links” in the left-hand column, click *PolicyNet*.
- Then click *MIs*.

The direct URL for the Postal Service PolicyNet website is <http://blue.usps.gov/cpim>.

— *Media Planning and Advertising, Mailing and Shipping Services, 5-21-09*

Organization Information

Address Management

Post Office Changes

Old/ New	Finance No.	ZIP Code	State	P.O. Name	County/ Parish	Station/Branch/ Unit	Unit Type	Effective Date	Comments
Old New	04-3231 04-3231	72923 72916	AR AR	Fort Smith Fort Smith	Sebastian Sebastian	Barling Main Office	Classified Branch Post Office	06/06/2009	Realign ZIP™ Code boundaries. Use Fort Smith AR 72916 as last line of address for the 22 deliveries previously in ZIP Code 72923.
Old New	03-0259 03-0259	85217 85117	AZ AZ	Apache Junction Apache Junction	Pinal Pinal	Main Office Main Office	Post Office Post Office	07/01/2009	Establish a new ZIP Code for a delivery area. Use Apache Junction AZ 85117 as last line of address for all 3,161 PO Box deliveries previously in ZIP Code 85217.
Old New	03-0259 03-0259	85218 85118	AZ AZ	Apache Junction Apache Junction	Pinal Pinal	Main Office Main Office	Post Office Post Office	07/01/2009	Establish a new ZIP Code for a delivery area. Use Apache Junction AZ 85118 as last line of address for all 6,745 deliveries previously in ZIP Code 85218.
Old New	03-0259 03-0259	85219 85119	AZ AZ	Apache Junction Apache Junction	Pinal Pinal	Main Office Main Office	Post Office Post Office	07/01/2009	Establish a new ZIP Code for a delivery area. Use Apache Junction 85119 as last line of address for all of the 9,675 deliveries previously in ZIP Code 85219.
Old New	03-0259 03-0259	85220 85120	AZ AZ	Apache Junction Apache Junction	Pinal Pinal	Main Office Main Office	Post Office Post Office	07/01/2009	Establish a new ZIP Code for a delivery area. Use Apache Junction AZ 85120 as last line of address for all the 14,913 deliveries previously in ZIP Code 85220.
Old New	03-7215 03-7215	85221 85121	AZ AZ	Sacaton Sacaton	Pinal Pinal	Bapchule Bapchule	Place Name Place Name	07/01/2009	Establish a new ZIP Code for a delivery area. Use Bapchule AZ 85121 as last line of address for all the 748 deliveries previously in ZIP Code 85221.
Old New	03-1221 03-1221	85222 85122	AZ AZ	Casa Grande Casa Grande	Pinal Pinal	Main Office Main Office	Post Office Post Office	07/01/2009	Establish a new ZIP Code for a delivery area. Use Casa Grande AZ 85122 as last line of address for all the 15,096 deliveries previously in ZIP Code 85222.
Old New	03-1221 03-1221	85223 85123	AZ AZ	Casa Grande Casa Grande	Pinal Pinal	Arizona City Arizona City	Place Name Place Name	07/01/2009	Establish a new ZIP Code for a delivery area. Use Arizona City AZ 85123 as last line of address for all the 4,404 deliveries previously in ZIP Code 85223.

Old/ New	Finance No.	ZIP Code	State	P.O. Name	County/ Parish	Station/Branch/ Unit	Unit Type	Effective Date	Comments
Old New	03-6845 03-6845	85227 85127	AZ AZ	Queen Creek Queen Creek	Maricopa Maricopa	Chandler Heights Chandler Heights	Community Post Office Community Post Office	07/01/2009	Establish a new ZIP Code for a delivery area. Use Chandler Heights AZ 85127 as last line of address for all the 527 deliveries previously in ZIP Code 85227.
Old New	03-2035 03-2035	85228 85128	AZ AZ	Coolidge Coolidge	Pinal Pinal	Main Office Main Office	Post Office Post Office	07/01/2009	Establish a new ZIP Code for a delivery area. Use Coolidge AZ 85128 as last line of address for all the 5,103 deliveries previously in ZIP Code 85228.
Old New	03-1221 03-1221	85230 85130	AZ AZ	Casa Grande Casa Grande	Pinal Pinal	Main Office Main Office	Post Office Post Office	07/01/2009	Establish a new ZIP Code for a delivery area. Use Casa Grande AZ 85230 as last line of address for all the 2,420 deliveries previously in ZIP Code 85230.
Old New	03-2738 03-2738	85231 85131	AZ AZ	Eloy Eloy	Pinal Pinal	Main Office Main Office	Post Office Post Office	07/01/2009	Establish a new ZIP Code for a delivery area. Use Eloy AZ 85131 as last line of address for all the 3,673 deliveries previously in ZIP Code 85231.
Old New	03-2886 03-2886	85232 85132	AZ AZ	Florence Florence	Pinal Pinal	Main Office Main Office	Post Office Post Office	07/01/2009	Establish a new ZIP Code for a delivery area. Use Florence AZ 85132 as last line of address for all the 1,206 deliveries previously in ZIP Code 85232.
Old New	03-3737 03-3737	85235 85135	AZ AZ	Hayden Hayden	Pinal Pinal	Main Office Main Office	Post Office Post Office	07/01/2009	Establish a new ZIP Code for a delivery area. Use Hayden AZ 85235 as last line of address for all the 621 deliveries previously in ZIP Code 85235.
Old New	03-4384 03-4384	85237 85137	AZ AZ	Kearny Kearny	Pinal Pinal	Main Office Main Office	Post Office Post Office	07/01/2009	Establish a new ZIP Code for a delivery area. Use Kearny AZ 85137 as last line of address for all the 57 deliveries previously in ZIP Code 85237.
Old New	03-5069 03-5069	85238 85138	AZ AZ	Maricopa Maricopa	Pinal Pinal	Main Office Main Office	Post Office Post Office	07/01/2009	Establish a new ZIP Code for a delivery area. Use Maricopa AZ 85138 as last line of address for all the 8,489 deliveries previously in ZIP Code 85238.
Old New	03-5069 03-5069	85239 85139	AZ AZ	Maricopa Maricopa	Pinal Pinal	Main Office Main Office	Post Office Post Office	07/01/2009	Establish a new ZIP Code for a delivery area. Use Maricopa AZ 85139 as last line of address for all the 5,538 deliveries previously in ZIP Code 85239.

Old/ New	Finance No.	ZIP Code	State	P.O. Name	County/ Parish	Station/Branch/ Unit	Unit Type	Effective Date	Comments
Old New	03-6845 03-6845	85240 85140	AZ AZ	Queen Creek Queen Creek	Pinal Pinal	Main Office Main Office	Post Office Post Office	07/01/2009	Establish a new ZIP Code for a delivery area. Use Queen Creek AZ 85140 as last line of address for all the 6,260 deliveries previously in ZIP Code 85240.
Old New	03-6401 03-6401	85241 85141	AZ AZ	Picacho Picacho	Pinal Pinal	Main Office Main Office	Post Office Post Office	07/01/2009	Establish a new ZIP Code for a delivery area. Use Picacho AZ 85141 as last line of address for all the 428 deliveries previously in ZIP Code 85241.
Old New	03-6845 03-6845	85242 85142	AZ AZ	Queen Creek Queen Creek	Pinal Pinal	Main Office Main Office	Post Office Post Office	07/01/2009	Establish a new ZIP Code for a delivery area. Use Queen Creek AZ 85142 as last line of address for all the 11,047 deliveries previously in ZIP Code 85242.
Old New	03-6845 03-6845	85243 85143	AZ AZ	Queen Creek Queen Creek	Pinal Pinal	Main Office Main Office	Post Office Post Office	07/01/2009	Establish a new ZIP Code for a delivery area. Use Queen Creek AZ 85143 as last line of address for all the 5,627 deliveries previously in ZIP Code 85243.
Old New	03-6956 03-6956	85245 85145	AZ AZ	Red Rock Red Rock	Pinal Pinal	Main Office Main Office	Post Office Post Office	07/01/2009	Establish a new ZIP Code for a delivery area. Use Red Rock AZ 85145 as last line of address for all the 257 deliveries previously in ZIP Code 85245.
Old New	03-7215 03-7215	85247 85147	AZ AZ	Sacaton Sacaton	Pinal Pinal	Main Office Main Office	Post Office Post Office	07/01/2009	Establish a new ZIP Code for a delivery area. Use Sacaton AZ 85147 as last line of address for all the 1,886 deliveries previously in ZIP Code 85247.
Old New	03-8251 03-8251	85272 85172	AZ AZ	Stanfield Stanfield	Pinal Pinal	Main Office Main Office	Post Office Post Office	07/01/2009	Establish a new ZIP Code for a delivery area. Use Stanfield AZ 85172 as last line of address for all the 132 deliveries previously in ZIP Code 85272.
Old New	03-8325 03-8325	85273 85173	AZ AZ	Superior Superior	Pinal Pinal	Main Office Main Office	Post Office Post Office	07/01/2009	Establish a new ZIP Code for a delivery area. Use Superior AZ 85173 as last line of address for all the 1,336 deliveries previously in ZIP Code 85273.
Old New	03-0259 03-0259	85278 85178	AZ AZ	Apache Junction Apache Junction	Pinal Pinal	Main Office Main Office	Post Office Post Office	07/01/2009	Establish a new ZIP Code for a delivery area. Use Apache Junction AZ 85178 as last line of address for all the 2,949 deliveries previously in ZIP Code 85278.

Old/ New	Finance No.	ZIP Code	State	P.O. Name	County/ Parish	Station/Branch/ Unit	Unit Type	Effective Date	Comments
Old New	03-0259 03-0259	85290 85190	AZ AZ	Apache Junction Apache Junction	Pinal Pinal	Tortilla Flat Tortilla Flat	Community Post Office Community Post Office	07/01/2009	Establish a new ZIP Code for a delivery area. Use Tortilla Flat AZ 85190 as last line of address for all the 44 deliveries previously in ZIP Code 85290.
Old New	03-9028 03-9028	85291 85191	AZ AZ	Valley Farms Valley Farms	Pinal Pinal	Main Office Main Office	Post Office Post Office	07/01/2009	Establish a new ZIP Code for a delivery area. Use Valley Farms AZ 85191 as last line of address for all the 213 deliveries previously in ZIP Code 85291.
Old New	03-1221 03-1221	85293 85193	AZ AZ	Casa Grande Casa Grande	Pinal Pinal	Main Office Main Office	Post Office Post Office	07/01/2009	Establish a new ZIP Code for a delivery area. Use Casa Grande AZ 85193 as last line of address for all the 1,284 deliveries previously in ZIP Code 85293.
Old New	03-1221 03-1221	85294 85194	AZ AZ	Casa Grande Casa Grande	Pinal Pinal	Main Office Main Office	Post Office Post Office	07/01/2009	Establish a new ZIP Code for a delivery area. Use Casa Grande AZ 85194 as last line of address for all the 2,327 deliveries previously in ZIP Code 85294.
Old New	03-9546 03-9546	85292 85192	AZ AZ	Winkelman Winkelman	Pinal Pinal	Main Office Main Office	Post Office Post Office	07/01/2009	Establish a new ZIP Code for a delivery area. Use Winkelman AZ 85192 as last line of address for all 257 deliveries previously in ZIP Code 85292.
Old New	05-6936 05-5376	92707 92660	CA CA	Santa Ana Newport Beach	Orange Orange	Santa Ana Main Office	Carrier Annex Post Office	07/01/2009	Realign ZIP Code boundaries. Use Newport Beach CA 92660 as last line of address for the 792 deliveries previously in ZIP Code 92707.
Old New	05-4158 05-4158	91941 91942	CA CA	La Mesa La Mesa	San Diego San Diego	La Mesa La Mesa	Carrier Annex Carrier Annex	07/01/2009	Realign ZIP Code boundaries. Use La Mesa CA 91942 as last line of address for the 7,222 deliveries previously in ZIP Code 91941.
Old New	07-5634 07-5634	80501 80504	CO CO	Longmont Longmont	Boulder Boulder	Main Office Main Office	Post Office Post Office	07/01/2009	Realign ZIP Code boundaries. Use Longmont CO 80504 as last line of address for the 8,195 deliveries previously in ZIP Code 80501.
Old New	12-4961 12-4961	30046 30046	GA GA	Lawrenceville Lawrenceville	Gwinnett Gwinnett	Main Office Main Office	Post Office Post Office	07/01/2009	This announcement expands the use of ZIP Code 30046 to include delivery.
Old New	12-4961 12-4961	30045 30046	GA GA	Lawrenceville Lawrenceville	Gwinnett Gwinnett	Main Office Main Office	Post Office Post Office	07/01/2009	Realign ZIP Code boundaries. Use Lawrenceville GA 30046 as last line of address for the 15,633 deliveries previously in ZIP Code 30045.

Old/ New	Finance No.	ZIP Code	State	P.O. Name	County/ Parish	Station/Branch/ Unit	Unit Type	Effective Date	Comments
Old New	12-3135 12-3190	30213 30214	GA GA	Fairburn Fayetteville	Fayetteville Fayetteville	Main Office Main Office	Post Office Post Office	06/20/2009	Realign ZIP Code boundaries. Use Fayetteville GA 30214 as last line of address for the 1,695 deliveries previously in ZIP Code 30213.
Old New	12-7436 12-3190	30296 30214	GA GA	Riverdale Fayetteville	Fayetteville Fayetteville	Main Office Main Office	Post Office Post Office	06/20/2009	Realign ZIP Code boundaries. Use Fayetteville GA 30214 as last line of address for the 510 deliveries previously in ZIP Code 30296.
Old New	18-2412 18-2412	50311 50324	IA IA	Des Moines Des Moines	Polk Polk	University Windsor Heights	Classified Station Place Name	07/01/2009	Establish a new ZIP Code for a delivery area. Use Windsor Height IA 50324 as last line of address for a portion of the 1,450 deliveries previously in ZIP Code 50311.
Old New	18-2412 18-2412	50322 50324	IA IA	Des Moines Des Moines	Polk Polk	Urbandale Windsor Heights	Carrier Annex Place Name	07/01/2009	Establish a new ZIP Code for a delivery area. Use Windsor Heights IA 50324 as last line of address for a portion of the 819 deliveries previously in ZIP Code 50322.
Old New	18-2412 18-2412	50312 50324	IA IA	Des Moines Des Moines	Polk Polk	Morgan Street Windsor Heights	Classified Station Place Name	07/01/2009	Establish a new ZIP Code for a delivery area. Use Windsor Heights IA 50324 as last line of address for a portion of the 179 deliveries previously in ZIP Code 50312.
Old New	16-6099 16-6099	60466 60484	IL IL	Park Forest Park Forest	Cook Will	Main Office University Park	Post Office Place Name	07/01/2009	Establish a new ZIP Code for a delivery area. Use University Park IL 60484 as last line of address for a portion of the 2,797 deliveries previously in ZIP Code 60466.
Old New	16-5232 16-6936	60954 60958	IL IL	Momence Saint Anne	Kankakee Kankakee	Main Office Pembroke Township	Post Office Place Name	07/01/2009	Establish a new ZIP Code for a delivery area. Use Pembroke Township IL 60958 as last line of address for a portion of the 1,63 deliveries previously in ZIP Code 60954.
Old New	16-6936 16-6936	60964 60958	IL IL	Saint Anne Saint Anne	Kankakee Kankakee	Main Office Pembroke Township	Post Office Place Name	07/01/2009	Establish a new ZIP Code for a delivery area. Use Pembroke Township IL 60958 as last line of address for a portion of the 630 deliveries previously in ZIP Code 60964.
Old New	16-0570 16-6936	60912 60958	IL IL	Beaverville Saint Anne	Iroquois Iroquois	Main Office Pembroke Township	Post Office Place Name	07/01/2009	Realign ZIP Code boundaries. Use Saint Anne IL 60958 as last line of address for the 4 deliveries previously in ZIP Code 60912.

Old/ New	Finance No.	ZIP Code	State	P.O. Name	County/ Parish	Station/Branch/ Unit	Unit Type	Effective Date	Comments
Old New	40-5408 40-5408	97504 97501	OR OR	Medford Medford	Jackson Jackson	Main Office Main Office	Post Office Post Office	07/01/2009	Realign ZIP Code boundaries. Use Medford OR 97501 as last line of address for the 542 PO Box deliveries previously in ZIP Code 97504.
Old New	41-5112 41-5112	19061 19060	PA PA	Marcus Hook Marcus Hook	Delaware Delaware	Main Office Garnet Valley	Post Office Place Name	07/01/2009	Establish a new ZIP Code for a delivery area. Use Garnet Valley PA 19060 as last line of address for a portion of the 3,692 deliveries previously in ZIP Code 19061.
Old New	48-3237 48-3237	76180 76182	TX TX	Fort Worth Fort Worth	Tarrant Tarrant	North Richland Hills North Richland Hills	Classified Branch Classified Branch	07/01/2009	Realign ZIP Code boundaries. Use North Richland Hills TX 76182 as last line of address for the 9,500 deliveries previously in ZIP Code 76180.
Old New	48-4600 48-4600	76248 76244	TX TX	Keller Keller	Tarrant Tarrant	Main Office Main Office	Post Office Post Office	07/01/2009	Realign ZIP Code boundaries. Use Fort Worth TX 76244 as last line of address for the 17,500 deliveries previously in ZIP Code 76248.
Old New	48-4600 48-4600	76244 76244	TX TX	Keller Keller	Tarrant Tarrant	Main Office Main Office	Post Office Post Office	07/01/2009	This announcement expands the use of ZIP Code 76244 to include delivery.
Old New	48-3237 48-3237	76182 76182	TX TX	Forth Worth Forth Worth	Tarrant Tarrant	North Richland Hills North Richland Hills	Classified Branch Classified Branch	07/01/2009	This announcement expands the use of ZIP Code 76182 to include delivery.
Old New	56-7900 56-7900	54481 54482	WI WI	Stevens Point Stevens Point	Portage Portage	Main Office Main Office	Post Office Post Office	07/01/2009	Establish a new ZIP Code for a delivery area. Use Stevens Point WI 54482 as last line of address for a portion of the 3,745 deliveries previously in ZIP Code 54481.

Finance

Household Diary Study

The Postal Service's Household Diary Study (HDS), conducted since 1987, provides information about the contents of the mail sent and received by our customers in U.S. households. The Postal Service™ uses this information to help understand why and how customers use the mail. The results are used to:

- Forecast mail volume.
- Plan marketing strategies.
- Provide information for rate-setting purposes.

The HDS is administered at Headquarters by the Office of Demand Forecasting and Analysis, Finance. NuStats, the HDS survey research firm contractor since July 1999, conducts the interviews and collects and analyzes the HDS data throughout the year.

HDS is a two-stage survey. Stage 1 is the Household Interview. NuStats sends an advance letter, signed by the postmaster general, to a representative sample of U.S. households. This letter emphasizes the importance of the HDS and asks for participation. Sample households are contacted either by telephone or in person and asked about the mail they send and receive, their adoption and use of various communications' technologies, their attitudes about mail service in general, and information relating to their household and personal demographics. Respondent households are recruited to participate in HDS Stage 2.

Stage 2 is the Mail Diary. NuStats asks households that agree to participate in Stage 2 to record information about the mail they send and receive for a 7-day period from Monday to Sunday. Information recorded includes number

of mailpieces received and sent, industry mail source, mail characteristics, and attitudes regarding mail received. As an incentive for HDS Stage 2 participation, households are offered the options of receiving \$30 or a roll of 100 First-Class Mail® stamps.

Customers who participate in Stage 2 of the HDS can expect to receive their incentive about 2 months after they return the diary packet to NuStats.

Data gathered in both HDS stages is available in a final report, *The Household Diary Study — Mail Use and Attitudes*. The report is published in hard copy and an electronic file. Order forms for the latest HDS report may be obtained via the Postal Service Internet at www.usps.com/householddiary.

For additional information, contact either of the following individuals:

John Pickett
Telephone: 202-268-2641
Fax: 202-268-6841
e-mail: john.pickett@usps.gov

John Mazzone
Telephone: 202-268-4169
Fax: 202-268-6841
e-mail: john.f.mazzone@usps.gov

Study participants may also contact NuStats directly for help or information at 888-441-8777 or usps@nustats.com.

— Office of Demand Forecasting and Analysis,
Finance, 5-21-09

Global Business

Free Mail Program for U.S. Armed Forces

Under the provisions of Title 39 of the United States Code (U.S.C.) 3401(a)(1) and pursuant to Executive Order 12556, dated April 16, 1986, the Secretary of Defense may authorize or terminate free mail privileges for members of the U.S. Armed Forces and designated civilians directly supporting military operations in designated international locations.

Accordingly, the Secretary of Defense has authorized free mail privileges for members of the U.S. Armed Forces and designated civilians in the Philippine Province of Basilan in support of "Operation Enduring Freedom."

The following list includes the current locations for which the Secretary of Defense has authorized free mail privileges for members of the U.S. Armed Forces and designated civilians directly supporting military operations. This list supersedes the list in the article titled "Free Mail Program for U.S. Armed Forces" published in *Postal Bulletin* 22224 (1-17-08, pages 12-13).

Operation Desert Spring

- Kuwait — Kabal.

Operation Enduring Freedom

- Afghanistan.
- Bahrain.
- Djibouti.
- Ethiopia.
- Kuwait.
- Qatar.
- Aboard ships in the Gulf of Aden.
- Aboard ships in the Gulf of Oman.
- Aboard ships in the North Arabian Sea (that portion of the Arabian Sea that lies north of 10 degrees north latitude and west of 68 degrees east longitude).
- Aboard ships in the Persian Gulf.
- Aboard ships in the Red Sea.

Operation Enduring Freedom — Philippines

- The southern Philippine islands of Mindanao and Tawi Tawi.
- Jolo on the southern Philippine island of Sulu.
- Province of Basilan.

Operation Iraqi Freedom

- Iraq.

Operation Joint Forge/Joint Guardian

- Former Republic of Yugoslavia:
 - Bosnia-Herzegovina.
 - Macedonia.
 - Serbia-Montenegro (including Kosovo and Vojvodina).

In accordance with 39 U.S.C. 3401(a)(1)(B), free mail privileges will also be extended to individuals hospitalized for disease or injury in a facility under the jurisdiction of the

Armed Forces as a result of service in these designated areas.

Personnel who are authorized this privilege may mail — without postage — letters, postcards, and sound recordings (audio or video recordings) having the character of personal correspondence to any place in the United States, to any U.S. possession or territory, or to any military post office (APO/FPO).

Consistent with DMM 703.2.4, free mail originating from the overseas locations listed in this article should have a complete APO or FPO return address, the word “Free” in the upper right corner, and a complete delivery address. In most cases, the mailpiece will also exhibit an APO or FPO postmark. Free mail receives First-Class Mail® service; however, it may not be registered, insured, or certified.

All employees who handle and deliver mail should be made aware of this free mail privilege. Do not collect postage upon delivery; do not return this mail to the sender for postage. Mail having the appearance of free mail under this program should never be returned to sender. Submit questions regarding the legitimacy of users of this program to the Military Postal Service Agency. The agency’s contact information is as follows:

Military Postal Service Agency
2461 Eisenhower Ave.
Alexandria, VA 22331-0006
Telephone: 800-810-6098 (toll free)
Monday–Friday, 7:30 A.M.–4:00 P.M. ET
Fax: 703-325-9534
DSN prefix: 221
e-mail: mpsawebcontacts@hqda.army.mil

— *International Operations,
Global Business, 5-21-09*

Human Resources

Equal Employment Opportunity Policy Statement

Effective May 1, 2009, the Postal Service™ reissued its Equal Employment Opportunity Policy Statement (see page 14). In accordance with the Equal Employment Opportunity Commission’s (EEOC’s) Management Directive 715 (MD 715), the policy will be updated annually and prominently posted in all personnel offices, in EEO offices, and on the agency’s internal website. This policy reaffirms the Postal Service’s commitment to equality of opportunity in every aspect of employment.

The EEO Policy Statement is also available on the PolicyNet webpage at <http://blue.usps.gov/cpim/ftp/policy/dd/050109.pdf>.

— *National Office EEO Compliance and Appeals Programs,
Employee Development and Diversity, 5-21-09*



May 1, 2009

Equal Employment Opportunity Policy Statement

The United States Postal Service reaffirms its long-standing commitment to equality of opportunity in every aspect of employment. Equal employment opportunity (EEO) is not only a legal requirement under our nation's laws, but also a business imperative. EEO is a critical component of the Postal Service's efforts to recruit, develop, and retain the most qualified, diverse workforce to support our organization's strategic mission of delivering to every household in America.

It is the policy of the Postal Service that all employees and applicants for employment be afforded equal opportunities in employment without regard to race, color, sex, national origin, religion, age (40 and above), or physical or mental disability. Employment actions based on any of these protected categories are illegal.

The Postal Service is also unequivocal in its opposition to all forms of discrimination including harassment based on race, color, sex (including sexual orientation, gender identity, or gender stereotyping), national origin, religion, age, physical or mental disability, or in reprisal for participating in EEO activity. All employees must refrain from practicing or tolerating discrimination or harassment.

Employees found to have taken actions that violate this policy and our country's EEO laws may be subject to corrective action up to and including removal from the Postal Service.

All of us—executives, managers, supervisors, and employees—share in the responsibility for successfully incorporating the Postal Service's policy on equal employment opportunity in every aspect of our duties and complying with this country's EEO laws.

A handwritten signature in black ink that reads "John E. Potter".

John E. Potter

Mailing and Shipping Services

Mail Alert

The mailings below will be deposited in the near future. Offices should honor the requested home delivery dates. Mailers wishing to participate in these alerts, for mailings of 1 million pieces or more, should contact Business Service Network Integration at 202-268-3258 at least 1 month preceding the requested delivery dates. The Postal Service™

also offers electronic Mail Alerts via ADVANCE. For more information, see the *ADVANCE Notification & Tracking System Technical Guide* on the Internet at <http://ribbs.usps.gov/files/advance/advtech.pdf> or contact the National Customer Support Center at 800-238-3150.

Requested Delivery Dates	Title of Mailing	Class and Type of Mail	Number of Pieces (Millions)	Distribution	Presort Level	Comments
5/25/09–5/27/09	Vonage Core	Standard Letter	1.2	National	3/5-Digit	Compak
5/25/09–5/29/09	Costco Connection	Standard Flat	8.5	Nationwide	Barcoded 3/5-digit, Car-Rt	Quebecor Merced, CA & Olive Branch, MS
5/27/09–6/2/09	Life Line Screening	Standard Letter	2.0	Nationwide	3/5-Digit	Mail America Forest, VA
5/28/09–5/30/09	BSG June Shopping Guide	Standard Letter	1.0	Nationwide	3/5-Digit, Car-Rt	Henry Wurst Inc. North Kansas City, MO
5/28/09–5/30/09	Sally Beauty June Pro Flyer Guide	Standard Letter	1.345	Nationwide	Barcoded 3/5-digit	Ridgway Mailing Service Dallas, TX
5/30/09–6/2/09	JCP — Wk 18 Appreciation Days	Standard Flat & Letter	8.2	National	Car-Rt	Harte-Hanks
5/30/09–6/2/09	JCP — Wk 18 Diamond Showcase	Standard Flat	3.5	National	Car-Rt	Harte-Hanks
6/1/09–6/3/09	Vonage Core	Standard Letter	1.3	National	3/5-Digit	Compak
6/4/09–6/6/09	JCP — Wk 19 Father's Day Appreciation	Standard Letter	20.4	National	Car-Rt	Harte-Hanks
6/6/09–6/9/09	JCP — Wk 19 Saturday Bonus Sale	Standard Letter	8.0	National	Car-Rt	Harte-Hanks

— Business Service Network Integration, Sales, 5-21-09

Philately

Stamp Announcement 09-33: Grand Teton National Park, Wyoming



On June 28, 2009, in Washington, DC, the Postal Service™ will issue a 98-cent, *Grand Teton National Park, Wyoming*, definitive stamp in one design in a pressure-sensitive adhesive (PSA) pane of 20 stamps (Item 574600). The stamp, designed by Ethel Kessler of Bethesda, Maryland, goes on sale nationwide June 28, 2009.

This international rate stamp in the *Scenic American Landscapes* series features a photograph by Dennis Flaherty, Bishop, California, of Grand Teton National Park. The photograph was taken from the Snake River Overlook at dawn. Text on the stamp reads, "Grand Teton National Park, Wyoming."

How to Order the First Day of Issue Postmark

Customers have 60 days to obtain the first day of issue postmark by mail. They may purchase new stamps at their local Post Office™, at The Postal Store® website at www.usps.com/shop, or by calling 800-STAMP-24. They should affix the stamps to envelopes of their choice, address the envelopes (to themselves or others), and place them in a larger envelope addressed to:

Grand Teton National Park, Wyoming, Stamp
Special Cancellations
PO Box 92282
Washington, DC 20090-2282

After applying the first day of issue postmark, the Postal Service will return the envelopes through the mail. There is no charge for the postmark. All orders must be postmarked by August 31, 2009.

How to Order First Day Covers

Stamp Fulfillment Services (SFS) also offers first day covers for new stamp issues and Postal Service stationery items postmarked with the official first day of issue cancellation. Each item has an individual catalog number and is

Issue:	<i>Grand Teton National Park, Wyoming</i>
Item Number:	574600
Denomination & Type of Issue:	98-cent Definitive
Format:	Pane of 20 (1 design)
Series:	<i>Scenic American Landscapes</i>
Issue Date & City:	June 28, 2009, Washington, DC 20066 (No Ceremony)
Designer:	Ethel Kessler, Bethesda, MD
Art Director:	Ethel Kessler, Bethesda, MD
Typographer:	Ethel Kessler, Bethesda, MD
Existing Photograph:	Dennis Flaherty, Bishop, CA
Engraver:	Keating Gravure
Modeler:	Avery Dennison, SPD
Manufacturing Process:	Gravure
Printer:	Avery Dennison (AVR)
Printed at:	AVR, Clinton, SC
Press Type:	Dia Nippon Kiko (DNK)
Stamps per Pane:	20
Print Quantity:	100 million stamps
Paper Type:	Pre-phosphored, Type II
Adhesive Type:	Pressure-sensitive
Processed at:	AVR, Clinton, SC
Colors:	Yellow, Magenta, Cyan, Black, PMS 877 (Silver)
Stamp Orientation:	Horizontal
Image Area (w x h):	1.420 x 0.85 in./36.07 x 21.59 mm
Overall Size (w x h):	1.56 x 0.99 in./39.62 x 25.15mm
Full Pane Size (w x h):	7.25 x 5.85 in./184.15 x 148.59 mm
Plate Size:	100 stamps per revolution
Plate Numbers:	"V" followed by five (5) single digits
Marginal Markings:	
Front:	© 2009 USPS • Price • Plate position diagram • Plate numbers in four corners of pane • "Grand Teton National Park, Wyoming" located under the right side of each stamp
Back:	USPS logo • Barcode (574600) in two corners

offered in the quarterly *USA Philatelic* catalog. Customers may request a free catalog by calling 800-STAMP-24 or writing to:

Information Fulfillment
Dept. 6270
U.S. Postal Service
PO Box 19014
Kansas City, MO 64121-9014

Philatelic Products

There is one philatelic product available for this stamp issue:

- 574661*, First Day Cover, \$1.36.

Items with an asterisk (*) will use the 128 barcode from SFS. All other philatelic products will continue to use bar-

code series A, with the exception of the Yearbook and the Guide Book.

Distribution: Item 574600, 98-cent (International Rate), Grand Teton National Park, Wyoming, PSA Pane of 20 Stamps

All stamp distribution offices (SDOs) will receive automatic distributions of the 98-cent *Grand Teton National Park, Wyoming*, PSA pane of 20. Distributions will be in one wave. SDO distributions, which began on May 11, 2009, will be completed by June 10, 2009. SDOs will receive approximately 65 percent of their standard automatic distribution for a PSA pane. Distributions are rounded up to nearest master carton size (40,000 stamps).

Initial Supply for Post Offices

SDOs *will not* make a subsequent automatic distribution of Item 574600 to Post Offices. All Post Offices requiring quantities of Item 574600 must order them from their

designated SDO using a separate PS Form 17, *Stamp Requisition/Stamp Return*. SDOs must not distribute stamps to Post Offices before June 21, 2009.

Additional Supply

Post Offices requiring additional stamps must requisition Item 574600 from their designated SDO using PS Form 17. SDOs requiring additional stamps must order them from the appropriate accountable paper depository (APD) using PS Form 17.

For fulfilling supplemental orders from SDOs, the Memphis, Chicago, New York, and San Francisco APDs will each receive additional stamps. The Kansas City Stamp Services Center will receive additional stamps for fulfilling supplemental orders from APDs.

— Stamp Services,
Government Relations and Public Policy, 5-21-09

Stamp Announcement 09-34: Zion National Park, Utah



© 2008 USPS

On June 28, 2009, in Washington, DC, the Postal Service™ will issue a 79-cent, *Zion National Park, Utah*, definitive stamp in one design in a pressure-sensitive adhesive (PSA) pane of 20 stamps (Item 574700). The stamp, designed by Ethel Kessler of Bethesda, Maryland, goes on sale nationwide June 28, 2009.

This international rate stamp in the *Scenic American Landscapes* series features a photograph of Zion National Park by Richard Cummins of Temecula, California. The photograph reveals layers of sedimentary rock that reflect the park's geologic origins in the slick rock area on the east side of the park.

How to Order the First Day of Issue Postmark

Customers have 60 days to obtain the first day of issue postmark by mail. They may purchase new stamps at their local Post Office™, at The Postal Store® website at www.usps.com/shop, or by calling 800-STAMP-24. They should affix the stamps to envelopes of their choice, address the envelopes (to themselves or others), and place them in a larger envelope addressed to:

Zion National Park, Utah Stamp
Special Cancellations
PO Box 92282
Washington, DC 20090-2282

After applying the first day of issue postmark, the Postal Service will return the envelopes through the mail. There is no charge for the postmark. All orders must be postmarked by September 1, 2009.

How to Order First Day Covers

Stamp Fulfillment Services (SFS) also offers first day covers for new stamp issues and Postal Service stationery items postmarked with the official first day of issue cancellation. Each item has an individual catalog number and is offered in the quarterly *USA Philatelic* catalog. Customers may request a free catalog by calling 800-STAMP-24 or writing to:

Information Fulfillment
Dept. 6270
U.S. Postal Service
PO Box 19014
Kansas City, MO 64121-9014

Philatelic Products

There is one philatelic product available for this stamp issue:

- 574761*, First Day Cover, \$1.17.

Items with an asterisk (*) will use the 128 barcode from SFS. All other philatelic products will continue to use barcode series A, with the exception of the Yearbook and the Guide Book.

Distribution: Item 574700, 79-cent (International Rate), Zion National Park, Utah, PSA Pane of 20 Stamps

All stamp distribution offices (SDOs) will receive automatic distributions of the 79-cent *Zion National Park, Utah*, PSA pane of 20. Distributions will be in one wave. SDO distributions, which began on May 11, 2009, will be completed by June 1, 2009. SDOs will receive approximately 20 to 29 percent of their standard automatic distribution quantity for a PSA pane. Distributions are rounded up to nearest master carton size (40,000 stamps).

Initial Supply for Post Offices

SDOs *will not* make a subsequent automatic distribution of Item 574700 to Post Offices. All Post Offices requiring quantities of Item 574700 must order them from their designated SDO using a separate PS Form 17, *Stamp Requisition/Stamp Return*. SDOs must not distribute stamps to Post Offices before June 21, 2009.

Additional Supply

Post Offices requiring additional stamps must requisition Item 574700 from their designated SDO using PS Form 17. SDOs requiring additional stamps must order them from the appropriate accountable paper depository (APD) using PS Form 17.

For fulfilling supplemental orders from SDOs, the Memphis, Chicago, New York, and San Francisco APDs will each receive additional stamps. The Kansas City Stamp Services Center will receive additional stamps for fulfilling supplemental orders from APDs.

Issue:	<i>Zion National Park, Utah</i>
Item Number:	574700
Denomination & Type of Issue:	79-cent Definitive
Format:	Pane of 20 (1 design)
Series:	<i>Scenic American Landscapes</i>
Issue Date & City:	June 28, 2009, Washington, DC 20066 (No Ceremony)
Designer:	Ethel Kessler, Bethesda, MD
Art Director:	Ethel Kessler, Bethesda, MD
Typographer:	Greg Berger, Bethesda, MD
Existing Photograph:	Richard Cummins, Temecula, CA
Engraver:	N/A
Modeler:	Joseph Sheeran
Manufacturing Process:	Offset, Microprinting, "USPS"
Printer:	Ashton Potter (USA) Ltd. (APU)
Printed at:	Williamsville, NY
Press Type:	Mueller Martini, A76
Stamps per Pane:	20
Print Quantity:	40 million stamps
Paper Type:	Nonphosphored, Type III, Block Tagged
Adhesive Type:	Pressure-sensitive
Processed at:	Ashton Potter (USA) Ltd.
Colors:	Black, Cyan, Magenta, Yellow, PMS 877 (Silver)
Stamp Orientation:	Horizontal
Image Area (w x h):	1.42 x .84 in./36.07 x 21.37mm
Overall Size (w x h):	1.56 x .98 in./39.62 x 24.89 mm
Full Pane Size (w x h):	7.24 x 5.95 in./183.90 x 151.13 mm
Plate Size:	240 stamps per revolution
Plate Numbers:	"P" followed by five (5) single digits
Marginal Markings:	
Front:	© 2009 USPS Plate position diagram • Price • Plate numbers in four corners of pane • "Zion National Park, Utah" located under the right side of each stamp
Back:	USPS logo • Barcode (574700) in four corners

— Stamp Services,
Government Relations and Public Policy, 5-21-09

Stamp Announcement 09-35: Migratory Bird Hunting and Conservation Stamp



On June 26, 2009, at the Bass Pro Shops, Outdoor World, in Nashville, Tennessee, the U.S. Department of the Interior will issue the \$15 *Migratory Bird Hunting and Conservation* stamp for the 2009–2010 waterfowl hunting season. The stamp goes on sale nationwide June 26, 2009, and is valid through June 30, 2010.

The *Migratory Bird Hunting and Conservation* stamp will be available in the following formats:

- Water-activated gum (WAG) pane of 20 (Item 334000).
- Pressure-sensitive adhesive (PSA) pane of 1 (Item 334100).

Philatelic Products

There are four products available for this stamp issue:

- 334084*, Migratory Bird Uncut Press Sheet, \$1,000.00.
- 334184*, Migratory Bird Uncut Press Sheet (PSA), \$300.00.
- 540962*, Migratory Bird Silk Cachet, \$30.00.
- 540992*, Migratory Bird Artist Commemorative Card, \$50.00.

Items with an asterisk (*) will use the 128 barcode from Stamp Fulfillment Services (SFS). All other philatelic products will continue to use barcode series A, with the exception of the Yearbook and the Guide Book.

Issue:	<i>Migratory Bird Hunting and Conservation Stamp</i>
Item Number:	334000
Denomination & Type of Issue:	\$15.00 Special
Format:	Sheet of 20 (1 design)
Series:	<i>Federal Duck Stamp</i>
Issue Date & City:	June 26, 2009, Bass Pro Shops, Outdoor World, Nashville, TN 37214
Artist:	Joshua Spies, Watertown, SD
Art Director:	Laurie Shaffer, FWS
Modeler:	Joseph Sheeran
Manufacturing Process:	Offset/Microprint
Printer:	Ashton Potter (USA) Ltd. (APU)
Printed at:	Williamsville, NY
Press Type:	Stevens, Vari-Size Security Press
Stamps per pane:	20
Print Quantity:	500,000 stamps
Paper Type:	Nonphosphored, Type III
Adhesive Type:	Water-Activated Gum
Processed at:	Ashton Potter (USA) Ltd.(APU)
Colors:	Black, Cyan, Magenta, Yellow, Invisible Fluorescent
Stamp Orientation:	Horizontal
Image Area (w x h):	1.733 x 1.260 in./44.02 x 32.00 mm
Overall Size (w x h):	1.89 x 1.417 in./48.01 x 35.99 mm
Full Pane Size (w x h):	7.085 x 10.25 in./179.96 x 260.35 mm
Plate Size:	60 stamps per press sheet
Plate Numbers:	N/A
Marginal Markings:	
Front:	“ARTIST: JOSHUA SPIES” in four positions • Department of the Interior 20 x \$15.00” in four positions • Silhouetted image of duck printed in Black, Cyan, Magenta, Yellow, in two positions
Back:	Barcode (334000) in four positions • Verso-text

Distribution: Item 334000, Migratory Bird Hunting and Conservation Stamp, WAG Pane of 20

Stamp Distribution Offices. Stamp distribution offices (SDOs) *will not* receive an automatic distribution of Item 334000 for subsequent distribution to Post Offices™.

The *Migratory Bird Hunting and Conservation* stamp, produced in the WAG format, will *only* be automatically distributed to SFS in Kansas City, Missouri, and by consignment via Amplex Corporation.

Issue:	<i>Migratory Bird Hunting and Conservation Stamp</i>
Item Number:	334100
Denomination & Type of Issue:	\$15.00 Special
Format:	Pane of 1
Series:	<i>Federal Duck Stamp</i>
Issue Date & City:	June 26, 2009, Bass Pro Shops, Outdoor World, Nashville, TN 37214
Artist:	Joshua Spies, Watertown, SD
Art Director:	Laurie Shaffer, FWS
Modeler:	Joseph Sheeran
Manufacturing Process:	Offset/Microprint
Printer:	Ashton Potter (USA) Ltd. (APU)
Printed at:	Williamsville, NY
Press Type:	Stevens, Vari-Size Security Press
Stamps per pane:	1
Print Quantity:	3,500,000 stamps
Paper Type:	Nonphosphored, Type III
Adhesive Type:	Pressure-sensitive
Processed at:	Ashton Potter (USA) Ltd.(APU)
Colors:	Black, Cyan, Magenta, Yellow, Invisible Fluorescent
Stamp Orientation:	Horizontal
Image Area (w x h):	1.733 x 1.260 in./44.02 x 32.00 mm
Overall Size (w x h):	1.89 x 1.417 in./48.01 x 35.99 mm
Full Pane Size (w x h):	6.125 x 2.625 in./155.58 x 66.68 mm
Plate Size:	18 stamps per press sheet
Plate Numbers:	N/A
Marginal Markings:	
Front:	“THE U.S. FISH & WILDLIFE SERVICE, 2009–2010 MIGRATORY BIRD HUNTING & CONSERVATION STAMP, ARTIST: JOSHUA SPIES, LONG TAILED DUCK” • Price • “If applicable: sign, peel and attach to hunting license” • “Peel here”
Back:	Verso-text • Ordering information • Barcode (334100)

Distribution: Item 334100, Migratory Bird Hunting and Conservation Stamp, PSA Pane of 1

Stamp Distribution Offices. Only SDOs will receive an automatic distribution of Item 334100. Automatic distributions to SDOs began May 1, 2009, and will be complete May 30, 2009. SDOs must not distribute the *Migratory Bird Hunting and Conservation* stamps to Post Offices™ before June 19, 2009.

SDOs requiring additional self-adhesive stamps (Item 334100) must requisition them from a designated accountable paper depository (APD) using PS Form 17, *Stamp Requisition/Stamp Return*.

Post Offices. To allow postmasters to order the 2009–2010 *Migratory Bird Hunting and Conservation* stamps in quantities approximating customer demand, there is no minimum ordering quantity. Postmasters should review their previous year’s sales records to determine the appropriate number of the 2009–2010 *Migratory Bird Hunting and Conservation* stamps to requisition.

Postmasters should requisition sufficient quantities of Item 334100 to meet the expected demand by stamp collectors, conservationists, and hunters.

Postmasters must immediately send a separate PS Form 17 to their SDOs for enough *Migratory Bird Hunting and Conservation* stamps to last until April 30, 2010. Post Offices served by stamp service centers (SSCs) must follow their established ordering guidelines.

If the initial stamp supply is exhausted before April 30, 2010, postmasters must requisition additional quantities. Retail units with authorized philatelic centers should order quantities of Item 334100 and have them available to meet philatelic demand. All postmasters/station managers must ensure that *Migratory Bird Hunting and Conservation* stamps are available to meet public demand.

Hunting Regulations Pamphlets

The Department of the Interior does not automatically distribute pamphlets on hunting regulations because migratory game bird laws vary by state. Direct all inquiries about hunting regulations to your state fish and wildlife agency or your state department of natural resources. Do not forward to the U.S. Department of the Interior’s U.S. Fish and Wildlife Service.

— Stamp Services,
Government Relations and Public Policy, 5-21-09

(Continued on page [45](#).)

Pull-Out Information

Fraud

Domestic Orders

False Representation. Enforced by postmasters at the cities listed below.

State, City ZIP Code	Names and Addresses Covered	Product
MD, Annapolis 21401-1902	Strategy Core Systems, 3 Church Circle, Suite 139	False billing scheme
CA, Weaverville 96093-0763	Coast National Credit or CNC, PO Box 763	Advance fee credit card scheme

— Judicial Officer, 5-21-09

Invalid Express Mail Corporate Account Numbers

These numbers are to be posted and used by retail/acceptance clerks. This listing supersedes all previous notices, which must be recycled. Retail/acceptance clerks must not accept Express Mail® shipments bearing any of

the invalid numbers (listed below) in the “customer number” or “agreement number” section of the label or form.

Note: The first 6 digits of a 9-digit Custom Designed Service and Next Day Pickup Agreement make up the Corporate Account Number.

005733	018620	021568	022784	061520	095364	110574	115020	152802	277047	335304	477053	601367
005992	018778	021578	022822	062011	096043	110670	115058	152850	282196	335308	477093	601633
007003	018781	021584	022827	063143	096348	110679	115060	156086	286051	335615	481658	601861
007255	018813	021679	022838	063490	098297	110694	115063	159031	286147	335763	482554	602383
008485	018818	021701	023003	064084	098777	110708	115064	159236	292659	335912	488028	605048
008664	018852	021707	023597	064388	100227	110719	115363	159282	293115	335957	488032	606101
008739	018880	021748	026138	064627	100684	110760	115373	165032	300718	336205	488045	607148
008770	018900	021759	027051	064846	101624	110784	115375	165037	301540	336565	489396	607333
008877	018976	021777	027927	065201	103037	110897	116039	165050	301591	337192	516425	607984
008882	018987	021787	028015	065281	103095	111148	117036	165112	302903	338048	520034	608059
008977	019004	021877	028034	065659	103319	111163	117941	171240	303613	340998	520036	608540
009402	019007	021881	028067	065784	103331	111358	117984	176074	314120	344007	524114	620015
009441	019122	021920	028072	066280	103482	111366	118207	191278	314206	344102	531537	622011
010670	019129	021966	028162	067073	103539	111398	119075	192561	314622	352708	531670	630017
010673	019133	021972	028555	067150	103570	111401	121142	192583	319126	354109	531798	631532
010697	019139	021987	028584	068191	103658	111528	122434	192807	320065	358018	532424	631590
011068	019160	021988	028612	068505	103697	111900	125043	192962	322017	358240	537123	631683
011251	019410	021989	028656	069473	103778	112059	125144	192967	322031	370039	541180	641009
011339	019427	021990	028720	069585	103782	112064	125220	193357	322065	373025	551001	641334
012268	019511	021997	029410	069818	103838	112065	129001	200003	323013	376012	551003	652295
012348	019686	022015	029532	069890	103861	112068	129859	200067	323724	381043	551035	652435
012431	019709	022022	029713	070187	103884	112407	129963	200210	325622	381052	551375	658235
013075	019800	022026	029803	070292	104235	112776	142042	200303	325791	381521	551412	660228
013134	019817	022066	030096	071300	104345	113011	142078	207876	326012	386014	551739	662086
013216	019826	022084	030351	075052	104523	113028	142160	209722	326446	390041	551760	662088
014052	019891	022096	032009	075213	104654	113031	142187	210065	327000	392508	551815	662091
014149	019985	022104	037145	075217	105074	113035	142216	210089	327045	402282	551926	662097
014466	021008	022112	038569	075271	105431	113073	142342	210093	327063	402371	553312	662131
014579	021034	022113	038651	075409	105799	113136	142372	210369	327065	402610	553553	662335
014938	021093	022120	038654	076255	105826	113309	142420	210667	327792	402869	554549	662351
015016	021096	022140	040145	076536	105845	113321	142489	210703	328079	430124	570005	662452
015167	021098	022172	041318	076631	106443	113336	142617	210736	328096	431050	570029	666305
015366	021129	022181	041326	077316	107094	113451	142683	210746	328116	432035	570074	667011
015416	021131	022182	047030	077342	108005	113505	142768	210815	328138	432971	570081	667016
015690	021146	022184	047104	077349	108048	113671	142812	210851	329024	436150	570128	672015
015756	021152	022187	050087	077422	108074	113694	142853	210876	329028	436367	570133	672349
016019	021190	022222	051002	078420	108092	113702	142863	220299	330420	436478	570171	680076
016096	021195	022227	054239	080017	108097	113762	146022	220538	330598	441480	570173	681234
016164	021207	022277	055031	080130	108231	113768	146173	222110	330905	441661	570180	681379
016344	021217	022294	055065	080155	108578	113778	146304	223030	331241	443239	571002	681395
016444	021280	022336	055150	080302	108588	113792	146548	232009	331253	443555	571009	681599
016536	021299	022366	055173	085200	109036	113886	146583	232299	331821	447050	573002	681604
016848	021322	022383	055197	088392	109044	113968	146611	232313	331903	447070	598579	681625
018100	021355	022404	055199	088411	109215	114002	146678	232379	332193	452111	600005	681639
018198	021366	022414	057113	088422	110001	114158	146706	235336	333115	452174	600109	683013
018216	021380	022428	058012	088687	110007	114167	146724	240042	333168	452539	600167	684021
018243	021383	022443	058014	088763	110011	114175	146757	254009	333349	452828	600272	685040
018330	021413	022454	058025	088765	110018	114302	146784	260016	333598	452993	600348	685104
018433	021467	022468	060206	089311	110026	114363	146828	272361	333681	452999	600838	685283
018461	021488	022501	060917	091564	110041	114438	146833	274129	333793	453065	600921	685286
018492	021506	022531	061049	092655	110198	114441	148244	274260	334048	454429	600935	685287
018510	021513	022539	061252	092773	110234	114530	148248	274326	334103	454584	600994	685299
018517	021554	022685	061360	094177	110460	114535	150128	276015	334140	460156	601030	685300
018526	021560	022702	061492	094431	110557	115006	150159	277005	335203	462591	601224	688123

688126	741991	752926	785556	840068	900004	912455	926411	940530	946304	951936	968730	982489
691459	744101	752942	787086	840167	900007	913128	926422	940578	946387	953331	968756	982550
701440	748031	757055	787110	840234	900081	913452	926508	940598	946563	953373	968801	982552
725033	749152	757314	787880	841031	900385	914254	926982	940742	946598	954179	968835	982563
730044	750054	757556	797001	841125	900504	914560	927052	940856	947033	954400	968929	982598
730054	750063	761843	799007	841152	900535	914858	927336	940919	947263	954448	969093	982637
730062	750079	770023	799009	841280	901535	915009	928425	941015	948416	955313	970358	983078
730187	750223	770328	800524	844124	901570	915049	928462	941016	948596	958184	970805	995011
730427	750250	770861	802071	846010	901627	917460	928531	941256	948648	958405	970837	995076
730435	750299	770970	802449	853714	902019	917470	930030	941265	948716	958776	970885	995180
730559	750330	773074	802583	853789	902380	917480	931060	941548	948755	958834	970931	995367
730675	750438	774047	802613	853851	902598	917632	931878	941634	948816	967032	971038	995436
730927	750501	774052	804044	853854	902998	918036	936081	941644	949220	967182	972554	995456
731260	751005	774053	809114	891206	903006	918427	937687	941690	949529	967226	972889	995504
731313	751057	774054	831100	891221	904721	920104	937801	941697	949540	967301	972996	995549
731387	752027	774059	832054	891233	906020	920123	940028	941702	949543	967331	974030	995563
731447	752043	774066	832102	891241	906217	921890	940056	941750	949596	968058	980082	995847
731464	752129	774067	833110	891257	906610	922100	940074	941779	950043	968258	980251	997192
731486	752539	782137	833132	891432	907029	922342	940089	941813	950207	968284	980290	998167
740307	752606	782579	833210	891534	907320	925034	940178	941864	950286	968298	980772	998310
741073	752620	782701	833230	891769	907380	926153	940279	943006	950827	968329	980859	999320
741485	752721	782769	836543	891991	907994	926197	940335	943036	950984	968355	980911	
741698	752729	782827	837052	891997	911217	926231	940441	945647	951143	968629	980966	
741950	752878	782948	840032	895034	911321	926330	940471	946263	951292	968663	982090	

— Product Information Requirements, Mailing and Shipping Services, 5-21-09

Missing, Lost, or Stolen U.S. Money Order Forms

Do Not Cash — Upon Receipt, Notify Local Postal Inspectors

This listing will be provided to all Postal Service™ employees responsible for accepting and cashing postal money orders. All interim notices should be destroyed when the numbers listed appear in the *Postal Bulletin*. The

actual serial numbers consist of the first 10 digits on the money orders. Check for altered dollar amounts by holding money orders to the light.

010 504 1932 to 1999	041 623 8889 to 8899	079 807 2342 to 2399	362 861 3064 to 3099
011 582 1889 to 1899	041 803 6565 to 6599	082 721 0228 to 0254	373 006 2176 to 2199
011 588 2900 to 3099	043 205 5922 to 5999	083 140 5000 to 7499	374 768 2600 to 2699
012 579 5675 to 5699	044 087 3457 to 3499	083 784 8886 to 8899	375 169 4400 to 4599
013 289 6176 to 6199	044 087 4000 to 4099	083 913 6915 to 6999	375 829 3400 to 3499
013 610 0014 to 0099	045 524 4121 to 4298	084 478 3920 to 3999	375 851 9100 to 9199
014 932 1000 to 1099	046 800 9870 to 9899	086 000 8271 to 8299	376 196 0911 to 0999
014 972 0800 to 0899	047 352 4000 to 4099	086 798 3840 to 3849	378 085 3679 to 3699
015 363 0065 to 0099	048 383 7650 to 7659	088 404 4472 to 4499	378 351 1063 to 1099
017 028 3200 to 3299	048 396 3647 to 3699	088 404 5584 to 5699	379 843 5100 to 5199
018 569 5333 to 5399	051 142 0755 to 0799	089 358 2248 to 2257	380 093 9600 to 9699
018 986 5264 to 5299	051 774 8857 to 8899	093 106 9346 to 9355	380 165 1165 to 1199
019 518 2814 to 2899	051 781 2875 to 2885	093 203 0500 to 0599	381 325 4500 to 4599
020 698 5159 to 5199	051 977 7010 to 7023	093 684 3630 to 3699	381 604 2510 to 2699
020 844 7307 to 7399	052 058 7115 to 7199	094 081 5074 to 5099	381 645 9525 to 9599
020 972 8948 to 8999	054 450 1130 to 1167	094 580 7062 to 7099	383 314 3968 to 3999
022 021 9110 to 9181	057 670 0563 to 0599	094 639 4200 to 4299	383 892 1000 to 1344
022 037 1411 to 1499	058 187 3836 to 3899	095 070 7186 to 7199	383 892 1382 to 1399
022 527 9201 to 9210	058 523 3003 to 3099	095 076 8300 to 8399	384 925 3641 to 3654
023 637 7169 to 7199	058 591 1153 to 1299	095 354 6864 to 6899	385 568 2331 to 2399
024 380 4100 to 4199	058 895 3746 to 3799	097 224 1350 to 1599	385 599 7554 to 7575
024 496 6870 to 6896	059 986 0814 to 0899	100 160 3800 to 3899	385 774 2024 to 2099
025 092 0987 to 0999	060 406 7650 to 7699	104 667 6400 to 6499	386 624 1412 to 1599
025 369 5535 to 5599	063 491 8122 to 8199	104 876 8937 to 8999	386 883 8936 to 8999
025 729 1151 to 1199	063 916 9968 to 9999	112 049 4413 to 4499	387 314 5574 to 5599
025 729 1643 to 1799	064 091 4500 to 4599	112 870 9765 to 9799	387 837 6300 to 6399
026 492 3180 to 3199	065 170 0471 to 0499	114 402 3850 to 3899	388 828 0656 to 0699
027 361 0430 to 0499	065 255 7909 to 7999	114 866 5368 to 5397	389 696 2400 to 2799
027 369 4482 to 4495	065 392 6345 to 6399	116 154 2800 to 2899	389 846 3104 to 3135
027 671 8762 to 8776	066 099 2014 to 2099	116 986 4400 to 4499	389 846 3145 to 3195
027 787 9886 to 9899	066 648 2880 to 2899	117 175 1647 to 5169	389 887 9211 to 9230
027 965 9487 to 9499	066 787 3639 to 3699	117 951 4687 to 4699	389 887 9234 to 9299
028 100 8069 to 8099	066 845 7500 to 9999	117 951 5200 to 5299	390 001 3182 to 3199
028 191 1852 to 1999	067 093 3869 to 3899	119 850 7400 to 7499	390 001 3500 to 3699
028 850 3000 to 3199	068 895 0334 to 0399	119 850 7700 to 7999	390 545 5974 to 5999
029 510 1500 to 1599	070 724 4488 to 4499	121 634 0460 to 0499	391 104 6146 to 6199
030 687 0903 to 0999	070 841 9181 to 9199	122 451 9879 to 9899	391 574 1466 to 1499
030 701 3442 to 3499	070 844 2546 to 2599	124 916 0304 to 0499	391 783 3020 to 3599
031 077 4507 to 4799	070 916 1340 to 1399	126 423 0136 to 0169	391 792 6100 to 6199
032 295 7500 to 9999	071 047 5768 to 5799	161 103 6581 to 6599	392 668 2956 to 2999
034 394 1000 to 1099	071 179 9800 to 9899	166 101 1433 to 1499	392 854 8500 to 8899
034 943 0400 to 0799	071 386 3682 to 3699	210 221 0548 to 0599	393 584 7566 to 7699
035 035 4337 to 4399	071 507 6840 to 6899	227 275 9400 to 9999	393 650 0074 to 0099
037 706 9578 to 9599	072 045 9641 to 9699	273 070 8059 to 8099	393 838 8316 to 8499
037 805 3677 to 3699	072 675 8287 to 8299	273 775 7700 to 7899	393 893 6007 to 6099
037 909 5490 to 5499	077 617 5481 to 5499	302 000 0000 to 9999	394 126 6907 to 6999
037 931 4660 to 4699	077 999 4001 to 4090	349 746 2056 to 2099	394 189 0405 to 0599
039 145 6521 to 6595	078 174 4475 to 4499	350 518 7350 to 7374	394 822 3243 to 3278
040 024 3901 to 3999	078 219 4931 to 4999	360 011 1690 to 1699	394 990 1810 to 1899
040 674 7100 to 7199	078 250 4756 to 4799	360 168 6008 to 6099	395 343 3264 to 3299
040 688 8816 to 8899	078 823 8312 to 8399	360 173 8800 to 8899	395 373 3035 to 3099
041 299 6752 to 6799	079 374 0300 to 2499	360 324 2326 to 2399	395 396 9649 to 9799

395 970 3240	to	3299	417 496 6800	to	6999	439 179 2300	to	2399	459 365 5432	to	5499
397 622 4054	to	4099	417 871 9250	to	9299	439 310 0458	to	0499	459 378 5764	to	5799
397 819 8902	to	8999	417 930 9533	to	9599	440 698 1947	to	1999	459 472 4816	to	4999
398 149 7200	to	7699	418 164 6500	to	6799	440 858 6300	to	6399	460 349 6878	to	6899
399 070 0872	to	0899	418 423 9863	to	9899	440 858 6420	to	7299	460 550 1909	to	1999
399 156 7119	to	7199	418 633 5922	to	5999	441 199 1655	to	1699	460 997 5234	to	5299
399 203 5064	to	5099	418 719 8520	to	8599	443 127 3648	to	3699	461 973 6443	to	6499
399 296 9910	to	9999	418 744 2235	to	2299	443 127 4000	to	4099	462 152 0107	to	0299
399 396 8935	to	8999	418 962 2848	to	2899	443 673 7900	to	7999	462 274 1072	to	1099
399 792 7775	to	7799	419 543 0286	to	0299	443 800 9335	to	9399	462 277 8373	to	8399
399 792 8300	to	8399	419 730 0300	to	0399	444 382 8822	to	8899	462 554 6051	to	6099
400 427 1051	to	1999	420 277 0015	to	0049	444 390 1667	to	1699	463 011 5529	to	5540
401 045 1505	to	1549	420 599 0734	to	0798	444 457 3854	to	3899	463 176 4115	to	4199
401 045 1571	to	1599	420 661 4115	to	4199	450 048 4173	to	4199	463 176 4229	to	4299
401 294 2700	to	2799	420 758 9500	to	9699	450 048 4442	to	4699	463 185 2600	to	2799
401 310 9505	to	9599	420 969 3951	to	3971	450 560 5173	to	5199	463 227 7711	to	7799
401 382 5312	to	5399	420 969 3973	to	3999	450 620 3077	to	3099	463 414 4869	to	4899
402 578 7876	to	7899	421 116 3565	to	3599	450 620 3135	to	3199	463 808 3484	to	3499
403 125 6744	to	6799	421 130 9300	to	9399	450 780 2716	to	2799	463 945 7400	to	7899
403 260 7000	to	7499	421 313 4500	to	4999	450 801 2700	to	2799	464 629 9000	to	9399
403 280 6470	to	6499	421 364 5537	to	5599	451 109 2967	to	2984	464 711 4332	to	4399
403 685 8600	to	8699	421 656 2609	to	2699	451 115 4110	to	4125	465 692 3963	to	3999
404 003 0300	to	0399	421 988 9700	to	9799	451 115 4127	to	4199	465 698 8300	to	8599
404 041 8838	to	8899	422 172 4667	to	4699	451 746 0700	to	0799	465 743 7745	to	7799
404 071 4268	to	4299	422 484 4212	to	4299	452 265 0074	to	0099	466 798 6056	to	6067
404 347 5356	to	5399	422 556 1270	to	1299	452 265 0246	to	0299	467 147 4300	to	4399
404 347 5548	to	5599	422 587 7024	to	7099	452 265 0335	to	0999	468 079 5782	to	5799
404 726 4500	to	4599	422 819 7533	to	7599	452 509 1169	to	1199	469 067 2817	to	2899
404 961 5001	to	5199	422 842 5073	to	5087	452 855 6471	to	6499	469 127 8000	to	8199
405 325 0188	to	0198	422 907 7563	to	7599	452 890 4679	to	4799	469 213 0359	to	0399
406 009 4587	to	4599	424 500 6050	to	6099	452 900 8215	to	8238	469 213 0500	to	0599
406 260 6830	to	6899	424 641 8500	to	8599	453 117 9146	to	9199	469 561 8011	to	8099
406 459 6641	to	6999	424 871 6600	to	6699	453 334 3631	to	3699	469 658 1961	to	1999
406 733 3000	to	3999	425 298 2352	to	2399	453 603 7841	to	7891	469 666 9900	to	9999
407 545 1557	to	1599	425 418 4269	to	4299	453 650 1140	to	1199	469 678 1900	to	1999
407 594 0412	to	0599	425 418 4405	to	4499	453 741 1300	to	1399	469 781 4900	to	4999
407 692 9100	to	9299	426 547 4566	to	4599	454 013 2919	to	2999	469 947 6960	to	6999
407 959 2190	to	2199	427 412 6337	to	6499	454 186 2411	to	2499	470 755 5800	to	5818
408 265 2275	to	2288	427 481 0900	to	0999	454 268 4883	to	4899	471 918 0300	to	0999
408 499 7700	to	7799	428 027 2742	to	2752	454 302 5400	to	5499	471 985 2408	to	2419
408 499 7900	to	7999	429 474 4172	to	4199	454 490 8300	to	8399	472 191 6700	to	6799
408 682 8484	to	8599	429 889 2900	to	2999	454 547 7434	to	7499	472 270 2555	to	2599
408 698 7015	to	7099	430 150 4401	to	4599	454 922 4867	to	4895	472 987 0213	to	0241
409 072 3941	to	3999	430 172 9800	to	9899	455 221 1348	to	1499	472 987 0290	to	0299
410 491 2311	to	2399	430 177 1900	to	2099	455 364 2147	to	2199	473 151 2069	to	2199
410 694 8400	to	8599	430 444 9500	to	9699	455 399 5400	to	5499	473 666 9138	to	9199
410 775 1500	to	1599	430 664 4070	to	4099	455 476 0676	to	0699	473 952 3429	to	3499
410 795 7927	to	7999	432 168 8419	to	8499	455 543 0618	to	0699	474 108 5402	to	5499
410 867 0917	to	0966	432 708 6800	to	6999	456 410 9006	to	9099	474 356 5193	to	5299
410 867 0970	to	0999	432 744 1544	to	1599	456 470 4146	to	4299	474 949 3366	to	3399
411 868 1023	to	1199	432 995 9775	to	9799	456 619 4460	to	4499	475 134 9362	to	9399
411 922 2322	to	2399	433 003 5800	to	5899	457 333 2686	to	2699	475 167 9667	to	9699
412 193 0900	to	0999	433 757 3047	to	3099	457 729 1767	to	1777	475 319 3415	to	3499
412 395 8599	to	8699	433 765 4003	to	4099	457 937 8615	to	8699	475 319 3649	to	3799
412 485 6500	to	6599	434 482 7060	to	7199	458 028 9810	to	9899	475 340 6400	to	6599
412 485 6610	to	6699	434 513 2386	to	2399	458 057 2712	to	2999	475 424 8410	to	8499
412 885 5953	to	5999	434 968 3076	to	3092	458 069 9537	to	9599	475 629 9156	to	9199
414 193 3608	to	3674	435 303 1831	to	1842	458 069 9665	to	9699	475 850 6101	to	6199
414 193 3677	to	3699	435 303 1986	to	1999	458 337 5222	to	5299	475 875 2500	to	2599
414 411 7348	to	7399	435 666 6092	to	6399	458 354 7653	to	7999	476 169 8264	to	8299
414 640 0757	to	0799	436 082 6400	to	6899	458 671 8678	to	8699	476 189 3000	to	3499
414 965 1727	to	1799	436 160 6441	to	6499	458 671 8721	to	8798	476 331 2480	to	2499
417 302 8104	to	8199	437 316 7115	to	7199	458 847 5044	to	5999	477 289 8601	to	8699
417 387 6532	to	6599	437 427 0500	to	3499	459 274 7624	to	7699	477 681 5206	to	5299

478 010 4243	to	4268	494 224 0500	to	0599	614 469 0979	to	0999	638 885 0000	to	0299
478 010 4270	to	4291	495 145 0600	to	0699	614 474 3000	to	3099	638 903 4362	to	4373
478 450 5071	to	5099	496 209 7425	to	7499	614 521 3490	to	3499	639 415 1929	to	1999
478 469 7838	to	7858	496 213 8728	to	8799	614 645 1800	to	1899	639 415 2019	to	2099
478 469 7883	to	7899	496 474 5226	to	5248	614 832 1100	to	2099	639 420 6200	to	6299
479 280 9800	to	9899	497 053 8517	to	8699	615 017 7505	to	7599	639 469 3517	to	3799
479 365 9116	to	9176	497 854 8673	to	8699	617 711 6609	to	6699	639 605 2143	to	2199
479 412 9900	to	9999	498 449 8888	to	8899	617 760 5266	to	5299	639 657 8600	to	8799
479 667 6190	to	6199	498 929 8285	to	8499	617 813 3601	to	3699	640 289 7500 to 7599		
479 748 9680	to	9699	498 936 5310	to	5399	618 840 9200	to	9299	640 289 7700	to	7999
479 860 7000	to	7199	499 016 5425	to	5499	619 551 7229	to	7299	641 170 4420	to	4499
480 526 2000 to 2099			499 440 8575	to	8899	619 859 3000	to	3099	641 318 3133	to	3199
480 640 6330	to	6399	499 731 6717	to	6799	620 073 9400 to 9499			641 378 6500	to	6999
480 658 0568	to	0599	500 064 1858 to 1869			621 614 7907	to	7930	641 383 8739	to	8799
480 689 5100	to	5199	500 070 5725	to	7799	621 614 7932	to	7999	641 877 3187	to	3299
481 072 9463	to	9499	600 645 3223 to 3299			621 648 8021	to	8199	641 877 3310	to	3399
481 673 0074	to	0095	601 339 1200	to	1399	621 648 8500	to	8599	642 355 8094	to	8199
482 527 1500	to	1599	601 653 5884	to	5899	621 904 8351	to	8599	642 355 8308	to	8999
482 541 5255	to	5299	601 661 7700	to	7799	621 916 1978	to	1989	642 900 0018	to	0099
482 729 6800	to	6899	601 682 5343	to	5399	622 989 8032	to	8099	643 030 6254	to	6299
483 363 7207	to	7299	601 928 1600	to	1699	623 076 9300	to	9399	644 066 0882	to	0899
483 402 2356	to	2399	602 512 2972	to	2999	623 819 5006	to	5099	644 069 0600	to	0699
483 486 5100	to	5199	602 555 2400	to	2799	623 895 8200	to	8399	644 077 7506	to	7699
483 632 1521	to	1599	602 829 7061	to	7099	623 917 0000	to	0099	644 085 8157	to	8199
483 632 2600	to	2799	603 483 9572	to	9599	623 917 0200	to	0299	644 112 9839	to	9899
483 849 1615	to	1699	603 490 7200	to	7299	624 468 5288	to	5299	644 373 9083	to	9099
484 174 4803	to	5299	603 678 7100	to	7199	624 665 3162	to	3198	644 380 1460	to	1499
484 323 8900	to	9199	603 678 7662	to	7699	625 088 6735	to	6799	644 733 4715	to	4799
484 680 5000	to	5038	603 678 7902	to	7999	625 916 9500	to	9799	644 900 9712	to	9799
484 680 5040	to	5074	603 678 8418	to	8499	625 968 8956	to	8999	644 901 0109	to	1299
484 680 5077	to	5099	603 678 8700	to	9999	627 005 3938	to	3999	644 901 1325	to	1399
485 029 4913	to	4999	604 086 0880	to	0899	627 384 3907	to	4099	644 923 6800	to	7799
486 176 0600	to	0699	604 349 1414	to	1499	627 496 7549	to	7599	644 932 4655	to	4699
486 559 7555	to	7599	604 503 7776	to	7799	627 708 3605	to	3699	645 318 7240	to	7499
486 696 3023	to	3199	605 520 9037	to	9099	627 776 2500	to	2599	645 333 1766	to	1799
488 173 7900	to	7999	605 685 4010	to	4099	628 226 3100	to	3199	645 790 8632	to	8699
488 206 4100	to	4199	605 988 6467	to	6499	628 814 4702	to	4799	645 821 0657	to	0699
488 226 0200	to	0299	607 689 7951	to	7960	628 851 9689	to	9699	645 930 7948	to	7999
488 709 3906	to	3999	607 728 1276	to	1299	629 510 7200	to	7299	645 975 0737	to	0762
488 855 8359	to	8399	608 727 7100	to	7199	629 964 4200	to	4294	646 242 6200	to	6299
489 181 8963	to	8999	608 727 7273	to	7599	630 389 3056 to 3071			646 270 7639	to	7799
489 223 2000	to	2099	608 813 9950	to	9999	630 463 0588	to	0599	646 798 4000	to	4999
489 311 1930	to	1999	609 067 5325	to	5399	631 459 9117	to	9199	647 048 7035	to	7099
489 318 6200	to	6300	609 067 5488	to	5499	631 762 9325	to	9399	647 049 2900	to	2999
489 384 0027	to	0099	609 067 5600	to	5699	632 217 4933	to	4999	647 398 8300	to	8399
489 427 0658	to	0899	609 289 6123	to	6199	632 500 0000	to	640 3999	647 398 8481	to	8499
489 997 5252	to	5299	609 438 4400	to	4499	633 110 4165	to	4199	647 437 3000	to	4999
490 669 5850 to 6099			609 493 1100	to	1199	633 110 4303	to	4499	647 811 2188	to	2199
490 717 7080	to	7099	609 766 8091	to	8999	633 438 6429	to	6599	648 009 6057	to	6099
490 721 6000	to	6099	609 825 4100	to	4115	633 588 7173	to	7182	648 163 5300	to	5499
490 793 1500	to	2099	609 884 2981	to	2999	634 725 0700	to	0799	648 722 5283	to	5299
490 886 8171	to	8199	609 893 1000	to	1099	634 803 3239	to	3299	648 892 3164	to	3199
490 977 9221	to	9240	610 092 3200 to 3299			634 807 2474	to	2499	649 100 3989	to	3999
491 258 8100	to	9099	610 582 4200	to	4299	634 827 5900	to	5999	649 647 0370	to	0399
491 567 1376	to	1399	611 879 6939	to	6999	634 886 3428	to	3499	649 647 0522	to	0599
492 254 4800	to	4899	612 291 8013	to	8099	635 559 3449	to	3499	649 647 5237	to	5399
492 283 5100	to	5199	612 751 5171	to	5199	636 289 6214	to	6299	649 647 9100	to	9299
492 610 6813	to	6899	612 751 5226	to	5299	636 634 8007	to	8042	649 666 7800	to	8299
493 394 5568	to	5599	612 751 6083	to	6099	637 150 1200	to	1299	650 114 7707 to 7719		
493 470 2562	to	2599	612 751 6268	to	6299	637 562 5828	to	5899	650 130 3400	to	3599
493 473 7700	to	7799	612 751 6572	to	6599	638 042 1647	to	1699	650 213 0406	to	0499
493 716 2153	to	2199	612 774 2111	to	2199	638 049 4984	to	4999	650 555 1749	to	1799
494 206 2972	to	2999	612 774 2254	to	2299	638 318 1115	to	1199	650 564 1900	to	1999
494 217 3446	to	3999	612 774 2500	to	2599	638 318 1453	to	1499	650 627 4212	to	4299

650 736 2043	to	2099	678 096 7531	to	7599	700 650 0452	to	0499	740 917 7490	to	7499
650 739 1540	to	1699	679 909 2578	to	2599	700 666 1323	to	1349	740 918 5531	to	5549
651 741 4415	to	4499	680 112 9565	to	9599	700 786 9106	to	9142	741 037 8528	to	8551
651 882 2800	to	2899	680 244 0903	to	0999	700 859 0744	to	0758	742 040 3300	to	3309
652 754 6317	to	6399	680 412 6046	to	6099	701 028 6780	to	6899	805 885 8411	to	8499
653 131 4945	to	4999	680 761 6800	to	6899	701 213 3900	to	3999	806 087 1100	to	1499
653 426 3300	to	3399	681 677 0540	to	0699	701 267 2000	to	3999	806 268 9275	to	9299
653 455 4874	to	4899	682 070 1029	to	1099	701 335 7312	to	7399	806 534 3400	to	3477
654 238 0000	to	0399	682 956 6280	to	6299	701 369 2005	to	2050	807 342 3283	to	3399
654 404 3065	to	3092	682 956 6490	to	6599	701 499 2260	to	2299	808 086 7100	to	7199
654 962 2900	to	3199	682 956 6700	to	6799	701 503 2247	to	2299	808 090 3440	to	3499
655 103 5081	to	5199	682 965 1178	to	1199	701 541 2271	to	2299	808 325 5161	to	5699
655 523 2600	to	2999	682 965 1201	to	1299	701 553 6557	to	6599	808 784 8000	to	8299
656 305 2448	to	2499	683 118 2389	to	2399	701 578 7460	to	7469	830 125 0672	to	0699
657 347 4438	to	4999	683 378 2000	to	2099	701 578 7475	to	7499	830 602 5800	to	5999
657 710 8100	to	8999	683 378 2117	to	2299	701 601 3457	to	3499	830 610 3700	to	3799
657 780 0985	to	0999	683 415 1200	to	1499	701 605 5913	to	5999	830 983 3500	to	3599
658 586 1400	to	1499	683 444 8159	to	8199	701 695 3982	to	3999	830 983 3635	to	3699
658 877 8000	to	8199	685 154 7780	to	7789	701 695 4148	to	4199	831 354 1387	to	1399
658 880 8000	to	8199	685 297 7645	to	7699	701 695 4227	to	4299	831 815 8240	to	8299
659 398 7300	to	7399	685 623 5264	to	5299	701 708 1741	to	1799	832 525 3810	to	3899
659 706 8113	to	8199	685 650 9487	to	9499	701 736 3966	to	3999	833 159 1884	to	1899
659 846 7837	to	7899	685 669 4200	to	4299	701 772 0870	to	0899	833 456 2567	to	2599
660 510 4100	to	4199	685 757 8452	to	8499	701 838 2800	to	2899	833 566 3015	to	3071
660 673 0400	to	0599	686 071 2694	to	2799	701 941 0600	to	0699	834 130 5200	to	5299
661 488 5000	to	5099	686 176 3333	to	3354	702 171 1603	to	1699	834 316 5444	to	5499
661 609 9100	to	9199	686 372 3200	to	3299	702 195 5109	to	5199	834 354 8747	to	8766
661 716 9420	to	9499	686 644 5879	to	5899	702 254 9300	to	9399	834 354 8824	to	8838
661 906 6522	to	6599	686 899 1371	to	1399	702 264 7569	to	7599	835 269 5700	to	5799
662 021 8332	to	8399	686 931 7636	to	7699	702 519 0513	to	0524	835 496 7303	to	7399
662 068 0700	to	0899	687 601 0973	to	0999	702 713 1800	to	1809	835 539 5200	to	5999
662 553 0774	to	0799	687 614 6774	to	6799	702 821 5730	to	5799	835 813 3015	to	3099
663 078 7034	to	7099	688 120 9000	to	9999	702 821 5805	to	5899	837 672 8967	to	8999
663 763 5300	to	5399	688 314 3107	to	3191	702 844 6975	to	6994	837 784 3282	to	3299
663 883 7039	to	7499	690 291 1361	to	1371	702 846 6331	to	6399	838 176 8377	to	8399
663 938 9200	to	9299	690 788 2877	to	2899	702 848 3900	to	3999	838 518 1257	to	1299
664 253 8000	to	8499	690 893 5344	to	5399	702 857 7302	to	7499	839 718 8257	to	8299
664 656 3055	to	3099	690 893 5512	to	5599	702 878 0114	to	0199	840 323 0600	to	0699
665 174 6400	to	6499	690 904 1300	to	1599	703 364 1707	to	1799	840 875 6235	to	6299
665 274 8208	to	8299	690 941 6000	to	6199	740 002 7710	to	7719	840 910 0900	to	0999
665 669 5400	to	5499	691 313 6383	to	6399	740 119 2275	to	2284	841 349 5000	to	5099
666 132 8226	to	8299	691 313 6600	to	6699	740 130 6688	to	6698	841 805 7747	to	7899
666 696 2209	to	2299	691 582 8003	to	8099	740 144 2780	to	2795	841 805 7944	to	8099
666 696 2309	to	2399	691 664 1800	to	1999	740 241 9049	to	9099	842 226 0685	to	0695
667 032 9300	to	9399	691 664 2400	to	2499	740 255 1718	to	1799	842 685 4600	to	4699
667 729 5529	to	5599	692 727 9362	to	9399	740 277 0366	to	0392	842 685 4742	to	4999
668 383 8400	to	8699	692 798 1800	to	1899	740 348 6641	to	6658	842 860 0300	to	0399
670 368 3400	to	3499	693 249 0779	to	0799	740 351 4790	to	4799	842 898 5582	to	5599
670 369 7336	to	7399	693 249 0877	to	1699	740 374 7416	to	7499	843 062 7100	to	7199
670 750 7169	to	7199	693 445 0566	to	0999	740 470 2420	to	2443	843 077 6288	to	6299
671 046 6200	to	6399	693 448 8500	to	8999	740 514 0300	to	0499	843 077 6378	to	6399
671 251 5448	to	5499	693 645 9583	to	9599	740 523 7432	to	7449	843 758 5769	to	5778
671 926 5600	to	5799	693 965 4200	to	4299	740 535 1555	to	1580	843 786 2554	to	2699
672 444 2000	to	2999	695 741 2906	to	2999	740 650 4104	to	4140	845 656 8165	to	8199
672 828 3410	to	3499	695 947 8518	to	8599	740 684 0620	to	0800	845 727 2100	to	2199
673 167 5776	to	5799	696 662 8247	to	8299	740 701 6105	to	6114	845 746 2618	to	2635
675 464 3700	to	3799	697 447 8285	to	8296	740 705 9790	to	9799	846 390 7531	to	7599
675 464 4000	to	4199	698 042 4816	to	4899	740 726 6400	to	6500	846 918 0572	to	0599
676 365 5958	to	5999	698 131 2138	to	2157	740 765 3306	to	3399	847 237 7690	to	7699
676 669 1024	to	1099	698 227 0000	to	0099	740 774 8434	to	8499	847 284 2481	to	2499
677 126 6734	to	6799	700 065 2570	to	2599	740 786 1885	to	1899	847 374 7055	to	7065
677 333 9979	to	9999	700 065 4800	to	4899	740 790 5989	to	5999	847 374 7055	to	7065
677 466 1088	to	1099	700 190 3350	to	3359	740 820 4854	to	7836	847 636 5304	to	5399
678 071 4500	to	4799	700 228 6048	to	6099	740 827 7578	to	7594	847 700 5447	to	5499

847 723 7500	to	7599	868 169 4529	to	4599	909 100 1787	to	1799	920 857 5500	to	5899
849 485 3427	to	3499	868 173 8400	to	8599	909 100 1900	to	2099	920 864 3480	to	3499
849 520 9850	to	9899	868 514 9000	to	9099	909 355 0422	to	0499	920 963 4567	to	4599
849 608 1357	to	1399	868 566 9200	to	9299	909 568 8900	to	9099	921 333 7400	to	7499
849 792 2600	to	2699	869 200 0000	to	9999	909 568 9300	to	9499	921 477 3762	to	3799
850 546 1862	to	1899	869 387 1150	to	1199	909 725 7307	to	7399	922 278 1048	to	1399
851 143 6826	to	6844	869 505 3500	to	3599	909 833 0947	to	0999	922 280 2019	to	2099
851 209 9880	to	9899	869 523 7033	to	7099	910 219 8631	to	8699	922 280 2233	to	2299
851 928 9221	to	9299	869 800 0000	to	999 9999	910 265 1100	to	1199	922 773 0459	to	0499
852 589 6560	to	6599	870 054 4814	to	4899	910 471 7273	to	7299	923 032 7000	to	7399
853 049 3646	to	3699	870 491 4812	to	4849	910 536 2505	to	2599	923 045 3630	to	3699
854 304 4089	to	4999	870 536 5820	to	5829	910 958 7499	to	7599	923 484 3600	to	3699
854 529 2200	to	2299	870 541 7167	to	7239	911 140 1000	to	2199	923 493 9403	to	9599
854 532 0000	to	2999	870 575 8155	to	8999	911 245 2545	to	2599	923 493 9681	to	9699
855 001 6204	to	6249	870 589 0485	to	0494	911 268 9077	to	9099	923 604 4424	to	4499
855 319 9364	to	9399	870 691 7060	to	7099	911 400 8948	to	8999	923 810 7800	to	8299
855 361 3390	to	3399	872 028 4850	to	4899	911 508 1620	to	1799	924 252 1200	to	1299
856 226 0490	to	0499	872 029 9306	to	9399	911 509 9310	to	9399	924 252 1400	to	1499
856 656 5800	to	5999	872 078 3709	to	3799	911 523 3000	to	3999	924 533 0711	to	0799
856 752 0200	to	0299	872 100 0445	to	0459	912 057 9922	to	9999	924 533 2343	to	2399
857 111 1352	to	1399	900 556 4178	to	4199	912 882 0563	to	0899	924 533 2428	to	2499
857 279 3450	to	3499	900 845 0044	to	0099	913 605 2218	to	2299	924 685 1957	to	1999
857 843 4000	to	4099	900 936 0217	to	0299	913 709 2429	to	2499	924 946 6300	to	6699
858 124 7644	to	7699	900 936 0435	to	0499	913 818 3501	to	3999	925 333 5900	to	6099
858 756 3111	to	3299	901 058 5255	to	5280	914 063 4300	to	4399	925 336 2300	to	2399
859 063 8200	to	8699	901 273 1082	to	1099	914 346 7621	to	7644	926 432 5907	to	5999
859 190 0600	to	0644	901 287 5143	to	5199	914 453 1366	to	1399	926 436 3600	to	3699
859 437 5538	to	5599	901 291 2789	to	2799	914 529 6185	to	6299	927 765 6257	to	6299
859 811 2888	to	2899	901 525 7122	to	7199	914 896 4658	to	4699	928 197 8100	to	8199
859 855 8873	to	8999	902 089 1253	to	1299	915 187 8774	to	8779	928 197 8283	to	8299
860 240 8520	to	8599	902 198 9769	to	9799	915 300 2783	to	2799	928 856 2059	to	2068
860 275 3900	to	3999	902 948 1269	to	1299	915 546 6822	to	6999	930 219 1722	to	1799
860 518 9629	to	9699	902 985 0833	to	0899	915 646 5183	to	5199	930 335 7810	to	7819
860 600 0021	to	0999	903 370 6934	to	6999	915 671 3963	to	3980	931 097 9259	to	9299
861 158 2350	to	2599	904 600 6523	to	6599	915 671 3982	to	3999	931 156 1502	to	1579
861 367 5400	to	5499	904 892 0378	to	0399	915 675 2217	to	2299	931 156 1600	to	1625
861 637 6010	to	6099	904 892 0648	to	1299	916 440 3377	to	3399	931 156 1671	to	1699
861 979 7292	to	7499	905 056 2216	to	2299	916 670 6352	to	6399	932 506 6400	to	6599
862 216 6100	to	6199	905 510 6647	to	6799	916 682 5300	to	5399	932 732 1796	to	1799
862 263 9213	to	9299	905 510 6900	to	7099	916 694 1414	to	1499	932 827 9026	to	9099
862 271 0800	to	0999	905 794 0000	to	0199	916 703 0802	to	0821	932 957 2300	to	2399
862 271 5000	to	5099	905 794 0288	to	0299	917 089 0709	to	0799	933 060 6160	to	6189
863 871 5138	to	5199	905 873 6900	to	6999	917 089 0842	to	0899	933 387 2541	to	2561
863 949 5300	to	5399	905 873 7100	to	7299	917 216 2928	to	2999	933 760 3609	to	4199
864 088 8200	to	8299	905 880 8900	to	8999	917 370 6300	to	6499	933 894 0928	to	0999
864 426 3972	to	3999	905 889 7100	to	7199	917 486 4900	to	4999	934 018 2729	to	2741
864 520 6117	to	6136	906 158 1508	to	1599	918 460 0602	to	0699	934 180 0300	to	0399
865 151 0526	to	0599	906 558 8812	to	8899	918 951 7231	to	7299	934 236 3954	to	3999
865 500 4034	to	4099	906 982 2214	to	2299	919 519 2786	to	2799	934 622 8717	to	8999
865 883 6082	to	6099	907 725 8500	to	8599	919 536 0770	to	0799	935 216 0312	to	0399
866 004 3000	to	3999	907 815 0216	to	0257	919 814 3095	to	3199	935 843 2202	to	2247
866 442 4100	to	4899	908 622 4225	to	4235	919 915 2774	to	2787	936 024 8889	to	8899
867 366 9108	to	9118	908 936 9254	to	9299	920 155 4662	to	4687	936 339 4455	to	4499
867 633 7403	to	7499	909 066 4494	to	7499	920 309 9039	to	9199			
867 737 5623	to	5699	909 067 7400	to	7499	920 771 5321	to	5399			

Missing, Lost, or Stolen Canadian Money Order Forms

Do Not Cash — Upon Receipt, Notify Local Postal Inspectors

This listing will be provided to all Postal Service™ employees responsible for accepting and cashing postal money orders. Destroy any interim notices when the numbers listed appear in the *Postal Bulletin*. The new money order serial numbers consist of the first 9 digits. The 10th digit is a check digit only.

Do not cash outdated money orders **104 151 601 to 692 600 000**. Advise holders to send invalid money orders to: Canada Post Corporation, Ottawa, Canada K1A 0B1. Check for altered dollar amounts by holding money orders to the light.

719 869 731	to	9 760	728 382 331	to	2 480	734 797 201	to	7 320	742 178 834	to	8 880
720 227 871	to	7 930	728 702 338	to	2 400	734 939 611	to	9 640	742 325 500	to	5 520
720 227 949	to	7 960	728 915 371	to	5 850	734 950 111	to	0 170	742 325 668	to	5 700
720 368 543	to	8 570	728 953 141	to	3 410	735 120 331	to	0 840	742 408 771	to	8 830
720 392 151	to	2 570	728 954 280	to	4 310	735 283 008	to	3 020	742 512 120	to	2 150
720 556 491	to	6 640	729 169 081	to	9 140	735 293 131	to	3 220	742 684 849	to	4 890
720 558 621	to	8 650	729 363 841	to	3 870	735 635 010	to	5 040	742 839 553	to	9 630
720 575 361	to	5 570	729 682 891	to	3 190	735 783 961	to	3 990	742 913 668	to	3 700
720 590 152	to	0 179	729 838 940	to	9 070	735 803 401	to	3 430	742 917 287	to	7 296
721 638 331	to	9 170	729 839 101	to	9 130	736 005 420	to	5 440	742 921 891	to	1 980
721 815 391	to	5 420	730 077 683	to	7 840	736 366 021	to	6 110	742 983 631	to	3 810
721 969 713	to	9 740	730 109 847	to	9 880	736 624 456	to	4 500	743 020 021	to	0 170
722 072 137	to	2 160	730 373 761	to	3 850	736 670 851	to	1 060	743 206 491	to	6 500
722 378 265	to	8 280	730 501 951	to	2 130	736 767 061	to	7 090	743 235 992	to	6 050
722 413 990	to	4 004	730 519 379	to	9 470	736 767 093	to	7 120	743 940 631	to	0 900
722 764 948	to	4 980	730 569 278	to	9 360	736 982 191	to	2 370	743 978 011	to	8 070
722 825 840	to	5 889	730 711 711	to	1 740	736 982 551	to	2 730	744 234 751	to	4 780
723 153 841	to	3 850	730 722 991	to	3 230	737 110 141	to	0 170	744 499 591	to	9 680
723 237 616	to	7 630	730 845 970	to	5 990	737 185 501	to	5 710	744 626 901	to	6 910
723 331 081	to	1 110	730 888 291	to	8 320	737 317 321	to	7 350	745 388 794	to	8 910
723 496 443	to	6 470	730 927 591	to	7 680	737 517 781	to	7 840	746 446 806	to	6 820
723 967 291	to	7 320	731 307 914	to	7 930	737 628 181	to	8 210	746 818 351	to	8 410
724 655 196	to	5 340	731 402 431	to	2 460	737 634 258	to	4 270	747 245 266	to	5 280
724 711 441	to	1 500	731 407 232	to	7 320	738 361 971	to	1 980	747 364 813	to	4 830
724 711 538	to	1 560	731 588 301	to	8 340	738 447 601	to	7 660	747 501 434	to	1 450
724 793 221	to	3 250	731 767 273	to	7 320	738 648 355	to	8 450	747 739 891	to	0 070
724 908 109	to	8 120	731 781 061	to	1 120	738 849 811	to	9 900	748 148 649	to	8 760
724 937 461	to	7 670	731 837 821	to	7 910	738 892 270	to	2 290	748 259 960	to	9 970
725 163 118	to	3 151	731 841 377	to	1 450	738 997 259	to	7 380	748 565 162	to	5 280
725 202 735	to	2 750	732 018 481	to	8 600	739 161 451	to	1 540	748 874 988	to	5 030
725 398 591	to	8 800	732 067 972	to	8 370	739 219 381	to	9 440	749 137 381	to	7 410
725 464 591	to	4 920	732 188 649	to	8 670	739 740 151	to	0 180	749 190 192	to	0 210
725 475 321	to	5 330	732 193 460	to	3 470	739 793 491	to	3 520	749 685 421	to	5 450
725 711 057	to	1 070	732 201 241	to	1 390	739 793 527	to	3 550	749 846 791	to	6 850
725 738 581	to	8 730	732 220 431	to	0 440	739 942 621	to	2 650	749 993 131	to	3 580
725 981 311	to	1 430	732 355 201	to	5 380	739 999 231	to	9 320	750 071 587	to	1 610
725 987 835	to	7 880	732 472 320	to	2 560	740 011 517	to	1 530	750 408 167	to	8 183
726 060 811	to	0 900	732 541 605	to	1 620	740 030 701	to	0 970	750 438 421	to	8 501
726 391 970	to	2 520	732 572 221	to	2 490	740 261 740	to	1 820	750 743 911	to	4 030
726 484 771	to	4 800	732 586 479	to	6 710	740 265 811	to	6 290	750 779 118	to	9 400
726 493 351	to	5 300	732 994 037	to	4 080	740 299 111	to	9 170	750 910 981	to	1 010
726 504 031	to	4 063	733 163 449	to	3 460	740 299 231	to	9 260	750 960 841	to	0 900
726 504 070	to	4 090	733 297 171	to	7 290	740 329 266	to	9 320	751 296 211	to	6 240
726 504 331	to	4 390	733 446 631	to	7 110	740 889 081	to	9 090	751 539 121	to	9 180
726 563 701	to	4 060	733 474 665	to	4 770	741 010 421	to	0 530	751 541 311	to	1 790
726 599 371	to	9 460	733 704 482	to	4 570	741 113 041	to	3 370	751 757 641	to	7 700
726 626 356	to	6 370	733 751 041	to	1 130	741 373 891	to	4 340	751 936 951	to	7 010
727 182 271	to	2 510	734 009 101	to	9 130	741 452 369	to	2 490	751 951 861	to	1 890
727 416 181	to	6 240	734 290 759	to	0 770	741 492 991	to	3 140	751 999 021	to	9 110
727 481 431	to	1 460	734 389 273	to	9 290	741 553 460	to	3 470	752 139 516	to	9 570
727 749 241	to	9 780	734 440 031	to	0 111	741 764 431	to	4 520	752 182 892	to	2 950

752 206 861	to	7 100	762 439 261	to	9 290	773 125 387	to	5 410	800 044 320	to	4 410
752 295 241	to	5 600	762 524 158	to	4 220	773 179 320	to	9 410	800 211 901	to	2 440
752 731 351	to	1 410	762 584 872	to	4 970	773 202 989	to	3 140	800 427 530	to	7 540
752 767 441	to	7 470	762 593 431	to	3 460	773 208 991	to	9 290	800 872 741	to	2 830
753 008 941	to	9 030	763 155 160	to	5 180	773 231 311	to	1 340	801 349 801	to	9 830
753 194 311	to	4 370	763 178 631	to	8 660	773 348 739	to	8 940	801 676 681	to	7 100
753 620 378	to	0 400	763 506 001	to	6 060	773 348 739	to	8 940	802 967 821	to	7 940
754 013 917	to	3 940	763 522 141	to	2 470	773 575 891	to	5 950	803 217 601	to	7 780
754 161 061	to	1 120	763 717 694	to	7 800	773 852 971	to	3 030	803 729 731	to	9 850
754 358 445	to	8 610	763 826 461	to	6 520	775 373 449	to	3 460	803 747 402	to	7 520
754 410 451	to	0 660	763 900 460	to	0 471	789 257 191	to	7 250	804 138 181	to	8 420
754 438 393	to	8 410	763 900 479	to	0 530	790 448 020	to	8 460	804 428 224	to	8 250
754 493 109	to	3 130	763 917 271	to	7 750	790 597 485	to	7 530	804 682 411	to	2 710
754 664 182	to	4 220	764 125 801	to	5 860	790 911 883	to	1 900	805 272 525	to	2 540
754 816 377	to	6 470	764 284 525	to	4 560	791 057 441	to	7 550	805 523 445	to	3 460
755 487 421	to	7 600	764 526 241	to	6 330	791 239 081	to	9 290	805 745 704	to	5 730
755 592 901	to	3 140	764 601 421	to	1 600	791 374 483	to	4 500	806 452 907	to	2 980
755 790 020	to	0 030	764 650 231	to	0 470	791 387 971	to	8 030	806 744 781	to	4 850
755 791 730	to	1 800	764 984 371	to	4 850	791 447 521	to	7 850	806 982 181	to	2 300
755 926 951	to	7 070	765 003 667	to	3 680	791 451 151	to	1 240	807 764 791	to	4 910
755 934 332	to	4 510	765 042 517	to	2 540	791 500 009	to	0 470	808 089 931	to	9 960
755 957 701	to	8 000	765 194 728	to	4 970	791 771 431	to	1 490	808 656 423	to	6 450
755 962 981	to	3 280	765 387 365	to	7 450	792 004 293	to	4 320	808 753 771	to	3 800
756 035 371	to	5 490	765 541 801	to	2 100	792 018 379	to	8 420	809 189 001	to	9 010
756 301 257	to	1 290	765 638 461	to	8 970	792 070 621	to	0 740	809 886 879	to	6 930
756 371 565	to	1 580	765 647 101	to	7 190	792 145 211	to	5 230	809 890 489	to	0 500
756 876 031	to	6 120	765 813 781	to	4 029	792 391 381	to	1 620	810 323 734	to	3 760
756 876 151	to	6 240	765 879 314	to	9 390	792 452 779	to	2 790	810 367 116	to	7 140
756 970 129	to	0 140	765 954 001	to	4 030	792 772 728	to	2 770	810 526 351	to	6 500
757 059 613	to	9 630	766 120 286	to	0 320	792 903 511	to	3 990	810 806 911	to	6 940
757 078 540	to	8 560	766 125 716	to	5 750	793 282 518	to	2 533	810 807 211	to	7 240
757 086 209	to	6 240	766 158 824	to	8 840	794 041 831	to	2 040	811 423 021	to	3 110
757 240 591	to	0 650	766 388 433	to	8 460	794 397 709	to	7 780	811 517 221	to	7 239
757 277 371	to	7 700	766 509 421	to	9 660	794 581 741	to	2 040	811 721 101	to	1 130
757 291 591	to	2 730	766 572 901	to	3 020	794 592 122	to	2 150	812 025 721	to	5 900
757 964 251	to	4 280	766 748 500	to	8 521	795 032 251	to	2 340	812 093 073	to	3 130
758 067 001	to	7 090	767 024 341	to	4 370	795 796 291	to	6 350	812 100 821	to	0 840
758 105 221	to	5 250	767 326 471	to	6 590	796 070 139	to	0 160	812 465 251	to	5 610
758 324 941	to	5 000	767 332 561	to	2 950	796 143 151	to	3 630	812 918 341	to	8 670
758 593 628	to	3 650	768 009 841	to	9 960	796 159 725	to	9 740	812 918 701	to	8 760
758 709 038	to	9 060	768 011 489	to	1 520	796 169 306	to	9 340	813 050 491	to	0 520
758 744 101	to	4 160	768 177 980	to	7 990	796 373 406	to	3 430	813 073 171	to	3 200
758 850 883	to	0 900	768 391 081	to	1 170	796 602 961	to	3 050	813 398 476	to	8 550
758 860 951	to	1 550	768 661 569	to	1 650	796 708 441	to	8 500	813 713 971	to	4 000
759 152 851	to	2 880	769 000 051	to	0 080	796 886 281	to	6 430	813 858 121	to	8 150
759 740 941	to	1 090	769 050 841	to	0 900	796 901 701	to	2 000	814 789 330	to	9 349
760 004 596	to	4 610	769 159 081	to	9 178	796 975 466	to	5 590	814 984 656	to	4 680
760 118 191	to	8 250	769 737 496	to	7 510	797 272 917	to	2 950	815 016 020	to	6 030
760 155 001	to	5 090	769 778 491	to	8 730	797 519 441	to	9 460	815 199 410	to	9 420
760 378 002	to	8 020	769 827 331	to	7 450	797 519 731	to	0 240	815 240 491	to	0 520
760 692 722	to	2 749	770 216 071	to	6 100	797 535 181	to	5 330	815 755 591	to	5 620
761 055 460	to	5 480	770 723 281	to	3 400	798 040 053	to	0 080	815 755 622	to	5 650
761 169 781	to	9 810	770 790 451	to	0 480	798 055 813	to	5 830	815 806 381	to	6 680
761 504 941	to	5 120	770 915 150	to	5 490	798 055 891	to	5 950	816 126 834	to	6 870
761 516 836	to	6 910	771 455 551	to	5 610	798 326 371	to	6 520	816 156 721	to	6 780
761 613 588	to	3 600	771 609 661	to	9 690	798 339 167	to	9 210	816 580 903	to	0 920
761 688 631	to	8 690	771 932 551	to	2 580	798 562 411	to	2 440	816 945 571	to	5 600
761 805 199	to	5 240	772 057 224	to	7 440	798 632 461	to	2 490	817 253 011	to	3 280
761 826 106	to	6 120	772 162 660	to	3 070	798 807 151	to	7 510	817 763 881	to	4 060
761 881 171	to	1 560	772 718 615	to	8 640	798 944 761	to	5 030	818 330 562	to	0 610
761 975 641	to	5 670	772 940 140	to	0 160	799 118 616	to	8 640	818 459 641	to	9 670
761 975 886	to	5 895	772 970 886	to	0 940	799 133 191	to	3 220	818 926 273	to	6 320
762 304 144	to	4 170	773 009 419	to	9 430	799 177 626	to	7 650	818 950 351	to	0 380
762 324 931	to	4 960	773 112 031	to	2 060	799 854 751	to	5 200	818 962 492	to	2 530

819 032 341	to 2 730	821 229 743	to 9 780	824 588 281	to 8 370	827 609 085	to 9 100
819 127 054	to 7 080	821 903 731	to 3 910	825 140 397	to 0 460	827 883 511	to 3 600
819 278 540	to 8 670	821 927 841	to 7 850	825 409 651	to 9 680	828 160 441	to 0 530
819 544 681	to 4 740	822 505 801	to 5 830	825 472 171	to 2 200	828 441 602	to 1 630
819 928 441	to 8 650	822 703 442	to 3 470	826 042 898	to 2 920	828 539 316	to 9 340
820 034 406	to 4 430	822 925 951	to 6 100	826 226 644	to 6 670	828 732 331	to 2 390
820 070 761	to 1 540	823 284 931	to 4 990	826 582 951	to 3 430	828 830 952	to 0 963
820 191 342	to 1 360	823 293 031	to 3 210	826 720 201	to 0 230	829 080 241	to 0 330
820 274 856	to 4 880	823 556 011	to 6 100	827 005 671	to 5 830	829 176 841	to 6 930
820 600 171	to 0 230	824 078 341	to 8 370	827 287 861	to 7 950		
821 172 241	to 2 360	824 156 325	to 6 340	827 291 502	to 1 520		
821 229 661	to 9 720	824 511 252	to 1 270	827 575 381	to 5 470		

— Criminal Investigations Group, Postal Inspection Service, 5-21-09

Verifying U.S. Postal Service Money Orders

Follow these steps to cash a Postal Service™ money order:

1. Check that the amount does not exceed the legal limit: \$1,000 for domestic, and \$700 for international postal money orders.
2. Check that the proper security features are present:
 - When held to the light, a watermark of Benjamin Franklin is repeated from top to bottom on the left side.
 - When held to the light, a dark line (security thread) runs from top to bottom with the word “USPS” repeated.
 - There should be no discoloration around the dollar amounts, which might indicate the amounts were changes.

These appear in Postal Service Notice 299, *U.S. Postal Money Order Reference Card*, or online at <http://www.usps.com/missingmoneyorders/security.htm>.

3. If the money order seems suspicious, call the U.S. Postal Service Money Order Verification System at 866-459-7822.

Please provide this information to local banks and retailers, as they also receive Postal Service money orders for cashing.

— Value Added and Special Services,
Retail Products and Services, 5-21-09

Counterfeit Canadian Money Order Forms

Do Not Cash

To be posted and used by retail window employees. As directed, destroy previous notices. All interim notices should be destroyed when the numbers listed appear in the *Postal Bulletin*.

671,819,086	686,794,382
676,612,640	686,794,426
677,891,039	686,794,427
678,282,493	686,794,431
678,916,031	687,262,502
679,552,215	687,262,503
679,694,334	687,262,525
679,751,983	687,262,526
679,800,207	687,287,578
681,130,536	687,287,581
681,844,376	687,287,582
683,594,542	694,063,898
684,683,610	694,063,899
686,619,878	694,063,980
686,619,886	701,321,725
686,619,887	

— Criminal Investigations Group,
Postal Inspection Service, 5-21-09

Toll-Free Number Available to Verify Canadian Money Orders

The Canada Post Corporation is now providing a toll-free number that cashing agents can call to verify the validity of Canadian Postal Money Orders. The number is 800-563-0444.

This toll-free number is printed on the back of the Canadian Postal Money Orders.

— Criminal Investigations Group,
Postal Inspection Service, 5-21-09

Other Information

Overseas Military/Diplomatic Mail

Mail addressed to military and diplomatic post offices overseas is subject to certain conditions or restrictions of mailing regarding content, preparation, and handling. The APO/FPO/DPO table below outlines these conditions by APO/FPO/DPO ZIP™ Codes through the use of footnoted mailing restrictions codes (see the Restrictions page following the table).

Acceptance clerks should use the table with the integrated retail terminal (IRT) or POS ONE terminal to determine which APO/FPO/DPO ZIP Codes are active and

which conditions of mailing apply. **Acceptance clerks may contact the Military Postal Service Agency with any questions regarding APO/FPO/DPO ZIP Codes, toll free, at 800-810-6098, Monday–Friday, 0730–1600 ET.**

For Express Mail Military Service (EMMS) availability, all acceptance clerks must refer to the local hardcopy EMMS directory.

The entries under “Changes” appear in bold in the APO/FPO/DPO table starting below.

Changes

APO/FPO/DPO	Action	Effective Date	See Restrictions
APO AE 09010	Close	Immediately	
APO AE 09090	Add “P”	Immediately	A1-B-B1-C-D-P-U
APO AE 09201	Close	Immediately	
APO AE 09211	Add “P”	Immediately	A1-B-B1-C-D-P-U
APO AE 09368	Close	Immediately	
FPO AE 09805	Open	Immediately	A1-B-B1-F-F1-R-R1-V-Z1
FPO AE 09834	Add F-F1-R-R1	Immediately	A1-B-B1-F-F1-R-R1-V-Z1
FPO AP 96634	Close	Immediately	

We have eliminated “Not Active” entries from the table below to save space and paper.

APO/FPO/DPO Table

APO/ FPO/ DPO	See Restrictions	APO/ FPO/ DPO	See Restrictions	APO/ FPO/ DPO	See Restrictions	APO/ FPO/ DPO	See Restrictions
09001	A1-B-B1-C-D-U	09054	A1-B-B1-C-D-U	09107	A1-B-B1-C-D-U	09213	A1-B-B1-C-D-F1-U
09002	A1-B-B1-C-D-U	09055	A1-B-B1-C-D-F-R-R1-U-V	09110	A1-B-B1-C-D-U	09214	A1-B-B1-C-D-F1-U
09003	A1-B-B1-C-D-P-U	09056	A1-B-B1-C-D-U	09112	A1-B-B1-C-D-U	09226	A1-B-B1-C-D-U
09004	A1-B-B1-C-D-U	09058	A1-B-B1-C-D-U	09114	A1-B-B1-C-D-U	09227	A1-B-B1-C-D-U
09005	A1-B-B1-C-D-P-U	09059	A1-B-B1-C-D-U	09123	A1-B-B1-C-D-F1-U	09229	A1-B-B1-C-D-U
09006	A1-B-B1-C-D-U	09060	A1-B-B1-C-D-F1-U	09126	A1-B-B1-C-D-F-F1-P	09237	A1-B-B1-C-D-U-V
09007	A1-B-B1-C-D-U	09063	A1-B-B1-C-D-L-U	09128	A1-B-B1-C-D-U	09245	A1-B-B1-C-D-U
09008	A-A1-B-B1-C-D-P-U	09067	A1-B-B1-C-D-U	09131	A1-B-B1-C-D-U	09250	A1-B-B1-C-D-U
09009	A1-B-B1-C-D-F1-U	09069	A-A1-B-B1-C-D-U-V	09136	A1-B-B1-C-D-F1	09261	A1-B-B1-C-D-F1-U-V
09011	A1-B-B1-C-D-U	09075	A1-B-B1-C-D-U	09137	A1-B-B1-C-D-F1-U	09262	A1-B-B1-C-D-U
09012	A1-B-B1-C-D-F-F1-U	09079	A1-B-B1-C-D-U	09138	A1-B-B1-C-D-U	09263	A1-B-B1-C-D-U
09013	A1-B-B1-C-D-F-F1-U-Z1	09080	A1-B-B1-C-D-F1-U	09139	A1-B-B1-C-D-U	09264	A1-B-B1-C-D-U
09014	A1-B-B1-C-D-U	09081	A1-B-B1-C-D-U	09140	A1-B-B1-C-D-U	09265	A1-B-B1-C-D-F1-N-U
09020	A1-B-B1-C-D-U	09086	A1-B-B1-C-D-U	09142	A1-B-B1-C-D-F-F1-P-U	09266	A1-B-B1-C-D-U
09021	A1-B-B1-C-D-F1-U	09088	A1-B-B1-C-D-U	09143	A1-B-B1-C-D-U	09267	A1-B-B1-C-D-U
09028	A1-B-B1-C-D-U	09090	A1-B-B1-C-D-P-U	09154	A1-B-B1-C-D-U	09301	A-A1-B-B1-C1-E2-F-H1-M-R-R1-V-Z1
09033	A1-B-B1-C-D-U	09092	A1-B-B1-C-D-U	09166	A1-B-B1-C-D-U	09302	A-A1-B-B1-C1-F-F1-M-N-V1-Z-Z1
09034	A1-B-B1-C-D-U	09094	A1-B-B1-C-D-F-F1-P	09172	A1-B-B1-C-D-U	09304	A-A1-B-B1-C1-E2-F-H1-M-R-V-Z1
09036	A1-B-B1-C-D-U	09095	A1-B-B1-C-D-U	09173	A1-B-B1-C-D-U	09305	A-A1-B-B1-C1-E2-F-H1-M-R-R1-V-Z1
09038	A1-B-B1-C-D-U	09096	A1-B-B1-C-D-U	09175	A1-B-B1-C-D-U	09306	A-A1-B-B1-C1-E2-F-H1-R-R1-U2-V-Z1
09042	A1-B-B1-C-D-U	09099	A1-B-B1-C-D-U	09177	A1-B-B1-C-D-U	09307	A1-B-B1-N-V-Z1
09046	A1-B-B1-C-D-U	09100	A1-B-B1-C-D-U	09180	A1-B-B1-C-D-U		
09049	A1-B-B1-C-D-U	09102	A1-B-B1-C-D-U	09185	A1-B-B1-C-D-U		
09051	A1-B-B1-C-D-U	09103	A1-B-B1-C-D-U	09186	A1-B-B1-C-D-U		
09053	A1-B-B1-C-D-U	09104	A1-B-B1-C-D-F1-U	09211	A1-B-B1-C-D-P-U		
				09212	A1-B-B1-C-D-U-V		

APO/ FPO/ DPO	See Restrictions	APO/ FPO/ DPO	See Restrictions	APO/ FPO/ DPO	See Restrictions	APO/ FPO/ DPO	See Restrictions
09308	A-A1-B-B1-C1-E2-F-H1-M-R-V-Z1	09351	A-A1-B-B1-C1-E2-F-H1-M-R-V-Z1	09393	A-A1-B-B1-C1-E2-F-H1-M-R-R1-V-Z1	09575	A1-B-B1-F-F1-R-R1-V-V1
09309	A-A1-B-B1-C1-E2-F-H1-M-R-R1-V-Z1	09353	A-A1-B-B1-C1-E2-F-H1-M-R-R1-V-Z1	09396	A-A1-B-B1-C1-E2-F-H1-M-R-R1-U2-V-Z1	09576	A1-B-B1-F-F1-R-R1-V
09310	A-A1-B-B1-C1-E2-F-H1-M-R-V-Z1	09354	A-A1-B-B1-C1-E2-F-H1-M-R-R1-V-Z1	09402	A-A1-B1-C-F-R-R1-U3-W	09577	A1-B-B1-V
09311	A-A1-B-B1-C1-E2-F-H1-M-R-V-Z1	09355	A-A1-B-B1-C1-E2-F-H1-M-R-R1-V-Z1	09409	A1-B-B1-C-C1-U	09578	A1-B-B1-F-F1-R-R1-V
09312	A-A1-B-B1-C1-E2-F-H1-R-R1-U2-V-Z1	09356	A-A1-B-B1-C1-E2-F-H1-M-R-R1-V-Z1	09421	A1-B-B1-C-C1-U	09579	A1-B-B1-F-F1-R-R1-V
09313	A-A1-B-B1-C1-E2-F-H1-M-R-R1-V-Z1	09357	A-A1-B-B1-C1-E2-F-H1-M-R-R1-V-Z1	09447	A1-B-B1-C-C1-U-V	09581	A1-B-B1-F-F1-R-R1-V
09314	A-A1-B-B1-C1-E2-F-H1-M-R-R1-V-Z1	09358	CLOSE	09454	A1-B-B1-C-C1-U-V	09582	A1-B-B1-V
09315	A-A1-B-B1-C1-E2-F-H1-M-N-R-R1-V-Z1	09359	A-A1-B-B1-C1-E2-F-H1-M-R-R1-V-Z1	09456	A1-B-B1-C-C1-H-H1-M-Z1	09586	A1-B-B1-F-F1-R-R1-V
09316	A-A1-B-B1-C1-E2-F-H1-M-R-R1-U2-V-Z1	09360	A1-B-B1-V	09459	A1-B-B1-C-C1-U	09587	A1-B-B1-F-F1-R-R1-V
09317	A-A1-B-B1-C1-E2-F-H1-M-R-R1-V-Z1	09361	A-A1-B-B1-C1-E2-F-H1-M-R-R1-U2-V-Z1	09461	A1-B-B1-C-C1-F-F1-P-U	09588	A1-B-B1-V-V1
09318	A-A1-B-B1-C1-F-F1-M-N-V-V1-Z-Z1	09362	A-A1-B1-C1-E2-F-H1-R-V-Z1	09463	A1-B-B1-C-C1-U	09589	A1-B-B1-V-V1
09320	A-A1-B-B1-C1-E2-F-H1-M-R-R1-V-Z1	09363	A-A1-B-B1-C1-E2-F-H1-M-R-R1-V-Z1	09464	A1-B-B1-C-C1-U	09590	A1-B-B1-V
09321	A-A1-B-B1-C1-E2-F-H1-M-R-R1-V-Z1	09364	A-A1-B-B1-C1-E2-F-H1-M-N-R-R1-V-Z1	09468	A1-B-B1-C-C1-U	09591	A1-B-B1-V-V1
09322	A-A1-B-B1-C1-E2-F-H1-R-R1-U2-V-Z1	09365	A-A1-B-B1-C1-E2-F-H1-M-N-R-R1-V-Z1	09469	A1-B-B1-C-C1-U	09593	A1-B-B1-V
09324	A-A1-B-B1-C1-E2-F-H1-R-R1-U2-V-Z1	09366	A-A1-B-B1-C1-E2-F-H1-M-R-R1-V-Z1	09470	A1-B-B1-C-C1-U	09594	A1-B-B1-V-V1
09327	A-A1-B-B1-C1-E2-F-H1-M-R-R1-V-Z1	09367	A-A1-B-B1-C1-E2-F-H1-M-R-V	09494	A1-B-B1-C-C1-U	09596	A1-B-B1-V
09330	A-A1-B-B1-C1-E2-F-H1-M-R-R1-V-Z1	09369	A-A1-B-B1-C1-E2-F-H1-M-R-R1-V	09496	A1-B-B1-C-C1-U-V	09599	A1-B-B1-V
09331	A-A1-B-B1-C1-E2-F-H1-M-R-R1-V-Z1	09370	A-A1-B-B1-C1-E2-F-H1-M-R-V	09498	A1-B-B1-C-C1-F-F1-F2-N-R-R1-T-U-V-Z1	09601	A1-B-B1-C-F-F1-U
09332	A-A1-B-B1-C1-E2-F-H1-M-R-R1-V-Z1	09371	A-A1-B-B1-C1-E2-F-H1-M-R-V	09501	A1-B-B1-V-V1	09602	A1-B-B1-C-F-F1-N-U
09333	A-A1-B-B1-C1-E2-F-H1-M-R-R1-V-Z1	09372	A-A1-B-B1-C1-E2-F-H1-M-R-R1-V	09502	A1-B-B1-V	09603	A1-B-B1-C-F-F1-U
09334	A-A1-B-B1-C1-E2-F-H1-M-R-R1-V-Z1	09373	A-A1-B-B1-C1-E2-F-H1-M-R-R1-V	09503	A1-B-B1-V	09604	A1-B-B1-C-F-F1-P-U
09336	A-A1-B-B1-C1-E2-F-H1-R-R1-U2-V-Z1	09374	A-A1-B-B1-C1-E2-F-H1-M-N-R-V-Z1	09504	A1-B-B1-V-V1	09605	A1-B-B1-C-D-U-V
09337	A-A1-B-B1-C1-E2-F-H1-M-R-R1-V-Z1	09375	A-A1-B-B1-C1-E2-F-H1-M-R-V-Z1	09505	A1-B-B1-V-V1	09606	A1-B-B1-C-D-U-V
09338	A-A1-B-B1-C1-E2-F-H1-M-R-R1-U2-V-Z1	09376	A-A1-B-B1-C1-E2-F-H1-M-R-R1-V	09506	A1-B-B1-V-V1	09607	A-A1-B-B1-C-F-F1-M-R-R1-U-U3-V-W
09339	A-A1-B-B1-C1-E2-F-H1-M-N-R-R1-V-Z1	09377	A-A1-B-B1-C1-E2-F-H1-M-R-R1-V	09507	A1-B-B1-V-V1	09609	A1-B-B1-C-F-U
09340	A-A1-B-B1-C1-F-R-V	09378	A-A1-B-B1-C1-E2-F-H1-M-R-R1-U2-V-Z1	09508	A1-B-B1-V	09610	A1-B-B1-C-F-F1-U-V
09342	A-A1-B-B1-C1-E2-F-H1-M-R-R1-V-Z1	09381	A-A1-B-B1-C1-E2-F-H1-M-R-R1-U2-V-Z1	09509	A1-B-B1-V	09613	A1-B-B1-C-F-U-V
09343	A-A1-B-B1-C1-F-M-N-V-Z1	09387	A-A1-B-B1-C1-E2-F-H1-M-R-V	09510	A-A1-B-B1-C1-E2-F-H1-M-R-R1-V-Z1	09617	A1-B-B1-C-F-U
09344	A-A1-B-B1-C1-E2-F-H1-M-R-R1-V-Z-Z1	09388	A-A1-B-B1-C1-E2-F-H1-M-R-V	09511	A1-B-B1-V	09618	A1-B-B1-C-F-U
09348	A-A1-B-B1-C1-E2-F-H1-M-R-R1-U2-V-Z1	09389	A-A1-B-B1-C1-E2-F-H1-M-R-V	09513	A1-B-B1-F-F1-R-R1-V	09620	A1-B-B1-C-F-U
09350	A-A1-B-B1-C1-E2-F-H1-M-R-R1-V-Z1	09391	A-A1-B-B1-C1-E2-F-H1-M-R-R1-V-Z1	09517	A1-B-B1-F-F1-R-R1-V	09621	A1-B-B1-C-F-U
				09524	A1-B-B1-F-F1-R-R1-V	09622	A1-B-B1-C-F-U
				09532	A1-B-B1-F-F1-R-R1-V	09623	A1-B-B1-C-F-U
				09534	A1-B-B1-V	09624	A1-B-B1-C-F-U
				09543	A1-B-B1-F-F1-R-R1-V	09625	A1-B-B1-C-F-U
				09545	A1-B-B1-V	09626	A1-B-B1-C-F-U
				09549	A1-B-B1-V	09627	A1-B-B1-C-F-U
				09554	A1-B-B1-F-F1-R-R1-V	09630	A1-B-B1-C-F-U-V
				09557	A1-B-B1-F-F1-R-R1-V	09631	A1-B-B1-C-F-U
				09564	A1-B-B1-F-F1-R-R1-V	09636	A1-B-B1-C-F-U
				09565	A1-B-B1-V	09642	A1-B-B1-N-U
				09566	A1-B-B1-F-F1-R-R1-V	09643	A1-B-B1-U
				09567	A1-B-B1-V-V1	09645	A1-B-U
				09568	A1-B-B1-V	09647	A1-B-B1-N-U
				09569	A1-B-B1-F-F1-R-R1-V	09648	A1-B-B1-N-U-V-Z1
				09570	A1-B-B1-F-F1-R-R1-V	09649	A1-B-B1-N-U-Z1
				09573	A1-B-B1-V	09701	A-A1-B-B1-B2-C-C1-D-F-I-M-N-Q-R-R1-T-V-Z-Z1
				09574	A1-B-B1-F-F1-R-R1-V	09702	A1-B-B1-C-C1-F1-M-R-R1-U
						09703	A1-B-B1-C-F1-U
						09704	A1-B-B1-C-V
						09705	A1-B-B1-U

APO/ FPO/ DPO	See Restrictions	APO/ FPO/ DPO	See Restrictions	APO/ FPO/ DPO	See Restrictions	APO/ FPO/ DPO	See Restrictions
09706	A1-B-B1-C-N-U-V	09746	A-A1-B-B1-C-E1-N-V-Z-Z1	09828	A1-B-N-V-Z1	34037	A1-B-B1-C-F-H-I-M-N-V-Z-Z1
09707	A1-B-B1-C-N-U-V			09830	A1-B-B1-C-N-V-Z1		
09708	A1-B-B1	09747	A1-B-B1-F-J-N-U-V-Z1	09831	A1-B-B1-F-N-U-V-Z1	34038	A1-B-B1-M-N-V-Z1
09709	A1-B-B1-F1	09748	A-A1-B-B1-B2-C-C1-D-F-I-M-N-Q-R-R1-T-V-Z-Z1	09832	A-A1-B-B1-U1-V-Z1	34039	A1-B-N-V-Z1
09710	A1-B-B1-C-C1-F1-M-N-R-R1-U			09833	A1-B-B1-U1-V-Z1	34041	A1-B-B1-M-N-U-V-Z1
09711	A1-B-B1-F1-N-Z1	09749	A-A1-B-B1-F-N-V-Z1	09834	A1-B-B1-F-F1-R-R1-V-Z1	34042	A1-B-B1-D-F-M-N-V-Z1
09713	A1-B-B1-C-F1	09750	A-B-B1-B2-C-C1-F-M-N-Q-T-V-Z-Z1	09835	A-A1-B-B1-V-Z1	34050	A1-B-B1-V
09714	A1-B-B1-C-C1-F1-M-R-R1-U	09751	A1-B-B1-C-D-U	09836	A-A1-B-B1-C-F-M-V-Z1	34055	A1-B-B1-N-V-Z1
09715	A1-B-B1-F1	09752	A1-B-B1-C-D-U	09837	A1-B-B1-V-Z1	34058	A1-B-B1-V-Z1
09716	A1-B-B1-C-D-N-U-V	09753	A1-B-B1-F-N-V-Z1	09838	A1-B-B1-V-Z1	34076	A1-B-B1-F1-N-V-Z1
09717	A-A1-B-B1-M-V-W	09754	A1-B-B1-U	09839	A-A1-B-B1-U-V-Z1	34090	A1-B-B1-V
09718	A1-B-B1-F-I-N-U-V	09755	A1-B-B1-U	09840	A-A1-B-B1-V-Z1	34091	A1-B-B1-F-F1-R-R1-V
09719	A1-B-B1-C-F1-V	09756	A1-B-B1-U	09841	A-A1-B-B1-N-U-Z1	34092	A1-B-B1-F-F1-R-R1-V
09720	A1-B-B1-U-V	09757	A1-B-B1-U	09842	A-A1-B-B1-N-Z1	34093	A1-B-B1-F-F1-R-R1-V
09721	A1-B-B1-N-U-V-Z1	09758	A-A1-B-B1-B2-C-C1-F-I-M-N-Q-R-R1-T-V-Z-Z1	09843	A-A1-B-B1-N-V	34095	A1-B-B1-V
09722	A-A1-B-B1-F-N-V-Z-Z1	09759	A-A1-B-B1-B2-C1-E2-F-F1-F2-I-N-R-R1-T-V-Z-Z1	09844	A-A1-B-B1-C-F-N-U-V-Z1	34098	A1-B-B1-V
09723	A1-B-B1-N-U-V-Z1			09852	A1-B-B1-E2-E3-F-H1-N-R-R1-U1-V-Z1	34099	A1-B-B1-V-V1
09724	A1-B-B1-C-C1-F1-M-R-R1-U	09769	A-A1-B-B1-B2-C-C1-D-F-I-M-N-Q-R-R1-T-V-Z-Z1	09853	A1-B-B1-E2-F-H1-R-R1-U2-V-Z1	96201	A-A1-B-B1
09726	A1-B-B1-N-U-V			09855	A-A1-B-B1-C1-E2-F-H1-R-R1-U2-V-Z1	96202	A-A1-B-B1-U
09727	A-A1-B-B1-B2-C-C1-D-F-I-M-N-Q-R-R1-T-V-Z-Z1	09777	A-A1-B-B1-C-E1-N	09858	A1-B-B1-E2-E3-F-H1-N-R-R1-U1-V-Z1	96203	A-A1-B-B1
09729	A1-B-B1-C-F-N-R-R1-U-V	09780	A-A1-B-B1-F-N-R-V	09865	A-A1-B-B1-V-Z1	96204	A-A1-B-B1
09730	A-A1-B-B1-B2-C-C1-F-M-N-R-R1-T-V-Z1	09801	A-A1-B-B1-C1-E2-F-H1-M-N-R-R1-V-Z1	09866	A-A1-B-B1-V-Z1	96205	A-A1-B-B1-U
09731	A-A1-B-B1-B2-C-C1-F-M-N-R-R1-T-V-Z1	09803	A1-B-B1-E2-E3-F-H1-N-R-R1-U1-V-Z1	09868	A-A1-B-B1-U-V-Z1	96206	A-A1-B-B1-U
09732	A1-B-B1-N-V-Z1	09804	A-A1-B-B1-F-F1-N-V-Z1	09870	A-A1-B-B1-C1-E2-F-H1-M-R-R1-U-V-Z1	96207	A-A1-B-B1-U
09733	A1-B-B1-V	09805	A-B-B1-F-F1-R-R1-V-Z1	09880	A-A1-B-B1-C1-E2-F-H1-R-R1-U-V-Z1	96209	A-A1-B-B1-N-U-V
09734	A-A1-B-B1-B2-C-C1-D-F-I-M-N-Q-R-R1-T-V-Z-Z1	09806	A-A1-B-B1-C1-E2-F-H1-M-N-R-R1-V-Z1	09888	A-A1-B-B1-U-V-Z1	96213	A-A1-B-B1-U
09735	A1-B-B1-N-V-Z1	09807	A-A1-B-B1-C1-E2-F-H1-M-N-R-R1-V-Z1	09870	A-A1-B-B1-C1-E2-F-H1-M-R-R1-U-V-Z1	96214	A-A1-B-B1-U
09736	A-A1-B-B1-B2-C-C1-D-F-I-M-N-Q-R-R1-T-V-Z-Z1	09808	A-A1-B-B1-C1-E2-F-H1-M-R-V	09890	A1-B-B1-E2-F-H1-N-R-R1-U2-V-Z1	96218	A-A1-B-B1-U
09737	A-A1-B-B1-B2-C-C1-D-F-I-M-N-Q-R-R1-T-V-Z-Z1	09809	A1-B-B1-V-Z1	09892	A-A1-B-B1-E2-F-N-R-R1-V-Z1	96224	A-A1-B-B1-U
09738	A-A1-B-B1-B2-C-C1-D-F-I-M-N-Q-R-R1-T-V-Z-Z1	09811	A1-B-B1-E2-E3-F-H1-N-R-R1-U1-V-Z1	09898	A1-B-B1-E2-F-H1-N-R-R1-U2-V-Z1	96257	A-A1-B-B1-U
09739	A-A1-B-B1-B2-C-C1-D-F-I-M-N-Q-R-R1-T-V-Z-Z1	09812	A1-B-B1-E2-E3-F-F1-I-N-R-U-V-Z-Z1	34002	A1-B-B1-N-U-Z1	96258	A-A1-B-B1-U
09741	A-A1-B-B1-C1-E2-F-F1-H1-I-M-N-Q-R-R1-T-V-W-Y-Z-Z1	09814	A1-B-B1-E2-E3-F-F1-I-N-R-U-V-Z-Z1	34004	A-B-B1-N-V	96260	A-A1-B-B1-U
09742	A-A1-B-B1-B2-F-F1-I-M-N-Q-R-T-V-Z-Z1	09815	A-A1-B-B1-C1-E2-F-H1-M-R-R1-V-Z1	34006	A-A1-B-B1-C1-F1-N-V-Z1	96262	A-A1-B-B1-U-V
09743	A-A1-B-B1-F-N-V-Z-Z1	09817	A-A1-B-B1-B2-C1-E2-E3-F-F1-H-H1-M-N-R-R1-T-V-Z1	34007	A-A1-B-B1-C1-F1-V-Z1	96264	A-A1-B-B1-U
09744	A-B-B1-B2-C-C1-F-M-N-R-R1-T-V-Z1	09819	A-A1-B-F-P-V-Z1	34008	A-A1-B-B1-C1-F1-V-Z1	96266	A-A1-B-B1-U
09745	A-A1-B1-B2-F-F1-M-N-R-R1-V-Z1	09821	A-A1-B-F-V-Z1	34020	A1-B-B1-M-N-V-Z1	96267	A-A1-B-B1-U-V
		09822	A-A1-B-F-V-Z1	34021	A1-B-B1-M-N-V-Z1	96269	A-A1-B-B1-U
		09823	A-A1-B-F-V-Z1	34022	A1-B-B1-D-F-M-N-V-Z1	96271	A-A1-B-B1-U
		09824	A-A1-B-F-V-Z1	34023	A1-B-B1-M-N-V-Z1	96275	A-A1-B-B1-V
		09825	A-A1-B-B1-C-C1-D-F-M-N-R-R1-T-V-Z1	34024	A1-B-B1-M-N-V-Z1	96276	A-A1-B-B1
		09827	A-A1-B-B1-F-F1-N-V-Z1	34025	A1-B-B1-F-N-U-V-Z1	96278	A-A1-B-B1-U
				34030	A1-B-B1-M-N-V-Z1	96283	A-A1-B-B1-U
				34031	A1-B-B1-M-N-V-Z1	96284	A-A1-B-B1-U-V
				34032	A1-B-M-N-V-Z1	96297	A-A1-B-B1-U
				34033	A1-B-C-F-M-N-V-Z1	96303	A1-B-B1-M-N-V-W
				34034	A1-B-B1-M-N-V-Z1	96306	A1-B-B1-F-F1-F2-M-W
				34035	A1-B-B1-H-M-N-V-Z1	96309	A1-B-B1-M-V-W
				34036	A1-B-B1-M-N-U-V-Z1	96310	A1-B-B1-M-W
						96311	A1-B-B1-M-W
						96313	A1-B-B1-F-F1-F2-M-W
						96319	A1-B-B1-M-W
						96321	A1-B-B1-F-F1-F2-M-W
						96322	A1-B-B1-F-F1-F2-M-W
						96323	A1-B-B1-M-V-W

APO/ FPO/ DPO	See Restrictions	APO/ FPO/ DPO	See Restrictions	APO/ FPO/ DPO	See Restrictions	APO/ FPO/ DPO	See Restrictions
96326	A1-B-B1-M-W	96426	A-A1-B-B1-C1-E2-F-H1-M-R-V	96552	A1-B-B1	96622	A1-B-B1-F-F1-R-R1-V
96328	A1-B-B1-M-W			96553	A-A1-B-B1-F-F1-H-M-U	96624	A1-B-B1-F-F1-R-R1-V
96330	A1-B-B1-M-W	96427	A-A1-B-B1-C1-E2-F-H1-M-R-R1-V	96554	A-A1-B-B1-H-M-U	96628	A1-B-B1-F-F1-R-R1-V
96336	A1-B-B1-M-V-W			96555	A1-B-B1-F-M-V	96643	A1-B-B1-F-F1-R-R1-V
96337	A1-B-B1-M-W	96447	A1-B-B1-F-N-U3-V-V1	96557	A1-B-B1-F-M-V	96650	A1-B-B1-F-F1-R-R1-V
96338	A1-B-B1-M-W	96501	A-A1-B-B1-N-V	96562	A-A1-B-B1-B2-C-C1-D-E2-E3-F-F1-H-H1-I-M-N-R-R1-T-V-Z-Z1	96657	A1-B-B1-F-F1-R-R1-V
96339	A1-B-B1-M-V-W	96503	A1-B-B1-F-N-U3-V			96660	A1-B-B1-F-F1-R-R1-V
96343	A1-B-B1-M-W	96507	A-A1-B-B1-F-V	96595	A1-B-B1-V	96661	A1-B-B1-F-F1-R-R1-V
96346	A1-B-B1-F-F1-F2-M-V-W	96510	A1-B-B1-I-N-V	96598	A1-B-B1-N-V	96662	A1-B-B1-F-F1-R-R1-V
		96511	A1-B-B1-I-N-V	96599	A1-B-B1-V	96663	A1-B-B1-F-F1-R-R1-V
96347	A1-B-B1-F-F1-F2-M-W	96515	A1-B-B1-F	96601	A1-B-B1-V-V1	96664	A1-B-B1-V-V1
96348	A1-B-B1-F-F1-F2-M-W	96517	A1-B-B1-F-U3-V	96602	A1-B-B1-V	96665	A1-B-B1-V
96349	A1-B-B1-F-F1-F2-M-W	96518	A1-B-B1-V	96603	A1-B-B1-V	96666	A1-B-B1-V-V1
96350	A1-B-B1-F-F1-F2-M-W	96520	A1-B-B1-F-N-U3-V	96604	A1-B-B1-V	96667	A1-B-B1-F-F1-R-R1-V
96351	A1-B-B1-F-F1-F2-M-W	96521	A1-B-B1-F-N-U3	96605	A1-B-B1-V-V1	96668	A1-B-B1-F-F1-R-R1-V-V1
96362	A1-B-B1-F-F1-F2-M-W	96522	A1-B-B1-F-N-U	96606	A1-B-B1-V	96669	A1-B-B1-F-F1-R-R1-V
96365	A1-B-B1-M-V-W	96530	A-A1-B-B1-F-F1-H-H1-M-N-U-V	96607	A1-B-B1-V	96670	A1-B-B1-V-V1
96367	A1-B-B1-L-M-W			96608	A1-B-B1-V	96671	A1-B-B1-F-F1-R-R1-V
96368	A1-B-B1-M-W	96531	A-A1-B-B1-H-M-U-V	96609	A1-B-B1-V	96672	A1-B-B1-F-F1-R-R1-V
96370	A1-B-B1-F-F1-F2-M-W	96534	A-A1-B-B1-F	96610	A1-B-B1-V	96673	A1-B-B1-V-V1
96372	A1-B-B1-M-W	96535	A-A1-B-B1-F-V	96611	A1-B-B1-V	96674	A1-B-B1-F-F1-R-R1-V
96373	A1-B-B1-M-W	96537	A1-B-B1-V	96612	A1-B-B1-F-F1-R-R1-V	96675	A1-B-B1-F-F1-R-R1-V
96374	A1-B-B1-M-W	96538	A1-B-B1-V	96613	A-A1-B-B1-C1-E2-F-H1-I-M-R-R1-U2-V-Z-Z1	96677	A1-B-B1-F-F1-R-R1-V
96375	A1-B-B1-M-W	96540	A1-B-B1-V			96678	A1-B-B1-F-F1-R-R1-V
96376	A1-B-B1-M-W	96541	A1-B-B1-V	96614	A-A1-B-B1-C1-E2-F-H1-I-M-R-R1-U2-V-Z-Z1	96679	A1-B-B1-F-F1-R-R1-V
96377	A1-B-B1-M-W	96542	A1-B-B1-V			96681	A1-B-B1-V-V1
96378	A1-B-B1-M-W	96543	A1-B-B1-P-V	96615	A1-B-B1-F-F1-R-R1-V	96682	A1-B-B1-V-V1
96379	A1-B-B1-M-W	96544	A1-B-B1-F-N-U3-V	96616	A1-B-B1-F-F1-R-R1-V	96683	A1-B-B1-V-V1
96384	A1-B-B1-M-W	96546	A1-B-B1-F-U3	96617	A1-B-B1-F-F1-R-R1-V	96686	A1-B-B1-V-V1
96386	A1-B-B1-M-W	96548	A-A1-B-B1-H-M-U	96619	A1-B-B1-V	96687	A1-B-B1-V-V1
96387	A1-B-B1-M-W	96549	A-A1-B-B1-H-M-U	96620	A1-B-B1-F-F1-R-R1-V	96698	A1-B-B1-V-V1
96388	A1-B-B1-M-W	96550	A-A1-B-B1-H-M-U-V	96621	A1-B-B1-V		
96401	A1-B-B1-F-N-V-Z1	96551	A-A1-B-B1-H-M-U				

RESTRICTIONS

LEGEND

PS Form 2976, *Customs — CN 22 (Old C 1) and Sender's Declaration* (green label)

PS Form 2976-A, *Customs Declaration and Dispatch Note*

AAFES	= Army and Air Force Exchange Service
APO	= Army/Air Force Post Office
Box R	= Retired military personnel
DMM	= <i>Domestic Mail Manual</i>
DPO	= Diplomatic Post Office
FPO	= Fleet Post Office
MOM	= Military Ordinary Mail
MPO	= Military Post Office
PAL	= Parcel Airlift
PSC	= Postal Service Center
SAM	= Space Available Mail
USDA	= United States Department of Agriculture

Note: Mail order catalogs are prohibited as SAM or PAL mail.

A. Securities, currency, or precious metals in their raw, unmanufactured state are prohibited. Official shipments are exempt from this restriction.

A1. Mail addressed to "Any Servicemember," or similar wording such as "Any Soldier," "Sailor," "Airman," or "Marine"; "Military Mail"; etc., is prohibited. Mail must be addressed to an individual or job title such as "Commander," "Commanding Officer," etc.

B. PS Form 2976-A is required for all mail weighing 16 ounces or more, with exceptions noted below. In addition, mailers must properly complete required customs documentation when mailing any potentially dutiable mail addressed to an APO, FPO, or DPO regardless of weight. The following are exceptions to the requirement for customs documentation on nondutiable mail that weighs 16 ounces or more:

- Known mailers are exempt from providing customs documentation on non-dutiable letters, and printed matter weighing 16 ounces or more. (A known mailer is anyone who legally applies a permit imprint to a mailpiece. Mail with meter postage is not considered to be from a known mailer.)
- All federal, state, and local government agencies are exempt from providing customs documentation on mail addressed to an APO, FPO, or DPO except for those APOs/FPOs/DPOs to which restriction B2 applies.
- Prepaid mail from military contractors is exempt, providing the mailpiece is endorsed "Contents for Official Use — Exempt from Customs Requirements."

B1. PS Form 2976 or 2976-A is required. Articles are liable for customs duty and/or purchase tax unless they are bona fide gifts intended for use by military personnel or their dependents. When the contents of a parcel meet these requirements, the mailer must endorse the customs form, "Certified to be a bona fide gift, personal effects, or items for personal use of military personnel and dependents," under the heading, Description of Contents.

Exceptions: All other exceptions listed in restriction B above are applicable to this restriction.

B2. All federal, state, and local government agencies must complete customs documentation when sending mail addressed to or from this APO, FPO, or DPO weighing 16 ounces or more.

C. Cigarettes and other tobacco products are prohibited.

C1. Obscene articles, prints, paintings, cards, films, videotapes, etc., and horror comics and matrices are prohibited.

D. Coffee is prohibited.

E1. Medicines or vaccines not conforming to French laws are prohibited.

E2. Any matter depicting nude or seminude persons, pornographic or sexual items, or nonauthorized political materials is prohibited. Although religious materials contrary to the Islamic faith are prohibited in bulk quantities, items for the personal use of the addressee are permissible.

E3. Radio transceivers, cordless telephones, global positioning systems, scanners, base stations, and handheld transmitters are prohibited.

F. Firearms of any type are prohibited in all classes of mail. See definitions of firearms in DMM 601.11.1.2c. This restriction does not apply to firearms mailed to or by official U.S. government agencies. The restriction for mail to this APO/FPO/DPO ZIP Code does not apply to firearms mailed from this APO/FPO/DPO ZIP Code, provided ATF and USPS regulations are met. Antique firearms are a separate category defined in DMM 601.11.2 and ATF regulations; they do not require an ATF form.

F1. Privately owned weapons addressed to an individual are prohibited in any class of mail.

F2. Importation of firearms is restricted to one shotgun and one single shot.22 caliber rifle per individual.

G. Only letters, flats, and Periodicals are authorized. Parcels of any class are prohibited.

H. Meats, including preserved meats, whether hermetically sealed or not, are prohibited.

H1. Pork or pork by-products are prohibited.

I. Mail of all classes must fit in a mail sack. Mail may not exceed the following dimensions:

- Maximum length 20 inches.
- Maximum width 12 inches.
- Maximum height 12 inches.

The maximum length and girth combined may not exceed 68 inches.

This restriction does not apply to registered mail and official government mail marked MOM.

I1. This restriction does not apply to registered mail.

I2. This restriction does not apply to official government mail marked MOM.

J. Parcels may not exceed 108 inches in length and girth combined.

K. Mail that includes in the address the words, "Dependent Mail Section," may consist only of letter mail, newspapers, magazines, and books. No parcel of any class containing any other matter may be mailed to the Dependent Mail section. This restriction does not apply if the address does not include the words "Dependent Mail Section."

L. All official mail is prohibited.

M. Fruits, vegetables, animals, and living plants are prohibited.

N. Registered mail is prohibited.

O. Delivery status information for Extra Services is not available on USPS.com.

P. APO is used for the receipt and dispatch of official mail only.

Q. Mail may not exceed 66 pounds, and size is limited to 42 inches maximum length and 72 inches maximum length and girth combined.

R. All alcoholic beverages, including those mailable under DMM 601.8.0, are prohibited.

R1. Materials used in the production of alcoholic beverages (i.e., distilling material, hops, malts, yeast, etc.) are prohibited.

T. Mailings of case lots of food and supplemental household shipments must be approved by the sender's parent agency prior to mailing.

U. Parcels must weigh less than 16 ounces when addressed to Box R. This restriction does not apply to mail endorsed "Free Matter for the Blind or Handicapped."

U1. Mail is limited to First-Class Mail weighing 13 ounces or less when addressed to Box R. This restriction does not apply to mail endorsed "Free Matter for the Blind or Handicapped." Videotapes are prohibited when addressed to Box R, regardless of weight.

U2. Mail is limited to First-Class Mail letters only when addressed to Box R.

U3. Mail is limited to First-Class Mail correspondence (including voice and video cassettes), newspapers, magazines, photographs, not exceeding 16 ounces, when addressed to Box R.

V. Express Mail Military Service (EMMS) not available from any origin.

V1. Delivery Confirmation service is not available.

W. Meat products, such as dried beef, salami, and sausage, may be mailed, provided they remain in their original, hermetically sealed packages and bear USDA certification. Other meats, bones, skin, hair, feathers, horns or hoofs of hoofed animals, wool samples, tobacco leaves, including chewing and pipe tobacco, snuff, cigars, and cigarettes, or obscene material, including obscene drawings, photographs, films, and carvings, are prohibited. Exception: 200 grams of tobacco per parcel are permitted duty free.

X. Personal mail is limited to First-Class Mail items (to include audio cassettes and voice tapes) weighing 13 ounces or less. This limitation does not apply to official mail.

Y. Mail is limited to First-Class and Priority Mail items only. All Periodicals, Standard Mail items, and Package Services items (including SAM and PAL) are not authorized. This restriction also applies to official mail.

Z. No outside pieces (OSPs).

Z1. The following restriction is applicable only to International Service Centers (ISC)/Exchange Offices. An Anti-Pilferage Seal (Item No O817E or O818A) is required on all pouches and sacks.

— *International Network Operations,
Global Business, 5-21-09*

Thrift Savings Plan Fact Sheet

Returns were updated May 4, 2009.

ANNUAL RETURNS	G Fund	F Fund	LBA Bond Index	C Fund	S&P 500 Stock Index	S * Fund	Wilshire 4500 Stock Index	I * Fund	EAFE Stock Index
1994	7.22	-2.96	-2.92	1.33	1.32	—	-2.66	—	7.75
1995	7.03	18.31	18.47	37.41	37.58	—	33.48	—	11.27
1996	6.76	3.66	3.63	22.85	22.96	18.52	17.18	6.27	6.14
1997	6.77	9.60	9.65	33.17	33.36	26.61	25.69	1.46	1.55
1998	5.74	8.70	8.69	28.44	28.58	7.51	8.63	20.46	20.09
1999	5.99	-0.85	-0.82	20.95	21.04	32.70	35.49	26.81	26.72
2000	6.42	11.67	11.63	-9.14	-9.10	-8.76	-15.77	-14.11	-14.17
2001	5.39	8.61	8.44	-11.94	-11.89	-2.22*	-2.52*	-15.42*	-14.88*
2002	5.00	10.27	10.26	-22.05	-22.10	-18.14	-17.80	-15.98	-15.94
2003	4.11	4.11	4.10	28.54	28.69	42.92	43.84	37.94	38.59
2004	4.30	4.30	4.34	10.82	10.88	18.03	18.10	20.00	20.25
2005	4.49	2.40	2.43	4.96	4.91	10.45	10.03	13.63	13.54
2006	4.93	4.40	4.33	15.79	15.79	15.30	15.28	26.32	26.34
2007	4.87	7.09	6.97	5.54	5.49	5.49	5.39	11.43	11.17
2008	3.75	5.45	5.24	-36.99	-37.00	-38.32	-39.03	-42.43	-43.38

*Rates of return for May (inception of S and I Funds) through December 2001.

MONTHLY RETURNS	G Fund	F Fund	LBA Bond Index	C Fund	S&P 500 Stock Index	S * Fund	Wilshire 4500 Stock Index	I * Fund	EAFE Stock Index
2008									
May	0.32	-0.74	-0.73	1.27	1.30	4.88	4.76	1.09	0.97
June	0.32	-0.08	-0.08	-8.41	-8.43	-7.63	-7.50	-8.15	-8.18
July	0.40	-0.01	-0.08	-0.80	-0.84	-0.79	-0.94	-3.72	-3.21
Aug	0.33	0.92	0.95	1.46	1.45	2.17	1.95	-4.16	-4.05
Sept	0.31	-1.31	-1.34	-8.94	-8.91	-10.32	-10.87	-12.31	-14.46
Oct	0.31	-2.40	-2.36	-16.83	-16.79	-20.99	-20.63	-20.59	-20.18
Nov	0.31	3.30	3.25	-7.18	-7.18	-11.13	-11.39	-6.72	-5.41
Dec	0.24	3.73	3.73	1.07	1.06	4.68	4.53	7.66	6.01
2009									
Jan	0.19	-0.86	-0.88	-8.41	-8.43	-8.19	-7.47	-11.93	-9.81
Feb	0.21	-0.39	-0.38	-10.64	-10.65	-10.22	-9.78	-10.23	-10.26
March	0.24	1.38	1.39	8.81	8.76	8.64	8.62	7.20	6.34
April	0.21	0.49	0.48	9.58	9.57	15.00	15.03	12.13	12.80
LAST 12 MONTHS	3.45	3.93	3.84	-35.26	-35.31	-33.35	-33.12	-43.06	-42.76

Fund	Invested In	Index Tracked
G — Government Securities Investment Fund	Special issues of U.S. Treasury securities	N/A
F — Fixed Income Index Investment Fund	Barclays U.S. Debt Index Fund	Lehman Brothers U.S. Aggregate bond index
C — Common Stock Index Investment Fund	Barclays Equity Index Fund	S&P 500 stock index
S — Small Capitalization Stock Index Investment Fund	Barclays Extended Market Index Fund Barclays EAFE Index Fund	Wilshire 4500 stock index Europe, Australasia, and Far East stock index
I — International Stock Index Investment Fund		

Future performance of the funds will vary and may be significantly different from the returns shown above. See the *Summary of the Thrift Savings Plan* for detailed information about the funds and their investment risks. The monthly returns of the TSP Funds represent net earnings for the month after deduction of accrued administrative expenses and, except for the G Fund, after deduction of trading costs and accrued investment management

fees as well. The returns for the four indexes shown do not include any of these deductions.

* Implemented May 2001.

See next page for new L Funds.

Returns were updated May 4, 2009.

L Funds

Annual Returns	L 2040	L 2030	L 2020	L 2010	L Income
2006	16.53	15.00	13.72	11.09	7.59
2007	7.36	7.14	6.87	6.40	5.56
2008	-33.53	-27.50	-22.77	-10.53	-5.09
Monthly Returns	L 2040	L 2030	L 2020	L 2010	L Income
2008					
May	1.65	1.48	1.23	0.78	0.59
June	-6.70	-5.88	-4.97	-2.65	-1.47
July	-1.31	-1.07	-0.82	-0.23	0.00
Aug	0.11	0.17	0.16	0.29	0.35
Sept	-8.35	-7.24	-6.01	-3.00	-1.75
Oct	-15.40	-13.40	-11.10	-5.41	-3.44
Nov	-5.85	-4.96	-3.91	-1.58	-0.84
Dec	3.63	3.24	2.82	1.66	1.21
2009					
Jan	-7.67	-6.69	-5.58	-2.61	-1.74
Feb	-8.52	-7.47	-6.22	-2.95	-1.98
Mar	7.08	6.30	5.35	2.82	2.06
Apr	9.38	8.20	6.79	3.20	2.37
LAST 12 MONTHS	-29.88	-25.91	-21.42	-9.62	-4.71

The L Funds are invested in the five individual TSP funds.

Displaying the U.S. Flag and the POW-MIA Flag

U.S. Flag at Half-Staff

How to Display

Displaying the U.S. flag at *half-staff* means lowering the flag to half the distance between the top and bottom of the staff.

Specific Dates

Display the U.S. flag at half-staff on the following days each year:

- May 15: Peace Officers Memorial Day (see note 1 below).
- Last Monday in May: Memorial Day Observed (see note 2 below).
- December 7: National Pearl Harbor Remembrance Day.

Note 1: When May 15, which is the date for Peace Officers Memorial Day, falls on the third Saturday in May, which is the date for Armed Forces Day, display the U.S. flag in the full-staff position, *not* at half-staff.

Note 2: On the last Monday in May, when Memorial Day is observed, display the flag at half-staff from sunrise, or the hour at which you raise it, until noon, and then hoist it to the peak of the staff, until the time of closing or no later than sunset.



POW-MIA Flag

How to Display

In relation to the U.S. flag, display the POW-MIA flag (and any other flag) as follows:

- If displayed on the same flagstaff, place it below the U.S. flag.
- If displayed on a separate flagstaff, place it at the same level or lower. If displayed at the same level, place it on the U.S. flag's left.

When flying the U.S. flag at half-staff, fly the POW-MIA flag (and any other flags) at half-staff also.



Specific Dates

Display the POW-MIA flag on the following days each year:

- Armed Forces Day: Third Saturday in May.
- Memorial Day: Last Monday in May.
- Flag Day: June 14.
- Independence Day: July 4.
- National POW-MIA Recognition Day: Third Friday in September.
- Veterans Day: November 11.

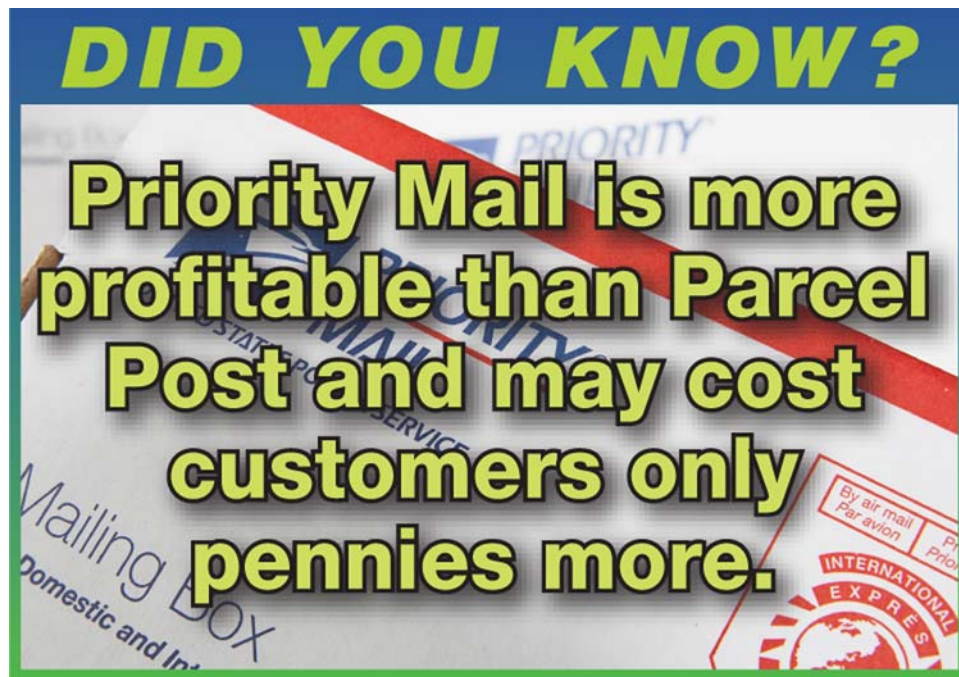
If any of these days fall on a nonbusiness day, display the POW-MIA flag on the last business day before the designated day.

For more detailed information about flying the U.S. flag and the POW-MIA flag, see the following parts in the *Administrative Support Manual (ASM)*:

- ASM 472, U.S. Flag Display.
- ASM 476, POW-MIA Flag Display.

DID YOU KNOW?

Priority Mail is more profitable than Parcel Post and may cost customers only pennies more.



May 2009

Have You Seen Any of These Missing Children?

Please participate in the NALC/USPS Child Alert Program. Tear out this page and carry it with you. If you have information on any of these missing persons, tell your Postal Service™ supervisor.



Name: Jaden Bailey
Born: 1-23-99
Date Missing: 3-29-09
Missing From: Marathon, FL



Name: Brittane Drexel
Born: 10-7-91
Date Missing: 4-25-09
Missing From: Myrtle Beach, SC



Name: Shanna Fry
Born: 11-3-94
Date Missing: 4-27-09
Missing From: Tampa, FL



Name: Beth Knickerbocker
Born: 7-17-94
Date Missing: 4-25-09
Missing From: Pinellas Park, FL



Name: Linda Lopez-Mejia
Born: 9-24-03
Date Missing: 3-27-09
Missing From: Indiantown, FL

**Please call the National Center for Missing and Exploited Children
Hot Line 1-800-843-5678
TDD 1-800-826-7653**

Missing Children Poster Display Instructions

Post Offices, classified stations, branches, and contract postal units may display this poster at their option. If the poster is displayed, it should be placed on the community bulletin board located in the Post Office™ box lobby and not in the main retail (full service) lobby. Alternatively, Missing Children posters can be maintained in a binder behind the counter to be used as a reference guide. The posters also may be posted in a prominent location where letter carriers will be able to see them before or after they go out on their routes. Making this information available to letter carriers is consistent with the NALC/USPS Child Alert Program to facilitate identification of missing children.

Companion posters, authorized for display on bulletin boards maintained by employee organizations, appear periodically in *The Postal Record*, a publication for members of the National Association of Letter Carriers.

This poster is published in cooperation with the National Center for Missing and Exploited Children, the United States Department of Justice, and the National Association of Letter Carriers. Information appearing on this poster is selected solely by the National Center for Missing and Exploited Children (NCMEC).

In addition to *Postal Bulletin* updates, NCMEC distributes information periodically. Notification of newly reported missing children is sent to designated district “Missing Children” coordinators via e-mail addresses provided by district managers. Within 24 hours of receipt of an e-mailed Missing Children poster, district coordinators should distribute copies to all Postal Service™ facilities in their districts. Missing Children posters are to be displayed as noted above for 30 days unless notification is received (from NCMEC) to remove a particular poster sooner. The e-mail network is used to distribute posters and information in only the most urgent cases of missing children. This system supplements, but does not replace, the missing children information in this *Postal Bulletin*.

Missing Children posters are available to the U.S. Postal Service® only as described above. If Postal Service employees are contacted by individuals or local agencies about displaying a sign or poster of a missing child in local Post Offices, the individual or agency should be politely informed that the U.S. Postal Service displays only those posters provided by NCMEC, because it has been designated by the U.S. Department of Justice to be the national clearinghouse and resource center for missing and exploited children. The individual or agency should then be referred to NCMEC at 800-843-5678.

If you have any information, or for free prevention tips, please call 800-THE-LOST (800-843-5678).

May 2009

Have You Seen Any of These Missing Children?

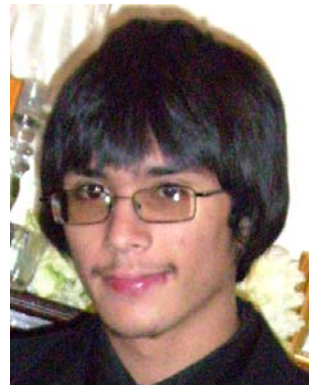
Please participate in the NALC/USPS Child Alert Program. Tear out this page and carry it with you. If you have information on any of these missing persons, tell your Postal Service™ supervisor.



Name: Ashley Martinez-Mejia
Born: 2-23-99
Date Missing: 3-27-09
Missing From: Indiantown, FL



Name: Camilo Miller
Born: 1-6-95
Date Missing: 4-30-09
Missing From: Chicago, IL



Name: Ryan Ramirez
Born: 7-3-92
Date Missing: 4-4-09
Missing From: Corpus Christi, TX



Name: Aaliyah Shedd
Born: 8-1-94
Date Missing: 4-29-09
Missing From: Saint Cloud, FL



Name: Kari Vanderburg
Born: 8-23-92
Date Missing: 5-1-09
Missing From: Lake Forest
Park, WA

**Please call the National Center for Missing and Exploited Children
Hot Line 1-800-843-5678
TDD 1-800-826-7653**

Missing Children Poster Display Instructions

Post Offices, classified stations, branches, and contract postal units may display this poster at their option. If the poster is displayed, it should be placed on the community bulletin board located in the Post Office™ box lobby and not in the main retail (full service) lobby. Alternatively, Missing Children posters can be maintained in a binder behind the counter to be used as a reference guide. The posters also may be posted in a prominent location where letter carriers will be able to see them before or after they go out on their routes. Making this information available to letter carriers is consistent with the NALC/USPS Child Alert Program to facilitate identification of missing children.

Companion posters, authorized for display on bulletin boards maintained by employee organizations, appear periodically in *The Postal Record*, a publication for members of the National Association of Letter Carriers.

This poster is published in cooperation with the National Center for Missing and Exploited Children, the United States Department of Justice, and the National Association of Letter Carriers. Information appearing on this poster is selected solely by the National Center for Missing and Exploited Children (NCMEC).

In addition to *Postal Bulletin* updates, NCMEC distributes information periodically. Notification of newly reported missing children is sent to designated district "Missing Children" coordinators via e-mail addresses provided by district managers. Within 24 hours of receipt of an e-mailed Missing Children poster, district coordinators should distribute copies to all Postal Service™ facilities in their districts. Missing Children posters are to be displayed as noted above for 30 days unless notification is received (from NCMEC) to remove a particular poster sooner. The e-mail network is used to distribute posters and information in only the most urgent cases of missing children. This system supplements, but does not replace, the missing children information in this *Postal Bulletin*.

Missing Children posters are available to the U.S. Postal Service® only as described above. If Postal Service employees are contacted by individuals or local agencies about displaying a sign or poster of a missing child in local Post Offices, the individual or agency should be politely informed that the U.S. Postal Service displays only those posters provided by NCMEC, because it has been designated by the U.S. Department of Justice to be the national clearinghouse and resource center for missing and exploited children. The individual or agency should then be referred to NCMEC at 800-843-5678.

If you have any information, or for free prevention tips, please call 800-THE-LOST (800-843-5678).

Update: Seabiscuit Stamped Envelope

In the article “Stamp Announcement 09-24: *Seabiscuit* Stamped Envelope” in *Postal Bulletin* 22256 (4-9-09, pages 29–35), the technical details showing the *Seabiscuit* Stamped Envelope #10 Regular (Item No. 218500) and #10 Window (Item No. 218600), originally printed by Ashton Potter (USA) Ltd. (APU), will also be printed by National Envelope using flexography. The envelopes will be issued June 1, 2009, in Kansas City, Missouri.

Issue:	<i>Seabiscuit</i>
Item Number:	218500
Denomination & Type of Issue:	44-cent Stamped Envelope
Format:	#10 Regular Envelope
Series:	N/A
Issue Date & City:	June 1, 2009, Kansas City, MO 64108 (No Ceremony)
Engraver:	N/A
Art Director:	Phil Jordan, Falls Church, VA
Designer:	John Mattos, San Francisco, CA
Typographer:	John Mattos, San Francisco, CA
Artist:	John Mattos, San Francisco, CA
Modeler:	Joseph Sheeran
Manufacturing Process:	Flexographic
Printer:	National Envelope
Printed at:	Exton, PA
Press Type:	Cerutti, WND #527
Stamps per Pane/Sheet:	N/A
Print Quantity:	28,000,000 Envelopes
Paper Type:	61# Postal Envelope, Class 1, Block, Type III
Adhesive Type:	Water-activated
Processed at:	Ashton Potter, Williamsville, NY
Colors:	Black, Cyan, Magenta, Special Yellow, PMS 339 (Green)
Envelope Orientation:	Horizontal
Envelope Size (w x h):	9.5 x 4.125 in./241.30 x 104.78 mm
Image Size (w x h):	1.875 x 1.125 in./47.63 x 28.58 mm
Marginal Markings:	© USPS 2009 • Sustainable forestry initiative logo • “THIS ENVELOPE IS RECYCLABLE AND MADE WITH 30% POST- CONSUMER CONTENT” • Recycling logo (in new position)

Issue:	<i>Seabiscuit</i>
Item Number:	218600
Denomination & Type of Issue:	44-cent Stamped Envelope
Format:	#10 Window Envelope
Series:	N/A
Issue Date & City:	June 1, 2009, Kansas City, MO 64108 (No Ceremony)
Engraver:	N/A
Art Director:	Phil Jordan, Falls Church, VA
Designer:	John Mattos, San Francisco, CA
Typographer:	John Mattos, San Francisco, CA
Artist:	John Mattos, San Francisco, CA
Modeler:	Joseph Sheeran
Manufacturing Process:	Flexographic
Printer:	National Envelope
Printed at:	Exton, PA
Press Type:	Cerutti, WND #527
Stamps per Pane/Sheet:	N/A
Print Quantity:	12,000,000 Envelopes
Paper Type:	61# Postal Envelope, Class, Block, Type III
Adhesive Type:	Water-activated
Processed at:	Ashton Potter, Williamsville, NY
Colors:	Black, Cyan, Magenta, Special Yellow, PMS 339 (Green)
Envelope Orientation:	Horizontal
Envelope Size (w x h):	9.5 x 4.125 in./241.30 x 104.78 mm
Image Size (w x h):	1.875 x 1.125 in./47.63 x 28.58 mm
Marginal Markings:	© USPS 2009 • Sustainable forestry initiative logo • “THIS ENVELOPE IS RECYCLABLE AND MADE WITH 30% POST- CONSUMER CONTENT” • Recycling logo (in new position)

Post Offices™ and customers are advised that the window size and location on all new stamped envelopes, 44-cent *Seabiscuit* envelopes, and non-denominated Forever Stamp™ (Liberty Bell) envelopes issued May 11, 2009, have been adjusted slightly. This was done to be in compliance with new mailing guidelines that have been proposed and will be recommended for mailings in the future. The purpose is to move the window aperture away from envelope edges and specify a maximum size for the apertures, which will improve mail processing efficiency and quality.

The windows and apertures are all the same height as before, namely 1-1/8 inch. They are slightly shorter in the long dimension, reduced from the old size of 4-3/4 inches to 4-1/2 inches (No. 10 and 9 sizes) or 4-3/8 inches (No. 6-3/4 size). The windows have been moved up slightly from the bottom edge, from a distance of 5/8 inch to a new distance of 13/16 inch (moving upward 3/16 inch). And, they have been moved over 1/16 inch from the left edge to a distance of 1-1/16 inch as opposed to the old 1 inch.

Post Offices and customers are advised further that a limited number of *Seabiscuit* envelopes with water-activated gum (WAG) adhesive were produced using the remaining stock of envelopes to meet initial volume demands, minimize waste, and best utilize resources. These three types of envelopes are:

- Item 264900, *Seabiscuit* WAG size 6-3/4 with old window location.
- Item 218600, *Seabiscuit* WAG size 10 with old window location.
- Item 218700 *Seabiscuit* WAG size 9 without window but with old security tint inside the envelope. The security tint image and ink were both updated for new envelopes to further enhance the security properties.

These varieties were produced in very limited volumes and shipped in support of the May 11, 2009, new pricing implementation to help meet initial demand. A limited quantity of all three varieties was supplied to Stamp Fulfillment Services (SFS) for philatelic requests. A set of envelopes will be available in mint condition with the

May 11, 2009, or June 1, 2009, Kansas City, Missouri, first day cancellation as follows:

- 218563*, *Seabiscuit* (National Envelope) First Day Cover Set, \$1.28.
(218500 — *Seabiscuit* WAG Reg. #10, \$0.64)
- 218598*, *Seabiscuit* (National Envelope) Bundle of 2, \$1.08.
(218500 — *Seabiscuit* WAG Reg. #10, \$0.54)
- 218663*, *Seabiscuit* (Old), First Day Cover Set, \$1.92.
(264900 — *Seabiscuit* WAG Window #6 3/4, \$0.64)
(218700 — *Seabiscuit* WAG Reg. #9, \$0.60)
(218600 — *Seabiscuit* WAG Window #10, \$0.64)
- 218698*, *Seabiscuit* (Old) Bundle of 3, \$1.62.
(264900 — *Seabiscuit* WAG Window #6 3/4, \$0.54)
(218700 — *Seabiscuit* WAG Reg. #9, \$0.54)
(218600 — *Seabiscuit* WAG Window #10, \$0.54)

Items with an asterisk (*) will use the 128 barcode from SFS. All other philatelic products will continue to use barcode series A, with the exception of the Yearbook and the Guide Book.

— Stamp Services,
Government Relations and Public Policy, 5-21-09

Stamp Stock Items Withdrawn From Regular Sale and From Sale at Philatelic Centers

Effective close-of-business June 30, 2009, all Post Offices™, stations, branches, postal stores, vending outlets, and authorized philatelic centers must (1) withdraw the stamp stock items and products listed here and their related vending and store-prepared stamp items from sale and (2) prepare them for destruction. Submit items to destruction sites according to local established procedures under the guidelines in Handbook F-101, *Field Accounting Procedures*, subchapter 11-6, Returning Stock to the SDO or SSC.

Do not permit sales of the stamp stock items, products, and their related vending and store-prepared stamp items listed below at retail counters and outlets after June 30, 2009. Stamp items with an asterisk (*) remain on sale at Stamp Fulfillment Services via the *USA Philatelic* catalog.

Note: This notice does not apply to philatelic products unless specifically listed below. Philatelic products that contain or are packaged with stamps removed from sale will remain on sale until further notice.

Item Number	Description
101800	20-cent Virginia Apgar Gum Pane of 100
102400	63-cent Dr. Jonas Salk Pane of 20
107500	75-cent Wendell Willkie Pane of 100
107515	75-cent Wendell Willkie Pane of 100 Shrinkwrapped
108800	42-cent Purple Heart Pane of 100

Item Number	Description
110100	42-cent Purple Heart PSA Pane of 20
112700	\$16.50 Hoover Dam Express Mail Pane of 20
112800	\$4.80 Mount Rushmore Priority Mail Pane of 20
222300*	30-cent Mount Saint Mary's University Stamped Card
222361	39-cent Mount Saint Mary's University First Day Cover
222391*	\$6.95 Mount Saint Mary's University Ceremony Program
222400	30-cent Corinthian Capital Stamped Card
222461	40-cent Corinthian Capital Stamped Card CNC
222500*	60-cent Corinthian Capital Double Card
222561	70-cent Corinthian Capital Reply CNC
222600	\$12.00 Corinthian Capital Sheet Card
222700	\$1.50 Corinthian Capital Banded Cards
462100	42-cent Take Me Out to the Ball Game Pane of 20
462500	42-cent Minnesota Statehood Pane of 20
462600*	42-cent Bette Davis Legends of Hollywood Pane of 20
462700*	\$4.20 Great Lakes Dune Nature of America
462800	42-cent Charles W. Chesnutt Pane of 20
462900	42-cent Olympic Games Pane of 20
463000	42-cent Charles & Ray Eames
463100*	42-cent Vintage Black Cinema Pane of 20
463200	42-cent Frank Sinatra Pane of 20
463400*	42-cent Alzheimer's Pane of 20
463500*	42-cent Latin Jazz Pane of 20
463600*	42-cent America on the Move: Tail Fins & Chrome Pane of 20

Item Number	Description
462161	80-cent Take Me Out to the Ball Game First Day Cover
462165	\$1.50 Take Me Out to the Ball Game DCP
462199	\$9.90 Take Me Out to the Ball Game Cancellation Keepsake
462561	80-cent Minnesota Statehood First Day Cover
462591	\$6.95 Minnesota Statehood Ceremony Program
462593	\$9.20 Minnesota Statehood Keepsake
463062	\$9.22 Ray & Charles Eames First Day Cover Full Pane
463064	\$9.22 Ray & Charles Eames Cancelled Full Pane
463091	\$6.95 Ray & Charles Eames Ceremony Program
463093	\$15.95 Ray & Charles Eames Souvenir Sheet
463261	80-cent Frank Sinatra First Day Cover (NY)
463265	\$1.50 Frank Sinatra DCP First Day Cover (NY)
463269	80-cent Frank Sinatra First Day Cover (Las Vegas)
463279	\$1.50 Frank Sinatra DCP First Day Cover (Las Vegas)
463284	\$50.40 Frank Sinatra Uncut Press Sheet
463291	\$6.95 Frank Sinatra Ceremony Program
463299	\$11.40 Frank Sinatra DCP Keepsake
556500	\$1.00 Official Mail Gum Pane of 20
561300*	60-cent Arcadia National Park Pane of 20
561400	70-cent Nine-Mile Prairie International Pane of 20
561500*	80-cent Mount McKinley International Pane of 20
566700	37-cent The Art of Disney Pane of 20
566715	37-cent The Art of Disney Pane of 20 Shrinkwrapped
567200	37-cent The Art of Disney Celebration Pane of 20 Shrinkwrapped
567215	\$7.40 The Art of Disney Celebration Pane of 20 Shrinkwrapped
568000	39-cent Art of Disney Romance Pane of 20
568015	\$7.80 The Art Disney Romance Pane of 20 Shrinkwrapped
568400*	84-cent Yosemite National Park Pane of 20
568500*	63-cent Bryce Canyon Pane of 20
569700	41-cent Disney Magic Pane of 20
570200	69-cent Okefenokee Swamp Pane of 20
570300	90-cent Hagåtña Bay Guam Pane of 20
571400*	42-cent The Art of Disney Imagination Pane of 20

Item Number	Description
571500	42-cent Holiday Nutcracker ATM Pane of 20
571600*	59-cent Hearts PSA Pane of 20
571800*	94-cent St. John U.S. Virgin Islands Pane of 20
571900*	72-cent 13 Miles Wood Pane of 20
572000*	42-cent Celebrate Pane of 20
573000*	42-cent EID
670800	\$7.40 Flag PSA Double-sided Booklet
677600*	\$8.40 Hearts Booklet
677800*	\$8.40 Love All Heart Booklet
677900*	\$8.40 Madonna Booklet
678000*	\$8.40 Nutcracker Booklet
678100	\$8.40 Nutcrackers Vending Booklet
678111	\$8.40 Nutcrackers Vending CC Booklet
678300*	\$8.40 Sunflower Booklet
678400*	\$8.40 Albert Bierstadt Booklet
780600	\$1,110.00 37-cent Flag Gum Coil of 3K
781300	\$300.00 3-cent Star Gum Coil of 3K
783800	\$3,900.00 39-cent Lady Liberty PSA Coil of 10K
784000	\$3,900 39-cent Lady Liberty Gum Coil of 10K
784900*	\$1,230 41-cent American Flag PSA Coil of 3K
785800	\$4,100.00 41-cent American Flag PSA Coil of 10K
785900*	\$42.00 42-cent Flags 24/7 Coil of 100
785901	\$42.00 42-cent Flags 24/7 Vending PSA Coil of 100
786300*	\$27.00 27-cent Tropical Fruit Coil of 100
796200	\$30.00 1-cent Krestrel Gum Coil of 3K
798100	\$1,000 10-cent Green Bicycle Gum Coil of 10M
890700 & 01	\$19.95 34th Guide to U.S. Stamps
991300 & 01	\$19.95 Four Centuries of Art Prints
Listed stamp items were taken off-sale at regular sales units during 2008. Effective 6/30/09, they are off-sale at SFS.	
112761	60-cent Hoover Dam First Day Cover
112793	\$346.88 Hoover Dam Keepsake
112861	\$5.18 Mount Rushmore First Day Cover
112893	\$101.18 Mount Rushmore Keepsake
212061	\$5.18 Prepaid Flat Rate Envelope First Day Cover
462891	\$6.95 Charles W. Chestnutt Ceremony Program
462893	\$8.99 Charles W. Chestnutt First Day Cover
462961	80-cent Olympic Games First Day Cover
462993	\$9.20 Olympic Games Keepsake

— Stamp Services,
Government Relations and Public Policy, 5-21-09

DID YOU KNOW?

A photograph of a postal sorting facility, showing conveyor belts and sorting equipment. The image is overlaid with a blue grid pattern. The text is centered over the image.

**The Postal Service
processes more than
28 million mailpieces
each hour.**

Announcement 09-F: 2009 Stamps and Postal Stationery

“2009 Stamps and Postal Stationery” (Announcement 09-F, May 2009), which appears on pages [49–51](#), replaces the quarterly announcement of the same name, previously printed and sent to customers on request through Stamp Fulfillment Services in Kansas City. The announcement is a listing of stamps and postal stationery items scheduled for issuance during calendar year 2009. Postmasters may wish to post this schedule on their Post Office™ bulletin boards.

Customers may also access the *Postal Bulletin* through the Postal Service™ website at www.usps.com; click on *About USPS & News*, then *Forms & Publications*, then *Postal Bulletin*.

This announcement will be updated every 2 to 3 months, as changes warrant.

How to Order First Day of Issue Postmarks and Covers

Customers may purchase new stamps or postal stationery items at their Post Office, from the *USA Philatelic* catalog, by calling 800-STAMP-24, or online at www.usps.com by clicking *Buy Stamps & Shop*. Then they should prepare their own covers by affixing new stamps to the upper-right corner of envelopes or postcards of their

choice, and address those envelopes, postcards, or postal stationery items to themselves or others. (Postage must equal the current First-Class Mail® rate.) For sturdiness, include a card of postcard thickness in each cover (envelopes only) submitted, and tuck in the flap. Place the cover in a larger envelope addressed to:

Name of Issue
 Postmaster
 City, State ZIP Code (followed by -9998)

Covers submitted for first day of issue postmarks may include additional uncanceled stamps only if the uncanceled stamps were issued before the first day of issue of the new stamps or postal stationery items. All orders must be postmarked on or before the deadline indicated in the “2009 Stamps and Postal Stationery” announcement on pages [49–51](#).

Information Fulfillment
 Dept. 6270
 U.S. Postal Service
 PO Box 219014
 Kansas City, MO 64121-9014

— Stamp Services,
 Government Relations and Public Policy, 5-21-09

2009 Stamps and Postal Stationery

This schedule is subject to change.

Updated Announcement 09-F (May 2009)

This is a periodic announcement of new stamps and postal stationery items being issued during the calendar year. For additional information on stamps and stamp products, visit The Postal Store® website at www.usps.com/shop.

	Issue	Nationwide First Day of Issue	First Day City/State	Format	Deadline
P DC	42¢ Alaska Statehood	Jan 3	Anchorage, AK 99501	PSA pane of 20 (C)	Mar 3
DC	42¢ Lunar New Year: Year of the Ox	Jan 8	New York, NY 10199	PSA souvenir sheet of 12 (C)	Mar 8
P DC	42¢ Oregon Statehood	Jan 14	Portland, OR 97208	PSA pane of 20 (C)	Mar 14
DC	42¢ Edgar Allan Poe	Jan 16	Richmond, VA 23232	PSA pane of 20 (C)	Mar 16
	\$4.95 Redwoods Forest (Priority Mail)	Jan 16	San Diego, CA 92199 (SANDICAL Stamp Show)	PSA pane of 20 (M)	Mar 16
	\$17.50 Old Faithful (Express Mail)	Jan 16	San Diego, CA 92199 (SANDICAL Stamp Show)	PSA pane of 20 (M)	Mar 16
	\$4.95 Redwoods Forest (Priority Mail Envelope)	Jan 16	Kansas City, MO 64108	Pre-stamped Priority Mail envelope	Mar 16
P DC	42¢ Abraham Lincoln	Feb 9	Springfield, IL 62703	PSA pane of 20 (C) (4 designs)	Apr 9
	27¢ Miami University	Feb 17	Oxford, OH 45056	Stamped card	Apr 17
	42¢ Civil Rights Pioneers	Feb 21	New York, NY 10199	PSA souvenir sheet of 6 (C) (6 designs)	Apr 21
1	1¢ Official Mail	Feb 24	Washington, DC 20066	PSA pane of 20 (M)	Apr 24
1	10¢ Patriotic Banner (Standard Presort)	Feb 24	Washington, DC 20066	Gummed coil of 500 (M)	Apr 24
	42¢ Forever	Feb 24	Washington, DC 20066	PSA ATM sheetlet of 18 (M)	Apr 25

	Issue	Nationwide First Day of Issue	First Day City/State	Format	Deadline
P	61¢ Richard Wright (Literary Arts) 2 oz.	Apr 9	Chicago, IL 60607	PSA pane of 20 (M)	Jun 8
	28¢ Polar Bear	Apr 16	New York, NY 10199 (Mega Stamp Show)	PSA pane of 20 PSA coil of 100 (M)	Jun 15
	28¢ Koi	Apr 17	New York, NY 10199 (Mega Stamp Show)	Stamped card single Stamped card double Stamped card sheet	Jun 16
	44¢ Purple Heart	Apr 28	Washington, DC 20066	PSA pane of 20 (M)	Jun 27
1	1¢ Tiffany Lamp	Apr 28	Washington, DC 20066	Gummed coil of 10,000 (M)	Jun 27
	44¢ U.S. Flag	May 1	Washington, DC 20066	PSA coil of 3,000 PSA coil of 10,000 Gummed coil of 3,000 (M)	Jun 30
DC	44¢ Wedding: Rings	May 1	Washington, DC 20066	PSA pane of 20 (M)	Jun 30
DC	61¢ Wedding: Cake 2 oz.	May 1	Washington, DC 20066	PSA pane of 20 (M)	Jun 30
P DC	44¢ The Simpsons	May 7	Los Angeles, CA 90052	PSA booklet of 20 (M) (5 designs)	Jul 6
	44¢ U.S. Flag	May 8	Washington, DC 20066	PSA coil of 100 (M)	Jul 7
DC	44¢ Love: The King and Queen of Hearts	May 8	Washington, DC 20066	PSA booklet of 20 (M) (2 designs)	Jul 7
	44¢ Seabiscuit	May 11	Kansas City, MO 64108	Stamped envelope #10 Stamped envelope #10W Stamped envelope #9 Stamped envelope #9W Stamped envelope #6 3/4 Stamped envelope #6 3/4 W	Jul 10
	44¢ PSE Seabiscuit	May 11	Kansas City, MO 64108	PSA #10 PSA envelope #10W PSA envelope #9 PSA envelope #9W PSA envelope #6 3/4 PSA envelope #6 3/4 W	Jul 10
	44¢ PSE Forever	May 11	Kansas City, MO 64108	Stamped envelope #10 Stamped envelope #10W Stamped envelope #9 Stamped envelope #9W Stamped envelope #6 3/4 Stamped envelope #6 3/4 W	Jul 10
	44¢ PSE Forever	May 11	Kansas City, MO 64108	PSA #10 PSA envelope #10W PSA envelope #9 PSA envelope #9W PSA envelope #6 3/4 PSA envelope #6 3/4 W	
N	44¢ Forever	May 15	Washington, DC 20066	PSA booklet of 20 (M)	Jul 14
	78¢ Mary Lasker 3 oz.	May 15	Washington, DC 20066	PSA pane of 20 (M)	Jul 14
P DC N	44¢ Bob Hope	May 29	San Diego, CA 92199	PSA pane of 20 (C)	Jul 28
N	44¢ Seabiscuit	Jun 1	Kansas City, MO 64108	Stamped envelope #10 Stamped envelope #10W	Jul 31
	44¢ U.S. Flag	Jun 5	McLean, VA 22101 (NAPEX Stamp Show)	PSA book of 10 (M)	Aug 4
	44¢ Celebrate!	Jun 10	Washington, DC 20066	PSA pane of 20 (M)	Aug 9
P	44¢ Anna Julia Cooper (Black Heritage)	Jun 11	Washington, DC 20066	PSA pane of 20 (C)	Aug 27
	64¢ Dolphin	Jun 12	Washington, DC 20066	PSA pane of 20 (M)	Aug 11
	98¢ Grand Teton National Park, WY (International Rate)	Jun 28	Washington, DC 20066	PSA pane of 20 (M)	Aug 27
	79¢ Zion National Park, UT (International Rate, Mexico)	Jun 28	Washington, DC 20066	PSA pane of 20 (M)	
DC	44¢ Gulf Coast Lighthouses	Jul 23	Biloxi, MS 39530	PSA pane of 20 (C) (5 designs)	Sep 21

	Issue	Nationwide First Day of Issue	First Day City/State	Format	Deadline
P DC	44¢ Flags of our Nation: Set 3	Aug 6	Pittsburgh, PA 15290 (APS Stamp Show)	PSA coil of 50 (M) (10 designs)	Oct 5
N	44¢ Forever	Aug 7	Pittsburgh, PA 15290 (APS Stamp Show)	PSA booklet of 20 (M)	Oct 6
P DC	44¢ Early TV Memories	Aug 11	North Hollywood, CA 91605	PSA pane of 20 (C) (20 designs)	Oct 10
P DC	44¢ Hawaii Statehood	Aug 21	Honolulu, HI 96820	PSA pane of 20 (C)	Oct 20
	44¢ Eid	Sep 3	Washington, DC 20066	PSA pane of 20 (M)	Sep 3
DC	44¢ Thanksgiving Day Parade	Sep 9	New York, NY 10199	PSA pane of 20 (C) (4 designs)	Nov 8
P DC	44¢ Gary Cooper	Sep 10	Los Angeles, CA 90052	PSA pane of 20 (C)	Nov 9
C	44¢ Supreme Court Justices	Sep 22	Washington, DC 20066	PSA souvenir sheet of 4 (C) (4 designs)	Nov 21
	44¢ Nature of America: Kelp Forest	Oct 1	Monterey, CA 93940	PSA pane of 10 (C) (10 designs)	Nov 30
DC	44¢ Winter Holidays	Oct 8	New York, NY 10199 (Mega Stamp Show)	PSA booklet of 20 PSA ATM booklet of 18 (M) (4 designs)	Dec 7
	44¢ Hanukkah Menorah	Oct 9	New York, NY 10199 (Mega Stamp Show)	PSA pane of 20 (M)	Dec 8
	44¢ Kwanzaa	Oct 9	New York, NY 10199 (Mega Stamp Show)	PSA pane of 20 (M)	Dec 8
	44¢ Christmas: "Virgin and Child" by Sassoferrato	Oct 20	San Simeon, CA 93452	PSA booklet of 20 (M)	Dec 19

Note Descriptions

C: Change in previously announced date, site, and/or rate

DC: Digital Color Postmark

N: New issue

P: Pictorial first day postmark

(C): Collectible


(M): Mail use

1: Customers must affix additional postage to bring total postage to at least the minimum First-Class Mail® rate for an envelope or stamped card, depending on which is used. Also, the cost for a stamped envelope is the value of the postage plus 10 cents, and the cost for a stamped card is the value of the postage plus 3 cents.

2: Issued to kick off National Stamp Collecting Month.

DID YOU KNOW?

USPS has more than 54,000 employees of Asian and Pacific Islander descent.

A smiling man with glasses, wearing a dark suit and a blue shirt, is holding a white USPS Priority Mail envelope. He is positioned on the right side of the graphic. The background is a collage of various USPS Priority Mail boxes and envelopes, some with red 'Priority Mail' labels. A globe is visible in the lower right corner of the background. The text is overlaid on the image in a bold, yellow, sans-serif font with a blue outline.

Pictorial Postmarks Announcement

As a community service, the Postal Service™ offers pictorial postmarks to commemorate local events celebrated in communities throughout the nation. A list of events for which pictorial postmarks are authorized appears below. If available, the sponsor of the pictorial postmark appears in italics under the date. Also provided are illustrations of those postmarks.

People attending these local events may obtain the postmark in person at the temporary Post Office™ station established there. Those who cannot attend the event but who wish to obtain the postmark may submit a mail order request. Pictorial postmarks are available only for the dates indicated, and *requests must be postmarked no later than 30 days following the requested pictorial postmark date.*

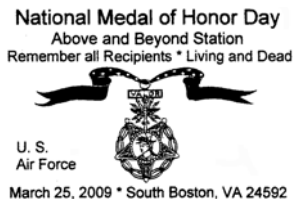
All requests must include a stamped envelope or postcard bearing at least the minimum First-Class Mail® postage. Items submitted for postmark may not include

postage issued after the date of the requested postmark. Such items will be returned unserved.

Customers wishing to obtain a postmark should affix stamps to any envelope or postcard of their choice, address the envelope or postcard to themselves or others, insert a card of postcard thickness in envelopes for sturdiness, and tuck in the flap. Place the envelope or postcard in a larger envelope and address it to: PICTORIAL POSTMARKS, followed by the NAME OF THE STATION, ADDRESS, CITY, STATE, ZIP+4® CODE, as listed below.

Customers can also send stamped envelopes and postcards without addresses for postmark, as long as they supply a larger envelope with adequate postage and their return address. After applying the pictorial postmark, the Postal Service returns the items (with or without addresses) under addressed protective cover.

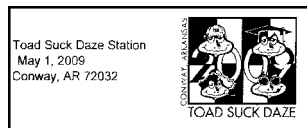
The following pictorial postmark has been extended for 30 days:



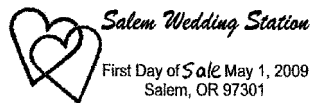
March 25, 2009
U.S. Postal Service
 National Medal of Honor Day Above and Beyond Station
 Postmaster
 601 N. Main St.
 South Boston, VA 24592-9998



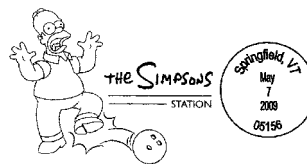
May 1, 2009
American Cancer Society
 Relay For Life
 Medina County Station
 Postmaster
 PO Box 9998
 Devine, TX 78016-9998



May 1-3, 2009
U.S. Postal Service
 Toad Suck Daze Station
 Postmaster
 1111 Main St.
 Conway, AR 72032-9998



May 1, 2009
U.S. Postal Service
 Salem Wedding Station
 Postmaster
 PO Box 9998
 Salem, OR 97301-9998



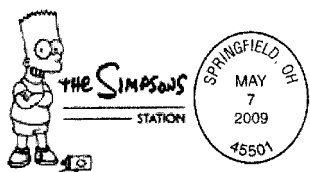
May 7, 2009
U.S. Postal Service
 The Simpsons Station
 Postmaster
 132 Main St.
 Springfield, VT 05156-9998



May 7, 2009
U.S. Postal Service
 The Simpsons Station
 Postmaster
 188 E. 9th Ave.
 Springfield, CO 81073-9998



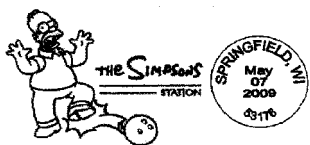
May 7, 2009
U.S. Postal Service
 The Simpsons Station
 Postmaster
 101 Stoneblock Row
 Montchanin, DE 19710-9998



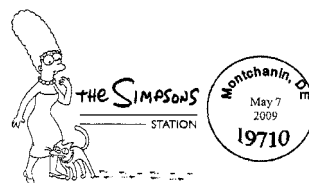
May 7, 2009
U.S. Postal Service
 The Simpsons Station
 Postmaster
 PO Box 9998
 Springfield, OH 45501-9998



May 7, 2009
U.S. Postal Service
 The Simpsons Station
 Postmaster
 101 Stoneblock Row
 Montchanin, DE 19710-9998



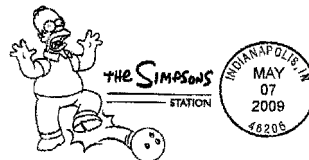
May 7, 2009
U.S. Postal Service
 The Simpsons Station
 Postmaster
 PO Box 9998
 Springfield, WI 53176-9998



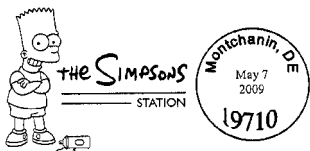
May 7, 2009
U.S. Postal Service
 The Simpsons Station
 Postmaster
 101 Stoneblock Row
 Montchanin, DE 19710-9998



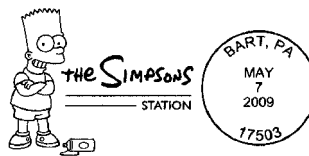
May 7, 2009
U.S. Postal Service
 The Simpsons Station
 Postmaster
 101 Stoneblock Row
 Montchanin, DE 19710-9998



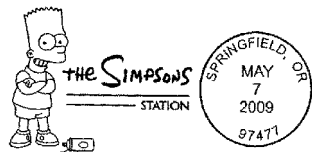
May 7, 2009
U.S. Postal Service
 The Simpsons Station
 Postmaster
 125 W. South St.
 Indianapolis, IN 46206-9998



May 7, 2009
U.S. Postal Service
 The Simpsons Station
 Postmaster
 101 Stoneblock Row
 Montchanin, DE 19710-9998



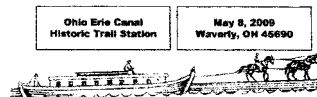
May 7, 2009
U.S. Postal Service
 The Simpsons Station
 Postmaster
 PO Box 9998
 Bart, PA 17503-9998



May 7, 2009
 U.S. Postal Service
 The Simpsons Station
 Postmaster
 PO Box 9998
 Springfield, OR 97477-9998



May 9, 2009
 U.S. Postal Service
 The Simpsons Station
 Postmaster
 PO Box 9998
 Hamden, OH 45634-9998



May 8, 2009
 Pike County Historical Society
 Ohio Erie Canal Historic Trail Station
 Postmaster
 PO Box 9998
 Waverly, OH 45690-9998



May 9, 2009
 U.S. Postal Service
 The Simpsons Station
 Postmaster
 PO Box 9998
 Ray, OH 45672-9998



May 9, 2009
 Town of Hudson
 Hudson Centennial Station
 Postmaster
 PO Box 9998
 Hudson, WY 82515-9998



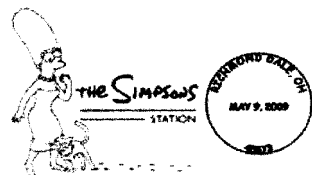
May 9, 2009
 U.S. Postal Service
 The Simpsons Station
 Postmaster
 PO Box 9998
 Bainbridge, OH 45612-9998



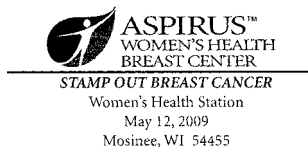
May 9, 2009
 Concrete Centennial Committee
 Concrete Centennial Station
 Postmaster
 PO Box 9998
 Concrete, WA 98237-9998



May 9-11, 2009
 NASA Space Center
 Final Visit Station
 Postmaster Designee
 Catherine Bindman
 401 Franklin St.
 Houston, TX 77201-9718



May 9, 2009
 U.S. Postal Service
 The Simpsons Station
 Postmaster
 PO Box 9998
 Richmond Dale, OH 45673-9998



May 12, 2009
 Aspirus Women's Health
 Women's Health Station
 Postmaster
 408 Second St.
 Mosinee, WI 54455-9998



May 14, 2009

*Wright Brothers Aeroplane
Company*

Charley Furnas Station
Postmaster
30 N. Main St.
West Milton, OH 45383-
9998



May 22, 2009

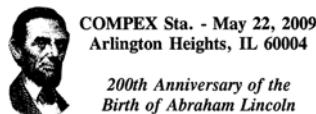
Canadian Wildcats Football
Wildcat Station
Postmaster
311 Purcell Ave.
Canadian, TX 79014-9998



May 14-17, 2009

*Old Petersburg - Addison
Historical Society*

National Road Festival
Station
Postmaster
PO Box 9998
Addison, PA 15411-9998



May 22-24, 2009

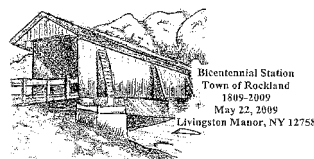
U.S. Postal Service
COMPLEX Station
Postmaster
909 W. Euclid Ave.
Arlington Heights, IL 60004-
9998

May 15, 2009



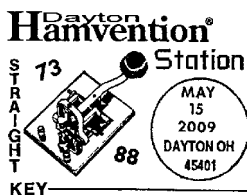
May 15, 2009

U.S. Postal Service
Mary Woodard Lasker
Station
Postmaster
PO Box 9998
Watertown, WI 53094-9998



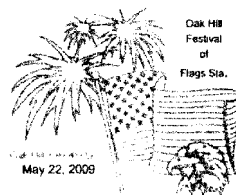
May 22, 2009

U.S. Postal Service
Bicentennial Station
Postmaster
PO Box 9998
Livingston Manor, NY
12758-9998



May 15-16, 2009

Dayton Stamp Club
Dayton Hamvention Station
Postmaster
1111 E. Fifth St.
Dayton, OH 45401-9998



May 22, 2009

U.S. Postal Service
Festival of Flags Station
Postmaster
PO Box 9998
Oak Hill, OH 45656-9998



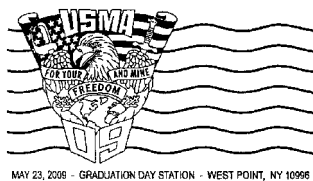
May 16, 2009

U.S. Postal Service
Preakness Station
Manager, MOWS
900 East Fayette Street
Baltimore, MD 21233-9715



May 23, 2009

*Hibbing Chamber of
Commerce*
Dylan Days Station
Postmaster
PO Box 9998
Hibbing, MN 55746-9998



May 23, 2009
 U.S. Military Academy
 Graduation Day Station
 Postmaster
 PO Box 9998
 West Point, NY 10996-9998



May 23, 2009
 Creede/Mineral County
 Chamber of Commerce
 Art Fest Station
 Postmaster
 10 S. Main St.
 Creede, CO 81130-9998



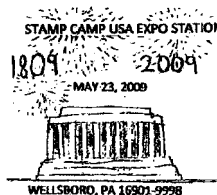
May 23, 2009
 Montandon Community
 Days Committee
 Montandon Day Station
 Postmaster
 PO Box 152
 Montandon, PA 17650-9998



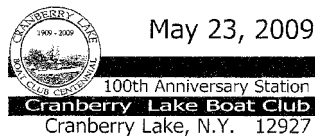
May 23, 2008
 Carter County
 Sesquicentennial
 Committee
 Carter County
 Sesquicentennial
 Celebration Station
 Postmaster
 307 W. Oliver St.
 Van Buren, MO 63965-9998



May 23, 2009
 Bethel Historical Society
 Postcard & History Fair
 Station
 Postmaster
 34 N. Main St.
 Bethel, VT 05032-9998



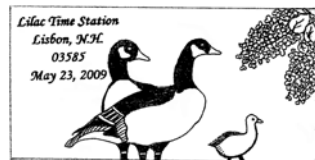
May 23-24, 2009
 Stamp Camp USA
 Stamp Camp USA Expo
 Station
 Postmaster
 PO Box 9998
 Wellsboro, PA 16901-9998



May 23, 2009
 U.S. Postal Service
 100th Anniversary Station
 Postmaster
 PO Box 9998
 Cranberry, NY 12927-9998



May 23-25, 2009
 U.S. Postal Service
 Welcome Home Station
 Postmaster
 PO Box 9998
 Waterloo, NY 13165-9998



May 23, 2009
 Lisbon Main Street & Lilac
 Festival
 Lilac Time Station
 Postmaster
 80 N. Main St.
 Lisbon, NH 03585-9998



May 24, 2009
 Pleasant Township
 Memorial Association
 Memorial Day Parade &
 Ceremonies Station
 Postmaster
 7 W. Pleasant St.
 Catawba, OH 43010-9998



May 24, 2009

U.S. Postal Service
Heritage Museum Station
Postmaster
PO Box 9998
Ticonderoga, NY 12883-9998

175th ANNIVERSARY STATION
CELEBRATING OTTAWA
175 YEARS OF PROGRESS
OTTAWA OH 45875 MAY 28, 2009



May 28, 2009

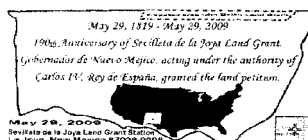
Village of Ottawa, OH
175th Anniversary Station
Postmaster
404 E. Main St.
Ottawa, OH 45875-9998



**HONORING
U.S. AIR FORCE
VETERANS STATION**
Westminster MA 01473
May 25, 2009

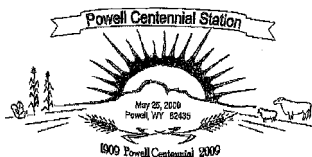
May 25, 2009

U.S. Postal Service
Honoring U.S. Air Force
Veterans Station
Postmaster
PO Box 9998
Westminster, MA 01473-9998



May 29, 2009

U.S. Postal Service
Seville de la Joya Land
Grant Station
Postmaster
PO Box 9998
La Joya, NM 87028-9998



May 25, 2009

City of Powell
Powell Centennial Station
Postmaster
270 N. Bent St.
Powell, WY 82435-9998



May 29, 2009

U.S. Postal Service
Bob Hope Station
Postmaster
2140 N. Hollywood Way
Burbank, CA 91505-9998



May 27-30, 2009

Village of Old Washington
Our Heritage Homes Station
Postmaster
PO Box 9998
Old Washington, OH 43768-9998



May 29-30, 2009

*Clinch River Days
Committee*
Clinch River Days Station
Postmaster
PO Box 9998
St. Paul, VA 24283-9998



THE RED LION INN
May 28, 2009
The Red Lion Inn Station
Stockbridge, Mass. 01262

May 28, 2009

The Red Lion Inn
The Red Lion Inn Station
Postmaster
1 Elm St.
Stockbridge, MA 01262-9998



"Art in the Sky" Station
at
Stone Quarry Hill Art Park
Cazenovia, NY 13035
May 30, 2009

May 30, 2009

U.S. Postal Service
Art in the Sky Station
Postmaster
PO Box 9998
Cazenovia, NY 13035-9998



May 30, 2009
Mackinaw City
McGulpin Point Light
Station
Postmaster
PO Box 9998
Mackinaw City, MI 49701-
9998



Celebrate & Commemorate
Welcome Home Station
May 30, 2009
Waterloo, NY 13165

May 30, 2009
U.S. Postal Service
Welcome Home Station
Postmaster
PO Box 9998
Waterloo, NY 13165-9998

— Stamp Services,
Government Relations and Public Policy, 5-21-09



50th Anniversary Celebration
The Greatest
Game Ever Pitched
12 Perfect Innings
May 26, 1959
Harvey Haddix
Station 46801
Springfield, Ohio
May 30, 2009

May 30, 2009
Clark County Historical
Society/Springfield-Clark
County Baseball Hall of
Fame
Harvey Haddix Station
Postmaster
150 N. Limestone St.
Springfield, OH 45501-9998

Postal Service PolicyNet

UNITED STATES POSTAL SERVICE

Postal Service PolicyNet

Search

Manuals HBKs MIs PUBs MOPs Forms Posters Notices VMOs VMBs

(text-only web site)
Postal Bulletin 22199
2-1-07

POSTAL BULLETIN
VOE
It's your money. We handle. Thanks to technology.

Postal Bulletin Web site

Latest News
Security of the Mail
What's New
PolicyNet Resources
How to Publish
Clearance
Online Links
Blue
USPS.com
ML Bulletins

Postal policies and procedures are an essential part of every business process. They tell customers how to do business with us, and they give employees information they need to do their jobs. Policies and procedures impact the bottom line of the Postal Service in four ways:

Productivity -- When a task is done correctly, it prevents rework and saves workhours.
Revenue -- When we charge customers the correct amount, we make money.
Legal Liability -- When we comply with federal and state laws and regulations, we avoid fines and penalties.
Customer Service -- When we give correct and consistent answers, our customers are happier.

Defining Policies and Procedures

Policies are:

- Statements of the Postal Service position on an issue.
- Interpretations of how the Postal Service complies with federal, state, and local laws.
- Specific guidelines or standards which must be followed.
- Designed to influence decisions and actions.

Procedures are:

- The official way business is done in the Postal Service.
- A set of established methods of how a task is performed.

This collection is updated when new information becomes available.

Kits | Signs | Labels | Acrobat | Winzip

Please send an email to #policynet with any questions or comments, or call us at 703-292-3557.

**It's your source for
up-to-date information
<http://blue.usps.gov/cpim>**

Supply Management

Coin-Operated Copiers — TRM Copy Centers, LLC

Early last year, we announced that TRM Copy Centers would be our new coin-operated photo copier machine program supplier. Since then, we've had positive responses about TRM Copy Centers' superior service from postmasters that signed up for the new program. TRM is able to service most areas of the country.

TRM Copy Centers uses the Postal Service's local agreement, which does not involve any out-of-pocket expense, except for copies made using the bypass key. You simply provide the floor space for the equipment and share in the revenue generated by the customer copies. It is a great opportunity for you to provide a service to your customers, while generating more revenue for your Post Office™.

Coin-Operated Copier Program Details

- **Included Items:** Equipment installation and maintenance including paper, toner, merchandising, parts, and labor.
- **Suggested Minimum Retail Copy Price:** \$0.20 per copy.
- **Retail Copy Revenue Share:** The Postal Service™ will receive \$0.05 for every retail copy made.

- **Postal Service–Use Copy Price:** Price of copies made by the Postal Service using the bypass key is \$0.05 per copy
- **Payment by Credit Card:** Payment for copies made in excess of copy revenue due the Postal Service can be made by credit card.
- **Installation Lead Time:** 30 to 60 days.

More information about this program is available on the USPS® Intranet at <http://blue.usps.gov/purchase/services/escmc/coinop.htm>.

To participate in this program or get further information, contact Gael Schuler of TRM Copy Centers by phone: 800-927-0979 ext. 3869, or e-mail at gaelschuler@trmcopycenters.com.

There are some other copier companies that may offer to install a coin-op copier in your lobby, but if they are not willing to use the Postal Service's local coin-op agreement, you should not sign their agreement, which typically would be a 3–5 year lease that would involve an out-of-pocket expense.

— Eastern Services CMC, Windsor CT,
Supply Management, 5-21-09

DID YOU KNOW?

**More than 55% of all
minority-owned
businesses with sales
exceeding \$1 million are
Asian American owned.**

A group of approximately 15 diverse Asian American business professionals, including men and women of various ages, are smiling and posing for a group photograph. They are dressed in professional attire, such as suits and blouses. The background is a plain, light-colored wall.

DID YOU KNOW?

**EAP can help you
emotionally prepare
for retirement.
Call 800-327-4968.**





475 L'ENFANT PLAZA SW
WASHINGTON DC 20260-5540

First-Class Mail
Postage & Fees Paid
USPS
Permit No. G-10



**Local Emergencies.
Incidents.
Extreme weather.**
Is your facility operating as usual?

Call the USPS National Emergency Hotline.

1-888-363-7462