

## VPL-FH65

6,000 lumens WUXGA 3LCD installation projector



### Overview

Bring presentations to life with impressive brightness and picture quality - plus easy, flexible integration and powerful picture features.

The VPL-FH65 installation projector is ideal for a wide range of business, education and entertainment applications. The energy-efficient High Pressure Mercury (HPM) lamp source is teamed with Sony's advanced BrightEra 3LCD projection engine, delivering extremely bright, detail-packed WUXGA resolution images with generous 6000 lumens brightness and rich, stable colours. Reality Creation and Contrast Enhancer technologies fine-tune image quality even further to assure exceptional clarity, realism and punch with every presentation.

With a stylish blend-in design, neat cable management and low fan noise, the VPL-FH65 integrates smoothly into almost any environment - from academic institutions, corporate, medical training and public sector organisations to visitor attractions and retail spaces. Easy set-up's assisted by a friendly new installation menu.

VPLFH65/W is a white model.

VPLFH65/B is a black model.

**Black and lensless models available in Europe; please check for local availability.**

## Features

- **Very high image quality with BrightEra 3LCD projection engine**

The energy-efficient High Pressure Mercury (HPM) lamp source is coupled with Sony's acclaimed BrightEra 3LCD projection engine to ensure high 6000 lumen image brightness with vivid, natural colour reproduction.

- **Advanced picture refinement technologies**

Picture quality is boosted by advanced processing featured on Sony home cinema projectors. Reality Creation uses a powerful pattern-matching database to optimise every pixel. Contrast Enhancer actively analyses and refines dark and light image areas for sparkling highlights and rich, deep blacks.

- **Crisp, detail-packed WUXGA resolution images**

See the finest detail in PC presentations, videos or multimedia signage with WUXGA (1920 x 1200) 16:10 resolution.

- **Hassle-free automatic filter cleaning**

Focus on great-looking images instead of arduous maintenance: automated filter cleaning system removes dust every 100 hours.

- **Powered Wide Lens Shift**

Generous lens shift adjustments give more flexibility for positioning the projector where you need it: close to ceilings or even horizontally offset.

- **Included powered standard zoom lens plus wide choice of lens options**

Installation flexibility is increased by a wide range of compatible lens options to suit virtually any size of room and throw requirements. New quick-release bayonet mount simplifies quick lens exchange.

- **Supports HDBaseT**

Simpler, more cost-effective installation and connectivity with digital transmission of HD video, audio and networking/control over a single Ethernet cable.

- **Create super-size displays with Edge Blending**

Seamlessly join accurately colour-matched images from multiple projectors, simplifying creation of stunning super-size displays for corporate and education.

- **Project onto non-flat surfaces with Image Warping**

Easily correct image geometry for natural-looking projections, even on convex or concave surfaces. Corner and edge correction can be easily adjusted with the supplied remote and on-screen menu.

- **Quiet operation**

Low fan noise ensures discreet, unobtrusive operation in quiet environments from museums and galleries to lecture theatres.

- **Slim, attractive new blend-in design**

The slim, stylish case design features a flat top surface that blends in discreetly when the projector is ceiling mounted. The clean appearance is accentuated by a new terminal cover that reduces cable clutter.

- **Choice of Picture Modes**

New Picture Mode ensures great-looking presentations in a wide range of operating conditions. Select

Standard, Dynamic, Brightness Priority or Multi Screen mode for optimised image quality, with any source and in every room.

- **Simple set-up with friendly new Installation menu**

Easily adjust projector settings with remote commander, including image warping and edge blending.

- **Project Side by Side**

Project images from two inputs at the same time: ideal for applications such as video conferencing and medical training where two images need to be seen simultaneously.

## Technical Specifications

Display system	
● Display system	3 LCD system

Display device	
● Size of effective display area	0.76" (19 mm) x 3 BrightEra LCD Panel, Aspect ratio: 16:10
● Number of pixels	6,912,000 (1920 x 1200 x 3) pixels

Projection lens *1	
● Focus	Powered
● Zoom - Powered/Manual	Powered (Approx. 1.6 x)
● Throw ratio	1.39:1 to 2.23:1
● Lens shift - Powered/Manual	Powered
● Lens shift - Range Vertical	-5.0%, +60%
● Lens shift - Range Horizontal	+/- 32%

Light source	
● Type	Ultra high pressure mercury lamp
● Wattage	370 W type

Recommended lamp replacement time *2	
● Lamp mode: High	3000 H
● Lamp mode: Low	4000 H

Filter cleaning / replacement cycle (Max.)*2	
● Filter cleaning / replacement cycle (Max.)	20000 H (service maintenance)

Screen size	
● Screen size	40" to 600" (1.02 m to 15.24 m) (measured diagonally)

Light output	
● Lamp mode: High	6000 lm
● Lamp mode: Standard	4400 lm

Color light output	
● Lamp mode: High	6000 lm
● Lamp mode: Standard	4400 lm

Contrast ratio (full white / full black) *3	
● Contrast ratio (full white / full black)	2000:1

Displayable scanning frequency	
● Horizontal	15 kHz to 92 kHz

● Vertical	48 Hz to 92 Hz
<b>Display resolution</b>	
● Computer signal input	Maximum display resolution: 1920 x 1200 dots *4
● Video signal input	NTSC, PAL, SECAM, 480/60i, 576/50i, 480/60p, 576/50p, 720/60p, 720/50p, 1080/60i, 1080/50i The following items are available for digital signal (HDMI input) only; 1080/60P, 1080/50p, 1080/24p
<b>Color system</b>	
● Color system	NTSC3.58, PAL, SECAM, NTSC4.43, PAL-M, PAL-N, PAL60
<b>Keystone correction (Max.)</b>	
● Horizontal	+/- 30 degrees
● Vertical	+/- 30 degrees
<b>OSD language</b>	
● OSD language	24-language (English, Dutch, French, Italian, German, Spanish, Portuguese, Turkish, Polish, Russian, Swedish, Norwegian, Japanese, Simplified Chinese, Traditional Chinese, Korean, Thai, Vietnamese, Arabic, Farsi, Finnish, Indonesian, Hungarian, Greek)
<b>INPUT OUTPUT (Computer/Video/Control)</b>	
● INPUT A	RGB / Y PB PR input connector: Mini D-sub 15-pin (female) Audio input connector: Stereo mini jack
● INPUT B	DVI input connector: DVI-D 24-pin (single link), HDCP support Audio input connector: Shared with INPUT A
● INPUT C	HDMI input connector: HDMI 19-pin, HDCP support Audio input connector: HDMI audio support
● INPUT D	HDBaseT interface connector: RJ45, 4 play (Video, Audio, LAN, Control)
● VIDEO IN	Video input connector: BNC Audio input connector: Shared with INPUT A
● OUTPUT A	Monitor output for INPUT A connector: Mini D-sub 15-pin (female) Audio output connector: Stereo mini jack
● OUTPUT B	Monitor output for INPUT B connector: DVD-D 24-pin (single link), HDCP not supported Audio output Monitor out connector: Stereo mini jack
● REMOTE	D-sub 9-pin (male) / RS232C
● LAN	RJ45, 10BASE-T/100BASE-TX
● IR (Control S)	Stereo mini jack, Plug in power DC5V
<b>Acoustic Noise</b>	
● Lamp mode: Standard	28 dB
<b>Operating temperature / Operating humidity</b>	
● Operating temperature / Operating humidity	0°C to 40°C (32°F to 104°F) / 20% to 80% (no condensation)
<b>Storage temperature / Storage humidity</b>	
● Storage temperature / Storage humidity	-10°C to +60°C (14°F to +140°F) / 20% to 80% (no condensation)
<b>Power requirements</b>	
● Power requirements	AC 100 V to 240 V, 5.0 A to 2.1 A, 50 Hz / 60 Hz
<b>Power consumption</b>	
● AC 100 V to 120 V	Lamp mode: High: 498 W
● AC 220 V to 240 V	Lamp mode: High: 483 W

Power Consumption (Standby Mode)	
● AC 100 V to 120 V	0.5 W (when "Standby mode" is set to "Low")
● AC 220 V to 240 V	0.5 W (when "Standby mode" is set to "Low")

Power Consumption (Networked Standby Mode)	
● AC 100 V to 120 V	15.0 W (LAN) 15.0 W (HDBaseT) 15.0 W (All Terminals and Networks Connected) (when "Standby Mode" is set to "Standard")
● AC 220 V to 240 V	13.3 W (LAN) 13.3 W (HDBaseT) 13.3 W (All Terminals and Networks Connected) (when "Standby Mode" is set to "Standard")

Standby Mode / Networked Standby Mode Activated	
● Standby Mode / Networked Standby Mode Activated	Approx. 10 Minutes

Heat dissipation	
● AC 100 V to 120 V	1699 BTU/h
● AC 220 V to 240 V	1648 BTU/h

Dimensions (W x H x D)	
● Dimensions (W x H x D) (without protrusions)	460 x 169 x 515 mm 18 1/8 x 6 21/32 x 20 9/32 inches

Mass	
● Mass	Approx. 13 kg (28 lb)

Supplied accessories	
● Remote commander	RM-PJ27

Optional accessories	
● Projection Lens	VPLL3007 / Z3009/ Z3024 / Z3032

Notes	
● *1	With supplied standard lens.
● *2	This figure is expected maintenance time, not guaranteed time. The actual value depends on the environment and how the projector is used.
● *3	The value is average.
● *4	Available for VESA Reduced Blanking signal.
● Environmental notice for customers in the USA	Lamp in this product contains mercury. Disposal of these materials may be regulated due to environmental considerations. For disposal or recycling information, please contact your local authorities or see <a href="http://www.sony.com/mercury">www.sony.com/mercury</a> for additional information.

## Accessories

### Ceiling Brackets



**PSS-650**  
Projector Ceiling Bracket for Installation



**PSS-650P**  
Projector Ceiling Bracket for Installation

### Lamps



**LMP-F370**  
Replacement Lamp for the VPL-F Series

### Lenses



**VPLL-3003**  
Projection Lens for the VPL-F Series



**VPLL-3007**  
Projection Lens for the VPL-F Series



**VPLL-Z3009**  
Short focus zoom lens



**VPLL-Z3032**  
Long focus zoom lens

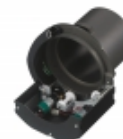
### Other Accessories



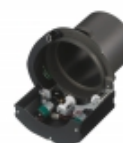
**LKRA-FL1**  
Optical Filter for 3D projection



**LKRA-FL2**  
Optical Filter for angular projection



**PK-F60LA1**  
Lens Adaptor for the discontinued VPLL-1032 optional Lens to use with the VPL-FHZ57, FHZ60, FHZ65, FH60, FH65, VPL-FWZ65, FWZ60 FW65 and FW60 Installation Projectors



**PK-F60LA2**  
Lens Adaptor for the discontinued VPLL-1024 optional Lens to use with the VPL-FHZ57, FHZ60, FHZ65, FH60, FH65, VPL-FWZ65, FWZ60 FW65 and FW60 Installation Projectors



**PK-F60LA3**  
Lens Adaptor for the discontinued VPLL-Z2009 optional Lens to use with the VPL-FHZ57, FHZ60, FHZ65, FH60, FH65, VPL-FWZ65, FWZ60 FW65 and FW60 Installation Projectors



**VPLL-Z3010**

Projection Lens for the VPL-F Series



**VPLL-Z3024**

Projection Lens for the VPL-F Series



**PK-F60LA4**

Lens Adaptor for the discontinued VPLL-2007 optional Lens to use with the VPL-FHZ57, FHZ60, FHZ65, FH60, FH65, VPL-FWZ65, FWZ60, FW65 and FW60 Installation Projectors